

# The Study on Integrated Development Strategy for Danang City and Its Neighboring Area in the Socialist Republic of Vietnam (DaCRISS)

FINAL REPORT / Annex 6

**Urban Karte**

December 2010

ALMEC Corporation  
International Development Center of Japan

EID

JR

10-194

**JAPAN INTERNATIONAL COOPERATION AGENCY (JICA)  
DANANG PEOPLE'S COMMITTEE**

**THE STUDY ON INTEGRATED DEVELOPMENT STRATEGY  
FOR DANANG CITY AND ITS NEIGHBORING AREA  
IN THE SOCIALIST REPUBLIC OF VIETNAM  
(DACRISS)**

**FINAL REPORT**

**ANNEX 6**

**URBAN KARTE**

**December 2010**

**ALMEC CORPORATION  
INTERNATIONAL DEVELOPMENT CENTER OF JAPAN**

# TABLE OF CONTENTS

|          |                                      |              |
|----------|--------------------------------------|--------------|
| <b>1</b> | <b>ASSESSMENT OF WHOLE CITY.....</b> | <b>A6-1</b>  |
|          | Danang City.....                     | A6-2         |
| <b>2</b> | <b>ASSESSMENT BY DISTRICT .....</b>  | <b>A6-5</b>  |
|          | Hai Chau.....                        | A6-6         |
|          | Thanh Khe.....                       | A6-9         |
|          | Son Tra.....                         | A6-12        |
|          | Ngu Hanh Son.....                    | A6-15        |
|          | Cam Le.....                          | A6-18        |
|          | Lien Chieu.....                      | A6-21        |
|          | Hoa Vang.....                        | A6-24        |
| <b>3</b> | <b>ASSESSMENT BY COMMUNE .....</b>   | <b>A6-27</b> |
|          | Binh Hien.....                       | A6-28        |
|          | Binh Thuan.....                      | A6-30        |
|          | Hoa Cuong Nam.....                   | A6-32        |
|          | Hoa Thuan Tay.....                   | A6-34        |
|          | Hai Cahu I.....                      | A6-36        |
|          | Hai Cahu II.....                     | A6-38        |
|          | Hoa Cuong Bac.....                   | A6-40        |
|          | Nam Duong.....                       | A6-42        |
|          | Phuoc Ninh.....                      | A6-44        |
|          | Thanh Binh.....                      | A6-46        |
|          | Thuan Phuoc.....                     | A6-48        |
|          | Thach Thang.....                     | A6-50        |
|          | Hoa Thuan Dong.....                  | A6-52        |
|          | An Khe.....                          | A6-54        |
|          | Chinh Gian.....                      | A6-56        |
|          | Tam Thuan.....                       | A6-58        |
|          | Thanh Khe Dong.....                  | A6-60        |
|          | Thac Gian.....                       | A6-62        |
|          | Tan Chinh.....                       | A6-64        |
|          | Vinh Trung.....                      | A6-66        |
|          | Xuan Ha.....                         | A6-68        |
|          | Hoa Khe.....                         | A6-70        |
|          | Thanh Khe Tay.....                   | A6-72        |
|          | An Hai Bac.....                      | A6-74        |
|          | An Hai Tay.....                      | A6-76        |
|          | An Hai Dong.....                     | A6-78        |
|          | Man Thai.....                        | A6-80        |
|          | Nai Hien Dong.....                   | A6-82        |
|          | Phuoc My.....                        | A6-84        |

|                     |        |
|---------------------|--------|
| Tho Quang.....      | A6-86  |
| My An.....          | A6-88  |
| Hoa Hai.....        | A6-90  |
| Hoa Quy .....       | A6-92  |
| Khue My .....       | A6-94  |
| Hoa An.....         | A6-96  |
| Hoa Phat.....       | A6-98  |
| Hoa Tho Tay .....   | A6-100 |
| Hoa Tho Dong .....  | A6-102 |
| Hoa Xuan.....       | A6-104 |
| Khue Trung.....     | A6-106 |
| Hoa Hiep Nam .....  | A6-108 |
| Hoa Khanh Nam ..... | A6-110 |
| Hoa Minh .....      | A6-112 |
| Hoa Hiep Bac .....  | A6-114 |
| Hoa Khanh Bac ..... | A6-116 |
| Hoa Bac.....        | A6-118 |
| Hoa Chau .....      | A6-120 |
| Hoa Khuong.....     | A6-122 |
| Hoa Lien .....      | A6-124 |
| Hoa Nhon .....      | A6-126 |
| Hoa Ninh.....       | A6-128 |
| Hoa Phong.....      | A6-130 |
| Hoa Phu.....        | A6-132 |
| Hoa Phuoc.....      | A6-134 |
| Hoa Bac.....        | A6-135 |
| Hoa Son.....        | A6-136 |
| Hoa Tien .....      | A6-138 |

## **ASSESSMENT OF WHOLE CITY**

---

# Danang City

## Vietnam

### Profile

Danang City is bordered by Thua Thien Hue province to the north and Quang Nam province to the south. As of 2007, the city had a population of 806,757, about 87% of which resided in urban areas. The existence of large areas of forested land, water bodies, and coastal areas enhances the living environment and at the same time increases the city's vulnerability to disasters. The provision of infrastructure and public services still need improvement, especially in the rural areas.

### FACT SHEET

| Main Indicators          |                                                | Value        |
|--------------------------|------------------------------------------------|--------------|
| Population               | Population (2000)                              | 716,287      |
|                          | Population (2007)                              | 806,757      |
|                          | Average Population Growth Rate (00-07)         | 1.71         |
|                          | Gross Population Density Ratio (no./ha)        | 8            |
|                          | Net Population Density Ratio (no. /ha)         | 39           |
| Land                     | Total Area (ha)                                | 94972        |
|                          | Net Area (ha) <sup>1</sup>                     | 20572        |
| Employment and Enrolment | Primary:Secondary:Tertiary Employment Rate (%) | 11 : 26 : 63 |
|                          | Employment-Residence Ratio (%) <sup>2</sup>    | 0.99         |
|                          | Enrolment-Residence Ratio (%) <sup>3</sup>     | 1.00         |
| Household Information    | Average Household Size                         | 3.9          |
|                          | Average Monthly Household Income (000VND)      | 3,929        |
|                          | Poor Households (%)                            | 6.2          |
|                          | Households with Own Houses (%)                 | 95.1         |
|                          | Households with Cars/1-2 Motorcycles (%)       | 90.6         |
| Transportation           | Average Travel Time (excluding walking) (min.) | 15.4         |
|                          | Public Transportation Usage (all trips) (%)    | 0.3          |
| Landscape Areas          | Water Surface (ha)                             | 2891.5       |
|                          | Parks and Open Spaces (ha)                     | 311.4        |
| Connectivity             | Households with Mobile Phones (%)              | 73.2         |
|                          | Households with Internet Connection (%)        | 17           |
| Health                   | Hospitals (no.)                                | 94           |
|                          | Hospital Beds (no.)                            | 4,430        |
|                          | Doctors (no.)                                  | 620          |
| Education                | Schools (no.)                                  | 350          |
|                          | Students (no.)                                 | 167,432      |
|                          | Teachers (no.)                                 | 8,203        |

<sup>1</sup>Net Area refers to urban areas and areas suitable for development. The latter was calculated based on a development suitability analysis wherein development constraints were identified.

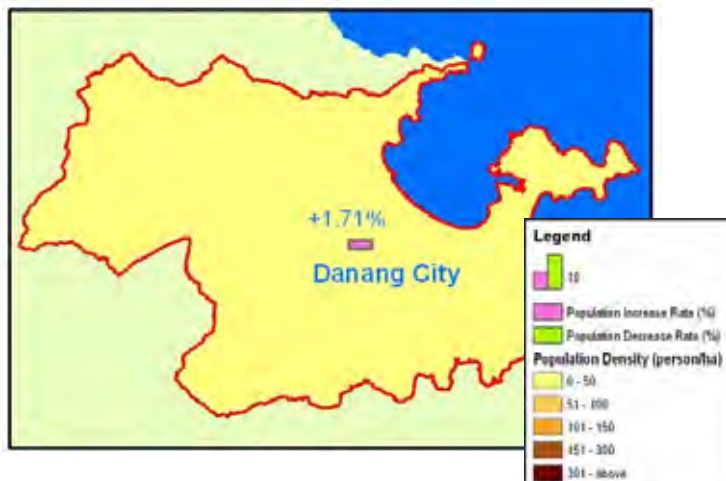
<sup>2</sup> Measures the number of workers working in the area and workers living in the area.

<sup>3</sup> Measures the number of students studying in the area and students living in the area.

### Location

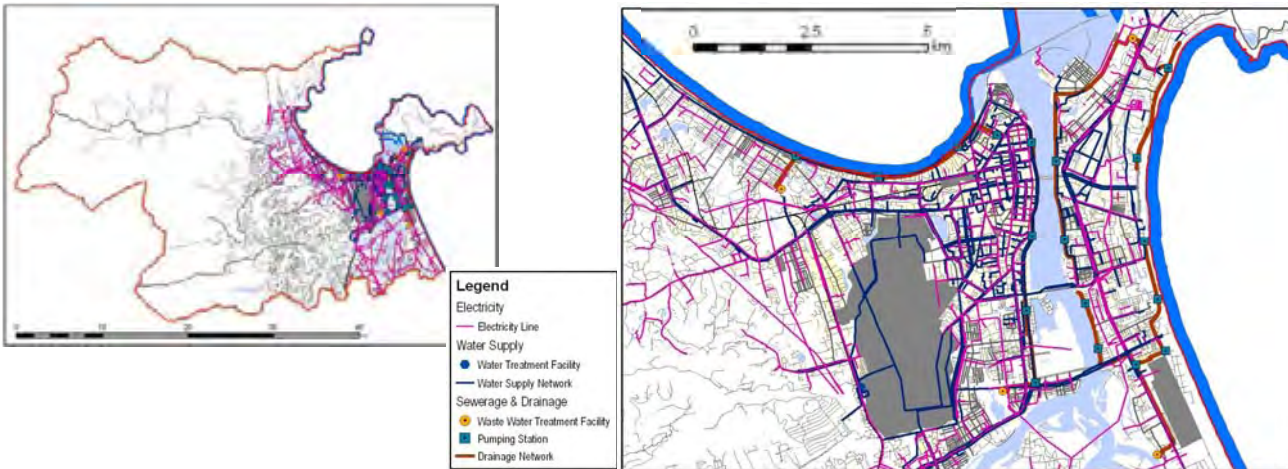


### Population

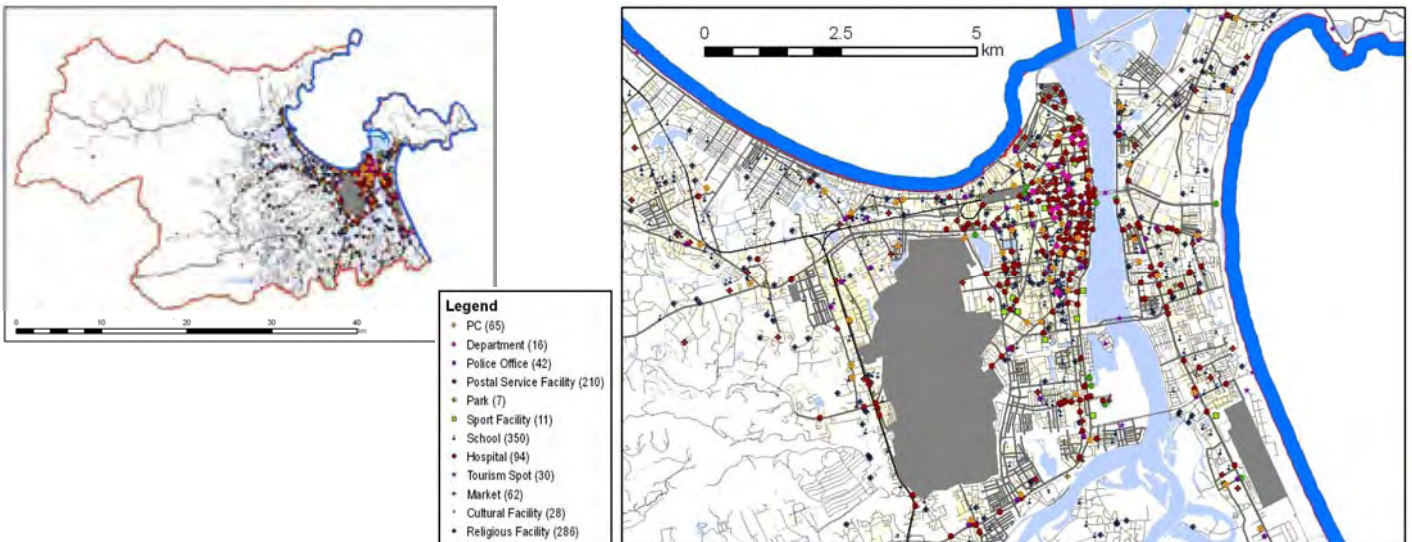


# Danang City Vietnam

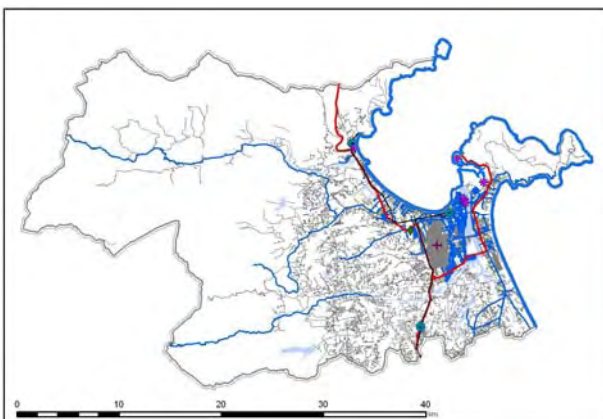
## Urban Infrastructure



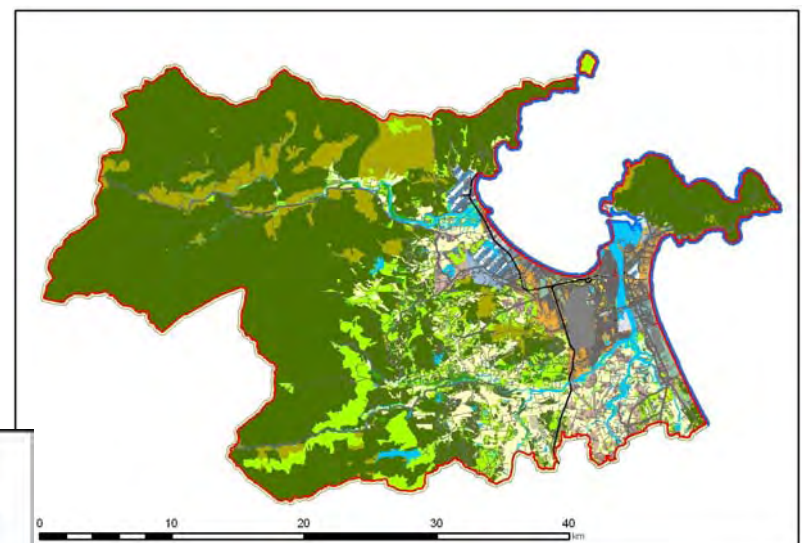
## Public Facilities



## Transportation



## Land Use



| Statistical Data on Current Condition     |                                                   | 2007             |                    |                                | People's Assessment on Current Condition | Danang City | ASSESSMENT      |                  |
|-------------------------------------------|---------------------------------------------------|------------------|--------------------|--------------------------------|------------------------------------------|-------------|-----------------|------------------|
|                                           |                                                   | Danang City      | Vietnam            | Benchmark 2025 for Danang City |                                          |             | Objective Score | Subjective Score |
| CONVENIENCE                               |                                                   |                  |                    |                                |                                          | <b>0.50</b> | <b>1</b>        | <b>1</b>         |
|                                           | Household Electricity Connection (%)              | 99               | -                  | 100                            | Power Supply                             | 0.37        | 1               | 1                |
|                                           | Road Area Ratio (% per net area)                  | 12.8             | -                  | 15.0                           | Traffic Situation                        | 0.65        | 1               | 1                |
|                                           | To-work Travel Time (min.)                        | 16.7             | -                  | 15.0                           | To-work Travel Time                      | 0.54        | 2               | 1                |
|                                           | To-work Trips by Public Transportation (%)        | 0.07             | -                  | 35.00                          | Public Transportation Convenience        | 0.40        | -2              | 1                |
|                                           | Motor Vehicle Ownership per 000 Population        | 458              | -                  | 250                            | Transportation Convenience               | 0.65        | 2               | 1                |
|                                           | # of TV Sets per 000 Population                   | 322              | -                  | 300                            | Telecommunications                       | 0.45        | 2               | 1                |
| # of Telephones per 000 Population        | 200                                               | 127 <sup>1</sup> | 300                | Telecommunications             | 0.45                                     | 1           | 1               |                  |
| SAFETY & SECURITY                         |                                                   |                  |                    |                                |                                          | <b>0.32</b> | <b>-1</b>       | <b>1</b>         |
|                                           | Police Service Coverage (%)                       | 71.6             | -                  | 80.0                           | Safety and Security                      | 0.50        | 1               | 1                |
|                                           | Flood Vulnerability (% of area)                   | 25.7             | -                  | 10.0                           | Flooding                                 | 0.28        | -2              | 1                |
|                                           | HHs with Permanent Housing (%)                    | 98.4             | -                  | 100.0                          | Housing                                  | 0.37        | 1               | 1                |
| Traffic Injuries per 100,000 Population   | 1,480                                             | -                | 700                | Traffic Safety                 | 0.12                                     | -2          | 1               |                  |
| HEALTH & WELL-BEING                       |                                                   |                  |                    |                                |                                          | <b>0.29</b> | <b>-1</b>       | <b>1</b>         |
|                                           | HHs with Piped Water Connection (%)               | 60.9             | -                  | 80.0                           | Water Supply                             | 0.18        | -1              | 1                |
|                                           | HHs Covered by SW Collection Services (%)         | 80.2             | 80 <sup>2</sup>    | 90.0                           | Solid Waste Collection                   | 0.36        | 0               | 1                |
|                                           | HHs with Sewerage Systems (%)                     | 51.6             | -                  | 90.0                           | Drainage Conditions                      | 0.39        | -2              | 1                |
|                                           | Hospitals per 000 Population                      | 0.13             | 0.16 <sup>3</sup>  | 0.15                           | Access to Health Care                    | 0.23        | 1               | 1                |
| AMENITY                                   |                                                   |                  |                    |                                |                                          | <b>0.09</b> | <b>1</b>        | <b>0</b>         |
|                                           | Cultural Facilities per 000 Population            | 0.53             | -                  | 1.00                           | Access to Entertainment Facilities       | -0.06       | 0               | -1               |
|                                           | Water Areas per 000 Population (ha)               | 5.52             | 4.93 <sup>1</sup>  | 10.00                          | Neighborhood Landscape                   | 0.05        | 0               | 1                |
|                                           | Parks / Open Spaces per 000 Population (ha)       | 0.46             | -                  | 3.00                           | Access to Parks and Green Spaces         | -0.05       | -2              | 0                |
|                                           | Green Areas per 000 Population (ha)               | 299              | -                  | 300.00                         | Greenery                                 | -0.02       | 2               | 0                |
|                                           | Average Living Space per Capita (m <sup>2</sup> ) | 75.3             | 71.99 <sup>5</sup> | 50.0                           | Housing Conditions                       | 0.35        | 2               | 1                |
|                                           | Net Population Density (no./ha)                   | 39               | -                  | 100                            | Peace and Order Situation                | 0.28        | 2               | 1                |
| CAPACITY                                  |                                                   |                  |                    |                                |                                          | <b>0.48</b> | <b>1</b>        | <b>1</b>         |
|                                           | Average Annual Income (USD)                       | 2,619            | 1,024 <sup>4</sup> | 5,000                          | Housing                                  | 0.37        | 0               | 1                |
|                                           | Motor Vehicle Ownership per 000 Population        | 458              | -                  | 250                            | Transportation Convenience               | 0.65        | 2               | 1                |
|                                           | Internet Connections per 000 Population           | 174              | 210 <sup>1</sup>   | 500                            | Telecommunications                       | 0.45        | 0               | 1                |
| Mobile Phone Ownership per 000 Population | 344                                               | 390 <sup>1</sup> | 500                | Telecommunications             | 0.45                                     | 1           | 1               |                  |

1: HP of 'The World Factbook' by the Central Intelligence Agency, 2: Data of 2008, General Statistics Office of Vietnam, 3: General Statistics Office of Vietnam  
 4: Data of 2008, HP of Secretary for Public Diplomacy and Public Affairs of United States (<http://www.state.gov/r/pa/ei/bgn/4130.htm>)  
 5: Data of 2006, Vietnam's Ministry of Natural Resource and Environment Note: Population data source is the General Statistics Office of Vietnam.

**Overall Assessment**

**Objective Assessment Score: 0.28**

**Subjective Assessment Score: 0.33**

**Summary Diagnosis**

**Overall Assessment** The overall living conditions in Danang City are generally good, although improvements are needed in the aspects of safety & security and health & well-being.

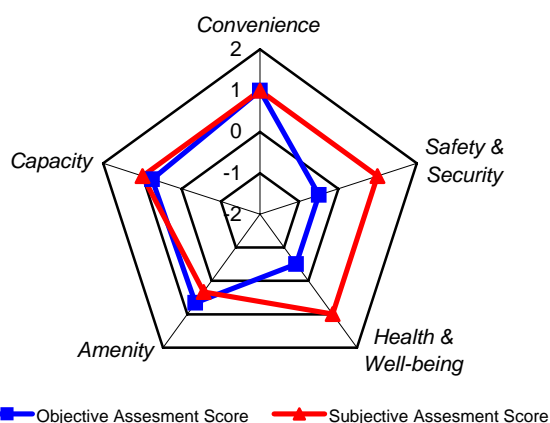
**Convenience** Basic services are provided well, but still needs improvement in certain areas of the city.

**Safety & Security** The city is highly vulnerable to flooding. Meanwhile, public transportation usage is very low.

**Health & Well-being** Piped water connection and sewerage system provision need improvement to enhance the people's health and well-being.

**Amenity** The people desire to have better access to cultural facilities, parks / open spaces, and greeneries.

**Capacity** The ownership rate for motor vehicles is high, i.e., almost 1 in every 2 households. The people are generally satisfied with their capacity levels.





**ASSESSMENT BY DISTRICT**

---

# District: Hai Chau

## City: Danang City

### Profile

Hai Chau district is the central business district of Danang City. The district's net population density is high at 206 persons / ha, but population growth rate is moderate. Employment is dominant in the tertiary sector. The average annual income is high, and access to basic services is good. Land use is mainly residential and commercial, but the Danang International Airport airport accounts for 34% of the total land area. The city people's committee office is located in this district.

### FACT SHEET

| Main Indicators          |                                                | Value       |
|--------------------------|------------------------------------------------|-------------|
| Population               | Population (2000)                              | 183,998     |
|                          | Population (2007)                              | 195,109     |
|                          | Average Population Growth Rate (00-07)         | 0.84        |
|                          | Gross Population Density Ratio (no./ha)        | 92          |
|                          | Net Population Density Ratio (no. /ha)         | 206         |
| Land                     | Total Area (ha)                                | 2110        |
|                          | Net Area (ha) <sup>1</sup>                     | 947         |
| Employment and Enrolment | Primary:Secondary:Tertiary Employment Rate (%) | 2 : 19 : 79 |
|                          | Employment-Residence Ratio (%) <sup>2</sup>    | 1.24        |
|                          | Enrolment-Residence Ratio (%) <sup>3</sup>     | 1.22        |
| Household Information    | Average Household Size                         | 3.9         |
|                          | Average Monthly Household Income (000VND)      | 4,943       |
|                          | Poor Households (%)                            | 4.4         |
|                          | Households with Own Houses (%)                 | 97.8        |
|                          | Households with Cars/1-2 Motorcycles (%)       | 93.8        |
| Transportation           | Average Travel Time (excluding walking) (min.) | 14.3        |
|                          | Public Transportation Usage (all trips) (%)    | 0.1         |
| Landscape Areas          | Water Surface (ha)                             | 242.6       |
|                          | Parks and Open Spaces (ha)                     | 133.9       |
| Connectivity             | Households with Mobile Phones (%)              | 82.9        |
|                          | Households with Internet Connection (%)        | 34          |
| Health                   | Hospitals (no.)                                | 31          |
|                          | Hospital Beds (no.)                            | 2,260       |
|                          | Doctors (no.)                                  | 389         |
| Education                | Schools (no.)                                  | 81          |
|                          | Students (no.)                                 | 46,573      |
|                          | Teachers (no.)                                 | 2,129       |

<sup>1</sup>Net Area refers to urban areas and areas suitable for development. The latter was calculated based on a development suitability analysis wherein development constraints were identified.

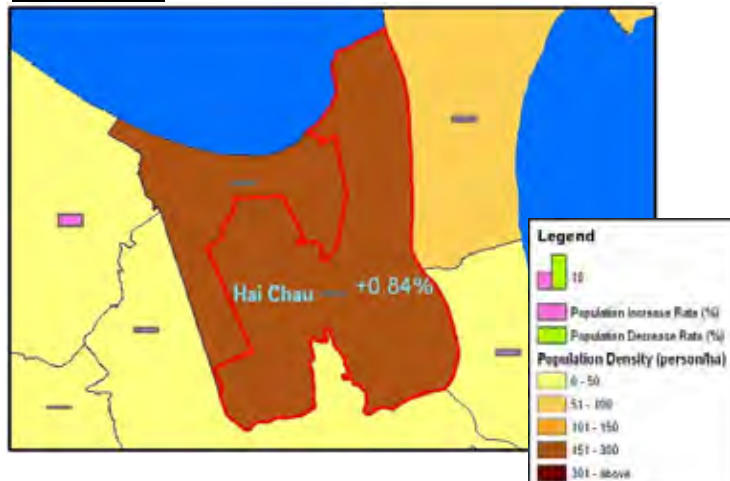
<sup>2</sup> Measures the number of workers working in the area and workers living in the area.

<sup>3</sup> Measures the number of students studying in the area and students living in the area.

### Location



### Population



# District: Hai Chau

## City: Danang City

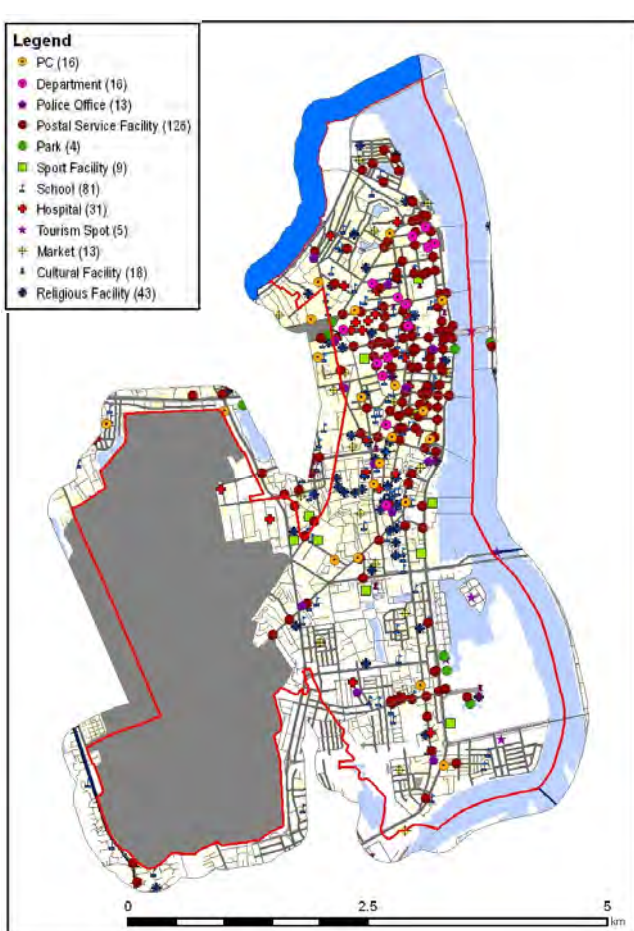
### Urban Infrastructure



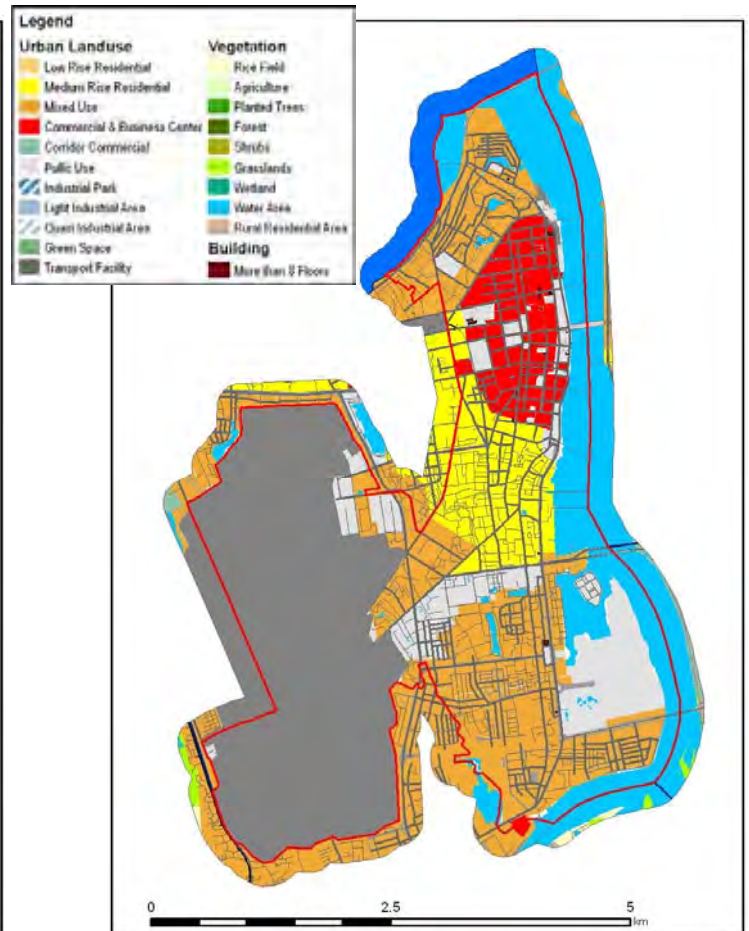
### Transportation



### Public Facilities



### Land Use



| Statistical Data on Current Condition      |                                                   | 2007              |             |                            | Benchmark 2025 for Danang City     | People's Assessment on Current Condition | Hai Chau District | ASSESSMENT      |               |                  |               |
|--------------------------------------------|---------------------------------------------------|-------------------|-------------|----------------------------|------------------------------------|------------------------------------------|-------------------|-----------------|---------------|------------------|---------------|
|                                            |                                                   | Hai Chau District | Danang City |                            |                                    |                                          |                   | Objective Score | District Rank | Subjective Score | District Rank |
| CONVENIENCE                                |                                                   |                   |             |                            |                                    |                                          | <b>0.62</b>       | <b>1</b>        | <b>1</b>      | <b>1</b>         | <b>2</b>      |
|                                            | Household Electricity Connection (%)              | 100               | 99          | 100                        | Power Supply                       | 0.37                                     | 2                 | 1               | 1             | 5                |               |
|                                            | Road Area Ratio (% per net area)                  | 19.8              | 12.8        | 15.0                       | Traffic Situation                  | 0.83                                     | 2                 | 1               | 1             | 1                |               |
|                                            | To-work Travel Time (min.)                        | 14.9              | 16.7        | 15.0                       | To-work Travel Time                | 0.73                                     | 2                 | 2               | 1             | 1                |               |
|                                            | To-work Trips by Public Transportation (%)        | 0.00              | 0.07        | 35.00                      | Public Transportation Convenience  | 0.75                                     | -2                | 4               | 1             | 2                |               |
|                                            | Motor Vehicle Ownership per 000 Population        | 546               | 450         | 250                        | Transportation Convenience         | 0.81                                     | 2                 | 1               | 1             | 1                |               |
|                                            | # of TV Sets per 000 Population                   | 407               | 323         | 300                        | Telecommunications                 | 0.40                                     | 2                 | 1               | 1             | 6                |               |
|                                            | # of Telephones per 000 Population                | 226               | 200         | 300                        | Telecommunications                 | 0.40                                     | 1                 | 1               | 1             | 6                |               |
| SAFETY & SECURITY                          |                                                   |                   |             |                            |                                    |                                          | <b>0.34</b>       | <b>0</b>        | <b>4</b>      | <b>1</b>         | <b>4</b>      |
|                                            | Police Service Coverage (%)                       | 99.8              | 71.6        | 80.0                       | Safety and Security                | 0.40                                     | 2                 | 1               | 1             | 6                |               |
|                                            | Flood Vulnerability (% of area)                   | 38.7              | 25.7        | 10.0                       | Flooding                           | 0.45                                     | -2                | 6               | 1             | 3                |               |
|                                            | HHs with Permanent Housing (%)                    | 98.9              | 98.4        | 100.0                      | Housing                            | 0.41                                     | 1                 | 2               | 1             | 4                |               |
| HEALTH & WELL-BEING                        | Traffic Injuries per 100,000 Population           | 1,306             | 1,480       | 700                        | Traffic Safety                     | 0.09                                     | -2                | 4               | 1             | 4                |               |
|                                            |                                                   |                   |             |                            |                                    |                                          | <b>0.35</b>       | <b>1</b>        | <b>1</b>      | <b>1</b>         | <b>4</b>      |
|                                            | HHs with Piped Water Connection (%)               | 95.2              | 60.9        | 80.0                       | Water Supply                       | 0.38                                     | 1                 | 1               | 1             | 4                |               |
|                                            | HHs Covered by SW Collection Services (%)         | 96.3              | 80.2        | 90.0                       | Solid Waste Collection             | 0.37                                     | 2                 | 3               | 1             | 6                |               |
| AMENITY                                    | HHs with Sewerage Systems (%)                     | 87.7              | 51.6        | 90.0                       | Drainage Conditions                | 0.56                                     | 1                 | 1               | 1             | 2                |               |
|                                            | Hospitals per 000 Population                      | 0.16              | 0.13        | 0.15                       | Access to Health Care              | 0.07                                     | 1                 | 1               | 1             | 7                |               |
|                                            |                                                   |                   |             |                            |                                    |                                          | <b>0.14</b>       | <b>-1</b>       | <b>6</b>      | <b>1</b>         | <b>3</b>      |
|                                            | Cultural Facilities per 000 Population            | 0.41              | 0.53        | 1.00                       | Access to Entertainment Facilities | -0.04                                    | 0                 | 5               | 0             | 5                |               |
|                                            | Water Areas per 000 Population (ha)               | 1.25              | 5.52        | 10.00                      | Neighborhood Landscape             | 0.13                                     | -1                | 5               | 1             | 3                |               |
|                                            | Parks / Open Spaces per 000 Population (ha)       | 0.52              | 0.46        | 3.00                       | Access to Parks and Green Spaces   | 0.03                                     | -2                | 2               | 0             | 5                |               |
| CAPACITY                                   | Green Areas per 000 Population (ha)               | 0.01              | 298.66      | 300.00                     | Greenery                           | 0.04                                     | -2                | 7               | 0             | 3                |               |
|                                            | Average Living Space per Capita (m <sup>2</sup> ) | 22.4              | 75.3        | 50.0                       | Housing Conditions                 | 0.42                                     | 2                 | 7               | 1             | 4                |               |
|                                            | Net Population Density (no./ha)                   | 206               | 39          | 100                        | Peace and Order Situation          | 0.26                                     | 0                 | 6               | 1             | 4                |               |
|                                            |                                                   |                   |             |                            |                                    |                                          | <b>0.51</b>       | <b>2</b>        | <b>1</b>      | <b>1</b>         | <b>6</b>      |
| Average Annual Income (USD)                | 3,295                                             | 2,619             | 5,000       | Housing                    | 0.41                               | 1                                        | 1                 | 1               | 4             |                  |               |
| Motor Vehicle Ownership per 000 Population | 546                                               | 450               | 250         | Transportation Convenience | 0.81                               | 2                                        | 1                 | 1               | 1             |                  |               |
| Internet Connections per 000 Population    | 342                                               | 174               | 500         | Telecommunications         | 0.40                               | 2                                        | 1                 | 1               | 6             |                  |               |
| Mobile Phone Ownership per 000 Population  | 476                                               | 352               | 500         | Telecommunications         | 0.40                               | 1                                        | 1                 | 1               | 6             |                  |               |

## Overall Assessment

Objective Assessment Score: **0.66** (1/7)  
 Subjective Assessment Score: **0.39** (3/7)

rank / district

## Summary Diagnosis

**Overall Assessment** Objective and subjective scores of the overall living conditions in the district are quite good. Improvements can be made in safety & security, as well as in amenity.

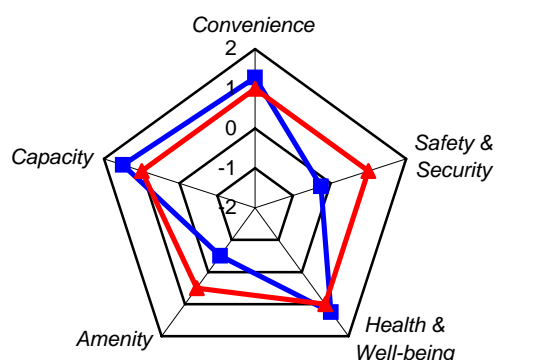
**Convenience** The road area ratio is very high, and the people are satisfied with traffic conditions. They, however, do not use public transportation for commuting.

**Safety & Security** Flood vulnerability is rather high. While almost all of the area has police presence, the people are still concerned with safety / security conditions.

**Health & Well-being** All health & well-being services are provided well in Hai Chau district. However, the people want improvement in solid waste collection.

**Amenity** The objective score for amenity is one of the lowest in the city, mainly due to the lack of cultural facilities, water areas, parks / open spaces, and greeneries.

**Capacity** The people's capacity is the highest among all the districts in the city; however, the people's perception of their capacity is not as high.



Objective Assessment Score (Blue line) Subjective Assessment Score (Red line)

# District: Thanh Khe

## City: Danang City

### Profile

Thanh Khe district is bordered by the Danang Bay to the north and by the airport to the south. Its population density is the highest of all districts in Danang City. The district is located in the inner city, and the average travel time is short. Land use is predominantly residential and partly commercial. Basic urban services are well provided, and the average annual household income is high.

### FACT SHEET

| Main Indicators          |                                                | Value       |
|--------------------------|------------------------------------------------|-------------|
| Population               | Population (2000)                              | 153,611     |
|                          | Population (2007)                              | 167,289     |
|                          | Average Population Growth Rate (00-07)         | 1.23        |
|                          | Gross Population Density Ratio (no./ha)        | 180         |
|                          | Net Population Density Ratio (no. /ha)         | 250         |
| Land                     | Total Area (ha)                                | 927         |
|                          | Net Area (ha) <sup>1</sup>                     | 669         |
| Employment and Enrolment | Primary:Secondary:Tertiary Employment Rate (%) | 3 : 21 : 76 |
|                          | Employment-Residence Ratio (%) <sup>2</sup>    | 0.79        |
|                          | Enrolment-Residence Ratio (%) <sup>3</sup>     | 0.80        |
| Household Information    | Average Household Size                         | 4.0         |
|                          | Average Monthly Household Income (000VND)      | 4,540       |
|                          | Poor Households (%)                            | 4.7         |
|                          | Households with Own Houses (%)                 | 94.6        |
|                          | Households with Cars/1-2 Motorcycles (%)       | 92.1        |
| Transportation           | Average Travel Time (excluding walking) (min.) | 14.4        |
|                          | Public Transportation Usage (all trips) (%)    | 0.2         |
| Landscape Areas          | Water Surface (ha)                             | 25.79       |
|                          | Parks and Open Spaces (ha)                     | 22.63       |
| Connectivity             | Households with Mobile Phones (%)              | 78.8        |
|                          | Households with Internet Connection (%)        | 25          |
| Health                   | Hospitals (no.)                                | 15          |
|                          | Hospital Beds (no.)                            | 395         |
|                          | Doctors (no.)                                  | 57          |
| Education                | Schools (no.)                                  | 52          |
|                          | Students (no.)                                 | 30,076      |
|                          | Teachers (no.)                                 | 1,413       |

<sup>1</sup>Net Area refers to urban areas and areas suitable for development. The latter was calculated based on a development suitability analysis wherein development constraints were identified.

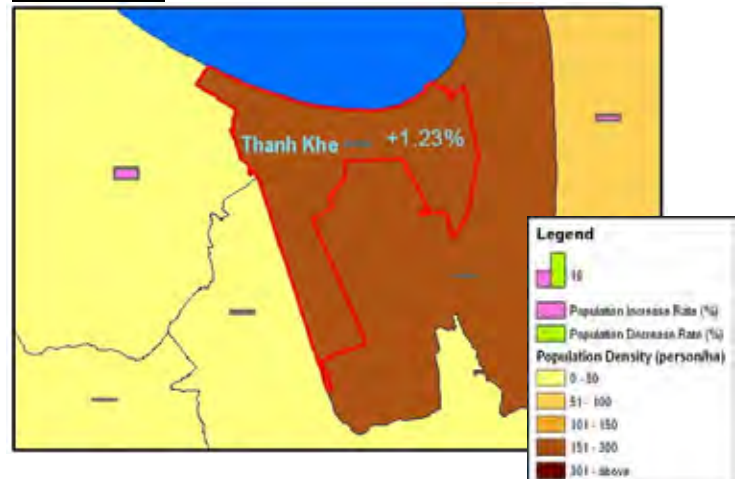
<sup>2</sup> Measures the number of workers working in the area and workers living in the area.

<sup>3</sup> Measures the number of students studying in the area and students living in the area.

### Location



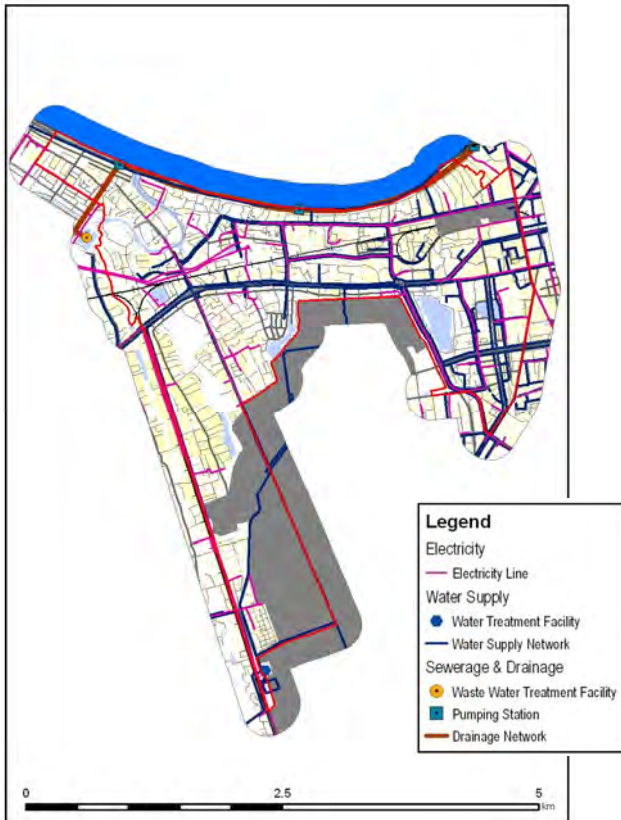
### Population



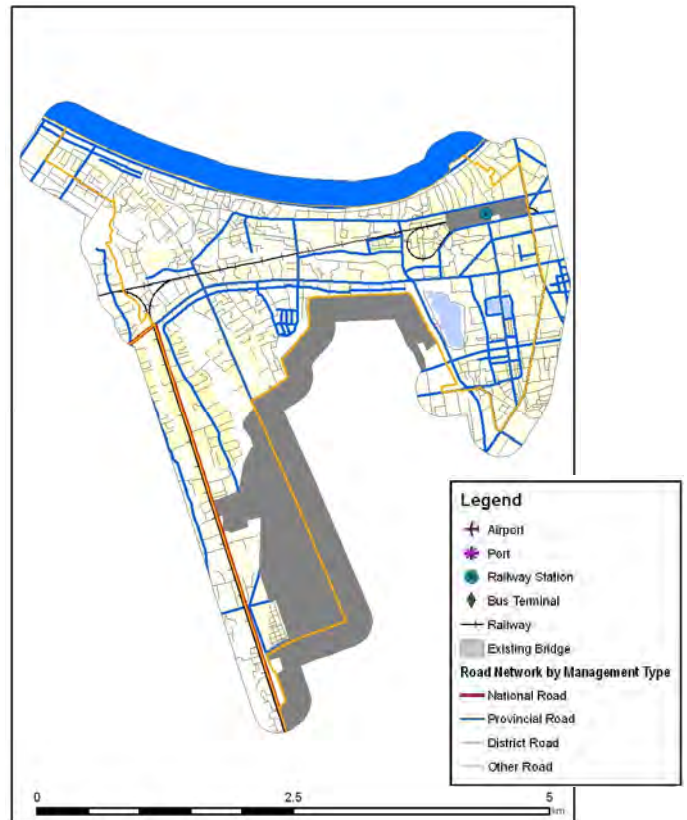
# District: Thanh Khe

## City: Danang City

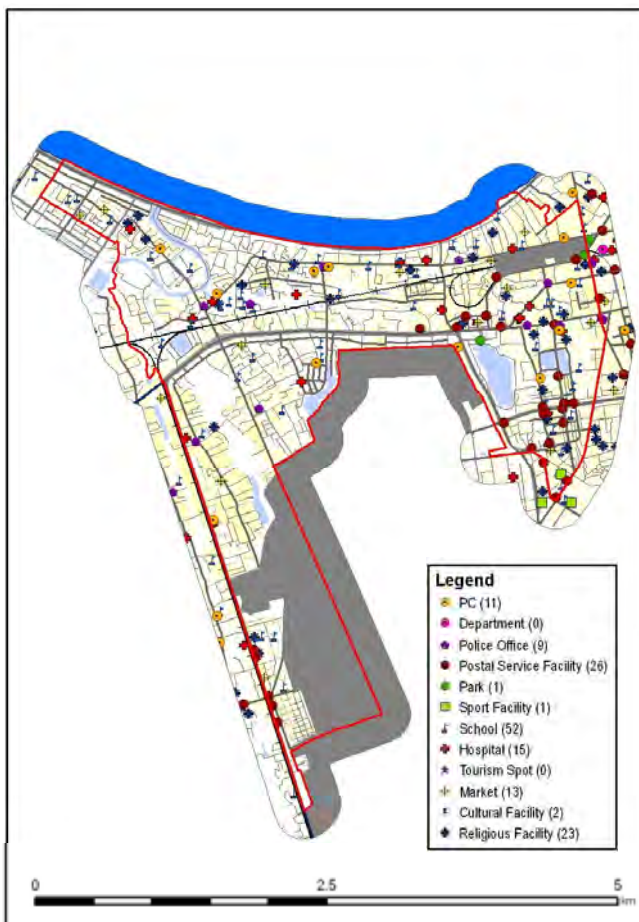
### Urban Infrastructure



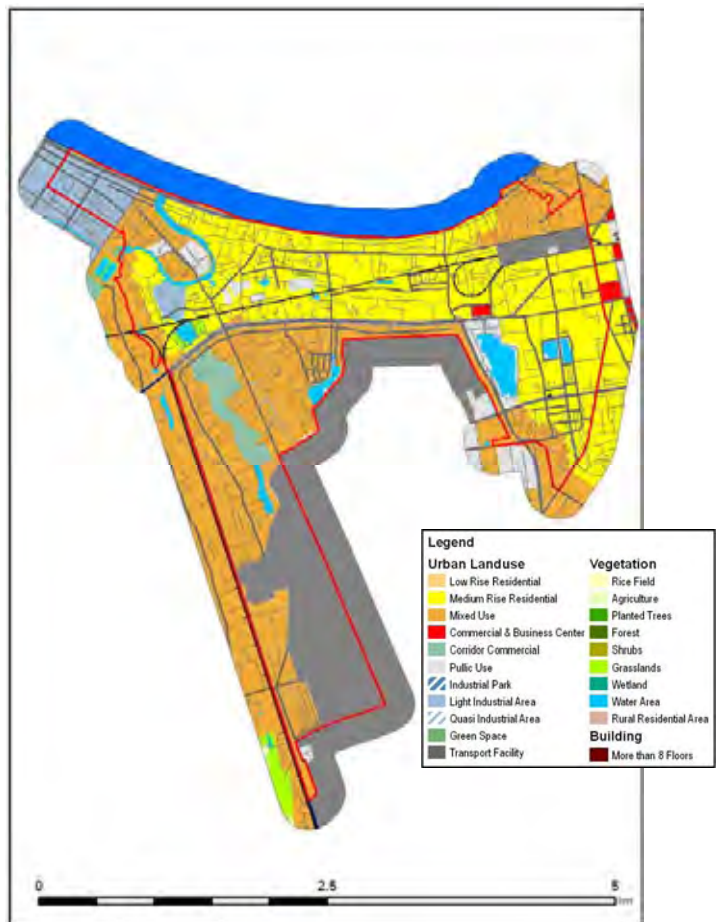
### Transportation



### Public Facilities



### Land Use



| Statistical Data on Current Condition |                                                   | 2007               |             |        | Benchmark 2025 for Danang City     | People's Assessment on Current Condition | Thanh Khe District | ASSESSMENT      |               |                  |               |
|---------------------------------------|---------------------------------------------------|--------------------|-------------|--------|------------------------------------|------------------------------------------|--------------------|-----------------|---------------|------------------|---------------|
|                                       |                                                   | Thanh Khe District | Danang City |        |                                    |                                          |                    | Objective Score | District Rank | Subjective Score | District Rank |
| CONVENIENCE                           |                                                   |                    |             |        |                                    | <b>0.54</b>                              | <b>1</b>           | <b>2</b>        | <b>1</b>      | <b>3</b>         |               |
|                                       | Household Electricity Connection (%)              | 100                | 99          | 100    | Power Supply                       | 0.39                                     | 1                  | 3               | 1             | 4                |               |
|                                       | Road Area Ratio (% per net area)                  | 17.7               | 12.8        | 15.0   | Traffic Situation                  | 0.69                                     | 2                  | 3               | 1             | 3                |               |
|                                       | To-work Travel Time (min.)                        | 16.9               | 16.7        | 15.0   | To-work Travel Time                | 0.54                                     | 2                  | 6               | 1             | 3                |               |
|                                       | To-work Trips by Public Transportation (%)        | 0.13               | 0.07        | 35.00  | Public Transportation Convenience  | 0.47                                     | -2                 | 3               | 1             | 3                |               |
|                                       | Motor Vehicle Ownership per 000 Population        | 467                | 450         | 250    | Transportation Convenience         | 0.66                                     | 2                  | 3               | 1             | 5                |               |
|                                       | # of TV Sets per 000 Population                   | 338                | 323         | 300    | Telecommunications                 | 0.50                                     | 2                  | 2               | 1             | 4                |               |
|                                       | # of Telephones per 000 Population                | 211                | 200         | 300    | Telecommunications                 | 0.50                                     | 1                  | 3               | 1             | 4                |               |
| SAFETY & SECURITY                     |                                                   |                    |             |        |                                    | <b>0.39</b>                              | <b>0</b>           | <b>1</b>        | <b>1</b>      | <b>2</b>         |               |
|                                       | Police Service Coverage (%)                       | 98.5               | 71.6        | 80.0   | Safety and Security                | 0.57                                     | 2                  | 2               | 1             | 3                |               |
|                                       | Flood Vulnerability (% of area)                   | 25.2               | 25.7        | 10.0   | Flooding                           | 0.52                                     | -2                 | 0               | 1             | 2                |               |
|                                       | HHs with Permanent Housing (%)                    | 97.9               | 98.4        | 100.0  | Housing                            | 0.51                                     | 1                  | 5               | 1             | 2                |               |
| HEALTH & WELL-BEING                   | Traffic Injuries per 100,000 Population           | 888                | 1,480       | 700    | Traffic Safety                     | -0.02                                    | -1                 | 2               | 0             | 7                |               |
|                                       |                                                   |                    |             |        |                                    | <b>0.49</b>                              | <b>1</b>           | <b>2</b>        | <b>1</b>      | <b>2</b>         |               |
|                                       | HHs with Piped Water Connection (%)               | 85.9               | 60.9        | 80.0   | Water Supply                       | 0.46                                     | 0                  | 2               | 1             | 2                |               |
|                                       | HHs Covered by SW Collection Services (%)         | 99.1               | 80.2        | 90.0   | Solid Waste Collection             | 0.57                                     | 2                  | 2               | 1             | 3                |               |
| AMENITY                               | HHs with Sewerage Systems (%)                     | 83.0               | 51.6        | 90.0   | Drainage Conditions                | 0.54                                     | 0                  | 2               | 1             | 3                |               |
|                                       | Hospitals per 000 Population                      | 0.10               | 0.13        | 0.15   | Access to Health Care              | 0.41                                     | 0                  | 7               | 1             | 2                |               |
|                                       |                                                   |                    |             |        |                                    | <b>0.12</b>                              | <b>-1</b>          | <b>7</b>        | <b>0</b>      | <b>4</b>         |               |
|                                       | Cultural Facilities per 000 Population            | 0.17               | 0.53        | 1.00   | Access to Entertainment Facilities | 0.13                                     | -1                 | 7               | 1             | 2                |               |
|                                       | Water Areas per 000 Population (ha)               | 0.17               | 5.52        | 10.00  | Neighborhood Landscape             | -0.06                                    | -2                 | 7               | -1            | 6                |               |
|                                       | Parks / Open Spaces per 000 Population (ha)       | 0.12               | 0.46        | 3.00   | Access to Parks and Green Spaces   | 0.12                                     | -2                 | 3               | 1             | 3                |               |
| CAPACITY                              | Green Areas per 000 Population (ha)               | 0.12               | 298.66      | 300.00 | Greenery                           | -0.17                                    | -2                 | 6               | -1            | 7                |               |
|                                       | Average Living Space per Capita (m <sup>2</sup> ) | 22.5               | 75.3        | 50.0   | Housing Conditions                 | 0.45                                     | 2                  | 6               | 1             | 3                |               |
|                                       | Net Population Density (no./ha)                   | 250                | 39          | 100    | Peace and Order Situation          | 0.26                                     | -1                 | 7               | 1             | 5                |               |
|                                       |                                                   |                    |             |        |                                    | <b>0.54</b>                              | <b>1</b>           | <b>2</b>        | <b>1</b>      | <b>3</b>         |               |
| CAPACITY                              | Average Annual Income (USD)                       | 3,027              | 2,619       | 5,000  | Housing                            | 0.51                                     | 1                  | 2               | 1             | 2                |               |
|                                       | Motor Vehicle Ownership per 000 Population        | 467                | 450         | 250    | Transportation Convenience         | 0.66                                     | 2                  | 3               | 1             | 5                |               |
|                                       | Internet Connections per 000 Population           | 248                | 174         | 500    | Telecommunications                 | 0.50                                     | 1                  | 2               | 1             | 4                |               |
|                                       | Mobile Phone Ownership per 000 Population         | 385                | 352         | 500    | Telecommunications                 | 0.50                                     | 1                  | 2               | 1             | 4                |               |

**Overall Assessment**

**Objective Assessment Score: 0.38 (4/7)**  
**Subjective Assessment Score: 0.42 (2/7)**

rank / district

**Summary Diagnosis**

**Overall Assessment** The overall living conditions of Thanh Khe district are acceptable. However, the objective score for amenity is very low.

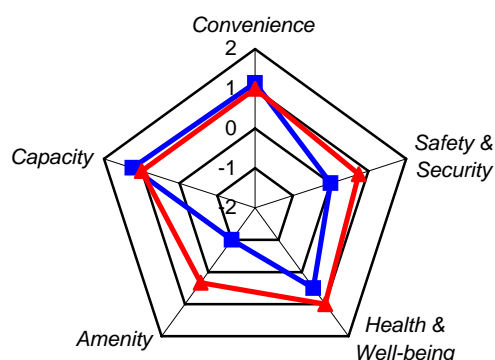
**Convenience** Basic services are provided quite well. Public transportaiton use is relatively higher than in other communes in the city.

**Safety & Security** The rate of traffic injuries is quite high, and the people's perception of traffic safety is the worst in the city.

**Health & Well-being** Facilities for health & well-being are provided well except for hospitals.

**Amenity** The district lacks cultural facilities, water areas, parks / open spaces, and greeneries.

**Capacity** The capacity of Thanh Khe households is quite high, and the people are generally satisfied with the situation.



— Objective Assessment Score — Subjective Assessment Score

# District: Son Tra

## City: Danang City

### Profile

Son Tra district is located northeast of Danang City. The Son Tra peninsula is one of the city's landmarks. Only about a fourth of the total land area is suitable for development, as 65% are forested. From 2000 to 2007, its population grew by about 2.24%. The average travel time is the lowest of all the districts. Tien Sa Port, the city's main port is located here.

### FACT SHEET

| Main Indicators          |                                                | Value        |
|--------------------------|------------------------------------------------|--------------|
| Population               | Population (2000)                              | 102,742      |
|                          | Population (2007)                              | 119,970      |
|                          | Average Population Growth Rate (00-07)         | 2.24         |
|                          | Gross Population Density Ratio (no./ha)        | 20           |
|                          | Net Population Density Ratio (no. /ha)         | 76           |
| Land                     | Total Area (ha)                                | 6017         |
|                          | Net Area (ha) <sup>1</sup>                     | 1583         |
| Employment and Enrolment | Primary:Secondary:Tertiary Employment Rate (%) | 11 : 23 : 65 |
|                          | Employment-Residence Ratio (%) <sup>2</sup>    | 0.91         |
|                          | Enrolment-Residence Ratio (%) <sup>3</sup>     | 0.90         |
| Household Information    | Average Household Size                         | 4.1          |
|                          | Average Monthly Household Income (000VND)      | 4,044        |
|                          | Poor Households (%)                            | 7.0          |
|                          | Households with Own Houses (%)                 | 95.8         |
|                          | Households with Cars/1-2 Motorcycles (%)       | 92.7         |
| Transportation           | Average Travel Time (excluding walking) (min.) | 13.5         |
|                          | Public Transportation Usage (all trips) (%)    | 0.4          |
| Landscape Areas          | Water Surface (ha)                             | 141.8        |
|                          | Parks and Open Spaces (ha)                     | 0.00         |
| Connectivity             | Households with Mobile Phones (%)              | 80.8         |
|                          | Households with Internet Connection (%)        | 16           |
| Health                   | Hospitals (no.)                                | 11           |
|                          | Hospital Beds (no.)                            | 305          |
|                          | Doctors (no.)                                  | 34           |
| Education                | Schools (no.)                                  | 45           |
|                          | Students (no.)                                 | 24,311       |
|                          | Teachers (no.)                                 | 1,275        |

<sup>1</sup>Net Area refers to urban areas and areas suitable for development. The latter was calculated based on a development suitability analysis wherein development constraints were identified.

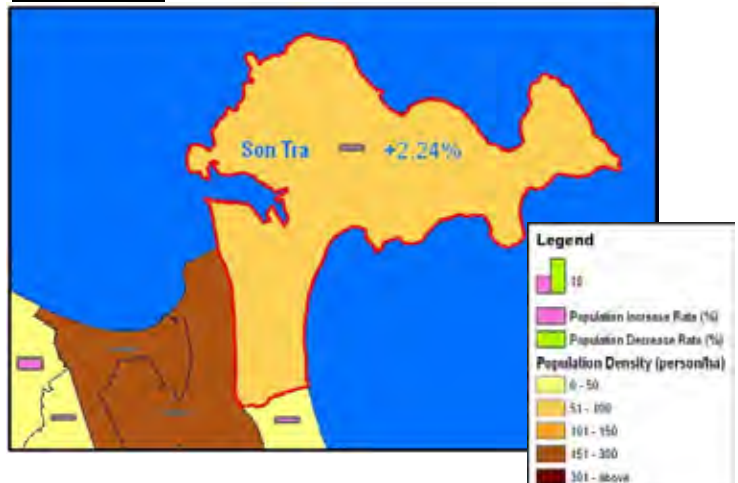
<sup>2</sup> Measures the number of workers working in the area and workers living in the area.

<sup>3</sup> Measures the number of students studying in the area and students living in the area.

### Location



### Population

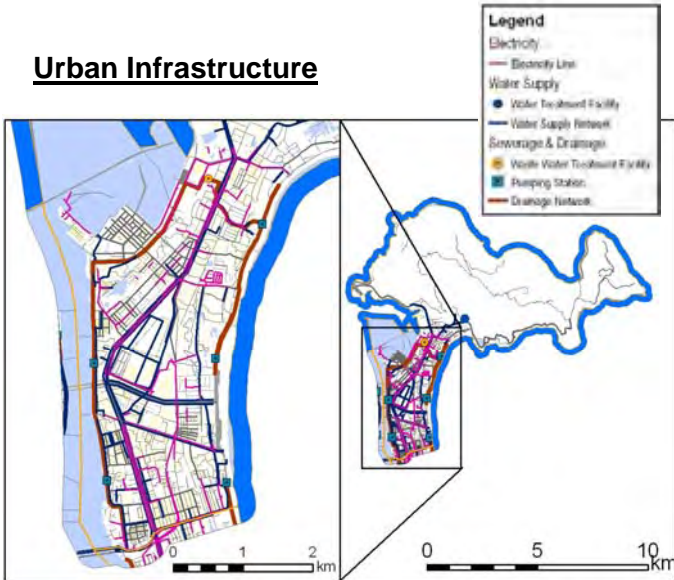




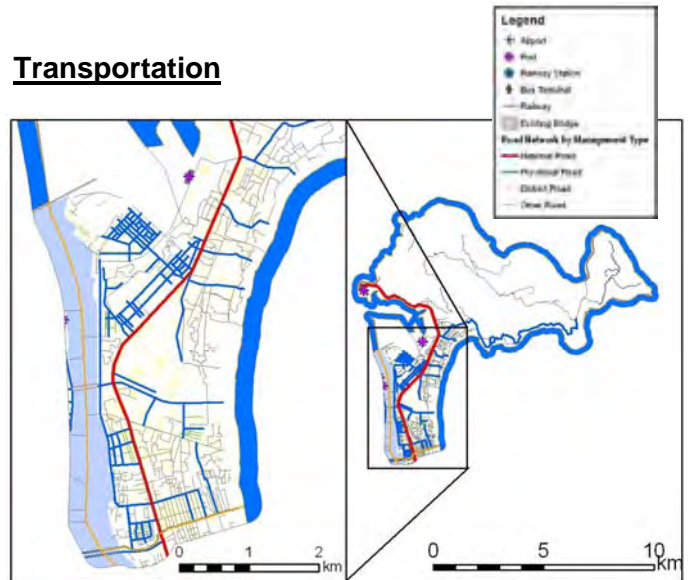
# District: Son Tra

## City: Danang City

### Urban Infrastructure

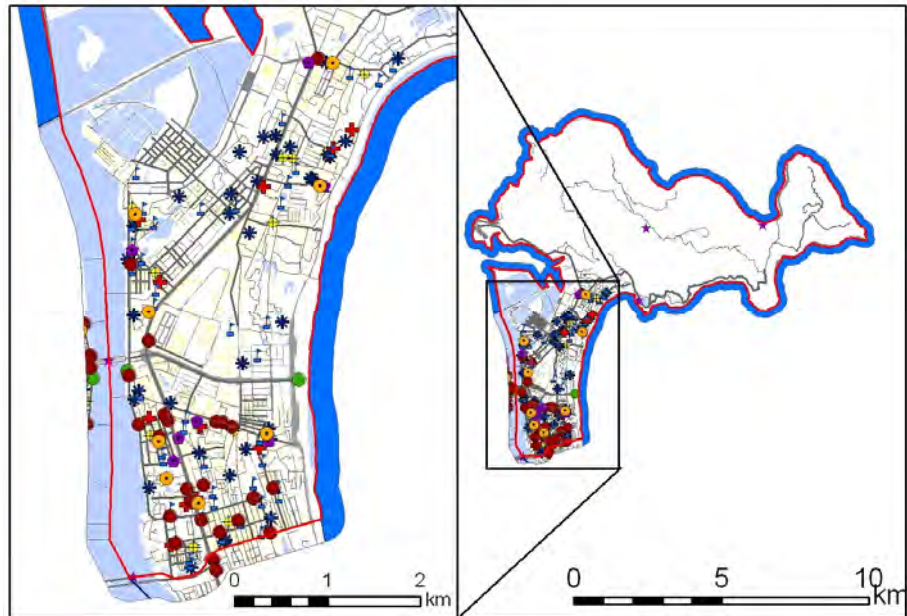


### Transportation



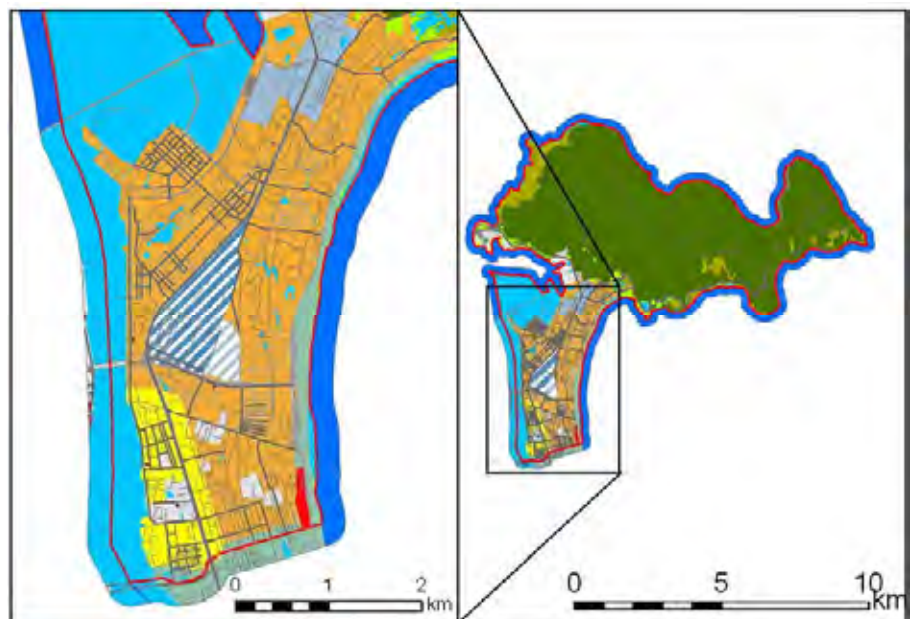
### Public Facilities

- Legend**
- PC (8)
  - Department (9)
  - Police Office (7)
  - Postal Service Facility (23)
  - Park (2)
  - Sport Facility (9)
  - School (43)
  - Hospital (11)
  - Tourism Spot (4)
  - Market (10)
  - Cultural Facility (0)
  - Religious Facility (36)



### Land Use

- Legend**
- |                              |                        |
|------------------------------|------------------------|
| <b>Urban Landuse</b>         | <b>Vegetation</b>      |
| Low Rise Residential         | Rice Field             |
| Median Rise Residential      | Agriculture            |
| Mixed Use                    | Planted Trees          |
| Commercial & Business Center | Forest                 |
| Corridor Commercial          | Shrubs                 |
| Public Use                   | Grasslands             |
| Industrial Park              | Wetland                |
| Light Industrial Area        | Water Area             |
| Quasi Industrial Area        | Rural Residential Area |
| Green Space                  | <b>Building</b>        |
| Transport Facility           | More than 8 Floors     |



| Statistical Data on Current Condition      |                                                   | 2007             |             |                            | Benchmark 2025 for Danang City     | People's Assessment on Current Condition | Son Tra District | ASSESSMENT      |               |                  |               |
|--------------------------------------------|---------------------------------------------------|------------------|-------------|----------------------------|------------------------------------|------------------------------------------|------------------|-----------------|---------------|------------------|---------------|
|                                            |                                                   | Son Tra District | Danang City |                            |                                    |                                          |                  | Objective Score | District Rank | Subjective Score | District Rank |
| CONVENIENCE                                |                                                   |                  |             |                            |                                    | <b>0.49</b>                              | <b>1</b>         | <b>2</b>        | <b>1</b>      | <b>4</b>         |               |
|                                            | Household Electricity Connection (%)              | 100              | 99          | 100                        | Power Supply                       | 0.26                                     | 1                | 4               | 1             | 6                |               |
|                                            | Road Area Ratio (% per net area)                  | 19.3             | 12.8        | 15.0                       | Traffic Situation                  | 0.66                                     | 2                | 2               | 1             | 5                |               |
|                                            | To-work Travel Time (min.)                        | 14.2             | 16.7        | 15.0                       | To-work Travel Time                | 0.51                                     | 2                | 1               | 1             | 5                |               |
|                                            | To-work Trips by Public Transportation (%)        | 0.00             | 0.07        | 35.00                      | Public Transportation Convenience  | 0.40                                     | -2               | 4               | 1             | 4                |               |
|                                            | Motor Vehicle Ownership per 000 Population        | 432              | 450         | 250                        | Transportation Convenience         | 0.68                                     | 2                | 5               | 1             | 4                |               |
|                                            | # of TV Sets per 000 Population                   | 321              | 323         | 300                        | Telecommunications                 | 0.47                                     | 2                | 3               | 1             | 5                |               |
|                                            | # of Telephones per 000 Population                | 214              | 200         | 300                        | Telecommunications                 | 0.47                                     | 1                | 2               | 1             | 5                |               |
| SAFETY & SECURITY                          |                                                   |                  |             |                            |                                    | <b>0.37</b>                              | <b>0</b>         | <b>1</b>        | <b>1</b>      | <b>3</b>         |               |
|                                            | Police Service Coverage (%)                       | 84.9             | 71.6        | 80.0                       | Safety and Security                | 0.47                                     | 2                | 3               | 1             | 5                |               |
|                                            | Flood Vulnerability (% of area)                   | 25.0             | 25.7        | 10.0                       | Flooding                           | 0.30                                     | -2               | 4               | 1             | 4                |               |
|                                            | HHs with Permanent Housing (%)                    | 97.9             | 98.4        | 100.0                      | Housing                            | 0.42                                     | 1                | 6               | 1             | 3                |               |
| HEALTH & WELL-BEING                        |                                                   |                  |             |                            |                                    | <b>0.37</b>                              | <b>0</b>         | <b>3</b>        | <b>1</b>      | <b>3</b>         |               |
|                                            | Traffic Injuries per 100,000 Population           | 657              | 1,480       | 700                        | Traffic Safety                     | 0.30                                     | -1               | 1               | 1             | 2                |               |
|                                            | HHs with Piped Water Connection (%)               | 82.0             | 60.9        | 80.0                       | Water Supply                       | 0.34                                     | 0                | 3               | 1             | 5                |               |
|                                            | HHs Covered by SW Collection Services (%)         | 99.4             | 80.2        | 90.0                       | Solid Waste Collection             | 0.43                                     | 2                | 1               | 1             | 5                |               |
| AMENITY                                    |                                                   |                  |             |                            |                                    | <b>0.11</b>                              | <b>0</b>         | <b>5</b>        | <b>0</b>      | <b>5</b>         |               |
|                                            | HHs with Sewerage Systems (%)                     | 66.7             | 51.6        | 90.0                       | Drainage Conditions                | 0.41                                     | -1               | 3               | 1             | 4                |               |
|                                            | Hospitals per 000 Population                      | 0.10             | 0.13        | 0.15                       | Access to Health Care              | 0.28                                     | 0                | 6               | 1             | 3                |               |
|                                            | Cultural Facilities per 000 Population            | 0.35             | 0.53        | 1.00                       | Access to Entertainment Facilities | -0.17                                    | -1               | 6               | -1            | 6                |               |
|                                            | Water Areas per 000 Population (ha)               | 1.13             | 5.52        | 10.00                      | Neighborhood Landscape             | 0.06                                     | -1               | 6               | 1             | 4                |               |
|                                            | Parks / Open Spaces per 000 Population (ha)       | 0.00             | 0.46        | 3.00                       | Access to Parks and Green Spaces   | -0.12                                    | -2               | 4               | -1            | 6                |               |
| CAPACITY                                   |                                                   |                  |             |                            |                                    | <b>0.51</b>                              | <b>1</b>         | <b>3</b>        | <b>1</b>      | <b>5</b>         |               |
|                                            | Green Areas per 000 Population (ha)               | 29.8             | 298.66      | 300.00                     | Greenery                           | -0.03                                    | 2                | 5               | 0             | 4                |               |
|                                            | Average Living Space per Capita (m <sup>2</sup> ) | 27.5             | 75.3        | 50.0                       | Housing Conditions                 | 0.51                                     | 2                | 5               | 1             | 1                |               |
|                                            | Net Population Density (no./ha)                   | 76               | 39          | 100                        | Peace and Order Situation          | 0.45                                     | 2                | 5               | 1             | 2                |               |
| Average Annual Income (USD)                | 2,696                                             | 2,619            | 5,000       | Housing                    | 0.42                               | 0                                        | 4                | 1               | 3             |                  |               |
| Motor Vehicle Ownership per 000 Population | 432                                               | 450              | 250         | Transportation Convenience | 0.68                               | 2                                        | 5                | 1               | 4             |                  |               |
| Internet Connections per 000 Population    | 163                                               | 174              | 500         | Telecommunications         | 0.47                               | 0                                        | 3                | 1               | 5             |                  |               |
| Mobile Phone Ownership per 000 Population  | 348                                               | 352              | 500         | Telecommunications         | 0.47                               | 1                                        | 5                | 1               | 5             |                  |               |

**Overall Assessment**

**Objective Assessment Score: 0.50 (2/7)**  
**Subjective Assessment Score: 0.37 (4/7)**

rank / district

**Summary Diagnosis**

**Overall Assessment** The people are generally satisfied with the living conditions in Son Tra district.

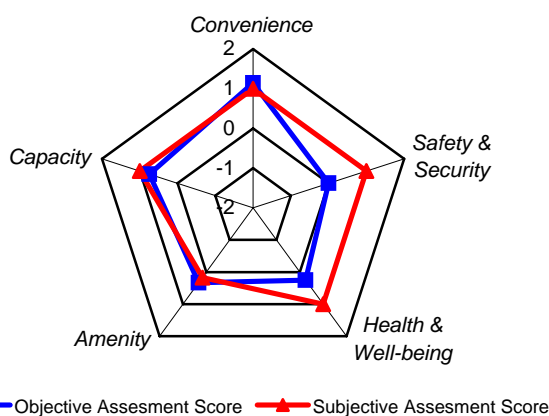
**Convenience** The road area ratio is quite high. Ownership rates for motor vehicles, TV sets, and telephones are high.

**Safety & Security** The traffic injury rate is the lowest of all districts, and the people rated traffic safety level in the district as high.

**Health & Well-being** Basic services are generally provided well, but improvements can be made in sewerage system coverage.

**Amenity** There is sufficient greenery in Son Tra district; however, it lacks cultural facilities and parks / open spaces for the people.

**Capacity** Capacity level is high. The average annual household income is nearly the same as the city average.



# District: Ngu Hanh Son

City: Danang City

## Profile

Ngu Hanh Son district is large and famous for its mountains and cultural heritage. The district has a low population density, but its population has been growing in recent years. A considerable number of workers are engaged in the secondary sector. Some basic services such as the provision of sewerage systems and supply of piped water, are provided poorly.

## FACT SHEET

| Main Indicators          |                                                | Value        |
|--------------------------|------------------------------------------------|--------------|
| Population               | Population (2000)                              | 45,759       |
|                          | Population (2007)                              | 54,067       |
|                          | Average Population Growth Rate (00-07)         | 2.41         |
|                          | Gross Population Density Ratio (no./ha)        | 15           |
|                          | Net Population Density Ratio (no. /ha)         | 23           |
| Land                     | Total Area (ha)                                | 3655         |
|                          | Net Area (ha) <sup>1</sup>                     | 2341         |
| Employment and Enrolment | Primary:Secondary:Tertiary Employment Rate (%) | 10 : 37 : 53 |
|                          | Employment-Residence Ratio (%) <sup>2</sup>    | 0.85         |
|                          | Enrolment-Residence Ratio (%) <sup>3</sup>     | 1.11         |
| Household Information    | Average Household Size                         | 4.0          |
|                          | Average Monthly Household Income (000VND)      | 4,106        |
|                          | Poor Households (%)                            | 8.2          |
|                          | Households with Own Houses (%)                 | 96.9         |
|                          | Households with Cars/1-2 Motorcycles (%)       | 95.9         |
| Transportation           | Average Travel Time (excluding walking) (min.) | 15.8         |
|                          | Public Transportation Usage (all trips) (%)    | 0.5          |
| Landscape Areas          | Water Surface (ha)                             | 385.3        |
|                          | Parks and Open Spaces (ha)                     | 154.8        |
| Connectivity             | Households with Mobile Phones (%)              | 81.1         |
|                          | Households with Internet Connection (%)        | 11           |
| Health                   | Hospitals (no.)                                | 7            |
|                          | Hospital Beds (no.)                            | 750          |
|                          | Doctors (no.)                                  | 21           |
| Education                | Schools (no.)                                  | 29           |
|                          | Students (no.)                                 | 10,997       |
|                          | Teachers (no.)                                 | 565          |

<sup>1</sup>Net Area refers to urban areas and areas suitable for development. The latter was calculated based on a development suitability analysis wherein development constraints were identified.

<sup>2</sup> Measures the number of workers working in the area and workers living in the area.

<sup>3</sup> Measures the number of students studying in the area and students living in the area.

## Location



## Population



# District: Ngu Hanh Son

City: Danang City

## Urban Infrastructure



## Transportation



## Public Facilities



## Land Use



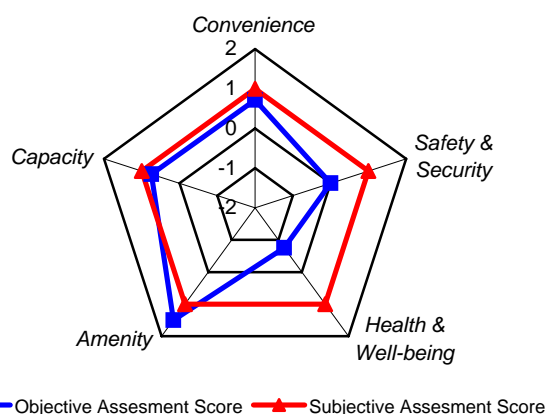
| Statistical Data on Current Condition |                                                   | 2007                  |             |        | Benchmark 2025 for Danang City     | People's Assessment on Current Condition | Ngu Hanh Son District | ASSESSMENT      |               |                  |               |
|---------------------------------------|---------------------------------------------------|-----------------------|-------------|--------|------------------------------------|------------------------------------------|-----------------------|-----------------|---------------|------------------|---------------|
|                                       |                                                   | Ngu Hanh Son District | Danang City |        |                                    |                                          |                       | Objective Score | District Rank | Subjective Score | District Rank |
| CONVENIENCE                           |                                                   |                       |             |        |                                    | <b>0.45</b>                              | <b>1</b>              | <b>4</b>        | <b>1</b>      | <b>6</b>         |               |
|                                       | Household Electricity Connection (%)              | 100                   | 99          | 100    | Power Supply                       | 0.65                                     | 1                     | 5               | 1             | 1                |               |
|                                       | Road Area Ratio (% per net area)                  | 10.1                  | 12.8        | 15.0   | Traffic Situation                  | 0.31                                     | 1                     | 4               | 1             | 7                |               |
|                                       | To-work Travel Time (min.)                        | 16.5                  | 16.7        | 15.0   | To-work Travel Time                | 0.20                                     | 2                     | 5               | 1             | 7                |               |
|                                       | To-work Trips by Public Transportation (%)        | 0.21                  | 0.07        | 35.00  | Public Transportation Convenience  | 0.06                                     | -2                    | 2               | 1             | 6                |               |
|                                       | Motor Vehicle Ownership per 000 Population        | 488                   | 450         | 250    | Transportation Convenience         | 0.26                                     | 2                     | 2               | 1             | 7                |               |
|                                       | # of TV Sets per 000 Population                   | 282                   | 323         | 300    | Telecommunications                 | 0.83                                     | 1                     | 6               | 1             | 1                |               |
|                                       | # of Telephones per 000 Population                | 190                   | 200         | 300    | Telecommunications                 | 0.83                                     | 0                     | 5               | 1             | 1                |               |
| SAFETY & SECURITY                     |                                                   |                       |             |        |                                    | <b>0.62</b>                              | <b>0</b>              | <b>1</b>        | <b>1</b>      | <b>1</b>         |               |
|                                       | Police Service Coverage (%)                       | 84.9                  | 71.6        | 80.0   | Safety and Security                | 0.70                                     | 2                     | 4               | 1             | 1                |               |
|                                       | Flood Vulnerability (% of area)                   | 39.1                  | 25.7        | 10.0   | Flooding                           | 0.62                                     | -2                    | 7               | 1             | 1                |               |
|                                       | HHs with Permanent Housing (%)                    | 100.0                 | 98.4        | 100.0  | Housing                            | 0.68                                     | 2                     | 1               | 1             | 1                |               |
|                                       | Traffic Injuries per 100,000 Population           | 2,798                 | 1,480       | 700    | Traffic Safety                     | 0.46                                     | -2                    | 7               | 1             | 1                |               |
| HEALTH & WELL-BEING                   |                                                   |                       |             |        |                                    | <b>0.63</b>                              | <b>-1</b>             | <b>5</b>        | <b>1</b>      | <b>1</b>         |               |
|                                       | HHs with Piped Water Connection (%)               | 45.0                  | 60.9        | 80.0   | Water Supply                       | 0.55                                     | -2                    | 5               | 1             | 1                |               |
|                                       | HHs Covered by SW Collection Services (%)         | 83.8                  | 80.2        | 90.0   | Solid Waste Collection             | 0.63                                     | 0                     | 5               | 1             | 1                |               |
|                                       | HHs with Sewerage Systems (%)                     | 9.5                   | 51.6        | 90.0   | Drainage Conditions                | 0.76                                     | -2                    | 6               | 1             | 1                |               |
|                                       | Hospitals per 000 Population                      | 0.15                  | 0.13        | 0.15   | Access to Health Care              | 0.58                                     | 1                     | 2               | 1             | 1                |               |
| AMENITY                               |                                                   |                       |             |        |                                    | <b>0.28</b>                              | <b>2</b>              | <b>1</b>        | <b>1</b>      | <b>1</b>         |               |
|                                       | Cultural Facilities per 000 Population            | 1.30                  | 0.53        | 1.00   | Access to Entertainment Facilities | 0.10                                     | 2                     | 1               | 1             | 4                |               |
|                                       | Water Areas per 000 Population (ha)               | 7.87                  | 5.52        | 10.00  | Neighborhood Landscape             | 0.21                                     | 0                     | 2               | 1             | 1                |               |
|                                       | Parks / Open Spaces per 000 Population (ha)       | 4.46                  | 0.46        | 3.00   | Access to Parks and Green Spaces   | 0.22                                     | 1                     | 1               | 1             | 1                |               |
|                                       | Green Areas per 000 Population (ha)               | 45.6                  | 298.66      | 300.00 | Greenery                           | 0.10                                     | 2                     | 3               | 1             | 2                |               |
|                                       | Average Living Space per Capita (m <sup>2</sup> ) | 89.3                  | 75.3        | 50.0   | Housing Conditions                 | 0.49                                     | 2                     | 3               | 1             | 2                |               |
|                                       | Net Population Density (no./ha)                   | 23                    | 39          | 100    | Peace and Order Situation          | 0.52                                     | 2                     | 2               | 1             | 1                |               |
| CAPACITY                              |                                                   |                       |             |        |                                    | <b>0.65</b>                              | <b>1</b>              | <b>3</b>        | <b>1</b>      | <b>1</b>         |               |
|                                       | Average Annual Income (USD)                       | 2,737                 | 2,619       | 5,000  | Housing                            | 0.68                                     | 0                     | 3               | 1             | 1                |               |
|                                       | Motor Vehicle Ownership per 000 Population        | 488                   | 450         | 250    | Transportation Convenience         | 0.26                                     | 2                     | 2               | 1             | 7                |               |
|                                       | Internet Connections per 000 Population           | 112                   | 174         | 500    | Telecommunications                 | 0.83                                     | 0                     | 4               | 1             | 1                |               |
|                                       | Mobile Phone Ownership per 000 Population         | 362                   | 352         | 500    | Telecommunications                 | 0.83                                     | 1                     | 4               | 1             | 1                |               |

## Overall Assessment

Objective Assessment Score: **0.44** (3/7) rank / district  
 Subjective Assessment Score: **0.52** (1/7)

## Summary Diagnosis

- Overall Assessment** The overall living conditions in Ngu Hanh Son district are acceptable to the people; but the objective score for health & well-being is quite low.
- Convenience** People feel the need for improvements in traffic situation, travel time to work, and convenience.
- Safety & Security** Of all the districts, this is the most vulnerable to flood disasters, as nearly 40% of the area highly flood-prone.
- Health & Well-being** Sewerage systems are provided poorly, and less than 1 in 2 households have piped water connection.
- Amenity** Both objective and subjective indicators for amenity are the highest in the city.
- Capacity** The people feel that transportation convenience should be improved.



# District: Cam Le

## City: Danang City

### Profile

In 2005, Cam Le district was established as a result of administrative reform. Rivers run through this district, making it highly vulnerable to floods especially the lowlying communes such as Hoa Xuan. The district is large and there is much greenery, providing good amenity.

### FACT SHEET

| Main Indicators          |                                                | Value        |
|--------------------------|------------------------------------------------|--------------|
| Population               | Population (2000)                              | 59,856       |
|                          | Population (2007)                              | 68,320       |
|                          | Average Population Growth Rate (00-07)         | 1.91         |
|                          | Gross Population Density Ratio (no./ha)        | 21           |
|                          | Net Population Density Ratio (no. /ha)         | 32           |
| Land                     | Total Area (ha)                                | 3322         |
|                          | Net Area (ha) <sup>1</sup>                     | 2146         |
| Employment and Enrolment | Primary:Secondary:Tertiary Employment Rate (%) | 14 : 37 : 48 |
|                          | Employment-Residence Ratio (%) <sup>2</sup>    | 0.99         |
|                          | Enrolment-Residence Ratio (%) <sup>3</sup>     | 0.77         |
| Household Information    | Average Household Size                         | 3.8          |
|                          | Average Monthly Household Income (000VND)      | 3,177        |
|                          | Poor Households (%)                            | 4.9          |
|                          | Households with Own Houses (%)                 | 87.6         |
|                          | Households with Cars/1-2 Motorcycles (%)       | 87.5         |
| Transportation           | Average Travel Time (excluding walking) (min.) | 15.0         |
|                          | Public Transportation Usage (all trips) (%)    | 0.3          |
| Landscape Areas          | Water Surface (ha)                             | 332.3        |
|                          | Parks and Open Spaces (ha)                     | 0.0          |
| Connectivity             | Households with Mobile Phones (%)              | 67.0         |
|                          | Households with Internet Connection (%)        | 8            |
| Health                   | Hospitals (no.)                                | 8            |
|                          | Hospital Beds (no.)                            | 270          |
|                          | Doctors (no.)                                  | 52           |
| Education                | Schools (no.)                                  | 37           |
|                          | Students (no.)                                 | 10,222       |
|                          | Teachers (no.)                                 | 513          |

<sup>1</sup>Net Area refers to urban areas and areas suitable for development. The latter was calculated based on a development suitability analysis wherein development constraints were identified.

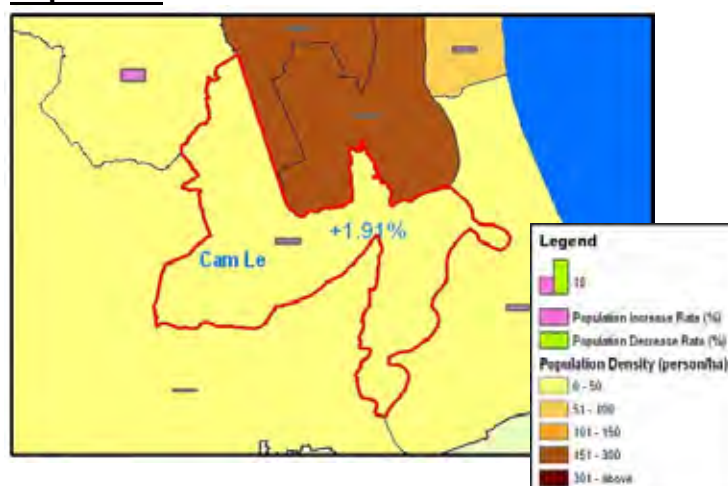
<sup>2</sup> Measures the number of workers working in the area and workers living in the area.

<sup>3</sup> Measures the number of students studying in the area and students living in the area.

### Location



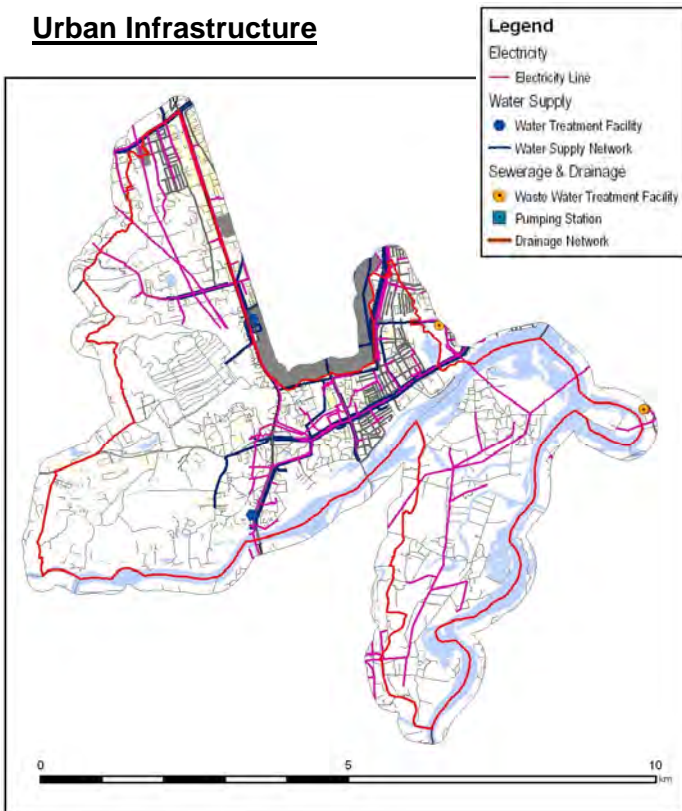
### Population



# District: Cam Le

## City: Danang City

### Urban Infrastructure



### Transportation



### Public Facilities



### Land Use



| Statistical Data on Current Condition |                                                   | 2007            |             |                                | People's Assessment on Current Condition | Cam Le District | ASSESSMENT      |               |                  |               |
|---------------------------------------|---------------------------------------------------|-----------------|-------------|--------------------------------|------------------------------------------|-----------------|-----------------|---------------|------------------|---------------|
|                                       |                                                   | Cam Le District | Danang City | Benchmark 2025 for Danang City |                                          |                 | Objective Score | District Rank | Subjective Score | District Rank |
| CONVENIENCE                           | Household Electricity Connection (%)              | 98              | 99          | 100                            | Power Supply                             | 0.46            | 1               | 6             | 1                | 5             |
|                                       | Road Area Ratio (% per net area)                  | 7.2             | 12.8        | 15.0                           | Traffic Situation                        | 0.69            | 0               | 6             | 1                | 2             |
|                                       | To-work Travel Time (min.)                        | 15.8            | 16.7        | 15.0                           | To-work Travel Time                      | 0.64            | 2               | 4             | 1                | 2             |
|                                       | To-work Trips by Public Transportation (%)        | 0.00            | 0.07        | 35.00                          | Public Transportation Convenience        | -0.50           | -2              | 4             | -1               | 7             |
|                                       | Motor Vehicle Ownership per 000 Population        | 436             | 450         | 250                            | Transportation Convenience               | 0.70            | 2               | 4             | 1                | 3             |
|                                       | # of TV Sets per 000 Population                   | 296             | 323         | 300                            | Telecommunications                       | 0.57            | 1               | 5             | 1                | 3             |
|                                       | # of Telephones per 000 Population                | 184             | 200         | 300                            | Telecommunications                       | 0.57            | 0               | 6             | 1                | 3             |
|                                       |                                                   |                 |             |                                |                                          |                 | <b>0.31</b>     | <b>-1</b>     | <b>5</b>         | <b>1</b>      |
| SAFETY & SECURITY                     | Police Service Coverage (%)                       | 70.9            | 71.6        | 80.0                           | Safety and Security                      | 0.49            | 1               | 5             | 1                | 4             |
|                                       | Flood Vulnerability (% of area)                   | 22.4            | 25.7        | 10.0                           | Flooding                                 | 0.22            | -2              | 3             | 1                | 5             |
|                                       | HHs with Permanent Housing (%)                    | 98.7            | 98.4        | 100.0                          | Housing                                  | 0.36            | 1               | 3             | 1                | 5             |
|                                       | Traffic Injuries per 100,000 Population           | 2,068           | 1,480       | 700                            | Traffic Safety                           | 0.18            | -2              | 6             | 1                | 3             |
|                                       |                                                   |                 |             |                                |                                          | <b>0.25</b>     | <b>-1</b>       | <b>5</b>      | <b>1</b>         | <b>6</b>      |
| HEALTH & WELL-BEING                   | HHs with Piped Water Connection (%)               | 36.4            | 60.9        | 80.0                           | Water Supply                             | 0.00            | -2              | 6             | 0                | 6             |
|                                       | HHs Covered by SW Collection Services (%)         | 80.1            | 80.2        | 90.0                           | Solid Waste Collection                   | 0.44            | 0               | 6             | 1                | 4             |
|                                       | HHs with Sewerage Systems (%)                     | 17.8            | 51.6        | 90.0                           | Drainage Conditions                      | 0.33            | -2              | 5             | 1                | 5             |
|                                       | Hospitals per 000 Population                      | 0.12            | 0.13        | 0.15                           | Access to Health Care                    | 0.22            | 1               | 4             | 1                | 4             |
|                                       |                                                   |                 |             |                                |                                          | <b>0.21</b>     | <b>1</b>        | <b>3</b>      | <b>1</b>         | <b>2</b>      |
| AMENITY                               | Cultural Facilities per 000 Population            | 0.86            | 0.53        | 1.00                           | Access to Entertainment Facilities       | 0.13            | 1               | 2             | 1                | 1             |
|                                       | Water Areas per 000 Population (ha)               | 5.08            | 5.52        | 10.00                          | Neighborhood Landscape                   | 0.19            | 0               | 3             | 1                | 2             |
|                                       | Parks / Open Spaces per 000 Population (ha)       | 0.00            | 0.46        | 3.00                           | Access to Parks and Green Spaces         | 0.06            | -2              | 4             | 1                | 4             |
|                                       | Green Areas per 000 Population (ha)               | 32.5            | 298.66      | 300.00                         | Greenery                                 | 0.21            | 2               | 4             | 1                | 1             |
|                                       | Average Living Space per Capita (m <sup>2</sup> ) | 116.3           | 75.3        | 50.0                           | Housing Conditions                       | 0.25            | 2               | 2             | 1                | 5             |
|                                       | Net Population Density (no./ha)                   | 32              | 39          | 100                            | Peace and Order Situation                | 0.40            | 2               | 4             | 1                | 3             |
|                                       |                                                   |                 |             |                                |                                          | <b>0.55</b>     | <b>1</b>        | <b>5</b>      | <b>1</b>         | <b>2</b>      |
| CAPACITY                              | Average Annual Income (USD)                       | 2,118           | 2,619       | 5,000                          | Housing                                  | 0.36            | 0               | 6             | 1                | 5             |
|                                       | Motor Vehicle Ownership per 000 Population        | 436             | 450         | 250                            | Transportation Convenience               | 0.70            | 2               | 4             | 1                | 3             |
|                                       | Internet Connections per 000 Population           | 78              | 174         | 500                            | Telecommunications                       | 0.57            | -1              | 6             | 1                | 3             |
|                                       | Mobile Phone Ownership per 000 Population         | 301             | 352         | 500                            | Telecommunications                       | 0.57            | 1               | 6             | 1                | 3             |

**Overall Assessment**

**Objective Assessment Score: 0.13 (5/7)**  
**Subjective Assessment Score: 0.36 (5/7)**

rank / district

**Summary Diagnosis**

**Overall Assessment** The objective score of Cam Le district is low, negative even for safety & security and health & well-being.

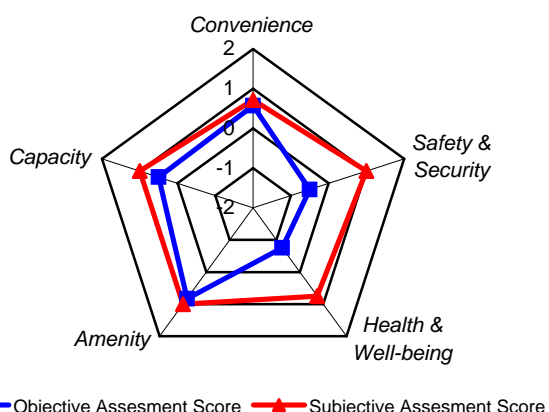
**Convenience** The coverage of electricity connection in Cam Le district is the lowest in the city, at 98%.

**Safety & Security** Traffic injury rate is quite high. The people feel the need for improvement in the flooding and housing conditions.

**Health & Well-being** Piped water connection and sewerage system coverage are considerably low.

**Amenity** Amenity levels are good, and the people are generally satisfied with the situation.

**Capacity** Capacity levels in Cam Le district are low, but the people are still rather satisfied with the situation.





# District: Lien Chieu

## City: Danang City

### Profile

Lien Chieu district borders Thua Thien Hue province in the north and Danang Bay in the east. Hoa Khanh and Lien Chieu industrial zones account for 11% of the total land area in the commune. Workers and students concentrate to this district in the daytime. The landmark feature is the Hai Van Pass, which provides a beautiful view of the city from the mountains, attracting many tourists to it.

### FACT SHEET

| Main Indicators          |                                                | Value       |
|--------------------------|------------------------------------------------|-------------|
| Population               | Population (2000)                              | 65,643      |
|                          | Population (2007)                              | 95,089      |
|                          | Average Population Growth Rate (00-07)         | 5.44        |
|                          | Gross Population Density Ratio (no./ha)        | 11          |
|                          | Net Population Density Ratio (no. /ha)         | 26          |
| Land                     | Total Area (ha)                                | 8308        |
|                          | Net Area (ha) <sup>1</sup>                     | 3673        |
| Employment and Enrolment | Primary:Secondary:Tertiary Employment Rate (%) | 5 : 34 : 62 |
|                          | Employment-Residence Ratio (%) <sup>2</sup>    | 1.24        |
|                          | Enrolment-Residence Ratio (%) <sup>3</sup>     | 1.27        |
| Household Information    | Average Household Size                         | 3.9         |
|                          | Average Monthly Household Income (000VND)      | 3,772       |
|                          | Poor Households (%)                            | 5.2         |
|                          | Households with Own Houses (%)                 | 93.3        |
|                          | Households with Cars/1-2 Motorcycles (%)       | 89.9        |
| Transportation           | Average Travel Time (excluding walking) (min.) | 15.6        |
|                          | Public Transportation Usage (all trips) (%)    | 0.9         |
| Landscape Areas          | Water Surface (ha)                             | 353.2       |
|                          | Parks and Open Spaces (ha)                     | 0.0         |
| Connectivity             | Households with Mobile Phones (%)              | 75.3        |
|                          | Households with Internet Connection (%)        | 9           |
| Health                   | Hospitals (no.)                                | 10          |
|                          | Hospital Beds (no.)                            | 450         |
|                          | Doctors (no.)                                  | 63          |
| Education                | Schools (no.)                                  | 54          |
|                          | Students (no.)                                 | 18,124      |
|                          | Teachers (no.)                                 | 856         |

<sup>1</sup>Net Area refers to urban areas and areas suitable for development. The latter was calculated based on a development suitability analysis wherein development constraints were identified.

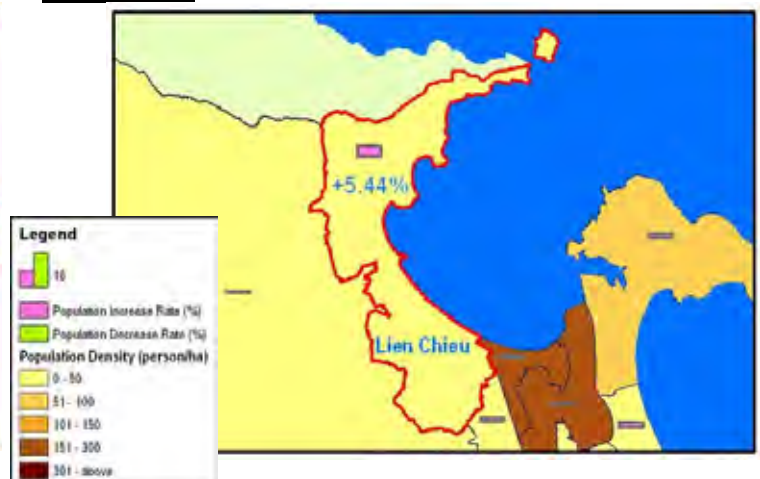
<sup>2</sup> Measures the number of workers working in the area and workers living in the area.

<sup>3</sup> Measures the number of students studying in the area and students living in the area.

### Location



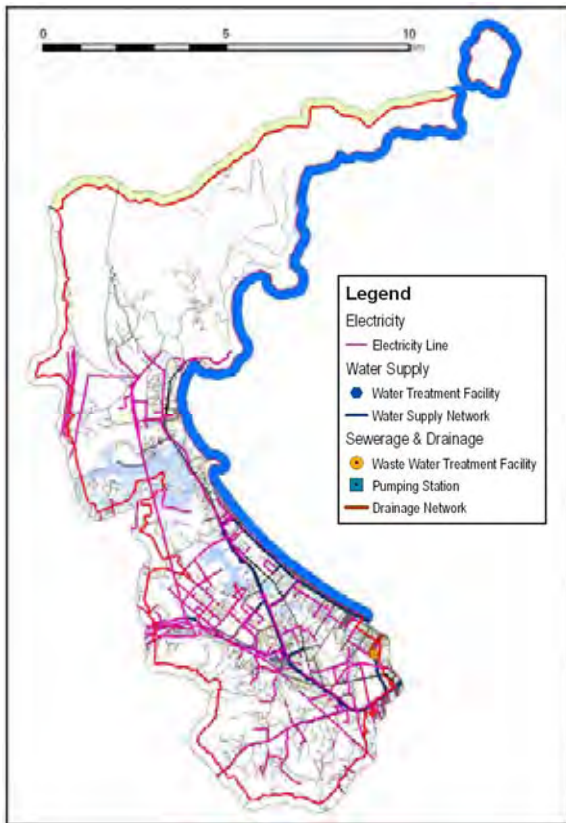
### Population



# District: Lien Chieu

## City: Danang City

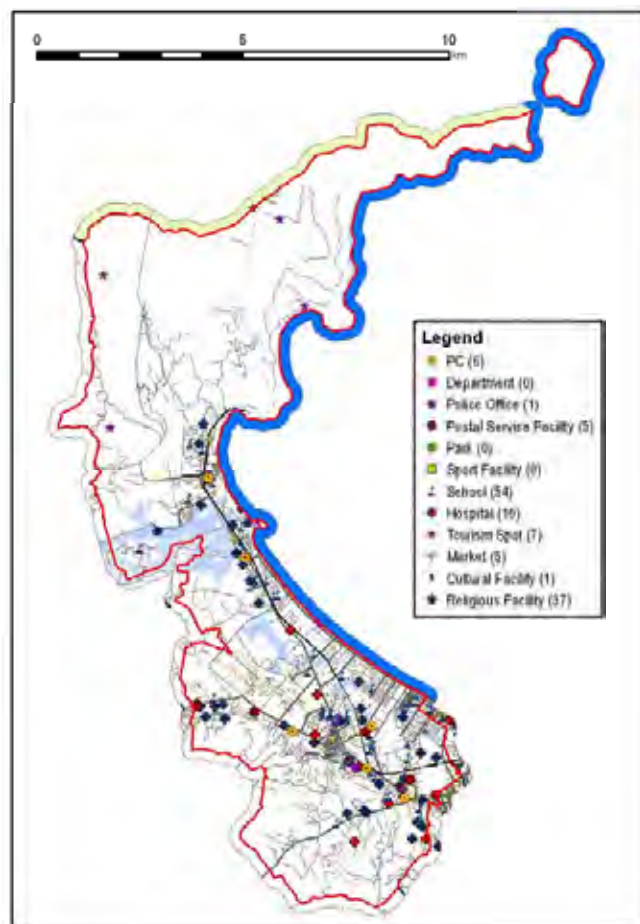
### Urban Infrastructure



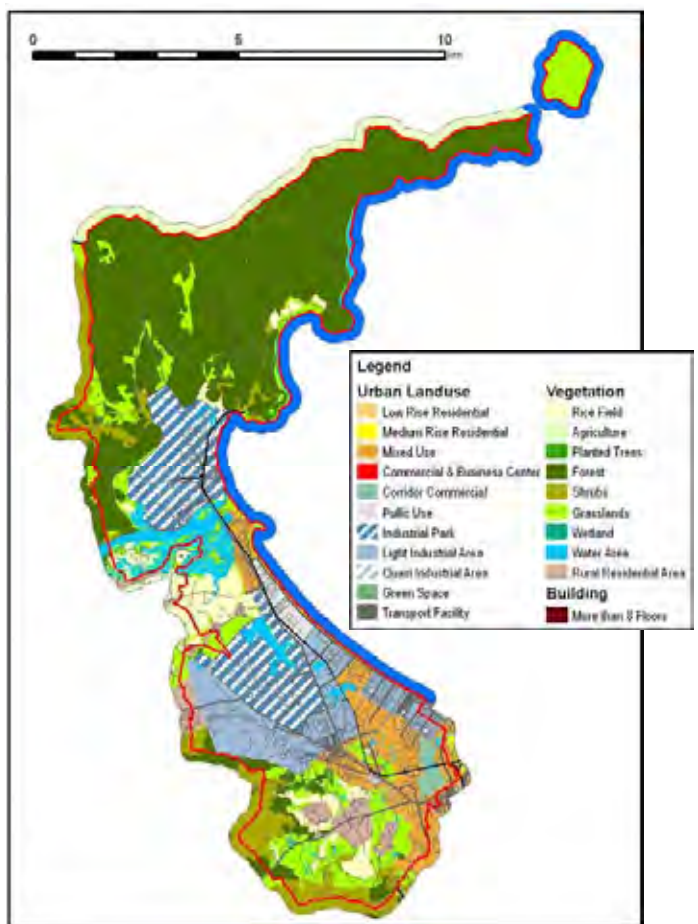
### Transportation



### Public Facilities



### Land Use



| Statistical Data on Current Condition |                                                   | 2007                |             |        | Benchmark 2025 for Danang City     | People's Assessment on Current Condition |             | ASSESSMENT          |                 |               |                  |
|---------------------------------------|---------------------------------------------------|---------------------|-------------|--------|------------------------------------|------------------------------------------|-------------|---------------------|-----------------|---------------|------------------|
|                                       |                                                   | Lien Chieu District | Danang City |        |                                    |                                          |             | Lien Chieu District | Objective Score | District Rank | Subjective Score |
| CONVENIENCE                           |                                                   |                     |             |        |                                    |                                          | <b>0.62</b> | <b>1</b>            | <b>4</b>        | <b>1</b>      | <b>1</b>         |
|                                       | Household Electricity Connection (%)              | 100                 | 99          | 100    | Power Supply                       | 0.44                                     | 2           | 1                   | 1               | 3             |                  |
|                                       | Road Area Ratio (% per net area)                  | 8.9                 | 12.8        | 15.0   | Traffic Situation                  | 0.68                                     | 0           | 5                   | 1               | 4             |                  |
|                                       | To-work Travel Time (min.)                        | 15.5                | 16.7        | 15.0   | To-work Travel Time                | 0.52                                     | 2           | 3                   | 1               | 4             |                  |
|                                       | To-work Trips by Public Transportation (%)        | 0.36                | 0.07        | 35.00  | Public Transportation Convenience  | 0.81                                     | -2          | 1                   | 1               | 1             |                  |
|                                       | Motor Vehicle Ownership per 000 Population        | 400                 | 450         | 250    | Transportation Convenience         | 0.73                                     | 1           | 6                   | 1               | 2             |                  |
|                                       | # of TV Sets per 000 Population                   | 300                 | 323         | 300    | Telecommunications                 | 0.59                                     | 2           | 4                   | 1               | 2             |                  |
|                                       | # of Telephones per 000 Population                | 194                 | 200         | 300    | Telecommunications                 | 0.59                                     | 0           | 4                   | 1               | 2             |                  |
| SAFETY & SECURITY                     |                                                   |                     |             |        |                                    |                                          | <b>0.19</b> | <b>-1</b>           | <b>6</b>        | <b>1</b>      | <b>6</b>         |
|                                       | Police Service Coverage (%)                       | 34.9                | 71.6        | 80.0   | Safety and Security                | 0.39                                     | -1          | 6                   | 1               | 7             |                  |
|                                       | Flood Vulnerability (% of area)                   | 19.6                | 25.7        | 10.0   | Flooding                           | 0.16                                     | -2          | 2                   | 1               | 6             |                  |
|                                       | HHs with Permanent Housing (%)                    | 97.9                | 98.4        | 100.0  | Housing                            | 0.19                                     | 1           | 4                   | 1               | 6             |                  |
|                                       | Traffic Injuries per 100,000 Population           | 1,235               | 1,480       | 700    | Traffic Safety                     | 0.03                                     | -2          | 3                   | 0               | 6             |                  |
| HEALTH & WELL-BEING                   |                                                   |                     |             |        |                                    |                                          | <b>0.33</b> | <b>0</b>            | <b>4</b>        | <b>1</b>      | <b>5</b>         |
|                                       | HHs with Piped Water Connection (%)               | 52.8                | 60.9        | 80.0   | Water Supply                       | 0.39                                     | -1          | 4                   | 1               | 3             |                  |
|                                       | HHs Covered by SW Collection Services (%)         | 94.2                | 80.2        | 90.0   | Solid Waste Collection             | 0.58                                     | 1           | 4                   | 1               | 2             |                  |
|                                       | HHs with Sewerage Systems (%)                     | 56.4                | 51.6        | 90.0   | Drainage Conditions                | 0.16                                     | -2          | 4                   | 1               | 6             |                  |
|                                       | Hospitals per 000 Population                      | 0.11                | 0.13        | 0.15   | Access to Health Care              | 0.21                                     | 1           | 5                   | 1               | 5             |                  |
| AMENITY                               |                                                   |                     |             |        |                                    |                                          | <b>0.08</b> | <b>1</b>            | <b>4</b>        | <b>1</b>      | <b>6</b>         |
|                                       | Cultural Facilities per 000 Population            | 0.50                | 0.53        | 1.00   | Access to Entertainment Facilities | 0.12                                     | 0           | 4                   | 1               | 3             |                  |
|                                       | Water Areas per 000 Population (ha)               | 4.90                | 5.52        | 10.00  | Neighborhood Landscape             | 0.02                                     | -1          | 4                   | 0               | 5             |                  |
|                                       | Parks / Open Spaces per 000 Population (ha)       | 0.00                | 0.46        | 3.00   | Access to Parks and Green Spaces   | 0.13                                     | -2          | 4                   | 1               | 2             |                  |
|                                       | Green Areas per 000 Population (ha)               | 81.5                | 298.66      | 300.00 | Greenery                           | -0.04                                    | 2           | 2                   | 0               | 5             |                  |
|                                       | Average Living Space per Capita (m <sup>2</sup> ) | 55.8                | 75.3        | 50.0   | Housing Conditions                 | 0.25                                     | 2           | 4                   | 1               | 6             |                  |
|                                       | Net Population Density (no./ha)                   | 26                  | 39          | 100    | Peace and Order Situation          | -0.02                                    | 2           | 3                   | 0               | 7             |                  |
| CAPACITY                              |                                                   |                     |             |        |                                    |                                          | <b>0.52</b> | <b>0</b>            | <b>6</b>        | <b>1</b>      | <b>4</b>         |
|                                       | Average Annual Income (USD)                       | 2,515               | 2,619       | 5,000  | Housing                            | 0.19                                     | 0           | 5                   | 1               | 6             |                  |
|                                       | Motor Vehicle Ownership per 000 Population        | 400                 | 450         | 250    | Transportation Convenience         | 0.73                                     | 1           | 6                   | 1               | 2             |                  |
|                                       | Internet Connections per 000 Population           | 93                  | 174         | 500    | Telecommunications                 | 0.59                                     | -1          | 5                   | 1               | 2             |                  |
|                                       | Mobile Phone Ownership per 000 Population         | 364                 | 352         | 500    | Telecommunications                 | 0.59                                     | 1           | 3                   | 1               | 2             |                  |

**Overall Assessment**

**Objective Assessment Score: 0.04 (6/7)**  
**Subjective Assessment Score: 0.35 (6/7)**

rank / district

**Summary Diagnosis**

**Overall Assessment** Both objective and subjective scores are low for Lien Chieu district. More improvements are needed in safety & security and health & well-being.

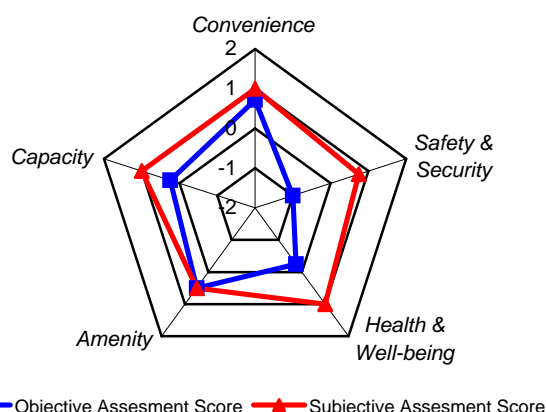
**Convenience** The percentage of people using public transportation is the highest in the city, albeit the rate is still very low.

**Safety & Security** Police presence is low, resulting in the worst assessment for safety / security in the city.

**Health & Well-being** The people are dissatisfied with health & well-being. Improvements are needed in most aspects.

**Amenity** Although the net population density is not very high, the people feel that the peace & order situation can be improved.

**Capacity** The internet connection rate is low in comparison to the city average.



# District: Hoa Vang

## City: Danang City

### Profile

Hoa Vang district is the only rural district in Danang City. About 36% of its population is engaged in the primary sector. Population density and growth are low in all communes. Almost 1 in 10 households are poor. Some 70% of the land area is covered by forests. Ba Na and Suoi Mo mountains are located here. In 2009, the world's longest and steepest cable car was built in Ba Na, and is now open to tourists.

### FACT SHEET

| Main Indicators          |                                                | Value        |
|--------------------------|------------------------------------------------|--------------|
| Population               | Population (2000)                              | 104,678      |
|                          | Population (2007)                              | 106,913      |
|                          | Average Population Growth Rate (00-07)         | 0.30         |
|                          | Gross Population Density Ratio (no./ha)        | 2            |
|                          | Net Population Density Ratio (no. /ha)         | 14           |
| Land                     | Total Area (ha)                                | 70633        |
|                          | Net Area (ha) <sup>1</sup>                     | 7916         |
| Employment and Enrolment | Primary:Secondary:Tertiary Employment Rate (%) | 36 : 29 : 34 |
|                          | Employment-Residence Ratio (%) <sup>2</sup>    | 0.81         |
|                          | Enrolment-Residence Ratio (%) <sup>3</sup>     | 0.91         |
| Household Information    | Average Household Size                         | 3.8          |
|                          | Average Monthly Household Income (000VND)      | 2,520        |
|                          | Poor Households (%)                            | 9.7          |
|                          | Households with Own Houses (%)                 | 96.4         |
|                          | Households with Cars/1-2 Motorcycles (%)       | 84.0         |
| Transportation           | Average Travel Time (excluding walking) (min.) | 18.8         |
|                          | Public Transportation Usage (all trips) (%)    | 0.1          |
| Landscape Areas          | Water Surface (ha)                             | 1410.5       |
|                          | Parks and Open Spaces (ha)                     | 0.0          |
| Connectivity             | Households with Mobile Phones (%)              | 51.4         |
|                          | Households with Internet Connection (%)        | 3            |
| Health                   | Hospitals (no.)                                | 12           |
|                          | Hospital Beds (no.)                            | 0            |
|                          | Doctors (no.)                                  | 4            |
| Education                | Schools (no.)                                  | 52           |
|                          | Students (no.)                                 | 27,129       |
|                          | Teachers (no.)                                 | 1,452        |

<sup>1</sup>Net Area refers to urban areas and areas suitable for development. The latter was calculated based on a development suitability analysis wherein development constraints were identified.

<sup>2</sup> Measures the number of workers working in the area and workers living in the area.

<sup>3</sup> Measures the number of students studying in the area and students living in the area.

### Location



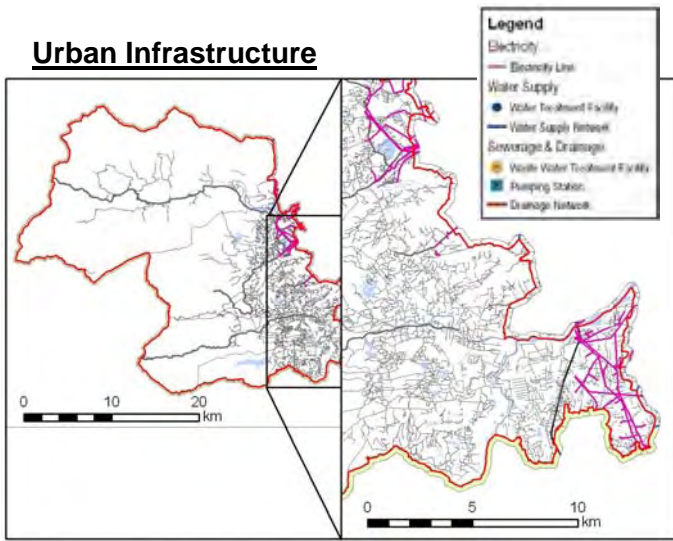
### Population



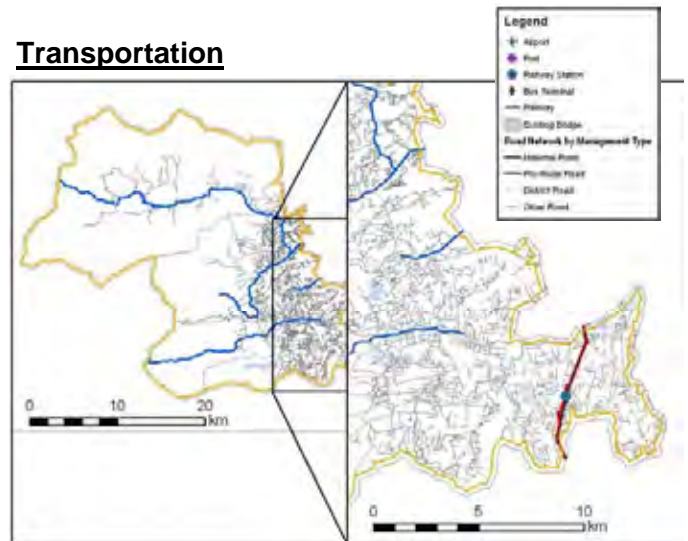
# District: Hoa Vang

City: Danang City

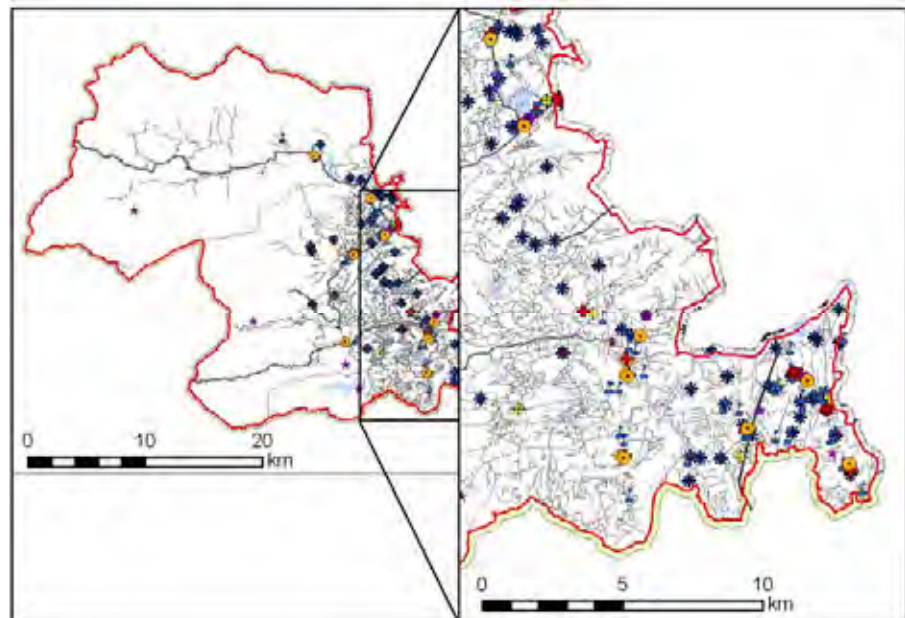
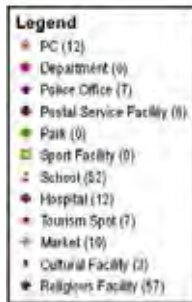
## Urban Infrastructure



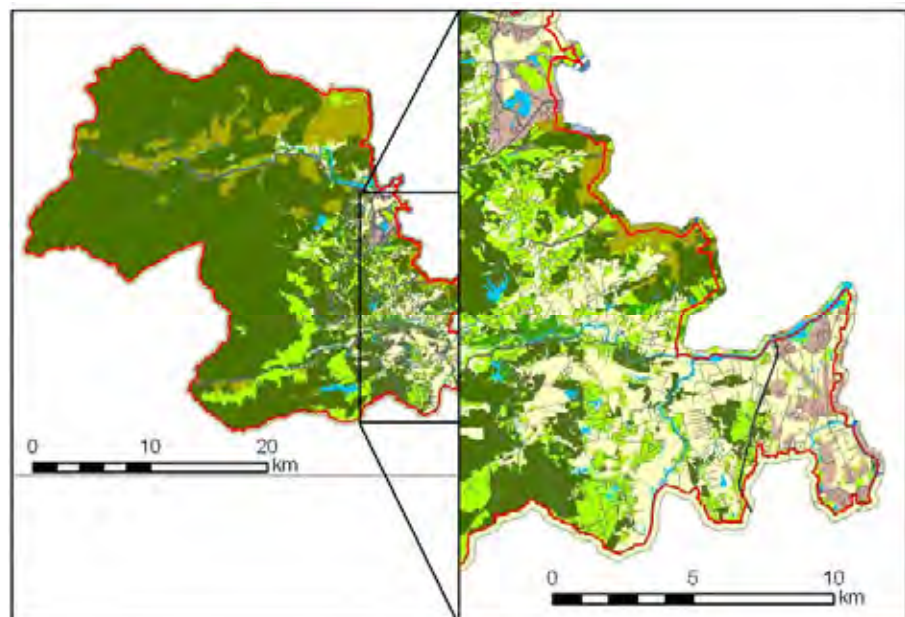
## Transportation



## Public Facilities



## Land Use



| Statistical Data on Current Condition |                                                   | 2007              |             |        | Benchmark 2025 for Danang City     | People's Assessment on Current Condition | Hoa Vang District | ASSESSMENT      |               |                  |               |
|---------------------------------------|---------------------------------------------------|-------------------|-------------|--------|------------------------------------|------------------------------------------|-------------------|-----------------|---------------|------------------|---------------|
|                                       |                                                   | Hoa Vang District | Danang City |        |                                    |                                          |                   | Objective Score | District Rank | Subjective Score | District Rank |
| CONVENIENCE                           |                                                   |                   |             |        |                                    | <b>0.31</b>                              | <b>0</b>          | <b>7</b>        | <b>1</b>      | <b>7</b>         |               |
|                                       | Household Electricity Connection (%)              | 98                | 99          | 100    | Power Supply                       | 0.15                                     | 1                 | 6               | 1             | 7                |               |
|                                       | Road Area Ratio (% per net area)                  | 1.8               | 12.8        | 15.0   | Traffic Situation                  | 0.49                                     | -2                | 7               | 1             | 6                |               |
|                                       | To-work Travel Time (min.)                        | 21.3              | 16.7        | 15.0   | To-work Travel Time                | 0.41                                     | 1                 | 7               | 1             | 6                |               |
|                                       | To-work Trips by Public Transportation (%)        | 0.00              | 0.07        | 35.00  | Public Transportation Convenience  | 0.30                                     | -2                | 4               | 1             | 5                |               |
|                                       | Motor Vehicle Ownership per 000 Population        | 362               | 450         | 250    | Transportation Convenience         | 0.50                                     | 1                 | 7               | 1             | 6                |               |
|                                       | # of TV Sets per 000 Population                   | 249               | 323         | 300    | Telecommunications                 | 0.18                                     | 1                 | 7               | 1             | 7                |               |
|                                       | # of Telephones per 000 Population                | 163               | 200         | 300    | Telecommunications                 | 0.18                                     | 0                 | 7               | 1             | 7                |               |
| SAFETY & SECURITY                     |                                                   |                   |             |        |                                    | <b>0.13</b>                              | <b>-1</b>         | <b>7</b>        | <b>0</b>      | <b>7</b>         |               |
|                                       | Police Service Coverage (%)                       | 17.4              | 71.6        | 80.0   | Safety and Security                | 0.57                                     | -2                | 7               | 1             | 2                |               |
|                                       | Flood Vulnerability (% of area)                   | 11.1              | 25.7        | 10.0   | Flooding                           | -0.21                                    | -2                | 1               | -1            | 7                |               |
|                                       | HHs with Permanent Housing (%)                    | 97.8              | 98.4        | 100.0  | Housing                            | 0.13                                     | 1                 | 7               | 1             | 7                |               |
|                                       | Traffic Injuries per 100,000 Population           | 2,058             | 1,480       | 700    | Traffic Safety                     | 0.04                                     | -2                | 5               | 0             | 5                |               |
| HEALTH & WELL-BEING                   |                                                   |                   |             |        |                                    | <b>-0.14</b>                             | <b>-1</b>         | <b>7</b>        | <b>0</b>      | <b>7</b>         |               |
|                                       | HHs with Piped Water Connection (%)               | 7.1               | 60.9        | 80.0   | Water Supply                       | -0.57                                    | -2                | 7               | -1            | 7                |               |
|                                       | HHs Covered by SW Collection Services (%)         | 24.2              | 80.2        | 90.0   | Solid Waste Collection             | -0.13                                    | -2                | 7               | -1            | 7                |               |
|                                       | HHs with Sewerage Systems (%)                     | 2.4               | 51.6        | 90.0   | Drainage Conditions                | 0.03                                     | -2                | 7               | 0             | 7                |               |
|                                       | Hospitals per 000 Population                      | 0.14              | 0.13        | 0.15   | Access to Health Care              | 0.09                                     | 1                 | 3               | 1             | 6                |               |
| AMENITY                               |                                                   |                   |             |        |                                    | <b>-0.13</b>                             | <b>1</b>          | <b>2</b>        | <b>0</b>      | <b>7</b>         |               |
|                                       | Cultural Facilities per 000 Population            | 0.68              | 0.53        | 1.00   | Access to Entertainment Facilities | -0.41                                    | 1                 | 3               | -1            | 7                |               |
|                                       | Water Areas per 000 Population (ha)               | 17.89             | 5.52        | 10.00  | Neighborhood Landscape             | -0.07                                    | 1                 | 1               | -1            | 7                |               |
|                                       | Parks / Open Spaces per 000 Population (ha)       | 0.00              | 0.46        | 3.00   | Access to Parks and Green Spaces   | -0.49                                    | -2                | 4               | -1            | 7                |               |
|                                       | Green Areas per 000 Population (ha)               | 1430              | 298.66      | 300.00 | Greenery                           | -0.13                                    | 2                 | 1               | -1            | 6                |               |
|                                       | Average Living Space per Capita (m <sup>2</sup> ) | 197.4             | 75.3        | 50.0   | Housing Conditions                 | 0.14                                     | 2                 | 1               | 1             | 7                |               |
|                                       | Net Population Density (no./ha)                   | 14                | 39          | 100    | Peace and Order Situation          | 0.17                                     | 2                 | 1               | 1             | 6                |               |
| CAPACITY                              |                                                   |                   |             |        |                                    | <b>0.24</b>                              | <b>0</b>          | <b>7</b>        | <b>1</b>      | <b>7</b>         |               |
|                                       | Average Annual Income (USD)                       | 1,680             | 2,619       | 5,000  | Housing                            | 0.13                                     | -1                | 7               | 1             | 7                |               |
|                                       | Motor Vehicle Ownership per 000 Population        | 362               | 450         | 250    | Transportation Convenience         | 0.50                                     | 1                 | 7               | 1             | 6                |               |
|                                       | Internet Connections per 000 Population           | 27                | 174         | 500    | Telecommunications                 | 0.18                                     | -1                | 7               | 1             | 7                |               |
|                                       | Mobile Phone Ownership per 000 Population         | 188               | 352         | 500    | Telecommunications                 | 0.18                                     | 0                 | 7               | 1             | 7                |               |

## Overall Assessment

Objective Assessment Score: **-0.35** (7/7) rank / district  
 Subjective Assessment Score: **0.08** (7/7)

## Summary Diagnosis

Overall Assessment The overall living conditions in Hoa Vang district are poor, especially in terms of safety & security and health & well-being.

|                     |                                                                                                                                                                    |
|---------------------|--------------------------------------------------------------------------------------------------------------------------------------------------------------------|
| Convenience         | Both objective and subjective scores of convenience are low, as basic services are provided poorly.                                                                |
| Safety & Security   | Police presence is low. And although the commune has the lowest flood vulnerability among all districts, its people are still the most concerned about this issue. |
| Health & Well-being | All health & well-being facilities and services need to be improved.                                                                                               |
| Amenity             | The objective score for amenity is quite good; however, the people's perception is different.                                                                      |
| Capacity            | Both objective and subjective scores for capacity are low. The average annual income is quite low at less than two-thirds of the city average.                     |

