

Result of Field Geological Survey and Ground Truth for the Satellite Image Analysis

Date:	2007/7/5	Location (UTM)		Elev	Geological Unit			
Point No.	NT-01	X (m)	Y (m)	(m)	VSW Index	V	S	W
		265,220	1,268,119	49				

Description

Topography of granite hill in flat land

Lithology: Medium grained hornblende granite.

Topography: Small hill extend NNE-SSW.

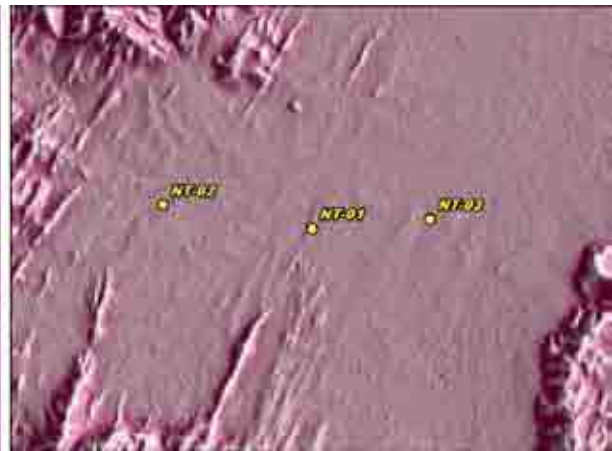
Land use: Grass land for pasturage.

Water use: no water in dug well.

Photo



Satellite Image



Existing Map



Result of Field Geological Survey and Ground Truth for the Satellite Image Analysis

Date:	2007/7/5	Location (UTM)		Elev	Geological Unit			
Point No.	NT-02	X (m)	Y (m)	(m)	VSW Index	V	S	W
		260,759	1,268,832	68				

Description

Village of minority group (Cham tribe)

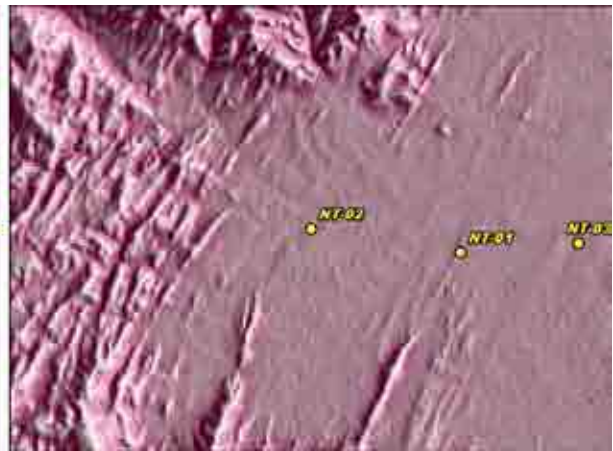
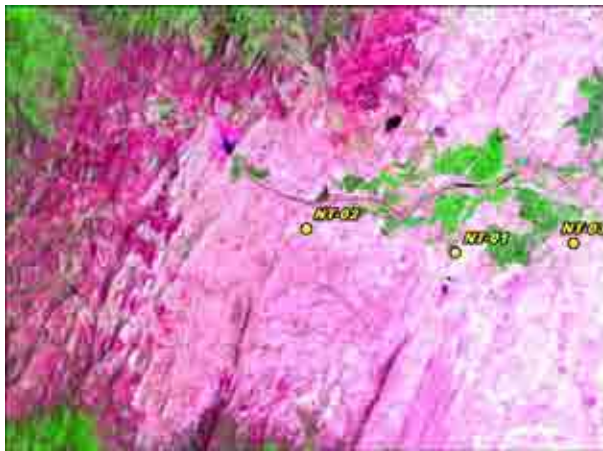
Water use: Water jar for rain water donated by UNICEF.

Land use: Farmland (corn field).

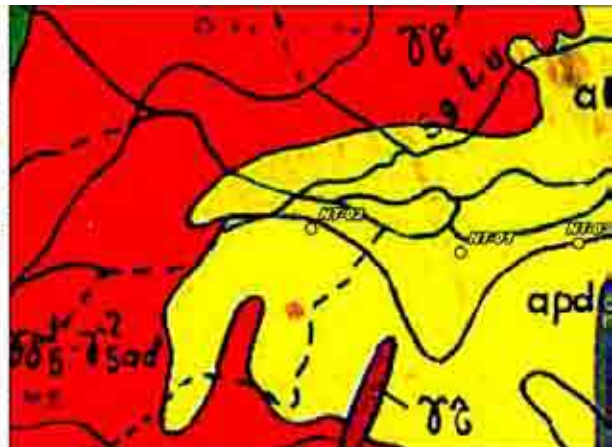
Photo



Satellite Image



Existing Map



Result of Field Geological Survey and Ground Truth for the Satellite Image Analysis

Date:	2007/7/5	Location (UTM)		Elev	Geological Unit			
Point No.	NT-03	X (m)	Y (m)	(m)	VSW Index	V	S	W
		268,742	1,268,397	23				

Description

Village of majority group (Kinh tribe)

Water use: Dug well and water jar for rain water.

Land use: Farmland (corn and paddy field).

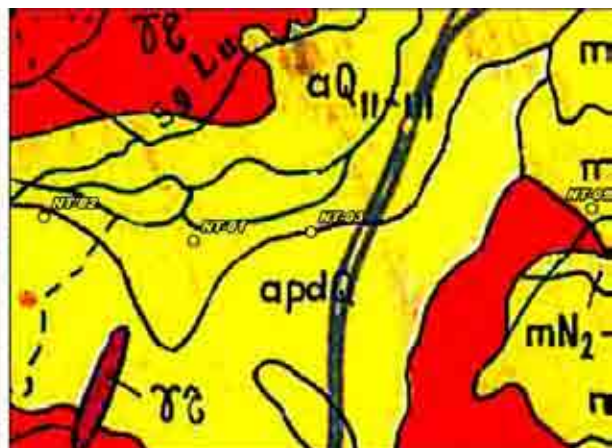
Photo

(No Picture)

Satellite Image



Existing Map



Result of Field Geological Survey and Ground Truth for the Satellite Image Analysis

Date:	2007/7/5	Location (UTM)		Elev	Geological Unit			
Point No.	NT-04	X (m)	Y (m)	(m)	VSW Index	V	S	W
		271,249	1,261,116	35				

Description

Salt field near granite mountain

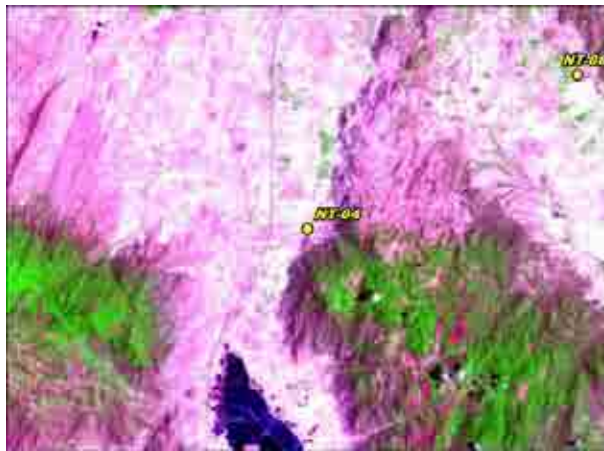
Land use: Salt field operated by VISALCO (almsit field under construction), water pumping unit donated by Japanese Governmnet?

Topography: Steep mountain of Cretaceous granite and flat land.

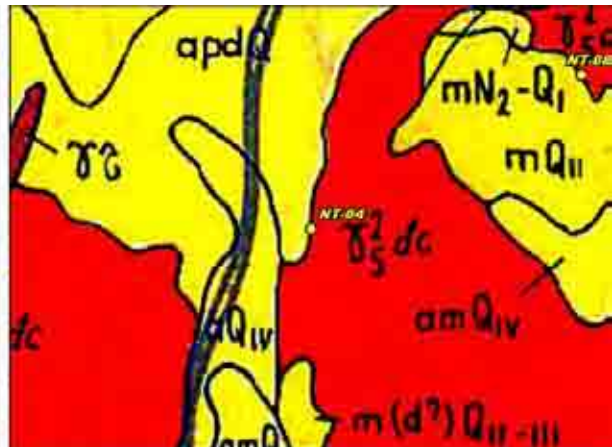
Photo



Satellite Image



Existing Map



Result of Field Geological Survey and Ground Truth for the Satellite Image Analysis

Date:	2007/7/5	Location (UTM)		Elev	Geological Unit			
Point No.	NT-05	X (m)	Y (m)	(m)	VSW Index	V	S	W
		277,120	1,269,083	60				

Description

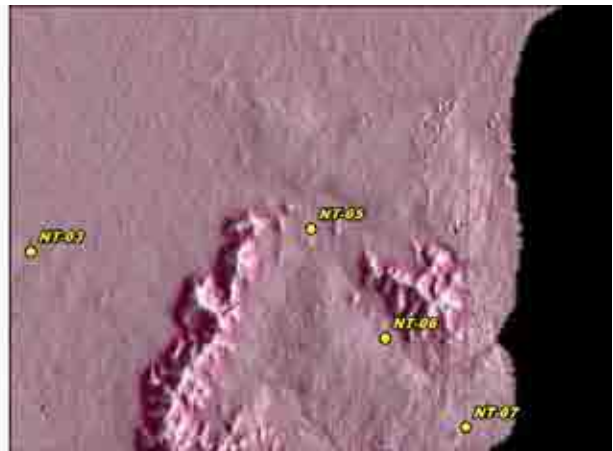
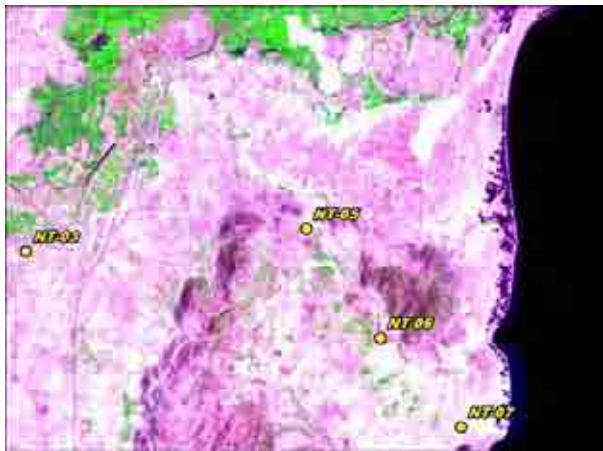
Dam site for agricultural water supply

Water use: Dam for agricultural water supply operated by the department of agricultural development, dug well (D = 4 - 5m).
 Land use: Farmland (peanut, corn, water melon, paddy field in low land).

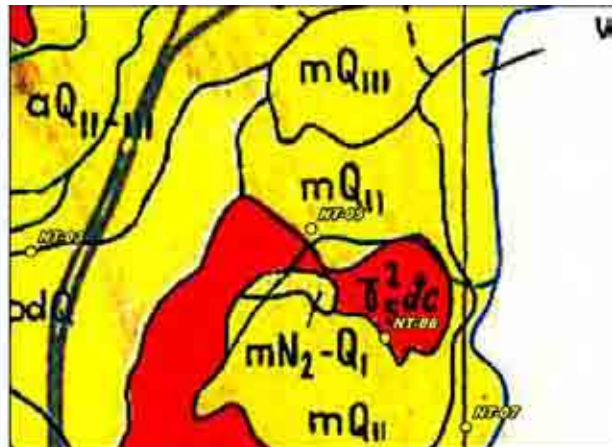
Photo



Satellite Image



Existing Map



Result of Field Geological Survey and Ground Truth for the Satellite Image Analysis

Date:	2007/7/5	Location (UTM)		Elev	Geological Unit			
Point No.	NT-06	X (m)	Y (m)	(m)	VSW Index	V	S	W
		279,332	1,265,776	97				

Description

Topography of granite and sand dune

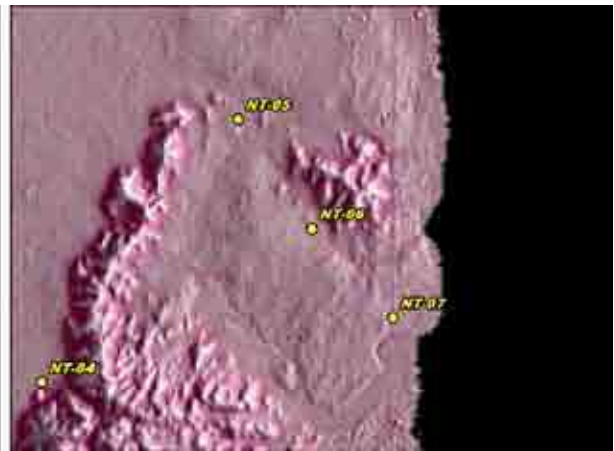
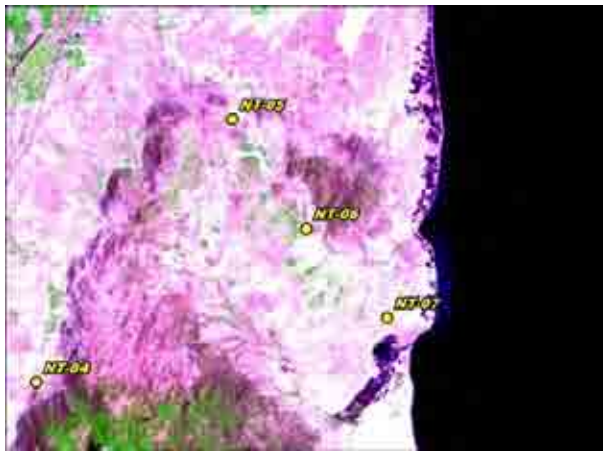
Topography: Steep mountain of granite and flat land with gentle relief of sand dune

Land use: Bare land of whitish brown colored soil (granule and pebble of quartz, feldspar).

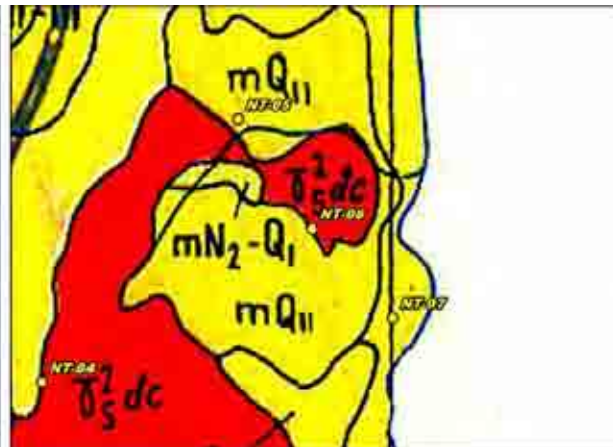
Photo



Satellite Image



Existing Map



Result of Field Geological Survey and Ground Truth for the Satellite Image Analysis

Date:	2007/7/5	Location (UTM)		Elev	Geological Unit			
Point No.	NT-07	X (m)	Y (m)	(m)	VSW Index	V	S	W
		281,744	1,263,075	43				

Description

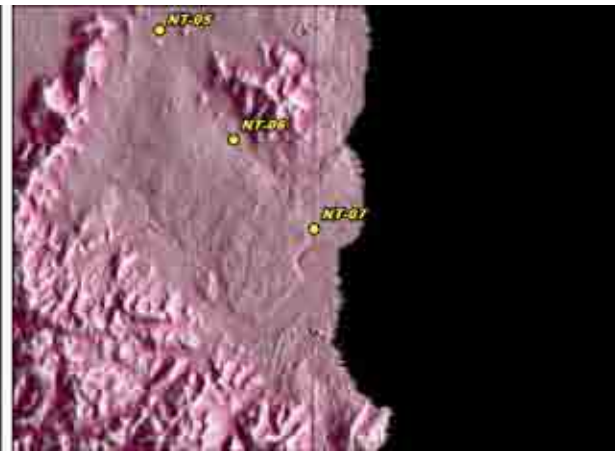
Topography of sand dune

Topography: Gentle slope hill with whitish brown sand (fine to medium grain of quartz, feldspar)
 Land use: Farmland (bean), fish breeding pond (shrimp) near coast line.

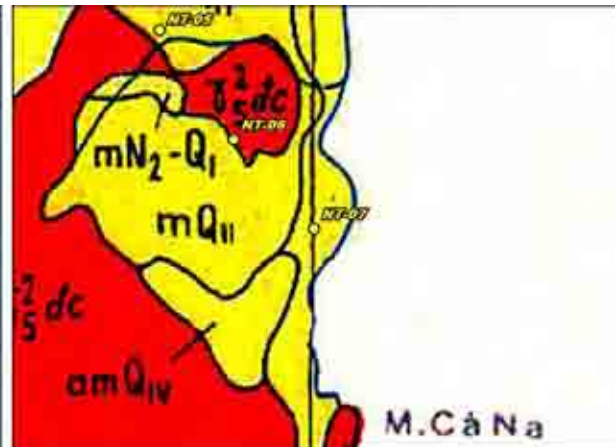
Photo



Satellite Image



Existing Map



Result of Field Geological Survey and Ground Truth for the Satellite Image Analysis

Date:	2007/7/5	Location (UTM)		Elev	Geological Unit			
Point No.	NT-08	X (m)	Y (m)	(m)	VSW Index	V	S	W
		268,830	1,287,602	32				

Description

Outcrop of Cretaceous granite

Lithology: Weathered medium to coarse grained granite.
 Topography: Gentle hill extend NE-SW.

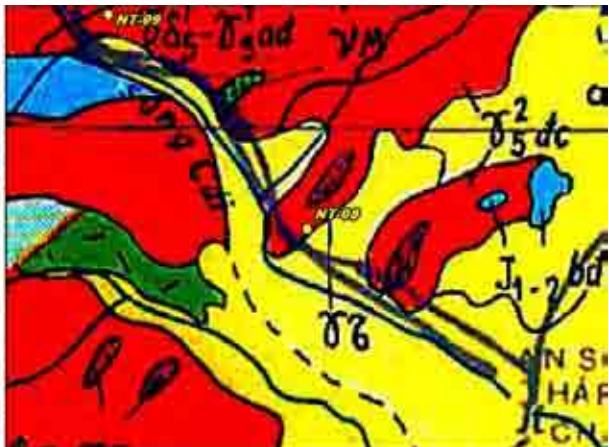
Photo



Satellite Image



Existing Map



Result of Field Geological Survey and Ground Truth for the Satellite Image Analysis

Date:	2007/7/5	Location (UTM)		Elev	Geological Unit			
Point No.	NT-09	X (m)	Y (m)	(m)	VSW Index	V	S	W
		262,886	1,294,084	40				

Description

Water use in Cretaceous granite area

Water use: Dug well (D = 8m) and water jar for rain water, salinity and fluorine problem in dug well, dry up in dry season.
 Topography: Gentle hill, granite exist in shallow part (difficult to drill under 20m).

Photo



Satellite Image



Existing Map



Result of Field Geological Survey and Ground Truth for the Satellite Image Analysis

Date:	2007/7/5	Location (UTM)		Elev	Geological Unit			
Point No.	NT-10	X (m)	Y (m)	(m)	VSW Index	V	S	W
		255,083	1,305,281	129				

Description

Land use in intermountane basin

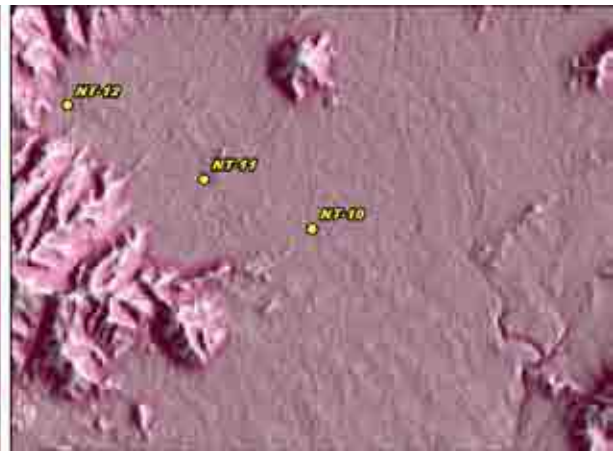
Land use: Farmland (paddy field).

Water use: Agricultural water supply from river water.

Photo



Satellite Image



Existing Map



Result of Field Geological Survey and Ground Truth for the Satellite Image Analysis

Date:	2007/7/5	Location (UTM)		Elev	Geological Unit			
Point No.	NT-11	X (m)	Y (m)	(m)	VSW Index	V	S	W
		251,849	1,306,770	155				

Description

Topography in intermountane basin of granite

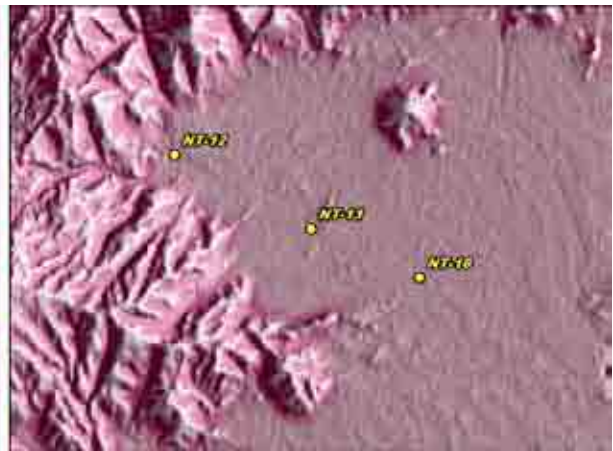
Topography: Small mountain extend NE-SW.

Water use: Dug well for drinking (D = 4m), calcium problem in groundwater.

Photo



Satellite Image



Existing Map



Result of Field Geological Survey and Ground Truth for the Satellite Image Analysis

Date:	2007/7/5	Location (UTM)		Elev	Geological Unit			
Point No.	NT-12	X (m)	Y (m)	(m)	VSW Index	V	S	W
		247,769	1,309,003	214				

Description

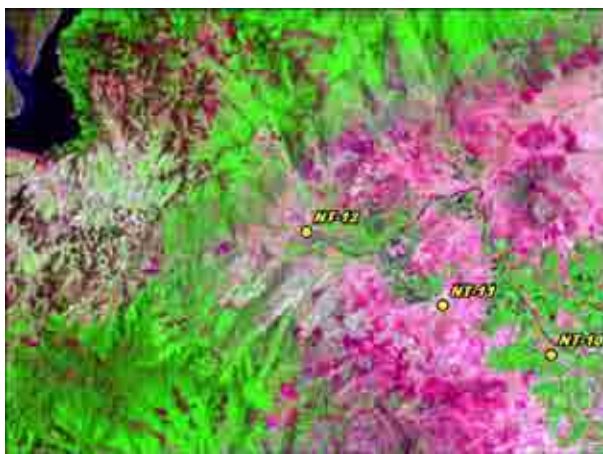
Hydraulic power plant in granite area

"Song Pha" hydraulic power plant, water from dam in the opposite side of mountain by pipeline.

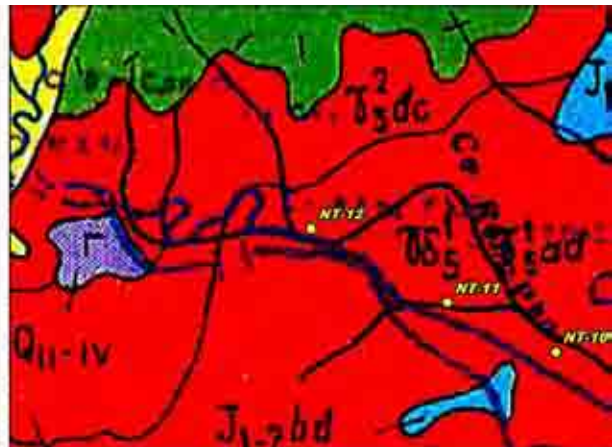
Photo



Satellite Image



Existing Map



Result of Field Geological Survey and Ground Truth for the Satellite Image Analysis

Date:	2007/7/6	Location (UTM)		Elev	Geological Unit			
Point No.	NT-13	X (m)	Y (m)	(m)	VSW Index	V	S	W
		292,821	1,281,532	5				

Description

Land use in flat land near coast

Land use: Fish breeding pond (Shrimp) and salt field, factory for salt manufacturing, farmland (garlic and onion).
 Water use: Dug well, salinity problem.

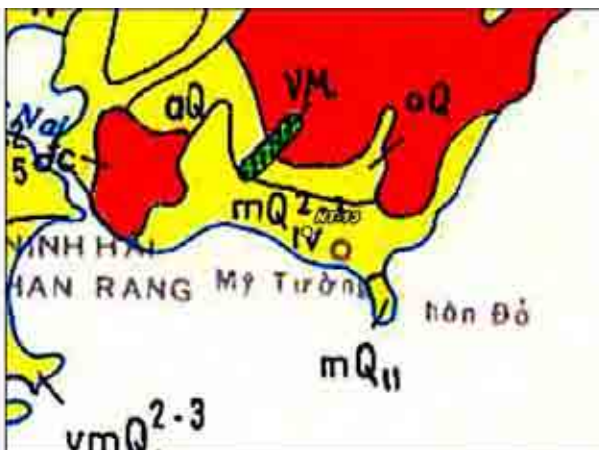
Photo



Satellite Image



Existing Map



Result of Field Geological Survey and Ground Truth for the Satellite Image Analysis

Date:	2007/7/6	Location (UTM)		Elev	Geological Unit			
Point No.	NT-14	X (m)	Y (m)	(m)	VSW Index	V	S	W
		300,011	1,289,182	14				

Description

Water use in intermountane small basin

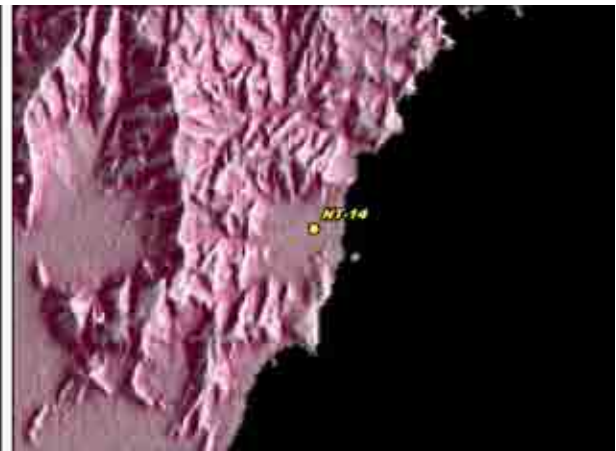
Water use: Dug well for drinking (D = 3m, W = 5m), quality of water is good, volume is rich, water supply system from dam.

Land use: Farmland (grape, garlic and onion)

Photo



Satellite Image



Existing Map



Result of Field Geological Survey and Ground Truth for the Satellite Image Analysis

Date:	2007/7/6	Location (UTM)		Elev	Geological Unit			
Point No.	NT-15	X (m)	Y (m)	(m)	VSW Index	V	S	W
		284,763	1,289,243	5				

Description

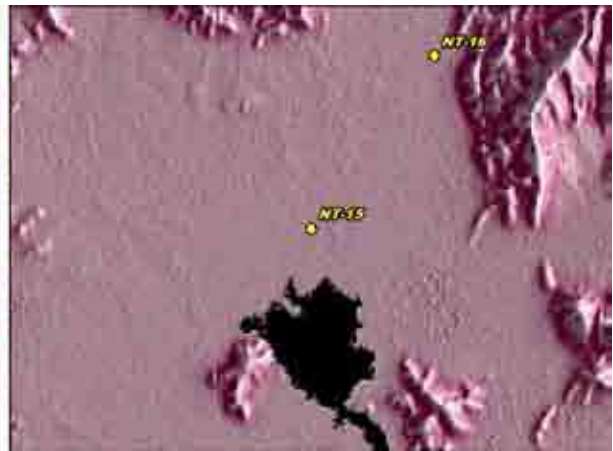
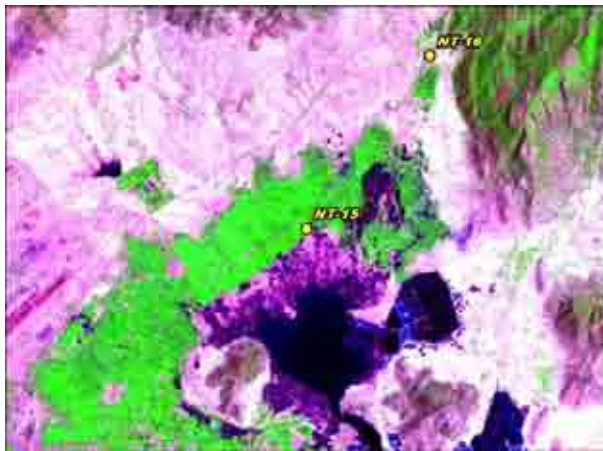
Water supply system

Water use: Water supply center for drinking, dug well and river water for irrigation.
 Land use: Farmland (paddy field) and grass land.

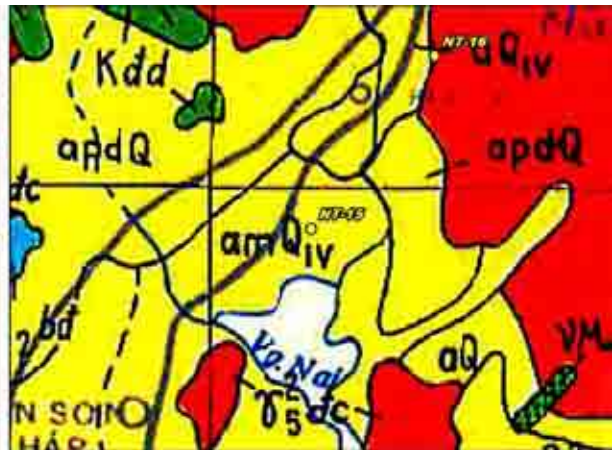
Photo



Satellite Image



Existing Map



Result of Field Geological Survey and Ground Truth for the Satellite Image Analysis

Date:	2007/7/6	Location (UTM)		Elev	Geological Unit			
Point No.	NT-16	X (m)	Y (m)	(m)	VSW Index	V	S	W
		288,448	1,294,463	21				

Description

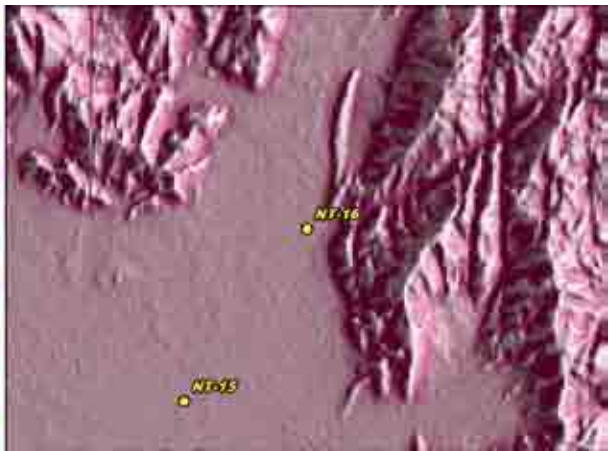
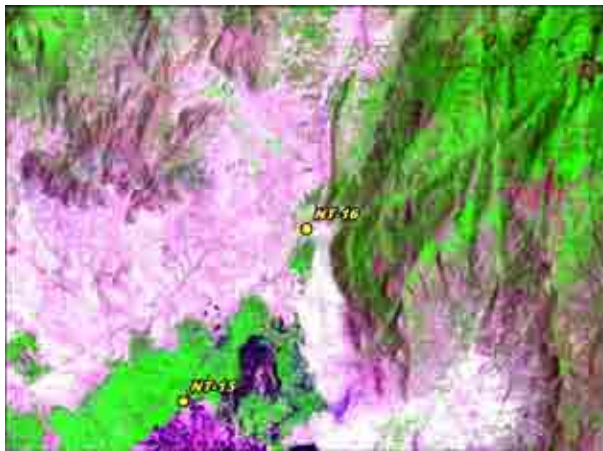
Topography in Cretaceous granite.

Topography: Steep mountain and valley extend NE-SW along lineament.
 Land use: Farmland (paddy field with reservoir).

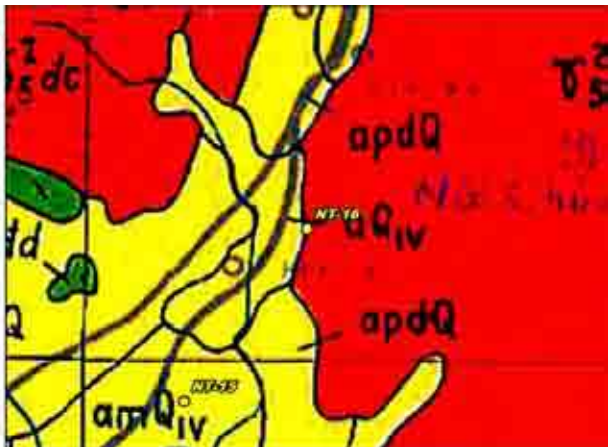
Photo



Satellite Image



Existing Map



Result of Field Geological Survey and Ground Truth for the Satellite Image Analysis

Date:	2007/7/6	Location (UTM)		Elev	Geological Unit			
Point No.	NT-17	X (m)	Y (m)	(m)	VSW Index	V	S	W
		292,246	1,304,465	19				

Description

Topography of Jurassic or Cretaceous volcanic rock

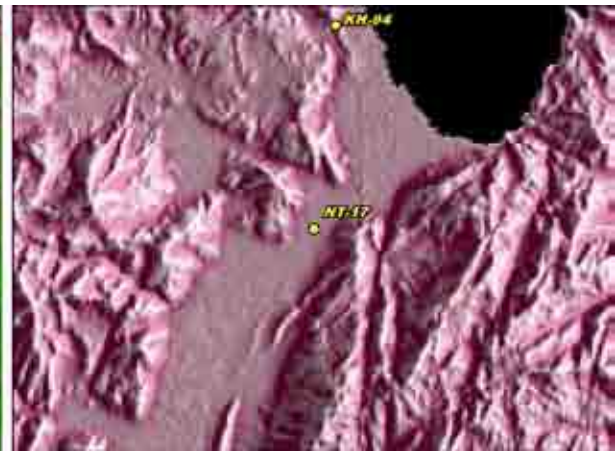
Topography: Steep mountain, edge of mountain is clear.

Land use: Quarry for volcanic rock, farmland in flat land (paddy field).

Photo



Satellite Image



Existing Map



Result of Field Geological Survey and Ground Truth for the Satellite Image Analysis

Date:	2007/7/6	Location (UTM)		Elev	Geological Unit			
Point No.	NT-18	X (m)	Y (m)	(m)	VSW Index	V	S	W
		264,720	1,298,615	133				

Description

Outcrop of Jurassic or Cretaceous volcanic rock

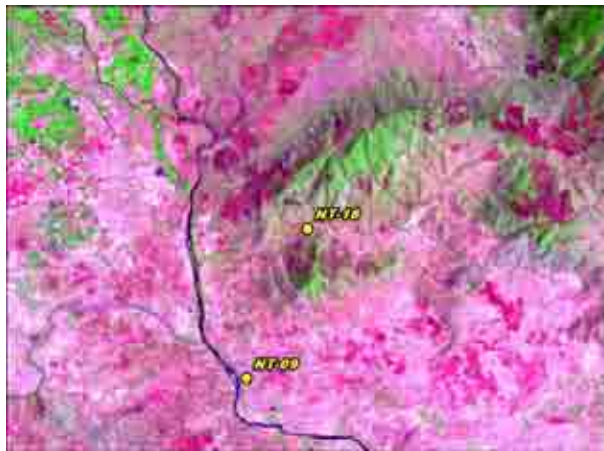
Lithology: Silicified rhyolitic rock with quartz vein (W = 10mm).

Topography: Steep mountain covered with vegetation.

Photo



Satellite Image



Existing Map



Result of Field Geological Survey and Ground Truth for the Satellite Image Analysis

Date:	2007/7/2	Location (UTM)		Elev	Geological Unit			
Point No.	BT-01	X (m)	Y (m)	(m)	VSW Index	V	S	W
		99,294	1,208,023	120				

Description

Soil in Quarternary volcanic rock

Soil: Brown colored gravel of basalt.

Land use: Farmland (corn and vegetable).

Water use: Dug well, villager purchase water in dry season for dry up of well water.

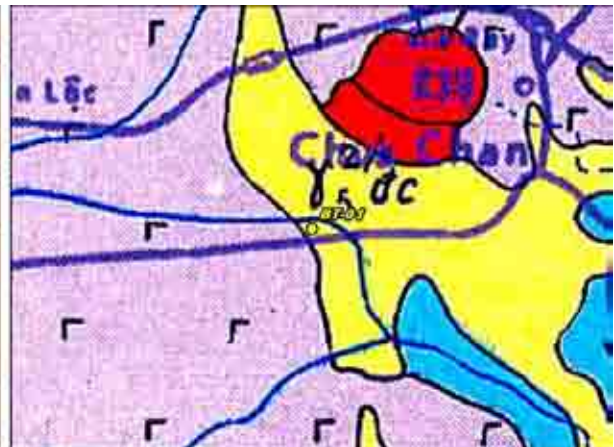
Photo



Satellite Image



Existing Map



Result of Field Geological Survey and Ground Truth for the Satellite Image Analysis

Date:	2007/7/2	Location (UTM)		Elev	Geological Unit			
Point No.	BT-02	X (m)	Y (m)	(m)	VSW Index	V	S	W
		110,452	1,227,846	90				

Description

Land use in Quaternary volcanic rock

Land use: Farmland (corn, vegetable, coffee and cashew nut).

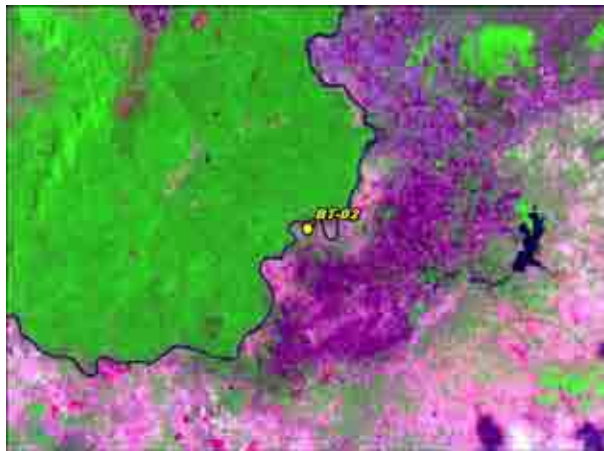
Water use: Drilled well for drinking (D = 30m), agricultural water supply for irrigation from river water.

Soil: Brown colored soil with basalt boulder.

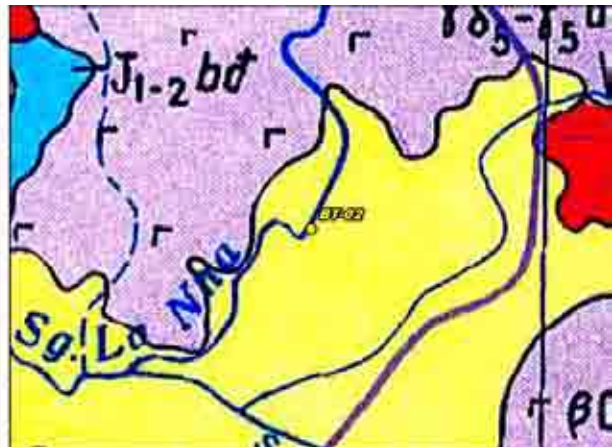
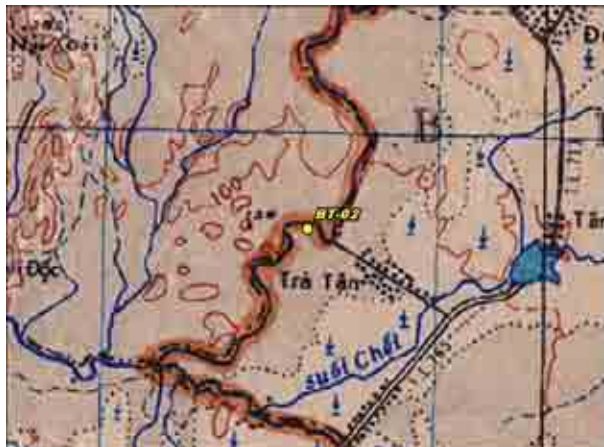
Photo



Satellite Image



Existing Map



Result of Field Geological Survey and Ground Truth for the Satellite Image Analysis

Date:	2007/7/2	Location (UTM)		Elev	Geological Unit			
Point No.	BT-03	X (m)	Y (m)	(m)	VSW Index	V	S	W
		126,108	1,239,787	111				

Description

Land use in alluvium plain

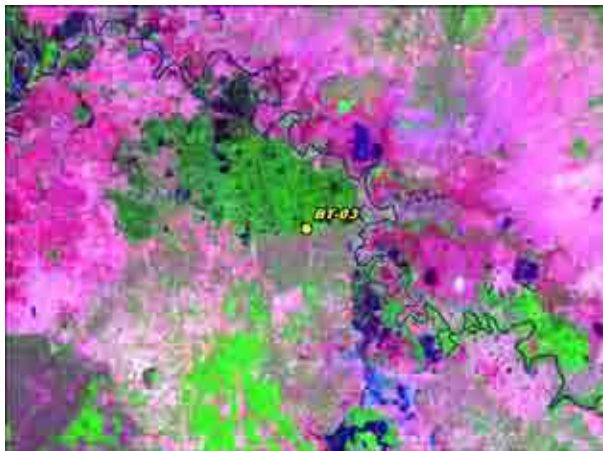
Land use: Farmland (paddy field).

Water use: Dug well (dry up in dry season), agricultural water supply from river water, volume of water is rich.

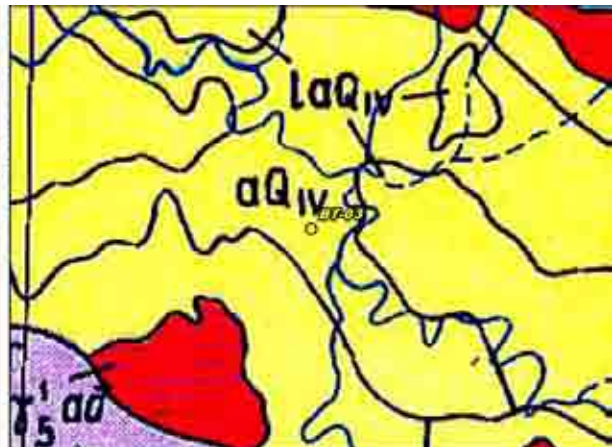
Photo



Satellite Image



Existing Map



Result of Field Geological Survey and Ground Truth for the Satellite Image Analysis

Date:	2007/7/2	Location (UTM)		Elev	Geological Unit			
Point No.	BT-04	X (m)	Y (m)	(m)	VSW Index	V	S	W
		142,777	1,234,480	143				

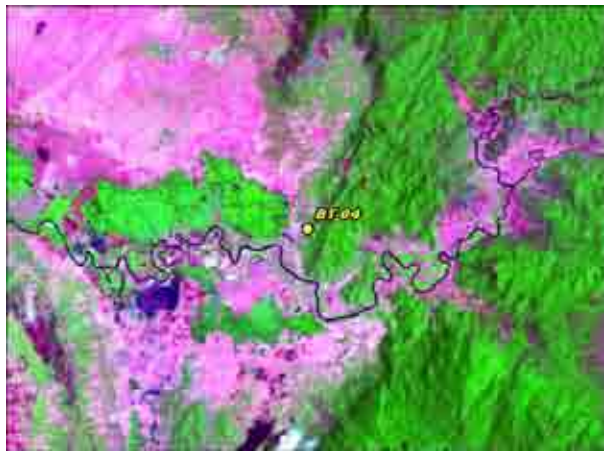
Description

Outcrop of Jurassic sedimentary rock

Photo



Satellite Image



Existing Map



Result of Field Geological Survey and Ground Truth for the Satellite Image Analysis

Date:	2007/7/2	Location (UTM)		Elev	Geological Unit			
Point No.	BT-05	X (m)	Y (m)	(m)	VSW Index	V	S	W
		139,029	1,227,106	124				

Description

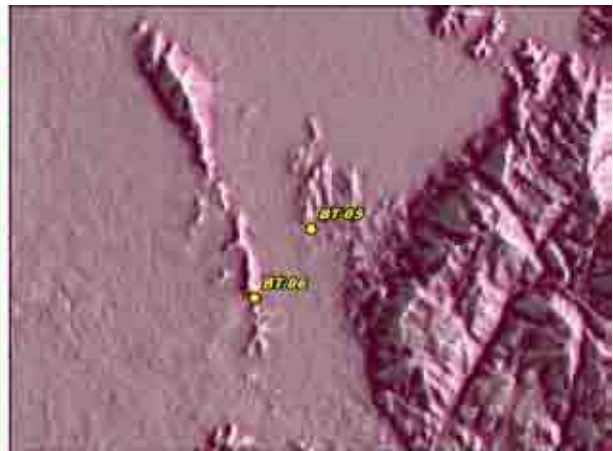
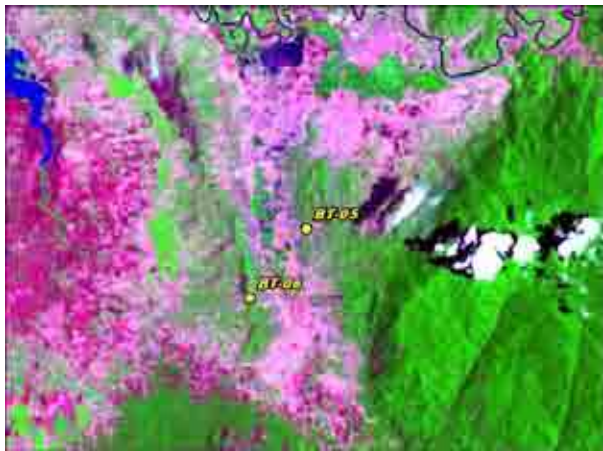
Water supply center

Water supply center operated by P-CERWASS with iron elimination facility.

Photo



Satellite Image



Existing Map



Result of Field Geological Survey and Ground Truth for the Satellite Image Analysis

Date:	2007/7/2	Location (UTM)		Elev	Geological Unit			
Point No.	BT-06	X (m)	Y (m)	(m)	VSW Index	V	S	W
		137,342	1,225,006	136				

Description

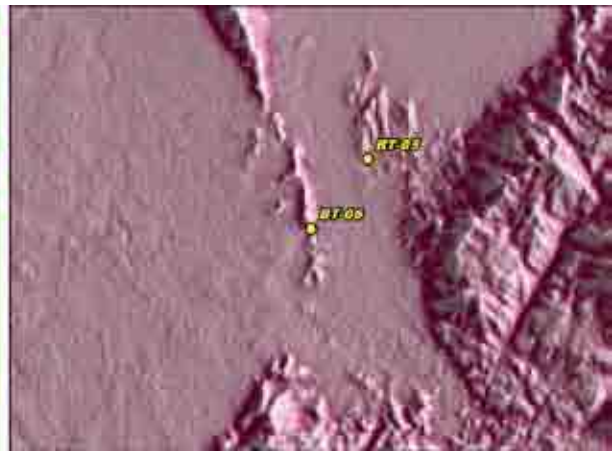
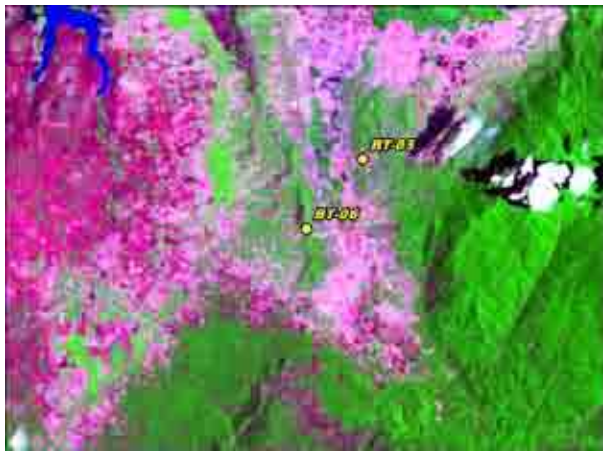
Outcrop of Jurassic sedimentary rock

Lithology: Light gray colored fine sandstone and siltstone which are hard by silicification, landslide in oxidation zone.

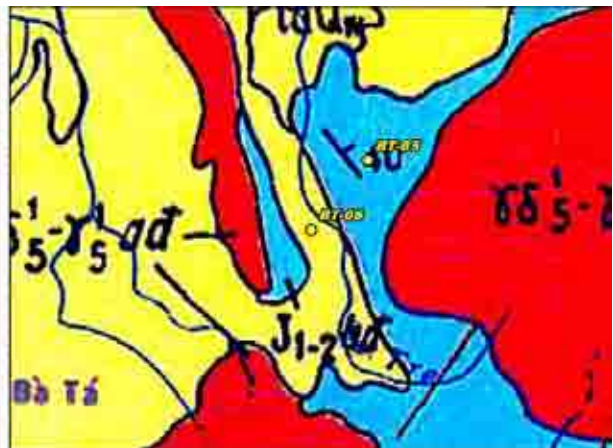
Photo



Satellite Image



Existing Map



Result of Field Geological Survey and Ground Truth for the Satellite Image Analysis

Date:	2007/7/2	Location (UTM)		Elev	Geological Unit			
Point No.	BT-07	X (m)	Y (m)	(m)	VSW Index	V	S	W
		132,062	1,214,368	134				

Description

Granite mountain with lineament

Topography: Steep mountain and valley extend NE-SW.
 Land use: Farmland (mango, cashew nut and cassava).

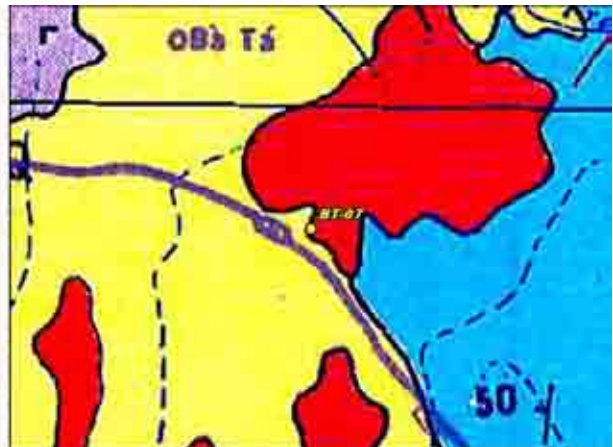
Photo



Satellite Image



Existing Map



Result of Field Geological Survey and Ground Truth for the Satellite Image Analysis

Date:	2007/7/2	Location (UTM)		Elev	Geological Unit			
Point No.	BT-08	X (m)	Y (m)	(m)	VSW Index	V	S	W
		138,813	1,197,891	65				

Description

Land use in Jurassic sedimentary rock

Land use: Farmland (paddy, sugarcane and corn field).

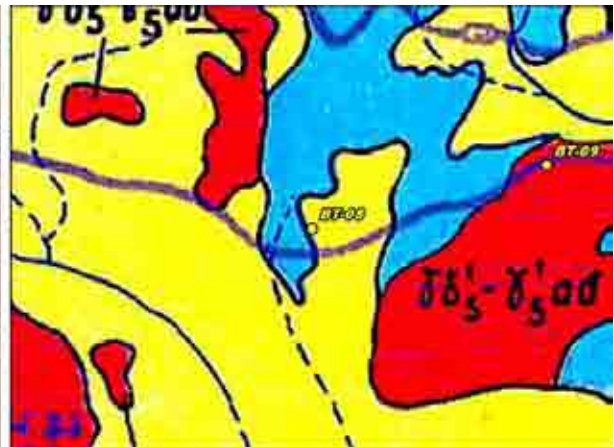
Photo



Satellite Image



Existing Map



Result of Field Geological Survey and Ground Truth for the Satellite Image Analysis

Date:	2007/7/2	Location (UTM)		Elev	Geological Unit			
Point No.	BT-09	X (m)	Y (m)	(m)	VSW Index	V	S	W
		145,825	1,199,800	56				

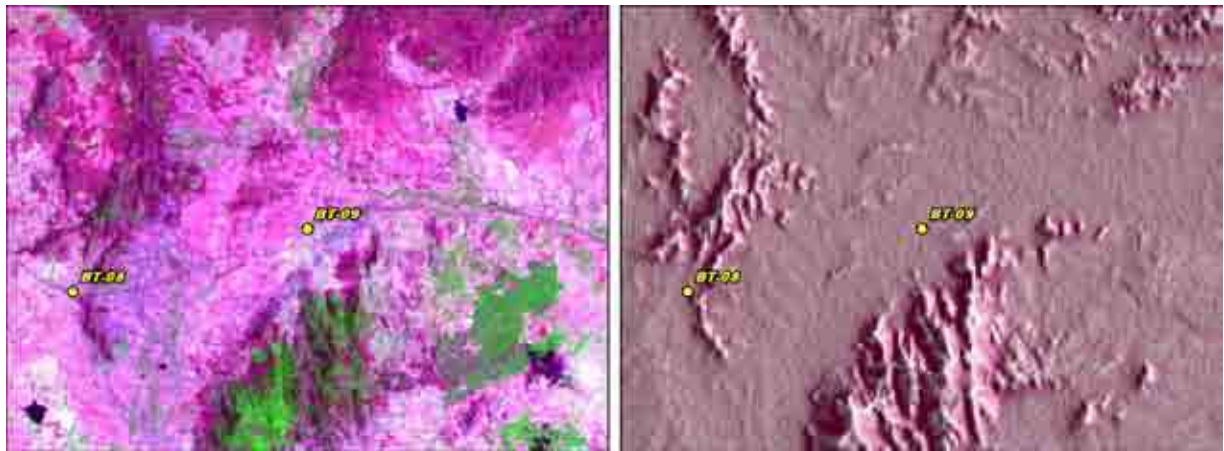
Description

Drilled well site
 Drilled by 705 Geological Union (D = 93m, > 100m finally).

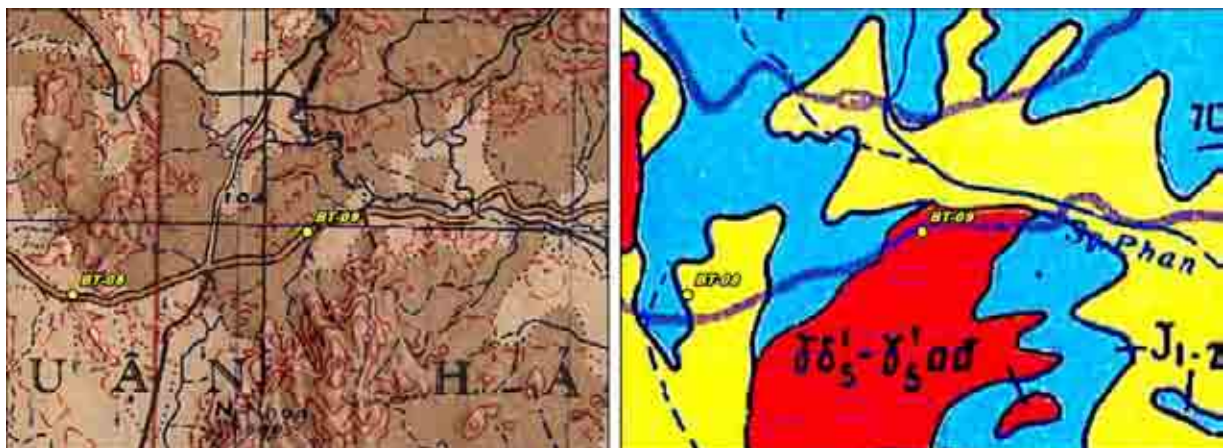
Photo

(No Picture)

Satellite Image



Existing Map



Result of Field Geological Survey and Ground Truth for the Satellite Image Analysis

Date:	2007/7/3	Location (UTM)		Elev	Geological Unit			
Point No.	BT-10	X (m)	Y (m)	(m)	VSW Index	V	S	W
		189,625	1,218,271	13				

Description

Land use in flat land near sand dune

Land use: Farmland (dragon fruits and paddy field).

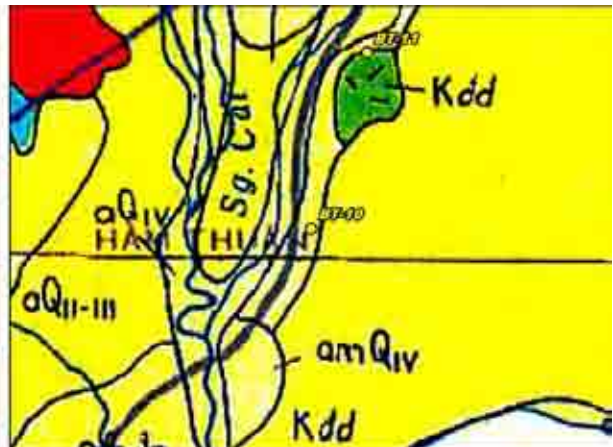
Photo



Satellite Image



Existing Map



Result of Field Geological Survey and Ground Truth for the Satellite Image Analysis

Date:	2007/7/3	Location (UTM)		Elev	Geological Unit			
Point No.	BT-11	X (m)	Y (m)	(m)	VSW Index	V	S	W
		191,285	1,223,593	29				

Description

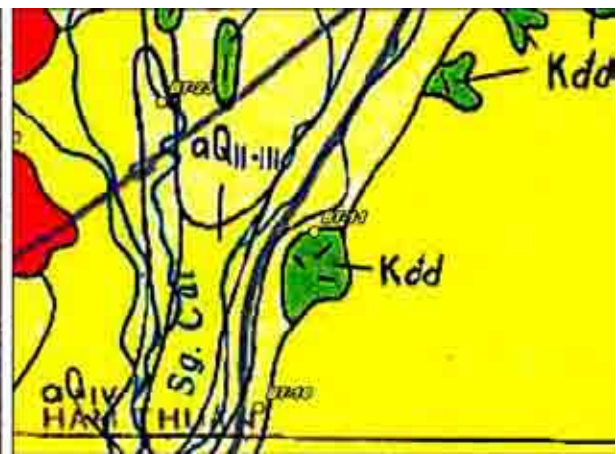
Outcrop of Cretaceous volcanic rock

Lithology: Gray colored silicified rock (andesitic?) on slope, medium grained hornblende granite boulder with quartz vein (1cm).

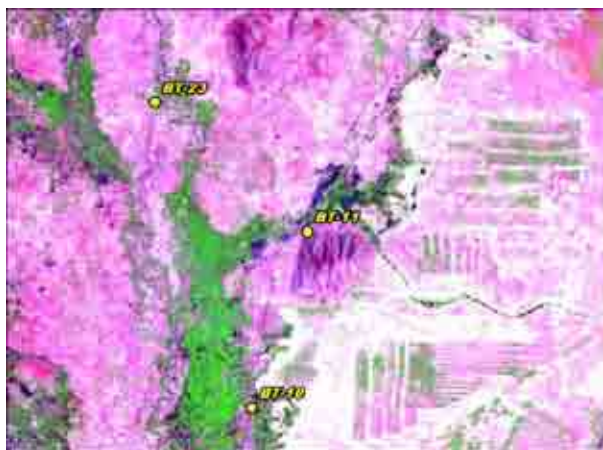
Photo



Satellite Image



Existing Map



Result of Field Geological Survey and Ground Truth for the Satellite Image Analysis

Date:	2007/7/3	Location (UTM)		Elev	Geological Unit			
Point No.	BT-12	X (m)	Y (m)	(m)	VSW Index	V	S	W
		210,436	1,241,254	36				

Description

Boulder of basalt and basaltic soil section

Lithology: Dark colored porous basalt.

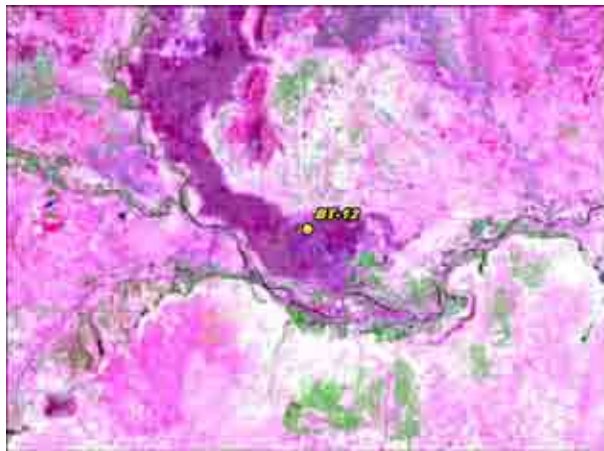
Soil: Dark brown colored soil, many granules in B layer.

Land use: Grass land for pasturage, farmland (cassava, cashew nut, paddy near pond).

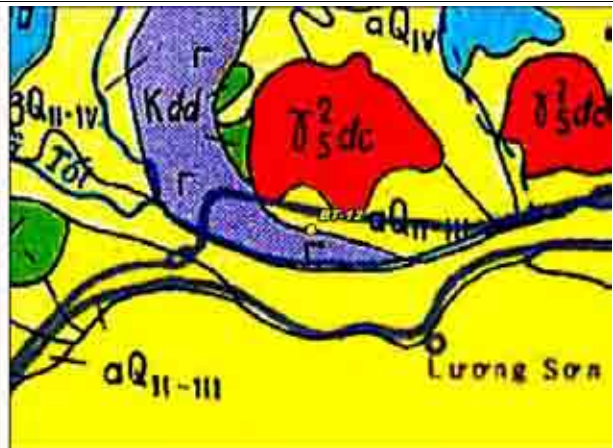
Photo



Satellite Image



Existing Map



Result of Field Geological Survey and Ground Truth for the Satellite Image Analysis

Date:	2007/7/3	Location (UTM)		Elev	Geological Unit			
Point No.	BT-13	X (m)	Y (m)	(m)	VSW Index	V	S	W
		210,451	1,250,615	78				

Description

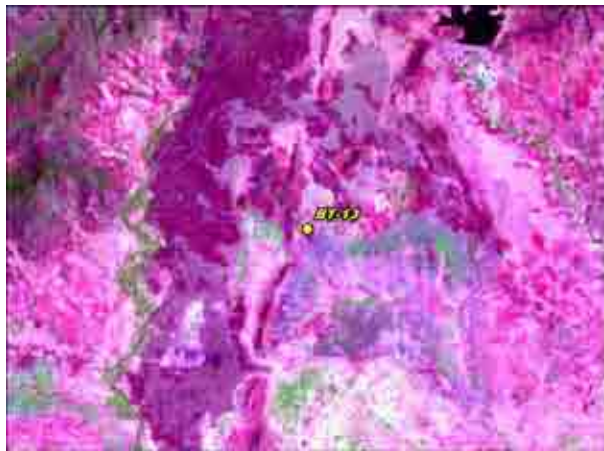
Outcrop of Jurassic sedimentary rock

Lithology: Dark gray colored fine sandstone - siltstone, well bedded and lamination, silicified, N40E vertical.
 Topography: Flat land with gentle relief, low mountain extend N-S in Jurassic volcanics?

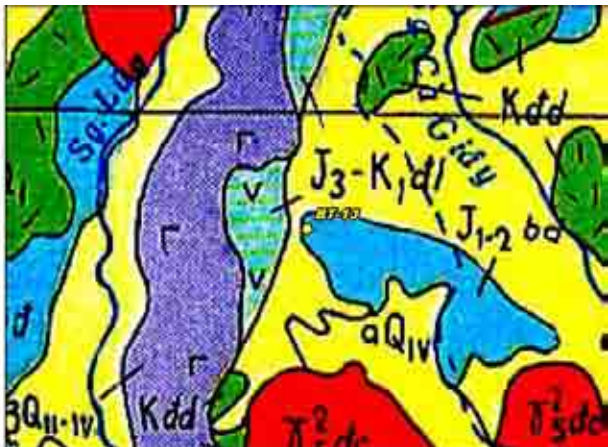
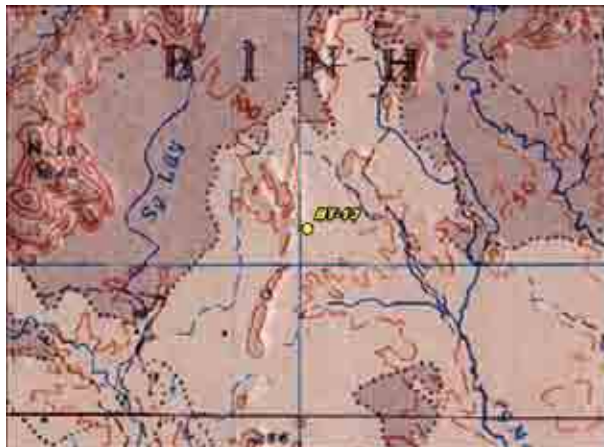
Photo



Satellite Image



Existing Map



Result of Field Geological Survey and Ground Truth for the Satellite Image Analysis

Date:	2007/7/3	Location (UTM)		Elev	Geological Unit			
Point No.	BT-14	X (m)	Y (m)	(m)	VSW Index	V	S	W
		211,524	1,263,344	144				

Description

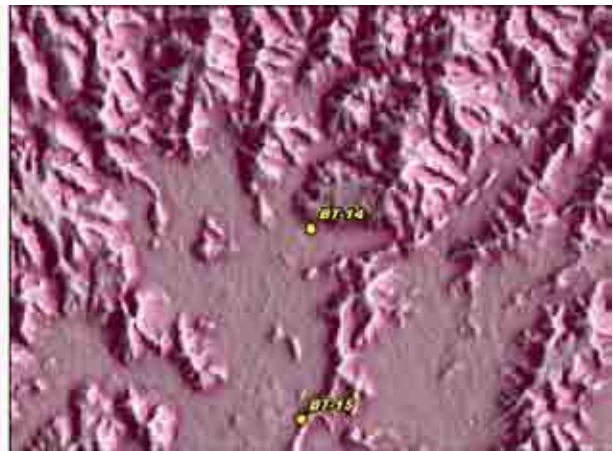
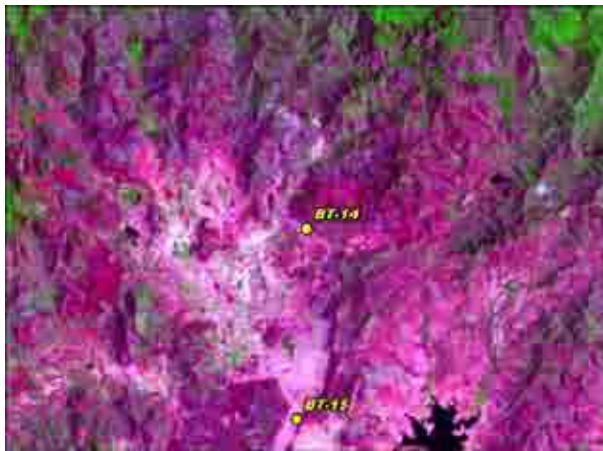
Residence area for minority group

New residences for the settlement plan of minority group with water supply system, bath and toilet.

Photo



Satellite Image



Existing Map



Result of Field Geological Survey and Ground Truth for the Satellite Image Analysis

Date:	2007/7/3	Location (UTM)		Elev	Geological Unit			
Point No.	BT-15	X (m)	Y (m)	(m)	VSW Index	V	S	W
		211,231	1,257,584	155				

Description

Outcrop of Jurassic volcanic rock

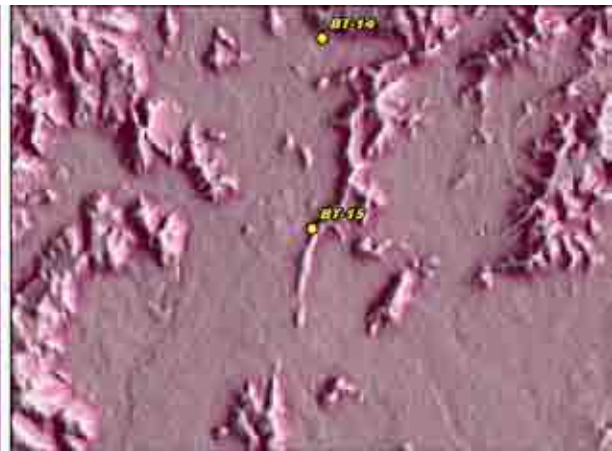
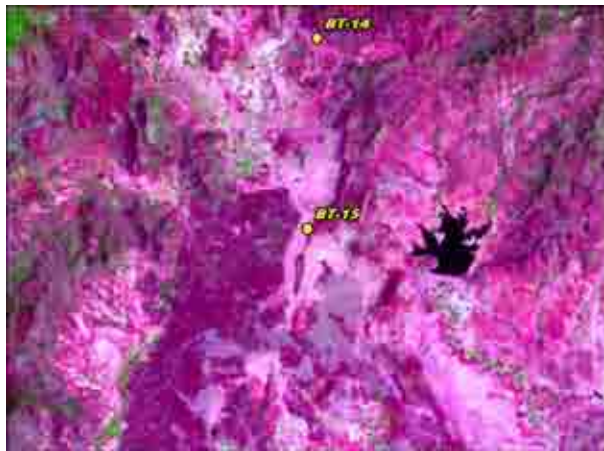
Lithology: Silicified andesite with joint.

Land use: Farmland (paddy in flat land and corn field on slope).

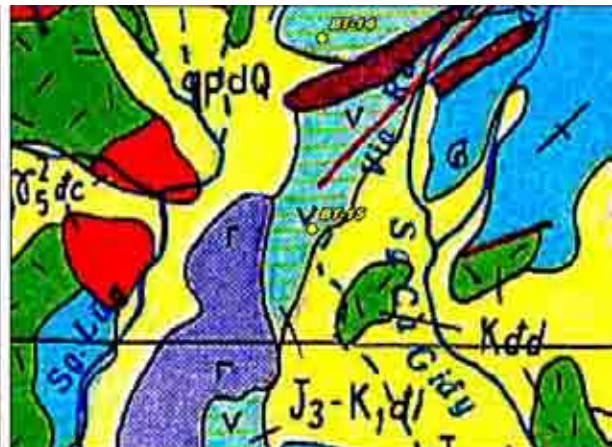
Photo



Satellite Image



Existing Map



Result of Field Geological Survey and Ground Truth for the Satellite Image Analysis

Date:	2007/7/3	Location (UTM)		Elev	Geological Unit			
Point No.	BT-16	X (m)	Y (m)	(m)	VSW Index	V	S	W
		227,307	1,249,464	28				

Description

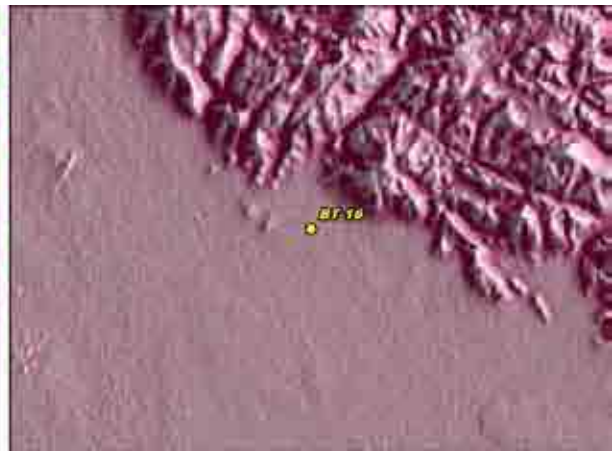
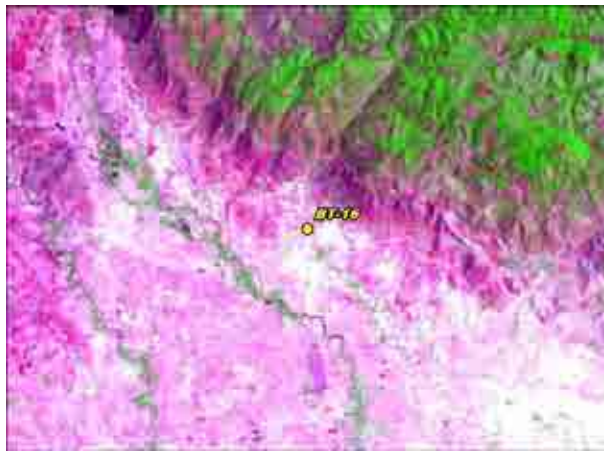
Aguricultural water supply system near granite mountain

Water use: Irrigation canal, volume of water is poor, pipeline and water service tower for water supply system.
 Land use: Farmland (sesame and corn, no cropping in dry season).

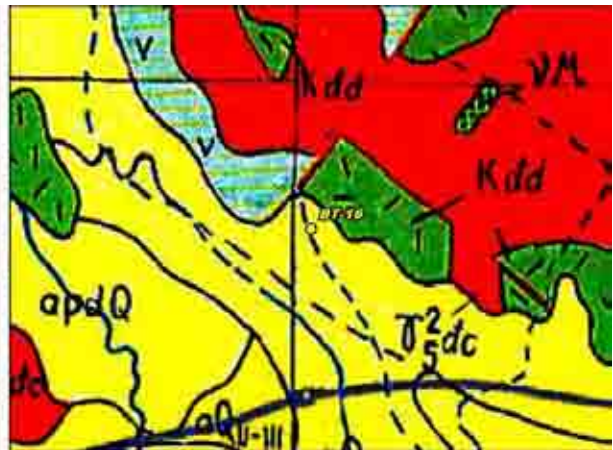
Photo



Satellite Image



Existing Map



Result of Field Geological Survey and Ground Truth for the Satellite Image Analysis

Date:	2007/7/3	Location (UTM)		Elev	Geological Unit			
Point No.	BT-17	X (m)	Y (m)	(m)	VSW Index	V	S	W
		238,662	1,237,664	5				

Description

Land use in flat land along coast

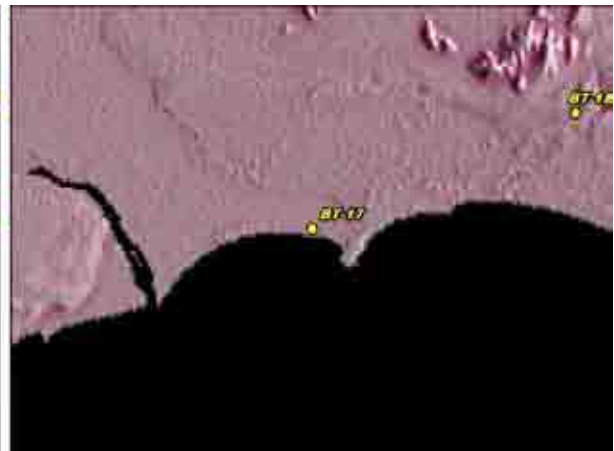
Land use: Fish breeding pond (shrimp) and salt field.

Water use: Fluorine problem in dug well, villager purchase drinking water.

Photo



Satellite Image



Existing Map



Result of Field Geological Survey and Ground Truth for the Satellite Image Analysis

Date:	2007/7/3	Location (UTM)		Elev	Geological Unit			
Point No.	BT-18	X (m)	Y (m)	(m)	VSW Index	V	S	W
		246,538	1,241,169	90				

Description

Topography of sand dune

Topography: Gentle relief hill.

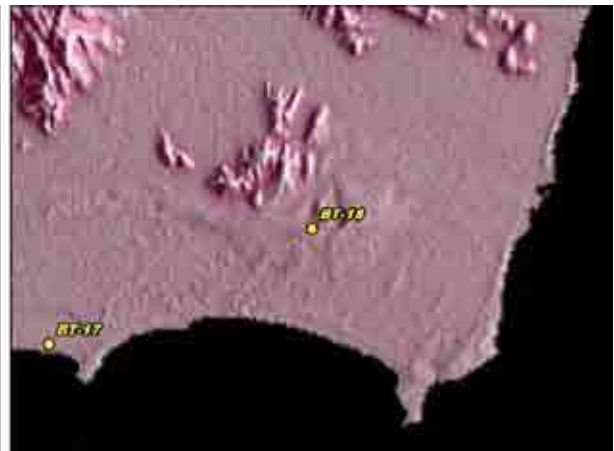
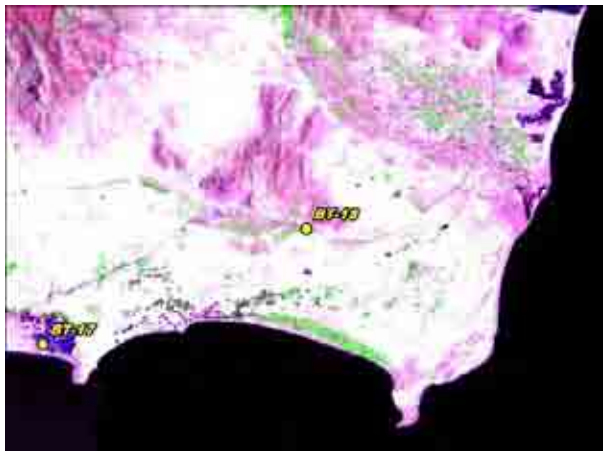
Soil: Reddish (oxidation) quartz sand, medium to coarse grained.

Land use: Grass land for pasturage, drought.

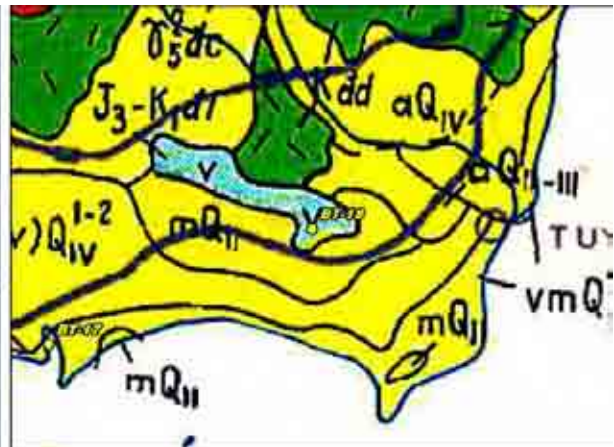
Photo



Satellite Image



Existing Map



Result of Field Geological Survey and Ground Truth for the Satellite Image Analysis

Date:	2007/7/3	Location (UTM)		Elev	Geological Unit			
Point No.	BT-19	X (m)	Y (m)	(m)	VSW Index	V	S	W
		253,825	1,252,275	37				

Description

Outcrop of Cretaceous volcanic rock near dam

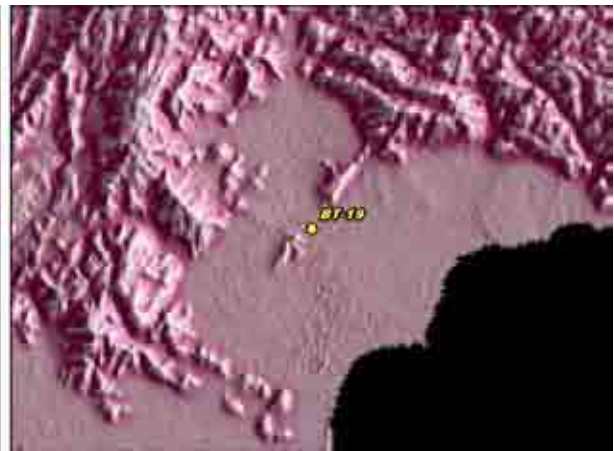
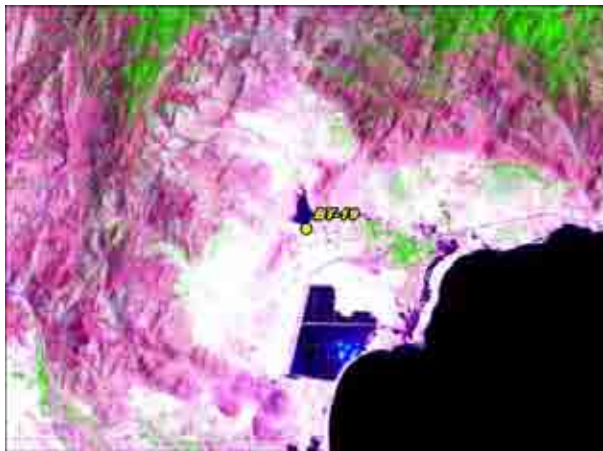
Lithology: Silicified rhyolite with quartz veinlets (max. 50cm, ave. joint (N40W, N80E).

Water use: Dam for agricultural water supply operated by Hydrologic engineering, control and exploring company.

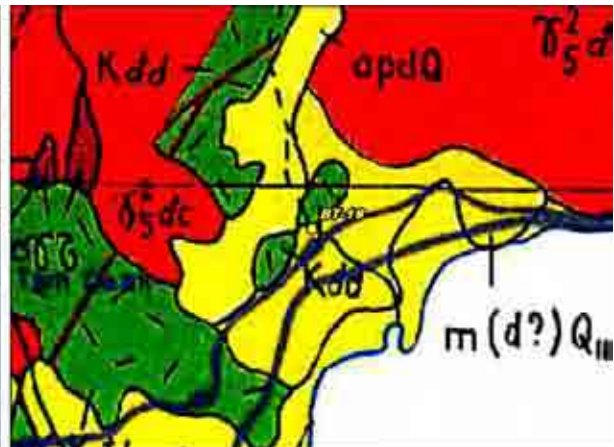
Photo



Satellite Image



Existing Map



Result of Field Geological Survey and Ground Truth for the Satellite Image Analysis

Date:	2007/7/3	Location (UTM)		Elev	Geological Unit			
Point No.	BT-20	X (m)	Y (m)	(m)	VSW Index	V	S	W
		213,008	1,230,825	164				

Description

Topography of sand dune

Topography: Gentle hill and mountain.

Landuse: Forest

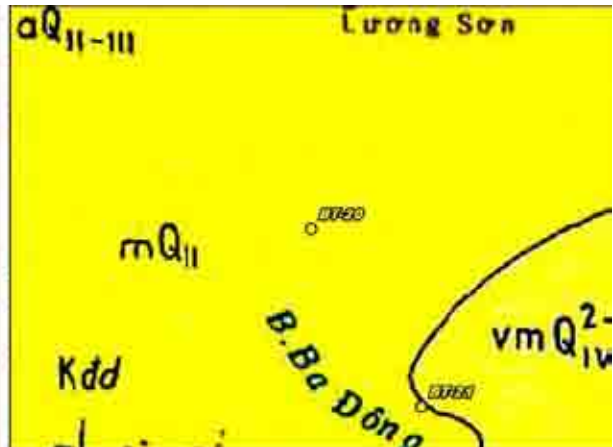
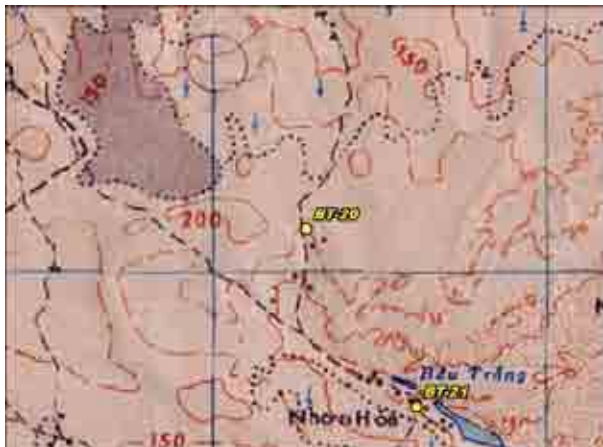
Photo



Satellite Image



Existing Map



Result of Field Geological Survey and Ground Truth for the Satellite Image Analysis

Date:	2007/7/3	Location (UTM)		Elev	Geological Unit			
Point No.	BT-21	X (m)	Y (m)	(m)	VSW Index	V	S	W
		216,297	1,225,437	68				

Description

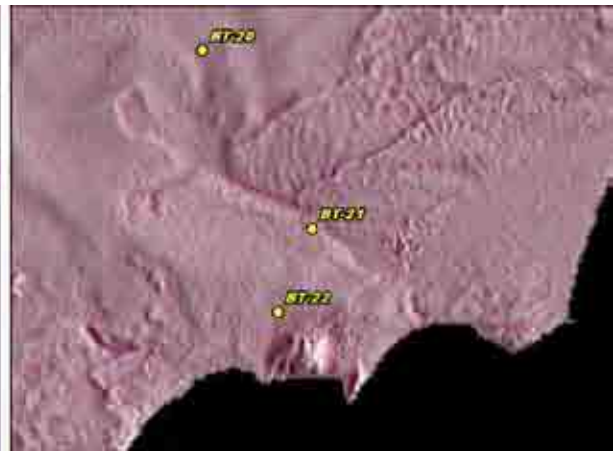
Land use in sand dune

Land use: Farmland (peanut) and grass land.
 Water use: Reservoir in valley among sand dune.

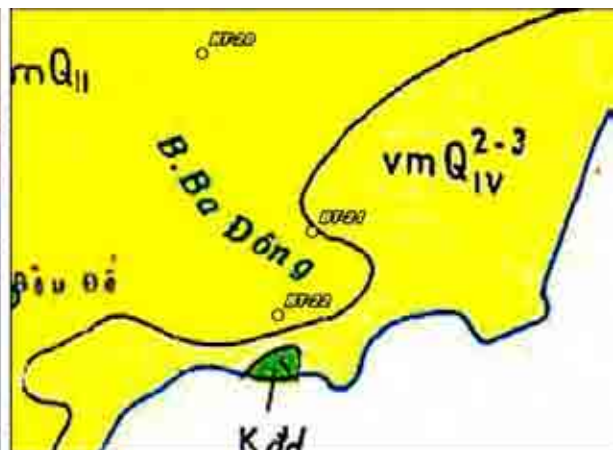
Photo



Satellite Image



Existing Map



Result of Field Geological Survey and Ground Truth for the Satellite Image Analysis

Date:	2007/7/3	Location (UTM)		Elev	Geological Unit			
Point No.	BT-22	X (m)	Y (m)	(m)	VSW Index	V	S	W
		215,265	1,222,911	87				

Description

Soil of sand dune

Soil: Reddish brown colored quartz sand, sand dune on slope of mountain.
 Land use: Grass land.

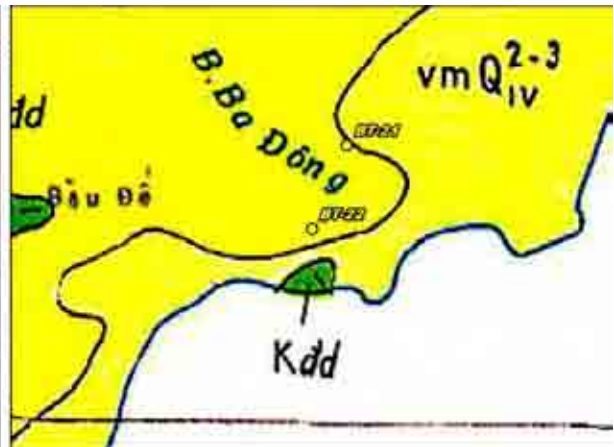
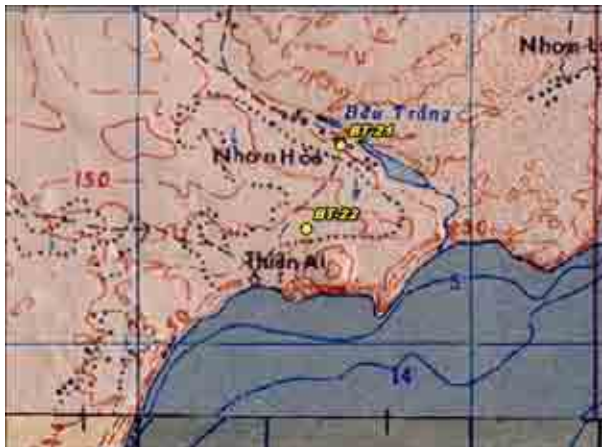
Photo



Satellite Image



Existing Map



Result of Field Geological Survey and Ground Truth for the Satellite Image Analysis

Date:	2007/7/4	Location (UTM)		Elev	Geological Unit			
Point No.	BT-23	X (m)	Y (m)	(m)	VSW Index	V	S	W
		186,723	1,227,506	33				

Description

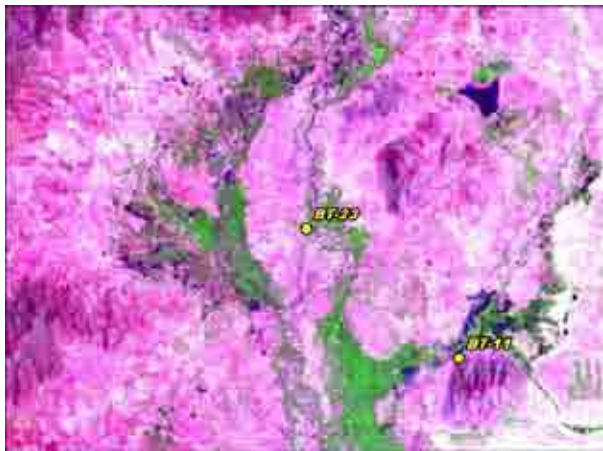
Land use in alluvium

Land use: Farmland (paddy field), the biggest paddy field in Binh Thuan Province.
 Water use: Dug well (dry up in dry season), water supply system is under construction.

Photo



Satellite Image



Existing Map



Result of Field Geological Survey and Ground Truth for the Satellite Image Analysis

Date:	2007/7/4	Location (UTM)		Elev	Geological Unit			
Point No.	BT-24	X (m)	Y (m)	(m)	VSW Index	V	S	W
		187,674	1,235,757	92				

Description

Outcrop of Cretaceous granite near dam site

Lithology: Medium grained hornblende granite with volcanics nodule, joint (N50E).

Water use: Dam for agricultural water supply.

Photo



Satellite Image



Existing Map



Result of Field Geological Survey and Ground Truth for the Satellite Image Analysis

Date:	2007/7/4	Location (UTM)		Elev	Geological Unit			
Point No.	BT-25	X (m)	Y (m)	(m)	VSW Index	V	S	W
		186,281	1,244,950	161				

Description

Outcrop of Jurassic sedimentary rock

Lithology: Alternation of dark gray colored siltstone / brown colored mussive sandstone, N50E 80S.

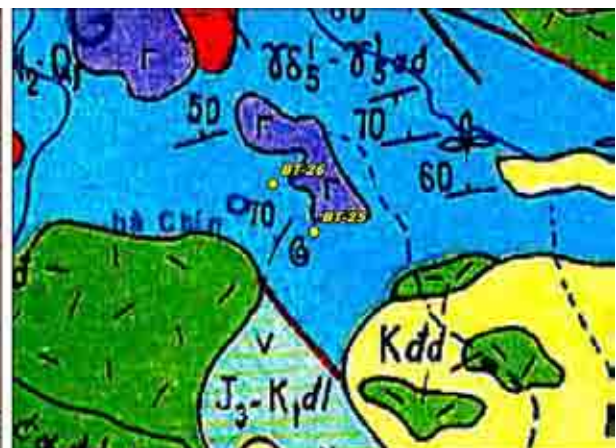
Photo



Satellite Image



Existing Map



Result of Field Geological Survey and Ground Truth for the Satellite Image Analysis

Date:	2007/7/4	Location (UTM)		Elev	Geological Unit			
Point No.	BT-26	X (m)	Y (m)	(m)	VSW Index	V	S	W
		185,050	1,246,387	197				

Description

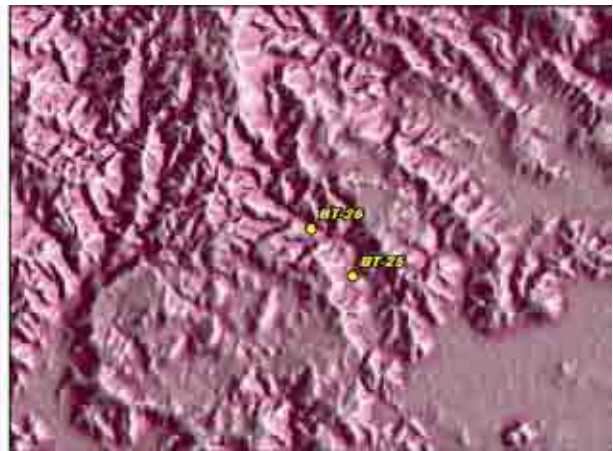
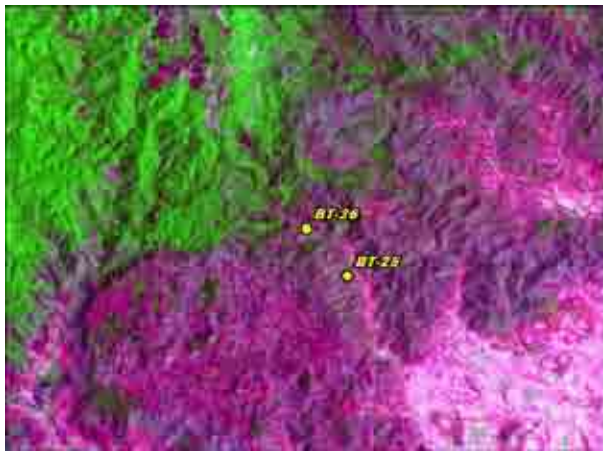
Outcrop of Jurassic sediments and Cretaceous volcanics

Lithology: Dark gray colored siltstone (shale) with heat alteration, intrusive of light gray colored andesite (W = 6 - 7m).
 Topography: Gentle hill and mountain.
 Land use: Farmland (corn).

Photo



Satellite Image



Existing Map



Result of Field Geological Survey and Ground Truth for the Satellite Image Analysis

Date:	2007/7/4	Location (UTM)		Elev	Geological Unit			
Point No.	BT-27	X (m)	Y (m)	(m)	VSW Index	V	S	W
		164,830	1,213,595	46				

Description

Land use in Alluvium plain

Land use: Farmland (dragon fruits) with reddish colored soil.

Water use: Irrigation canal from river, water supply system for drinking water.

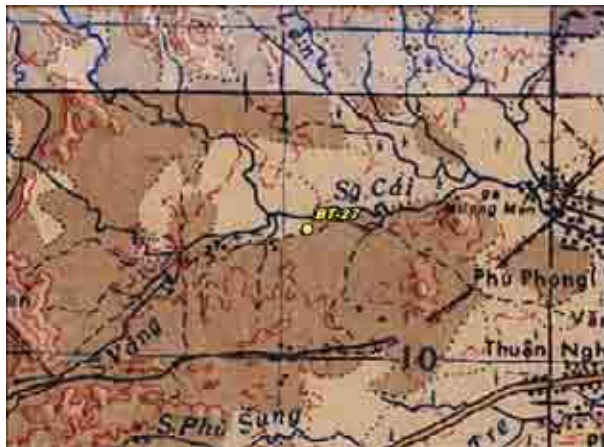
Photo



Satellite Image



Existing Map



Result of Field Geological Survey and Ground Truth for the Satellite Image Analysis

Date:	2007/7/4	Location (UTM)		Elev	Geological Unit			
Point No.	BT-28	X (m)	Y (m)	(m)	VSW Index	V	S	W
		158,123	1,189,071	5				

Description

Land use in Alluvium plain near coast

Land use: Farmland (dragon fruits and paddy field).
 Surface water: River, volume of water is rich.

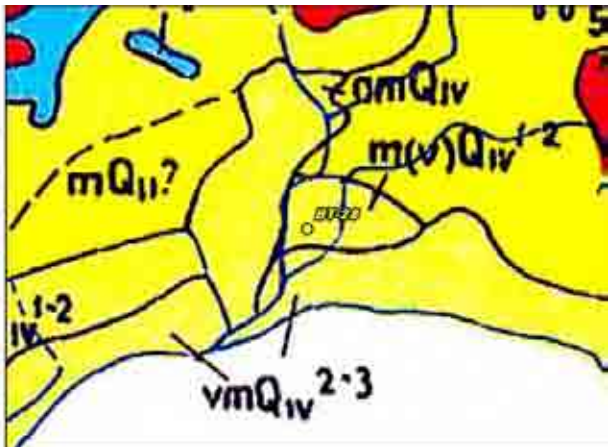
Photo



Satellite Image



Existing Map



Result of Field Geological Survey and Ground Truth for the Satellite Image Analysis

Date:	2007/7/4	Location (UTM)		Elev	Geological Unit			
Point No.	BT-29	X (m)	Y (m)	(m)	VSW Index	V	S	W
		167,284	1,186,769	10				

Description

Land use in Alluvium plain near coast

Land use: Farmland (paddy and dragon fruits field).

Water use: Dug well (D = 11m), iron and fluorine problem in drinking water.

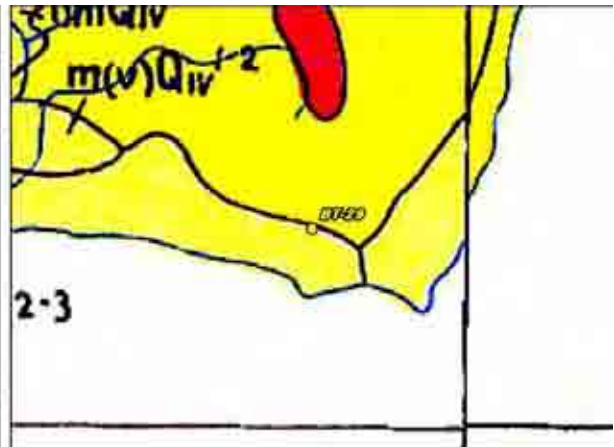
Photo



Satellite Image



Existing Map



Result of Field Geological Survey and Ground Truth for the Satellite Image Analysis

Date:	2007/7/4	Location (UTM)		Elev	Geological Unit			
Point No.	BT-30	X (m)	Y (m)	(m)	VSW Index	V	S	W
		175,172	1,196,507	12				

Description

Landslide (earth slide) in sand dune

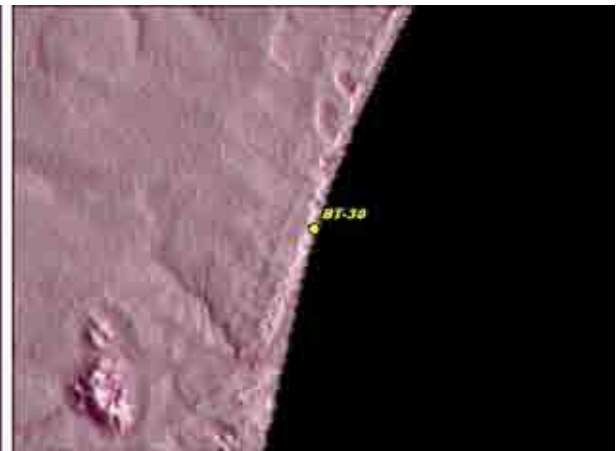
Landslide (earth slide) of weathered granite by heavy rain, slide killed 2 villager in last year.

Lithology: Weathered granite, reddish brown colored quartz sand,

Photo



Satellite Image



Existing Map

