

**Final Report for
Strengthening of Wildlife Conservation Education (SOWCE) Project
(14 February 2005 to 13 February 2008)**

**Paul Mbugua, Assistant Director,
Conservation Education and Extension Department, KWS
Kazuhiro Nitta, Conservation Education Advisor, JICA
13 February 2008**

Paul Mbugua
K. Nitta

1. Revision of PDM

The PDM was jointly prepared by KWS and JICA during the pre-evaluation of the project, signed on 14 February 2005 (Appendix 1). During the course of the project implementation, the PDM has never been revised. The project framework is shown in Appendix 2.

2. Actual Input

(1) JICA Expert

There were total two long-term experts in the field of wildlife conservation education and five short-term experts in the field of wildlife conservation education, conservation education material production, and community and conservation education, dispatched to the project for the three years (Appendix 3).

(2) KWS Counterparts

Total 44 KWS staff was counted as the project counterparts for the three years, from HQs, Nairobi, Nakuru and Coast (Appendix 4). Apart from Director as the project director and Assistant Director of Conservation Education and Extension (CEE) Department as the project manager, various occupations of staff have been involved in the project such as: Senior Warden, Warden, Assistant Warden, Naturalist, Curator, Animal Keeper and Multi-media Officer.

(3) Training in Japan

There were total 10 persons trained in Japan for four types of training (Appendix 5).

- Long-term training for Ph.D course: Education for wild animal protection (1 person)
- Environmental education through nature experience (4 persons)
- Environmental education for sustainable development (2 persons)
- Digital video production for education and dissemination (3 persons: 1 from KWS and 2 from NMK).

(4) Training in Third Country

Three persons were sent to Malaysia to participate and make presentation at International Conference on Bornean Biodiversity and Ecosystem Conservation (BBEC) in early 2005 (Appendix 6).

(5) Equipment Procured

Through the project, various kinds of equipment for the educational purpose have been procured by JICA with the total value of Ksh 6,059,000 (Appendix 7). The equipment is grouped into the following categories based on the purpose of usage.

- Audio-visual equipment to produce electronic materials for the Multi-media Unit.
- Audio-visual equipment to produce print materials for the Multi-media Unit.
- Audio-visual equipment to conduct in-house and outreach programmes for the field education facilities.
- Computer equipment to produce print materials for the field education facilities.
- Marine transport and equipment for marine conservation education in Coast.
- Equipment for captive animal management for the Nairobi education facilities.

The equipment has been procured mainly for the three target areas (Nairobi, Nakuru and Coast) and the other two education centres (Tsavo East and Meru). In general, the equipment has been well utilised and maintained by KWS staff with assistance of JICA volunteers, particularly in Nairobi and Nakuru.

(6) Local Cost

The total amount of general recurrent cost from JICA was Ksh 11,776,000 for the three years, while KWS contributed Ksh 3,437,000 as operation/management cost. The grand total cost was Ksh 15,213,000 (Appendix 8).

- 1) In the first year, the budget was spent mainly for participating in BBEC Conference in Malaysia, organising an exposure/exchange workshop on marine life management, technical exchange on captive animal management, and a training workshop on education programme development.
- 2) In the second year, the budget was spend for preparing the Conservation Education (CE) Strategy with a stakeholder workshop, organising a training workshop on presentation skills, an exposure/exchange workshop in Nakuru, training workshops on education programme development and exhibition/interpretation material development, and producing radio programmes for CE.

- 3) In the third year, the budget was spent mostly for organising a training workshop on presentation skills, an exposure/exchange workshop on marine ecosystem management, a seminar workshop on human-wildlife conflict, two teacher's guide workshops, and preparing the CE Manual and Performance Monitoring Plan (PMP).

3. Plan of Operation and Actual Result

Comparison between the original schedule and the actual implementation for the Plan of Operation (PO) is shown in Appendix 9.

- 1) For the CE Strategy Development, all the activities had been done about one year behind the schedule. The Strategy was produced and approved by the KWS management in October 2006 after taking about one year for the preparation.
- 2) For the Staff Capacity Development, most of the activities conducted in the country have been done behind the schedule to some extent. The technical exchange on captive animal management and the presentation in BBEC Conference were done only once in spite of twice originally planned because of low priority under the circumstances of time and staff constraints. Further, the workshop on the impact of social issues on wildlife management was merged into another workshop on human-wildlife conflict since these two subjects were closely related and efficient to be dealt with together. To the contrary, three training courses on presentation skills, on education programme development, and on marine life management were done twice increased from once as the courses were considered more relevant and required to improve the staff capacity for implementing CE.
- 3) For the Tool and Material Development, all the activities have been done more or less within the schedule.
- 4) For the Project Evaluation, apart from the joint terminal evaluation conducted in September 2007, the Joint Coordinating Committee (JCC) held annual meetings, which have been used to review the progress and re-plan the activities

4. Output of the Project

Detailed outputs of the project for each year and target area are shown in Appendix 10.

(1) Conservation Education Strategy

The CE Strategy (2006-2011) was produced in line with the KWS 5-year Strategic Plan and in collaboration with other KWS departments and stakeholders through the constitution of a working group and holding workshops. At the end of the project, 31 out of 37 activities planned

for the first two years have been under implementation and monitoring in collaboration with field stations and other departments. To support the implementation of the Strategy, the project assisted CEE Department to produce the final draft of CE Manual and Performance Monitoring Plan (PMP).

(2) Training Courses

The project organised 13 training workshops and seminars for KWS education-related staff through the 3-year period (Appendix 11). Nine training courses were planned to improve technical skills for CE and four courses to acquire wider knowledge and perspectives for wildlife and nature conservation. Seven of the 13 courses have also facilitated the KWS staff to strengthen linkage with the relevant organisations and communities. The total number of the participants was 623, in which KWS and NMK trainees numbered 302 and 13 respectively. The number of stakeholder groups involved or invited to the courses was 180 in total, ranging from government departments, research institutions, schools, communities and NGOs. Besides these training courses, an educational workshop for marine resource management for fishermen was organised in Mombasa in 2008 as a follow-up of the coast exposure/exchange workshop held in 2007.

Apart from the above fixed training courses, there was on-the-job training and exchange of skills for four multi-media officers in the production of audio-visual materials by JICA senior volunteers. Through annual field inspection at three field education centres, training for the operation and maintenance of audio-visual equipment was made to 20 field staff in total by the senior volunteers and multi-media officers.

(3) Education Tools and Materials

Total 24 items of various education tools, materials and products have been developed through the project period (Appendix 12). They are grouped into the following categories:

- Proceedings of training workshops and seminars.
- Print materials, such as teacher's guide and nature calendar.
- Electronic materials, such as educational videos and radio programmes.
- Exhibition, interpretation and hands-on materials at education facilities.

5. Achievement of the Project

The project purpose is "to strengthen the institutional capacity of KWS for effective implementation of wildlife conservation education". At the end of the project, we concluded the project purpose have been achieved successfully with the following outcome:

- 1) The CE Strategy (2006-2011) has been developed in collaboration with other KWS departments and stakeholders and implemented and monitored in collaboration with field stations and other departments.
- 2) The quality and quantity of education activities has improved and increased as the results of the following outputs:
 - KWS staff improved technical skills in developing education programmes, materials and exhibition and presentation/communication for effective delivery of conservation messages.
 - KWS staff acquired wider knowledge and perspectives of wildlife conservation for effective education programmes and communication with various audiences
 - KWS established stronger linkage with the relevant organisations to enhance collaboration for implementing conservation education.
- 3) Education tools, materials, equipment and facilities have been developed, improved and maintained with the following outputs:
 - Various education and audio-visual materials developed.
 - Education facilities and exhibition improved, particularly in Nairobi and Nakuru.
 - Various education and audio-visual equipment procured, well-utilized and maintained in the three target areas and other education facilities.

6. Issues on Project Implementation/Management, Countermeasures Taken and Lessons Learnt

1) Current Conditions and Issues on Counterpart Organization

KWS started restructuring in the late 2004 and still has been proceeding. In line with its 5-year Strategic Plan, KWS has been promoting decentralization for its administrative areas, dividing the country into eight Conservation Areas. For the education section, the Conservation Education and Extension (CEE) Department was newly established at the HQs level under the Wildlife and Community Service Division. Under this structural change, the project was also affected regarding the main unit to work with, changing from Nairobi Education Centre, which became a part of Southern Conservation Area, to CEE Department at the HQs. For about a half year in the transitional period, there had been some obscurity and slow function of both units. Partly in line with the restructuring, the project manager, Assistant Director of the education section was changed three times during the project period. The administrative change, frequent transfer of staff and lack of education officers all affected the smooth implementation and management of the project.

2) Current Conditions and Issues on Conservation Education

The mission of CE determined in the CE Strategy is: to educate and sensitize the Kenyan public and international community on the value of Kenya's wildlife resources for increased support and participation in conservation. CE becomes more important and is recognised as an effective approach to extend the value of wildlife conservation to the public as human-wildlife conflict has been increasing after human population increase and economic development in the country. In Interim-Poverty Reduction Strategy Paper (I-IPRSP) and Vision 2030, wildlife conservation is considered important to promote tourism development and education to the public is needed for ecosystem conservation. Also in the draft Wildlife Policy made in 2007 as well as the KWS Strategic Plan, CE is regarded as an important measure and activity to enhance wildlife conservation, protection and management.

Apart from KWS, there are many NGOs that have committed themselves to CE activities: for example, Wildlife Clubs of Kenya, Giraffe Centre, William Holden Wildlife Foundation, Laikipia Wildlife Forum, Elsamere Field Study Centre, Eden Wildlife Trust, IFAW and WWF. There are no major international aid agencies that have been working for this field in particular with KWS other than JICA.

3) Countermeasures Taken to Improve the Project Outputs and Overcome the Issues

The project had Joint Coordination Committee (JCC) meetings once per year. Issues and concerns arisen during the project implementation were brought to the members of JCC to discuss and recommend solutions. Some of the topics raised were: securing budget for the project and education activities, frequent transfer of education officers, shortage of education officers, delay in completing the extension of the Multi-media Office, and usage of equipment provided by the project. In this regard, the JCC meetings were well functioned. Furthermore, meetings among the project members were held frequently lead by the project managers and the JICA experts for smooth communication.

To make training courses more interesting and effective for trainees, various devices for the programme were developed and applied as following examples:

- Using the existing education facilities as working places for trainees to improve the exhibition/interpretation materials.
- Making hands-on materials that can be brought back to their working stations for actual use after workshops.
- Making draft plans, programmes or materials for CE that can be developed further by trainees after workshops.
- Practising education programmes (table lecture, etc.) to the real audiences at the

Wetland Day in Nakuru.

- Practising the presentation/communication skills to the real audiences in villages and primary schools.
- Producing a demo video from a synopsis prepared by trainees during a workshop.
- Providing opportunities for trainees to learn by themselves through visit to various community projects, to expose themselves to other stakeholders, and to exchange information and knowledge among participants.

Evaluation sheets were always distributed to participants at the end of workshops. After analysing the evaluation sheets, the workshop organisers (Education HQs and JICA) always had post-mortem meetings to evaluate the preparation, implementation and outputs of training and discuss how to improve the future workshops.

To make education activities in the field more effectively and intensively, the project has cooperated with JOCV volunteers, inviting them to the relevant training courses. By attending the same training together, KWS education officers and JICA volunteers were able to share knowledge, skills and experience, which could facilitate their cooperation in education activities once they went back to the field.

4) Recommendations for Sustainability of the Project

The project overall goal is “to enhance awareness and participation in wildlife conservation by Kenyan citizens”. In our conclusion, this will be achieved by continuous commitment to CE by KWS. Some impact of the project has been already evident from the enhancement of conservation awareness and activities on the ground of communities and other stakeholders. In order to assure the achievement of the overall goal as well as the sustainability of the project, the following actions are recommended to KWS:

- KWS needs to secure the budget allocation for education activities and staff training in line with the CE Strategy.
- KWS needs to deploy more education officers based on the staff structure suggested in the Strategy, particularly for education and information centres, and retain the trained education officers in their stations for a considerable time.
- The CE Manual and PMP shall be finalised and used properly in the field under supervision by HQs Education.
- KWS needs to follow up the activities that had been initiated during the project but not yet completed.
- Dispatch of JICA volunteers shall be continued since they could work in line with the project concept together with their field counterparts. To maximise the resource of the

volunteers, it is requested to KWS to evaluate their effectiveness and dispatch them more strategically.

- Collaboration with other stakeholders, particularly conservation/education organisations, needs to be continued in terms of technical and financial aspects to conduct better education activities and further improve knowledge and skills required.
- Education centres in the project target areas shall be further improved and developed by KWS to make them reference points for other education facilities.

5) Lessons Learnt for Similar Projects and Areas of Cooperation

- A project can be smoothly and efficiently implemented if the project is internalised and mainstreamed into the counterpart organization's policy, strategy and activities. It is also important that the project formulation is well aligned to national policy and strategy.
- To internalise knowledge and skills learnt, interactive and participatory approaches are highly effective for CE and its training.
- For a project that has a strong component of training and a few target areas for promoting outputs from training, it needs to allocate sufficient time and resources to efficiently conduct monitoring and follow-up during the planning stage to ensure that a project can facilitate trainees to adopt knowledge and skills learnt to field activities.

7. Record of JCC Meetings

There were three standard agenda for the JCC meetings:

- To formulate the annual work plan for the project based on the PO within the framework of the R/D.
- To review the results of the annual work plan and the progress of the implementation.
- To exchange views and ideas on major issues arisen during the implementation of the project.

1) 1st JCC Meeting

9 August 2005, 11 participants (7 from Kenyan side and 4 from Japanese side)

- The revision of the PO was proposed by the project team and approved by the JCC members
- The project should realign with KWS reform and National Environmental Education Strategy to be prepared by NEMA.
- Involving senior government officials and policy makers is important to foster a mood of public opinion for wildlife conservation for the sake of development of the country.
- Project management, logical support, supervision and monitoring of the appropriate use

of funds and equipment are all important for the success of the project.

2) 2nd JCC Meeting

19 September 2006, 9 participants (6 from Kenyan side and 3 from Japanese side)

- The revision of the PO was proposed by the Project team and approved by the JCC members with the condition that the planned project purpose had to be achieved.
- Participation in BBEC International Conference was cancelled. Technical exchange of captive animal management and workshop on impact of social issues on wildlife management was suspended for a while.
- After developing the CE Strategy, implementation and monitoring are essential.
- KWS needs to fully utilise the equipment procured by the project for effective education activities.
- JICA requested KWS to make positive consideration of frequent transfer of the counterparts, which poses challenges in the project implementation.
- KWS shall ensure necessary arrangement for the project implementation and smooth education activities after the project, including budget, staff and capacity building.

3) 3rd JCC Meeting (Joint Terminal Evaluation Reporting)

12 September 2007, 13 participants (6 from Kenyan side and 7 from Japanese side)

- A few changes in the PO was proposed by the project team and approved by the JCC members.
- Exposure/exchange workshop in Nakuru was cancelled and technical exchange of captive animal management was suspended further.
- Presentation and approval on the results of the joint terminal evaluation by signing the minutes and report by the both parties.
- The evaluation concluded that the project performed well for every criteria and would attain the project outputs and purpose at the end of the project.
- KWS looks forward to further collaboration with JICA after the project.
- JICA shall continue its collaboration through the volunteer and other schemes.
- In conclusion, the meeting made observations and recommendations to follow-up by KWS (Appendix 13).

Appendix 1. Project Design Matrix (PDM)

Project Title: Strengthening of Wildlife Conservation Education
 Target Groups: Education Officers at Kenya Wildlife Service (KWS)
 Target Area: KWS HQs, Coast, Nairobi and Nakuru Regions
 Duration: Three (3) Years

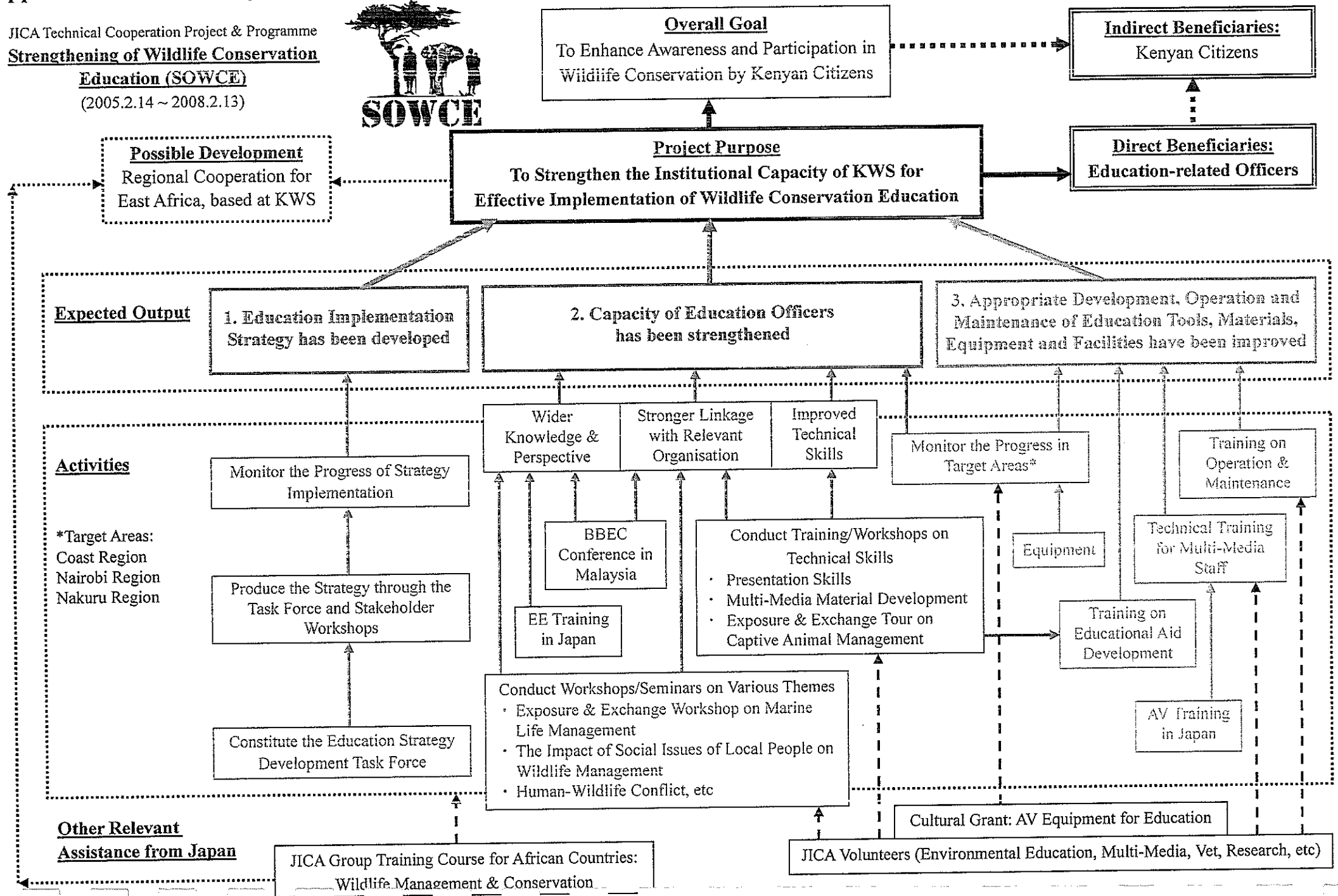
Ver. No. 1
 Date: 31st January 2005

Narrative Summary	Objectively Verifiable Indicators	Means of Verification	Important Assumptions
Overall Goal To Enhance Awareness and Participation in Wildlife Conservation by Kenyan Citizens.	The Number of Citizens Participating in Wildlife Conservation and Awareness Activities in the Target Areas.	<ul style="list-style-type: none"> - National Environment Action Plan Report - State of the Environment Report - KWS Reports 	<ul style="list-style-type: none"> - Government support to Wildlife Conservation Education remains favourable.
Project Purpose To Strengthen the Institutional Capacity of KWS for Effective Implementation of Wildlife Conservation Education.	<ol style="list-style-type: none"> 1. Degree of Implementation of the Education Strategy. 2. The Quality and Quantity of Education Activities in the Target Areas. 3. The Level of Utilization of Education Tools, Materials, Equipment and Facilities. 	<ol style="list-style-type: none"> 1. Project Monitoring and Evaluation Report KWS Reports 2. Project Monitoring and Evaluation Report KWS Reports Questionnaires to Visitors 3. Project Monitoring and Evaluation Report KWS Reports 	<ul style="list-style-type: none"> - KWS Support to Wildlife Conservation Education remains favourable
Outputs <ol style="list-style-type: none"> 1. Education Implementation Strategy Has Been Developed. 2. Capacity of Education Officers Has Been Strengthened. 3. Appropriate Development, Operation and Maintenance of Education Tools, Materials, Equipment and Facilities Has Been Improved. 	<ol style="list-style-type: none"> 1.1. Issue of the Education Implementation Strategy. 1.2. Level of Collaboration between Education Department and other Departments at KWS. 2.1. Number of Trainings Conducted 2.2. Number of Officers Trained. 2.3. Level of Skills Attained. 3.1. Quality and Quantity of Education Tools, Materials, Equipment and Facilities 3.2. Status of Education Equipment and Facilities 3.3. Number of Trainings Conducted 3.4. Number of Officers Trained. 3.5. Level of Skills Attained. 	<ol style="list-style-type: none"> 1.1. Education Implementation Strategy Paper Project Monitoring Report 1.2. Project Monitoring Report 2.1. Record of Certificates Project Monitoring Report 2.2. Project Monitoring Report 2.3. Project Monitoring Report 3.1. KWS Reports Project Monitoring Report 3.2. KWS Reports Project Monitoring Report 3.3. Record of Certificates Project Monitoring Report 3.4. Project Monitoring Report 3.5. Project Monitoring Report 	<ul style="list-style-type: none"> - Support from the other Departments at KWS Remain consistently Positive. - Trained Education Officers at KWS are Retained in Wildlife Conservation Education - Appropriate Resources Required for Wildlife Conservation Education are Secured and Available.

Activities	Inputs		Pre-Condition
<p>1.1. Prepare the Terms of Reference (TOR) for the Education Implementation Strategy Development.</p> <p>1.2. Constitute the "Education Implementation Strategy Development Task Force".</p> <p>1.3. Produce the Strategy through Task Force and Stakeholder Workshops.</p> <p>1.4. Monitor Progress of Strategy Implementation.</p> <p>2.1. Conduct Training/Workshops for Education Officers on Technical Skills.</p> <p>2.2. Conduct Workshops/Seminars for Education Officers on Various Themes.</p> <p>2.3. Undertake Technical Exchange with Relevant Stakeholders.</p> <p>2.4. Facilitate the Education Programmes in the Target Areas.</p> <p>2.5. Monitor the Progress in Education Activities.</p> <p>3.1. Conduct Training/Workshops for Education Officers on Planning and Development of Education Tools and Materials.</p> <p>3.2. Conduct Technical Training for Multi-Media Officers on Audio-Visual Education Material Production.</p> <p>3.3. Conduct Training for Officers on Operation and Maintenance of Tools, Facilities and Equipment for Effective Use.</p> <p>3.4. Follow Up on the Application of Skills in the Operation of the Tools, Materials, Equipment and Facilities in the Target Areas.</p>	<p><Kenya Side></p> <p><u>1. Personnel</u></p> <p>1.1. Project Director: Director, KWS</p> <p>1.2. Project Manager: Assistant Director, Education, KWS</p> <p>1.3. Counterparts: Staff of Education Dept., KWS HQ Park Managers and Related Officers of KWS in the Target Areas</p> <p>1.4 Support Staff: Administrative Staff, Secretaries, Drivers</p> <p><u>2. Facilities and Equipment</u></p> <p><u>3. Administrative and Operational Cost</u></p>	<p><Japanese Side></p> <p><u>1. Personnel</u></p> <p>1.1. Long-term Expert: Wildlife Conservation Education</p> <p>1.2. Short-term Experts: as appropriate</p> <p><u>2. Counterpart Training</u></p> <p>2.1. Short-term Training in Japan and/or any other Countries for Education Officer(s)</p> <p>2.2. Short-term Training in Japan and/or any other Countries for Multi-Media Officer(s)</p> <p>2.3. Long-term PhD Training for a KWS Officer on the Wildlife Conservation and Rural Communities</p> <p><u>3. Seminars and Workshops</u></p> <p><u>4. Infrastructure and Equipment</u></p> <p>Equipment for Education Material Development and Education Programmes</p>	<p>Pre-Condition</p> <p>The Mandate of KWS on Wildlife Conservation Education Remains Consistent with Current Provisions.</p>

Appendix 2. SOWCE Project Framework

JICA Technical Cooperation Project & Programme
Strengthening of Wildlife Conservation Education (SOWCE)
 (2005.2.14 ~ 2008.2.13)



Appendix 3. List of JICA Experts

Name	Assignment	Period	Affiliation
【Long-term】			
Hiroshi IMAE	Wildlife Conservation Education/ National Park Management	14 February, 2005 ~ 10 March, 2006	Hasegawa Corporation Ltd.
Kazuhiro NITTA	Wildlife Conservation Education	23 February, 2006 ~ 22 February, 2008	Applied Biology Ltd.
【Short-term】			
Koji YAMAZAKI	Wildlife Conservation Education	5 January, 2006 ~ 15 February, 2006	Ibaraki Nature Museum
		27 February, 2007 ~ 22 March, 2007	Ibaraki Nature Museum
Mie HORIUCHI	Conservation Education Material Production	17 February, 2007 ~ 28 February, 2007	Consultant
		30 October, 2007 ~ 11 November, 2007	Consultant
Yukino IWAI	Community and Conservation Education	24 September, 2007 ~ 23 October, 2007	Waseda University

Appendix 4. List of KWS Couterparts

	Post/Assignment	Name	Period
Project Director			
1	Director, KWS	Dr. Julius Kipng'etich	2004 Dec to 2008 Feb
Project Manager			
2	Assistant Director-Education	Mr. Edin Kalla	2005 Feb-Dec
3	Assistant Director-Education	Mr. Josiah Achoki	2006 Jan-Mar
4	Assistant Director-Education	Mr. Robert Muwasia	2006 Apr-Aug
5	Assistant Director-Education	Mr. Paul Mbugua	2007 Sept to 2008 Feb
Counterpart Staff			
KWS HQ			
6	Senior Warden-Education	Ms. Mary Kirabui	2006 Apr to 2008 Feb
7	Warden-Education	Mr. Dickson Ritan	2007 Mar to 2008 Feb
8	Multi-media Resource Manager	Mr. Charles Ooro	2006 Feb to 2008 Feb
9	Multi-media Officer	Mr. Athanas Mballa	2005 Feb-2006 Dec
10	Multi-media Officer	Mr. Obed Mule	2006 Feb to 2008 Feb
11	Multi-media Assistant	Mr. Rono Kiptoo	2007 Aug to 2008 Feb
KWS Nairobi			
12	Senior Warden-Education	Mr. Richard Obanda	2005 Feb to 2008 Feb
13	Senior Warden-Education	Mr. Muteru Njayini	2006 Apr-Aug
14	Warden-Education	Mr. William Kiptoo	2005 Feb-2006 Aug
15	Warden-Education	Ms. Grace Nzale	2005 Feb-2007 Mar
16	Warden-Education	Ms. Eunice Kiarie	2006 Sept to 2008 Feb
17	Assistant Warden-Education	Ms. Karen Ndiema	2005 Feb to 2008 Feb
18	Naturalist-Safari Walk/Orphanage	Mr. Daisy Mbogo	2005 Feb-2006 Dec
19	Naturalist-Safari Walk/Orphanage	Ms. Mary Chege	2005 Feb to 2008 Feb
20	Naturalist-Safari Walk/Orphanage	Mr. Jackson Asila	2007 Jan to 2008 Feb
21	Curator-Safari Walk/Orphanage	Dr. Adeela Sayyid	2005 Feb-2006 Aug
22	Curator-Safari Walk/Orphanage	Dr. Edward Kariuki	2007 Jan to 2008 Feb
23	Animal Keeper	Mr. Eliud Kimathi	2005 Feb to 2008 Feb
24	Animal Keeper	Mr. Jones Mutuku	2005 Feb to 2008 Feb
25	Animal Keeper	Mr. Leonard Kiriama	2005 Feb to 2008 Feb

	Post/Assignment	Name	Period
	KWS Nakuru		
26	Seniro Warden	Mr. Joseph Warutere	2005 Feb-2006 Mar
27	Seniro Warden	Mr. Charles Muthui	2006 Apr to 2008 Feb
28	Assistant Warden-Education	Ms. Elema Hapicha	2005 Feb to 2008 Feb
29	Multi-media Assistant	Mr. Andrew Mwaka	2006 Sept to 2008 Feb
	KWS Coast		
30	Senior Warden-Coast	Mr. John Kagwi	2005 Feb-2006 Mar
31	Senior Warden-Coast	Mr. Simon Gitau	2007 July to 2008 Feb
32	Warden-Mombasa	Mr. Alfred Kanyanya	2006 Apr -Feb 2007
33	Warden-Mombasa	Mr. Arthur Tuda	2007 Mar to 2008 Feb
34	Senior Warden-Malindi	Mr. Philip Mwakio	2005 Feb-2006 Mar
35	Warden-Malindi	Mr. Ali Sugou	2006 Apr-2007 Feb
36	Warden-Malindi/Watamu	Mr. D.K. Gitau	2007 Mar to 2008 Feb
37	Warden-Watamu	Mr. Robert Njue	2005 Feb-2006 Mar
38	Assistant Warden-Watamu	Mr. Meraji Ruga	2007 Apr to 2008 Feb
39	Warden-Arabuko Sokoke	Mr. Francis Mbaka	2005 Feb-2006 Aug
40	Assistant Warden-Arabuko Sokoke	Ms. Grace Kariuki	2006 Apr to 2008 Feb
41	Warden-Kiunga	Mr. Godfrey Wakaba	2005 Feb-2007 June
42	Senior Warden-Kisite/Mpunguti	Ms. Janet Kleha	2005 Feb-2006 Mar
43	Warden-Kisite/Mpunguti	Mr. Tom Amulavu	2006 Apr to 2007 Aug
44	Warden-Kisite/Mpunguti	Mr. Yussuf Adan	2007 Sept to 2008 Feb

At the end of Project (No. in bold): 25 persons

Appendix 5. List of KWS/NMK Counterparts Trained in Japan

	Name	Post	Organization /Department	Course Title	Training Institution	Duration
Conservation Education						
1	Mr. Dickson Katoliki RITAN	Assistant Warden	Meru National Park	Environmental Education through Nature Experience	Institute of Whole Earth	2005/10/10 ~ 2005/11/19
2	Mr. Richard Kiprotich CHEPK WONY	Education Officer (Naturalist)	Nairobi Natinal Park			2005/10/10 ~ 2005/11/19
3	Ms. Edith Nancy Akinyi JURA	Assistant Warden	Kisumu Impala Sanctuary			2006/10/09 ~ 2006/11/19
4	Ms. Mary Kirabui	Senior Warden	Education HQs			2007/10/15 ~ 2007/11/23
5	Ms. Grace Wangari KARIUKI	Assistant Warden	Arabuko Sokoke National Park	Environmental Education for Sustainable Development	International Society for Mangrove Ecosystems (ISME)	2006/09/26 ~ 2006/11/11
6	Mr. Yussuf Adan WATO	Warden	Kisite-Mpunguti Marine National Park	Education for Wild Animal Protection	Kyoto University	2006/09/25 ~ 2006/11/10
7	Mr. Charles Mutua MUSYOKI	Senior Scientist	Aberdare National Park			2004/03/22 ~ 2007/03/27
Audio Visual						
1	Mr. Obed Mui MULE	Communication Assistant	HQs Education	Digital Video Production for Education and Dissemination	Okinawa International Centre (JICA)	2005/08/23 ~ 2005/12/17
2	Mr. Mark Ng'ang'a KAMAU	Audio Visual Officer	National Museums of Kenya			2006/08/22 ~ 2006/12/16
3	Mr. Gilbert Busolo LUSWETI	Audio Visual Technician	National Museums of Kenya			2007/08/14 ~ 2007/12/01

Appendix 6. List of KWS Counterparts Trained in Third Country

	Name	Post	Organization /Department	Course Title	Training Institution	Duration
1	Mr. James MATHENGA	Assistant Research Scientist	Research HQs	International Conference on Bornean Biodiversity and Ecosystem Conservation	Bornean Biodiversity and Ecosystem Conservation (BBEC) Project	2005/02/22-27
2	Mr. Solomon KYALO	Assistant Research Scientist	Research HQs			2005/02/22-29
3	Mr. Edward INDAKWA	Corporate Communication Officer	Corporate Communication HQs			2005/02/22-28

Appendix 7. List of Equipment Procured by JICA

No.	Item	Price (Ksh)	Purchase/ Delivery Date	Unit	Manufacturer	Model type	Management in Charge
JFY2005							
1	Glass-botom Boat	577,125	2005.11.11	1	Order-made	28ft long, 25 pax	Malindi MNP
2	Outboard Engine	230,400	2005.11.11	1	Yamaha	40HP	Malindi MNP
3	Fender	19,040	2005.11.11	6	--	--	Malindi MNP
4	Life Jacket	210,000	2005.11.11	60	--	--	Malindi MNP
5	Life Ring	63,525	2005.11.11	10	--	--	Malindi MNP
6	Snorkelling Equipment	28,800	2005.11.11	3	--	--	Malindi MNP
7	Video Editing Machines	1,348,400	2005.9.9	1	AVID, HP	Xpress Pro HD with MOJO, XW8200 PC Workstation	HQs Multi-media
8	UPS	45,240	2005.8.17	2	MGE	NOVA 1100	HQs Multi-media
9	Desktop Computer (for DP)	149,320	2006.3.22	1	Mecer	MX-P6, MS Office XP2003	HQs Multi-media
10	Desktop Computer	113,000	2006.3.22	1	Mecer	MX-P6, MS Office XP2003	Animal Orphanage
11	External Hard Disk	22,500	2006.3.22	1	Seagate	250GB	HQs Multi-media
12	Software (for DP)	145,000	2006.3.31	3	Adobe	Acrobat 7.0 STD	HQs Multi-media
13	Multi-functional Color Pinter	42,600	2006.3.22	1	HP	Office Jet 7313	HQs Multi-media
14	UPS	16,000	2006.3.22	2	Mecer	Blazer 1KVA	HQs Multi-media
15	Binder	45,000	2006.3.31	1	Rexel	CB 355	HQs Multi-media
16	Refrigerator	26,400	2006.3.17	1	LG	GR-T242QM	Animal Orphanage
17	Deep Freezer	49,000	2006.3.17	1	Ariston	MO450 TFA	Animal Orphanage
18	Hand-held Radio	275,000	2006.3.17	10	Motorola	VHF, Buttery Charger	Nairobi Ed Centre
Subtotal		3,406,350					
JFY2006							
1	Desktop Computer	500,900	2007.3.30	4	HP/Compaq	DC7700, MS Office XP Pro	HQs, Tsavo West, Kisumu Impala, Kisite-Mpunguti
2	Inkjet Color Printer	197,500	2007.3.30	4	HP	Business Inkjet 2300	Tsavo East, Tsavo West, Kisumu Impala, Kisite-Mpunguti
3	UPS	114,000	2007.3.30	4	APC	Smart 1000	HQs, Tsavo West, Kisumu Impala, Kisite-Mpunguti
4	Digital Compact Camera	148,000	2007.3.30	4	Canon	Power Shot A430, Battery Charger	HQs, Tsavo West, Kisumu Impala, Nakuru
5	Digital Lens Camera	145,000	2007.3.30	1	Nikon	D70S	HQs Multi-media
6	Zoom Lens (for Digital Camera)	45,000	2007.3.30	1	Nikon	18-70mm Lens	HQs Multi-media
7	Digital Video Camera	594,020	2007.3.30	1	Sony	PD170AP Camcorde, Wide-angle Adapter, Battery Charger, Carrying Case (PCCB2)	HQs Multi-media
8	Carrying Case (for Video Camera)		2007.3.30	1	Petrol	PCCB2	HQs Multi-media
9	Tripod (for Video Camera)	70,880	2007.3.30	1	Manfrotto	501/525, Carrying Case	HQs Multi-media
10	Inkjet Color Printer	19,860	2007.3.30	1	HP	Deskjet 1280	Nakuru
Subtotal		1,835,160					
JFY2007							
1	Laptop Computer	333,600	2007.12.20	4	Toshiba	SA120-10L, Windows VISTA A Business, Carrying Bag	Nakuru, Tsavo East, Meru, Watamu
2	LCD Projector	135,000	2007.12.20	1	Epson	EMP-X5	Watamu
3	DVD Player	22,500	2008.1.23	3	Panasonic	DVDS-2	Meru, Watamu, Kisite-Mpunguti
4	Screen	34,500	2007.12.20	1	SOSL	70 x 70 inch, with Tripod	Watamu
5	UPS	75,000	2007.12.20	4	APC	RS 1100VA	HQ Multi-media, Watamu, Kisite-Mpunguti
6	Portable Generator	117,600	2008.1.7	2	Elemax	2.6KVA, 50m Cable	Watamu, Kisite-Mpunguti
7	Column Speaker	24,000	2007.12.11	4	Ahuja	SCM-20XT, 20m Cable	Watamu, Kisite-Mpunguti
8	Amplifier	20,000	2007.12.11	2	Ahuja	SSB-80EM	Watamu, Kisite-Mpunguti
9	Wireless Microphone	12,000	2007.12.11	2	Max	DH-835	Watamu, Kisite-Mpunguti
10	External Hard Disk	8,500	2008.2.16	1	MSSS	80GB	HQs Education
11	Software	35,000	2008.2.15	1	Microsoft	Widndwos VISTA Ultimate, MS Office Pro 2007	HQs Education
Subtotal		817,700					
Total		6,059,210					

The following equipment was procured in Japan by the first long-term expert before starting the project and handed over to KWS by the second expert at the end of the project.

(Price Unit: JP Yen)

1	Laptop Computer	420,000	2003.4.16/ 2008.2.13	1	Toshiba	Dynabook G7, FD Drive, MS Office XP Pro	HQs Education
2	Multi-functional Color Pinter	44,800	2003.4.16/ 2008.2.13	1	Canon	Pixus MP55	HQs Education
3	Digital Compact Camera	60,000	2003.4.16/ 2008.2.13	1	Panasonic	Lumix DMC-FZ1	HQs Education
Total		524,800					

Appendix 8. Project Cost Sharing by JICA and KWS

⟨JICA⟩

(Unit : Ksh)

Items of Expenditure	JFY2004 (Result)	JFY2005 (Result)	JFY2006 (Result)	JFY2007 (Plan)	Total
General recurrent cost	1,607,000.00	2,622,000.00	3,704,000.00	3,843,600.00	11,776,600.00
Equipment		3,406,350.00	1,835,160.00	817,700.00	6,059,210.00
Total of JICA	1,607,000.00	6,028,350.00	5,539,160.00	4,661,300.00	17,835,810.00

*JFY: Japanese Financial Year; April - March

⟨KWS⟩

(Unit : Ksh)

Items of Expenditure	KFY2004 (Result)	KFY2005 (Result)	KY2006 (Result)	KY2007 (Plan)	Total
Operation/management cost	482,500.00	766,000.00	1,213,139.00	975,171.00	3,436,810.00
Total of KWS	482,500.00	766,000.00	1,213,139.00	975,171.00	3,436,810.00

**KFY: Kenyan Financial Year; July - June

* Gray Square and Broken Line show the original schedule
 * Vertical Stripes and Solid Line show the actual implementation

Appendix 9. Original Schedule and Actural Implementation for Plan of Operation

Activities	Expected Results	2004			2005			2006			2007			Organization in Charge	Activity Implementers	Materials and Equipment	Notes
		1	4	7	10	1	4	7	10	1	4	7	10				
1. Education Implementation Strategy at KWS has been developed.																	
1-1. Prepare the Terms of Reference (TOR) for the Education Implementation Strategy Development	TOR for the Strategy Development													KWS Education Section	KWS Education Section		Pay Attention to the KWS Restructuring & Strategy Development in Other Departments such as Community and Tourism
1-2. Constitute the "Education Implementation Strategy Development Task Force" Involving Relevant Departments and Park Managers	Constitution of the Task Force													KWS Education Section	KWS Education & Other Sections		Consider Inviting an Advisor from Japan as a Short-term Expert
1-3. Produce the Strategy through Task Force and Stakeholders Workshop(s)	Production of the Strategy													KWS Education Section	KWS Education & Other Sections	As Necessary to Hold Workshops	Consider Inviting an Advisor from Japan as a Short-term Expert
1-4. Follow up and Monitor the Progress of Strategy Implementation	Action out of the Strategy													KWS Education Section	KWS Education & Other Sections		Consider Supporting the Strategy Implementation, such as Developing Education Manual and Monitoring Plan
2. Capacity of Education Officers has been strengthened.																	
2-1. Conduct Training/Workshops for Education Officers on Technical Skills																	
Prepare and Conduct Workshop(s) on Presentation Skills														KWS Education Section	KWS Education Section	As Necessary to Hold Workshops	Covers "Guidelines for Effective Communication", "Using Visual Aids", "Dealing with Media", etc.
Prepare and Conduct Workshop(s) on Educational Aid Development														KWS Education Section	KWS Education Section	As Necessary to Hold Workshops	Consider Inviting a Short-term Expert to Introduce "Bear Trunk Kit"
Prepare and Conduct Workshop(s) on NSW Nature Calendar, Educator's Guide and Eco-School Development														KWS Education Section		As Necessary to Hold Workshops	Consider Hiring a Local Consultant and Inviting Relevant Organisations
2-2. Conduct Workshops/Seminars for Education Officers on Various Themes																	
Prepare and Conduct Workshop(s) on Marine Life Management	Network with Relevant Organisations													KWS Education Section & Coast HQs	KWS Officers in the Coast & Education Section	As Necessary to Hold Workshops	Consider Inviting Relevant Organisations such as UNEP, KEMFRI, etc.
Prepare and Conduct Workshop(s) on Human-Wildlife Conflict														KWS Education Section	KWS Sections of Education, Research, Community & Elephant Programme	As Necessary to Hold Workshops	Consider Inviting a Short-term Expert to Research on the Issue and Give Lectures & JICA Long-term Trainee (Mr. Charles Musyoki Mutua) to Give his Report
Prepare and Conduct Workshop(s) on the Impact of Social Issues (including gender) on Wildlife Management														KWS Education Section	KWS Education & Community Sections	As Necessary to Hold Workshops	The Subject shall be Covered in the Workshop on Human-Wildlife Conflict.
Prepare and Conduct Exposure & Exchange Workshop(s) with Communities in Nakuru														KWS Education Section & Lake Nakuru NP	KWS Education, Community & Research Sections & KWS Officers in Nakuru	As Necessary to Hold Workshops	Monitor Actions Recommended in the 2006 Workshop to Determine Holding the 2007 Workshop.
2-3. Undertake Technical Exchange with Relevant Stakeholders																	
Prepare and Undertake Technical Exchange on Captive Animal Management	Information Sharing & Networking													KWS Education Section	KWS Education Section & Relevant Private Institutions	As Necessary	Suspend Holding the 3rd Exchange unless New Staff Employed or Other Visiting Facilities Identified.
Presentation and Participation in BBEC International Conference in Malaysia	Information Sharing & Networking, Presentation at BBEC Conference													KWS Education Section	Officers whose paper has been accepted	As Necessary	Consider Attending a Regional Conference/ Workshop for Conservation Education
Participation in the Group Training (Environmental Education) in Japan	Information Sharing & Networking													KWS Education Section	KWS Education Section		Consider Transparent Process of Participant Selection

* Gray Square and Broken Line show the original schedule
 * Vertical Stripes and Solid Line show the actual implementation

Activities	Expected Results	04	2005			2006			2007			Organization in Charge	Activity Implementers	Materials and Equipment	Notes
		1	4	7	10	1	4	7	10	1	4				
2-4. Facilitate the Education Programmes in the Target Areas															
Coast												KWS Education Section & Marine NPs & NRs	Marine NPs & NRs	Glass-Bottom Boat	Retain JICA Volunteers
Lake Nakuru												KWS Education Section & Lake Nakuru NP	Lake Nakuru NP	As Necessary	Strengthen Linkage between Research & Education, Retain JICA Volunteers
Nairobi												KWS Education Section & Nairobi NP	KWS Education Section & Nairobi NP	Better Use of Equipment and Facilities for Captive Animal Management	Retain JICA Volunteers
2-5. Monitor the Progress of Education Activities															
												KWS Education Section	KWS Education Section		
3. Appropriate Development, Operation and Maintenance of Education Tools, Materials, Equipment and Facilities have been improved.															
3-1. Conduct Training/Workshops for Education Officers on Planning and Development of Education Tools and Materials															
Prepare and Conduct Workshop(s) on Multi-Media Material Development												KWS Education Section	KWS Education Section	As Necessary to Hold Workshops	Train Education Officers How to Write Good Proposals for Audio-Visual Material Request
3-2. Conduct Technical Training for Multi-Media Officers on Production of Audio-Visual Education Materials															
Assistance to In-house Training												KWS Education Section	KWS Education Section	As Necessary	Require Proposal(s) for In-house Training
Participation in the Group Training (Multi-Media) in Japan												KWS Education Section	KWS Education Section		Opportunities will be Shared with NMK
3-3. Conduct Training for Officers on Operation and Maintenance of Tools, Equipments and Facilities for Effective Use															
Prepare and Conduct Site Visits for Training Officers on Handling of Audio-Visual Equipment												KWS Education Section	KWS Education Section	As Necessary to Hold Workshops	Regular Site Visits and In-house Training will be planned
3-4. Follow up on the Application of Skills in the Operation of the Tools, Materials, Equipment and Facilities in the Target Areas															
Coast												KWS Education Section & Marine NPs & NRs	Marine NPs & NRs	As Necessary	Possible Topics would be Sea Turtle Conservation, Coral Reef Conservation, Conflict with Fishermen, Mangrove Conservation, etc.
Lake Nakuru												KWS Education Section & Lake Nakuru NP	Lake Nakuru NP	As Necessary	Possible Topics would be Conflict with Local People over Water and Firewood, Rhino Conservation, Dynamism of the Unique Enclosed Ecosystems, Lake Pollution, Flamingoes, etc.
Nairobi												KWS Education Section & Nairobi NP	Nairobi Education & NP	As Necessary	Possible Topics would be Conflict with Local People over Co-Existence with Livestock, Captive Animal Management, Development of Edutainment in the Cosmopolitan, etc.
4. Carry Out Evaluation of the Project															

Appendix 10. Outputs of SOWCE Project

(1) Outputs at KWS HQs

Year	Strategy Development	Capacity Development	Tool/Material Development
Outputs 1 st Year	<ul style="list-style-type: none"> • Preparation of TOR for Education Strategy Development (Oct. 2005) 	<ul style="list-style-type: none"> • PhD Training in Japan for a KWS Officer "Education for Wild Animal Protection" (2004–2007) • Presentations at BBEC International Conference in Malaysia (Feb. 2005) • Short-term Trainings in Japan for KWS Officers on Digital Video Production & Environmental Education (Aug.-Dec. 2005) • Training Workshop on Hands-on Material Development (Feb. 2006) 	<ul style="list-style-type: none"> • Inspection & Monitoring of AV Equipment at Education Centres (Jun.-Aug. 2005) • Procurement of Video Editing Machine & PC (Aug. 2005)
Outputs 2 nd Year	<ul style="list-style-type: none"> • Presentation of SOWCE Project for KWS (Apr. 2006) • Constitution of Education Strategy Working Group (Apr. 2006) • Preparation of TOR for Education Strategy Development (May 2006) • Production of the Education Strategy through the Working Group and Stakeholder Workshop (Jul. 2006) • Approval of the Education Strategy by BOT (Oct. 2006) • Printing and Distribution of the Education Strategy to KWS and Stakeholders (Dec. 2006, Mar. 2007) 	<ul style="list-style-type: none"> • Training Workshop on Presentation Skills (Aug. 2006) • Short-term Trainings in Japan for NMK/KWS Officers on Digital Video Production & Environmental Education (Aug.-Dec. 2006) • Training Workshop on Nature Calendar & Eco-School Development (Feb. 2007) 	<ul style="list-style-type: none"> • Procurement of Video Editing Machine & PC (Apr. 2006) • Inspection & Monitoring of AV Equipment at Education Centres (Jun.-Aug. 2006) • Training Workshop on AV Material Development (Aug. 2006) • Training Workshop on AV Material Development (Feb. 2007)
Outputs 3 rd Year	<ul style="list-style-type: none"> • Follow-up and Monitoring for Implementation of the Education Strategy • Preparation of the Final Draft of Education Manual and Monitoring Plan (Feb. 2008) 	<ul style="list-style-type: none"> • Training Workshop on Exhibition & Interpretation Material Development (Mar. 2007) • Training Workshop on Presentation Skills (May 2007) • Seminar Workshop on Human-Wildlife Conflict (Oct. 2007) • Short-term Trainings in Japan for NMK/KWS Officers on Digital Video Production & Environmental Education (Aug.-Dec. 2007) 	<ul style="list-style-type: none"> • Production of Radio Programme for Conservation Education (Mar. 2007) • Preparation of Rhino Education Card (Mar. 2007) • Procurement of Video Camera, Digital Camera, PC & Printer (Mar. 2007) • Inspection & Monitoring of AV Equipment at Education Centres (Oct.-Dec. 2007) • Production of Educational Video for Participatory Teaching (Feb. 2008)

(2) Outputs in Target Areas

Target Areas	Nairobi	Nakuru	Coast
Outputs 1 st Year	<p>Capacity</p> <ul style="list-style-type: none"> Exposure & Exchange Training Tour on Captive Animal Management in Coast (Dec. 2005) 	<p>Tool/Material</p> <ul style="list-style-type: none"> Inspection & Monitoring of AV Equipment (Jun. 2005) 	<p>Capacity</p> <ul style="list-style-type: none"> Exposure & Exchange Workshop with Communities in Coast and Follow-up (Apr. 2005) <p>Tool/Material</p> <ul style="list-style-type: none"> Production of Educational Video for Malindi & Watamu MNPs (Feb. 2005) Procurement of a Glass-Bottom Boat for Malindi MNP (Dec. 2005)
Outputs 2 nd Year	<p>Tool/Material</p> <ul style="list-style-type: none"> Procurement of PC, Hand Radio & Veterinary Equipment (Apr. 2006) Preparation of the Draft NSW Nature Calendar & Teacher's Guide (Feb. 2007) 	<p>Capacity</p> <ul style="list-style-type: none"> Exposure & Exchange Workshop with Communities in Nakuru and Follow-up (Oct. 2006) <p>Tool/Material</p> <ul style="list-style-type: none"> Inspection & Monitoring of Education Activities and Facilities (Mar. 2006) Inspection & Monitoring of AV Equipment (Jun. 2006) 	<p>Tool/Material</p> <ul style="list-style-type: none"> Inspection & Monitoring of Education Activities and Facilities (Jul. 2006)
Outputs 3 rd Year	<p>Capacity</p> <ul style="list-style-type: none"> Teacher's Guide Workshop for NSW (Nov. 2007) <p>Tool/Material</p> <ul style="list-style-type: none"> Procurement of Books (Mar. 2007) Improvement of NSW Children Museum and Opening to the Public (Apr. 2007) Production of the Final NSW Nature Calendar & Teacher's Guide (Feb. 2008) 	<p>Capacity</p> <ul style="list-style-type: none"> Teacher's Guide Workshop for Lake Nakuru NP (Nov. 2007) <p>Tool/Material</p> <ul style="list-style-type: none"> Procurement of Printer & Books (Apr. 2007) Facilitation for Establishment of Information Centre in Lake Nakuru NP (May-Aug. 2007) Inspection & Monitoring of AV Equipment (Oct. 2007) Preparation of the Draft Teacher's Guide for Lake Nakuru NP (Oct. 2007) Production of Educational Video for Lake Nakuru NP (Draft) (Feb. 2008) 	<p>Capacity</p> <ul style="list-style-type: none"> Exposure & Exchange Workshop with Communities in Coast (Jul. 2007) Educational Workshop on Marine Resource Management for Fishermen in Mombasa (Feb. 2008) <p>Tool/Material</p> <ul style="list-style-type: none"> Procurement of PC, Printer & Digital Camera for Kisite-Mpunguti (Apr. 2007) Procurement of Books for Malindi, Watamu & Kisite-Mpunguti MNP (Apr., Aug. 2007) Production of Educational Video for Kisite-Mpunguti Marine NP (Draft) (Feb. 2008)

Appendix 11. Training Courses Undertaken by SOWCE Project

No.	Course Title	Course Type	Conducted	No. of Planned Participants	No. of Actual Participants	No. of Trainees Participated (incl. NMK staff)	No. of Stakeholder Groups Involved (excl. KWS, JICA)
1	Exposure & Exchange Workshop on Marine Life Management	B, C	April 2005	70	66	15	32
2	Technical Tour on Captive Animal Management in the Coastal Region	A, C	Decemeber 2005	40	43	36 (6)	7
3	Training Workshop on Education Programmes Development with Hands-on Materials	A	February 2006	60	41	30	0
4	Training Workshop on Presentation Skills & Audio-visual Material Development	A	August 2006	50	33	28	0
5	Exposure & Exchange Workshop on Conservation of Lake Nakuru Catchment Area	B, C	October 2006	50	63	23 (1)	25
6	Nairobi Safari Walk Conservation Education Workshop	A, C	November 2006	40	41	8	24
7	Training Workshop on Development of Multi-media Materials & Conservation Education Programmes	A	February 2007	40	44	31 (2)	5
8	Training Workshop on Development & Exhibition of Education & Interpretation Materials	A	March 2007	40	38	30 (2)	3
9	Training Workshop on Presentation & Communication Skills	A	May 2007	30	34	27	0
10	Exposure & Exchange Workshop on Marine Ecosystems & Sustainable Management	B, C	July 2007	70	80	23 (2)	43
11	Seminar Workshop on Human-Wildlife Conflict	B	October 2007	70	55	44	2
12	Nairobi Safari Walk Teacher's Guide Workshop	A, C	November 2007	50	39	12	20
13	Lake Nakuru National Park Teacher's Guide Workshop	A, C	November 2007	40	46	8	19
	TOTAL			650	623	315 (13)	180

(N.B.) Besides the above workshops, two more workshops were scheduled in the original Plan of Operation but eventually merged or cancelled:

1) Workshop on Impact of Social Issues of Communities on Wildlife Management, and 2) Technical Exchange on Captive Animal Management.

Course Type: A: for improved technical skills, B: for wider knowledge and perspectives, C: for stronger linkage with relevant organizations.

Appendix 12. List of Education Materials and Products

No.	Title/Subject	Produced	Target Area
Proceedings of Training Workshops and Seminars			
1	Exposure & Exchange Workshop on Marine Life Management	July 2005	Coast
2	Technical Tour on Captive Animal Management in the Coastal Region	Feb 2006	Nairobi
3	Education Strategic Plan Workshop	May 2006	National-wide
4	Training Workshop on Presentation Skills & Audio-visual Material Development	Sept 2006	National-wide
5	Exposure & Exchange Workshop on Conservation of Lake Nakuru Catchment Area	Jan 2007	Nakuru
6	Nairobi Safari Walk Conservation Education Workshop	Jan 2007	Nairobi
7	Training Workshop on Development of Multi-media Materials & Conservation Education Programmes	July 2007	National-wide
8	Training Workshop on Presentation & Communication Skills	July 2007	National-wide
9	Training Workshop on Development & Exhibition of Education & Interpretation Materials	Oct 2007	National-wide
10	Exposure & Exchange Workshop on Marine Ecosystems & Sustainable Management	Dec 2007	Coast
11	Nairobi Safari Walk Teacher's Guide Workshop	Jan 2008	Nairobi
12	Seminar Workshop on Human-Wildlife Conflict	Feb 2008	National-wide
13	Education Workshop for Marine Resource Management for Fishermen	Feb 2008	Coast
Print Materials			
1	Rhino Conservation Card (Kiswahili version)	May 2007	National-wide
2	Lake Nakuru National Park Teacher's Guide (draft)	Nov 2007	Nakuru
3	Nairobi Safari Walk Teacher's Guide	Jan 2008	Nairobi
4	Nairobi Safari Walk Nature Calendar	Feb 2008	Nairobi
Electronic Materials and Programme			
1	Educational Video for Watamu/Malindi Marine National Park	Feb 2005	Coast
2	Radio Programmes for Conservation Education (KBC)	Mar 2007	National-wide
3	Educational Video for Participatory Teaching with Nature Game	Jan 2008	National-wide
4	Educational Video for Lake Nakuru National Park (draft)	Feb 2008	Nakuru
5	Educational Video for Kisite-Mpunguti Marine National Park (draft)	Feb 2008	Coast
Exhibition, Interpretation and Hands-on Materials at Education Facilities			
1	Improvement at Nairobi Education Centre, Safari Walk (Children Museum) and Animal Orphanage	Mar 2007	Nairobi
2	Improvement at Lake Nakuru Education Centre	May 2008	Nakuru

Appendix 13. Observations and Recommendations by 3rd JCC Meeting

In conclusion, the meeting made the following observations and recommendations for follow-up by KWS:

1. Education Dept should be able to roll out the Education activities even after SOWCE project pulls out. The recently reviewed Wildlife Policy fully supports Conservation Education.
2. The meeting observed that the trained KWS Education officers should continue training other officers in the field to ensure continuity / sustainability of capacity development after closure of SOWCE Project in February 2008. Besides Education officers, all KWS officers both at Headquarters and the field level should have at least the basic information about Wildlife.
3. It will be worthy-while for KWS to consider retaining the trained Education officers in their stations for a considerable time hence giving them opportunity to implement what they have learnt and to train other officers through work in the field. That is avoiding frequent transfers.
4. Capacity building is a key focus in SOWCE project. The meeting observed that KWS should factor in Education training budget in line with Conservation Education Strategy by February 2008 when the Project comes to an end. This will ensure sustainability of Education activities.
5. The Ministry also requested KWS through Education Dept to tailor-make Education programmes for them to at least have exposure to various aspects of Wildlife conservation. This way both the KWS and the Ministry officers will be in the same footing. It's also one way of increasing number of educators on Wildlife issues.
6. The evaluation report showed less impact in the Coast (one of the three project target areas) as compared to Nairobi and Nakuru. One of the contributing factors is that there is no officer specifically for Education in addition to lack of Education Center unlike the case of Nairobi and Nakuru. The meeting observed the need for assigning Education officers to the Coast in particular to enhance Education programmes.
7. JICA raised concern over the JICA donated boat at Malindi that is not adequately being utilized for education activities as expected. KWS was requested to pursue the effective use of the boat.
8. Tourism sector is within the pillars of Vision 2030 hence the continuity of Education activities should be there as long as appropriate measures are put in place to ensure sustainability.