

Appendix

Appendix-1: Tree Cover Rate, Remaining Tree Cover Rate, Deforestation Rate and Correlation's Coefficient

Appendix-2: Tree cover area and Farm area at the Hot Spot 1

Appendix-3: Land Cover Map from 1987 to 2018 (32 years)

Appendix-4: GCF access status in the LMB

Appendix-5: Information of the Lancang-Mekong Cooperation - LMC

Appendix-6: Documents of Seminars

Appendix-6-1: Kickoff Seminar

Appendix-6-2: Interim Workshop

Appendix-6-3: Wrap-up Seminar

Appendix-6-4: Open Seminar

Appendix-1

Tree Cover Rate, Remaining Tree Cover Rate, Deforestation Rate and Correlation's Coefficient

Appendix-1 Summary of Tree Cover Rate, Remaining Tree Cover Rate, Tree Cover Decreasing Rate (Deforestation Rate) and Correlation's Coefficient

Province Name (English)	Tree Cover Rate (1988) on Province	Remaining Tree Cover Rate (1988 - 2017)	Tree Cover Rate (2017) on Province	Tree cover decreasing rate (Deforestation Rate)	Correlation Coefficient
Cambodia					
Banteay Meanchey	15.9%	51.2%	8.1%	1.63%	-0.9978
Battambang	50.1%	61.1%	30.6%	1.30%	-0.9935
Kampot	49.5%	91.8%	45.5%	0.27%	-0.9996
Kampong Cham	29.1%	70.4%	20.5%	0.99%	-0.8545
Kampong Chhnang	39.6%	44.1%	17.4%	1.86%	-0.9061
Kampong Speu	48.6%	70.7%	34.4%	0.98%	-1.0000
Kampong Thom	59.3%	77.4%	45.9%	0.75%	-0.8890
Kandal	21.1%	12.6%	2.6%	2.91%	-0.9889
Kratie	70.0%	79.1%	55.4%	0.70%	-0.9999
Mondul Kiri	88.5%	93.3%	82.6%	0.22%	-0.9978
Otdar Meanchey	66.7%	65.8%	43.9%	1.14%	-1.0000
Pailin	80.9%	74.4%	60.2%	0.85%	-1.0000
Phnom Penh	0.6%	134.1%	0.8%	-1.14%	-0.9859
Pursat	67.6%	91.6%	61.9%	0.28%	-0.9594
Preah Vihear	91.7%	86.3%	79.2%	0.46%	-0.9999
Prey Veng	5.3%	14.3%	0.8%	2.86%	-0.9763
Ratanak Kiri	96.1%	90.8%	87.3%	0.31%	-1.0000
Siem Reap	56.0%	73.3%	41.1%	0.89%	-0.9836
Stung Treng	92.1%	89.9%	82.8%	0.34%	-0.9990
Takeo	9.4%	61.7%	5.8%	1.28%	-0.9298
Tbong Khmum	46.4%	86.5%	40.1%	0.45%	-0.9944
Lao PDR					
Attapu	95.5%	95.4%	91.1%	0.15%	-0.9997
Bokeo	98.0%	95.8%	93.9%	0.14%	-0.9995
Bolikhamxai	96.0%	96.1%	92.3%	0.13%	-0.9995
Champasak	83.8%	94.5%	79.2%	0.18%	-0.9983
Houaphan	98.3%	95.0%	93.4%	0.17%	-0.9496
Khammouan	87.9%	94.9%	83.5%	0.17%	-0.9975
Louang Namtha	98.0%	97.0%	95.1%	0.10%	-0.9779
Louangphrabang	98.3%	97.5%	95.8%	0.08%	-0.9920
Oudomxay	98.6%	95.7%	94.3%	0.14%	-0.9956
Phongsali	99.0%	96.0%	95.1%	0.13%	-0.9791
Saravane	89.5%	94.7%	84.8%	0.18%	-0.9995
Savannakhet	77.7%	85.0%	66.1%	0.50%	-1.0000
Vientiane city	71.9%	71.4%	51.4%	0.95%	-1.0000
Vientiane	90.1%	91.1%	82.1%	0.30%	-0.9998
Xekong	99.2%	99.3%	98.5%	0.02%	-0.9976
Xaignabouri	95.9%	91.1%	87.4%	0.30%	-0.9999
Xaisomboun	96.0%	95.7%	91.9%	0.14%	-0.9827
Xiangkhoang	91.0%	94.4%	85.9%	0.19%	-0.9927
Thailand					
Amnat Charoen	37.2%	48.1%	17.9%	1.73%	-1.0000
Bueng Kan	36.9%	137.6%	50.7%	-1.25%	-0.9998
Buri Ram	15.2%	91.1%	13.9%	0.30%	-0.9909

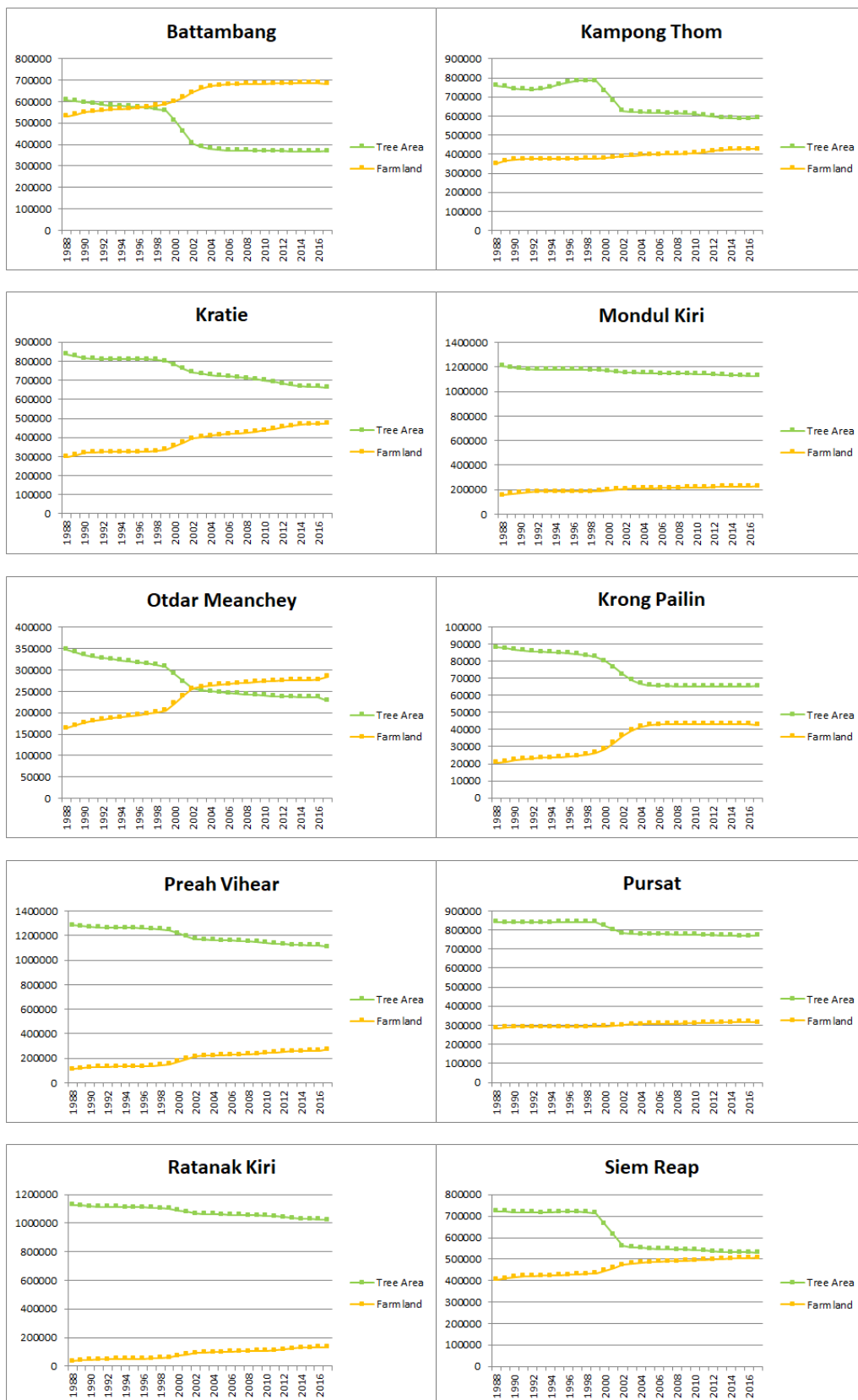
Chaiyaphum	45.9%	74.6%	34.2%	0.85%	-0.9995
Chanthaburi	67.9%	120.5%	81.9%	-0.68%	-1.0000
Chiang Mai	86.6%	88.5%	76.6%	0.38%	-0.9894
Chiang Rai	73.3%	81.6%	59.8%	0.61%	-0.9991
Kalasin	19.6%	78.4%	15.3%	0.72%	-0.9984
Khon Kaen	19.3%	67.2%	13.0%	1.09%	-0.9989
Loei	72.2%	81.2%	58.6%	0.63%	-0.9997
Maha Sarakham	4.4%	56.1%	2.5%	1.46%	-0.9445
Mukdahan	62.7%	74.2%	46.6%	0.86%	-1.0000
Nakhon Phanom	47.7%	63.3%	30.2%	1.22%	-1.0000
Nakhon Ratchasima	24.0%	72.7%	17.4%	0.91%	-0.9984
Nong Bua Lam Phu	37.9%	44.4%	16.8%	1.85%	-1.0000
Nong Khai	40.5%	80.2%	32.5%	0.66%	-0.9996
Phayao	73.4%	81.8%	60.0%	0.61%	-0.9997
Phetchabun	52.0%	83.7%	43.5%	0.54%	-0.9990
Roi Et	10.0%	76.2%	7.6%	0.79%	-0.9924
Sa Kaeo	24.2%	117.6%	28.4%	-0.59%	-0.9995
Sakon Nakhon	47.4%	60.4%	28.6%	1.32%	-1.0000
Si Sa Ket	23.0%	93.1%	21.4%	0.23%	-0.9975
Surin	17.2%	75.0%	12.9%	0.83%	-0.9963
Ubon Ratchathani	40.4%	64.7%	26.1%	1.18%	-0.9999
Udon Thani	35.9%	59.3%	21.3%	1.36%	-0.9999
Yasothon	22.7%	63.6%	14.5%	1.21%	-0.9999
Viet Nam					
Dong Thap	8.2%	12.5%	1.0%	2.92%	-0.9797
Dak Nong	96.1%	89.3%	85.9%	0.36%	-0.9999
Dak Lak	90.4%	72.8%	65.9%	0.91%	-1.0000
Dien Bien	95.1%	84.1%	80.0%	0.53%	-0.9910
An Giang	6.3%	60.0%	3.8%	1.33%	-0.2416
Bac Lieu	8.4%	14.2%	1.2%	2.86%	0.6998
Ben Tre	9.8%	82.4%	8.1%	0.59%	0.7017
Ca Mau	30.8%	47.6%	14.7%	1.75%	0.4469
Gia Lai	86.7%	74.9%	64.9%	0.84%	-1.0000
Hau Giang	18.9%	20.7%	3.9%	2.64%	-0.9859
Kien Giang	41.3%	33.6%	13.9%	2.21%	-0.9985
Kon Tum	91.1%	94.4%	85.9%	0.19%	-0.9983
Lam Dong	89.9%	98.5%	88.5%	0.05%	-0.9306
Quang Tri	75.8%	99.7%	75.6%	0.01%	-0.6907
Soc Trang	5.6%	56.0%	3.1%	1.47%	-0.3693
Thua Thien Hue	75.3%	100.7%	75.8%	-0.02%	-0.9739
Tien Giang	14.5%	26.9%	3.9%	2.44%	-0.7275
Tra Vinh	4.6%	81.2%	3.8%	0.63%	0.5386
Vinh Long	12.5%	27.2%	3.4%	2.43%	-0.9662
Myanmar					
Shan	87.5%	82.0%	71.8%	0.60%	-0.9950

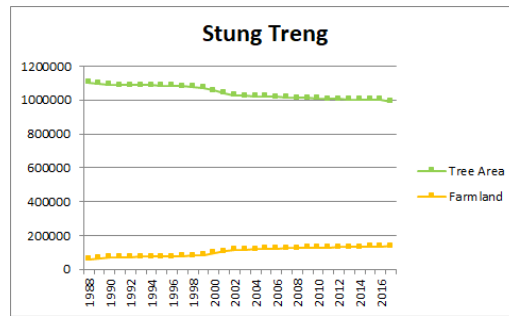
Appendix-2

Tree cover area and Farm area at the Hot Spot 1

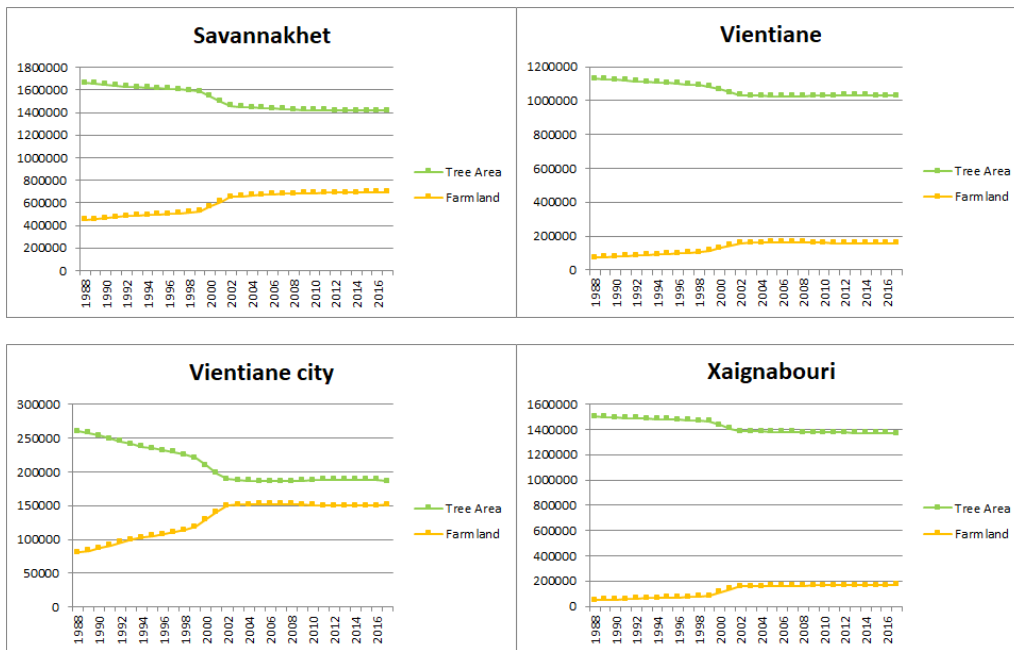
Appendix-2 Hotspot Province

► Cambodia

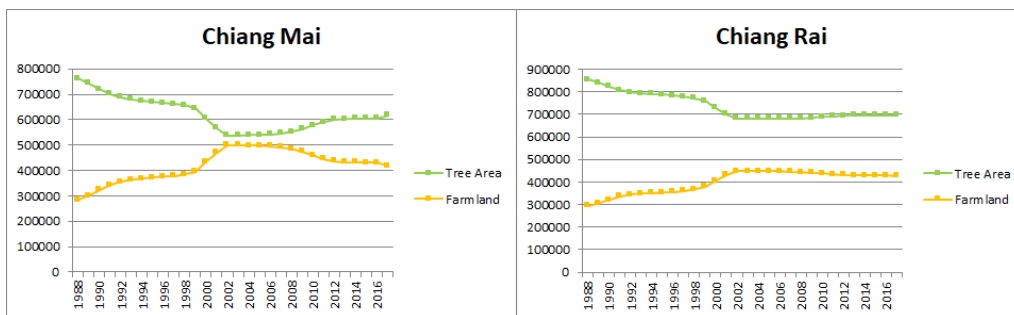


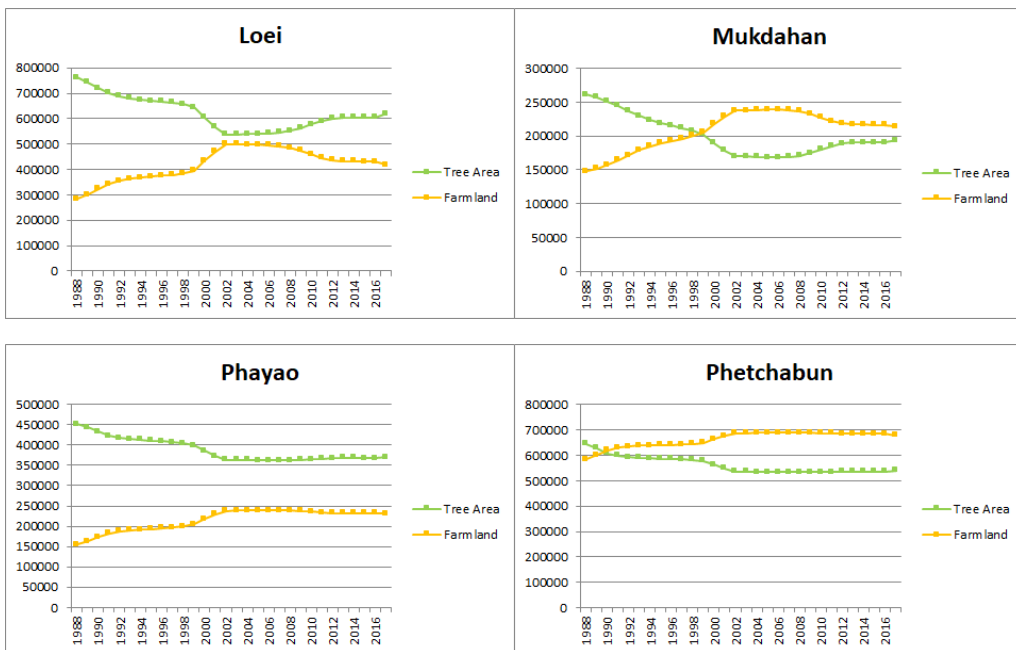


► Lao PDR

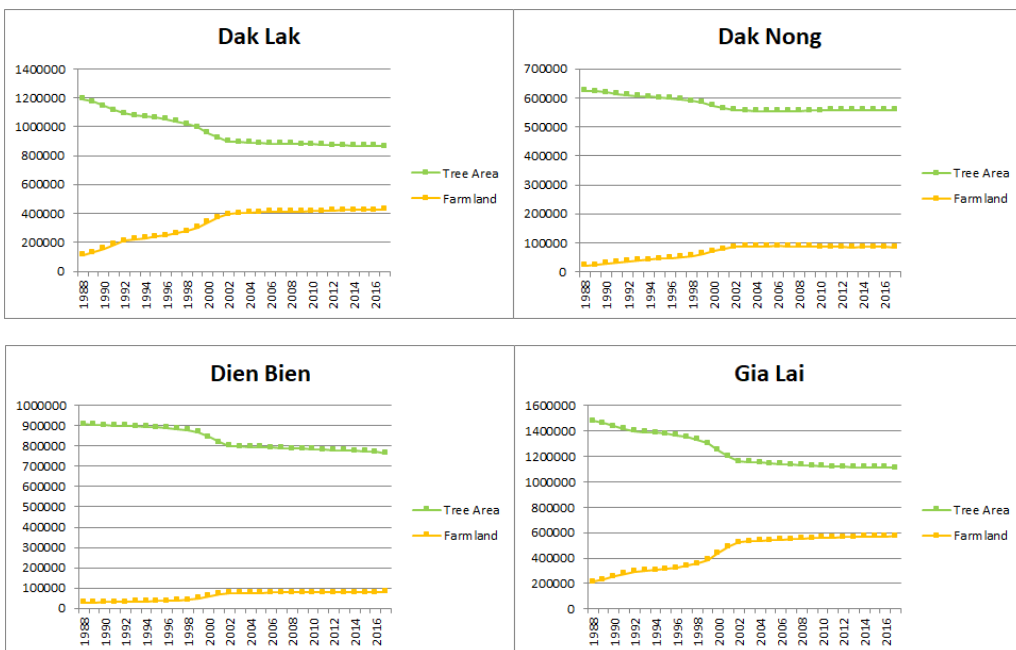


► Thailand





► Viet Nam



Appendix-3

Land Cover Map from 1987 to 2018 (32 years)

