

添付資料

添付-1：森林被覆率、残森林率、森林減少率および相関係数

添付-2：ホットスポット1における森林被覆面積と農地面積

添付-3：土地被覆図 1987年から2018年（32年分）

添付-4：メコン流域におけるGCFアクセス状況

添付-5：Lancang-Mekong Cooperation LMCに関する情報収集資料

添付-6：セミナー等資料

添付-6-1：キックオフセミナー@ラオス 資料

添付-6-2：中間ワークショップ@ラオス 資料

添付-6-3：ラップアップセミナー@ラオス 資料

添付-6-4：国内オープンセミナー 資料

添付-1

森林被覆率、残森林率、森林減少率および相関係数

添付-1 森林被覆率、残森林率、森林減少率および相関係数

Province Name (English)	Tree Cover Rate (1988) on Province	Remaining Tree Cover Rate (1988 - 2017)	Tree Cover Rate (2017) on Province	Deforestation Rate	Correlation's Coefficient
Cambodia					
Banteay Meanchey	15.9%	51.2%	8.1%	1.63%	-0.9978
Battambang	50.1%	61.1%	30.6%	1.30%	-0.9935
Kampot	49.5%	91.8%	45.5%	0.27%	-0.9996
Kampong Cham	29.1%	70.4%	20.5%	0.99%	-0.8545
Kampong Chhnang	39.6%	44.1%	17.4%	1.86%	-0.9061
Kampong Speu	48.6%	70.7%	34.4%	0.98%	-1.0000
Kampong Thom	59.3%	77.4%	45.9%	0.75%	-0.8890
Kandal	21.1%	12.6%	2.6%	2.91%	-0.9889
Kratie	70.0%	79.1%	55.4%	0.70%	-0.9999
Mondul Kiri	88.5%	93.3%	82.6%	0.22%	-0.9978
Otdar Meanchey	66.7%	65.8%	43.9%	1.14%	-1.0000
Pailin	80.9%	74.4%	60.2%	0.85%	-1.0000
Phnom Penh	0.6%	134.1%	0.8%	-1.14%	-0.9859
Pursat	67.6%	91.6%	61.9%	0.28%	-0.9594
Preah Vihear	91.7%	86.3%	79.2%	0.46%	-0.9999
Prey Veng	5.3%	14.3%	0.8%	2.86%	-0.9763
Ratanak Kiri	96.1%	90.8%	87.3%	0.31%	-1.0000
Siem Reap	56.0%	73.3%	41.1%	0.89%	-0.9836
Stung Treng	92.1%	89.9%	82.8%	0.34%	-0.9990
Takeo	9.4%	61.7%	5.8%	1.28%	-0.9298
Tbong Khmum	46.4%	86.5%	40.1%	0.45%	-0.9944
Lao PDR					
Attapu	95.5%	95.4%	91.1%	0.15%	-0.9997
Bokeo	98.0%	95.8%	93.9%	0.14%	-0.9995
Bolikhamxai	96.0%	96.1%	92.3%	0.13%	-0.9995
Champasak	83.8%	94.5%	79.2%	0.18%	-0.9983
Houaphan	98.3%	95.0%	93.4%	0.17%	-0.9496
Khammouan	87.9%	94.9%	83.5%	0.17%	-0.9975
Louang Namtha	98.0%	97.0%	95.1%	0.10%	-0.9779
Louangphrabang	98.3%	97.5%	95.8%	0.08%	-0.9920
Oudomxay	98.6%	95.7%	94.3%	0.14%	-0.9956
Phongsali	99.0%	96.0%	95.1%	0.13%	-0.9791
Saravane	89.5%	94.7%	84.8%	0.18%	-0.9995
Savannakhet	77.7%	85.0%	66.1%	0.50%	-1.0000
Vientiane city	71.9%	71.4%	51.4%	0.95%	-1.0000
Vientiane	90.1%	91.1%	82.1%	0.30%	-0.9998
Xekong	99.2%	99.3%	98.5%	0.02%	-0.9976
Xaignabouri	95.9%	91.1%	87.4%	0.30%	-0.9999
Xaisomboun	96.0%	95.7%	91.9%	0.14%	-0.9827
Xiangkhoang	91.0%	94.4%	85.9%	0.19%	-0.9927
Thailand					

Province Name (English)	Tree Cover Rate (1988) on Province	Remaining Tree Cover Rate (1988 - 2017)	Tree Cover Rate (2017) on Province	Deforestation Rate	Correlation's Coefficient
Amnat Charoen	37.2%	48.1%	17.9%	1.73%	-1.0000
Bueng Kan	36.9%	137.6%	50.7%	-1.25%	-0.9998
Buri Ram	15.2%	91.1%	13.9%	0.30%	-0.9909
Chaiyaphum	45.9%	74.6%	34.2%	0.85%	-0.9995
Chanthaburi	67.9%	120.5%	81.9%	-0.68%	-1.0000
Chiang Mai	86.6%	88.5%	76.6%	0.38%	-0.9894
Chiang Rai	73.3%	81.6%	59.8%	0.61%	-0.9991
Kalasin	19.6%	78.4%	15.3%	0.72%	-0.9984
Khon Kaen	19.3%	67.2%	13.0%	1.09%	-0.9989
Loei	72.2%	81.2%	58.6%	0.63%	-0.9997
Maha Sarakham	4.4%	56.1%	2.5%	1.46%	-0.9445
Mukdahan	62.7%	74.2%	46.6%	0.86%	-1.0000
Nakhon Phanom	47.7%	63.3%	30.2%	1.22%	-1.0000
Nakhon Ratchasima	24.0%	72.7%	17.4%	0.91%	-0.9984
Nong Bua Lam Phu	37.9%	44.4%	16.8%	1.85%	-1.0000
Nong Khai	40.5%	80.2%	32.5%	0.66%	-0.9996
Phayao	73.4%	81.8%	60.0%	0.61%	-0.9997
Phetchabun	52.0%	83.7%	43.5%	0.54%	-0.9990
Roi Et	10.0%	76.2%	7.6%	0.79%	-0.9924
Sa Kaeo	24.2%	117.6%	28.4%	-0.59%	-0.9995
Sakon Nakhon	47.4%	60.4%	28.6%	1.32%	-1.0000
Si Sa Ket	23.0%	93.1%	21.4%	0.23%	-0.9975
Surin	17.2%	75.0%	12.9%	0.83%	-0.9963
Ubon Ratchathani	40.4%	64.7%	26.1%	1.18%	-0.9999
Udon Thani	35.9%	59.3%	21.3%	1.36%	-0.9999
Yasothon	22.7%	63.6%	14.5%	1.21%	-0.9999
Viet Nam					
Dong Thap	8.2%	12.5%	1.0%	2.92%	-0.9797
Dak Nong	96.1%	89.3%	85.9%	0.36%	-0.9999
Dak Lak	90.4%	72.8%	65.9%	0.91%	-1.0000
Dien Bien	95.1%	84.1%	80.0%	0.53%	-0.9910
An Giang	6.3%	60.0%	3.8%	1.33%	-0.2416
Bac Lieu	8.4%	14.2%	1.2%	2.86%	0.6998
Ben Tre	9.8%	82.4%	8.1%	0.59%	0.7017
Ca Mau	30.8%	47.6%	14.7%	1.75%	0.4469
Gia Lai	86.7%	74.9%	64.9%	0.84%	-1.0000
Hau Giang	18.9%	20.7%	3.9%	2.64%	-0.9859
Kien Giang	41.3%	33.6%	13.9%	2.21%	-0.9985
Kon Tum	91.1%	94.4%	85.9%	0.19%	-0.9983
Lam Dong	89.9%	98.5%	88.5%	0.05%	-0.9306
Quang Tri	75.8%	99.7%	75.6%	0.01%	-0.6907
Soc Trang	5.6%	56.0%	3.1%	1.47%	-0.3693
Thua Thien Hue	75.3%	100.7%	75.8%	-0.02%	-0.9739
Tien Giang	14.5%	26.9%	3.9%	2.44%	-0.7275

Province Name (English)	Tree Cover Rate (1988) on Province	Remaining Tree Cover Rate (1988 - 2017)	Tree Cover Rate (2017) on Province	Deforestation Rate	Correlation's Coefficient
Tra Vinh	4.6%	81.2%	3.8%	0.63%	0.5386
Vinh Long	12.5%	27.2%	3.4%	2.43%	-0.9662
Myanmar					
Shan	87.5%	82.0%	71.8%	0.60%	-0.9950

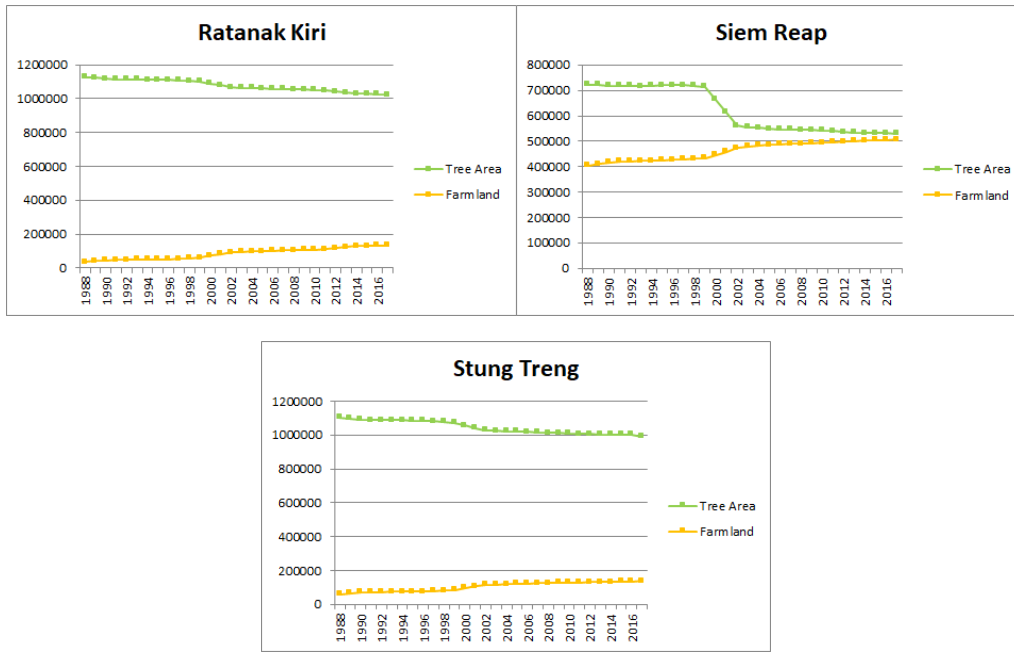
添付-2

ホットスポット1における森林被覆面積と農地面積

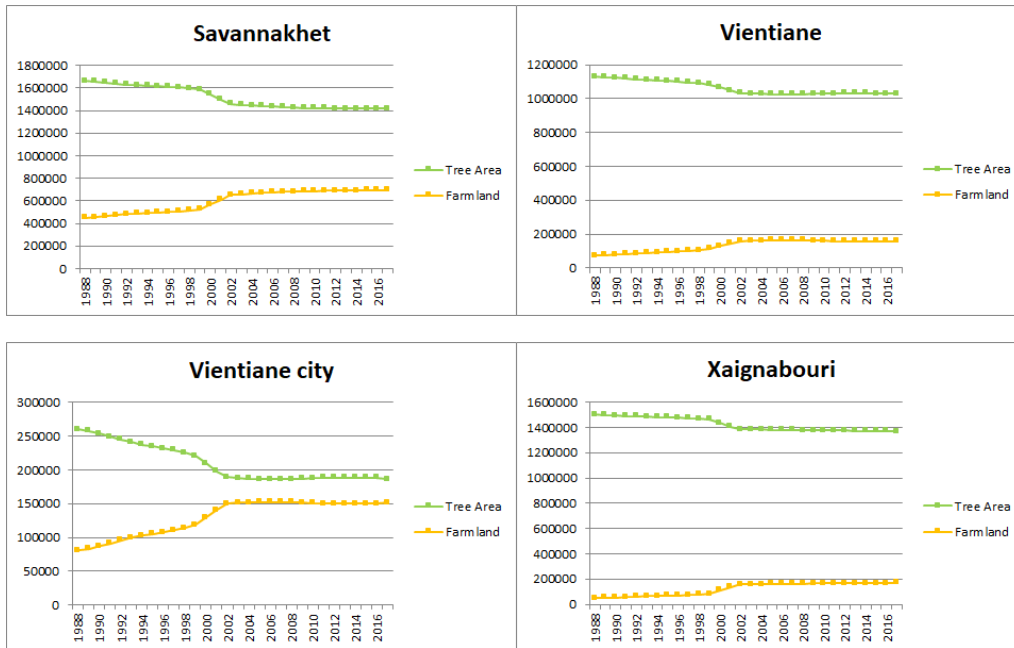
添付-2 ホットスポット 1 における森林被覆面積と農地面積

▶ Cambodia

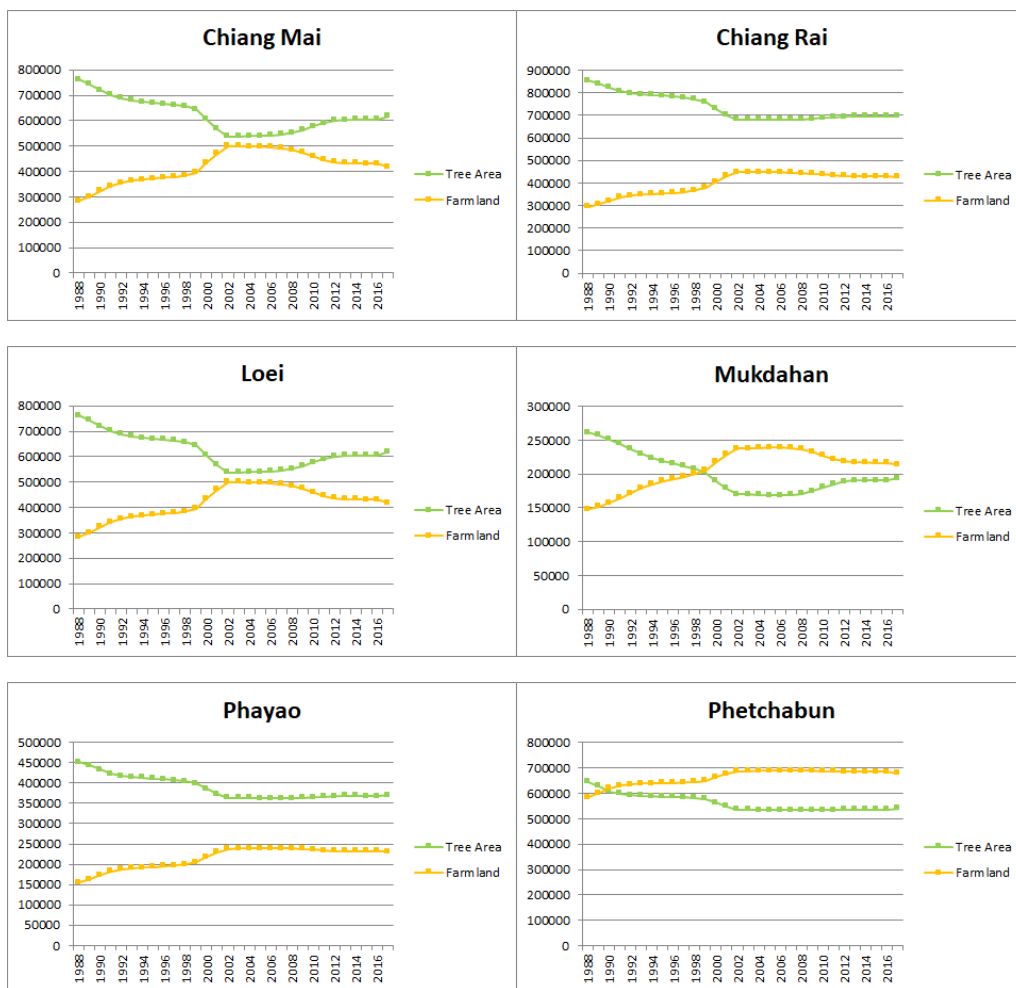




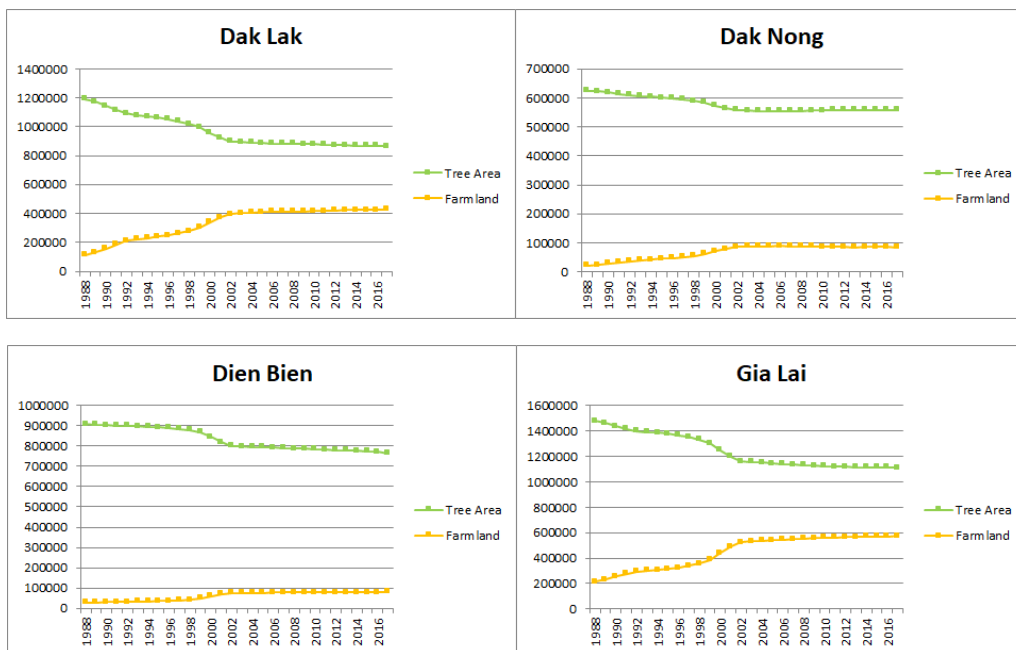
▶ Lao PDR



Thailand



Viet Nam



添付-3

土地被覆図 1987年から2018年（32年分）

