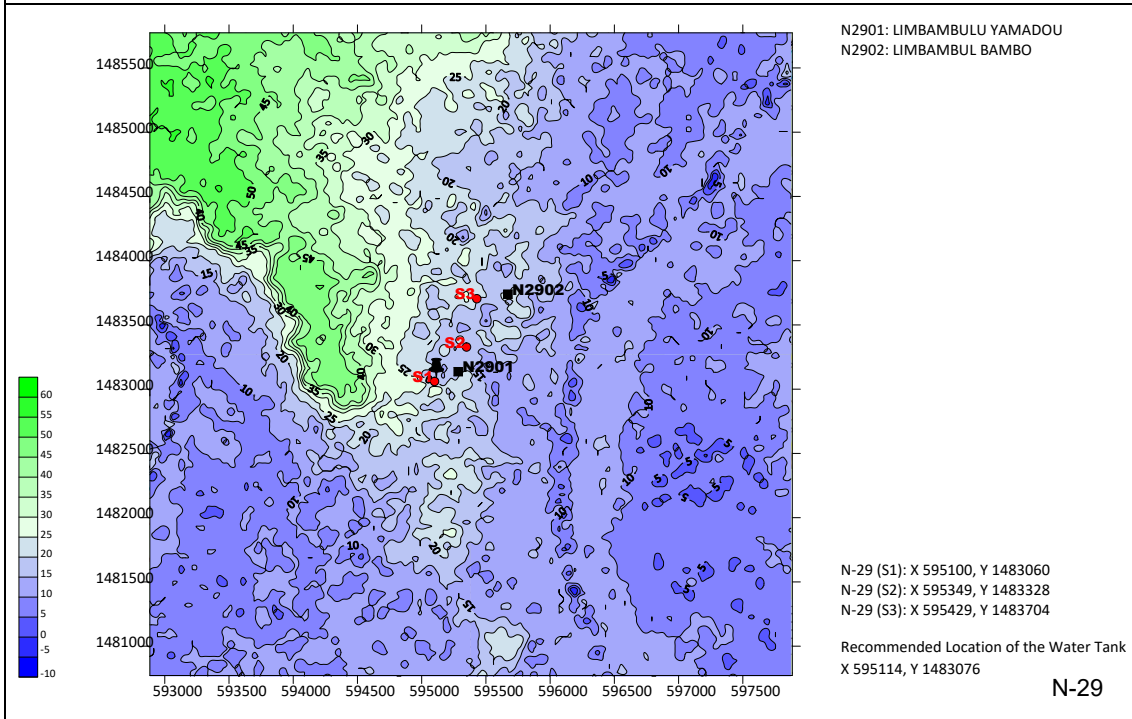
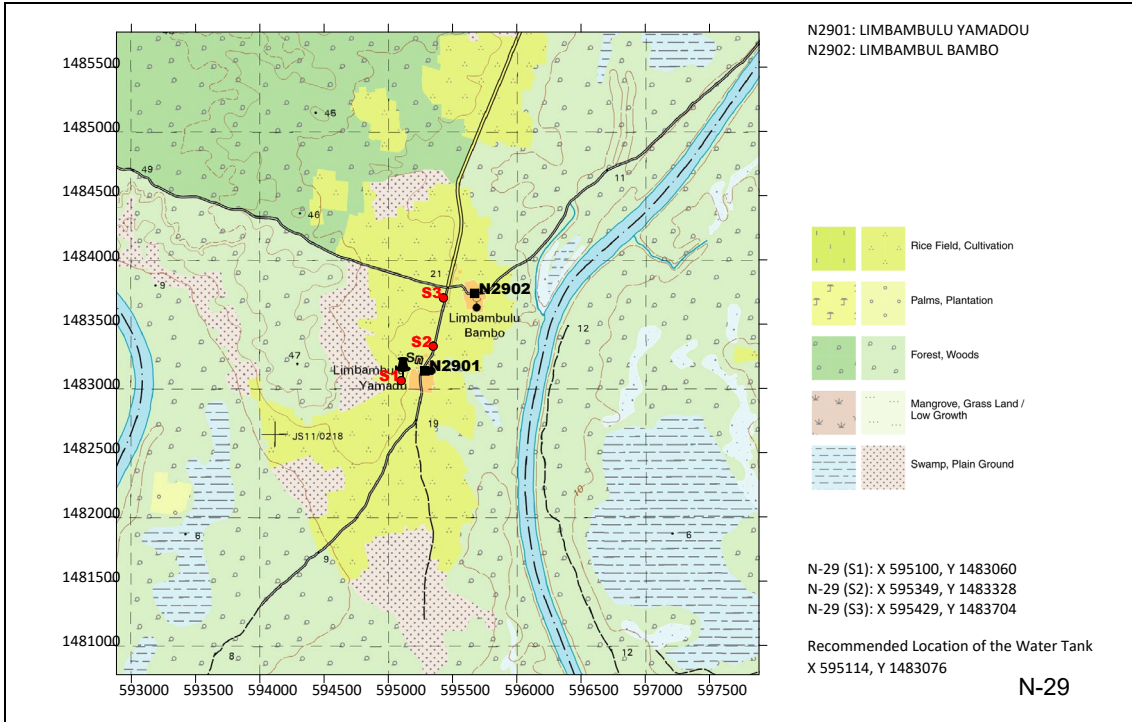
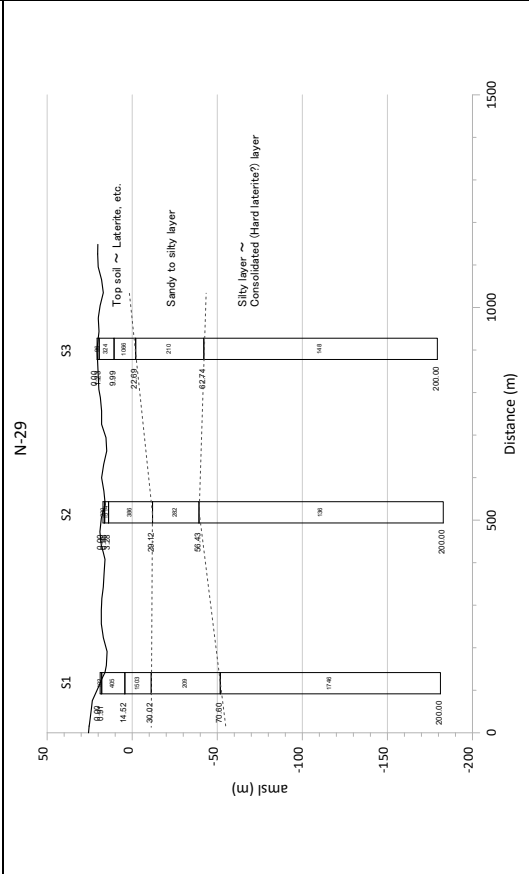
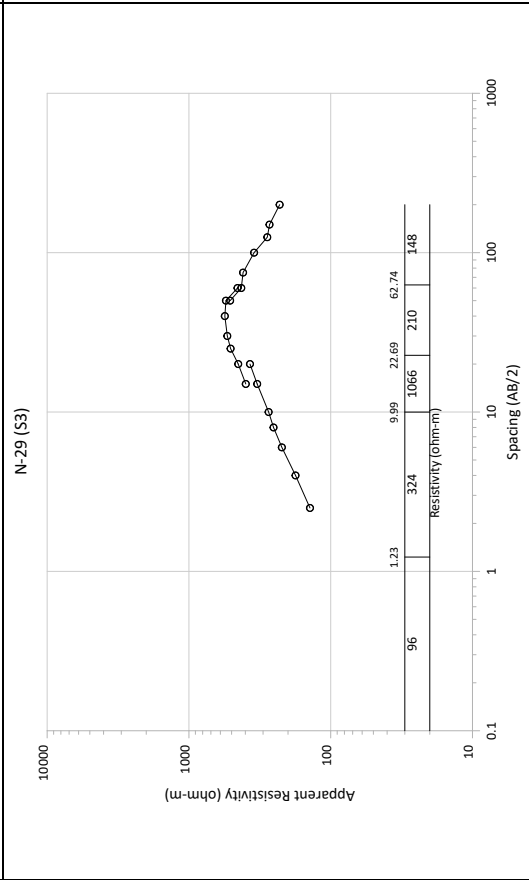
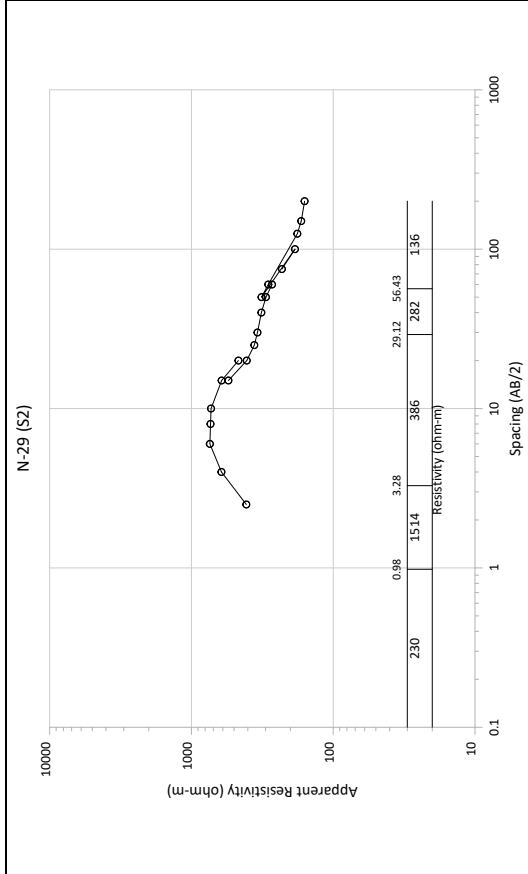
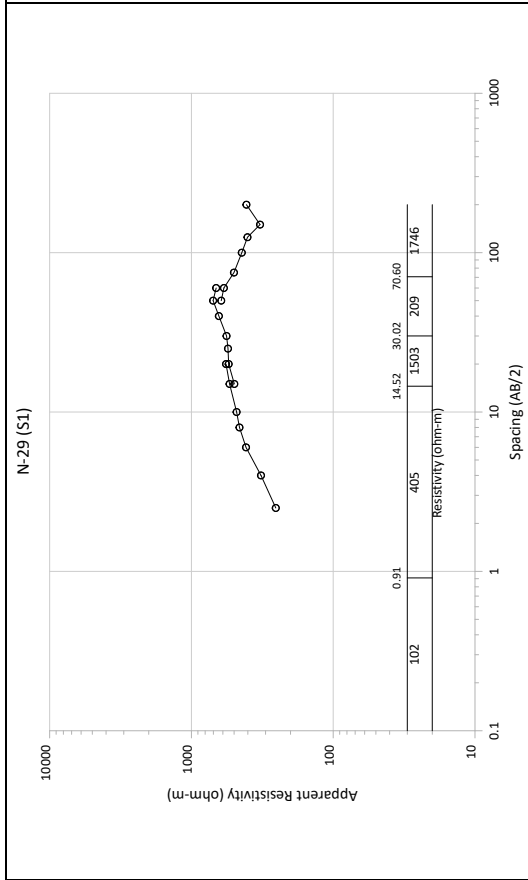


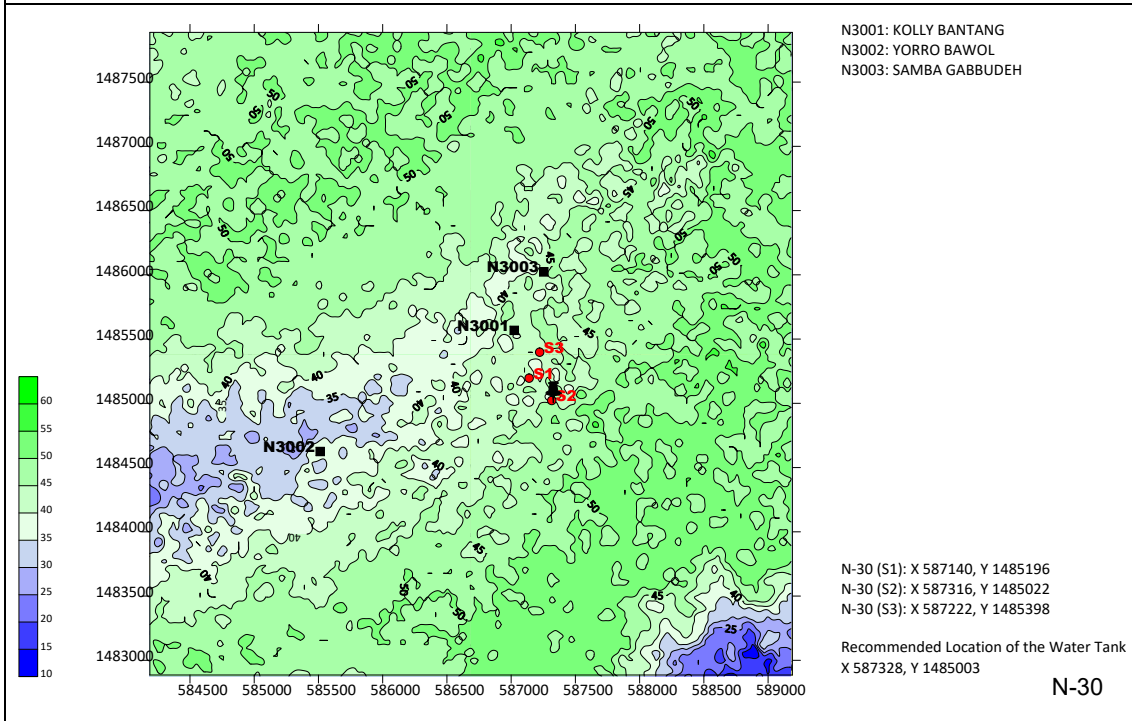
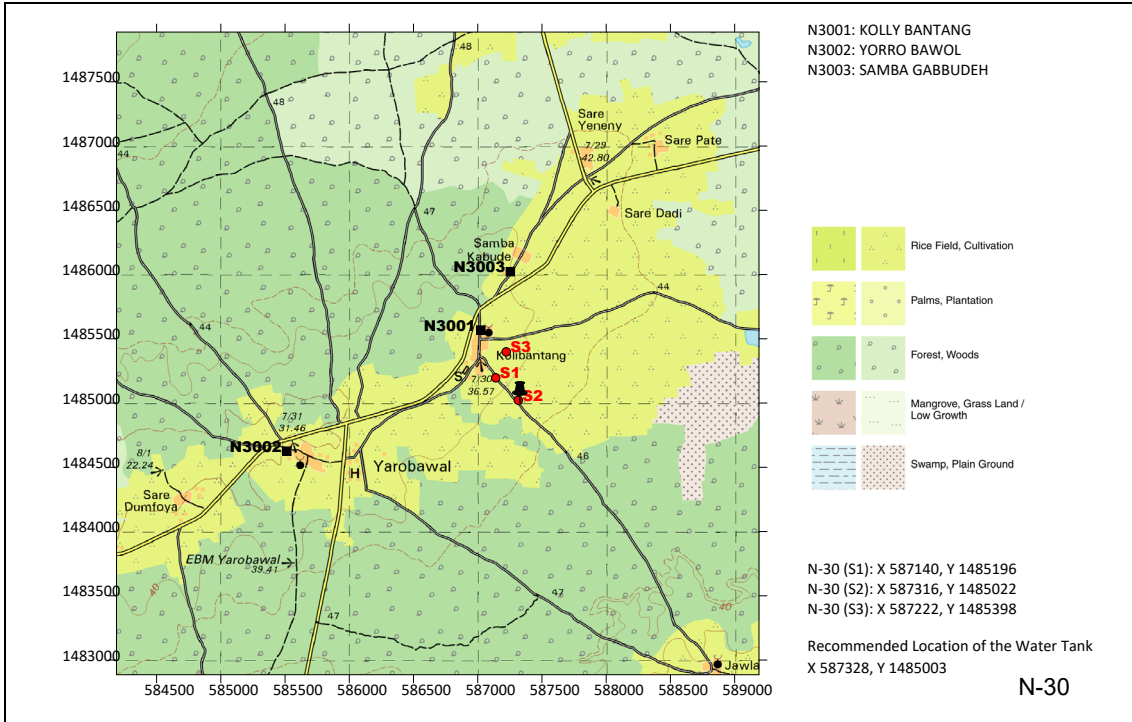
サイト番号 : N-29



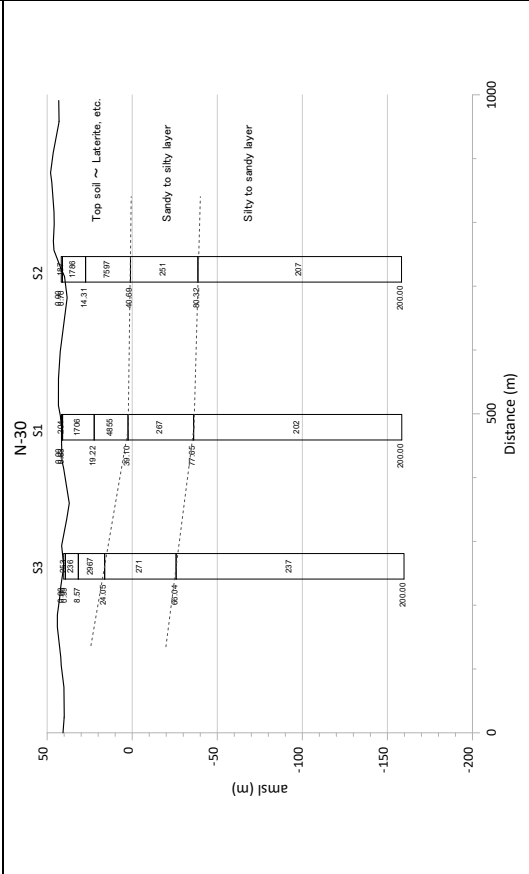
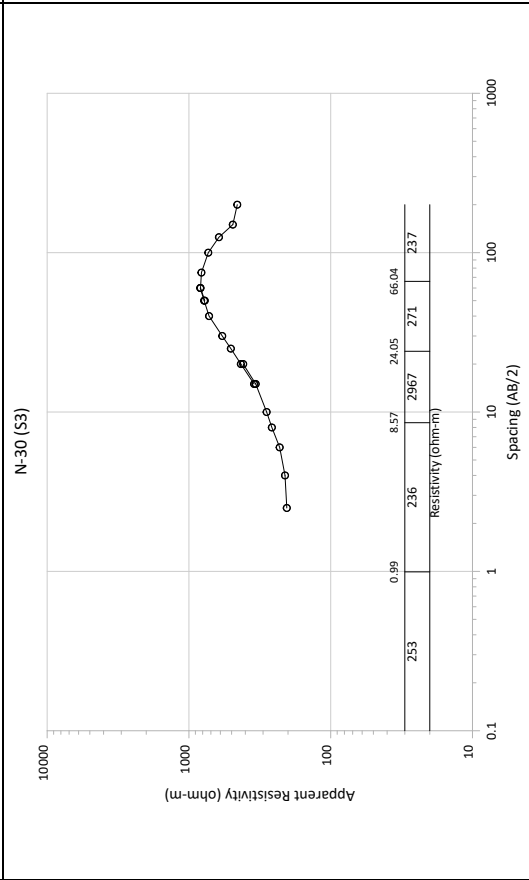
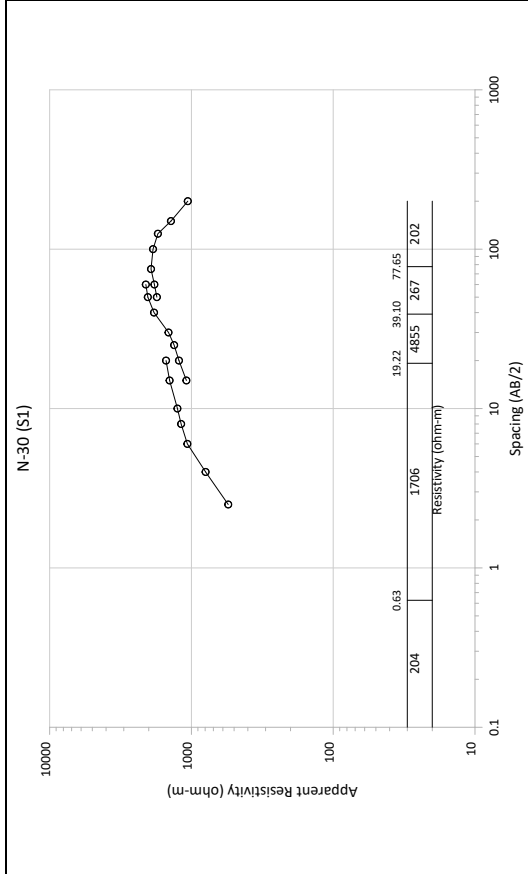
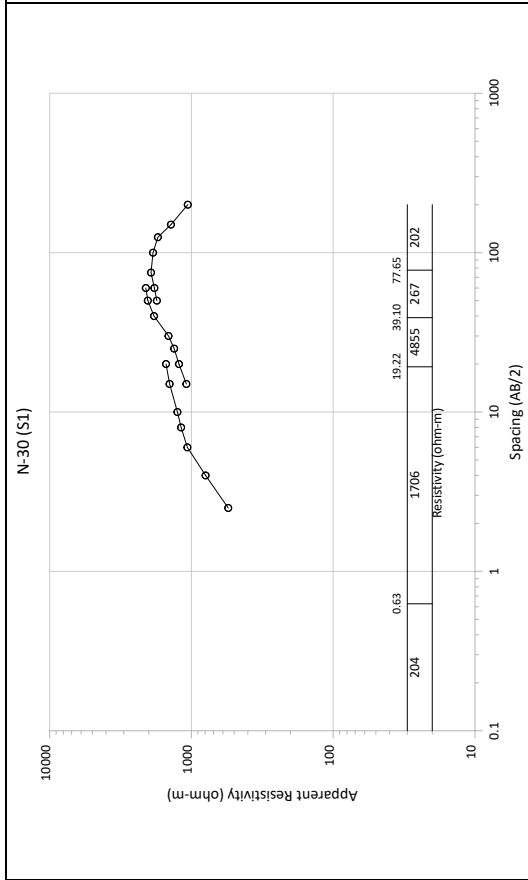
N-29



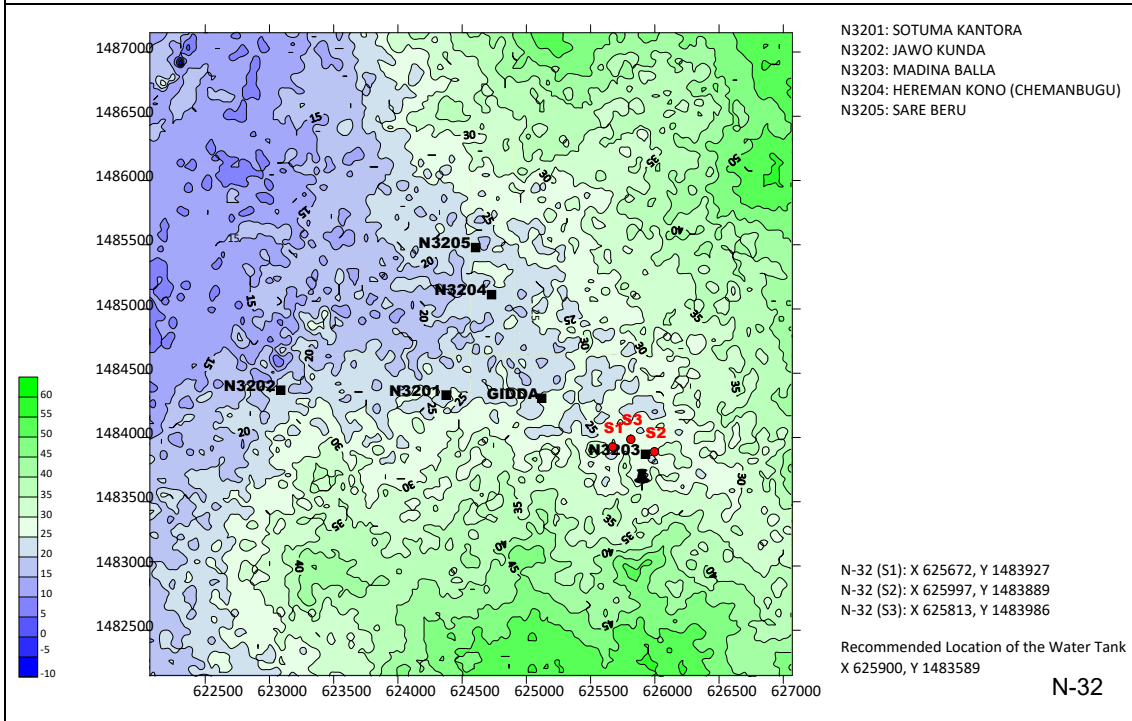
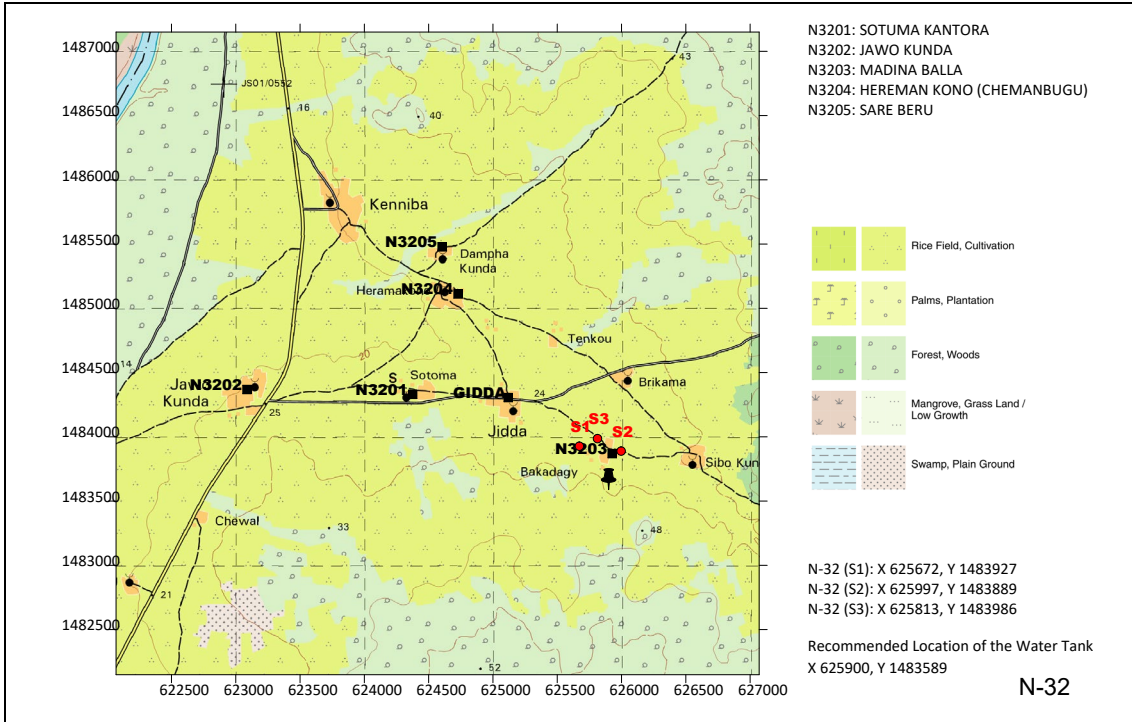
サイト番号 : N-30



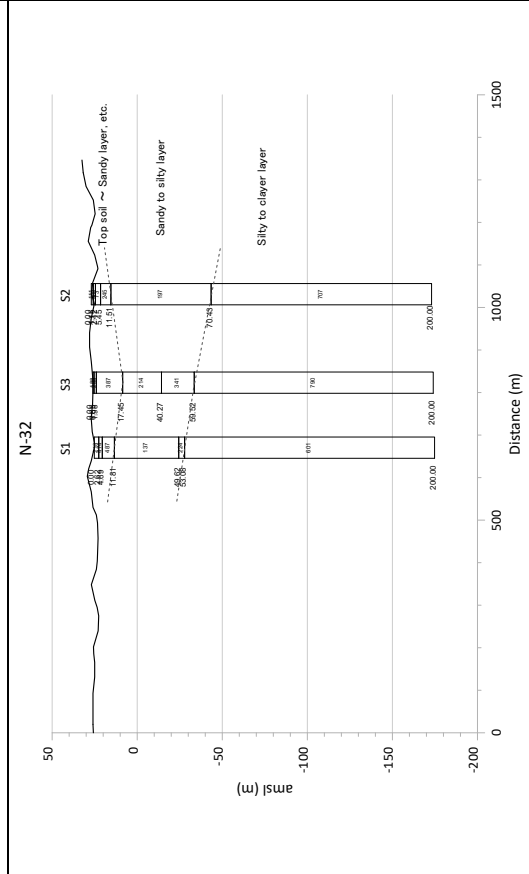
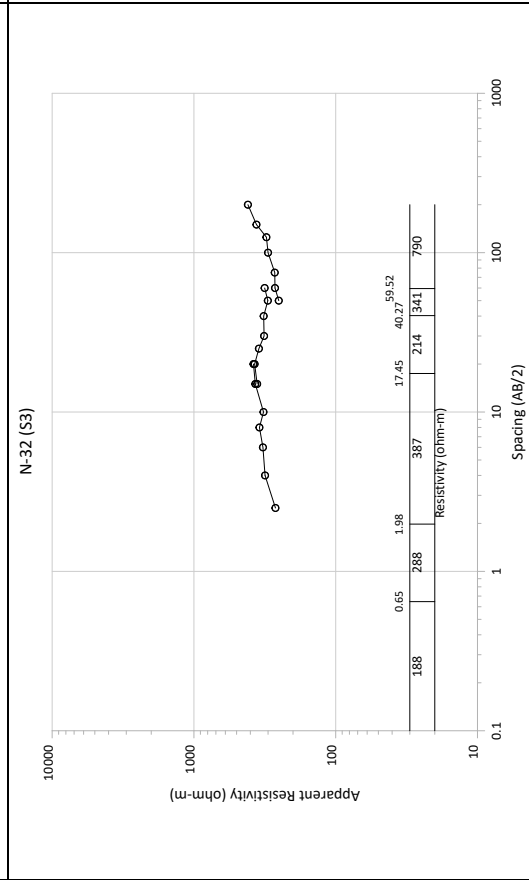
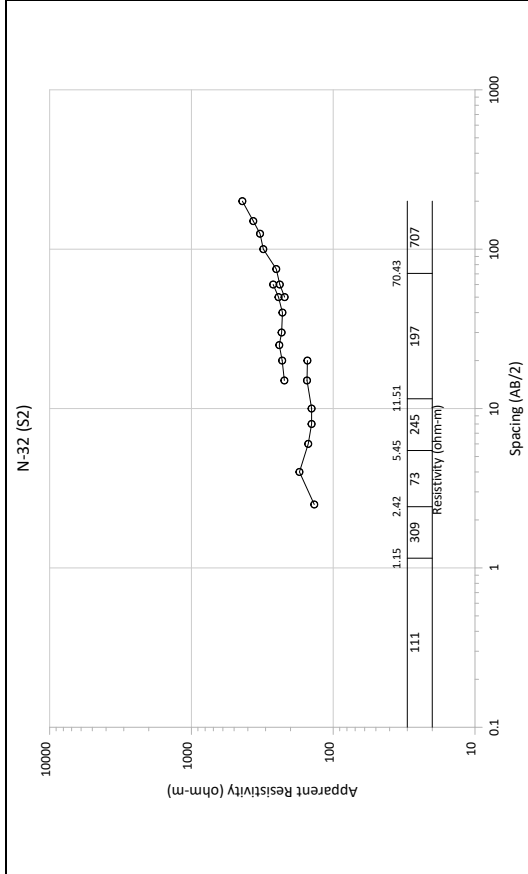
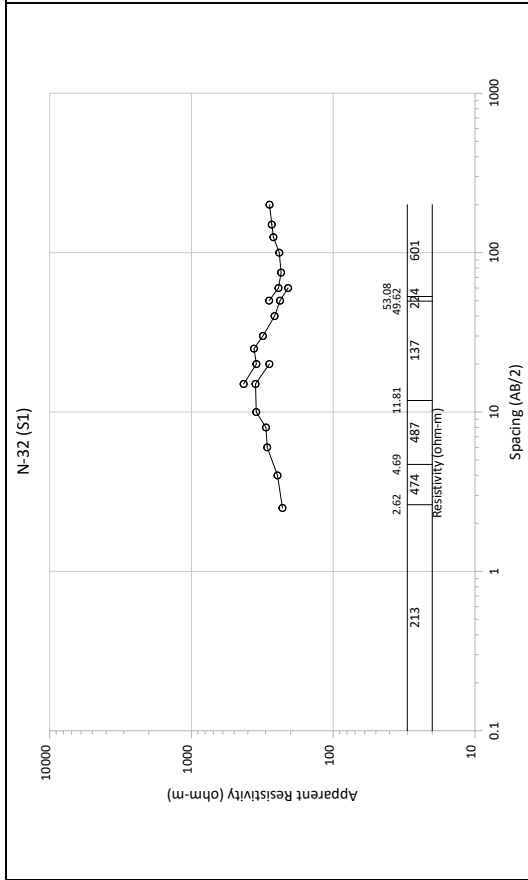
N-30



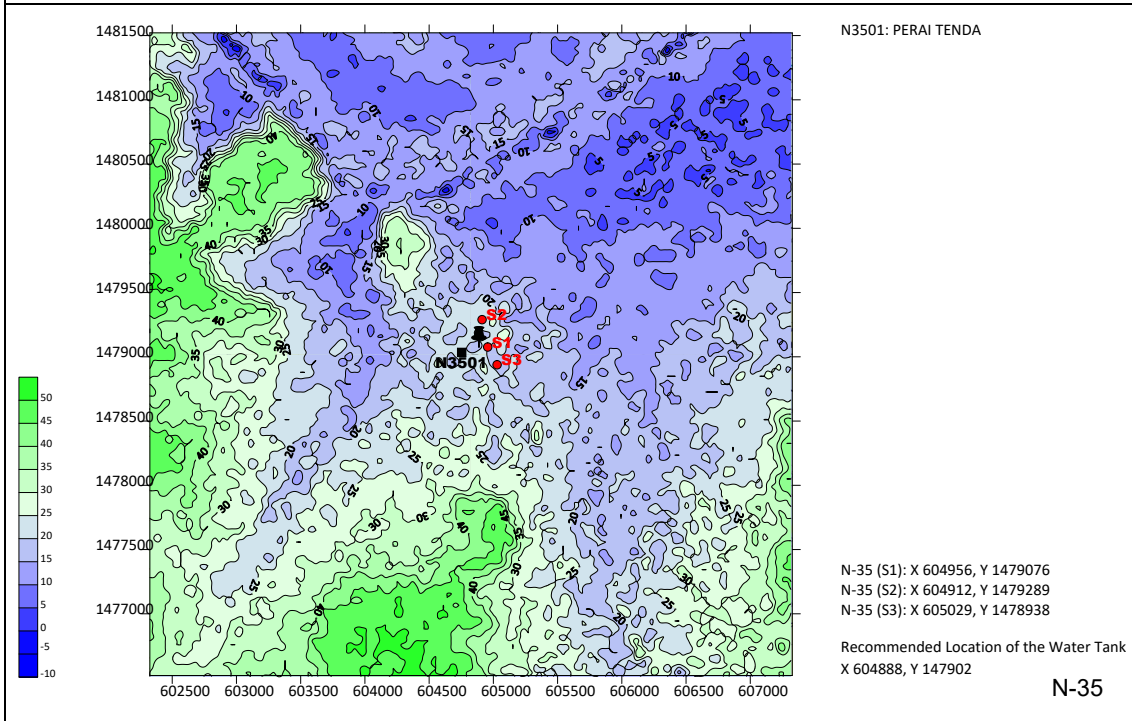
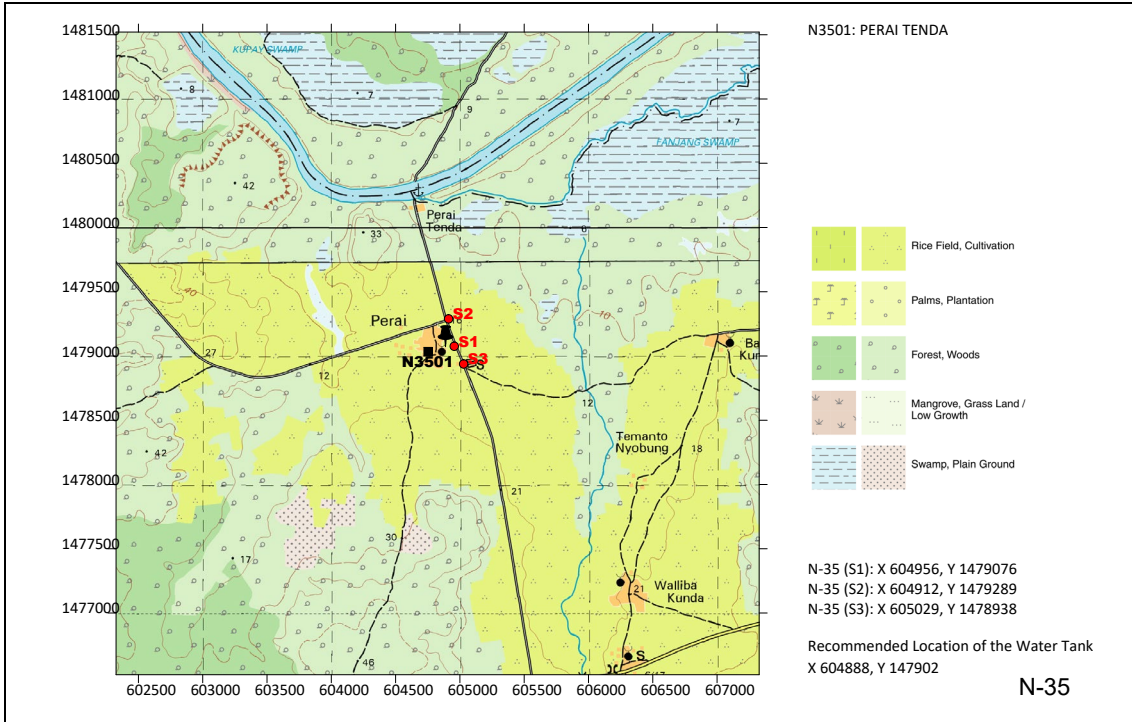
サイト番号 : N-32



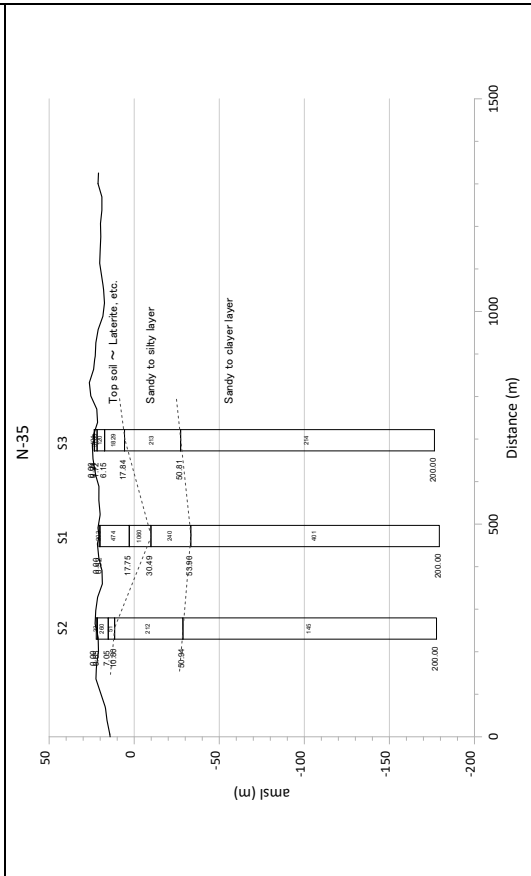
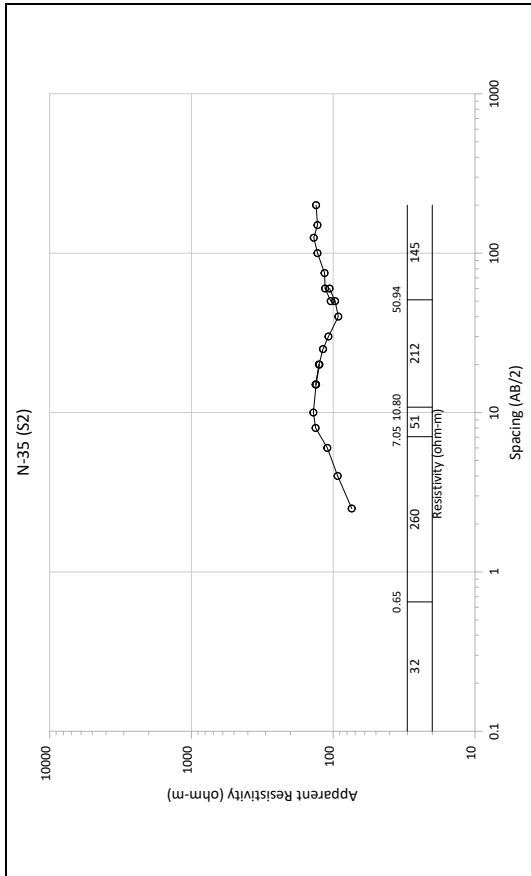
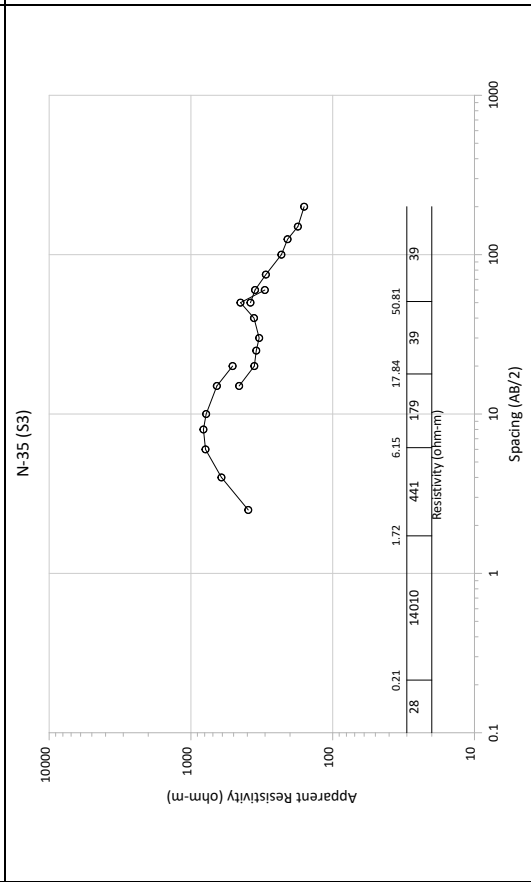
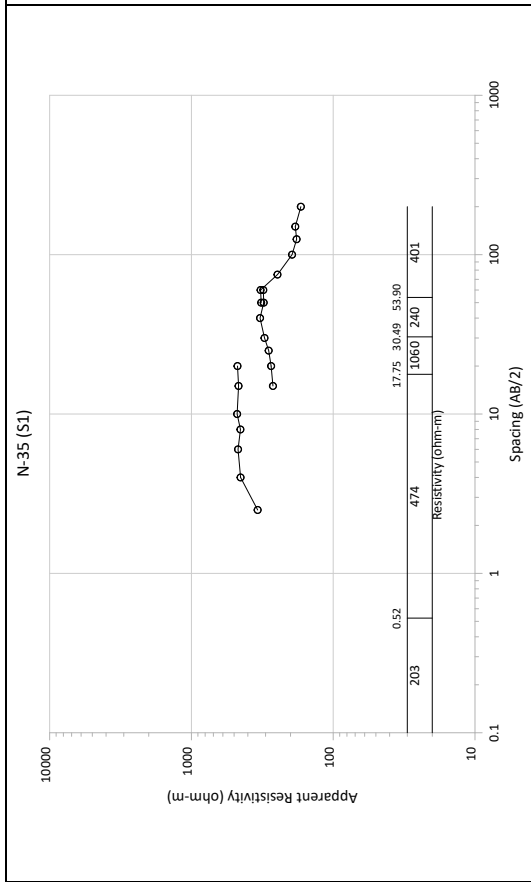
N-32



サイト番号 : N-35



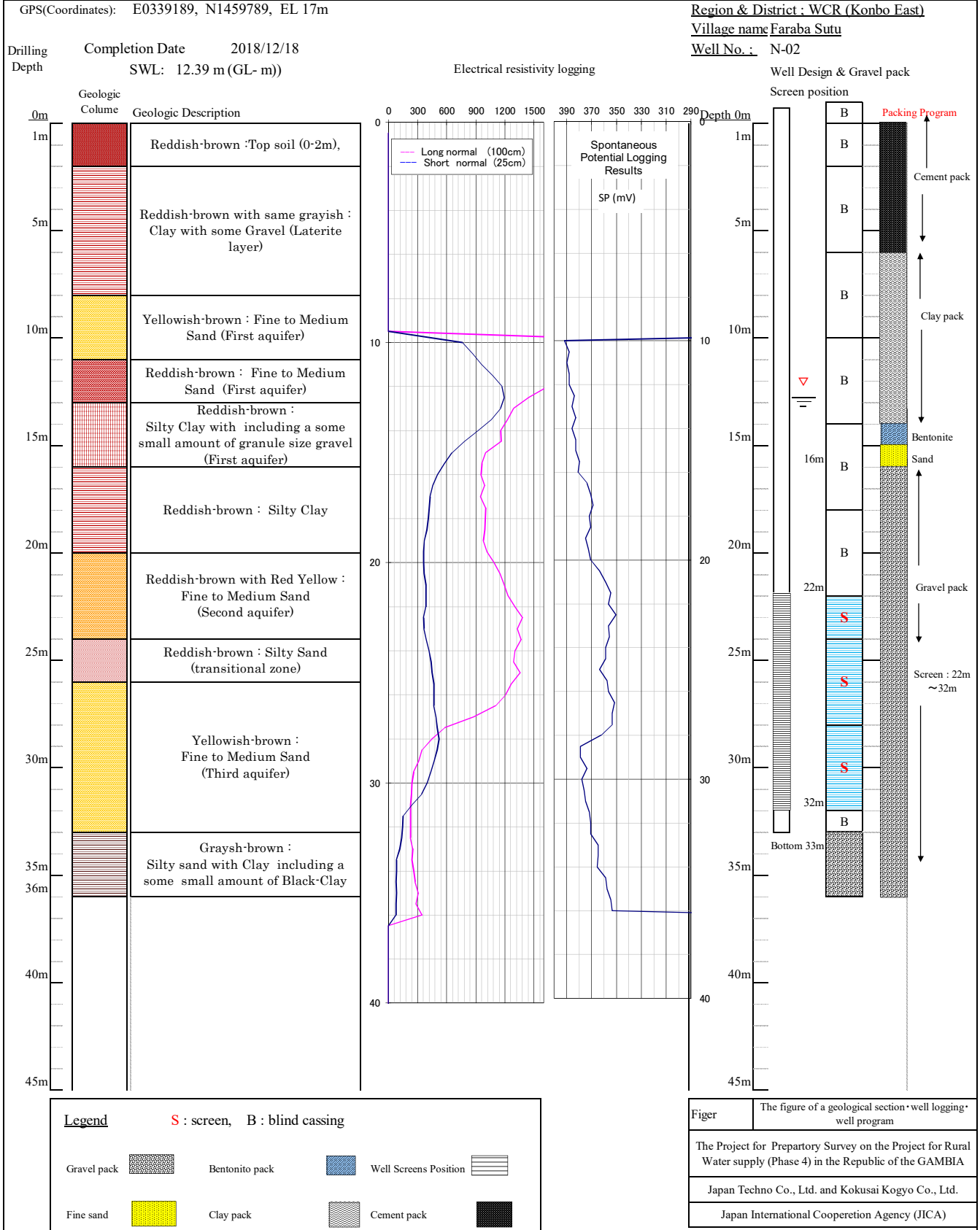
N-35



資料 7-7 井戸柱状図

WELL DRILLING DATA

Test Well Drilling for (Phase 4) in the Republic of the GAMBIA



WELL DRILLING DATA

Test Well Drilling for (Phase 4) in the Republic of the GAMBIA

GPS(Coordinates): E 0373653, N 1460545, EL 30 m

Region & District : WCR (Konbo East)

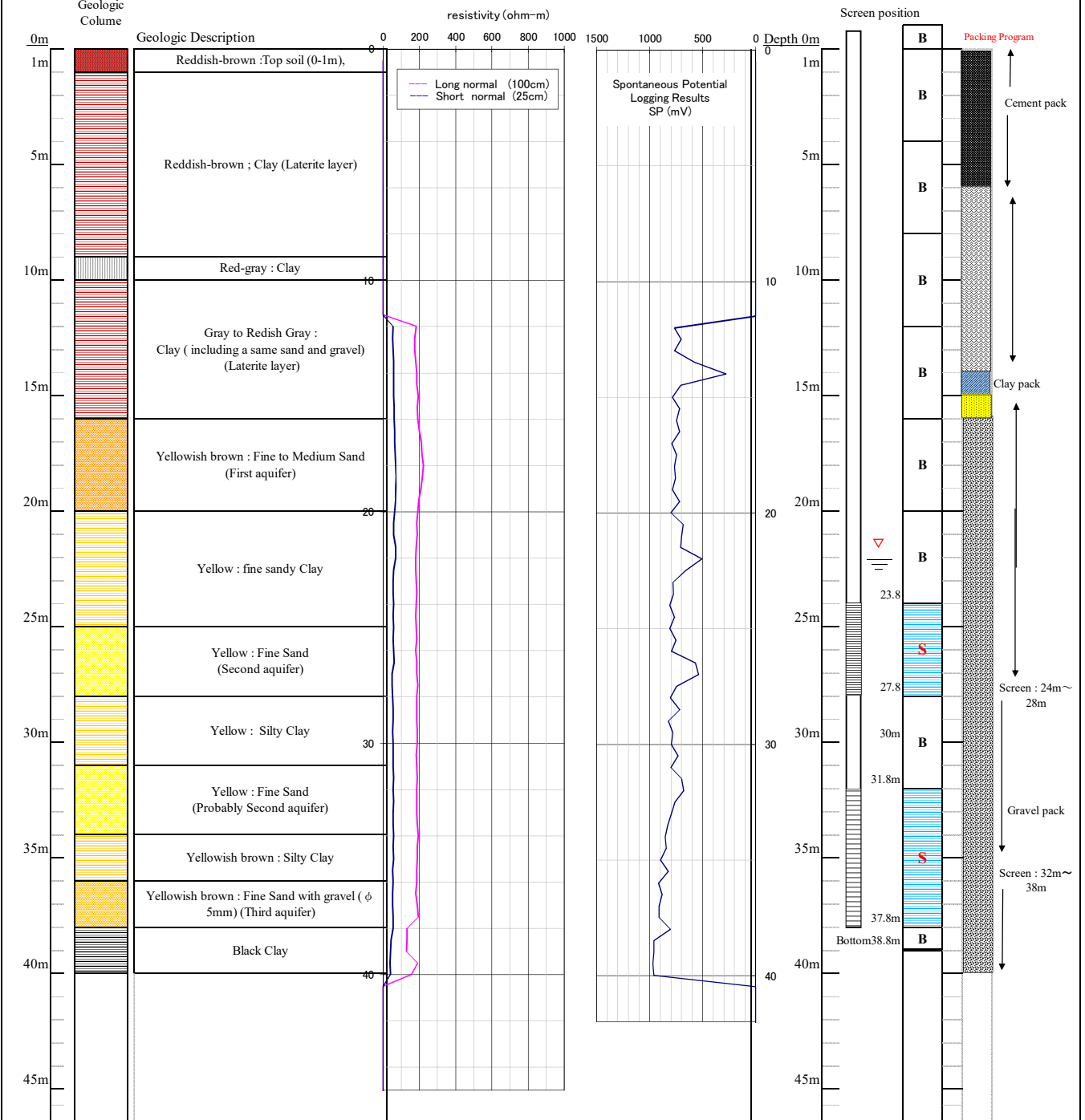
Village name Bntabut kantora

Drilling Completion Date 2018/12/16
 Depth SWL: 22.50 m (GL- m)

Electrical resistivity logging

Well No.: N-04

Well Design & Gravel pack



Legend S : screen, B : blind casing

Gravel pack	Bentonite pack	Well Screens Position
Fine sand	Clay pack	Cement pack

Figur The figure of a geological section · well logging · well program

The Project for Preparatory Survey on the Project for Rural Water supply (Phase 4) in the Republic of the GAMBIA

Japan Techno Co., Ltd. and Kokusai Kogyo Co., Ltd.

Japan International Cooperation Agency (JICA)

WELL DRILLING DATA

Test Well Drilling for (Phase 4) in the Republic of the GAMBIA

GPS(Coordinates): E 0433618, N 1502443, EL=35 m

Region & District : WCR (Konbo East)

Village name Ker Sulay

Well No. : N-08 (2)

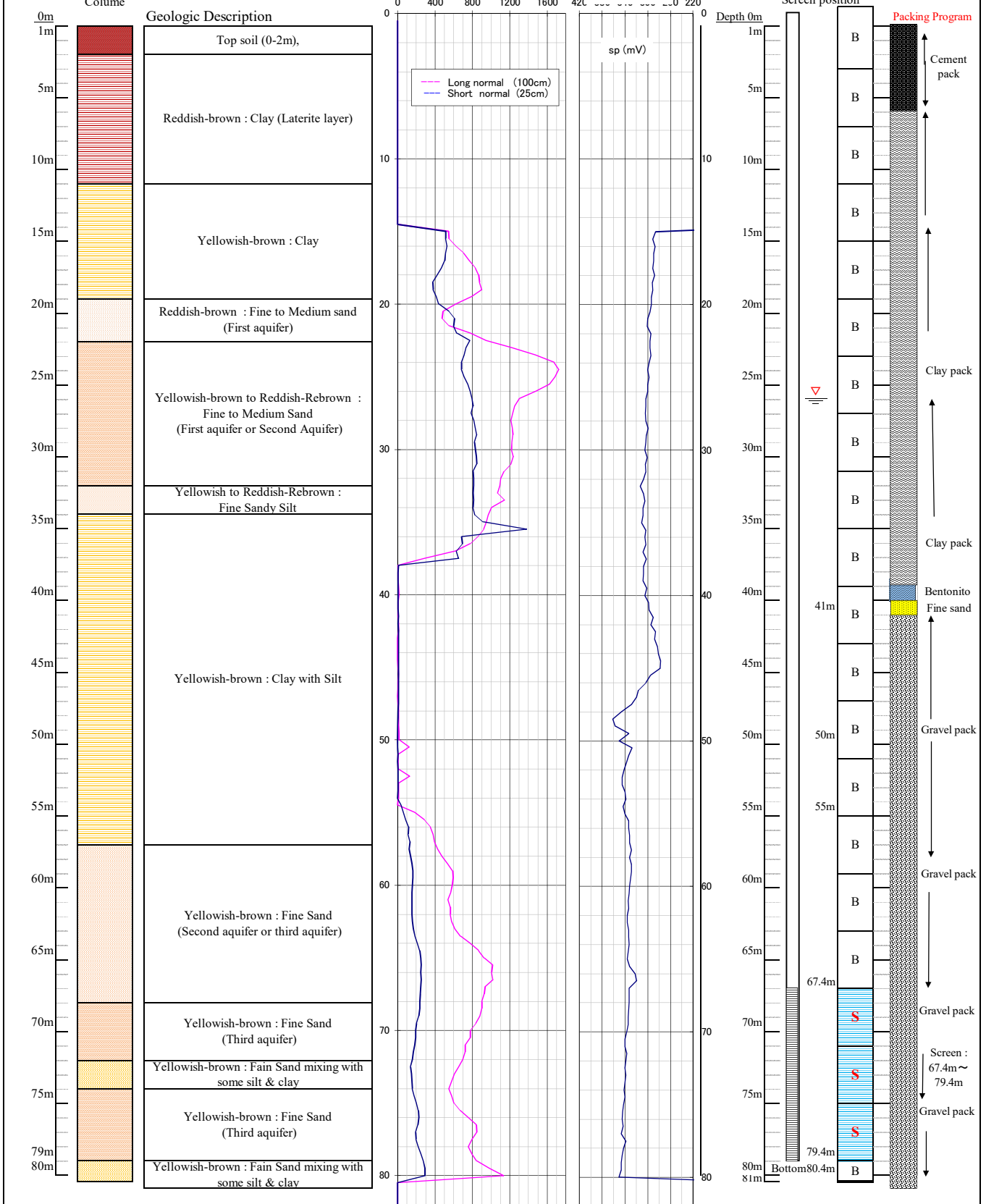
Completion Date 2019/1/26

SWL: 25.93m (GL- m)

Electrical resistivity logging

Spontaneous Potential Logging Results SP (mV)

Well Design & Gravel pack



Legend

S : screen, B : blind casing

Gravel pack	Bentonite pack	Well Screens Position
Fine sand	Clay pack	Cement pack

Figure The figure of a geological section · well logging · well program

The Project for Preparatory Survey on the Project for Rural Water supply (Phase 4) in the Republic of the GAMBIA

Japan Techno Co., Ltd. and Kokusai Kogyo Co., Ltd.

Japan International Cooperation Agency (JICA)

WELL DRILLING DATA

Test Well Drilling for (Phase 4) in the Republic of the GAMBIA

GPS (Coordinates) : E 0461086, N 1514214, EL 18m

Region & District : WCR (Konbo East)

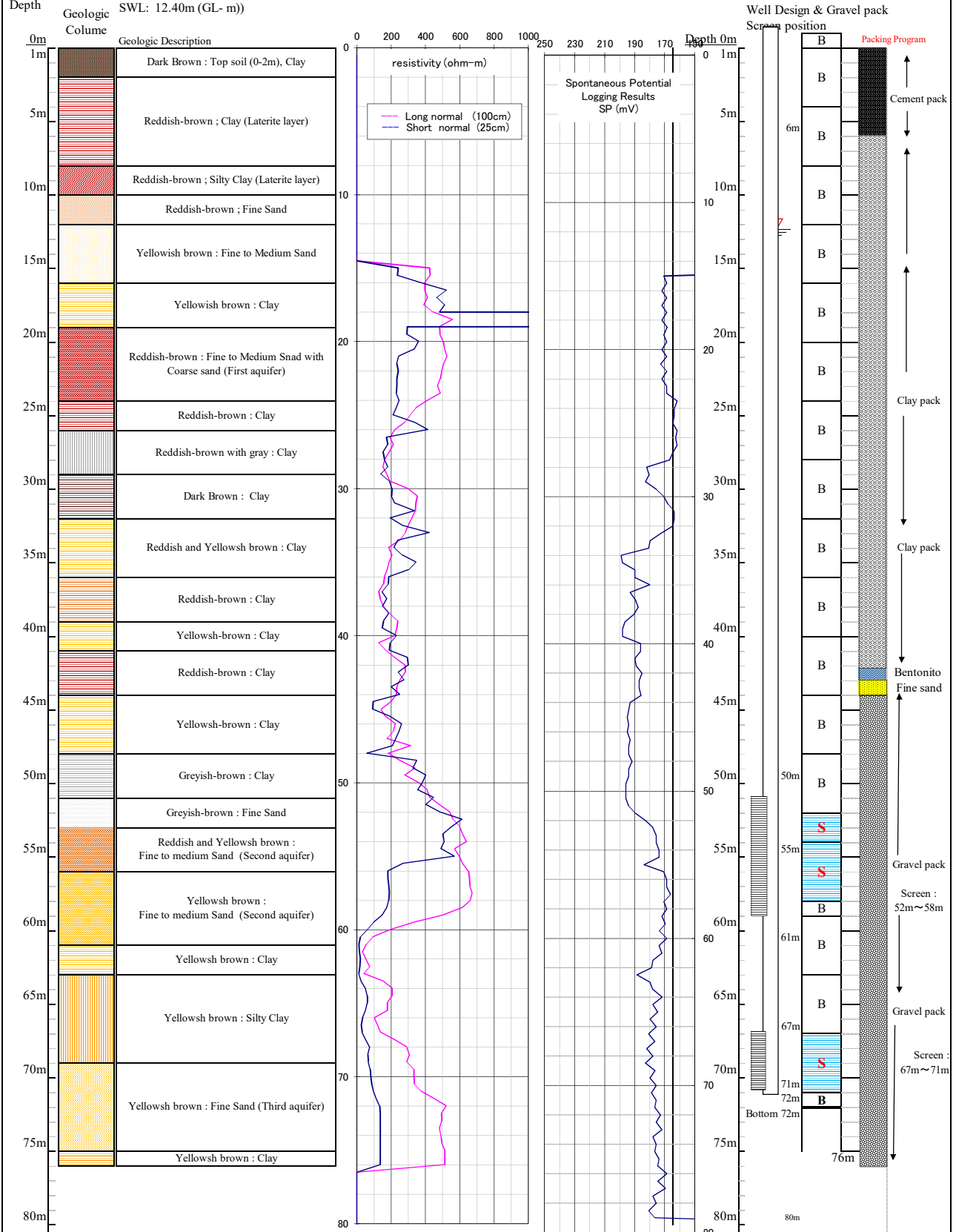
Village nan Jahawur Mandinke

Well No. : N-18

Drilling Completion Date 2018/12/27

Electrical resistivity logging

Well Design & Gravel pack



Legend

S : screen, B : blind casing

- Gravel pack
- Bentonite pack
- Well Screens Position
- Fine sand
- Clay pack
- Cement pack

Figur The figure of a geological section · well logging · well program

The Project for Preparatory Survey on the Project for Rural Water supply (Phase 4) in the Republic of the GAMBIA

Japan Techno Co., Ltd. and Kokusai Kogyo Co., Ltd.

Japan International Cooperation Agency (JICA)

WELL DRILLING DATA

Test Well Drilling for (Phase 4) in the Republic of the GAMBIA

GPS(Coordinates): E 0507085, N 1496180, EL=20 m

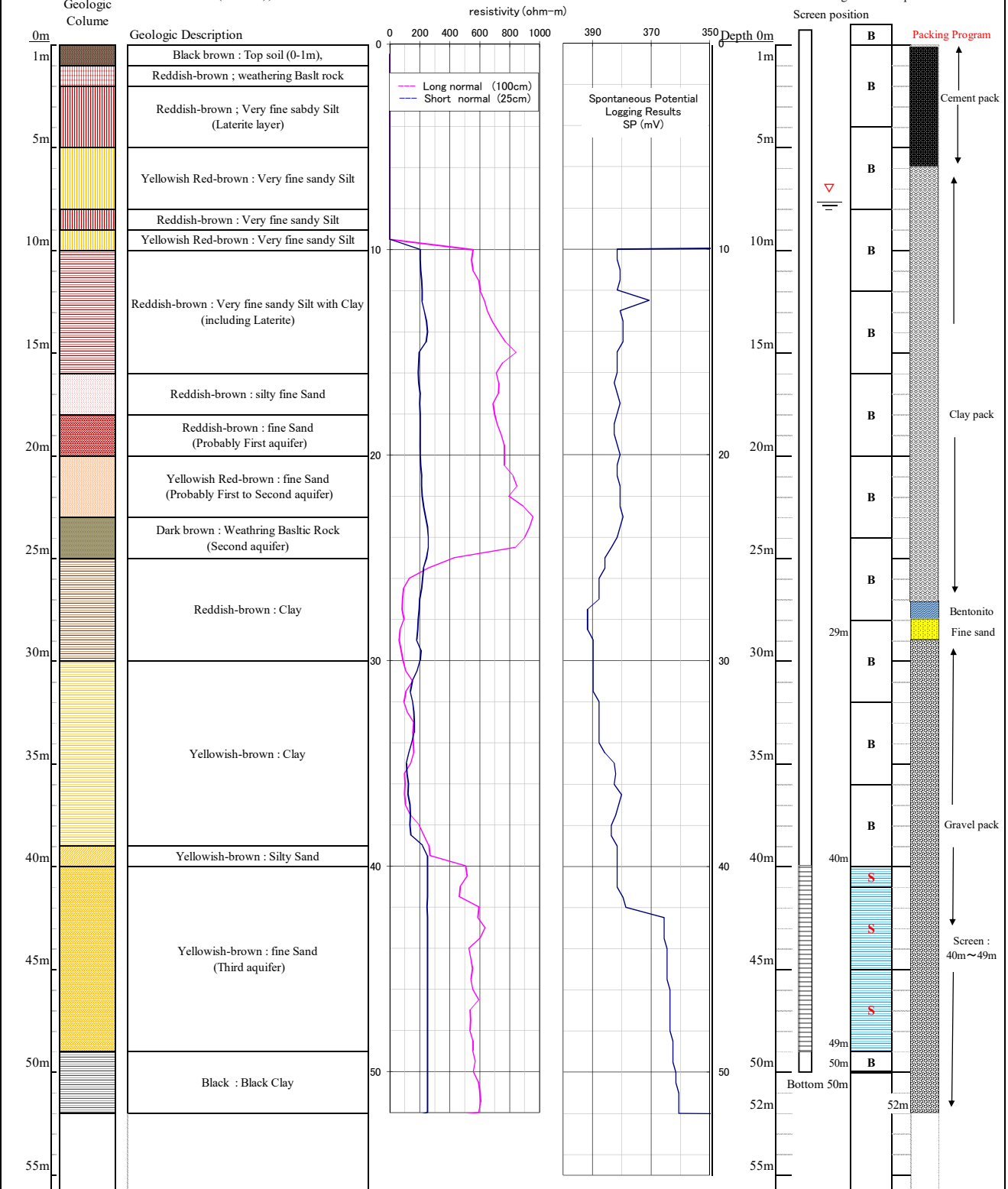
Region & District : WCR (Konbo East)

Village name : Brikamanding, Darsilami, etc.

Well No. : N-25

Drilling Completion Date 2018/12/22
 Depth SWL: 7.70 m (GL- m)

Electrical resistivity logging



Legend

S : screen, B : blind casing

Gravel pack	Bentonite pack	Well Screens Position
Fine sand	Clay pack	Cement pack

Figur The figure of a geological section · well logging · well program

The Project for Preparatory Survey on the Project for Rural Water supply (Phase 4) in the Republic of the GAMBIA

Japan Techno Co., Ltd. and Kokusai Kogyo Co., Ltd.

Japan International Cooperation Agency (JICA)

WELL DRILLING DATA

Test Well Drilling for (Phase 4) in the Republic of the GAMBIA

GPS(Coordinates): E 0496799, N 1505047, EL. 24 m

Region & District : WCR (Konbo East)

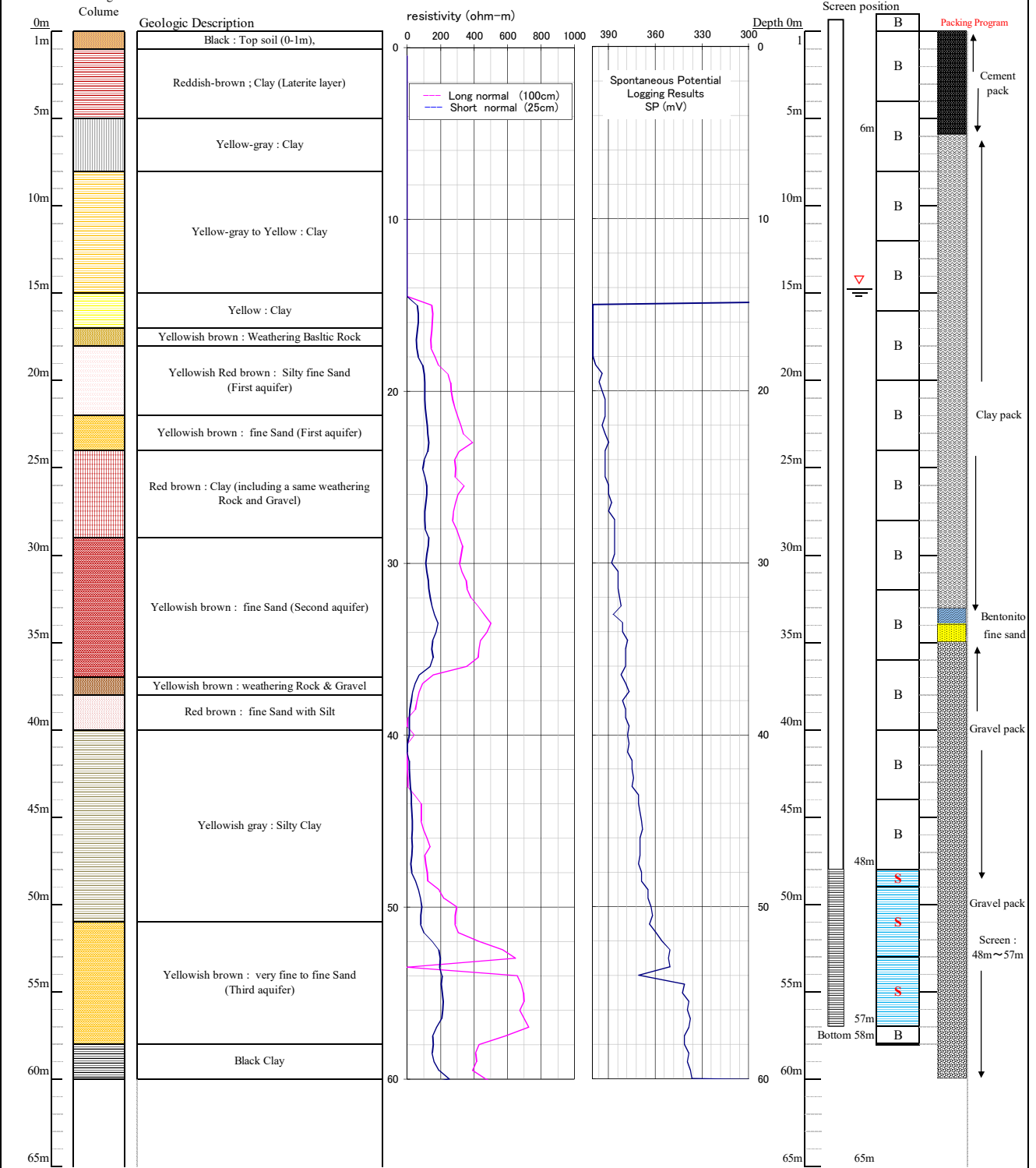
Village name : **Teneng Fara Complex**

Well No. : N-26

Drilling Completion Date 2018/12/20
 Depth SWL: 14.83 m (GL- m)

Electrical resistivity logging

Well Design & Gravel pack



Legend			
S : screen, B : blind casing			
Gravel pack	Bentonite pack	Well Screens Position	
Fine sand	Clay pack	Cement pack	

Figur The figure of a geological section·well logging·well program
 The Project for Preparatory Survey on the Project for Rural Water supply (Phase 4) in the Republic of the GAMBIA
 Japan Techno Co., Ltd. and Kokusai Kogyo Co., Ltd.
 Japan International Cooperation Agency (JICA)

WELL DRILLING DATA

Test Well Drilling for (Phase 4) in the Republic of the GAMBIA

GPS(Coordinates): E 0534413, N 1487257, EL=25 m

Region & District : WCR (Konbo East)

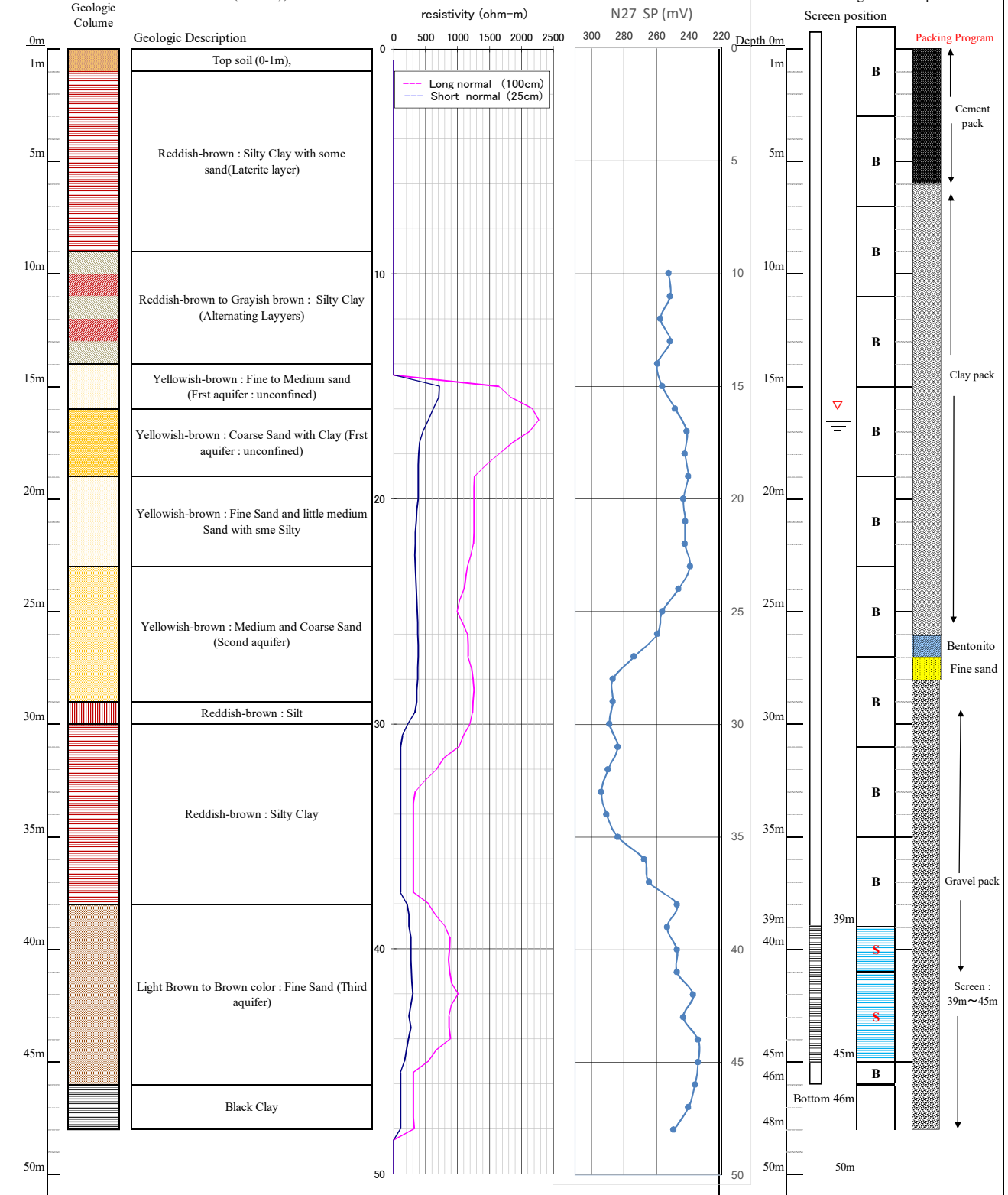
Village name : Sololo+Fuga+Dramman Complex

Drilling Completion Date 2018/12/23
 Depth SWL: 16.38 m (GL- m)

Electrical resistivity logging

Well No. : N-27

Well Design & Gravel pack



Legend

S : screen, B : blind casing

- Gravel pack
- Bentonite pack
- Well Screens Position
- Cement pack
- Fine sand
- Clay pack

Figur The figure of a geological section · well logging · well program

The Project for Preparatory Survey on the Project for Rural Water supply (Phase 4) in the Republic of the GAMBIA

Japan Techno Co., Ltd. and Kokusai Kogyo Co., Ltd.

Japan International Cooperation Agency (JICA)

