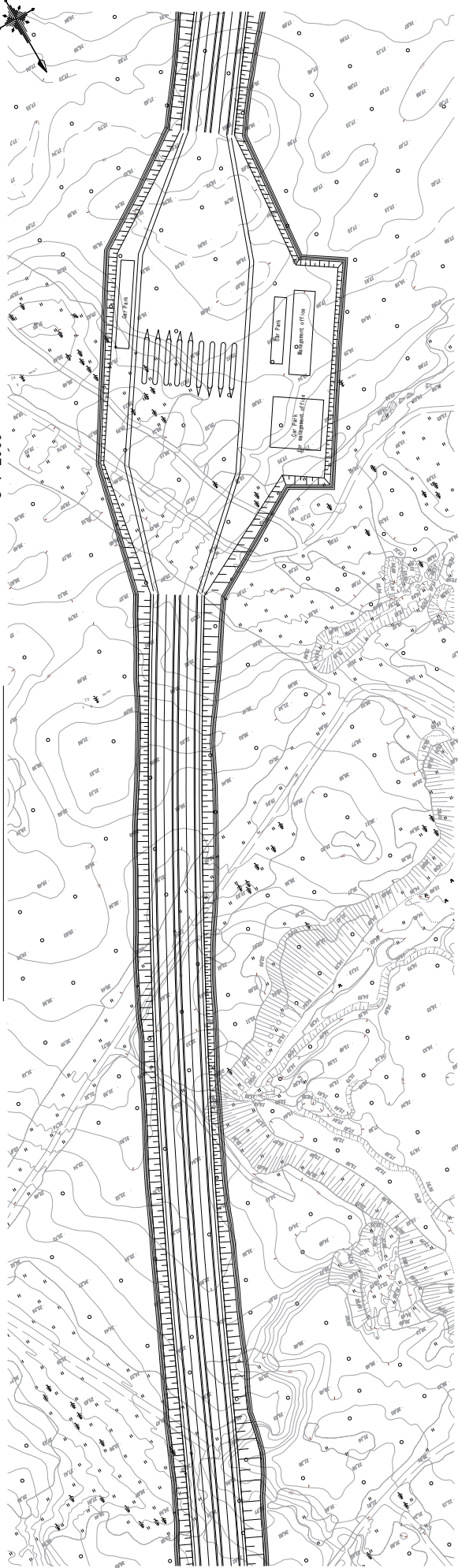
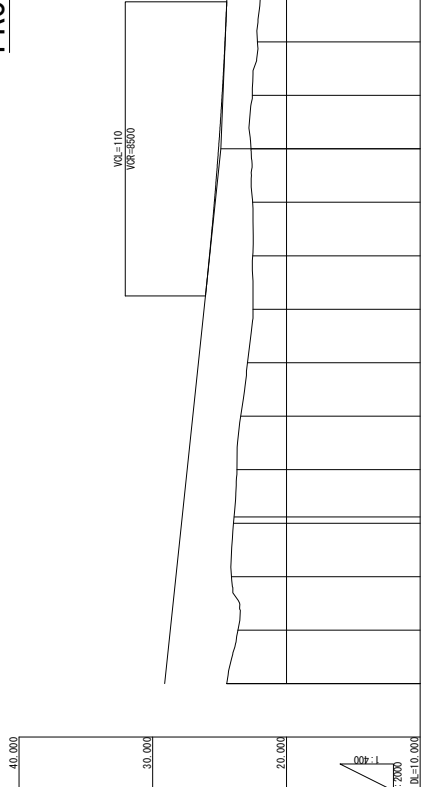


**PLAN NO. 70+0.0 ~ 77+0.0**

S=1:2000



**PROFILE NO. 70+0.0 ~ 77+0.0**



Station	Ground Height	Fill	Cut
NO. 70	24.474	29.100	4.626
+20.000	23.634	28.680	5.046
+40.000	24.112	28.260	4.148
+60.000	23.953	27.840	3.887
+80.000	23.700	27.420	3.720
+100.000	23.420	27.000	3.580
+120.000	22.921	26.580	3.659
+140.000	22.600	26.160	3.560
+160.000	22.524	25.754	3.230
+180.000	22.530	25.339	2.809
+200.000	22.645	25.079	2.434
+220.000	22.558	24.813	2.255
+240.000	22.171	24.594	2.423
+260.000	21.887	24.420	2.533
+280.000	21.473	24.260	2.787
+300.000	21.177	24.100	2.923
+320.000	20.935	23.940	3.005
+340.000	20.491	23.780	3.289
+360.000	20.703	23.620	2.917
+380.000	20.999	23.460	2.461
+400.000	19.708	23.300	3.592
+420.000	19.283	23.140	3.857
+440.000	18.664	22.980	4.316
+460.000	18.821	22.820	3.999
+480.000	19.947	22.660	2.713
+500.000	19.791	22.500	2.709
+520.000	19.997	22.340	2.343
+540.000	19.296	22.180	2.884
+560.000	18.451	22.020	3.569
+580.000	18.500	21.860	3.360
+600.000	18.737	21.700	2.963
+620.000	18.820	21.540	2.720
+640.000	18.526	21.380	2.854
+660.000	18.237	21.220	2.983
+680.000	18.137	21.060	2.923
+700.000	17.817	20.900	3.083

JAPAN INTERNATIONAL COOPERATION AGENCY (JICA)  
CENTRAL CONSULTANT INC. & NIPPON KOEI CO., LTD

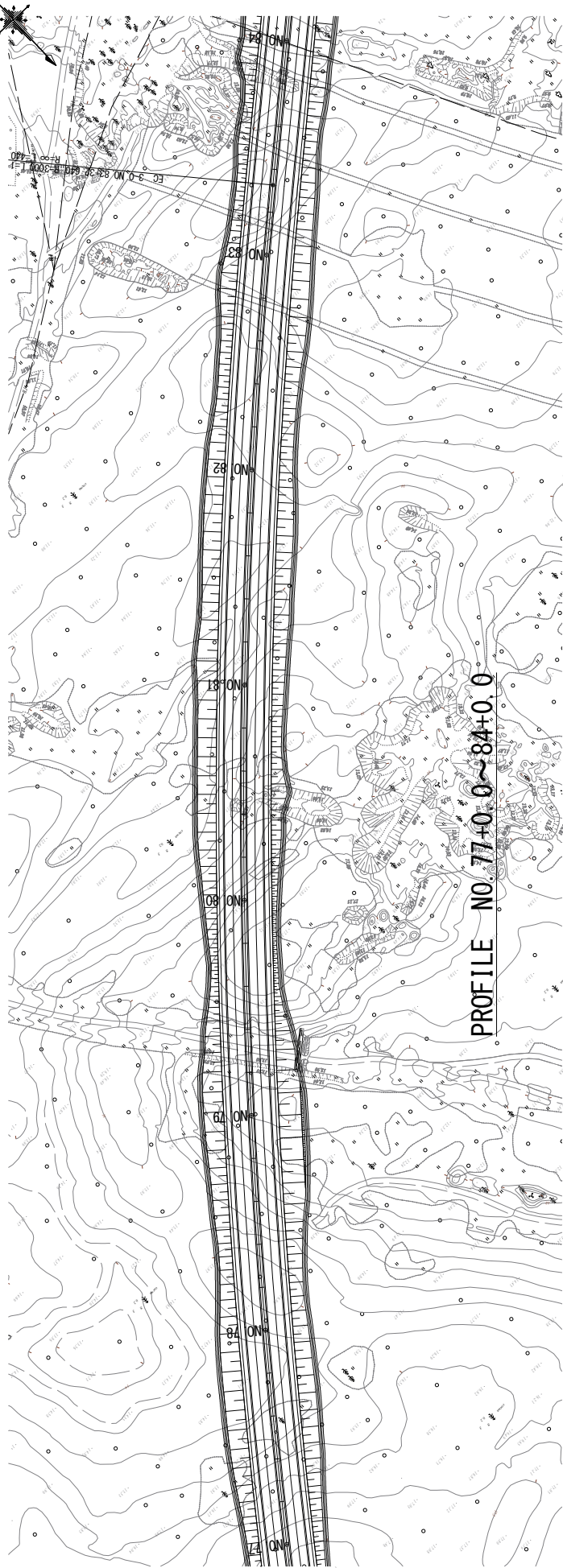
ADDITIONAL STUDY ON THE PROJECT FOR  
CONSTRUCTION OF MYKOLAIV BRIDGE IN UKRAINE

M-14 BYPASS Route3  
PLAN·PROFILE(11)

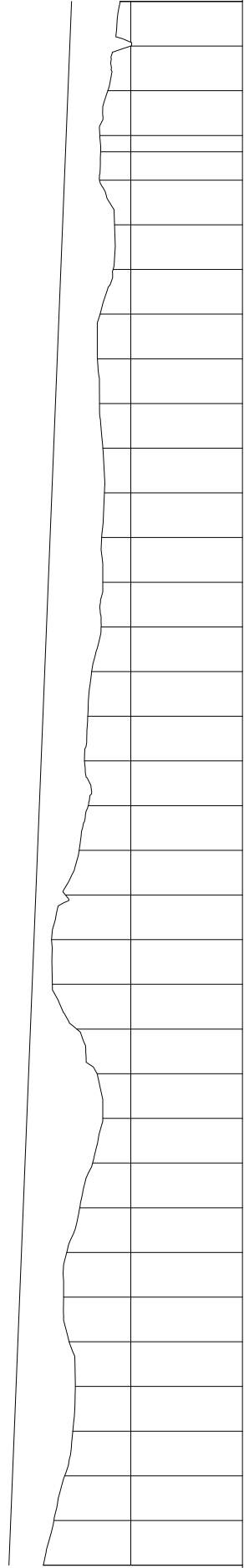
SCALE  
1/2000  
No. 36

PLAN NO. 77+0.0 ~ 84+0.0

S=1:2000



PROFILE NO. 77+0.0 ~ 84+0.0



Station	Ground Height	Proposed Height	Cut	Fill	Grade
77+0.000	17.817	20.900	3.083		
78+0.000	15.515	20.100	4.585		
79+0.000	15.730	19.780	4.050		
80+0.000	14.565	19.620	5.055		
81+0.000	13.412	19.460	6.048		
82+0.000	12.500	19.300	6.800		
83+0.000	13.007	19.140	6.133		
84+0.000	14.828	18.990	4.152		
85+0.000	17.014	18.820	1.806		
86+0.000	17.083	18.660	1.577		
87+0.000	15.835	18.500	2.665		
88+0.000	14.618	18.340	3.722		
89+0.000	13.796	18.180	4.384		
90+0.000	14.141	18.020	3.879		
91+0.000	13.845	17.860	4.015		
92+0.000	13.500	17.700	4.200		
93+0.000	12.643	17.540	4.897		
94+0.000	12.500	17.380	4.880		
95+0.000	12.586	17.220	4.624		
96+0.000	12.351	17.060	4.709		
97+0.000	12.494	16.900	4.406		
98+0.000	12.790	16.740	3.950		
99+0.000	12.974	16.580	3.606		
100+0.000	12.735	16.420	3.685		
101+0.000	11.574	16.260	4.686		
102+0.000	11.453	16.100	4.647		
103+0.000	12.795	15.940	3.145		
104+0.000	12.689	15.780	3.150		
105+0.000	12.768	15.620	3.012		
106+0.000	12.056	15.460	3.564		
107+0.000	9.973	15.300	5.487		
108+0.000	10.943	15.140	4.357		

ADDITIONAL STUDY ON THE PROJECT FOR  
CONSTRUCTION OF MYKOLAIV BRIDGE IN UKRAINE

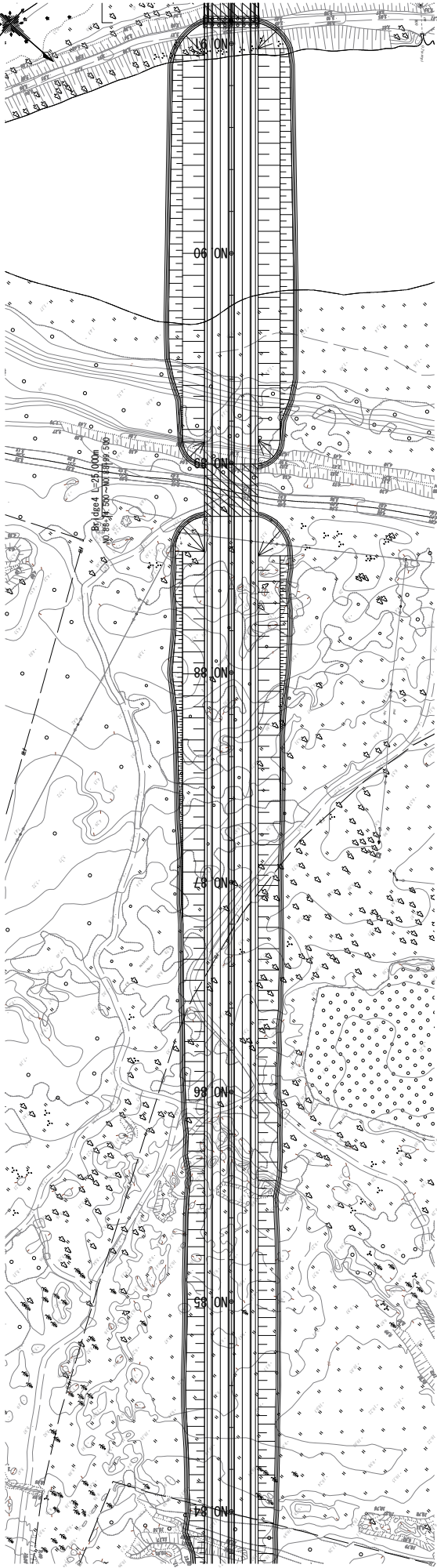
JAPAN INTERNATIONAL COOPERATION AGENCY (JICA)  
CENTRAL CONSULTANT INC. & NIPPON KOEI CO., LTD

M-14 BYPASS Route3  
PLAN · PROFILE(12)

SCALE  
1/2000  
No. 37

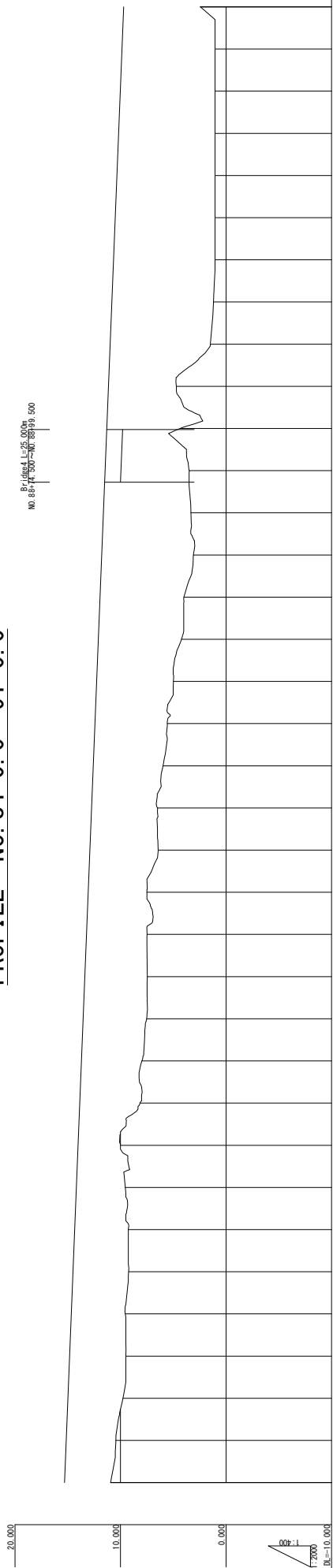
**PLAN NO. 84+0.0 ~ 91+0.0**

S=1:2000



**PROFILE NO. 84+0.0 ~ 91+0.0**

Profile 1:2500  
 NO. 84+0.000 ~ NO. 88+0.500



Station	Ground Height	Proposed Height	Grade
NO. 84	10.943	15.300	4.957
+20.000	10.442	15.140	4.698
+40.000	9.765	14.980	5.215
+60.000	9.498	14.820	5.324
+80.000	9.548	14.660	5.112
NO. 85	9.231	14.500	5.268
+20.000	9.250	14.340	5.090
+40.000	9.547	14.180	4.633
+60.000	10.000	14.020	4.020
+80.000	8.154	13.860	5.706
NO. 86	7.966	13.700	5.734
+20.000	7.524	13.540	6.016
+40.000	7.454	13.380	5.916
+60.000	7.488	13.220	5.732
+80.000	7.500	13.060	5.560
NO. 87	6.438	12.900	6.462
+20.000	6.501	12.740	6.239
+40.000	5.973	12.580	6.607
+60.000	5.567	12.420	6.853
+80.000	4.985	12.260	7.275
NO. 88	4.220	12.100	7.880
+20.000	3.985	11.940	7.955
+40.000	3.089	11.780	8.691
+60.000	3.327	11.620	8.293
+80.000	2.497	11.460	7.963
NO. 89	4.354	11.300	6.946
+20.000	4.710	11.140	6.430
+40.000	1.487	10.980	9.493
+60.000	1.197	10.820	9.623
+80.000	1.050	10.660	9.610
NO. 90	1.050	10.500	9.450
+20.000	1.050	10.340	9.290
+40.000	1.050	10.180	9.130
+60.000	1.050	10.020	8.970
+80.000	1.050	9.860	8.810
NO. 91	2.437	9.700	7.263

JAPAN INTERNATIONAL COOPERATION AGENCY (JICA)  
 CENTRAL CONSULTANT INC. & NIPPON KOEI CO., LTD

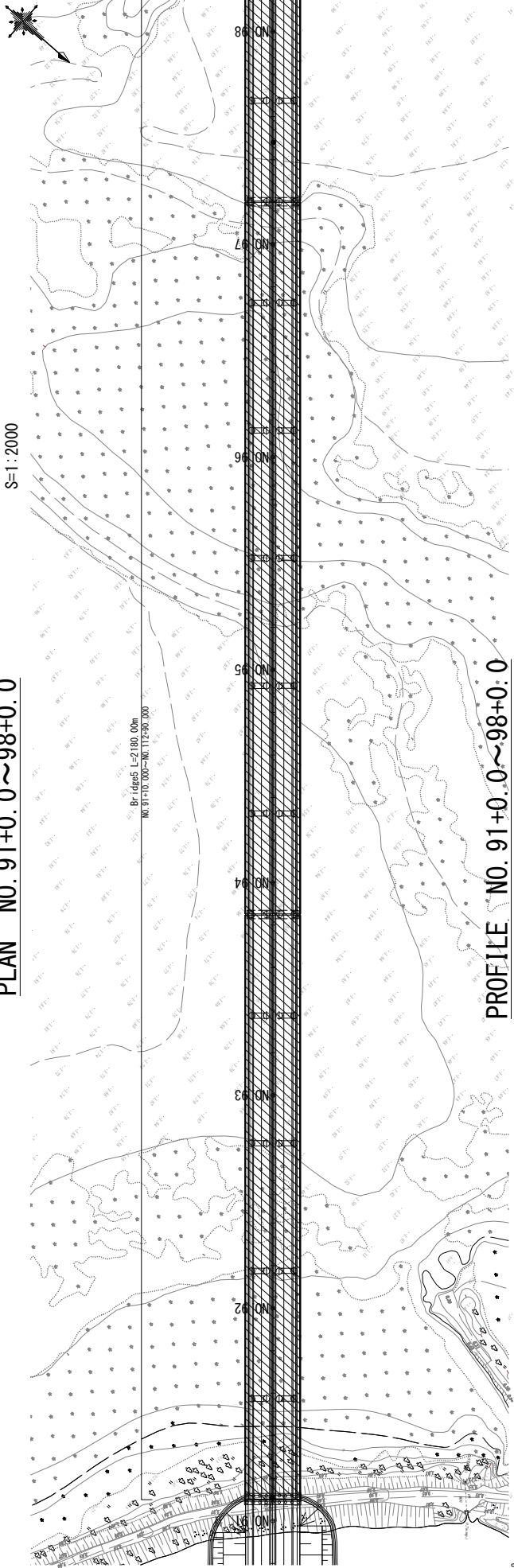
ADDITIONAL STUDY ON THE PROJECT FOR  
 CONSTRUCTION OF MYKOLAIV BRIDGE IN UKRAINE

M-14 BYPASS Route3  
 PLAN · PROFILE(13)

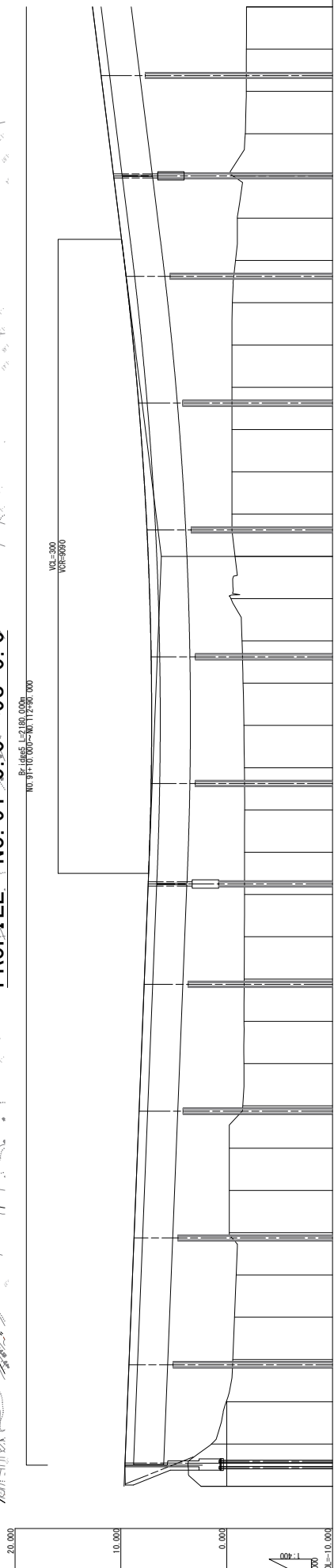
SCALE  
 1/2000  
 No. 38

**PLAN NO. 91+0.0 ~ 98+0.0**

S=1:2000



**PROFILE NO. 91+0.0 ~ 98+0.0**



Station	Ground Height	Grade	Fill	Cut
91+000	2.437	9.700		
91+100	1.442	9.540		
91+200	0.035	9.380		
91+300	0.570	9.220		
91+400	-0.731	9.060		
91+500	-0.891	8.900		
91+600	-0.240	8.740		
91+700	-0.240	8.580		
91+800	-1.523	8.260		
91+900	-1.625	8.100		
92+000	-1.636	7.940		
92+100	-1.532	7.780		
92+200	-1.673	7.620		
92+300	-1.673	7.460		
92+400	-1.688	7.300		
92+500	-1.697	7.140		
92+600	-1.670	6.980		
92+700	-1.621	6.820		
92+800	-1.550	6.660		
92+900	-1.441	6.500		
93+000	-1.441	6.340		
93+100	-0.403	6.180		
93+200	-0.791	6.020		
93+300	-0.500	5.860		
93+400	-0.500	5.700		
93+500	-0.500	5.540		
93+600	-0.500	5.380		
93+700	-0.530	5.220		
93+800	-0.832	5.060		
93+900	-1.000	4.900		
94+000	-0.581	4.740		
94+100	-1.755	4.580		
94+200	-1.847	4.420		
94+300	-1.854	4.260		
94+400	-1.859	4.100		
94+500	-1.859	3.940		
94+600	-1.854	3.780		
94+700	-1.854	3.620		
94+800	-1.854	3.460		
94+900	-1.859	3.300		
95+000	-1.859	3.140		
95+100	-1.859	2.980		
95+200	-1.859	2.820		
95+300	-1.859	2.660		
95+400	-1.859	2.500		
95+500	-1.859	2.340		
95+600	-1.859	2.180		
95+700	-1.859	2.020		
95+800	-1.859	1.860		
95+900	-1.859	1.700		
96+000	-1.859	1.540		
96+100	-1.859	1.380		
96+200	-1.859	1.220		
96+300	-1.859	1.060		
96+400	-1.859	0.900		
96+500	-1.859	0.740		
96+600	-1.859	0.580		
96+700	-1.859	0.420		
96+800	-1.859	0.260		
96+900	-1.859	0.100		
97+000	-1.859	-0.060		
97+100	-1.859	-0.220		
97+200	-1.859	-0.380		
97+300	-1.859	-0.540		
97+400	-1.859	-0.700		
97+500	-1.859	-0.860		
97+600	-1.859	-1.020		
97+700	-1.859	-1.180		
97+800	-1.859	-1.340		
97+900	-1.859	-1.500		
98+000	-1.859	-1.660		
98+100	-1.859	-1.820		
98+200	-1.859	-1.980		
98+300	-1.859	-2.140		
98+400	-1.859	-2.300		
98+500	-1.859	-2.460		
98+600	-1.859	-2.620		
98+700	-1.859	-2.780		
98+800	-1.859	-2.940		
98+900	-1.859	-3.100		

JAPAN INTERNATIONAL COOPERATION AGENCY(JICA)  
CENTRAL CONSULTANT INC. & NIPPON KOEI CO., LTD

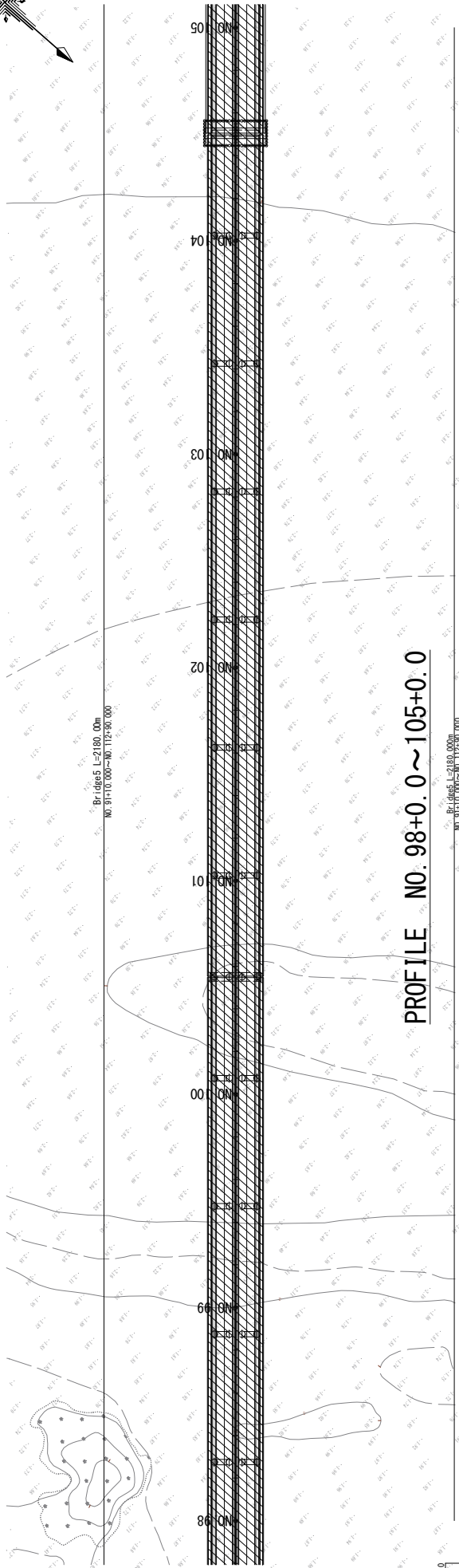
M-14 BYPASS Route3  
PLAN·PROFILE(14)

SCALE  
1/2000  
No. 39

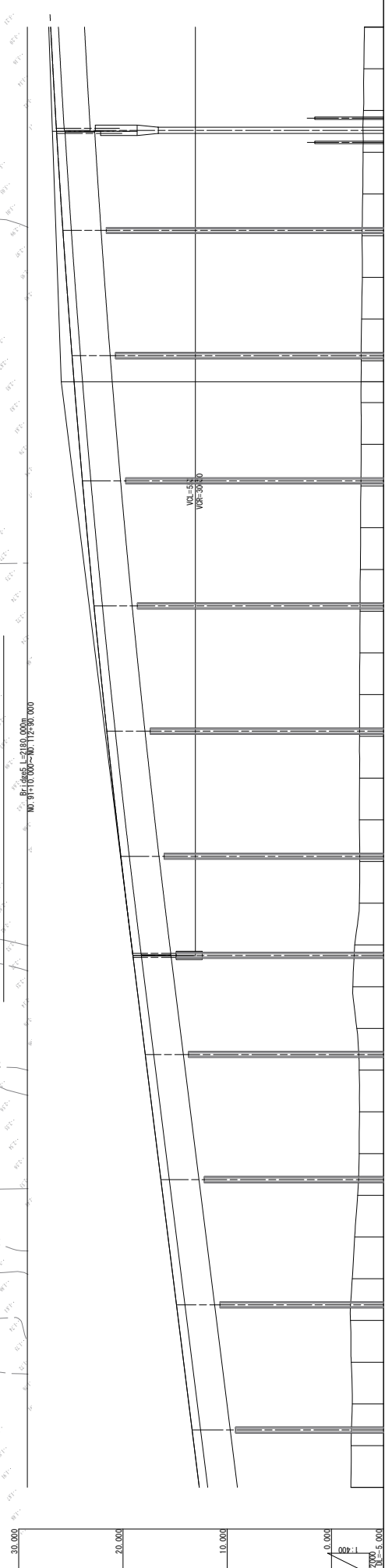
ADDITIONAL STUDY ON THE PROJECT FOR  
CONSTRUCTION OF MYKOLAIV BRIDGE IN UKRAINE

PLAN NO. 98+0.0 ~ 105+0.0

S=1:2000



PROFILE NO. 98+0.0 ~ 105+0.0



Station	Ground Height	Fill	Cut
98+000	12.680		
98+010	12.680		
98+020	12.680		
98+030	12.680		
98+040	12.680		
98+050	12.680		
98+060	12.680		
98+070	12.680		
98+080	12.680		
98+090	12.680		
98+100	12.680		
98+110	12.680		
98+120	12.680		
98+130	12.680		
98+140	12.680		
98+150	12.680		
98+160	12.680		
98+170	12.680		
98+180	12.680		
98+190	12.680		
98+200	12.680		
98+210	12.680		
98+220	12.680		
98+230	12.680		
98+240	12.680		
98+250	12.680		
98+260	12.680		
98+270	12.680		
98+280	12.680		
98+290	12.680		
98+300	12.680		
98+310	12.680		
98+320	12.680		
98+330	12.680		
98+340	12.680		
98+350	12.680		
98+360	12.680		
98+370	12.680		
98+380	12.680		
98+390	12.680		
98+400	12.680		
98+410	12.680		
98+420	12.680		
98+430	12.680		
98+440	12.680		
98+450	12.680		
98+460	12.680		
98+470	12.680		
98+480	12.680		
98+490	12.680		
98+500	12.680		
98+510	12.680		
98+520	12.680		
98+530	12.680		
98+540	12.680		
98+550	12.680		
98+560	12.680		
98+570	12.680		
98+580	12.680		
98+590	12.680		
98+600	12.680		
98+610	12.680		
98+620	12.680		
98+630	12.680		
98+640	12.680		
98+650	12.680		
98+660	12.680		
98+670	12.680		
98+680	12.680		
98+690	12.680		
98+700	12.680		
98+710	12.680		
98+720	12.680		
98+730	12.680		
98+740	12.680		
98+750	12.680		
98+760	12.680		
98+770	12.680		
98+780	12.680		
98+790	12.680		
98+800	12.680		
98+810	12.680		
98+820	12.680		
98+830	12.680		
98+840	12.680		
98+850	12.680		
98+860	12.680		
98+870	12.680		
98+880	12.680		
98+890	12.680		
98+900	12.680		
98+910	12.680		
98+920	12.680		
98+930	12.680		
98+940	12.680		
98+950	12.680		
98+960	12.680		
98+970	12.680		
98+980	12.680		
98+990	12.680		
99+000	12.680		
99+010	12.680		
99+020	12.680		
99+030	12.680		
99+040	12.680		
99+050	12.680		
99+060	12.680		
99+070	12.680		
99+080	12.680		
99+090	12.680		
99+100	12.680		
99+110	12.680		
99+120	12.680		
99+130	12.680		
99+140	12.680		
99+150	12.680		
99+160	12.680		
99+170	12.680		
99+180	12.680		
99+190	12.680		
99+200	12.680		
99+210	12.680		
99+220	12.680		
99+230	12.680		
99+240	12.680		
99+250	12.680		
99+260	12.680		
99+270	12.680		
99+280	12.680		
99+290	12.680		
99+300	12.680		
99+310	12.680		
99+320	12.680		
99+330	12.680		
99+340	12.680		
99+350	12.680		
99+360	12.680		
99+370	12.680		
99+380	12.680		
99+390	12.680		
99+400	12.680		
99+410	12.680		
99+420	12.680		
99+430	12.680		
99+440	12.680		
99+450	12.680		
99+460	12.680		
99+470	12.680		
99+480	12.680		
99+490	12.680		
99+500	12.680		
99+510	12.680		
99+520	12.680		
99+530	12.680		
99+540	12.680		
99+550	12.680		
99+560	12.680		
99+570	12.680		
99+580	12.680		
99+590	12.680		
99+600	12.680		
99+610	12.680		
99+620	12.680		
99+630	12.680		
99+640	12.680		
99+650	12.680		
99+660	12.680		
99+670	12.680		
99+680	12.680		
99+690	12.680		
99+700	12.680		
99+710	12.680		
99+720	12.680		
99+730	12.680		
99+740	12.680		
99+750	12.680		
99+760	12.680		
99+770	12.680		
99+780	12.680		
99+790	12.680		
99+800	12.680		
99+810	12.680		
99+820	12.680		
99+830	12.680		
99+840	12.680		
99+850	12.680		
99+860	12.680		
99+870	12.680		
99+880	12.680		
99+890	12.680		
99+900	12.680		
99+910	12.680		
99+920	12.680		
99+930	12.680		
99+940	12.680		
99+950	12.680		
99+960	12.680		
99+970	12.680		
99+980	12.680		
99+990	12.680		
100+000	12.680		
100+010	12.680		
100+020	12.680		
100+030	12.680		
100+040	12.680		
100+050	12.680		
100+060	12.680		
100+070	12.680		
100+080	12.680		
100+090	12.680		
100+100	12.680		
100+110	12.680		
100+120	12.680		
100+130	12.680		
100+140	12.680		
100+150	12.680		
100+160	12.680		
100+170	12.680		
100+180	12.680		
100+190	12.680		
100+200	12.680		
100+210	12.680		
100+220	12.680		
100+230	12.680		
100+240	12.680		
100+250	12.680		
100+260	12.680		
100+270	12.680		
100+280	12.680		
100+290	12.680		
100+300	12.680		

JAPAN INTERNATIONAL COOPERATION AGENCY(JICA)  
CENTRAL CONSULTANT INC. & NIPPON KOEI CO., LTD

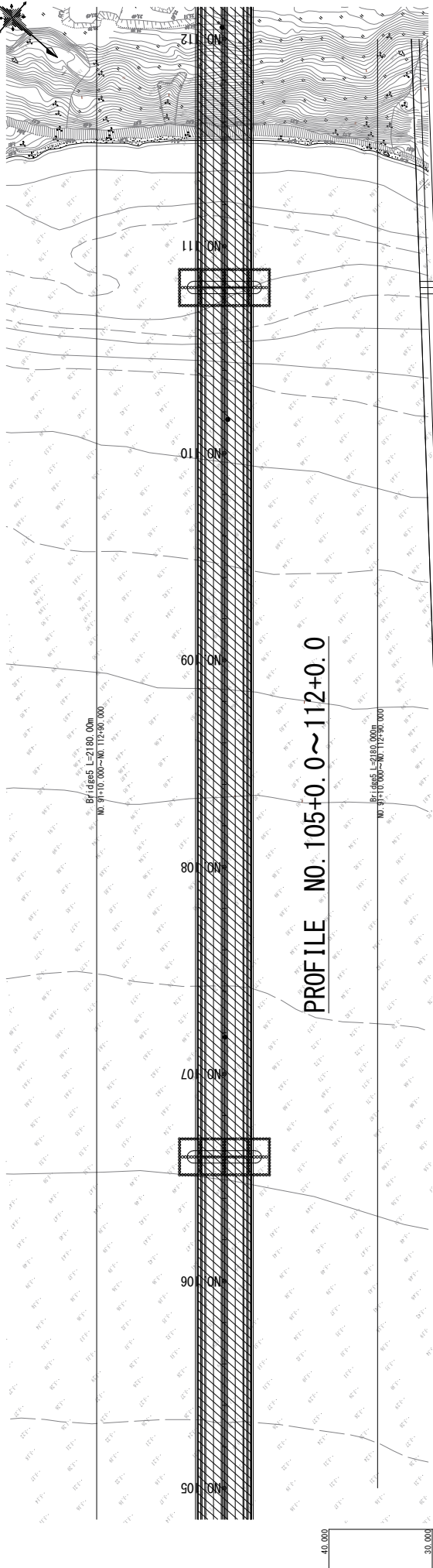
ADDITIONAL STUDY ON THE PROJECT FOR  
CONSTRUCTION OF MYKOLAIV BRIDGE IN UKRAINE

M-14 BYPASS Route3  
PLAN·PROFILE(15)

SCALE  
1/2000  
No. 40

**PLAN NO. 105+0.0 ~ 112+0.0**

S=1:2000



**PROFILE NO. 105+0.0 ~ 112+0.0**



Station	Ground Height	Fill	Cut
NO. 105+0.000	26.940		
NO. 105+100.000	27.142		
NO. 105+200.000	27.142		
NO. 105+300.000	27.142		
NO. 105+400.000	27.142		
NO. 105+500.000	27.142		
NO. 105+600.000	27.142		
NO. 105+700.000	27.142		
NO. 105+800.000	27.142		
NO. 105+900.000	27.142		
NO. 105+1000.000	27.142		
NO. 105+1100.000	27.142		
NO. 105+1200.000	27.142		
NO. 105+1300.000	27.142		
NO. 105+1400.000	27.142		
NO. 105+1500.000	27.142		
NO. 105+1600.000	27.142		
NO. 105+1700.000	27.142		
NO. 105+1800.000	27.142		
NO. 105+1900.000	27.142		
NO. 105+2000.000	27.142		
NO. 105+2100.000	27.142		
NO. 105+2200.000	27.142		
NO. 105+2300.000	27.142		
NO. 105+2400.000	27.142		
NO. 105+2500.000	27.142		
NO. 105+2600.000	27.142		
NO. 105+2700.000	27.142		
NO. 105+2800.000	27.142		
NO. 105+2900.000	27.142		
NO. 105+3000.000	27.142		
NO. 105+3100.000	27.142		
NO. 105+3200.000	27.142		
NO. 105+3300.000	27.142		
NO. 105+3400.000	27.142		
NO. 105+3500.000	27.142		
NO. 105+3600.000	27.142		
NO. 105+3700.000	27.142		
NO. 105+3800.000	27.142		
NO. 105+3900.000	27.142		
NO. 105+4000.000	27.142		
NO. 105+4100.000	27.142		
NO. 105+4200.000	27.142		
NO. 105+4300.000	27.142		
NO. 105+4400.000	27.142		
NO. 105+4500.000	27.142		
NO. 105+4600.000	27.142		
NO. 105+4700.000	27.142		
NO. 105+4800.000	27.142		
NO. 105+4900.000	27.142		
NO. 105+5000.000	27.142		
NO. 105+5100.000	27.142		
NO. 105+5200.000	27.142		
NO. 105+5300.000	27.142		
NO. 105+5400.000	27.142		
NO. 105+5500.000	27.142		
NO. 105+5600.000	27.142		
NO. 105+5700.000	27.142		
NO. 105+5800.000	27.142		
NO. 105+5900.000	27.142		
NO. 105+6000.000	27.142		
NO. 105+6100.000	27.142		
NO. 105+6200.000	27.142		
NO. 105+6300.000	27.142		
NO. 105+6400.000	27.142		
NO. 105+6500.000	27.142		
NO. 105+6600.000	27.142		
NO. 105+6700.000	27.142		
NO. 105+6800.000	27.142		
NO. 105+6900.000	27.142		
NO. 105+7000.000	27.142		
NO. 105+7100.000	27.142		
NO. 105+7200.000	27.142		
NO. 105+7300.000	27.142		
NO. 105+7400.000	27.142		
NO. 105+7500.000	27.142		
NO. 105+7600.000	27.142		
NO. 105+7700.000	27.142		
NO. 105+7800.000	27.142		
NO. 105+7900.000	27.142		
NO. 105+8000.000	27.142		
NO. 105+8100.000	27.142		
NO. 105+8200.000	27.142		
NO. 105+8300.000	27.142		
NO. 105+8400.000	27.142		
NO. 105+8500.000	27.142		
NO. 105+8600.000	27.142		
NO. 105+8700.000	27.142		
NO. 105+8800.000	27.142		
NO. 105+8900.000	27.142		
NO. 105+9000.000	27.142		
NO. 105+9100.000	27.142		
NO. 105+9200.000	27.142		
NO. 105+9300.000	27.142		
NO. 105+9400.000	27.142		
NO. 105+9500.000	27.142		
NO. 105+9600.000	27.142		
NO. 105+9700.000	27.142		
NO. 105+9800.000	27.142		
NO. 105+9900.000	27.142		
NO. 105+10000.000	27.142		

JAPAN INTERNATIONAL COOPERATION AGENCY (JICA)  
CENTRAL CONSULTANT INC. & NIPPON KOEI CO., LTD

M-14 BYPASS Route3  
PLAN · PROFILE(16)

SCALE  
1/2000  
No. 41

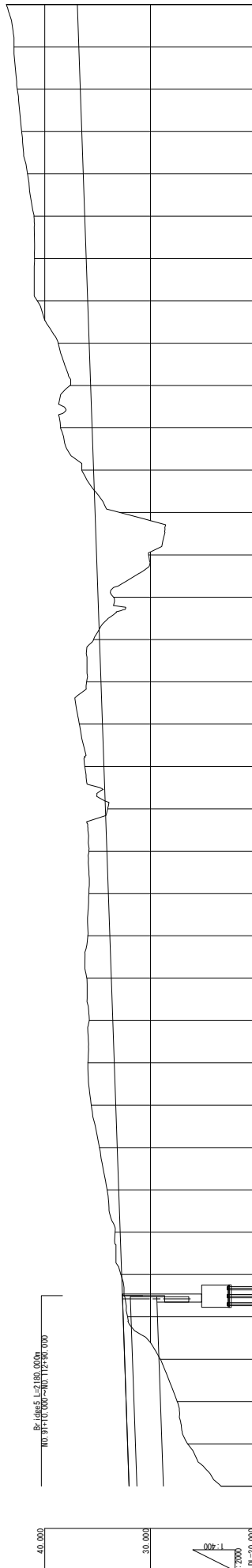
ADDITIONAL STUDY ON THE PROJECT FOR  
CONSTRUCTION OF MYKOLAIV BRIDGE IN UKRAINE

PLAN NO. 112+0.0 ~ 119+0.0

S=1:2000



PROFILE NO. 112+0.0 ~ 119+0.0



Station	Ground Height	Profile Height	Grade
NO. 112+23.314	32.020	32.020	0.000
NO. 112+23.314	32.020	32.020	0.000
NO. 113+32.802	32.720	32.720	0.000
NO. 113+32.802	32.720	32.720	0.000
NO. 120+000	33.342	32.890	0.482
NO. 140+000	34.108	33.000	1.108
NO. 160+000	34.822	33.140	1.682
NO. 180+000	35.598	33.280	2.318
NO. 200+000	35.917	33.420	2.497
NO. 220+000	35.782	33.560	2.222
NO. 400+000	36.019	33.700	2.319
NO. 600+000	35.931	33.840	2.091
NO. 800+000	35.835	33.980	1.855
NO. 1000+000	35.831	34.120	1.711
NO. 1200+000	34.047	34.260	0.213
NO. 1400+000	36.219	34.400	1.819
NO. 1600+000	36.729	34.540	2.189
NO. 1800+000	36.038	34.680	1.358
NO. 2000+000	35.389	34.820	0.569
NO. 2200+000	33.504	34.960	1.456
NO. 4000+000	30.173	35.100	4.927
NO. 6000+000	32.911	35.240	2.329
NO. 8000+000	36.500	35.380	1.120
NO. 10000+000	38.605	35.520	2.985
NO. 12000+000	37.609	35.660	1.949
NO. 14000+000	38.731	35.800	2.931
NO. 16000+000	40.722	35.940	4.782
NO. 18000+000	40.912	36.080	4.892
NO. 20000+000	41.632	36.260	5.272
NO. 40000+000	42.193	36.500	5.693
NO. 60000+000	42.599	36.640	5.959
NO. 80000+000	42.922	36.780	6.142
NO. 100000+000	43.630	36.920	6.710

ADDITIONAL STUDY ON THE PROJECT FOR CONSTRUCTION OF MYKOLAIV BRIDGE IN UKRAINE

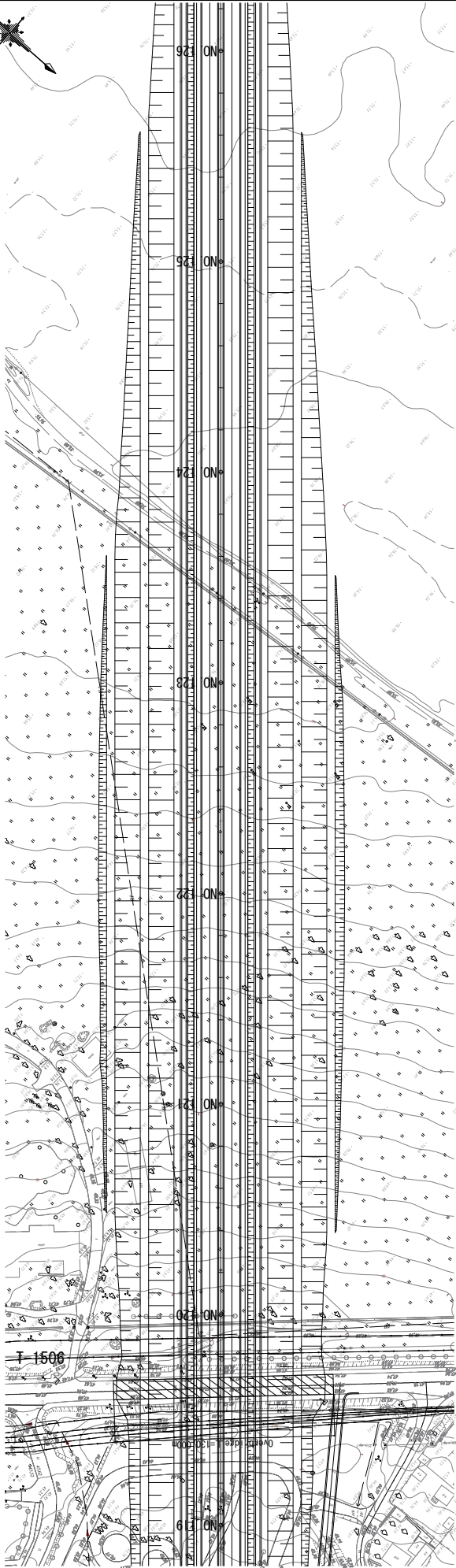
JAPAN INTERNATIONAL COOPERATION AGENCY (JICA)  
CENTRAL CONSULTANT INC. & NIPPON KOEI CO., LTD

M-14 BYPASS Route3  
PLAN · PROFILE(17)

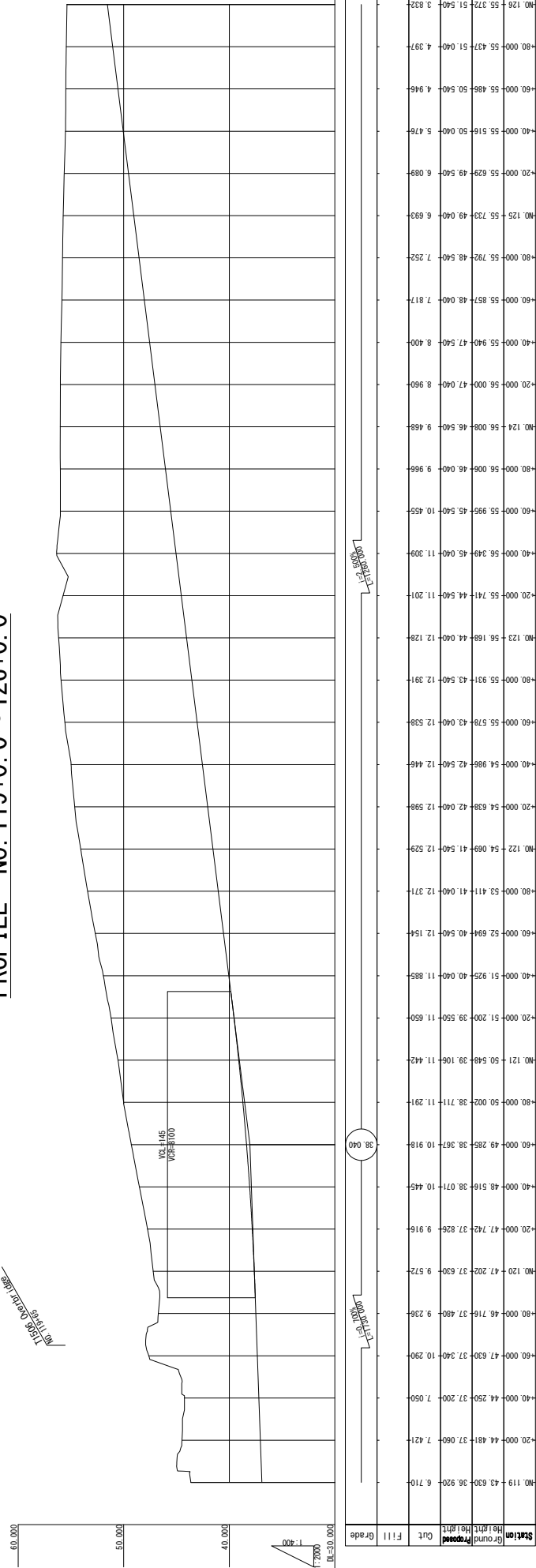
SCALE  
1/2000  
No. 42

PLAN NO. 119+0.0 ~ 126+0.0

S=1:2000



PROFILE NO. 119+0.0 ~ 126+0.0



Station	Ground Height	Proposed Height	Cut	Fill	Grade
119+0.000	43.630	38.920	6.710		
120+0.000	44.481	37.060	7.421		
121+0.000	44.250	37.200	7.050		
122+0.000	47.630	37.240	10.290		
123+0.000	46.716	37.480	9.236		
124+0.000	47.202	37.630	9.572		
125+0.000	47.742	37.826	9.916		
126+0.000	48.516	38.071	10.445		
127+0.000	49.285	38.267	10.918		
128+0.000	50.002	38.711	11.291		
129+0.000	50.548	39.106	11.442		
130+0.000	51.209	39.550	11.659		
131+0.000	51.925	40.040	11.885		
132+0.000	52.694	40.540	12.154		
133+0.000	53.411	41.040	12.374		
134+0.000	54.069	41.540	12.529		
135+0.000	54.638	42.040	12.598		
136+0.000	55.178	42.540	12.646		
137+0.000	55.579	43.040	12.538		
138+0.000	55.931	43.540	12.391		
139+0.000	56.168	44.040	12.128		
140+0.000	56.349	44.540	11.701		
141+0.000	56.468	45.040	11.309		
142+0.000	56.540	45.540	10.855		
143+0.000	56.568	46.040	9.966		
144+0.000	56.549	46.540	9.468		
145+0.000	56.476	47.040	8.969		
146+0.000	56.354	47.540	8.476		
147+0.000	56.187	48.040	7.937		
148+0.000	55.972	48.540	7.252		
149+0.000	55.733	49.040	6.693		
150+0.000	55.486	49.540	6.089		
151+0.000	55.232	50.040	5.476		
152+0.000	54.972	50.540	4.946		
153+0.000	54.704	51.040	4.397		
154+0.000	54.428	51.540	3.832		

JAPAN INTERNATIONAL COOPERATION AGENCY(JICA)  
CENTRAL CONSULTANT INC. & NIPPON KOEI CO., LTD

M-14 BYPASS Route3  
PLAN·PROFILE(18)

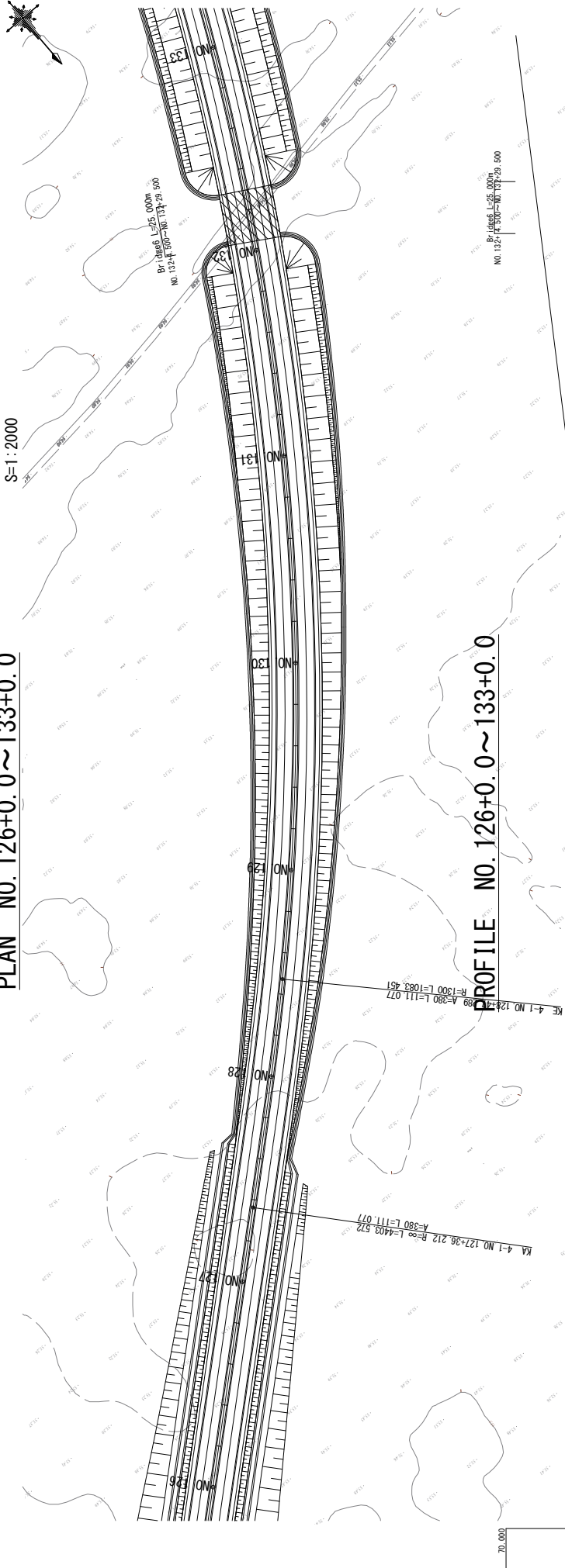
SCALE  
1/2000  
No. 43

ADDITIONAL STUDY ON THE PROJECT FOR  
CONSTRUCTION OF MYKOLAIV BRIDGE IN UKRAINE

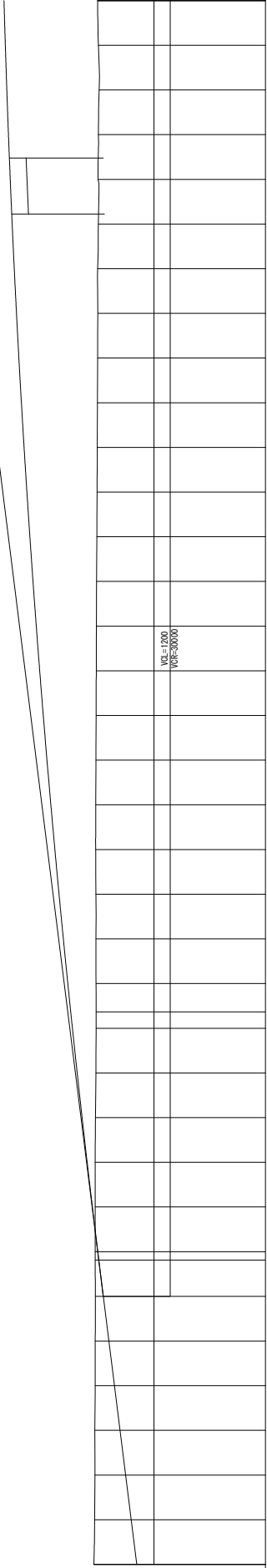


**PLAN NO. 126+0.0 ~ 133+0.0**

S=1:2000



**PROFILE NO. 126+0.0 ~ 133+0.0**

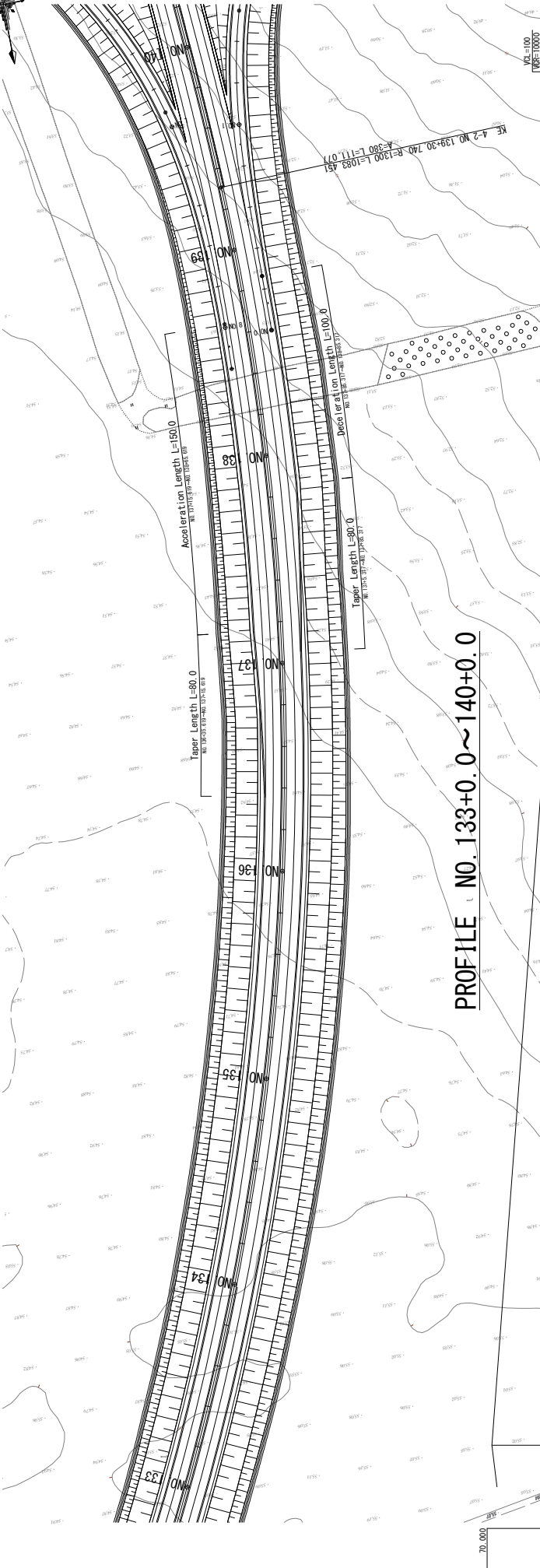


Station	Ground Height	Proposed Height	Cut	Fill	Grade
NO. 126+55.372	51.540	52.040	0.271		
NO. 127+55.256	54.040	54.040	1.216		
NO. 128+55.233	56.434	56.434	1.201		
NO. 129+55.195	58.500	58.500	3.905		
NO. 130+55.166	60.234	60.234	5.068		
NO. 131+55.074	61.634	61.634	6.560		
NO. 132+54.972	62.700	62.700	7.728		
NO. 133+54.907	63.180	63.180	8.273		
NO. 134+54.967	63.314	63.314	8.347		
NO. 135+54.947	63.434	63.434	8.387		

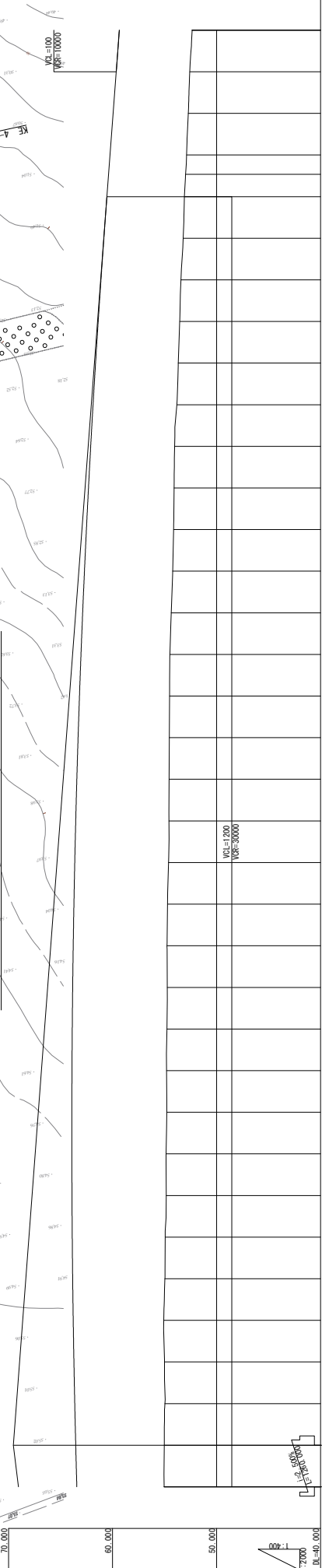
ADDITIONAL STUDY ON THE PROJECT FOR CONSTRUCTION OF MYKOLAIV BRIDGE IN UKRAINE	JAPAN INTERNATIONAL COOPERATION AGENCY (JICA)  CENTRAL CONSULTANT INC. & NIPPON KOEI CO., LTD	TITLE  M-14 BYPASS Route3 PLAN・PROFILE(19)
		SCALE 1/2000
		No. 44

**PLAN NO. 133+0.0 ~ 140+0.0**

S=1:2000



**PROFILE NO. 133+0.0 ~ 140+0.0**

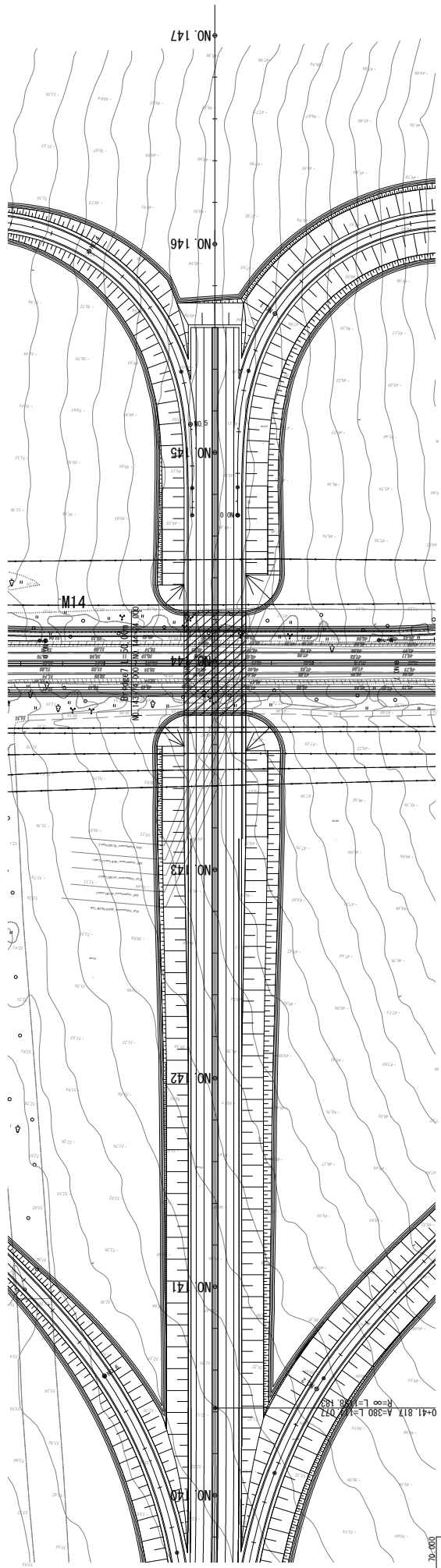


Station	Ground Height	Proposed Height	Fill	Grade
133+000	55.047	63.424		8.387
133+050	55.047	63.424		8.387
133+100	55.047	63.424		8.387
133+150	55.047	63.424		8.387
133+200	55.047	63.424		8.387
133+250	55.047	63.424		8.387
133+300	55.047	63.424		8.387
133+350	55.047	63.424		8.387
133+400	55.047	63.424		8.387
133+450	55.047	63.424		8.387
133+500	55.047	63.424		8.387
133+550	55.047	63.424		8.387
133+600	55.047	63.424		8.387
133+650	55.047	63.424		8.387
133+700	55.047	63.424		8.387
133+750	55.047	63.424		8.387
133+800	55.047	63.424		8.387
133+850	55.047	63.424		8.387
133+900	55.047	63.424		8.387
133+950	55.047	63.424		8.387
134+000	55.047	63.424		8.387
134+050	55.047	63.424		8.387
134+100	55.047	63.424		8.387
134+150	55.047	63.424		8.387
134+200	55.047	63.424		8.387
134+250	55.047	63.424		8.387
134+300	55.047	63.424		8.387
134+350	55.047	63.424		8.387
134+400	55.047	63.424		8.387
134+450	55.047	63.424		8.387
134+500	55.047	63.424		8.387
134+550	55.047	63.424		8.387
134+600	55.047	63.424		8.387
134+650	55.047	63.424		8.387
134+700	55.047	63.424		8.387
134+750	55.047	63.424		8.387
134+800	55.047	63.424		8.387
134+850	55.047	63.424		8.387
134+900	55.047	63.424		8.387
134+950	55.047	63.424		8.387
135+000	54.807	63.900		9.093
135+050	54.775	63.874		9.099
135+100	54.737	63.834		9.097
135+150	54.762	63.780		9.018
135+200	54.708	63.714		9.008
135+250	54.610	63.634		9.024
135+300	54.582	63.540		8.958
135+350	54.569	63.434		8.965
135+400	54.545	63.314		8.769
135+450	54.520	63.180		8.660
135+500	54.492	63.034		8.542
135+550	54.364	62.874		8.510
135+600	54.222	62.700		8.478
135+650	54.132	62.514		8.382
135+700	54.089	62.314		8.225
135+750	54.033	62.100		8.067
135+800	53.818	61.874		7.956
135+850	53.538	61.580		7.842
135+900	53.430	61.114		7.684
135+950	53.217	60.834		7.617
136+000	53.090	60.540		7.450
136+050	52.979	60.379		7.400
136+100	52.879	60.240		7.361
136+150	52.717	59.940		7.223
136+200	52.576	59.640		7.064
136+250	52.352	59.360		6.908

ADDITIONAL STUDY ON THE PROJECT FOR CONSTRUCTION OF MYKOLAIV BRIDGE IN UKRAINE		JAPAN INTERNATIONAL COOPERATION AGENCY(JICA) CENTRAL CONSULTANT INC. & NIPPON KOEI CO., LTD		TITLE M-14 BYPASS Route3 PLAN・PROFILE(20)		SCALE 1/2000 No. 45	
---	--	--	--	---	--	---------------------------	--

PLAN NO. 140+0.0 ~ 147+0.0

S=1:2000



PROFILE NO. 140+0.0 ~ 147+0.0

VC=100  
VBE=1000

VC=100  
VBE=1000



Station	Ground Height	Proposed Height	Fill	Grade
NO. 140	52.352	59.380	7.000	7.000
+20.000	52.194	59.120	6.926	7.000
+30.000	52.125	59.015	6.890	7.000
+40.000	52.048	58.920	6.872	7.000
KA-2	52.015	58.904	6.889	7.000
+50.000	50.665	58.240	7.575	7.331
+60.000	50.531	58.140	7.609	7.331
+70.000	50.324	58.040	7.716	7.331
+80.000	51.618	58.640	7.022	7.331
+90.000	51.782	58.760	6.978	7.331
+100.000	51.782	58.760	6.978	7.331
+110.000	51.112	58.440	7.328	7.331
+120.000	51.291	58.540	7.249	7.331
+130.000	51.291	58.540	7.249	7.331
+140.000	51.009	58.340	7.331	7.331
+150.000	50.655	58.240	7.575	7.331
+160.000	49.903	57.840	7.937	7.331
+170.000	49.903	57.840	7.937	7.331
+180.000	49.652	57.740	8.088	7.331
+190.000	49.485	57.640	8.155	7.331
+200.000	49.297	57.540	8.243	7.331
+210.000	49.118	57.440	8.222	7.331
+220.000	49.081	57.340	8.259	7.331
+230.000	48.705	57.240	8.535	7.331
+240.000	48.806	57.140	8.334	7.331
NO. 144	48.402	57.038	7.637	7.331
+250.000	48.508	56.925	8.417	7.331
+260.000	48.452	56.799	8.347	7.331
+270.000	48.557	56.659	8.102	7.331
+280.000	48.601	56.505	7.904	7.331
+290.000	48.610	56.339	7.729	7.331
+300.000	48.535	56.159	7.624	7.331
+310.000	48.686	55.965	7.279	7.331
+320.000	48.651	55.759	7.108	7.331
+330.000	48.617	55.538	6.868	7.331
+340.000	48.617	55.305	6.634	7.331
+350.000	48.760	55.059	6.299	7.331
+360.000	48.802	54.799	5.997	7.331
+370.000	48.702	54.525	5.823	7.331
+380.000	48.954	54.239	5.285	7.331
NO. 147	53.940			

JAPAN INTERNATIONAL COOPERATION AGENCY (JICA)

CENTRAL CONSULTANT INC. & NIPPON KOEI CO., LTD

ADDITIONAL STUDY ON THE PROJECT FOR CONSTRUCTION OF MYKOLAY BRIDGE IN UKRAINE

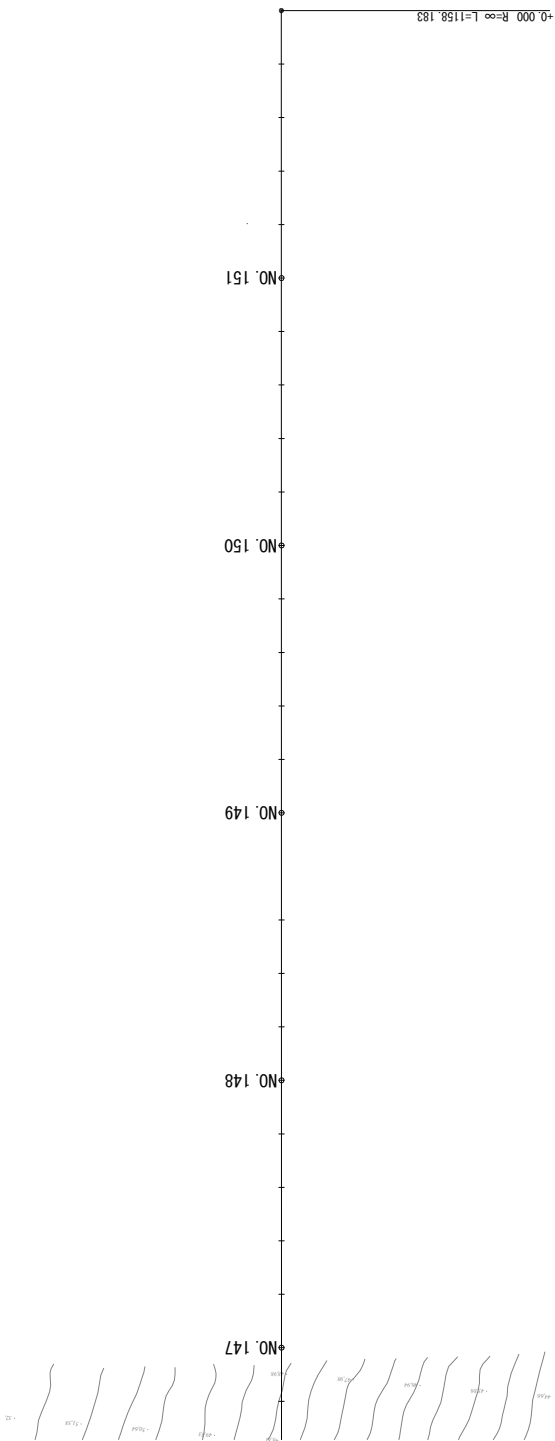
M-14 BYPASS Route3 PLAN PROFILE(21)

SCALE 1/2000

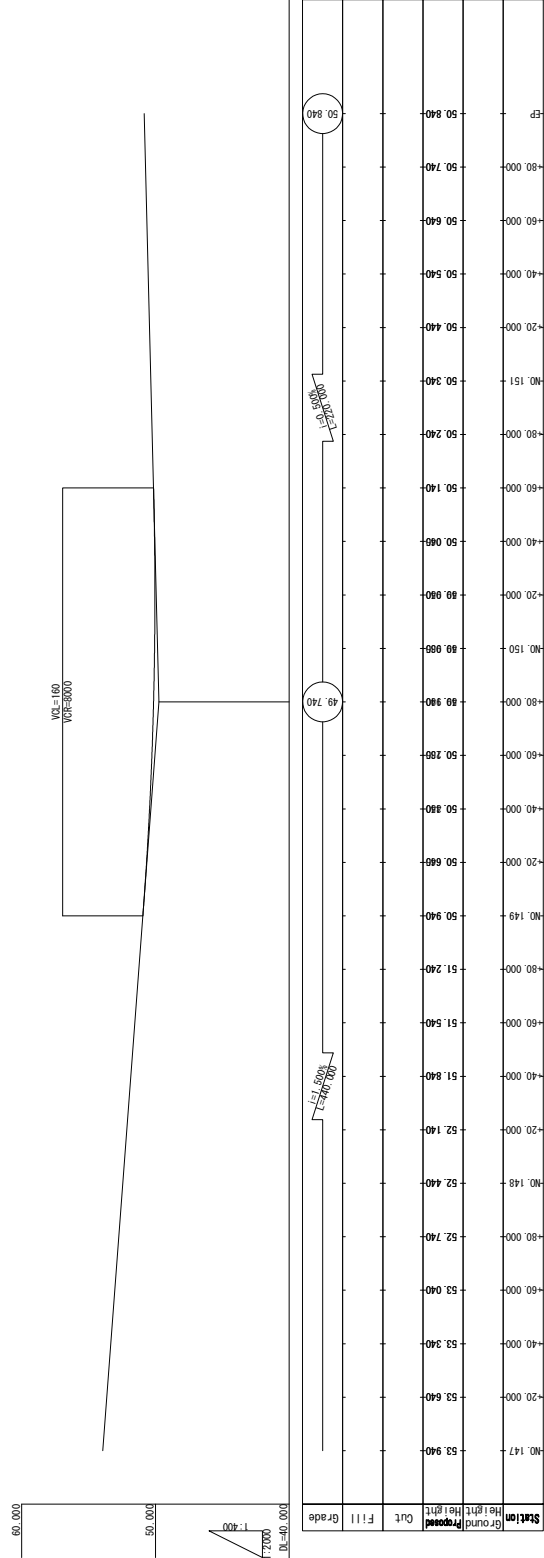
No. 46

**PLAN NO. 147+0.0 ~ 151+40.0**

S=1:2000



**PROFILE NO. 147+0.0 ~ 151+40.0**



ADDITIONAL STUDY ON THE PROJECT FOR  
CONSTRUCTION OF MYKOLAIV BRIDGE IN UKRAINE

JAPAN INTERNATIONAL COOPERATION AGENCY (JICA)

CENTRAL CONSULTANT INC. & NIPPON KOEI CO., LTD

TITLE

M-14 BYPASS Route3  
PLAN · PROFILE(22)

SCALE

1/2000

No.

47

# INTERCHANGE PLAN (1)

S=1:5000

Interchange at Origin (Route 2, 3)



ADDITIONAL STUDY ON THE PROJECT FOR  
CONSTRUCTION OF MYKOLAIV BRIDGE IN UKRAINE

JAPAN INTERNATIONAL COOPERATION AGENCY (JICA)

CENTRAL CONSULTANT INC. & NIPPON KOEI CO., LTD

TITLE

INTERCHANGE PLAN(1) Interchange at Origin (Route 2, 3)

SCALE

1/5000

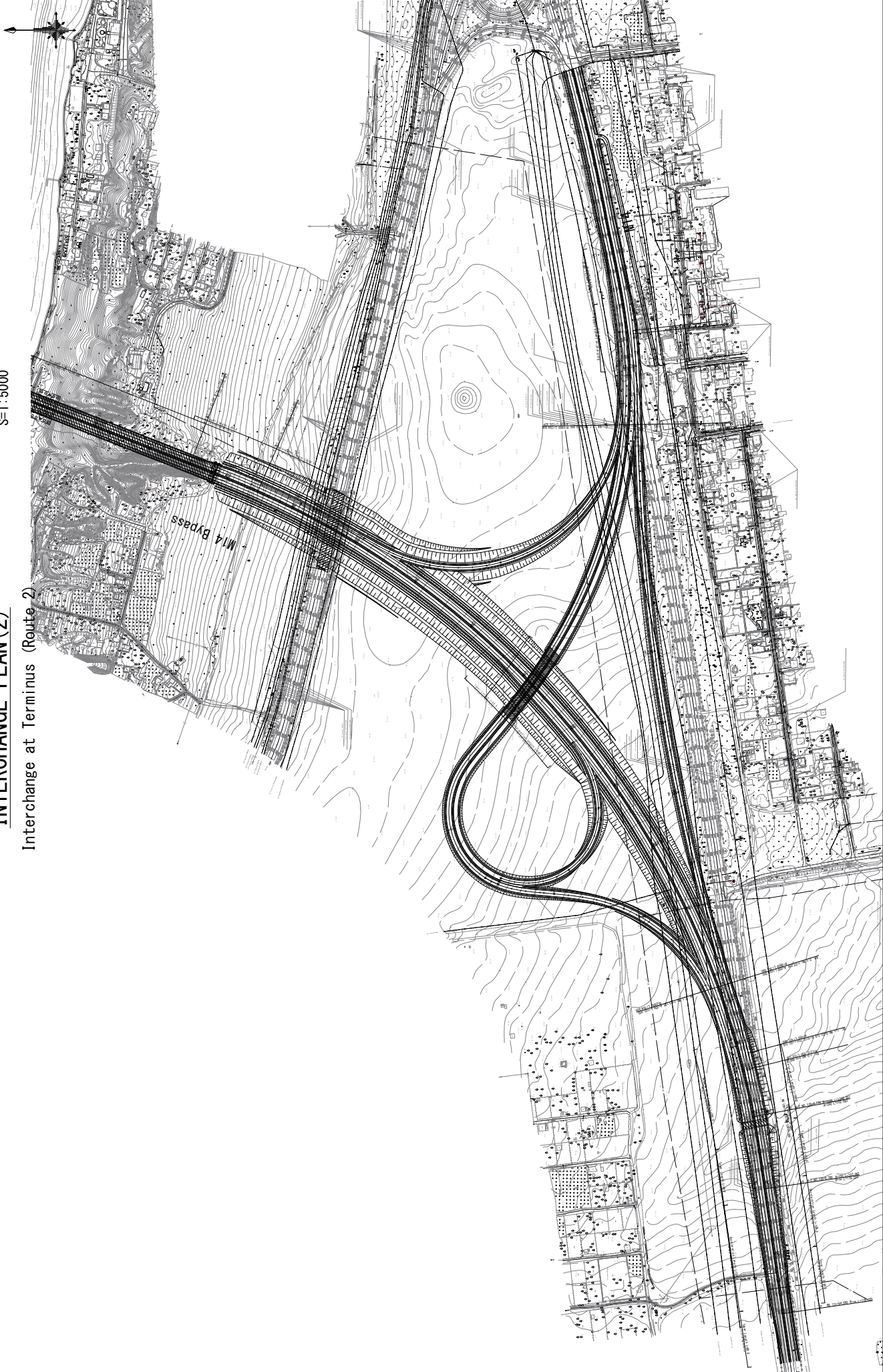
No.

48

# INTERCHANGE PLAN (2)

S=1:5000

Interchange at Terminus (Route 2)



ADDITIONAL STUDY ON THE PROJECT FOR  
CONSTRUCTION OF MYKOLAIV BRIDGE IN UKRAINE

JAPAN INTERNATIONAL COOPERATION AGENCY (JICA)  
CENTRAL CONSULTANT INC. & NIPPON KOEI CO., LTD

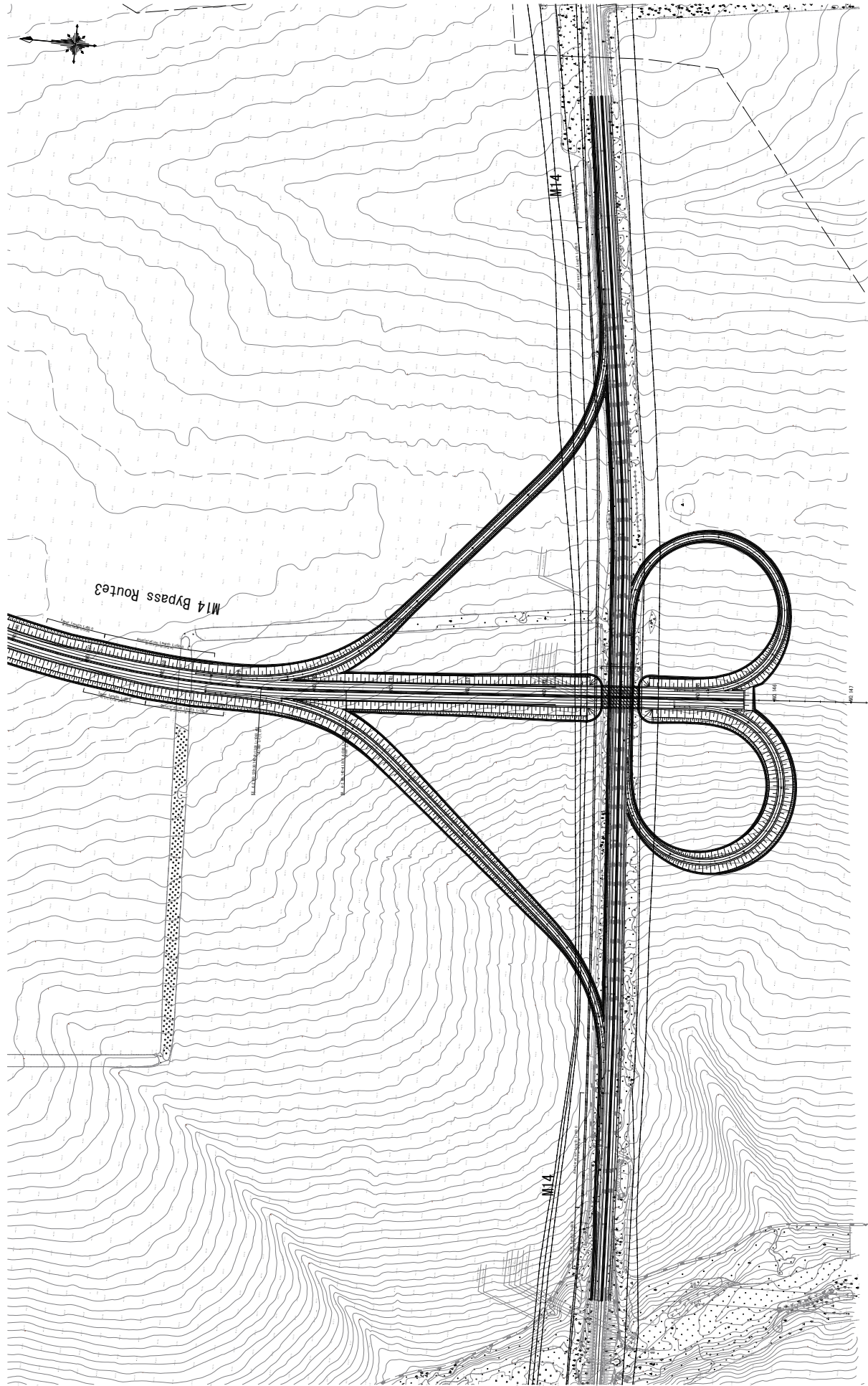
TITLE  
INTERCHANGE PLAN(2) Interchange at Terminus (Route 2)

SCALE  
1/5000  
No. 49

# INTERCHANGE PLAN (3)

S=1:5000

Interchange at Terminus (Route 3)



ADDITIONAL STUDY ON THE PROJECT FOR  
CONSTRUCTION OF MYKOLAIV BRIDGE IN UKRAINE

JAPAN INTERNATIONAL COOPERATION AGENCY (JICA)

CENTRAL CONSULTANT INC. & NIPPON KOEI CO., LTD

TITLE

INTERCHANGE PLAN(3) Interchange at Terminus (Route 3)

SCALE

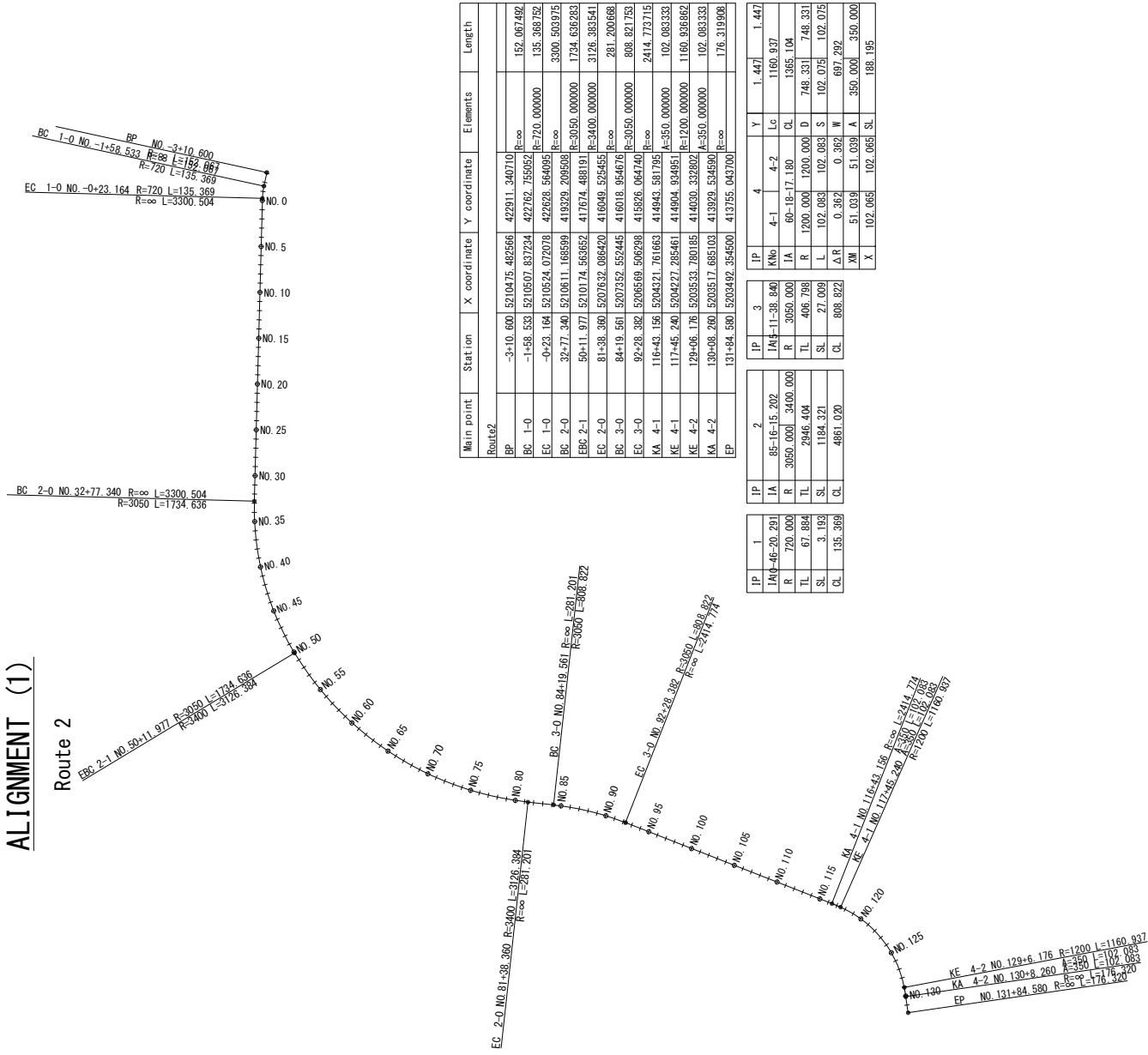
1/5000

No.

50

# ALIGNMENT (1)

Route 2



Main point	Station	X coordinate	Y coordinate	Elements	Length
Route2					
BP	-3+10.600	521047.5	482566.4	422911.340710	
BC 1-0	-1+58.538	521050.7	482724.4	422782.755957	152.067492
EC 1-0	-0+23.164	521052.4	472078.8	422928.564098	135.369752
BC 2-0	32+77.340	521061.1	419329.2	209508	3300.363975
EBC 2-1	50+11.977	521071.4	563652.4	417674.488191	1734.636293
EC 2-0	81+38.380	520763.2	086420.4	416049.525456	3126.383541
BC 3-0	84+19.561	520735.2	552445.4	416018.954676	281.220068
EC 3-0	92+28.392	520656.9	506298.4	415826.064740	808.321751
KA 4-1	117+45.240	520427.1	285461.4	414904.934951	2414.713715
KE 4-1	129+06.176	520353.3	780185.4	414030.332803	102.083333
KA 4-2	130+08.260	520351.7	685103.4	413929.524590	1160.836862
EP	131+84.580	520349.2	354500.4	413755.043706	102.083333

IP	1	2	3	4	Y	1.447
IA	85-16+15.202	IA	11-38.840	4-1	4-2	1.447
R	720.000	R	3050.000	IA	60-19+17.180	1160.937
TL	67.884	TL	406.798	R	1200.000	1385.104
SL	3.193	SL	27.009	L	102.083	748.331
CL	135.369	CL	808.822	ΔR	0.362	102.075
				ΔW	51.039	697.292
				ΔX	102.065	350.000
				ΔY	102.065	188.195

JAPAN INTERNATIONAL COOPERATION AGENCY (JICA)  
CENTRAL CONSULTANT INC. & NIPPON KOEI CO., LTD

M-14 BYPASS Route2  
ALIGNMENT (1)

SCALE  
1/50000  
No.  
51

ADDITIONAL STUDY ON THE PROJECT FOR  
CONSTRUCTION OF MYKOLAIV BRIDGE IN UKRAINE



# ALIGNMENT (2)

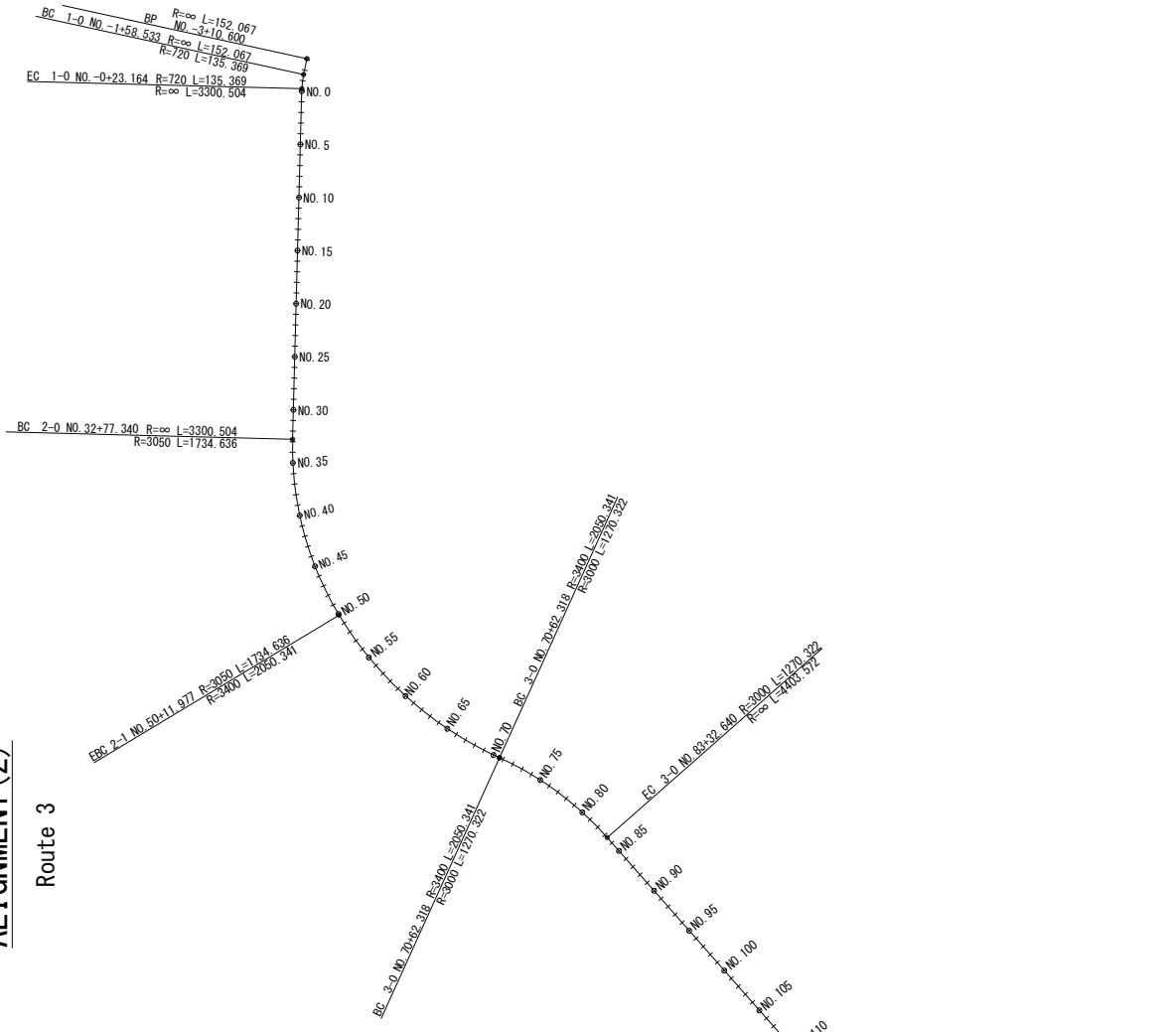
## Route 3

Main point	Station	X coordinate	Y coordinate	Elements	Length
Route3					
BP	-3+10.600	521.0475	492566		
BC 1-0	-1+58.533	521.0567	837234	R=∞	152.067492
EC 1-0	-0+23.164	521.0524	072078	R=720	135.368752
BC 2-0	32+77.340	521.0611	168599	R=∞	3300.503975
EC 2-1	50+11.977	521.0174	568651	R=3050	1734.638286
BC 3-0	70+62.318	520.8665	626258	R=3400	2059.341175
EC 3-0	83+32.640	520.7692	147395	R=∞	1270.322323
KA 4-1	127+36.212	520.4742	075673	R=380	4403.571831
KE 4-1	128+47.289	520.4667	497583	R=380	111.076923
KA 4-2	139+30.740	520.3893	923472	R=380	1083.451055
KE 4-2	140+41.817	520.3583	029280	R=380	111.076923
EP	152+00.000	520.2427	682585	R=∞	1158.183149

IP	1	2	3	4	Y	1.582	1.582
KA	4-1	127+36.212	520.4742	075673	411881.715181		
KE	4-1	128+47.289	520.4667	497583	411881.715181		
KA	4-2	139+30.740	520.3893	923472	411882.737274		
KE	4-2	140+41.817	520.3583	029280	411882.737274		

IP	1	2	3	4	Y	1.582	1.582
KA	4-1	127+36.212	520.4742	075673	411881.715181		
KE	4-1	128+47.289	520.4667	497583	411881.715181		
KA	4-2	139+30.740	520.3893	923472	411882.737274		
KE	4-2	140+41.817	520.3583	029280	411882.737274		

IP	1	2	3	4	Y	1.582	1.582
KA	4-1	127+36.212	520.4742	075673	411881.715181		
KE	4-1	128+47.289	520.4667	497583	411881.715181		
KA	4-2	139+30.740	520.3893	923472	411882.737274		
KE	4-2	140+41.817	520.3583	029280	411882.737274		



ADDITIONAL STUDY ON THE PROJECT FOR CONSTRUCTION OF MYKOLAIV BRIDGE IN UKRAINE	JAPAN INTERNATIONAL COOPERATION AGENCY (JICA) CENTRAL CONSULTANT INC. & NIPPON KOEI CO., LTD	TITLE	M-14 BYPASS Route3 ALIGNMENT(2)	SCALE	1/50000
				No.	52