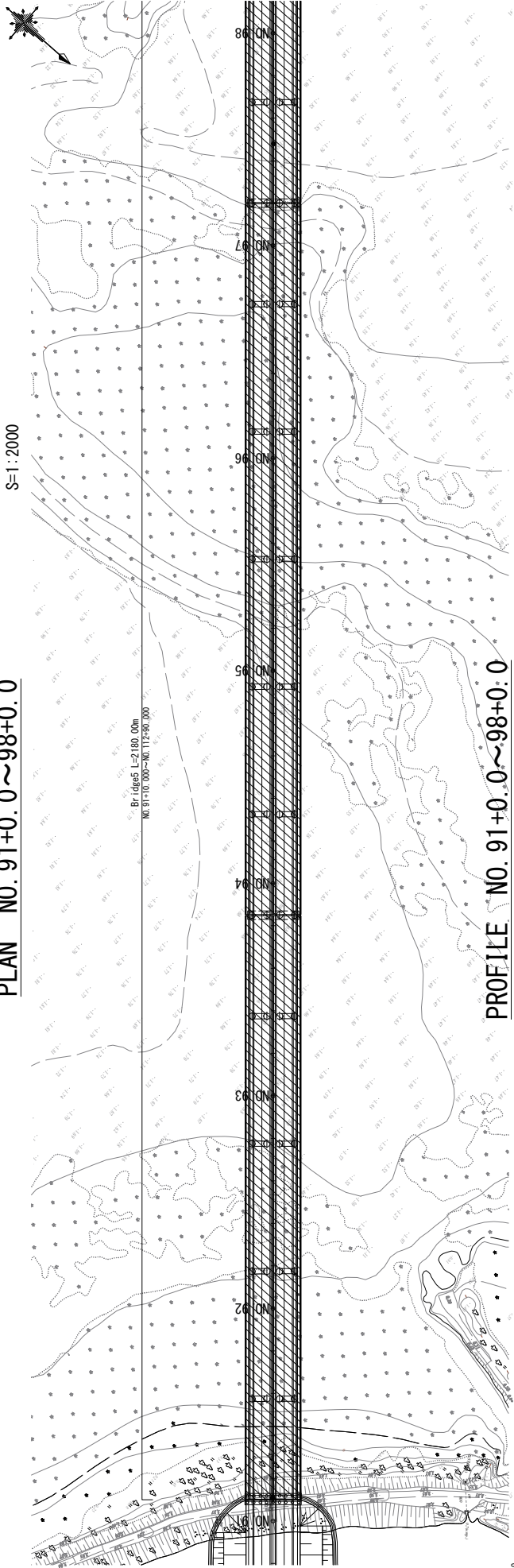
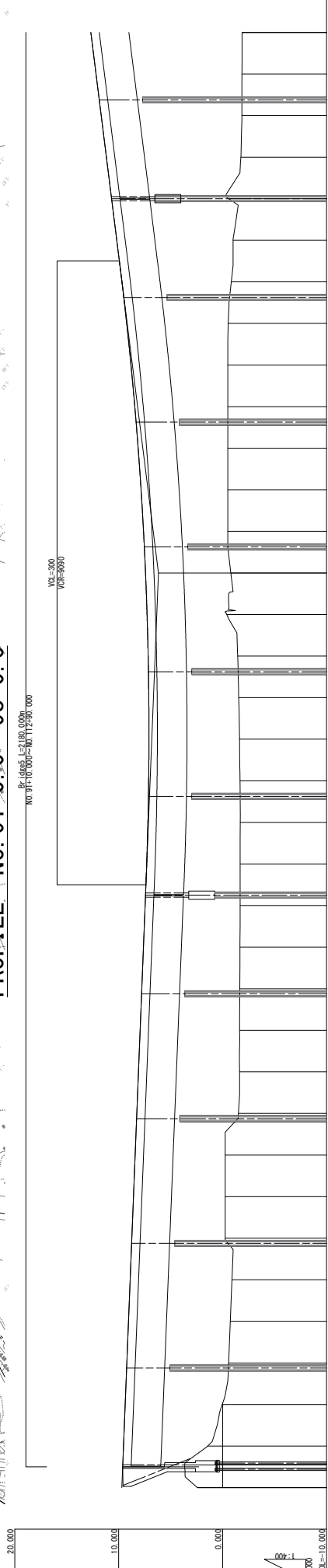


PLAN NO. 91+0.0 ~ 98+0.0

S=1:2000



PROFILE NO. 91+0.0 ~ 98+0.0



Station	Ground Height	Grade	Fill	Cut
90.91	2.437	9.700		
90.92	0.891	8.900		
90.93	1.625	8.100		
90.94	1.636	7.940		
90.95	1.625	7.780		
90.96	1.523	8.260		
90.97	1.636	7.940		
90.98	1.442	8.540		
90.99	0.035	9.380		
91.00	1.442	8.540		
91.01	1.442	8.540		
91.02	0.570	9.220		
91.03	0.731	9.060		
91.04	0.891	8.900		
91.05	0.240	8.740		
91.06	0.240	8.580		
91.07	0.240	8.420		
91.08	0.240	8.260		
91.09	0.240	8.100		
91.10	0.240	7.940		
91.11	0.240	7.780		
91.12	0.240	7.620		
91.13	0.240	7.460		
91.14	0.240	7.300		
91.15	0.240	7.140		
91.16	0.240	6.980		
91.17	0.240	6.820		
91.18	0.240	6.660		
91.19	0.240	6.500		
91.20	0.240	6.340		
91.21	0.240	6.180		
91.22	0.240	6.020		
91.23	0.240	5.860		
91.24	0.240	5.700		
91.25	0.240	5.540		
91.26	0.240	5.380		
91.27	0.240	5.220		
91.28	0.240	5.060		
91.29	0.240	4.900		
91.30	0.240	4.740		
91.31	0.240	4.580		
91.32	0.240	4.420		
91.33	0.240	4.260		
91.34	0.240	4.100		
91.35	0.240	3.940		
91.36	0.240	3.780		
91.37	0.240	3.620		
91.38	0.240	3.460		
91.39	0.240	3.300		
91.40	0.240	3.140		
91.41	0.240	2.980		
91.42	0.240	2.820		
91.43	0.240	2.660		
91.44	0.240	2.500		
91.45	0.240	2.340		
91.46	0.240	2.180		
91.47	0.240	2.020		
91.48	0.240	1.860		
91.49	0.240	1.700		
91.50	0.240	1.540		
91.51	0.240	1.380		
91.52	0.240	1.220		
91.53	0.240	1.060		
91.54	0.240	0.900		
91.55	0.240	0.740		
91.56	0.240	0.580		
91.57	0.240	0.420		
91.58	0.240	0.260		
91.59	0.240	0.100		
91.60	0.240	-0.060		
91.61	0.240	-0.220		
91.62	0.240	-0.380		
91.63	0.240	-0.540		
91.64	0.240	-0.700		
91.65	0.240	-0.860		
91.66	0.240	-1.020		
91.67	0.240	-1.180		
91.68	0.240	-1.340		
91.69	0.240	-1.500		
91.70	0.240	-1.660		
91.71	0.240	-1.820		
91.72	0.240	-1.980		
91.73	0.240	-2.140		
91.74	0.240	-2.300		
91.75	0.240	-2.460		
91.76	0.240	-2.620		
91.77	0.240	-2.780		
91.78	0.240	-2.940		
91.79	0.240	-3.100		
91.80	0.240	-3.260		
91.81	0.240	-3.420		
91.82	0.240	-3.580		
91.83	0.240	-3.740		
91.84	0.240	-3.900		
91.85	0.240	-4.060		
91.86	0.240	-4.220		
91.87	0.240	-4.380		
91.88	0.240	-4.540		
91.89	0.240	-4.700		
91.90	0.240	-4.860		
91.91	0.240	-5.020		
91.92	0.240	-5.180		
91.93	0.240	-5.340		
91.94	0.240	-5.500		
91.95	0.240	-5.660		
91.96	0.240	-5.820		
91.97	0.240	-5.980		
91.98	0.240	-6.140		
91.99	0.240	-6.300		
92.00	0.240	-6.460		
92.01	0.240	-6.620		
92.02	0.240	-6.780		
92.03	0.240	-6.940		
92.04	0.240	-7.100		
92.05	0.240	-7.260		
92.06	0.240	-7.420		
92.07	0.240	-7.580		
92.08	0.240	-7.740		
92.09	0.240	-7.900		
92.10	0.240	-8.060		
92.11	0.240	-8.220		
92.12	0.240	-8.380		
92.13	0.240	-8.540		
92.14	0.240	-8.700		
92.15	0.240	-8.860		
92.16	0.240	-9.020		
92.17	0.240	-9.180		
92.18	0.240	-9.340		
92.19	0.240	-9.500		
92.20	0.240	-9.660		
92.21	0.240	-9.820		
92.22	0.240	-9.980		
92.23	0.240	-10.140		
92.24	0.240	-10.300		
92.25	0.240	-10.460		
92.26	0.240	-10.620		
92.27	0.240	-10.780		
92.28	0.240	-10.940		
92.29	0.240	-11.100		
92.30	0.240	-11.260		
92.31	0.240	-11.420		
92.32	0.240	-11.580		
92.33	0.240	-11.740		
92.34	0.240	-11.900		
92.35	0.240	-12.060		
92.36	0.240	-12.220		
92.37	0.240	-12.380		
92.38	0.240	-12.540		
92.39	0.240	-12.700		
92.40	0.240	-12.860		
92.41	0.240	-13.020		
92.42	0.240	-13.180		
92.43	0.240	-13.340		
92.44	0.240	-13.500		
92.45	0.240	-13.660		
92.46	0.240	-13.820		
92.47	0.240	-13.980		
92.48	0.240	-14.140		
92.49	0.240	-14.300		
92.50	0.240	-14.460		

JAPAN INTERNATIONAL COOPERATION AGENCY(JICA)

CENTRAL CONSULTANT INC. & NIPPON KOEI CO., LTD

M-14 BYPASS Route3
PLAN·PROFILE(14)

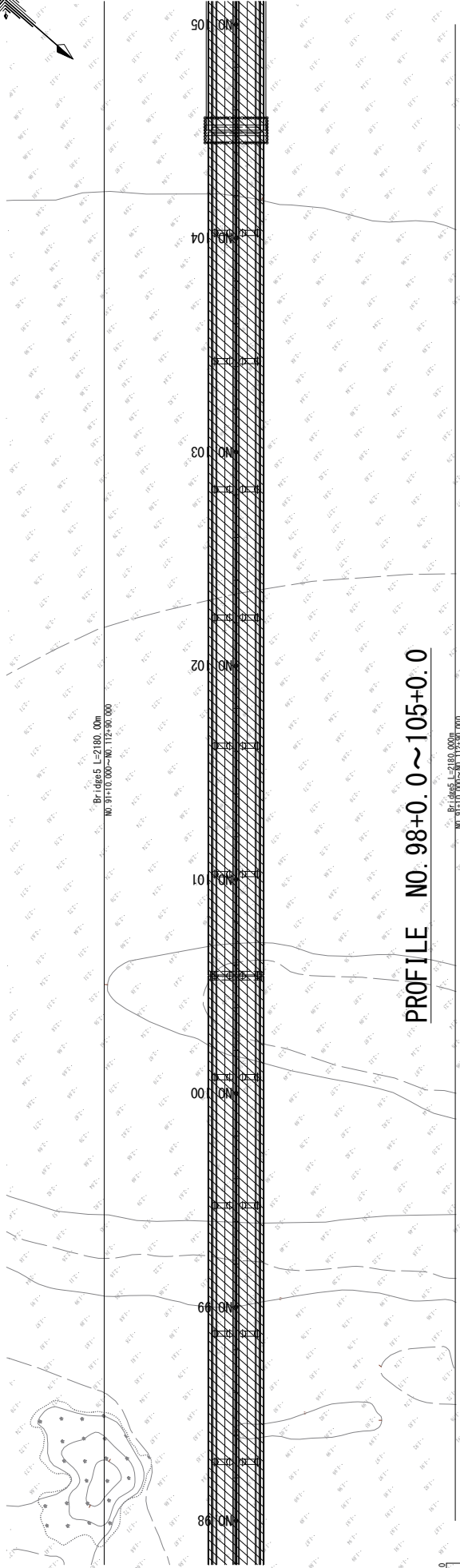
SCALE
1/2000

No.
39

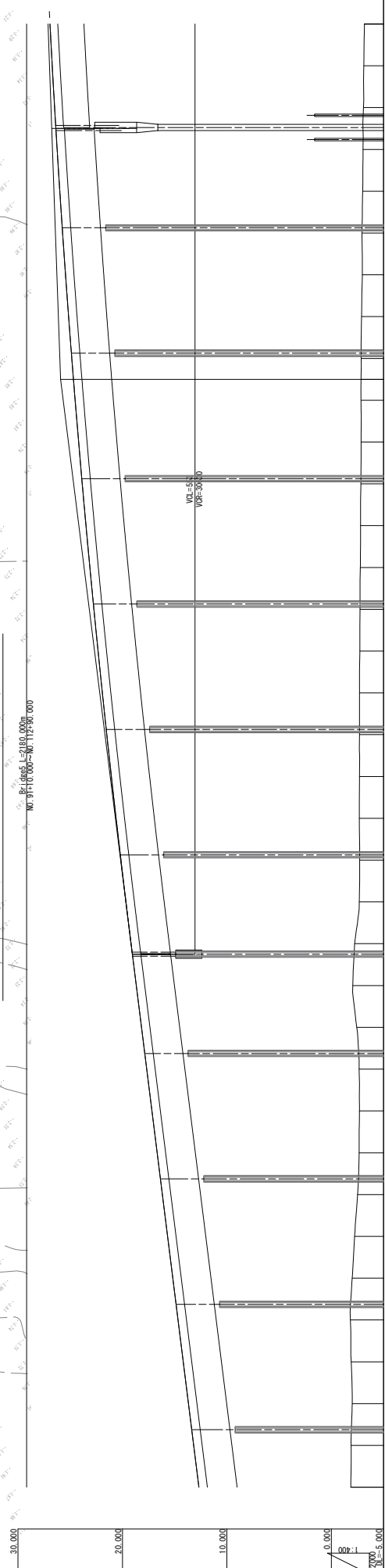
ADDITIONAL STUDY ON THE PROJECT FOR
CONSTRUCTION OF MYKOLAIV BRIDGE IN UKRAINE

PLAN NO. 98+0.0 ~ 105+0.0

S=1:2000



PROFILE NO. 98+0.0 ~ 105+0.0



Station	Ground Height	Fill	Cut
14.549	-1.859	12.690	
15.061	-1.881	13.180	
15.676	-1.996	13.690	
16.076	-1.896	14.180	
16.495	-1.815	14.680	
16.885	-2.505	16.180	
17.909	-2.229	15.690	
17.175	-1.995	15.180	
18.685	-2.505	16.180	
19.335	-2.655	16.690	
19.964	-2.684	17.190	
20.343	-2.663	17.690	
20.608	-2.428	18.180	
20.731	-2.051	18.690	
21.407	-2.227	19.180	
22.340	-2.670	19.670	
22.856	-2.709	20.147	
23.283	-2.672	20.611	
23.762	-2.700	21.062	
24.188	-2.688	21.500	
24.626	-2.701	21.925	
25.057	-2.721	22.336	
25.474	-2.739	22.735	
25.889	-2.769	23.120	
26.294	-2.801	23.493	
26.673	-2.821	23.852	
27.045	-2.847	24.198	
27.369	-2.838	24.531	
27.534	-2.841	24.693	
27.701	-2.850	24.851	
28.053	-2.895	25.158	
28.423	-2.917	25.452	
28.866	-2.930	25.733	
29.000	-3.000	26.000	
29.291	-3.036	26.255	
29.562	-3.066	26.496	
29.836	-3.111	26.725	
30.100	-3.160	26.940	

ADDITIONAL STUDY ON THE PROJECT FOR
CONSTRUCTION OF MYKOLAIY BRIDGE IN UKRAINE

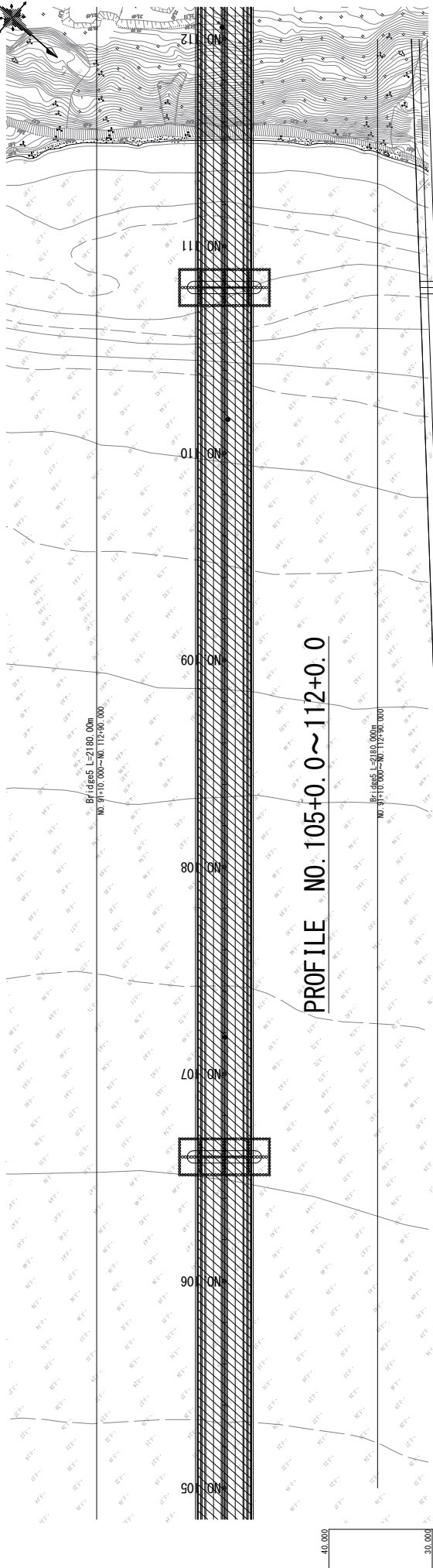
JAPAN INTERNATIONAL COOPERATION AGENCY (JICA)
CENTRAL CONSULTANT INC. & NIPPON KOEI CO., LTD

M-14 BYPASS Route3
PLAN·PROFILE(15)

SCALE
1/2000
No. 40

PLAN NO. 105+0.0 ~ 112+0.0

S=1:2000



PROFILE NO. 105+0.0 ~ 112+0.0

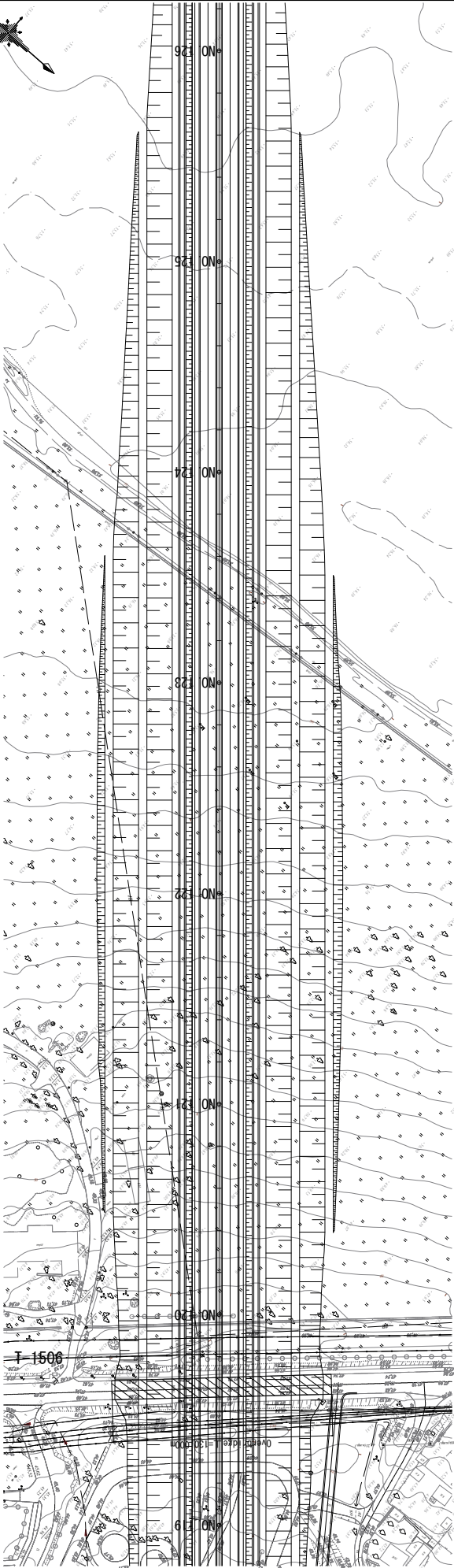


Station	Ground Height	Profile Height	Fill	Cut	Grade
NO. 105+0.000	26.940	26.940			
NO. 105+100.000	27.142	27.142			
NO. 105+200.000	27.193	27.193			
NO. 105+300.000	27.331	27.331			
NO. 105+400.000	27.271	27.271			
NO. 105+500.000	27.820	27.820			
NO. 105+600.000	27.837	27.837			
NO. 105+700.000	27.820	27.820			
NO. 105+800.000	27.670	27.670			
NO. 105+900.000	27.670	27.670			
NO. 105+1000.000	27.507	27.507			
NO. 105+1100.000	27.507	27.507			
NO. 105+1200.000	27.507	27.507			
NO. 105+1300.000	27.507	27.507			
NO. 105+1400.000	27.507	27.507			
NO. 105+1500.000	27.507	27.507			
NO. 105+1600.000	27.507	27.507			
NO. 105+1700.000	27.507	27.507			
NO. 105+1800.000	27.507	27.507			
NO. 105+1900.000	27.507	27.507			
NO. 105+2000.000	27.507	27.507			
NO. 105+2100.000	27.507	27.507			
NO. 105+2200.000	27.507	27.507			
NO. 105+2300.000	27.507	27.507			
NO. 105+2400.000	27.507	27.507			
NO. 105+2500.000	27.507	27.507			
NO. 105+2600.000	27.507	27.507			
NO. 105+2700.000	27.507	27.507			
NO. 105+2800.000	27.507	27.507			
NO. 105+2900.000	27.507	27.507			
NO. 105+3000.000	27.507	27.507			
NO. 105+3100.000	27.507	27.507			
NO. 105+3200.000	27.507	27.507			
NO. 105+3300.000	27.507	27.507			
NO. 105+3400.000	27.507	27.507			
NO. 105+3500.000	27.507	27.507			
NO. 105+3600.000	27.507	27.507			
NO. 105+3700.000	27.507	27.507			
NO. 105+3800.000	27.507	27.507			
NO. 105+3900.000	27.507	27.507			
NO. 105+4000.000	27.507	27.507			
NO. 105+4100.000	27.507	27.507			
NO. 105+4200.000	27.507	27.507			
NO. 105+4300.000	27.507	27.507			
NO. 105+4400.000	27.507	27.507			
NO. 105+4500.000	27.507	27.507			
NO. 105+4600.000	27.507	27.507			
NO. 105+4700.000	27.507	27.507			
NO. 105+4800.000	27.507	27.507			
NO. 105+4900.000	27.507	27.507			
NO. 105+5000.000	27.507	27.507			
NO. 105+5100.000	27.507	27.507			
NO. 105+5200.000	27.507	27.507			
NO. 105+5300.000	27.507	27.507			
NO. 105+5400.000	27.507	27.507			
NO. 105+5500.000	27.507	27.507			
NO. 105+5600.000	27.507	27.507			
NO. 105+5700.000	27.507	27.507			
NO. 105+5800.000	27.507	27.507			
NO. 105+5900.000	27.507	27.507			
NO. 105+6000.000	27.507	27.507			
NO. 105+6100.000	27.507	27.507			
NO. 105+6200.000	27.507	27.507			
NO. 105+6300.000	27.507	27.507			
NO. 105+6400.000	27.507	27.507			
NO. 105+6500.000	27.507	27.507			
NO. 105+6600.000	27.507	27.507			
NO. 105+6700.000	27.507	27.507			
NO. 105+6800.000	27.507	27.507			
NO. 105+6900.000	27.507	27.507			
NO. 105+7000.000	27.507	27.507			
NO. 105+7100.000	27.507	27.507			
NO. 105+7200.000	27.507	27.507			
NO. 105+7300.000	27.507	27.507			
NO. 105+7400.000	27.507	27.507			
NO. 105+7500.000	27.507	27.507			
NO. 105+7600.000	27.507	27.507			
NO. 105+7700.000	27.507	27.507			
NO. 105+7800.000	27.507	27.507			
NO. 105+7900.000	27.507	27.507			
NO. 105+8000.000	27.507	27.507			
NO. 105+8100.000	27.507	27.507			
NO. 105+8200.000	27.507	27.507			
NO. 105+8300.000	27.507	27.507			
NO. 105+8400.000	27.507	27.507			
NO. 105+8500.000	27.507	27.507			
NO. 105+8600.000	27.507	27.507			
NO. 105+8700.000	27.507	27.507			
NO. 105+8800.000	27.507	27.507			
NO. 105+8900.000	27.507	27.507			
NO. 105+9000.000	27.507	27.507			
NO. 105+9100.000	27.507	27.507			
NO. 105+9200.000	27.507	27.507			
NO. 105+9300.000	27.507	27.507			
NO. 105+9400.000	27.507	27.507			
NO. 105+9500.000	27.507	27.507			
NO. 105+9600.000	27.507	27.507			
NO. 105+9700.000	27.507	27.507			
NO. 105+9800.000	27.507	27.507			
NO. 105+9900.000	27.507	27.507			
NO. 105+10000.000	27.507	27.507			

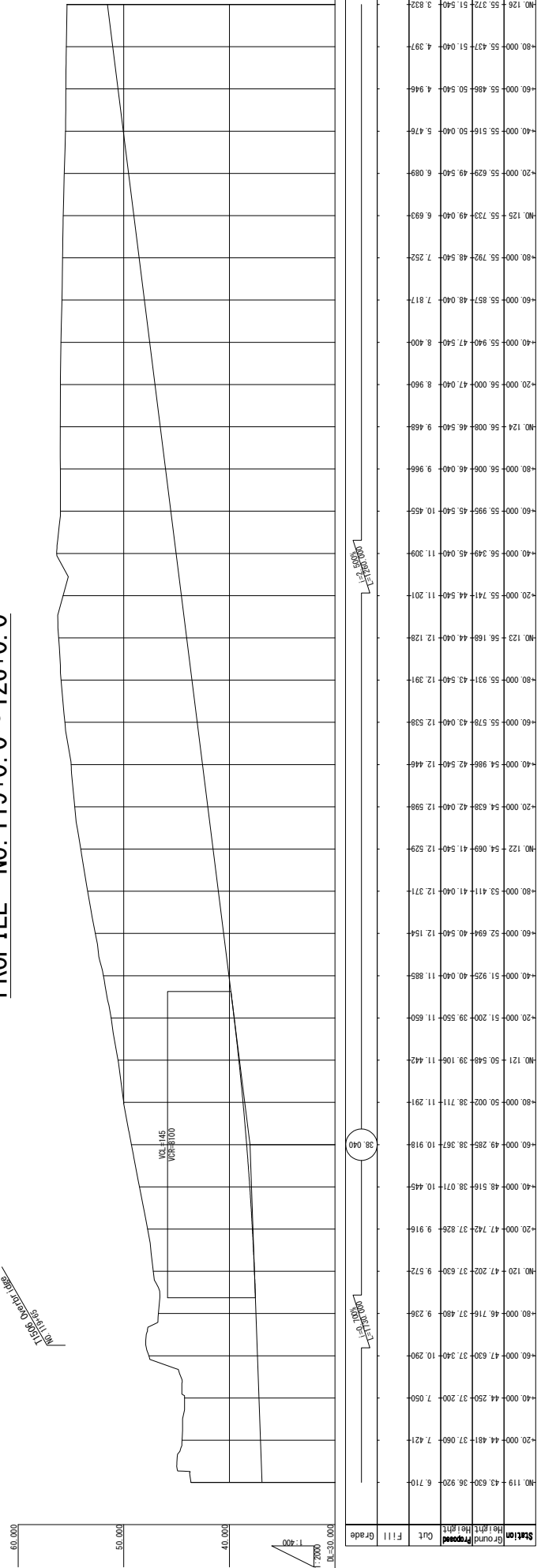
ADDITIONAL STUDY ON THE PROJECT FOR CONSTRUCTION OF MYKOLAIV BRIDGE IN UKRAINE		JAPAN INTERNATIONAL COOPERATION AGENCY(JICA) CENTRAL CONSULTANT INC. & NIPPON KOEI CO., LTD		TITLE M-14 BYPASS Route3 PLAN・PROFILE(16)		SCALE 1/2000 No. 41	
---	--	--	--	---	--	---------------------------	--

PLAN NO. 119+0.0 ~ 126+0.0

S=1:2000



PROFILE NO. 119+0.0 ~ 126+0.0

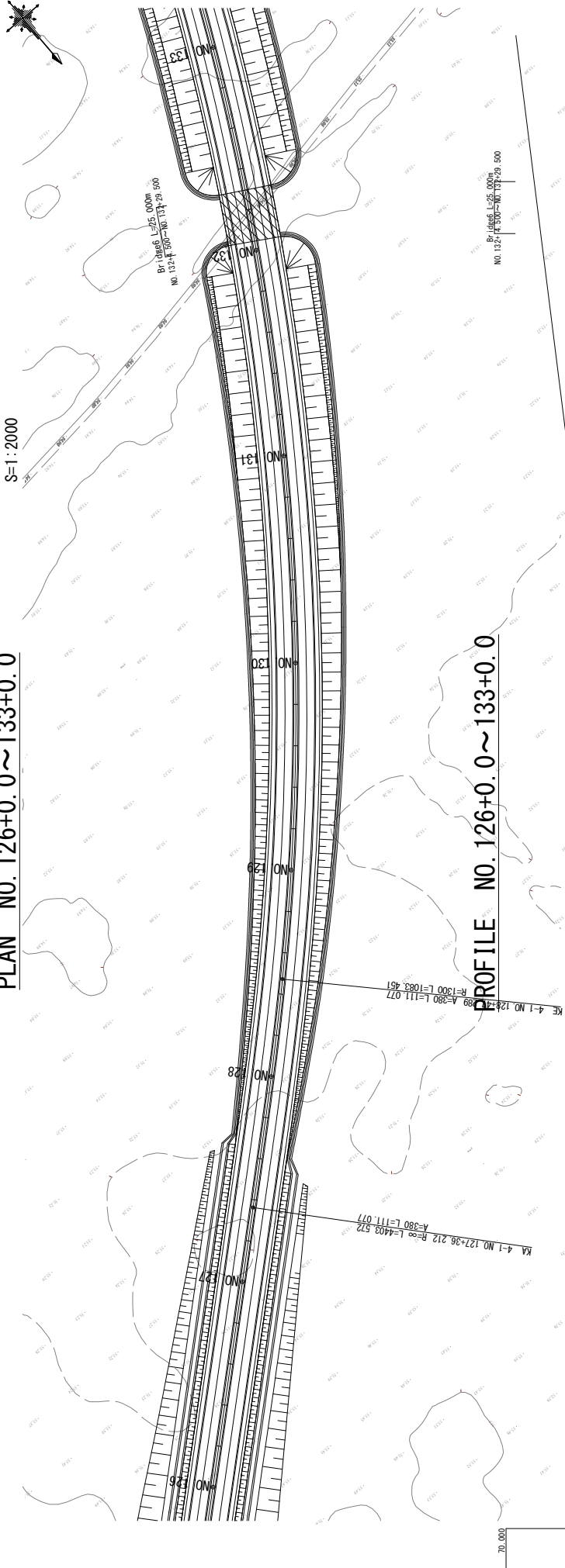


Station	Ground Height	Profile Height	Cut	Fill	Grade
119+0.000	43.630	38.920	6.710		
120+0.000	44.481	37.060	7.421		
121+0.000	44.250	37.200	7.050		
122+0.000	47.630	37.240	10.290		
123+0.000	46.716	37.480	9.236		
124+0.000	47.202	37.630	9.572		
125+0.000	47.742	37.826	9.916		
126+0.000	48.516	38.071	10.445		
127+0.000	49.285	38.367	10.918		
128+0.000	50.002	38.711	11.291		
129+0.000	50.684	40.540	12.154		
130+0.000	51.411	41.040	12.374		
131+0.000	54.069	41.540	12.529		
132+0.000	54.638	42.040	12.598		
133+0.000	54.986	42.540	12.446		
134+0.000	55.578	43.040	12.538		
135+0.000	55.931	43.540	12.391		
136+0.000	56.168	44.040	12.128		
137+0.000	55.741	44.540	11.201		
138+0.000	56.349	45.040	11.309		
139+0.000	55.955	45.540	10.455		
140+0.000	55.008	46.040	9.966		
141+0.000	56.000	46.540	9.468		
142+0.000	56.629	49.540	6.089		
143+0.000	55.516	50.040	5.476		
144+0.000	55.486	50.540	4.946		
145+0.000	55.437	51.040	4.397		
146+0.000	55.372	51.540	3.832		

ADDITIONAL STUDY ON THE PROJECT FOR CONSTRUCTION OF MYKOLAIV BRIDGE IN UKRAINE	JAPAN INTERNATIONAL COOPERATION AGENCY(JICA) CENTRAL CONSULTANT INC. & NIPPON KOEI CO., LTD		TITLE	M-14 BYPASS Route3 PLAN・PROFILE(18)	SCALE 1/2000
				No. 43	

PLAN NO. 126+0.0 ~ 133+0.0

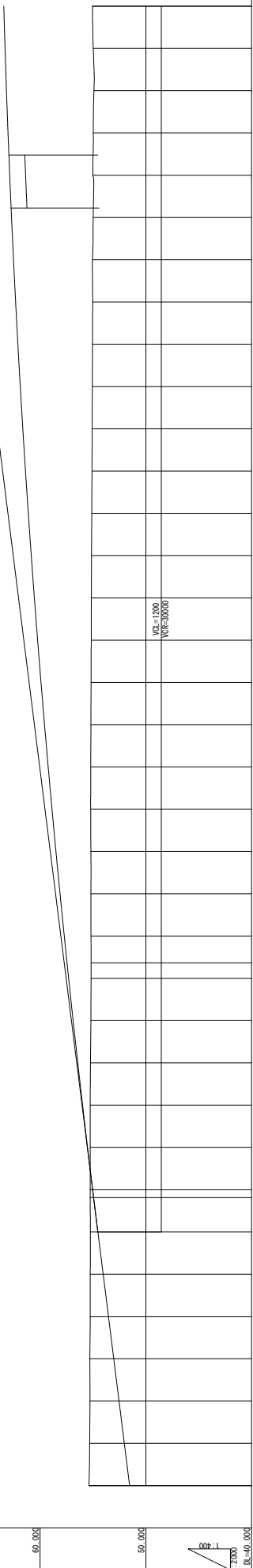
S=1:2000



PROFILE NO. 126+0.0 ~ 133+0.0

BR-14066 L=25.000m
NO. 132+44.500~NO. 132+9.500

70.000
60.000
50.000
40.000



Station	Ground Height	Proposed Height	Cut	Fill	Grade
NO. 126+55.372	51.540	52.040	0.832		
NO. 127+55.256	54.040	54.040	1.216		
NO. 128+55.233	53.540	53.540	1.723		
NO. 129+55.261	55.980	55.980	0.719		
NO. 130+55.263	55.514	55.514	0.251		
NO. 131+55.184	57.714	57.714	2.530		
NO. 132+55.187	58.114	58.114	2.927		
NO. 133+55.195	58.500	58.500	3.305		
NO. 134+55.214	58.874	58.874	3.660		
NO. 135+55.211	59.234	59.234	4.023		
NO. 136+55.198	59.580	59.580	4.382		
NO. 137+55.181	59.914	59.914	4.733		
NO. 138+55.166	60.234	60.234	5.068		
NO. 139+55.151	60.540	60.540	5.389		
NO. 140+55.134	60.834	60.834	5.700		
NO. 141+55.113	61.114	61.114	6.001		
NO. 142+55.092	61.380	61.380	6.288		
NO. 143+55.074	61.634	61.634	6.560		
NO. 144+55.058	61.874	61.874	6.816		
NO. 145+55.041	62.100	62.100	7.059		
NO. 146+55.026	62.314	62.314	7.288		
NO. 147+54.972	62.700	62.700	7.470		
NO. 148+55.000	62.874	62.874	7.874		
NO. 149+54.966	63.034	63.034	8.068		
NO. 150+54.907	63.180	63.180	8.273		
NO. 151+54.967	63.314	63.314	8.347		
NO. 152+55.047	63.434	63.434	8.387		

ADDITIONAL STUDY ON THE PROJECT FOR
CONSTRUCTION OF MYKOLAIV BRIDGE IN UKRAINE

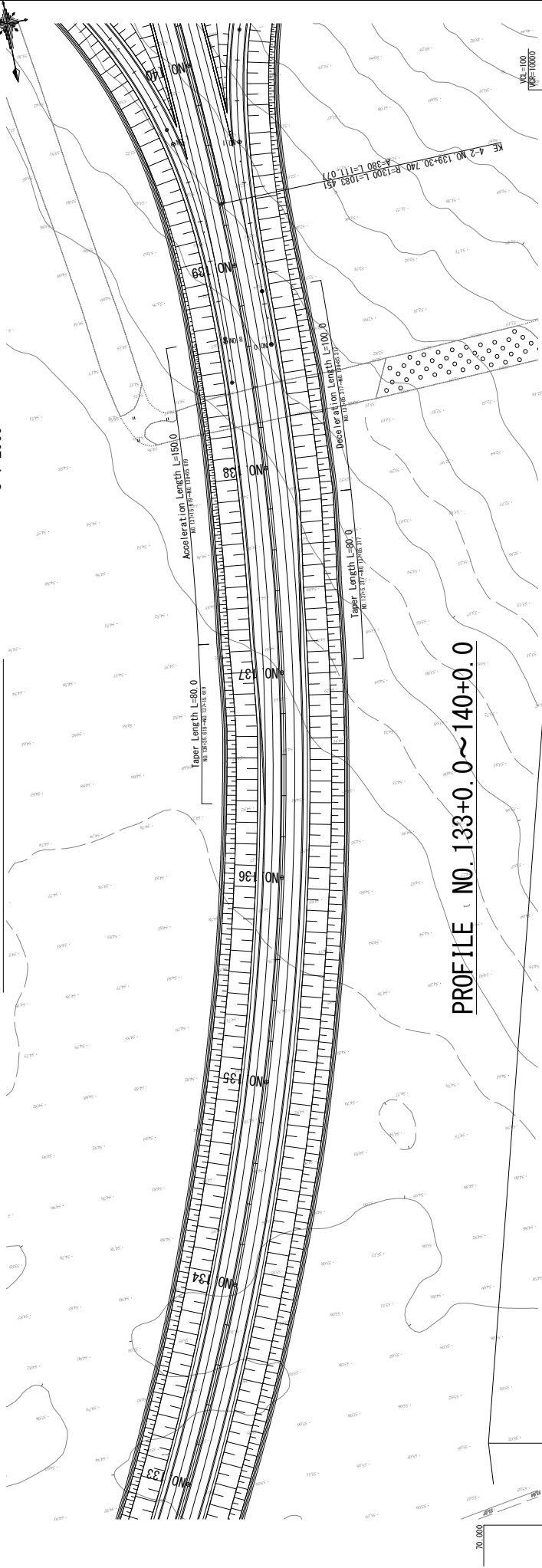
JAPAN INTERNATIONAL COOPERATION AGENCY (JICA)
CENTRAL CONSULTANT INC. & NIPPON KOEI CO., LTD

M-14 BYPASS Route3
PLAN・PROFILE(19)

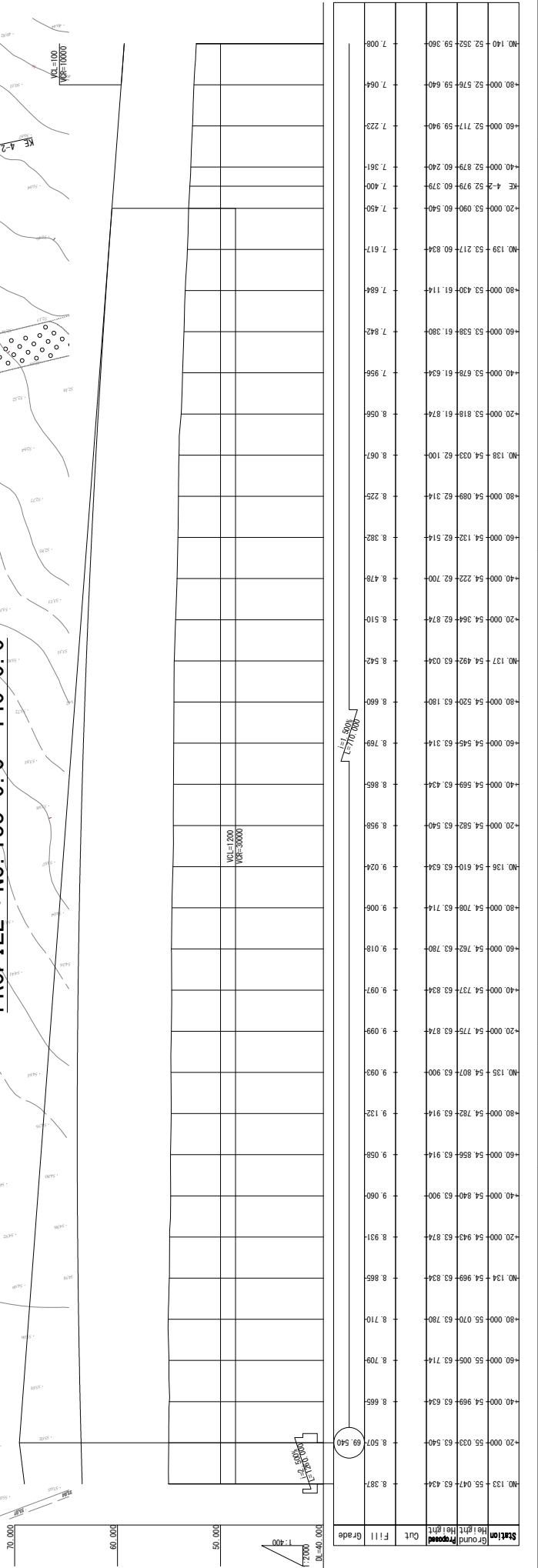
SCALE
1/2000
No. 44

PLAN NO. 133+0.0 ~ 140+0.0

S=1:2000



PROFILE NO. 133+0.0 ~ 140+0.0



Station	Ground Height	Proposed Height	Out	Fill	Grade
133+000	55.047	63.424	8.387		
133+100	55.047	63.424	8.387		
133+200	55.033	63.540	8.507	69.540	
140+000	54.969	63.634	8.665		
140+100	54.969	63.634	8.665		
140+200	55.070	63.780	8.710		
140+300	54.969	63.834	8.865		
140+400	54.943	63.874	8.931		
140+500	54.840	63.900	9.060		
140+600	54.856	63.914	9.058		
140+700	54.782	63.914	9.132		
140+800	54.807	63.900	9.093		
140+900	54.775	63.874	9.099		
141+000	54.737	63.834	9.097		
141+100	54.762	63.780	9.018		
141+200	54.708	63.714	9.008		
141+300	54.610	63.634	9.024		
141+400	54.582	63.540	8.958		
141+500	54.569	63.434	8.865		
141+600	54.545	63.314	8.769		
141+700	54.520	63.180	8.660		
141+800	54.492	63.034	8.542		
141+900	54.354	62.874	8.510		
142+000	54.222	62.700	8.478		
142+100	54.132	62.514	8.382		
142+200	54.089	62.314	8.225		
142+300	54.033	62.100	8.067		
142+400	53.818	61.874	7.956		
142+500	53.678	61.634	7.842		
142+600	53.538	61.380	7.684		
142+700	53.217	60.834	7.617		
142+800	52.990	60.540	7.450		
142+900	52.979	60.379	7.400		
143+000	52.879	60.240	7.361		
143+100	52.717	59.940	7.223		
143+200	52.576	59.640	7.064		
143+300	52.352	59.360	7.008		

ADDITIONAL STUDY ON THE PROJECT FOR CONSTRUCTION OF MYKOLAIV BRIDGE IN UKRAINE

JAPAN INTERNATIONAL COOPERATION AGENCY(JICA)
CENTRAL CONSULTANT INC. & NIPPON KOEI CO., LTD

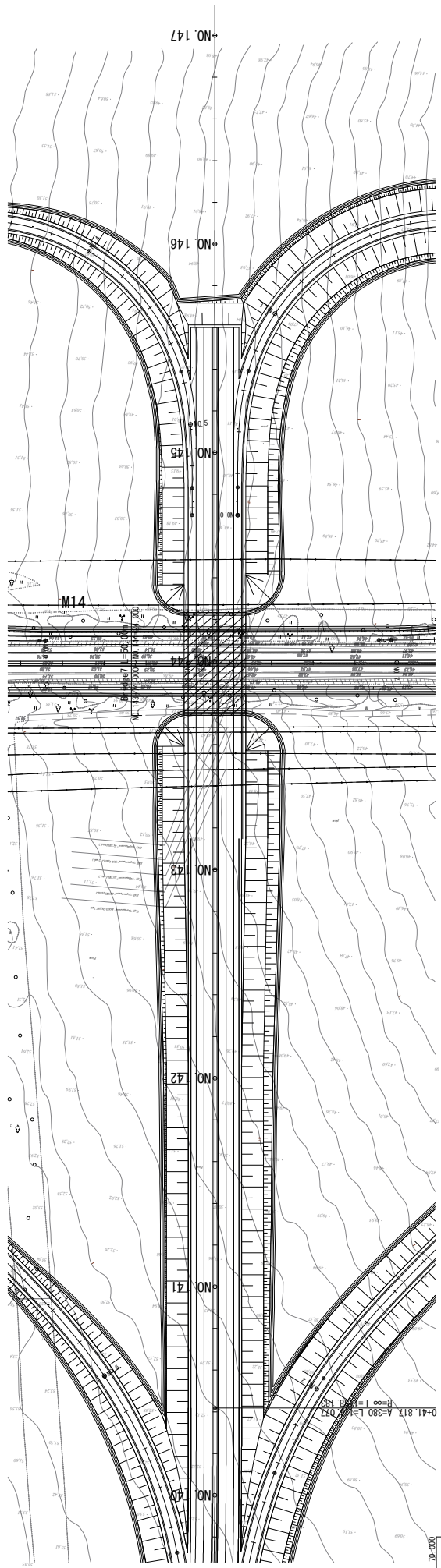
TITLE
M-14 BYPASS Route3 PLAN·PROFILE(20)

SCALE
 1/2000

No.
 45

PLAN NO. 140+0.0 ~ 147+0.0

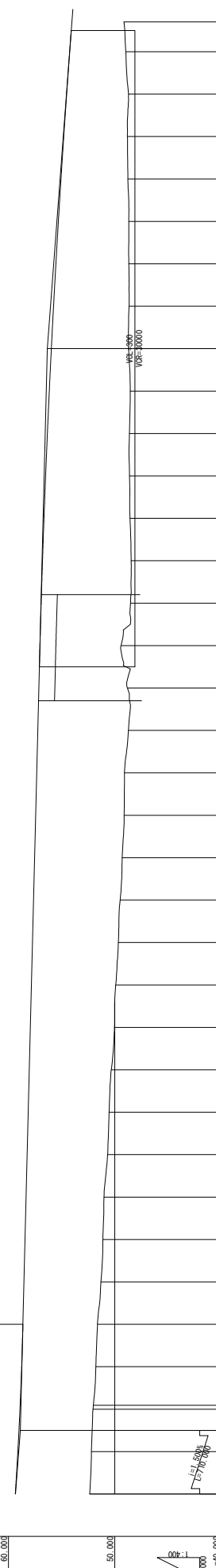
S=1:2000



PROFILE NO. 140+0.0 ~ 147+0.0

VC=100
VGE=1000

0+41.817 A=380 L=147.773
R=100 L=147.773



Station	Ground Height	Proposed Height	Fill	Grade
NO. 140	52.352	59.380	7.028	7.000
NO. 140+000	52.194	59.120	6.926	7.000
NO. 140+000	52.125	59.015	6.890	7.000
NO. 140+000	52.048	58.920	6.872	7.000
NO. 140+000	52.015	58.904	6.889	7.000
NO. 140+000	51.978	58.760	6.782	7.000
NO. 140+000	51.818	58.640	6.822	7.000
NO. 141	51.291	58.540	7.249	7.249
NO. 141	51.112	58.440	7.328	7.328
NO. 140+000	51.009	58.340	7.331	7.331
NO. 140+000	50.665	58.240	7.575	7.575
NO. 140+000	50.531	58.140	7.609	7.609
NO. 142	50.324	58.040	7.716	7.716
NO. 142	50.027	57.940	7.913	7.913
NO. 140+000	49.903	57.840	7.937	7.937
NO. 140+000	49.652	57.740	8.088	8.088
NO. 140+000	49.485	57.640	8.155	8.155
NO. 143	49.297	57.540	8.243	8.243
NO. 140+000	49.118	57.440	8.322	8.322
NO. 140+000	49.081	57.340	8.259	8.259
NO. 140+000	49.705	57.240	8.535	8.535
NO. 140+000	48.806	57.140	8.334	8.334
NO. 144	48.402	57.038	8.637	8.637
NO. 140+000	48.508	56.925	8.417	8.417
NO. 140+000	48.452	56.799	8.347	8.347
NO. 140+000	48.557	56.659	8.102	8.102
NO. 140+000	48.601	56.505	7.904	7.904
NO. 145	48.610	56.339	7.729	7.729
NO. 140+000	48.535	56.159	7.624	7.624
NO. 140+000	48.688	55.965	7.279	7.279
NO. 140+000	48.651	55.759	7.108	7.108
NO. 146	48.671	55.505	6.824	6.824
NO. 140+000	48.760	55.059	6.299	6.299
NO. 140+000	48.802	54.799	5.997	5.997
NO. 140+000	48.702	54.525	5.823	5.823
NO. 140+000	48.954	54.239	5.285	5.285
NO. 147	53.940			

ADDITIONAL STUDY ON THE PROJECT FOR
CONSTRUCTION OF MYKOLAIY BRIDGE IN UKRAINE

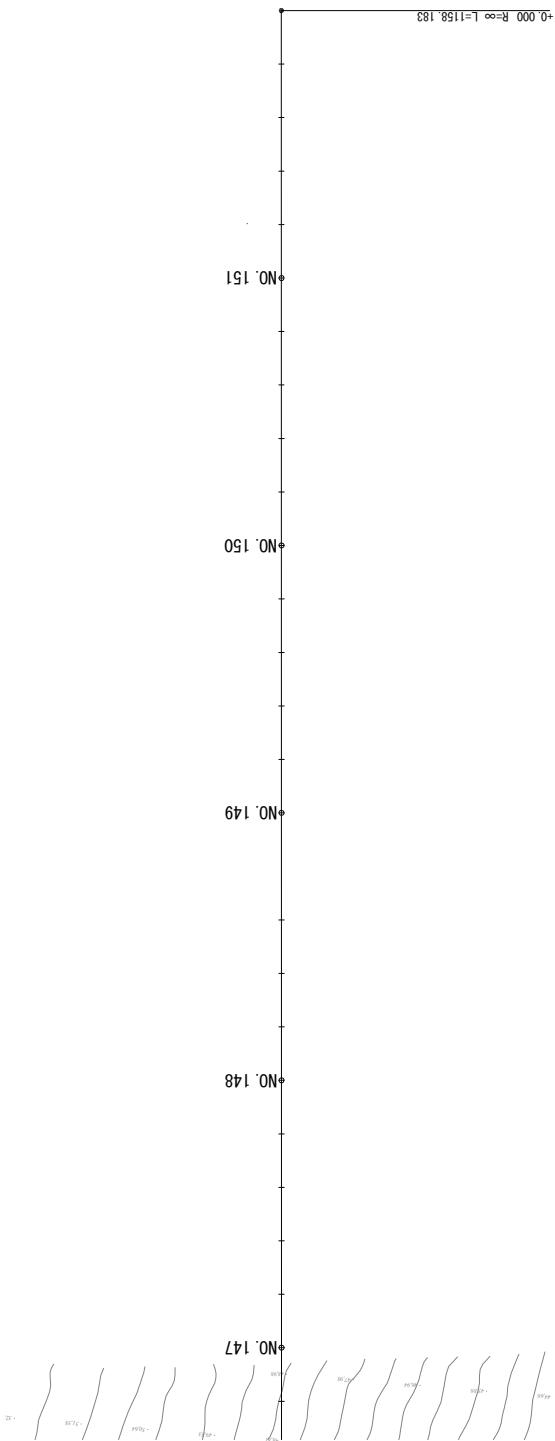
JAPAN INTERNATIONAL COOPERATION AGENCY (JICA)
CENTRAL CONSULTANT INC. & NIPPON KOEI CO., LTD

M-14 BYPASS Route3
PLAN · PROFILE(21)

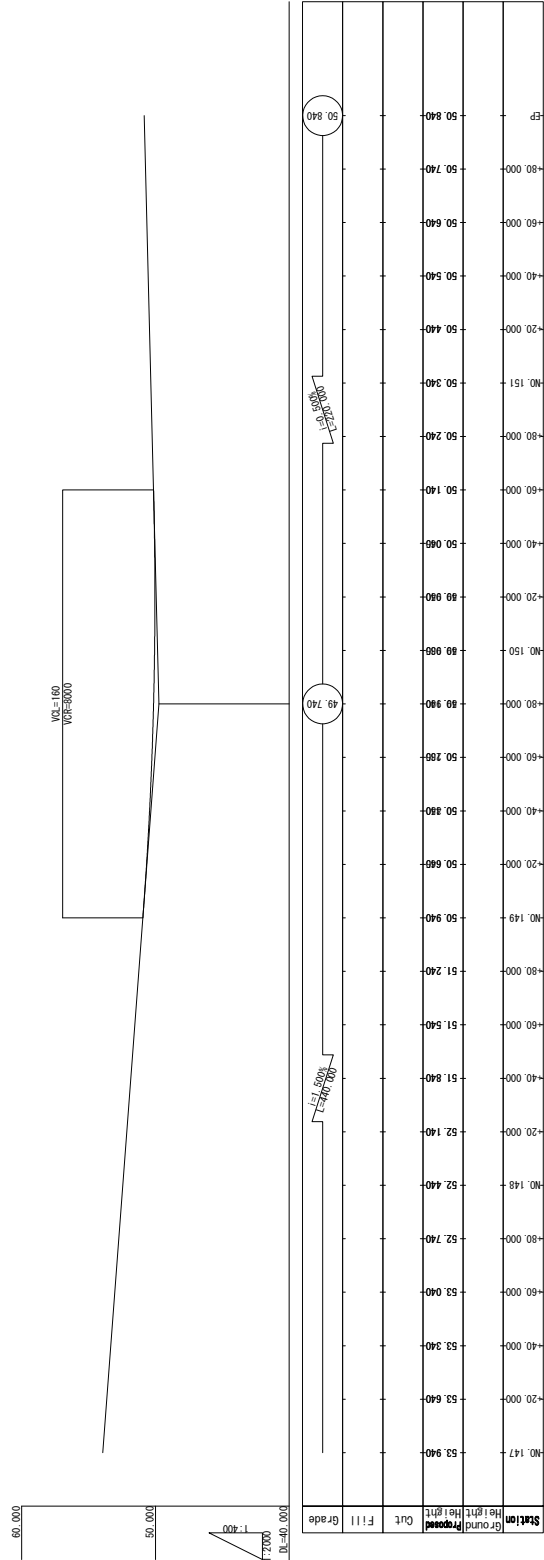
SCALE
1/2000
No. 46

PLAN NO. 147+0.0 ~ 151+40.0

S=1:2000



PROFILE NO. 147+0.0 ~ 151+40.0



Station	Ground Height	Proposed Height	Cut	Fill	Grade
NO. 147	53.940	53.940			
NO. 147+20.000	53.640	53.640			
NO. 147+40.000	53.940	53.940			
NO. 148	52.740	52.740			
NO. 148+20.000	52.440	52.440			
NO. 148+40.000	52.140	52.140			
NO. 149	51.540	51.540			
NO. 149+20.000	51.240	51.240			
NO. 149+40.000	50.940	50.940			
NO. 150	50.990	50.990			
NO. 150+20.000	50.990	50.990			
NO. 150+40.000	50.990	50.990			
NO. 151	50.240	50.240			
NO. 151+20.000	50.440	50.440			
NO. 151+40.000	50.540	50.540			
EP	50.740	50.740			
EP	50.840	50.840			

ADDITIONAL STUDY ON THE PROJECT FOR
CONSTRUCTION OF MYKOLAIIV BRIDGE IN UKRAINE

JAPAN INTERNATIONAL COOPERATION AGENCY (JICA)

CENTRAL CONSULTANT INC. & NIPPON KOEI CO., LTD

TITLE

M-14 BYPASS Route3
PLAN·PROFILE(22)

SCALE

1/2000

No.

47

INTERCHANGE PLAN (1)

S=1:5000

Interchange at Origin (Route 2, 3)



ADDITIONAL STUDY ON THE PROJECT FOR
CONSTRUCTION OF MYKOLAIV BRIDGE IN UKRAINE

JAPAN INTERNATIONAL COOPERATION AGENCY (JICA)

CENTRAL CONSULTANT INC. & NIPPON KOEI CO., LTD

TITLE

INTERCHANGE PLAN(1) Interchange at Origin (Route 2, 3)

SCALE

1/5000

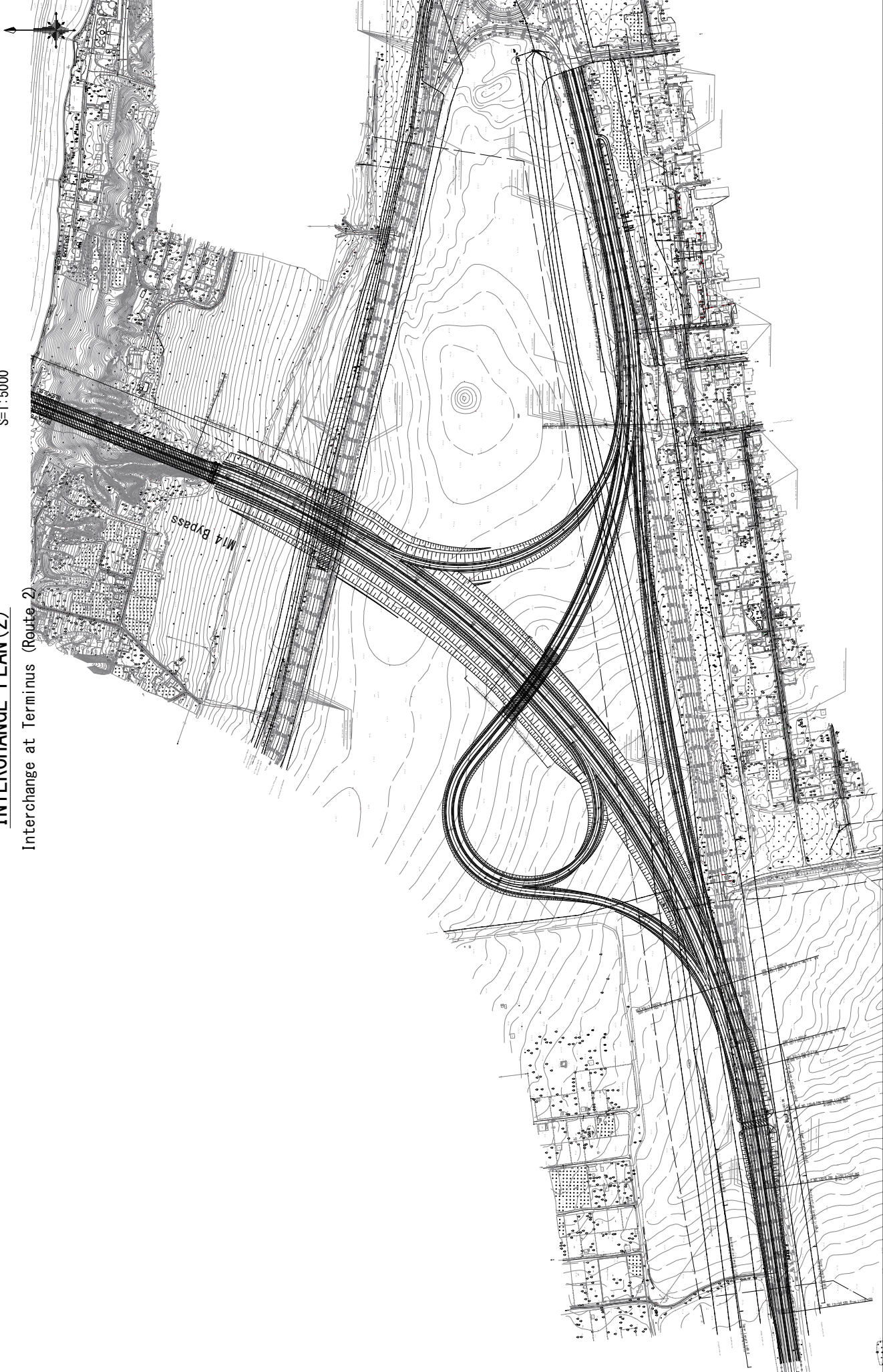
No.

48

INTERCHANGE PLAN (2)

S=1:5000

Interchange at Terminus (Route 2)



ADDITIONAL STUDY ON THE PROJECT FOR
CONSTRUCTION OF MYKOLAIV BRIDGE IN UKRAINE

JAPAN INTERNATIONAL COOPERATION AGENCY(JICA)

CENTRAL CONSULTANT INC. & NIPPON KOEI CO., LTD

TITLE

INTERCHANGE PLAN(2) Interchange at Terminus (Route 2)

SCALE

1/5000

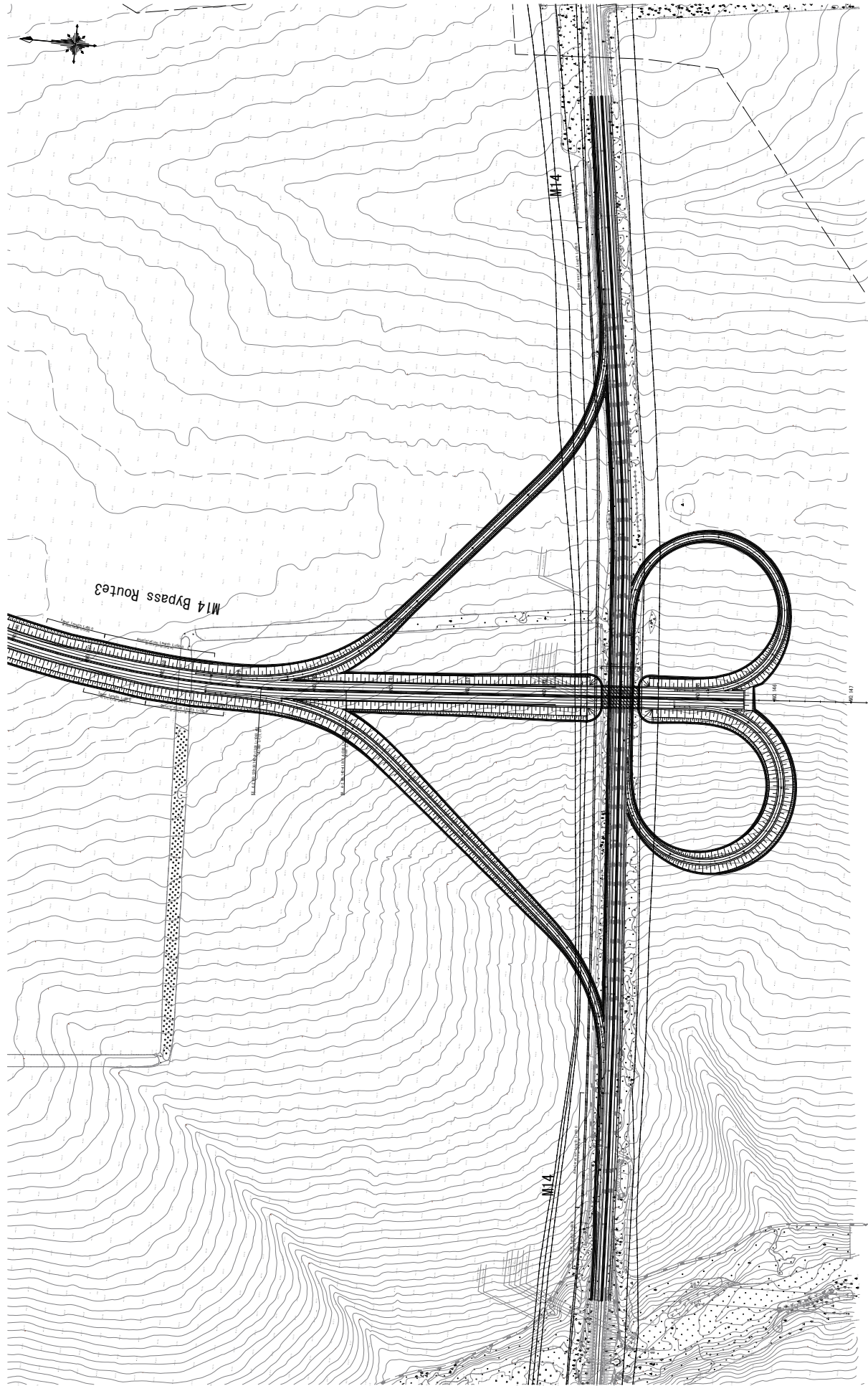
No.

49

INTERCHANGE PLAN (3)

S=1:5000

Interchange at Terminus (Route 3)



ADDITIONAL STUDY ON THE PROJECT FOR
CONSTRUCTION OF MYKOLAIV BRIDGE IN UKRAINE

JAPAN INTERNATIONAL COOPERATION AGENCY (JICA)

CENTRAL CONSULTANT INC. & NIPPON KOEI CO., LTD

TITLE

INTERCHANGE PLAN(3) Interchange at Terminus (Route 3)

SCALE

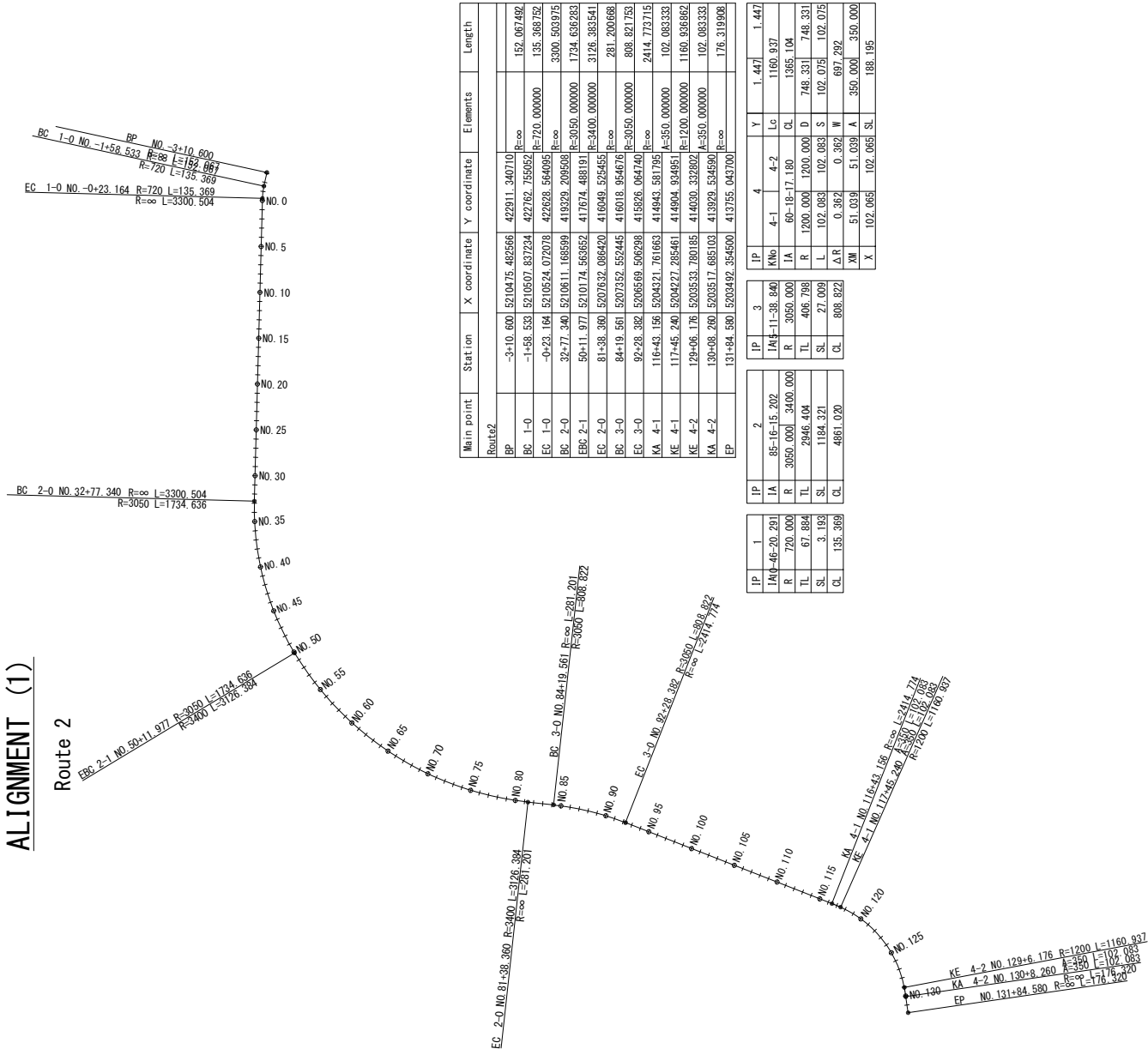
1/5000

No.

50

ALIGNMENT (1)

Route 2



Main point	Station	X coordinate	Y coordinate	Elements	Length
Route2					
BP	-3+10.600	5210475.482566	422911.340710	R=∞	
BC 1-0	-1+58.538	5210507.837234	422782.755952	R=720	152.067492
EC 1-0	-0+23.184	5210524.072078	422928.564098	R=∞	135.369752
BC 2-0	32+77.340	5210611.166599	419329.209508	R=∞	3300.363975
EBC 2-1	50+11.977	5210174.563652	417674.488191	R=3050	1734.636293
EC 2-0	81+38.380	5207632.086420	416049.525456	R=2400	3126.383541
BC 3-0	84+19.561	5207352.552445	416018.954676	R=∞	281.220068
EC 3-0	92+28.392	5206569.506298	415826.064740	R=∞	808.821751
KA 4-1	116+43.156	5204321.761663	414943.581795	R=∞	2414.713715
KE 4-1	117+45.240	5204272.285461	414904.934951	R=550	102.083333
KE 4-2	129+06.176	5203533.780185	414030.332803	R=1200	1160.836862
KA 4-2	130+08.260	5203517.685103	413929.524590	R=∞	102.083333
EP	131+84.580	5203492.354500	413755.043706	R=∞	176.319808

IP	1	2	3	4	Y	1.447
IA	85-16+15.202	IA	11-38.840	4-1	4-2	1.447
R	720.000	R	3050.000	IA	60-19+17.180	CL
TL	67.884	TL	406.798	R	1200.000	D
SL	3.193	SL	27.009	L	102.083	S
CL	135.369	CL	808.822	ΔR	0.362	W
				ΔM	51.039	A
				X	102.065	SL
				Y	1.447	
				LC	1160.937	
				CL	1385.104	
				D	748.331	
				S	102.075	
				W	697.292	
				A	350.000	
				SL	350.000	
					188.195	

JAPAN INTERNATIONAL COOPERATION AGENCY (JICA)
CENTRAL CONSULTANT INC. & NIPPON KOEI CO., LTD

M-14 BYPASS Route2
ALIGNMENT (1)

SCALE
1/50000
No.
51

ADDITIONAL STUDY ON THE PROJECT FOR
CONSTRUCTION OF MYKOLAIV BRIDGE IN UKRAINE

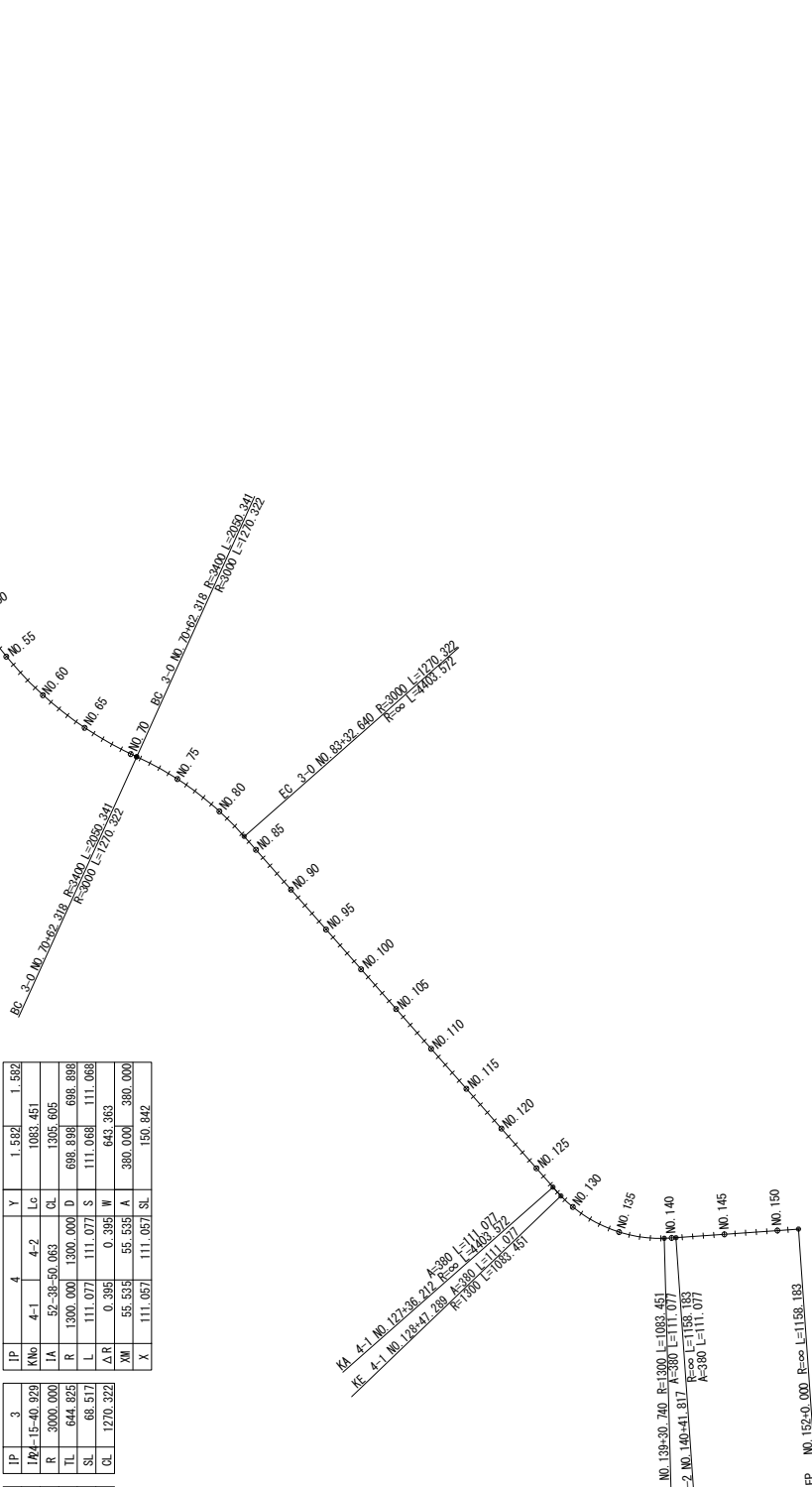
ALIGNMENT (2)

Route 3

Main point	Station	X coordinate	Y coordinate	Elements	Length
Route3					
BP	-3+10.600	521.0475	492566		
BC 1-0	-1+58.533	521.0567	837234	R=∞	152.067492
EC 1-0	-0+23.164	521.0524	072078	R=720	135.368752
BC 2-0	32+77.340	521.0611	168599	R=∞	3300.503975
EC 2-1	50+11.977	521.0174	568651	R=3050	1734.638286
BC 3-0	70+62.318	520.8665	626258	R=3400	2059.341175
EC 3-0	83+32.640	520.7692	147395	R=∞	1270.322323
KA 4-1	127+36.212	520.4742	075673	R=380	4403.571831
KE 4-1	128+47.289	520.4667	497583	R=380	111.076923
KA 4-2	139+30.740	520.3893	923472	R=380	1083.451055
KE 4-2	140+41.817	520.3583	029280	R=380	111.076923
EP	152+00.000	520.2427	682585	R=∞	1158.183149

IP	1	2	3	4	Y	1.582	1.582
KN	4-1	4-2					1083.451
IA	52-38-50.063	CL					1395.605
R	1300.000	1300.000	D				698.898
TL	644.825						111.068
SL	647.791						643.363
CL	3784.877						380.000
ΔR	0.395	0.395	W				
ΔM	55.535	55.535	A				380.000
X	111.067	111.067	SL				150.842

IP	1	2	3
IA	67-08-15.888		
R	3050.000	3400.000	
TL	2091.026		
SL	647.791		
CL	3784.877		



ADDITIONAL STUDY ON THE PROJECT FOR
CONSTRUCTION OF MYKOLAIV BRIDGE IN UKRAINE

JAPAN INTERNATIONAL COOPERATION AGENCY (JICA)
CENTRAL CONSULTANT INC. & NIPPON KOEI CO., LTD

TITLE
M-14 BYPASS Route3
ALIGNMENT(2)

SCALE
1/50000
No. 52