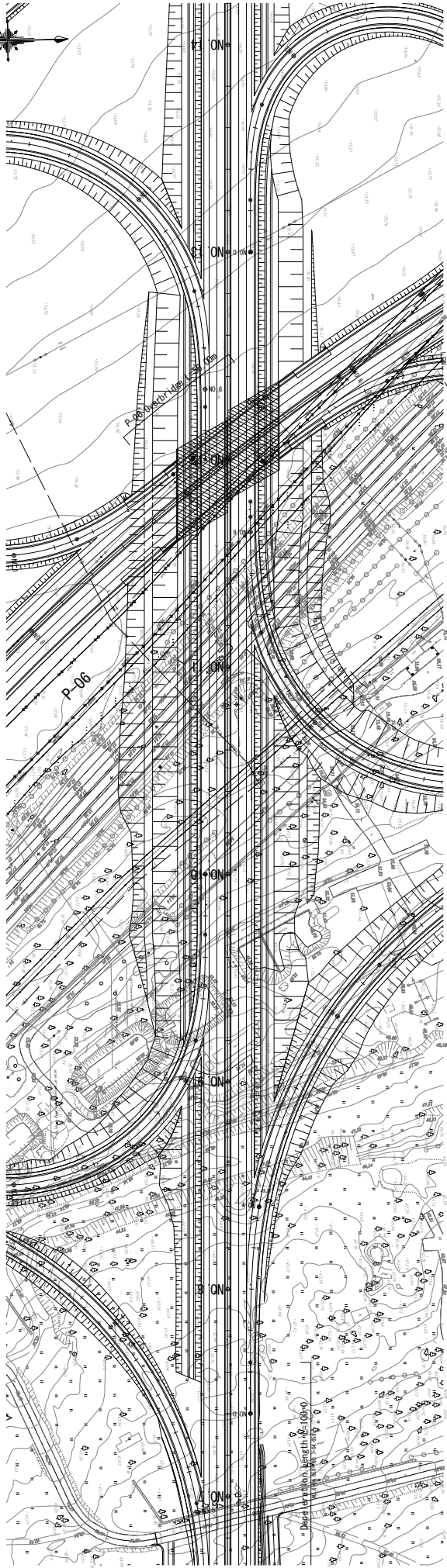
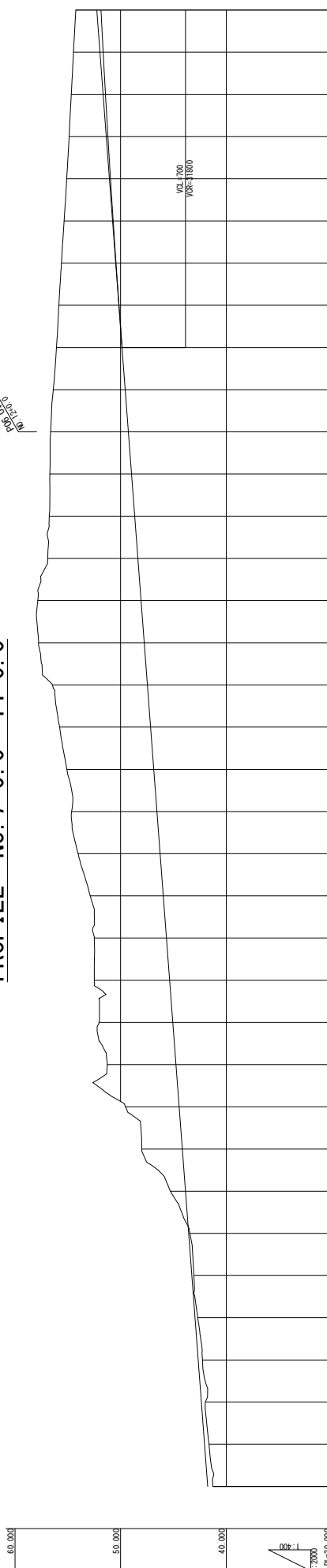


PLAN NO. 7+0.0 ~ 14+0.0

S=1:2000



PROFILE NO. 7+0.0 ~ 14+0.0



Station	Ground Height	Proposed Height	Cut	Fill	Grade
NO. 7	41.270	41.700	0.430		
NO. 7+20.000	41.636	42.060	0.424		
NO. 7+40.000	41.964	42.360	0.396		
NO. 7+60.000	42.253	42.660	0.407		
NO. 7+80.000	42.702	42.960	0.258		
NO. 8	43.066	43.260	0.194		
NO. 8+20.000	43.446	43.590	0.114		
NO. 8+40.000	43.289	43.660	1.429		
NO. 8+60.000	44.000	44.160	2.840		
NO. 8+80.000	44.531	44.460	5.071		
NO. 9	51.259	44.760	6.499		
NO. 9+20.000	52.045	45.060	6.985		
NO. 9+40.000	52.500	45.360	7.140		
NO. 9+60.000	52.496	45.660	6.836		
NO. 9+80.000	52.875	45.960	6.915		
NO. 10	54.018	46.260	7.758		
NO. 10+20.000	54.637	46.560	8.077		
NO. 10+40.000	55.082	46.860	8.222		
NO. 10+60.000	55.774	47.160	8.614		
NO. 10+80.000	56.455	47.460	8.995		
NO. 11	57.765	47.760	10.005		
NO. 11+20.000	57.839	48.060	9.779		
NO. 11+40.000	58.899	48.360	8.539		
NO. 11+60.000	58.899	48.360	8.539		
NO. 11+80.000	58.756	48.660	8.096		
NO. 12	56.624	49.260	7.364		
NO. 12+20.000	56.379	49.560	6.819		
NO. 12+40.000	56.067	49.860	6.207		
NO. 12+60.000	55.845	50.154	5.691		
NO. 12+80.000	55.604	50.435	5.169		
NO. 13	55.346	50.703	4.643		
NO. 13+20.000	55.102	50.959	4.143		
NO. 13+40.000	54.877	51.203	3.674		
NO. 13+60.000	54.672	51.434	2.238		
NO. 13+80.000	54.463	51.652	2.811		
NO. 14	54.239	51.858	2.381		

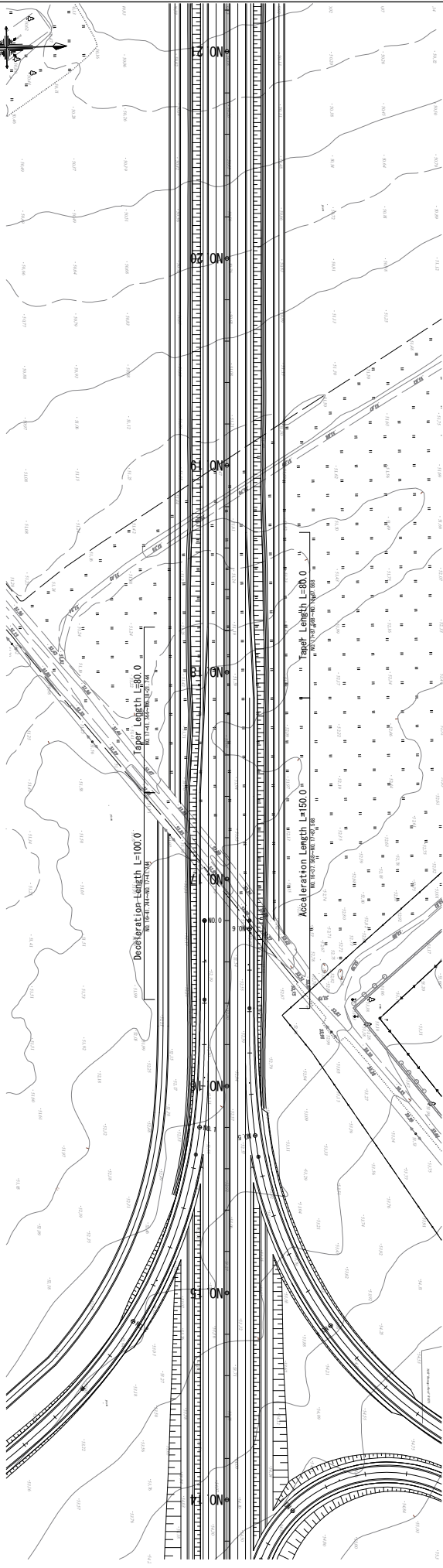
JAPAN INTERNATIONAL COOPERATION AGENCY (JICA)
CENTRAL CONSULTANT INC. & NIPPON KOEI CO., LTD

M-14 BYPASS Route3
PLAN-PROFILE(2)

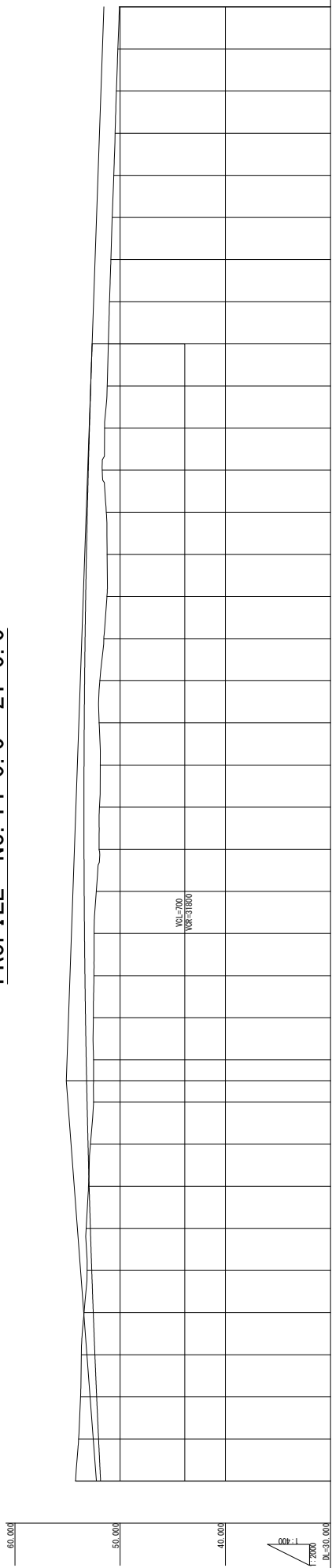
SCALE
1/2000
No. 27

PLAN NO. 14+0.0~21+0.0

S=1:2000



PROFILE NO. 14+0.0~21+0.0



Station	Ground Height	Proposed Height	Cut	Fill	Grade
NO. 14	54.239	51.658	2.381		
20+000	53.947	52.051	1.896		
40+000	53.765	52.231	1.534		
60+000	53.684	52.399	1.285		
80+000	53.434	52.555	0.879		
NO. 15	53.138	52.698	0.440		
20+000	53.224	52.828	0.396		
40+000	53.005	52.946	0.059		
60+000	52.819	53.051	0.232		
80+000	52.531	53.143	0.612		
90+000	52.526	53.185	0.659		
NO. 16	52.531	53.223	0.692		
20+000	52.541	53.291	0.750		
40+000	52.496	53.246	0.850		
60+000	52.478	53.388	0.910		
80+000	52.268	53.418	1.150		
NO. 17	52.000	53.405	1.405		
20+000	51.964	53.439	1.475		
40+000	51.891	53.431	1.540		
60+000	51.999	53.411	1.412		
80+000	51.926	53.378	1.452		
NO. 18	51.550	53.332	1.782		
20+000	51.253	53.274	2.021		
40+000	51.243	53.203	1.960		
60+000	51.312	53.119	1.807		
80+000	51.696	53.023	1.327		
NO. 19	51.472	52.915	1.443		
20+000	51.225	52.794	1.569		
40+000	51.123	52.660	1.537		
60+000	51.009	52.520	1.511		
80+000	50.877	52.380	1.503		
NO. 20	50.754	52.240	1.488		
20+000	50.611	52.100	1.489		
40+000	50.476	51.960	1.484		
60+000	50.352	51.820	1.468		
80+000	50.215	51.680	1.465		
NO. 21	50.067	51.540	1.473		

ADDITIONAL STUDY ON THE PROJECT FOR
CONSTRUCTION OF MYKOLAIV BRIDGE IN UKRAINE

JAPAN INTERNATIONAL COOPERATION AGENCY(JICA)
CENTRAL CONSULTANT INC. & NIPPON KOEI CO., LTD

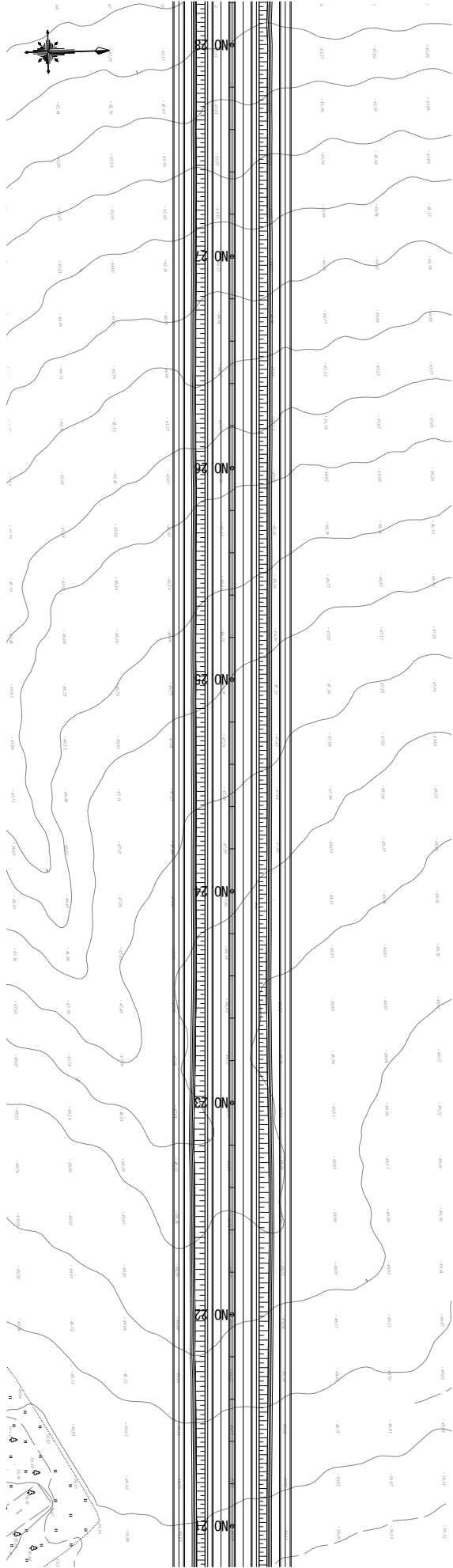
TITLE

M-14 BYPASS Route3
PLAN-PROFILE(3)

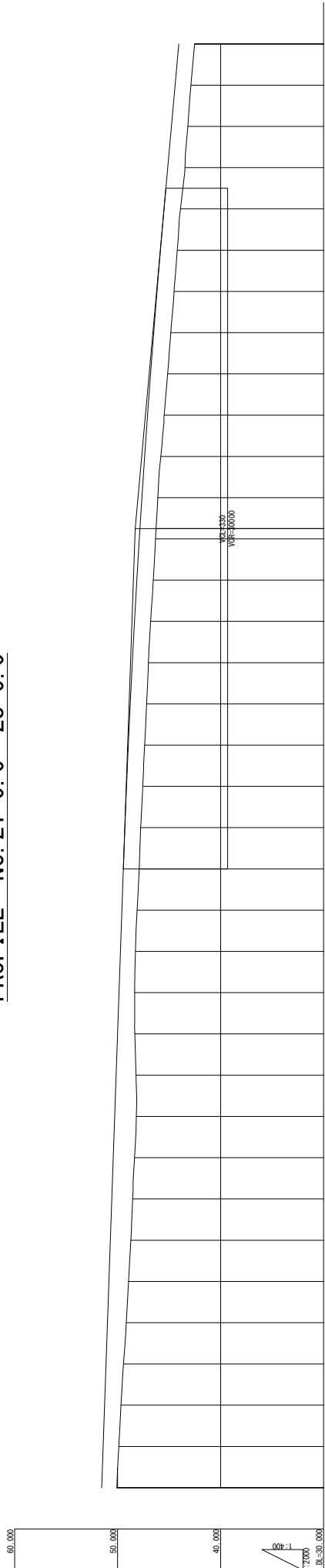
SCALE
1/2000
No. 28

PLAN NO. 21+0.0 ~ 28+0.0

S=1:2000



PROFILE NO. 21+0.0 ~ 28+0.0



Station	Ground Height	Proposed Height	Fill	Cut
21+000	51.540	51.540		
21+100	51.400	51.400		
21+200	51.260	51.260		
21+300	51.120	51.120		
21+400	50.980	50.980		
21+500	50.840	50.840		
21+600	50.700	50.700		
21+700	50.560	50.560		
21+800	50.420	50.420		
21+900	50.280	50.280		
22+000	50.140	50.140		
22+100	50.000	50.000		
22+200	49.860	49.860		
22+300	49.720	49.720		
22+400	49.580	49.580		
22+500	49.440	49.440		
22+600	49.300	49.300		
22+700	49.160	49.160		
22+800	49.020	49.020		
22+900	48.880	48.880		
23+000	48.740	48.740		
23+100	48.600	48.600		
23+200	48.460	48.460		
23+300	48.320	48.320		
23+400	48.180	48.180		
23+500	48.040	48.040		
23+600	47.900	47.900		
23+700	47.760	47.760		
23+800	47.620	47.620		
23+900	47.480	47.480		
24+000	47.340	47.340		
24+100	47.200	47.200		
24+200	47.060	47.060		
24+300	46.920	46.920		
24+400	46.780	46.780		
24+500	46.640	46.640		
24+600	46.500	46.500		
24+700	46.360	46.360		
24+800	46.220	46.220		
24+900	46.080	46.080		
25+000	45.940	45.940		
25+100	45.800	45.800		
25+200	45.660	45.660		
25+300	45.520	45.520		
25+400	45.380	45.380		
25+500	45.240	45.240		
25+600	45.100	45.100		
25+700	44.960	44.960		
25+800	44.820	44.820		
25+900	44.680	44.680		
26+000	44.540	44.540		
26+100	44.400	44.400		
26+200	44.260	44.260		
26+300	44.120	44.120		
26+400	43.980	43.980		
26+500	43.840	43.840		
26+600	43.700	43.700		
26+700	43.560	43.560		
26+800	43.420	43.420		
26+900	43.280	43.280		
27+000	43.140	43.140		
27+100	43.000	43.000		
27+200	42.860	42.860		
27+300	42.720	42.720		
27+400	42.580	42.580		
27+500	42.440	42.440		
27+600	42.300	42.300		
27+700	42.160	42.160		
27+800	42.020	42.020		
27+900	41.880	41.880		
28+000	41.740	41.740		

ADDITIONAL STUDY ON THE PROJECT FOR CONSTRUCTION OF MYKOLAIV BRIDGE IN UKRAINE

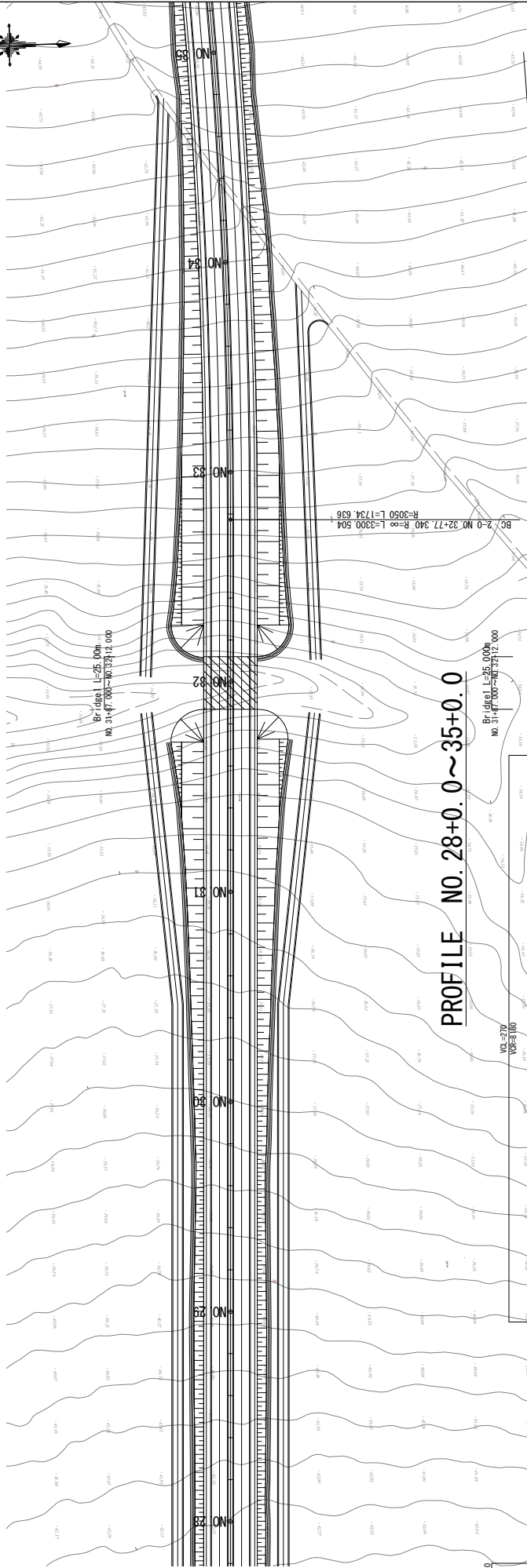
JAPAN INTERNATIONAL COOPERATION AGENCY (JICA)
CENTRAL CONSULTANT INC. & NIPPON KOEI CO., LTD

M-14 BYPASS Route3
PLAN-PROFILE(4)

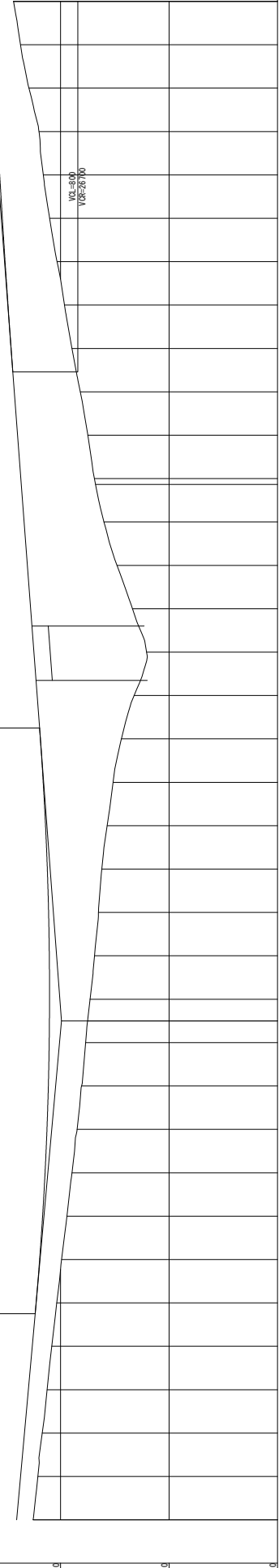
SCALE
1/2000
No. 29

PLAN NO. 28+0.0 ~ 35+0.0

S=1:2000



PROFILE NO. 28+0.0 ~ 35+0.0



Station	Ground Height	Fill	Cut	Grade
NO. 28	42.523	44.055		1.532
-20.000	42.090	43.695		1.605
-40.000	41.696	43.335		1.639
-60.000	41.247	42.975		1.728
-80.000	40.814	42.615		1.801
-NO. 29	40.354	42.257		1.903
-20.000	39.908	41.933		2.025
-40.000	39.419	41.659		2.240
-60.000	38.945	41.433		2.488
-80.000	38.479	41.257		2.778
-NO. 30	38.060	41.129		3.068
-20.000	37.689	41.050		3.361
-40.000	37.314	41.020		3.615
-60.000	36.945	41.020		3.735
-80.000	36.575	41.039		4.164
-NO. 31	36.200	41.223		5.023
-20.000	35.702	41.389		5.687
-40.000	35.158	41.603		6.445
-60.000	34.592	41.867		7.475
-80.000	33.927	42.165		8.938
-NO. 32	32.082	42.465		10.383
-20.000	31.374	42.765		9.391
-40.000	30.634	43.065		8.267
-60.000	29.894	43.365		7.966
-80.000	29.174	43.665		6.789
-NO. 33	27.491	43.965		6.474
-20.000	26.749	44.265		6.085
-40.000	25.999	44.565		5.614
-60.000	25.234	44.847		5.213
-80.000	24.457	45.117		4.790
-NO. 34	23.671	45.371		4.361
-20.000	22.874	45.610		3.944
-40.000	22.061	45.835		3.528
-60.000	21.231	46.044		3.126
-80.000	20.384	46.239		2.752
-NO. 35	19.522	46.418		2.402

JAPAN INTERNATIONAL COOPERATION AGENCY (JICA)
CENTRAL CONSULTANT INC. & NIPPON KOEI CO., LTD

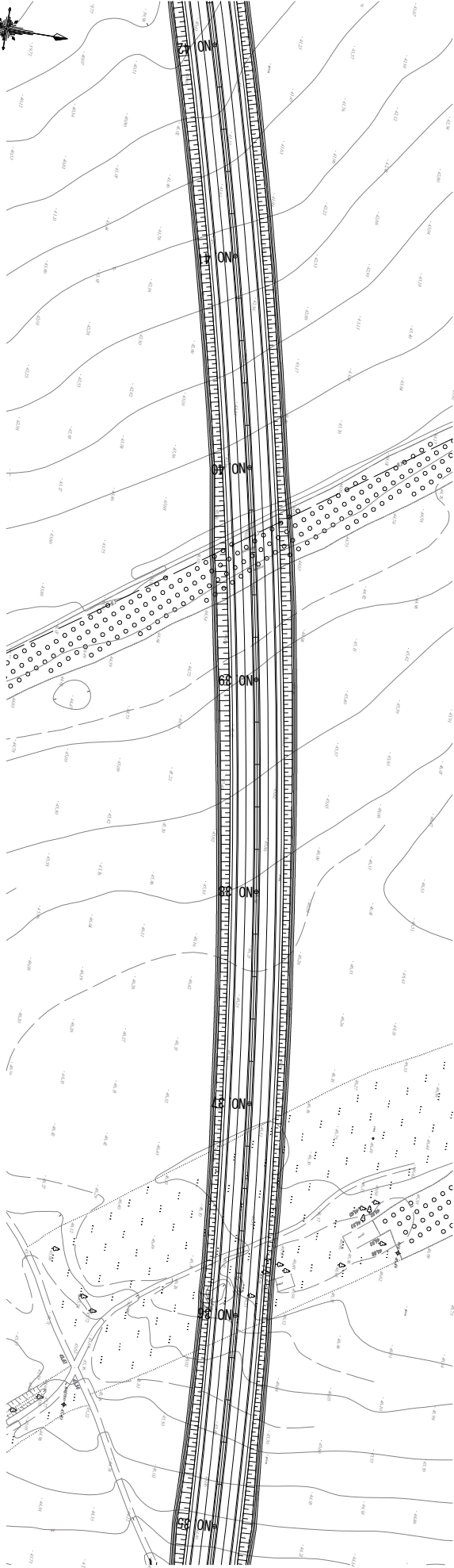
ADDITIONAL STUDY ON THE PROJECT FOR
CONSTRUCTION OF MYKOLAIV BRIDGE IN UKRAINE

M-14 BYPASS Route3
PLAN-PROFILE(5)

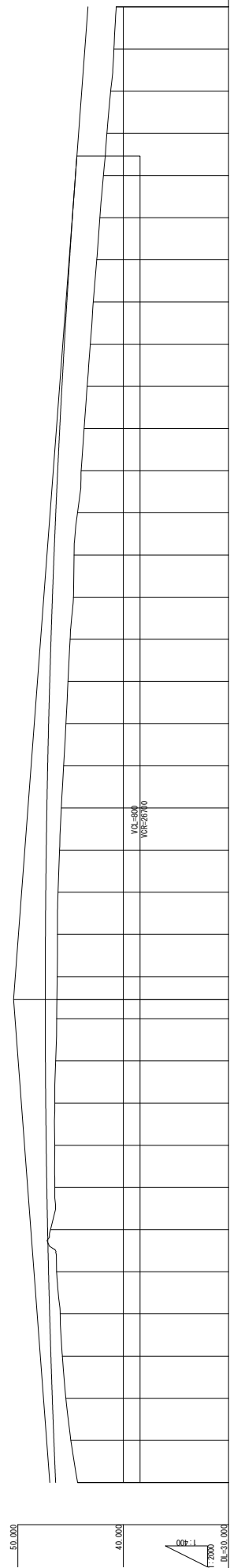
SCALE
1/2000
No. 30

PLAN NO. 35+0.0 ~ 42+0.0

S=1:2000



PROFILE NO. 35+0.0 ~ 42+0.0



Station	Ground Height	Fill	Cut
NO. 35	44.336	46.418	2.082
20.000	44.969	46.882	1.613
40.000	45.443	46.732	1.289
60.000	45.778	46.866	1.088
80.000	45.989	46.985	0.996
NO. 36	46.322	47.090	0.768
20.000	46.904	47.179	0.275
40.000	46.503	47.254	0.751
60.000	46.503	47.313	0.810
80.000	46.500	47.357	0.857
NO. 37	46.417	47.387	0.970
20.000	46.324	47.401	1.077
40.000	46.305	47.403	1.098
60.000	46.259	47.401	1.132
80.000	46.250	47.385	1.135
NO. 38	46.193	47.354	1.161
20.000	46.041	47.309	1.268
40.000	45.873	47.248	1.375
60.000	45.651	47.172	1.521
80.000	45.438	47.082	1.644
NO. 39	45.245	46.976	1.731
20.000	45.045	46.856	1.811
40.000	44.729	46.720	1.991
60.000	44.666	46.569	1.903
80.000	44.344	46.404	2.060
NO. 40	44.214	46.224	2.226
20.000	43.987	46.223	2.236
40.000	43.708	46.028	2.320
60.000	43.424	45.817	2.393
80.000	43.125	45.591	2.468
NO. 41	42.843	45.351	2.508
20.000	42.843	45.351	2.508
40.000	42.515	45.095	2.580
60.000	42.214	44.824	2.610
80.000	41.882	44.539	2.657
NO. 42	41.547	44.240	2.693
20.000	41.199	43.940	2.741
40.000	40.884	43.640	2.756
60.000	40.667	43.340	2.673

ADDITIONAL STUDY ON THE PROJECT FOR
CONSTRUCTION OF MYKOLAIV BRIDGE IN UKRAINE

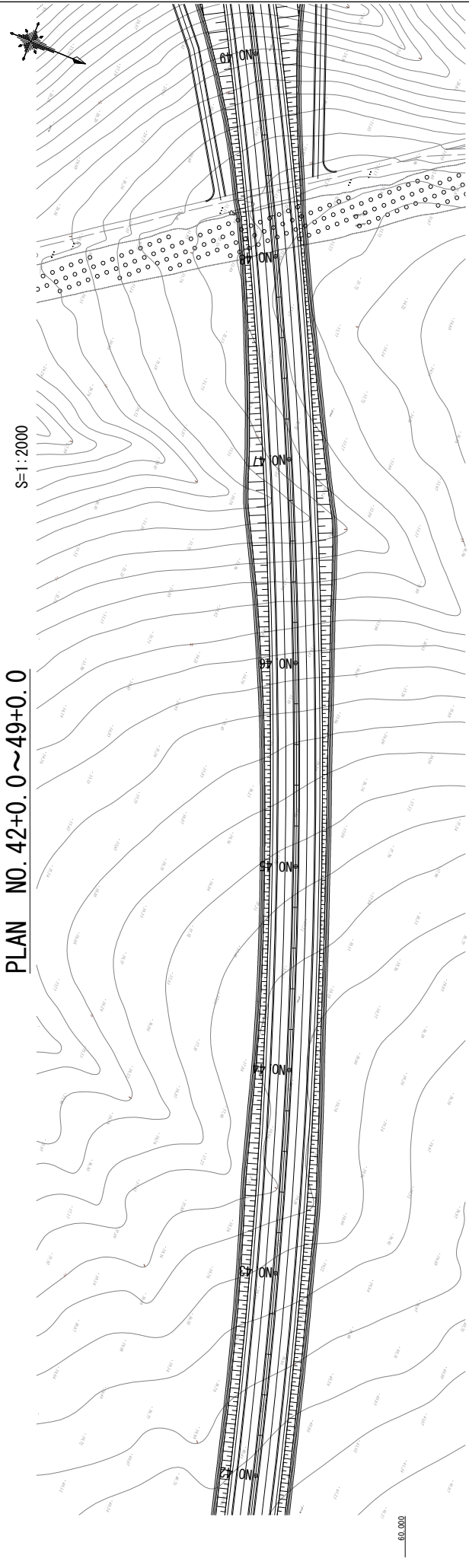
JAPAN INTERNATIONAL COOPERATION AGENCY(JICA)
CENTRAL CONSULTANT INC. & NIPPON KOEI CO., LTD

M-14 BYPASS Route3
PLAN-PROFILE(6)

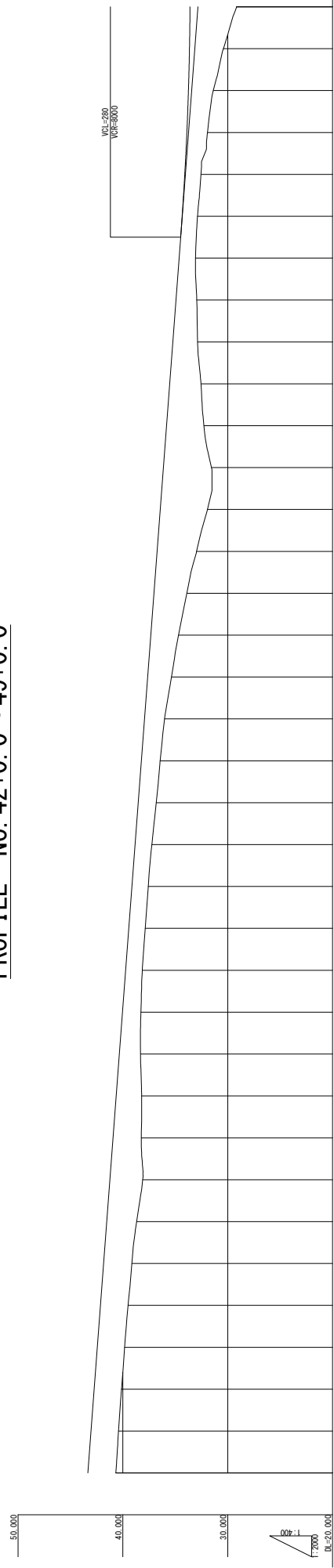
SCALE
1/2000
No. 31

PLAN NO. 42+0.0~49+0.0

S=1:2000



PROFILE NO. 42+0.0~49+0.0

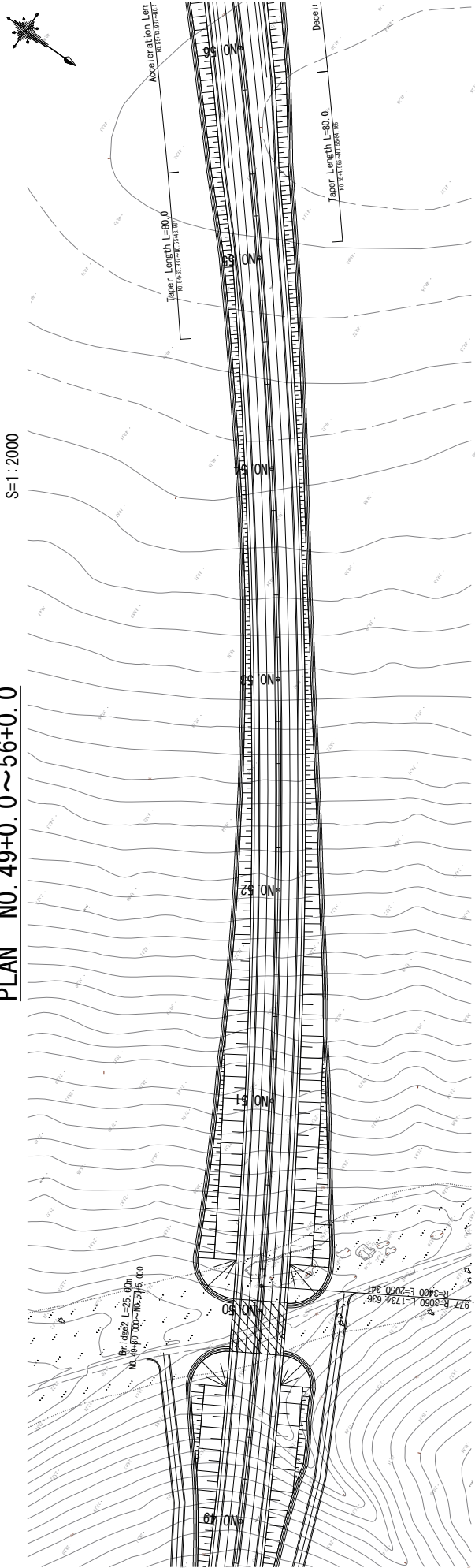


Station	Ground Height	Profile Height	Cut	Fill	Grade
40.42	40.657	43.240			2.673
40.000	40.412	43.040			2.628
40.000	40.133	42.740			2.607
40.000	39.830	42.440			2.610
40.000	39.507	42.140			2.633
40.000	39.138	41.840			2.702
20.000	38.690	41.540			2.850
40.000	38.110	41.240			3.130
40.000	38.277	40.940			1.763
40.000	38.146	39.740			1.594
40.000	37.822	38.540			1.718
40.000	36.440	38.240			1.800
40.000	36.024	37.940			1.916
40.000	35.365	37.640			2.275
40.000	34.687	37.340			2.653
20.000	33.897	37.040			3.143
40.000	32.972	36.740			3.768
40.000	31.938	36.440			4.502
40.000	31.550	36.140			4.590
40.47	32.271	35.840			3.569
20.000	32.556	35.540			2.984
40.000	32.869	35.240			2.371
40.000	32.956	34.940			1.984
40.000	33.073	34.640			1.587
40.48	32.879	34.347			1.468
20.000	32.582	34.097			1.545
40.000	31.934	33.897			1.963
40.000	31.373	33.747			2.374
40.000	30.413	33.647			3.234
40.49	29.145	33.597			4.452

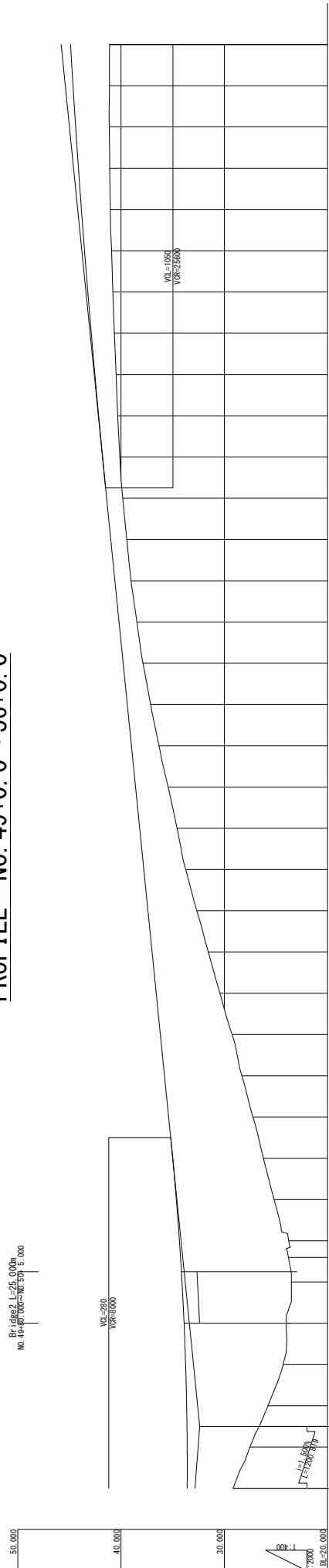
ADDITIONAL STUDY ON THE PROJECT FOR CONSTRUCTION OF MYKOLAIV BRIDGE IN UKRAINE	JAPAN INTERNATIONAL COOPERATION AGENCY(JICA) CENTRAL CONSULTANT INC. & NIPPON KOEI CO., LTD		TITLE M-14 BYPASS Route3 PLAN-PROFILE(7)		SCALE 1/2000
					No. 32

PLAN NO. 49+0.0 ~ 56+0.0

S=1:2000



PROFILE NO. 49+0.0 ~ 56+0.0



ADDITIONAL STUDY ON THE PROJECT FOR
CONSTRUCTION OF MYKOLAIV BRIDGE IN UKRAINE

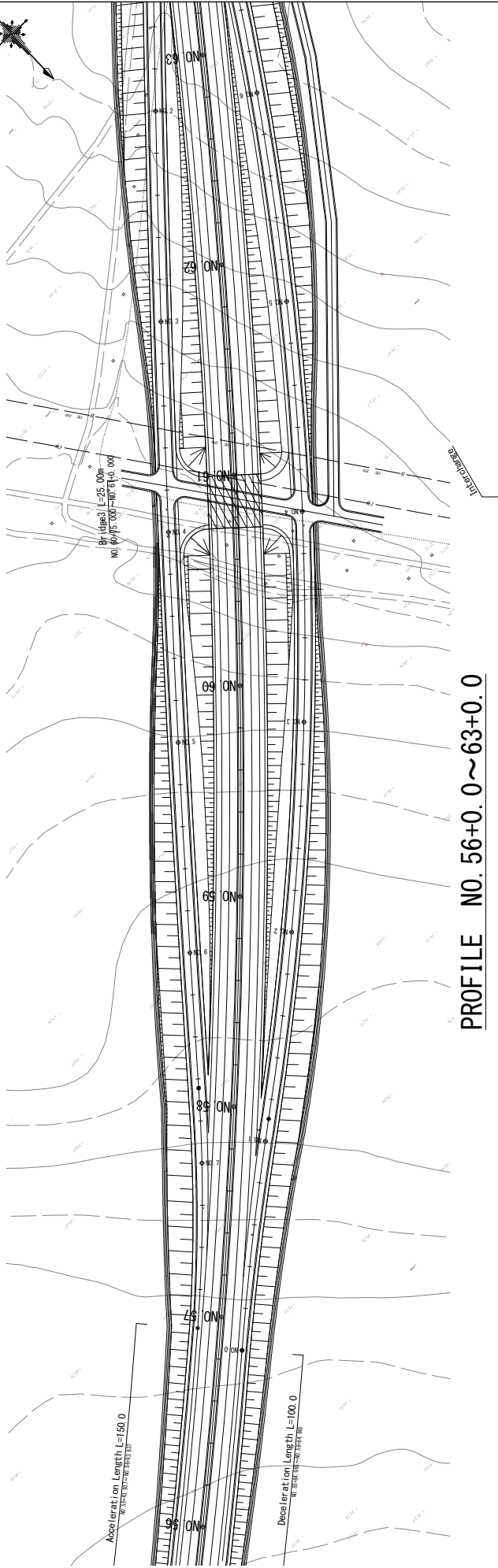
JAPAN INTERNATIONAL COOPERATION AGENCY (JICA)
CENTRAL CONSULTANT INC. & NIPPON KOEI CO., LTD

M-14 BYPASS Route3
PLAN-PROFILE(8)

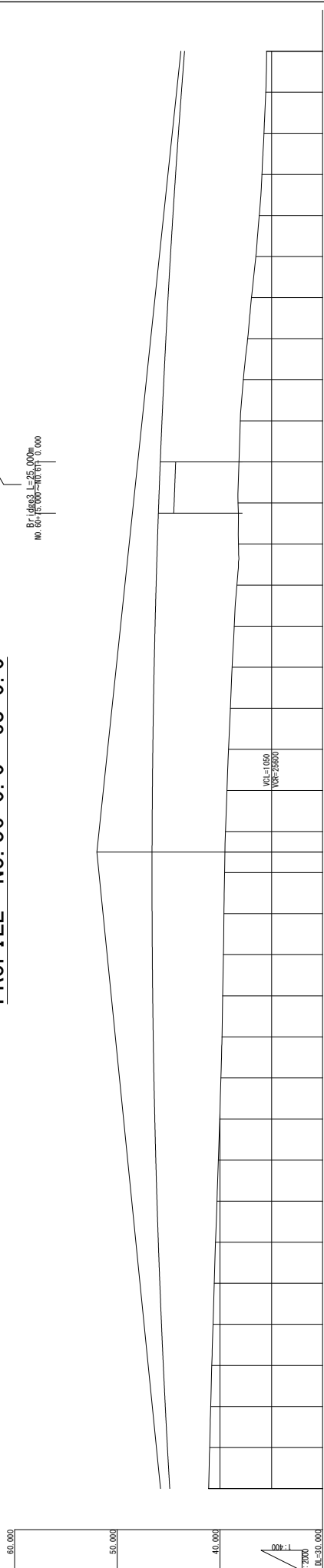
SCALE
1/2000
No. 33

PLAN NO. 56+0.0 ~ 63+0.0

S=1:2000



PROFILE NO. 56+0.0 ~ 63+0.0



Station	Ground Height	Fill	Cut
NO. 56	41.104	44.888	3.784
NO. 56+20	40.999	45.112	4.113
NO. 56+40	40.922	45.321	4.419
NO. 56+60	40.791	45.514	4.723
NO. 56+80	40.674	45.691	5.017
NO. 57	40.553	45.853	5.300
NO. 57+20	40.425	45.999	5.574
NO. 57+40	40.292	46.130	5.838
NO. 57+60	40.157	46.245	6.088
NO. 57+80	40.021	46.344	6.323
NO. 58	39.905	46.428	6.523
NO. 58+20	39.801	46.496	6.695
NO. 58+40	39.734	46.549	6.815
NO. 58+60	39.666	46.585	6.919
NO. 58+80	39.613	46.607	6.994
NO. 59	39.547	46.612	7.065
NO. 59+20	39.512	46.609	7.097
NO. 59+40	39.459	46.602	7.143
NO. 59+60	39.320	46.577	7.257
NO. 59+80	39.157	46.535	7.378
NO. 60	38.984	46.479	7.495
NO. 60+20	38.805	46.406	7.601
NO. 60+40	38.606	46.318	7.712
NO. 60+60	38.349	46.214	7.865
NO. 60+80	38.193	46.095	7.902
NO. 61	38.236	45.996	7.724
NO. 61+20	38.147	45.809	7.662
NO. 61+40	38.019	45.643	7.624
NO. 61+60	37.724	45.461	7.737
NO. 61+80	37.300	45.264	7.964
NO. 62	36.935	45.051	8.116
NO. 62+20	36.496	44.822	8.326
NO. 62+40	36.172	44.578	8.406
NO. 62+60	35.909	44.318	8.409
NO. 62+80	35.712	44.043	8.331
NO. 63	35.533	43.751	8.218
NO. 63+20	35.450	43.445	7.995

ADDITIONAL STUDY ON THE PROJECT FOR
CONSTRUCTION OF MYKOLAIV BRIDGE IN UKRAINE

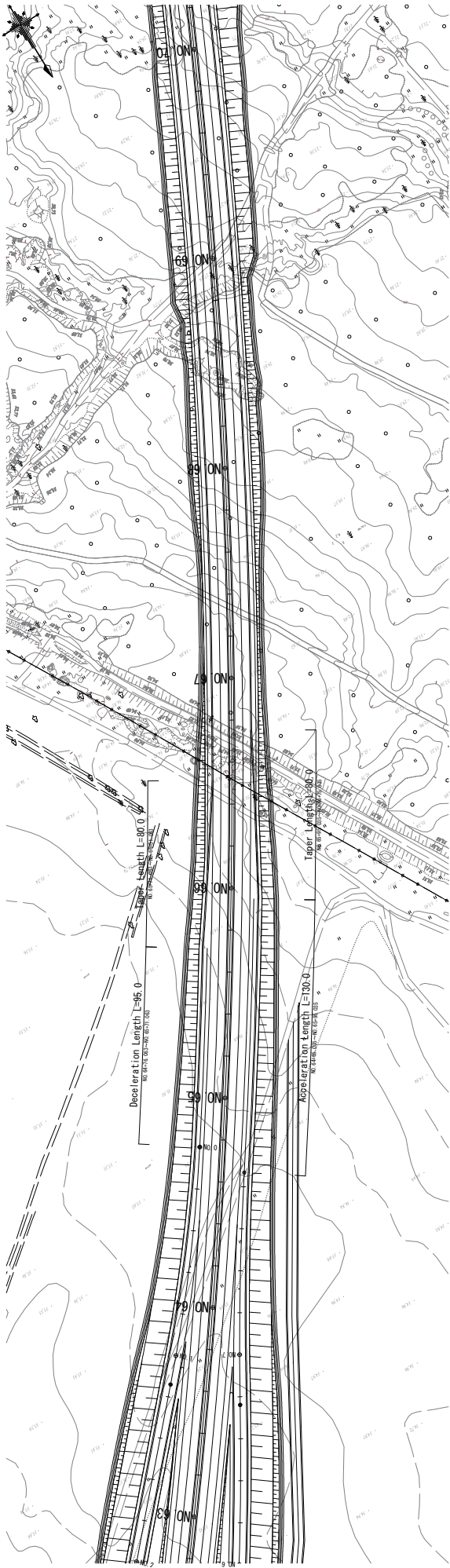
JAPAN INTERNATIONAL COOPERATION AGENCY (JICA)
CENTRAL CONSULTANT INC. & NIPPON KOEI CO., LTD

M-14 BYPASS Route3
PLAN-PROFILE(9)

SCALE
1/2000
No. 34

PLAN NO. 63+0.0 ~ 70+0.0

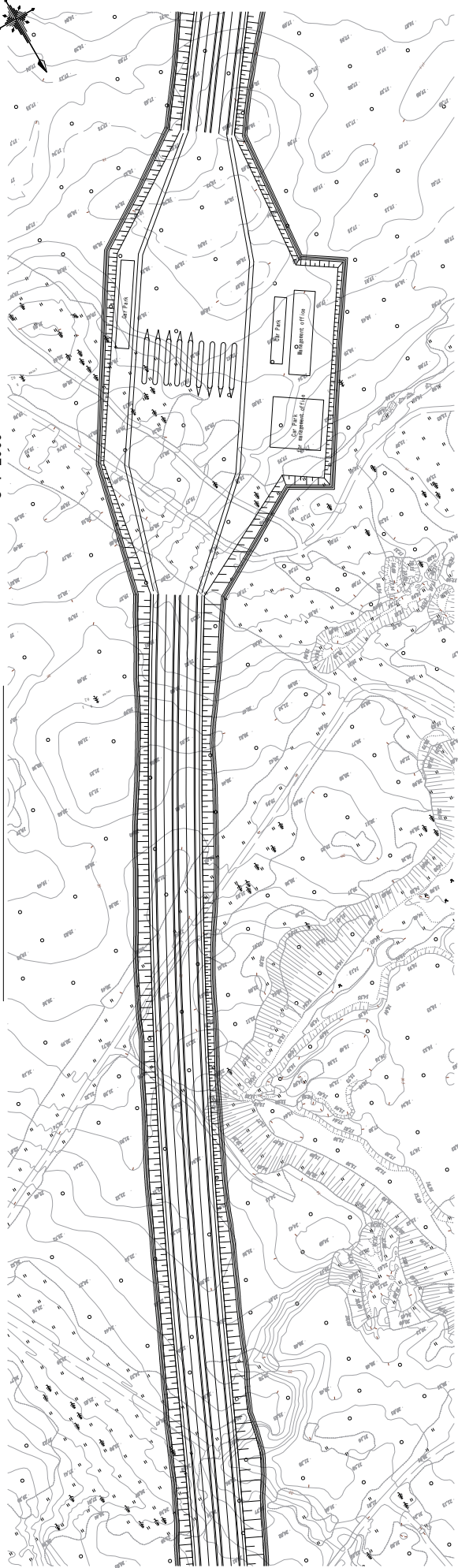
S=1:2000



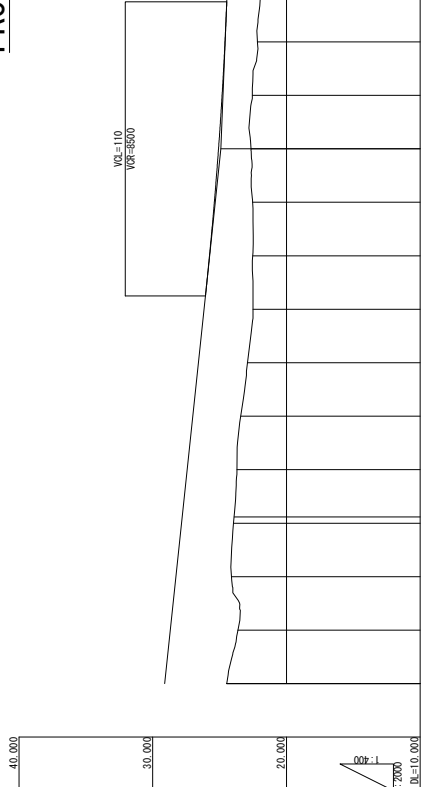
JAPAN INTERNATIONAL COOPERATION AGENCY (JICA) CENTRAL CONSULTANT INC. & NIPPON KOEI CO., LTD	TITLE M-14 BYPASS Route3 PLAN·PROFILE(10)
SCALE 1/2000 No. 35	
ADDITIONAL STUDY ON THE PROJECT FOR CONSTRUCTION OF MYKOLAIV BRIDGE IN UKRAINE	

PLAN NO. 70+0.0 ~ 77+0.0

S=1:2000



PROFILE NO. 70+0.0 ~ 77+0.0



Station	Ground Height	Proposed Height	Grade
NO. 70	24.474	29.100	4.626
+20.000	23.634	28.680	5.046
+40.000	24.112	28.260	4.148
+60.000	22.524	25.754	3.230
+80.000	22.500	26.160	3.660
+100.000	22.524	25.754	3.230
+120.000	22.530	25.393	2.863
+140.000	22.645	25.079	2.434
+160.000	22.588	24.813	2.265
+180.000	22.171	24.594	2.423
+200.000	21.887	24.420	2.533
+220.000	21.473	24.260	2.787
+240.000	21.117	24.100	2.983
+260.000	20.935	23.940	3.005
+280.000	20.491	23.780	3.289
+300.000	20.703	23.620	2.917
+320.000	20.999	23.460	2.461
+340.000	19.708	23.300	3.592
+360.000	19.283	23.140	3.857
+380.000	18.664	22.980	4.316
+400.000	18.821	22.820	3.999
+420.000	19.947	22.660	2.713
+440.000	19.791	22.500	2.709
+460.000	19.997	22.340	2.343
+480.000	19.296	22.180	2.884
+500.000	18.451	22.020	3.569
+520.000	18.500	21.860	3.360
+540.000	18.737	21.700	2.963
+560.000	18.820	21.540	2.720
+580.000	18.526	21.380	2.854
+600.000	18.237	21.220	2.983
+620.000	18.137	21.060	2.923
+640.000	17.817	20.900	3.083

JAPAN INTERNATIONAL COOPERATION AGENCY(JICA)
CENTRAL CONSULTANT INC. & NIPPON KOEI CO., LTD

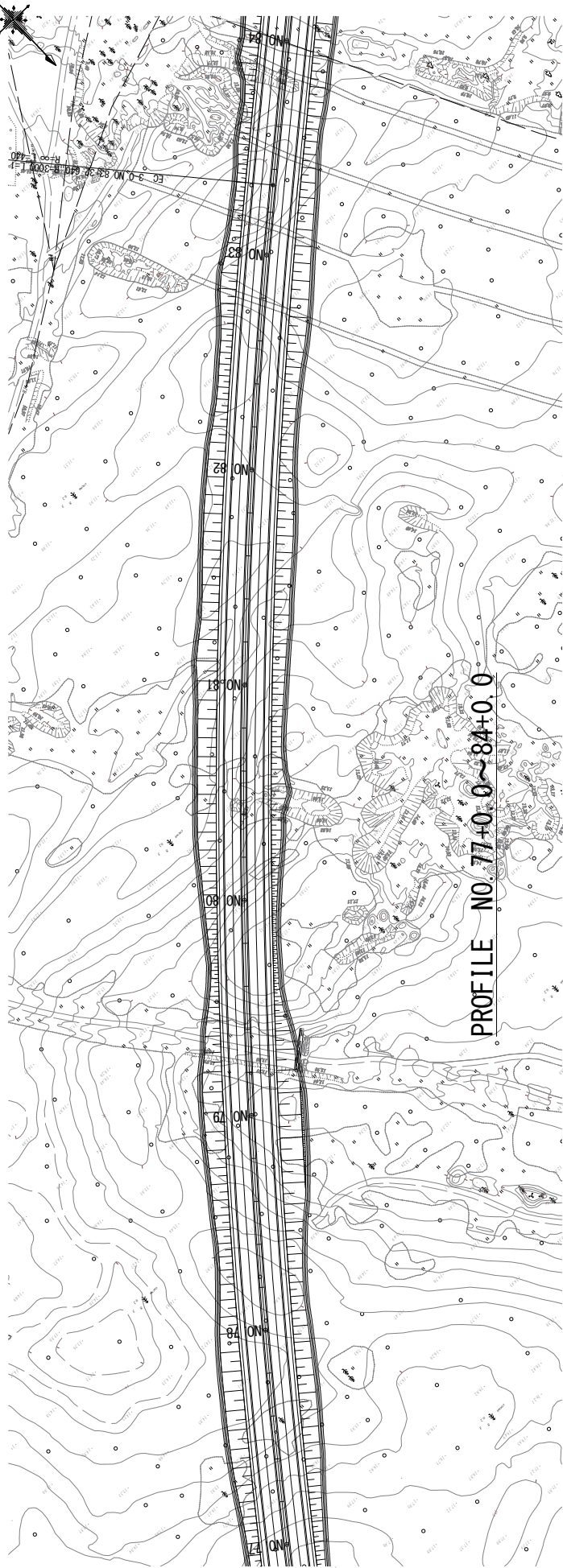
ADDITIONAL STUDY ON THE PROJECT FOR
CONSTRUCTION OF MYKOLAIV BRIDGE IN UKRAINE

M-14 BYPASS Route3
PLAN・PROFILE(11)

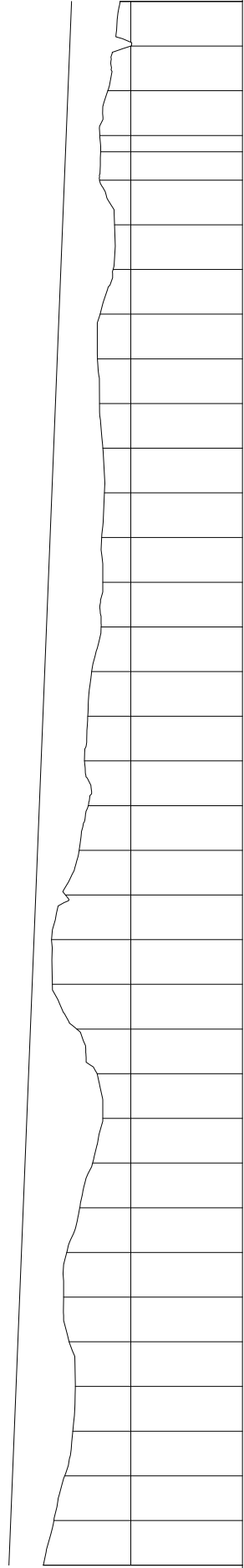
SCALE
1/2000
No. 36

PLAN NO. 77+0.0 ~ 84+0.0

S=1:2000



PROFILE NO. 77+0.0 ~ 84+0.0



Station	Ground Height	Proposed Height	Grade
77+0.00	17.817	20.900	3.083
77+20.00	16.877	20.740	3.863
77+40.00	15.908	20.580	4.672
77+60.00	15.187	20.420	5.233
77+80.00	14.961	20.260	5.299
78+00.00	15.515	20.100	4.585
78+20.00	16.000	19.940	3.940
78+40.00	15.730	19.780	4.050
78+60.00	14.565	19.620	5.055
78+80.00	13.412	19.460	6.048
79+00.00	12.500	19.300	6.800
79+20.00	13.007	19.140	6.133
79+40.00	14.828	18.980	4.152
79+60.00	17.014	18.820	1.806
79+80.00	17.083	18.660	1.577
80+00.00	15.835	18.500	2.665
80+20.00	14.618	18.340	3.722
80+40.00	13.796	18.180	4.384
80+60.00	14.141	18.020	3.879
80+80.00	13.845	17.860	4.015
81+00.00	13.500	17.700	4.200
81+20.00	12.643	17.540	4.897
81+40.00	12.500	17.380	4.880
81+60.00	12.586	17.220	4.624
81+80.00	12.351	17.060	4.709
82+00.00	12.494	16.900	4.406
82+20.00	12.790	16.740	3.950
82+40.00	12.974	16.580	3.606
82+60.00	12.735	16.420	3.685
82+80.00	11.574	16.260	4.686
83+00.00	11.453	16.100	4.647
83+20.00	12.795	15.940	3.145
83+40.00	12.689	15.780	3.150
83+60.00	12.768	15.620	3.072
83+80.00	9.973	15.460	5.487
84+00.00	10.943	15.300	4.357

JAPAN INTERNATIONAL COOPERATION AGENCY (JICA)
CENTRAL CONSULTANT INC. & NIPPON KOEI CO., LTD

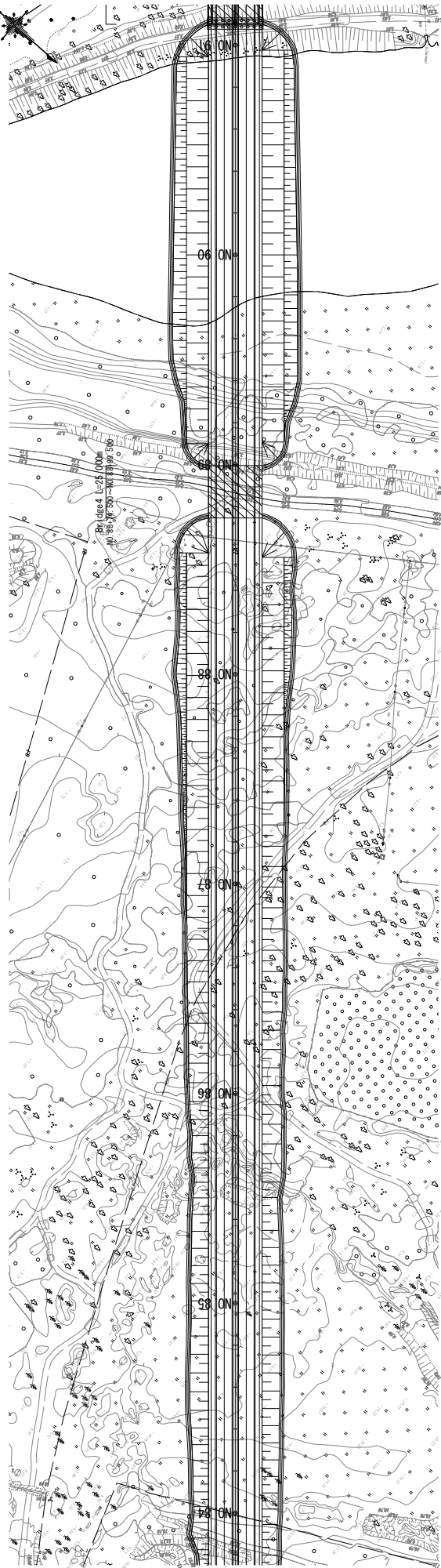
ADDITIONAL STUDY ON THE PROJECT FOR
CONSTRUCTION OF MYKOLAIV BRIDGE IN UKRAINE

M-14 BYPASS Route3
PLAN · PROFILE(12)

SCALE
1/2000
No. 37

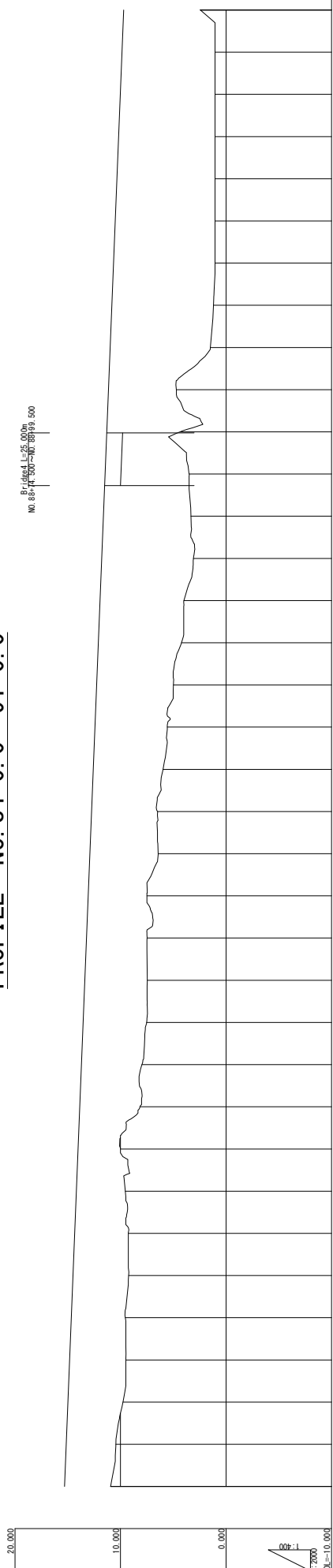
PLAN NO. 84+0.0 ~ 91+0.0

S=1:2000



PROFILE NO. 84+0.0 ~ 91+0.0

BRIDGE L=25.000m
NO. 84+0.000~NO. 89+0.500



Station	Ground Height	Proposed	Cut	Fill	Grade
NO. 84	10.943	15.300			4.357
+20.000	10.442	15.140			4.698
+40.000	9.765	14.980			5.215
+60.000	9.498	14.820			5.324
+80.000	9.548	14.660			5.112
NO. 85	9.231	14.500			5.268
+20.000	9.250	14.340			5.090
+40.000	9.547	14.180			4.633
+60.000	10.000	14.020			4.020
+80.000	8.154	13.860			5.706
NO. 86	7.966	13.700			5.734
+20.000	7.524	13.540			6.016
+40.000	7.454	13.380			5.916
+60.000	7.488	13.220			5.732
+80.000	7.500	13.060			5.560
NO. 87	6.438	12.900			6.462
+20.000	6.501	12.740			6.239
+40.000	5.973	12.580			6.607
+60.000	5.567	12.420			6.853
+80.000	4.985	12.260			7.275
NO. 88	4.220	12.100			7.880
+20.000	3.985	11.940			7.955
+40.000	3.089	11.780			8.691
+60.000	3.327	11.620			8.293
+80.000	2.497	11.460			7.963
NO. 89	4.354	11.300			6.946
+20.000	4.710	11.140			6.430
+40.000	1.487	10.980			9.493
+60.000	1.197	10.820			9.623
+80.000	1.050	10.660			9.610
NO. 90	1.050	10.500			9.450
+20.000	1.050	10.340			9.290
+40.000	1.050	10.180			9.130
+60.000	1.050	10.020			8.970
+80.000	1.050	9.860			8.810
NO. 91	2.437	9.700			7.263

JAPAN INTERNATIONAL COOPERATION AGENCY (JICA)
CENTRAL CONSULTANT INC. & NIPPON KOEI CO., LTD

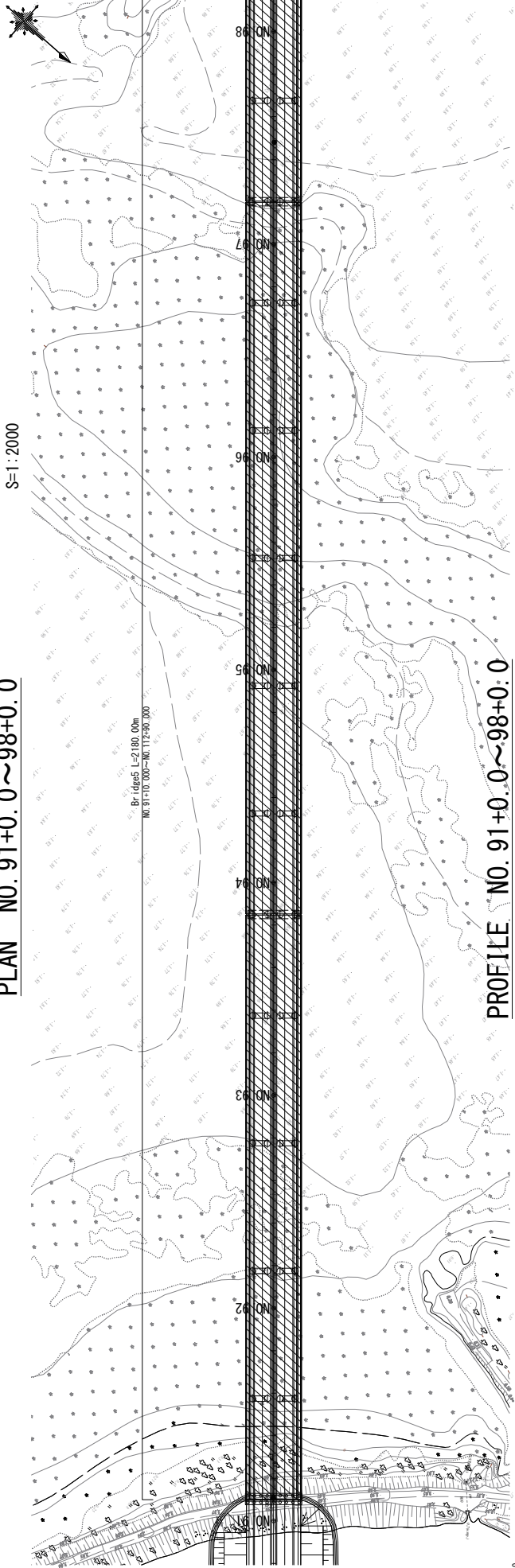
ADDITIONAL STUDY ON THE PROJECT FOR
CONSTRUCTION OF MYKOLAY BRIDGE IN UKRAINE

M-14 BYPASS Route3
PLAN · PROFILE(13)

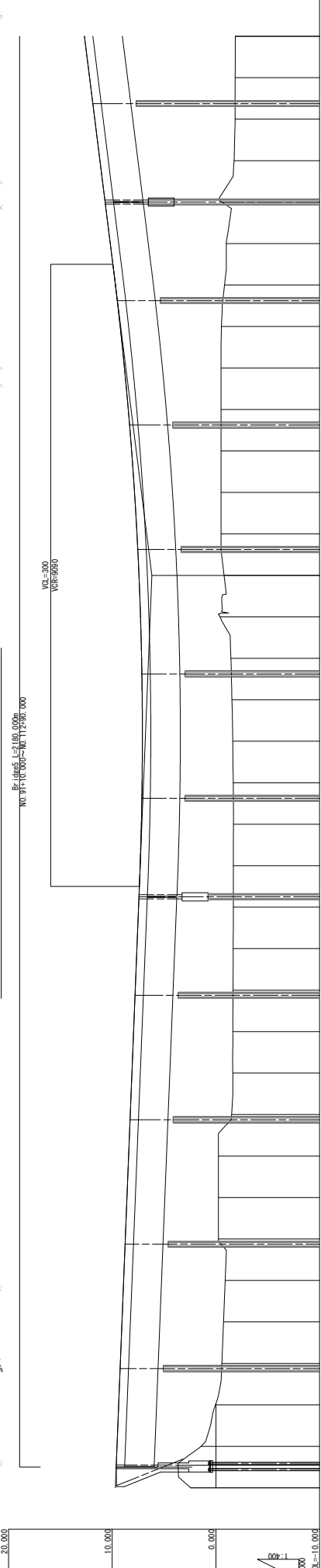
SCALE
1/2000
No. 38

PLAN NO. 91+0.0~98+0.0

S=1:2000



PROFILE NO. 91+0.0~98+0.0



Station	Ground Height	Grade	Fill	Cut
91+000	2.437	9.700		
91+050	1.442	9.540		
91+100	0.035	9.380		
91+150	0.570	9.220		
91+200	-0.731	9.060		
91+250	-0.891	8.900		
91+300	-0.240	8.740		
91+350	-0.240	8.580		
91+400	1.523	8.280		
91+450	8.100	7.940		
91+500	-1.636	7.490		
91+550	-1.632	7.290		
91+600	-1.673	7.620		
91+650	-1.680	7.460		
91+700	-1.688	7.300		
91+750	-1.697	7.190		
91+800	-1.670	7.118		
91+850	-1.621	7.090		
91+900	-1.550	7.106		
91+950	-1.441	7.166		
92+000	-0.403	7.270		
92+050	-0.791	7.418		
92+100	-0.500	7.610		
92+150	-0.500	7.846		
92+200	-0.500	8.126		
92+250	-0.530	8.459		
92+300	-0.500	8.818		
92+350	-0.530	9.230		
92+400	-0.832	9.686		
92+450	-1.000	10.180		
92+500	-0.581	10.680		
92+550	-1.755	11.180		
92+600	-1.847	11.680		
92+650	-1.854	12.180		
92+700	-1.869	12.680		
92+750	-1.869	13.180		
92+800	-1.854	13.680		
92+850	-1.869	14.180		
92+900	-1.869	14.680		

ADDITIONAL STUDY ON THE PROJECT FOR
CONSTRUCTION OF MYKOLAIV BRIDGE IN UKRAINE

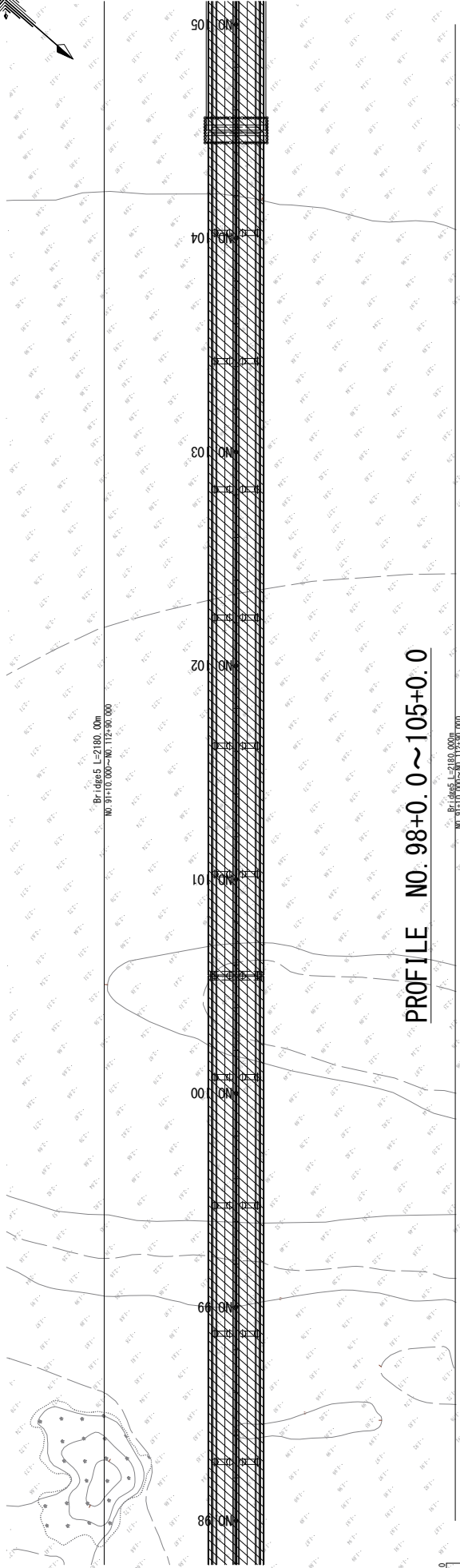
JAPAN INTERNATIONAL COOPERATION AGENCY(JICA)
CENTRAL CONSULTANT INC. & NIPPON KOEI CO., LTD

M-14 BYPASS Route3
PLAN·PROFILE(14)

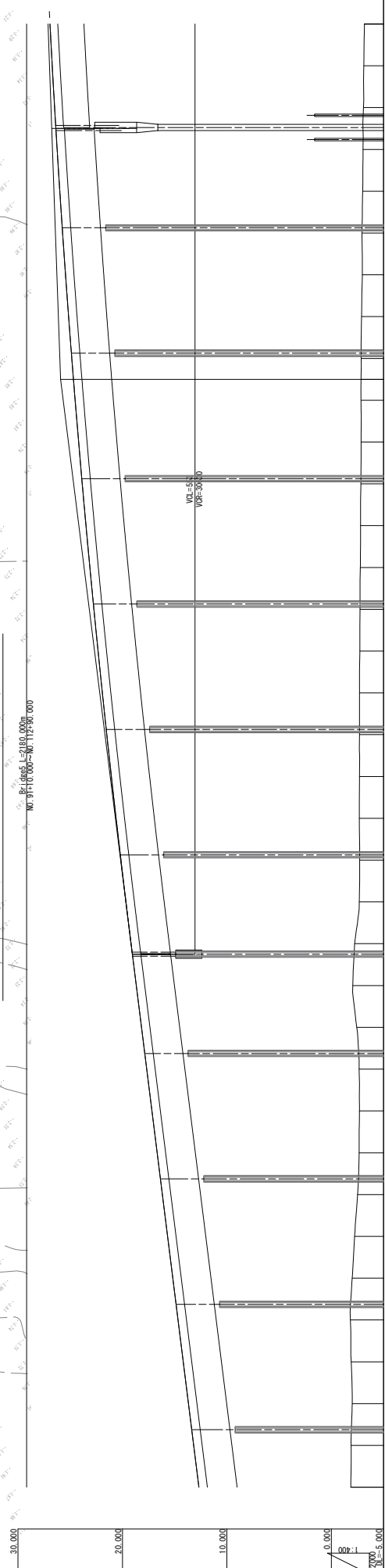
SCALE
1/2000
No. 39

PLAN NO. 98+0.0 ~ 105+0.0

S=1:2000



PROFILE NO. 98+0.0 ~ 105+0.0



Station	Ground Height	Profile Height	Cut	Fill	Grade
98+00	14.549	12.680			
98+10	15.061	13.180			
98+20	15.676	13.680			
98+30	16.076	14.180			
98+40	16.495	14.680			
98+50	16.885	15.180			
98+60	17.175	15.680			
98+70	17.909	15.680			
98+80	18.685	16.180			
98+90	19.335	16.680			
99+00	19.864	17.180			
99+10	20.343	17.680			
99+20	20.608	18.180			
99+30	20.731	18.680			
99+40	21.407	19.180			
99+50	22.340	19.670			
99+60	22.856	20.147			
99+70	23.283	20.611			
99+80	23.762	21.062			
99+90	24.188	21.500			
100+00	24.626	21.925			
100+10	25.057	22.336			
100+20	25.474	22.735			
100+30	25.889	23.120			
100+40	26.294	23.493			
100+50	26.673	23.852			
100+60	27.045	24.198			
100+70	27.369	24.531			
100+80	27.534	24.693			
100+90	27.701	24.851			
101+00	28.053	25.158			
101+10	28.423	25.452			
101+20	28.666	25.733			
101+30	29.000	26.000			
101+40	29.291	26.255			
101+50	29.567	26.496			
101+60	29.836	26.725			
101+70	30.100	26.940			

ADDITIONAL STUDY ON THE PROJECT FOR
CONSTRUCTION OF MYKOLAIY BRIDGE IN UKRAINE

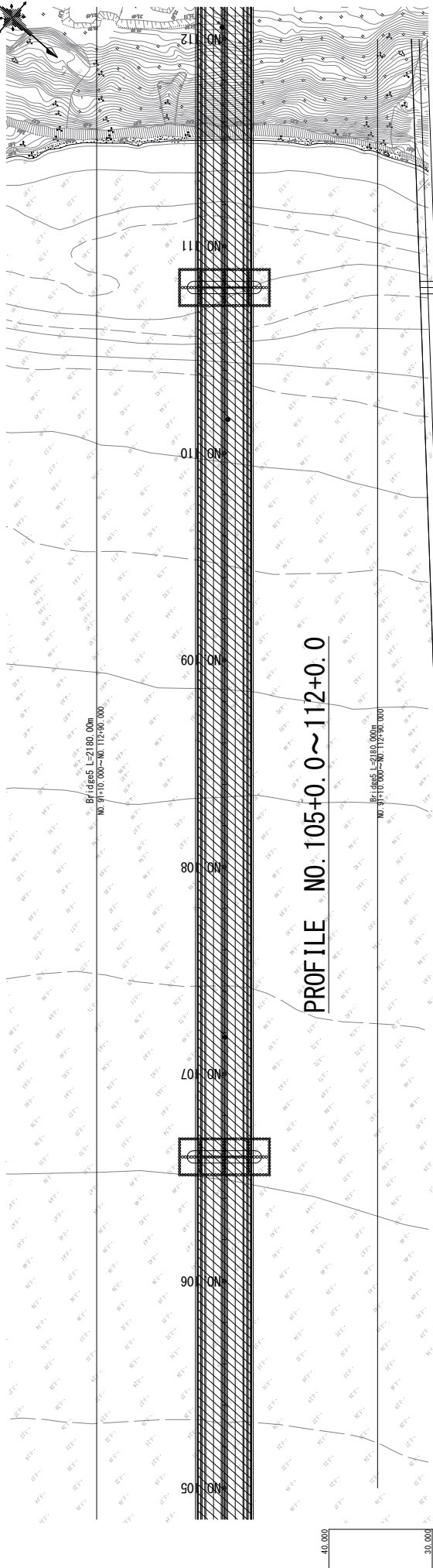
JAPAN INTERNATIONAL COOPERATION AGENCY (JICA)
CENTRAL CONSULTANT INC. & NIPPON KOEI CO., LTD

M-14 BYPASS Route3
PLAN·PROFILE(15)

SCALE
1/2000
No. 40

PLAN NO. 105+0.0 ~ 112+0.0

S=1:2000



PROFILE NO. 105+0.0 ~ 112+0.0

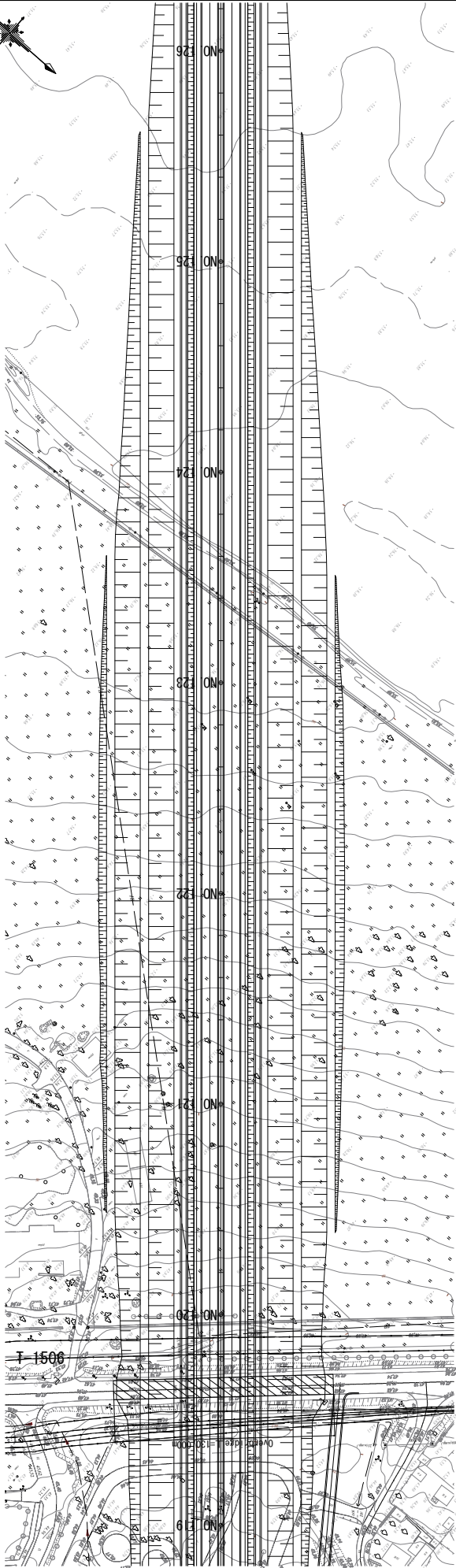


Station	Ground Height	Fill	Cut	Grade
105+0.000	26.940			30.100
105+0.100	27.142			30.335
105+0.200	27.142			30.335
105+0.300	27.142			30.335
105+0.400	27.142			30.335
105+0.500	27.142			30.335
105+0.600	27.142			30.335
105+0.700	27.142			30.335
105+0.800	27.142			30.335
105+0.900	27.142			30.335
105+1.000	27.142			30.335
105+1.100	27.142			30.335
105+1.200	27.142			30.335
105+1.300	27.142			30.335
105+1.400	27.142			30.335
105+1.500	27.142			30.335
105+1.600	27.142			30.335
105+1.700	27.142			30.335
105+1.800	27.142			30.335
105+1.900	27.142			30.335
105+2.000	27.142			30.335
105+2.100	27.142			30.335
105+2.200	27.142			30.335
105+2.300	27.142			30.335
105+2.400	27.142			30.335
105+2.500	27.142			30.335
105+2.600	27.142			30.335
105+2.700	27.142			30.335
105+2.800	27.142			30.335
105+2.900	27.142			30.335
105+3.000	27.142			30.335
105+3.100	27.142			30.335
105+3.200	27.142			30.335
105+3.300	27.142			30.335
105+3.400	27.142			30.335
105+3.500	27.142			30.335
105+3.600	27.142			30.335
105+3.700	27.142			30.335
105+3.800	27.142			30.335
105+3.900	27.142			30.335
105+4.000	27.142			30.335
105+4.100	27.142			30.335
105+4.200	27.142			30.335
105+4.300	27.142			30.335
105+4.400	27.142			30.335
105+4.500	27.142			30.335
105+4.600	27.142			30.335
105+4.700	27.142			30.335
105+4.800	27.142			30.335
105+4.900	27.142			30.335
105+5.000	27.142			30.335
105+5.100	27.142			30.335
105+5.200	27.142			30.335
105+5.300	27.142			30.335
105+5.400	27.142			30.335
105+5.500	27.142			30.335
105+5.600	27.142			30.335
105+5.700	27.142			30.335
105+5.800	27.142			30.335
105+5.900	27.142			30.335
105+6.000	27.142			30.335
105+6.100	27.142			30.335
105+6.200	27.142			30.335
105+6.300	27.142			30.335
105+6.400	27.142			30.335
105+6.500	27.142			30.335
105+6.600	27.142			30.335
105+6.700	27.142			30.335
105+6.800	27.142			30.335
105+6.900	27.142			30.335
105+7.000	27.142			30.335
105+7.100	27.142			30.335
105+7.200	27.142			30.335
105+7.300	27.142			30.335
105+7.400	27.142			30.335
105+7.500	27.142			30.335
105+7.600	27.142			30.335
105+7.700	27.142			30.335
105+7.800	27.142			30.335
105+7.900	27.142			30.335
105+8.000	27.142			30.335
105+8.100	27.142			30.335
105+8.200	27.142			30.335
105+8.300	27.142			30.335
105+8.400	27.142			30.335
105+8.500	27.142			30.335
105+8.600	27.142			30.335
105+8.700	27.142			30.335
105+8.800	27.142			30.335
105+8.900	27.142			30.335
105+9.000	27.142			30.335
105+9.100	27.142			30.335
105+9.200	27.142			30.335
105+9.300	27.142			30.335
105+9.400	27.142			30.335
105+9.500	27.142			30.335
105+9.600	27.142			30.335
105+9.700	27.142			30.335
105+9.800	27.142			30.335
105+9.900	27.142			30.335
105+10.000	27.142			30.335
105+10.100	27.142			30.335
105+10.200	27.142			30.335
105+10.300	27.142			30.335
105+10.400	27.142			30.335
105+10.500	27.142			30.335
105+10.600	27.142			30.335
105+10.700	27.142			30.335
105+10.800	27.142			30.335
105+10.900	27.142			30.335
105+11.000	27.142			30.335
105+11.100	27.142			30.335
105+11.200	27.142			30.335
105+11.300	27.142			30.335
105+11.400	27.142			30.335
105+11.500	27.142			30.335
105+11.600	27.142			30.335
105+11.700	27.142			30.335
105+11.800	27.142			30.335
105+11.900	27.142			30.335
105+12.000	27.142			30.335

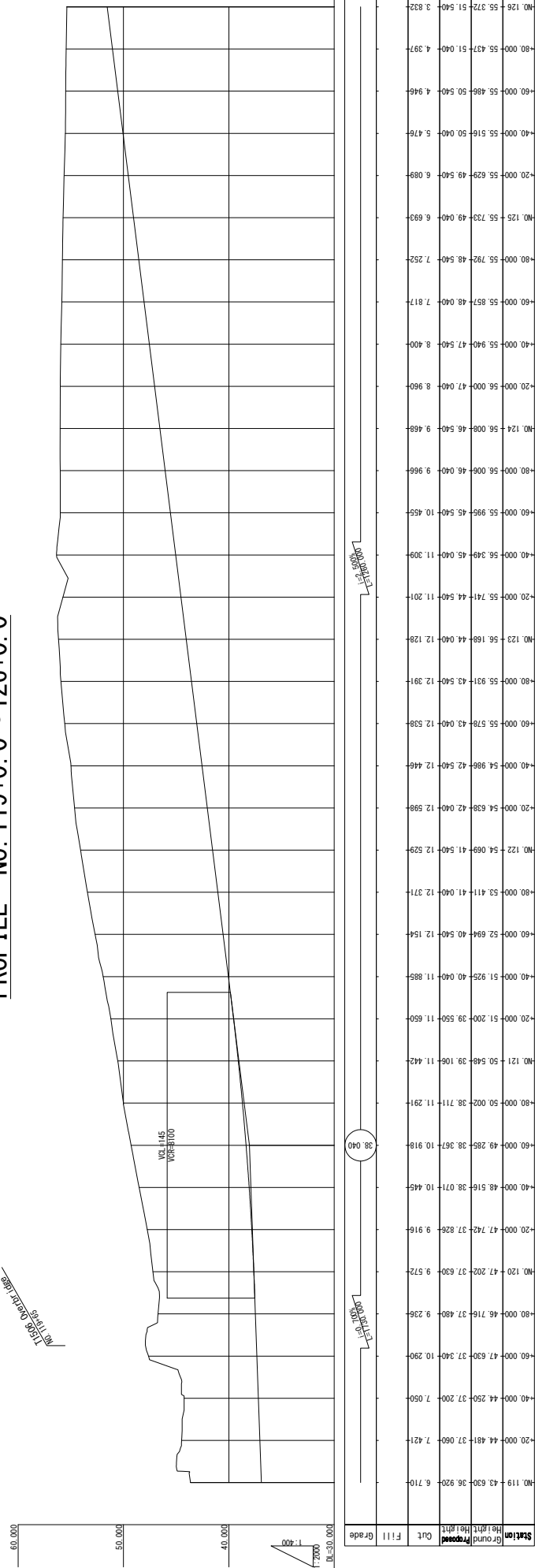
ADDITIONAL STUDY ON THE PROJECT FOR CONSTRUCTION OF MYKOLAIV BRIDGE IN UKRAINE		JAPAN INTERNATIONAL COOPERATION AGENCY (JICA) CENTRAL CONSULTANT INC. & NIPPON KOEI CO., LTD		TITLE M-14 BYPASS Route3 PLAN・PROFILE(16)		SCALE 1/2000 No. 41	
---	--	---	--	---	--	---------------------------	--

PLAN NO. 119+0.0 ~ 126+0.0

S=1:2000



PROFILE NO. 119+0.0 ~ 126+0.0



Station	Ground Height	Profile Height	Cut	Fill	Grade
119+0.00	43.630	38.920	6.710		
120+0.00	44.481	37.060	7.421		
140+0.00	44.250	37.200	7.050		
160+0.00	47.630	37.240	10.290		
180+0.00	46.716	37.480	9.236		
200+0.00	47.202	37.630	9.572		
220+0.00	47.742	37.826	9.916		
40+0.00	48.616	38.071	10.445		
60+0.00	49.285	38.367	10.918		
80+0.00	50.002	38.711	11.291		
100+0.00	50.689	41.540	12.529		
120+0.00	54.638	42.040	12.598		
140+0.00	54.968	42.540	12.446		
160+0.00	55.578	43.040	12.538		
180+0.00	55.931	43.540	12.391		
200+0.00	56.168	44.040	12.128		
220+0.00	55.741	44.540	11.201		
40+0.00	56.349	45.040	11.309		
60+0.00	55.955	45.540	10.455		
80+0.00	56.006	46.040	9.966		
100+0.00	56.008	46.540	9.468		
120+0.00	56.000	47.040	8.960		
140+0.00	55.940	47.540	8.400		
160+0.00	55.857	48.040	7.817		
180+0.00	55.792	48.540	7.252		
200+0.00	55.629	49.040	6.689		
220+0.00	55.516	49.540	6.026		
40+0.00	55.486	50.040	4.946		
60+0.00	55.437	50.540	4.397		
80+0.00	55.372	51.040	3.832		

JAPAN INTERNATIONAL COOPERATION AGENCY (JICA)
CENTRAL CONSULTANT INC. & NIPPON KOEI CO., LTD

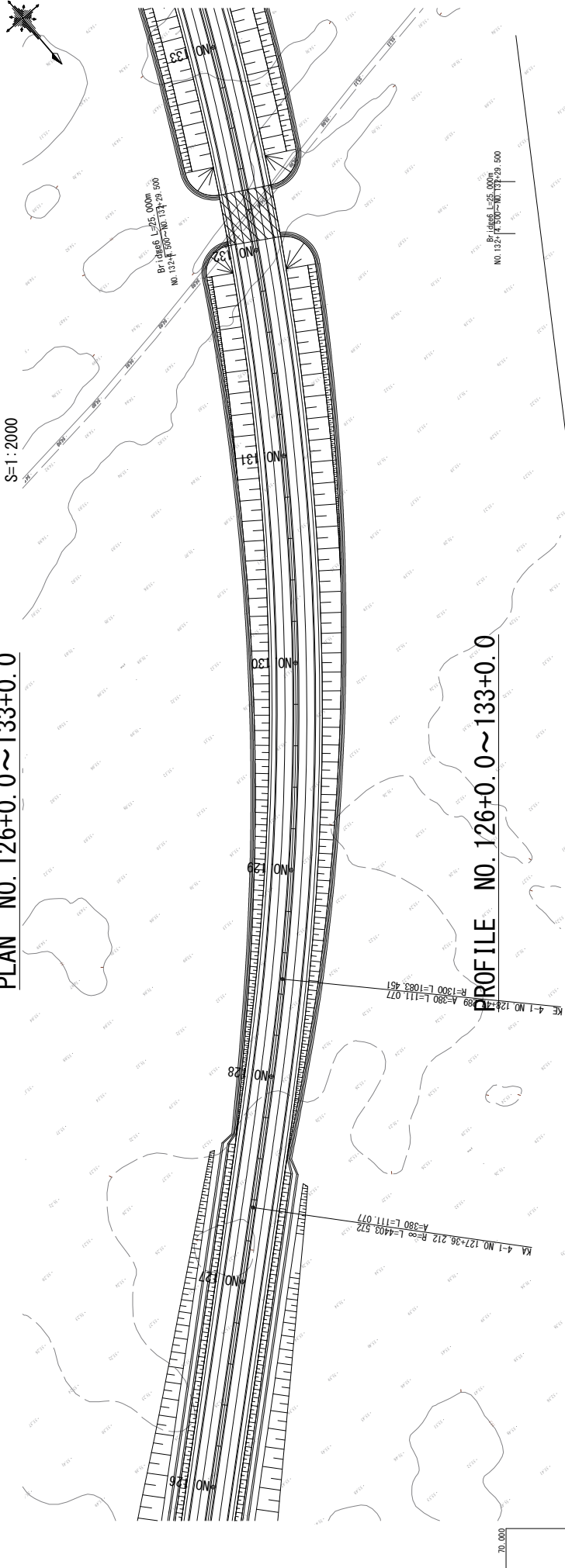
M-14 BYPASS Route3
PLAN · PROFILE(18)

SCALE
1/2000
No. 43

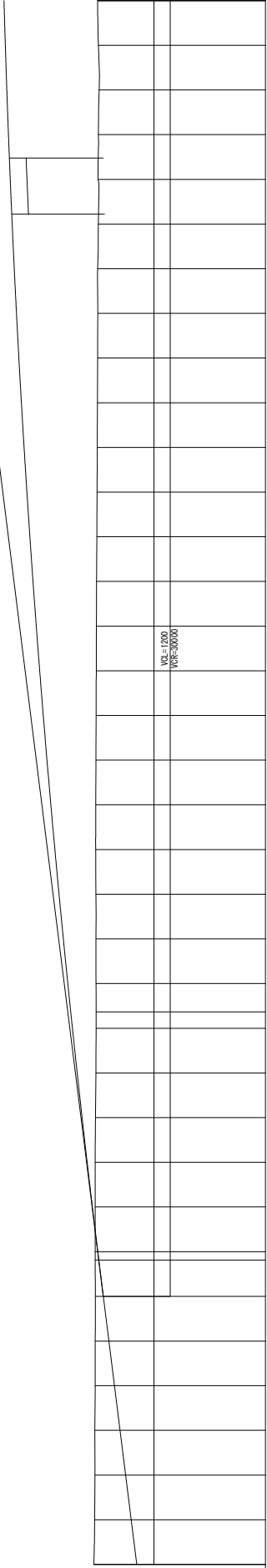
ADDITIONAL STUDY ON THE PROJECT FOR
CONSTRUCTION OF MYKOLAIV BRIDGE IN UKRAINE

PLAN NO. 126+0.0 ~ 133+0.0

S=1:2000



PROFILE NO. 126+0.0 ~ 133+0.0

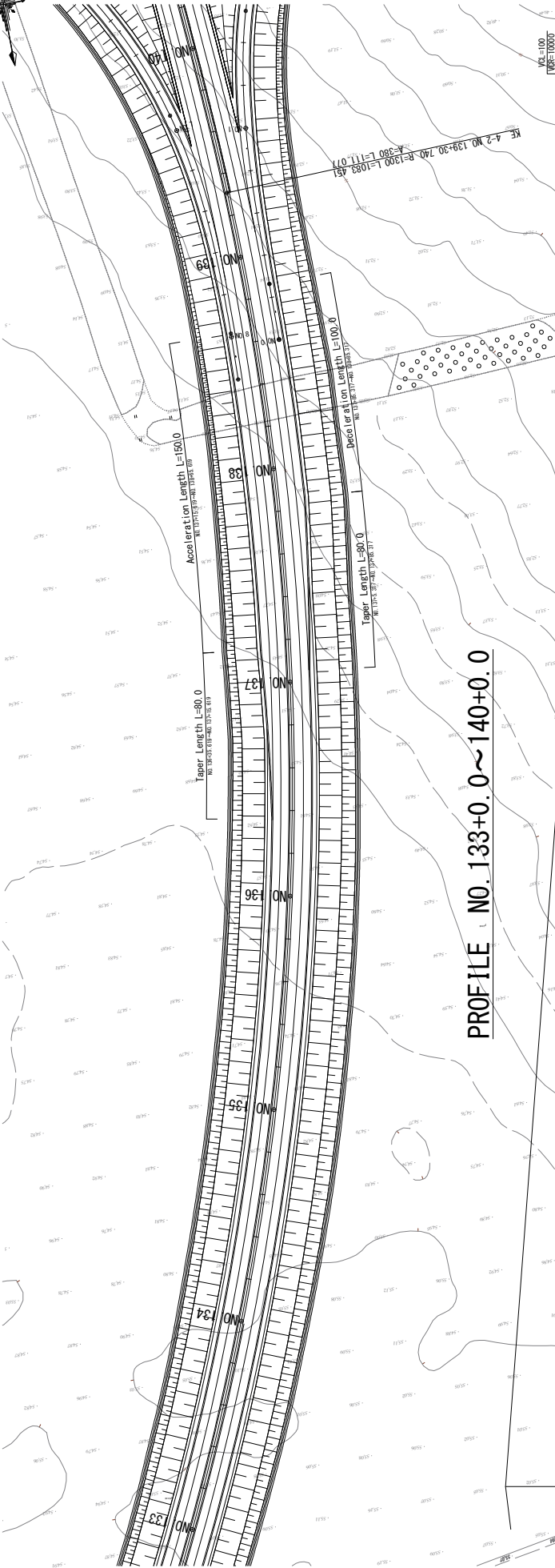


Station	Ground Height	Proposed Height	Cut	Fill	Grade
NO. 126+55.372	51.540	52.040	0.271		
NO. 127+55.256	54.040	54.040	1.216		
NO. 128+55.233	56.434	56.434	1.201		
NO. 129+55.195	58.500	58.500	3.305		
NO. 130+55.166	60.234	60.234	5.068		
NO. 131+55.074	61.634	61.634	6.560		
NO. 132+54.972	62.700	62.700	7.728		
NO. 133+54.914	62.514	62.514	7.470		
NO. 134+60.834	61.114	61.114	6.001		
NO. 135+55.092	61.380	61.380	6.288		
NO. 136+55.058	61.874	61.874	6.816		
NO. 137+55.041	62.100	62.100	7.059		
NO. 138+55.026	62.314	62.314	7.288		
NO. 139+55.044	62.514	62.514	7.470		
NO. 140+55.000	62.874	62.874	7.874		
NO. 141+54.966	63.034	63.034	8.068		
NO. 142+54.907	63.180	63.180	8.273		
NO. 143+54.967	63.314	63.314	8.347		
NO. 144+55.047	63.434	63.434	8.387		

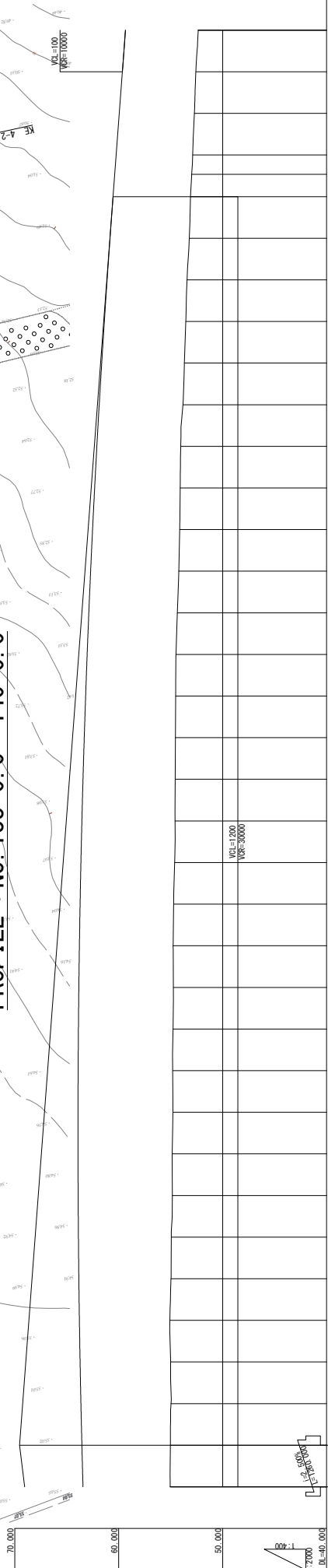
ADDITIONAL STUDY ON THE PROJECT FOR CONSTRUCTION OF MYKOLAIV BRIDGE IN UKRAINE	JAPAN INTERNATIONAL COOPERATION AGENCY(JICA) CENTRAL CONSULTANT INC. & NIPPON KOEI CO., LTD	TITLE M-14 BYPASS Route3 PLAN・PROFILE(19)
		SCALE 1/2000 No. 44

PLAN NO. 133+0.0 ~ 140+0.0

S=1:2000



PROFILE NO. 133+0.0 ~ 140+0.0

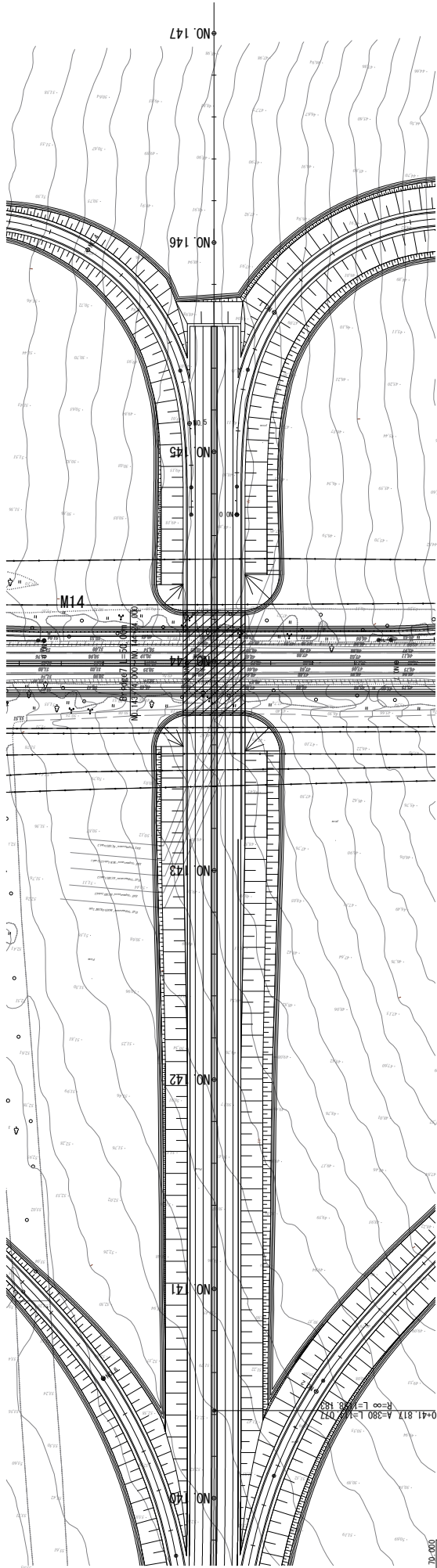


Station	Ground Height	Proposed Height	Fill	Grade
133+000	55.047	63.424	8.387	
133+050	55.047	63.424	8.387	
133+100	55.047	63.424	8.387	
133+150	54.943	63.874	8.931	
134+000	54.969	63.834	8.865	
134+050	54.969	63.834	8.865	
134+100	55.070	63.780	8.710	
134+150	55.005	63.714	8.709	
135+000	54.807	63.900	9.093	
135+050	54.775	63.874	9.099	
135+100	54.737	63.834	9.097	
135+150	54.762	63.780	9.018	
136+000	54.708	63.714	9.006	
136+050	54.610	63.634	9.024	
136+100	54.582	63.540	8.958	
136+150	54.569	63.434	8.865	
137+000	54.545	63.314	8.769	
137+050	54.520	63.180	8.660	
137+100	54.492	63.034	8.542	
137+150	54.364	62.874	8.510	
138+000	54.222	62.700	8.478	
138+050	54.132	62.514	8.382	
138+100	54.089	62.314	8.225	
138+150	54.033	62.100	8.067	
139+000	53.818	61.874	7.956	
139+050	53.818	61.874	7.956	
139+100	53.678	61.634	7.964	
139+150	53.538	61.380	7.842	
140+000	53.430	61.114	7.684	
140+050	53.217	60.834	7.617	
140+100	53.090	60.540	7.450	
140+150	52.979	60.379	7.400	
141+000	52.879	60.240	7.361	
141+050	52.717	59.940	7.223	
141+100	52.576	59.640	7.064	
141+150	52.352	59.360	7.008	

ADDITIONAL STUDY ON THE PROJECT FOR CONSTRUCTION OF MYKOLAIV BRIDGE IN UKRAINE		JAPAN INTERNATIONAL COOPERATION AGENCY(JICA) CENTRAL CONSULTANT INC. & NIPPON KOEI CO., LTD		TITLE M-14 BYPASS Route3 PLAN・PROFILE(20)		SCALE 1/2000 No. 45	
---	--	--	--	---	--	---------------------------	--

PLAN NO. 140+0.0 ~ 147+0.0

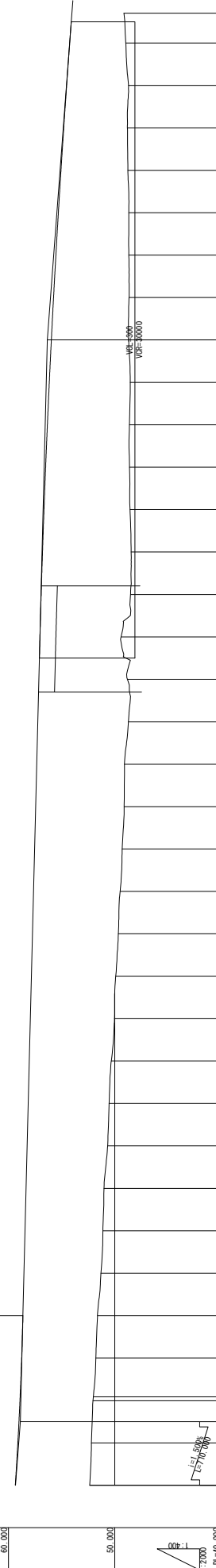
S=1:2000



PROFILE NO. 140+0.0 ~ 147+0.0

VC=100
VGE=1000

VC=100
VGE=1000



Station	Ground Height	Proposed Height	Fill	Cut
NO. 140	52.352	59.380	7.028	
NO. 140+000	52.194	59.120	6.926	
NO. 140+005	52.048	58.904	6.856	
NO. 140+010	52.015	58.904	6.889	
NO. 140+015	52.015	58.904	6.889	
NO. 140+020	51.618	58.640	6.978	
NO. 140+025	51.782	58.760	6.978	
NO. 140+030	51.728	58.760	6.978	
NO. 140+035	51.291	58.540	7.249	
NO. 140+040	51.112	58.440	7.328	
NO. 140+045	51.009	58.340	7.331	
NO. 140+050	50.665	58.240	7.575	
NO. 140+055	50.531	58.140	7.609	
NO. 140+060	50.324	58.040	7.716	
NO. 140+065	49.903	57.840	7.937	
NO. 140+070	49.652	57.740	8.088	
NO. 140+075	49.485	57.640	8.155	
NO. 140+080	49.297	57.540	8.243	
NO. 140+085	49.118	57.440	8.322	
NO. 140+090	48.981	57.340	8.358	
NO. 140+095	48.705	57.240	8.535	
NO. 140+100	48.806	57.140	8.334	
NO. 140+105	48.402	57.038	8.417	
NO. 140+110	48.452	56.799	8.347	
NO. 140+115	48.557	56.659	8.102	
NO. 140+120	48.601	56.505	7.904	
NO. 140+125	48.610	56.339	7.729	
NO. 140+130	48.535	56.159	7.624	
NO. 140+135	48.688	55.965	7.279	56.340
NO. 140+140	48.651	55.759	7.108	
NO. 140+145	48.617	55.539	6.868	
NO. 140+150	48.617	55.305	6.634	
NO. 140+155	48.760	55.059	6.299	
NO. 140+160	48.802	54.799	5.997	
NO. 140+165	48.702	54.525	5.823	
NO. 140+170	48.954	54.239	5.285	
NO. 147	53.940			

ADDITIONAL STUDY ON THE PROJECT FOR
CONSTRUCTION OF MYKOLAIV BRIDGE IN UKRAINE

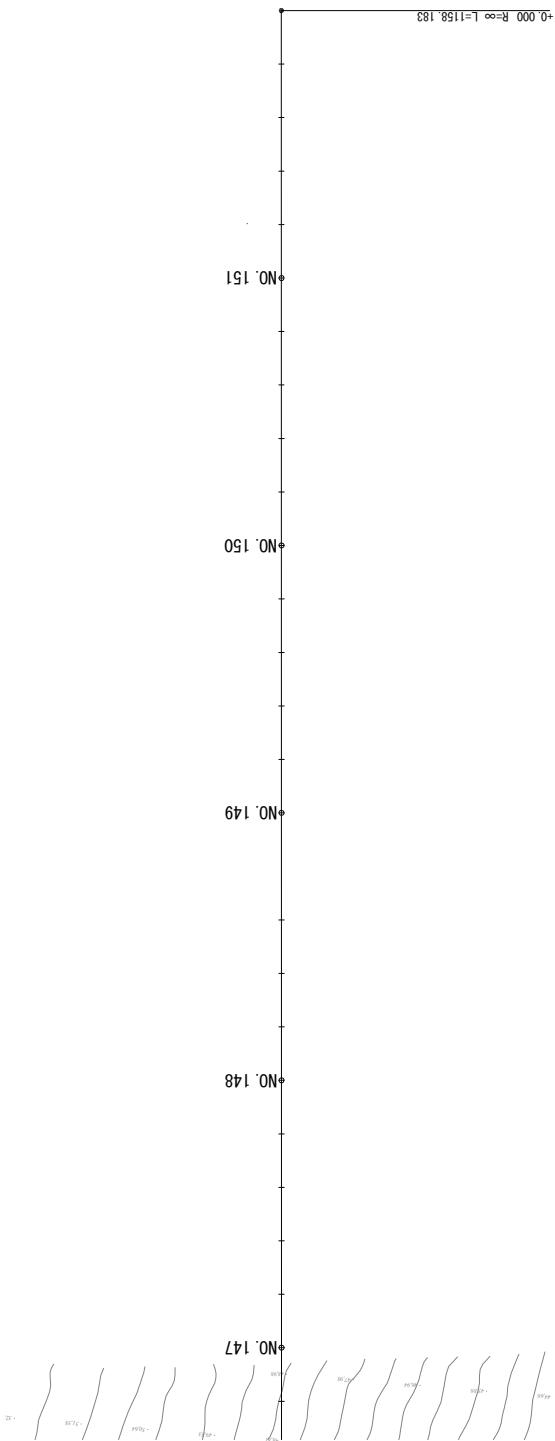
JAPAN INTERNATIONAL COOPERATION AGENCY (JICA)
CENTRAL CONSULTANT INC. & NIPPON KOEI CO., LTD

M-14 BYPASS Route3
PLAN · PROFILE(21)

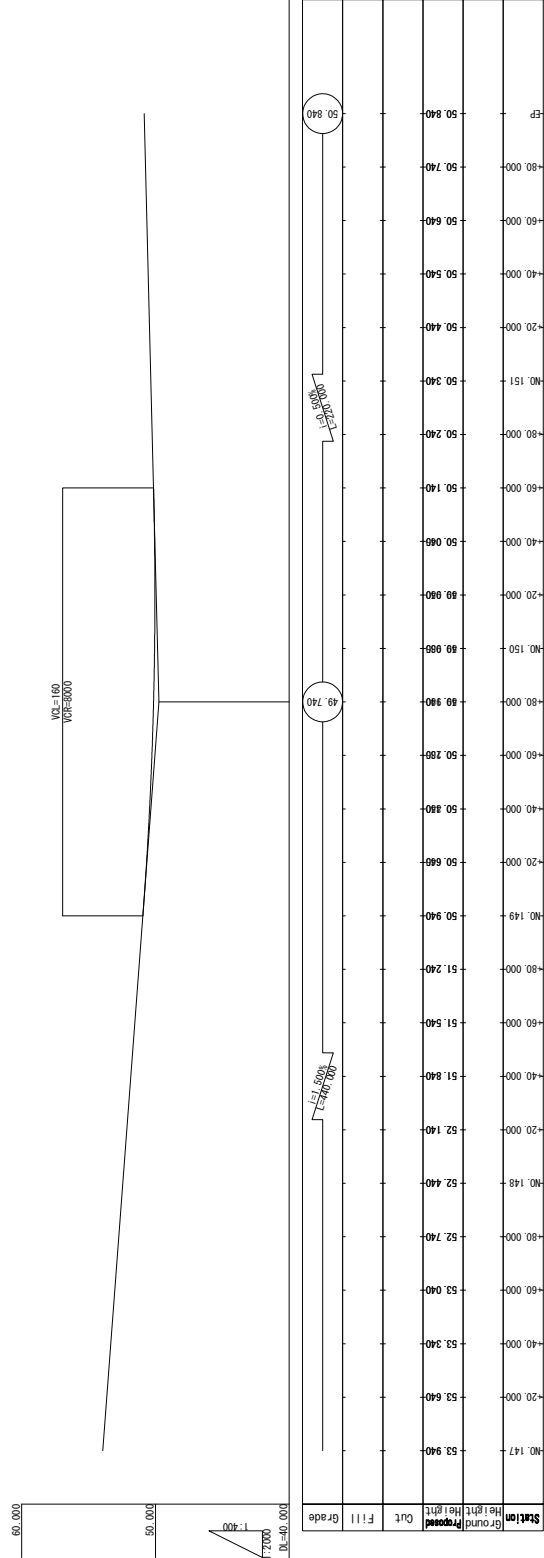
SCALE
1/2000
No. 46

PLAN NO. 147+0.0 ~ 151+40.0

S=1:2000



PROFILE NO. 147+0.0 ~ 151+40.0



ADDITIONAL STUDY ON THE PROJECT FOR
CONSTRUCTION OF MYKOLAIV BRIDGE IN UKRAINE

JAPAN INTERNATIONAL COOPERATION AGENCY (JICA)

CENTRAL CONSULTANT INC. & NIPPON KOEI CO., LTD

TITLE

M-14 BYPASS Route3
PLAN · PROFILE(22)

SCALE

1/2000

No.

47

INTERCHANGE PLAN (1)

S=1:5000

Interchange at Origin (Route 2, 3)



ADDITIONAL STUDY ON THE PROJECT FOR
CONSTRUCTION OF MYKOLAIV BRIDGE IN UKRAINE

JAPAN INTERNATIONAL COOPERATION AGENCY (JICA)
CENTRAL CONSULTANT INC. & NIPPON KOEI CO., LTD

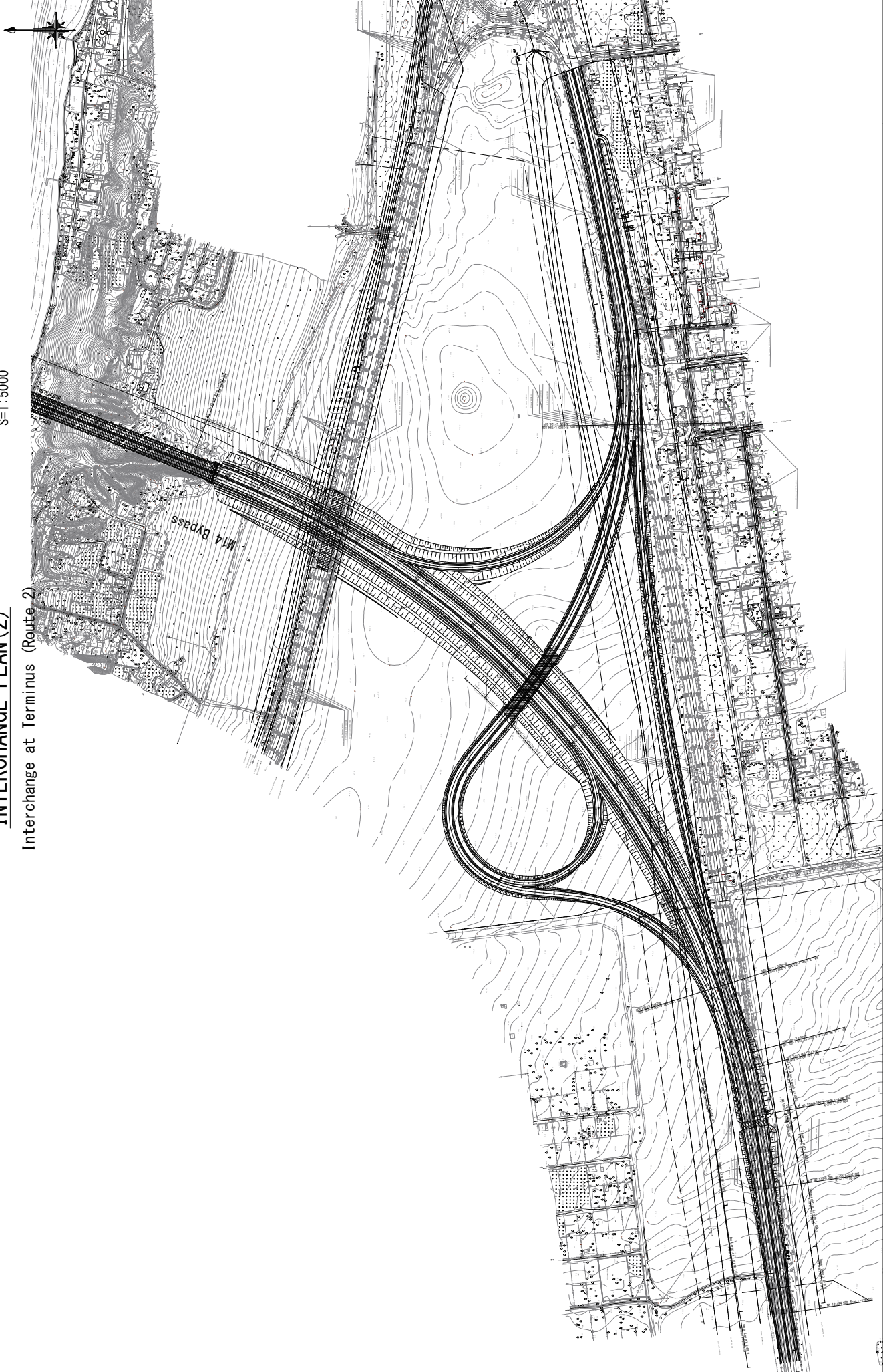
TITLE
INTERCHANGE PLAN(1) Interchange at Origin (Route 2, 3)

SCALE
1/5000
No. 48

INTERCHANGE PLAN (2)

S=1:5000

Interchange at Terminus (Route 2)



ADDITIONAL STUDY ON THE PROJECT FOR
CONSTRUCTION OF MYKOLAIV BRIDGE IN UKRAINE

JAPAN INTERNATIONAL COOPERATION AGENCY(JICA)

CENTRAL CONSULTANT INC. & NIPPON KOEI CO., LTD

TITLE
INTERCHANGE PLAN(2) Interchange at Terminus (Route 2)

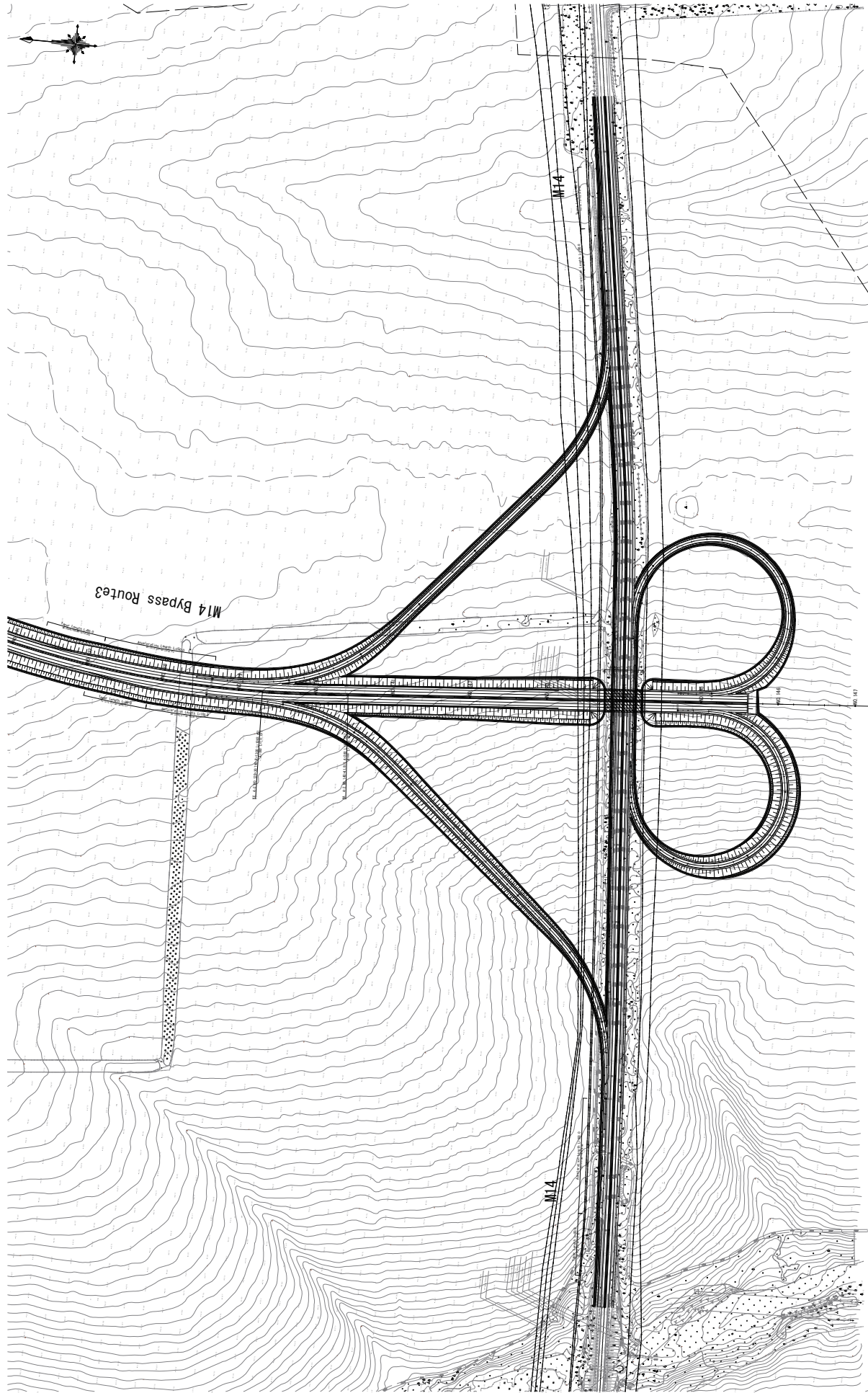
SCALE
1/5000

No.
49

INTERCHANGE PLAN (3)

S=1:5000

Interchange at Terminus (Route 3)



ADDITIONAL STUDY ON THE PROJECT FOR
CONSTRUCTION OF MYKOLAIV BRIDGE IN UKRAINE

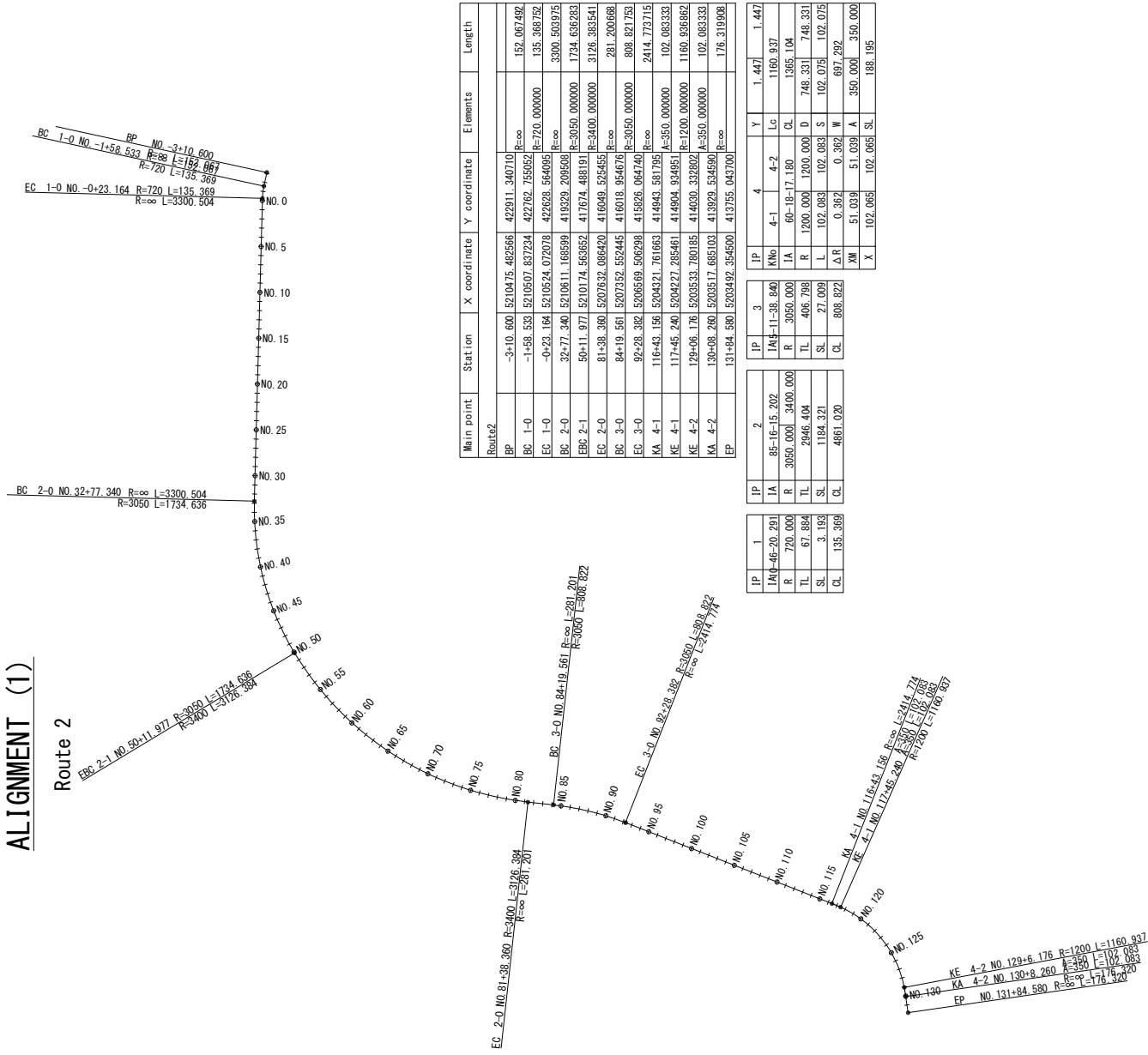
JAPAN INTERNATIONAL COOPERATION AGENCY (JICA)
CENTRAL CONSULTANT INC. & NIPPON KOEI CO., LTD

TITLE
INTERCHANGE PLAN(3) Interchange at Terminus (Route 3)

SCALE
1/5000
No. 50

ALIGNMENT (1)

Route 2



Main point	Station	X coordinate	Y coordinate	Elements	Length
Route2					
BP	-3+10.600	521047.5	482566.4	422911.340710	
BC 1-0	-1+58.538	521050.7	482724.4	422782.755957	152.067492
EC 1-0	-0+23.184	521052.4	472078.8	422928.564098	135.369752
BC 2-0	32+77.340	521061.1	419329.2	209508	3300.363975
EBC 2-1	50+11.977	521017.4	563652.4	417674.488191	1734.636293
EC 2-0	81+38.380	520763.2	086420.4	416049.525456	3126.383541
BC 3-0	84+19.561	520735.2	552445.4	416018.954676	281.220068
EC 3-0	92+28.392	520656.9	506298.4	415826.064740	808.321751
KA 4-1	117+45.240	520427.1	285461.4	414904.934951	2414.713715
KE 4-1	129+06.176	520353.3	780185.4	414030.332803	102.083333
KA 4-2	130+08.260	520351.7	685103.4	413929.524590	1160.836862
EP	131+84.580	520349.2	354500.4	413755.043700	102.083333

IP	1	2	3	4	Y	1.447
IA	85-16+15.202	IA	11-38.840	4-1	4-2	1.447
R	720.000	R	3050.000	IA	60-19+17.180	1160.937
TL	67.884	TL	406.798	R	1200.000	1385.104
SL	3.193	SL	27.009	L	102.083	748.331
CL	135.369	CL	808.822	ΔR	0.362	102.075
				ΔW	51.039	697.292
				ΔX	102.065	350.000
				ΔY	102.065	188.195

JAPAN INTERNATIONAL COOPERATION AGENCY (JICA)
CENTRAL CONSULTANT INC. & NIPPON KOEI CO., LTD

M-14 BYPASS Route2
ALIGNMENT (1)

SCALE
1/50000
No.
51

ADDITIONAL STUDY ON THE PROJECT FOR
CONSTRUCTION OF MYKOLAIV BRIDGE IN UKRAINE

ALIGNMENT (2)

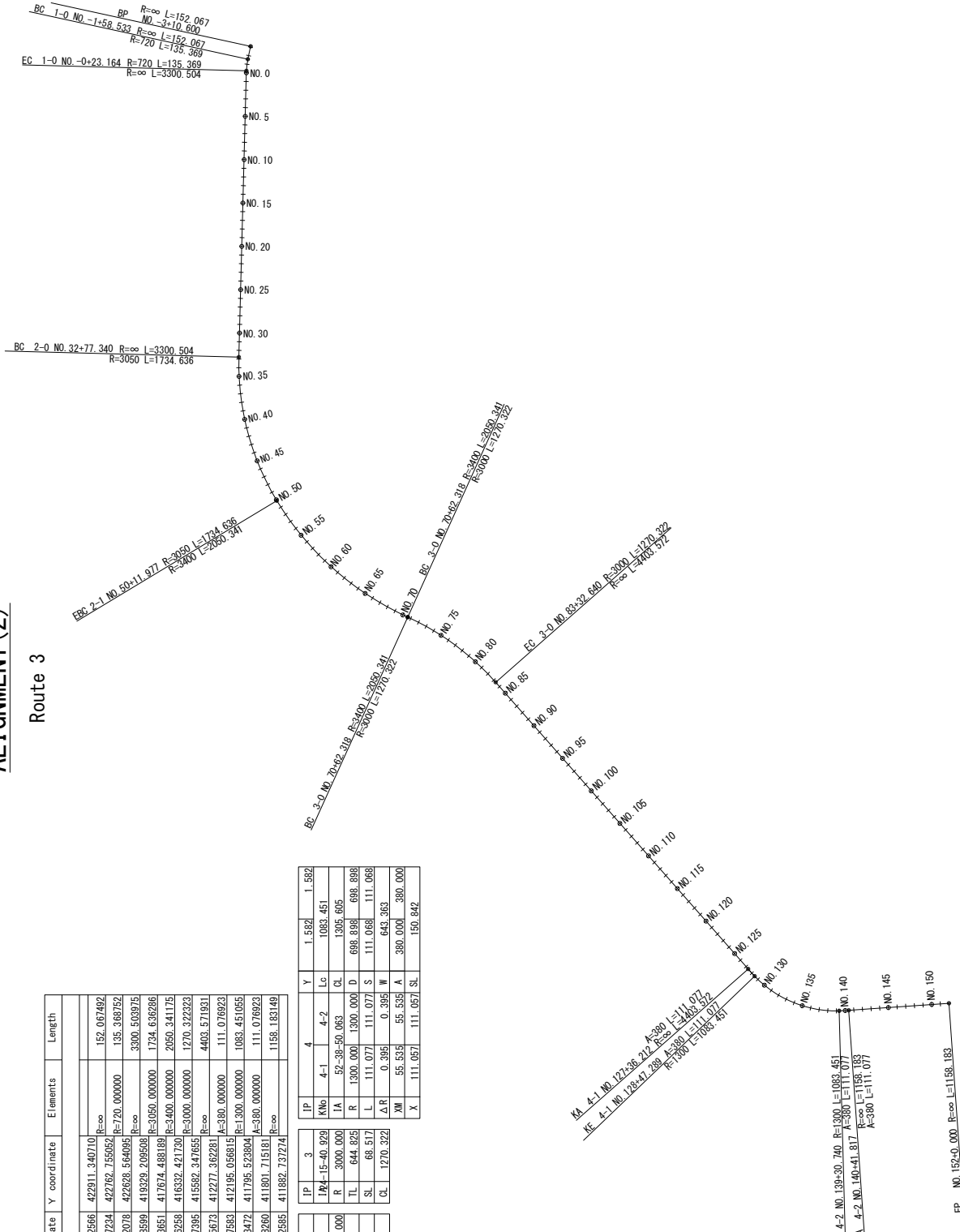
Route 3

Main point	Station	X coordinate	Y coordinate	Elements	Length
Route3					
BP	-3+10.600	521.0475	492566		
BC 1-0	-1+58.533	521.0567	837234	R=∞	152.067492
EC 1-0	-0+23.164	521.0524	072078	R=720	135.368752
BC 2-0	32+77.340	521.0611	168599	R=∞	3300.503975
EC 2-1	50+11.977	521.0174	568651	R=3050	1734.638286
BC 3-0	70+62.318	520.8665	626258	R=3400	2059.341175
EC 3-0	83+32.640	520.7692	147395	R=∞	1270.322323
KA 4-1	127+36.212	520.4742	075673	R=3000	4403.571931
KE 4-1	128+47.289	520.4667	497583	R=380	111.076923
KA 4-2	139+30.740	520.3893	923472	R=1300	1083.451055
KE 4-2	140+41.817	520.3583	029280	R=380	111.076923
EP	152+00.000	520.2427	682585	R=∞	1158.183149

IP	1	2	3	4	Y	1.582	1.582
KA	4-1	127+36.212	520.4742	075673	411801.715181		
KE	4-1	128+47.289	520.4667	497583	411801.715181		
KA	4-2	139+30.740	520.3893	923472	411801.715181		
KE	4-2	140+41.817	520.3583	029280	411801.715181		
EP							

IP	1	2	3	4	Y	1.582	1.582
KA	4-1	127+36.212	520.4742	075673	411801.715181		
KE	4-1	128+47.289	520.4667	497583	411801.715181		
KA	4-2	139+30.740	520.3893	923472	411801.715181		
KE	4-2	140+41.817	520.3583	029280	411801.715181		
EP							

IP	1	2	3	4	Y	1.582	1.582
KA	4-1	127+36.212	520.4742	075673	411801.715181		
KE	4-1	128+47.289	520.4667	497583	411801.715181		
KA	4-2	139+30.740	520.3893	923472	411801.715181		
KE	4-2	140+41.817	520.3583	029280	411801.715181		
EP							



ADDITIONAL STUDY ON THE PROJECT FOR CONSTRUCTION OF MYKOLAIV BRIDGE IN UKRAINE	JAPAN INTERNATIONAL COOPERATION AGENCY (JICA) CENTRAL CONSULTANT INC. & NIPPON KOEI CO., LTD	TITLE	M-14 BYPASS Route3 ALIGNMENT(2)	SCALE 1/50000
			No.	52