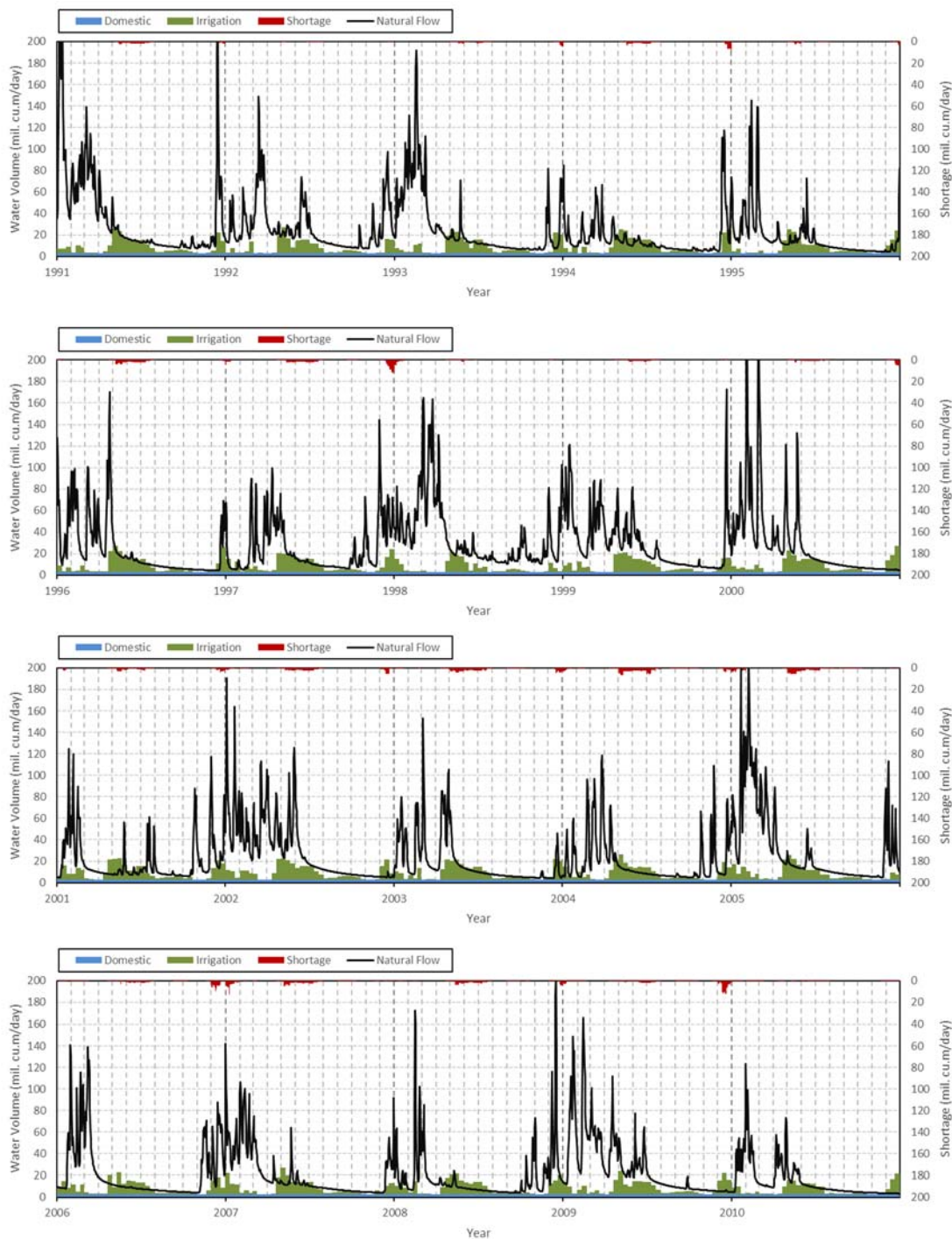


CHAPTER A4 RESULT OF WATER BALANCE SIMULATION

After the developing the water balance mode through the above described procedure, the water balance analysis conducted, and the results are summarized in the main report.

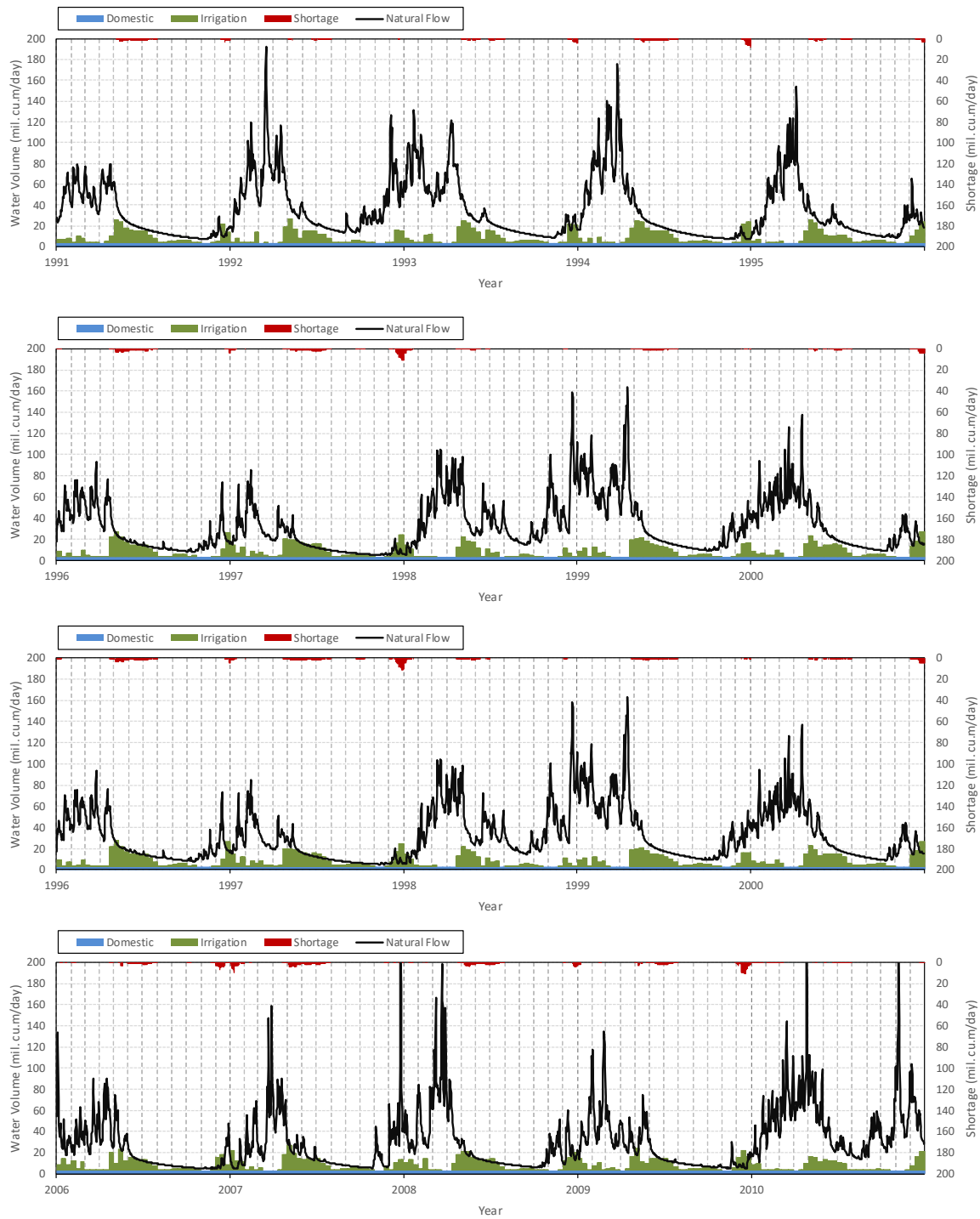
A4.1 Demand and Supply Balance

A4.1.1 Scenario 1



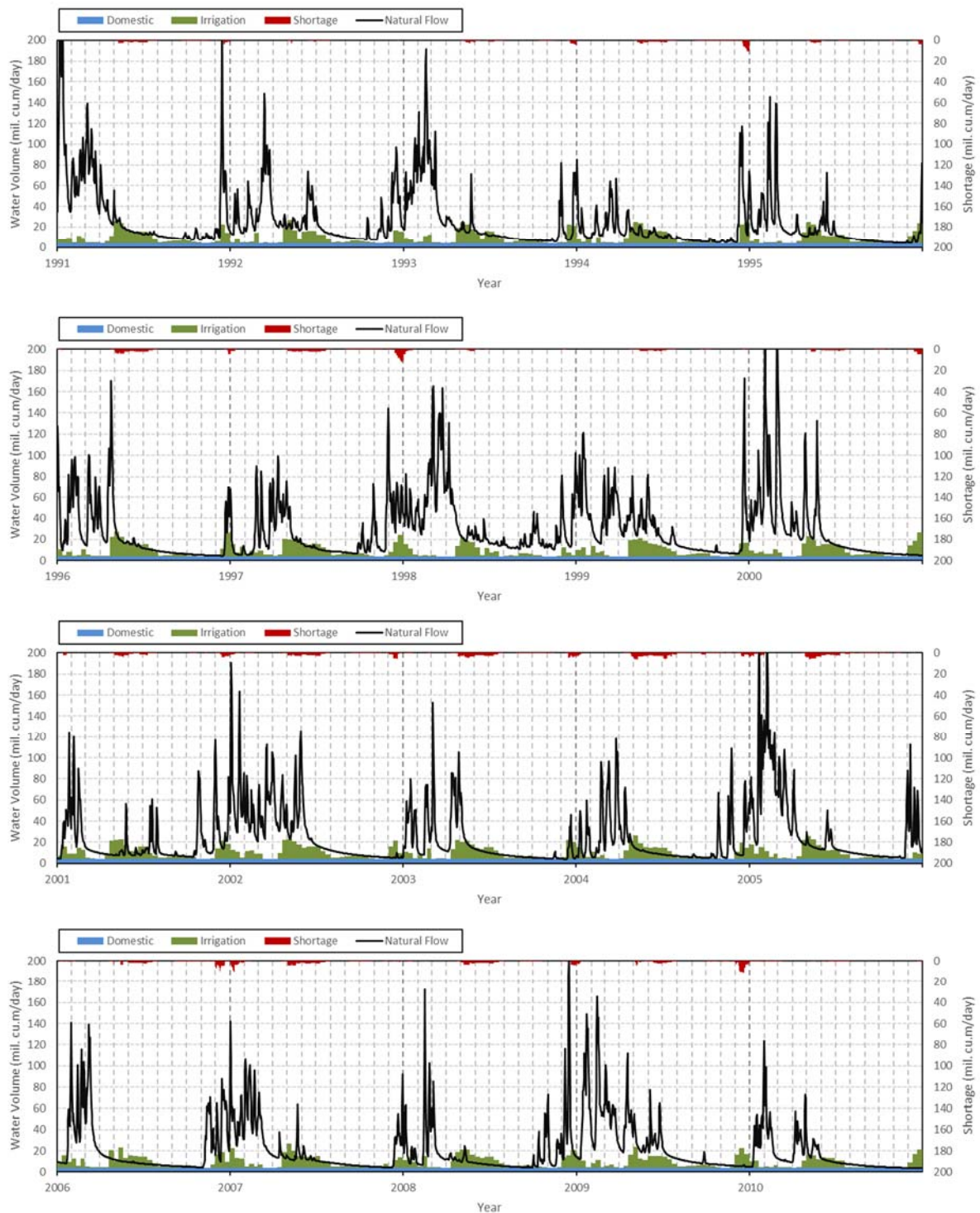
Source: JICA Project Team 2

A4.1.2 Scenario 2



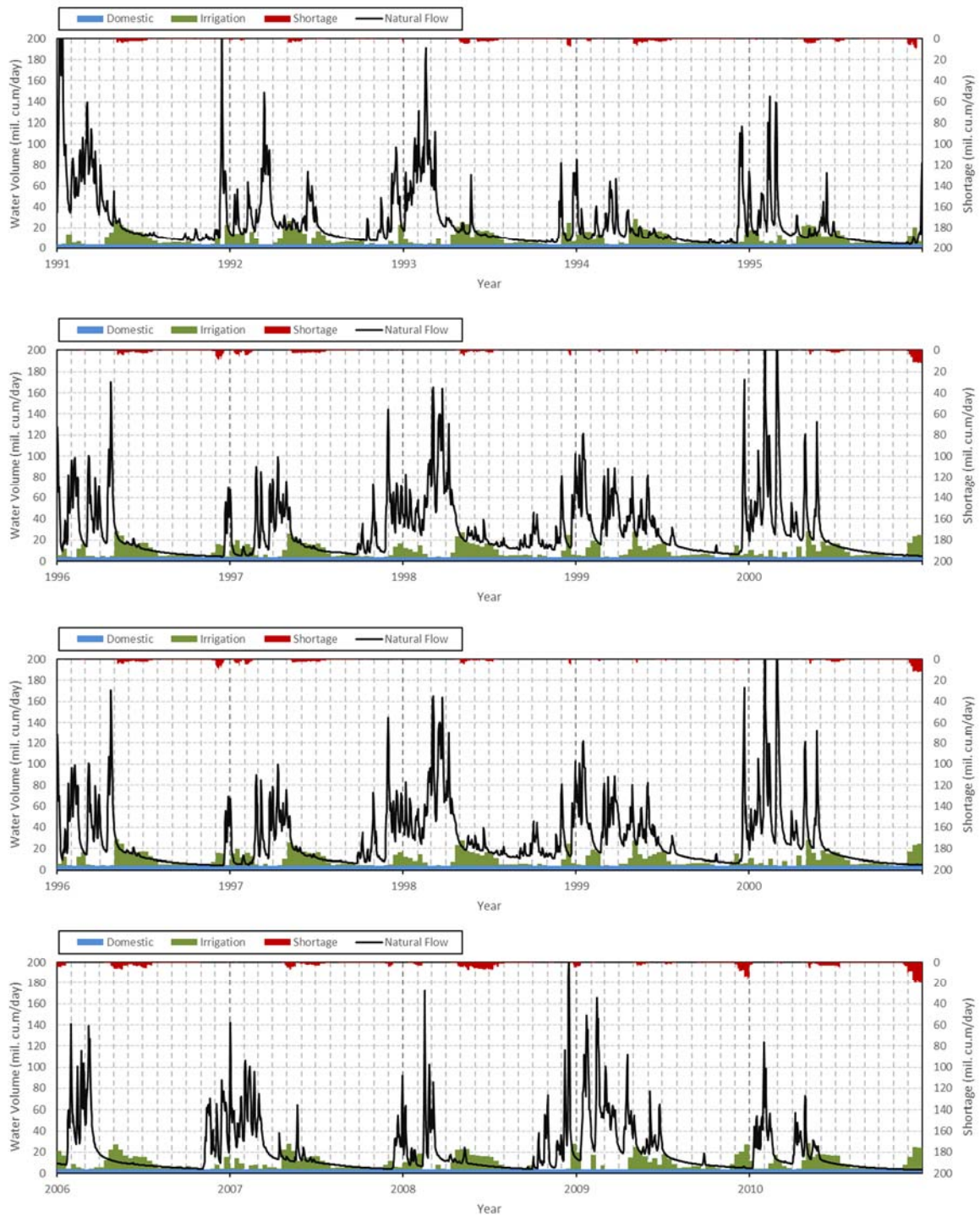
Source: JICA Project Team 2

A4.1.3 Scenario 3



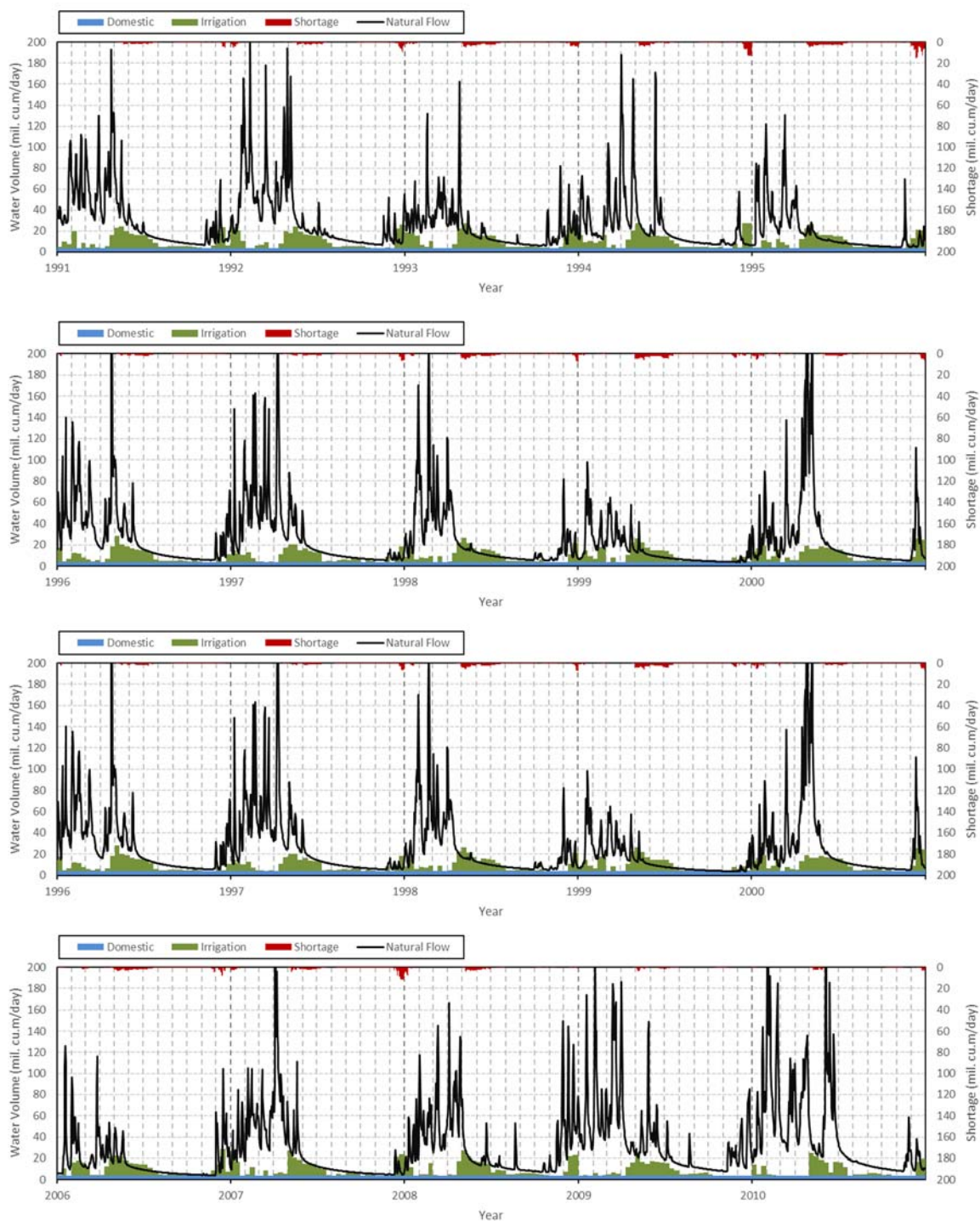
Source: JICA Project Team 2

A4.1.4 Scenario 4



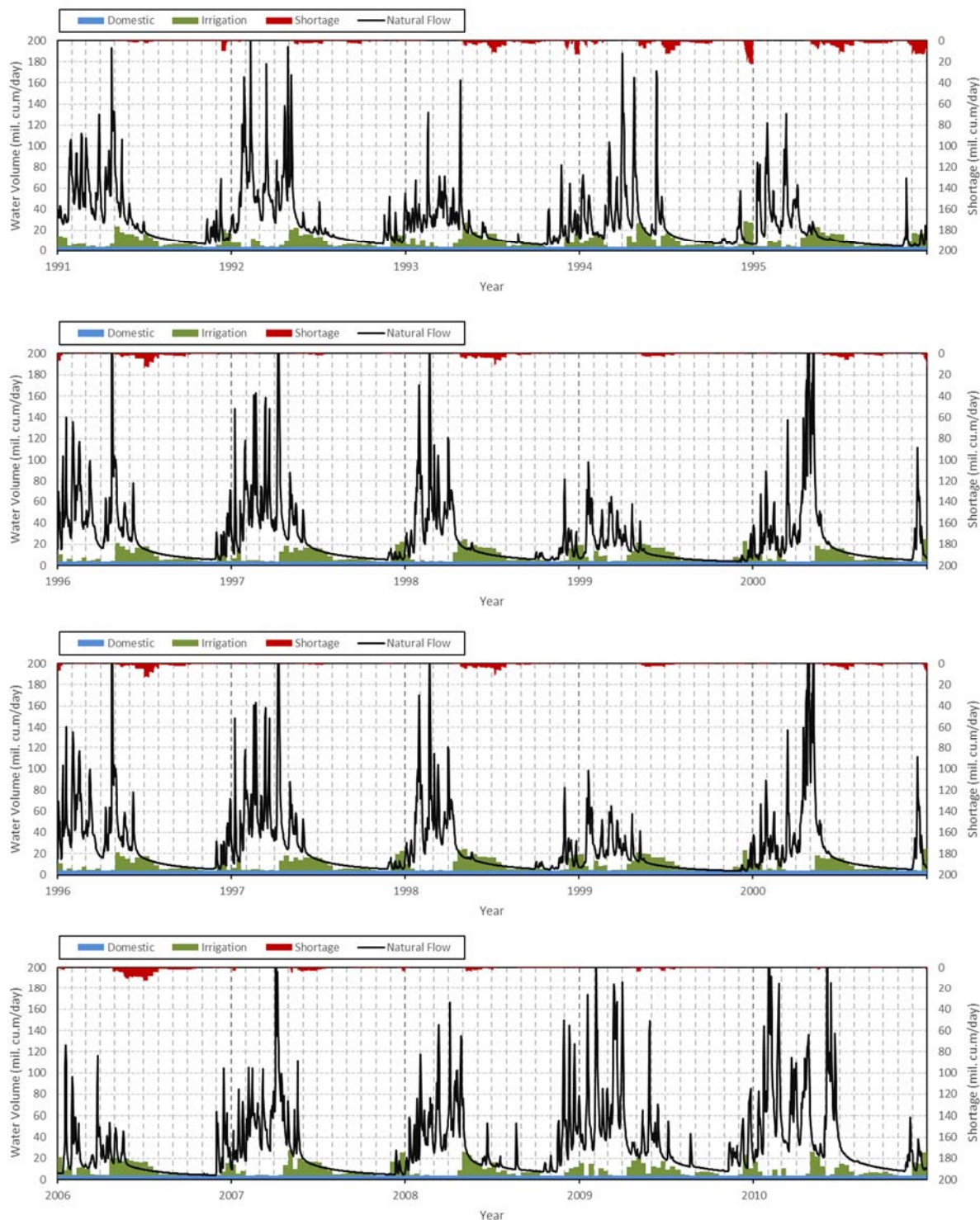
Source: JICA Project Team 2

A4.1.5 Scenario 5



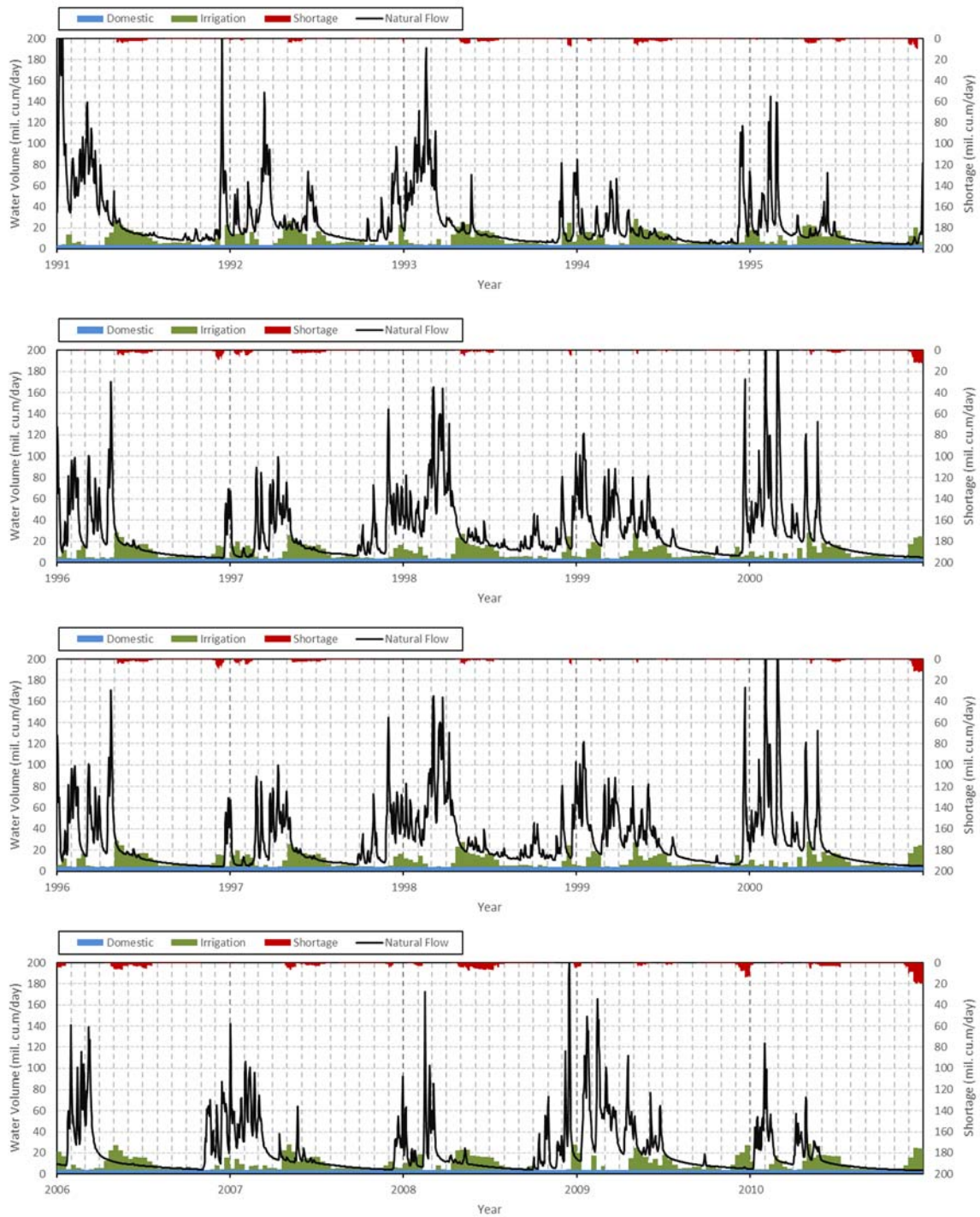
Source: JICA Project Team 2

A4.1.6 Scenario 6



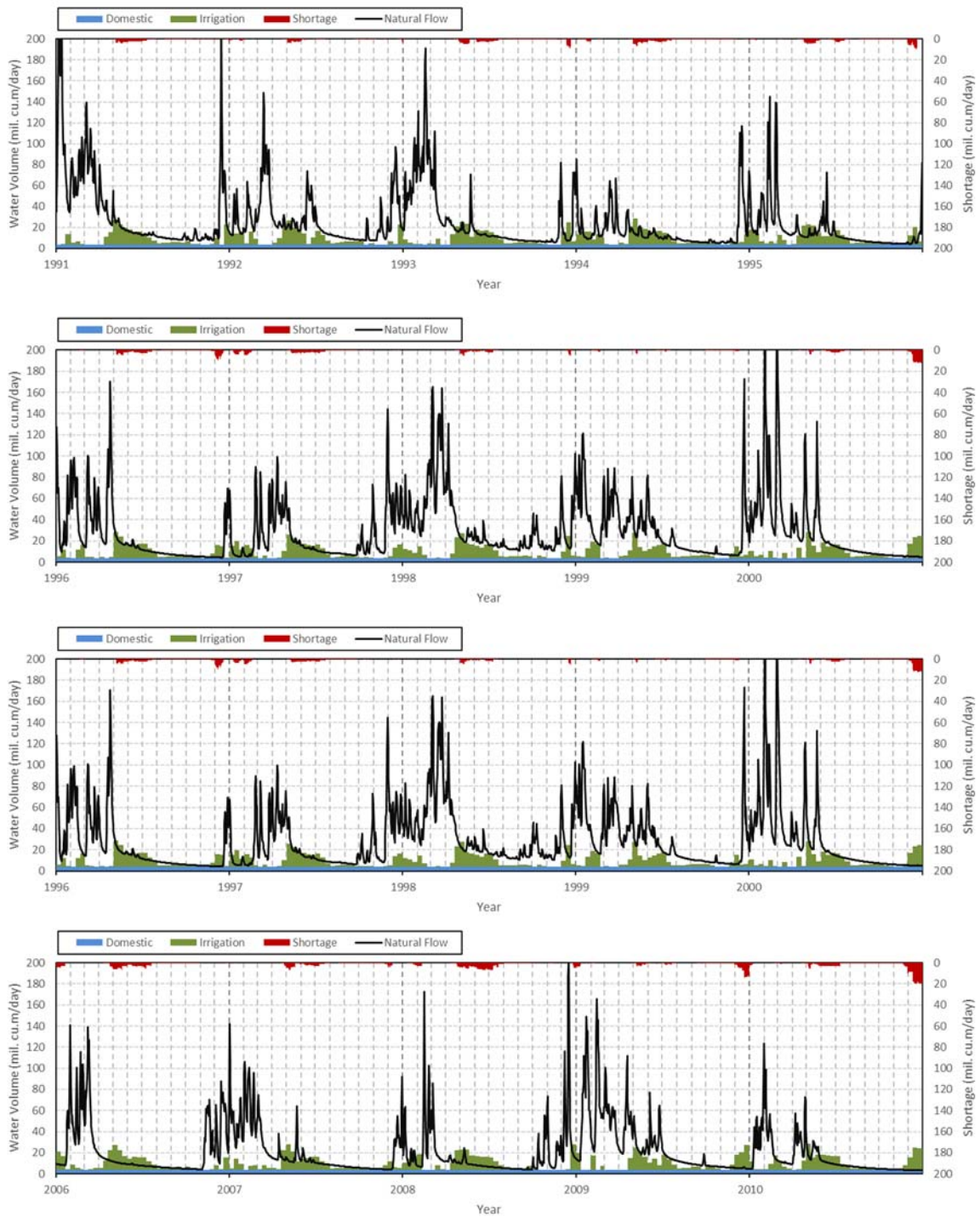
Source: JICA Project Team 2

A4.1.7 Scenario 7



Source: JICA Project Team 2

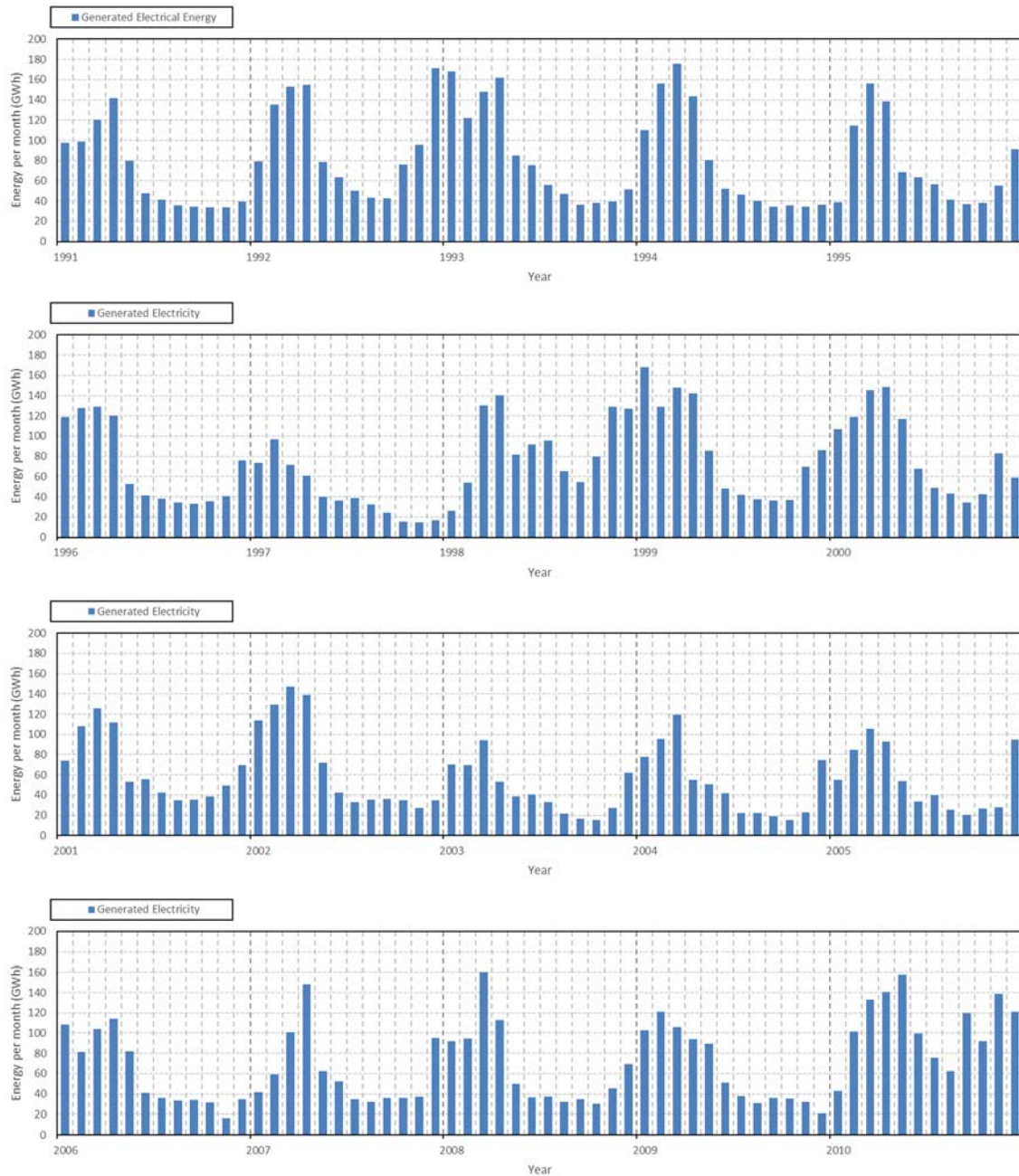
A4.1.8 Scenario 8



Source: JICA Project Team 2

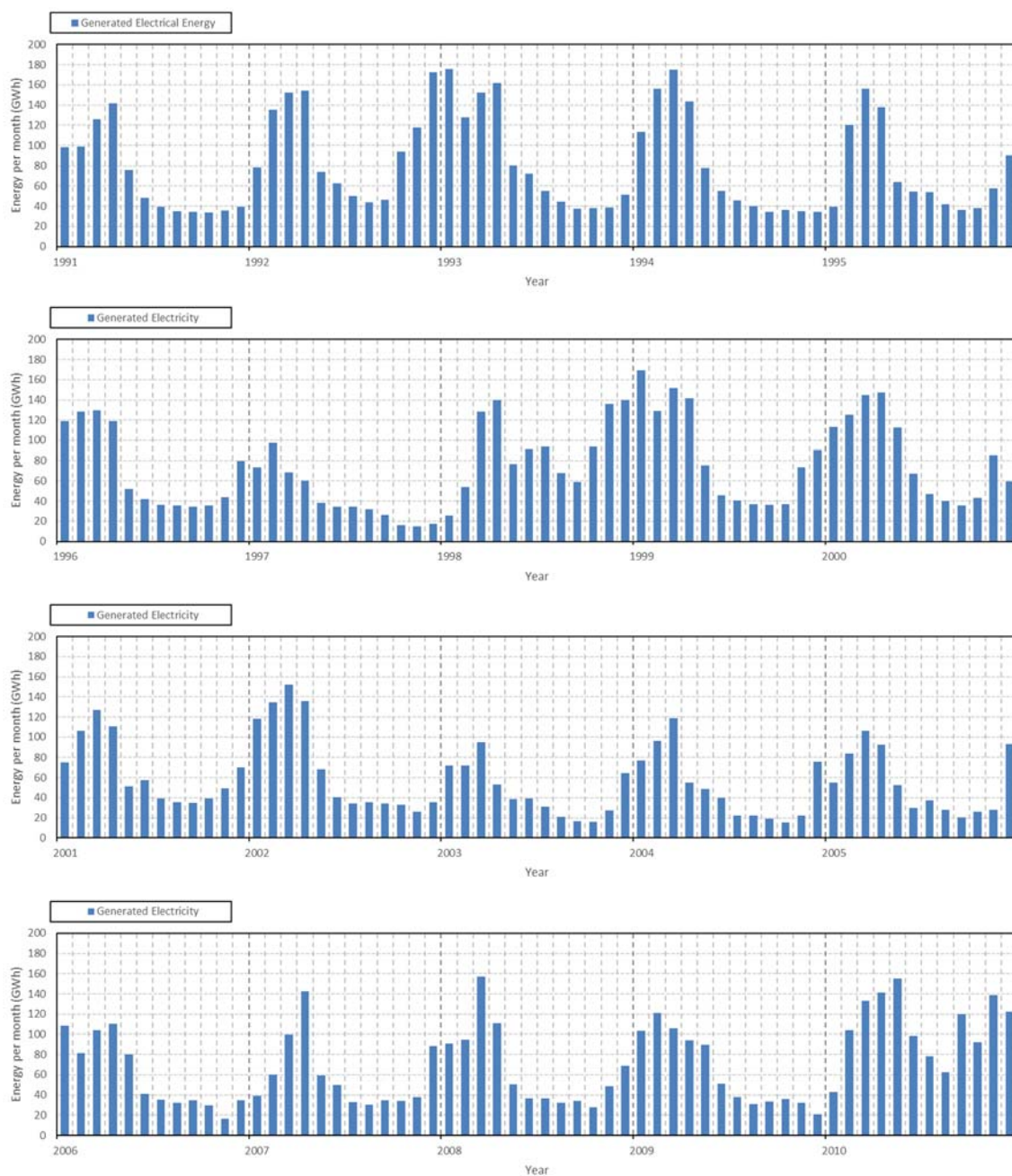
A4.2 Hydropower Generation

A4.2.1 Scenario 1



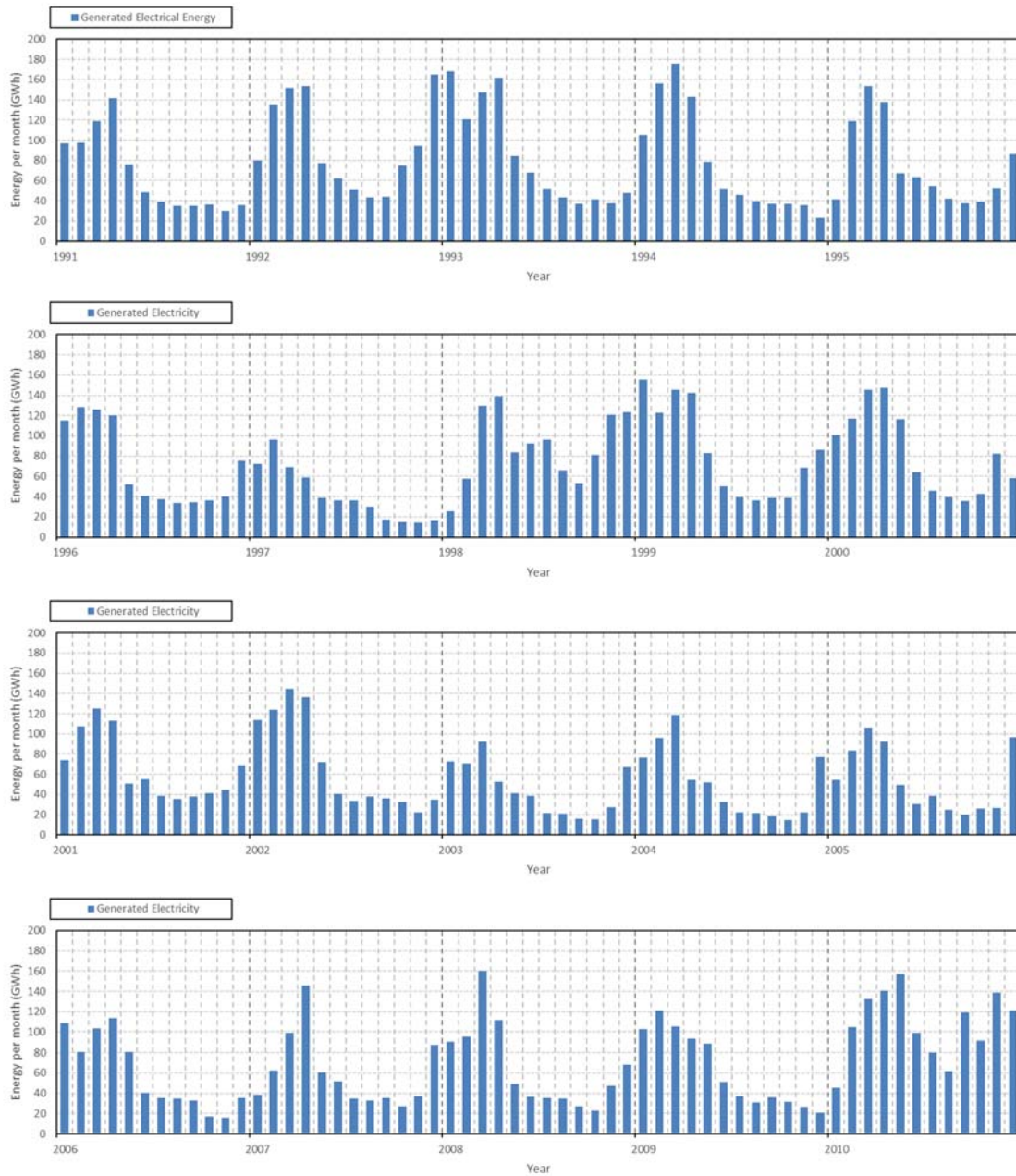
Source: JICA Project Team 2

A4.2.2 Scenario 2



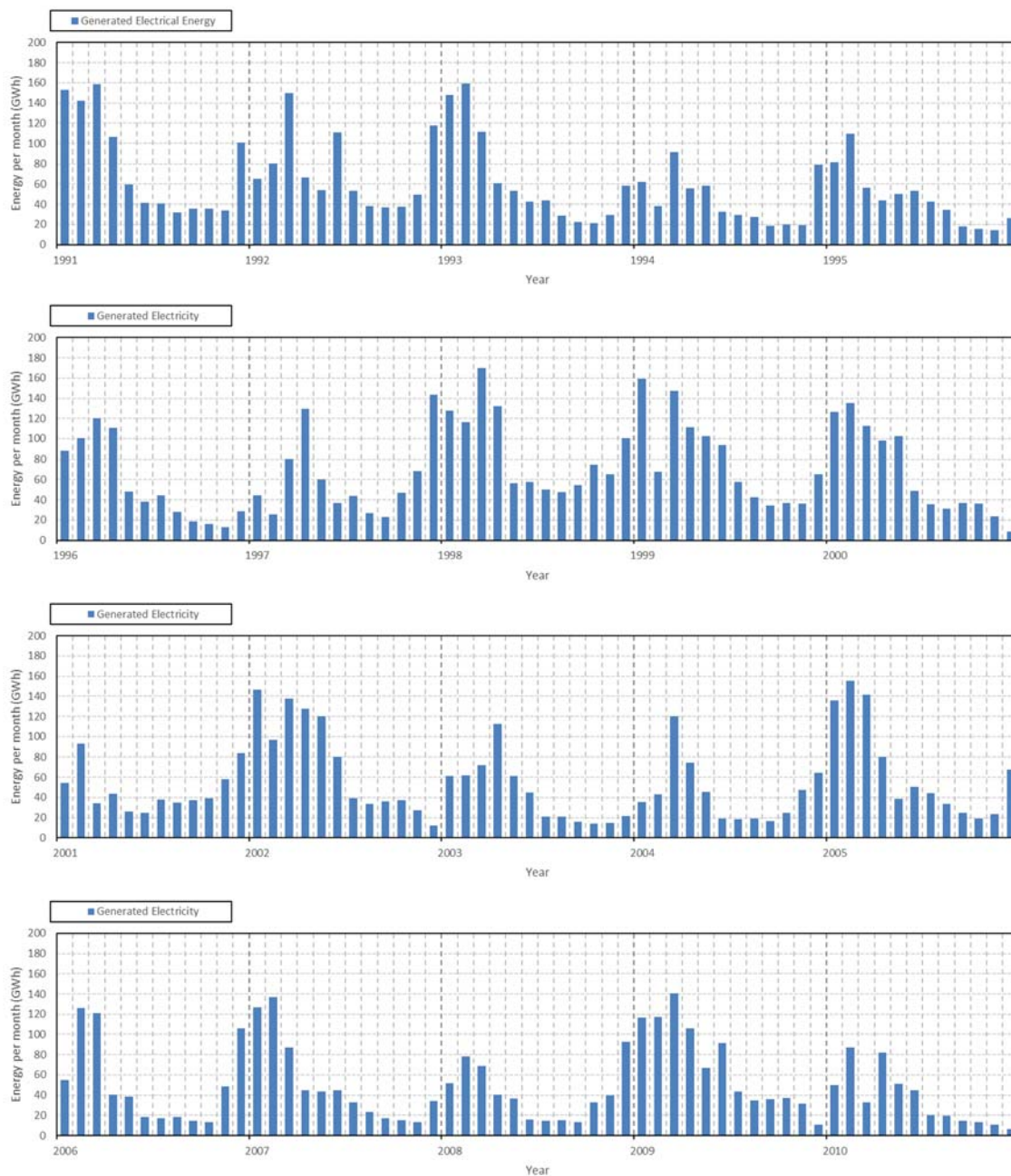
Source: JICA Project Team 2

A4.2.3 Scenario 3



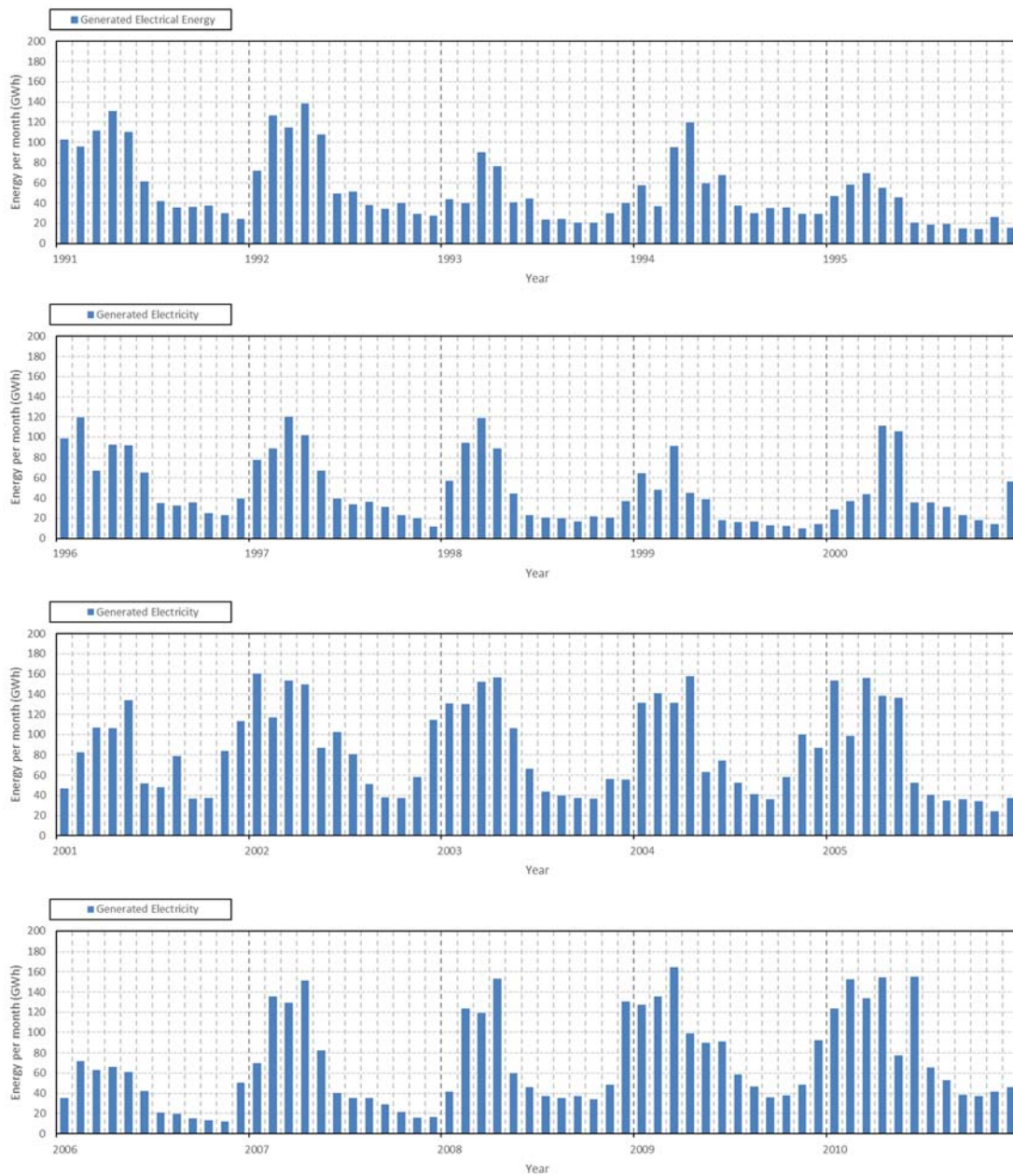
Source: JICA Project Team 2

A4.2.4 Scenario 4



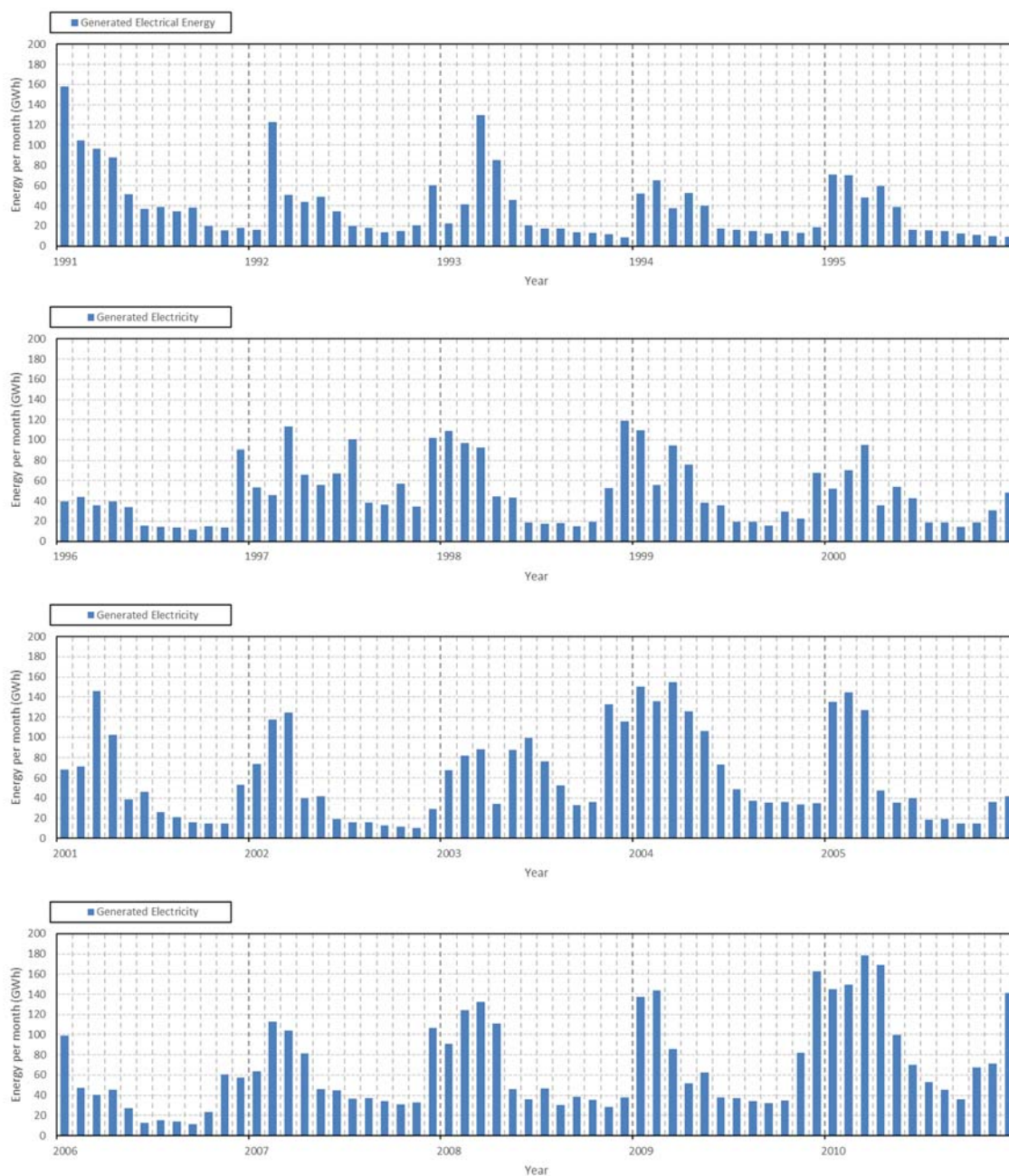
Source: JICA Project Team 2

A4.2.5 Scenario 5



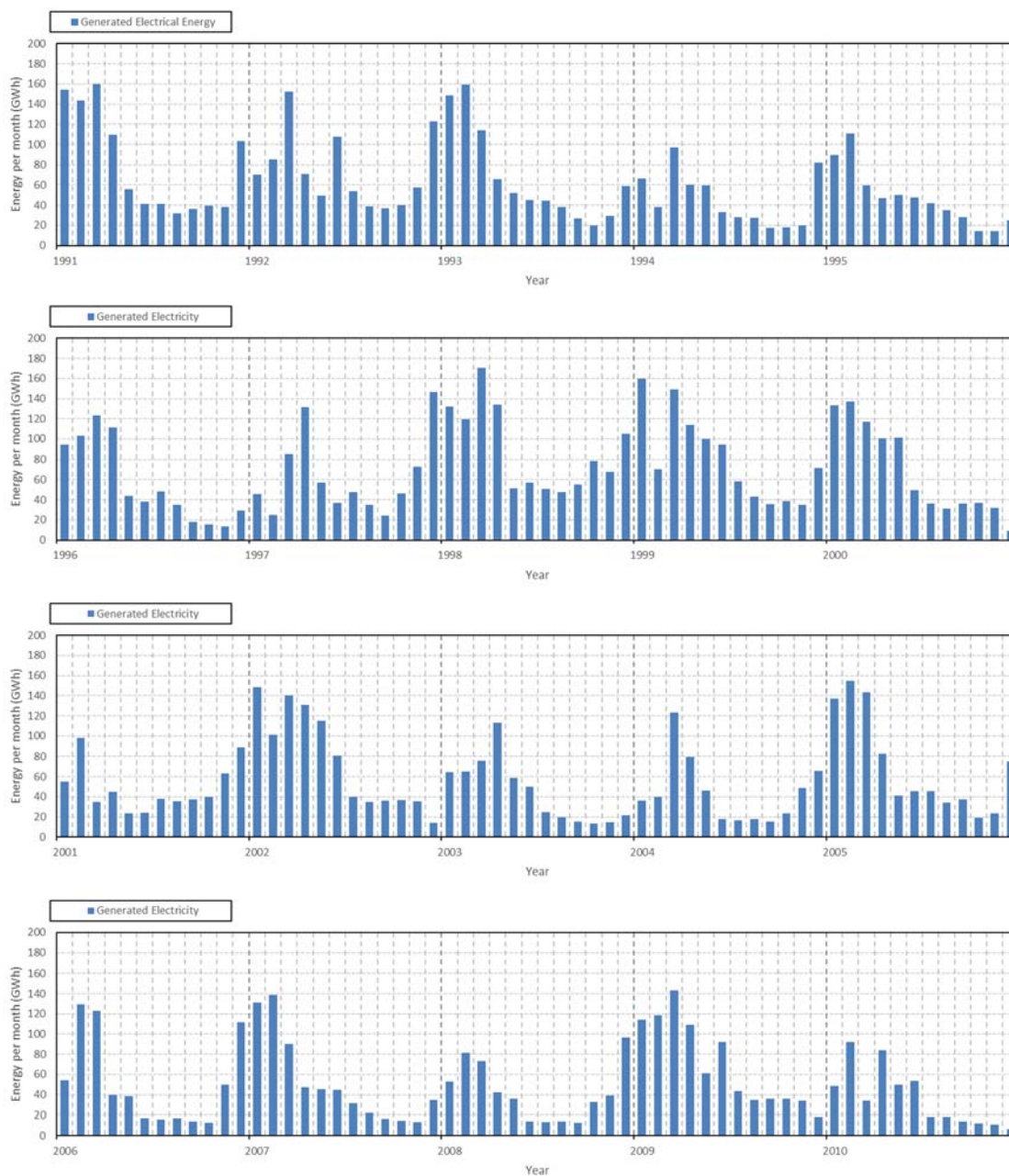
Source: JICA Project Team 2

A4.2.6 Scenario 6



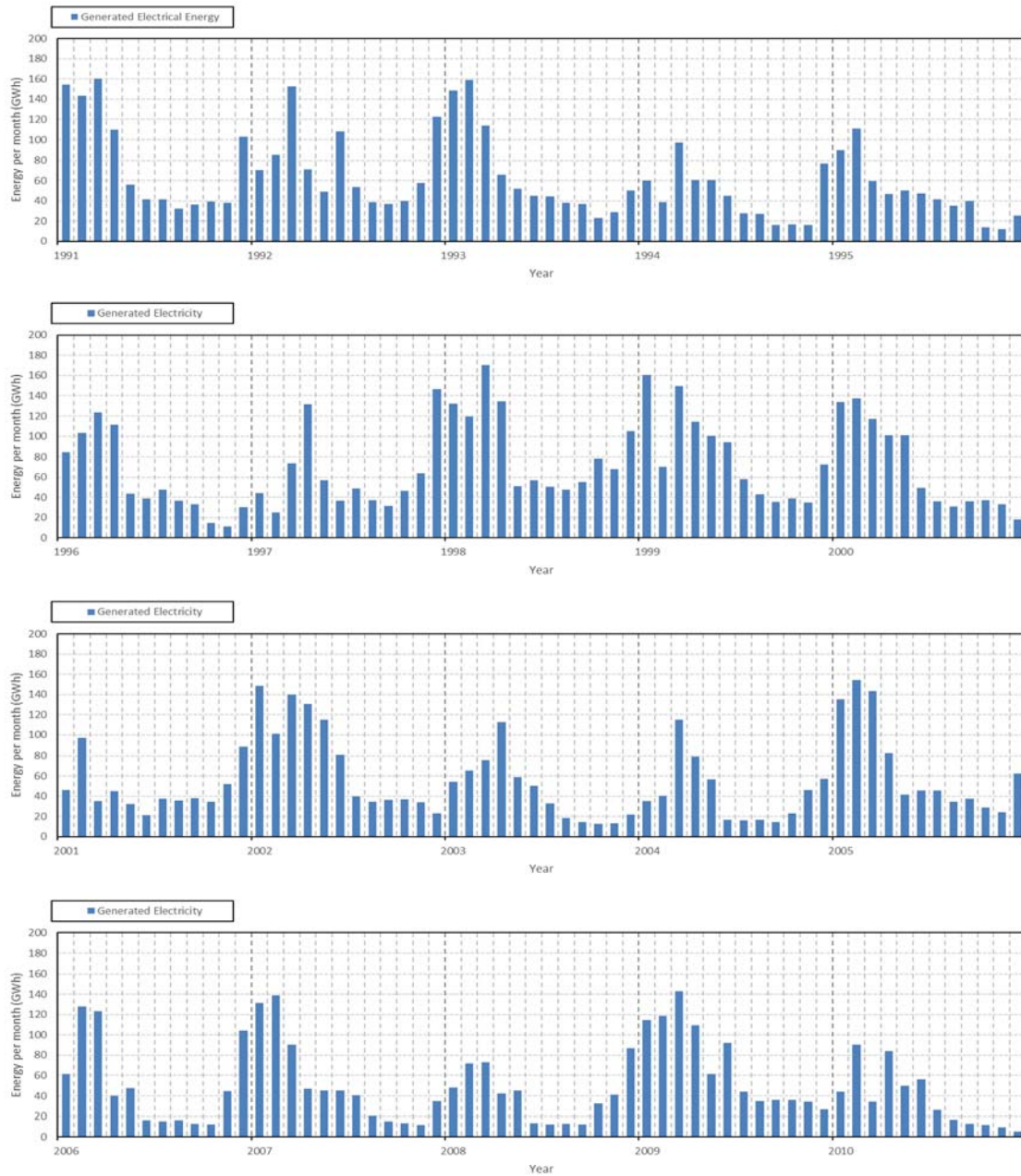
Source: JICA Project Team 2

A4.2.7 Scenario 7



Source: JICA Project Team 2

A4.2.8 Scenario 8

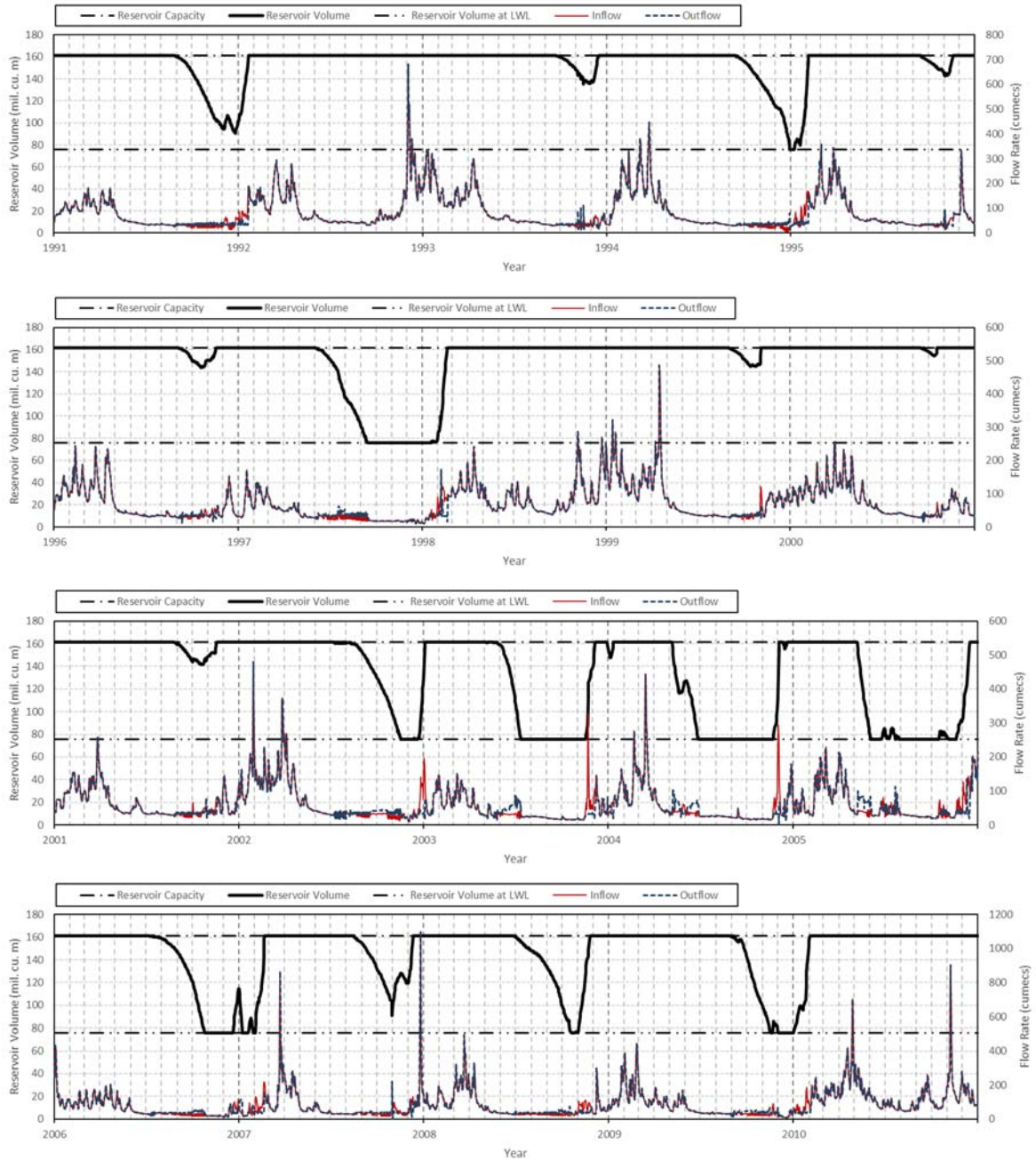


Source: JICA Project Team 2

A4.3 Reservoir Volume

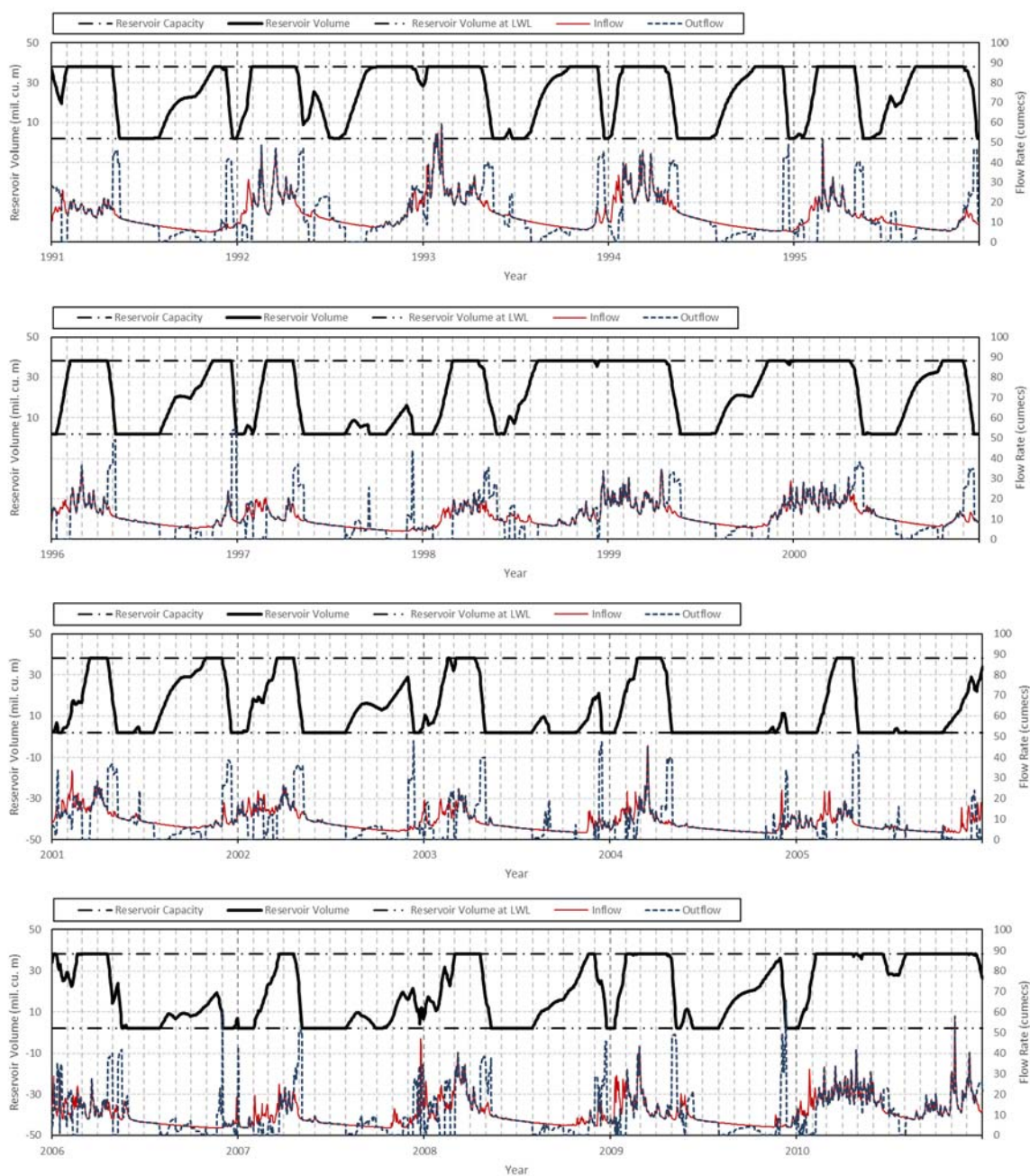
A4.3.1 Scenario 1

(1) Sutami



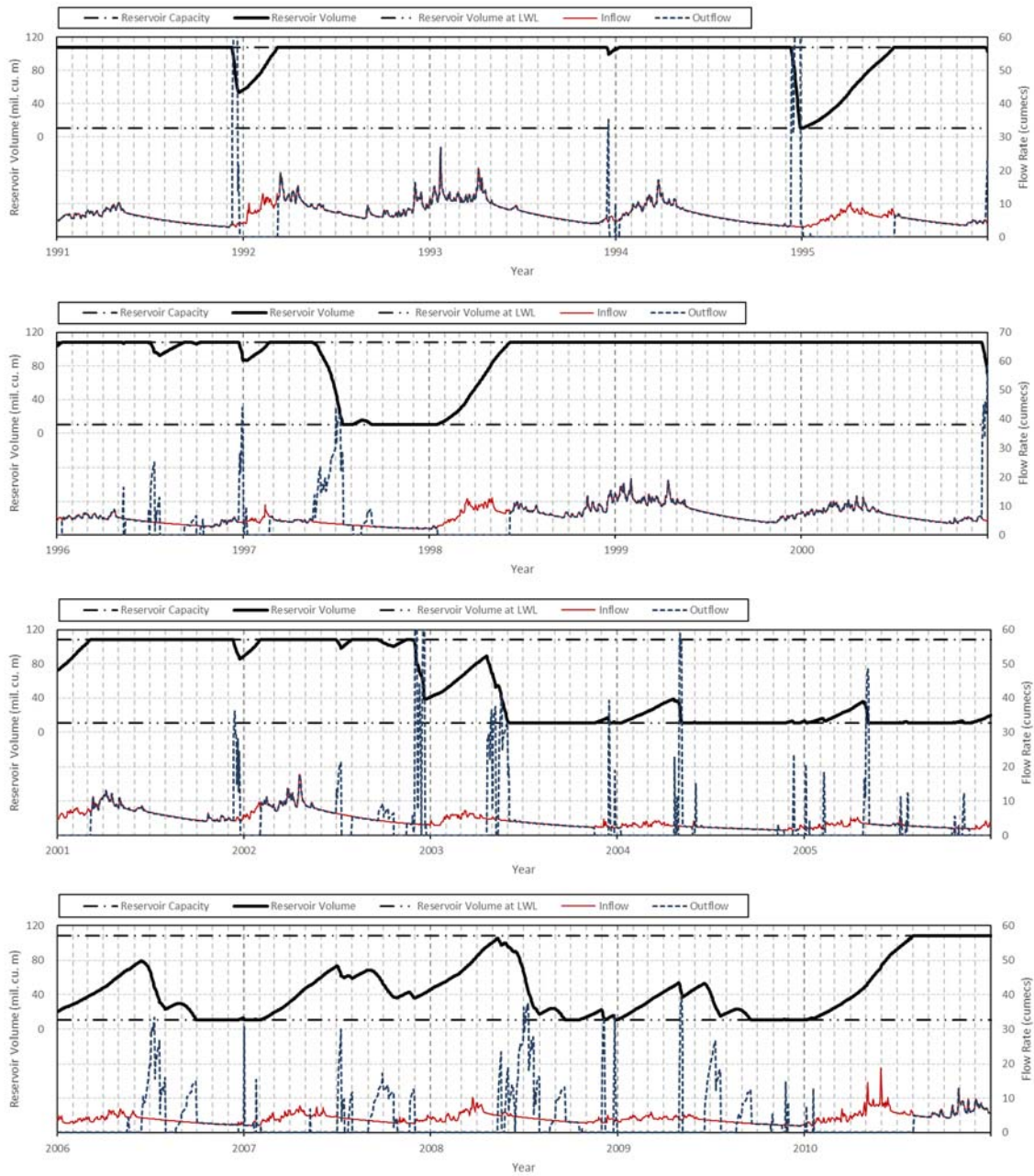
Source: JICA Project Team 2

(2) Selorejo



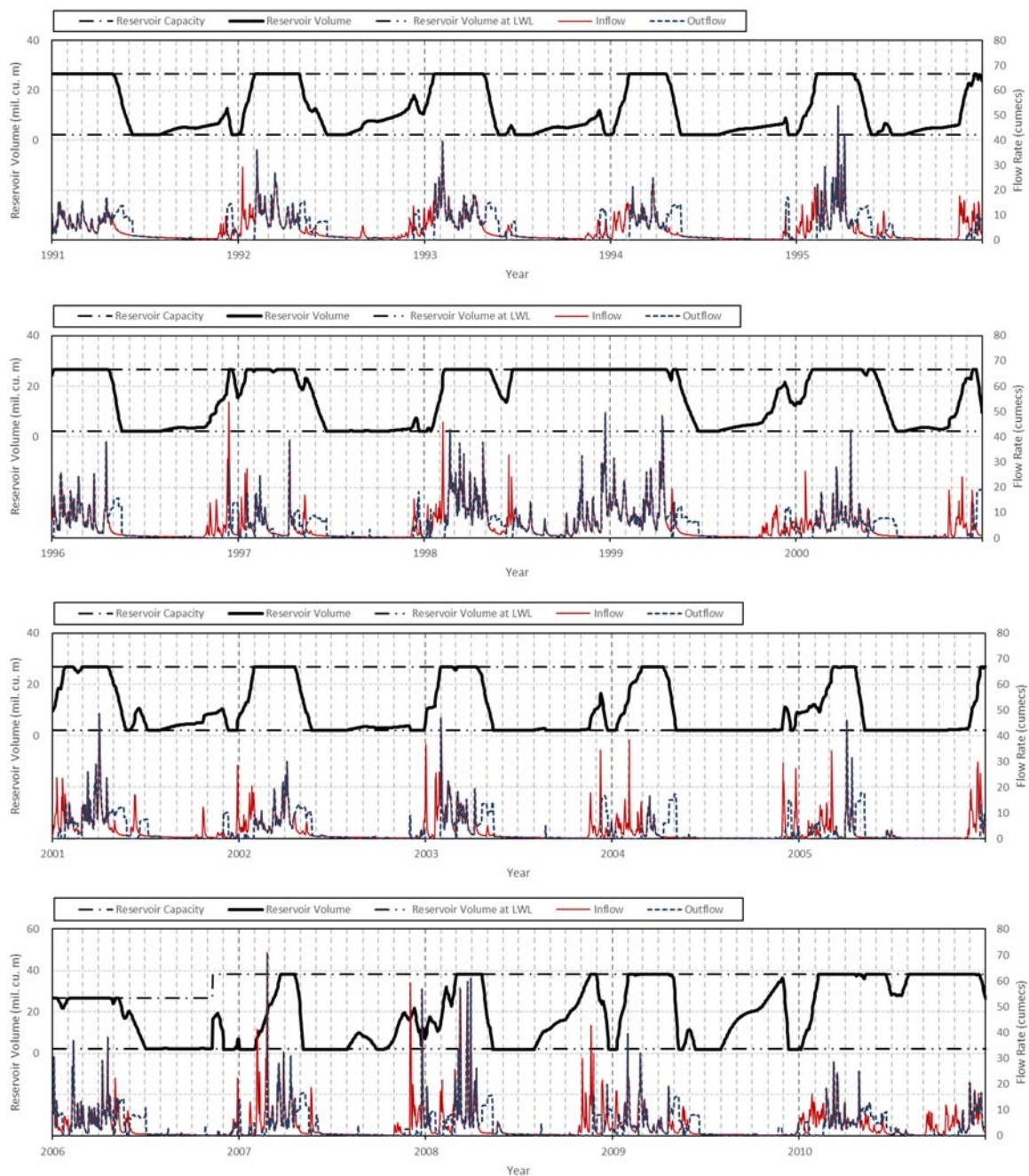
Source: JICA Project Team 2

(3) Wonorejo



Source: JICA Project Team 2

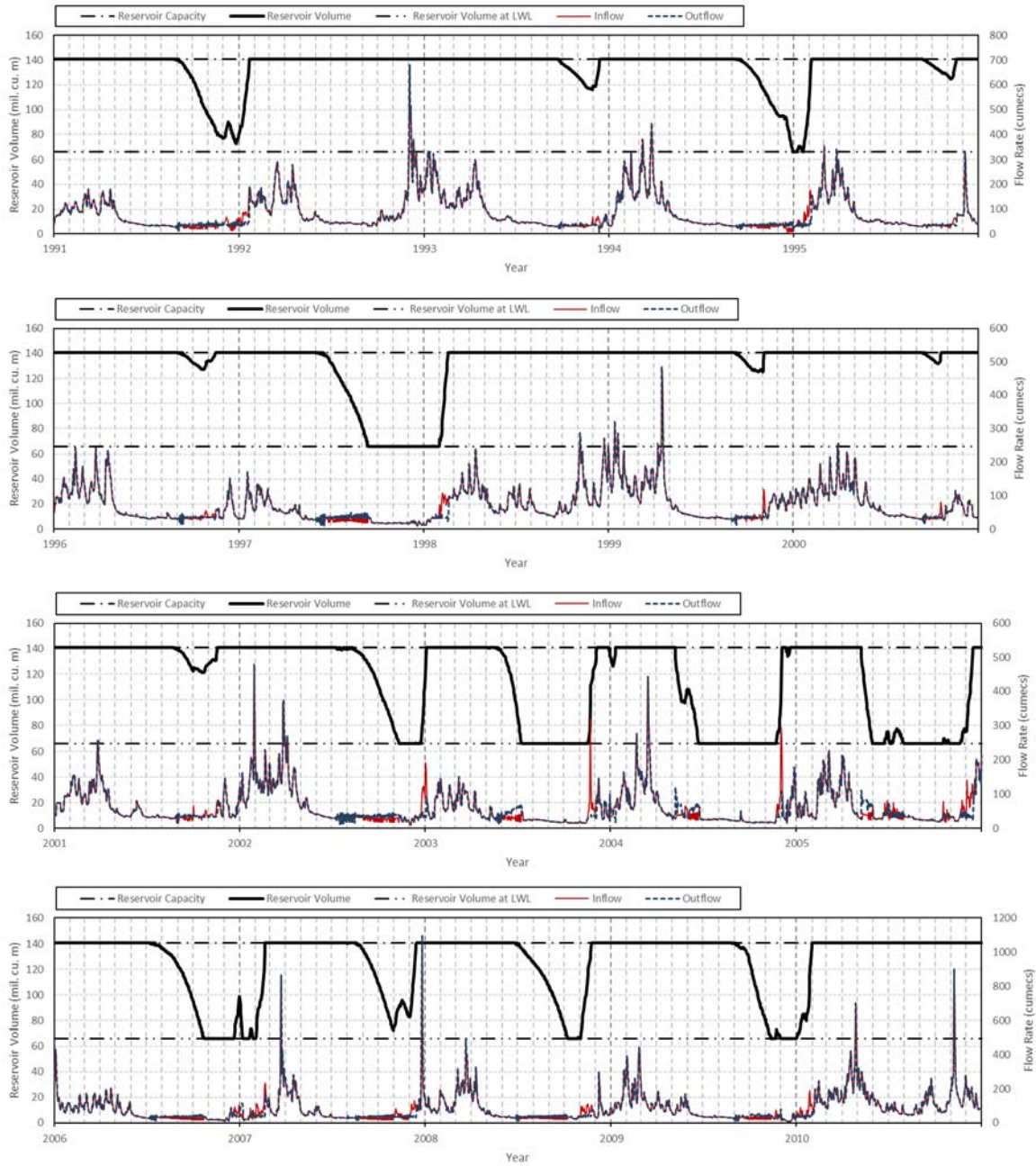
(4) Bening



Source: JICA Project Team 2

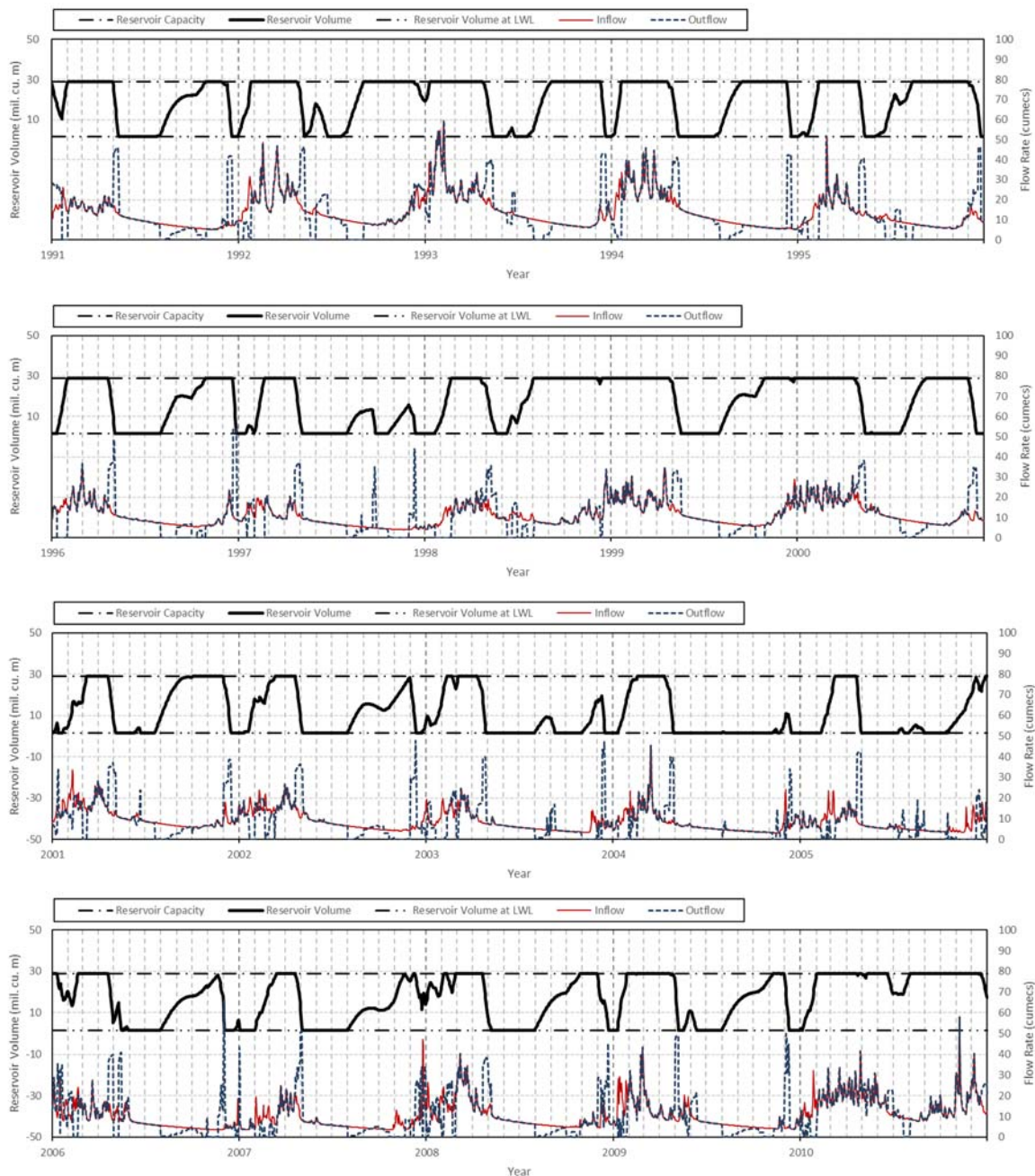
A4.3.2 Scenario 2

(1) Sutami



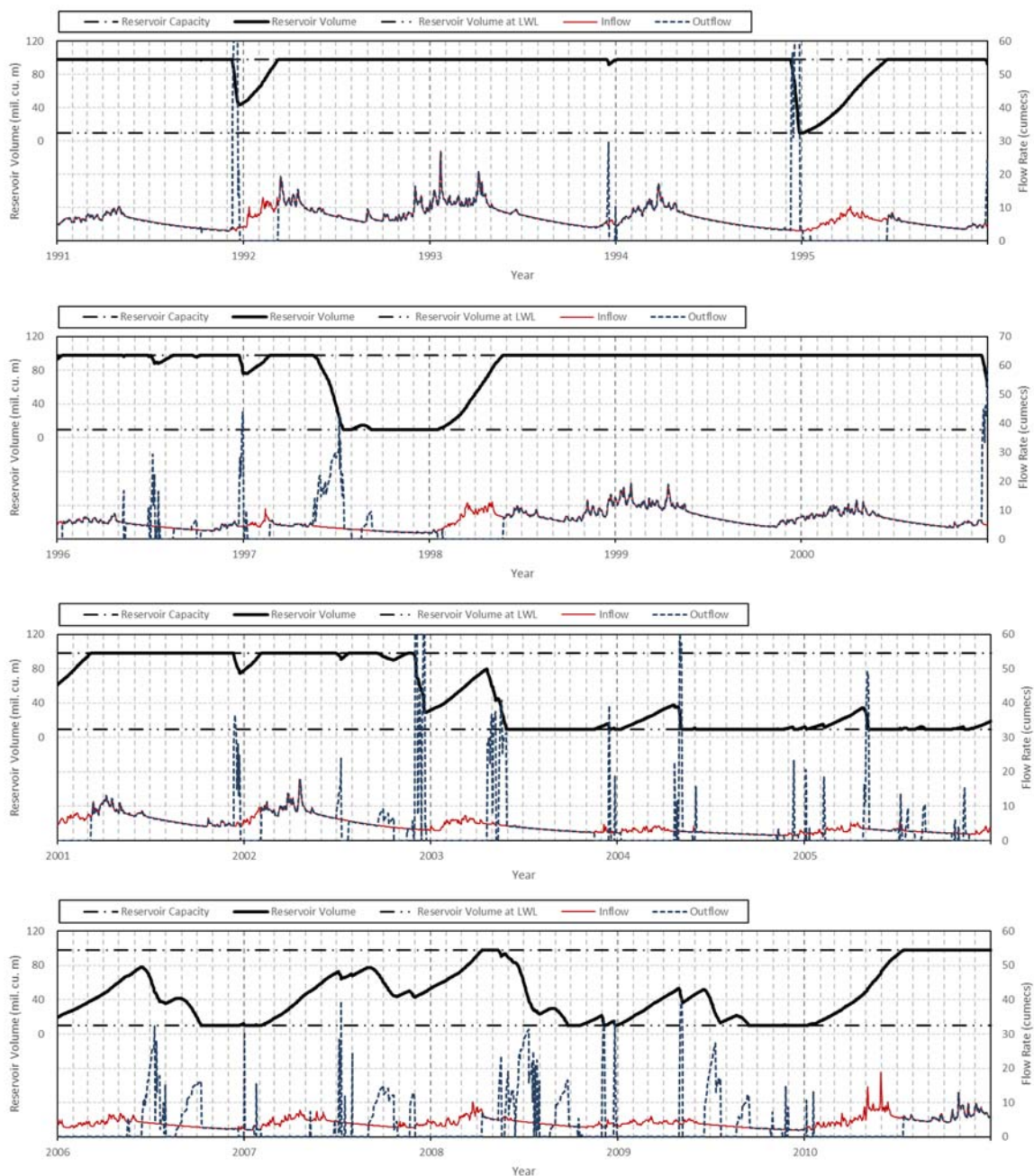
Source: JICA Project Team 2

(2) Selorejo



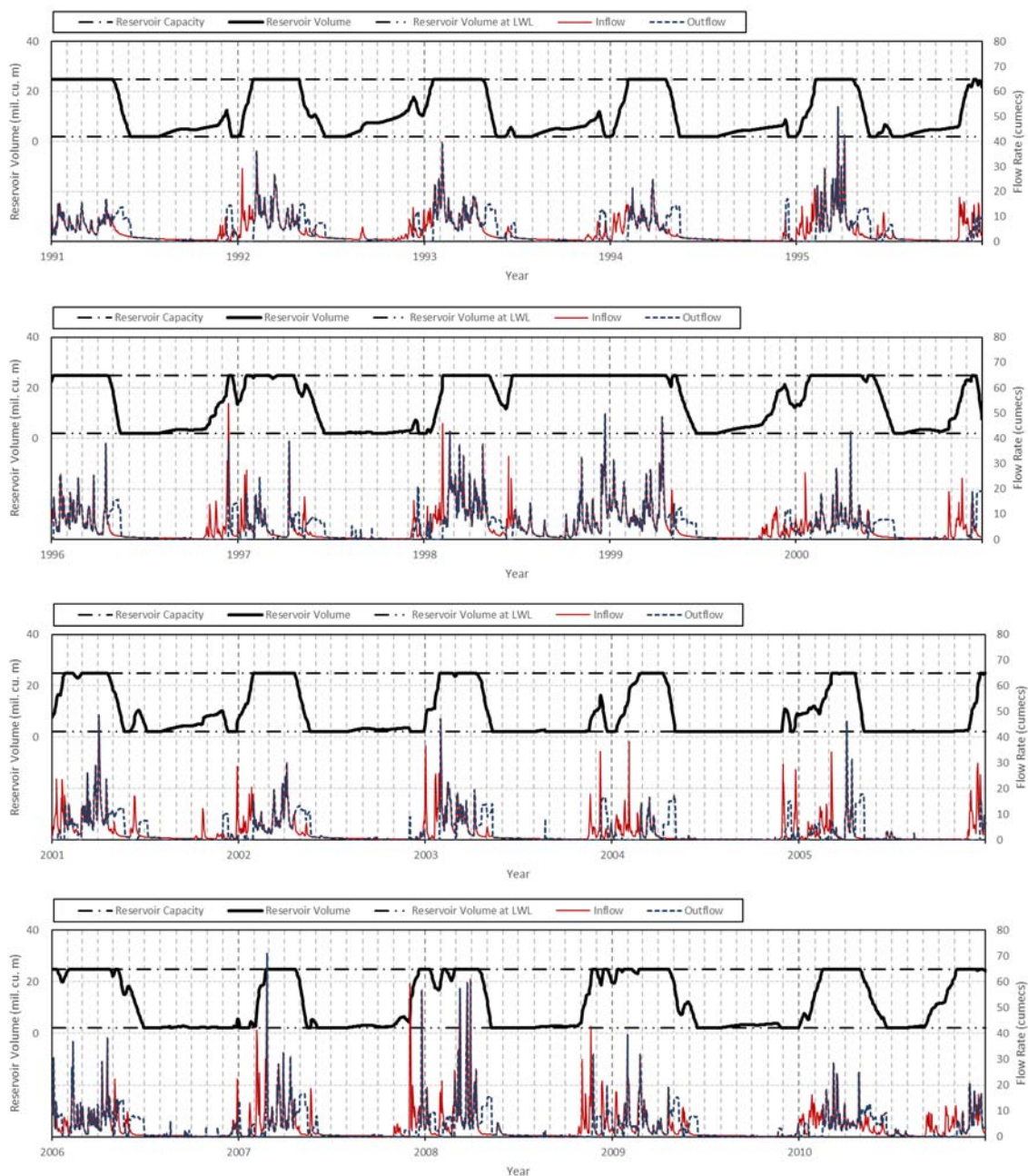
Source: JICA Project Team 2

(3) Wonorejo



Source: JICA Project Team 2

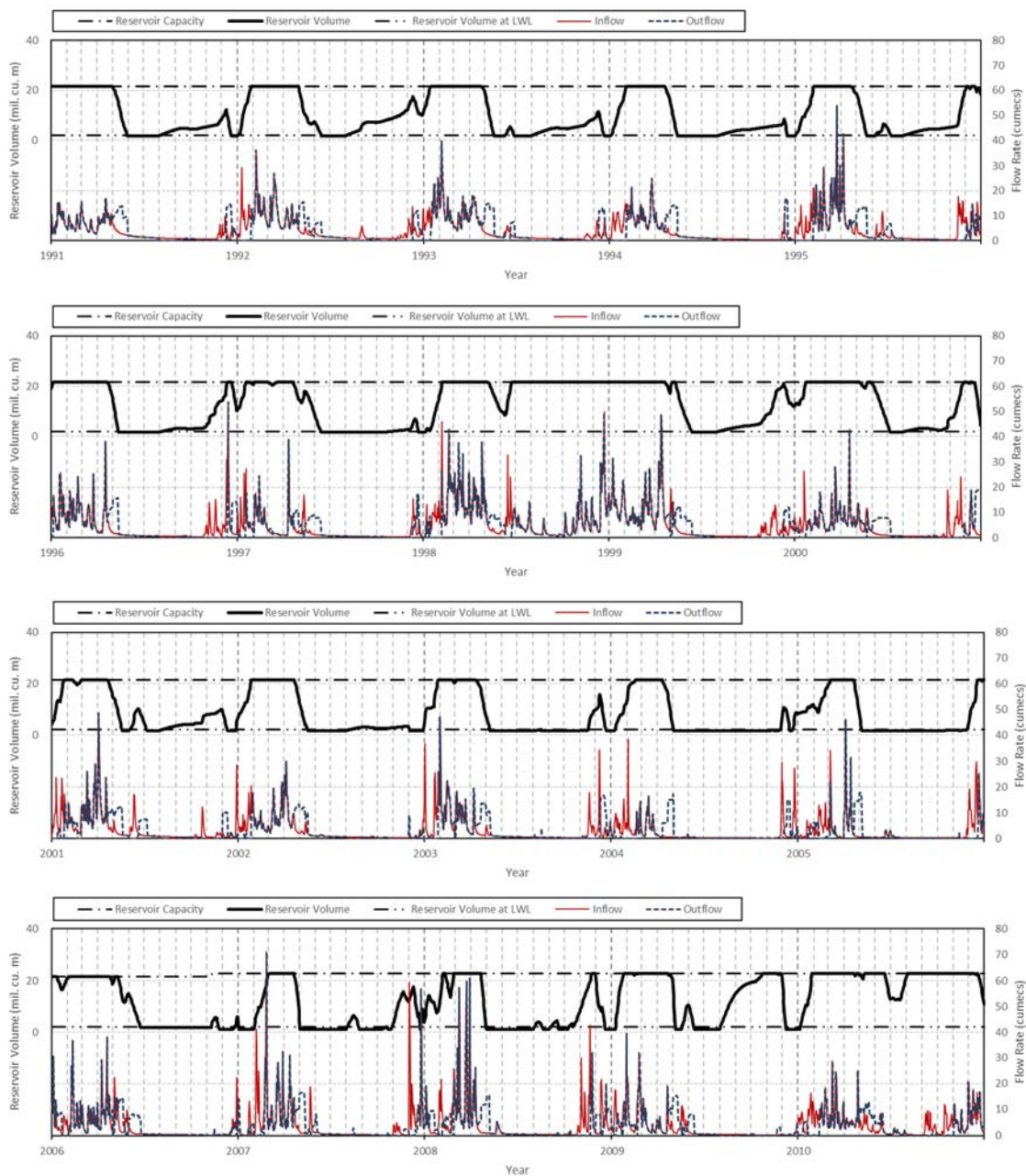
(4) Bening



Source: JICA Project Team 2

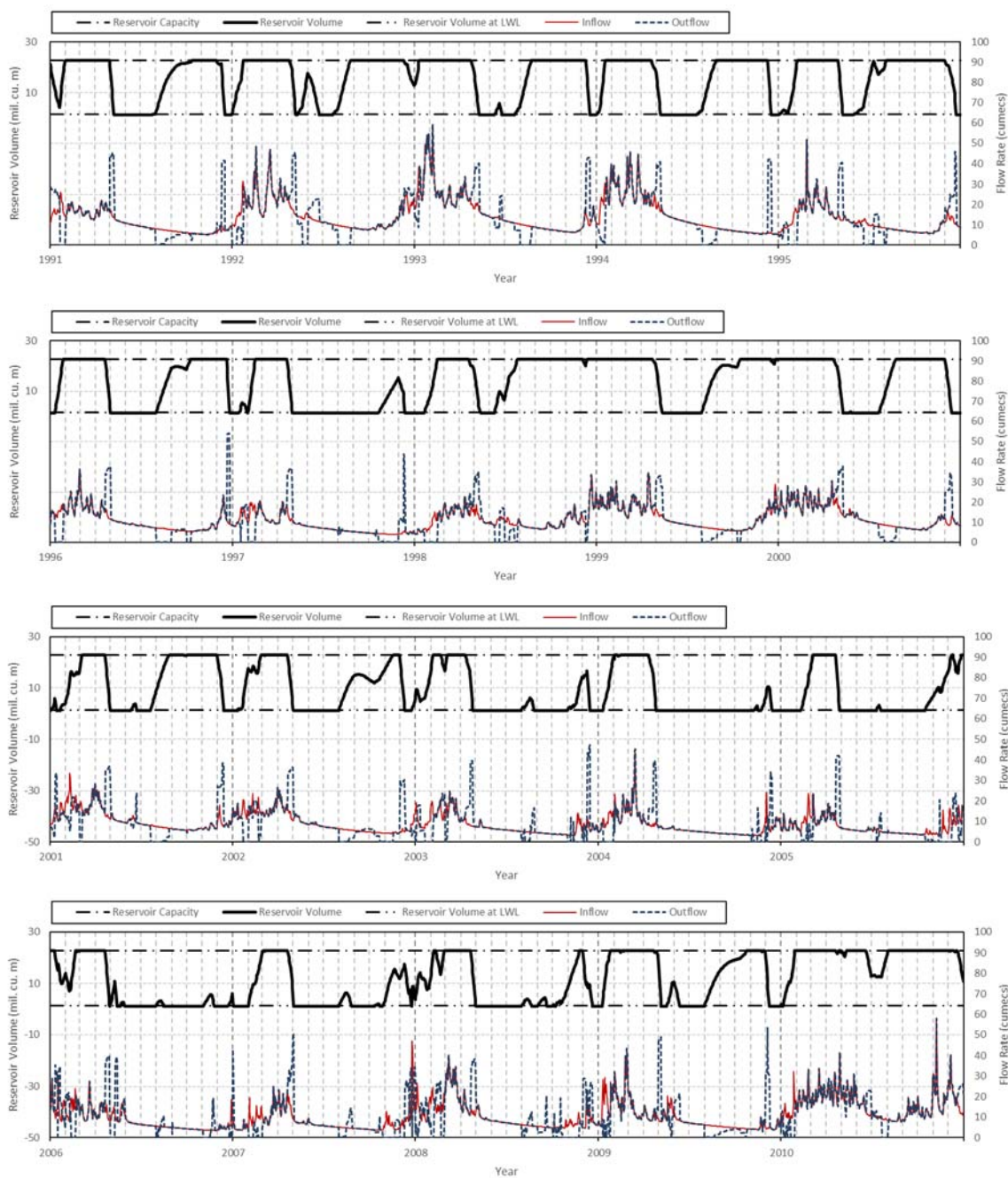
A4.3.3 Scenario 3

(1) Sutami



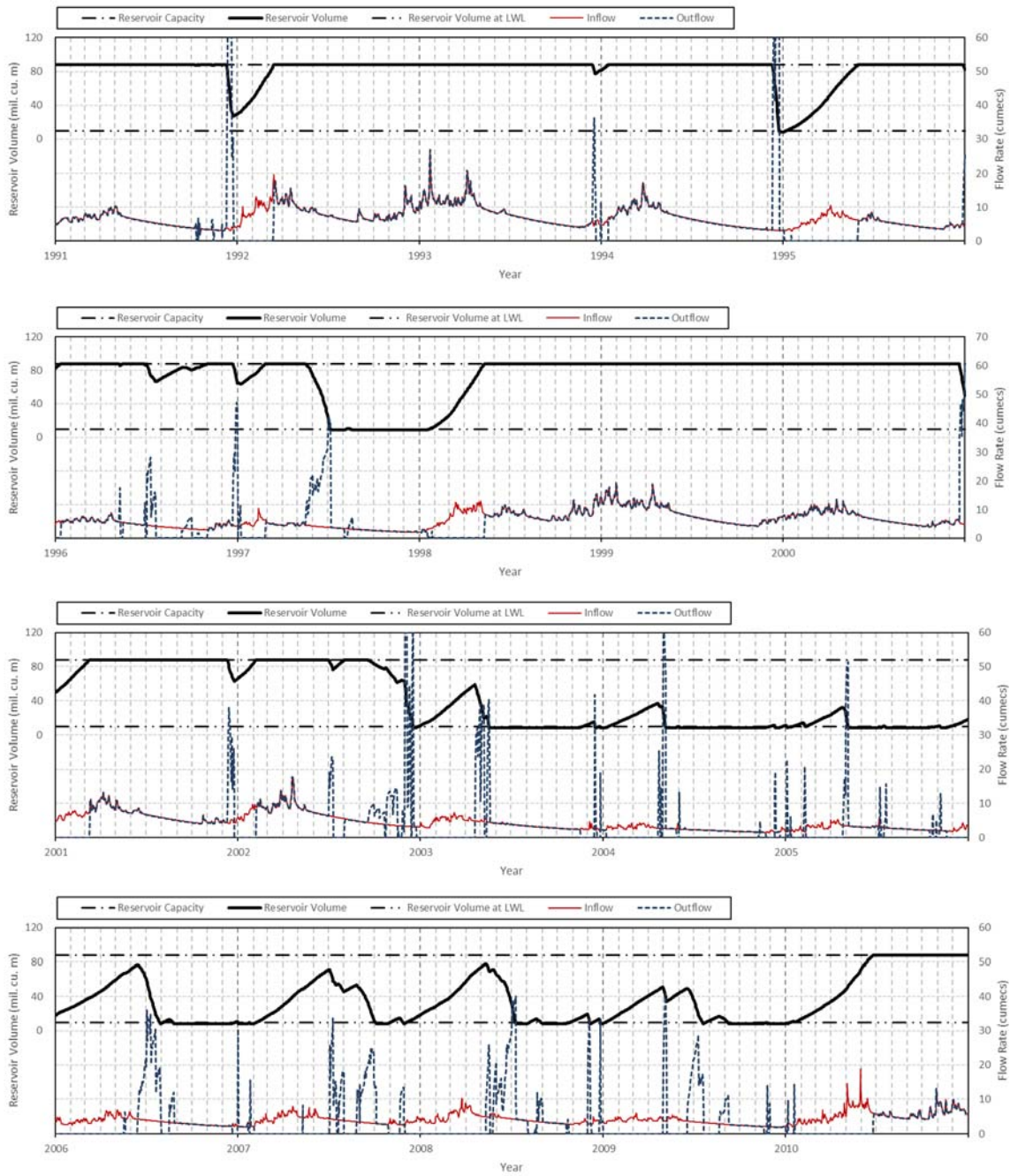
Source: JICA Project Team 2

(2) Selorejo



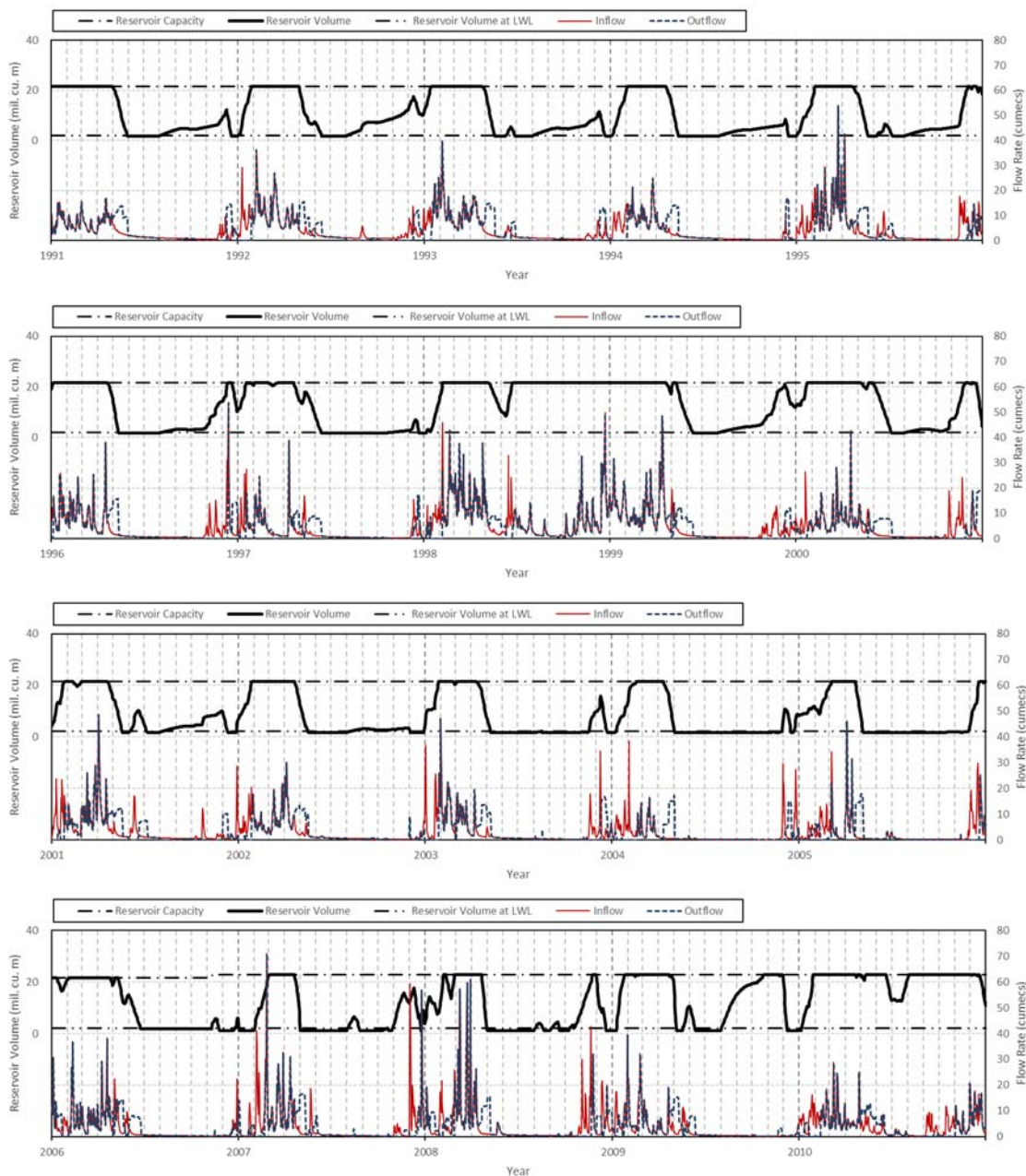
Source: JICA Project Team 2

(3) Wonorejo



Source: JICA Project Team 2

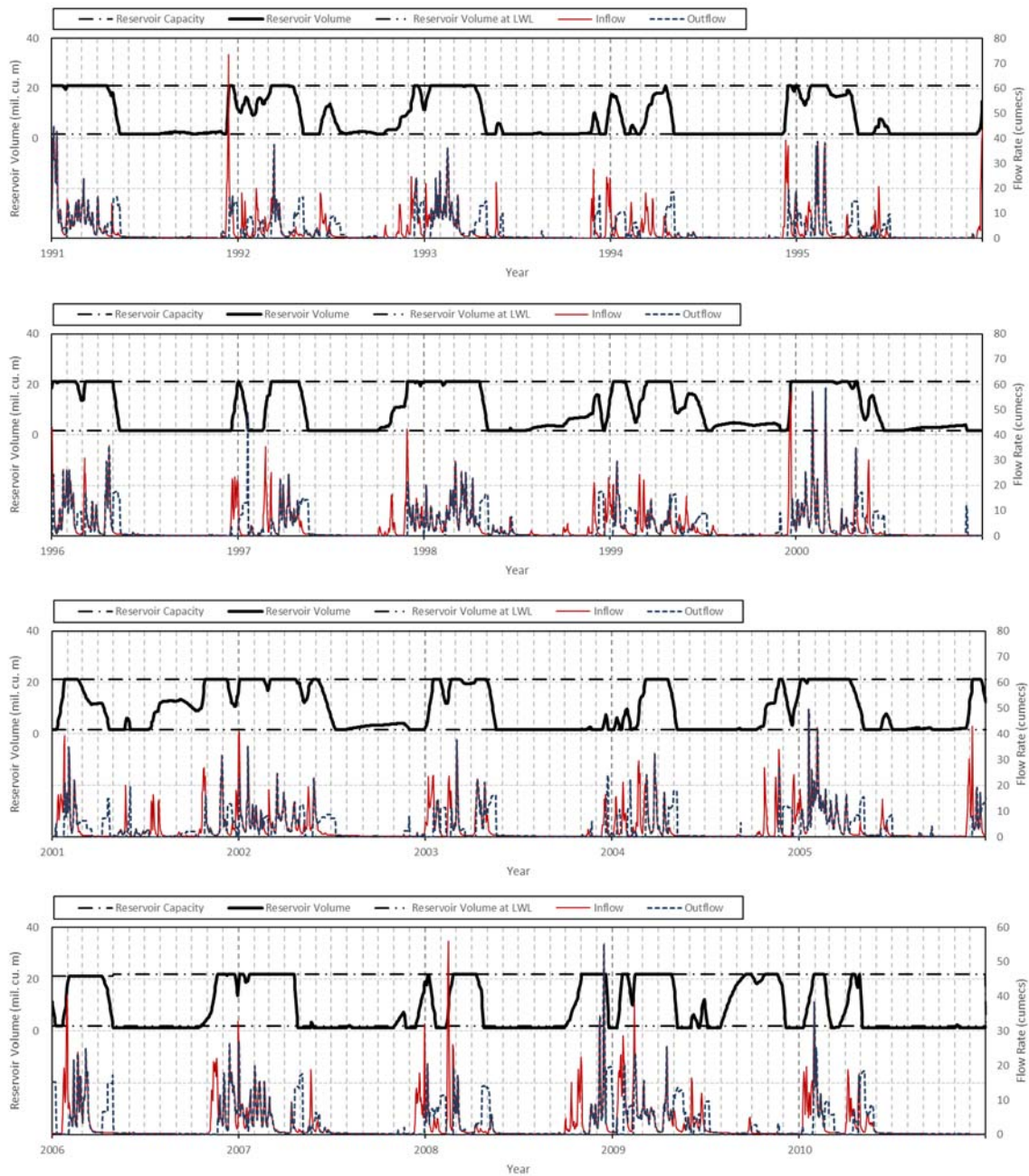
(4) Bening



Source: JICA Project Team 2

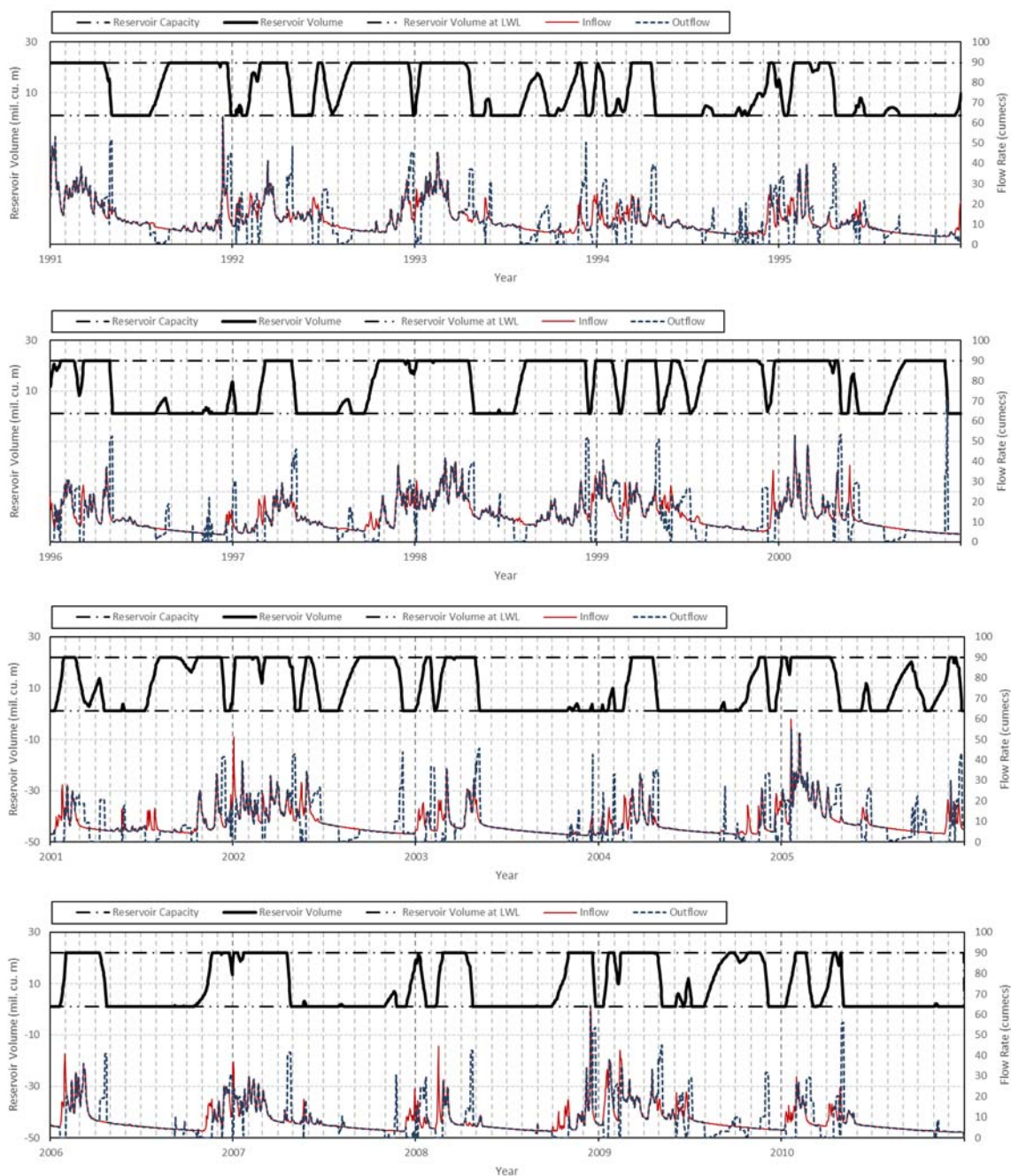
A4.3.4 Scenario 4

(1) Sutami



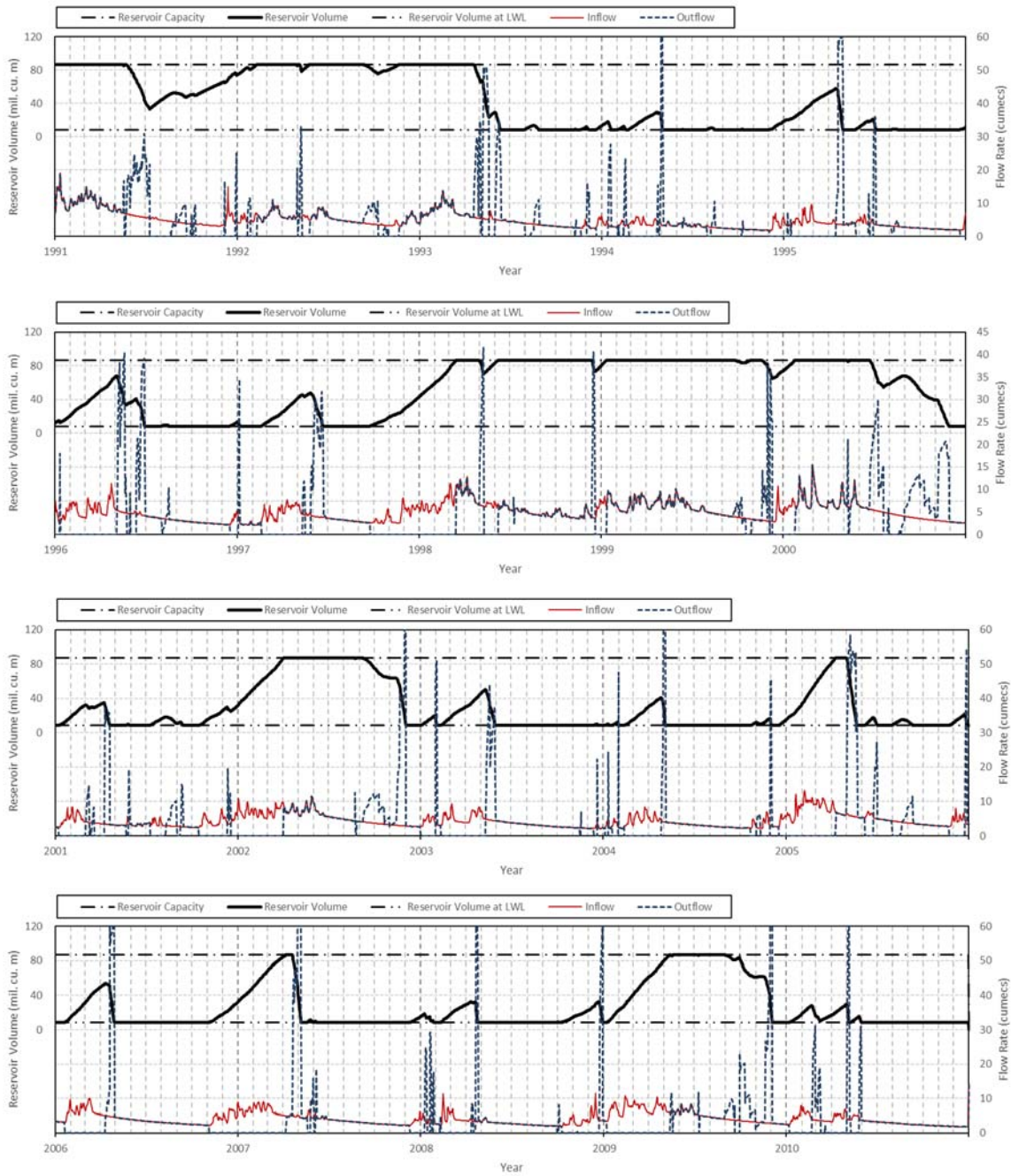
Source: JICA Project Team 2

(2) Selorejo



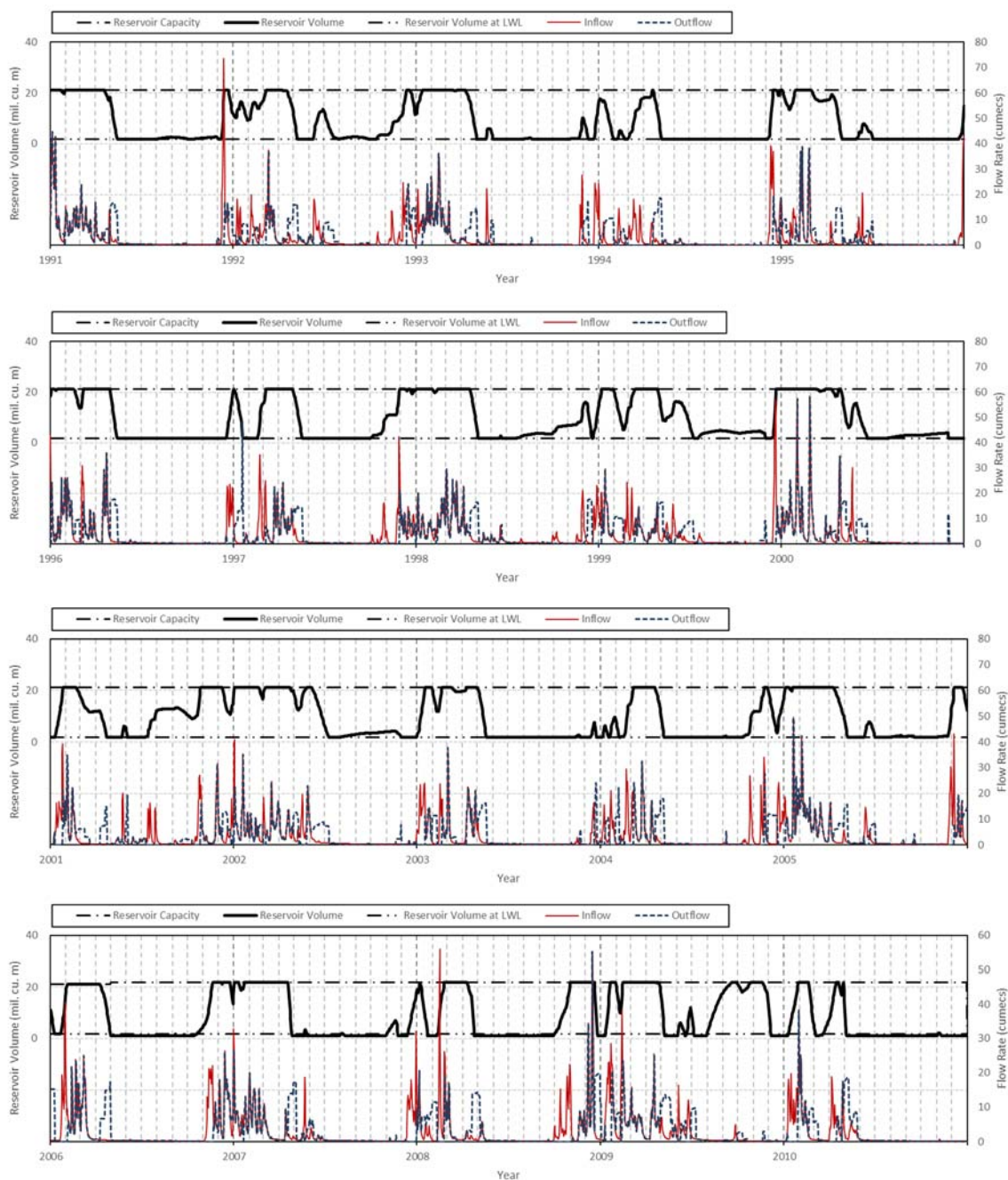
Source: JICA Project Team 2

(3) Wonorejo



Source: JICA Project Team 2

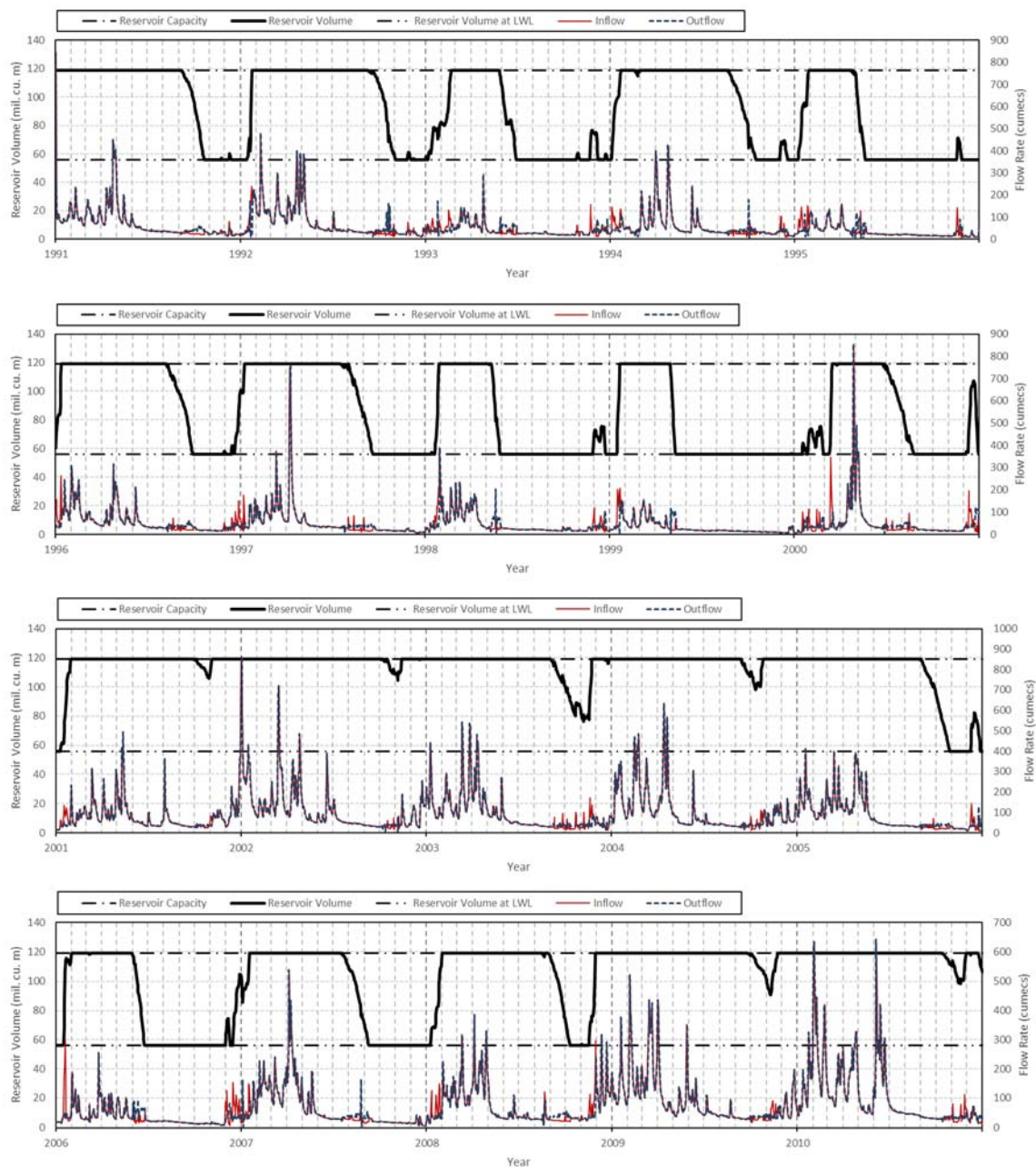
(4) Bening



Source: JICA Project Team 2

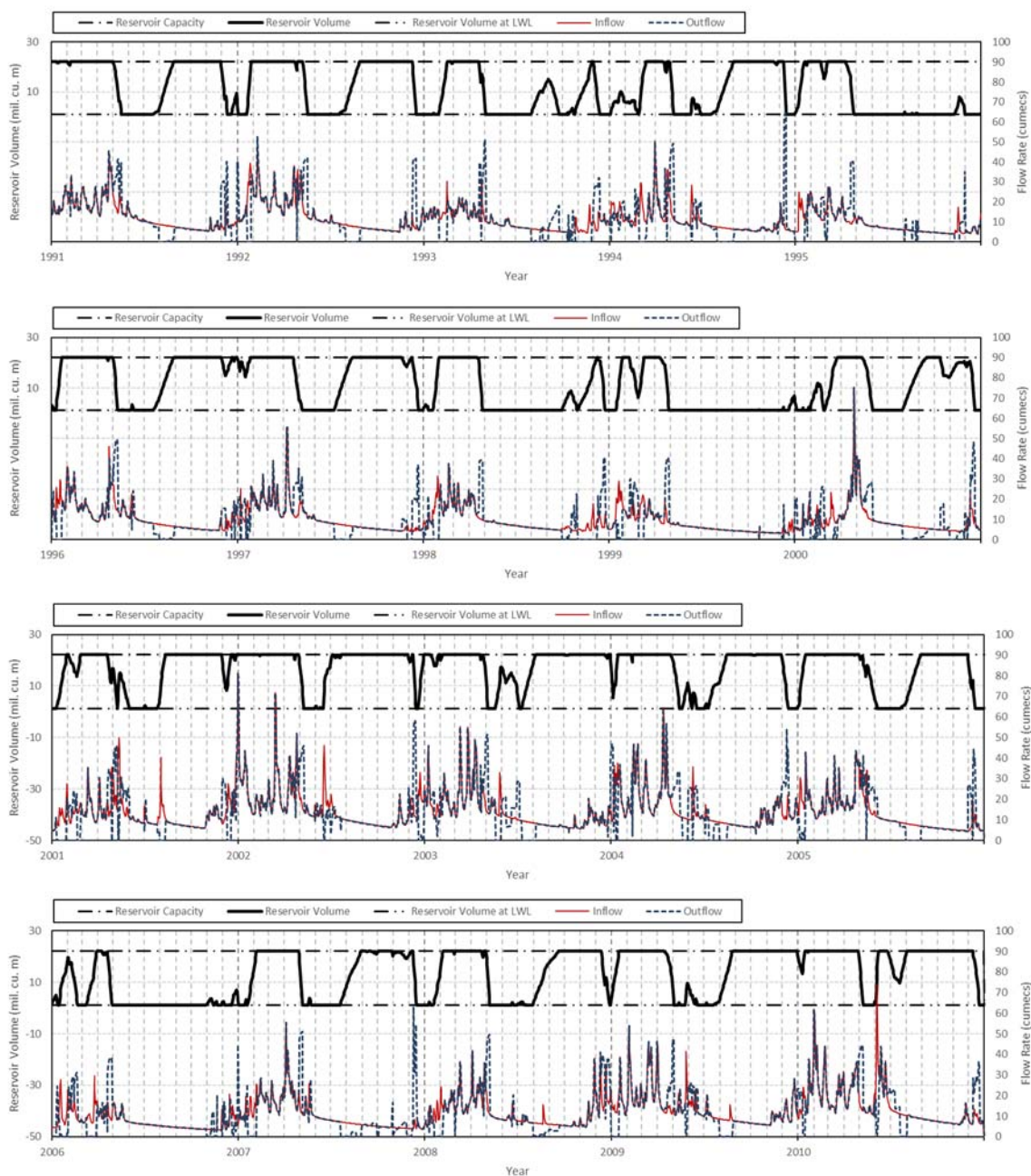
A4.3.5 Scenario 5

(1) Sutami



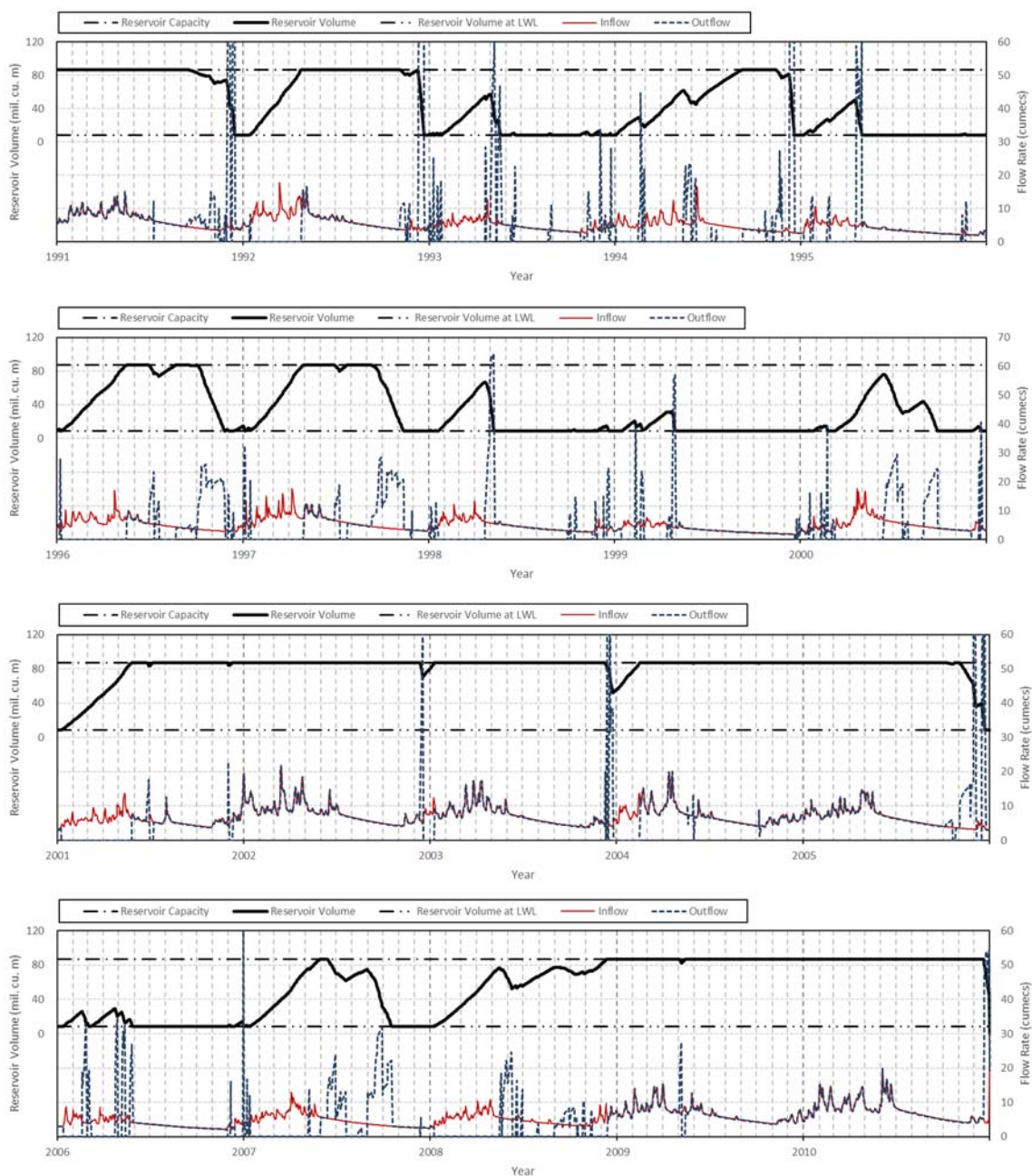
Source: JICA Project Team 2

(2) Selorejo



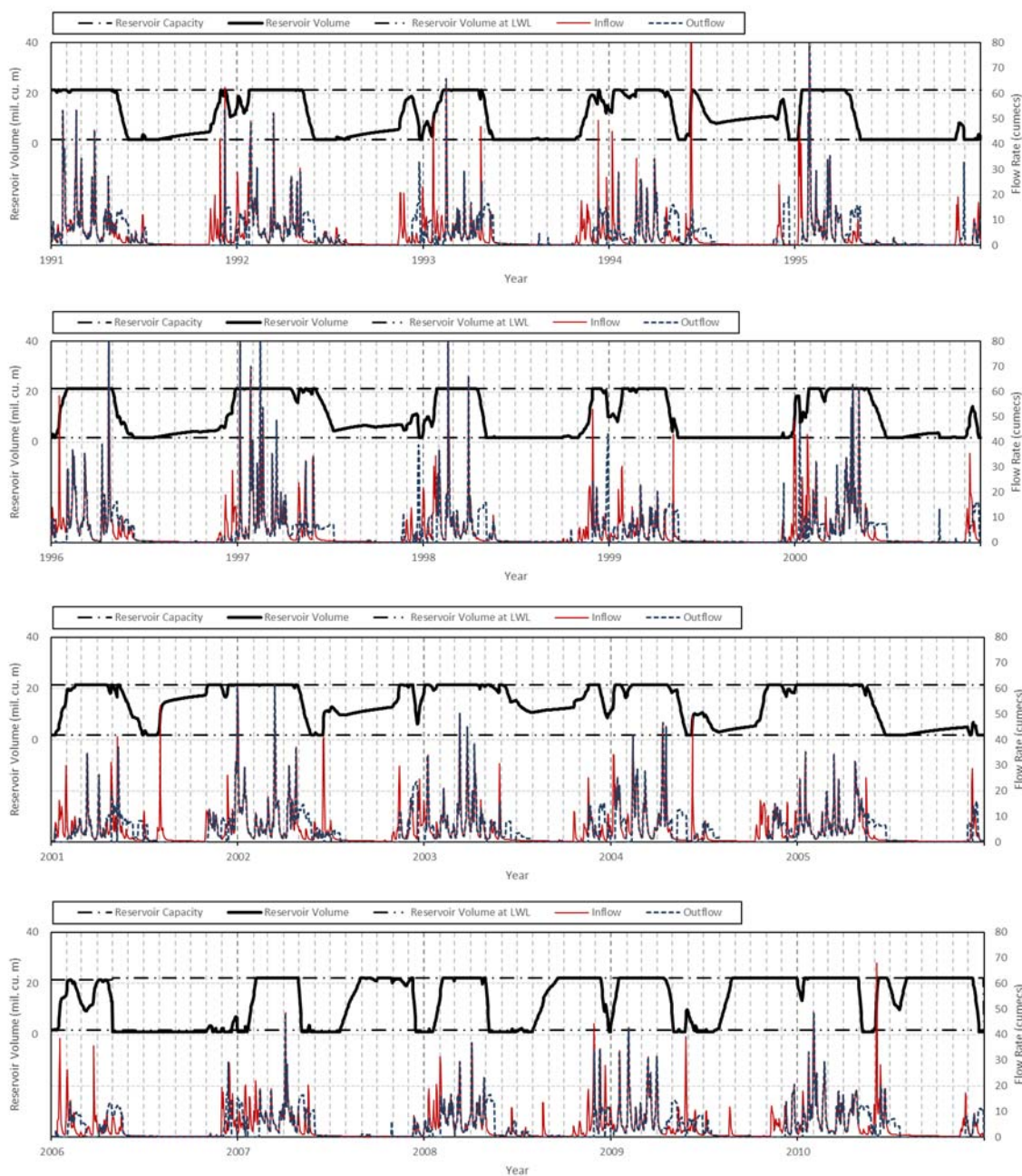
Source: JICA Project Team 2

(3) Wonorejo



Source: JICA Project Team 2

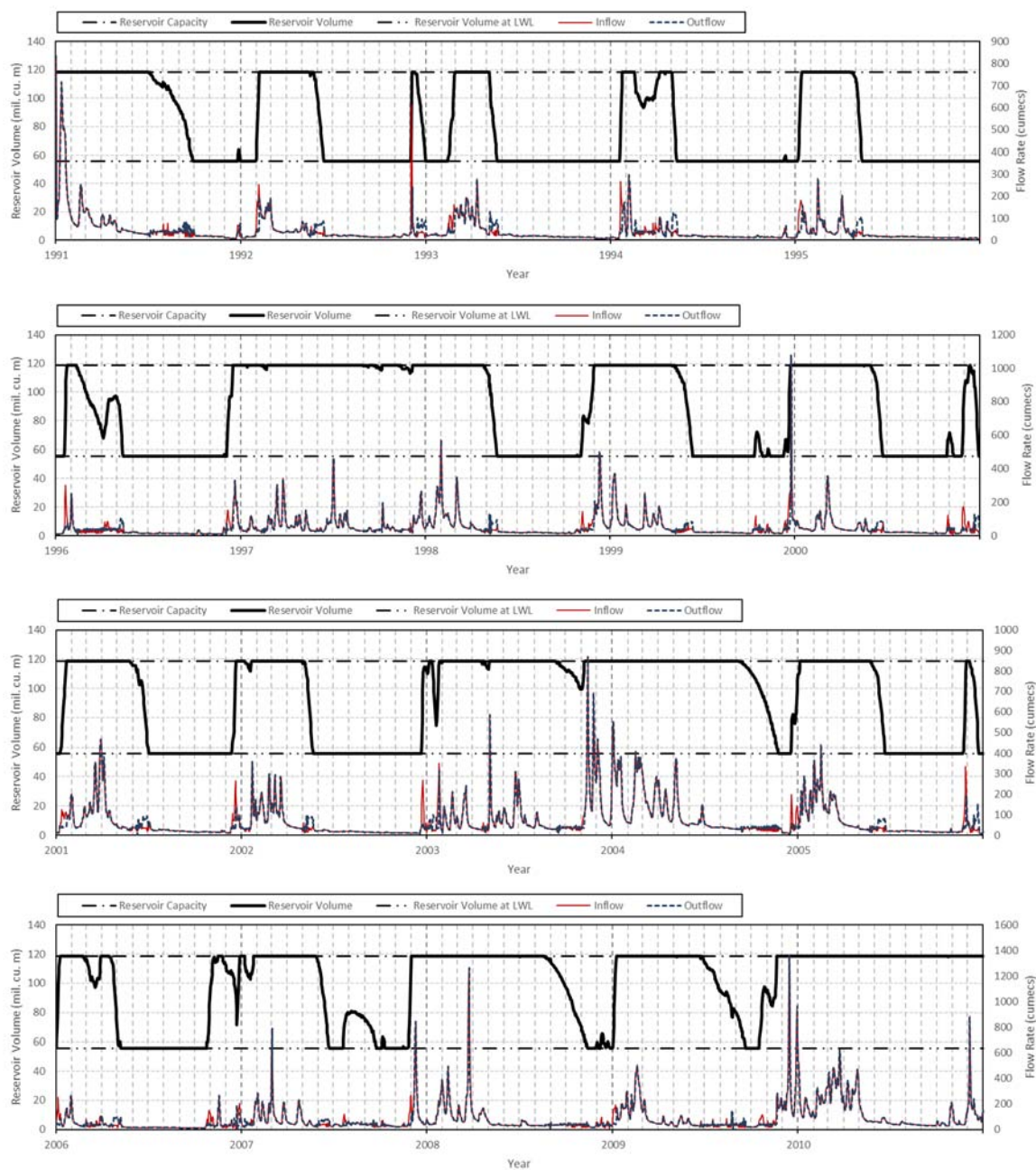
(4) Bening



Source: JICA Project Team 2

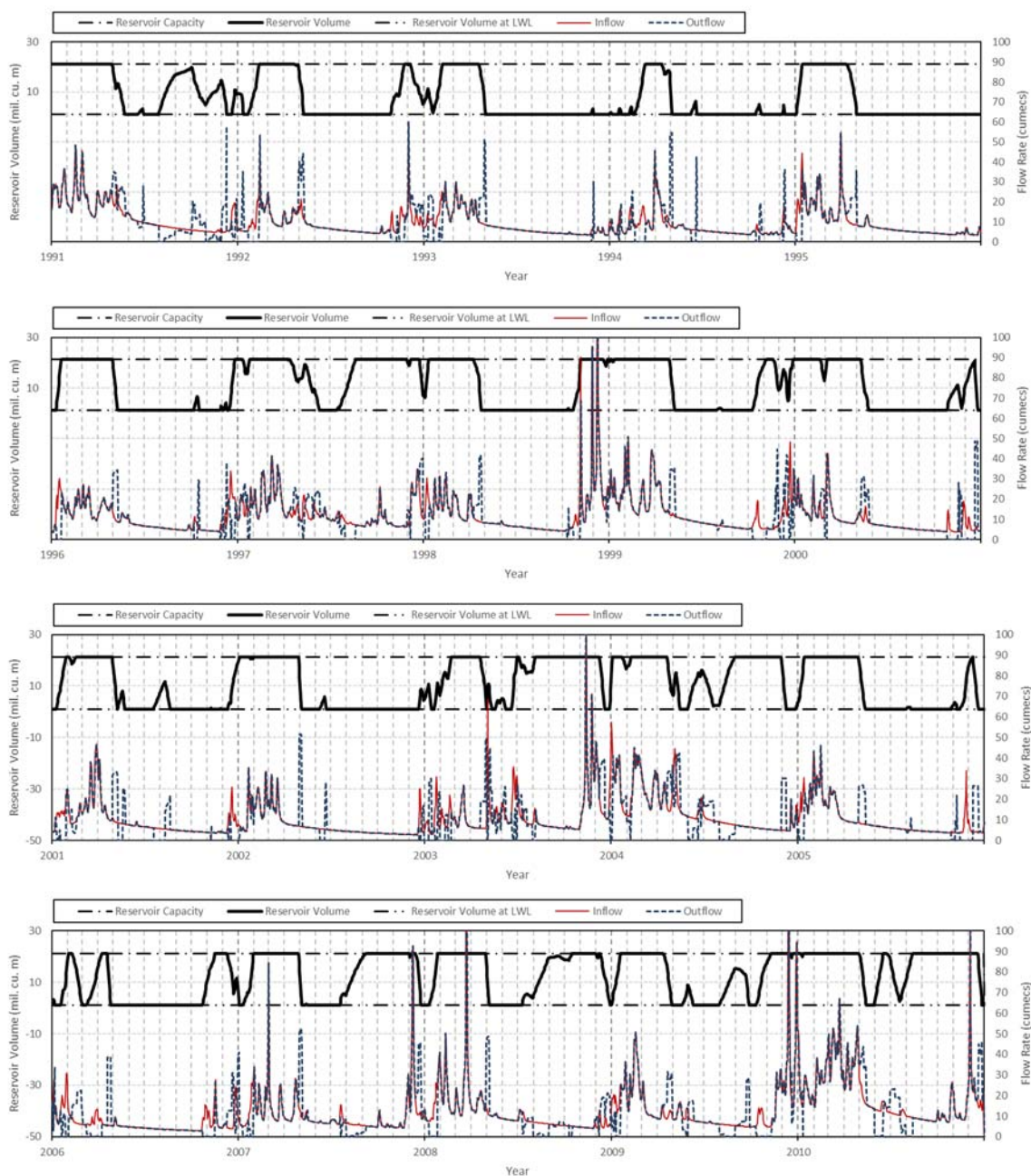
A4.3.6 Scenario 6

(1) Sutami



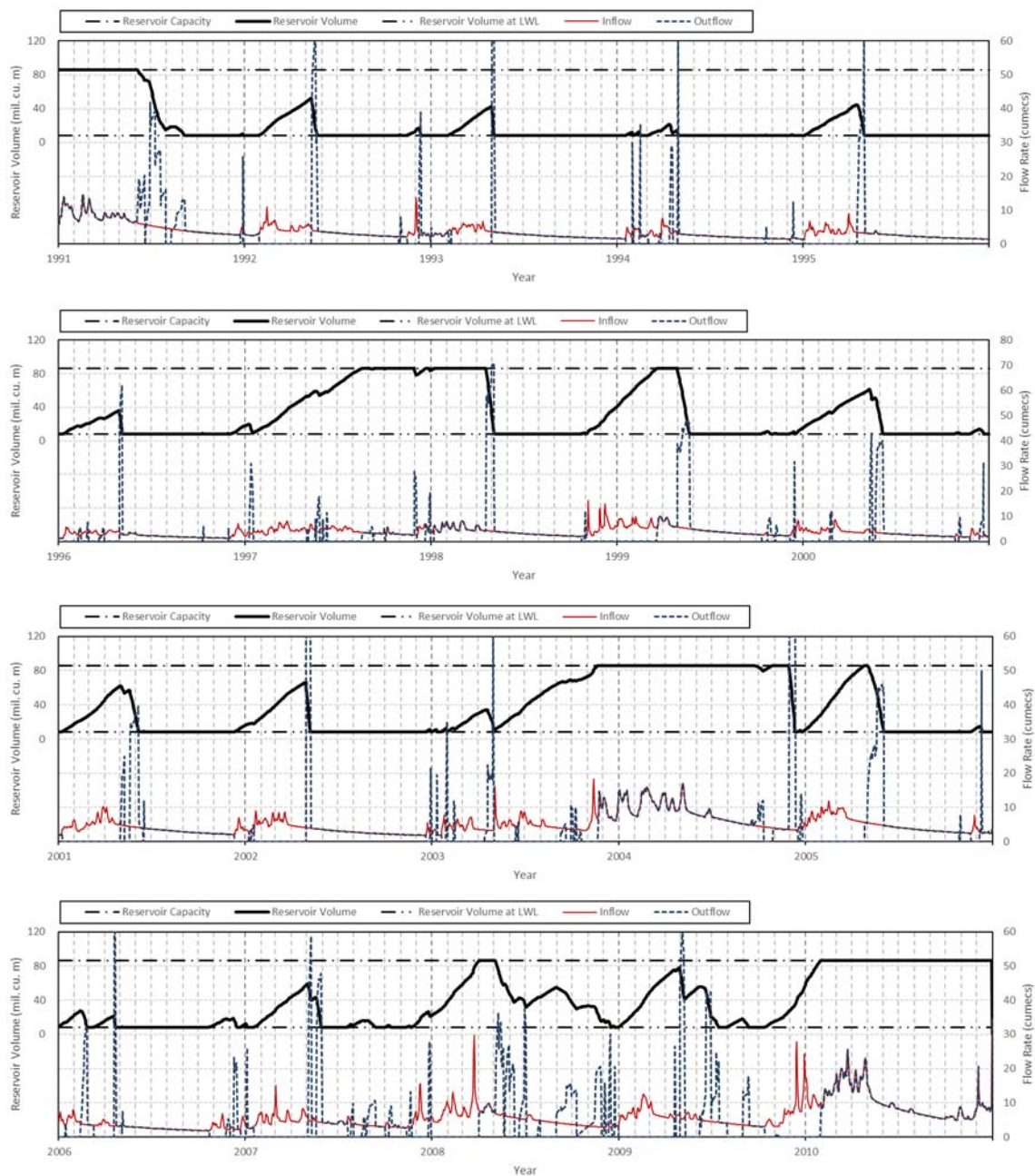
Source: JICA Project Team 2

(2) Selorejo



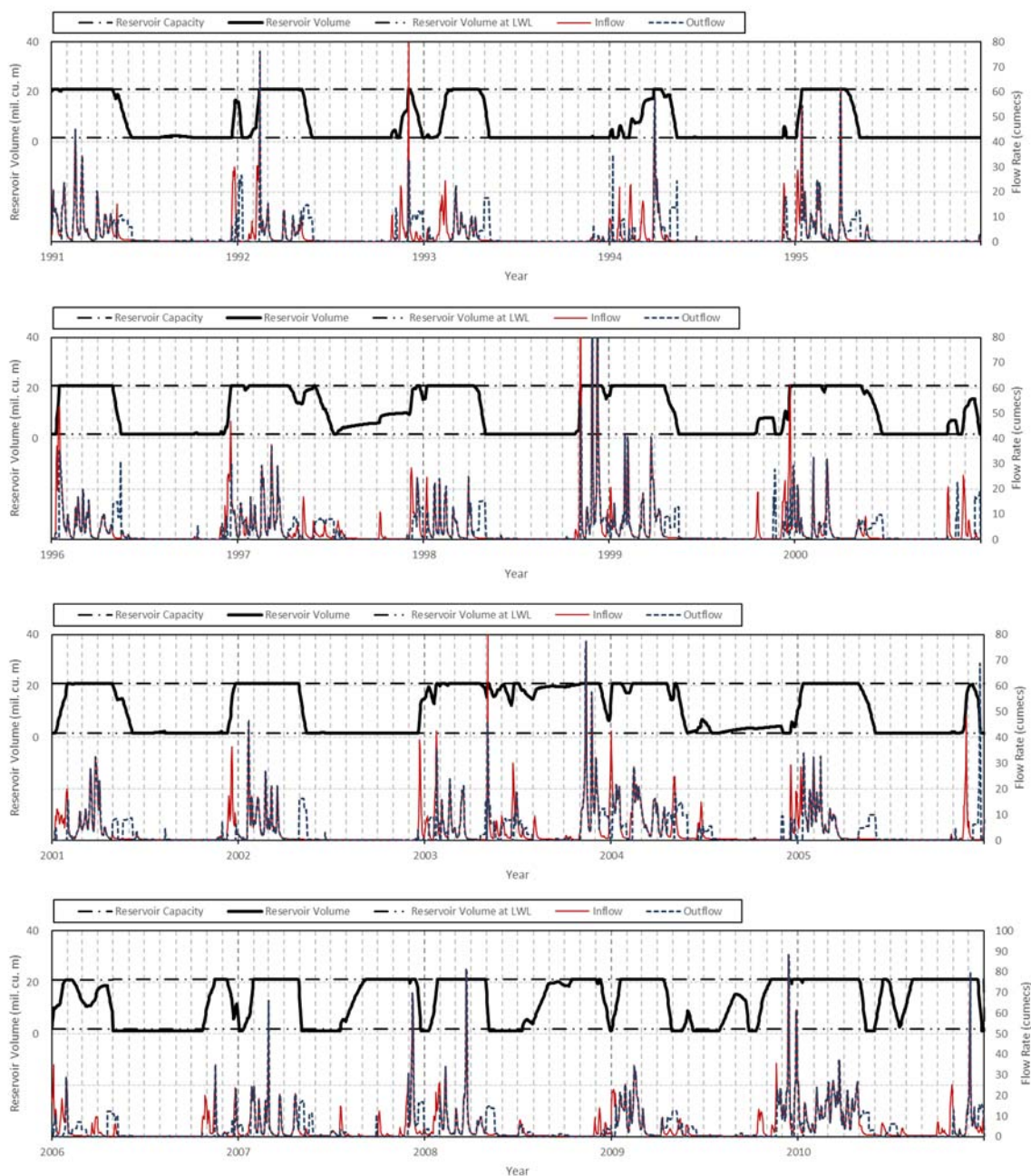
Source: JICA Project Team 2

(3) Wonorejo



Source: JICA Project Team 2

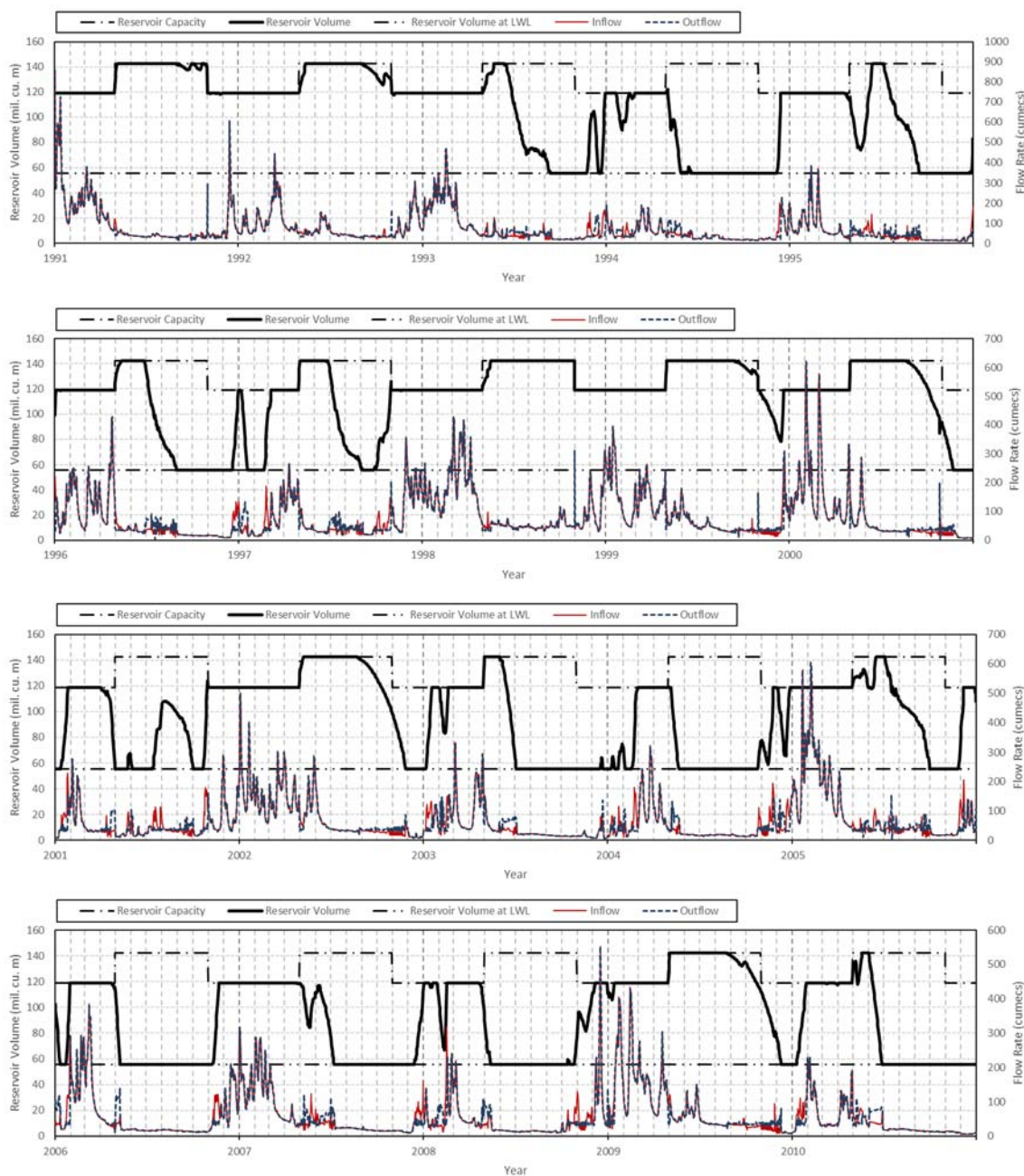
(4) Bening



Source: JICA Project Team 2

A4.3.7 Scenario 7

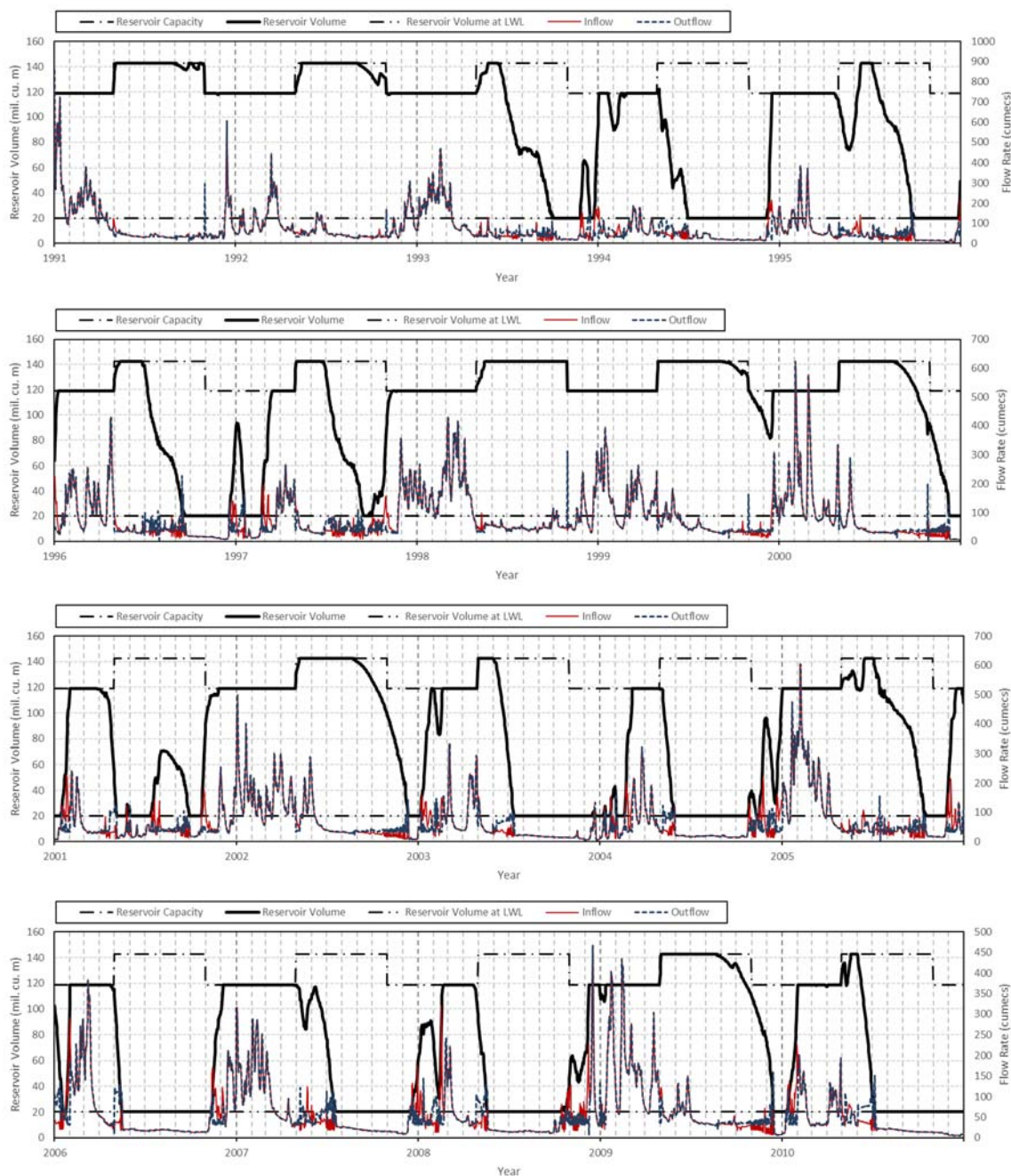
(1) Sutami



Source: JICA Project Team 2

A4.3.8 Scenario 8

(1) Sutami



Source: JICA Project Team 2