

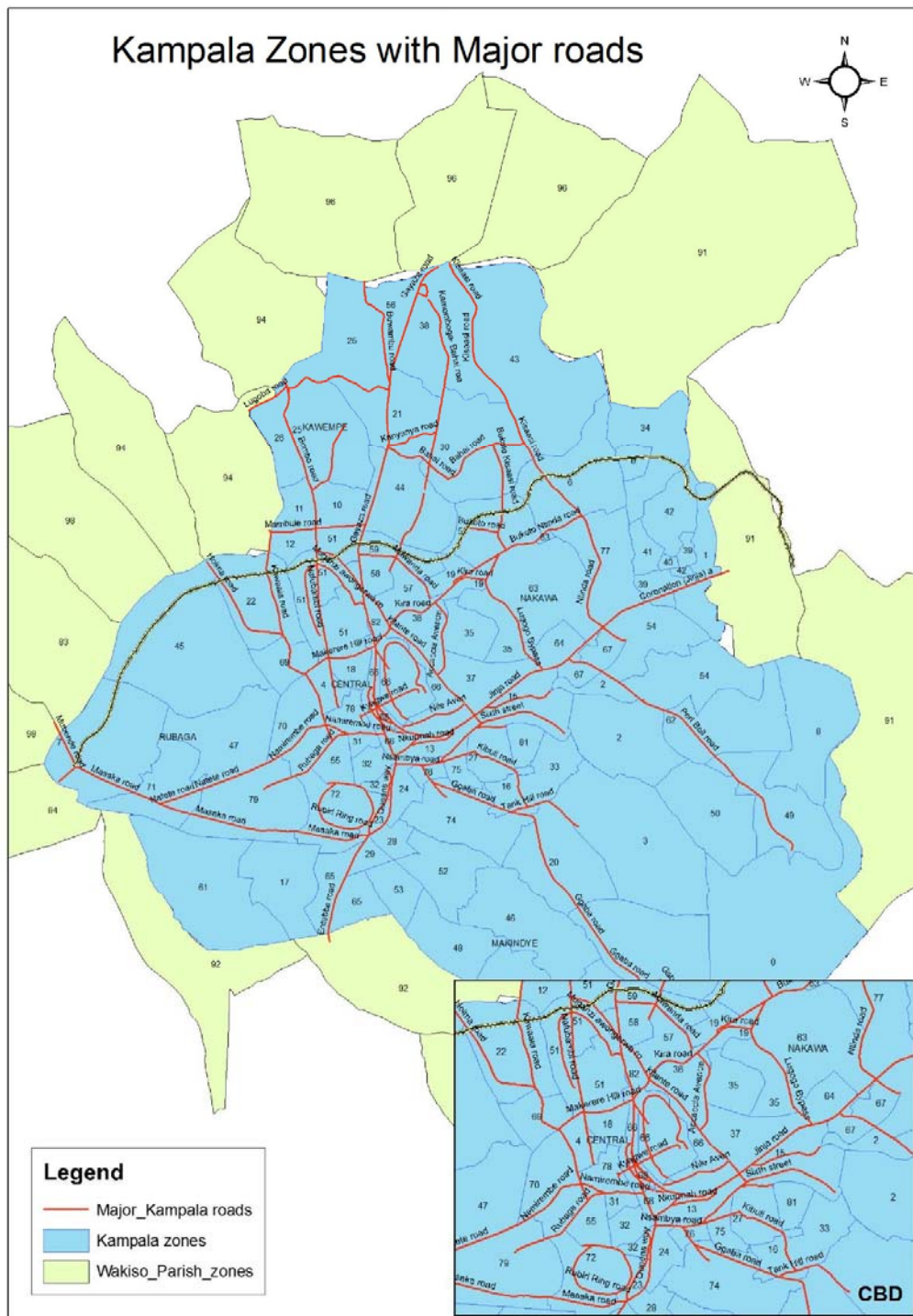
ANNEX-4 TRAFFI DEMAND FORECAST

ANNEX 4. TRAFFIC DEMAND FORECAST

(1) PARAMETER

A) ZONING

As with JICA's F/S in 2013, the parish-based zoning system in Kampala was applied. Parish is the smallest administrative unit. The zoning map is shown in Figure 4.1.



Source: JST

Figure 4.1 Zoning Map

Table 4.1 Zone List

Parish Name & Code List			Kampala 82 zone, Mukono 23 zone, Wakiso 16 zone, Other 10 zone			
No	Zone	District	Parish Name	Division Name	Parish Code	Division Code
1	4	Kampala	BUKESA	CENTRAL KAMPALA	201001	201
2	13	Kampala	CIVIC CENTRE	CENTRAL KAMPALA	201002	201
3	15	Kampala	INDUSTRIAL AREA	CENTRAL KAMPALA	201003	201
4	18	Kampala	KAGUGUBE	CENTRAL KAMPALA	201004	201
5	19	Kampala	KAMWOKYA I	CENTRAL KAMPALA	201005	201
6	19	Kampala	KAMWOKYA II	CENTRAL KAMPALA	201006	201
7	19	Kampala	KAMWOKYA	CENTRAL KAMPALA	201007	201
8	31	Kampala	KISENYI1	CENTRAL KAMPALA	201008	201
9	32	Kampala	KISENYI2	CENTRAL KAMPALA	201009	201
10	32	Kampala	KISENYI3	CENTRAL KAMPALA	201010	201
11	32	Kampala	KISENYI	CENTRAL KAMPALA	201011	201
12	35	Kampala	KOLOLO1	CENTRAL KAMPALA	201012	201
13	35	Kampala	KOLOLO2	CENTRAL KAMPALA	201013	201
14	36	Kampala	KOLOLO3	CENTRAL KAMPALA	201014	201
15	37	Kampala	KOLOLO4	CENTRAL KAMPALA	201015	201
16	36	Kampala	KOLOLO	CENTRAL KAMPALA	201016	201
17	55	Kampala	MENGO	CENTRAL KAMPALA	201017	201
18	66	Kampala	NAKASERO I	CENTRAL KAMPALA	201018	201
19	66	Kampala	NAKASERO II	CENTRAL KAMPALA	201019	201
20	66	Kampala	NAKASERO III	CENTRAL KAMPALA	201020	201
21	66	Kampala	NAKASERO IV	CENTRAL KAMPALA	201021	201
22	66	Kampala	NAKASERO	CENTRAL KAMPALA	201022	201
23	68	Kampala	NAKIVUBO	CENTRAL KAMPALA	201023	201
24	78	Kampala	OLD KAMPALA	CENTRAL KAMPALA	201024	201
25	10	Kampala	BWAISE1	KAWEMPE	202025	202
26	11	Kampala	BWAISE2	KAWEMPE	202026	202
27	12	Kampala	BWAISE3	KAWEMPE	202027	202
28	10	Kampala	BWAISE	KAWEMPE	202028	202
29	21	Kampala	KANYANYA	KAWEMPE	202029	202
30	25	Kampala	KAWEMPE I	KAWEMPE	202030	202
31	25	Kampala	KAWEMPE II	KAWEMPE	202031	202
32	25	Kampala	KAWEMPE	KAWEMPE	202032	202
33	26	Kampala	KAZO	KAWEMPE	202033	202
34	30	Kampala	KIKAYA	KAWEMPE	202034	202
35	38	Kampala	KOMAMBOGA	KAWEMPE	202035	202
36	44	Kampala	KYEBANDO	KAWEMPE	202036	202
37	51	Kampala	MAKERERE I	KAWEMPE	202037	202
38	51	Kampala	MAKERERE II	KAWEMPE	202038	202
39	51	Kampala	MAKERERE III	KAWEMPE	202039	202
40	51	Kampala	MAKERERE	KAWEMPE	202040	202
41	56	Kampala	MPERERWE	KAWEMPE	202041	202
42	57	Kampala	MULAGO1	KAWEMPE	202042	202
43	58	Kampala	MULAGO2	KAWEMPE	202043	202
44	59	Kampala	MULAGO3	KAWEMPE	202044	202
45	57	Kampala	MULAGO	KAWEMPE	202045	202
46	82	Kampala	WANDEGEYA	KAWEMPE	202046	202
47	3	Kampala	BUKASA	MAKINDYE	205047	205
48	9	Kampala	BUZIGA	MAKINDYE	205048	205
49	14	Kampala	GGABA	MAKINDYE	205049	205
50	16	Kampala	KABALAGALA	MAKINDYE	205050	205
51	20	Kampala	KANSANGA	MAKINDYE	205051	205
52	23	Kampala	KATWE1	MAKINDYE	205052	205
53	24	Kampala	KATWE2	MAKINDYE	205053	205
54	23	Kampala	KATWE	MAKINDYE	205054	205
55	27	Kampala	KIBULI	MAKINDYE	205055	205
56	28	Kampala	KIBUYE1	MAKINDYE	205056	205
57	29	Kampala	KIBUYE2	MAKINDYE	205057	205
58	29	Kampala	KIBUYE	MAKINDYE	205058	205

Source: JST

Parish Name & Code List			Kampala 82 zone, Mukono 23 zone, Wakiso 16 zone, Other 10 zone			
No	Zone	District	Parish Name	Division Name	Parish Code	Division Code
59	33	Kampala	KISUGU	MAKINDYE	205059	205
60	46	Kampala	LUKULI	MAKINDYE	205060	205
61	48	Kampala	LUWAFU	MAKINDYE	205061	205
62	52	Kampala	MAKINDYE1	MAKINDYE	205062	205
63	53	Kampala	MAKINDYE2	MAKINDYE	205063	205
64	52	Kampala	MAKINDYE	MAKINDYE	205064	205
65	74	Kampala	NSAMBYA CENTRAL	MAKINDYE	205065	205
66	73	Kampala	NSAMBYA ESTATE	MAKINDYE	205066	205
67	76	Kampala	NSAMBYA RAILWAY	MAKINDYE	205067	205
68	80	Kampala	SALAAMA	MAKINDYE	205068	205
69	81	Kampala	WABIGALO	MAKINDYE	205069	205
70	75	Kampala	NSAMBYA POLICE	MAKINDYE	205070	205
71	1	Kampala	BANDA	NAKAWA	206071	206
72	2	Kampala	BUGOLOBI	NAKAWA	206072	206
73	5	Kampala	BUKOTO1	NAKAWA	206073	206
74	6	Kampala	BUKOTO2	NAKAWA	206074	206
75	5	Kampala	BUKOTO	NAKAWA	206075	206
76	8	Kampala	BUTABIKA	NAKAWA	206076	206
77	2	Kampala	KISWA	NAKAWA	206077	206
78	34	Kampala	KIWATULE	NAKAWA	206078	206
79	43	Kampala	KYANJA	NAKAWA	206079	206
80	49	Kampala	LUZIRA	NAKAWA	206080	206
81	50	Kampala	LUZIRA PRISONS	NAKAWA	206081	206
82	54	Kampala	MBUYA I	NAKAWA	206082	206
83	54	Kampala	MBUYA II	NAKAWA	206083	206
84	54	Kampala	MBUYA	NAKAWA	206084	206
85	62	Kampala	MUTUNGO	NAKAWA	206085	206
86	63	Kampala	NAGURU1	NAKAWA	206086	206
87	64	Kampala	NAGURU2	NAKAWA	206087	206
88	63	Kampala	NAGURU	NAKAWA	206088	206
89	67	Kampala	NAKAWA	NAKAWA	206089	206
90	67	Kampala	NAKAWA INSTITUTIONS	NAKAWA	206090	206
91	77	Kampala	NTINDA	NAKAWA	206091	206
92	39	Kampala	KYAMBOGO	NAKAWA	206092	206
93	7	Kampala	BUSEGA	RUBAGA	207093	207
94	17	Kampala	KABOWA	RUBAGA	207094	207
95	22	Kampala	KASUBI	RUBAGA	207095	207
96	45	Kampala	LUBYA	RUBAGA	207096	207
97	47	Kampala	LUNGUJJA	RUBAGA	207097	207
98	61	Kampala	MUTUNDWE	RUBAGA	207098	207
99	65	Kampala	NAJJANANKUMB I	RUBAGA	207099	207
100	65	Kampala	NAJJANANKUMB II	RUBAGA	207100	207
101	65	Kampala	NAJJANANKUMB	RUBAGA	207101	207
102	69	Kampala	NAKULABYE	RUBAGA	207102	207
103	70	Kampala	NAMIREMBE	RUBAGA	207103	207
104	71	Kampala	NATEETE	RUBAGA	207104	207
105	72	Kampala	NDEEBA	RUBAGA	207105	207
106	79	Kampala	RUBAGA	RUBAGA	207106	207
107	51	Kampala	MULUKA1	MAKERERE UNIVERSITY	204107	204
108	51	Kampala	MULUKA II	MAKERERE UNIVERSITY	204108	204
109	51	Kampala	MULUKA III	MAKERERE UNIVERSITY	204109	204
110	51	Kampala	MULUKA IV	MAKERERE UNIVERSITY	204110	204
111	60	Kampala	MULUKA	MAKERERE UNIVERSITY	204111	204
112	40	Kampala	KYAMBOGO ITEK	KYAMBOGO	203112	203
113	42	Kampala	NABISUNSA	KYAMBOGO	203113	203
114	41	Kampala	KYAMBOGO UPK	KYAMBOGO	203114	203
115	42	Kampala	KYAMBOGO UPP	KYAMBOGO	203115	203
116	39	Kampala	KYAMBOGO	KYAMBOGO	203116	203
1	99	Mukono	BUIKWE	BUIKWE	802001	802
2	99	Mukono	KITAZI	BUIKWE	802002	802
3	99	Mukono	LWERU	BUIKWE	802003	802
4	99	Mukono	MALONGWE	BUIKWE	802004	802
5	99	Mukono	SSUGU	BUIKWE	802005	802
6	102	Mukono	BIBBO	KAWOLO	807006	807
7	102	Mukono	BULYANTETE	KAWOLO	807007	807
8	102	Mukono	BUSABAGA	KAWOLO	807008	807

Parish Name & Code List			Kampala 82 zone, Mukono 23 zone, Wakiso 16 zone, Other 10 zone			
No	Zone	District	Parish Name	Division Name	Parish Code	Division Code
9	102	Mukono	BUTININDI	KAWOLO	807009	807
10	102	Mukono	KIGENDA	KAWOLO	807010	807
11	102	Mukono	KITEZA	KAWOLO	807011	807
12	102	Mukono	LUWAYO	KAWOLO	807012	807
13	102	Mukono	SAGAZI	KAWOLO	807013	807
14	105	Mukono	KABOWA	LUGAZI T.C.	811014	811
15	105	Mukono	KAWOTTO	LUGAZI T.C.	811015	811
16	105	Mukono	KIKAULA	LUGAZI T.C.	811016	811
17	105	Mukono	LUGAZI CENTRAL	LUGAZI T.C.	811017	811
18	105	Mukono	NAKAZADDE	LUGAZI T.C.	811018	811
19	105	Mukono	NAMENGO	LUGAZI T.C.	811019	811
20	108	Mukono	BUSAGAZI	NAJJA	815020	815
21	108	Mukono	GULAMA	NAJJA	815021	815
22	108	Mukono	KISIIMBA	NAJJA	815022	815
23	108	Mukono	KIYINDI	NAJJA	815023	815
24	108	Mukono	MAWOTTO	NAJJA	815024	815
25	108	Mukono	NAMATOVU	NAJJA	815025	815
26	108	Mukono	TUKULU Ssugu ?	NAJJA	815026	815
27	109	Mukono	BUVUNYA Najjembe ?	NAJEMBE	816027	816
28	109	Mukono	BUWOOLA	NAJEMBE	816028	816
29	109	Mukono	KABANGA	NAJEMBE	816029	816
30	109	Mukono	KINONI	NAJEMBE	816030	816
31	109	Mukono	KITIGOMA	NAJEMBE	816031	816
32	109	Mukono	KIZIGO	NAJEMBE	816032	816
33	109	Mukono	NSAKYA	NAJEMBE	816033	816
34	113	Mukono	DDUNGI	NGOGWE	819034	819
35	113	Mukono	KIKWAYI	NGOGWE	819035	819
36	113	Mukono	KIRINGO	NGOGWE	819036	819
37	113	Mukono	LUBONGO	NGOGWE	819037	819
38	113	Mukono	NAMULESA	NGOGWE	819038	819
39	113	Mukono	NDOLWA	NGOGWE	819039	819
40	114	Mukono	NJERU EAST	NJERU TOWN COUNCIL	820040	820
41	114	Mukono	NJERU NORTH	NJERU TOWN COUNCIL	820041	820
42	114	Mukono	NJERU SOUTH	NJERU TOWN COUNCIL	820042	820
43	114	Mukono	NJERU WEST	NJERU TOWN COUNCIL	820043	820
44	115	Mukono	BUKASA	NKONKONJERU T.C.	821044	821
45	115	Mukono	MULAJJE	NKONKONJERU T.C.	821045	821
46	115	Mukono	NKONKONJERU	NKONKONJERU T.C.	821046	821
47	118	Mukono	BUZIKA	NYENGA	824047	824
48	118	Mukono	KABIZZI	NYENGA	824048	824
49	118	Mukono	NAMABU	NYENGA	824049	824
50	118	Mukono	NYENGA	NYENGA	824050	824
51	118	Mukono	SSUNGA	NYENGA	824051	824
52	118	Mukono	TONGOLO	NYENGA	824052	824
53	120	Mukono	KIMERA	SSI - BUKUNJA	827053	827
54	120	Mukono	LUGALA	SSI - BUKUNJA	827054	827
55	120	Mukono	LUGOBA	SSI - BUKUNJA	827055	827
56	120	Mukono	MUVO	SSI - BUKUNJA	827056	827
57	120	Mukono	NAMUKUMA	SSI - BUKUNJA	827057	827
58	120	Mukono	ZZITWE	SSI - BUKUNJA	827058	827
59	120	Mukono	KKOBA	SSI - BUKUNJA	827059	827
60	121	Mukono	KALAGALA	WAKISI	828060	828
61	121	Mukono	KKONKO	WAKISI	828061	828
62	121	Mukono	MALINDI	WAKISI	828062	828
63	121	Mukono	NAKALANGA	WAKISI	828063	828
64	121	Mukono	NAMINYA	WAKISI	828064	828
65	121	Mukono	WAKISI	WAKISI	828065	828
66	120	Mukono	BUWUGA	BUGAYA	801066	801
67	120	Mukono	BUYE	BUGAYA	801067	801
68	118	Mukono	BUSAMUZI	BUSAMUZI	803068	803
69	118	Mukono	LINGIRA	BUSAMUZI	803069	803
70	118	Mukono	LUNYANJJA	BUSAMUZI	803070	803
71	120	Mukono	BWEEMA	BWEEMA	804071	804
72	120	Mukono	LWAIJE	BWEEMA	804072	804
73	118	Mukono	BUWANGA	NAIRAMBI	814073	814
74	118	Mukono	LUFU	NAIRAMBI	814074	814

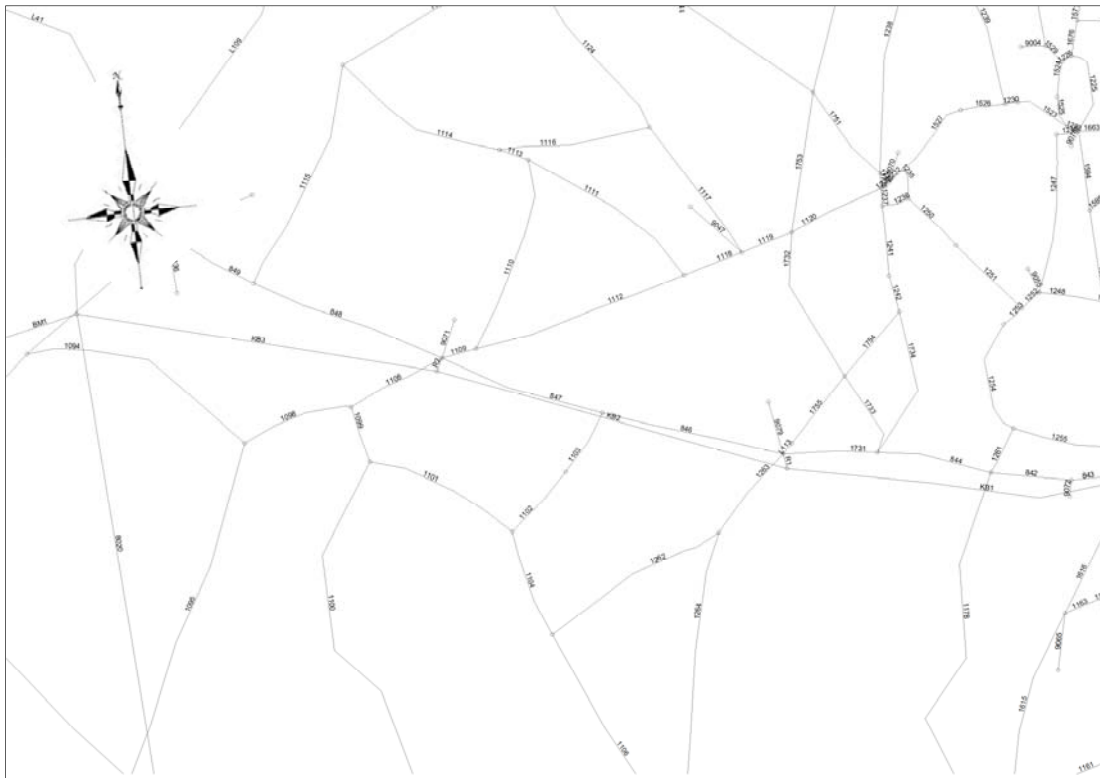
Parish Name & Code List			Kampala 82 zone, Mukono 23 zone, Wakiso 16 zone, Other 10 zone			
No	Zone	District	Parish Name	Division Name	Parish Code	Division Code
75	118	Mukono	MAGYO	NAIRAMBI	814075	814
76	100	Mukono	BUKERERE	GOMA	805076	805
77	116	Mukono	BUGOMBE	KKOME ISLANDS	809077	809
78	116	Mukono	BUSANGA	KKOME ISLANDS	809078	809
79	116	Mukono	LOMOLO	KKOME ISLANDS	809079	809
80	116	Mukono	MUBEMBE	KKOME ISLANDS	809080	809
81	104	Mukono	BULIJJO	KYAMPISI	810081	810
82	104	Mukono	DDUNDU	KYAMPISI	810082	810
83	104	Mukono	KABEMBE	KYAMPISI	810083	810
84	104	Mukono	KYABAKADDE	KYAMPISI	810084	810
85	104	Mukono	NTONTO	KYAMPISI	810085	810
86	110	Mukono	KATENTE	NAKISUNGA	817086	817
87	110	Mukono	KIYOOLA	NAKISUNGA	817087	817
88	110	Mukono	KYABALOGO	NAKISUNGA	817088	817
89	110	Mukono	KYETUME	NAKISUNGA	817089	817
90	110	Mukono	NAMAIBA	NAKISUNGA	817090	817
91	110	Mukono	NAMUYENJE	NAKISUNGA	817091	817
92	110	Mukono	SEETA - NAZIGO	NAKISUNGA	817092	817
93	110	Mukono	WANKOBA	NAKISUNGA	817093	817
94	111	Mukono	BULIKA	NAMA	818094	818
95	111	Mukono	KASENGE	NAMA	818095	818
96	111	Mukono	KATOOGO	NAMA	818096	818
97	111	Mukono	MPOMA	NAMA	818097	818
98	111	Mukono	NAMAWOJJOLO	NAMA	818098	818
99	116	Mukono	BUGOYE	NTENJERU	822099	822
100	116	Mukono	BUNAKIJJA	NTENJERU	822100	822
101	116	Mukono	KABANGA	NTENJERU	822101	822
102	116	Mukono	MPATTA	NTENJERU	822102	822
103	116	Mukono	MPUNGE	NTENJERU	822103	822
104	116	Mukono	NSANJA	NTENJERU	822104	822
105	116	Mukono	NTANZI	NTENJERU	822105	822
106	116	Mukono	SSAAYI	NTENJERU	822106	822
107	116	Mukono	TERERE	NTENJERU	822107	822
108	101	Mukono	KABIMBIRI	KASAWO	806108	806
109	101	Mukono	KAKUKUULU	KASAWO	806109	806
110	101	Mukono	KASANA	KASAWO	806110	806
111	101	Mukono	KIGOGOLA	KASAWO	806111	806
112	101	Mukono	KITOVU	KASAWO	806112	806
113	101	Mukono	NAMALIIRI	KASAWO	806113	806
114	103	Mukono	BUKASA	KIMENYEDDE	808114	808
115	103	Mukono	KAWONGO	KIMENYEDDE	808115	808
116	103	Mukono	KIWAFU	KIMENYEDDE	808116	808
117	103	Mukono	NAMALIGA	KIMENYEDDE	808117	808
118	103	Mukono	NANGA	KIMENYEDDE	808118	808
119	112	Mukono	BAMUSUUTA	NABAAL	812119	812
120	112	Mukono	MAKUKUBA	NABAAL	812120	812
121	112	Mukono	NABALANGA	NABAAL	812121	812
122	112	Mukono	NAGGALAMA	NABAAL	812122	812
123	112	Mukono	NAKANYONYI	NABAAL	812123	812
124	107	Mukono	KYAJJA	NAGOJJE	813124	813
125	107	Mukono	NAGOJJE	NAGOJJE	813125	813
126	107	Mukono	NAKIBANO	NAGOJJE	813126	813
127	107	Mukono	NAMAGUNGA	NAGOJJE	813127	813
128	107	Mukono	NAMATABA	NAGOJJE	813128	813
129	107	Mukono	WAGALA	NAGOJJE	813129	813
130	117	Mukono	KATEETE	NTUNDA	823130	823
131	117	Mukono	KYABAZAALA	NTUNDA	823131	823
132	117	Mukono	NAMAYUBA	NTUNDA	823132	823
133	117	Mukono	NTUNDA	NTUNDA	823133	823
134	119	Mukono	KAYINI	SEETA	826134	826
135	119	Mukono	KITALE	SEETA	826135	826
136	119	Mukono	KITUULA	SEETA	826136	826
137	119	Mukono	NAMANOGA	SEETA	826137	826
138	119	Mukono	NAMUGANGA	SEETA	826138	826
139	100	Mukono	MISINDYE	GOMA	805139	805
140	100	Mukono	NANTABULIRWA	GOMA	805140	805

Parish Name & Code List			Kampala 82 zone, Mukono 23 zone, Wakiso 16 zone, Other 10 zone			
No	Zone	District	Parish Name	Division Name	Parish Code	Division Code
141	100	Mukono	NYENJE	GOMA	805141	805
142	100	Mukono	SEETA	GOMA	805142	805
143	106	Mukono	MUKONO_KAWUGA	Other	825143	825
144	106	Mukono	NSUUBE	Other	825144	825
145	111	Mukono	NAMUBIRU	NAMA	818145	818
1	88	Wakiso	BUWANUKA	KAKIRI	1303001	1303
2	88	Wakiso	KAKIRI	KAKIRI	1303002	1303
3	88	Wakiso	KAMULI	KAKIRI	1303003	1303
4	88	Wakiso	KIKANDWA	KAKIRI	1303004	1303
5	88	Wakiso	LUBBE	KAKIRI	1303005	1303
6	88	Wakiso	LUWUNGA	KAKIRI	1303006	1303
7	88	Wakiso	MAGOGGO	KAKIRI	1303007	1303
8	88	Wakiso	NAKYELONGOOSA	KAKIRI	1303008	1303
9	88	Wakiso	NAMPUNGE	KAKIRI	1303009	1303
10	88	Wakiso	SSENTEMA	KAKIRI	1303010	1303
11	89	Wakiso	BULUMBU	KASANJE	1304011	1304
12	89	Wakiso	BUSSI	KASANJE	1304012	1304
13	89	Wakiso	JJUNGO	KASANJE	1304013	1304
14	89	Wakiso	KASANJE	KASANJE	1304014	1304
15	89	Wakiso	MAKO	KASANJE	1304015	1304
16	89	Wakiso	SAZI	KASANJE	1304016	1304
17	89	Wakiso	SOKOLO	KASANJE	1304017	1304
18	89	Wakiso	ZZIBA	KASANJE	1304018	1304
19	89	Wakiso	ZZINGA	KASANJE	1304019	1304
20	93	Wakiso	BBALE-MUKWENDA	MASULITA	1307020	1307
21	93	Wakiso	KABALE bbikka ?	MASULITA	1307021	1307
22	93	Wakiso	KANZIZE	MASULITA	1307022	1307
23	93	Wakiso	KATIKAMU	MASULITA	1307023	1307
24	93	Wakiso	KYENGEZA	MASULITA	1307024	1307
25	93	Wakiso	LUGUNGUDE	MASULITA	1307025	1307
26	93	Wakiso	LWEMWENDDE	MASULITA	1307026	1307
27	93	Wakiso	MANZE	MASULITA	1307027	1307
28	93	Wakiso	MASULITA	MASULITA	1307028	1307
29	93	Wakiso	NAKIKUNGUBE	MASULITA	1307029	1307
30	93	Wakiso	TTUMBAALI	MASULITA	1307030	1307
31	95	Wakiso	BEMBE	NAMAYUMBA	1309031	1309
32	95	Wakiso	BUKONDO	NAMAYUMBA	1309032	1309
33	95	Wakiso	KANZILO	NAMAYUMBA	1309033	1309
34	95	Wakiso	KITAYITA	NAMAYUMBA	1309034	1309
35	95	Wakiso	KYAMPISI	NAMAYUMBA	1309035	1309
36	95	Wakiso	KYANJUUNA	NAMAYUMBA	1309036	1309
37	95	Wakiso	KYASA	NAMAYUMBA	1309037	1309
38	95	Wakiso	LUGUZI	NAMAYUMBA	1309038	1309
39	95	Wakiso	LUTISI	NAMAYUMBA	1309039	1309
40	95	Wakiso	NAKEDDE	NAMAYUMBA	1309040	1309
41	84	Wakiso	MAYA	BUSIRO	1311041	1311
42	84	Wakiso	NANZIGA	BUSIRO	1311042	1311
43	97	Wakiso	BULWANYI	SSISA	1314043	1314
44	97	Wakiso	NAKAWUKA	SSISA	1314044	1314
45	97	Wakiso	NANKONGE	SSISA	1314045	1314
46	97	Wakiso	NGONGOLO	SSISA	1314046	1314
47	97	Wakiso	NKUNGULUTALE	SSISA	1314047	1314
48	97	Wakiso	NSAGGU	SSISA	1314048	1314
49	97	Wakiso	SSISA	SSISA	1314049	1314
50	98	Wakiso	BAKKA	WAKISO	1315050	1315
51	98	Wakiso	KALIITI	WAKISO	1315051	1315
52	98	Wakiso	MENDE	WAKISO	1315052	1315
53	85	Wakiso	BUSUKUMA	BUSUKUMA	1301053	1301
54	85	Wakiso	GGULUDDENE	BUSUKUMA	1301054	1301
55	85	Wakiso	KABUMBA	BUSUKUMA	1301055	1301
56	85	Wakiso	KIKOKO	BUSUKUMA	1301056	1301
57	85	Wakiso	KIWENDA	BUSUKUMA	1301057	1301
58	85	Wakiso	LUGO	BUSUKUMA	1301058	1301
59	85	Wakiso	MAGIGYE	BUSUKUMA	1301059	1301
60	85	Wakiso	WAMIRONGO	BUSUKUMA	1301060	1301
61	87	Wakiso	BUWAMBO	GOMBE	1302061	1302

Parish Name & Code List			Kampala 82 zone, Mukono 23 zone, Wakiso 16 zone, Other 10 zone			
No	Zone	District	Parish Name	Division Name	Parish Code	Division Code
62	87	Wakiso	GOMBE	GOMBE	1302062	1302
63	87	Wakiso	KAVULE bujumba/jaggala ?	GOMBE	1302063	1302
64	87	Wakiso	KIRYAMULI	GOMBE	1302064	1302
65	87	Wakiso	MIGADDE	GOMBE	1302065	1302
66	87	Wakiso	MWERERWE	GOMBE	1302066	1302
67	87	Wakiso	SANGA	GOMBE	1302067	1302
68	87	Wakiso	TTIKALU bujumba/jaggala ?	GOMBE	1302068	1302
69	87	Wakiso	WAMBALE	GOMBE	1302069	1302
70	96	Wakiso	KABUBBU	NANGABO	1310070	1310
71	96	Wakiso	KATADDE	NANGABO	1310071	1310
72	92	Wakiso	SEGUKU	KYANDONDO	1313072	1313
73	90	Wakiso	KABALE	KATABI	1305073	1305
74	90	Wakiso	KISUBI	KATABI	1305074	1305
75	90	Wakiso	KITALA	KATABI	1305075	1305
76	90	Wakiso	NALUGALA	KATABI	1305076	1305
77	90	Wakiso	NKUMBA	KATABI	1305077	1305
78	84	Wakiso	BUDDO	BUSIRO	1311078	1311
79	84	Wakiso	KASENGE	BUSIRO	1311079	1311
80	84	Wakiso	KATEREKE	BUSIRO	1311080	1311
81	84	Wakiso	KIKAJO	BUSIRO	1311081	1311
82	84	Wakiso	KISOZI KITEMU	BUSIRO	1311082	1311
83	84	Wakiso	KYENGERA	BUSIRO	1311083	1311
84	84	Wakiso	NABBINGO	BUSIRO	1311084	1311
85	84	Wakiso	NSANGI	BUSIRO	1311085	1311
86	97	Wakiso	BWEYA	SSISA	1314086	1314
87	97	Wakiso	KITENDE	SSISA	1314087	1314
88	97	Wakiso	NAMULANDA	SSISA	1314088	1314
89	97	Wakiso	WAMALA_BUSIRO	SSISA	1314089	1314
90	98	Wakiso	BANDA	WAKISO	1315090	1315
91	98	Wakiso	BUKASA_WAKISO	WAKISO	1315091	1315
92	83	Wakiso	BULOBA	BUKASA	1316092	1316
93	98	Wakiso	KASENGEJJE	WAKISO	1315093	1315
94	98	Wakiso	KYEBANDO_WAKISO	WAKISO	1315094	1315
95	83	Wakiso	LUKWANGA	BUKASA	1316095	1316
96	83	Wakiso	NAKABUGO	BUKASA	1316096	1316
97	98	Wakiso	NALUVULE	WAKISO	1315097	1315
98	98	Wakiso	NAMUSERA	WAKISO	1315098	1315
99	98	Wakiso	SSUMBWE	WAKISO	1315099	1315
100	86	Wakiso	KISIMBIRI	ENTEBBE	825100	825
101	86	Wakiso	ENTEBBE_MUN	ENTEBBE	825101	825
102	87	Wakiso	MATUGA	GOMBE	1302102	1302
103	87	Wakiso	NASSE	GOMBE	1302103	1302
104	91	Wakiso	BWEYGERERE	KIRA	1306104	1306
105	91	Wakiso	KIMWANYI	KIRA	1306105	1306
106	91	Wakiso	KIRA	KIRA	1306106	1306
107	91	Wakiso	KIREKA	KIRA	1306107	1306
108	91	Wakiso	KIRINYA	KIRA	1306108	1306
109	91	Wakiso	KYALIWAJALA	KIRA	1306109	1306
110	94	Wakiso	KAWANDA	NABWERU	1308110	1308
111	94	Wakiso	KAZO_NABWERU	NABWERU	1308111	1308
112	94	Wakiso	MAGANJO	NABWERU	1308112	1308
113	94	Wakiso	NAKYESANJA	NABWERU	1308113	1308
114	94	Wakiso	NANSANA	NABWERU	1308114	1308
115	94	Wakiso	WAMALA_KYADONDO	NABWERU	1308115	1308
116	96	Wakiso	BULAMU	NANGABO	1310116	1310
117	96	Wakiso	GAYAZA	NANGABO	1310117	1310
118	96	Wakiso	KITEEZI	NANGABO	1310118	1310
119	96	Wakiso	MASOOLI	NANGABO	1310119	1310
120	96	Wakiso	NANGABO	NANGABO	1310120	1310
121	96	Wakiso	WAMPEEWO	NANGABO	1310121	1310
122	96	Wakiso	WATTUBA	NANGABO	1310122	1310
123	92	Wakiso	BUNAMWAYA	KYANDONDO	1313123	1313
124	92	Wakiso	BUSABALA	KYANDONDO	1313124	1313
125	92	Wakiso	MASAJJA	KYANDONDO	1313125	1313
126	92	Wakiso	MUTUNDWE_WAKISO	KYANDONDO	1313126	1313
127	92	Wakiso	MUTUNGO_WAKISO	KYANDONDO	1313127	1313
128	92	Wakiso	NDEJJE	KYANDONDO	1313128	1313

B) ROAD NETWORK

Road network map and network parameters are shown in following figures.



Source: JST

Figure 4.2 Network Map in Project Area (Link Name)

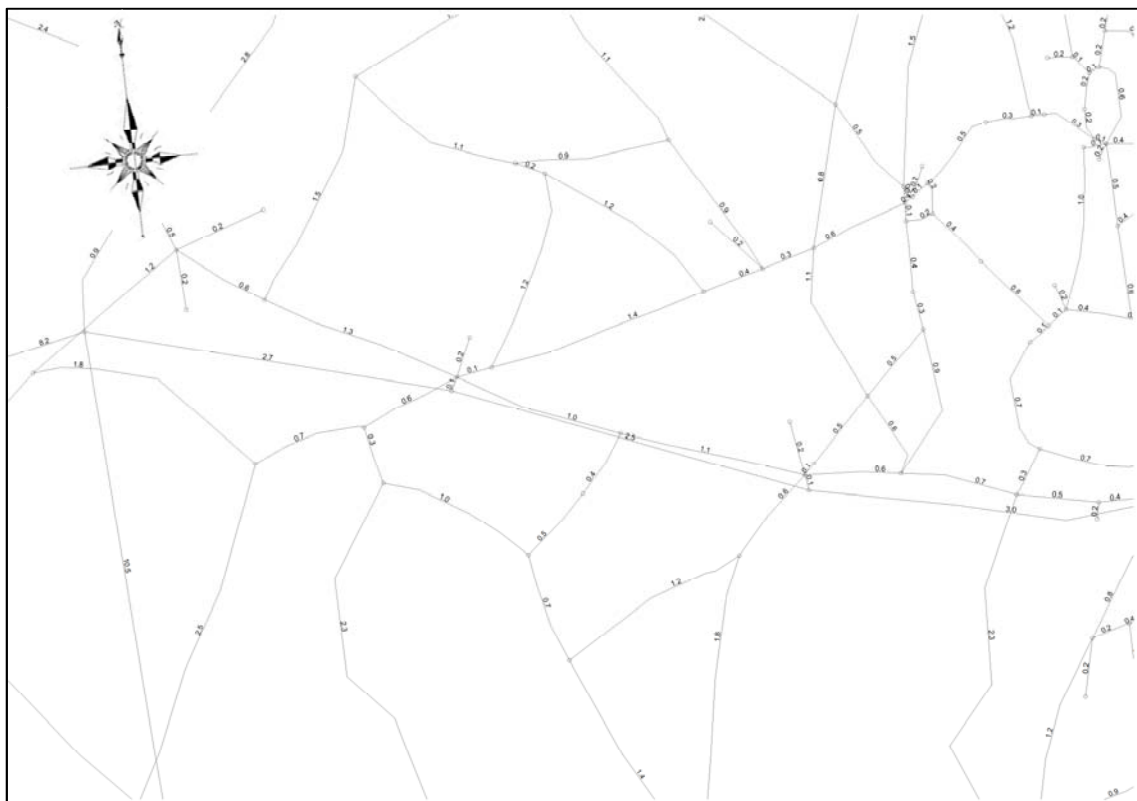


Figure 4.3 Network Map in Project Area (Link Length)

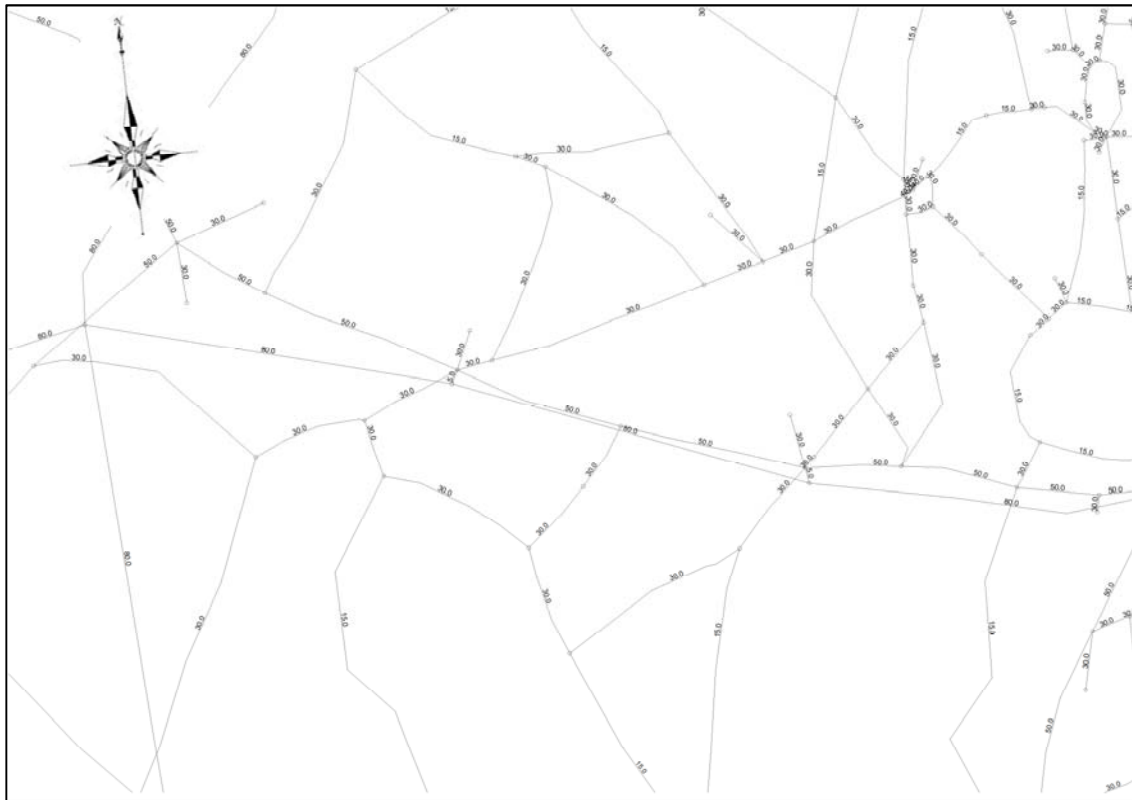


Figure 4.4 Network Map in Project Area (Link Velocity)

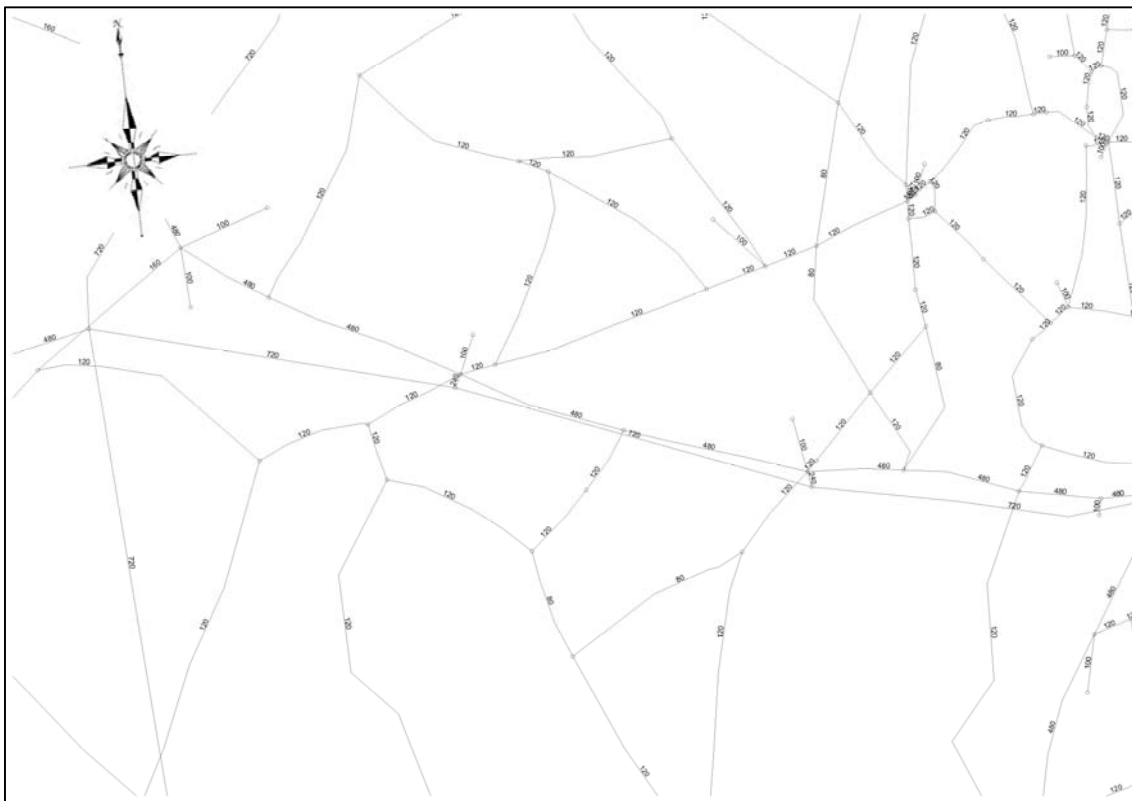


Figure 4.5 Network Map in Project Area (Link Capacity)

(2) ADDITIONAL CASE

An additional future traffic assignment was conducted for two cases in traffic mode variation on KBEX, as shown in the following table.

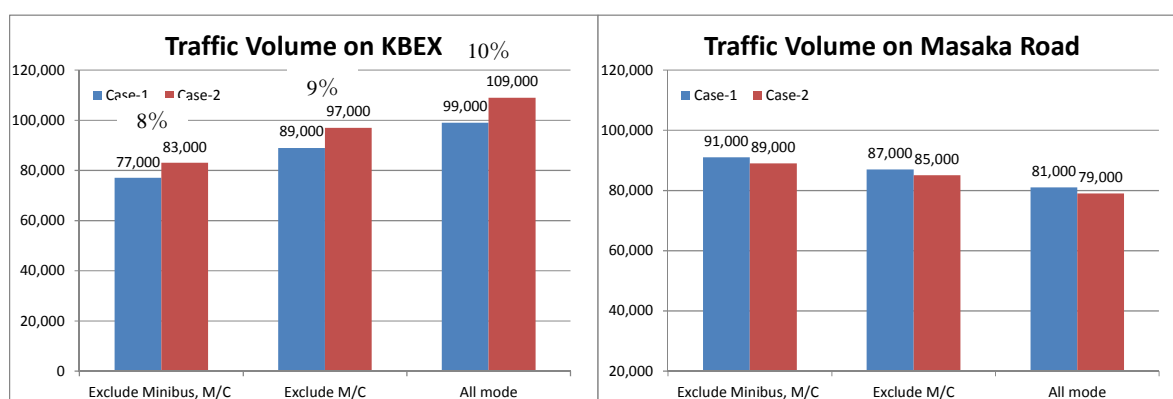
Table Result of ADDITIONAL CASE

Unit: PCU/day

2034	Case	KBEX (4-lane)	Masaka Road (4-lane)	Total
Case-1	Exclude Minibus, M/C	77,000	91,000	168,000
Case-1-2	Exclude M/C	89,000	87,000	176,000
Case-1-3	All mode	99,000	81,000	180,000
2034	Case	KBEX (6-lane)	Masaka Road (4-lane)	Total
Case-2	Exclude Minibus, M/C	83,000	89,000	172,000
Case-2-2	Exclude M/C	97,000	85,000	182,000
Case-2-3	All mode	109,000	79,000	188,000

The necessity of 6-lane installation

- Even if KBEX is enabled for all vehicle types (case 1-3, and 2-3), the traffic volume of KBEX will only be about 99,000 pcu/day for 4-lane scenario, and 109,000 pcu/day for 6-lane scenario. With the installation costs increase by 1.3 times, and the road capacity increases by 1.5 times, because the increase in traffic volume is small, the KBEX 6-lane might not be effective.
- Since traffic volume on Masaka road only decreases about 2,000 pcu/day for all cases, even if KBEX has 6 lanes, it will not alleviate the congestion on Masaka road.



Vehicle restriction on KBEX

- KBEX is an urban expressway, aimed at long travel distance connecting the east and west sides of Kampala city, that requires swift travel and punctual performance. Both minibus, due to its short-distance travel, and M/C, due to its speed problem, are not desirable for KBEX usage. The Kampala flyover project also has a ban on M/C.
- Even when the road restriction on KBEX is lifted, the traffic volume on Masaka road, at about 80,000 pcu/day, already far exceeds its traffic capacity (designed for 48,000 pcu/day with the 4-lane scenario).
- For measures to alleviate congestion on Masaka road, it is difficult to secure the number of traffic lane. As shown in section 3.6.3, it is necessary to develop a public transport system with high transport capacity, such as BRT and railway.

- The total traffic volume on KBEX will change, with or without lane restriction. From this, the potential traffic demand for the entire route (KBEX and Masaka Road) is predicted to be even higher.

ANNEX-5 PHOTO

Photo

01 Queen's Way(Start Point) .JPG



02 Queen's Way(Green Belt) .JPG



03 Queen's Way(High Voltage Line) .JPG



04 Kibuye JCT.JPG



05 Kibuye JCT-2.JPG



06 Masaka Road(Kibuye) .JPG



Photo

07 Masaka Road(Wedt Side).JPG



08 Masaka Road (Railway Workshop).JPG



09 Railway Workshop.JPG



10 Wanklukuku JCT.JPG



11 WFP.JPG



12 Plastic Factory.JPG



Photo

13 Masaka Road(Near Nalukolongo JCT).JPG



14 Nalukolongo Waterway.JPG



15 High Voltage Line (near Busega).JPG



16 Natete JCT.JPG



17 Natete JCT (West side) .JPG



18 Masaka Road(End Point).JPG



Photo

19 Busega IC.JPG



20 Northern Bypass.JPG



21 Existing Road (Kampala Side).JPG



22 Existing Road (Gulu Side).JPG



23 Existing Road (Bridge Section).JPG



24 Existing Bridge (Gulu Side).JPG



Photo

25 Existing Bridge (Kampala Side).JPG



26 Existing Road (Narrow Width).JPG



27 Existing Bridge (Downstream Side).JPG



28 Existing Bridge (Upstream Side).JPG



29 Jacketing of Abutment.JPG



30 Serious water leakage of bridge decks.JPG



Photo

31 Expansion Joints.JPG



32 Downstream of the river from Existing Bridge.JPG



33 Location of the bridge in Current Dsign .JPG



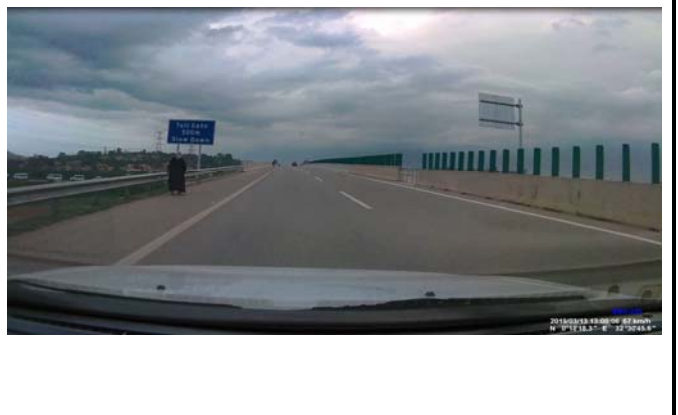
34 Location of the bridge in Current Dsign .JPG



35 Dam Facility .JPG



36 Kampala-Entebbe EXP-1.jpg



Photo

37 Kampala-Entebbe EXP -2.jpg



38 Northern BP-1.jpg



39 Northern BP -2.jpg



40 Entebbe Road-1.jpg



41 Entebbe Road -2.jpg



42 Clock Tower JCT.jpg



Photo

43 Source of the Nile Bridge-1.JPG



44 Source of the Nile Bridge-2.JPG



45 Source of the Nile Bridge-3.JPG



46 Kick OFF Meeting .jpg



47 UEGCL Metting .JPG



48 stakeholder Metting.jpg



Photo

49 UNRA Meeting .jpg



50 Site Reconnaissance with UNRA.JPG



