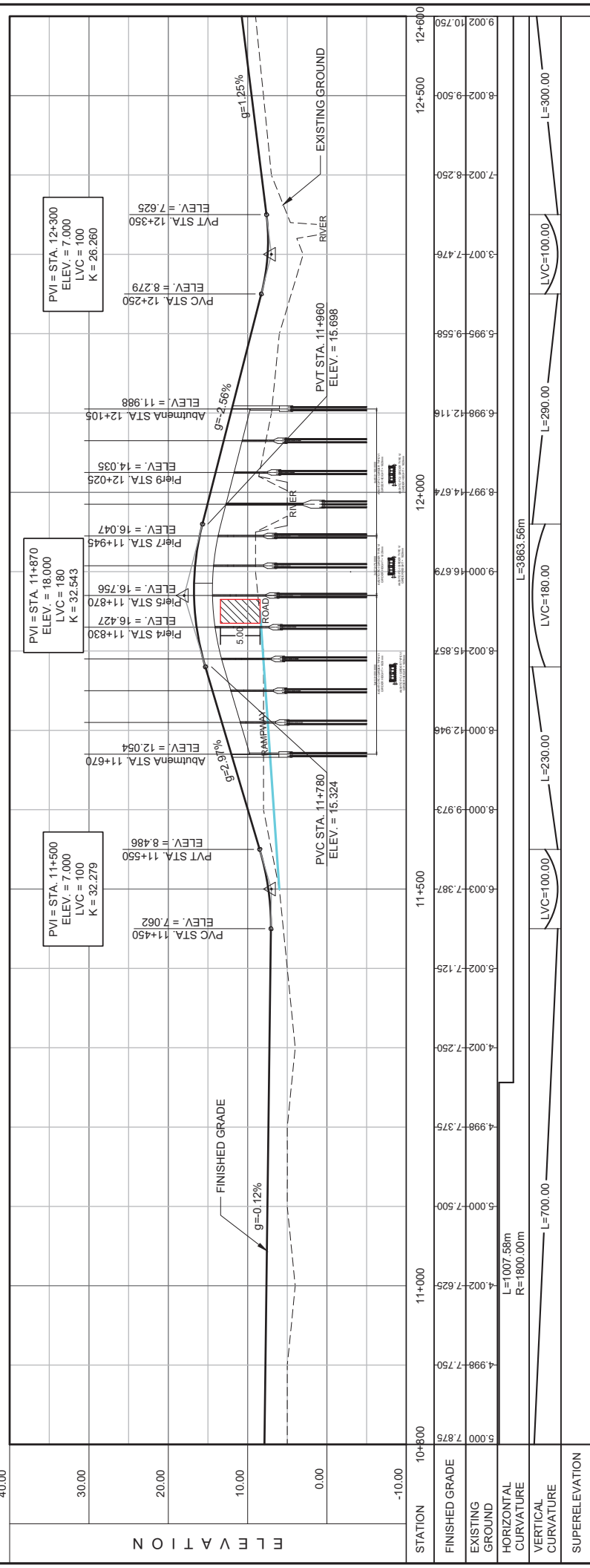
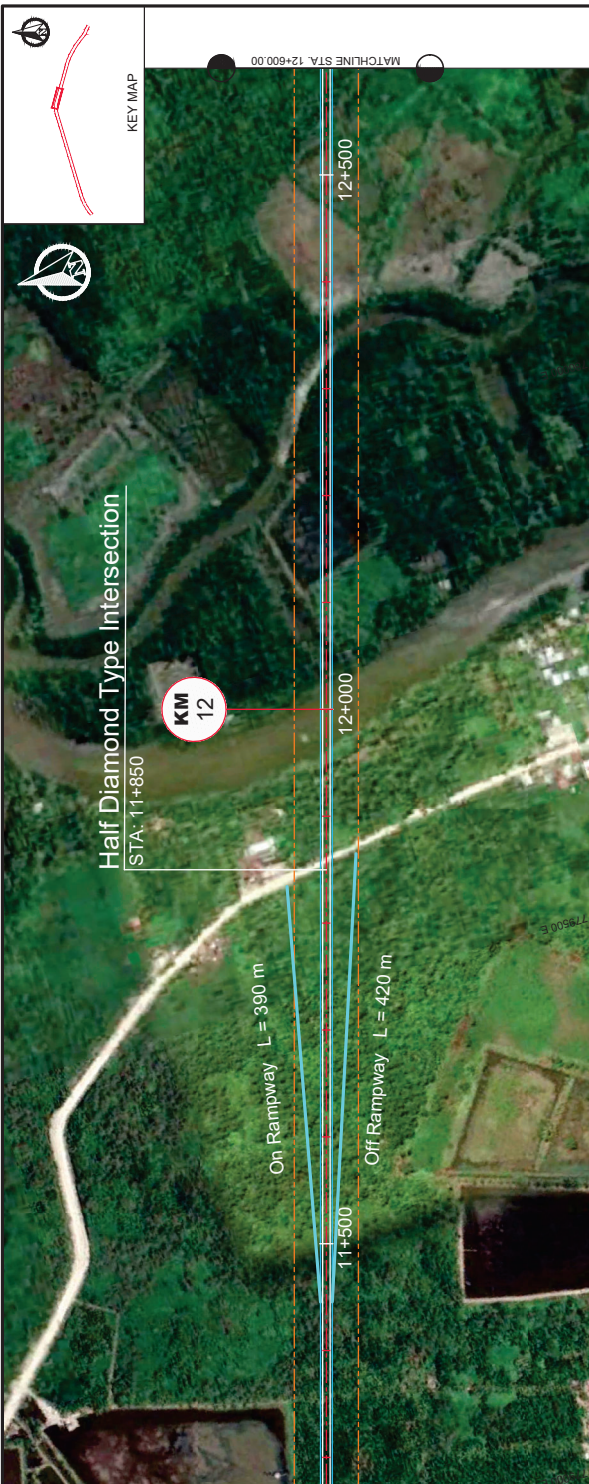
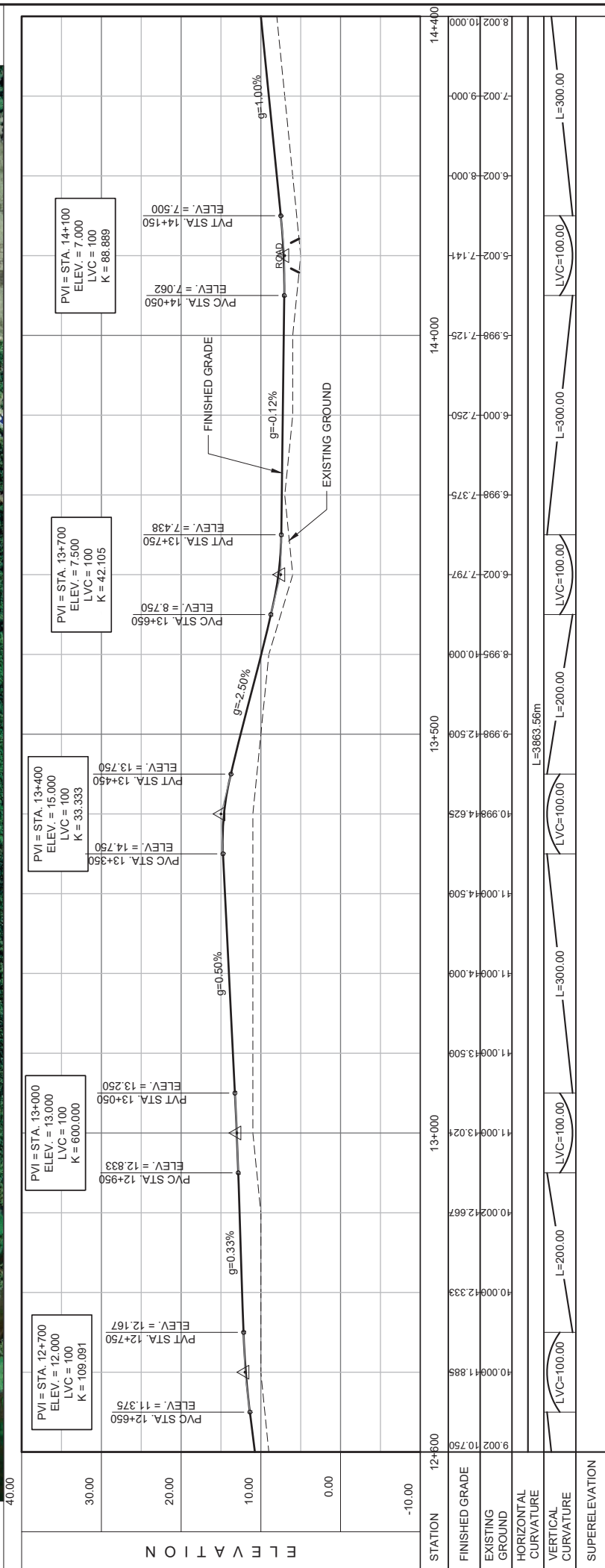


STUDY NAME		PROJECT TITLE		SHEET CONTENTS		SCALE	DRAWING NO.	SHEET NO.
JICA-ASSISTED STUDY OF MASTER PLAN ON HIGH STANDARD HIGHWAY NETWORK DEVELOPMENT, PHASE 2		PRE-FEASIBILITY STUDY OF AGUSAN DEL NORTE - BUTUAN CITY LOGISTIC HIGHWAY		PROFILE		H = 1:5000 V = 1:500	PP-05	05 OF 11
				STA. 7+200.000~STA. 9+000.000				

PI NO.	PI STATION	NORTHINGS	EASTINGS	I	R	T	E	L _g	PC	PT	V(0.5h) (m/s)
PI-2	10+765.57	896790.047	776530.198	32°04'20"	1800.00	517.37	72.88	1007.58	10+248.60	11+256.17	



STUDY NAME		PROJECT TITLE		SHEET CONTENTS		SCALE	DRAWING NO.	SHEET NO.
JICA-ASSISTED STUDY OF MASTER PLAN ON HIGH STANDARD HIGHWAY NETWORK DEVELOPMENT, PHASE 2		AGUSAN DEL NORTE - BUTUAN CITY LOGISTIC HIGHWAY		PROFILE		H = 1:5000 V = 1:500	PP-07	07 OF 11

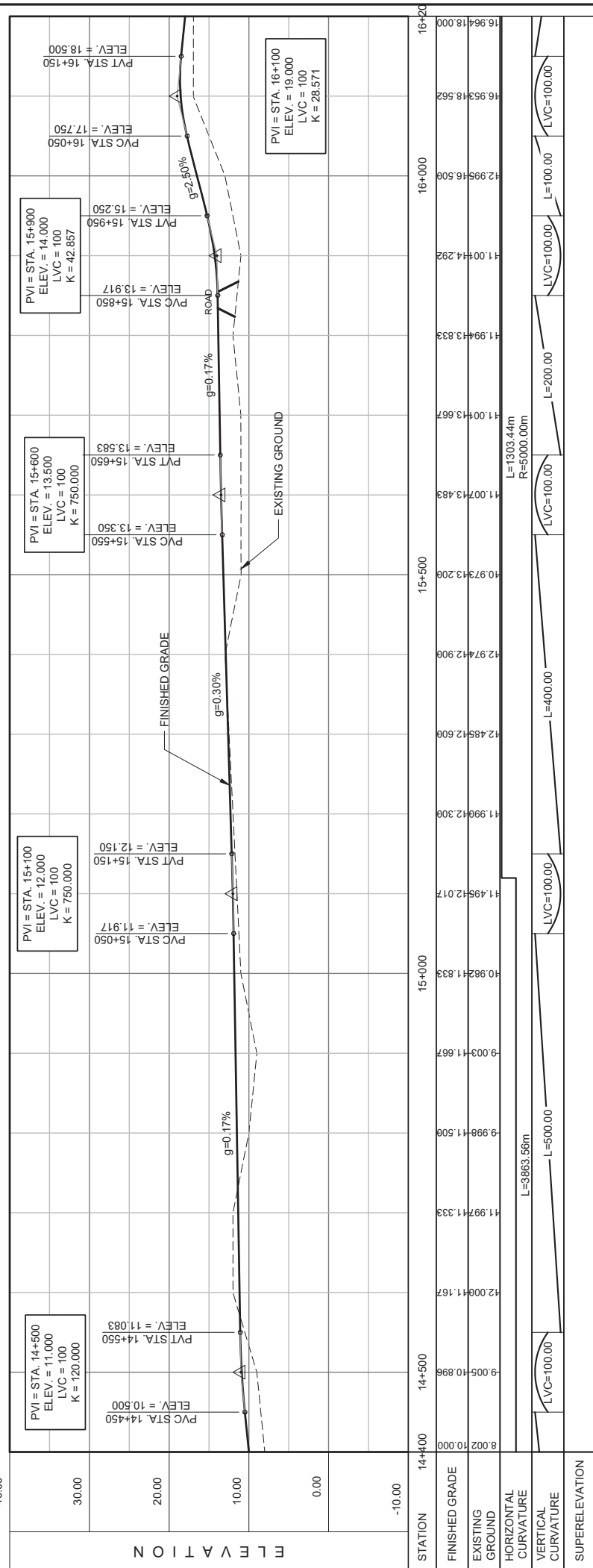


STUDY NAME		PROJECT TITLE		SHEET CONTENTS		SCALE		DRAWING NO.		SHEET NO.	
JICA-ASSISTED STUDY OF MASTER PLAN ON HIGH STANDARD HIGHWAY NETWORK DEVELOPMENT, PHASE 2				AGUSAN DEL NORTE - BUTUAN CITY LOGISTIC HIGHWAY				PROFILE			
				STA. 12+600.000-ST. 14+400.00							
								H = 1:5000 V = 1:500			
								PP-08			
								08 OF 11			



ELEMENTS OF CURVE

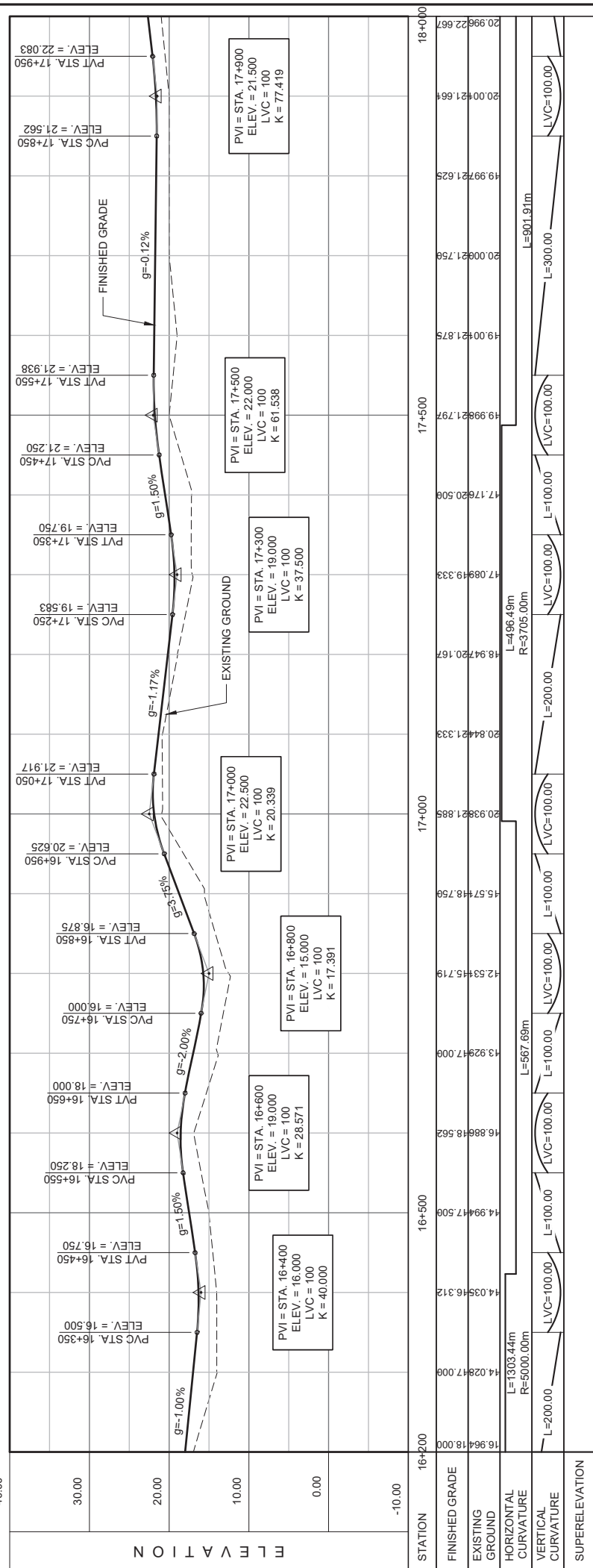
PI NO.	STATION	NORTHING	EASTING	I	R	T	E	L _c	PC	PT	V(%)	e(%)
PI-3	15+775.17	99547.986	733384.482	14°56'11"	5000.00	655.44	42.78	13.03	14+400.00	15+119.73	16+423.18	



STATION	14+400	14+500	15+000	15+500	16+000	16+200
FINISHED GRADE	8.002	10.000	11.997	12.906	13.483	14.292
EXISTING GROUND	9.003	11.667	12.017	13.667	14.292	16.562
HORIZONTAL CURVATURE	L=3863.58m					
VERTICAL CURVATURE	L=500.00		L=400.00		L=1000.00	
SUPERELEVATION	L=1303.44m, R=5000.00m					

STUDY NAME	PROJECT TITLE	SHEET CONTENTS	SCALE	DRAWING NO.	SHEET NO.
JICA-ASSISTED STUDY OF MASTER PLAN ON HIGH STANDARD HIGHWAY NETWORK DEVELOPMENT, PHASE 2	AGUSAN DEL NORTE - BUTUAN CITY LOGISTIC HIGHWAY	PROFILE STA. 14+400.000-STA. 16+200.000	H = 1:5000 V = 1:500	PP-09	09 OF 11

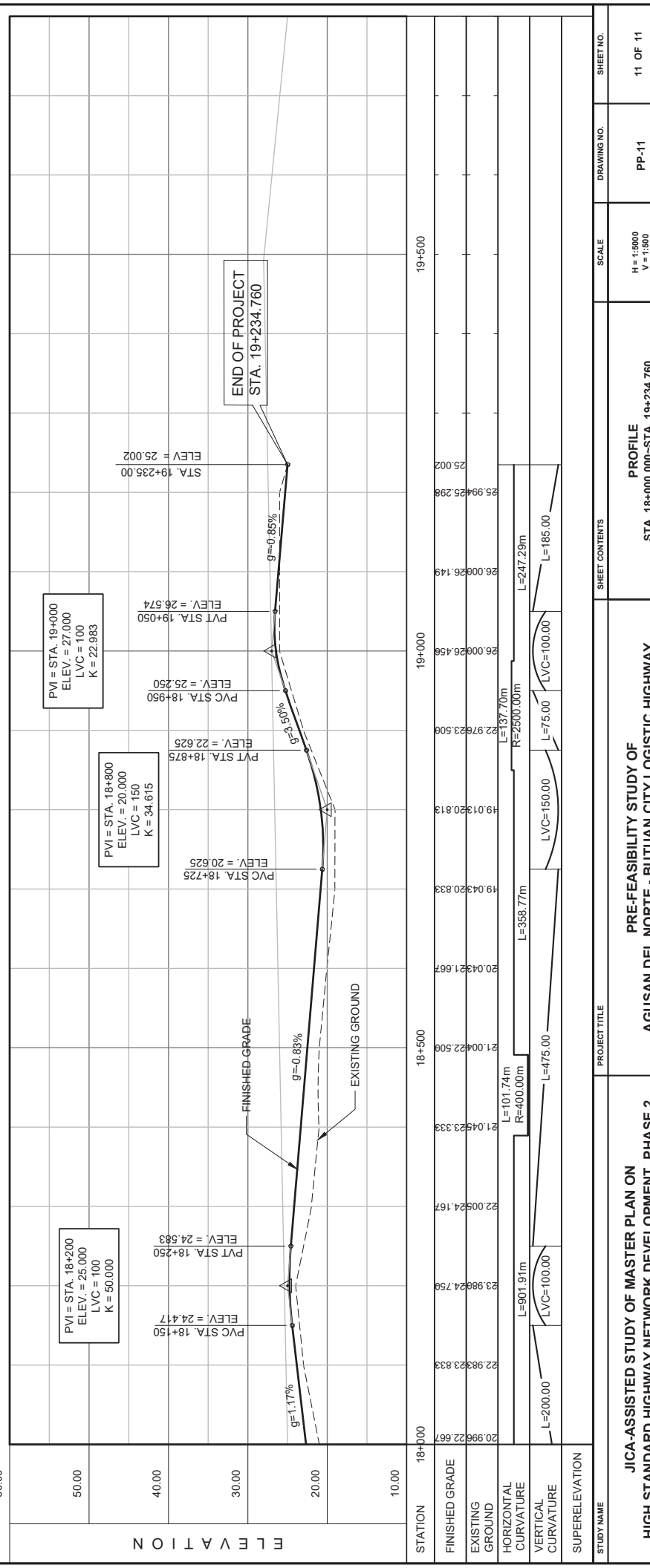
ELEMENTS OF CURVE												
PNO.	IN STATION	NORTHING	EASTING	I	R	T	E	LC	PC	PT	V(%)	e(%)
PH4	17+239.48	994705.437	784853.960	7+4041*	3705.00	248.62	8.33	486.49	16+990.87	17+487.36		



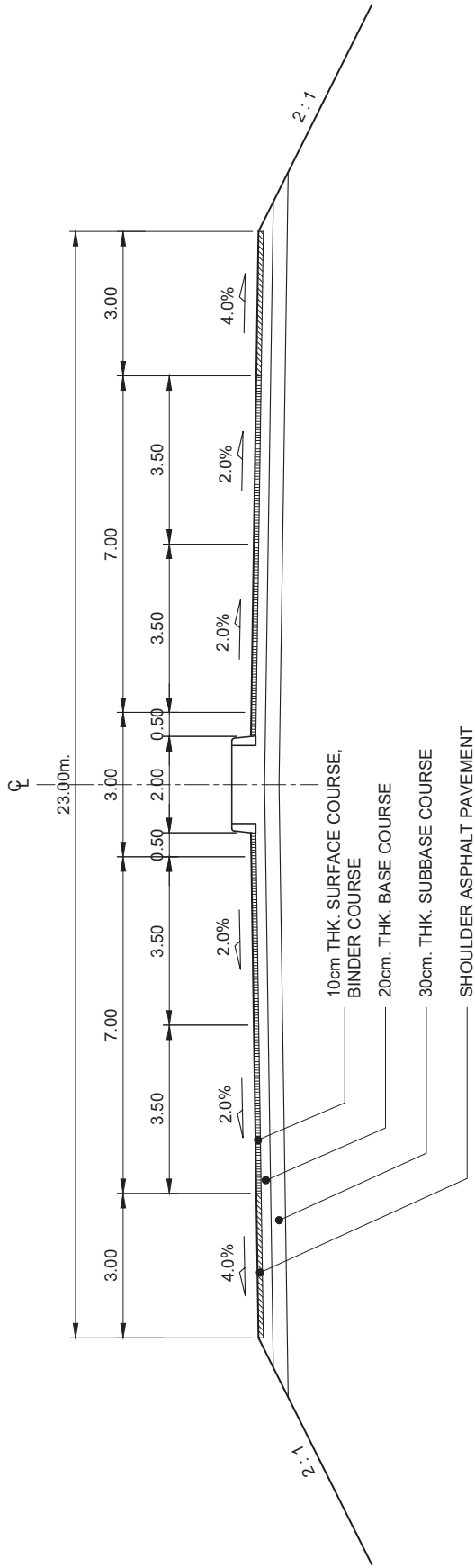
STUDY NAME		PROJECT TITLE		SHEET CONTENTS		SCALE		DRAWING NO.		SHEET NO.	
JICA-ASSISTED STUDY OF MASTER PLAN ON HIGH STANDARD HIGHWAY NETWORK DEVELOPMENT, PHASE 2				AGUSAN DEL NORTE - BUTUAN CITY LOGISTIC HIGHWAY				PROFILE		STA. 16+200.000-STA. 18+000.000	
								H = 1:5000 V = 1:500		PP-10	
										10 OF 11	



ELEMENTS OF CURVE											
PNO.	STATION	NORTHING	EASTING	I	R	T	E	Lc	PC	PT	P(%)
P15	18+440.41	93982.478	78600.019	14°34'24"	400.00	51.15	3.26	101.74	18+389.26	18+491.00	
P16	18+916.64	933771.698	786039.106	3°07'21"	2500.00	68.87	0.95	137.70	18+849.78	18+987.47	
END	19+234.76	93029.782	78637.674								

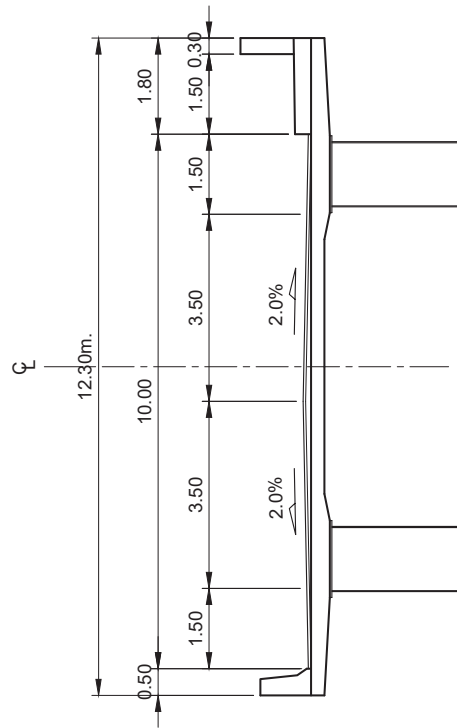


STUDY NAME		PROJECT TITLE		SHEET CONTENTS		SCALE		DRAWING NO.		SHEET NO.	
JICA-ASSISTED STUDY OF MASTER PLAN ON HIGH STANDARD HIGHWAY NETWORK DEVELOPMENT, PHASE 2		AGUSAN DEL NORTE - BUTUAN CITY LOGISTIC HIGHWAY		PRE-FEASIBILITY STUDY OF STA. 18+000.000~STA. 19+234.760		H = 1:5000 V = 1:500		PP-11		11 OF 11	



1 TYPICAL ROADWAY CROSS SECTION

Scale: 1:100



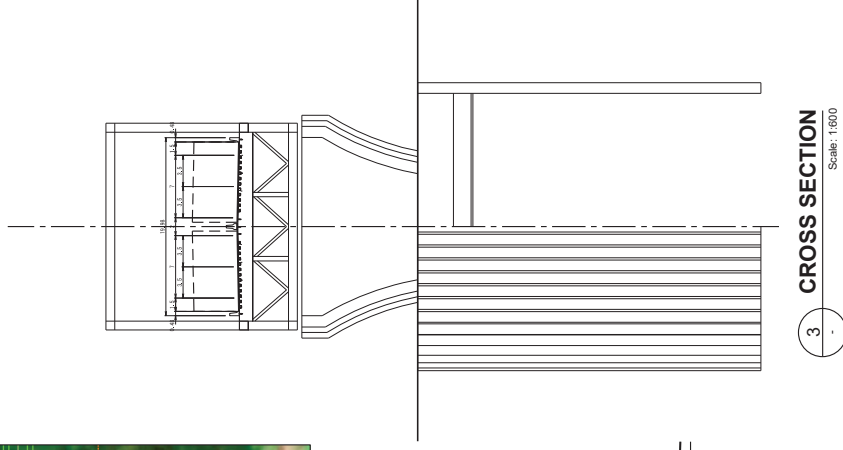
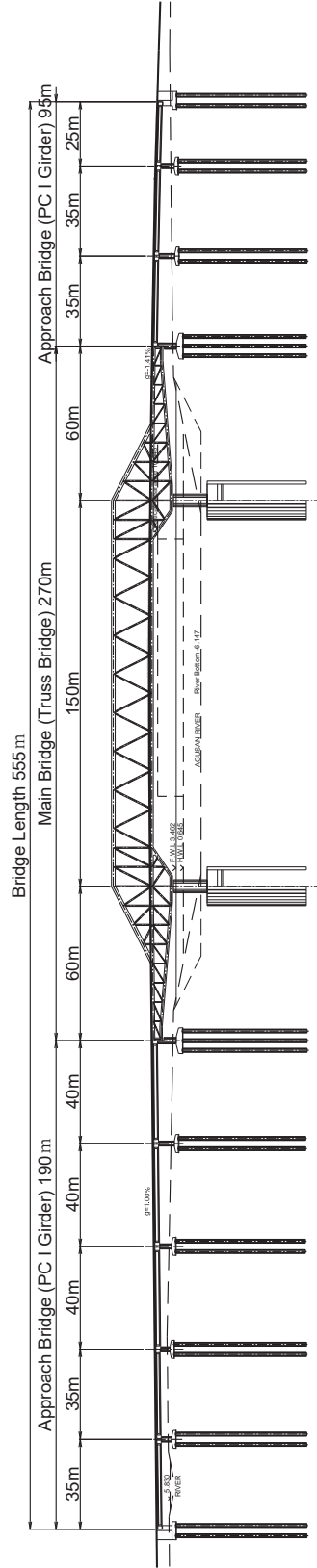
2 TYPICAL CROSS SECTION OF BRIDGE

Scale: 1:100

STUDY NAME	PROJECT TITLE	SHEET CONTENTS	SCALE	DRAWING NO.	SHEET NO.
JICA-ASSISTED STUDY OF MASTER PLAN ON HIGH STANDARD HIGHWAY NETWORK DEVELOPMENT, PHASE 2	AGUSAN DEL NORTE - BUTUAN CITY LOGISTIC HIGHWAY	TYPICAL CROSS SECTION	1:100	CS-01	01 OF 02



1 GENERAL PLAN
Scale: 1:2000



STUDY NAME	PROJECT TITLE	SHEET CONTENTS	SCALE	DRAWING NO.	SHEET NO.
JICA-ASSISTED STUDY OF MASTER PLAN ON HIGH STANDARD HIGHWAY NETWORK DEVELOPMENT, PHASE 2	AGUSAN DEL NORTE - BUTUAN CITY LOGISTIC HIGHWAY	GENERAL PLAN, ELEVATION AND SECTION OF BRIDGE	AS SHOWN	CS-02	02 OF 02