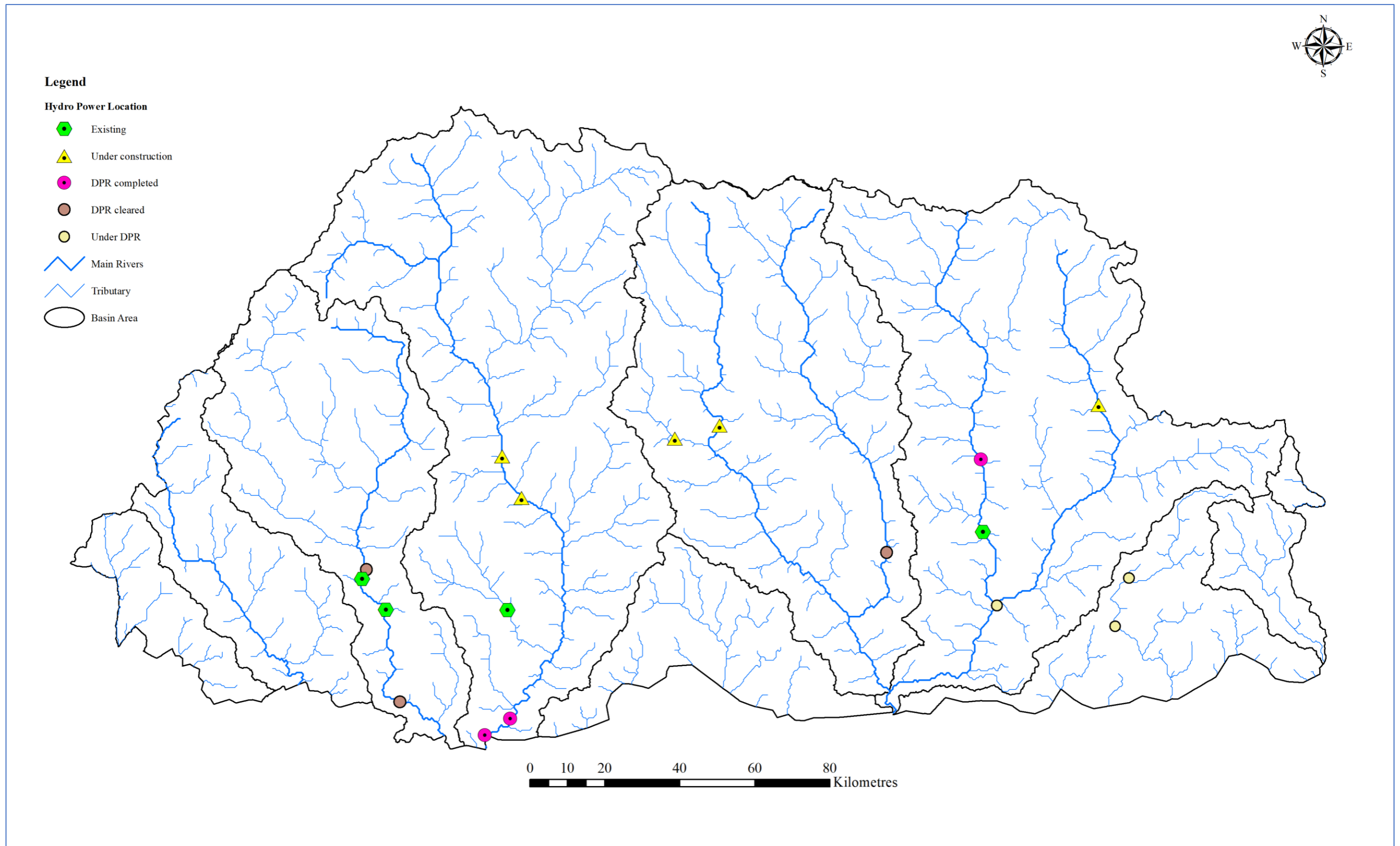


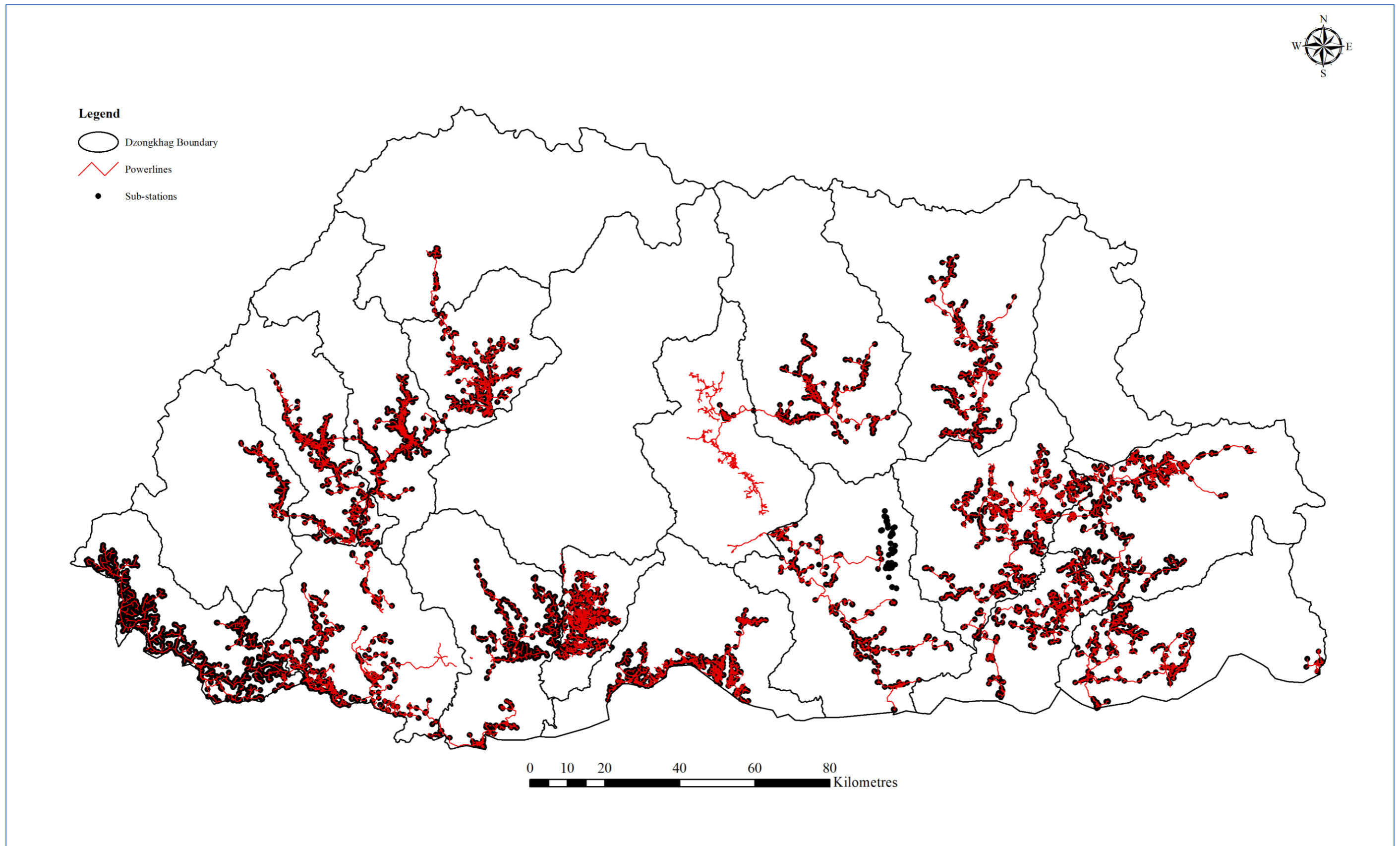
Source: DOR and JICA Project Team

4-1 Road Network with Bridges and Airports



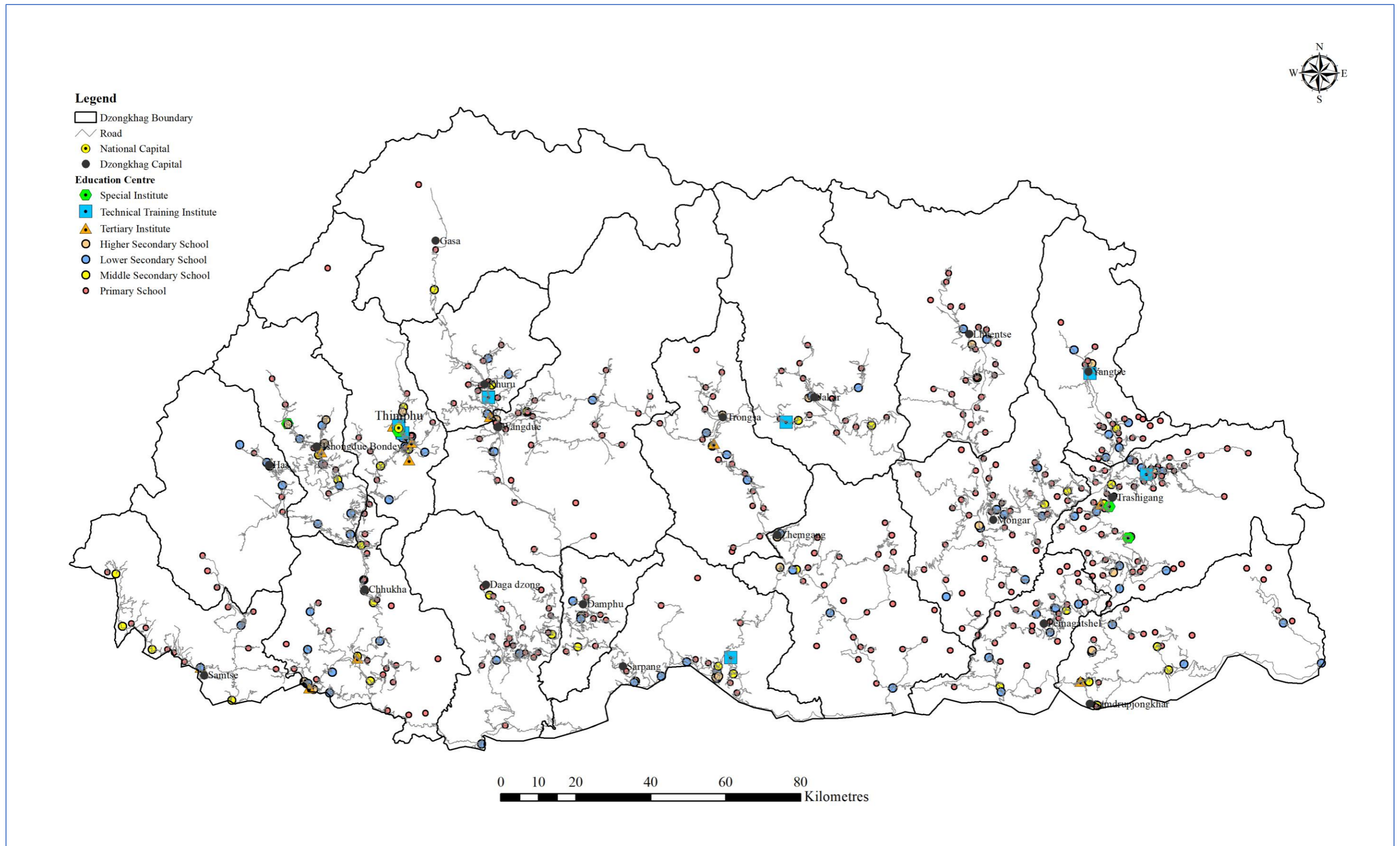
Source: DOHP

4-2 Hydro Power Location



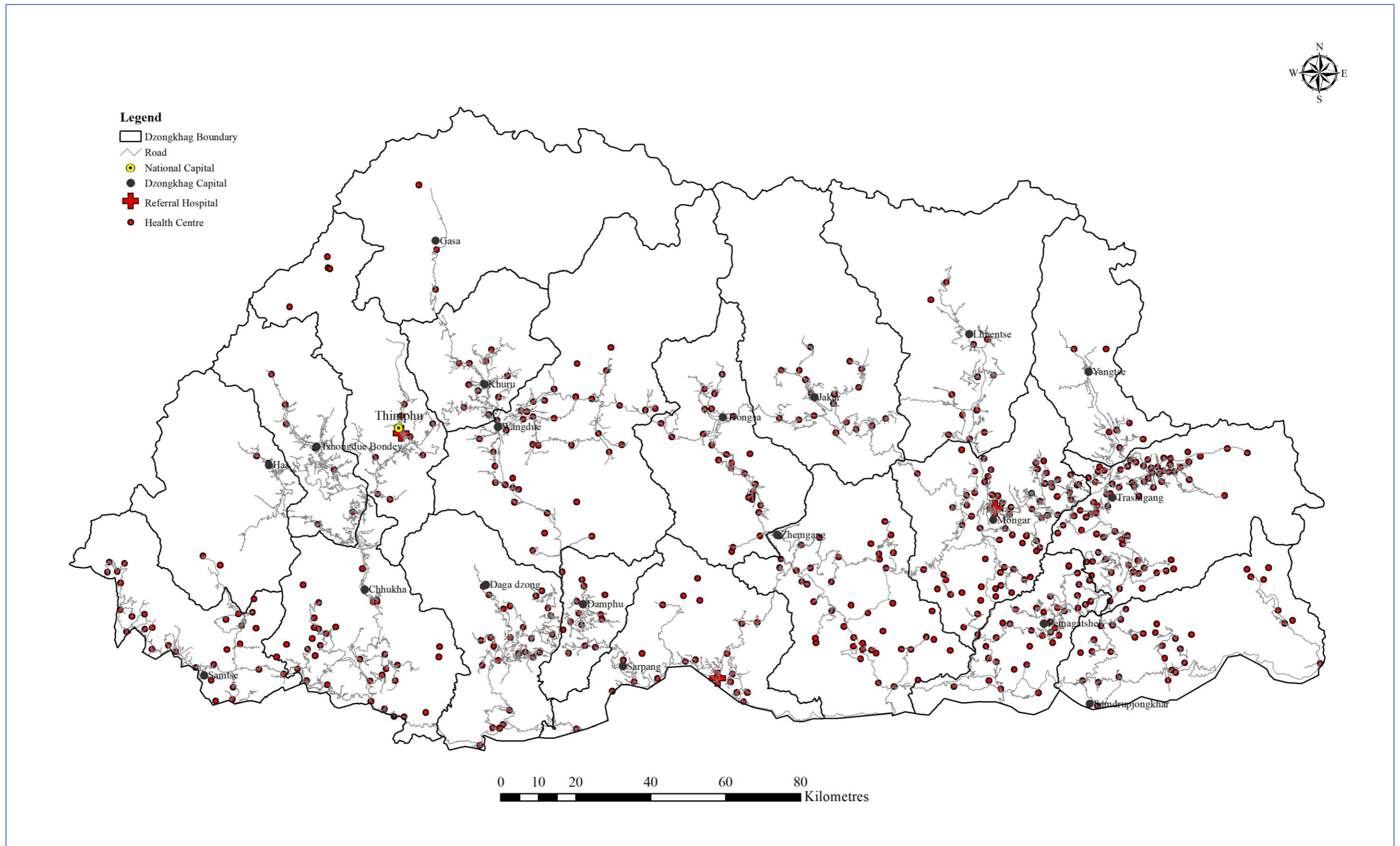
Source: DOHPS

4-3 Power Lines and Sub-stations



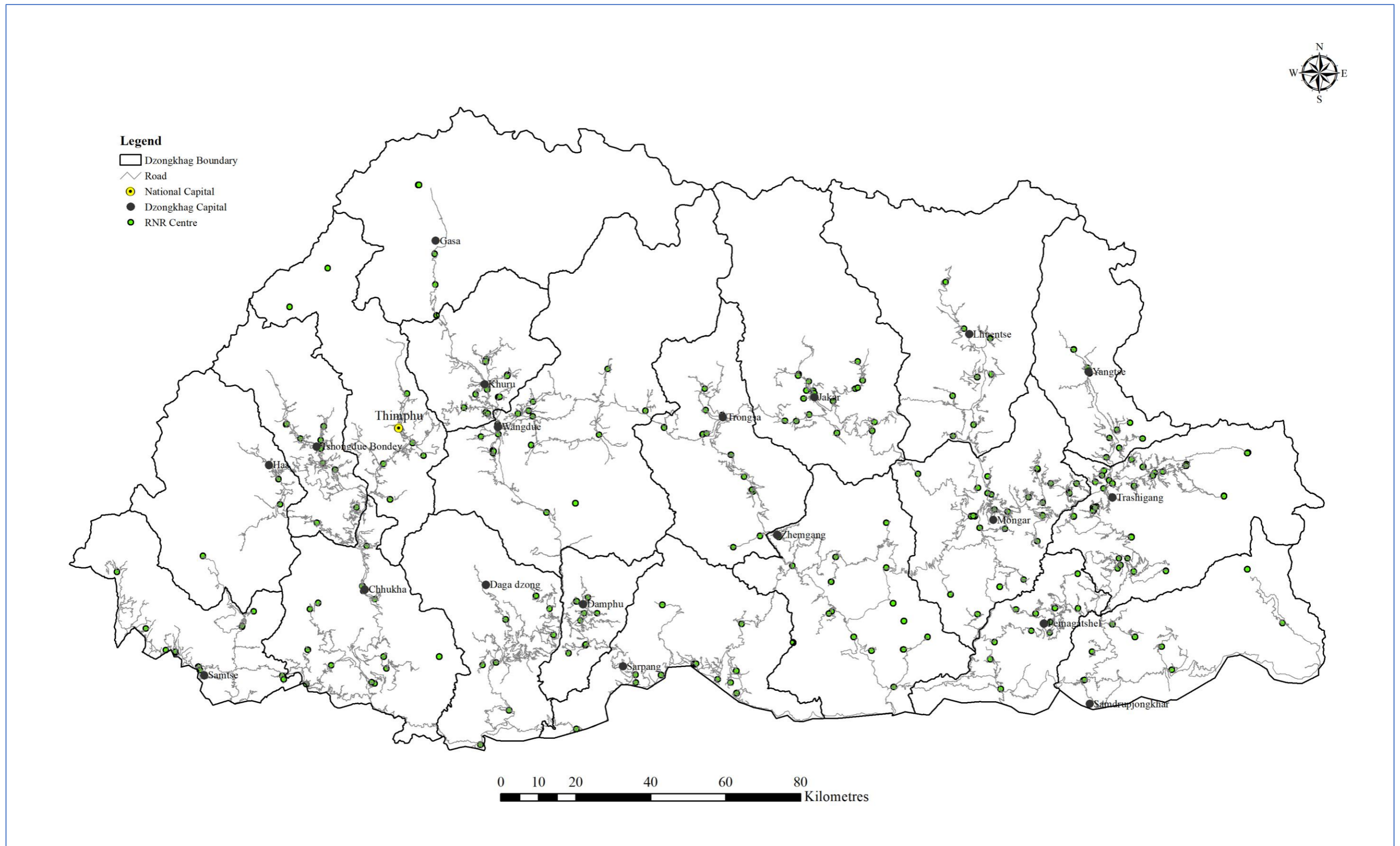
Source: NLC

4-4 Education Centre



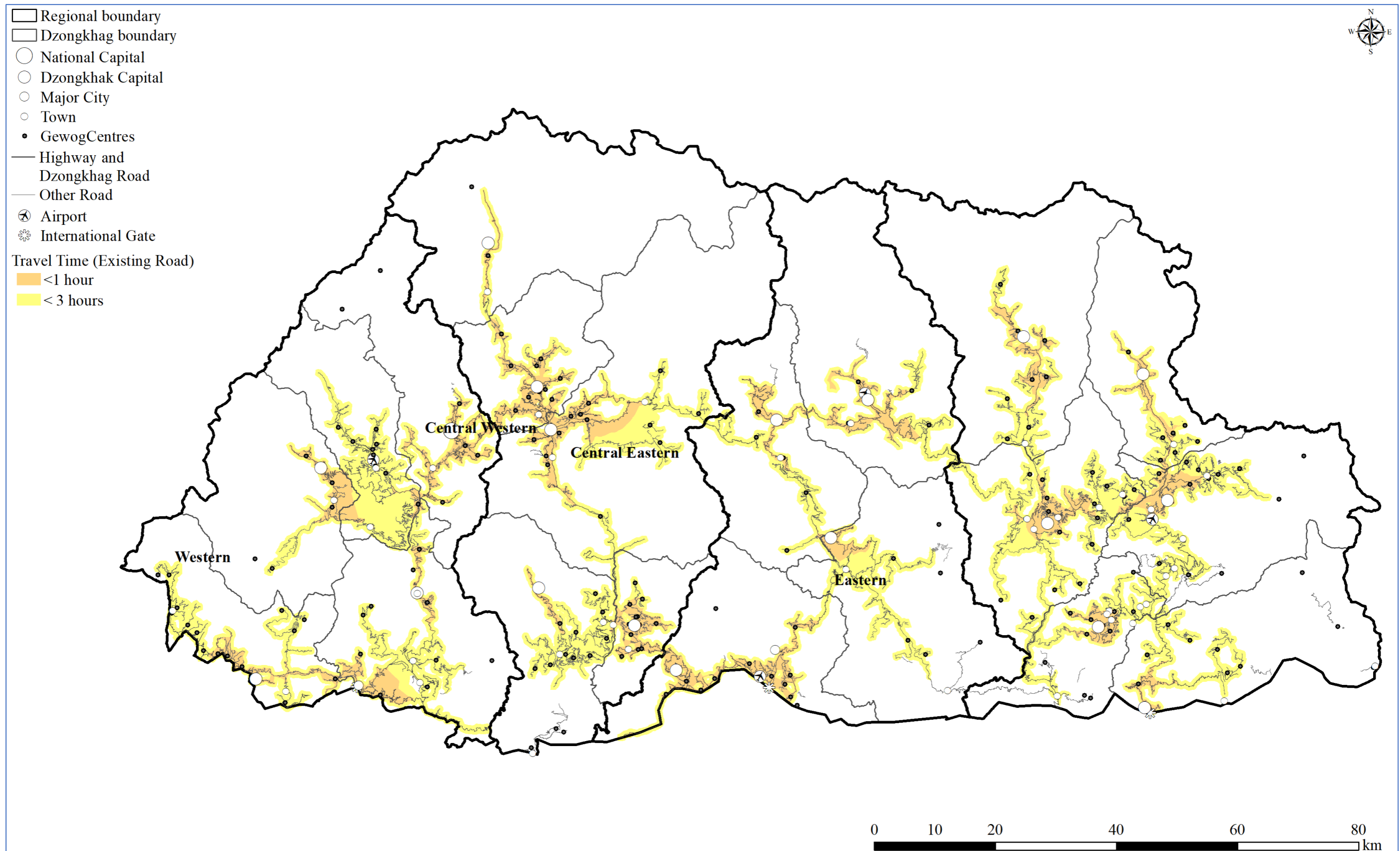
Source: NLC

4-5 Health Centre



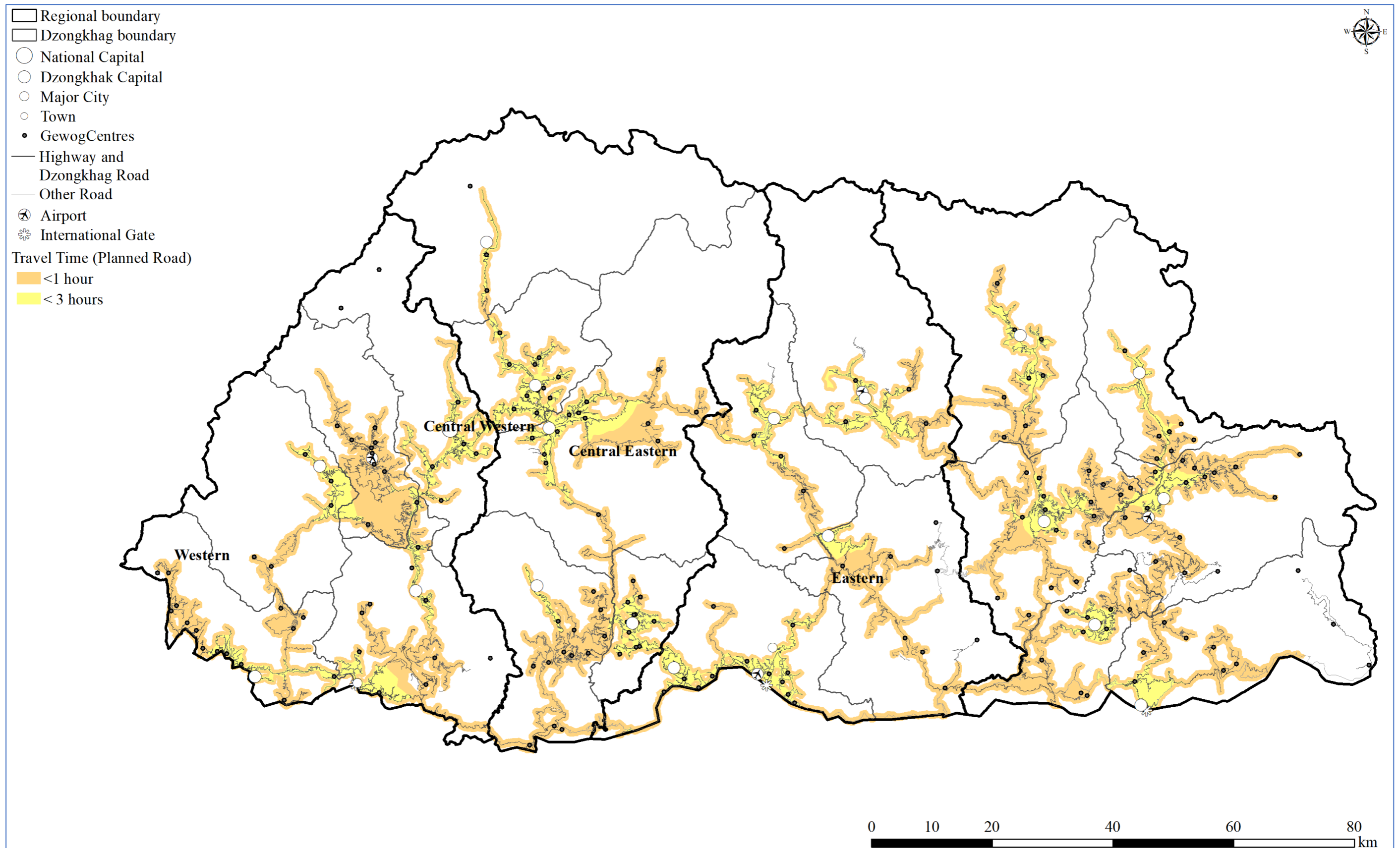
Source: NLC

4-6 RNR Centre



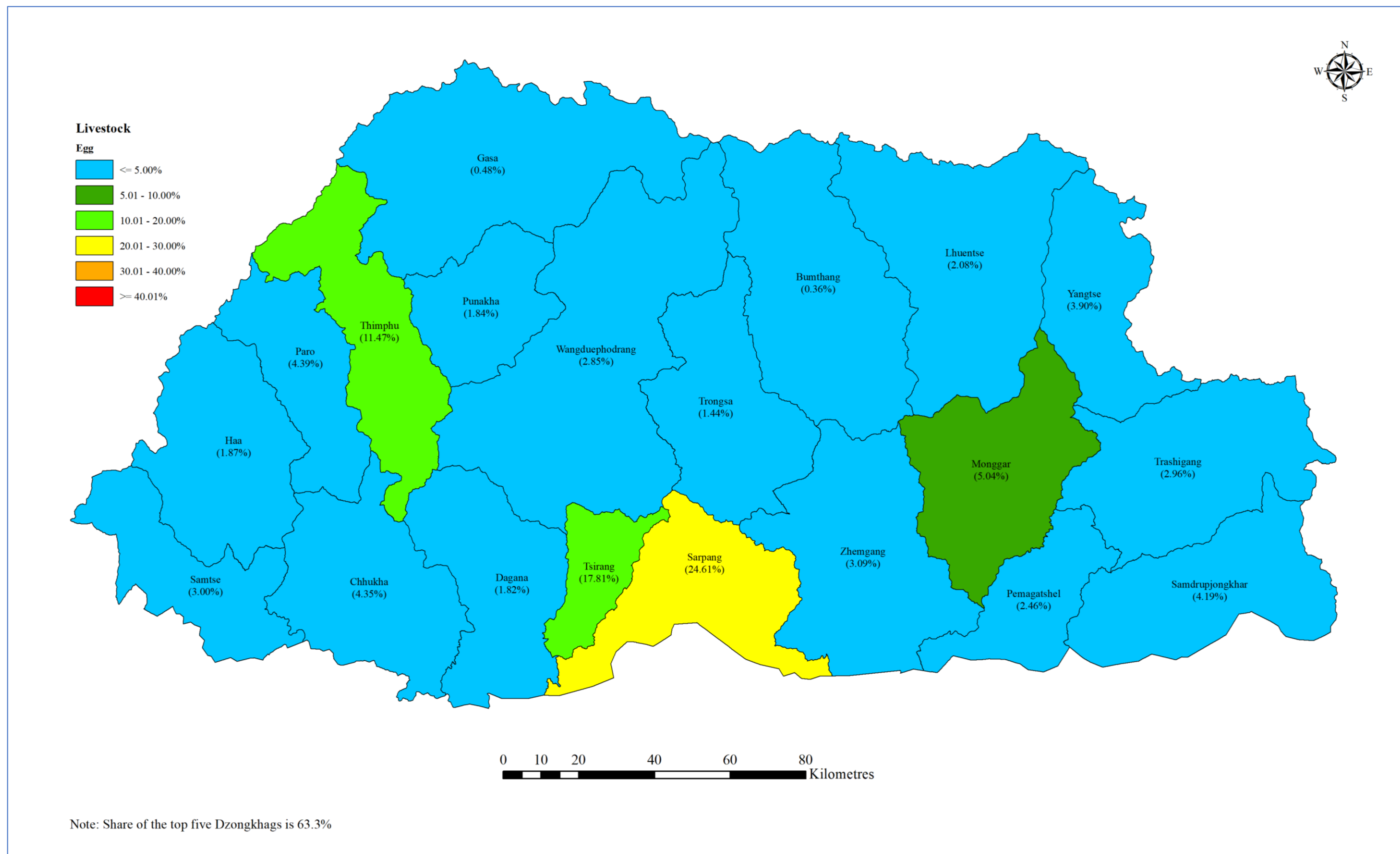
Source: DoR

4-7 Area Accessible from Towns within Three Hours's Travel via the Existing Road Network



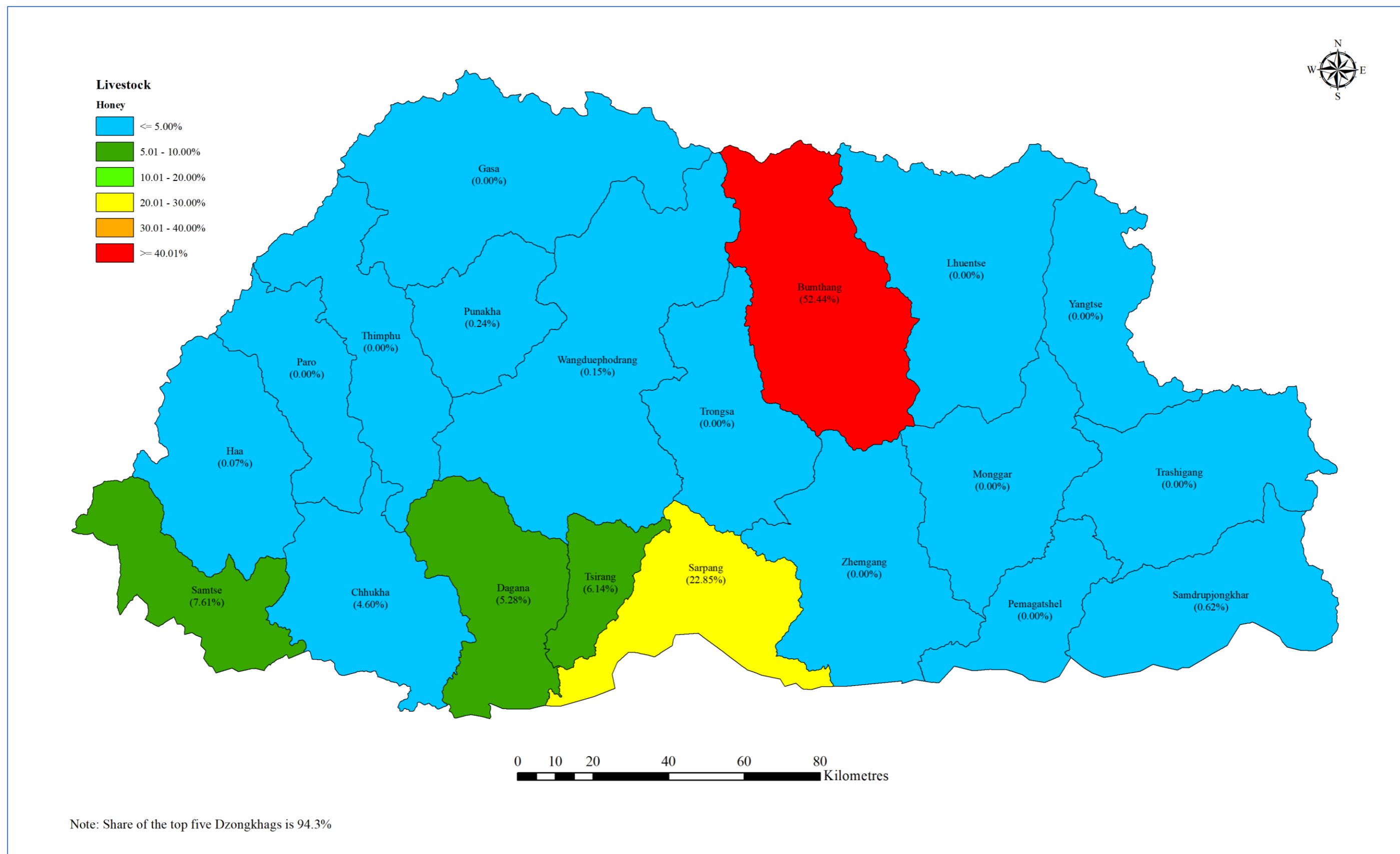
Source: DoR

4-8 Area Accessible from Towns within Three Hours' Travel via the Planned Road Network



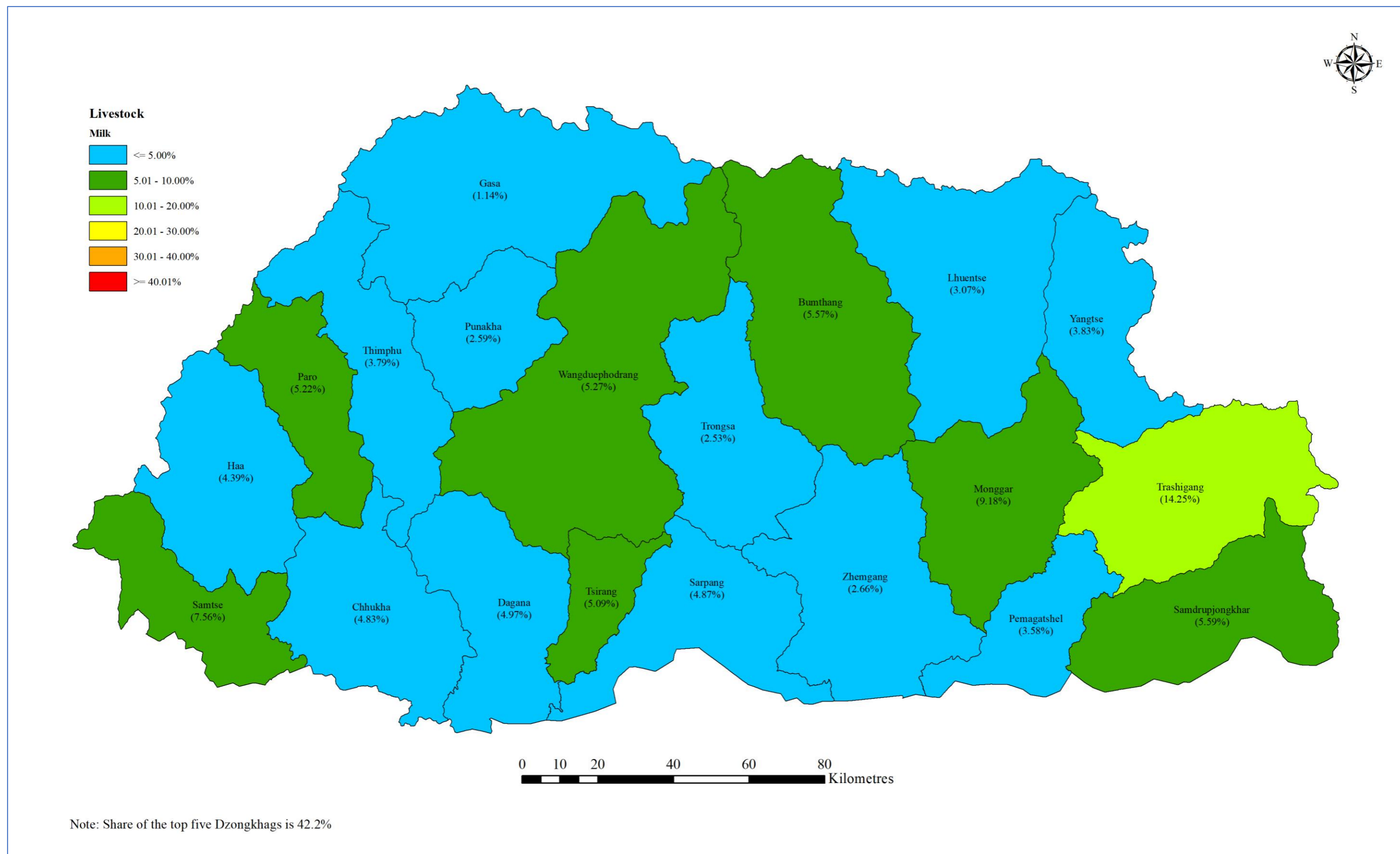
Source: MOAF

5-1 The Leading Egg Producing Dzongkhags (% of production share in 2016)



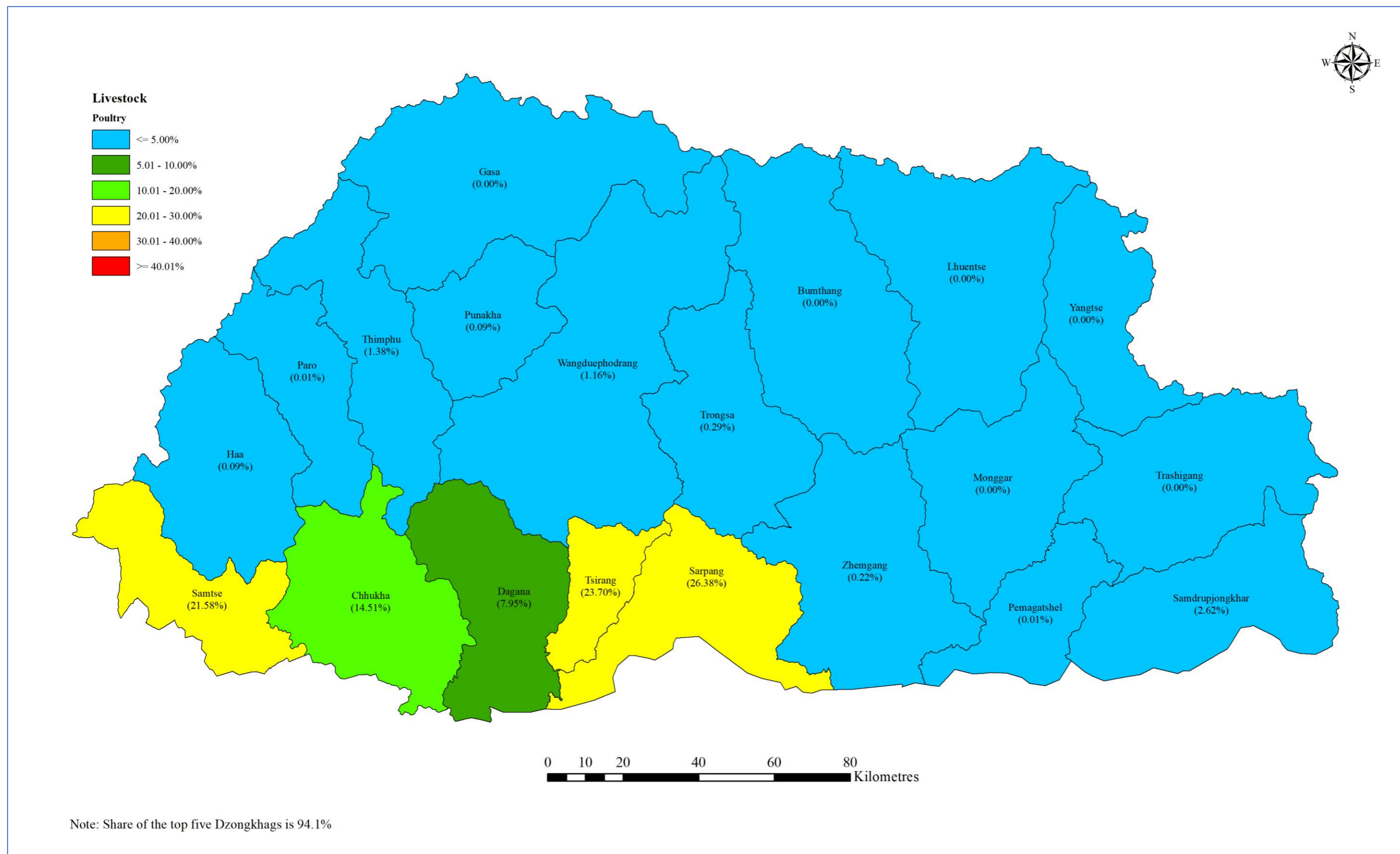
Source: MOAF

5-2 The Leading Honey Producing Dzongkhags (% of production share in 2016)



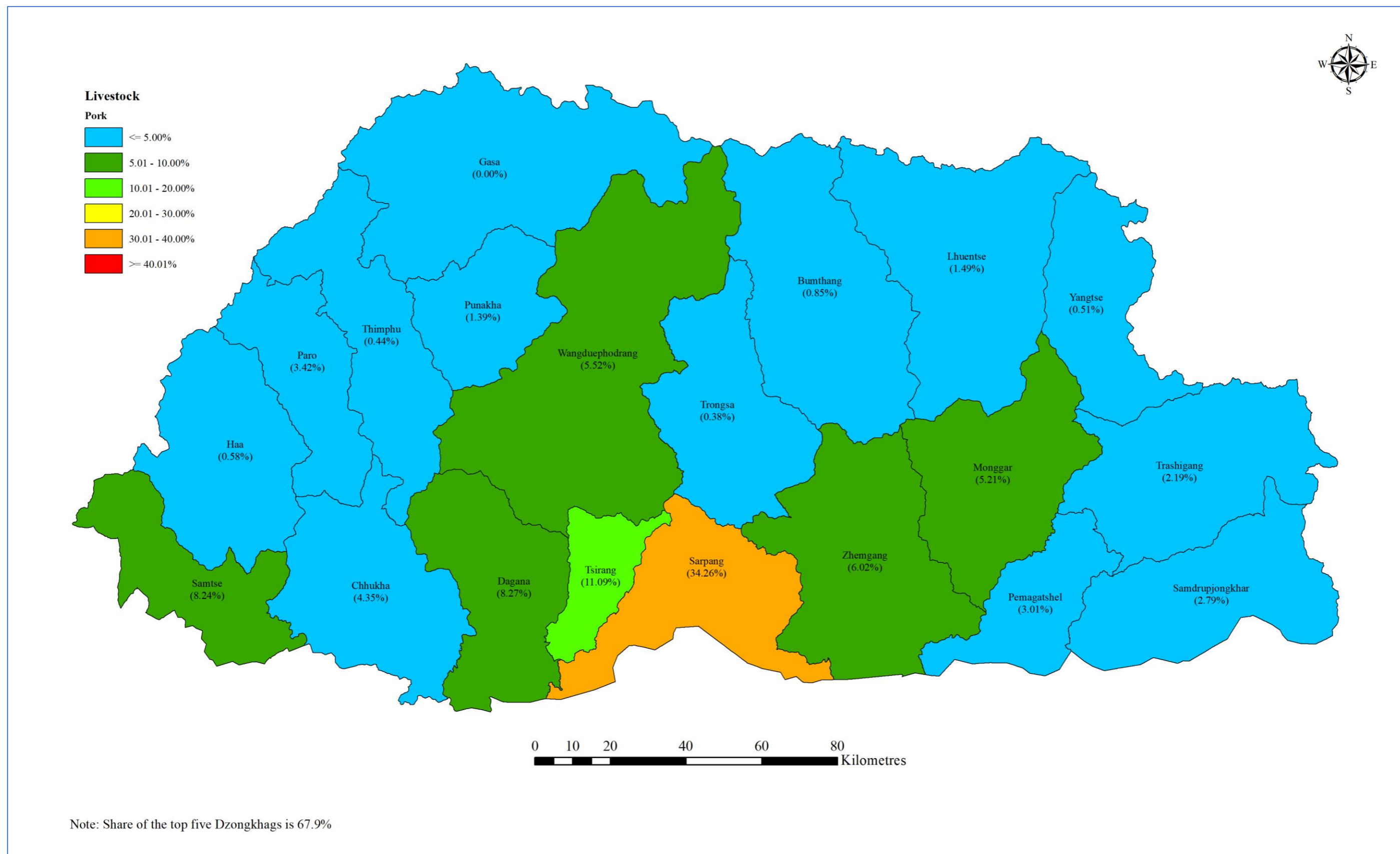
Source: MOAF

5-3 The Leading Milk Producing Dzongkhags (% of production share in 2016)



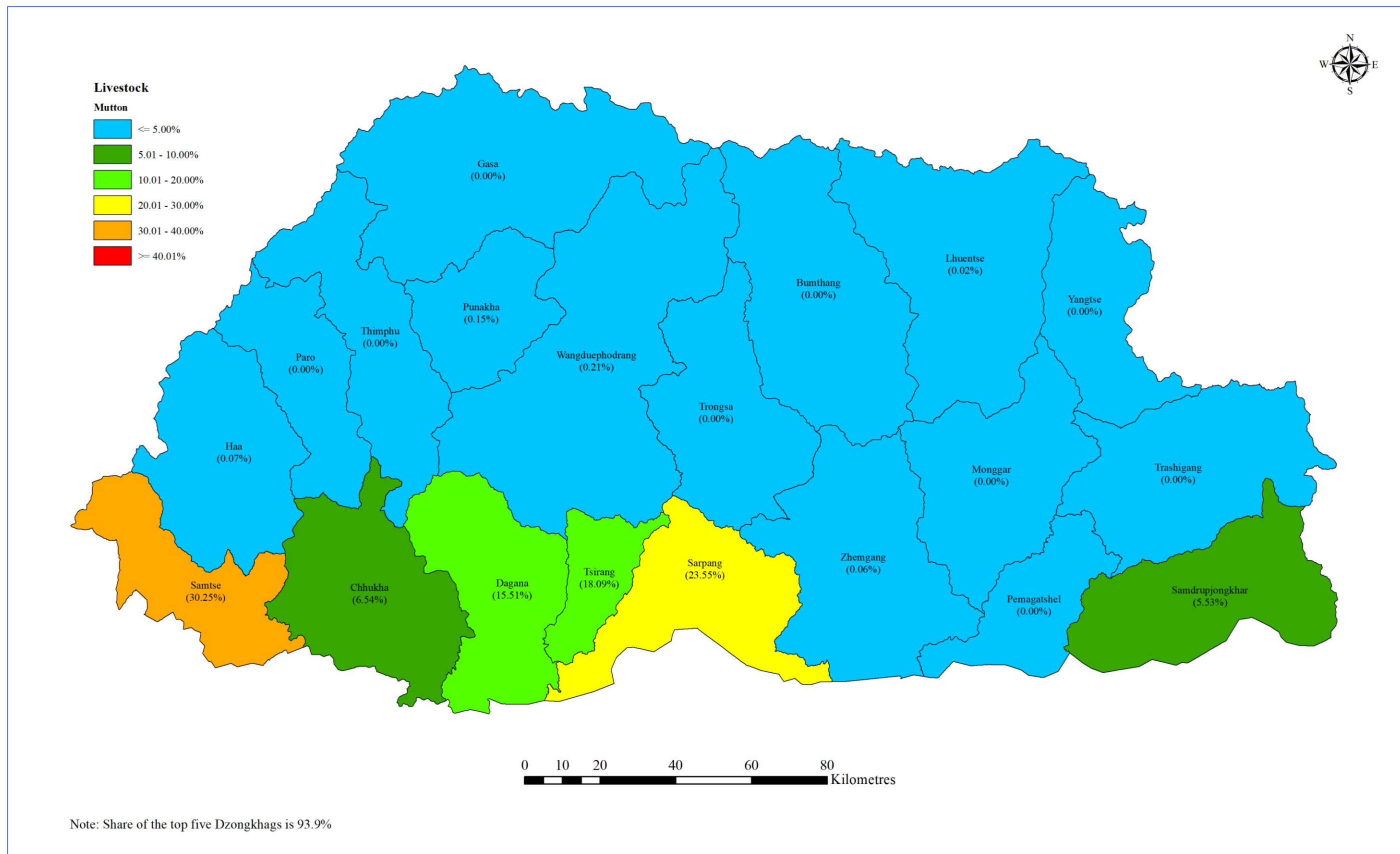
Source: MOAF

5-4 The Leading Poultry Producing Dzongkhags (% of production share in 2016)



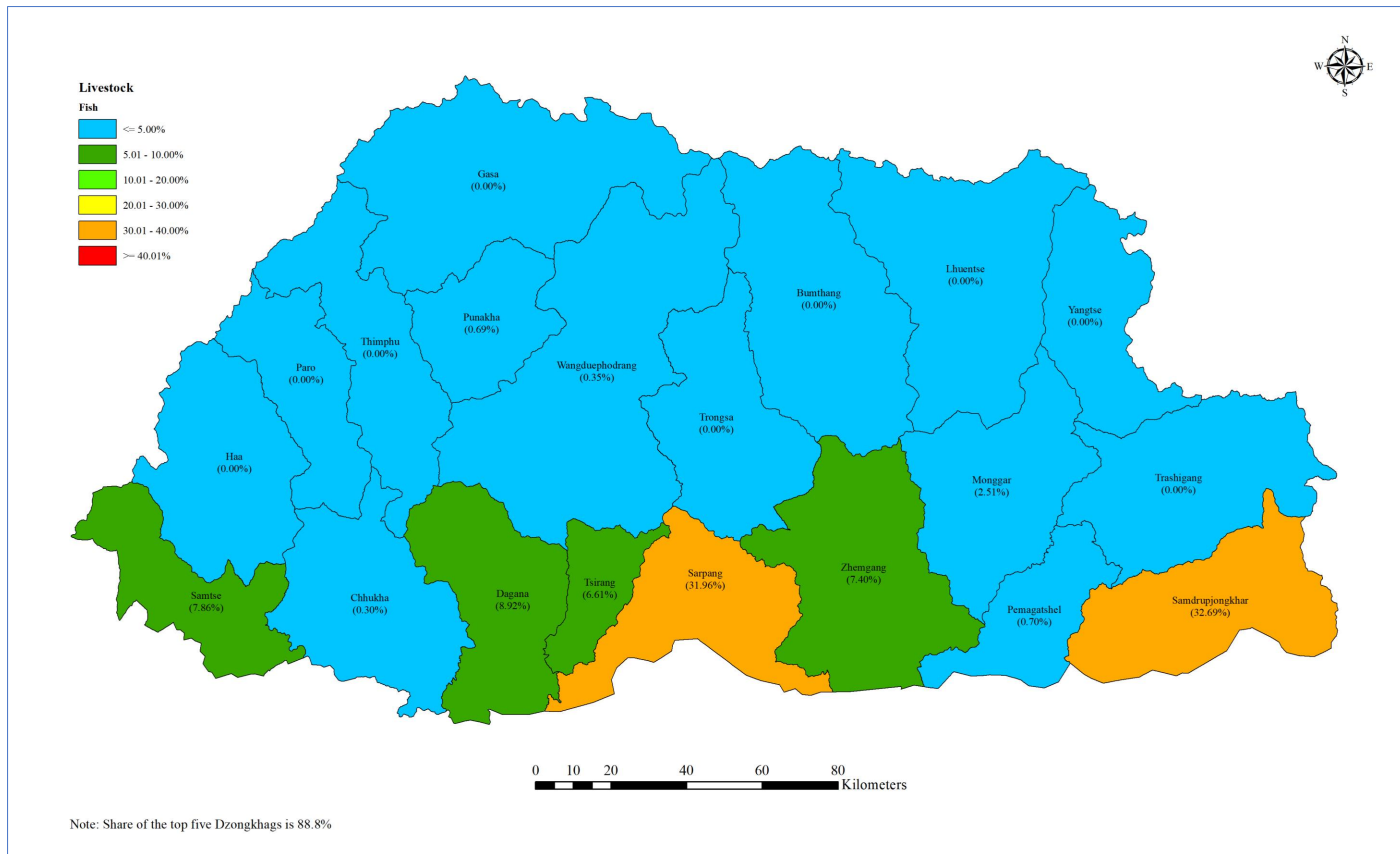
Source: MOAF

5-5 The Leading Pork Producing Dzongkhags (% of production share in 2016)



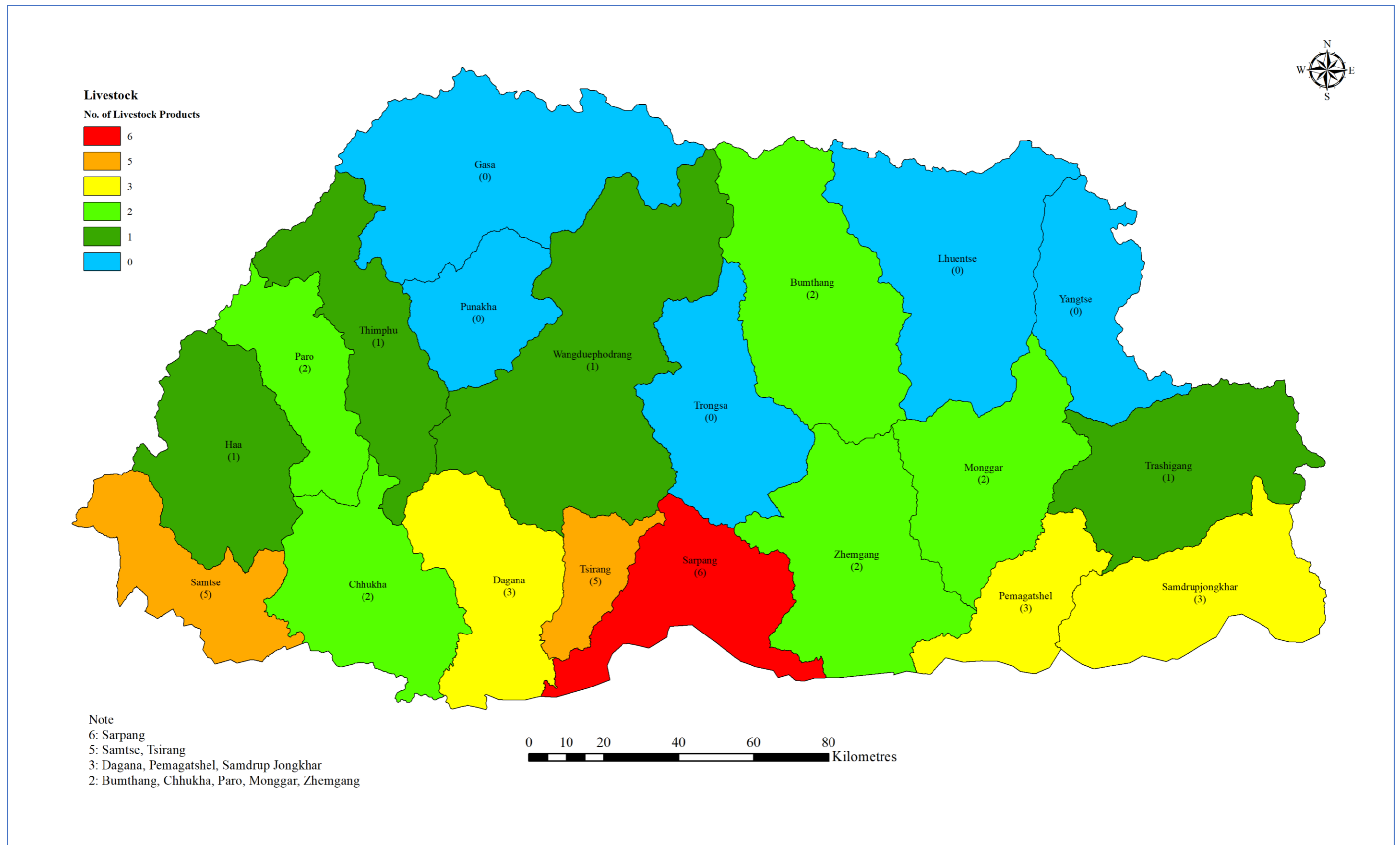
Source: MOAF

5-6 The Leading Mutton Producing Dzongkhags (% of production share in 2016)



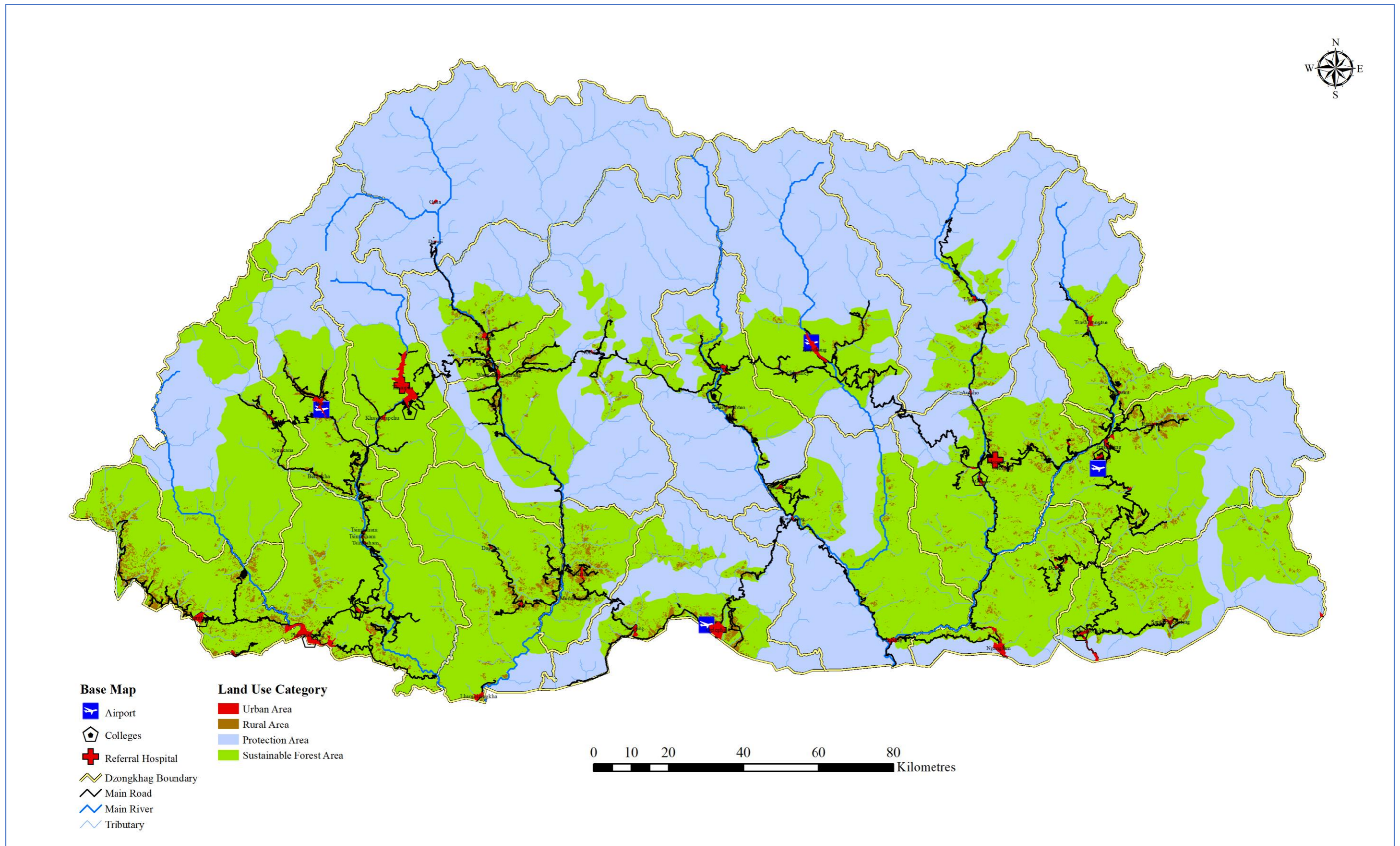
Source: MOAF

5-7 The Leading Fish Producing Dzongkhags (% of production share in 2016)



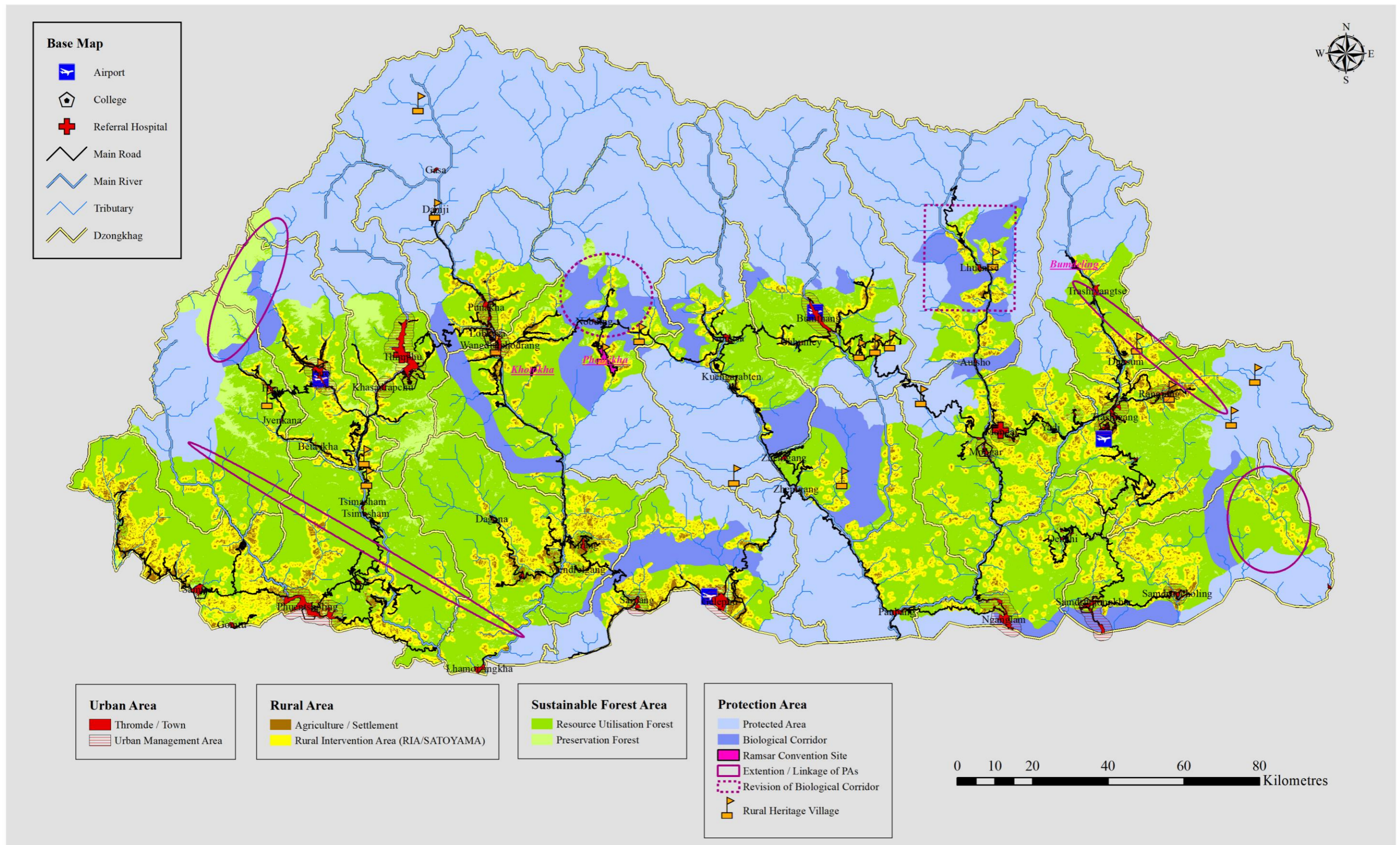
Source: MOAF

5-8 Number of Livestock Products to be Promoted



Source: JICA Project Team

6-1 Current Land Use Plan



Source: JICA Project Team

6-2 Future Land Use Plan