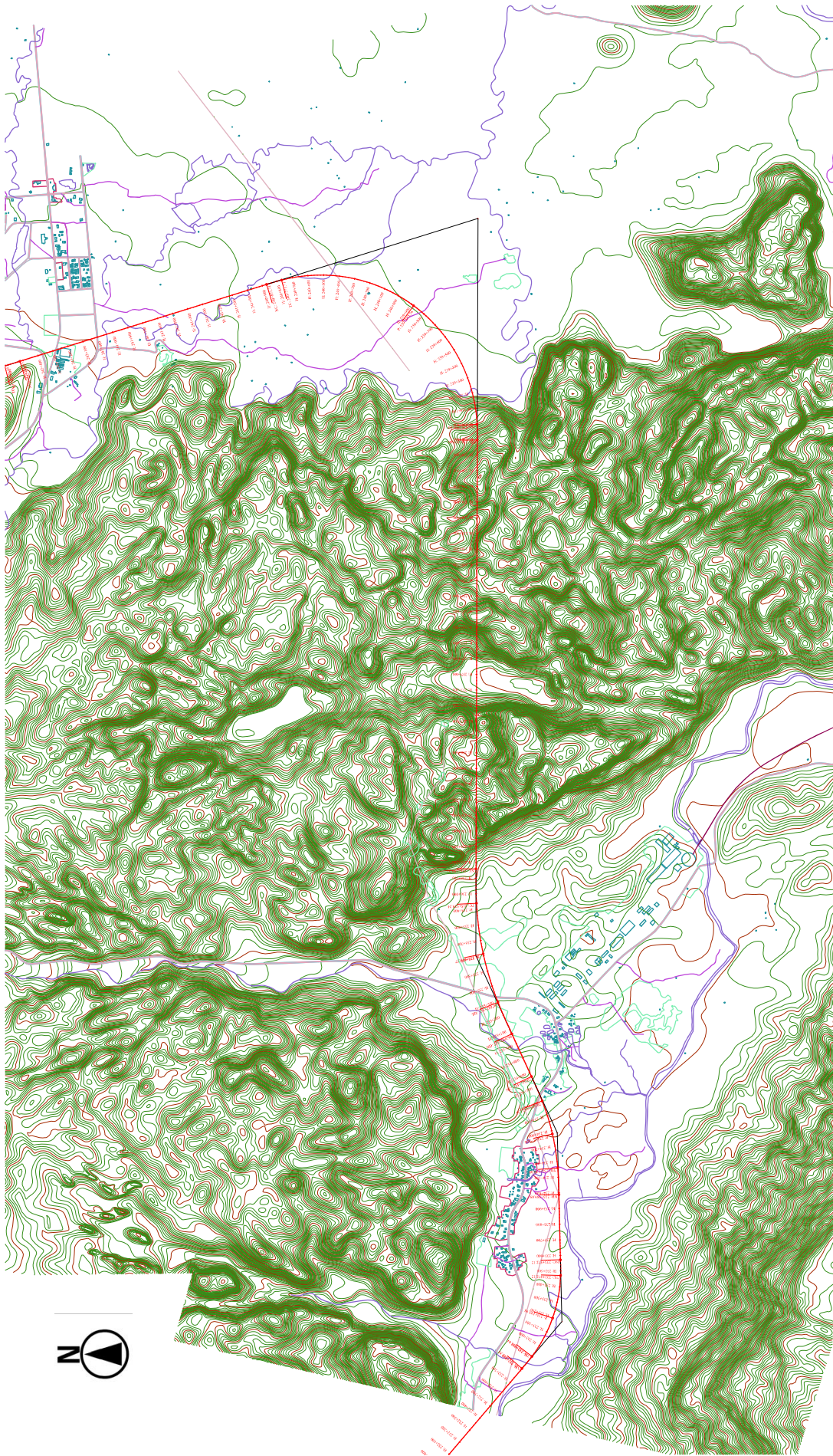


VIENTIANE

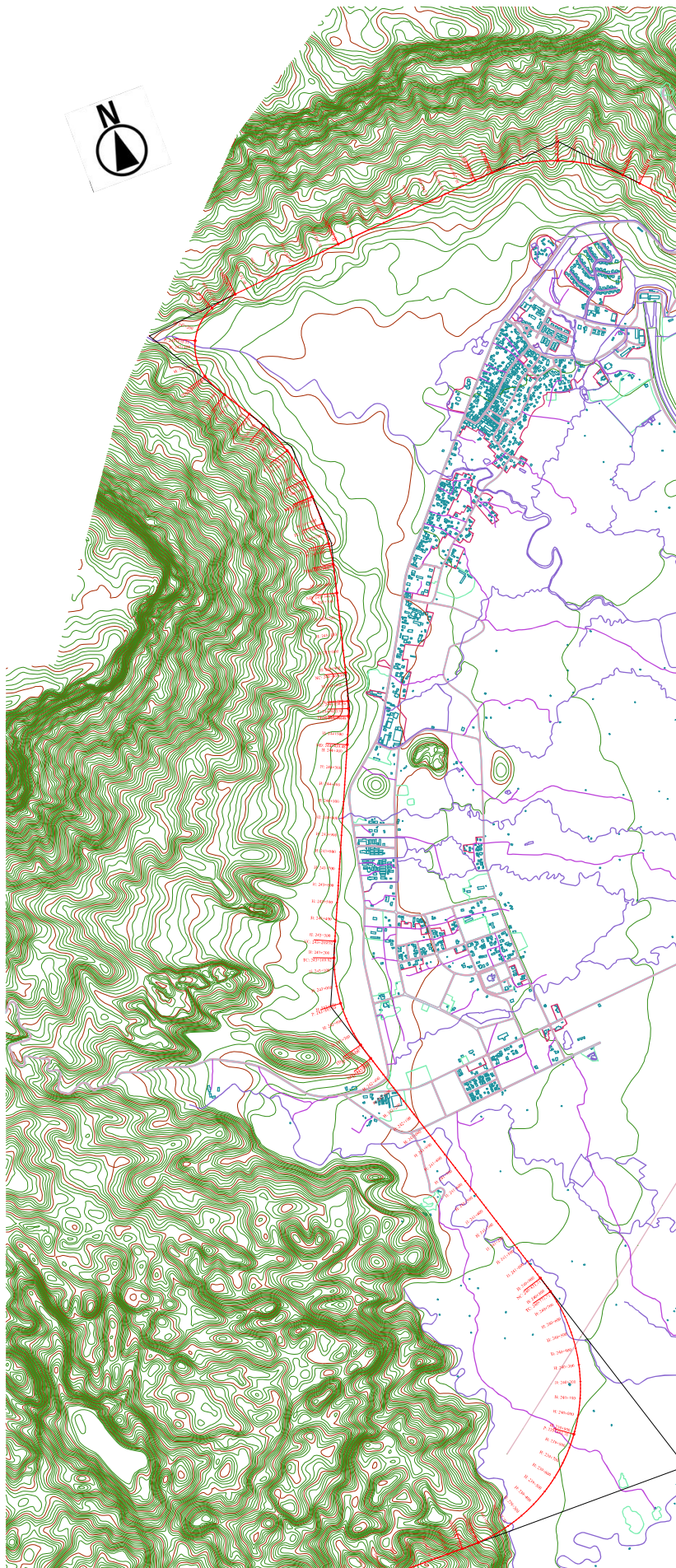
HA NOI



LAO PEOPLES DEMOCRATIC REPUBLIC SOCIALIST REPUBLIC OF VIETNAM	 JAPAN INTERNATIONAL COOPERATION AGENCY Yachyo Engineering Co., Ltd. NIPPON KOEI Nippon Koei Co., Ltd. CENTRAL Central Consultant Inc. PASCO Pasco Corporation		DATA COLLECTION SURVEY FOR ENHANCEMENT OF CONNECTIVITY BETWEEN HANOI AND VIENTIANE IN ASIA		Study on NH8 Corridor SECTION 2	SHEET CONTENTS PLAN (1/3)	SCALE 1:25,000
	DATE MAR 2018						PAGE NO. /

VIENTIANE

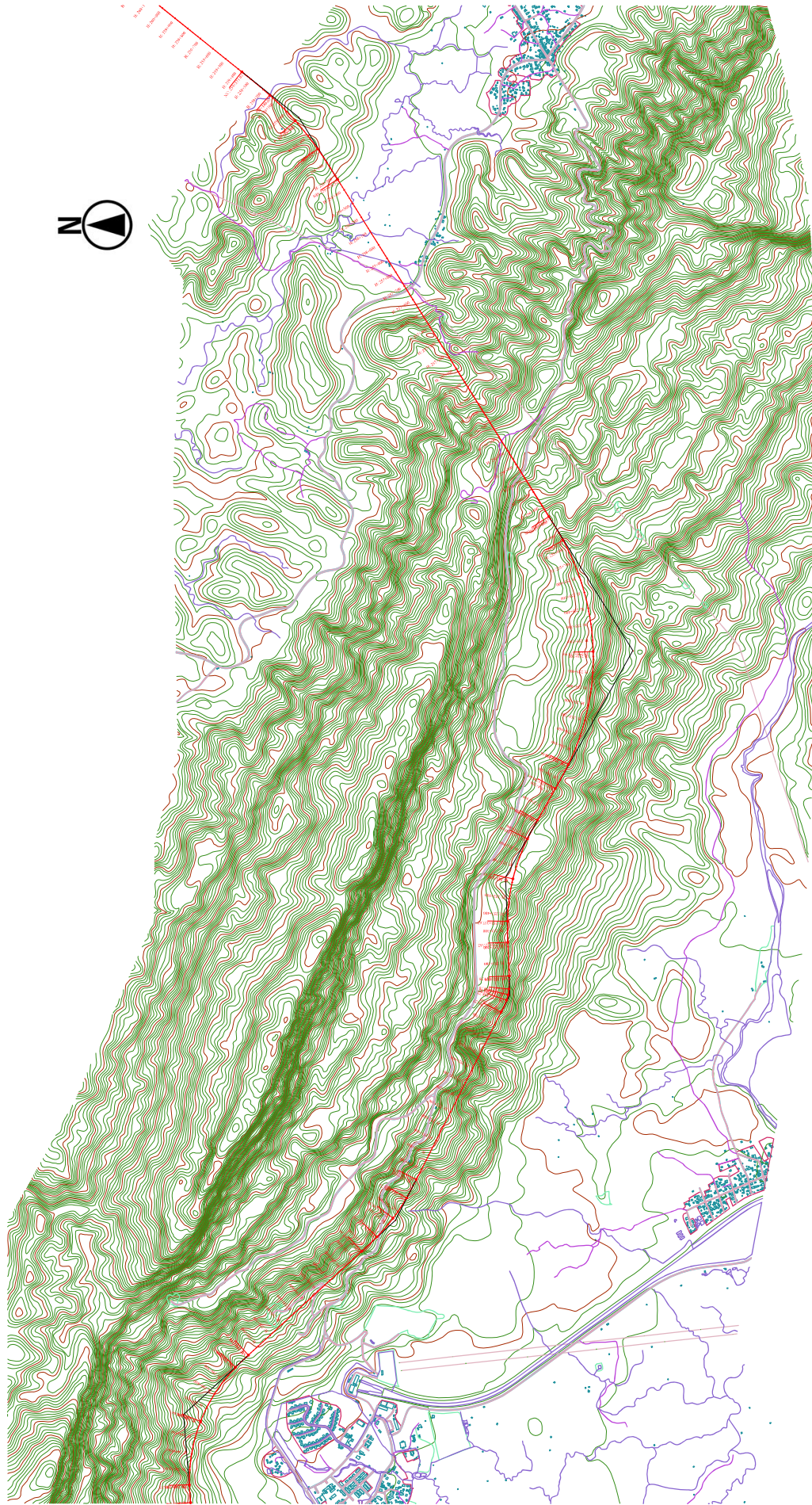
HA NOI



LAO PEOPLES DEMOCRATIC REPUBLIC SOCIALIST REPUBLIC OF VIETNAM	JAPAN INTERNATIONAL COOPERATION AGENCY Yachiyo Engineering Co., Ltd. NIPPON KOEI Nippon Koei Co., Ltd. Y&E CENTRAL Central Consultant Inc. PASCO Pasco Corporation		DATA COLLECTION SURVEY FOR ENHANCEMENT OF CONNECTIVITY BETWEEN HANOI AND VIENTIANE IN ASIA		Study on NH8 Corridor SECTION 2		SHEET CONTENTS PLAN (2/3)		SCALE 1:25,000
								DATE MAR 2018	PAGE NO. /

VIENTIANE

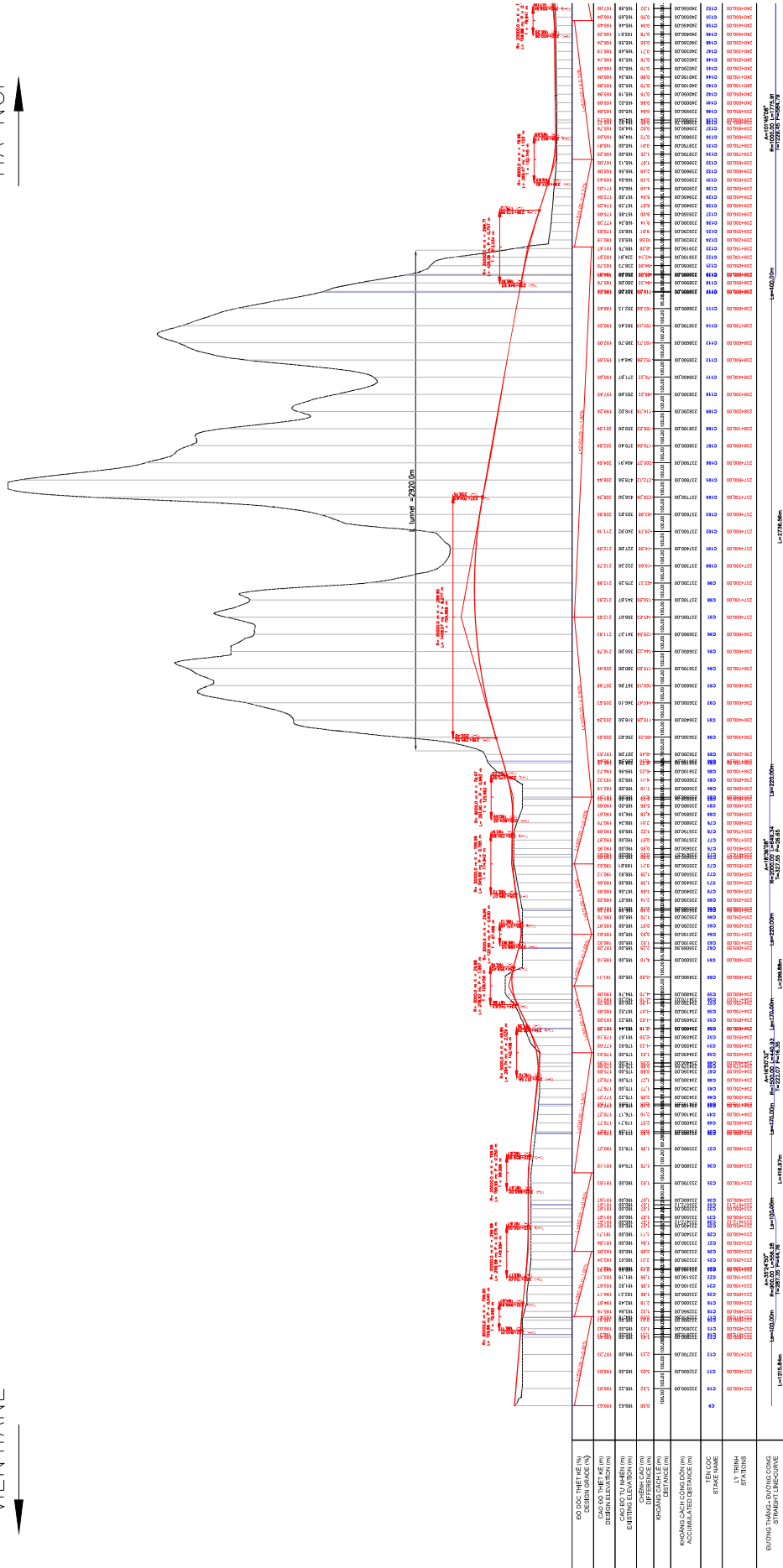
HA NOI



LAO PEOPLE'S DEMOCRATIC REPUBLIC SOCIALIST REPUBLIC OF VIETNAM	JAPAN INTERNATIONAL COOPERATION AGENCY Yachyo Engineering Co., Ltd. NIPPON KOEI Nippon Koei Co., Ltd. CENTRAL Central Consultant Inc. PASCO Pasco Corporation		DATA COLLECTION SURVEY FOR ENHANCEMENT OF CONNECTIVITY BETWEEN HANOI AND VIENTIANE IN ASIA		Study on NH8 Corridor SECTION 2		SHEET CONTENTS PLAN (3/3)		SCALE 1:25,000
									DATE MAR 2018
								PAGE NO. /	

VIENTIANE

HA NOI



STATION	GROUND ELEVATION (m)	PROPOSED ELEVATION (m)	VERTICAL CURVE DATA
0+000	100.00	100.00	
0+050	105.00	105.00	
0+100	110.00	110.00	
0+150	115.00	115.00	
0+200	120.00	120.00	
0+250	125.00	125.00	
0+300	130.00	130.00	
0+350	135.00	135.00	
0+400	140.00	140.00	
0+450	145.00	145.00	
0+500	150.00	150.00	
0+550	155.00	155.00	
0+600	160.00	160.00	
0+650	165.00	165.00	
0+700	170.00	170.00	
0+750	175.00	175.00	
0+800	180.00	180.00	
0+850	185.00	185.00	
0+900	190.00	190.00	

LAO PEOPLE'S DEMOCRATIC REPUBLIC
SOCIALIST REPUBLIC OF VIETNAM

JAPAN INTERNATIONAL COOPERATION AGENCY
Yachyo Engineering Co., Ltd. NIPPON KOEI
Pasco Corporation

DATA COLLECTION SURVEY FOR
ENHANCEMENT OF CONNECTIVITY
BETWEEN HANOI AND VIENTIANE IN ASIA

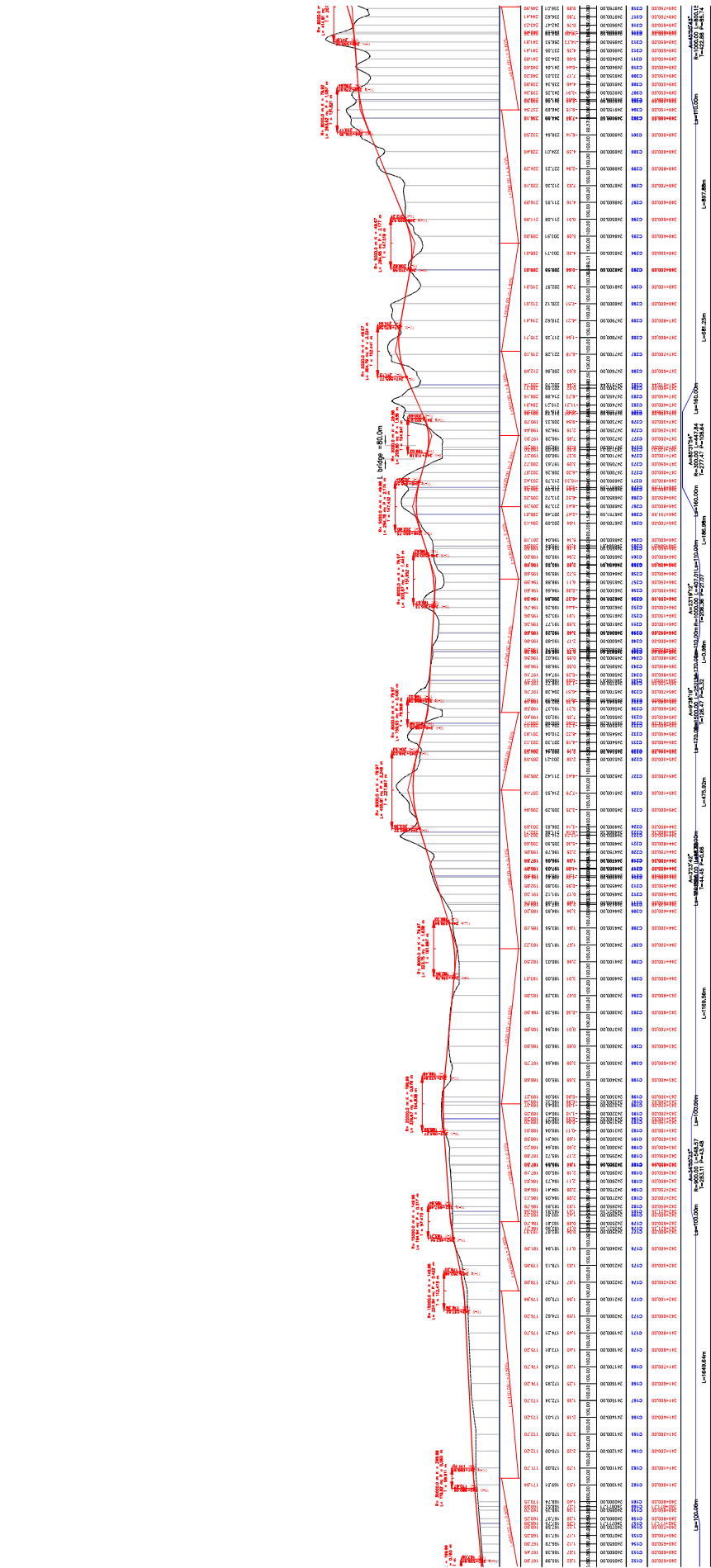
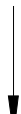
Study on NH8 Corridor
SECTION 2

SHEET CONTENTS
PROFILE (1/3)

SCALE 1:25,000
DATE MAR 2018
PAGE NO. /

VIENTIANE

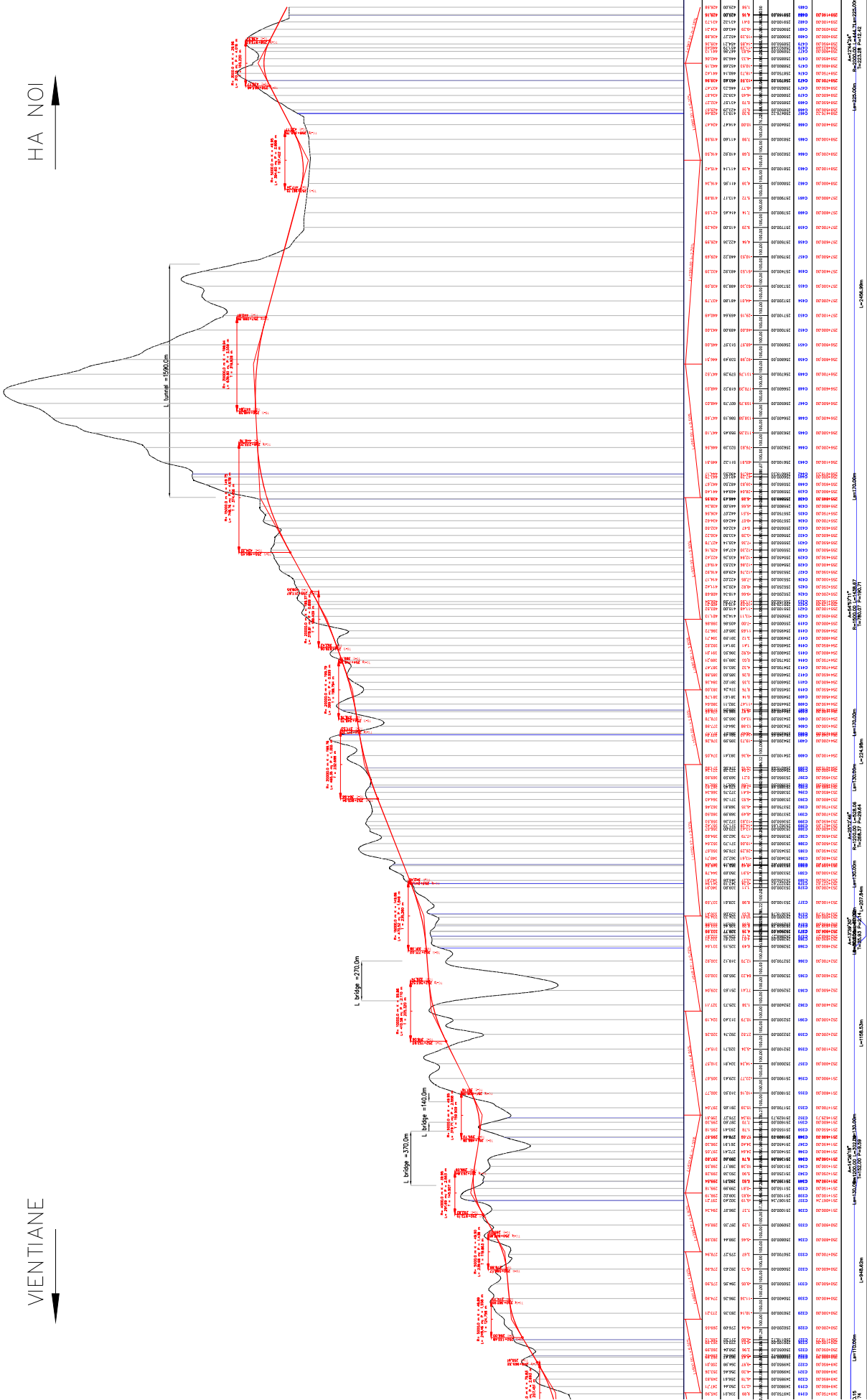
HA NOI



LAO PEOPLE'S DEMOCRATIC REPUBLIC SOCIALIST REPUBLIC OF VIETNAM	JAPAN INTERNATIONAL COOPERATION AGENCY Yachiyo Engineering Co., Ltd. NIPPON KOEI Nippon Koei Co., Ltd.		DATA COLLECTION SURVEY FOR ENHANCEMENT OF CONNECTIVITY BETWEEN HANOI AND VIENTIANE IN ASIA		Study on NH8 Corridor SECTION 2		SHEET CONTENTS PROFILE (2/3)		SCALE 1:25,000
	CENTRAL Central Consultant Inc. PASCO Pasco Corporation								DATE MAR 2018
								PAGE NO. /	

VIENTIANE

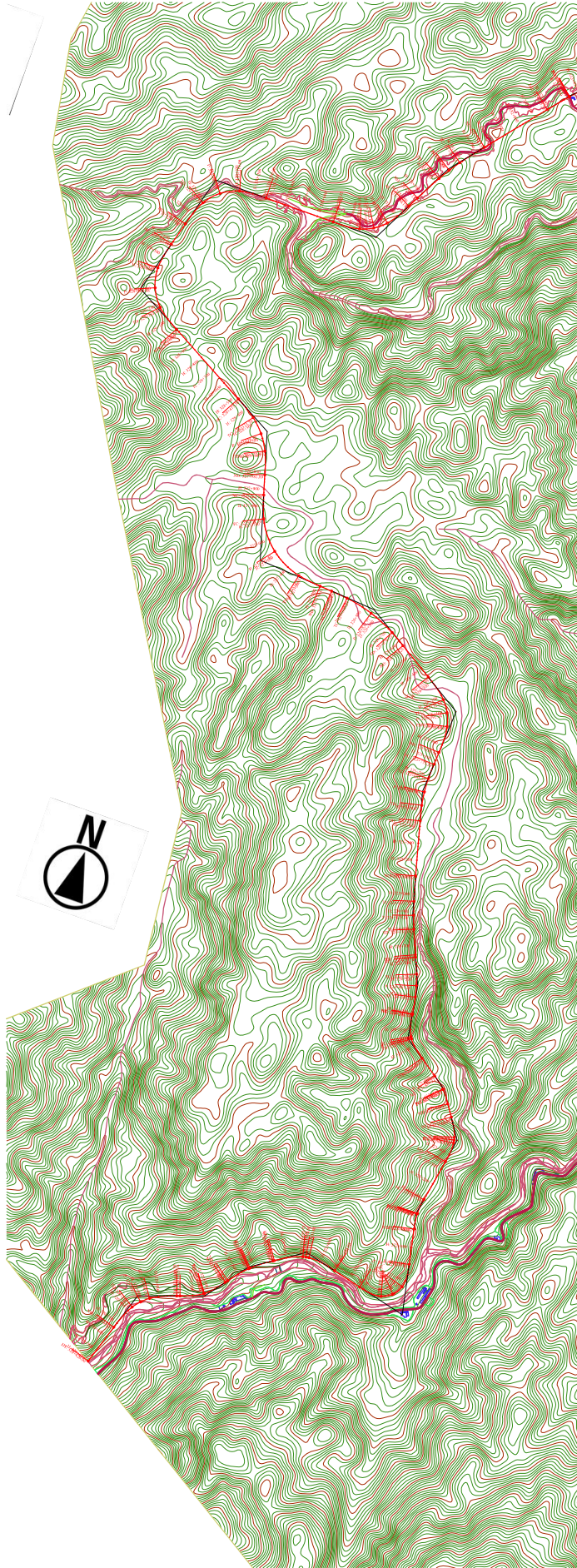
HA NOI



<p>LAO PEOPLE'S DEMOCRATIC REPUBLIC</p> <p>SOCIALIST REPUBLIC OF VIETNAM</p>	<p>JAPAN INTERNATIONAL COOPERATION AGENCY</p> <p>Yachiyo Engineering Co., Ltd. NIPPON KOEI Nippon Koei Co., Ltd.</p> <p>CENTRAL Central Consultant Inc. PASCO Pasco Corporation</p>		<p>DATA COLLECTION SURVEY FOR</p> <p>ENHANCEMENT OF CONNECTIVITY</p> <p>BETWEEN HANOI AND VIENTIANE IN ASIA</p>		<p>Study on NH8 Corridor</p> <p>SECTION 2</p>		<p>SHEET CONTENTS</p> <p>PROFILE (3/3)</p>		<p>SCALE</p> <p>1:25,000</p>
				<p>DATE</p> <p>MAR 2018</p>		<p>PAGE NO.</p> <p>/</p>			

VIENTIANE ←

→ HA NOI



LAO PEOPLES DEMOCRATIC REPUBLIC
SOCIALIST REPUBLIC OF VIETNAM

 JAPAN INTERNATIONAL COOPERATION AGENCY
 Yachyo Engineering Co., Ltd. **NIPPON KOEI** Nippon Koei Co., Ltd.
 **CENTRAL** Central Consultant Inc. **PASCO** Pasco Corporation

DATA COLLECTION SURVEY FOR
ENHANCEMENT OF CONNECTIVITY
BETWEEN HANOI AND VIENTIANE IN ASIA

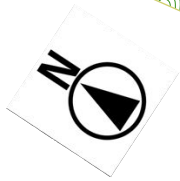
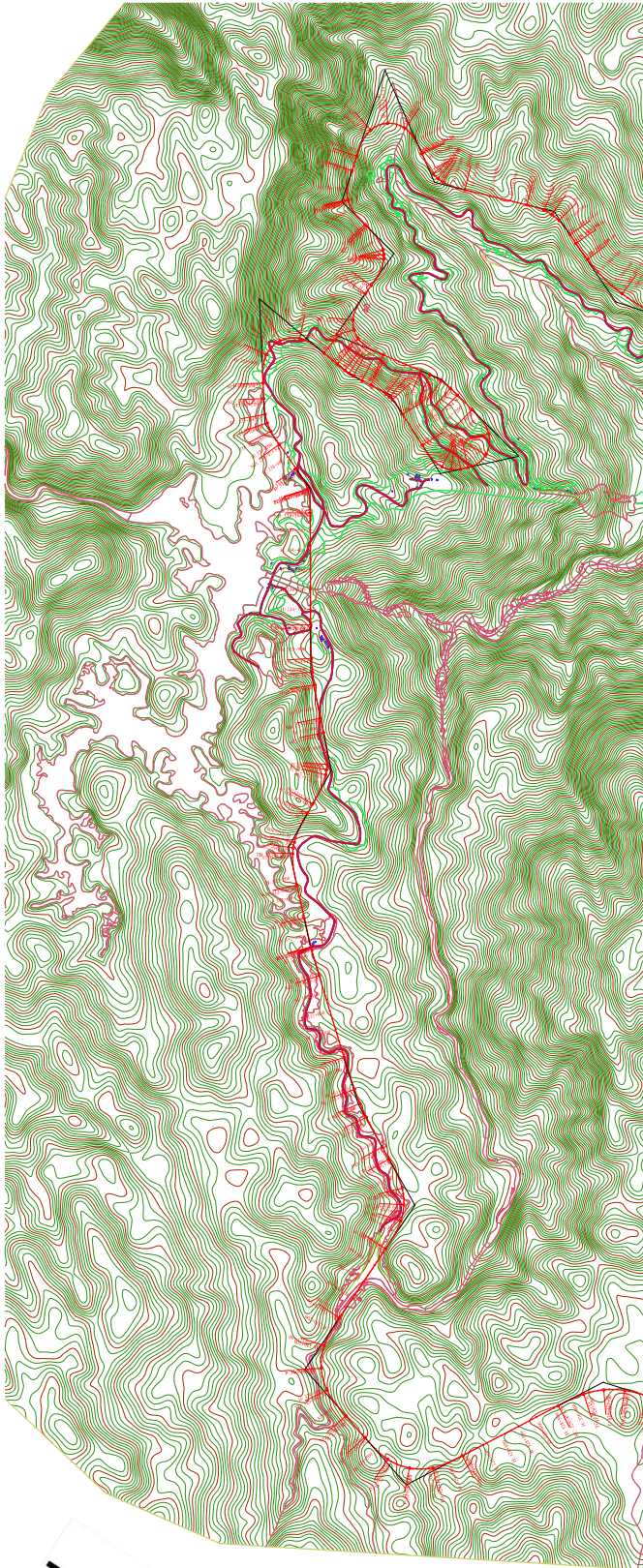
Study on NH8 Corridor
SECTION 3

SHEET CONTENTS
PLAN (1/4)

SCALE	1:25,000
DATE	MAR 2018
PAGE NO.	/

VIENTIANE ←

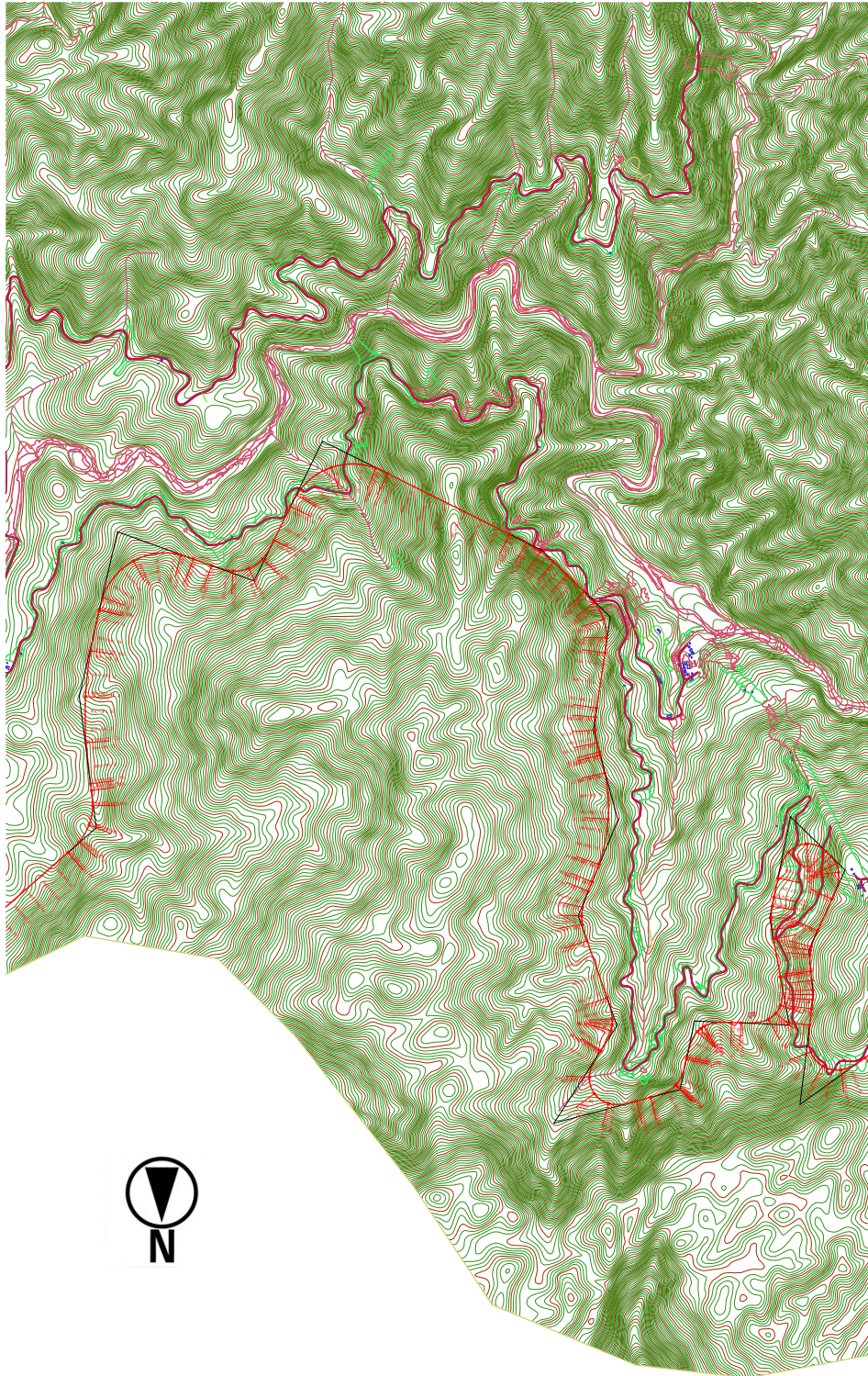
→ HA NOI



LAO PEOPLES DEMOCRATIC REPUBLIC SOCIALIST REPUBLIC OF VIETNAM	<p>JAPAN INTERNATIONAL COOPERATION AGENCY Yachyo Engineering Co., Ltd. NIPPON KOEI Nippon Koei Co., Ltd. CENTRAL Central Consultant Inc. PASCO Pasco Corporation</p>	DATA COLLECTION SURVEY FOR ENHANCEMENT OF CONNECTIVITY BETWEEN HANOI AND VIENTIANE IN ASIA	Study on NH8 Corridor	SHEET CONTENTS		SCALE	1:25,000
		SECTION 3	PLAN (2/4)	DATE	MAR 2018	PAGE NO.	/

VIENTIANE

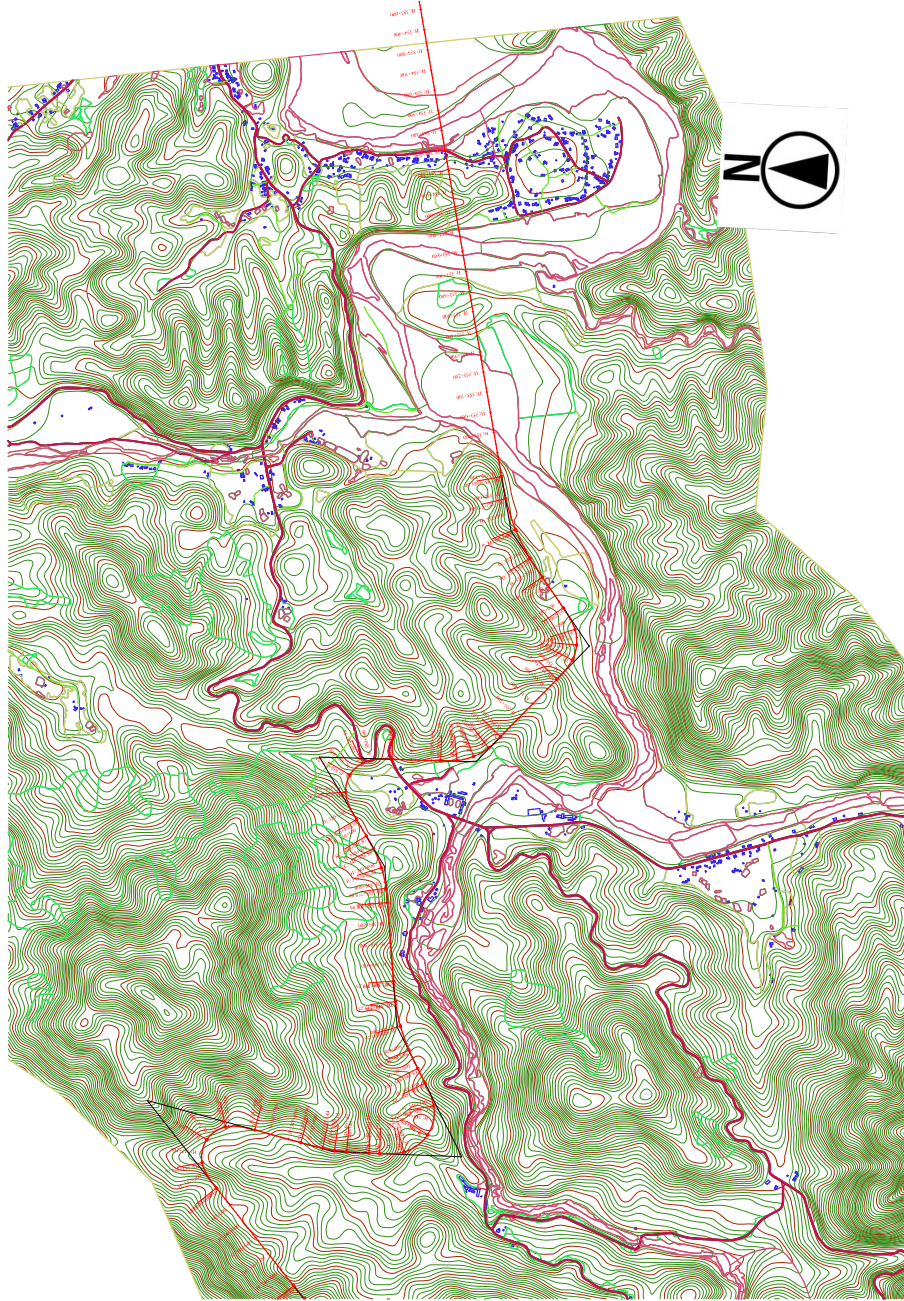
HA NOI



LAO PEOPLES DEMOCRATIC REPUBLIC SOCIALIST REPUBLIC OF VIETNAM	<p>JAPAN INTERNATIONAL COOPERATION AGENCY Yachyo Engineering Co., Ltd. NIPPON KOEI Nippon Koei Co., Ltd. CENTRAL Central Consultant Inc. PASCO Pasco Corporation</p>	DATA COLLECTION SURVEY FOR ENHANCEMENT OF CONNECTIVITY BETWEEN HANOI AND VIENTIANE IN ASIA	Study on NH8 Corridor	SHEET CONTENTS		SCALE	1:25,000
				SECTION 3	PLAN (3/4)	DATE	MAR 2018

VIENTIANE

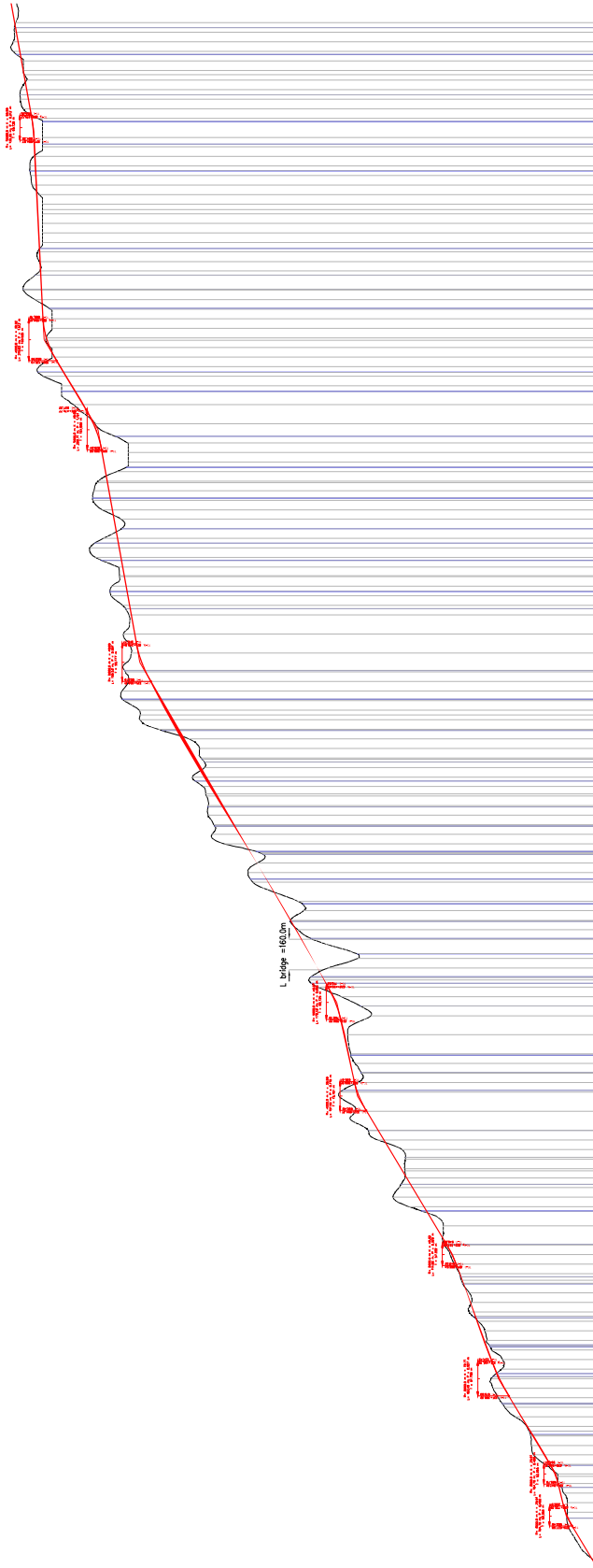
HA NOI



LAO PEOPLES DEMOCRATIC REPUBLIC	<p>JAPAN INTERNATIONAL COOPERATION AGENCY Yachyo Engineering Co., Ltd. NIPPON KOEI Nippon Koei Co., Ltd. CENTRAL Central Consultant Inc. PASCO Pasco Corporation</p>	DATA COLLECTION SURVEY FOR ENHANCEMENT OF CONNECTIVITY BETWEEN HANOI AND VIENTIANE IN ASIA	Study on NH8 Corridor	SHEET CONTENTS		
				PLAN (4/4)	SCALE 1:25,000	DATE MAR 2018
SOCIALIST REPUBLIC OF VIETNAM			SECTION 3			

VIENTIANE

HA NOI



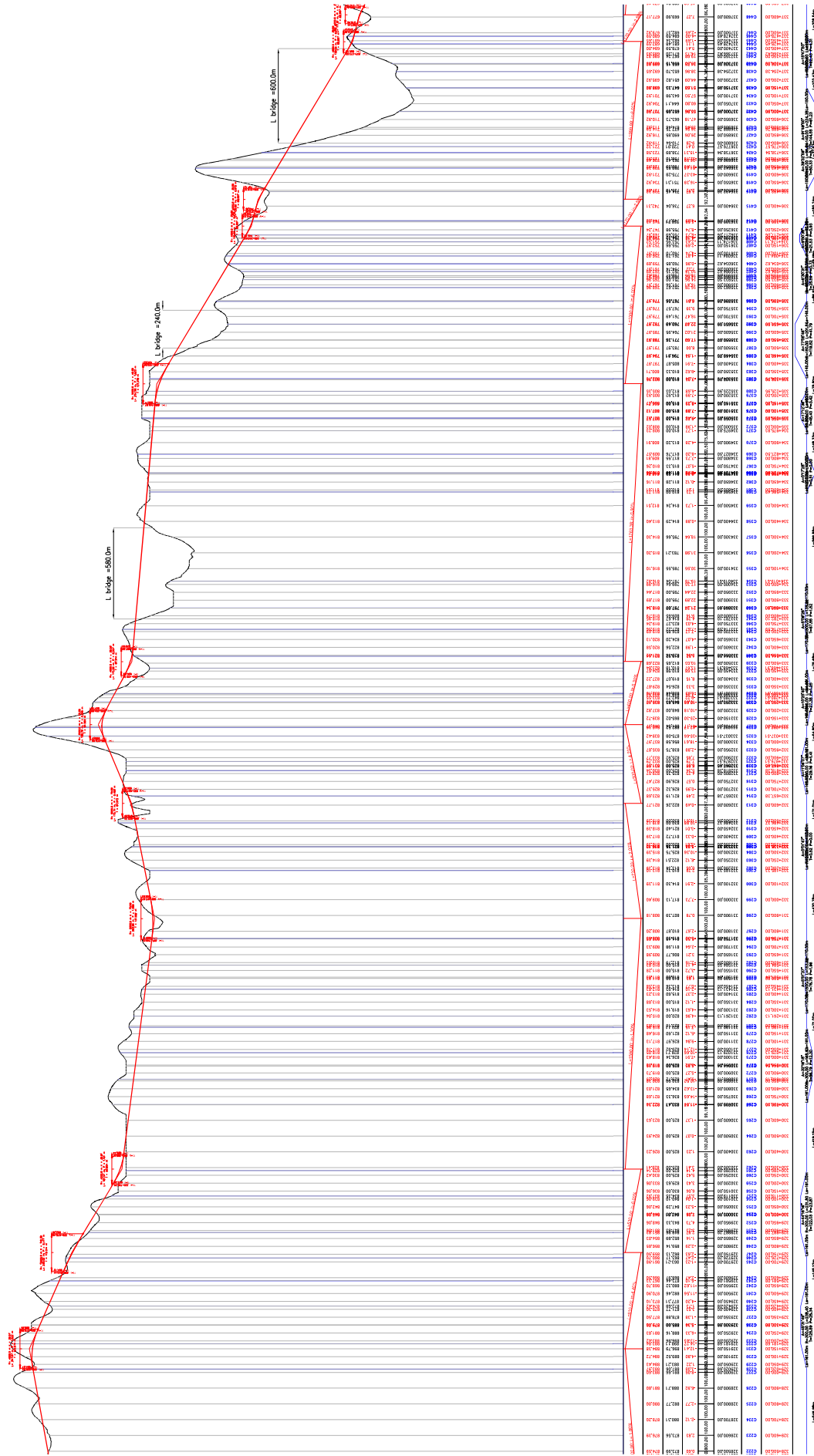
L_{Curve} = 160.0m

STATION	PROPOSED GRADE (%)	EXISTING ELEVATION (m)	PROPOSED ELEVATION (m)	VERTICAL CURVE TYPE	VERTICAL CURVE LENGTH (m)	VERTICAL CURVE START STATION	VERTICAL CURVE END STATION	VERTICAL CURVE POINT STATION	VERTICAL CURVE POINT ELEVATION (m)
0+000	0.00	100.00	100.00	VC1	160.00	0+000	0+160	0+080	100.00
0+100	0.00	100.00	100.00	VC1	160.00	0+000	0+160	0+080	100.00
0+200	0.00	100.00	100.00	VC1	160.00	0+000	0+160	0+080	100.00
0+300	0.00	100.00	100.00	VC1	160.00	0+000	0+160	0+080	100.00
0+400	0.00	100.00	100.00	VC1	160.00	0+000	0+160	0+080	100.00
0+500	0.00	100.00	100.00	VC1	160.00	0+000	0+160	0+080	100.00
0+600	0.00	100.00	100.00	VC1	160.00	0+000	0+160	0+080	100.00
0+700	0.00	100.00	100.00	VC1	160.00	0+000	0+160	0+080	100.00
0+800	0.00	100.00	100.00	VC1	160.00	0+000	0+160	0+080	100.00
0+900	0.00	100.00	100.00	VC1	160.00	0+000	0+160	0+080	100.00

<p>JICA Yachyo Engineering Co., Ltd.</p> <p>YEO NIPPON KOEI</p> <p>Q CENTRAL Pasco Corporation</p>	<p>DATA COLLECTION SURVEY FOR ENHANCEMENT OF CONNECTIVITY BETWEEN HANOI AND VIENTIANE IN ASIA</p>		<p>Study on N8 Corridor</p>		<p>1:25,000</p>	
	<p>LAO PEOPLE'S DEMOCRATIC REPUBLIC SOCIALIST REPUBLIC OF VIETNAM</p>		<p>SECTION 3</p>		<p>SCALE DATE PAGE NO.</p>	
<p>JAPAN INTERNATIONAL COOPERATION AGENCY Yachyo Engineering Co., Ltd. NIPPON KOEI CENTRAL Pasco Corporation</p>			<p>PROFILE (1/4)</p>			
<p>HA NOI</p>			<p>MAR 2018</p>			
<p>VIENTIANE</p>			<p>7</p>			

VIENTIANE

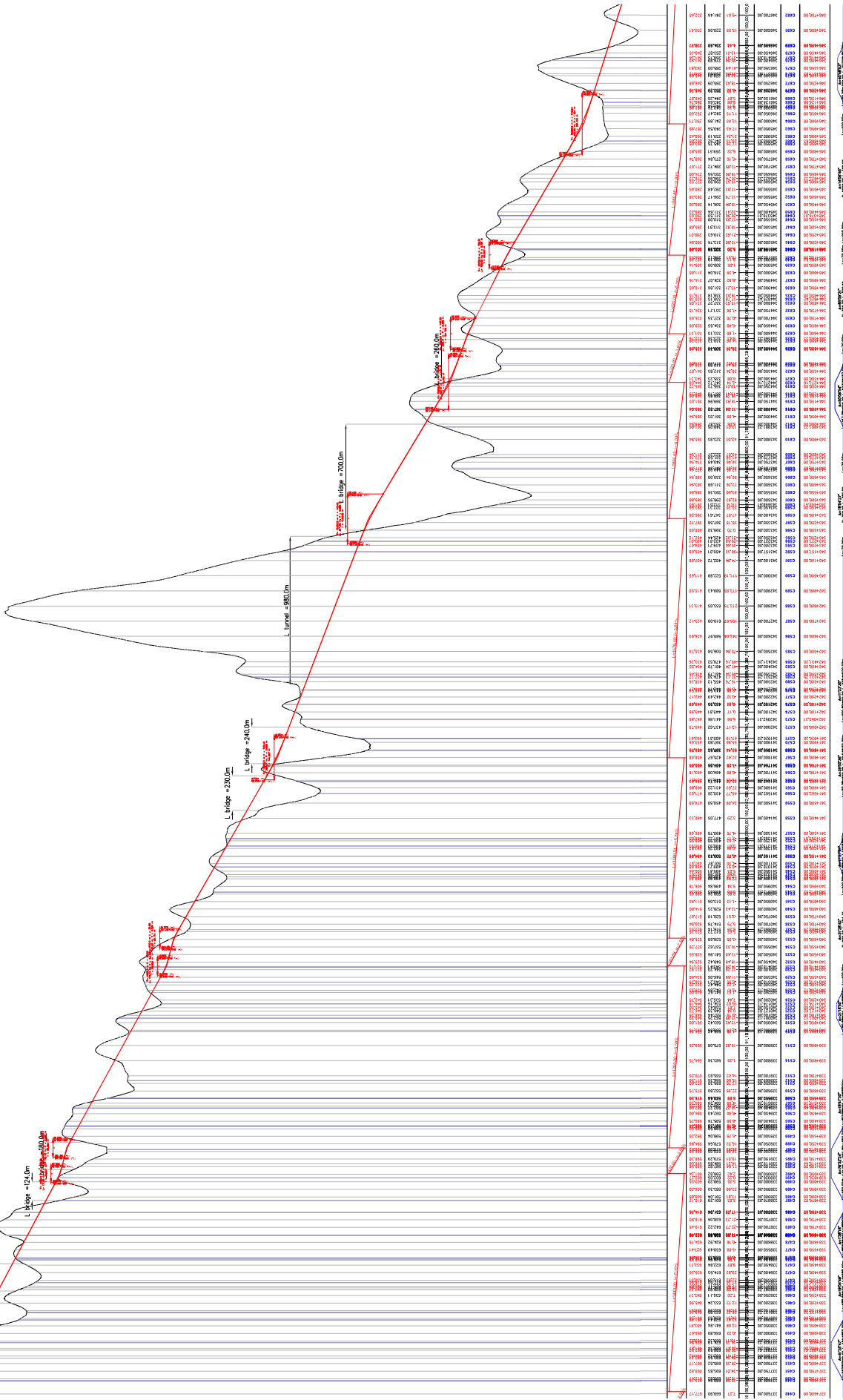
HA NOI



<p>JICA Yachyo Engineering Co., Ltd.</p> <p>YEO NIPPON KOEI</p> <p>Q PASCO Central Consultant Inc.</p>	<p>DATA COLLECTION SURVEY FOR ENHANCEMENT OF CONNECTIVITY BETWEEN HANOI AND VIENTIANE IN ASIA</p>		<p>Study on NH8 Corridor</p>	<p>SHEET CONTENTS</p>	<p>SCALE 1:25,000</p>
	<p>SECTION 3</p>			<p>PROFILE (2/4)</p>	<p>DATE MAR 2018</p>
<p>LAO PEOPLE'S DEMOCRATIC REPUBLIC</p> <p>SOCIALIST REPUBLIC OF VIETNAM</p>	<p>SECTION 3</p>				<p>PAGE NO. /</p>

VIENTIANE

HA NOI



SCALE	1:25,000
DATE	MAR 2018
PAGE NO.	/

SHEET CONTENTS
PROFILE (3/4)

Study on N8 Corridor
SECTION 3

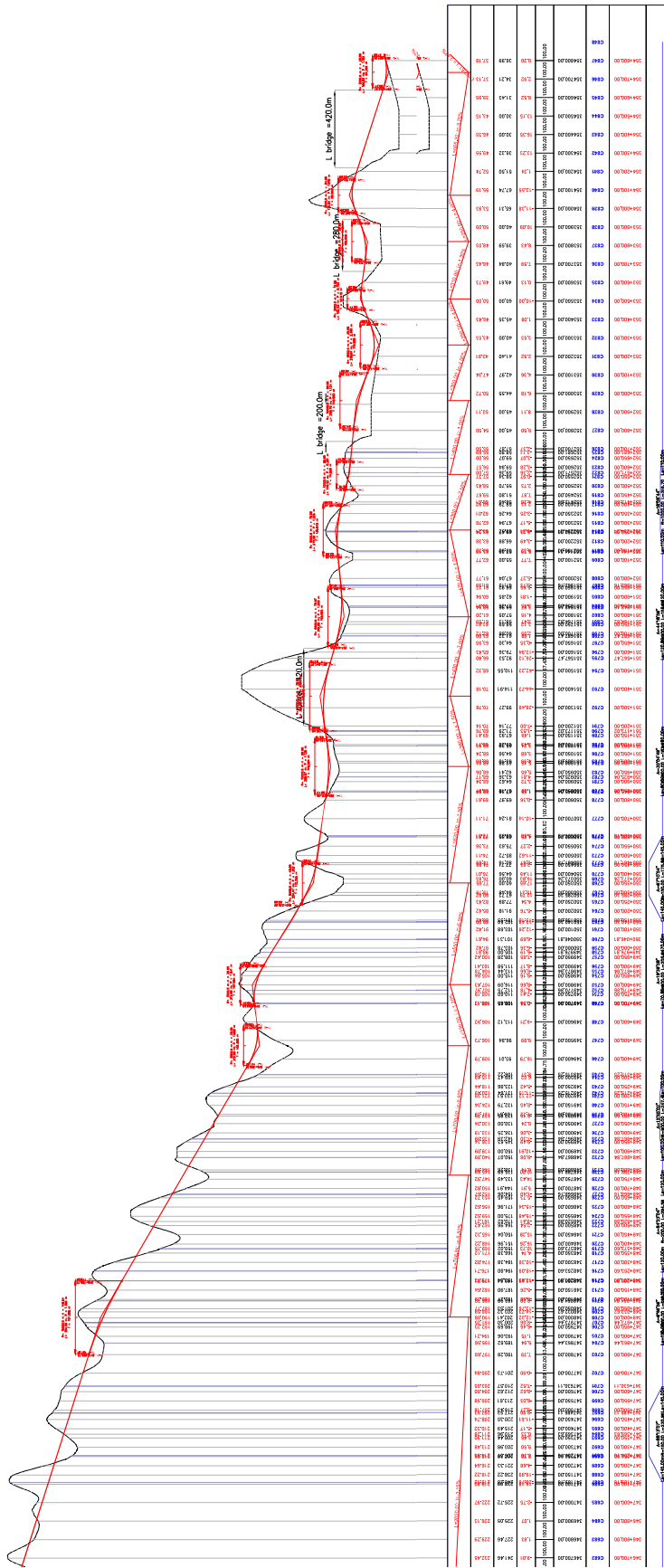
DATA COLLECTION SURVEY FOR
ENHANCEMENT OF CONNECTIVITY
BETWEEN HANOI AND VIENTIANE IN ASIA

JAPAN INTERNATIONAL COOPERATION AGENCY
Yachyo Engineering Co., Ltd. NIPPON KOEI Nippon Koei Co., Ltd.
CENTRAL Pasco Corporation

LAO PEOPLE'S DEMOCRATIC REPUBLIC
SOCIALIST REPUBLIC OF VIETNAM

VIENTIANE

HA NOI



LAO PEOPLES DEMOCRATIC REPUBLIC
SOCIALIST REPUBLIC OF VIETNAM

JAPAN INTERNATIONAL COOPERATION AGENCY
Yachyo Engineering Co., Ltd. **NIPPON KOEI** Nippon Koei Co., Ltd.
CENTRAL Central Consultant Inc. **PASCO** Pasco Corporation

DATA COLLECTION SURVEY FOR
ENHANCEMENT OF CONNECTIVITY
BETWEEN HANOI AND VIENTIANE IN ASIA

Study on NH8 Corridor
SECTION 3

SHEET CONTENTS
PROFILE (4/4)

SCALE 1:25,000
DATE MAR 2018
PAGE NO. /