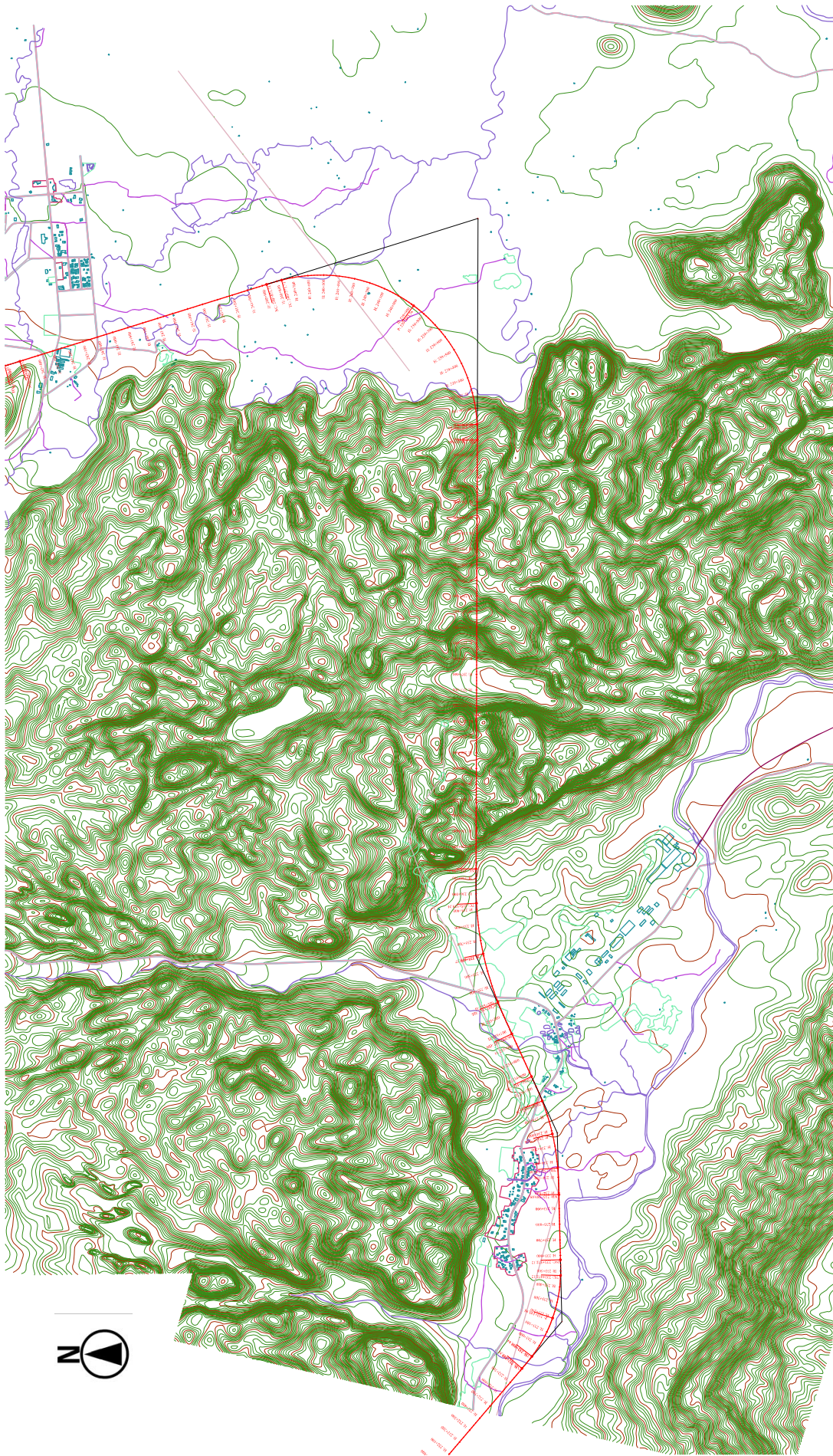


VIENTIANE

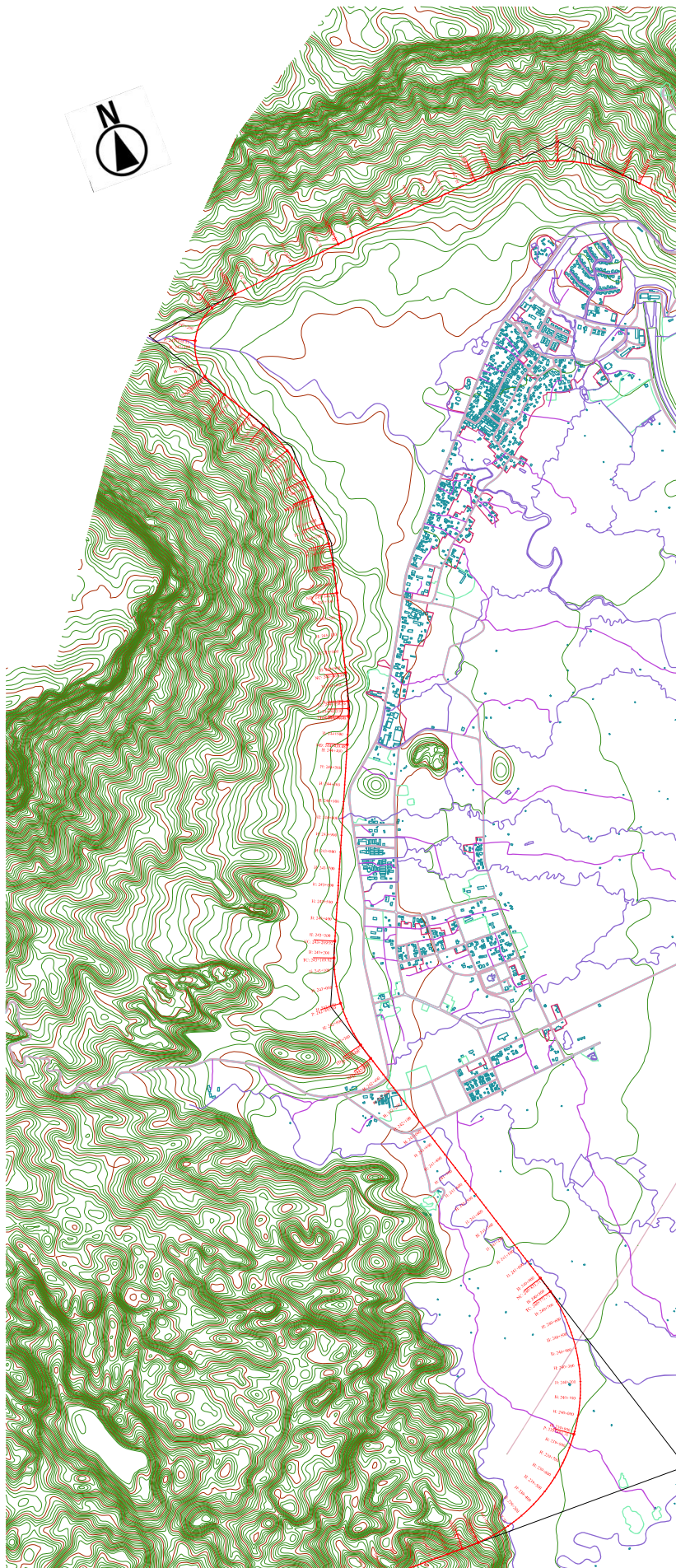
HA NOI



LAO PEOPLES DEMOCRATIC REPUBLIC SOCIALIST REPUBLIC OF VIETNAM	<p>JAPAN INTERNATIONAL COOPERATION AGENCY Yachyo Engineering Co., Ltd. NIPPON KOEI Nippon Koei Co., Ltd. CENTRAL Central Consultant Inc. PASCO Pasco Corporation</p>		<p>DATA COLLECTION SURVEY FOR ENHANCEMENT OF CONNECTIVITY BETWEEN HANOI AND VIENTIANE IN ASIA</p>		<p>Study on NH8 Corridor</p>		<p>SHEET CONTENTS</p>		SCALE	1:25,000
					SECTION 2		PLAN (1/3)		DATE	MAR 2018
								PAGE NO.	/	

VIENTIANE

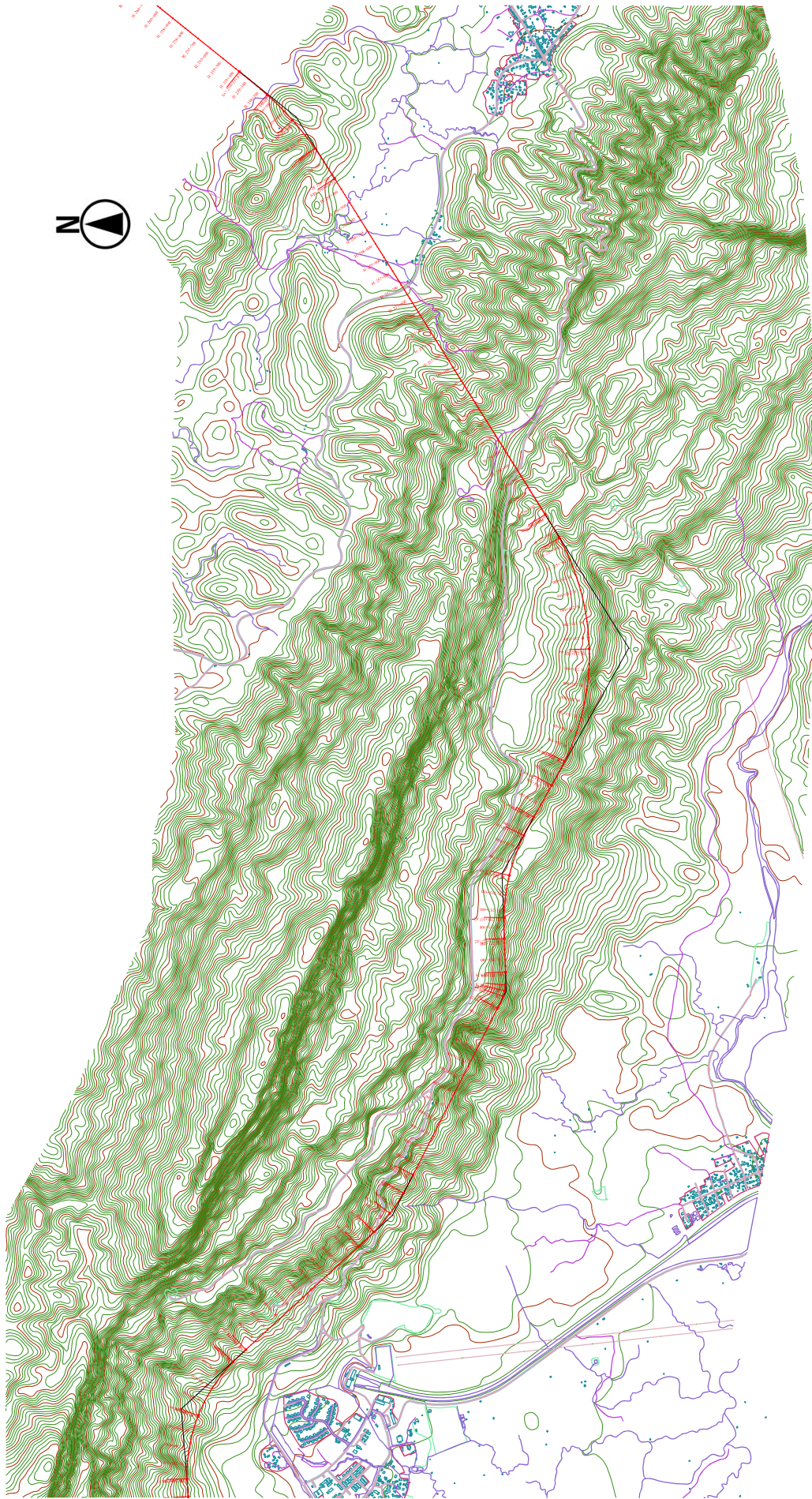
HA NOI



LAO PEOPLES DEMOCRATIC REPUBLIC SOCIALIST REPUBLIC OF VIETNAM	JAPAN INTERNATIONAL COOPERATION AGENCY Yachiyo Engineering Co., Ltd. NIPPON KOEI Nippon Koei Co., Ltd. Y&O CEVTRAL Central Consultant Inc. PASCO Pasco Corporation		DATA COLLECTION SURVEY FOR ENHANCEMENT OF CONNECTIVITY BETWEEN HANOI AND VIENTIANE IN ASIA		Study on NH8 Corridor SECTION 2		SHEET CONTENTS PLAN (2/3)		SCALE 1:25,000
								DATE MAR 2018	PAGE NO. /

VIENTIANE

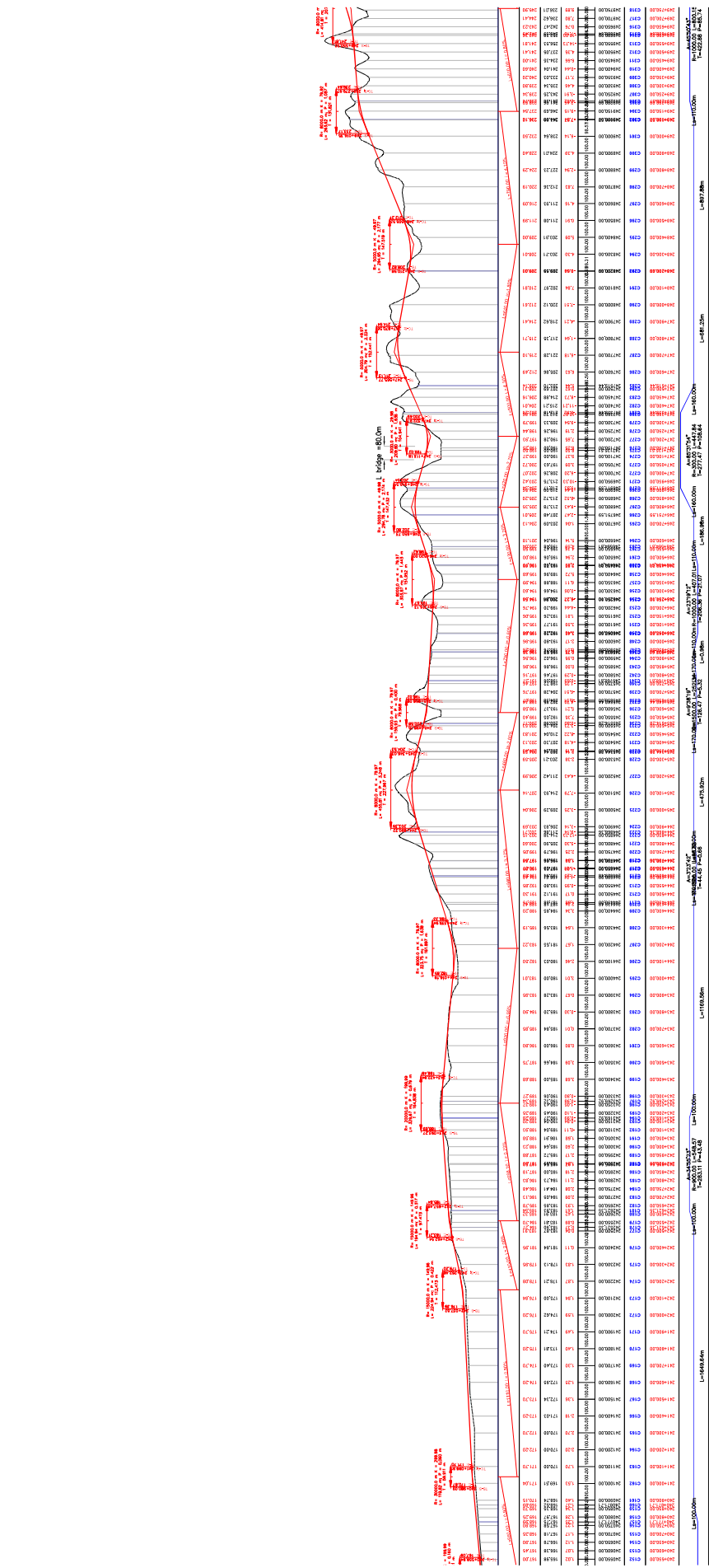
HA NOI



LAO PEOPLE'S DEMOCRATIC REPUBLIC SOCIALIST REPUBLIC OF VIETNAM	JAPAN INTERNATIONAL COOPERATION AGENCY Yachyo Engineering Co., Ltd. NIPPON KOEI Nippon Koei Co., Ltd. CENTRAL Central Consultant Inc. PASCO Pasco Corporation		DATA COLLECTION SURVEY FOR ENHANCEMENT OF CONNECTIVITY BETWEEN HANOI AND VIENTIANE IN ASIA		Study on NH8 Corridor SECTION 2		SHEET CONTENTS PLAN (3/3)		SCALE 1:25,000
									DATE MAR 2018
								PAGE NO. /	

VIENTIANE

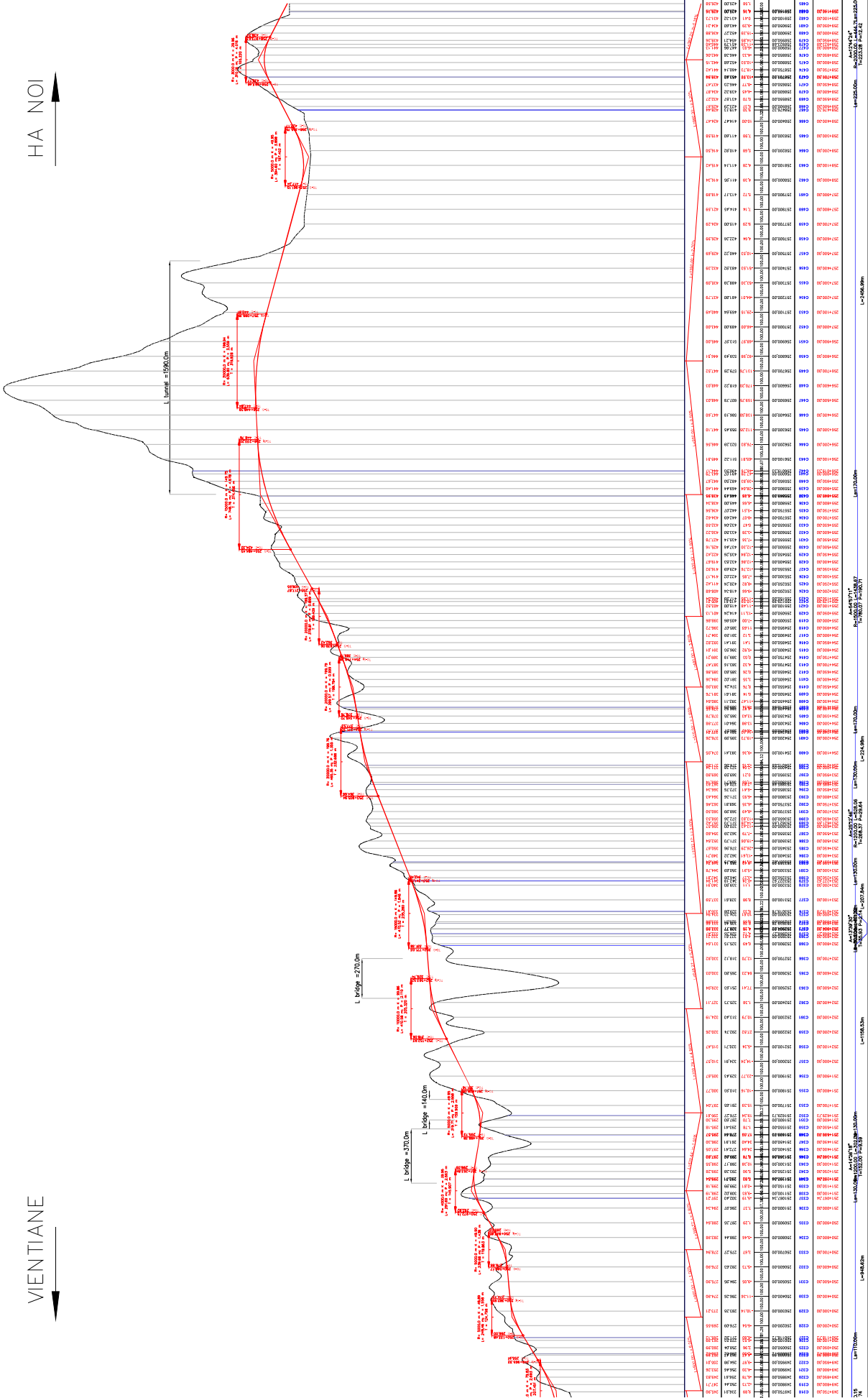
HA NOI



LAO PEOPLE'S DEMOCRATIC REPUBLIC SOCIALIST REPUBLIC OF VIETNAM	JAPAN INTERNATIONAL COOPERATION AGENCY Yachiyo Engineering Co., Ltd. NIPPON KOEI Nippon Koei Co., Ltd.		DATA COLLECTION SURVEY FOR ENHANCEMENT OF CONNECTIVITY BETWEEN HANOI AND VIENTIANE IN ASIA		Study on NH8 Corridor		SHEET CONTENTS		SCALE 1:25,000	
	CENTRAL Central Consultant Inc. PASCO Pasco Corporation				SECTION 2		PROFILE (2/3)		DATE MAR 2018	
									PAGE NO. /	

VIENTIANE

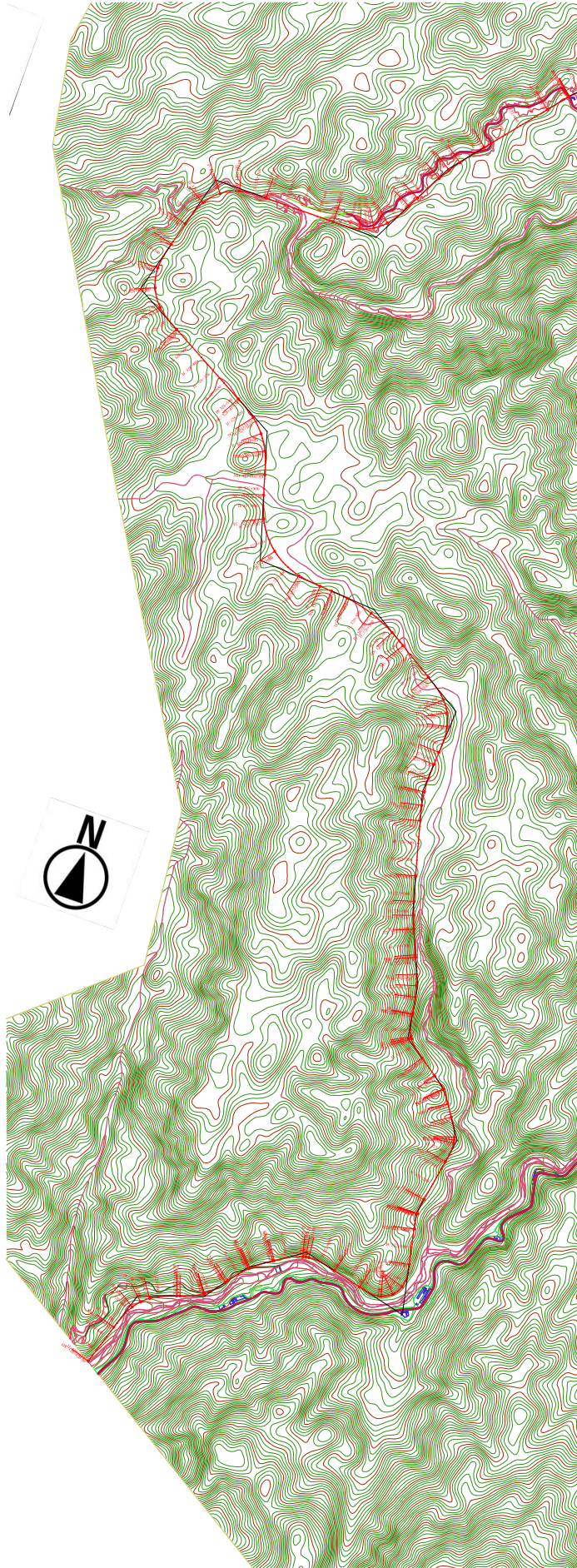
HA NOI



LAO PEOPLE'S DEMOCRATIC REPUBLIC SOCIALIST REPUBLIC OF VIETNAM	JAPAN INTERNATIONAL COOPERATION AGENCY Yachiyo Engineering Co., Ltd. NIPPON KOEI Nippon Koei Co., Ltd. CENTRAL Pasco Corporation Pasco Corporation	DATA COLLECTION SURVEY FOR ENHANCEMENT OF CONNECTIVITY BETWEEN HANOI AND VIENTIANE IN ASIA		Study on N8 Corridor	SHEET CONTENTS PROFILE (3/3)	SCALE 1:25,000
				SECTION 2		DATE MAR 2018
				PAGE NO. /		

VIENTIANE ←

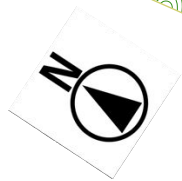
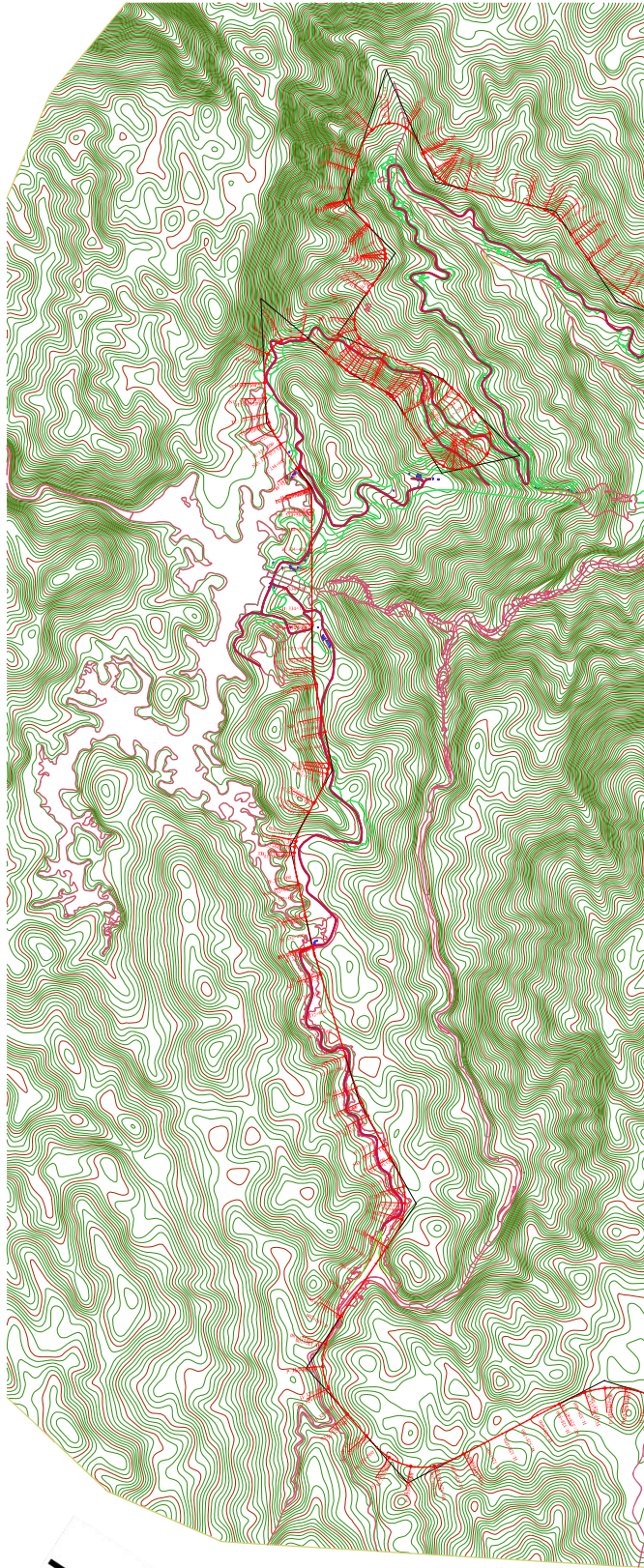
→ HA NOI



LAO PEOPLES DEMOCRATIC REPUBLIC SOCIALIST REPUBLIC OF VIETNAM	<p>JAPAN INTERNATIONAL COOPERATION AGENCY Yachyo Engineering Co., Ltd. NIPPON KOEI Nippon Koei Co., Ltd. PASCO Pasco Corporation</p>	<p>DATA COLLECTION SURVEY FOR ENHANCEMENT OF CONNECTIVITY BETWEEN HANOI AND VIENTIANE IN ASIA</p>	<p>Study on NH8 Corridor SECTION 3</p>	SHEET CONTENTS		SCALE	1:25,000
				PLAN (1/4)		DATE	MAR 2018

VIENTIANE ←

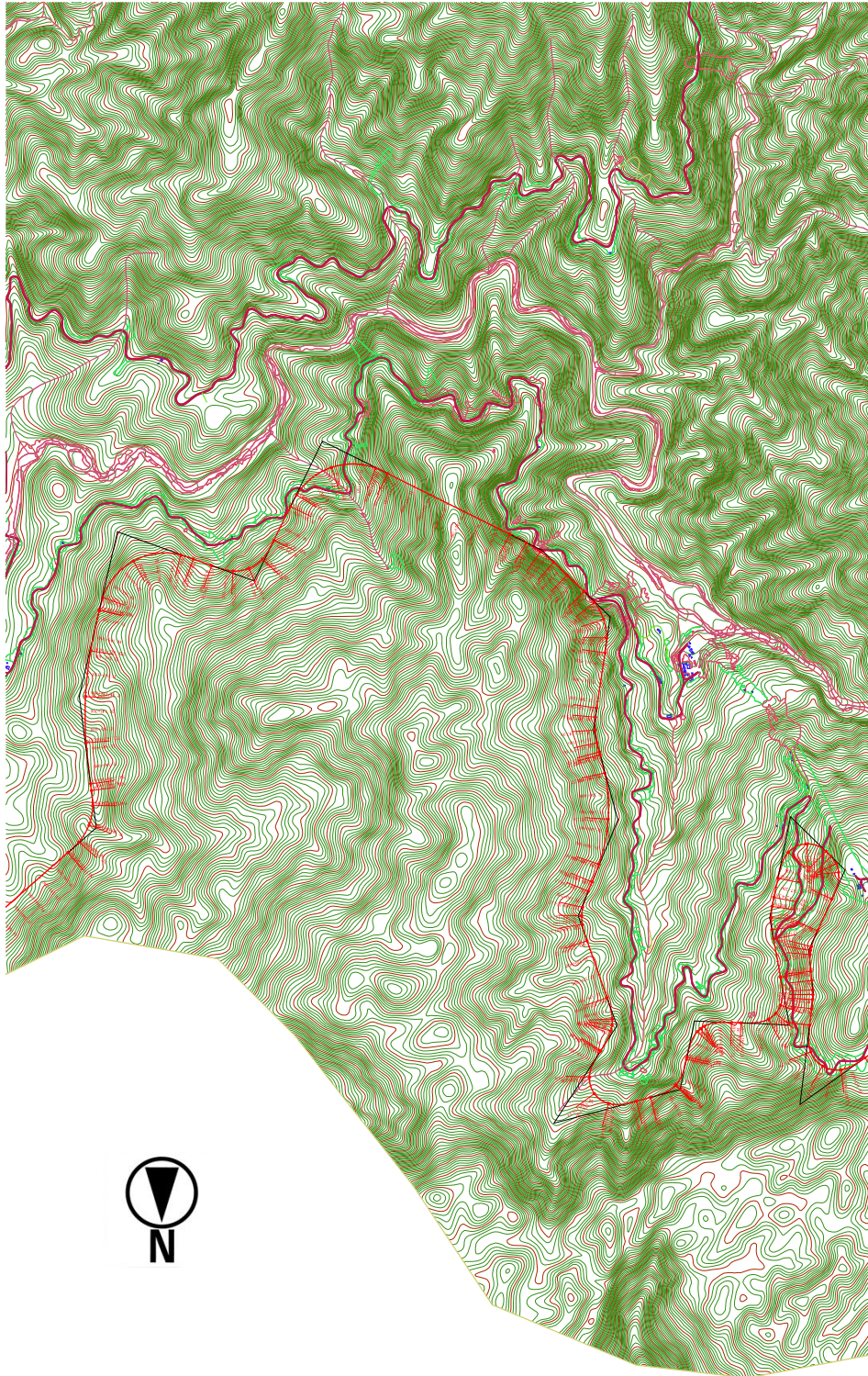
→ HANOI



LAO PEOPLES DEMOCRATIC REPUBLIC SOCIALIST REPUBLIC OF VIETNAM	<p>JAPAN INTERNATIONAL COOPERATION AGENCY Yachyo Engineering Co., Ltd. NIPPON KOEI Nippon Koei Co., Ltd. PASCO Pasco Corporation</p>	DATA COLLECTION SURVEY FOR ENHANCEMENT OF CONNECTIVITY BETWEEN HANOI AND VIENTIANE IN ASIA	Study on NH8 Corridor	SHEET CONTENTS		SCALE	1:25,000
				SECTION 3	PLAN (2/4)	DATE	MAR 2018

VIENTIANE

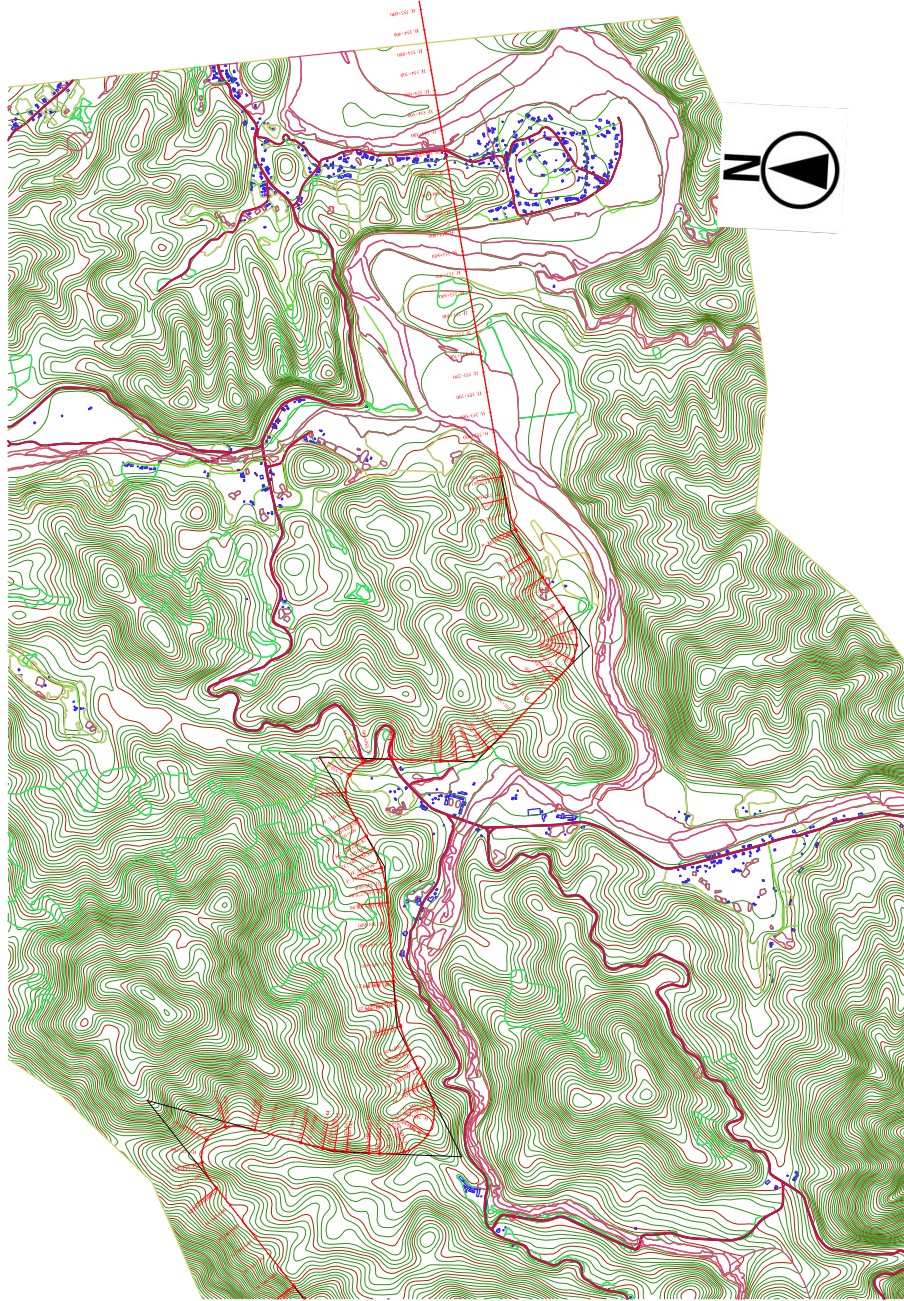
HA NOI



LAO PEOPLES DEMOCRATIC REPUBLIC SOCIALIST REPUBLIC OF VIETNAM	<p>JAPAN INTERNATIONAL COOPERATION AGENCY Yachyo Engineering Co., Ltd. NIPPON KOEI Nippon Koei Co., Ltd. PASCO Pasco Corporation</p>	<p>DATA COLLECTION SURVEY FOR ENHANCEMENT OF CONNECTIVITY BETWEEN HANOI AND VIENTIANE IN ASIA</p>	<p>Study on NH8 Corridor SECTION 3</p>	SHEET CONTENTS		
				PLAN (3/4)	SCALE DATE PAGE NO.	
				1:25,000	MAR 2018	/

VIENTIANE

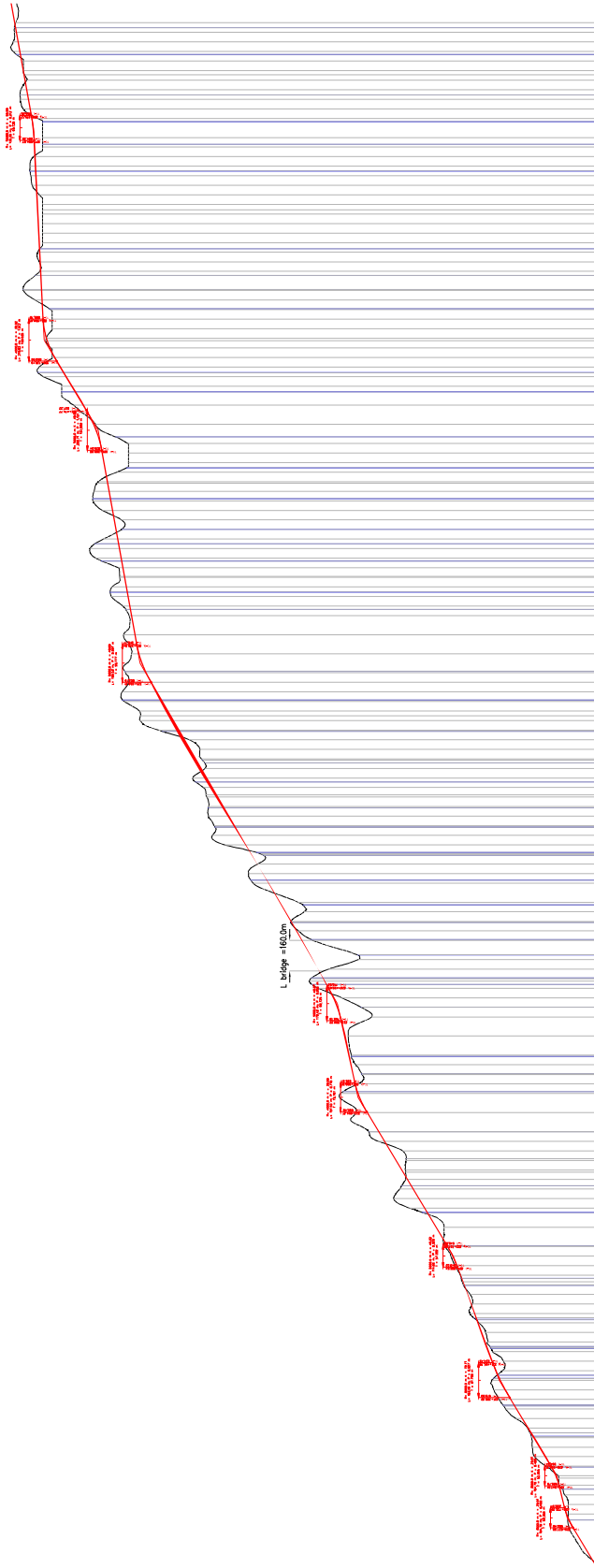
HA NOI



LAO PEOPLES DEMOCRATIC REPUBLIC	<p>JAPAN INTERNATIONAL COOPERATION AGENCY Yachyo Engineering Co., Ltd. NIPPON KOEI Nippon Koei Co., Ltd. CENTRAL Central Consultant Inc. PASCO Pasco Corporation</p>	DATA COLLECTION SURVEY FOR ENHANCEMENT OF CONNECTIVITY BETWEEN HANOI AND VIENTIANE IN ASIA	Study on NH8 Corridor	SHEET CONTENTS		
				PLAN (4/4)	SCALE 1:25,000	DATE MAR 2018
SOCIALIST REPUBLIC OF VIETNAM			SECTION 3			

VIENTIANE

HA NOI



L Bridge = 160.0m

STATIONING	PROPOSED ROAD ELEVATION (m)	EXISTING GROUND ELEVATION (m)	VERTICAL CURVE DATA	GRADE (%)	ACCUMULATED DISTANCE (m)
0+000	100.00	100.00		0.00	0.00
0+050	100.00	100.00		0.00	50.00
0+100	100.00	100.00		0.00	100.00
0+150	100.00	100.00		0.00	150.00
0+200	100.00	100.00		0.00	200.00
0+250	100.00	100.00		0.00	250.00
0+300	100.00	100.00		0.00	300.00
0+350	100.00	100.00		0.00	350.00
0+400	100.00	100.00		0.00	400.00
0+450	100.00	100.00		0.00	450.00
0+500	100.00	100.00		0.00	500.00
0+550	100.00	100.00		0.00	550.00
0+600	100.00	100.00		0.00	600.00
0+650	100.00	100.00		0.00	650.00
0+700	100.00	100.00		0.00	700.00
0+750	100.00	100.00		0.00	750.00
0+800	100.00	100.00		0.00	800.00
0+850	100.00	100.00		0.00	850.00
0+900	100.00	100.00		0.00	900.00
0+950	100.00	100.00		0.00	950.00
1+000	100.00	100.00		0.00	1000.00

LAO PEOPLE'S DEMOCRATIC REPUBLIC
SOCIALIST REPUBLIC OF VIETNAM

JAPAN INTERNATIONAL COOPERATION AGENCY
Yachyo Engineering Co., Ltd. **NIPPON KOEI** Nippon Koei Co., Ltd.
CENTRAL Central Consultant Inc. **PASCO** Pasco Corporation

**DATA COLLECTION SURVEY FOR
ENHANCEMENT OF CONNECTIVITY
BETWEEN HANOI AND VIENTIANE IN ASIA**

Study on N8 Corridor

SECTION 3

SHEET CONTENTS

PROFILE (1/4)

SCALE

DATE

PAGE NO.

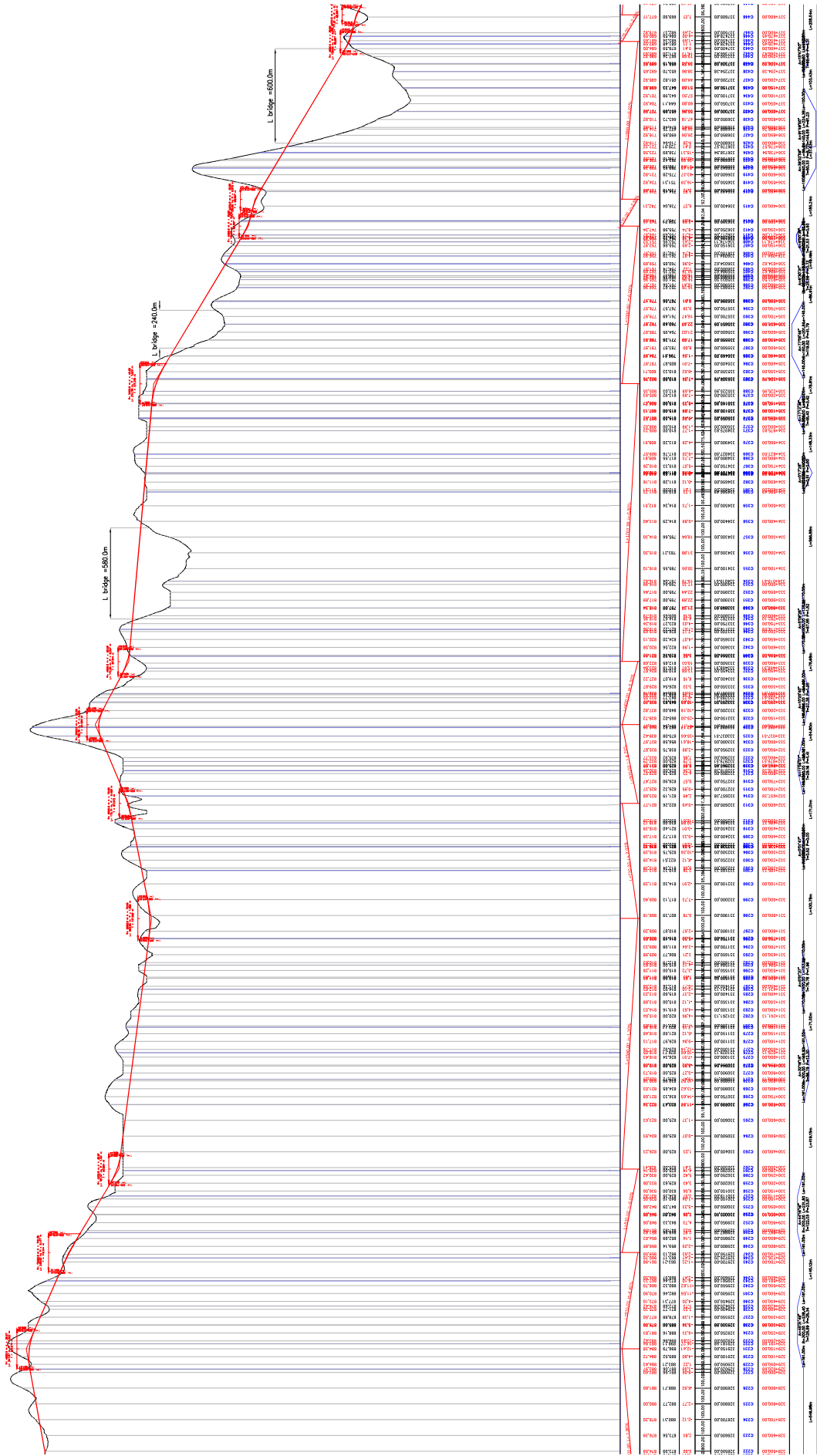
1:25,000

MAR 2018

/

VIENTIANE

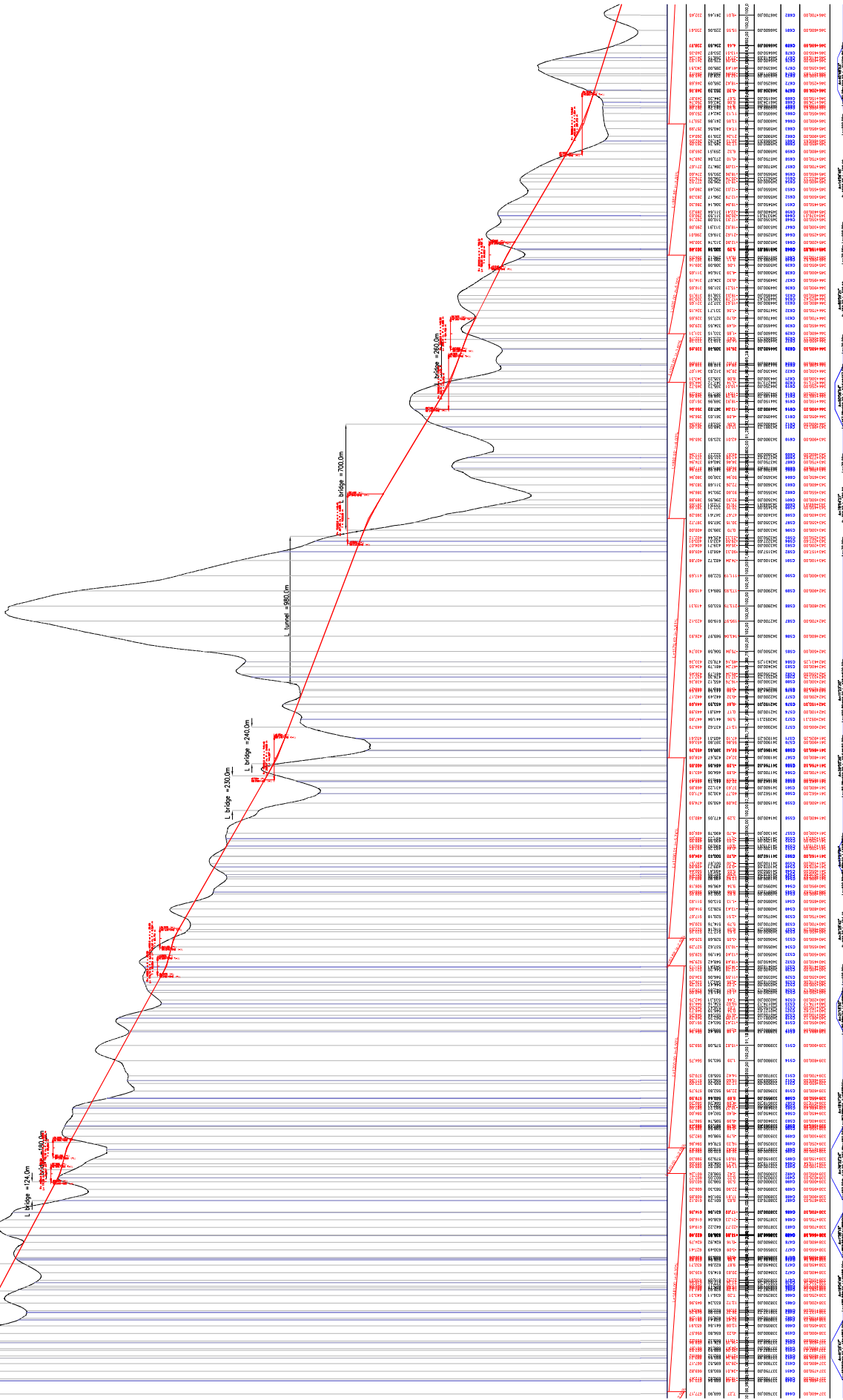
HA NOI



LAO PEOPLES DEMOCRATIC REPUBLIC SOCIALIST REPUBLIC OF VIETNAM	JAPAN INTERNATIONAL COOPERATION AGENCY Yachyo Engineering Co., Ltd. NIPPON KOEI CENTRAL Consultant Inc. PASCO	DATA COLLECTION SURVEY FOR ENHANCEMENT OF CONNECTIVITY BETWEEN HANOI AND VIENTIANE IN ASIA	Study on NH8 Corridor SECTION 3	SHEET CONTENTS	
				PROFILE (2/4)	1:25,000
				SCALE	MAR 2018
				DATE	
				PAGE NO.	/

VIENTIANE

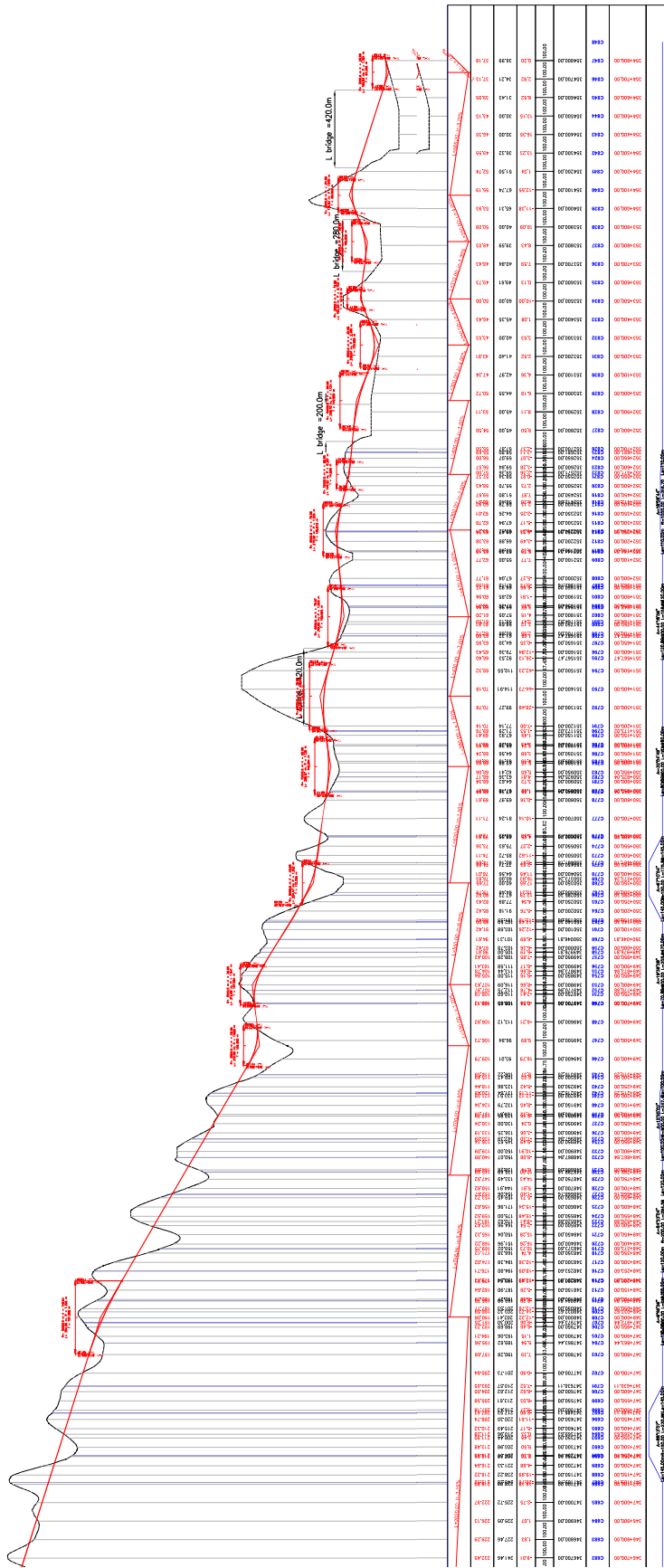
HA NOI



<p>LAO PEOPLE'S DEMOCRATIC REPUBLIC</p> <p>SOCIALIST REPUBLIC OF VIETNAM</p>	<p>JAPAN INTERNATIONAL COOPERATION AGENCY</p> <p>Yachyo Engineering Co., Ltd. NIPPON KOEI Nippon Koei Co., Ltd.</p> <p>Central Consultant Inc. PASCO Pasco Corporation</p>		<p>SECTION 3</p>	<p>Study on N8 Corridor</p>	<p>SHEET CONTENTS</p> <p>PROFILE (3/4)</p>	<p>SCALE</p> <p>1:25,000</p>
	<p>DATE</p> <p>MAR 2018</p>	<p>PAGE NO.</p> <p>/</p>				

VIENTIANE

HA NOI



LAO PEOPLE'S DEMOCRATIC REPUBLIC
SOCIALIST REPUBLIC OF VIETNAM

JAPAN INTERNATIONAL COOPERATION AGENCY
Yachyo Engineering Co., Ltd. **NIPPON KOEI** Nippon Koei Co., Ltd.
CENTRAL Central Consultant Inc. **PASCO** Pasco Corporation

DATA COLLECTION SURVEY FOR
ENHANCEMENT OF CONNECTIVITY
BETWEEN HANOI AND VIENTIANE IN ASIA

Study on NH8 Corridor
SECTION 3

SHEET CONTENTS
PROFILE (4/4)

SCALE 1:25,000
DATE MAR 2018
PAGE NO. /