

1	2	3	4	5	6	7
14	13	12	11	10	9	8
15	16	17	18	19	20	21
27	26	25	24	23	22	
28	29	30	31	32		
				34	33	

INDEX TO ADJOINING SHEETS

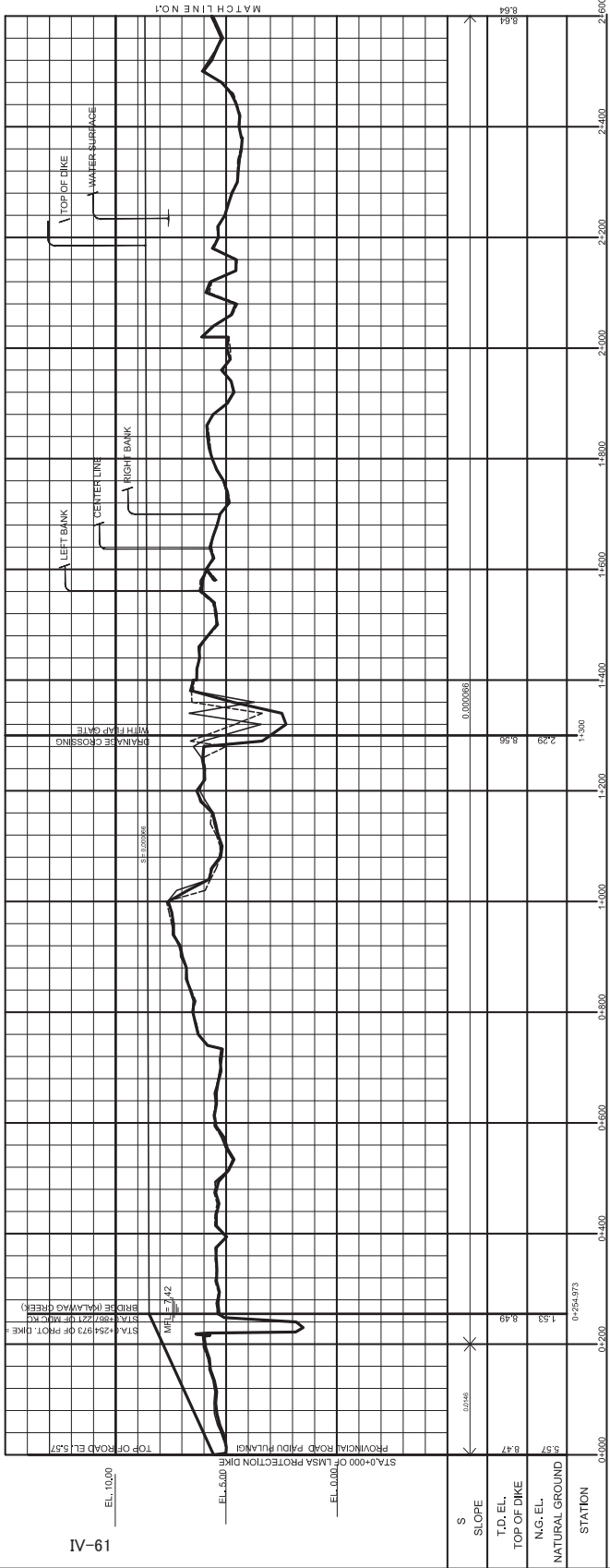
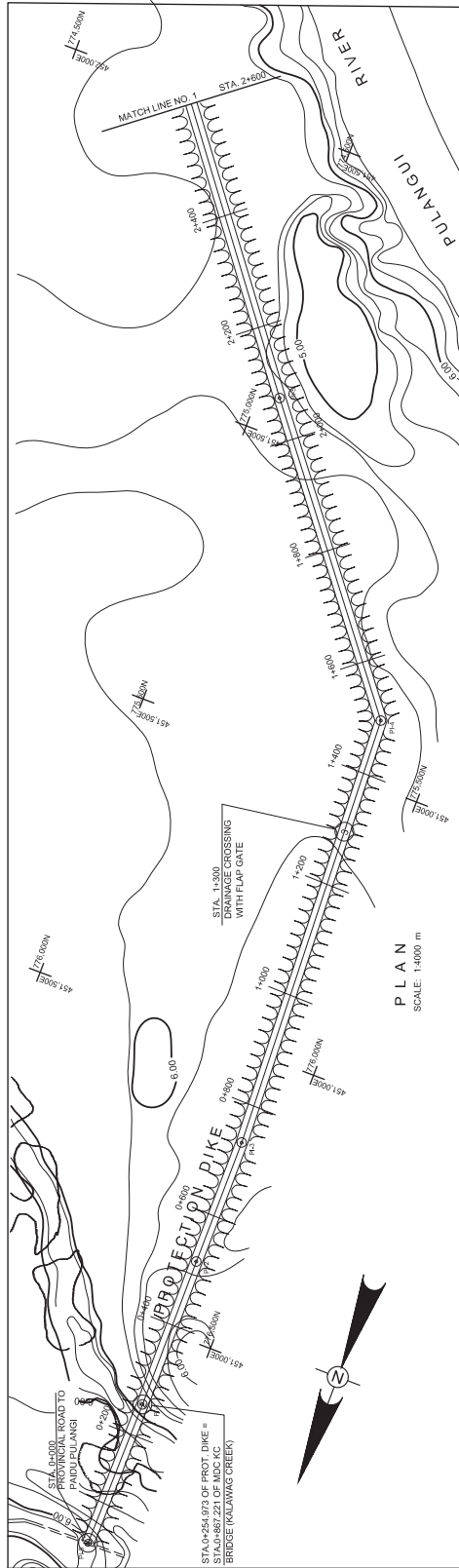
- LEGENDS**
- PROPOSED HEADWORKS / DIVERSION WORKS
 - EXISTING HEADWORKS / DIVERSION WORKS
 - MAIN CANAL (PROPOSED)
 - BRANCH CANAL (PROPOSED)
 - LATERAL / SUB-LATERAL (PROPOSED)
 - EXISTING MAIN FARM LOTS (IMP. OR BFD)
 - SUPPLEMENTARY FARM LOT (PROPOSED)
 - MAIN DRAIN
 - SUPPLEMENTARY FARM LOT (PROPOSED)
 - EXISTING CANALS / DRENCHES
 - PROPOSED CANALS / DRENCHES
 - PROPOSED TURNOUTS (ARROW POINTING TO SOFT AREA DRAINAGE)
 - EXISTING CANAL STRUCTURE
 - PROPOSED CANAL STRUCTURE
 - PIPELINE / LONG STRUCTURES (A COVER)
 - EXISTING TURNOUT WITH MFD (D)
 - PROPOSED TURNOUT WITH MFD (D)
 - LATERALS OR SUB-LATERALS
 - PROPOSED ACCESS ROAD
 - EXISTING NATIONAL ROAD / HIGHWAYS / PROVINCIAL ROADS
 - EXISTING STREETS / OTHER ROADS
 - TRAIL
 - EXCLUDED AREA
 - LIMIT OF IRRIABLE / PROJECT AREA
 - CREEKS / RIVERS / NATURAL WATERWAYS



3						
2						
1						
NO.	DATE	NATURE OF REVISION	BY	CHECKED	RECHECK	APPROVED
NATIONAL IRRIGATION ADMINISTRATION DIVISION OF MALABALAG						
PROVINCE OF NORTH COTABATO NORTH COTABATO AND MAGUINDAO LOWER MALITUBOG SERVICE AREA IRRIGATION AND DRAINAGE NETWORK						
LOWER MALITUBOG			DESIGN			
DESIGNED BY			CHECKED			
REVIEWED BY			REVIEWED BY			
SUBMITTED						
RECOMMENDING APPROVAL						
ACTING PROJECT MANAGER ALI S. SAYOL						
APPROVED						
LYDIA S. ESQUERA MANAGER, ENGINEERING DEPARTMENT						
C. ARAM SULAK SENIOR ADMINISTRATOR FOR ENGINEERING ADMINISTRATION						
SHEET NO. OF 34						

461.000E 462.500E 463.000E 463.500E 464.000E

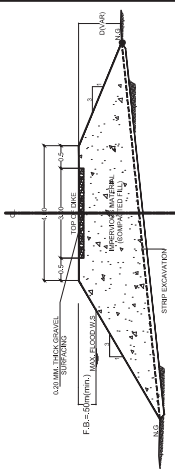
IV.1.4 ORIGINAL PLAN OF PROTECTION DIKE AND RING DIKE



TRAVERSE LINE DATA

STATION	LINE	LOCAL OBS.	AZIMUTH	NORTHINGS	EASTINGS	COORDINATES
0+000	P4-1	P4-1	00+05.39	778.852.380	451.078.448	
0+254.974	P4-1	P4-1	254.974	778.038.439	451.074.988	
0+400	P4-2	P4-2	00+05.39	778.852.380	451.078.448	
0+700	P4-2	P4-2	00+05.39	778.852.380	451.078.448	
0+800	P4-3	P4-3	00+05.39	778.852.380	451.078.448	
0+900	P4-3	P4-3	00+05.39	778.852.380	451.078.448	
1+000	P4-3	P4-3	00+05.39	778.852.380	451.078.448	
1+100	P4-3	P4-3	00+05.39	778.852.380	451.078.448	
1+200	P4-3	P4-3	00+05.39	778.852.380	451.078.448	
1+300	P4-3	P4-3	00+05.39	778.852.380	451.078.448	
1+400	P4-3	P4-3	00+05.39	778.852.380	451.078.448	
1+500	P4-3	P4-3	00+05.39	778.852.380	451.078.448	
1+600	P4-3	P4-3	00+05.39	778.852.380	451.078.448	
1+700	P4-3	P4-3	00+05.39	778.852.380	451.078.448	
1+800	P4-3	P4-3	00+05.39	778.852.380	451.078.448	
1+900	P4-3	P4-3	00+05.39	778.852.380	451.078.448	
2+000	P4-4	P4-4	00+05.39	778.852.380	451.078.448	
2+100	P4-4	P4-4	00+05.39	778.852.380	451.078.448	
2+200	P4-4	P4-4	00+05.39	778.852.380	451.078.448	
2+300	P4-4	P4-4	00+05.39	778.852.380	451.078.448	
2+400	P4-4	P4-4	00+05.39	778.852.380	451.078.448	
2+500	P4-4	P4-4	00+05.39	778.852.380	451.078.448	
2+600	P4-4	P4-4	00+05.39	778.852.380	451.078.448	

- NOTES:**
- ALL DIMENSIONS, ELEVATIONS AND STATIONING ARE IN METERS UNLESS OTHERWISE SPECIFIED
 - DATE OF SURVEY - APRIL 13, 2015



GOOD FOR CONSTRUCTION

CONSULTANT: N/A

NO.	DATE	REVISION	BY	CHECKED	APPROVED
1					
2					
3					

REPUBLIC OF THE PHILIPPINES
NATIONAL IRRIGATION ADMINISTRATION
MALITUBOG MARDAGAO IRRIGATION PROJECT
NORTH COTABATO AND MARIKINA

LOWER MALITUBOG PROTECTION DIKE
PLAN AND PROFILE

LOWER MALITUBOG STA. 0+000 - STA. 2+600

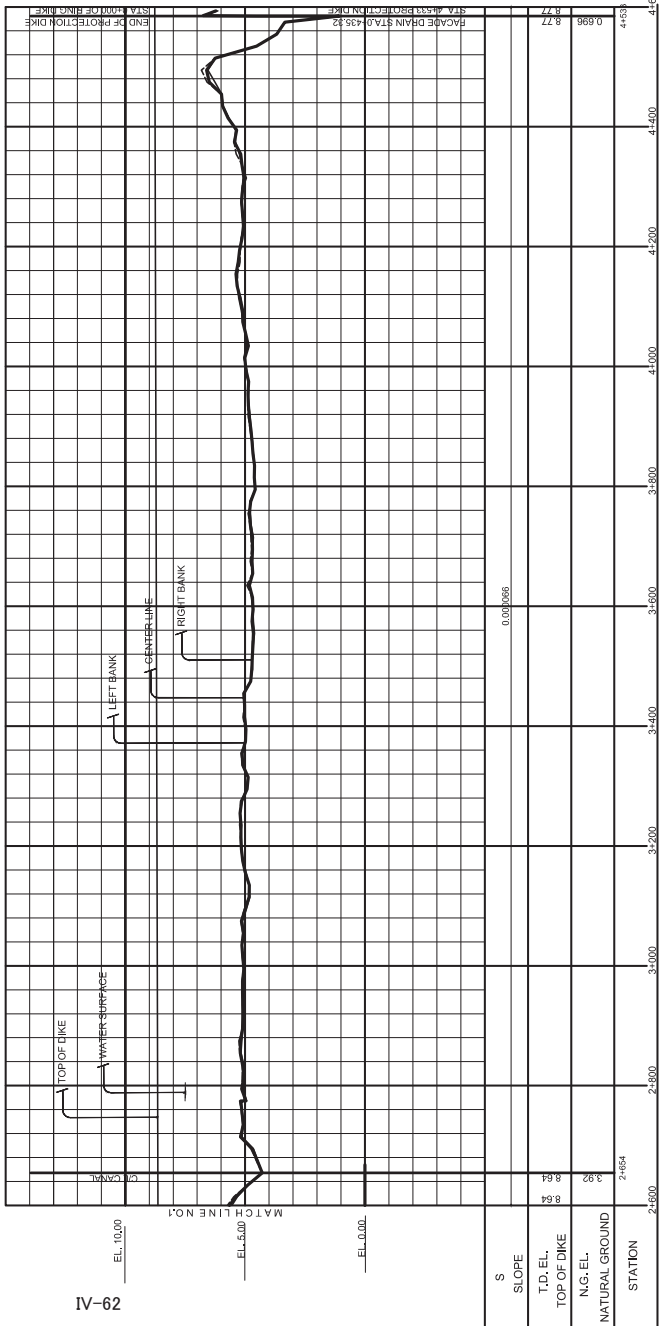
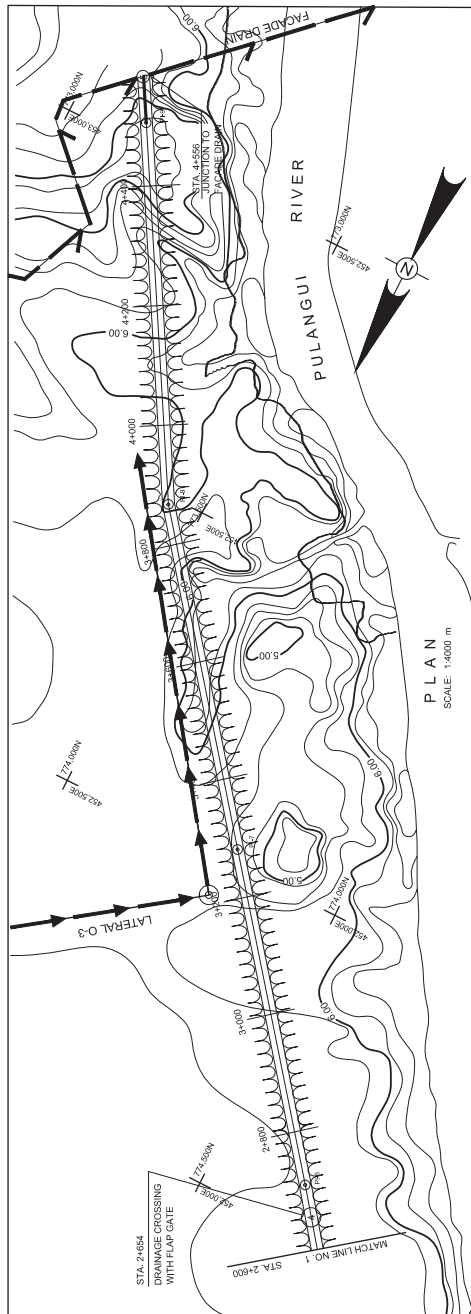
DESIGNER: ED. YAMAW
DRAWN: JES. DUCAO
CHECKED: JES. DUCAO
SUBMITTED: JES. DUCAO

RECOMMENDED:
REYNALDO M. SARIQUIMBA
MANAGER, DISTRICT OFFICE

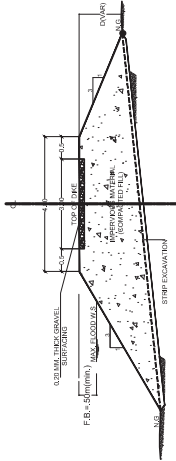
APPROVED:
NG. EN. S. CUYO
PROJECT MANAGER

DATE: _____ DWG. NO. IRRP. _____ SHEET 1 OF 2

TRAVERSE LINE DATA				COORDINATES			
STATION	LINE	COG	CHS	DISTANCE	AZIMUTH	NORTHINGS	EASTINGS
2+700.000	PL4	PL4	PL4	636.607	332.35242	774.430315	451.846500
3+286.543	PL4	PL7	PL7	575.774	371.49243	773.981384	452.201000
3+862.317	PL4	PL4	PL4	575.774	332.35242	774.430315	451.846500
4+438.091	PL4	PL4	PL4	568.021	329.56544	773.824602	452.009120
4+150.000	PL4	PL4	PL4	288.091	329.56544	773.824602	452.009120



NOTES:
 1. ALL DIMENSIONS, ELEVATIONS AND STATIONING ARE IN METERS UNLESS OTHERWISE SPECIFIED.
 2. DATE OF SURVEY: 7 APRIL 13, 2015



GOOD FOR CONSTRUCTION
 CONSULTANT: N/A

REV.	DATE	REASON FOR REVISION	BY	CHECKED	REVISION	APPROVED	NO.
1							
2							
3							

REPUBLIC OF THE PHILIPPINES
 NATIONAL IRRIGATION ADMINISTRATION
 MALTUBOG MARDIAGAO IRRIGATION PROJECT
 NORTH COTABATO AND MARIKINA

LOWER MALTUBOG PROTECTION DIKE
 PLAN AND PROFILE
 LOWER MALTUBOG STA. 2+600 - STA. 4+556

DRAWN: ED. TAMAYAN
 CHECKED: JES. DUCAO
 SUBMITTED: HSD, DUCAO

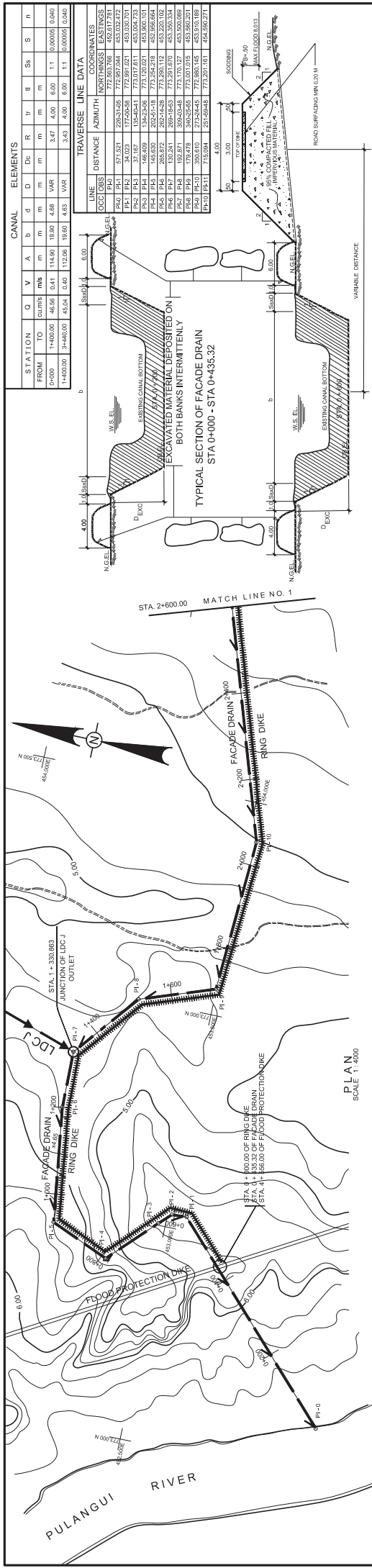
DESIGN: ED. TAMAYAN
 CHECKED: JES. DUCAO
 SUBMITTED: HSD, DUCAO

RECOMMENDED:
 REYNALDO M. SARGIUMBA
 MANAGER, DIVISION

APPROVED:

 PROJECT MANAGER

DATE: _____ DIVISION: _____ SHEET 2 OF 2

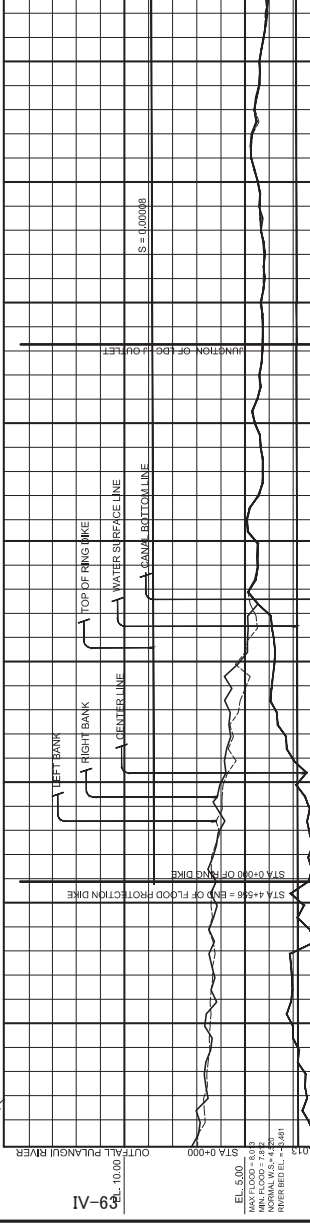


CANAL ELEMENTS

STATION	TO	FROM	Q	V	A	b	d	D	Dc	R	tr	II	Sh	S	n
1+400.00	1+400.00	1+400.00	46.56	0.41	114.90	18.90	4.88	VAR	3.47	4.00	6.00	1.1	0.00005	0.040	
1+400.00	3+400.00	1+400.00	45.54	0.40	112.06	18.60	4.63	VAR	3.43	4.00	6.00	1.1	0.00005	0.040	

TRAVERSE LINE DATA

LINE	COORDINATES	DISTANCE	AZIMUTH	NORTHINGS	EASTINGS
PI-1	772.561769	172.561769	452.817791		
PI-2	772.561769	772.561769	452.817791		
PI-3	772.561769	772.561769	452.817791		
PI-4	772.561769	772.561769	452.817791		
PI-5	772.561769	772.561769	452.817791		
PI-6	772.561769	772.561769	452.817791		
PI-7	772.561769	772.561769	452.817791		
PI-8	772.561769	772.561769	452.817791		
PI-9	772.561769	772.561769	452.817791		
PI-10	772.561769	772.561769	452.817791		
PI-11	772.561769	772.561769	452.817791		
PI-12	772.561769	772.561769	452.817791		
PI-13	772.561769	772.561769	452.817791		
PI-14	772.561769	772.561769	452.817791		
PI-15	772.561769	772.561769	452.817791		
PI-16	772.561769	772.561769	452.817791		
PI-17	772.561769	772.561769	452.817791		
PI-18	772.561769	772.561769	452.817791		
PI-19	772.561769	772.561769	452.817791		
PI-20	772.561769	772.561769	452.817791		
PI-21	772.561769	772.561769	452.817791		
PI-22	772.561769	772.561769	452.817791		
PI-23	772.561769	772.561769	452.817791		
PI-24	772.561769	772.561769	452.817791		
PI-25	772.561769	772.561769	452.817791		
PI-26	772.561769	772.561769	452.817791		
PI-27	772.561769	772.561769	452.817791		
PI-28	772.561769	772.561769	452.817791		
PI-29	772.561769	772.561769	452.817791		
PI-30	772.561769	772.561769	452.817791		
PI-31	772.561769	772.561769	452.817791		
PI-32	772.561769	772.561769	452.817791		
PI-33	772.561769	772.561769	452.817791		
PI-34	772.561769	772.561769	452.817791		
PI-35	772.561769	772.561769	452.817791		
PI-36	772.561769	772.561769	452.817791		
PI-37	772.561769	772.561769	452.817791		
PI-38	772.561769	772.561769	452.817791		
PI-39	772.561769	772.561769	452.817791		
PI-40	772.561769	772.561769	452.817791		
PI-41	772.561769	772.561769	452.817791		
PI-42	772.561769	772.561769	452.817791		
PI-43	772.561769	772.561769	452.817791		
PI-44	772.561769	772.561769	452.817791		
PI-45	772.561769	772.561769	452.817791		
PI-46	772.561769	772.561769	452.817791		
PI-47	772.561769	772.561769	452.817791		
PI-48	772.561769	772.561769	452.817791		
PI-49	772.561769	772.561769	452.817791		
PI-50	772.561769	772.561769	452.817791		
PI-51	772.561769	772.561769	452.817791		
PI-52	772.561769	772.561769	452.817791		
PI-53	772.561769	772.561769	452.817791		
PI-54	772.561769	772.561769	452.817791		
PI-55	772.561769	772.561769	452.817791		
PI-56	772.561769	772.561769	452.817791		
PI-57	772.561769	772.561769	452.817791		
PI-58	772.561769	772.561769	452.817791		
PI-59	772.561769	772.561769	452.817791		
PI-60	772.561769	772.561769	452.817791		
PI-61	772.561769	772.561769	452.817791		
PI-62	772.561769	772.561769	452.817791		
PI-63	772.561769	772.561769	452.817791		
PI-64	772.561769	772.561769	452.817791		
PI-65	772.561769	772.561769	452.817791		
PI-66	772.561769	772.561769	452.817791		
PI-67	772.561769	772.561769	452.817791		
PI-68	772.561769	772.561769	452.817791		
PI-69	772.561769	772.561769	452.817791		
PI-70	772.561769	772.561769	452.817791		
PI-71	772.561769	772.561769	452.817791		
PI-72	772.561769	772.561769	452.817791		
PI-73	772.561769	772.561769	452.817791		
PI-74	772.561769	772.561769	452.817791		
PI-75	772.561769	772.561769	452.817791		
PI-76	772.561769	772.561769	452.817791		
PI-77	772.561769	772.561769	452.817791		
PI-78	772.561769	772.561769	452.817791		
PI-79	772.561769	772.561769	452.817791		
PI-80	772.561769	772.561769	452.817791		
PI-81	772.561769	772.561769	452.817791		
PI-82	772.561769	772.561769	452.817791		
PI-83	772.561769	772.561769	452.817791		
PI-84	772.561769	772.561769	452.817791		
PI-85	772.561769	772.561769	452.817791		
PI-86	772.561769	772.561769	452.817791		
PI-87	772.561769	772.561769	452.817791		
PI-88	772.561769	772.561769	452.817791		
PI-89	772.561769	772.561769	452.817791		
PI-90	772.561769	772.561769	452.817791		
PI-91	772.561769	772.561769	452.817791		
PI-92	772.561769	772.561769	452.817791		
PI-93	772.561769	772.561769	452.817791		
PI-94	772.561769	772.561769	452.817791		
PI-95	772.561769	772.561769	452.817791		
PI-96	772.561769	772.561769	452.817791		
PI-97	772.561769	772.561769	452.817791		
PI-98	772.561769	772.561769	452.817791		
PI-99	772.561769	772.561769	452.817791		
PI-100	772.561769	772.561769	452.817791		



NOTES:

- ALL DIMENSIONS ELEVATIONS AND STATIONING ARE IN METERS UNLESS OTHERWISE SPECIFIED.
- DATE OF SURVEY - APRIL 14, 2014

GOOD FOR CONSTRUCTION

CONSULTANT: _____ N/A

PROFILE

SCALE: HOR: 1:4000 VERT: 1:100

STA.	W.S. EL.	C.B. EL.	CHANNEL BOTTOM
0+000	2.80	1.88	0+435.22
0+200	2.82	1.86	
0+400	2.82	1.86	
0+600	2.82	1.86	
0+800	2.82	1.86	
1+000	2.82	1.86	
1+200	2.82	1.86	
1+400	2.82	1.86	
1+600	2.82	1.86	
1+800	2.82	1.86	
2+000	2.82	1.86	
2+200	2.82	1.86	
2+400	2.82	1.86	
2+600	2.82	1.86	

OFFICE OF THE PRESIDENT
NATIONAL IRRIGATION ADMINISTRATION
MULITUBOG MARIDAGAO IRRIGATION PROJECT
NORTI COYABATO AND MASIBANGAO

FACADE DRAIN
PLAN AND PROFILE

LOWER MULITUBOG STA 0+000 - STA 2+600

DRAFTING: _____
DESIGN: _____
CHECKED: _____
SUBMITTED: _____

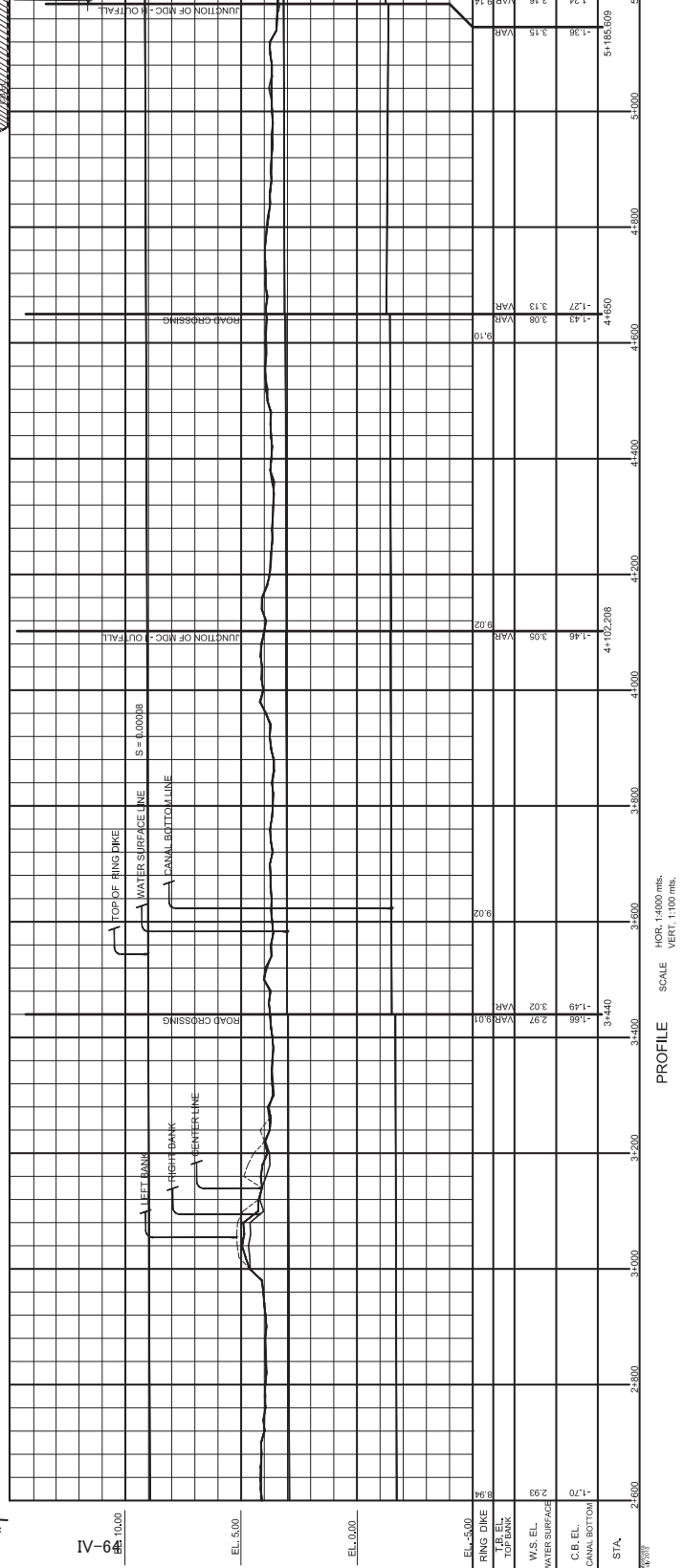
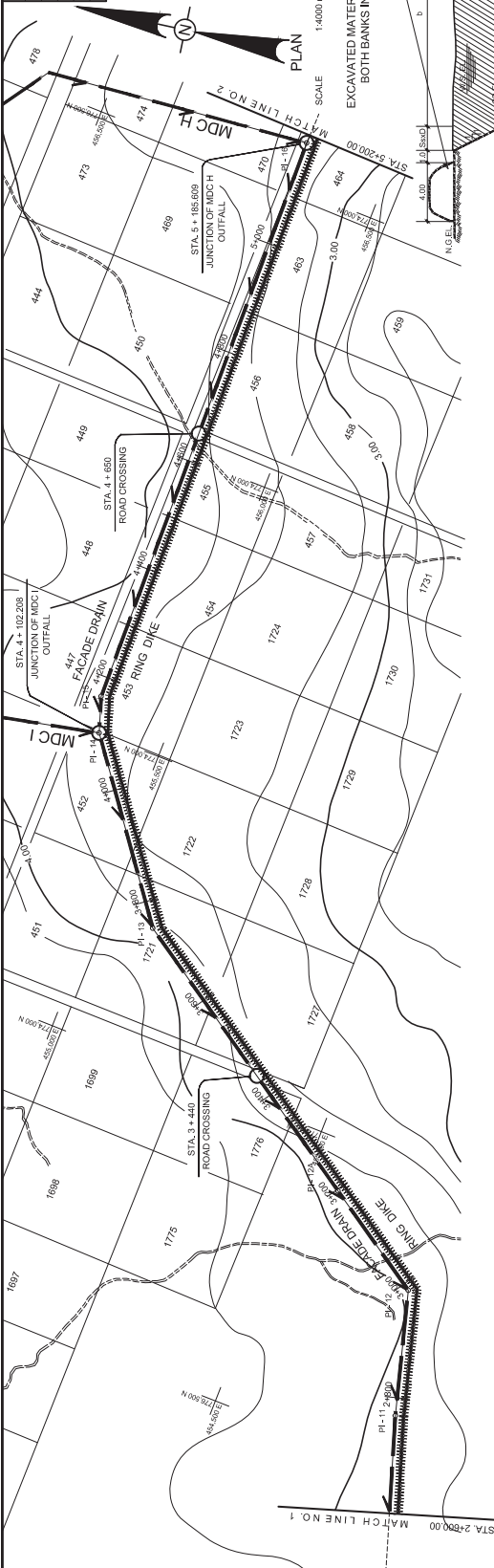
RECOMMENDED: _____
APPROVED: _____

PROJECT MANAGER: _____
DATE: _____

SHEET 1 OF 5

STATION		Q	V	A	b	d	D	Dc	R	l _p	l _u	l _s	n
FROM	TO	cu/m	m	m	m	m	m	m	m	m	m	m	
1+400.00	3+460.00	45.04	0.40	112.06	19.00	4.03	VAR		3.43	4.00	6.00	1.1	0.00005
3+460.00	4+650.00	42.122	0.40	106.55	19.10	4.51	VAR		3.34	4.00	6.00	1.1	0.00005
4+650.00	5+880.00	37.095	0.39	98.30	17.95	4.40	VAR		3.22	4.00	6.00	1.1	0.00005

LINE	DISTANCE	AZIMUTH	CORRECTED	NORTHINGS	EASTINGS
PH-10	PH-11	715.694	25.204-48	773,201.161	-454,590.271
PH-11	PH-12	217.948	294.2-13	772,259.341	-454,800.143
PH-12	PH-13	585.033	234.06-30	773,065.361	-452,200.142
PH-13	PH-14	348.238	233.07-55	774,109.854	-452,200.142
PH-14	PH-15	83.422	25.29-23	774,129.369	-452,500.152
PH-15	PH-16	103.879	25.29-23	774,129.369	-452,500.152
PH-16	PH-17	25.29-23	25.29-23	774,129.369	-452,500.152
PH-17	PH-18	25.29-23	25.29-23	774,129.369	-452,500.152



TYPICAL FACADE DRAIN & RING DIKE SECTION
(FACING UPSTREAM)
STA 0+880 - STA 5+200

- NOTES:
1. ALL DIMENSIONS, ELEVATIONS AND ANGLES ARE IN METERS UNLESS OTHERWISE SPECIFIED.
 2. DATE OF SURVEY - APRIL 14, 2014

GOOD FOR CONSTRUCTION

3													
2													
1													
NO.	DATE	BY	DATE	BY	DATE	BY	DATE	BY	DATE	BY	DATE	BY	DATE
1													
2													
3													

CONSULTANT: _____

OFFICE OF THE PRESIDENT
NATIONAL IRRIGATION ADMINISTRATION
MALIBUG MARIDAGAO IRRIGATION PROJECT
NORTH COTABATO AND MASINAGAO

DESIGNER: LA. ARAMAS
CHECKED: HS. DUCAO
SUBMITTED: HS. DUCAO

RECOMMENDED:
REYNALDO M. SARGUMBA
TANANGERANG BRITON

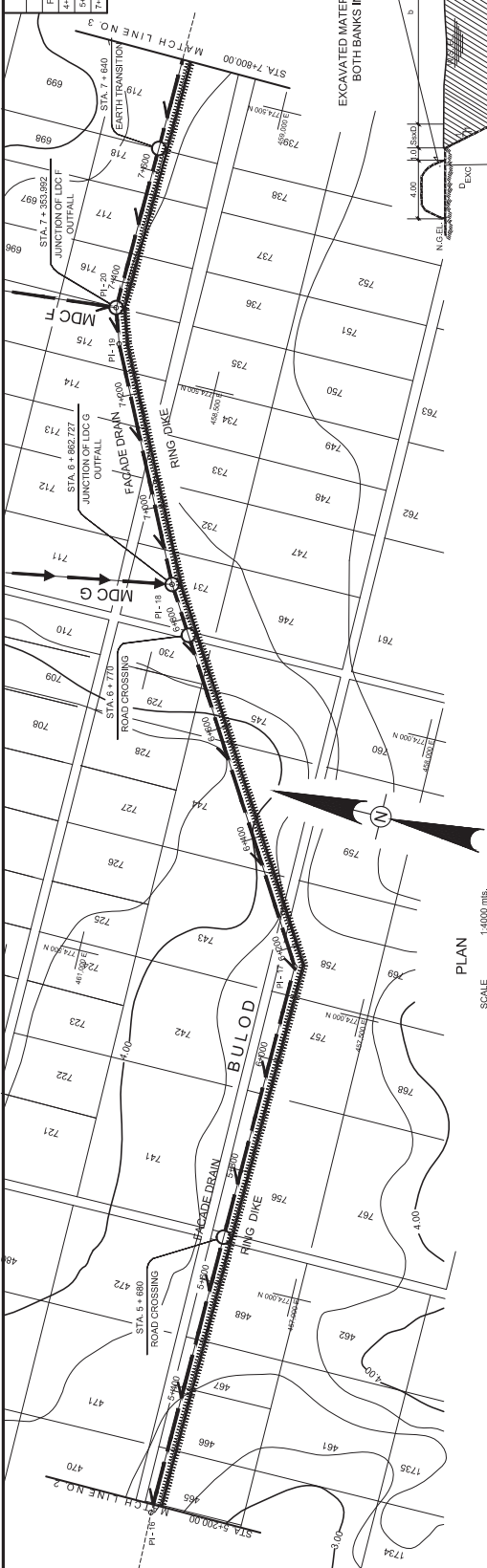
APPROVED:
NOLAN S. OYOD
PROJECT MANAGER

CANAL ELEMENTS

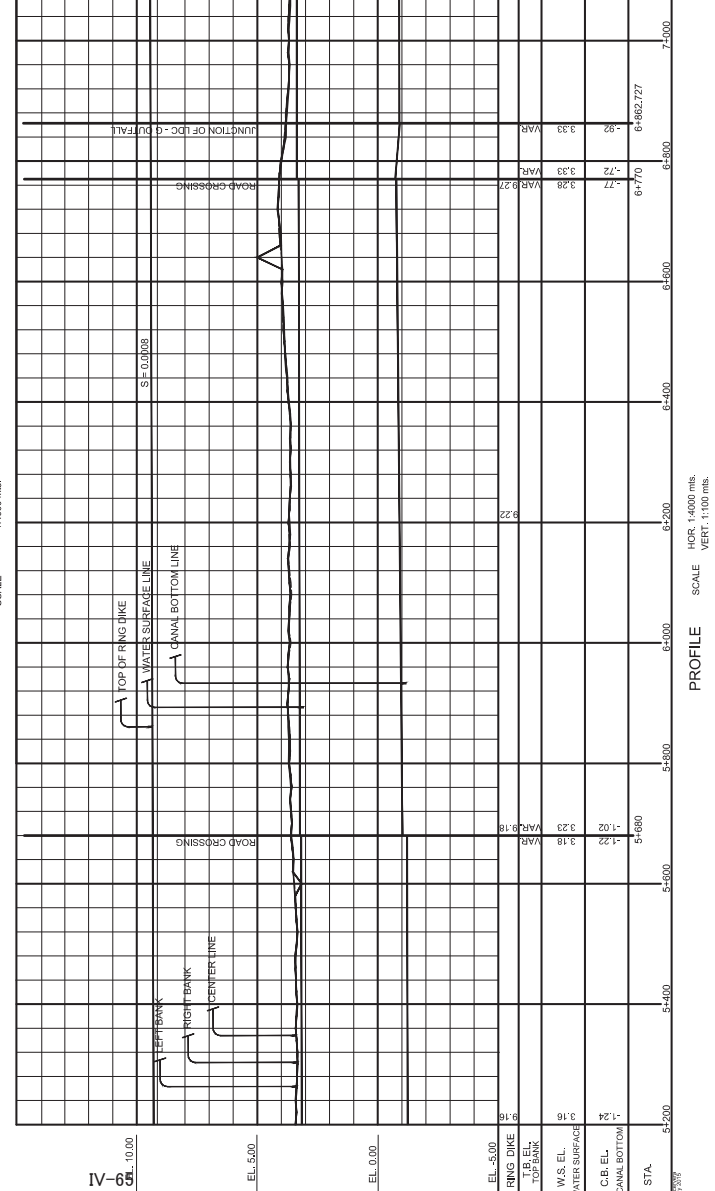
STATION	Q	V	A	b	d	D	Dc	R	tr	ll	Ss	n
FROM TO	cu/m	m/s	m	m	m	m	m	m	m	m	m	1/s
4+650.00	5+880.00	37.085	0.39	96.30	17.50	4.40	VAR	3.22	4.00	6.00	1:1	0.00098
5+880.00	7+440.00	33.897	0.38	90.23	17.00	4.25	VAR	3.11	4.00	6.00	1:1	0.00098
7+440.00	9+210.00	25.684	0.35	73.15	15.30	3.82	VAR	2.80	4.00	6.00	1:1	0.00098

TRAVERSE LINE DATA

LINE	DISTANCE	AZIMUTH	NORTHINGS	EASTINGS
PL-16	7417	883.385	271.456-18	774.193-10
PL-16	7418	696.333	238.45-17	774.497-364
PL-17	7418	696.333	238.45-17	774.497-364
PL-17	7419	63.389	245.52-23	774.669-14
PL-18	7419	63.389	245.52-23	774.669-14
PL-20	7421	820.271	271.52-23	774.850-040
PL-20	7421	820.271	271.52-23	774.850-040

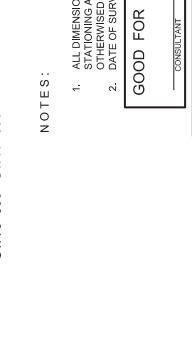


PLAN
SCALE 1:4000 mbs.



PROFILE
SCALE HOR. 1:4000 mbs.
VERT. 1:100 mbs.

TYPICAL FACADE DRAIN & RING DIKE SECTION (FACING UPSTREAM)
STA 5+500 - STA 7+800



NOTES:

1. ALL DIMENSIONS, ELEVATIONS AND STATIONING ARE IN METERS UNLESS OTHERWISE SPECIFIED
2. DATE OF SURVEY - APRIL 14, 2014

GOOD FOR CONSTRUCTION

CONSULTANT: NSA

NO.	DATE	REVISION	BY	CHECKED	APPROVED
1					
2					
3					

NATIONAL IRRIGATION ADMINISTRATION
OFFICE OF THE PRESIDENT
MULTIBOAS MARIADAGAO IRRIGATION PROJECT
MARIADAGAO SUBDIVISION

FACADE DRAIN
PLAN AND PROFILE

LOWER MALUBOG STA 5+200 - 7+800

DESIGNER: AB GERVENA
CHECKED: AS EDUAGA
SUBMITTED: AS EDUAGA

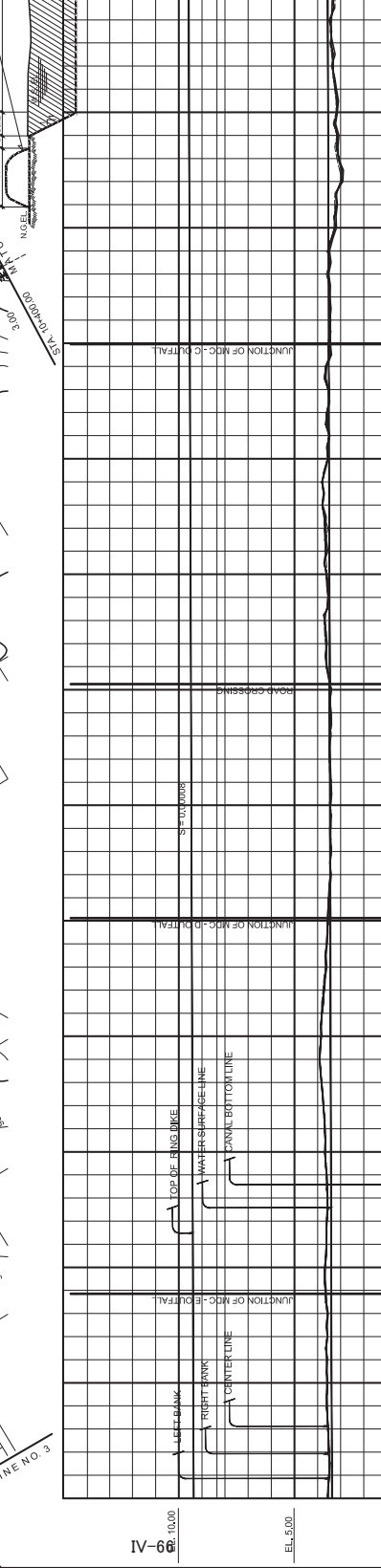
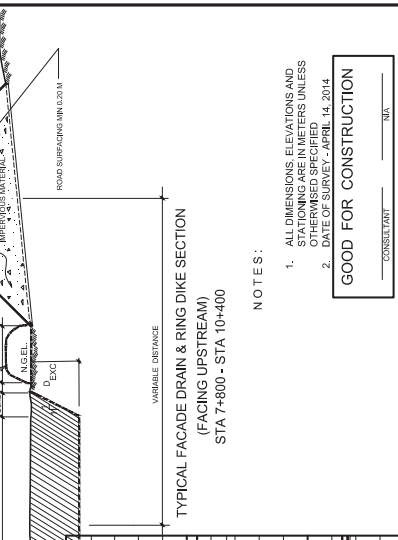
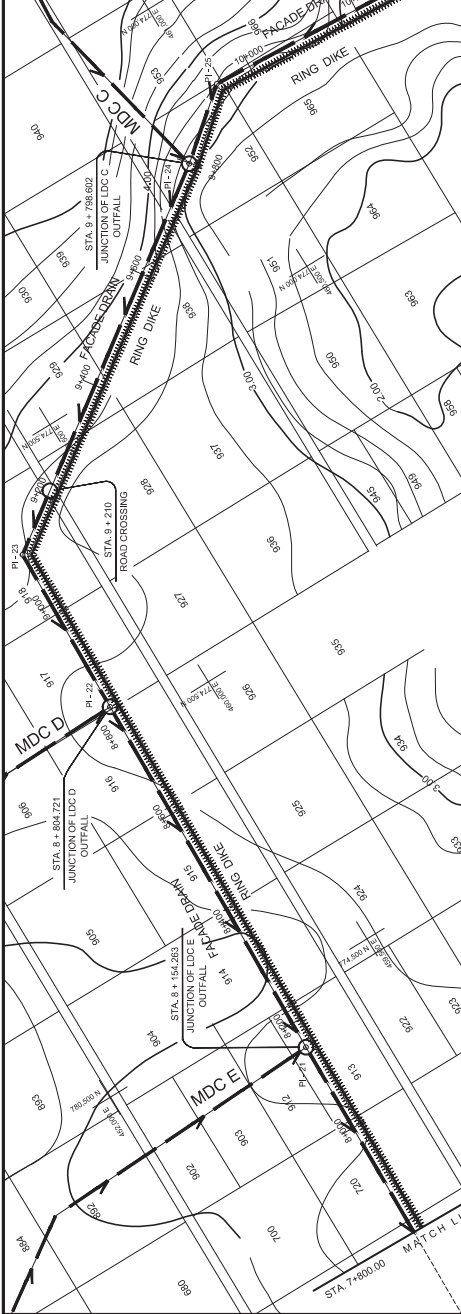
RECOMMENDED: REYNALDO M. SARGUIMERA
MANAGING ENGINEER

APPROVED: NOLAN S. OYOD
PROJECT MANAGER

DATE: DMG NO IMP. SHEET 3 OF 6

CANAL ELEMENTS											
STATION	Q	V	A	b	d	Dc	R	tr	f	Ss	S
FROM TO	CU/M	MM	M	M	M	M	M	M	M	M	M
7+640.00	9+210.00	25.684	0.35	73.15	15.30	3.52	VAR	2.90	4.00	6.00	1.1
9+210.00	11+488.22	15.848	0.31	49.82	11.60	3.34	VAR	2.37	4.00	6.00	1.1
9+210.00	11+488.22	15.848	0.31	49.82	11.60	3.34	VAR	2.37	4.00	6.00	1.1

TRANSVERSE LINE DATA			
LINE	DISTANCE	AZIMUTH	NORTHINGS/EASTINGS
PL-20	PL-21	80.271	27.125-23
PL-21	PL-22	69.049	77.485-04
PL-22	PL-23	77.444-14	77.485-04
PL-23	PL-24	70.507	54.252-23
PL-24	PL-25	140.31	32.52-21
PL-25	PL-26	112.071	63.5-26



NOTES:

- ALL DIMENSIONS, ELEVATIONS, AND STATIONING ARE IN METERS UNLESS OTHERWISE SPECIFIED.
- DATE OF SURVEY - APRIL, H. 2014.

GOOD FOR CONSTRUCTION

CONSULTANT: MA

NO.	DATE	BY	CHKD.	RECD.	APP'D.
1					
2					
3					

NATIONAL IRRIGATION ADMINISTRATION
 OFFICE OF THE PRESIDENT
 MALIBUO MARIAGAO IRRIGATION PROJECT
 NORTH COTACOTAN AND BANGSANDAO

FACADE DRAIN
 PLAN AND PROFILE

LOWER MALIBUO STA 7+800 - 10+400

DRAFTING: DESIGN: STA 7+800 - 10+400
 CHECKED: LA. ARANAS
 DESIGNED: AB. CERVIERA
 CHECKED: JES. DUCAO
 SURVEYED: JES. DUCAO

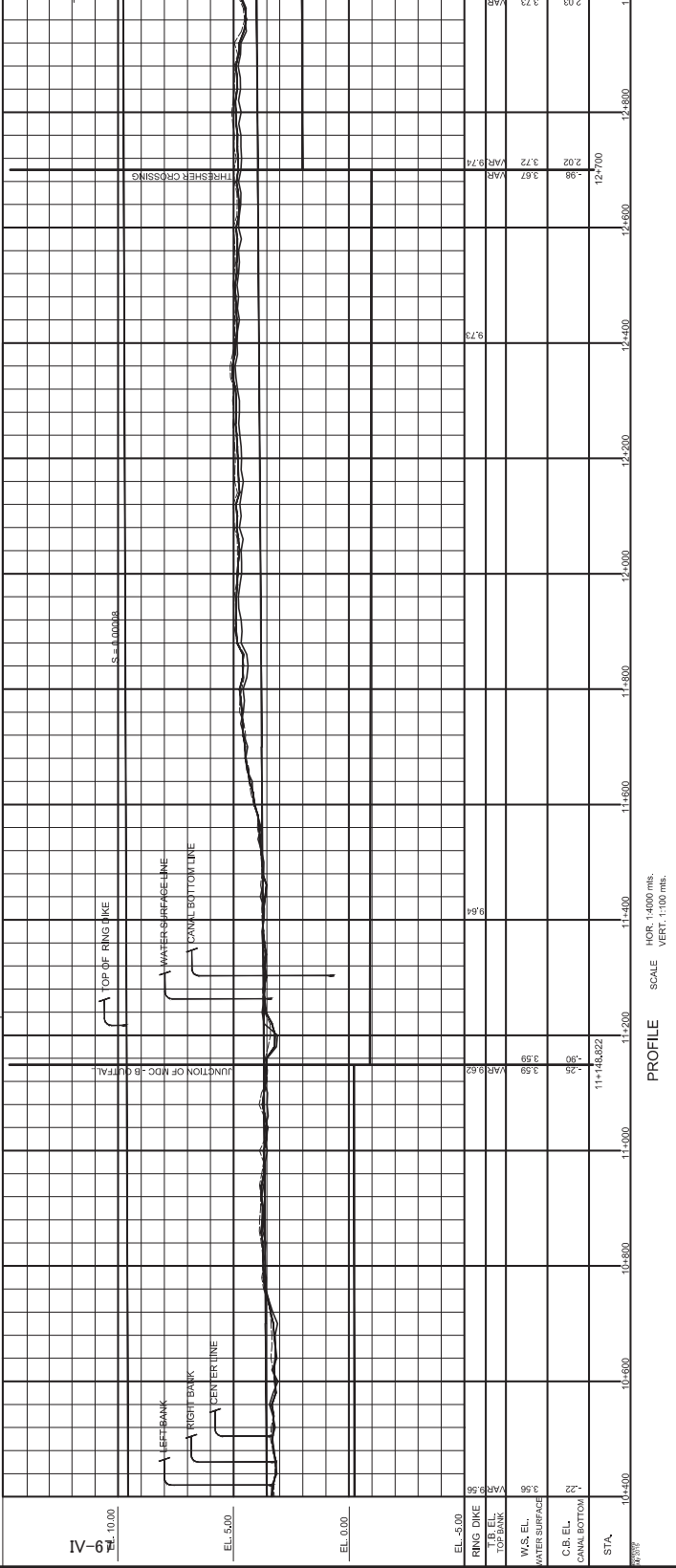
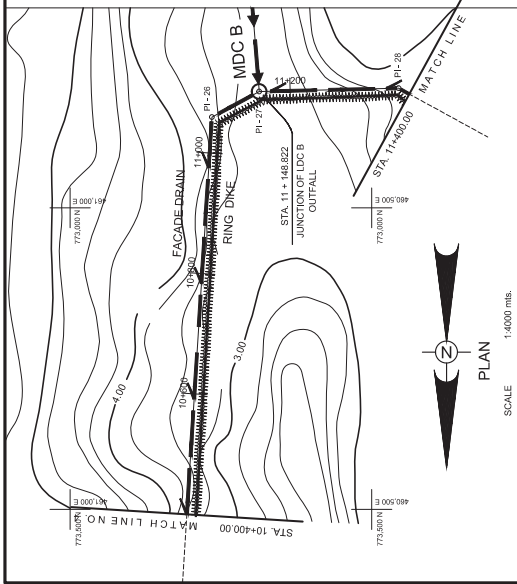
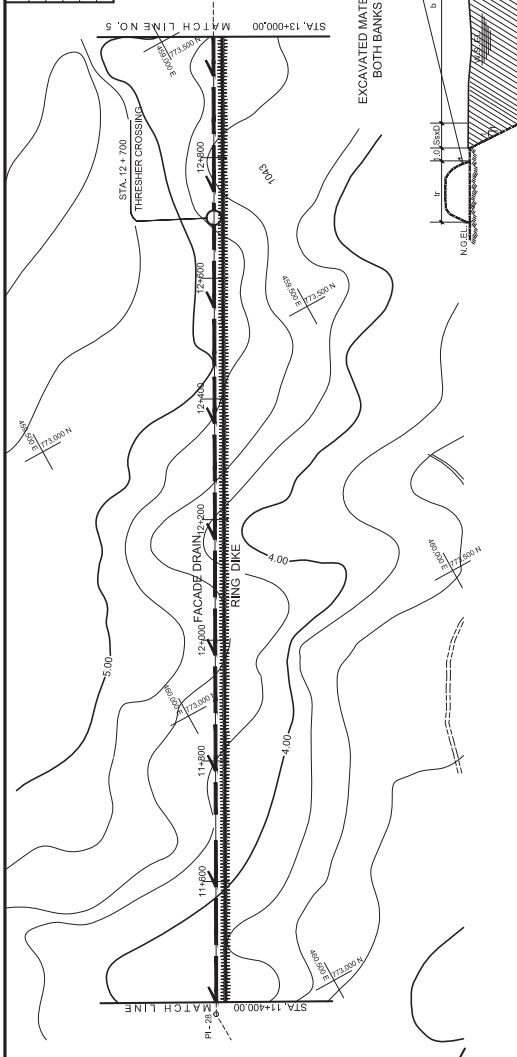
RECOMMENDED: REYNALDO M. SARGUMBA
 TRANSMISSIONS DIVISION

APPROVED: NOLAN S. CYCO
 PROJECT MANAGER

DATE: DWG. NO. MIMP: SHEET 4 OF 5

CANAL ELEMENTS												
STATION	TO	Q	V	A	b	d	Dc	R	tr	u	Ss	n
9+210.00	11+488.22	15.648	0.31	48.82	11.60	3.34	VAR	2.37	4.00	6.00	1.1	0.00005
11+488.22	12+700.00	6.5112	0.26	26.23	6.70	2.89	VAR	1.76	4.00	6.00	1.1	0.00005
12+700.00	14+070.00	1.282	0.17	7.14	2.50	1.70	VAR	0.88	2.00	4.00	1.1	0.00005

TRAVERSE LINE DATA			
LINE	DISTANCE	AZIMUTH	COORDINATES
OC1	123.771	03-54-52	772,848,930
PI-25	883.38	81-53-50	772,807,350
PI-26	231.081	88-36-50	772,801,362
PI-27	1,263.921	110-25-21	772,920,710



TYPICAL FACADE DRAIN & RING DIKE SECTION
(FACING UPSTREAM)
STA 10+400 - STA 13+000

- NOTES:
- ALL DIMENSIONS, ELEVATIONS AND STATIONING ARE IN METERS UNLESS OTHERWISE NOTED.
 - DATE OF SURVEY - APRIL 14, 2014

GOOD FOR CONSTRUCTION

NO.	DATE	DATE OF REVISION	BY	CHECKED	SPECIAL	APPROVED	NO.
1							
2							
3							

CONSULTANT: _____

NATIONAL IRRIGATION ADMINISTRATION
OFFICE OF THE PRESIDENT
MULTITUBOS MARIAGAO IRRIGATION PROJECT
NORTH COTABATO AND DAVAO

FACADE DRAIN
PLAN AND PROFILE
STA 10+400 - 13+000

DESIGN: _____
CHECKED: _____
SUBMITTED: _____

RECOMMENDED: REYNALDO M. SARGUMBA
MANAGER/ENGR. DIVISION

APPROVED: _____
NOLAN S. OYOD
PROJECT MANAGER

DATE: _____ DWG. NO. IRR- _____ SHEET 5 OF 6

IV.2 THE IRRIGATOR'S ASSOCIATION (IA)

IV.2.1 THE IRRIGATOR'S ASSOCIATION (IA)

Information of the Irrigator's Association (IA)

Name of IA	Office Location	Barangay/s Covered	Date Organized	Date of SEC Registration	SEC Registration No.	Current President of IA	No. of Farmer-members:				
							Total	Male: Cristian	Female: Cristian	Male: Muslim	Female: Muslim
TAFIA (Tagaligue Farmers' Irrigators Association)	Maridagao, Datu Montawal, Maguindanao	Part of Kilangan and Maridagao				Datu Iskak Matalam	77			1	
Division 1	Campo 2	Kilangan, Pagalungan		02-Jan-2008	CN200251950	Datu Khalib Matalam	154			154	
KALIMUDAN	Watermaster's Quarter	Part of Kilangan	Organized last April 2006			Datu Teng Matalam	231			1	
Kilangan Farmers' Association (KIFABRE IA, Inc)	Poblacion, Kilangan, Pagalungan	Kilangan		01-Apr-2001	A200019008	Datu Arnel Matalam	100 over			1	
MIRIS DIV. 3 IA, INC.	Nabundas, Datu Montawal, Maguindanao		15-Mar-2002	01-Aug-2002	CN200252352	Omar T. Ladtudan	239			154	
PIGKUTAN IA, INC.	Nasapian, Carmen, Cotabato		16-May-2006	21-Sep-2006	CN200629816	Nasser Matog	173			78	
KIPAN IA, Inc. (Kibayao, Pantadon, Nasapian IA, Inc.)	Kibayao, Carmen, North Cotabato	Kibayao		01-May-1999	D199900340	Butch Basalon	291				
Maridagao River Irrigation System Irrigators Association	Nasapian, Carmen, Cotabato	Limbalod, Nasapian, General Luna, Ugalingan		01-Aug-2002	Cn 200252532	Abdul Salipata	136	98		30	4
NASFIA	Sito Dansuli, Nasapian	Nasapian		21-Sep-2006	CN200629815	Musa Esmael	165 over			132	33
MIRIS Div 6 IA	IA Treasurer's residence (temp	Barangays Luna and Ugalingan, Carmen, Cotabato		02-Jan-2008	CN200252351	Mr. Edwin Bandilia	245	154	1	91	4

Name of IA	Service Area (has)	Irrigable Area (has)	Irrigated Area (has)	Not-irrigated Area (has)	Built-up	Permanent Crops	Undeveloped Area	Others (specify)
TAFIA (Tagaligue Farmers' Irrigators Association)	200 has	100 has	100 has	100 has	10 has	60 has	17 has	13 has (swampy areas)
Division 1	810 has	520.50	380.5					
KALIMUDAN	275	275	224	51	25 used for homelots of 31 farmers scattered all over the irrigated area	12 has.	14 has because swampy or overgrown with large trees	
Kilangan Farmers' Association (KIFABRE IA, Inc)	668 has	431 has	100 has	331 has				Some have permanent crops, some are used as side barrow, and some on high grounds 237ha Planted with permanent crops (rubber and fruits) and also for corn
MIRIS DIV. 3 IA, INC.	660.21							
PIGKUTAN IA, INC.	150.75							
KIPAN IA, Inc. (Kibayao, Pantadon, Nasapian IA, Inc.)	620		340					
Maítadagao River Irrigation System Irrigators Association	843.6 has	255 has	150 has		30 has	none		submerged 30 has
NASFIA	154 ha	154 has	141 ha + 50 ha that is easily flooded			11 ha (sugar, coconuts, mango, pomelo)		
MIRIS Div 6 IA	893.83	536.25	373					

Name of IA	Number of TSAG:	No. of TSAGs served	No. of TSAGS not Served	Reason of not served	Number of BOD Members	Number of Farmer-Beneficiaries	Type of O & M Contracts	Name of Supply Canal:	Length of Canal served in KM
TAFIA (Tagaligue Farmers' Irrigators Association)	9	5	4	the ones in the very end that are still undeveloped and swampy	10	77	No contract yet but have MOA with NIA to clear the canals at the rate of P400/km cleared.	LC I-2 from Turn outs 10-18	2.6 km
Division 1	21	19	2	not served because swampy and with large trees	15	357 with 203 non-member farmers	none	Part of LMC1, part of Lateral 1-2	LCM1- 1.84 KM, Lateral Canal I-2 – 6.88 KM
KALIMUDAN	16	14	2		14	231 farm beneficiaries	No contract yet because new break away group	Lateral A1 and A1-1	4.21 km
Kilangan Farmers' Association (KIFABRE IA, Inc)	18	16	2	2 because the turnouts have been non-functional	18	100 members + 100 using the irrigation facilities	No contracts yet but have been maintaining the canal by bayanihan	Lat. I , Lat. I-1	Lat. I = 4.10 km, Lat. I-1= 1.48 km , total = 5.58 km
MRIS DIV. 3 IA, INC.	20	11							
PIGKUTAN IA, INC.	9	9					None		3.16 Lateral A2 – 3.16 km
KIPAN IA, Inc. (Kibayao, Pantadon, Nasapian IA, Inc.)	25	25		but some not served well because of high elevation, illegal checking that diminish the volume of water for the members, and there are some flooded areas due to the unfinished drainage canals.	15	328	Yes, Type 1 and Type 2	Main Canal 2, Lat. Canal B and C	Main Canal 2 – 5.2 KM, Lat. B- 1.04 Lat. C- 2.51; Total= 8.75km
Maítadagao River Irrigation System Irrigators Association	16	11				232 (served)	none	Lat.D, MC-2	5.366 km
NASFIA	10	10	0		13	165	No contract yet	Main canal and Lateral D	2060 meters and 500 m for lateral canal = 2.562 km
MRIS Div 6 IA	30	24	6		11	344	With NIA : Types 1 & 2	MC-2, Laterals E, E1 & E3	11.97

LIST OF EXISTING IRRIGATORS ASSOCIATION UNDER MMIP I & II

No	Service Area	PROVINCE	MUNICIPALITY	NAME OF IA	LOCATION	NO. OF MEMBERS	NO. OF FEMALE	NO. OF BOARD MEMBER	NO. OF FEMALE in BOARD MEMBER	SERVICE AREA (Ha)	REMARKS
1	MMIP I /MSA	COTABATO	Carmen	BASBIA	Nasapian, Carmen, Cotabato	300	0	7	0	432.88	Turned-over
2				MANSAPA	Nasapian, Carmen, Cotabato	213	3	7	0	201.26	Turned-over
3				MRISIA DIV 5	Nasapian, Carmen, Cotabato	178	23	9	0	902.96	Turned-over
4				NASFIA	Nasapian, Carmen, Cotabato	127	3	9	0	165.55	Turned-over
5				KIPAN	Kibayao, Carmen, Cotabato	237	4	9	0	369.9	Turned-over
6	MMIP I /MSA	MAGUINDANAO	Pagalungan	NASGIA	Kibayao, Carmen, Cotabato	192	2	7	1	211.14	Turned-over
7				MRISIA DIV 6	Ugalingan, Carmen, Cotabato	182	19	9	0	326.81	Turned-over
8				EDUFIA	Ugalingan, Carmen, Cotabato	122	16	7	0	186.41	Turned-over
9				GAGDANEN BAYA	Kilangan, Pagalungan, Maguindanao	351	16	9	0	345.36	Turned-over
10				KATINGKONGAN	Kilangan, Pagalungan, Maguindanao	318	32	11	1	394.86	Turned-over
11	MMIP I /MSA	MAGUINDANAO	D. Montawal	MORNING LIGHT	Kilangan, Pagalungan, Maguindanao	265	32	11	3	377.67	Turned-over
12				TAFIA	Meridagao, D. Montawal, Maguindanao	174	4	5	0	211.34	Turned-over
13				BAGONABATI	Balabak, Pikit, Cotabato	450	4	11	1	641.02	Turned-over
14				BALATIKAN	Balaitkan, Pikit, Cotabato	318	40	11	1	368.23	Turned-over
15				DALFIA	Dalligaon, Pikit, Cotabato	195	31	9	1	255.72	Turned-over
16	MMIP II /UMSA	COTABATO	Pikit	TAMICIA	Takepan, Pikit, Cotabato	82	5	9	1	251.85	Turned-over
17				LAGUNDI PAMBUA	Lagunde, Pikit, Cotabato	162	152	9	1	283	Turned-over
18				MALIGA LUPA	Bualan, Pikit, Cotabato	64	15	7	0	118	Turned-over
19				PAIKOL	Paidu Puang/Kolambog, Pikit, Cotabato	120	4	11	0	410.08	For turn-over Nov 2018
20				PAMALIAN TALIAWID	Pamalian, Pikit, Cotabato	78	5	5	0	116.92	For turn-over Nov 2018
21	MMIP II /UMSA	COTABATO	Aleosan	SARAPANI	Panicupan, Pikit, Cotabato	75	7	9	0	365.87	Turned-over
22				CHRISLAMI	Panicupan, Pikit, Cotabato	316	25	11	4	339.31	Turned-over
23				NALAPANI	Nalapaan, Pikit, Cotabato	72	4	9	1	51.97	Turned-over
24				TAPODOC BANGSAMORO	Tapodoc, Aleosan, Cotabato	33	4	5	0	268.11	For turn-over Nov 2018
25				DUNGGUAN-LANGAYEN	Dungguan, Aleosan, Cotabato	28	0	7	0	191	For turn-over Nov 2018
26	MMIP II /PESA	MAGUINDANAO	Pagalungan	UBADALA FARMERS IA	Galakit, Pagalungan, Maguindanao	42	6	7	0	145	SEC Registered
27				LAYOG INUG-UG IA INC	Layog, Pagalungan, Maguindanao	86	5	7	1	261.8	SEC Registered
28				PAGALUNGAN TALIAWID IA	Pagalungan, Maguindanao	40	6	9	0	no data	SEC Registered
29				GLI-GLI LATERAL H & H2 FARMERS IA	GLI-GLI, Pikit, Cotabato	163	12	13	0	292	SEC Registered
30				BULOD BULOD IA INC	Bulod, Pikit, Cotabato	90	9	9	0	238.7	SEC Registered
31	MMIP II /LMSA	COTABATO	Pikit	TALITAY INUG-UG GLI-GLI POBLACION IA	Talitay, Pikit, Cotabato	130	4	9	0	225.7	SEC Registered
32				BATOLAWAN GINATILAN LADTINGAN IA	Batuawan, Pikit, Cotabato	82	16	13	5	362.4	SEC Registered
33				MAKAUYAG GU-GLI LATERAL H3 IA	GI-gli, Pikit, Cotabato	150	19	9	0	217	SEC Registered
34				MAGLIB IA	GI-gli, Pikit, Cotabato	171	11	15	0	481	SEC Registered
35				MACABUAL KALTAN FARMERS IA	Macabual, Pikit, Cotabato	95	6	9	1	190.1	SEC Registered
36	MMIP II /LMSA	COTABATO	Pikit	KALTAN BALONG FARMERS IA	Balong, Pikit, Cotabato	95	6	11	0	268.5	SEC Registered
37				TAMBAK BALONG IA	Balong, Pikit, Cotabato	88	7	9	0	183.8	SEC Registered
38				MANAULANAN IA	Manaulanan, Pikit, Cotabato	70	5	9	1	172.7	SEC Registered
39				PROPER MACABUAL IA	Macabual, Pikit, Cotabato	78	10	7	0	122.7	SEC on process
40				SITIO GALIGAYANEN IA	Macabual, Pikit, Cotabato	89	7	9	0	245	SEC on process
41	NALKATAN MANAULANAN IA	Manaulanan, Pikit, Cotabato	on process					371.3	SEC on process		
				8 IAs to be established							
				GRAND TOTAL		6,121	579	368	23	11,565	