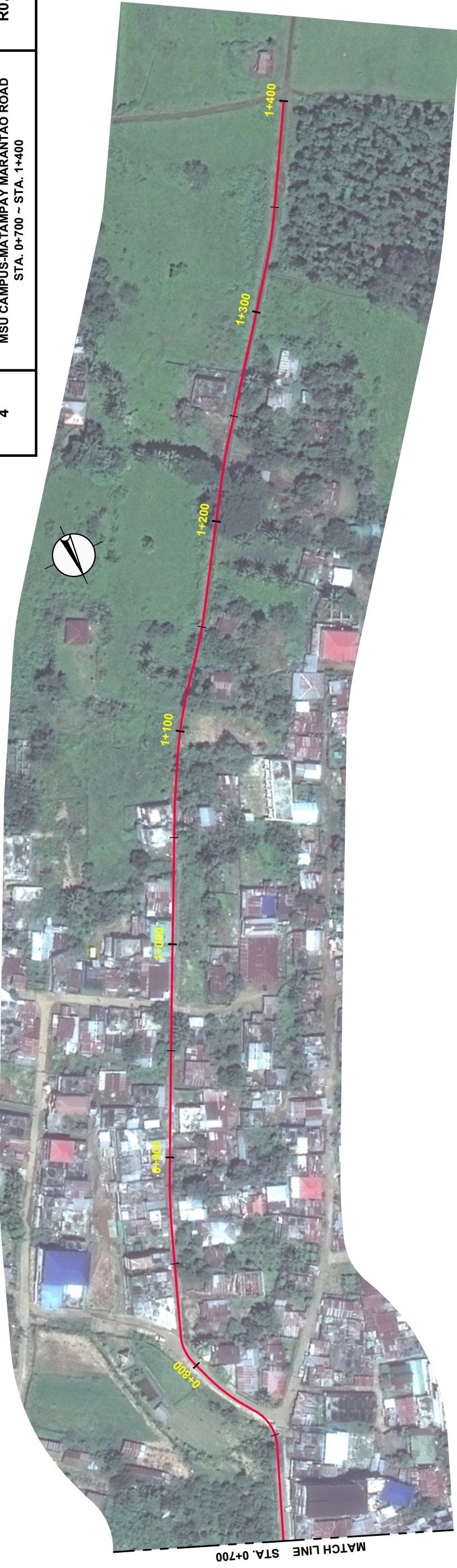
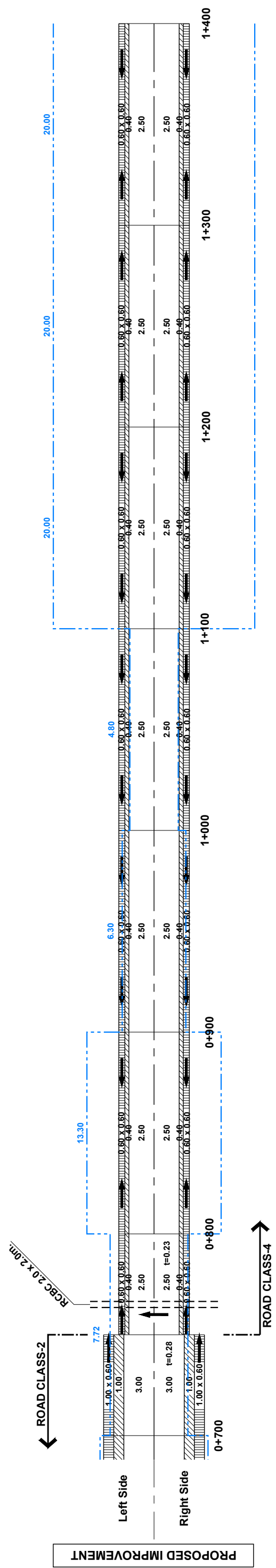
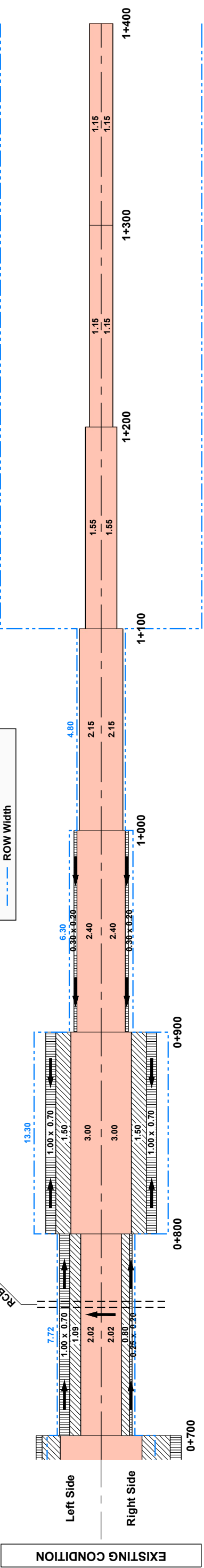


ROAD CLASS	SHEET CONTENTS	DRAWING NO.
4	ROAD-07 MSU CAMPUS-MATAMPAY MARANTAO ROAD STA. 0+700 ~ STA. 1+400	R07-02

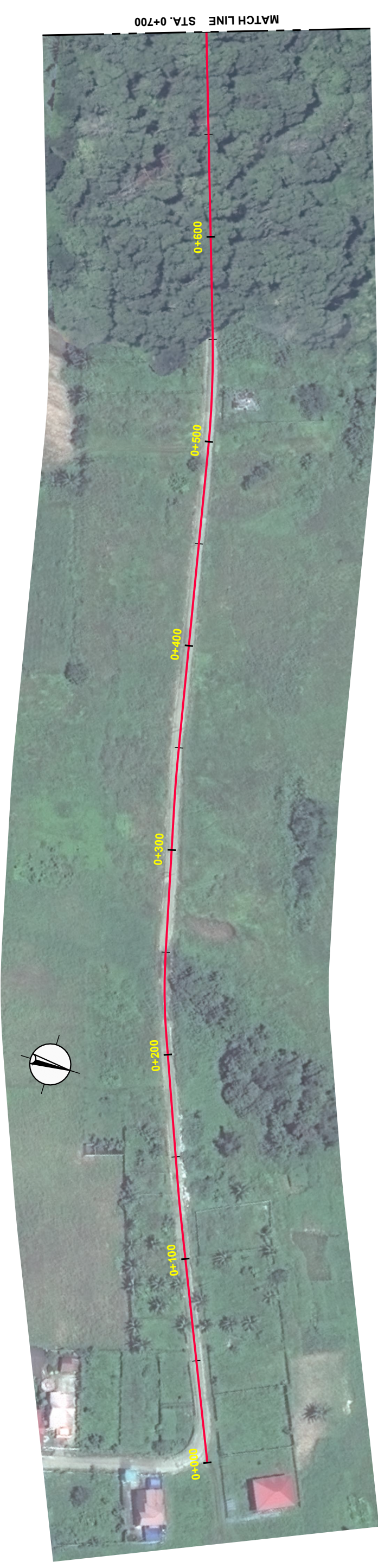


LEGEND :

Good	Bad
Fair	Very Bad
Shoulder	
Side Ditch	
ROW Width	

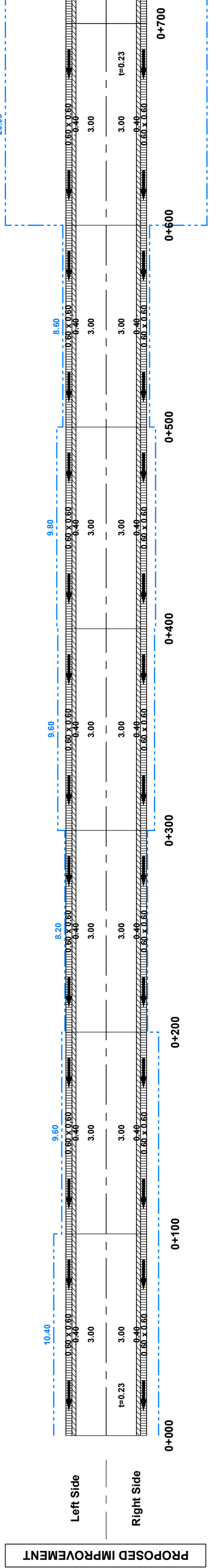
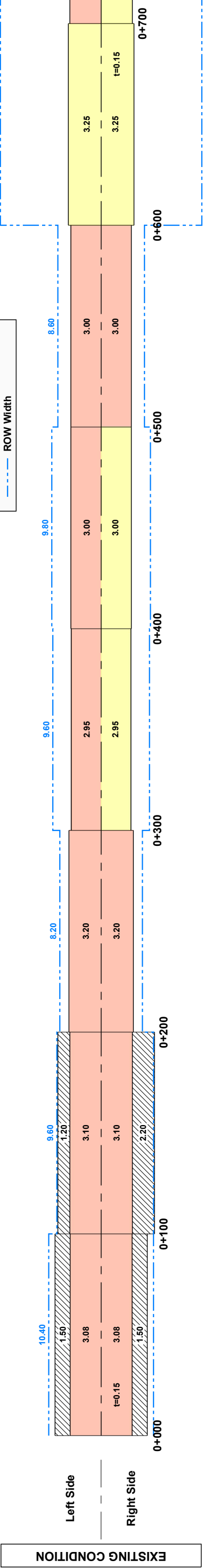


ROAD CLASS	SHEET CONTENTS	DRAWING NO.
3	ROAD-08 MSU-GMA TERMINAL ROAD STA. 0+000 ~ STA. 0+700	R08-01



LEGEND :

Good	Bad
Fair	Very Bad
Shoulder	
Side Ditch	
ROW Width	

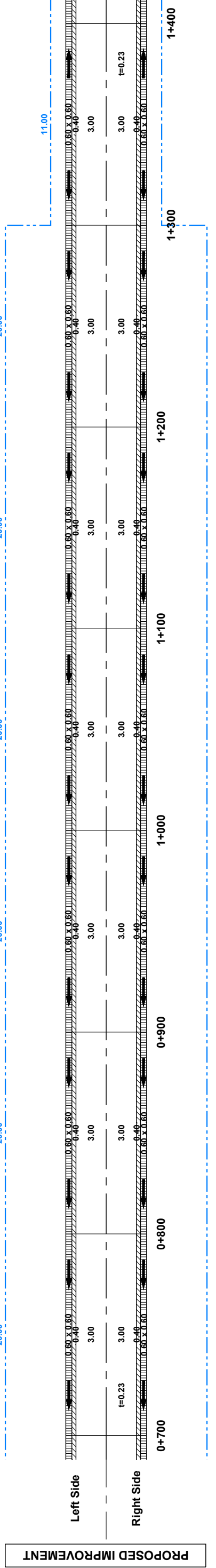
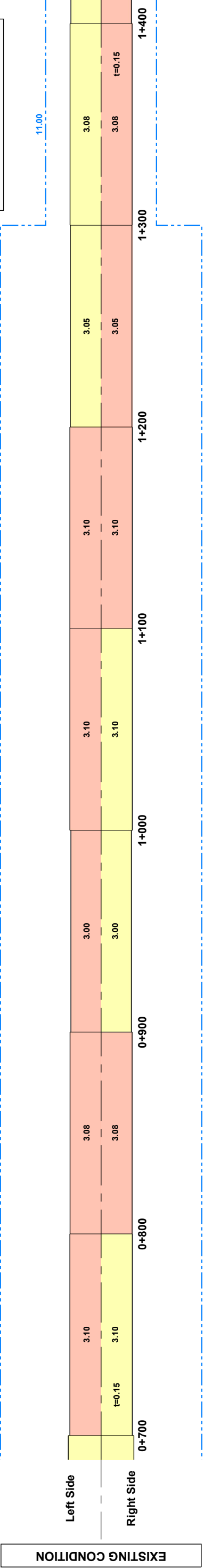


ROAD CLASS	SHEET CONTENTS	DRAWING NO.
3	ROAD-08 MSU-GMA TERMINAL ROAD STA. 0+700 ~ STA. 1+400	R08-02



LEGEND :

Good	Bad
Fair	Very Bad
Shoulder	
Side Ditch	
ROW Width	

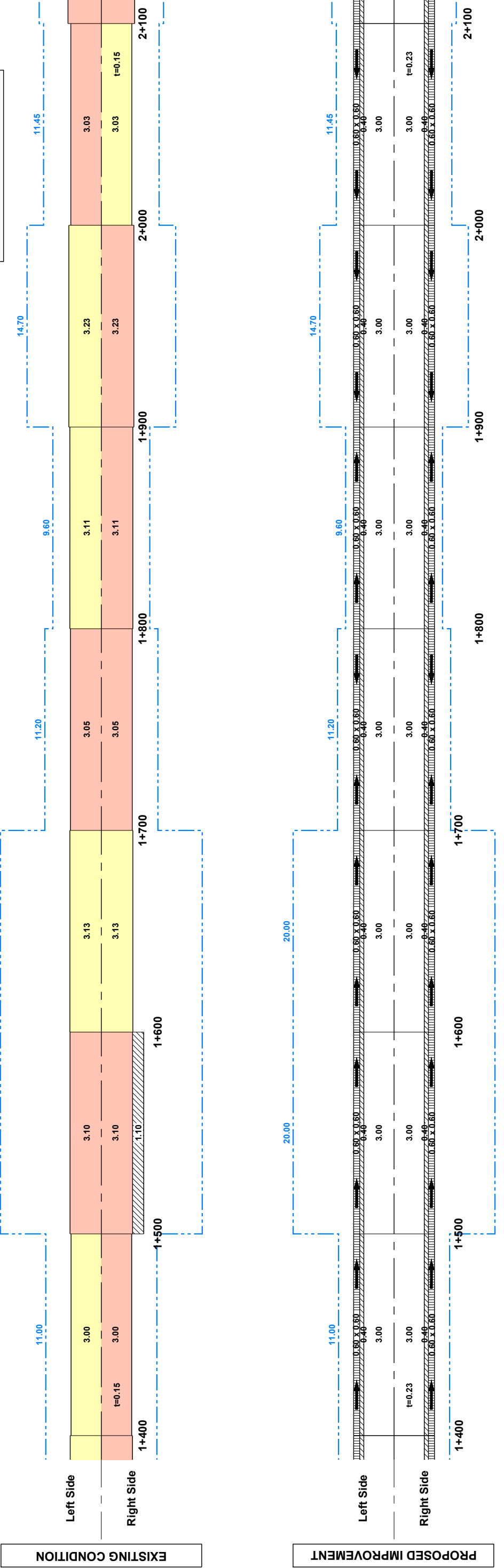


ROAD CLASS	SHEET CONTENTS	DRAWING NO.
3	ROAD-08 MSU-GMA TERMINAL ROAD STA. 1+400 ~ STA. 2+100	R08-03



LEGEND :

Good	Bad
Fair	Very Bad
Shoulder	Side Ditch
ROW Width	

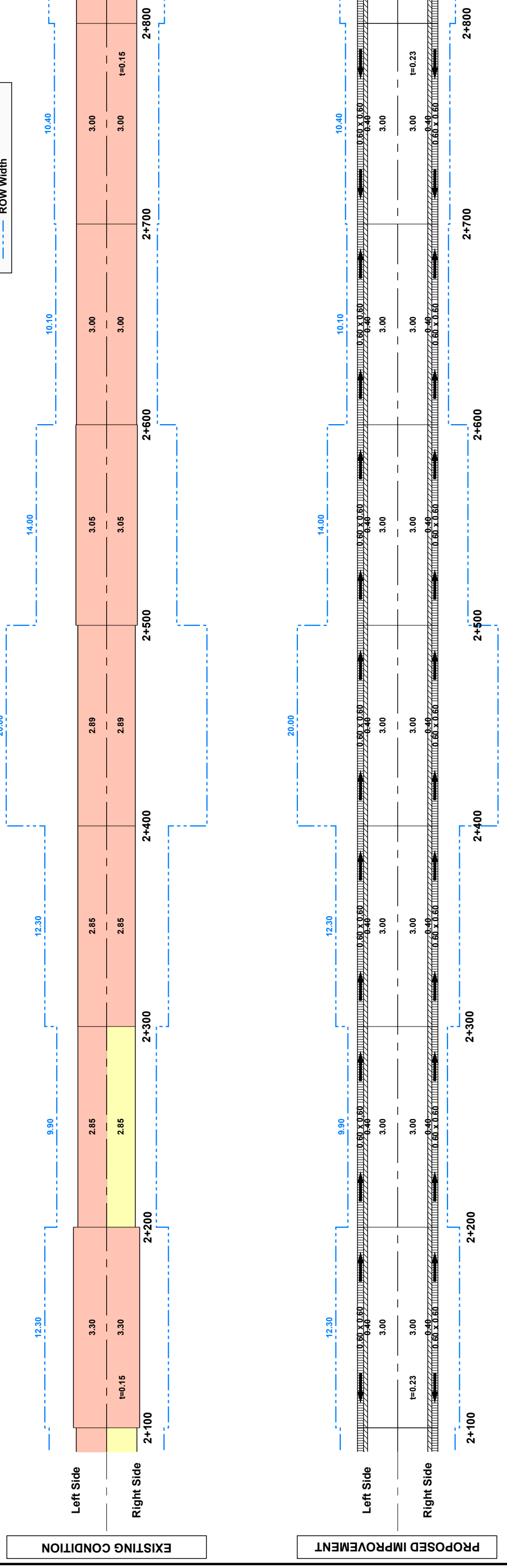


ROAD CLASS	SHEET CONTENTS	DRAWING NO.
3	ROAD-08 MSU-GMA TERMINAL ROAD STA. 2+100 ~ STA. 2+800	R08-04

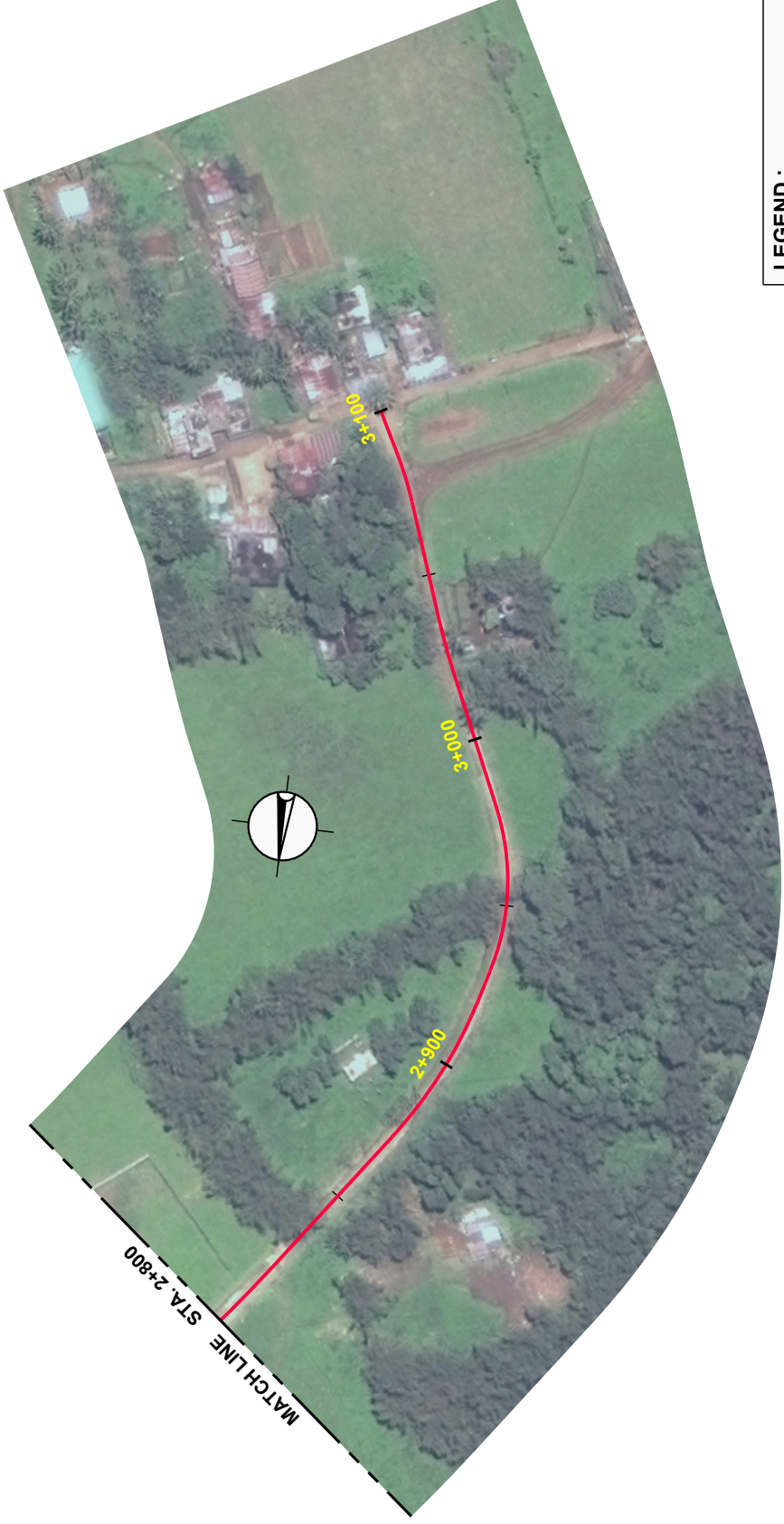


LEGEND :

Good	Bad
Fair	Very Bad
Shoulder	
Side Ditch	
ROW Width	

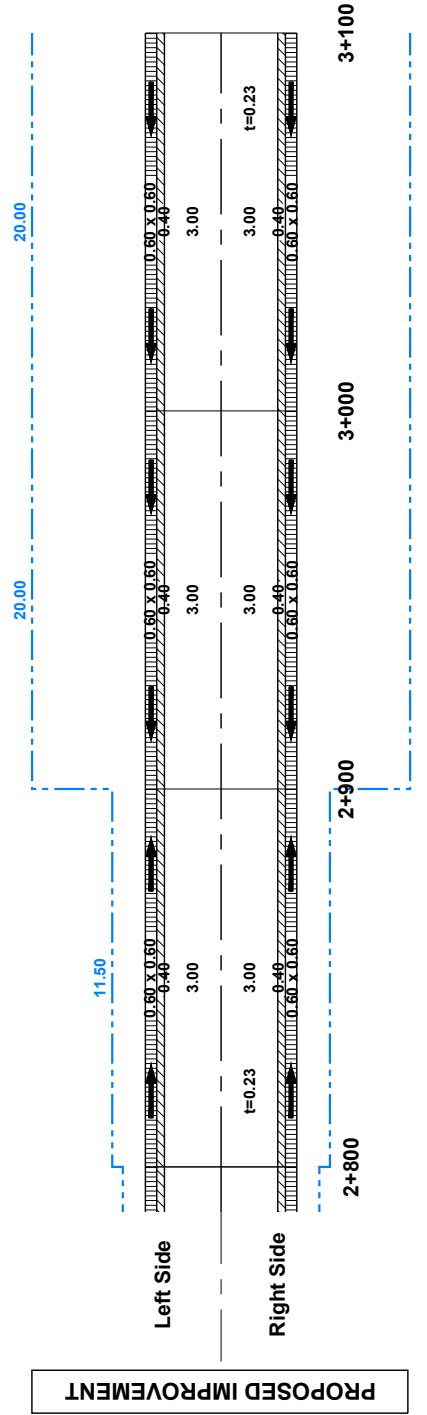
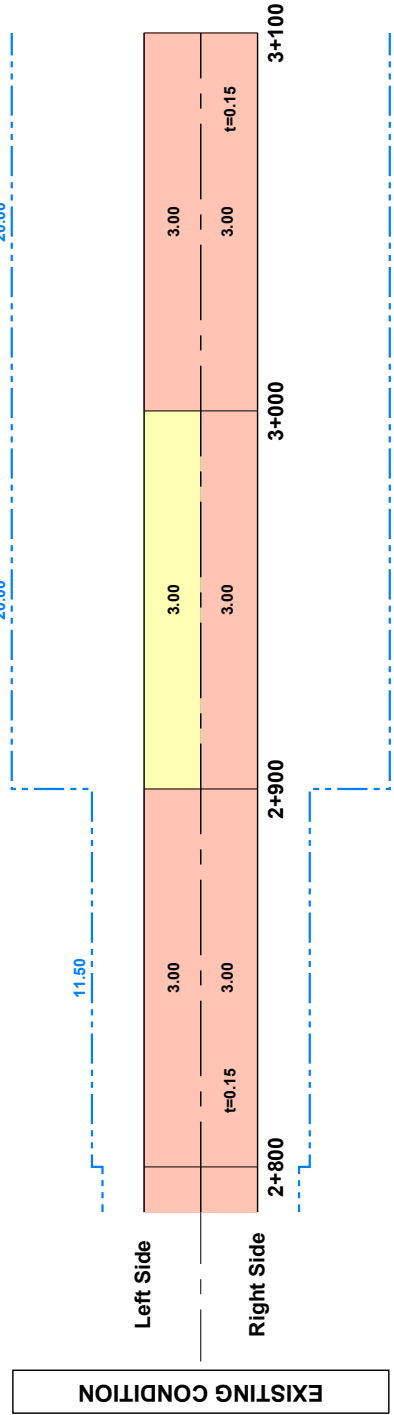


ROAD CLASS	SHEET CONTENTS	DRAWING NO.
3	ROAD-08 MSU-GMA TERMINAL ROAD STA. 2+800 ~ STA. 3+100	R08-05

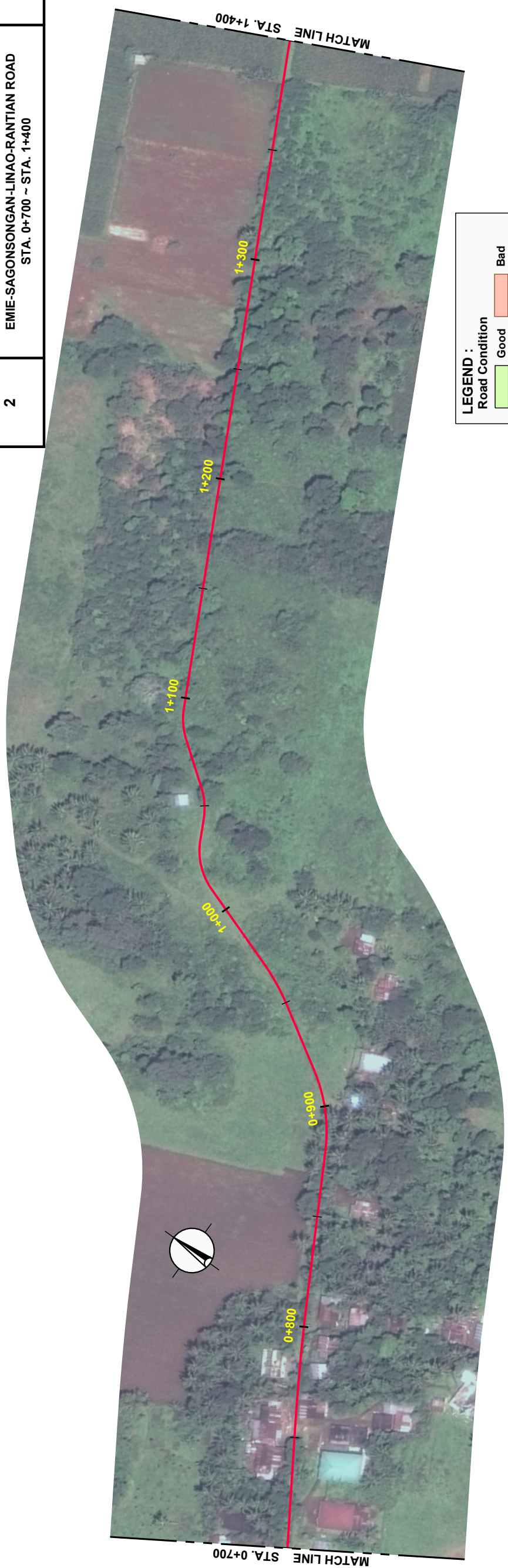


LEGEND :

Road Condition	Good	Fair	Bad	Very Bad
Shoulder				
Side Ditch				
ROW Width				

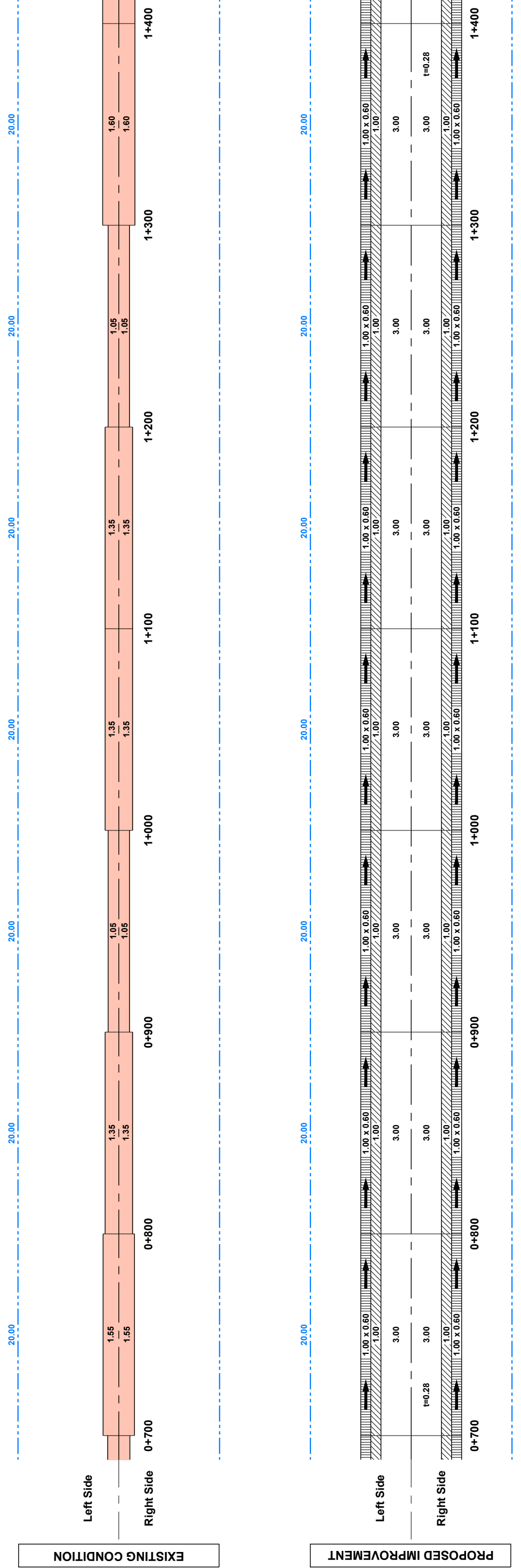


ROAD CLASS	SHEET CONTENTS	DRAWING NO.
2	ROAD-09 EMIE-SAGONSONGAN-LINAO-RANTIAN ROAD STA. 0+700 ~ STA. 1+400	R09-02

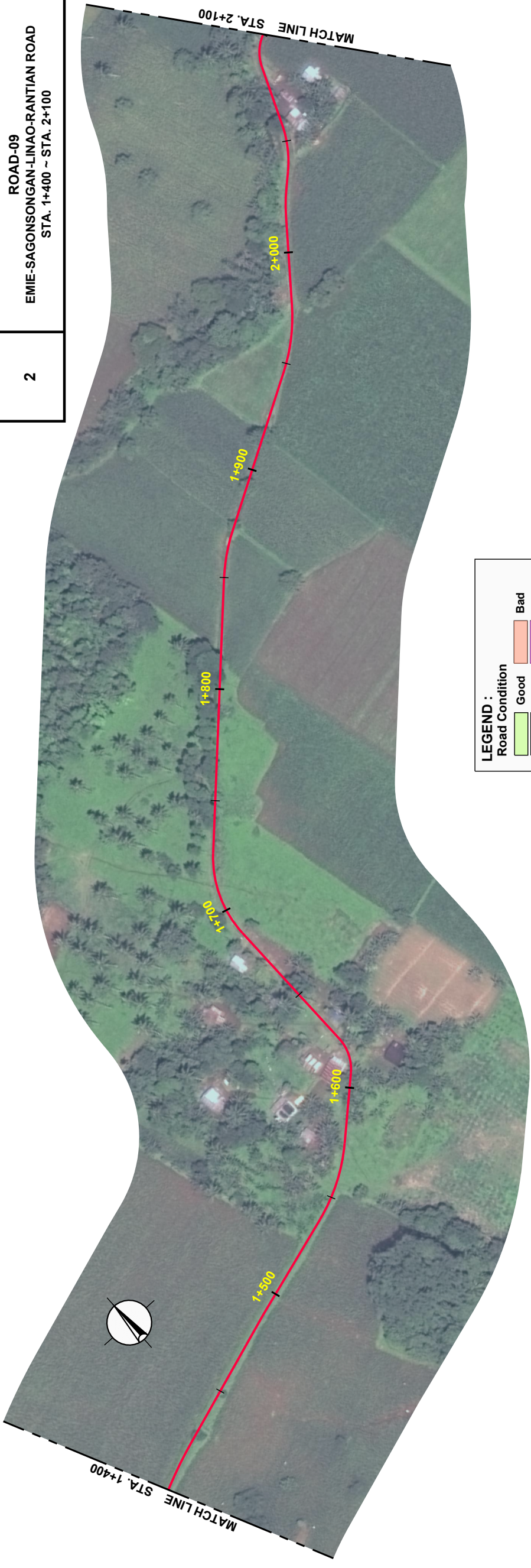


LEGEND :

	Good		Bad
	Fair		Very Bad
	Shoulder		Side Ditch
	ROW Width		

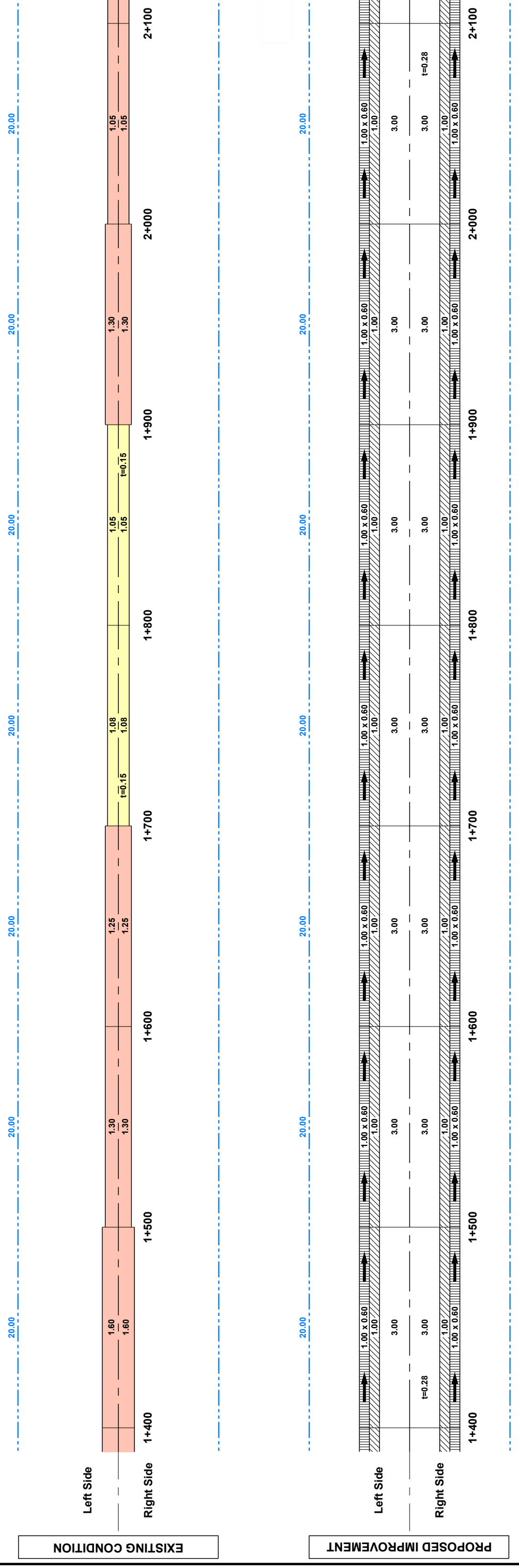


ROAD CLASS	SHEET CONTENTS	DRAWING NO.
2	ROAD-09 EMIE-SAGONSONGAN-LINAO-RANTIAN ROAD STA. 1+400 ~ STA. 2+100	R09-03



LEGEND :

Road Condition	
Good	Bad
Fair	Very Bad
Shoulder	Side Ditch
Side Ditch	ROW Width

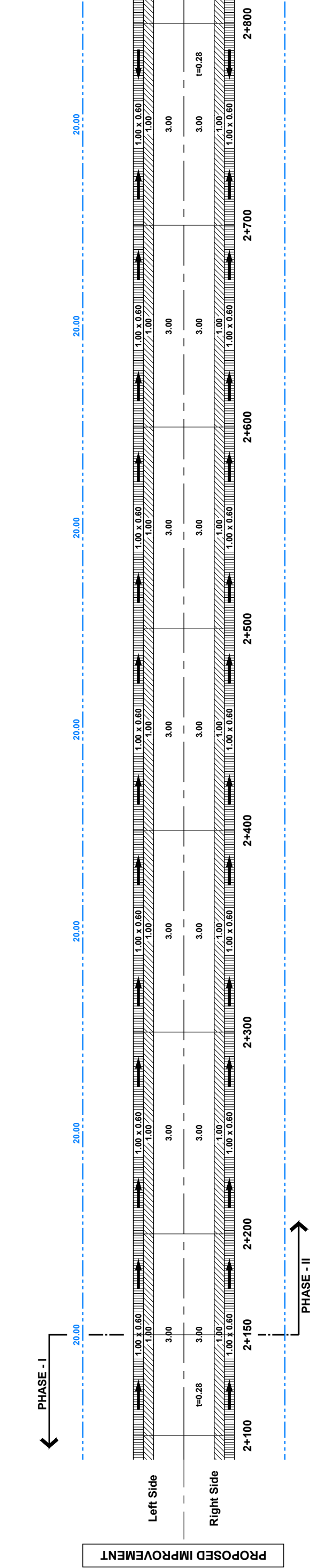
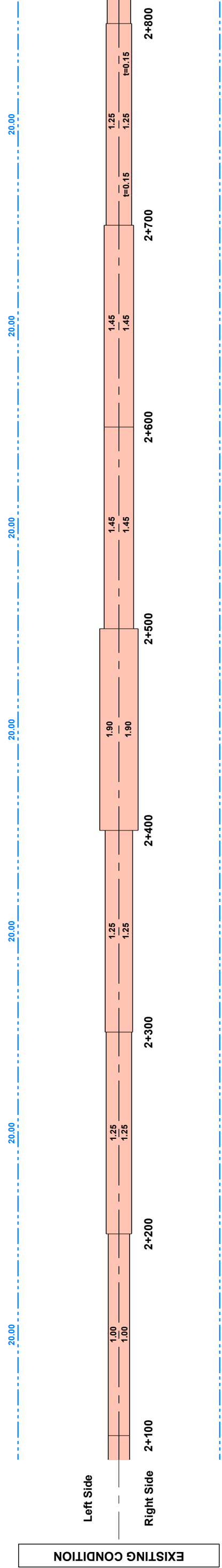


ROAD CLASS	SHEET CONTENTS	DRAWING NO.
2	ROAD-09 EMIE-SAGONSONGAN-LINAO-RANTIAN ROAD STA. 2+100 ~ STA. 2+800	R09-04

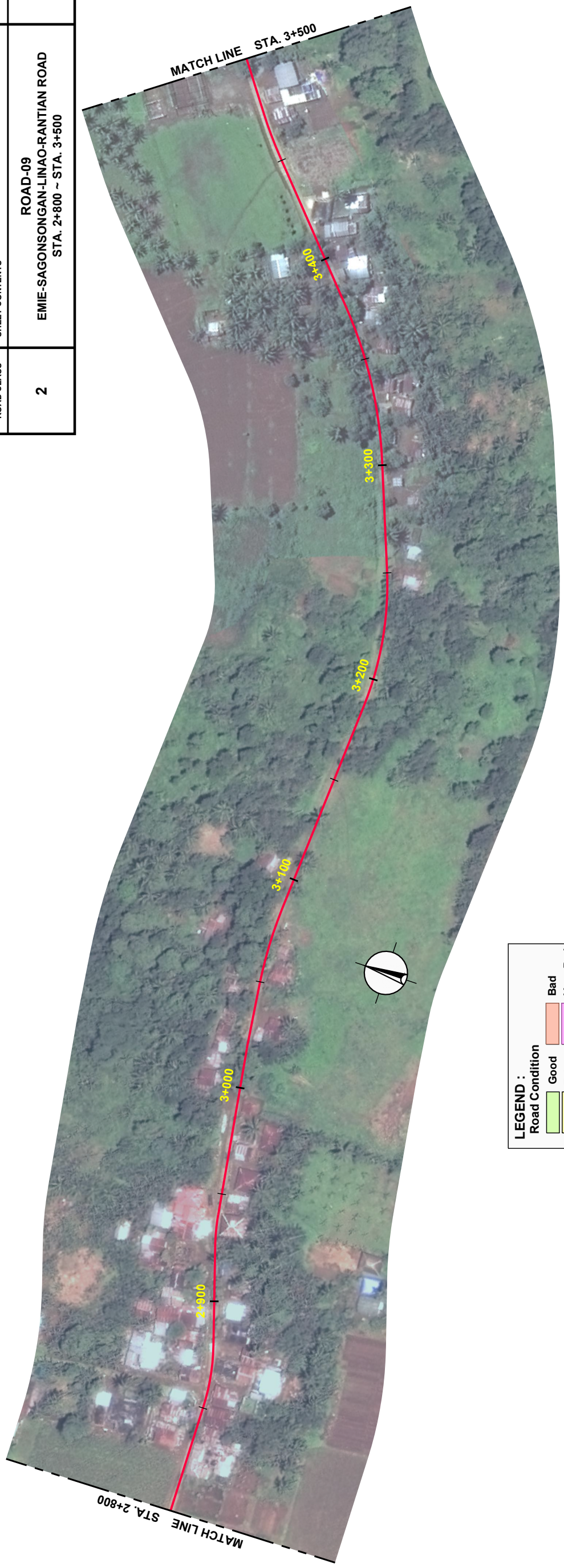


LEGEND :

Good	Bad
Fair	Very Bad
Shoulder	
Side Ditch	
ROW Width	

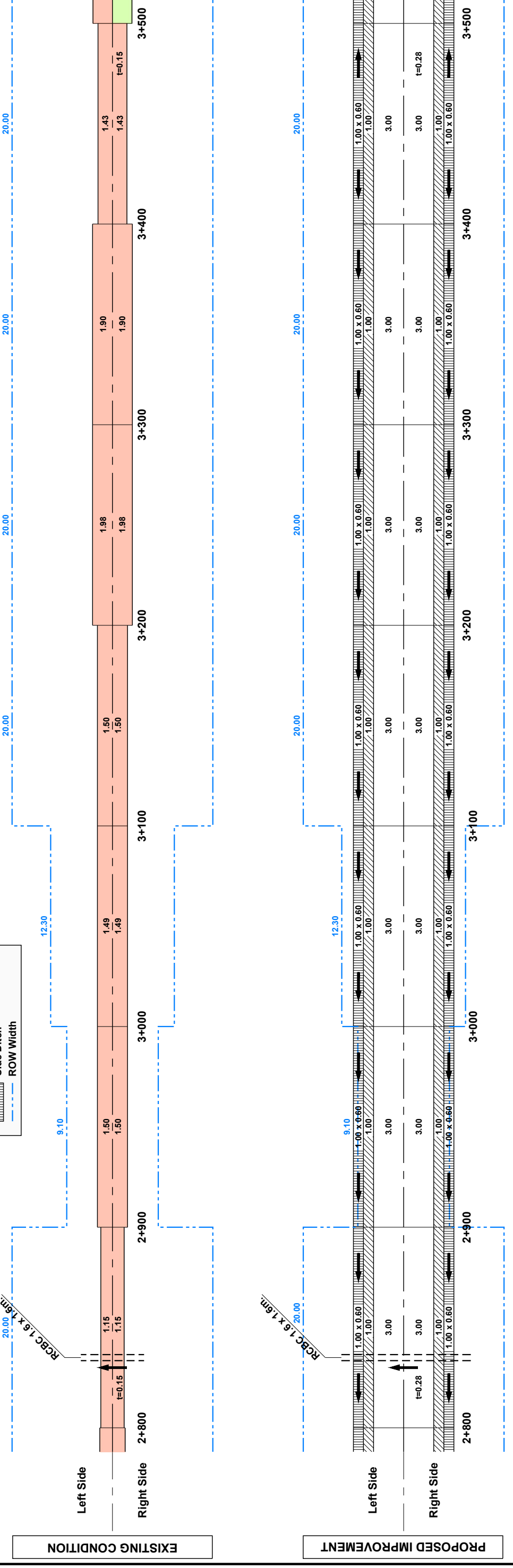


ROAD CLASS	SHEET CONTENTS	DRAWING NO.
2	ROAD-09 EMIE-SAGONSONGAN-LINAO-RANTIAN ROAD STA. 2+800 ~ STA. 3+500	R09-05



LEGEND :

Road Condition	
	Good
	Fair
	Bad
	Very Bad
	Shoulder
	Side Ditch
	ROW Width

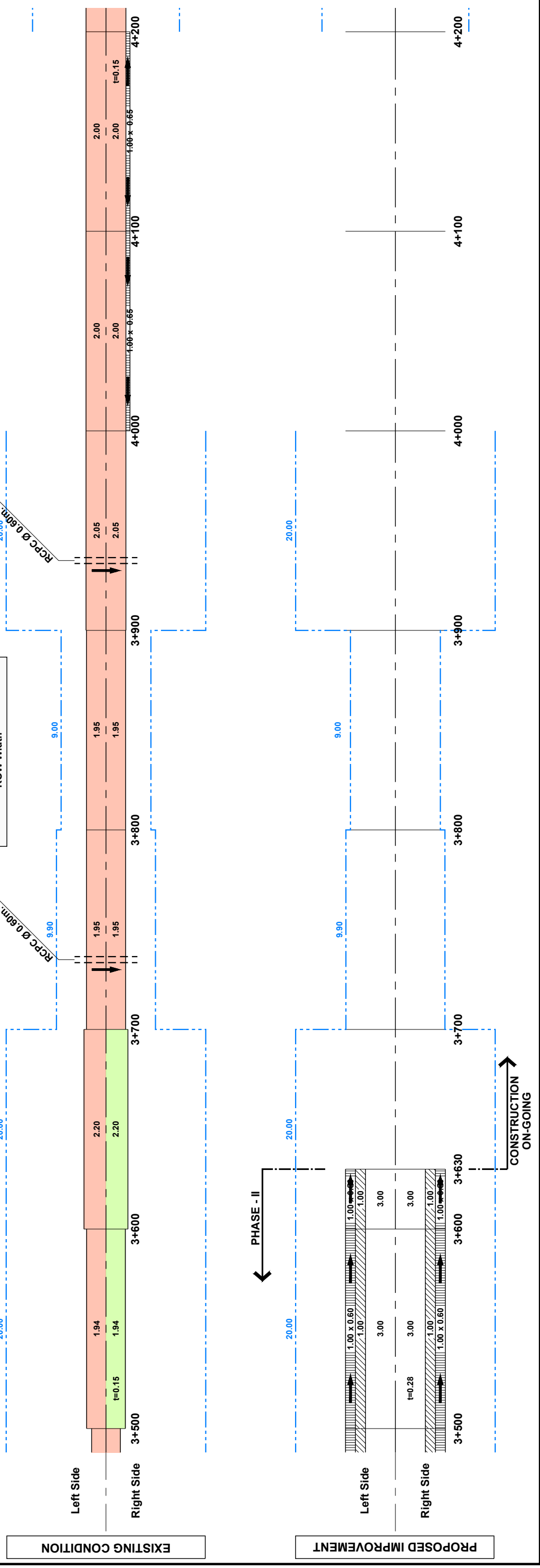


ROAD CLASS	SHEET CONTENTS	DRAWING NO.
2	ROAD-09 EMIE-SAGONSONGAN-LINAO-RANTIAN ROAD STA. 3+500 ~ STA. 4+200	R09-06



LEGEND :

Good	Bad
Fair	Very Bad
Shoulder	Side Ditch
Side Ditch	ROW Width

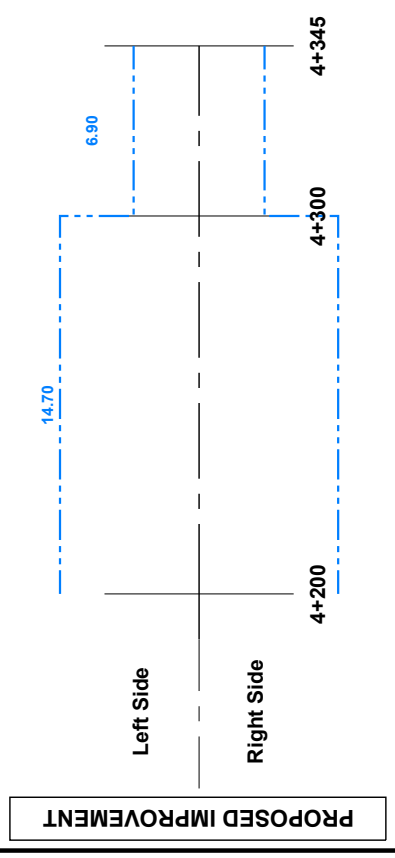
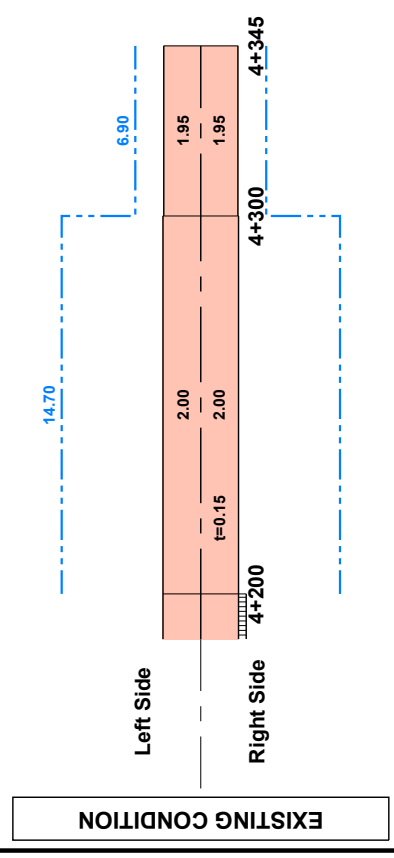


ROAD CLASS	SHEET CONTENTS	DRAWING NO.
2	ROAD-09 EMIE-SAGONSONGAN-LINAO-RANTIAN ROAD STA. 4+200 ~ STA. 4+345	R09-07



LEGEND :

Road Condition	Good	Fair	Bad	Very Bad
	Shoulder			
	Side Ditch			
	ROW Width			

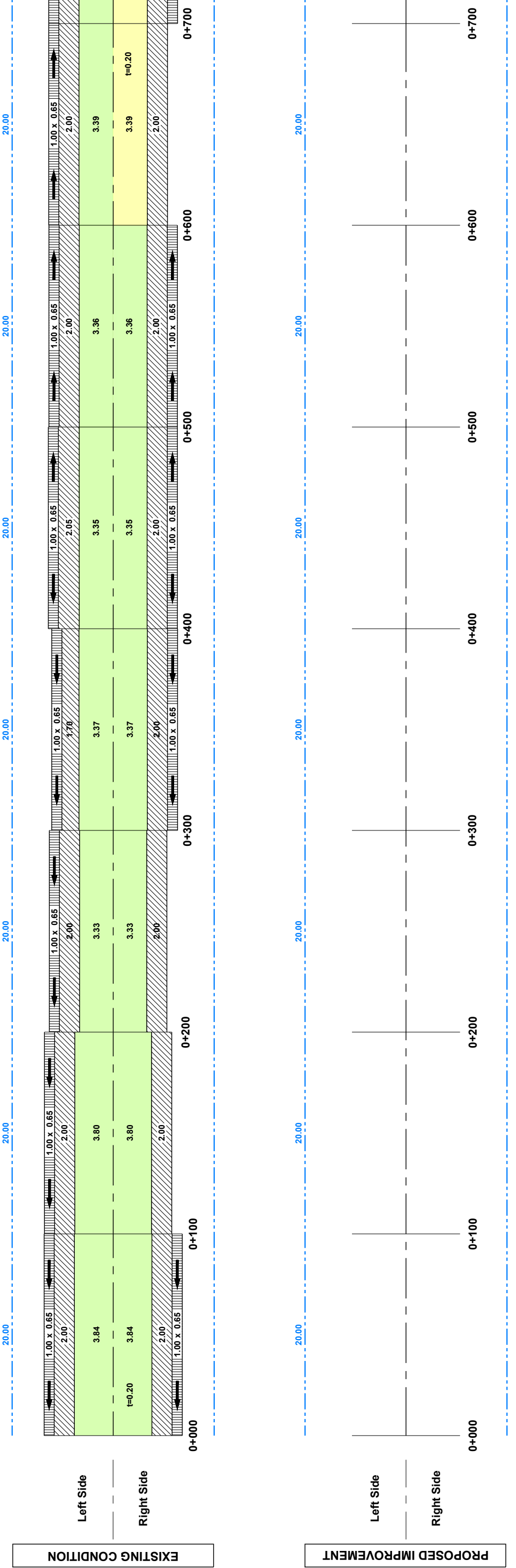


ROAD CLASS	SHEET CONTENTS	DRAWING NO.
1	ROAD-10 NEW MARAWI DIVERSION ROAD STA. 0+000 ~ STA. 0+700	R10-01



LEGEND :

Road Condition	
	Good
	Fair
	Bad
	Very Bad
	Shoulder
	Side Ditch
	ROW Width

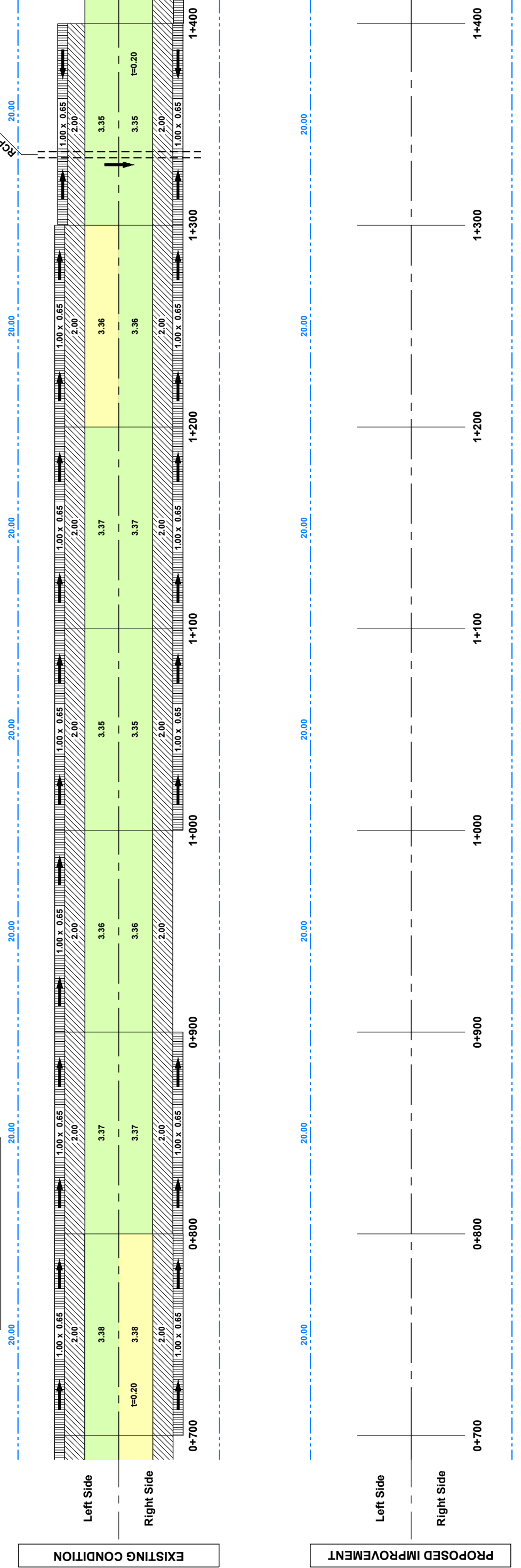


ROAD CLASS	SHEET CONTENTS	DRAWING NO.
1	ROAD-10 NEW MARAWI DIVERSION ROAD STA. 0+700 ~ STA. 1+400	R10-02



LEGEND :

Road Condition	
	Good
	Fair
	Bad
	Very Bad
	Shoulder
	Side Ditch
	ROW Width



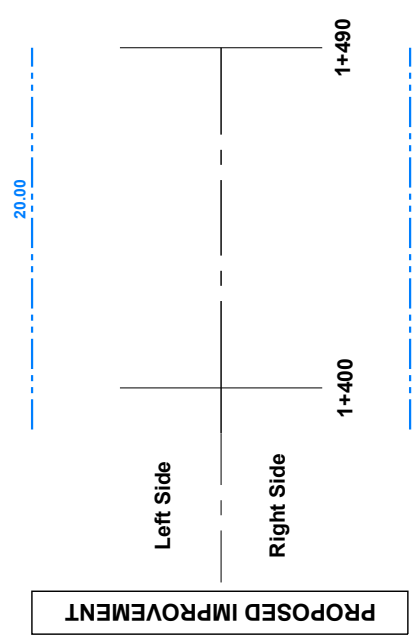
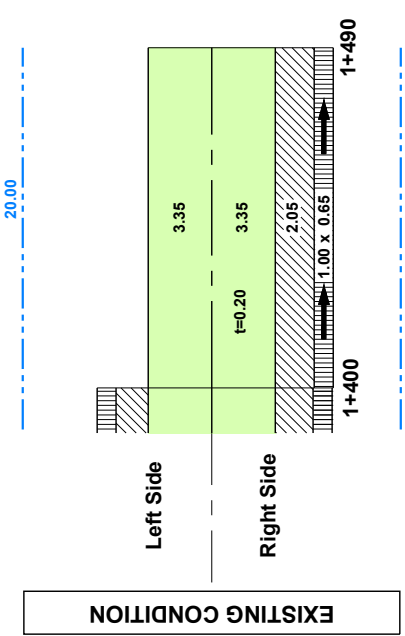
ROAD CLASS	SHEET CONTENTS	DRAWING NO.
1	ROAD-10 NEW MARAWI DIVERSION ROAD STA. 1+400 ~ STA. 1+490	R10-03



MATCH LINE STA. 1+400

LEGEND :

Road Condition	
Good	Bad
Fair	Very Bad
Shoulder	Side Ditch
ROW Width	



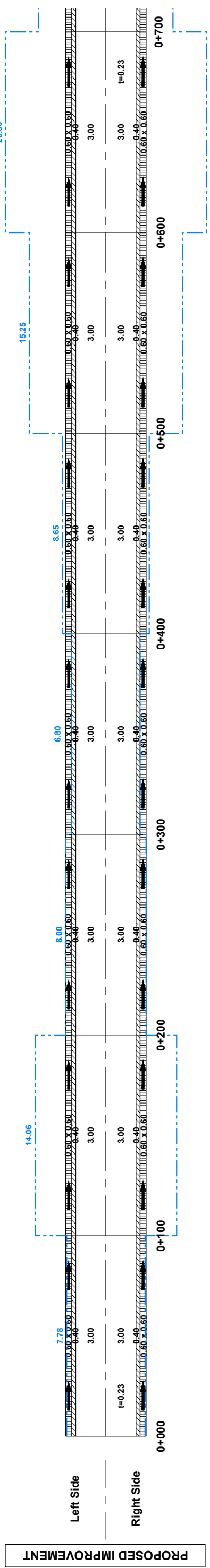
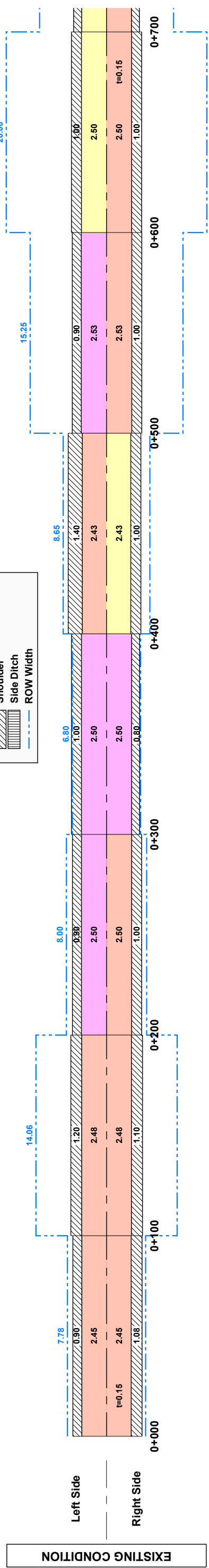
ROAD CLASS	SHEET CONTENTS	DRAWING NO.
3	ROAD-11 BITO-ROROGAGUS-GUIMBA ROAD STA. 0+000 ~ STA. 0+700	R11-01



MATCH LINE STA. 0+700

LEGEND :

Good	Bad
Fair	Very Bad
Shoulder	
Side Ditch	
ROW Width	

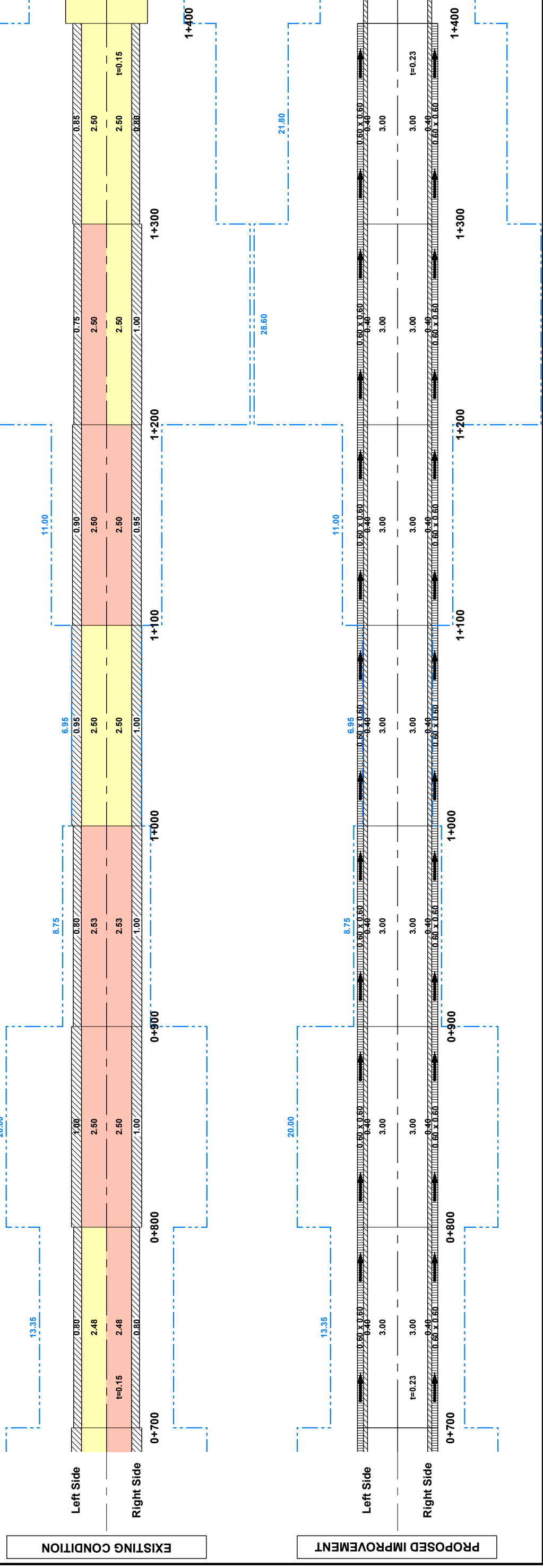


ROAD CLASS	SHEET CONTENTS	DRAWING NO.
3	ROAD-11 BITO-ROROGAGUS-GUIMBA ROAD STA. 0+700 ~ STA. 1+400	R11-02



LEGEND :

Road Condition	
Good	Bad
Fair	Very Bad
Shoulder	Side Ditch
Side Ditch	ROW Width

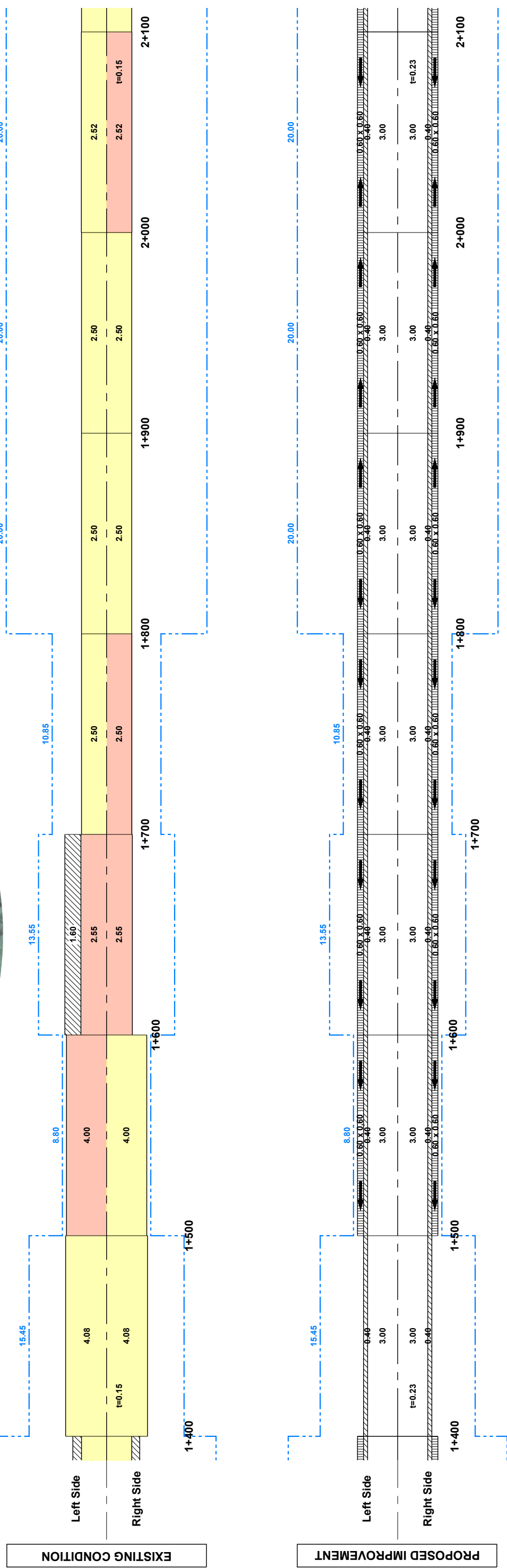


ROAD CLASS	SHEET CONTENTS	DRAWING NO.
3	ROAD-11 BITO-ROROGAGUS-GUIMBA ROAD STA. 1+400 ~ STA. 2+100	R11-03



LEGEND :

Good	Bad
Fair	Very Bad
Shoulder	
Side Ditch	
ROW Width	

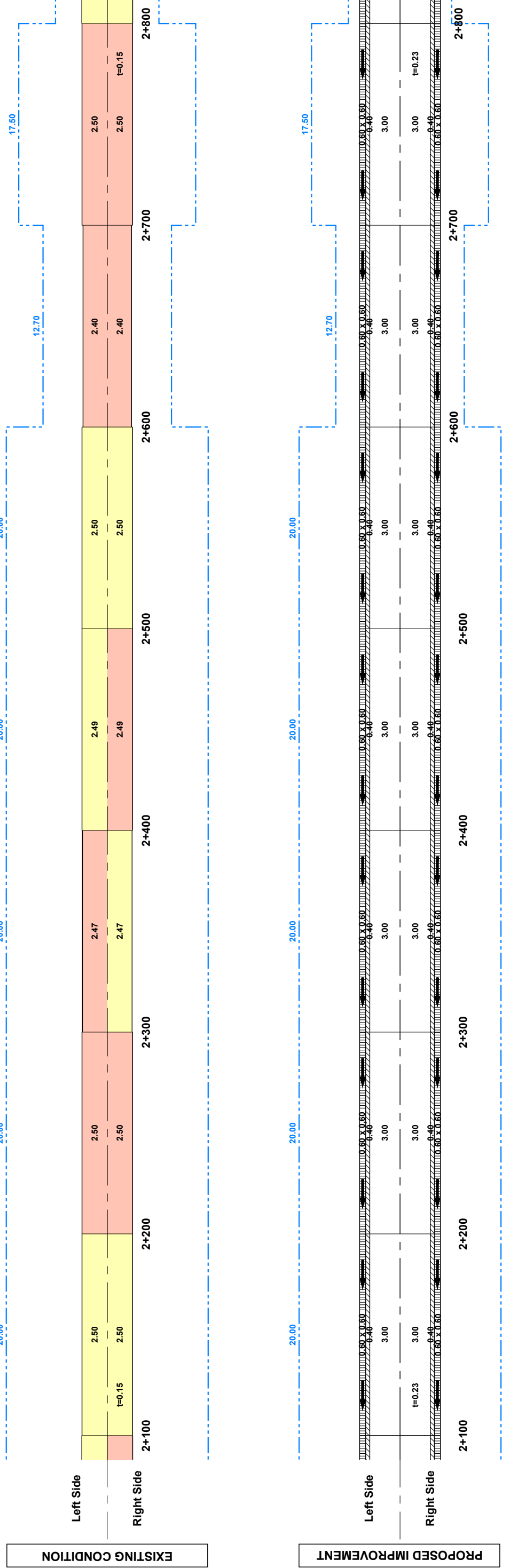


ROAD CLASS	SHEET CONTENTS	DRAWING NO.
3	ROAD-11 BITO-ROROGAGUS-GUIMBA ROAD STA. 2+100 ~ STA. 2+800	R11-04

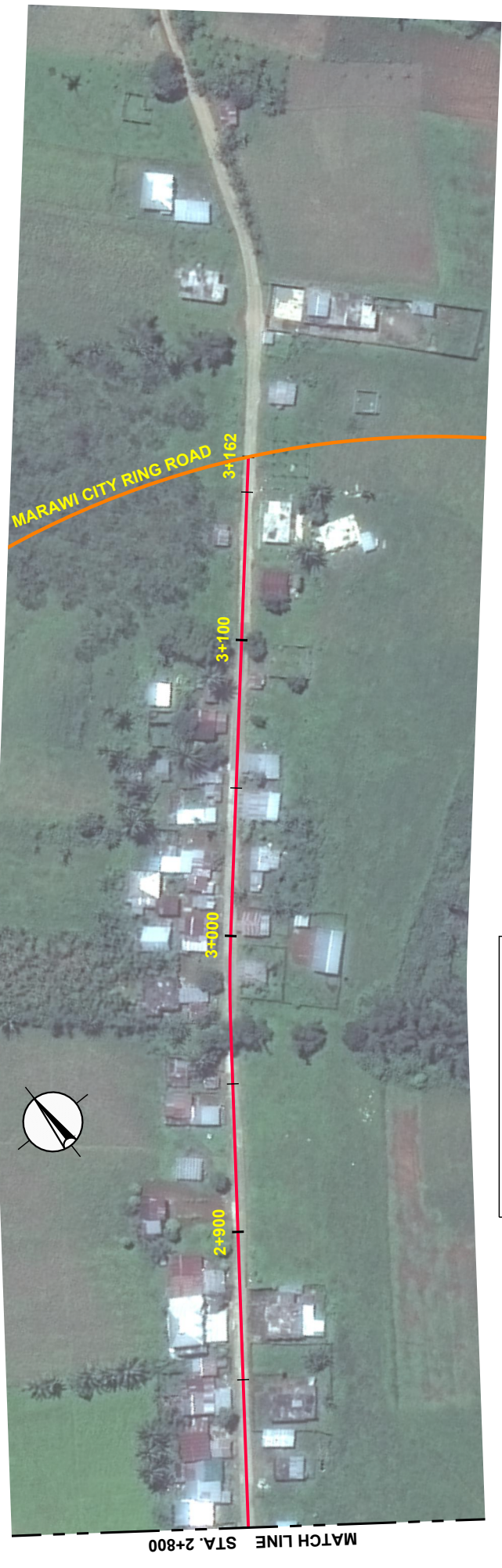


LEGEND :

Good	Bad
Fair	Very Bad
Shoulder	
Side Ditch	
ROW Width	

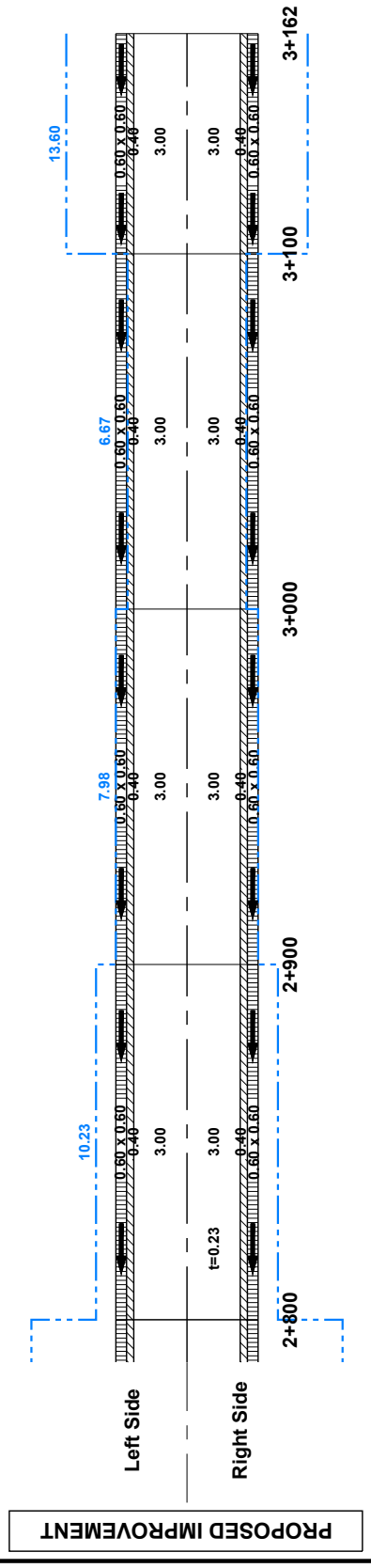
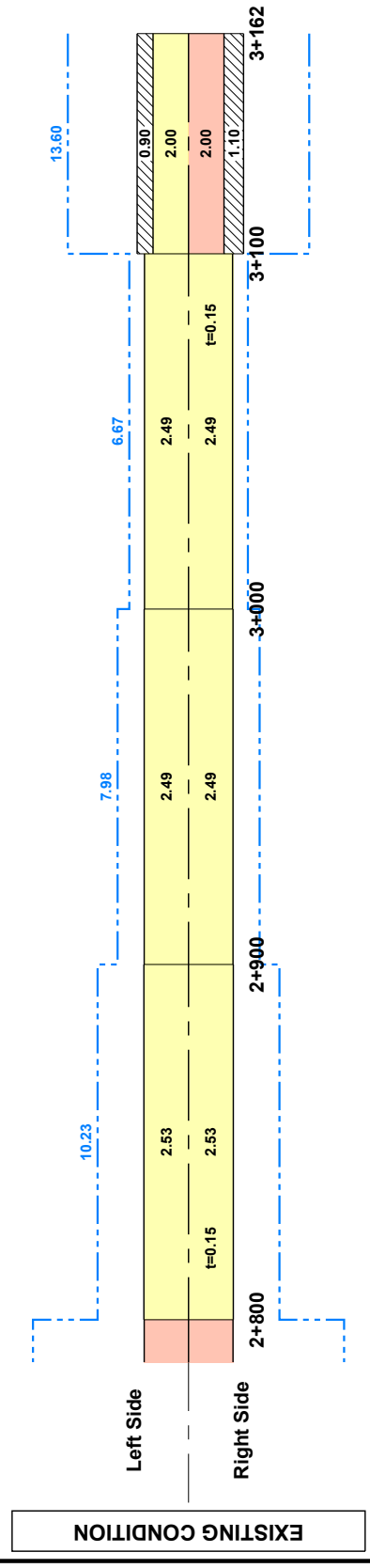


ROAD CLASS	SHEET CONTENTS	DRAWING NO.
3	ROAD-11 BITO-ROROGAGUS-GUIMBA ROAD STA. 2+800 ~ STA. 3+162	R11-05



LEGEND :

	Good		Bad
	Fair		Very Bad
	Shoulder		Side Ditch
	ROW Width		



ROAD CLASS	SHEET CONTENTS	DRAWING NO.
1	ROAD-12 GMA TERMINAL ACCESS ROAD STA. 0+000 ~ STA. 0+584	R12-01



LEGEND :

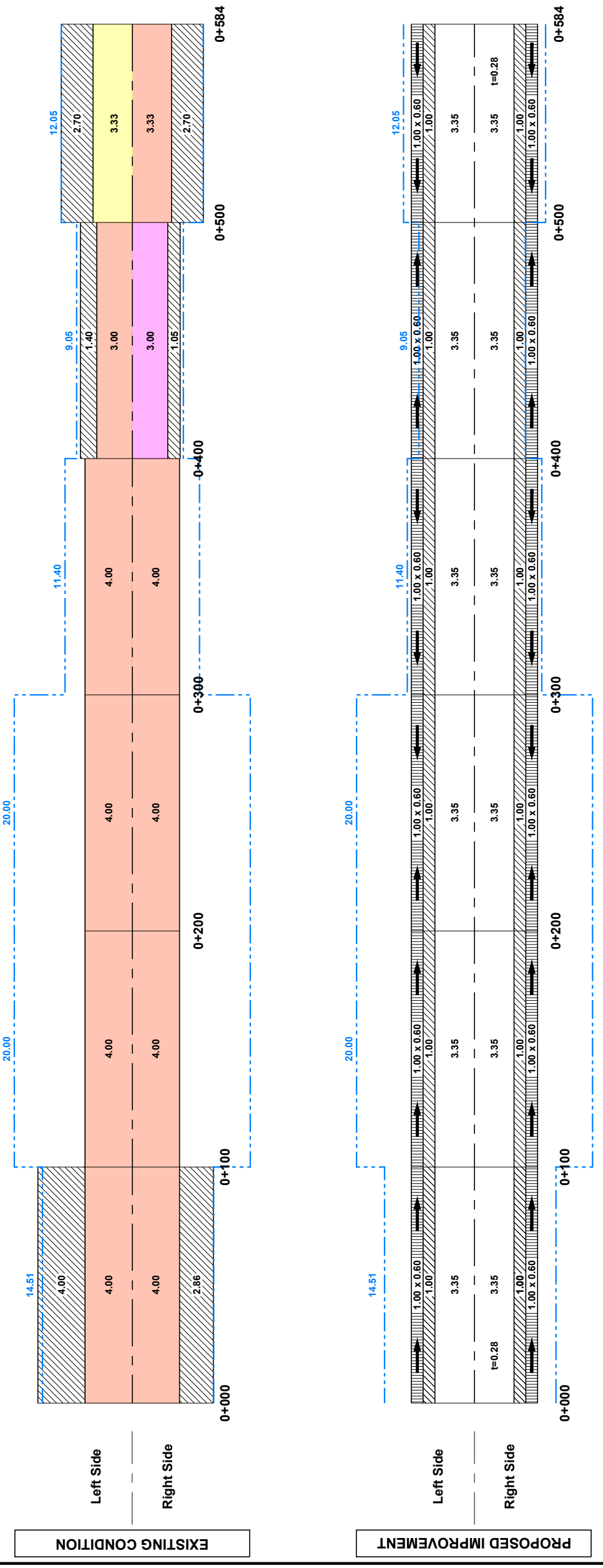
Road Condition

- Good (Green box)
- Fair (Yellow box)
- Bad (Orange box)
- Very Bad (Pink box)

Shoulder (Hatched box)

Side Ditch (Dashed line)

ROW Width (Dotted line)



ROAD CLASS	SHEET CONTENTS	DRAWING NO.
3	ROAD-13 MSU-BUBO ROAD STA. 0+000 ~ STA. 0+700	R13-01



LEGEND :

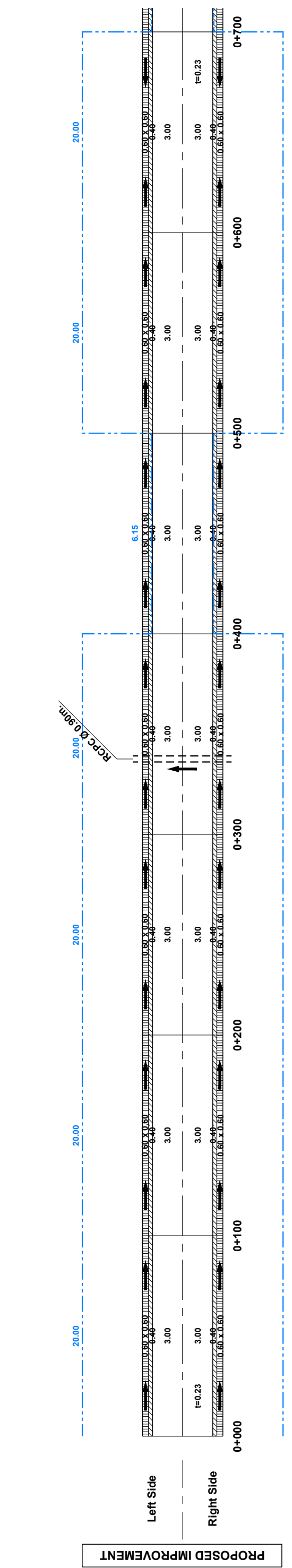
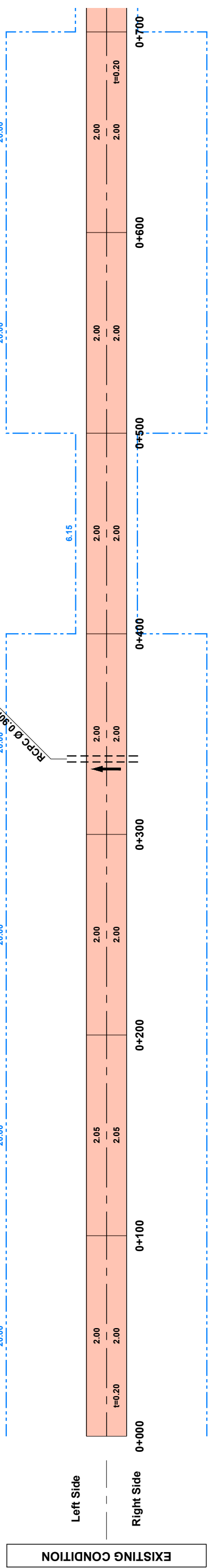
Road Condition

Good	Bad
Fair	Very Bad

Shoulder

Side Ditch

ROW Width

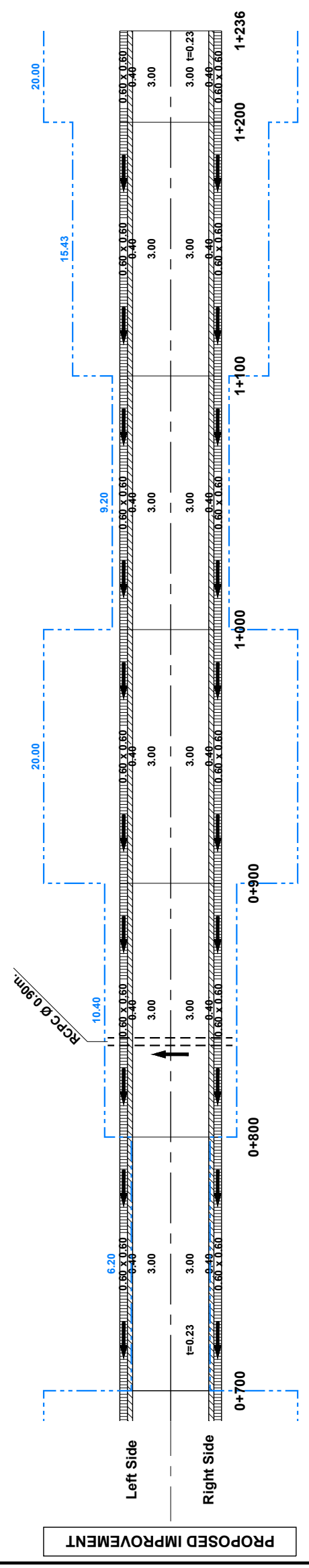
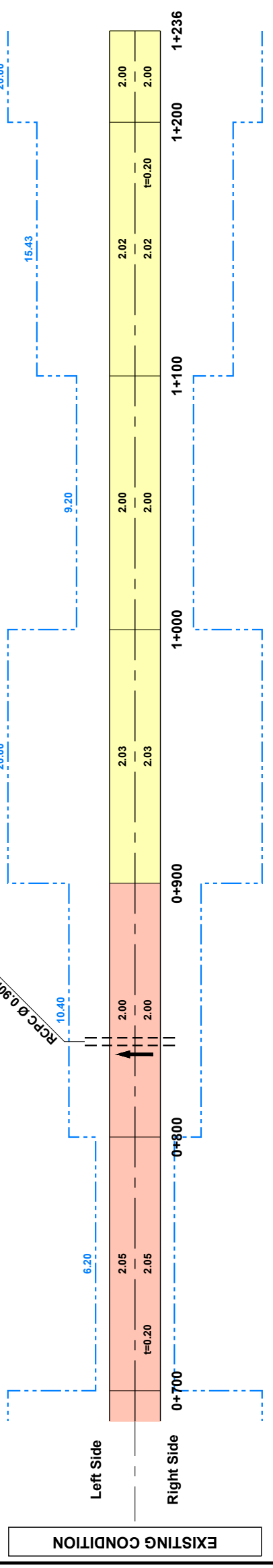


ROAD CLASS	SHEET CONTENTS	DRAWING NO.
3	ROAD-13 MSU-BUBO ROAD STA. 0+700 ~ STA. 1+236	R13-02

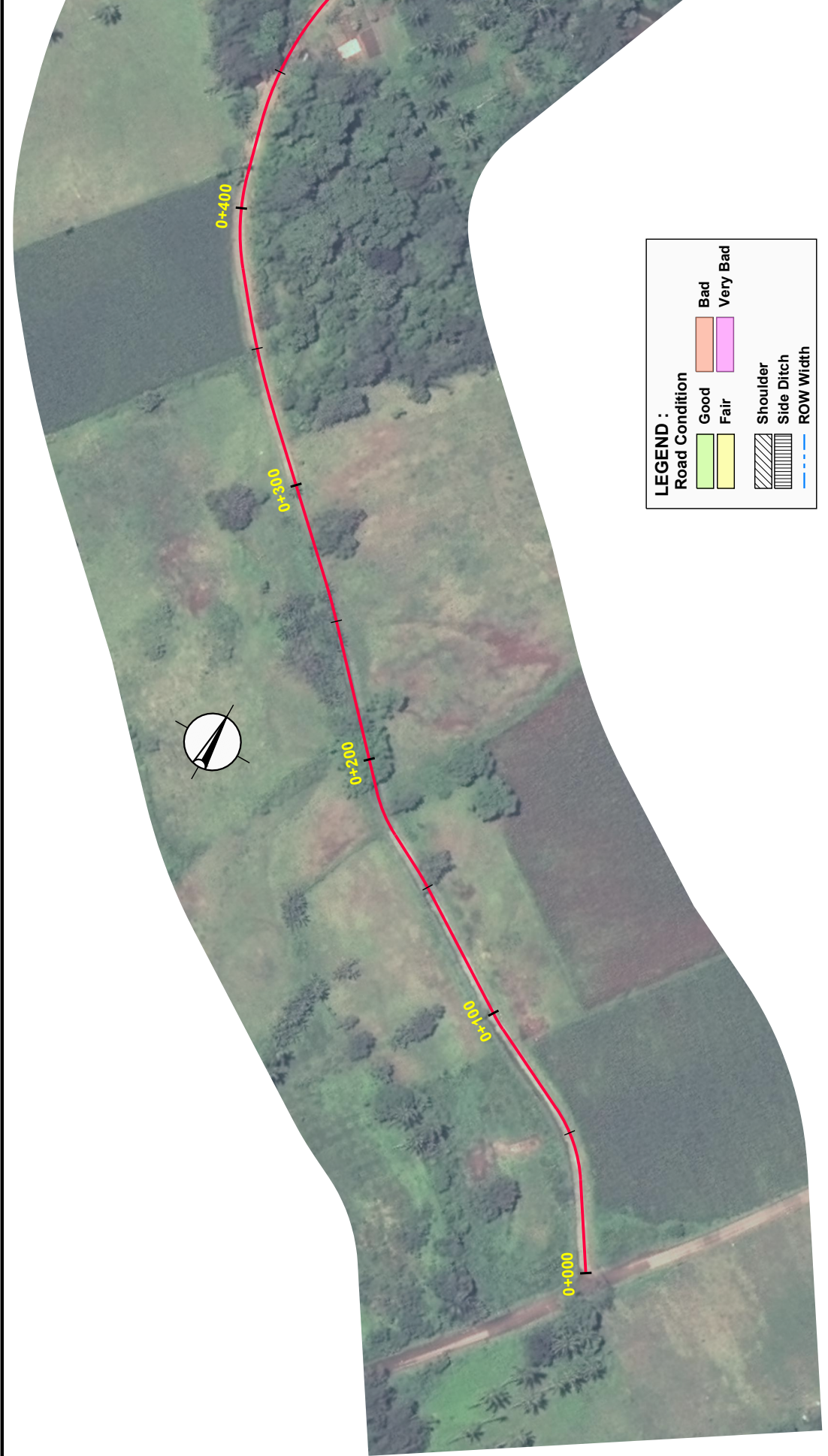


LEGEND :

Good	Bad
Fair	Very Bad
Shoulder	
Side Ditch	
ROW Width	

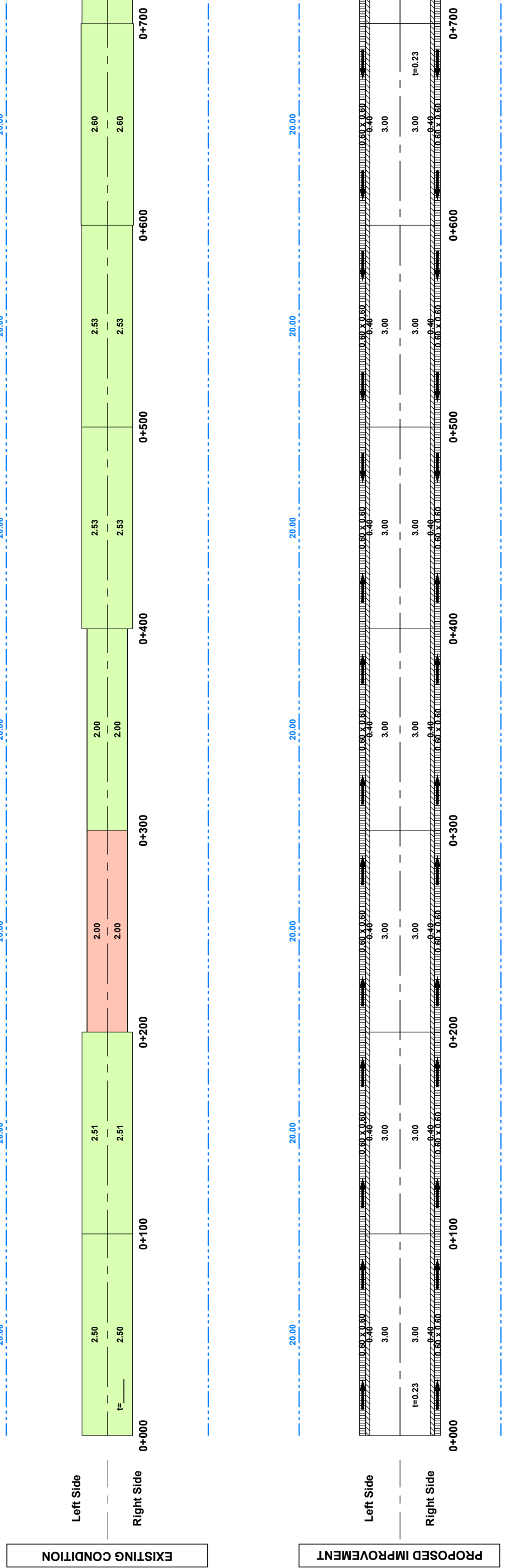


ROAD CLASS	SHEET CONTENTS	DRAWING NO.
3	ROAD-14 RANTIAN-PALING ROAD STA. 0+000 ~ STA. 0+700	R14-01



LEGEND :

Road Condition	
	Good
	Fair
	Bad
	Very Bad
	Shoulder
	Side Ditch
	ROW Width

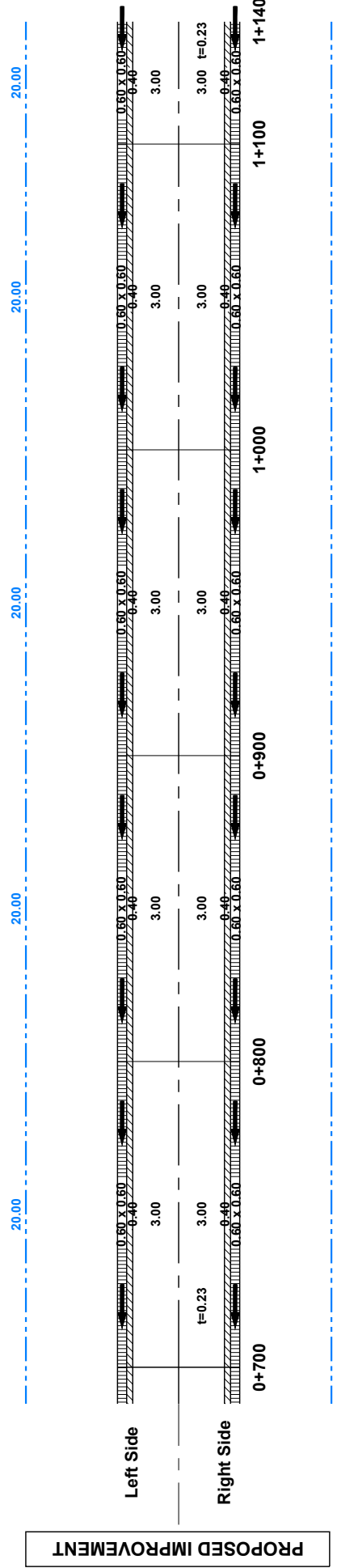
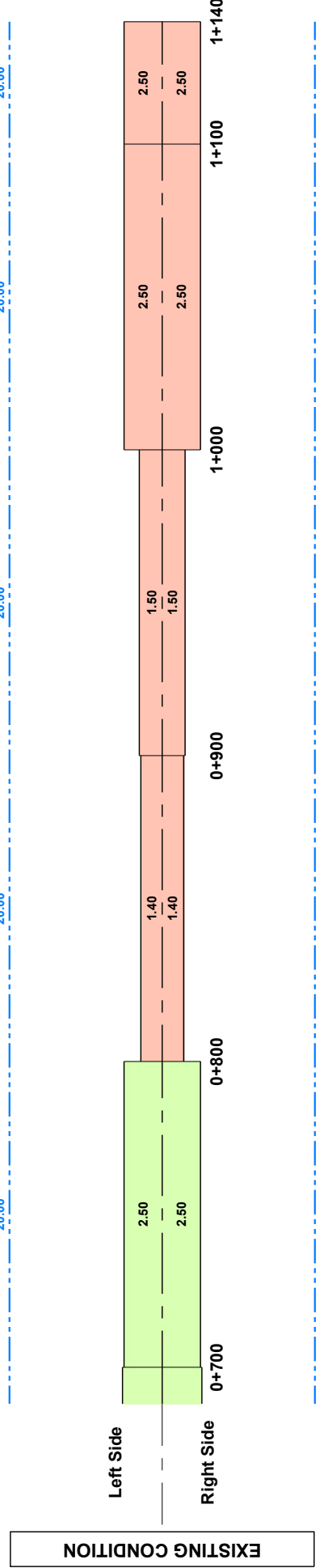


ROAD CLASS	SHEET CONTENTS	DRAWING NO.
3	ROAD-14 RANTIAN-PALING ROAD STA. 0+700 ~ STA. 1+140	R14-02



LEGEND :

Road Condition	
Good	Bad
Fair	Very Bad
Shoulder	Side Ditch
ROW Width	

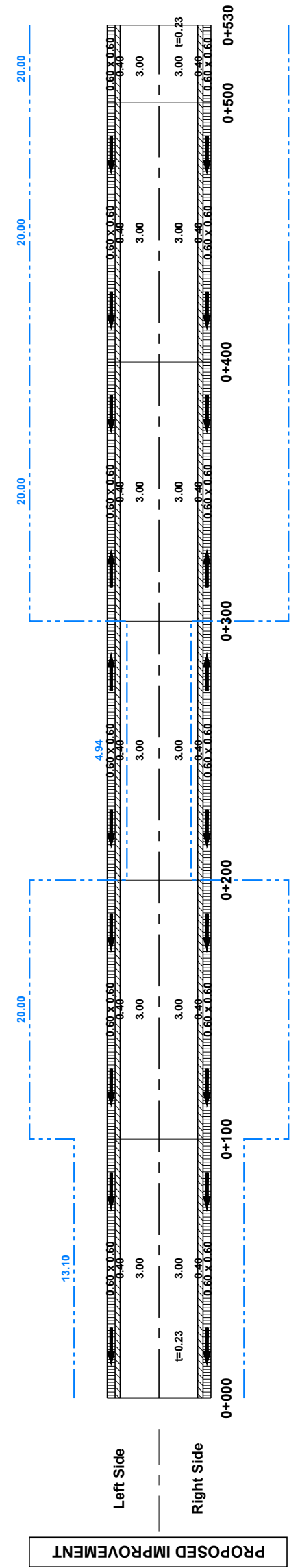
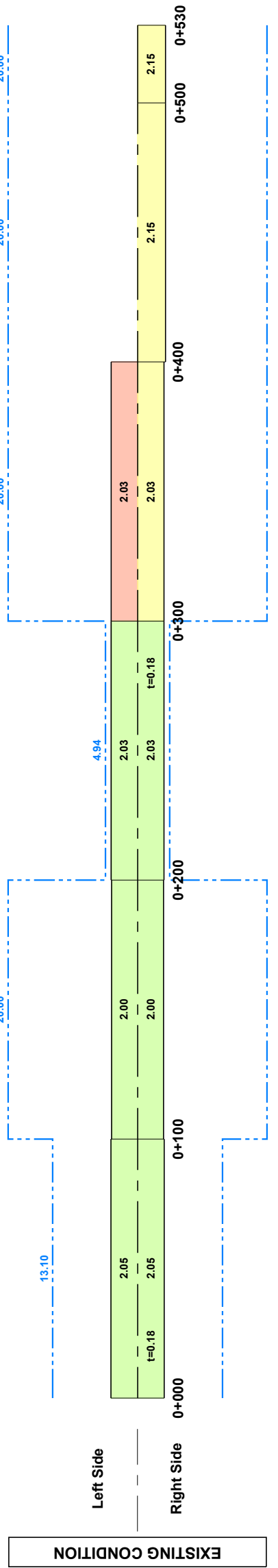


ROAD CLASS	SHEET CONTENTS	DRAWING NO.
3	ROAD-15 LINAO-ALINUN ROAD STA. 0+000 ~ STA. 0+530	R15-01



LEGEND :

Good	Bad
Fair	Very Bad
Shoulder	
Side Ditch	
ROW Width	



ROAD CLASS	SHEET CONTENTS	DRAWING NO.
2	ROAD-16 MARAWI-KAPAI ROAD STA. 0+000 ~ STA. 0+700	R16-01



LEGEND :

Road Condition

- Good (Green box)
- Fair (Yellow box)
- Bad (Orange box)
- Very Bad (Pink box)

Shoulder (Hatched pattern)

Side Ditch (Dashed line)

ROW Width (Blue dashed line)

