

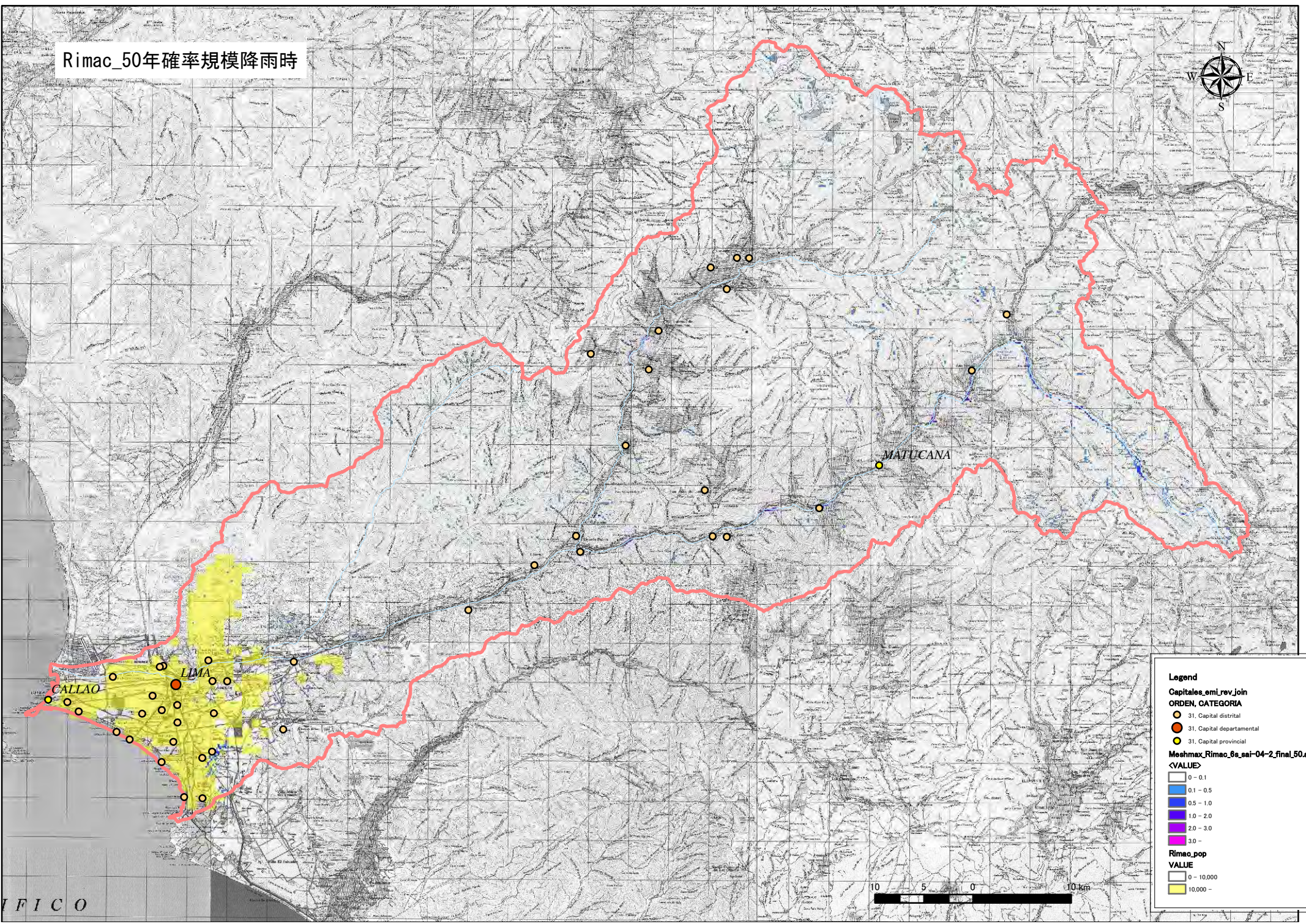
添付資料-4-7

規模別の氾濫解析結果図_ Rima

Rimac_50年確率規模降雨時



添付-4-38



Legend

Capitales_em_rev_join
ORDEN, CATEGORIA

- 31, Capital distrital
- 31, Capital departamental
- 31, Capital provincial

Meshmax_Rimac_6a_sai-04-2_final_50.as
<VALUE>

- 0 - 0.1
- 0.1 - 0.5
- 0.5 - 1.0
- 1.0 - 2.0
- 2.0 - 3.0
- 3.0 -

Rimac_pop
VALUE

- 0 - 10,000
- 10,000 -

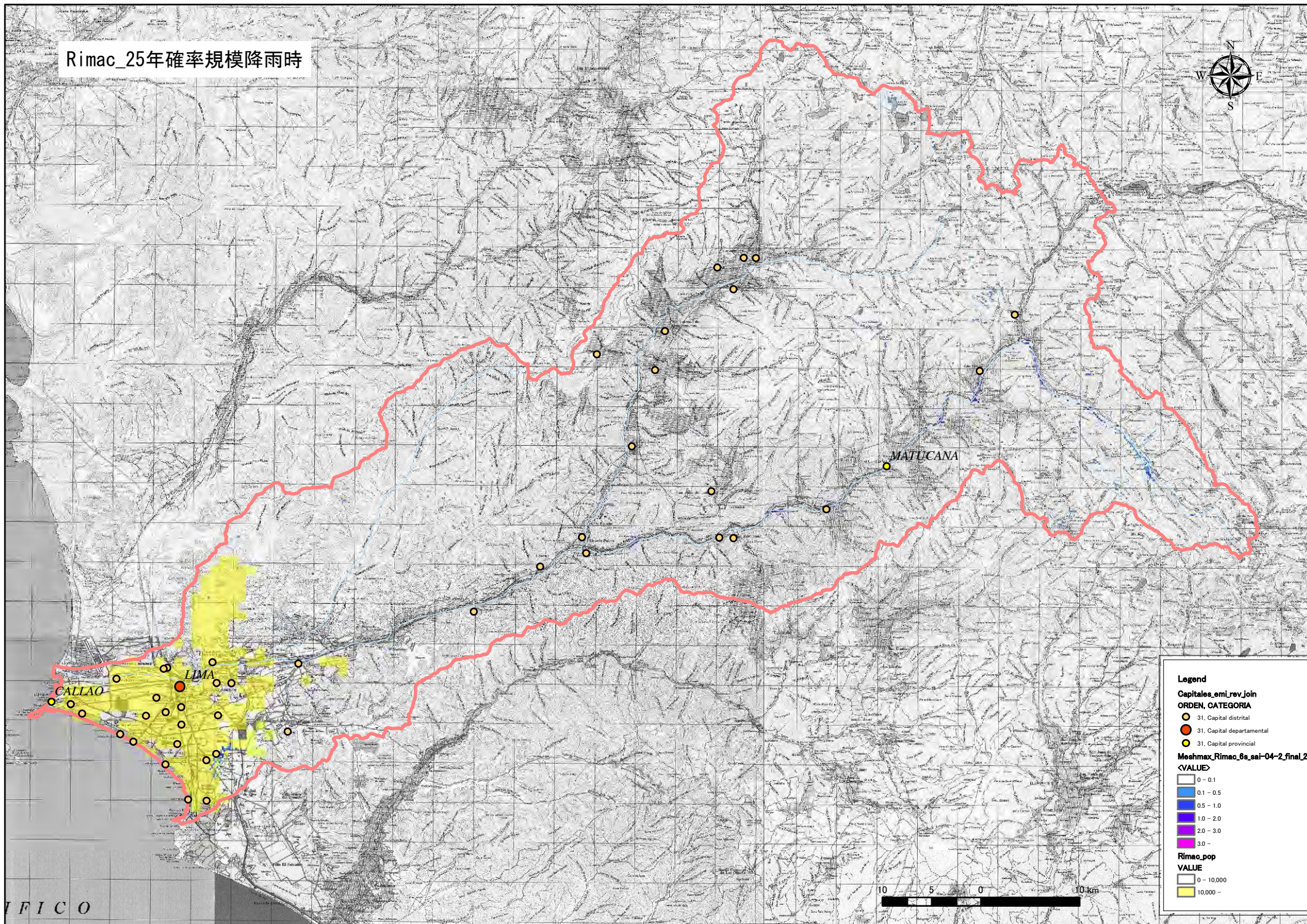


IFICO

Rimac_25年確率規模降雨時



添付-4-39



Legend

Capitales_eml_rev_join
ORDEN, CATEGORIA

- 31, Capital distrital
- 31, Capital departamental
- 31, Capital provincial

Meshmax_Rimac_6a_sai-04-2_final_25.as
<VALUE>

- 0 - 0.1
- 0.1 - 0.5
- 0.5 - 1.0
- 1.0 - 2.0
- 2.0 - 3.0
- 3.0 -

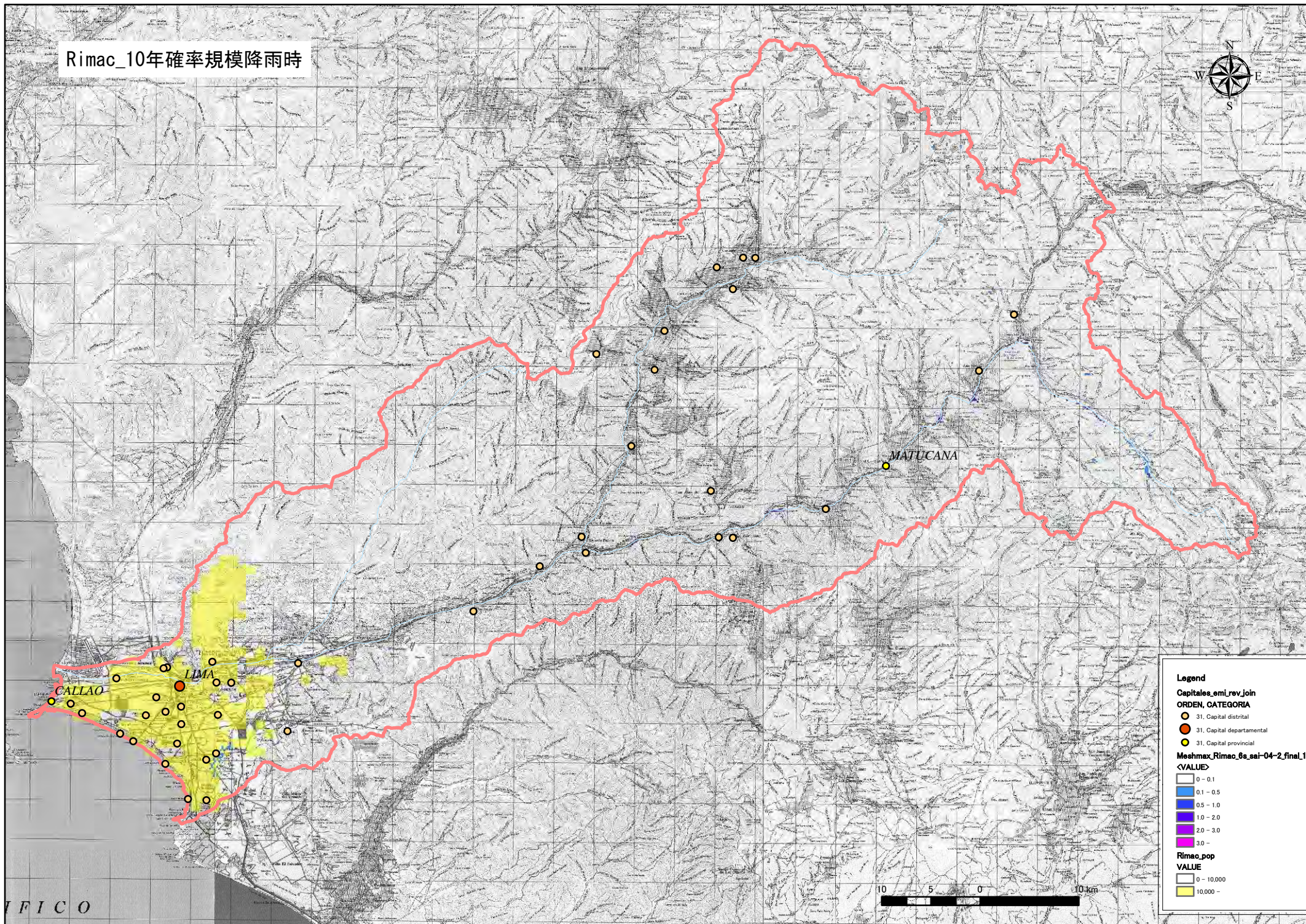
Rimac_pop
VALUE

- 0 - 10,000
- 10,000 -

Rimac_10年確率規模降雨時



添付-4-40



Legend

Capitales_emi_rev_join
ORDEN, CATEGORIA

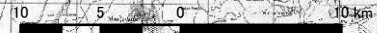
- 31, Capital distrital
- 31, Capital departamental
- 31, Capital provincial

Meshmax_Rimac_6a_sai-04-2_final_10.as
<VALUE>

- 0 - 0.1
- 0.1 - 0.5
- 0.5 - 1.0
- 1.0 - 2.0
- 2.0 - 3.0
- 3.0 -

Rimac_pop
VALUE

- 0 - 10,000
- 10,000 -

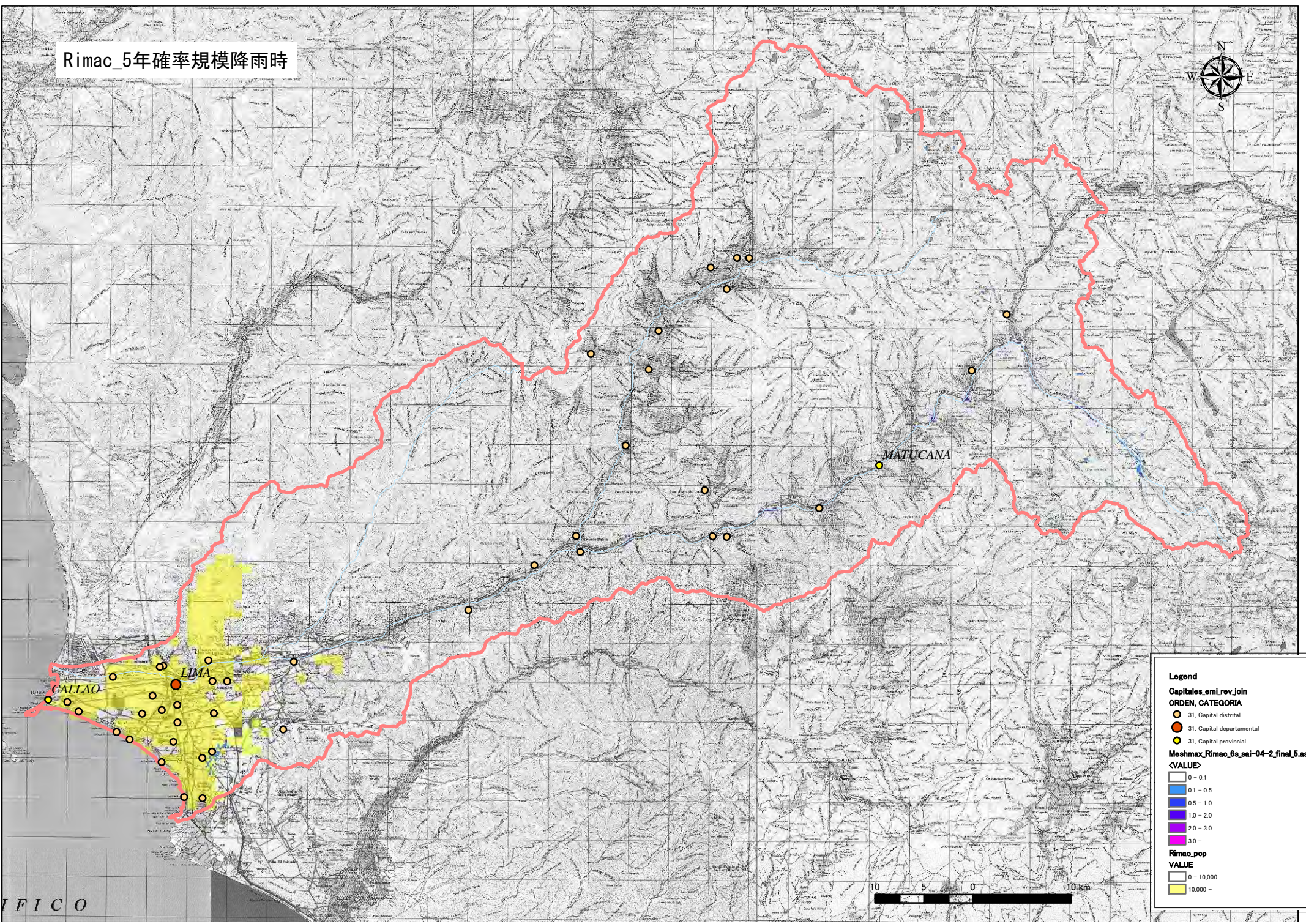


IFICO

Rimac_5年確率規模降雨時



添付-4-41



Legend

Capitales_emi_rev_join
ORDEN, CATEGORIA

- 31, Capital distrital
- 31, Capital departamental
- 31, Capital provincial

Meshmax_Rimac_6a_sai-04-2_final_5.asc
<VALUE>

- 0 - 0.1
- 0.1 - 0.5
- 0.5 - 1.0
- 1.0 - 2.0
- 2.0 - 3.0
- 3.0 -

Rimac_pop
VALUE

- 0 - 10,000
- 10,000 -

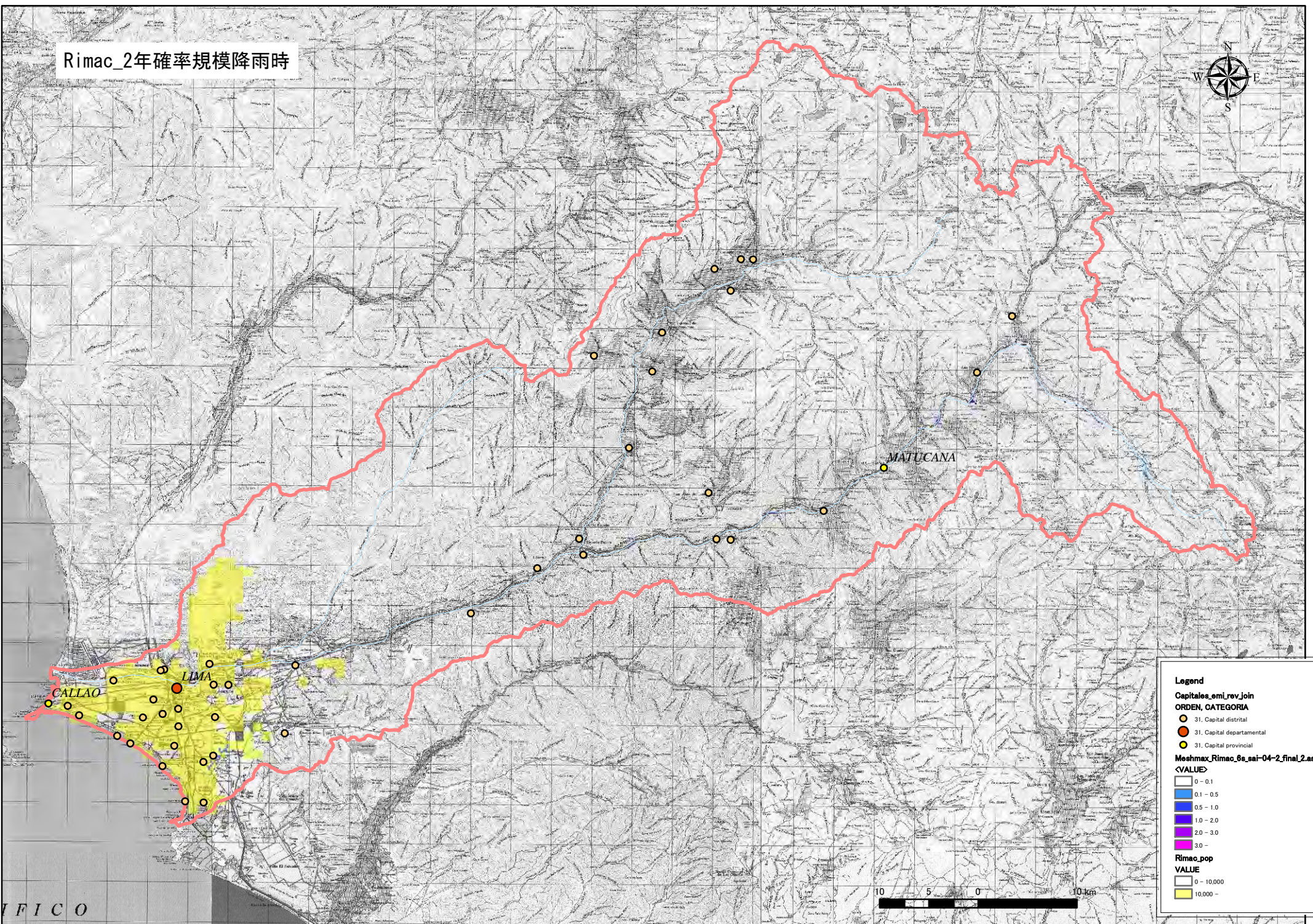


IFICO

Rimac_2年確率規模降雨時



添付-4-42



Legend

Capitales_eml_rev_join
ORDEN, CATEGORIA

- 31, Capital distrital
- 31, Capital departamental
- 31, Capital provincial

Meshmax_Rimac_6a_sai-04-2_final2.asc
<VALUE>

- 0 - 0.1
- 0.1 - 0.5
- 0.5 - 1.0
- 1.0 - 2.0
- 2.0 - 3.0
- 3.0 -

Rimac_pop
VALUE

- 0 - 10,000
- 10,000 -

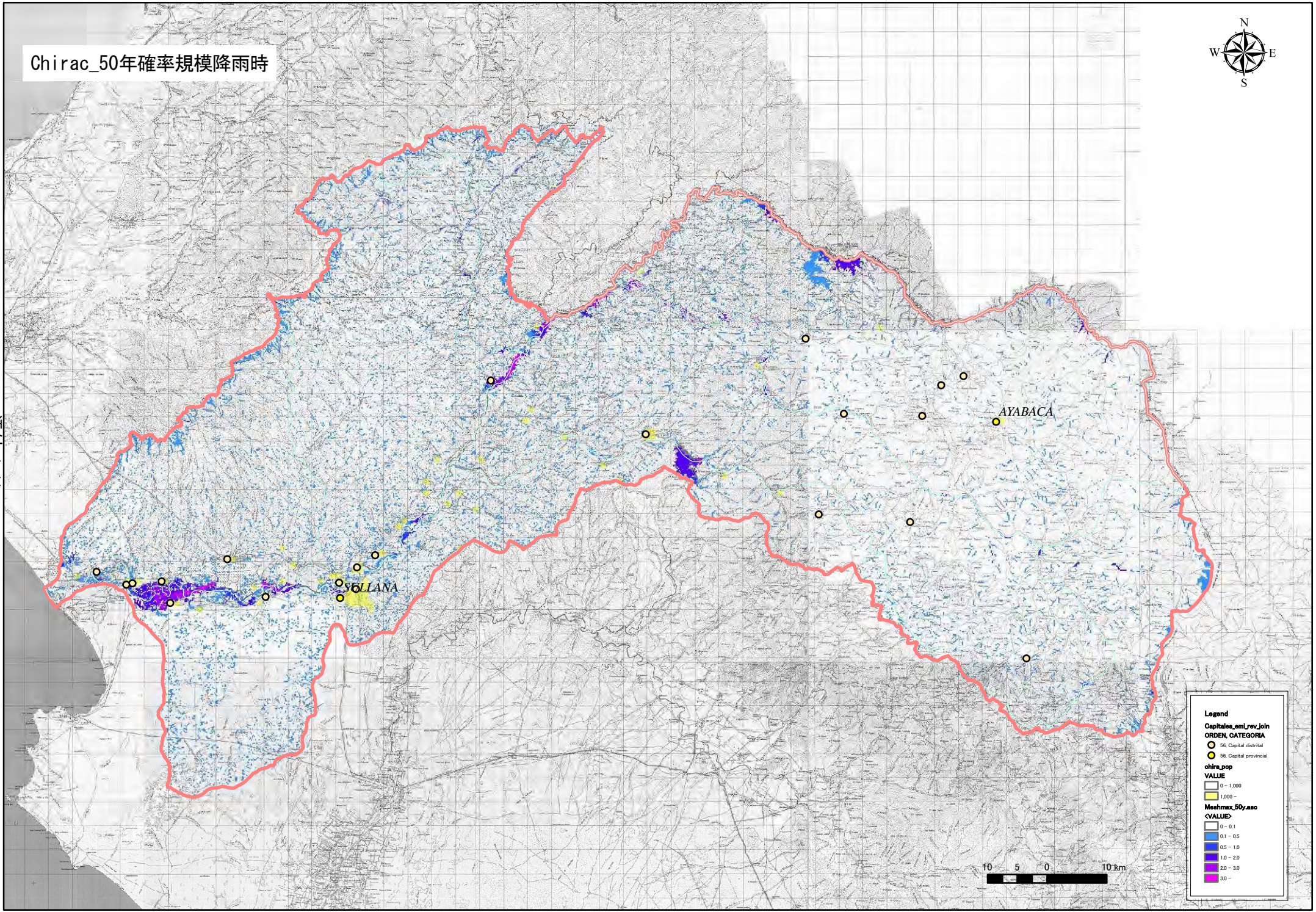
添付資料-4-8

規模別の氾濫解析結果図_chira

Chirac_50年確率規模降雨時



添付-4-44



Legend

Capitales_emi_rev_join
ORDEN, CATEGORIA
○ 56, Capital distrital
● 56, Capital provincial

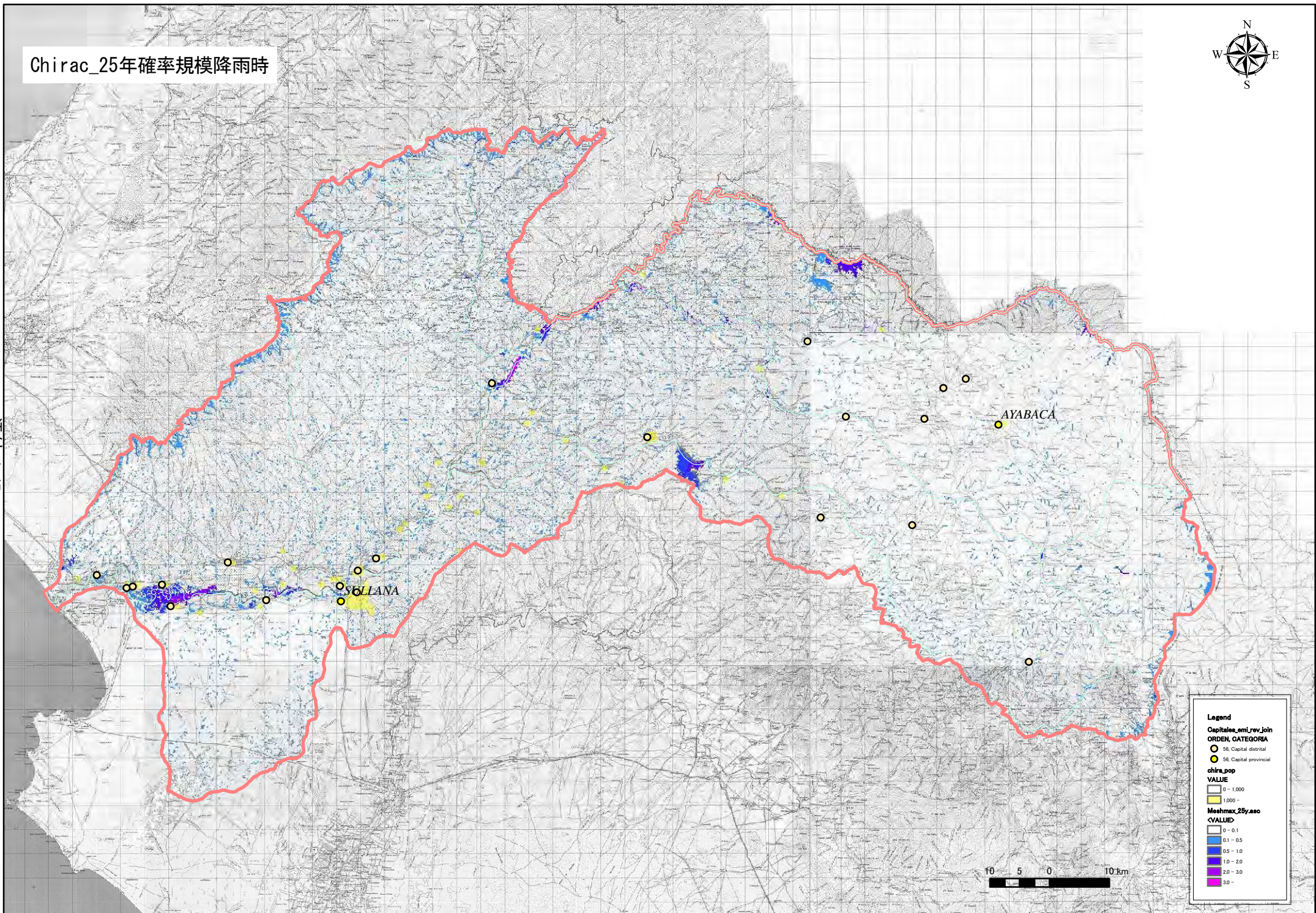
chira_pop
VALUE
□ 0 - 1,000
■ 1,000 -

Meshmax_50y_aeo
<VALUE>
□ 0 - 0.1
■ 0.1 - 0.5
■ 0.5 - 1.0
■ 1.0 - 2.0
■ 2.0 - 3.0
■ 3.0 -

Chirac_25年確率規模降雨時



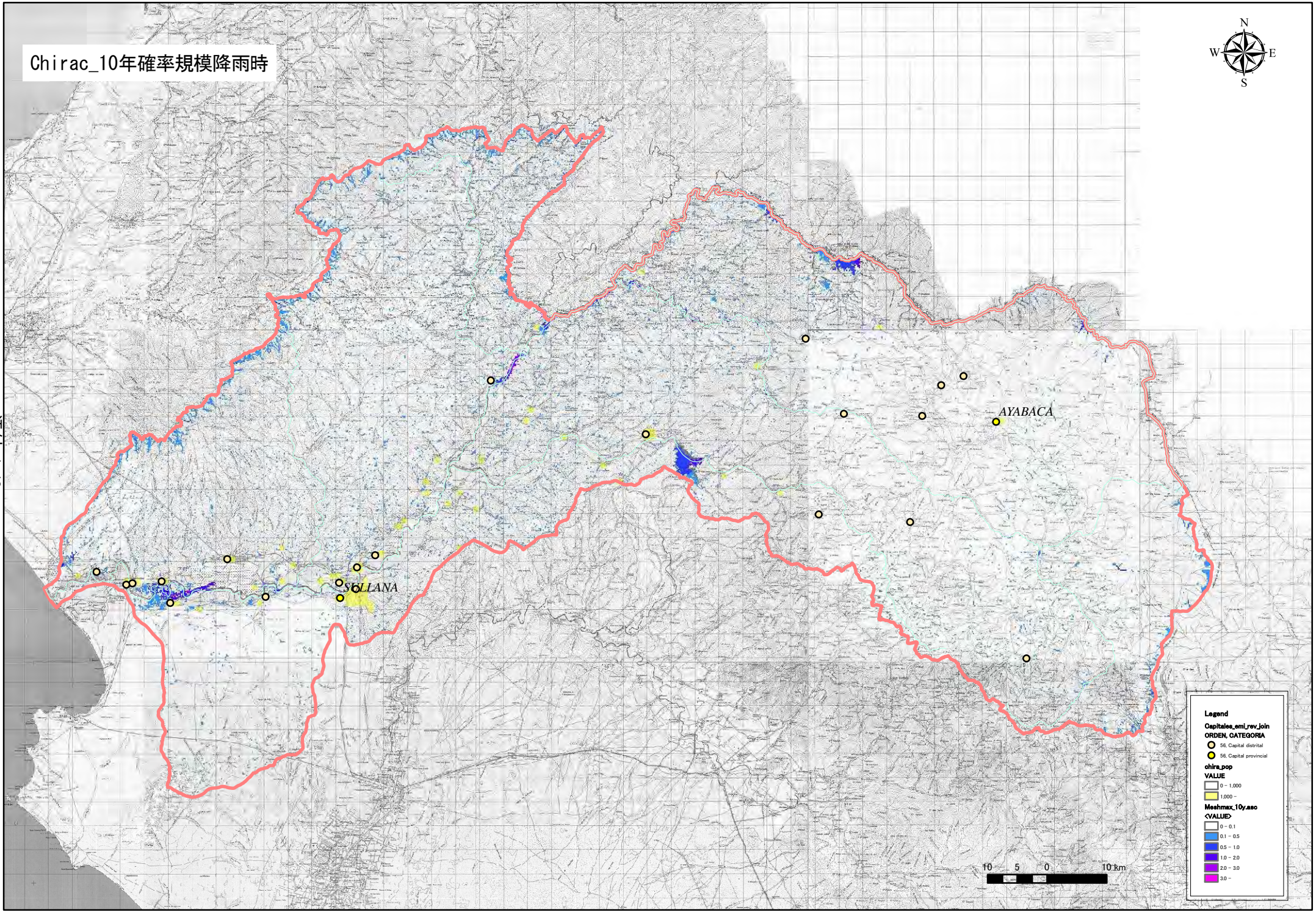
添付-4-45



Chirac_10年確率規模降雨時



添付-4-46



Legend

Capitales_emi_rev_join
ORDEN, CATEGORIA
○ 56, Capital distrital
● 56, Capital provincial

chira_pop
VALUE
□ 0 - 1,000
■ 1,000 -

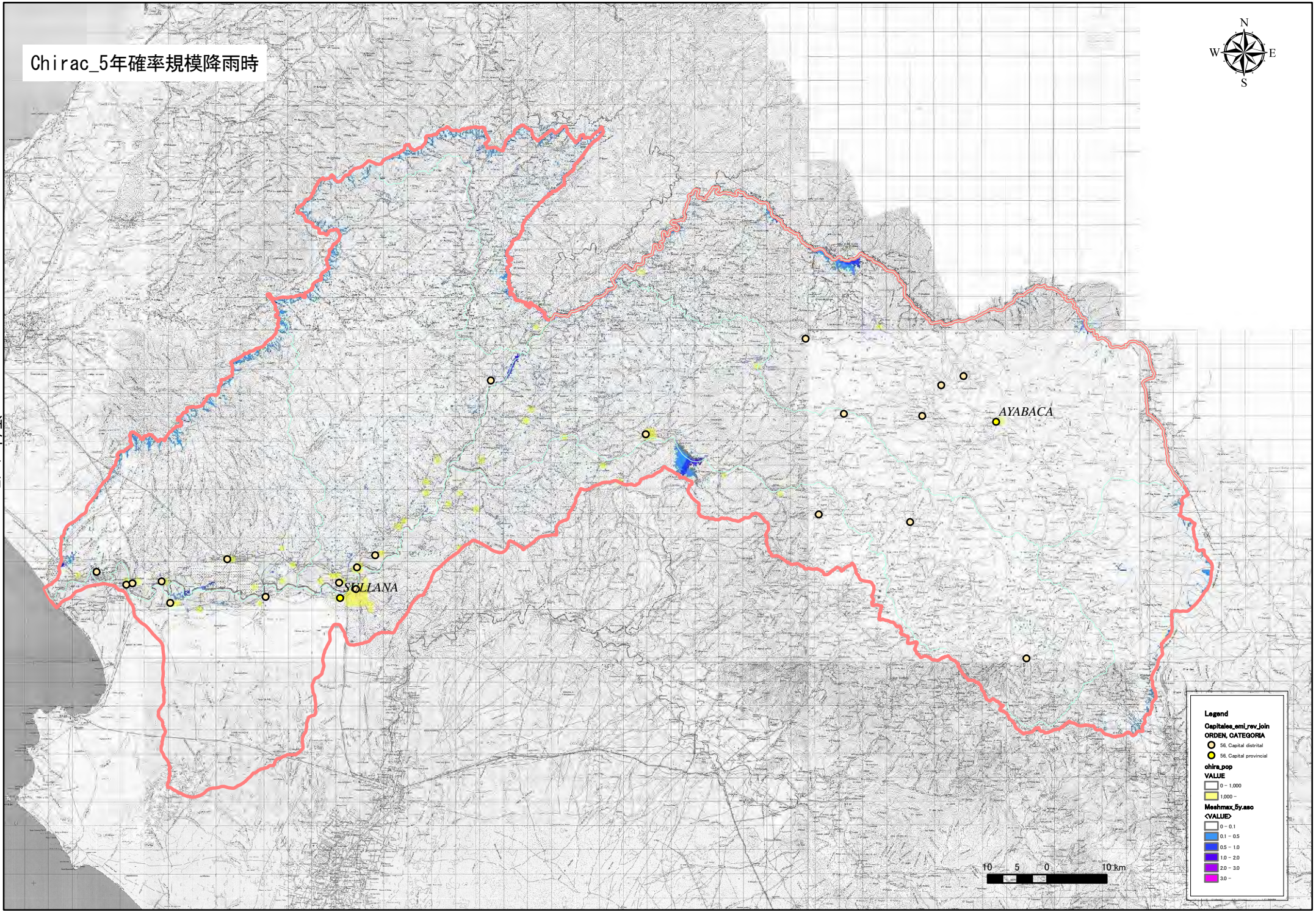
Meshmax_10y_aao
<VALUE>
□ 0 - 0.1
■ 0.1 - 0.5
■ 0.5 - 1.0
■ 1.0 - 2.0
■ 2.0 - 3.0
■ 3.0 -



Chirac_5年確率規模降雨時



添付-4-47



Legend

Capitales_smi_rev_join
ORDEN, CATEGORIA

- 56, Capital distrital
- 56, Capital provincial

chira_pop
VALUE

- 0 - 1,000
- 1,000 -

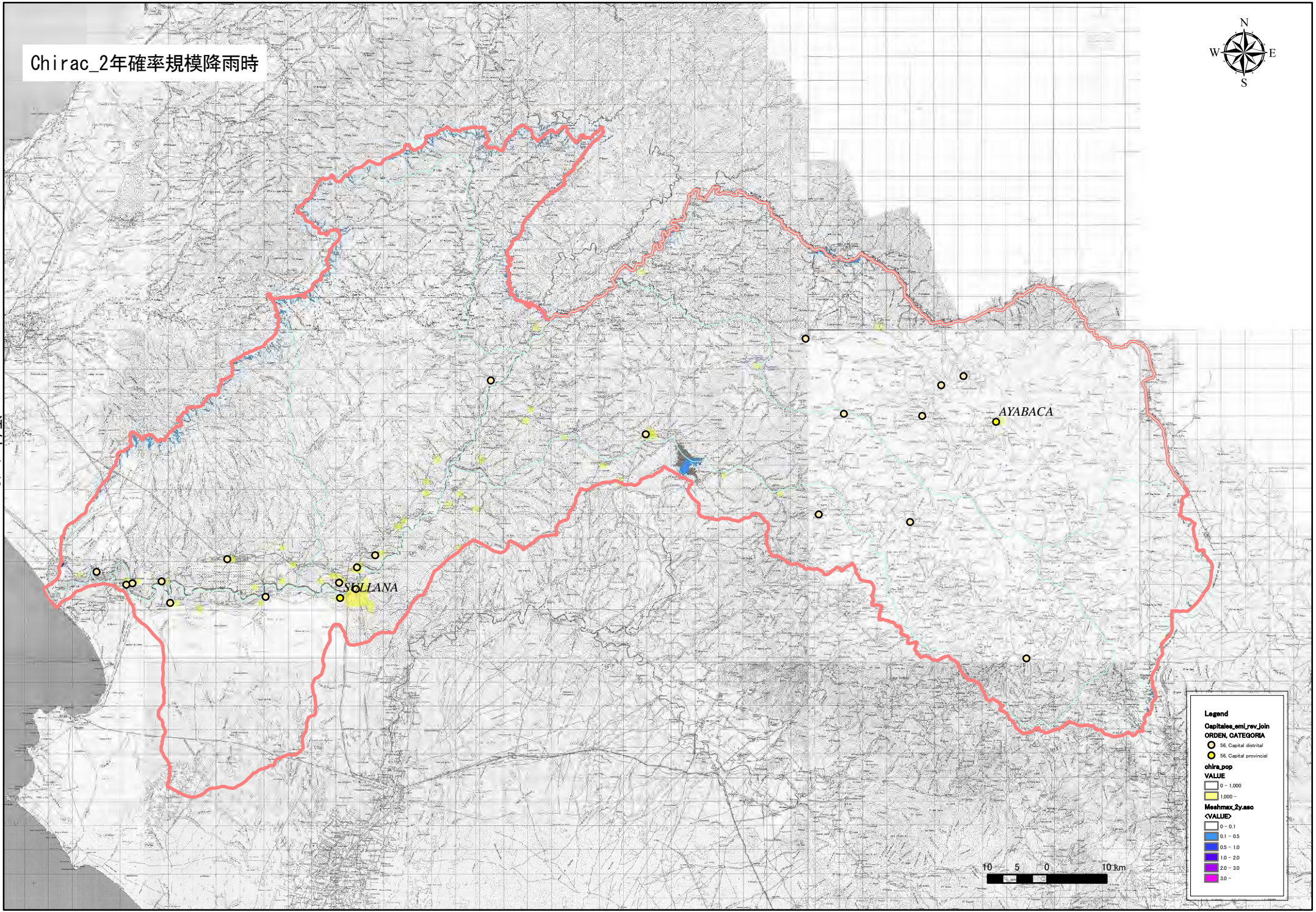
Meshmax_5y_aao
<VALUE>

- 0 - 0.1
- 0.1 - 0.5
- 0.5 - 1.0
- 1.0 - 2.0
- 2.0 - 3.0
- 3.0 -

Chirac_2年確率規模降雨時



添付-4-48



Legend

Capitales_smi_rev_join
ORDEN, CATEGORIA
○ 56, Capital distrital
● 56, Capital provincial

chira_pop
VALUE
□ 0 - 1,000
■ 1,000 -

Meshmax_2y.aso
<VALUE>
□ 0 - 0.1
■ 0.1 - 0.5
■ 0.5 - 1.0
■ 1.0 - 2.0
■ 2.0 - 3.0
■ 3.0 -

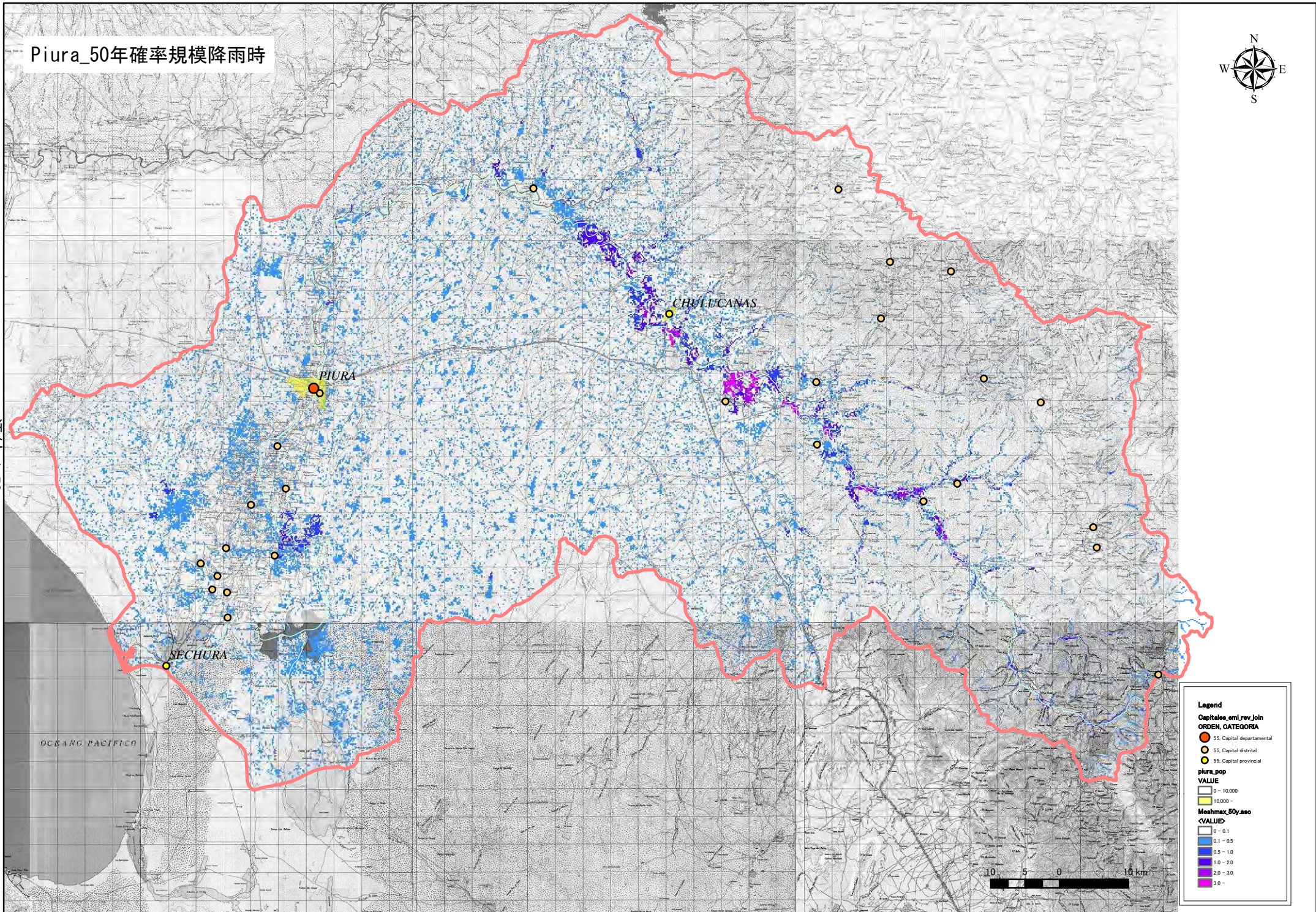
添付資料-4-9

規模別の氾濫解析結果図_ Piura

Piura_50年確率規模降雨時



添付-4-50



Legend

Capitales_ami_rev_join
ORDEN, CATEGORIA

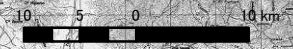
- 55, Capital departamental
- 55, Capital distrital
- 55, Capital provincial

piura_pop
VALUE

- 0 - 10,000
- 10,000 -

Meehmax_50y.asc
<VALUE>

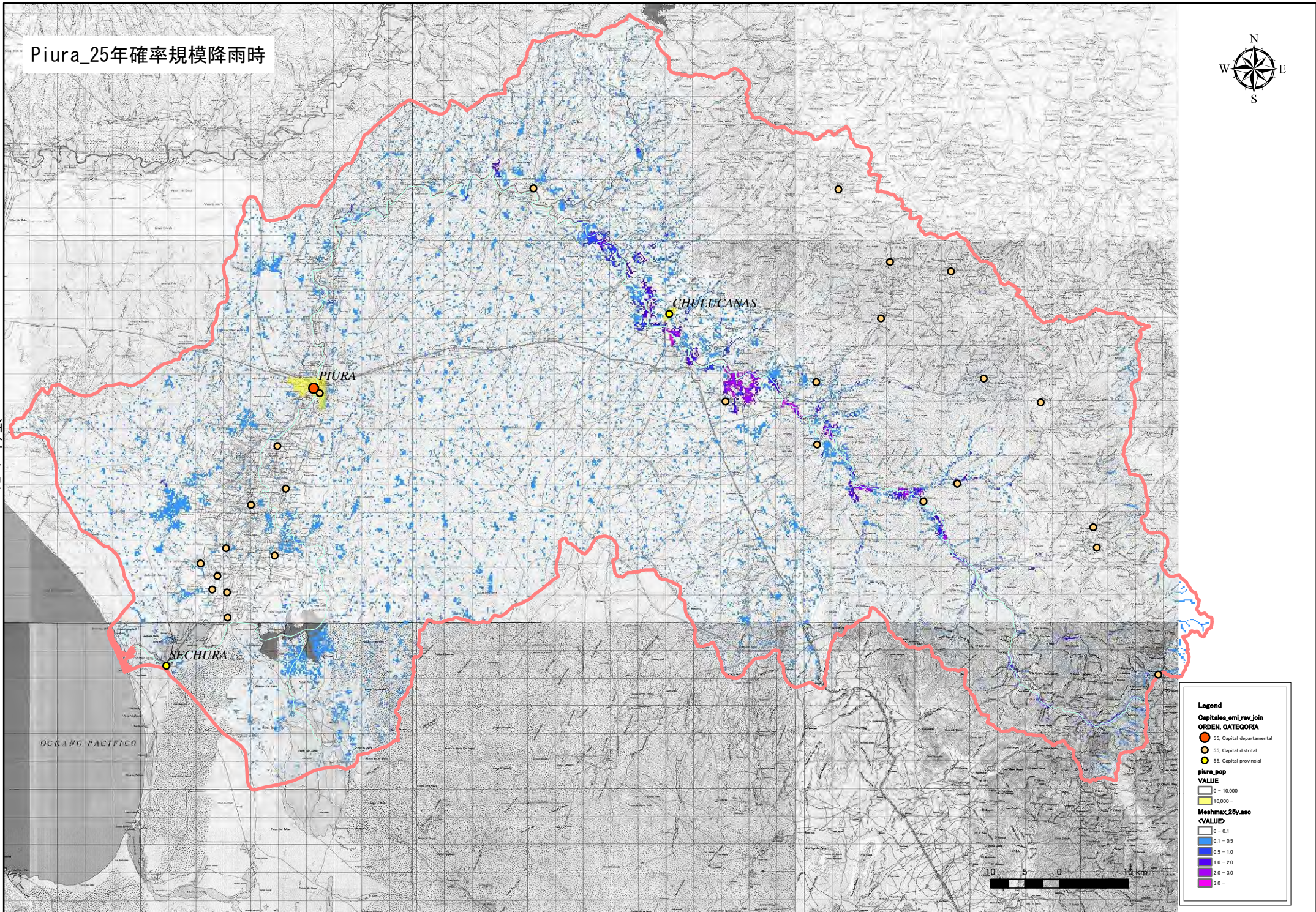
- 0 - 0.1
- 0.1 - 0.5
- 0.5 - 1.0
- 1.0 - 2.0
- 2.0 - 3.0
- 3.0 -



Piura_25年確率規模降雨時



添付-4-51



Legend

Capitale_enti_rev_join
ORDEN, CATEGORIA

- 55, Capital departamental
- 55, Capital distrital
- 55, Capital provincial

piura_pop
VALUE

- 0 - 10,000
- 10,000 -

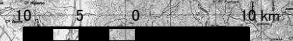
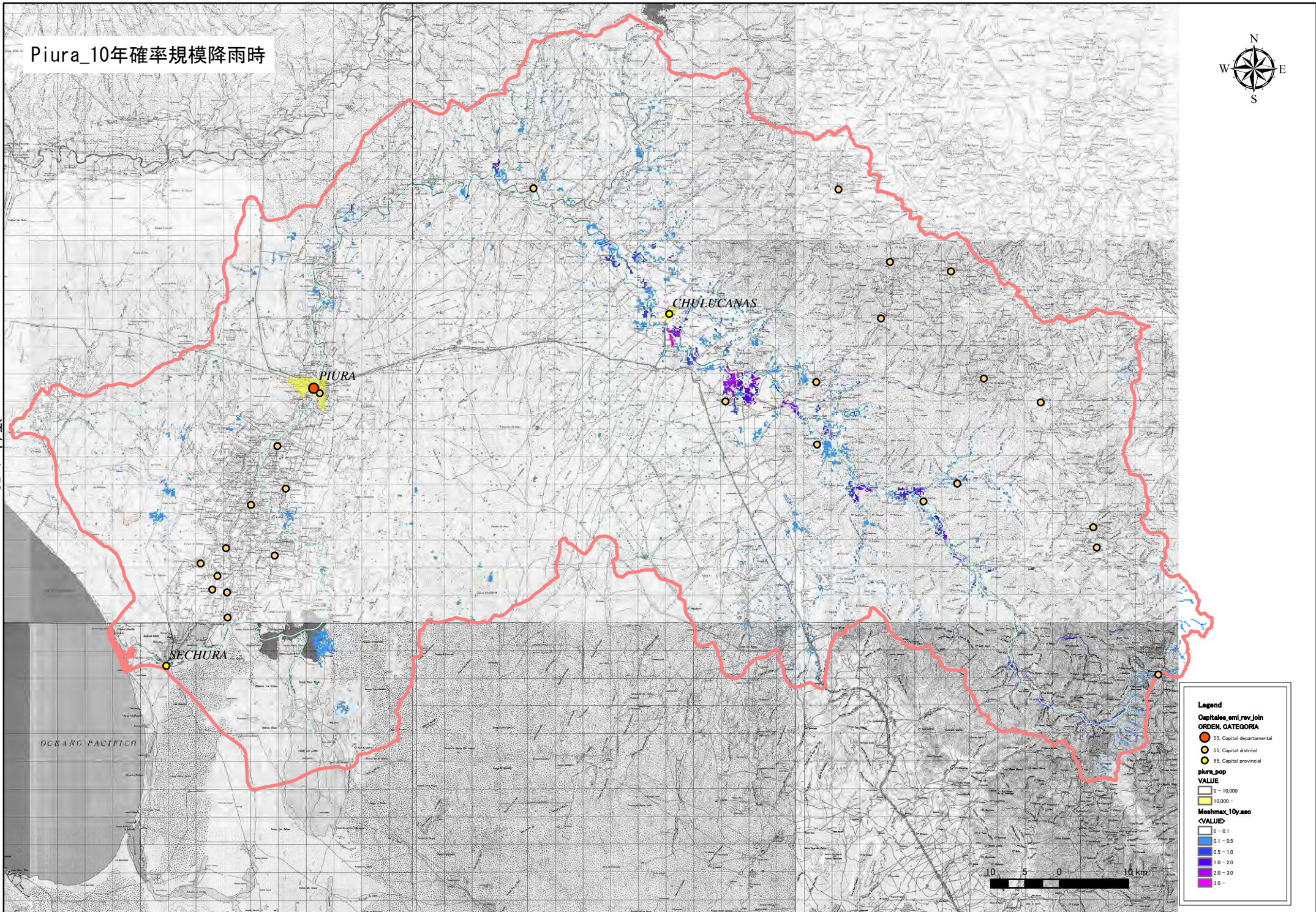
Meehmax_25y_aao
<VALUE>

- 0 - 0.1
- 0.1 - 0.5
- 0.5 - 1.0
- 1.0 - 2.0
- 2.0 - 3.0
- 3.0 -

Piura_10年確率規模降雨時



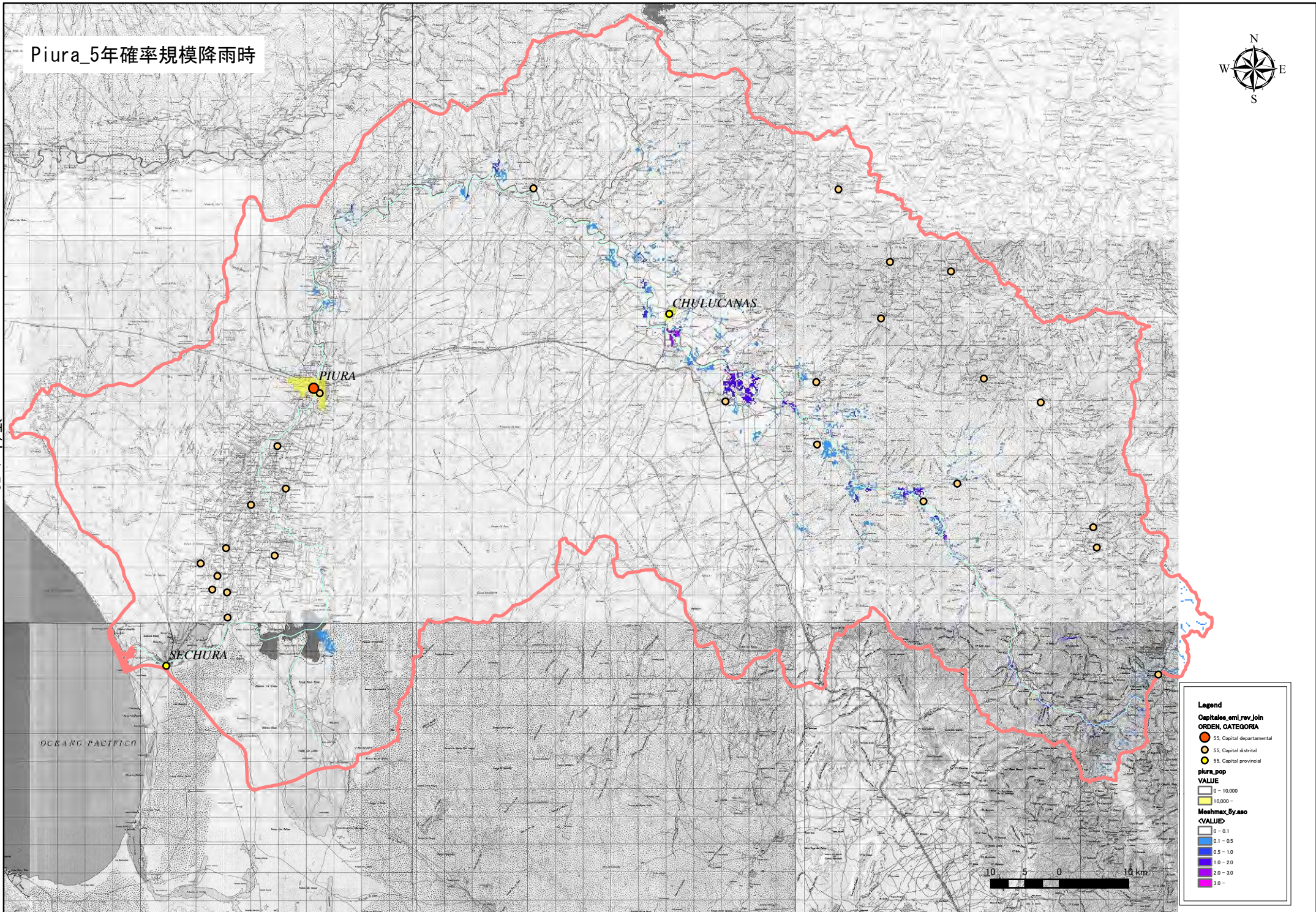
添付-4-52



Piura_5年確率規模降雨時



添付-4-53



Legend

Capitales_ami_rev_join
ORDEN, CATEGORIA

- 55, Capital departamental
- 55, Capital distrital
- 55, Capital provincial

piura_pop
VALUE

- 0 - 10,000
- 10,000 -

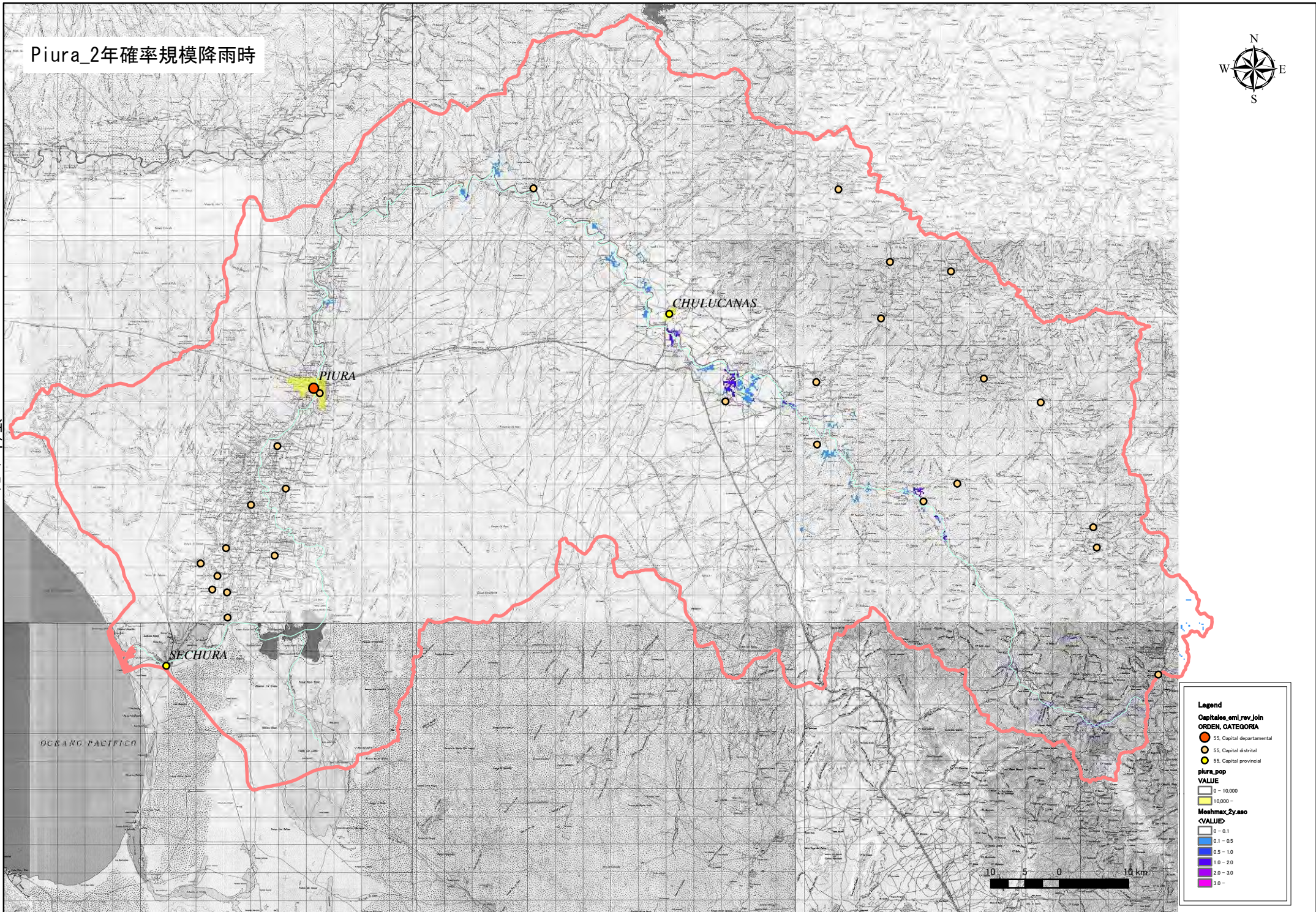
Meehmax_5y_aoo
<VALUE>

- 0 - 0.1
- 0.1 - 0.5
- 0.5 - 1.0
- 1.0 - 2.0
- 2.0 - 3.0
- 3.0 -

Piura_2年確率規模降雨時



添付-4-54



OCEANO PACIFICO