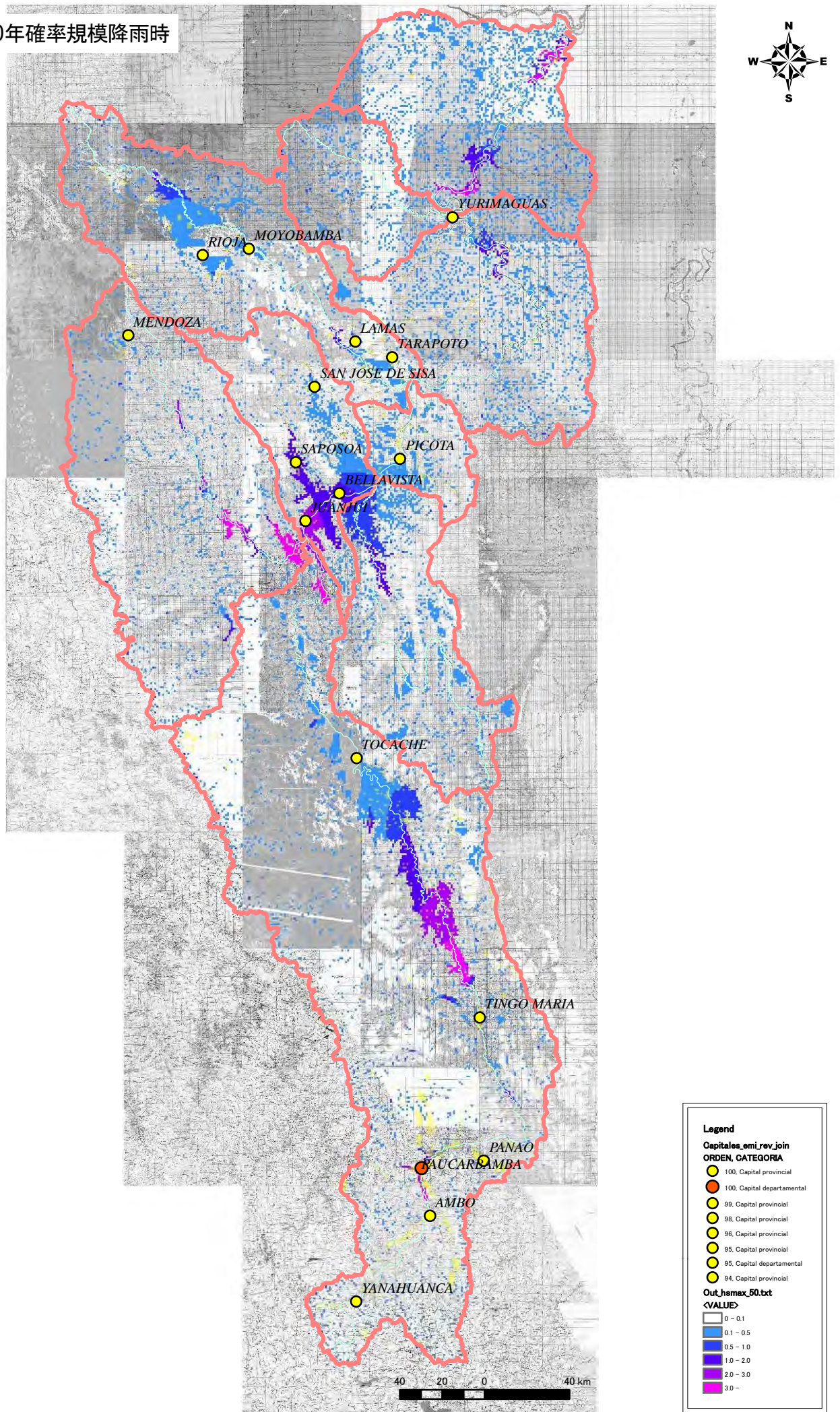


添付資料-4-4

規模別の氾濫解析結果図_ Huallaga

HualIaga_50年確率規模降雨時



Legend

Capitales_emi_rev_join

ORDEN, CATEGORIA

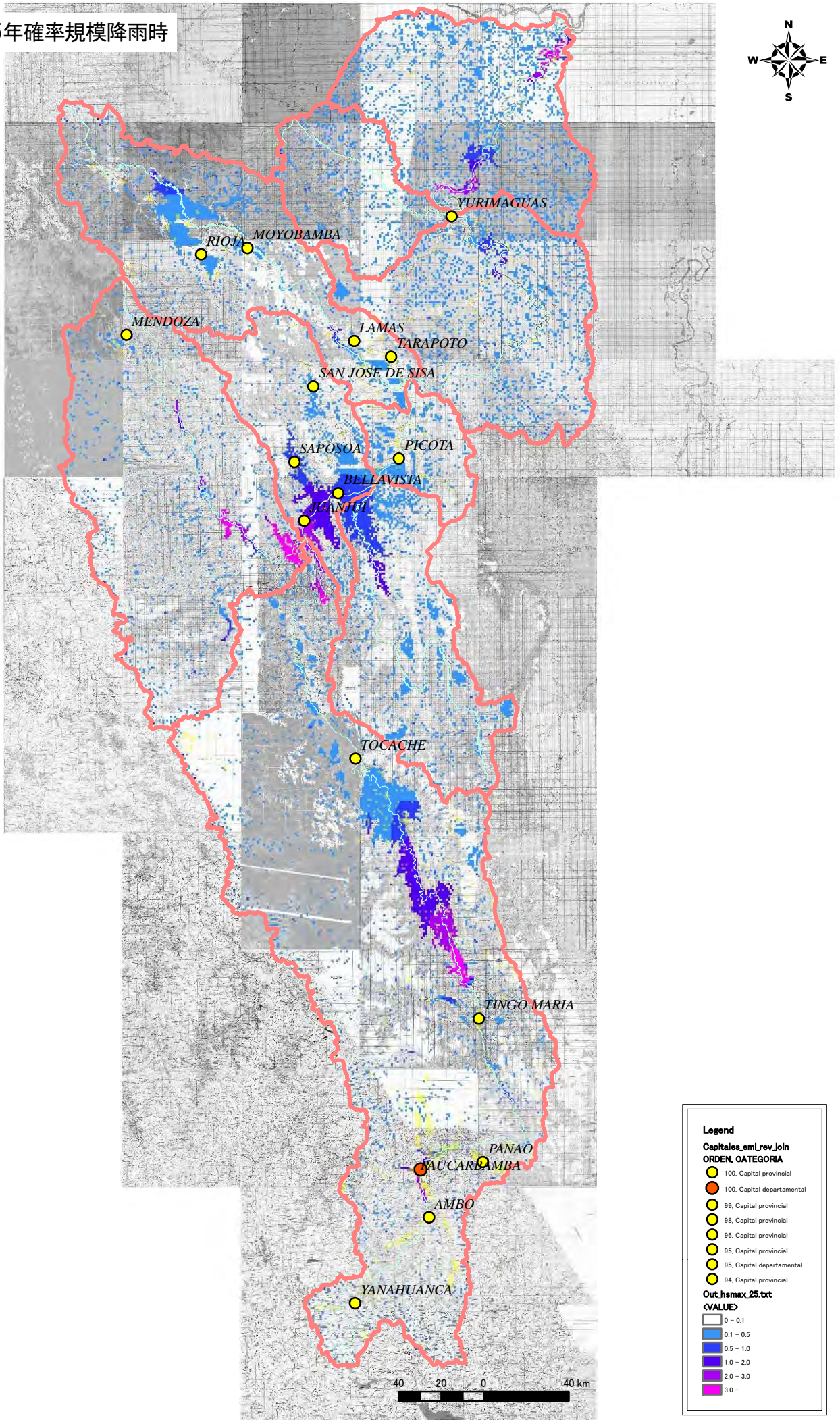
- 100, Capital provincial
- 100, Capital departamental
- 99, Capital provincial
- 98, Capital provincial
- 96, Capital provincial
- 95, Capital provincial
- 95, Capital departamental
- 94, Capital provincial

Out_hemax_50.txt

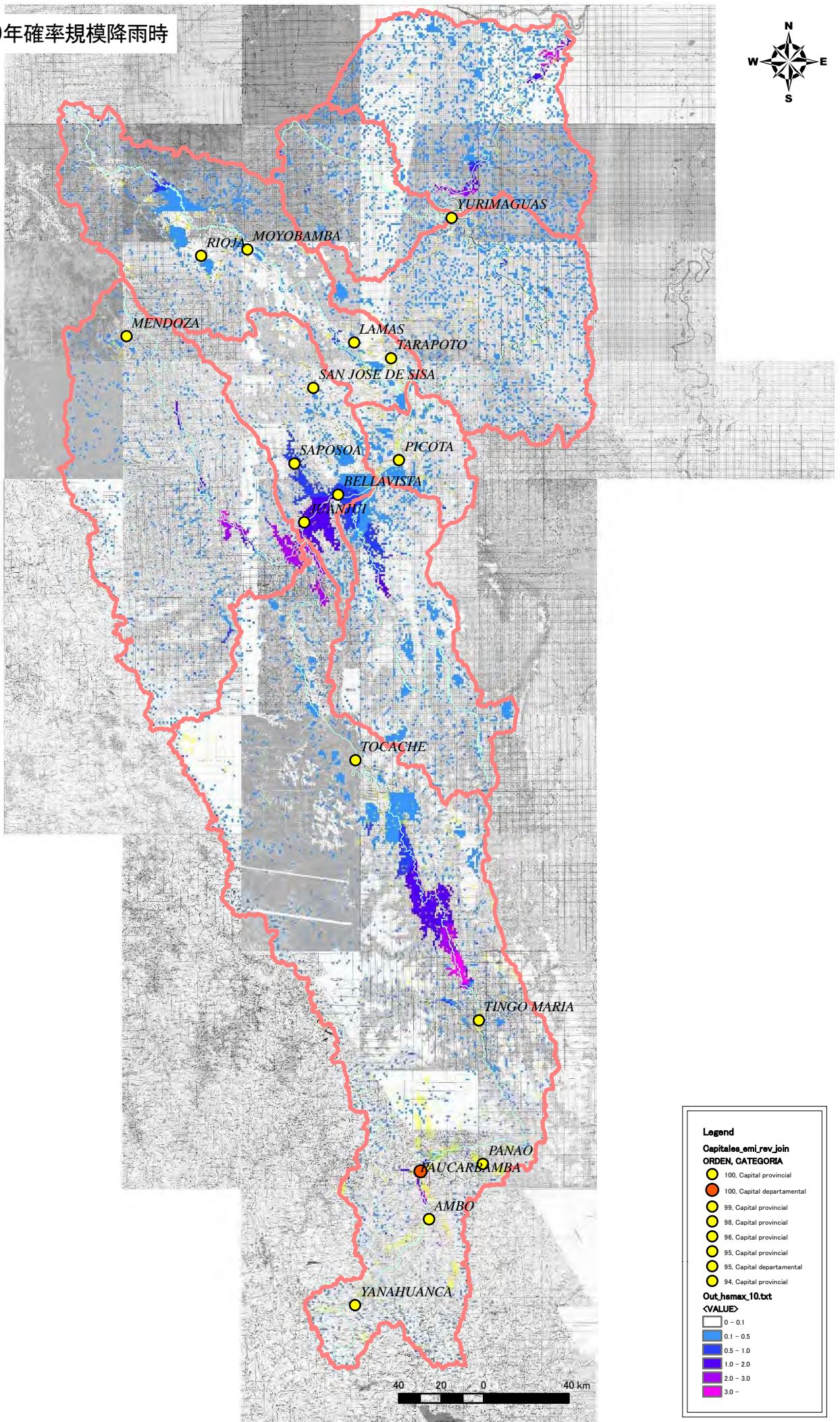
<VALUE>

- 0 - 0.1
- 0.1 - 0.5
- 0.5 - 1.0
- 1.0 - 2.0
- 2.0 - 3.0
- 3.0 -

HualIaga_25年確率規模降雨時



HualIaga_10年確率規模降雨時



Legend

Capitales_emi_rev_join

ORDEN, CATEGORIA

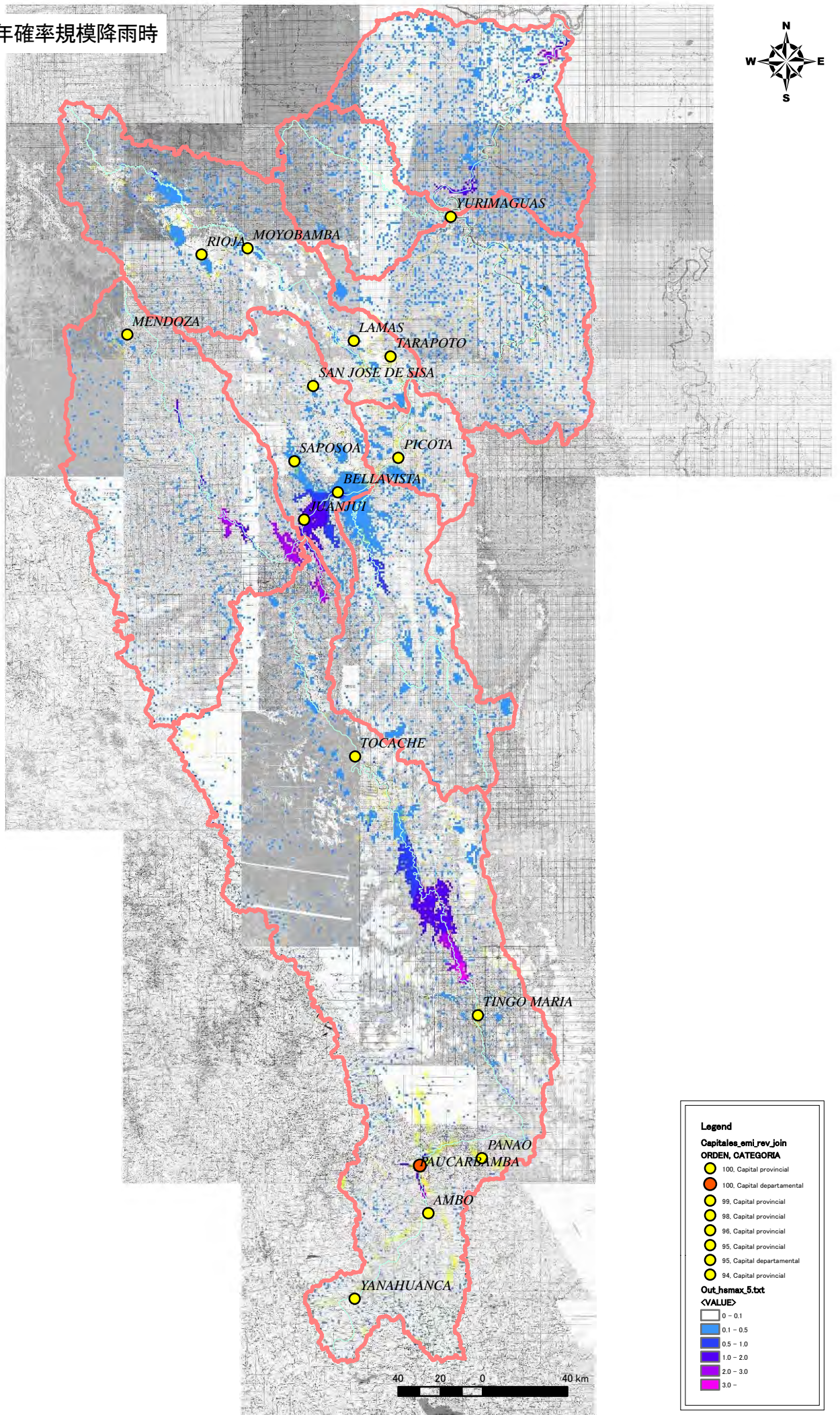
- 100, Capital provincial
- 100, Capital departamental
- 99, Capital provincial
- 98, Capital provincial
- 96, Capital provincial
- 95, Capital provincial
- 95, Capital departamental
- 94, Capital provincial

Out_hsmx_10.txt

<VALUE>

- 0 - 0.1
- 0.1 - 0.5
- 0.5 - 1.0
- 1.0 - 2.0
- 2.0 - 3.0
- 3.0 -

HualIaga_5年確率規模降雨時



Legend

Capitales_emi_rev_join

ORDEN, CATEGORIA

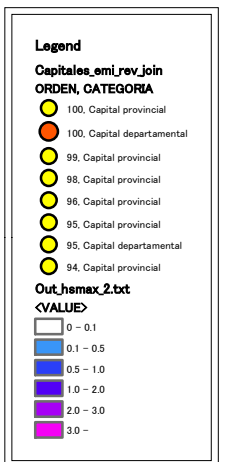
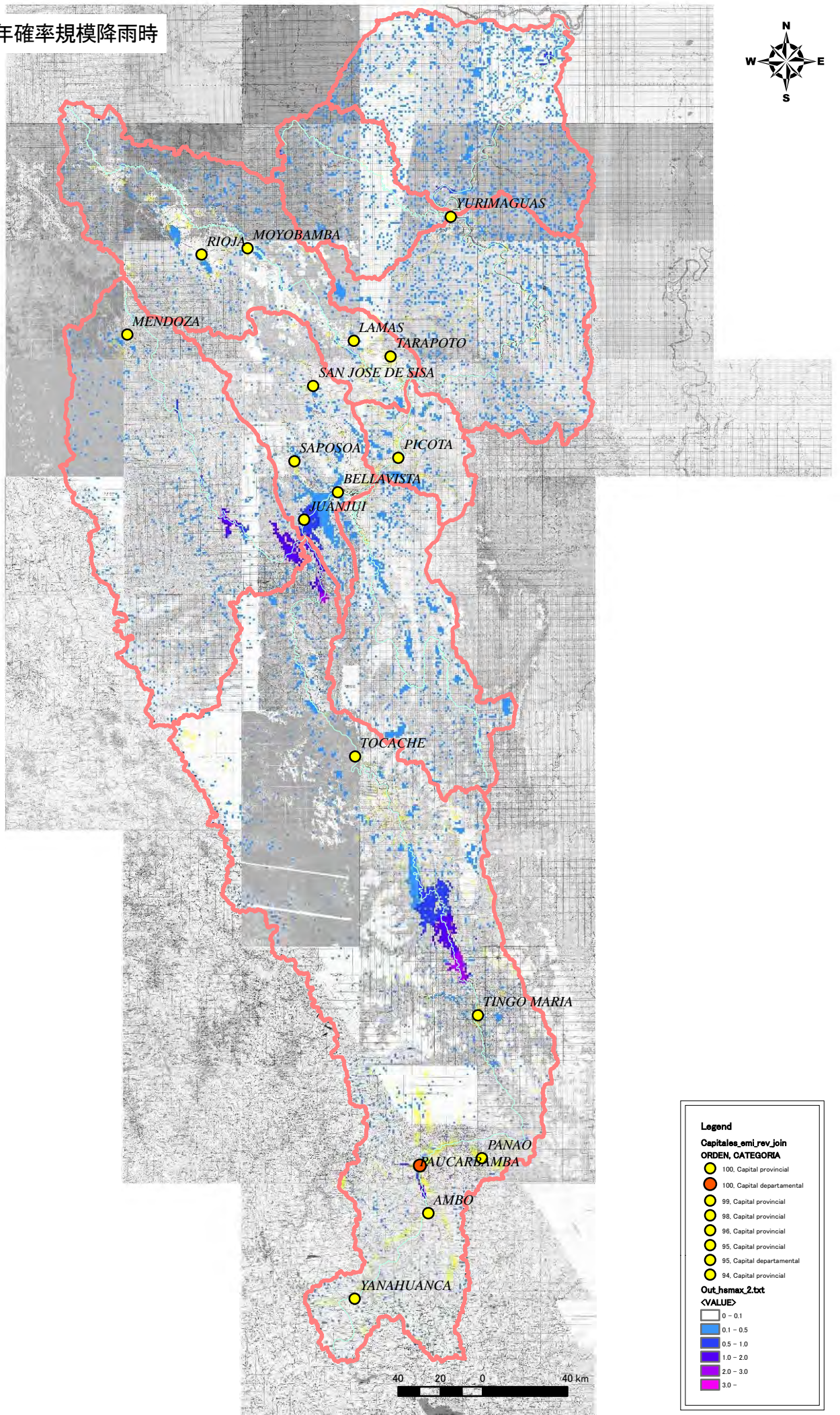
- 100, Capital provincial
- 100, Capital departamental
- 99, Capital provincial
- 98, Capital provincial
- 96, Capital provincial
- 95, Capital provincial
- 95, Capital departamental
- 94, Capital provincial

Out_hemax_5.txt

<VALUE>

- 0 - 0.1
- 0.1 - 0.5
- 0.5 - 1.0
- 1.0 - 2.0
- 2.0 - 3.0
- 3.0 -

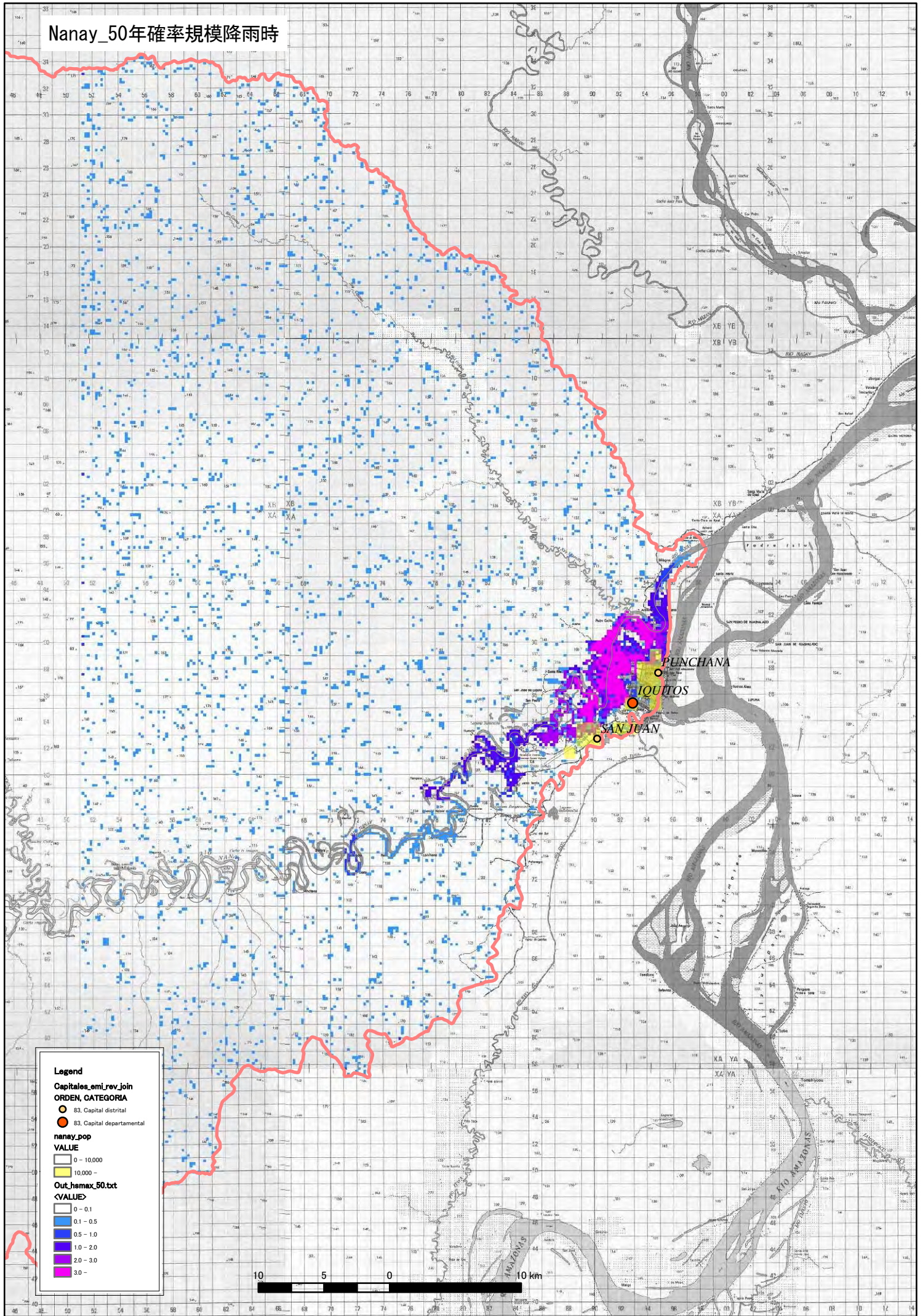
HualIaga_2年確率規模降雨時



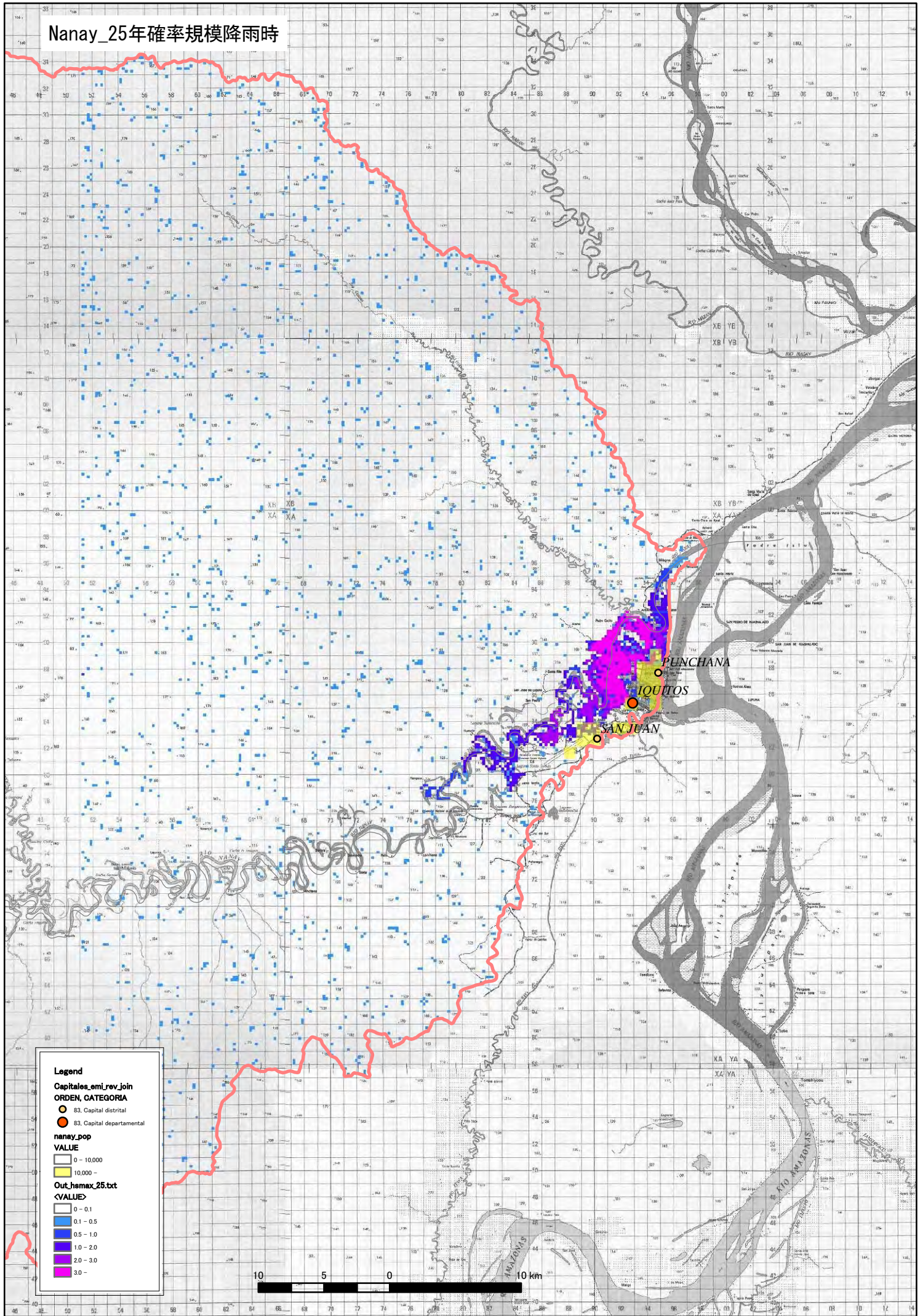
添付資料-4-5

規模別の氾濫解析結果図_Nanay

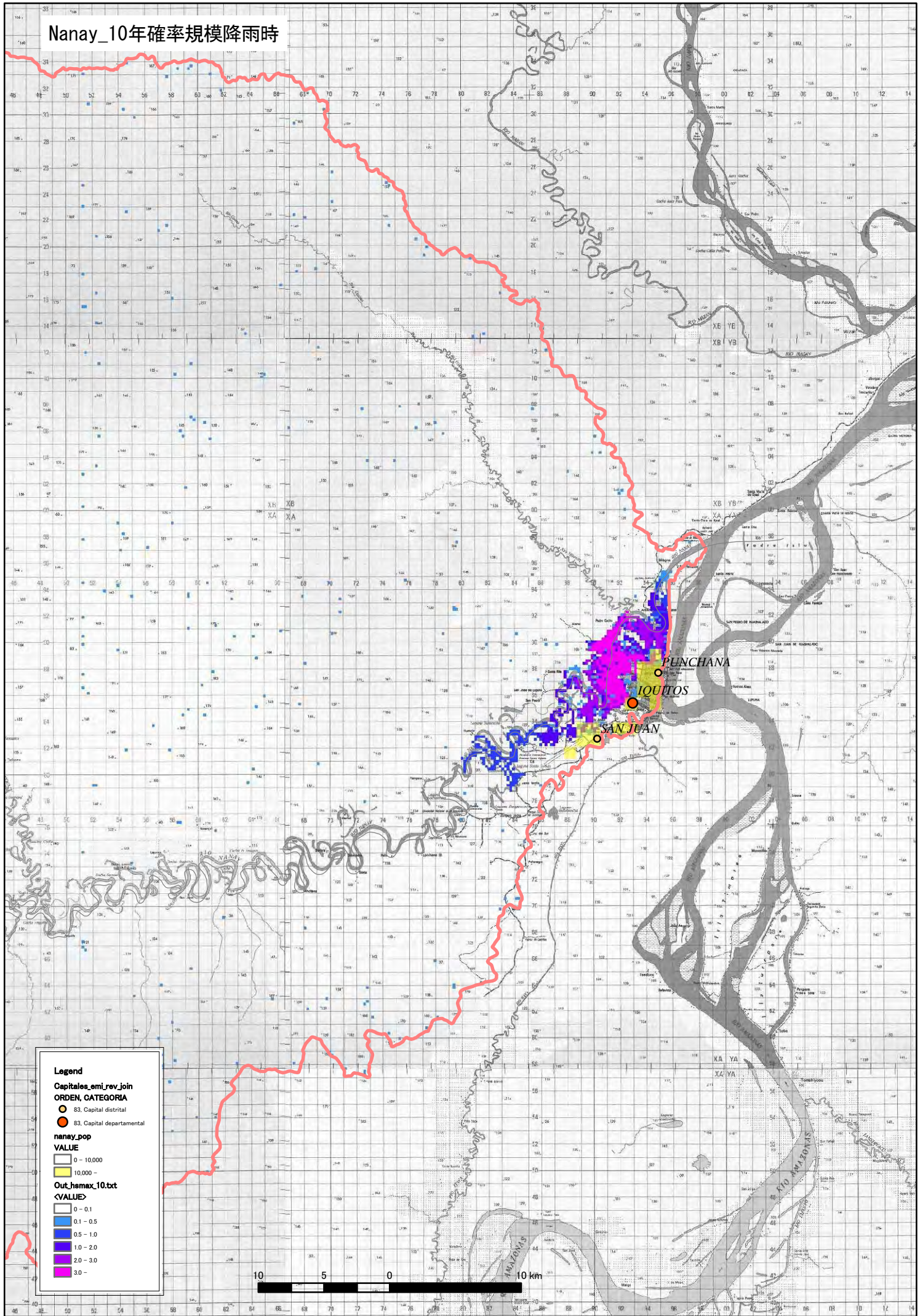
Nanay_50年確率規模降雨時



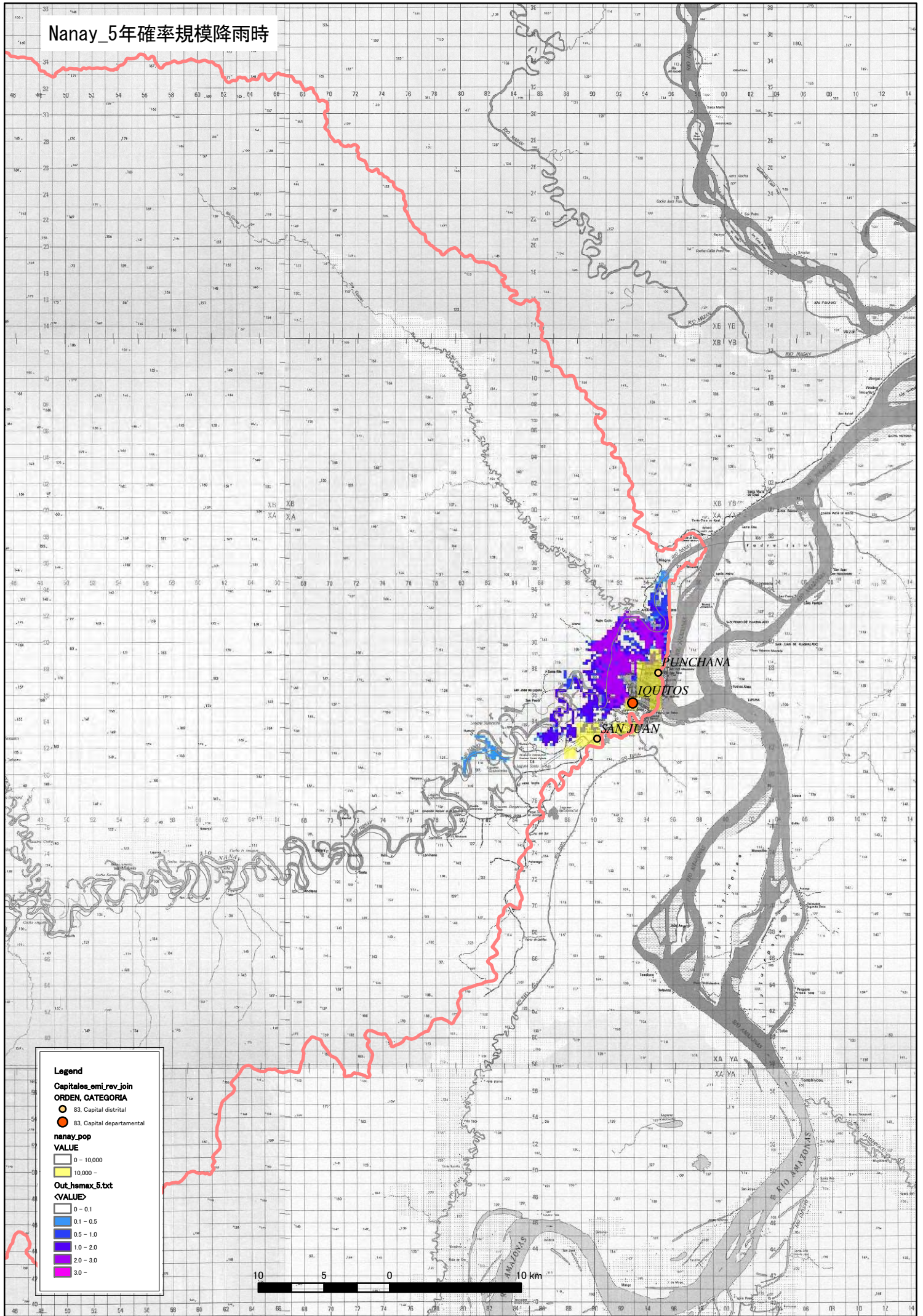
Nanay_25年確率規模降雨時



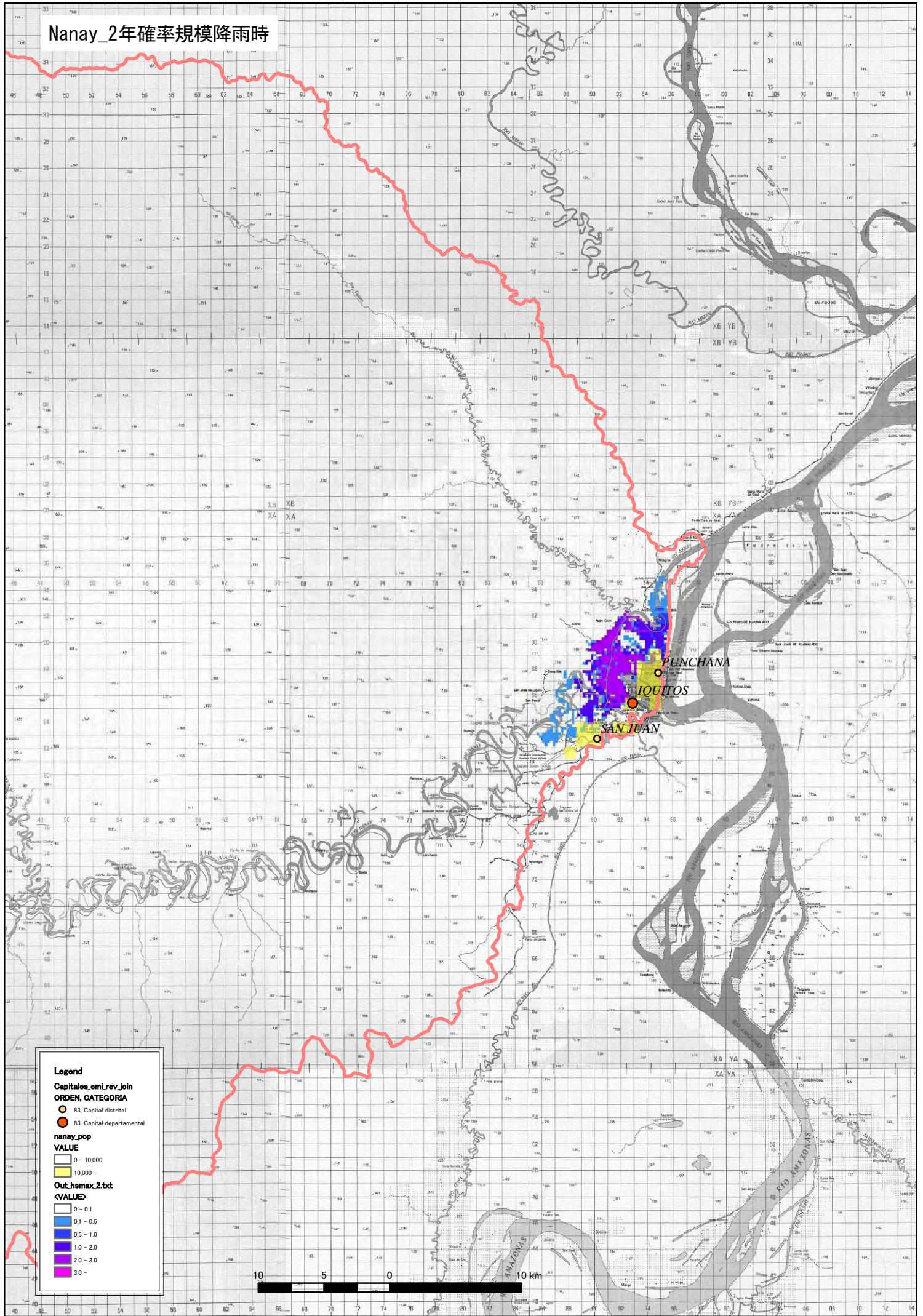
Nanay_10年確率規模降雨時



Nanay_5年確率規模降雨時



Nanay_2年確率規模降雨時



添付資料-4-6

規模別の氾濫解析結果図_Ramis

