

GULF OF THAILAND
 KINGDOM OF CAMBODIA
**SIHANOUKVILLE
 HARBOUR**
VECTOR FAIR SHEET

SCALE 1:20 000
 2014 Feb. - 2014 Dec. SURVEYED

Depths are in metres and reduced to Chart Datum, which is the level of Lowest Astronomical Tide.
 Heights are in metres. Elevations are above Mean Sea Level.
 Orange heights above Chart Datum, all Vertical clearances are above Nearly Highest High Water.
 Positions obtained from global positioning system are normally referred to the World Geodetic System 1984 Datum.
 Magnetism is on Mercator.

NOTE
 This draft fair sheet was prepared by Waterways Department, Ministry of Public Works and Transport, Kingdom of Cambodia with Technical Cooperation by Japan International Cooperation Agency (JICA).



GULF OF THAILAND
KINGDOM OF CAMBODIA
KOMPONG SAOM BAY,
COASTAL

VECTOR FAIR SHEET 1/2
DEPTHS IN METRES

SCALE 1:80 000
March 2016 - June 2016

EXTENSION PROJECT SURVEYED

Depths are in metres and reduced to Chart Datum, which is the level of Lowest Astronomical Tide.

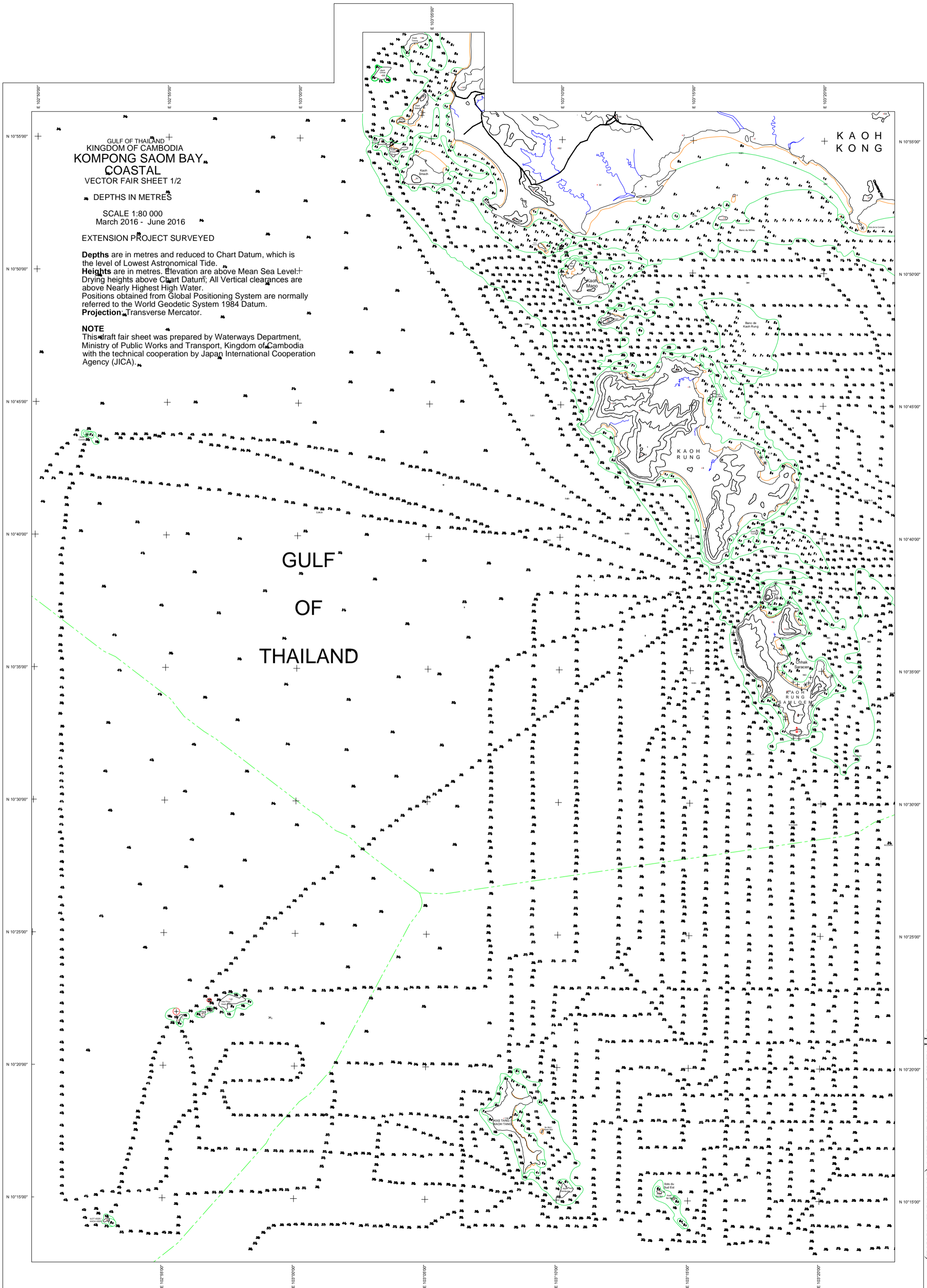
Heights are in metres. Elevation are above Mean Sea Level; Drying heights above Chart Datum; All Vertical clearances are above Nearly Highest High Water.

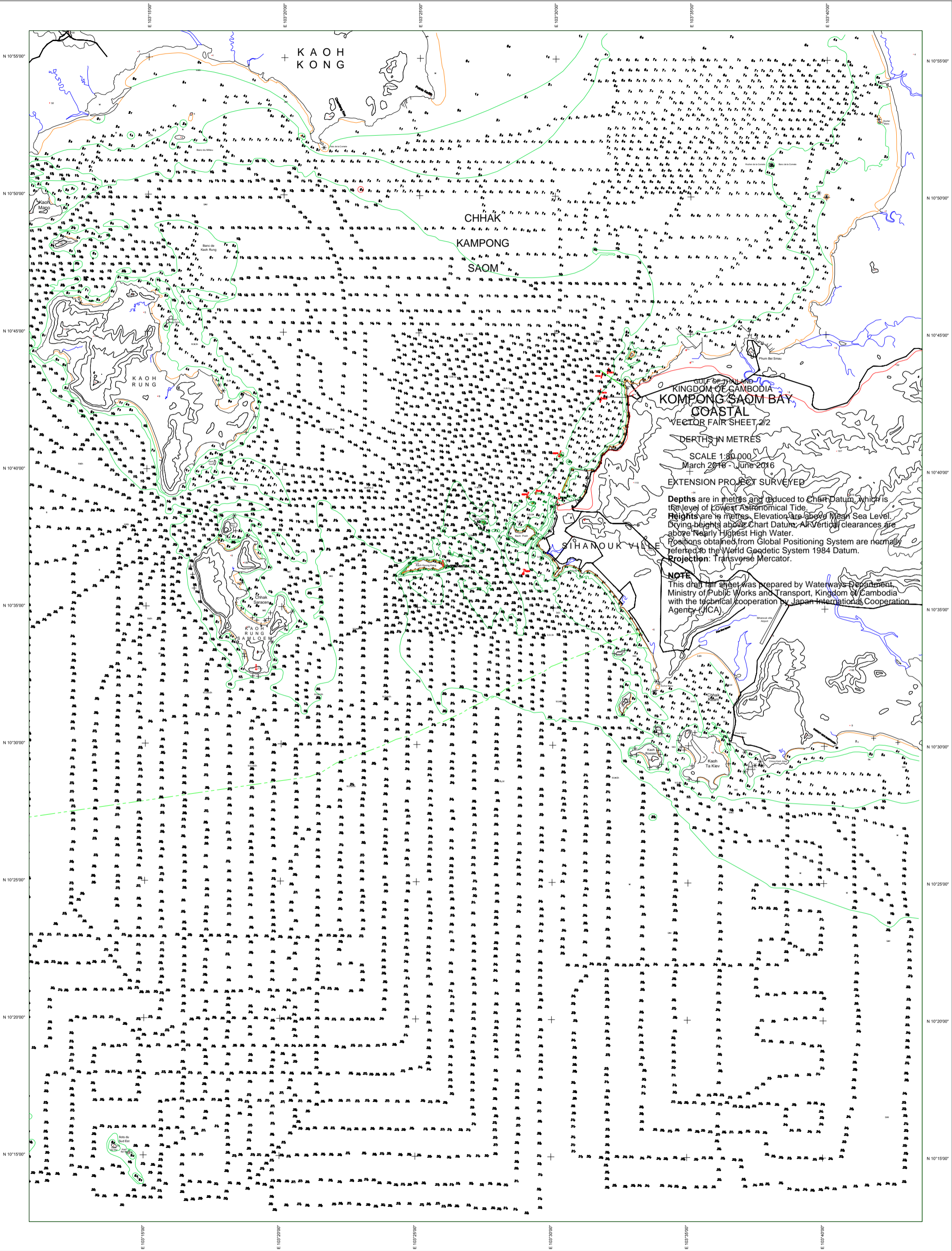
Positions obtained from Global Positioning System are normally referred to the World Geodetic System 1984 Datum.

Projection: Transverse Mercator.

NOTE

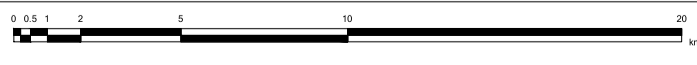
This draft fair sheet was prepared by Waterways Department, Ministry of Public Works and Transport, Kingdom of Cambodia with the technical cooperation by Japan International Cooperation Agency (JICA).



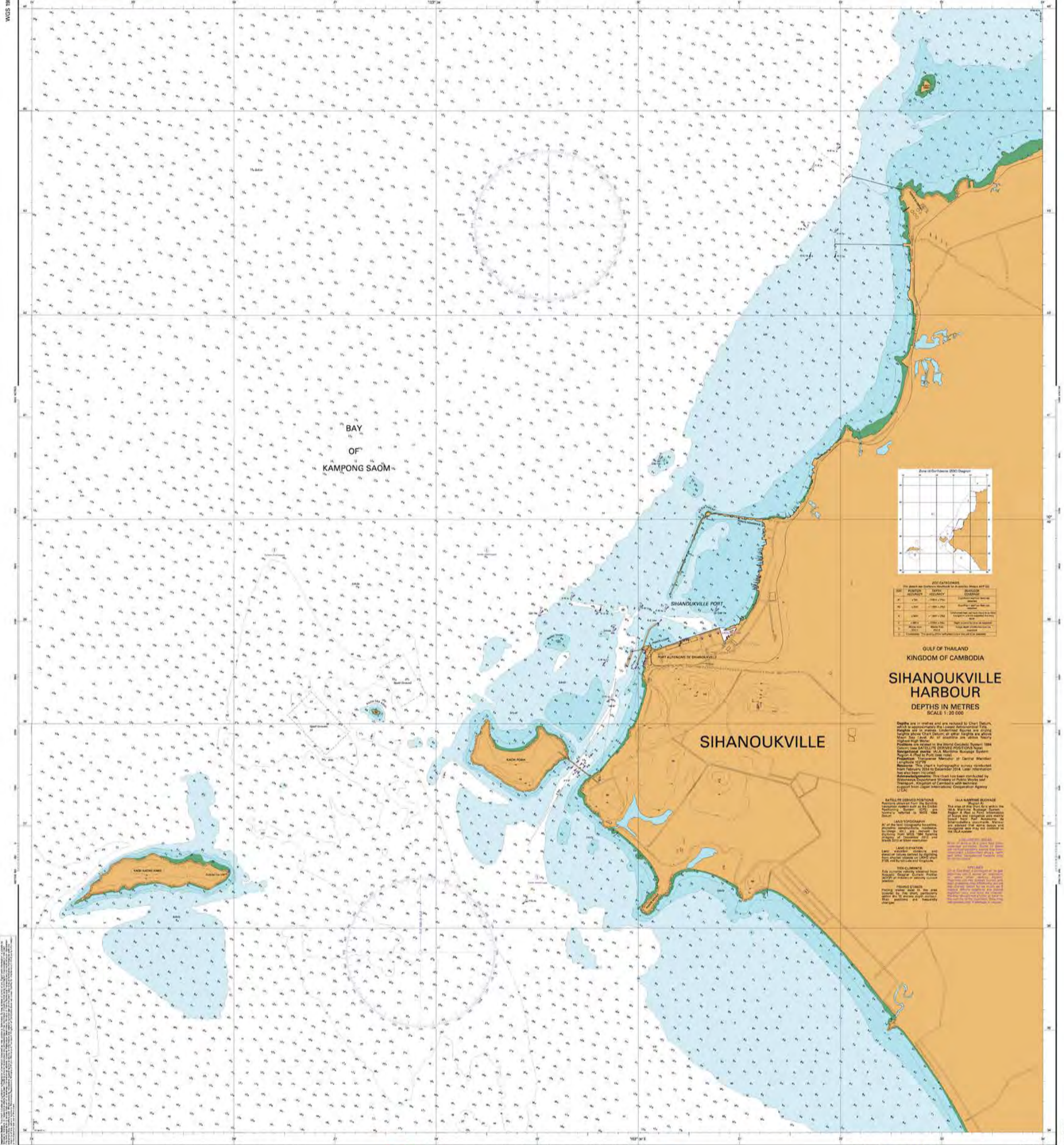


GULF OF THAILAND
 KINGDOM OF CAMBODIA
KOMPONG SAOM BAY COASTAL
 VECTOR FAIR SHEET 2/2
 DEPTHS IN METRES
 SCALE 1:80,000
 March 2016 - June 2016
 EXTENSION PROJECT SURVEYED
 Depths are in metres and reduced to Chart Datum, which is the level of Lowest Astronomical Tide.
 Heights are in metres. Elevations are above Mean Sea Level.
 Drying heights above Chart Datum. All vertical clearances are above Nearly Highest High Water.
 Positions obtained from Global Positioning System are normally referred to the World Geodetic System 1984 Datum.
 Projection: Transverse Mercator.

NOTE
 This draft fair sheet was prepared by Waterways Department, Ministry of Public Works and Transport, Kingdom of Cambodia with the technical cooperation by Japan International Cooperation Agency (JICA).



100AHS DEPTHS IN METRES



ENCLOSURES

ENCLOSURE NO.	ENCLOSURE DESCRIPTION	ENCLOSURE DATE
1	ENCLOSURE NO. 100AHS	2015
2	ENCLOSURE NO. 100AHS	2015
3	ENCLOSURE NO. 100AHS	2015
4	ENCLOSURE NO. 100AHS	2015
5	ENCLOSURE NO. 100AHS	2015
6	ENCLOSURE NO. 100AHS	2015
7	ENCLOSURE NO. 100AHS	2015
8	ENCLOSURE NO. 100AHS	2015
9	ENCLOSURE NO. 100AHS	2015
10	ENCLOSURE NO. 100AHS	2015

GULF OF THAILAND
 KINGDOM OF CAMBODIA
SIHANOUKVILLE HARBOUR
 DEPTHS IN METRES
 SCALE 1:20 000

Depths are in metres and are reduced to Chart Datum, which is approximately the Lowest Astronomical Tide, except in water Underlined where they are given to the Mean High Water level. Other depths are shown to the Mean High Water level.

Positions are referred to the World Geodetic System 1984 datum, which is the datum used for the Sounding System.

Published by the Waterways Department, Ministry of Public Works and Transport, Kingdom of Cambodia on 21st August 2015, with technical cooperation by Japan International Cooperation Agency (JICA).

Copyright © 2015 by the Waterways Department, Ministry of Public Works and Transport, Kingdom of Cambodia.

ENCLOSURES

ENCLOSURE NO. 100AHS

ENCLOSURE NO. 100AHS

ENCLOSURE NO. 100AHS

ENCLOSURE NO. 100AHS

ENCLOSURE NO. 100AHS

ENCLOSURE NO. 100AHS

ENCLOSURE NO. 100AHS

ENCLOSURE NO. 100AHS

ENCLOSURE NO. 100AHS

ENCLOSURE NO. 100AHS

© Kingdom of Cambodia 2015. This work is licensed under a Creative Commons Attribution-NonCommercial-ShareAlike 4.0 International License.



Published by Waterways Department, Ministry of Public Works and Transport, Kingdom of Cambodia on 21st August 2015, with technical cooperation by Japan International Cooperation Agency (JICA).

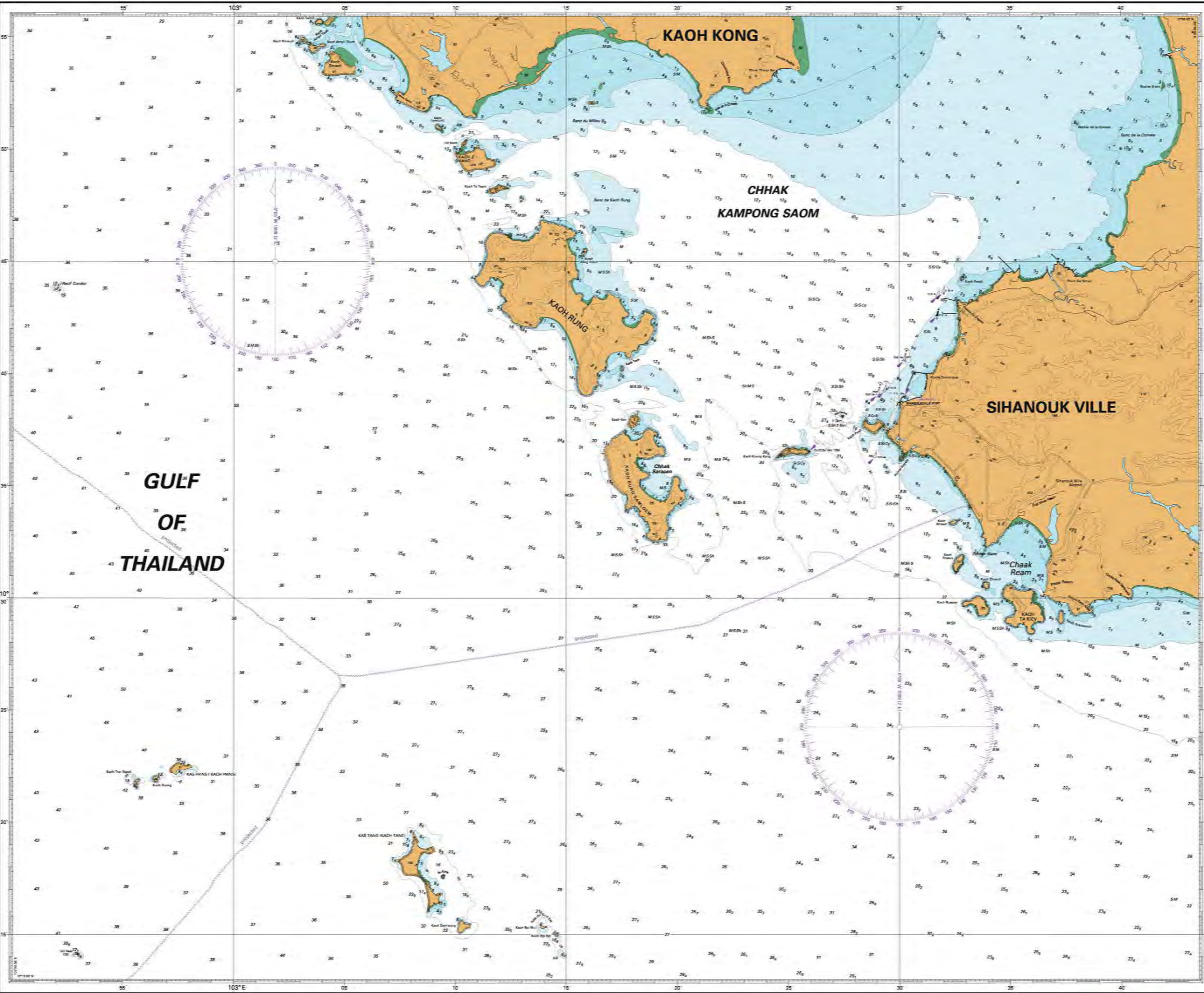


DEPTHS IN METRES

SHV001

For information about related Kingdom of Cambodia publications see IMPORTANT INFORMATION FOR CHART USERS AND NOTICES TO MARINERS on the Cambodian Hydrographic Service website at www.mrwat.gov.kh to ENSURE THAT CHARTS AND PUBLICATIONS ARE KEPT CORRECTED.

DEPTHS IN METRES



ZOC	POSITION ACCURACY	DEPTH ACCURACY	SEAFLOOR COVERAGE
A1	± 5m	+ 0.5m - 1.5m	Significant seafloor features detected
A2	± 20m	+ 1.0m - 2.5m	Significant seafloor features detected
B	± 50m	+ 1.0m - 2.5m	Unclassified features hazardous to surface navigation are not expected but may exist
C	± 500m	+ 3.0m - 5.0m	Depth anomalies may be expected
D	Worse than ZOC C	Worse than ZOC C	Large depth anomalies may be expected
U	Unmeasured	The quality of the bathymetric data has not to be assessed	

GULF OF THAILAND
 KINGDOM OF CAMBODIA
**KAMPONG SAOM
 BAY COASTAL**
 SCALE 1:150 000

Depths are in metres and are reduced to Chart Datum, which is approximately the level of Lowest Astronomical Tide. Depths shown in upright figures are from old or inadequate surveys. Heights are in metres. Underlined figures are drying heights in metres and decimetres above Chart Datum; all other heights are above Mean Sea Level. All of Coastline are above Neaply Highest High Water.
 Positions are related to the World Geodetic System 1984 Datum; see SATELLITE DERIVED POSITIONS Note.
 Navigational marks: IALA Maritime Buoyage System - Region A (Red to Port).
 Projection: Transverse Mercator at Central Meridian Longitude 103°15'.
 Resource: This chart has been created by the compilation of digitized paper chart 2102 and confirmed Hydrographic Survey conducted from March to May 2016.
 Acknowledgements: This Chart has been compiled by the Waterways Department, Ministry of Public Works and Transport, Kingdom of Cambodia with the Technical Support from Japan International Cooperation Agency (JICA).

- SATELLITE DERIVED POSITIONS**
Positions obtained from the Satellite Navigation System such as the Global Positioning System (GPS) are normally referred to WGS 1984 Datum.
- LAND ELEVATION**
Land elevation contour and values derived by digitizing from charted objects on CAMBODIA 1:100000 SPMW chart 8606/570 not by latitude and longitude.
- TIDE CURRENTS**
Tide Currents velocity obtained from Acoustic Doppler Current Profiler (ADCP) at maximum velocity current positions.
- FISHING STAKES**
Fishing stakes exist in the area covered by the chart, particularly within the 10 meters depth contour. Their positions are frequently changed.
- DEPTH SOUNDINGS**
Some of depth sounding derives from LHO 2102 chart which did not survey by digitizing from LHO 2102 chart not by latitude and longitude refer to ZOC Diagram.
- LIGHTHOUSE**
Lighthouse at Koh Rung Samicem did not in the function.
- LARGE SCALE CHART**
At area of NW 10 SE 10 103, can see the detail of scale 1:20000 from Sihanoukville Harbour (SHV001) for the detail.
- MAGNETIC COMPASS**
Compass has been derived from LHO 2102 chart which did not survey by digitizing from LHO 2102 chart not by latitude and longitude.
- IALA MARITIME BUOYAGE (Region A)**
The area of this chart falls within the IALA Maritime Buoyage System Region A (Red to Port). Information of Buoyage and Navigational Aids mainly based from Port Autonome de Sihanoukville documents. Mariners are advised that some buoyage and navigational aids may not totally conform to the IALA system.
- LAND TOPOGRAPHY**
All of the land topography (location, shoreline, construction, roadway, buildings etc) are derived by digitizing from WGS 1984 Satellite imagery at 2013 to 2016 in the various resolutions from 0.4m - 15m resolution.
- UNSURVEYED AREAS**
Most of area in this chart had been covered hydrographic survey. Some of areas had not been conducted (unclassified areas, reefs and other navigational hazards) may be encountered.
- PIPELINES**
Oil or Gas from a damaged oil or gas pipeline could cause an explosion or some other serious hazard. Pipelines are not always buried and their presence may effectively reduce the charted depth by as much as ten meters. Where pipelines are close together only one may be charted. Mariners should not anchor or trawl in the vicinity of the pipelines. They may risk prosecution if damage is caused.
- Submarine Cables**
Submarine cables are not always buried and their presence may effectively reduce the charted depth. Mariner should not anchor or trawl in the vicinity of the submarine cables; they may risk prosecution if damage is caused.

Important Notice: This chart is issued as an information only and does not constitute a warranty of accuracy. The user of this chart is advised to verify the information contained herein with the appropriate authorities. The user of this chart is advised to verify the information contained herein with the appropriate authorities. The user of this chart is advised to verify the information contained herein with the appropriate authorities.