

GULF OF THAILAND  
 KINGDOM OF CAMBODIA  
**SIHANOUKVILLE**  
**HARBOUR**  
**VECTOR FAIR SHEET**

SCALE 1:20 000  
 2014 Feb. - 2014 Dec. SURVEYED

Depths are in metres and reduced to Chart Datum, which is the level of Lowest Astronomical Tide.  
 Heights are in metres. Elevations are above Mean Sea Level.  
 Orange heights above Chart Datum, all Vertical clearances are above Nearest Highest High Water.  
 Positions obtained from global positioning system are normally referred to the World Geodetic System 1984 Datum.  
 Magnetism is on Mercator.

NOTE  
 This draft fair sheet was prepared by Waterways Department, Ministry of Public Works and Transport, Kingdom of Cambodia with Technical Cooperation by Japan International Cooperation Agency (JICA).



GULF OF THAILAND  
KINGDOM OF CAMBODIA  
KOMPONG SAOM BAY,  
COASTAL

VECTOR FAIR SHEET 1/2

DEPTHS IN METRES

SCALE 1:80 000  
March 2016 - June 2016

EXTENSION PROJECT SURVEYED

Depths are in metres and reduced to Chart Datum, which is the level of Lowest Astronomical Tide.

Heights are in metres. Elevation are above Mean Sea Level.

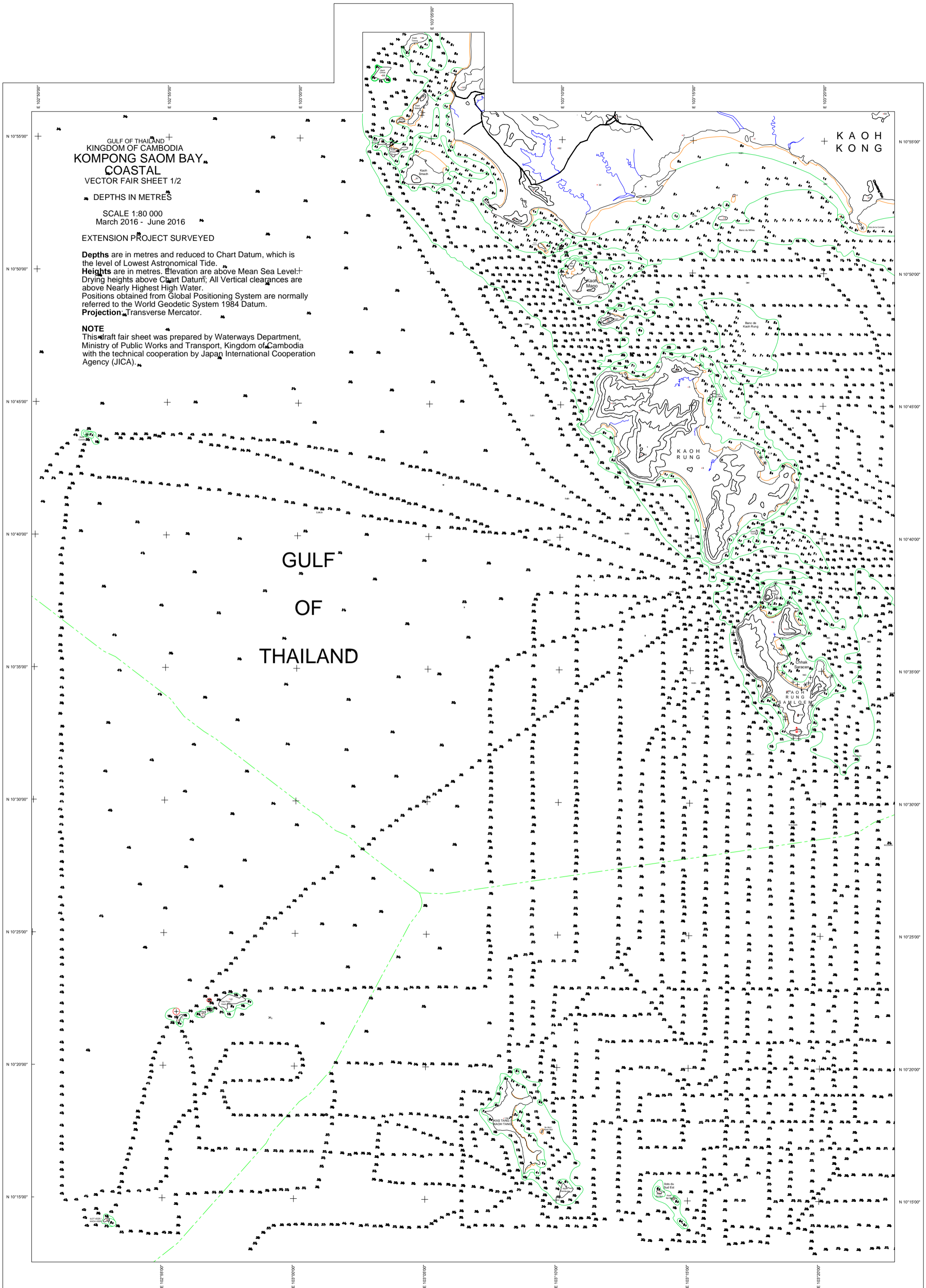
Drying heights above Chart Datum; All Vertical clearances are above Nearly Highest High Water.

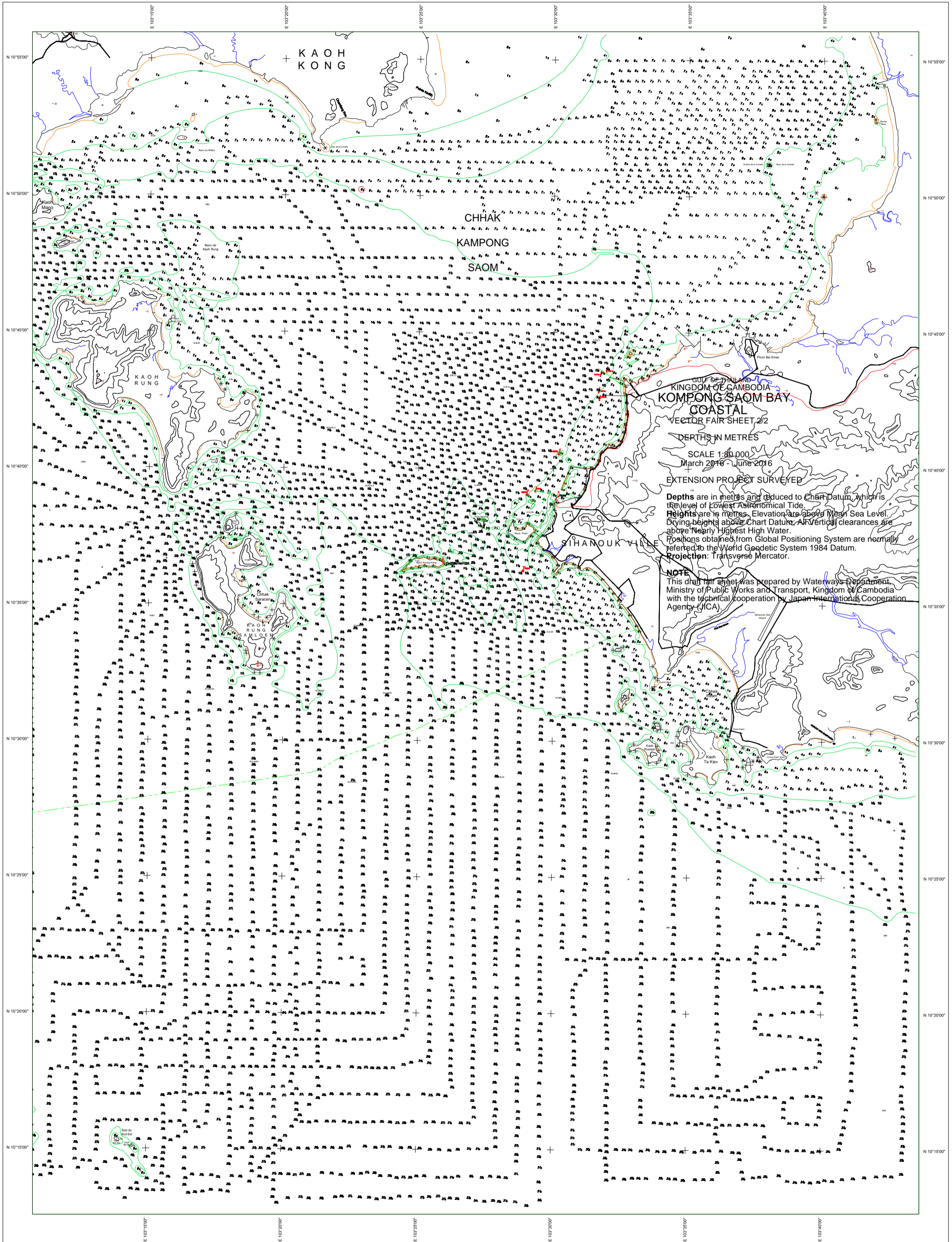
Positions obtained from Global Positioning System are normally referred to the World Geodetic System 1984 Datum.

Projection: Transverse Mercator.

NOTE

This draft fair sheet was prepared by Waterways Department, Ministry of Public Works and Transport, Kingdom of Cambodia with the technical cooperation by Japan International Cooperation Agency (JICA).



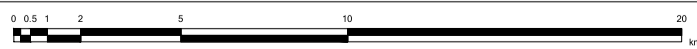


KINGDOM OF CAMBODIA  
**KOMPONG SAOM BAY**  
**COASTAL**  
VECTOR FAIR SHEET 2/2

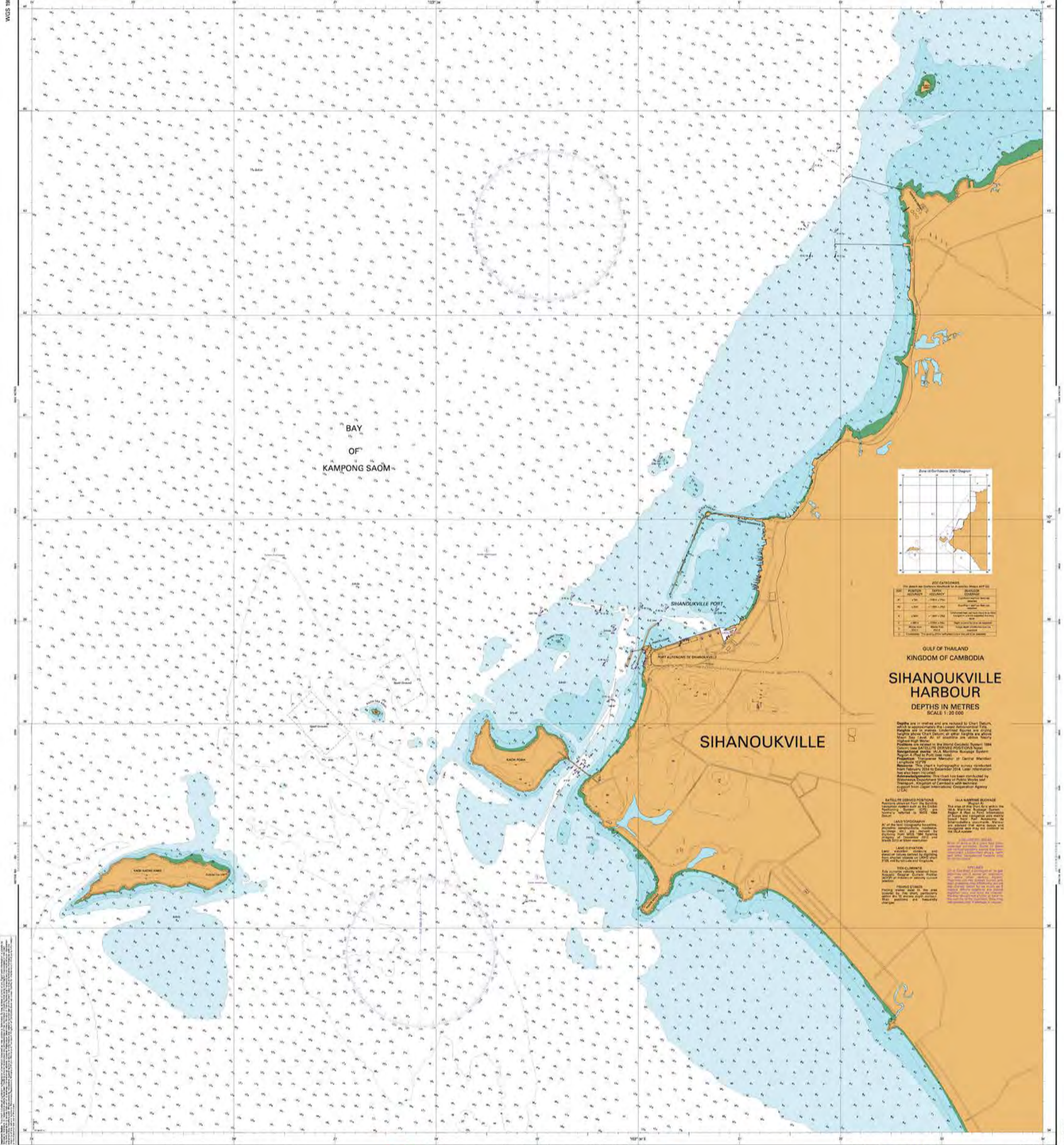
DEPTHS IN METRES  
SCALE 1:80,000  
March 2016 - June 2016  
EXTENSION PROJECT SURVEYED

Depths are in metres and reduced to Chart Datum, which is the level of Lowest Astronomical Tide.  
Heights are in metres. Elevations are above Mean Sea Level.  
Drying heights above Chart Datum. All vertical clearances are above Nearly Highest High Water.  
Positions obtained from Global Positioning System are normally referred to the World Geodetic System 1984 Datum.  
Projection: Transverse Mercator.

**NOTE**  
This draft fair sheet was prepared by Waterways Department, Ministry of Public Works and Transport, Kingdom of Cambodia with the technical cooperation by Japan International Cooperation Agency (JICA).



100AHS DEPTHS IN METRES



**ENCLOSURE**

DEPTH	COLOUR	SYMBOL
0	White	Small black triangle
1	Light Blue	Small black triangle
2	Light Blue	Small black triangle
3	Light Blue	Small black triangle
4	Light Blue	Small black triangle
5	Light Blue	Small black triangle
6	Light Blue	Small black triangle
7	Light Blue	Small black triangle
8	Light Blue	Small black triangle
9	Light Blue	Small black triangle
10	Light Blue	Small black triangle
11	Light Blue	Small black triangle
12	Light Blue	Small black triangle
13	Light Blue	Small black triangle
14	Light Blue	Small black triangle
15	Light Blue	Small black triangle
16	Light Blue	Small black triangle
17	Light Blue	Small black triangle
18	Light Blue	Small black triangle
19	Light Blue	Small black triangle
20	Light Blue	Small black triangle
21	Light Blue	Small black triangle
22	Light Blue	Small black triangle
23	Light Blue	Small black triangle
24	Light Blue	Small black triangle
25	Light Blue	Small black triangle
26	Light Blue	Small black triangle
27	Light Blue	Small black triangle
28	Light Blue	Small black triangle
29	Light Blue	Small black triangle
30	Light Blue	Small black triangle
31	Light Blue	Small black triangle
32	Light Blue	Small black triangle
33	Light Blue	Small black triangle
34	Light Blue	Small black triangle
35	Light Blue	Small black triangle
36	Light Blue	Small black triangle
37	Light Blue	Small black triangle
38	Light Blue	Small black triangle
39	Light Blue	Small black triangle
40	Light Blue	Small black triangle
41	Light Blue	Small black triangle
42	Light Blue	Small black triangle
43	Light Blue	Small black triangle
44	Light Blue	Small black triangle
45	Light Blue	Small black triangle
46	Light Blue	Small black triangle
47	Light Blue	Small black triangle
48	Light Blue	Small black triangle
49	Light Blue	Small black triangle
50	Light Blue	Small black triangle
51	Light Blue	Small black triangle
52	Light Blue	Small black triangle
53	Light Blue	Small black triangle
54	Light Blue	Small black triangle
55	Light Blue	Small black triangle
56	Light Blue	Small black triangle
57	Light Blue	Small black triangle
58	Light Blue	Small black triangle
59	Light Blue	Small black triangle
60	Light Blue	Small black triangle
61	Light Blue	Small black triangle
62	Light Blue	Small black triangle
63	Light Blue	Small black triangle
64	Light Blue	Small black triangle
65	Light Blue	Small black triangle
66	Light Blue	Small black triangle
67	Light Blue	Small black triangle
68	Light Blue	Small black triangle
69	Light Blue	Small black triangle
70	Light Blue	Small black triangle
71	Light Blue	Small black triangle
72	Light Blue	Small black triangle
73	Light Blue	Small black triangle
74	Light Blue	Small black triangle
75	Light Blue	Small black triangle
76	Light Blue	Small black triangle
77	Light Blue	Small black triangle
78	Light Blue	Small black triangle
79	Light Blue	Small black triangle
80	Light Blue	Small black triangle
81	Light Blue	Small black triangle
82	Light Blue	Small black triangle
83	Light Blue	Small black triangle
84	Light Blue	Small black triangle
85	Light Blue	Small black triangle
86	Light Blue	Small black triangle
87	Light Blue	Small black triangle
88	Light Blue	Small black triangle
89	Light Blue	Small black triangle
90	Light Blue	Small black triangle
91	Light Blue	Small black triangle
92	Light Blue	Small black triangle
93	Light Blue	Small black triangle
94	Light Blue	Small black triangle
95	Light Blue	Small black triangle
96	Light Blue	Small black triangle
97	Light Blue	Small black triangle
98	Light Blue	Small black triangle
99	Light Blue	Small black triangle
100	Light Blue	Small black triangle

GULF OF THAILAND  
 KINGDOM OF CAMBODIA  
**SIHANOUKVILLE HARBOUR**  
 DEPTHS IN METRES  
 SCALE 1:20 000

Depths are in metres and are indicated by Chart Datum, which is approximately the lowest astronomical tide. High water and in various Underwater Reports are given in metres above Chart Datum. Other depths are above High Water. Positions are referred to the World Geodetic System 1984 datum. The chart is a hydrographic survey conducted from February 2018 to October 2018. Last revision for this chart: 2018.

**ENCLOSURE**  
 The chart is a hydrographic survey conducted from February 2018 to October 2018. Last revision for this chart: 2018.

© Crown Copyright 2018. This work is licensed under a Creative Commons Attribution-NonCommercial-ShareAlike 4.0 International License.



Published by Waterways Department, Ministry of Public Works and Transport, Kingdom of Cambodia on 21st August 2018, with technical cooperation by Japan International Cooperation Agency (JICA).

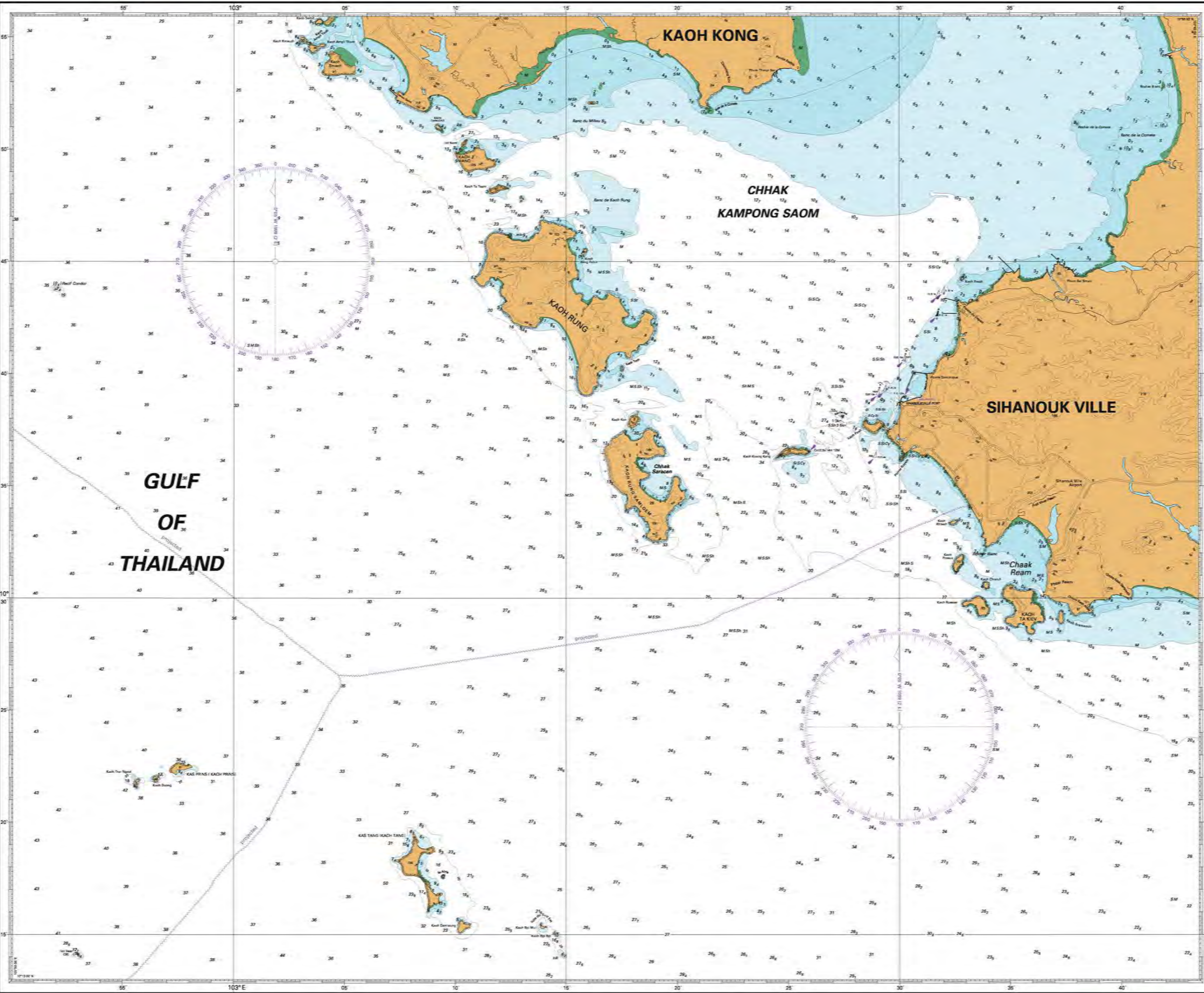


DEPTHS IN METRES

SHV001

DEPTHS IN METRES

For information about related Kingdom of Cambodia publications see IMPORTANT INFORMATION FOR CHART USERS AND NOTICES TO MARINERS on the Cambodian Hydrographic Service website at www.mpsw.gov.kh to ENSURE THAT CHARTS AND PUBLICATIONS ARE KEPT CORRECTED



(For details see Seafarers Handbook for Australian Waters AHP 20)

ZOC	POSITION ACCURACY	DEPTH ACCURACY	SEAFLOOR COVERAGE
A1	± 5m	+ 0.5m - 1.5m	Significant seafloor features detected
A2	± 20m	+ 1.0m - 2.5m	Significant seafloor features detected
B	± 50m	+ 1.0m - 2.5m	Unclassified features hazardous to surface navigation are not expected but may exist
C	± 300m	+ 3.0m - 5.5m	Depth anomalies may be expected
D	Worse than ZOC C	Worse than ZOC C	Large depth anomalies may be expected
U	Unlimited	The quality of the bathymetric data set is to be assessed	

GULF OF THAILAND  
KINGDOM OF CAMBODIA  
**KAMPONG SAOM BAY COASTAL**  
SCALE 1:150 000

Depths are in metres and are reduced to Chart Datum, which is approximately the level of Lowest Astronomical Tide. Depths shown in upright figures are from old or inadequate surveys. Heights are in metres. Underlined figures are drying heights in metres and decimetres above Chart Datum; all other heights are above Mean Sea Level. All of Coastline are above Neaply Highest High Water.  
Positions are related to the World Geodetic System 1984 Datum; see SATELLITE DERIVED POSITIONS Note.  
Navigational marks: IALA Maritime Buoyage System - Region A (Red to Port).  
Projection: Transverse Mercator at Central Meridian Longitude 103°15'.  
Resource: This chart has been created by the compilation of digitized paper chart 2102 and confirmed Hydrographic Survey conducted from March to May 2016.  
Acknowledgements: This Chart has been compiled by Waterways Department, Ministry of Public Works and Transport, Kingdom of Cambodia with the Technical Support from Japan International Cooperation Agency (JICA).

**SATELLITE DERIVED POSITIONS**  
Positions obtained from the Satellite Navigation System such as the Global Positioning System (GPS) are normally referred to WGS 1984 Datum.

**LAND ELEVATION**  
Land elevation contour and values derived by digitizing from charted objects on CAMBODIA 1:100000 (MPSW) chart 8606/570 not by latitude and longitude.

**TIDE CURRENTS**  
Tide Currents velocity obtained from Acoustic Doppler Current Profiler (ADCP) at maximum velocity current positions.

**FISHING STAKES**  
Fishing stakes exist in the area covered by the chart, particularly within the 10 metres depth contour. Their positions are frequently changed.

**DEPTH SOUNDINGS**  
Some of depth soundings derived from LHD 2102 chart which did not survey by digitizing from LHD 2102 chart not by latitude and longitude refer to ZOC Diagram.

**LIGHTHOUSE**  
Lighthouse at Koh Rung Samicem did not in the function.

**LARGE SCALE CHART**  
At area of NW 10 SE 10 103, can see the detail of scale 1:20000 from Sihanoukville Harbour (SHV01) for the detail.

**MAGNETIC COMPASS**  
Compass has been derived from LHD 2102 chart which did not survey by digitizing from LHD 2102 chart not by latitude and longitude.

**IALA MARITIME BUOYAGE (Region A)**  
The area of this chart falls within the IALA Maritime Buoyage System Region A (Red to Port). Information of Buoyage and Navigational Aids mainly based from Port Autonome de Sihanoukville documents. Mariners are advised that some buoyage and navigational aids may not totally conform to the IALA system.

**LAND TOPOGRAPHY**  
All of the land topography (location, shoreline, construction, roadway, buildings etc) are derived by digitizing from WGS 1984 Satellite imagery at 2013 to 2016 in the various resolutions from 0.4m - 15m resolution.

**UNSURVEYED AREAS**  
Most of area in this chart had been covered hydrographic survey. Some of areas had not been conducted (unclassified areas, reefs and other navigational hazards) may be encountered.

**PIPELINES**  
Oil or Gas from a damaged oil or gas pipeline could cause an explosion or some other serious hazard. Pipelines are not always buried and their presence may effectively reduce the charted depth by as much as ten metres. Where pipelines are close together only one may be charted. Mariners should not anchor or trawl in the vicinity of the pipelines. They may risk prosecution if damage is caused.

**Submarine Cables**  
Submarine cables are not always buried and their presence may effectively reduce the charted depth. Mariner should not anchor or trawl in the vicinity of the submarine cables; they may risk prosecution if damage is caused.

Important Notice: This chart is issued as an information only and does not constitute a warranty of accuracy. The user of this chart is advised to verify the accuracy of the information contained herein by reference to the appropriate official publications. The user of this chart is advised to verify the accuracy of the information contained herein by reference to the appropriate official publications. The user of this chart is advised to verify the accuracy of the information contained herein by reference to the appropriate official publications.