



Appendix A Drawing

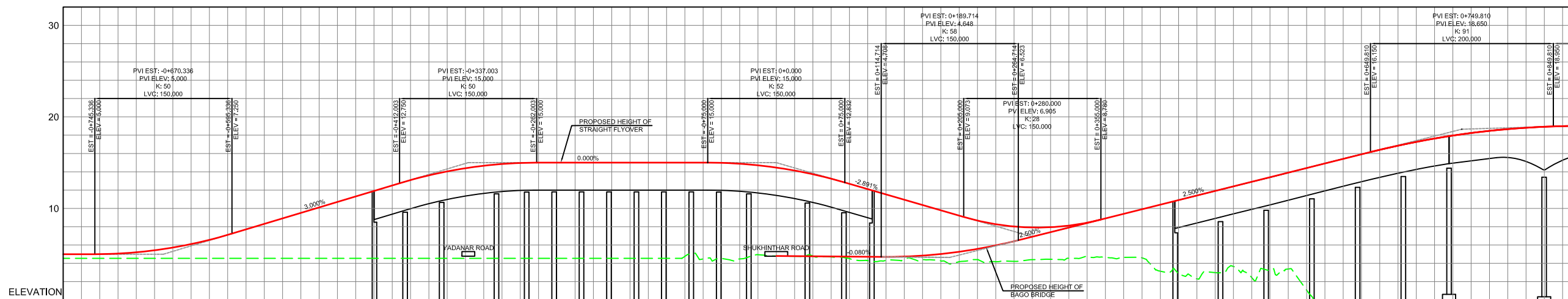
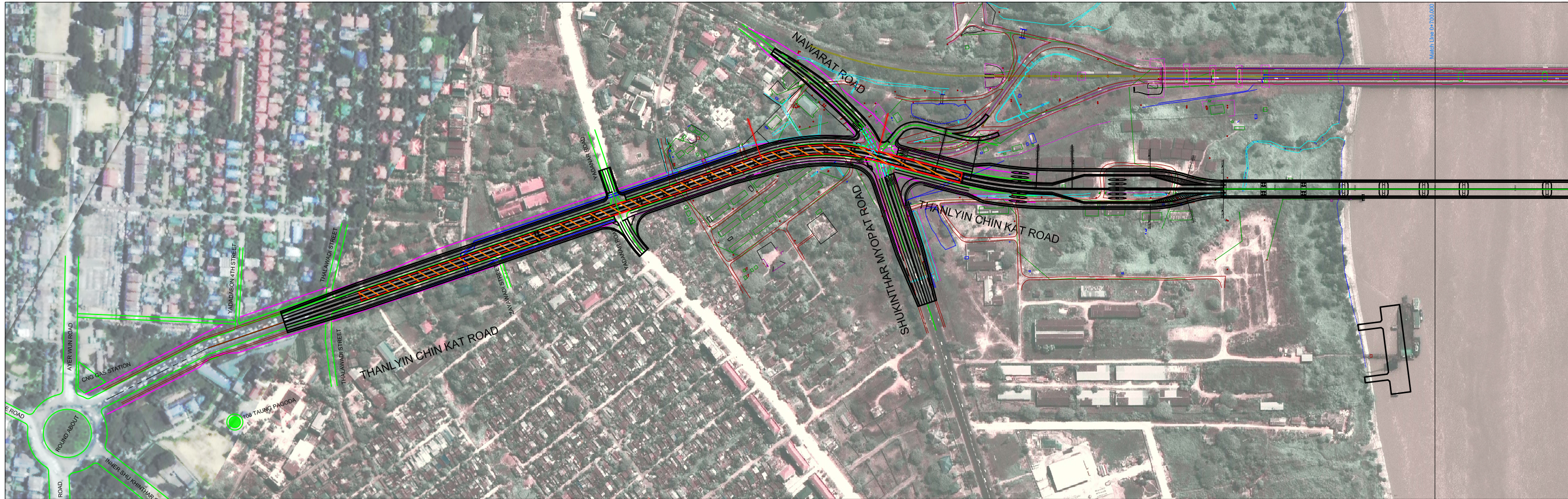
DRAWING LIST

SHEET NO.	TITLE	DRAWING NO.
1	DRAWING LIST (1/2)	GE-01
2	DRAWING LIST (2/2)	GE-02
3	PLAN AND PROFILE OF BAGO BRIDGE WITH STRAIGHT FLYOVER AT YANGON SIDE (1/3)	RD-01
4	PLAN AND PROFILE OF BAGO BRIDGE WITH STRAIGHT FLYOVER AT YANGON SIDE (2/3)	RD-02
5	PLAN AND PROFILE OF BAGO BRIDGE WITH STRAIGHT FLYOVER AT YANGON SIDE (3/3)	RD-03
6	PLAN AND PROFILE FOR ALTERNATIVE OF LEFT TURN FLYOVER AT YANGON SIDE	RD-04
7	PLAN AND PROFILE FOR ALTERNATIVE OF AT-GRADE IMPROVEMENT (WITHOUT FLYOVER) AT YANGON SIDE	RD-05
8	PLAN AND PROFILE OF ON-RAMP DIRECT TO BRIDGE AT THANLYIN SIDE	RD-06
9	PLAN FOR ALTERNATIVE OF ON-RAMP DIRECTLY FROM RESIDENTIAL AREA AT THANLYIN SIDE	RD-07
10	PROFILE FOR ALTERNATIVE OF ON-RAMP DIRECTLY FROM RESIDENTIAL AREA AT THANLYIN SIDE (1/2)	RD-08
11	PROFILE FOR ALTERNATIVE OF ON-RAMP DIRECTLY FROM RESIDENTIAL AREA AT THANLYIN SIDE (2/2)	RD-09
12	PLAN AND PROFILE FOR ALTERNATIVE OF STRAIGHT FLYOVER AT INTERSECTIONS ON THANLYIN SIDE	RD-10
13	TYPICAL CROSS SECTION OF APPROACH SECTION FOR BAGO BRIDGE	RD-11
14	TYPICAL CROSS SECTION OF APPROACH SECTION FOR STRAIGHT FLYOVER AT YANGON SIDE	RD-12
15	TYPICAL DETAILS OF PIER WITH STEEL GIRDER FOR STRAIGHT FLYOVER AT YANGON SIDE	RD-13
16	TYPICAL DETAILS OF PIER WITH PCT GIRDER FOR STRAIGHT FLYOVER AT YANGON SIDE	RD-14
17	TYPICAL DETAILS OF ABUTMENT (AF.1) WITH PCT GIRDER FOR STRAIGHT FLYOVER AT YANGON SIDE	RD-15
18	TYPICAL DETAILS OF ABUTMENT (AF.2) WITH PCT GIRDER FOR STRAIGHT FLYOVER AT YANGON SIDE	RD-16
19	TYPICAL CROSS SECTION OF APPROACH SECTION FOR ALTERNATIVE OF LEFT TURN FLYOVER AT YANGON SIDE	RD-17
20	TYPICAL CROSS SECTION OF APPROACH SECTION FOR ON-RAMP DIRECT TO BRIDGE AT THANLYIN SIDE	RD-18
21	TYPICAL DETAILS OF PIER WITH PCT GIRDER FOR ON-RAMP DIRECT TO BRIDGE AT THANLYIN SIDE	RD-19
22	TYPICAL DETAILS OF ABUTMENT (AO.1) WITH PCT GIRDER FOR ON-RAMP DIRECT TO BRIDGE AT THANLYIN SIDE	RD-20

 JAPAN INTERNATIONAL COOPERATION AGENCY	 NIPPON KOEI CO., LTD.	REMARKS	THE SUPPLEMENTAL SURVEY FOR THE PROJECT FOR CONSTRUCTION OF BAGO RIVER BRIDGE						
 REPUBLIC OF THE UNION OF MYANMAR PUBLIC WORKS, MINISTRY OF CONSTRUCTION DEPARTMENT OF BRIDGES			DRAWING TITLE DRAWING LIST (1/2)						
			<table border="1" style="width: 100%; border-collapse: collapse;"> <tr> <td style="text-align: center;">SCALE</td> <td style="text-align: center;">-</td> </tr> <tr> <td style="text-align: center;">DRAWING NO.</td> <td style="text-align: center;">GE-01</td> </tr> <tr> <td style="text-align: center;">SHEET NO.</td> <td style="text-align: center;">1</td> </tr> </table>	SCALE	-	DRAWING NO.	GE-01	SHEET NO.	1
SCALE	-								
DRAWING NO.	GE-01								
SHEET NO.	1								

DRAWING LIST

SHEET NO.	TITLE	DRAWING NO.
23	TYPICAL DETAILS OF ABUTMENT (AO.2) WITH PCT GIRDER FOR ON-RAMP DIRECT TO BRIDGE AT THANLYIN SIDE	RD-21
24	TYPICAL CROSS SECTION OF APPROACH SECTION FOR ALTERNATIVE OF STRAIGHT FLYOVER AT INTERSECTIONS ON THANLYIN SIDE	RD-22
25	TYPICAL DETAILS OF PIER WITH PCT GIRDER FOR ALTERNATIVE OF STRAIGHT FLYOVER AT INTERSECTIONS ON THANLYIN SIDE	RD-23
26	TYPICAL DETAILS OF ABUTMENT (AS.1) WITH PCT GIRDER FOR ALTERNATIVE OF STRAIGHT FLYOVER AT INTERSECTIONS ON THANLYIN SIDE	RD-24
27	TYPICAL DETAILS OF ABUTMENT (AS.2) WITH PCT GIRDER FOR ALTERNATIVE OF STRAIGHT FLYOVER AT INTERSECTIONS ON THANLYIN SIDE	RD-25
28	GENERAL VIEW OF BAGO BRIDGE	BG-GP-01
29	GENERAL VIEW OF STRAIGHT FLYOVER AT YANGON SIDE (1/3)	BG-GP-02
30	GENERAL VIEW OF STRAIGHT FLYOVER AT YANGON SIDE (2/3)	BG-GP-03
31	GENERAL VIEW OF STRAIGHT FLYOVER AT YANGON SIDE (3/3)	BG-GP-04
32	GENERAL VIEW OF ON-RAMP DIRECT TO BRIDGE AT THANLYIN SIDE	BG-GP-05
33	PLAN AND PROFILE OF TOLL GATE	TL-01



GRADE OF STRAIGHT FLYOVER	i = 0.000%		i = 3.000%		i = 0.000%		i = -2.891%		i = 2.500%	
PROPOSED HEIGHT OF STRAIGHT FLYOVER	5.003		5.064		5.206		5.427		5.726	
GRADE OF BAGO BRIDGE	0+0.000		0+113.274		0+113.274		0+454		0+650	
PROPOSED HEIGHT OF BAGO BRIDGE	4.789		4.783		4.767		4.751		4.735	
EXISTING HEIGHT	5.000		5.000		5.000		5.000		5.000	
STATION	0+0.000		0+113.274		0+113.274		0+454		0+650	
CURVE ELEMENTS	R = ∞		R = 250.00 m		R = ∞		R = 500.00 m		R = 150 m	