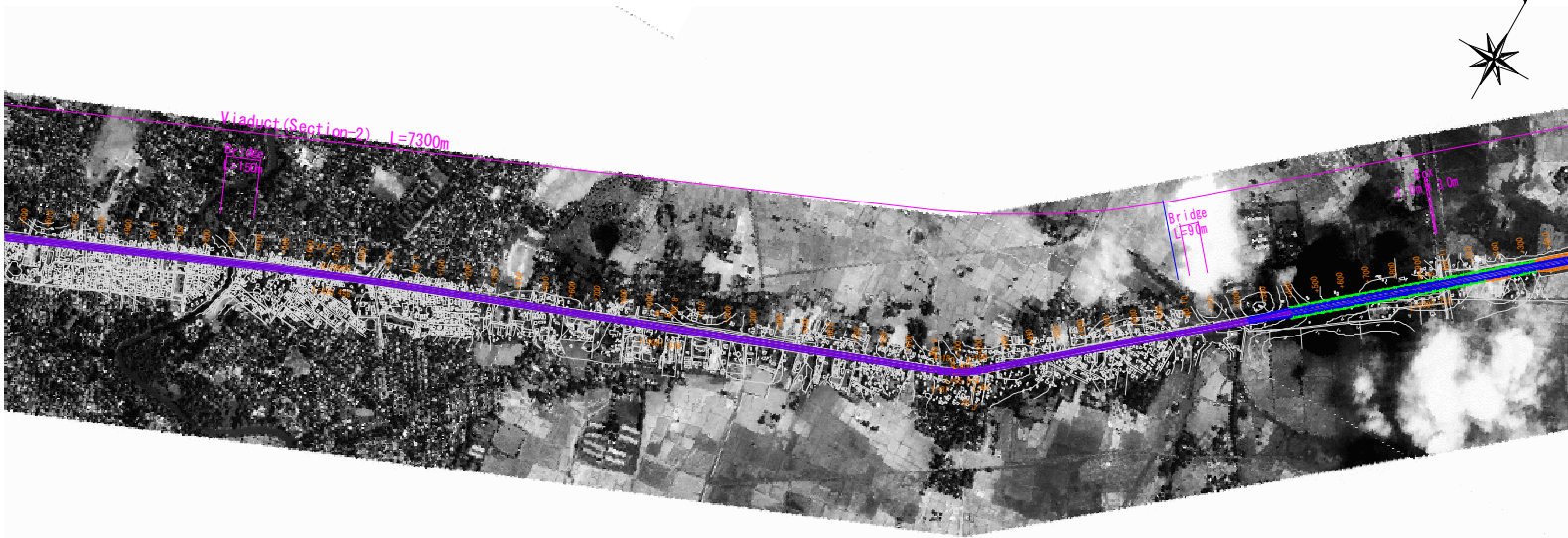
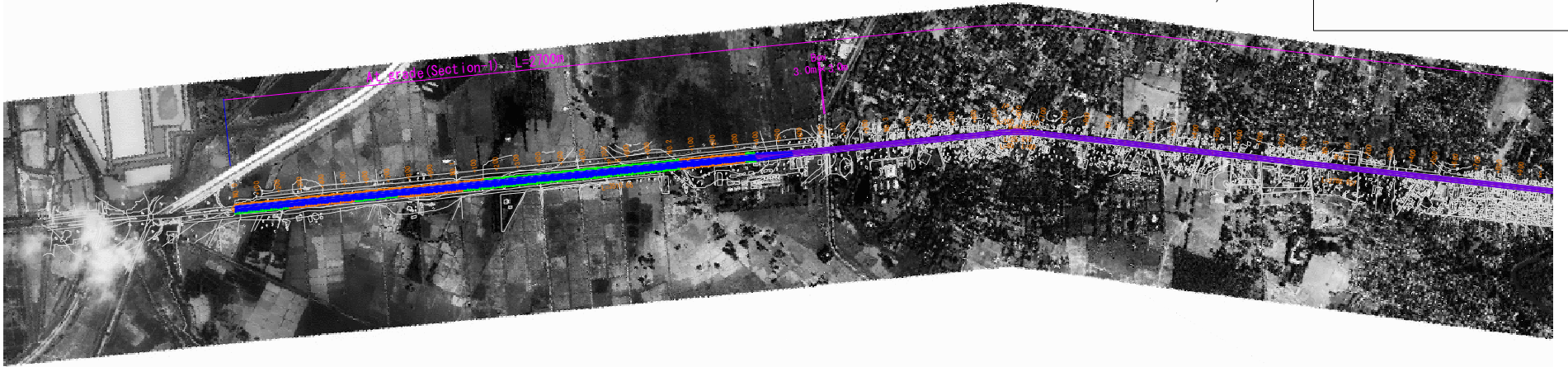
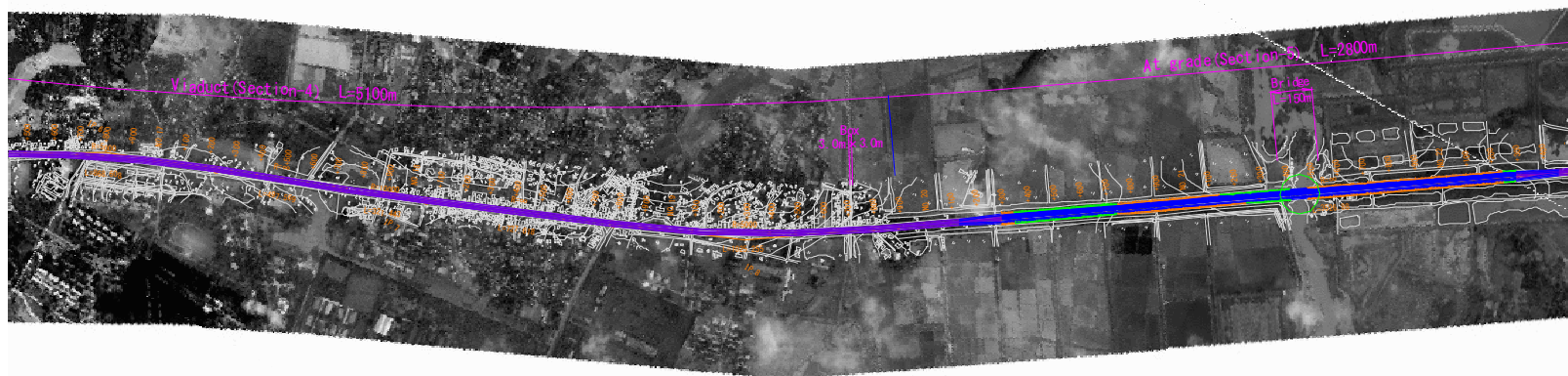
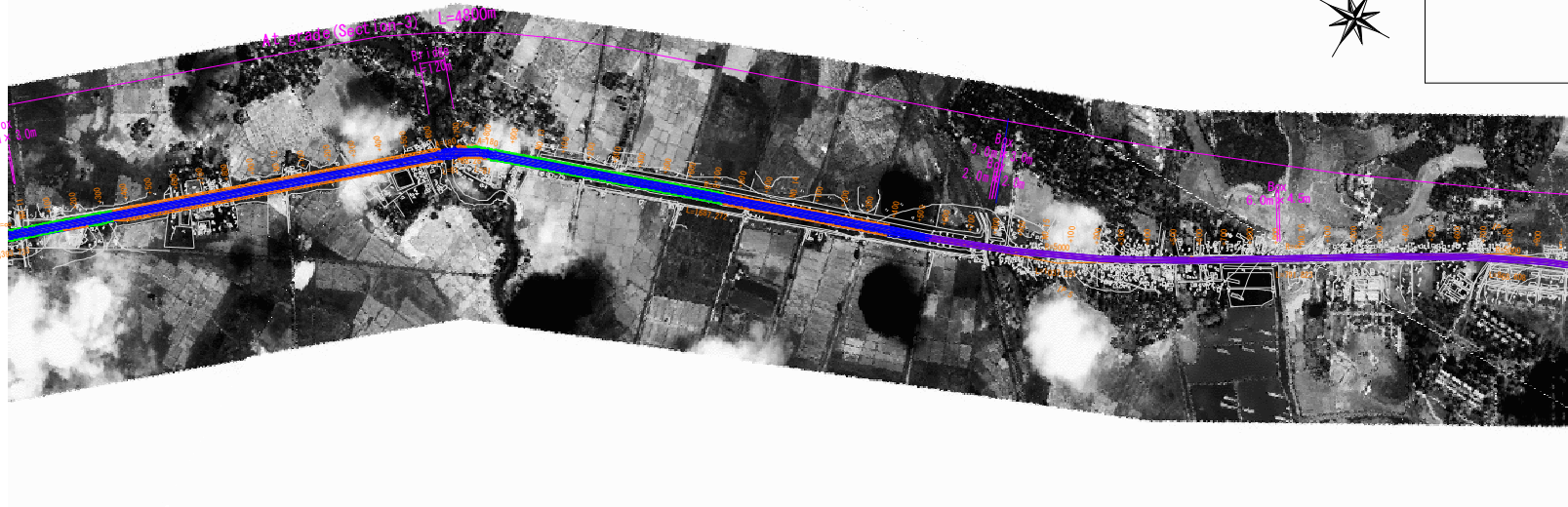
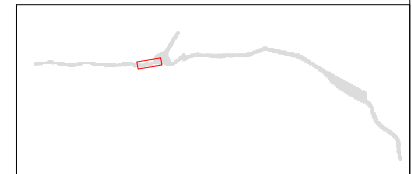
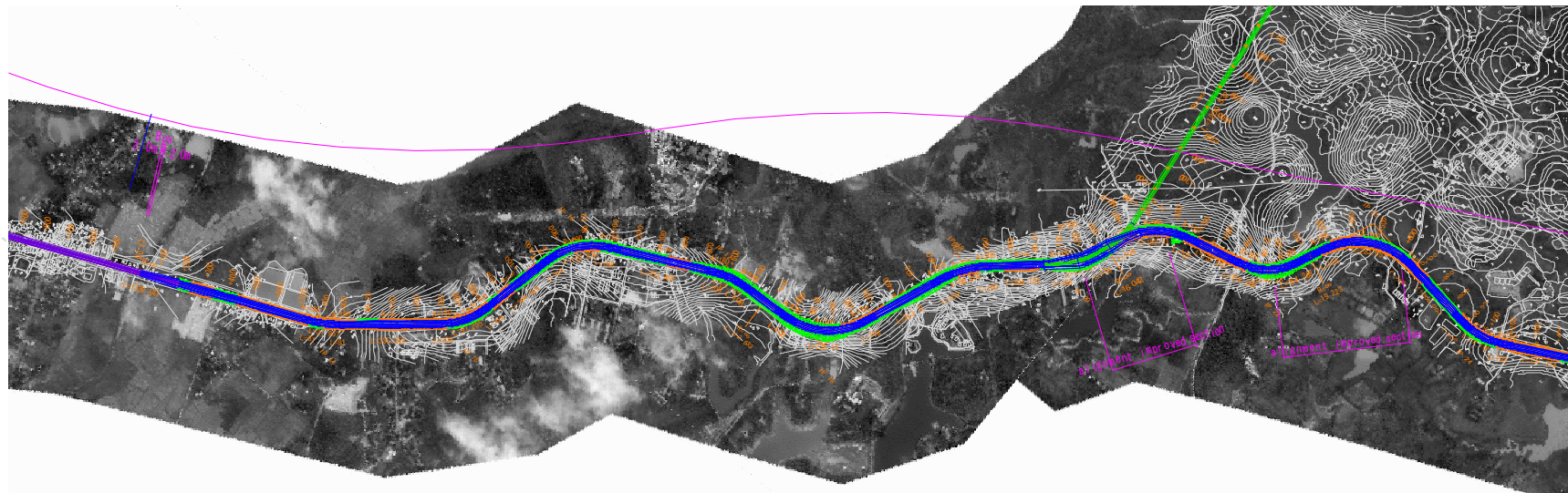
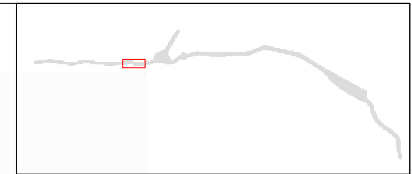
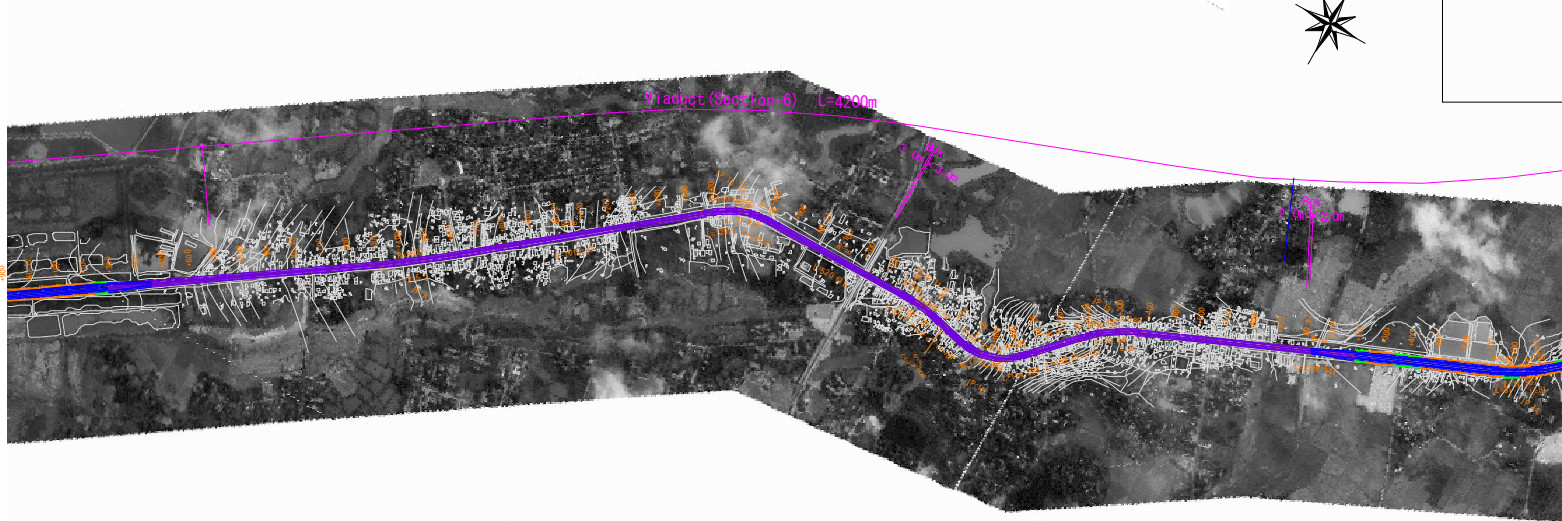


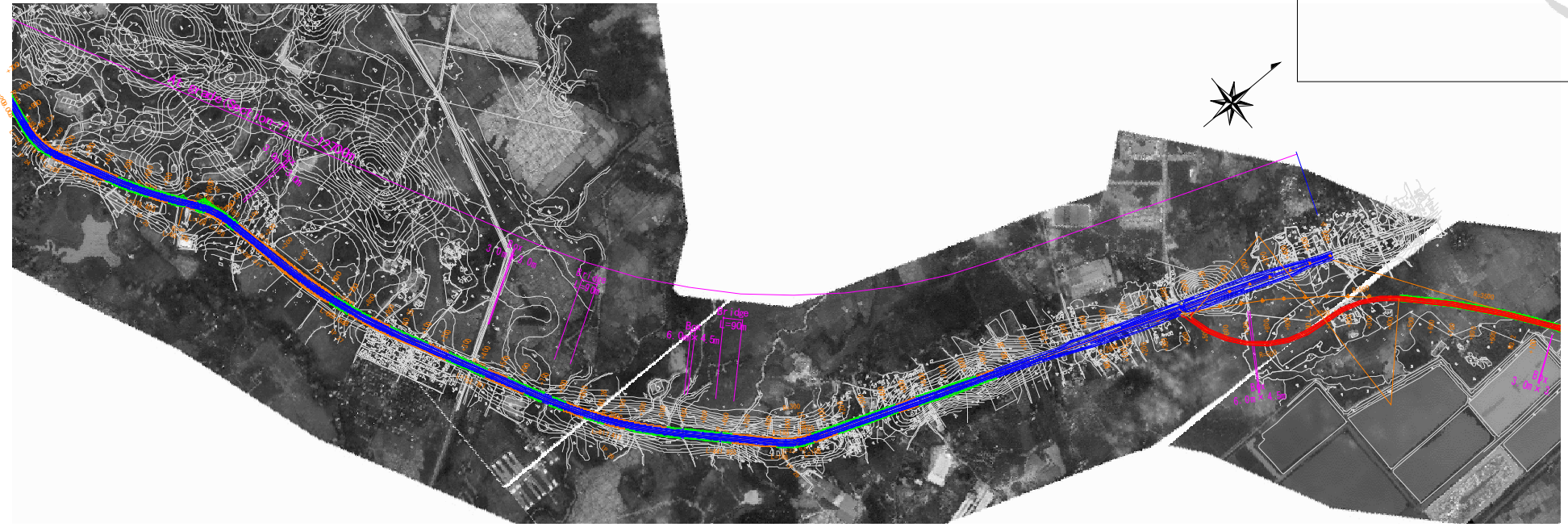
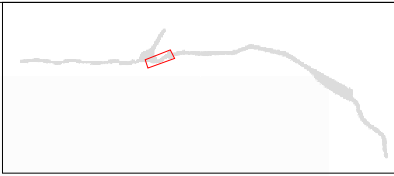
付属資料



付属資料-1 図面集







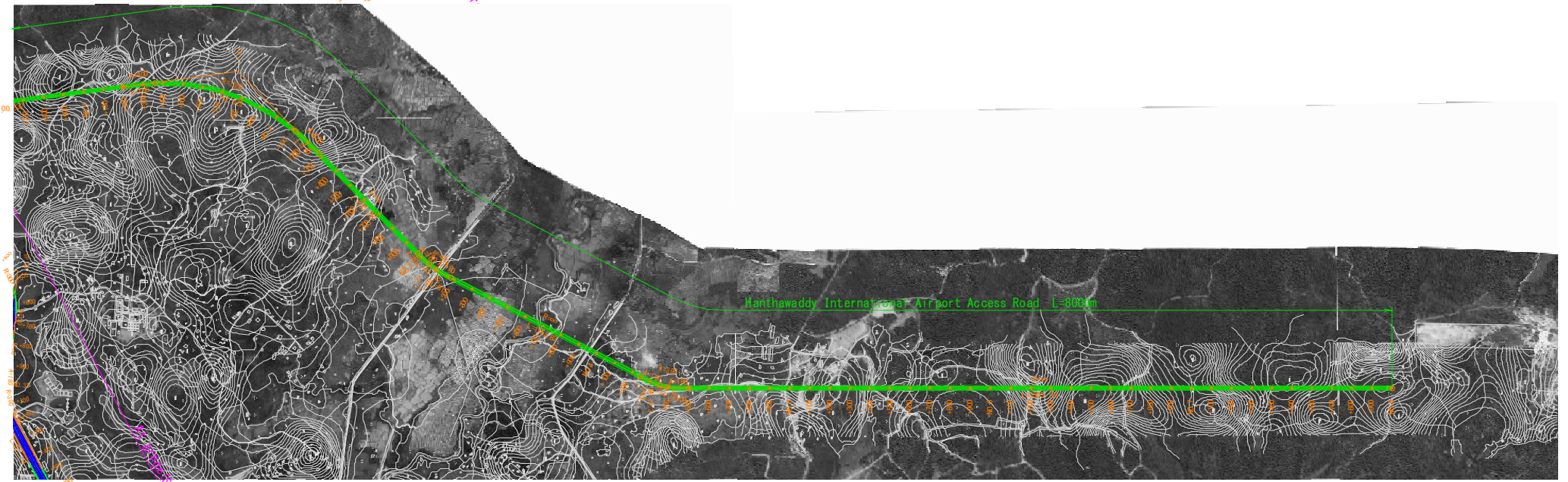
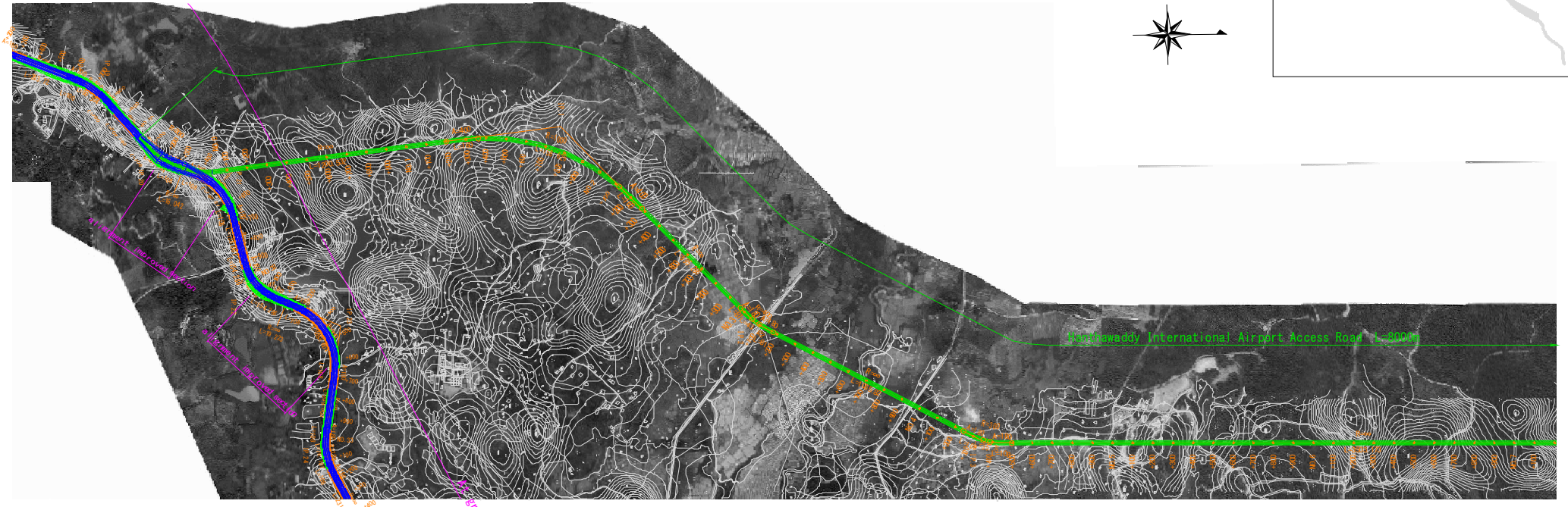


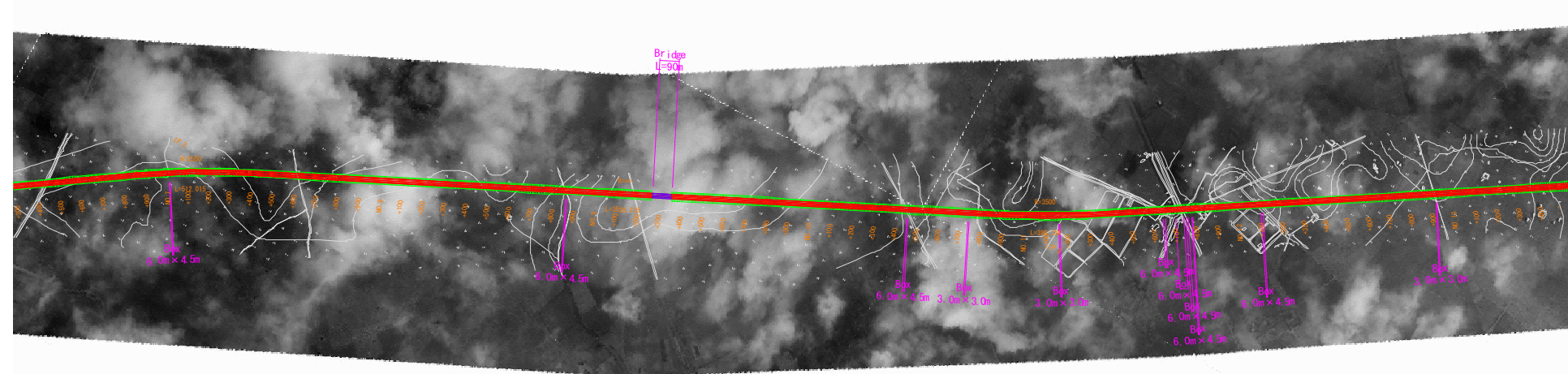
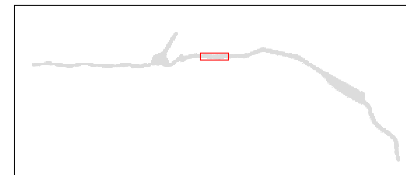
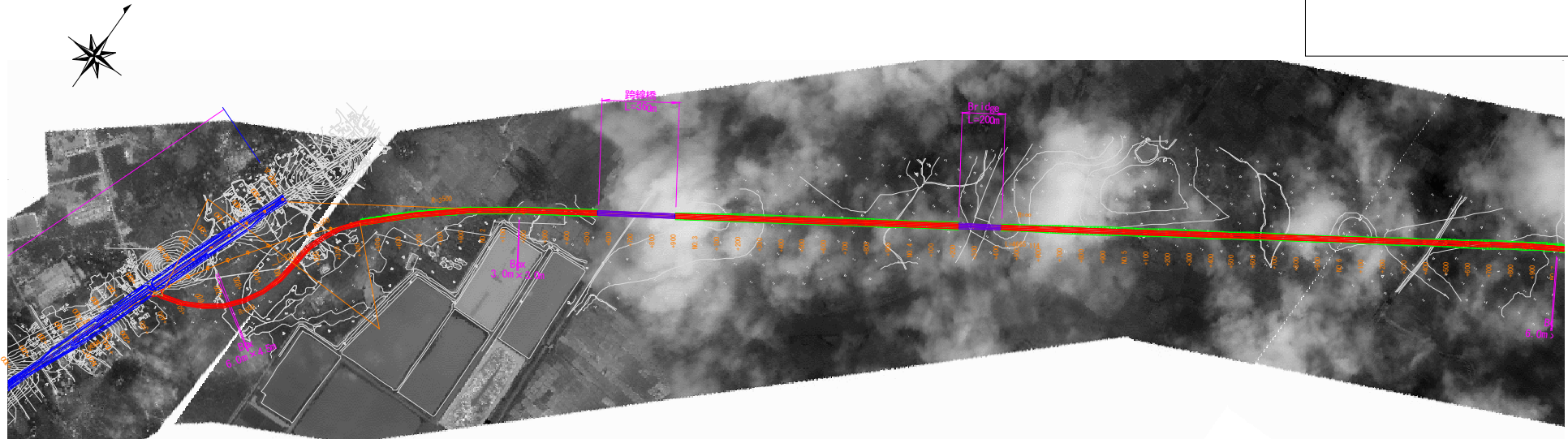
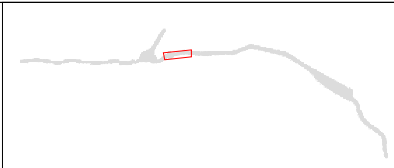
 JAPAN INTERNATIONAL COOPERATION AGENCY
 REPUBLIC OF THE UNION OF MYANMAR
 MINISTRY OF CONSTRUCTION



 ORIENTAL CONSULTANTS GLOBAL CO., LTD
 INTERNATIONAL DEVELOPMENT CENTER OF JAPAN INCORPORATED
 CTI ENGINEERING INTERNATIONAL CO., LTD
 NIPPON KOEI CO., LTD

REMARKS

THE PROJECT FOR STRENGTHENING CONNECTIVITY
 OF INTERNATIONAL HIGHWAY IN MEKONG REGION PHASE II
 DRAWING TITLE: PLAN (4) (NH1)
 SCALE: S=1/20000
 DRAWING NO.:
 SHEET NO.:



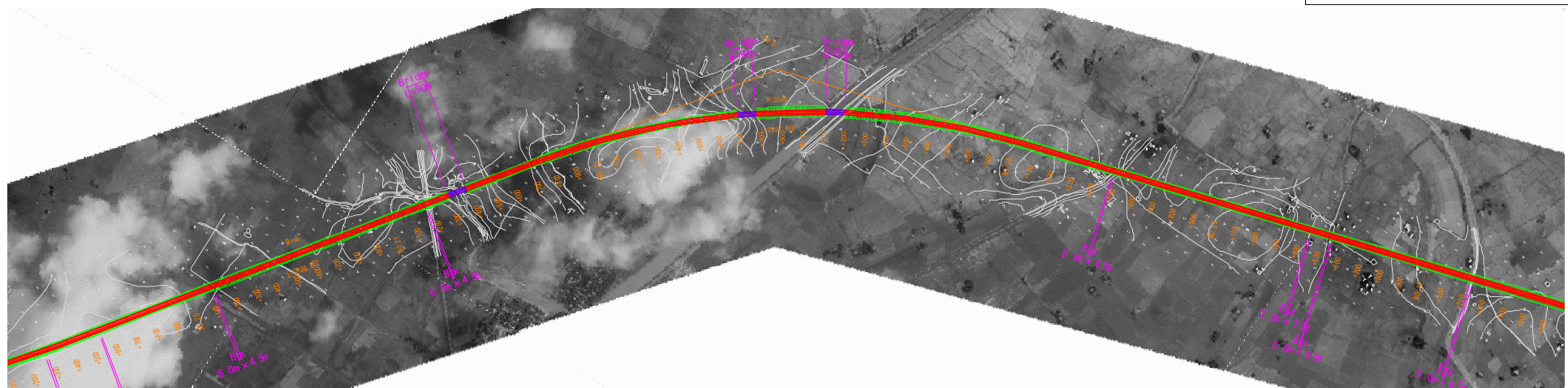
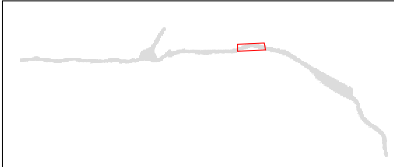
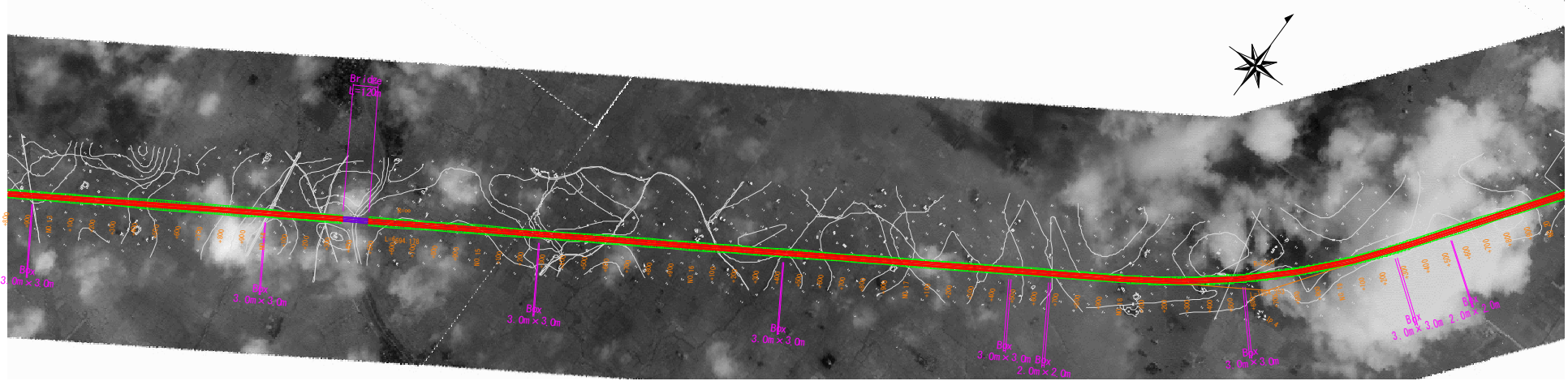
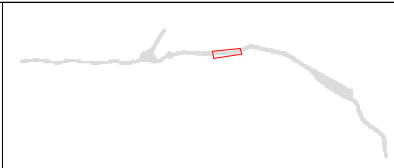




 JAPAN INTERNATIONAL COOPERATION AGENCY
 REPUBLIC OF THE UNION OF MYANMAR
 MINISTRY OF CONSTRUCTION

 ORIENTAL CONSULTANTS GLOBAL CO., LTD
 INTERNATIONAL DEVELOPMENT CENTER OF JAPAN INCORPORATED
 CTI ENGINEERING INTERNATIONAL CO., LTD
 NIPPON KOEI CO., LTD

REMARKS

THE PROJECT FOR STRENGTHENING CONNECTIVITY
 OF INTERNATIONAL HIGHWAY IN MEKONG REGION PHASE II
 DRAWING TITLE
PLAN(1)
(Bago)
 SCALE S=1/20000
 DRAWING NO.
 SHEET NO.

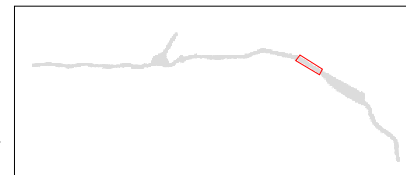
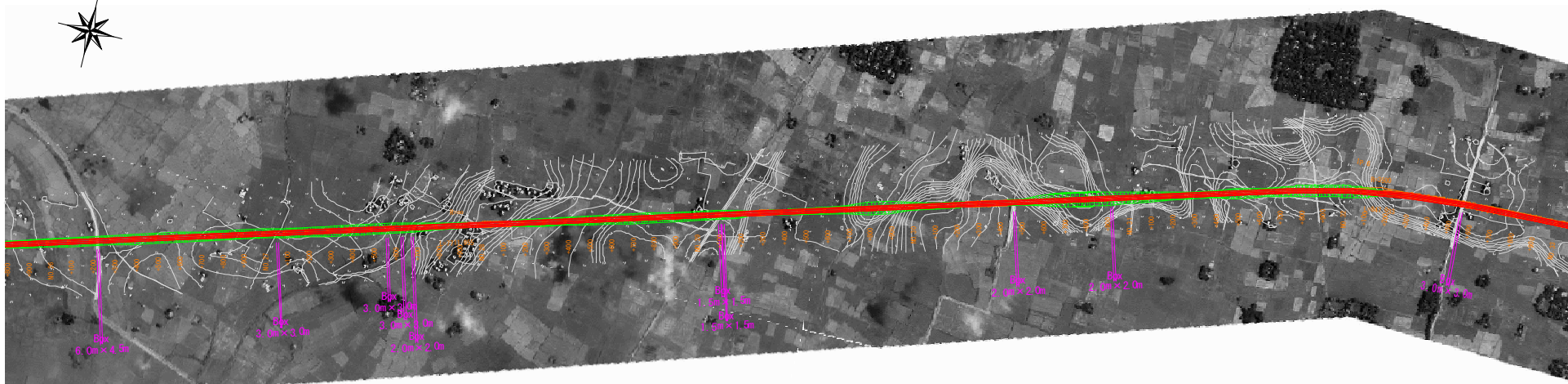
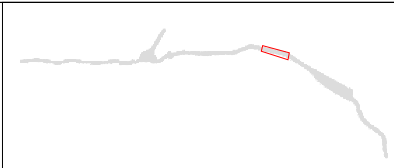




 JAPAN INTERNATIONAL COOPERATION AGENCY
 REPUBLIC OF THE UNION OF MYANMAR
 MINISTRY OF CONSTRUCTION

 ORIENTAL CONSULTANTS GLOBAL CO., LTD
 INTERNATIONAL DEVELOPMENT CENTER OF JAPAN INCORPORATED
 CTI ENGINEERING INTERNATIONAL CO., LTD
 NIPPON KOEI CO., LTD

REMARKS

THE PROJECT FOR STRENGTHENING CONNECTIVITY
 OF INTERNATIONAL HIGHWAY IN MEKONG REGION PHASE II
 DRAWING TITLE: PLAN (2) (Bago)
 SCALE: S=1/20000
 DRAWING NO.
 SHEET NO.

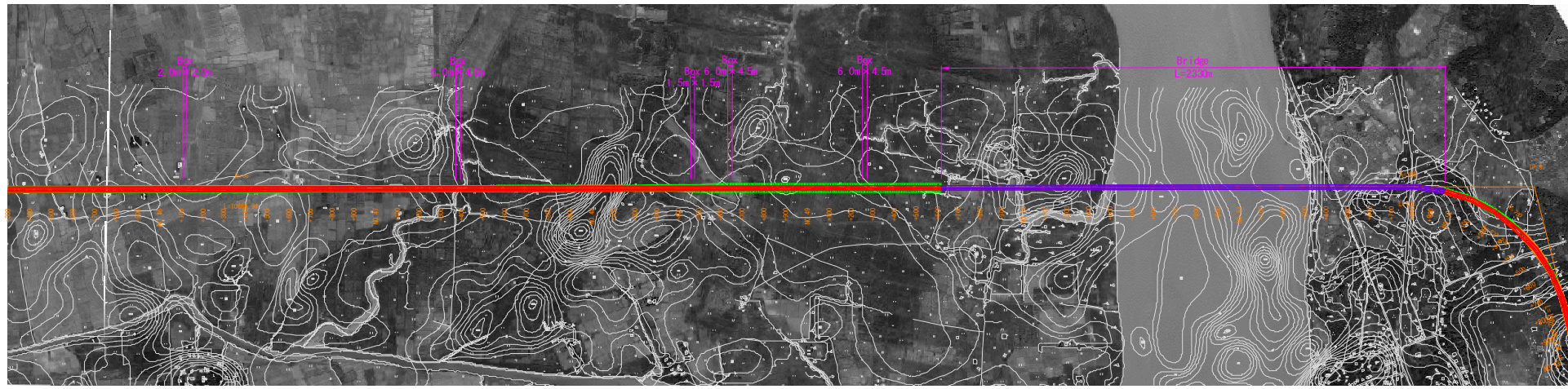
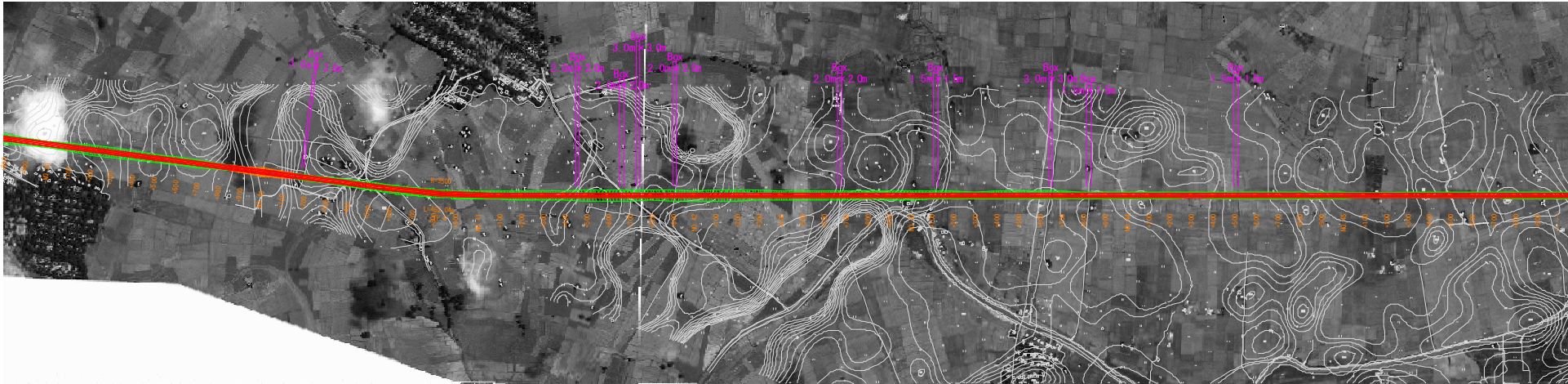
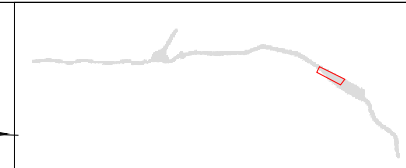


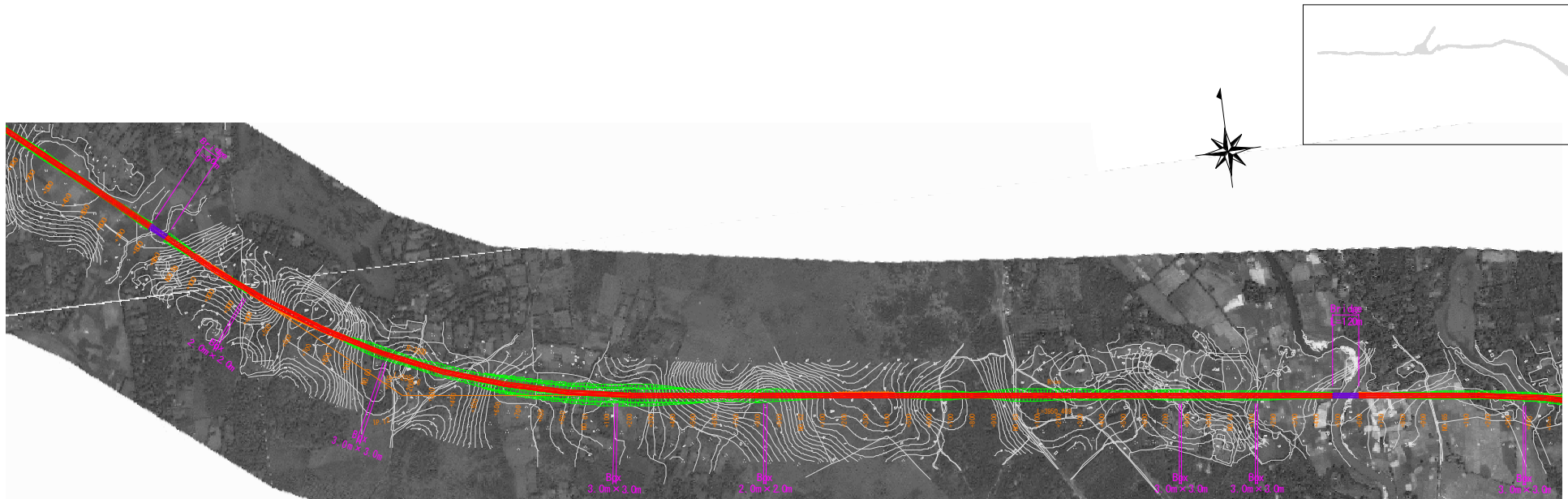
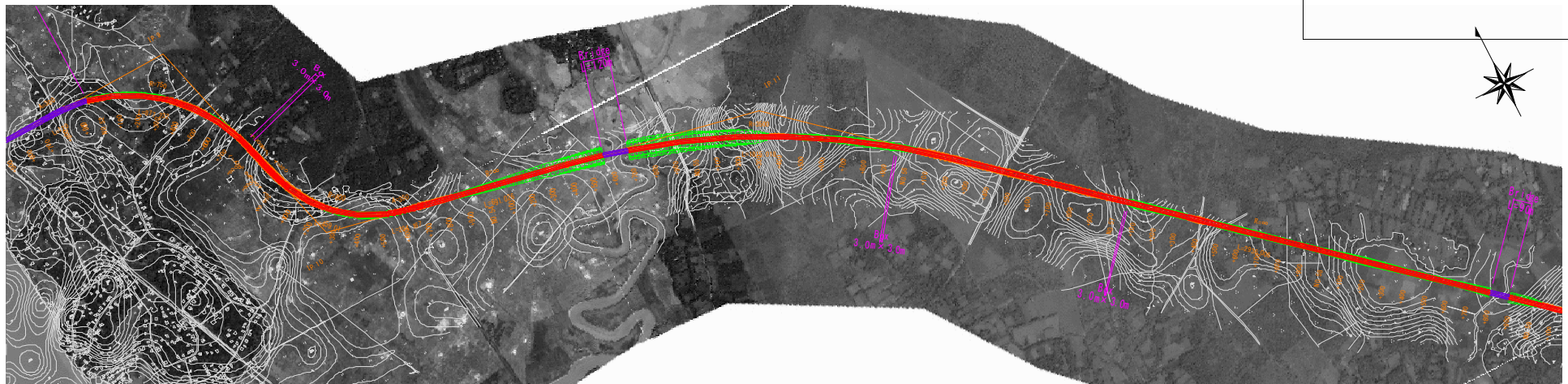
 JAPAN INTERNATIONAL COOPERATION AGENCY
 REPUBLIC OF THE UNION OF MYANMAR
 MINISTRY OF CONSTRUCTION

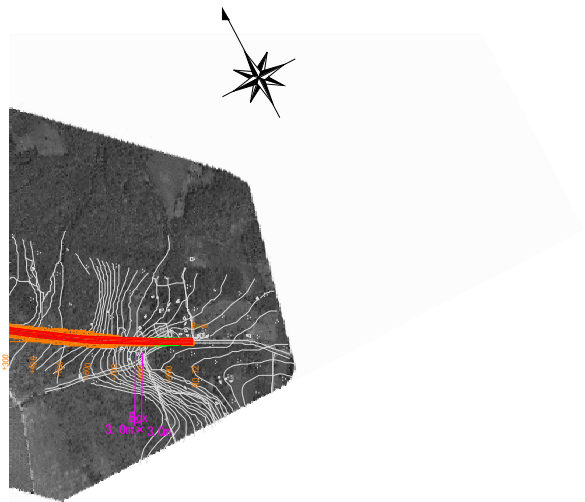
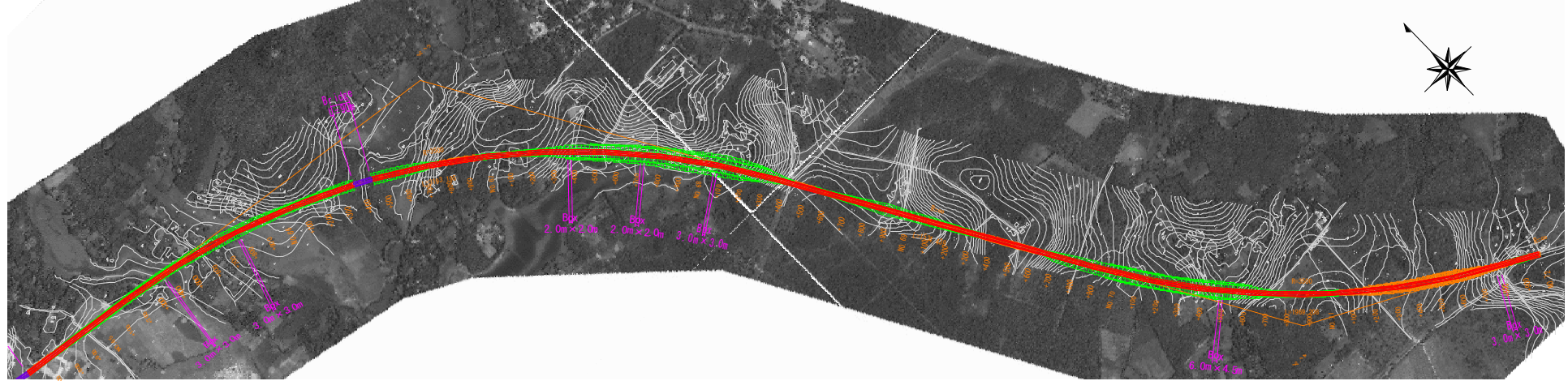
 ORIENTAL CONSULTANTS GLOBAL CO., LTD
 INTERNATIONAL DEVELOPMENT CENTER OF JAPAN INCORPORATED
 CTI ENGINEERING INTERNATIONAL CO., LTD
 NIPPON KOEI CO., LTD

REMARKS



THE PROJECT FOR STRENGTHENING CONNECTIVITY
 OF INTERNATIONAL HIGHWAY IN MEKONG REGION PHASE II
 DRAWING TITLE PLAN (3)
 (Bago)
 SCALE S=1/20000
 DRAWING NO.
 SHEET NO.







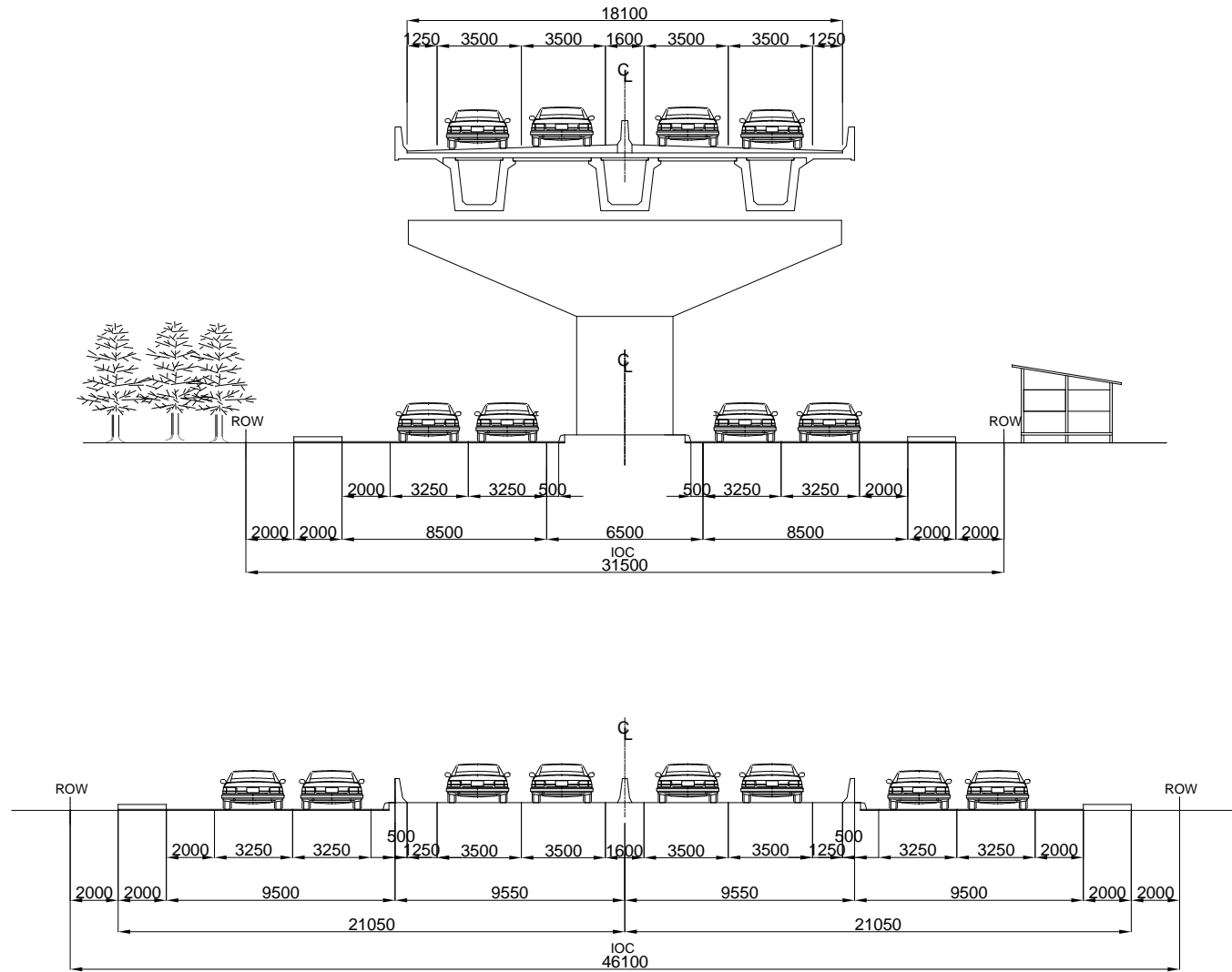
REMARKS

 JAPAN INTERNATIONAL COOPERATION AGENCY
 REPUBLIC OF THE UNION OF MYANMAR
 MINISTRY OF CONSTRUCTION

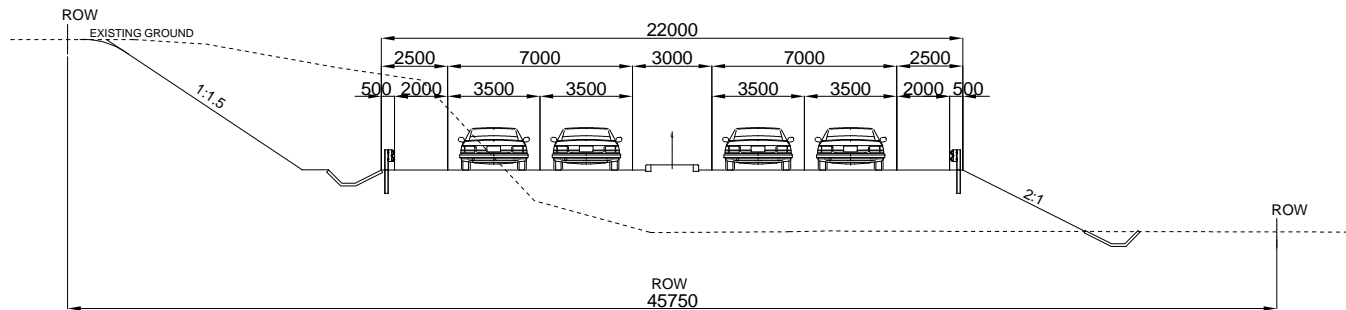
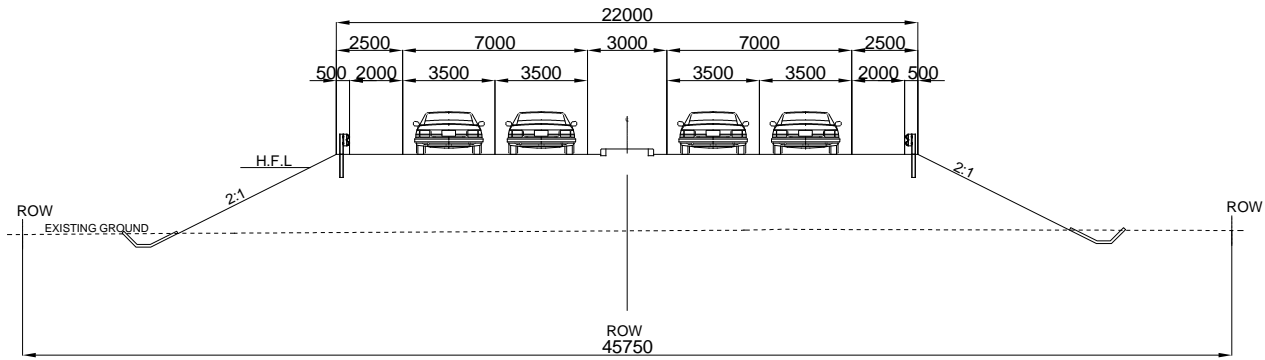
 ORIENTAL CONSULTANTS GLOBAL CO., LTD
 INTERNATIONAL DEVELOPMENT CENTER OF JAPAN INCORPORATED
 CTI ENGINEERING INTERNATIONAL CO., LTD
 NIPPON KOEI CO., LTD

THE PROJECT FOR STRENGTHENING CONNECTIVITY
 OF INTERNATIONAL HIGHWAY IN MEKONG REGION PHASE II
 DRAWING TITLE: PLAN (6) (Bago)
 SCALE: S=1/20000
 DRAWING NO.:
 SHEET NO.:

TYPICAL CROSS SECTION (S=1/200)



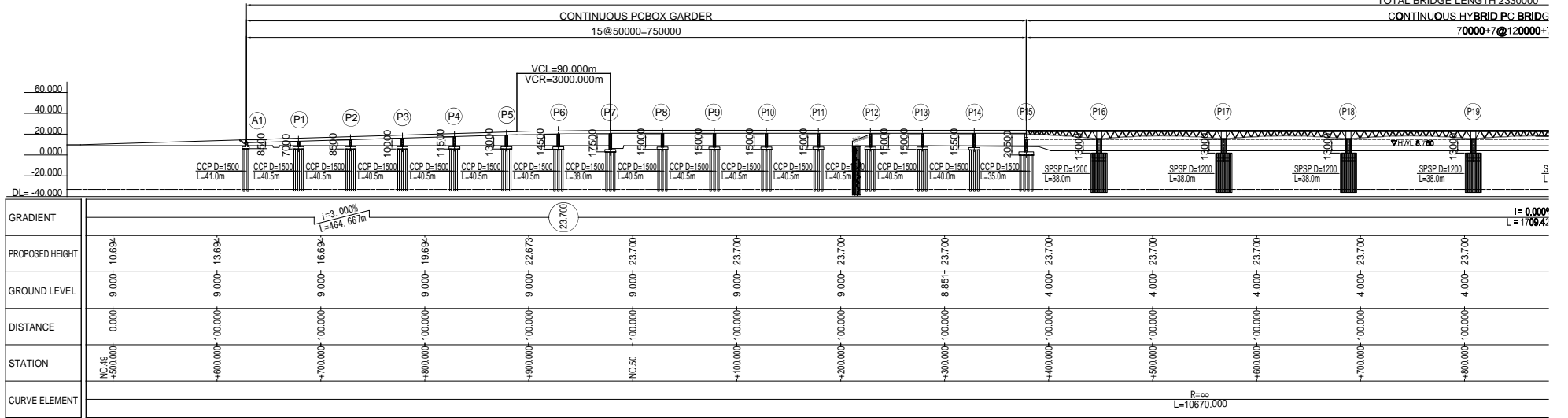
TYPICAL CROSS SECTION (S=1/200)



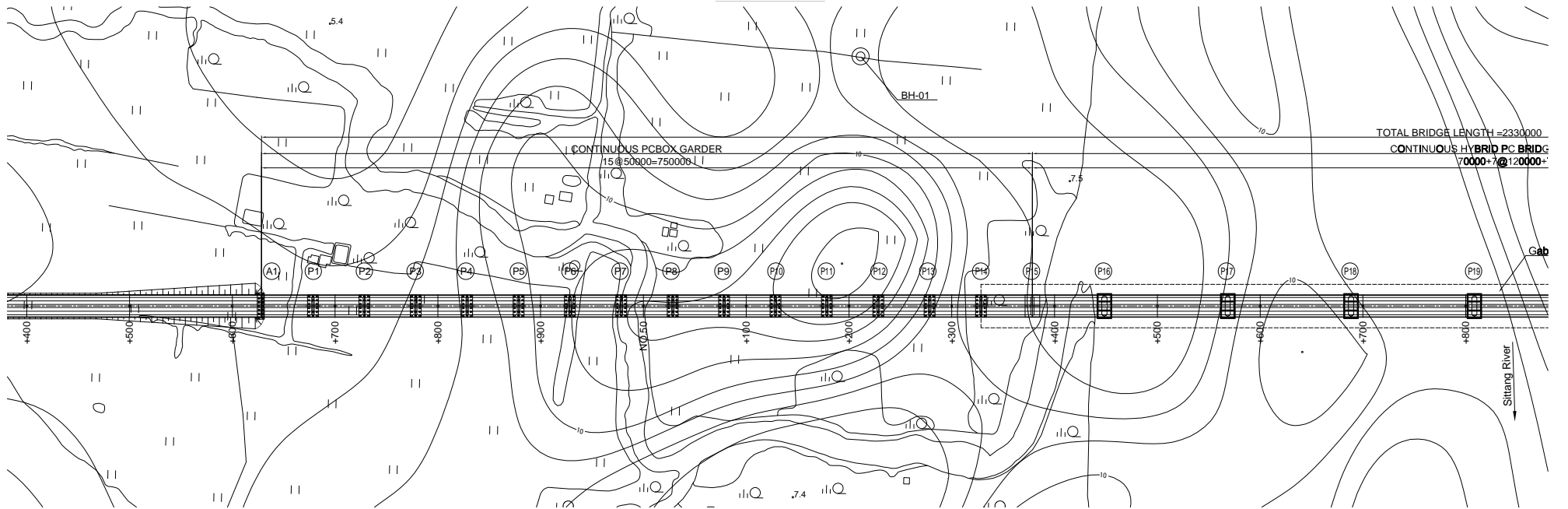
NEW SITTAUNG BRIDGE GENERAL VIEW (1)

SIDE VIEW S=1/4000

TOTAL BRIDGE LENGTH 2330000
CONTINUOUS HYBRID PC BRIDGE
70000+7@120000+

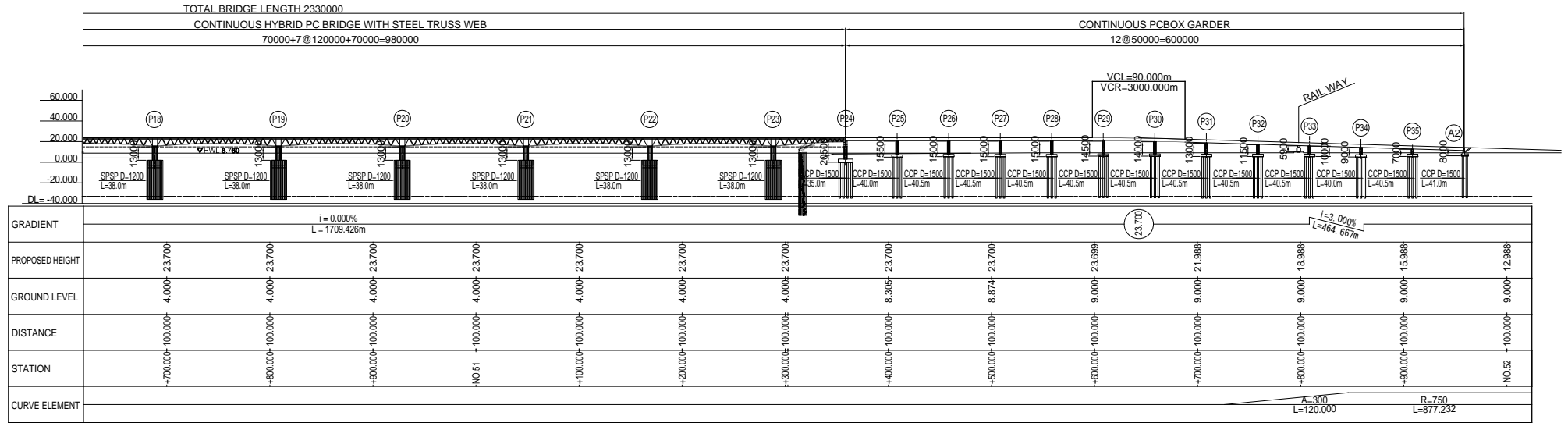


PLAN VIEW S=1/4000

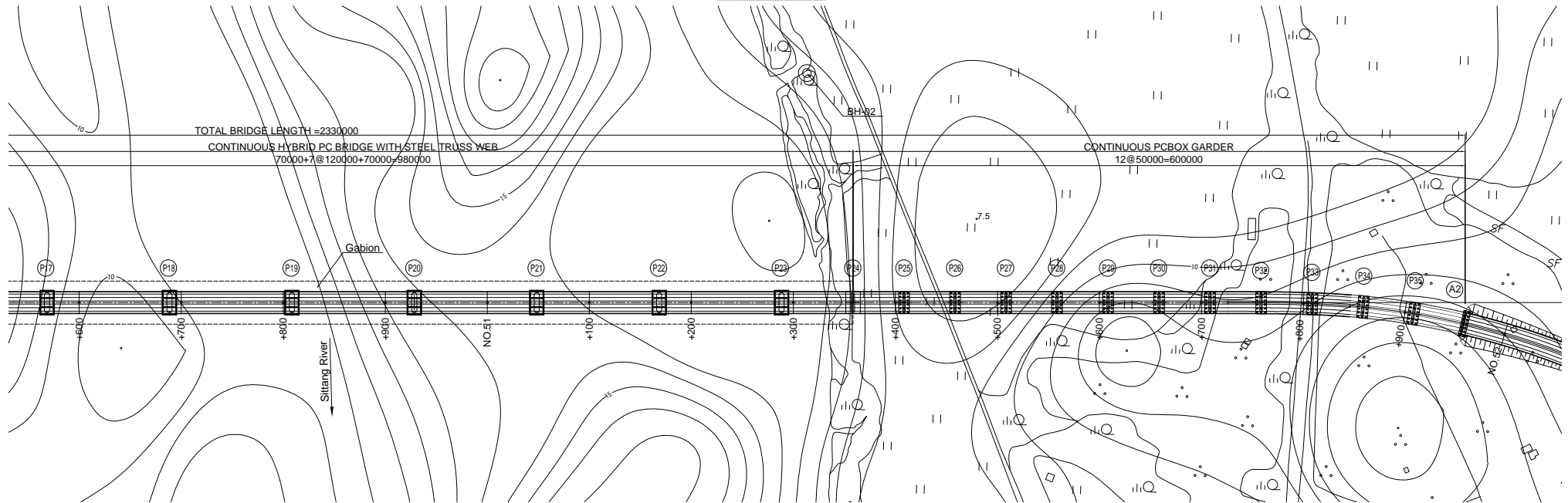


NEW SITTAUNG BRIDGE GENERAL VIEW (2)

SIDE VIEW S=1/4000



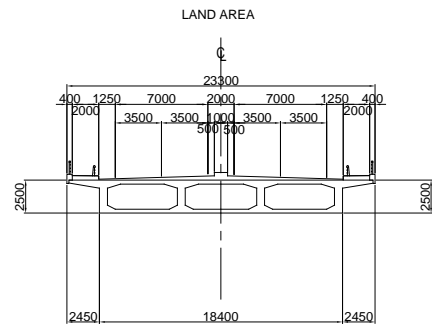
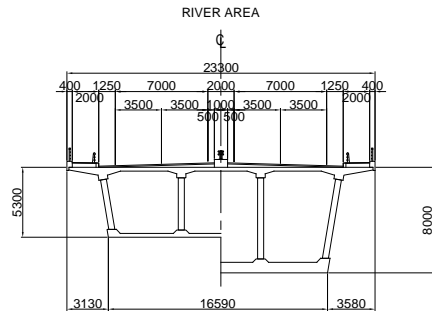
PLAN VIEW S=1/4000



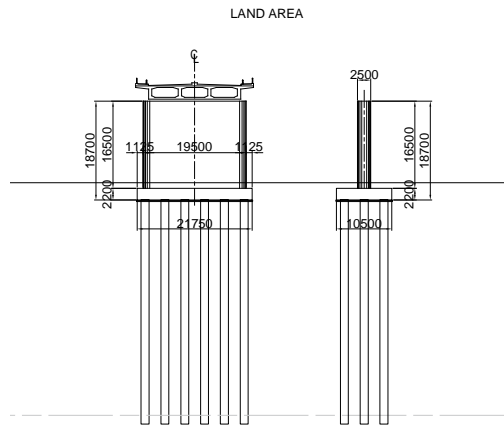
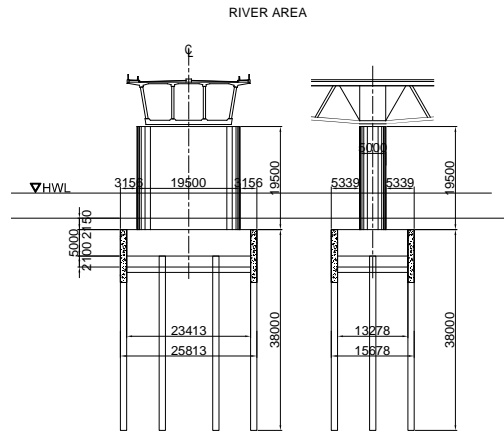
REMARKS

NEW SITTAUNG BRIDGE GENERAL VIEW(3)

CLOSS SECTION S=1/400



SUB STRUCTURE S=1/1000



DESIGN CRITERIA

Road Class & Design Speed		
Bridge Length (Span Length)	2330.00m(15@50.00m+7@120.00m+7@120.00m+12@50.00m)	
Bridge Width	Carriageway:2@8.75m, Footpath:2@2.00m	
Pavement	Asphalt Concrete t=80mm	
Longitudinal Gradient	3.000% - LEVEL - -3.000%	
Cross-fall of Carriageway	3.00 %	
Superstructure Type	15 span Continuous PC Box Girder + 9 span Continuous Hybrid PC Bridge With Steel Truss Web + 12 span Continuous PC Box Girder	
Substructure Type	Abutment	Inverted T-Type
	Pier	Pillar-Type
Foundation Type	Abutment	Cast in Situ Pile φ1500
	Pier (Land Area)	Cast in Situ Pile φ1500
	Pier (River Area)	Steel Pipe Sheet Pile φ1200
Material Strength		
Superstructure	Girder	σ _{ck} =40N/mm ²
	Cross Beam	σ _{ck} =40N/mm ²
	Slab	σ _{ck} =40N/mm ²
Surface Facility	Curb , Wheel guard	σ _{ck} =24N/mm ²
Substructure	σ _{ck} =24N/mm ²	
Reinforcing Steel	SD345 (py=345N/mm ²)	
Pre-stressing Steel	Girder	12S12.7(SWPR7BL) 19S15.2(SWPR7B)
	Cross Beam	1S28.6(SWPR19L)
	Slab	1S28.6(SWPR19L)

RAILWAY SECTION

