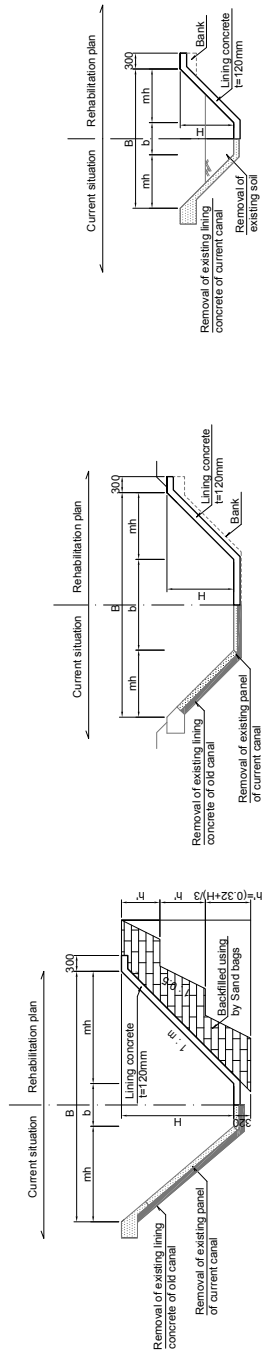
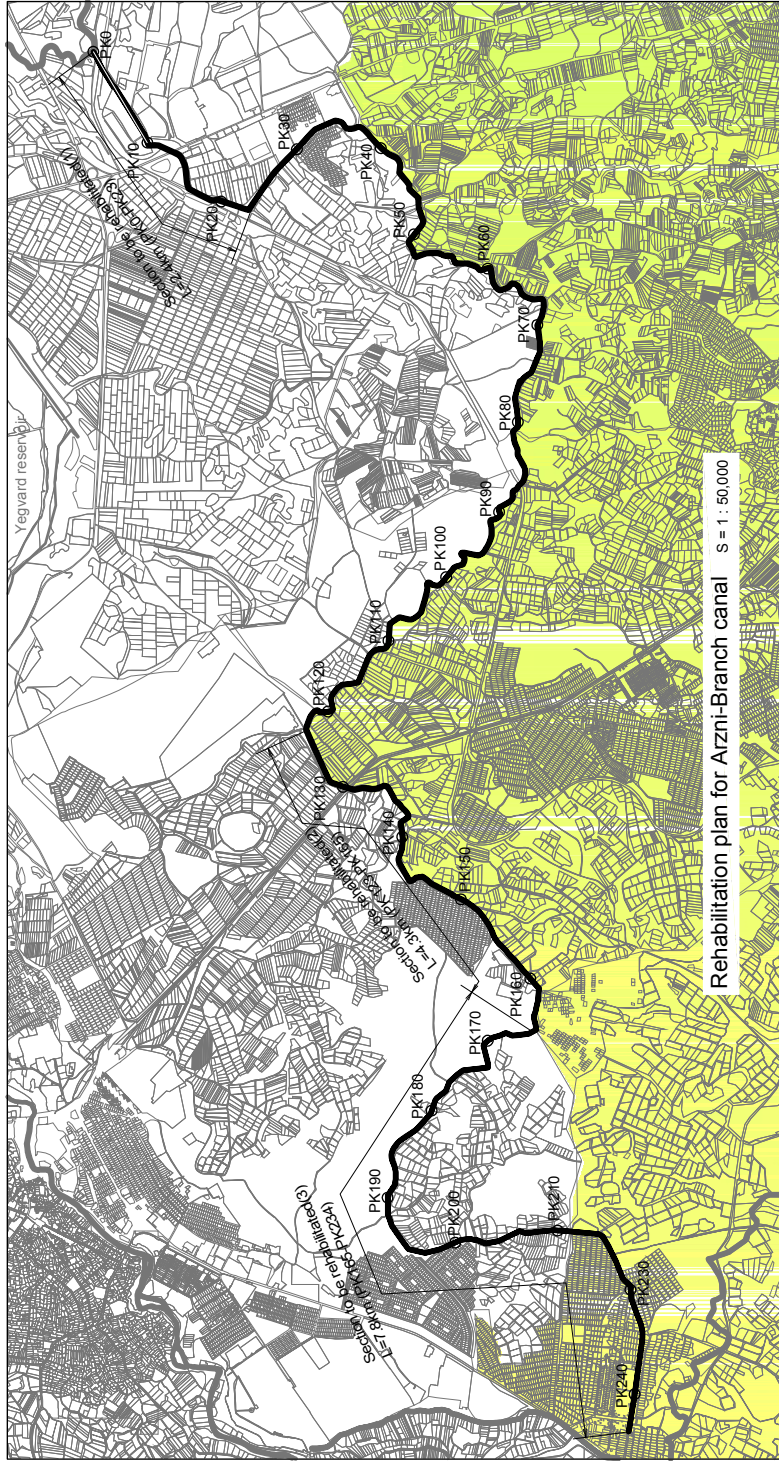


DIMENSION OF THE CANALS

PK	L (m)	H (m)	B (m)	b (m)	m	Q1 (Current Discharge) (m ³ /s)	Q2 (Design Discharge) (m ³ /s)
TypeA: PK0 - PK23							
PK0+00	30.00	1.60	4.20	1.00	1.00	5.00	2.30
PK0+30	874.00	1.20	3.20	0.80	1.00	5.00	2.30
PK0+04	546.00	1.40	3.80	1.00	1.00	5.00	2.30
PK1+50	70.00	1.80	4.80	1.20	1.00	6.00	2.30
PK15+50	180.00	2.10	6.70	2.50	1.00	5.00	2.30
PK17+00	356.00	2.10	4.55	0.80	0.80	4.80	2.30
PK20+56	250.00	2.10	4.37	0.80	0.85	4.80	2.30
PK23+06	250.00	2.10	4.37	0.80	0.85	4.80	2.30
TypeB: PK123 - PK165							
PK123+00	400.00	0.85	2.45	0.75	1.00	2.60	0.56
PK127+00	30.00	1.05	3.00	0.90	1.00	2.80	0.56
PK127+30	30.00	-	-	-	-	-	-
PK127+60	340.00	1.25	4.20	1.70	1.00	2.80	0.56
PK131+00	680.00	1.45	3.80	0.70	1.00	2.80	0.56
PK137+60	25.00	1.90	4.20	1.20	1.00	2.80	0.56
PK138+05	248.00	1.25	3.40	0.90	1.00	2.80	0.56
PK140+53	376.00	1.00	1.80	0.40	0.70	2.80	0.56
PK144+29	47.00	-	-	-	-	-	-
PK144+76	24.00	1.25	3.40	3.40	0.00	2.80	0.56
PK145+00	186.00	1.15	2.80	0.50	1.00	2.00	0.56
PK146+86	384.00	0.90	2.45	0.65	1.00	2.00	0.56
PK150+80	40.00	1.00	1.20	1.20	0.00	2.10	0.56
PK151+20	40.00	0.90	2.50	0.70	1.00	2.10	0.56
PK151+60	970.00	-	-	-	-	-	-
PK161+30	135.00	0.90	2.60	0.80	1.00	2.00	0.56
PK162+65	49.00	0.85	1.35	1.35	0.00	-	-
PK163+14	76.00	1.00	2.60	0.60	1.00	2.00	0.56
PK163+90	12.00	0.70	2.00	0.60	1.00	2.00	0.56
PK164+02	93.00	1.00	2.60	0.60	1.00	2.00	0.56
PK164+95	2,895.00	1.00	2.60	0.60	1.00	2.00	0.56
PK191+80	1,975.00	1.30	3.00	0.40	1.00	-	0.56
PK211+65	2,193.00	0.80	2.10	0.50	1.00	-	0.56
PK233+68	-	-	-	-	-	-	0.56

NOTE : Source of dimension (section1) and current Q are by Ashatarak WUA
 Source of dimension (section2,3) is by study team
 Source of current Q (section2,3) is designed by Millennium project

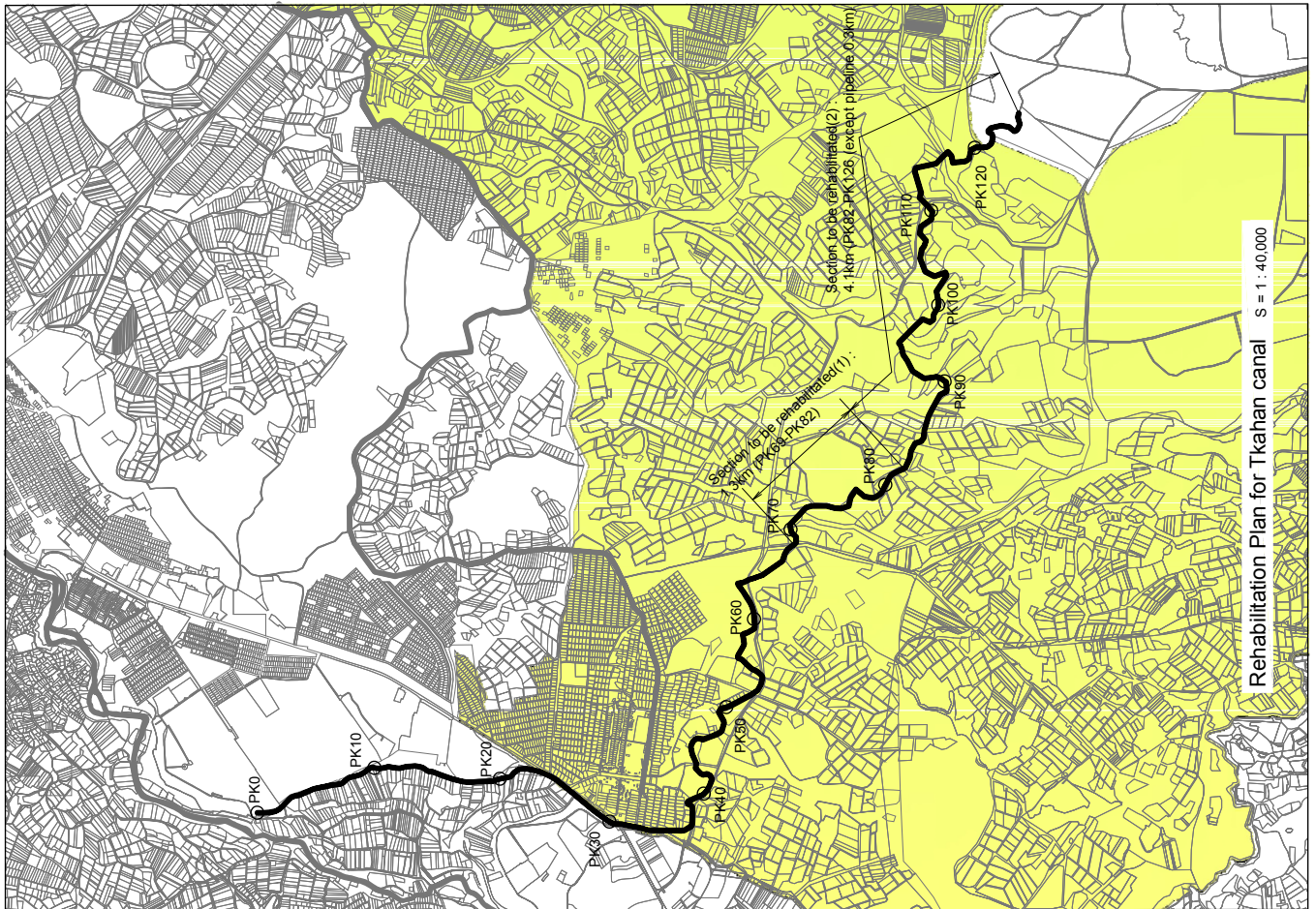


TypeB : Section(2) PK123-165

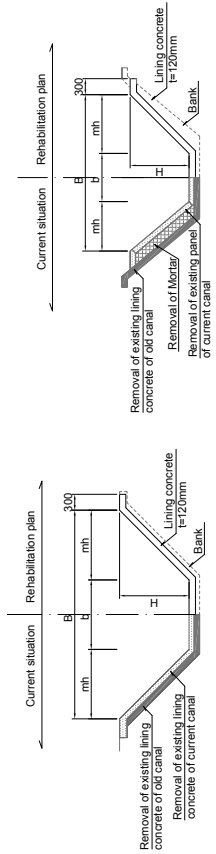
TypeC : Section(3) PK165-234

TypeA : Section(1) PK0 - PK23

Project:	Preparatory Survey for Yegvard Irrigation System Improvement Project	Drawing No:	Drawn by: Sanyu Consultants Inc.
Drawing Title:	Rehabilitation Plan for Azzni-Branch canal	Scale:	Checked by:
Revision:	Initials	All dimension in:	Approved by:
		Meter	



Rehabilitation Plan for Tkanan canal s = 1 : 40,000



TypeA : Section(1) PK69 - PK82

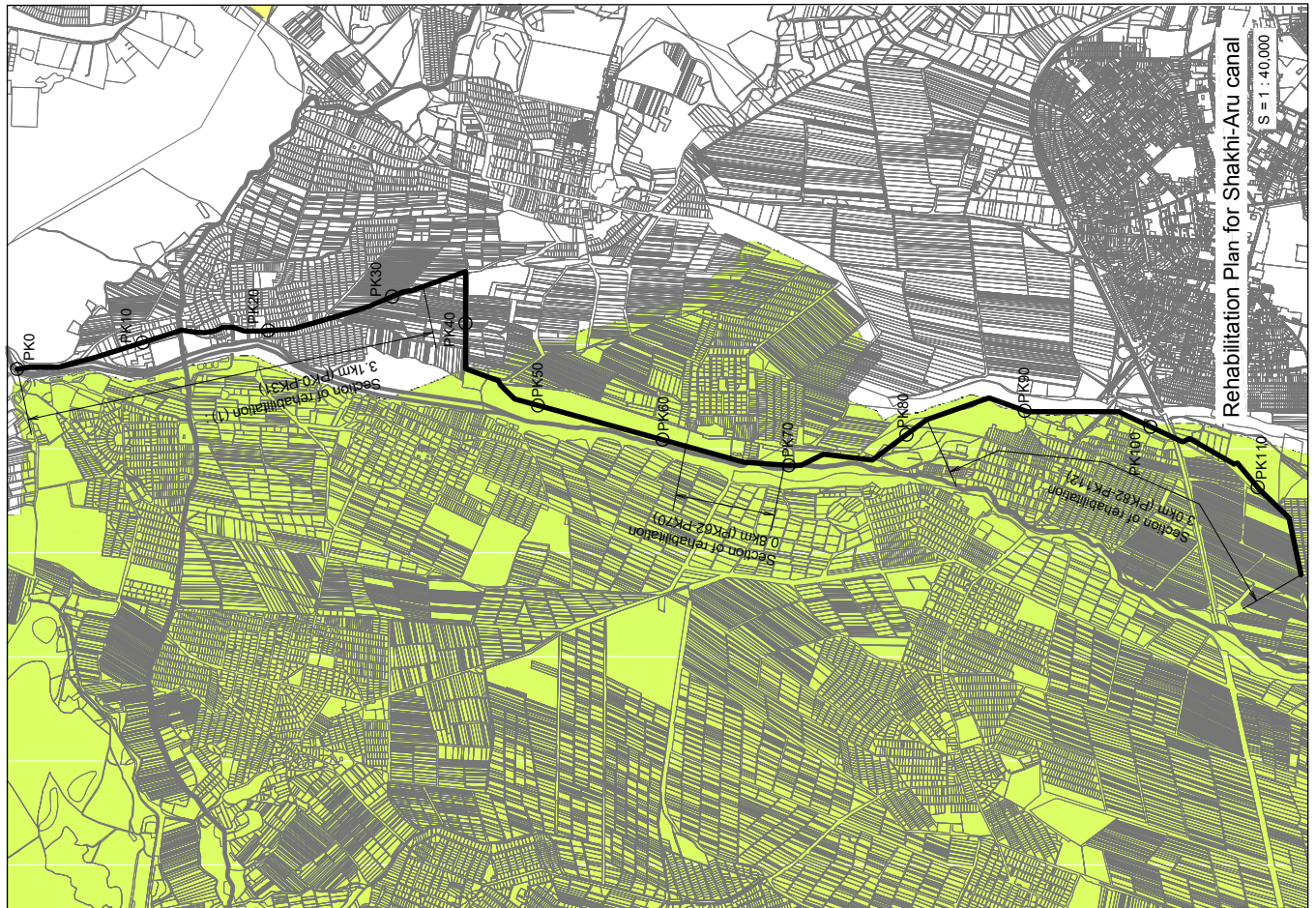
TypeB : Section(2) PK82 -126

DIMENSION OF THE CANALS

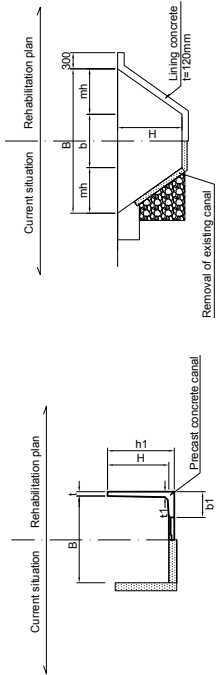
PK	L (m)	H (m)	B (m)	b (m)	m	Q1 (Current Discharge) (m ³ /s)	Q2 (Design Discharge) (m ³ /s)
TypeA: PK69 - PK82							
PK68+60	330.00	1.30	3.90	1.30	1.00	-	1.30
PK71+60	300.00	1.25	3.50	1.00	1.00	-	1.30
PK74+60	635.00	1.30	3.80	1.20	1.00	-	1.30
PK81+25	75.00	1.30	3.60	1.00	1.00	-	1.30
TypeB: PK82 - PK126							
PK82+00	165.00	1.30	3.60	1.00	1.00	-	1.30
PK83+65	280.00	1.10	3.10	0.90	1.00	-	1.30
PK86+45	34.00	1.40	1.60	1.60	0.00	-	1.30
PK86+79	141.00	1.30	3.75	1.15	1.00	-	1.30
PK88+20	425.00	1.20	3.30	0.90	1.00	-	1.30
PK92+45	535.00	1.05	2.80	0.70	1.00	-	1.30
PK97+80	295.00	1.05	3.00	0.90	1.00	-	1.30
PK100+70	660.00	1.20	3.30	0.90	1.00	-	1.30
PK103+65	360.00	0.90	2.60	0.80	1.00	-	1.30
PK110+25	615.00	1.00	2.90	0.90	1.00	-	1.30
PK113+65	615.00	1.30	3.95	0.75	1.00	-	1.30
PK120+00	625.00	1.25	3.40	0.90	1.00	-	1.30
PK120+17	625.00	1.45	3.60	0.90	1.00	-	1.30
PK126+40	625.00	1.45	3.85	0.90	1.00	-	1.30

NOTE : Source of dimension is by study team

Project:	Preparatory Survey for Yeghvard Irrigation System Improvement Project	Drawing No:		Drawn by:	Sanyu Consultants Inc.
Drawing Title:	Rehabilitation Plan for Tkanan canal	Scale:	Free	Checked by:	
Revision:	Initials	All dimension in:	Meter	Approved by:	



Rehabilitation Plan for Shakhi-Aru canal
 Drawing Title: Rehabilitation Plan for Shakhi-Aru canal
 Scale: S = 1 : 40,000



L	H	b	H	1	1
PK0-30	300	300	1.50	1	1
PK31-65	450	300	1.10	1	1
PK66-100	600	300	1.10	1	1

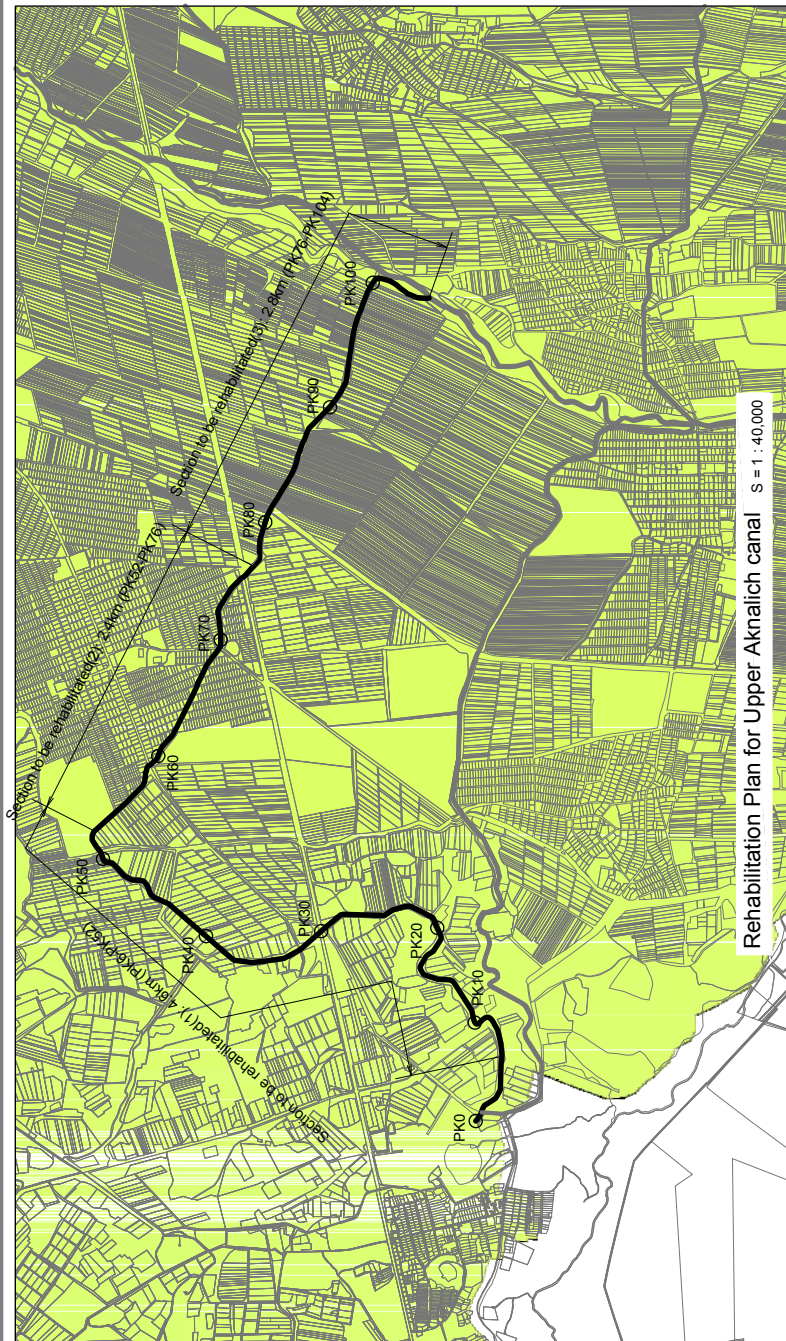
Section of rehabilitation(1) PK0 - PK31, PK62 - PK63
 Section of rehabilitation(2) PK63 - PK70, PK82 - PK112

DIMENSION OF THE CANALS

PK	L (m)	H (m)	B (m)	b (m)	m	Q1 (Current Discharge) (m ³ /s)	Q2 (Design Discharge) (m ³ /s)
TypeA: PK0 - PK31, PK62 - PK63							
PK0-00	30.00	1.50	1.60	1.60	0.00	1.80	1.00
PK0-30	450.00	1.10	1.80	1.60	0.00	1.80	1.00
PK6-65	600.00	1.10	1.65	1.65	0.00	1.80	1.00
PK11-00	55.00	1.10	1.65	1.65	0.00	1.80	1.00
PK11-50	260.00	1.15	3.10	3.10	0.00	1.80	1.00
PK12-05	110.00	1.10	2.95	2.95	0.00	1.80	1.00
PK14-65	690.00	1.05	3.00	3.00	0.00	1.80	1.00
PK15-75	180.00	1.15	3.00	3.00	0.00	1.80	1.00
PK22-65	250.00	1.00	3.05	3.05	0.00	1.80	1.00
PK24-45	40.00	1.15	1.80	1.60	0.00	1.80	1.00
PK26-65	170.00	1.00	1.60	1.60	0.00	1.80	1.00
PK27-35	125.00	1.10	1.80	1.80	0.00	1.80	1.00
PK29-05	1185.00	1.20	1.50	1.50	0.00	1.80	1.00
PK29-27	162.00	1.10	1.80	1.80	0.00	1.80	1.00
PK30-89	155.00	1.20	2.20	2.20	0.00	1.20	0.57
PK61-90	3060.00	1.20	2.70	1.00	0.70	1.00	0.39
PK63-45	1.20	2.20	1.00	1.00	0.50	1.20	0.57
TypeB: PK62 - PK70, PK82 - PK112							
PK63-45	125.00	1.20	2.20	1.00	0.50	1.20	0.57
PK64-70	1185.00	1.20	2.70	1.00	0.70	1.00	0.39
PK69-65						1.00	0.39
PK82-00		1.20	2.70	1.00	0.70	1.00	0.39
PK112-10		1.20	2.70	1.00	0.70	1.00	0.39

NOTE : Source of dimension is by study team current Q are by Vagashapat WUA

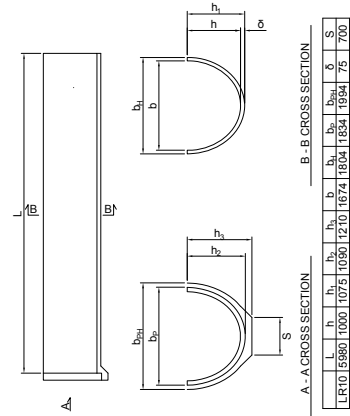
Project: Preparatory Survey for Yeghvard Irrigation System Improvement Project
 Drawing No: Sanyu Consultants Inc.
 Drawing Title: Rehabilitation Plan for Shakhi-Aru canal
 Scale: Free
 Checked by:
 Revision: Initials
 All dimension in: Meter
 Approved by:



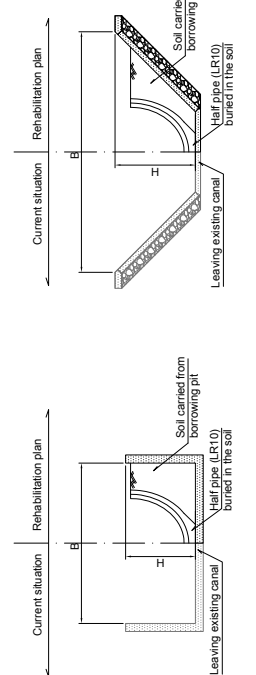
DIMENSION OF THE CANALS

PK	L (m)	H (m)	B (m)	b (m)	m	O1 (Current Discharge) (m ³ /s)	O2 (Design Discharge) (m ³ /s)
TypeA : PK6 - PK32							
PK6+65	170.00	1.30	3.00	3.00	0.00	2.20	1.08
PK7+35	235.00	1.35	2.80	2.80	0.00	2.20	1.08
PK9+70	255.00	1.70	2.75	2.75	0.00	2.20	1.08
PK12+25	125.00	1.80	2.80	2.80	0.00	2.20	1.08
PK13+50	180.00	1.70	2.60	2.60	0.00	2.20	1.08
PK15+40	620.00	1.90	2.80	2.80	0.00	2.20	1.08
PK21+60	160.00	1.90	2.75	2.75	0.00	2.20	1.08
PK23+20	160.00	1.85	2.70	2.70	0.00	2.20	1.08
PK24+80	380.00	1.75	2.85	2.85	0.00	2.20	1.08
PK28+40	90.00	1.70	2.75	2.75	0.00	2.20	1.08
PK29+30	155.00	1.75	2.70	2.70	0.00	2.20	1.08
PK30+85	125.00	1.70	2.85	2.85	0.00	2.20	1.08
PK32+10	180.00	1.80	2.80	2.80	0.00	2.20	1.08
PK34+00	410.00	1.80	2.75	2.75	0.00	2.20	1.08
PK38+10	180.00	1.35	2.10	2.10	0.00	2.20	1.08
PK40+00	50.00	1.50	2.00	2.00	0.00	2.20	1.08
PK40+50	485.00	1.35	2.20	2.20	0.00	2.20	1.08
PK45+45	23.00	1.30	2.25	2.25	0.00	2.20	1.08
PK45+68	6.00	1.30	2.25	2.25	0.00	2.20	1.08
PK45+74	646.00	1.50	4.50	1.50	1.00	2.20	1.08
PK52+20	17.00	1.50	2.00	2.00	0.00	2.20	1.08
PK52+37	17.00	1.10	3.20	1.00	1.00	2.20	1.08
TypeB : PK52 - PK76							
PK52+37	13.00	1.10	3.20	1.00	1.00	2.20	1.08
PK52+50	355.00	1.30	4.35	1.75	1.00	2.20	1.08
PK59+05	215.00	1.10	4.40	2.20	1.00	2.20	1.08
PK59+20	245.00	1.30	4.10	1.50	1.00	2.20	1.08
PK60+65	300.00	0.70	3.20	1.80	1.00	2.20	1.08
PK63+65	745.00	0.70	3.00	1.60	1.00	1.20	0.30
PK71+10	535.00	0.80	2.10	0.50	1.00	1.20	0.30
PK76+45	2755.00	1.50	4.50	1.50	1.00	1.20	0.30
TypeC : PK76 - PK104							
PK104+00	2755.00	1.50	4.50	1.50	1.00	1.20	0.30

NOTE : Source of dimension (PK6-PK76) is by study team, the other is by Vagashapat WUA Current Q are by Vagashapat WUA



Half pipe (LR10)



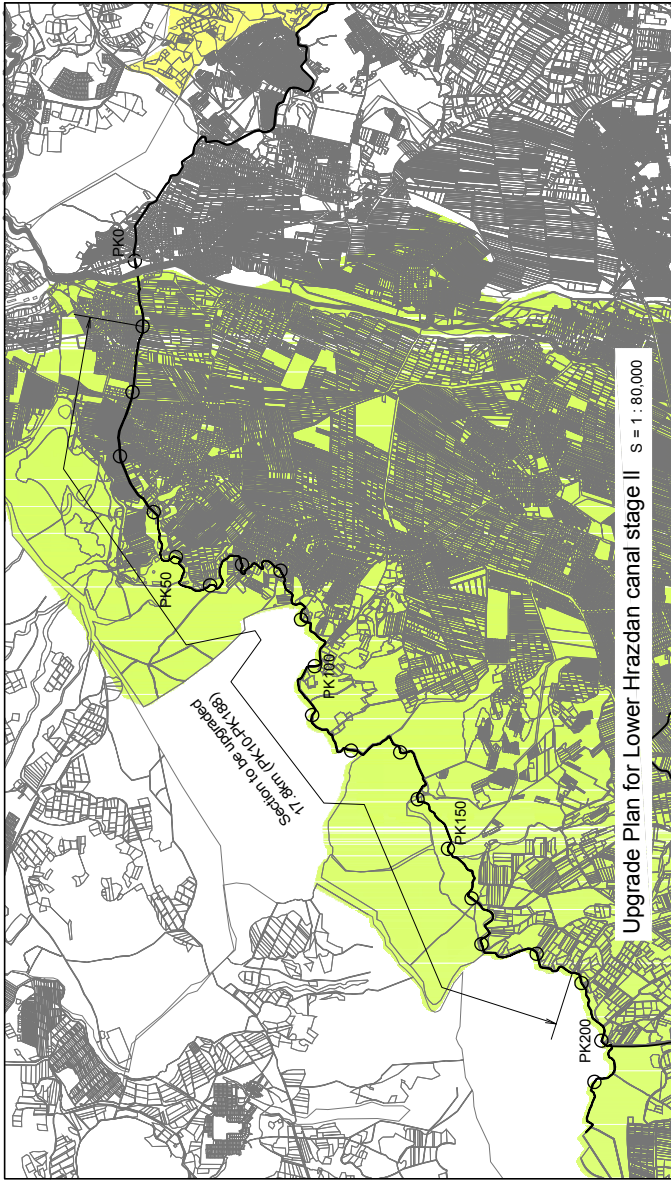
TypeA : Section(1) PK6 - PK52

TypeB : Section(2) PK52 - PK76

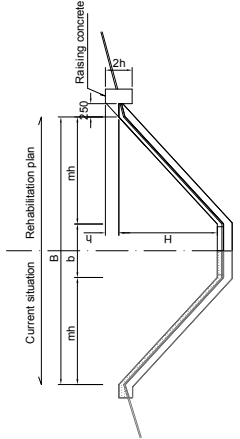
TypeC : Section(3) PK76 - PK104

Project: Preparatory Survey for Yeghvard Irrigation System Improvement Project
 Drawing Title: Rehabilitation Plan for Upper Aknaich canal
 Revision: Initials

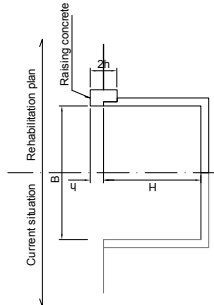
Drawing No: _____
 Drawn by: Sanyu Consultants Inc.
 Checked by: _____
 Scale: Free
 All dimension in: Meter



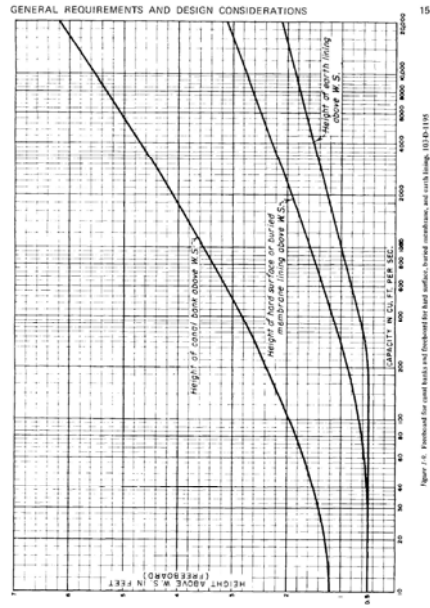
Upgrade Plan for Lower Hrazdan canal stage II s = 1 : 80,000



TypeA : Trapezoidal section



TypeB : Rectangular section

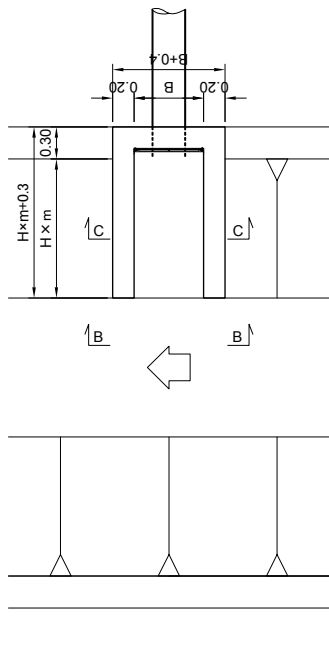


NOTE : Source of DESIGN OF SMALL CANAL STRUCTURE 1 feet = 10.3048 m

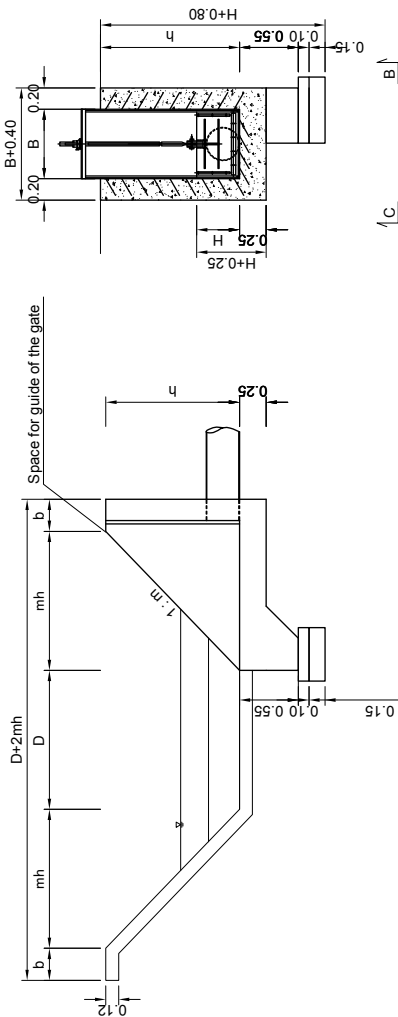
PK	L (m)	H (m)	B (m)	m	Q1 (Design) (m³/s)	Q2 (Design) (m³/s)	h (higher) (m)	
PK150	147.00	1.07	7.21	2.60	1.17	7.00	8.92	0.32
PK1547	156.00	1.07	7.21	2.60	1.17	7.00	8.92	0.32
PK1590	165.00	1.07	7.21	2.60	1.17	7.00	8.92	0.32
PK1634	174.00	1.07	7.21	2.60	1.17	7.00	8.92	0.32
PK1678	183.00	1.07	7.21	2.60	1.17	7.00	8.92	0.32
PK1722	192.00	1.07	7.21	2.60	1.17	7.00	8.92	0.32
PK1766	201.00	1.07	7.21	2.60	1.17	7.00	8.92	0.32
PK1810	210.00	1.07	7.21	2.60	1.17	7.00	8.92	0.32
PK1854	219.00	1.07	7.21	2.60	1.17	7.00	8.92	0.32
PK1898	228.00	1.07	7.21	2.60	1.17	7.00	8.92	0.32
PK1942	237.00	1.07	7.21	2.60	1.17	7.00	8.92	0.32
PK1986	246.00	1.07	7.21	2.60	1.17	7.00	8.92	0.32
PK2030	255.00	1.07	7.21	2.60	1.17	7.00	8.92	0.32
PK2074	264.00	1.07	7.21	2.60	1.17	7.00	8.92	0.32
PK2118	273.00	1.07	7.21	2.60	1.17	7.00	8.92	0.32
PK2162	282.00	1.07	7.21	2.60	1.17	7.00	8.92	0.32
PK2206	291.00	1.07	7.21	2.60	1.17	7.00	8.92	0.32
PK2250	300.00	1.07	7.21	2.60	1.17	7.00	8.92	0.32
PK2294	309.00	1.07	7.21	2.60	1.17	7.00	8.92	0.32
PK2338	318.00	1.07	7.21	2.60	1.17	7.00	8.92	0.32
PK2382	327.00	1.07	7.21	2.60	1.17	7.00	8.92	0.32
PK2426	336.00	1.07	7.21	2.60	1.17	7.00	8.92	0.32
PK2470	345.00	1.07	7.21	2.60	1.17	7.00	8.92	0.32
PK2514	354.00	1.07	7.21	2.60	1.17	7.00	8.92	0.32
PK2558	363.00	1.07	7.21	2.60	1.17	7.00	8.92	0.32
PK2602	372.00	1.07	7.21	2.60	1.17	7.00	8.92	0.32
PK2646	381.00	1.07	7.21	2.60	1.17	7.00	8.92	0.32
PK2690	390.00	1.07	7.21	2.60	1.17	7.00	8.92	0.32
PK2734	399.00	1.07	7.21	2.60	1.17	7.00	8.92	0.32
PK2778	408.00	1.07	7.21	2.60	1.17	7.00	8.92	0.32
PK2822	417.00	1.07	7.21	2.60	1.17	7.00	8.92	0.32
PK2866	426.00	1.07	7.21	2.60	1.17	7.00	8.92	0.32
PK2910	435.00	1.07	7.21	2.60	1.17	7.00	8.92	0.32
PK2954	444.00	1.07	7.21	2.60	1.17	7.00	8.92	0.32
PK3000	453.00	1.07	7.21	2.60	1.17	7.00	8.92	0.32
PK3046	462.00	1.07	7.21	2.60	1.17	7.00	8.92	0.32
PK3092	471.00	1.07	7.21	2.60	1.17	7.00	8.92	0.32
PK3138	480.00	1.07	7.21	2.60	1.17	7.00	8.92	0.32
PK3184	489.00	1.07	7.21	2.60	1.17	7.00	8.92	0.32
PK3230	498.00	1.07	7.21	2.60	1.17	7.00	8.92	0.32
PK3276	507.00	1.07	7.21	2.60	1.17	7.00	8.92	0.32
PK3322	516.00	1.07	7.21	2.60	1.17	7.00	8.92	0.32
PK3368	525.00	1.07	7.21	2.60	1.17	7.00	8.92	0.32
PK3414	534.00	1.07	7.21	2.60	1.17	7.00	8.92	0.32
PK3460	543.00	1.07	7.21	2.60	1.17	7.00	8.92	0.32
PK3506	552.00	1.07	7.21	2.60	1.17	7.00	8.92	0.32
PK3552	561.00	1.07	7.21	2.60	1.17	7.00	8.92	0.32
PK3598	570.00	1.07	7.21	2.60	1.17	7.00	8.92	0.32
PK3644	579.00	1.07	7.21	2.60	1.17	7.00	8.92	0.32
PK3690	588.00	1.07	7.21	2.60	1.17	7.00	8.92	0.32
PK3736	597.00	1.07	7.21	2.60	1.17	7.00	8.92	0.32
PK3782	606.00	1.07	7.21	2.60	1.17	7.00	8.92	0.32
PK3828	615.00	1.07	7.21	2.60	1.17	7.00	8.92	0.32
PK3874	624.00	1.07	7.21	2.60	1.17	7.00	8.92	0.32
PK3920	633.00	1.07	7.21	2.60	1.17	7.00	8.92	0.32
PK3966	642.00	1.07	7.21	2.60	1.17	7.00	8.92	0.32
PK4012	651.00	1.07	7.21	2.60	1.17	7.00	8.92	0.32
PK4058	660.00	1.07	7.21	2.60	1.17	7.00	8.92	0.32
PK4104	669.00	1.07	7.21	2.60	1.17	7.00	8.92	0.32
PK4150	678.00	1.07	7.21	2.60	1.17	7.00	8.92	0.32
PK4196	687.00	1.07	7.21	2.60	1.17	7.00	8.92	0.32
PK4242	696.00	1.07	7.21	2.60	1.17	7.00	8.92	0.32
PK4288	705.00	1.07	7.21	2.60	1.17	7.00	8.92	0.32
PK4334	714.00	1.07	7.21	2.60	1.17	7.00	8.92	0.32
PK4380	723.00	1.07	7.21	2.60	1.17	7.00	8.92	0.32
PK4426	732.00	1.07	7.21	2.60	1.17	7.00	8.92	0.32
PK4472	741.00	1.07	7.21	2.60	1.17	7.00	8.92	0.32
PK4518	750.00	1.07	7.21	2.60	1.17	7.00	8.92	0.32
PK4564	759.00	1.07	7.21	2.60	1.17	7.00	8.92	0.32
PK4610	768.00	1.07	7.21	2.60	1.17	7.00	8.92	0.32
PK4656	777.00	1.07	7.21	2.60	1.17	7.00	8.92	0.32
PK4702	786.00	1.07	7.21	2.60	1.17	7.00	8.92	0.32
PK4748	795.00	1.07	7.21	2.60	1.17	7.00	8.92	0.32
PK4794	804.00	1.07	7.21	2.60	1.17	7.00	8.92	0.32
PK4840	813.00	1.07	7.21	2.60	1.17	7.00	8.92	0.32
PK4886	822.00	1.07	7.21	2.60	1.17	7.00	8.92	0.32
PK4932	831.00	1.07	7.21	2.60	1.17	7.00	8.92	0.32
PK4978	840.00	1.07	7.21	2.60	1.17	7.00	8.92	0.32
PK5024	849.00	1.07	7.21	2.60	1.17	7.00	8.92	0.32
PK5070	858.00	1.07	7.21	2.60	1.17	7.00	8.92	0.32
PK5116	867.00	1.07	7.21	2.60	1.17	7.00	8.92	0.32
PK5162	876.00	1.07	7.21	2.60	1.17	7.00	8.92	0.32
PK5208	885.00	1.07	7.21	2.60	1.17	7.00	8.92	0.32
PK5254	894.00	1.07	7.21	2.60	1.17	7.00	8.92	0.32
PK5300	903.00	1.07	7.21	2.60	1.17	7.00	8.92	0.32
PK5346	912.00	1.07	7.21	2.60	1.17	7.00	8.92	0.32
PK5392	921.00	1.07	7.21	2.60	1.17	7.00	8.92	0.32
PK5438	930.00	1.07	7.21	2.60	1.17	7.00	8.92	0.32
PK5484	939.00	1.07	7.21	2.60	1.17	7.00	8.92	0.32
PK5530	948.00	1.07	7.21	2.60	1.17	7.00	8.92	0.32
PK5576	957.00	1.07	7.21	2.60	1.17	7.00	8.92	0.32
PK5622	966.00	1.07	7.21	2.60	1.17	7.00	8.92	0.32
PK5668	975.00	1.07	7.21	2.60	1.17	7.00	8.92	0.32
PK5714	984.00	1.07	7.21	2.60	1.17	7.00	8.92	0.32
PK5760	993.00	1.07	7.21	2.60	1.17	7.00	8.92	0.32
PK5806	1002.00	1.07	7.21	2.60	1.17	7.00	8.92	0.32
PK5852	1011.00	1.07	7.21	2.60	1.17	7.00	8.92	0.32
PK5898	1020.00	1.07	7.21	2.60	1.17	7.00	8.92	0.32
PK5944	1029.00	1.07	7.21	2.60	1.17	7.00	8.92	0.32
PK5990	1038.00	1.07	7.21	2.60	1.17	7.00	8.92	0.32
PK6036	1047.00	1.07	7.21	2.60	1.17	7.00	8.92	0.32
PK6082	1056.00	1.07	7.21	2.60	1.17	7.00	8.92	0.32
PK6128	1065.00	1.07	7.21	2.60	1.17	7.00	8.92	0.32
PK6174	1074.00	1.07	7.21	2.60	1.17	7.00	8.92	0.32
PK6220	1083.00	1.07	7.21	2.60	1.17	7.00	8.92	0.32
PK6266	1092.00	1.07	7.21	2.60	1.17	7.00	8.92	0.32
PK6312	1101.00	1.07	7.21	2.60	1.17	7.00	8.92	0.32
PK6358	1110.00	1.07	7.21	2.60	1.17	7.00	8.92	0.32
PK6404	1119.00	1.07	7.21	2.60	1.17	7.00	8.92	0.32
PK6450	1128.00	1.07	7.21	2.60	1.17	7.00	8.92	0.32
PK6496	1137.00	1.07	7.21	2.60	1.17	7.00	8.92	0.32
PK6542	1146.00	1.07	7.21	2.60	1.17	7.00	8.92	0.32
PK6588	1155.00	1.07	7.21	2.60	1.17	7.00	8.92	0.32
PK6634	1164.00	1.07	7.21	2.60	1.17	7.00	8.92	0.32
PK6680	1173.00	1.07	7.21	2.60	1.17	7.00	8.92	0.32
PK6726	1182.00	1.07	7.21	2.60	1.17	7.00	8.92	0.32
PK6772	1191.00	1.07	7.21	2.60	1.17	7.00	8.92	0.32
PK6818	1200.00	1.07	7.21	2.60	1.17	7.00	8.92	0.32
PK6864	1209.00	1.07	7.21	2.60	1.17	7.00	8.92	0.32
PK6910	1218.00	1.07	7.21	2.60	1.17	7.00	8.92	0.32
PK6956	1227.00	1.07	7.21	2.60	1.17	7.00	8.92	0.32
PK7002	1236.00	1.07	7.21	2.60	1.17	7.00	8.92	0.32
PK7048	1245.00	1.07	7.21	2.60	1.17	7.00	8.92	0.32
PK7094	1254.00	1.07	7.21	2.60	1.17	7.00	8.92	0.32
PK7140	1263.00	1.07	7.21	2.60	1.17	7.00	8.92	0.32
PK7186	1272.00	1.07	7.21	2.60	1.17	7.00	8.92	0.32
PK7232	1281.00	1.07	7.21	2.60	1.17	7.00	8.92	0.32
PK7278	1290.00	1.07	7.21	2.60	1.17	7.00	8.92	0.32
PK7324	1299.00	1.07	7.21	2.60	1.17	7.00	8.92	0.32
PK7370	1308.00	1.07	7.21	2.60	1.17	7.00	8.92	0.32
PK7416	1317.00	1.07	7.21	2.60				

LOCATION OF THE SLUICE GATE WITH THE SIZE

Size	Canal			
	Azmi-Branch	Tkahtan	Shakhi-Aru	Upper canal
B = 0.30m				(1) PK63+65 (2) PK64+90 (3) PK96+77 (1) PK95+3 (2) PK97+35
B = 0.30m x 0.40	(1) PK224+65 (2) PK224+65 (3) PK224+65			
B = 0.30 x 0.50		(1) PK124+10		
B = 0.30 x 0.60	(1) PK161+30	(1) PK124+10		
B = 0.35m				(1) PK96+77 (1) PK99+18
B = 0.35 x 0.50	(1) PK162+65			
B = 0.40m			(1) PK107+41	(1) PK13+50
B = 0.40 x 0.40		(1) PK91+85 (2) PK91+85 (3) PK92+55 (4) PK103+65		
B = 0.40 x 0.60		(1) PK81+25 (2) PK83+65 (3) PK88+20 (4) PK92+45		(1) PK5+65 (2) PK7+35 (3) PK9+70
B = 0.40 x -	(1) PK163+40 (2) PK188+50 (3) PK214+50 (4) PK220+15	(1) PK108+80 (2) PK113+85		
B = 0.45m				
B = 0.45 x 0.50	(1) PK173+15 (2) PK173+15			
B = 0.45 x 0.60			(1) PK27+51	
B = 0.50m				(1) PK93+69 (1) PK95+53 (1) PK13+46
B = 0.50 x 0.40	(1) PK138+05			
B = 0.50 x 0.50	(1) PK191+30			
B = 0.50 x 0.60		(1) PK93+35		
B = 0.50 x 0.95				(1) PK45+45
B = 0.50 x 1.10	(1) PK161+30			
B = 0.50 x -	(1) PK211+65 (2) PK106+25 (3) PK110+25 (1) PK7+5	(1) PK16+44		
B = 0.60m				
B = 0.60 x 0.40	(1) PK162+65			
B = 0.60 x 0.50	(1) PK173+15			
B = 0.60 x 0.60			(1) PK22+76 (2) PK107+41	(1) PK38+10
B = 0.60 x 0.80			(1) PK22+47 (2) PK69+56	
B = 0.60 x 0.90				(1) PK62+50
B = 0.60 x 1.00				(1) PK40+50
B = 0.60 x 1.30	(1) PK12+08			(1) PK60+65 (1) PK30+85 (1) PK56+5
B = 0.60 x -				(1) PK15+40 (2) PK23+20 (3) PK24+80 (4) PK34+0
B = 0.65m				
B = 0.65 x 0.65	(1) PK143+50			(1) PK29+30 (2) PK32+10 (1) PK21+60 (2) PK28+40
B = 0.65 x 0.70				
B = 0.70 x 0.60				
B = 0.75m			(1) PK110+91	(1) PK95+53 (2) PK96+77 (3) PK97+35
B = 0.80m				(1) PK95+3 (1) PK93+69 (1) PK59+20 (1) PK60+65 (1) PK43+20 (2) PK43+20
B = 0.80 x 0.55				
B = 0.80 x 0.60				
B = 0.80 x 0.80			(1) PK75+36	
B = 0.80 x 1.00	(1) PK161+30			
B = 0.80 x 1.15				
B = 0.85 x 1.20	(1) PK143+50			
B = 0.90m				(1) PK99+18
B = 0.90 x 0.40			(1) PK107+41	
B = 0.95m				
B = 0.95 x 0.70	(1) PK219+15			
B = 1.05m				
B = 1.15m				
B = 1.40m				PK60+65
B = 1.50m				
B = 1.50 x 0.80			(1) PK89+16	
B = 1.50 x 1.00			(1) PK75+36	



PLAN VIEW

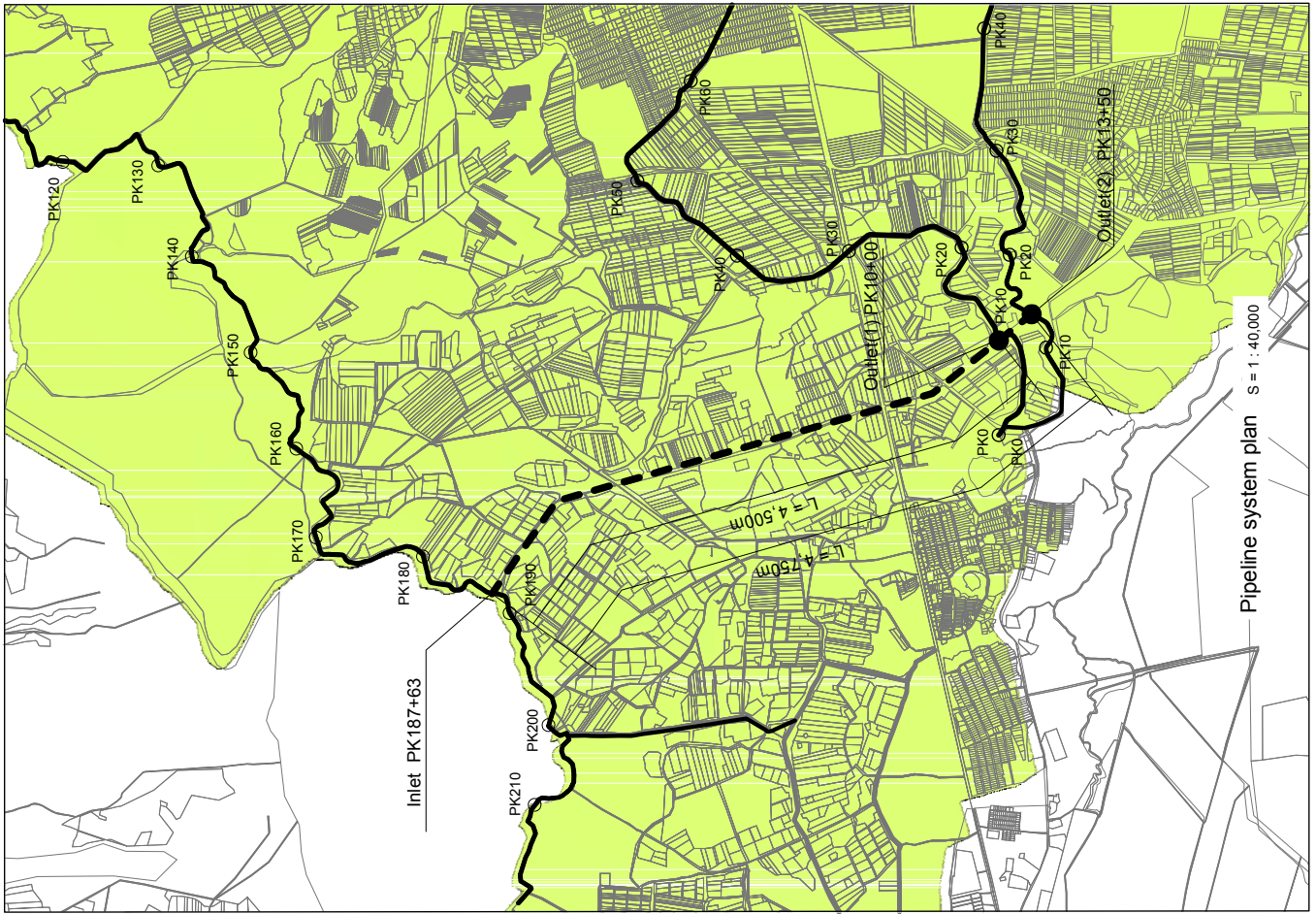


A-A CROSS SECTION

B-B, C-C FRONT OF THE GATE

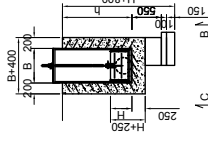
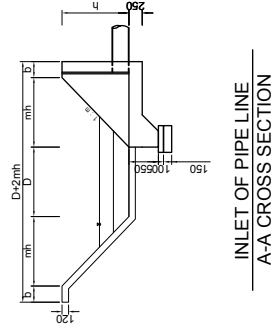
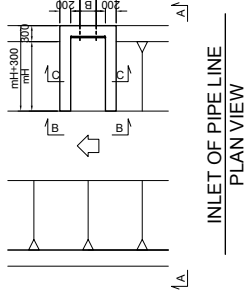
B : Shall include the frame of the gate
 m : Shall be confirmed at site
 h : Shall include design water level and freeboard

Project:	Preparatory Survey for Yeghvard Irrigation System Improvement Project	Drawing No:		Drawn by:	Sanyu Consultants Inc.
Drawing Title:	Standard drawing of the diversion works	Scale:	Free	Checked by:	
Revision	Initials	All dimension in:	Meter	Approved by:	



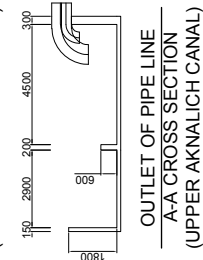
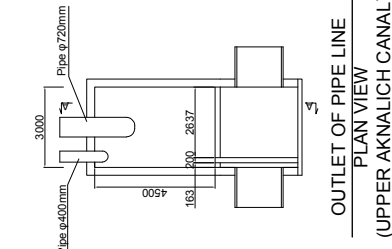
PK	L (m)	H (m)	B (m)	b (m)	m	Q1 (Current Discharge) (m ³ /s)	Q2 (Design Discharge) (m ³ /s)	Freeboard (m)	h (Height of raising bank) (m)
PK185+70		1.72	4.60	1.40	0.93	3.00	6.64	0.28	0.13

Size	Canal	
	Lower Hazadan to Upper	Lower Hazadan to Inner
B = 0.50m	(1) PK10+10	
B = 1.20m		(1) PK13+50



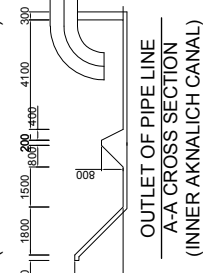
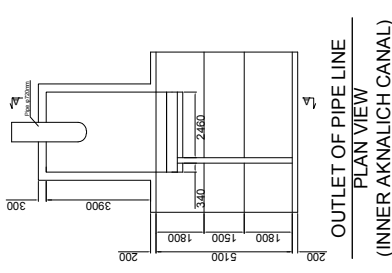
INLET OF PIPE LINE
A-A CROSS SECTION

INLET OF PIPE LINE
B-B-C CROSS SECTION



OUTLET OF PIPE LINE
PLAN VIEW
(UPPER AKNALICH CANAL)

OUTLET OF PIPE LINE
A-A CROSS SECTION
(UPPER AKNALICH CANAL)



OUTLET OF PIPE LINE
PLAN VIEW
(INNER AKNALICH CANAL)

OUTLET OF PIPE LINE
A-A CROSS SECTION
(INNER AKNALICH CANAL)

Project:	Preparatory Survey for Yeghvard Irrigation System Improvement Project	Drawing No:		Drawn by:	Sanyu Consultants Inc.
Drawing Title:	Water transmitting pipeline for Upper and Inner Aknalich canal system	Scale:	Free	Checked by:	
Revision:	Initials	All dimension in:	Meter	Approved by:	