

Figure II-3-2 Manning Schedule for the Consulting Services

		Position	2018												2019												2020												2021													
			1	2	3	4	5	6	7	8	9	10	11	12	1	2	3	4	5	6	7	8	9	10	11	12	1	2	3	4	5	6	7	8	9	10	11	12	1	2	3	4	5	6	7	8	9	10	11	12		
A	1	Team Leader					1	1	1	1	1	1	1				1	1		1	1			1	1	1			1	1	1	1	1	1	1	1	1	1	1	1	1	1	1	1	1	1	1	1	1	1	1	
A	2	Forest Development planning and Monitoring							1	1													1	1					1	1																						
A	3	REDD+ Safeguard and Collaborative Management							1	1							1	1								1	1																									
A	4	Satellite Data Analysis/ GIS											1	1																																						
B	1	Forest Development & Planning						1	1	1	1	1	1	1			1	1	1	1	1	1	1	1	1	1	1			1	1	1	1	1	1	1	1	1	1	1	1	1	1	1	1	1	1	1	1	1	1	1
B	2	REDD+ Safeguard and Collaborative Management							1	1	1	1	1	1			1	1	1	1	1	1	1	1	1	1	1			1	1	1	1	1	1	1	1	1	1	1	1	1	1	1	1	1	1	1	1	1	1	1
B	3	Livelihood Development															1	1	1							1	1			1	1	1	1	1	1	1	1	1	1	1	1	1	1	1	1	1	1	1	1	1	1	1
B	4	Institutional Development							1	1																																										
B	5	Infrastructure Development (A)															1	1	1	1	1	1	1	1	1	1	1			1	1	1	1	1	1	1	1	1	1	1	1	1	1	1	1	1	1	1	1	1	1	
B	6	Infrastructure Development (B)																	1	1	1	1	1																													
B	7	NTFP Development																																																		
B	8	GIS						1	1	1										1	1	1	1	1	1	1					1	1	1	1																		
		[Total of Pro-A]						11											14																																	
		[Total of Pro-B]						18											47																																	
		[Total of Pro-A+Pro-B]						29											61																																	
C	1	Administration Officer/translator						1	1	1	1	1	1	1	1	1	1	1	1	1	1	1	1	1	1	1	1	1	1	1	1	1	1	1	1	1	1	1	1	1	1	1	1	1	1	1	1	1	1	1	1	1
C	2	Interpreter						1	1	1	1	1	1	1	1	1	1	1	1	1	1	1	1	1	1	1	1	1	1	1	1	1	1	1	1	1	1	1	1	1	1	1	1	1	1	1	1	1	1	1	1	1
C	3	Secretary						1	1	1	1	1	1	1	1	1	1	1	1	1	1	1	1	1	1	1	1	1	1	1	1	1	1	1	1	1	1	1	1	1	1	1	1	1	1	1	1	1	1	1	1	1
		[Total of Supporting Staff]						21											34																																	
		Grand Total						50											95																																	

		Position	2022												2023												2024												2025												Total	
			1	2	3	4	5	6	7	8	9	10	11	12	1	2	3	4	5	6	7	8	9	10	11	12	1	2	3	4	5	6	7	8	9	10	11	12	1	2	3	4	5	6	7	8	9	10	11	12		
A	1	Team Leader	1		1	1	1	1	1				1	1	1			1	1			1	1			1	1		1	1																						55
A	2	Forest Development planning and Monitoring																																																		6
A	3	REDD+ Safeguard and Collaborative Management												1				1	1			1				1	1																								20	
A	4	Satellite Data Analysis/ GIS																																																	2	
																																																				0
B	1	Forest Development & Planning	1		1	1	1	1	1				1	1				1	1	1		1	1	1			1	1	1		1	1	1																			68
B	2	REDD+ Safeguard and Collaborative Management	1				1	1	1				1	1				1	1	1																															43	
B	3	Livelihood Development	1		1	1			1	1				1	1				1	1			1	1				1	1	1																					42	
B	4	Institutional Development												1				1	1	1	1	1	1																												9	
B	5	Infrastructure Development (A)	1		1	1	1	1																																											37	
B	6	Infrastructure Development (B)																																																	15	
B	6	NTFP Development					1	1						1	1																																				12	
B	7	GIS					1	1										1	1																																36	
		[Total of Pro-A]	10												9												7												2												83	
		[Total of Pro-B]	35												29												15												6												262	
		[Total of Pro-A+Pro-B]	45												38												22												8												345	
C	1	Administration Officer/translator	1	1	1	1	1	1	1	1	1	1	1	1	1	1	1	1	1	1	1	1	1	1	1	1	1	1	1	1	1	1	1	1	1	1	1	1	1	1	1	1	1	1	1	1	1	1	1	1	84	
C	2	Interpreter	1		1	1	1	1	1				1	1				1	1			1	1			1	1																								63	
C	3	Secretary	1			1				1				1				1				1				1																									53	
		[Total of Supporting Staff]	25												23												22												8												200	
		Grand Total	70												61												44												16												545	

Figure II-3-3 Implementation Schedule of the Project

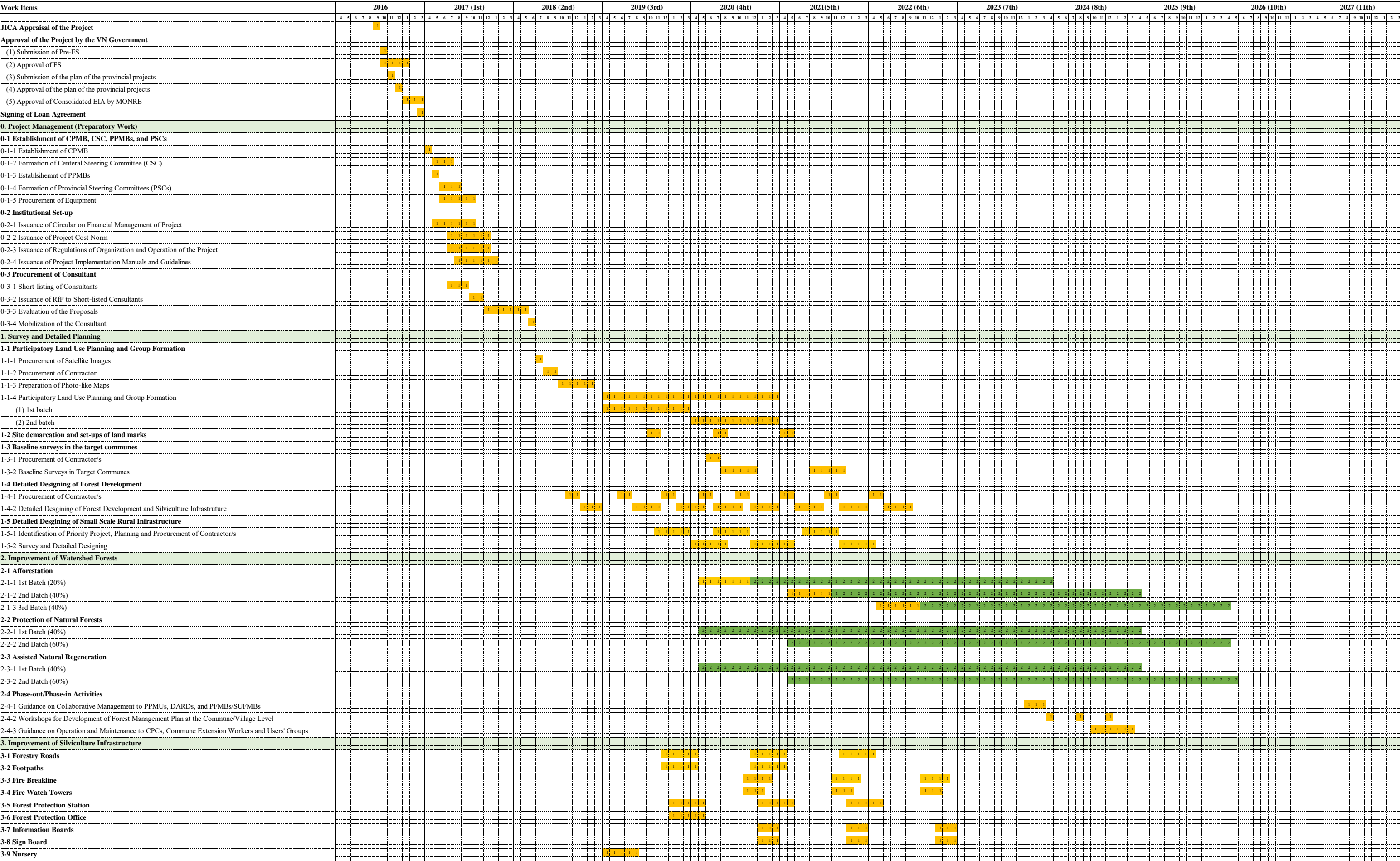


Figure II-3-3 Implementation Schedule of the Project

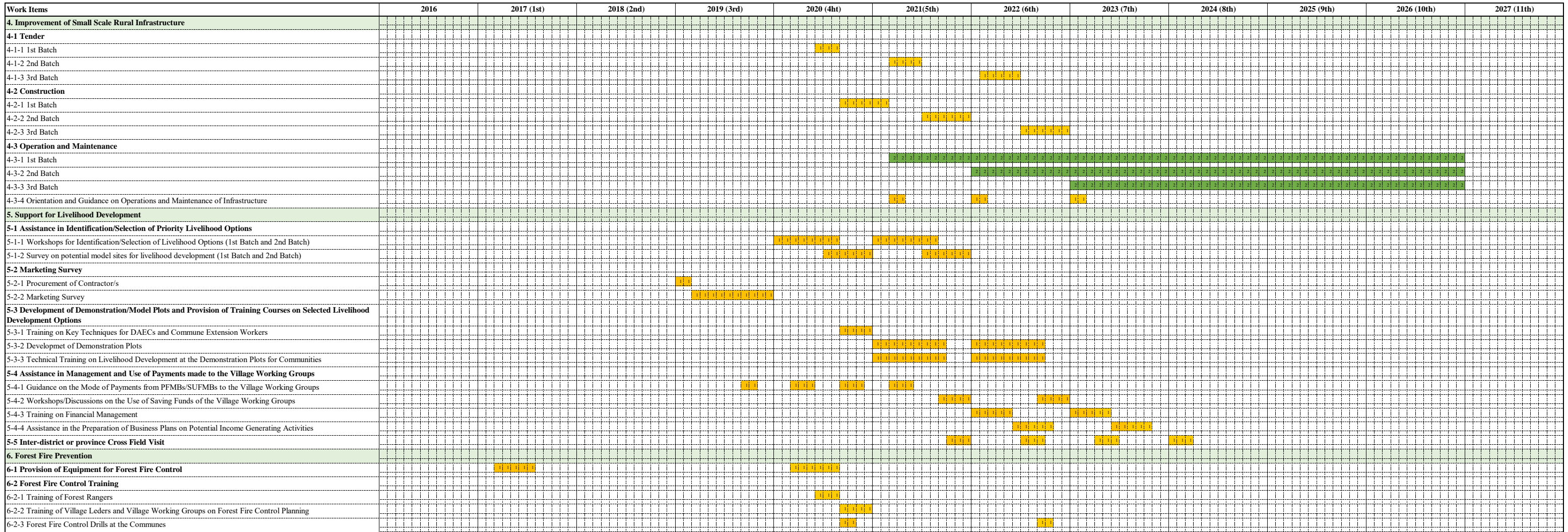


Figure II-3-3 Implementation Schedule of the Project

Work Items	2016	2017 (1st)	2018 (2nd)	2019 (3rd)	2020 (4ht)	2021(5th)	2022 (6th)	2023 (7th)	2024 (8th)	2025 (9th)	2026 (10th)	2027 (11th)				
7. Project Management																
7-1 Information Dissemination																
7-1-1 Project Orientation (including M&E system)			12-13-14-15-16-17													
(1) Project Orientation to CPMUs/MARD			12													
(2) Project Orientation to PPMUs/DARDs			13													
(3) Project Orientation to DPCs/PFMBs/SUFMBs			14-15													
(4) Project Orientation to CPCs and Village Working Groups			15-16-17													
7-1-2 Annual Planning Workshop			14													
(1) At the Central Level (with CPMU)			14													
(2) At the Provincial Level (with PPMUs)			15													
7-1-3 Orientation and Guidance on Annual Work Plan and Guidelines																
(1) To Forest Owners (PFMBs/SUFMBs)			14-15													
(2) To DPCs, CPCs, and Village Working Groups			15-16													
7-1-4 Orientation and Guidance on Benefit Sharing Mechanism								12-13-14-15-16-17								
(1) Orientation to CPMUs/MARD								12								
(2) Orientation to PPMUs/DARDs								13								
(3) Orientation to DPCs/PFMBs/SUFMBs								14-15								
(4) Orientation to CPCs and Village Working Groups								16-17-18								
7-2 Production and Publication of Project Documents																
7-2-1 Project Brief (Leaflets)			12-13-14-15													
7-2-2 Project Newsletter				14	15	16	17	18	19	20	21	22				
7-2-3 Awareness Raising Materials					12-13-14-15											
7-3 Study Tours																
7-3-1 Study Tours to JICA 2 Sites for PPMUs and Forest Owners (PFMBs/SUFMBs)			14			16										
7-3-2 Study Tours to SNRMP Sites for Forest Owners (PFMBs/SUFMBs) and Village Working Groups				12-13-14	15-16-17											
7-3-3 Overseas Study Tours for CPMU/MBFPs and PPMUs/DARDs					15-16		17-18									
7-4 Review Meetings																
7-4-1 Bi-annual Review Meetings at the Central Level		12	13	14	15	16	17	18	19	20	21	22				
7-4-2 Bi-annual Review Meetings at the Provincial Level		13	14	15	16	17	18	19	20	21	22	23				
7-5 Technical Guidance to PPMBs and/or PFMBs/SUFMBs and ContractorS																
7-5-1 Guidance on PLUP (for PPMBs, PFMBs/SUFMBs, and Contractors)			14													
7-5-2 Guidance on Demarcation with GPS and Use of GIS (for PPMBs/SUFMBs)				15	16	17										
7-6 Project Monitoring and Evaluation																
7-6-1 Establishment of Monitoring, Supervision, and Evaluation System for the Project			12-13-14													
7-6-2 Regular Supervision and Monitoring of the Project				12-13-14-15-16-17-18-19-20-21-22-23-24-25-26-27-28-29-30-31-32-33-34-35-36-37-38-39-40-41-42-43-44-45-46-47-48-49-50-51-52-53-54-55-56-57-58-59-60-61-62-63-64-65-66-67-68-69-70-71-72-73-74-75-76-77-78-79-80-81-82-83-84-85-86-87-88-89-90-91-92-93-94-95-96-97-98-99-100-101-102-103-104-105-106-107-108-109-110-111-112-113-114-115-116-117-118-119-120-121-122-123-124-125-126-127-128-129-130-131-132-133-134-135-136-137-138-139-140-141-142-143-144-145-146-147-148-149-150-151-152-153-154-155-156-157-158-159-160-161-162-163-164-165-166-167-168-169-170-171-172-173-174-175-176-177-178-179-180-181-182-183-184-185-186-187-188-189-190-191-192-193-194-195-196-197-198-199-200-201-202-203-204-205-206-207-208-209-210-211-212-213-214-215-216-217-218-219-220-221-222-223-224-225-226-227-228-229-230-231-232-233-234-235-236-237-238-239-240-241-242-243-244-245-246-247-248-249-250-251-252-253-254-255-256-257-258-259-260-261-262-263-264-265-266-267-268-269-270-271-272-273-274-275-276-277-278-279-280-281-282-283-284-285-286-287-288-289-290-291-292-293-294-295-296-297-298-299-300-301-302-303-304-305-306-307-308-309-310-311-312-313-314-315-316-317-318-319-320-321-322-323-324-325-326-327-328-329-330-331-332-333-334-335-336-337-338-339-340-341-342-343-344-345-346-347-348-349-350-351-352-353-354-355-356-357-358-359-360-361-362-363-364-365-366-367-368-369-370-371-372-373-374-375-376-377-378-379-380-381-382-383-384-385-386-387-388-389-390-391-392-393-394-395-396-397-398-399-400-401-402-403-404-405-406-407-408-409-410-411-412-413-414-415-416-417-418-419-420-421-422-423-424-425-426-427-428-429-430-431-432-433-434-435-436-437-438-439-440-441-442-443-444-445-446-447-448-449-450-451-452-453-454-455-456-457-458-459-460-461-462-463-464-465-466-467-468-469-470-471-472-473-474-475-476-477-478-479-480-481-482-483-484-485-486-487-488-489-490-491-492-493-494-495-496-497-498-499-500-501-502-503-504-505-506-507-508-509-510-511-512-513-514-515-516-517-518-519-520-521-522-523-524-525-526-527-528-529-530-531-532-533-534-535-536-537-538-539-540-541-542-543-544-545-546-547-548-549-550-551-552-553-554-555-556-557-558-559-560-561-562-563-564-565-566-567-568-569-570-571-572-573-574-575-576-577-578-579-580-581-582-583-584-585-586-587-588-589-590-591-592-593-594-595-596-597-598-599-600-601-602-603-604-605-606-607-608-609-610-611-612-613-614-615-616-617-618-619-620-621-622-623-624-625-626-627-628-629-630-631-632-633-634-635-636-637-638-639-640-641-642-643-644-645-646-647-648-649-650-651-652-653-654-655-656-657-658-659-660-661-662-663-664-665-666-667-668-669-670-671-672-673-674-675-676-677-678-679-680-681-682-683-684-685-686-687-688-689-690-691-692-693-694-695-696-697-698-699-700-701-702-703-704-705-706-707-708-709-710-711-712-713-714-715-716-717-718-719-720-721-722-723-724-725-726-727-728-729-730-731-732-733-734-735-736-737-738-739-740-741-742-743-744-745-746-747-748-749-750-751-752-753-754-755-756-757-758-759-760-761-762-763-764-765-766-767-768-769-770-771-772-773-774-775-776-777-778-779-780-781-782-783-784-785-786-787-788-789-790-791-792-793-794-795-796-797-798-799-800-801-802-803-804-805-806-807-808-809-810-811-812-813-814-815-816-817-818-819-820-821-822-823-824-825-826-827-828-829-830-831-832-833-834-835-836-837-838-839-840-841-842-843-844-845-846-847-848-849-850-851-852-853-854-855-856-857-858-859-860-861-862-863-864-865-866-867-868-869-870-871-872-873-874-875-876-877-878-879-880-881-882-883-884-885-886-887-888-889-890-891-892-893-894-895-896-897-898-899-900-901-902-903-904-905-906-907-908-909-910-911-912-913-914-915-916-917-918-919-920-921-922-923-924-925-926-927-928-929-930-931-932-933-934-935-936-937-938-939-940-941-942-943-944-945-946-947-948-949-950-951-952-953-954-955-956-957-958-959-960-961-962-963-964-965-966-967-968-969-970-971-972-973-974-975-976-977-978-979-980-981-982-983-984-985-986-987-988-989-990-991-992-993-994-995-996-997-998-999-1000												
7-6-3 Periodic Monitoring, Assessment, and Evaluation																
(1) Initial Evaluation		12														
(2) Mid-term Evaluation							16									
(3) Terminal Evaluation												22				
7-7 Forest Monitoring																
7-7-1 Guidance on Provincial Forest Monitoring System to PPMUs, PFMBs/SUFMBs			12-13-14													
7-7-2 Procurement of Equipment for Provincial Forest Monitoring System			13-14-15													
7-7-3 Annual Monitoring of Forest Reseources				12-13-14-15-16-17-18-19-20-21-22-23-24-25-26-27-28-29-30-31-32-33-34-35-36-37-38-39-40-41-42-43-44-45-46-47-48-49-50-51-52-53-54-55-56-57-58-59-60-61-62-63-64-65-66-67-68-69-70-71-72-73-74-75-76-77-78-79-80-81-82-83-84-85-86-87-88-89-90-91-92-93-94-95-96-97-98-99-100-101-102-103-104-105-106-107-108-109-110-111-112-113-114-115-116-117-118-119-120-121-122-123-124-125-126-127-128-129-130-131-132-133-134-135-136-137-138-139-140-141-142-143-144-145-146-147-148-149-150-151-152-153-154-155-156-157-158-159-160-161-162-163-164-165-166-167-168-169-170-171-172-173-174-175-176-177-178-179-180-181-182-183-184-185-186-187-188-189-190-191-192-193-194-195-196-197-198-199-200-201-202-203-204-205-206-207-208-209-210-211-212-213-214-215-216-217-218-219-220-221-222-223-224-225-226-227-228-229-230-231-232-233-234-235-236-237-238-239-240-241-242-243-244-245-246-247-248-249-250-251-252-253-254-255-256-257-258-259-260-261-262-263-264-265-266-267-268-269-270-271-272-273-274-275-276-277-278-279-280-281-282-283-284-285-286-287-288-289-290-291-292-293-294-295-296-297-298-299-300-301-302-303-304-305-306-307-308-309-310-311-312-313-314-315-316-317-318-319-320-321-322-323-324-325-326-327-328-329-330-331-332-333-334-335-336-337-338-339-340-341-342-343-344-345-346-347-348-349-350-351-352-353-354-355-356-357-358-359-360-361-362-363-364-365-366-367-368-369-370-371-372-373-374-375-376-377-378-379-380-381-382-383-384-385-386-387-388-389-390-391-392-393-394-395-396-397-398-399-400-401-402-403-404-405-406-407-408-409-410-411-412-413-414-415-416-417-418-419-420-421-422-423-424-425-426-427-428-429-430-431-432-433-434-435-436-437-438-439-440-441-442-443-444-445-446-447-448-449-450-451-452-453-454-455-456-457-458-459-460-461-462-463-464-465-466-467-468-469-470-471-472-473-474-475-476-477-478-479-480-481-482-483-484-485-486-487-488-489-490-491-492-493-494-495-496-497-498-499-500-501-502-503-504-505-506-507-508-509-510-511-512-513-514-515-516-517-518-519-520-521-522-523-524-525-526-527-528-529-530-531-532-533-534-535-536-537-538-539-540-541-542-543-544-545-546-547-548-549-550-551-552-553-554-555-556-557-558-559-560-561-562-563-564-565-566-567-568-569-570-571-572-573-574-575-576-577-578-579-580-581-582-583-584-585-586-587-588-589-590-591-592-593-594-595-596-597-598-599-600-601-602-603-604-605-606-607-608-609-610-611-612-613-614-615-616-617-618-619-620-621-622-623-624-625-626-627-628-629-630-631-632-633-634-635-636-637-638-639-640-641-642-643-644-645-646-647-648-649-650-651-652-653-654-655-656-657-658-659-660-661-662-663-664-665-666-667-668-669-670-671-672-673-674-675-676-677-678-679-680-681-682-683-684-685-686-687-688-689-690-691-692-693-694-695-696-697-698-699-700-701-702-703-704-705-706-707-708-709-710-711-712-713-714-715-716-717-718-719-720-721-722-723-724-725-726-727-728-729-730-731-732-733-734-735-736-737-738-739-740-741-742-743-744-745-746-747-748-749-750-751-752-753-754-755-756-757-758-759-760-761-762-763-764-765-766-767-768-769-770-771-772-773-774-775-776-777-778-779-780-781-782-783-784-785-786-787-788-789-790-791-792-793-794-795-796-797-798-799-800-801-802-803-804-805-806-807-808-809-810-811-812-813-814-815-816-817-818-819-820-821-822-823-824-825-826-827-828-829-830-831-832-833-834-835-836-837-838-839-840-841-842-843-844-845-846-847-848-849-850-851-852-853-854-855-856-857-858-859-860-861-862-863-864-865-866-867-868-869-870-871-872-873-874-875-876-877-878-879-880-881-882-883-884-885-886-887-888-889-890-891-892-893-894-895-896-897-898-899-900-901-902-903-904-905-906-907-908-909-910-911-912-913-914-915-916-917-918-919-920-921-922-923-924-925-926-927-928-929-930-931-932-933-934-935-936-937-938-939-940-941-942-943-944-945-946-947-948-949-950-951-952-953-954-955-956-957-958-959-960-961-962-963-964-965-966-967-968-969-970-971-972-973-974-975-976-977-978-979-980-981-982-983-984-985-986-987-988-989-990-991-992-993-994-995-996-997-998-999-1000												
8. Consulting Services			12-13-14-15-16-17-18-19-20-21-22-23-24-25-26-27-28-29-30-31-32-33-34-35-36-37-38-39-40-41-42-43-44-45-46-47-48-49-50-51-52-53-54-55-56-57-58-59-60-61-62-63-64-65-66-67-68-69-70-71-72-73-74-75-76-77-78-79-80-81-82-83-84-85-86-87-88-89-90-91-92-93-94-95-96-97-98-99-100-101-102-103-104-105-106-107-108-109-110-111-112-113-114-115-116-117-118-119-120-121-122-123-124-125-126-127-128-129-130-131-132-133-134-135-136-137-138-139-140-141-142-143-144-145-146-147-148-149-150-151-152-153-154-155-156-157-158-159-160-161-162-163-164-165-166-167-168-169-170-171-172-173-174-175-176-177-178-179-180-181-182-183-184-185-186-187-188-189-190-191-192-193-194-195-196-197-198-199-200-201-202-203-204-205-206-207-208-209-210-211-212-213-214-215-216-217-218-219-220-221-222-223-224-225-226-227-228-229-230-231-232-233-234-235-236-237-238-239-240-241-242-243-244-245-246-247-248-249-250-251-252-253-254-255-256-257-258-259-260-261-262-263-264-265-266-267-268-269-270-271-272-273-274-275-276-277-278-279-280-281-282-283-284-285-286-287-288-289-290-291-292-293-294													