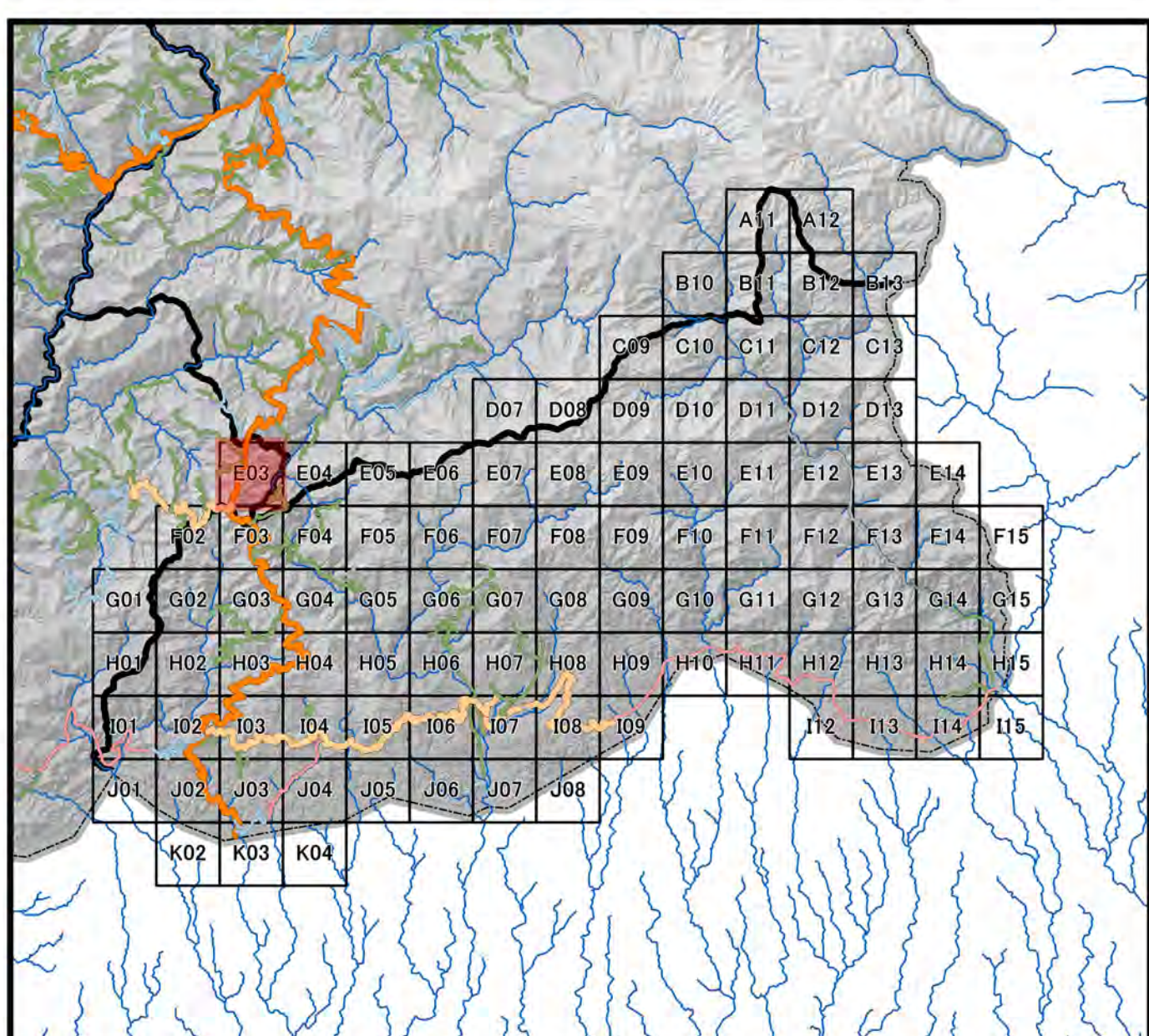
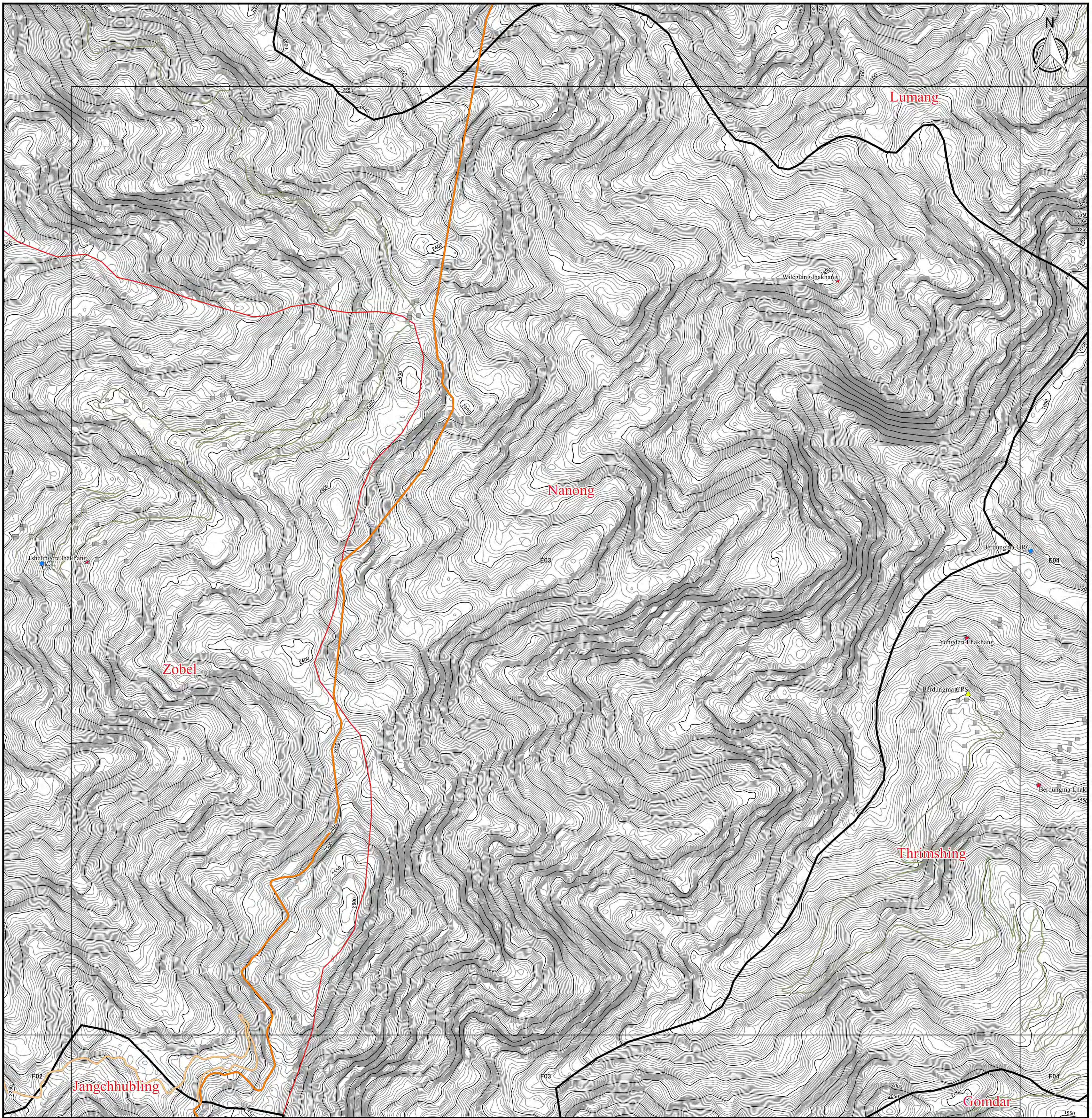


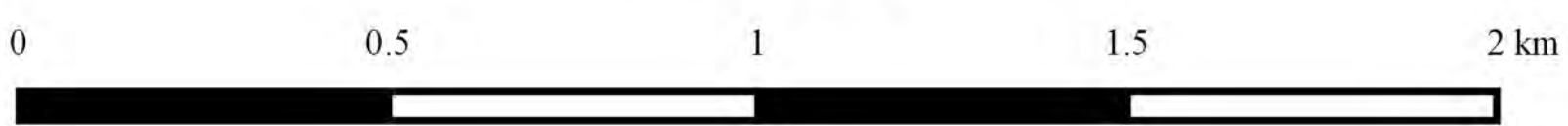


Topographic Map in Samdrupjongkhar



Legend		
DOR Office	Road Network	5km Grid Area
● Regional office	— Asian Highway	Boundary
● Sub-divisional office	— Primary Highway	▭ Country Boundary
NSB Data	— Secondary Highway	▭ Dzongkhag Boundary
★ Historical Place	— Urban Road	▭ Gewog Boundary
▲ Education Center	— Farm Road	Contour by SRTM
● Health Center	— Forest Road	— 50m Contour
■ Settlement	— Proposed Road	— 5m Contour
	— Under Construction	

1:10,000



Coordinate Systems :

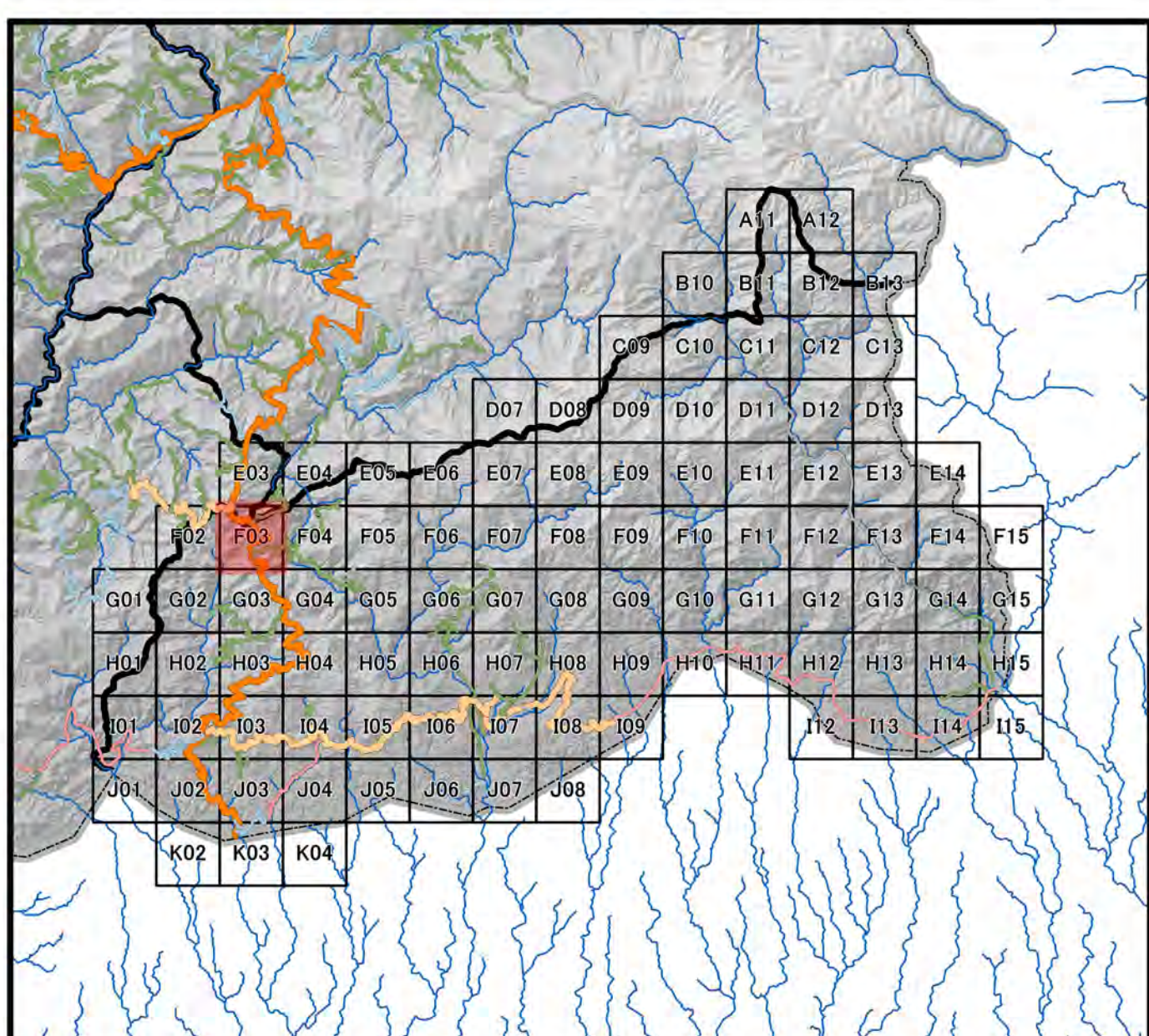
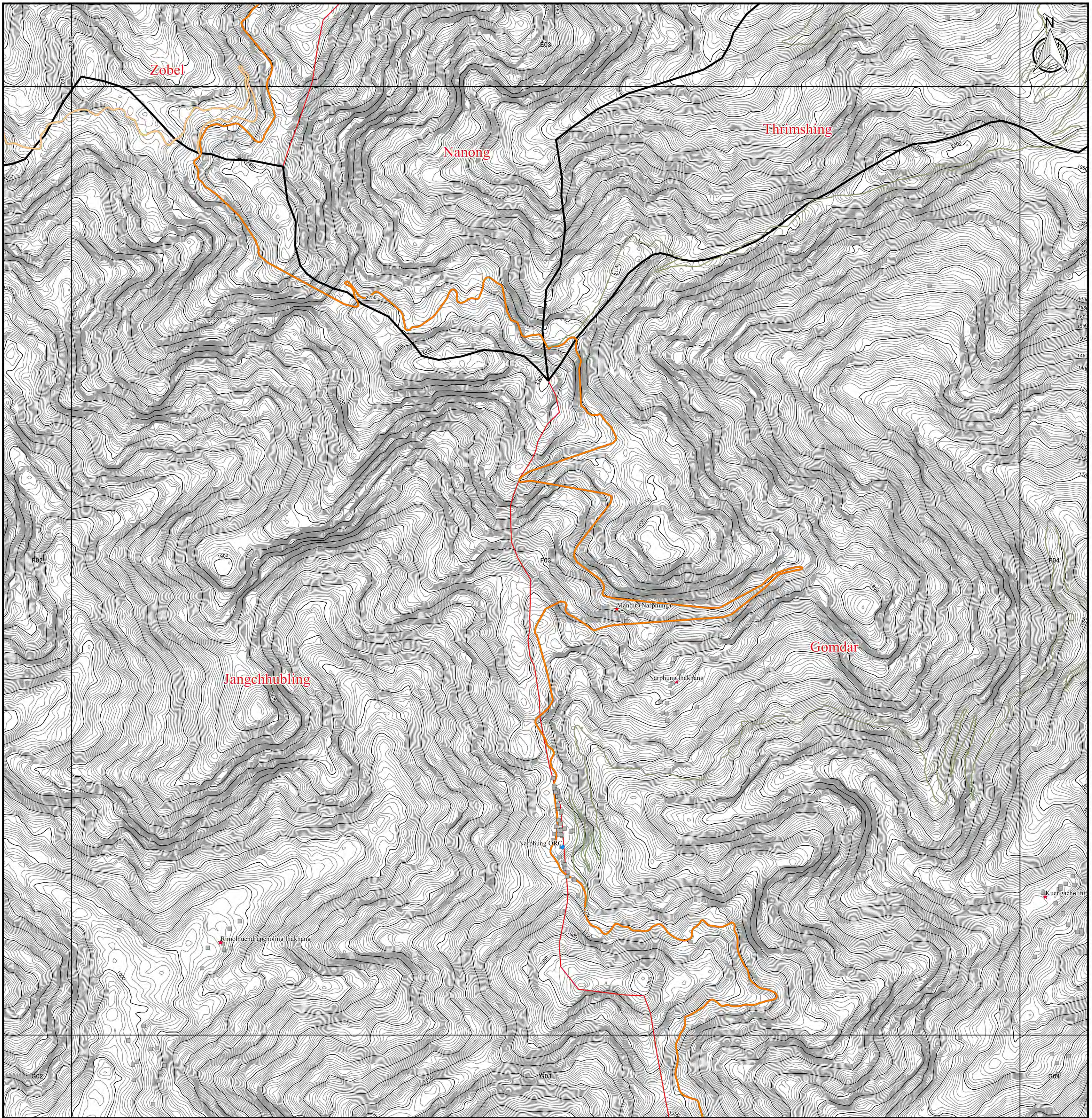
PCS DRUKREF03 / Bhutan National Grid
 Projection : Transverse Mercator
 False Easting : 250,000.000
 False Northing : 0.000
 Central Meridian : 90.000
 Scale Factor : 1.000
 Units : Meter

Data Sources :

- Boundary, Road, Cities and DOR Regional Office has been provided from Department of Road, Ministry of Works and Human, Settlement, Bhutan.
- Historical Place, Education Center, Health Center, and Settlement has been provided from National Statistic Bureau.
- Topographic data and Relief has been generated from SRTM ver3.0 (30m mesh).

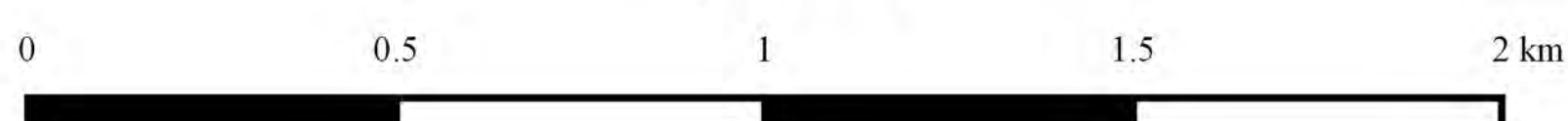


Topographic Map in Samdrupjongkhar



Legend		
DOR Office	Road Network	□ 5km Grid Area
● Regional office	— Asian Highway	Boundary
● Sub-divisional office	— Primary Highway	▭ Country Boundary
NSB Data	— Secondary Highway	▭ Dzongkhag Boundary
★ Historical Place	— Urban Road	▭ Dzogwog Boundary
▲ Education Center	— Farm Road	Contour by SRTM
● Health Center	— Forest Road	— 50m Contour
■ Settlement	— Proposed Road	— 5m Contour
	— Under Construction	

1:10,000



Coordinate Systems :

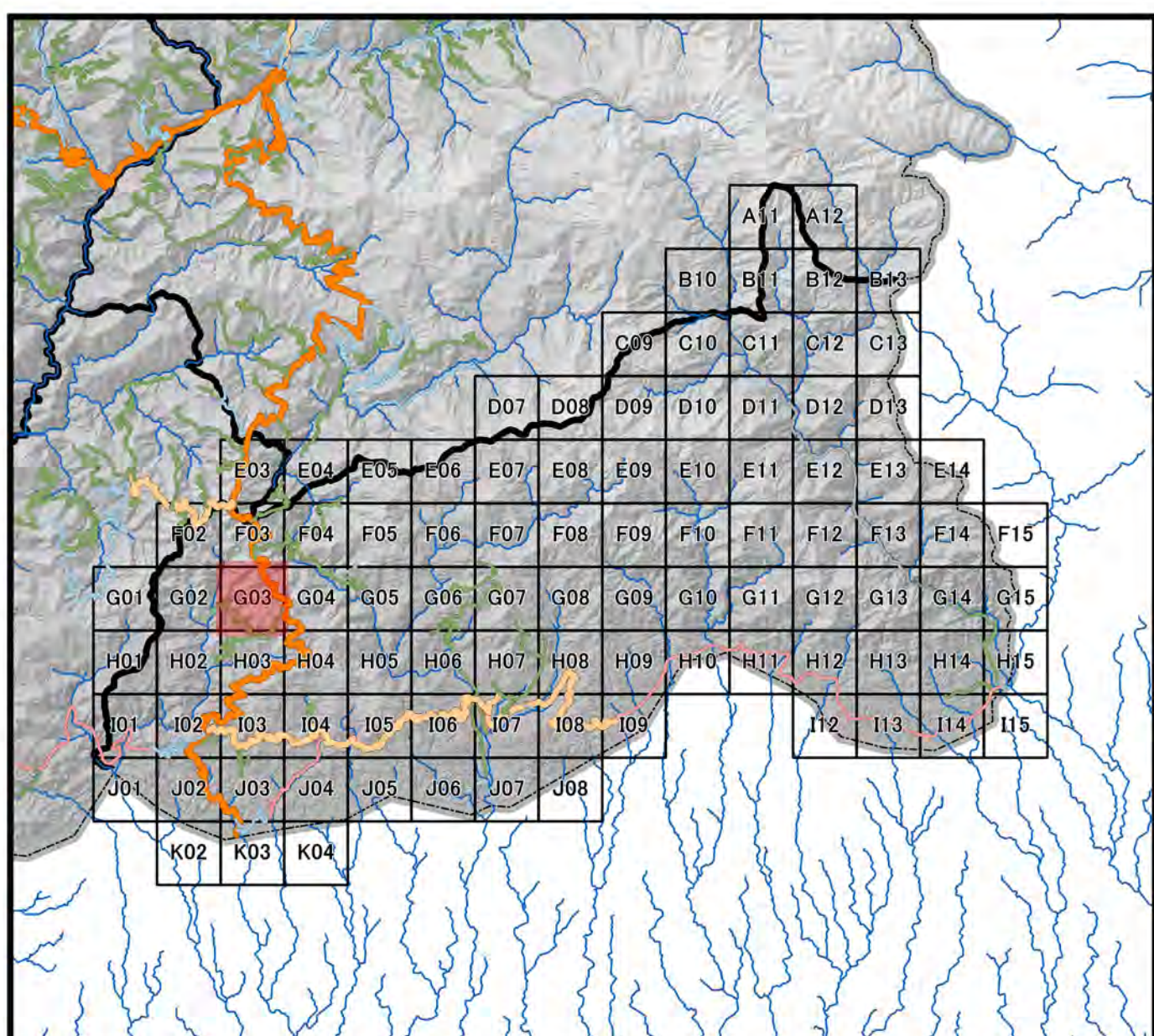
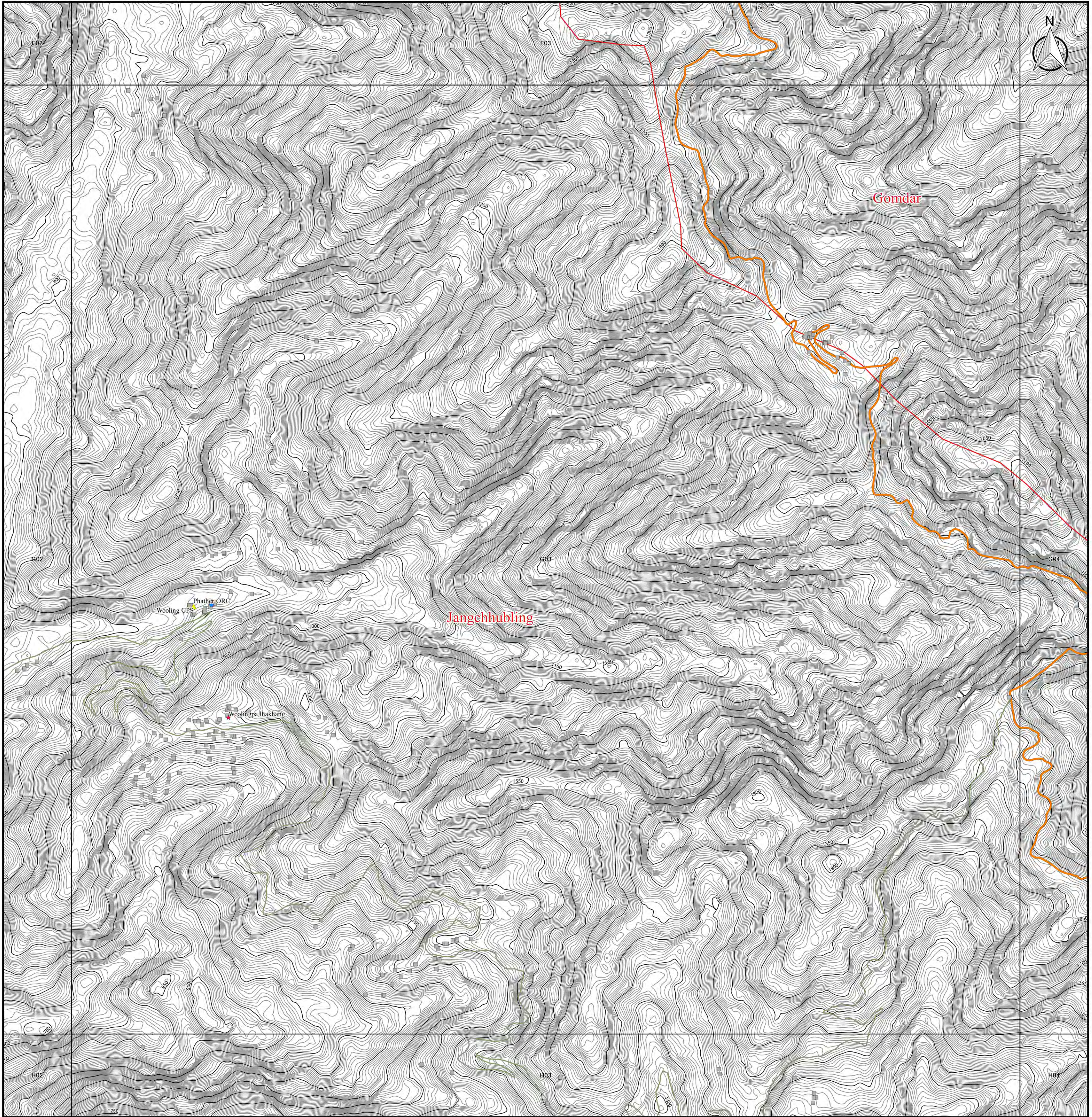
PCS DRUKREF03 / Bhutan National Grid
 Projection : Transverse Mercator
 False Easting : 250,000.000
 False Northing : 0.000
 Central Meridian : 90.000
 Scale Factor : 1.000
 Units : Meter

Data Sources :

- Boundary, Road, Cities and DOR Regional Office has been provided from Department of Road, Ministry of Works and Human Settlement, Bhutan.
- Historical Place, Education Center, Health Center, and Settlement has been provided from National Statistic Bureau.
- Topographic data and Relief has been generated from SRTM ver3.0 (30m mesh).

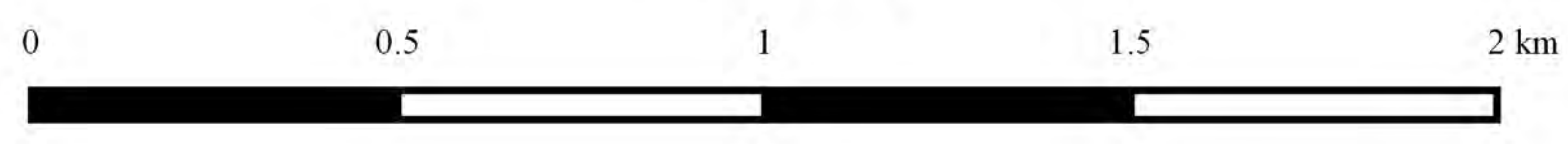


Topographic Map in Samdrupjongkhar



Legend		
DOR Office	Road Network	□ 5km Grid Area
● Regional office	— Asian Highway	Boundary
● Sub-divisional office	— Primary Highway	▭ Country Boundary
NSB Data	— Secondary Highway	▭ Dzongkhag Boundary
★ Historical Place	— Dzongkhag Road	▭ Gewog Boundary
▲ Education Center	— Urban Road	Contour by SRTM
● Health Center	— Farm Road	— 50m Contour
■ Settlement	— Forest Road	— 5m Contour
	— Proposed Road	
	— Under Construction	

1:10,000



Coordinate Systems :

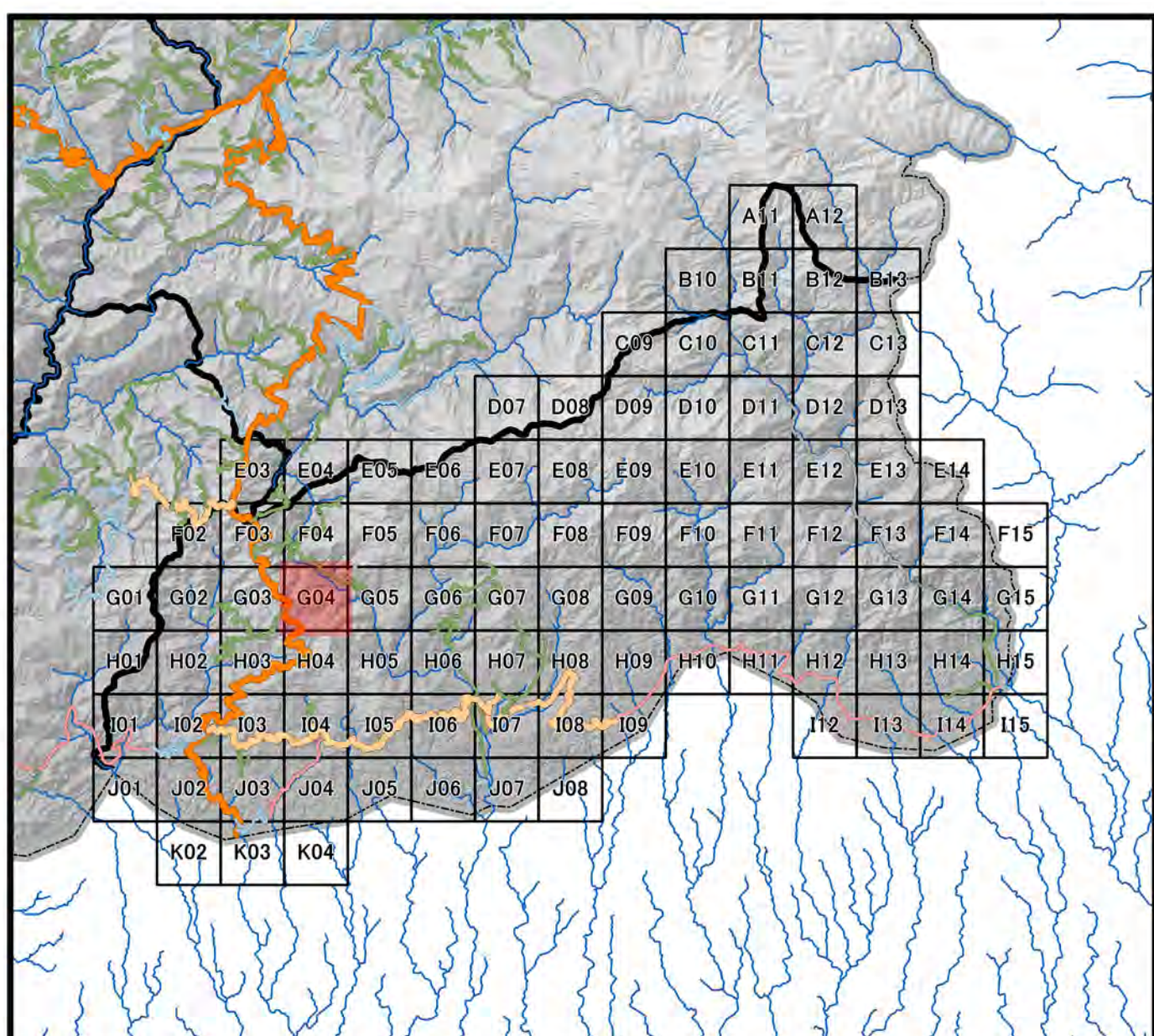
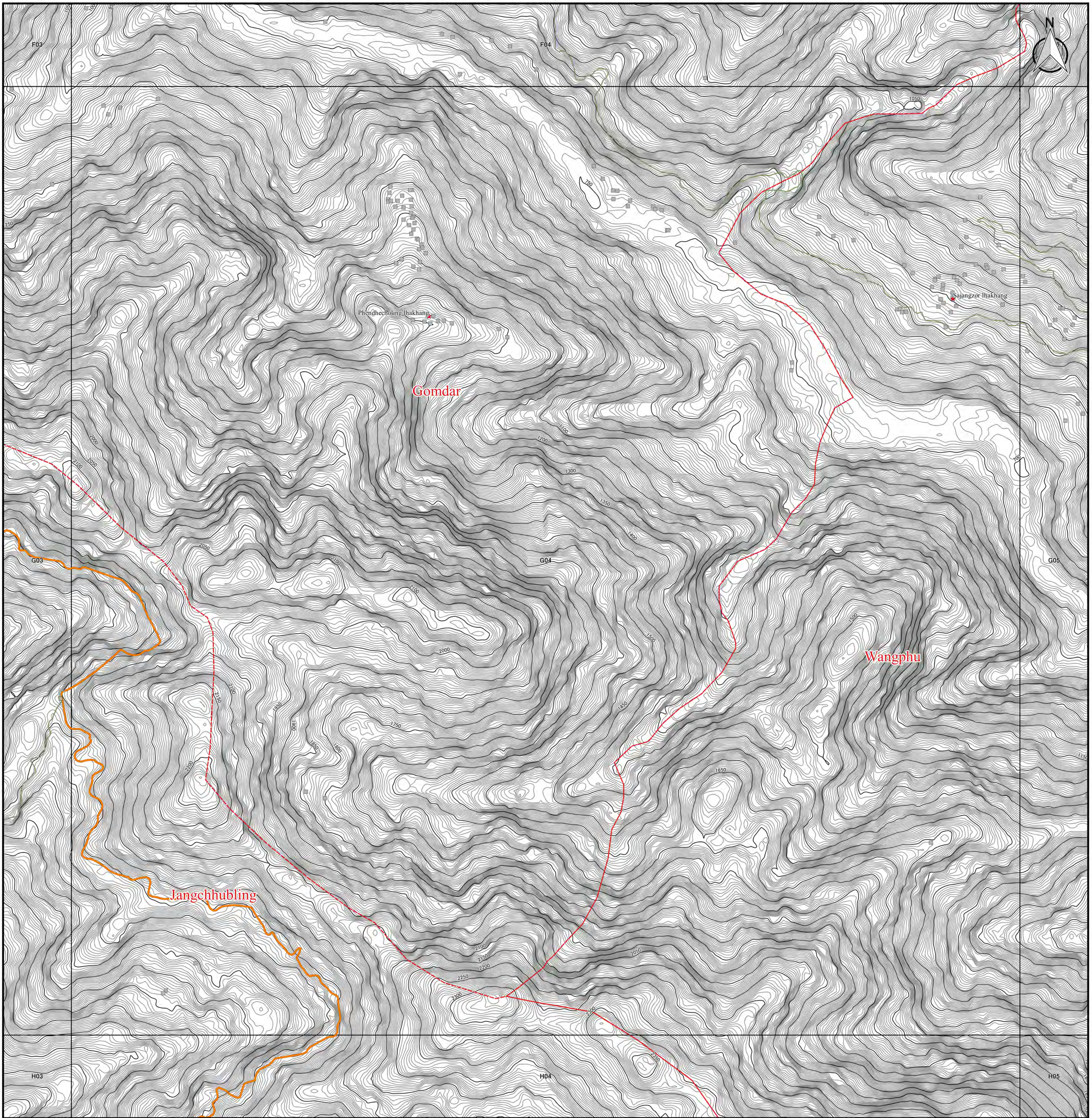
PCS DRUKREF03 / Bhutan National Grid
 Projection : Transverse Mercator
 False Easting : 250,000.000
 False Northing : 0.000
 Central Meridian : 90.000
 Scale Factor : 1.000
 Units : Meter

Data Sources :

- Boundary, Road, Cities and DOR Regional Office has been provided from Department of Road, Ministry of Works and Human Settlement, Bhutan.
- Historical Place, Education Center, Health Center, and Settlement has been provided from National Statistical Bureau.
- Topographic data and Relief has been generated from SRTM ver3.0 (30m mesh).

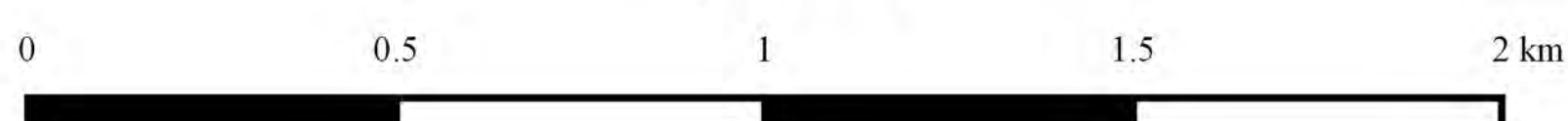


Topographic Map in Samdrupjongkhar



Legend		
DOR Office	Road Network	□ 5km Grid Area
● Regional office	— Asian Highway	Boundary
● Sub-divisional office	— Primary Highway	▭ Country Boundary
NSB Data	— Secondary Highway	▭ Dzongkhag Boundary
★ Historical Place	— Dzongkhag Road	▭ Gewog Boundary
▲ Education Center	— Urban Road	Contour by SRTM
● Health Center	— Farm Road	— 50m Contour
■ Settlement	— Forest Road	— 5m Contour
	— Proposed Road	
	— Under Construction	

1:10,000



Coordinate Systems :

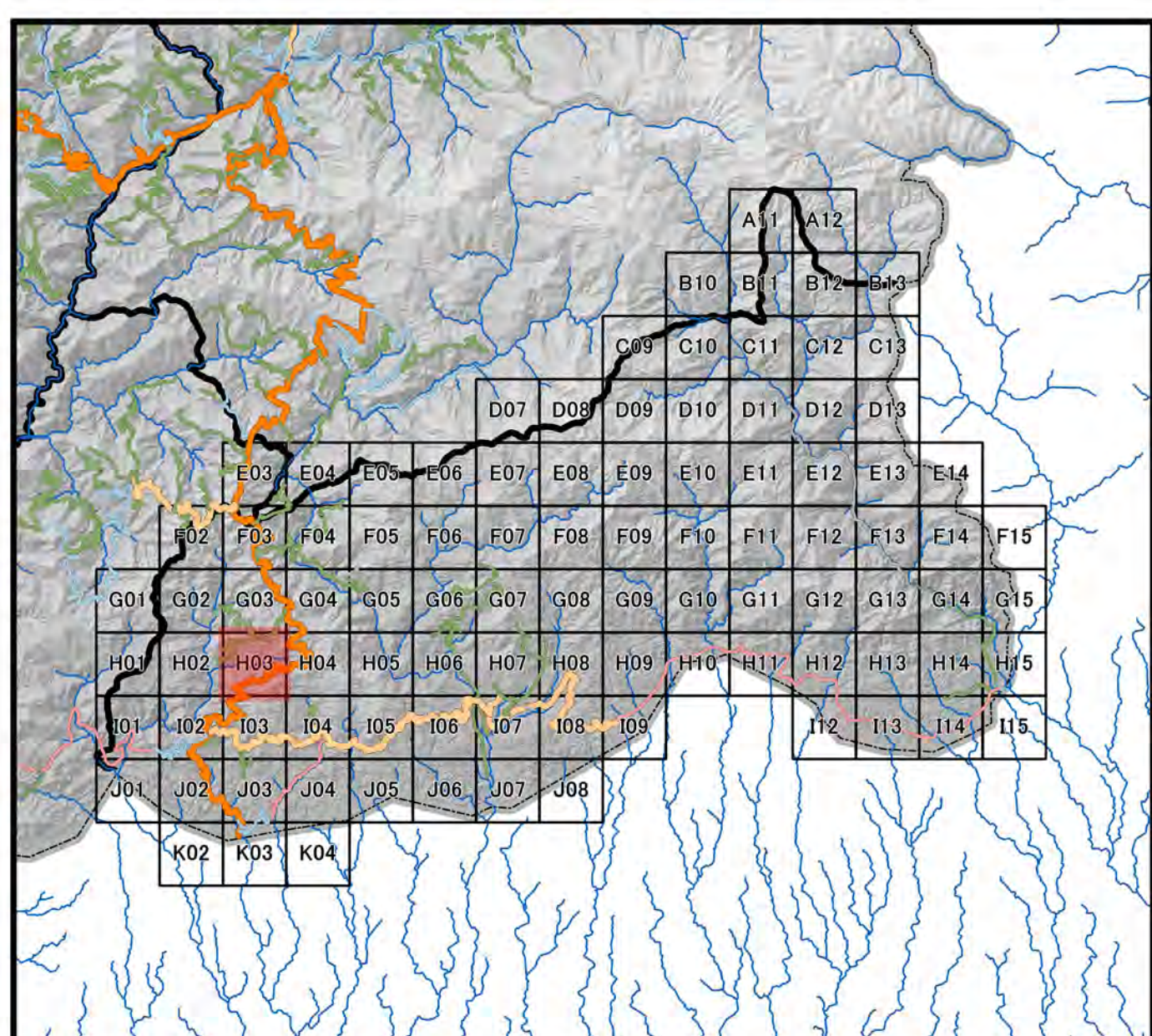
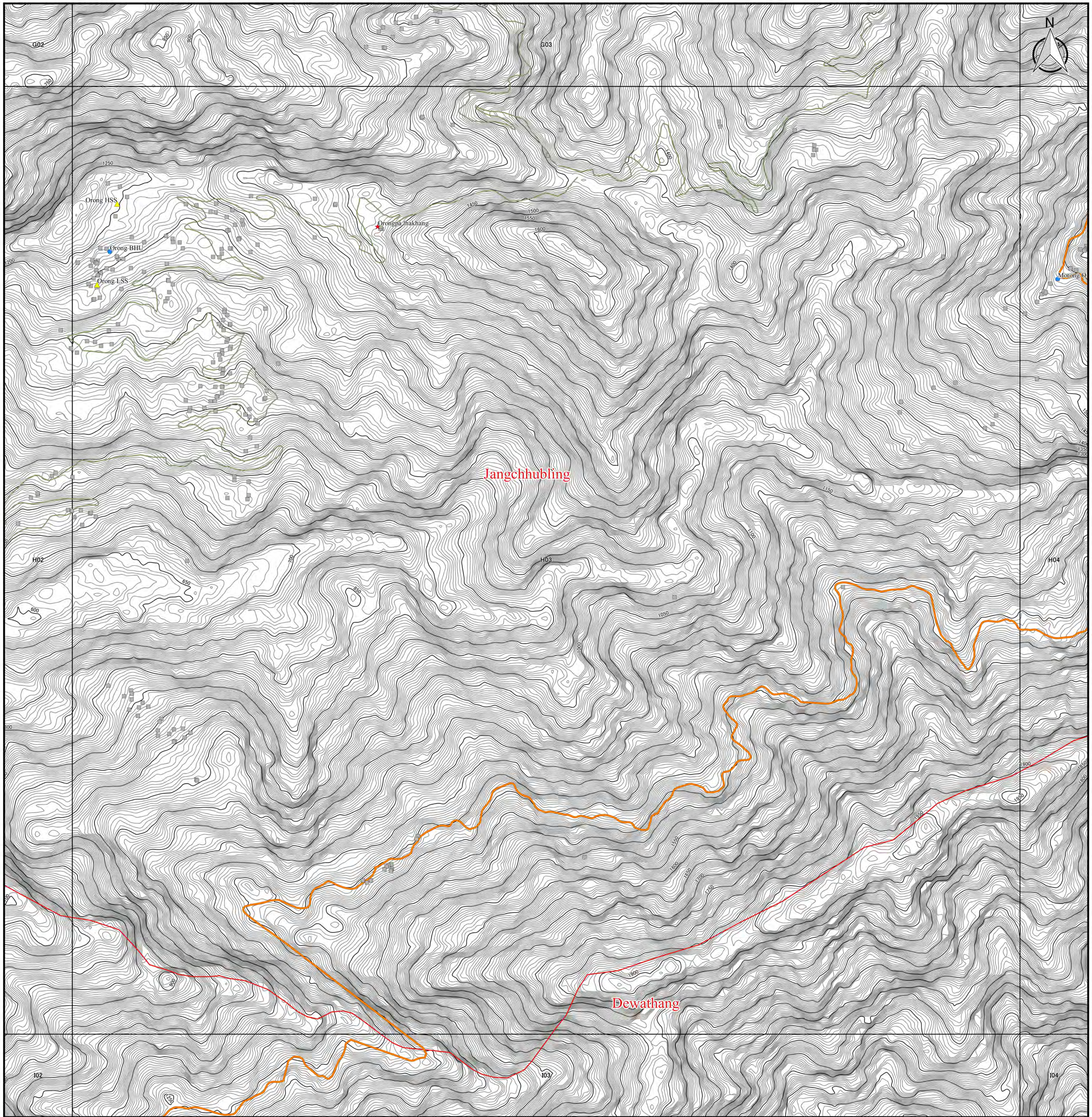
PCS DRUKREF03 / Bhutan National Grid
 Projection : Transverse Mercator
 False Easting : 250,000.000
 False Northing : 0.000
 Central Meridian : 90.000
 Scale Factor : 1.000
 Units : Meter

Data Sources :

- Boundary, Road, Cities and DOR Regional Office has been provided from Department of Road, Ministry of Works and Human, Settlement, Bhutan.
- Historical Place, Education Center, Health Center, and Settlement has been provided from National Statistic Bureau.
- Topographic data and Relief has been generated from SRTM ver3.0 (30m mesh).

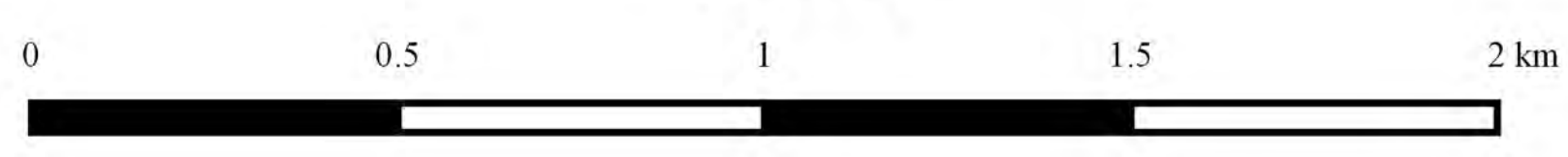


Topographic Map in Samdrupjongkhar



Legend		
DOR Office	Road Network	□ 5km Grid Area
● Regional office	— Asian Highway	Boundary
● Sub-divisional office	— Primary Highway	▭ Country Boundary
NSB Data	— Secondary Highway	▭ Dzongkhag Boundary
★ Historical Place	— Dzongkhag Road	▭ Gewog Boundary
▲ Education Center	— Urban Road	Contour by SRTM
● Health Center	— Farm Road	— 50m Contour
■ Settlement	— Forest Road	— 5m Contour
	— Proposed Road	
	— Under Construction	

1:10,000



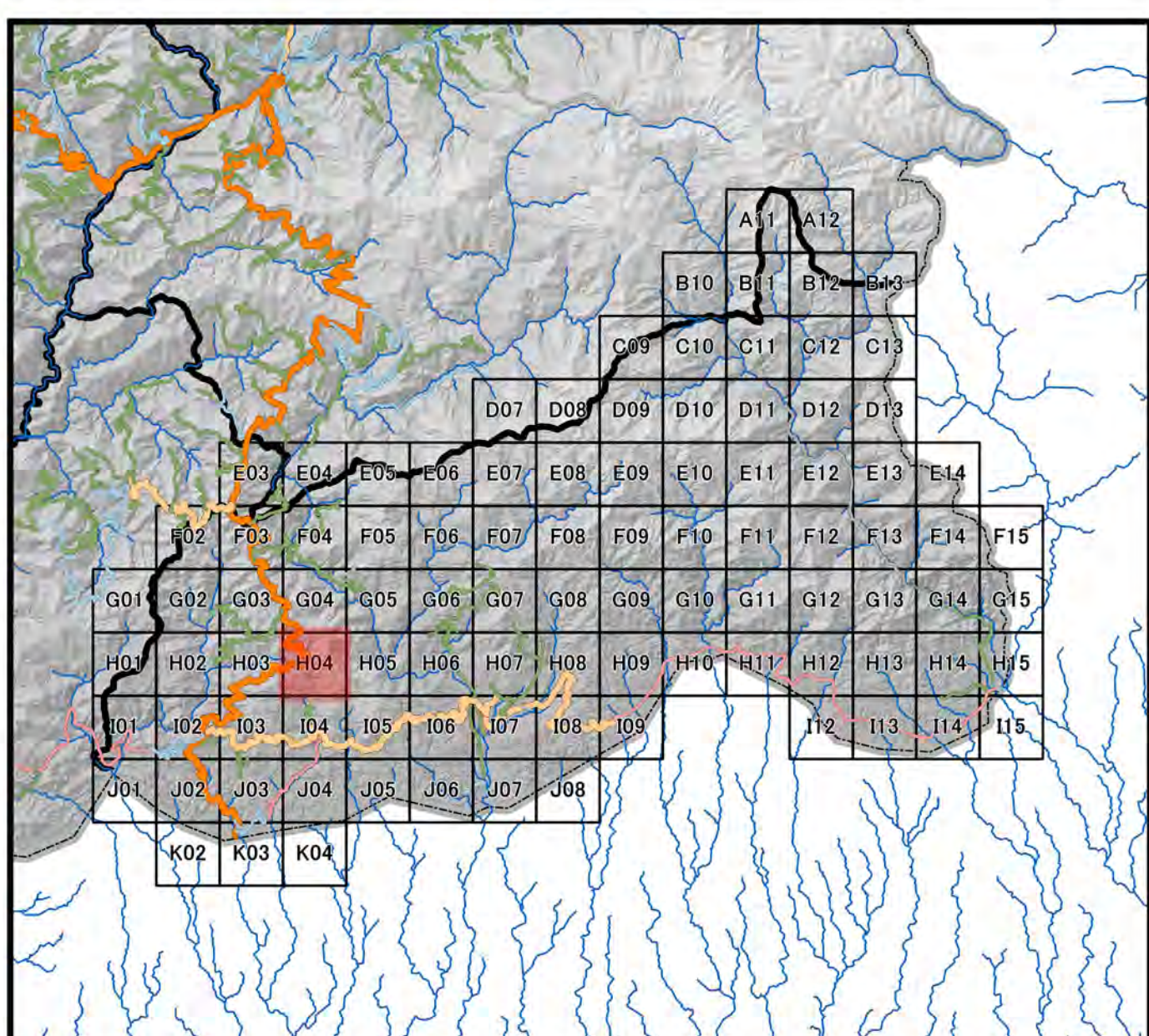
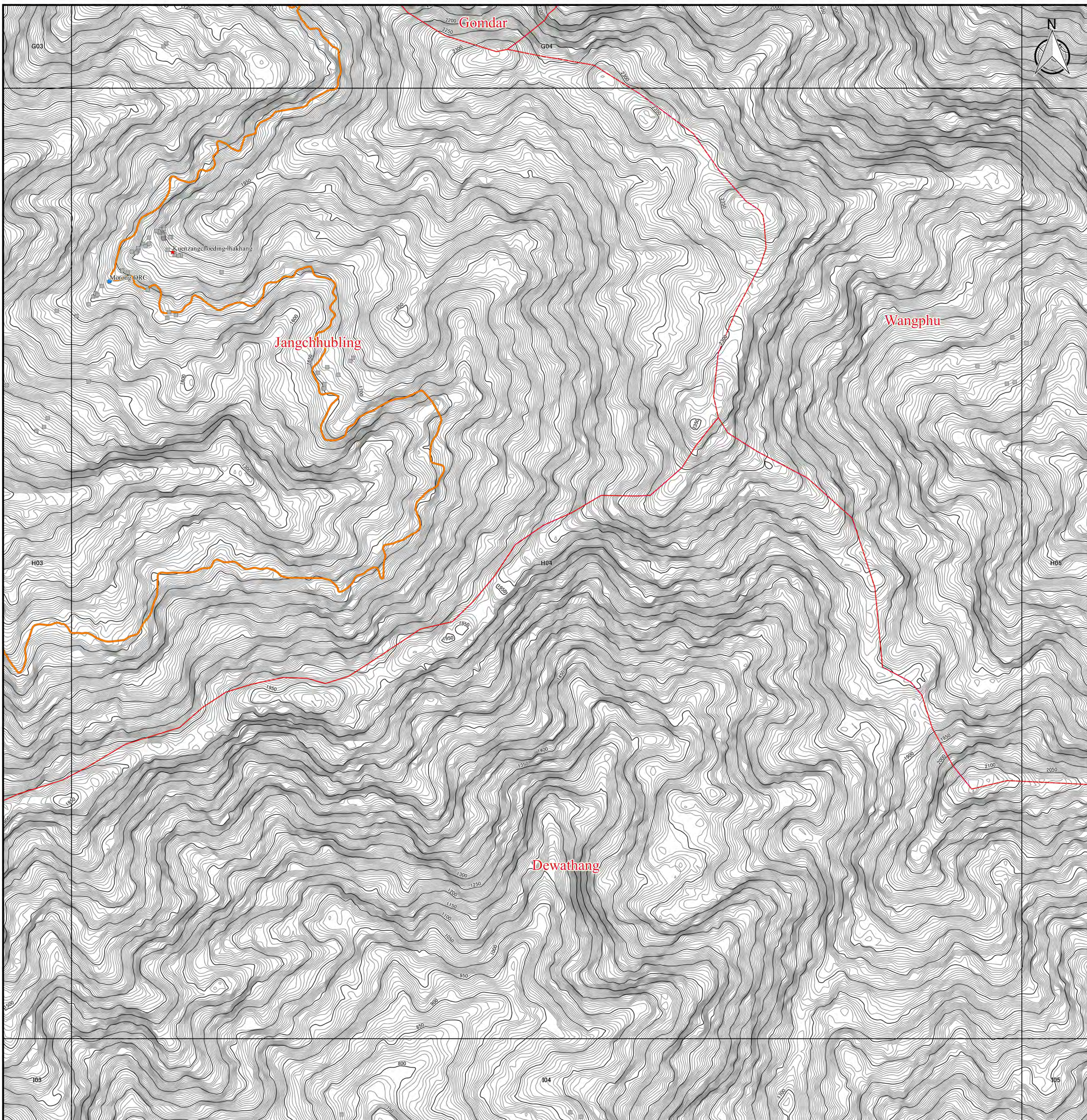
Coordinate Systems :
 PCS DRUKREF03 / Bhutan National Grid
 Projection : Transverse Mercator
 False Easting : 250,000.000
 False Northing : 0.000
 Central Meridian : 90.000
 Scale Factor : 1.000
 Units : Meter

Data Sources :

- Boundary, Road, Cities and DOR Regional Office has been provided from Department of Road, Ministry of Works and Human Settlement, Bhutan.
- Historical Place, Education Center, Health Center, and Settlement has been provided from National Statistic Bureau.
- Topographic data and Relief has been generated from SRTM ver3.0 (30m mesh).

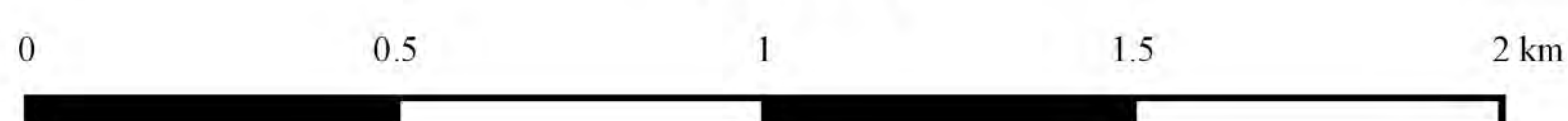


Topographic Map in Samdrupjongkhar



Legend		
DOR Office	Road Network	□ 5km Grid Area
● Regional office	— Asian Highway	Boundary
● Sub-divisional office	— Primary Highway	▭ Country Boundary
NSB Data	— Secondary Highway	▭ Dzongkhag Boundary
★ Historical Place	— Dzongkhag Road	▭ Gewog Boundary
▲ Education Center	— Urban Road	Contour by SRTM
● Health Center	— Farm Road	— 50m Contour
■ Settlement	— Forest Road	— 5m Contour
	— Proposed Road	
	— Under Construction	

1:10,000



Coordinate Systems :

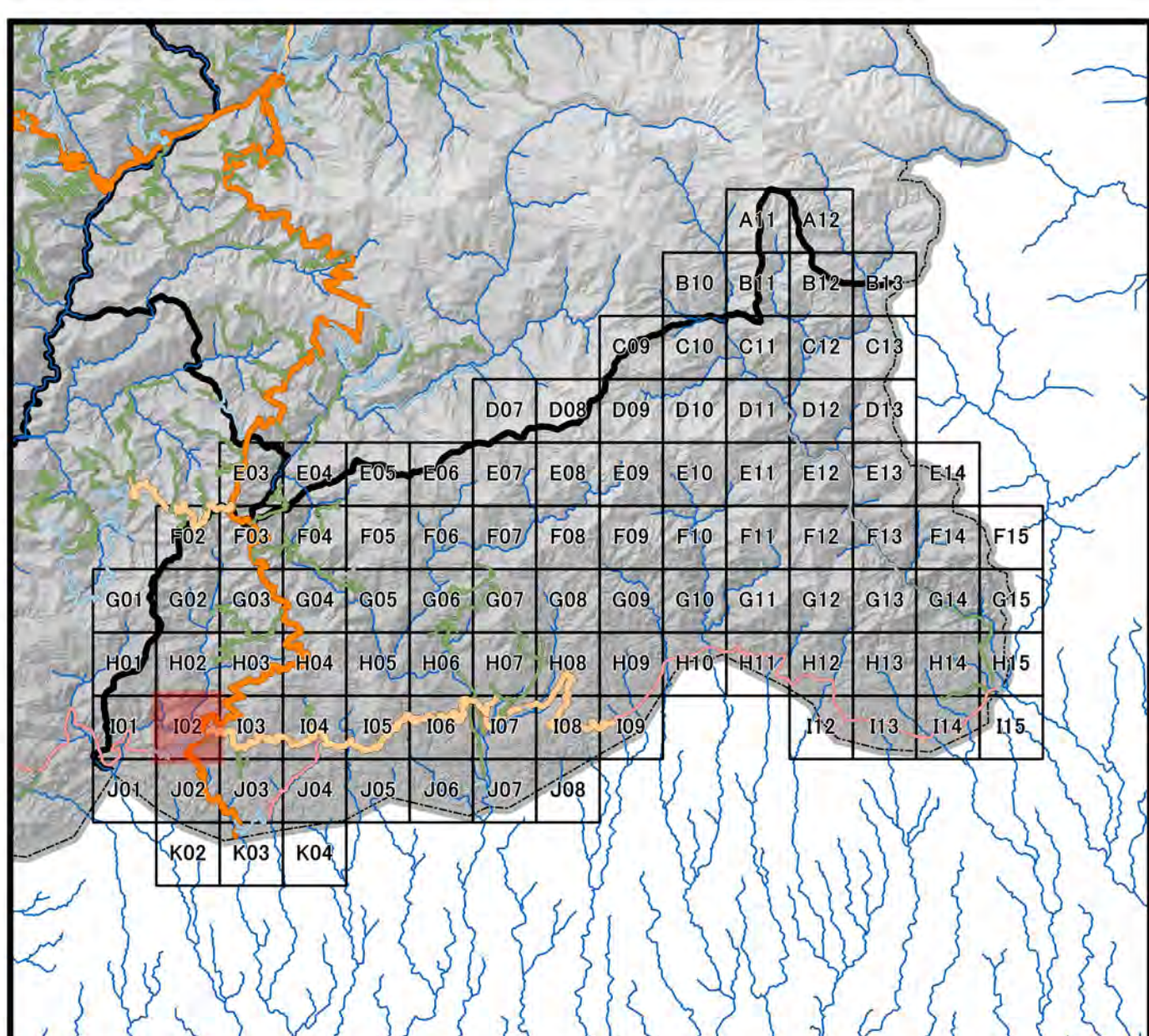
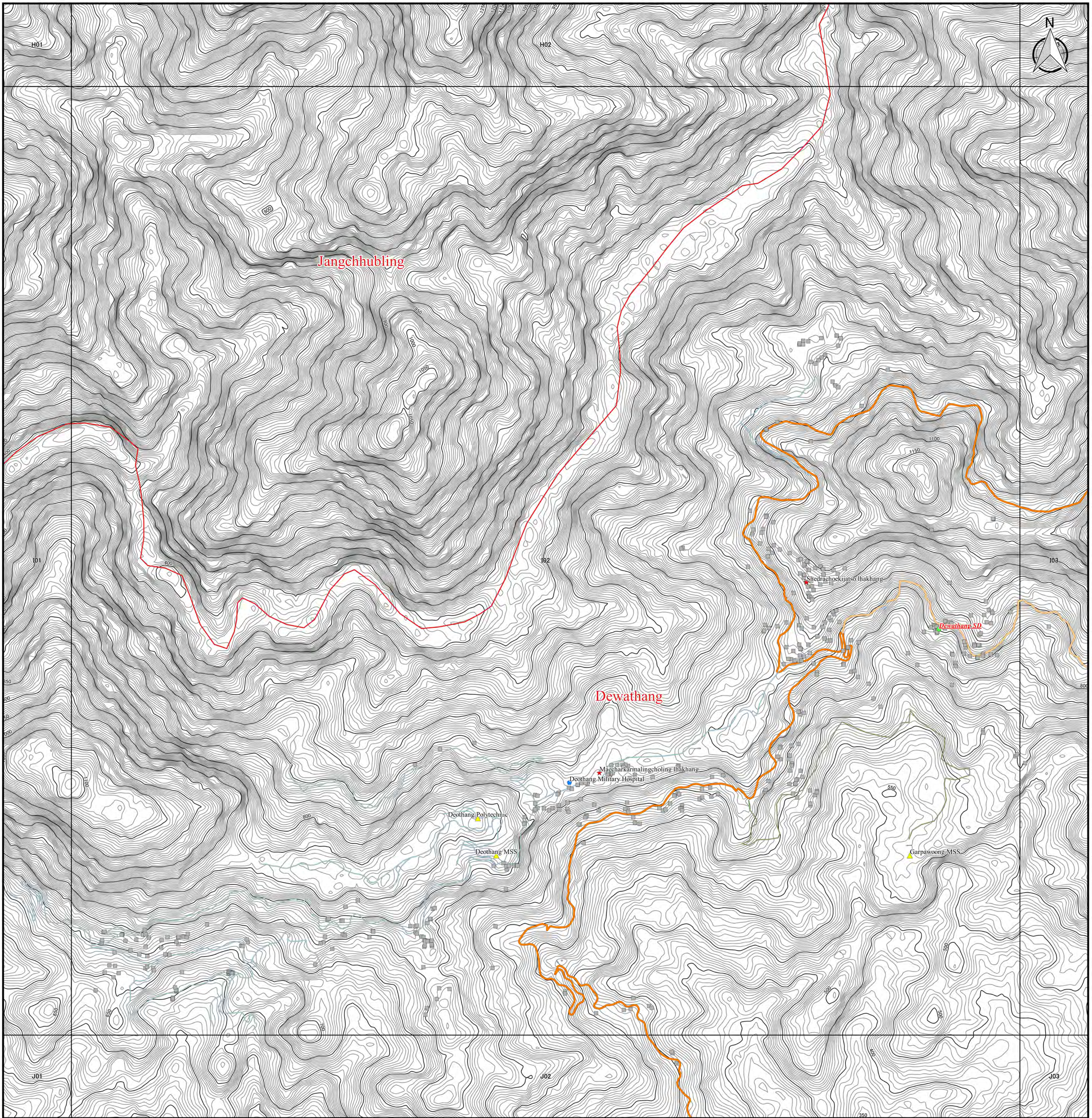
PCS DRUKREF03 / Bhutan National Grid
 Projection : Transverse Mercator
 False Easting : 250,000.000
 False Northing : 0.000
 Central Meridian : 90.000
 Scale Factor : 1.000
 Units : Meter

Data Sources :

- Boundary, Road, Cities and DOR Regional Office has been provided from Department of Road, Ministry of Works and Human Settlement, Bhutan.
- Historical Place, Education Center, Health Center, and Settlement has been provided from National Statistical Bureau.
- Topographic data and Relief has been generated from SRTM ver3.0 (30m mesh).

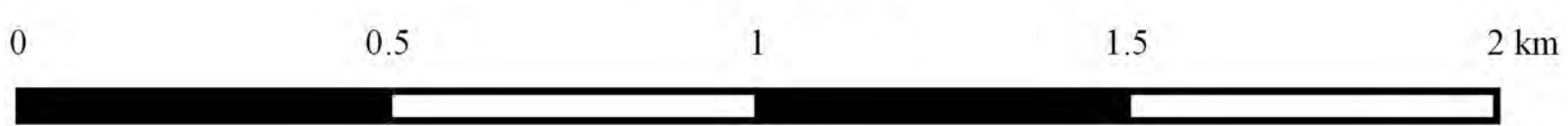


Topographic Map in Samdrupjongkhar



Legend		
DOR Office	Road Network	□ 5km Grid Area
● Regional office	— Asian Highway	Boundary
● Sub-divisional office	— Primary Highway	▭ Country Boundary
NSB Data	— Secondary Highway	▭ Dzongkhag Boundary
★ Historical Place	— Urban Road	▭ Gewog Boundary
▲ Education Center	— Farm Road	Contour by SRTM
● Health Center	— Forest Road	— 50m Contour
■ Settlement	— Proposed Road	— 5m Contour
	— Under Construction	

1:10,000



Coordinate Systems :

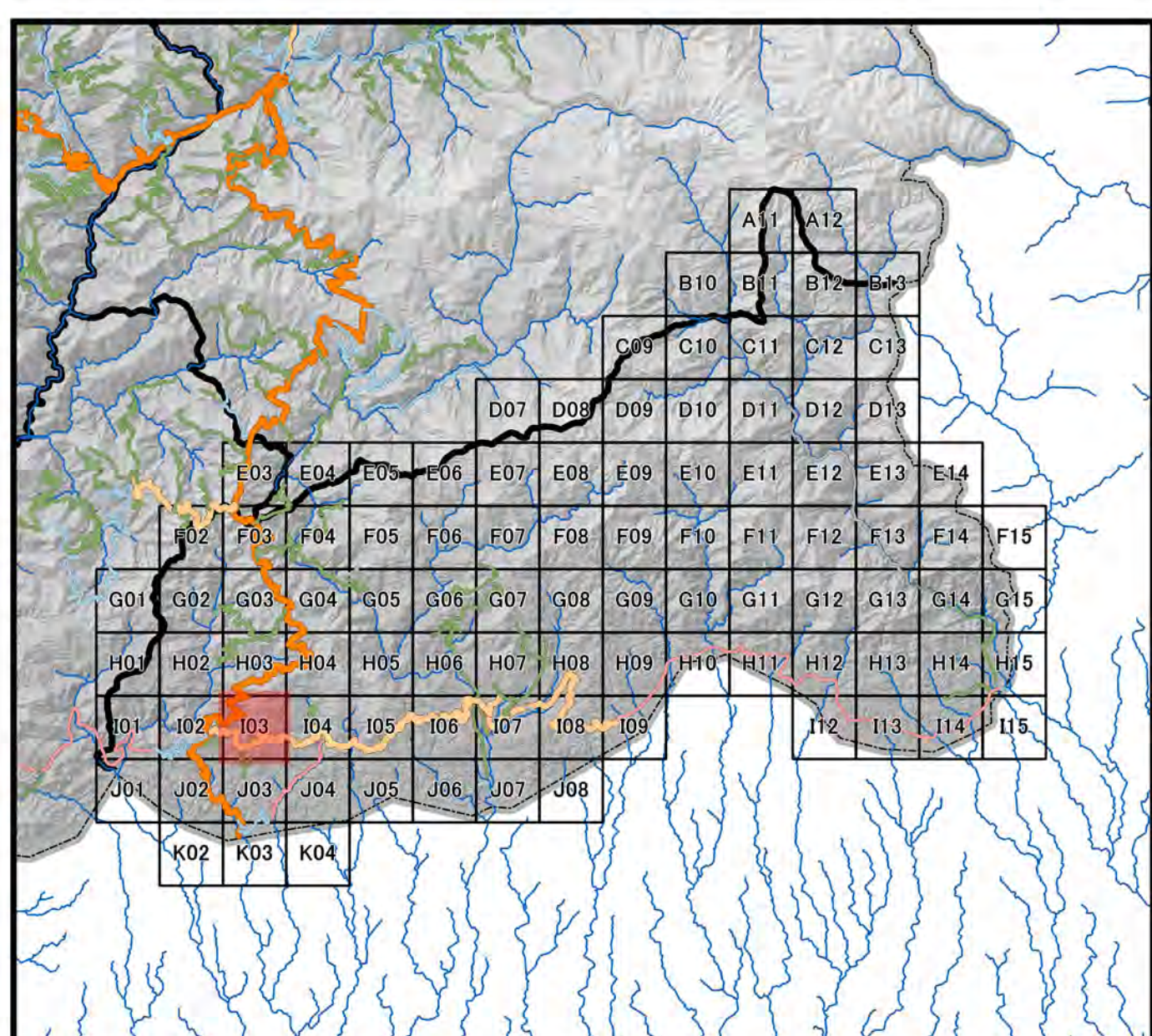
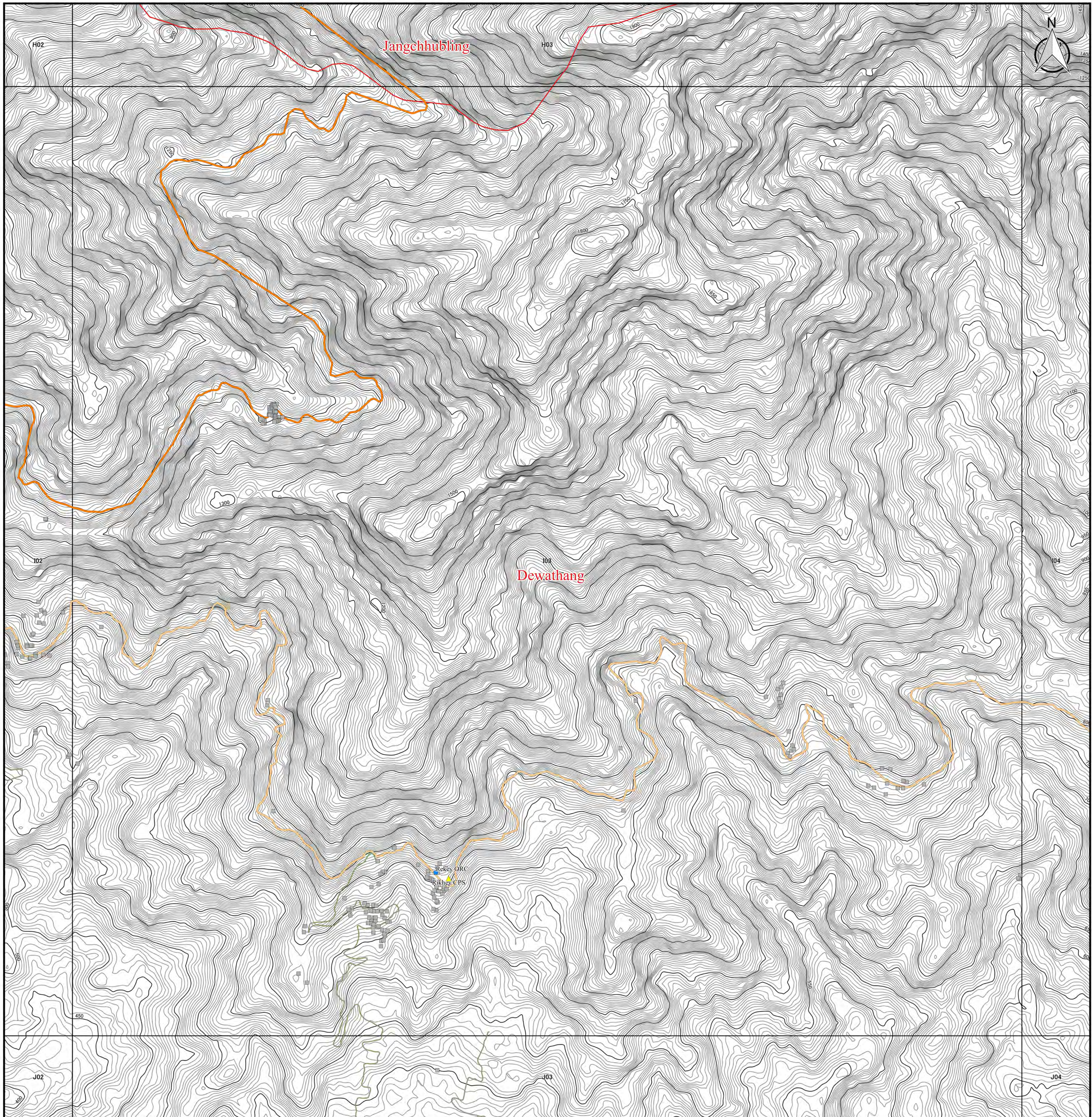
PCS DRUKREF03 / Bhutan National Grid
 Projection : Transverse Mercator
 False Easting : 250,000.000
 False Northing : 0.000
 Central Meridian : 90.000
 Scale Factor : 1.000
 Units : Meter

Data Sources :

- Boundary, Road, Cities and DOR Regional Office has been provided from Department of Road, Ministry of Works and Human Settlement, Bhutan.
- Historical Place, Education Center, Health Center, and Settlement has been provided from National Statistic Bureau.
- Topographic data and Relief has been generated from SRTM ver3.0 (30m mesh).

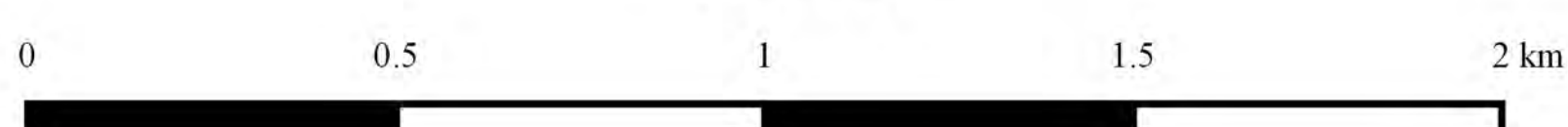


Topographic Map in Samdrupjongkhar



Legend		
DOR Office	Road Network	□ 5km Grid Area
● Regional office	— Asian Highway	Boundary
● Sub-divisional office	— Primary Highway	▭ Country Boundary
NSB Data	— Secondary Highway	▭ Dzongkhag Boundary
★ Historical Place	— Urban Road	▭ Gewog Boundary
▲ Education Center	— Farm Road	Contour by SRTM
● Health Center	— Forest Road	— 50m Contour
■ Settlement	— Proposed Road	— 5m Contour
	— Under Construction	

1:10,000



Coordinate Systems :

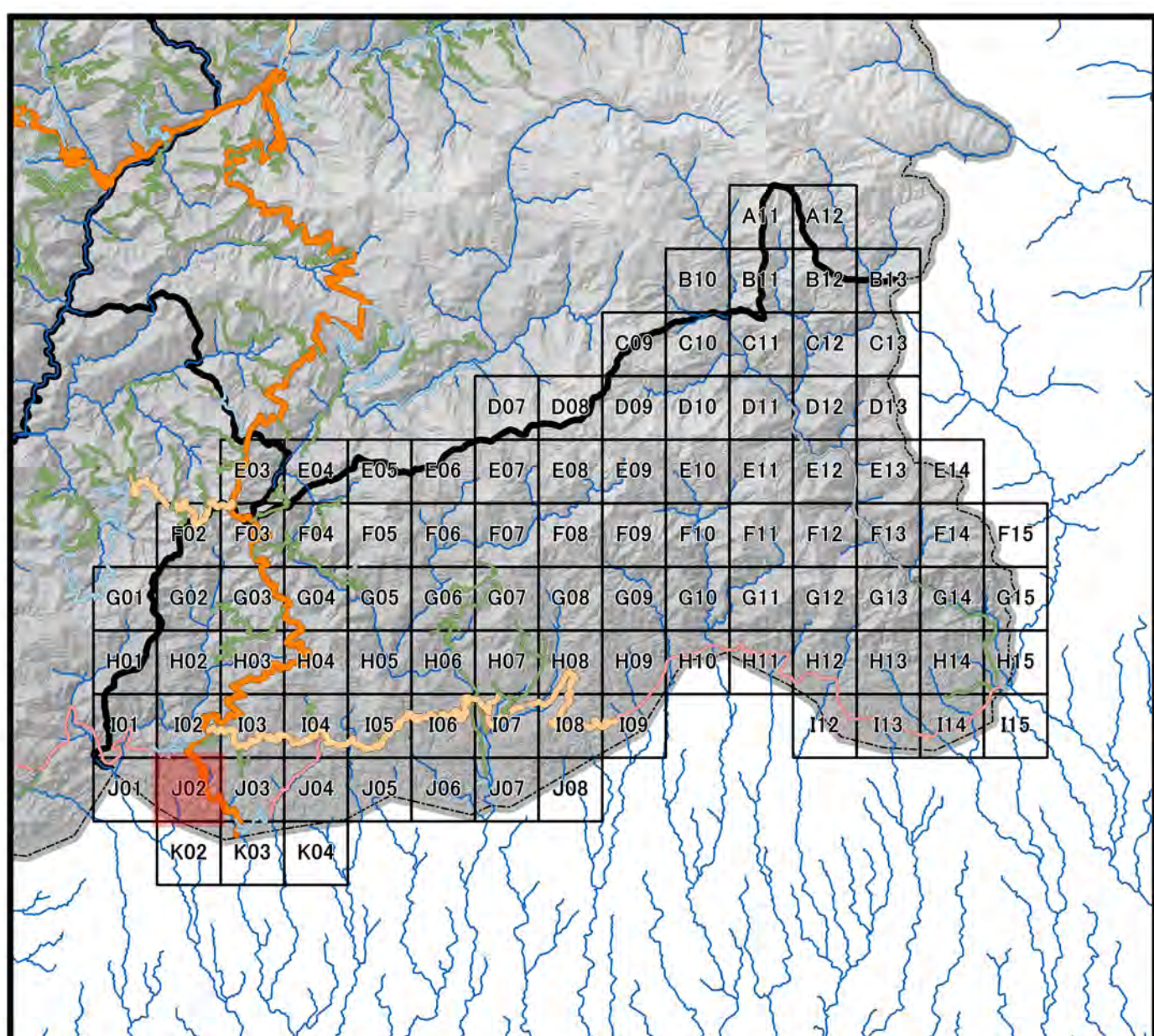
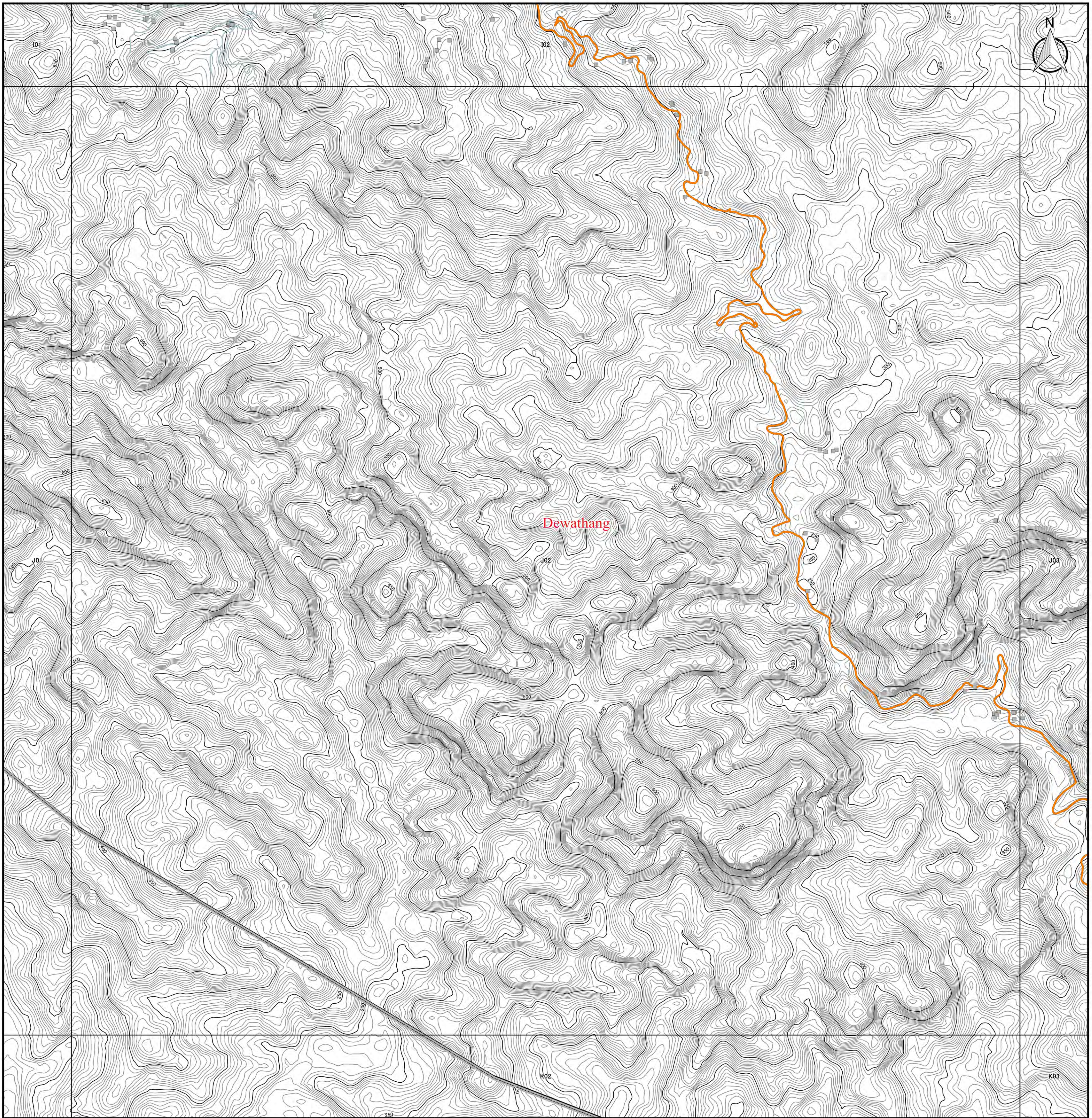
PCS DRUKREF03 / Bhutan National Grid
 Projection : Transverse Mercator
 False Easting : 250,000.000
 False Northing : 0.000
 Central Meridian : 90.000
 Scale Factor : 1.000
 Units : Meter

Data Sources :

- Boundary, Road, Cities and DOR Regional Office has been provided from Department of Road, Ministry of Works and Human, Settlement, Bhutan.
- Historical Place, Education Center, Health Center, and Settlement has been provided from National Statistic Bureau.
- Topographic data and Relief has been generated from SRTM ver3.0 (30m mesh).

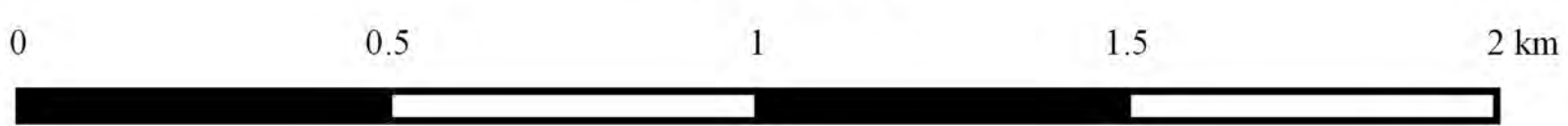


Topographic Map in Samdrupjongkhar



Legend		
DOR Office	Road Network	□ 5km Grid Area
● Regional office	— Asian Highway	Boundary
● Sub-divisional office	— Primary Highway	▭ Country Boundary
NSB Data	— Secondary Highway	▭ Dzongkhag Boundary
★ Historical Place	— Urban Road	▭ Gewog Boundary
▲ Education Center	— Farm Road	Contour by SRTM
● Health Center	— Forest Road	— 50m Contour
■ Settlement	— Proposed Road	— 5m Contour
	— Under Construction	

1:10,000



Coordinate Systems :

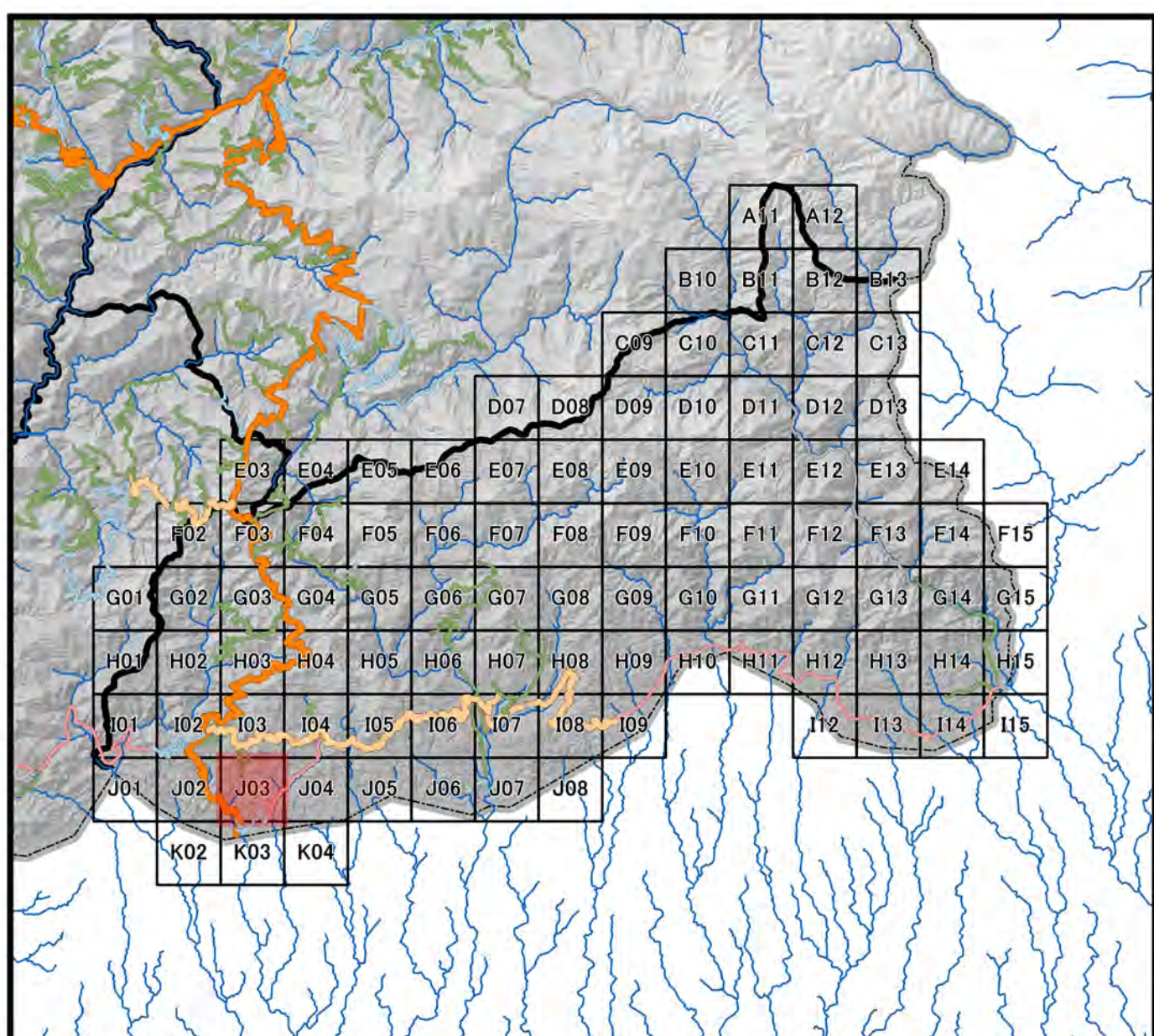
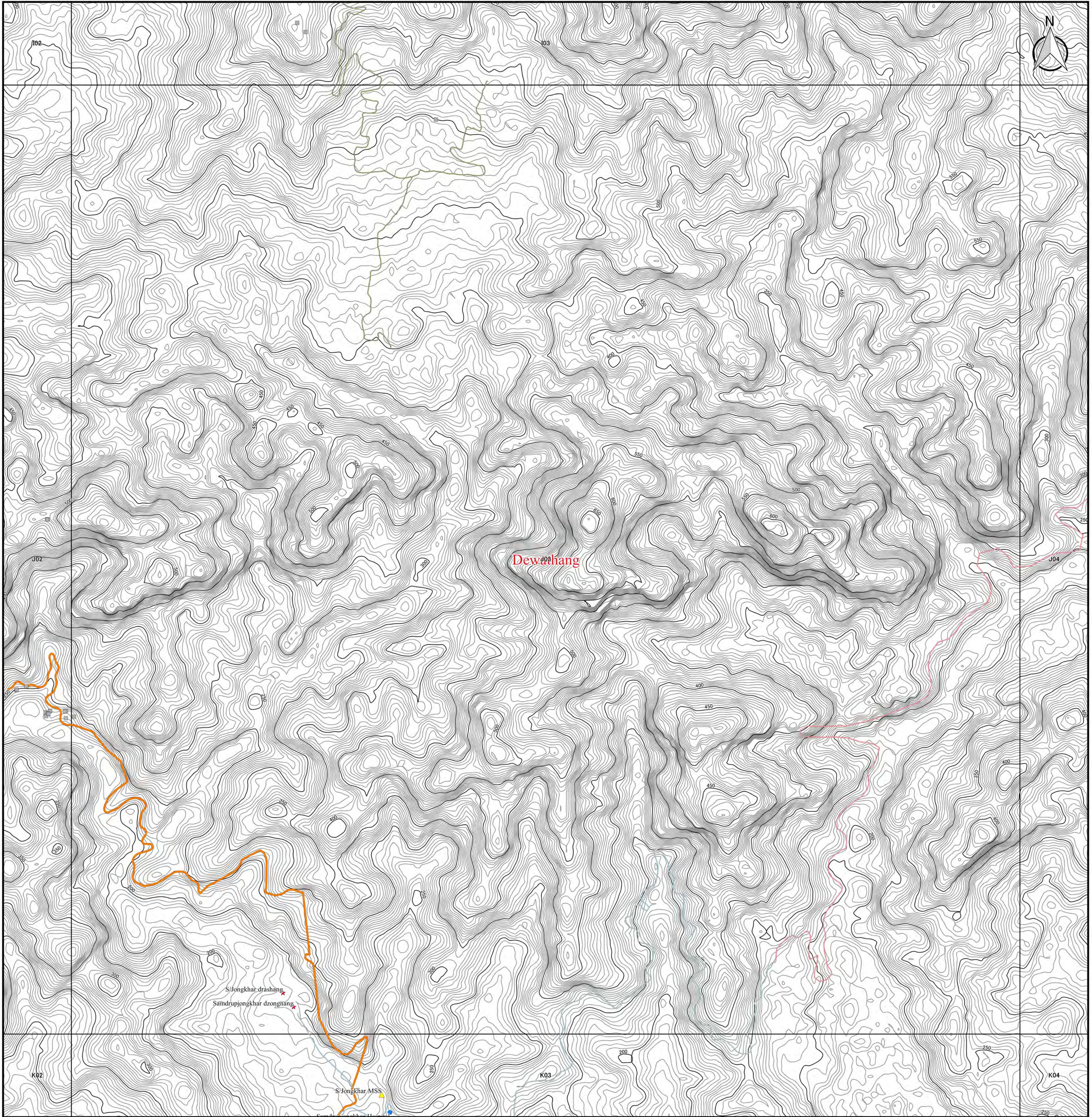
PCS DRUKREF03 / Bhutan National Grid
 Projection : Transverse Mercator
 False Easting : 250,000.000
 False Northing : 0.000
 Central Meridian : 90.000
 Scale Factor : 1.000
 Units : Meter

Data Sources :

- Boundary, Road, Cities and DOR Regional Office has been provided from Department of Road, Ministry of Works and Human, Settlement, Bhutan.
- Historical Place, Education Center, Health Center, and Settlement has been provided from National Statistic Bureau.
- Topographic data and Relief has been generated from SRTM ver3.0 (30m mesh).

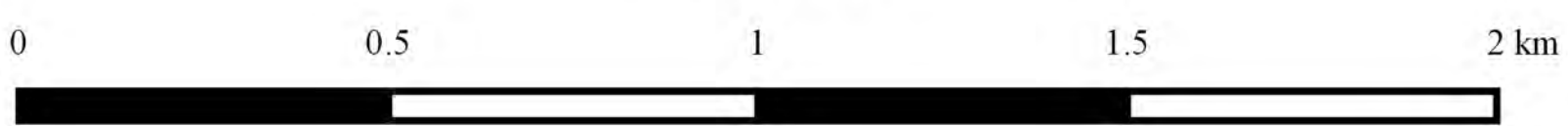


Topographic Map in Samdrupjongkhar



Legend		
DOR Office	Road Network	□ 5km Grid Area
● Regional office	— Asian Highway	Boundary
● Sub-divisional office	— Primary Highway	▭ Country Boundary
NSB Data	— Secondary Highway	▭ Dzongkhag Boundary
★ Historical Place	— Urban Road	▭ Gewog Boundary
▲ Education Center	— Farm Road	Contour by SRTM
● Health Center	— Forest Road	— 50m Contour
■ Settlement	— Proposed Road	— 5m Contour
	— Under Construction	

1:10,000

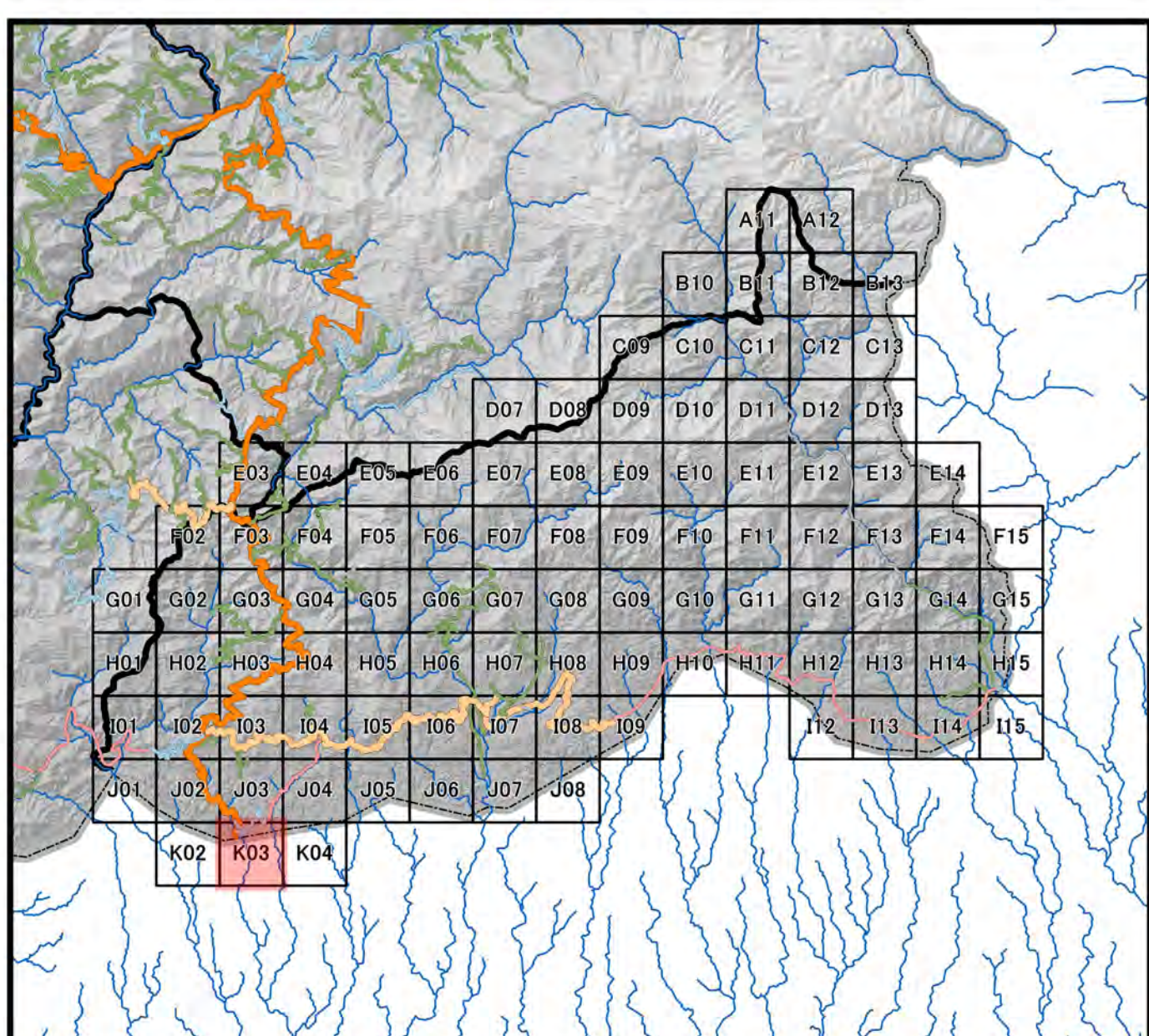
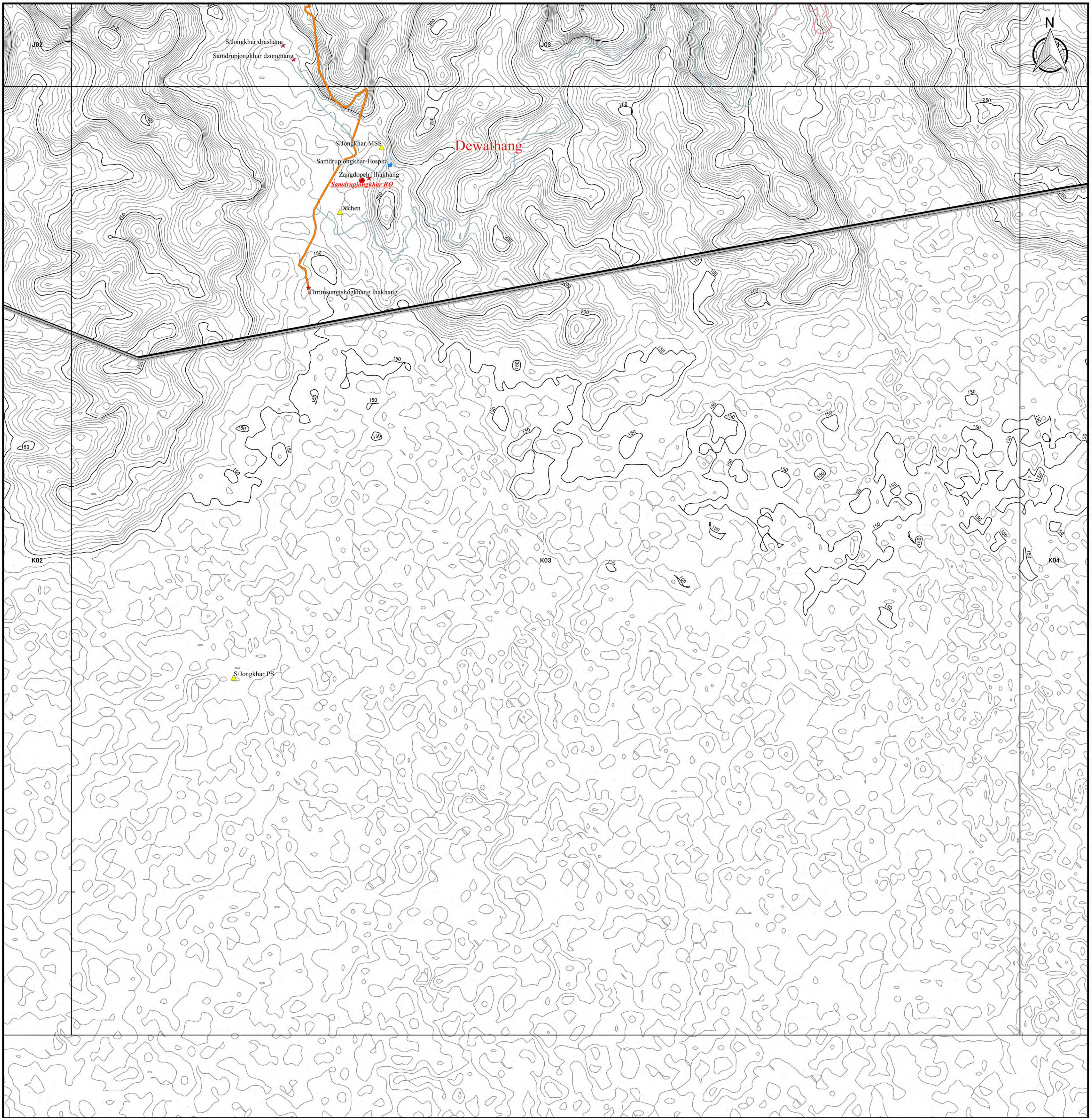


Coordinate Systems :
 PCS DRUKREF03 / Bhutan National Grid
 Projection : Transverse Mercator
 False Easting : 250,000.000
 False Northing : 0.000
 Central Meridian : 90.000
 Scale Factor : 1.000
 Units : Meter

Data Sources :
 - Boundary, Road, Cities and DOR Regional Office has been provided from Department of Road, Ministry of Works and Human Settlement, Bhutan.
 - Historical Place, Education Center, Health Center, and Settlement has been provided from National Statistic Bureau.
 - Topographic data and Relief has been generated from SRTM ver3.0 (30m mesh).



Topographic Map in Samdrupjongkhar



Legend		
DOR Office	Road Network	□ 5km Grid Area
● Regional office	— Asian Highway	Boundary
● Sub-divisional office	— Primary Highway	▭ Country Boundary
NSB Data	— Secondary Highway	▭ Dzongkhag Boundary
★ Historical Place	— Dzongkhag Road	▭ Gewog Boundary
▲ Education Center	— Urban Road	Contour by SRTM
● Health Center	— Farm Road	— 50m Contour
■ Settlement	— Forest Road	— 5m Contour
	— Proposed Road	
	— Under Construction	

Coordinate Systems :
 PCS DRUKREF03 / Bhutan National Grid
 Projection : Transverse Mercator
 False Easting : 250,000.000
 False Northing : 0.000
 Central Meridian : 90.000
 Scale Factor : 1.000
 Units : Meter

Data Sources :
 - Boundary, Road, Cities and DOR Regional Office has been provided from Department of Road, Ministry of Works and Human Settlement, Bhutan.
 - Historical Place, Education Center, Health Center, and Settlement has been provided from National Statistic Bureau.
 - Topographic data and Relief has been generated from SRTM ver3.0 (30m mesh).

1:10,000

