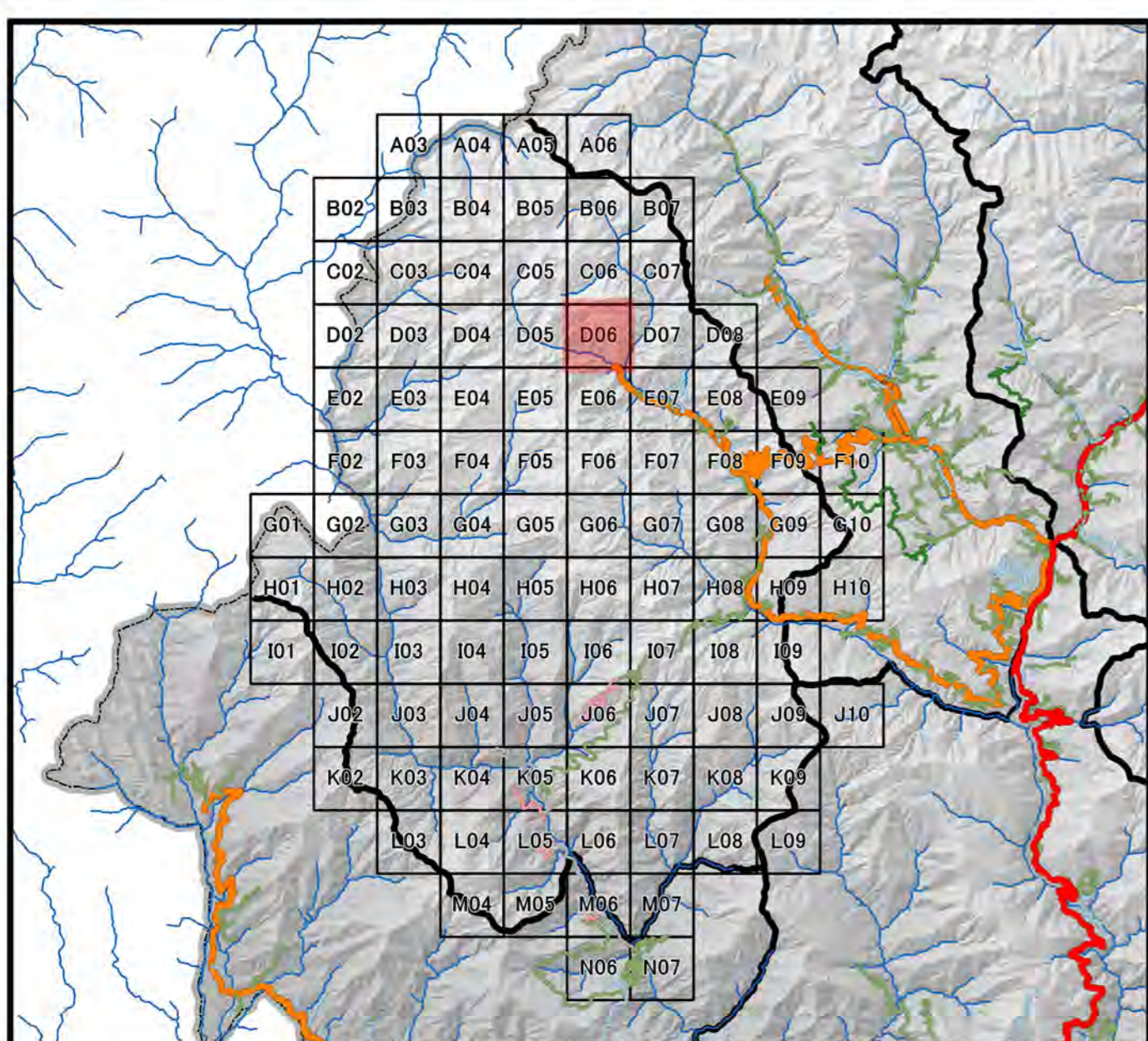
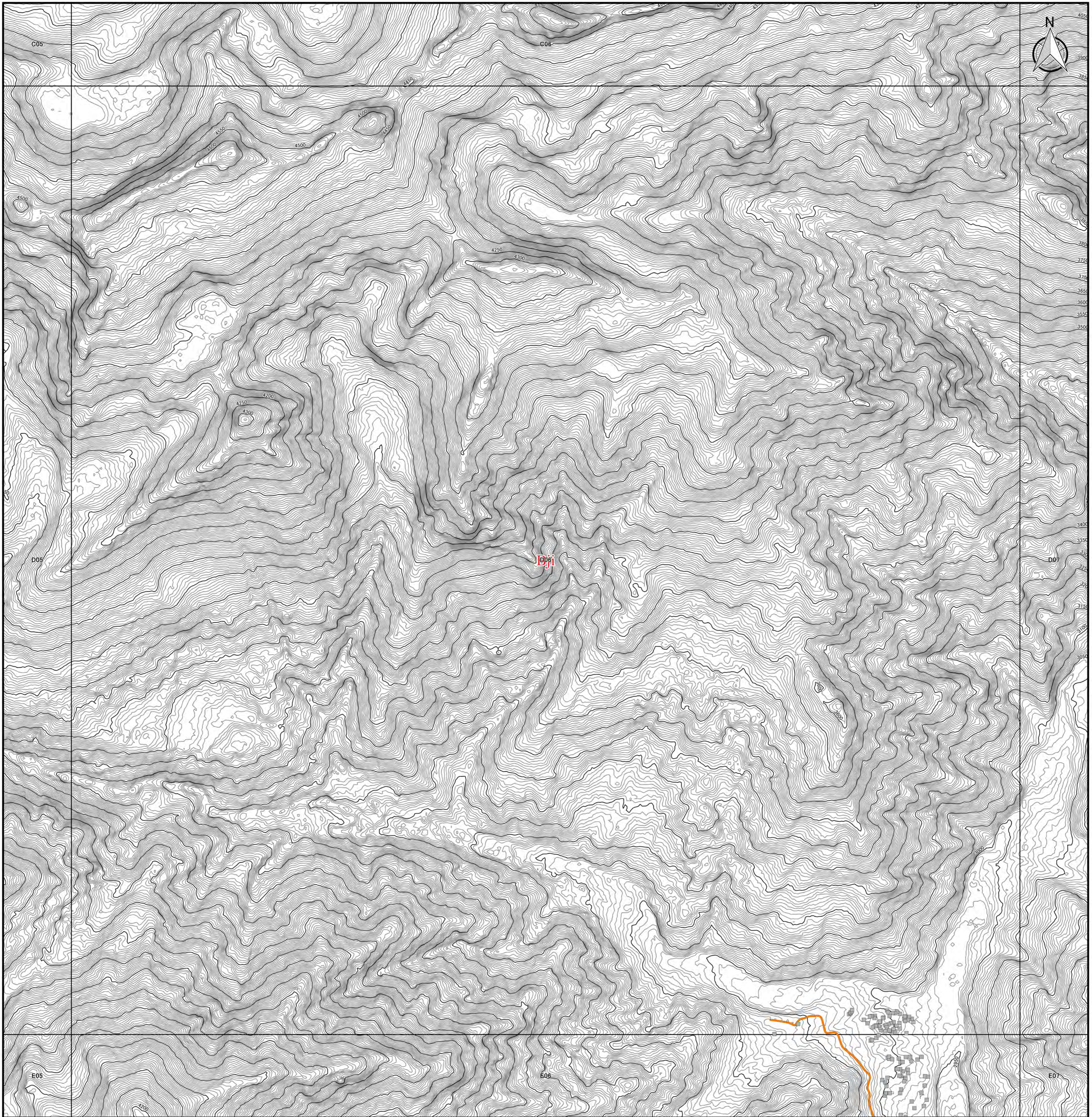


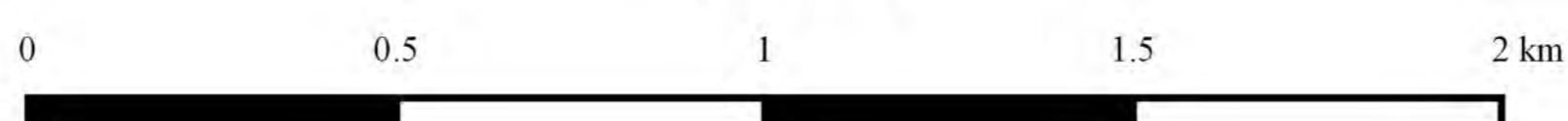


# Topographic Map in Haa



Legend		
<b>DOR Office</b>	<b>Road Network</b>	□ 5km Grid Area
● Regional office	— Asian Highway	<b>Boundary</b>
● Sub-divisional office	— Primary Highway	▭ Country Boundary
<b>NSB Data</b>	— Secondary Highway	▭ Dzongkhag Boundary
★ Historical Place	— Dzungkhag Road	▭ Gewog Boundary
▲ Education Center	— Urban Road	<b>Contour by PRISM</b>
● Health Center	— Farm Road	— 50m Contour
■ Settlement	— Forest Road	— 5m Contour
	— Proposed Road	
	— Under Construction	

1:10,000



### Coordinate Systems :

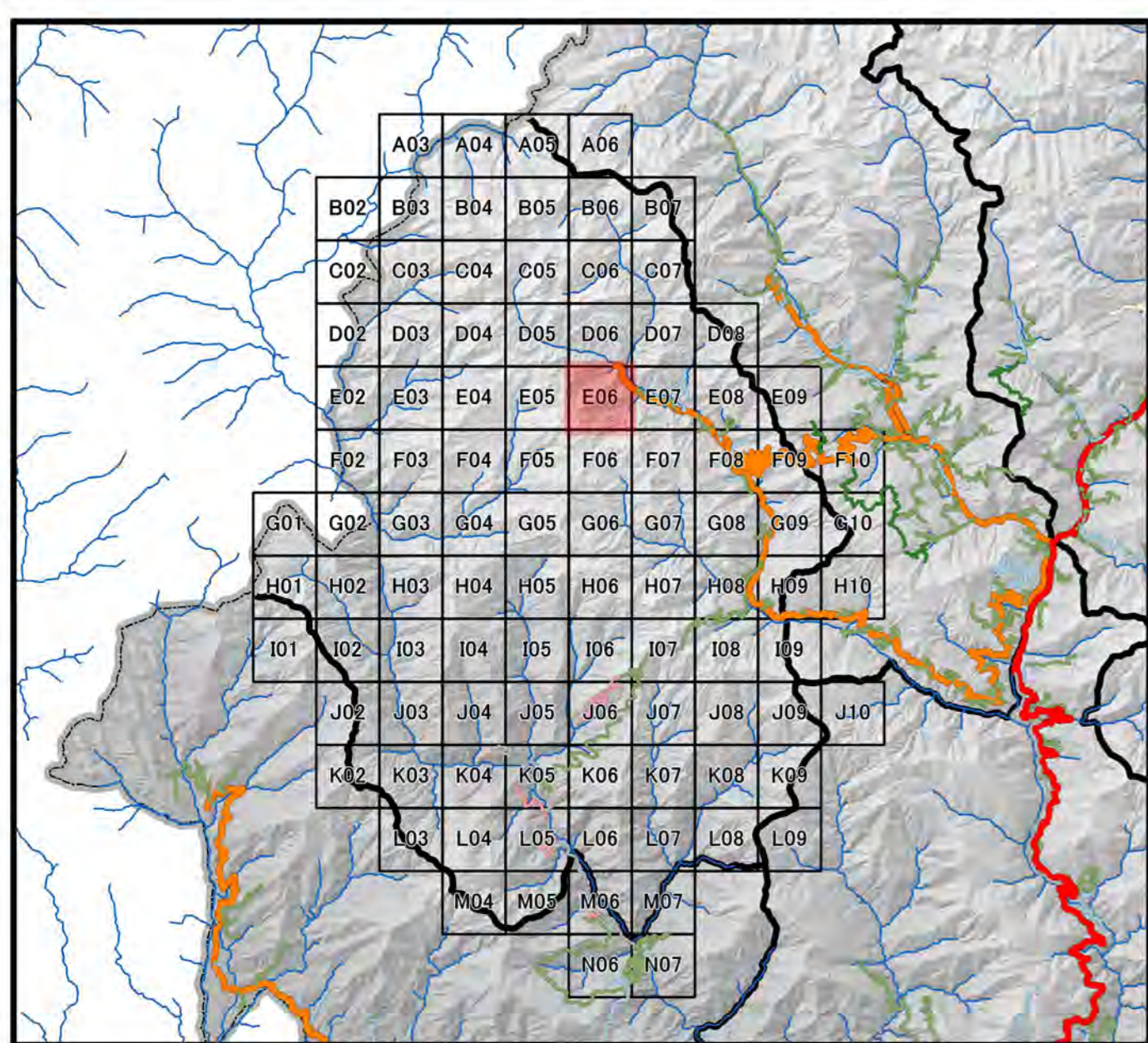
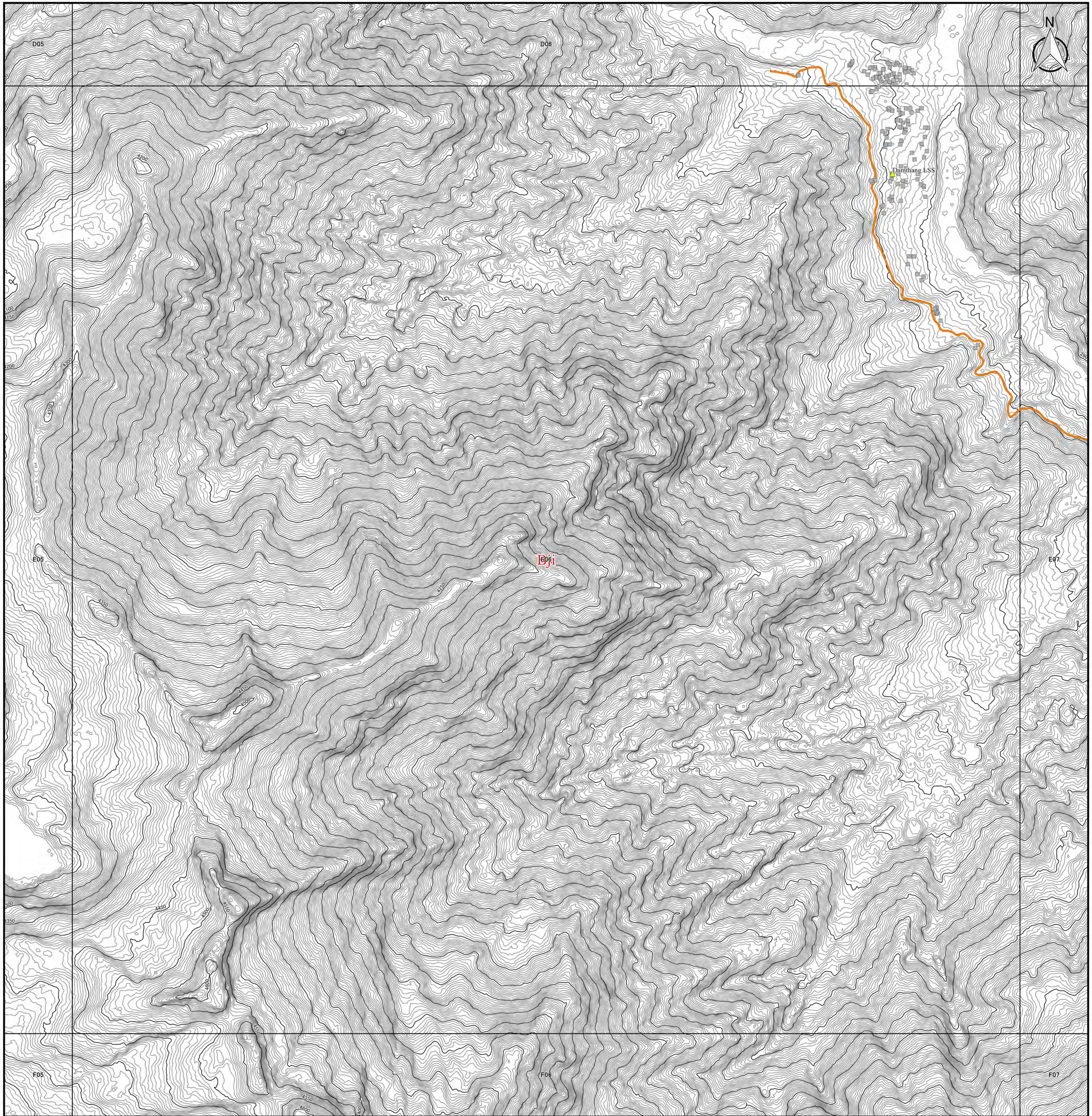
PCS DRUKREF03 / Bhutan National Grid  
 Projection : Transverse Mercator  
 False Easting : 250,000.000  
 False Northing : 0.000  
 Central Meridian : 90.000  
 Scale Factor : 1.000  
 Units : Meter

### Data Sources :

- Boundary, Road, Cities and DOR Regional Office has been provided from Department of Road, Ministry of Works and Human Settlement, Bhutan.
- Historical Place, Education Center, Health Center, and Settlement has been provided from National Statistic Bureau.
- Contour data has been generated from PRISM-DSM (10m mesh).

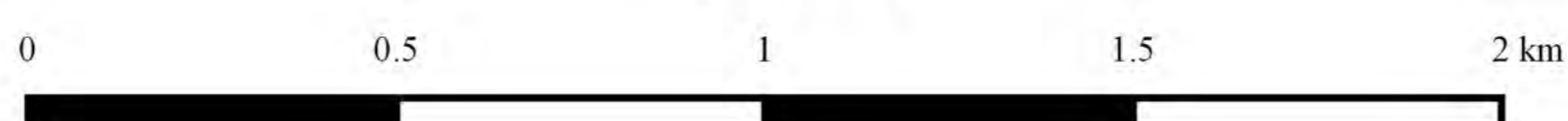


# Topographic Map in Haa



Legend		
<b>DOR Office</b>	<b>Road Network</b>	5km Grid Area
● Regional office	— Asian Highway	<b>Boundary</b>
● Sub-divisional office	— Primary Highway	▭ Country Boundary
<b>NSB Data</b>	— Secondary Highway	▭ Dzongkhag Boundary
★ Historical Place	— Urban Road	▭ Gewog Boundary
▲ Education Center	— Farm Road	<b>Contour by PRISM</b>
● Health Center	— Forest Road	— 50m Contour
■ Settlement	— Proposed Road	— 5m Contour
	— Under Construction	

1:10,000



### Coordinate Systems :

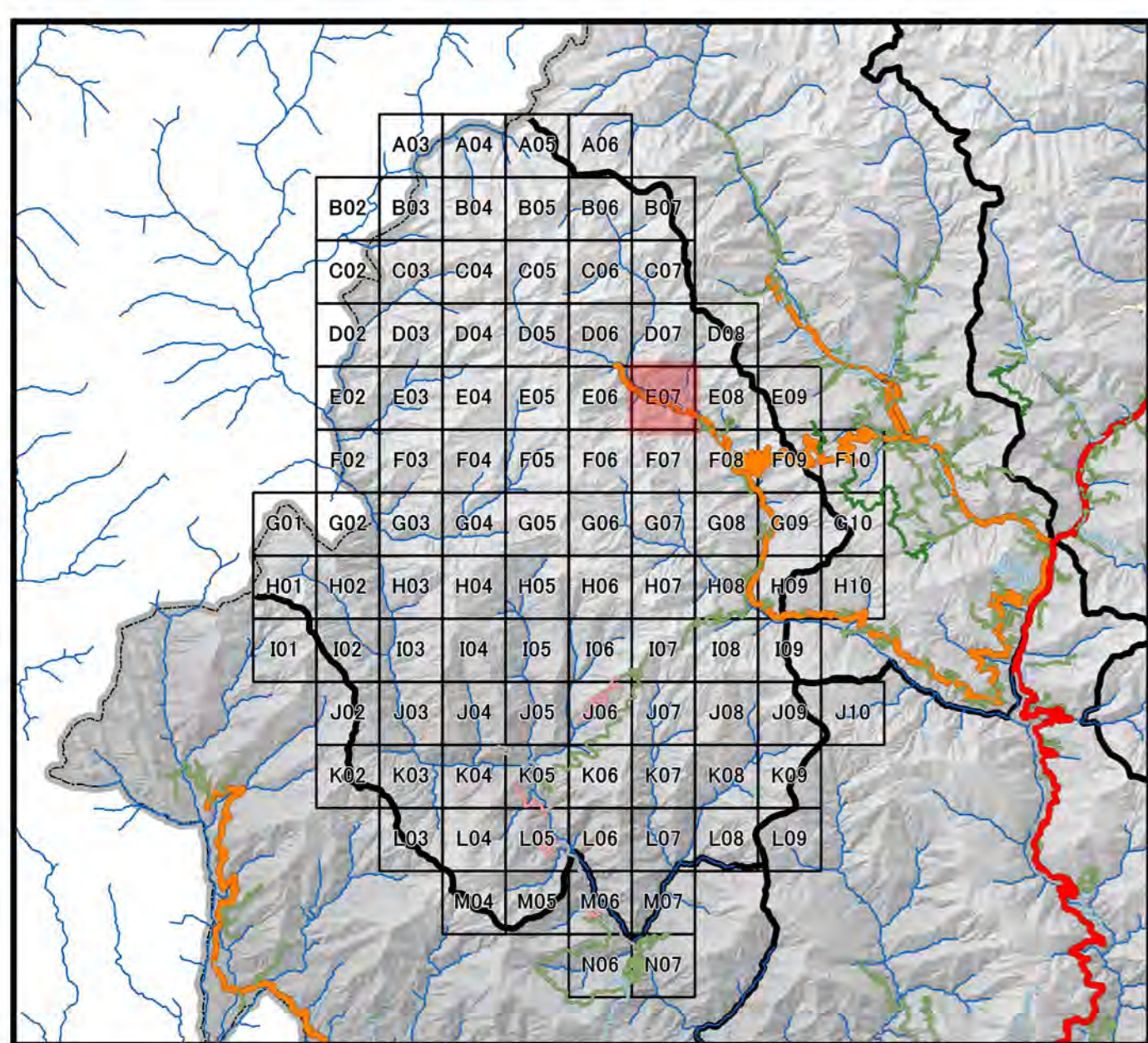
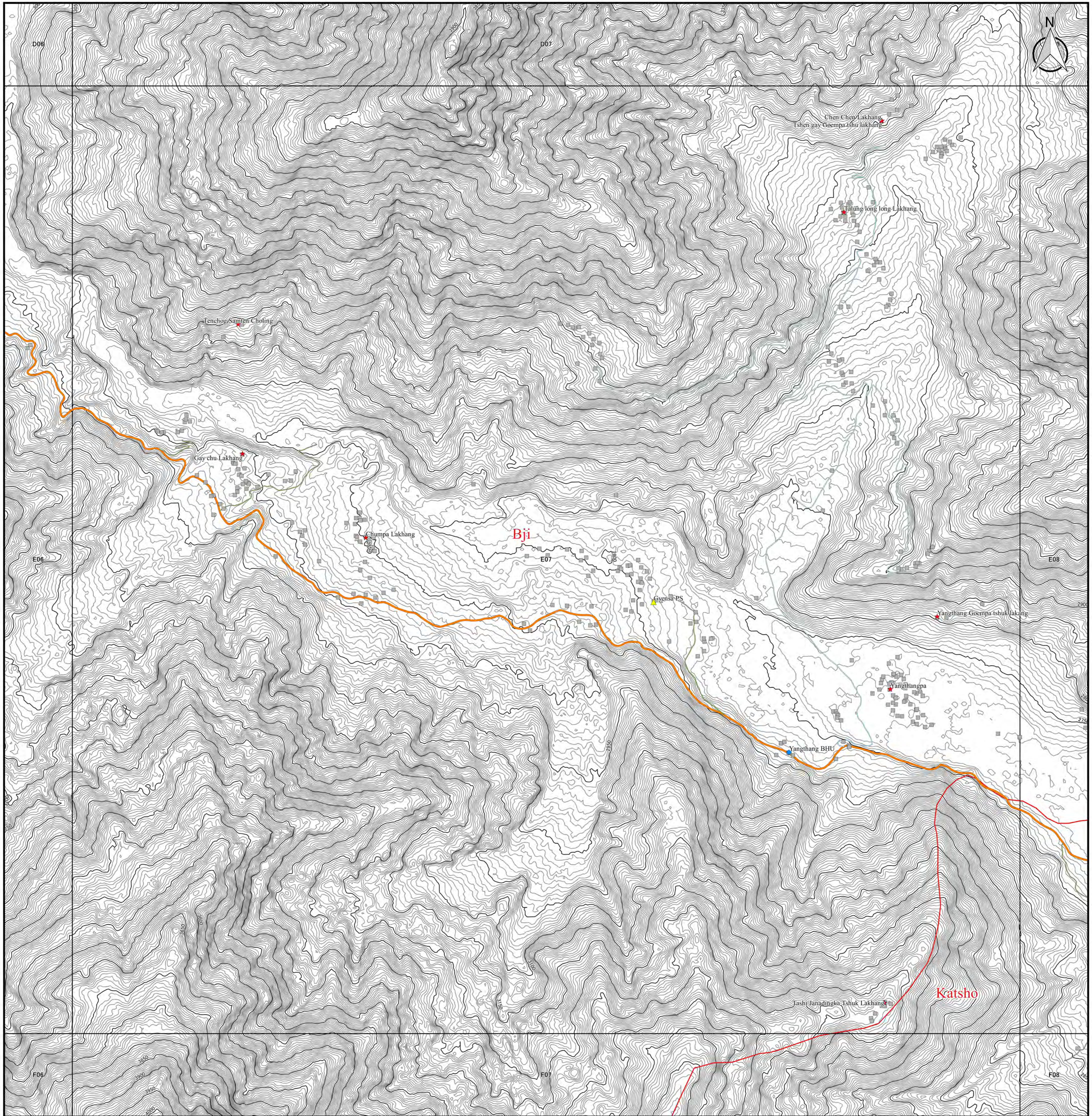
PCS DRUKREF03 / Bhutan National Grid  
 Projection : Transverse Mercator  
 False Easting : 250,000.000  
 False Northing : 0.000  
 Central Meridian : 90.000  
 Scale Factor : 1.000  
 Units : Meter

### Data Sources :

- Boundary, Road, Cities and DOR Regional Office has been provided from Department of Road, Ministry of Works and Human, Settlement, Bhutan.
- Historical Place, Education Center, Health Center, and Settlement has been provided from National Statistic Bureau.
- Contour data has been generated from PRISM-DSM (10m mesh).



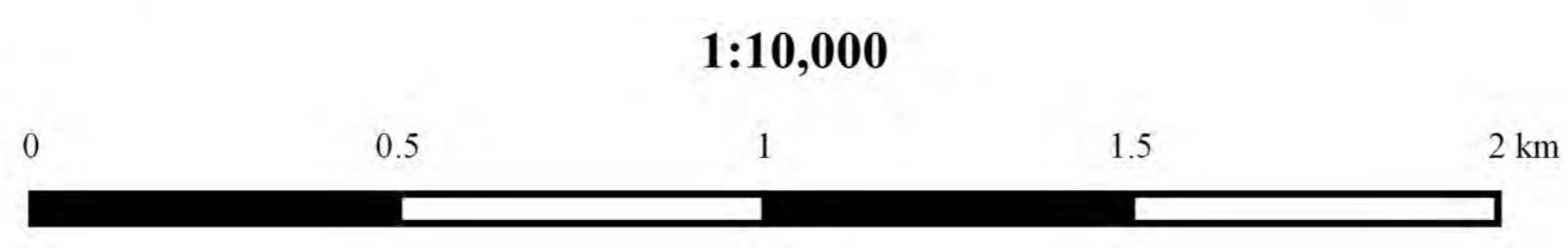
# Topographic Map in Haa



Legend		
<b>DOR Office</b>	<b>Road Network</b>	□ 5km Grid Area
● Regional office	— Asian Highway	<b>Boundary</b>
● Sub-divisional office	— Primary Highway	▭ Country Boundary
<b>NSB Data</b>	— Secondary Highway	▭ Dzongkhag Boundary
★ Historical Place	— Dzongkhag Road	▭ Gewog Boundary
▲ Education Center	— Urban Road	<b>Contour by PRISM</b>
● Health Center	— Farm Road	— 50m Contour
■ Settlement	— Forest Road	— 5m Contour
	— Proposed Road	
	— Under Construction	

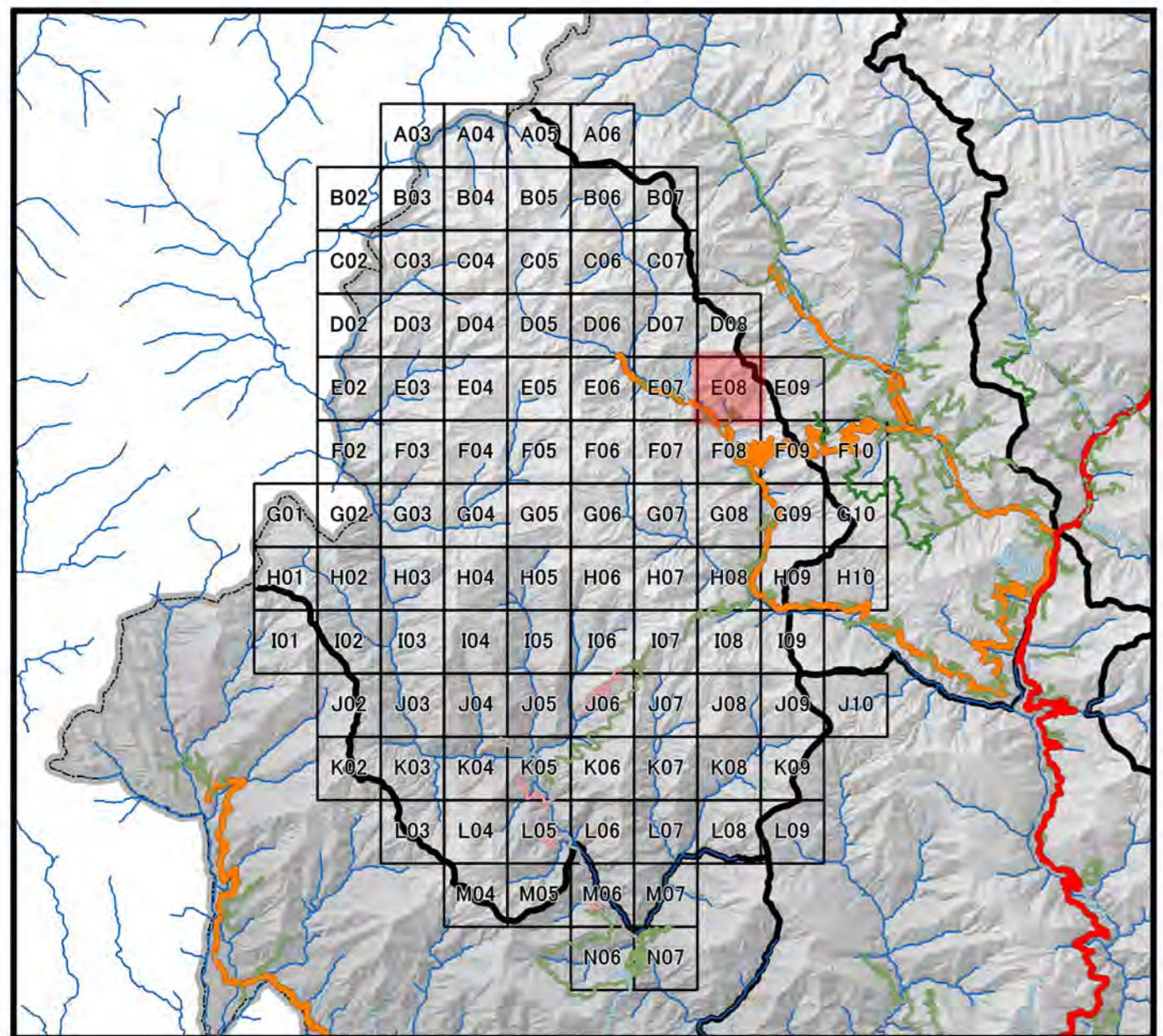
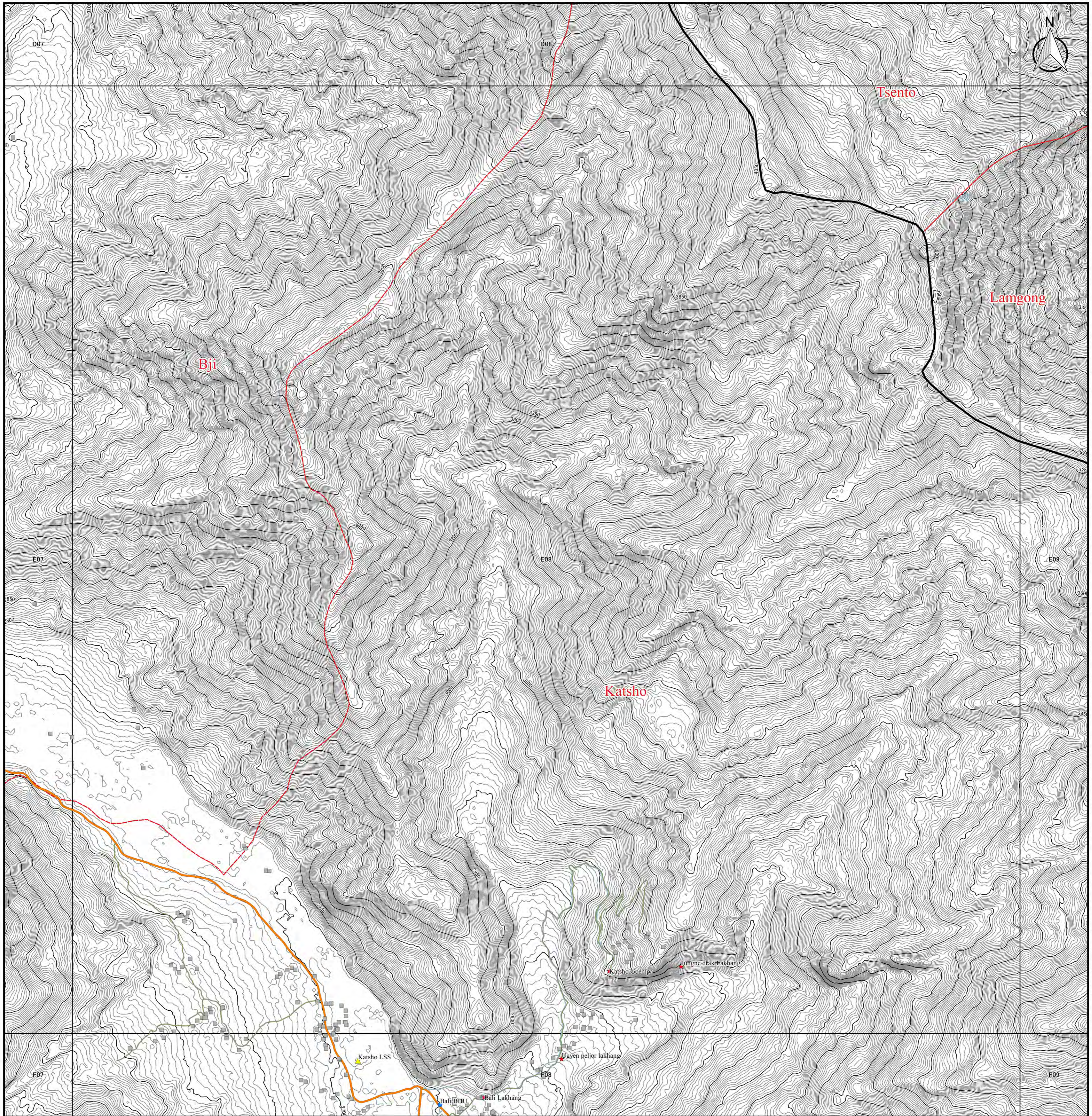
**Coordinate Systems :**  
 PCS DRUKREF03 / Bhutan National Grid  
 Projection : Transverse Mercator  
 False Easting : 250,000.000  
 False Northing : 0.000  
 Central Meridian : 90.000  
 Scale Factor : 1.000  
 Units : Meter

**Data Sources :**  
 - Boundary, Road, Cities and DOR Regional Office has been provided from Department of Road, Ministry of Works and Human, Settlement, Bhutan.  
 - Historical Place, Education Center, Health Center, and Settlement has been provided from National Statistic Bureau.  
 - Contour data has been generated from PRISM-DSM (10m mesh).





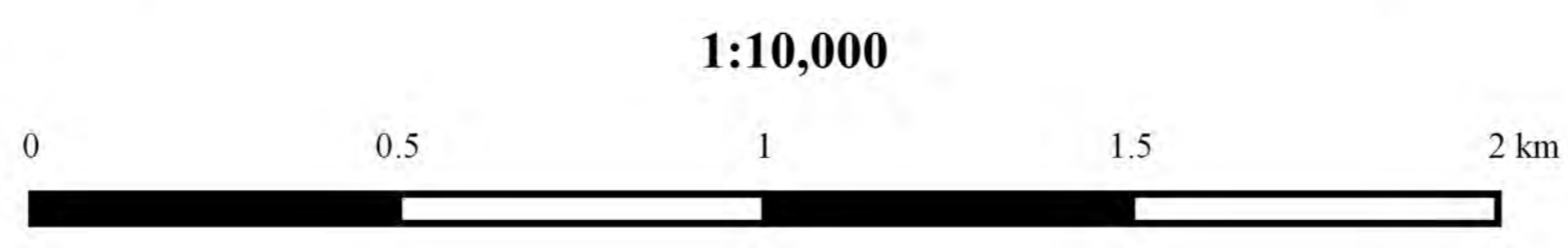
# Topographic Map in Haa



Legend		
<b>DOR Office</b>	<b>Road Network</b>	□ 5km Grid Area
● Regional office	— Asian Highway	<b>Boundary</b>
● Sub-divisional office	— Primary Highway	▭ Country Boundary
<b>NSB Data</b>	— Secondary Highway	▭ Dzongkhag Boundary
★ Historical Place	— Dzungkhag Road	▭ Gewog Boundary
▲ Education Center	— Urban Road	<b>Contour by PRISM</b>
● Health Center	— Farm Road	— 50m Contour
■ Settlement	— Forest Road	— 5m Contour
	— Proposed Road	
	— Under Construction	

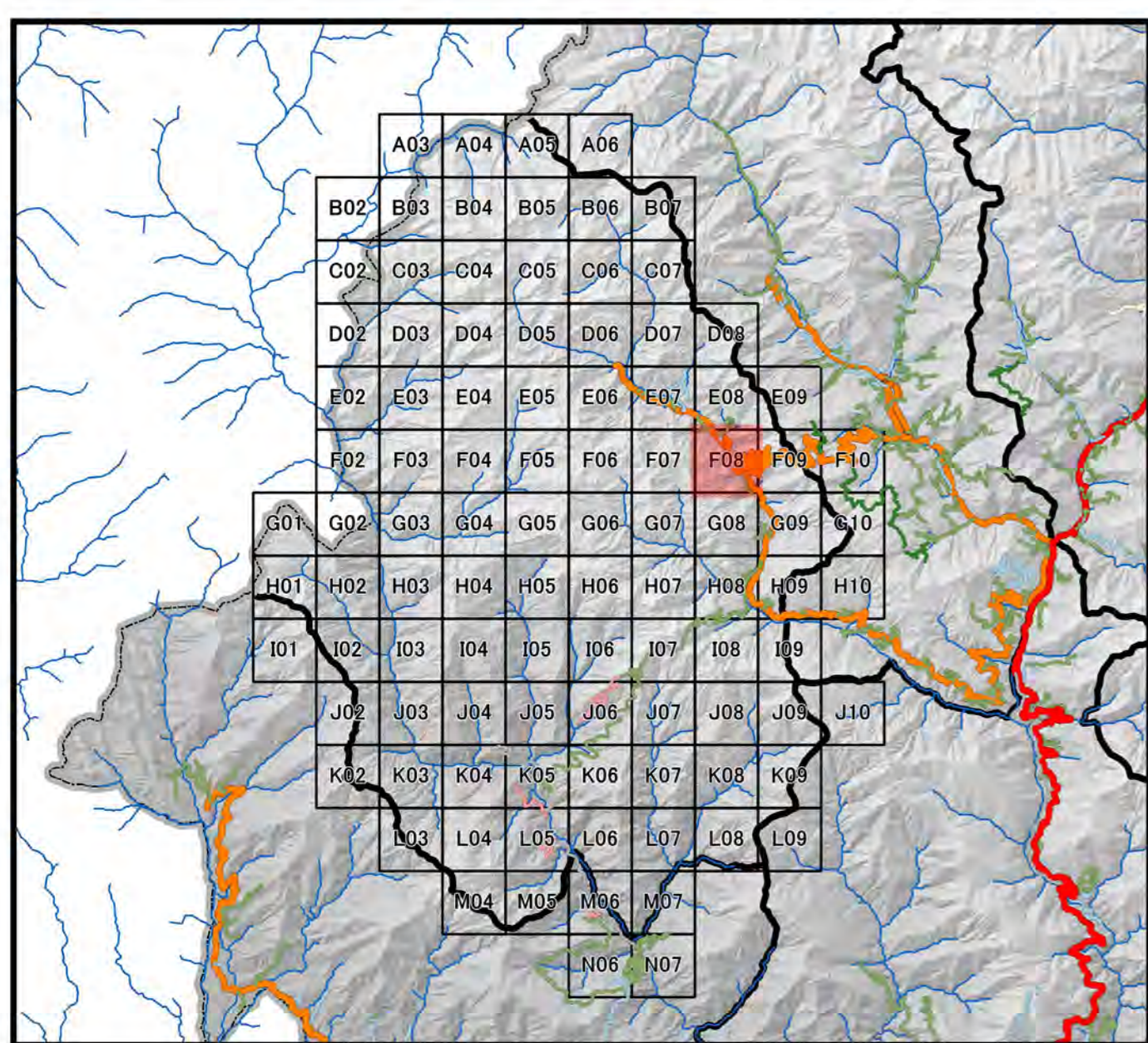
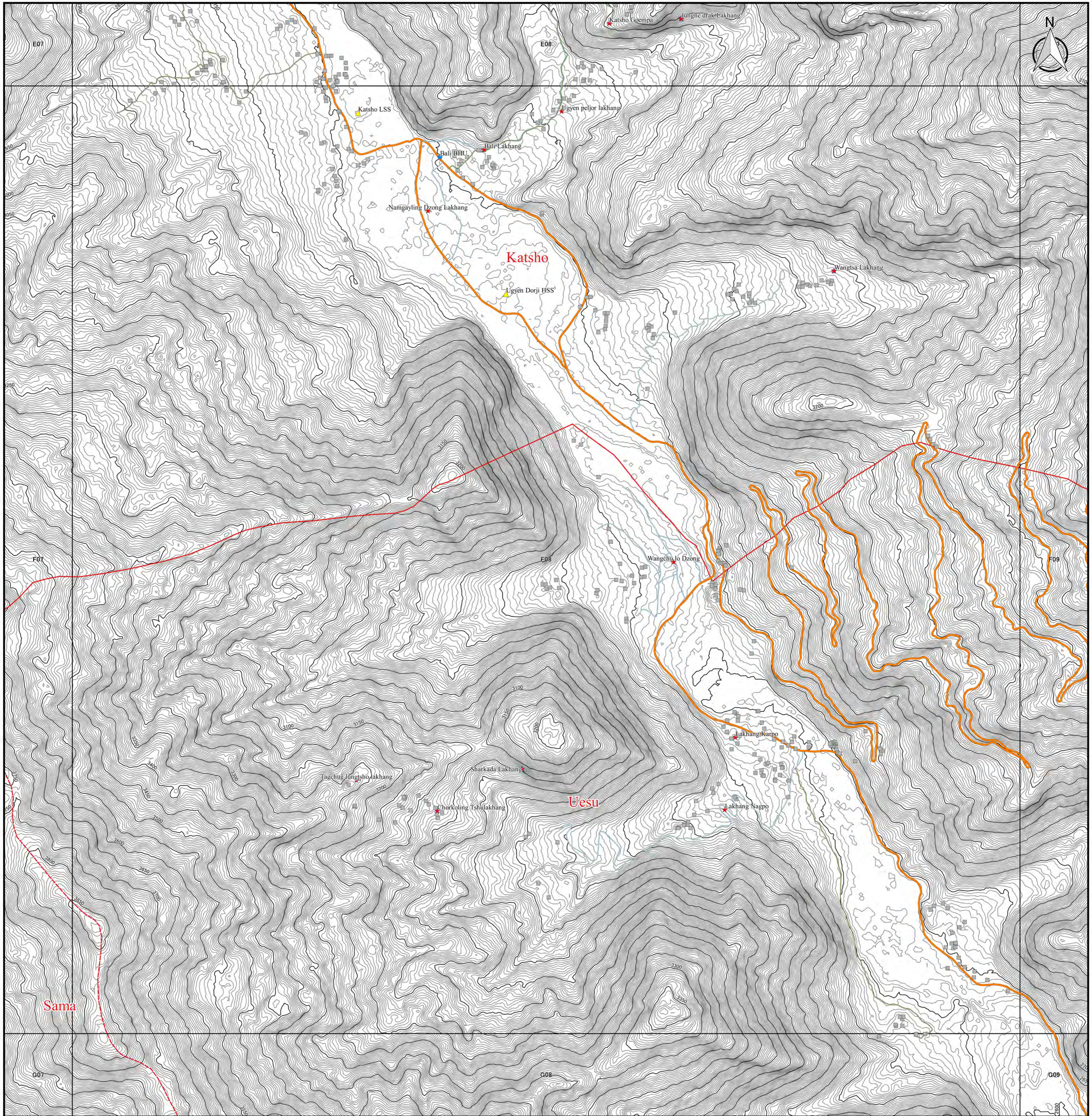
**Coordinate Systems :**  
 PCS DRUKREF03 / Bhutan National Grid  
 Projection : Transverse Mercator  
 False Easting : 250,000.000  
 False Northing : 0.000  
 Central Meridian : 90.000  
 Scale Factor : 1.000  
 Units : Meter

**Data Sources :**  
 - Boundary, Road, Cities and DOR Regional Office has been provided from Department of Road, Ministry of Works and Human, Settlement, Bhutan.  
 - Historical Place, Education Center, Health Center, and Settlement has been provided from National Statistic Bureau.  
 - Contour data has been generated from PRISM-DSM (10m mesh).





# Topographic Map in Haa

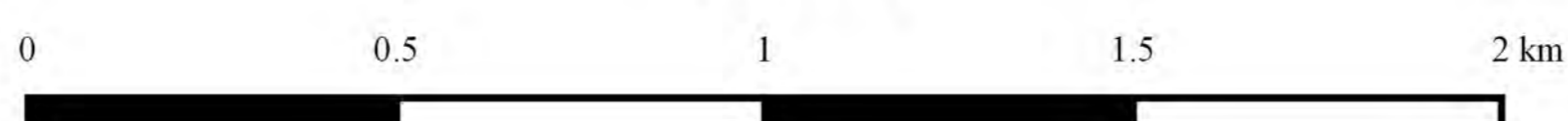


Legend		
<b>DOR Office</b>	<b>Road Network</b>	□ 5km Grid Area
● Regional office	— Asian Highway	<b>Boundary</b>
● Sub-divisional office	— Primary Highway	▭ Country Boundary
<b>NSB Data</b>	— Secondary Highway	▭ Dzongkhag Boundary
★ Historical Place	— Dzongkhag Road	▭ Gewog Boundary
▲ Education Center	— Urban Road	<b>Contour by PRISM</b>
● Health Center	— Farm Road	— 50m Contour
■ Settlement	— Forest Road	— 5m Contour
	— Proposed Road	
	— Under Construction	

**Coordinate Systems :**  
 PCS DRUKREF03 / Bhutan National Grid  
 Projection : Transverse Mercator  
 False Easting : 250,000.000  
 False Northing : 0.000  
 Central Meridian : 90.000  
 Scale Factor : 1.000  
 Units : Meter

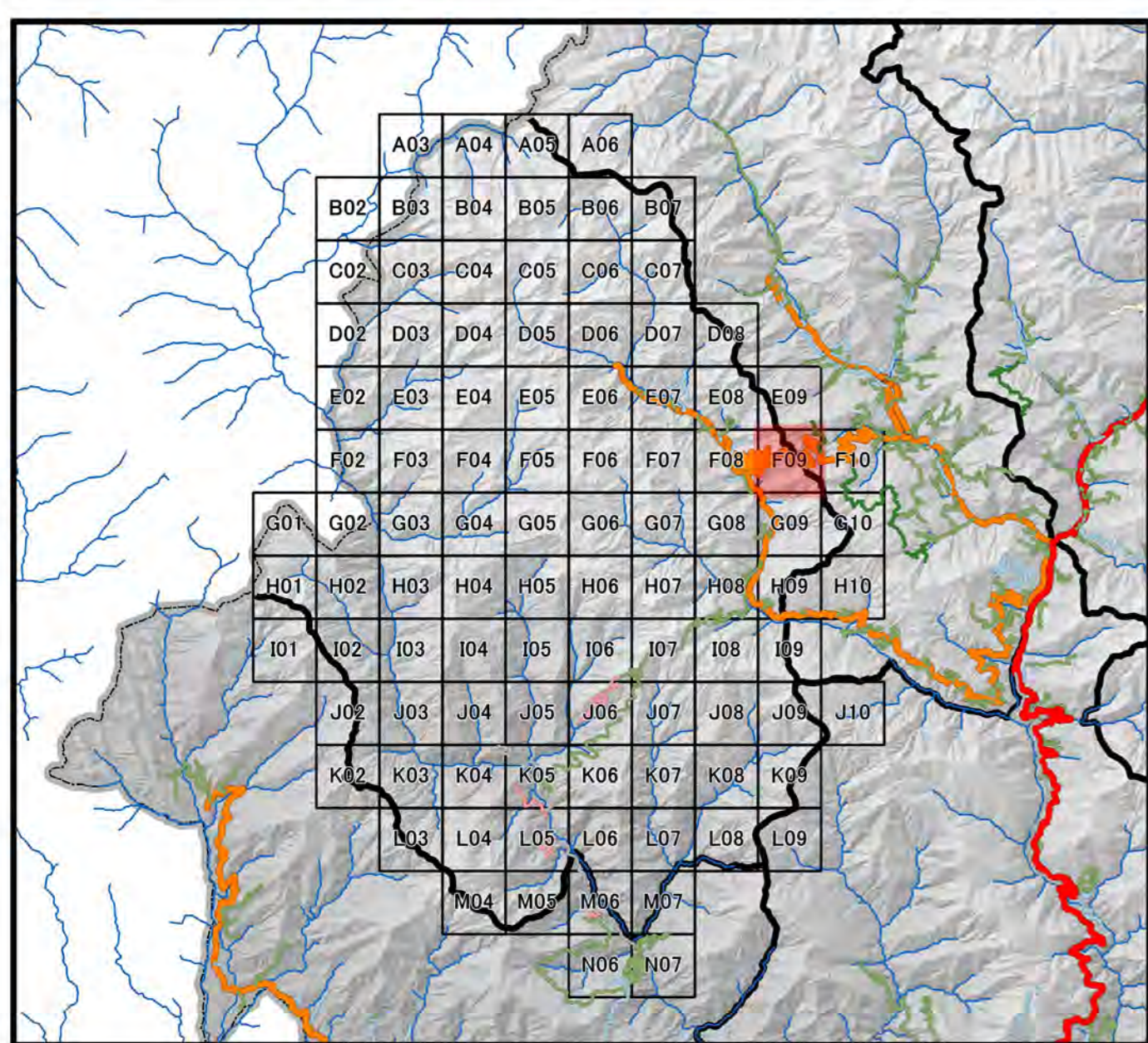
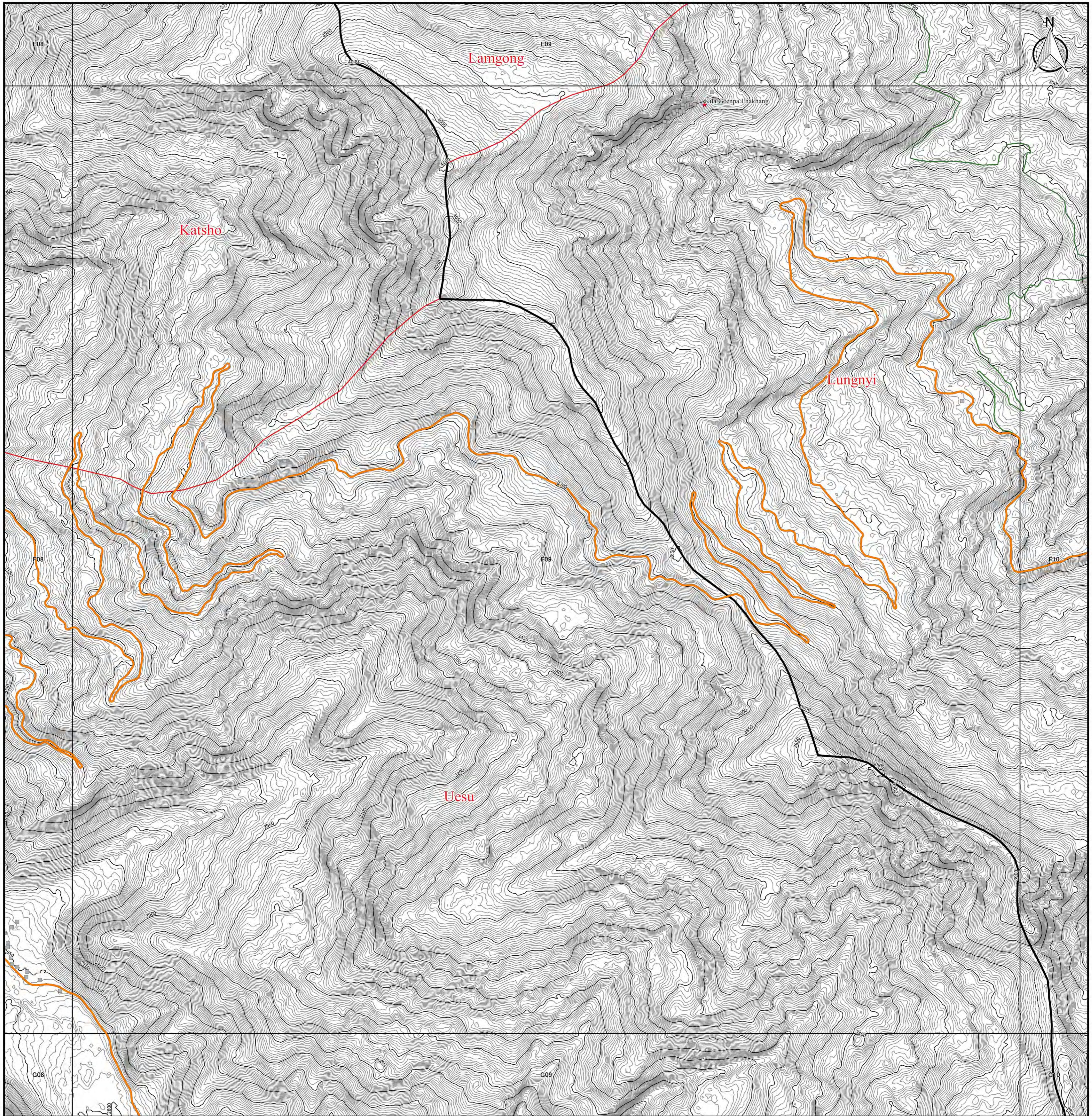
**Data Sources :**  
 - Boundary, Road, Cities and DOR Regional Office has been provided from Department of Road, Ministry of Works and Human, Settlement, Bhutan.  
 - Historical Place, Education Center, Health Center, and Settlement has been provided from National Statistic Bureau.  
 - Contour data has been generated from PRISM-DSM (10m mesh).

1:10,000



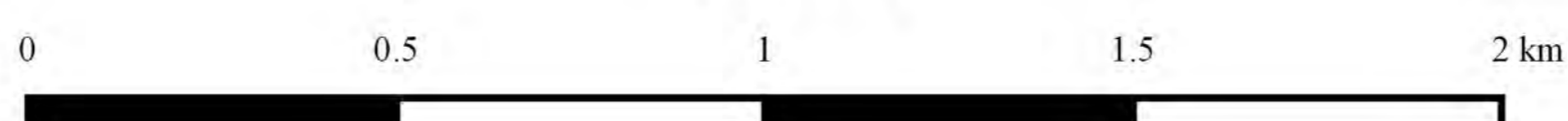


# Topographic Map in Haa



Legend		
<b>DOR Office</b>	<b>Road Network</b>	5km Grid Area
● Regional office	— Asian Highway	<b>Boundary</b>
● Sub-divisional office	— Primary Highway	Country Boundary
<b>NSB Data</b>	— Secondary Highway	Dzongkhag Boundary
★ Historical Place	— Urban Road	Gewog Boundary
▲ Education Center	— Farm Road	<b>Contour by PRISM</b>
● Health Center	— Forest Road	— 50m Contour
■ Settlement	— Proposed Road	— 5m Contour
	— Under Construction	

1:10,000



### Coordinate Systems :

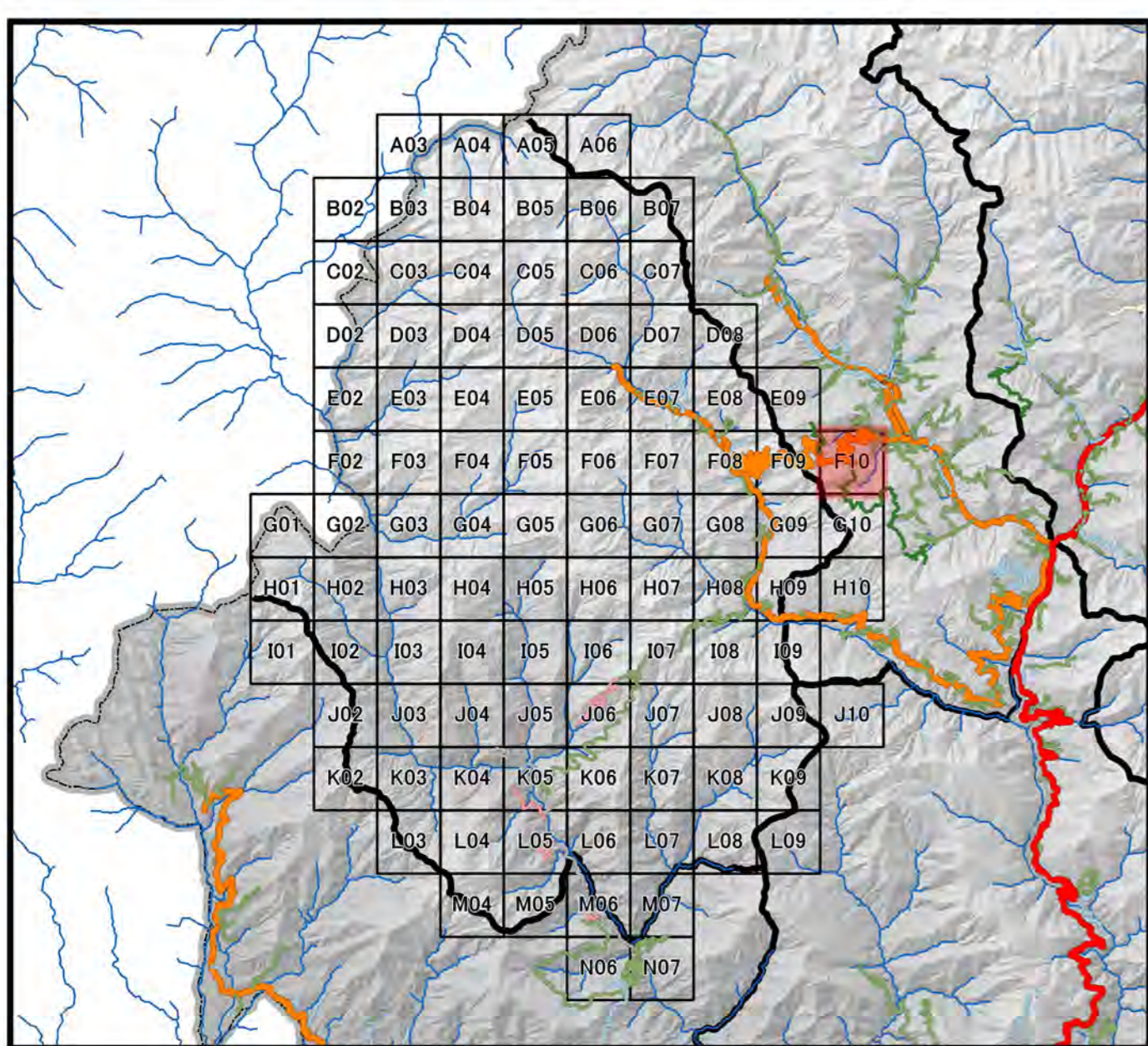
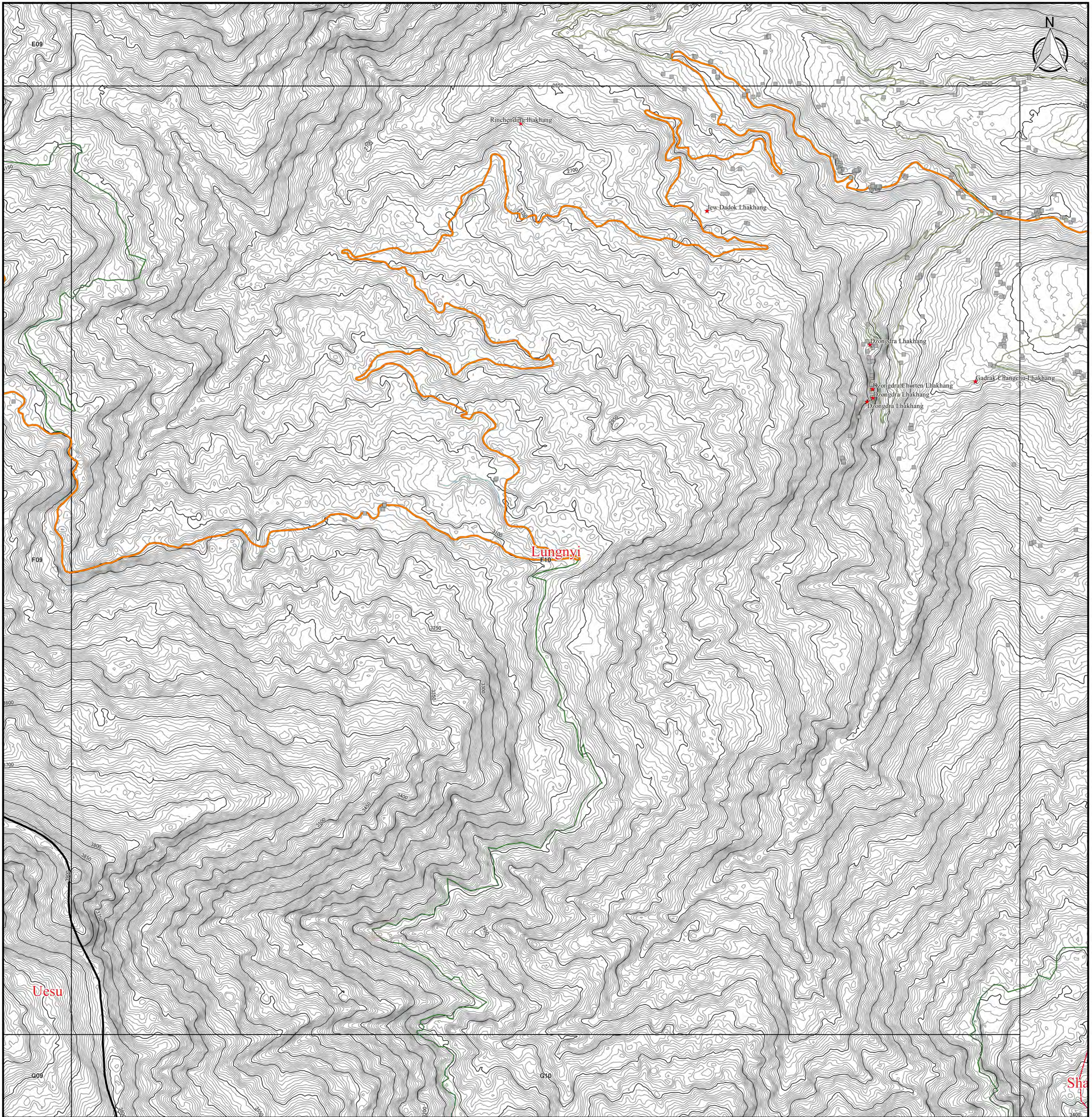
PCS DRUKREF03 / Bhutan National Grid  
 Projection : Transverse Mercator  
 False Easting : 250,000.000  
 False Northing : 0.000  
 Central Meridian : 90.000  
 Scale Factor : 1.000  
 Units : Meter

### Data Sources :

- Boundary, Road, Cities and DOR Regional Office has been provided from Department of Road, Ministry of Works and Human, Settlement, Bhutan.
- Historical Place, Education Center, Health Center, and Settlement has been provided from National Statistic Bureau.
- Contour data has been generated from PRISM-DSM (10m mesh).

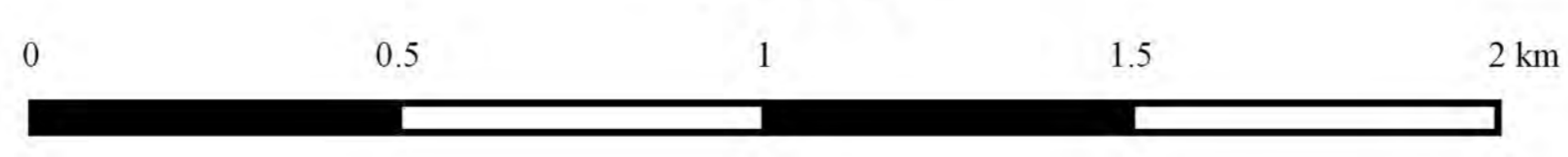


# Topographic Map in Haa



Legend		
<b>DOR Office</b>	<b>Road Network</b>	5km Grid Area
● Regional office	— Asian Highway	<b>Boundary</b>
● Sub-divisional office	— Primary Highway	▭ Country Boundary
<b>NSB Data</b>	— Secondary Highway	▭ Dzongkhag Boundary
★ Historical Place	— Dzongkhag Road	▭ Gewog Boundary
▲ Education Center	— Urban Road	<b>Contour by PRISM</b>
● Health Center	— Farm Road	— 50m Contour
■ Settlement	— Forest Road	— 5m Contour
	— Proposed Road	
	— Under Construction	

1:10,000



**Coordinate Systems :**

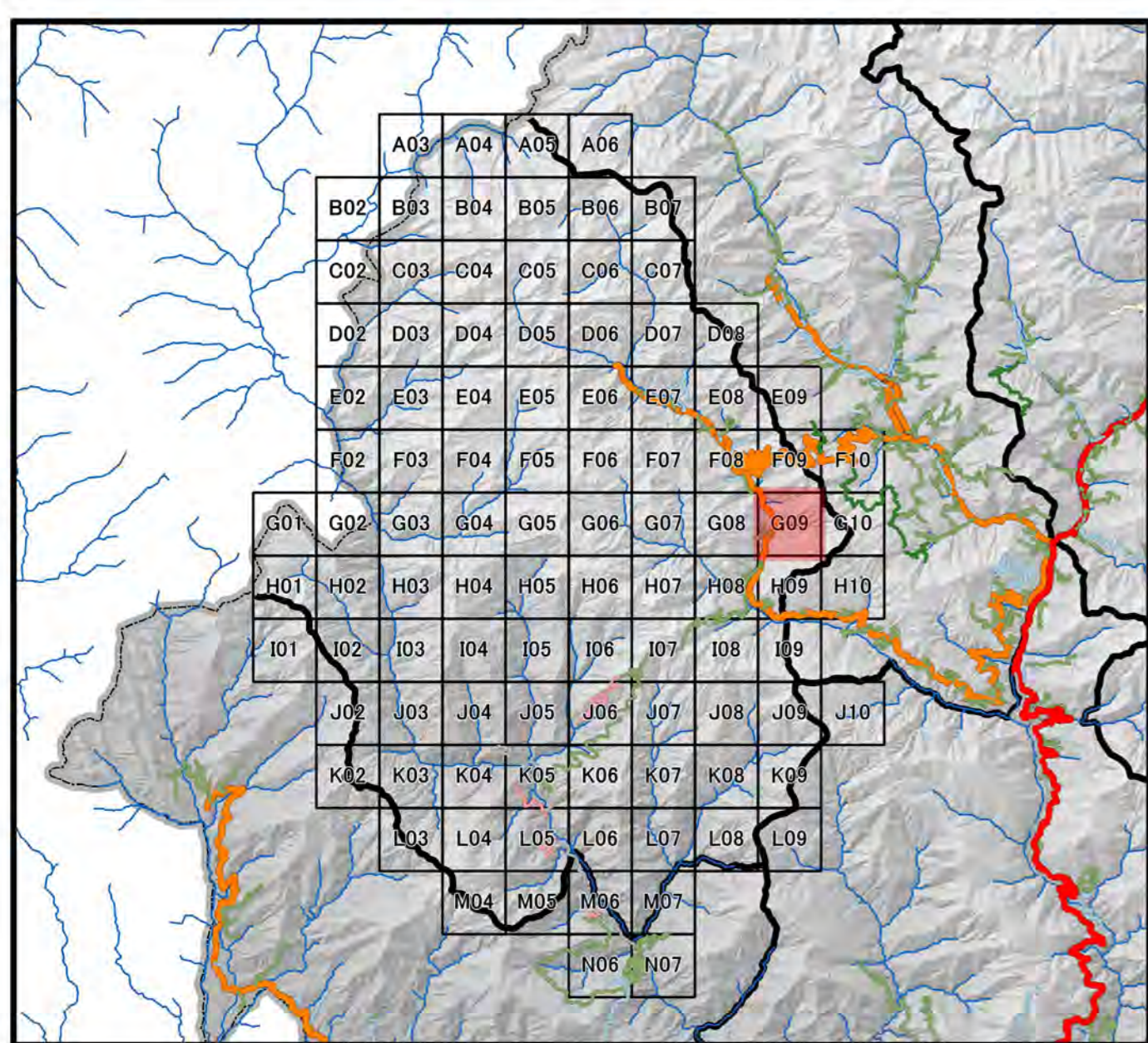
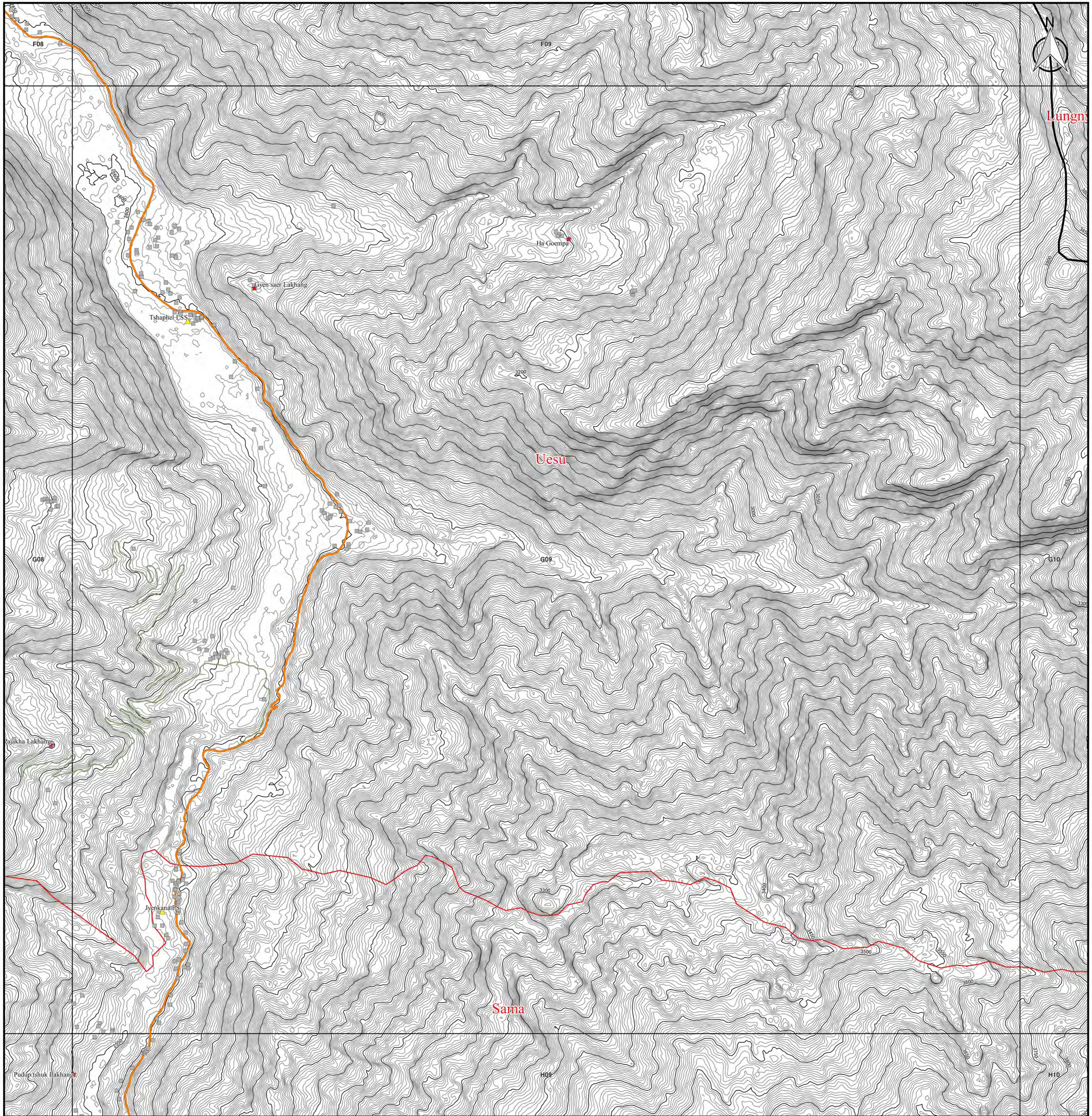
PCS DRUKREF03 / Bhutan National Grid  
 Projection : Transverse Mercator  
 False Easting : 250,000.000  
 False Northing : 0.000  
 Central Meridian : 90.000  
 Scale Factor : 1.000  
 Units : Meter

**Data Sources :**

- Boundary, Road, Cities and DOR Regional Office has been provided from Department of Road, Ministry of Works and Human, Settlement, Bhutan.
- Historical Place, Education Center, Health Center, and Settlement has been provided from National Statistic Bureau.
- Contour data has been generated from PRISM-DSM (10m mesh).

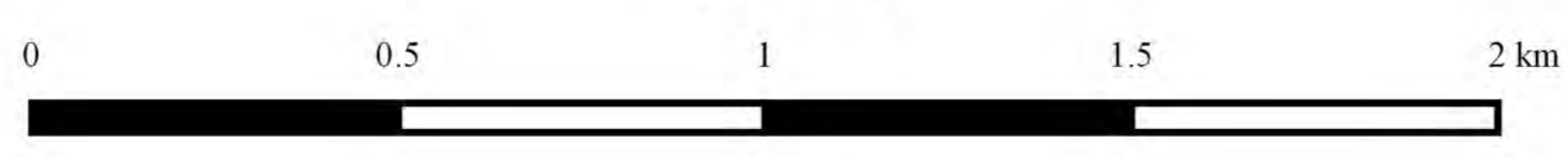


# Topographic Map in Haa



Legend		
<b>DOR Office</b>	<b>Road Network</b>	□ 5km Grid Area
● Regional office	— Asian Highway	<b>Boundary</b>
● Sub-divisional office	— Primary Highway	▭ Country Boundary
<b>NSB Data</b>	— Secondary Highway	▭ Dzongkhag Boundary
★ Historical Place	— Dzongkhag Road	▭ Gewog Boundary
▲ Education Center	— Urban Road	<b>Contour by PRISM</b>
● Health Center	— Farm Road	— 50m Contour
■ Settlement	— Forest Road	— 5m Contour
	— Proposed Road	
	— Under Construction	

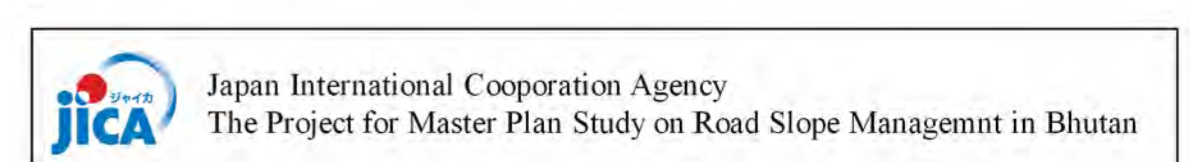
1:10,000



**Coordinate Systems :**  
 PCS DRUKREF03 / Bhutan National Grid  
 Projection : Transverse Mercator  
 False Easting : 250,000.000  
 False Northing : 0.000  
 Central Meridian : 90.000  
 Scale Factor : 1.000  
 Units : Meter

**Data Sources :**

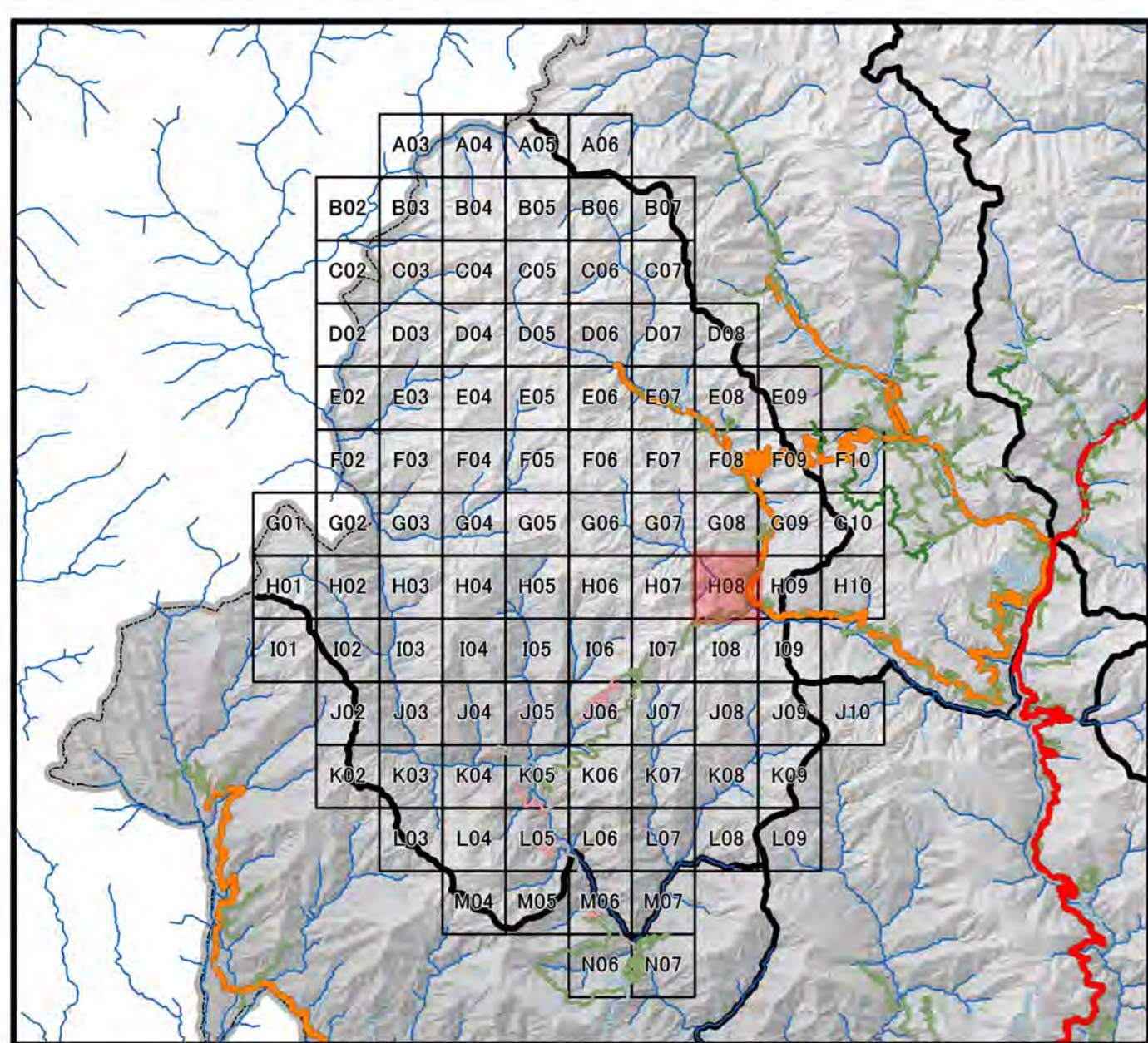
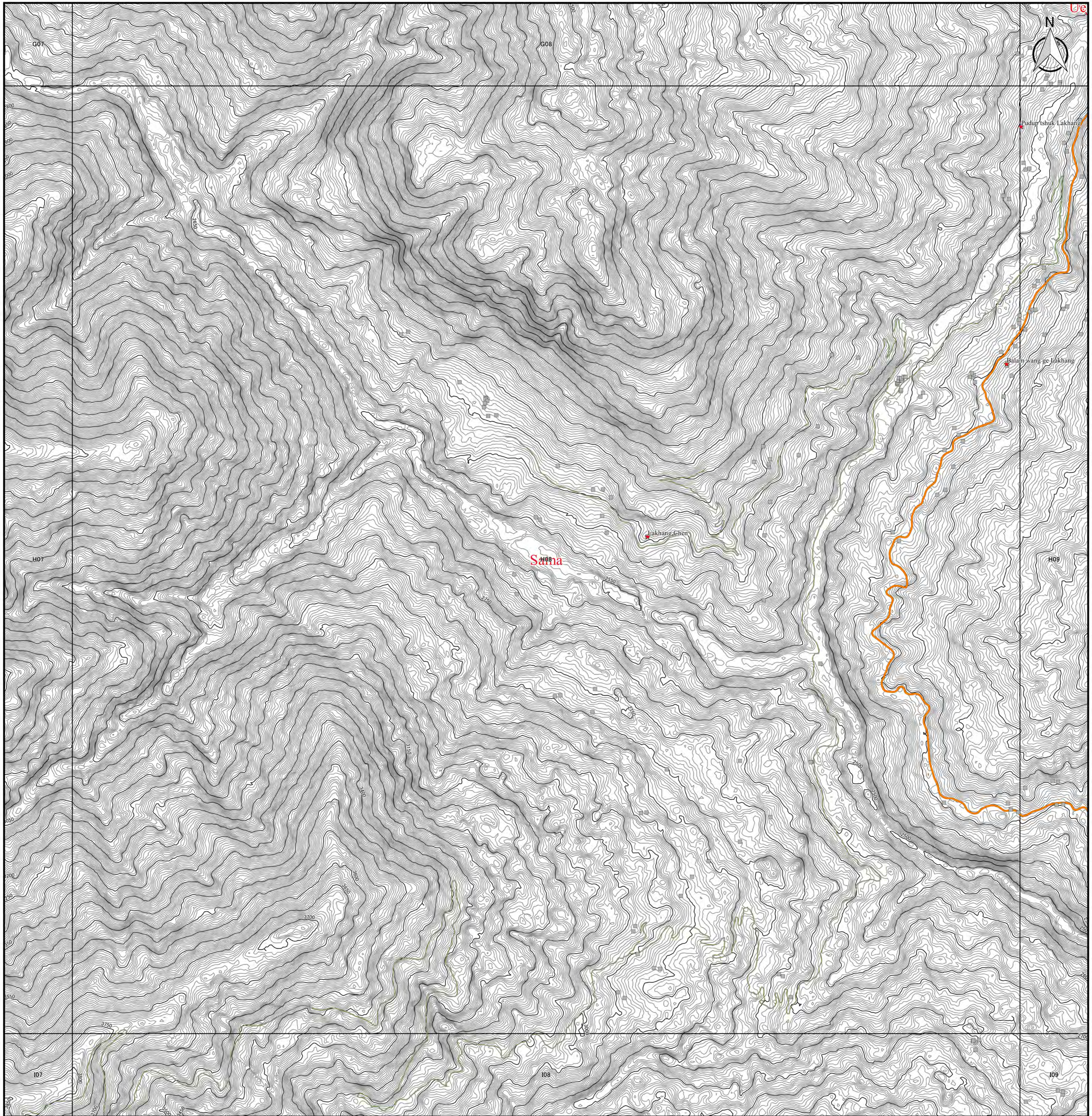
- Boundary, Road, Cities and DOR Regional Office has been provided from Department of Road, Ministry of Works and Human, Settlement, Bhutan.
- Historical Place, Education Center, Health Center, and Settlement has been provided from National Statistic Bureau.
- Contour data has been generated from PRISM-DSM (10m mesh).





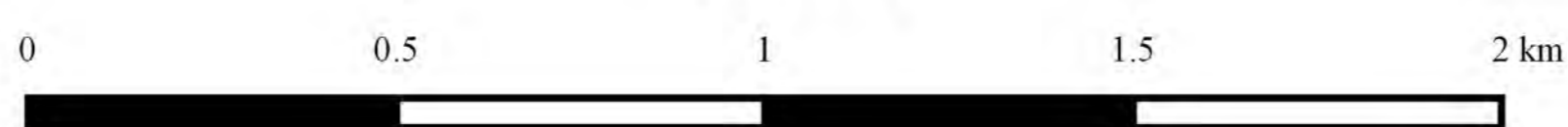


# Topographic Map in Haa



Legend		
<b>DOR Office</b>	<b>Road Network</b>	5km Grid Area
● Regional office	— Asian Highway	<b>Boundary</b>
● Sub-divisional office	— Primary Highway	▭ Country Boundary
<b>NSB Data</b>	— Secondary Highway	▭ Dzongkhag Boundary
★ Historical Place	— Dzongkhag Road	▭ Gewog Boundary
▲ Education Center	— Urban Road	<b>Contour by PRISM</b>
● Health Center	— Farm Road	— 50m Contour
■ Settlement	— Forest Road	— 5m Contour
	— Proposed Road	
	— Under Construction	

1:10,000



### Coordinate Systems :

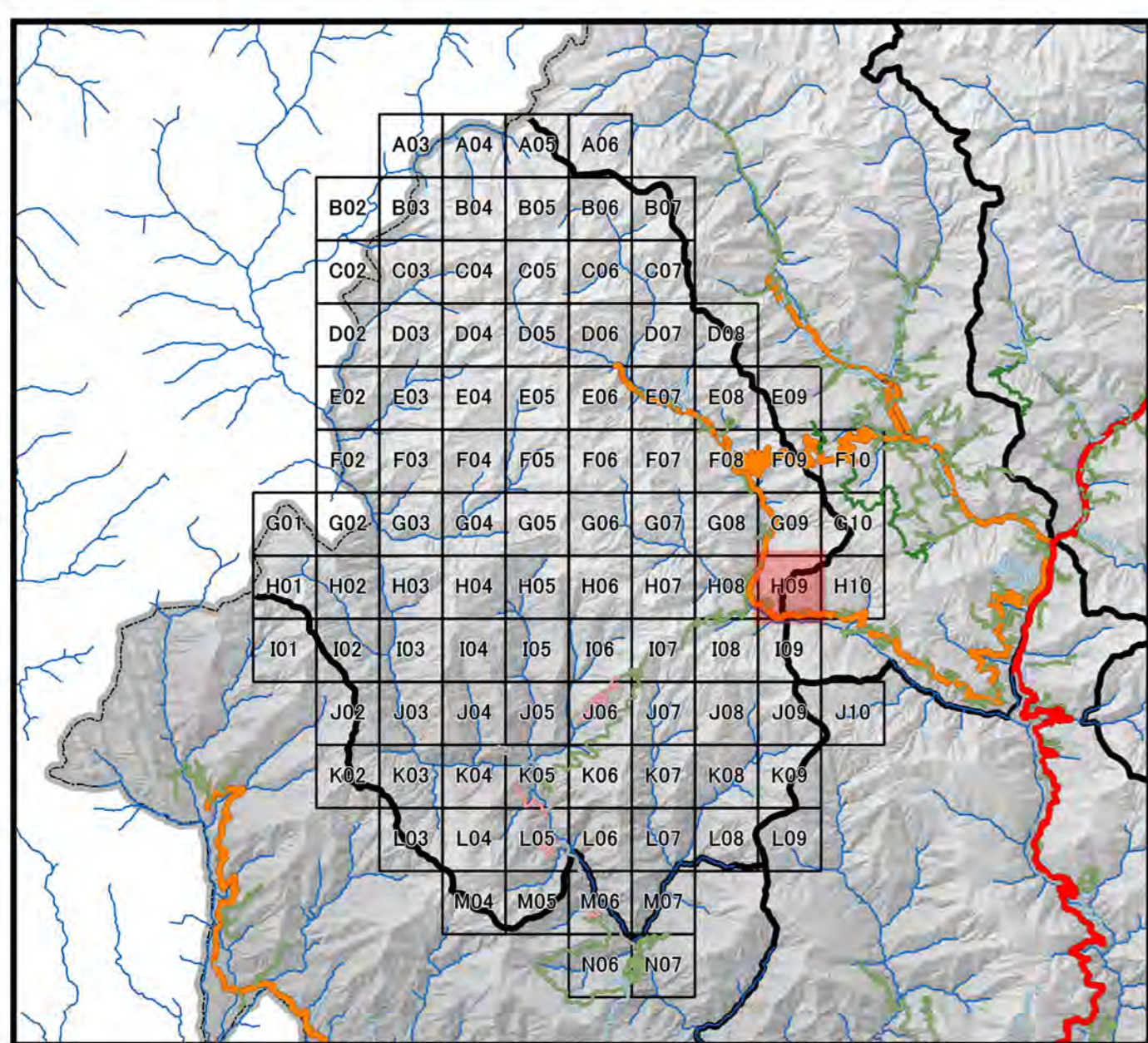
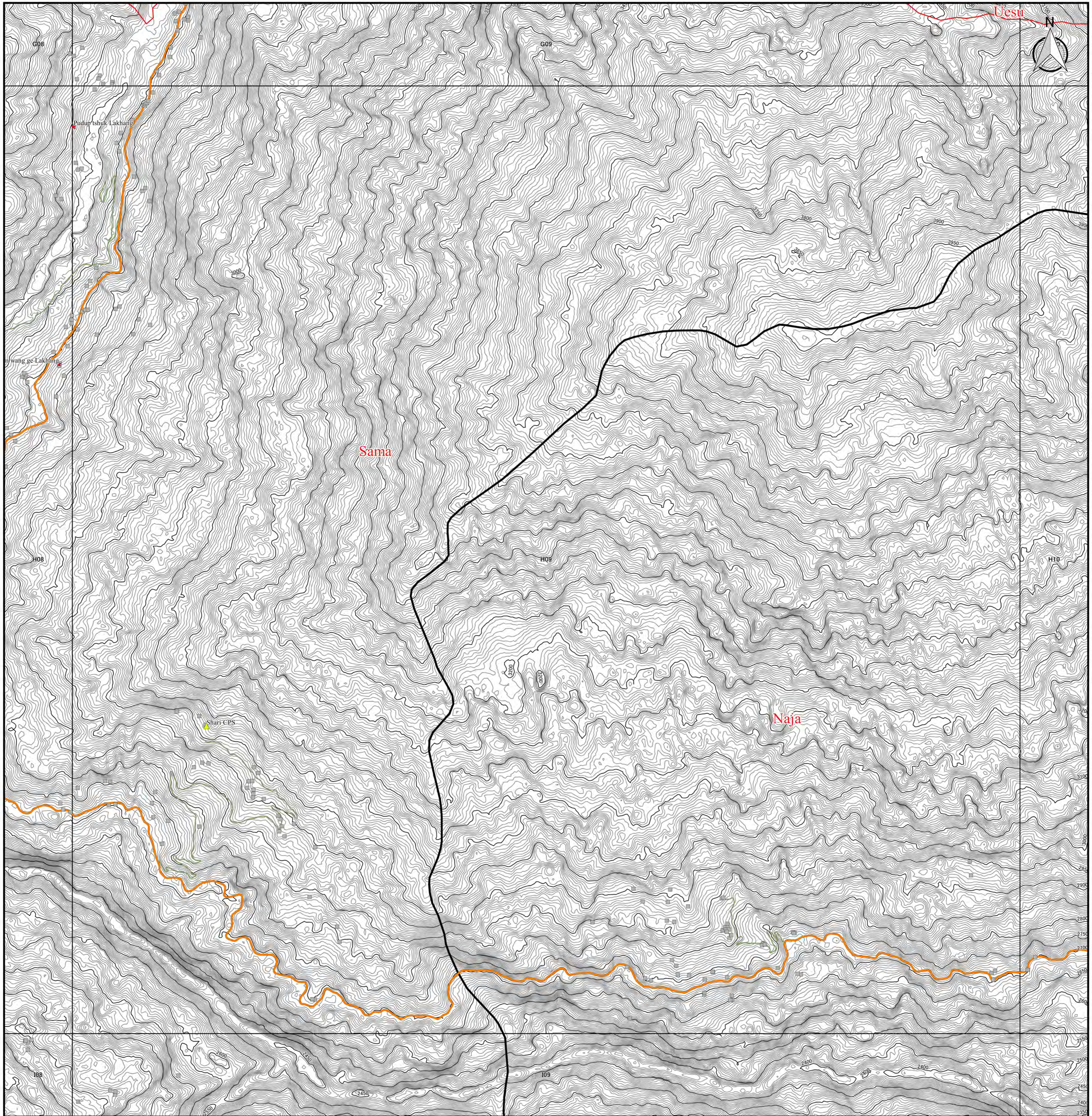
PCS DRUKREF03 / Bhutan National Grid  
 Projection : Transverse Mercator  
 False Easting : 250,000.000  
 False Northing : 0.000  
 Central Meridian : 90.000  
 Scale Factor : 1.000  
 Units : Meter

### Data Sources :

- Boundary, Road, Cities and DOR Regional Office has been provided from Department of Road, Ministry of Works and Human Settlement, Bhutan.
- Historical Place, Education Center, Health Center, and Settlement has been provided from National Statistic Bureau.
- Contour data has been generated from PRISM-DSM (10m mesh).

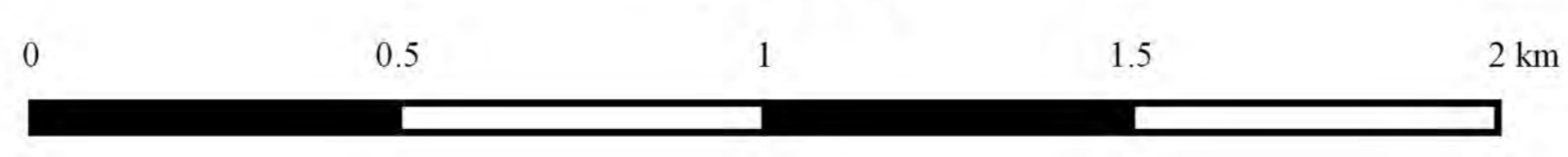


# Topographic Map in Haa



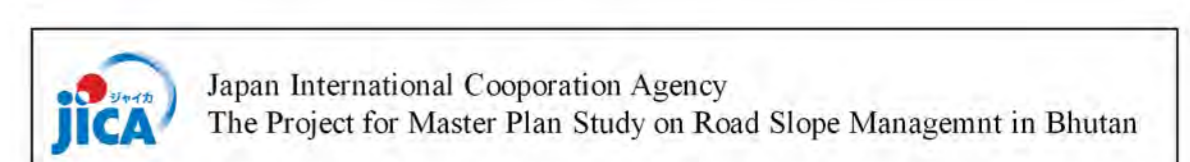
Legend		
<b>DOR Office</b>	<b>Road Network</b>	5km Grid Area
● Regional office	— Asian Highway	<b>Boundary</b>
● Sub-divisional office	— Primary Highway	Country Boundary
<b>NSB Data</b>	— Secondary Highway	Dzongkhag Boundary
★ Historical Place	— Urban Road	Gewog Boundary
▲ Education Center	— Farm Road	<b>Contour by PRISM</b>
● Health Center	— Forest Road	— 50m Contour
■ Settlement	— Proposed Road	— 5m Contour
	— Under Construction	

1:10,000



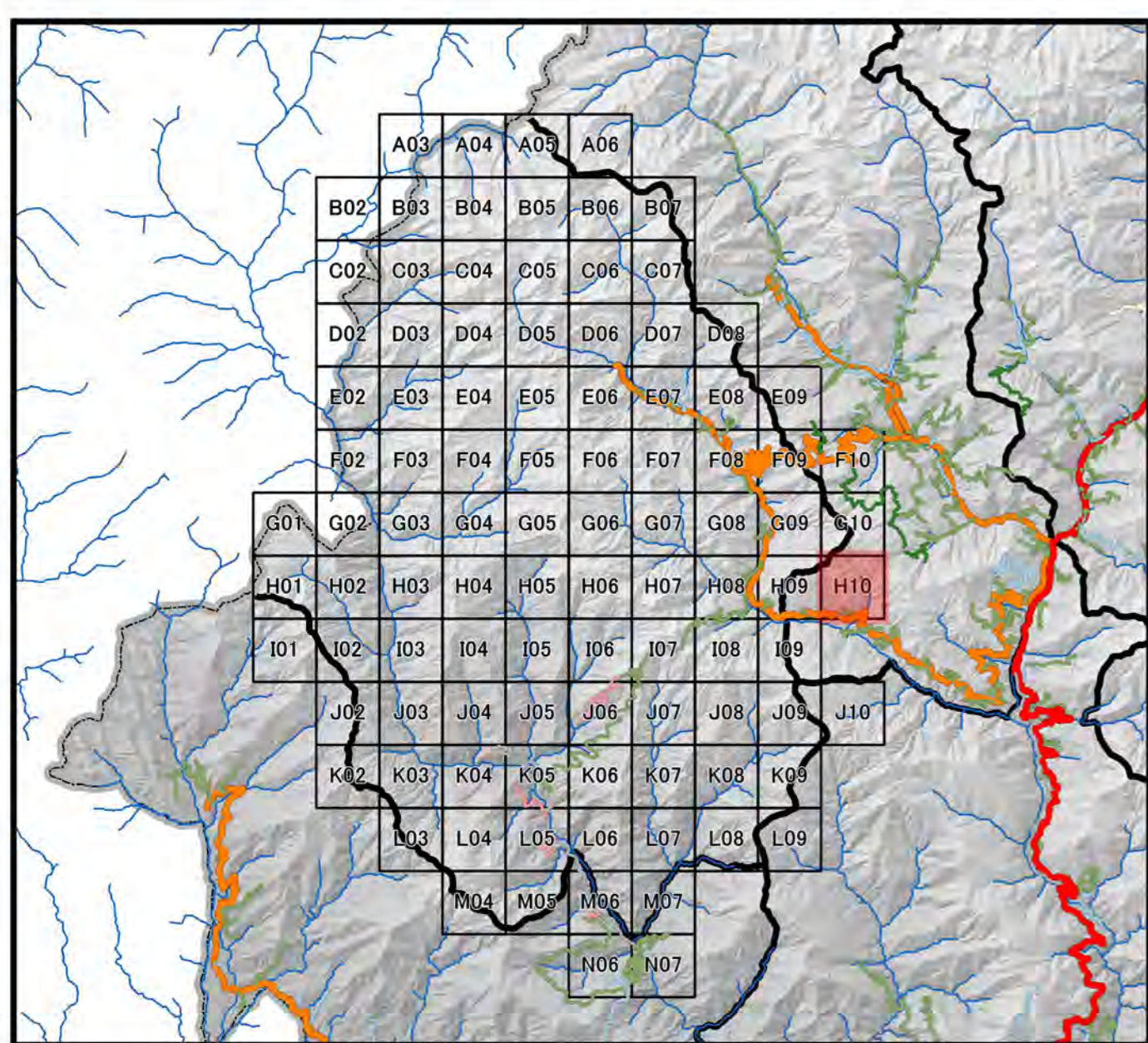
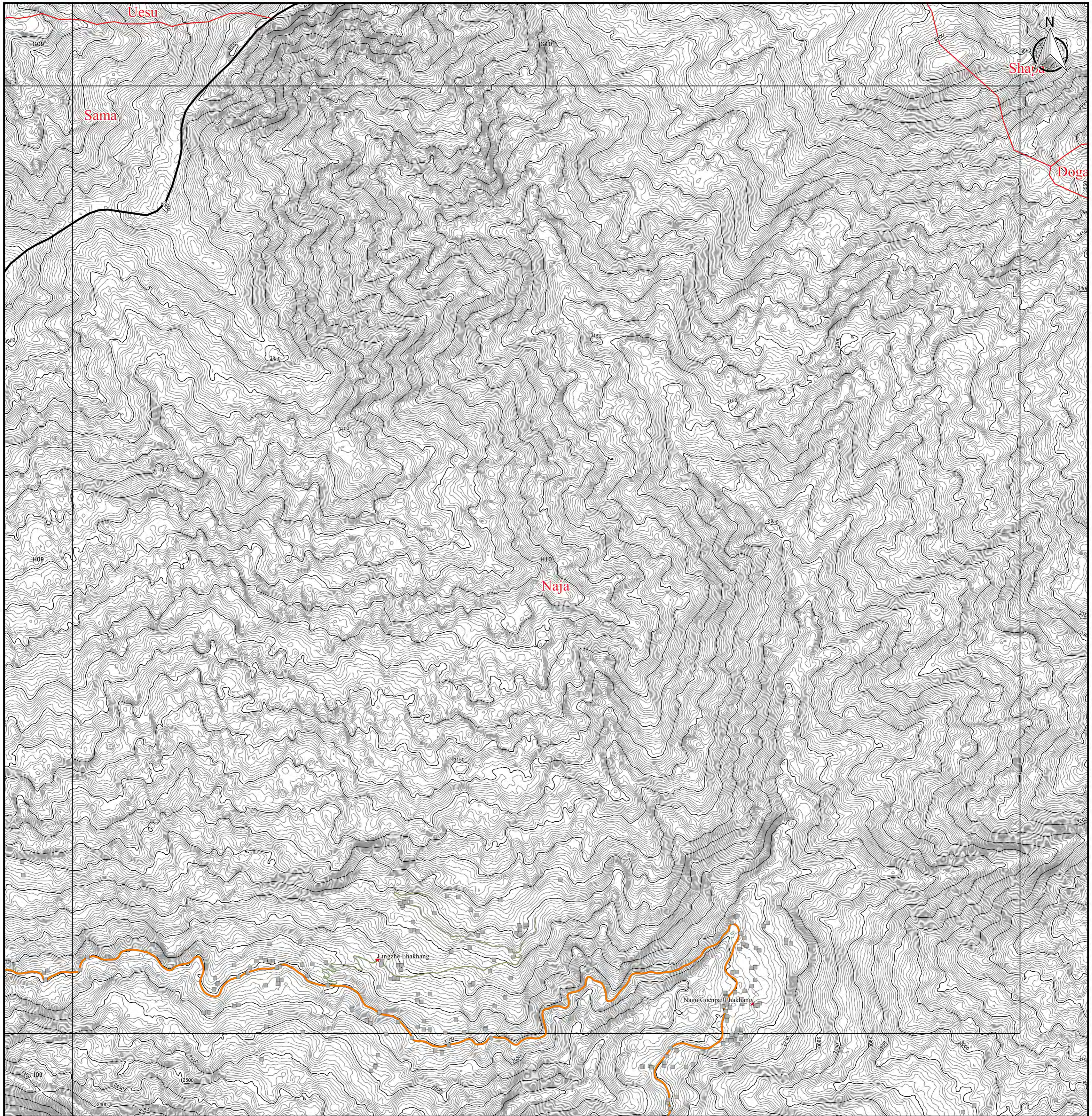
**Coordinate Systems :**  
 PCS DRUKREF03 / Bhutan National Grid  
 Projection : Transverse Mercator  
 False Easting : 250,000.000  
 False Northing : 0.000  
 Central Meridian : 90.000  
 Scale Factor : 1.000  
 Units : Meter

**Data Sources :**  
 - Boundary, Road, Cities and DOR Regional Office has been provided from Department of Road, Ministry of Works and Human, Settlement, Bhutan.  
 - Historical Place, Education Center, Health Center, and Settlement has been provided from National Statistic Bureau.  
 - Contour data has been generated from PRISM-DSM (10m mesh).



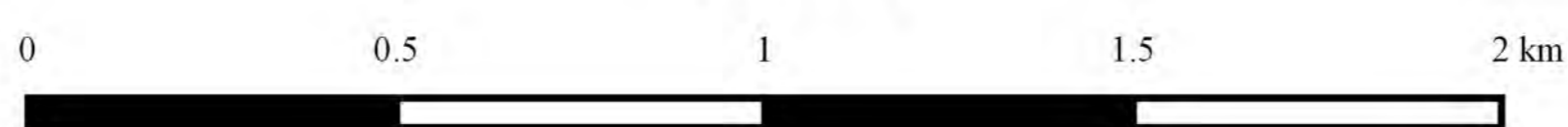


# Topographic Map in Haa



Legend		
<b>DOR Office</b>	<b>Road Network</b>	□ 5km Grid Area
● Regional office	— Asian Highway	<b>Boundary</b>
● Sub-divisional office	— Primary Highway	▭ Country Boundary
<b>NSB Data</b>	— Secondary Highway	▭ Dzongkhag Boundary
★ Historical Place	— Urban Road	▭ Gewog Boundary
▲ Education Center	— Farm Road	<b>Contour by PRISM</b>
● Health Center	— Forest Road	— 50m Contour
■ Settlement	— Proposed Road	— 5m Contour
	— Under Construction	

1:10,000



### Coordinate Systems :

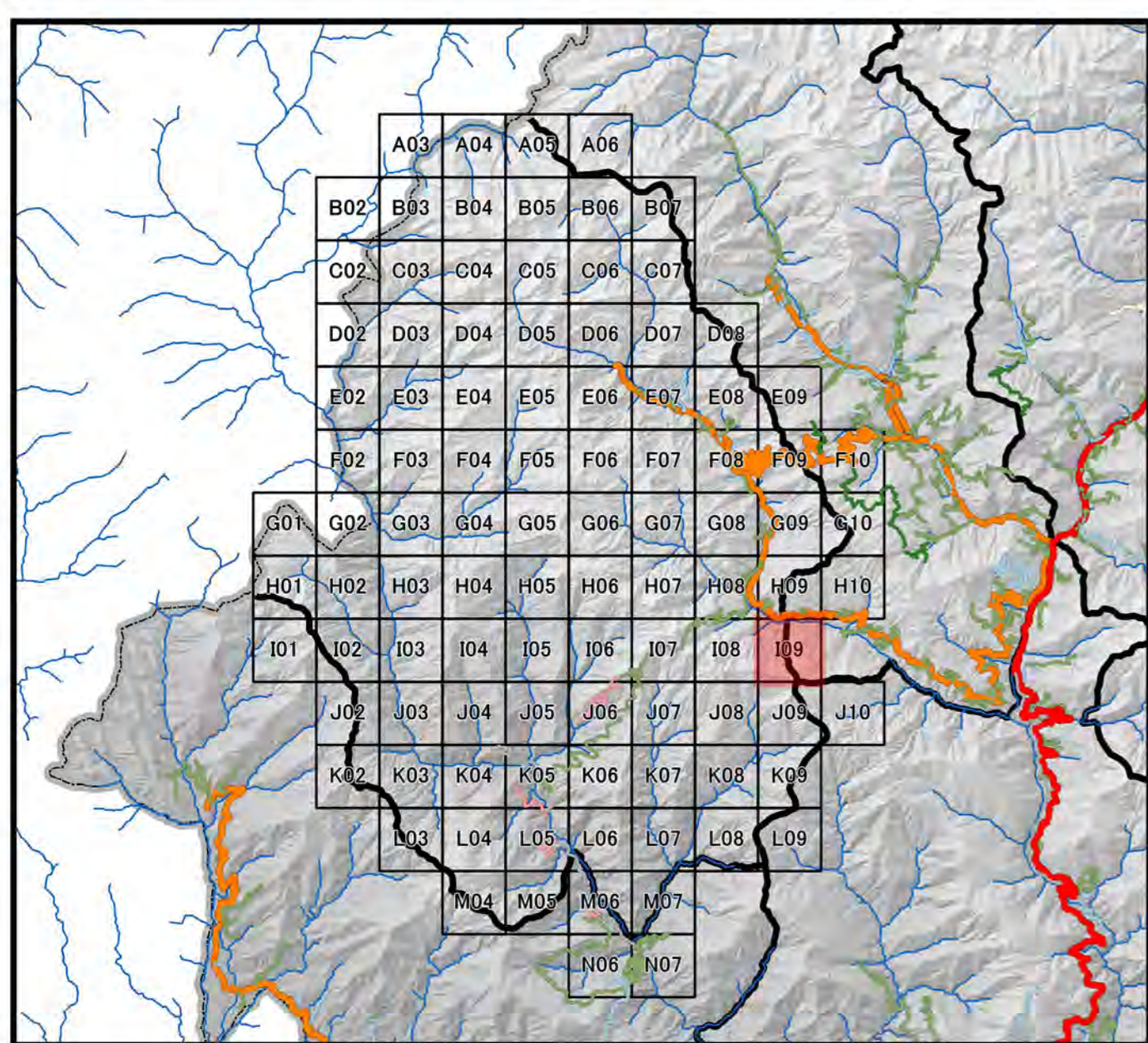
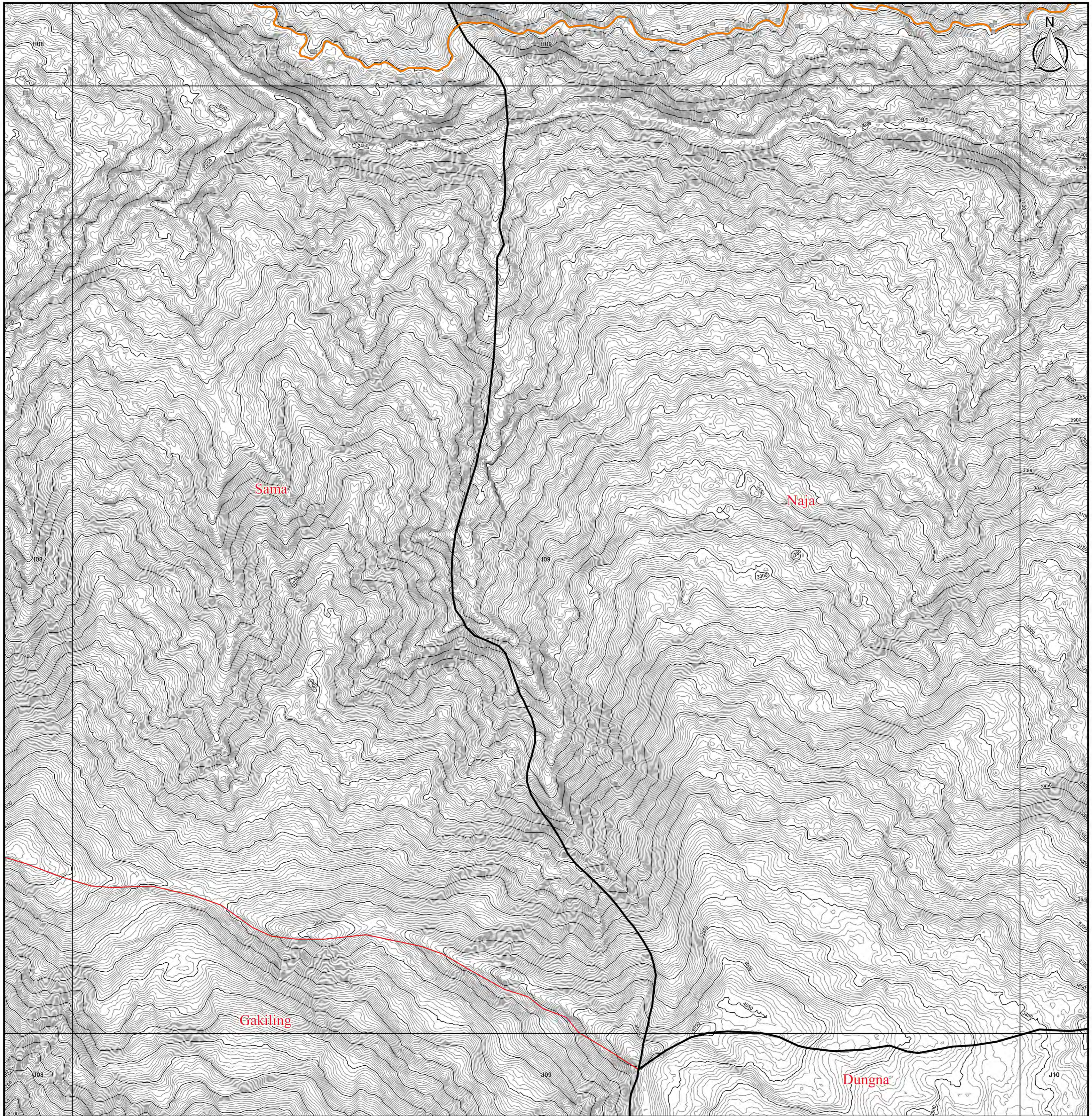
PCS DRUKREF03 / Bhutan National Grid  
 Projection : Transverse Mercator  
 False Easting : 250,000.000  
 False Northing : 0.000  
 Central Meridian : 90.000  
 Scale Factor : 1.000  
 Units : Meter

### Data Sources :

- Boundary, Road, Cities and DOR Regional Office has been provided from Department of Road, Ministry of Works and Human, Settlement, Bhutan.
- Historical Place, Education Center, Health Center, and Settlement has been provided from National Statistic Bureau.
- Contour data has been generated from PRISM-DSM (10m mesh).

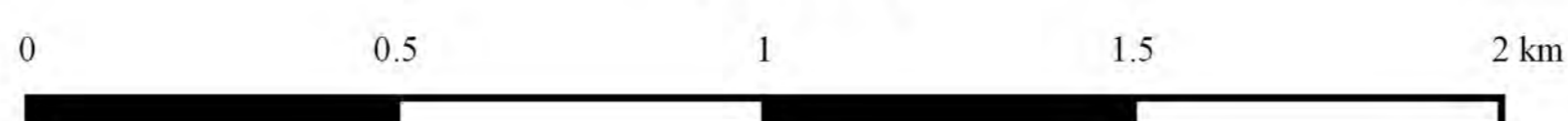


# Topographic Map in Haa



Legend		
<b>DOR Office</b>	<b>Road Network</b>	□ 5km Grid Area
● Regional office	— Asian Highway	<b>Boundary</b>
● Sub-divisional office	— Primary Highway	▭ Country Boundary
<b>NSB Data</b>	— Secondary Highway	▭ Dzongkhag Boundary
★ Historical Place	— Dzongkhag Road	▭ Gewog Boundary
▲ Education Center	— Urban Road	<b>Contour by PRISM</b>
● Health Center	— Farm Road	— 50m Contour
■ Settlement	— Forest Road	— 5m Contour
	— Proposed Road	
	— Under Construction	

1:10,000



### Coordinate Systems :

PCS DRUKREF03 / Bhutan National Grid  
 Projection : Transverse Mercator  
 False Easting : 250,000.000  
 False Northing : 0.000  
 Central Meridian : 90.000  
 Scale Factor : 1.000  
 Units : Meter

### Data Sources :

- Boundary, Road, Cities and DOR Regional Office has been provided from Department of Road, Ministry of Works and Human, Settlement, Bhutan.
- Historical Place, Education Center, Health Center, and Settlement has been provided from National Statistical Bureau.
- Contour data has been generated from PRISM-DSM (10m mesh).