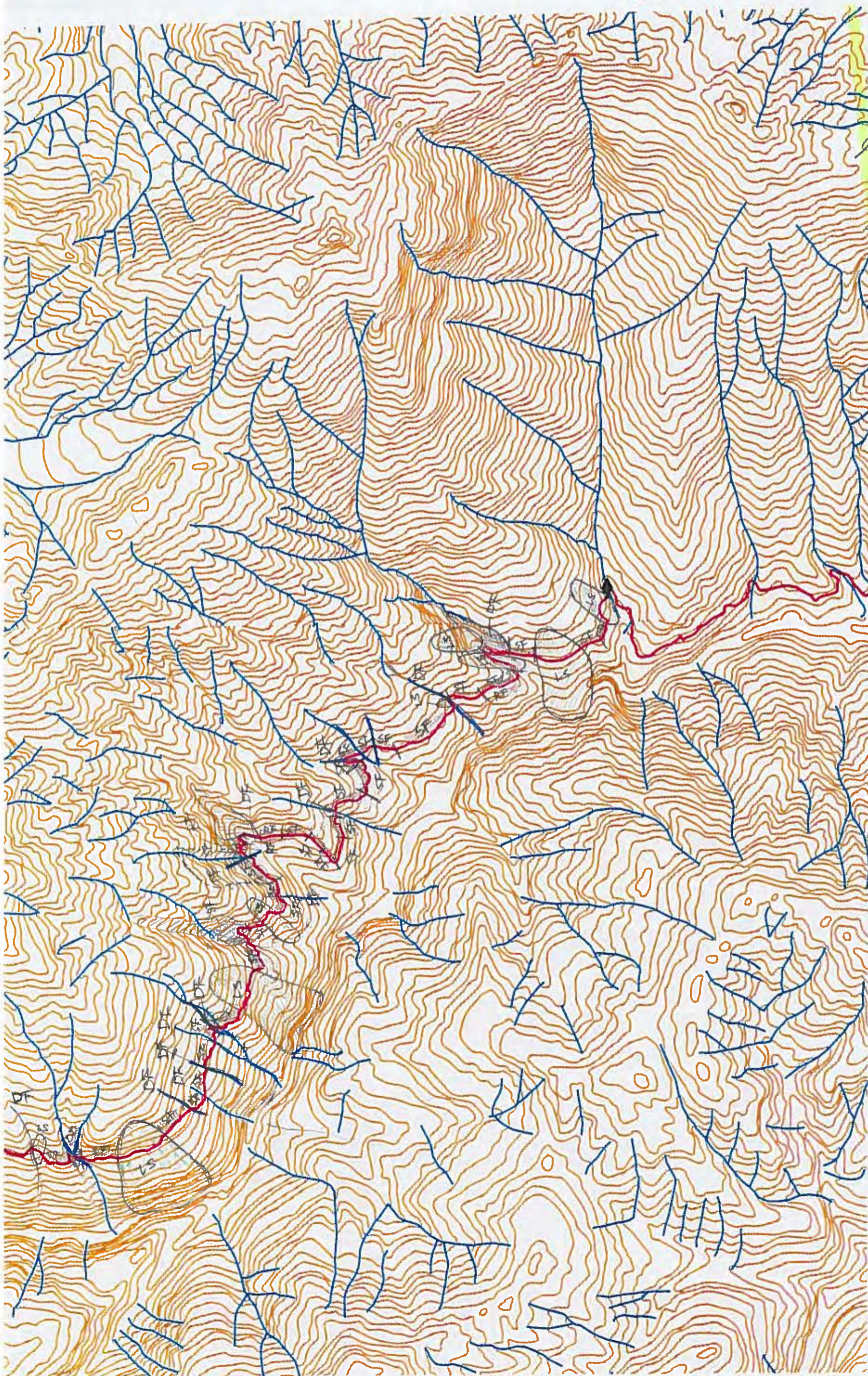


Appendix 10

二次スクリーニングの地図
Map of Secondary Screening

Section I.

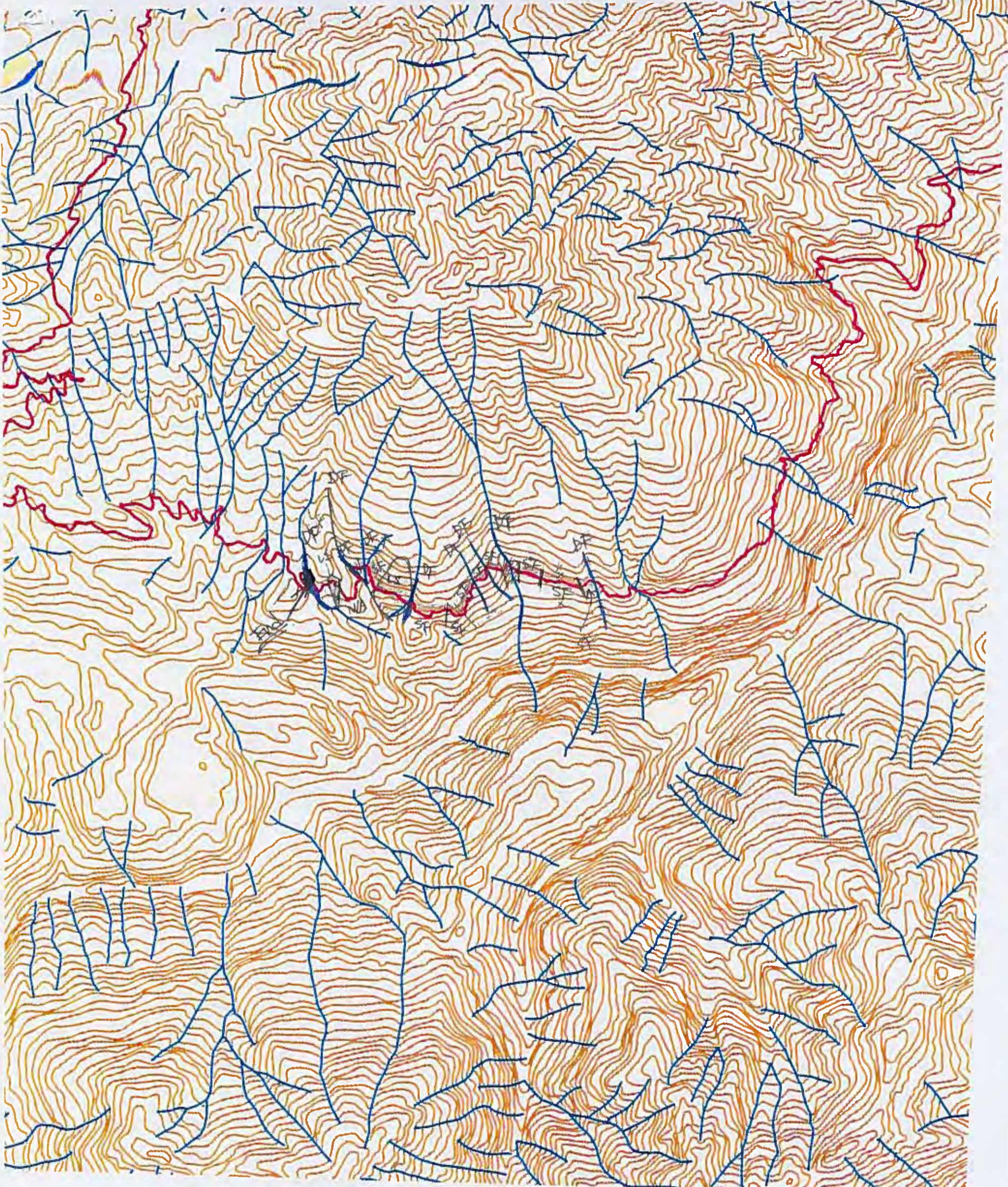


Total
LS = 11
DF = 23
SF = 39
RF = 4





77

↑
↓
N

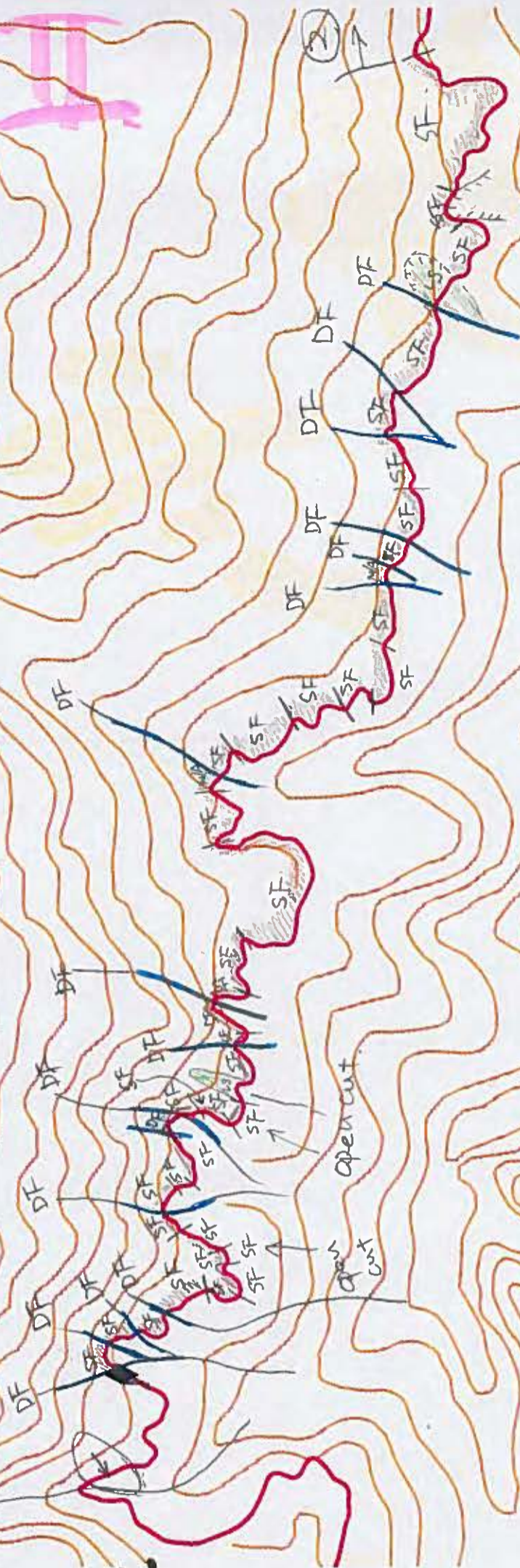
Sub-Total
LS → 9
DF → 15
SF → 30
RF → 4



PLAN

- Sub Total
- LS  : Landslide → 2
 - DF  : Debris Flow → 8
 - SF  : Debris Slope Failure → 9
 - RF  : Rock Slope Failure → 0

Section III



Total

LS → 30

DF → 70

SF → 160

RF → 3

263

142

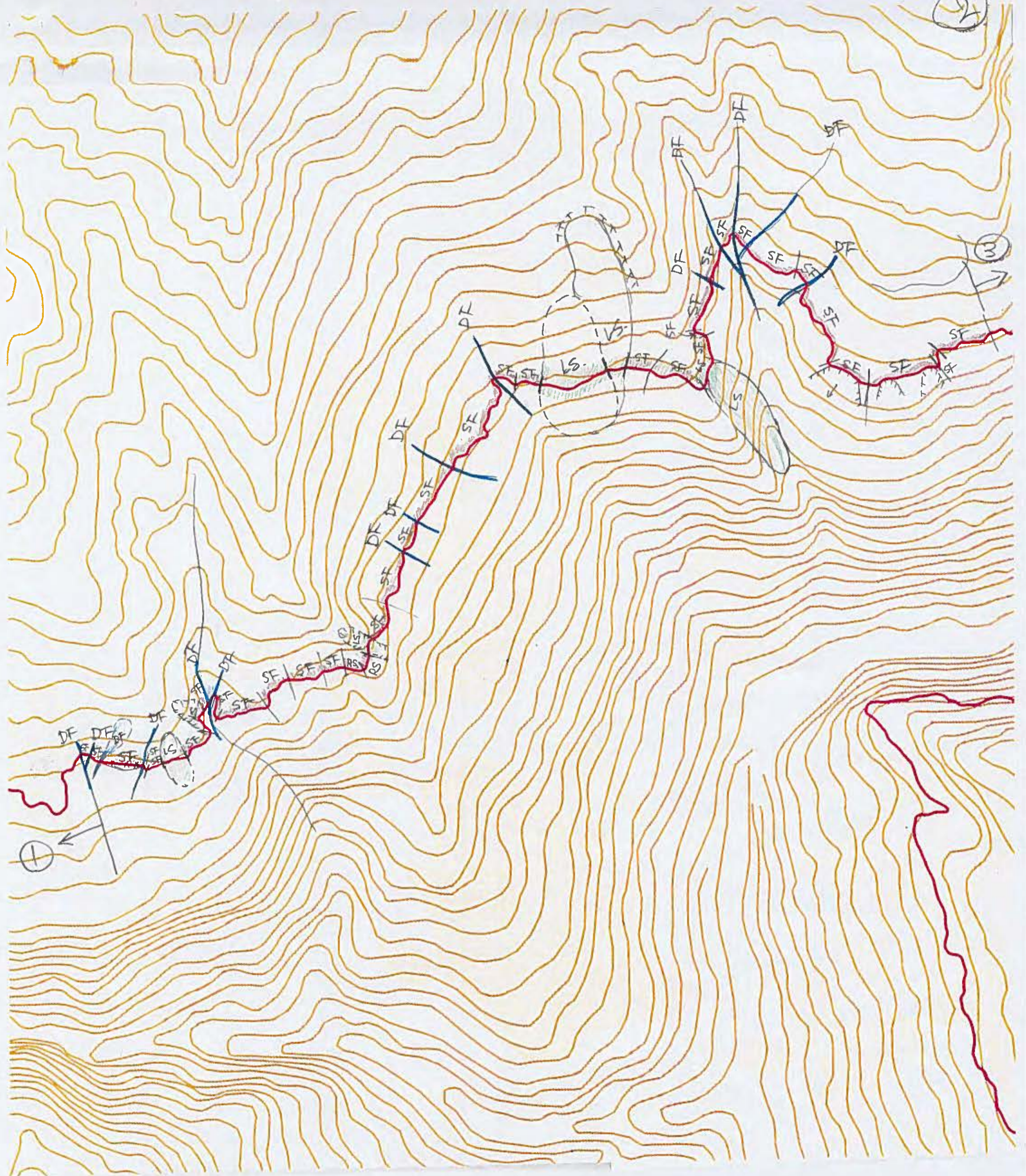
Sub total

LS → 2

DF → 16

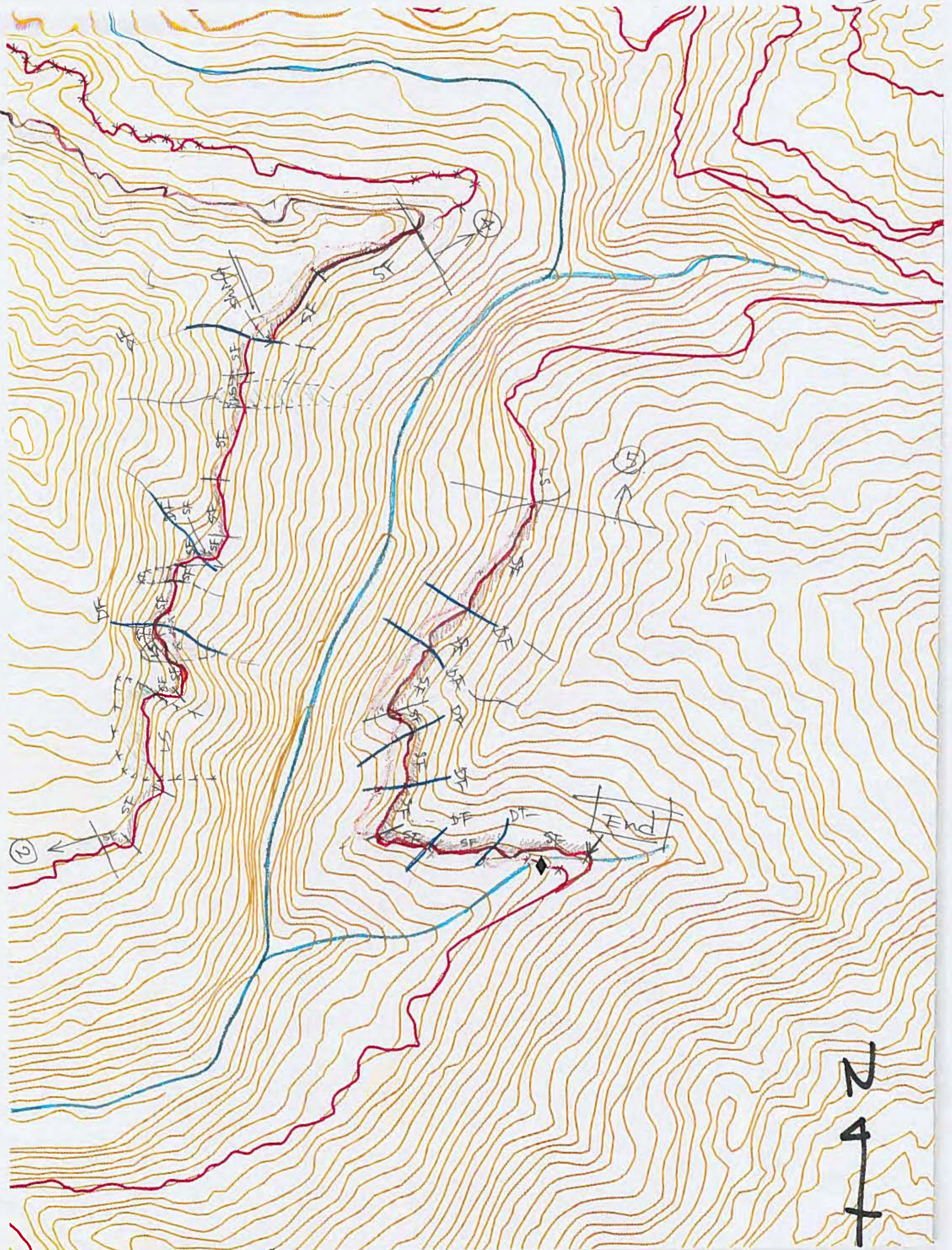
SF → 36

RF → 0



2
+
4
+

Sub-Total.
 LS → 6
 DF → 15
 SF → 33
 RF → 2.

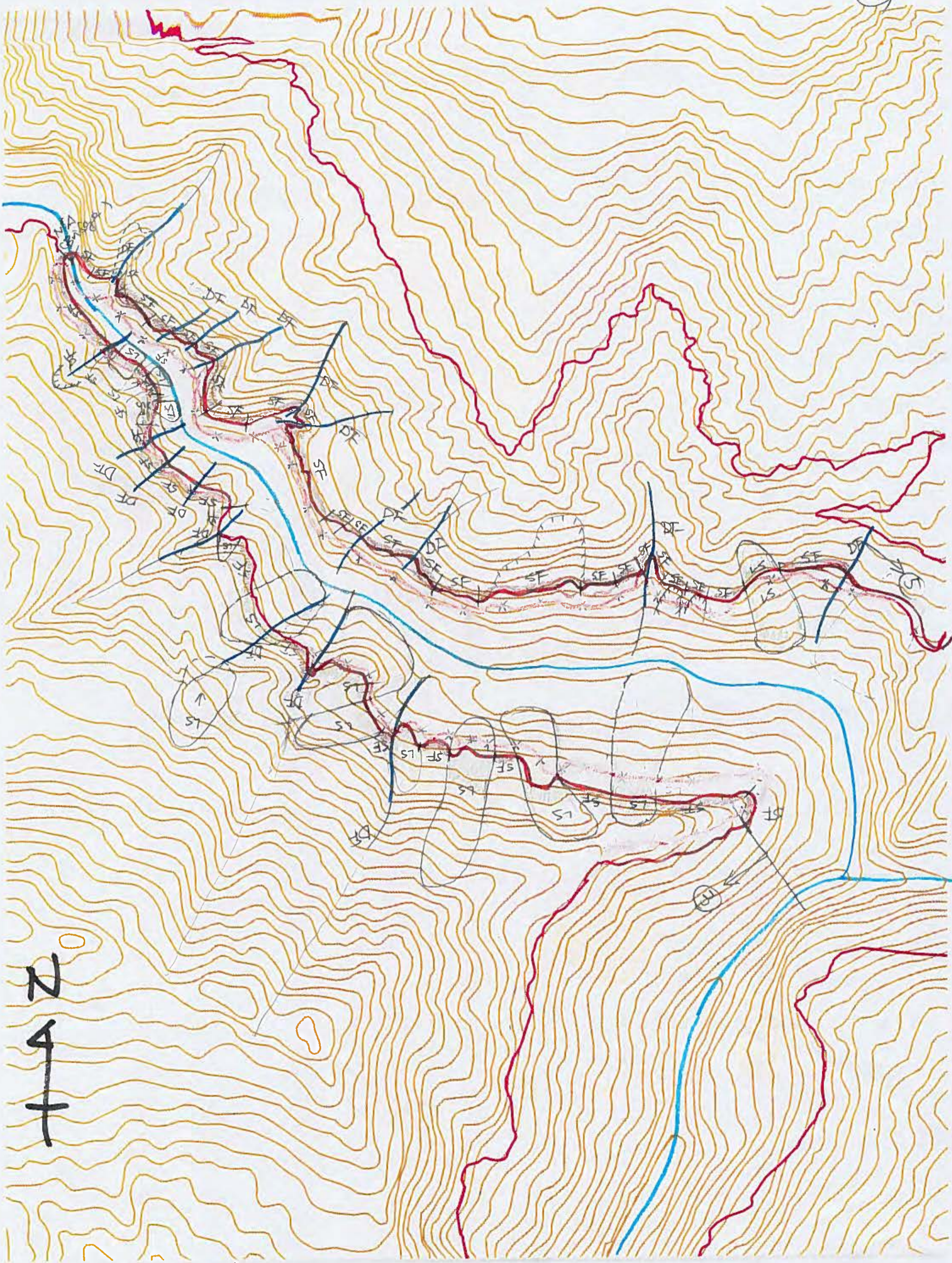


Sub-total

LS	→	3
RT	→	4

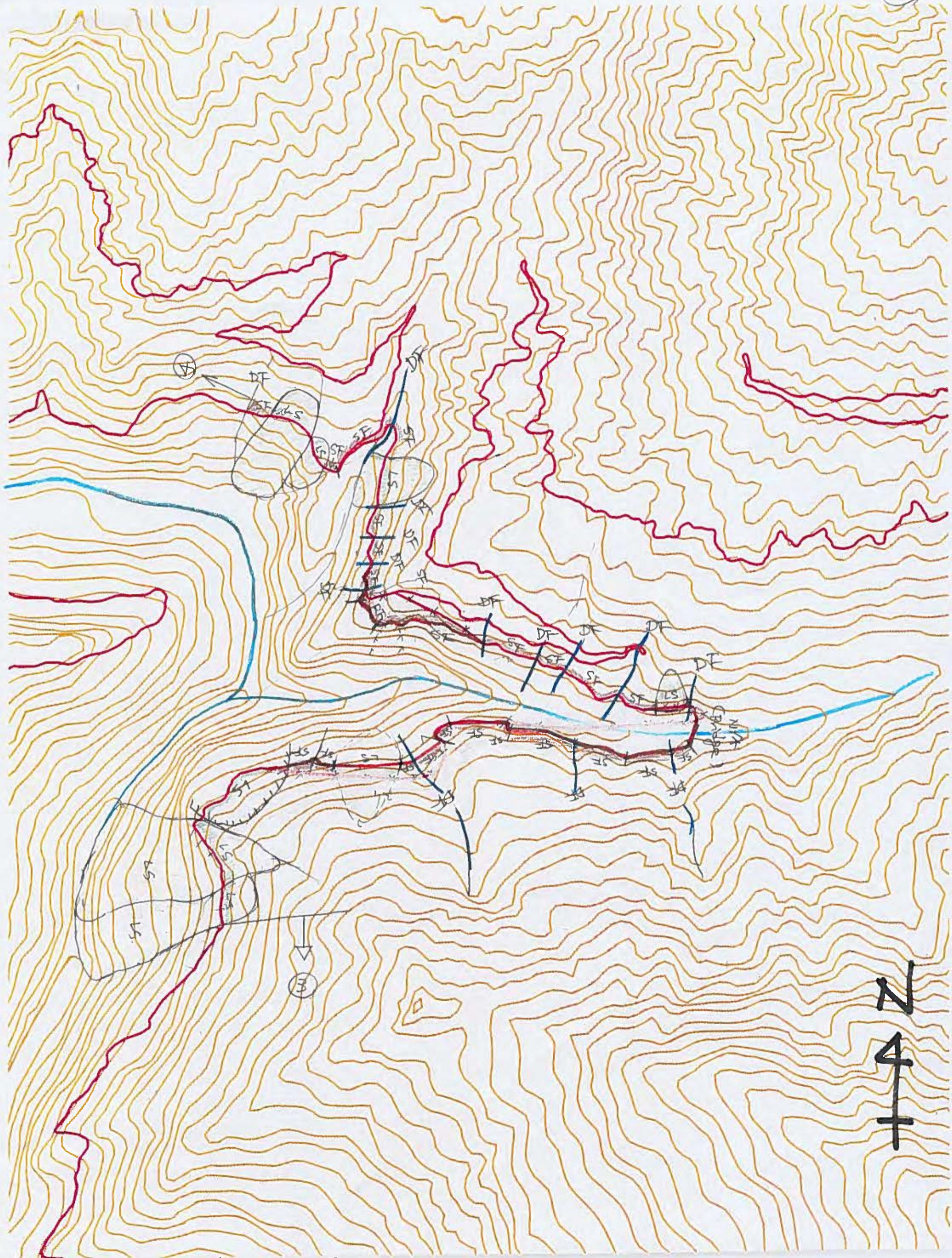
SF	→	24
RT	→	0

N
↑



Sub-total

LS	→	11	SF	→	43
DF	→	12	DT	→	0

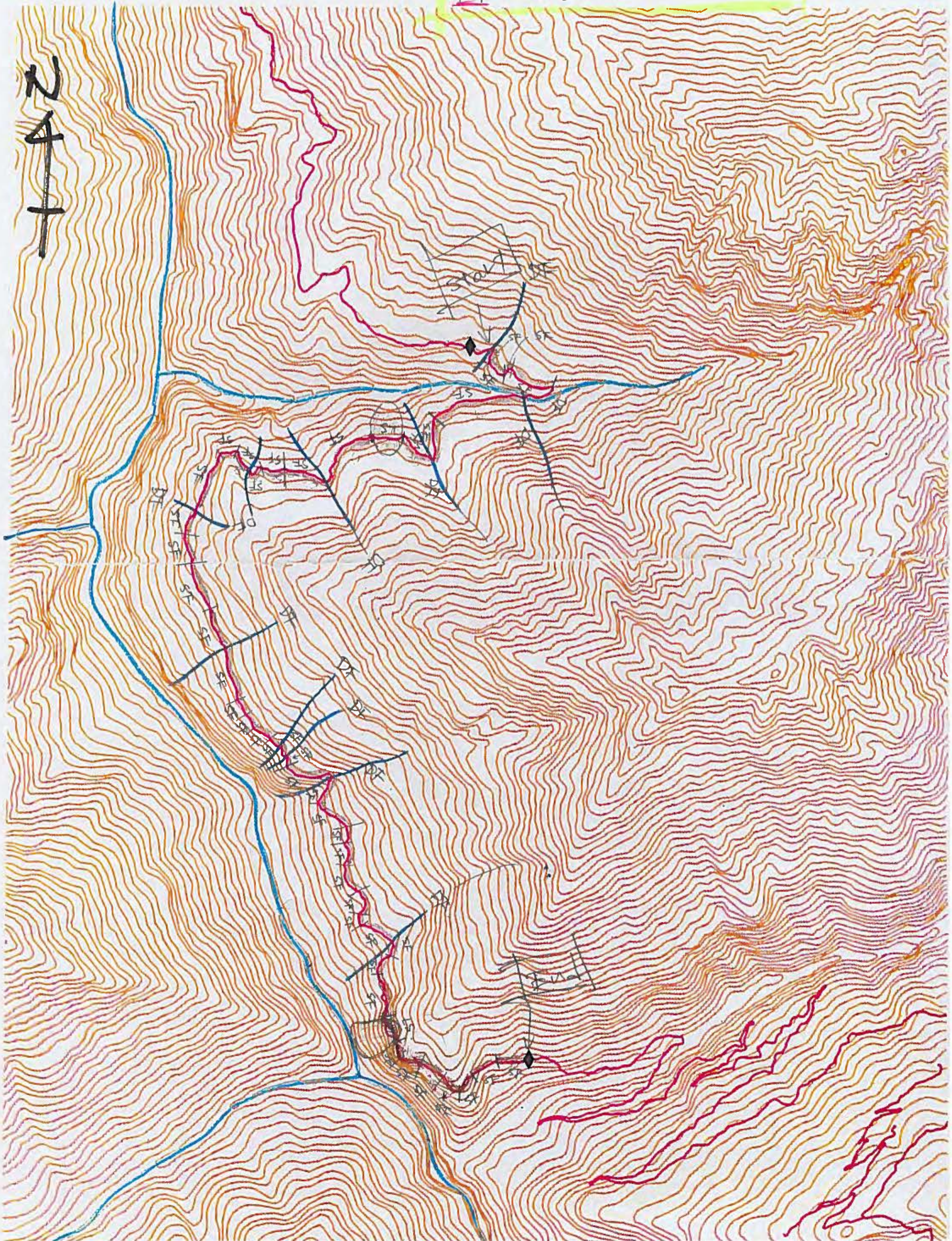


sub-total.

LS →	8	SF →	29.
DE →	12	DE →	.1

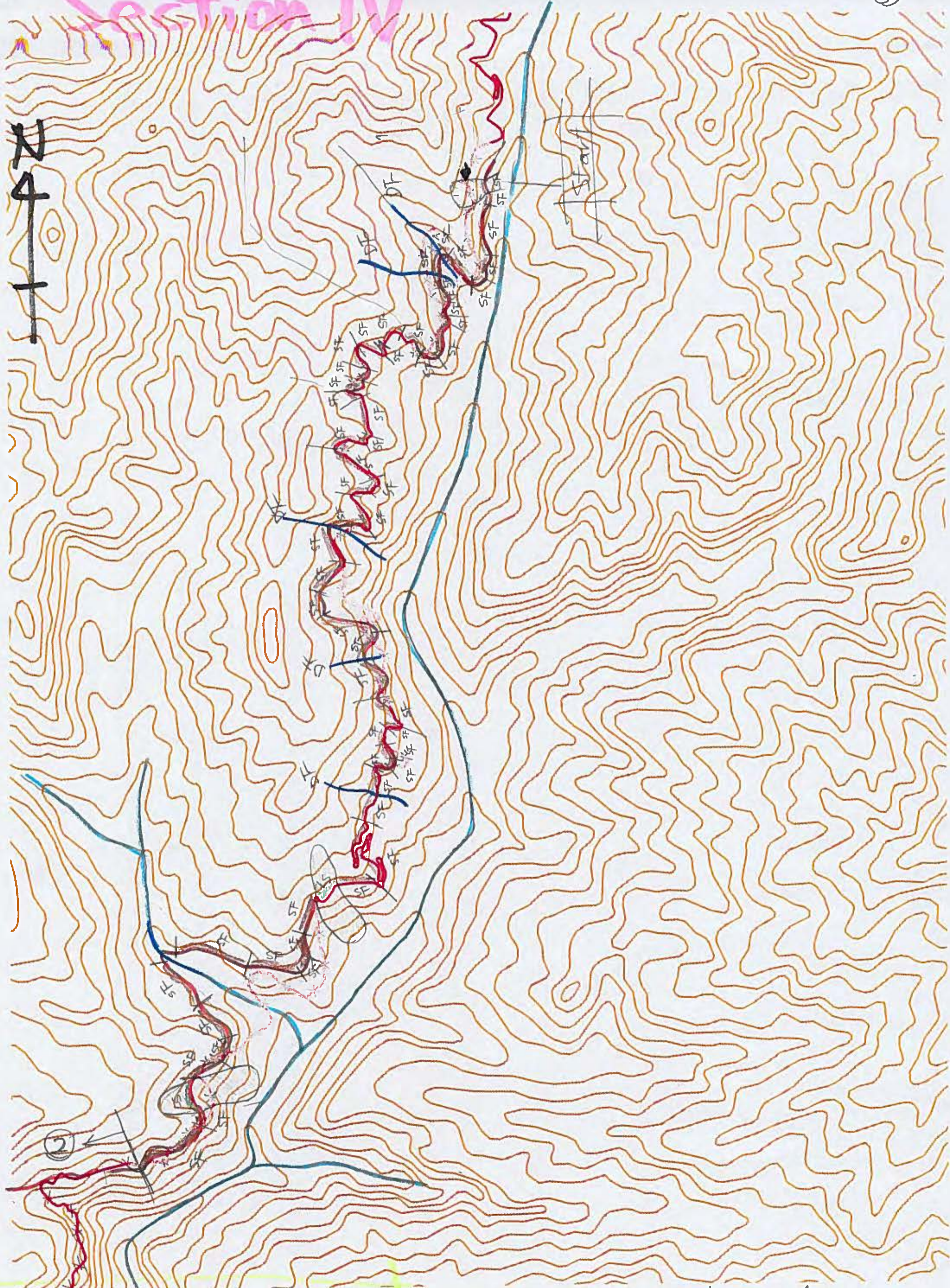
Section III

Total		
LS	→ 2] → <u>56</u>
DF	→ 10	
SF	→ 44	
RF	→ 0	



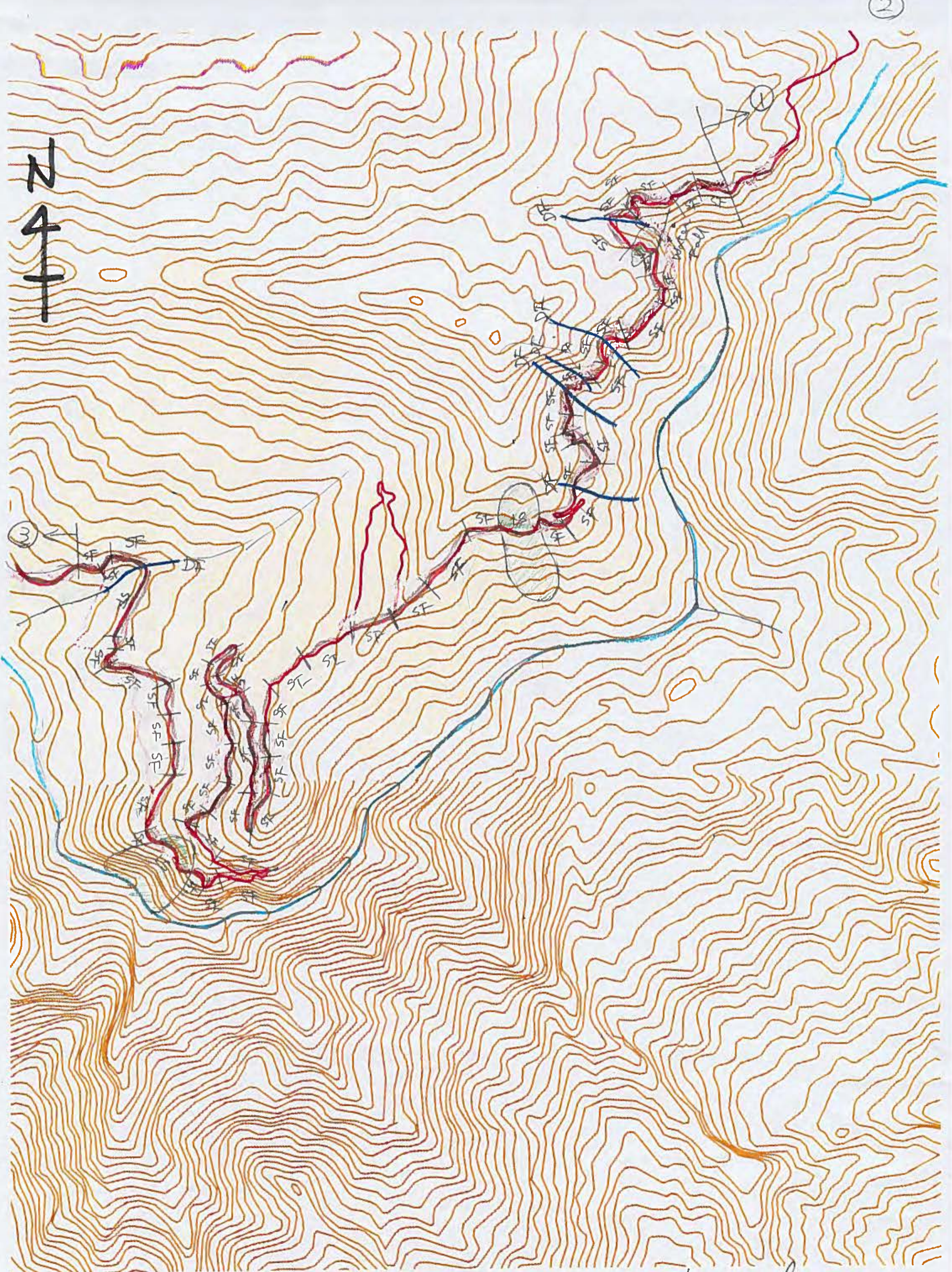
Section IV

N
4
N



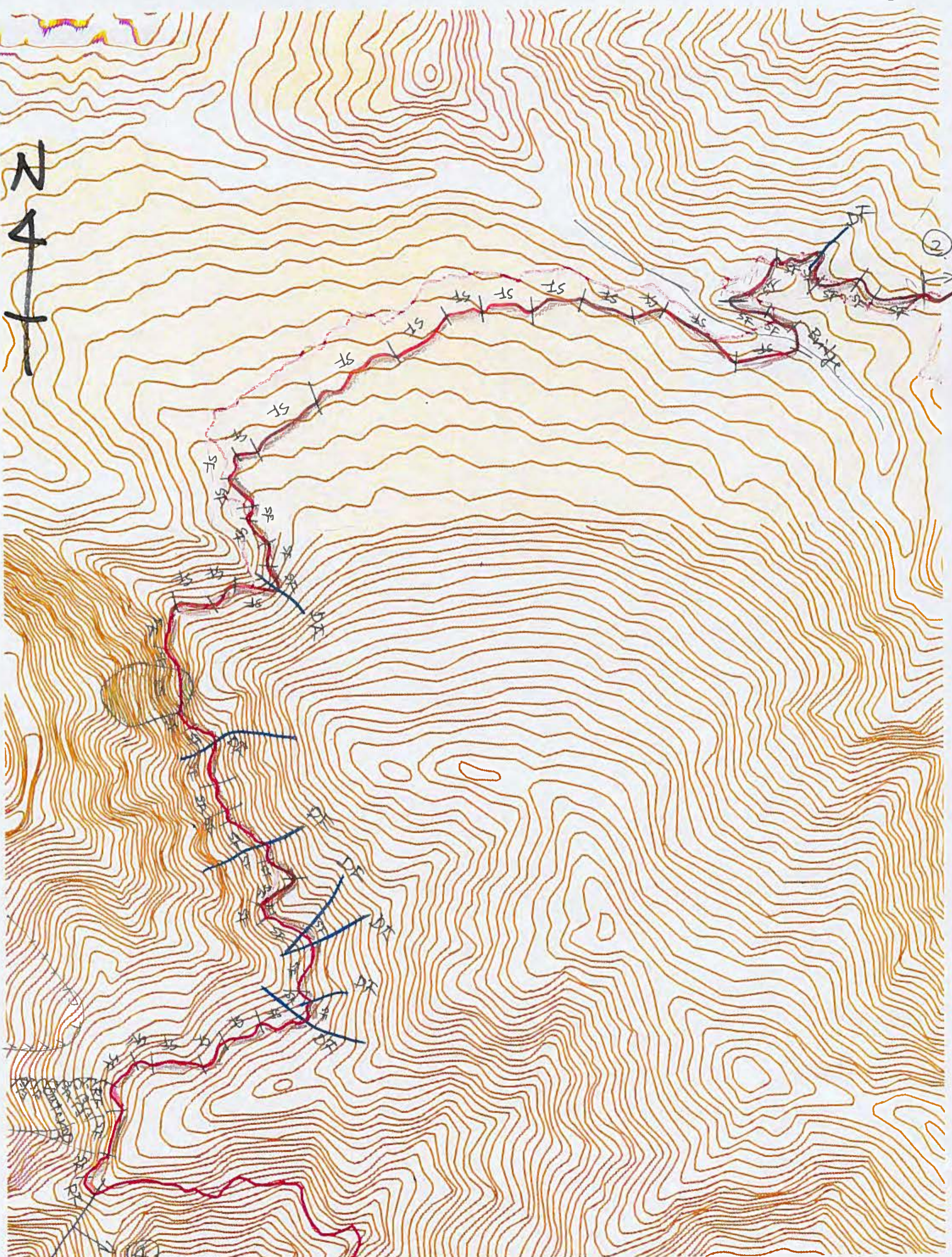
Total			
LS →	15	SF →	268
DT →	20	DF →	?
			<u>324</u>

sub-total.
 LS → 2 SF → 57
 DF → 6 RF → 0

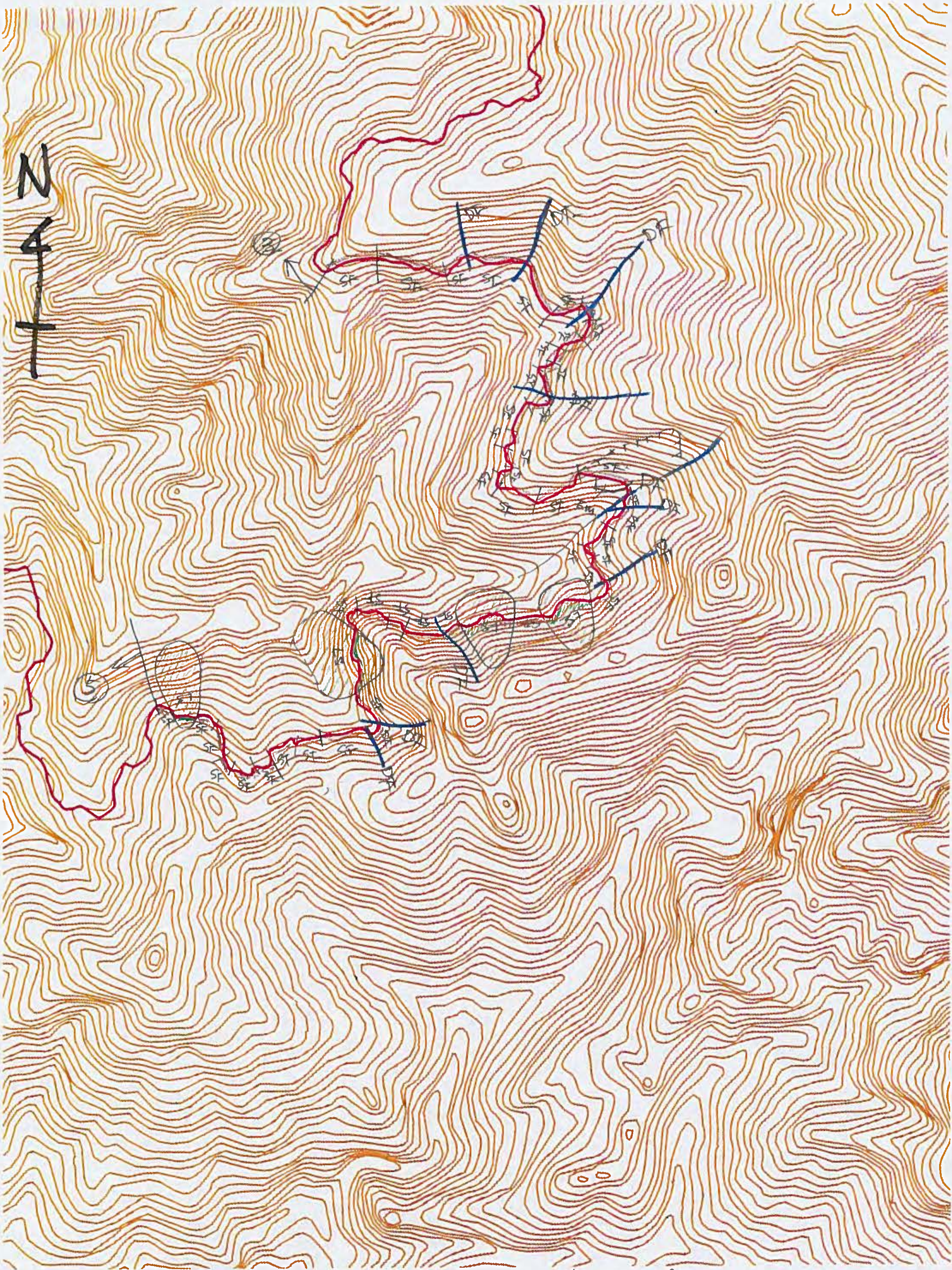


Sub-total.
 LS → 3 SF → 61
 DF → 6 DE → 7

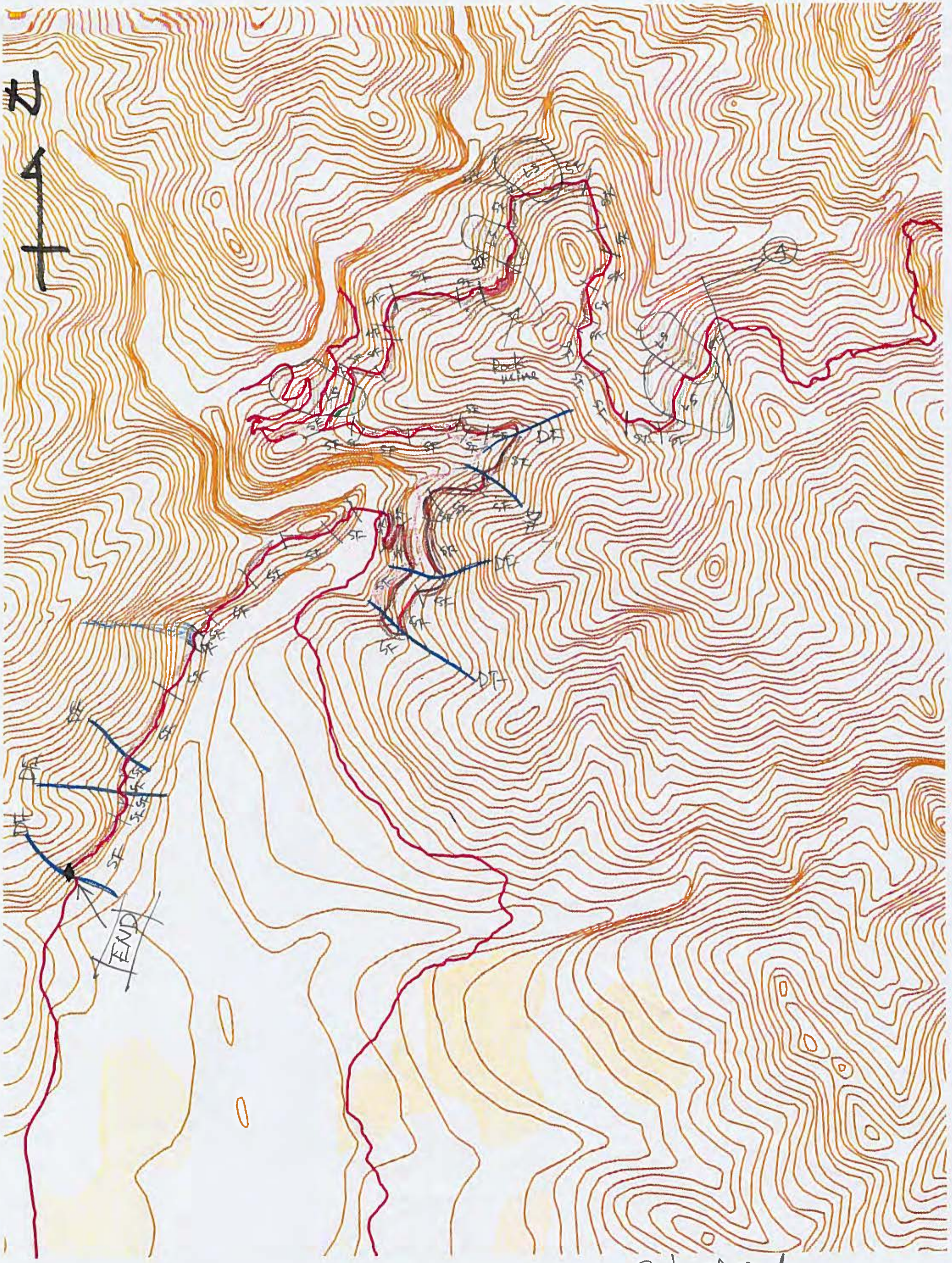
N
4
1



Sub-total
 LS → 1 SF → 53
 DF → 8 RF → 2



Sub-total.
LS → 4 SF → 0.44
DF → 10 RF → 0

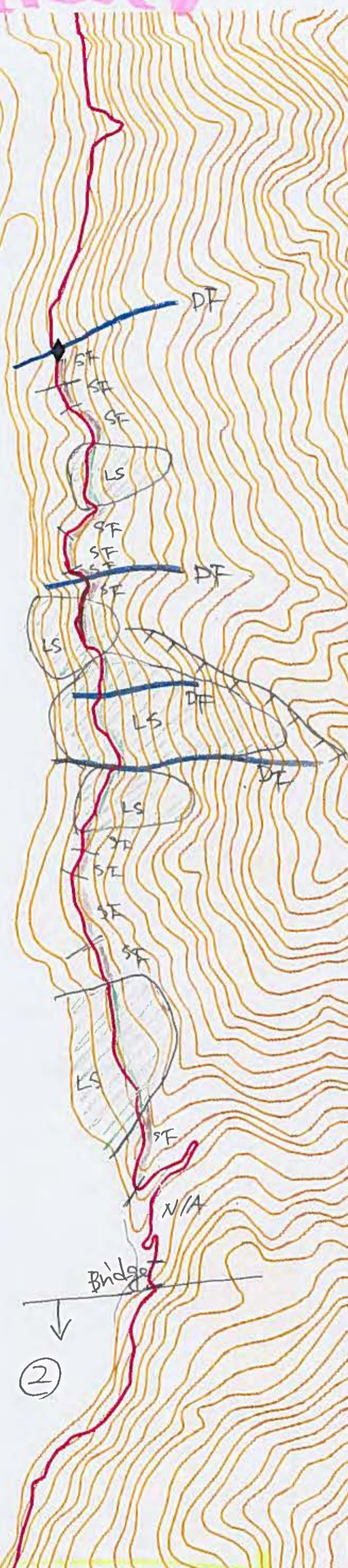


Sub-total
 LS → 5 SF → 53
 DT → 2 DE → 1

Section V

①

N
↑
4
+



Total
 LS → 9 SF → 33
 DF → 0 53

Sub-total
 LS → 5 SF → 12
 DF → 4 RE → 0.

N
4
+



sub-total
 LS → 4 SF → 16
 DF → 7 RE → 0

N
↑
4
↑
N

2



END

Bridge

SF
SF
SF
SF

Sub-total
 LS → 0 SF → 5
 DF → 0 RF → 0

Appendix 11

道路斜面点検結果

The Results of Inventory Survey

The Number of Each Section in Risk Rank (Source: JET)

Basic Information														Final Judgment		
Section	Management Office	Road No.	Management No.	Distance Mark			latitude				longitude			Judgment & Score		
				km	from	to	N/S	dd	mm	ss.s	E/W	dd	mm	ss.s	Mountain	Valley side
S-1	Wangduephodrang	1	WPP0120010	40.34	Wangduephodrang	Trongsa	N	28	32	41.8	E	90	9	2.4	Rank 3	-
S-1	Wangduephodrang	1	WPP0120020	40.15	Wangduephodrang	Trongsa	N	28	32	42.0	E	90	9	2.1	Rank 3	Rank 2
S-1	Wangduephodrang	1	WPP0120030	39.73	Wangduephodrang	Trongsa	N	28	32	47.2	E	90	8	56.0	Rank 3	Rank 3
S-1	Wangduephodrang	1	WPP0120040	39.34	Wangduephodrang	Trongsa	N	27	32	48.8	E	90	8	45.4	Rank 2	Rank 2
S-1	Wangduephodrang	1	WPP0120050	39.33	Wangduephodrang	Trongsa	N	27	32	39.9	E	90	8	46.2	Rank 2	-
S-1	Wangduephodrang	1	WPP0120060	39.19	Wangduephodrang	Trongsa	N	27	32	39.7	E	90	8	46.1	Rank 3	Rank 3
S-1	Wangduephodrang	1	WPP0120070	39.17	Wangduephodrang	Trongsa	N	27	32	39.7	E	90	8	42.0	Rank 2	-
S-1	Wangduephodrang	1	WPP0120080	39.16	Wangduephodrang	Trongsa	N	27	32	39.8	E	90	8	41.7	Rank 3	Rank 3
S-1	Wangduephodrang	1	WPP0120090	39.07	Wangduephodrang	Trongsa	N	27	32	40.7	E	90	8	41.3	Rank 2	Rank 2
S-1	Wangduephodrang	1	WPP0120100	39.02	Wangduephodrang	Trongsa	N	28	32	44.0	E	90	8	38.5	Rank 2	Rank 3
S-1	Wangduephodrang	1	WPP0120110	38.78	Wangduephodrang	Trongsa	N	28	32	44.0	E	90	8	38.5	Rank 1B	Rank 2
S-1	Wangduephodrang	1	WPP0120120	38.74	Wangduephodrang	Trongsa	N	28	32	47.7	E	90	8	31.1	Rank 2	Rank 3
S-1	Wangduephodrang	1	WPP0120130	38.56	Wangduephodrang	Trongsa	N	28	32	47.4	E	90	8	30.7	Rank 2	Rank 3
S-1	Wangduephodrang	1	WPP0120140	38.55	Wangduephodrang	Trongsa	N	27	32	49.6	E	90	8	25.5	Rank 2	-
S-1	Wangduephodrang	1	WPP0120150	38.30	Wangduephodrang	Trongsa	N	27	32	50.0	E	90	8	25.0	Rank 3	Rank 3
S-1	Wangduephodrang	1	WPP0120160	38.15	Wangduephodrang	Trongsa	N	27	32	51.4	E	90	8	13.1	Rank 3	-
S-1	Wangduephodrang	1	WPP0120170	38.15	Wangduephodrang	Trongsa	N	27	32	51.8	E	90	8	12.8	Rank 3	Rank 3
S-1	Wangduephodrang	1	WPP0120180	37.90	Wangduephodrang	Trongsa	N	27	32	51.5	E	90	8	12.8	Rank 3	Rank 3
S-1	Wangduephodrang	1	WPP0120190	37.84	Wangduephodrang	Trongsa	N	27	32	48.2	E	90	8	6.7	Rank 2	Rank 2
S-1	Wangduephodrang	1	WPP0120200	37.64	Wangduephodrang	Trongsa	N	27	32	42.9	E	90	8	4.7	Rank 1B	Rank 3
S-1	Wangduephodrang	1	WPP0120210	37.63	Wangduephodrang	Trongsa	N	27	32	42.9	E	90	8	4.7	Rank 2	-
S-1	Wangduephodrang	1	WPP0120220	37.43	Wangduephodrang	Trongsa	N	27	32	38.8	E	90	8	2.4	Rank 2	Rank 3
S-1	Wangduephodrang	1	WPP0120230	37.42	Wangduephodrang	Trongsa	N	28	32	38.6	E	90	8	2.2	Rank 2	-
S-1	Wangduephodrang	1	WPP0120240	37.22	Wangduephodrang	Trongsa	N	28	32	38.0	E	90	7	55.3	Rank 2	Rank 3
S-1	Wangduephodrang	1	WPP0120250	37.19	Wangduephodrang	Trongsa	N	28	32	38.3	E	90	7	54.3	Rank 2	-
S-1	Wangduephodrang	1	WPP0120260	37.03	Wangduephodrang	Trongsa	N	28	32	39.9	E	90	7	49.5	Rank 2	Rank 3
S-1	Wangduephodrang	1	WPP0120270	36.87	Wangduephodrang	Trongsa	N	28	32	41.0	E	90	7	45.8	Rank 1B	Rank 2
S-1	Wangduephodrang	1	WPP0120280	36.71	Wangduephodrang	Trongsa	N	28	32	42.4	E	90	7	41.4	Rank 3	Rank 3
S-1	Wangduephodrang	1	WPP0120290	36.54	Wangduephodrang	Trongsa	N	28	32	43.0	E	90	7	33.1	Rank 2	Rank 3
S-1	Wangduephodrang	1	WPP0120300	36.46	Wangduephodrang	Trongsa	N	28	32	43.1	E	90	7	28.9	Rank 2	Rank 3
S-1	Wangduephodrang	1	WPP0120310	36.41	Wangduephodrang	Trongsa	N	28	32	42.1	E	90	7	28.2	Rank 2	Rank 3
S-1	Wangduephodrang	1	WPP0120320	36.38	Wangduephodrang	Trongsa	N	27	32	41.0	E	90	7	27.3	Rank 2	Rank 3
S-1	Wangduephodrang	1	WPP0120330	36.37	Wangduephodrang	Trongsa	N	27	32	41.0	E	90	7	27.3	Rank 1A	-
S-1	Wangduephodrang	1	WPP0120340	36.24	Wangduephodrang	Trongsa	N	28	32	42.5	E	90	7	24.3	Rank 3	Rank 3
S-1	Wangduephodrang	1	WPP0120350	36.14	Wangduephodrang	Trongsa	N	28	32	46.1	E	90	7	20.3	Rank 3	Rank 3
S-1	Wangduephodrang	1	WPP0120360	35.97	Wangduephodrang	Trongsa	N	28	32	46.2	E	90	7	14.4	Rank 2	-
S-1	Wangduephodrang	1	WPP0120370	35.90	Wangduephodrang	Trongsa	N	28	32	44.0	E	90	7	14.4	Rank 2	Rank 3
S-1	Wangduephodrang	1	WPP0120380	35.89	Wangduephodrang	Trongsa	N	28	32	43.8	E	90	7	14.1	Rank 3	-

Basic Information														Final Judgment		
Section	Management Office	Road No.	Management No.	Distance Mark			latitude			longitude			Judgment & Score			
				km	from	to	N/S	dd	mm	ss.s	E/W	dd	mm	ss.s	Mountain	Valley side
S-1	Wangduephodrang	1	WPP0120390	35.84	Wangduephodrang	Trongsa	N	27	32	45.0	E	90	7	12.0	Rank 2	-
S-1	Wangduephodrang	1	WPP0120400	35.84	Wangduephodrang	Trongsa	N	28	32	43.6	E	90	7	14.0	Rank 3	Rank 3
S-1	Wangduephodrang	1	WPP0120410	35.61	Wangduephodrang	Trongsa	N	27	32	44.0	E	90	7	12.0	Rank 2	Rank 2
S-1	Wangduephodrang	1	WPP0120420	35.49	Wangduephodrang	Trongsa	N	27	32	45.0	E	90	7	2.0	Rank 3	Rank 3
S-1	Wangduephodrang	1	WPP0120430	35.27	Wangduephodrang	Trongsa	N	27	32	43.0	E	90	6	52.0	Rank 3	Rank 3
S-1	Wangduephodrang	1	WPP0120440	34.93	Wangduephodrang	Trongsa	N	27	32	43.0	E	90	6	45.0	Rank 3	Rank 3
S-1	Wangduephodrang	1	WPP0120450	34.83	Wangduephodrang	Trongsa	N	27	32	39.2	E	90	6	43.2	Rank 3	Rank 3
S-1	Wangduephodrang	1	WPP0120460	34.71	Wangduephodrang	Trongsa	N	27	32	37.6	E	90	6	41.5	Rank 2	Rank 2
S-1	Wangduephodrang	1	WPP0120470	34.53	Wangduephodrang	Trongsa	N	27	32	36.1	E	90	6	39.4	Rank 2	Rank 2
S-1	Wangduephodrang	1	WPP0120480	34.52	Wangduephodrang	Trongsa	N	27	32	30.2	E	90	6	33.4	Rank 3	-
S-1	Wangduephodrang	1	WPP0120490	34.15	Wangduephodrang	Trongsa	N	27	32	30.5	E	90	6	33.0	Rank 2	Rank 2
S-1	Wangduephodrang	1	WPP0120500	34.13	Wangduephodrang	Trongsa	N	27	32	24.5	E	90	6	28.1	Rank 2	Rank 3
S-1	Wangduephodrang	1	WPP0120510	34.07	Wangduephodrang	Trongsa	N	27	32	21.8	E	90	6	28.3	Rank 1B	Rank 3
S-1	Wangduephodrang	1	WPP0120520	33.88	Wangduephodrang	Trongsa	N	27	32	16.1	E	90	6	27.3	Rank 3	Rank 3
S-1	Wangduephodrang	1	WPP0120530	33.87	Wangduephodrang	Trongsa	N	27	3	16.1	E	90	6	27.3	Rank 3	-
S-1	Wangduephodrang	1	WPP0120540	33.78	Wangduephodrang	Trongsa	N	27	32	12.0	E	90	6	25.3	Rank 1A	Rank 3
S-1	Wangduephodrang	1	WPP0120550	33.61	Wangduephodrang	Trongsa	N	27	32	7.1	E	90	6	24.3	Rank 3	Rank 3
S-1	Wangduephodrang	1	WPP0120560	33.60	Wangduephodrang	Trongsa	N	27	32	7.1	E	90	6	24.3	Rank 3	
S-1	Wangduephodrang	1	WPP0120570	33.44	Wangduephodrang	Trongsa	N	28	32	5.1	E	90	6	20.5	Rank 1B	Rank 3
S-1	Wangduephodrang	1	WPP0120580	33.42	Wangduephodrang	Trongsa	N	28	32	4.6	E	90	6	20.5	Rank 3	-
S-1	Wangduephodrang	1	WPP0120590	33.23	Wangduephodrang	Trongsa	N	28	32	0.6	E	90	6	16.4	Rank 3	-
S-1	Wangduephodrang	1	WPP0120600	33.19	Wangduephodrang	Trongsa	N	28	32	0.5	E	90	6	15.6	Rank 2	Rank 3
S-1	Wangduephodrang	1	WPP0120610	33.06	Wangduephodrang	Trongsa	N	28	31	56.2	E	90	6	12.9	Rank 3	Rank 3
S-1	Wangduephodrang	1	WPP0120620	32.98	Wangduephodrang	Trongsa	N	28	31	53.4	E	90	6	13.2	Rank 3	Rank 1A
S-1	Wangduephodrang	1	WPP0120630	32.82	Wangduephodrang	Trongsa	N	28	31	49.4	E	90	6	12.2	Rank 3	Rank 3
S-1	Wangduephodrang	1	WPP0120640	32.50	Wangduephodrang	Trongsa	N	27	31	53.0	E	89	53	48.0	Rank 2	Rank 2
S-1	Wangduephodrang	1	WPP0120650	32.42	Wangduephodrang	Trongsa	N	27	31	37.0	E	90	6	11.0	Rank 1B	Rank 2
S-1	Wangduephodrang	1	WPP0120660	32.25	Wangduephodrang	Trongsa	N	27	31	36.0	E	90	6	13.0	Rank 1B	Rank 2
S-1	Wangduephodrang	1	WPP0120670	32.24	Wangduephodrang	Trongsa	N	27	31	38.0	E	90	6	15.0	Rank 2	-
S-1	Wangduephodrang	1	WPP0120680	32.13	Wangduephodrang	Trongsa	N	27	31	34.5	E	90	6	13.8	Rank 3	Rank 3
S-1	Wangduephodrang	1	WPP0120690	31.94	Wangduephodrang	Trongsa	N	27	31	33.0	E	90	6	8.4	Rank 3	-
S-1	Wangduephodrang	1	WPP0120700	31.79	Wangduephodrang	Trongsa	N	27	31	30.4	E	90	6	4.0	Rank 3	Rank 3
S-1	Wangduephodrang	1	WPP0120710	31.53	Wangduephodrang	Trongsa	N	27	31	29.9	E	90	6	4.6	Rank 2	Rank 2
S-1	Wangduephodrang	1	WPP0120720	31.11	Wangduephodrang	Trongsa	N	27	31	26.5	E	90	6	2.5	Rank 1B	Rank 2
S-1	Wangduephodrang	1	WPP0120730	31.10	Wangduephodrang	Trongsa	N	27	31	16.2	E	90	6	11.2	Rank 3	-
S-1	Wangduephodrang	1	WPP0120740	30.82	Wangduephodrang	Trongsa	N	28	31	9.7	E	90	6	15.7	Rank 2	-
S-1	Wangduephodrang	1	WPP0120750	30.81	Wangduephodrang	Trongsa	N	27	31	15.7	E	90	6	11.1	Rank 1A	Rank 2
S-1	Wangduephodrang	1	WPP0120760	30.75	Wangduephodrang	Trongsa	N	28	31	7.0	E	90	6	15.2	Rank 2	Rank 3
S-1	Wangduephodrang	1	WPP0120770	30.72	Wangduephodrang	Trongsa	N	28	31	6.3	E	90	6	15.8	Rank 2	Rank 3
S-1	Wangduephodrang	1	WPP0120780	30.70	Wangduephodrang	Trongsa	N	28	31	6.1	E	90	6	15.9	Rank 2	-

Basic Information														Final Judgment		
Section	Management Office	Road No.	Management No.	Distance Mark			latitude			longitude			Judgment & Score			
				km	from	to	N/S	dd	mm	ss.s	E/W	dd	mm	ss.s	Mountain	Valley side
S-1	Wangduephodrang	1	WPP0120790	30.44	Wangduephodrang	Trongsa	N	28	31	7.4	E	90	6	7.5	Rank 2	Rank 3
S-1	Wangduephodrang	1	WPP0120800	30.38	Wangduephodrang	Trongsa	N	28	31	7.1	E	90	6	5.0	Rank 3	Rank 3
S-1	Wangduephodrang	1	WPP0120810	30.33	Wangduephodrang	Trongsa	N	27	31	7.0	E	90	6	1.0	Rank 3	Rank 2
S-1	Wangduephodrang	1	WPP0120820	30.06	Wangduephodrang	Trongsa	N	27	31	13.0	E	90	5	45.0	Rank 2	Rank 2
S-1	Wangduephodrang	1	WPP0120830	29.76	Wangduephodrang	Trongsa	N	27	31	12.0	E	89	5	41.0	Rank 2	Rank 2
S-1	Wangduephodrang	1	WPP0120840	29.69	Wangduephodrang	Trongsa	N	27	31	14.7	E	90	5	42.9	Rank 3	Rank 3
S-1	Wangduephodrang	1	WPP0120850	29.48	Wangduephodrang	Trongsa	N	27	31	7.8	E	90	5	40.7	Rank 3	Rank 3
S-1	Wangduephodrang	1	WPP0120860	29.30	Wangduephodrang	Trongsa	N	27	31	3.9	E	90	5	40.2	Rank 3	Rank 3
S-1	Wangduephodrang	1	WPP0120870	29.11	Wangduephodrang	Trongsa	N	27	30	57.7	E	90	5	43.5	Rank 2	Rank 3
S-1	Wangduephodrang	1	WPP0120880	28.27	Wangduephodrang	Trongsa	N	27	30	43.8	E	90	5	37.0	Rank 1A	Rank 2
S-1	Wangduephodrang	1	WPP0120890	28.26	Wangduephodrang	Trongsa	N	27	30	57.7	E	90	5	43.5	Rank 3	-
S-1	Wangduephodrang	1	WPP0120900	28.26	Wangduephodrang	Trongsa	N	27	30	44.0	E	90	5	40.5	Rank 2	-
S-1	Wangduephodrang	1	WPP0120910	28.12	Wangduephodrang	Trongsa	N	27	29	53.0	E	89	53	48.0	Rank 3	Rank 2
S-1	Wangduephodrang	1	WPP0120920	27.95	Wangduephodrang	Trongsa	N	27	30	43.0	E	90	5	40.0	Rank 2	-
S-1	Wangduephodrang	1	WPP0120930	27.74	Wangduephodrang	Trongsa	N	27	30	40.0	E	90	5	30.0	Rank 3	Rank 2
S-1	Wangduephodrang	1	WPP0120940	27.73	Wangduephodrang	Trongsa	N	27	30	39.5	E	90	5	19.1	Rank 3	-
S-1	Wangduephodrang	1	WPP0120950	27.34	Wangduephodrang	Trongsa	N	28	30	35.8	E	90	5	9.9	Rank 3	Rank 3
S-1	Wangduephodrang	1	WPP0120960	27.03	Wangduephodrang	Trongsa	N	28	30	28.8	E	90	5	3.5	Rank 3	-
S-1	Wangduephodrang	1	WPP0120970	26.99	Wangduephodrang	Trongsa	N	28	30	26.9	E	90	5	3.9	Rank 2	Rank 3
S-1	Wangduephodrang	1	WPP0120980	26.93	Wangduephodrang	Trongsa	N	28	30	25.8	E	90	5	4.6	Rank 1B	Rank 3
S-1	Wangduephodrang	1	WPP0120990	26.92	Wangduephodrang	Trongsa	N	28	30	25.0	E	90	5	5.2	Rank 3	-
S-1	Wangduephodrang	1	WPP0121000	26.85	Wangduephodrang	Trongsa	N	27	30	24.4	E	90	5	3.2	Rank 2	Rank 3
S-1	Wangduephodrang	1	WPP0121010	26.67	Wangduephodrang	Trongsa	N	27	30	25.6	E	90	4	56.7	Rank 3	Rank 3
S-1	Wangduephodrang	1	WPP0121020	26.22	Wangduephodrang	Trongsa	N	27	30	19.6	E	90	4	41.3	Rank 1B	Rank 3
S-1	Wangduephodrang	1	WPP0121030	25.73	Wangduephodrang	Trongsa	N	27	30	18.9	E	90	4	41.7	Rank 1A	Rank 2
S-1	Wangduephodrang	1	WPP0121040	25.72	Wangduephodrang	Trongsa	N	28	30	11.3	E	90	4	50.0	Rank 3	-
S-1	Wangduephodrang	1	WPP0121050	25.51	Wangduephodrang	Trongsa	N	28	30	11.8	E	90	4	46.4	Rank 3	-
S-1	Wangduephodrang	1	WPP0121060	25.35	Wangduephodrang	Trongsa	N	28	30	12.5	E	90	4	41.8	Rank 3	-
S-1	Wangduephodrang	1	WPP0121070	25.22	Wangduephodrang	Trongsa	N	27	30	13.0	E	90	4	36.0	Rank 2	-
S-1	Wangduephodrang	1	WPP0121080	24.87	Wangduephodrang	Trongsa	N	27	30	12.0	E	90	4	38.0	Rank 3	-
S-1	Wangduephodrang	1	WPP0121090	24.56	Wangduephodrang	Trongsa	N	27	29	53.0	E	89	53	48.0	Rank 2	-
S-1	Wangduephodrang	1	WPP0121100	24.36	Wangduephodrang	Trongsa	N	27	30	8.0	E	90	4	14.0	Rank 2	Rank 2
S-1	Wangduephodrang	1	WPP0121110	24.25	Wangduephodrang	Trongsa	N	27	30	3.0	E	90	7	10.0	Rank 2	Rank 2
S-1	Wangduephodrang	1	WPP0121120	24.10	Wangduephodrang	Trongsa	N	27	29	55.8	E	90	4	11.8	Rank 2	-
S-1	Wangduephodrang	1	WPP0121130	24.07	Wangduephodrang	Trongsa	N	27	29	55.8	E	90	4	11.8	Rank 2	Rank 2
S-1	Wangduephodrang	1	WPP0121140	23.98	Wangduephodrang	Trongsa	N	27	29	52.2	E	90	4	11.2	Rank 2	Rank 3
S-1	Wangduephodrang	1	WPP0121150	23.96	Wangduephodrang	Trongsa	N	28	29	52.3	E	90	4	11.1	Rank 3	-
S-1	Wangduephodrang	1	WPP0121160	23.66	Wangduephodrang	Trongsa	N	28	29	58.5	E	90	4	4.0	Rank 2	-
S-1	Wangduephodrang	1	WPP0121170	23.65	Wangduephodrang	Trongsa	N	28	29	58.3	E	90	4	3.2	Rank 1B	-
S-1	Wangduephodrang	1	WPP0121180	23.58	Wangduephodrang	Trongsa	N	28	29	60.0	E	90	4	2.9	Rank 1B	-

Basic Information														Final Judgment		
Section	Management Office	Road No.	Management No.	Distance Mark			latitude			longitude			Judgment & Score			
				km	from	to	N/S	dd	mm	ss.s	E/W	dd	mm	ss.s	Mountain	Valley side
S-2	Trongsa	1	TPP0120010	122.93	Wangduephodrang	Trongsa	N	27	29	45.8	E	90	30	22.2	Rank 3	Rank 3
S-2	Trongsa	1	TPP0120020	122.75	Wangduephodrang	Trongsa	N	27	29	51.5	E	90	30	23.7	Rank 3	Rank 3
S-2	Trongsa	1	TPP0120030	122.55	Wangduephodrang	Trongsa	N	27	29	57.7	E	90	30	24.1	Rank 3	Rank 3
S-2	Trongsa	1	TPP0120040	122.19	Wangduephodrang	Trongsa	N	27	30	7.2	E	90	30	19.0	Rank 3	Rank 3
S-2	Trongsa	1	TPP0120050	121.39	Wangduephodrang	Trongsa	N	27	30	11.7	E	90	30	30.5	Rank 3	Rank 3
S-2	Trongsa	1	TPP0120060	121.22	Wangduephodrang	Trongsa	N	27	30	13.3	E	90	30	13.7	Rank 2	-
S-2	Trongsa	1	TPP0120070	121.03	Wangduephodrang	Trongsa	N	27	30	16.0	E	90	30	7.5	Rank 2	-
S-2	Trongsa	1	TPP0120080	121.00	Wangduephodrang	Trongsa	N	27	30	17.2	E	90	30	2.0	Rank 2	-
S-2	Trongsa	1	TPP0120090	120.74	Wangduephodrang	Trongsa	N	27	30	17.1	E	90	30	2.1	Rank 3	-
S-2	Trongsa	1	TPP0120100	120.56	Wangduephodrang	Trongsa	N	27	30	19.7	E	90	29	55.1	Rank 2	Rank 3
S-2	Trongsa	1	TPP0120110	120.42	Wangduephodrang	Trongsa	N	27	30	17.5	E	90	29	43.4	Rank 2	-
S-2	Trongsa	1	TPP0120120	119.86	Wangduephodrang	Trongsa	N	27	30	14.9	E	90	29	35.0	Rank 2	Rank 3
S-2	Trongsa	1	TPP0120130	119.79	Wangduephodrang	Trongsa	N	27	30	20.5	E	90	29	24.2	Rank 1B	-
S-2	Trongsa	1	TPP0120140	119.38	Wangduephodrang	Trongsa	N	27	30	20.9	E	90	29	24.3	Rank 2	Rank 3
S-2	Trongsa	1	TPP0120150	118.92	Wangduephodrang	Trongsa	N	27	30	15.8	E	90	29	9.3	Rank 3	Rank 1B
S-2	Trongsa	1	TPP0120160	118.40	Wangduephodrang	Trongsa	N	27	30	21.1	E	90	28	38.6	Rank 2	-
S-2	Trongsa	1	TPP0120170	118.40	Wangduephodrang	Trongsa	N	27	30	15.6	E	90	28	56.0	Rank 2	Rank 3
S-2	Trongsa	1	TPP0120180	118.06	Wangduephodrang	Trongsa	N	27	30	21.3	E	90	28	38.3	Rank 1A	Rank 1B
S-2	Trongsa	1	TPP0120190	117.39	Wangduephodrang	Trongsa	N	27	30	25.0	E	90	29	30.3	Rank 3	Rank 1B
S-2	Trongsa	1	TPP0120200	117.22	Wangduephodrang	Trongsa	N	27	30	43.5	E	90	28	18.4	Rank 3	-
S-2	Trongsa	1	TPP0120210	117.13	Wangduephodrang	Trongsa	N	27	30	46.4	E	90	28	18.0	Rank 3	Rank 3
S-2	Trongsa	1	TPP0120220	117.12	Wangduephodrang	Trongsa	N	27	30	46.4	E	90	28	18.0	Rank 2	-
S-2	Trongsa	1	TPP0120230	116.92	Wangduephodrang	Trongsa	N	27	30	44.2	E	90	28	12.6	Rank 3	Rank 3
S-2	Trongsa	1	TPP0120240	116.66	Wangduephodrang	Trongsa	N	27	30	45.4	E	90	28	2.2	Rank 3	Rank 3
S-2	Trongsa	1	TPP0120250	116.41	Wangduephodrang	Trongsa	N	27	30	53.7	E	90	28	1.8	Rank 3	Rank 3
S-2	Trongsa	1	TPP0120260	116.39	Wangduephodrang	Trongsa	N	27	30	53.7	E	90	28	1.8	Rank 2	-
S-2	Trongsa	1	TPP0120270	116.26	Wangduephodrang	Trongsa	N	27	30	59.4	E	90	27	55.7	Rank 2	Rank 2
S-2	Trongsa	1	TPP0120280	116.24	Wangduephodrang	Trongsa	N	27	30	59.4	E	90	27	55.7	Rank 2	-
S-2	Trongsa	1	TPP0120290	115.96	Wangduephodrang	Trongsa	N	27	31	1.1	E	90	27	50.6	Rank 3	Rank 3
S-2	Trongsa	1	TPP0120300	115.74	Wangduephodrang	Trongsa	N	27	31	7.5	E	90	27	45.4	Rank 2	Rank 3
S-2	Trongsa	1	TPP0120310	115.72	Wangduephodrang	Trongsa	N	27	31	7.5	E	90	27	45.4	Rank 3	-
S-2	Trongsa	1	TPP0120320	115.38	Wangduephodrang	Trongsa	N	27	31	13.0	E	90	27	37.3	Rank 2	Rank 3
S-2	Trongsa	1	TPP0120330	115.06	Wangduephodrang	Trongsa	N	27	31	6.0	E	90	27	36.3	Rank 1B	Rank 3
S-2	Trongsa	1	TPP0120340	114.87	Wangduephodrang	Trongsa	N	27	31	0.8	E	90	27	41.1	Rank 2	Rank 3
S-2	Trongsa	1	TPP0120350	114.50	Wangduephodrang	Trongsa	N	27	30	53.1	E	90	27	51.1	Rank 3	Rank 2
S-2	Trongsa	1	TPP0120360	114.28	Wangduephodrang	Trongsa	N	27	30	47.2	E	90	27	52.7	Rank 3	Rank 3
S-2	Trongsa	1	TPP0120370	114.15	Wangduephodrang	Trongsa	N	27	30	43.0	E	90	27	52.2	Rank 1B	Rank 3
S-2	Trongsa	1	TPP0120380	113.89	Wangduephodrang	Trongsa	N	27	30	35.5	E	90	28	0.4	Rank 2	Rank 3
S-2	Trongsa	1	TPP0120390	113.62	Wangduephodrang	Trongsa	N	27	30	34.0	E	90	28	6.1	Rank 2	Rank 3
S-2	Trongsa	1	TPP0120400	113.40	Wangduephodrang	Trongsa	N	27	30	27.9	E	90	28	6.3	Rank 1B	Rank 3

Basic Information														Final Judgment		
Section	Management Office	Road No.	Management No.	Distance Mark			latitude				longitude			Judgment & Score		
				km	from	to	N/S	dd	mm	ss.s	E/W	dd	mm	ss.s	Mountain	Valley side
S-2	Trongsa	1	TPP0120410	113.39	Wangduephodrang	Trongsa	N	27	30	27.9	E	90	28	6.3	Rank 3	-
S-2	Trongsa	1	TPP0120420	113.22	Wangduephodrang	Trongsa	N	27	30	26.2	E	90	28	10.7	Rank 2	Rank 3
S-2	Trongsa	1	TPP0120430	112.99	Wangduephodrang	Trongsa	N	27	30	18.0	E	90	28	12.1	Rank 2	Rank 3
S-2	Trongsa	1	TPP0120440	112.96	Wangduephodrang	Trongsa	N	27	30	11.9	E	90	28	15.0	Rank 1B	-
S-2	Trongsa	1	TPP0120450	112.76	Wangduephodrang	Trongsa	N	27	30	11.9	E	90	28	15.0	Rank 2	-
S-2	Trongsa	1	TPP0120460	112.42	Wangduephodrang	Trongsa	N	27	30	5.3	E	90	28	23.6	Rank 3	Rank 3
S-2	Trongsa	1	TPP0120470	112.40	Wangduephodrang	Trongsa	N	27	30	5.3	E	90	28	23.6	Rank 3	-
S-2	Trongsa	1	TPP0120480	112.20	Wangduephodrang	Trongsa	N	27	30	5.7	E	90	28	29.0	Rank 3	Rank 3
S-2	Trongsa	1	TPP0120490	111.96	Wangduephodrang	Trongsa	N	27	30	0.6	E	90	28	33.4	Rank 2	Rank 3
S-2	Trongsa	1	TPP0120500	111.80	Wangduephodrang	Trongsa	N	27	29	56.7	E	90	28	35.9	Rank 2	-
S-2	Trongsa	1	TPP0120510	111.76	Wangduephodrang	Trongsa	N	27	29	54.3	E	90	28	38.5	Rank 3	Rank 3
S-2	Trongsa	1	TPP0120520	111.72	Wangduephodrang	Trongsa	N	27	29	53.0	E	90	28	44.8	Rank 3	-
S-2	Trongsa	1	TPP0120530	111.46	Wangduephodrang	Trongsa	N	27	29	53.0	E	90	28	44.8	Rank 2	Rank 3
S-2	Trongsa	1	TPP0120540	111.28	Wangduephodrang	Trongsa	N	27	29	51.9	E	90	28	50.5	Rank 3	Rank 3
S-2	Trongsa	1	TPP0120550	111.25	Wangduephodrang	Trongsa	N	27	29	51.9	E	90	28	50.5	Rank 3	-
S-2	Trongsa	1	TPP0120560	110.94	Wangduephodrang	Trongsa	N	27	29	50.9	E	90	29	1.4	Rank 3	Rank 3
S-2	Trongsa	1	TPP0120570	110.75	Wangduephodrang	Trongsa	N	27	29	47.5	E	90	29	5.7	Rank 1A	Rank 2
S-2	Trongsa	1	TPP0120580	110.72	Wangduephodrang	Trongsa	N	27	29	47.5	E	90	29	5.7	Rank 3	-
S-2	Trongsa	1	TPP0120590	110.45	Wangduephodrang	Trongsa	N	27	29	47.1	E	90	29	14.2	Rank 3	Rank 3
S-2	Trongsa	1	TPP0120600	110.11	Wangduephodrang	Trongsa	N	27	29	45.4	E	90	29	26.1	Rank 3	Rank 3
S-2	Trongsa	1	TPP0120610	109.80	Wangduephodrang	Trongsa	N	27	29	45.9	E	90	29	37.5	Rank 3	Rank 3
S-2	Trongsa	1	TPP0120620	109.53	Wangduephodrang	Trongsa	N	27	29	46.9	E	90	29	47.4	Rank 2	Rank 2
S-2	Trongsa	1	TPP0120630	109.29	Wangduephodrang	Trongsa	N	27	29	41.1	E	90	29	42.8	Rank 2	Rank 3
S-2	Trongsa	1	TPP0120640	109.01	Wangduephodrang	Trongsa	N	27	29	36.8	E	90	29	34.0	Rank 3	Rank 3
S-2	Trongsa	1	TPP0120650	108.77	Wangduephodrang	Trongsa	N	27	29	34.9	E	90	29	26.4	Rank 3	Rank 3
S-2	Trongsa	1	TPP0120660	108.43	Wangduephodrang	Trongsa	N	27	29	31.9	E	90	29	16.4	Rank 3	Rank 3
S-2	Trongsa	1	TPP0120670	108.22	Wangduephodrang	Trongsa	N	27	29	25.8	E	90	29	11.2	Rank 2	Rank 3
S-2	Trongsa	1	TPP0120680	108.10	Wangduephodrang	Trongsa	N	27	29	23.2	E	90	29	7.9	Rank 3	Rank 3
S-2	Trongsa	1	TPP0120690	107.94	Wangduephodrang	Trongsa	N	27	29	19.6	E	90	29	4.7	Rank 3	Rank 3
S-2	Trongsa	1	TPP0120700	107.93	Wangduephodrang	Trongsa	N	27	29	19.6	E	90	29	4.7	Rank 3	-
S-2	Trongsa	1	TPP0120710	107.81	Wangduephodrang	Trongsa	N	27	29	15.9	E	90	29	3.6	Rank 3	Rank 3
S-2	Trongsa	1	TPP0120720	107.80	Wangduephodrang	Trongsa	N	27	29	15.9	E	90	29	3.6	Rank 3	-
S-2	Trongsa	1	TPP0120730	107.63	Wangduephodrang	Trongsa	N	27	29	10.2	E	90	29	2.7	Rank 2	Rank 3
S-2	Trongsa	1	TPP0120740	107.61	Wangduephodrang	Trongsa	N	27	29	10.2	E	90	29	2.7	Rank 3	-
S-2	Trongsa	1	TPP0120750	107.38	Wangduephodrang	Trongsa	N	27	29	2.6	E	90	29	1.7	Rank 1A	Rank 3
S-2	Trongsa	1	TPP0120760	107.17	Wangduephodrang	Trongsa	N	27	28	56.1	E	90	29	58.8	Rank 2	Rank 3
S-2	Trongsa	1	TPP0120770	106.89	Wangduephodrang	Trongsa	N	27	28	46.6	E	90	29	0.4	Rank 2	Rank 3
S-2	Trongsa	1	TPP0120780	106.75	Wangduephodrang	Trongsa	N	27	28	42.2	E	90	28	58.5	Rank 2	Rank 3
S-2	Trongsa	1	TPP0120790	106.64	Wangduephodrang	Trongsa	N	27	28	43.0	E	90	28	54.6	Rank 3	Rank 3
S-2	Trongsa	1	TPP0120800	106.62	Wangduephodrang	Trongsa	N	27	28	43.0	E	90	28	54.6	Rank 3	-

Basic Information														Final Judgment		
Section	Management Office	Road No.	Management No.	Distance Mark			latitude			longitude			Judgment & Score			
				km	from	to	N/S	dd	mm	ss.s	E/W	dd	mm	ss.s	Mountain	Valley side
S-2	Trongsa	1	TPP0120810	106.53	Wangduephodrang	Trongsa	N	27	28	41.9	E	90	28	51.3	Rank 3	Rank 3
S-2	Trongsa	1	TPP0120820	106.51	Wangduephodrang	Trongsa	N	27	28	41.9	E	90	28	51.3	Rank 2	-
S-2	Trongsa	1	TPP0120830	106.45	Wangduephodrang	Trongsa	N	27	28	38.9	E	90	28	50.4	Rank 3	Rank 3
S-2	Trongsa	1	TPP0120840	106.43	Wangduephodrang	Trongsa	N	27	28	38.9	E	90	28	50.4	Rank 3	-
S-2	Trongsa	1	TPP0120850	106.27	Wangduephodrang	Trongsa	N	27	28	33.9	E	90	28	45.8	Rank 1A	Rank 1A
S-2	Trongsa	1	TPP0120860	106.25	Wangduephodrang	Trongsa	N	27	28	33.9	E	90	28	45.8	Rank 2	-
S-2	Trongsa	1	TPP0120870	105.94	Wangduephodrang	Trongsa	N	27	28	23.9	E	90	28	53.3	Rank 1A	Rank 3
S-2	Trongsa	1	TPP0120880	105.80	Wangduephodrang	Trongsa	N	27	28	19.8	E	90	28	50.6	Rank 1A	Rank 3
S-2	Trongsa	1	TPP0120890	105.69	Wangduephodrang	Trongsa	N	27	28	20.2	E	90	28	46.6	Rank 3	Rank 3
S-2	Trongsa	1	TPP0120900	105.68	Wangduephodrang	Trongsa	N	27	28	20.2	E	90	28	46.6	Rank 3	-
S-2	Trongsa	1	TPP0120910	105.57	Wangduephodrang	Trongsa	N	27	28	17.4	E	90	28	44.8	Rank 1B	Rank 3
S-2	Trongsa	1	TPP0120920	105.55	Wangduephodrang	Trongsa	N	27	28	17.4	E	90	28	44.8	Rank 3	-
S-2	Trongsa	1	TPP0120930	105.29	Wangduephodrang	Trongsa	N	27	28	10.7	E	90	28	45.1	Rank 1B	Rank 3
S-2	Trongsa	1	TPP0120940	105.10	Wangduephodrang	Trongsa	N	27	28	3.0	E	90	28	47.7	Rank 2	Rank 3
S-2	Trongsa	1	TPP0120950	104.76	Wangduephodrang	Trongsa	N	27	27	53.4	E	90	28	41.2	Rank 3	Rank 3
S-2	Trongsa	1	TPP0120960	104.46	Wangduephodrang	Trongsa	N	27	27	52.0	E	90	28	31.4	Rank 3	Rank 3
S-2	Trongsa	1	TPP0120970	104.33	Wangduephodrang	Trongsa	N	27	27	51.2	E	90	28	27.3	Rank 3	Rank 3
S-2	Trongsa	1	TPP0120980	104.31	Wangduephodrang	Trongsa	N	27	27	51.2	E	90	28	27.3	Rank 3	-
S-2	Trongsa	1	TPP0120990	104.24	Wangduephodrang	Trongsa	N	27	27	48.4	E	90	28	27.1	Rank 3	Rank 3
S-2	Trongsa	1	TPP0121000	103.92	Wangduephodrang	Trongsa	N	27	27	46.2	E	90	28	16.8	Rank 3	Rank 3
S-2	Trongsa	1	TPP0121010	103.65	Wangduephodrang	Trongsa	N	27	27	49.2	E	90	28	8.2	Rank 3	Rank 3
S-2	Trongsa	1	TPP0121020	103.21	Wangduephodrang	Trongsa	N	27	28	2.3	E	90	28	4.6	Rank 3	Rank 3
S-2	Trongsa	1	TPP0121030	103.20	Wangduephodrang	Trongsa	N	27	28	2.3	E	90	28	4.6	Rank 3	-
S-2	Trongsa	1	TPP0121040	103.13	Wangduephodrang	Trongsa	N	27	28	4.4	E	90	28	2.5	Rank 3	Rank 3
S-2	Trongsa	1	TPP0121050	103.12	Wangduephodrang	Trongsa	N	27	28	4.4	E	90	28	2.5	Rank 3	-
S-2	Trongsa	1	TPP0121060	102.85	Wangduephodrang	Trongsa	N	27	28	7.8	E	90	27	54.6	Rank 3	Rank 3
S-2	Trongsa	1	TPP0121070	102.84	Wangduephodrang	Trongsa	N	27	28	7.8	E	90	27	54.6	Rank 3	-
S-2	Trongsa	1	TPP0121080	102.74	Wangduephodrang	Trongsa	N	27	28	11.6	E	90	27	52.0	Rank 2	Rank 3
S-2	Trongsa	1	TPP0121090	102.73	Wangduephodrang	Trongsa	N	27	28	11.6	E	90	27	52.0	Rank 2	-
S-2	Trongsa	1	TPP0121100	102.67	Wangduephodrang	Trongsa	N	27	28	8.8	E	90	27	49.6	Rank 3	Rank 3
S-2	Trongsa	1	TPP0121110	102.65	Wangduephodrang	Trongsa	N	27	28	8.8	E	90	27	49.6	Rank 3	-
S-2	Trongsa	1	TPP0121120	102.55	Wangduephodrang	Trongsa	N	27	27	36.9	E	90	27	2.8	Rank 1B	Rank 3
S-2	Trongsa	1	TPP0121130	102.22	Wangduephodrang	Trongsa	N	27	27	6.0	E	90	27	48.5	Rank 2	Rank 3
S-2	Trongsa	1	TPP0121140	101.88	Wangduephodrang	Trongsa	N	27	27	56.2	E	90	27	44.9	Rank 3	Rank 3
S-2	Trongsa	1	TPP0121150	101.58	Wangduephodrang	Trongsa	N	27	27	49.9	E	90	27	37.0	Rank 3	Rank 3
S-2	Trongsa	1	TPP0121160	101.40	Wangduephodrang	Trongsa	N	27	27	50.0	E	90	27	29.3	Rank 3	Rank 3
S-2	Trongsa	1	TPP0121170	101.38	Wangduephodrang	Trongsa	N	27	27	50.0	E	90	27	29.3	Rank 3	-
S-2	Trongsa	1	TPP0121180	100.97	Wangduephodrang	Trongsa	N	27	27	48.6	E	90	27	14.2	Rank 3	Rank 1A
S-2	Trongsa	1	TPP0121190	100.97	Wangduephodrang	Trongsa	N	27	27	48.2	E	90	27	16.9	Rank 3	Rank 3
S-2	Trongsa	1	TPP0121200	100.80	Wangduephodrang	Trongsa	N	27	27	48.5	E	90	27	9.0	Rank 2	Rank 3

Basic Information														Final Judgment		
Section	Management Office	Road No.	Management No.	Distance Mark			latitude			longitude			Judgment & Score			
				km	from	to	N/S	dd	mm	ss.s	E/W	dd	mm	ss.s	Mountain	Valley side
S-2	Trongsa	1	TPP0121210	100.79	Wangduephodrang	Trongsa	N	27	27	48.5	E	90	27	9.0	Rank 3	-
S-2	Trongsa	1	TPP0121220	100.61	Wangduephodrang	Trongsa	N	27	27	44.6	E	90	27	8.9	Rank 3	-
S-2	Trongsa	1	TPP0121230	100.60	Wangduephodrang	Trongsa	N	27	27	44.6	E	90	27	8.9	Rank 2	-
S-2	Trongsa	1	TPP0121240	100.24	Wangduephodrang	Trongsa	N	27	27	36.9	E	90	27	2.8	Rank 3	Rank 3
S-2	Trongsa	1	TPP0121250	100.20	Wangduephodrang	Trongsa	N	27	27	37.1	E	90	27	2.9	Rank 3	-
S-2	Trongsa	1	TPP0121260	100.07	Wangduephodrang	Trongsa	N	27	27	32.1	E	90	26	59.4	Rank 3	Rank 3
S-2	Trongsa	1	TPP0121270	99.89	Wangduephodrang	Trongsa	N	27	27	27.2	E	90	26	55.9	Rank 3	-
S-2	Trongsa	1	TPP0121280	99.87	Wangduephodrang	Trongsa	N	27	27	26.8	E	90	26	55.8	Rank 3	-
S-2	Trongsa	1	TPP0121290	99.75	Wangduephodrang	Trongsa	N	27	27	22.6	E	90	26	53.6	Rank 3	-
S-2	Trongsa	1	TPP0121300	99.45	Wangduephodrang	Trongsa	N	27	27	16.0	E	90	26	52.0	Rank 3	-
S-2	Trongsa	1	TPP0121310	99.24	Wangduephodrang	Trongsa	N	27	27	8.8	E	90	26	48.1	Rank 1B	-
S-2	Trongsa	1	TPP0121320	99.17	Wangduephodrang	Trongsa	N	27	27	6.5	E	90	26	48.1	Rank 2	Rank 2
S-2	Trongsa	1	TPP0121330	99.02	Wangduephodrang	Trongsa	N	27	27	4.1	E	90	26	43.2	Rank 1B	Rank 3
S-2	Trongsa	1	TPP0121340	98.86	Wangduephodrang	Trongsa	N	27	27	3.6	E	90	26	39.0	Rank 2	-
S-2	Trongsa	1	TPP0121350	98.80	Wangduephodrang	Trongsa	N	27	27	2.7	E	90	26	36.9	Rank 3	Rank 3
S-2	Trongsa	1	TPP0121360	98.55	Wangduephodrang	Trongsa	N	27	27	0.5	E	90	26	29.7	Rank 3	-
S-2	Trongsa	1	TPP0121370	98.35	Wangduephodrang	Trongsa	N	27	26	57.3	E	90	26	24.2	Rank 1A	Rank 3
S-2	Trongsa	1	TPP0121380	98.28	Wangduephodrang	Trongsa	N	27	26	56.9	E	90	26	21.9	Rank 3	Rank 3
S-2	Trongsa	1	TPP0121390	98.15	Wangduephodrang	Trongsa	N	27	27	0.0	E	90	26	19.9	Rank 1B	Rank 3
S-2	Trongsa	1	TPP0121400	98.10	Wangduephodrang	Trongsa	N	27	27	0.6	E	90	26	19.7	Rank 2	Rank 3
S-2	Trongsa	1	TPP0121410	98.09	Wangduephodrang	Trongsa	N	27	27	0.1	E	90	26	19.5	Rank 3	-
S-2	Trongsa	1	TPP0121420	97.99	Wangduephodrang	Trongsa	N	27	26	56.8	E	90	26	17.6	Rank 3	-
S-2	Trongsa	1	TPP0121430	97.99	Wangduephodrang	Trongsa	N	27	26	57.2	E	90	26	17.8	Rank 2	Rank 3
S-2	Trongsa	1	TPP0121440	97.99	Wangduephodrang	Trongsa	N	27	26	57.5	E	90	26	17.1	Rank 2	-
S-2	Trongsa	1	TPP0121450	97.96	Wangduephodrang	Trongsa	N	27	26	56.5	E	90	26	17.9	Rank 2	Rank 3
S-2	Trongsa	1	TPP0121460	97.86	Wangduephodrang	Trongsa	N	27	26	52.4	E	90	26	17.3	Rank 3	-
S-2	Trongsa	1	TPP0121470	97.86	Wangduephodrang	Trongsa	N	27	26	52.7	E	90	26	18.0	Rank 3	Rank 3
S-2	Trongsa	1	TPP0121480	97.77	Wangduephodrang	Trongsa	N	27	26	51.9	E	90	26	15.9	Rank 3	Rank 3
S-2	Trongsa	1	TPP0121490	97.64	Wangduephodrang	Trongsa	N	27	26	50.6	E	90	26	14.6	Rank 3	-
S-2	Trongsa	1	TPP0121500	97.50	Wangduephodrang	Trongsa	N	27	26	50.6	E	90	26	7.7	Rank 2	Rank 3
S-2	Trongsa	1	TPP0121510	97.49	Wangduephodrang	Trongsa	N	27	26	50.7	E	90	26	7.6	Rank 3	-
S-2	Trongsa	1	TPP0121520	97.30	Wangduephodrang	Trongsa	N	27	26	50.2	E	90	25	60.0	Rank 1A	Rank 3
S-2	Trongsa	1	TPP0121530	97.29	Wangduephodrang	Trongsa	N	27	26	50.0	E	90	25	59.9	Rank 2	-
S-2	Trongsa	1	TPP0121540	97.24	Wangduephodrang	Trongsa	N	27	26	51.2	E	90	25	58.2	Rank 3	Rank 3
S-2	Trongsa	1	TPP0121550	97.23	Wangduephodrang	Trongsa	N	27	26	51.1	E	90	25	57.9	Rank 3	-
S-2	Trongsa	1	TPP0121560	97.20	Wangduephodrang	Trongsa	N	27	26	51.3	E	90	25	57.0	Rank 3	Rank 3
S-2	Trongsa	1	TPP0121570	97.19	Wangduephodrang	Trongsa	N	27	26	51.3	E	90	25	56.7	Rank 3	-
S-2	Trongsa	1	TPP0121580	97.09	Wangduephodrang	Trongsa	N	27	26	48.9	E	90	25	54.2	Rank 3	Rank 3
S-2	Trongsa	1	TPP0121590	97.05	Wangduephodrang	Trongsa	N	27	26	48.4	E	90	25	53.2	Rank 3	Rank 3
S-2	Trongsa	1	TPP0121600	97.03	Wangduephodrang	Trongsa	N	27	26	48.0	E	90	25	53.2	Rank 3	-

Basic Information														Final Judgment		
Section	Management Office	Road No.	Management No.	Distance Mark			latitude				longitude			Judgment & Score		
				km	from	to	N/S	dd	mm	ss.s	E/W	dd	mm	ss.s	Mountain	Valley side
S-2	Trongsa	1	TPP0121610	96.76	Wangduephodrang	Trongsa	N	27	26	43.5	E	90	25	50.7	Rank 3	-
S-2	Trongsa	1	TPP0121620	96.74	Wangduephodrang	Trongsa	N	27	26	43.7	E	90	25	49.5	Rank 3	Rank 3
S-2	Trongsa	1	TPP0121630	96.59	Wangduephodrang	Trongsa	N	27	26	45.3	E	90	25	46.1	Rank 3	Rank 3
S-2	Trongsa	1	TPP0121640	96.50	Wangduephodrang	Trongsa	N	27	26	46.5	E	90	25	43.1	Rank 3	Rank 3
S-2	Trongsa	1	TPP0121650	96.43	Wangduephodrang	Trongsa	N	27	26	47.4	E	90	25	41.0	Rank 3	Rank 3
S-2	Trongsa	1	TPP0121660	96.35	Wangduephodrang	Trongsa	N	27	26	47.4	E	90	25	38.8	Rank 3	Rank 3
S-2	Trongsa	1	TPP0121670	96.03	Wangduephodrang	Trongsa	N	27	26	47.0	E	90	25	31.6	Rank 3	Rank 3
S-2	Trongsa	1	TPP0121680	95.94	Wangduephodrang	Trongsa	N	27	26	48.8	E	90	25	29.1	Rank 3	Rank 3
S-2	Trongsa	1	TPP0121690	95.92	Wangduephodrang	Trongsa	N	27	26	48.8	E	90	25	29.0	Rank 3	-
S-2	Trongsa	1	TPP0121700	95.87	Wangduephodrang	Trongsa	N	27	26	48.6	E	90	25	27.2	Rank 1A	-
S-2	Trongsa	1	TPP0121710	95.59	Wangduephodrang	Trongsa	N	27	26	53.3	E	90	25	18.9	Rank 3	-
S-2	Trongsa	1	TPP0121720	95.46	Wangduephodrang	Trongsa	N	27	26	52.9	E	90	25	16.6	Rank 3	Rank 3
S-2	Trongsa	1	TPP0121730	95.45	Wangduephodrang	Trongsa	N	27	26	53.7	E	90	25	14.6	Rank 3	-
S-2	Trongsa	1	TPP0121740	95.25	Wangduephodrang	Trongsa	N	27	26	51.3	E	90	25	8.2	Rank 3	-
S-2	Trongsa	1	TPP0121750	95.04	Wangduephodrang	Trongsa	N	27	26	50.0	E	90	25	5.7	Rank 3	Rank 3
S-2	Trongsa	1	TPP0121760	95.03	Wangduephodrang	Trongsa	N	27	26	51.6	E	90	25	1.6	Rank 3	-
S-2	Trongsa	1	TPP0121770	94.91	Wangduephodrang	Trongsa	N	27	26	52.0	E	90	25	0.6	Rank 3	Rank 3
S-2	Trongsa	1	TPP0121780	94.91	Wangduephodrang	Trongsa	N	27	26	53.7	E	90	24	58.3	Rank 2	-
S-2	Trongsa	1	TPP0121790	94.69	Wangduephodrang	Trongsa	N	27	26	53.6	E	90	24	50.8	Rank 3	Rank 3
S-2	Trongsa	1	TPP0121800	94.42	Wangduephodrang	Trongsa	N	27	26	56.0	E	90	24	45.8	Rank 3	Rank 3
S-2	Trongsa	1	TPP0121810	94.29	Wangduephodrang	Trongsa	N	27	26	58.3	E	90	24	43.3	Rank 3	Rank 3
S-2	Trongsa	1	TPP0121820	94.12	Wangduephodrang	Trongsa	N	27	27	2.6	E	90	24	42.1	Rank 3	Rank 3
S-2	Trongsa	1	TPP0121830	93.87	Wangduephodrang	Trongsa	N	27	27	5.0	E	90	24	38.3	Rank 3	Rank 3
S-2	Trongsa	1	TPP0121840	93.85	Wangduephodrang	Trongsa	N	27	27	9.2	E	90	24	38.6	Rank 2	-
S-2	Trongsa	1	TPP0121850	93.73	Wangduephodrang	Trongsa	N	27	27	10.7	E	90	24	35.0	Rank 3	Rank 3
S-2	Trongsa	1	TPP0121860	93.72	Wangduephodrang	Trongsa	N	27	27	11.4	E	90	24	34.2	Rank 3	-
S-2	Trongsa	1	TPP0121870	93.47	Wangduephodrang	Trongsa	N	27	27	7.8	E	90	24	32.0	Rank 3	Rank 3
S-2	Trongsa	1	TPP0121880	93.45	Wangduephodrang	Trongsa	N	27	27	10.2	E	90	24	27.9	Rank 2	-
S-2	Trongsa	1	TPP0121890	93.16	Wangduephodrang	Trongsa	N	27	27	1.2	E	90	24	26.2	Rank 3	Rank 3
S-2	Trongsa	1	TPP0121900	92.92	Wangduephodrang	Trongsa	N	27	27	2.0	E	90	24	22.1	Rank 2	-
S-2	Trongsa	1	TPP0121910	92.86	Wangduephodrang	Trongsa	N	27	27	3.1	E	90	24	18.9	Rank 2	-
S-2	Trongsa	1	TPP0121920	92.68	Wangduephodrang	Trongsa	N	27	27	8.0	E	90	24	17.0	Rank 3	-
S-2	Trongsa	1	TPP0121930	92.47	Wangduephodrang	Trongsa	N	27	27	7.3	E	90	24	14.6	Rank 3	Rank 3
S-2	Trongsa	1	TPP0121940	92.40	Wangduephodrang	Trongsa	N	27	27	8.9	E	90	24	10.6	Rank 3	Rank 3
S-2	Trongsa	1	TPP0121950	92.39	Wangduephodrang	Trongsa	N	27	27	12.3	E	90	24	10.1	Rank 2	-
S-2	Trongsa	1	TPP0121960	92.33	Wangduephodrang	Trongsa	N	27	27	10.6	E	90	24	9.5	Rank 3	Rank 3
S-2	Trongsa	1	TPP0121970	92.16	Wangduephodrang	Trongsa	N	27	27	9.0	E	90	24	8.2	Rank 3	Rank 3
S-2	Trongsa	1	TPP0121980	92.15	Wangduephodrang	Trongsa	N	27	27	8.7	E	90	24	5.3	Rank 2	-
S-2	Trongsa	1	TPP0121990	92.02	Wangduephodrang	Trongsa	N	27	27	7.7	E	90	24	0.8	Rank 3	Rank 3
S-2	Trongsa	1	TPP0122000	91.94	Wangduephodrang	Trongsa	N	27	27	8.0	E	90	23	59.5	Rank 3	-

Basic Information														Final Judgment		
Section	Management Office	Road No.	Management No.	Distance Mark			latitude			longitude			Judgment & Score			
				km	from	to	N/S	dd	mm	ss.s	E/W	dd	mm	ss.s	Mountain	Valley side
S-2	Trongsa	1	TPP0122010	91.85	Wangduephodrang	Trongsa	N	27	27	8.2	E	90	23	56.7	Rank 3	Rank 2
S-2	Trongsa	1	TPP0122020	91.74	Wangduephodrang	Trongsa	N	27	27	12.1	E	90	23	57.2	Rank 3	Rank 3
S-2	Trongsa	1	TPP0122030	91.73	Wangduephodrang	Trongsa	N	27	27	12.4	E	90	23	57.5	Rank 2	-
S-2	Trongsa	1	TPP0122040	91.70	Wangduephodrang	Trongsa	N	27	27	13.8	E	90	23	57.4	Rank 2	Rank 3
S-2	Trongsa	1	TPP0122050	91.62	Wangduephodrang	Trongsa	N	27	27	14.6	E	90	23	54.8	Rank 2	Rank 2
S-2	Trongsa	1	TPP0122060	91.61	Wangduephodrang	Trongsa	N	27	27	15.8	E	90	23	55.0	Rank 2	-
S-2	Trongsa	1	TPP0122070	91.37	Wangduephodrang	Trongsa	N	27	27	12.8	E	90	23	52.5	Rank 2	Rank 3
S-2	Trongsa	1	TPP0122080	91.28	Wangduephodrang	Trongsa	N	27	27	14.8	E	90	23	48.4	Rank 3	Rank 3
S-2	Trongsa	1	TPP0122090	91.26	Wangduephodrang	Trongsa	N	27	27	15.6	E	90	23	46.4	Rank 2	-
S-2	Trongsa	1	TPP0122100	91.05	Wangduephodrang	Trongsa	N	27	27	15.8	E	90	23	46.7	Rank 2	Rank 3
S-2	Trongsa	1	TPP0122110	90.95	Wangduephodrang	Trongsa	N	27	27	10.0	E	90	23	42.4	Rank 3	Rank 3
S-2	Trongsa	1	TPP0122120	90.74	Wangduephodrang	Trongsa	N	27	27	9.1	E	90	23	40.1	Rank 3	Rank 3
S-2	Trongsa	1	TPP0122130	90.60	Wangduephodrang	Trongsa	N	27	27	11.3	E	90	23	37.6	Rank 2	Rank 3
S-2	Trongsa	1	TPP0122140	90.59	Wangduephodrang	Trongsa	N	27	27	16.0	E	90	23	35.4	Rank 2	-
S-2	Trongsa	1	TPP0122150	90.44	Wangduephodrang	Trongsa	N	27	27	15.2	E	90	23	32.8	Rank 2	Rank 3
S-2	Trongsa	1	TPP0122160	90.37	Wangduephodrang	Trongsa	N	27	27	19.1	E	90	23	31.6	Rank 1B	Rank 3
S-2	Trongsa	1	TPP0122170	90.36	Wangduephodrang	Trongsa	N	27	27	19.2	E	90	23	32.3	Rank 2	-
S-2	Trongsa	1	TPP0122180	90.33	Wangduephodrang	Trongsa	N	27	27	20.2	E	90	23	21.4	Rank 3	Rank 3
S-2	Trongsa	1	TPP0122190	90.30	Wangduephodrang	Trongsa	N	27	27	22.4	E	90	23	32.0	Rank 2	-
S-2	Trongsa	1	TPP0122200	90.20	Wangduephodrang	Trongsa	N	27	27	21.9	E	90	23	30.5	Rank 2	Rank 3
S-2	Trongsa	1	TPP0122210	90.19	Wangduephodrang	Trongsa	N	27	27	21.0	E	90	23	28.0	Rank 3	-
S-2	Trongsa	1	TPP0122220	89.91	Wangduephodrang	Trongsa	N	27	27	17.6	E	90	23	27.0	Rank 1A	Rank 3
S-2	Trongsa	1	TPP0122230	89.90	Wangduephodrang	Trongsa	N	27	27	17.3	E	90	23	20.8	Rank 3	-
S-2	Trongsa	1	TPP0122240	89.55	Wangduephodrang	Trongsa	N	27	27	22.9	E	90	23	16.3	Rank 3	Rank 3
S-2	Trongsa	4	TRP0450010	8.80	Trongsa	Gelephu	N	27	27	48.5	E	90	30	3.9	Rank 1B	Rank 2
S-2	Trongsa	4	TRP0450020	8.78	Trongsa	Gelephu	N	27	27	50.2	E	90	30	2.1	Rank 2	-
S-2	Trongsa	4	TRP0450030	8.64	Trongsa	Gelephu	N	27	27	50.2	E	90	29	59.8	Rank 3	Rank 3
S-2	Trongsa	4	TRP0450040	8.62	Trongsa	Gelephu	N	27	27	51.6	E	90	29	56.1	Rank 3	-
S-2	Trongsa	4	TRP0450050	8.42	Trongsa	Gelephu	N	27	27	51.5	E	90	29	53.7	Rank 3	Rank 3
S-2	Trongsa	4	TRP0450060	8.11	Trongsa	Gelephu	N	27	27	52.8	E	90	29	44.1	Rank 3	Rank 3
S-2	Trongsa	4	TRP0450070	8.07	Trongsa	Gelephu	N	27	27	52.9	E	90	29	40.8	Rank 1A	-
S-2	Trongsa	4	TRP0450080	7.65	Trongsa	Gelephu	N	27	27	55.3	E	90	29	29.1	Rank 3	Rank 3
S-2	Trongsa	4	TRP0450090	7.25	Trongsa	Gelephu	N	27	28	3.7	E	90	29	28.4	Rank 3	Rank 3
S-2	Trongsa	4	TRP0450100	7.24	Trongsa	Gelephu	N	27	28	8.6	E	90	29	30.5	Rank 3	-
S-2	Trongsa	4	TRP0450110	7.00	Trongsa	Gelephu	N	27	28	10.9	E	90	29	30.7	Rank 2	Rank 3
S-2	Trongsa	4	TRP0450120	6.98	Trongsa	Gelephu	N	27	28	16.0	E	90	29	32.5	Rank 3	-
S-2	Trongsa	4	TRP0450130	6.67	Trongsa	Gelephu	N	27	28	17.2	E	90	29	26.3	Rank 2	Rank 3
S-2	Trongsa	4	TRP0450140	6.33	Trongsa	Gelephu	N	27	28	23.5	E	90	29	31.4	Rank 3	Rank 3
S-2	Trongsa	4	TRP0450150	6.14	Trongsa	Gelephu	N	27	28	31.3	E	90	29	39.8	Rank 1B	Rank 3
S-2	Trongsa	4	TRP0450160	6.11	Trongsa	Gelephu	N	27	28	32.4	E	90	29	44.9	Rank 3	-

Basic Information														Final Judgment		
Section	Management Office	Road No.	Management No.	Distance Mark			latitude			longitude			Judgment & Score			
				km	from	to	N/S	dd	mm	ss.s	E/W	dd	mm	ss.s	Mountain	Valley side
S-2	Trongsa	4	TRP0450170	6.02	Trongsa	Gelephu	N	27	28	33.5	E	90	29	44.1	Rank 1A	Rank 3
S-2	Trongsa	4	TRP0450180	5.76	Trongsa	Gelephu	N	27	28	35.8	E	90	29	44.2	Rank 3	Rank 3
S-2	Trongsa	4	TRP0450190	5.48	Trongsa	Gelephu	N	27	28	42.1	E	90	29	50.3	Rank 3	-
S-2	Trongsa	4	TRP0450200	5.32	Trongsa	Gelephu	N	27	28	48.5	E	90	29	55.7	Rank 3	-
S-2	Trongsa	4	TRP0450210	5.19	Trongsa	Gelephu	N	27	28	54.2	E	90	29	57.5	Rank 3	-
S-2	Trongsa	4	TRP0450220	4.84	Trongsa	Gelephu	N	27	28	59.7	E	90	29	57.7	Rank 3	-
S-2	Trongsa	4	TRP0450230	4.35	Trongsa	Gelephu	N	27	29	11.1	E	90	29	54.6	Rank 3	-
S-2	Trongsa	4	TRP0450240	4.19	Trongsa	Gelephu	N	27	29	15.8	E	90	30	0.0	Rank 3	Rank 3
S-2	Trongsa	4	TRP0450250	4.04	Trongsa	Gelephu	N	27	29	17.1	E	90	30	14.1	Rank 3	-
S-2	Trongsa	4	TRP0450260	3.88	Trongsa	Gelephu	N	27	29	14.8	E	90	30	29.6	Rank 2	Rank 1B
S-2	Trongsa	4	TRP0450270	3.63	Trongsa	Gelephu	N	27	29	14.4	E	90	30	29.8	Rank 2	-
S-2	Trongsa	4	TRP0450280	3.46	Trongsa	Gelephu	N	27	29	16.2	E	90	30	34.0	Rank 1A	Rank 2
S-2	Trongsa	4	TRP0450290	3.43	Trongsa	Gelephu	N	27	29	16.2	E	90	30	38.8	Rank 1B	-
S-2	Trongsa	4	TRP0450300	3.28	Trongsa	Gelephu	N	27	29	24.7	E	90	30	42.8	Rank 3	-
S-2	Trongsa	4	TRP0450310	3.28	Trongsa	Gelephu	N	27	29	17.5	E	90	30	37.6	Rank 1B	Rank 2
S-2	Trongsa	4	TRP0450320	3.10	Trongsa	Gelephu	N	27	29	25.5	E	90	30	50.5	Rank 3	Rank3
S-2	Trongsa	4	TRP0450330	3.09	Trongsa	Gelephu	N	27	29	24.8	E	90	30	50.6	Rank 3	-
S-2	Trongsa	4	TRP0450340	2.86	Trongsa	Gelephu	N	27	29	24.9	E	90	30	52.9	Rank 2	Rank 3
S-2	Trongsa	4	TRP0450350	2.86	Trongsa	Gelephu	N	27	29	24.1	E	90	30	57.2	Rank 3	-
S-2	Trongsa	4	TRP0450360	2.50	Trongsa	Gelephu	N	27	29	24.2	E	90	30	58.2	Rank 2	Rank 3
S-2	Trongsa	4	TRP0450370	2.50	Trongsa	Gelephu	N	27	29	21.6	E	90	31	5.6	Rank 3	-
S-2	Trongsa	4	TRP0450380	2.31	Trongsa	Gelephu	N	27	29	22.2	E	90	31	6.6	Rank 2	Rank 3
S-2	Trongsa	4	TRP0450390	2.04	Trongsa	Gelephu	N	27	29	22.3	E	90	31	20.6	Rank 3	-
S-2	Trongsa	4	TRP0450400	2.04	Trongsa	Gelephu	N	27	29	20.8	E	90	31	13.8	Rank 3	Rank 3
S-2	Trongsa	4	TRP0450410	1.83	Trongsa	Gelephu	N	27	29	23.3	E	90	31	21.8	Rank 2	Rank 3
S-2	Trongsa	4	TRP0450420	1.70	Trongsa	Gelephu	N	27	29	26.5	E	90	31	25.9	Rank 2	Rank 3
S-2	Trongsa	4	TRP0450430	1.39	Trongsa	Gelephu	N	27	29	26.9	E	90	31	13.7	Rank 3	-
S-2	Trongsa	4	TRP0450440	1.33	Trongsa	Gelephu	N	27	29	29.1	E	90	31	11.8	Rank 3	-
S-2	Trongsa	4	TRP0450450	1.33	Trongsa	Gelephu	N	27	29	27.4	E	90	31	12.7	Rank 3	Rank 3
S-2	Trongsa	4	TRP0450460	0.99	Trongsa	Gelephu	N	27	29	33.1	E	90	31	2.6	Rank 3	Rank 3
S-2	Trongsa	4	TRP0450470	0.97	Trongsa	Gelephu	N	27	29	33.6	E	90	31	1.6	Rank 1B	-
S-2	Trongsa	4	TRP0450480	0.82	Trongsa	Gelephu	N	27	29	34.5	E	90	30	57.8	Rank 3	Rank 3
S-2	Trongsa	4	TRP0450490	0.81	Trongsa	Gelephu	N	27	29	35.7	E	90	30	57.4	Rank 1B	-
S-2	Trongsa	4	TRP0450500	0.70	Trongsa	Gelephu	N	27	29	35.5	E	90	30	56.3	Rank 3	Rank 3
S-2	Trongsa	4	TRP0450510	0.68	Trongsa	Gelephu	N	27	29	36.6	E	90	30	52.3	Rank 3	-
S-2	Trongsa	4	TRP0450520	0.36	Trongsa	Gelephu	N	27	29	40.0	E	90	30	44.0	Rank 3	Rank 3
S-2	Trongsa	4	TRP0450530	0.35	Trongsa	Gelephu	N	27	29	41.1	E	90	30	42.0	Rank 3	-
S-2	Trongsa	4	TRP0450540	0.15	Trongsa	Gelephu	N	27	29	42.2	E	90	30	40.3	Rank 3	Rank 3
S-2	Trongsa	4	TRP0450550	0.03	Trongsa	Gelephu	N	27	29	43.6	E	90	30	32.4	Rank 1B	-
S-3	Trongsa	4	TRP0420010	82.92	Trongsa	Gelephu	N	27	13	36.2	E	90	37	44.3	Rank 1A	Rank 2

Basic Information														Final Judgment		
Section	Management Office	Road No.	Management No.	Distance Mark			latitude				longitude			Judgment & Score		
				km	from	to	N/S	dd	mm	ss.s	E/W	dd	mm	ss.s	Mountain	Valley side
S-3	Trongsa	4	TRP0420020	82.61	Trongsa	Gelephu	N	27	13	34.0	E	90	37	28.8	Rank 1A	Rank 2
S-3	Trongsa	4	TRP0420030	82.29	Trongsa	Gelephu	N	27	13	28.5	E	90	37	20.3	Rank 2	Rank 3
S-3	Trongsa	4	TRP0420040	81.98	Trongsa	Gelephu	N	27	13	26.5	E	90	37	10.9	Rank 1A	Rank 3
S-3	Trongsa	4	TRP0420050	81.71	Trongsa	Gelephu	N	27	13	33.9	E	90	37	5.9	Rank 2	Rank 3
S-3	Trongsa	4	TRP0420060	81.50	Trongsa	Gelephu	N	27	13	42.0	E	90	36	58.8	Rank 2	Rank 2
S-3	Trongsa	4	TRP0420070	81.29	Trongsa	Gelephu	N	27	13	48.0	E	90	36	53.7	Rank 1A	Rank 2
S-3	Trongsa	4	TRP0420080	80.94	Trongsa	Gelephu	N	27	13	52.3	E	90	36	54.7	Rank 1A	Rank 2
S-3	Trongsa	4	TRP0420090	80.78	Trongsa	Gelephu	N	27	14	2.6	E	90	36	54.4	Rank 2	Rank 3
S-3	Trongsa	4	TRP0420100	80.77	Trongsa	Gelephu	N	27	14	7.3	E	90	36	57.6	Rank 3	-
S-3	Trongsa	4	TRP0420110	80.65	Trongsa	Gelephu	N	27	14	7.3	E	90	36	57.6	Rank 2	Rank 3
S-3	Trongsa	4	TRP0420120	80.63	Trongsa	Gelephu	N	27	14	10.1	E	90	36	54.4	Rank 3	-
S-3	Trongsa	4	TRP0420130	80.22	Trongsa	Gelephu	N	27	14	10.1	E	90	36	54.4	Rank 1B	Rank 1A
S-3	Trongsa	4	TRP0420140	80.21	Trongsa	Gelephu	N	27	14	18.0	E	90	36	48.8	Rank 3	-
S-3	Trongsa	4	TRP0420150	80.10	Trongsa	Gelephu	N	27	14	31.2	E	90	36	42.9	Rank 1A	-
S-3	Trongsa	4	TRP0420160	79.79	Trongsa	Gelephu	N	27	14	18.0	E	90	36	48.8	Rank 1A	Rank 1A
S-3	Trongsa	4	TRP0420170	79.72	Trongsa	Gelephu	N	27	14	31.2	E	90	36	42.9	Rank 3	Rank 3
S-3	Trongsa	4	TRP0420180	79.70	Trongsa	Gelephu	N	27	14	32.6	E	90	36	44.1	Rank 3	-
S-3	Trongsa	4	TRP0420190	79.46	Trongsa	Gelephu	N	27	14	32.6	E	90	36	44.1	Rank 3	Rank 3
S-3	Trongsa	4	TRP0420200	79.44	Trongsa	Gelephu	N	27	14	39.9	E	90	36	42.5	Rank 3	-
S-3	Trongsa	4	TRP0420210	79.24	Trongsa	Gelephu	N	27	14	39.9	E	90	36	42.5	Rank 2	Rank 3
S-3	Trongsa	4	TRP0420220	78.87	Trongsa	Gelephu	N	27	14	44.4	E	90	36	36.1	Rank 3	Rank 3
S-3	Trongsa	4	TRP0420230	78.85	Trongsa	Gelephu	N	27	14	53.5	E	90	36	37.8	Rank 2	-
S-3	Trongsa	4	TRP0420240	78.63	Trongsa	Gelephu	N	27	14	53.5	E	90	36	37.8	Rank 3	Rank 3
S-3	Trongsa	4	TRP0420250	78.36	Trongsa	Gelephu	N	27	14	54.6	E	90	36	28.5	Rank 3	Rank 3
S-3	Trongsa	4	TRP0420260	78.35	Trongsa	Gelephu	N	27	14	58.5	E	90	36	24.0	Rank 3	-
S-3	Trongsa	4	TRP0420270	78.23	Trongsa	Gelephu	N	27	14	58.5	E	90	36	24.0	Rank 3	Rank 3
S-3	Trongsa	4	TRP0420280	78.22	Trongsa	Gelephu	N	27	15	1.5	E	90	36	22.5	Rank 3	-
S-3	Trongsa	4	TRP0420290	77.94	Trongsa	Gelephu	N	27	15	1.5	E	90	36	22.5	Rank 3	Rank 3
S-3	Trongsa	4	TRP0420300	77.69	Trongsa	Gelephu	N	27	15	7.6	E	90	36	14.5	Rank 3	Rank 3
S-3	Trongsa	4	TRP0420310	77.41	Trongsa	Gelephu	N	27	15	14.6	E	90	36	9.2	Rank 3	Rank 3
S-3	Trongsa	4	TRP0420320	77.19	Trongsa	Gelephu	N	27	15	23.4	E	90	36	6.1	Rank 3	Rank 3
S-3	Trongsa	4	TRP0420330	77.17	Trongsa	Gelephu	N	27	15	29.7	E	90	36	4.7	Rank 3	-
S-3	Trongsa	4	TRP0420340	76.81	Trongsa	Gelephu	N	27	15	29.7	E	90	36	4.7	Rank 3	Rank 3
S-3	Trongsa	4	TRP0420350	76.62	Trongsa	Gelephu	N	27	15	40.3	E	90	36	0.4	Rank 3	Rank 3
S-3	Trongsa	4	TRP0420360	76.33	Trongsa	Gelephu	N	27	15	48.1	E	90	36	55.7	Rank 3	Rank 3
S-3	Trongsa	4	TRP0420370	75.93	Trongsa	Gelephu	N	27	15	53.4	E	90	36	54.4	Rank 3	Rank 3
S-3	Trongsa	4	TRP0420380	75.67	Trongsa	Gelephu	N	27	16	6.5	E	90	36	54.9	Rank 3	Rank 3
S-3	Trongsa	4	TRP0420390	75.37	Trongsa	Gelephu	N	27	16	14.6	E	90	36	58.7	Rank 3	Rank 3
S-3	Trongsa	4	TRP0420400	74.97	Trongsa	Gelephu	N	27	16	22.8	E	90	36	3.8	Rank 3	Rank 3
S-3	Trongsa	4	TRP0420410	74.96	Trongsa	Gelephu	N	27	16	17.0	E	90	36	12.6	Rank 3	-

Basic Information														Final Judgment		
Section	Management Office	Road No.	Management No.	Distance Mark			latitude				longitude				Judgment & Score	
				km	from	to	N/S	dd	mm	ss.s	E/W	dd	mm	ss.s	Mountain	Valley side
S-3	Trongsa	4	TRP0420420	74.60	Trongsa	Gelephu	N	27	16	17.0	E	90	36	12.6	Rank 3	Rank 3
S-3	Trongsa	4	TRP0420430	74.25	Trongsa	Gelephu	N	27	16	17.7	E	90	36	25.1	Rank 3	Rank 3
S-3	Trongsa	4	TRP0420440	74.24	Trongsa	Gelephu	N	27	16	15.3	E	90	36	36.0	Rank 3	-
S-3	Trongsa	4	TRP0420450	74.04	Trongsa	Gelephu	N	27	16	15.3	E	90	36	36.0	Rank 3	Rank 3
S-3	Trongsa	4	TRP0420460	73.69	Trongsa	Gelephu	N	27	16	20.2	E	90	36	38.0	Rank 2	Rank 3
S-3	Trongsa	4	TRP0420470	73.29	Trongsa	Gelephu	N	27	16	27.0	E	90	36	47.8	Rank 3	Rank 3
S-3	Trongsa	4	TRP0420480	73.02	Trongsa	Gelephu	N	27	16	26.4	E	90	37	2.1	Rank 3	Rank 3
S-3	Trongsa	4	TRP0420490	73.01	Trongsa	Gelephu	N	27	16	21.5	E	90	37	8.8	Rank 3	-
S-3	Trongsa	4	TRP0420500	72.80	Trongsa	Gelephu	N	27	16	21.5	E	90	37	8.8	Rank 3	Rank 3
S-3	Trongsa	4	TRP0420510	72.50	Trongsa	Gelephu	N	27	16	30.1	E	90	37	8.8	Rank 3	Rank 3
S-3	Trongsa	4	TRP0420520	72.19	Trongsa	Gelephu	N	27	16	35.1	E	90	37	13.2	Rank 3	Rank 3
S-3	Trongsa	4	TRP0420530	71.85	Trongsa	Gelephu	N	27	16	38.3	E	90	37	24.8	Rank 3	Rank 3
S-3	Trongsa	4	TRP0420540	71.84	Trongsa	Gelephu	N	27	16	39.2	E	90	37	36.4	Rank 3	-
S-3	Trongsa	4	TRP0420550	71.55	Trongsa	Gelephu	N	27	16	39.2	E	90	37	36.4	Rank 2	Rank 2
S-3	Trongsa	4	TRP0420560	71.10	Trongsa	Gelephu	N	27	16	41.6	E	90	37	44.6	Rank 1A	Rank 1A
S-3	Trongsa	4	TRP0420570	70.74	Trongsa	Gelephu	N	27	16	46.1	E	90	37	34.2	Rank 2	Rank 3
S-3	Trongsa	4	TRP0420580	70.73	Trongsa	Gelephu	N	27	16	52.3	E	90	37	27.3	Rank 2	-
S-3	Trongsa	4	TRP0420590	70.58	Trongsa	Gelephu	N	27	16	52.3	E	90	37	27.3	Rank 2	Rank 3
S-3	Trongsa	4	TRP0420600	70.33	Trongsa	Gelephu	N	27	16	50.7	E	90	37	23.0	Rank 3	Rank 3