

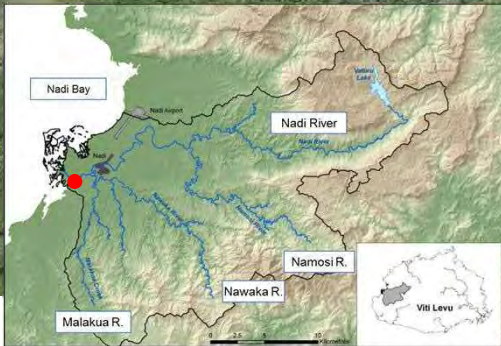
## Data Book-4

### ナンディ川流域航空写真

# Nadi River(1): River mouth



# Nadi River(2):



# Nadi River(3):



# Nadi River(4):



# Nadi River(5):



# Nadi River(6):

D4-6



# Nadi River(7):



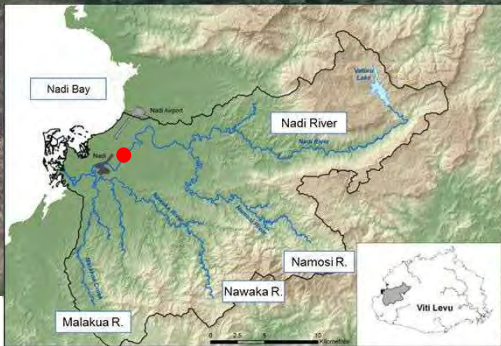


# Nadi River(8):

D4-8

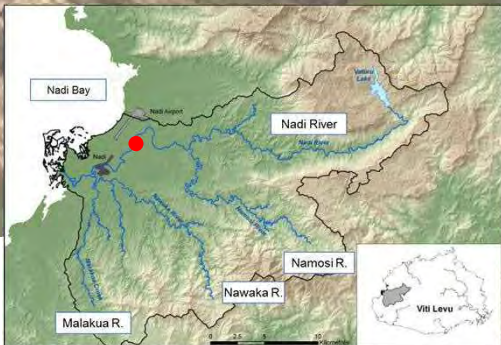


# Nadi River(9):



# Nadi River(10):

D4-10

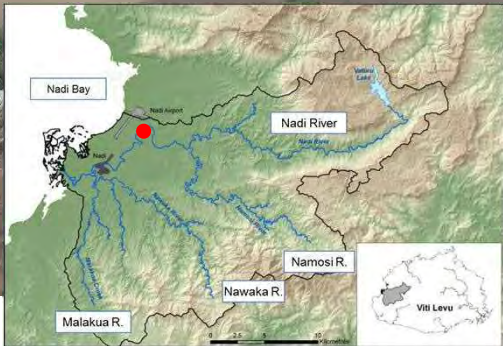


# Nadi River(11):

D4-11



# Nadi River(12):



# Nadi River(13):

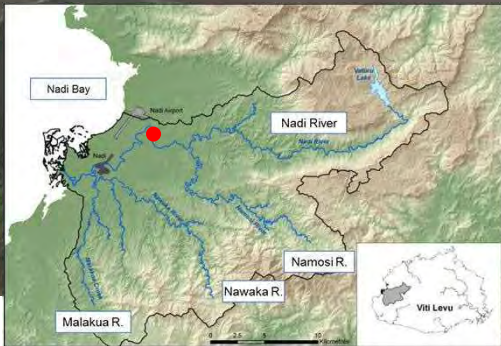


# Nadi River(14):



# Nadi River(15):

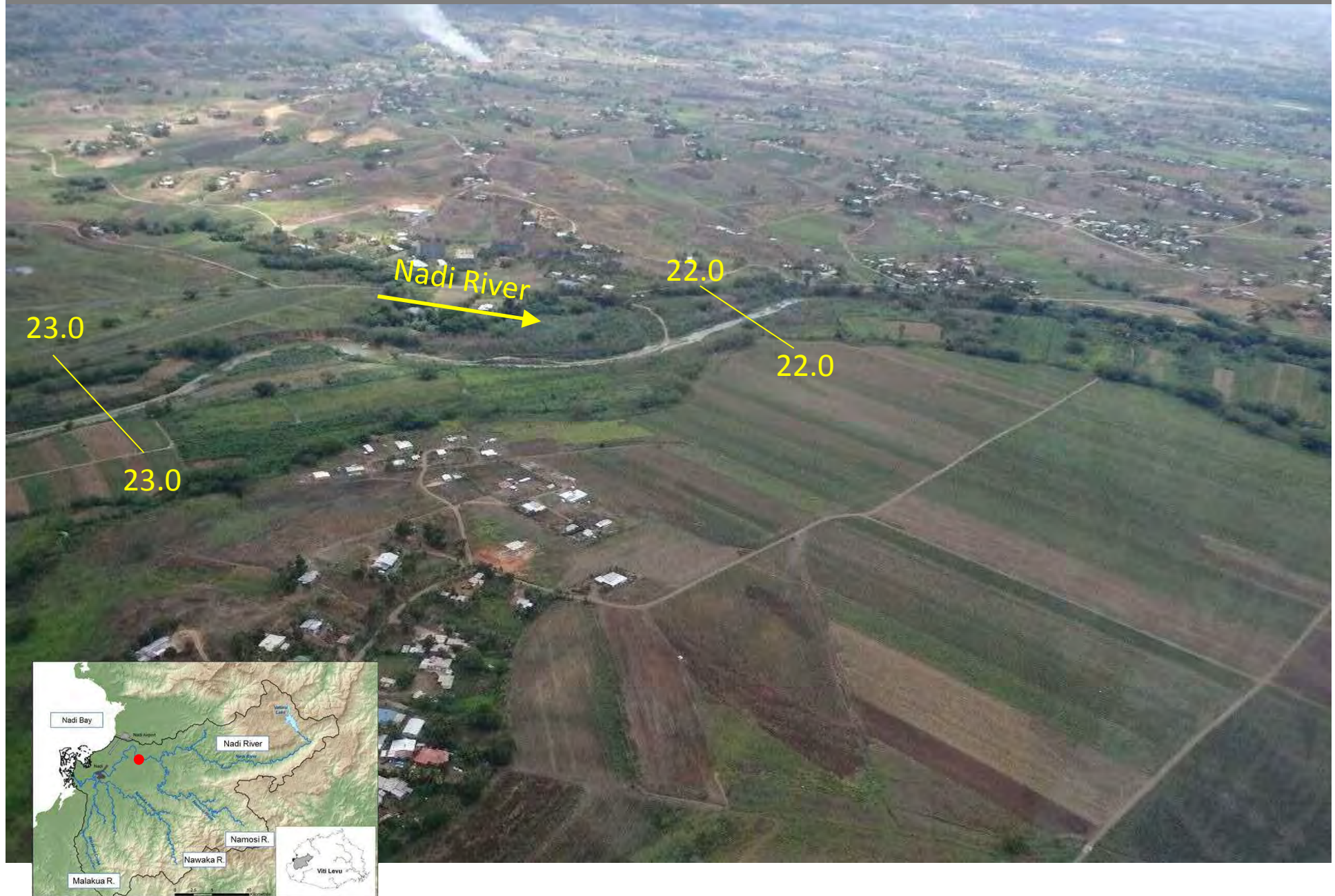
D4-15



20.0 ————— 20.0



# Nadi River(16):



# Nadi River(17):

D4-17



# Nadi River(18):



# Nadi River(19):

D4-19



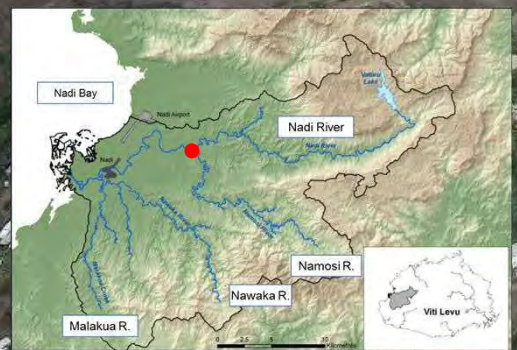
24.0

25.0

25.0

Namosi River

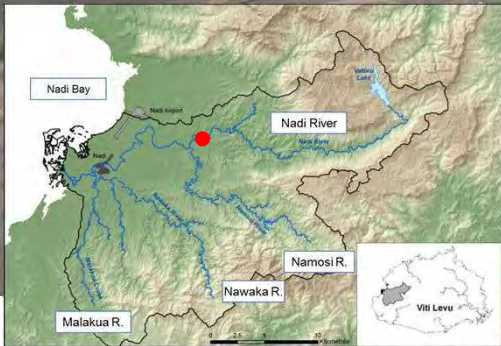
Nadi River



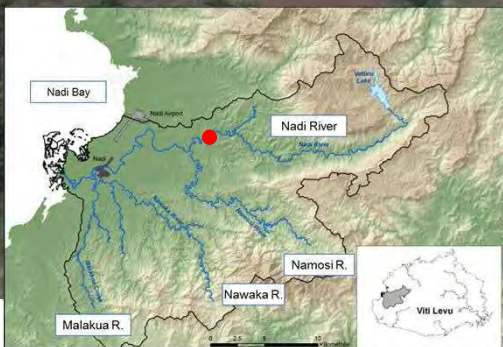
# Nadi River(20):



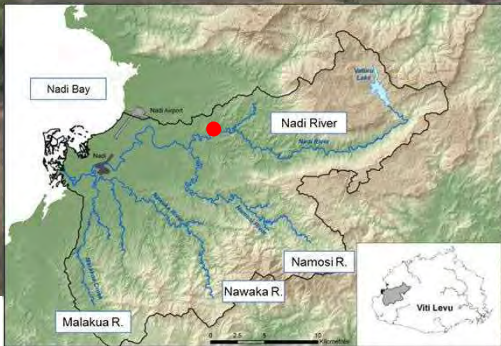
# Nadi River(21):



# Nadi River(22):

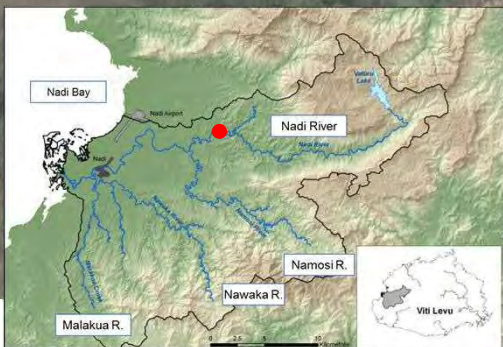


# Nadi River(23):

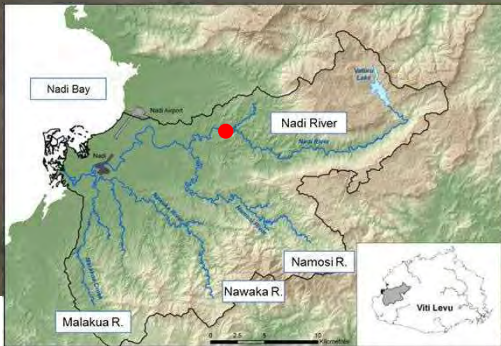




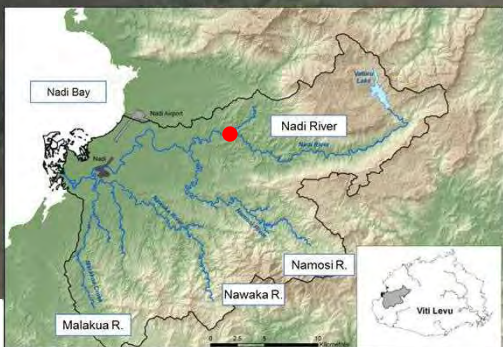
# Nadi River(24):



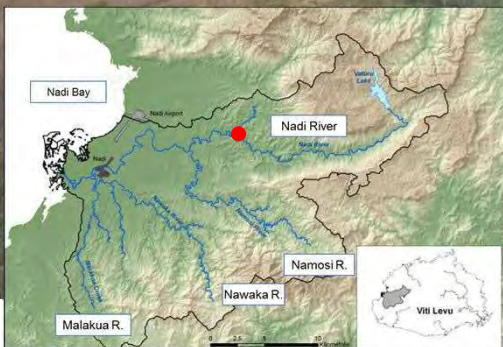
# Nadi River(25):



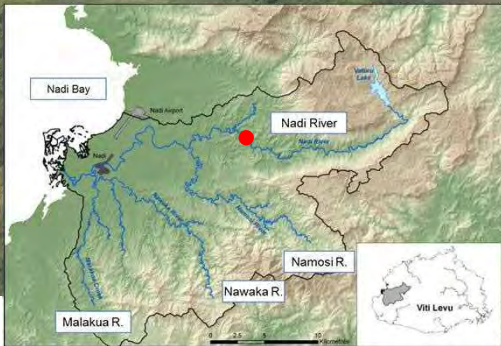
# Nadi River(26):



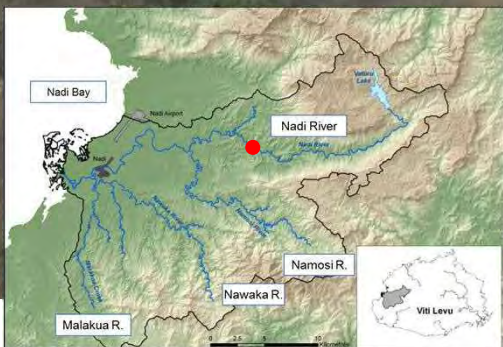
# Nadi River(27):



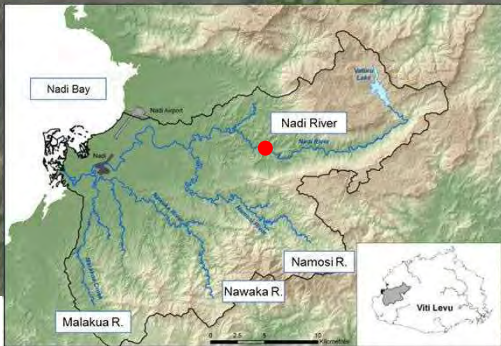
# Nadi River(28):



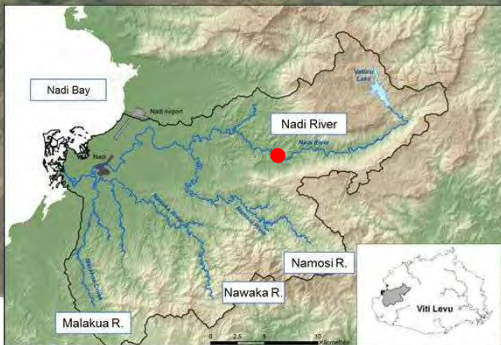
# Nadi River(29):



# Nadi River(30):

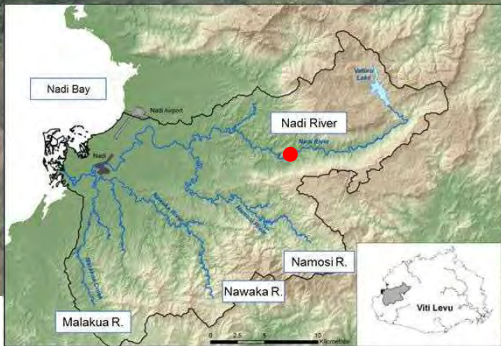


# Nadi River(31):

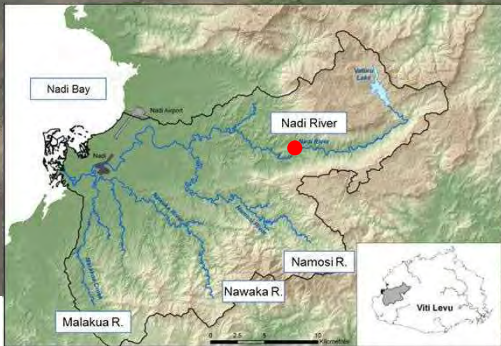




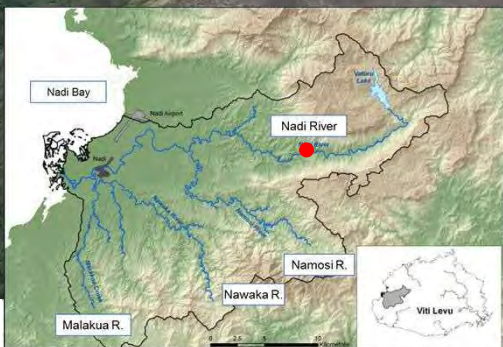
# Nadi River(32):



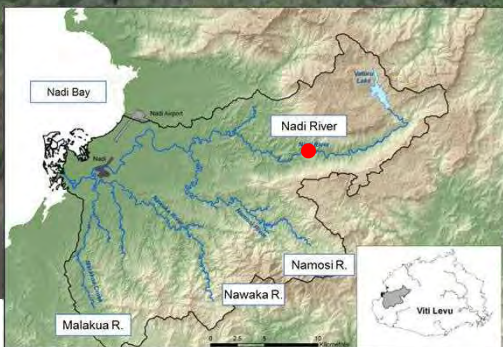
# Nadi River(33):



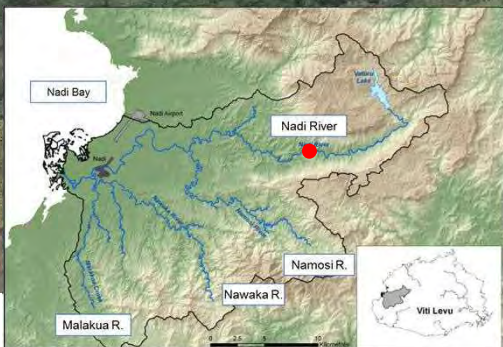
# Nadi River(34):



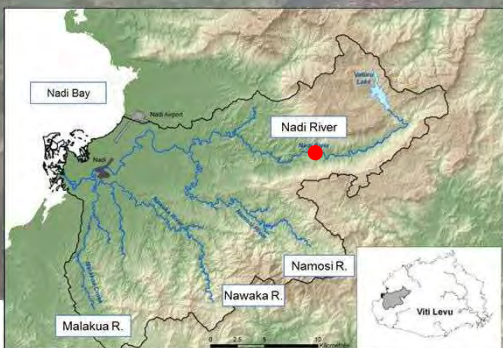
# Nadi River(35):



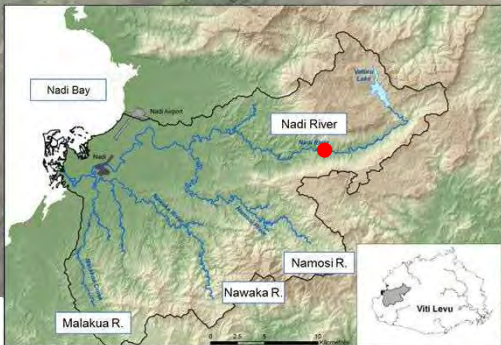
# Nadi River(36):



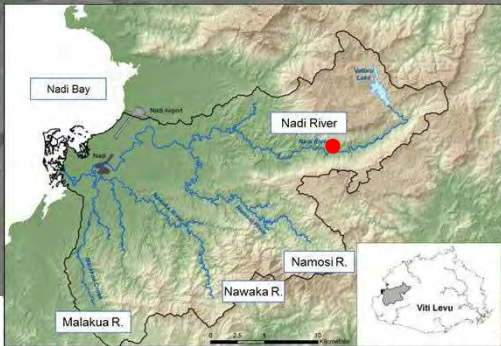
# Nadi River(37):



# Nadi River(38):

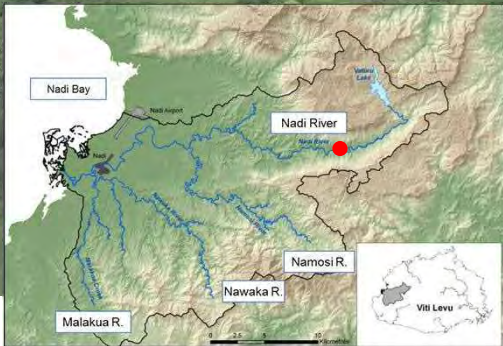


# Nadi River(39):

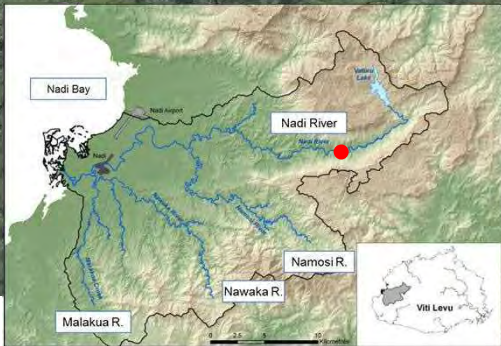




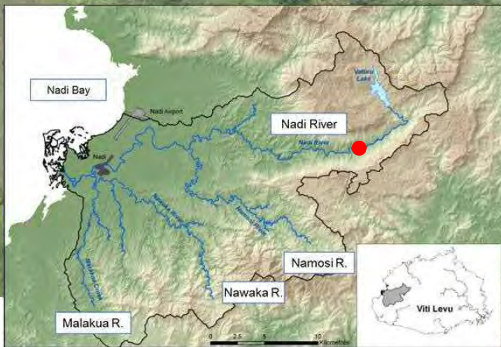
# Nadi River(40):



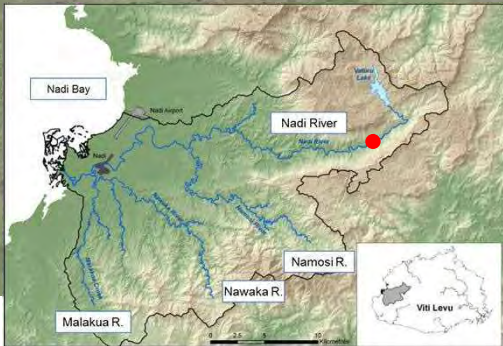
# Nadi River(41):



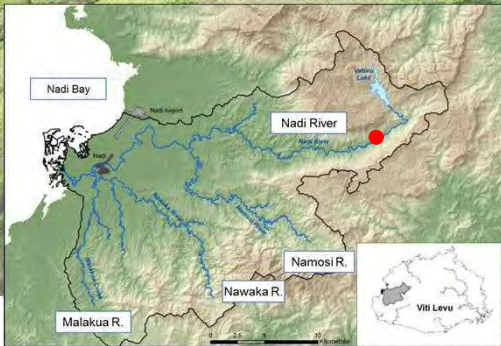
# Nadi River(42):



# Nadi River(43):

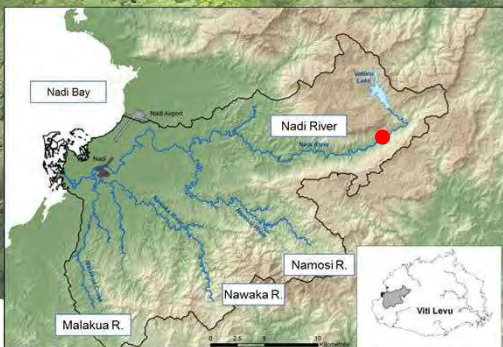


# Nadi River(44):

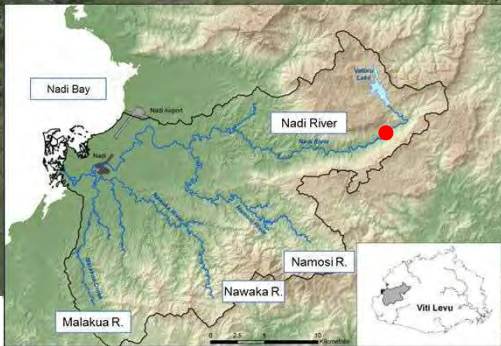


# Nadi River(45):

D4-45



# Nadi River(46):

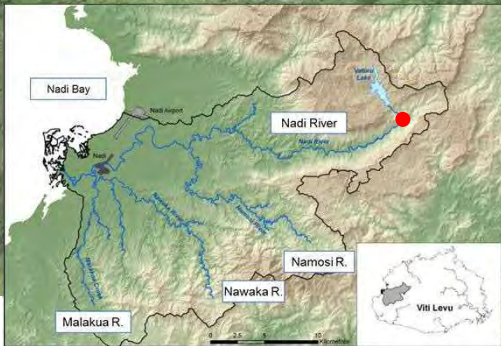


# Nadi River(47):

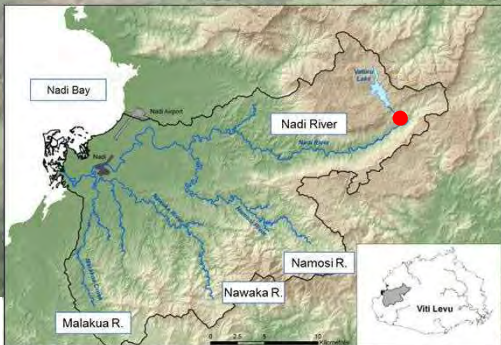




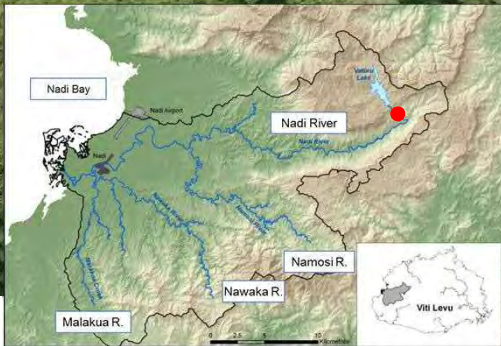
# Nadi River(48):



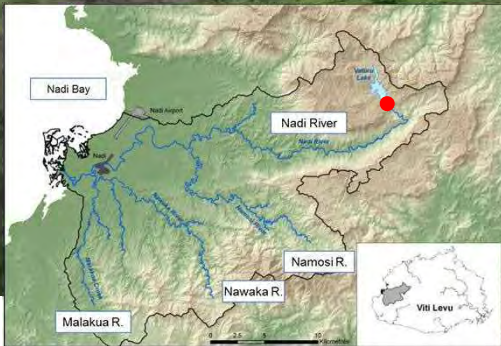
# Nadi River(49):



# Nadi River(50):



# Nadi River(51):

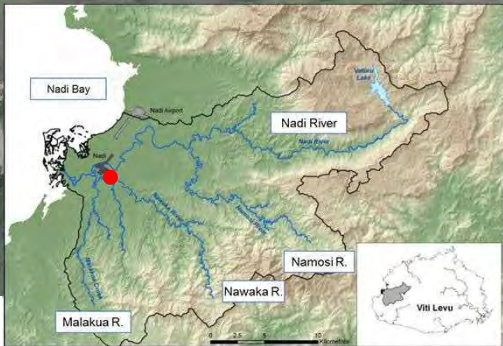


# Nawaka River

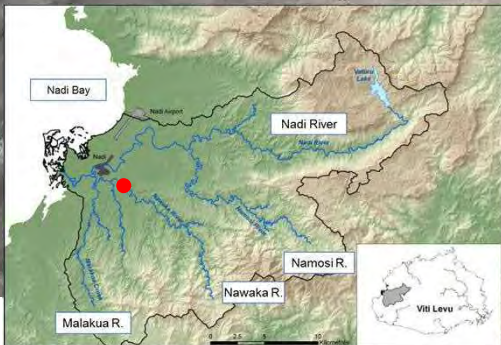
# Nawaka River(1):



# Nawaka River(2):



# Nawaka River(3):





# Nawaka River(4):



# Malakua River

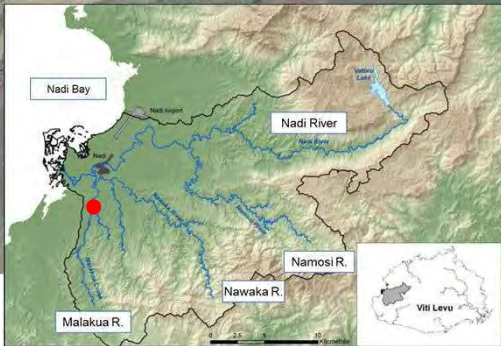
# Malakua River(1):



# Malakua River(2):



# Malakua River(3):



# Malakua River(4):



# Malakua River(5):



# Malakua River(6):





# Malakua River(7):

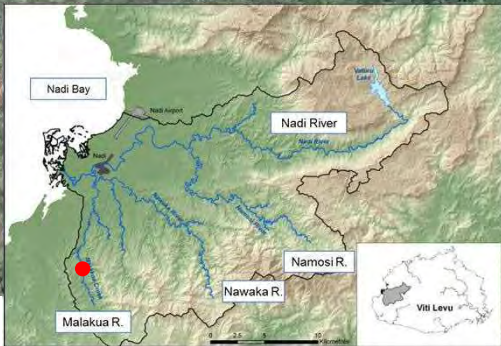


# Malakua River(8):

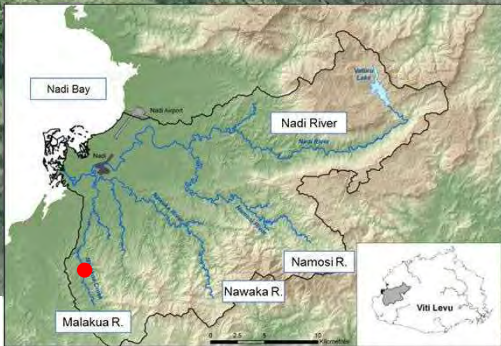
D4-65



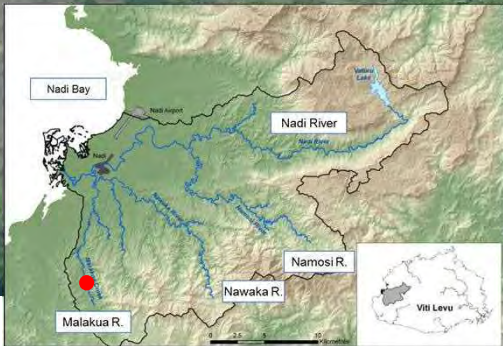
# Malakua River(9):



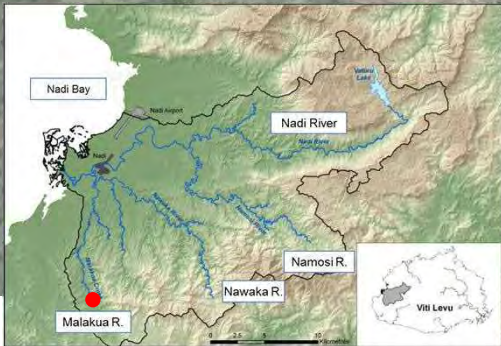
# Malakua River(10):



# Malakua River(11):



# Malakua River(12):



# Specified Area

# Nadi River(2): Down-stream





# Nadi River(3): Nadi town



# Nadi River(4): Mid-stream



# Nadi River(5): Up-stream

D4-74



# Nadi River(6): Vaturu dam



# Namosi River



# Nawaka River(1): Nadi river confluence



# Nawaka River(2): Mid-stream



# Malakua River

