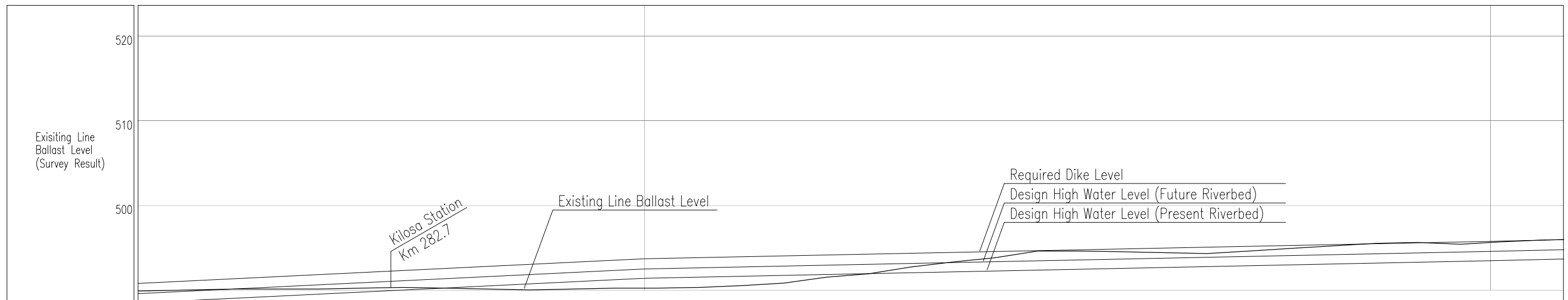
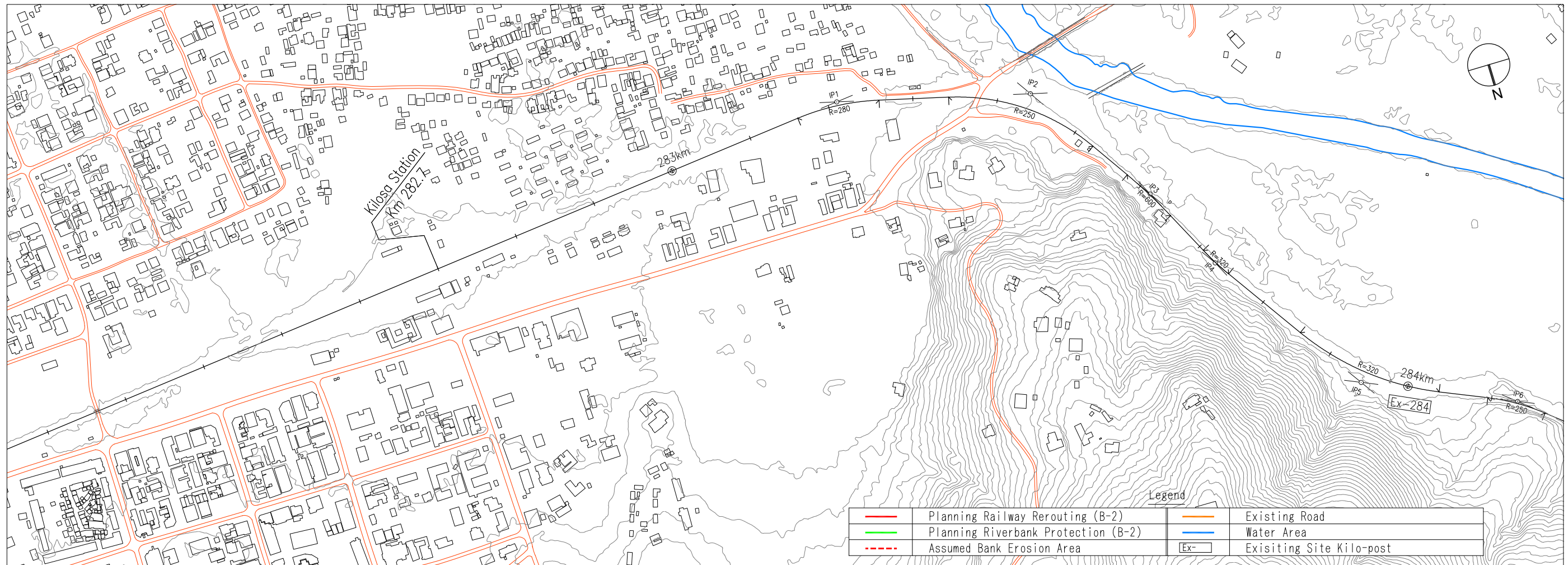


**APPENDIX W**

**ALIGNMENT STATEMENT OF EXISTING LINE**

# Existing Railway Line

A1[H=1:2,500 V=1:250] A3[H=1:5,000 V=1:500]



Existing Line Ballast Level (Survey Result)	489.91	489.95	489.99	490.03	490.07	490.10	490.10	490.10	490.11	490.15	490.19	490.23	490.27	490.29	490.25	490.21	490.17	490.13	490.09	490.05	490.01	490.03	490.07	490.11	490.15	490.19	490.20	490.20	490.21	490.25	490.29	490.36	490.44	490.53	490.65	490.77	491.01	491.29	491.54	491.70	491.86	492.14	492.46	492.76	493.00	493.24	493.45	493.65	493.88	494.20	494.52	494.60	494.60	494.59	494.59	494.55	494.51	494.47	494.43	494.39	494.35	494.31	494.39	494.51	494.63	494.75	494.87	494.99	495.11	495.23	495.35	495.47	495.53	495.57	495.58	495.50	495.42	495.49	495.61	495.72	495.80	495.88	495.93
Existing Line Curvature	R=280m IP1																												R=250m IP2						R=600m IP3						R=320m IP4						R=320m IP5																																				
Kilometrage (Re-Setting)	5																												6						7						8						9						283						284																								
Kilometrage (Site Kilo Post)	Km283																												Km283						Km283						Km283						Km284						Km284																														

**GOVERNMENT AGENCIES:**



Japan International Cooperation Agency

Reli Assets Holding Company (RAHCO), Tanzania

**JICA STUDY TEAM:**

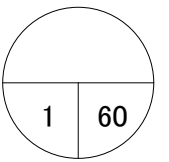
PADECO Co., Ltd.,  
Nippon Koei Co., Ltd.,  
Japan International Consultants for Transportation Co., Ltd., and  
Fukken Engineering Co., Ltd.

**PROJECT & LOCATION:**

Preparatory Survey on Flood Protection Measures for Central Railway Line in the United Republic of Tanzania

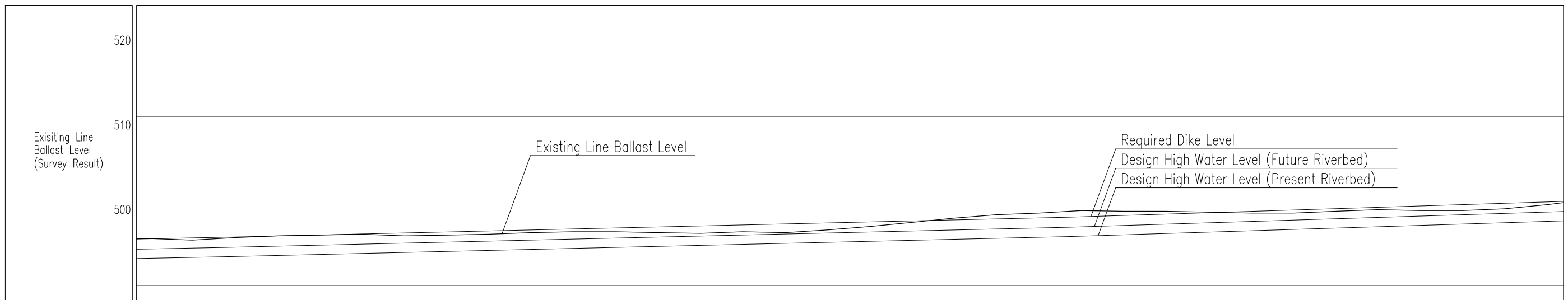
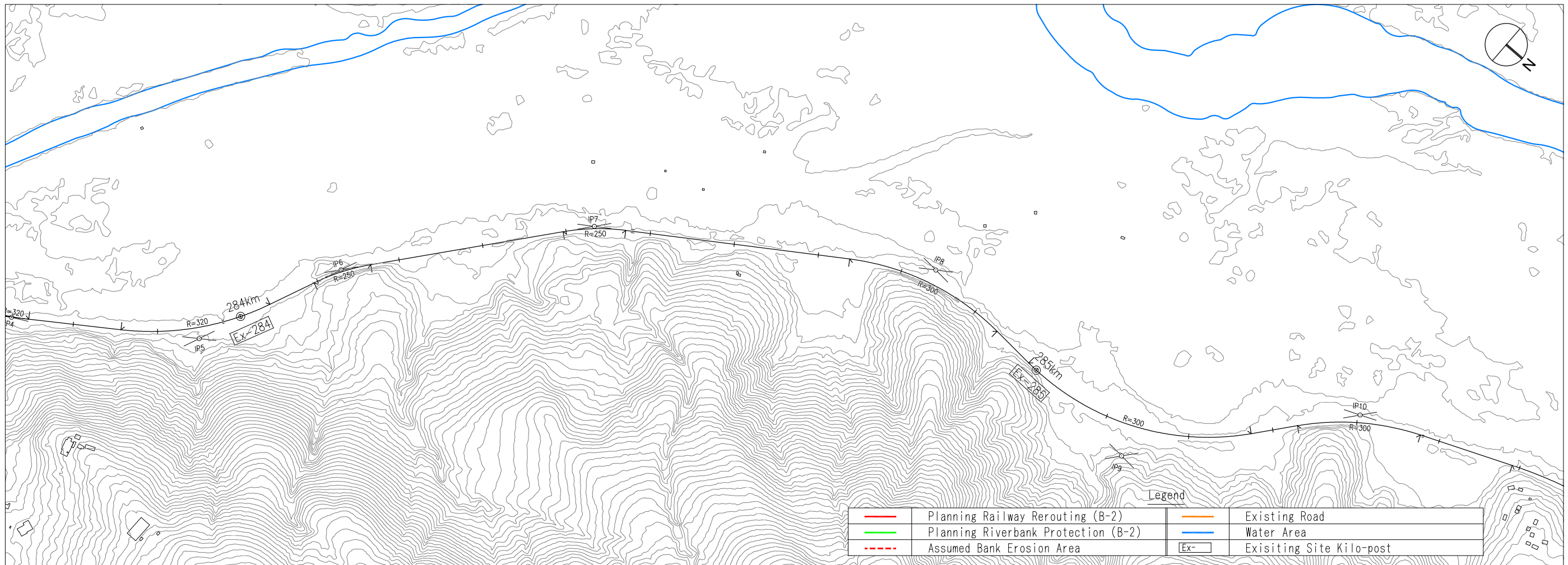
**SHEET CONTENTS:**

**DWG NUM**



# Existing Railway Line

A1[H=1:2,500 V=1:250] A3[H=1:5,000 V=1:500]



Existing Line Ballast Level (Survey Result)	495.58 495.50 495.42 495.49 495.61 495.72 495.80 495.88 495.93 495.97 496.01 496.05 496.09 496.04 495.96 495.91 495.95 495.99 496.03 496.07 496.12 496.20 496.28 496.33 496.37 496.40 496.40 496.37 496.33 496.29 496.25 496.21 496.26 496.34 496.39 496.35 496.31 496.39 496.51 496.64 496.80 496.96 497.15 497.35 497.55 497.75 497.95 498.12 498.28 498.42 498.50 498.58 498.69 498.81 498.89 498.85 498.81 498.80 498.80 498.79 498.75 498.71 498.67 498.63 498.60 498.60 498.60 498.66 498.74 498.82 498.90 498.98 498.97 498.93 498.90 498.90 498.90 498.96 499.04 499.15 499.35 499.55 499.78
Existing Line Curvature	IP5 R=320m R=250m IP6 R=250m IP7 R=300m IP8 R=300m IP9 R=300m IP10
Kilometrage (Re-Setting)	284   1   2   3   4   5   6   7   8   9   285   1   2   3   4   5
Kilometrage (Site Kilo Post)	Km284   Km285

## GOVERNMENT AGENCIES:



Japan International Cooperation Agency



Reli Assets Holding Company (RAHCO), Tanzania

## JICA STUDY TEAM:

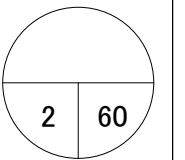
PADECO Co., Ltd.,  
Nippon Koei Co., Ltd.,  
Japan International Consultants for Transportation Co., Ltd., and  
Fukken Engineering Co., Ltd.

## PROJECT & LOCATION:

Preparatory Survey on Flood Protection Measures for Central Railway Line in the United Republic of Tanzania

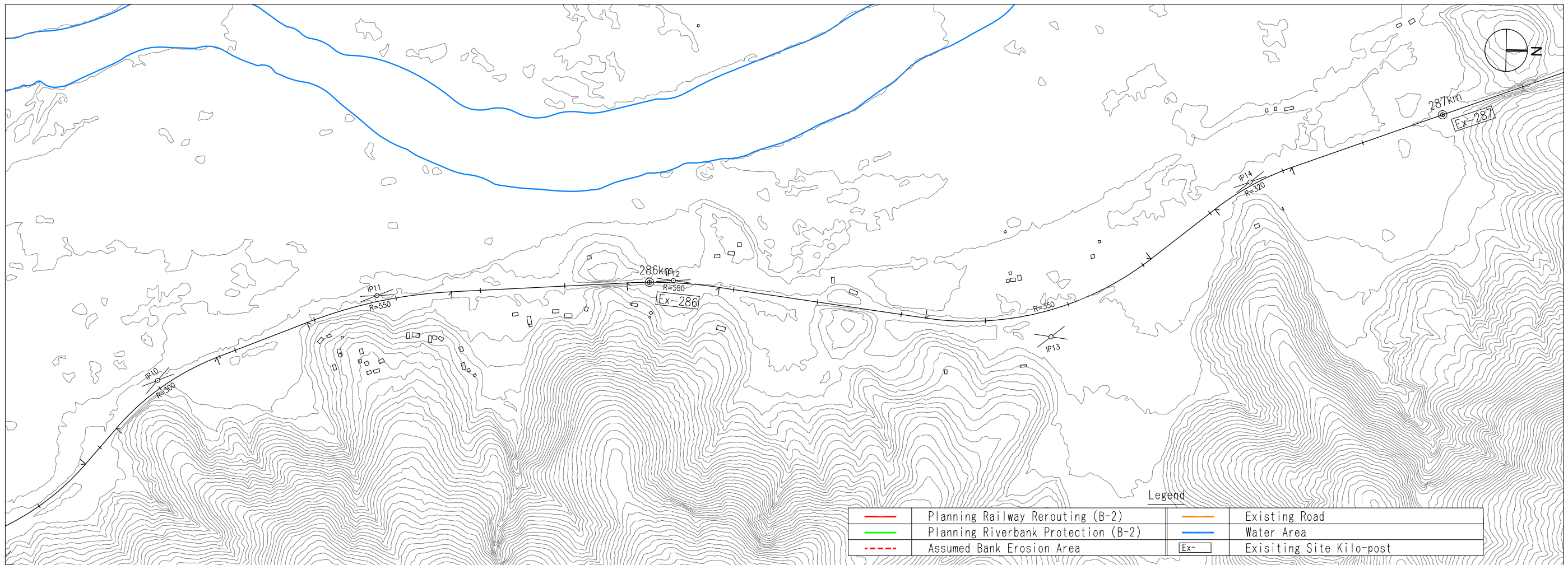
## SHEET CONTENTS:

## DWG NUM

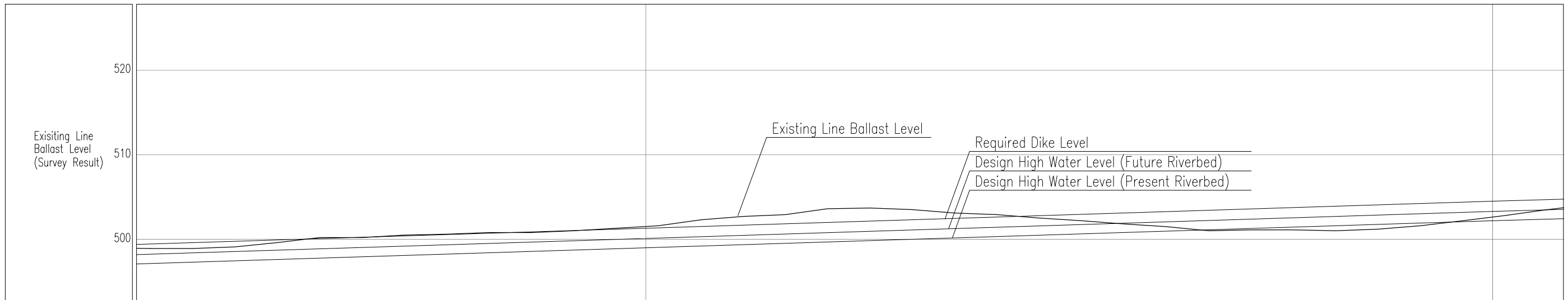


# Existing Railway Line

A1[H=1:2,500 V=1:250] A3[H=1:5,000 V=1:500]



Legend	
<span style="color: red;">—</span>	Planning Railway Rerouting (B-2)
<span style="color: green;">—</span>	Planning Riverbank Protection (B-2)
<span style="color: red;">- - -</span>	Assumed Bank Erosion Area
<span style="color: orange;">—</span>	Existing Road
<span style="color: blue;">—</span>	Water Area
[Ex- ]	Existing Site Kilo-post



Existing Line Ballast Level (Survey Result)	498.90 498.90 498.90 498.96 499.04 499.15 499.35 499.55 499.78 500.02 500.20 500.20 500.29 500.41 500.51 500.55 500.59 500.66 500.74 500.80 500.80 500.86 500.86 500.94 501.03 501.15 501.27 501.39 501.51 501.67 501.95 502.23 502.42 502.58 502.72 502.80 502.88 503.11 503.39 503.61 503.65 503.69 503.64 503.56 503.46 503.30 503.14 503.04 502.96 502.86 502.70 502.54 502.41 502.29 502.16 502.00 501.84 501.71 501.59 501.45 501.25 501.05 501.03 501.07 501.10 501.10 501.10 501.07 501.03 501.02 501.10 501.18 501.32 501.48 501.66 501.90 502.14 502.38 502.62 502.87 503.15 503.43 503.68
Existing Line Curvature	300m P10 R=550m IP11 R=550m IP12 R=350m IP13 R=320m IP14
Kilometrage (Re-Setting)	5 6 7 8 9 286 1 2 3 4 5 6 7 8 9 287
Kilometrage (Site Kilo Post)	Km286 Km287

**GOVERNMENT AGENCIES:**



Reli Assets Holding Company (RAHCO), Tanzania

**JICA STUDY TEAM:**

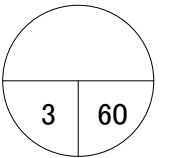
PADECO Co., Ltd.,  
Nippon Koei Co., Ltd.,  
Japan International Consultants for Transportation Co., Ltd., and  
Fukken Engineering Co., Ltd.

**PROJECT & LOCATION:**

Preparatory Survey on Flood Protection Measures for Central Railway Line in the United Republic of Tanzania

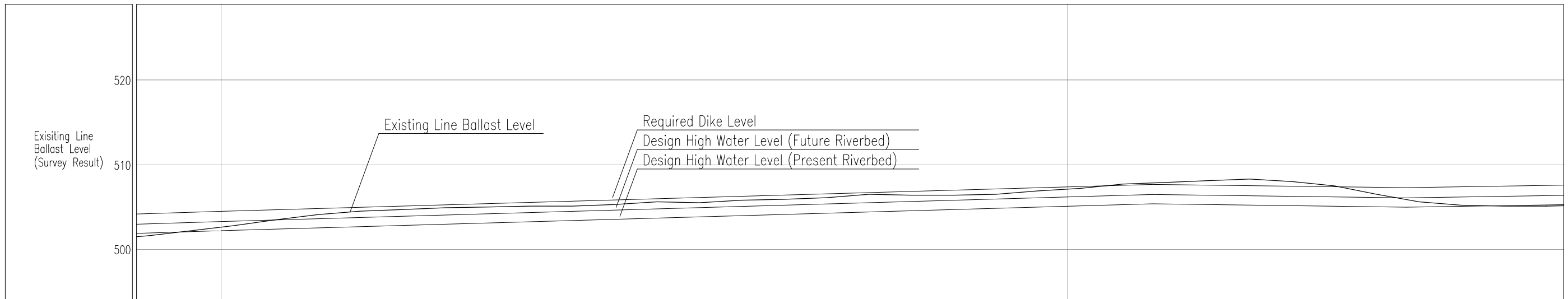
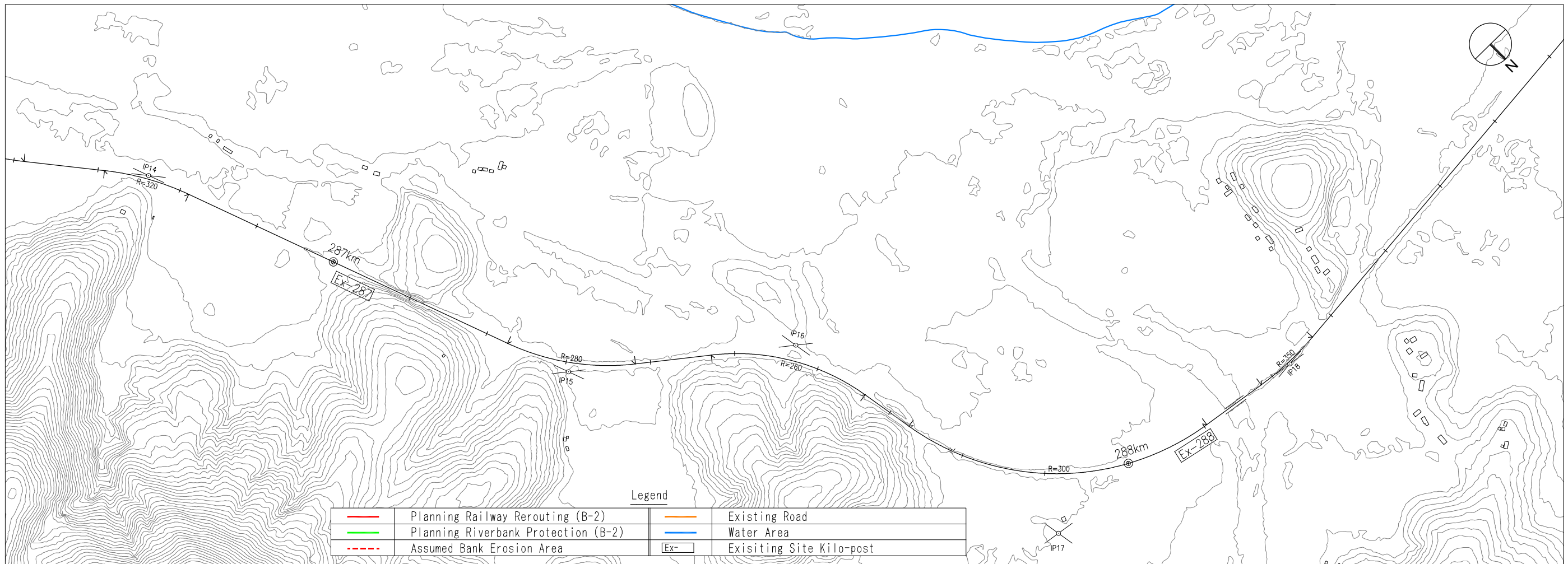
**SHEET CONTENTS:**

**DWG NUM**



# Existing Railway Line

A1[H=1:2,500 V=1:250] A3[H=1:5,000 V=1:500]



Existing Line Ballast Level (Survey Result)	501.66 501.90 502.14 502.38 502.62 502.87 503.15 503.43 503.68 503.92 504.14 504.30 504.46 504.56 504.64 504.72 504.80 504.88 504.93 504.97 505.01 505.05 505.09 505.10 505.12 505.20 505.28 505.39 505.51 505.59 505.55 505.51 505.59 505.71 505.81 505.85 505.89 505.96 506.04 506.14 506.30 506.46 506.47 506.43 506.40 506.40 506.40 506.43 506.47 506.54 506.70 506.86 506.99 507.11 507.25 507.45 507.65 507.76 507.84 507.92 508.00 508.08 508.16 508.24 508.27 508.15 508.03 507.85 507.65 507.40 507.00 506.60 506.23 505.87 505.56 505.40 505.24 505.17 505.13 505.10 505.10 505.13
Existing Line Curvature	IP15 R=280m IP16 R=260m IP17 R=300m IP18 R=350m
Kilometrage (Re-Setting)	287 1 2 3 4 5 6 7 8 9 288 1 2 3 4 5
Kilometrage (Site Kilo Post)	Km287 Km288 Km289

**GOVERNMENT AGENCIES:**



Japan International Cooperation Agency

Reli Assets Holding Company (RAHCO), Tanzania

**JICA STUDY TEAM:**

PADECO Co., Ltd.,  
Nippon Koei Co., Ltd.,  
Japan International Consultants for Transportation Co., Ltd., and  
Fukken Engineering Co., Ltd.

**PROJECT & LOCATION:**

Preparatory Survey on Flood Protection Measures for Central Railway Line in the United Republic of Tanzania

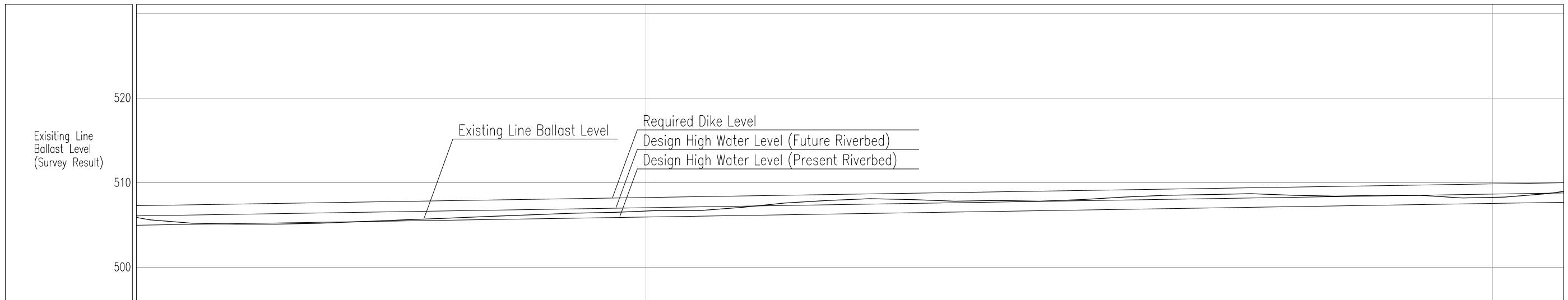
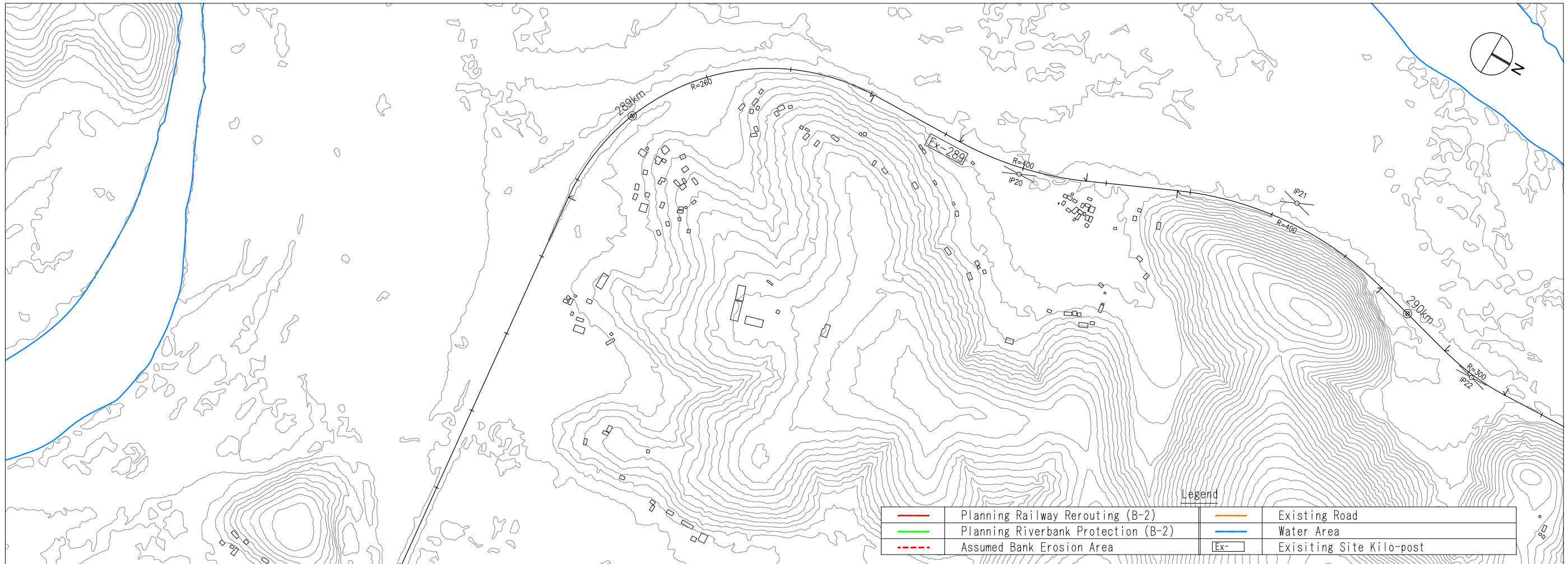
**SHEET CONTENTS:**

**DWG NUM**

4	60
---	----

# Existing Railway Line

A1[H=1:2,500 V=1:250] A3[H=1:5,000 V=1:500]



Existing Line Ballast Level (Survey Result)	505.56 505.40 505.24 505.17 505.13 505.10 505.10 505.10 505.13 505.17 505.22 505.30 505.38 505.46 505.54 505.62 505.70 505.78 505.86 505.94 506.02 506.10 506.18 506.26 506.34 506.41 506.45 506.49 506.56 506.64 506.70 506.70 506.70 506.82 506.98 507.15 507.35 507.55 507.69 507.81 507.92 508.00 508.08 508.07 508.03 507.98 507.90 507.82 507.83 507.87 507.89 507.85 507.81 507.86 507.94 508.03 508.15 508.27 508.36 508.44 508.51 508.55 508.59 508.63 508.67 508.68 508.60 508.62 508.47 508.43 508.41 508.45 508.49 508.50 508.50 508.47 508.35 508.23 508.23 508.27 508.34 508.50 508.66 508.91
Existing Line Curvature	R=260m IP19
Kilometrage (Re-Setting)	R=400m IP20
Kilometrage (Site Kilo Post)	R=400m IP21

**GOVERNMENT AGENCIES:**



Reli Assets Holding Company (RAHCO), Tanzania

**JICA STUDY TEAM:**

PADECO Co., Ltd.,  
Nippon Koei Co., Ltd.,  
Japan International Consultants for Transportation Co., Ltd., and  
Fukken Engineering Co., Ltd.

**PROJECT & LOCATION:**

Preparatory Survey on Flood Protection Measures for Central Railway Line in the United Republic of Tanzania

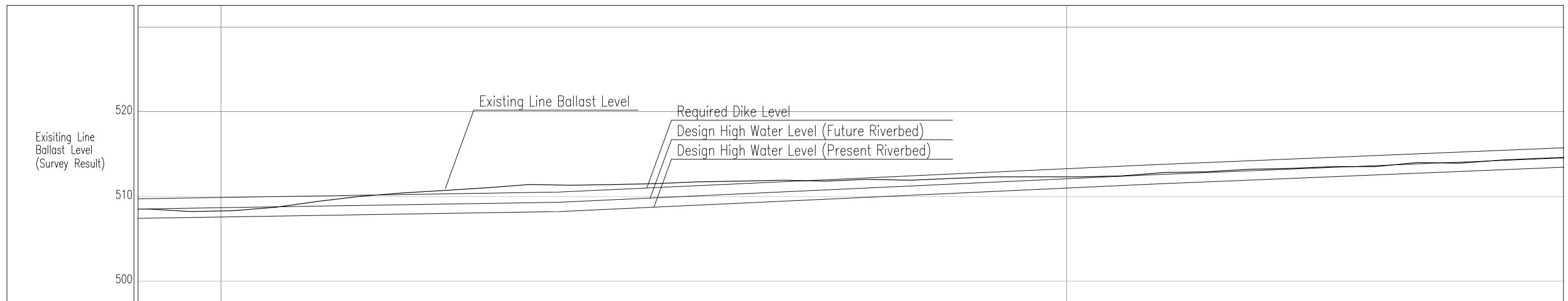
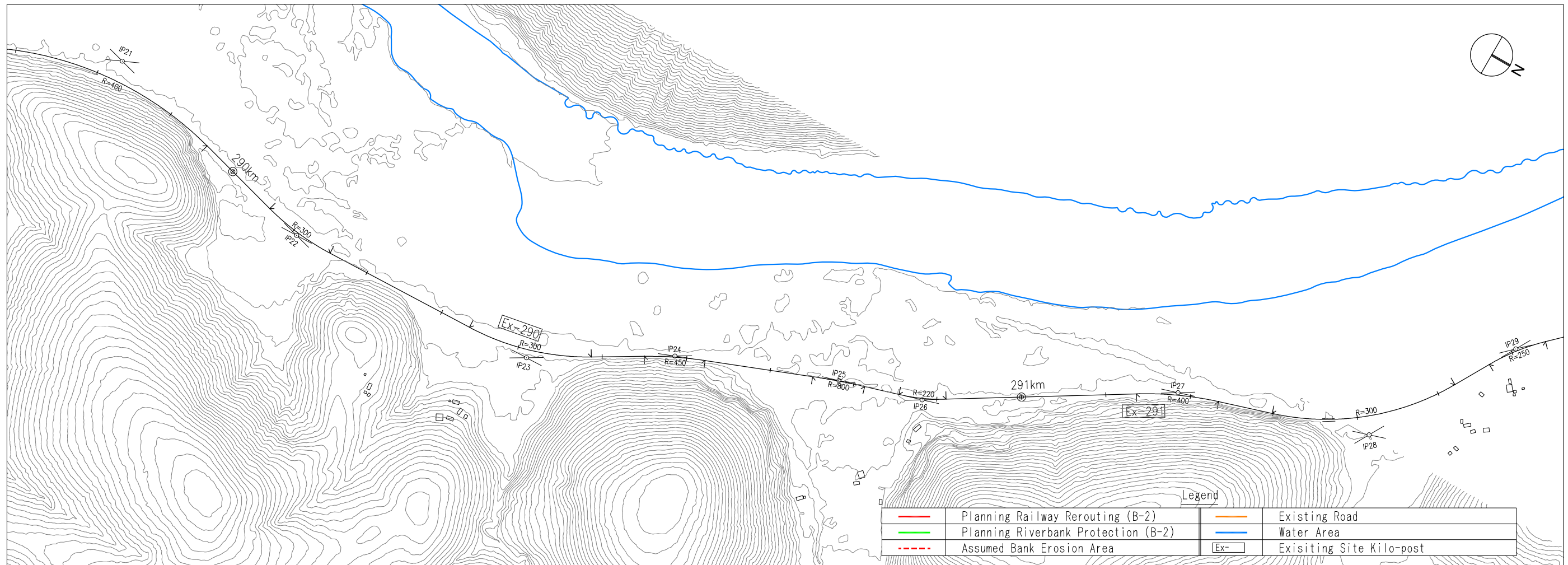
**SHEET CONTENTS:**

**DWG NUM**

5	60
---	----

# Existing Railway Line

A1[H=1:2,500 V=1:250] A3[H=1:5,000 V=1:500]



Existing Line Ballast Level (Survey Result)	508.47	508.35	508.23	508.23	508.27	508.34	508.50	508.66	508.91	509.19	509.46	509.70	509.94	510.12	510.28	510.43	510.55	510.67	510.79	510.91	511.04	511.20	511.36	511.37	511.33	511.31	511.35	511.39	511.43	511.47	511.52	511.60	511.68	511.73	511.77	511.81	511.85	511.89	511.87	511.83	511.82	511.90	511.98	511.97	511.93	511.92	512.00	512.08	512.16	512.24	512.30	512.30	512.30	512.30	512.31	512.35	512.39	512.52	512.68	512.81	512.85	512.89	512.99	513.11	513.21	513.25	513.29	513.36	513.44	513.50	513.50	513.65	513.85	513.99	513.95	513.91	514.02	514.18	514.32	514.40	514.48	514.56
Existing Line Curvature	R=300m										R=450m					R=800m					R=220m					R=400m																																																								
Kilometrage (Re-Setting)	290										291										292																																																													
Kilometrage (Site Kilo Post)	Km290										Km291										Km292																																																													

**GOVERNMENT AGENCIES:**



Reli Assets Holding Company (RAHCO), Tanzania

**JICA STUDY TEAM:**

PADECO Co., Ltd.,  
Nippon Koei Co., Ltd.,  
Japan International Consultants for Transportation Co., Ltd., and  
Fukken Engineering Co., Ltd.

**PROJECT & LOCATION:**

Preparatory Survey on Flood Protection Measures for Central Railway Line in the United Republic of Tanzania

**SHEET CONTENTS:**

**DWG NUM**

