

Health Profile of Yenanchaung Township



Area and Location*

Area	:	1007.38 Km ²
North	:	Kyaukpadaung
South	:	Magway
East	:	Natmauk
West	:	Salin

Administrative Units*

Wards	:	14
Village tracts	:	29
Villages	:	143

Population (2009)*

Total	:	176,544
Urban	:	63,130
Rural	:	113,414
Male	:	84,807
Female	:	91,737
Sex Ratio	:	92
<5 Year	:	18,414
0-14 Year	:	49,882
15-49 Year	:	88,532
Population Density	:	175.25/ Km ²

Health Facilities (2009)*

Township Hospital (50) Bedded	:	1
Station Hospital	:	1
Maternal and Child Health Centers	:	1
Rural Health Centers	:	6
Sub Health Centers	:	30
School Health Centers	:	1
Private Clinics and Maternity Homes	:	15

Health Manpower*

	<i>Doctor</i>	<i>Nurse</i>	<i>HA</i>	<i>LHV</i>	<i>PHS I</i>	<i>PHS II</i>	<i>MW</i>
Sanction	13	20	6	8	4	18	43
Appointed	9	17	6	8	4	16	39
Vacant	4	3	0	0	0	2	4
% Vacancy	30.8%	15%	0%	0%	0%	11.1%	9.3%

(HA: Health Assistant, LHV: Lady Health Visitor, PHS:Public Health Supervisor , MW: Midwife)

Health Manpower (Volunteer)*

	Category of Volunteer Health Workers		
	CHW	AMW	TTBA
Trained	195	124	35
Functioning	156	84	23
% Functioning	78.8%	67.7%	65.7%

(CHW: Community health Worker, AMW: Auxiliary Mid Wife, TTBA: Trained Traditional Birth Attendant)

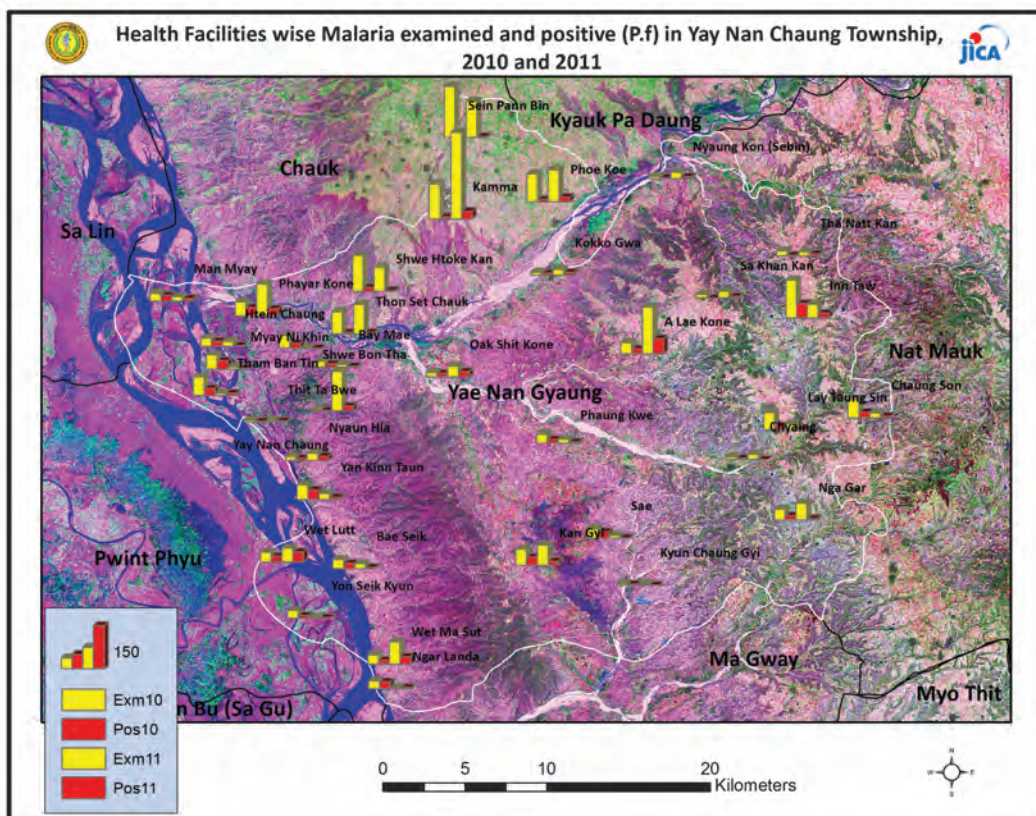
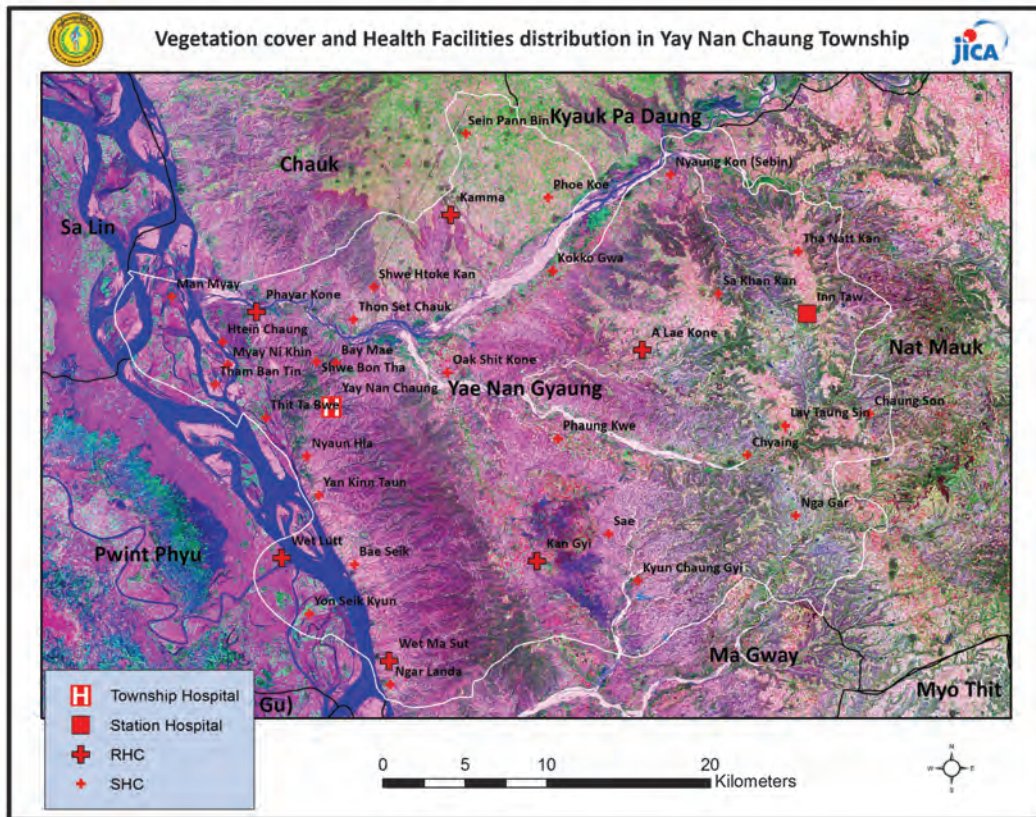
Common Diseases under National Surveillance*

<i>Diseases</i>	<i>Morbidity</i>	<i>Mortality</i>
Malaria	254.89	0
ARI <5	4284.78	0
Diarrhea	1222.92	0.57
Dysentery	701.81	0
TB(Sputum+)	41.35	2.27
Snake Bite	17.56	4.53

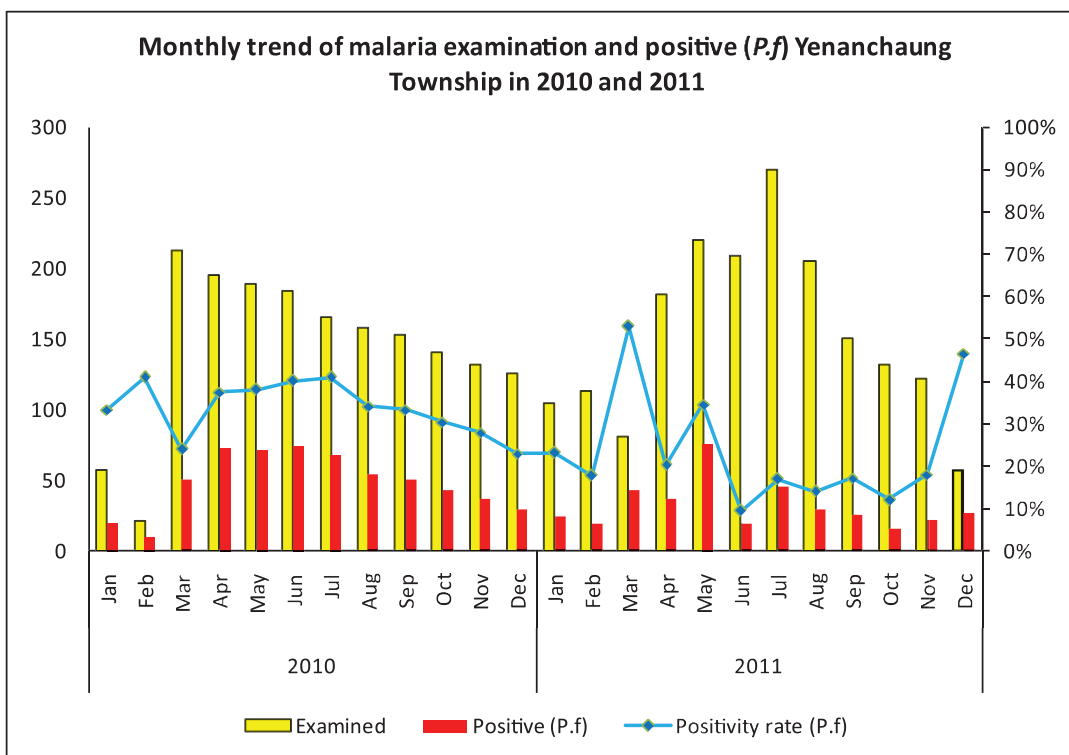
(Per 100,000 Populations)

*The data source is Health Profile of Magway Region (2009) From Department of Health Planning

Vegetation cover and Health Facilities distribution in Yenanchaung Township in Magway Region

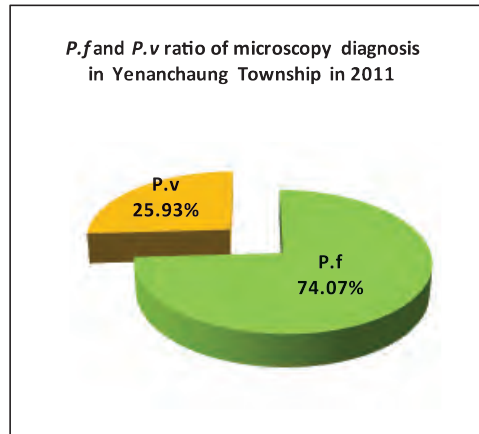


Monthly trend of malaria examination and positive (*P.f*) in Yenanchaung Township in 2010 and 2011

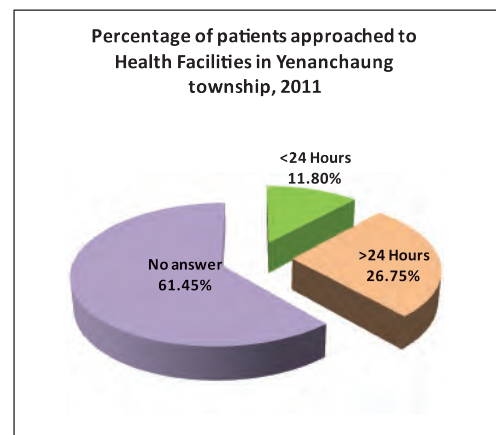
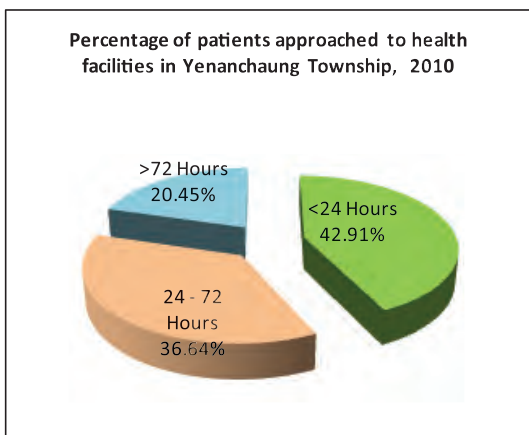


Month	2010			2011		
	Examined	Positive (<i>P.f</i>)	Positivity rate (<i>P.f</i>)	Examined	Positive (<i>P.f</i>)	Positivity rate (<i>P.f</i>)
Jan	57	19	33.33%	104	24	23.08%
Feb	22	9	40.91%	113	20	17.70%
Mar	213	51	23.94%	81	43	53.09%
Apr	195	73	37.44%	182	37	20.33%
May	189	72	38.10%	220	76	34.55%
Jun	184	74	40.22%	209	20	9.57%
Jul	166	68	40.96%	270	46	17.04%
Aug	158	54	34.18%	205	29	14.15%
Sep	153	51	33.33%	151	26	17.22%
Oct	141	43	30.50%	132	16	12.12%
Nov	132	37	28.03%	122	22	18.03%
Dec	126	29	23.02%	58	27	46.55%
Total	1,736	580	33.41%	1,847	386	20.90%

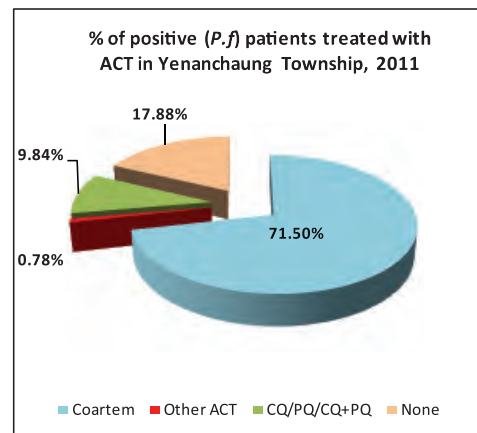
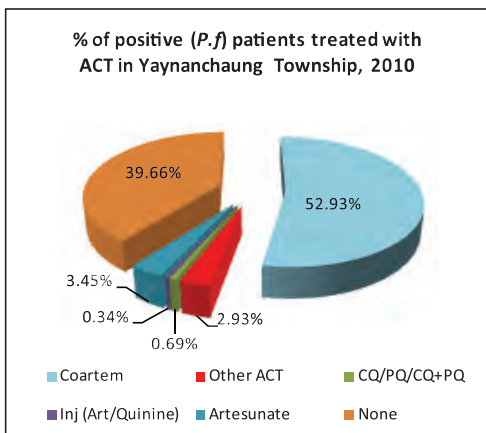
***P.f* and *P.v* ratio of malaria microscopy diagnosis in Yenanchaung in 2011**



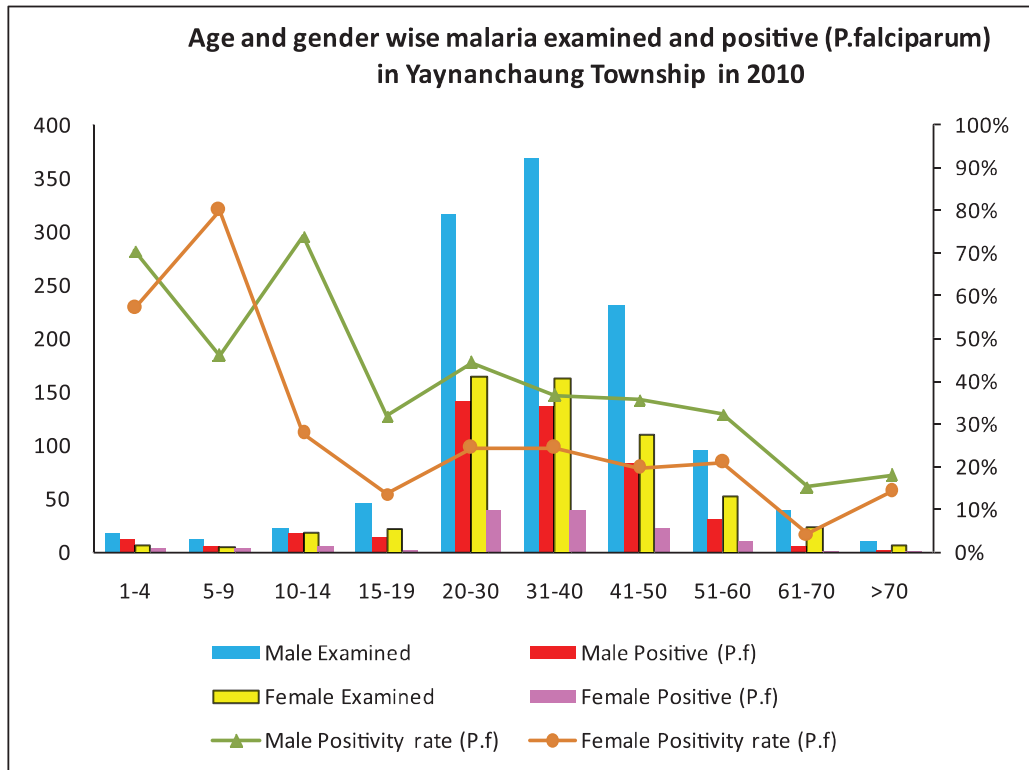
Percentage of patients approached to health facilities in Yenanchaung Township in 2010 and 2011



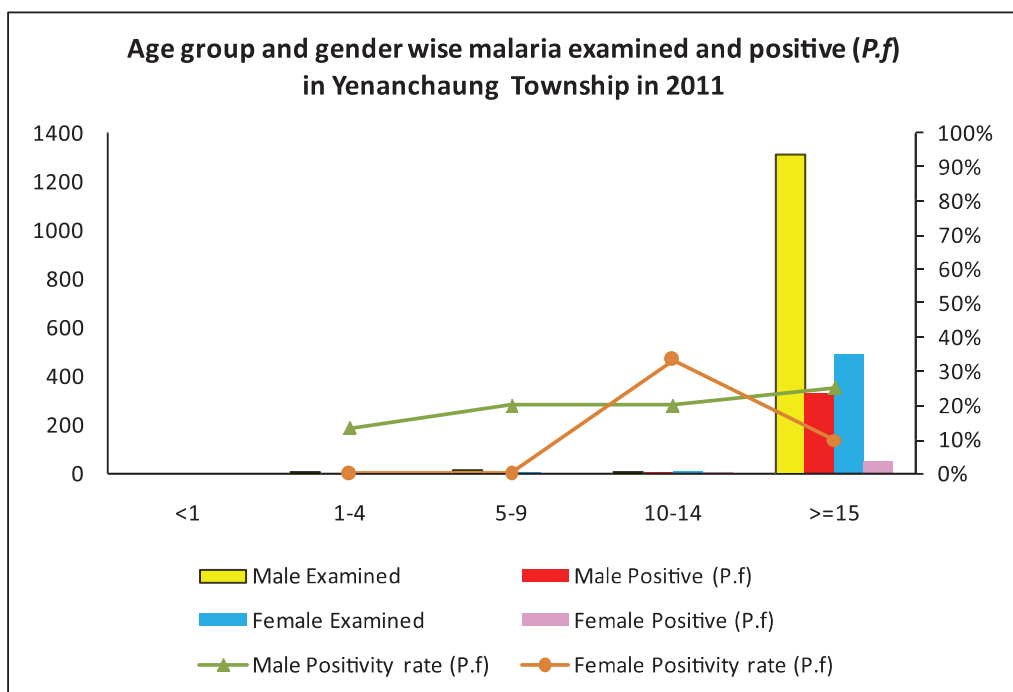
Percentage of Positive (*P.f*) patients treated with ACT in Yenanchaung Township in 2010 and 2011



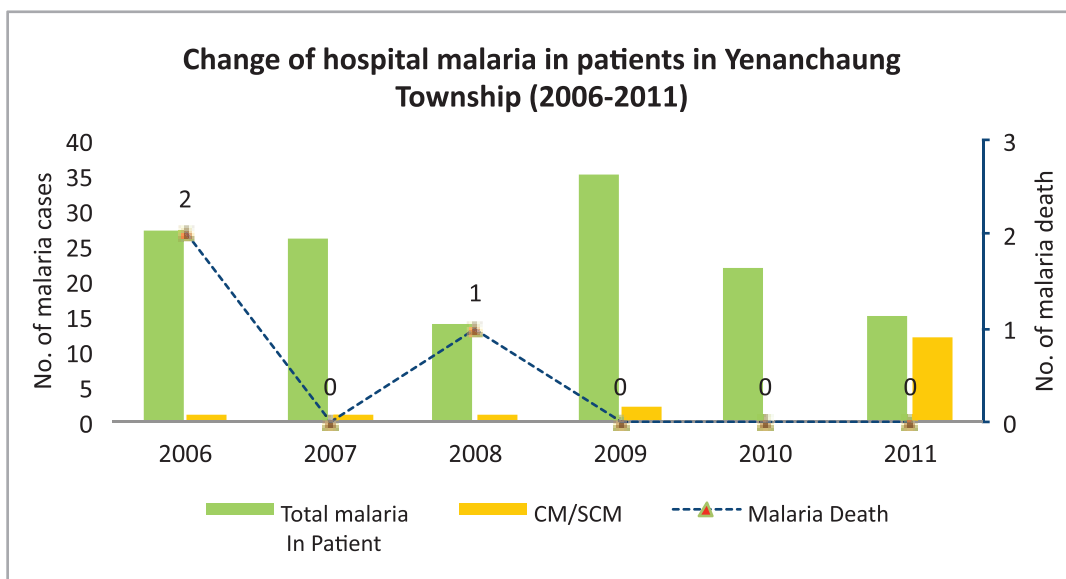
Age and gender wise malaria examination and positive (P.f) in Yenanchaung Township, 2010



Age and gender wise malaria examination and positive (P.f) in Yenanchaung Township, 2011



Change of hospital malaria in patients in Yenanchaung Township in Magway Region from 2006 to 2011



Sr	Year	Total In Patient	Total malaria In Patient	CM/SCM	Malaria Death	Total Death
1	2006	1813	27	1	2	27
2	2007	1402	26	1	0	36
3	2008	1182	14	1	1	15
4	2009	2383	35	2	0	4
5	2010	1260	22	0	0	0
6	2011	1290	15	12	0	8

Health Profile of Yesagy Township



Area and Location*

Area:	999.04 Km ²
North:	Salingyi
South:	Taungthar
East:	Myinchan
West:	Myaung

Administrative Units*

Wards	: 8
Village tracts	: 81
Villages	: 249

Population (2009)*

Total	: 241,425
Urban	: 22,960
Rural	: 224,465
Male	: 117,346
Female	: 130,079
Sex Ratio	: 90
<5 Year	: 18,485
0-14 Year	: 58,123
15-49 Year	: 139,569
Population Density	: 247.66/ Km ²

Health Facilities (2009)*

Township Hospital (50) Bedded	: 1
Station Hospital	: 4
Maternal and Child Health Centers	: 1
Rural Health Centers	: 7
Sub Health Centers	: 34
Private Clinics and Maternity Homes	: 2

Health Manpower*

	<i>Doctor</i>	<i>Nurse</i>	<i>HA</i>	<i>LHV</i>	<i>PHS I</i>	<i>PHS II</i>	<i>MW</i>
Sanction	15	30	8	8	2	29	46
Appointed	14	30	8	8	2	24	41
Vacant	1	0	0	0	0	5	5
% Vacancy	6.7%	0%	0%	0%	0%	17.2%	10.9%

(HA: Health Assistant, LHV: Lady Health Visitor, PHS:Public Health Supervisor , MW: Midwife)

Health Manpower (Volunteer)*

	Category of Volunteer Health Workers		
	CHW	AMW	TTBA
Trained	239	140	150
Functioning	118	95	47
% Functioning	49.4%	67.9%	31.3%

(CHW: Community health Worker, AMW: Auxiliary Mid Wife, TTBA: Trained Traditional Birth Attendant)

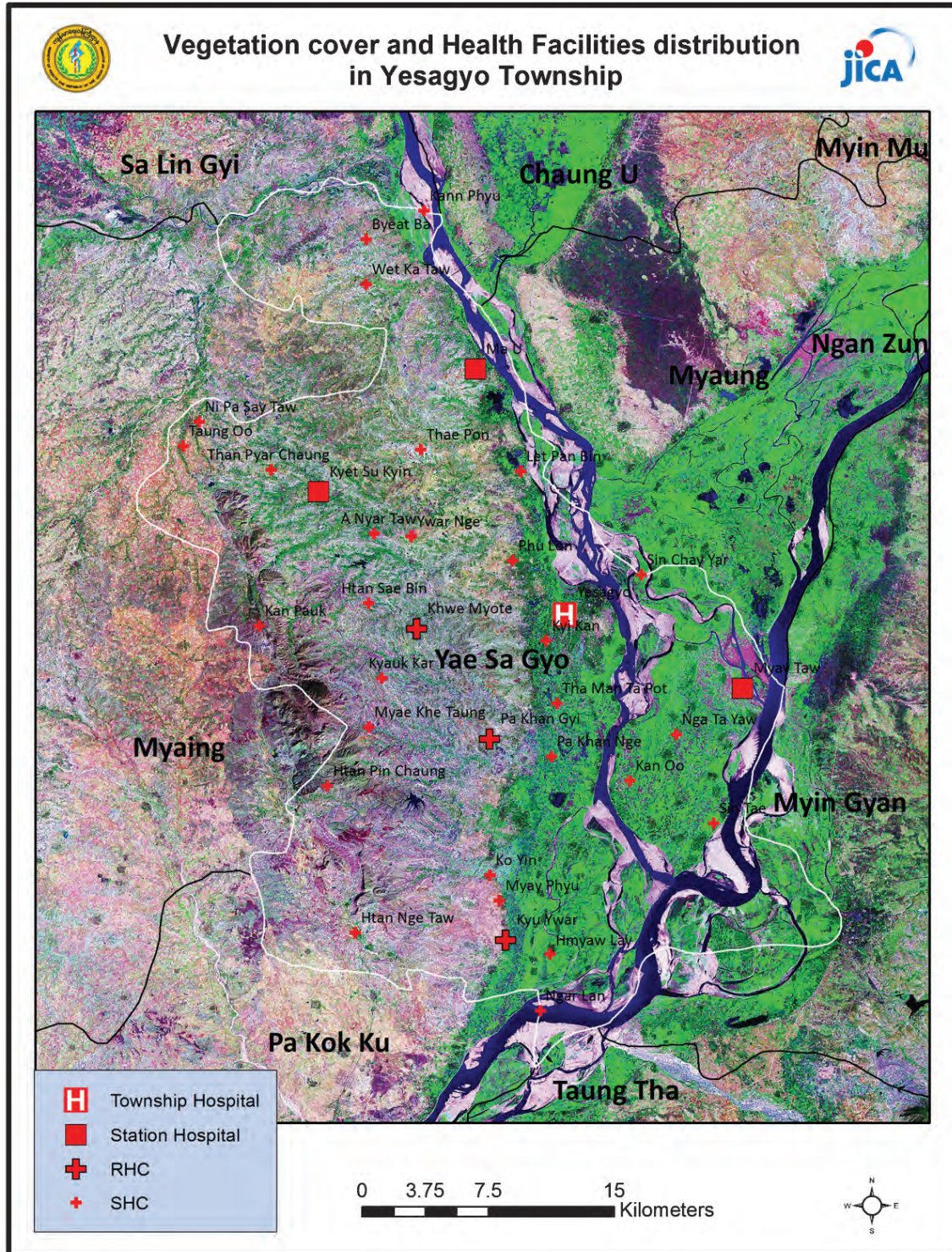
Common Diseases under National Surveillance*

<i>Diseases</i>	<i>Morbidity</i>	<i>Mortality</i>
Malaria	493.89	0.4
ARI <5	9380.58	97.38
Diarrhea	1093.26	0
Dysentery	497.12	0
TB(Sputum+)	25.06	0.4
Snake Bite	14.15	0.81

(Per 100,000 Populations)

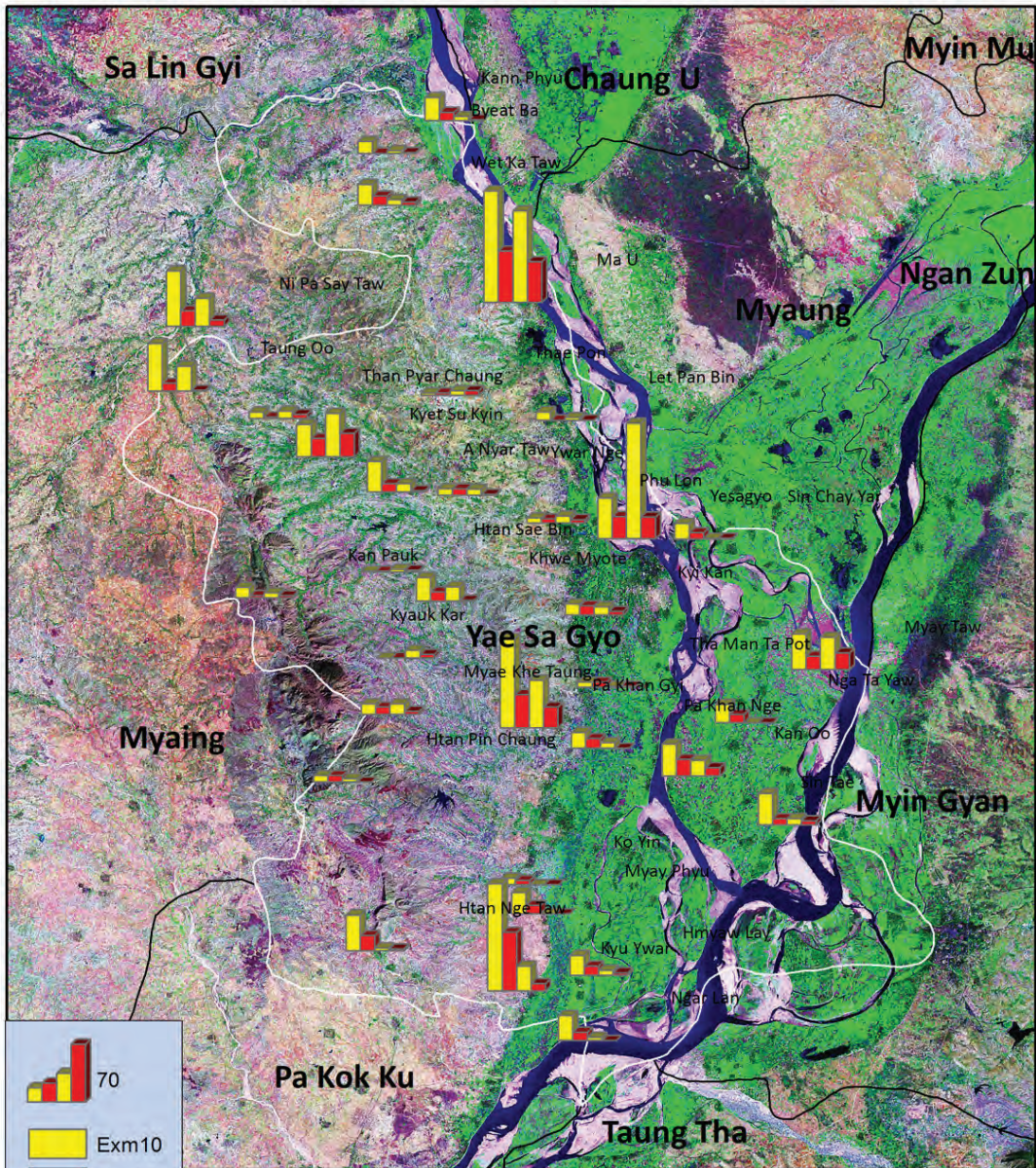
***The data source is Health Profile of Magway Region (2009) from Department of Health Planning.**

Vegetation cover and Health Facilities distribution in Yesagy Township in Magway Region

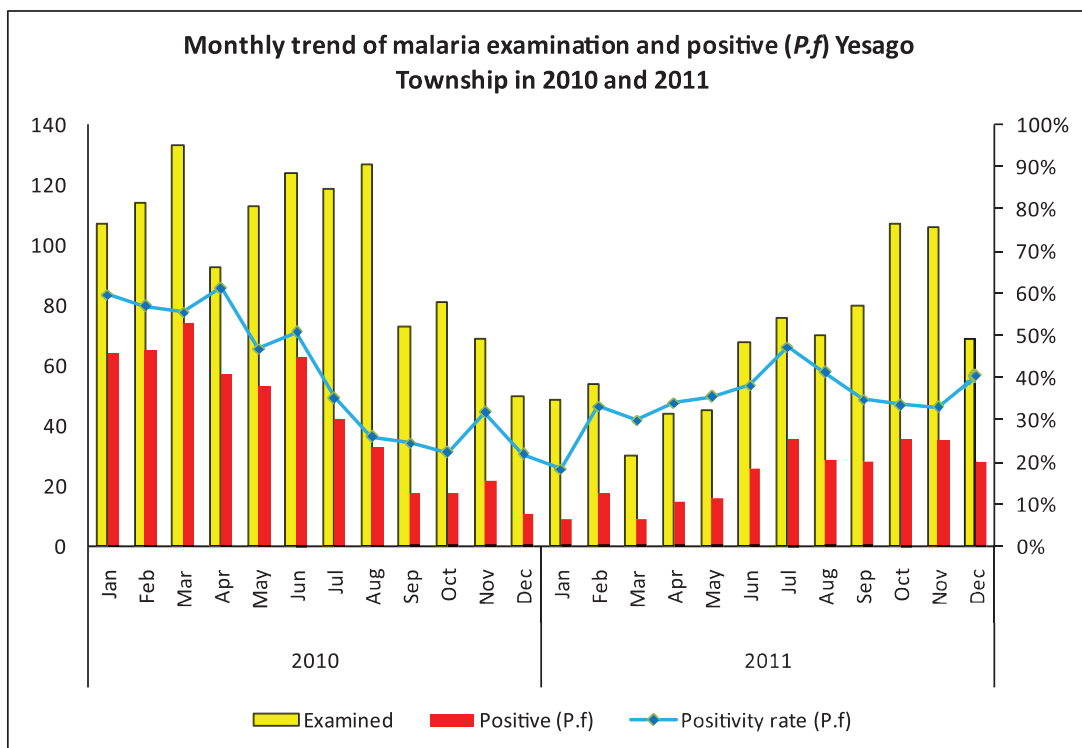




Health Facilities wise Malaria examined and positive(P.f) in Yesagyo Township, 2010 and 2011

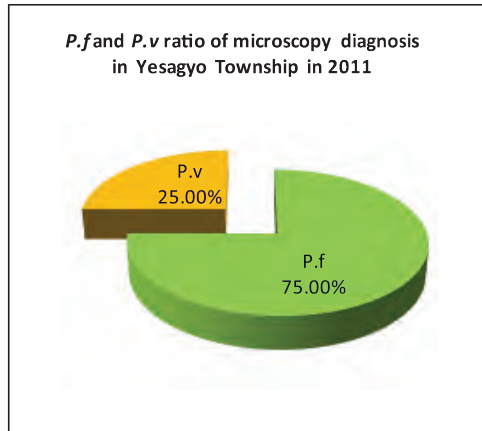


Monthly trend of malaria examination and positive (*P.f*) in Yesagyo Township in 2010 and 2011

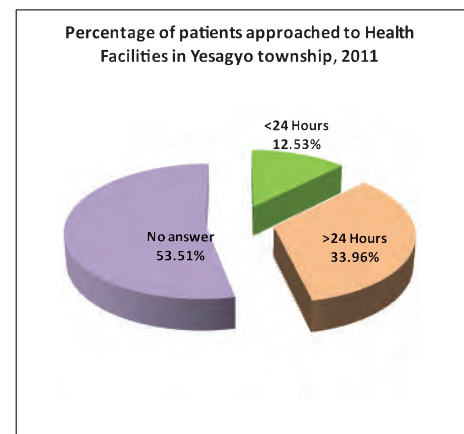
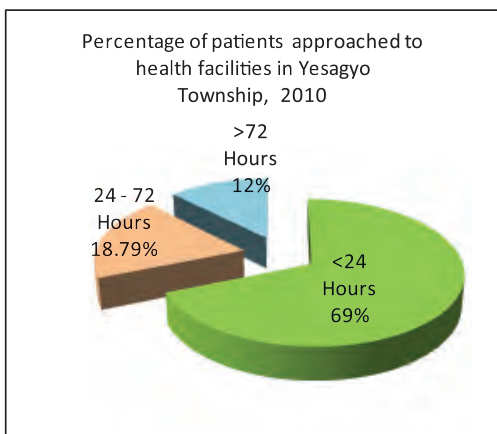


Month	2010			2011		
	Examined	Positive (<i>P.f</i>)	Positivity rate (<i>P.f</i>)	Examined	Positive (<i>P.f</i>)	Positivity rate (<i>P.f</i>)
Jan	107	64	59.81%	49	9	18.37%
Feb	114	65	57.02%	54	18	33.33%
Mar	133	74	55.64%	30	9	30.00%
Apr	93	57	61.29%	44	15	34.09%
May	113	53	46.90%	45	16	35.56%
Jun	124	63	50.81%	68	26	38.24%
Jul	119	42	35.29%	76	36	47.37%
Aug	127	33	25.98%	70	29	41.43%
Sep	73	18	24.66%	80	28	35.00%
Oct	81	18	22.22%	107	36	33.64%
Nov	69	22	31.88%	106	35	33.02%
Dec	50	11	22.00%	69	28	40.58%
Total	1,203	520	43.23%	798	285	35.71%

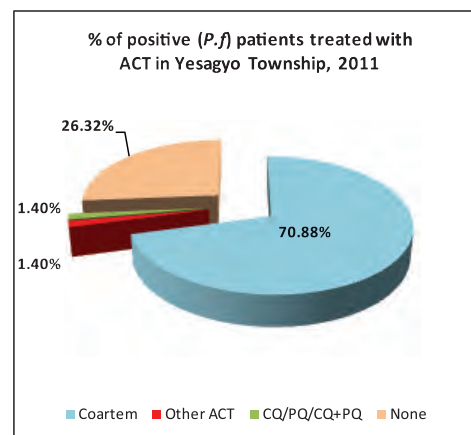
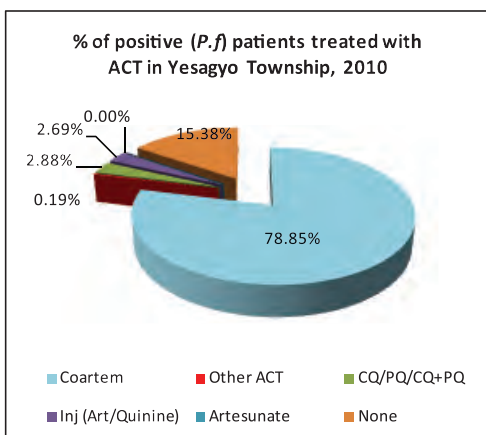
***P.f* and *P.v* ratio of malaria microscopy diagnosis in Yesagyo Township in Magway Region**



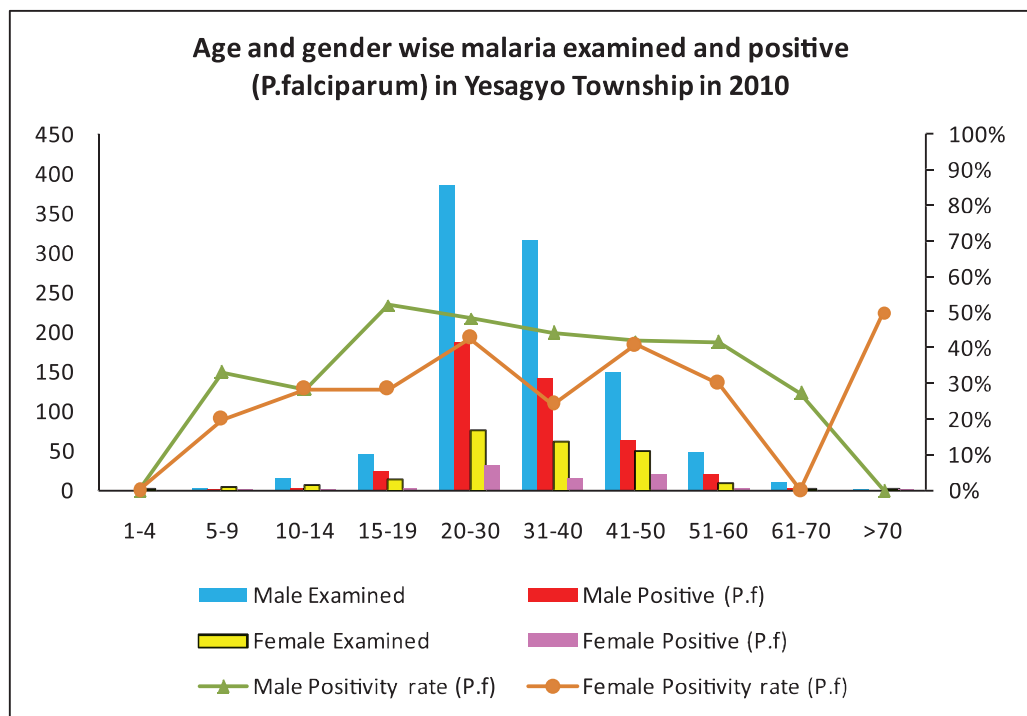
Percentage of patients approached to health facilities in Yesagyo Township in 2010 and 2011



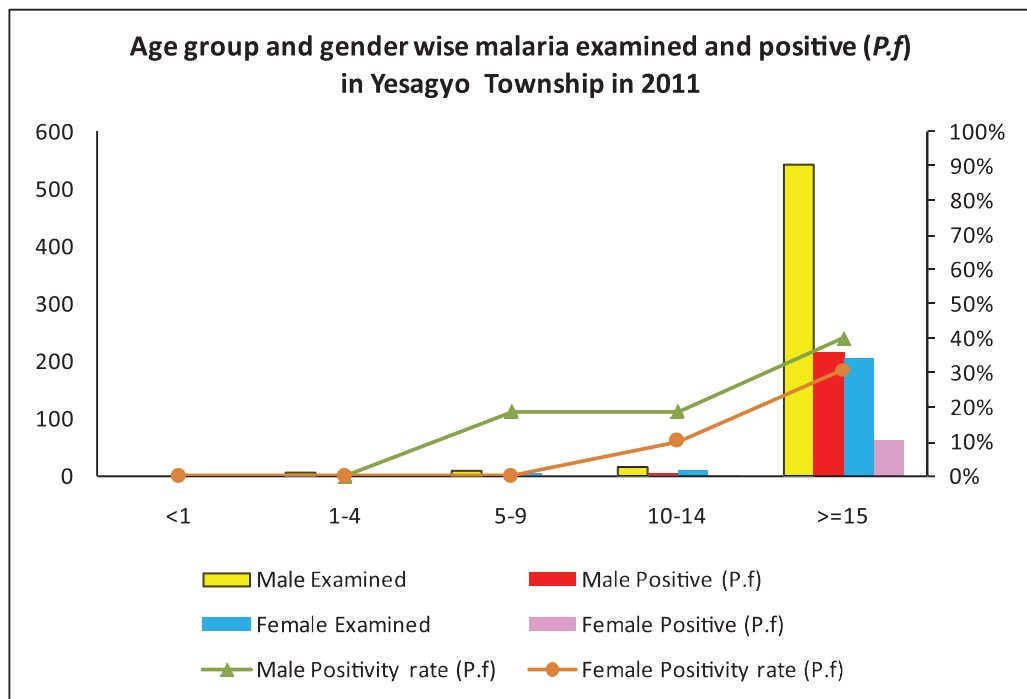
Percentage of Positive (*P.f*) patients treated with ACT in Yesagyo Township in 2010 and 2011



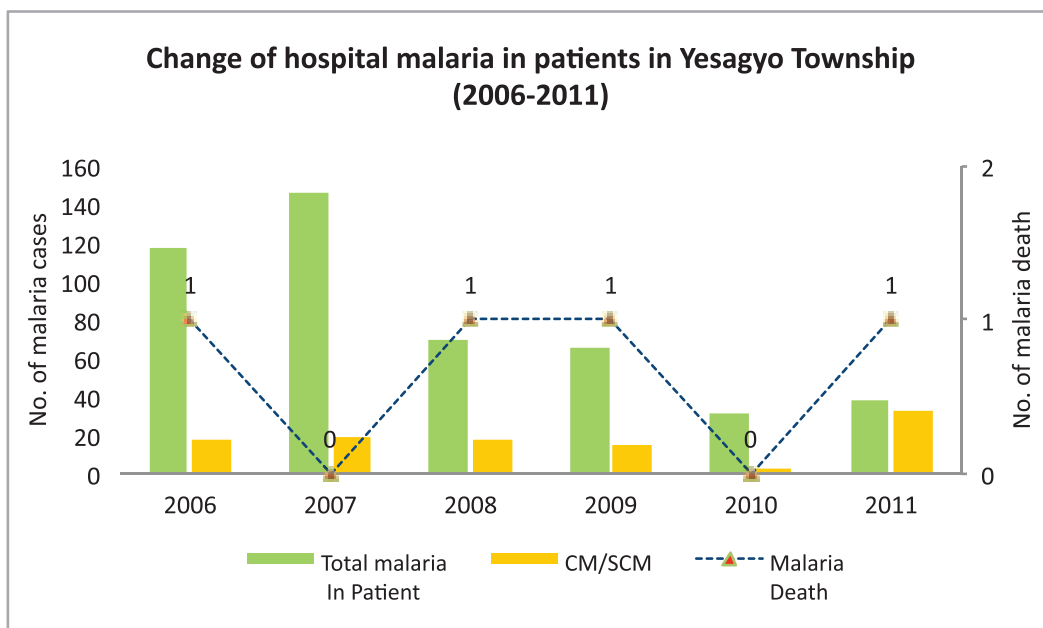
Age and gender wise malaria examination and positive (P.f) in Yesagy Township, 2010



Age and gender wise malaria examination and positive (P.f) Yesagy Township, 2011



Change of hospital malaria in Patients in Yesagy Township in Magway Region from 2006 to 2011



Sr	Year	Total In Patient	Total malaria In Patient	CM/SCM	Malaria Death	Total Death
1	2006	2106	117	18	1	6
2	2007	1627	146	19	0	11
3	2008	1648	70	18	1	6
4	2009	2068	65	15	1	12
5	2010	2199	31	3	0	14
6	2011	2206	38	33	1	13

References and Data Sources

- (1) State and Regional Health Profiles (2009): Health Profile, 2009 from Department of Health Planning, Ministry of Health
- (2) Township Health Profiles (2009): Health Profile, 2009 from Department of Health Planning, Ministry of Health
- (3) Satellite Images : Landsat ETM and Aster (NASA)
- (4) GIS (Geographical Information System): ArcGIS 10
- (5) Database: Health Facilities Based Malaria Patients' Record Database Management System in Microsoft Access 2010

Data Analysis: Microsoft Excel 2010

