

Health Profile of Sinbaungwe Township



Area and Location*

Area	:	1523.29 Km ²
North	:	Magway
South	:	Myede
East	:	Lewe
West	:	Minhla

Administrative Units*

Wards	:	3
Village tracts	:	46
Villages	:	138

Population (2009)*

Total	:	128,545
Urban	:	6,706
Rural	:	121,839
Male	:	62,090
Female	:	66,455
Sex Ratio	:	93
<5 Year	:	13,556
0-14 Year	:	35,426
15-49 Year	:	71,922
Population Density	:	84.38/ Km ²

Health Facilities (2009)*

Township Hospital (16) Bedded	:	1
Station Hospitals	:	1
Maternal and Child Health Centers	:	1
Rural Health Centers	:	4
Sub Health Centers	:	21
Private Clinics and Maternity Homes	:	3

Health Manpower*

	<i>Doctor</i>	<i>Nurse</i>	<i>HA</i>	<i>LHV</i>	<i>PHS I</i>	<i>PHS II</i>	<i>MW</i>
Sanction	7	17	4	5	2	10	28
Appointed	3	6	4	4	2	10	23
Vacant	4	11	0	1	0	0	5
% Vacancy	57.1%	64.7%	0%	20%	0%	0%	17.9%

(HA: Health Assistant, LHV: Lady Health Visitor, PHS:Public Health Supervisor , MW: Midwife)

Health Manpower (Volunteer)*

	Category of Volunteer Health Workers		
	CHW	AMW	TTBA
Trained	113	116	53
Functioning	95	102	41
% Functioning	84.1%	87.9%	77.4%

(CHW: Community health Worker, AMW: Auxiliary Mid Wife, TTBA: Trained Traditional Birth Attendant)

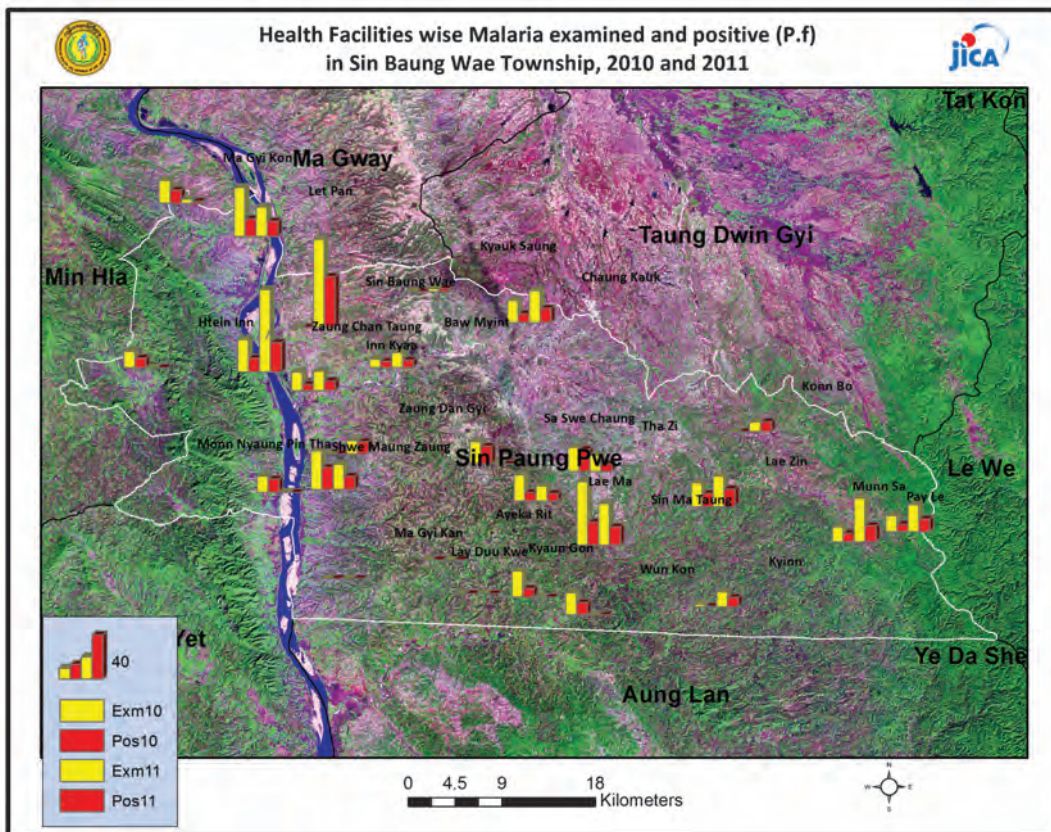
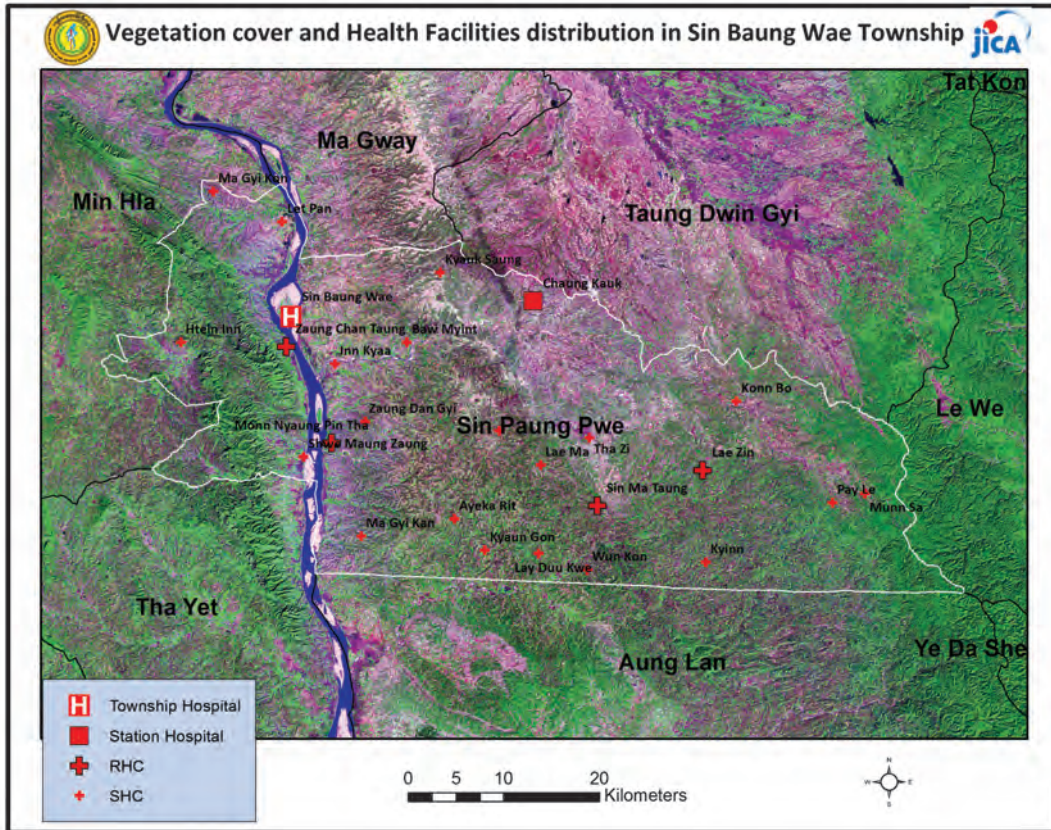
Common Diseases under National Surveillance*

<i>Diseases</i>	<i>Morbidity</i>	<i>Mortality</i>
Malaria	914.08	0
ARI <5	6882.56	0
Diarrhea	1325.61	0
Dysentery	295.90	0
TB(Sputum+)	14.0	0
Snake Bite	42.79	7

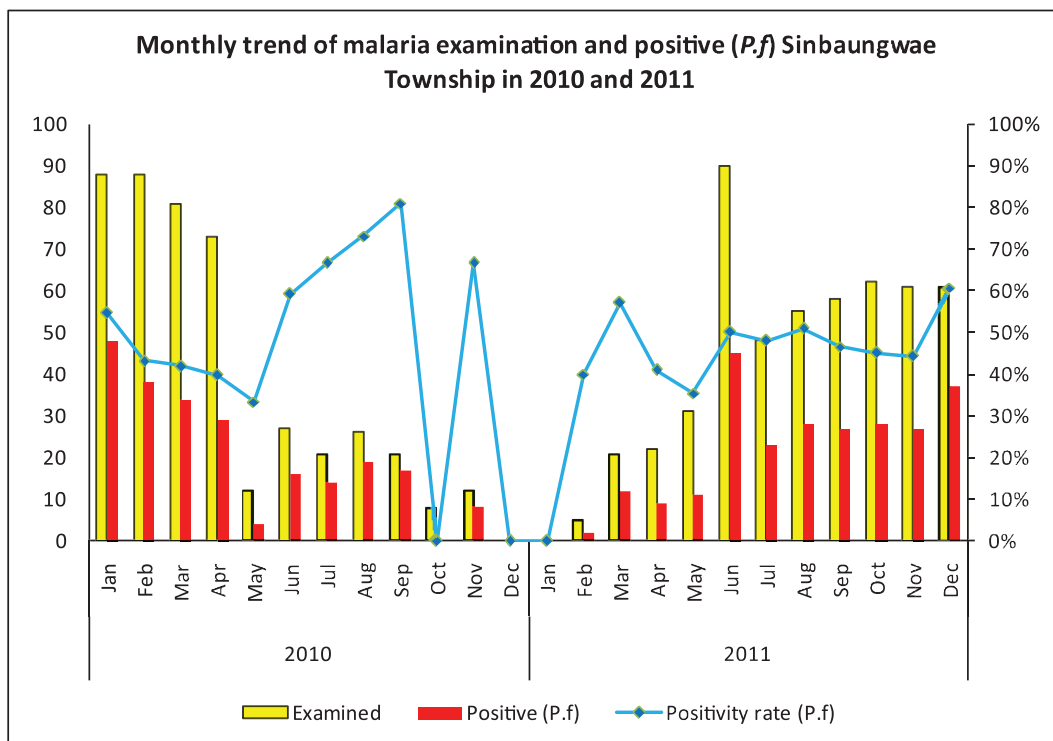
(Per 100,000 Populations)

*The data source is Health Profile of Magway Region (2009) From Department of Health Planning.

Vegetation cover and Health Facilities distribution in Sinbaungwae Township in Magway Region

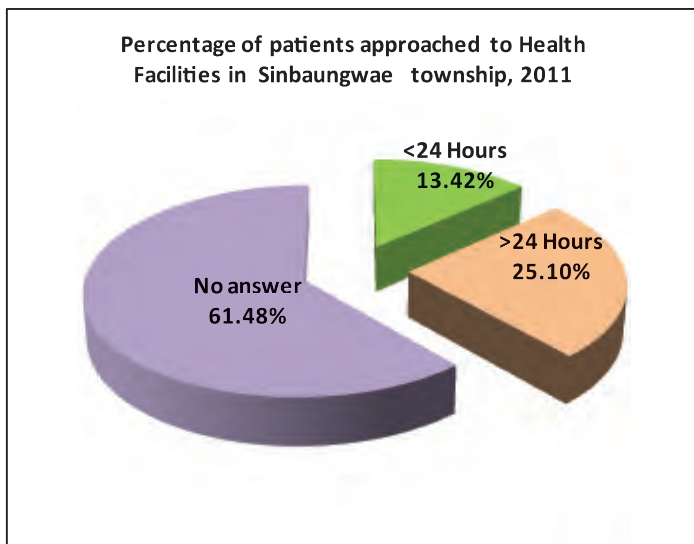


Monthly trend of malaria examination and positive (*P.f*) in Sinbaungwae Township in 2010 and 2011

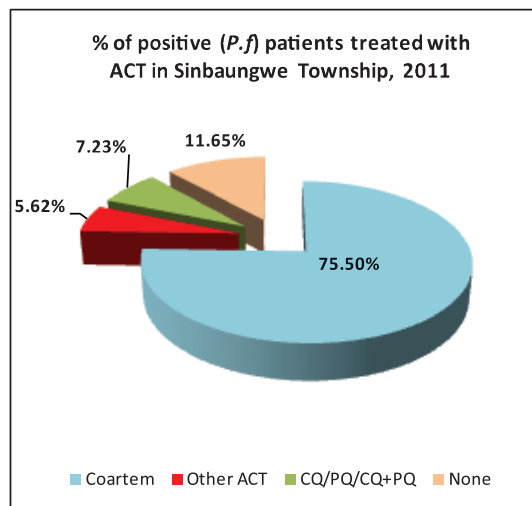
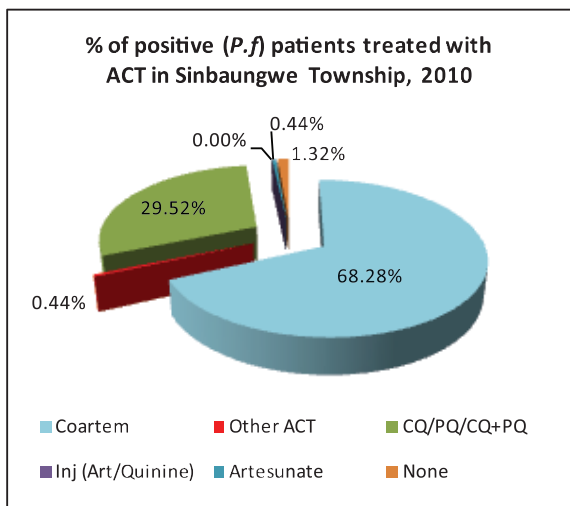


Month	2010			2011		
	Examined	Positive (<i>P.f</i>)	Positivity rate (<i>P.f</i>)	Examined	Positive (<i>P.f</i>)	Positivity rate (<i>P.f</i>)
Jan	88	48	54.55%	0	0	0.00%
Feb	88	38	43.18%	5	2	40.00%
Mar	81	34	41.98%	21	12	57.14%
Apr	73	29	39.73%	22	9	40.91%
May	12	4	33.33%	31	11	35.48%
Jun	27	16	59.26%	90	45	50.00%
Jul	21	14	66.67%	48	23	47.92%
Aug	26	19	73.08%	55	28	50.91%
Sep	21	17	80.95%	58	27	46.55%
Oct	8	0	0.00%	62	28	45.16%
Nov	12	8	66.67%	61	27	44.26%
Dec	0	0	0.00%	61	37	60.66%
Total	457	227	49.67%	514	249	48.44%

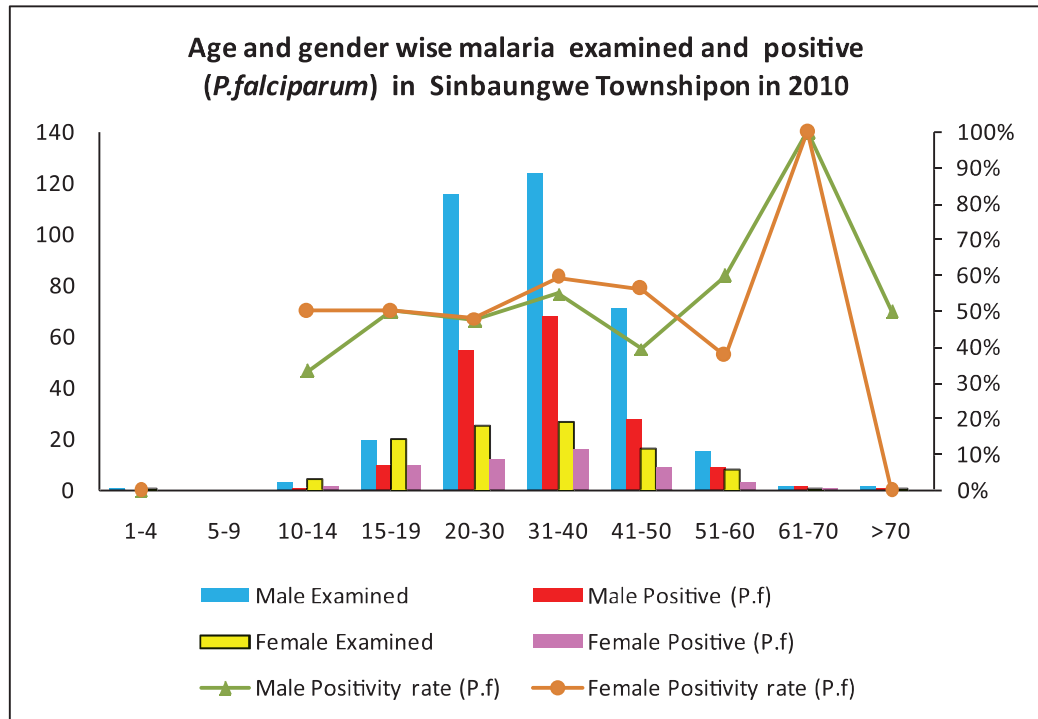
Percentage of patients approached to health facilities in Sinbaungwae Township in 2011



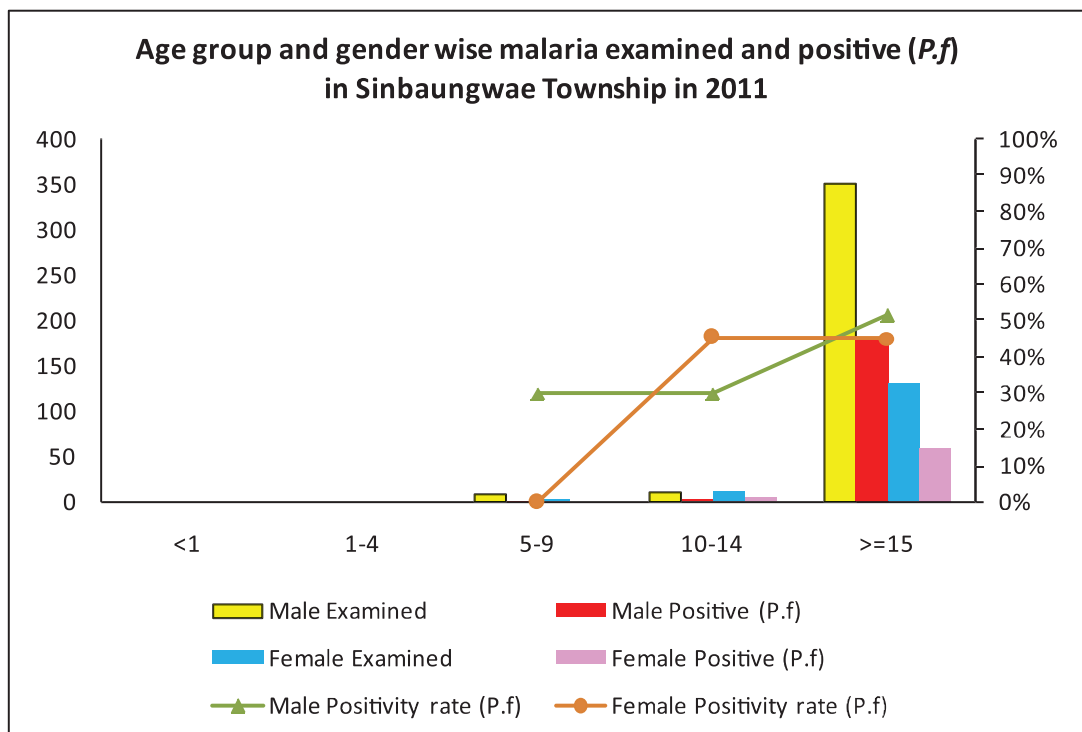
Percentage of Positive (*P.f*) patients treated with ACT in Sinbaungwae Township in 2010 and 2011



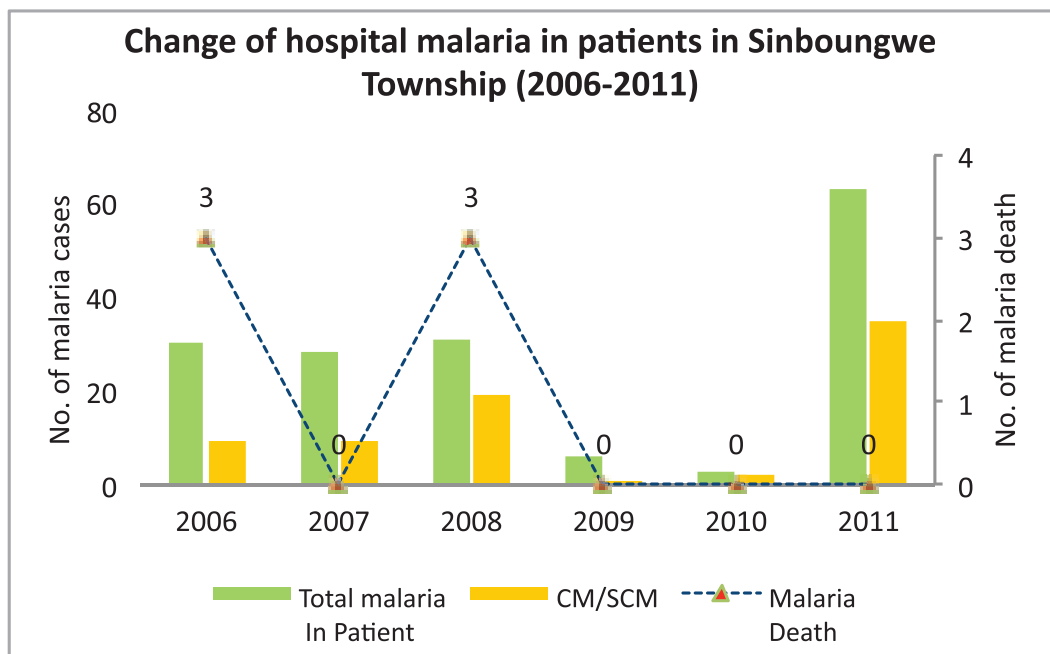
Age and gender wise malaria examination and positive (*P.f*) in Sinbaungwae Township, 2010



Age and gender wise malaria examination and positive (*P.f*) in Sinbaungwae Township, 2011

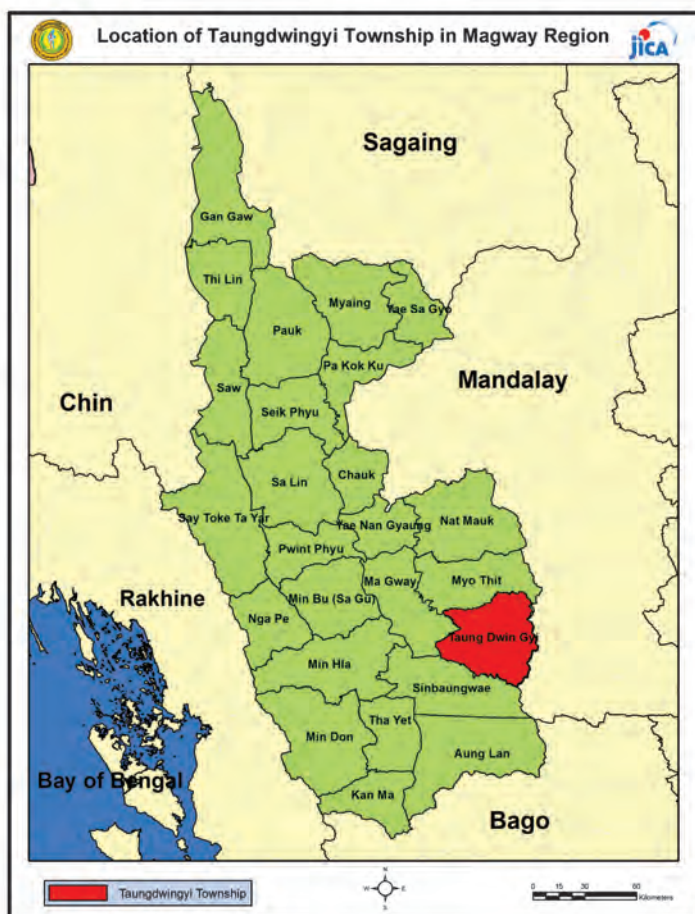


Change of hospital malaria in patients in Sinbaungwae in Magway Region From 2006 to 2011



Sr	Year	Total In Patient	Total malaria In Patient	CM/SCM	Malaria Death	Total Death
1	2006	795	30	9	3	26
2	2007	819	28	9	0	15
3	2008	845	31	19	3	16
4	2009	727	6	1	0	22
5	2010	577	3	2	0	5
6	2011	782	63	35	0	4

Health Profile of Taungdwingyi Township



Area and Location*

Area	:	1968.41 Km ²
North	:	Myothit
South	:	Sinbangwe
East	:	Tatkone
West	:	Maway

Administrative Units*

Wards	:	10
Village tracts	:	72
Villages	:	275

Population (2009)*

Total	:	256,483
Urban	:	42,283
Rural	:	214,200
Male	:	124,797
Female	:	131,689
Sex Ratio	:	95
<5 Year	:	32,433
0-14 Year	:	88,615
15-49 Year	:	127,594
Population Density	:	130.3/ Km ²

Health Facilities (2009)*

Township Hospital (50) Bedded	:	1
Station Hospital	:	1
Maternal and Child Health Centers	:	1
Rural Health Centers	:	5
Sub Health Centers	:	26
Private Clinics and Maternity Homes	:	13

Health Manpower*

	<i>Doctor</i>	<i>Nurse</i>	<i>HA</i>	<i>LHV</i>	<i>PHS I</i>	<i>PHS II</i>	<i>MW</i>
Sanction	6	15	6	7	2	20	38
Appointed	5	15	6	7	2	20	36
Vacant	1	0	0	0	0	0	2
% Vacancy	16.7%	0%	0%	0%	0%	0%	5.3%

(HA: Health Assistant, LHV: Lady Health Visitor, PHS:Public Health Supervisor , MW: Midwife)

Health Manpower (Volunteer)*

	Category of Volunteer Health Workers		
	CHW	AMW	TTBA
Trained	214	156	54
Functioning	196	145	50
% Functioning	91.6%	92.9%	92.6%

(CHW: Community health Worker, AMW: Auxiliary Mid Wife, TTBA: Trained Traditional Birth Attendant)

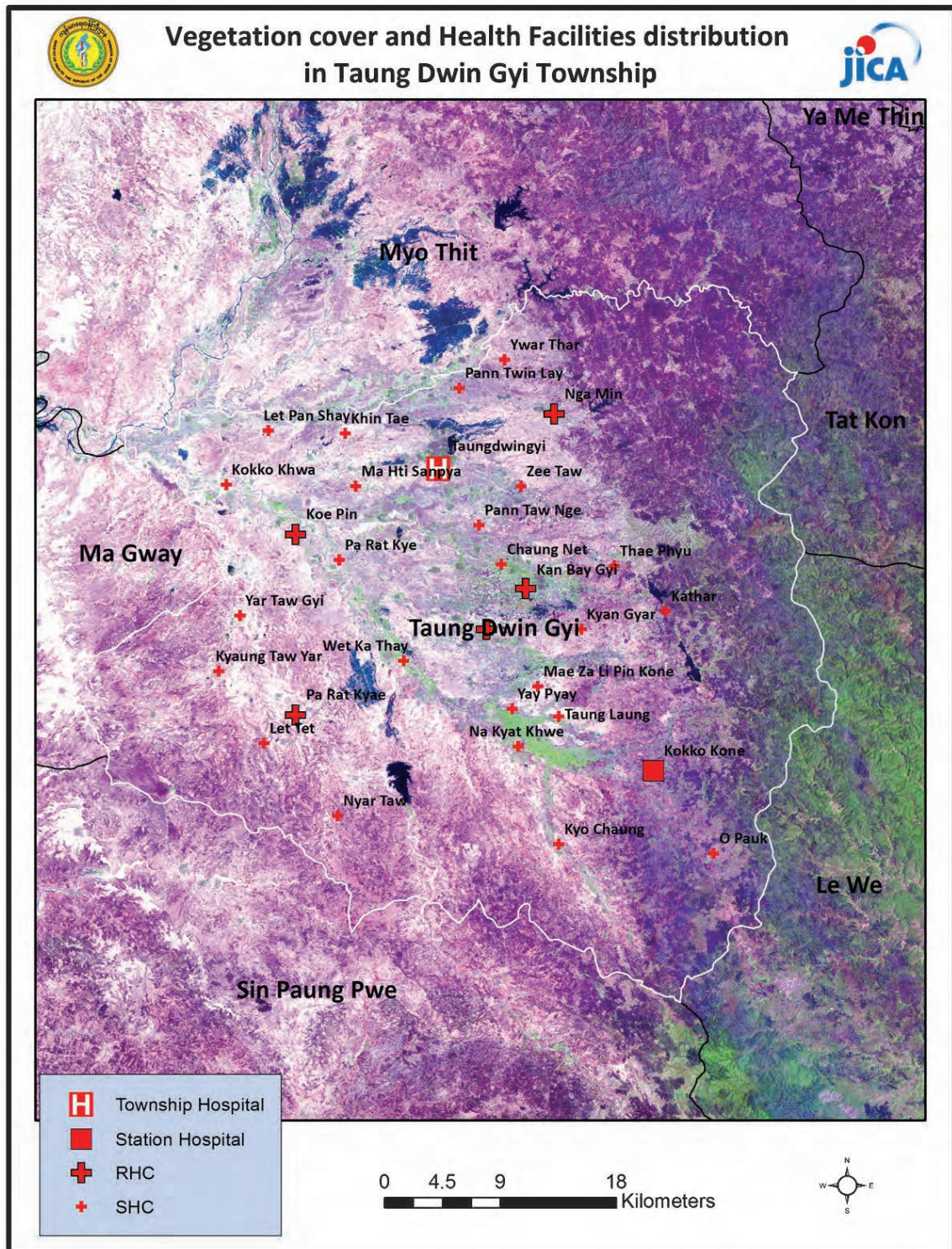
Common Diseases under National Surveillance*

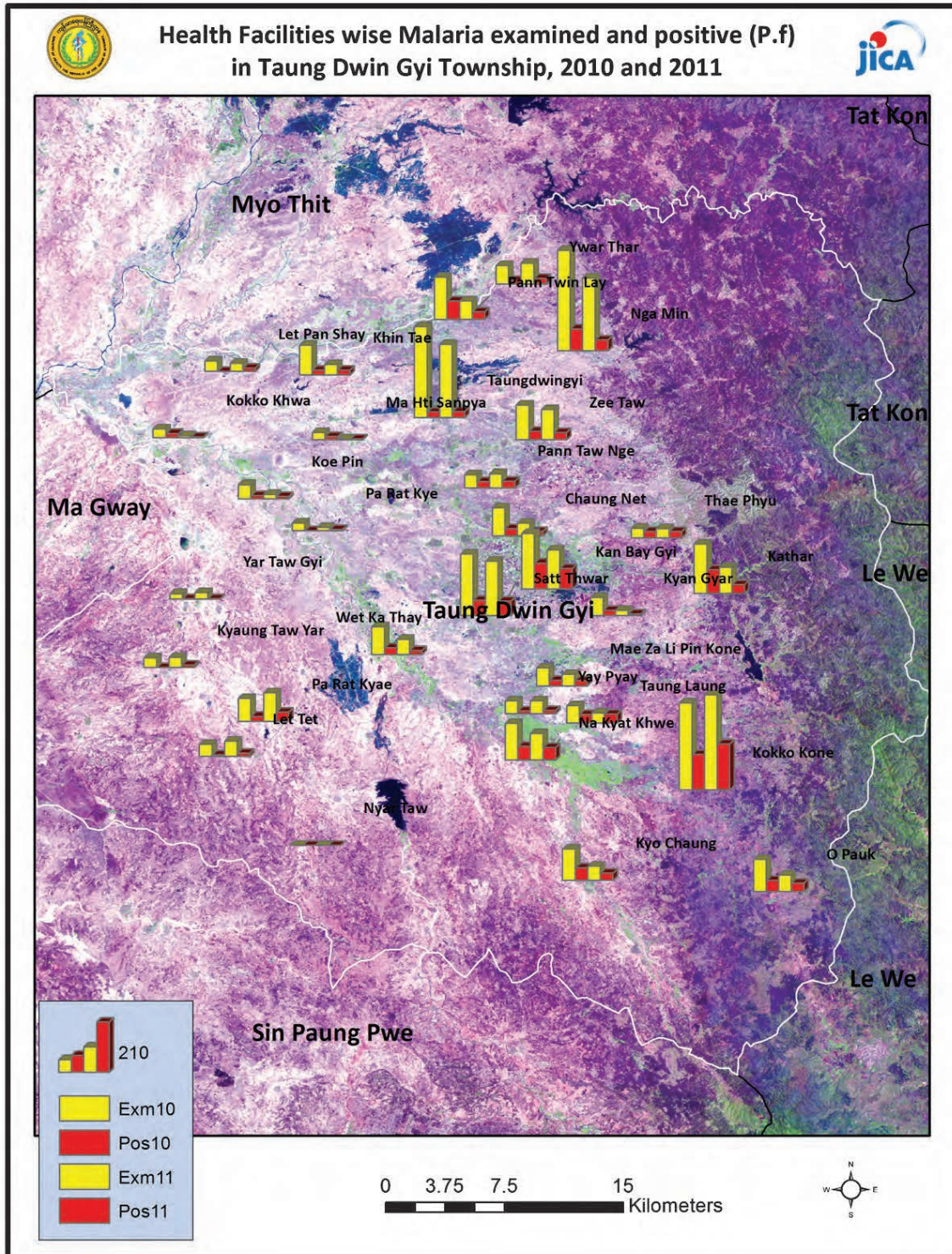
<i>Diseases</i>	<i>Morbidity</i>	<i>Mortality</i>
Malaria	609.01	1.95
ARI <5	2833.53	24.67
Diarrhea	560.27	1.56
Dysentery	200.01	0
TB(Sputum+)	51.47	0
Snake Bite	66.67	0

(Per 100,000 Populations)

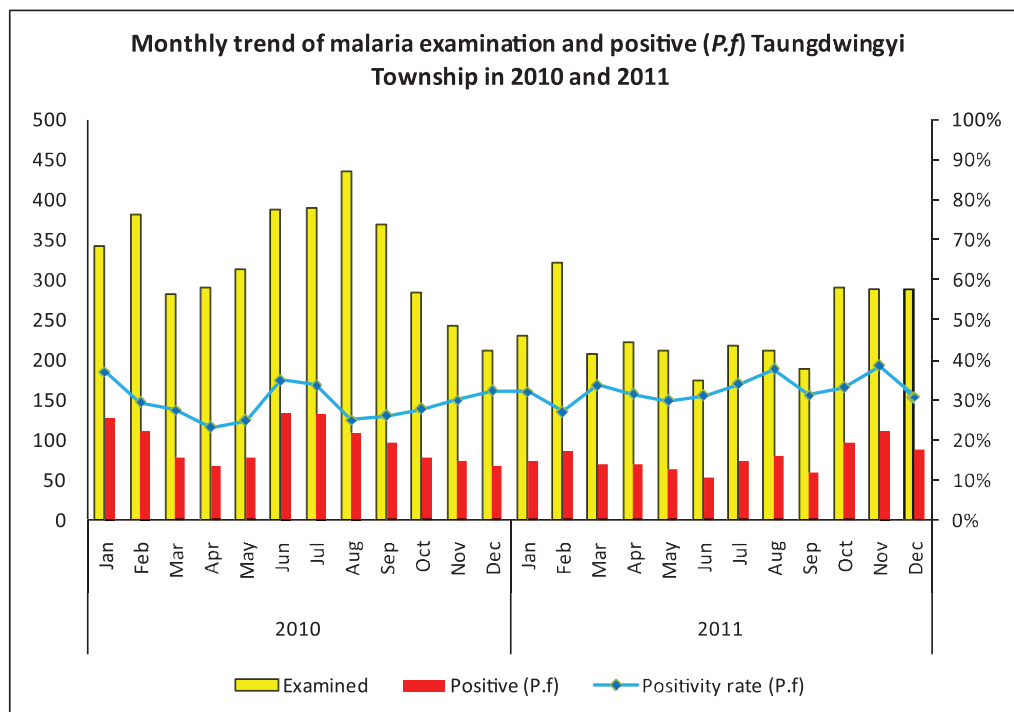
*The data source is Health Profile of Magway Region (2009) from Department of Health Planning.

Vegetation cover and Health Facilities distribution in Taungdwingyi Township



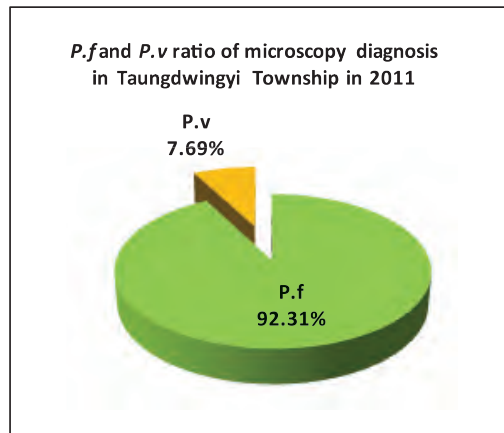
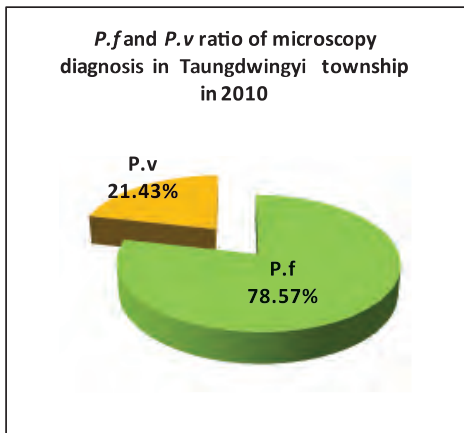


Monthly trend of malaria examination and positive (*P.f*) in Taungdwingyi Township in 2010 and 2011

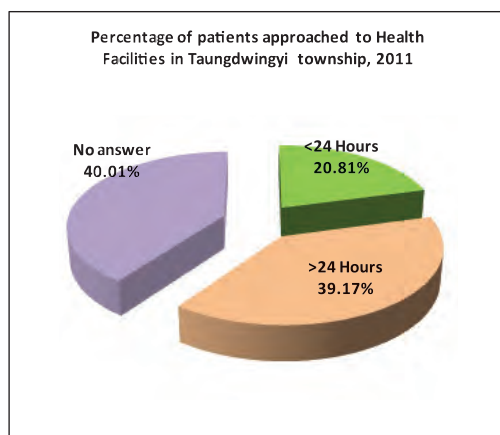


Month	2010			2011		
	Examined	Positive (<i>P.f</i>)	Positivity rate (<i>P.f</i>)	Examined	Positive (<i>P.f</i>)	Positivity rate (<i>P.f</i>)
Jan	342	127	37.13%	230	74	32.17%
Feb	381	112	29.40%	322	87	27.02%
Mar	283	78	27.56%	208	70	33.65%
Apr	290	67	23.10%	222	70	31.53%
May	314	78	24.84%	212	63	29.72%
Jun	387	135	34.88%	174	54	31.03%
Jul	389	131	33.68%	218	74	33.94%
Aug	435	109	25.06%	212	80	37.74%
Sep	368	96	26.09%	189	59	31.22%
Oct	285	79	27.72%	290	96	33.10%
Nov	243	73	30.04%	289	111	38.41%
Dec	211	68	32.23%	288	89	30.90%
Total	3,928	1,153	29.35%	2,854	927	32.48%

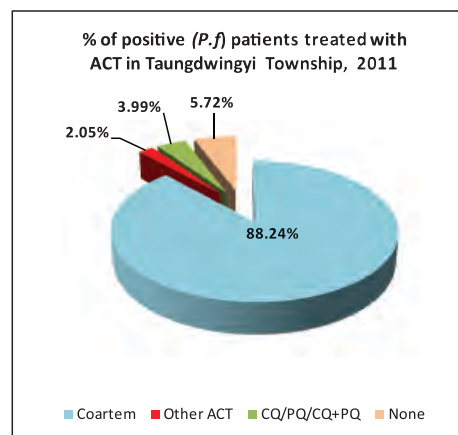
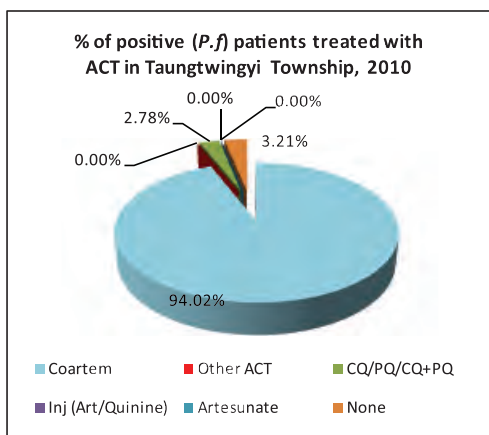
P.f and *P.v* ratio of malaria microscopy diagnosis in Taungdwingyi Township in 2010 and 2011



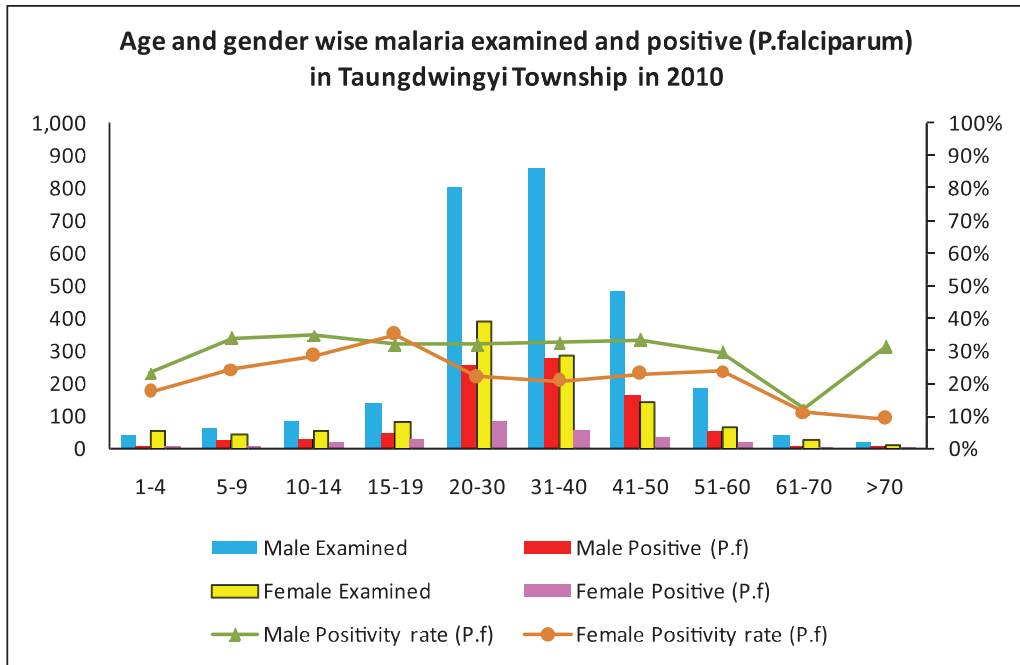
Percentage of patients approached to health facilities in Taungdwingyi Township in 2011



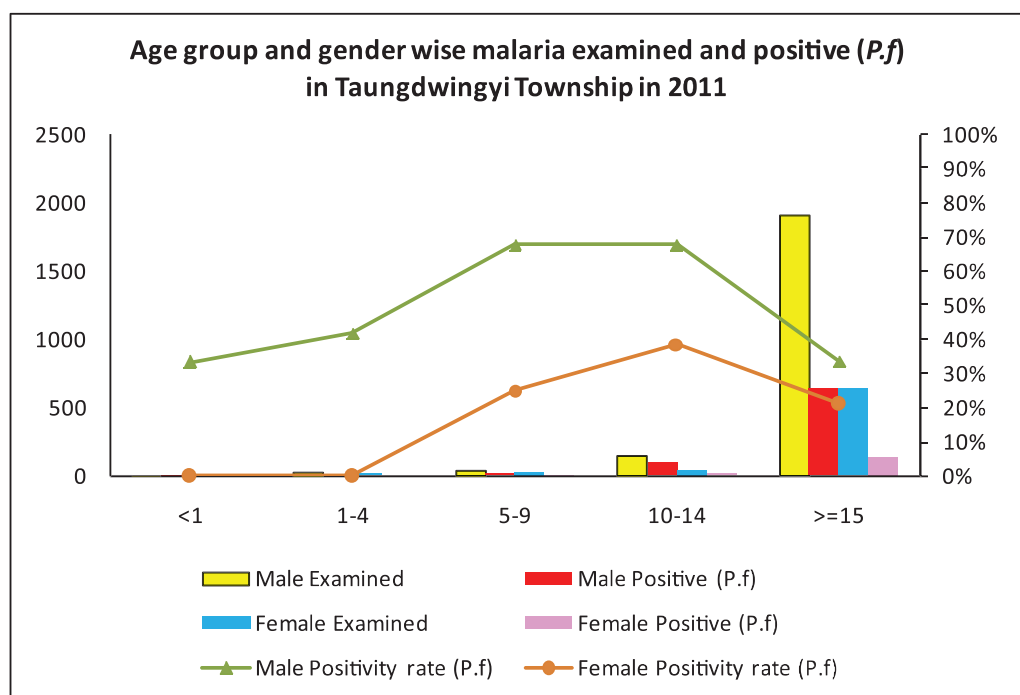
Percentage of Positive (*P.f*) patients treated with ACT in Taungdwingyi Township in 2010 and 2011



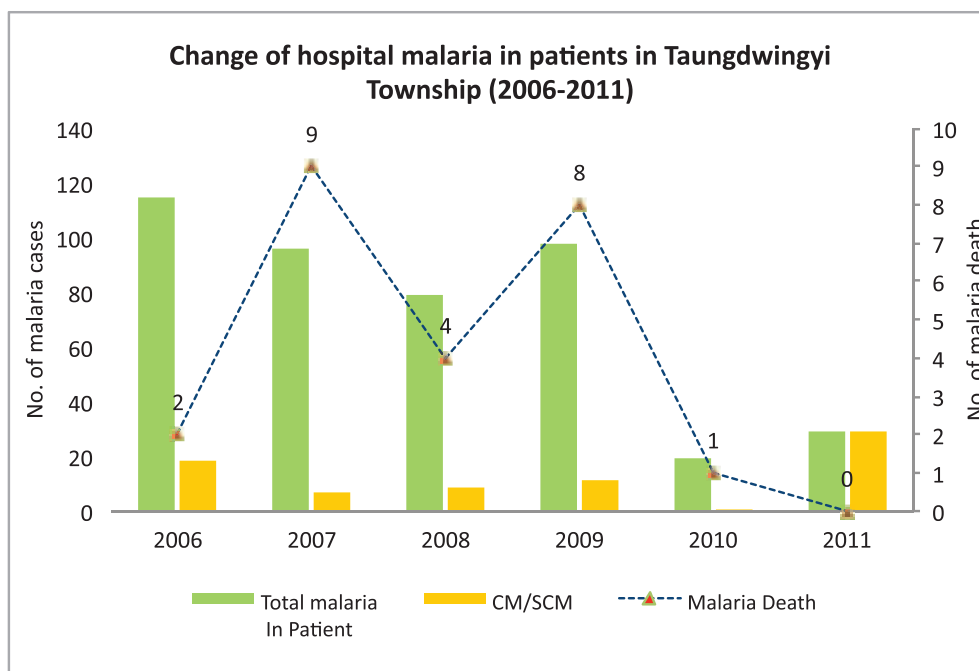
Age and gender wise malaria examination and positive (*P.f*) in Taungdwingyi Township, 2010



Age and gender wise malaria examination and positive (*P.f*) in Taungdwingyi Township, 2011



Change of hospital malaria in Patients in Taungdwingyi Township in Magway Region from 2006 to 2011



Sr	Year	Total In Patient	Total malaria In Patient	CM/SCM	Malaria Death	Total Death
1	2006	2577	115	18	2	88
2	2007	2876	96	7	9	102
3	2008	3319	79	9	4	99
4	2009	3509	98	11	8	70
5	2010	2266	19	1	1	28
6	2011	2714	29	29	0	4

Health Profile of Thayet Township



Area and Location*

Area	:	1188.68 Km ²
North	:	Minhla
South	:	Kama
East	:	AungLan
West	:	Mindone

Administrative Units*

Wards	:	8
Village tracts	:	53
Villages	:	157

Population (2009)*

Total	:	100,368
Urban	:	21,713
Rural	:	78,655
Male	:	48,458
Female	:	51,910
Sex Ratio	:	93
<5 Year	:	7,390
0-14 Year	:	21,730
15-49 Year	:	58,921
Population Density	:	84.44/ Km ²

Health Facilities (2009)*

District Hospital (100) Bedded	:	1
Station Hospitals	:	3
Maternal and Child Health Centers	:	1
Rural Health Centers	:	5
Sub Health Centers	:	25
School Health Center	:	1

Health Manpower*

	<i>Doctor</i>	<i>Nurse</i>	<i>HA</i>	<i>LHV</i>	<i>PHS I</i>	<i>PHS II</i>	<i>MW</i>
Sanction	20	21	6	7	2	12	36
Appointed	19	20	6	7	2	12	33
Vacant	1	1	0	0	0	0	3
% Vacancy	5.0%	4.8%	0%	0%	0%	0%	8.3%

(HA: Health Assistant, LHV: Lady Health Visitor, PHS:Public Health Supervisor , MW: Midwife)

Health Manpower (Volunteer)*

	Category of Volunteer Health Workers		
	CHW	AMW	TTBA
Trained	155	133	29
Functioning	96	88	12
% Functioning	61.9%	66.2%	41.4%

(CHW: Community health Worker, AMW: Auxiliary Mid Wife, TTBA: Trained Traditional Birth Attendant)

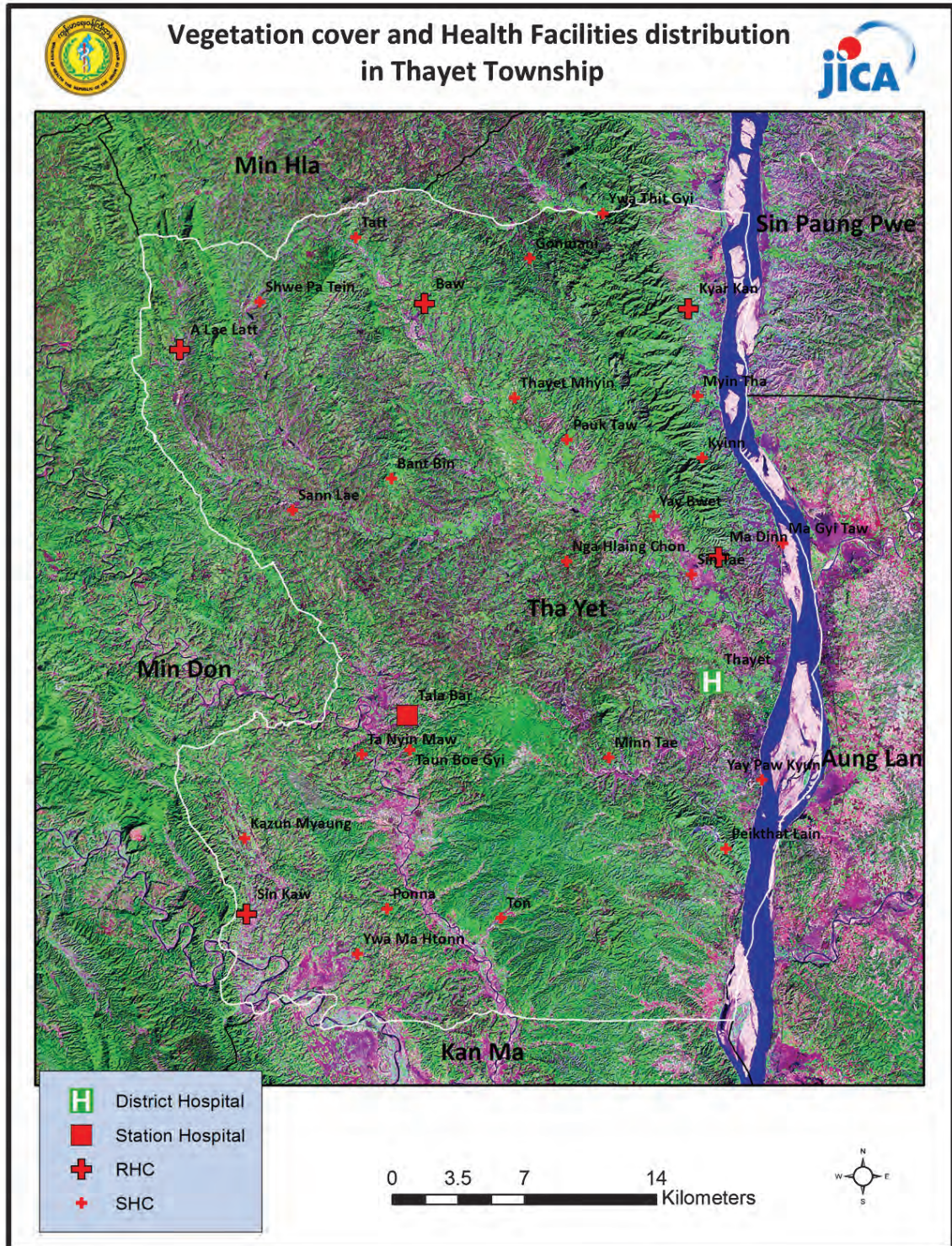
Common Diseases under National Surveillance*

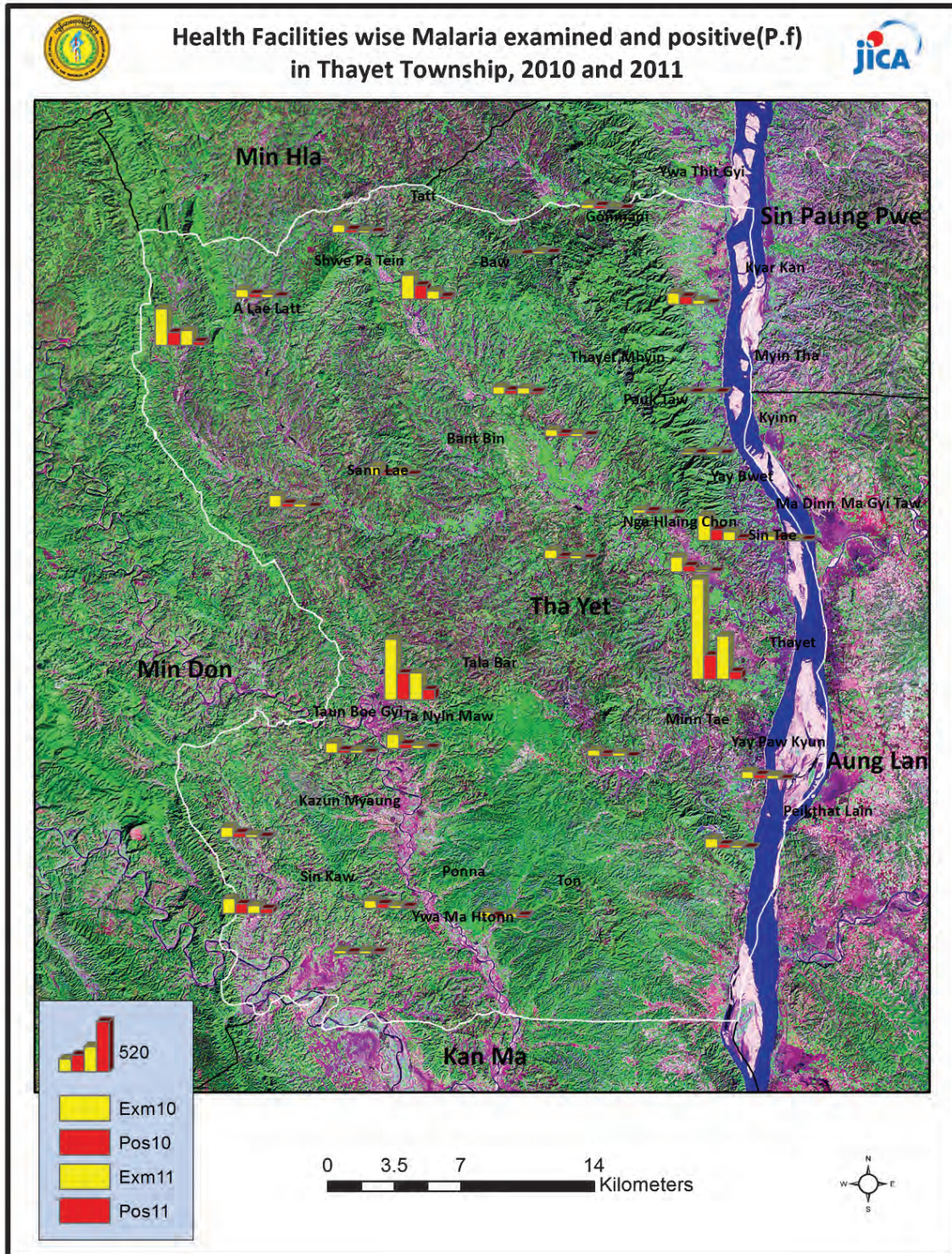
<i>Diseases</i>	<i>Morbidity</i>	<i>Mortality</i>
Malaria	1223.5	1.99
ARI <5	10054.13	13.53
Diarrhea	571.9	0
Dysentery	179.34	0
TB(Sputum+)	86.68	7.97
Snake Bite	67.75	4.98

(Per 100,000 Populations)

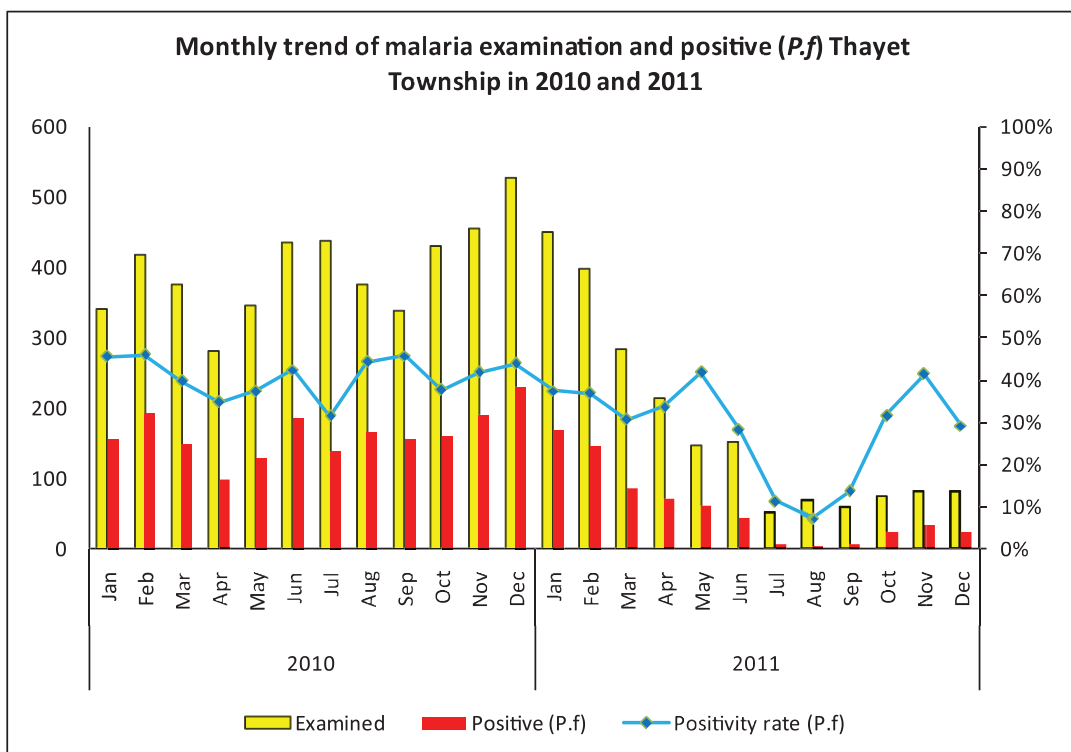
*The data source is Health Profile of Magway Region (2009) from Department of Health Planning.

Vegetation cover and Health Facilities a distribution in Thayet Township in Magway Region



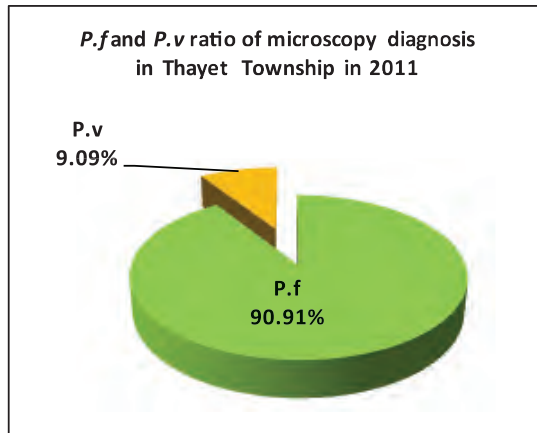
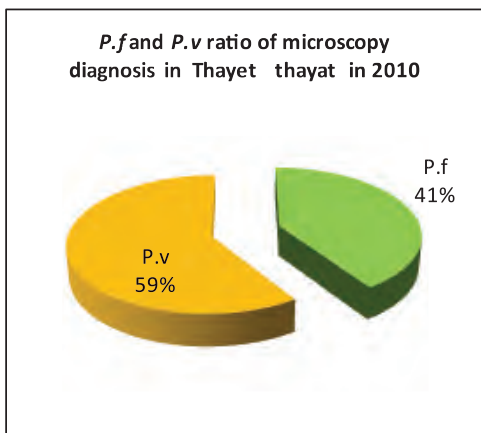


Monthly trend of malaria examination and positive (*P.f*) in Thayet Township in 2010 and 2011

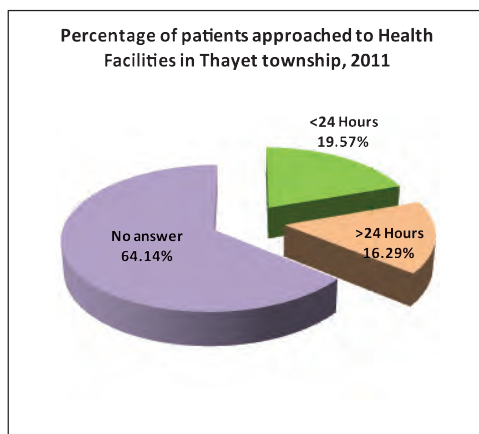


Month	2010			2011		
	Examined	Positive (<i>P.f</i>)	Positivity rate (<i>P.f</i>)	Examined	Positive (<i>P.f</i>)	Positivity rate (<i>P.f</i>)
Jan	341	155	45.45%	451	169	37.47%
Feb	417	192	46.04%	399	147	36.84%
Mar	375	149	39.73%	284	87	30.63%
Apr	282	98	34.75%	214	72	33.64%
May	345	129	37.39%	148	62	41.89%
Jun	436	185	42.43%	152	43	28.29%
Jul	439	138	31.44%	53	6	11.32%
Aug	375	166	44.27%	69	5	7.25%
Sep	339	155	45.72%	59	8	13.56%
Oct	430	162	37.67%	76	24	31.58%
Nov	456	191	41.89%	82	34	41.46%
Dec	526	231	43.92%	82	24	29.27%
Total	4,761	1,951	40.98%	2,069	681	32.91%

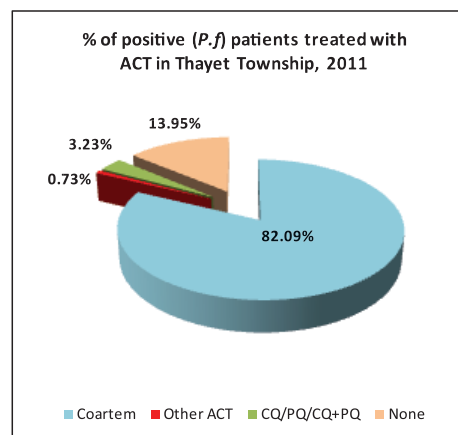
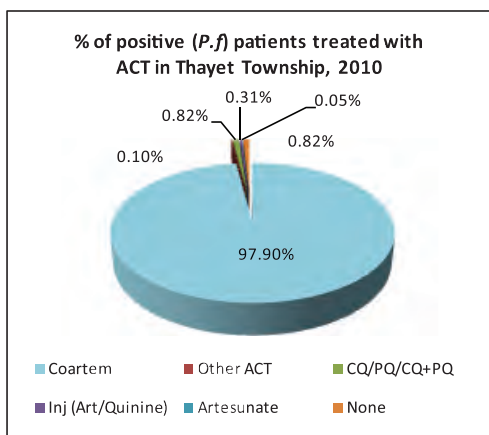
P.f and P.v ratio of malaria microscopy diagnosis in Thayet Township in 2010 and 2011



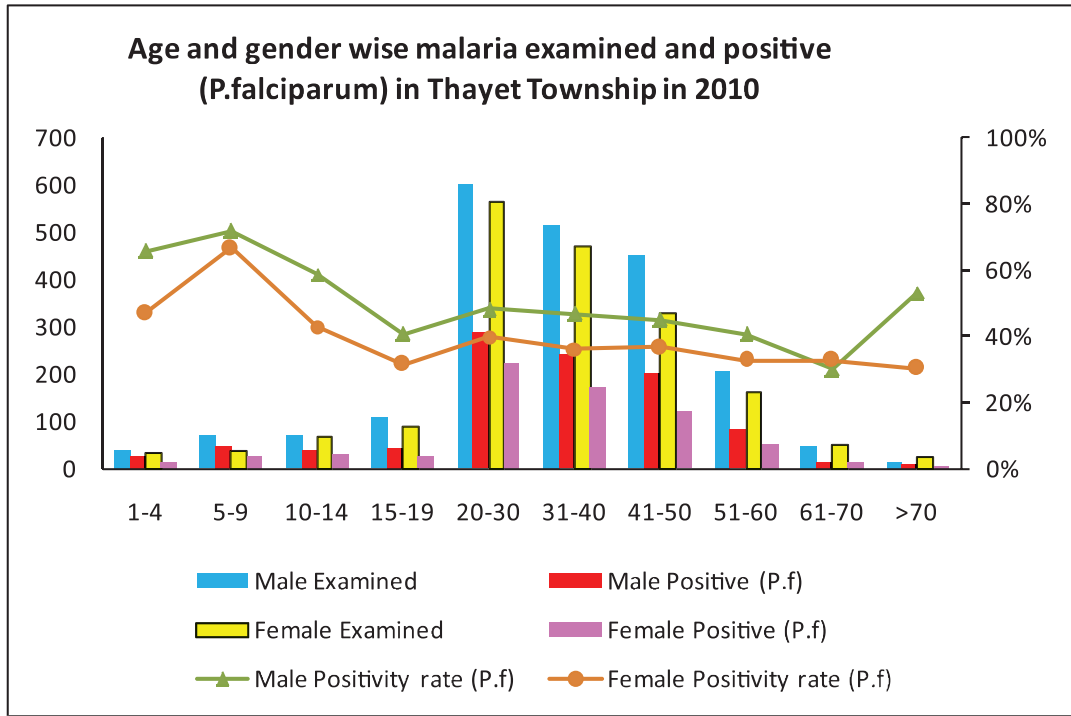
Percentage of patients approached to health facilities in Thayet Township in 2011



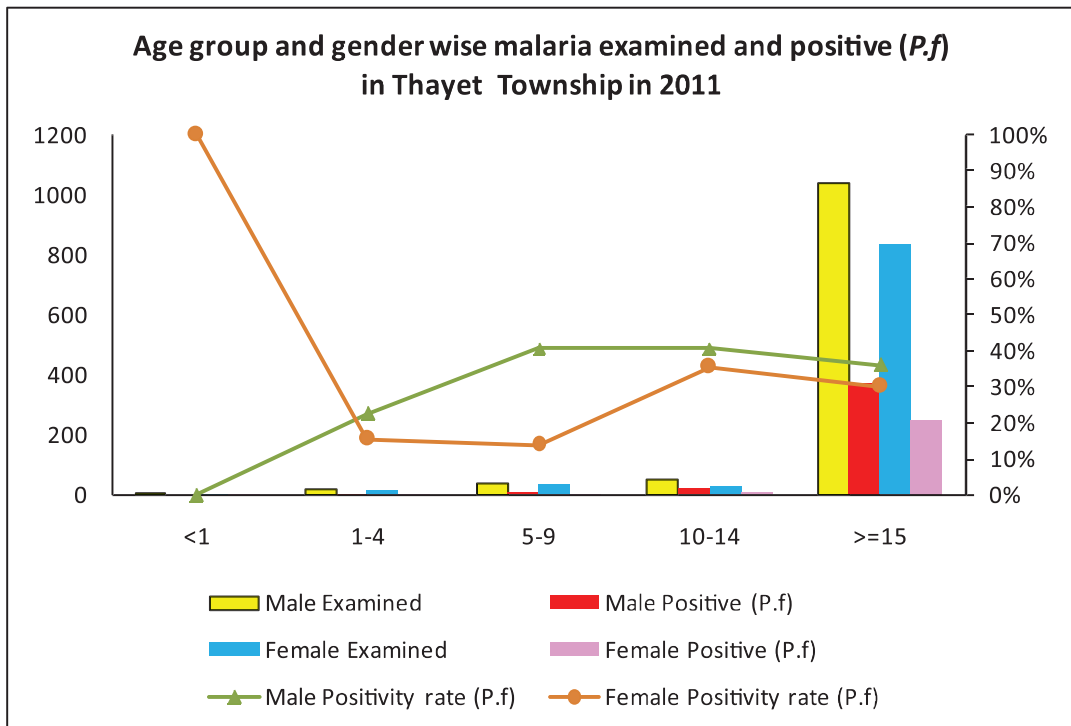
Percentage of positive (P.f) patients treated with ACT in Thayet Township in 2010 and 2011



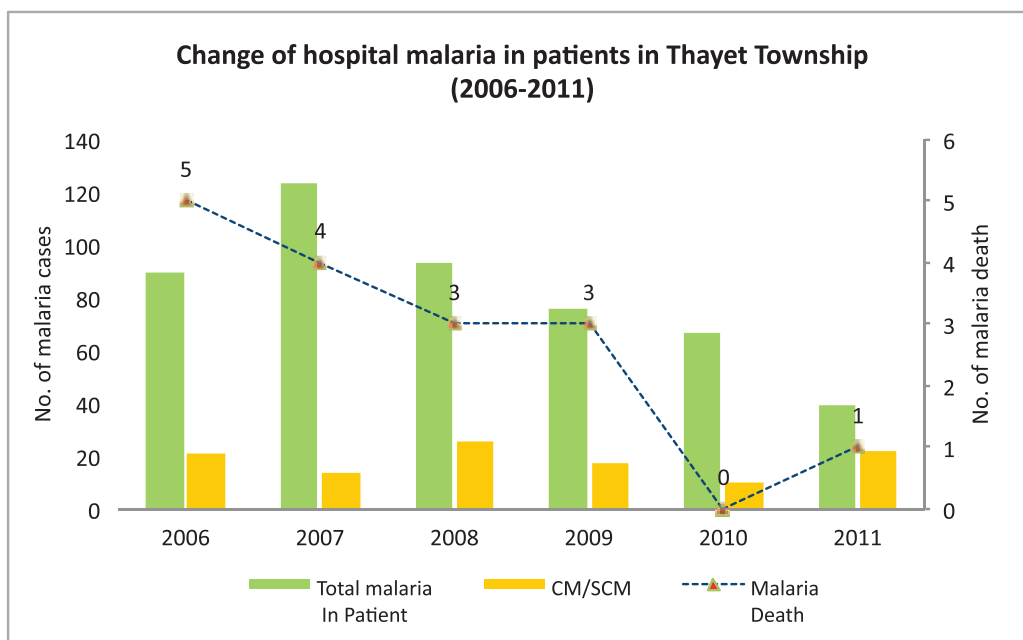
Age and gender wise malaria examination and positive (*P.f*) in Thayet Township, 2010



Age and gender wise malaria examination and positive (*P.f*) in Thayet Township, 2011



Change of hospital malaria in Patients in Thayet Township in Magway Region from 2006 to 2011



Sr	Year	Total In Patient	Total malaria In Patient	CM/ SCM	Malaria Death	Total Death
1	2006	2,646	90	21	5	109
2	2007	2,995	123	14	4	103
3	2008	2,624	93	26	3	12
4	2009	3,583	76	17	3	40
5	2010	3,100	67	10	0	20
6	2011	3,437	39	22	1	45

Health Profile of Htilin Township



Area and Location*

Area:	1333.85 Km ²
North:	Gangaw
South:	saw
East:	Pauk
West:	Matupi

Administrative Units*

Wards	: 2
Village tracts	: 71
Villages	: 95

Population (2009)*

Total	: 52,230
Urban	: 4,067
Rural	: 48,163
Male	: 25,004
Female	: 27,226
Sex Ratio	: 92
<5 Year	: 3,444
0-14 Year	: 10,889
15-49 Year	: 29,579
Population Density	: 36.16/ Km ²

Health Facilities (2009)*

Township Hospital (16) Bedded	: 1
Station Hospital	: 1
Maternal and Child Health Centers	: 1
Rural Health Centers	: 4
Sub Health Centers	: 23

Health Manpower*

	<i>Doctor</i>	<i>Nurse</i>	<i>HA</i>	<i>LHV</i>	<i>PHS I</i>	<i>PHS II</i>	<i>MW</i>
Sanction	7	17	4	5	2	5	30
Appointed	3	7	4	5	2	3	29
Vacant	3	10	0	0	0	2	1
% Vacancy	57.1%%	53.8%	0%	0%	0%	40.0%	3.3%

(HA: Health Assistant, LHV: Lady Health Visitor, PHS:Public Health Supervisor , MW: Midwife)

Health Manpower (Volunteer)*

	Category of Volunteer Health Workers		
	CHW	AMW	TTBA
Trained	82	86	55
Functioning	73	79	38
% Functioning	89%	91.9%	69.1%

(CHW: Community health Worker, AMW: Auxiliary Mid Wife, TTBA: Trained Traditional Birth Attendant)

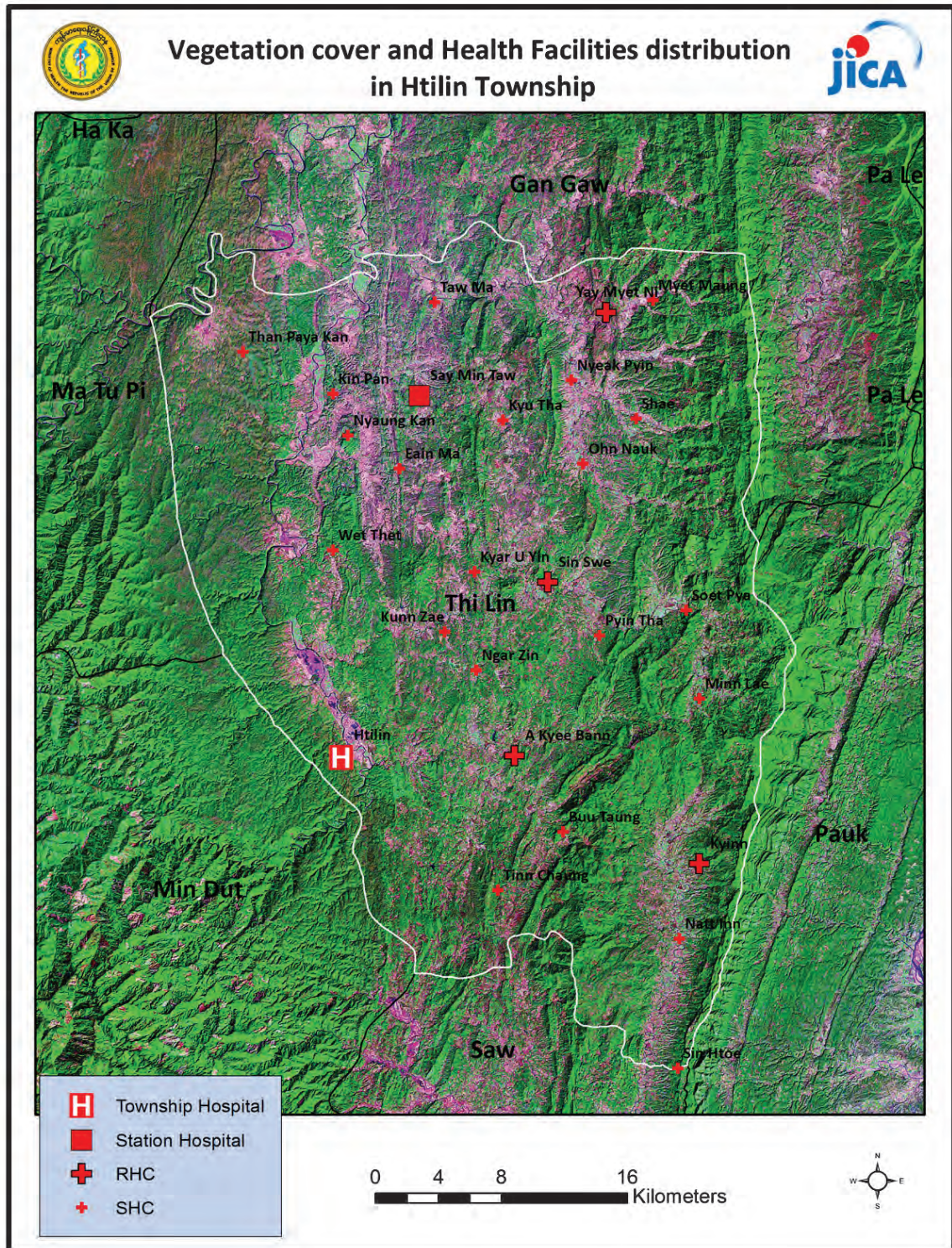
Common Diseases under National Surveillance*

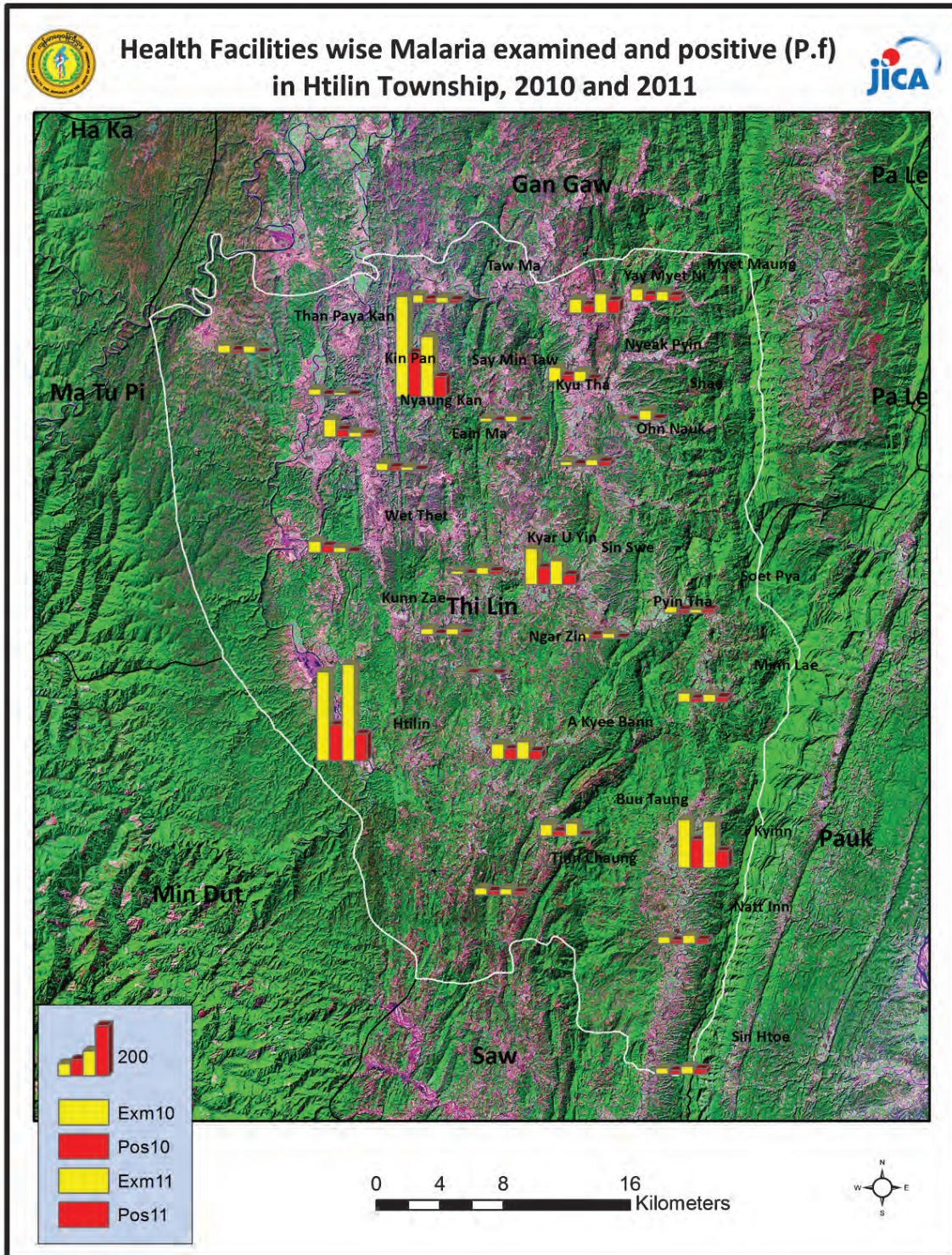
<i>Diseases</i>	<i>Morbidity</i>	<i>Mortality</i>
Malaria	1876.32	1.91
ARI <5	7491.29	0
Diarrhea	1185.14	0
Dysentery	271.87	0
TB(Sputum+)	24.89	0
Snake Bite	0	0

(Per 100,000 Populations)

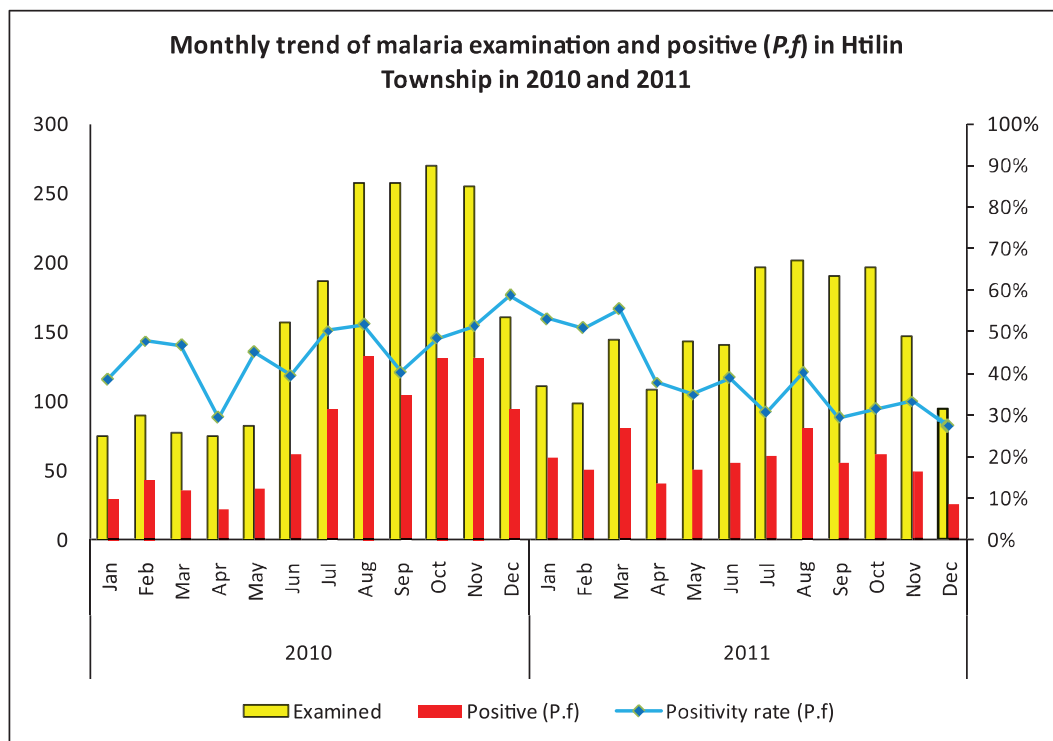
*The data source is Health Profile of Magway (2009) from Department of Health Planning.

Vegetation cover and Health Facilities distribution in Htilin Township in Magway Region



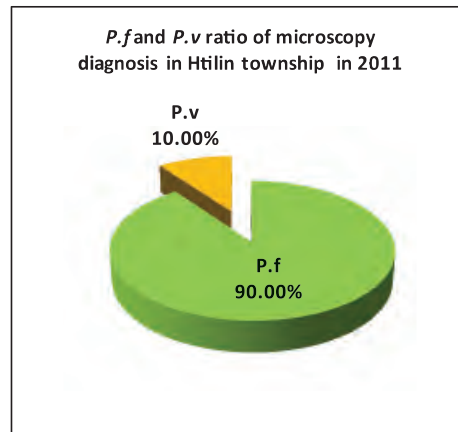
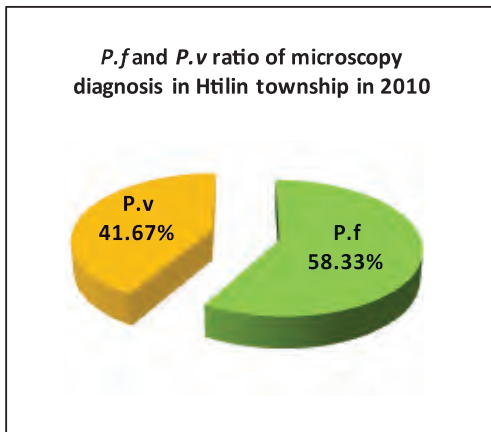


Monthly trend of malaria examination and positive (P.f) in Htilin Township in 2010 and 2011

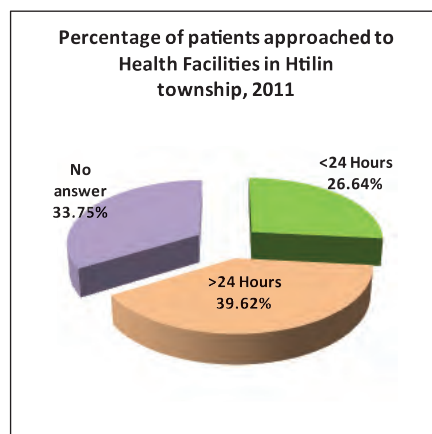
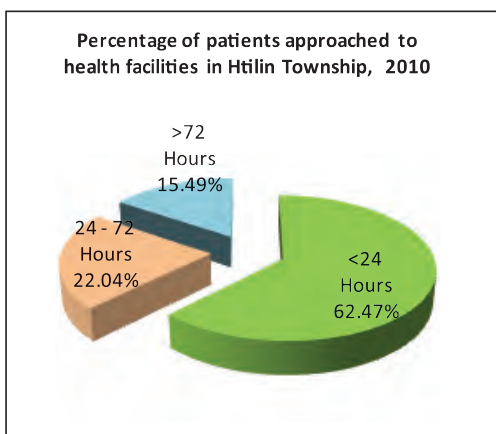


Month	2010			2011		
	Examined	Positive (P.f)	Positivity rate (P.f)	Examined	Positive (P.f)	Positivity rate (P.f)
Jan	75	29	38.67%	111	59	53.15%
Feb	90	43	47.78%	98	50	51.02%
Mar	77	36	46.75%	144	80	55.56%
Apr	75	22	29.33%	108	41	37.96%
May	82	37	45.12%	143	50	34.97%
Jun	157	62	39.49%	141	55	39.01%
Jul	187	94	50.27%	196	60	30.61%
Aug	257	133	51.75%	202	81	40.10%
Sep	258	104	40.31%	190	56	29.47%
Oct	270	131	48.52%	197	62	31.47%
Nov	255	131	51.37%	147	49	33.33%
Dec	160	94	58.75%	95	26	27.37%
Total	1,943	916	47.14%	1,772	669	37.75%

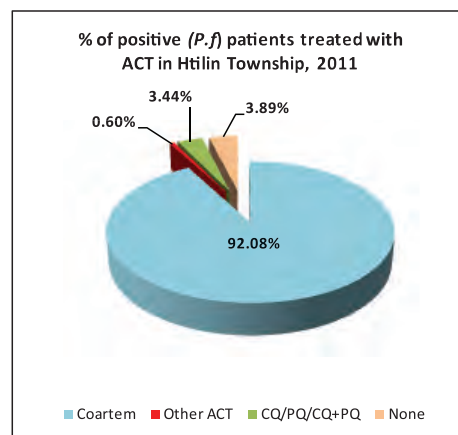
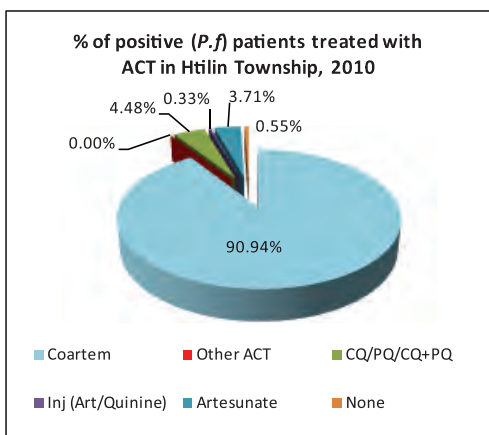
P.f and *P.v* ratio of malaria microscopy diagnosis in Htilin Township in 2010 and 2011



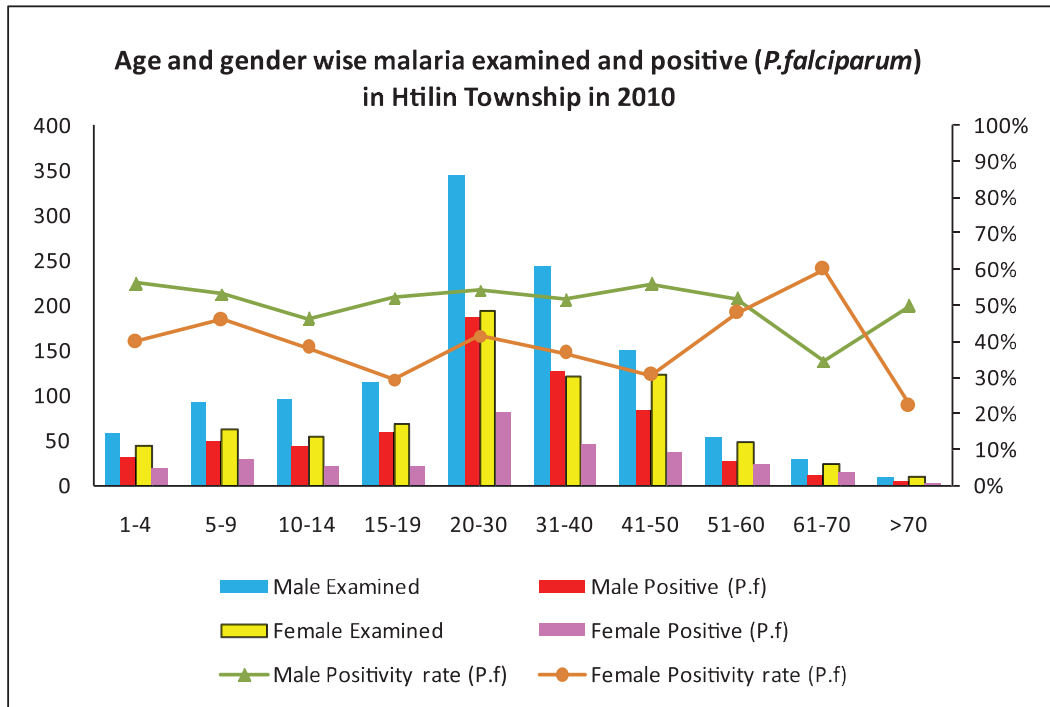
Percentage of patients approached to health facilities in Htilin Township in 2010 and 2011



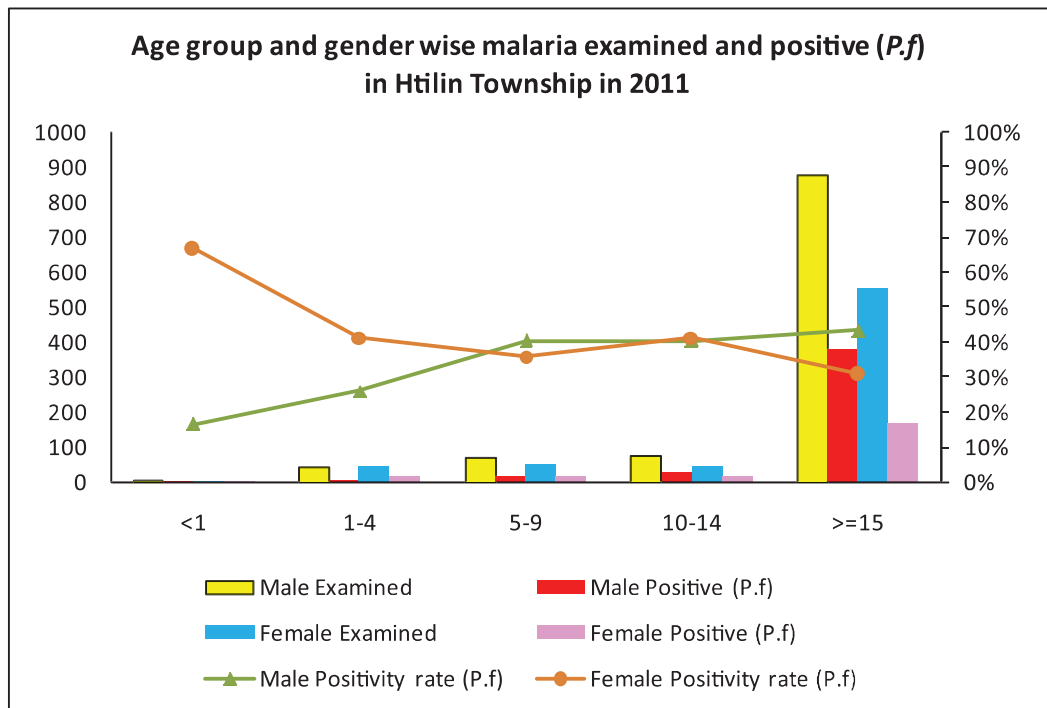
Percentage of Positive (*P.f*) patients treated with ACT in Htilin Township in 2010 and 2011



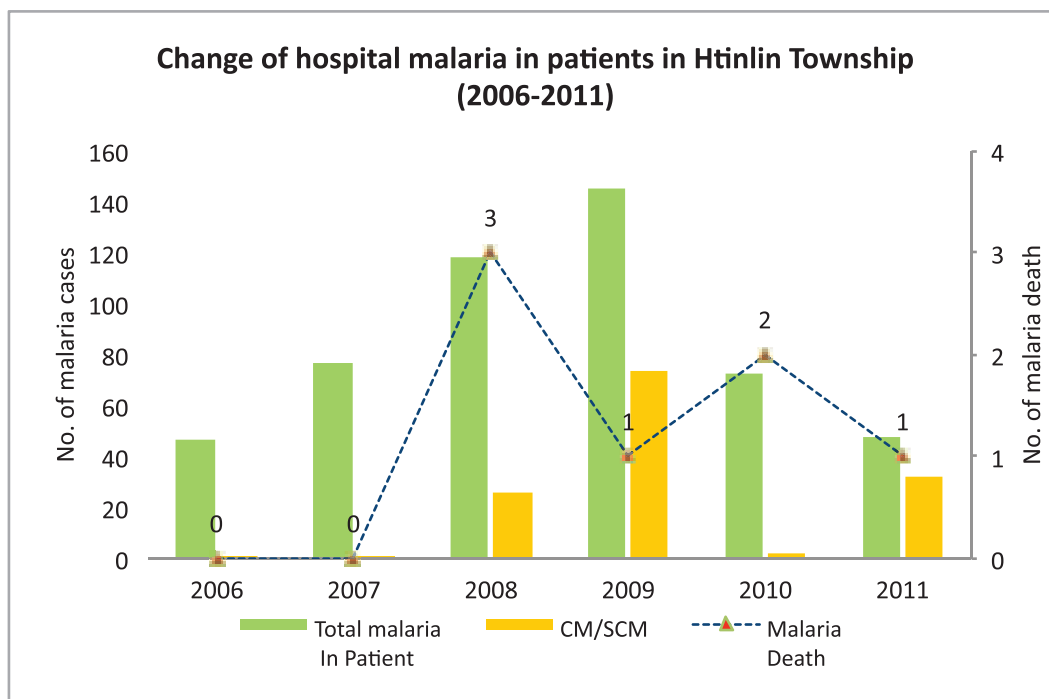
Age and gender wise malaria examination and positive (*P.f*) in Htilin Township, 2010



Age and gender wise malaria examination and positive (*P.f*) in Htilin Township, 2011



Change of hospital malaria in patients in Htinlin Township in Magway Region from 2006 to 2011



Sr	Year	Total In Patient	Total malaria In Patient	CM/SCM	Malaria Death	Total Death
1	2006	521	47	1	0	7
2	2007	624	77	1	0	8
3	2008	953	118	26	3	14
4	2009	1509	145	74	1	21
5	2010	1538	73	2	2	26
6	2011	1569	48	32	1	19