

## Health Profile of Salin Township



### Area and Location\*

Area	:	2313.23 Km <sup>2</sup>
North	:	Seik Phyu
South	:	Pwint Phyu
East	:	Chauk
West	:	Sadoktaya

### Administrative Units\*

Wards	:	7
Village tracts	:	67
Villages	:	148

### Population (2009)\*

Total	:	256,344
Urban	:	11,316
Rural	:	245,028
Male	:	124,208
Female	:	132,136
Sex Ratio	:	94
<5 Year	:	21,501
0-14 Year	:	67,011
15-49 Year	:	134,752
Population Density	:	110.82/ Km <sup>2</sup>

### Health Facilities (2009)\*

Township Hospital (25) Bedded	:	1
Station Hospitals	:	3
Maternal and Child Health Centers	:	2
Rural Health Centers	:	6
Sub Health Centers	:	35
Private Clinics and Maternity Home	:	5

**Health Manpower\***

	<i>Doctor</i>	<i>Nurse</i>	<i>HA</i>	<i>LHV</i>	<i>PHS I</i>	<i>PHS II</i>	<i>MW</i>
Sanction	8	14	6	8	3	9	47
Appointed	6	14	6	8	3	9	45
Vacant	2	0	0	0	0	0	2
% Vacancy	25%	0%	0%	0%	0%	0%	4.3%

(HA: Health Assistant, LHV: Lady Health Visitor, PHS:Public Health Supervisor , MW: Midwife)

**Health Manpower (Volunteer)\***

	Category of Volunteer Health Workers		
	CHW	AMW	TTBA
Trained	223	407	0
Functioning	181	374	0
% Functioning	81.2%	91.9%	0%

(CHW: Community health Worker, AMW: Auxiliary Mid Wife, TTBA: Trained Traditional Birth Attendant)

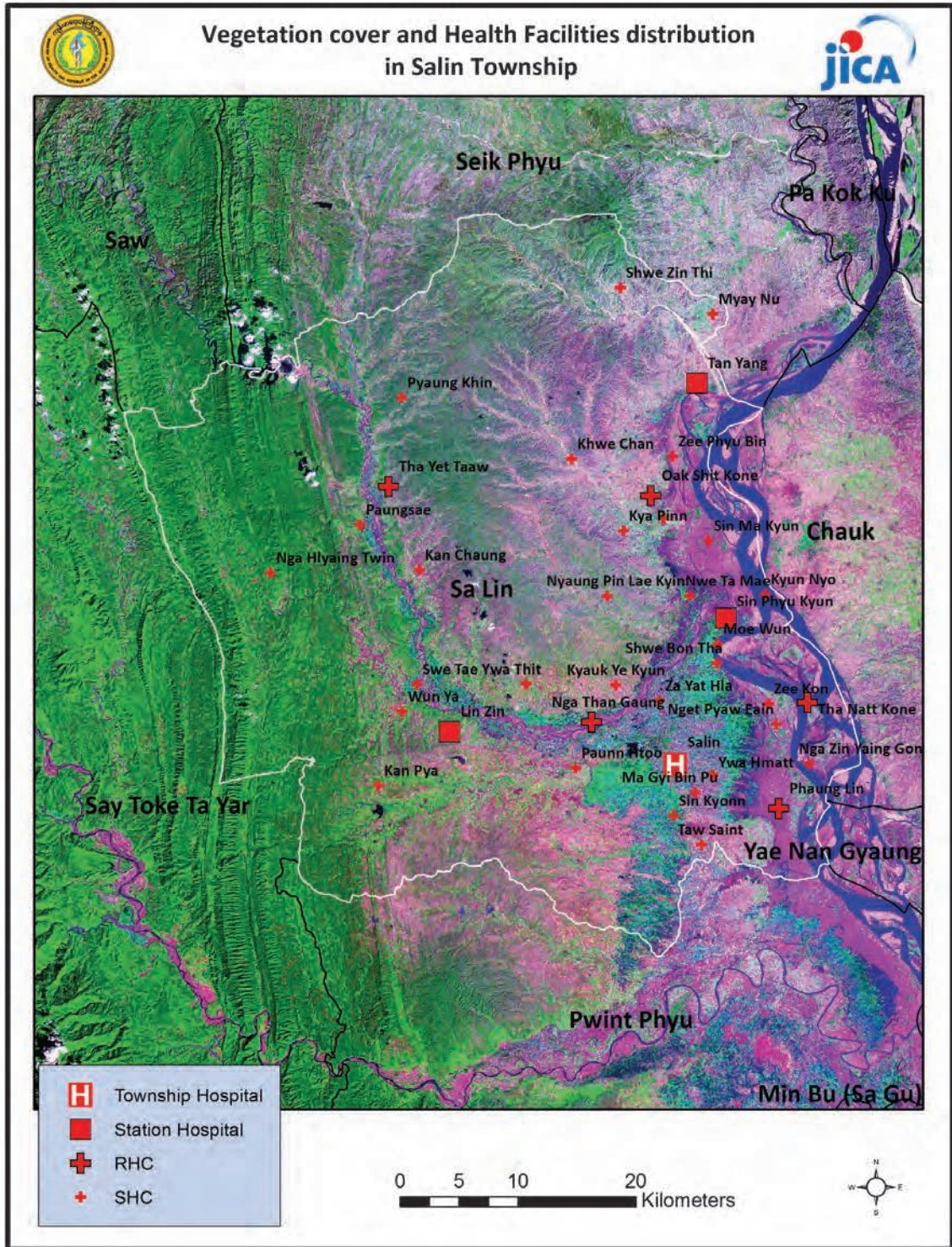
**Common Diseases under National Surveillance\***

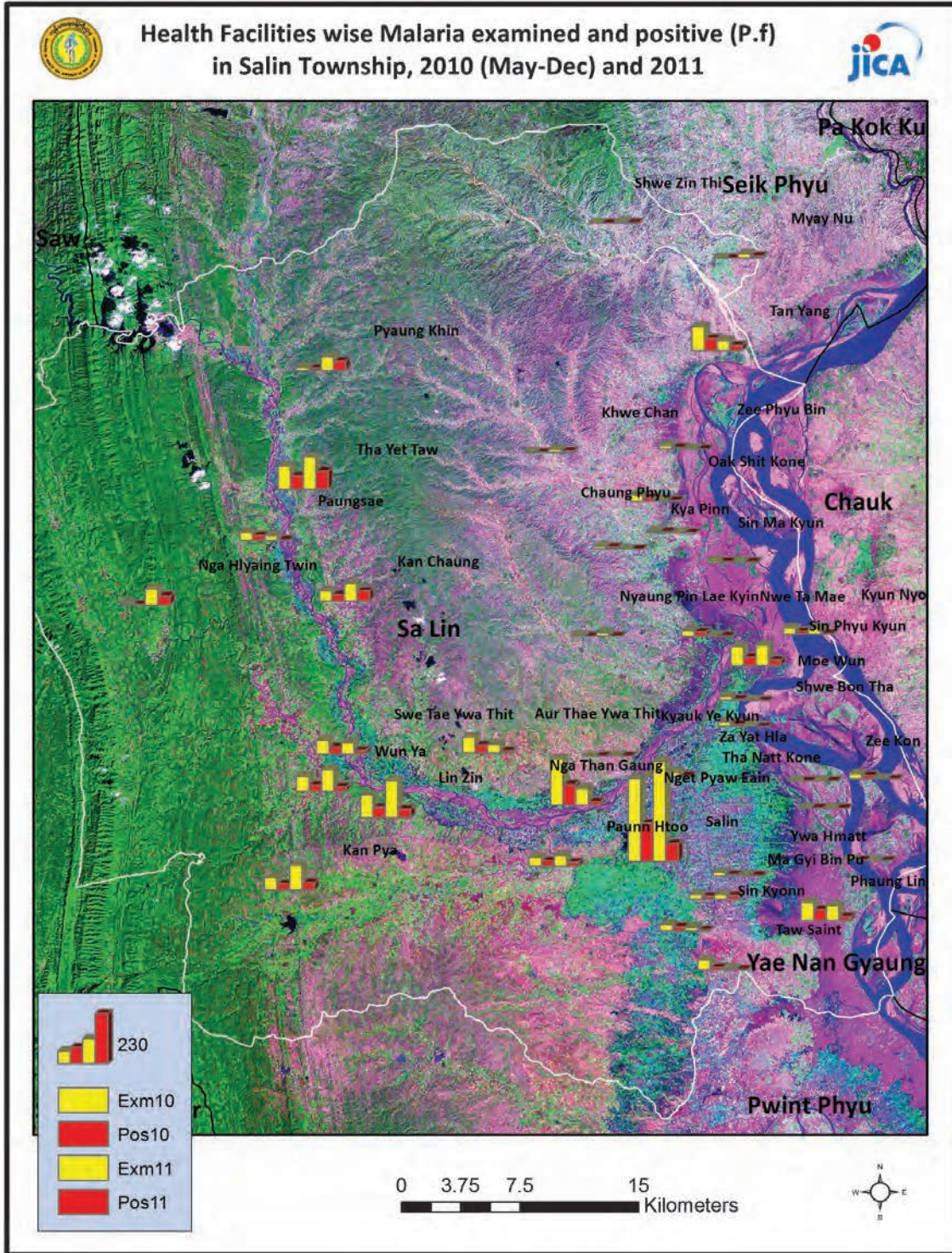
<i>Diseases</i>	<i>Morbidity</i>	<i>Mortality</i>
Malaria	492.87	0
ARI <5	6348.54	4.65
Diarrhea	342.12	0
Dysentery	303.50	0
TB(Sputum+)	31.6	0
Snake Bite	21.46	1.95

(Per 100,000 Populations)

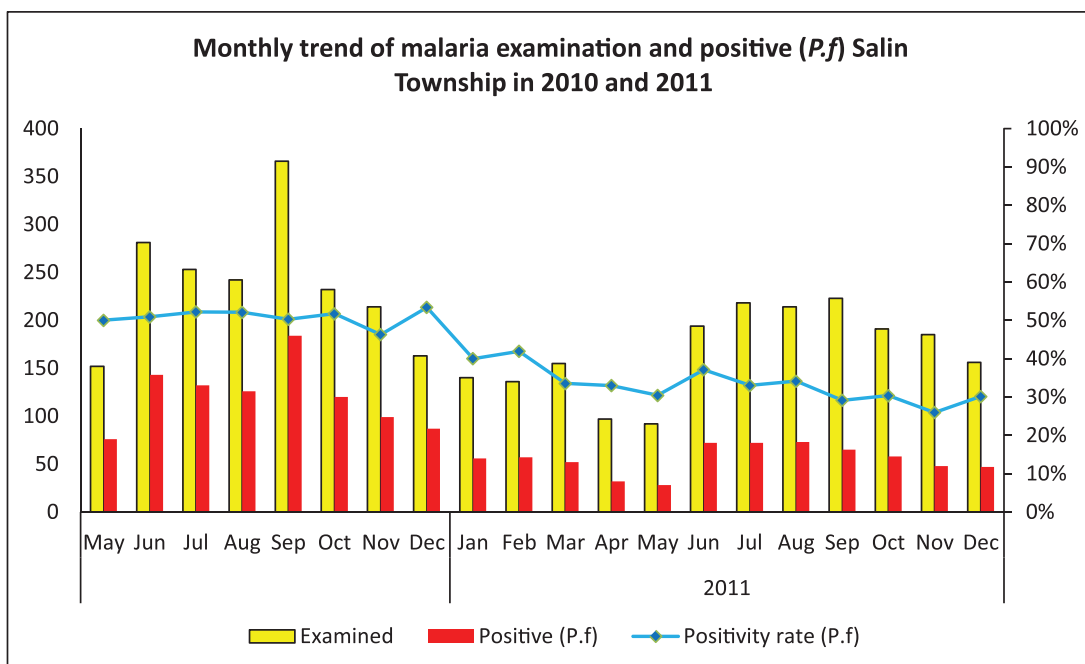
\*The data source is Health profile of Magway Region (2009 )from Department of Health Planning.

Vegetation cover and Health Facilities distribution in Salin Township in Magway Region





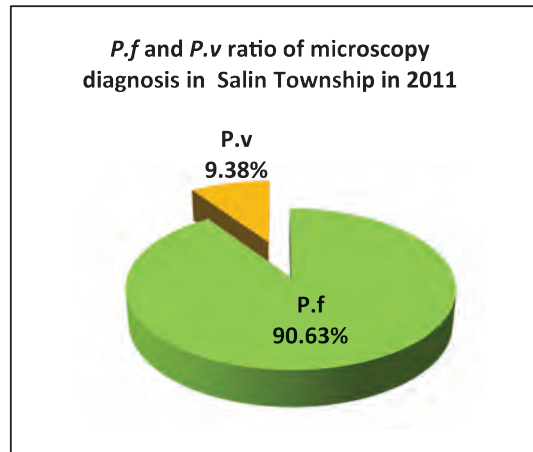
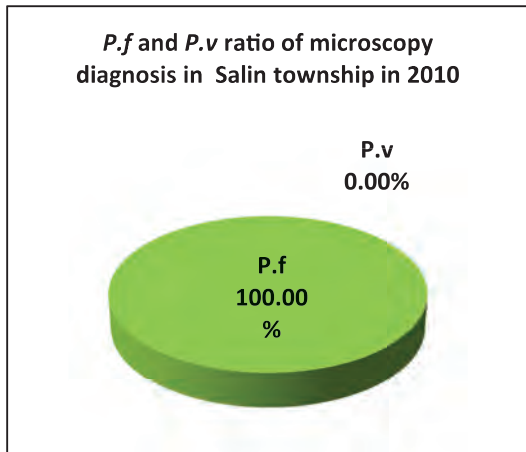
### Monthly trend of malaria examination and positive (P.f) in Salin Township in 2010 and 2011



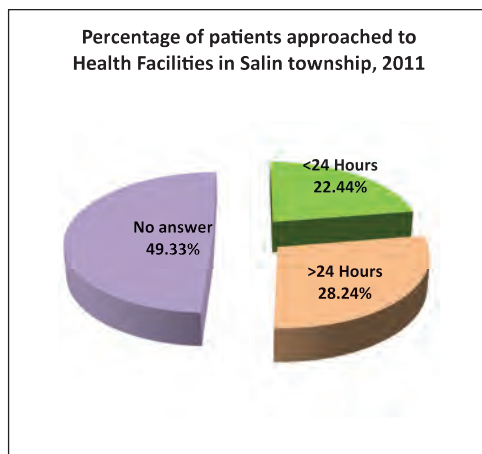
Month	2010			2011		
	Examined	Positive (P.f)	Positivity rate (P.f)	Examined	Positive (P.f)	Positivity rate (P.f)
Jan				140	56	40.00%
Feb				136	57	41.91%
Mar				155	52	33.55%
Apr				97	32	32.99%
May	152	76	50.00%	92	28	30.43%
Jun	281	143	50.89%	194	72	37.11%
Jul	253	132	52.17%	218	72	33.03%
Aug	242	126	52.07%	214	73	34.11%
Sep	366	184	50.27%	223	65	29.15%
Oct	232	120	51.72%	191	58	30.37%
Nov	214	99	46.26%	185	48	25.95%
Dec	163	87	53.37%	156	47	30.13%
<b>Total</b>	<b>1,903</b>	<b>967</b>	<b>50.81%</b>	<b>2,001</b>	<b>660</b>	<b>32.98%</b>

There are no availability of carbonless report of malaraiia patient records for Jan-Apr, 2010 in Salin Township

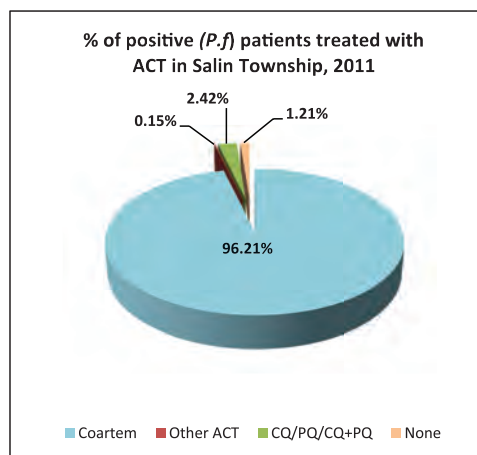
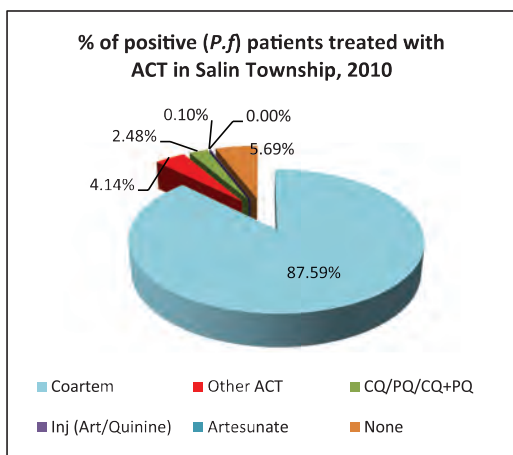
### *P.f* and *P.v* of malaria microscopy diagnosis in Salin Township in 2010 and 2011



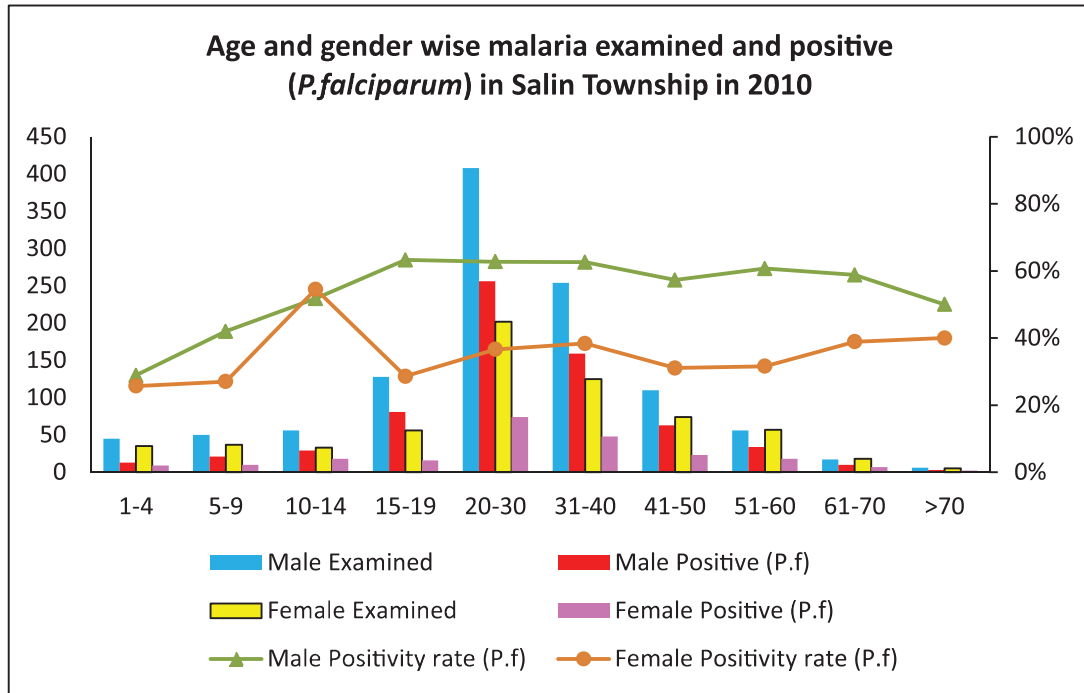
### Percentage of patients approached to health facilities in Salin Township in 2011



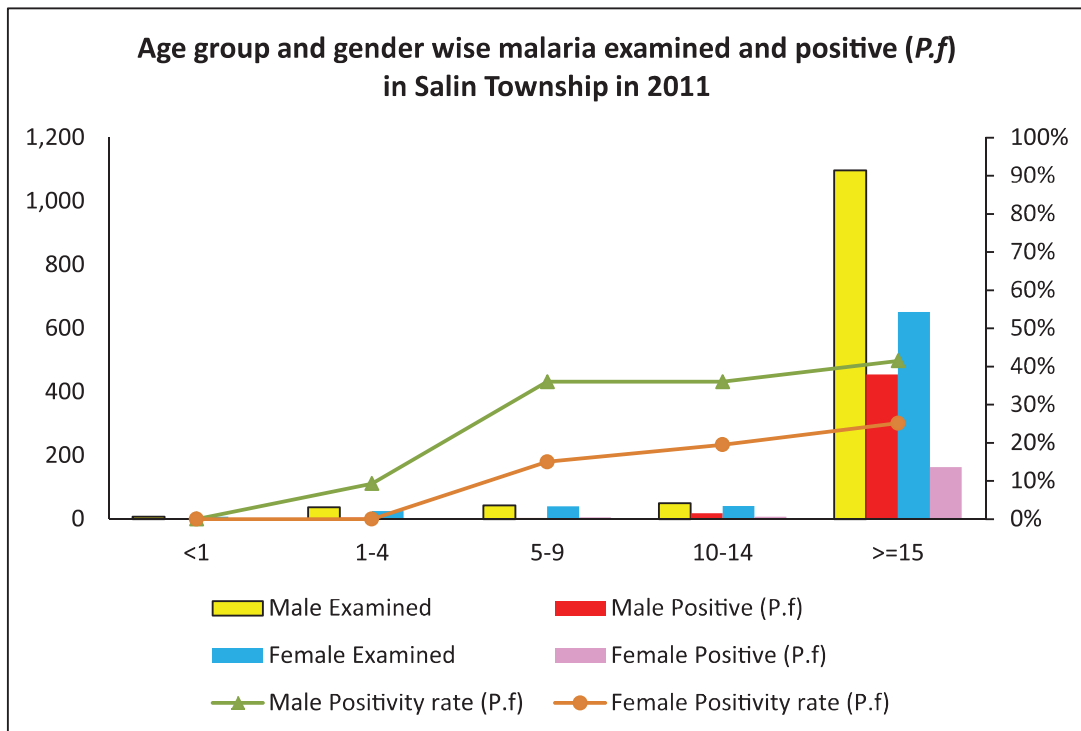
### Percentage of Positive (*P.f*) patients treated with ACT in Salin Township in 2010 and 2011



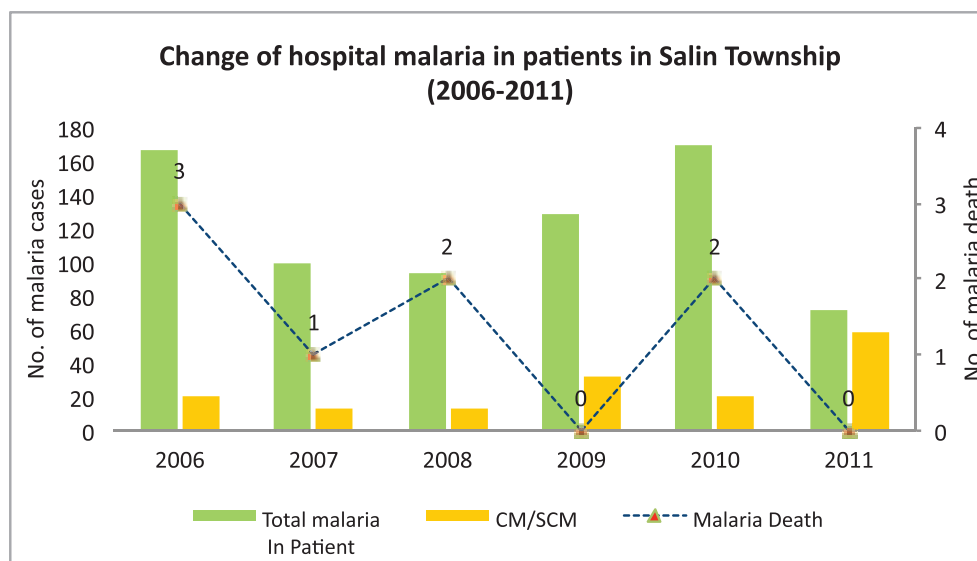
Age and gender wise malaria examination and positive (P.f) in Salin Township, 2010



Age and gender wise malaria examination and positive (P.f) in Silin Township, 2011



### Change of hospital malaria in patients in Silin Township in Magway Region from 2006 to 2011



Sr	Year	Total In Patient	Total malaria In Patient	CM/SCM	Malaria Death	Total Death
1	2006	2377	167	21	3	30
2	2007	2137	100	13	1	16
3	2008	2058	94	13	2	19
4	2009	2422	129	32	0	29
5	2010	3546	169	20	2	17
6	2011	3106	71	59	0	25



## Health Profile of Saw Township



### Area and Location\*

Area	:	1781.07 Km <sup>2</sup>
North	:	Tilin
South	:	Sadoktaya
East	:	Pauk
West	:	Mindat

### Administrative Units\*

Wards	:	5
Village tracts	:	63
Villages	:	118

### Population (2009)\*

Total	:	68,408
Urban	:	4,600
Rural	:	63,808
Male	:	32,845
Female	:	35,563
Sex Ratio	:	92
<5 Year	:	4,769
0-14 Year	:	15,402
15-49 Year	:	38,725
Population Density	:	38.41/ Km <sup>2</sup>

### Health Facilities (2009)\*

Township Hospital (16) Bedded	:	1
Station Hospitals	:	2
Maternal and Child Health Centers	:	1
Rural Health Centers	:	5
Sub Health Centers	:	31

**Health Manpower\***

	<i>Doctor</i>	<i>Nurse</i>	<i>HA</i>	<i>LHV</i>	<i>PHS I</i>	<i>PHS II</i>	<i>MW</i>
Sanction	10	24	5	4	3	6	40
Appointed	6	22	4	3	3	6	38
Vacant	4	2	1	1	0	0	2
% Vacancy	40%	8.3%	20%	25%	0%	0%	5%

(HA: Health Assistant, LHV: Lady Health Visitor, PHS:Public Health Supervisor , MW: Midwife)

**Health Manpower (Volunteer)\***

	Category of Volunteer Health Workers		
	CHW	AMW	TTBA
Trained	130	143	0
Functioning	95	114	0
% Functioning	73.1%	79.7%	0%

(CHW: Community health Worker, AMW: Auxiliary Mid Wife, TTBA: Trained Traditional Birth Attendant)

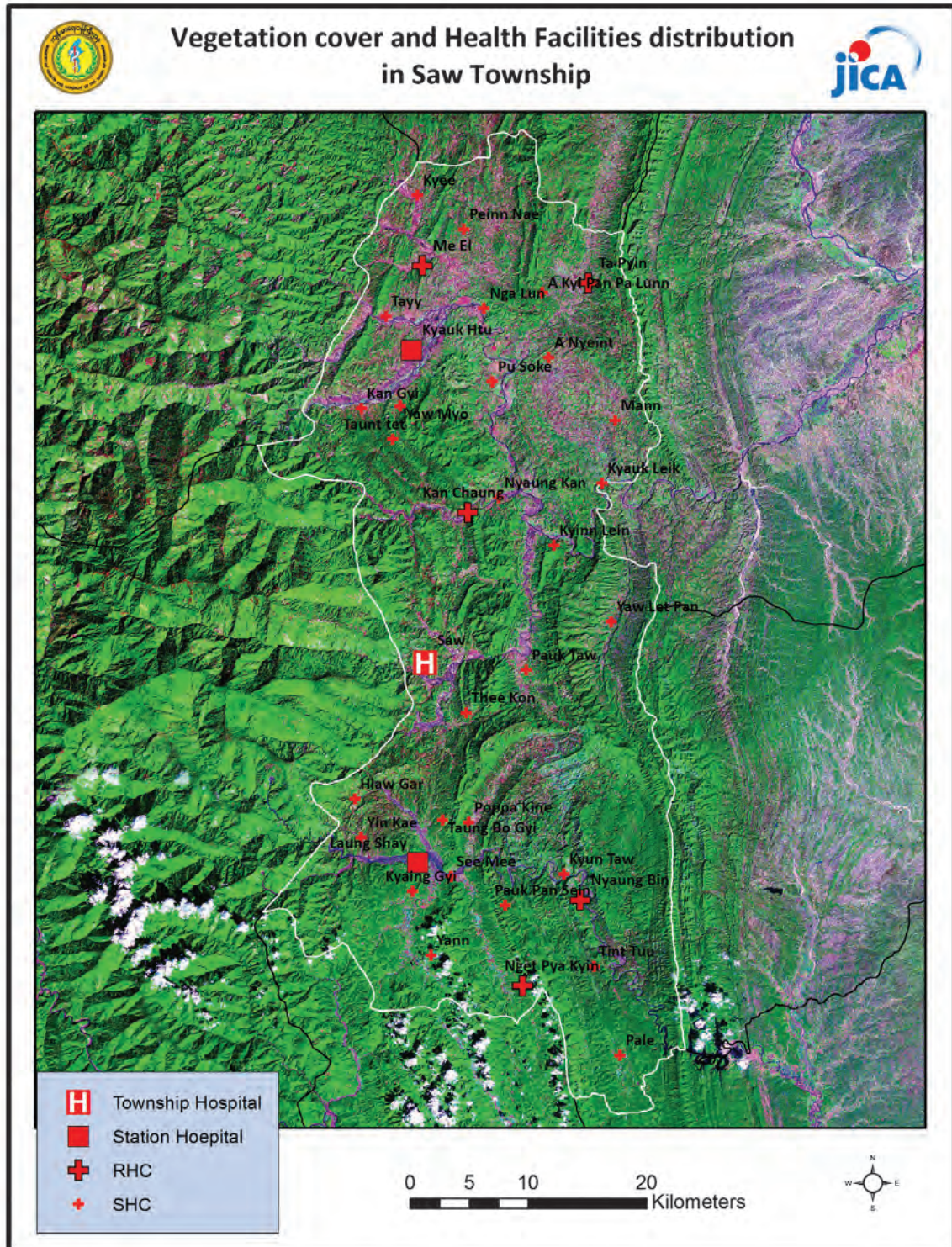
**Common Diseases under National Surveillance\***

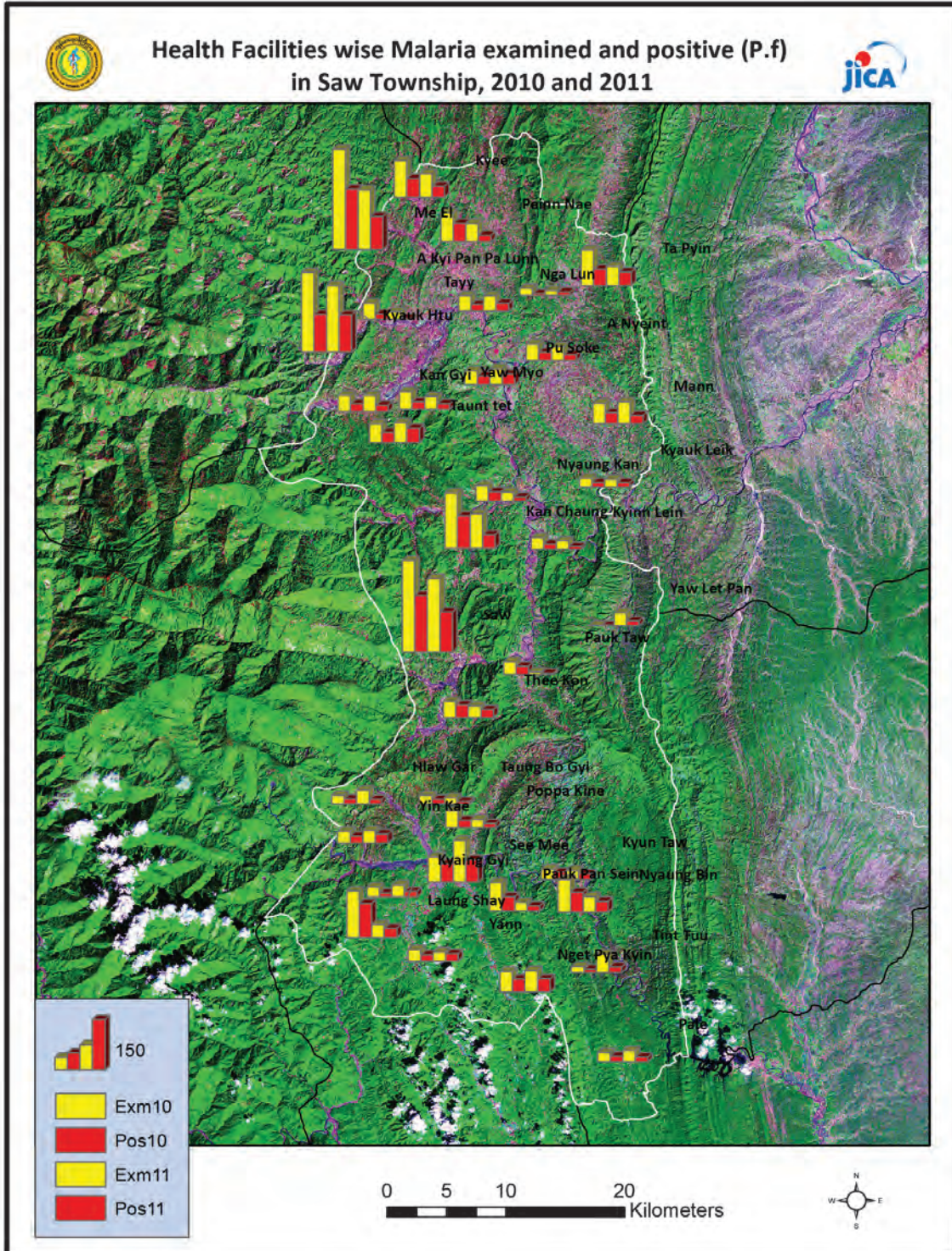
<i>Diseases</i>	<i>Morbidity</i>	<i>Mortality</i>
Malaria	4231.96	1.46
ARI <5	19689.66	62.91
Diarrhea	793.77	1.46
Dysentery	251.43	0
TB(Sputum+)	48.24	0
Snake Bite	5.85	1.46

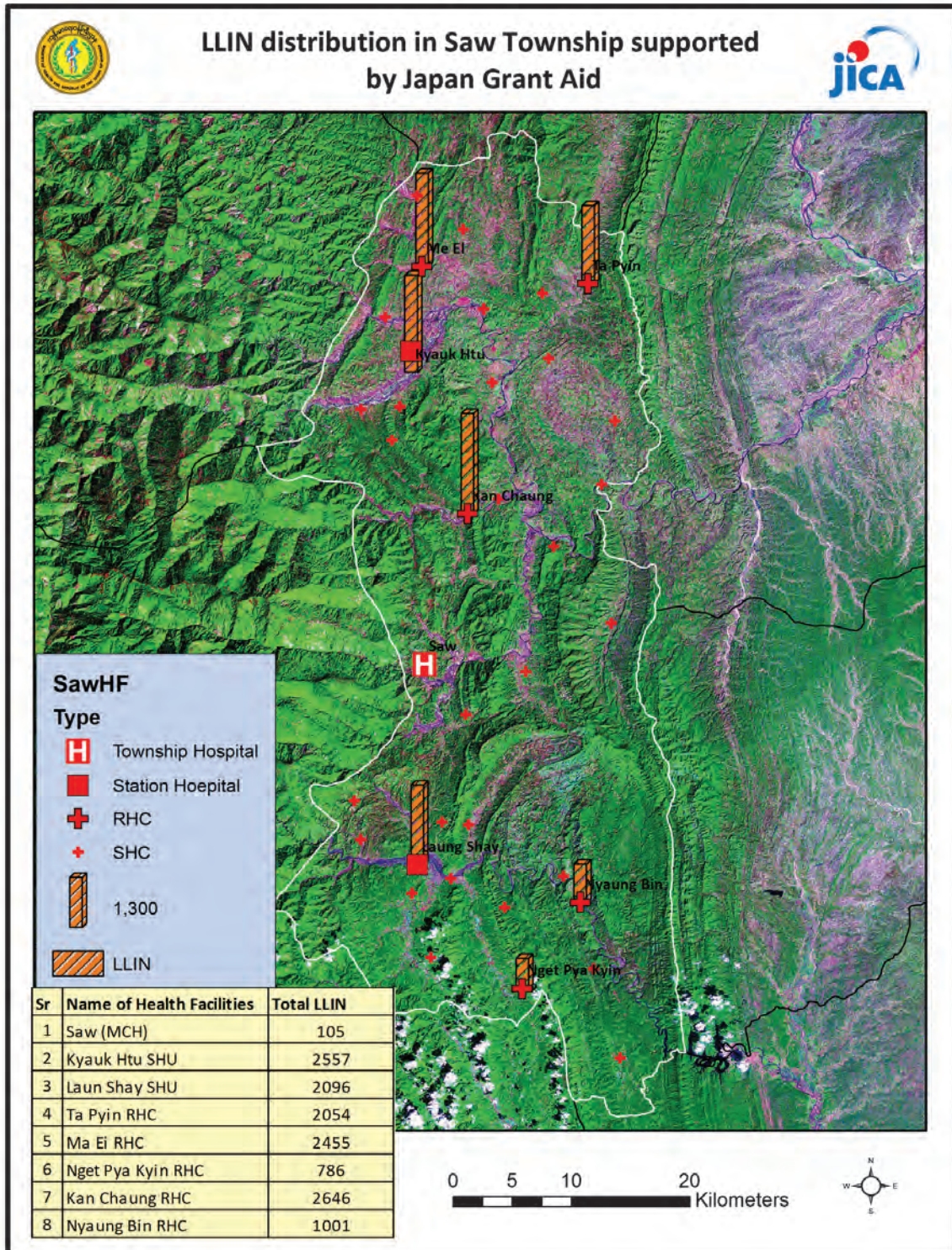
(Per 100,000 Populations)

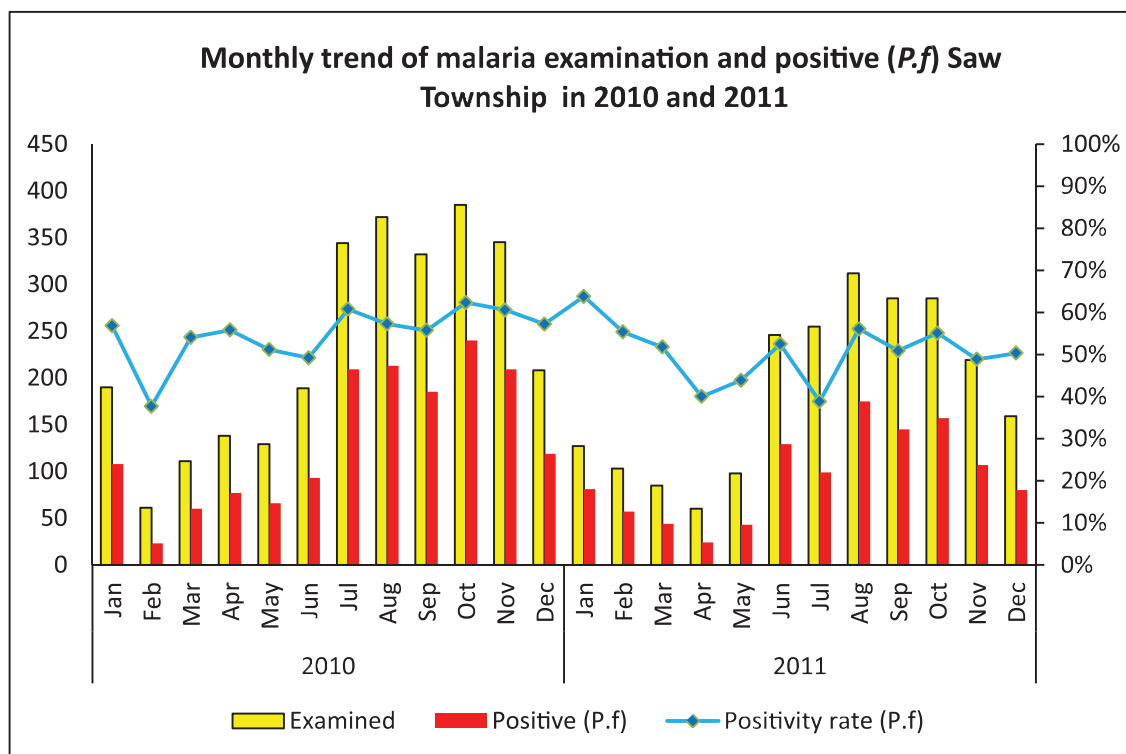
\*The data source is Health profile of Magway Region (2009) From Department of Health Planning.

Vegetation cover and Health Facilities distribution in Saw Township in Magway Region



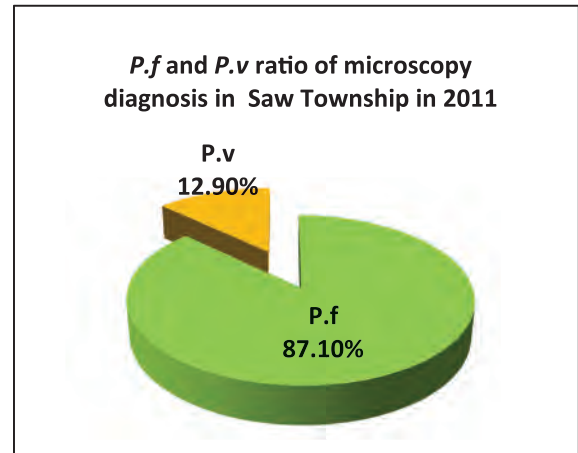
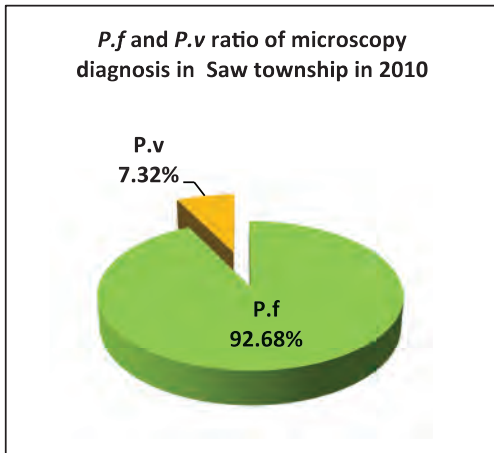




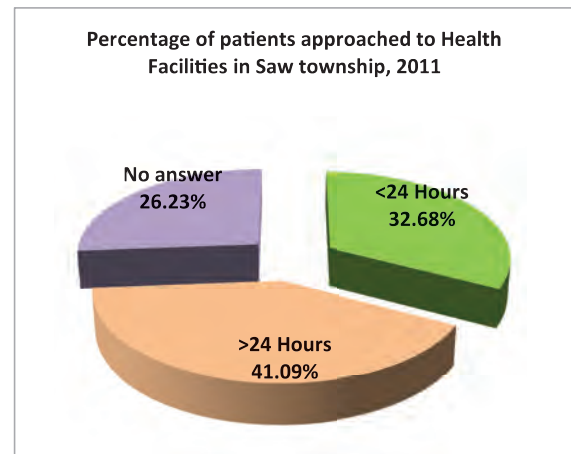
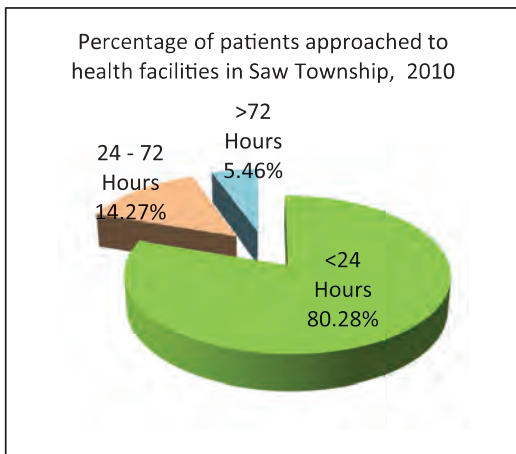
Monthly trend of malaria examination and positive (*P.f*) in Saw Township in 2010 and 2011


Month	2010			2011		
	Examined	Positive ( <i>P.f</i> )	Positivity rate ( <i>P.f</i> )	Examined	Positive ( <i>P.f</i> )	Positivity rate ( <i>P.f</i> )
Jan	190	108	56.84%	127	81	63.78%
Feb	61	23	37.70%	103	57	55.34%
Mar	111	60	54.05%	85	44	51.76%
Apr	138	77	55.80%	60	24	40.00%
May	129	66	51.16%	98	43	43.88%
Jun	189	93	49.21%	246	129	52.44%
Jul	344	209	60.76%	255	99	38.82%
Aug	372	213	57.26%	312	175	56.09%
Sep	332	185	55.72%	285	145	50.88%
Oct	385	240	62.34%	285	157	55.09%
Nov	345	209	60.58%	219	107	48.86%
Dec	208	119	57.21%	159	80	50.31%
<b>Total</b>	<b>2,804</b>	<b>1,602</b>	<b>57.13%</b>	<b>2,234</b>	<b>1,141</b>	<b>51.07%</b>

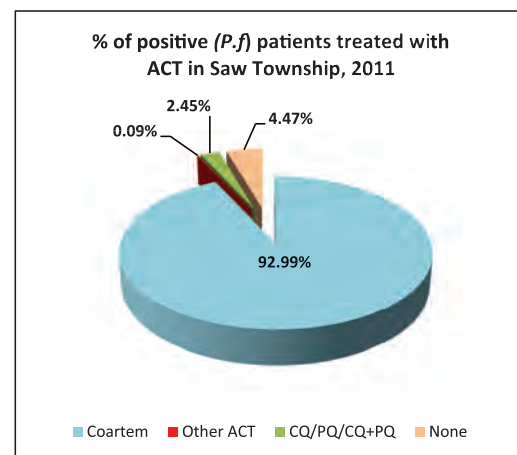
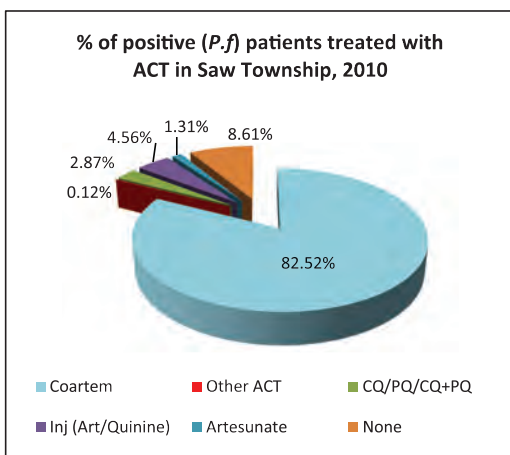
**P.f and P.v ratio of malaria microscopy diagnosis in Saw Township in 2010 and 2011**



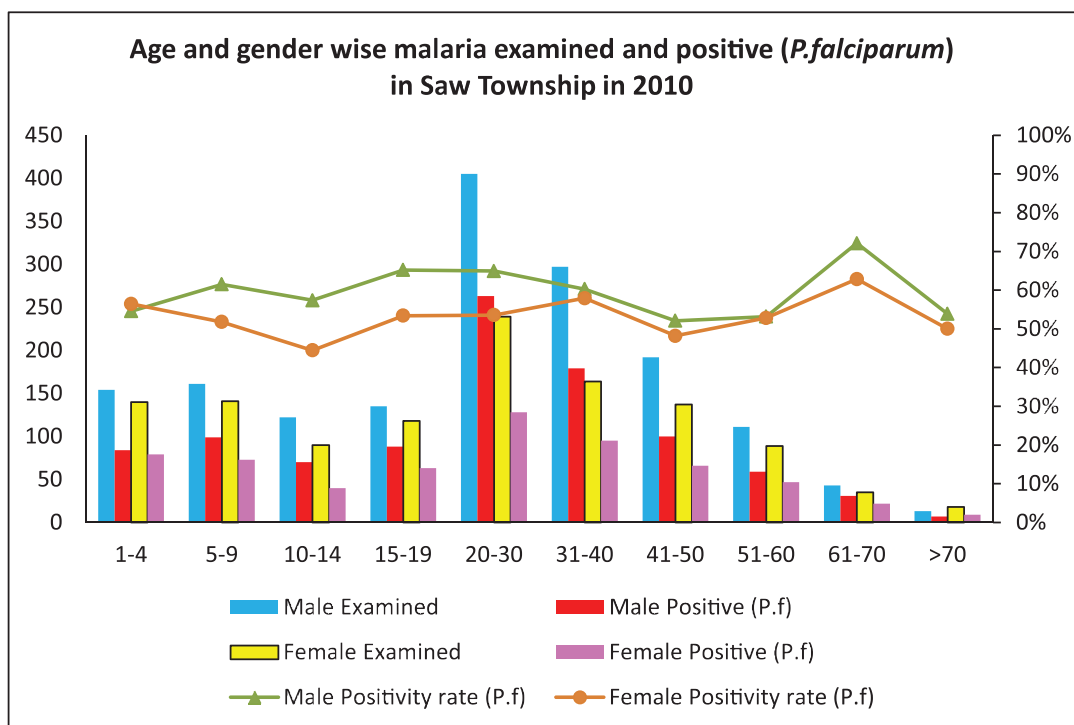
**Percentage of patients approached to health facilities in Saw Township in 2010 and 2011**



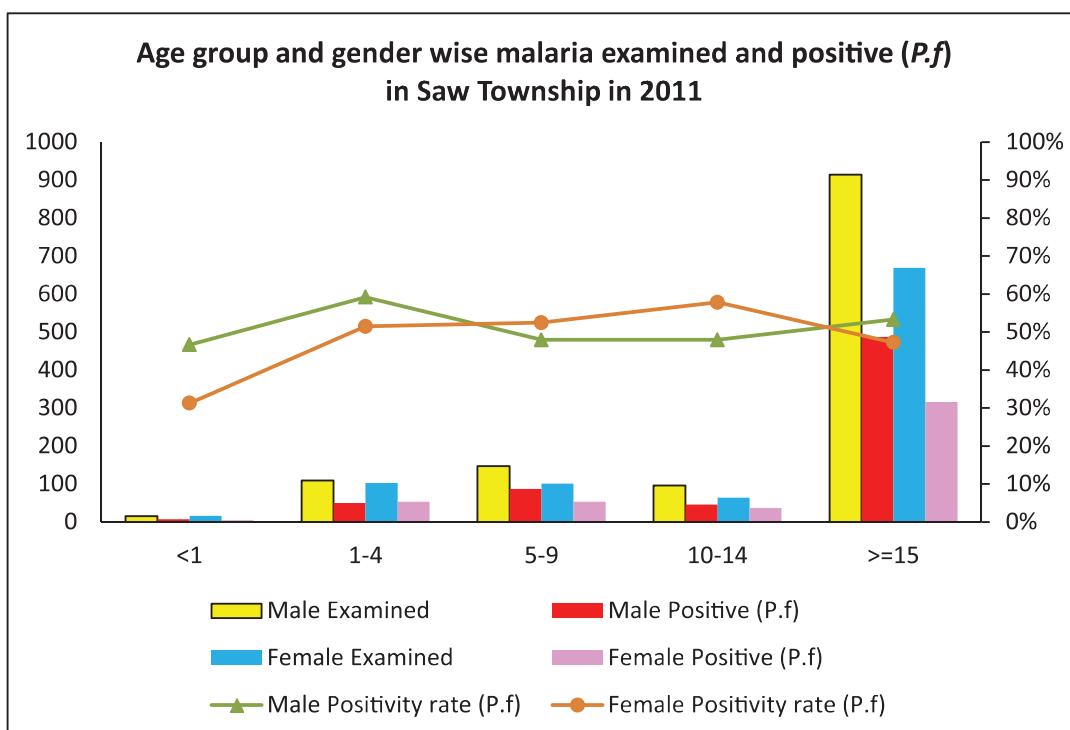
**Percentage of Positive (P.f) patients treated with ACT in Saw Township in 2010 and 2011**



### Age and gender wise malaria examination and positive (*P.f*) in Saw Township, 2010

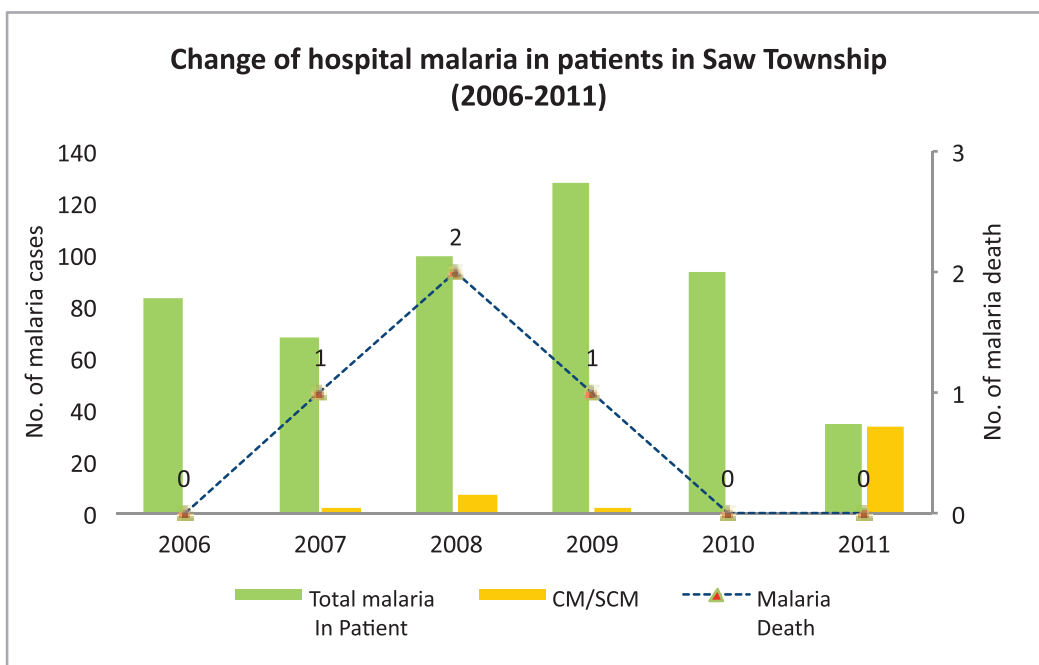


### Age and gender wise malaria examination and positive (*P.f*) in Saw Township, 2011





### Change of hospital malaria in patients in Saw Township in Magway Region from 2006 to 2011



Sr	Year	Total In Patient	Total malaria In Patient	CM/SCM	Malaria Death	Total Death
1	2006	1070	83	0	0	5
2	2007	896	68	2	1	6
3	2008	1025	99	7	2	7
4	2009	1164	128	2	1	6
5	2010	874	93	0	0	13
6	2011	649	34	33	0	12

## Health Profile of Saydoktaya Township



### Area and Location\*

Area	:	2805.62 Km <sup>2</sup>
North	:	Saw
South	:	Ngape
East	:	Pwintphyu
West	:	Minbu

### Administrative Units\*

Wards	:	2
Village tracts	:	46
Villages	:	120

### Population (2009)\*

Total	:	42,061
Urban	:	4,278
Rural	:	37,783
Male	:	20,325
Female	:	21,736
Sex Ratio	:	94
<5 Year	:	3,942
0-14 Year	:	11,085
15-49 Year	:	22,574
Population Density	:	14.99/ Km <sup>2</sup>

### Health Facilities (2009)\*

Township Hospital (25) Bedded	:	1
Station Hospital	:	1
Maternal and Child Health Centers	:	1
Rural Health Centers	:	4
Sub Health Centers	:	23

**Health Manpower\***

	<i>Doctor</i>	<i>Nurse</i>	<i>HA</i>	<i>LHV</i>	<i>PHS I</i>	<i>PHS II</i>	<i>MW</i>
Sanction	7	17	4	4	2	7	30
Appointed	5	14	4	4	2	3	28
Vacant	2	3	0	0	0	4	2
% Vacancy	28.6%	17.6%	0%	0%	0%	57.1%	6.7%

(HA: Health Assistant, LHV: Lady Health Visitor, PHS:Public Health Supervisor , MW: Midwife)

**Health Manpower (Volunteer)\***

	Category of Volunteer Health Workers		
	CHW	AMW	TTBA
Trained	107	116	33
Functioning	74	89	27
% Functioning	69.2%	76.7%	81.8%

(CHW: Community health Worker, AMW: Auxiliary Mid Wife, TTBA: Trained Traditional Birth Attendant)

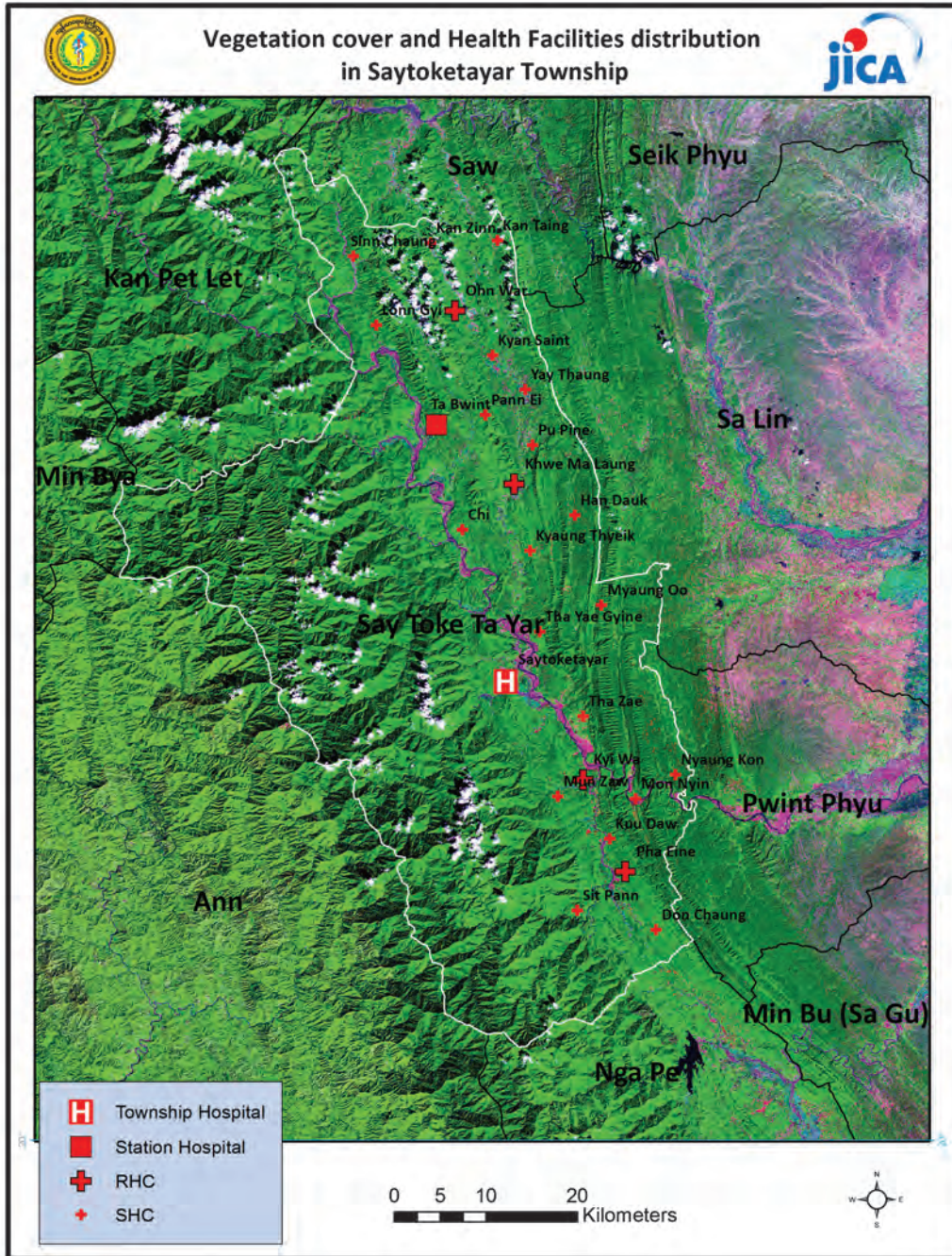
**Common Diseases under National Surveillance\***

<i>Diseases</i>	<i>Morbidity</i>	<i>Mortality</i>
Malaria	5736.91	11.89
ARI <5	6265.85	50.74
Diarrhea	2113.6	0
Dysentery	903.45	0
TB(Sputum+)	83.21	2.38
Snake Bite	0	0

(Per 100,000 Populations)

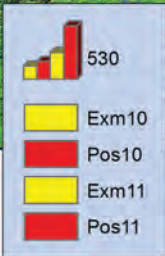
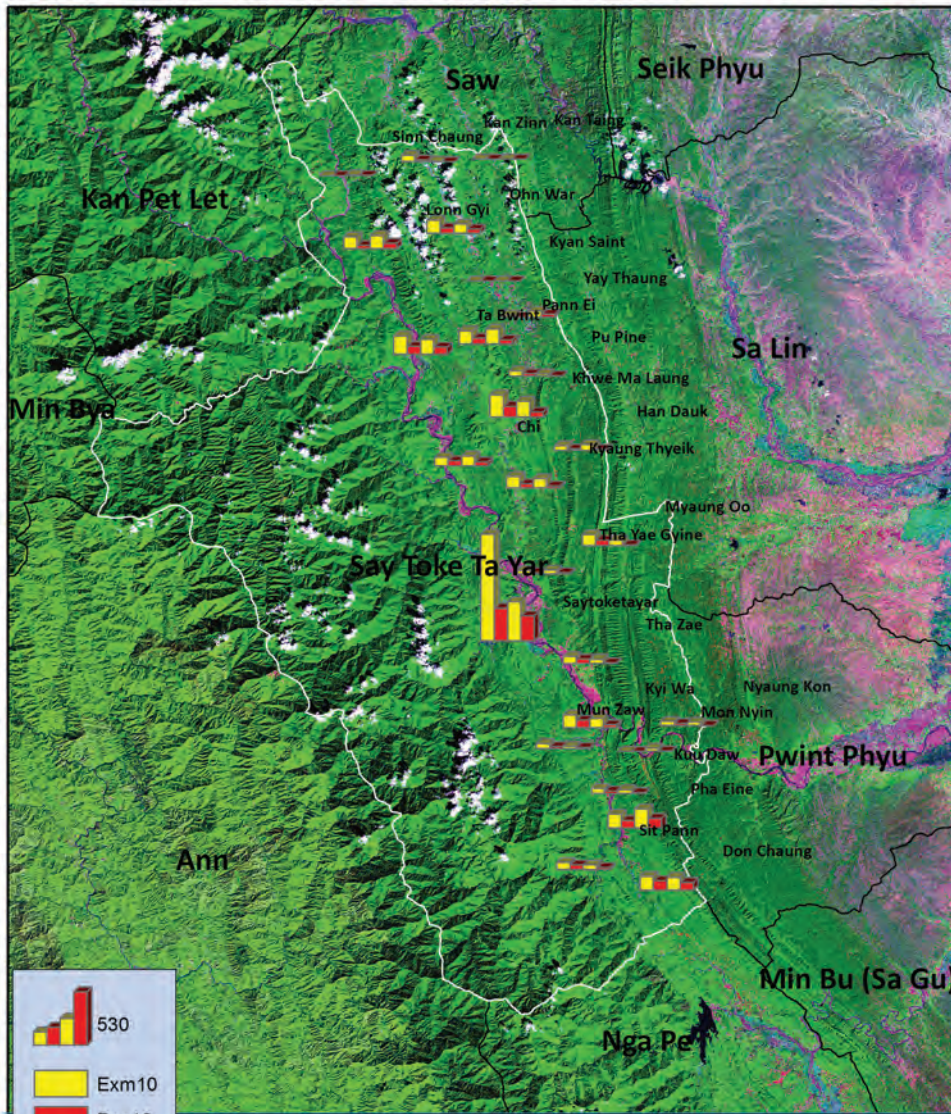
\*The data source is Health Profile of Magway Region (2009) From Department of Health Planning.

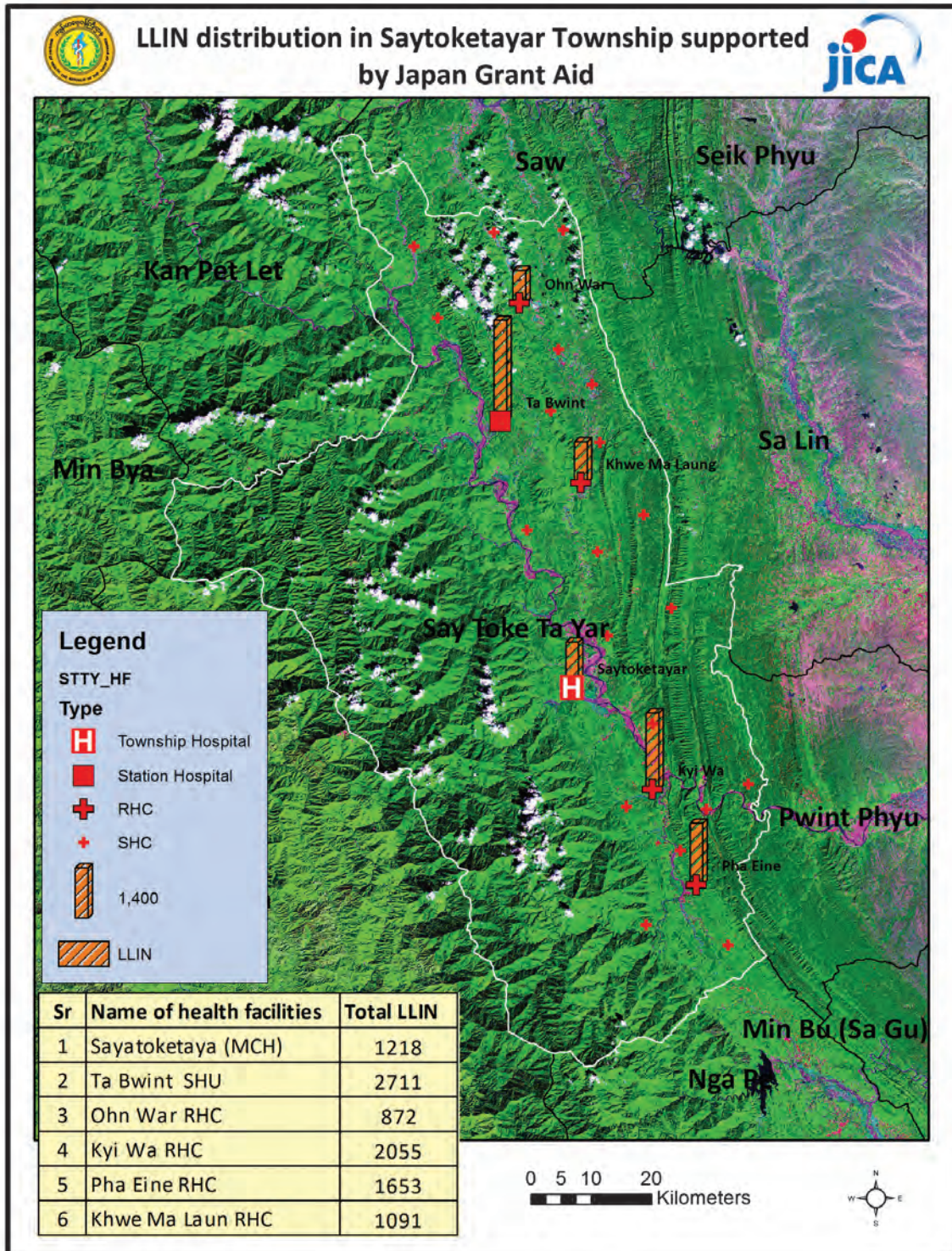
## Vegetation cover and Health Facilities distribution in Saydokyta Township in Magway Region



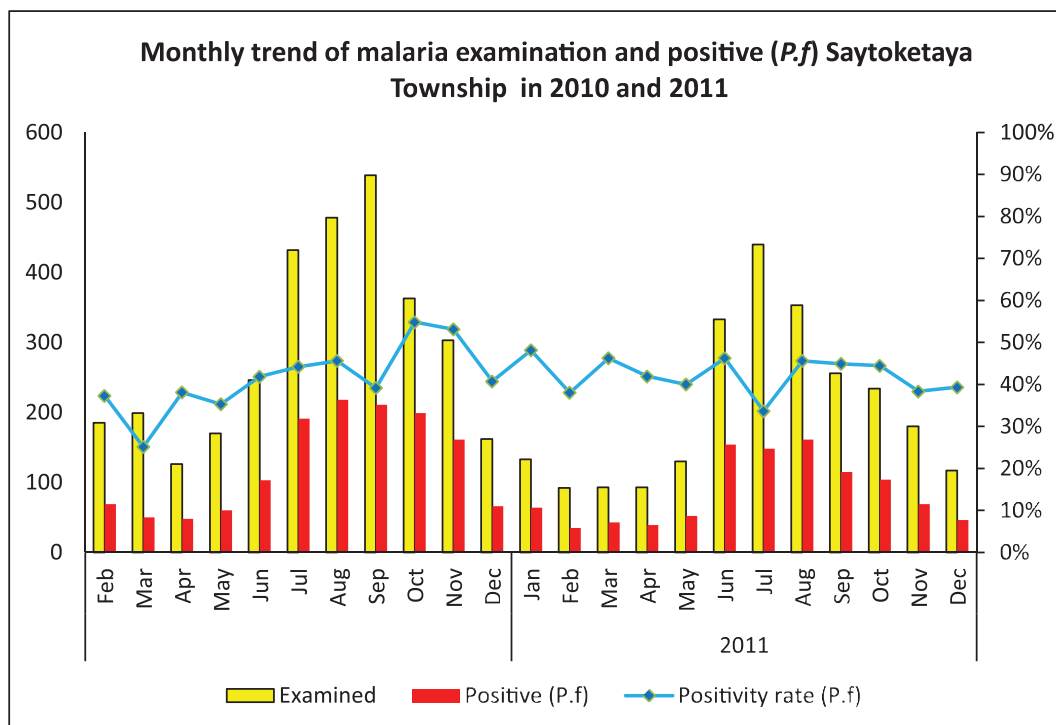


Health Facilities wise Malaria examined and positive (P.f) in Saytoketayar Township, 2010 and 2011



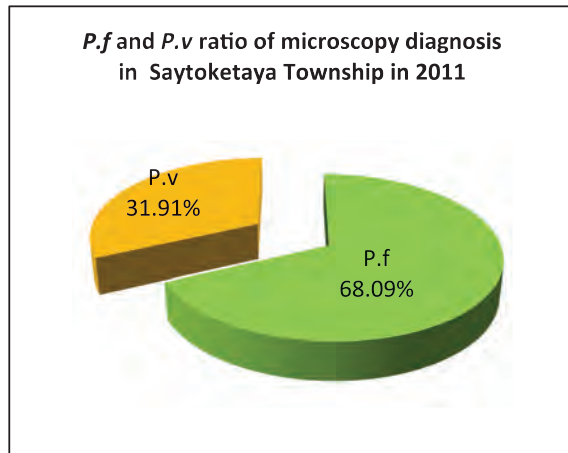
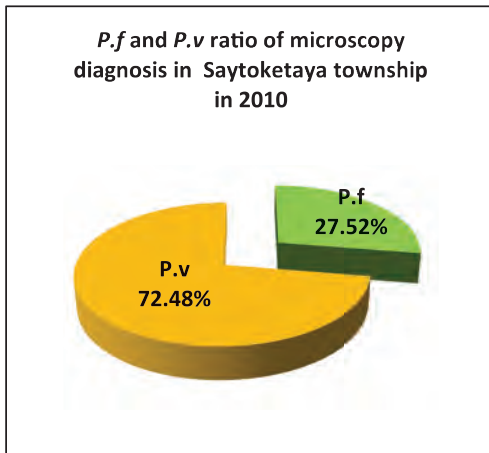


## Monthly trend of malaria examination and positive (*P.f*) Saydocketaya Township in 2010 and 2011

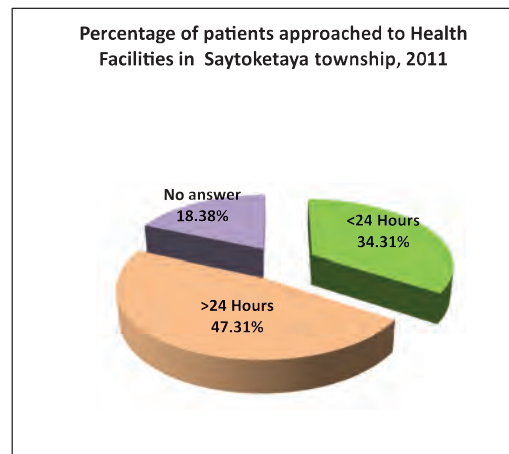
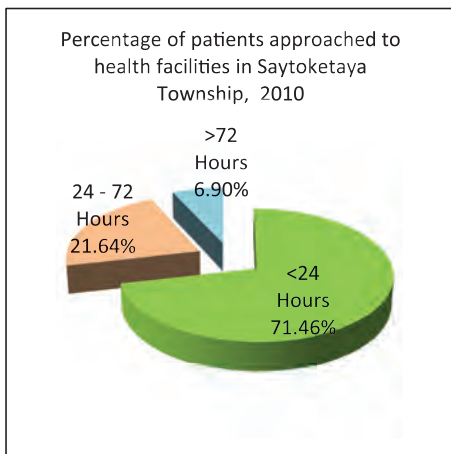


Month	2010			2011		
	Examined	Positive ( <i>P.f</i> )	Positivity rate ( <i>P.f</i> )	Examined	Positive ( <i>P.f</i> )	Positivity rate ( <i>P.f</i> )
Jan				133	64	48.12%
Feb	185	69	37.30%	92	35	38.04%
Mar	199	50	25.13%	93	43	46.24%
Apr	126	48	38.10%	93	39	41.94%
May	170	60	35.29%	130	52	40.00%
Jun	246	103	41.87%	333	154	46.25%
Jul	432	191	44.21%	440	148	33.64%
Aug	478	218	45.61%	353	161	45.61%
Sep	539	211	39.15%	256	115	44.92%
Oct	363	199	54.82%	234	104	44.44%
Nov	303	161	53.14%	180	69	38.33%
Dec	162	66	40.74%	117	46	39.32%
<b>Total</b>	<b>3,203</b>	<b>1,376</b>	<b>42.96%</b>	<b>2,454</b>	<b>1,030</b>	<b>41.97%</b>

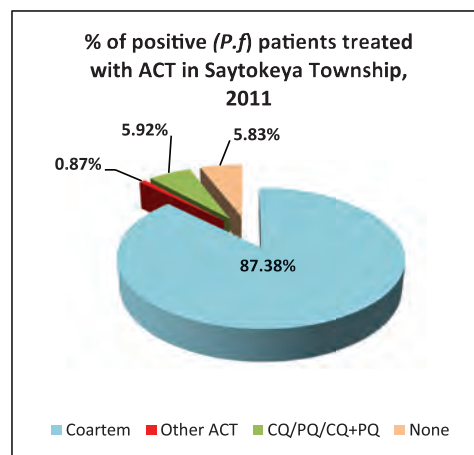
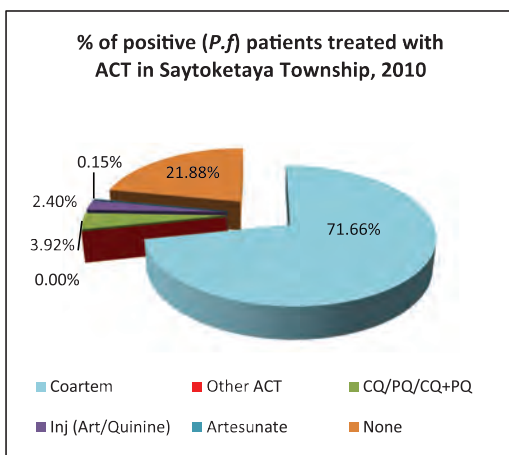
***P.f* and *P.v* ratio of malaria microscopy diagnosis in Saydokitaya Township in 2010 and 2011**



**Percentage of patients approached to health facilities in Saydokitaya Township in 2010 and 2011**

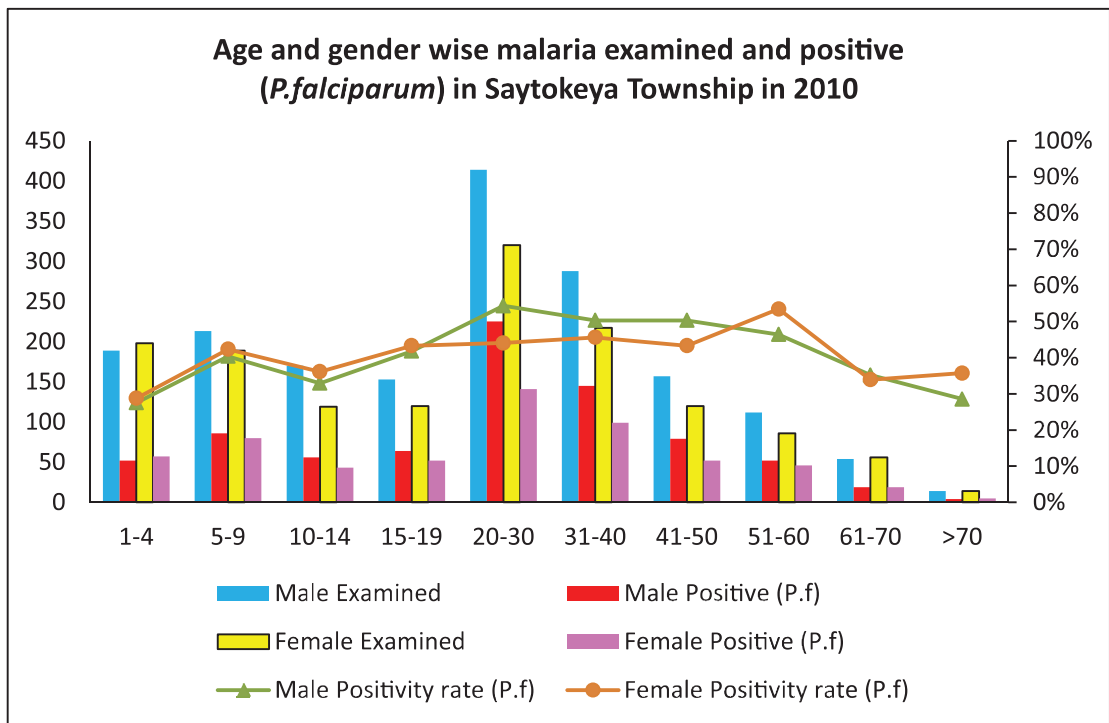


**Percentage of Positive (*P.f*) patients treated with ACT in Saydokitaya Township in 2010 and 2011**

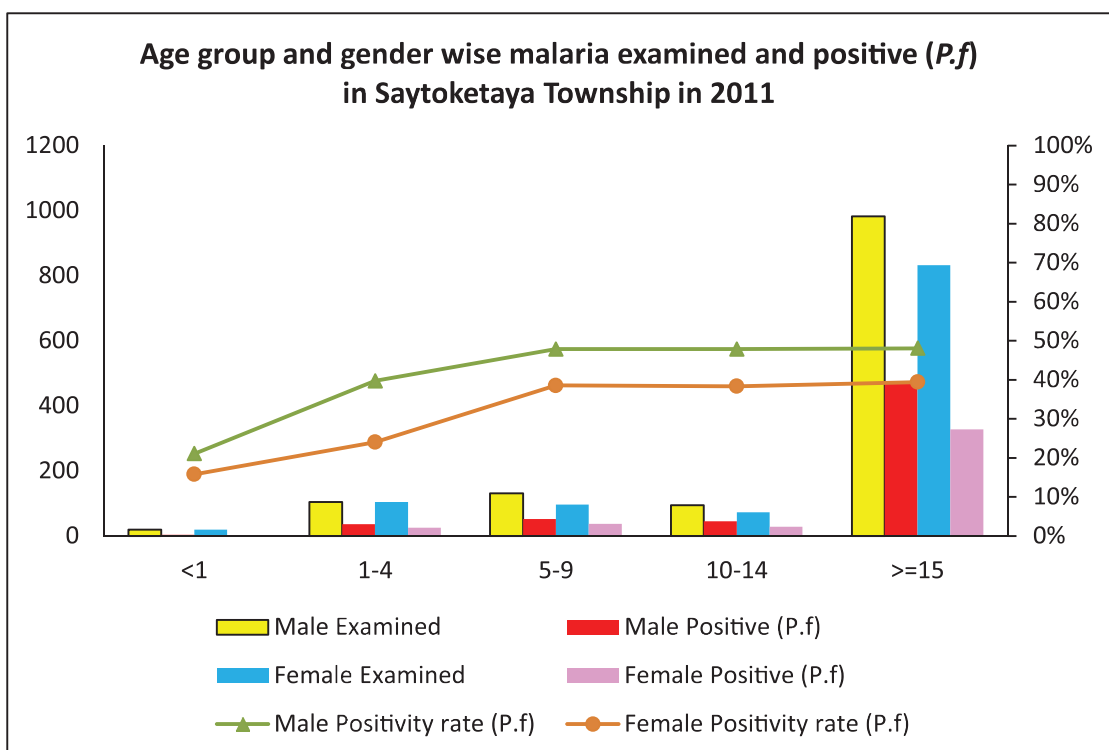




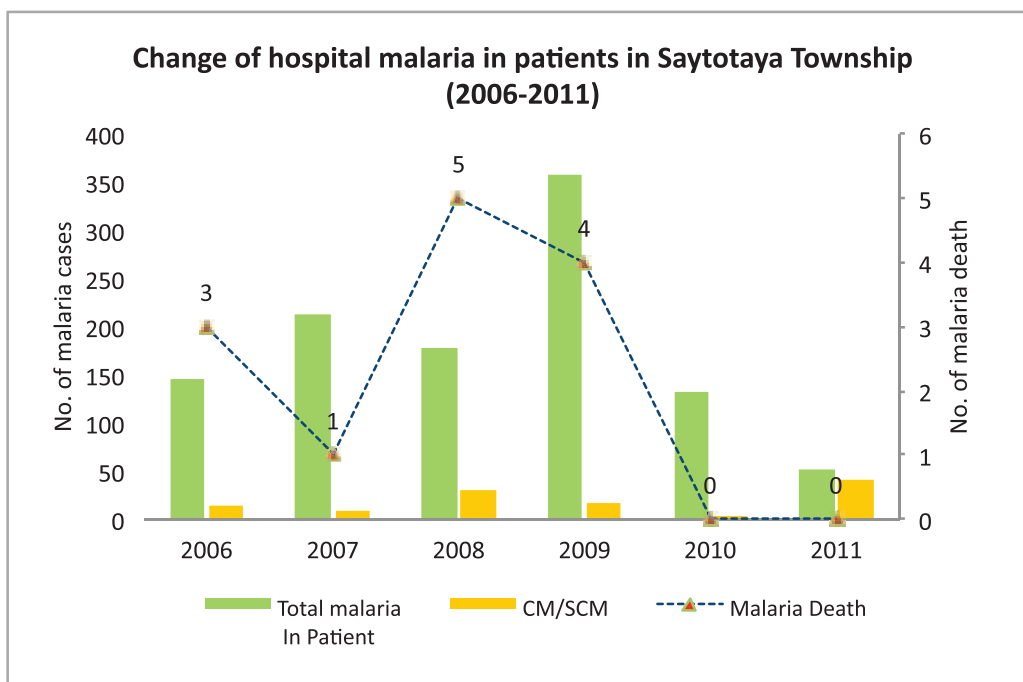
Age and gender wise malaria examination and positive (*P.f*) in Saydoktaya Township , 2010



Age and gender wise malaria examination and positive (*P.f*) in Saydoktaya Township, 2011



### Change of hospital malaria in patients in Saydoktaya Township in Magway Region from 2006 to 2011



Sr	Year	Total In Patient	Total malaria In Patient	CM/SCM	Malaria Death	Total Death
1	2006	513	146	15	3	9
2	2007	654	212	10	1	16
3	2008	779	178	30	5	10
4	2009	903	358	17	4	9
5	2010	843	132	3	0	3
6	2011	618	52	40	0	8

## Health Profile of Seik Phyu Township



### Area and Location\*

Area	:	2049.58 Km <sup>2</sup>
North	:	Pauk
South	:	Salin
East	:	Pakokku
West	:	Saw

### Administrative Units\*

Wards	:	3
Village tracts	:	43
Villages	:	141

### Population (2009)\*

Total	:	100,452
Urban	:	8,341
Rural	:	92,111
Male	:	48,151
Female	:	52,301
Sex Ratio	:	92
<5 Year	:	10,530
0-14 Year	:	30,157
15-49 Year	:	54,419
Population Density	:	49.01/ Km <sup>2</sup>

### Health Facilities (2009)\*

Township Hospital (25) Bedded	:	1
Station Hospitals	:	1
Maternal and Child Health Centers	:	1
Rural Health Centers	:	3
Sub Health Centers	:	19
Private Clinics and Maternity Homes	:	3

**Health Manpower\***

	<i>Doctor</i>	<i>Nurse</i>	<i>HA</i>	<i>LHV</i>	<i>PHS I</i>	<i>PHS II</i>	<i>MW</i>
Sanction	7	17	3	4	2	5	25
Appointed	7	17	3	4	2	4	24
Vacant	0	0	0	0	0	1	1
% Vacancy	0%	0%	0%	0%	0%	20%	4%

(HA: Health Assistant, LHV: Lady Health Visitor, PHS:Public Health Supervisor , MW: Midwife)

**Health Manpower (Volunteer)\***

	Category of Volunteer Health Workers		
	CHW	AMW	TTBA
Trained	116	116	0
Functioning	116	116	0
% Functioning	100%	100%	0%

(CHW: Community health Worker, AMW: Auxiliary Mid Wife, TTBA: Trained Traditional Birth Attendant)

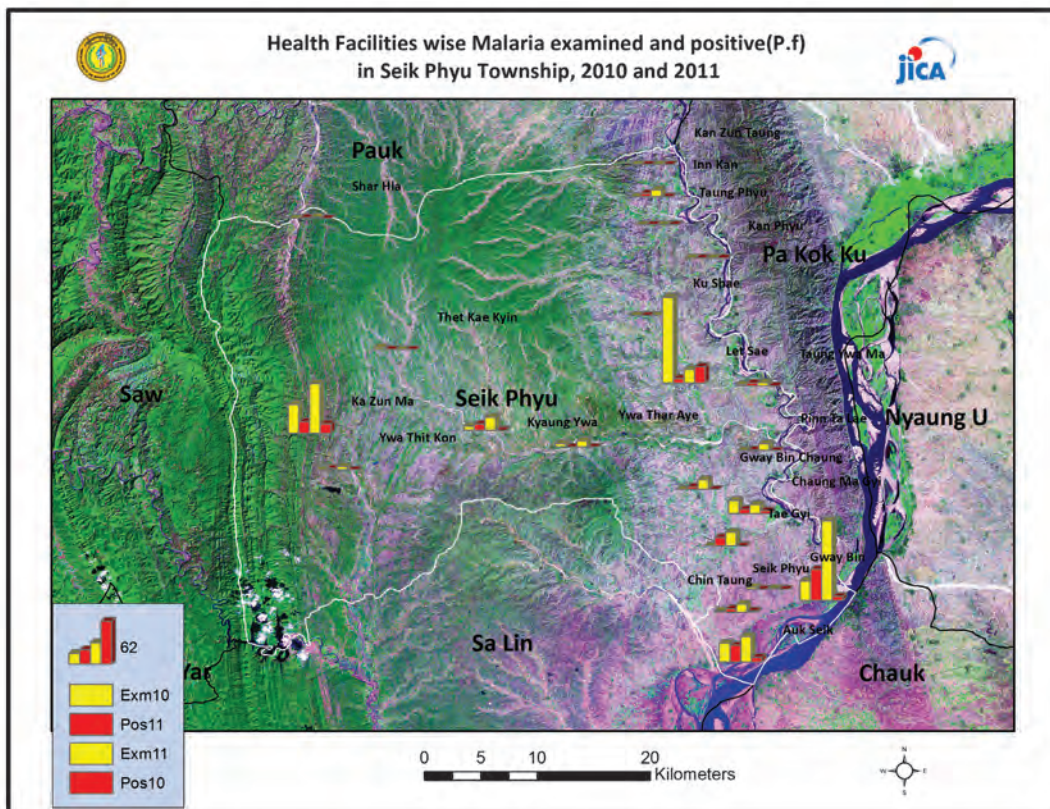
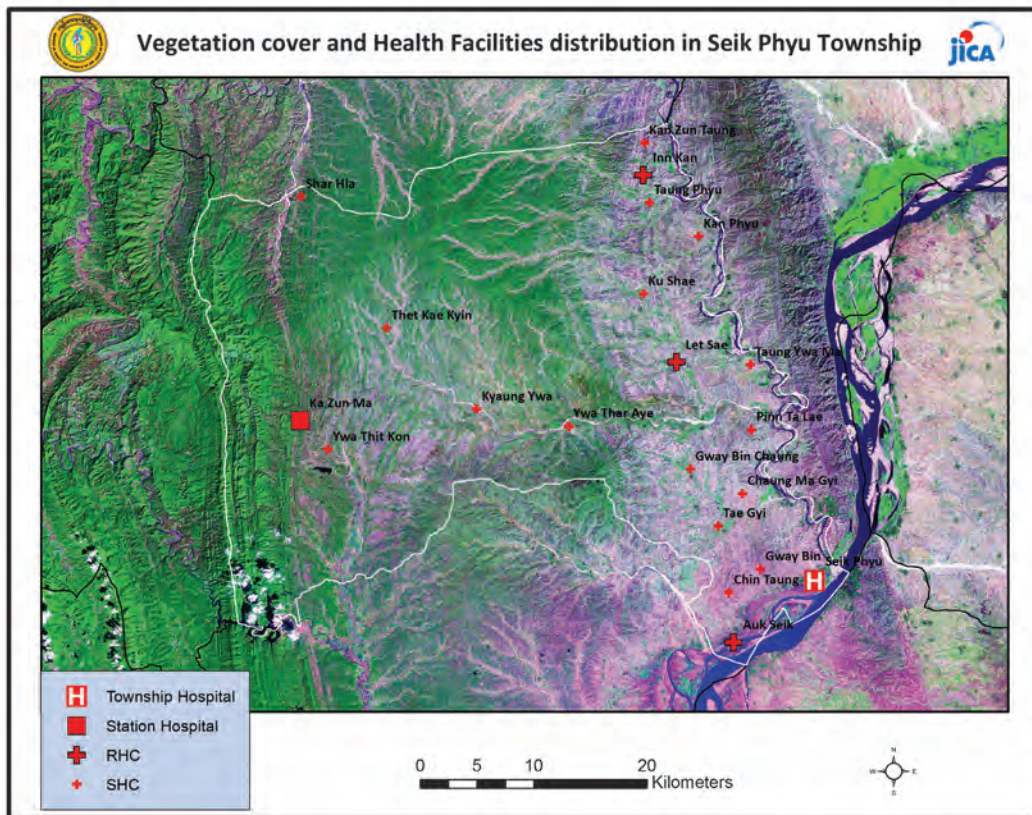
**Common Diseases under National Surveillance\***

<i>Diseases</i>	<i>Morbidity</i>	<i>Mortality</i>
Malaria	550.51	0
ARI <5	5992.4	9.5
Diarrhea	651.06	0
Dysentery	305.62	0
TB(Sputum+)	21.9	0
Snake Bite	16.92	1.99

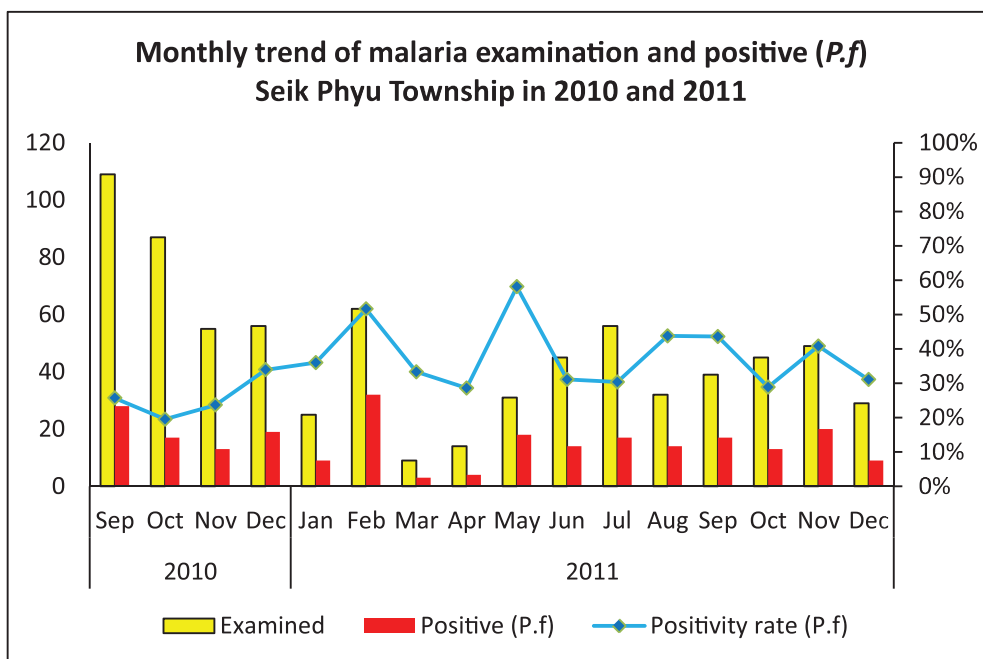
(Per 100,000 Populations)

\*The data source is Health Profile of magway Region (2009) from Department of Health Planning.

Vegetation cover and Health Facilities distribution in Seikphyu in Magway Region



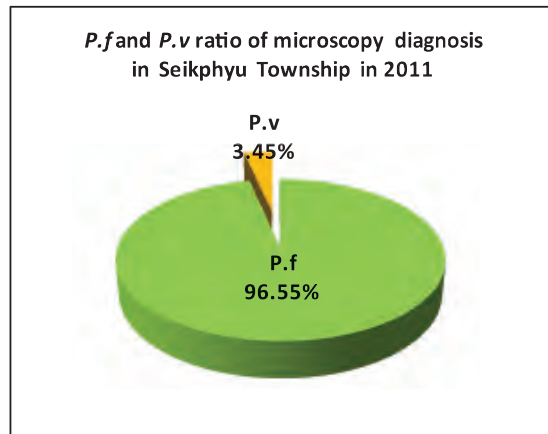
## Monthly trend of malaria examination and positive (*P.f*) in Seikphyu Township in 2010 and 2011



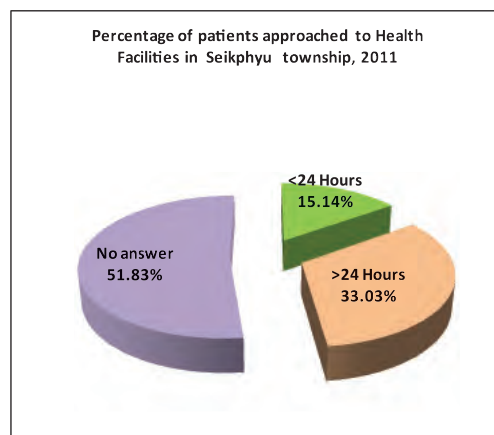
Month	2010			2011		
	Examined	Positive ( <i>P.f</i> )	Positivity rate ( <i>P.f</i> )	Examined	Positive ( <i>P.f</i> )	Positivity rate ( <i>P.f</i> )
Jan				25	9	36.00%
Feb				62	32	51.61%
Mar				9	3	33.33%
Apr				14	4	28.57%
May				31	18	58.06%
Jun				45	14	31.11%
Jul				56	17	30.36%
Aug				32	14	43.75%
Sep	109	28	25.69%	39	17	43.59%
Oct	87	17	19.54%	45	13	28.89%
Nov	55	13	23.64%	49	20	40.82%
Dec	56	19	33.93%	29	9	31.03%
<b>Total</b>	<b>307</b>	<b>77</b>	<b>25.08%</b>	<b>436</b>	<b>170</b>	<b>38.99%</b>

There are no availability of carbonless report of malaria patient records for Jan-Aug, 2010 in Seik Phy Township.

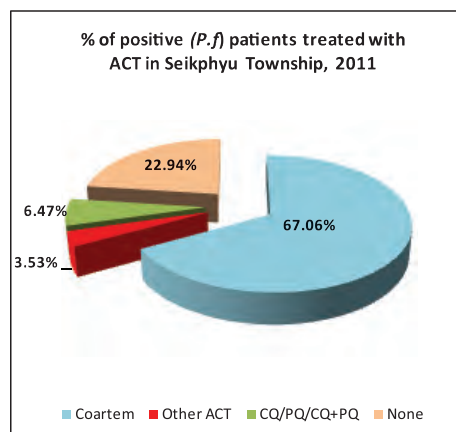
***P.f* and *P.v* of malaria microscopy diagnosis in Seikphyu Township in 2011**



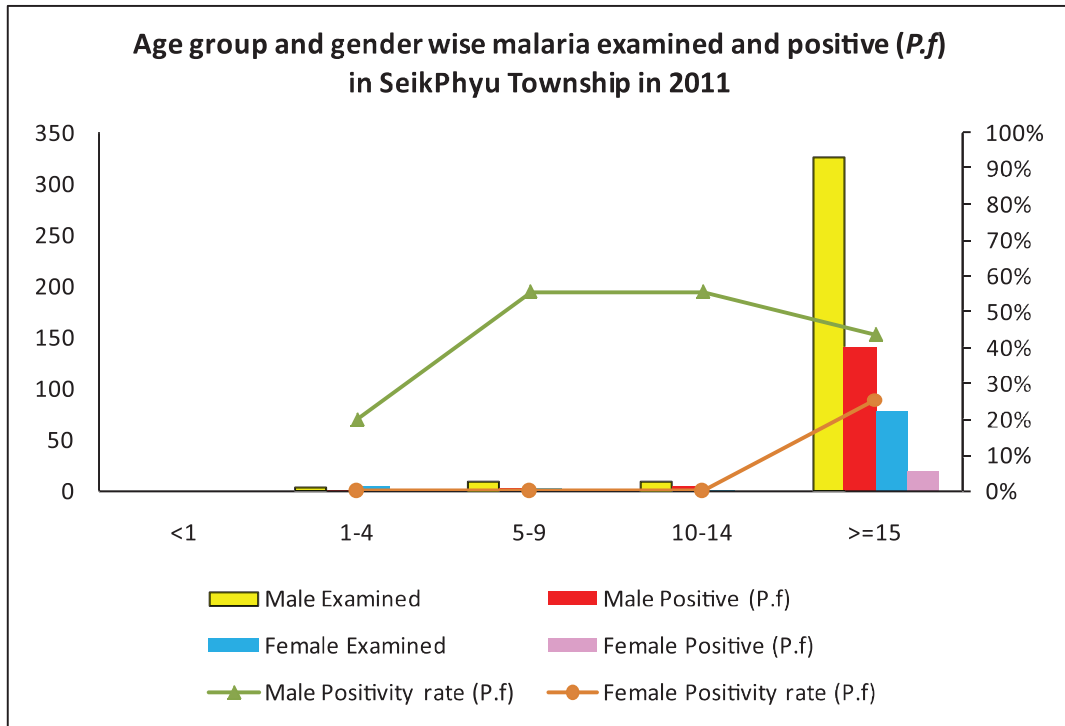
**Percentage of patients approached to health facilities in Seik Phyu Township in 2011**



**Percentage of Positive (*P.f*) patients treated with ACT in Seik Phyu Township in 2011**

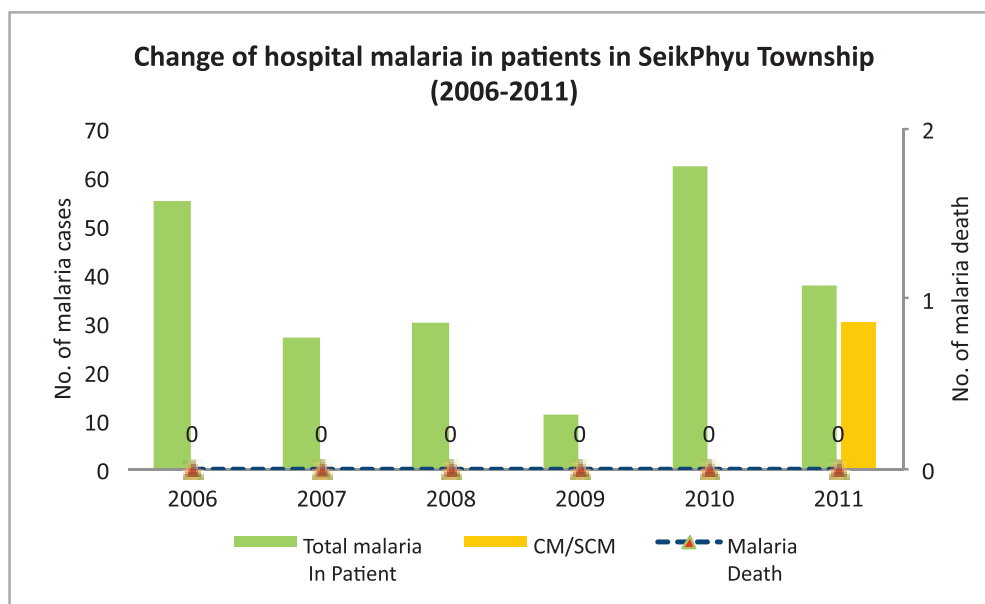


Age and gender wise malaria examination and positive (P.f) in Seikphyu Township, 2011





### Change of hospital malaria in patients in Seikphyu Township in Magway Region from 2006 to 2011



Sr	Year	Total In Patient	Total malaria In Patient	CM/SCM	Malaria Death	Total Death
1	2006	1537	55	0	0	0
2	2007	495	27	0	0	0
3	2008	1271	30	0	0	0
4	2009	908	11	0	0	0
5	2010	3508	62	0	0	20
6	2011	1597	38	30	0	52