

## Health Profile of Minhla Township



### Area and Location\*

Area	:	1371.38 Km <sup>2</sup>
North	:	Minbu
South	:	Mindone
East	:	Sinbaungdwe
West	:	Ann

### Administrative Units\*

Wards	:	6
Village tracts	:	63
Villages	:	157

### Population (2009)\*

Total	:	110,860
Urban	:	12,196
Rural	:	98,664
Male	:	54,439
Female	:	56,421
Sex Ratio	:	96
<5 Year	:	8,365
0-14 Year	:	27,097
15-49 Year	:	63,498
Population Density	:	80.84/ Km <sup>2</sup>

### Health Facilities (2009)\*

Township Hospital (16) Bedded	:	1
Station Hospital	:	1
Man Thanmayar Kan Fatalizer Mail Hospital	:	1
Maternal and Child Health Centers	:	1
Rural Health Centers	:	4
Sub Health Centers	:	23
Private Clinics and Maternity Homes	:	1

**Health Manpower\***

	<i>Doctor</i>	<i>Nurse</i>	<i>HA</i>	<i>LHV</i>	<i>PHS I</i>	<i>PHS II</i>	<i>MW</i>
Sanction	7	17	4	5	2	6	30
Appointed	4	7	4	5	2	6	30
Vacant	3	10	0	0	0	0	0
% Vacancy	42.9%	53.8%	0%	0%	0%	0%	0%

(HA: Health Assistant, LHV: Lady Health Visitor, PHS:Public Health Supervisor , MW: Midwife)

**Health Manpower (Volunteer)\***

	Category of Volunteer Health Workers		
	CHW	AMW	TTBA
Trained	124	121	0
Functioning	113	100	0
% Functioning	91.1%	82.6%	0%

(CHW: Community health Worker, AMW: Auxiliary Mid Wife, TTBA: Trained Traditional Birth Attendant)

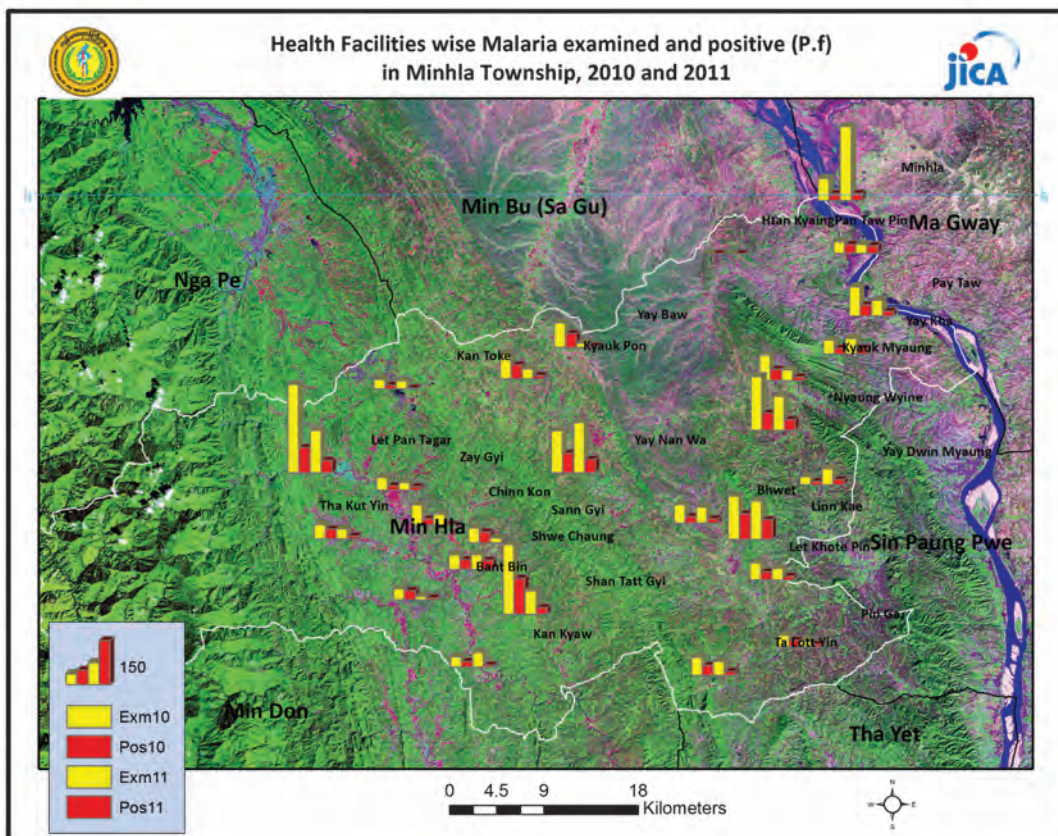
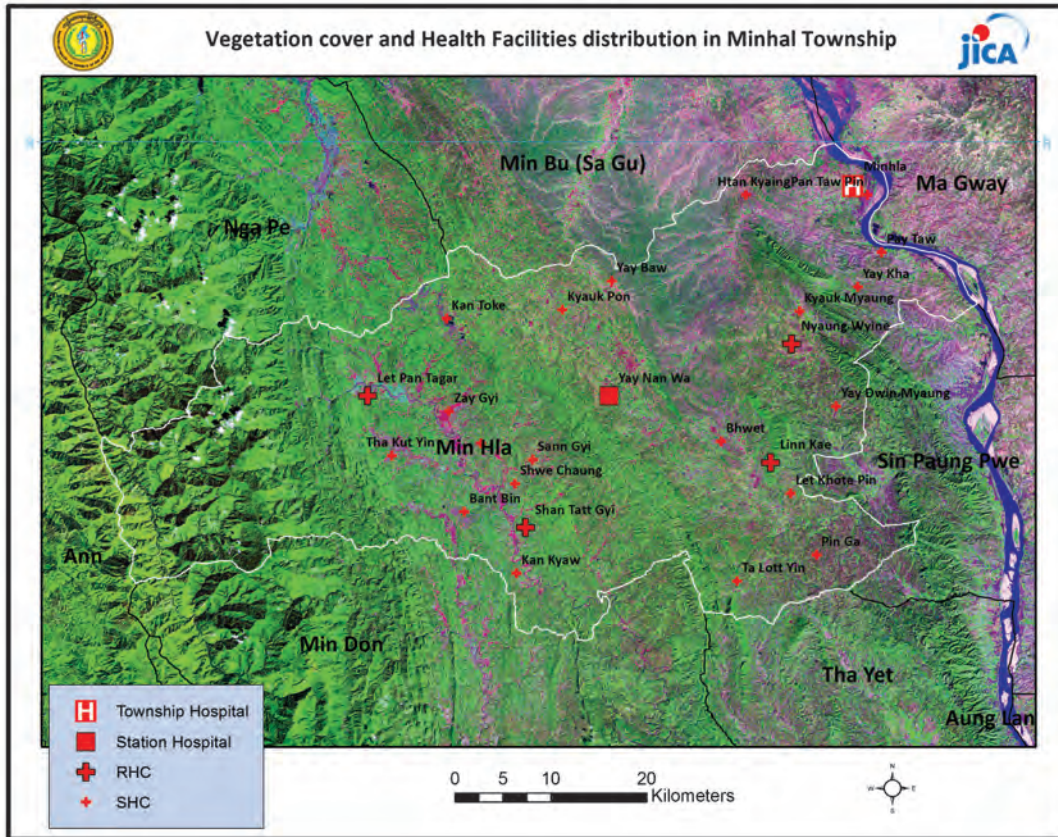
**Common Diseases under National Surveillance\***

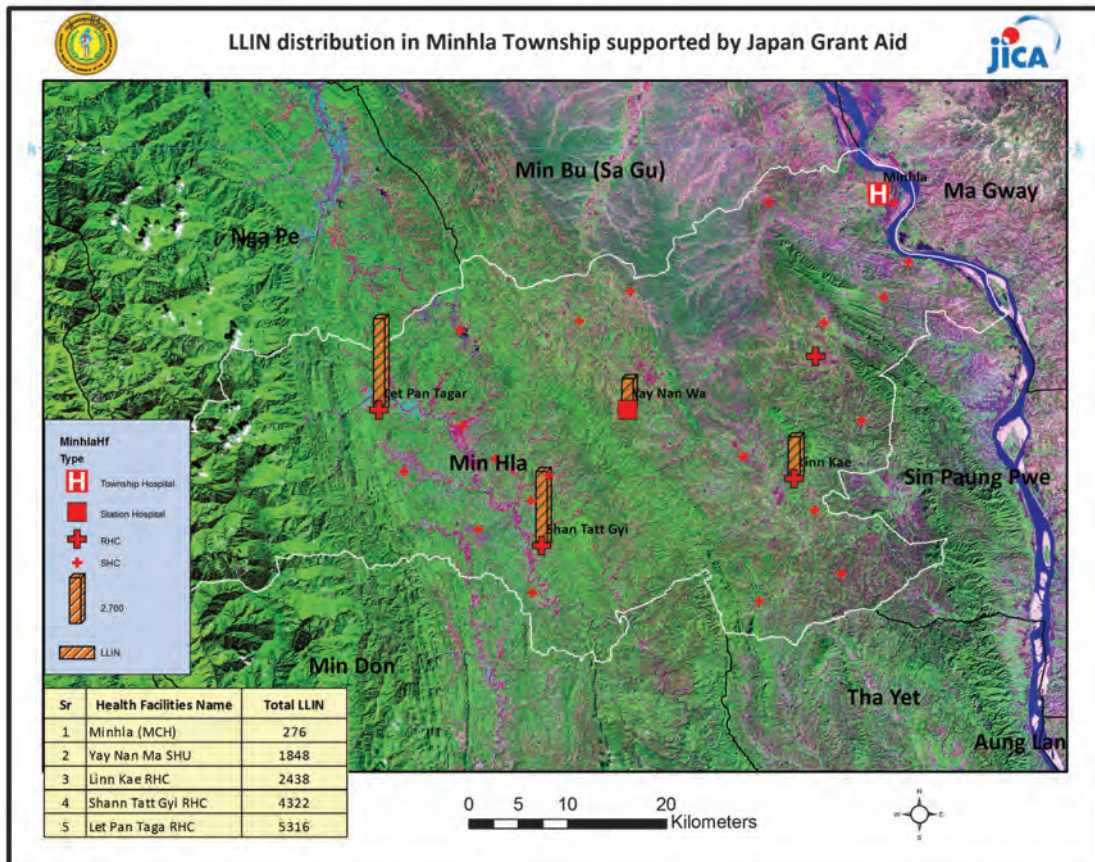
<i>Diseases</i>	<i>Morbidity</i>	<i>Mortality</i>
Malaria	2126.1	0
ARI <5	11846.98	11.95
Diarrhea	230.92	0
Dysentery	188.53	0
TB(Sputum+)	56.83	0
Snake Bite	9.02	1.80

(Per 100,000 Populations)

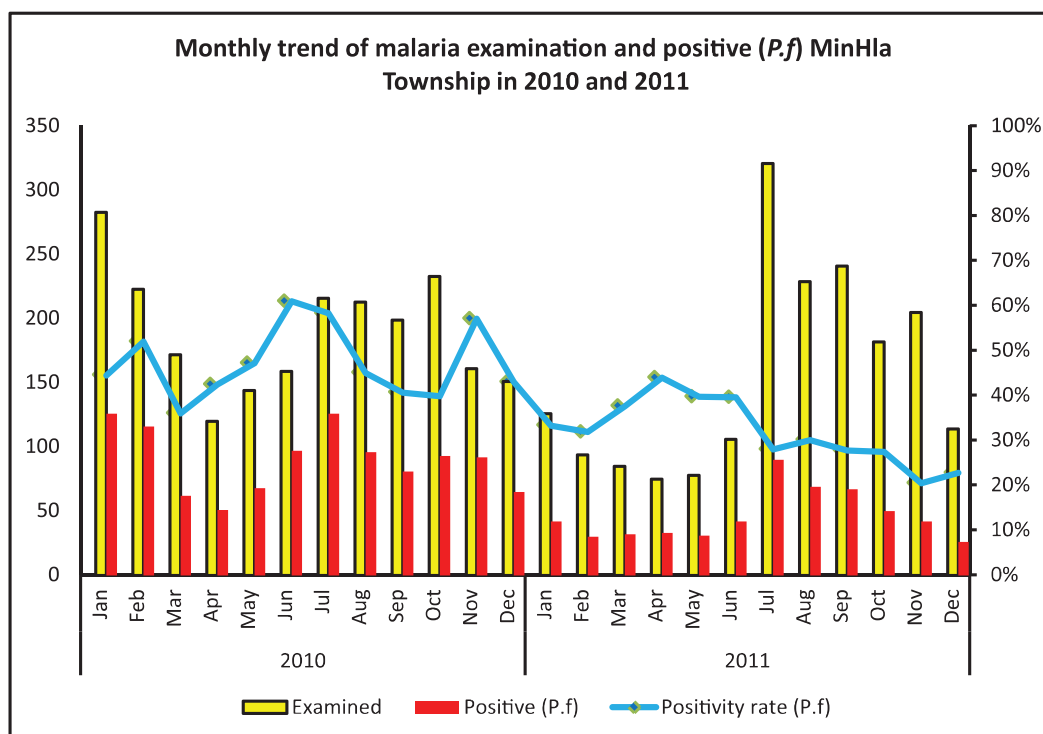
\*The data source is Health Profile of Magway Region (2009) from Department of Health Planning.

**Vegetation cover and Health Facilities distribution in Minhla Township in Magway Region**



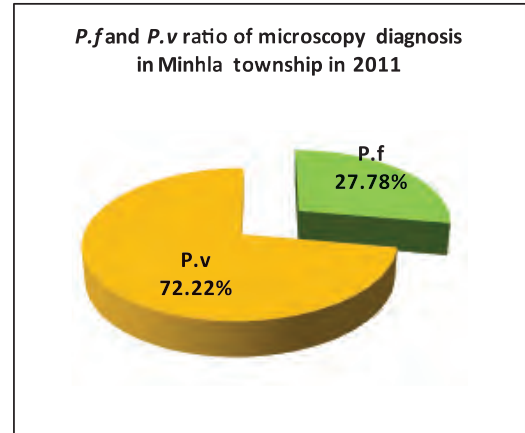
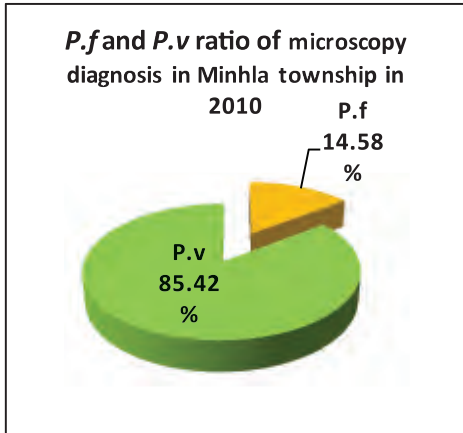


## Monthly trend of malaria examination and positive (*P.f*) in Minhla Township in 2010 and 2011

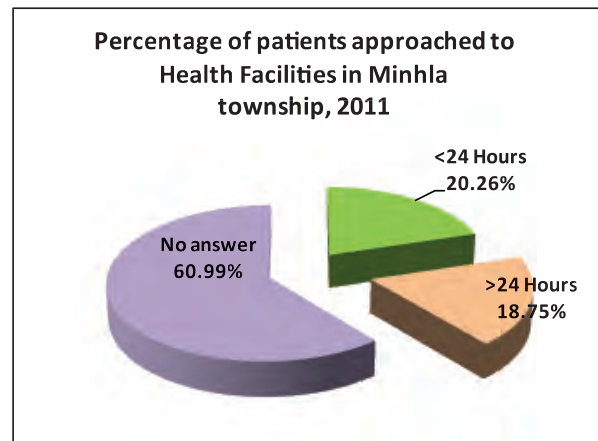
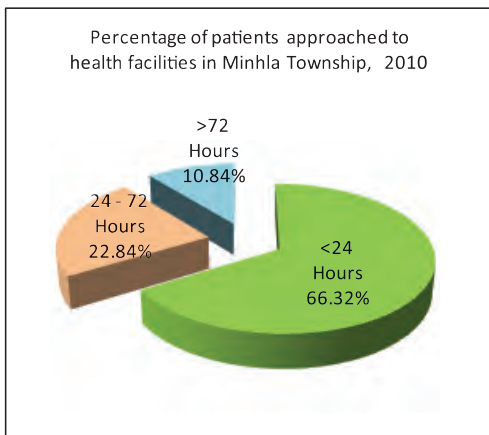


Month	2010			2011		
	Examined	Positive ( <i>P.f</i> )	Positivity rate ( <i>P.f</i> )	Examined	Positive ( <i>P.f</i> )	Positivity rate ( <i>P.f</i> )
Jan	283	126	44.52%	126	42	33.33%
Feb	223	116	52.02%	94	30	31.91%
Mar	172	62	36.05%	85	32	37.65%
Apr	120	51	42.50%	75	33	44.00%
May	144	68	47.22%	78	31	39.74%
Jun	159	97	61.01%	106	42	39.62%
Jul	216	126	58.33%	321	90	28.04%
Aug	213	96	45.07%	229	69	30.13%
Sep	199	81	40.70%	241	67	27.80%
Oct	233	93	39.91%	182	50	27.47%
Nov	161	92	57.14%	205	42	20.49%
Dec	151	65	43.05%	114	26	22.81%
<b>Total</b>	<b>2,274</b>	<b>1,073</b>	<b>47.19%</b>	<b>1,856</b>	<b>554</b>	<b>29.85%</b>

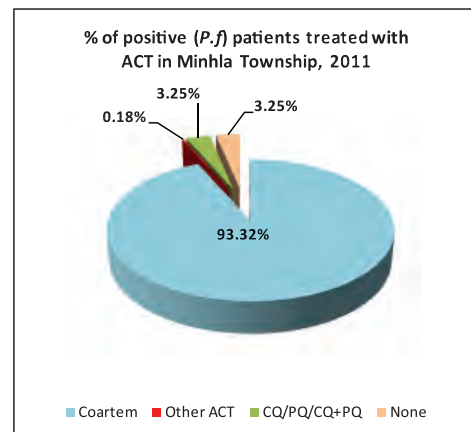
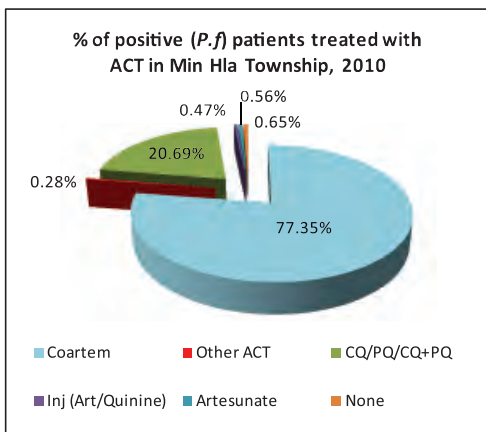
***P.f* and *P.v* ratio of malaria microscopy diagnosis in Minhla Township in 2010 and 2011**



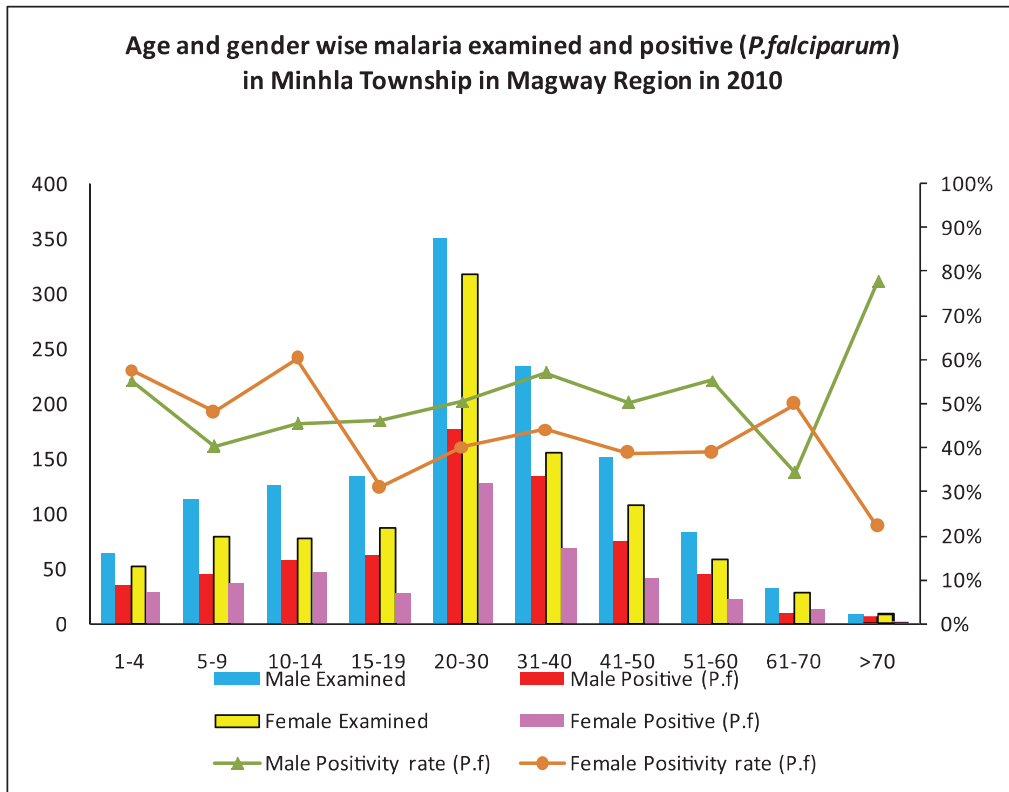
**Percentage of patients approached to health facilities for malaria confirmatory diagnosis in Minhla Township in 2010 and 2011**



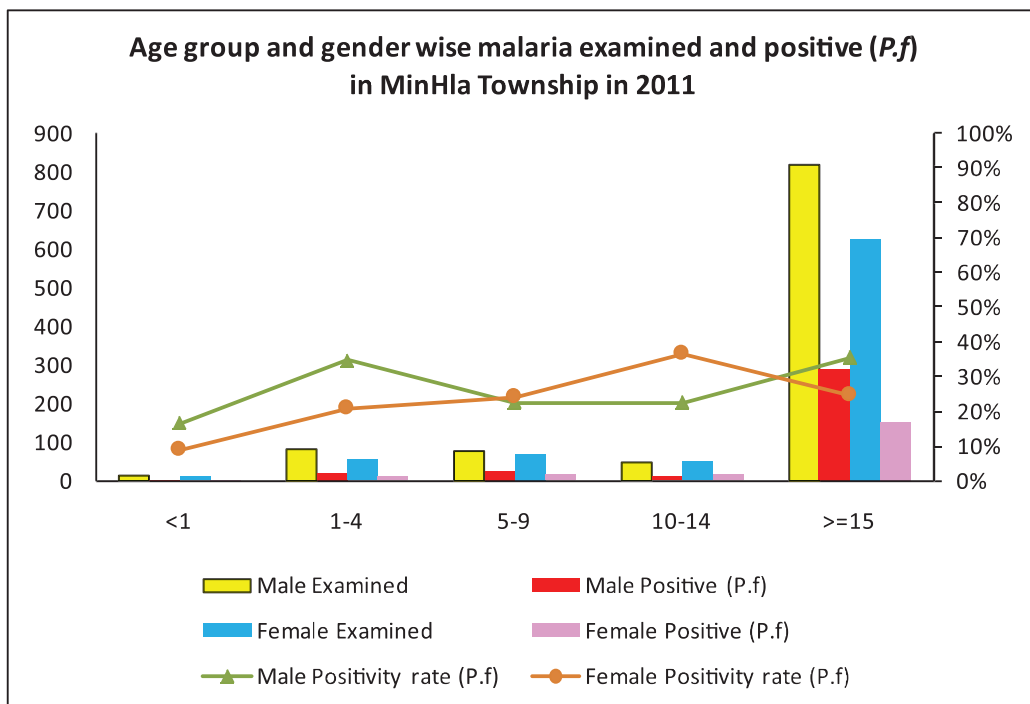
**Percentage of Positive (*P.f*) patients treated with ACT in Minhla Township in 2010 and 2011**



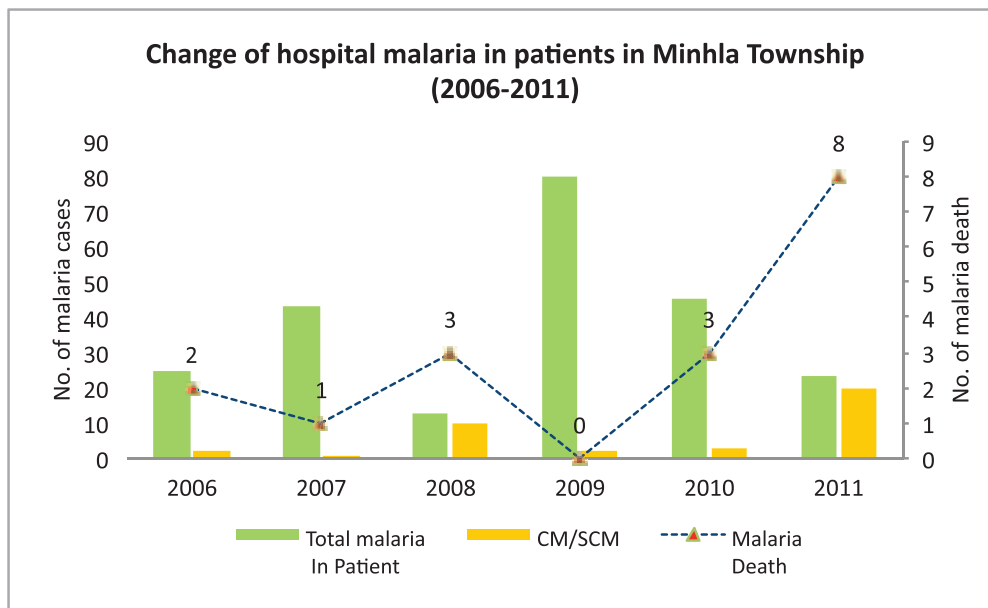
Age and gender wise malaria examination and positive (*P.f*) in Minhla Township, 2010



Age and gender wise malaria examination and positive (*P.f*) in Minhla Township, 2011



### Change of hospital malaria in patients in Minhla Township in Magway Region from 2006 to 2011



Sr	Year	Total In Patient	Total malaria In Patient	CM/SCM	Malaria Death	Total Death
1	2006	656	25	2	2	10
2	2007	782	43	1	1	25
3	2008	814	13	10	3	30
4	2009	917	80	2	0	8
5	2010	1066	45	3	3	29
6	2011	1022	23	8	1	20



## Health Profile of Myaing Township



### Area and Location\*

Area	:	2034.86 Km <sup>2</sup>
North	:	Pale
South	:	Pakokku
East	:	Yesagyoo
West	:	Pauk

### Administrative Units\*

Wards	:	3
Village tracts	:	81
Villages	:	332

### Population (2009)\*

Total	:	234,333
Urban	:	6,892
Rural	:	227,441
Male	:	111,274
Female	:	123,059
Sex Ratio	:	90
<5 Year	:	19,376
0-14 Year	:	62,645
15-49 Year	:	128,914
Population Density	:	115.16/ Km <sup>2</sup>

### Health Facilities (2009)\*

Township Hospital (25) Bedded	:	1
Station Hospitals (25) Bedded	:	2
Maternal and Child Health Centers	:	1
Rural Health Centers	:	6
Sub Health Centers	:	29

**Health Manpower\***

	<i>Doctor</i>	<i>Nurse</i>	<i>HA</i>	<i>LHV</i>	<i>PHS I</i>	<i>PHS II</i>	<i>MW</i>
Sanction	10	23	6	6	1	19	38
Appointed	7	17	6	6	1	16	38
Vacant	3	6	0	0	0	3	0
% Vacancy	30%	26.1%	0%	0%	0%	15.8%	0%

(HA: Health Assistant, LHV: Lady Health Visitor, PHS:Public Health Supervisor , MW: Midwife)

**Health Manpower (Volunteer)\***

	Category of Volunteer Health Workers		
	CHW	AMW	TTBA
Trained	270	180	97
Functioning	53	101	32
% Functioning	19.6%	56.1%	33%

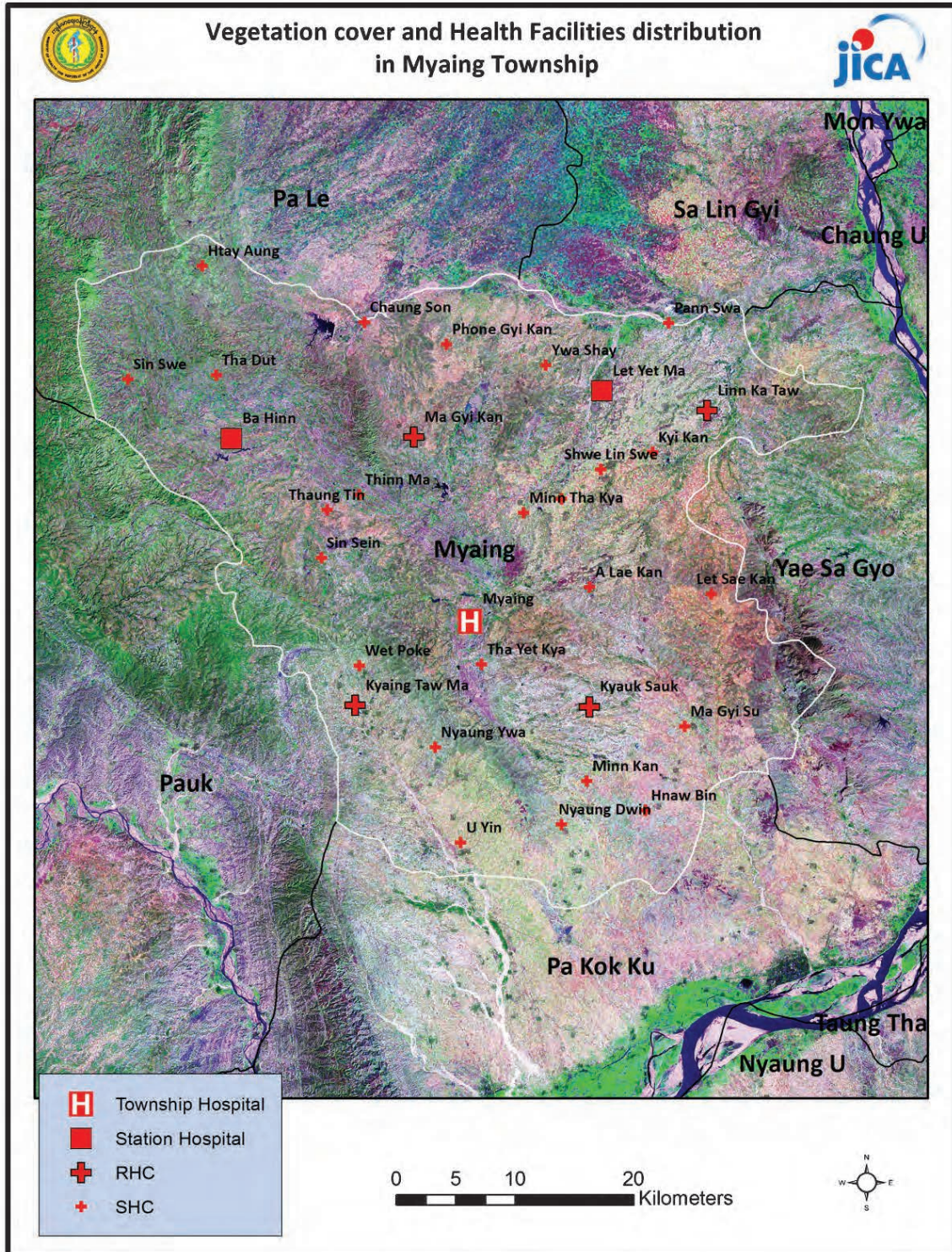
(CHW: Community health Worker, AMW: Auxiliary Mid Wife, TTBA: Trained Traditional Birth Attendant)

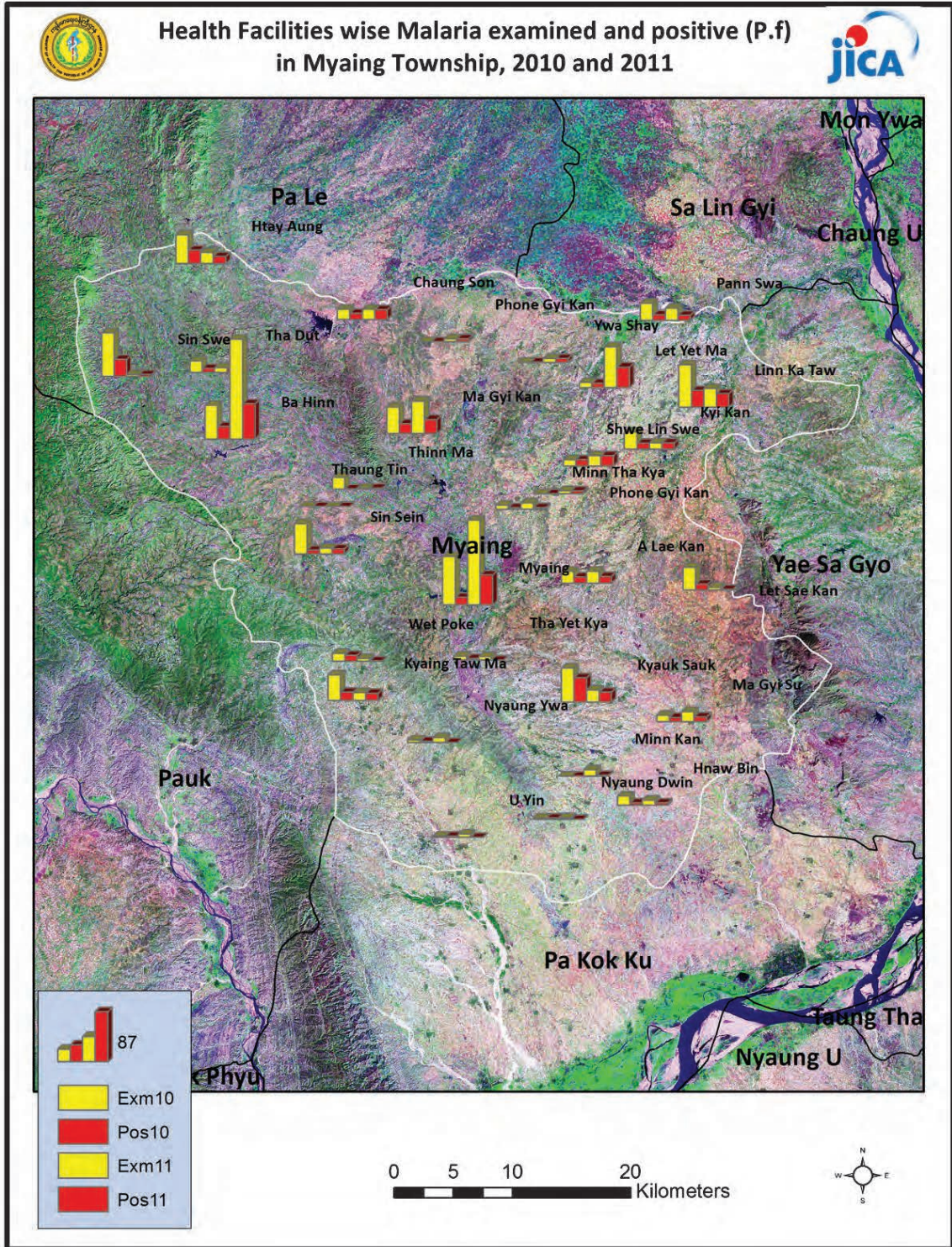
**Common Diseases under National Surveillance\***

<i>Diseases</i>	<i>Morbidity</i>	<i>Mortality</i>
Malaria	489.05	0
ARI <5	6729.98	51.61
Diarrhea	979.38	0
Dysentery	418.21	0.43
TB(Sputum+)	36.701	0
Snake Bite	16.64	5.97

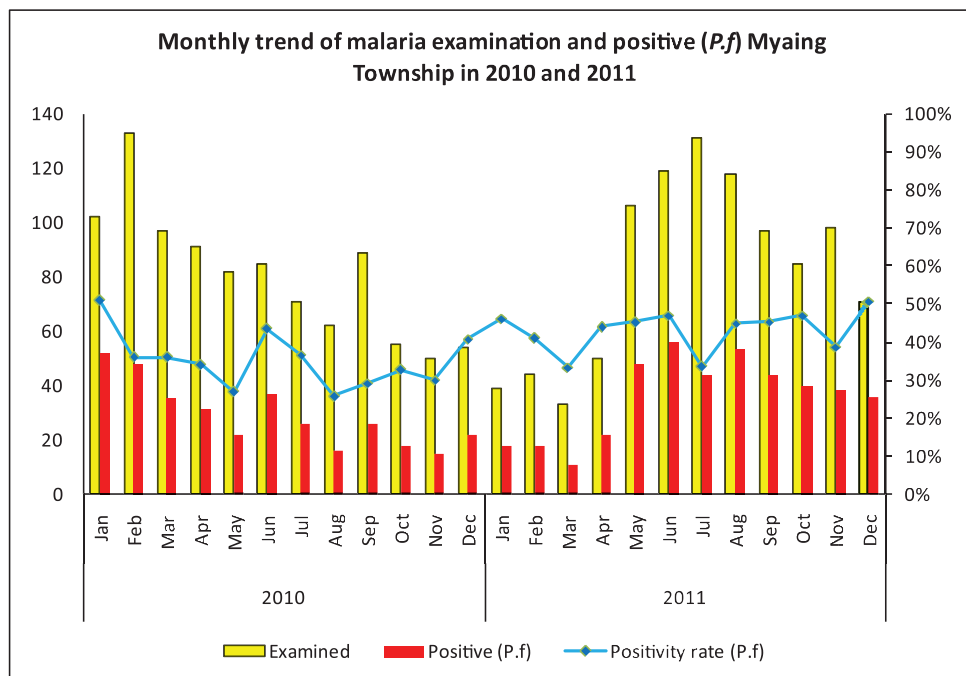
(Per 100,000 Populations)

\*The data source is Health Profil of Magway Region (2009) from Department of Health Planning.



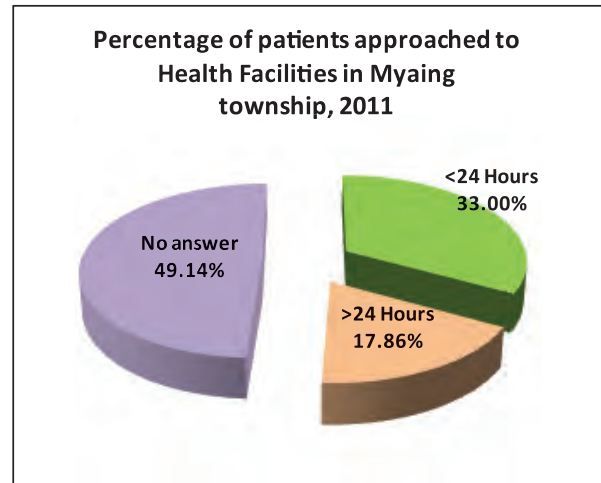
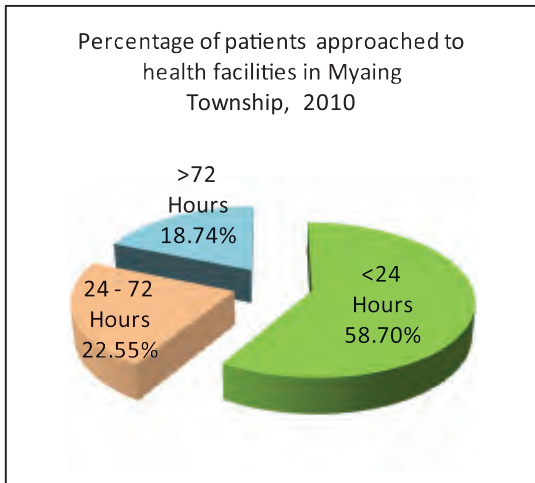


## Monthly trend of malaria examination and positive (*P.f*) in Myaing Township in 2010 and 2011

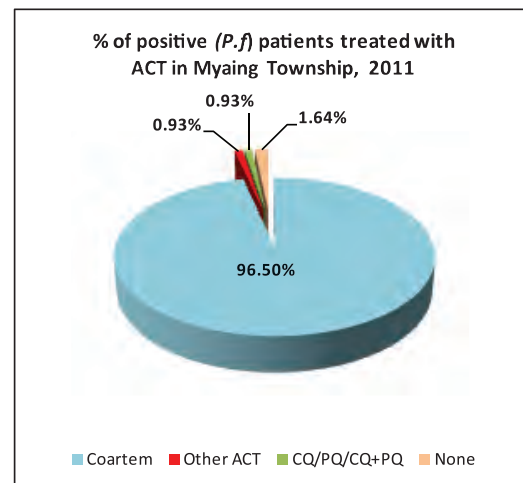
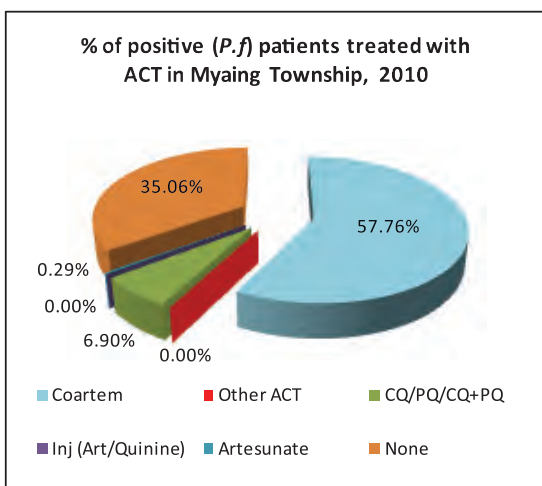


Month	2010			2011		
	Examined	Positive ( <i>P.f</i> )	Positivity rate ( <i>P.f</i> )	Examined	Positive ( <i>P.f</i> )	Positivity rate ( <i>P.f</i> )
Jan	102	52	50.98%	39	18	46.15%
Feb	133	48	36.09%	44	18	40.91%
Mar	97	35	36.08%	33	11	33.33%
Apr	91	31	34.07%	50	22	44.00%
May	82	22	26.83%	106	48	45.28%
Jun	85	37	43.53%	119	56	47.06%
Jul	71	26	36.62%	131	44	33.59%
Aug	62	16	25.81%	118	53	44.92%
Sep	89	26	29.21%	97	44	45.36%
Oct	55	18	32.73%	85	40	47.06%
Nov	50	15	30.00%	98	38	38.78%
Dec	54	22	40.74%	71	36	50.70%
<b>Total</b>	<b>971</b>	<b>348</b>	<b>35.84%</b>	<b>991</b>	<b>428</b>	<b>43.19%</b>

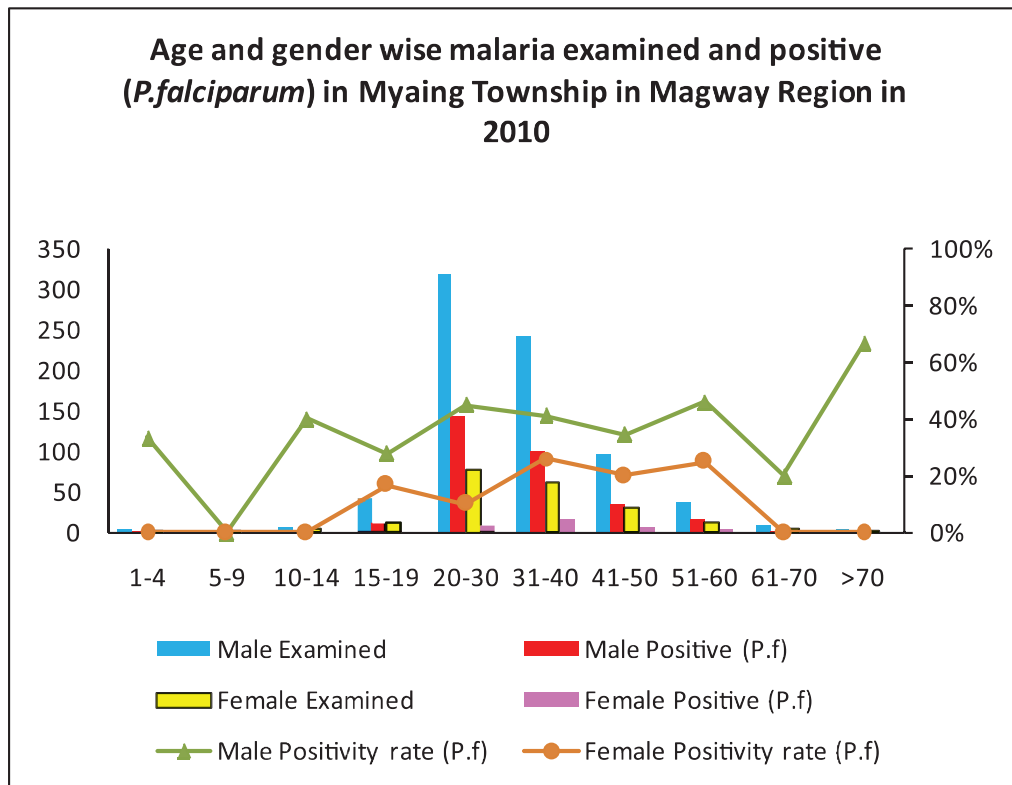
### Percentage of patients approached to health facilities in Myaing Township in 2010 and 2011



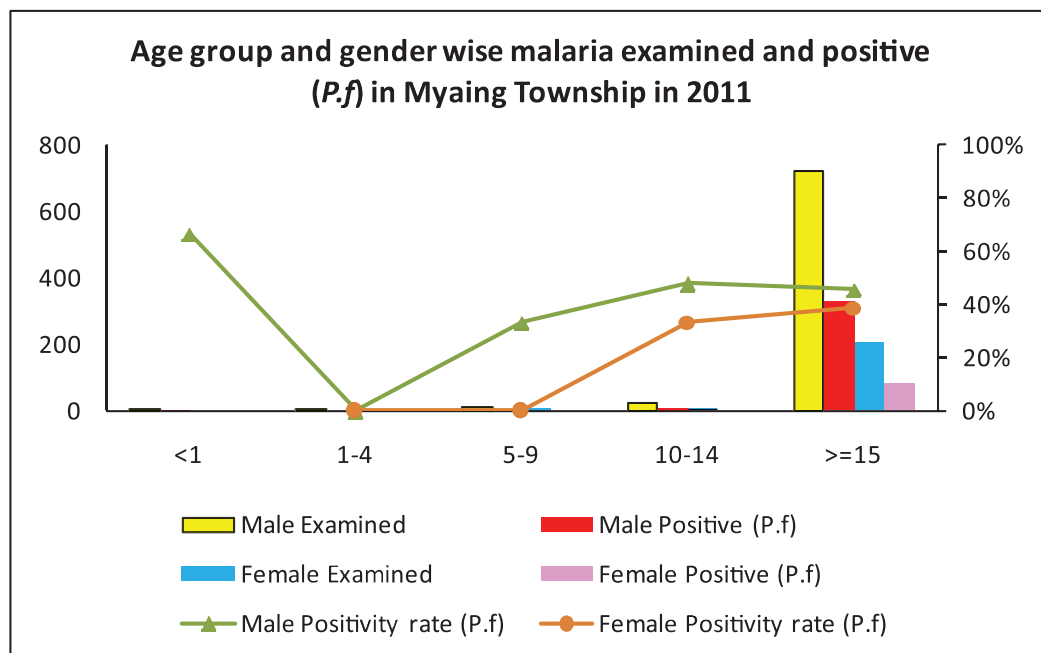
### Percentage of Positive (*P.f*) patients treated with ACT in Myaing Township in 2010 and 2011



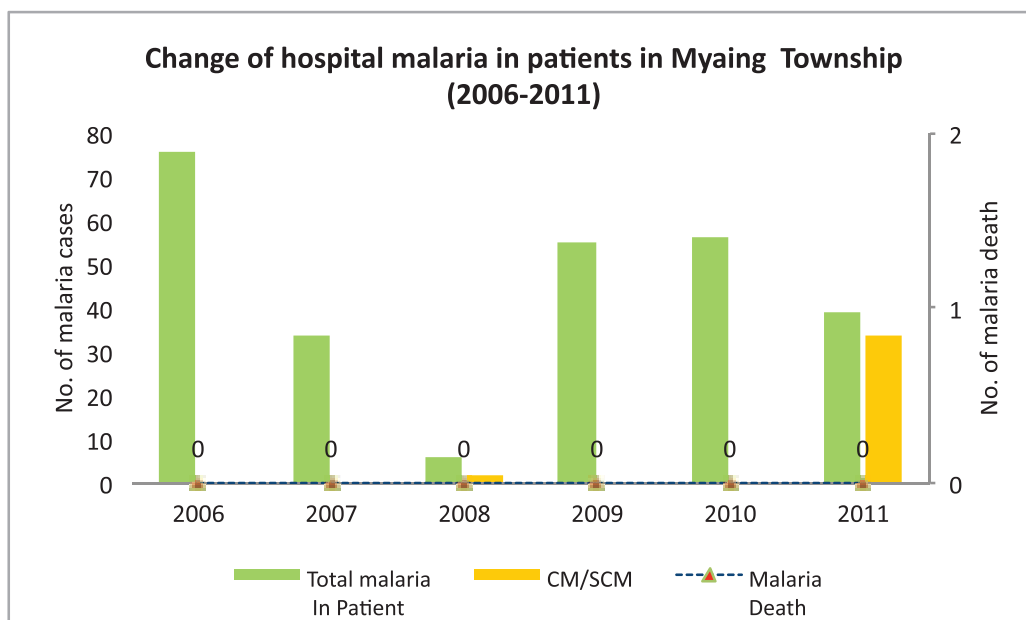
Age and gender wise malaria examination and positive (*P.f*) in Myaing Township, 2010



Age and gender wise malaria examination and positive (*P.f*) in Myaing Township, 2011



### Change of hospital malaria in patients in Myaing Township in Magway Region from 2006 to 2011



Sr	Year	Total In Patient	Total malaria In Patient	CM/SCM	Malaria Death	Total Death
1	2006	1832	76	0	0	19
2	2007	1109	34	0	0	8
3	2008	1921	6	2	0	9
4	2009	2300	55	0	0	16
5	2010	4390	56	0	0	0
6	2011	2724	39	34	0	42



## Health Profile of Myothit Township



### Area and Location\*

Area:	1568.84 Km <sup>2</sup>
North:	Natmauk
South:	Taungdwin
East:	Tatkone
West:	Magwe

### Administrative Units\*

Wards	: 5
Village tracts	: 47
Villages	: 170

### Population (2009)\*

Total	: 175,087
Urban	: 10,257
Rural	: 164,830
Male	: 84,858
Female	: 90,229
Sex Ratio	: 94
<5 Year	: 21,502
0-14 Year	: 57,168
15-49 Year	: 79,779
Population Density	: 110.34/ Km <sup>2</sup>

### Health Facilities (2009)\*

Township Hospital (25) Bedded	: 1
Maternal and Child Health Centers	: 1
Rural Health Centers	: 5
Sub Health Centers	: 25
Private Clinics and Maternity Home	: 1

### Health Manpower\*

	<i>Doctor</i>	<i>Nurse</i>	<i>HA</i>	<i>LHV</i>	<i>PHS I</i>	<i>PHS II</i>	<i>MW</i>
Sanction	8	17	5	6	2	16	36
Appointed	7	12	5	6	2	16	34
Vacant	1	5	0	0	0	0	2
% Vacancy	12.5%	29.4%	0%	0%	0%	0%	5.6%

(HA: Health Assistant, LHV: Lady Health Visitor, PHS:Public Health Supervisor , MW: Midwife)

### Health Manpower (Volunteer)\*

	Category of Volunteer Health Workers		
	CHW	AMW	TTBA
Trained	150	155	93
Functioning	102	119	59
% Functioning	68%	76.8%	63.4%

(CHW: Community health Worker, AMW: Auxiliary Mid Wife, TTBA: Trained Traditional Birth Attendant)

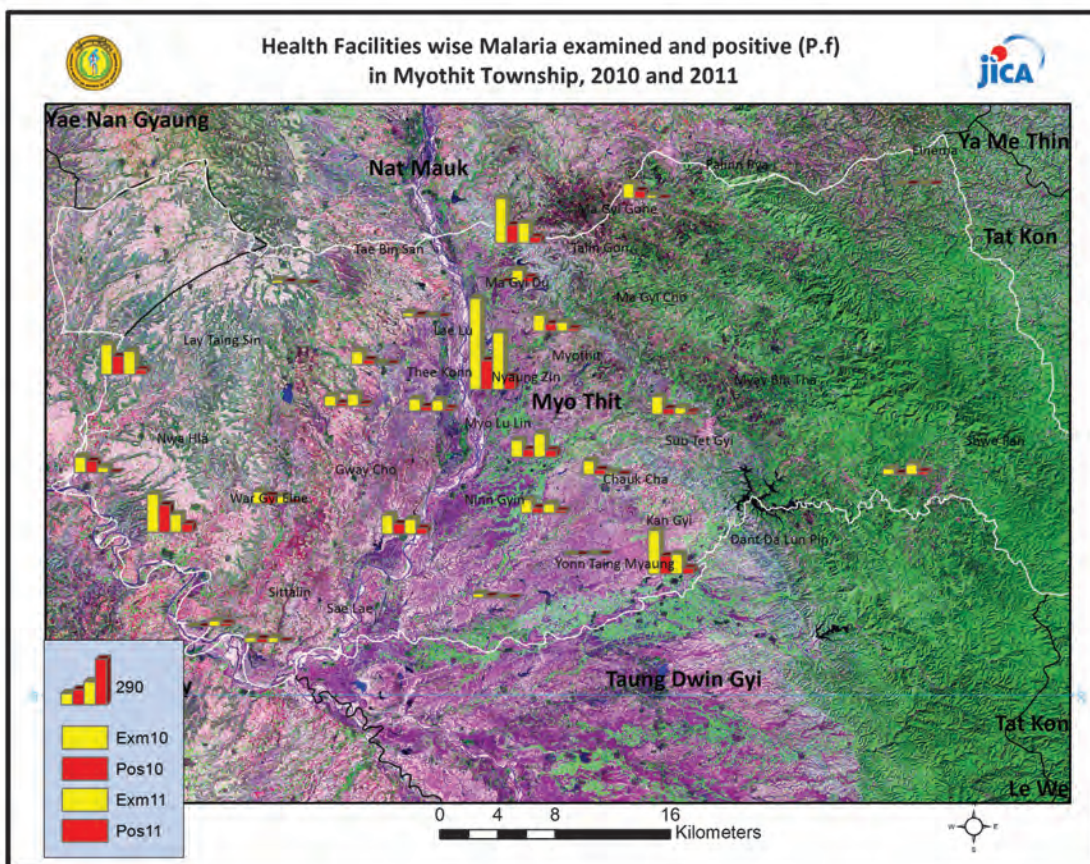
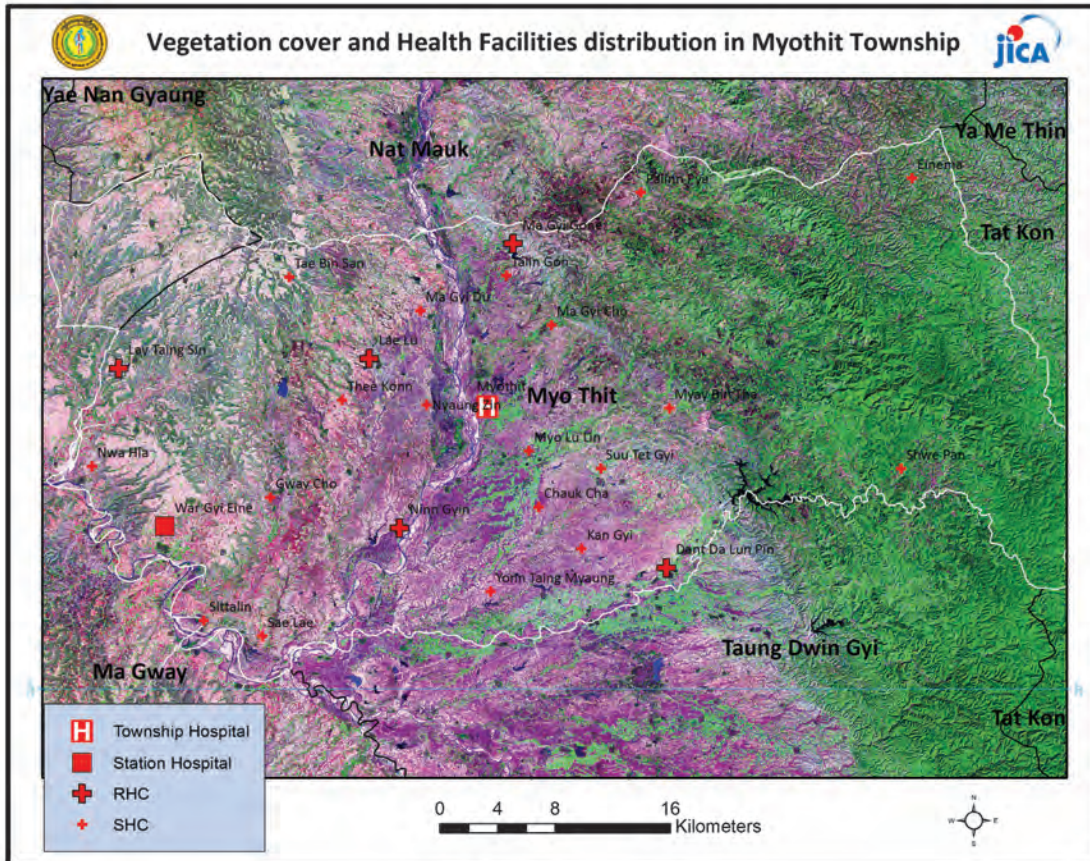
### Common Diseases under National Surveillance\*

<i>Diseases</i>	<i>Morbidity</i>	<i>Mortality</i>
Malaria	661.39	0
ARI <5	6627.29	13.95
Diarrhea	622.55	0
Dysentery	304.99	0
TB(Sputum+)	82.24	0
Snake Bite	67.97	2.86

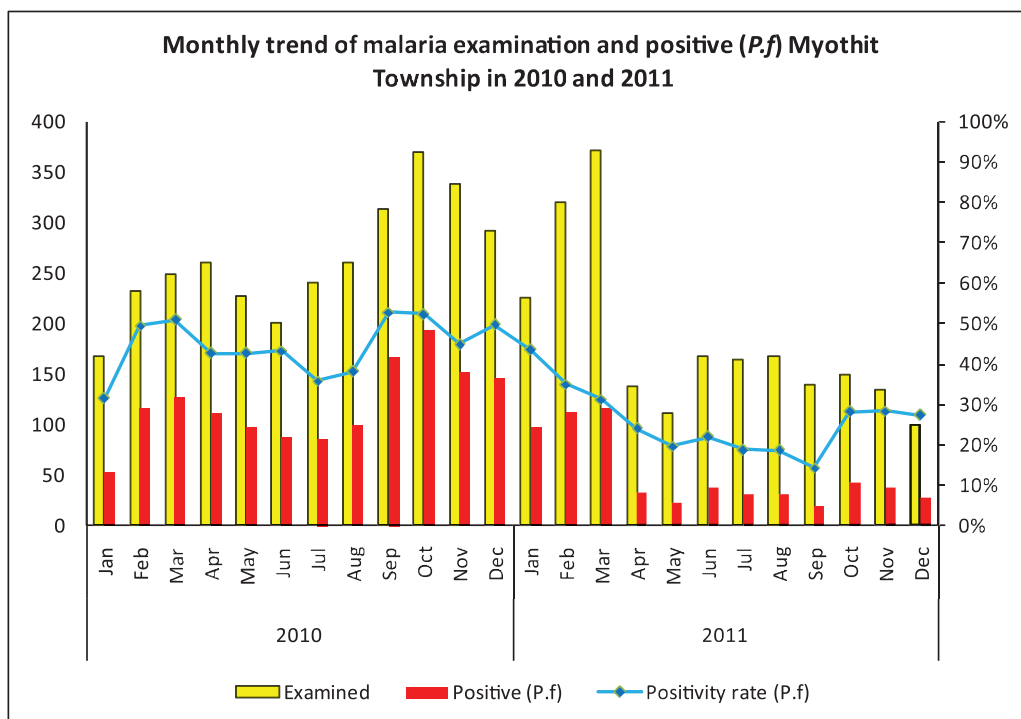
(Per 100,000 Populations)

\*The data source is Health Profile of Magway Region (2009) from Department of Health Planning.

### Vegetation cover and Health Facilities distribution in Myothis in Magway Region

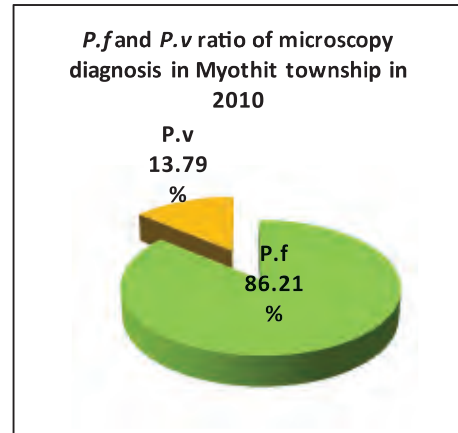
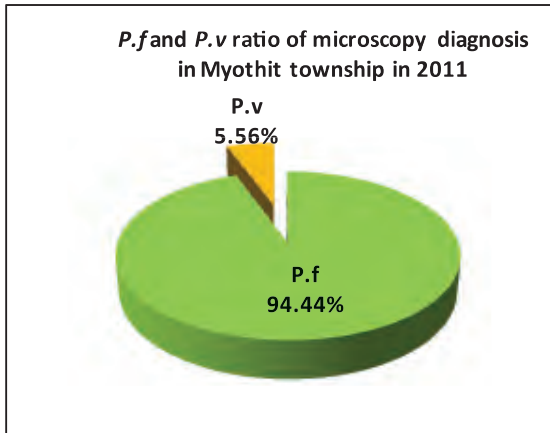


### Monthly trend of malaria examination and positive (*P.f*) in Myothit Township in 2010 and 2011

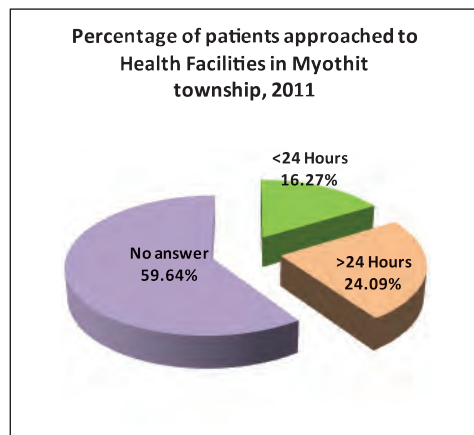
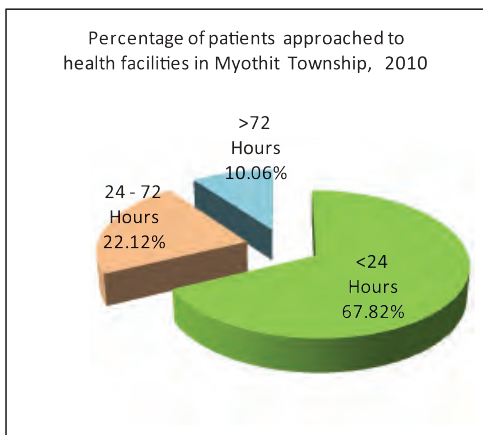


Month	2010			2011		
	Examined	Positive ( <i>P.f</i> )	Positivity rate ( <i>P.f</i> )	Examined	Positive ( <i>P.f</i> )	Positivity rate ( <i>P.f</i> )
Jan	168	53	31.55%	225	98	43.56%
Feb	232	115	49.57%	320	112	35.00%
Mar	249	127	51.00%	371	116	31.27%
Apr	260	111	42.69%	138	33	23.91%
May	227	97	42.73%	112	22	19.64%
Jun	201	87	43.28%	168	37	22.02%
Jul	240	86	35.83%	165	31	18.79%
Aug	260	99	38.08%	167	31	18.56%
Sep	314	166	52.87%	140	20	14.29%
Oct	369	193	52.30%	149	42	28.19%
Nov	339	152	44.84%	134	38	28.36%
Dec	292	145	49.66%	99	27	27.27%
<b>Total</b>	<b>3,151</b>	<b>1,431</b>	<b>45.41%</b>	<b>2,188</b>	<b>607</b>	<b>27.74%</b>

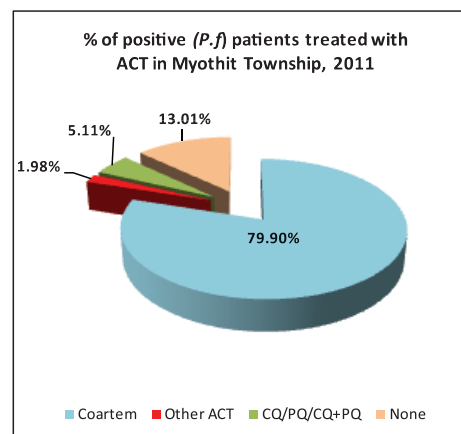
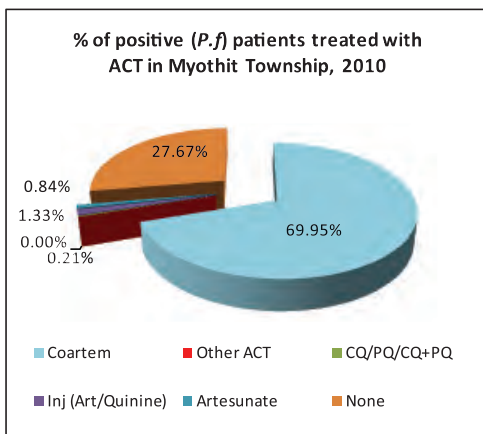
***P.f* and *P.v* ratio of malaria microscopy diagnosis in Myothit Township in 2010 and 2011**



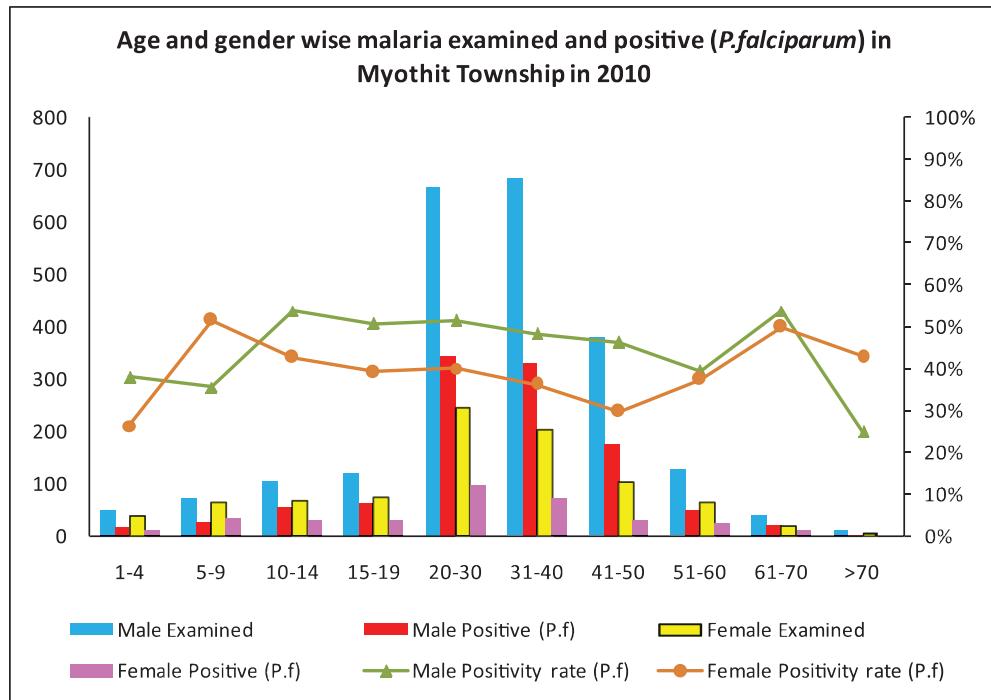
**Percentage of patients approached to health facilities in Myothit Township in 2010 and 2011**



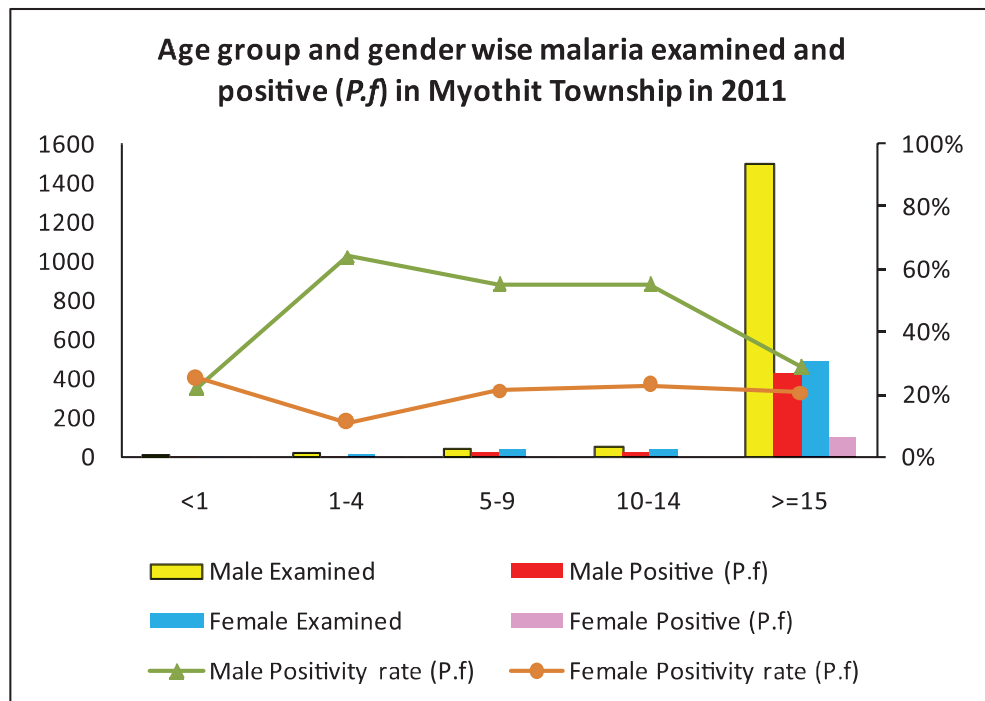
**Percentage of Positive (*P.f*) patients treated with ACT in Myothit Township in 2010 and 2011**



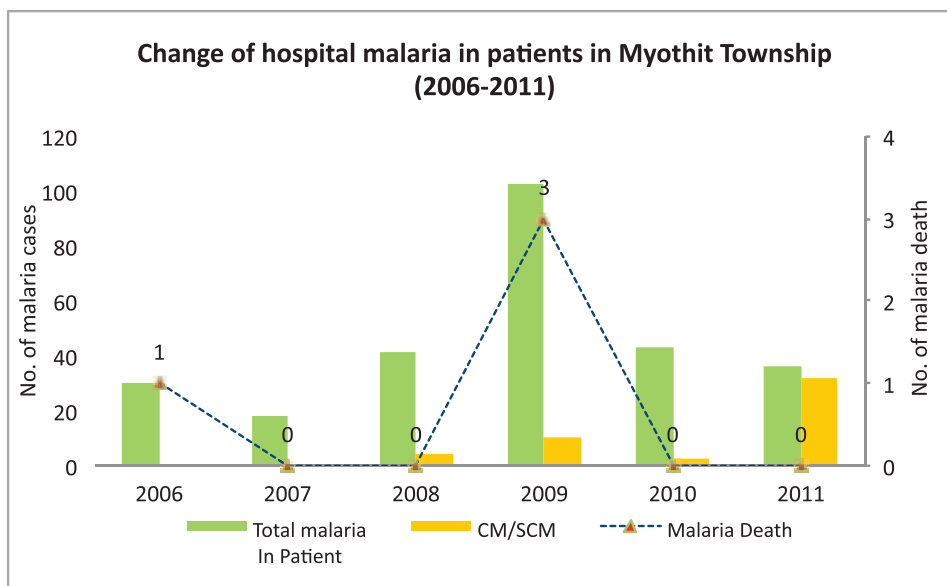
Age and gender wise malaria examination and positive (*P.f*) in Myothit Township, 2010



Age and gender wise malaria examination and positive (*P.f*) in Myothit Township, 2011



## Change of hospital malaria in patients in Myothit Township in Magway Region from 2006 to 2011



Sr	Year	Total In Patient	Total malaria In Patient	CM/SCM	Malaria Death	Total Death
1	2006	2135	30	0	1	12
2	2007	1043	18	0	0	14
3	2008	1023	41	4	0	9
4	2009	1722	103	10	3	14
5	2010	1450	43	3	0	4
6	2011	1448	36	32	0	14

## Health Profile of Natmauk Township



### Area and Location\*

Area	:	2309.24 Km <sup>2</sup>
North	:	Kyaukpadaung
South	:	Myothit
East	:	Pywabwe
West	:	Yenangyaung

### Administrative Units\*

Wards	:	7
Village tracts	:	73
Villages	:	230

### Population (2009)\*

Total	:	227,498
Urban	:	14,945
Rural	:	212,553
Male	:	108,776
Female	:	118,722
Sex Ratio	:	92
<5 Year	:	19,528
0-14 Year	:	65,545
15-49 Year	:	123,318
Population Density	:	98.52/ Km <sup>2</sup>

### Health Facilities (2009)\*

Township Hospital (25) Bedded	:	1
Station Hospitals	:	1
Maternal and Child Health Centers	:	1
Rural Health Centers	:	6
Sub Health Centers	:	32
Private Clinics and Maternity Home	:	3



**Health Manpower\***

	<i>Doctor</i>	<i>Nurse</i>	<i>HA</i>	<i>LHV</i>	<i>PHS I</i>	<i>PHS II</i>	<i>MW</i>
Sanction	8	17	6	7	2	16	41
Appointed	5	8	6	7	2	16	38
Vacant	3	9	0	0	0	0	3
% Vacancy	37.5%	52.9%	0%	0%	0%	0%	7.3%

(HA: Health Assistant, LHV: Lady Health Visitor, PHS:Public Health Supervisor , MW: Midwife)

**Health Manpower (Volunteer)\***

	Category of Volunteer Health Workers		
	CHW	AMW	TTBA
Trained	142	209	95
Functioning	136	200	83
% Functioning	95.8%	95.7%	87.4%

(CHW: Community health Worker, AMW: Auxiliary Mid Wife, TTBA: Trained Traditional Birth Attendant)

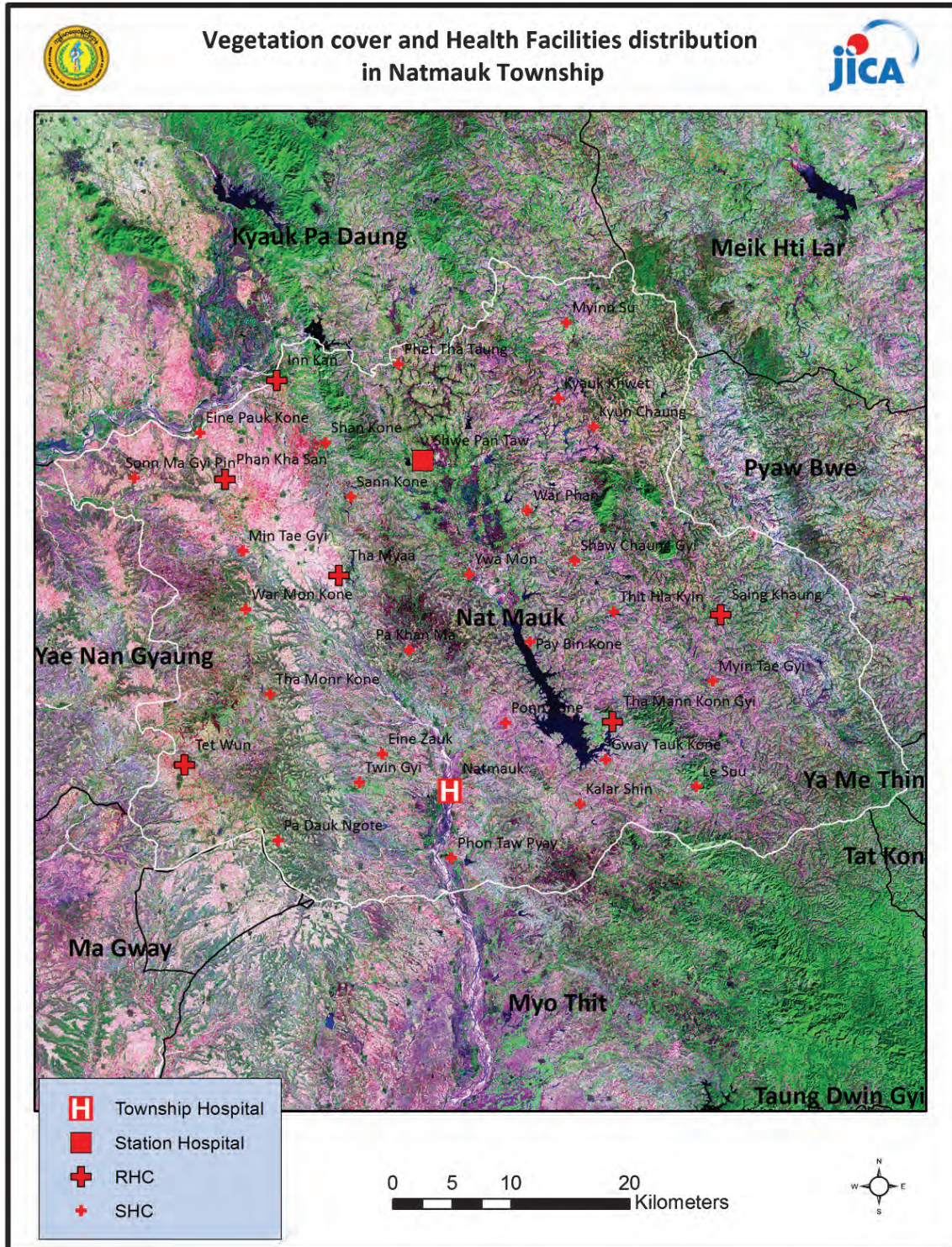
**Common Diseases under National Surveillance\***

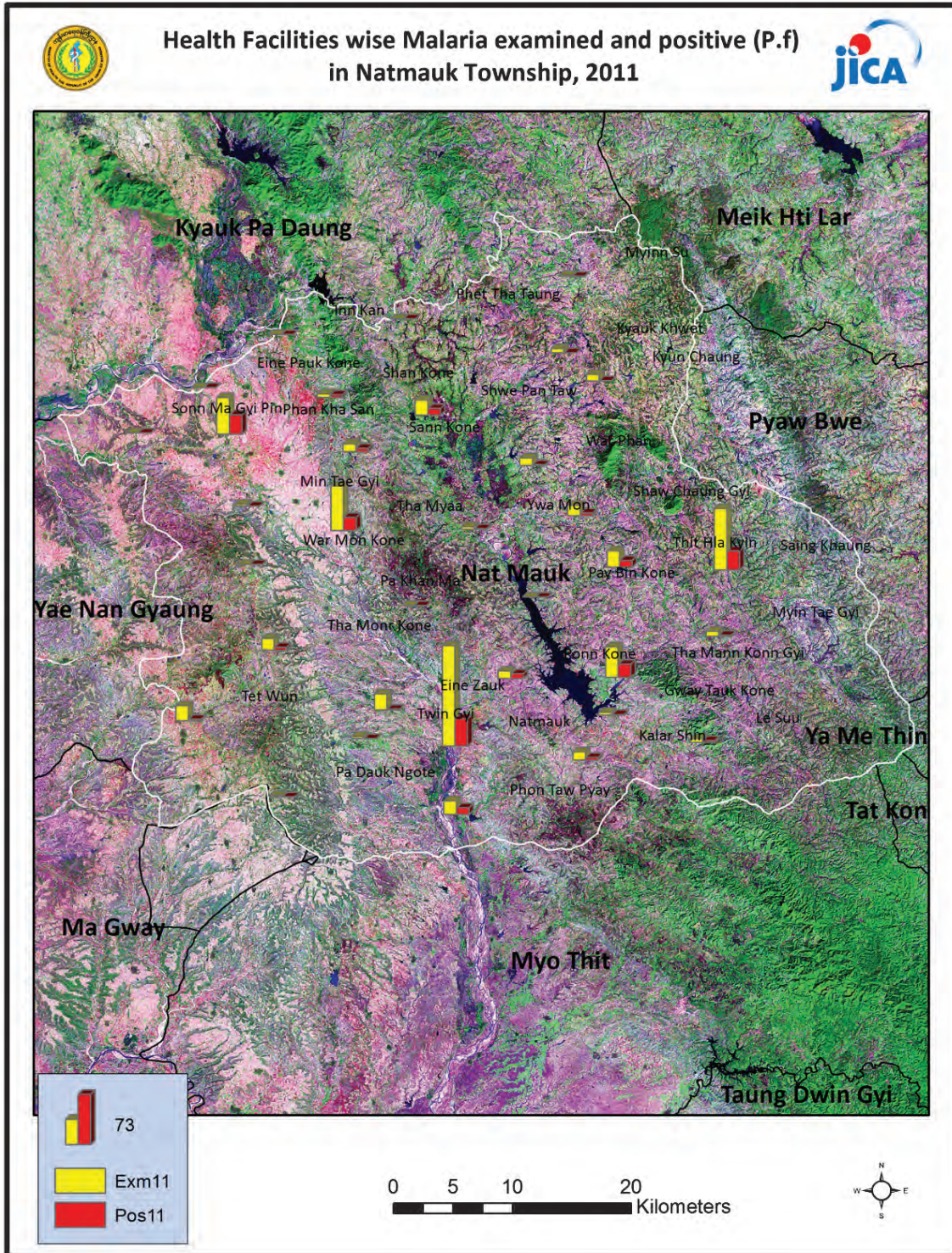
<i>Diseases</i>	<i>Morbidity</i>	<i>Mortality</i>
Malaria	255.83	0
ARI <5	4456.28	20.49
Diarrhea	362.64	0
Dysentery	138.46	0
TB(Sputum+)	20.22	0
Snake Bite	50.11	3.96

(Per 100,000 Populations)

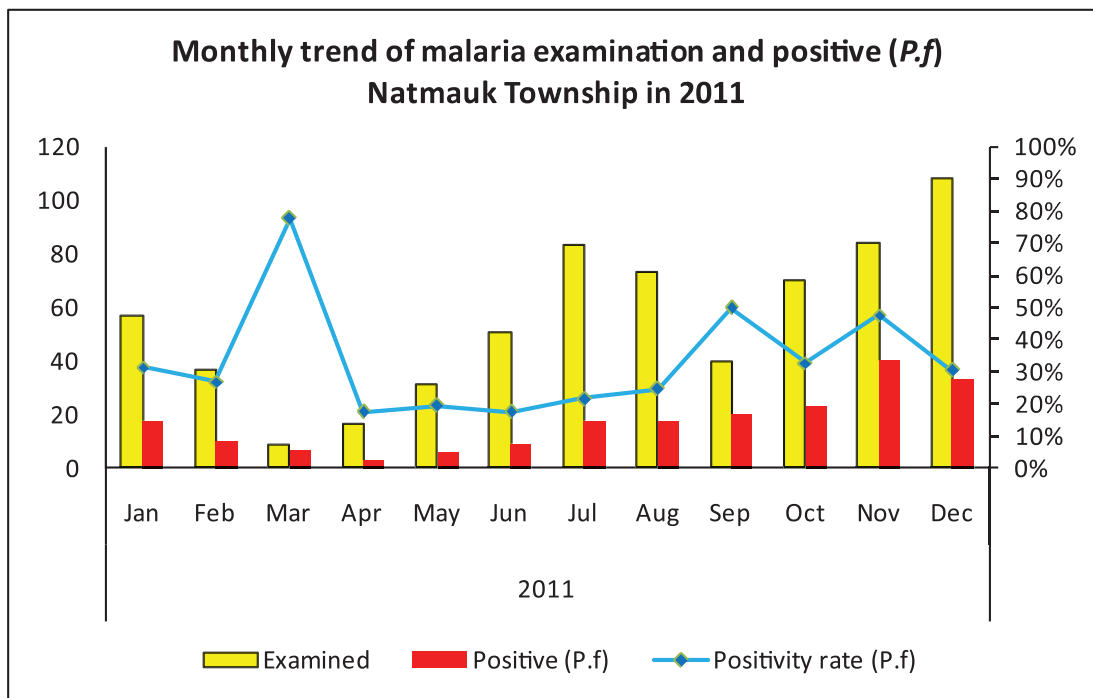
\*The data is Health profile of Magway Region (2009) from Department of Health planning.

Vegetation cover and Health Facilities distribution in Natmauk Township in Magway Region



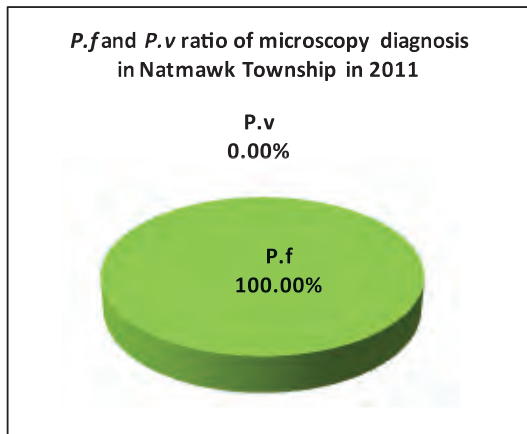


Monthly trend of malaria examination and positive (*P.f*) in Natmauk Township in 2011

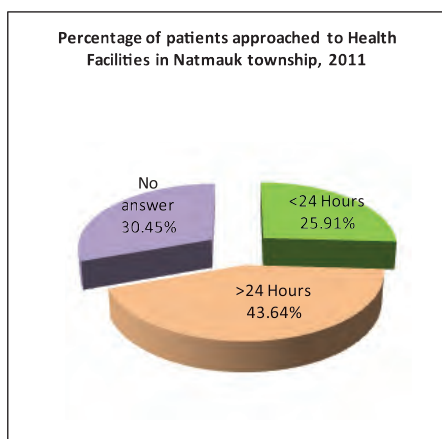


Month	2011		
	Examined	Positive ( <i>P.f</i> )	Positivity rate ( <i>P.f</i> )
Jan	57	18	31.58%
Feb	37	10	27.03%
Mar	9	7	77.78%
Apr	17	3	17.65%
May	31	6	19.35%
Jun	51	9	17.65%
Jul	83	18	21.69%
Aug	73	18	24.66%
Sep	40	20	50.00%
Oct	70	23	32.86%
Nov	84	40	47.62%
Dec	108	33	30.56%
<b>Total</b>	<b>660</b>	<b>205</b>	<b>31.06%</b>

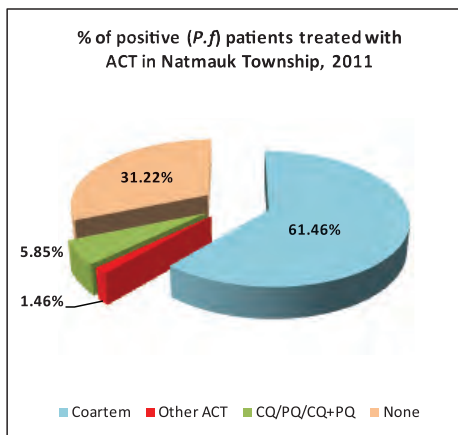
### P.f and P.v ratio of malaria microscopy diagnosis in Natmawk Township in 2011



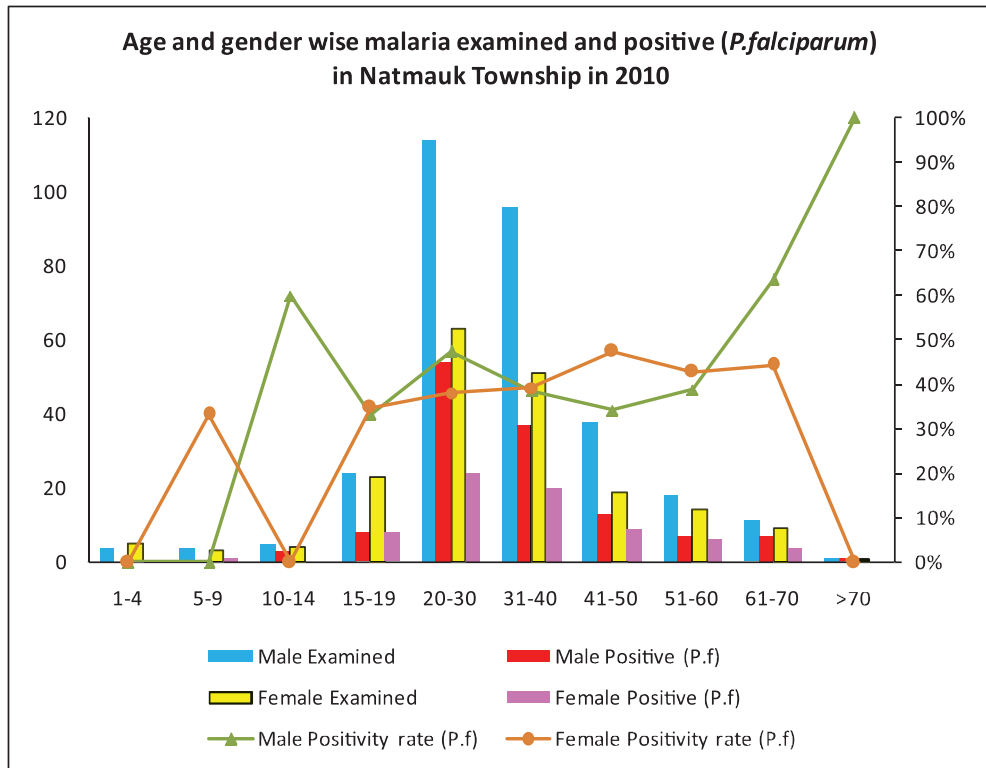
### Percentage of patients approached to health facilities in Natmawk Township in 2011



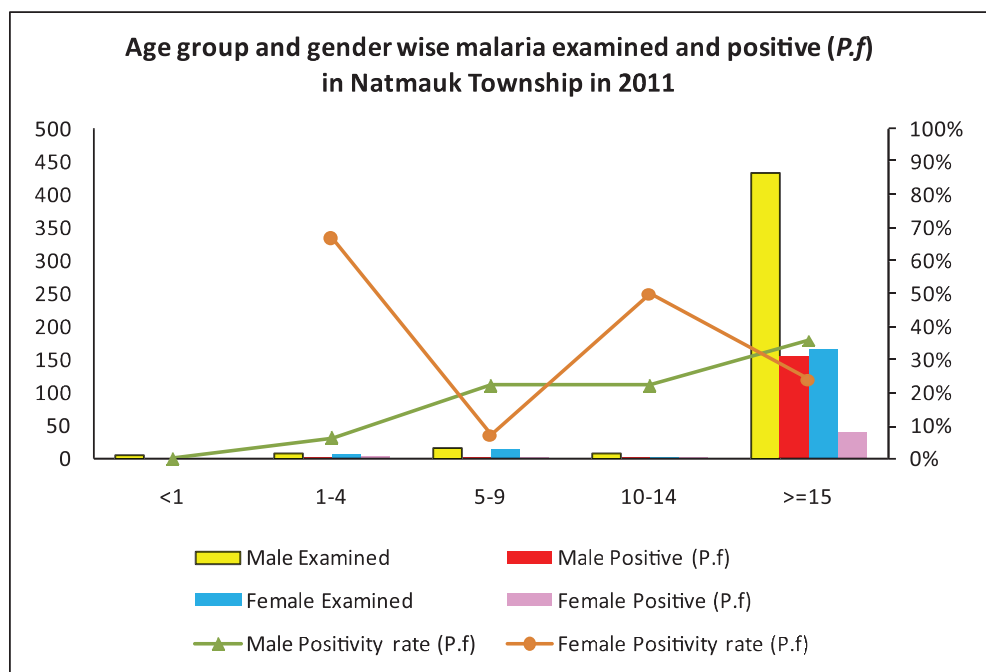
### Percentage of Positive (*P.f*) patients treated with ACT in Natmawk Township in 2011



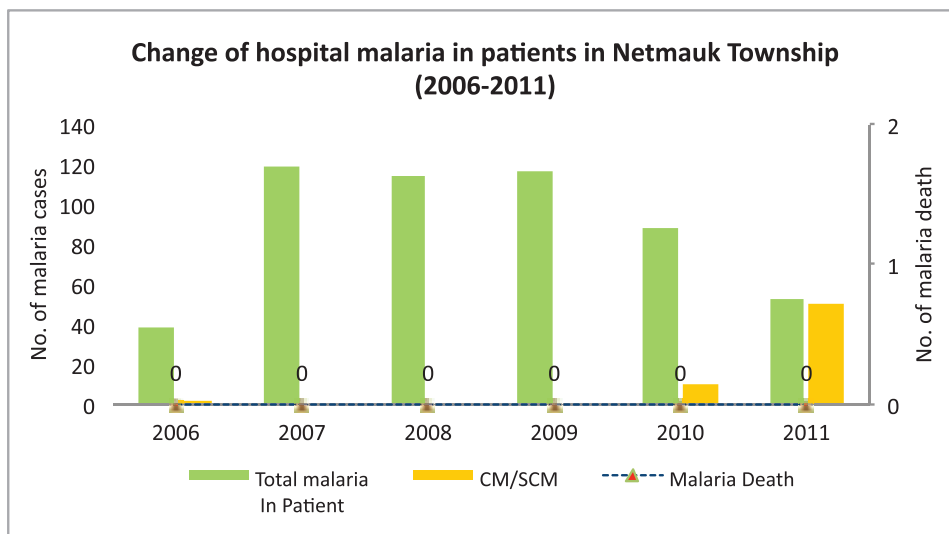
Age and gender wise malaria examination and positive (*P.f*) in Natmauk Township, 2010



Age and gender wise malaria examination and positive (*P.f*) in Natmauk Township in 2011



### Change of hospital malaria in patients in Natmauk Township in Magway Region From 2006 to 2011



Sr	Year	Total In Patient	Total malaria In Patient	CM/SCM	Malaria Death	Total Death
1	2006	1032	39	2	0	6
2	2007	1533	119	0	0	30
3	2008	1697	114	0	0	3
4	2009	2054	117	0	0	1
5	2010	2415	88	10	0	24
6	2011	3193	53	50	0	44