

## Health Profile of Kama Township



### Area and Location\*

Area	:	1153.20 Km <sup>2</sup>
North	:	Thayet
South	:	Padaung
East	:	Aunglan
West	:	Taungoo

### Administrative Units\*

Wards	:	4
Village tracts	:	52
Villages	:	153

### Population (2009)\*

Total	:	70,166
Urban	:	6,346
Rural	:	63,820
Male	:	33,811
Female	:	36,355
Sex Ratio	:	93
<5 Year	:	4,872
0-14 Year	:	15,010
15-49 Year	:	40,037
Population Density	:	60.84/ Km <sup>2</sup>

### Health Facilities (2009)\*

Township Hospital (50) Bedded	:	1
Station Hospital	:	1
Maternal and Child Health Centers	:	1
Rural Health Centers	:	4
Sub Health Centers	:	22

**Health Manpower\***

	<i>Doctor</i>	<i>Nurse</i>	<i>HA</i>	<i>LHV</i>	<i>PHS I</i>	<i>PHS II</i>	<i>MW</i>
Sanction	7	17	4	4	2	6	29
Appointed	2	6	4	4	1	5	27
Vacant	5	11	0	0	1	1	2
% Vacancy	71.4%	64.7%	0%	0%	50%	16.7%	6.9%

(HA: Health Assistant, LHV: Lady Health Visitor, PHS:Public Health Supervisor , MW: Midwife)

**Health Manpower (Volunteer)\***

	Category of Volunteer Health Workers		
	CHW	AMW	TTBA
Trained	137	189	34
Functioning	105	106	17
% Functioning	76.6%	56.1%	50%

(CHW: Community health Worker, AMW: Auxiliary Mid Wife, TTBA: Trained Traditional Birth Attendant)

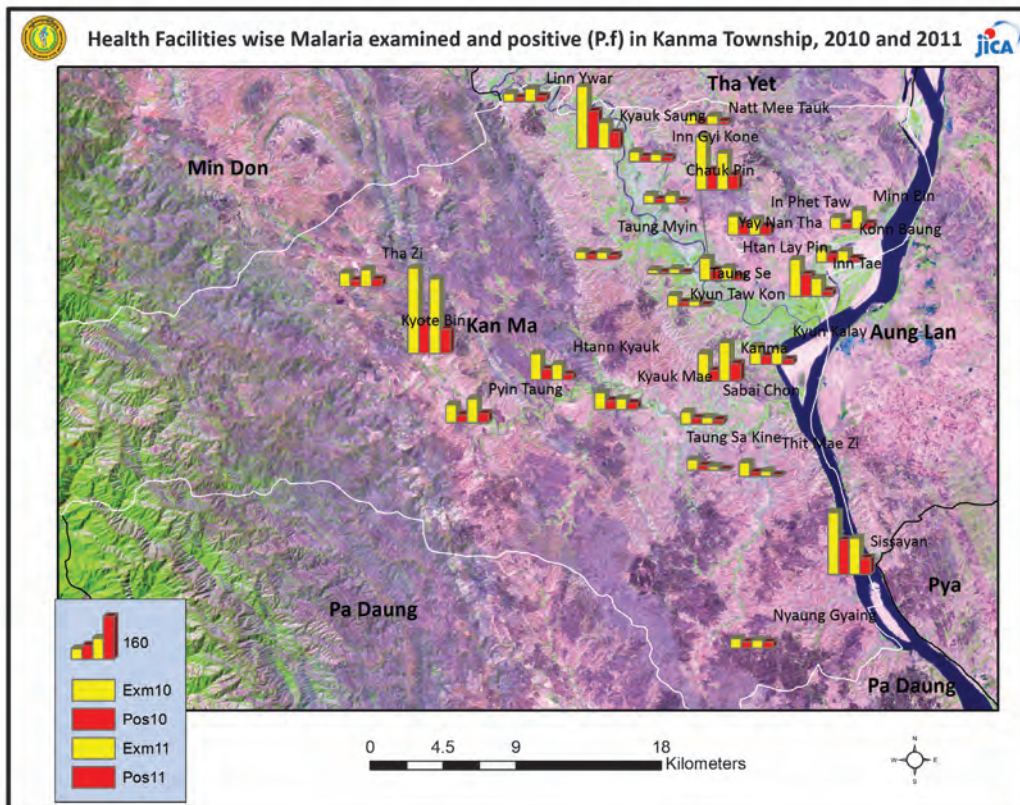
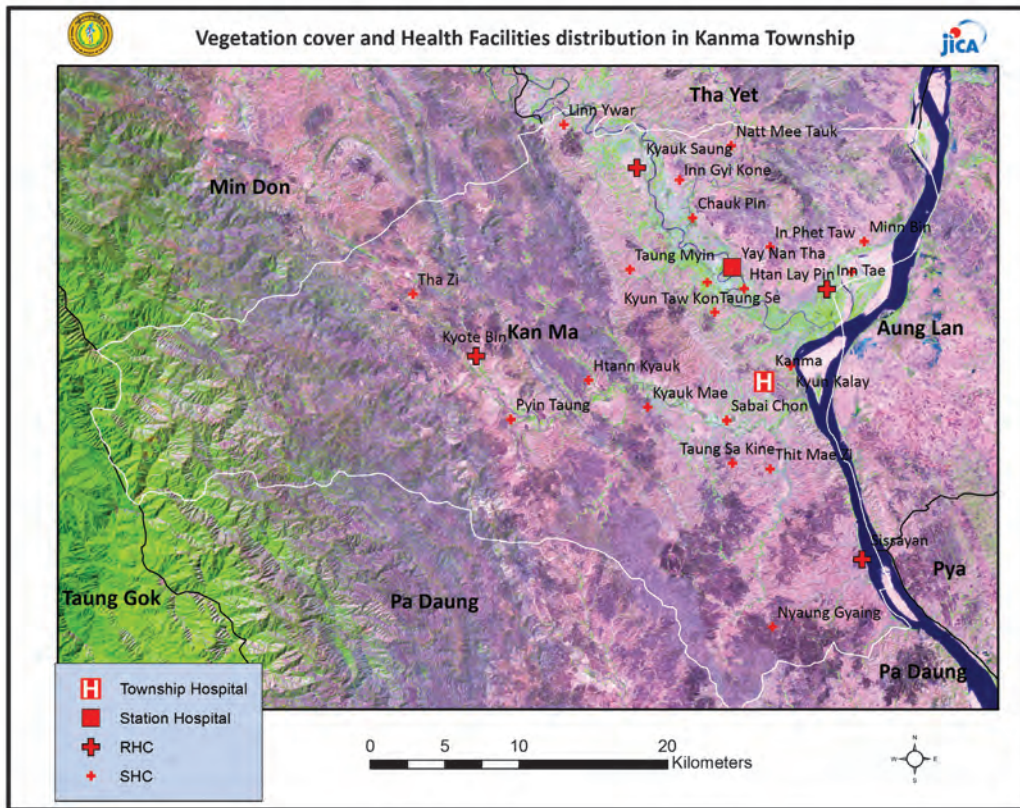
**Common Diseases under National Surveillance\***

<i>Diseases</i>	<i>Morbidity</i>	<i>Mortality</i>
Malaria	1871.28	0
ARI <5	11658.46	41.05
Diarrhea	1506.43	0
Dysentery	1224.24	0
TB(Sputum+)	72.68	7.13
Snake Bite	44.18	1.43

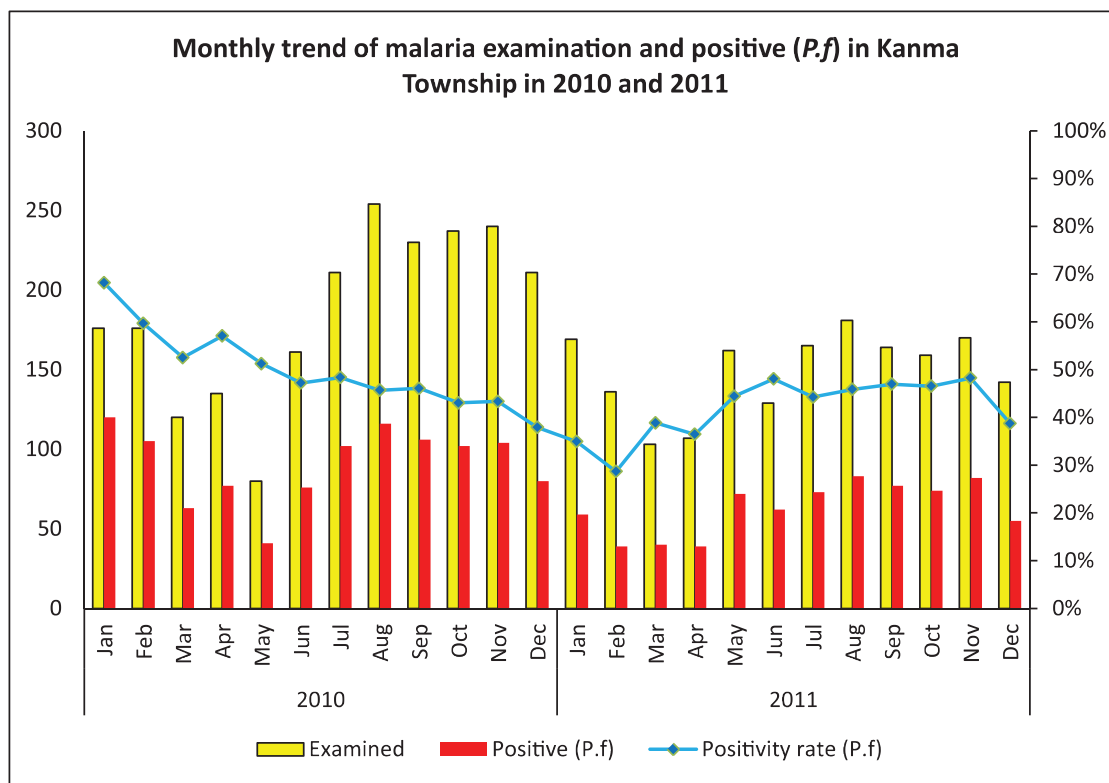
(Per 100,000 Populations)

\*The data source is Health Profile of Magway Region (2009) from Department of Health Planning.

### Vegetation cover and Health Facilities distribution in Kanma Township in Magway Region



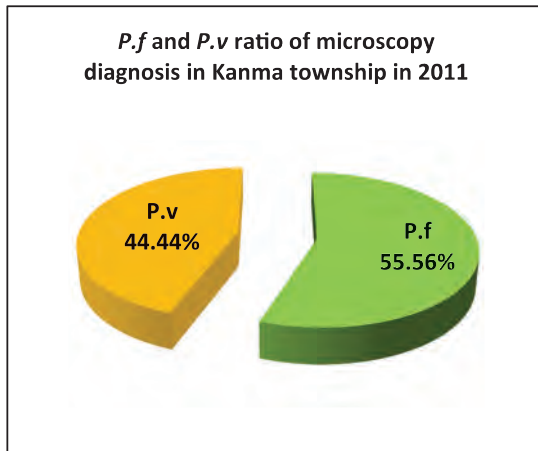
### Monthly trend of malaria examination and positive (P.f) in Kanma Township in 2010 and 2011



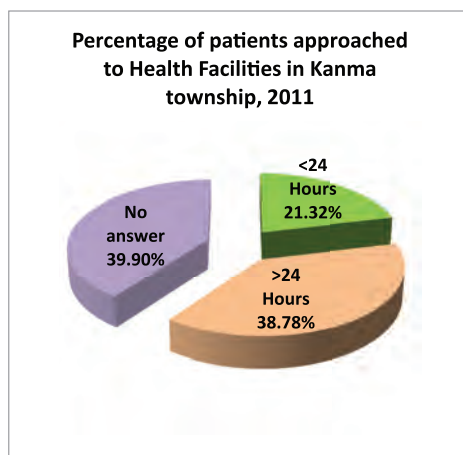
Month	2010			2011		
	Examined	Positive (P.f)	Positivity rate (P.f)	Examined	Positive (P.f)	Positivity rate (P.f)
Jan	176	120	68.18%	169	59	34.91%
Feb	176	105	59.66%	136	39	28.68%
Mar	120	63	52.50%	103	40	38.83%
Apr	135	77	57.04%	107	39	36.45%
May	80	41	51.25%	162	72	44.44%
Jun	161	76	47.20%	129	62	48.06%
Jul	211	102	48.34%	165	73	44.24%
Aug	254	116	45.67%	181	83	45.86%
Sep	230	106	46.09%	164	77	46.95%
Oct	237	102	43.04%	159	74	46.54%
Nov	240	104	43.33%	170	82	48.24%
Dec	211	80	37.91%	142	55	38.73%
<b>Total</b>	<b>2,231</b>	<b>1,092</b>	<b>48.95%</b>	<b>1,787</b>	<b>755</b>	<b>42.25%</b>



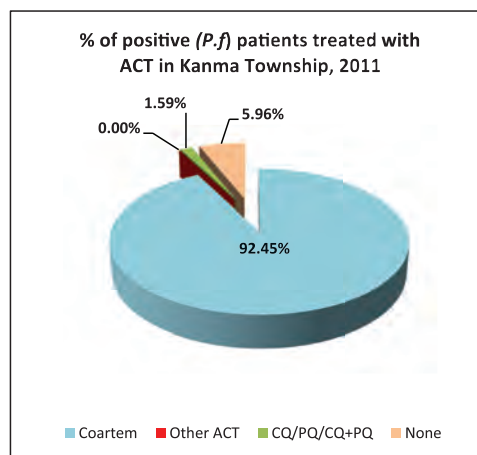
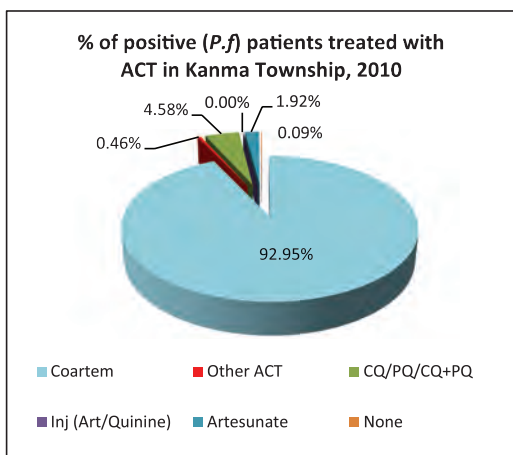
**P.f and P.v ratio of malaria microscopy diagnosis in Kanma Township in 2011**



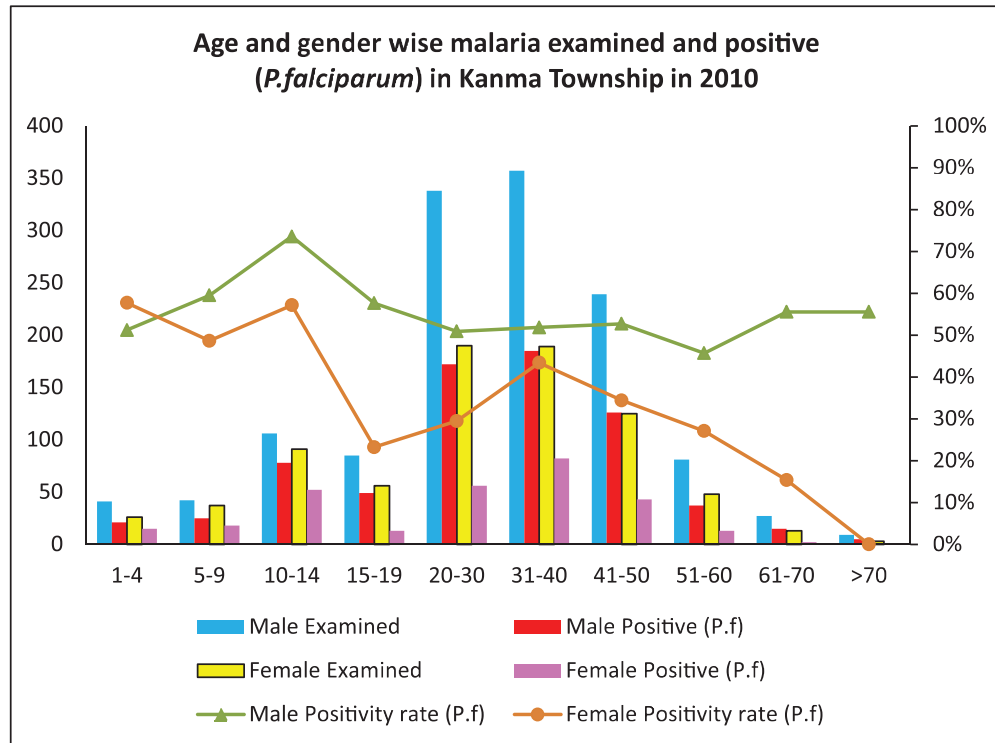
**Percentage of patients approached to health facilities in Kanma Township in 2011**



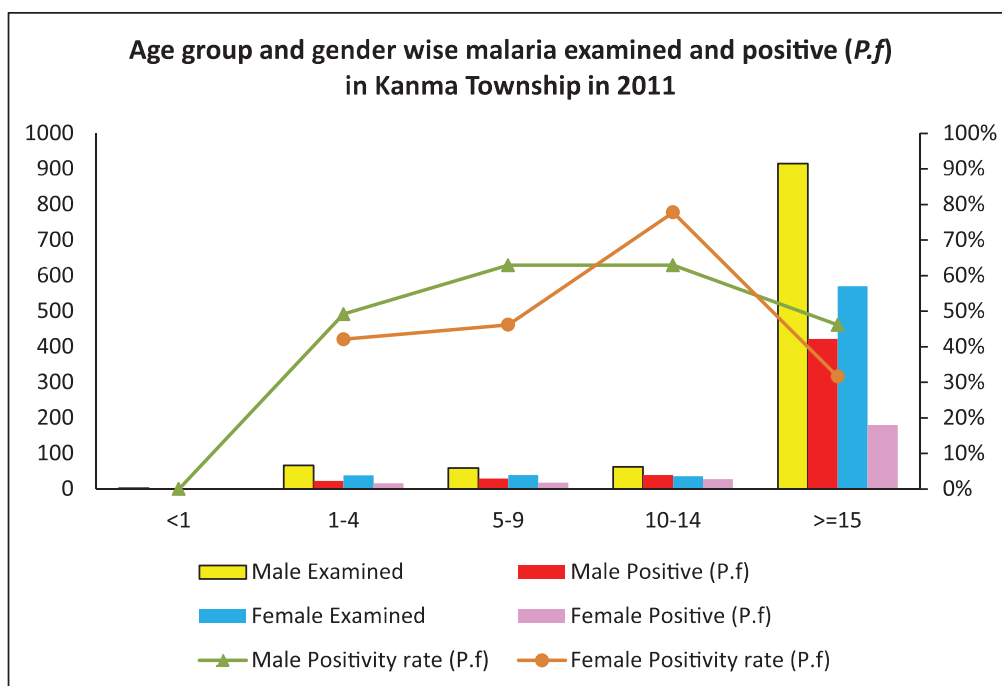
**Percentage of Positive patients (P.f) treated with ACT in Kanma Township in 2010 and 2011**



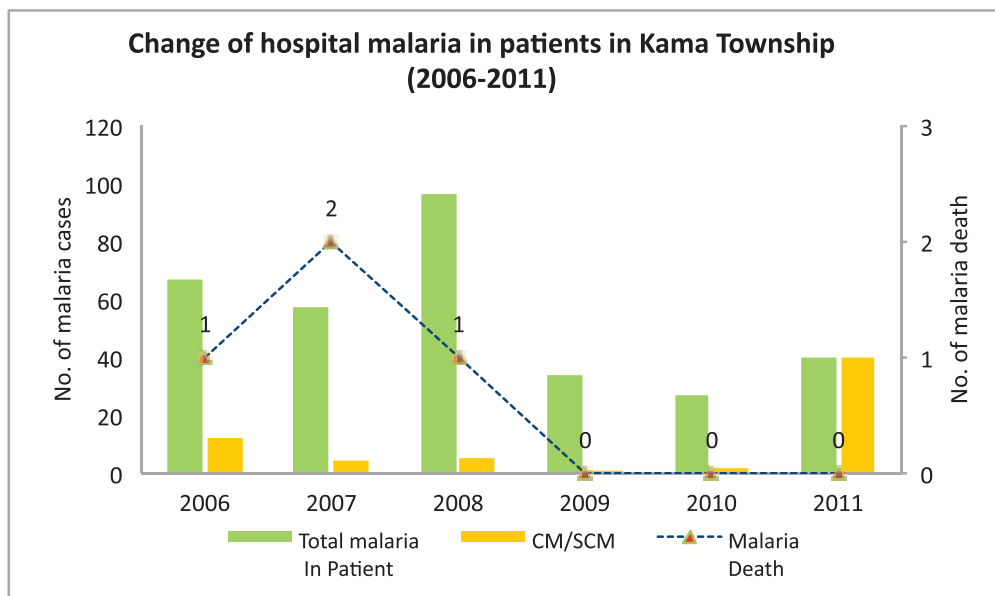
Age and gender wise malaria examination and positive (*P.f*) in Kanma Township, 2010



Age and gender wise malaria examination and positive (*P.f*) in Kanma Township, 2011

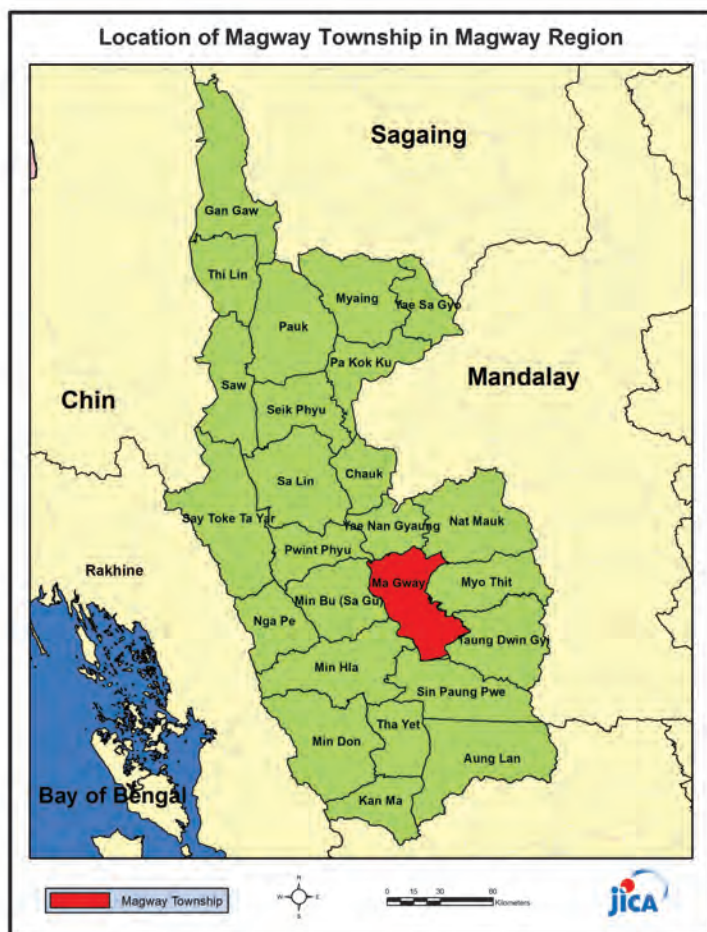


### Change of hospital malaria in patients in Kanma Township from 2006 to 2011



Sr	Year	Total In Patient	Total malaria In Patient	CM/SCM	Malaria Death	Total Death
1	2006	716	67	12	1	8
2	2007	751	57	4	2	14
3	2008	850	96	5	1	7
4	2009	818	34	1	0	4
5	2010	608	27	2	0	2
6	2011	604	40	40	0	5

## Health Profile of Magway Township



### Area and Location\*

Area	:	682.22 Km <sup>2</sup>
North	:	Yenangyang
South	:	Sinbaungwe
East	:	Myothit
West	:	Minbyu

### Administrative Units\*

Wards	:	14
Village tracts	:	61
Villages	:	214

### Population (2009)\*

Total	:	292,798
Urban	:	77,703
Rural	:	215,095
Male	:	142,187
Female	:	150,611
Sex Ratio	:	94
<5 Year	:	30,826
0-14 Year	:	87,772
15-49 Year	:	150,487
Population Density	:	429.18/ Km <sup>2</sup>

### Health Facilities (2009)\*

General Hospital (200) Bedded	:	1
Teaching Hospital (200) Bedded	:	1
Station Hospitals	:	2
Maternal and Child Health Centers	:	1
Rural Health Centers	:	7
Sub Health Centers	:	45
School Health Center	:	1
Urban Health Centers	:	2
Private Clinics and Maternity Homes	:	36



## Health Manpower

	<i>Doctor</i>	<i>Nurse</i>	<i>HA</i>	<i>LHV</i>	<i>PHS I</i>	<i>PHS II</i>	<i>MW</i>
Sanction	201	469	12	13	5	31	68
Appointed	106	398	12	13	3	28	67
Vacant	95	71	0	0	2	3	1
% Vacancy	47.3%	15.1%	0%	0%	40%	9.7%	1.5%

(HA: Health Assistant, LHV: Lady Health Visitor, PHS:Public Health Supervisor , MW: Midwife)

## Health Manpower (Volunteer)

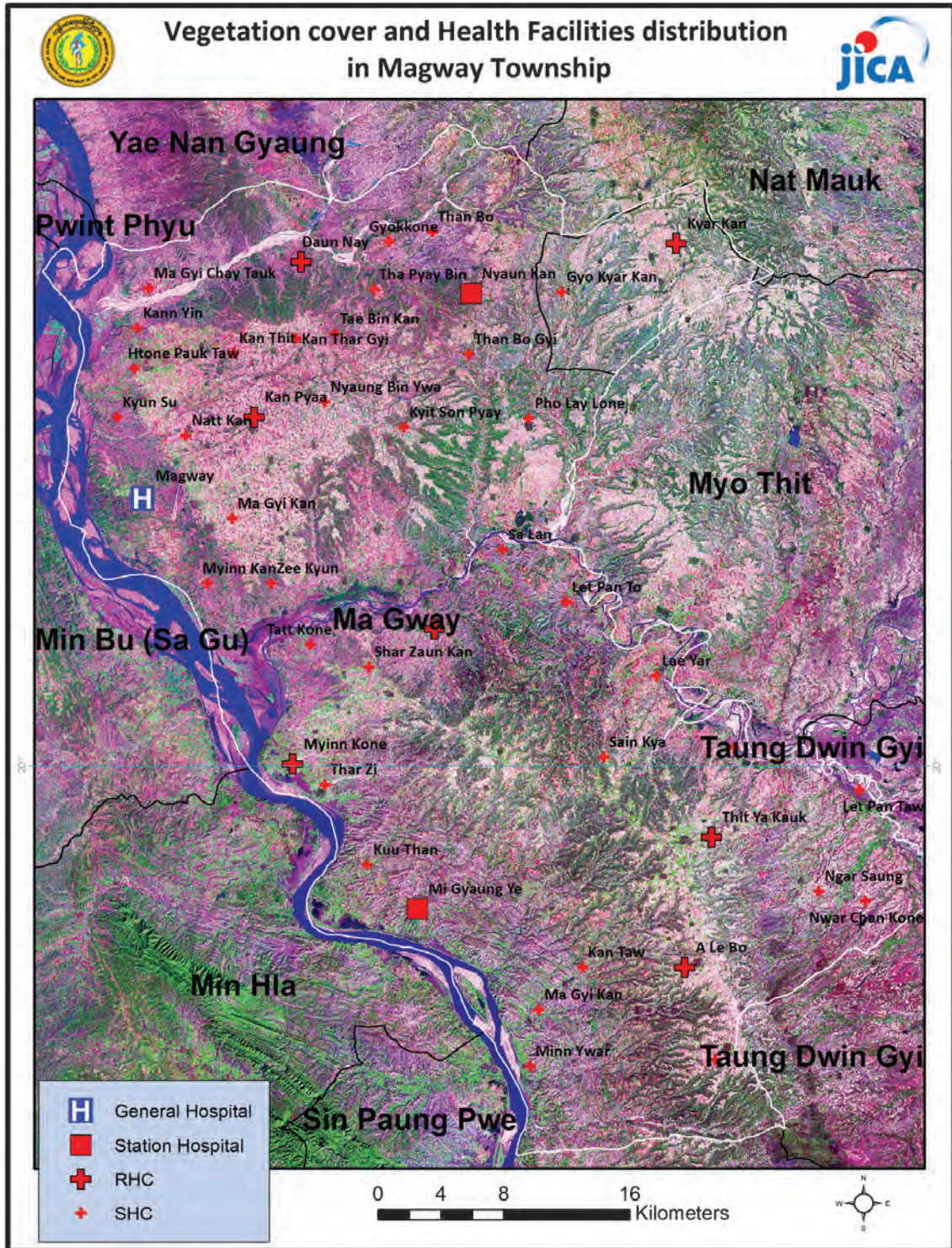
	Category of Volunteer Health Workers		
	CHW	AMW	TTBA
Trained	228	236	159
Functioning	134	148	25
% Functioning	58.8%	62.7%	15.7%

(CHW: Community health Worker, AMW: Auxiliary Mid Wife, TTBA: Trained Traditional Birth Attendant)

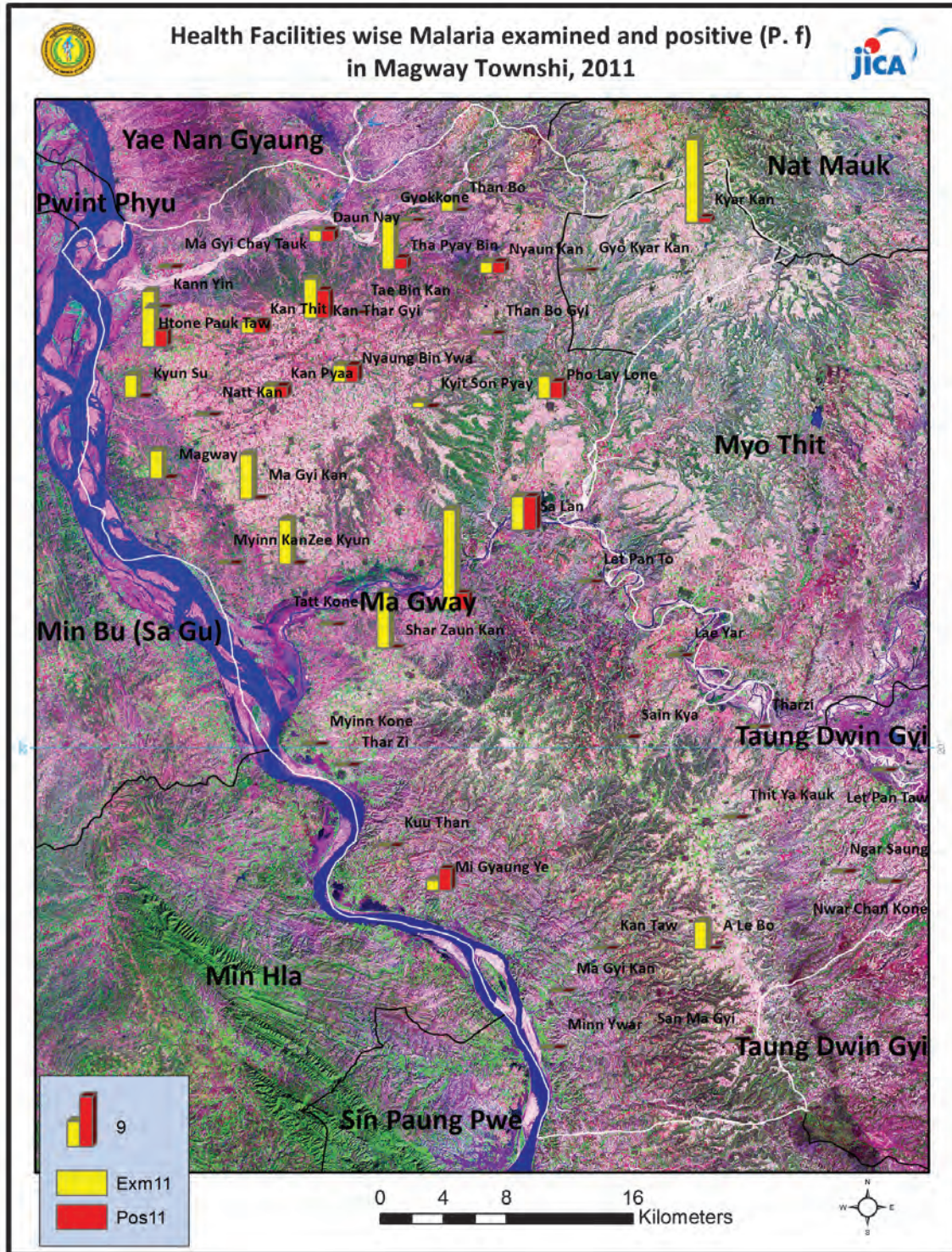
## Common Diseases under National Surveillance

<i>Diseases</i>	<i>Morbidity</i>	<i>Mortality</i>
Malaria	60.79	1.37
ARI <5	7415.82	0
Diarrhea	835.39	1.37
Dysentery	519.81	0
TB(Sputum+)	105.19	0
Snake Bite	15.03	1.37

(Per 100,000 Populations)









## Health Profile of Minbu Township



### Area and Location\*

Area:	1664062 Km <sup>2</sup>
North:	Pwintphyu
South:	Minhla
East:	Magway
West:	Ngape

### Administrative Units\*

Wards	: 7
Village tracts	: 67
Villages	: 148

### Population (2009)\*

Total	: 182,622
Urban	: 4,529
Rural	: 137,328
Male	: 88,953
Female	: 93,669
Sex Ratio	: 95
<5 Year	: 16,210
0-14 Year	: 47,688
15-49 Year:	: 97,836
Population Density	: 109.71/ Km <sup>2</sup>

### Health Facilities (2009)\*

Township Hospital (200) Bedded	: 1
Station Hospitals	: 2
Maternal and Child Health Centers	: 2
Rural Health Centers	: 6
Sub Health Centers	: 30
Private Clinics and Maternity Home	: 1



### Health Manpower\*

	<i>Doctor</i>	<i>Nurse</i>	<i>HA</i>	<i>LHV</i>	<i>PHS I</i>	<i>PHS II</i>	<i>MW</i>
Sanction	112	303	11	8	2	20	43
Appointed	63	151	10	7	2	20	42
Vacant	49	152	1	1	0	0	1
% Vacancy	43.8%	50.2%	9.1%	12.5%	0%	0%	2.3%

(HA: Health Assistant, LHV: Lady Health Visitor, PHS:Public Health Supervisor , MW: Midwife)

### Health Manpower (Volunteer)\*

	Category of Volunteer Health Workers		
	CHW	AMW	TTBA
Trained	167	136	92
Functioning	89	86	38
% Functioning	53.3%	63.2%	41.3%

(CHW: Community health Worker, AMW: Auxiliary Mid Wife, TTBA: Trained Traditional Birth Attendant)

### Common Diseases under National Surveillance\*

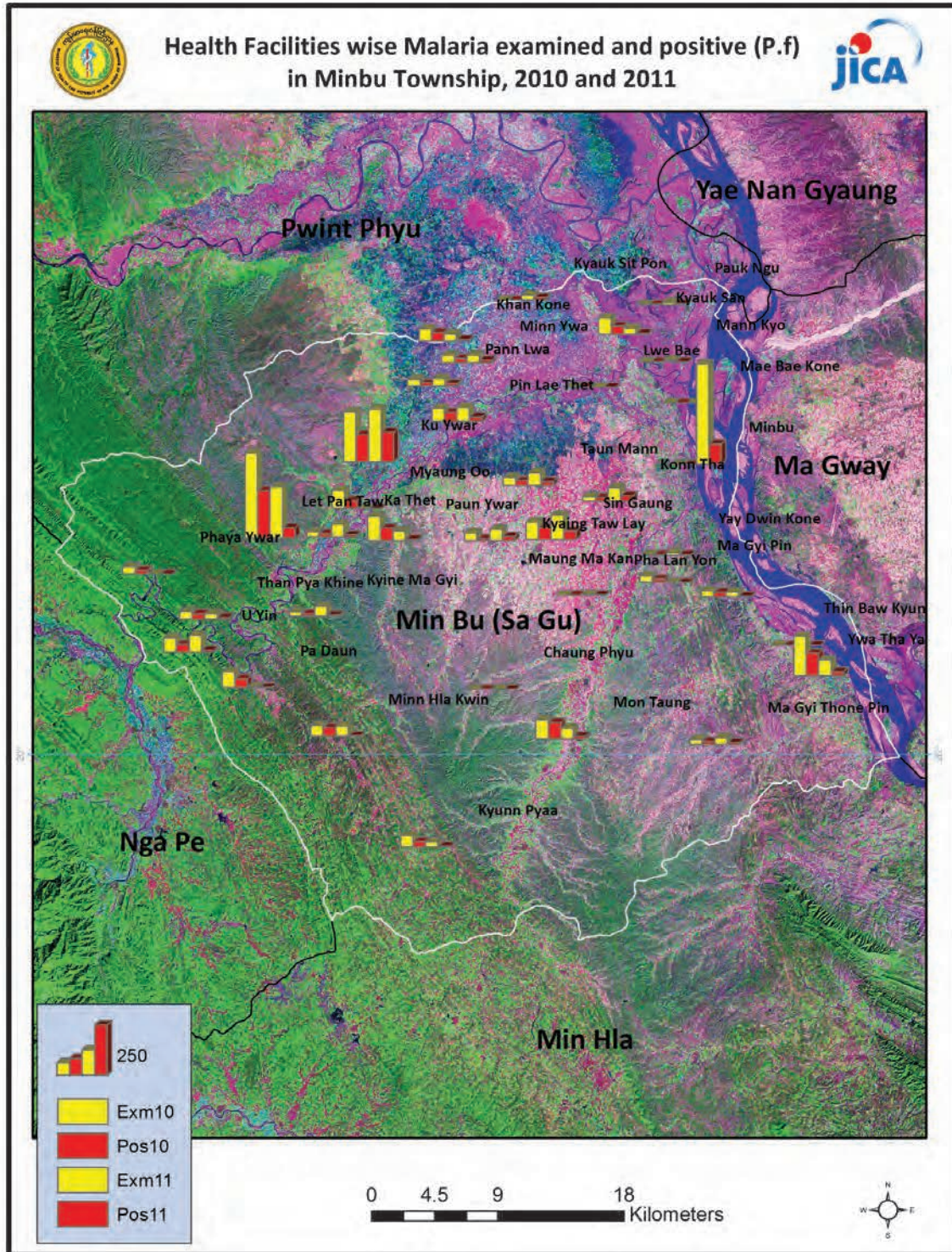
<i>Diseases</i>	<i>Morbidity</i>	<i>Mortality</i>
Malaria	683.93	1.1
ARI <5	7711.29	178.9
Diarrhea	617.12	0
Dysentery	294.6	0
TB(Sputum+)	35.05	0
Snake Bite	41.62	5.48

(Per 100,000 Populations)

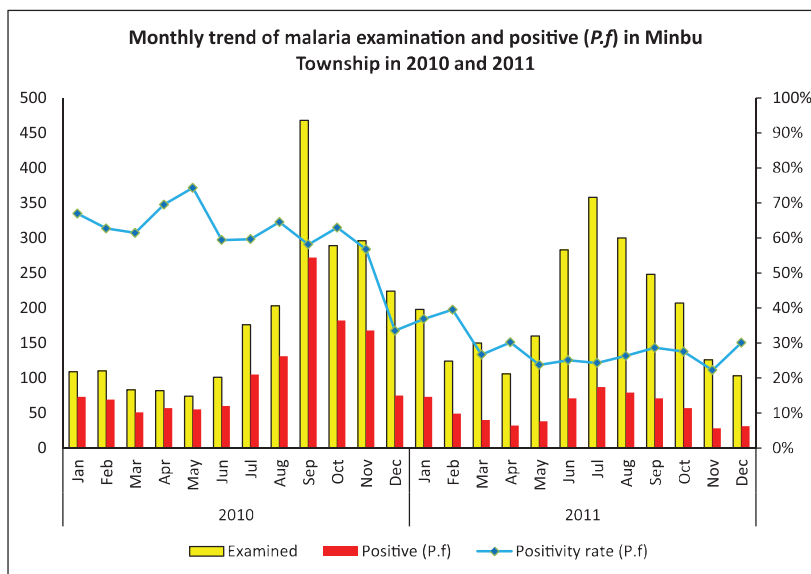
\*The data source is Health Profile of Magway Region (2009) From Department of Health Planning.





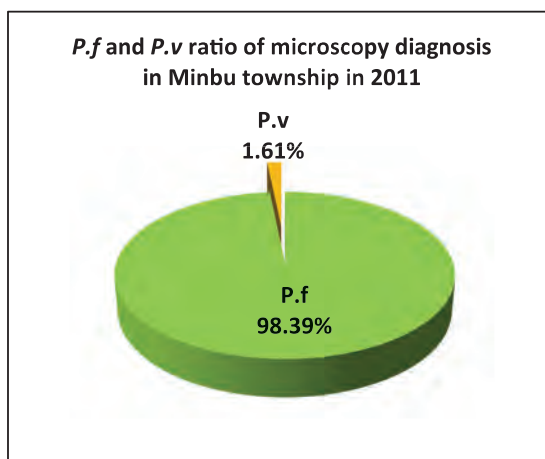


### Monthly trend of malaria examination and positive (*P.f*) in Minbu Township in 2010 and 2011



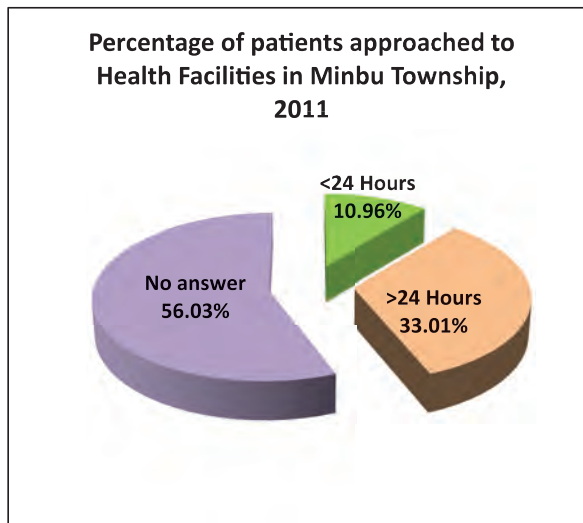
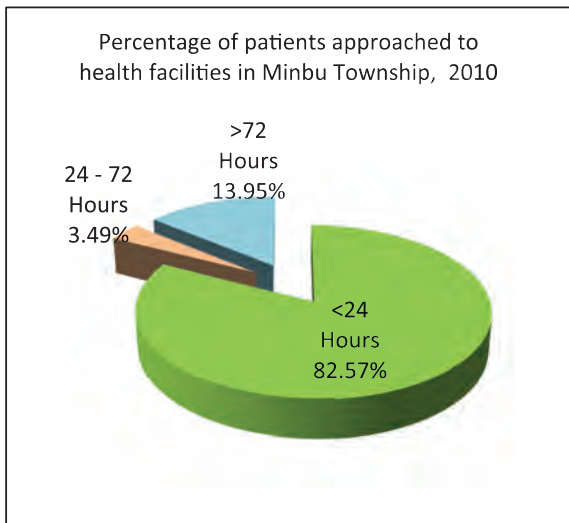
Month	2010			2011		
	Examined	Positive ( <i>P.f</i> )	Positivity rate ( <i>P.f</i> )	Examined	Positive ( <i>P.f</i> )	Positivity rate ( <i>P.f</i> )
Jan	109	73	66.97%	198	73	36.87%
Feb	110	69	62.73%	124	49	39.52%
Mar	83	51	61.45%	150	40	26.67%
Apr	82	57	69.51%	106	32	30.19%
May	74	55	74.32%	160	38	23.75%
Jun	101	60	59.41%	283	71	25.09%
Jul	176	105	59.66%	358	87	24.30%
Aug	203	131	64.53%	300	79	26.33%
Sep	468	272	58.12%	248	71	28.63%
Oct	289	182	62.98%	207	57	27.54%
Nov	296	168	56.76%	126	28	22.22%
Dec	224	75	33.48%	103	31	30.10%
<b>Total</b>	<b>2,215</b>	<b>1,298</b>	<b>58.60%</b>	<b>2,363</b>	<b>656</b>	<b>27.76%</b>

### *P.f* and *P.v* ratio of malaria microscopy diagnosis in Minbu Township in 2011

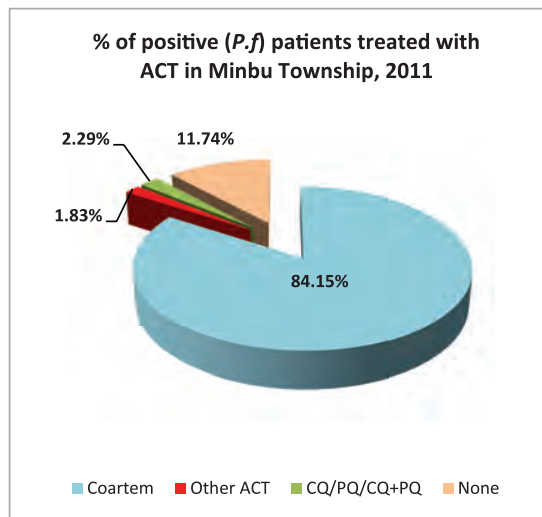
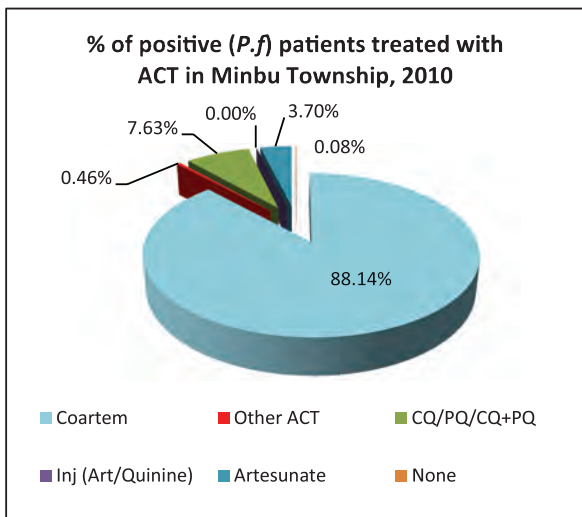




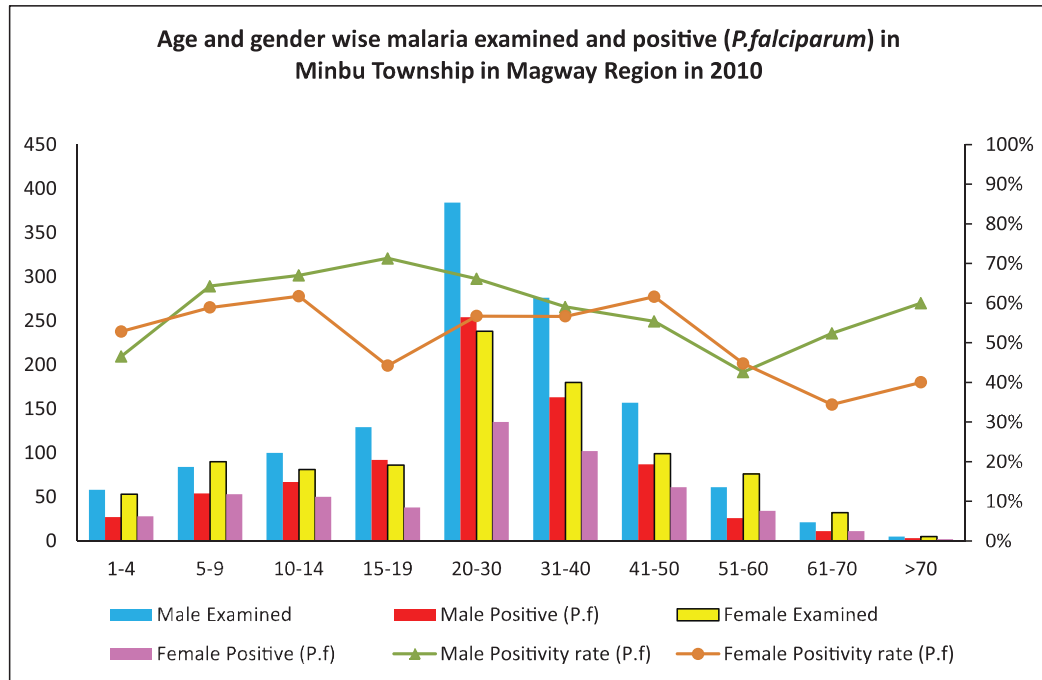
### Percentage of patients approached to health facilities in Minbu Township in 2010 and 2011



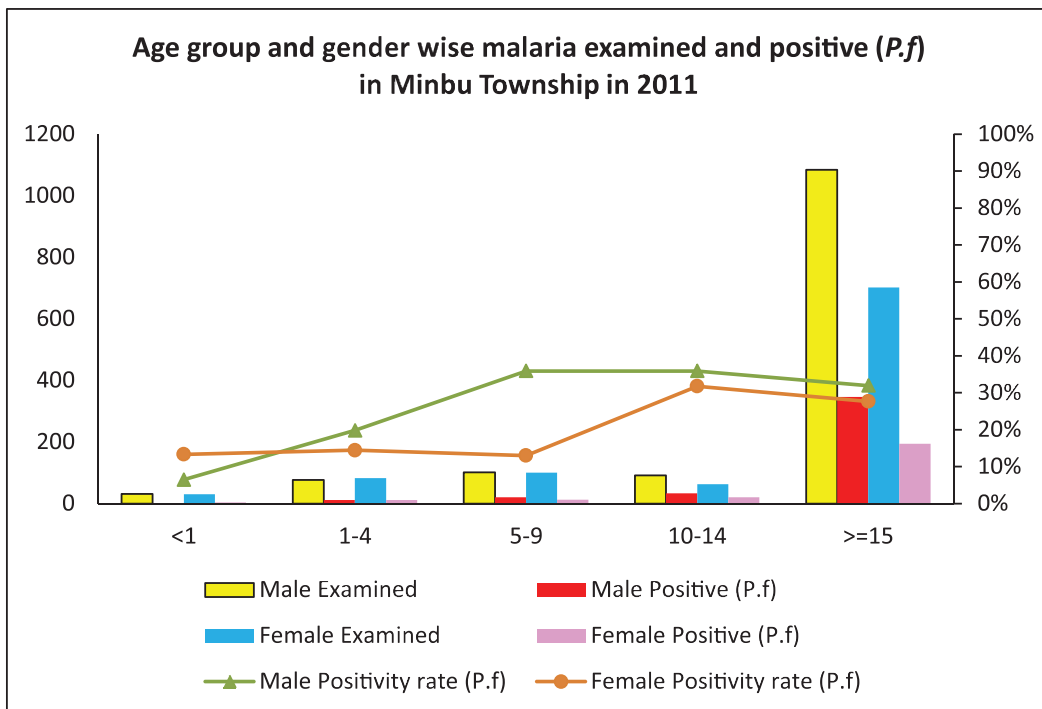
### Percentage of Positive (*P.f*) patients treated with ACT in Minbu Township in 2010 and 2011



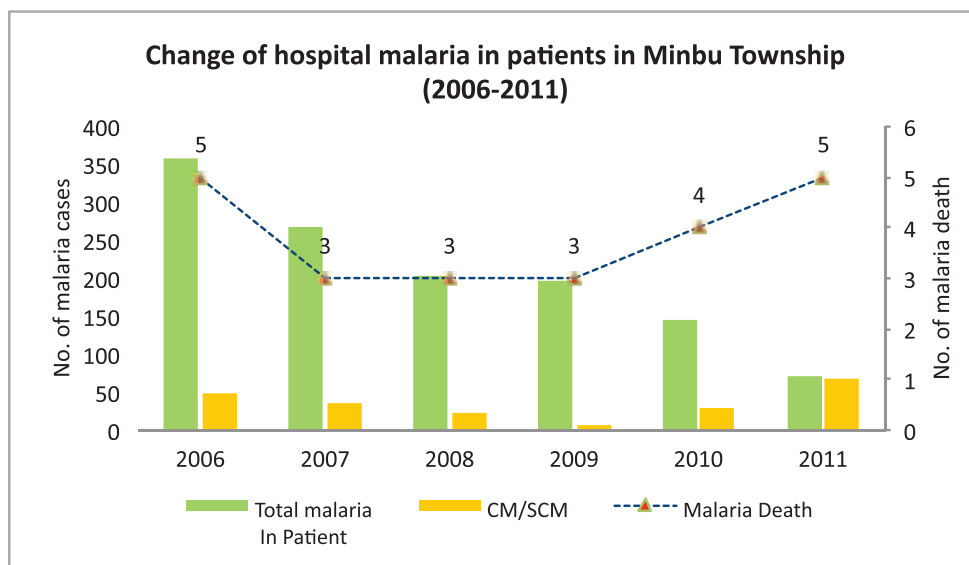
Age and gender wise malaria examination and positive (*P.f*) in Minbu Township, 2010



Age and gender wise malaria examination and positive (*P.f*) in Minbu Township, 2011



### Change of hospital malaria in Patients in Minbu Township in Magway Region from 2006 to 2011



Sr	Year	Total In Patient	Total malaria In Patient	CM/SCM	Malaria Death	Total Death
1	2006	6231	357	48	5	101
2	2007	11082	266	37	3	100
3	2008	11694	204	21	3	82
4	2009	12997	198	7	3	89
5	2010	13496	145	29	4	124
6	2011	10739	70	67	5	150

## Health Profile of Mindon Township



### Area and Location\*

Area	:	986.59 Km <sup>2</sup>
North	:	Minhla
South	:	Kama
East	:	Thayet
West	:	Taungoo

### Administrative Units\*

Wards	:	4
Village tracts	:	72
Villages	:	178

### Population (2009)\*

Total	:	60,459
Urban	:	4,493
Rural	:	55,966
Male	:	29,131
Female	:	31,328
Sex Ratio	:	93
<5 Year	:	3,737
0-14 Year	:	12,255
15-49 Year	:	34,017
Population Density	:	61.28/ Km <sup>2</sup>

### Health Facilities (2009)\*

Township Hospital (200) Bedded	:	1
Station Hospitals	:	2
Maternal and Child Health Centers	:	2
Rural Health Centers	:	6
Sub Health Centers	:	30
Private Clinics and Maternity Home	:	1



**Health Manpower\***

	<i>Doctor</i>	<i>Nurse</i>	<i>HA</i>	<i>LHV</i>	<i>PHS I</i>	<i>PHS II</i>	<i>MW</i>
Sanction	7	17	3	4	2	5	25
Appointed	7	17	3	4	2	4	24
Vacant	0	0	0	0	0	1	1
% Vacancy	0%	0%	0%	0%	0%	20%	4%

(HA: Health Assistant, LHV: Lady Health Visitor, PHS:Public Health Supervisor , MW: Midwife)

**Health Manpower (Volunteer)\***

	Category of Volunteer Health Workers		
	CHW	AMW	TTBA
Trained	116	116	0
Functioning	116	116	0
% Functioning	100%	100%	0%

(CHW: Community health Worker, AMW: Auxiliary Mid Wife, TTBA: Trained Traditional Birth Attendant)

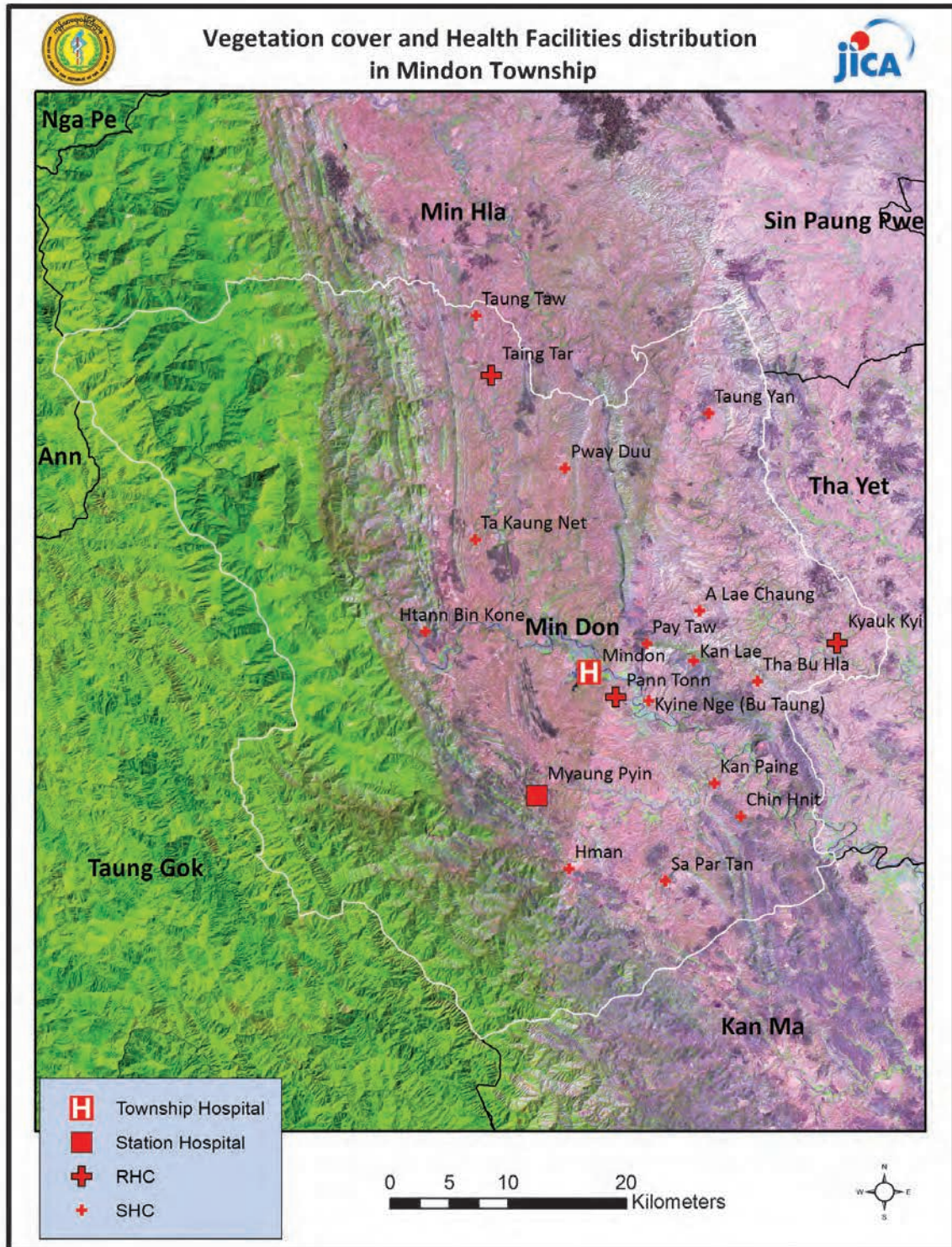
**Common Diseases under National Surveillance\***

<i>Diseases</i>	<i>Morbidity</i>	<i>Mortality</i>
Malaria	550.51	0
ARI <5	5992.4	9.5
Diarrhea	651.06	0
Dysentery	305.62	0
TB(Sputum+)	21.9	0
Snake Bite	16.92	1.99

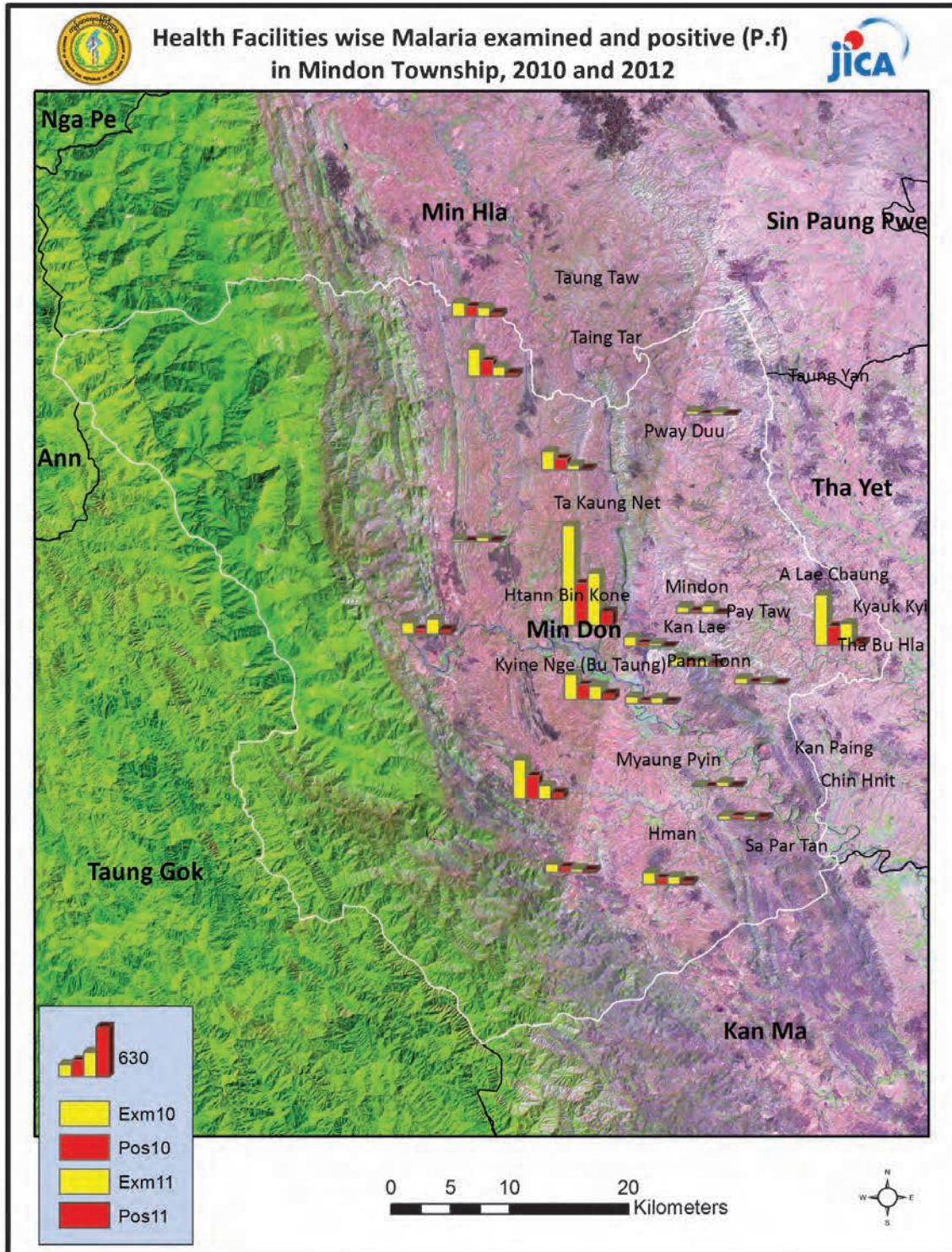
(Per 100,000 Populations)

\*The data source is Health profile of Magway Region (2009) from Department of Health Planning.

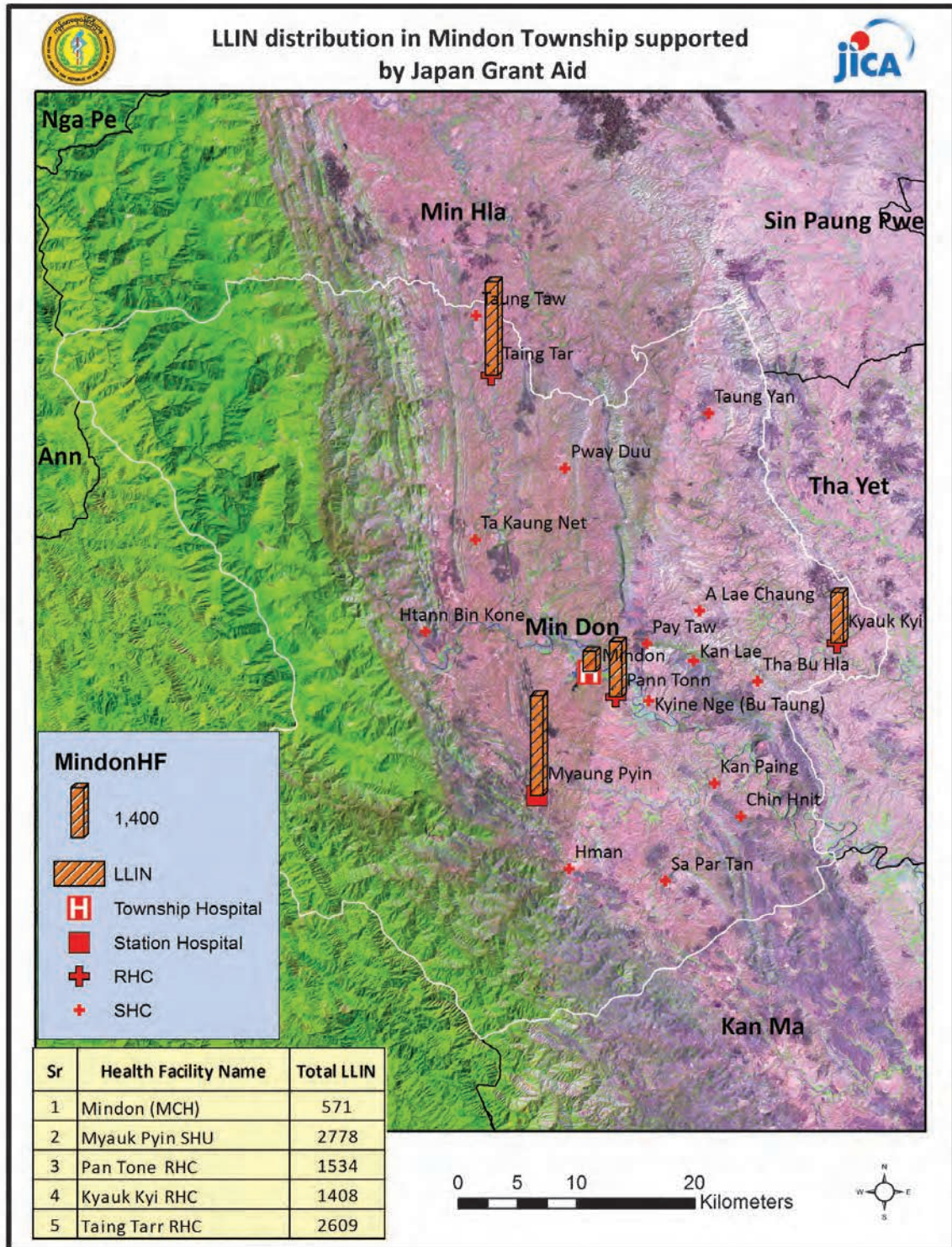
Vegetation cover and Health Facilities distribution in Mindon Township In Magway Region





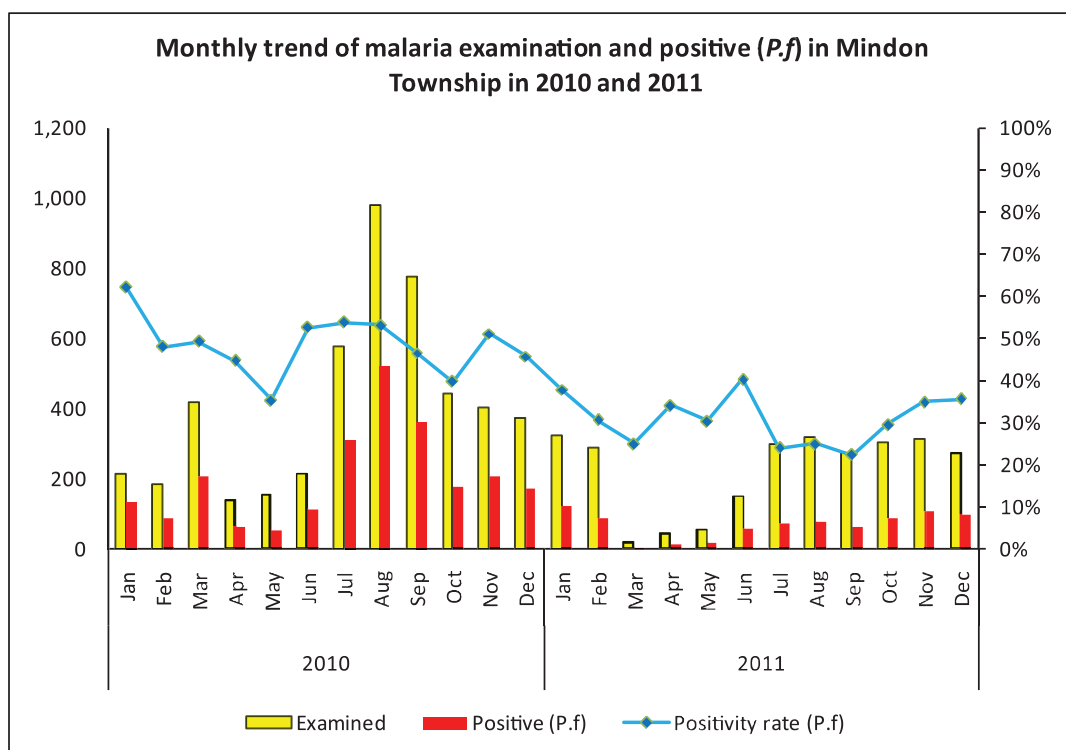






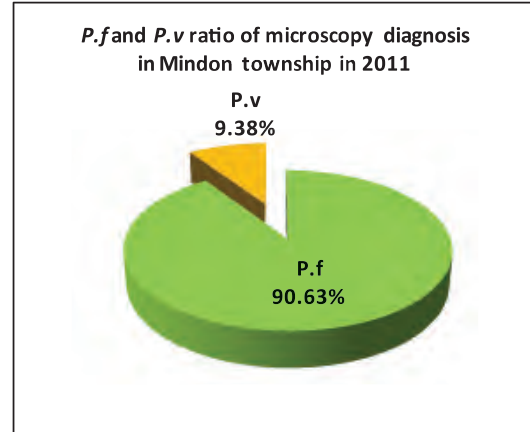
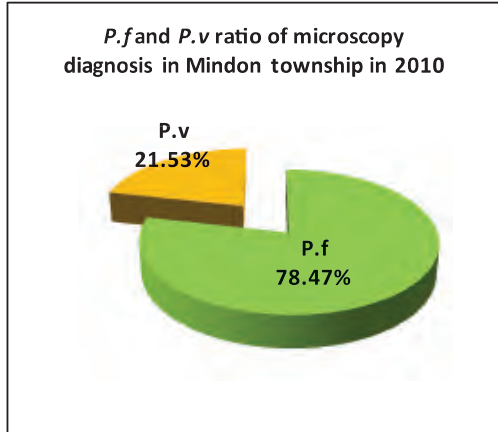


## Monthly trend of malaria examination and positive (*P.f*) in Mindon Township in 2010 and 2011

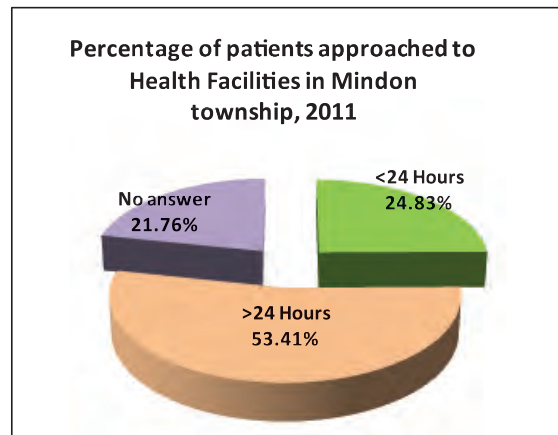
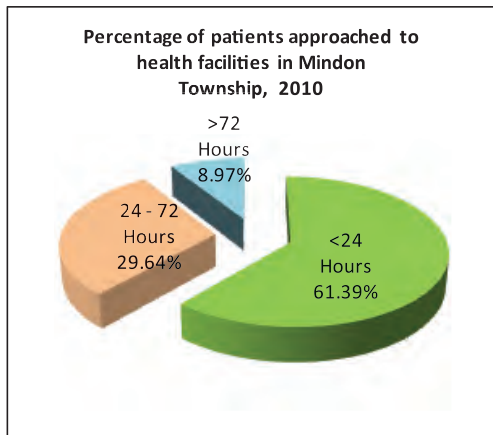


Month	2010			2011		
	Examined	Positive ( <i>P.f</i> )	Positivity rate ( <i>P.f</i> )	Examined	Positive ( <i>P.f</i> )	Positivity rate ( <i>P.f</i> )
Jan	214	133	62.15%	322	122	37.89%
Feb	183	88	48.09%	290	89	30.69%
Mar	416	205	49.28%	20	5	25.00%
Apr	139	62	44.60%	44	15	34.09%
May	153	54	35.29%	56	17	30.36%
Jun	213	112	52.58%	149	60	40.27%
Jul	576	310	53.82%	299	72	24.08%
Aug	981	521	53.11%	320	80	25.00%
Sep	776	362	46.65%	273	61	22.34%
Oct	445	177	39.78%	305	90	29.51%
Nov	405	207	51.11%	312	109	34.94%
Dec	373	171	45.84%	276	98	35.51%
<b>Total</b>	<b>4,874</b>	<b>2,402</b>	<b>49.28%</b>	<b>2,666</b>	<b>818</b>	<b>30.68%</b>

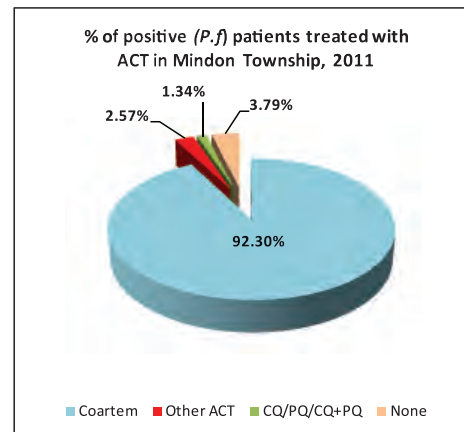
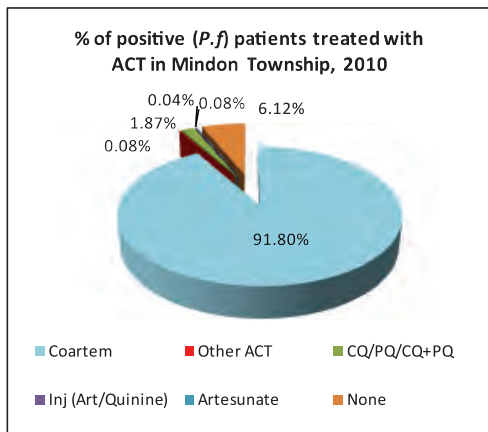
***P.f* and *P.v* ratio of malaria microscopy diagnosis in Mindon Township in 2010 and 2011**



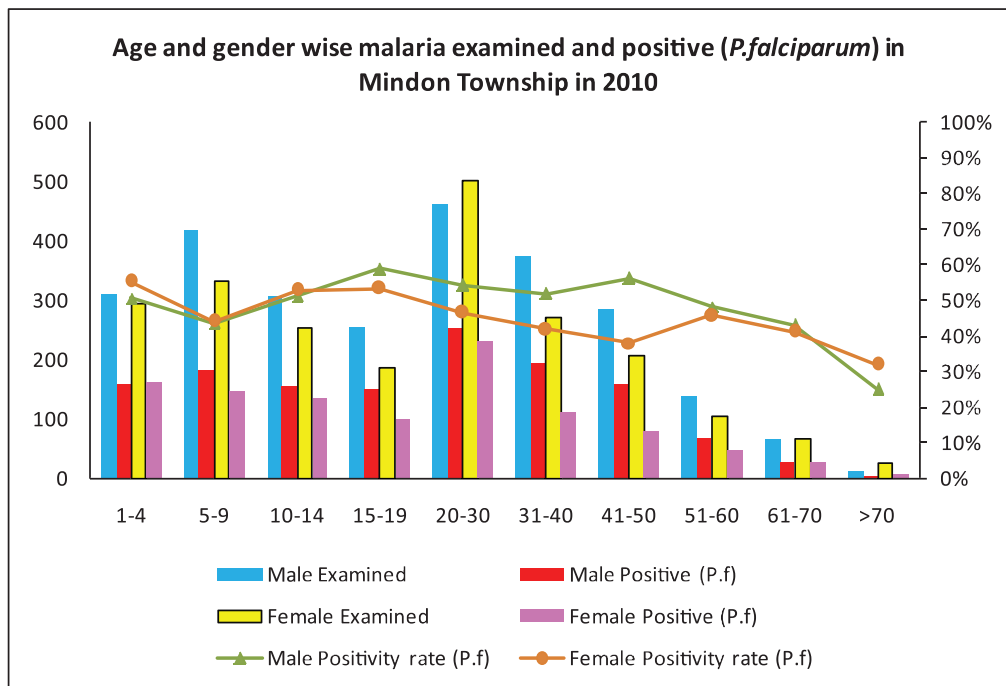
**Percentage of patients approached to health facilities in Mindon Township in 2010 and 2011**



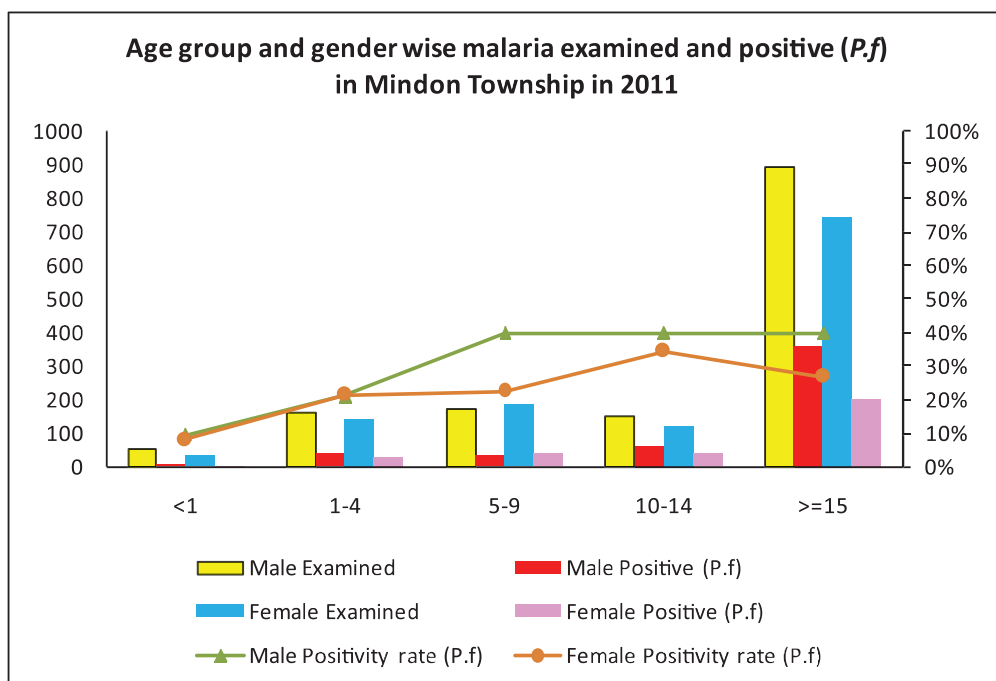
**Percentage of Positive (*P.f*) patients treated with ACT in Mindon Township in 2010 and 2011**



### Age and gender wise malaria examination and positive (*P.f*) in Mindon Township, 2010

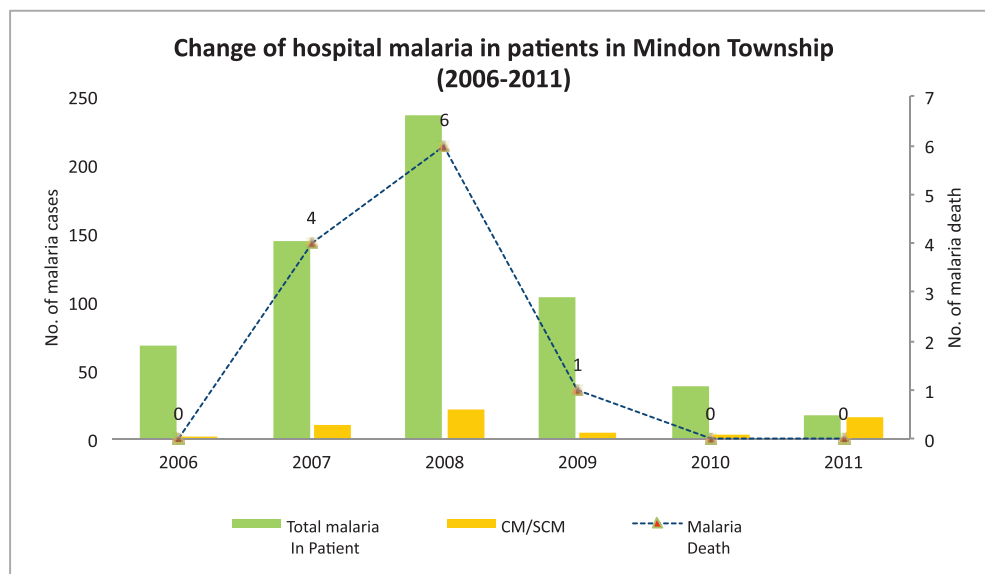


### Age and gender wise malaria examination and positive (*P.f*) in Mindon Township, 2011





### Change of hospital malaria in patients in Mindon Township in Magway Region from 2006 to 2011



Sr	Year	Total In Patient	Total malaria In Patient	CM/SCM	Malaria Death	Total Death
1	2006	785	68	1	0	6
2	2007	788	144	10	4	24
3	2008	960	236	22	6	19
4	2009	932	103	5	1	13
5	2010	968	39	3	0	10
6	2011	847	17	16	0	13