

# Magway Region

## Profile of Magway Region

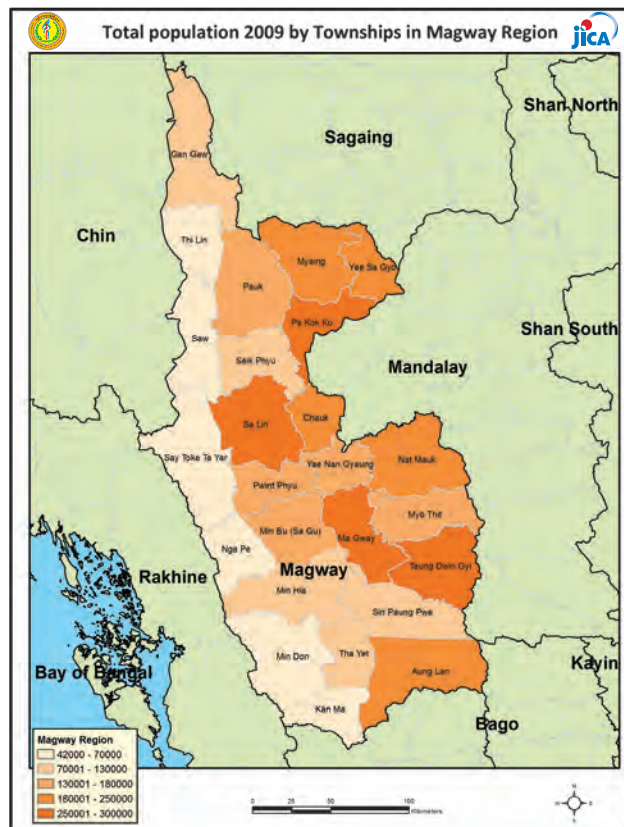


### Area and Location\*

Area : 44818.96 Sq Km  
 North : Sagaing Division  
 South : Bago Division  
 East : Mandalay Division  
 West : Rakhine State

### Administrative Units\*

Townships : 25  
 Wards : 163  
 Village Tracts : 1,541  
 Villages : 4,764



### Population (2009)\*

Total : 4,019,957  
 Urban : 591,023  
 Rural : 3,428,934  
 Male : 1,934,690  
 Female : 2,085,267  
 Sex Ratio : 93  
 <5 Year : 377,420  
 0-14 Year : 1,116,892  
 15-49 Year : 2,143,567  
 Population Density : 89.69322/Km<sup>2</sup>

## Health Facilities\*

General Hospital (200) Bedded	2	Maternal and Child Health Centers	28
Teaching Hospital (200) Bedded	2	Urban Health Centers	3
District Hospital (100) Bedded	2	Rural Health Centers	128
Township Hospital (50=4, 25=7, 16=9)	20	Sub Health Centers	690
Station Hospital	39	School Health Centers	6
Hospital under other Ministry	6	Private Clinics and Maternity Homes	90

## Health Manpower (2009)\*

	Doctor	Nurse	HA	LHV	PHS I	PHS II	MW
Sanction	589	1339	149	162	60	356	953
Appointed	379	992	147	151	55	306	899
Vacant	210	347	2	11	5	50	54
% Vacancy	35.7%	25.9%	1.3%	6.8%	8.3%	14.0%	5.7%

(HA: Health Assistant, LHV: Lady Health Visitor, PHS: Public Health Supervisor, MW: Midwife)

## Health Manpower (Volunteer)\*

	Category of Volunteer Health		
	CHW	AMW	TTBA
Trained	4176	3957	1319
Functioning	2889	3067	712
% Functioning	69.2%	77.5%	54.0%

(CHW: Community Health Worker, AMW: Auxiliary Mid Wife, TTBA: Trained Traditional Birth Attendant)

## Common Diseases under National Surveillance\*

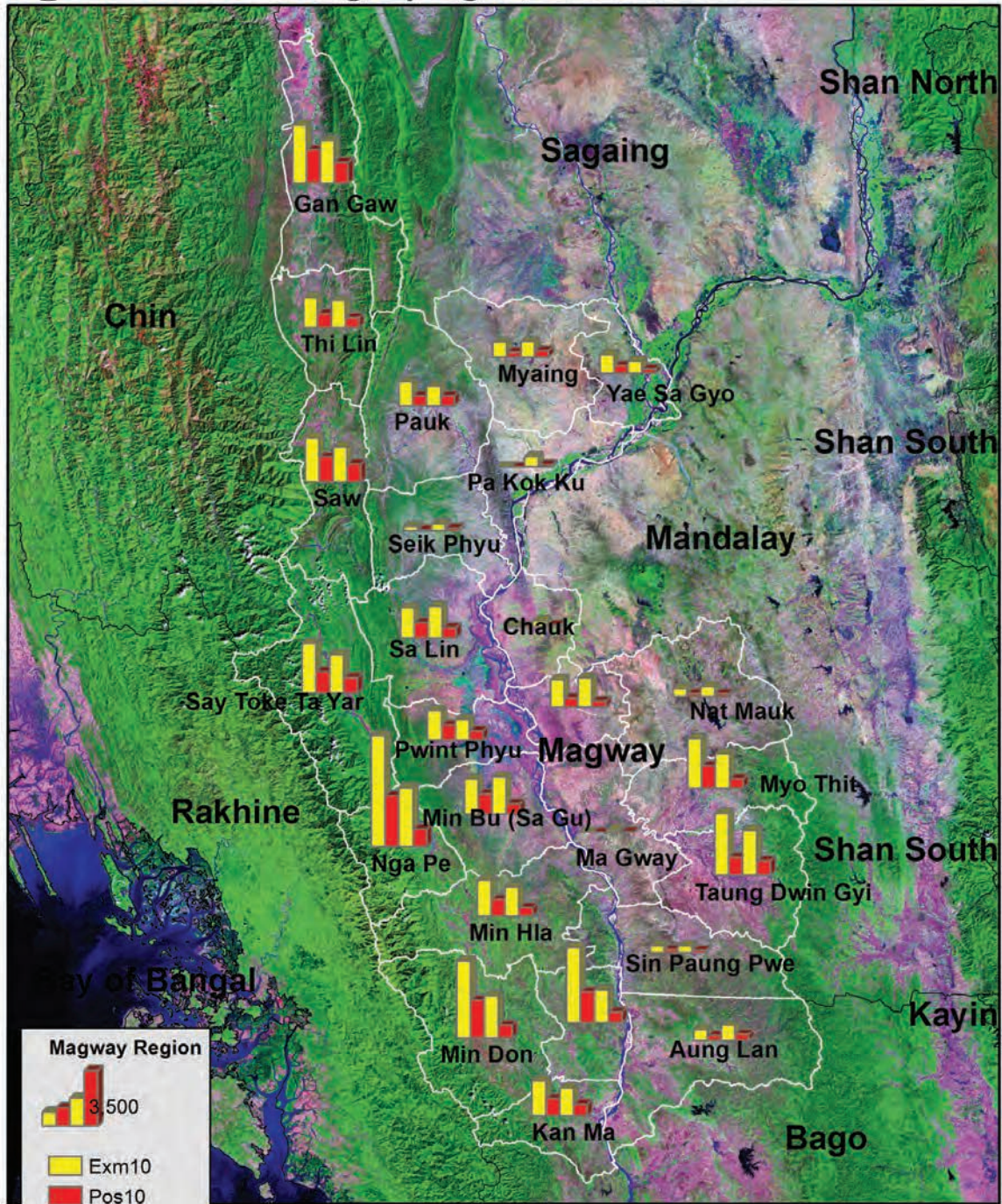
Diseases	Morbidity	Mortality
Malaria	873.07	1.02
ARI<5	7428.59	28.09
Diarrhea	810.78	0.35
Dysentery	384.28	0.02
TB (Sputum +)	47.76	0.47
Snake Bite	32.57	3.21

(Per 100,000 Populations)

\* The data source is Health Profile of Magway Region (2009) from Department of Health Planning.



### Malaria examined and positive (*P.f*) by Townships in Magway Region, 2010 and 2011



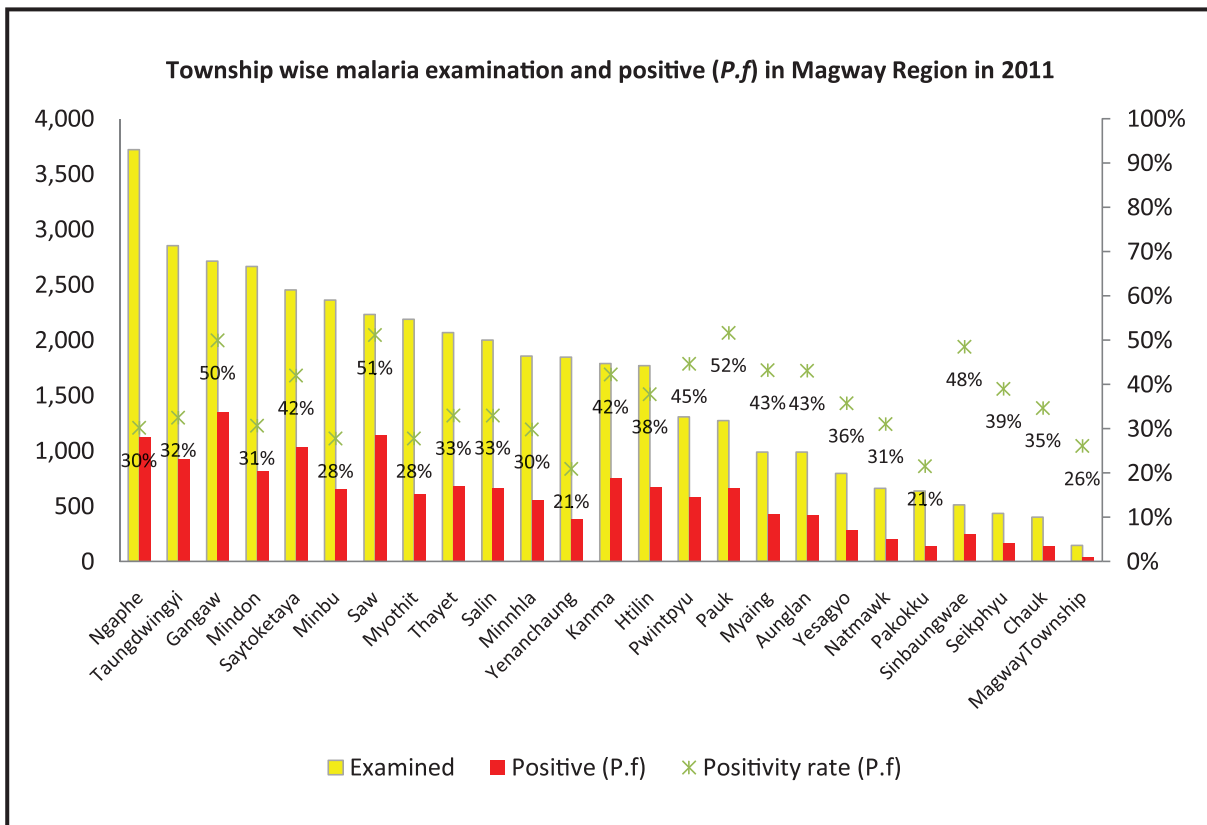
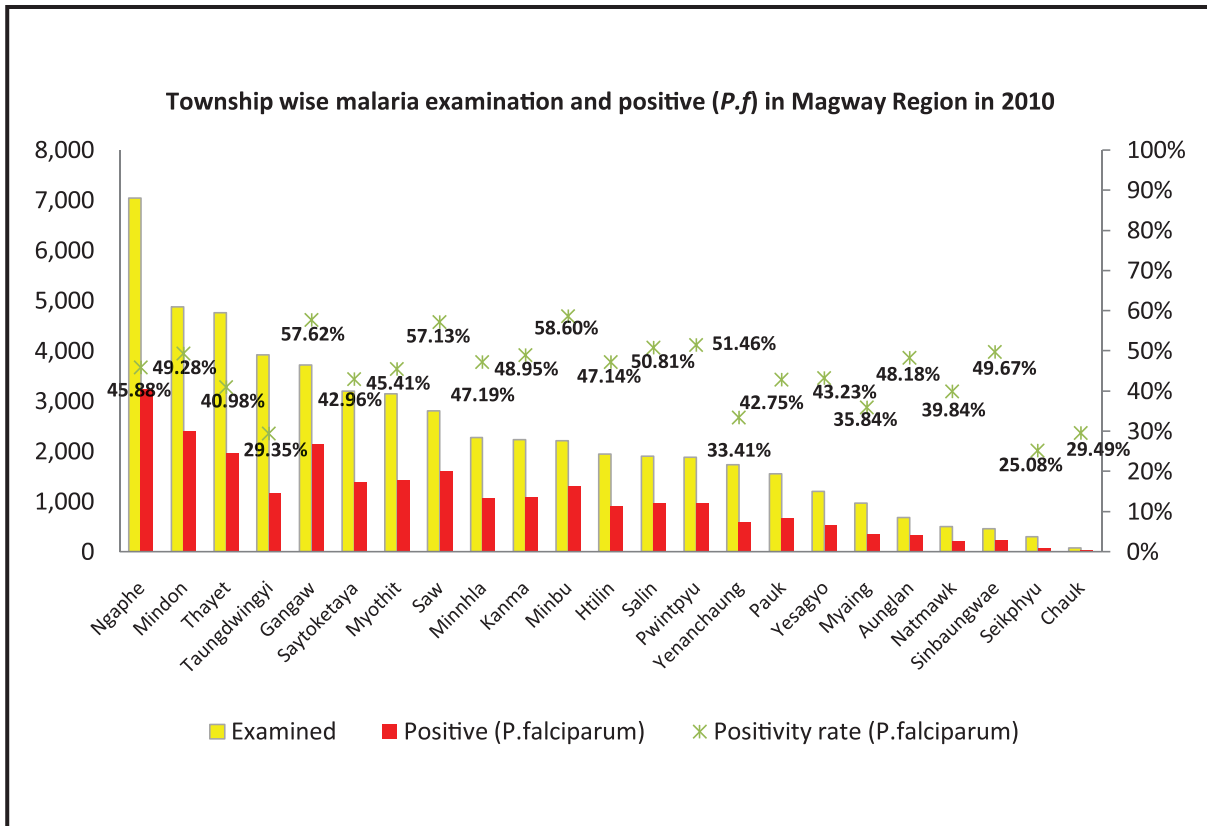
## Result of Malaria examination by Townships in Magway Region in 2010

Sr	Township Name	Total Examination	Examined by RDT			Examined by microscope							SFR	SVR	SPR	
			Examined	Pf	Other species	Examined	Pf	Mix	P_v	P.m/P.o	Total positive					
1	Aunglan	687	687	331	1	0	0	0	0	0	0	0	0	0.00%	0.00%	48.18%
2	Chauk	78	78	23	0	0	0	0	0	0	0	0	0	0.00%	0.00%	29.49%
3	Gangaw	3,716	2,164	2,136	0	1,552	4	1	0	0	5	5	5	100.00%	0.00%	57.62%
4	Htilin	1,943	919	909	0	1,024	7	0	5	0	12	12	12	58.33%	41.67%	47.40%
5	Kanna	2,231	2,221	1,092	3	10	0	0	0	0	0	0	0	0.00%	0.00%	48.95%
7	Mimbu	2,215	1,319	1,298	1	896	0	0	0	0	0	0	0	0.00%	0.00%	58.60%
8	Mindon	4,874	4,299	2,238	0	575	164	0	45	2	211	211	211	77.73%	21.33%	50.25%
9	Minnhla	2,274	1,369	1,066	6	905	6	1	41	0	48	48	48	14.58%	85.42%	48.99%
10	Myaing	971	959	348	0	12	0	0	0	0	0	0	0	0.00%	0.00%	35.84%
11	Myothit	3,151	3,004	1,381	0	147	50	0	8	0	58	58	58	86.21%	13.79%	45.67%
12	Natmawk	507	474	170	0	33	32	0	0	0	32	32	32	100.00%	0.00%	39.84%
13	Ngaphe	7,042	6,375	3,228	1	667	3	0	15	1	19	19	19	15.79%	78.95%	46.11%
15	Pauk	1,551	1,543	657	44	8	6	0	0	0	6	6	6	100.00%	0.00%	42.75%
16	Pwintpyu	1,881	1,762	912	5	119	56	0	0	0	56	56	56	100.00%	0.00%	51.46%
17	Salin	1,903	1,875	965	8	28	2	0	0	0	2	2	2	100.00%	0.00%	50.81%
18	Saw	2,804	2,458	1,412	0	346	190	0	15	0	205	205	205	92.68%	7.32%	57.67%
19	Saytoketaya	3,203	2,968	1,346	12	235	28	2	79	0	109	109	109	27.52%	72.48%	45.43%
20	Seikphyu	307	305	77	0	2	0	0	0	0	0	0	0	0.00%	0.00%	25.08%
21	Sinbaungwae	457	243	227	0	214	0	0	0	0	0	0	0	0.00%	0.00%	49.67%
22	Taungdwingyi	3,928	3,617	1,131	6	311	22	0	6	0	28	28	28	78.57%	21.43%	29.51%
23	Thayet	4,761	4,334	1,940	5	427	11	0	16	0	27	27	27	40.74%	59.26%	41.31%
24	Yenanchaung	1,736	1,736	580	0	0	0	0	0	0	0	0	0	0.00%	0.00%	33.41%
25	Yesagyoo	1,203	1,188	520	1	15	0	0	0	0	0	0	0	0.00%	0.00%	43.23%
		<b>53,423</b>	<b>45,897</b>	<b>23,987</b>	<b>93</b>	<b>7,526</b>	<b>581</b>	<b>4</b>	<b>230</b>	<b>3</b>	<b>818</b>	<b>818</b>	<b>818</b>	<b>71.52%</b>	<b>28.12%</b>	<b>46.43%</b>

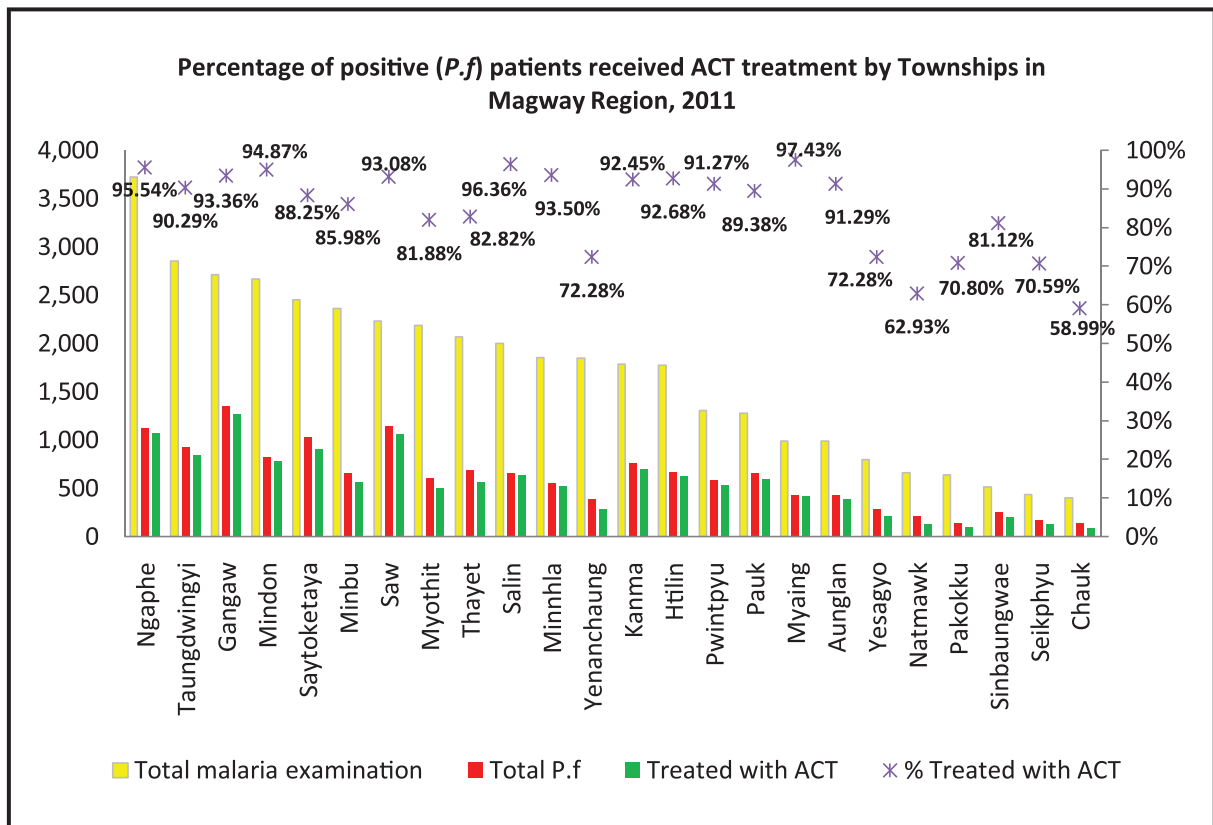
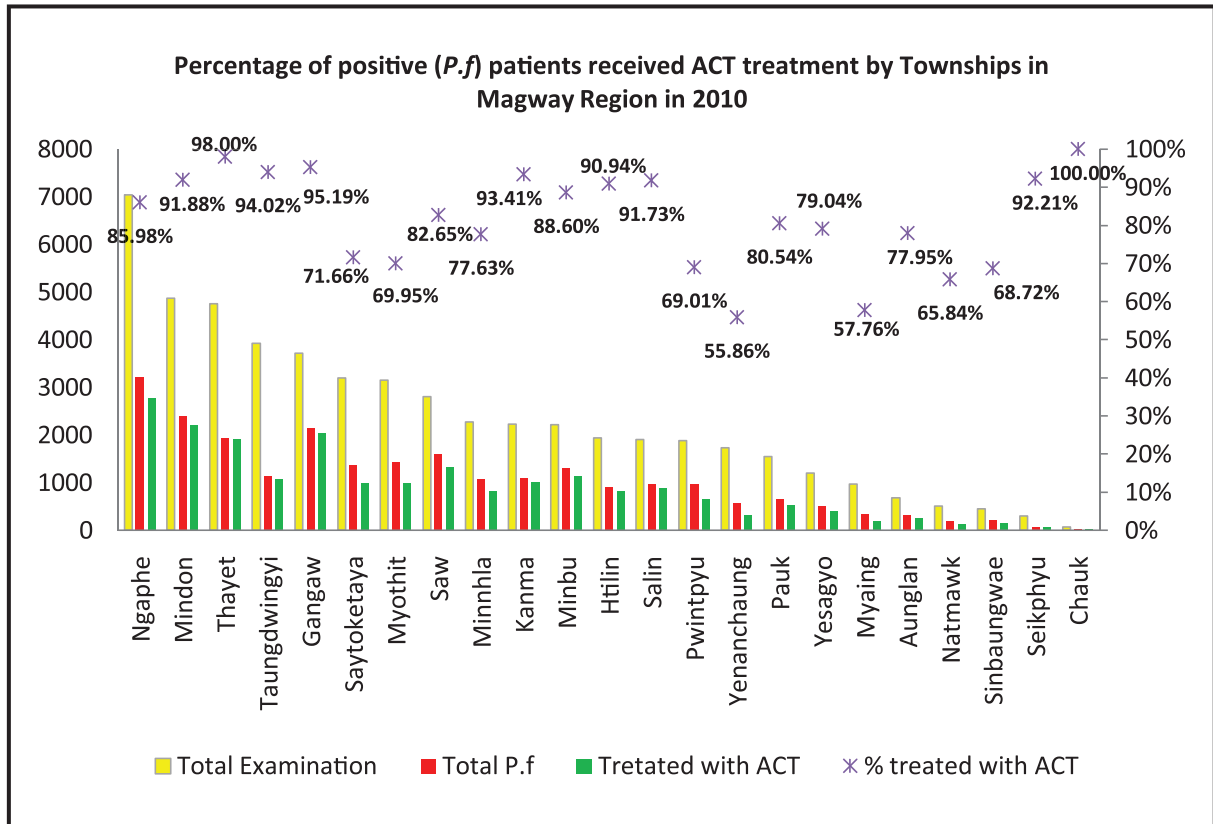
## Result of Malaria examination by Townships in Magway Region in 2011

Sr	Township Name	Total Examination	Examined by RDT				Examined by microscope					SFR	SVR	SPR
			Examined	Pf	Mix	Other Species	Examined	Pf	Mix	Pv	Total positive			
1	Aunglan	988	868	343	43	23	120	39	0	9	48	81.25%	18.75%	46.26%
2	Chauk	401	377	123	0	29	24	16	0	5	21	76.19%	23.81%	43.14%
3	Gangaw	2,714	2,685	1,221	111	88	29	20	3	2	25	92.00%	8.00%	53.24%
4	Htilin	1,772	1,570	584	31	60	202	48	6	6	60	90.00%	10.00%	41.48%
5	Kanma	1,787	1,774	711	39	79	13	5	0	4	9	55.56%	44.44%	46.89%
6	MagwayTownship	146	141	32	6	0	5	0	0	0	0	0.00%	0.00%	26.03%
7	Mimbu	2,363	2,201	576	19	117	162	61	0	1	62	98.39%	1.61%	32.75%
8	Mindon	2,666	2,426	735	54	82	240	29	0	3	32	90.63%	9.38%	33.87%
9	Minnhla	1,856	1,807	535	14	85	49	4	1	13	18	27.78%	72.22%	35.13%
10	Myaing	991	991	418	10	73	0	0	0	0	0	0.00%	0.00%	50.55%
11	Myothit	2,188	1,920	539	0	70	268	60	8	4	72	94.44%	5.56%	31.12%
12	Natmawk	660	642	189	9	91	18	5	2	0	7	100.00%	0.00%	44.85%
13	Ngaphe	3,721	3,698	1,041	80	101	23	1	0	1	2	50.00%	50.00%	32.89%
14	Pakokku	638	293	108	0	19	345	29	0	0	29	100.00%	0.00%	24.45%
15	Pauk	1,276	1,271	628	27	60	5	4	0	1	5	80.00%	20.00%	56.43%
16	Pwintpyu	1,308	1,276	546	28	101	32	10	0	0	10	100.00%	0.00%	52.37%
17	Salin	2,001	1,806	606	25	40	195	27	2	3	32	90.63%	9.38%	35.13%
18	Saw	2,234	2,037	976	57	66	197	108	0	16	124	87.10%	12.90%	54.74%
19	Saytoketaya	2,454	2,329	900	66	198	125	60	4	30	94	68.09%	31.91%	51.26%
20	Seikphyu	436	372	131	11	1	64	27	1	1	29	96.55%	3.45%	39.45%
21	Sinbaungwae	514	512	230	19	17	2	0	0	0	0	0.00%	0.00%	51.75%
22	Taungdwingyi	2,854	2,515	877	26	78	339	24	0	2	26	92.31%	7.69%	35.28%
23	Thayet	2,069	1,925	637	14	158	144	24	6	3	33	90.91%	9.09%	40.70%
24	Yenanchaung	1,847	1,767	366	0	137	80	15	5	7	27	74.07%	25.93%	28.70%
25	Yesagyoo	798	683	243	24	47	115	14	4	6	24	75.00%	25.00%	42.36%
		40,682	37,886	13,295	713	1,820	2,796	630	42	117	789	85.17%	14.83%	40.85%

### Township wise malaria examined and positive (P.f) in Magway Region in 2010 and 2011



## Malaria positive patients received ACT treatment by Townships in Magway Region in 2010 and 2011



## Percentage of malaria positive patients received ACT treatment by Townships in Magway Region in 2010

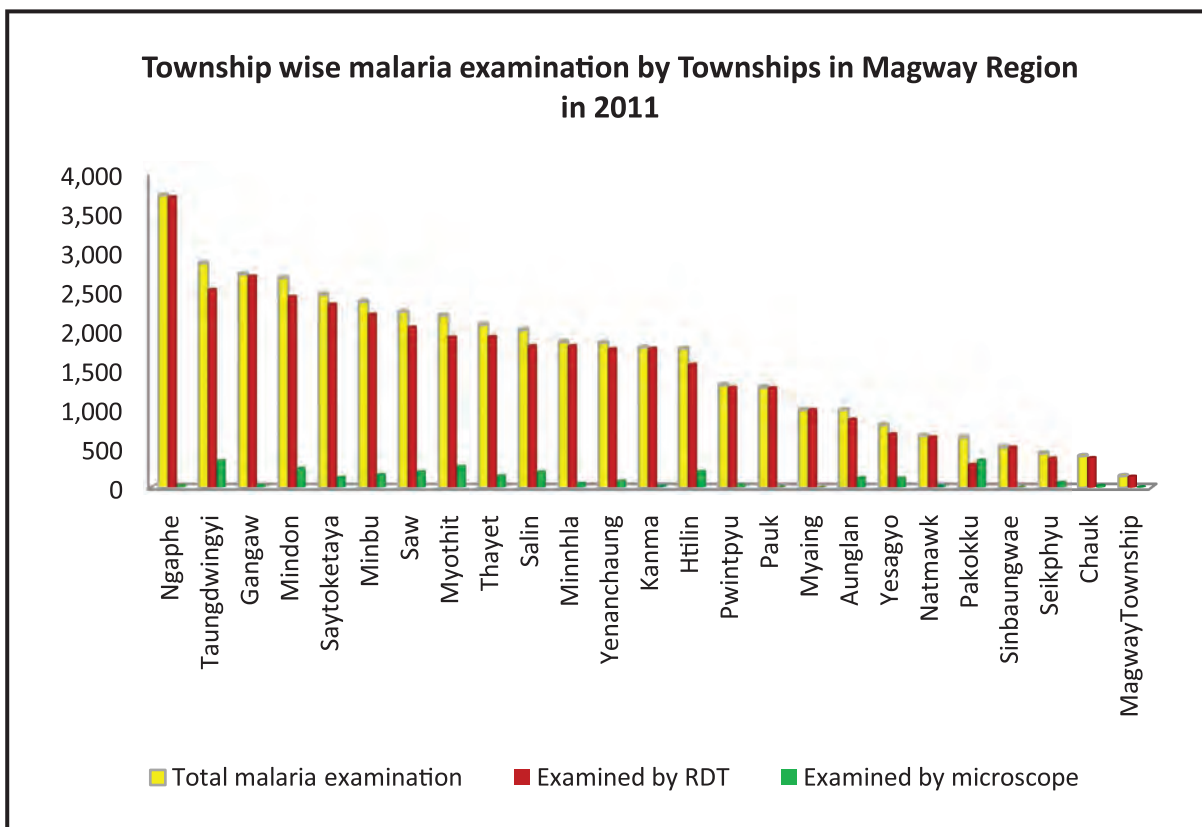
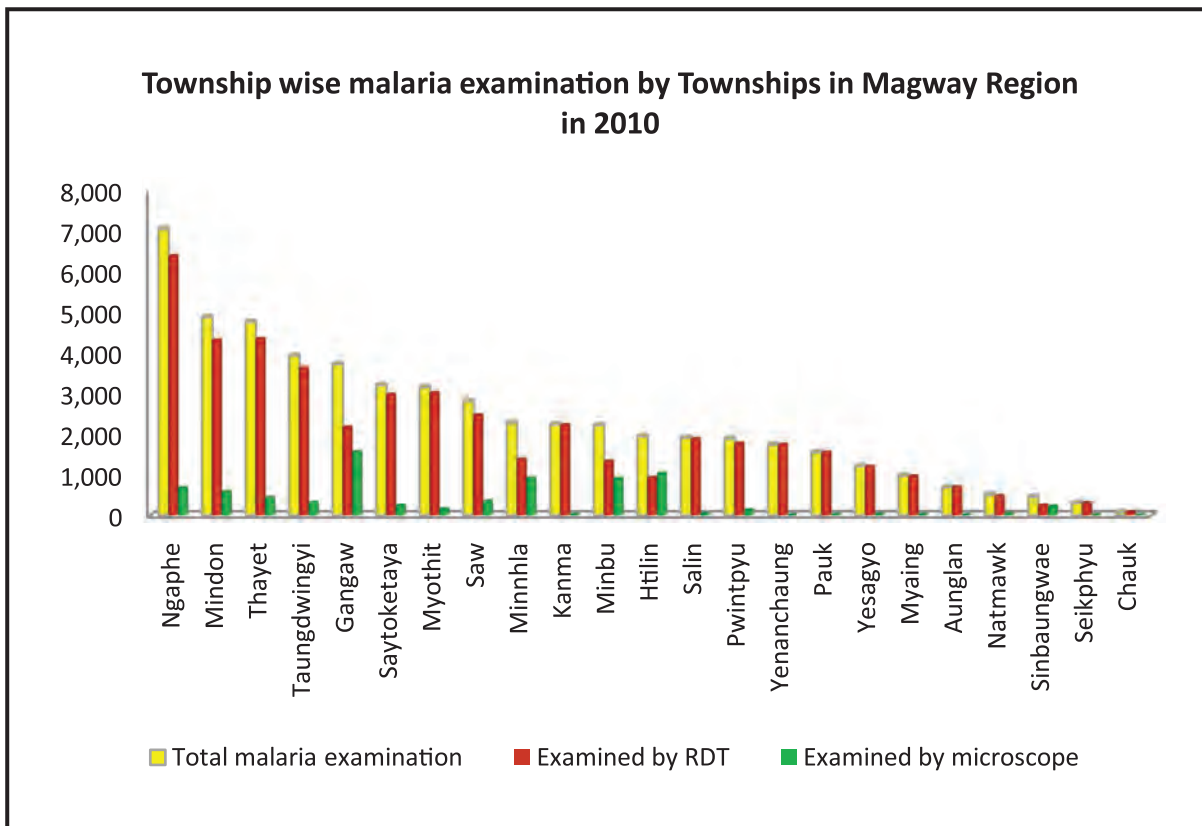
Sr	Township Name	Total Examination	Examined by RDT		Examined by microscope						Total Pf	Treated with ACT	% treated with ACT
			Examined	Pf	Examined	Pf	Mix	P_v	P.m/ P.o				
1	Aunglan	687	687	331	0	0	0	0	0	0	331	258	77.95%
2	Chauk	78	78	23	0	0	0	0	0	0	23	23	100.00%
3	Gangaw	3,716	2,164	2,136	1,552	4	1	0	0	0	2,141	2,038	95.19%
4	Htilin	1,943	919	909	1,024	7	0	5	0	0	916	833	90.94%
5	Kanma	2,231	2,221	1,092	10	0	0	0	0	0	1,092	1,020	93.41%
7	Minbu	2,215	1,319	1,298	896	0	0	0	0	0	1,298	1,150	88.60%
8	Mindon	4,874	4,299	2,238	575	164	0	45	2	2	2,402	2,207	91.88%
9	Minnhla	2,274	1,369	1,066	905	6	1	41	0	0	1,073	833	77.63%
10	Myaing	971	959	348	12	0	0	0	0	0	348	201	57.76%
11	Myothit	3,151	3,004	1,381	147	50	0	8	0	0	1,431	1,001	69.95%
12	Natmawk	507	474	170	33	32	0	0	0	0	202	133	65.84%
13	Ngaphe	7,042	6,375	3,228	667	3	0	15	1	1	3,231	2,778	85.98%
15	Pauk	1,551	1,543	657	8	6	0	0	0	0	663	534	80.54%
16	Pwintpyu	1,881	1,762	912	119	56	0	0	0	0	968	668	69.01%
17	Salin	1,903	1,875	965	28	2	0	0	0	0	967	887	91.73%
18	Saw	2,804	2,458	1,412	346	190	0	15	0	0	1,602	1,324	82.65%
19	Saytoketaya	3,203	2,968	1,346	235	28	2	79	0	0	1,376	986	71.66%
20	Seikphyu	307	305	77	2	0	0	0	0	0	77	71	92.21%
21	Sinbaungwae	457	243	227	214	0	0	0	0	0	227	156	68.72%
22	Taungdwingyi	3,928	3,617	1,131	311	22	0	6	0	0	1,153	1,084	94.02%
23	Thayet	4,761	4,334	1,940	427	11	0	16	0	0	1,951	1,912	98.00%
24	Yenanchaung	1,736	1,736	580	0	0	0	0	0	0	580	324	55.86%
25	Yesagyo	1,203	1,188	520	15	0	0	0	0	0	520	411	79.04%
	<b>Total</b>	<b>53,423</b>	<b>45,897</b>	<b>23,987</b>	<b>7,526</b>	<b>581</b>	<b>4</b>	<b>230</b>	<b>3</b>	<b>24,572</b>	<b>20,832</b>	<b>84.78%</b>	



## Percentage of malaria positive patients treated with by Townships in Magway Region in 2011

Sr	Township Name	Total Examination	Examined by RDT			Examined by microscope				Total positive	Total P.f	Treated with ACT	% Treated with ACT	
			Examined	P.f	Mix	Other Species	Examined	P.f	Mix					P.v
1	Aunglan	988	868	343	43	23	120	39	0	9	48	425	388	91.29%
2	Chauk	401	377	123	0	29	24	16	0	5	21	139	82	58.99%
3	Gangaw	2,714	2,685	1,221	111	88	29	20	3	2	25	1,355	1,265	93.36%
4	Htilin	1,772	1,570	584	31	60	202	48	6	6	60	669	620	92.68%
5	Kanma	1,787	1,774	711	39	79	13	5	0	4	9	755	698	92.45%
6	MagwayTownship	146	141	32	6	0	5	0	0	0	0	38	30	78.95%
7	Minbu	2,363	2,201	576	19	117	162	61	0	1	62	656	564	85.98%
8	Mindon	2,666	2,426	735	54	82	240	29	0	3	32	818	776	94.87%
9	Minnhla	1,856	1,807	535	14	85	49	4	1	13	18	554	518	93.50%
10	Myaing	991	991	418	10	73	0	0	0	0	0	428	417	97.43%
11	Myothit	2,188	1,920	539	0	70	268	60	8	4	72	607	497	81.88%
12	Natmawk	660	642	189	9	91	18	5	2	0	7	205	129	62.93%
13	Ngaphe	3,721	3,698	1,041	80	101	23	1	0	1	2	1,122	1,072	95.54%
14	Pakokku	638	293	108	0	19	345	29	0	0	29	137	97	70.80%
15	Pauk	1,276	1,271	628	27	60	5	4	0	1	5	659	589	89.38%
16	Pwintpyu	1,308	1,276	546	28	101	32	10	0	0	10	584	533	91.27%
17	Salin	2,001	1,806	606	25	40	195	27	2	3	32	660	636	96.36%
18	Saw	2,234	2,037	976	57	66	197	108	0	16	124	1,141	1,062	93.08%
19	Saytoketaya	2,454	2,329	900	66	198	125	60	4	30	94	1,030	909	88.25%
20	Seikphyu	436	372	131	11	1	64	27	1	1	29	170	120	70.59%
21	Simbaungwae	514	512	230	19	17	2	0	0	0	0	249	202	81.12%
22	Taungdwingyi	2,854	2,515	877	26	78	339	24	0	2	26	927	837	90.29%
23	Thayet	2,069	1,925	637	14	158	144	24	6	3	33	681	564	82.82%
24	Yenanchaung	1,847	1,767	366	0	137	80	15	5	7	27	386	279	72.28%
25	Yesago	798	683	243	24	47	115	14	4	6	24	285	206	72.28%
	<b>Total</b>	<b>40,682</b>	<b>37,886</b>	<b>13,295</b>	<b>713</b>	<b>1,820</b>	<b>2,796</b>	<b>630</b>	<b>42</b>	<b>117</b>	<b>789</b>	<b>14,680</b>	<b>13,090</b>	<b>89.17%</b>

### Township wise malaria examination in Magway Region in 2010 and 2011



## Health Profile of Aunglan Township



### Area and Location\*

Area	:	1033.65 Km <sup>2</sup>
North	:	Sinbaungwe
South	:	PaukKhaung
East	:	Yedashe
West	:	Thayet

### Administrative Units\*

Wards	:	8
Village tracts	:	92
Villages	:	236

### Population (2009)\*

Total	:	225,394
Urban	:	56,262
Rural	:	169,132
Male	:	108,891
Female	:	116,503
Sex Ratio	:	93
<5 Year	:	21,417
0-14 Year	:	62,232
15-49 Year	:	117,140
Population Density	:	218.06/ Km <sup>2</sup>

### Health Facilities (2009)\*

General Hospital (200) Bedded	:	1
KyawSwaFatalizer Mail Hospital	:	1
Station Hospitals	:	3
Maternal and Child Health Centers	:	1
Rural Health Centers	:	6
Sub Health Centers	:	30
School Health Center	:	1

**Health Manpower\***

	<i>Doctor</i>	<i>Nurse</i>	<i>HA</i>	<i>LHV</i>	<i>PHS I</i>	<i>PHS II</i>	<i>MW</i>
Sanction	15	27	6	7	2	16	43
Appointed	14	22	6	6	2	14	38
Vacant	1	5	0	1	0	2	5
% Vacancy	6.7%	18.5%	0%	14.3%	0%	12.5%	11.6%

(HA: Health Assistant, LHV: Lady Health Visitor, PHS:Public Health Supervisor , MW: Midwife)

**Health Manpower (Volunteer)\***

	Category of Volunteer Health Workers		
	CHW	AMW	TTBA
Trained	186	175	109
Functioning	176	159	95
% Functioning	94.6%	90.9%	87.2%

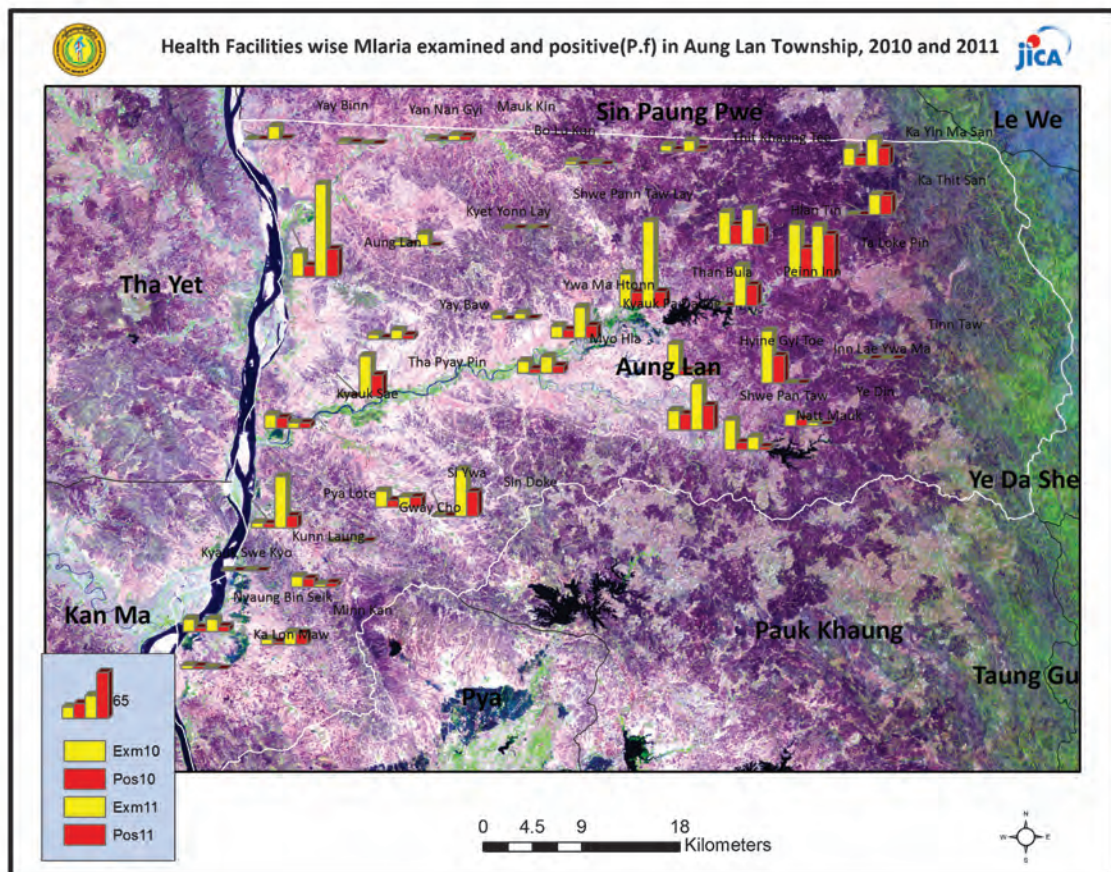
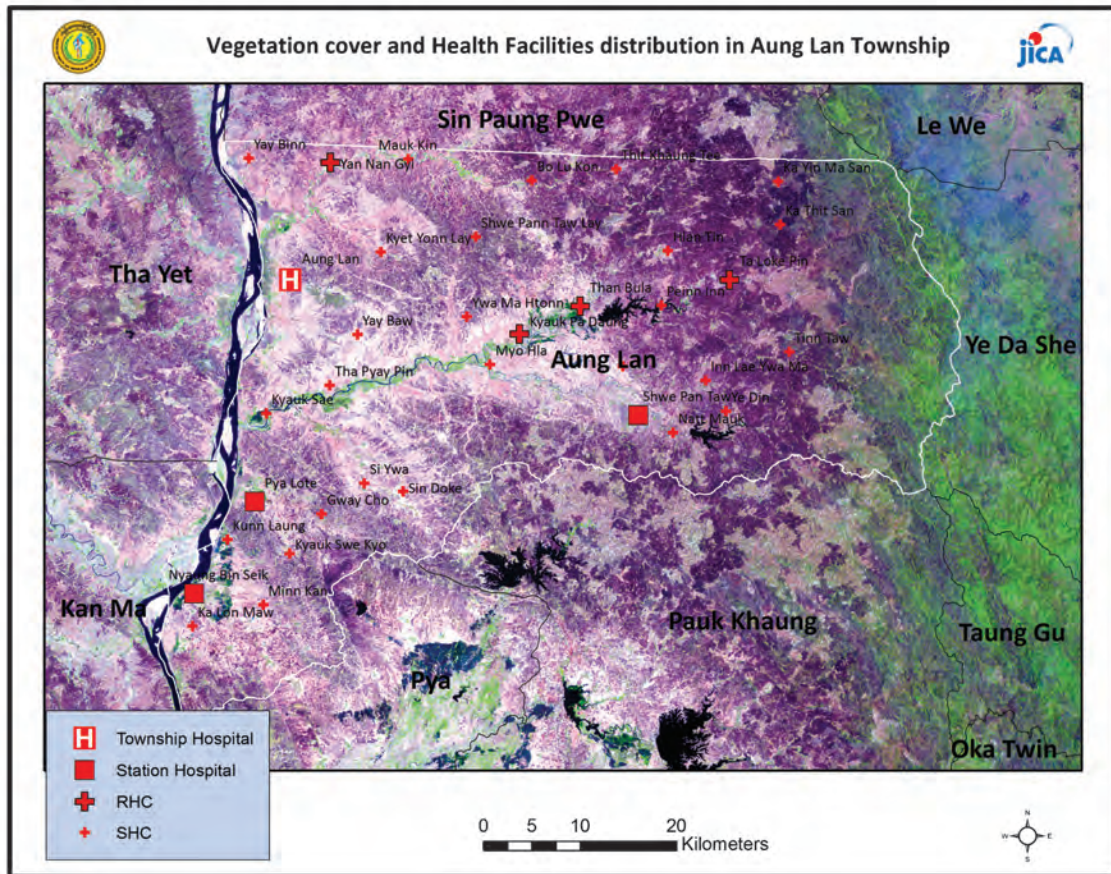
(CHW: Community health Worker, AMW: Auxiliary Mid Wife, TTBA: Trained Traditional Birth Attendant)

**Common Diseases under National Surveillance\***

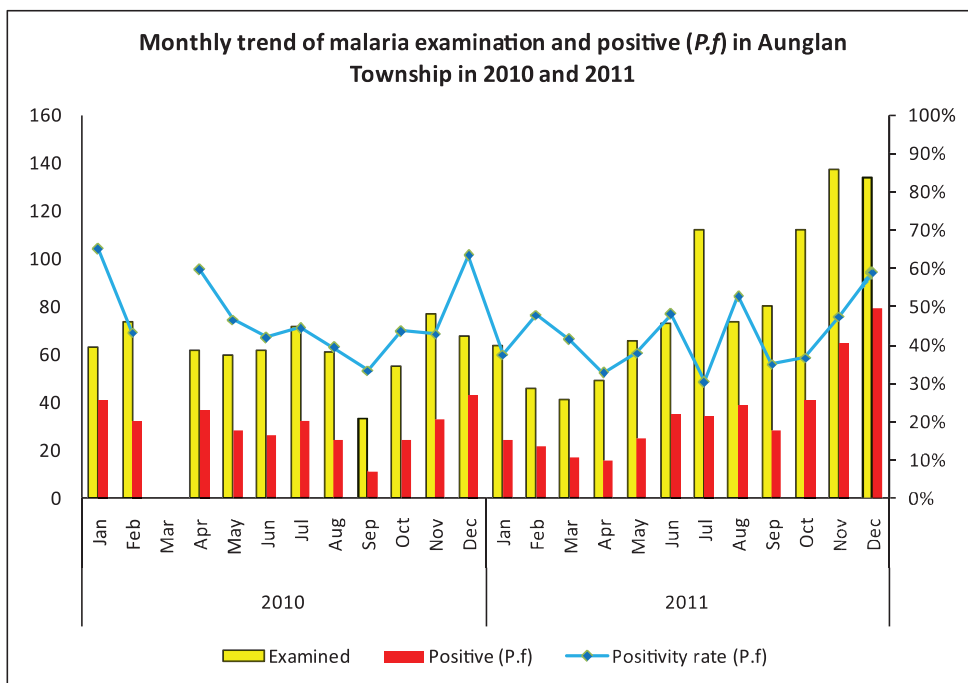
<i>Diseases</i>	<i>Morbidity</i>	<i>Mortality</i>
Malaria	329.64	0.44
ARI <5	3389.83	23.35
Diarrhea	408.62	0
Dysentery	181.02	0
TB(Sputum+)	62.11	0
Snake Bite	109.14	7.54

(Per 100,000 Populations)

\* The data source is Health Profile of Magway Region (2009) from Department of Health Planning.

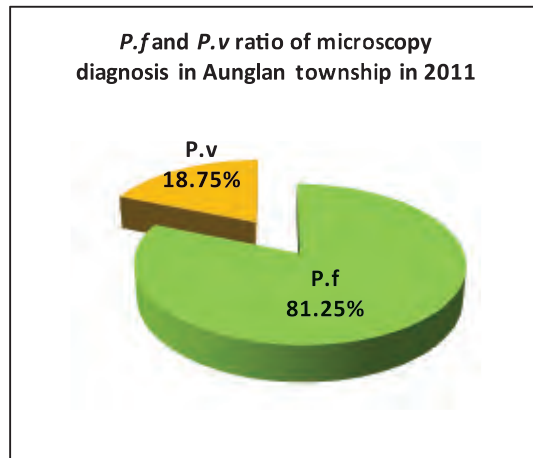


### Monthly trend of malaria examination and positive (*P.f*) in Aunglan Township in 2010 and 2011

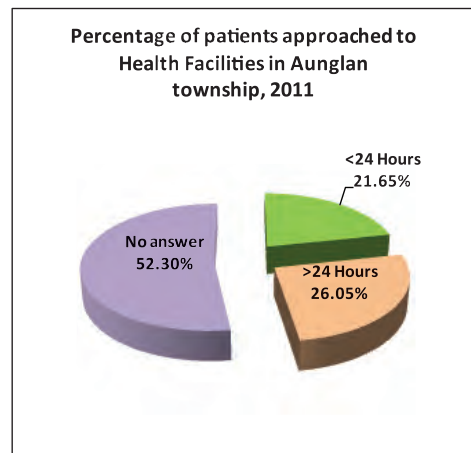
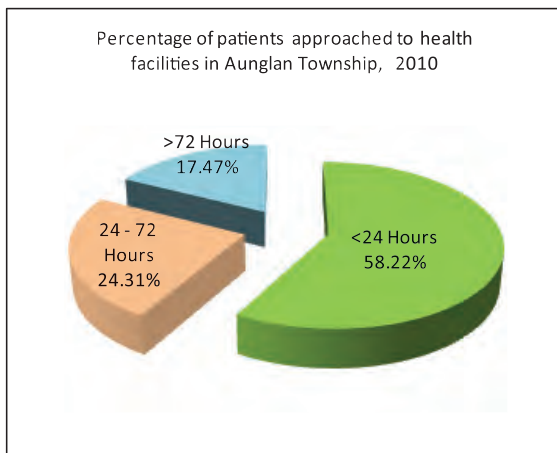


Month	2010			2011		
	Examined	Positive ( <i>P.f</i> )	Positivity rate ( <i>P.f</i> )	Examined	Positive ( <i>P.f</i> )	Positivity rate ( <i>P.f</i> )
Jan	63	41	65.08%	64	24	37.50%
Feb	74	32	43.24%	46	22	47.83%
Mar				41	17	41.46%
Apr	62	37	59.68%	49	16	32.65%
May	60	28	46.67%	66	25	37.88%
Jun	62	26	41.94%	73	35	47.95%
Jul	72	32	44.44%	112	34	30.36%
Aug	61	24	39.34%	74	39	52.70%
Sep	33	11	33.33%	80	28	35.00%
Oct	55	24	43.64%	112	41	36.61%
Nov	77	33	42.86%	137	65	47.45%
Dec	68	43	63.24%	134	79	58.96%
<b>Total</b>	<b>687</b>	<b>331</b>	<b>48.18%</b>	<b>988</b>	<b>425</b>	<b>43.02%</b>

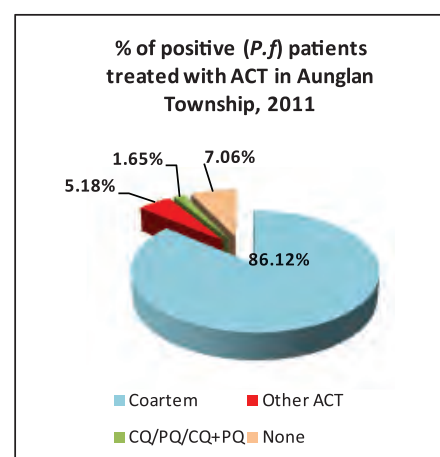
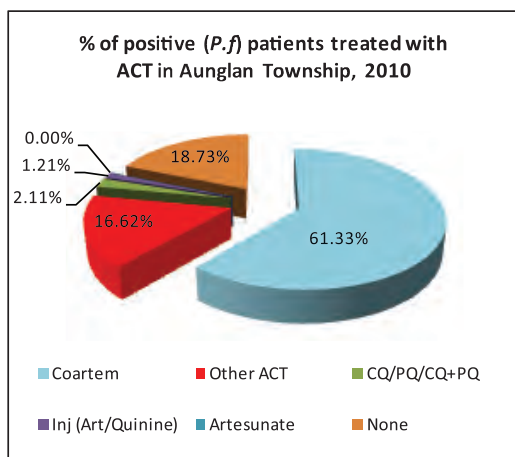
***P.f* and *P.v* ratio of malaria microscopy diagnosis in Aunglan Township in 2011**



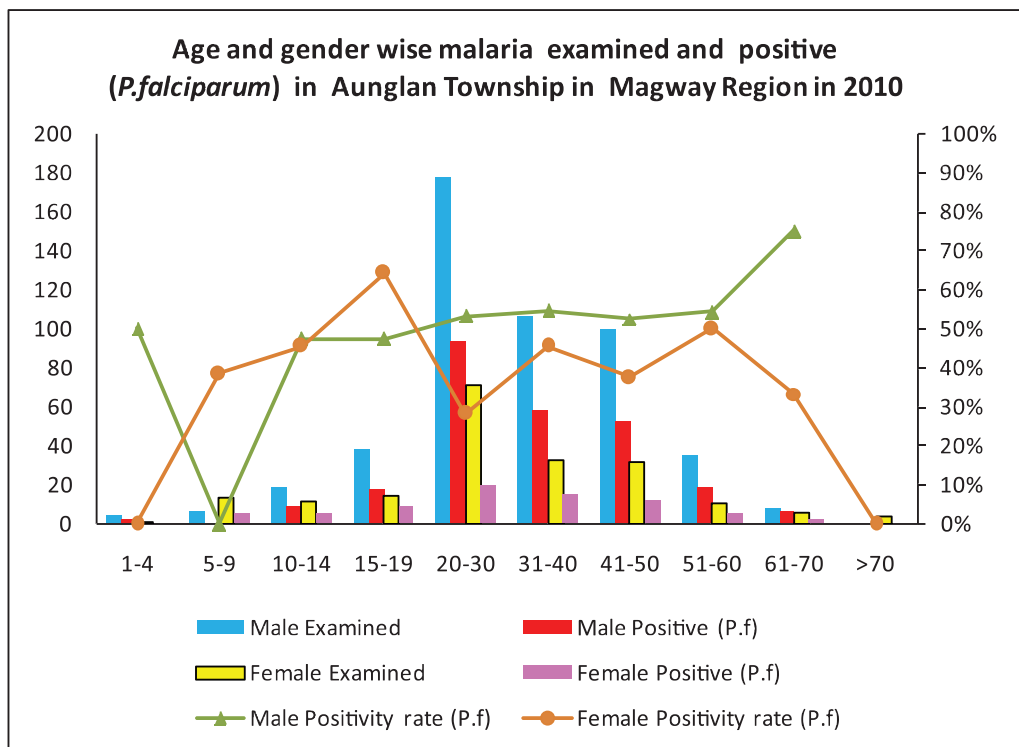
**Percentage of patients approached to health facilities for malaria confirmatory diagnosis in Aunglan Township in 2010 and 2011**



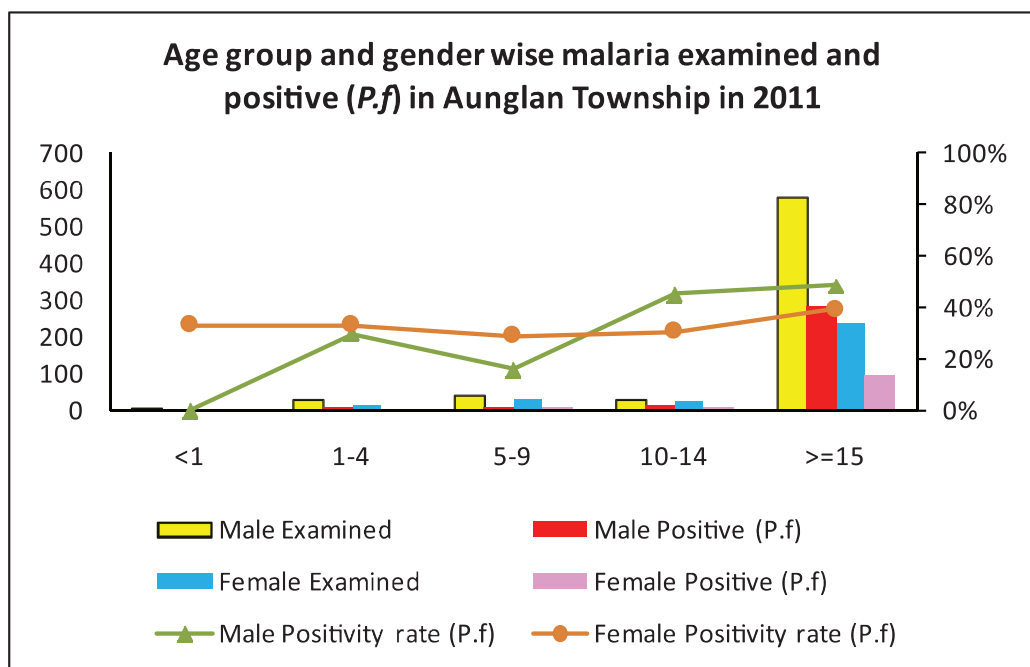
**Percentage of positive patients treated with ACT in Aunglan Township in 2010 and 2011**



Age and gender wise malaria examination and positive (*P.f*) in Aunglan Township, 2010

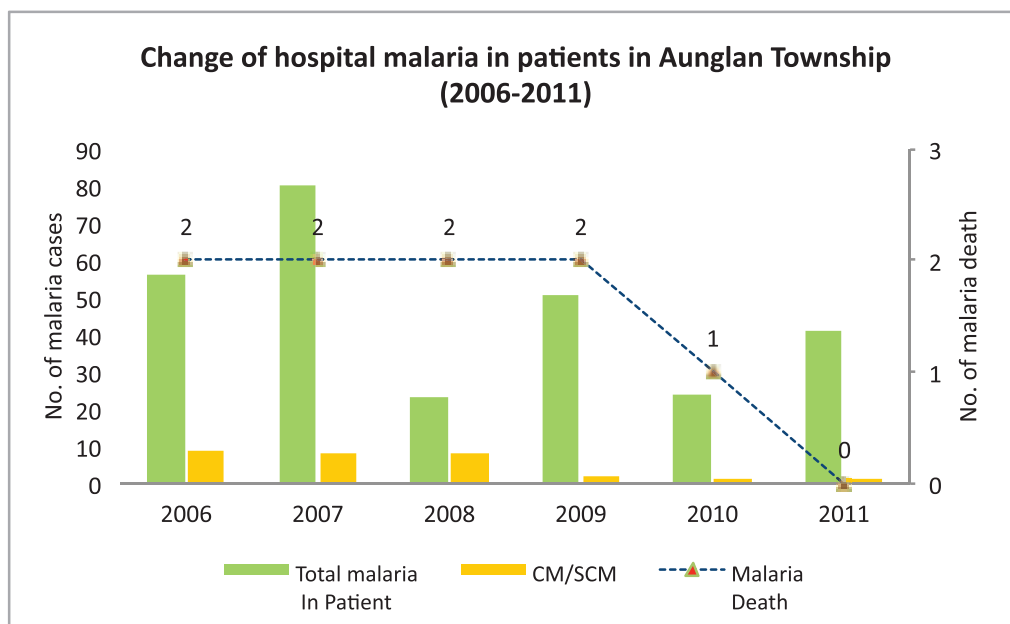


Age and gender wise malaria examination and positive (*P.f*) in Aunglan Township, 2011





### Change of hospital malaria in patients in Aunglan Township from 2006 to 2011



Sr	Year	Total In Patient	Total malaria In Patient	CM/SCM	Malaria Death	Total Death
1	2006	1986	56	9	2	36
2	2007	2136	80	8	2	37
3	2008	2694	23	8	2	38
4	2009	2883	51	2	2	22
5	2010	2187	24	1	1	34
6	2011	2768	41	1	0	29

## Health Profile of Chauk Township



### Area and Location\*

Area	:	991.54 Km <sup>2</sup>
North	:	NyaungOo
South	:	Yenangyaung
East	:	Kyaukpadaung
West	:	Salin

### Administrative Units\*

Wards	:	15
Village tracts	:	51
Villages	:	220

### Population (2009)\*

Total	:	214,450
Urban	:	44,867
Rural	:	169,583
Male	:	102,140
Female	:	112,310
Sex Ratio	:	91
<5 Year	:	19,651
0-14 Year	:	61,344
15-49 Year	:	115,238
Population Density	:	216.28/ Km <sup>2</sup>

### Health Facilities (2009)\*

Myanmar Oil & Gas Enterprise	
Hospital (150) Bedded	: 1
Sale Fatalizer Mail Hospital	: 1
Station Hospital	: 1
Maternal and Child Health Centers	: 2
Rural Health Centers	: 8
Sub Health Centers	: 29
School Health Center	: 1
Private Clinics and Maternity Homes	: 1

**Health Manpower\***

	<i>Doctor</i>	<i>Nurse</i>	<i>HA</i>	<i>LHV</i>	<i>PHS I</i>	<i>PHS II</i>	<i>MW</i>
Sanction	10	11	10	10	3	27	55
Appointed	9	11	10	8	3	24	55
Vacant	1	0	0	2	0	3	0
% Vacancy	10%	0%	0%	20%	0%	11.1%	0%

(HA: Health Assistant, LHV: Lady Health Visitor, PHS:Public Health Supervisor , MW: Midwife)

**Health Manpower (Volunteer)\***

	Category of Volunteer Health Workers		
	CHW	AMW	TTBA
Trained	201	156	57
Functioning	129	128	38
% Functioning	64.2%	82.1%	66.7%

(CHW: Community health Worker, AMW: Auxiliary Mid Wife, TTBA: Trained Traditional Birth Attendant)

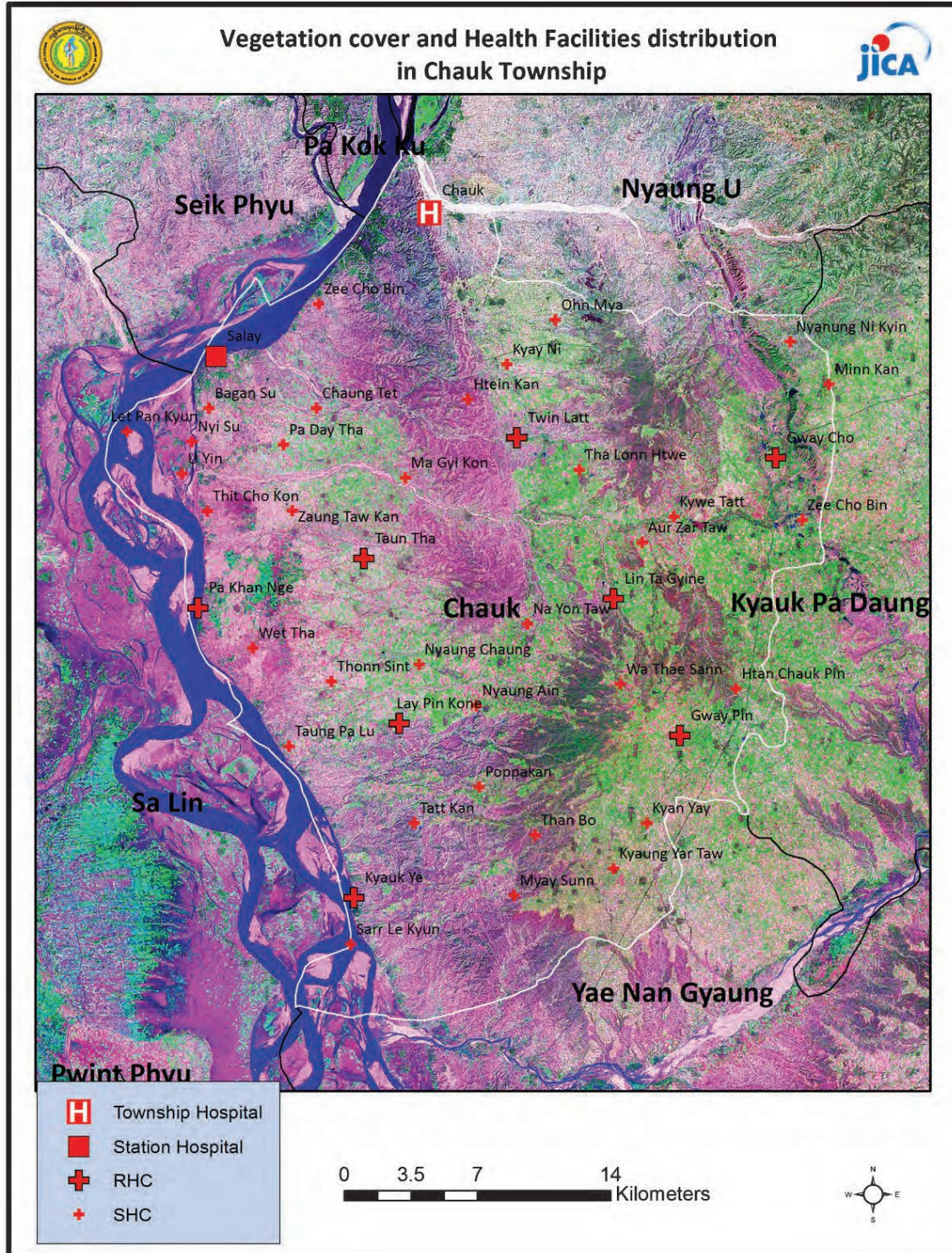
**Common Diseases under National Surveillance\***

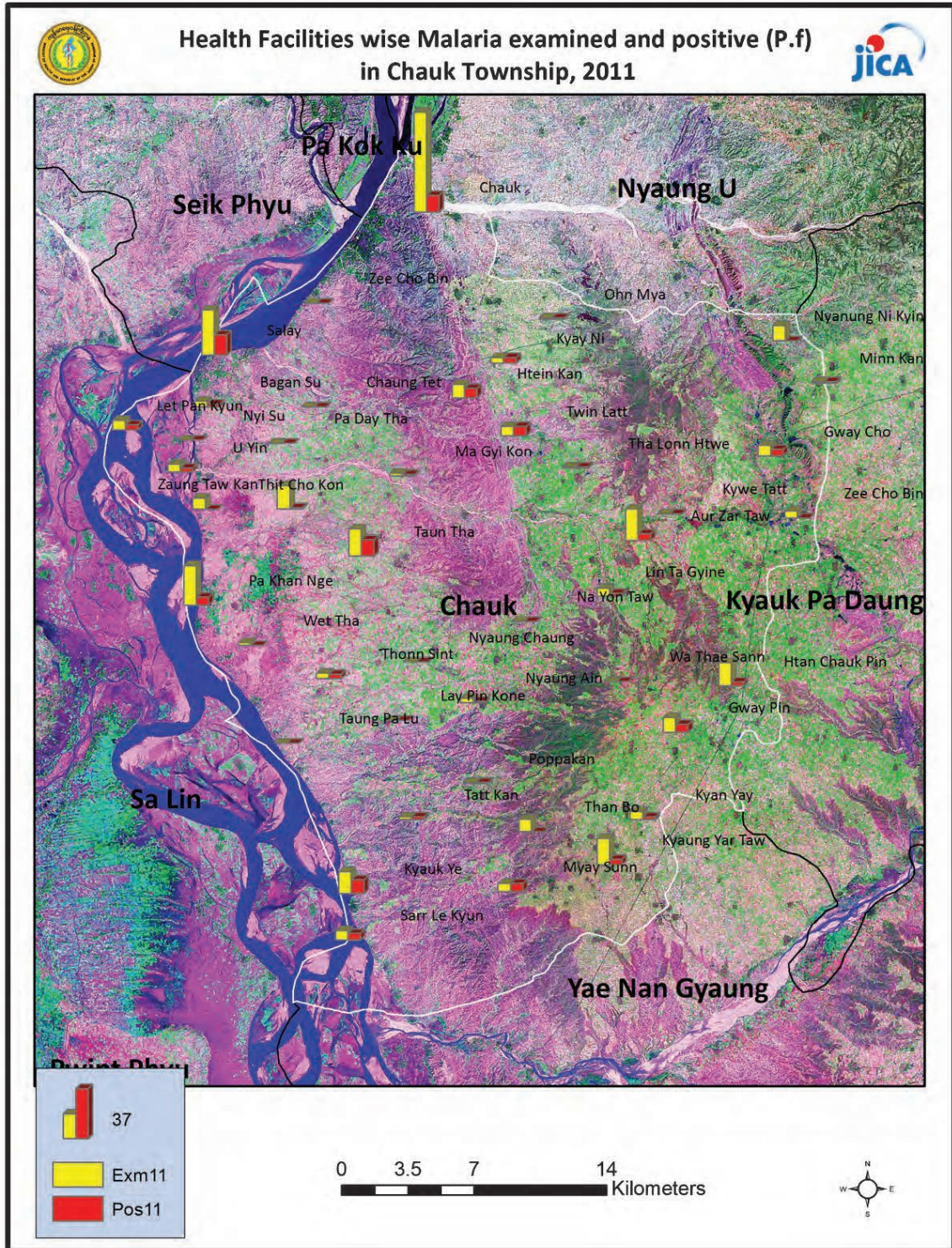
<i>Diseases</i>	<i>Morbidity</i>	<i>Mortality</i>
Malaria	38.24	0.47
ARI <5	4137.19	0
Diarrhea	1110.28	0
Dysentery	430.40	0
TB(Sputum+)	56.89	0
Snake Bite	12.59	4.20

(Per 100,000 Populations)

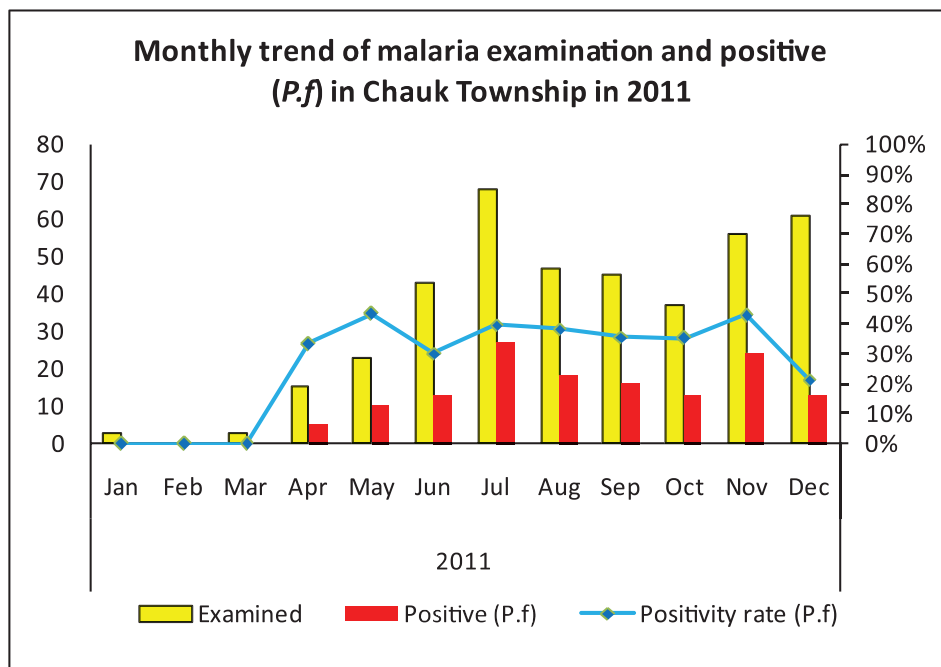
\*The data source is Health Profile of Magway Region (2009) from Department of Health Planning.

Vegetation Cover and Health Facilities distribution in Chauk Township in Magway Region



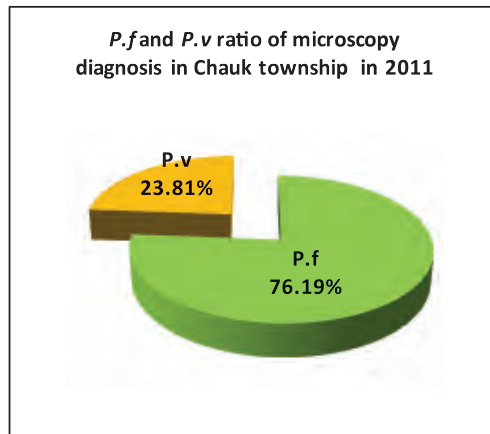


## Monthly trend of malaria examination and positive (*P.f*) in Chauk Township in 2011

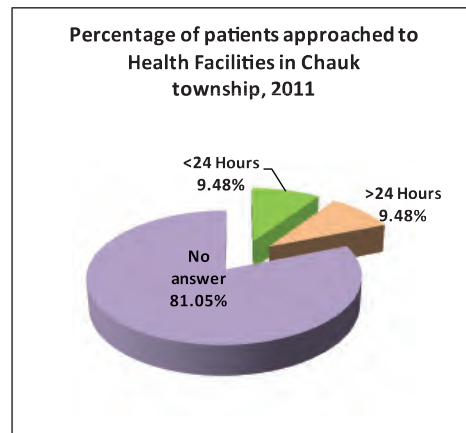


Month	2011		
	Examined	Positive ( <i>P.f</i> )	Positivity rate ( <i>P.f</i> )
Jan	3	0	0.00%
Feb	0	0	0.00%
Mar	3	0	0.00%
Apr	15	5	33.33%
May	23	10	43.48%
Jun	43	13	30.23%
Jul	68	27	39.71%
Aug	47	18	38.30%
Sep	45	16	35.56%
Oct	37	13	35.14%
Nov	56	24	42.86%
Dec	61	13	21.31%
<b>Total</b>	<b>401</b>	<b>139</b>	<b>34.66%</b>

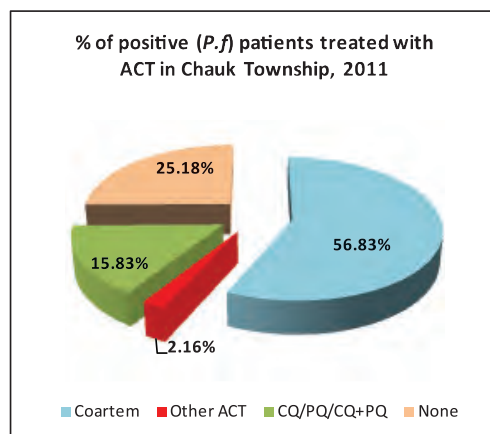
***P.f* and *P.v* ratio of malaria microscopy diagnosis in Chauk Township in 2011**



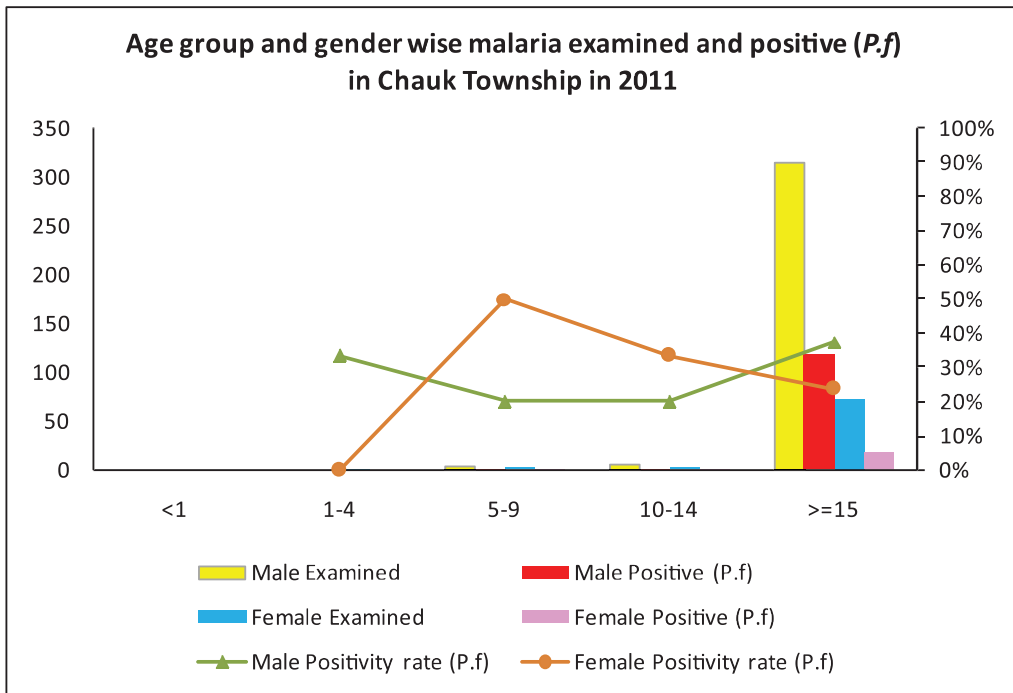
**Percentage of patients approached to health facilities for malaria confirmatory diagnosis in Chauk Township in 2011**



**Percentage of positive (*P.f*) patients treated with ACT in Chauk Township in 2011**

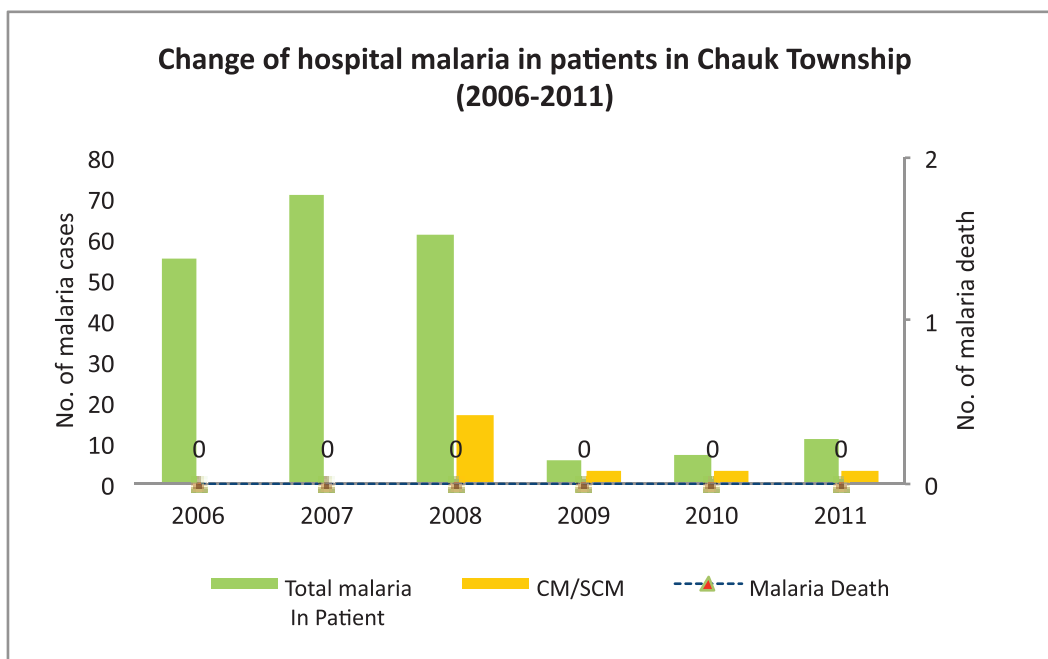


Age and gender wise malaria examination and positive (P.f) in Chauk Township, 2011



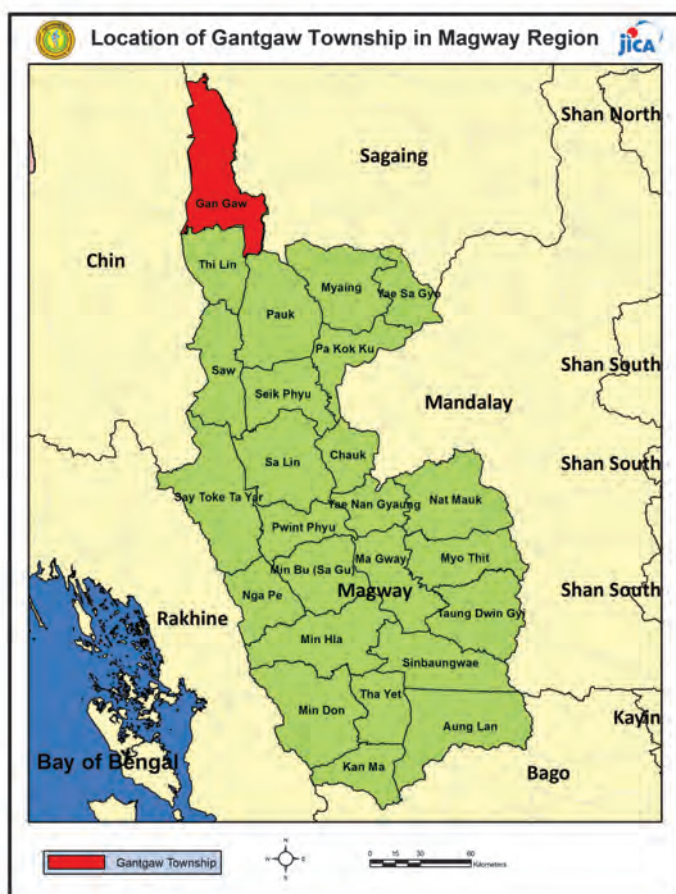


### Change of hospital malaria in patients in Chauk Township from 2006 to 2011



Sr	Year	Total In Patient	Total malaria In Patient	CM/SCM	Malaria Death	Total Death
1	2006	2145	55	0	0	0
2	2007	1804	71	0	0	0
3	2008	1098	61	17	0	0
4	2009	1119	6	3	0	0
5	2010	1226	7	3	0	18
6	2011	1122	11	3	0	10

## Health Profile of Gantgaw Township



### Area and Location\*

Area:	2463.83 Km <sup>2</sup>
North:	Kalay
South:	Tilin
East:	Minkin
West:	Hakha

### Administrative Units\*

Wards	: 4
Village tracts	: 71
Villages	: 102

### Population (2009)\*

Total	: 126,430
Urban	: 10,887
Rural	: 115,543
Male	: 61,867
Female	: 64,563
Sex Ratio	: 96
<5 Year	: 108,840
0-14 Year	: 32,760
15-49 Year	: 71,637
Population Density	: 51.31/ Km <sup>2</sup>

### Health Facilities (2009)\*

Township Hospital (50) Bedded	: 1
Station Hospital	: 2
Maternal and Child Health Centers	: 1
Rural Health Centers	: 6
Sub Health Centers	: 29
Private Clinics and Maternity Homes	: 1

**Health Manpower\***

	<i>Doctor</i>	<i>Nurse</i>	<i>HA</i>	<i>LHV</i>	<i>PHS I</i>	<i>PHS II</i>	<i>MW</i>
Sanction	32	91	6	7	3	17	39
Appointed	21	77	6	4	3	4	33
Vacant	11	14	0	3	0	13	6
% Vacancy	34.4%	15.4%	0%	42.9%	0%	76.5%	15.4%

(HA: Health Assistant, LHV: Lady Health Visitor, PHS:Public Health Supervisor , MW: Midwife)

**Health Manpower (Volunteer)\***

	Category of Volunteer Health Workers		
	CHW	AMW	TTBA
Trained	137	91	0
Functioning	66	66	0
% Functioning	48.2%	72.5%	0%

(CHW: Community health Worker, AMW: Auxiliary Mid Wife, TTBA: Trained Traditional Birth Attendant)

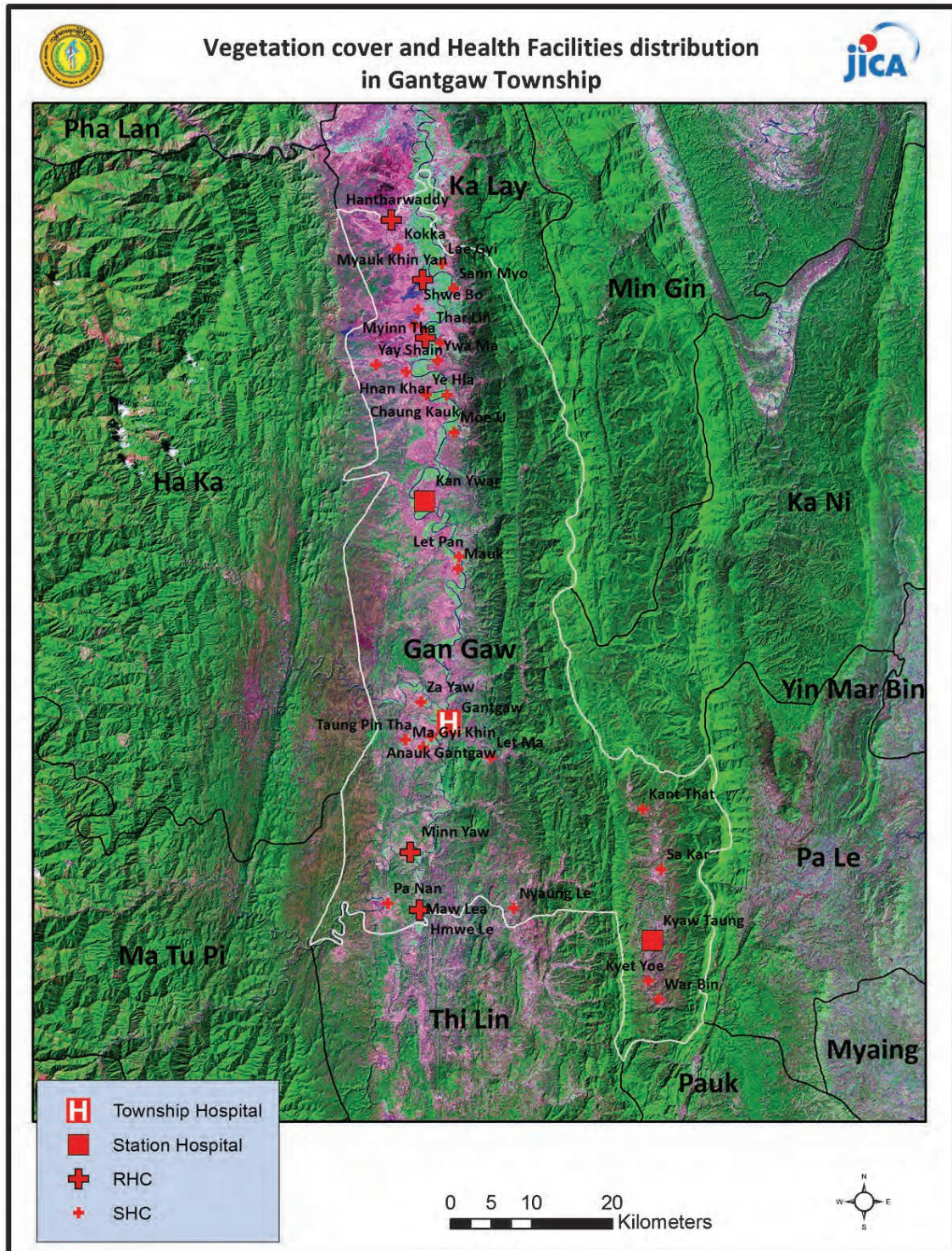
**Common Diseases under National Surveillance\***

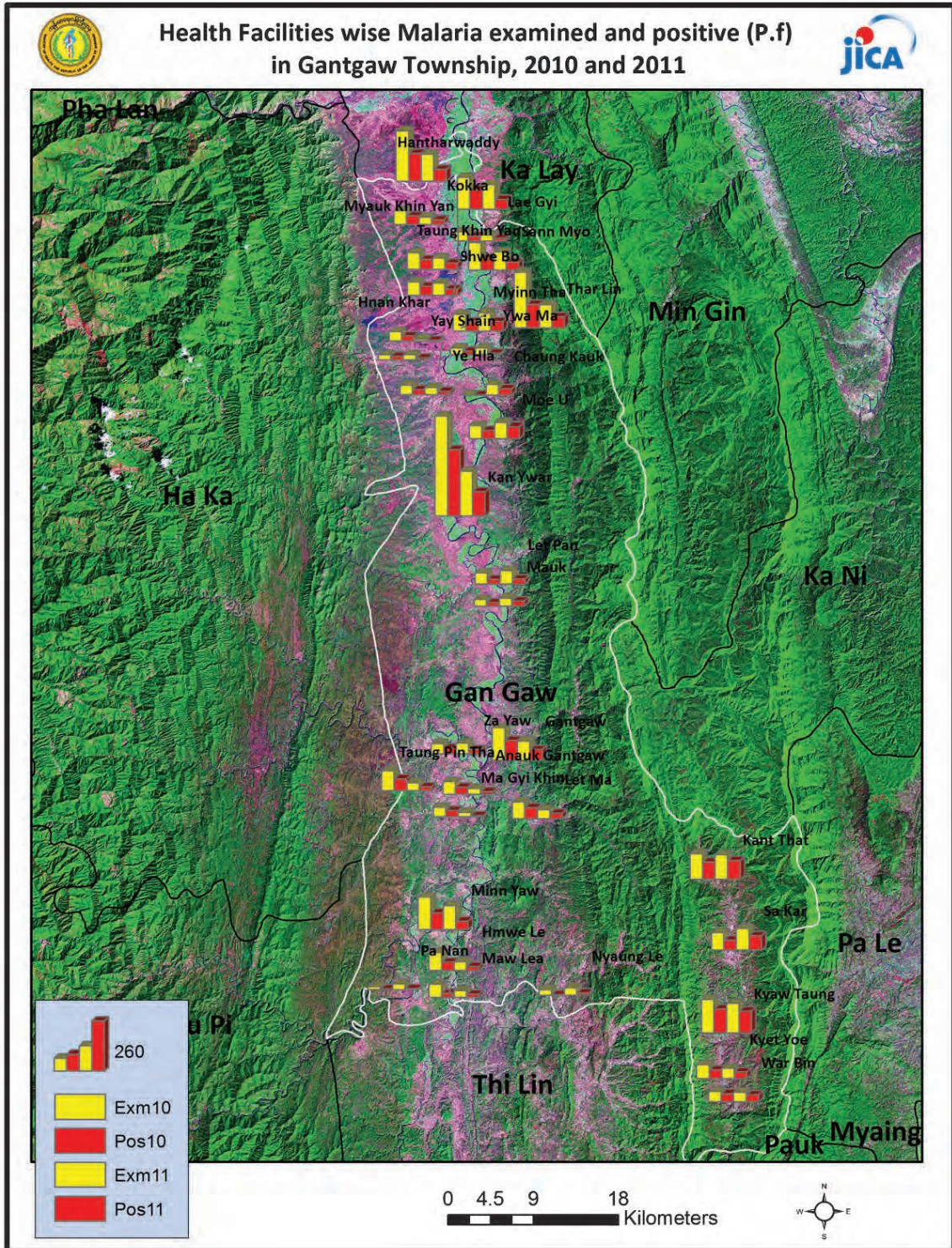
<i>Diseases</i>	<i>Morbidity</i>	<i>Mortality</i>
Malaria	2377.6	5.54
ARI <5	24446.49	55.35
Diarrhea	1162.7	0
Dysentery	348.02	0
TB(Sputum+)	30.06	0
Snake Bite	0	0

(Per 100,000 Populations)

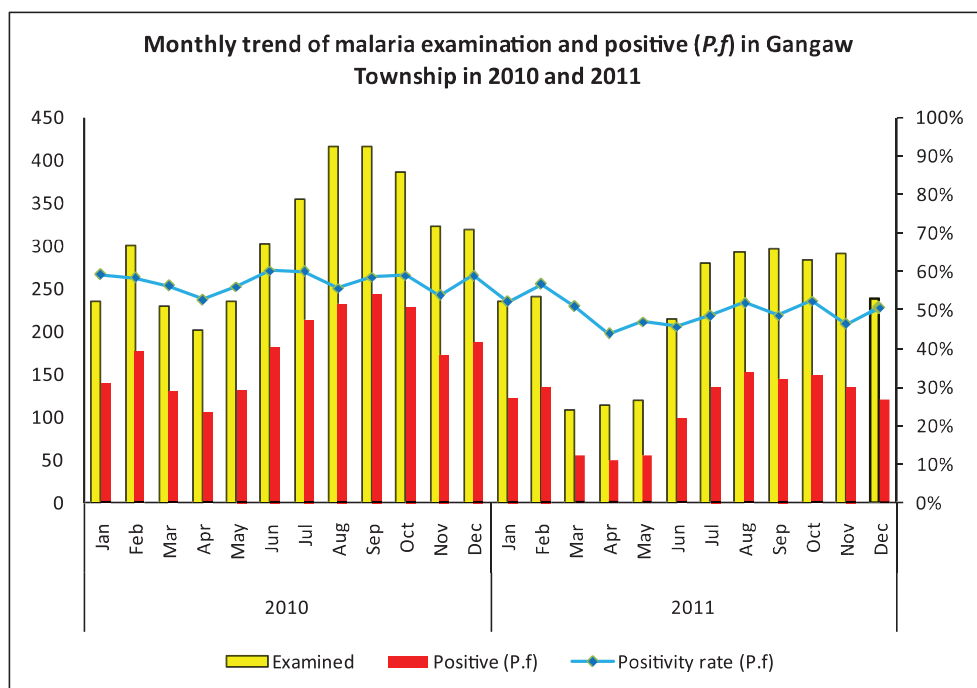
\*The data source is Health Profile of Magway Region (2009) from Department of Health Planning.

Vegetation cover and Health Facilities distribution in Gantgaw Township in Magway Region



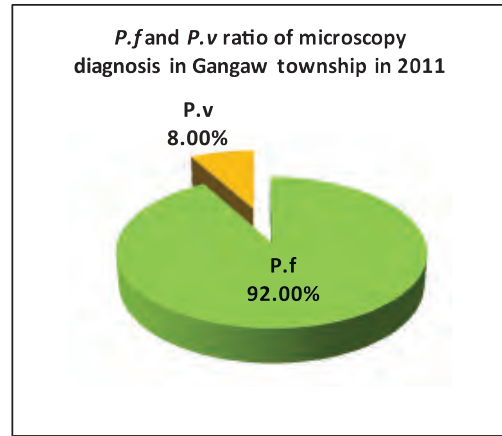
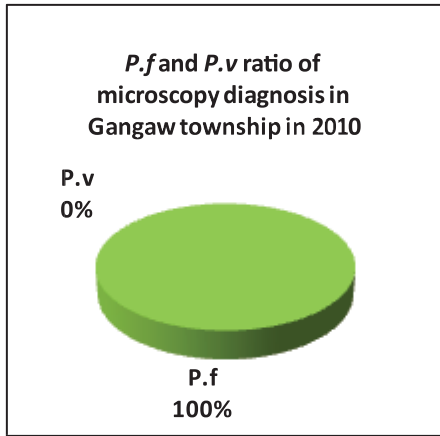


## Monthly trend of malaria examination and positive (*P.f*) in Gantgaw Township in 2010 and 2011

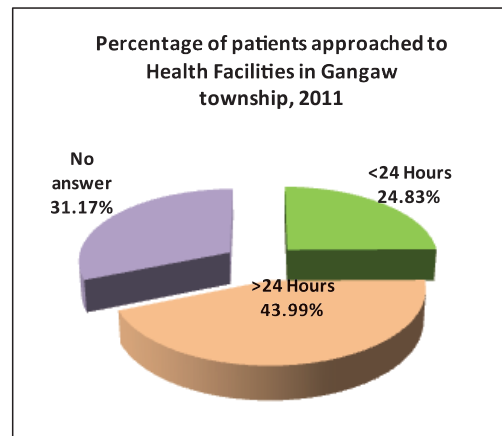
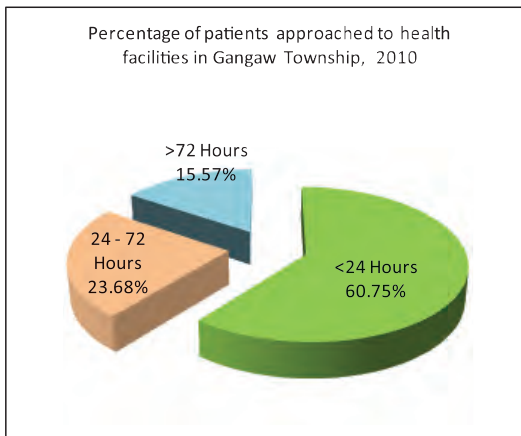


Month	2010			2011		
	Examined	Positive ( <i>P.f</i> )	Positivity rate ( <i>P.f</i> )	Examined	Positive ( <i>P.f</i> )	Positivity rate ( <i>P.f</i> )
Jan	235	139	59.15%	236	123	52.12%
Feb	301	176	58.47%	240	136	56.67%
Mar	229	129	56.33%	108	55	50.93%
Apr	201	106	52.74%	114	50	43.86%
May	235	132	56.17%	119	56	47.06%
Jun	302	182	60.26%	214	98	45.79%
Jul	355	213	60.00%	280	136	48.57%
Aug	416	232	55.77%	293	152	51.88%
Sep	415	243	58.55%	296	144	48.65%
Oct	386	228	59.07%	284	149	52.46%
Nov	322	173	53.73%	291	135	46.39%
Dec	319	188	58.93%	239	121	50.63%
<b>Total</b>	<b>3,716</b>	<b>2,141</b>	<b>57.62%</b>	<b>2,714</b>	<b>1,355</b>	<b>49.93%</b>

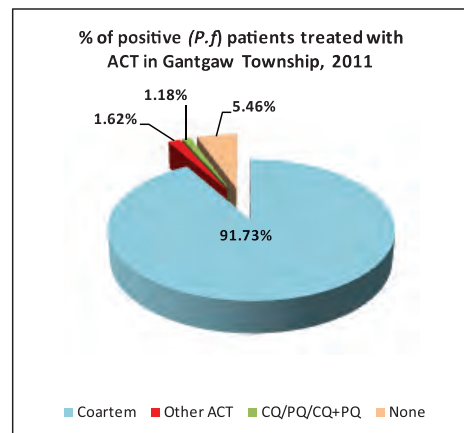
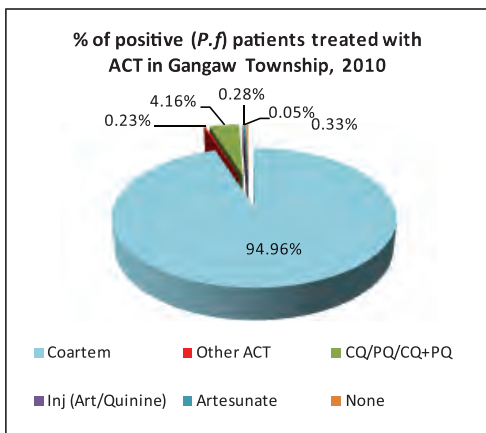
**P.f and P.v ratio of malaria microscopy diagnosis in Gantgaw township in 2010 and 2011**



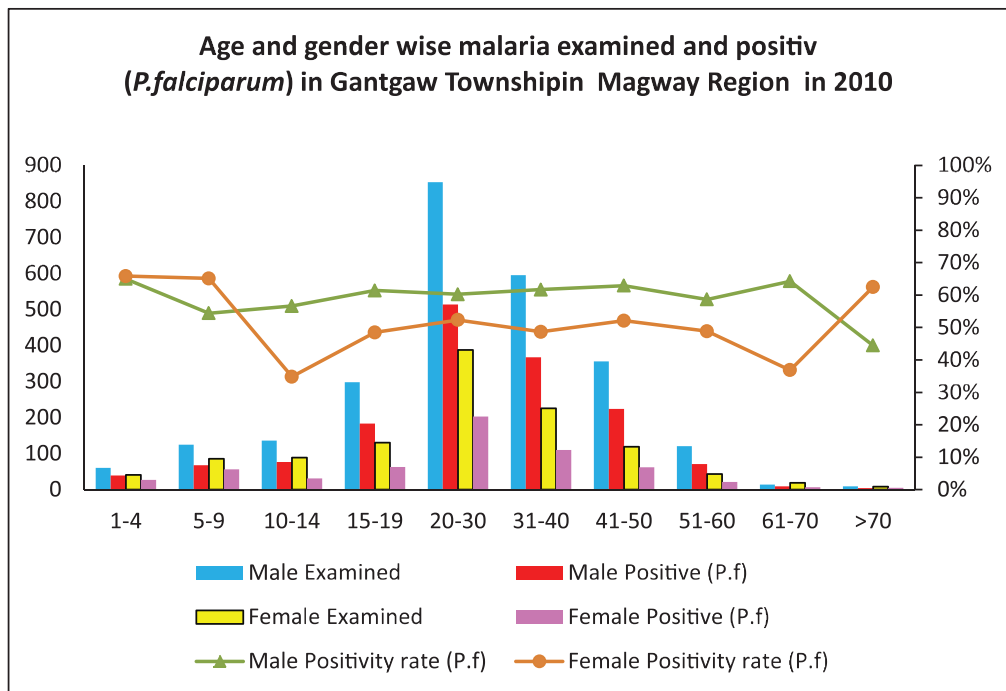
**Percentage of patients approached to health facilities in Gantgaw Township in 2010 and 2011**



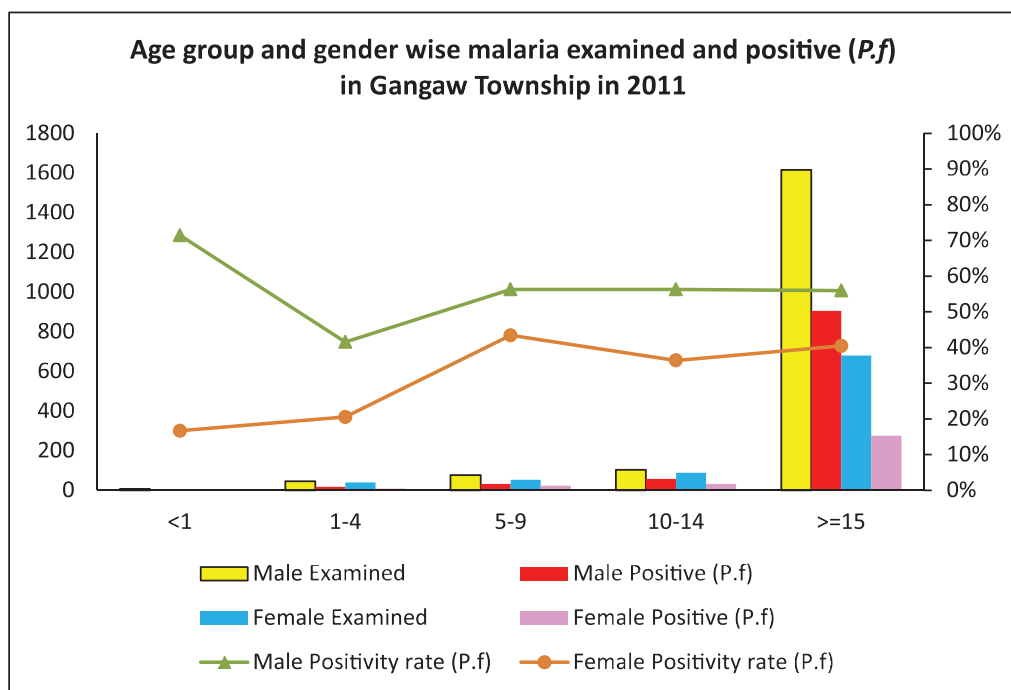
**Percentage of Positive patients (P.f) treated with ACT in Gantgaw Township in 2010 and 2011**



Age and gender wise malaria examination and positive (*P.f*) in Gantgaw Township, 2010

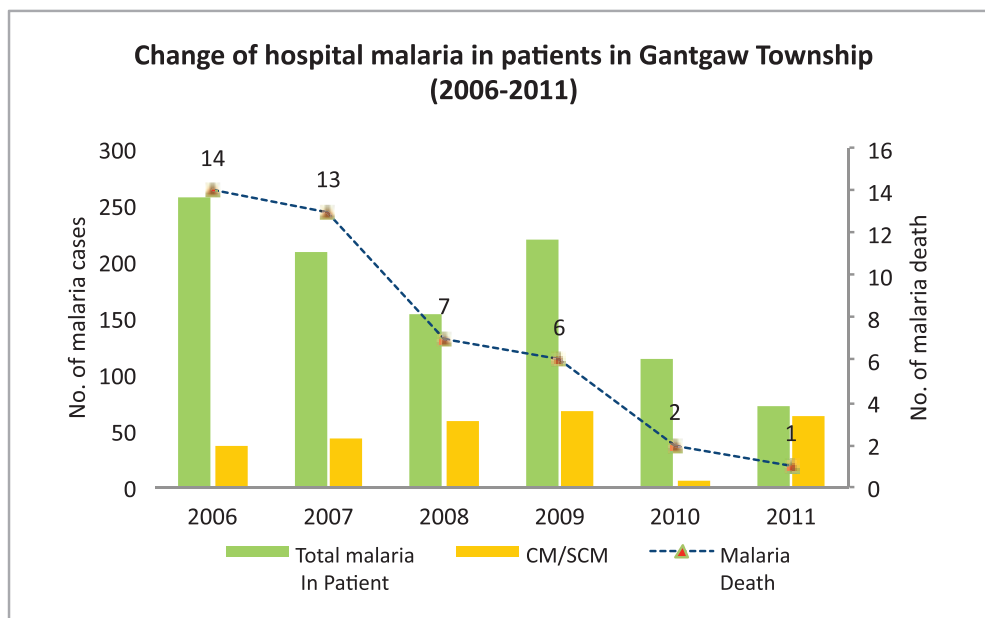


Age and gender wise malaria examination and positive (*P.f*) in Gantgaw Township, 2011





### Change of hospital malarial in patients in Gantgaw Township in Magway Region from 2006 to 2011



Sr	Year	Total In Patient	Total malaria In Patient	CM/SCM	Malaria Death	Total Death
1	2006	2617	256	37	14	84
2	2007	2318	208	43	13	68
3	2008	2074	153	58	7	41
4	2009	2585	220	67	6	53
5	2010	2145	114	5	2	46
6	2011	1567	72	63	1	45