

## Health Profile of Mrauk U Township



### Area and Location\*

Area	:	1271.61 Km <sup>2</sup>
North	:	Paletwa
South	:	Pauk Taw
East	:	Min Bya
West	:	Pon Nar Gyun

### Administrative Units\*

Wards	:	6
Village tracts	:	94
Villages	:	281

### Population (2009)\*

Total	:	237,778
Urban	:	35,316
Rural	:	202,462
Male	:	117,650
Female	:	120,128
Sex Ratio	:	98
<5 Year	:	27,693
0-14 Year	:	76,524
15-49 Year	:	122,674
Population Density	:	186.99/ Km <sup>2</sup>

### Health Facilities (2009)\*

Township Hospital (25) Bedded	:	1
Station Hospital	:	1
Maternal and Child Health Center	:	1
Rural Health Centers	:	6
Sub Health Centers	:	24
School Health Center	:	1
Private Clinics and Maternity Homes	:	3

### Health Manpower\*

	<i>Doctor</i>	<i>Nurse</i>	<i>HA</i>	<i>LHV</i>	<i>PHS I</i>	<i>PHS II</i>	<i>MW</i>
Sanction	6	12	8	6	2	3	40
Appointed	4	12	7	6	2	3	36
Vacant	2	0	1	0	0	0	4
% Vacancy	33.3%	0%	12.5%	0%	0%	0%	10%

(HA: Health Assistant, LHV: Lady Health Visitor, PHS:Public Health Supervisor , MW: Midwife)

### Health Manpower (Volunteer)\*

	Category of Volunteer Health Workers		
	CHW	AMW	TTBA
Trained	172	148	174
Functioning	90	101	134
% Functioning	52.3%	68.2%	77%

(CHW: Community health Worker, AMW: Auxiliary Mid Wife, TTBA: Trained Traditional Birth Attendant)

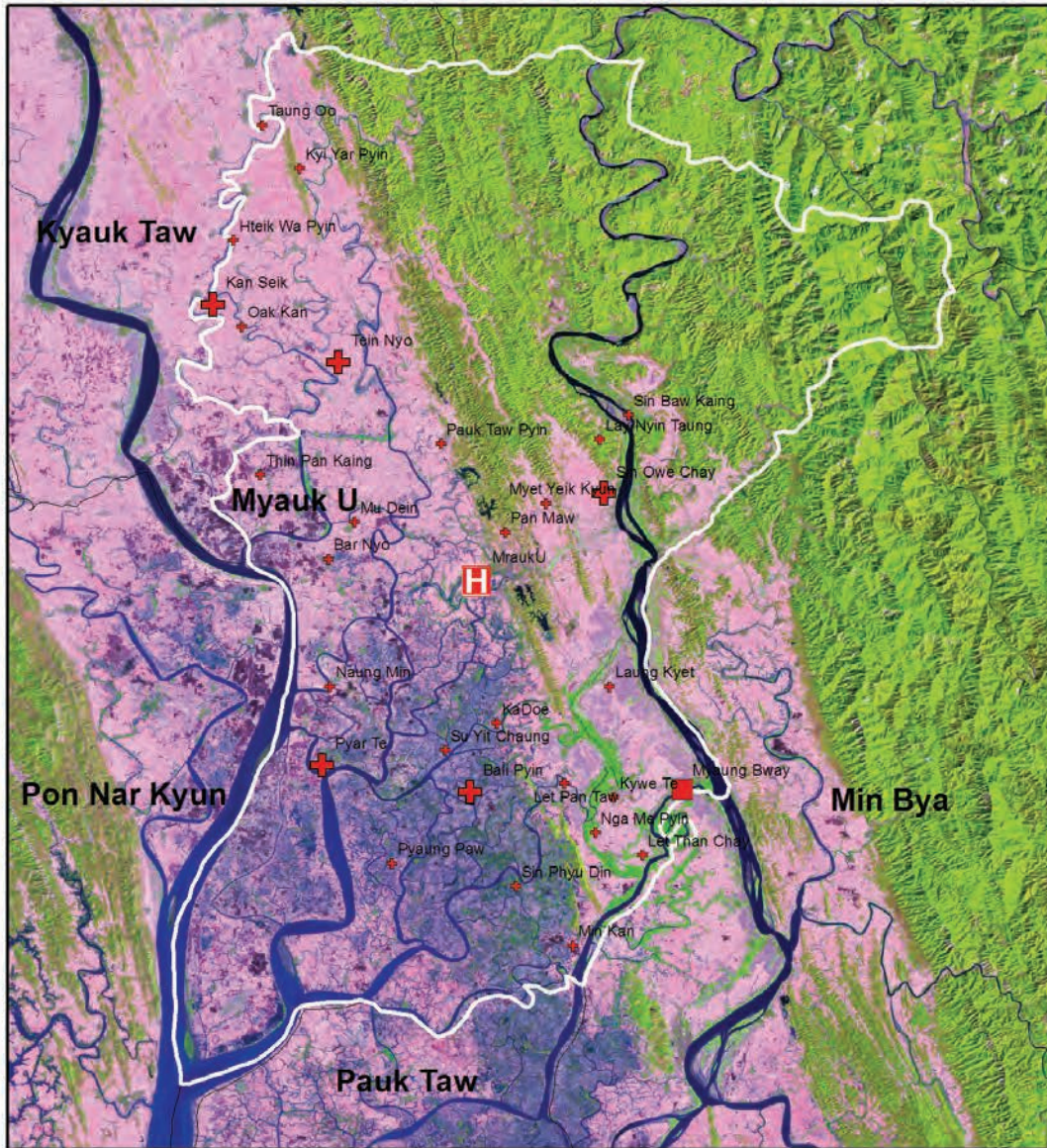
### Common Diseases under National Surveillance\*

<i>Diseases</i>	<i>Morbidity</i>	<i>Mortality</i>
Malaria	2141.49	0.84
ARI <5	4957.93	3.61
Diarrhea	841.54	1.68
Dysentery	325.09	0
TB(Sputum+)	77.38	5.05
Snake Bite	0	0

(Per 100,000 Populations)

\* The data source is Health Profile of Rakhine State (2009) from Department of Health Planning.

### Vegetation Cover and Health Facilities distribution in Mrauk\_U Township in Rakhine State

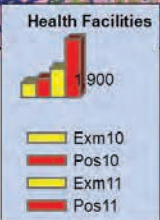
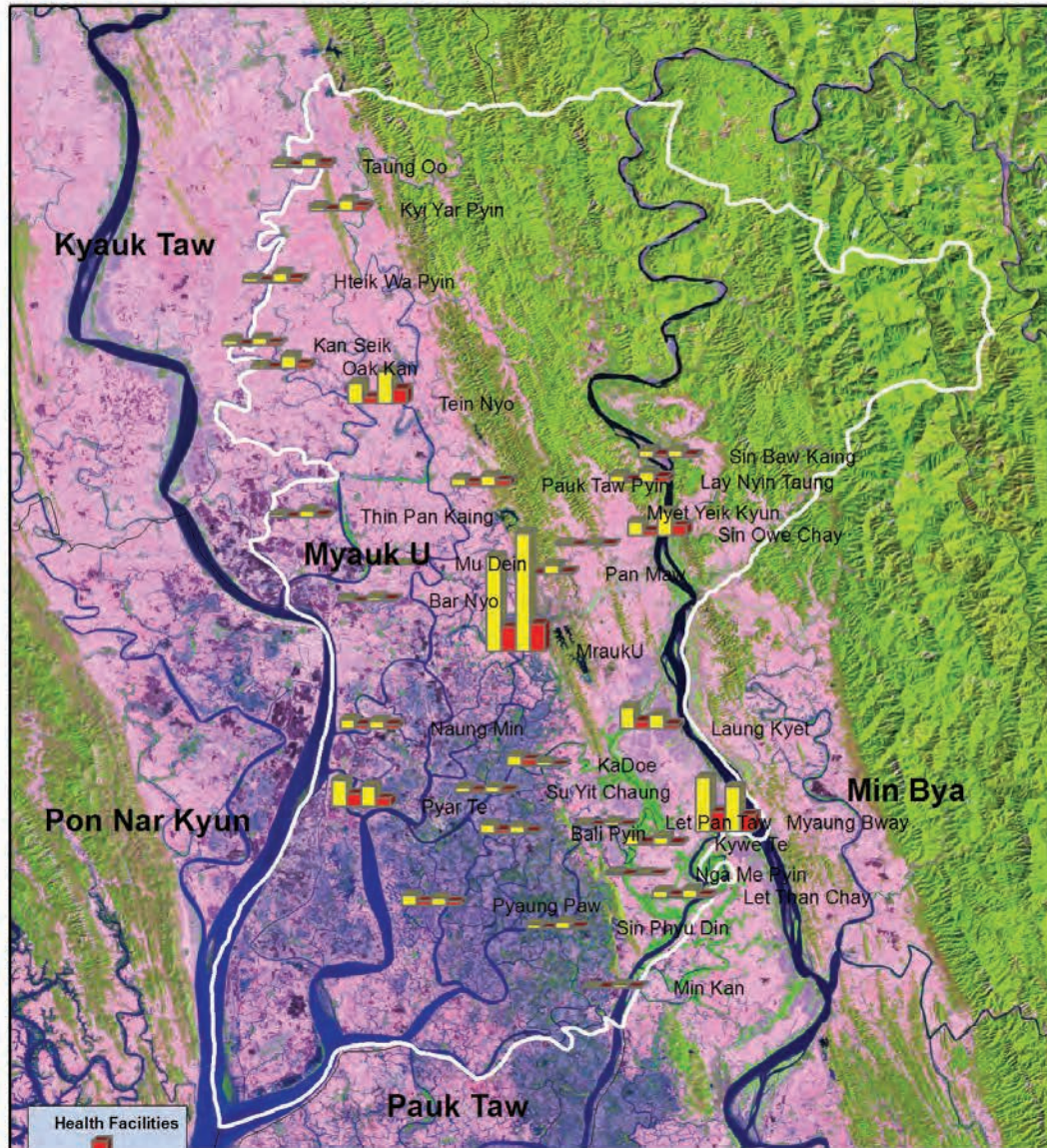


Health Facilities	
	Township Hospital
	Station Hospital
	RHC
	SHC



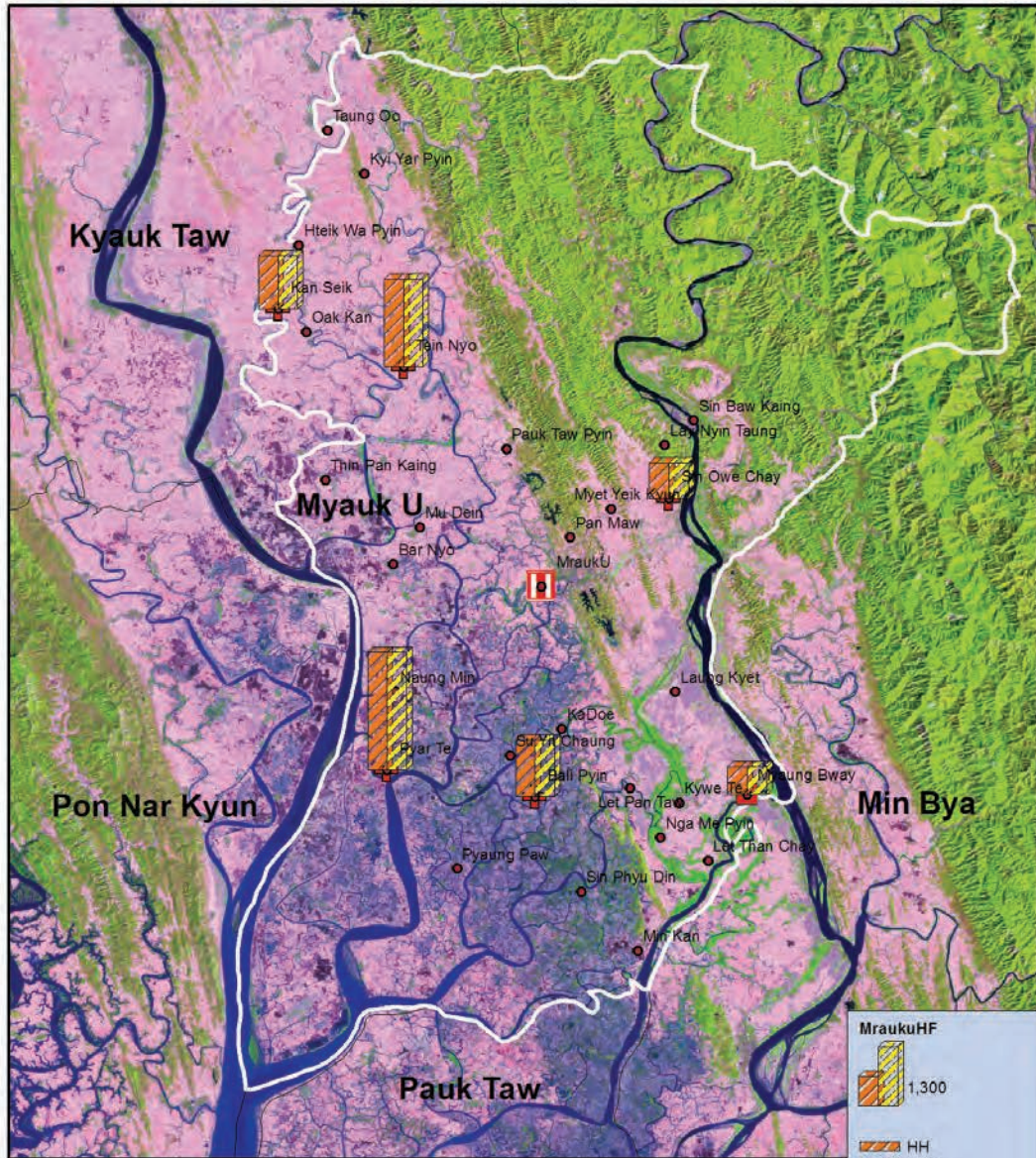


Health facilities wise malaria examined and positive (P.f) in Mrauk\_U Township, 2010 and 2011





No of house holds and LLIN distribution in Mrauk U Township



Sr	Name	Tot_HH	LLIN
1	Kyain Tali SHU	864	864
2	Kalar Pyin RHC	1,274	1,274
3	Sert Thwar RHC	1,486	1,486
4	Nyaung Chaung RHC	747	747
5	Taung Pauk RHC	2,130	2,130
	Total	6,501	6,501

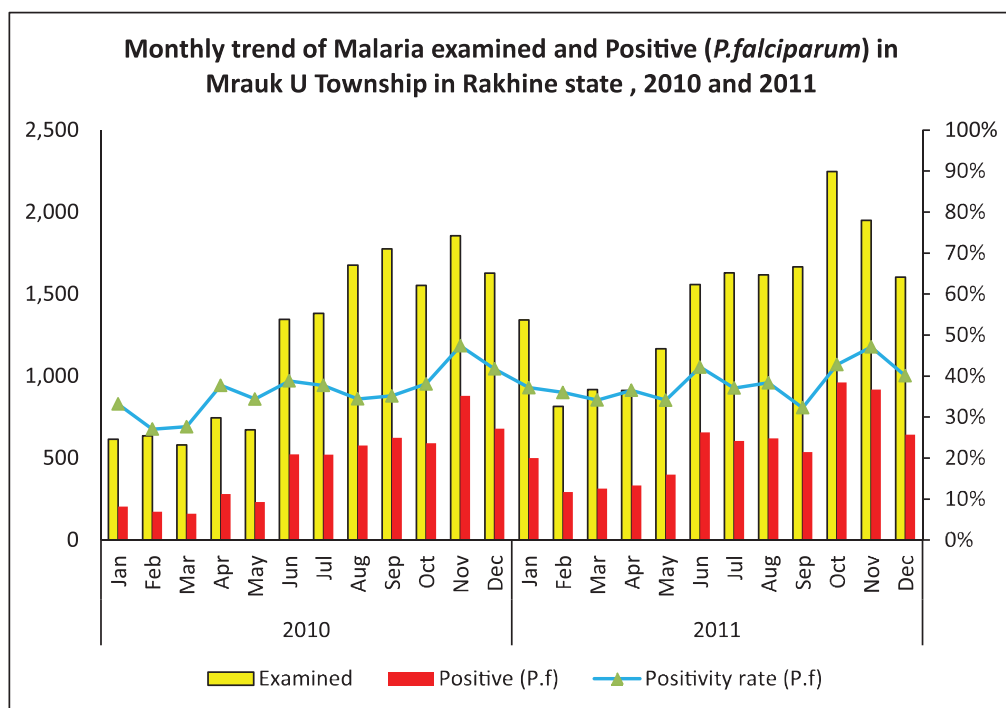


Sr	RHC Name	SHC Name	Village Name	Households	Population	Total LLIN
1	Sin Oae Chai	Thin Baw Kai	Maw Ywar Thit	101	511	101
2	Sin Oae Chai	Thin Baw Kai	Maw Ywar Haung	58	349	58
3	Sin Oae Chai	Sin Oae Chai	Myot Chaung	195	873	195
4	Sin Oae Chai	Sin Oae Chai	Kyaung Taung	412	2265	412
5	Kan Sauk	Oakkan	Aut See Maung	190	1013	190
6	Kan Sauk	Oakkan	Pa Zine Chaung	18	83	18
7	Kan Sauk	Kyee Yar Pyin	Kyee Yar Pyin	350	2344	350
8	Kan Sauk	Kyee Yar Pyin	Ahet See Maung	120	654	120
9	Kan Sauk	Taung Oo	Kyauk Sae Pyin	129	692	129
10	Kan Sauk	Taung Oo	Kyauk Kyat	184	938	184
11	Kan Sauk	Taung Oo	Zay Ti Taung	137	763	137
12	Kan Sauk	Taung Oo	Gar Yar Taung	31	145	31
13	Pali Pyin	Minn Gan	Minn Gan	132	493	132
14	Pali Pyin	Minn Gan	A Wa Pyaun	206	826	206
15	Pali Pyin	Nga Mae Pyin	Par Taw	274	1105	274
16	Pali Pyin	Nga Mae Pyin	Khawe Dauk Chaung	140	648	140
17	Pali Pyin	Nga Mae Pyin	Thu Nge Taw	274	1471	274
18	Pali Pyin	Nga Mae Pyin	Pyaun Khaung	198	906	198
19	Pyar Tae	Pyar Tae	A Kyee Taw Ma (Old)	235	858	235
20	Pyar Tae	Pyar Tae	A Kyee Taw Ma (New)	71	279	71
21	Pyar Tae	Pyar Tae	Don Kyi	82	284	82
22	Pyar Tae	Set Thar	Zee Pyi Kyi	223	1015	223
23	Pyar Tae	Set Thar	Nyaung Pin Lae	343	1667	343
24	Pyar Tae	Set Thar	Net Chaung	232	1140	232
25	Pyar Tae	Set Thar	Gyin Chai	70	305	70
26	Pyar Tae	Set Thar	Ywar Thit	79	358	79
27	Pyar Tae	Zurit Chaung	Zurit Chaung	420	1459	420
28	Pyar Tae	Pyaung Paw	Phayar Myar	171	862	171
29	Pyar Tae	Pyaung Paw	Sin Chan	166	834	166
30	Pyar Tae	Pyaung Paw	Tin Htain Yan	105	571	105
31	Pyar Tae	Pyaung Paw	Kalar Chaung	49	393	49
32	Pyar Tae	Naung Minn	Wet Kha Mauk	103	452	103
33	Pyar Tae	Naung Minn	Taw Bawe	156	648	156
34	Pyar Tae	Naung Minn	Soke Par	49	211	49
35	Tane Nyo	Tane Nyo	Ma Kyar	123	530	123



Sr	RHC Name	SHC Name	Village Name	Households	Population	Total LLIN
36	Tane Nyo	Tane Nyo	Nay Pu Khan	36	144	36
37	Tane Nyo	Tane Nyo	Gyon Chaung	22	99	22
38	Tane Nyo	Tane Nyo	Kyat Khin	122	420	122
39	Tane Nyo	Tane Nyo	Khu Hlaing	62	240	62
40	Tane Nyo	Bar Nyo	Bar Nyo	218	1100	218
41	Tane Nyo	Bar Nyo	Ma Nyinn Chaung	42	236	42
42	Tane Nyo	Bar Nyo	A Yet Thay Ma	152	762	152
43	Tane Nyo	Bar Nyo	Yane Wa	120	487	120
44	Tane Nyo	Mu Dane	Mu Dane	122	542	122
45	Tane Nyo	Mu Dane	Nga Khwar Ywar	110	500	110
46	Tane Nyo	Mu Dane	Kinn Chaung	217	987	217
47	Tane Nyo	Mu Dane	Kalar Chaung	142	579	142
48	Tane Nyo	Mu Dane	Nga Swe Kan	83	336	83
49	Tane Nyo	Mu Dane	Pya Hla	102	493	102
50	Tane Nyo	Mu Dane	Let Kyar	76	369	76
51	Tane Nyo	Thin Pan Kai	Pa Daine	97	479	97
52	Tane Nyo	Thin Pan Kai	Thar Si (New)	23	140	23
53	Tane Nyo	Thin Pan Kai	Thar Si (Old)	40	210	40
54	Myaung Bwae	Laung Kyet	Tha Yet Cho	128	859	128
55	Myaung Bwae	Laung Kyet	Tha Htay Kone	70	434	70
56	Myaung Bwae	Laung Kyet	Zay Ya Waddy	72	472	72
57	Myaung Bwae	Let Pan Taw	Baw Ywar Zay	118	484	118
58	Myaung Bwae	Let Pan Taw	Mahar Htee	90	563	90
59	Myaung Bwae	Let Pan Taw	Tha Kyar Ywar	59	354	59
60	Myaung Bwae	Let Than Chai	Ywar Kyi	60	241	60
<b>Grand Total</b>				<b>8209</b>	<b>39475</b>	<b>8209</b>

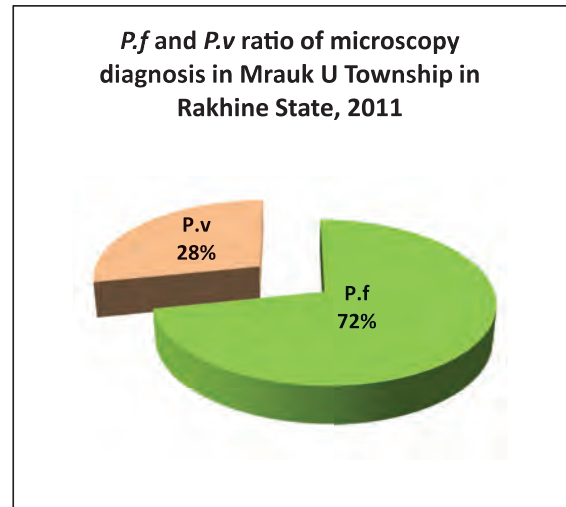
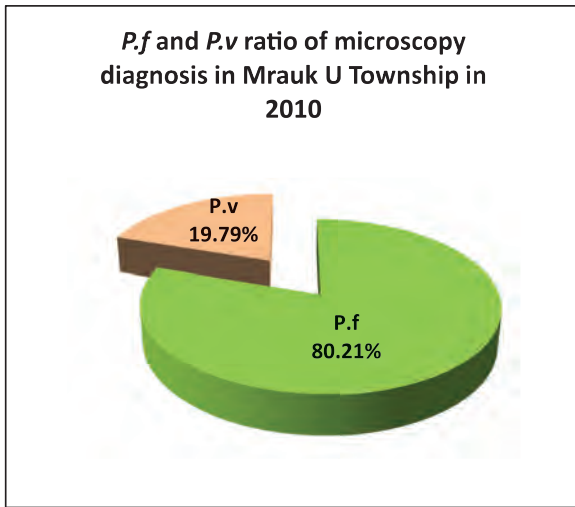
## Monthly trend of malaria examination and positive (*P.falciparum*) in Mrauk U Township in Rakhine State, 2010 and 2011



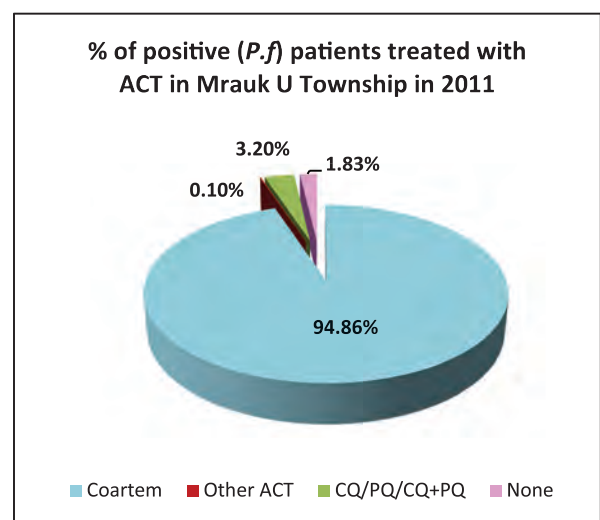
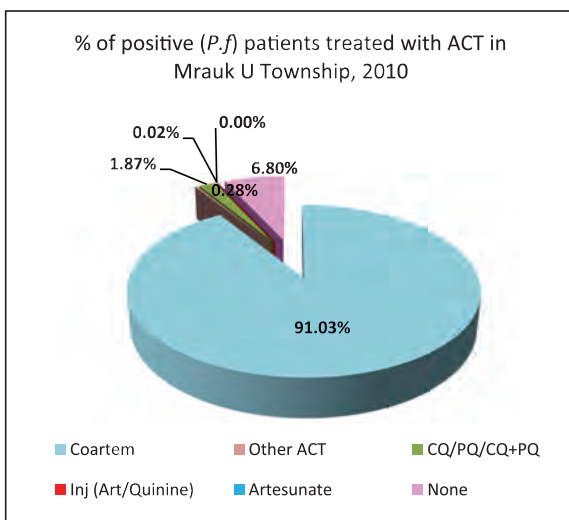
Month	2010			2011		
	Examined	Positive ( <i>P.f</i> )	Positivity rate ( <i>P.f</i> )	Examined	Positive ( <i>P.f</i> )	Positivity rate ( <i>P.f</i> )
Jan	615	204	33.17%	1,342	499	37.18%
Feb	636	172	27.04%	814	293	36.00%
Mar	579	160	27.63%	917	313	34.13%
Apr	745	281	37.72%	912	333	36.51%
May	672	231	34.38%	1,167	398	34.10%
Jun	1,345	522	38.81%	1,558	657	42.17%
Jul	1,382	521	37.70%	1,630	604	37.06%
Aug	1,677	577	34.41%	1,617	620	38.34%
Sep	1,775	624	35.15%	1,665	537	32.25%
Oct	1,552	591	38.08%	2,247	961	42.77%
Nov	1,856	879	47.36%	1,950	918	47.08%
Dec	1,627	679	41.73%	1,603	642	40.05%
	<b>14,461</b>	<b>5,441</b>	<b>37.63%</b>	<b>17,422</b>	<b>6,775</b>	<b>38.89%</b>



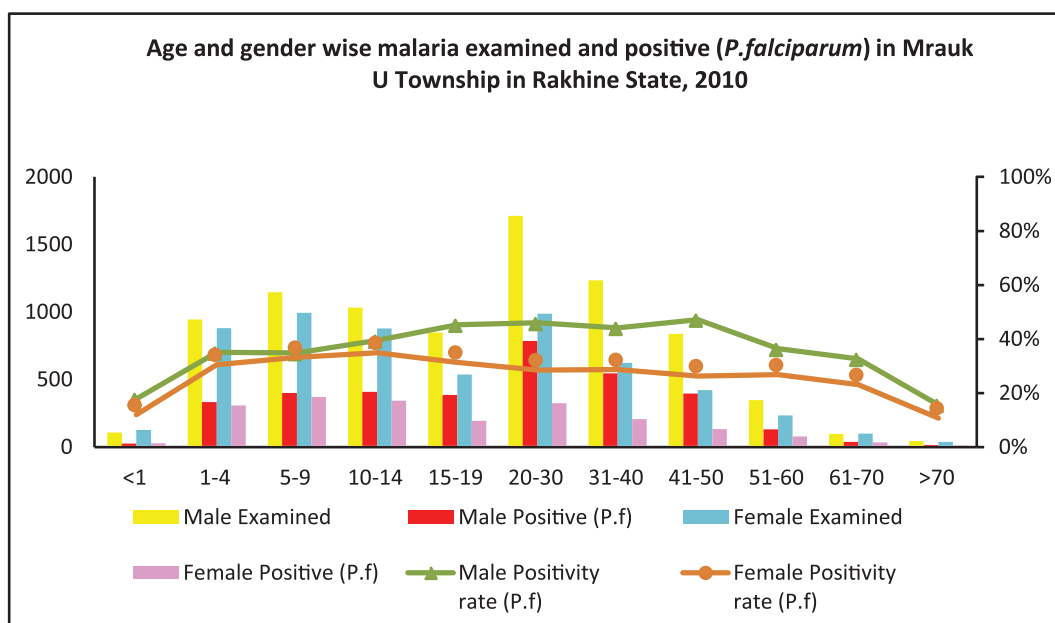
***P.f* and *P.v* ratio of malaria microscopy diagnosis in Mrauk U Township in Rakhine State, 2010 and 2011**



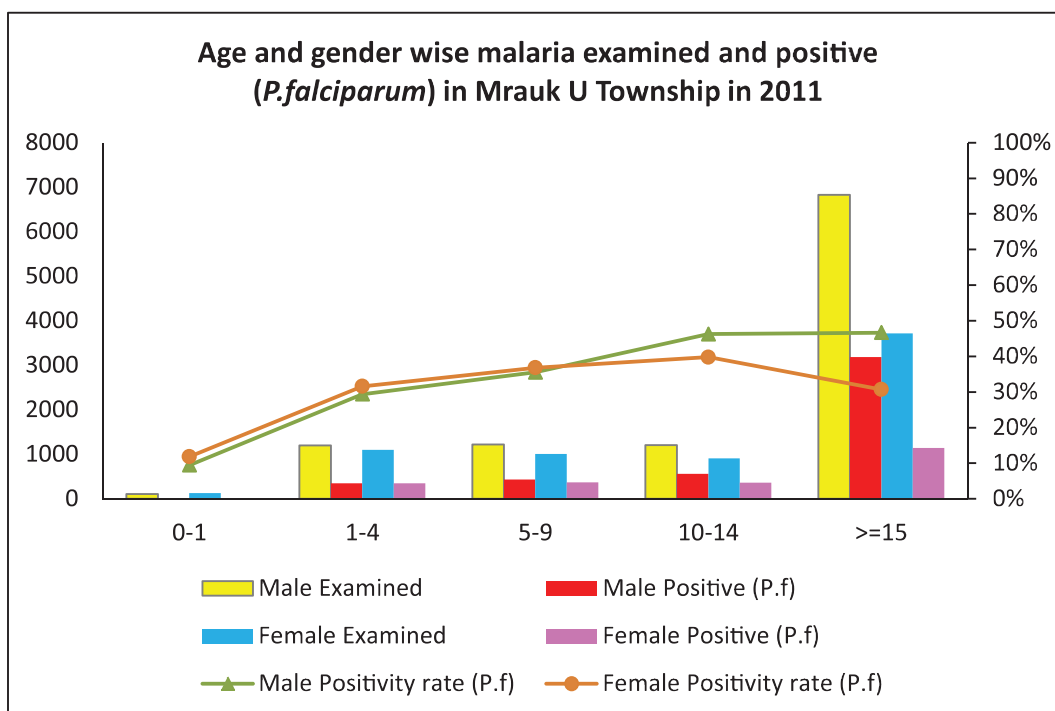
**Percentage of patients approached to health facilities for malaria confirmatory diagnosis in Mrauk U Township in Rakhine State, 2010 and 2011**



### Age and gender wise malaria examination and positive (*P.f*) in Mrauk U Township, 2010

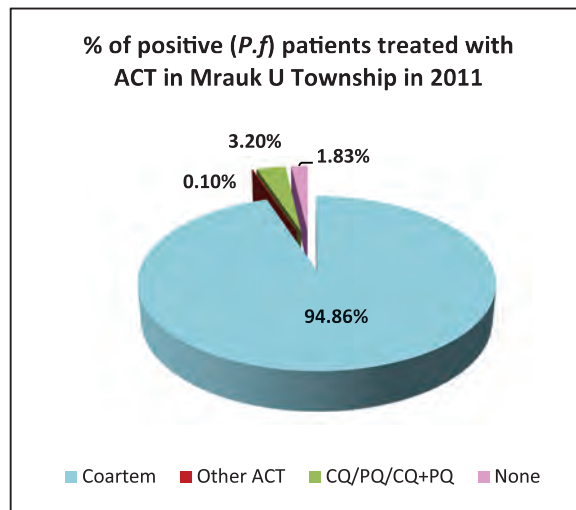
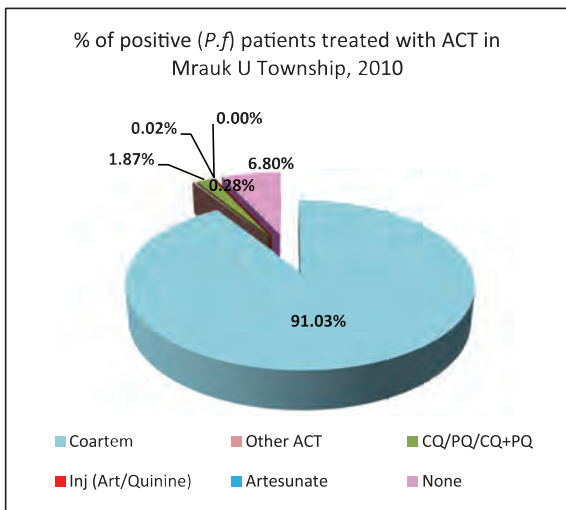


### Age and gender wise malaria examination and positive (*P.f*) in Mrauk U Township, 2011

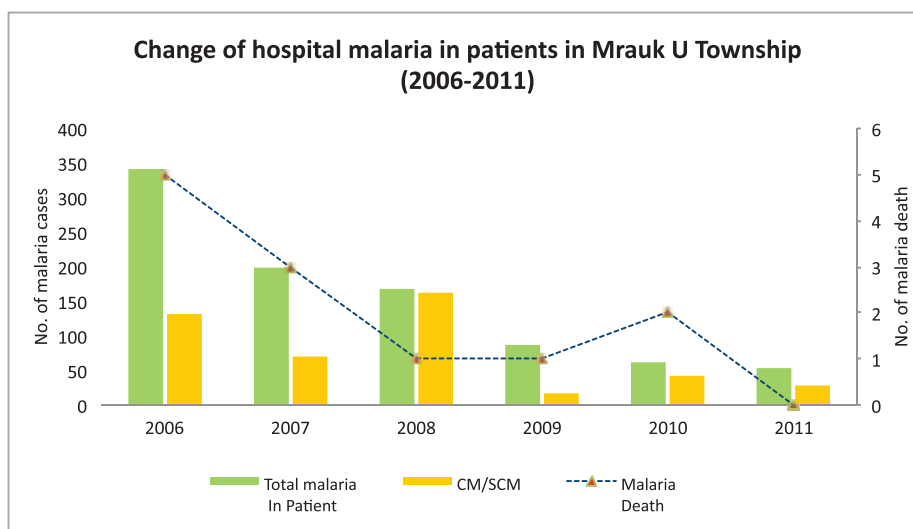




### Percentage of positive patients treated with ACT in Mrauk U Township in 2010 and 2011

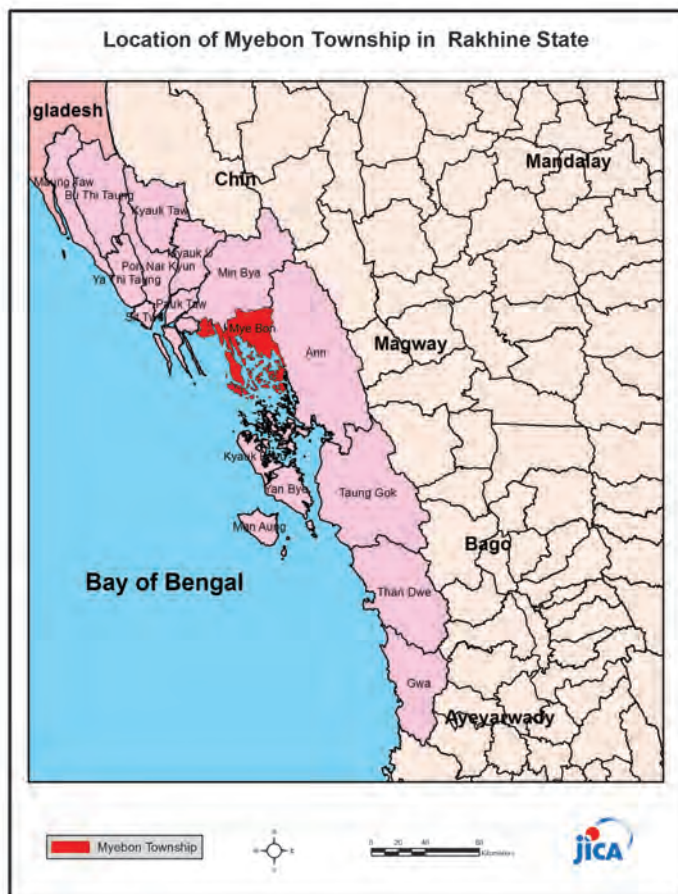


### Change of hospital malaria in patients in Mrauk U Township in Rakhine State from 2006 to 2011



Sr	Year	Total In Patient	Total malaria In Patient	CM/SCM	Malaria Death	Total Death
1	2006	2695	341	132	5	20
2	2007	2415	198	71	3	31
3	2008	2626	168	163	1	59
4	2009	1689	88	16	1	32
5	2010	1367	63	41	2	45
6	2011	1270	52	27	0	32

## Health Profile of Myebon Township



### Area and Location\*

Area	:	2440.09 Km <sup>2</sup>
North	:	Min Bya
South	:	Kyauk Phyu
East	:	Ann
West	:	Rakhine Coastal Strip

### Administrative Units\*

Wards	:	9
Village tracts	:	51
Villages	:	132

### Population (2009)\*

Total	:	130,011
Urban	:	16,171
Rural	:	113,840
Male	:	66,157
Female	:	63,854
Sex Ratio	:	104
<5 Year	:	15,102
0-14 Year	:	41,303
15-49 Year	:	62,810
Population Density	:	53.28/ Km <sup>2</sup>

### Health Facilities (2009)\*

Township Hospital (25) Bedded	:	1
Station Hospital	:	1
Maternal and Child Health Center	:	1
Rural Health Centers	:	7
Sub Health Centers	:	28
Private Clinics and Maternity Homes	:	3

**Health Manpower\***

	<i>Doctor</i>	<i>Nurse</i>	<i>HA</i>	<i>LHV</i>	<i>PHS I</i>	<i>PHS II</i>	<i>MW</i>
Sanction	6	17	7	6	2	12	38
Appointed	2	15	5	6	2	9	33
Vacant	4	2	2	0	0	3	5
% Vacancy	66.7%	11.8%	28.6%	0%	0%	25%	13.2%

(HA: Health Assistant, LHV: Lady Health Visitor, PHS:Public Health Supervisor , MW: Midwife)

**Health Manpower (Volunteer)\***

	Category of Volunteer Health Workers		
	CHW	AMW	TTBA
Trained	118	69	0
Functioning	74	32	0
% Functioning	62.7%	46.4%	0%

(CHW: Community health Worker, AMW: Auxiliary Mid Wife, TTBA: Trained Traditional Birth Attendant)

**Common Diseases under National Surveillance\***

<i>Diseases</i>	<i>Morbidity</i>	<i>Mortality</i>
Malaria	3498.17	0
ARI <5	1443.52	0
Diarrhea	1586.02	0
Dysentery	981.46	0
TB(Sputum+)	0	0
Snake Bite	1.54	0.77

(Per 100,000 Populations)

\* The data source is Health Profile of Rakhine State (2009) from Department of Health Planning.



### Vegetation Cover and Health Facilities distribution in Myebon Township in Rakhine State

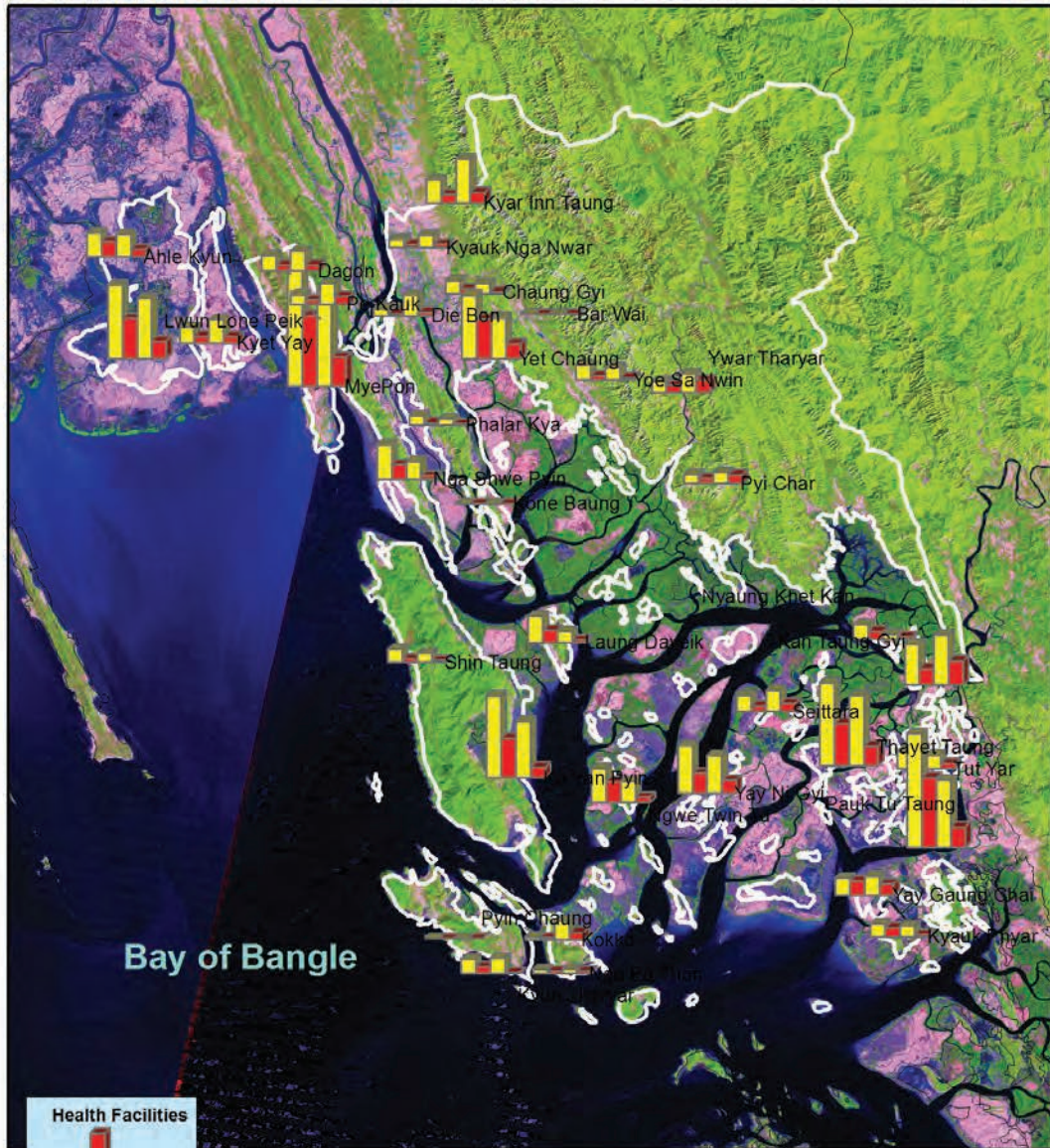


- Health Facilities**
- Township Hospital
  - Station Hospital
  - RHC
  - SHC

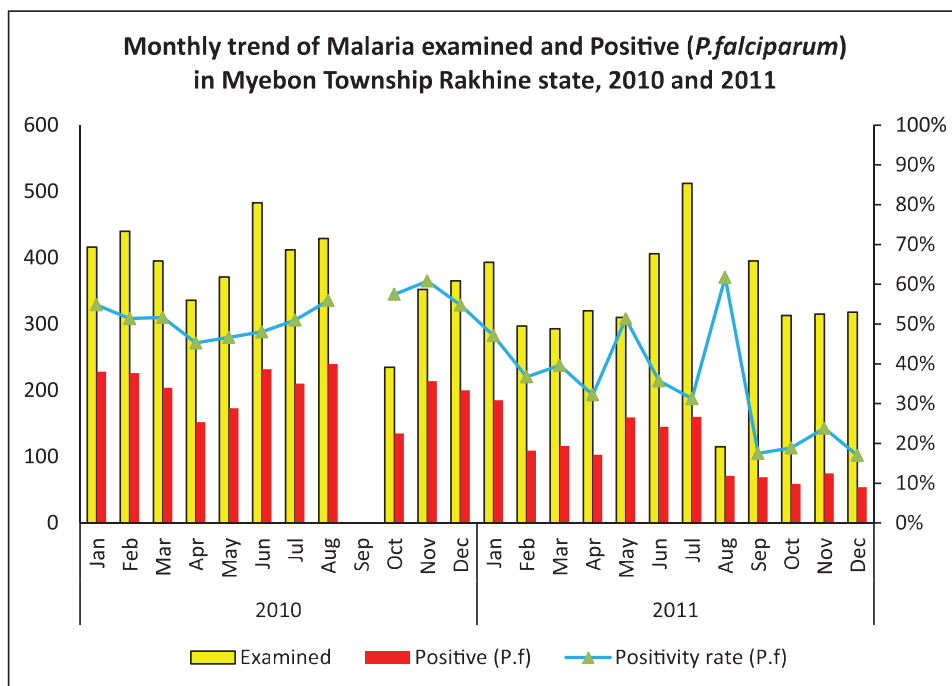




Health facilities wise malaria examined and positive (P.f) in Myebon Township, 2010 and 2011



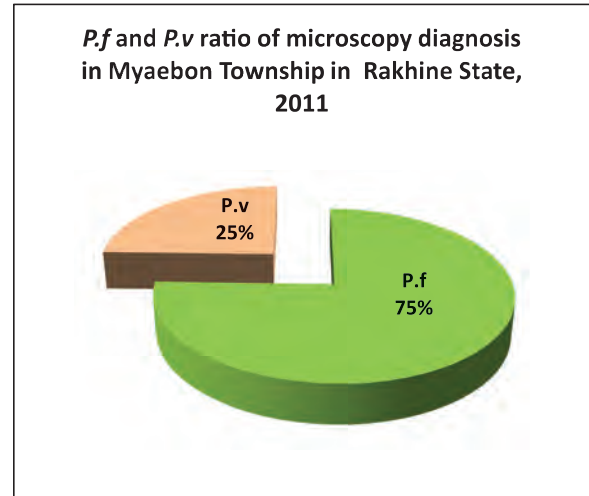
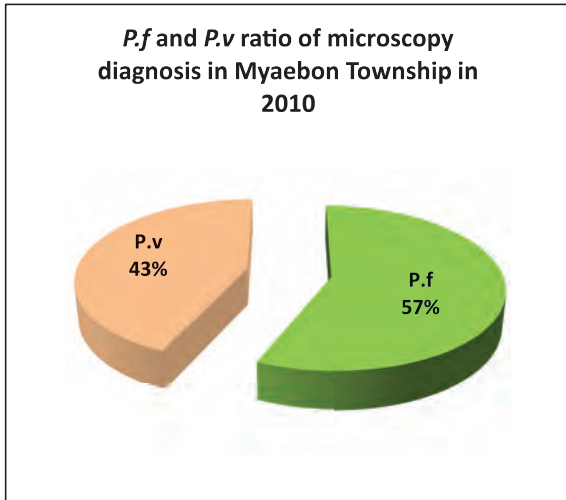
## Monthly trend of malaria examination and positive (*P.falciparum*) in Myebon Township in Rakhine State, 2010 and 2011



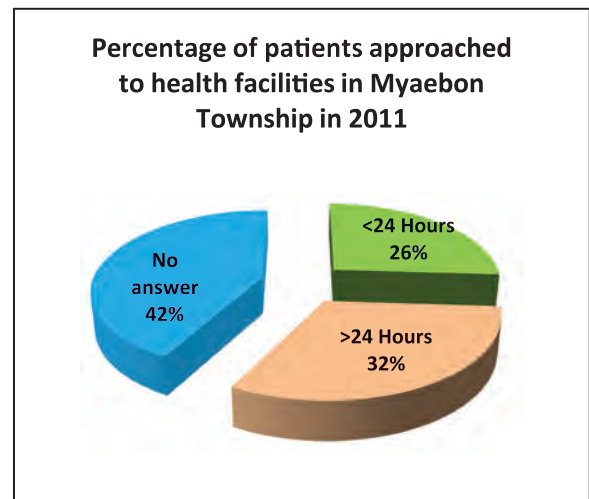
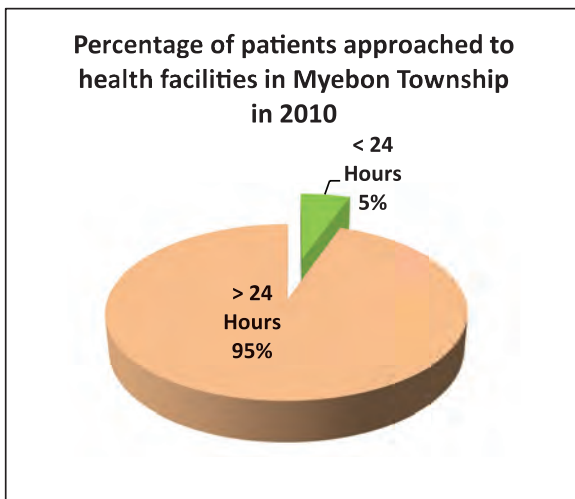
Month	2010			2011		
	Examined	Positive ( <i>P.f</i> )	Positivity rate ( <i>P.f</i> )	Examined	Positive ( <i>P.f</i> )	Positivity rate ( <i>P.f</i> )
Jan	416	228	54.81%	393	185	47.07%
Feb	440	226	51.36%	297	109	36.70%
Mar	395	204	51.65%	293	116	39.59%
Apr	336	152	45.24%	320	103	32.19%
May	371	173	46.63%	310	159	51.29%
Jun	483	232	48.03%	406	145	35.71%
Jul	412	210	50.97%	512	160	31.25%
Aug	429	240	55.94%	115	71	61.74%
Sep				395	69	17.47%
Oct	235	135	57.45%	313	59	18.85%
Nov	352	214	60.80%	315	75	23.81%
Dec	365	200	54.79%	318	54	16.98%
	<b>4,234</b>	<b>2,214</b>	<b>52.29%</b>	<b>3,987</b>	<b>1,305</b>	<b>32.73%</b>



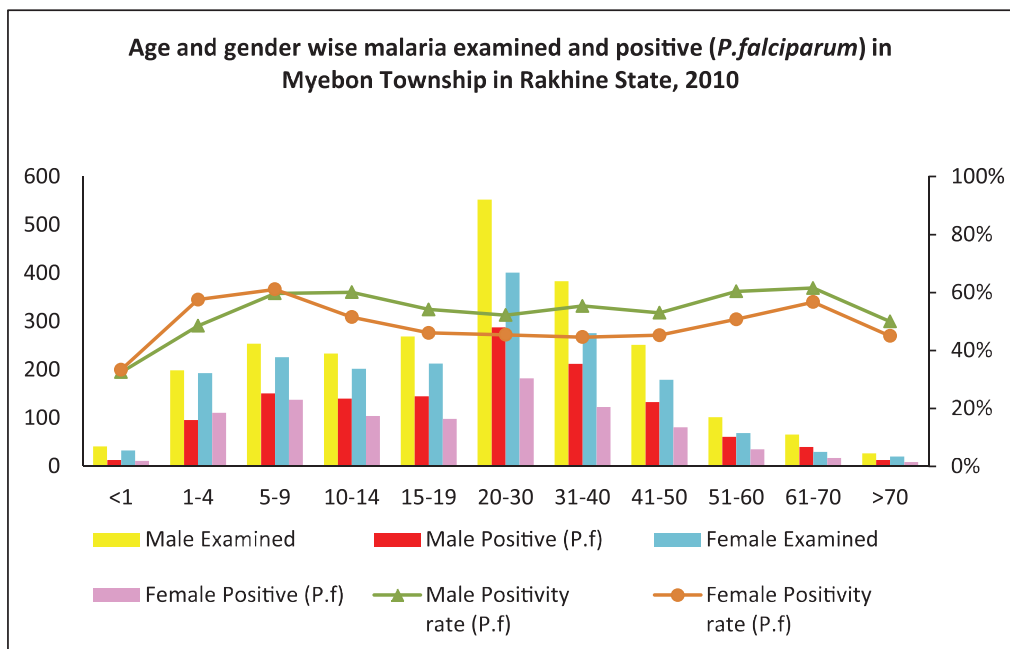
***P.f* and *P.v* ratio of malaria microscopy diagnosis in Myeabon Township in Rakhine State, 2010 and 2011**



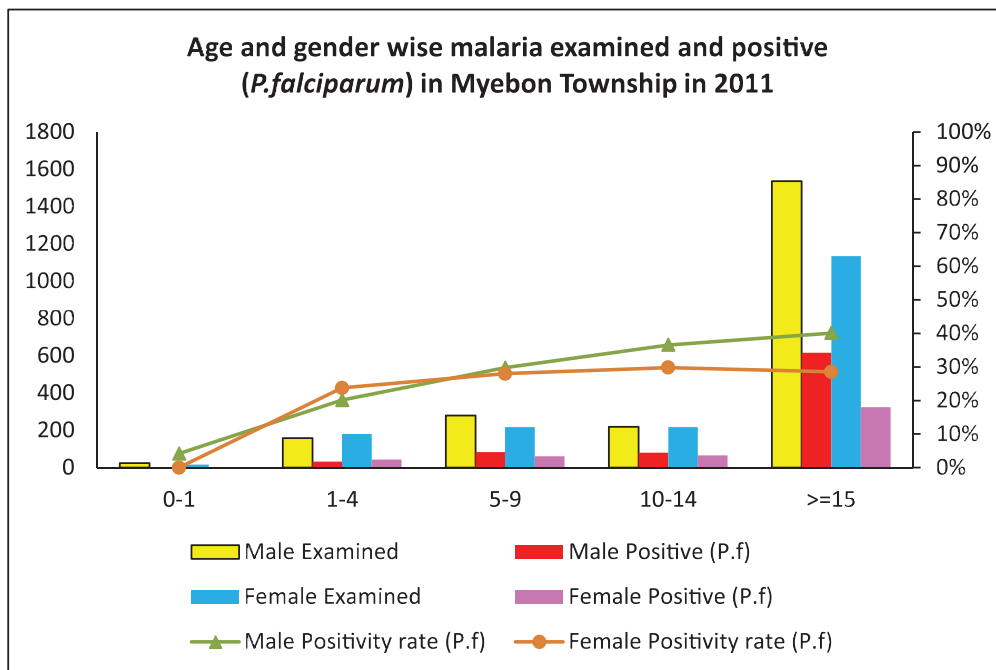
**Percentage of patients approached to health facilities for malaria confirmatory diagnosis in Myeabon Township in Rakhine State, 2010 and 2011**



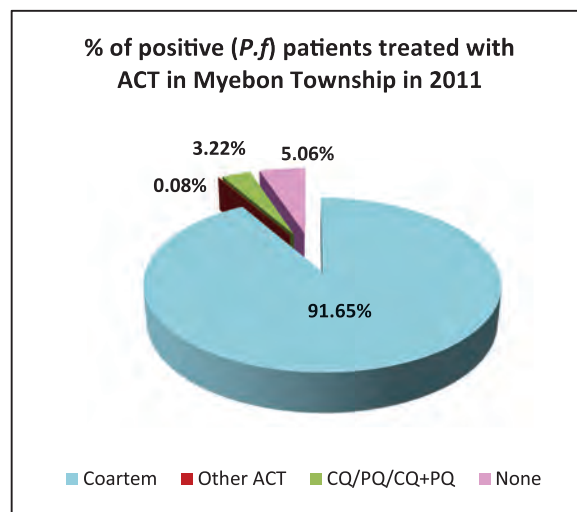
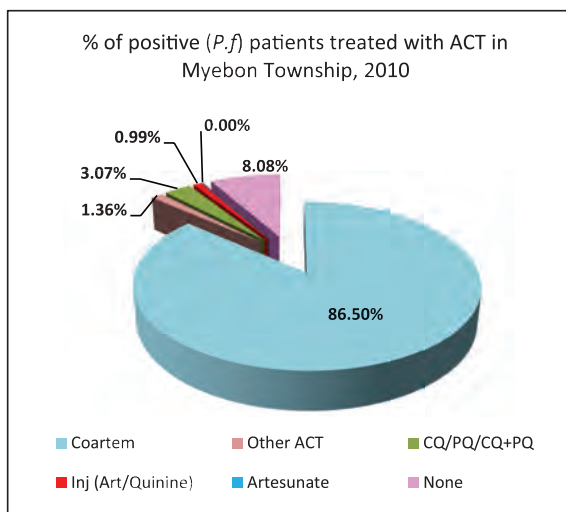
Age and gender wise malaria examination and positive (*P.f*) in Myebon Township, 2010



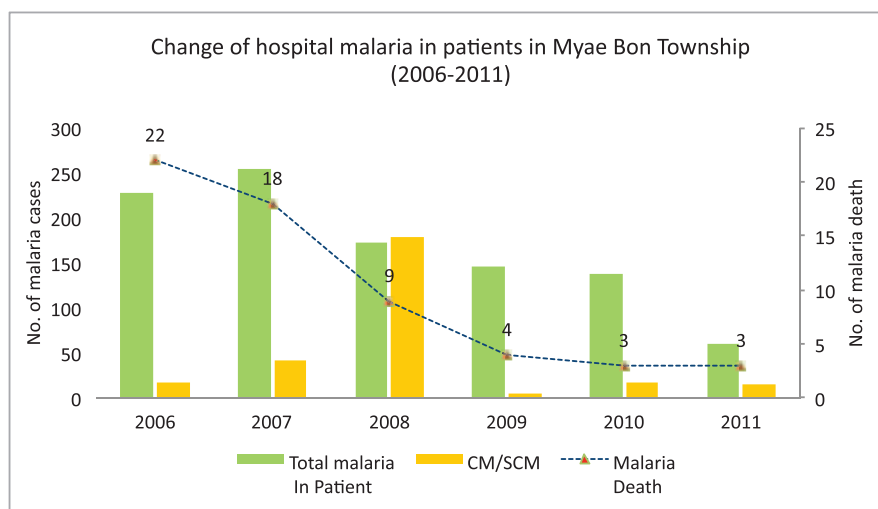
Age and gender wise malaria examination and positive (*P.f*) in Myebon Township, 2011



### Percentage of positive patients treated with ACT in Myebron Township in 2010 and 2011



### Change of hospital malaria in patients in Myebron Township in Rakhine State from 2006 to 2011



Sr	Year	Total In Patient	Total malaria In Patient	CM/SCM	Malaria Death	Total Death
1	2006	2033	228	17	22	51
2	2007	1232	255	41	18	49
3	2008	996	173	178	9	28
4	2009	1486	147	4	5	45
5	2010	1635	137	18	3	29
6	2011	1444	60	15	3	39



## Health Profile of Pauktaw Township



### Area and Location\*

Area:	1071.59 Km <sup>2</sup>
North:	Myauk U
South:	Bay of Bengal
East:	Myebon
West:	Pon Nar Gyun

### Administrative Units\*

Wards	: 5
Village tracts	: 53
Villages	: 182

### Population (2009)\*

Total	: 170,818
Urban	: 18,389
Rural	: 152,429
Male	: 82,890
Female	: 87,928
Sex Ratio	: 94
<5 Year	: 25,450
0-14 Year	: 63,171
15-49 Year	: 86,238
Population Density	: 159.41/ Km <sup>2</sup>

### Health Facilities (2009)\*

Township Hospital (25) Bedded	: 1
Station Hospital	: 1
Maternal and Child Health Centers	: 1
Rural Health Centers	: 5
Sub Health Centers	: 20
Private Clinics and Maternity Homes	: 2

### Health Manpower\*

	Doctor	Nurse	HA	LHV	PHS I	PHS II	MW
Sanction	6	17	5	4	2	3	28
Appointed	2	16	5	3	2	3	27
Vacant	4	1	0	1	0	0	1
% Vacancy	66.7%	5.9%	0%	25%	0%	0%	3.6%

(HA: Health Assistant, LHV: Lady Health Visitor, PHS:Public Health Supervisor , MW: Midwife)

### Health Manpower (Volunteer)\*

	Category of Volunteer Health Workers		
	CHW	AMW	TTBA
Trained	138	71	0
Functioning	67	39	0
% Functioning	48.6%	54.9%	0

(CHW: Community health Worker, AMW: Auxiliary Mid Wife, TTBA: Trained Traditional Birth Attendant)

### Common Diseases under National Surveillance\*





Diseases	Morbidity	Mortality
Malaria	1462.38	0
ARI <5	3693.52	0
Diarrhea	945.45	0
Dysentery	364.13	0
TB(Sputum+)	0	0
Snake Bite	0	0

(Per 100,000 Populations)

\* The data source is Health Profile of Rakhine State (2009) from Department of Health Planning.

### Vegetation Cover and Health Facilities distribution in Pauktaw Township in Rakhine State

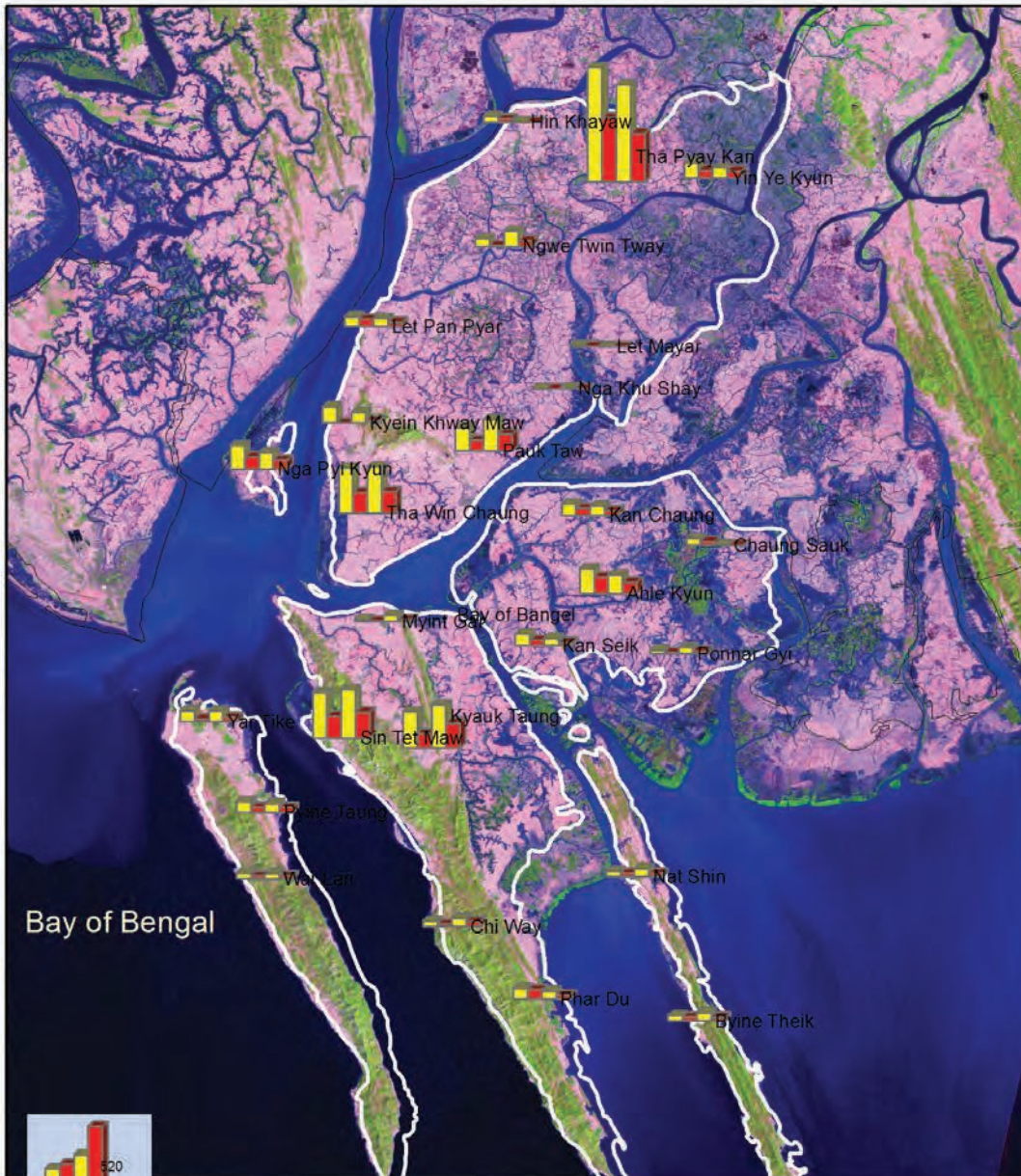


-  Township Hospital
-  Station Hospital
-  RHC
-  SHC

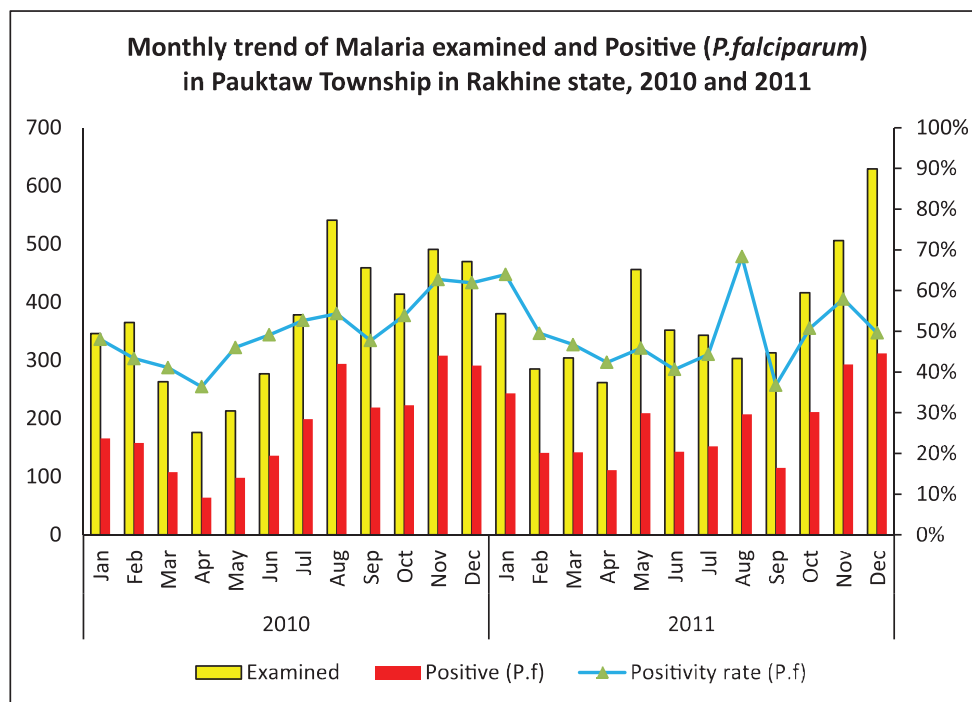




**Health facilities wise malaria examined and positive (P.f) in Pauktaw Township, 2010 and 2011**

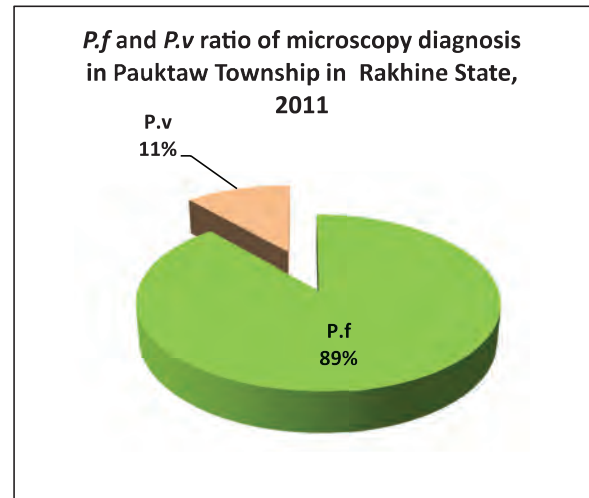
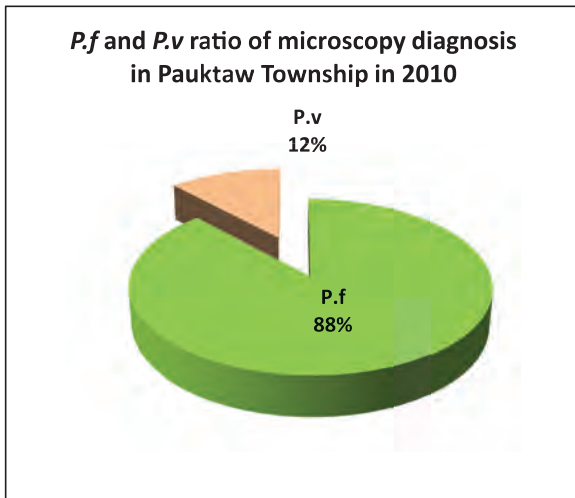


## Monthly trend of malaria examination and positive (*P.falciparum*) in Pauktaw Township in Rakhine State, 2010 and 2011

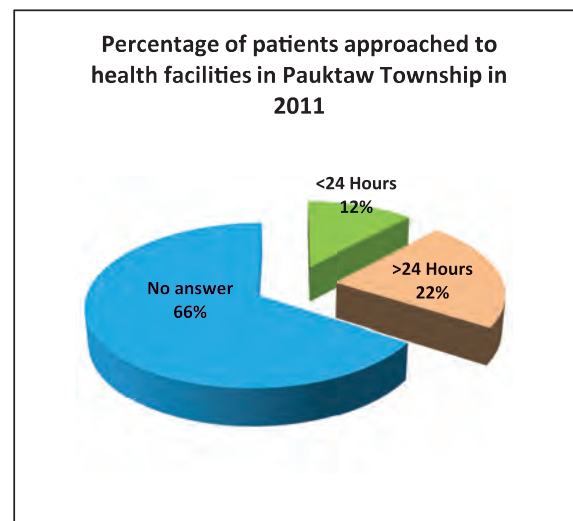
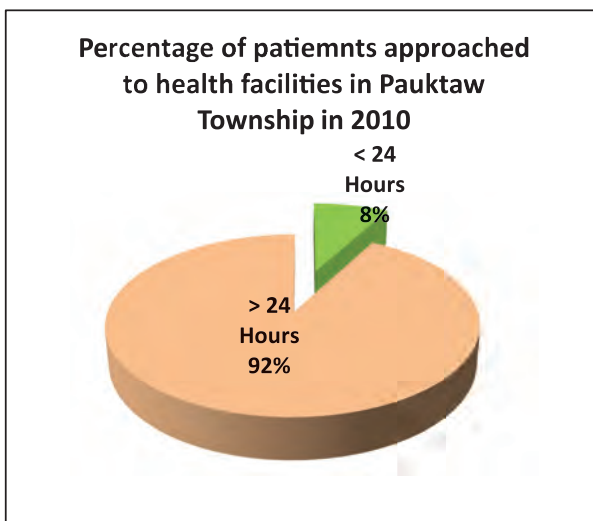


Month	2010			2011		
	Examined	Positive ( <i>P.f</i> )	Positivity rate ( <i>P.f</i> )	Examined	Positive ( <i>P.f</i> )	Positivity rate ( <i>P.f</i> )
Jan	346	166	47.98%	380	243	63.95%
Feb	365	158	43.29%	285	141	49.47%
Mar	263	108	41.06%	304	142	46.71%
Apr	176	64	36.36%	262	111	42.37%
May	213	98	46.01%	456	209	45.83%
Jun	277	136	49.10%	352	143	40.63%
Jul	378	199	52.65%	343	152	44.31%
Aug	541	294	54.34%	303	207	68.32%
Sep	459	219	47.71%	313	115	36.74%
Oct	414	223	53.86%	416	211	50.72%
Nov	491	308	62.73%	506	293	57.91%
Dec	470	291	61.91%	629	312	49.60%
	<b>4,393</b>	<b>2,264</b>	<b>51.54%</b>	<b>4,549</b>	<b>2,279</b>	<b>50.10%</b>

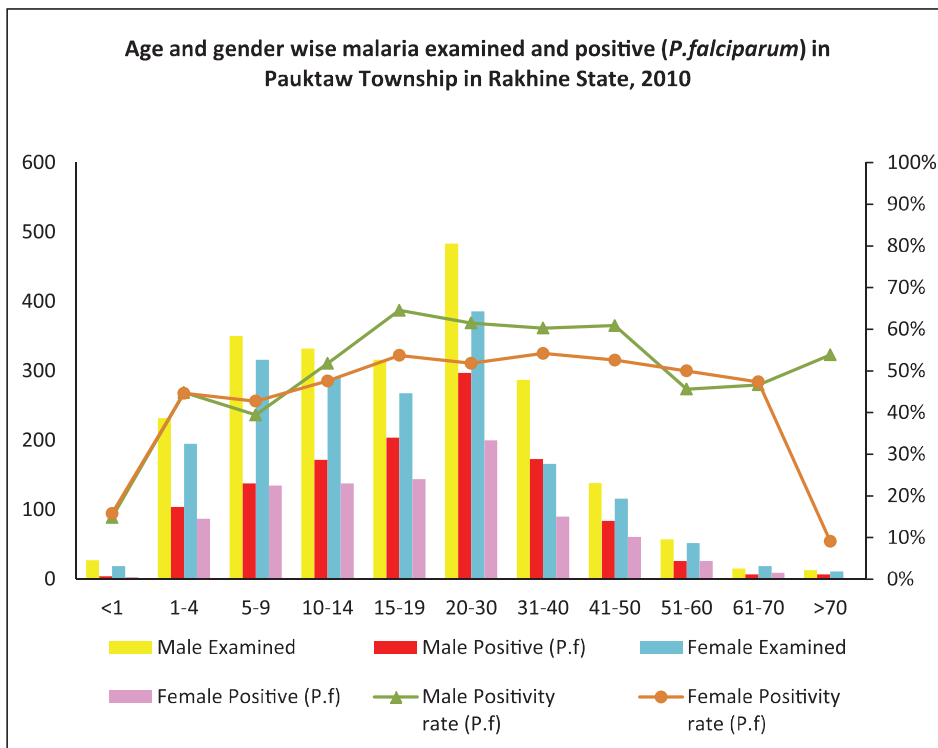
***P.f* and *P.v* ratio of malaria microscopy diagnosis in Pauktaw Township in Rakhine State, 2010 and 2011**



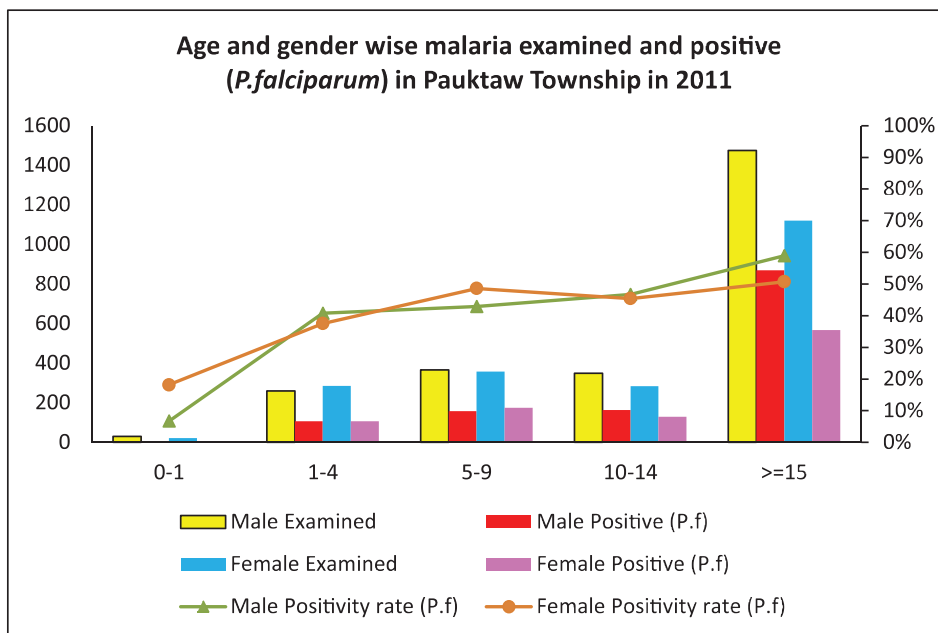
**Percentage of patients approached to health facilities for malaria confirmatory diagnosis in Pauktaw Township in Rakhine State, 2010 and 2011**



### Age and gender wise malaria examintaion and positive (P.f) in Pauktaw Township, 2010

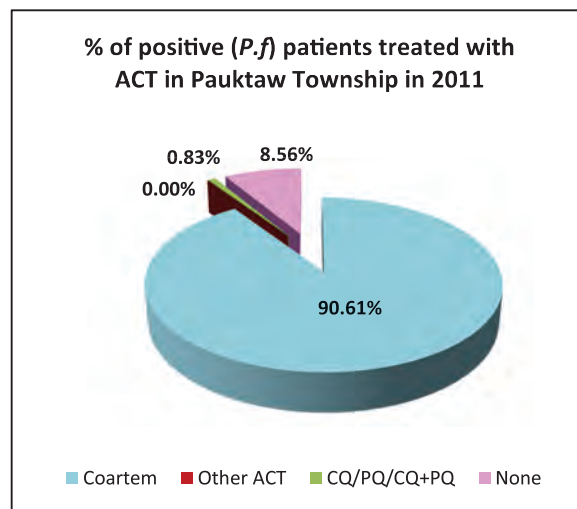
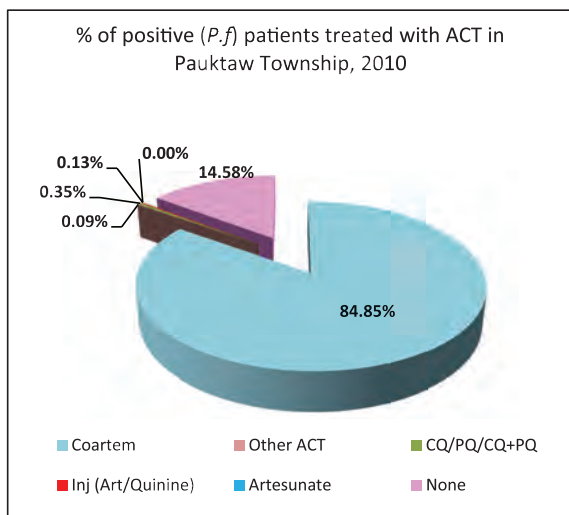


### Age and gender wise malaria examintaion and positive (P.f) in Pauktaw Township, 2011

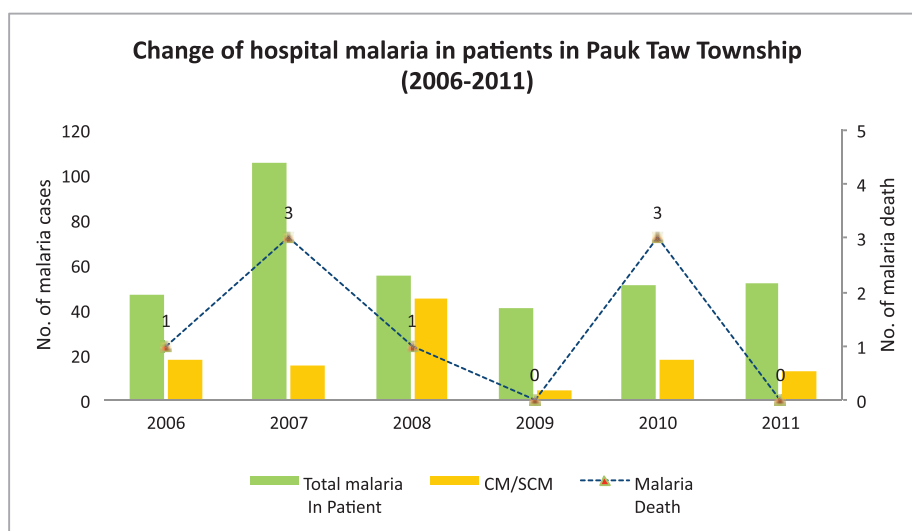




### Percentage of positive patients treated with ACT in Pauktaw Township in 2010 and 2011



### Change of hospital malaria in patients in Pauktaw Township in Rakhine State from 2006 to 2011



Sr	Year	Total In Patient	Total malaria In Patient	CM/SCM	Malaria Death	Total Death
1	2006	1127	47	18	1	9
2	2007	1419	105	15	3	16
3	2008	1586	55	45	1	13
4	2009	1284	41	4	0	30
5	2010	1133	51	18	3	29
6	2011	1340	52	13	0	29

## Health Profile of Ponnakyun Township



### Area and Location\*

Area	: 1138.63 Km <sup>2</sup>
North	: Kyauk Taw
South	: Pauk Taw
East	: Myauk U
West	: Ya Thi Daung

### Administrative Units\*

Wards	: 4
Village tracts	: 92
Villages	: 190

### Population (2009)\*

Total	: 139,830
Urban	: 10,378
Rural	: 129,452
Male	: 68,473
Female	: 71,357
Sex Ratio	: 96
<5 Year	: 18,445
0-14 Year	: 46,742
15-49 Year	: 69,444
Population Density	: 122.81/ Km <sup>2</sup>

### Health Facilities (2009)\*

Township Hospital (25) Bedded	: 1
Station Hospital	: 1
Hospital Under other Ministry	: 1
Rural Health Centers	: 5
Sub Health Centers	: 20
Private Clinics and Maternity Homes	: 2

**Health Manpower\***

	<i>Doctor</i>	<i>Nurse</i>	<i>HA</i>	<i>LHV</i>	<i>PHS I</i>	<i>PHS II</i>	<i>MW</i>
Sanction	6	17	5	4	2	3	27
Appointed	3	16	5	4	2	3	24
Vacant	3	1	0	0	0	0	3
% Vacancy	50%	5.9%	0%	0%	0%	0%	11.1%

(HA: Health Assistant, LHV: Lady Health Visitor, PHS:Public Health Supervisor , MW: Midwife)

**Health Manpower (Volunteer)\***

	Category of Volunteer Health Workers		
	CHW	AMW	TTBA
Trained	223	160	80
Functioning	151	120	65
% Functioning	67.7%	75%	81.3%

(CHW: Community health Worker, AMW: Auxiliary Mid Wife, TTBA: Trained Traditional Birth Attendant)

**Common Diseases under National Surveillance\***

<i>Diseases</i>	<i>Morbidity</i>	<i>Mortality</i>
Malaria	2636.06	0
ARI <5	11238.82	16.26
Diarrhea	1525.42	0
Dysentery	492.03	0
TB(Sputum+)	25.75	0
Snake Bite	0	0

(Per 100,000 Populations)

\* The data source is Health Profile of Rakhine State (2009) from Department of Health Planning.

### Vegetation Cover and Health Facilities distribution in Ponnarkyun Township in Rakhine State

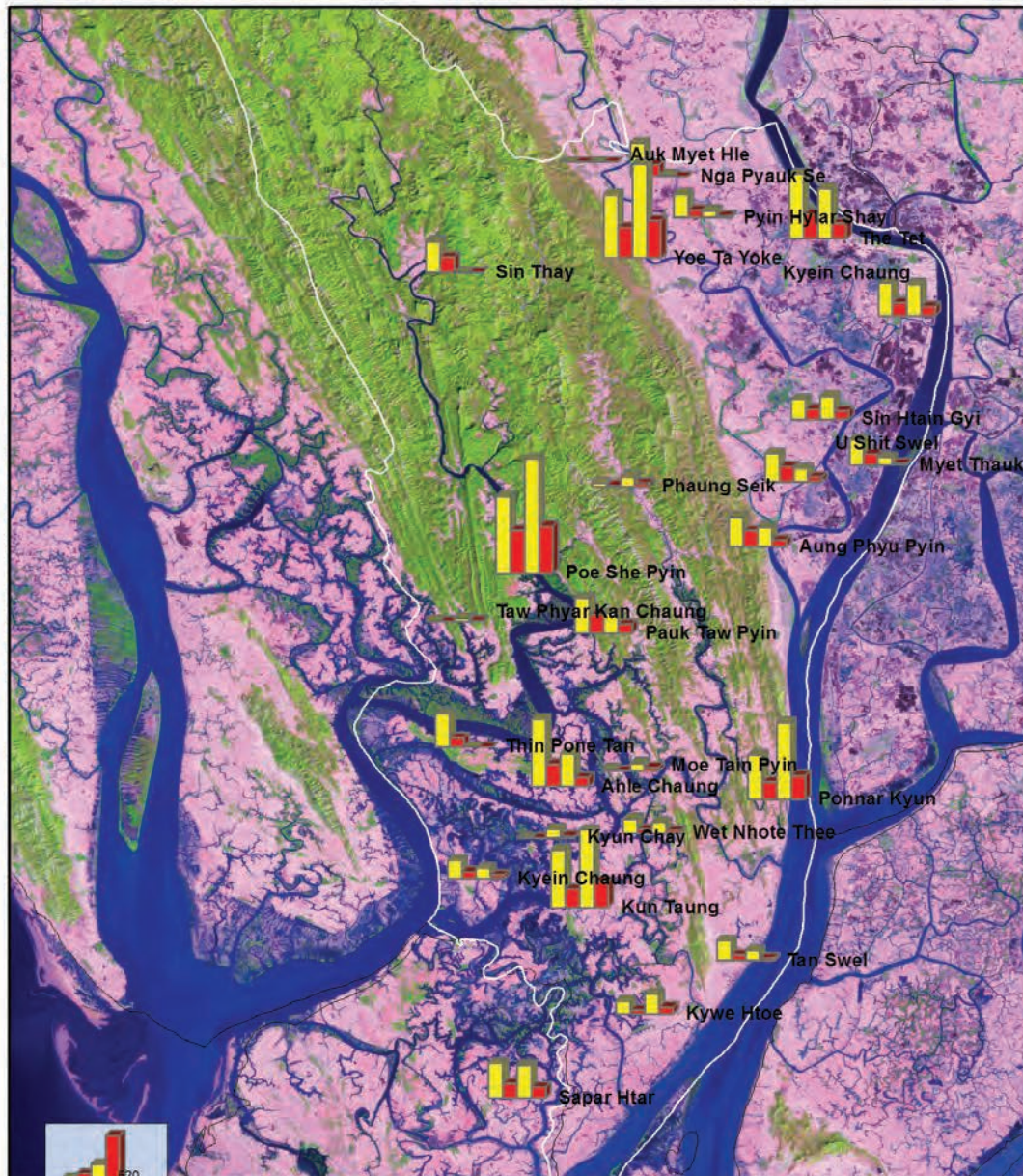


	Township Hospital
	RHC
	SHC

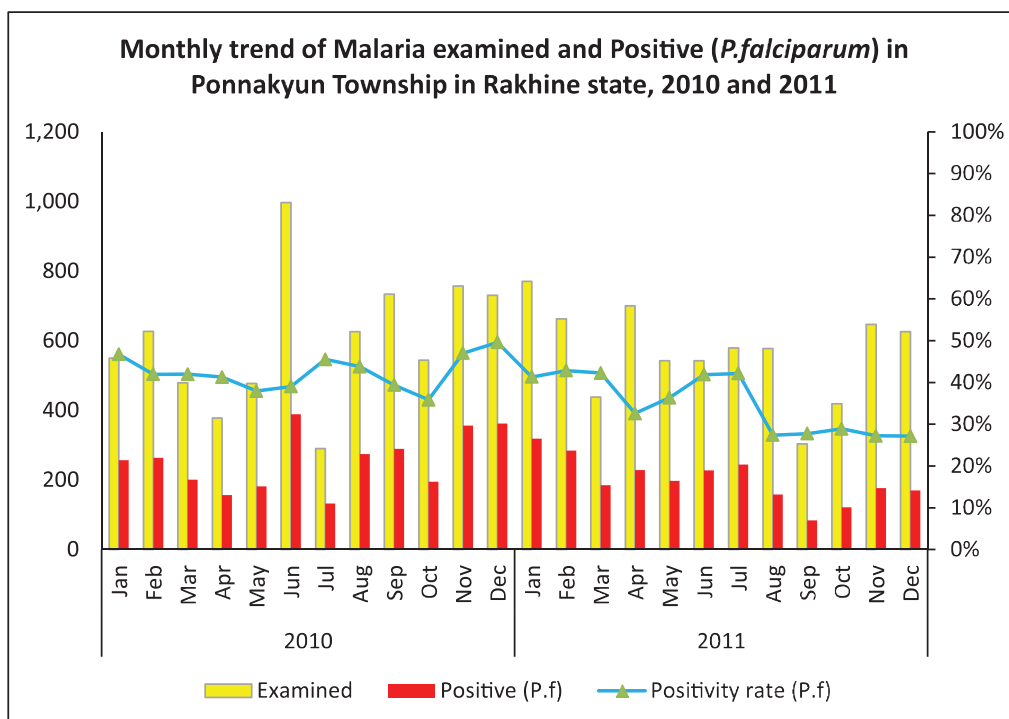




Health facilities wise malaria examined and positive (P.f) in Ponnarkyun Township, 2010 and 2011

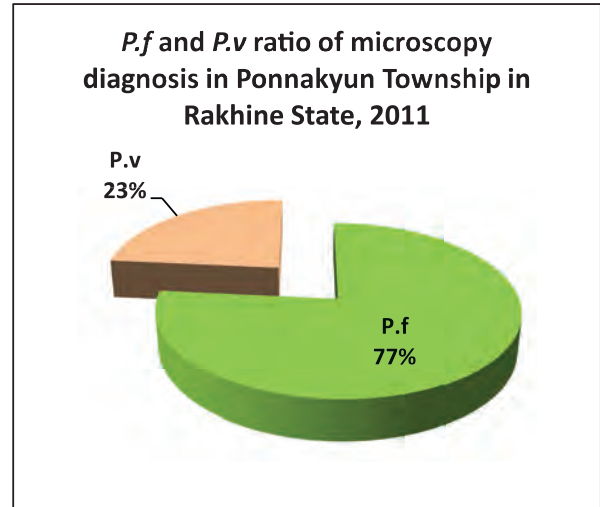
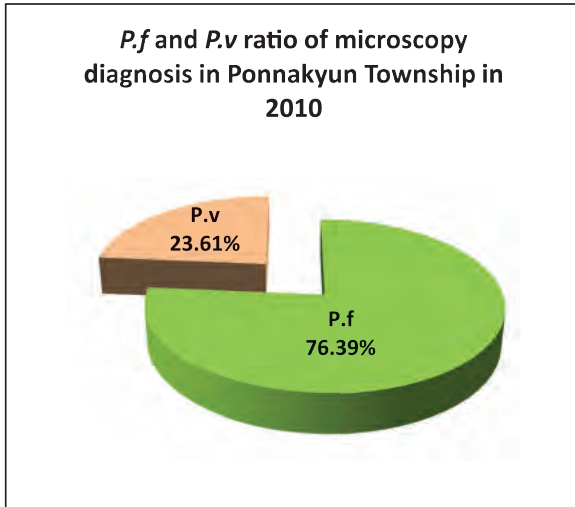


## Monthly trend of malaria examination and positive (*P.falciparum*) in Ponnakyun Township in Rakhine State in 2010 and 2011

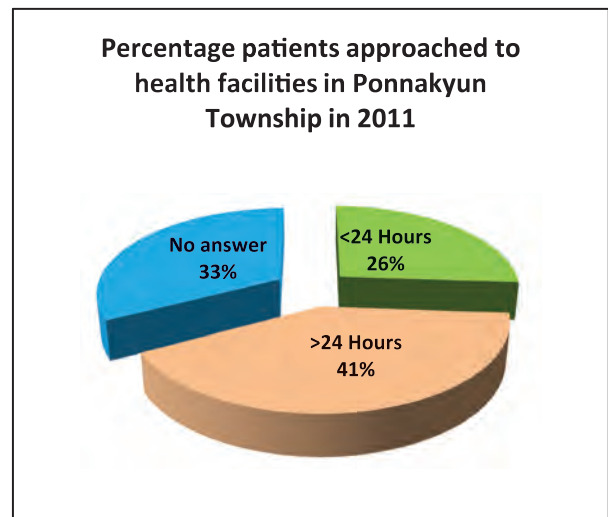
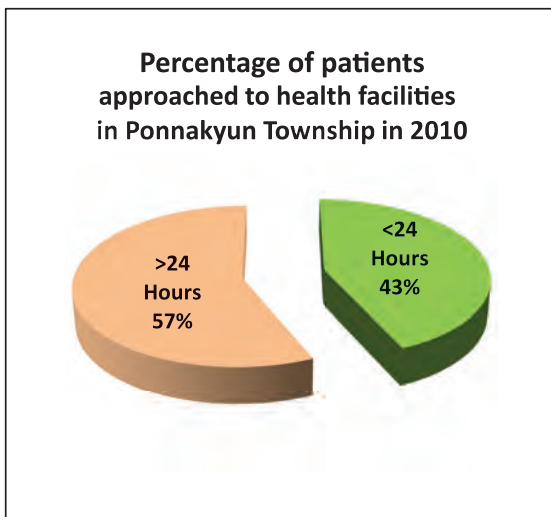


Month	2010			2011		
	Examined	Positive ( <i>P.f</i> )	Positivity rate ( <i>P.f</i> )	Examined	Positive ( <i>P.f</i> )	Positivity rate ( <i>P.f</i> )
Jan	550	257	46.73%	770	318	41.30%
Feb	627	263	41.95%	663	284	42.84%
Mar	479	201	41.96%	438	185	42.24%
Apr	378	156	41.27%	700	228	32.57%
May	477	181	37.95%	542	197	36.35%
Jun	997	389	39.02%	542	227	41.88%
Jul	290	132	45.52%	579	244	42.14%
Aug	626	274	43.77%	577	158	27.38%
Sep	734	289	39.37%	303	84	27.72%
Oct	544	195	35.85%	419	121	28.88%
Nov	757	356	47.03%	647	176	27.20%
Dec	730	362	49.59%	626	170	27.16%
	<b>7,189</b>	<b>3,055</b>	<b>42.50%</b>	<b>6,806</b>	<b>2,392</b>	<b>35.15%</b>

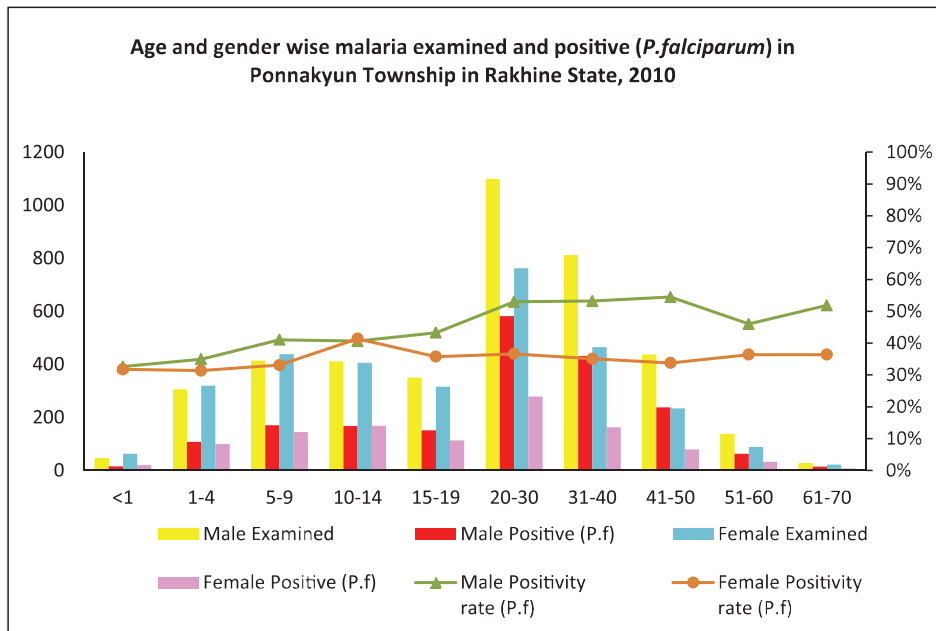
***P.f* and *P.v* ratio of malaria microscopy diagnosis in Ponnakyun Township in Rakhine State, 2010 and 2011**



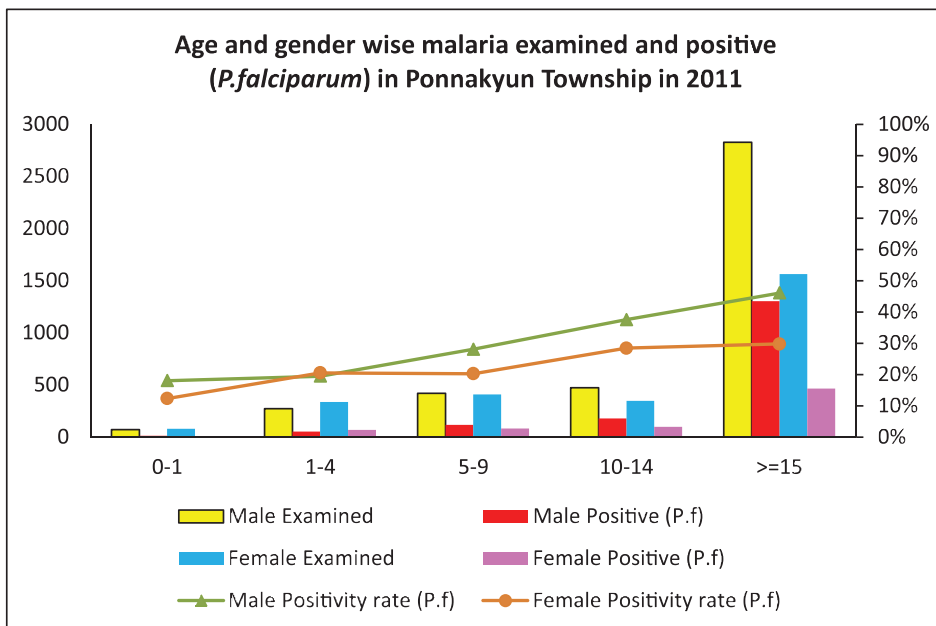
**Percentage of patients approached to health facilities for malaria confirmatory diagnosis in Ponnakyun Township in Rakhine State, 2010 and 2011**



### Age and gender wise malaria examination and positive (*P.f*) in Ponnakyun Township, 2010

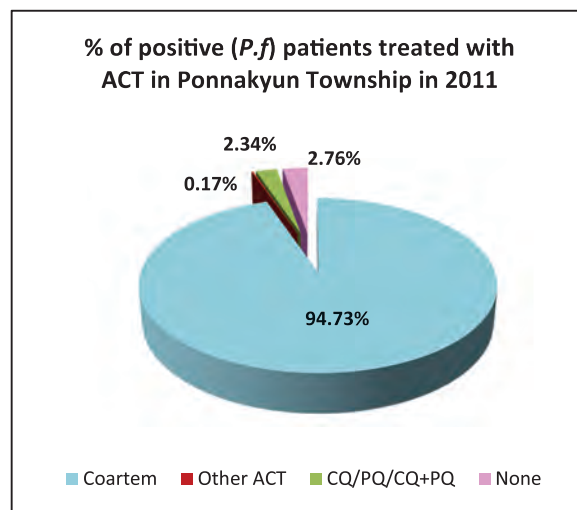
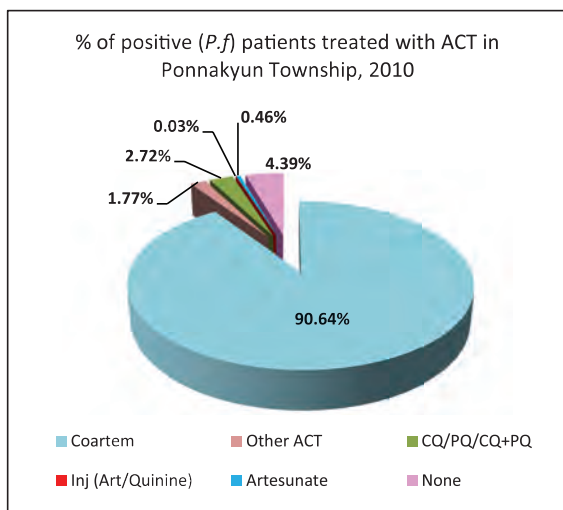


### Age and gender wise malaria examination and positive (*P.f*) in Ponnakyun Township, 2011

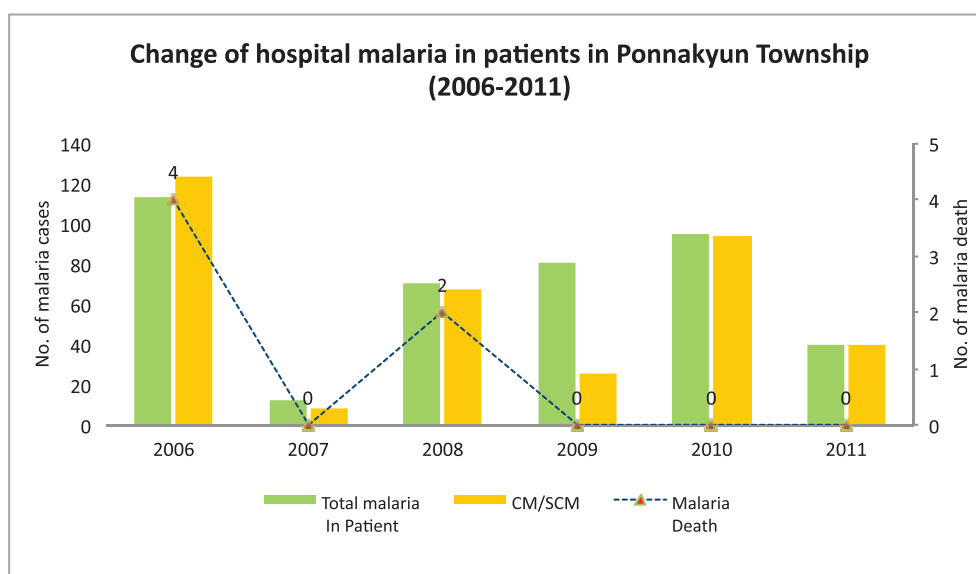




### Percentage of positive patients treated with ACT in Ponnakyun Township in 2010 and 2011



### Change of hospital malaria in patients in Ponnakyun Township in Rakhine State from 2006 to 2011



Sr	Year	Total In Patient	Total malaria In Patient	CM/SCM	Malaria Death	Total Death
1	2006	821	113	123	4	15
2	2007	943	12	8	0	42
3	2008	1004	70	67	2	37
4	2009	1430	81	26	0	31
5	2010	1816	95	94	0	29
6	2011	1172	40	40	0	16