

Health Profile of Kyauktaw Township



Area and Location*

Area	:	1749.67 Km ²
North	:	Paletwa
South	:	Pon Nar Gyun
East	:	Myauk U
West	:	Pon Nar Gyun

Administrative Units*

Wards	:	5
Village tracts	:	72
Villages	:	285

Population (2009)*

Total	:	253,576
Urban	:	25,303
Rural	:	228,273
Male	:	26,649
Female	:	126,927
Sex Ratio	:	100
<5 Year	:	27,870
0-14 Year	:	81,097
15-49 Year	:	137,504
Population Density	:	144.93/ Km ²

Health Facilities (2009)*

Township Hospital (25) Bedded	:	1
Station Hospital	:	1
Maternal and Child Health Center	:	1
Rural Health Centers	:	6
Sub Health Centers	:	24
Private Clinics and Maternity Homes	:	3

Health Manpower*

	<i>Doctor</i>	<i>Nurse</i>	<i>HA</i>	<i>LHV</i>	<i>PHS I</i>	<i>PHS II</i>	<i>MW</i>
Sanction	5	11	6	5	2	3	33
Appointed	5	10	6	5	2	2	32
Vacant	0	1	0	0	0	1	1
% Vacancy	0%	9.1%	0%	0%	0%	33.3%	3%

(HA: Health Assistant, LHV: Lady Health Visitor, PHS:Public Health Supervisor , MW: Midwife)

Health Manpower (Volunteer)*

	Category of Volunteer Health Workers		
	CHW	AMW	TTBA
Trained	280	168	234
Functioning	121	137	224
% Functioning	43.2%	81.5%	95.7%

(CHW: Community health Worker, AMW: Auxiliary Mid Wife, TTBA: Trained Traditional Birth Attendant)

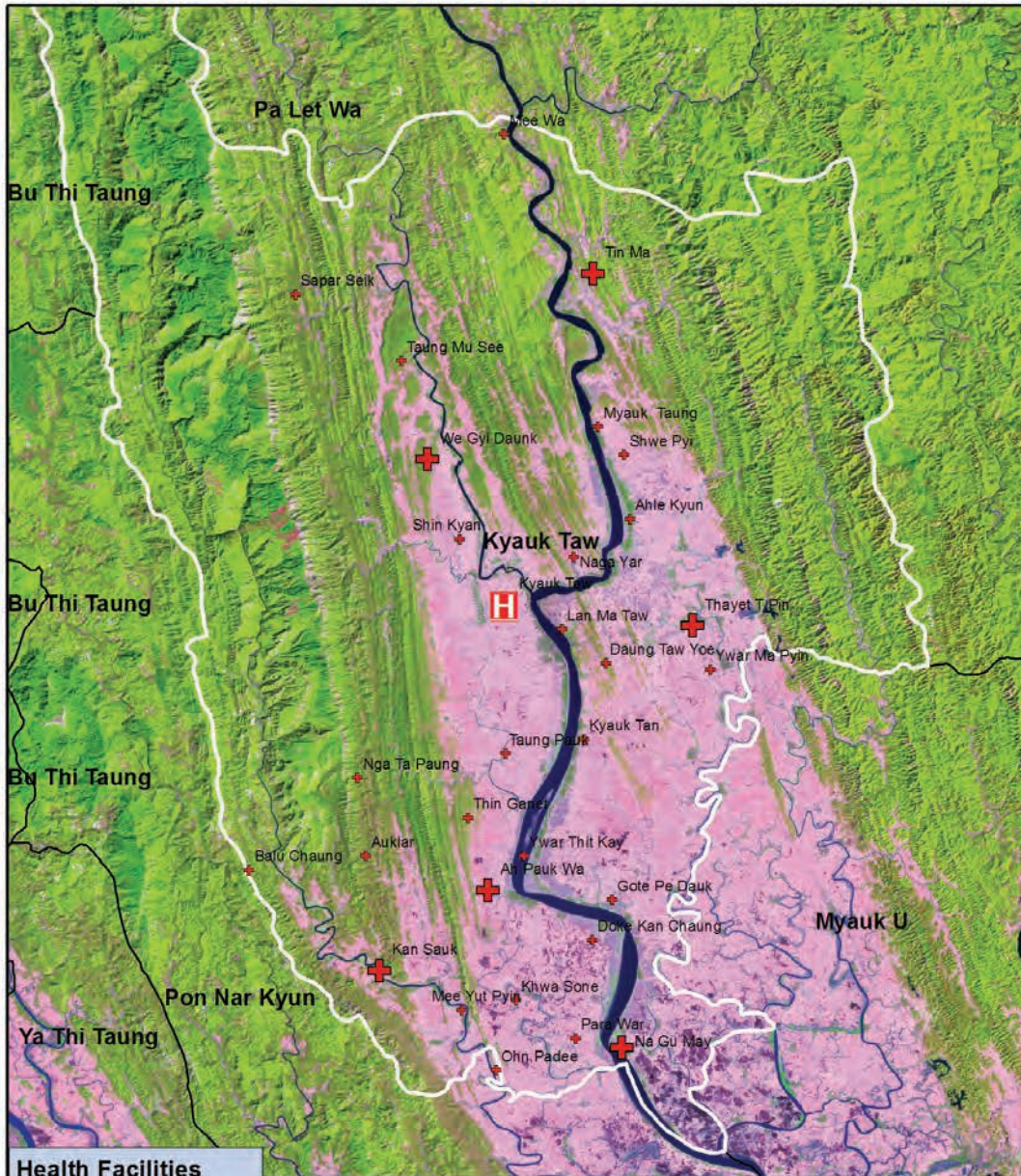
Common Diseases under National Surveillance*

<i>Diseases</i>	<i>Morbidity</i>	<i>Mortality</i>
Malaria	9521.80	5.52
ARI <5	7958.38	3.59
Diarrhea	694.47	1.58
Dysentery	261.07	0
TB(Sputum+)	81.24	0
Snake Bite	0	0

(Per 100,000 Populations)

* The data source is Health Profile of Rakhine State (2009) from Department of Health Planning.

Vegetation Cover and Health Facilities distribution in Kyauk Taw Township in Rakhine State

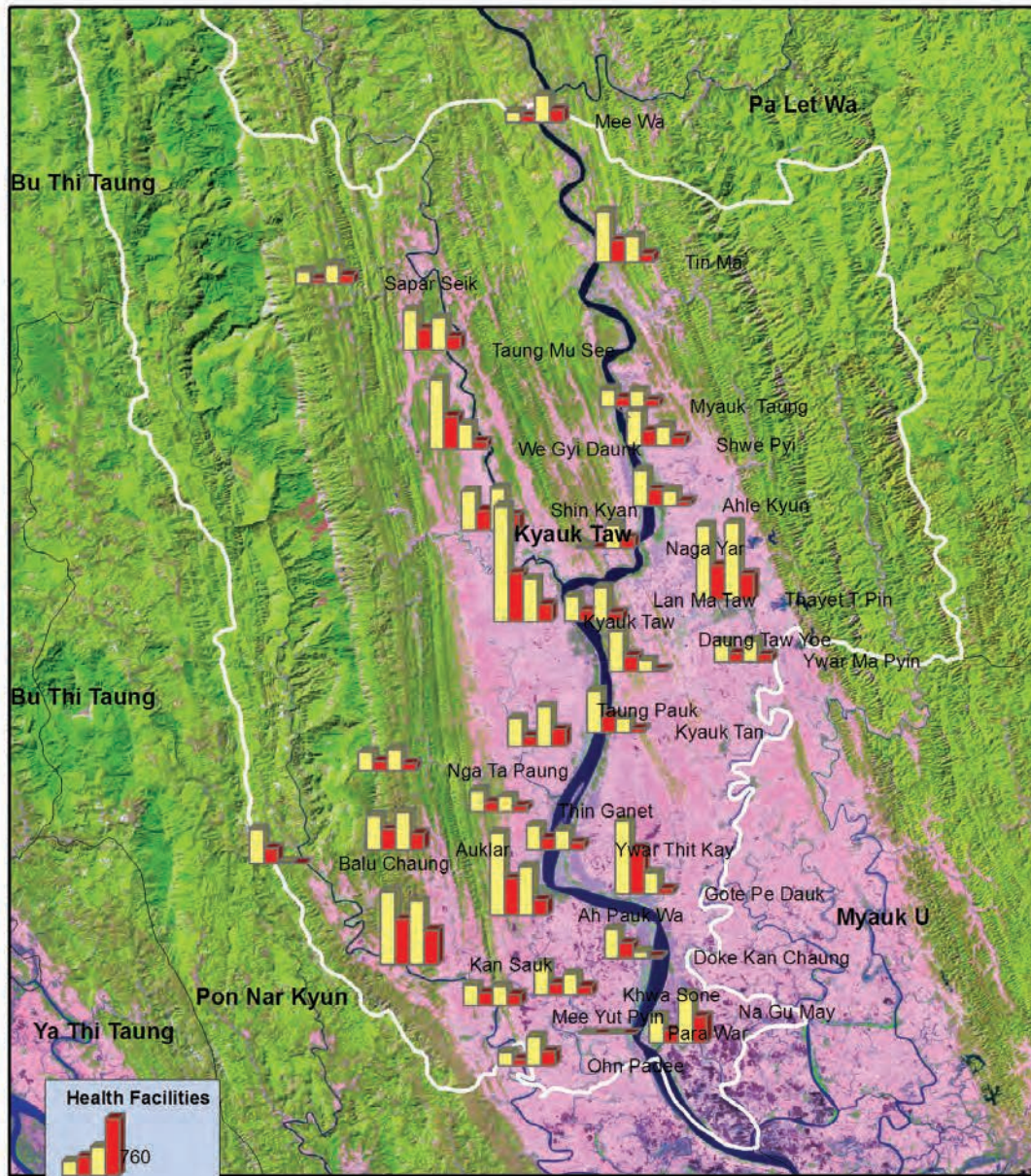


Health Facilities

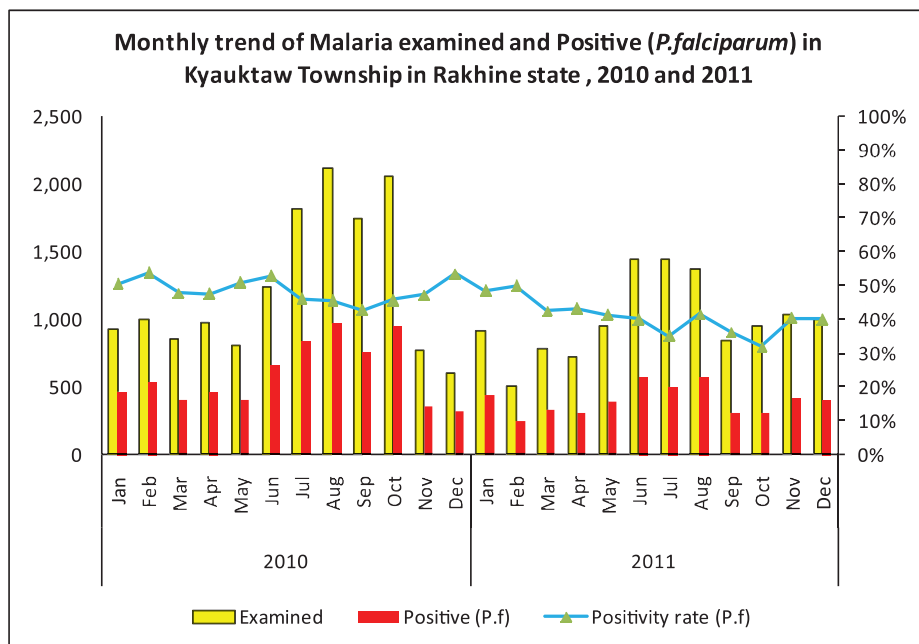
- Township Hospital
- RHC
- SHC



Health facilities wise malaria examined and positive (P.f) in Kyauktaw Township, 2010 and 2011

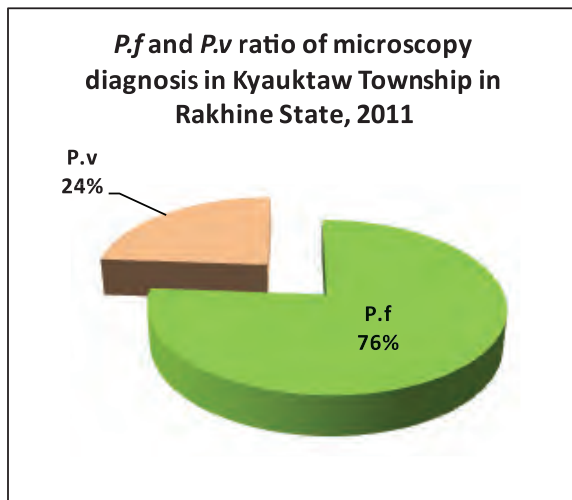
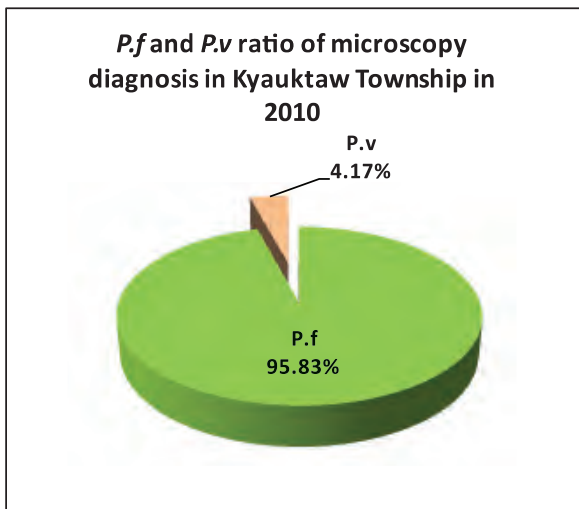


Monthly trend of malaria examination and positive (*P.falciparum*) in Kyauktaw Township in Rakhine State, 2010 and 2011

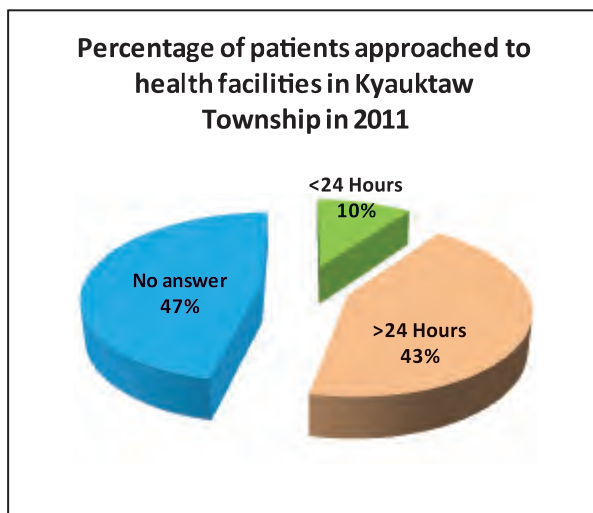
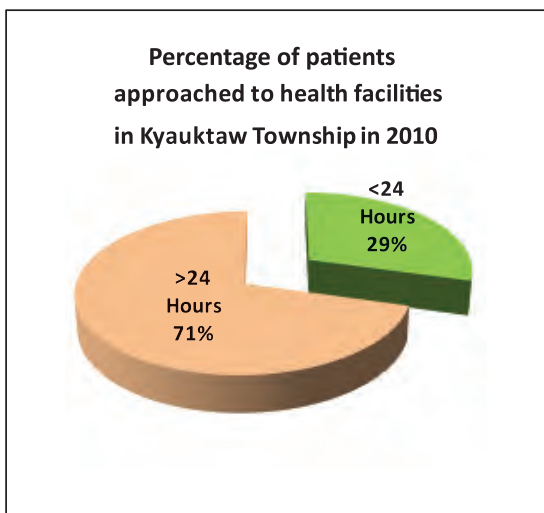


Month	2010			2011		
	Examined	Positive (P.f)	Positivity rate (P.f)	Examined	Positive (P.f)	Positivity rate (P.f)
Jan	927	469	50.59%	917	446	48.64%
Feb	1,006	543	53.98%	508	254	50.00%
Mar	854	409	47.89%	788	336	42.64%
Apr	981	468	47.71%	731	316	43.23%
May	809	412	50.93%	956	395	41.32%
Jun	1,239	657	53.03%	1,444	579	40.10%
Jul	1,817	840	46.23%	1,443	507	35.14%
Aug	2,118	969	45.75%	1,379	575	41.70%
Sep	1,751	752	42.95%	842	306	36.34%
Oct	2,060	946	45.92%	957	307	32.08%
Nov	768	364	47.40%	1,037	420	40.50%
Dec	605	325	53.72%	1,006	404	40.16%
	14,935	7,154	47.90%	12,008	4,845	40.35%

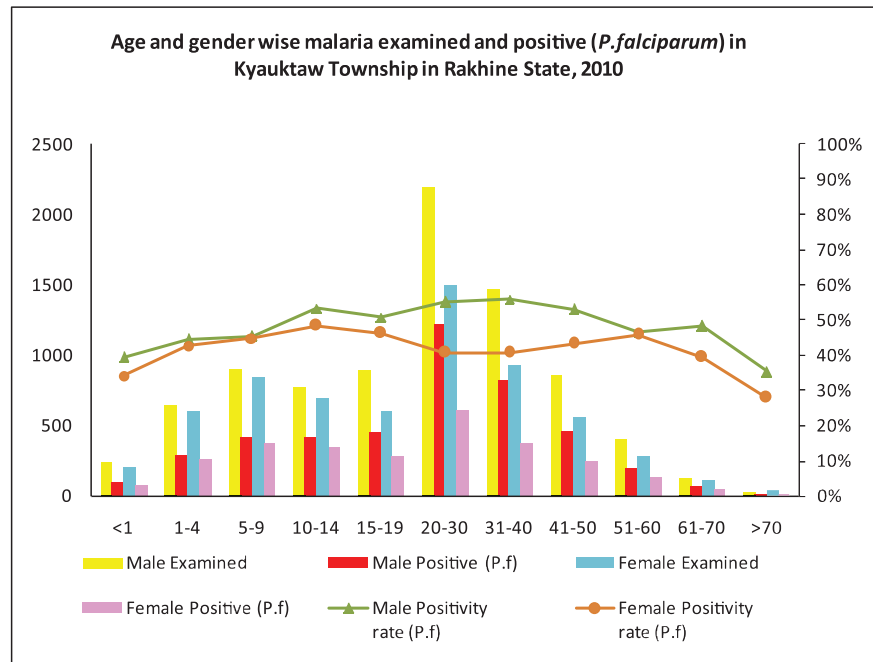
***P.f* and *P.v* ratio of malaria microscopy diagnosis in Kyauktaw Township in Rakhine State, 2010 and 2011**



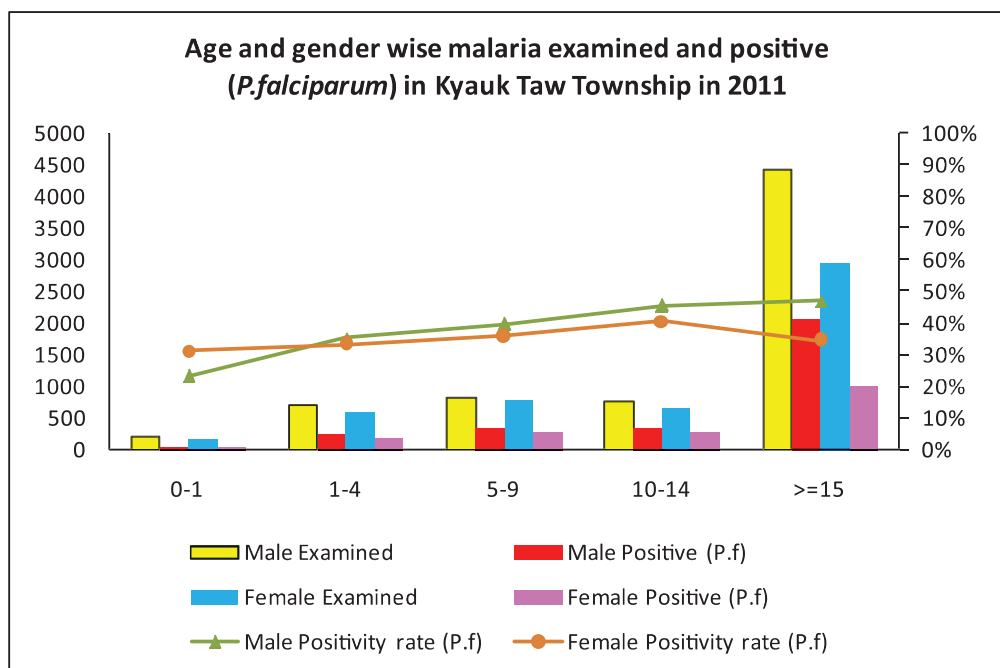
Percentage of patients approached to health facilities for malaria confirmatory diagnosis in Kyauktaw Township in Rakhine State, 2010 and 2011



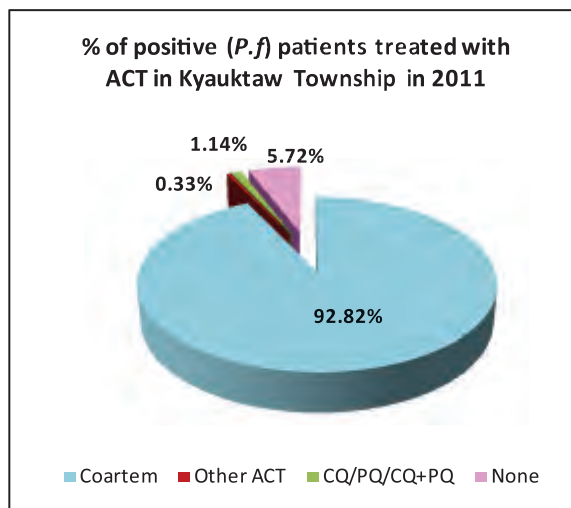
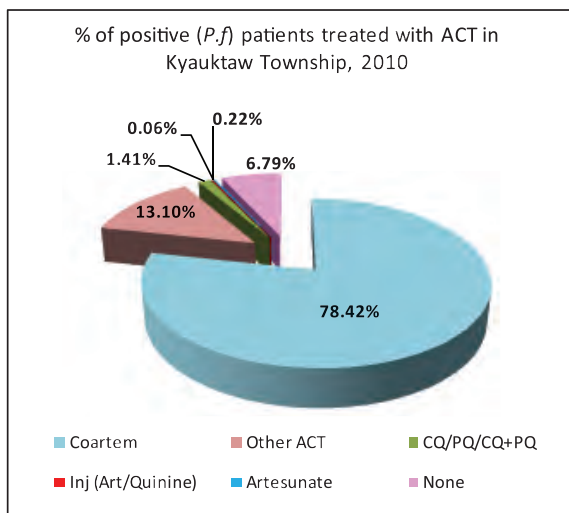
Age and gender wise malaria examination and positive (*P.f*) in Kyauktaw Township, 2010



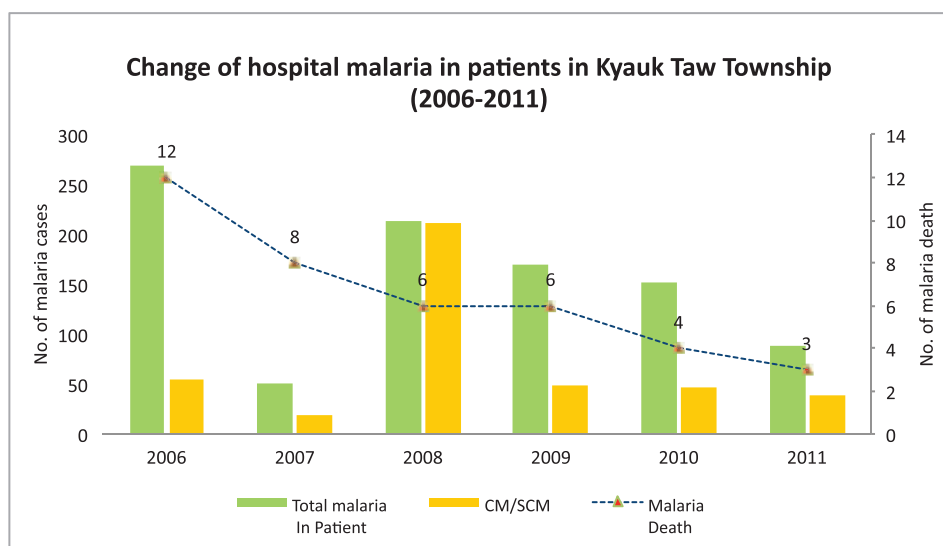
Age and gender wise malaria examination and positive (*P.f*) in Kyauktaw Township, 2011



Percentage of positive patients treated with ACT in Kyauk Taw Township in 2010 and 2011



Change of hospital malaria in patients in Kyauktaw Township in Rakhine State from 2006 to 2011



Sr	Year	Total In Patient	Total malaria In Patient	CM/SCM	Malaria Death	Total Death
1	2006	1492	269	55	12	52
2	2007	1524	51	19	8	35
3	2008	1754	214	212	6	37
4	2009	1922	170	49	6	49
5	2010	2062	151	47	4	47
6	2011	2704	88	39	3	36

Health Profile of Manaung Township



Area and Location*

Area : 523.30 Km²
 North : Bay of Bengal
 South : Bay of Bengal
 East : Bay of Bengal
 West : Bay of Bengal

Administrative Units*

Wards : 5
 Village tracts : 36
 Villages : 213

Population (2009)*

Total : 104,610
 Urban : 5,355
 Rural : 99,255
 Male : 49,878
 Female : 54,732
 Sex Ratio : 91
 <5 Year : 5,103
 0-14 Year : 16,535
 15-49 Year : 52,426
 Population Density : 199.9/ Km²

Health Facilities (2009)*

Township Hospital (25) Bedded : 1
 Station Hospital : 2
 Maternal and Child Health Centers : 1
 Rural Health Centers : 5
 Sub Health Centers : 20
 Private Clinics and Maternity Homes : 2

Health Manpower*

	<i>Doctor</i>	<i>Nurse</i>	<i>HA</i>	<i>LHV</i>	<i>PHS I</i>	<i>PHS II</i>	<i>MW</i>
Sanction	8	24	7	6	1	1	32
Appointed	2	22	6	5	1	0	28
Vacant	6	2	1	1	0	1	4
% Vacancy	75.0%	8.3%	14.3%	16.7%	0.0%	100%	12.5%

(HA: Health Assistant, LHV: Lady Health Visitor, PHS:Public Health Supervisor , MW: Midwife)

Health Manpower (Volunteer)*

	Category of Volunteer Health Workers		
	CHW	AMW	TTBA
Trained	164	50	42
Functioning	55	13	0
% Functioning	33.5%	26.0%	0.0%

(CHW: Community health Worker, AMW: Auxiliary Mid Wife, TTBA: Trained Traditional Birth Attendant)

Common Diseases under National Surveillance*

<i>Diseases</i>	<i>Morbidity</i>	<i>Mortality</i>
Malaria	1032.41	0.96
ARI <5	1332.55	39.19
Diarrhea	760.92	0
Dysentery	486.57	0
TB(Sputum+)	43.97	0
Snake Bite	2.87	0

(Per 100,000 Populations)

* The data source is Health Profile of Rakhine State (2009) from Department of Health Planning.

Vegetation Cover and Health Facilities distribution in Manaung Township in Rakhine State

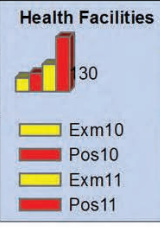


Health Facilities

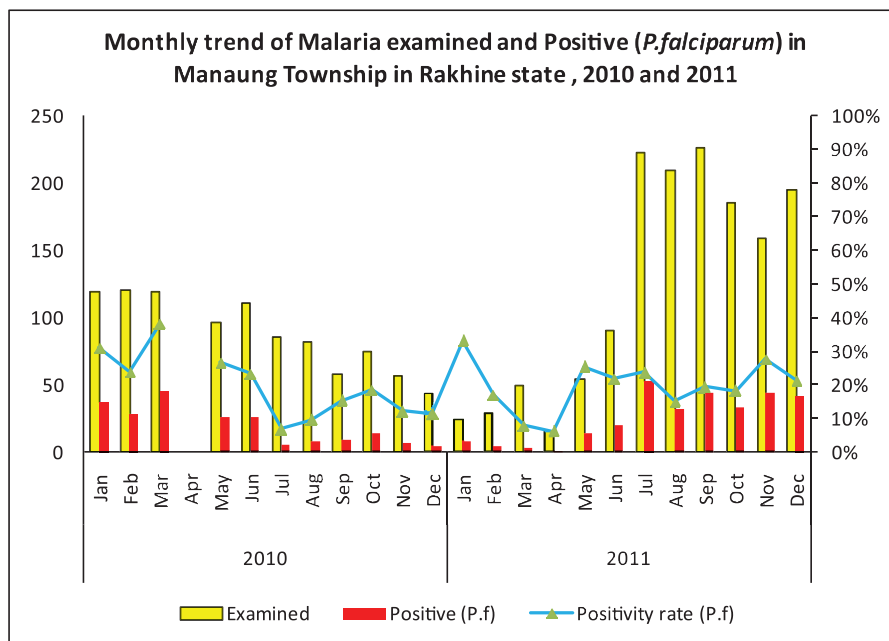
- H Township Hospital
- + RHC
- + SHC



Health facilities wise malaria examined and positive (P.f) in Manaung Township, 2010 and 2011

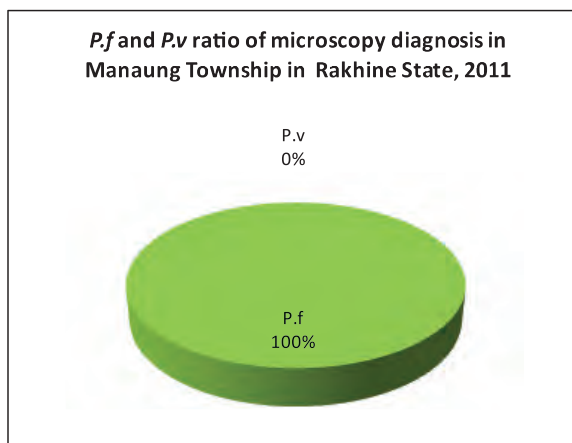
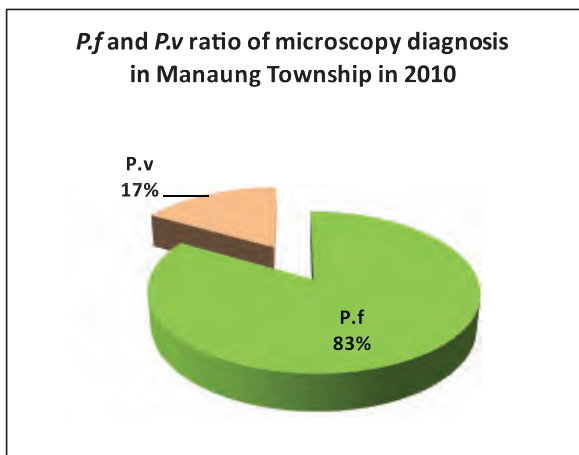


Monthly trend of malaria examination and positive (*P.falciparum*) in Manaung Township in Rakhine State, 2010 and 2011

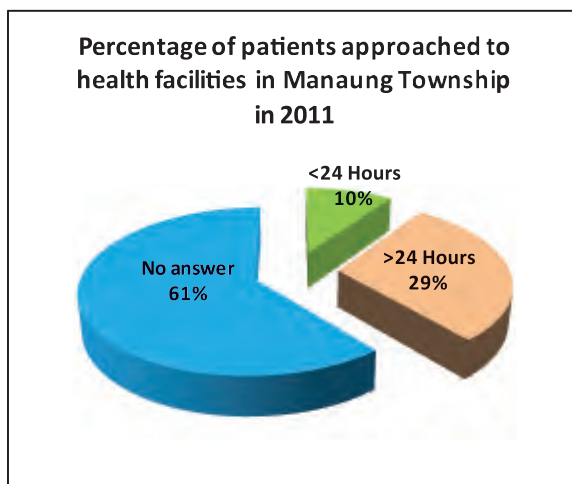
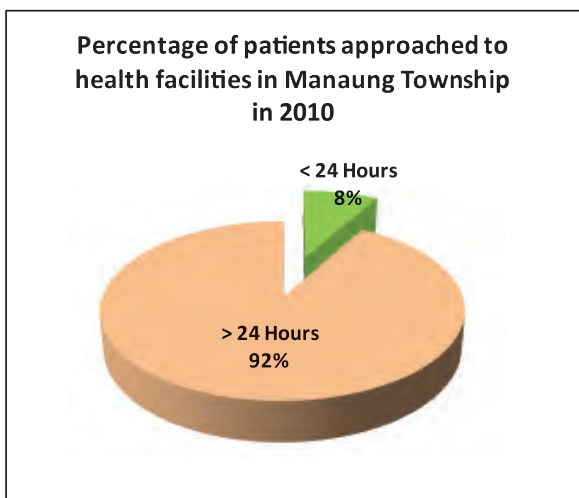


Month	2010			2011		
	Examined	Positive (<i>P.f</i>)	Positivity rate (<i>P.f</i>)	Examined	Positive (<i>P.f</i>)	Positivity rate (<i>P.f</i>)
Jan	119	37	31.09%	24	8	33.33%
Feb	121	29	23.97%	29	5	17.24%
Mar	120	46	38.33%	50	4	8.00%
Apr				16	1	6.25%
May	97	26	26.80%	55	14	25.45%
Jun	111	26	23.42%	91	20	21.98%
Jul	86	6	6.98%	223	53	23.77%
Aug	82	8	9.76%	210	32	15.24%
Sep	58	9	15.52%	226	44	19.47%
Oct	75	14	18.67%	185	34	18.38%
Nov	57	7	12.28%	159	44	27.67%
Dec	44	5	11.36%	195	42	21.54%
	970	213	21.96%	1,463	301	20.57%

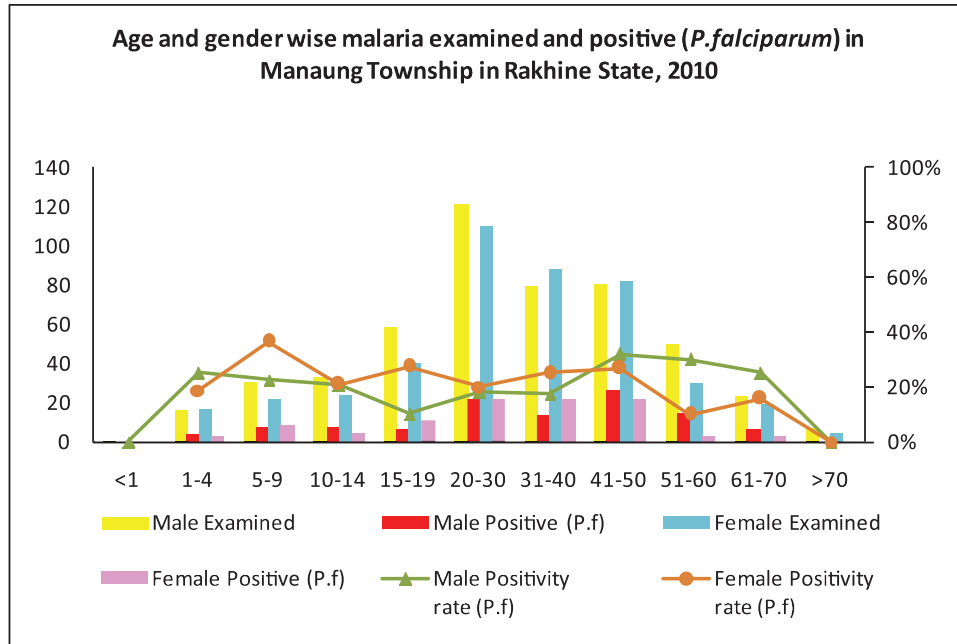
***P.f* and *P.v* ratio of malaria microscopy diagnosis in Manaung Township in Rakhine State, 2010 and 2011**



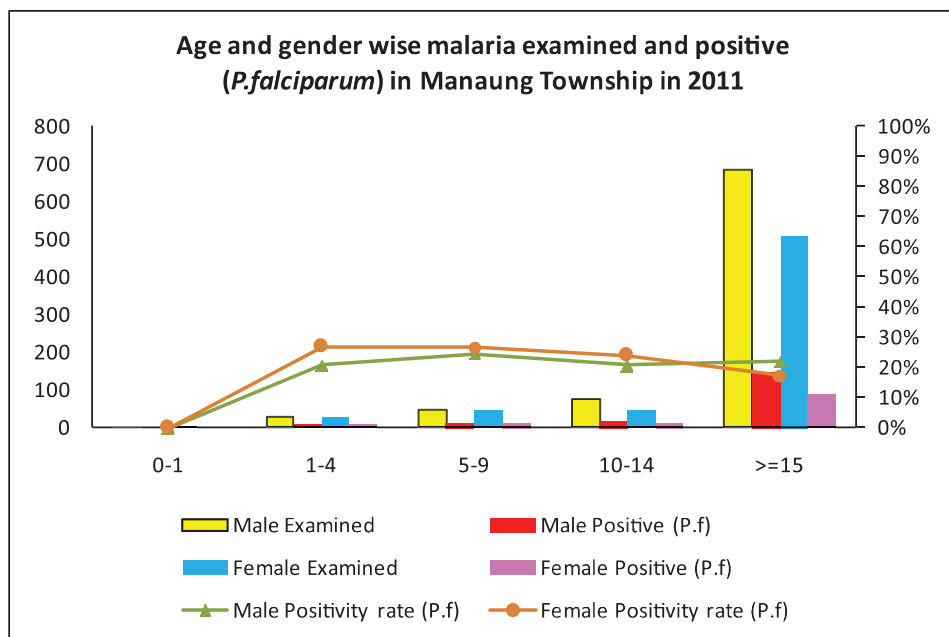
Percentage of patients for malaria confirmatory diagnosis approached to health facilities in Manaung Township in Rakhine State, 2010 and 2011



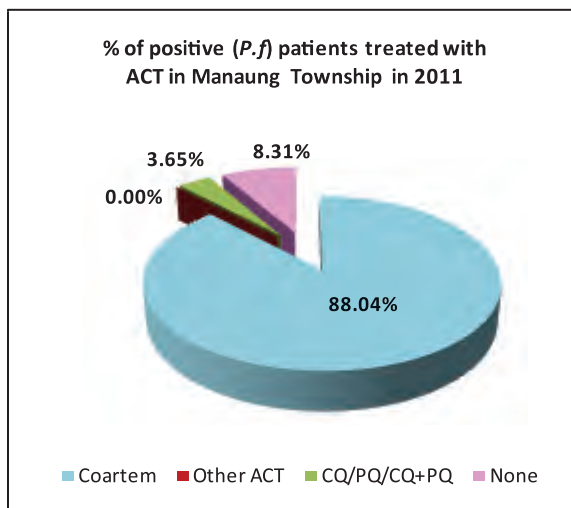
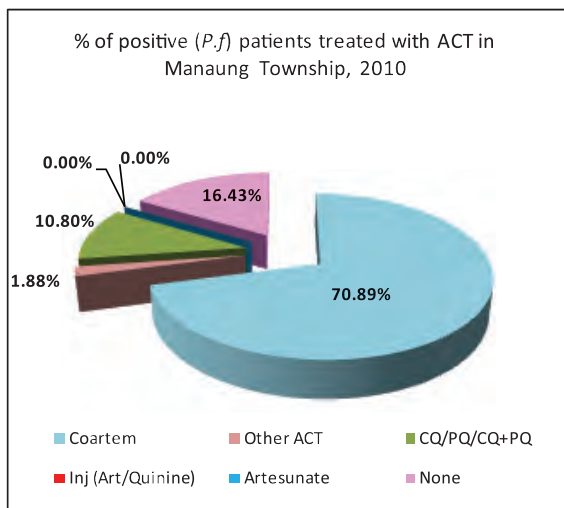
Age and gender wise malaria examination and positive (*P.f*) in Manaung Township, 2010



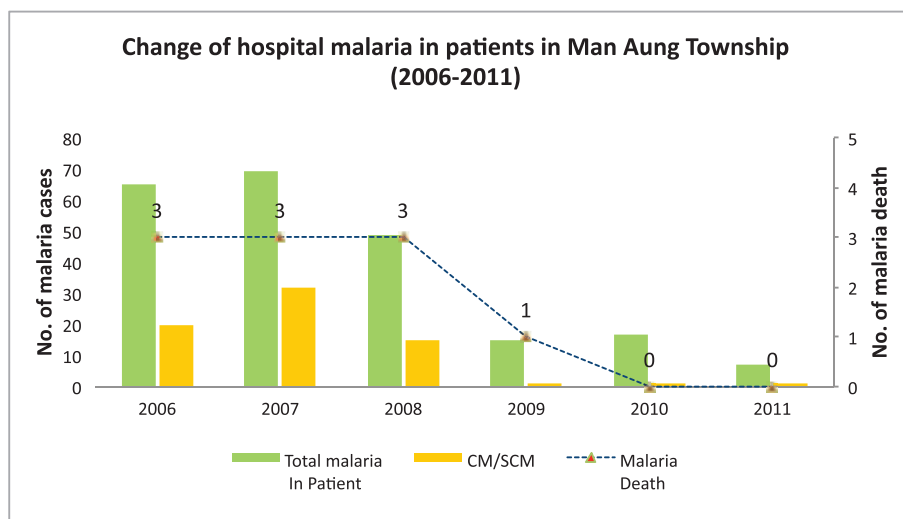
Age and gender wise malaria examination and positive (*P.f*) Manaung Township, 2011



Percentage of positive patients treated with ACT in Manaung Township in 2010 and 2011



Change of hospital malaria in patients in Manaung Township in Rakhine State from 2006 to 2011



Sr	Year	Total In Patient	Total malaria In Patient	CM/SCM	Malaria Death	Total Death
1	2006	688	65	20	3	19
2	2007	628	69	32	3	3
3	2008	702	49	15	3	20
4	2009	821	15	1	1	4
5	2010	773	17	1	0	4
6	2011	864	7	1	0	9

Health Profile of MaungdawTownship



Area and Location*

Area	:	1517.53 Km ²
North	:	Bangladesh
South	:	Bayof Bengal
East	:	Bu ThiTaung
West	:	Bangladesh

Administrative Units*

Wards	:	6
Village tracts	:	98
Villages	:	419

Population (2009)*

Total	:	459,360
Urban	:	55,530
Rural	:	403,830
Male	:	223,735
Female	:	235,625
Sex Ratio	:	95
<5 Year	:	78,792
0-14 Year	:	177,692
15-49 Year	:	226,261
Population Density	:	302.7/ Km ²

Health Facilities (2009)*

District Hospital (16) Bedded	:	1
Station Hospital	:	4
Hospital Under other Ministry	:	1
Rural Health Centers	:	7
Sub Health Centers	:	28
Private Clinics and Maternity Homes	:	8

Health Manpower*

	Doctor	Nurse	HA	LHV	PHS I	PHS II	MW
Sanction	19	39	7	7	3	1	44
Appointed	12	31	5	6	3	1	40
Vacant	7	8	2	1	0	0	4
% Vacancy	36.8%	20.5%	28.6%	14.3%	0%	0%	9.1%

(HA: Health Assistant, LHV: Lady Health Visitor, PHS:Public Health Supervisor , MW: Midwife)

Health Manpower (Volunteer)*

	Category of Volunteer Health Workers		
	CHW	AMW	TTBA
Trained	384	107	365
Functioning	256	31	247
% Functioning	66.7%	29%	67.7%

(CHW: Community health Worker, AMW: Auxiliary Mid Wife, TTBA: Trained Traditional Birth Attendant)

Common Diseases under National Surveillance*

Diseases	Morbidity	Mortality
Malaria	2074.19	1.96
ARI <5	5938.42	20.31
Diarrhea	1053.20	0
Dysentery	518.55	0
TB(Sputum+)	33.74	0.22
Snake Bite	1.52	0

(Per 100,000 Populations)

* The data source is Health Profile of Rakhine State (2009) from Department of Health Planning.

Vegetation Cover and Health Facilities distribution in Maungdaw Township in Rakhine State

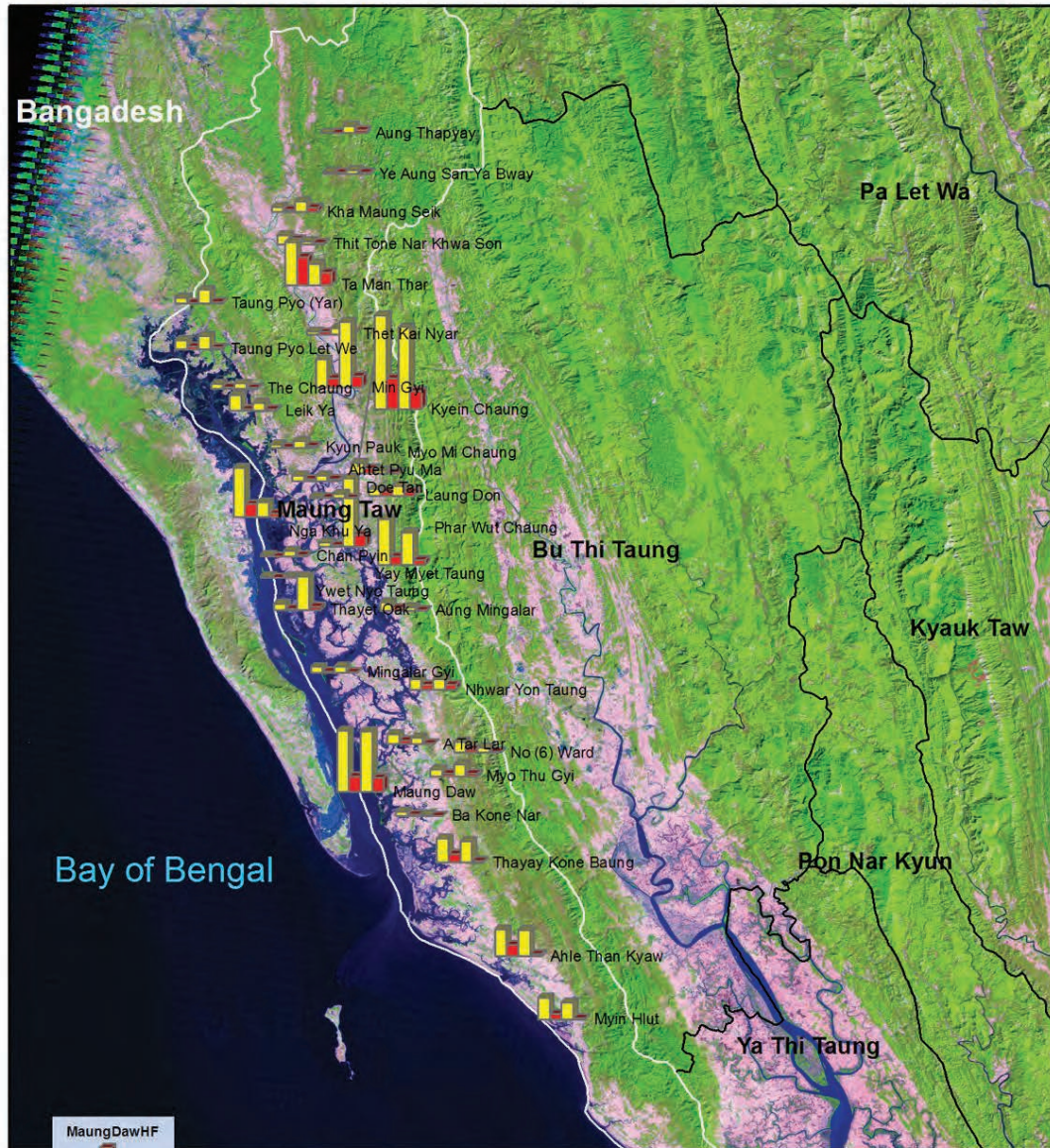


Health Facilities

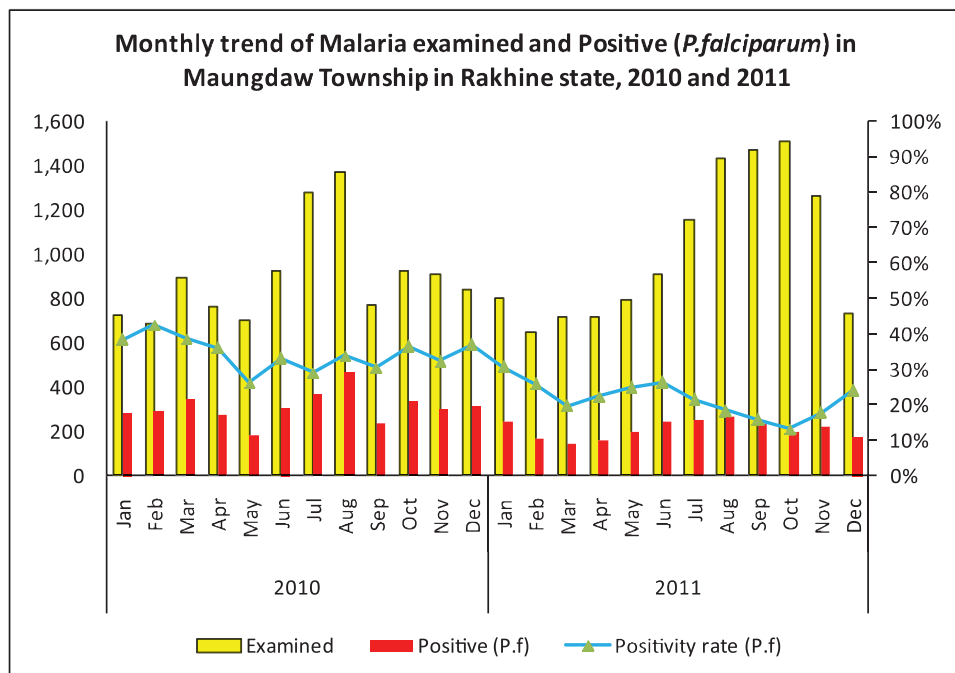
- Township Hospital
- Station Hospital
- RHC
- SHC



Vegetation Cover and Health Facilities distribution in Maung Daw Township in Rakhine State

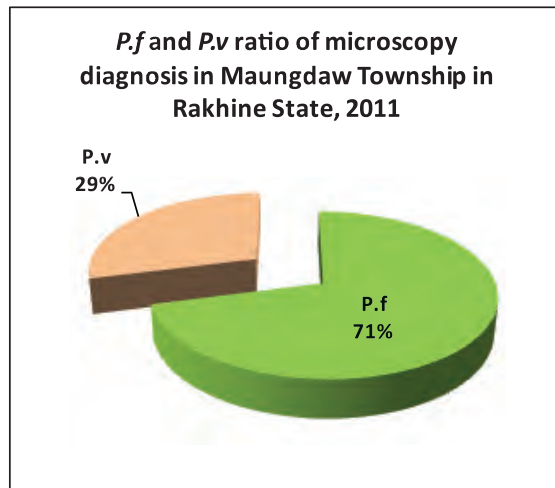
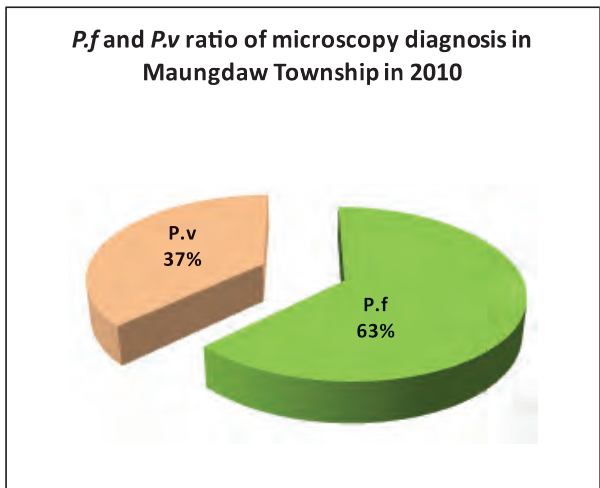


Monthly trend of malaria examination and positive (*P.falciparum*) in MaungDaw Township in Rakhine State, 2010 and 2011

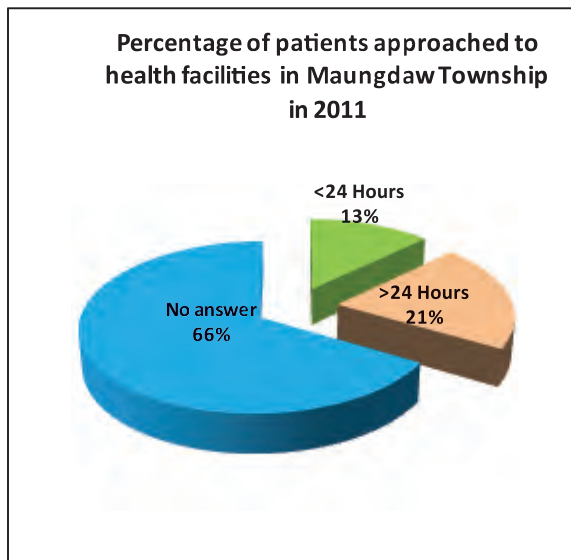
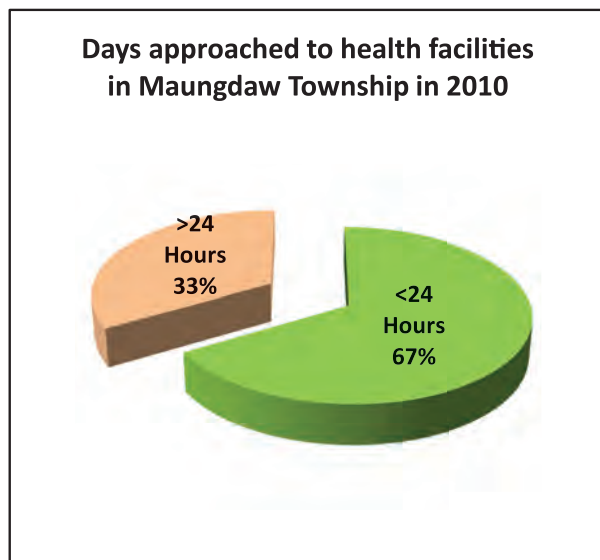


Month	2010			2011		
	Examined	Positive (<i>P.f</i>)	Positivity rate (<i>P.f</i>)	Examined	Positive (<i>P.f</i>)	Positivity rate (<i>P.f</i>)
Jan	729	280	38.41%	803	248	30.88%
Feb	687	293	42.65%	650	169	26.00%
Mar	896	348	38.84%	715	142	19.86%
Apr	768	277	36.07%	719	161	22.39%
May	704	185	26.28%	795	199	25.03%
Jun	925	307	33.19%	914	242	26.48%
Jul	1,276	372	29.15%	1,155	252	21.82%
Aug	1,374	467	33.99%	1,434	265	18.48%
Sep	769	236	30.69%	1,473	235	15.95%
Oct	928	340	36.64%	1,507	200	13.27%
Nov	913	296	32.42%	1,268	225	17.74%
Dec	840	311	37.02%	735	177	24.08%
	10,809	3,712	34.34%	12,168	2,515	20.67%

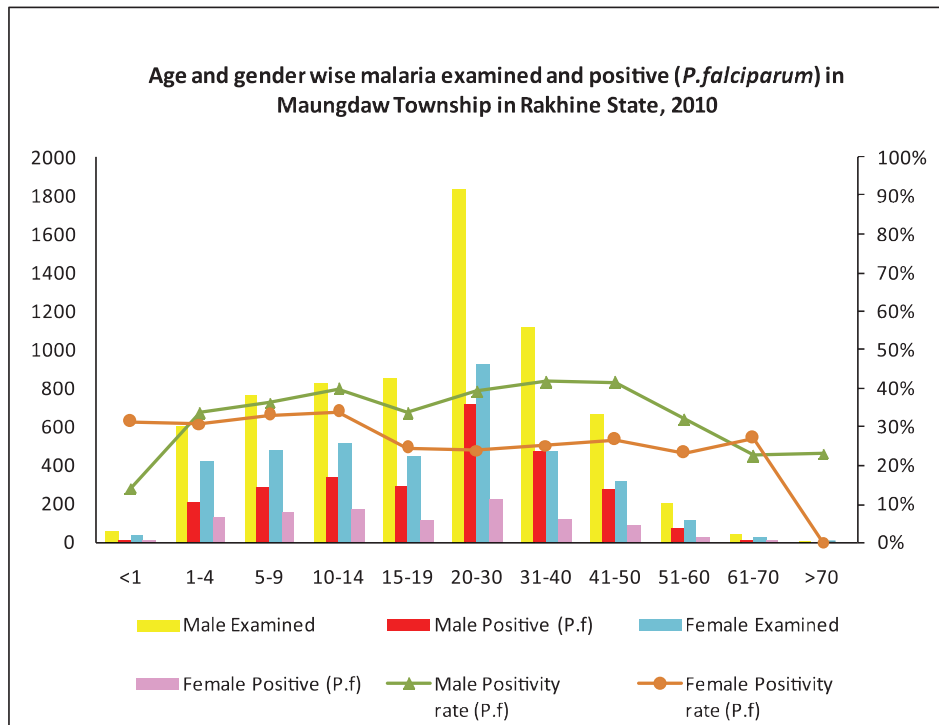
P.f and P.v ratio of malaria microscopy diagnosis in MaungDaw Township in Rakhine State, 2010 and 2011



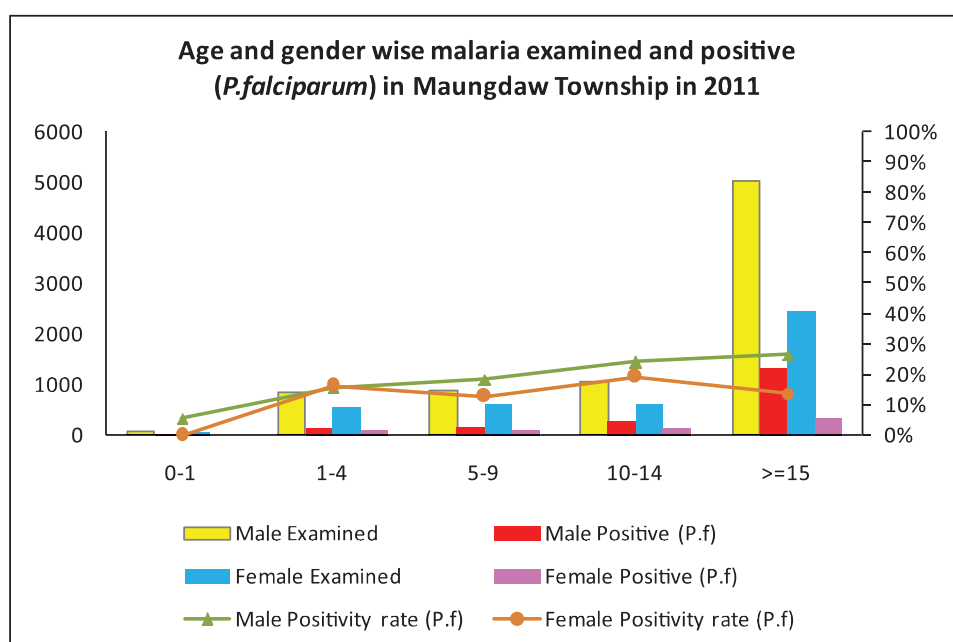
Percentage of patients days approached to health facilities in Maungdaw Township in Rakhine Stat ,2010 and 2011



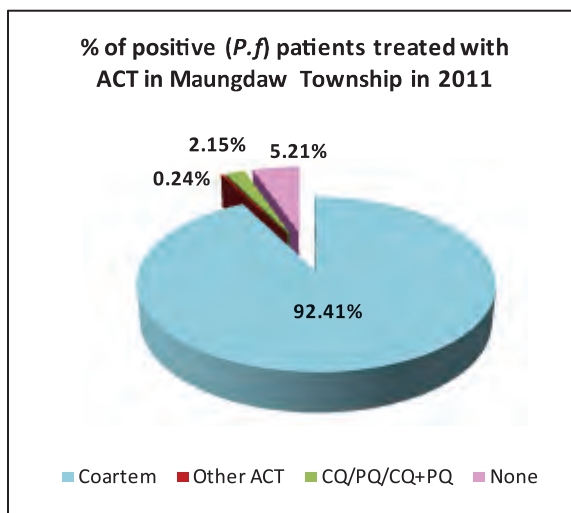
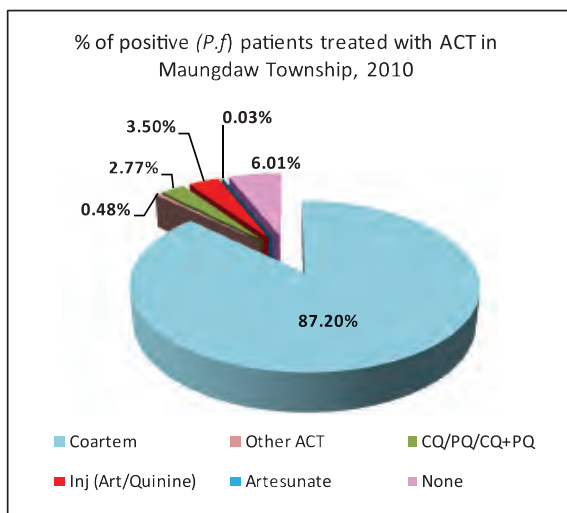
Age and gender wise malaria examination and positive (*P.f*) in Maungdaw Township, 2010



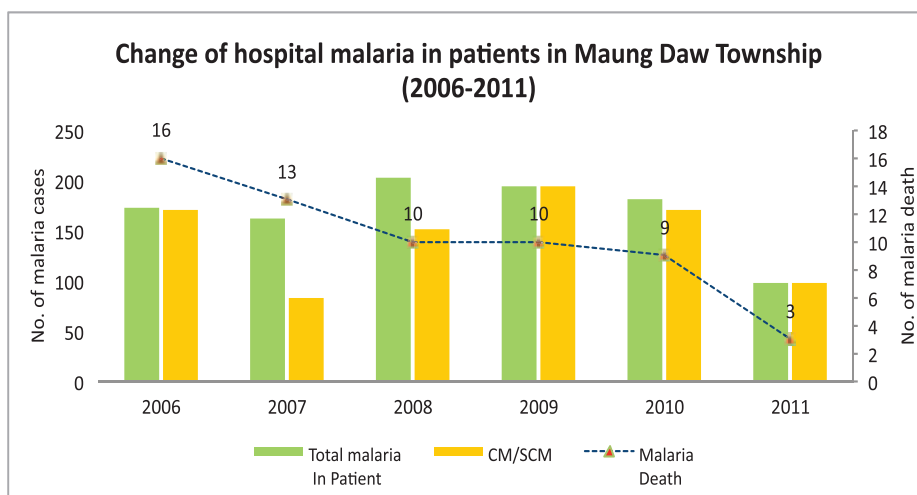
Age and gender wise malaria examination and positive (*P.f*) in Maungdaw Township, 2011



Percentage of positive patients treated with ACT in Maungdaw Township in 2010 and 2011

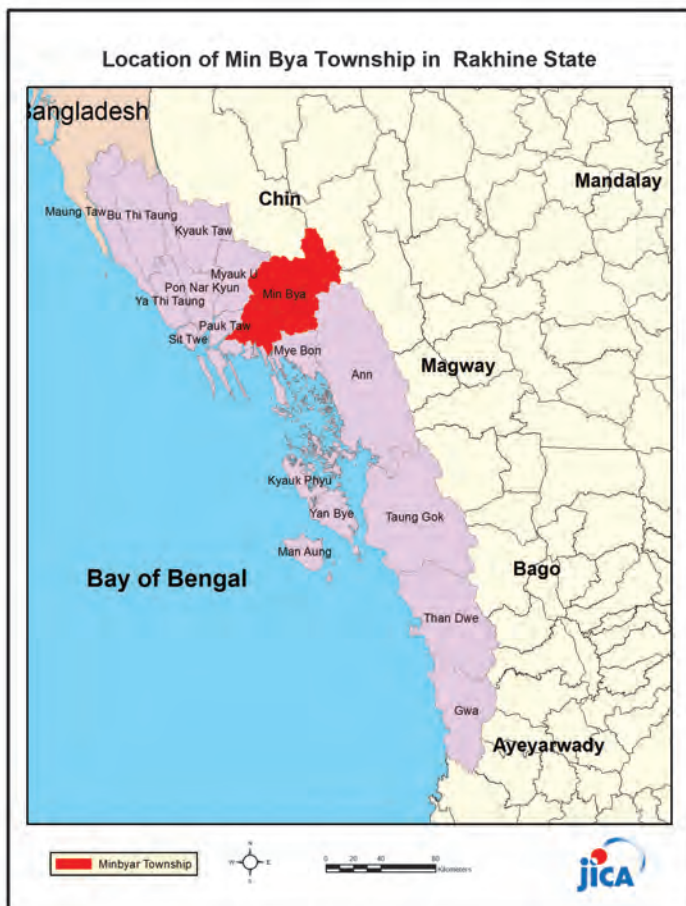


Change of hospital malaria in patients in Maungdaw Township in Rakhine State from 2006 to 2011



Sr	Year	Total In Patient	Total malaria In Patient	CM/SCM	Malaria Death	Total Death
1	2006	1623	172	171	16	77
2	2007	2134	163	83	13	123
3	2008	3461	202	152	10	116
4	2009	3033	195	195	10	87
5	2010	3274	181	171	9	109
6	2011	4095	99	99	3	97

Health Profile of Minbya Township



Area and Location*

Area	:	3466.61 Km ²
North	:	Paletwa
South	:	Myebon
East	:	Saydoktaya
West	:	Ann

Administrative Units*

Wards	:	3
Village tracts	:	62
Villages	:	224

Population (2009)*

Total	:	207,703
Urban	:	28,895
Rural	:	178,808
Male	:	102,172
Female	:	105,531
Sex Ratio	:	97
<5 Year	:	25,115
0-14 Year	:	68,373
15-49 Year	:	106,478
Population Density	:	59.92/ Km ²

Health Facilities (2009)*

Township Hospital (25) Bedded	:	1
Station Hospital	:	1
Maternal and Child Health Center	:	1
Rural Health Centers	:	6
Sub Health Centers	:	24
Private Clinics and Maternity Homes	:	3

Health Manpower*

	<i>Doctor</i>	<i>Nurse</i>	<i>HA</i>	<i>LHV</i>	<i>PHS I</i>	<i>PHS II</i>	<i>MW</i>
Sanction	6	11	7	7	2	3	34
Appointed	3	10	7	7	2	3	34
Vacant	3	1	0	0	0	0	0
% Vacancy	50%	9.1%	0%	0%	0%	0%	0%

(HA: Health Assistant, LHV: Lady Health Visitor, PHS:Public Health Supervisor , MW: Midwife)

Health Manpower (Volunteer)*

	Category of Volunteer Health Workers		
	CHW	AMW	TTBA
Trained	192	146	167
Functioning	137	93	162
% Functioning	71.4%	63.7%	97%

(CHW: Community health Worker, AMW: Auxiliary Mid Wife, TTBA: Trained Traditional Birth Attendant)

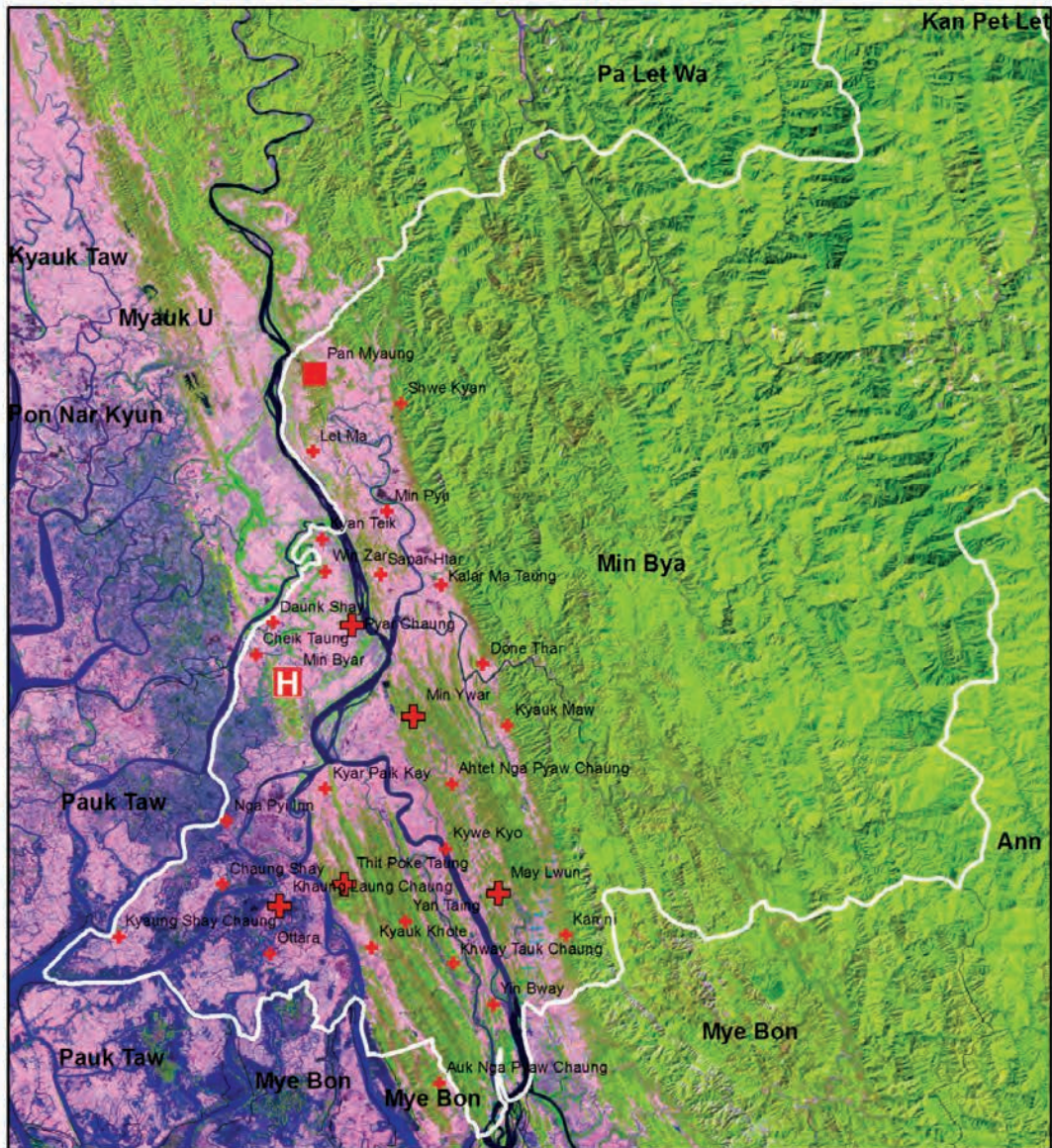
Common Diseases under National Surveillance*

<i>Diseases</i>	<i>Morbidity</i>	<i>Mortality</i>
Malaria	8535.26	7.7
ARI <5	7776.23	11.95
Diarrhea	1862.27	2.89
Dysentery	595.56	0
TB(Sputum+)	80.40	0
Snake Bite	0.96	0

(Per 100,000 Populations)

* The data source is Health Profile of Rakhine State (2009) from Department of Health Planning.

Vegetation Cover and Health Facilities distribution in Minbya Township in Rakhine State

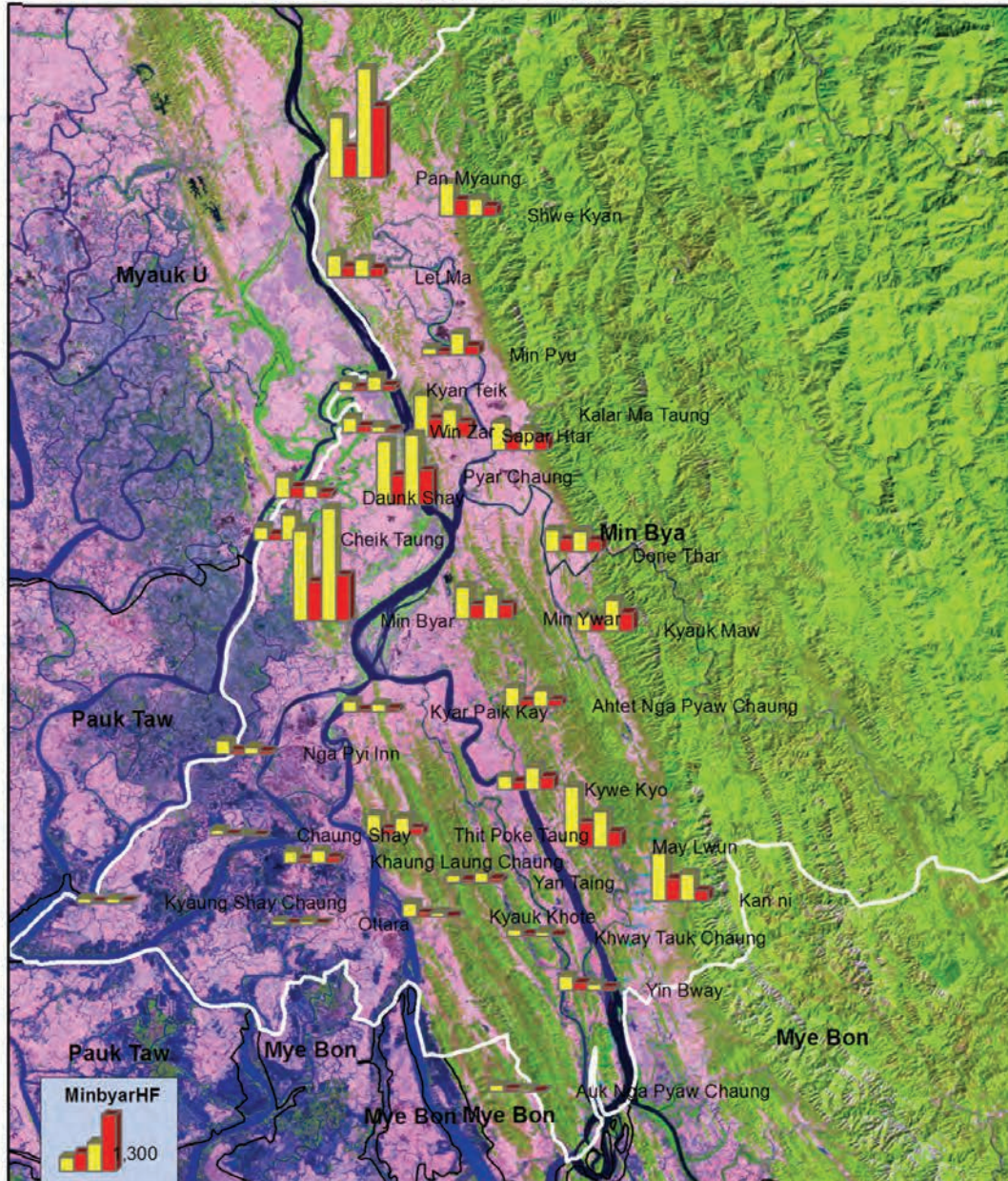


Health Facilities

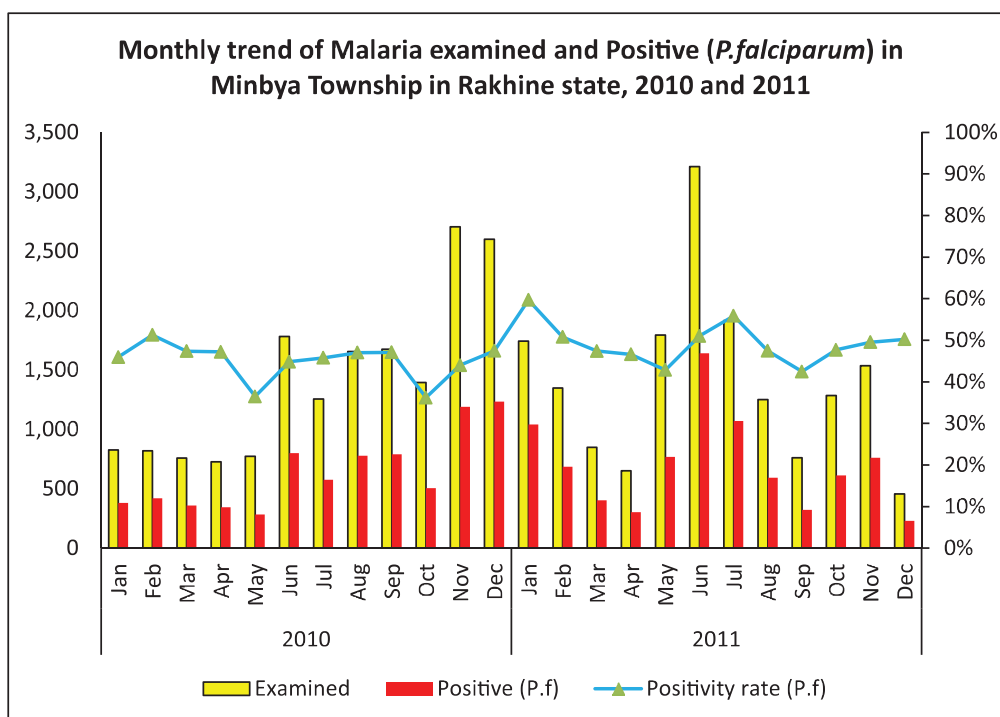
- Township Hospital
- Station Hospital
- RHC
- SHC



Health facilities wise malaria examined and positive (P.f) in Minbya Township, 2010 and 2011

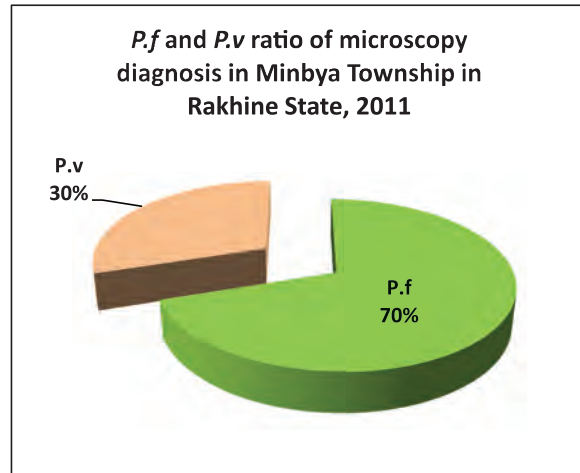
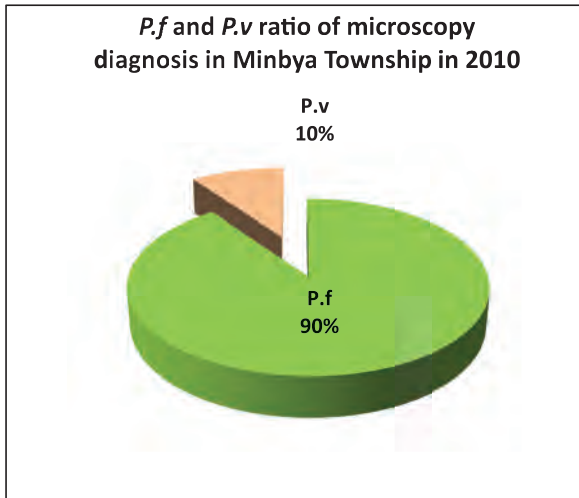


Monthly trend of malaria examination and positive (*P.falciparum*) in Minbya Township in Rakhine State, 2010 and 2011

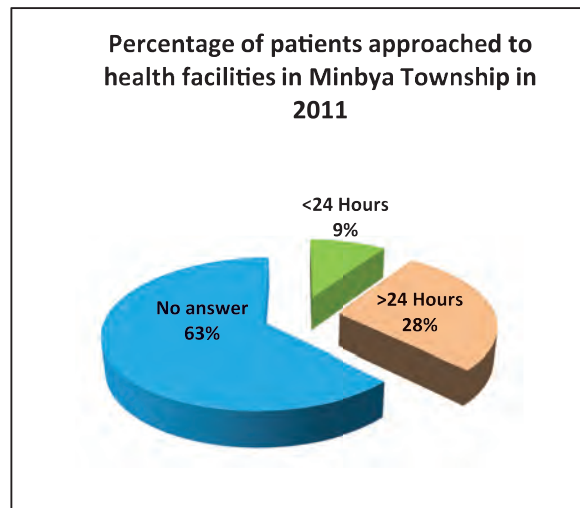
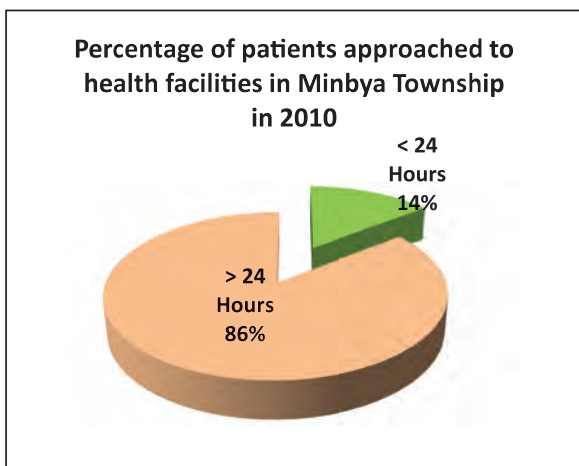


Month	2010			2011		
	Examined	Positive (<i>P.f</i>)	Positivity rate (<i>P.f</i>)	Examined	Positive (<i>P.f</i>)	Positivity rate (<i>P.f</i>)
Jan	827	380	45.95%	1,742	1,040	59.70%
Feb	819	420	51.28%	1,347	684	50.78%
Mar	758	359	47.36%	848	402	47.41%
Apr	727	343	47.18%	650	303	46.62%
May	773	282	36.48%	1,793	768	42.83%
Jun	1,782	799	44.84%	3,212	1,639	51.03%
Jul	1,256	575	45.78%	1,915	1,070	55.87%
Aug	1,655	778	47.01%	1,250	593	47.44%
Sep	1,675	789	47.10%	761	323	42.44%
Oct	1,393	504	36.18%	1,284	612	47.66%
Nov	2,705	1,190	43.99%	1,535	760	49.51%
Dec	2,601	1,234	47.44%	456	229	50.22%
	16,971	7,653	45.09%	16,793	8,423	50.16%

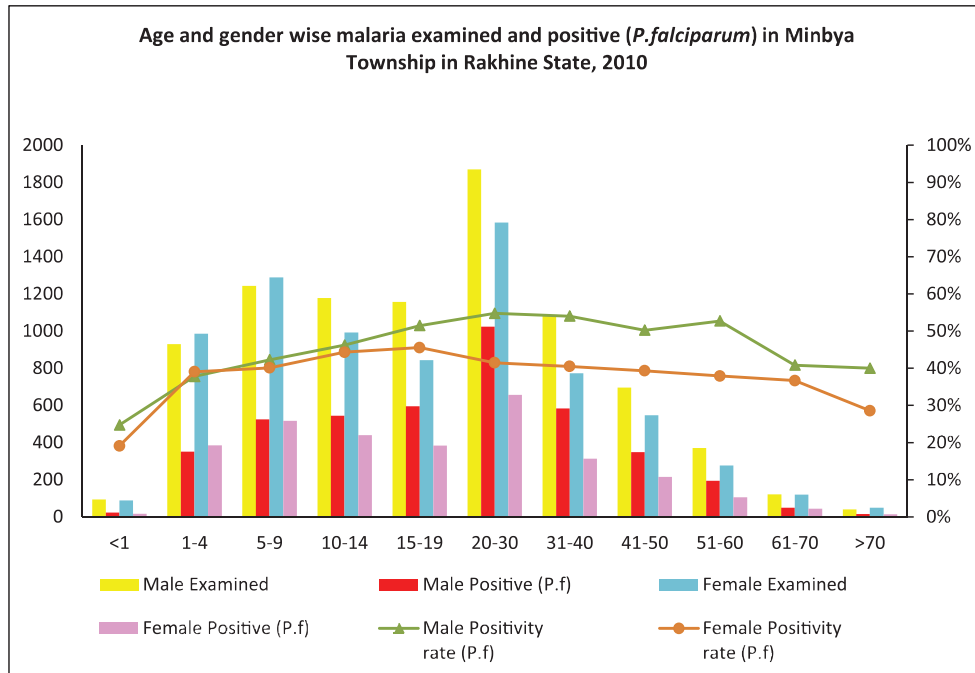
***P.f* and *P.v* ratio of malaria microscopy diagnosis in Minbya Township in Rakhine State, 2010 and 2011**



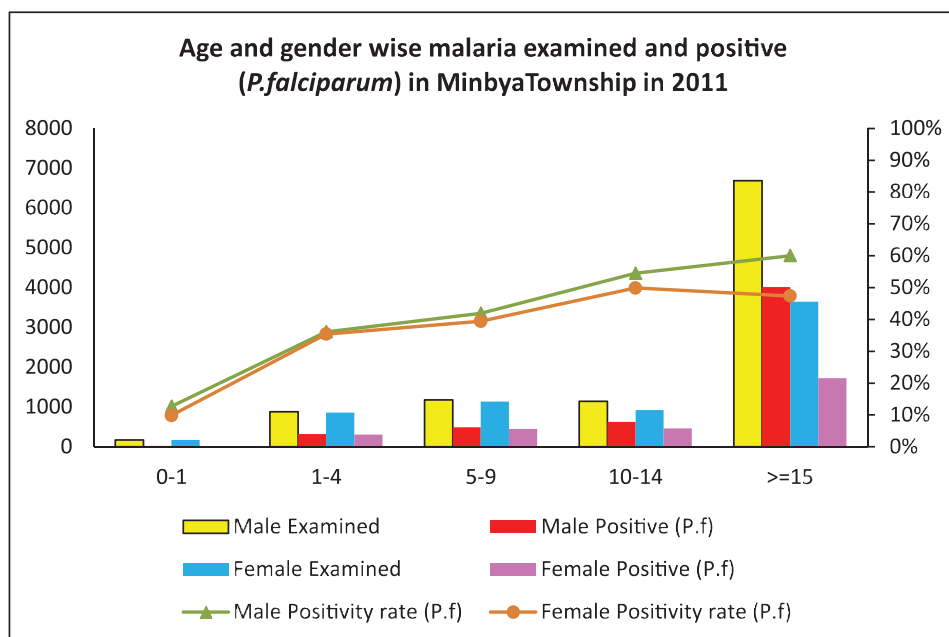
Percentage of patients approached to health facilities for malaria confirmatory diagnosis in Minbya Township in Rakhine State, 2010 and 2011



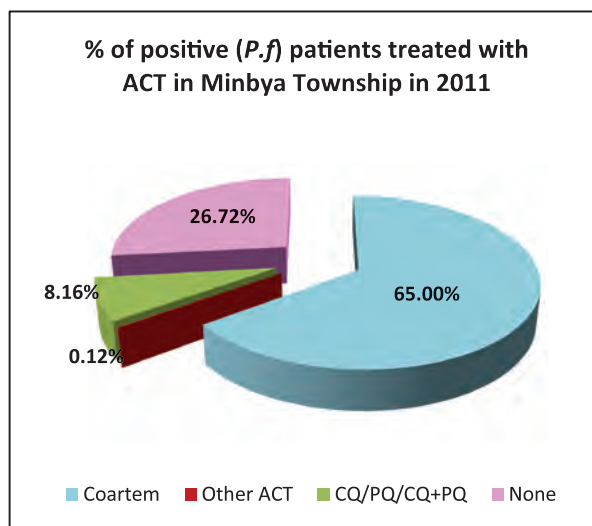
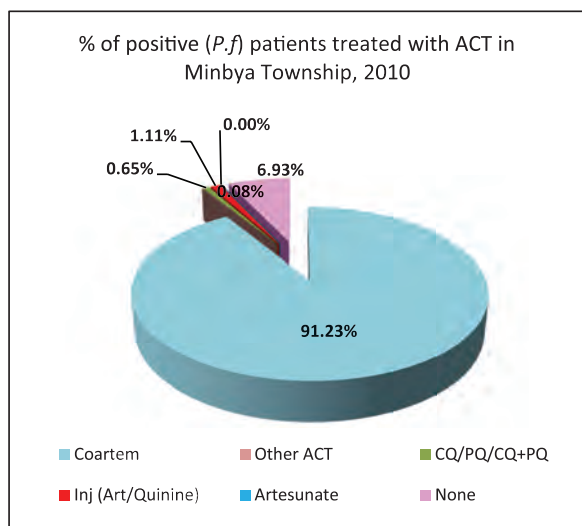
Age and gender wise malaria examination and positive (*P.f*) in Minbya Township, 2010



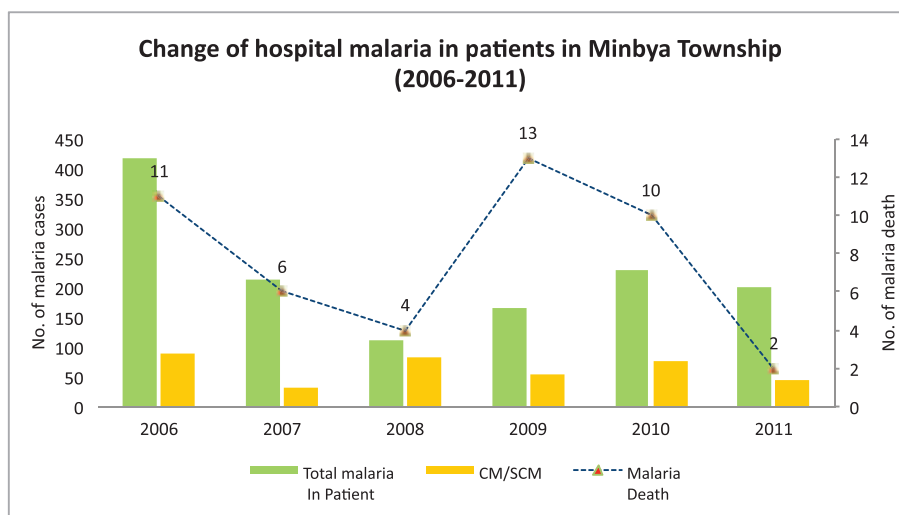
Age and gender wise malaria examination and positive (*P.f*) in Minbya Township, 2010



Percentage of positive patients treated with ACT in Minbya Township in 2010 and 2011



Change of hospital malaria in patients in Minbya Township in Rakhine State from 2006 to 2011



Sr	Year	Total In Patient	Total malaria In Patient	CM/SCM	Malaria Death	Total Death
1	2006	2404	417	89	11	40
2	2007	1888	213	31	6	41
3	2008	1077	112	82	4	16
4	2009	1455	166	53	13	42
5	2010	2263	229	77	10	38
6	2011	2745	200	44	2	54