

Health Profile of Buthidaung Township



Area and Location*

Area	:	2020.17 Km ²
North	:	Bangladesh
South	:	Maung Taw
East	:	Pon Nar Gyun
West	:	Maung Taw

Administrative Units*

Wards	:	7
Village tracts	:	86
Villages	:	399

Population (2009)*

Total	:	304,422
Urban	:	21,558
Rural	:	282,864
Male	:	148,014
Female	:	156,408
Sex Ratio	:	95
<5 Year	:	58,169
0-14 Year	:	117,883
15-49 Year	:	139,492
Population Density	:	150.69/ Km ²

Health Facilities (2009)*

District Hospital (25) Bedded	:	1
Station Hospital	:	1
Maternal and Child Health Centers	:	1
Rural Health Centers	:	6
Sub Health Centers	:	24
Private Clinics and Maternity Homes	:	4

Health Manpower*

	<i>Doctor</i>	<i>Nurse</i>	<i>HA</i>	<i>LHV</i>	<i>PHS I</i>	<i>PHS II</i>	<i>MW</i>
Sanction	9	8	7	5	3	0	35
Appointed	7	8	6	4	3	0	33
Vacant	2	0	1	1	0	0	2
% Vacancy	22.2%	0%	14.3%	20%	0%	0%	5.7%

(HA: Health Assistant, LHV: Lady Health Visitor, PHS:Public Health Supervisor , MW: Midwife)

Health Manpower (Volunteer)*

	Category of Volunteer Health Workers		
	CHW	AMW	TTBA
Trained	304	39	220
Functioning	243	29	220
% Functioning	79.9%	74.4%	100%

(CHW: Community health Worker, AMW: Auxiliary Mid Wife, TTBA: Trained Traditional Birth Attendant)

Common Diseases under National Surveillance*

<i>Diseases</i>	<i>Morbidity</i>	<i>Mortality</i>
Malaria	2323.75	3.28
ARI <5	3118.50	1.72
Diarrhea	910.58	0
Dysentery	532.48	0
TB(Sputum+)	79.49	0
Snake Bite	0	0

(Per 100,000 Populations)

* The data source is Health Profile of Rakhine State (2009) from Department of Health Planning.

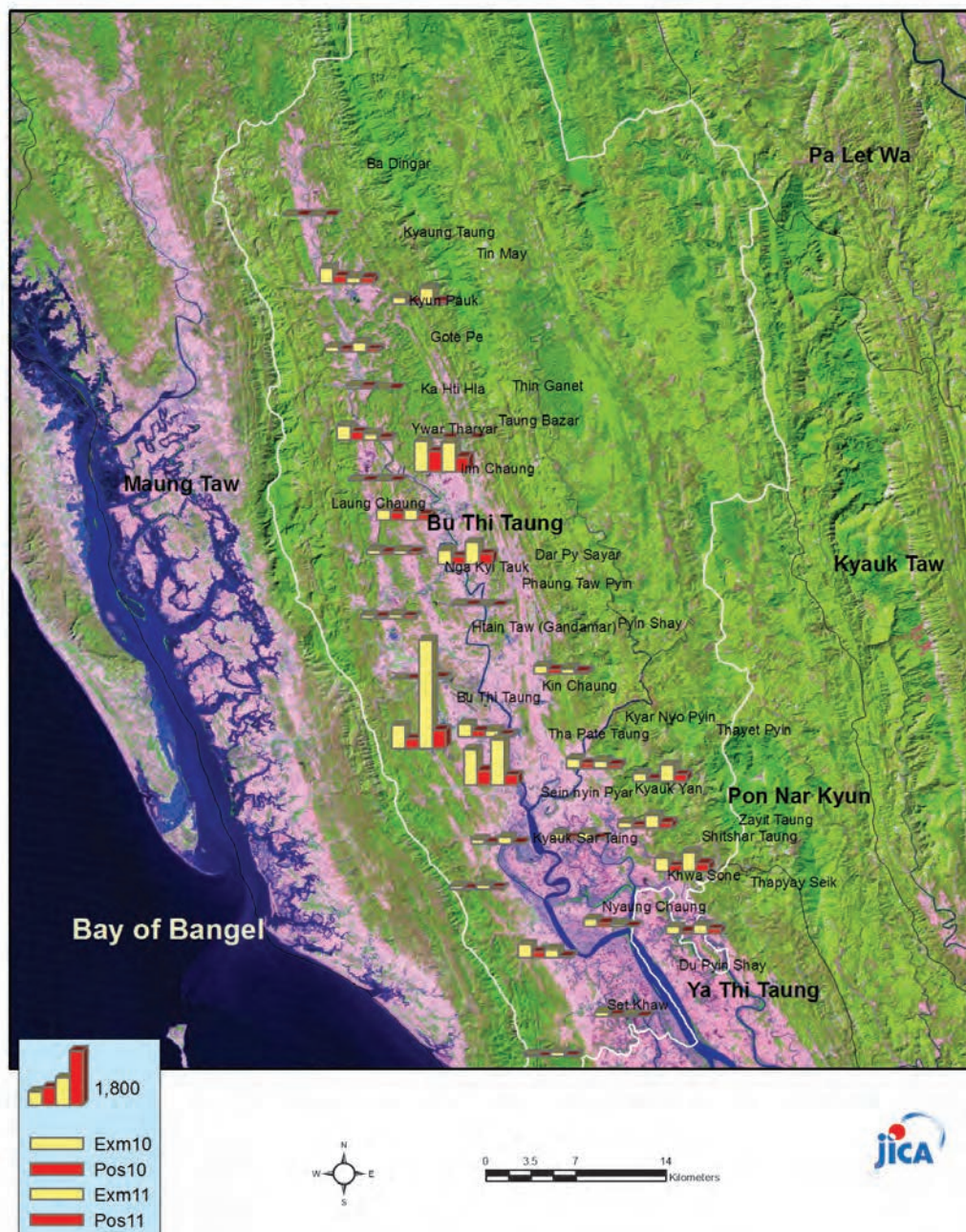
Vegetation Cover and Health Facilities distribution in Buthitaung Township in Rakhine State



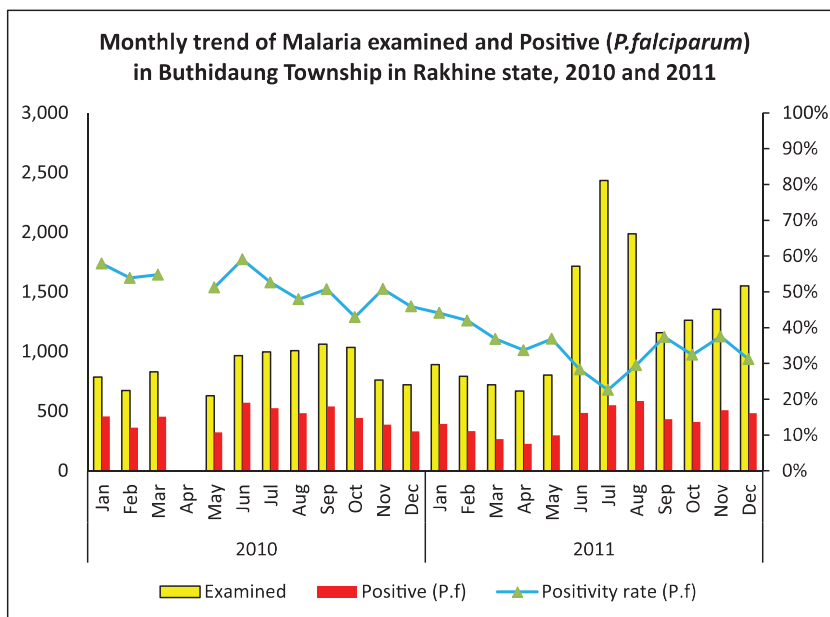
Health Facilities	
	Township Hospital
	Station Hospital
	RHC
	SHC



Health facilities wise malaria examination and positive (P.f) in Buthidaung Township
2010 and 2011



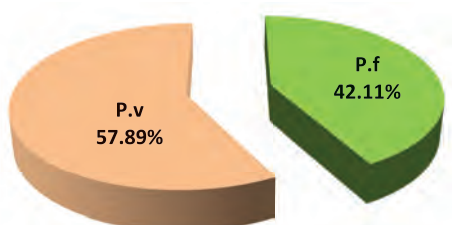
Monthly trend of malaria examination and positive (*P.falciparum*) in Buthidaung Township in Rakhine State, 2010 and 2011



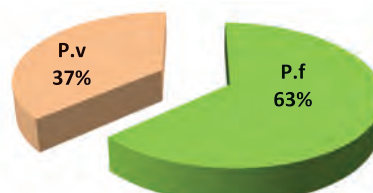
Month	2010			2011		
	Examined	Positive (<i>P.f</i>)	Positivity rate (<i>P.f</i>)	Examined	Positive (<i>P.f</i>)	Positivity rate (<i>P.f</i>)
Jan	786	455	57.89%	889	392	44.09%
Feb	672	362	53.87%	791	332	41.97%
Mar	829	454	54.76%	720	265	36.81%
Apr				668	225	33.68%
May	629	322	51.19%	803	296	36.86%
Jun	965	570	59.07%	1,714	485	28.30%
Jul	996	524	52.61%	2,434	550	22.60%
Aug	1,008	483	47.92%	1,987	586	29.49%
Sep	1,062	539	50.75%	1,158	433	37.39%
Oct	1,034	444	42.94%	1,262	409	32.41%
Nov	760	386	50.79%	1,354	508	37.52%
Dec	721	331	45.91%	1,550	483	31.16%
	9,462	4,870	51.47%	15,330	4,964	32.38%

P.f and *P.v* ratio of malaria microscopy diagnosis in Buthidaung Township in Rakhine State, 2010 and 2011

P.f and *P.v* ratio of microscopy diagnosis in Buthidaung Township in 2010

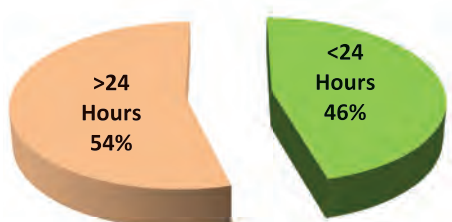


P.f and *P.v* ratio of microscopy diagnosis in Buthidaung Township in Rakhine State, 2011

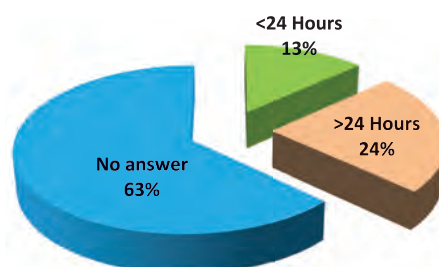


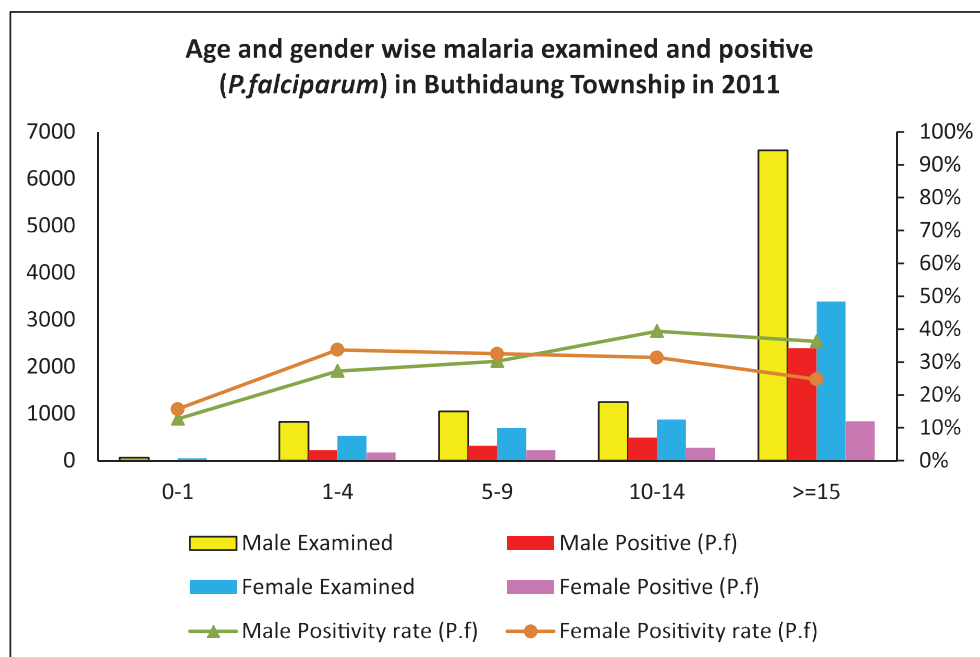
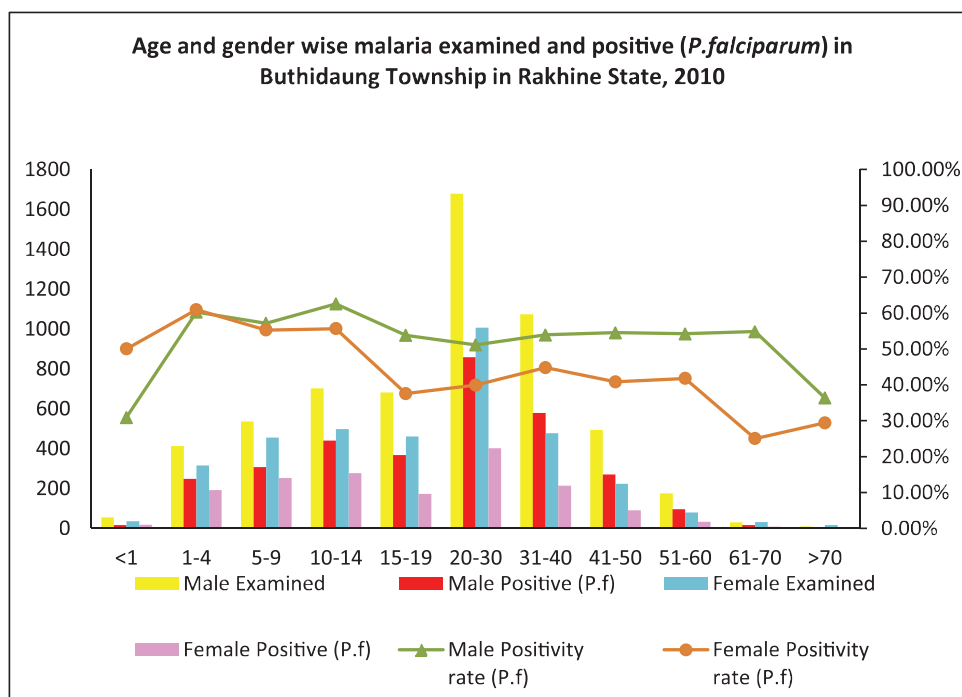
Percentage of patients days approached to health facilities in Buthidaung Township in Rakhine State, 2010 and 2011

Days approached to health facilities in Buthidaung Township in 2010

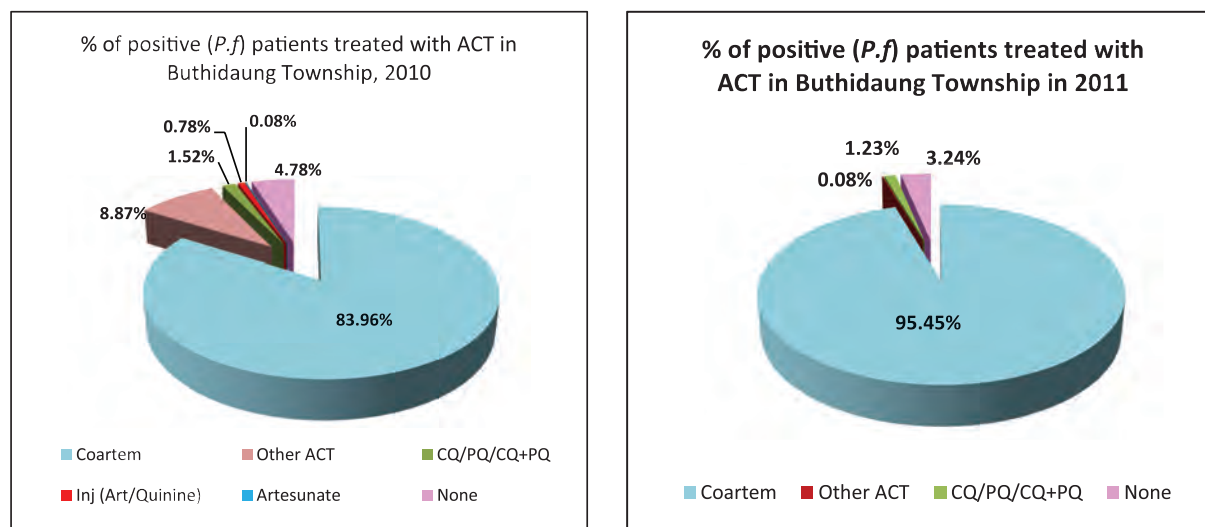


Percentage of patients approached to health facilities in Buthidaung Township in 2011

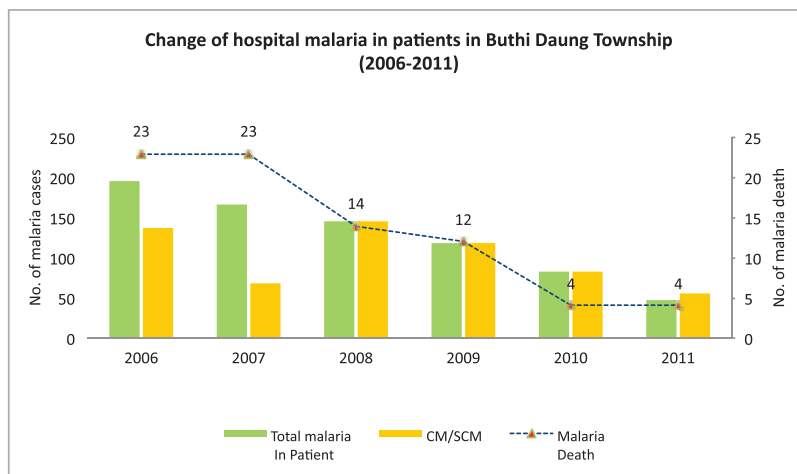


Age and Gender wise malaria examination and positive (*P.f*) in Buthidaung Township, 2011Age and Gender wise malaria examination and positive (*P.f*) in Buthidaung Township, 2010

Percentage of positive patients treated with ACT in Buthidaung Township in 2010 and 2011



Change of hospital malaria in Buthidaung Township in Rakhine State from 2006 to 2011



Sr	Year	Total In Patient	Total malaria In Patient	CM/SCM	Malaria Death	Total Death
1	2006	1245	195	138	23	80
2	2007	1381	166	68	23	76
3	2008	1208	145	145	14	63
4	2009	1363	118	118	12	78
5	2010	1835	83	83	4	114
6	2011	1823	47	55	4	117

Health Profile of Gwa Township



Area and Location*

Area:	2292.43 Km ²
North:	Thandwe
South:	Thabang
East:	Ingabu
West:	Bay of Bengal

Administrative Units*

Wards	: 3
Village tracts	: 37
Villages	: 128

Population (2009)*

Total	: 83,420
Urban	: 9,034
Rural	: 74,386
Male	: 41,057
Female	: 42,363
Sex Ratio	: 97
<5 Year	: 6,761
0-14 Year	: 20,753
15-49 Year	: 42,973
Population Density	: 36.39/ Km ²

Health Facilities (2009)*

Township Hospital (100) Bedded	: 1
Station Hospital	: 1
Maternal and Child Health Centers	: 1
Rural Health Centers	: 5
Sub Health Centers	: 20
Private Clinics and Maternity Homes	: 3

Health Manpower*

	<i>Doctor</i>	<i>Nurse</i>	<i>HA</i>	<i>LHV</i>	<i>PHS I</i>	<i>PHS II</i>	<i>MW</i>
Sanction	7	23	6	5	2	2	27
Appointed	1	20	4	5	2	2	26
Vacant	6	3	2	0	0	0	1
% Vacancy	85.7%	13.0%	33.3%	0%	0%	0%	3.7%

(HA: Health Assistant, LHV: Lady Health Visitor, PHS:Public Health Supervisor , MW: Midwife)

Health Manpower (Volunteer)*

	Category of Volunteer Health Workers		
	CHW	AMW	TTBA
Trained	85	75	41
Functioning	39	39	17
% Functioning	45.9%	52.0%	41.5%

(CHW: Community health Worker, AMW: Auxiliary Mid Wife, TTBA: Trained Traditional Birth Attendant)

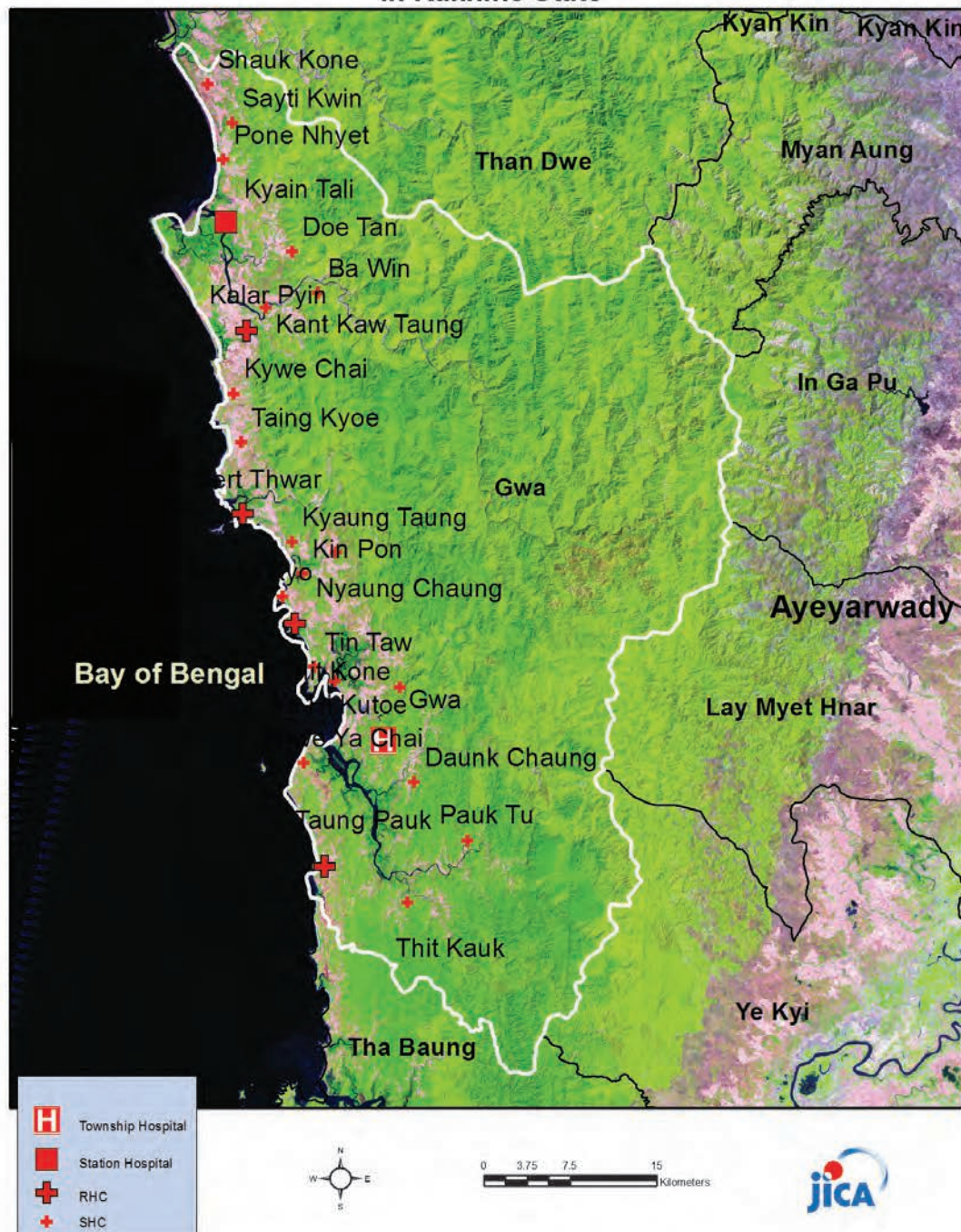
Common Diseases under National Surveillance*

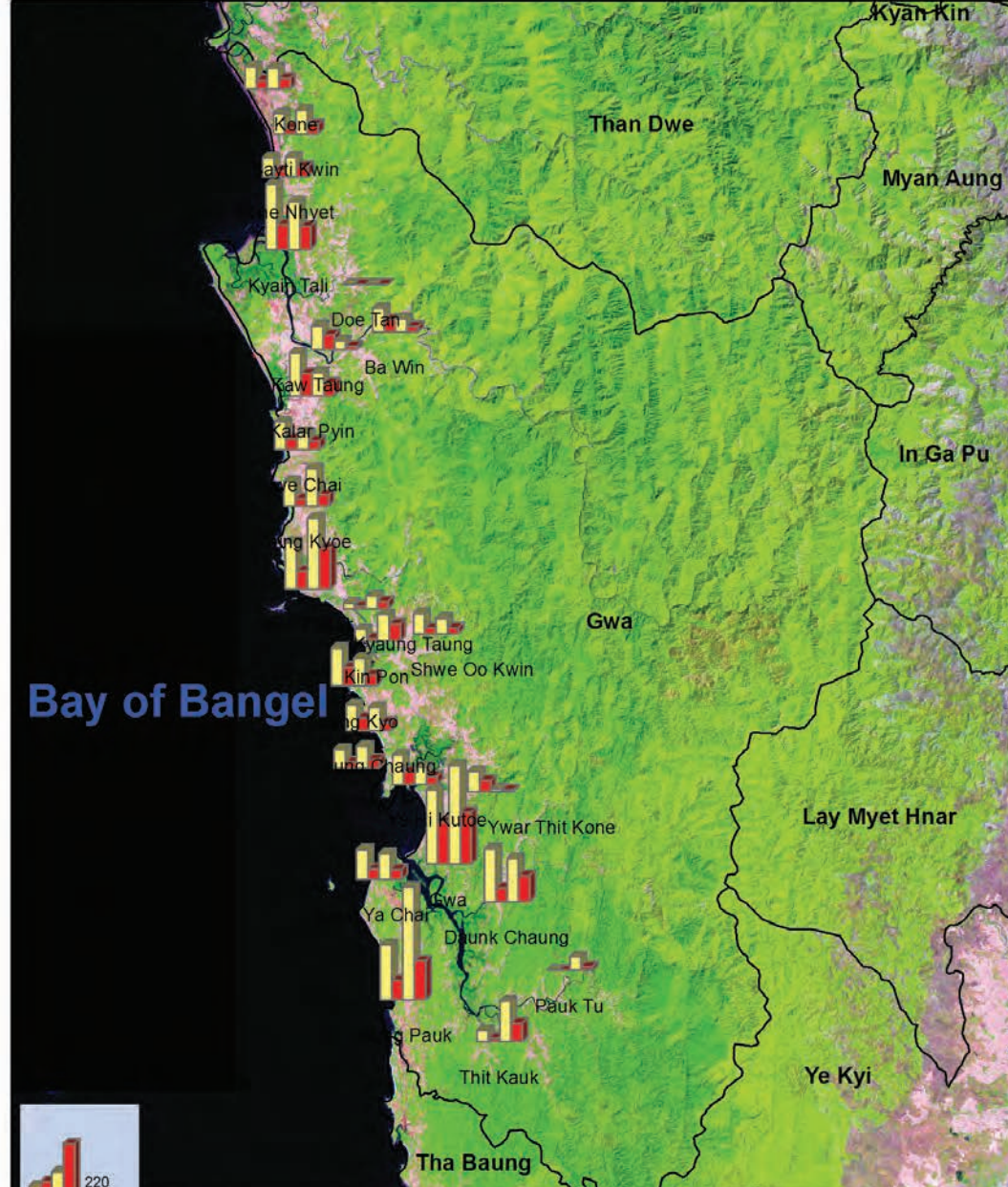
<i>Diseases</i>	<i>Morbidity</i>	<i>Mortality</i>
Malaria	2473.03	2.40
ARI <5	7587.63	14.79
Diarrhea	595.78	0
Dysentery	237.35	0
TB(Sputum+)	57.54	0
Snake Bite	0	0

(Per 100,000 Populations)

* The data source is Health Profile of Rakhine State (2009) from Department of Health Planning

Vegetation Cover and Health Facilities distribution in Gwa Township in Rakhine State





No of house holds and LLIN distribution in Gwa Township



Sr	Name	Tot_HH	LLIN
1	Kyain Tali SHU	864	864
2	Kalar Pyin RHC	1,274	1,274
3	Sert Thwar RHC	1,486	1,486
4	Nyaung Chaung RHC	747	747
5	Taung Pauk RHC	2,130	2,130
	Total	6,501	6,501



0 3.5 7 14
Kilometers

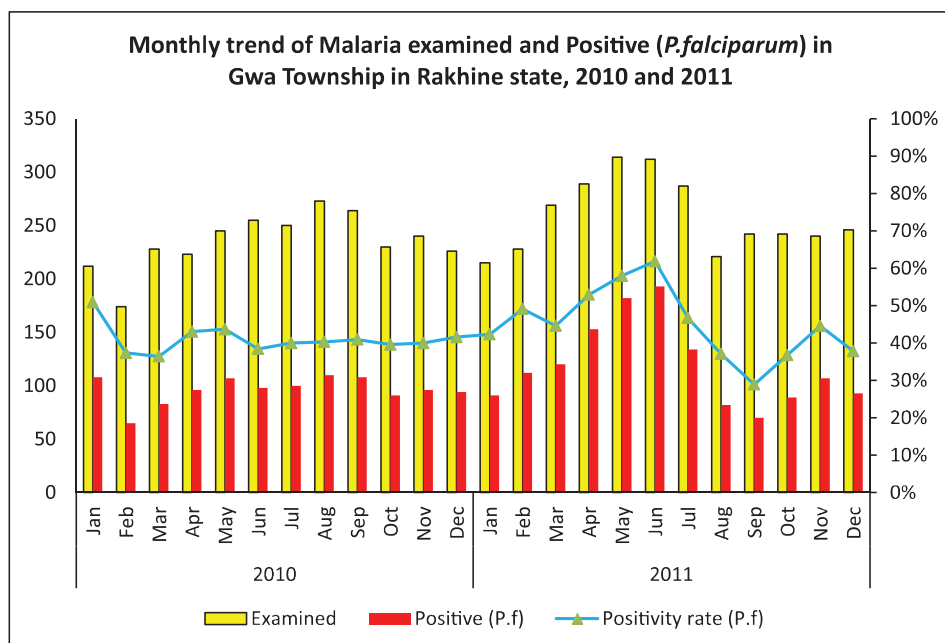
LLIN distribution in Gwa Township supported by Japan Grant Assistance

Sr	RHC Name	SHC Name	Village Name	House Holds	Population	Total LLIN
1	Kyain Tali SHU	Poe Nyhet	Chin Kwin	107	409	107
2	Kyain Tali SHU	Poe Nyhet	San Chaung	25	85	25
3	Kyain Tali SHU	Poe Nyhet	Thae Kone	122	391	122
4	Kyain Tali SHU	Poe Nyhet	Jake Taung	28	84	28
5	Kyain Tali SHU	Zay Ti Kwin	Set Thay	20	81	20
6	Kyain Tali SHU	Shauk Kone	Kyaung Kone	86	410	86
7	Kyain Tali SHU	Shauk Kone	Chin Ywar	63	250	63
8	Kyain Tali SHU	Shauk Kone	Nyaung Pin Thar	20	61	20
9	Kyain Tali SHU	Shauk Kone	Chaung Wa	21	73	21
10	Kyain Tali SHU	Shauk Kone	Wai Thar Li	11	32	11
11	Kyain Tali SHU	Doe Tan	Doe Tan	80	327	80
12	Kyain Tali SHU	Doe Tan	Taung Pet Lae	50	232	50
13	Kyain Tali SHU	Doe Tan	Yae San Kwin	27	103	27
14	Kyain Tali SHU	Doe Tan	Sae Sone Kwin	17	65	17
15	Kyain Tali SHU	Doe Tan	Kyauk Par Set	33	125	33
16	Kyain Tali SHU	Doe Tan	Sue Poke Kone	40	153	40
17	Kyain Tali SHU	Doe Tan	Htain Pin Kwin	15	53	15
18	Kyain Tali SHU	Doe Tan	Halay Khar Htaung	13	50	13
19	Kyain Tali SHU	Doe Tan	Phoe Hlaung Kwin	34	142	34
20	Kyain Tali SHU	Doe Tan	Yar Thar Yar	52	209	52
21	Kalar Pyin	Ka Lar Pyin	Bae Inn	19	71	19
22	Kalar Pyin	Ka Lar Pyin	Kawe Chan Kwin	13	55	13
23	Kalar Pyin	Ka Lar Pyin	Out Ba Win	18	69	18
24	Kalar Pyin	Kant Kaw Taung	Kant Kaw Taung	216	727	216
25	Kalar Pyin	Kant Kaw Taung	Pyin Kwin	21	83	21
26	Kalar Pyin	Kant Kaw Taung	Sarr Chat	103	328	103
27	Kalar Pyin	Yay Kyaw	Gyine Kyi	56	199	56
28	Kalar Pyin	Yay Kyaw	Ywar Thit	31	125	31
29	Kalar Pyin	Yay Kyaw	Pa Lin Maw	68	278	68
30	Kalar Pyin	Yay Kyaw	Kyinn Kyi	24	91	24
31	Kalar Pyin	Yay Kyaw	Nan Ka Thu	22	82	22
32	Kalar Pyin	Ba Win	Ba Win	245	824	245
33	Kalar Pyin	Ba Win	Oae Htaine	61	215	61
34	Kalar Pyin	Ba Win	Kauk Ya	10	38	10
35	Kalar Pyin	Ba Win	Shwe Nyaung Pin	7	25	7
36	Kalar Pyin	Ba Win	Khon Kyi	55	192	55
37	Kalar Pyin	Kywe Chai	Dale Poke	59	165	59
38	Kalar Pyin	Kywe Chai	Ku Tot Lay	125	443	125
39	Kalar Pyin	Kywe Chai	Ma Yan Kune	34	117	34
40	Kalar Pyin	Kywe Chai	Thaine Kun	87	315	87
41	Sert Thwar	Kyaung Taung	Kyaung Taung	64	232	64
42	Sert Thwar	Kyaung Taung	Pain Nae Kone	102	385	102

Sr	RHC Name	SHC Name	Village Name	House Holds	Population	Total LLIN
43	Sert Thwar	Kyaung Taung	Zee Kone	103	363	103
44	Sert Thwar	Kyaung Taung	Sin Kuu	70	299	70
45	Sert Thwar	Kyaung Taung	Sarr Chat Kyi	31	129	31
46	Sert Thwar	Kyaung Taung	Sarr Char Ka Lay	13	35	13
47	Sert Thwar	Kyaung Taung	Kyauk Phar	66	259	66
48	Sert Thwar	Kin Pon	Kin Pon	207	641	207
49	Sert Thwar	Kin Pon	Thar Yar Chainé	100	326	100
50	Sert Thwar	Kin Pon	Than Khae Chainé	80	269	80
51	Sert Thwar	Kin Pon	Bar Li Chaung	38	111	38
52	Sert Thwar	Shwe Oo Kwin	Shwe Oo Kwin	366	1108	366
53	Sert Thwar	Shwe Oo Kwin	Jo Lane	31	86	31
54	Sert Thwar	Shwe Oo Kwin	Yae Thoe	117	341	117
55	Sert Thwar	Shwe Oo Kwin	Ma Daw Kyawe	98	288	98
56	Nyaung Chaung	Tin Taw	A Maw	35	92	35
57	Nyaung Chaung	Ywar Thit Kone	Ya Hai Phar	118	458	118
58	Nyaung Chaung	Ywar Thit Kone	Mwae Twat	25	82	25
59	Nyaung Chaung	Ywar Thit Kone	Sone Twin	6	17	6
60	Nyaung Chaung	Ywar Thit Kone	Ywar Thit Kone	85	319	85
61	Nyaung Chaung	Ywar Thit Kone	A Lae Chaung	80	333	80
62	Nyaung Chaung	Nyaung Chaung	Shwe Twin Too	90	330	90
63	Nyaung Chaung	Nyaung Chaung	Chin Kone	22	86	22
64	Nyaung Chaung	Nyaung Chaung	Kaine Taw Kwin	34	163	34
65	Nyaung Chaung	Ya Hai Ku Tot	Kaung Kone	72	269	72
66	Nyaung Chaung	Ya Hai Ku Tot	Kyauk Kyi	81	237	81
67	Nyaung Chaung	Ya Hai Ku Tot	Si Pin	42	132	42
68	Nyaung Chaung	Ya Hai Ku Tot	Kwin Lyar Shay	57	190	57
69	Taung Pauk	Taung Pauk	Taung Pauk	192	725	192
70	Taung Pauk	Taung Pauk	Sin Kuu	32	120	32
71	Taung Pauk	Taung Pauk	Baw De	7	28	7
72	Taung Pauk	Taung Pauk	Tar Laung Kyi	72	231	72
73	Taung Pauk	Taung Pauk	A Lae Kone	8	24	8
74	Taung Pauk	Taung Pauk	A Son Kone	55	215	55
75	Taung Pauk	Taung Pauk	Kyauk Chon	298	1021	298
76	Taung Pauk	Shwe Ya Chai	Shwe Ya Chai	138	534	138
77	Taung Pauk	Shwe Ya Chai	Chan Thar	11	37	11
78	Taung Pauk	Shwe Ya Chai	Thin Paung Taw	58	193	58
79	Taung Pauk	Shwe Ya Chai	Dae Chaung	31	96	31
80	Taung Pauk	Thit Kauk	Kwin Kyi	34	115	34
81	Taung Pauk	Thit Kauk	Ywar Thit Kone	11	54	11
82	Taung Pauk	Thit Kauk	Tha Yet Pin Kwin	20	81	20
83	Taung Pauk	Thit Kauk	Kone Kyi	30	133	30
84	Taung Pauk	Thit Kauk	Bo Min	28	109	28
85	Taung Pauk	Thit Kauk	Paung Net Kyin	20	71	20
86	Taung Pauk	Thit Kauk	Seik Pyaung Kyi	11	41	11
87	Taung Pauk	Thit Kauk	San Yae Kyi	18	65	18
88	Taung Pauk	Thit Kauk	Kyauk Twin	4	16	4

Sr	RHC Name	SHC Name	Village Name	House Holds	Population	Total LLIN
89	Taung Pauk	Thit Kauk	Doe Tan	12	45	12
90	Taung Pauk	Thit Kauk	Kwin Thone Sint	10	41	10
91	Taung Pauk	Thit Kauk	Kywe Kuu Seik	20	82	20
92	Taung Pauk	Thit Kauk	Da Nae	98	388	98
93	Taung Pauk	Thit Kauk	Pyar Tike	96	345	96
94	Taung Pauk	Pauk Tu	Pauk Tu	38	150	38
95	Taung Pauk	Pauk Tu	Taung Lay	20	63	20
96	Taung Pauk	Pauk Tu	Shwe Pyae	17	76	17
97	Taung Pauk	Pauk Tu	Phet Wun Khon	10	48	10
98	Taung Pauk	Pauk Tu	Kwin Lay	5	13	5
99	Taung Pauk	Pauk Tu	Htan Ta Pin	9	44	9
100	Taung Pauk	Pauk Tu	Lae Za	9	44	9
101	Taung Pauk	Pauk Tu	Dwar Pon	9	41	9
102	Taung Pauk	Pauk Tu	Phoe Taing	5	18	5
103	Taung Pauk	Pauk Tu	War Yone Kwin	25	108	25
104	Taung Pauk	Pauk Tu	Byaw Kyi Tan	7	35	7
105	Taung Pauk	Pauk Tu	Na Pae Pin	4	23	4
106	Taung Pauk	Pauk Tu	Htain Kyin	39	174	39
107	Taung Pauk	Pauk Tu	Kan Kyin	16	73	16
108	Taung Pauk	Daunk Chaung	Kwin Kyi Kan Nar	98	329	98
109	Taung Pauk	Daunk Chaung	Kwin Kyi Taung Nar	84	328	84
110	Taung Pauk	Daunk Chaung	Chin Kwin	44	155	44
111	Taung Pauk	Daunk Chaung	Htan Pan Khon	58	231	58
112	Taung Pauk	Daunk Chaung	Wa Tain	49	193	49
113	Taung Pauk	Daunk Chaung	Sar Chat Kwin	32	119	32
114	Taung Pauk	Daunk Chaung	Kauk Tuu Kwin	25	110	25
115	Taung Pauk	Daunk Chaung	Pa Dae Kaw	35	161	35
116	Taung Pauk	Daunk Chaung	11/13/14 mile	47	181	47
117	Taung Pauk	Daunk Chaung	Baw De-Bay Dar	49	175	49
118	Taung Pauk	Daunk Chaung	Chaung Thar Kyi	82	319	82
Grand Total				6,494	23,378	6,494

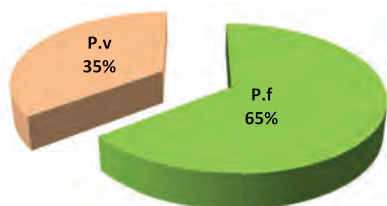
Monthly trend of malaria examination and positive (*P.falciparum*) in Gwa Township in Rakhine State, 2010 and 2011



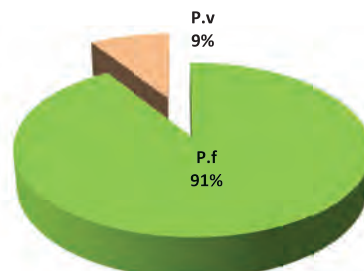
Month	2010			2011		
	Examined	Positive (<i>P.f</i>)	Positivity rate (<i>P.f</i>)	Examined	Positive (<i>P.f</i>)	Positivity rate (<i>P.f</i>)
Jan	212	108	50.94%	215	91	42.33%
Feb	174	65	37.36%	228	112	49.12%
Mar	228	83	36.40%	269	120	44.61%
Apr	223	96	43.05%	289	153	52.94%
May	245	107	43.67%	314	182	57.96%
Jun	255	98	38.43%	312	193	61.86%
Jul	250	100	40.00%	287	134	46.69%
Aug	273	110	40.29%	221	82	37.10%
Sep	264	108	40.91%	242	70	28.93%
Oct	230	91	39.57%	242	89	36.78%
Nov	240	96	40.00%	240	107	44.58%
Dec	226	94	41.59%	246	93	37.80%
	2,820	1,156	40.99%	3,105	1,426	45.93%

P.f and *P.v* ratio of malaria microscopy diagnosis in Gwa Township in Rakhine State, 2010 and 2011

P.f and *P.v* ratio of microscopy diagnosis in Gwa Township in 2010

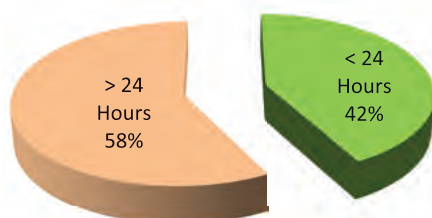


P.f and *P.v* ratio of microscopy diagnosis in Gwa Township in Rakhine State, 2011

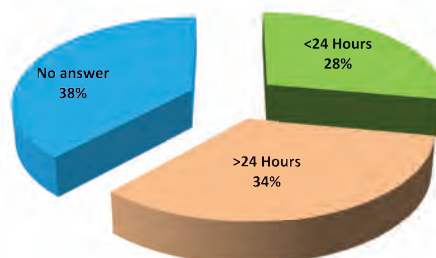


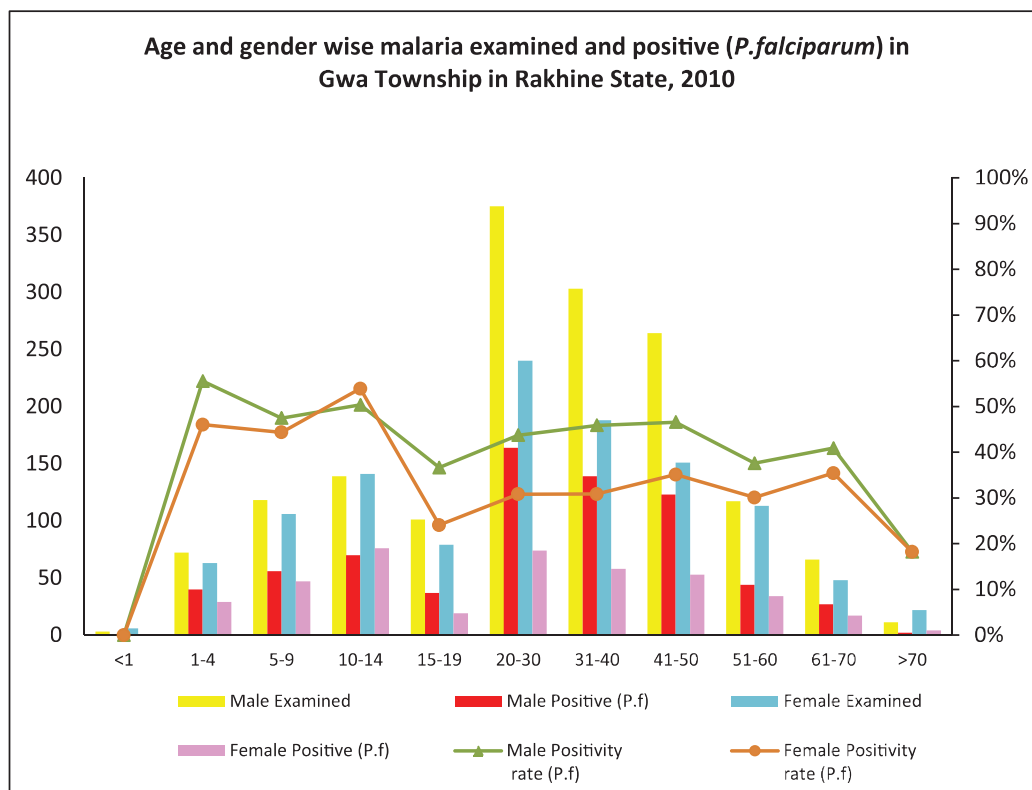
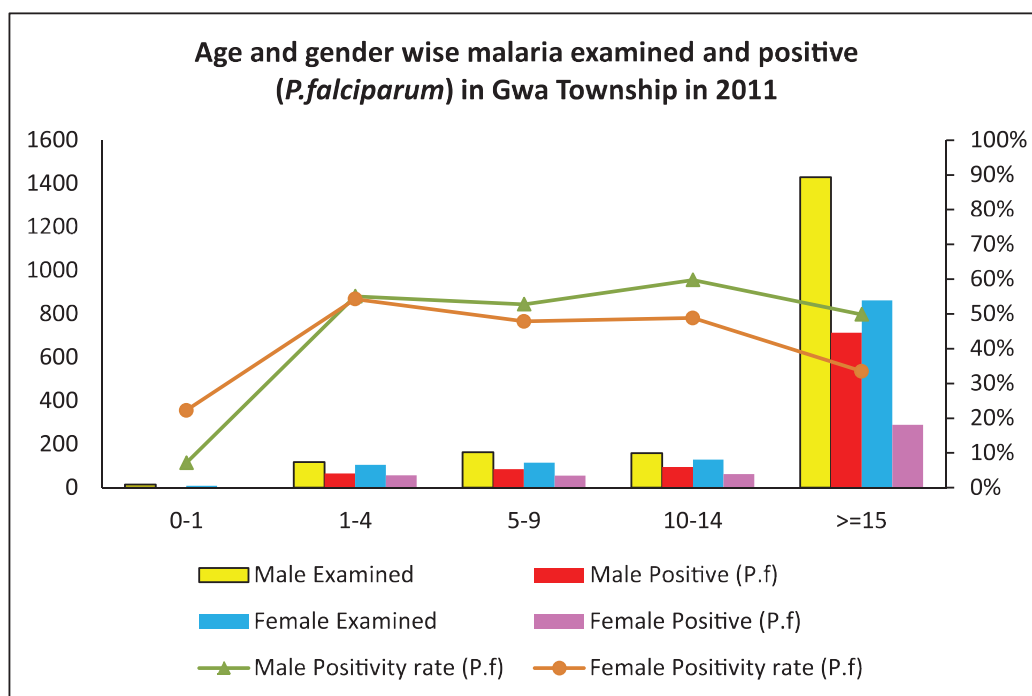
Percentage of patients approached to health facilities for malaria confirmatory diagnosis in Gwa Township in Rakhine State, 2010 and 2011

Days approached to health facilities in Gwa Township in 2010

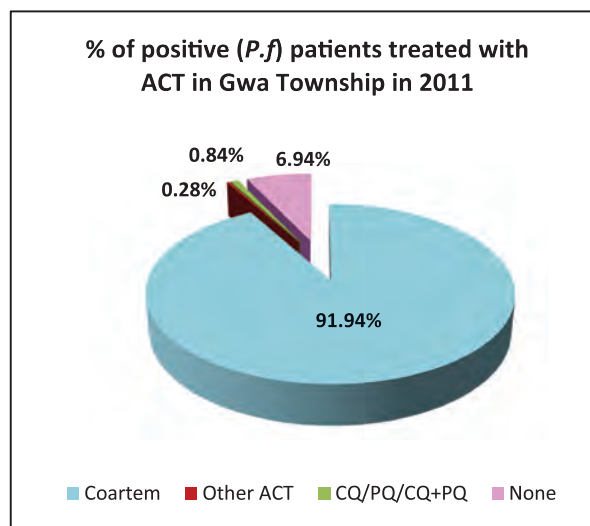
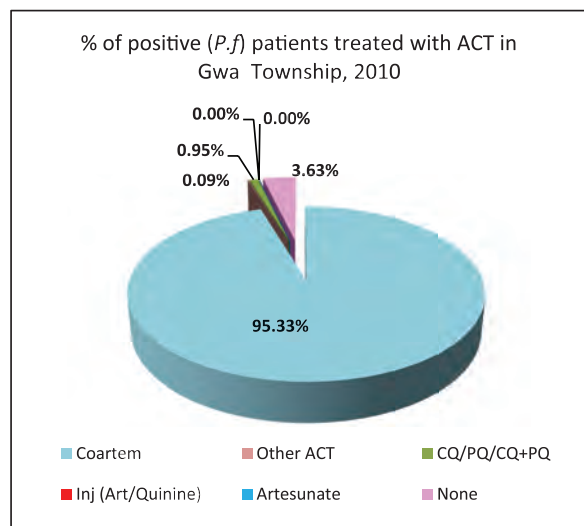


Percentage of patients approached to health facilities in Gwa Township in 2011

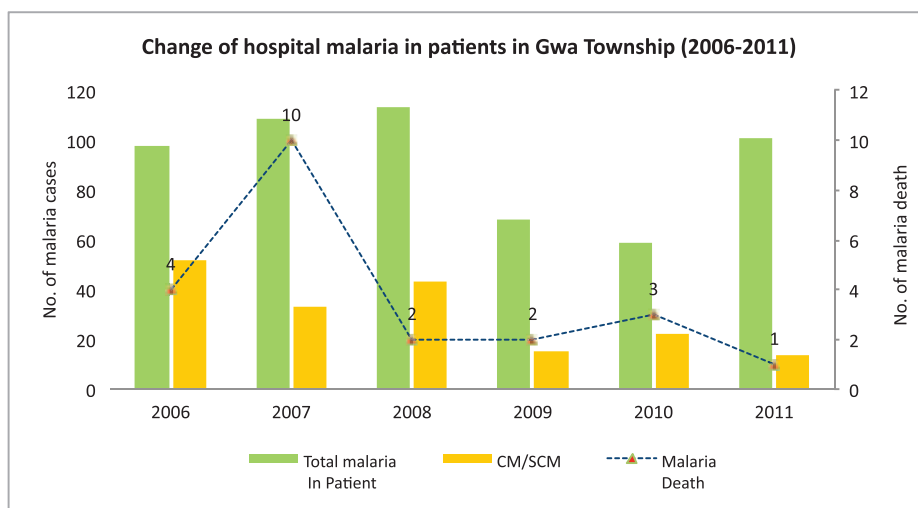


Age and gender wise malaria examination and positive (*P.f*) in Gwa Township, 2010Age and gender wise malaria examination and positive (*P.f*) in Gwa Township, 2011

Percentage of positive patients treated with ACT in Gwa Township in 2010 and 2011



Change of hospital malaria in patients in Gwa Township in Rakhine State from 2006 to 2011



Sr	Year	Total In Patient	Total malaria In Patient	CM/SCM	Malaria Death	Total Death
1	2006	757	98	52	4	29
2	2007	882	109	33	10	39
3	2008	860	113	43	2	21
4	2009	887	68	15	2	22
5	2010	725	59	22	3	21
6	2011	1268	101	14	1	22

Health Profile of Kyaukphyu Township



Area and Location*

Area	:	1756.93 Km ²
North	:	Mye Bon
South	:	Yan Bye
East	:	Ann
West	:	Bay of Bangel

Administrative Units*

Wards	:	16
Village tracts	:	54
Villages	:	264

Population (2009)*

Total	:	206,061
Urban	:	43,763
Rural	:	162,298
Male	:	100,897
Female	:	105,164
Sex Ratio	:	96
<5 Year	:	23,028
0-14 Year	:	62,448
15-49 Year	:	101,247
Population Density	:	117.28/ Km ²

Health Facilities (2009)*

Township Hospital (100) Bedded	:	1
Station Hospital	:	2
Maternal and Child Health Centers	:	1
Rural Health Centers	:	7
Sub Health Centers	:	28
School Health Center	:	1
Private Clinics and Maternity Homes	:	17

Health Manpower*

	<i>Doctor</i>	<i>Nurse</i>	<i>HA</i>	<i>LHV</i>	<i>PHS I</i>	<i>PHS II</i>	<i>MW</i>
Sanction	19	22	7	7	3	5	39
Appointed	14	20	6	7	3	5	37
Vacant	5	2	1	0	0	0	2
% Vacancy	25.8%	9.1%	14.3%	0%	0%	0%	5.1%

(HA: Health Assistant, LHV: Lady Health Visitor, PHS:Public Health Supervisor , MW: Midwife)

Health Manpower (Volunteer)*

	Category of Volunteer Health Workers		
	CHW	AMW	TTBA
Trained	189	79	27
Functioning	25	10	0
% Functioning	13.2%	12.7	0.0%

(CHW: Community health Worker, AMW: Auxiliary Mid Wife, TTBA: Trained Traditional Birth Attendant)

Common Diseases under National Surveillance*

<i>Diseases</i>	<i>Morbidity</i>	<i>Mortality</i>
Malaria	1793.64	0
ARI <5	4655.20	0
Diarrhea	1031.73	0
Dysentery	521.20	0
TB(Sputum+)	46.59	0
Snake Bite	0.49	0

(Per 100,000 Populations)

* The data source is Health Profile of Rakhine State (2009) from Department of Health Planning.

Vegetation Cover and Health Facilities distribution in Kyaukpyu Township in Rakhine State

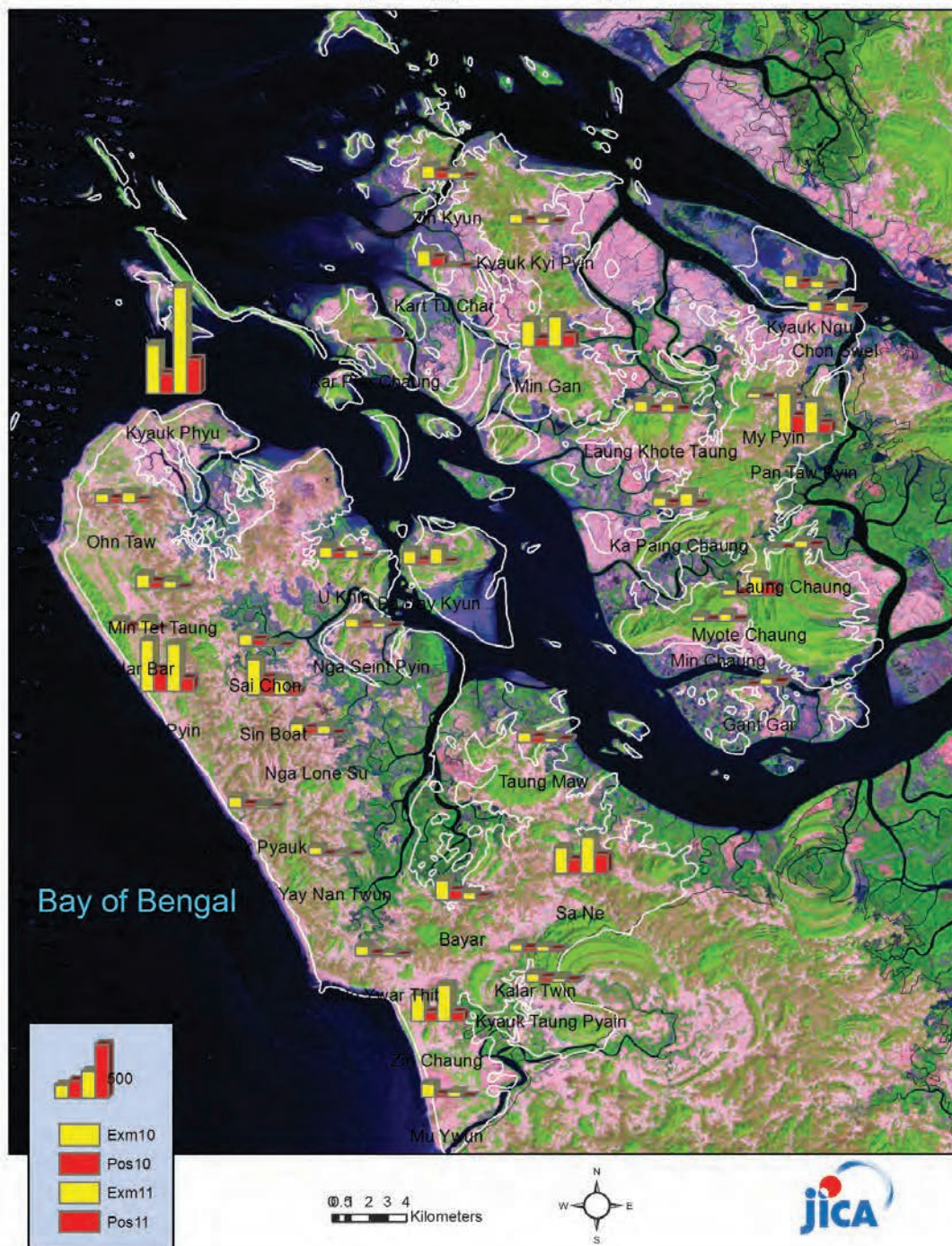


- H** Township Hospital
- Station Hospital
- +** RHC
- SHC

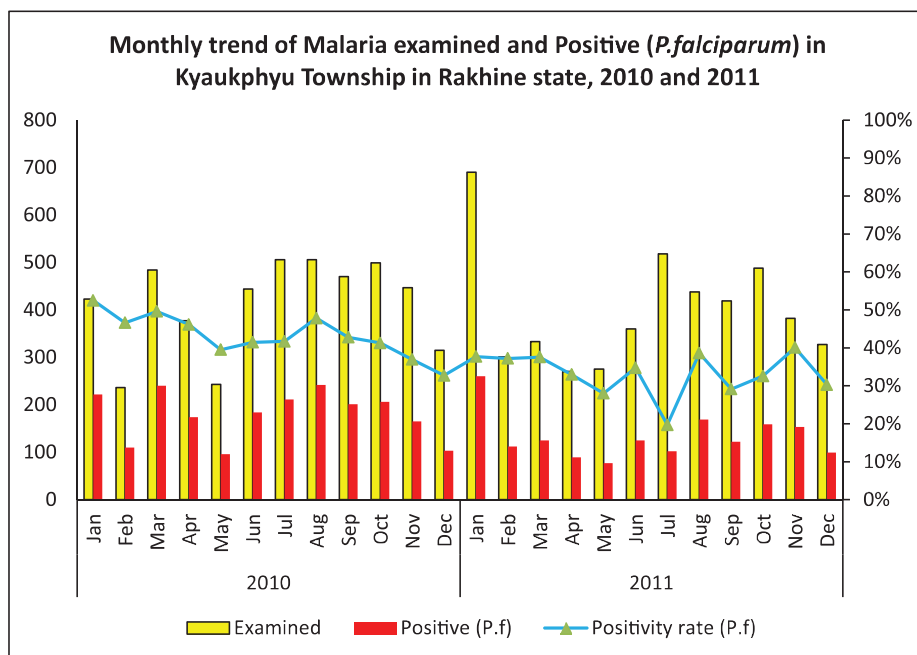
0 1.25 5 7.5 10
Kilometers



Health Facilities wise malaria examination and positive (P.f) in Kyaukpyu Township,



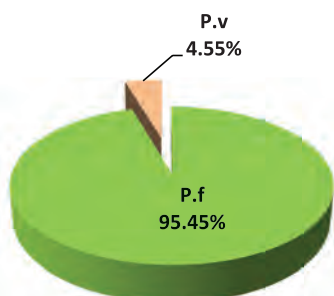
Monthly trend of malaria examination and positive (*P.falciparum*) in Kyaukphyu Township in Rakhine State, 2010 and 2011



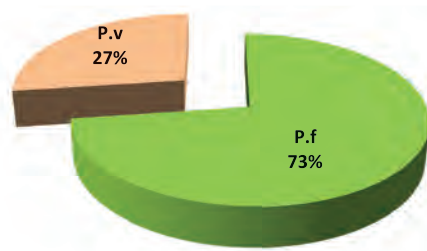
Month	2010			2011		
	Examined	Positive (<i>P.f</i>)	Positivity rate (<i>P.f</i>)	Examined	Positive (<i>P.f</i>)	Positivity rate (<i>P.f</i>)
Jan	423	222	52.48%	690	260	37.68%
Feb	236	110	46.61%	301	112	37.21%
Mar	484	240	49.59%	333	125	37.54%
Apr	377	174	46.15%	270	89	32.96%
May	243	96	39.51%	275	77	28.00%
Jun	444	184	41.44%	360	125	34.72%
Jul	506	211	41.70%	518	102	19.69%
Aug	506	242	47.83%	438	169	38.58%
Sep	470	201	42.77%	419	122	29.12%
Oct	499	206	41.28%	488	159	32.58%
Nov	447	165	36.91%	382	153	40.05%
Dec	315	103	32.70%	327	99	30.28%
	4,950	2,154	43.52%	4,801	1,592	33.16%

P.f and *P.v* ratio of malaria microscopy diagnosis in Kyaukphyu Township in Rakhine State, 2010 and 2011

P.f and *P.v* ratio of microscopy diagnosis in Kyaukphyu Township in 2010

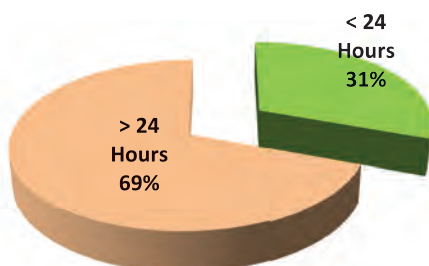


P.f and *P.v* ratio of microscopy diagnosis in Kyaukphyu Township in Rakhine State, 2011

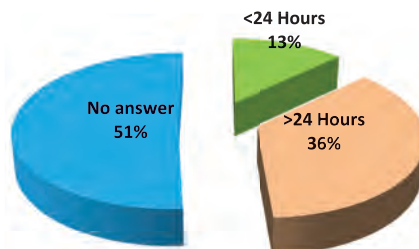


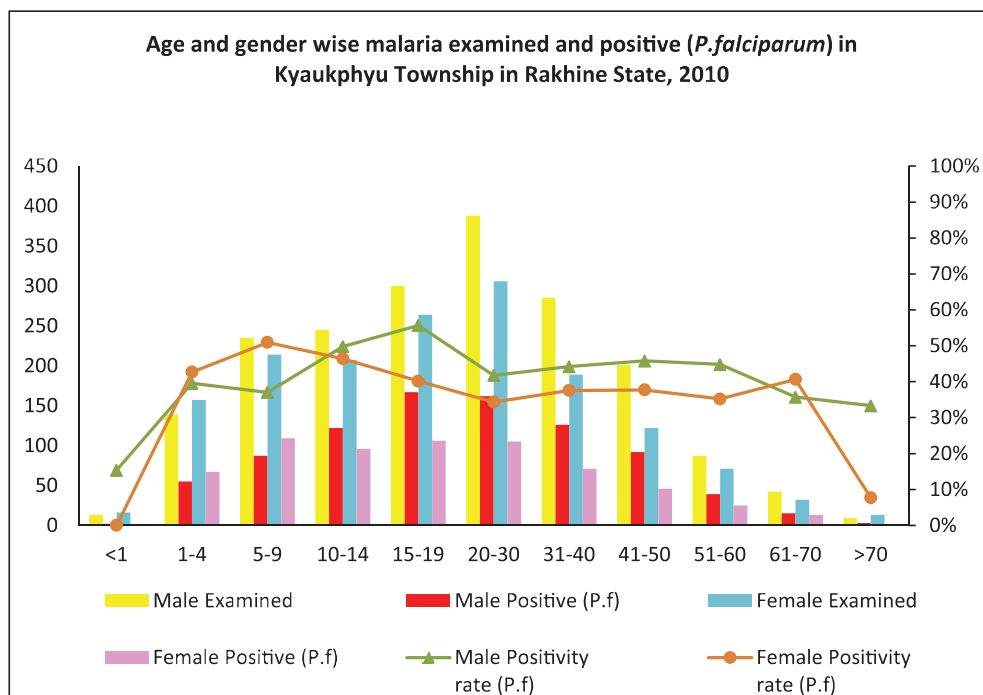
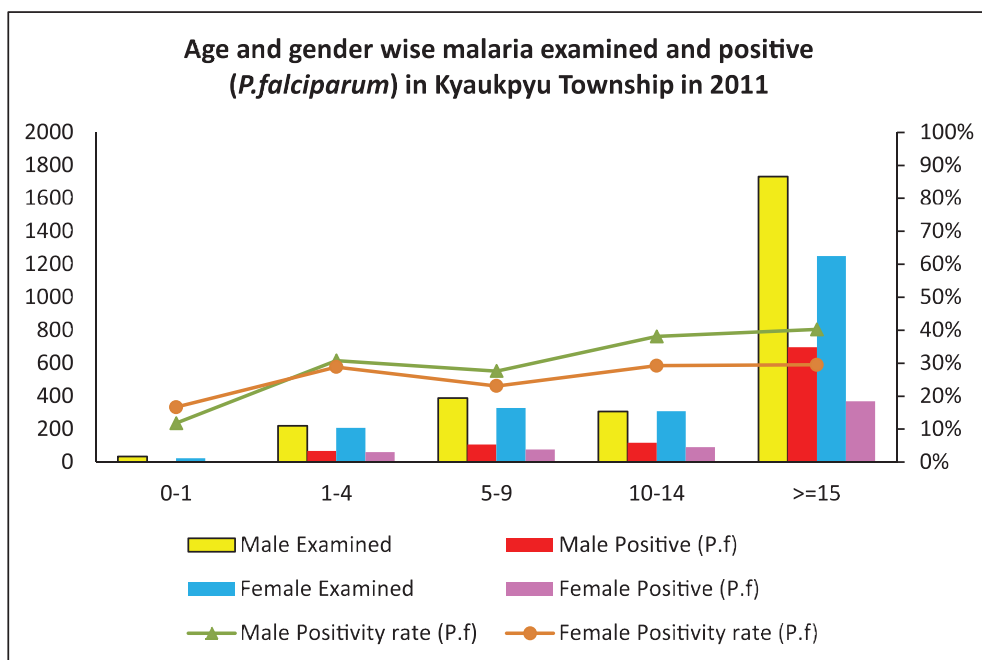
Percentage of patients approached to health facilities for malaria confirmatory diagnosis in Kyaukphyu Township in Rakhine State, 2010 and 2011

Percentage of patients approached to health facilities in Kyaukphyu Township in 2010

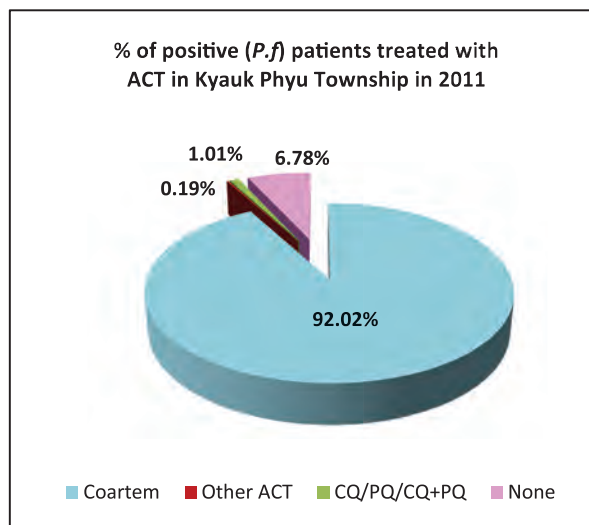
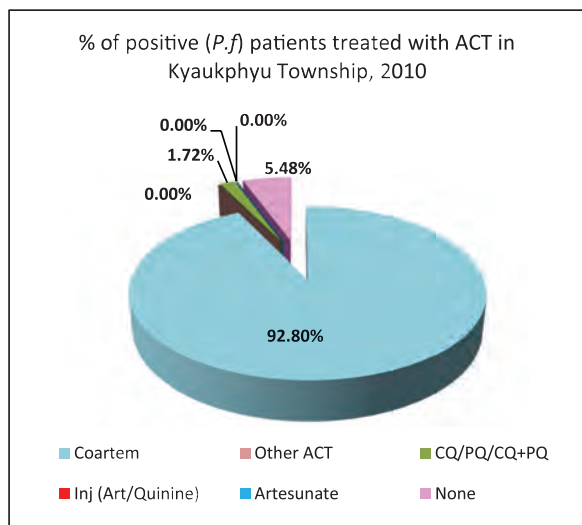


Percentage of patients approached to health facilities in Kyaukphyu Township in 2011

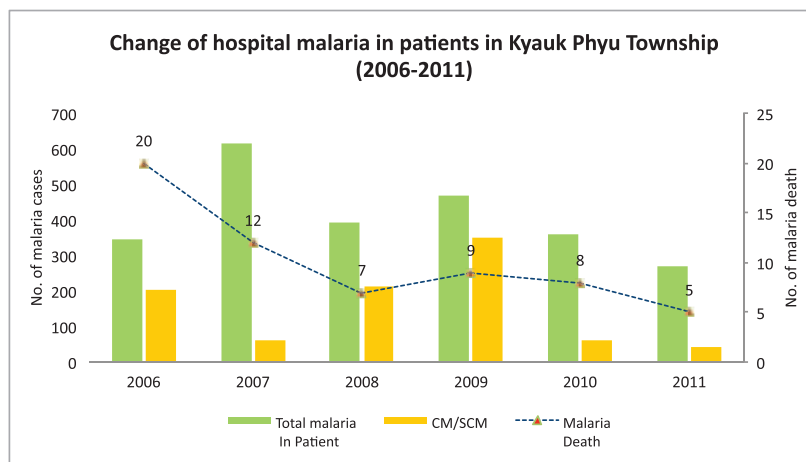


Age and gender wise malaria examination and positive (*P.f*) in Kyaukphyu Township, 2010Age and gender wise malaria examination and positive (*P.f*) in Kyaukphyu Township, 2011

Percentage of positive patients treated with ACT in Kyauk Phyu Township in 2010 and 2011



Change of hospital malaria in patients in Kyaukphyu Township in Rakhine State from 2006 to 2011



Sr	Year	Total In Patient	Total malaria In Patient	CM/SCM	Malaria Death	Total Death
1	2006	2563	345	201	20	77
2	2007	3870	614	62	12	124
3	2008	2791	395	212	7	76
4	2009	3177	468	352	9	91
5	2010	3168	359	61	8	88
6	2011	3104	270	44	5	68