

## Rakhine State

### Profile of Rakhine State



#### Area and Location\*

Area : 36,778.21 Sq Km

North : Chin State

South : Bay of Bengal

East : Magway Region

West : Bay of Bengal

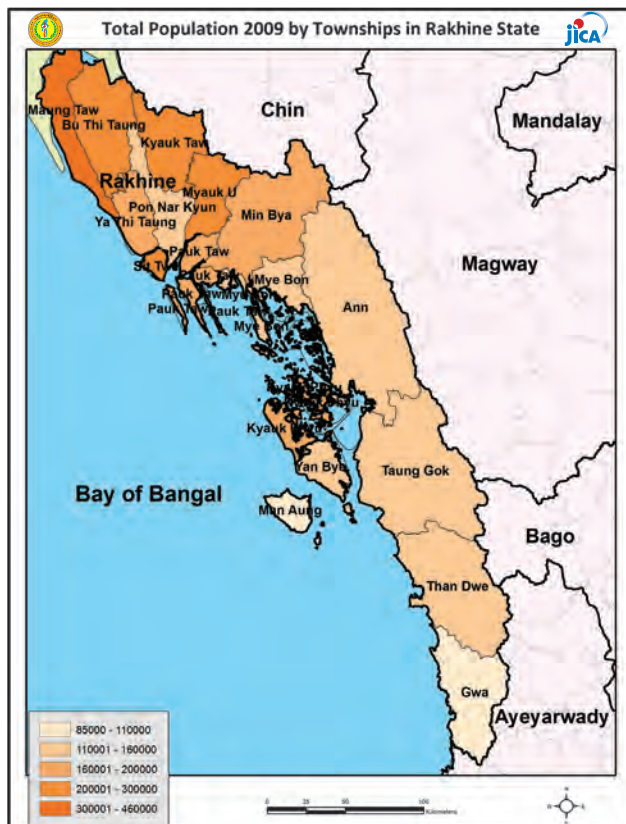
#### Administrative Units\*

Townships : 17

Wards : 121

Village Tracts : 1,046

Villages : 3,862



#### Population (2009)\*

Total : 3,355,987

Urban : 506,614

Rural : 2,849,373

Male : 1,645,649

Female : 1,710,338

Sex Ratio : 96

<5 Year : 424,842

0-14 Year : 1,086,502

15-49 Year : 1,685,253

Population Density : 91.24933/Km<sup>2</sup>

## Health Facilities\*

General Hospital (200) Bedded	1	Urban Health Centers	1
Hospital (100) Bedded	3	Rural Health Centers	100
Hospital (50) Bedded	2	Sub Health Centers	400
Hospital (25) Bedded	11	School Health Centers	4
Station Hospital	28	Private Clinics and Maternity Homes	109
Maternal and Child Health Centers	18		

## Health Manpower\*

	Doctor	Nurse	HA	LHV	PHS I	PHS II	MW
Sanction	225	392	110	98	39	63	575
Appointed	140	355	90	92	39	55	541
Vacant	85	37	20	6	0	8	34
% Vacancy	37.8%	9.4%	18.2%	6.1%	0.0%	12.7%	5.9%

(HA: Health Assistant, LHV: Lady Health Visitor, PHS: Public Health Supervisor, MW: Midwife)

## Health Manpower (Volunteer)\*

	Category of Volunteer Health		
	CHW	AMW	TTBA
Trained	3158	1693	1699
Functioning	1617	847	1222
% Functioning	51.2%	50.0%	71.9%

(CHW: Community Health Worker, AMW: Auxiliary Mid Wife, TTBA: Trained Traditional Birth Attendant)

## Common Diseases under National Surveillance\*

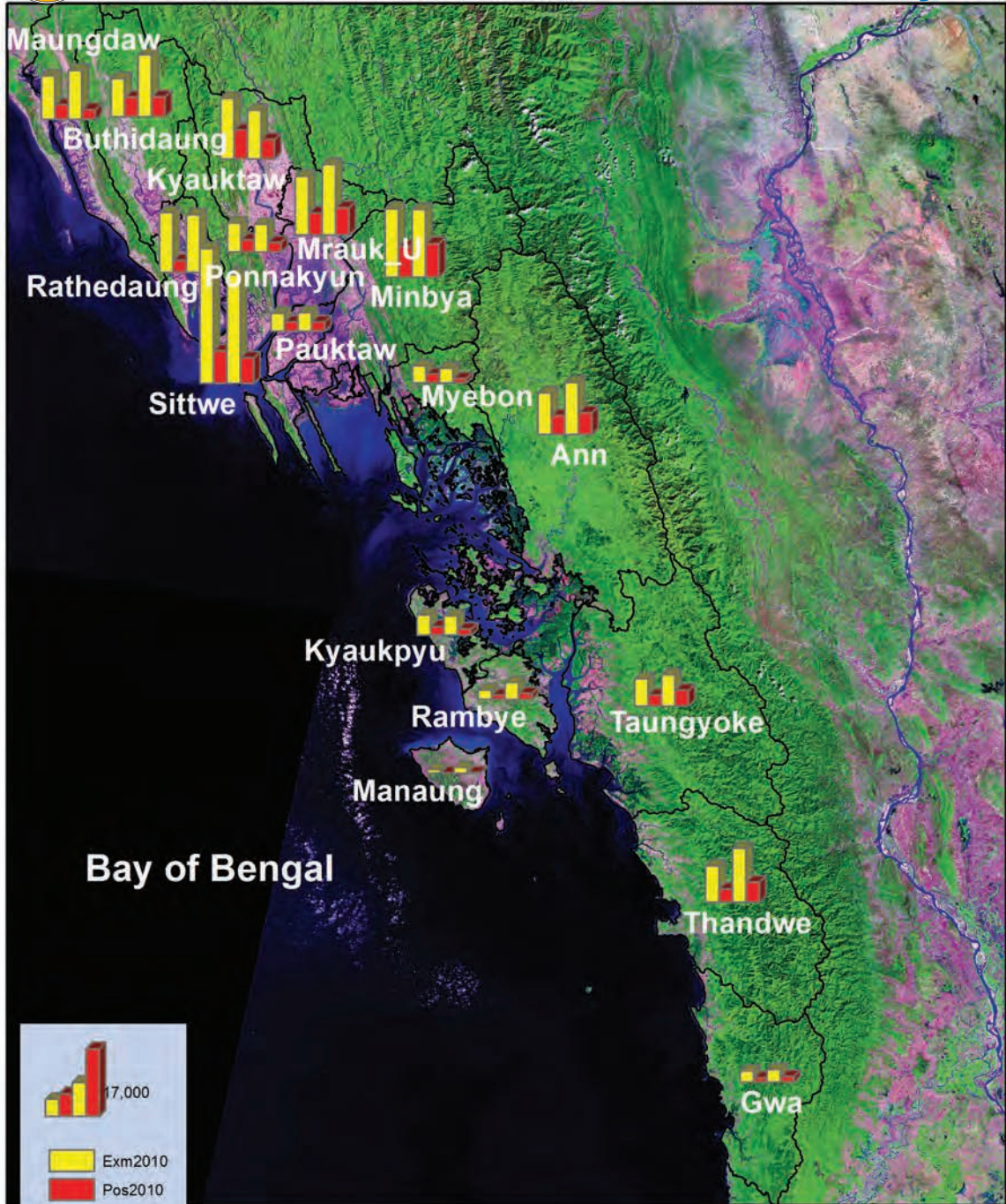
Diseases	Morbidity	Mortality
Malaria	3736.01	2.29
ARI<5	5861.94	8.71
Diarrhea	1111.15	0.57
Dysentery	495.38	0
TB (Sputum +)	54.02	0.42
Snake Bite	0.72	0.09

(Per 100,000 Populations)

\* The data source is Health Profile of Rakhine State (2009) from Department of Health Planning.



**Total examined and positive (*P.f*) by Townships in Rakhine State, 2010 and 2011**





## Result of Malaria examination by Townships in Rakhine State in 2010

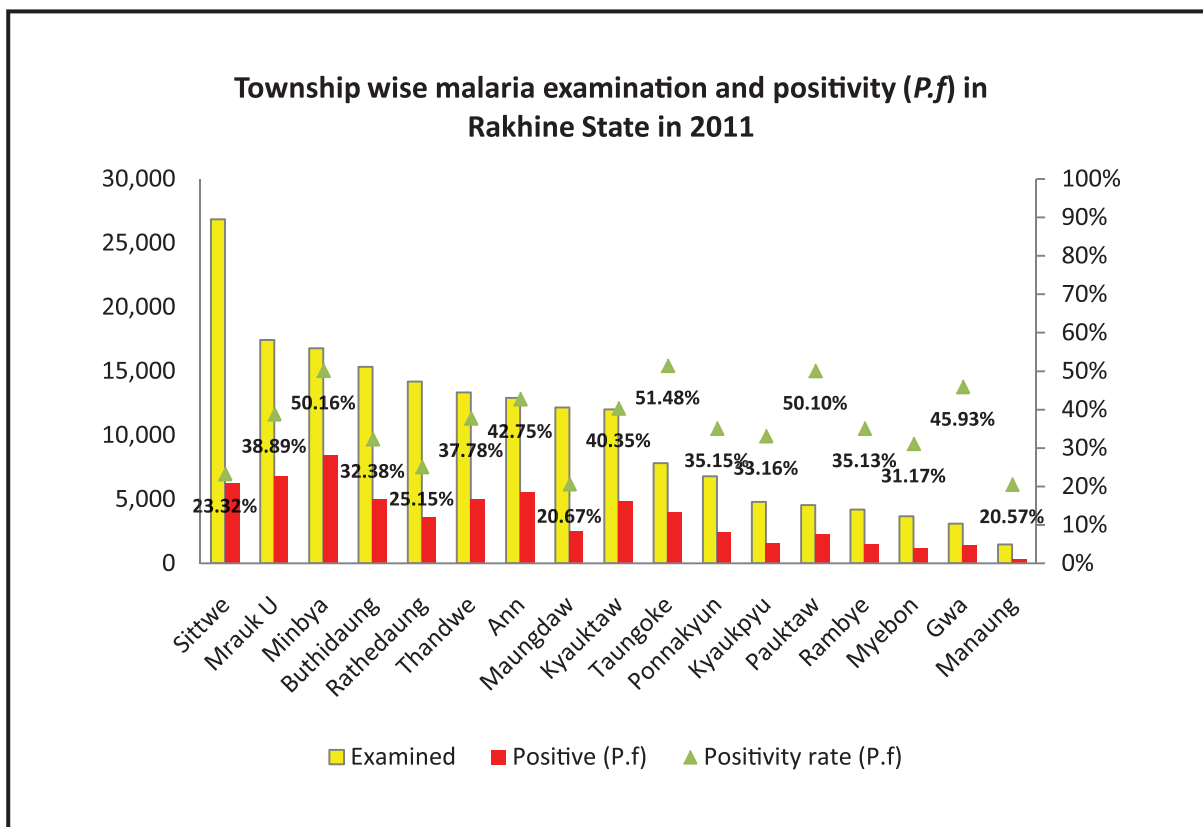
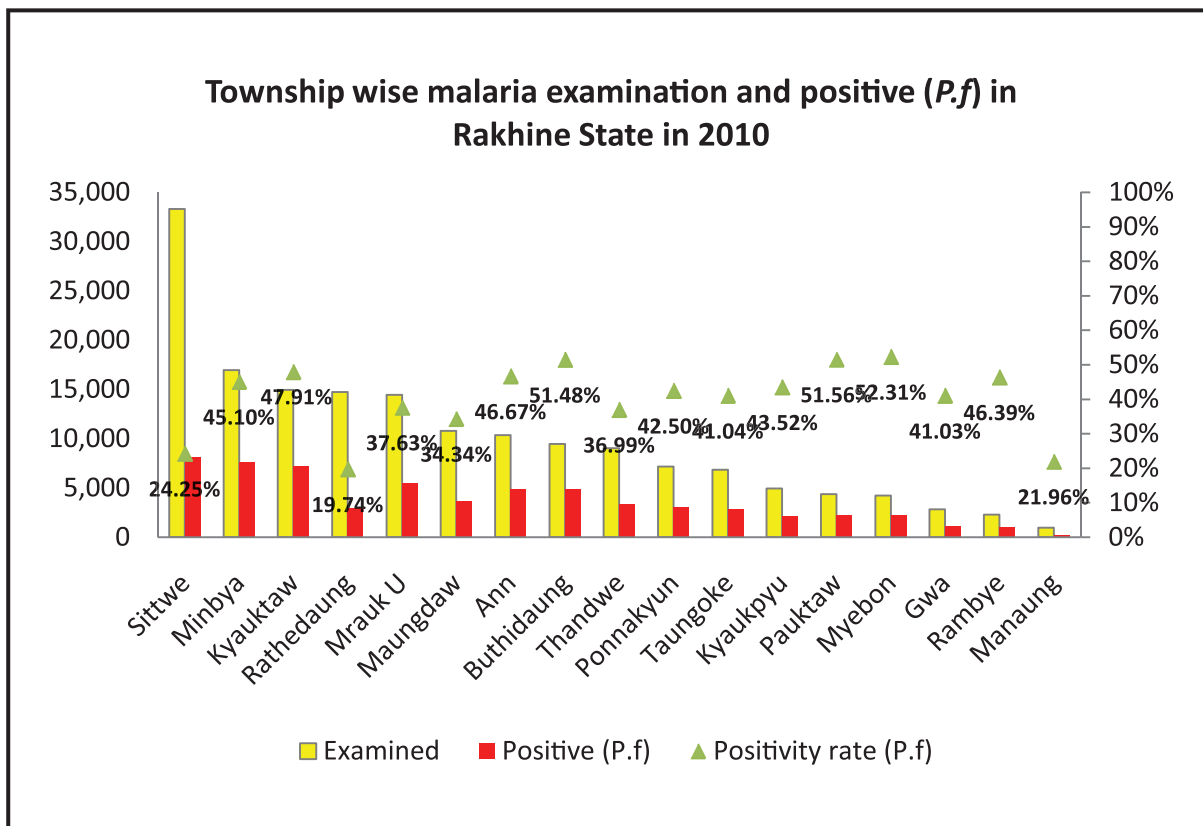
Sr	Township Name	Total Examination	Examined by RDT		Examined by Microscope							SFR	SVR	SPR
			Examined	P <sub>f</sub>	Examined	P <sub>f</sub>	P <sub>v</sub>	P <sub>m</sub> / P <sub>o</sub>	Mix	Total Positive				
1	Sittwe	33,311	8,480	3,599	24,831	4,325	5,774	1	155	10,255	43.69%	56.30%	41.59%	
2	Ponnakyun	7,189	6,621	2,945	568	110	34	0	0	144	76.39%	23.61%	42.97%	
3	Kyauktaw	14,935	14,844	7,087	91	69	3	1	0	73	94.52%	4.11%	47.94%	
4	Mrauk U	14,461	12,652	4,980	1,809	454	114	1	8	577	80.07%	19.76%	38.43%	
5	Minbya	16,971	16,842	7,572	129	76	9	1	6	92	89.13%	9.78%	45.16%	
6	Myebon	4,234	4,192	2,198	42	17	13	0	0	30	56.67%	43.33%	52.62%	
7	Pauktaw	4,393	4,027	2,102	366	159	22	1	4	186	87.63%	11.83%	52.08%	
8	Rathedaung	14,745	9,539	1,969	5,206	936	345	0	5	1,286	73.17%	26.83%	22.08%	
9	Maungdaw	10,809	9,083	3,272	1,726	431	260	0	9	700	62.86%	37.14%	36.75%	
10	Buthidaung	9,462	9,297	4,839	165	32	44	1	0	77	41.56%	57.14%	51.96%	
11	Kyaukpyu	4,950	4,913	2,133	37	21	1	0	0	22	95.45%	4.55%	43.54%	
12	Rambye	2,285	2,081	967	204	93	14	0	0	107	86.92%	13.08%	47.00%	
13	Manaung	970	947	208	23	5	1	0	0	6	83.33%	16.67%	22.06%	
14	Ann	10,354	9,620	4,537	734	292	122	13	3	430	68.60%	28.37%	47.97%	
15	Thandwe	9,030	8,251	3,193	779	122	221	3	25	371	39.62%	59.57%	39.47%	
16	Taungoke	6,852	6,008	2,490	844	310	172	0	12	494	65.18%	34.82%	43.55%	
17	Gwa	2,820	2,763	1,126	57	30	17	1	1	49	63.27%	34.69%	41.67%	
		<b>167,771</b>	<b>130,160</b>	<b>55,217</b>	<b>37,611</b>	<b>7,482</b>	<b>7,166</b>	<b>23</b>	<b>228</b>	<b>14,899</b>	<b>51.75%</b>	<b>48.10%</b>	<b>41.79%</b>	



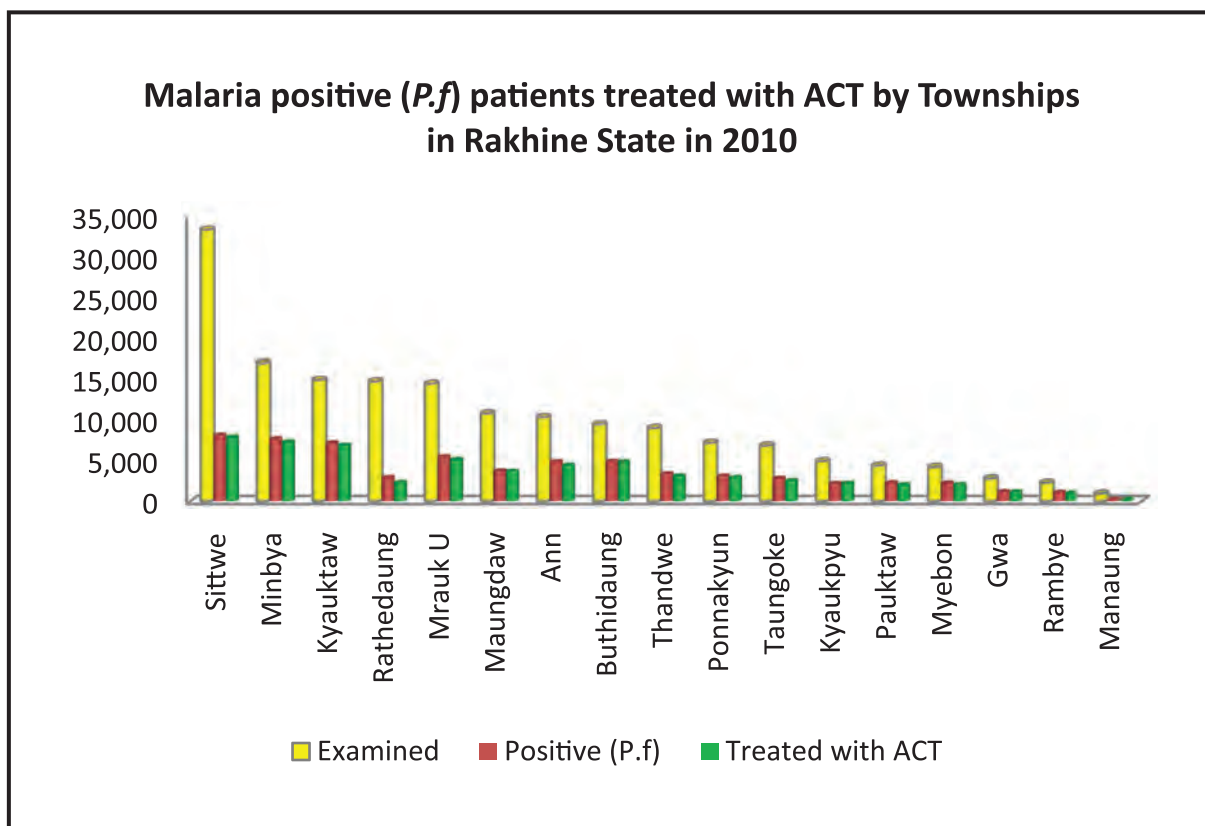
## Result of Malaria examination by Townships in Rakhine State in 2011

Sr	Township Name	Total examination	Examined by RDT				Examined by Microscope						SFR	SVR	SPR
			Examined	P.f	Mix	Other species	Examined	P.f	P.v	P.m/ P.o	Mix	Total Positive			
1	Sittwe	26,848	7,813	2,819	107	955	19,035	3,231	3,311	3	103	6648	50.15%	49.80%	35.66%
2	Ponnakyun	6,806	5,888	2,031	25	462	918	333	103	0	3	439	76.54%	23.46%	36.66%
3	Kyauktaw	12,008	11,242	4,264	188	827	766	323	123	1	70	517	76.02%	23.79%	41.38%
4	Mrauk U	17,422	15,060	5,232	837	683	2,362	631	278	0	75	984	71.75%	28.25%	40.48%
5	Minbya	16,793	12,881	5,627	722	486	3,912	2,008	888	51	66	3013	68.84%	29.47%	55.75%
6	Myebon	3,677	3,474	1,058	48	480	203	40	13	2	0	55	72.73%	23.64%	31.57%
7	Pauktaw	4,549	3,971	2,043	25	194	578	205	27	0	6	238	88.66%	11.34%	50.69%
8	Rathedaung	14,181	12,289	2,722	318	804	1,892	499	148	19	28	694	75.94%	21.33%	26.33%
9	Maungdaw	12,168	8,180	1,695	214	525	3,988	593	248	0	13	854	70.96%	29.04%	22.71%
10	Buthidaung	15,330	11,926	4,076	497	897	3,404	362	226	5	29	622	62.86%	36.33%	33.89%
11	Kyaukpyu	4,801	4,291	1,422	20	260	510	140	56	0	10	206	72.82%	27.18%	34.33%
12	Rambye	4,201	3,571	1,349	48	355	630	78	58	0	1	137	57.66%	42.34%	36.52%
13	Manaung	1,463	1,421	287	2	158	42	12	0	0	0	12	100.00%	0.00%	20.57%
14	Ann	12,917	9,976	3,901	609	1,029	2,941	908	238	3	104	1253	80.77%	18.99%	44.62%
15	Thandwe	13,348	10,337	4,166	455	650	3,011	351	361	0	71	783	53.90%	46.10%	40.49%
16	Taungoke	7,819	5,556	3,035	416	518	2,263	509	249	1	65	824	69.66%	30.22%	54.67%
17	Gwa	3,105	2,969	1,308	47	200	136	54	7	0	17	78	91.03%	8.97%	46.15%
		<b>177,436</b>	<b>130,845</b>	<b>47,035</b>	<b>4,578</b>	<b>9,483</b>	<b>46,591</b>	<b>10,277</b>	<b>6,334</b>	<b>85</b>	<b>661</b>	<b>17357</b>	<b>63.02%</b>	<b>36.49%</b>	<b>38.87%</b>

### Township wise malaria examined and positive (P.f) in Rakhine State in 2010 and 2011



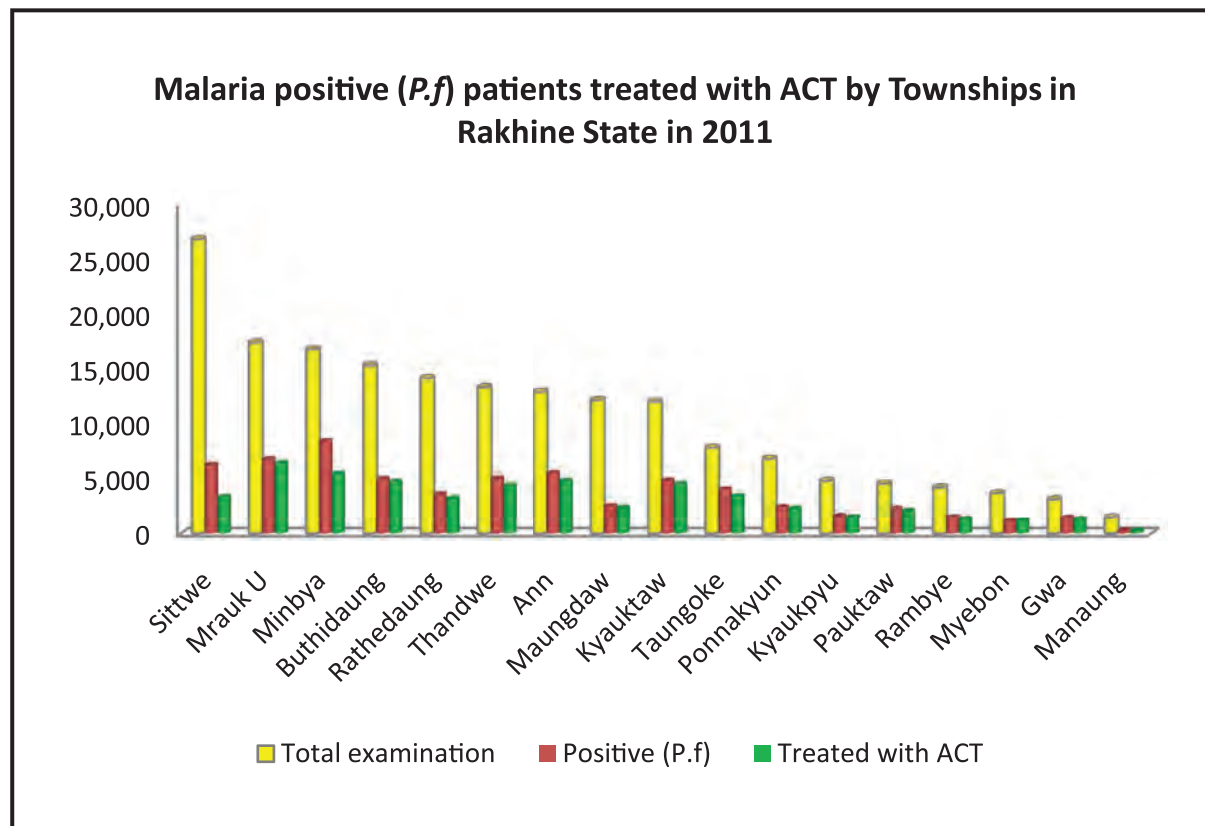
## Percentage of positive (*P.f*) patients treated with ACT by Townships in Rakhine State in 2010 and 2011



Sr	Township Name	Total Examination	Examined by RDT		Examined by Microscope					Treated with ACT	% Treated with ACT
			Examined	RDT Positive ( <i>P.f</i> )	Examined	<i>P.f</i>	<i>P.v</i>	<i>P.m/P.o</i>	Mix		
1	Sittwe	33,311	8,480	3,599	24,831	4,325	5,774	1	155	7,879	97.52%
2	Ponnakyun	7,189	6,621	2,945	568	110	34	0	0	2,916	95.45%
3	Kyauktaw	14,935	14,844	7,087	91	69	3	1	0	6,866	95.95%
4	Mrauk U	14,461	12,652	4,980	1,809	454	114	1	8	5,101	93.73%
5	Minbya	16,971	16,842	7,572	129	76	9	1	6	7,261	94.87%
6	Myebon	4,234	4,192	2,198	42	17	13	0	0	2,024	91.38%
7	Pauktaw	4,393	4,027	2,102	366	159	22	1	4	2,010	88.74%
8	Rathedaung	14,745	9,539	1,969	5,206	936	345	0	5	2,297	78.93%
9	Maungdaw	10,809	9,083	3,272	1,726	431	260	0	9	3,641	98.09%
10	Buthidaung	9,462	9,297	4,839	165	32	44	1	0	4,833	99.22%
11	Kyaukpyu	4,950	4,913	2,133	37	21	1	0	0	2,193	101.81%
12	Rambye	2,285	2,081	967	204	93	14	0	0	987	93.11%
13	Manaung	970	947	208	23	5	1	0	0	171	80.28%
14	Ann	10,354	9,620	4,537	734	292	122	13	3	4,423	91.54%
15	Thandwe	9,030	8,251	3,193	779	122	221	3	25	3,096	92.69%
16	Taungoke	6,852	6,008	2,490	844	310	172	0	12	2,525	89.79%
17	Gwa	2,820	2,763	1,126	57	30	17	1	1	1,118	96.63%
		<b>167,771</b>	<b>130,160</b>	<b>55,217</b>	<b>37,611</b>	<b>7,482</b>	<b>7,166</b>	<b>23</b>	<b>228</b>	<b>59,341</b>	<b>94.30%</b>

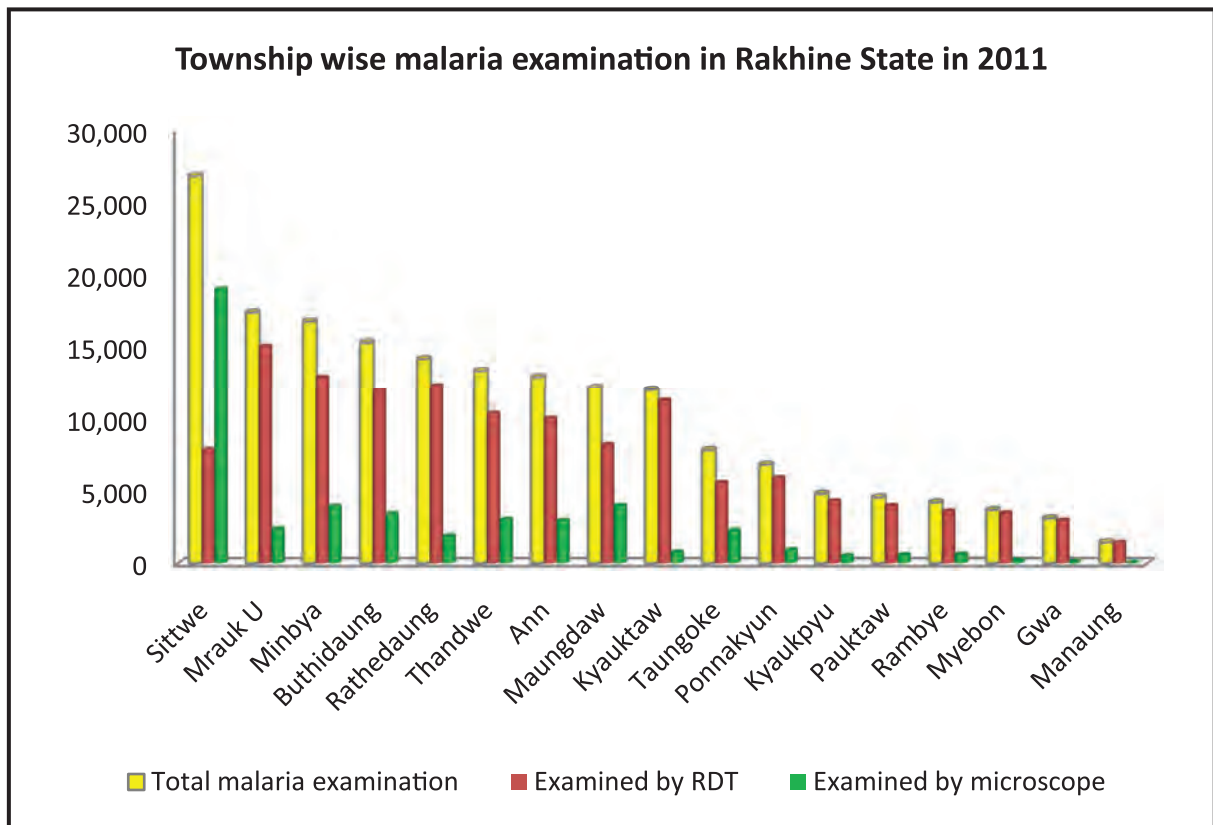
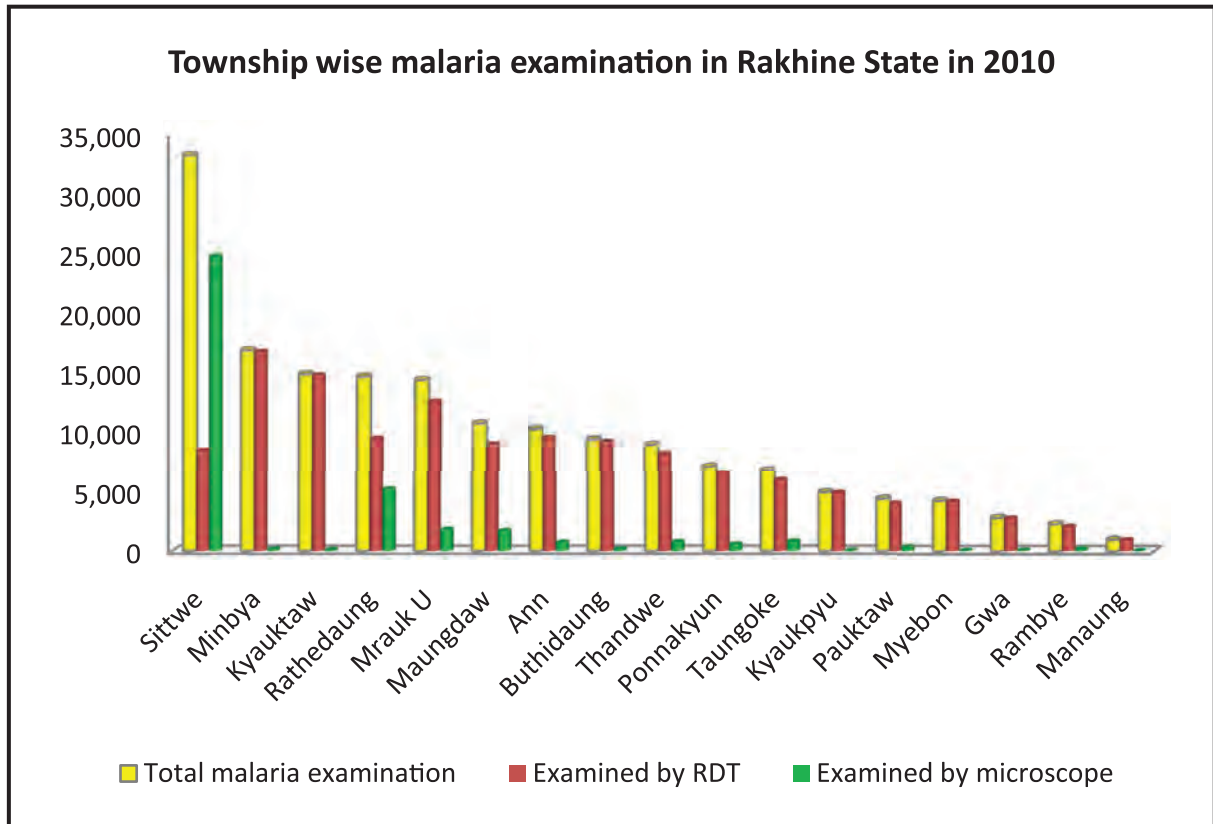


## Percentage of positive (*P.f*) patients treated with ACT by Townships in Rakhine State , 2011



Sr	Township Name	Total Examination	Examined by RDT			Examined by Microscope					Treated with ACT	% Treated with ACT
			Examined	<i>P.f</i>	<i>Mix</i>	Examined	<i>P.f</i>	<i>P.v</i>	<i>P.m/P.o</i>	<i>Mix</i>		
1	Sittwe	26,848	7,813	2,819	107	19,035	3,231	3,311	3	103	3336	53.29%
2	Ponnakyun	6,806	5,888	2,031	25	918	333	103	0	3	2270	94.90%
3	Kyauktaw	12,008	11,242	4,264	188	766	323	123	1	70	4513	93.15%
4	Mrauk U	17,422	15,060	5,232	837	2,362	631	278	0	75	6434	94.97%
5	Minbya	16,793	12,881	5,627	722	3,912	2,008	888	51	66	5485	65.12%
6	Myebon	3,677	3,474	1,058	48	203	40	13	2	0	1197	104.45%
7	Pauktaw	4,549	3,971	2,043	25	578	205	27	0	6	2065	90.61%
8	Rathedaung	14,181	12,289	2,722	318	1,892	499	148	19	28	3210	89.99%
9	Maungdaw	12,168	8,180	1,695	214	3,988	593	248	0	13	2329	92.60%
10	Buthidaung	15,330	11,926	4,076	497	3,404	362	226	5	29	4742	95.53%
11	Kyaukpyu	4,801	4,291	1,422	20	510	140	56	0	10	1468	92.21%
12	Rambye	4,201	3,571	1,349	48	630	78	58	0	1	1317	89.23%
13	Manaung	1,463	1,421	287	2	42	12	0	0	0	264	87.71%
14	Ann	12,917	9,976	3,901	609	2,941	908	238	3	104	4827	87.41%
15	Thandwe	13,348	10,337	4,166	455	3,011	351	361	0	71	4388	87.01%
16	Taungoke	7,819	5,556	3,035	416	2,263	509	249	1	65	3417	84.89%
17	Gwa	3,105	2,969	1,308	47	136	54	7	0	17	1314	92.15%
		<b>177,436</b>	<b>130,845</b>	<b>47,035</b>	<b>4,578</b>	<b>46,591</b>	<b>10,277</b>	<b>6,334</b>	<b>85</b>	<b>661</b>	<b>52576</b>	<b>84.05%</b>

### Township wise malaria examination in Rakhine State in 2010 and 2011



## Health Profile of Ann Township



### Area and Location\*

Area	:	6390.86 Km <sup>2</sup>
North	:	Minbya
South	:	Rambye
East	:	Ngape
West	:	Myebon

### Administrative Units\*

Wards	:	3
Village tracts	:	29
Villages	:	182

### Population (2009)\*

Total	:	124,830
Urban	:	21,769
Rural	:	103,061
Male	:	60,593
Female	:	64,237
Sex Ratio	:	94
<5 Year	:	15,139
0-14 Year	:	41,732
15-49 Year	:	60,502
Population Density	:	19.53/ Km <sup>2</sup>

### Health Facilities (2009)\*

District Hospital (100) Bedded	:	1
Station Hospital	:	1
Maternal and Child Health Centers	:	1
Rural Health Centers	:	5
Sub Health Centers	:	20
Private Clinics and Maternity Homes	:	14



**Health Manpower\***

	<i>Doctor</i>	<i>Nurse</i>	<i>HA</i>	<i>LHV</i>	<i>PHS I</i>	<i>PHS II</i>	<i>MW</i>
Sanction	18	37	5	5	2	0	27
Appointed	12	29	3	4	2	0	25
Vacant	6	8	2	1	0	0	2
% Vacancy	33.3%	21.6%	40.0%	20.0%	0%	0%	7.4%

(HA: Health Assistant, LHV: Lady Health Visitor, PHS:Public Health Supervisor , MW: Midwife)

**Health Manpower (Volunteer)\***

	Category of Volunteer Health Workers		
	CHW	AMW	TTBA
Trained	112	78	35
Functioning	68	47	5
% Functioning	60.7%	60.3%	14.3%

(CHW: Community health Worker, AMW: Auxiliary Mid Wife, TTBA: Trained Traditional Birth Attendant)

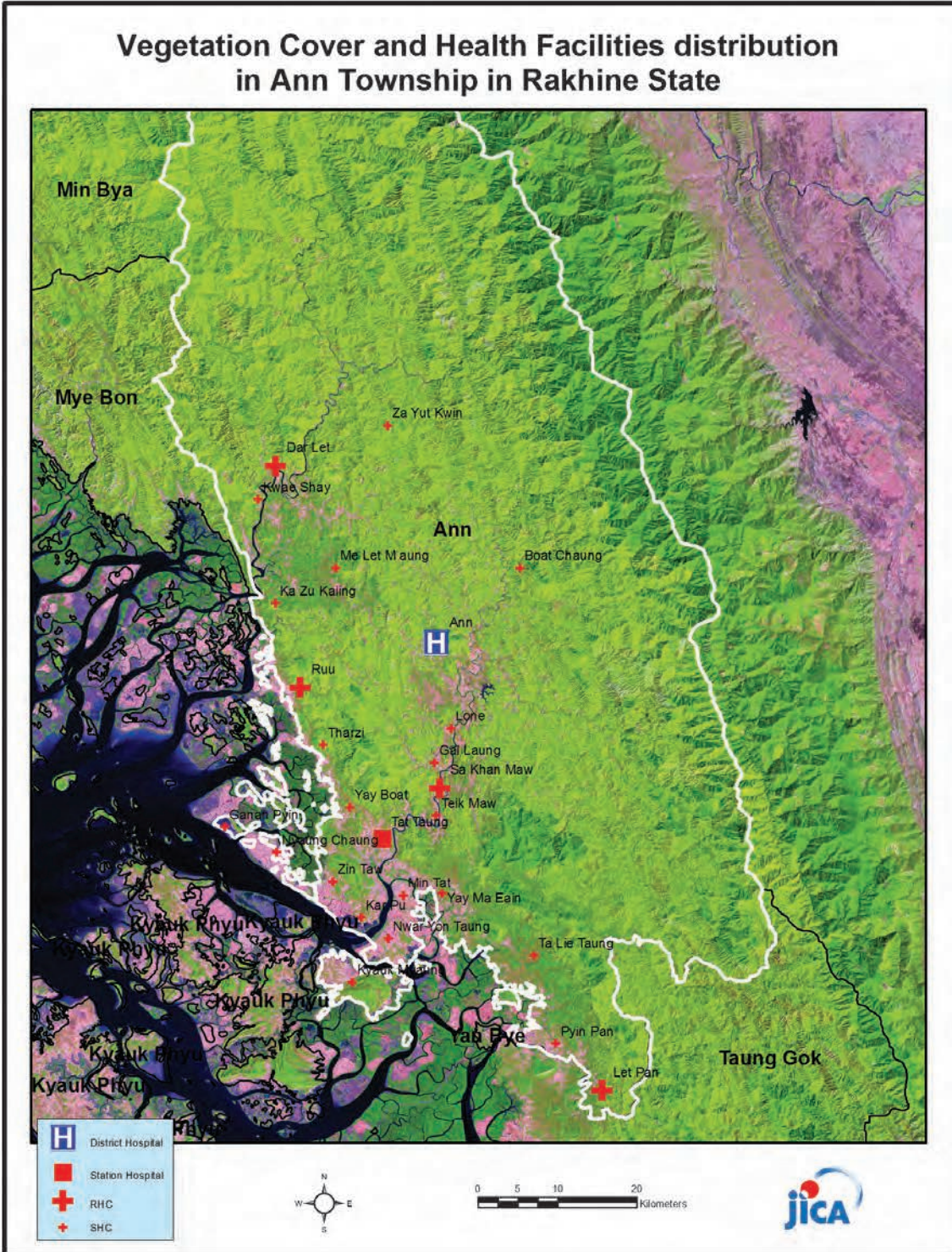
**Common Diseases under National Surveillance\***

<i>Diseases</i>	<i>Morbidity</i>	<i>Mortality</i>
Malaria	6740.37	7.21
ARI <5	6929.12	0
Diarrhea	1741.57	0
Dysentery	518.30	0
TB(Sputum+)	52.07	0.80
Snake Bite	2.40	0

(Per 100,000 Populations)

\* The data source is Health Profile of Rakhine State (2009) from Department of Health Planning.

### Vegetation Cover and Health Facilities distribution in Ann Township in Rakhine State

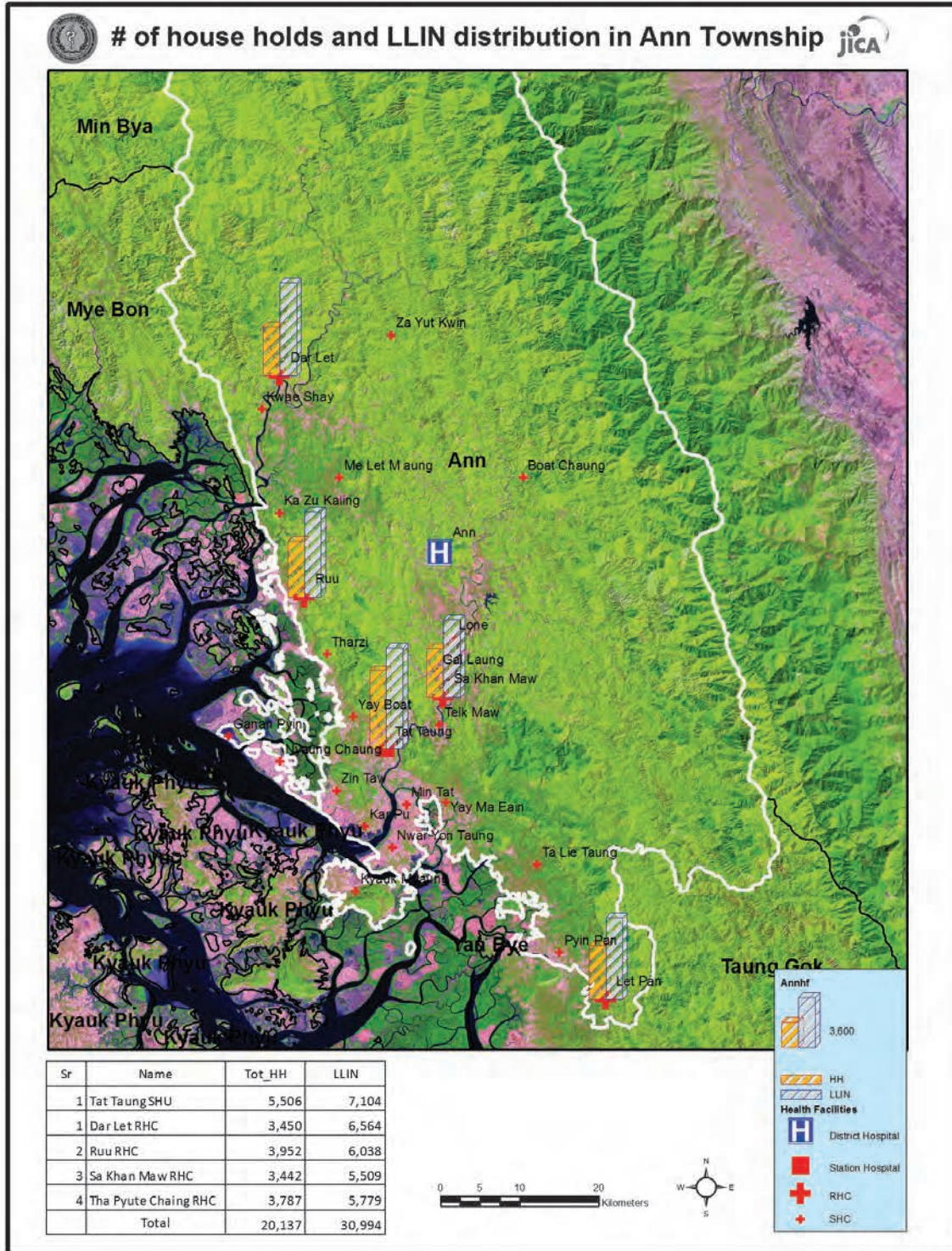




Health facilities wise malaria examination and positive (P.f) in Ann Township, 2010 and 2011







## LLIN distribution in Ann Township support by Japan Grant Assistance

Sr	RHC Name	SHC Name	Village Name	House Holds	Population	Total LLIN
1	MCH	Myo Thit	No. 3 Quarter	613	2955	613
2	MCH	Myo Thit	No. 4 Quarter	515	2114	515
3	MCH	Myo Thit	No. 5 Quarter	420	1580	420
4	MCH	Myo Haung	Airport	488	2057	488
5	MCH	Myo Haung	North Part	363	802	363
6	MCH	Myo Haung	Pyin Taw	371	822	742
7	MCH	Myo Haung	Suu Poke Kone	123	375	246
8	Tet Taung	Tet Taung	Mae	119	617	238
9	Tet Taung	Tet Taung	Mae Kan Taung	52	110	104
10	Tet Taung	Tet Taung	Ma Yan Taung	22	132	244
11	Tet Taung	Tet Taung	Maw Kyi	34	202	68
12	Tet Taung	Tet Taung	Kyar Chay Yar	33	167	66
13	Tet Taung	Tet Taung	Haine Yauk Maw	22	137	44
14	Tet Taung	Tet Taung	Tet Taung	1659	8357	1659
15	Tet Taung	Tet Taung	Nga Yoke Taung	55	266	55
16	Tet Taung	Tet Taung	Laung Cha Kwin	29	129	29
17	Tet Taung	Tet Taung	Kha Maung Chaung	9	40	9
18	Tet Taung	Kinn Chay	Sein Paiké	556	282	112
19	Tet Taung	Kinn Chay	Mon Hla	20	116	40
20	Tet Taung	Kinn Chay	Kan Chine	34	157	68
21	Tet Taung	Kinn Chay	Pyar Yar	29	156	58
22	Tet Taung	Kinn Chay	Chaung Board	109	516	218
23	Tet Taung	Kinn Chay	Kinn Chay	138	643	138
24	Tet Taung	Kinn Chay	Minn Tay	54	272	54
25	Tet Taung	Kinn Chay	Wai Chaung	79	404	79
26	Tet Taung	Kinn Chay	Loake	321	1371	321
27	Tet Taung	Minn Tet	Out Kune	63	336	126
28	Tet Taung	Minn Tet	Kyae Kuu Taung	145	533	290
29	Tet Taung	Minn Tet	Tane Tin	105	443	210
30	Tet Taung	Minn Tet	Tet Taw	82	544	790
31	Tet Taung	Minn Tet	Minn Tet	437	2069	437
32	Tet Taung	Minn Tet	Seik Kya Pyin	163	590	163
33	Tet Taung	Minn Tet	Taung Mee Lar	84	433	84
34	Tet Taung	Minn Tet	Kauk Lu Lin	34	254	34
35	Tet Taung	Minn Tet	Yar Thit	72	373	72
36	Tet Taung	Yae Ma Thain	Shauk Chon	130	722	260
37	Tet Taung	Yae Ma Thain	Yae Twin Hlaing	25	160	30
38	Tet Taung	Yae Ma Thain	Mae Zar Lee	30	580	60
39	Tet Taung	Yae Ma Thain	Yae Ma Thain	83	980	83
40	Tet Taung	Yae Ma Thain	Phar	43	245	43
Sr	RHC Name	SHC Name	Village Name	House Holds	Population	Total LLIN
41	Tet Taung	Yae Ma Thain	Haine Yauk	56	320	56
42	Tet Taung	Yae Ma Thain	Pa Dae Pyawe	130	640	130
43	Tet Taung	Yae Ma Thain	Naung Chaung	55	250	55

Sr	RHC Name	SHC Name	Village Name	House Holds	Population	Total LLIN
44	Tet Taung	Yae Ma Thain	Awe Tha Yae	27	240	27
45	Tet Taung	Ta Lie Taung	Ta Lie Taung	125	625	125
46	Tet Taung	Ta Lie Taung	Myay Ni	15	59	15
47	Tet Taung	Ta Lie Taung	Kha Mauk	40	162	40
48	Tet Taung	Ta Lie Taung	Sa Nae	36	159	66
49	Tet Taung	Ta Lie Taung	Doke Par Kan Kyi	55	269	110
50	Tet Taung	Ta Lie Taung	Doke Par Kan Chay	51	243	102
51	Tet Taung	Ta Lie Taung	Kwin Gyi	33	159	66
52	Tet Taung	Ta Lie Taung	Pae Yar Thu	13	50	26
53	Dar Let	Dar Let	Anout Ywar	300	1292	600
54	Dar Let	Dar Let	Shan Kone	80	314	160
55	Dar Let	Dar Let	Mingalardon	110	622	220
56	Dar Let	Dar Let	Net Maw	93	497	186
57	Dar Let	Dar Let	Myauk Ywar	127	570	254
58	Dar Let	Dar Let	Alae Ywar	31	158	62
59	Dar Let	Dar Let	Taung Ywar	58	307	116
60	Dar Let	Dar Let	Alae Kun	175	801	350
61	Dar Let	Dar Let	Thinbaw Hmauk	20	94	40
62	Dar Let	Dar Let	Thin Ka Night	26	186	52
63	Dar Let	Dar Let	Ai Waine	13	90	26
64	Dar Let	Dar Let	Kan Let	26	168	52
65	Dar Let	Dar Let	Ann Pya	28	161	56
66	Dar Let	Dar Let	Noke	18	109	36
67	Dar Let	Dar Let	Nan Yar Kone	34	254	68
68	Dar Let	Dar Let	Zan Thee	21	152	42
69	Dar Let	Dar Let	Arr Board	8	63	16
70	Dar Let	Dar Let	Tha Phan Pin Seik	27	149	54
71	Dar Let	Dar Let	Gwa Sone	16	90	32
72	Dar Let	Dar Let	Paung Wa	23	150	46
73	Dar Let	Dar Let	Twae Wa	34	202	68
74	Dar Let	Dar Let	Nay Ma Say	15	54	30
75	Dar Let	Dar Let	Wa Maw	45	202	90
76	Dar Let	Dar Let	Nyaung Chaung	23	112	46
77	Dar Let	Dar Let	Win Wa	10	63	20
78	Dar Let	Dar Let	Lone Ton	10	96	20
79	Dar Let	Dar Let	Hlaing Wa	15	59	30
80	Dar Let	Dar Let	Kune Wa	48	243	96
81	Dar Let	Dar Let	Yar Pyin Wa	20	131	40
82	Dar Let	Dar Let	Goke Wa	10	77	20
83	Dar Let	Ka Zu Kaing	Ka Zu Kaing	150	918	150
84	Dar Let	Ka Zu Kaing	Kawe Chaung	80	337	80
85	Dar Let	Ka Zu Kaing	Jake Chaung	101	566	202
86	Dar Let	Ka Zu Kaing	Pha Yone Chaung	30	131	60
87	Dar Let	Ka Zu Kaing	Sin Oo Taik	110	564	110



Sr	RHC Name	SHC Name	Village Name	House Holds	Population	Total LLIN
88	Dar Let	Ka Zu Kaing	Thae Kame Htuk	58	357	116
89	Dar Let	Ka Zu Kaing	Shauk Chon	45	190	90
90	Dar Let	Ka Zu Kaing	Tha Yet Pin Chaung	22	148	44
91	Dar Let	Kyawe Shay	Kyawe Shay	70	531	140
92	Dar Let	Kyawe Shay	Ahtet Ywar Haung	150	891	300
93	Dar Let	Kyawe Shay	Out Ywar Haung	23	116	46
94	Dar Let	Kyawe Shay	Kyauk Sin	20	198	42
95	Dar Let	Kyawe Shay	Nyaung Pin Kwin	26	175	52
96	Dar Let	Kyawe Shay	Lay Eain Su	30	236	60
97	Dar Let	Kyawe Shay	Ann Chaung	55	381	110
98	Dar Let	Mae Let Maung	Mae Let Maung	250	1767	500
99	Dar Let	Mae Let Maung	Mae Taung Chay	49	279	98
100	Dar Let	Mae Let Maung	Kaine Chaung	20	123	40
101	Dar Let	Mae Let Maung	Kha Mauk Taw	43	212	86
102	Dar Let	Mae Let Maung	Pyinn Taung	12	149	24
103	Dar Let	Mae Let Maung	Kawt Wa	19	153	38
104	Dar Let	Mae Let Maung	Sa Tone	35	264	70
105	Dar Let	Mae Let Maung	Phaung Taw	69	592	138
106	Dar Let	Za Yet Kwin	Za Yut Kwin	88	502	176
107	Dar Let	Za Yet Kwin	Lake Kone	61	345	122
108	Dar Let	Za Yet Kwin	Pyin Kone	59	326	118
109	Dar Let	Za Yet Kwin	A Yoe Taung	33	230	66
110	Dar Let	Za Yet Kwin	Kune Wa	89	614	178
111	Dar Let	Za Yet Kwin	Phar Pyoe	49	408	98
112	Dar Let	Za Yet Kwin	Kyauk Gyi	45	352	90
113	Dar Let	Za Yet Kwin	Nyaung Chaung	36	377	72
114	Dar Let	Za Yet Kwin	Pinn Phar	38	280	76
115	Dar Let	Za Yet Kwin	Maung Na Ma	21	151	44
116	Tha Pyut Chaing	Tha Pyut Chaing	Kyauk Myaung	318	1566	636
117	Tha Pyut Chaing	Tha Pyut Chaing	Lin Pan Kya	280	1411	560
118	Tha Pyut Chaing	Tha Pyut Chaing	Paine Nae Chane	28	159	56
119	Tha Pyut Chaing	Tha Pyut Chaing	Amwe Pone	176	888	352
120	Tha Pyut Chaing	Tha Pyut Chaing	Kar Yee Kye Taung	48	230	96

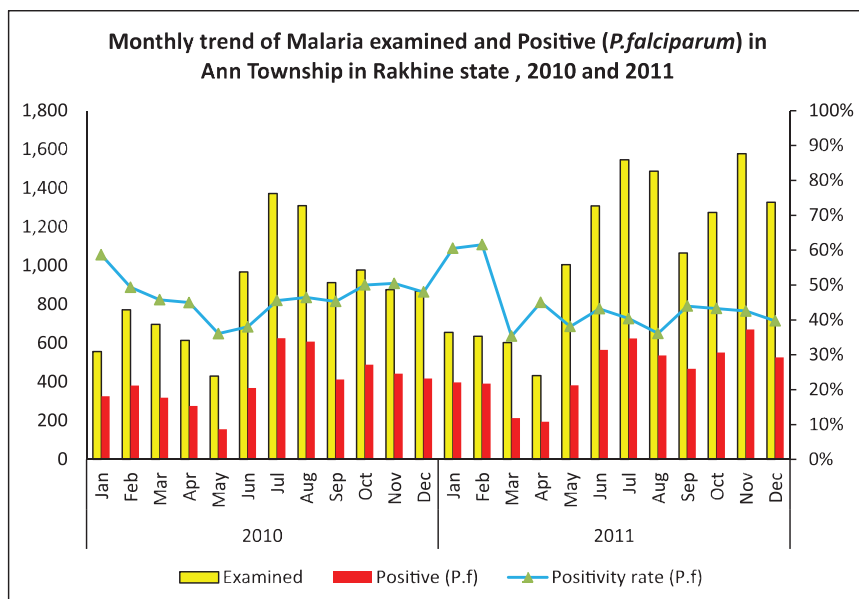
Sr	RHC Name	SHC Name	Village Name	House Holds	Population	Total LLIN
121	Tha Pyut Chaing	Tha Pyut Chaing	Si Taung Gyi	184	998	368
122	Tha Pyut Chaing	Yae Kaung Chein	Yae Kaung Chein	410	1787	410
123	Tha Pyut Chaing	Yae Kaung Chein	Taung Gyi Yine	74	830	148
124	Tha Pyut Chaing	Yae Kaung Chein	Thaine Chane Kyun	15	56	30
125	Tha Pyut Chaing	Yae Kaung Chein	Yin Ye Pyin	12	38	24
126	Tha Pyut Chaing	Yae Kaung Chein	Chit Pone Ma	192	883	384
127	Tha Pyut Chaing	Nwar Yone Taung	Nwar Yone Taung	360	1564	360
128	Tha Pyut Chaing	Nwar Yone Taung	Kan Kun	241	943	482
129	Tha Pyut Chaing	Nwar Yone Taung	Maut Kite	112	490	112
130	Tha Pyut Chaing	Nwar Yone Taung	Aung Maw	59	255	59
131	Tha Pyut Chaing	Nwar Yone Taung	AWa Pyin (1)	227	1248	227
132	Tha Pyut Chaing	Kar Pu	Kar Pu	221	1178	221
133	Tha Pyut Chaing	Kar Pu	Phat Chaung	182	742	182
134	Tha Pyut Chaing	Kar Pu	Htain Taw	83	364	166
135	Tha Pyut Chaing	Kar Pu	A Wa Pyin (2)	104	601	104
136	Tha Pyut Chaing	Zin Taw	Zin Taw	210	930	420
137	Tha Pyut Chaing	Zin Taw	Ohn Ni Kun	160	429	200
138	Tha Pyut Chaing	Zin Taw	Kwa Sone Pyin	91	399	182
139	Yue	Ga Nan Pyin	Ga Nan Pyin	226	1241	452
140	Yue	Ga Nan Pyin	Taung Shay	86	473	172
141	Yue	Ga Nan Pyin	Kan Bway	173	951	346
142	Yue	Ga Nan Pyin	Tha Lu Maw	269	1484	538
143	Yue	Ga Nan Pyin	Taung Ta Phat	78	428	156
144	Yue	Ga Nan Pyin	Laung Chaung	37	202	74
145	Yue	Yae Board	Yae Board	366	2016	732
146	Yue	Yae Board	Myin	61	336	122
147	Yue	Yue	Yue (Rakhine)	894	4920	394
148	Yue	Yue	Yue Chin Ywar	133	735	266
149	Yue	Yue	Toke Kan	182	997	364
150	Yue	Yue	Kan Ywar	37	204	74
151	Yue	Nyaung Chaung	Nyaung Chaung	168	920	168
152	Yue	Nyaung Chaung	Let Khwar Nwe	73	403	73
153	Yue	Nyaung Chaung	Set Phar Nwe	57	312	57
154	Yue	Nyaung Chaung	Nga Yoke Lin	139	765	139
155	Yue	Nyaung Chaung	A Lae Kun	35	193	35
156	Yue	Tha Yawe	Thar Si	63	347	126
157	Yue	Tha Yawe	Tha Yawe (Rakhine)	166	915	332
158	Yue	Tha Yawe	Tar Myar	47	260	94
159	Yue	Tha Yawe	Nga Sa Nae Kone	238	1303	476
160	Yue	Tha Yawe	Ma Whine (Rakhine)	115	633	230
161	Yue	Tha Yawe	Ma Whine (Chin)	122	617	244
162	Yue	Tha Yawe	Tha Yawe (Chin)	187	1027	374
163	Sa Khan Maw	Sa Khan Maw	Sa Khan Maw	199	1296	398
164	Sa Khan Maw	Sa Khan Maw	Oae Pon	72	571	144

Sr	RHC Name	SHC Name	Village Name	House Holds	Population	Total LLIN
165	Sa Khan Maw	Sa Khan Maw	Out Zin Taung	35	310	70
166	Sa Khan Maw	Sa Khan Maw	A Htet Zin Taung	33	282	66
167	Sa Khan Maw	Sa Khan Maw	Thin Pan	22	270	44
168	Sa Khan Maw	Sa Khan Maw	Kaing Kyi	48	228	96
169	Sa Khan Maw	Sa Khan Maw	Kha Maung Chaung	71	492	142
170	Sa Khan Maw	Sa Khan Maw	Kan	45	206	70
171	Sa Khan Maw	Tike Maw	Tike Maw	115	622	115
172	Sa Khan Maw	Tike Maw	Wet Mee To	109	593	109
173	Sa Khan Maw	Tike Maw	Kan Za Lie	55	432	55
174	Sa Khan Maw	Tike Maw	Male Za Li Kaing	38	138	38
175	Sa Khan Maw	Tike Maw	Taung Shauk	66	409	132
176	Sa Khan Maw	Tike Maw	Nawe Kyaw	58	357	116
177	Sa Khan Maw	Tike Maw	Taung Paw Ywar	169	903	169
178	Sa Khan Maw	Tike Maw	Out Kyaung	37	238	37
179	Sa Khan Maw	Tike Maw	Taung Phat	36	204	36
180	Sa Khan Maw	Gale Laung	Pyoke Kun	36	202	72
181	Sa Khan Maw	Gale Laung	La Mawt	13	82	26
182	Sa Khan Maw	Gale Laung	Pan Tone	16	99	32
183	Sa Khan Maw	Gale Laung	Net Chaung	14	97	28
184	Sa Khan Maw	Gale Laung	Nyaung Chaung	14	89	28
185	Sa Khan Maw	Lone	Lone	169	912	169
186	Sa Khan Maw	Lone	Kha Yan Kun	41	183	41
187	Sa Khan Maw	Lone	Laung Set	51	331	51
188	Sa Khan Maw	Lone	Yae Aye	21	90	21
189	Sa Khan Maw	Lone	Let Kya	46	200	92
190	Sa Khan Maw	Lone	Chin Kone	38	164	76
191	Sa Khan Maw	Lone	Than Pa Yar	13	75	26
192	Sa Khan Maw	Lone	Kyaine Chaung	7	30	14
193	Sa Khan Maw	Lone	Pyaung Thay	24	159	48
194	Sa Khan Maw	Lone	Pyaung Chaung	64	367	128
195	Sa Khan Maw	Lone	Nyaung Chaung	40	179	80
196	Sa Khan Maw	Lone	Htan Chaung	105	836	210
197	Sa Khan Maw	Lone	Out Ywar	218	1232	218
198	Sa Khan Maw	Sin Khon Taing	Sin Khon Taing	48	198	96
199	Sa Khan Maw	Sin Khon Taing	Park Kwae	31	152	62
200	Sa Khan Maw	Sin Khon Taing	Nga Pyae	26	127	52
201	Sa Khan Maw	Sin Khon Taing	Paine Yae San	29	1218	58
202	Sa Khan Maw	Sin Khon Taing	Kan Myint Kan	26	127	52
203	Sa Khan Maw	Sin Khon Taing	Set Si	97	476	194
204	Sa Khan Maw	Sin Khon Taing	Ponnar Wa	53	170	106
205	Sa Khan Maw	Sin Khon Taing	Board Chaung	79	387	168
206	Sa Khan Maw	Sin Khon Taing	Koe Kan Tan	32	156	64
207	Sa Khan Maw	Sin Khon Taing	Minn Kone	92	458	184
208	Sa Khan Maw	Sin Khon Taing	Nga Yit Ma	52	255	104
209	Sa Khan Maw	Sin Khon Taing	Hta Min Htoke	36	178	36

Sr	RHC Name	SHC Name	Village Name	House Holds	Population	Total LLIN
210	Sa Khan Maw	Sin Khon Taing	Kan Date	76	371	76
211	Sa Khan Maw	Daing	Ywar Thar Yar	40	181	80
212	Sa Khan Maw	Daing	Mee Laung Chaung	45	169	90
213	Sa Khan Maw	Daing	Pyin Taw Kyi	23	98	46
214	Sa Khan Maw	Daing	War Kyi Taung	15	47	30
215	Sa Khan Maw	Daing	Kawe Ta Lin	38	180	76
216	Sa Khan Maw	Daing	Gwe Kaing	17	60	34
217	Sa Khan Maw	Daing	Kant Kaw Taung	21	84	42
218	Sa Khan Maw	Daing	Sign Baung	24	100	48
219	Sa Khan Maw	Daing	Kyate	33	182	66
220	Sa Khan Maw	Daing	Kyaung Phyu Kwin	65	334	180
221	Sa Khan Maw	Daing	Nay Kar	14	44	28
222	Sa Khan Maw	Daing	Yet Thar	48	238	96
223	Sa Khan Maw	Daing	Daing	146	800	146
224	Sa Khan Maw	Daing	Sin Doe	34	160	34
225	Sa Khan Maw	Daing	Gyin Kone	29	130	29
226	Sa Khan Maw	Daing	Inn Kone	35	157	35
<b>Grand Total</b>				<b>23,030</b>	<b>116,332</b>	<b>34,381</b>

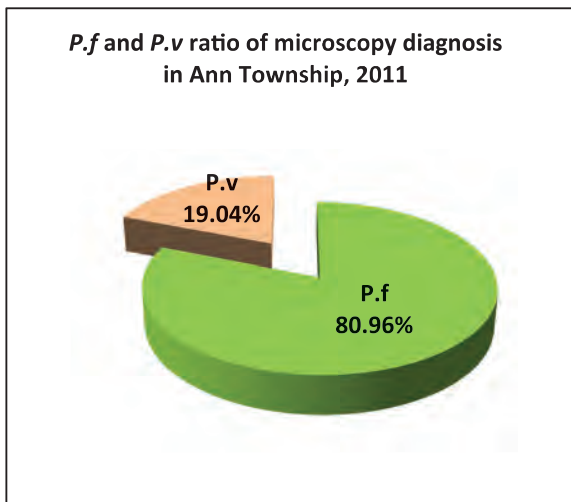
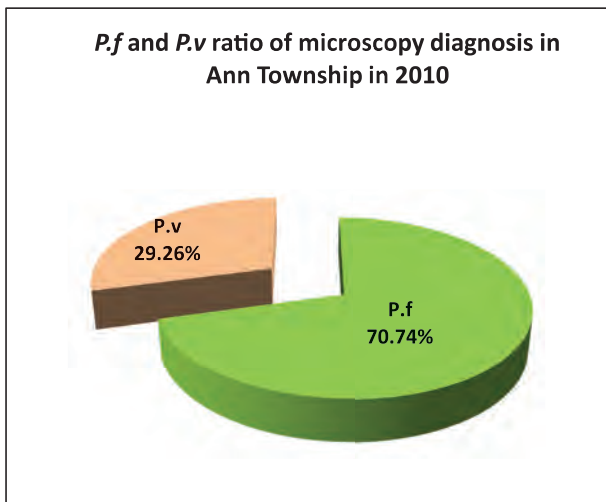


## Monthly trend of malaria examination and positive (*P.falciparum*) in Ann Township in Rakhine State, 2010 and 2011

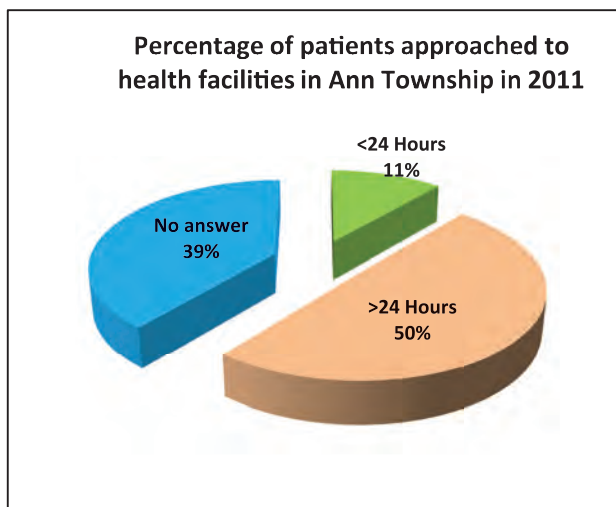
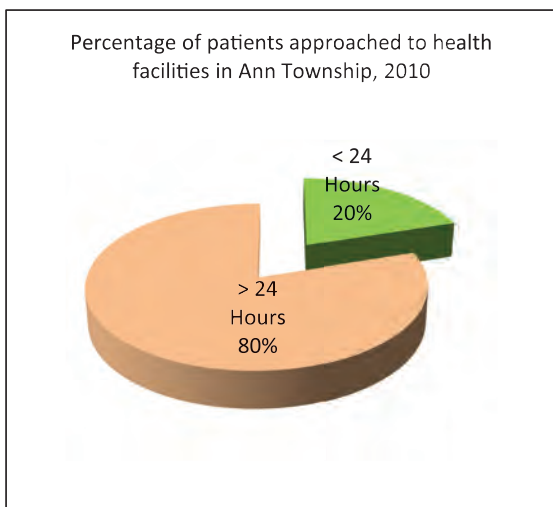


Month	2010			2011		
	Examined	Positive (P.f)	Positivity rate (P.f)	Examined	Positive (P.f)	Positivity rate (P.f)
Jan	556	326	58.63%	656	397	60.52%
Feb	772	381	49.35%	635	391	61.57%
Mar	697	319	45.77%	603	213	35.32%
Apr	614	276	44.95%	433	195	45.03%
May	430	155	36.05%	1,005	383	38.11%
Jun	968	368	38.02%	1,308	565	43.20%
Jul	1,372	625	45.55%	1,546	624	40.36%
Aug	1,310	608	46.41%	1,487	537	36.11%
Sep	912	413	45.29%	1,065	468	43.94%
Oct	978	489	50.00%	1,274	551	43.25%
Nov	876	442	50.46%	1,578	671	42.52%
Dec	869	417	47.99%	1,327	527	39.71%
	<b>10,354</b>	<b>4,819</b>	<b>46.54%</b>	<b>12,917</b>	<b>5,522</b>	<b>42.75%</b>

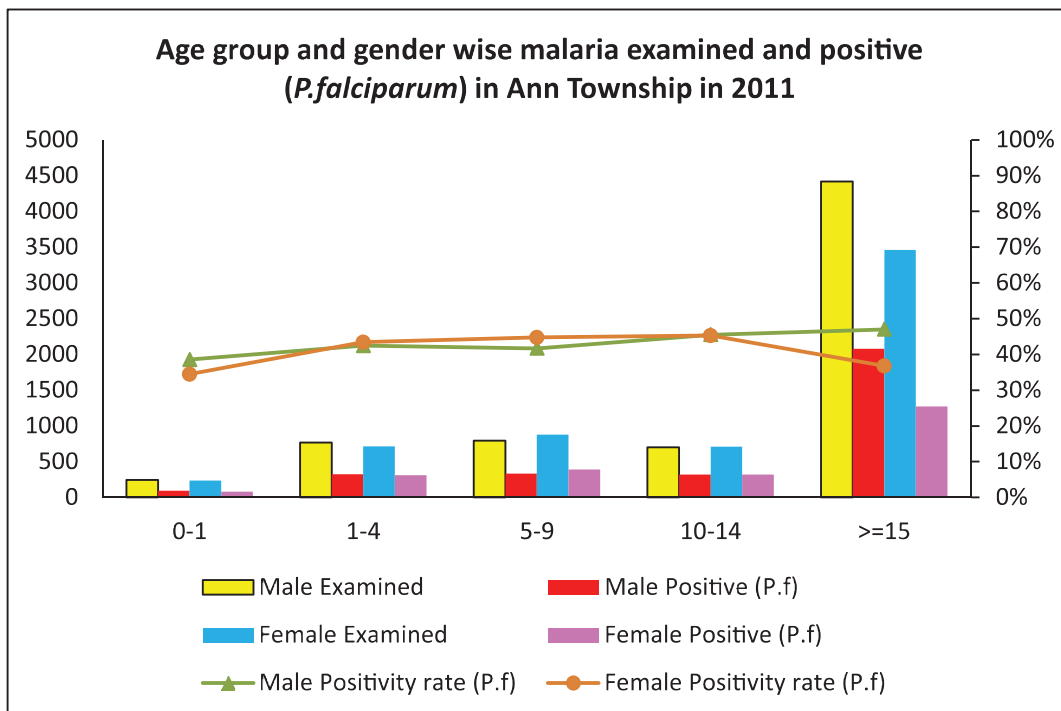
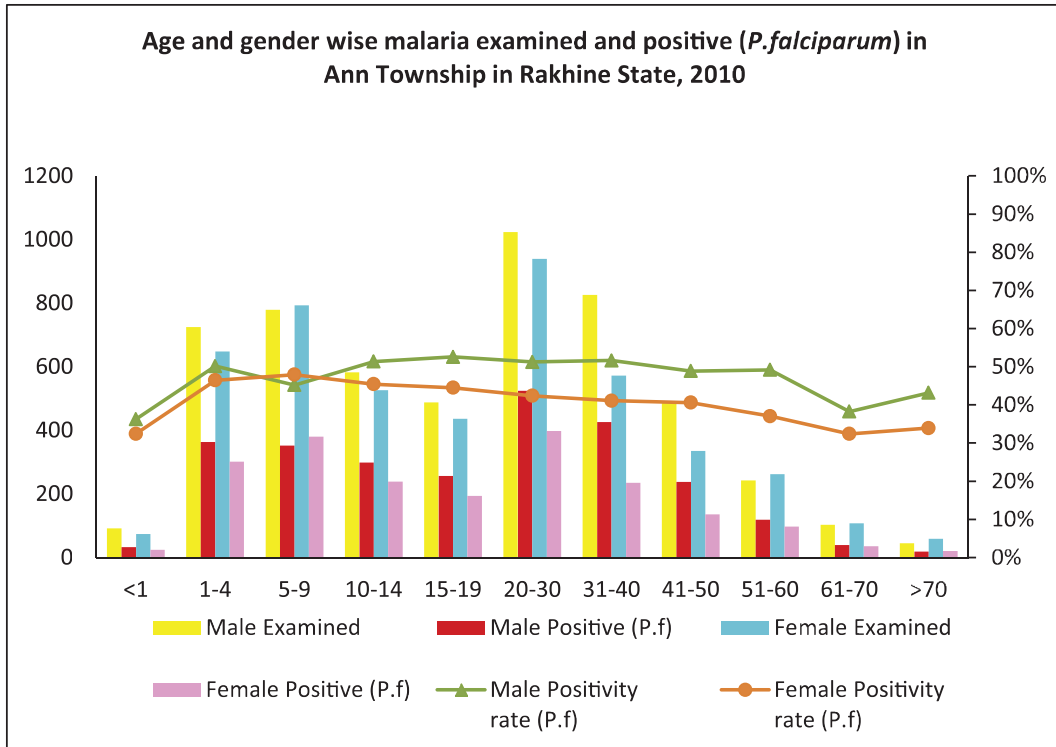
***P.f* and *P.v* ratio of malaria microscopy diagnosis in Ann Township in Rakhine State, 2010 and 2011**



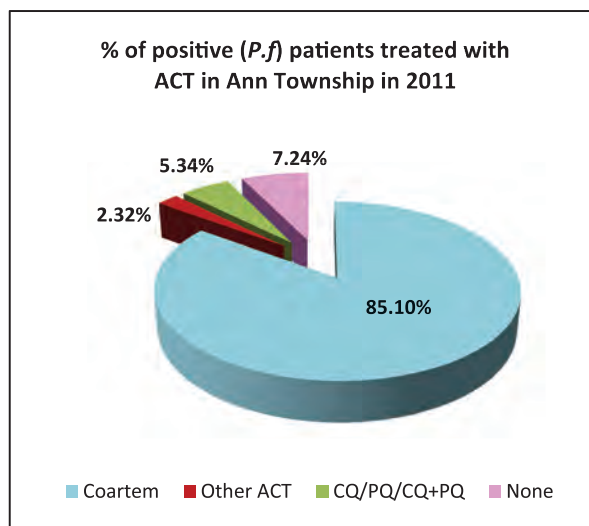
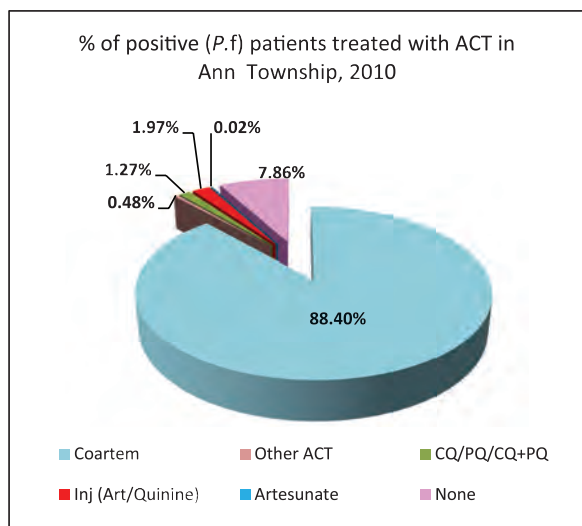
**Percentage of patients days approached to health facilities in Ann Township in Rakhine State, 2010 and 2011**



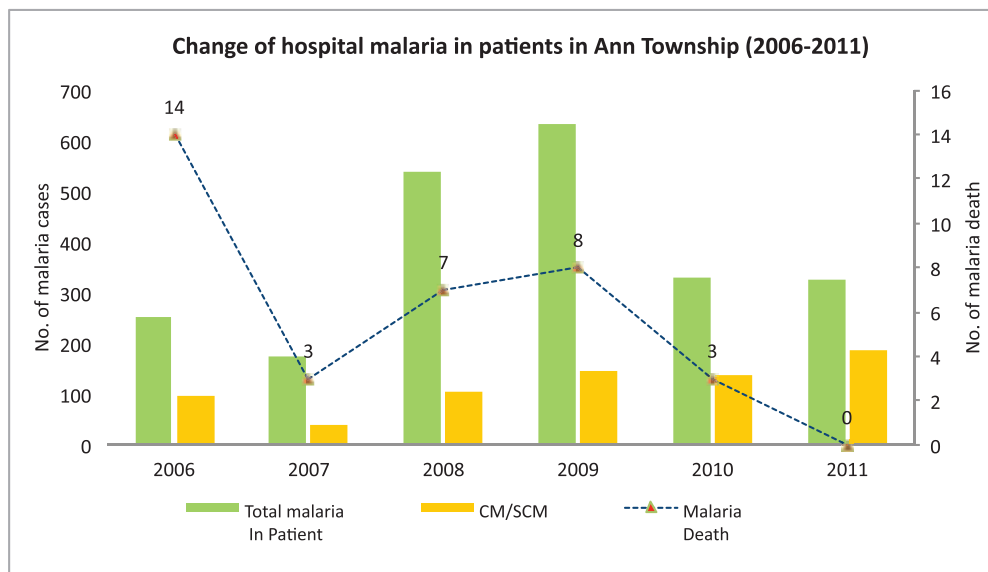
**Age and gender wise malaria examination and positive (*P.f*) in Ann Township, 2010 and 2011**



### Percentage of positive patients treated with ACT in Ann Township in 2010 and 2011



### Change of hospital malaria in patients in Ann Township in Rakhine State from 2006 to 2011



Sr	Year	Total In Patient	Total malaria In Patient	CM/SCM	Malaria Death	Total Death
1	2006	1059	251	98	14	30
2	2007	1501	173	40	3	19
3	2008	2110	541	105	7	32
4	2009	2713	632	147	8	39
5	2010	2500	330	136	3	34
6	2011	3264	327	186	0	32