

Health Profile of Shwe Taung Township



Area and Location*

Area : 735.38 Km²
 North : Pyay
 South : Kyangin
 East : Thegone
 West : Padaung

Administrative Units*

Wards : 3
 Village tracts : 48
 Villages : 290

Population (2009)*

Total : 130130
 Urban : 20602
 Rural : 109528
 Male : 62274
 Female : 67856
 Sex Ratio : 92
 <5 Year : 7927
 0-14 Year : 26824
 15-49 Year : 75162
 Population Density : 176.96/ Km²

Health Facilities (2009)*

Township Hospital (25) Bedded : 1
 Station Hospital : 2
 Maternal and Child Health Centers : 2
 Rural Health Centers : 5
 Sub Health Centers : 24
 Private Clinics and Maternity Homes : 10

Health Manpower*

	<i>Doctor</i>	<i>Nurse</i>	<i>HA</i>	<i>LHV</i>	<i>PHS I</i>	<i>PHS II</i>	<i>MW</i>
Sanction	12	20	7	8	2	15	43
Appointed	10	18	7	8	2	14	42
Vacant	2	2	-	-	-	1	1
% Vacancy	16.7%	00.0%	0.0%	0.0%	0.0%	6.7%	2.3%

(HA: Health Assistant, LHV: Lady Health Visitor, PHS:Public Health Supervisor , MW: Midwife)

Health Manpower (Volunteer) *

	Category of Volunteer Health Workers		
	CHW	AMW	TTBA
Trained	263	137	69
Functioning	148	86	24
% Functioning	56.3%	62.8%	34.8%

(CHW: Community health Worker, AMW: Auxiliary Mid Wife, TTBA: Trained Traditional Birth Attendant)

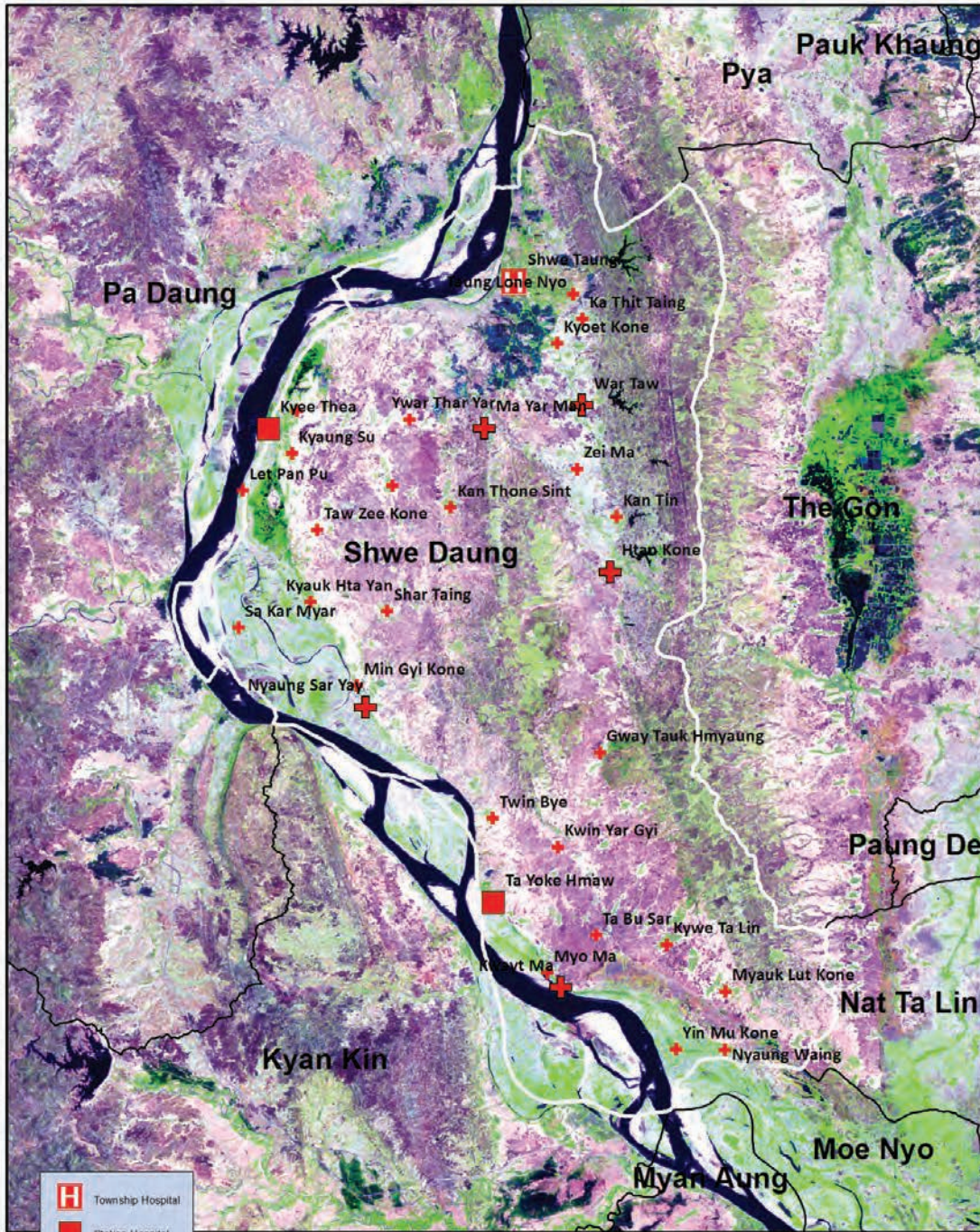
Common Diseases under National Surveillance*

<i>Diseases</i>	<i>Morbidity</i>	<i>Mortality</i>
Malaria	202.87	0
ARI <5	4263.91	12.62
Diarrhea	428.80	0
Dysentery	318.14	0
TB(Sputum+)	77.61	0
Snake Bite	31.51	0

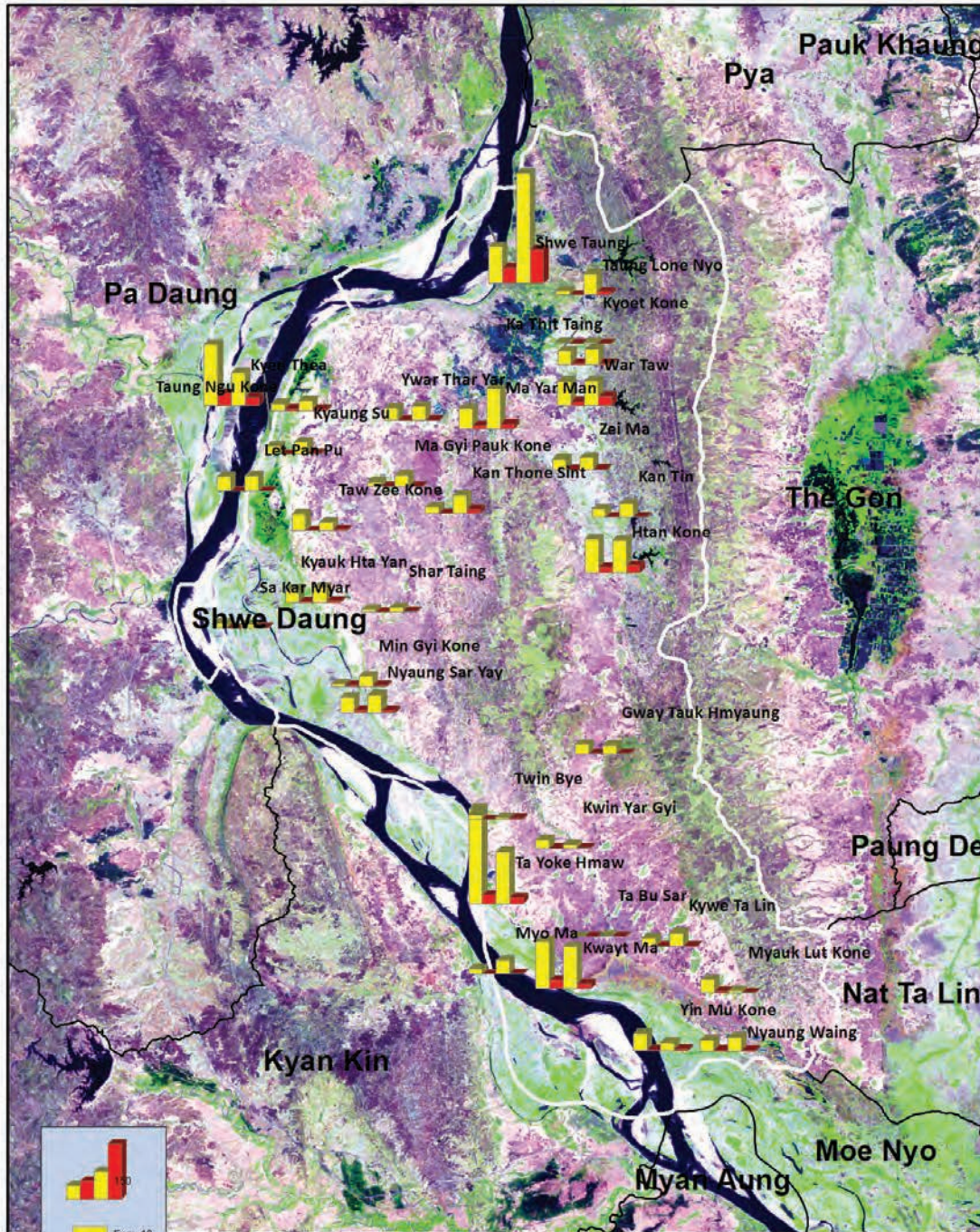
(Per 100,000 Populations)

*The data source is Health profile of Bago Region (2009) from Department of Health Planning.

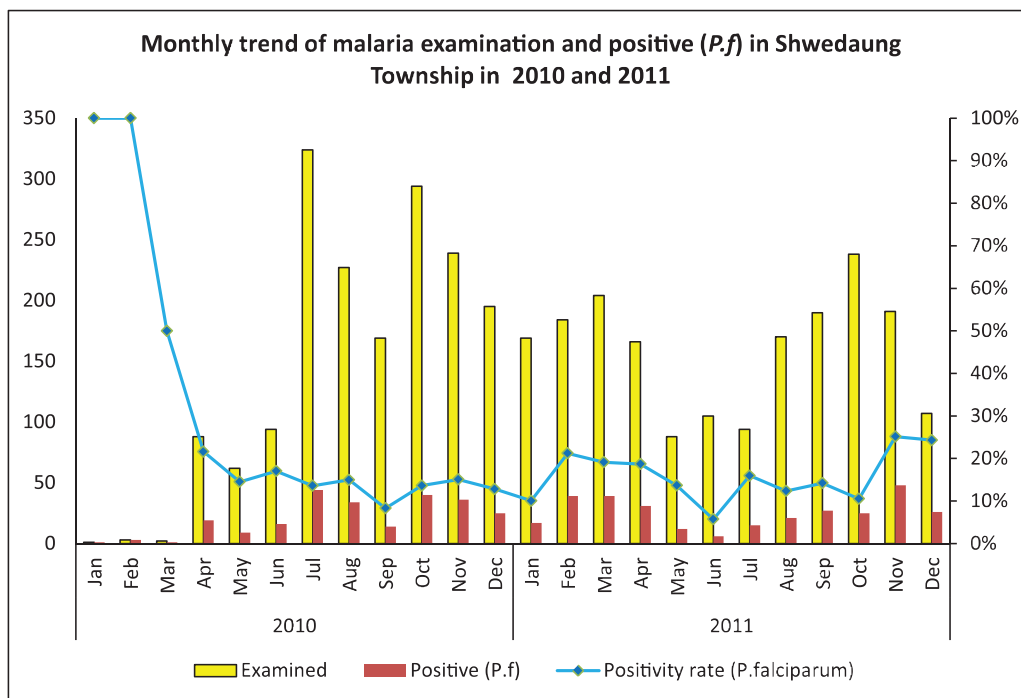
Vegetation cover and health facilities distribution in Shwe Taung Township in Bago Region West



Health facilities wise malaria examined and positive (*P.falciparum*) in Shwe Taung Township, 2010 and 2011

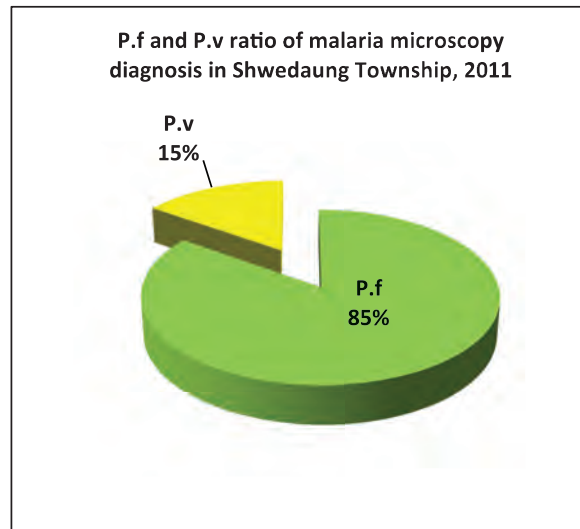
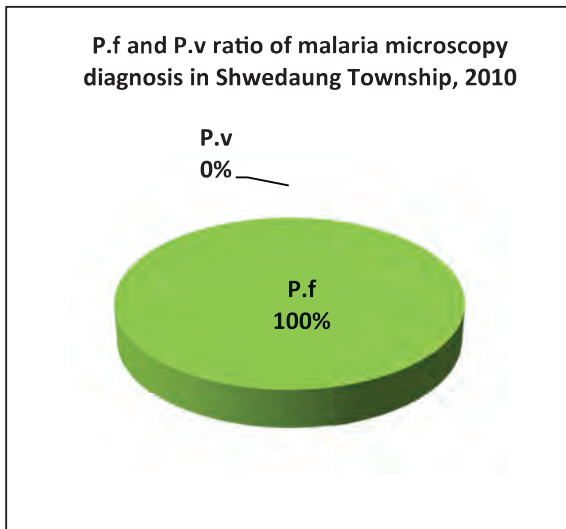


Monthly trend of malaria examined and Positive (*P.f*) in Shwe Taung Township in 2010 and 2011

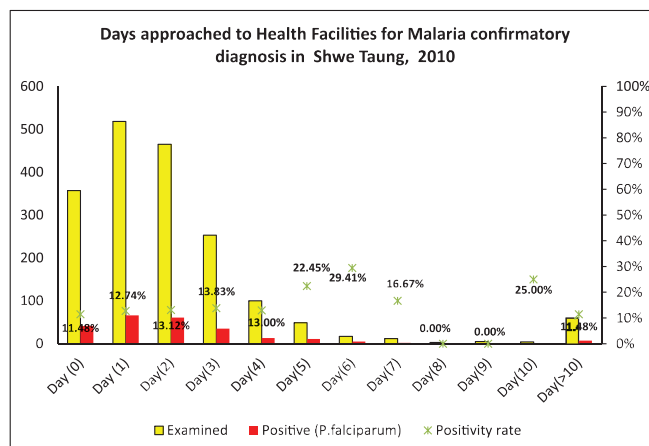
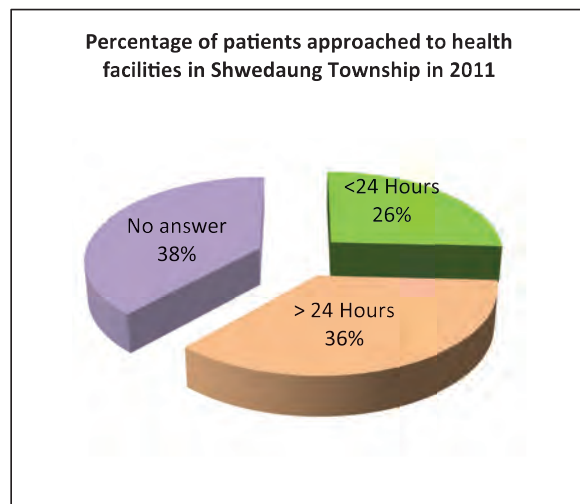
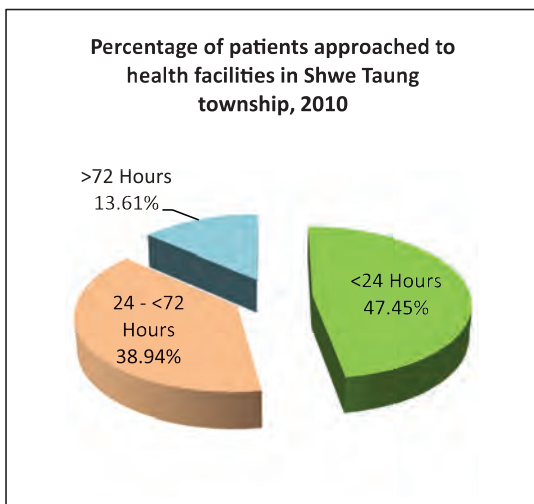


Month	2010			2011		
	Examined	Positive (<i>P.f</i>)	Positivity rate (<i>P.f</i>)	Examined	Positive (<i>P.f</i>)	Positivity rate (<i>P.f</i>)
Jan	1	1	100.00%	169	17	10.06%
Feb	3	3	100.00%	184	39	21.20%
Mar	2	1	50.00%	204	39	19.12%
Apr	88	19	21.59%	166	31	18.67%
May	62	9	14.52%	88	12	13.64%
Jun	94	16	17.02%	105	6	5.71%
Jul	324	44	13.58%	94	15	15.96%
Aug	227	34	14.98%	170	21	12.35%
Sep	169	14	8.28%	190	27	14.21%
Oct	294	40	13.61%	238	25	10.50%
Nov	239	36	15.06%	191	48	25.13%
Dec	195	25	12.82%	107	26	24.30%
Total	1,698	242	14.25%	1,906	306	16.05%

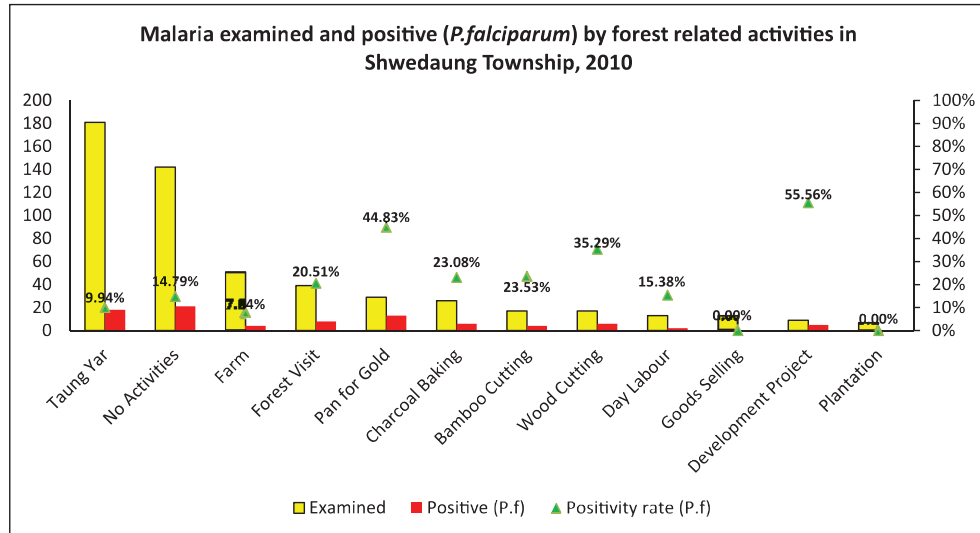
P.f and P.v ratio of microscopy diagnosis in Shwe Taung Township, 2010 and 2011



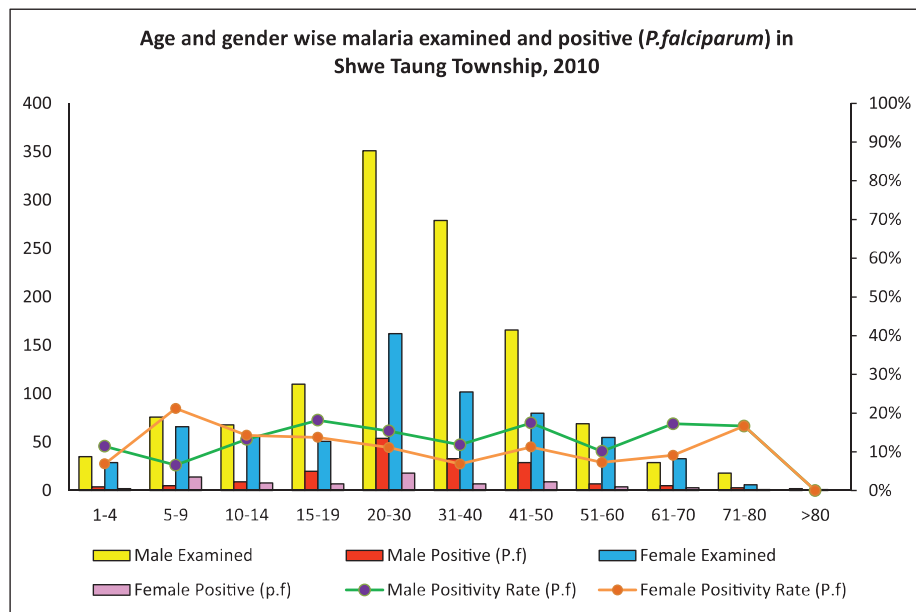
Percentage of patients approached to health facilities for malaria confirmatory diagnosis in Shwe Taung Township in 2010 and 2011



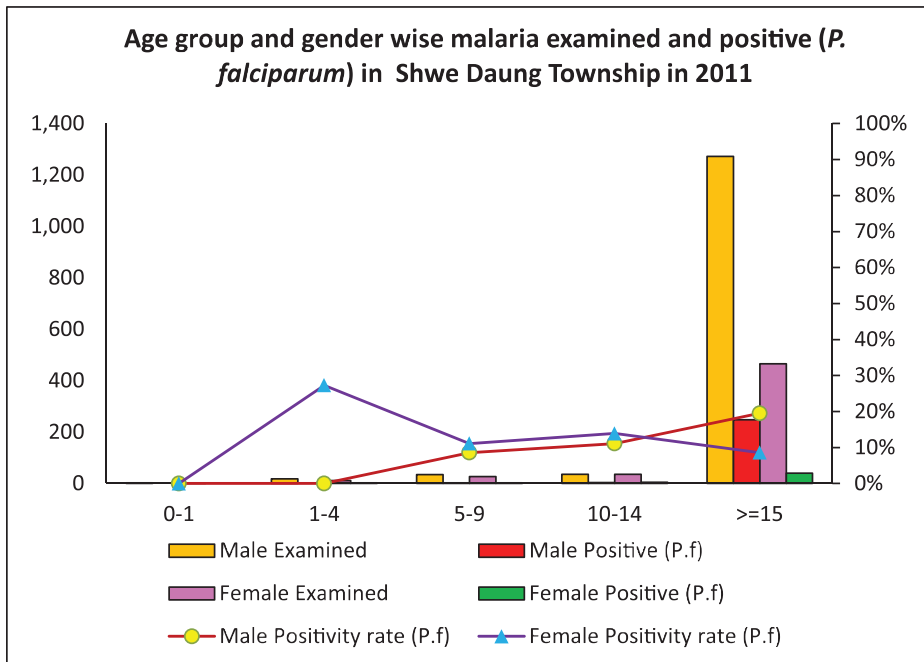
Malaria examined and positive (*P.falciparum*) by forest related activities in Shwe Taung Township in 2010



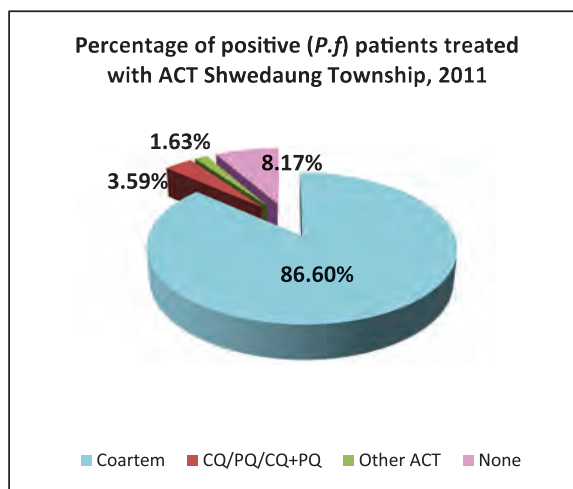
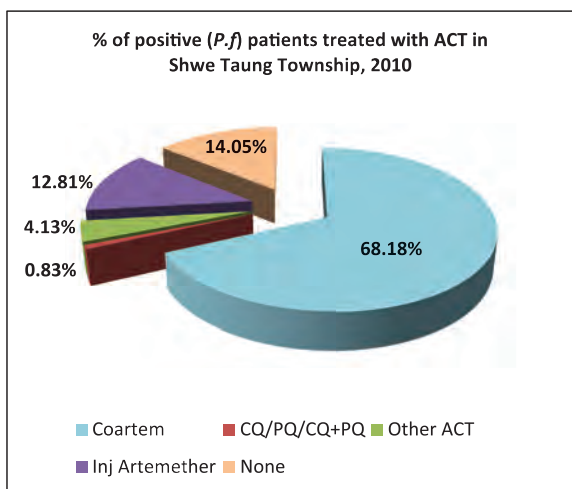
Age and Gender Wise Malaria examined and positive (*P.falciparum*) in Shwe Taung township in 2010



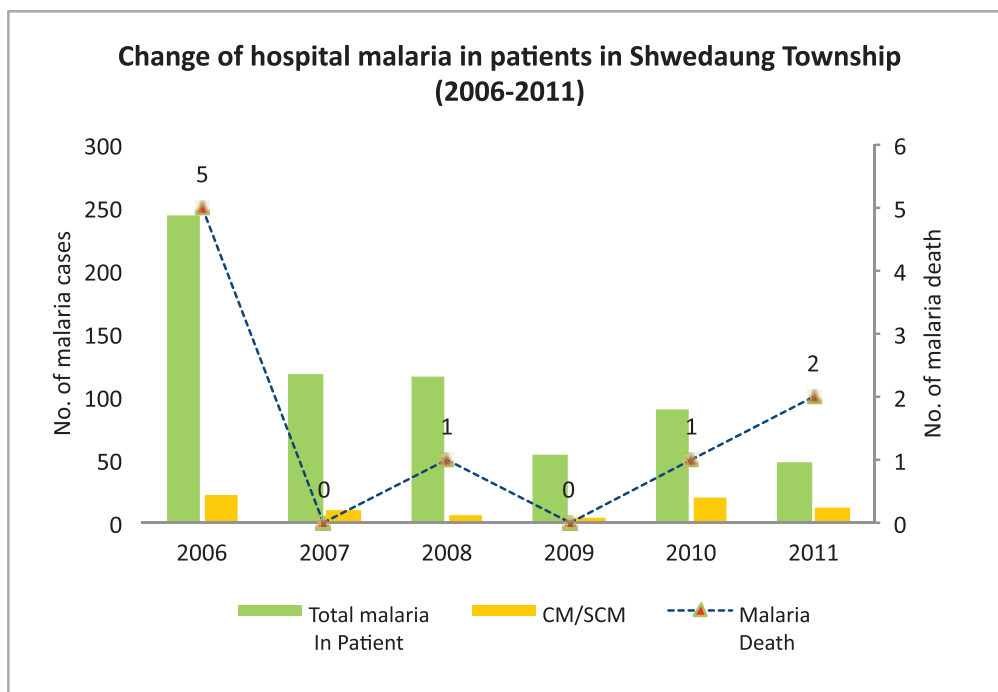
Age group and Gender Wise Malaria examined and positive (*P.falciparum*) in Shwe Taung Township in 2011



Percentage of positive patients treated with ACT in Shwe Daung Township in 2010 and 2011



Change of hospital malaria in patients in Shwe Daung Township from 2006 – 2011



Sr	Year	Total In Patient	Total malaria In Patient	CM/SCM	Malaria Death	Total Death
1	2006	3899	243	22	5	14
2	2007	2239	118	9	0	25
3	2008	1961	116	5	1	23
4	2009	1833	54	4	0	3
5	2010	2031	89	20	1	11
6	2011	2249	47	12	2	16

Health Profile of Thayarwady Township



Area and Location*

Area	:	1033.13 Km ²
North	:	Lepadan
South	:	Taikkyi
East	:	Bago
West	:	Zalun

Administrative Units*

Wards	:	21
Village tracts	:	48
Villages	:	264

Population (2009)*

Total	:	153282
Urban	:	37374
Rural	:	115908
Male	:	74400
Female	:	78882
Sex Ratio	:	94
<5 Year	:	15966
0-14 Year	:	45883
15-49 Year	:	79212
Population Density	:	148.37/ Km ²

Health Facilities (2009)*

Township Hospital (100) Bedded	:	1
Station Hospital	:	1
Maternal and Child Health Centers	:	2
Rural Health Centers	:	5
Sub Health Centers	:	24
School Health Center	:	1
Private Clinics and Maternity Homes	:	8

Health Manpower*

	<i>Doctor</i>	<i>Nurse</i>	<i>HA</i>	<i>LHV</i>	<i>PHS I</i>	<i>PHS II</i>	<i>MW</i>
Sanction	22	23	11	7	1	11	40
Appointed	21	21	11	7	1	11	38
Vacant	1	2	-	-	-	-	2
% Vacancy	4.5%	8.7%	0.0%	0.0%	0.0%	0.0%	5.0%

(HA: Health Assistant, LHV: Lady Health Visitor, PHS:Public Health Supervisor , MW: Midwife)

Health Manpower (Volunteer) *

	Category of Volunteer Health Workers		
	CHW	AMW	TTBA
Trained	244	165	128
Functioning	142	98	67
% Functioning	58.2%	59.4%	52.3%

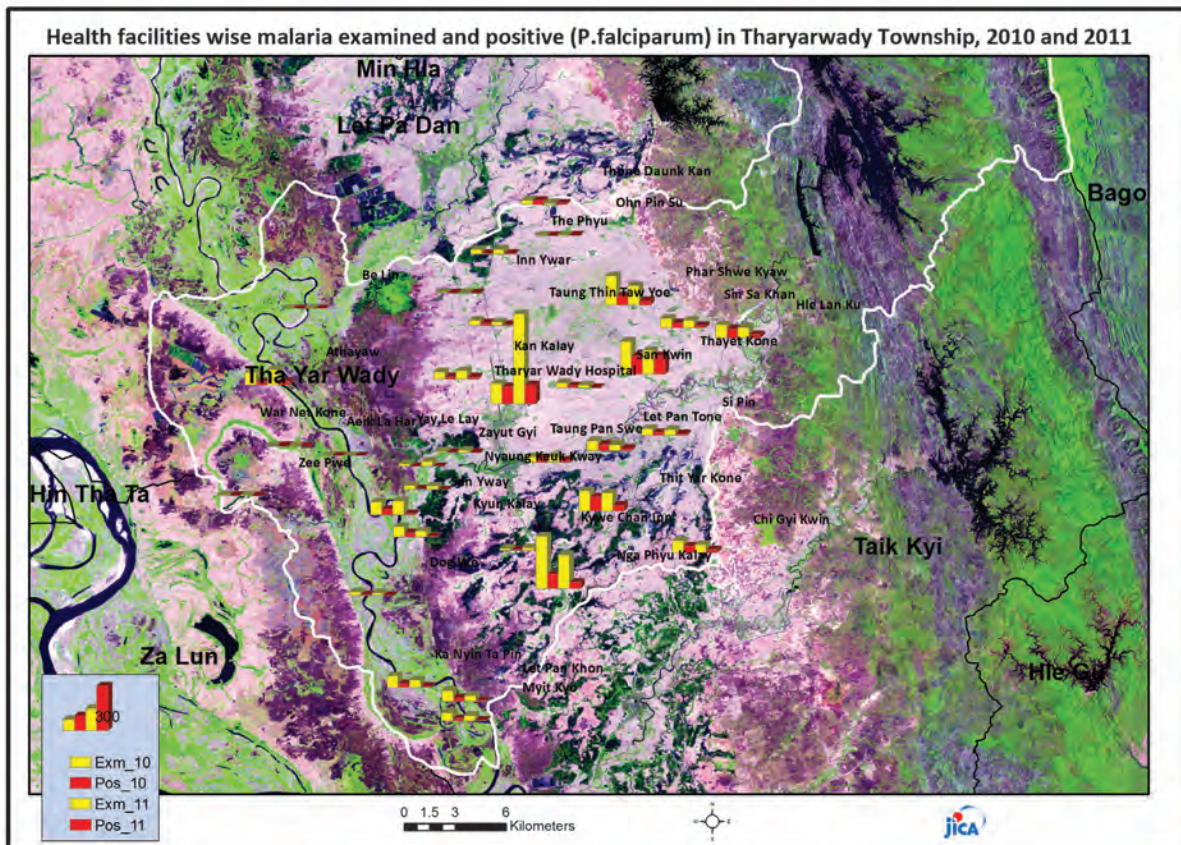
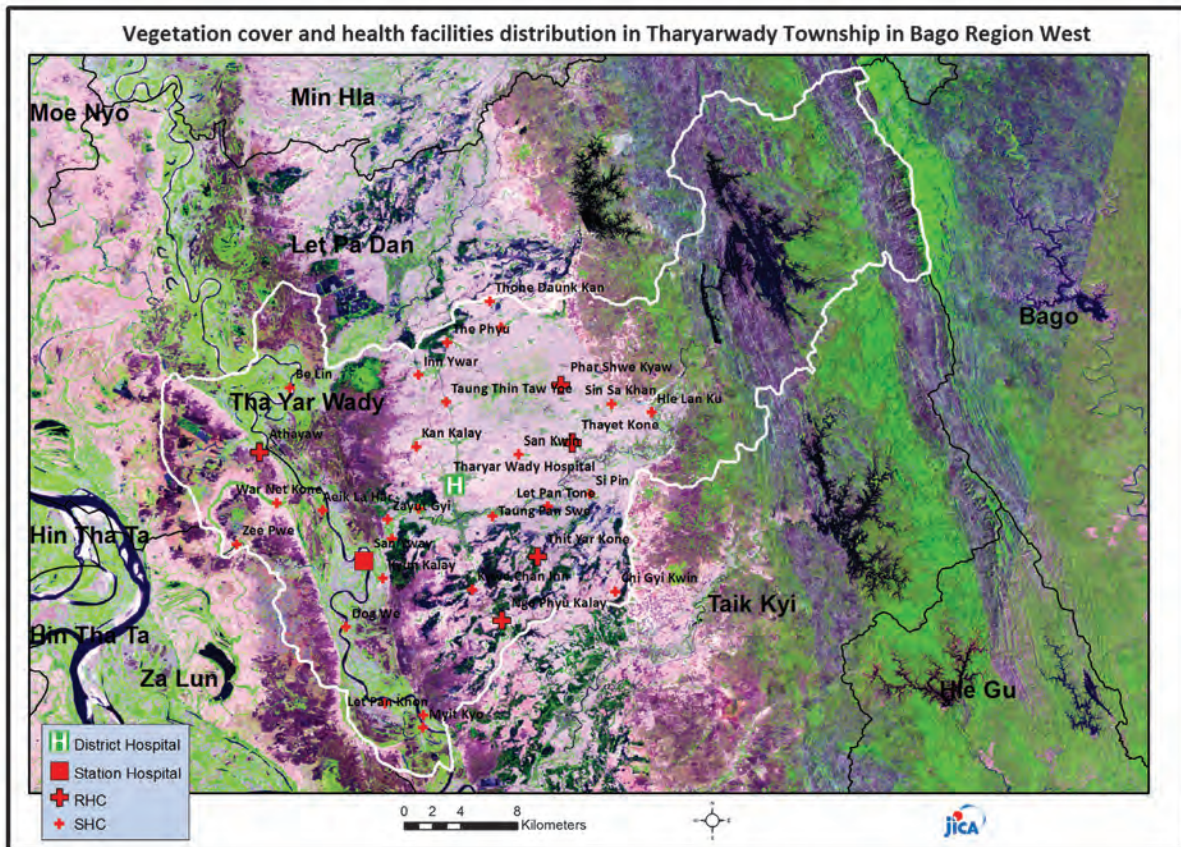
(CHW: Community health Worker, AMW: Auxiliary Mid Wife, TTBA: Trained Traditional Birth Attendant)

Common Diseases under National Surveillance*

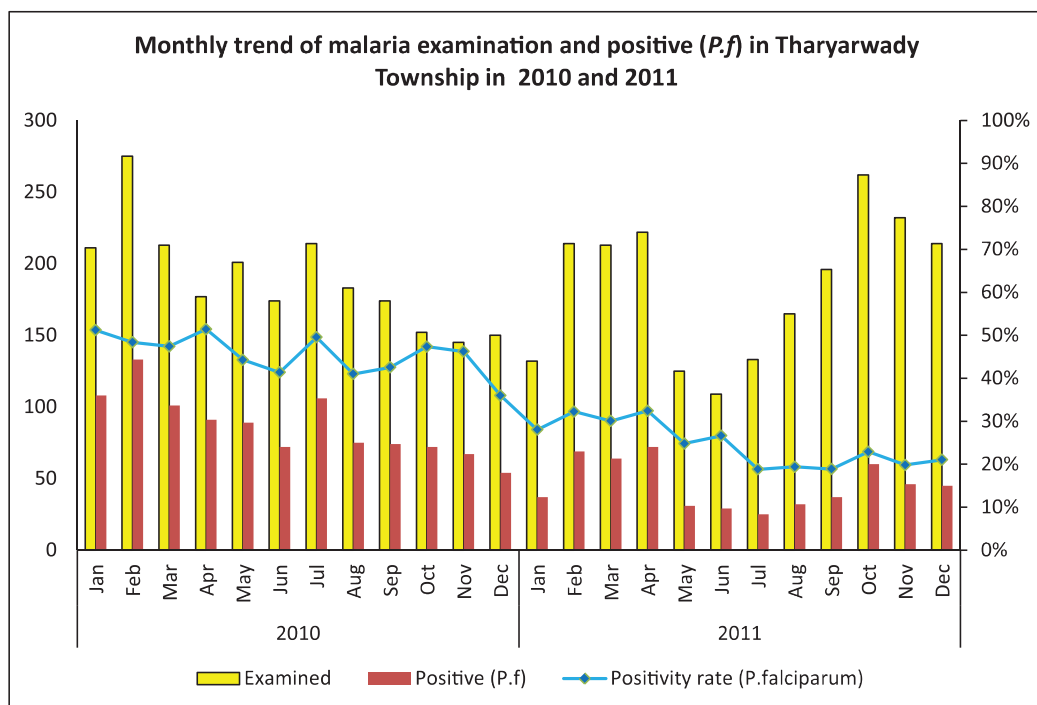
<i>Diseases</i>	<i>Morbidity</i>	<i>Mortality</i>
Malaria	1394.31	1.96
ARI <5	6983.59	6.26
Diarrhea	595.63	0
Dysentery	324.24	0
TB(Sputum+)	118.74	8.48
Snake Bite	95.25	2.61

(Per 100,000 Populations)

*The data source is Health Profile of Bago Region West(2009) from Department of Health Planning.

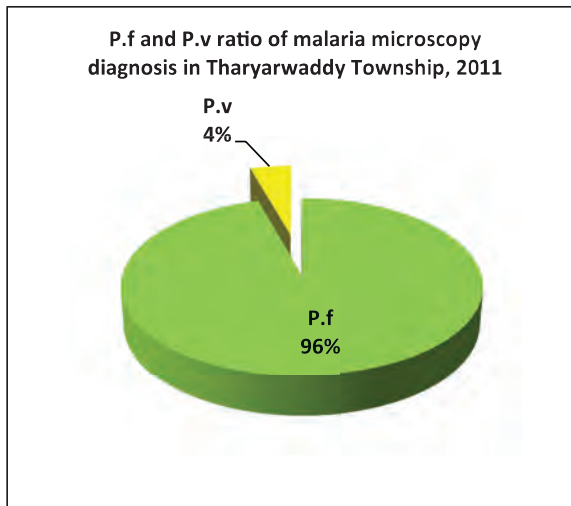
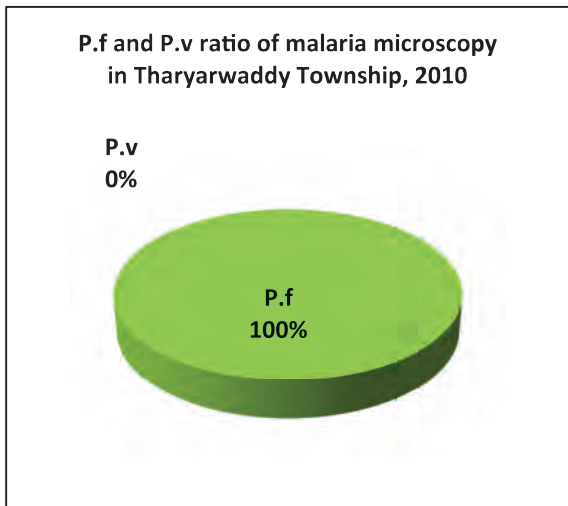


Monthly trend of malaria examined and Positive (*P.f*) in Tharyarwaddy Township in 2010 and 2011

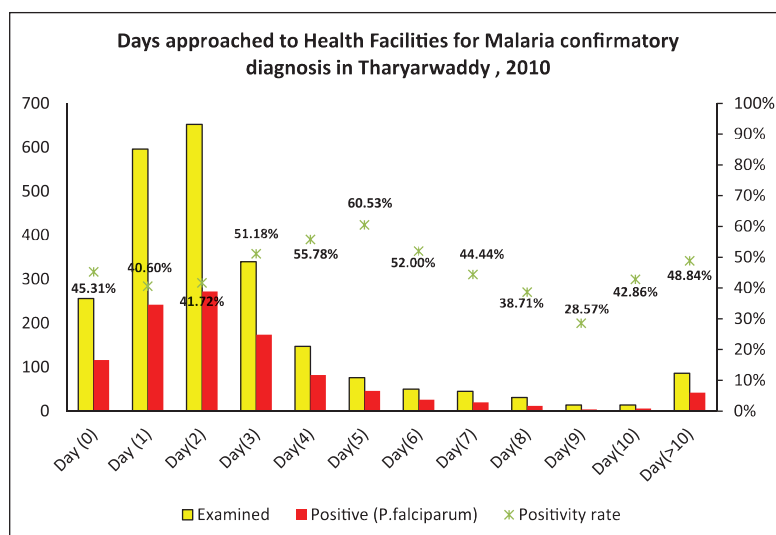
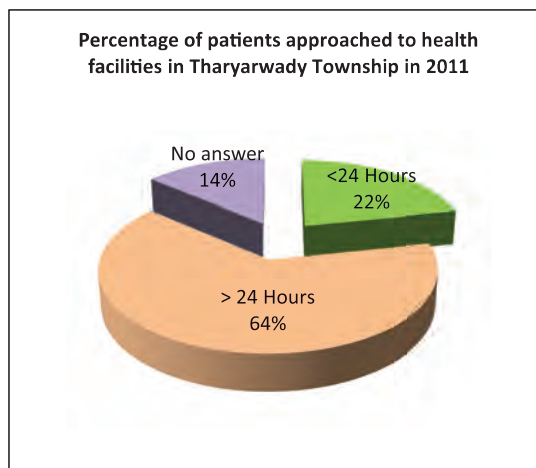
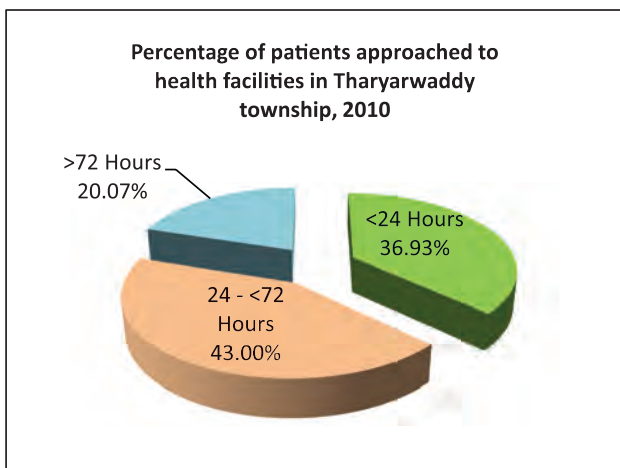


Month	2010			2011		
	Examined	Positive (<i>P.f</i>)	Positivity rate (<i>P.f</i>)	Examined	Positive (<i>P.f</i>)	Positivity rate (<i>P.f</i>)
Jan	211	108	51.18%	132	37	28.03%
Feb	275	133	48.36%	214	69	32.24%
Mar	213	101	47.42%	213	64	30.05%
Apr	177	91	51.41%	222	72	32.43%
May	201	89	44.28%	125	31	24.80%
Jun	174	72	41.38%	109	29	26.61%
Jul	214	106	49.53%	133	25	18.80%
Aug	183	75	40.98%	165	32	19.39%
Sep	174	74	42.53%	196	37	18.88%
Oct	152	72	47.37%	262	60	22.90%
Nov	145	67	46.21%	232	46	19.83%
Dec	150	54	36.00%	214	45	21.03%
Total	2,269	1,042	45.92%	2,217	547	24.67%

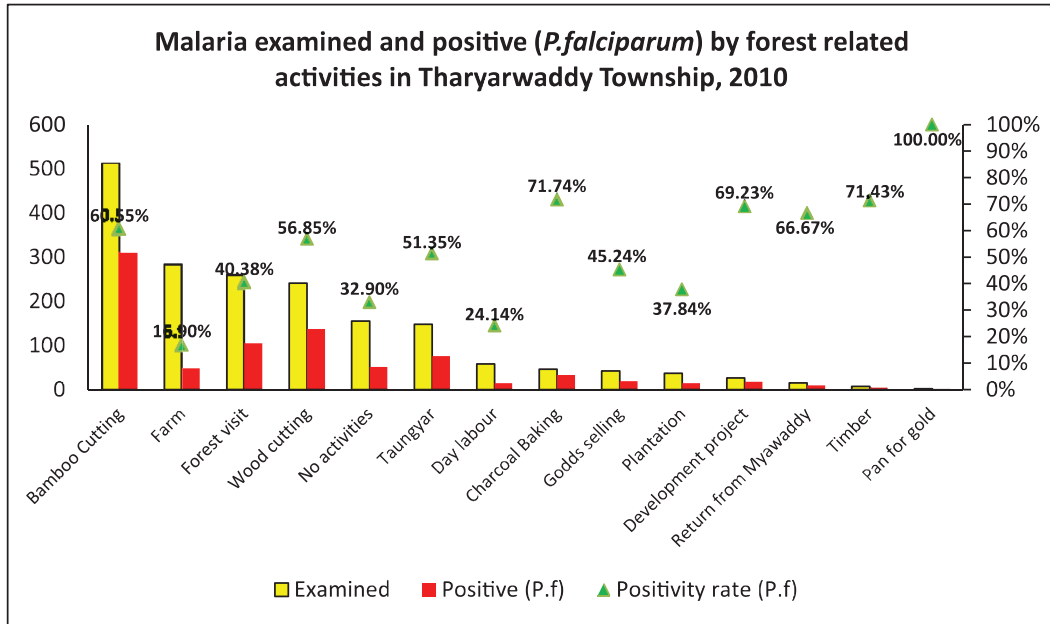
P.f and P.v ratio of microscopy diagnosis in Tha Yar Waddy Township, 2010 & 2011



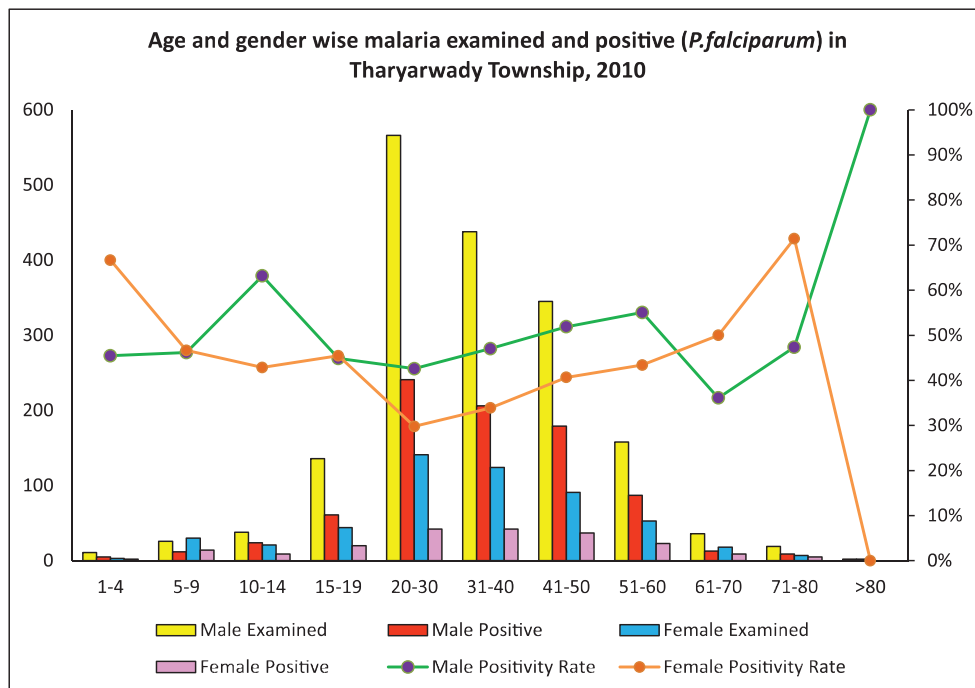
Percentage of patients approached to health facilities for malaria confirmatory diagnosis in Tha Yar Waddy Township in 2010 and 2011



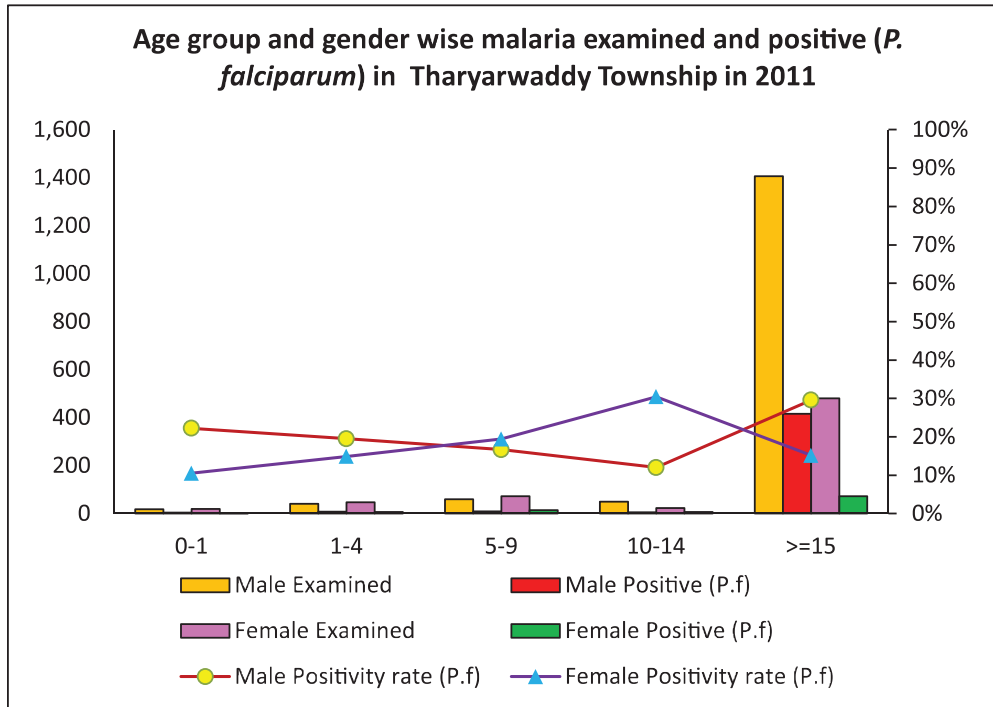
Malaria examined and positive (*P.falciparum*) by forest related activities in Tha Yar Waddy Township in 2010



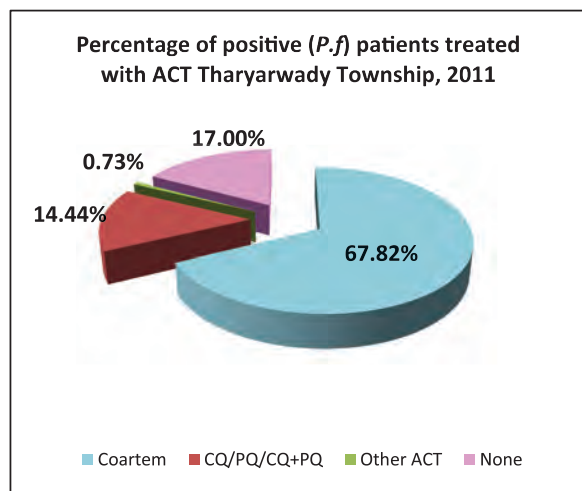
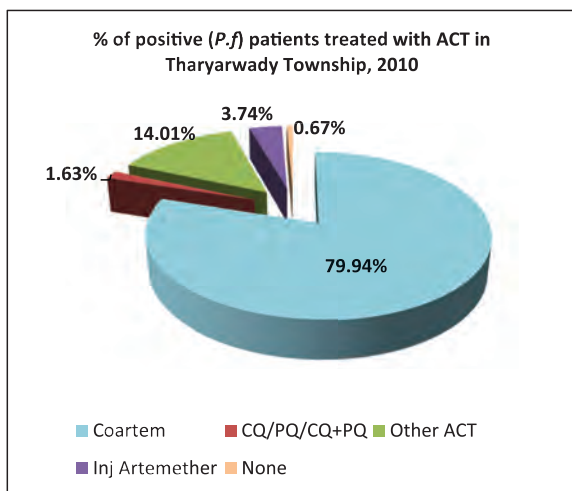
Age and Gender Wise Malaria examined and positive (*P.falciparum*) in Tha Yar Waddy Township in 2010



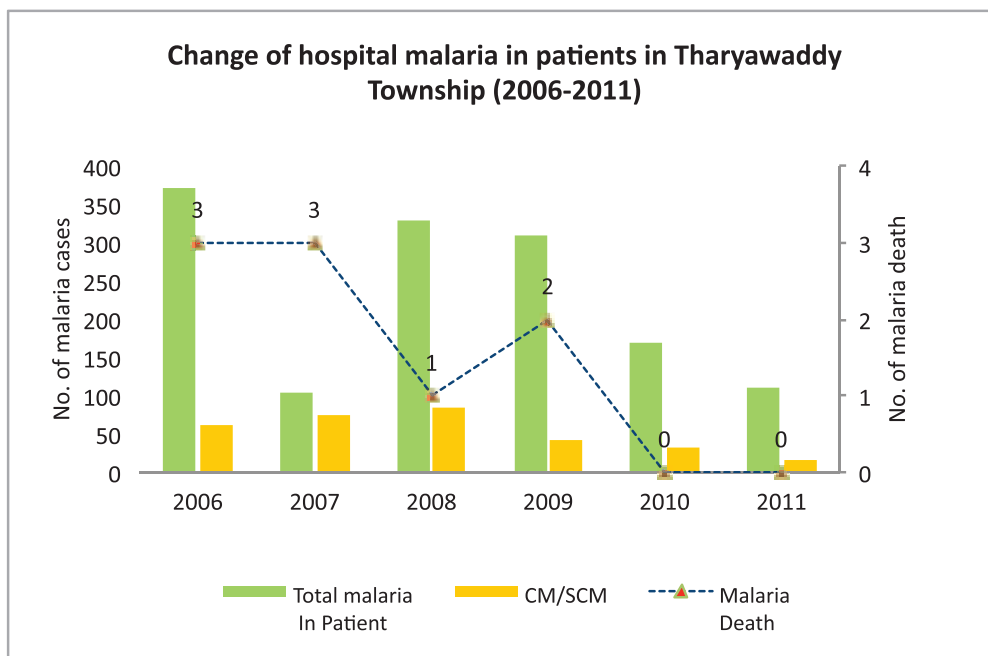
Age group and Gender Wise Malaria examined and positive (*P.falciparum*) in Tha Yar Waddy Township in 2011



Percentage of positive patients treated with ACT in Tharyarwaddy Township in 2010 and 2011



Change of hospital malaria in patients in Tha Yar Waddy Township from 2006 – 2011



Sr	Year	Total In Patient	Total malaria In Patient	CM/SCM	Malaria Death	Total Death
1	2006	4282	371	62	3	54
2	2007	4491	103	75	3	37
3	2008	3657	330	85	1	12
4	2009	4243	311	42	2	26
5	2010	3905	168	32	0	22
6	2011	3413	109	15	0	19

Health Profile of Thegone Township



Area and Location*

Area : 776.66 Km²
 North : Pyay
 South : Paungde
 East : Paungde
 West : Shwedaung

Administrative Units*

Wards : 4
 Village tracts : 346
 Villages : 49

Population (2009)*

Total : 132488
 Urban : 8866
 Rural : 123622
 Male : 64110
 Female : 68378
 Sex Ratio : 94
 <5 Year : 8619
 0-14 Year : 26775
 15-49 Year : 72899
 Population Density : 170.59/ Km²

Health Facilities (2009)*

Township Hospital (25) Bedded : 1
 Station Hospital : 3
 Maternal and Child Health Centers : 1
 Rural Health Centers : 5
 Sub Health Centers : 20
 Private Clinics and Maternity Homes : 7

Health Manpower*

	<i>Doctor</i>	<i>Nurse</i>	<i>HA</i>	<i>LHV</i>	<i>PHS I</i>	<i>PHS II</i>	<i>MW</i>
Sanction	11	24	4	7	4	9	32
Appointed	8	23	4	7	4	9	32
Vacant	3	1	-	-	-	-	-
% Vacancy	27.3%	4.2%	0.0%	0.0%	0.0%	0.0%	0.0%

(HA: Health Assistant, LHV: Lady Health Visitor, PHS:Public Health Supervisor , MW: Midwife)

Health Manpower (Volunteer) *

	Category of Volunteer Health Workers		
	CHW	AMW	TTBA
Trained	248	126	53
Functioning	133	55	34
% Functioning	53.6%	43.7%	64.2%

(CHW: Community health Worker, AMW: Auxiliary Mid Wife, TTBA: Trained Traditional Birth Attendant)

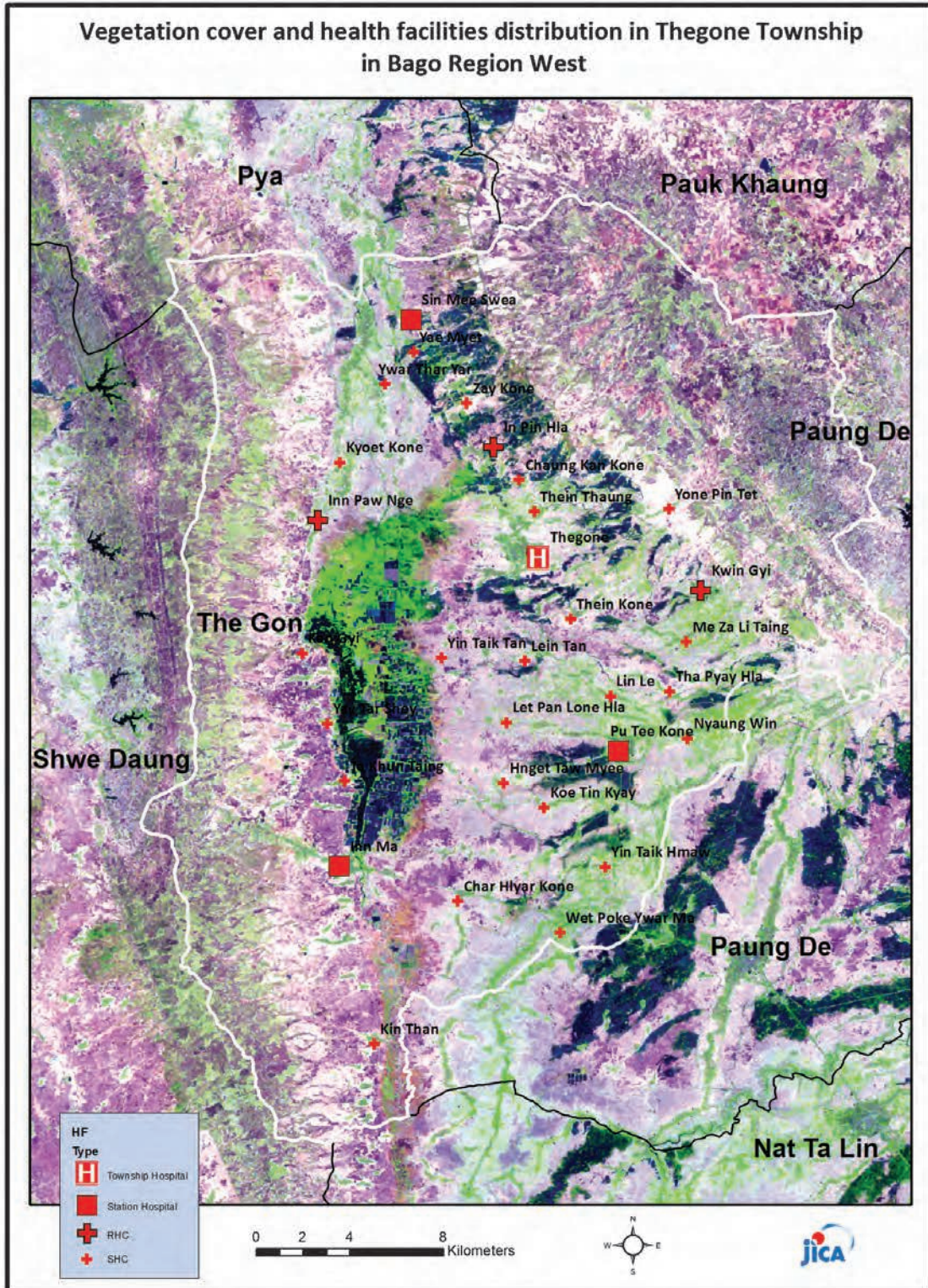
Common Diseases under National Surveillance*

<i>Diseases</i>	<i>Morbidity</i>	<i>Mortality</i>
Malaria	127.56	0.75
ARI <5	7367.44	46.41
Diarrhea	364.56	0
Dysentery	173.6	0
TB(Sputum+)	81.52	0
Snake Bite	58.87	6.04

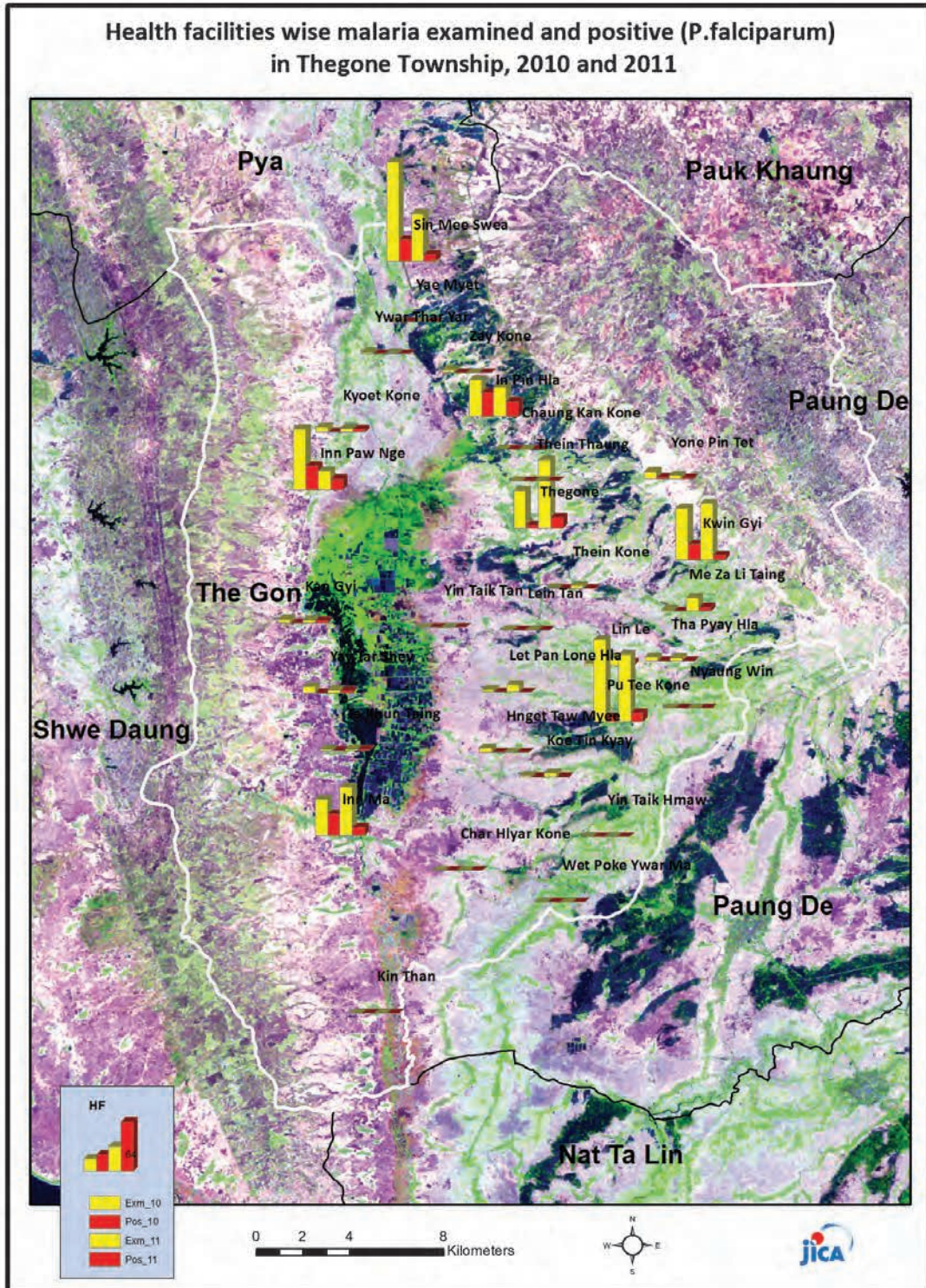
(Per 100,000 Populations)

*The data source is Health Profile of Bago Region West (2009) from Department of Health Planning.

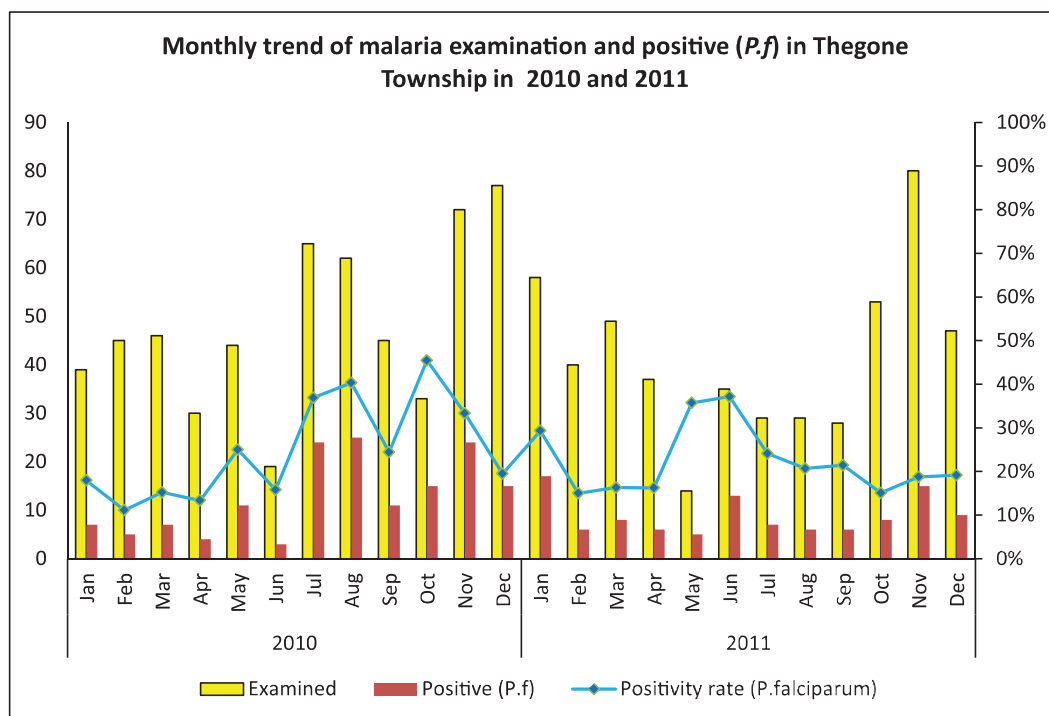
Vegetation cover and health facilities distribution in Thegone Township in Bago Region West



Health facilities wise malaria examined and positive (*P.falciparum*) in Thegone Township, 2010 and 2011

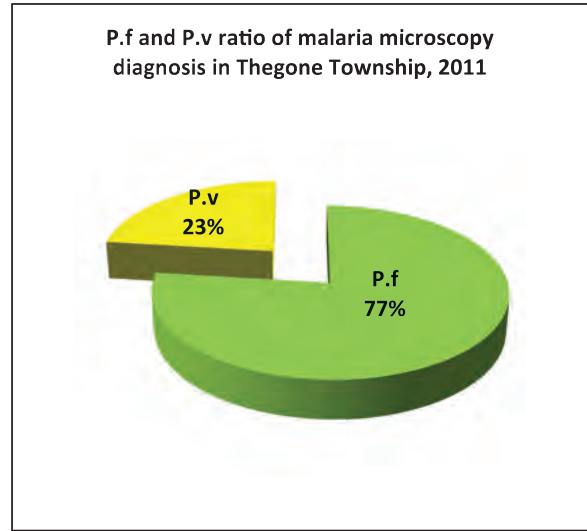
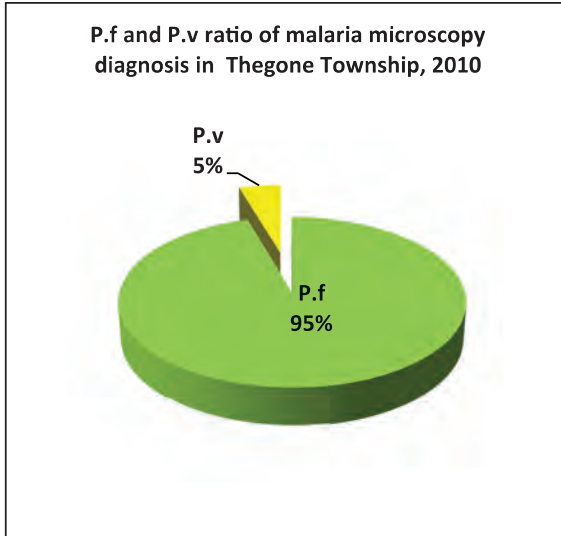


Monthly trend of malaria examined and positive (*P.f*) in The Gone Township in 2010 and 2011

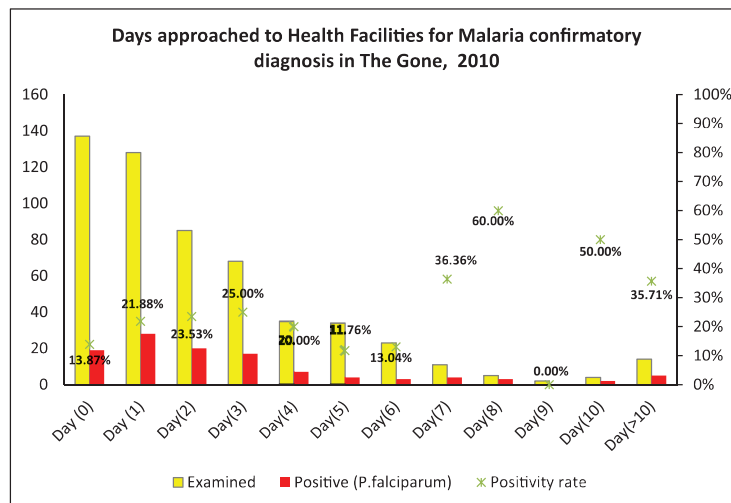
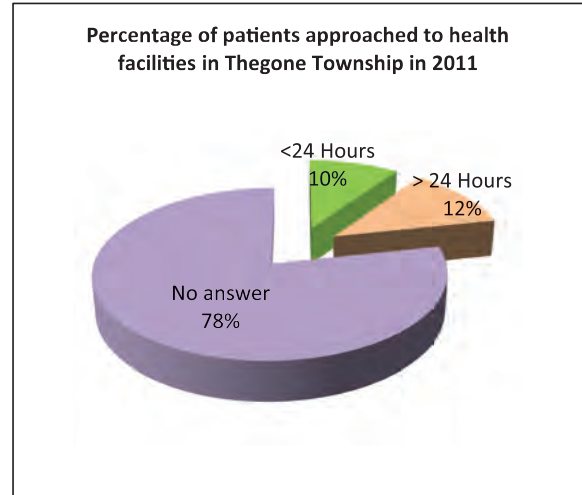
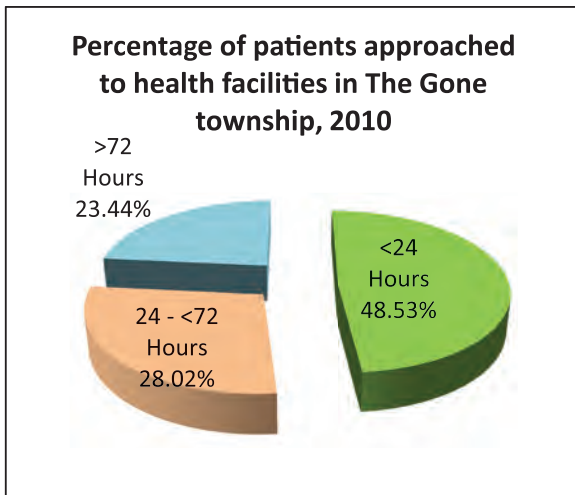


Month	2010			2011		
	Examined	Positive (<i>P.f</i>)	Positivity rate (<i>P.f</i>)	Examined	Positive (<i>P.f</i>)	Positivity rate (<i>P.f</i>)
Jan	39	7	17.95%	58	17	29.31%
Feb	45	5	11.11%	40	6	15.00%
Mar	46	7	15.22%	49	8	16.33%
Apr	30	4	13.33%	37	6	16.22%
May	44	11	25.00%	14	5	35.71%
Jun	19	3	15.79%	35	13	37.14%
Jul	65	24	36.92%	29	7	24.14%
Aug	62	25	40.32%	29	6	20.69%
Sep	45	11	24.44%	28	6	21.43%
Oct	33	15	45.45%	53	8	15.09%
Nov	72	24	33.33%	80	15	18.75%
Dec	77	15	19.48%	47	9	19.15%
Total	577	151	26.17%	499	106	21.24%

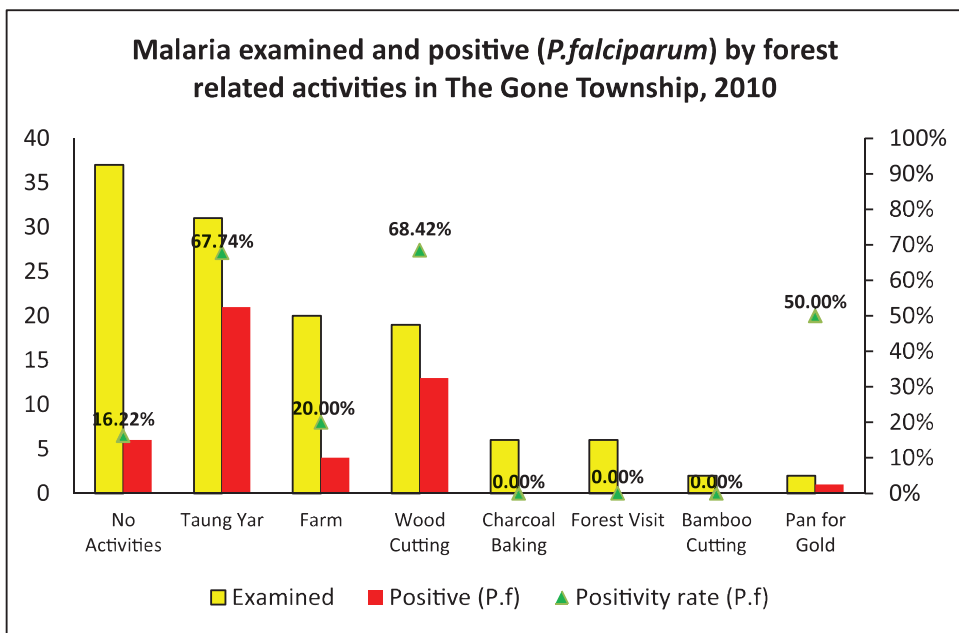
P.f and P.v ratio of microscopy diagnosis in The Gone Township, 2010 and 2011



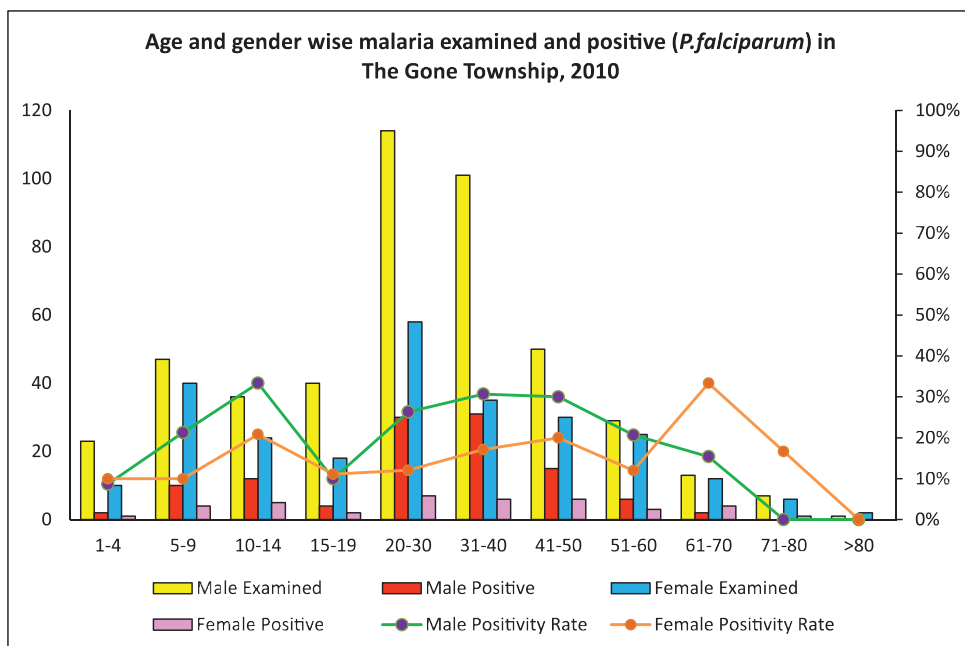
Percentage of patients approached to health facilities for malaria confirmatory diagnosis in Thegone Township in 2010 and 2011



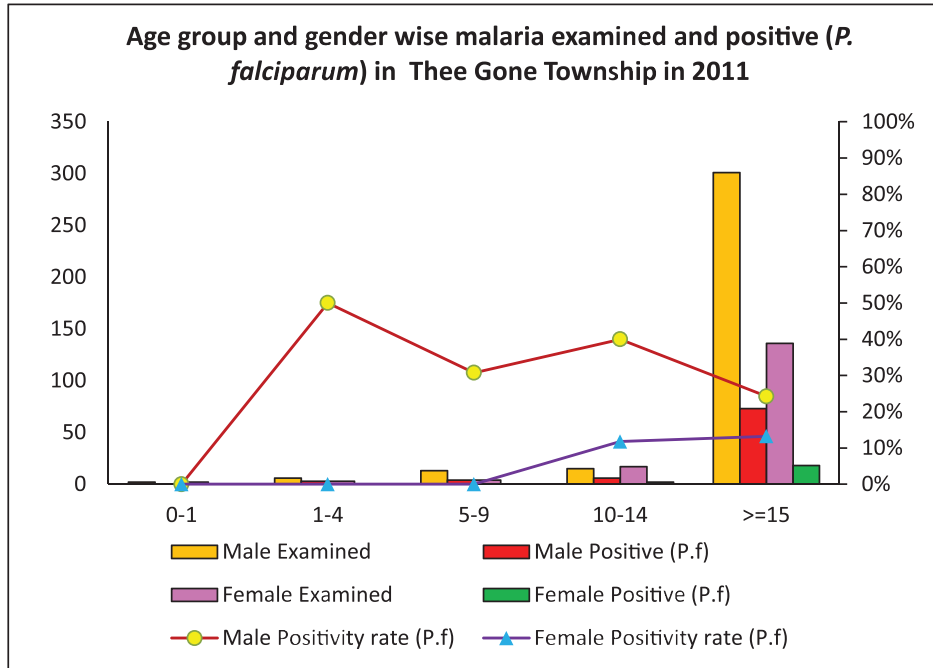
Malaria examined and positive (*P.falciparum*) by forest related activities in Thegone Township in 2010



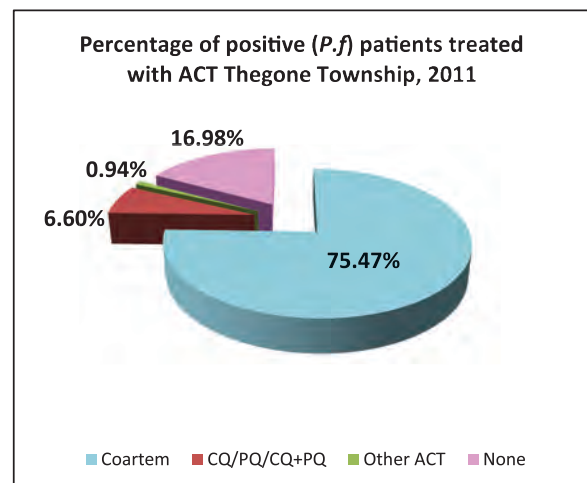
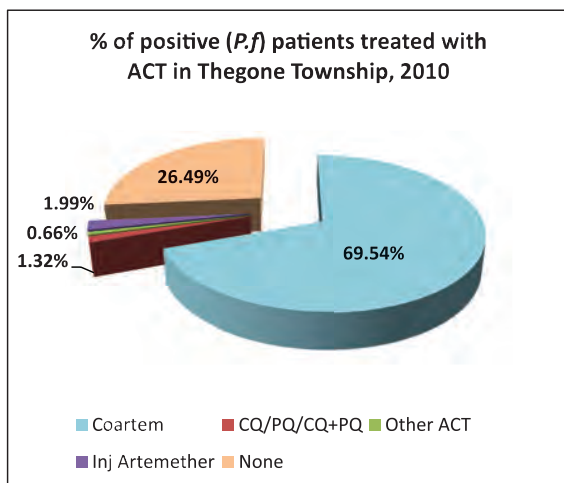
Age and Gender Wise Malaria examined and positive (*P.falciparum*) in The Gone Township in 2010



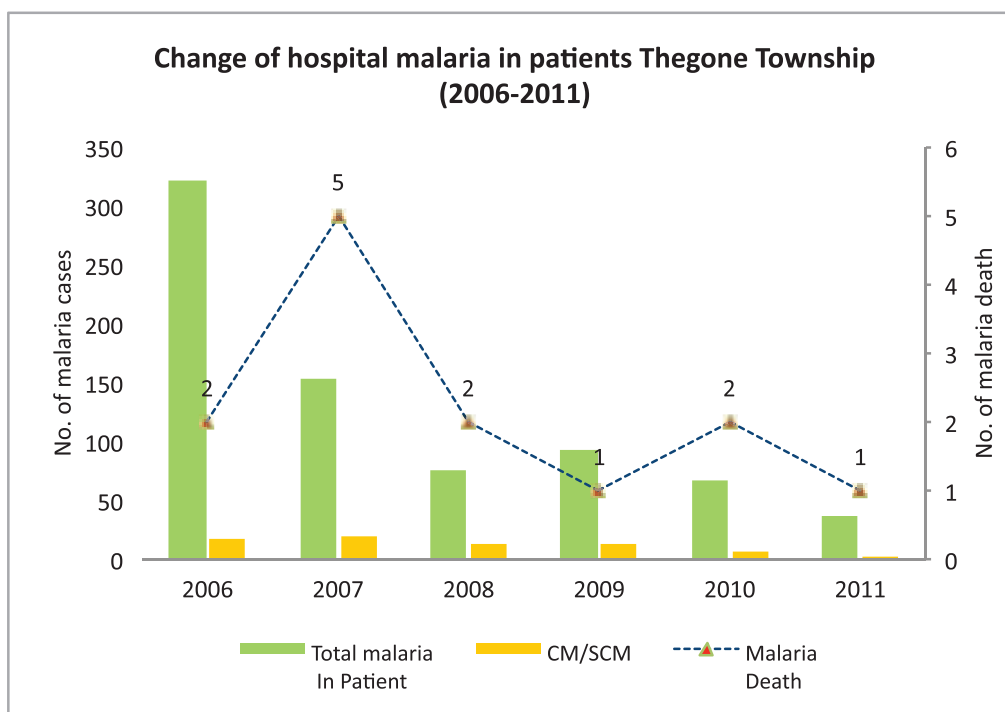
Age group and Gender Wise Malaria examined and positive (*P.falciparum*) in The Gone Township in 2011



Percentage of positive patient treated with ACT in The Gone Township in 2010 and 2011



Change of hospital malaria in patients in The Gone Township from 2006 – 2011



Sr	Year	Total In Patient	Total malaria In Patient	CM/SCM	Malaria Death	Total Death
1	2006	4860	321	18	2	71
2	2007	4510	154	20	5	55
3	2008	5355	76	14	2	77
4	2009	5257	92	13	1	77
5	2010	5382	67	6	2	46
6	2011	5926	37	3	1	53

Health Profile of Zeegone Township



Area and Location*

Area	: 245.17 Km ²
North	: Nattalin
South	: Gyobingauk
East	: Gyobingauk
West	: Nattalin

Administrative Units*

Wards	: 5
Village tracts	: 29
Villages	: 132

Population (2009)*

Total	: 73545
Urban	: 16822
Rural	: 56723
Male	: 36369
Female	: 37176
Sex Ratio	: 98
<5 Year	: 8675
0-14 Year	: 24902
15-49 Year	: 32717
Population Density	: 299.98/ Km ²

Health Facilities (2009)*

Township Hospital (25) Bedded	: 1
Maternal and Child Health Centers	: 1
Rural Health Centers	: 3
Sub Health Centers	: 24
Private Clinics and Maternity Homes	: 8

Health Manpower*

	Doctor	Nurse	HA	LHV	PHS I	PHS II	MW
Sanction	4	4	5	3	-	3	20
Appointed	4	4	5	3	-	3	20
Vacant	-	-	-	-	-	-	-
% Vacancy	0.0%	0.0%	0.0%	0.0%	0.0%	0.0%	0.0%

(HA: Health Assistant, LHV: Lady Health Visitor, PHS:Public Health Supervisor , MW: Midwife)

Health Manpower (Volunteer) *

	Category of Volunteer Health Workers		
	CHW	AMW	TTBA
Trained	170	79	59
Functioning	124	59	38
% Functioning	72.9%	74.7%	64.4%

(CHW: Community health Worker, AMW: Auxiliary Mid Wife, TTBA: Trained Traditional Birth Attendant)

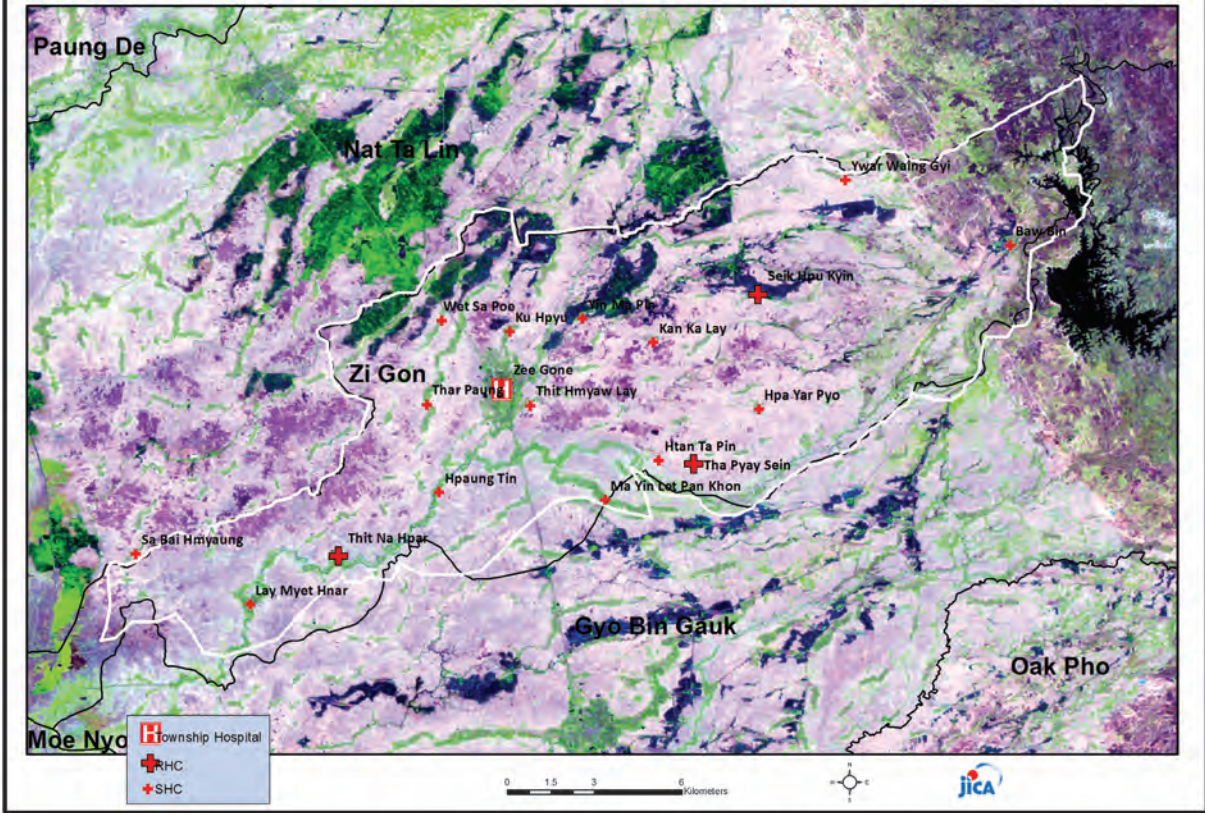
Common Diseases under National Surveillance*

Diseases	Morbidity	Mortality
Malaria	451.42	1.36
ARI <5	979.83	0
Diarrhea	477.26	0
Dysentery	378.00	0
TB(Sputum+)	161.81	0
Snake Bite	50.31	4.08

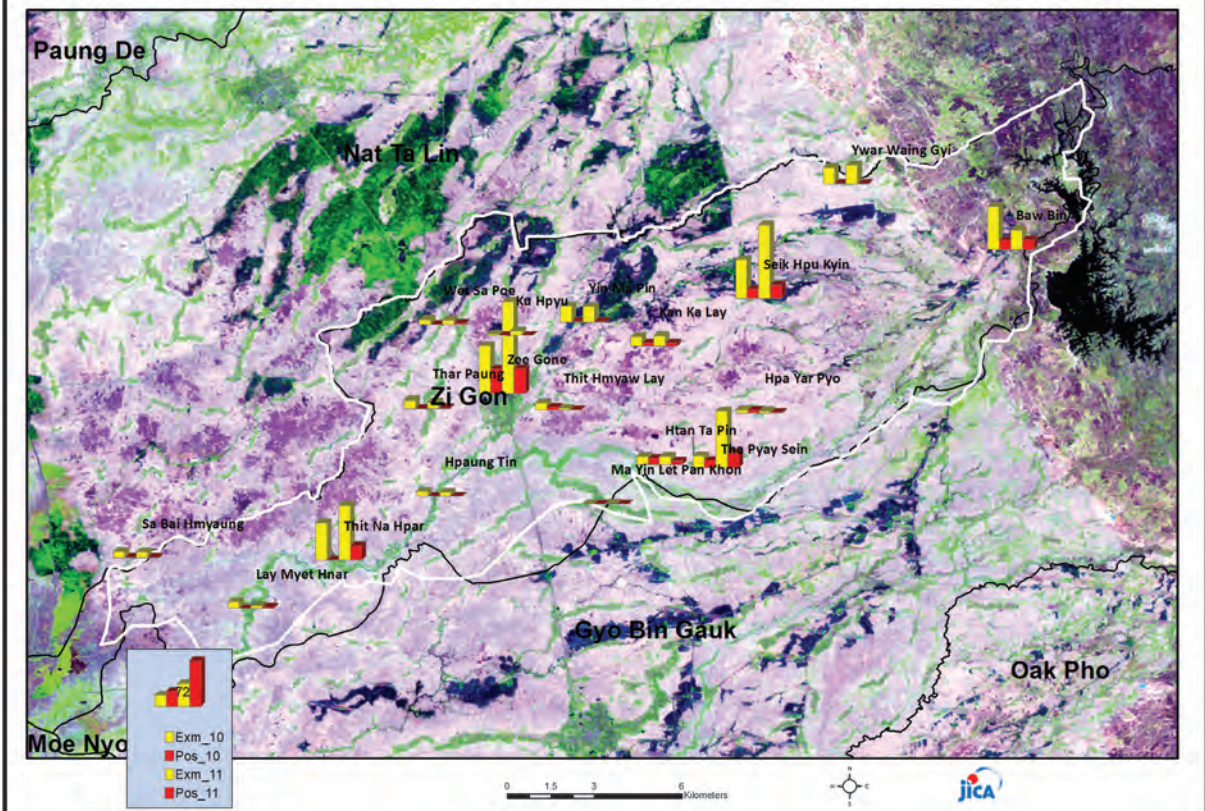
(Per 100,000 Populations)

*The data source is Health Profile of Bago Region West(2009) from Department of Health Planning.

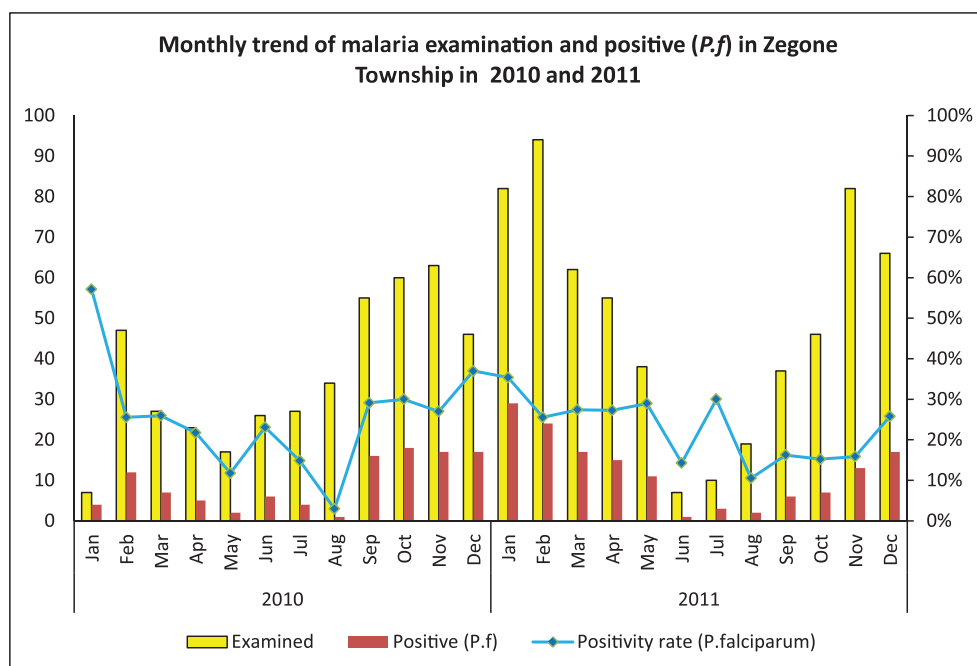
Vegetation cover and health facilities distribution in Zeegone Township in Bago Region West



Health facilities wise malaria examined and positive (*P.falciparum*) in Zeegone Township, 2010 and 2011

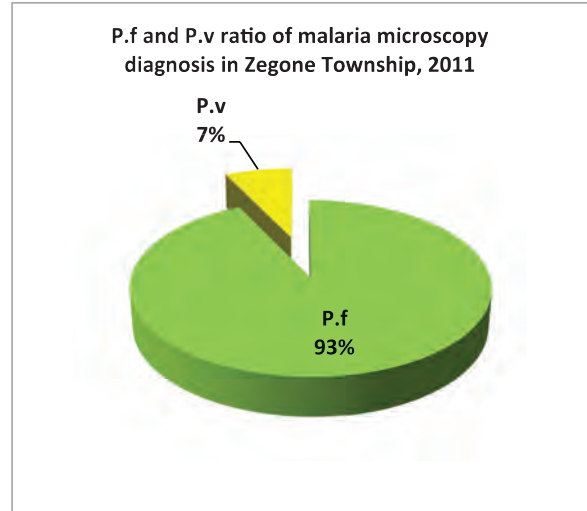
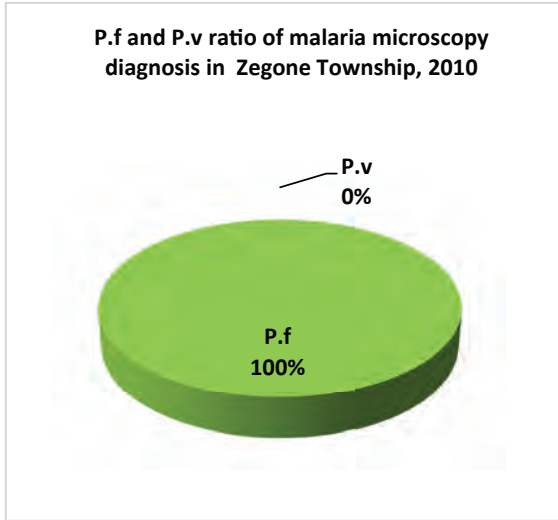


Monthly trend of malaria examined and positive (*P.f*) in Zee Gone Township in 2010 and 2011

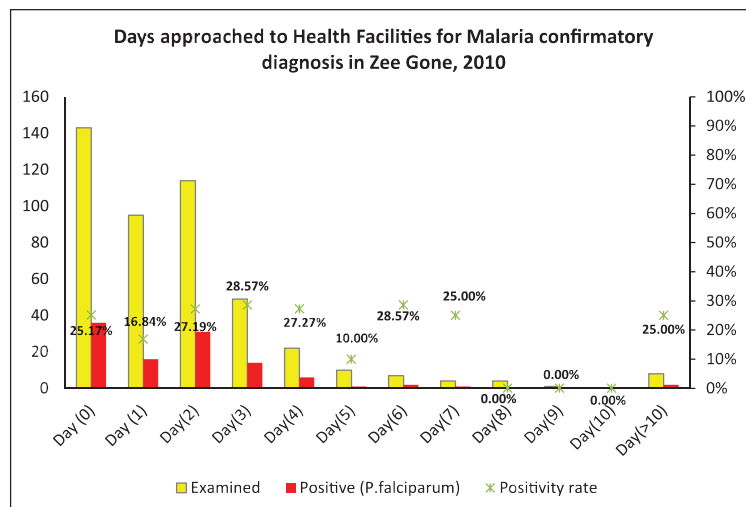
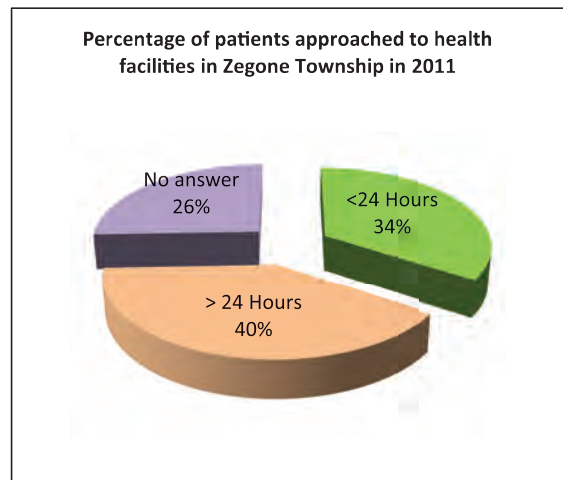
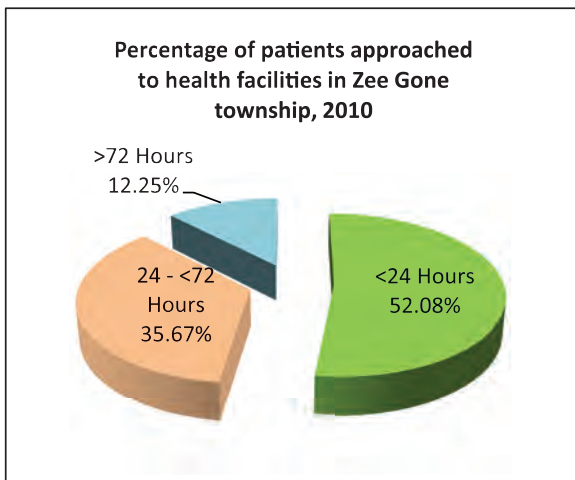


Month	2010			2011		
	Examined	Positive (<i>P.f</i>)	Positivity rate (<i>P.f</i>)	Examined	Positive (<i>P.f</i>)	Positivity rate (<i>P.f</i>)
Jan	7	4	57.14%	82	29	35.37%
Feb	47	12	25.53%	94	24	25.53%
Mar	27	7	25.93%	62	17	27.42%
Apr	23	5	21.74%	55	15	27.27%
May	17	2	11.76%	38	11	28.95%
Jun	26	6	23.08%	7	1	14.29%
Jul	27	4	14.81%	10	3	30.00%
Aug	34	1	2.94%	19	2	10.53%
Sep	55	16	29.09%	37	6	16.22%
Oct	60	18	30.00%	46	7	15.22%
Nov	63	17	26.98%	82	13	15.85%
Dec	46	17	36.96%	66	17	25.76%
Total	432	109	25.23%	598	145	24.25%

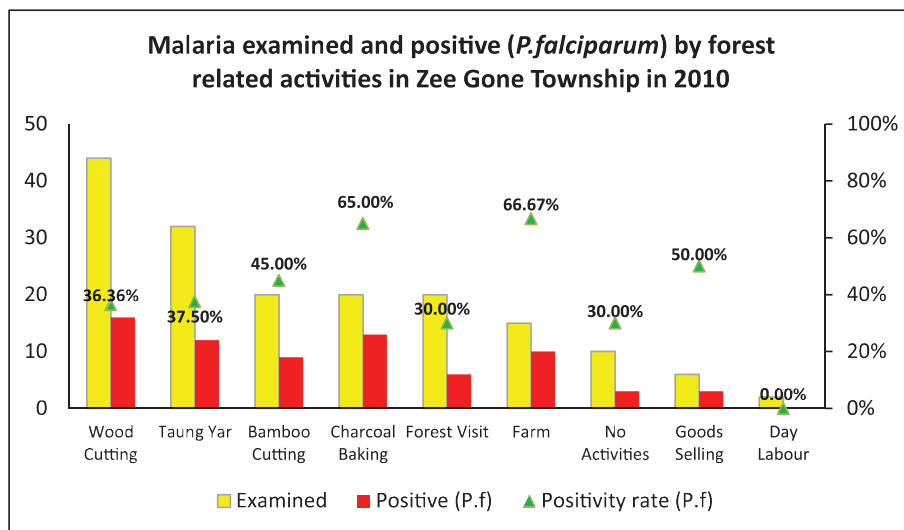
P.f and P.v ratio of microscopy diagnosis in Zee Gone Township, 2010 and 2011



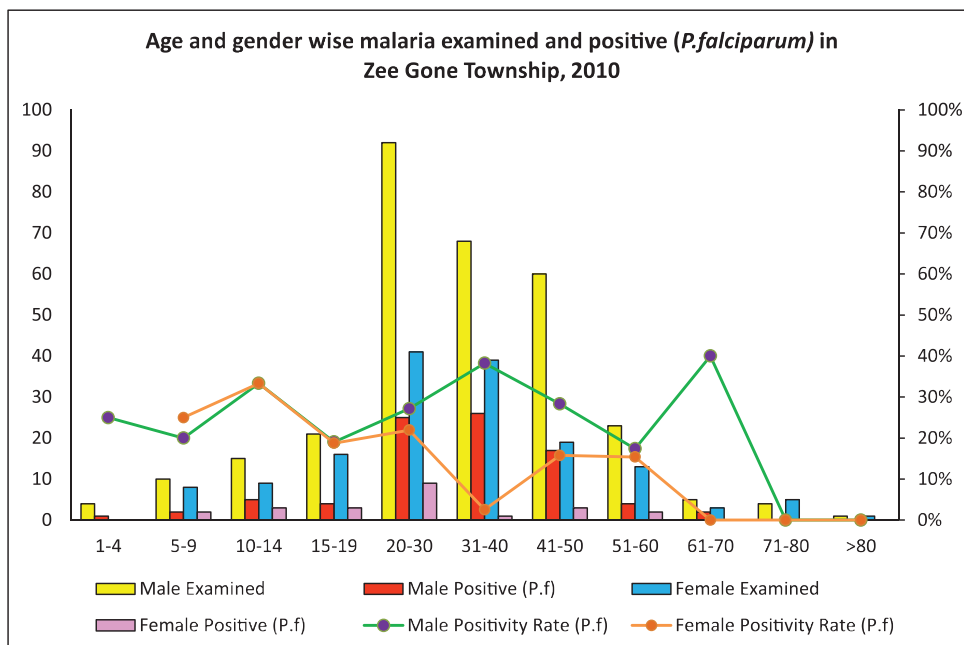
Percentage of patients approached to health facilities for malaria confirmatory diagnosis in Zee Gone Township in 2010 and 2011



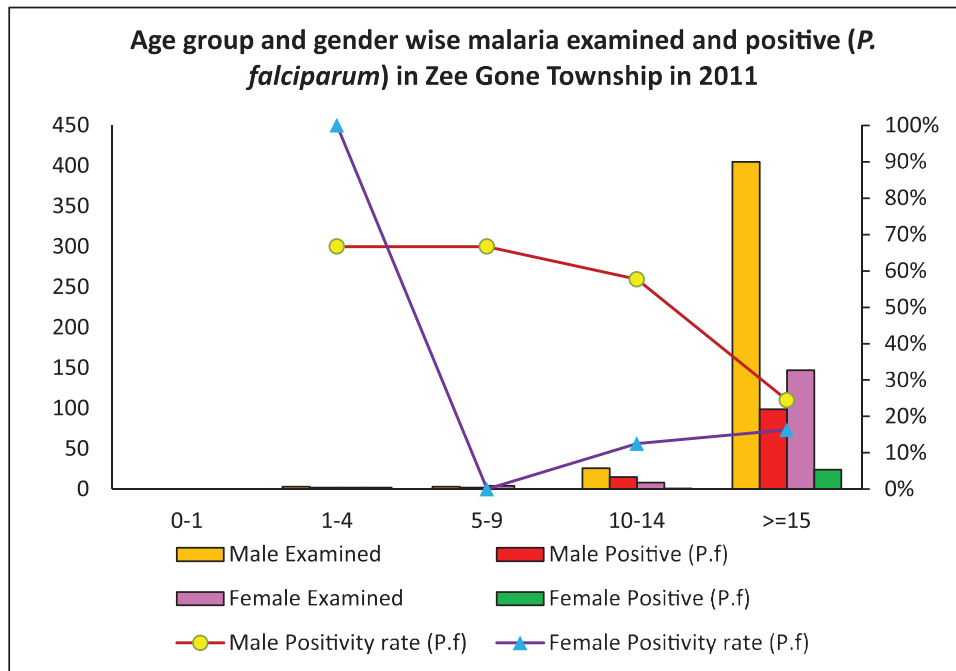
Malaria examined and positive (*P.falciparum*) by forest related activities in Zee Gone Township in 2010



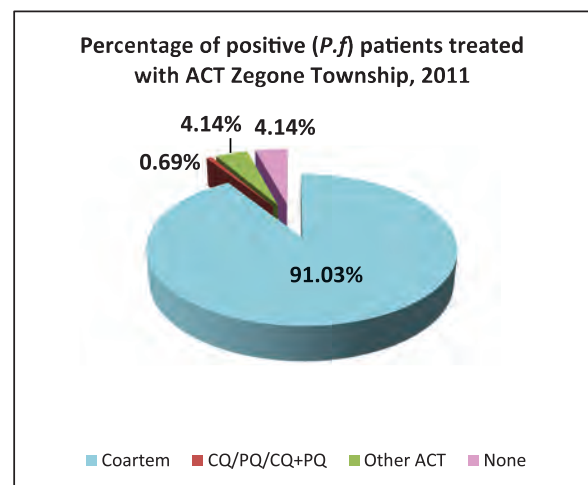
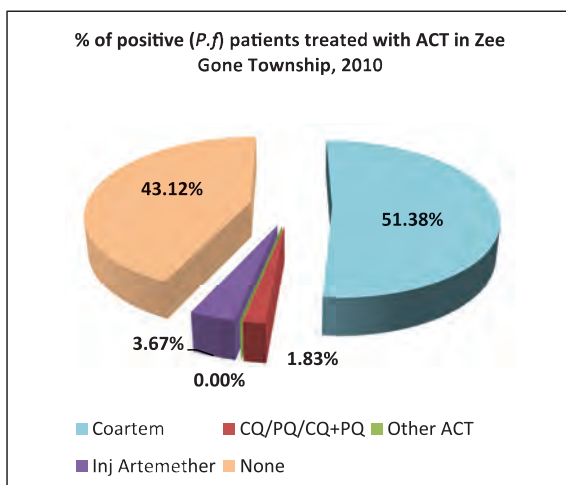
Age and Gender Wise Malaria examined and positive (*P.falciparum*) in Zee Gone Township in 2010



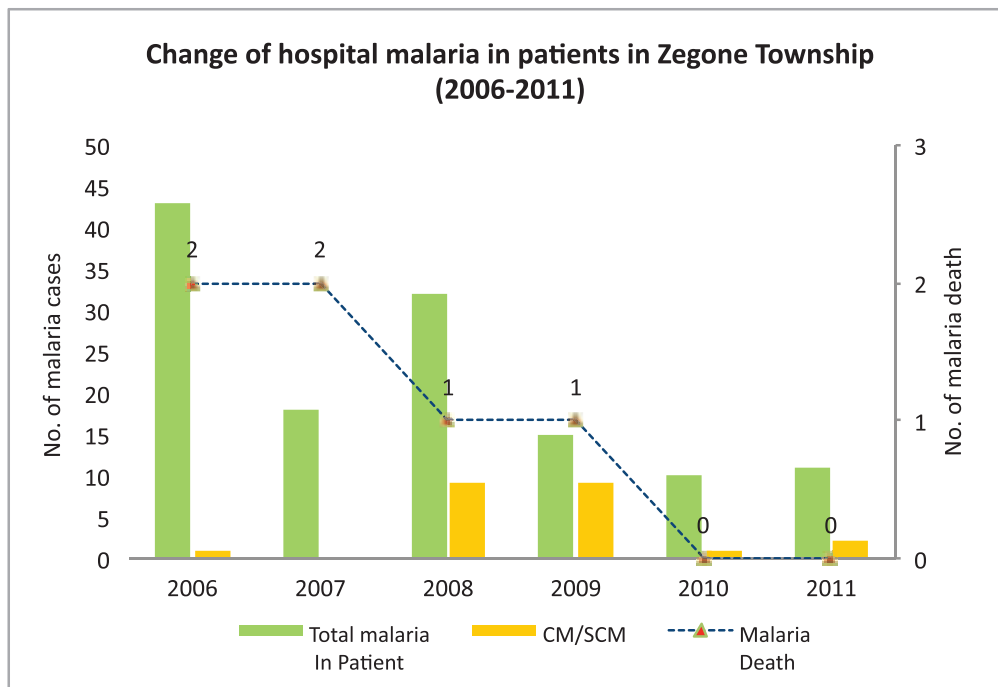
Age group and Gender Wise examined and positive (*P.falciparum*) in Zee Gone Township in 2011



Percentage of positive patients treated with ACT in Zee Gone Township in 2010 and 2011



Change of hospital malaria in patients in Zee Gone Township from 2006 – 2011



Sr	Year	Total In Patient	Total malaria In Patient	CM/SCM	Malaria Death	Total Death
1	2006	885	43	1	2	15
2	2007	943	18	0	2	5
3	2008	801	32	9	1	8
4	2009	1341	15	9	1	3
5	2010	1309	10	1	0	7
6	2011	1079	11	2	0	4