

## Health Profile of Padaung Township



### Area and Location\*

Area	:	25.7.75 Km <sup>2</sup>
North	:	Kanma
South	:	Kyaingin
East	:	Pyay
West	:	Taunggup

### Administrative Units\*

Wards	:	5
Village tracts	:	39
Villages	:	218

### Population (2009)\*

Total	:	135012
Urban	:	6841
Rural	:	128171
Male	:	65584
Female	:	69428
Sex Ratio	:	94
<5 Year	:	12287
0-14 Year	:	35499
15-49 Year	:	71677
Population Density	:	53.84/ Km <sup>2</sup>

### Health Facilities (2009)\*

Township Hospital (25) Bedded	:	1
Station Hospital	:	3
Hospital under other Ministries	:	1
Maternal and Child Health Centers	:	1
Rural Health Centers	:	2
Sub Health Centers	:	16
Private Clinics and Maternity Homes	:	16

**Health Manpower\***

	<i>Doctor</i>	<i>Nurse</i>	<i>HA</i>	<i>LHV</i>	<i>PHS I</i>	<i>PHS II</i>	<i>MW</i>
Sanction	10	24	4	5	3	6	29
Appointed	10	20	3	5	3	6	27
Vacant	-	4	1	-	-	-	2
% Vacancy	0.0%	16.7%	25.0%	0.0%	0.0%	0.0%	6.9%

(HA: Health Assistant, LHV: Lady Health Visitor, PHS:Public Health Supervisor , MW: Midwife)

**Health Manpower (Volunteer)\***

	Category of Volunteer Health Workers		
	CHW	AMW	TTBA
Trained	159	111	76
Functioning	121	94	62
% Functioning	76.1%	84.7%	81.6%

(CHW: Community health Worker, AMW: Auxiliary Mid Wife, TTBA: Trained Traditional Birth Attendant)

**Common Diseases under National Surveillance\***

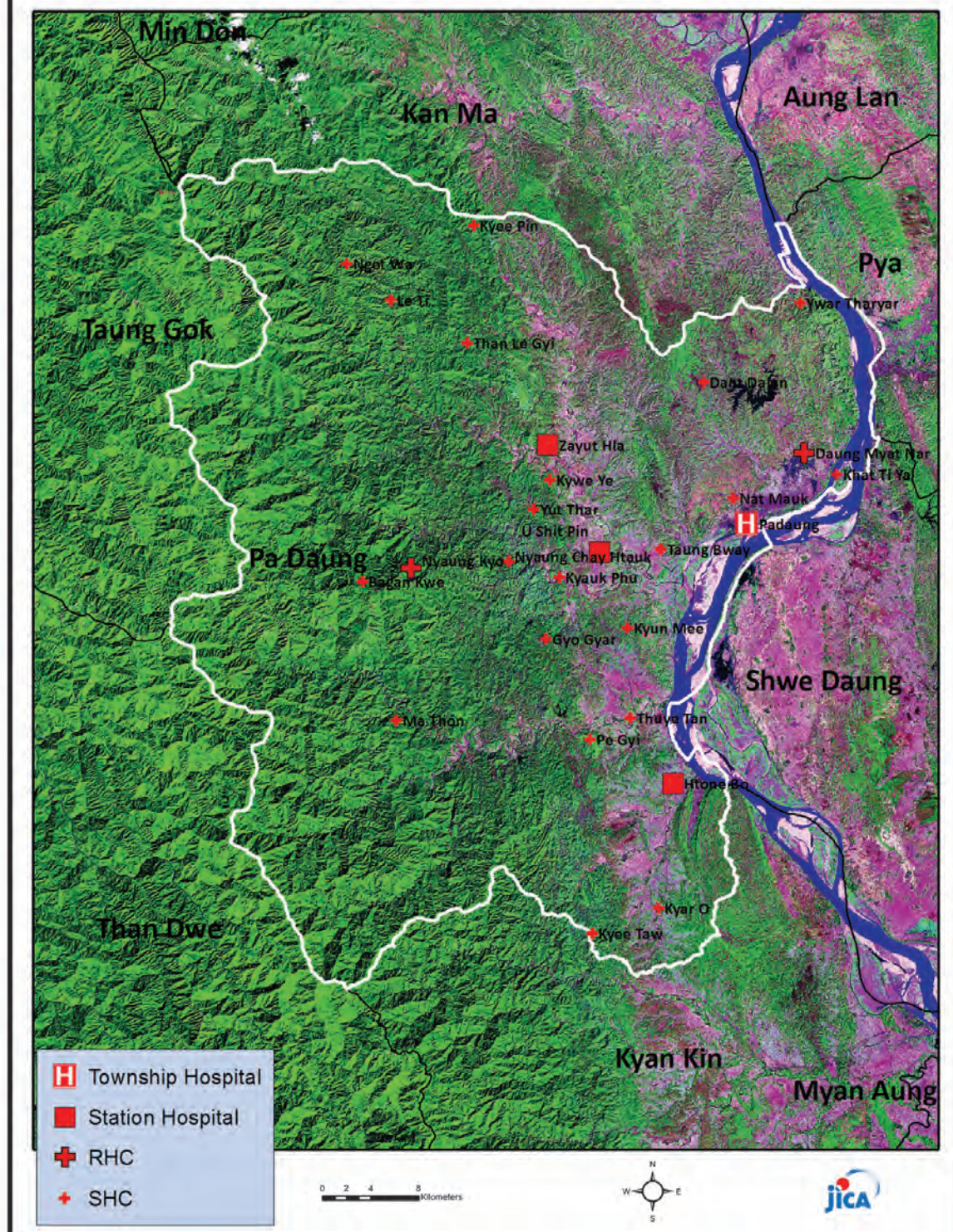
<i>Diseases</i>	<i>Morbidity</i>	<i>Mortality</i>
Malaria	778.45	5.18
ARI <5	1635.88	8.14
Diarrhea	534.03	0
Dysentery	212.57	0
TB(Sputum+)	66.66	0
Snake Bite	25.18	2.96

(Per 100,000 Populations)

\*The data source is Health Profile of Bago Region West (2009) from Department of Health Planning.

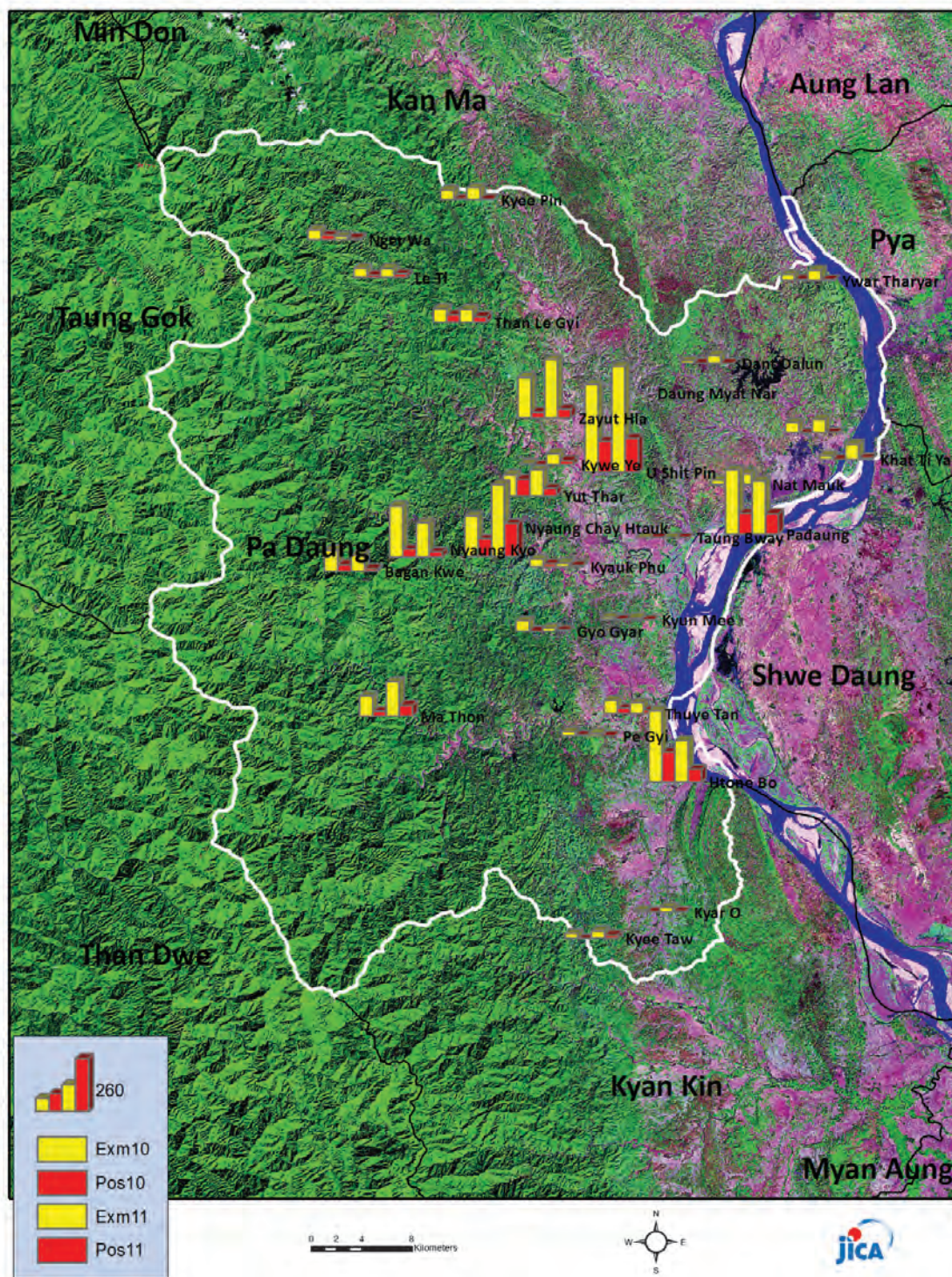


### Vegetation cover and health facilities distribution in Padaung Township in Bago Region West

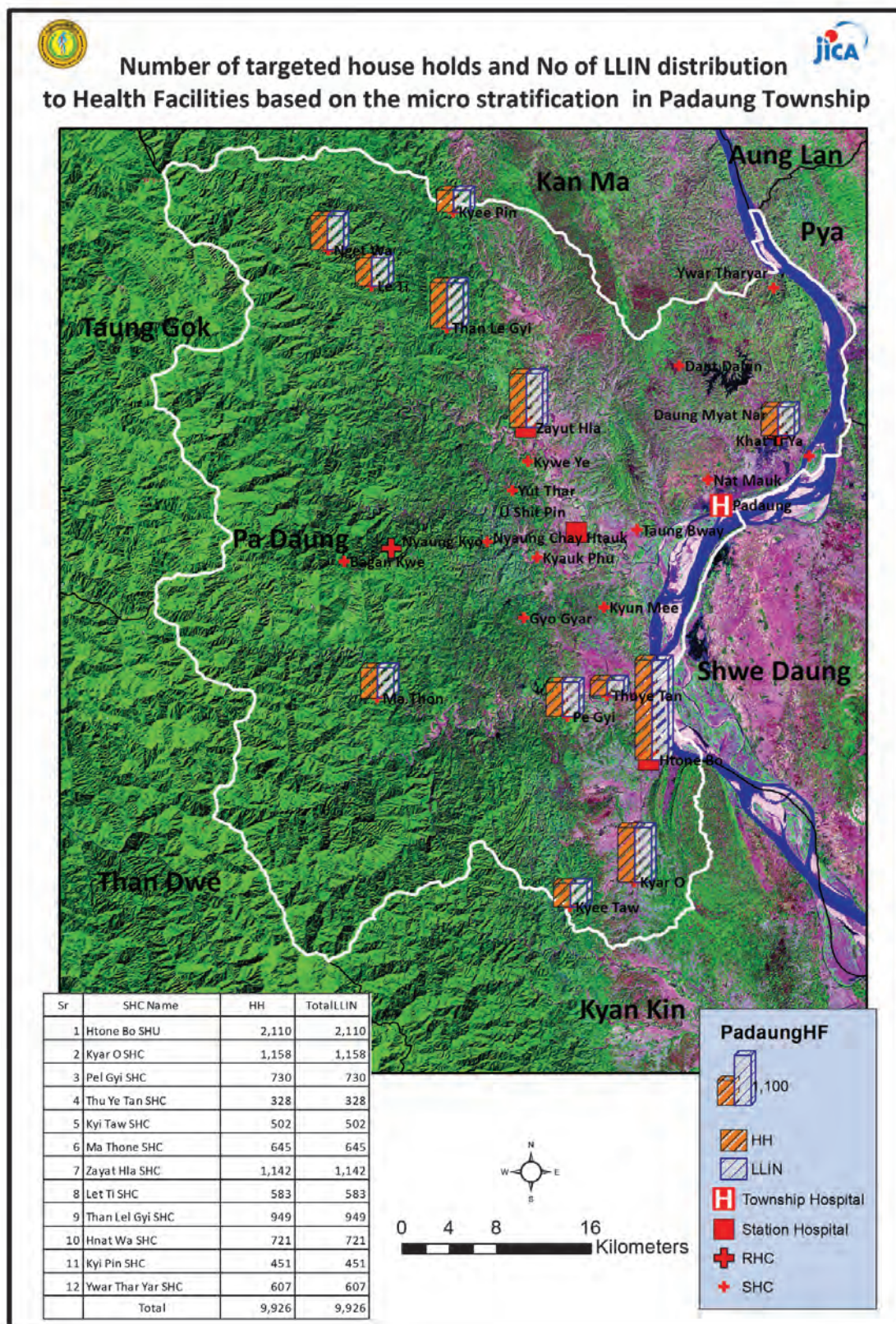




Health facilities wise malaria examined and positive (*P.falciparum*)  
in Padaung Township, 2010 and 2011

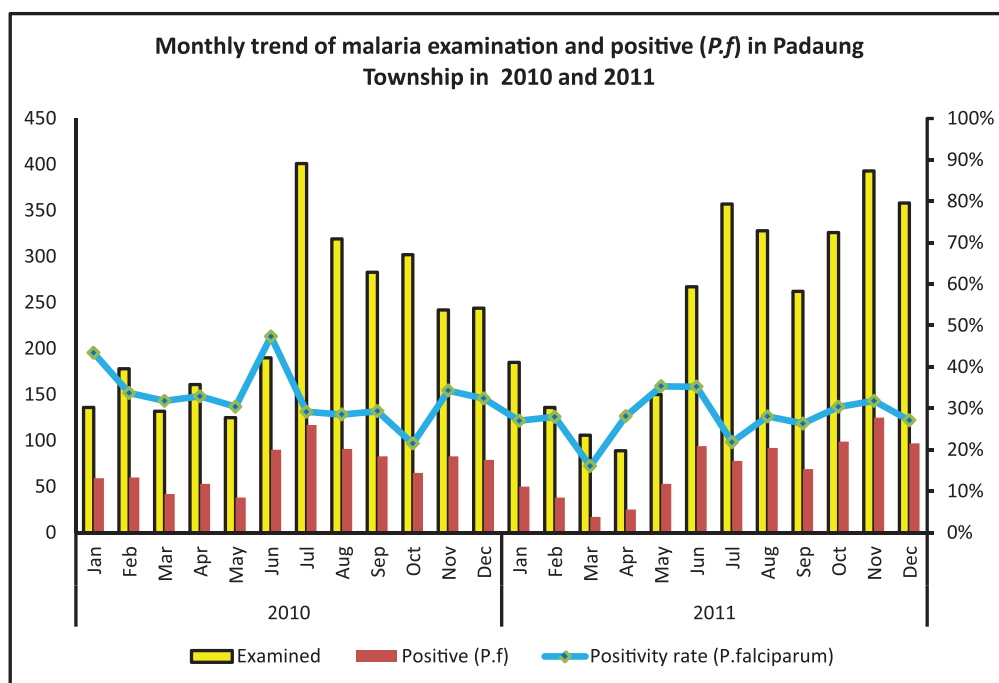






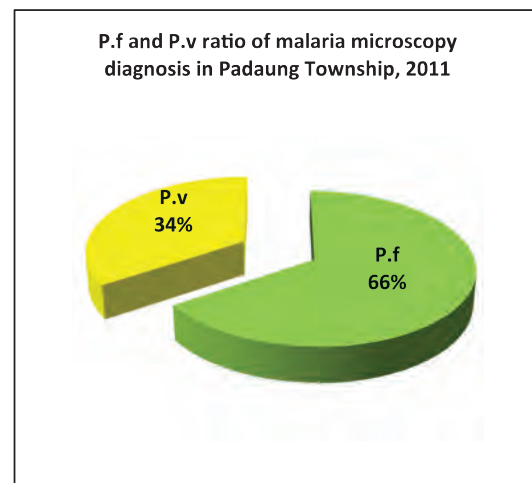
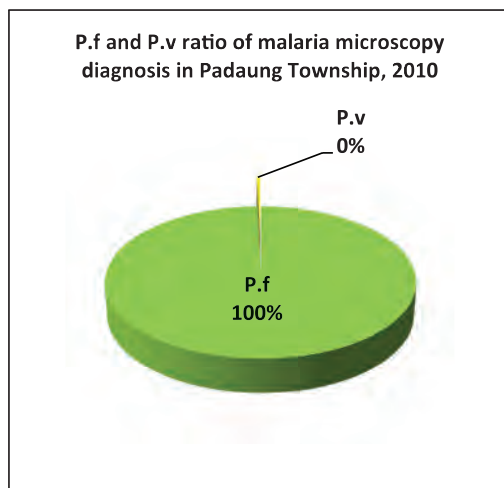
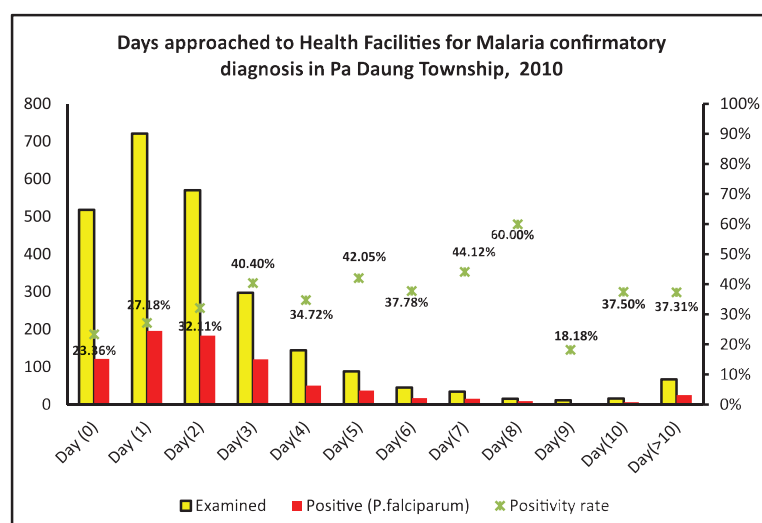
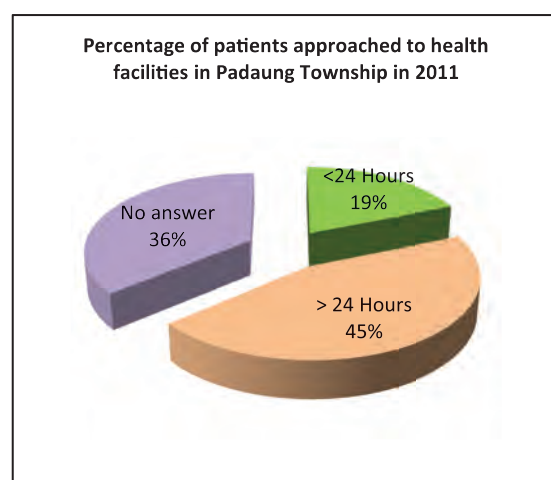
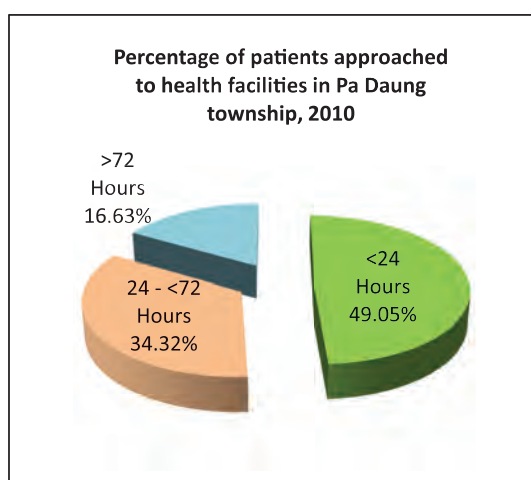


## Monthly trend of malaria examined and Positive (*P.f*) in Pa Daung Township in 2010 and 2011



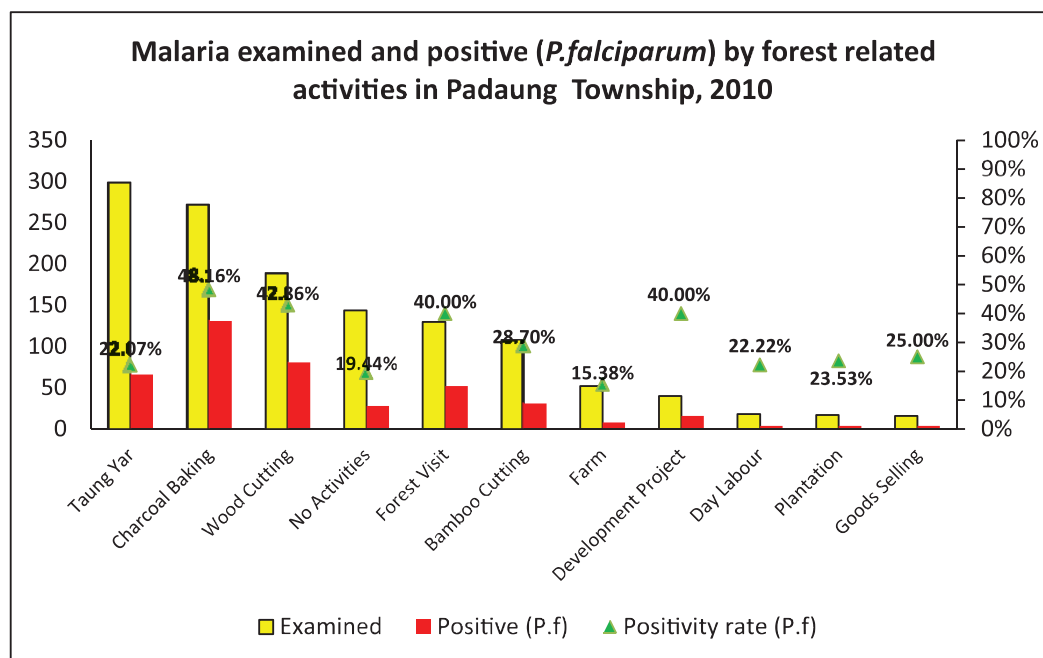
Month	2010			2011		
	Examined	Positive ( <i>P.f</i> )	Positivity Rate ( <i>P.f</i> )	Examined	Positive ( <i>P.f</i> )	Positivity Rate ( <i>P.f</i> )
Jan	136	59	43.38%	185	50	27.03%
Feb	178	60	33.71%	136	38	27.94%
Mar	132	42	31.82%	106	17	16.04%
Apr	161	53	32.92%	89	25	28.09%
May	125	38	30.40%	150	53	35.33%
Jun	190	90	47.37%	267	94	35.21%
Jul	401	117	29.18%	357	78	21.85%
Aug	319	91	28.53%	328	92	28.05%
Sep	283	83	29.33%	262	69	26.34%
Oct	302	65	21.52%	326	99	30.37%
Nov	242	83	34.30%	393	125	31.81%
Dec	244	79	32.38%	358	97	27.09%
<b>Total</b>	<b>2,713</b>	<b>860</b>	<b>31.70%</b>	<b>2,957</b>	<b>837</b>	<b>28.31%</b>



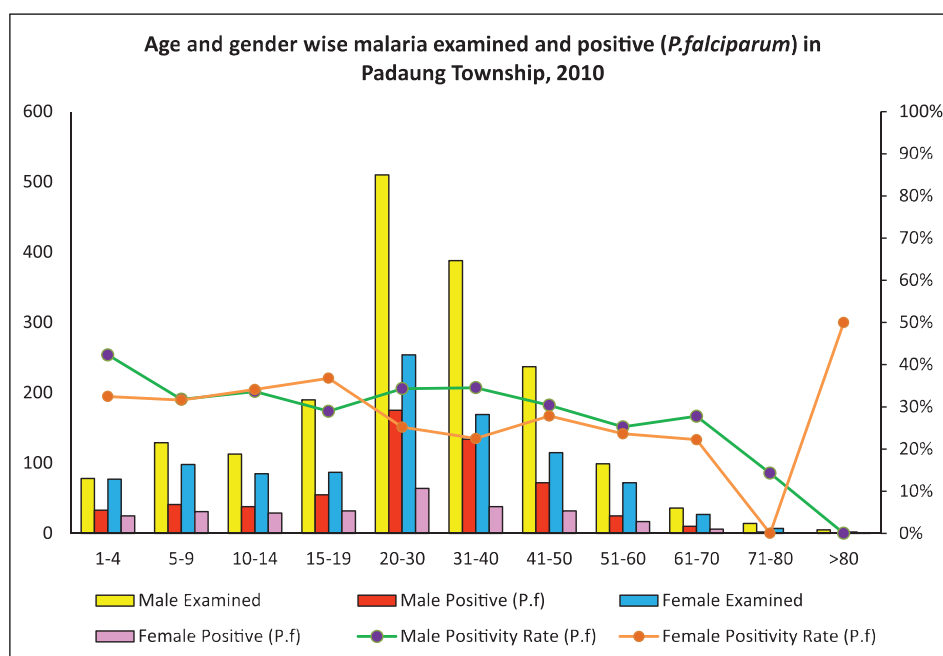
***P.f* and *P.v* ratio of microscopy diagnosis in Pa Daung Township, 2010 and 2011****Percentage of patients approached to health facilities for malaria confirmatory diagnosis in Pa Daung Township in 2010 and 2011**



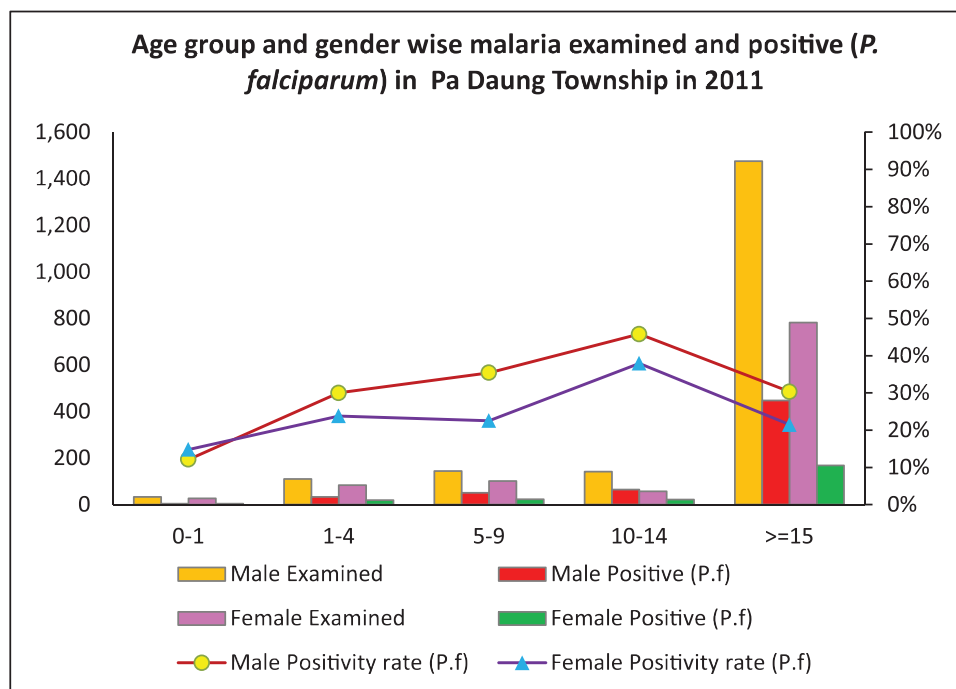
### Malaria examined and positive (*P.falciparum*) by forest related activities in Pa Daung Township in 2010



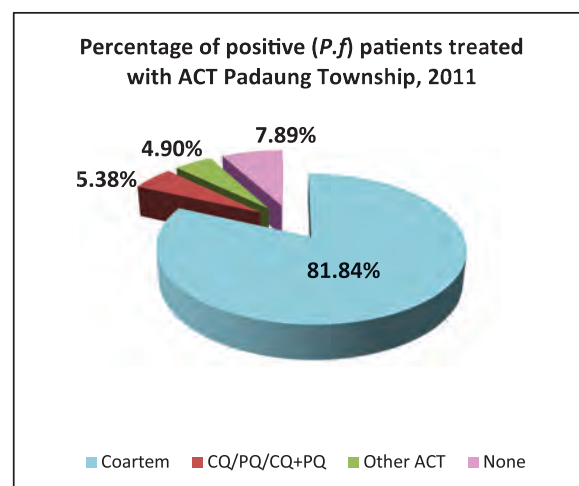
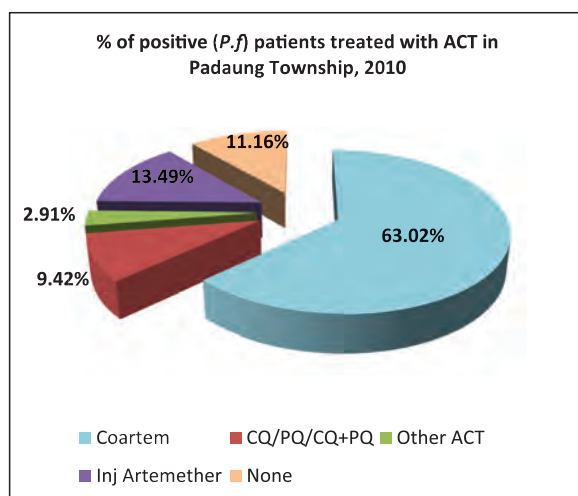
### Age and Gender Wise Malaria examined and positive (*P.falciparum*) in Pa Daung Township in 2010



### Age group and Gender Wise Malaria examined and positive (*P.falciparum*) in Pa Daung Township in 2011

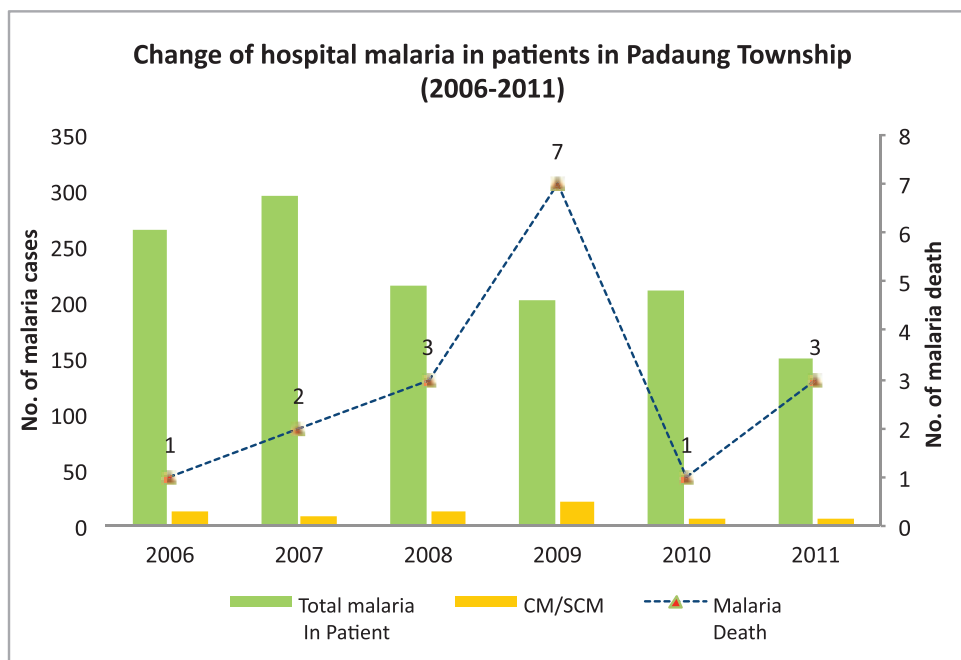


### Percentage of positive patients treated with ACT in Padaung Township in 2010 and 2011





### Change of hospital malaria in patients in Pa Daung Township from 2006 \_2011



Sr	Year	Total In Patient	Total malaria In Patient	CM/SCM	Malaria Death	Total Death
1	2006	2966	265	12	1	37
2	2007	5011	295	8	2	36
3	2008	2985	216	13	3	24
4	2009	2643	202	22	7	19
5	2010	3202	211	7	1	15
6	2011	3069	150	7	3	17

## Health Profile of Pauk Khaung Township



### Area and Location\*

Area	:	1907.57 Km <sup>2</sup>
North	:	Myedia
South	:	Paungde
East	:	Taungngu
West	:	Pyay

### Administrative Units\*

Wards	:	5
Village tracts	:	52
Villages	:	225

### Population (2009)\*

Total	:	116532
Urban	:	20096
Rural	:	96436
Male	:	57096
Female	:	59436
Sex Ratio	:	96
<5 Year	:	8921
0-14 Year	:	26638
15-49 Year	:	67293
Population Density	:	61.09/ Km <sup>2</sup>

### Health Facilities (2009)\*

Township Hospital (25) Bedded	:	1
Station Hospital	:	1
Maternal and Child Health Centers	:	1
Rural Health Centers	:	3
Sub Health Centers	:	16



**Health Manpower\***

	<i>Doctor</i>	<i>Nurse</i>	<i>HA</i>	<i>LHV</i>	<i>PHS I</i>	<i>PHS II</i>	<i>MW</i>
Sanction	7	17	5	6	2	7	29
Appointed	6	16	5	6	2	7	29
Vacant	1	1	-	-	-	-	-
% Vacancy	14.3%	5.9%	0.0%	0.0%	0.0%	0.0%	0.0%

(HA: Health Assistant, LHV: Lady Health Visitor, PHS:Public Health Supervisor , MW: Midwife)

**Health Manpower (Volunteer)\***

	Category of Volunteer Health Workers		
	CHW	AMW	TTBA
Trained	249	154	100
Functioning	98	75	28
% Functioning	39.4%	48.7%	28.0%

(CHW: Community health Worker, AMW: Auxiliary Mid Wife, TTBA: Trained Traditional Birth Attendant)

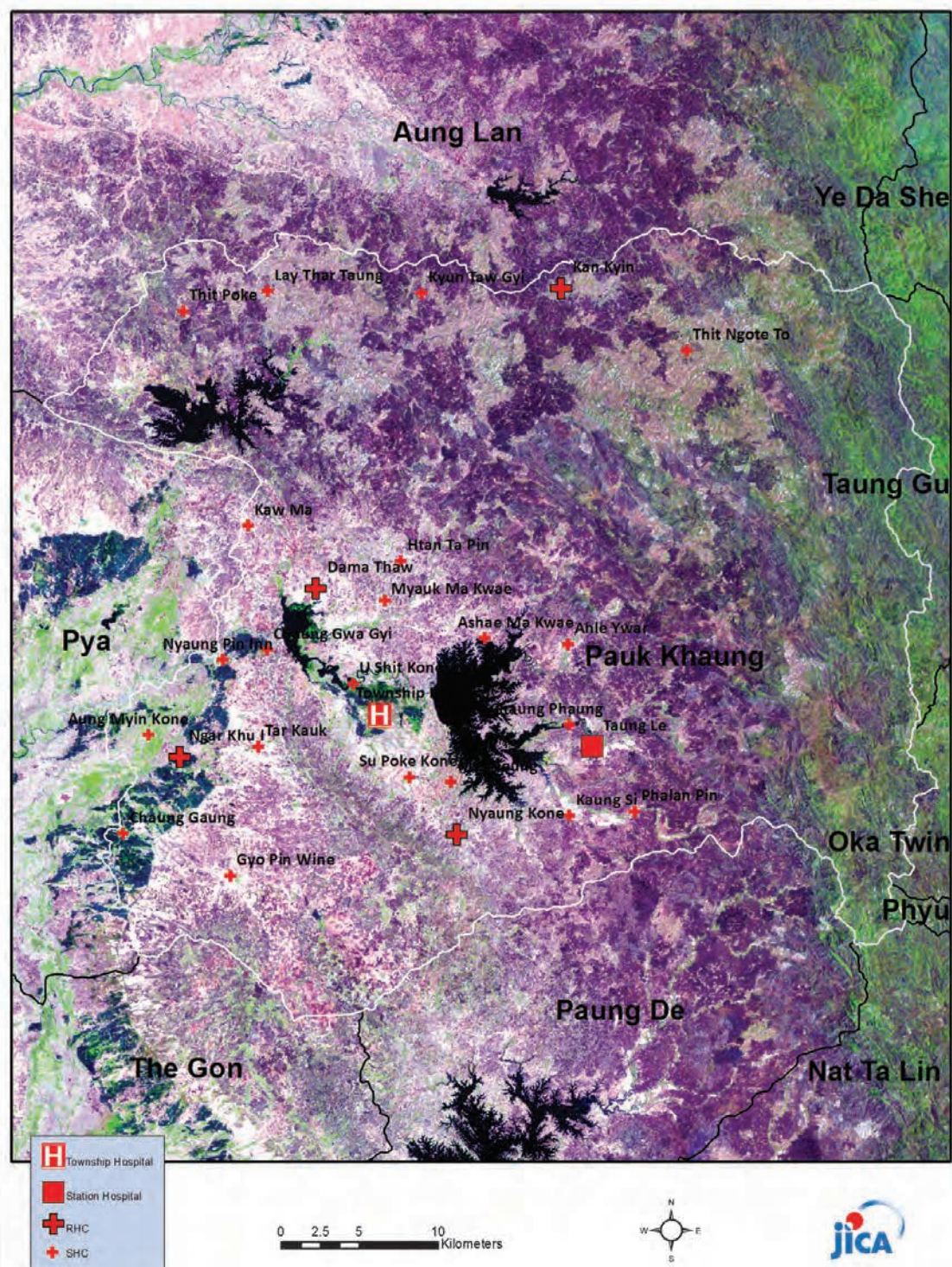
**Common Diseases under National Surveillance\***

<i>Diseases</i>	<i>Morbidity</i>	<i>Mortality</i>
Malaria	3666.80	2.57
ARI <5	4876.13	11.21
Diarrhea	509.73	0
Dysentery	126.15	0
TB(Sputum+)	85.81	0
Snake Bite	83.24	5.15

(Per 100,000 Populations)

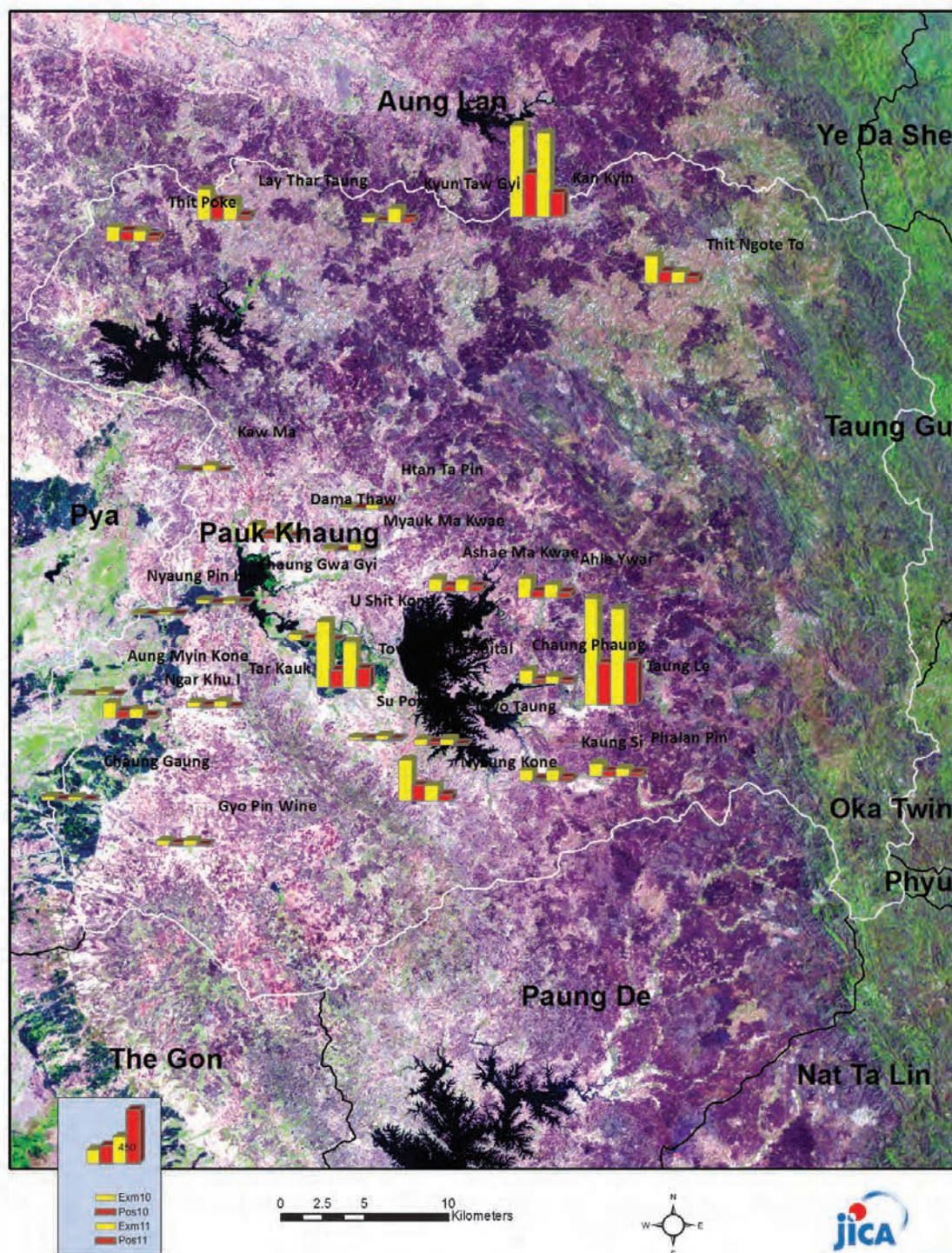
\*The data source is Health Profile of Bago Region West(2009) from Department of Health planning.

Vegetation cover and Health Facilities distribution in Pauk Kaung Township in Bago Region West

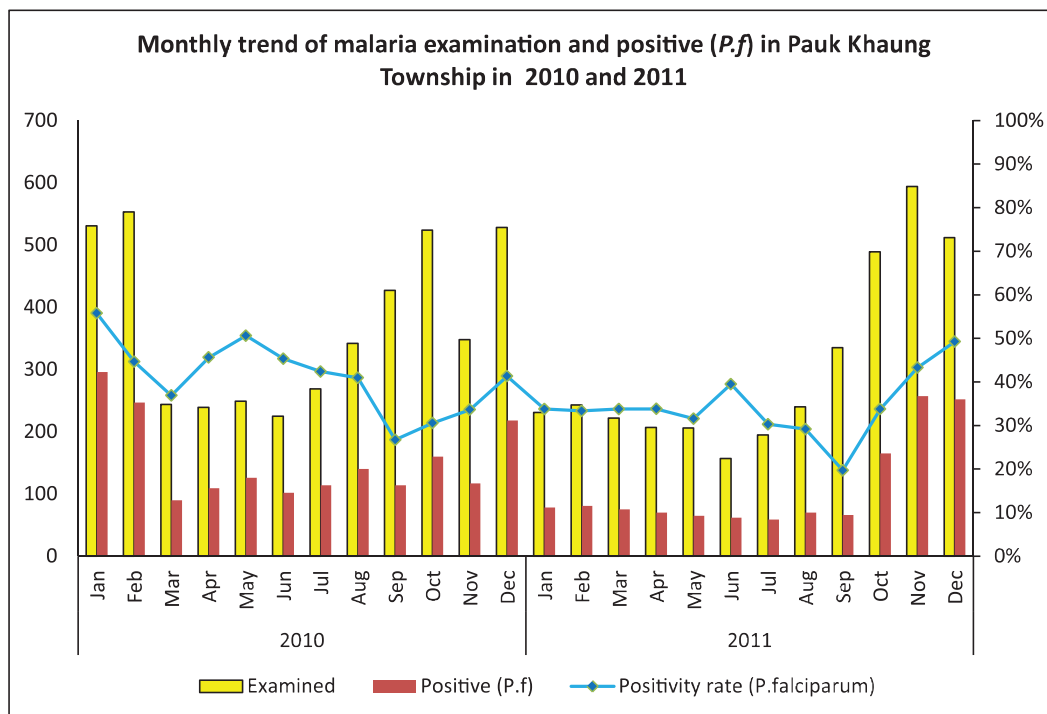




### Health facilities wise malaria examined and positive (*P.falciparum*) in Pauk Khaung Township, 2010 and 2011

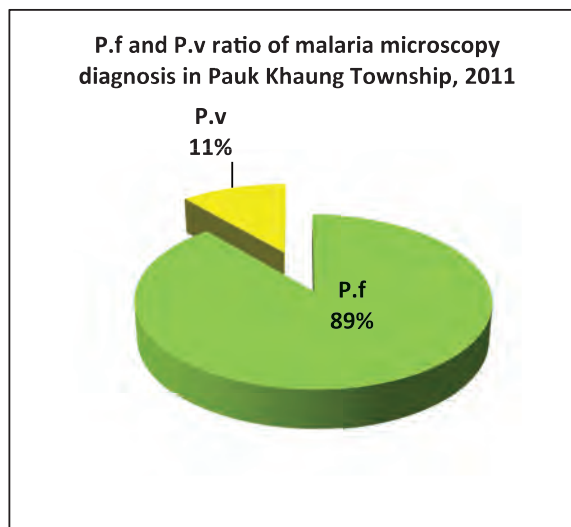
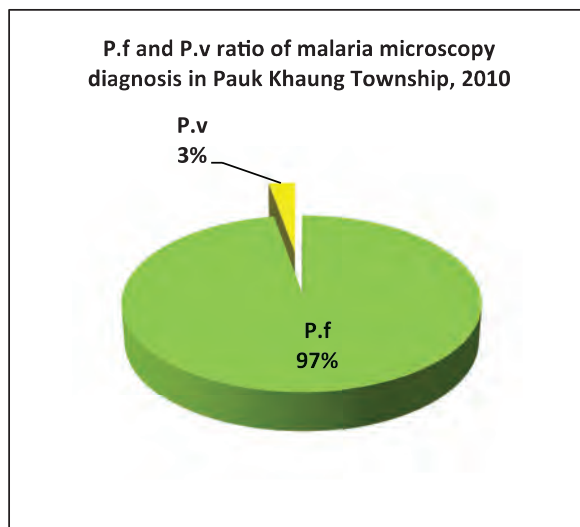
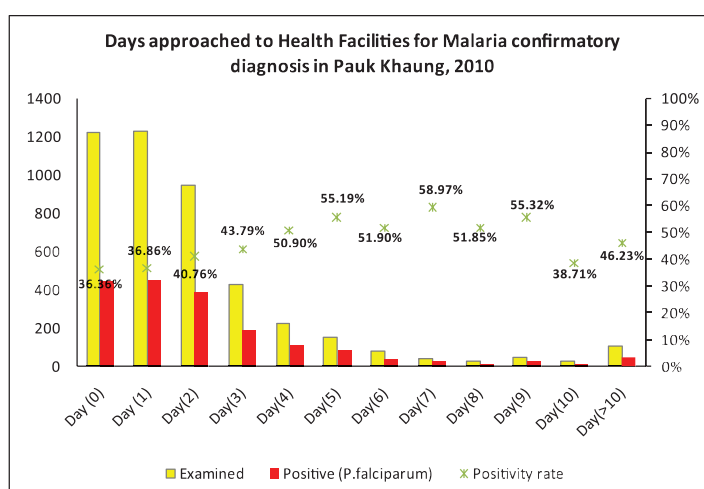
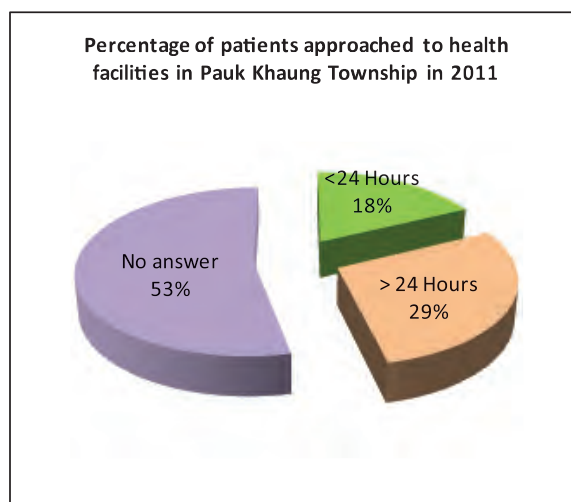
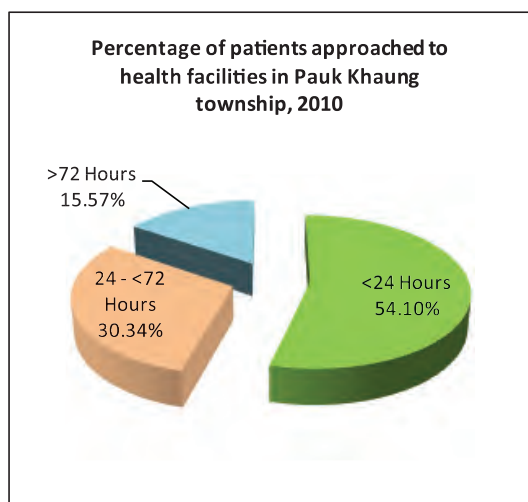


## Monthly trend of malaria examined and Positive(*P.f*) in Pauk Khaung Township in 2010 and 2011

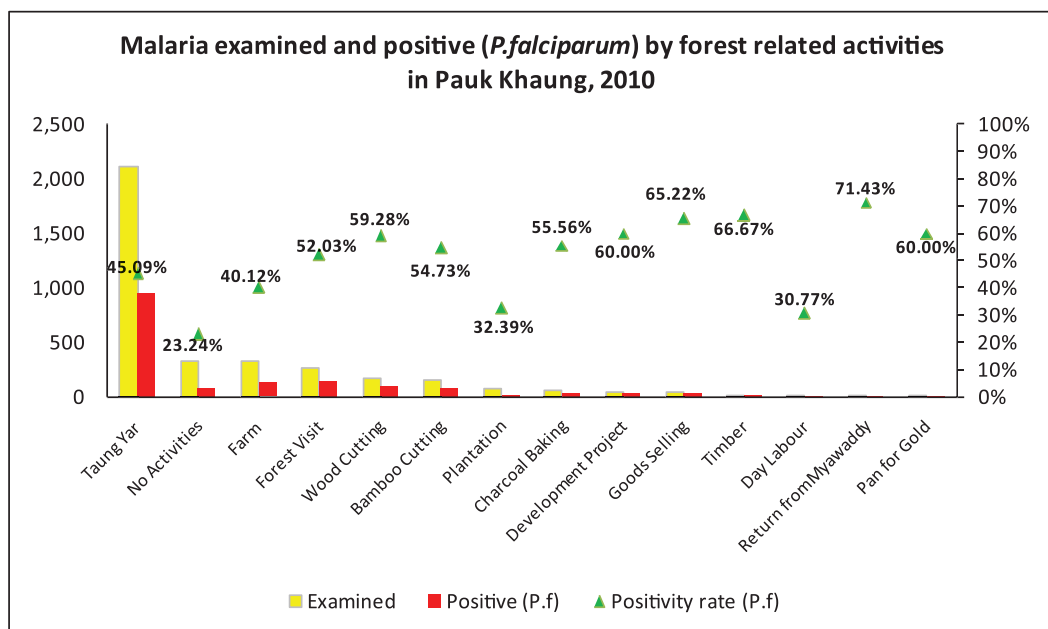


Month	2010			2011		
	Examined	Positive ( <i>P.f</i> )	Positivity rate ( <i>P.f</i> )	Examined	Positive ( <i>P.f</i> )	Positivity rate ( <i>P.f</i> )
Jan	531	296	55.74%	231	78	33.77%
Feb	553	247	44.67%	243	81	33.33%
Mar	244	90	36.89%	222	75	33.78%
Apr	239	109	45.61%	207	70	33.82%
May	249	126	50.60%	206	65	31.55%
Jun	225	102	45.33%	157	62	39.49%
Jul	269	114	42.38%	195	59	30.26%
Aug	342	140	40.94%	240	70	29.17%
Sep	427	114	26.70%	335	66	19.70%
Oct	524	160	30.53%	489	165	33.74%
Nov	348	117	33.62%	594	257	43.27%
Dec	528	218	41.29%	512	252	49.22%
<b>Total</b>	<b>4,479</b>	<b>1,833</b>	<b>40.92%</b>	<b>3,631</b>	<b>1,300</b>	<b>35.80%</b>

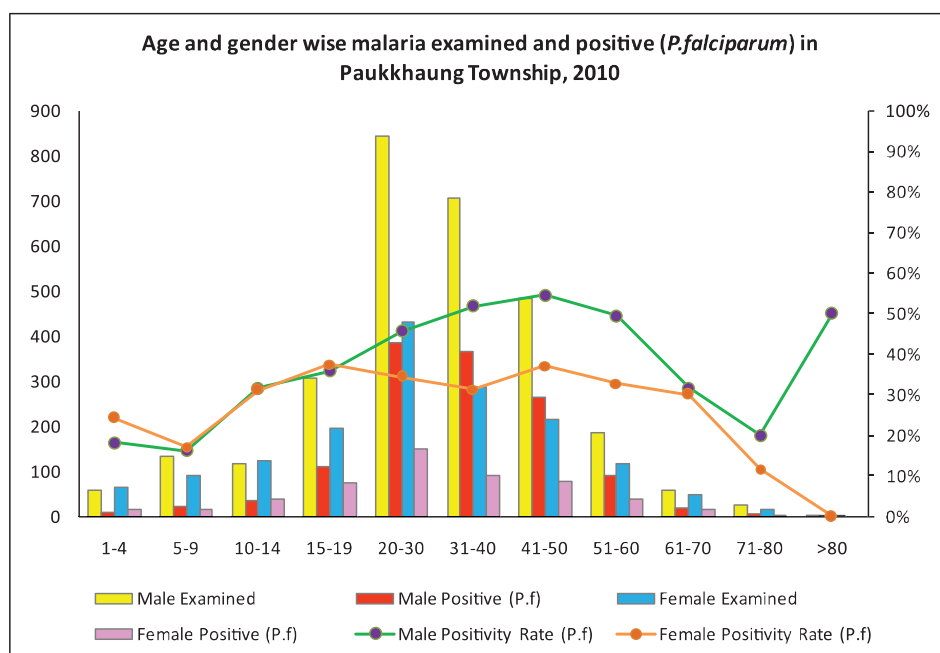


***P.f* and *P.v* ratio of microscopy diagnosis in Pauk Khaung Township, 2010 and 2011****Percentage of patients approached to health facilities for malaria confirmatory diagnosis in Pauk Khaung Township in 2010 and 2011**

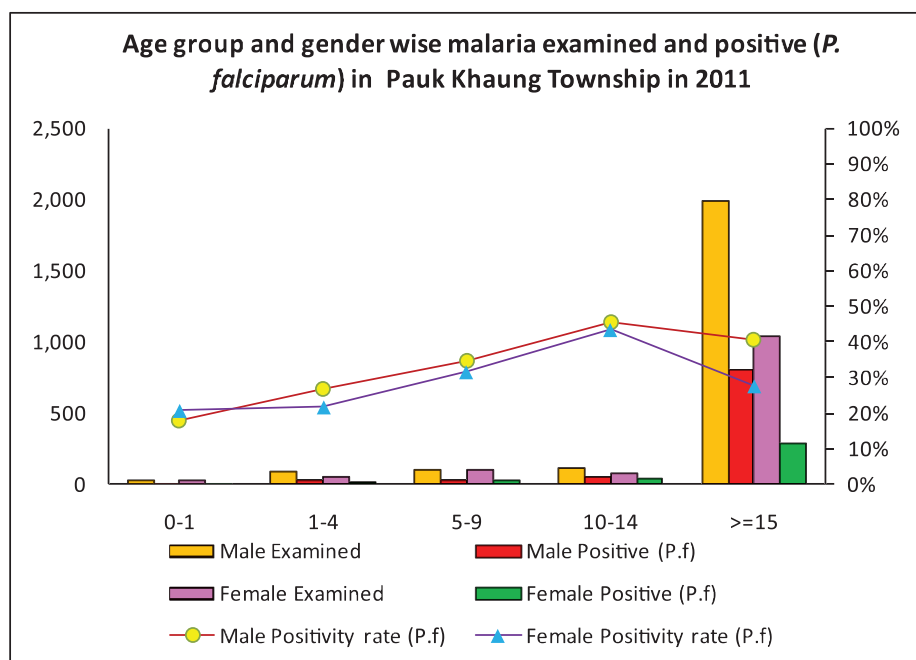
### Malaria examined and positive (*P.falciparum*) by forest related activities in PaukKhaung Township in 2010



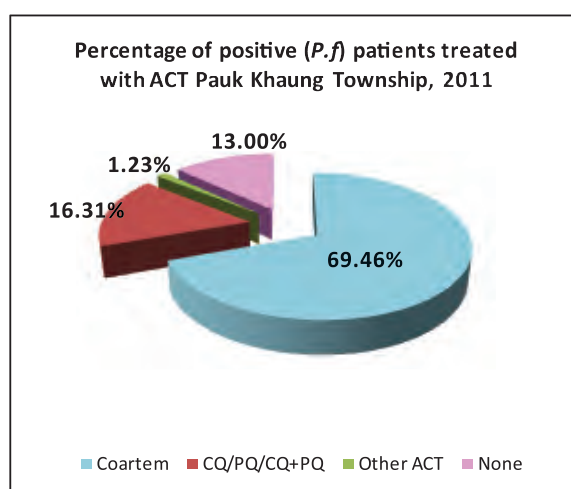
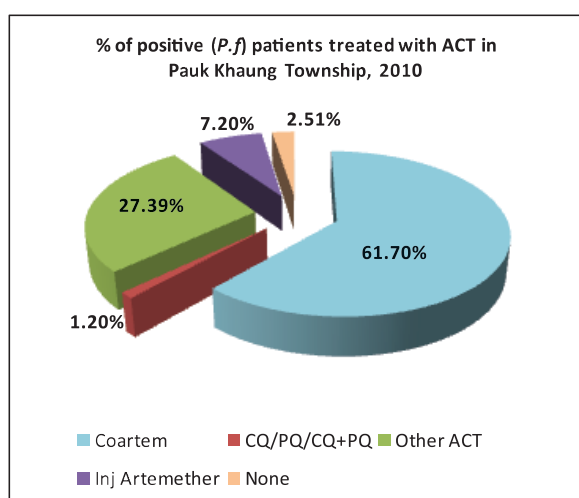
### Age and Gender Wise Malaria examined and positive (*P.falciparum*) in PaukKhaungTownship in 2010



### Age and Gender Wise Malaria examined and positive (*P.falciparum*) in PaukKhaung Township in 2010

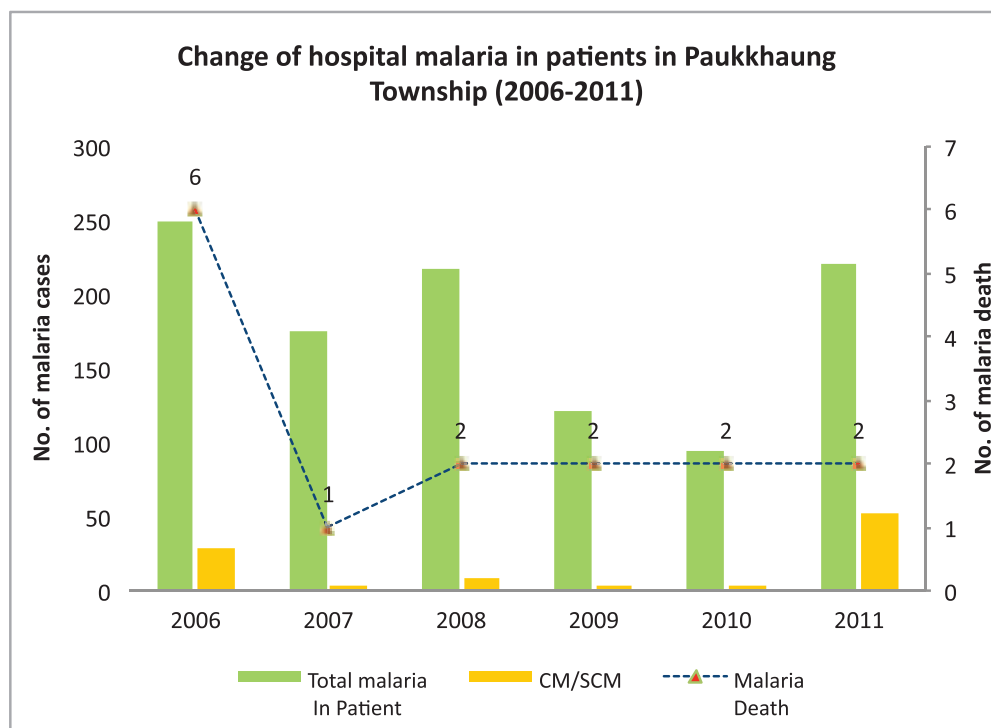


### Percentage of Positive patients treated with ACT in PaukKhaung Township in 2010 and 2011





## Change of hospital malaria in patients in PaukKhaung Township from 2006 - 2011



Sr	Year	Total In Patient	Total malaria In Patient	CM/SCM	Malaria Death	Total Death
1	2006	1165	249	29	6	35
2	2007	1101	175	4	1	27
3	2008	1919	217	9	2	11
4	2009	3283	122	3	2	9
5	2010	2680	94	4	2	61
6	2011	2441	221	52	2	23

## Health Profile of Paungde Township



### Area and Location\*

Area	:	928.90 Km <sup>2</sup>
North	:	Paukkhaung
South	:	Nattalin
East	:	Nattalin
West	:	Thegone

### Administrative Units\*

Wards	:	12
Village tracts	:	43
Villages	:	247

### Population (2009)\*

Total	:	142162
Urban	:	29609
Rural	:	112553
Male	:	69400
Female	:	72762
Sex Ratio	:	95
<5 Year	:	8736
0-14 Year	:	28107
15-49 Year	:	80948
Population Density	:	153.04/ Km <sup>2</sup>

### Health Facilities (2009)\*

Township Hospital (50) Bedded	:	1
Station Hospital	:	1
Maternal and Child Health Centers	:	1
Rural Health Centers	:	4
Sub Health Centers	:	20
Private Clinics and Maternity Homes	:	16

**Health Manpower\***

	<i>Doctor</i>	<i>Nurse</i>	<i>HA</i>	<i>LHV</i>	<i>PHS I</i>	<i>PHS II</i>	<i>MW</i>
Sanction	10	10	9	7	1	9	36
Appointed	6	9	8	7	1	9	35
Vacant	4	1	1	-	-	-	1
% Vacancy	40.0%	10.0%	11.1%	0.0%	0.0%	0.0%	2.8%

(HA: Health Assistant, LHV: Lady Health Visitor, PHS:Public Health Supervisor , MW: Midwife)

**Health Manpower (Volunteer)\***

	Category of Volunteer Health Workers		
	CHW	AMW	TTBA
Trained	248	132	156
Functioning	165	75	44
% Functioning	66.5%	56.8%	28.2%

(CHW: Community health Worker, AMW: Auxiliary Mid Wife, TTBA: Trained Traditional Birth Attendant)

**Common Diseases under National Surveillance\***

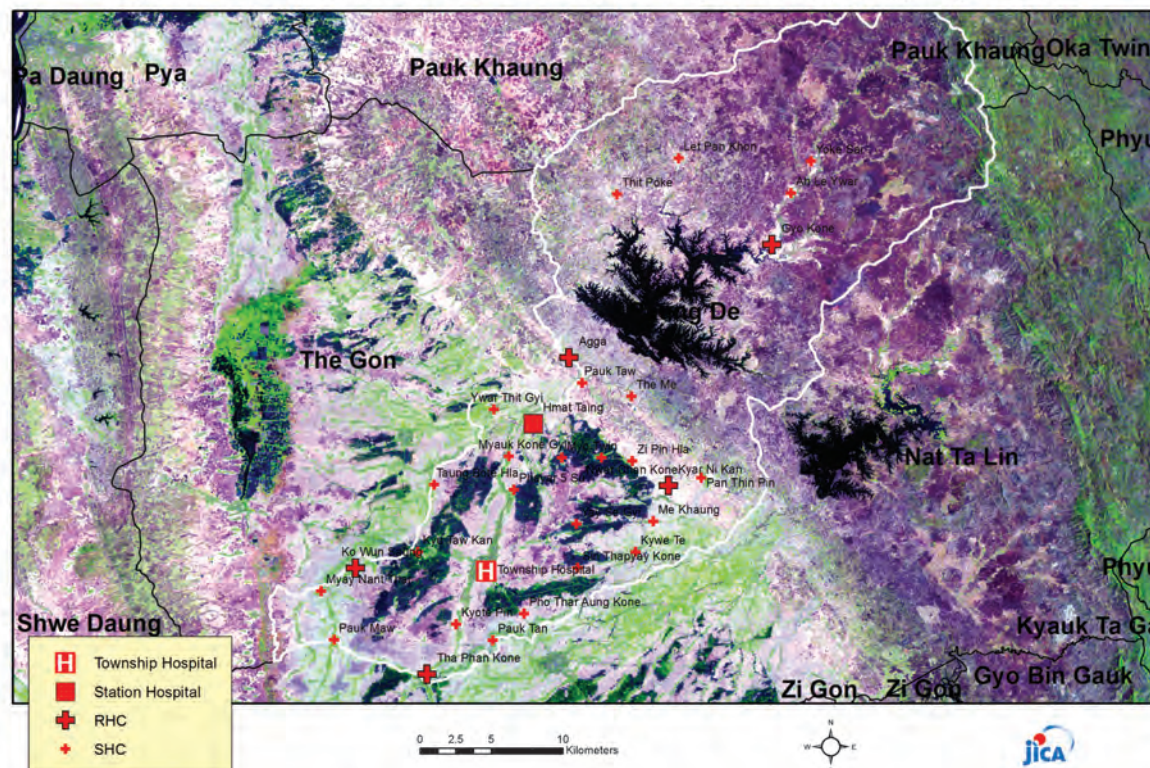
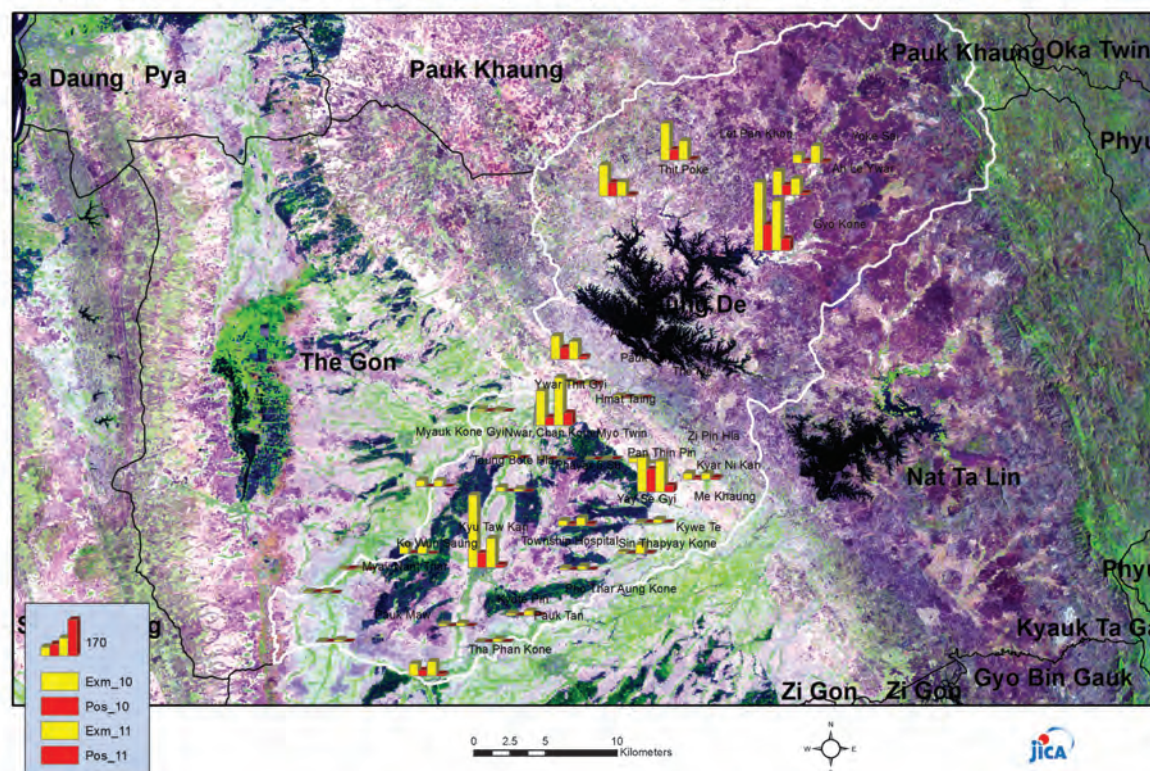
<i>Diseases</i>	<i>Morbidity</i>	<i>Mortality</i>
Malaria	699.20	0
ARI <5	2667.12	11.45
Diarrhea	351.01	0
Dysentery	170.93	0
TB(Sputum+)	66.12	0
Snake Bite	59.09	2.11

(Per 100,000 Populations)

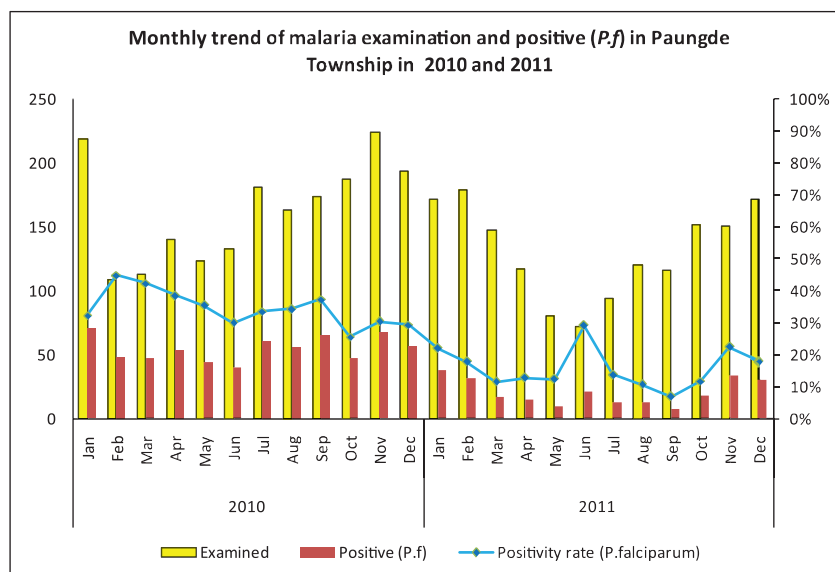
\*The data source is Health Profile of Bago Region West (2009) from Department of Health Planning.



Vegetation cover and health facilities distribution in Paung De Township in Bago Region West

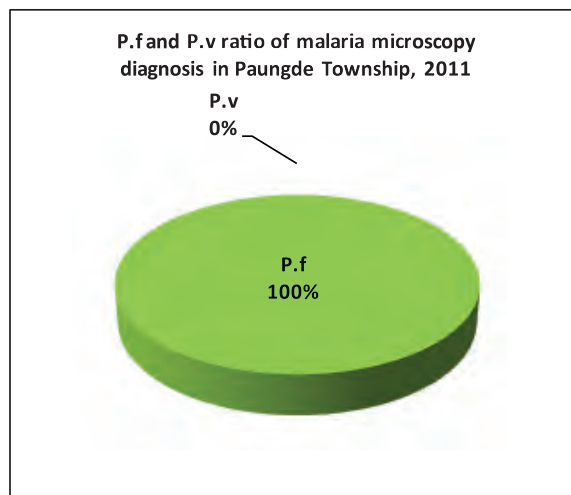
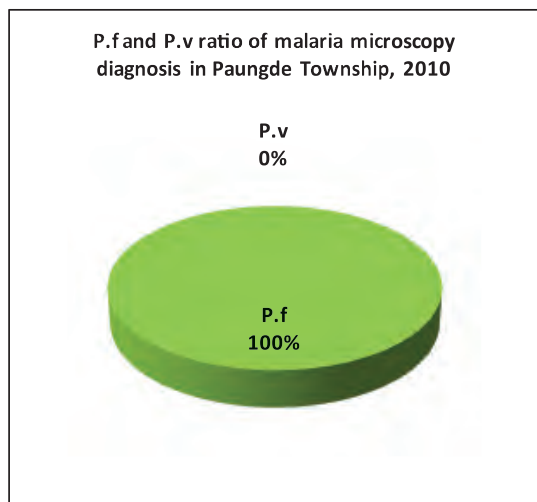
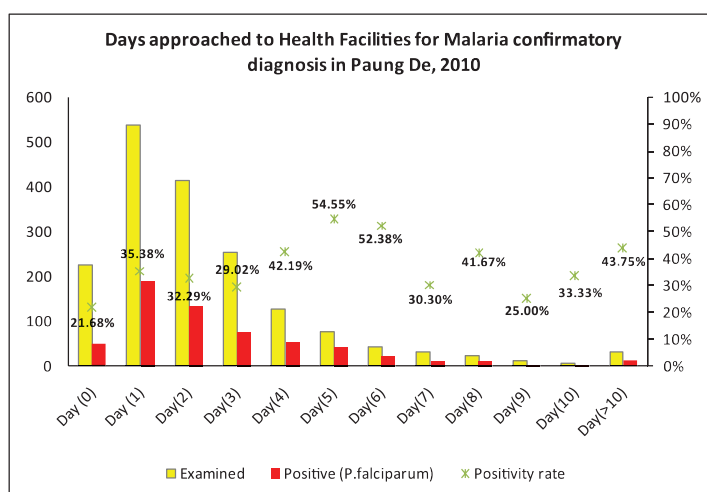
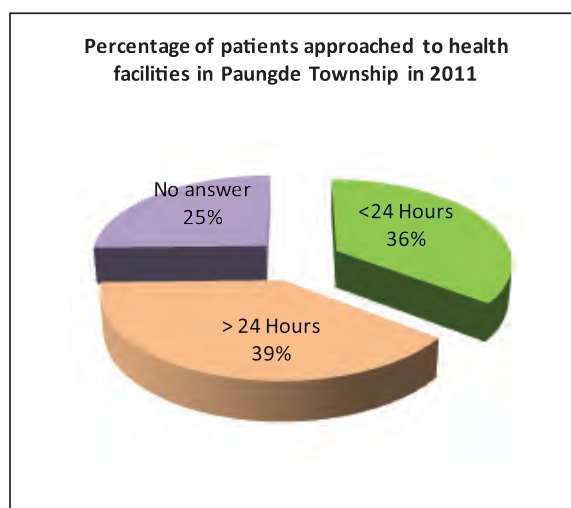
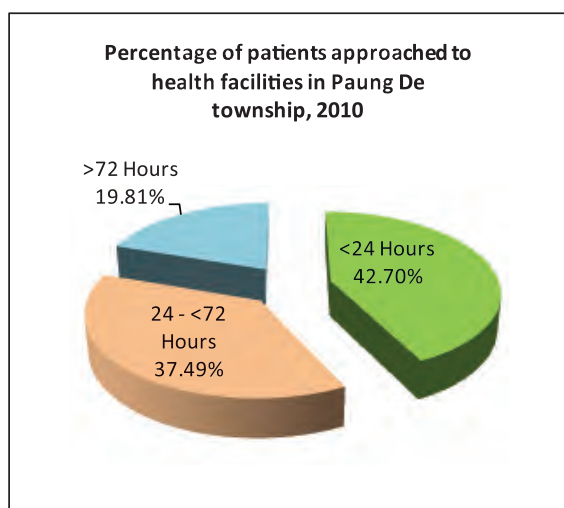
Health facilities wise malaria examined and positive (*P. falciparum*) in Paung De Township, 2010 and 2011

### Monthly trend of malria examined and Positive (*P.f*) in Paung De Township in 2010



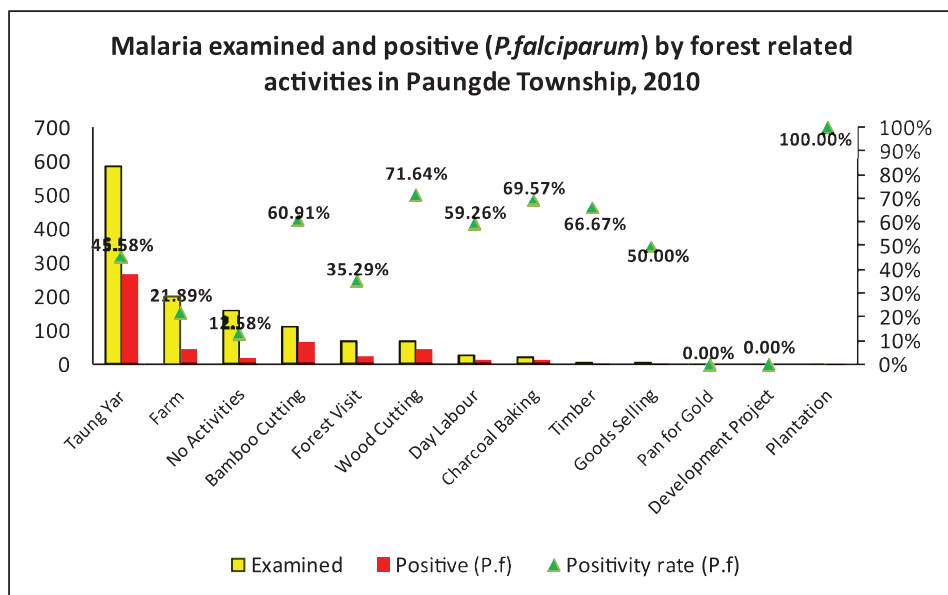
Month	2010			2011		
	Examined	Positive ( <i>P.f</i> )	Positivity rate ( <i>P.f</i> )	Examined	Positive ( <i>P.f</i> )	Positivity rate ( <i>P.f</i> )
Jan	219	71	32.42%	172	38	22.09%
Feb	109	49	44.95%	179	32	17.88%
Mar	113	48	42.48%	148	17	11.49%
Apr	140	54	38.57%	117	15	12.82%
May	124	44	35.48%	81	10	12.35%
Jun	133	40	30.08%	72	21	29.17%
Jul	181	61	33.70%	94	13	13.83%
Aug	163	56	34.36%	120	13	10.83%
Sep	174	65	37.36%	116	8	6.90%
Oct	187	48	25.67%	152	18	11.84%
Nov	224	68	30.36%	151	34	22.52%
Dec	194	57	29.38%	172	31	18.02%
Total	1,961	661	33.71%	1,574	250	15.88%



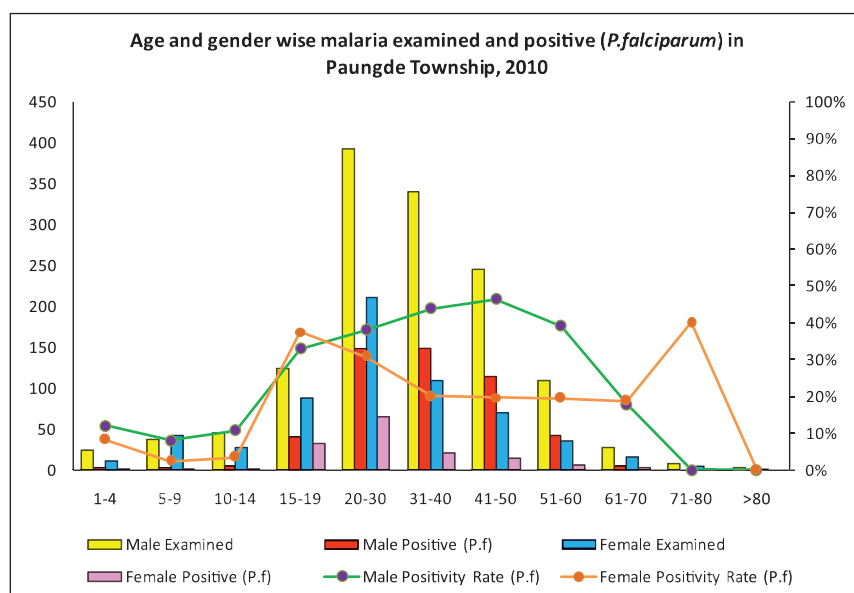
***P.f* and *P.v* ratio of microscopy diagnosis in Paungde Township, 2010 and 2011****Percentage of Patients approached to Health Facilities for malaria confirmatory diagnosis in Paung De Township in 2010 and 2011**



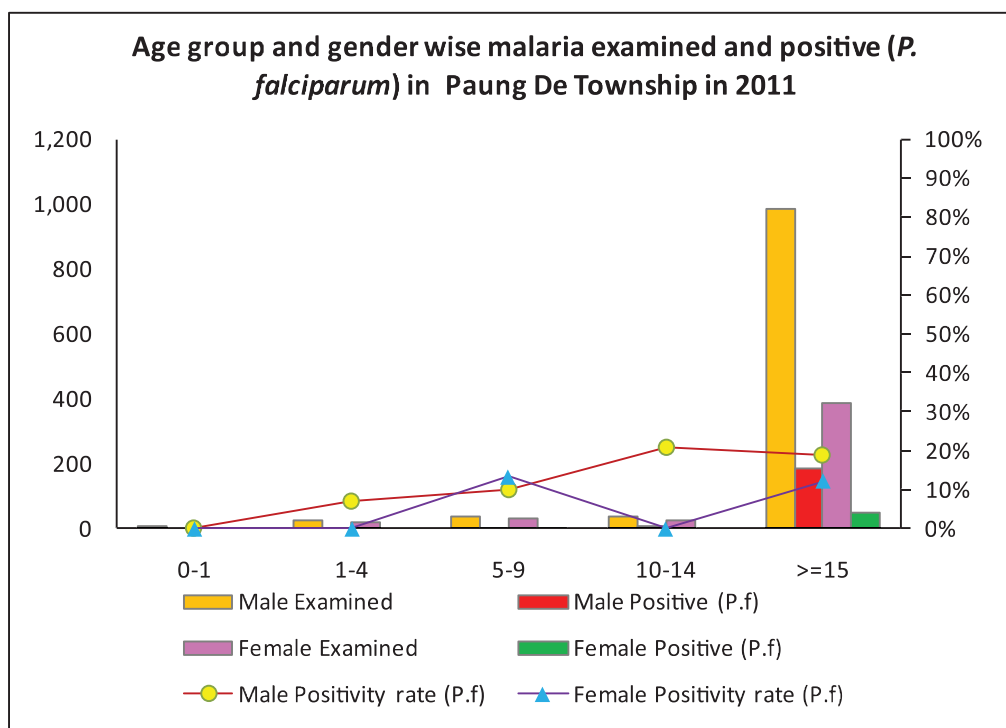
## Malaria examined and positive (*P.falciparum*) by forest related activities in Paung De Township in 2010



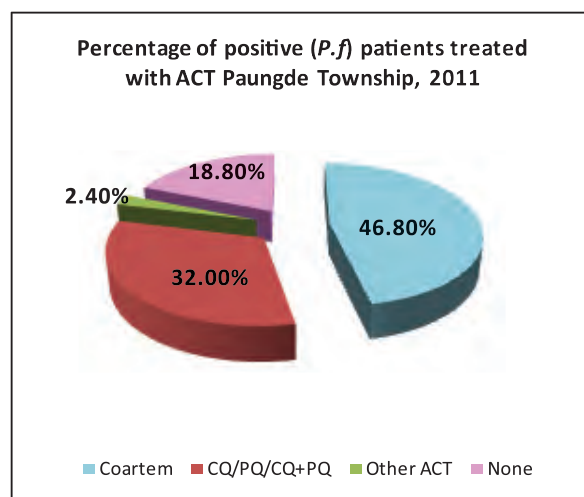
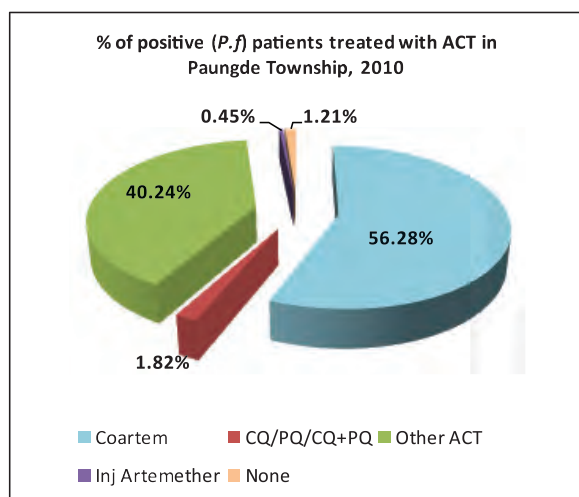
## Age and Gender Wise Malaria examined and positive (*P. falciparum*) in PaungDe Township in 2010



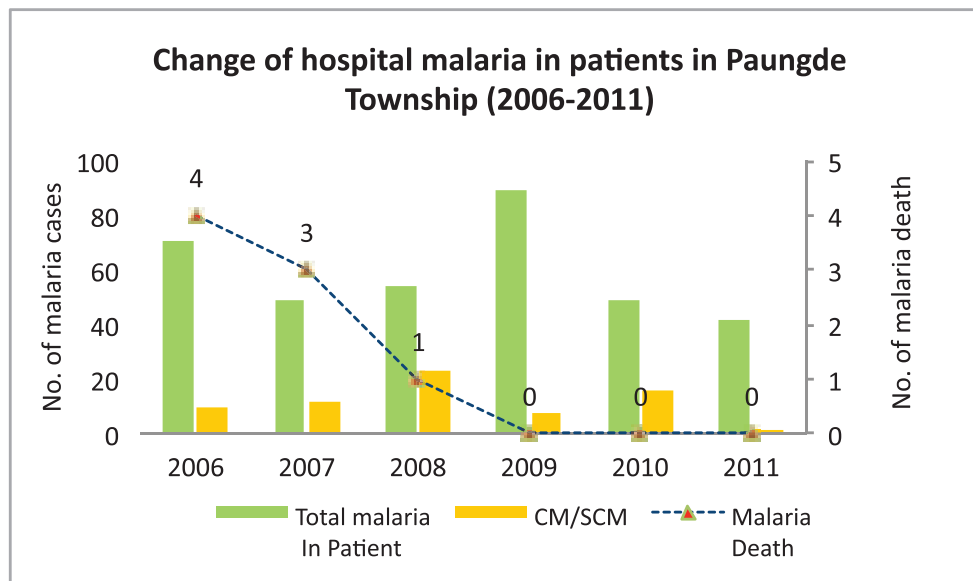
### Age group and Gender Wise Malaria examined and Positive (*P.falciparum*) in Paung De Township in 2011



### Percentage of positive patients treated with ACT in Paung De Township in 2010 and 2011



### Change of hospital malaria in Patients in Paung De Township from 2006 – 2011



Sr	Year	Total In Patient	Total malaria In Patient	CM/SCM	Malaria Death	Total Death
1	2006	1568	71	10	4	55
2	2007	1726	49	12	3	33
3	2008	3426	54	23	1	55
4	2009	3765	89	8	0	51
5	2010	2664	49	16	0	58
6	2011	2267	42	1	0	45



## Health Profile of Pyay Township



### Area and Location\*

Area	:	788.40 Km <sup>2</sup>
North	:	Aunglan
South	:	Thegon
East	:	Paukkhaung
West	:	Padaung

### Administrative Units\*

Wards	:	10
Village tracts	:	55
Villages	:	262

### Population (2009)\*

Total	:	236007
Urban	:	109791
Rural	:	126216
Male	:	114672
Female	:	121335
Sex Ratio	:	95
<5 Year	:	21962
0-14 Year	:	63128
15-49 Year	:	121738
Population Density	:	299.35/ Km <sup>2</sup>

### Health Facilities (2009)\*

Township Hospital (200) Bedded	:	1
Station Hospital	:	2
Urban Health Centers	:	1
Maternal and Child Health Centers	:	1
Rural Health Centers	:	4
Sub Health Centers	:	24
School Health Center	:	1
Private Clinics and Maternity Homes	:	31

**Health Manpower\***

	<i>Doctor</i>	<i>Nurse</i>	<i>HA</i>	<i>LHV</i>	<i>PHS I</i>	<i>PHS II</i>	<i>MW</i>
Sanction	65	79	9	10	7	11	47
Appointed	55	79	7	10	5	11	47
Vacant	10	-	2	-	2	-	-
% Vacancy	15.4%	0.0%	22.2%	0.0%	28.6%	0.0%	0.0%

(HA: Health Assistant, LHV: Lady Health Visitor, PHS:Public Health Supervisor , MW: Midwife)

**Health Manpower (Volunteer)\***

	Category of Volunteer Health Workers		
	CHW	AMW	TTBA
Trained	205	106	53
Functioning	124	78	26
% Functioning	60.5%	73.6%	49.1%

(CHW: Community health Worker, AMW: Auxiliary Mid Wife, TTBA: Trained Traditional Birth Attendant)

**Common Diseases under National Surveillance\***

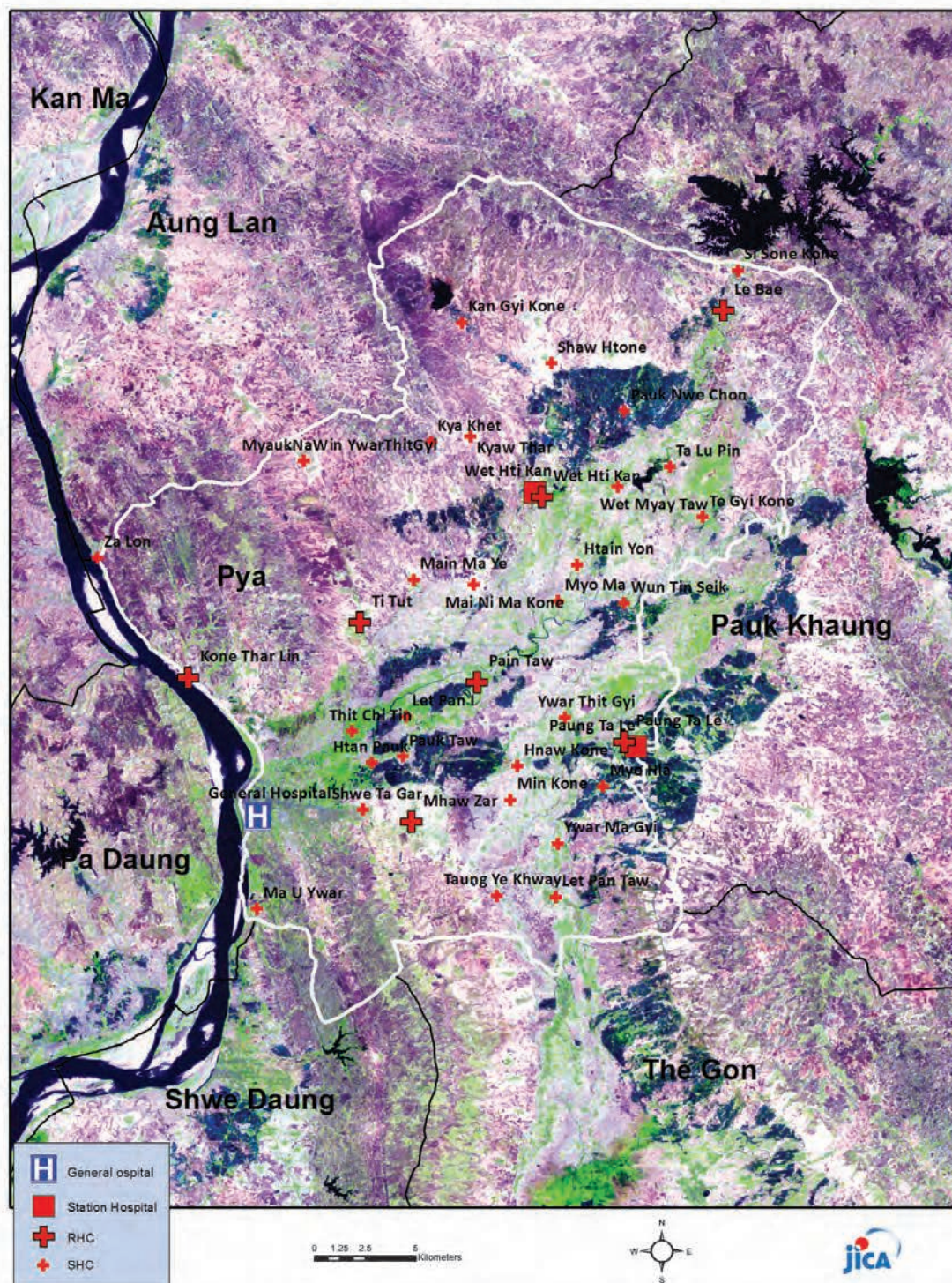
<i>Diseases</i>	<i>Morbidity</i>	<i>Mortality</i>
Malaria	363.55	0.42
ARI <5	2577.18	22.77
Diarrhea	320.33	0.42
Dysentery	216.10	0
TB(Sputum+)	91.52	0
Snake Bite	50.85	2.97

(Per 100,000 Populations)

\*The data source is Health Profile of Bago Region West (2009) from Department of Health Planning.

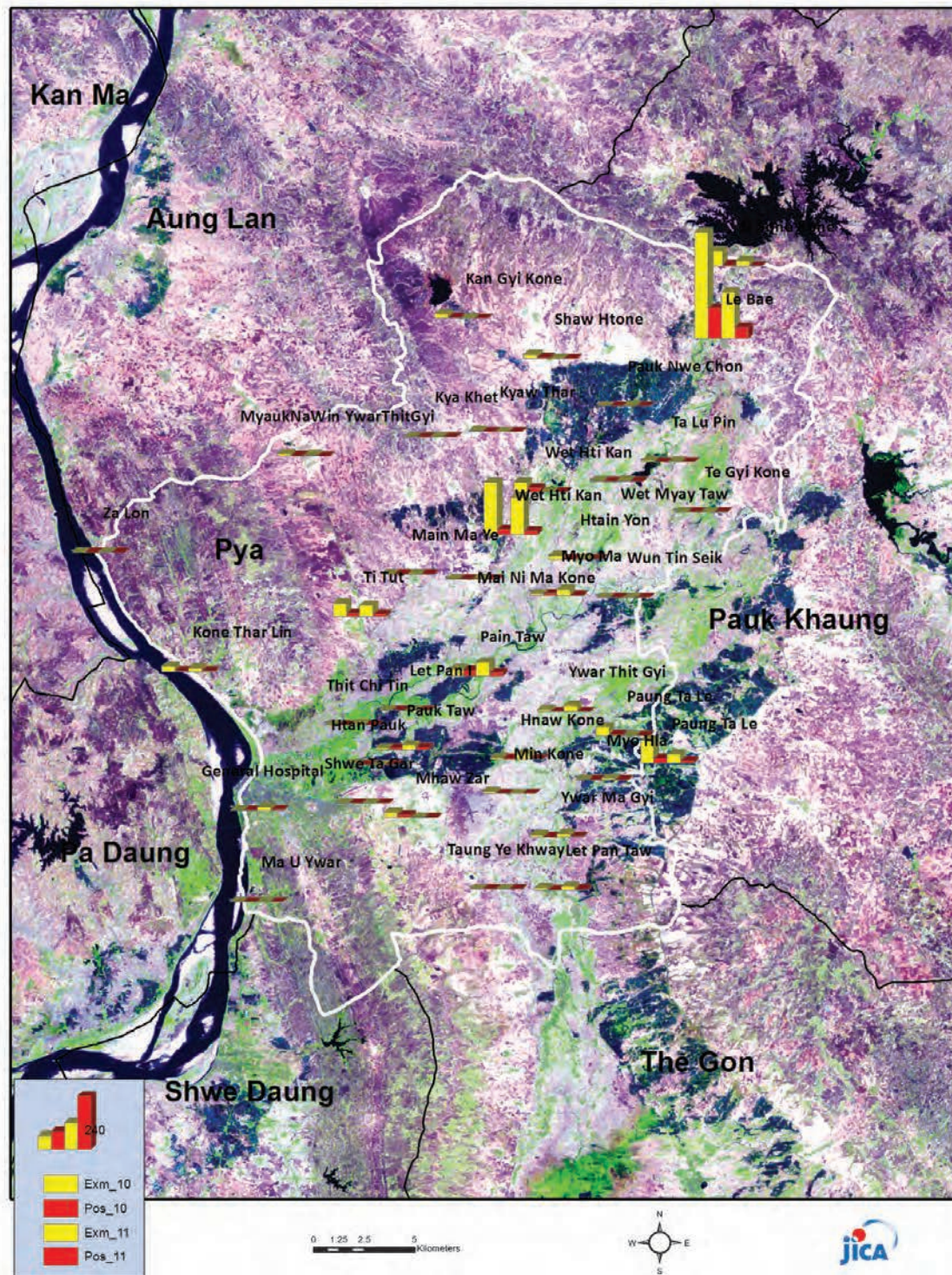


### Vegetation cover and health facilities distribution in Pyay Township in Bago Region West

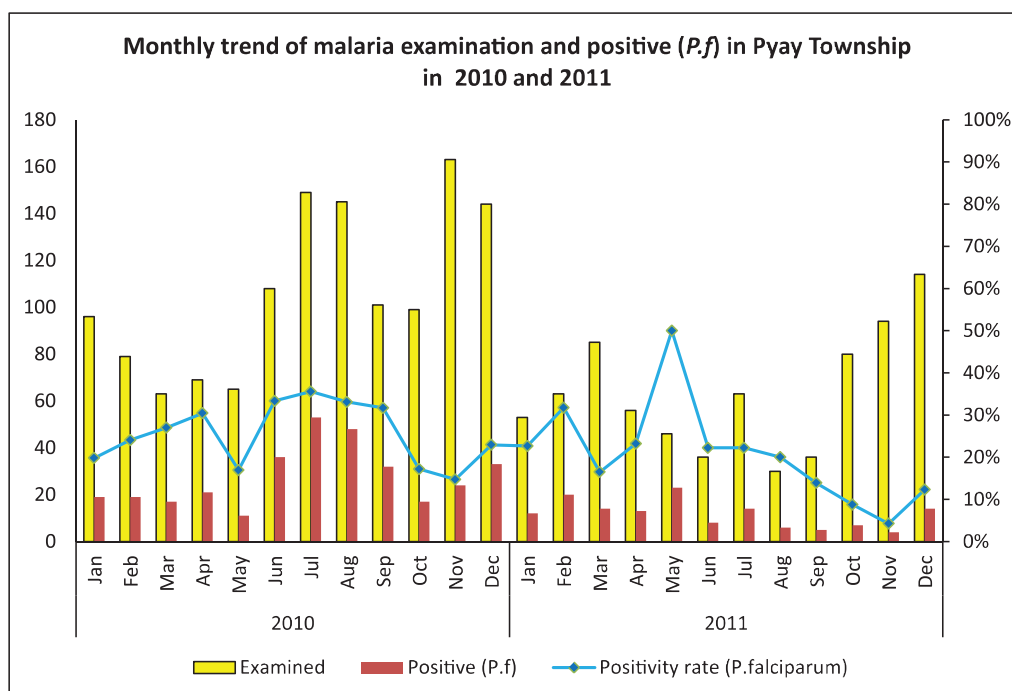




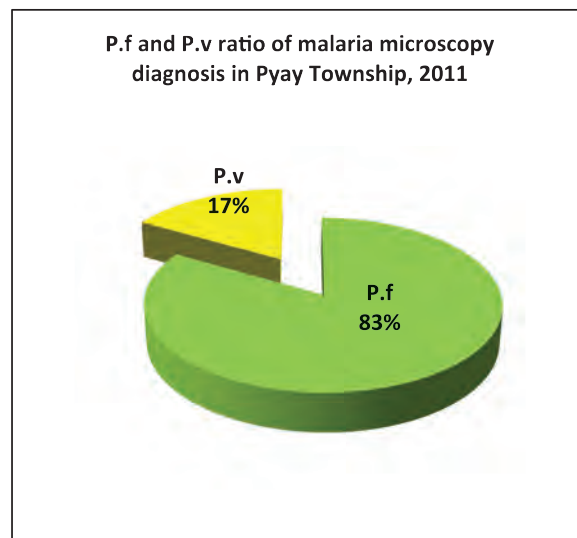
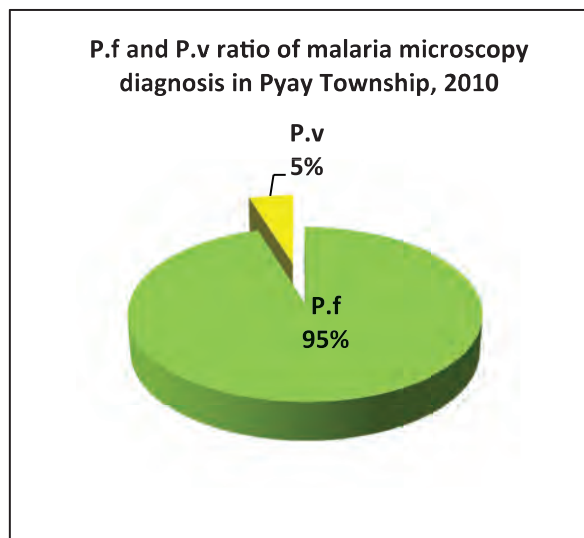
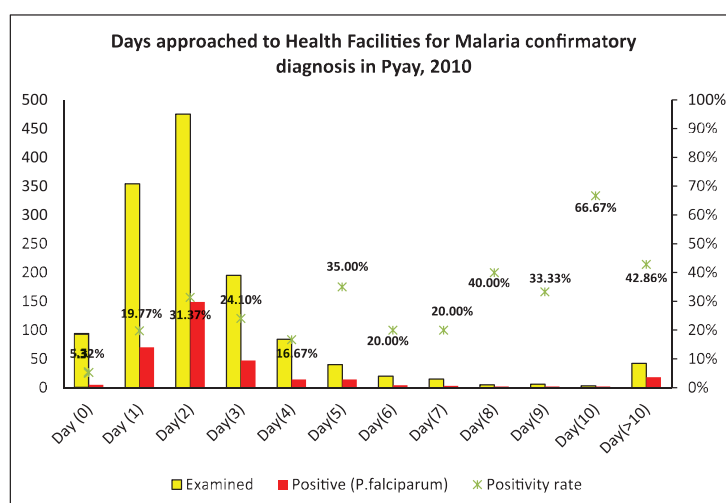
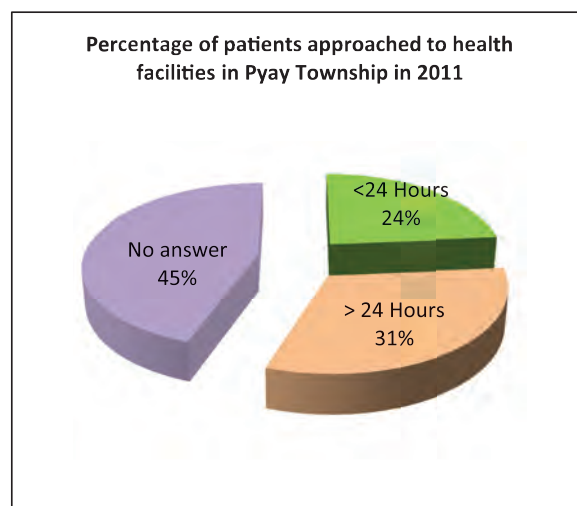
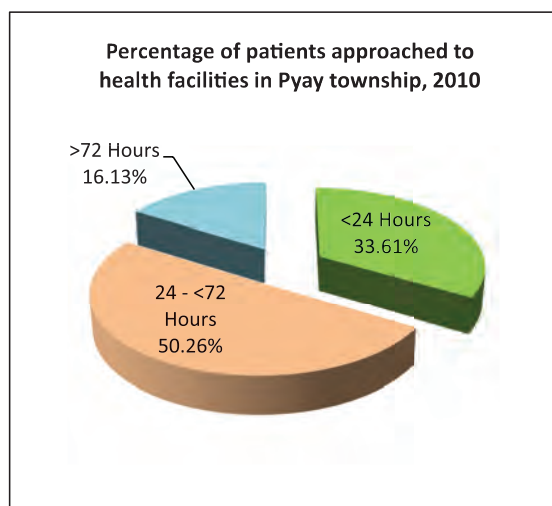
### Health facilities wise malaria examined and positive (*P.falciparum*) in Pyay Township, 2010 and 2011



## Monthly trend of malaria examined and Positive (*P.f*) in Pyay Township in 2010 and 2011

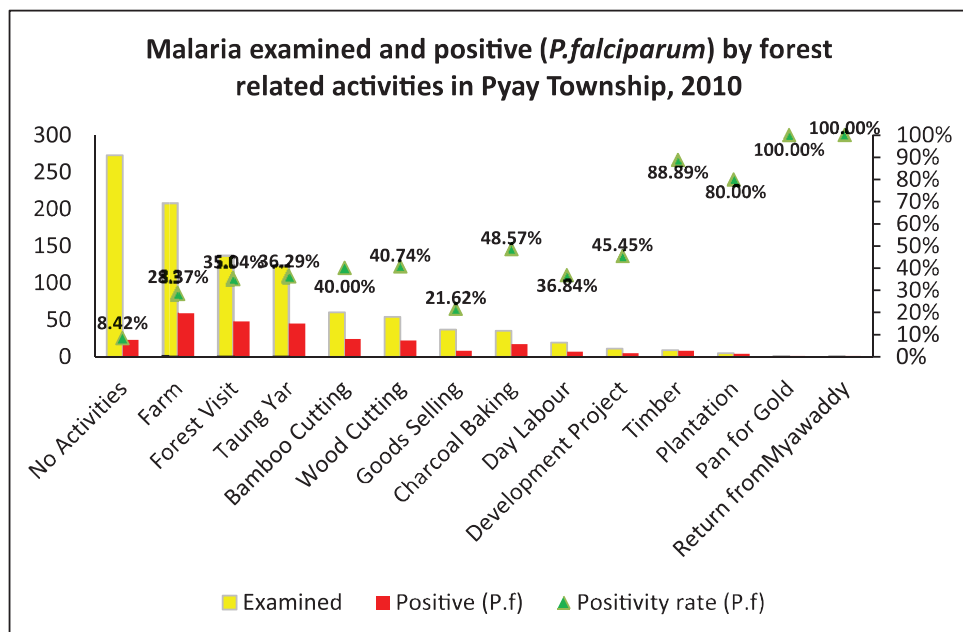


Month	2010			2011		
	Examined	Positive ( <i>P.f</i> )	Positivity rate ( <i>P.f</i> )	Examined	Positive ( <i>P.f</i> )	Positivity rate ( <i>P.f</i> )
Jan	96	19	19.79%	53	12	22.64%
Feb	79	19	24.05%	63	20	31.75%
Mar	63	17	26.98%	85	14	16.47%
Apr	69	21	30.43%	56	13	23.21%
May	65	11	16.92%	46	23	50.00%
Jun	108	36	33.33%	36	8	22.22%
Jul	149	53	35.57%	63	14	22.22%
Aug	145	48	33.10%	30	6	20.00%
Sep	101	32	31.68%	36	5	13.89%
Oct	99	17	17.17%	80	7	8.75%
Nov	163	24	14.72%	94	4	4.26%
Dec	144	33	22.92%	114	14	12.28%
<b>Total</b>	<b>1,281</b>	<b>330</b>	<b>25.76%</b>	<b>756</b>	<b>140</b>	<b>18.52%</b>

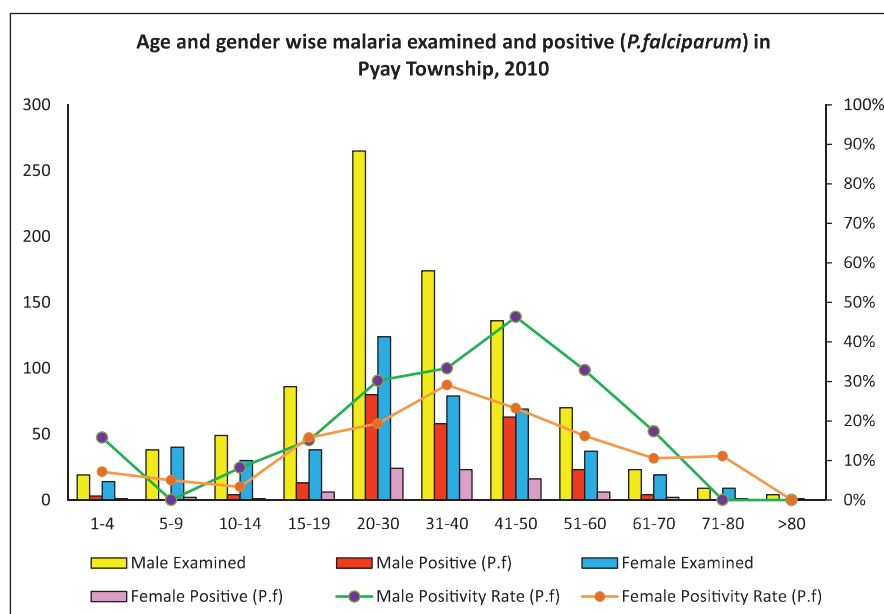
***P.f* and *P.v* ratio of microscopy diagnosis in Pyay Township, 2010 and 2011****Percentage of patients approached to health facilities for malaria confirmatory diagnosis in Pyay Township in 2010 and 2011**



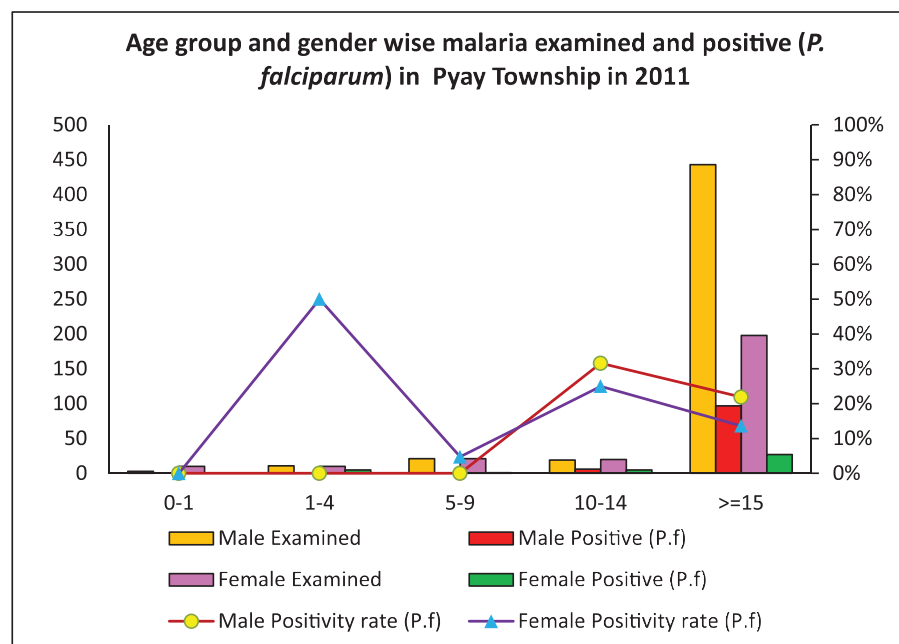
## Malaria examined and positive (*P.falciparum*) by forest related activities in Pyay Township in 2010



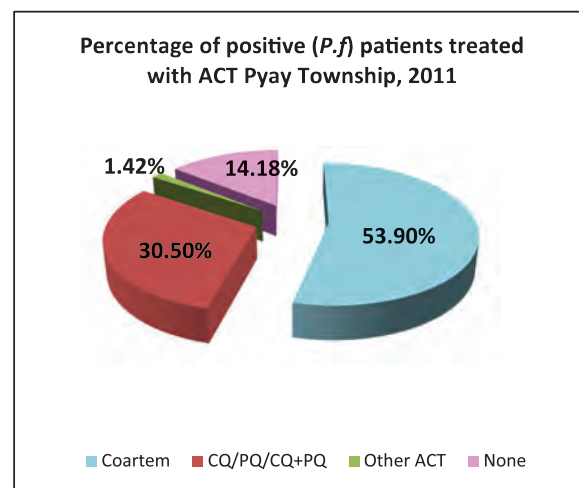
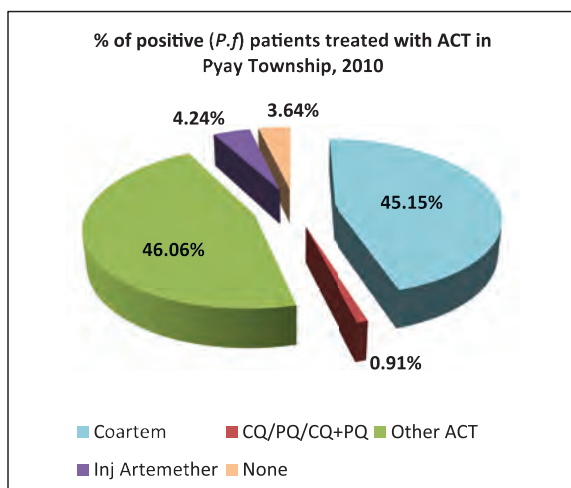
## Age and Gender Wise Malaria examined and positive (*P.falciparum*) in Pyay Township in 2010



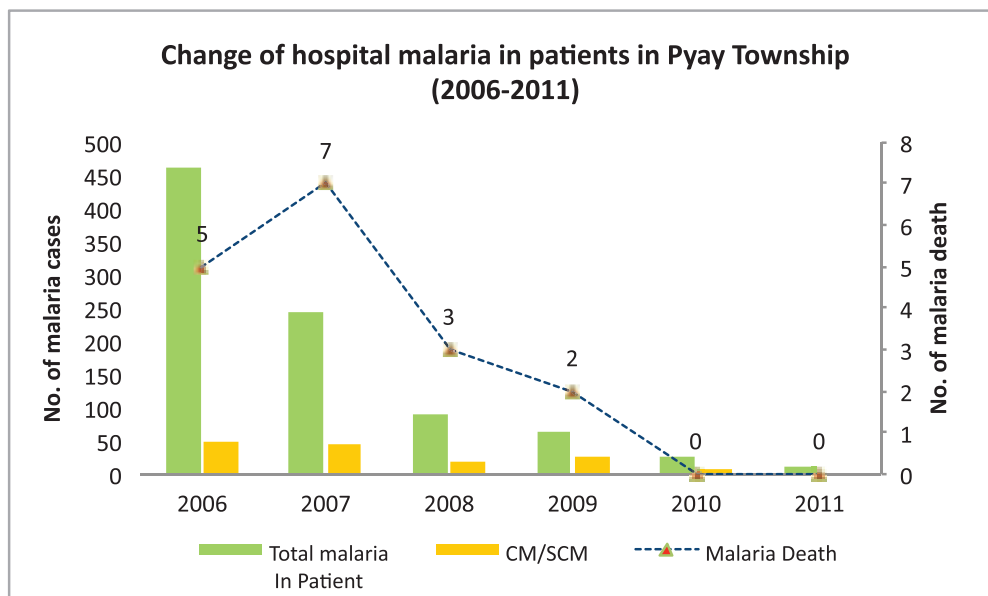
### Age group and Gender Wise Malaria examined and positive (*P.falciparum*) in Pyay Township in 2011



### Percentage of positive patients treated with ACT in Pyay Township in 2010 and 2011



### Change of hospital malaria in patients in Pyay Township from 2006 – 2011



Sr	Year	Total In Patient	Total malaria In Patient	CM/SCM	Malaria Death	Total Death
1	2006	8635	461	47	5	176
2	2007	7414	243	46	7	144
3	2008	3049	91	17	3	48
4	2009	2434	63	28	2	2
5	2010	2905	27	6	0	5
6	2011	1843	11	0	0	0