

Health Profile of Moenyo Township



Area and Location*

Area	:	639.70 Km ²
North	:	Nattalin
South	:	Letpadan
East	:	Okpo
West	:	Myanaung

Administrative Units*

Wards	:	5
Village tracts	:	37
Villages	:	211

Population (2009)*

Total	:	144116
Urban	:	11696
Rural	:	132420
Male	:	69751
Female	:	74365
Sex Ratio	:	94
<5 Year	:	17696
0-14 Year	:	50501
15-49 Year	:	67870
Population Density	:	225.29/ Km ²

Health Facilities (2009)*

Township Hospital (25) Bedded	:	1
Station Hospital	:	2
Maternal and Child Health Centers	:	1
Rural Health Centers	:	4
Sub Health Centers	:	20

Health Manpower*

	<i>Doctor</i>	<i>Nurse</i>	<i>HA</i>	<i>LHV</i>	<i>PHS I</i>	<i>PHS II</i>	<i>MW</i>
Sanction	11	20	5	5	2	4	30
Appointed	6	18	4	5	2	4	29
Vacant	5	2	1	-	-	-	1
% Vacancy	45.5%	10.0%	20.0%	0.0%	0.0%	0.0%	3.3%

(HA: Health Assistant, LHV: Lady Health Visitor, PHS:Public Health Supervisor , MW: Midwife)

Health Manpower (Volunteer)*

	Category of Volunteer Health Workers		
	CHW	AMW	TTBA
Trained	134	114	120
Functioning	87	71	75
% Functioning	64.9%	92.3%	62.5%

(CHW: Community health Worker, AMW: Auxiliary Mid Wife, TTBA: Trained Traditional Birth Attendant)

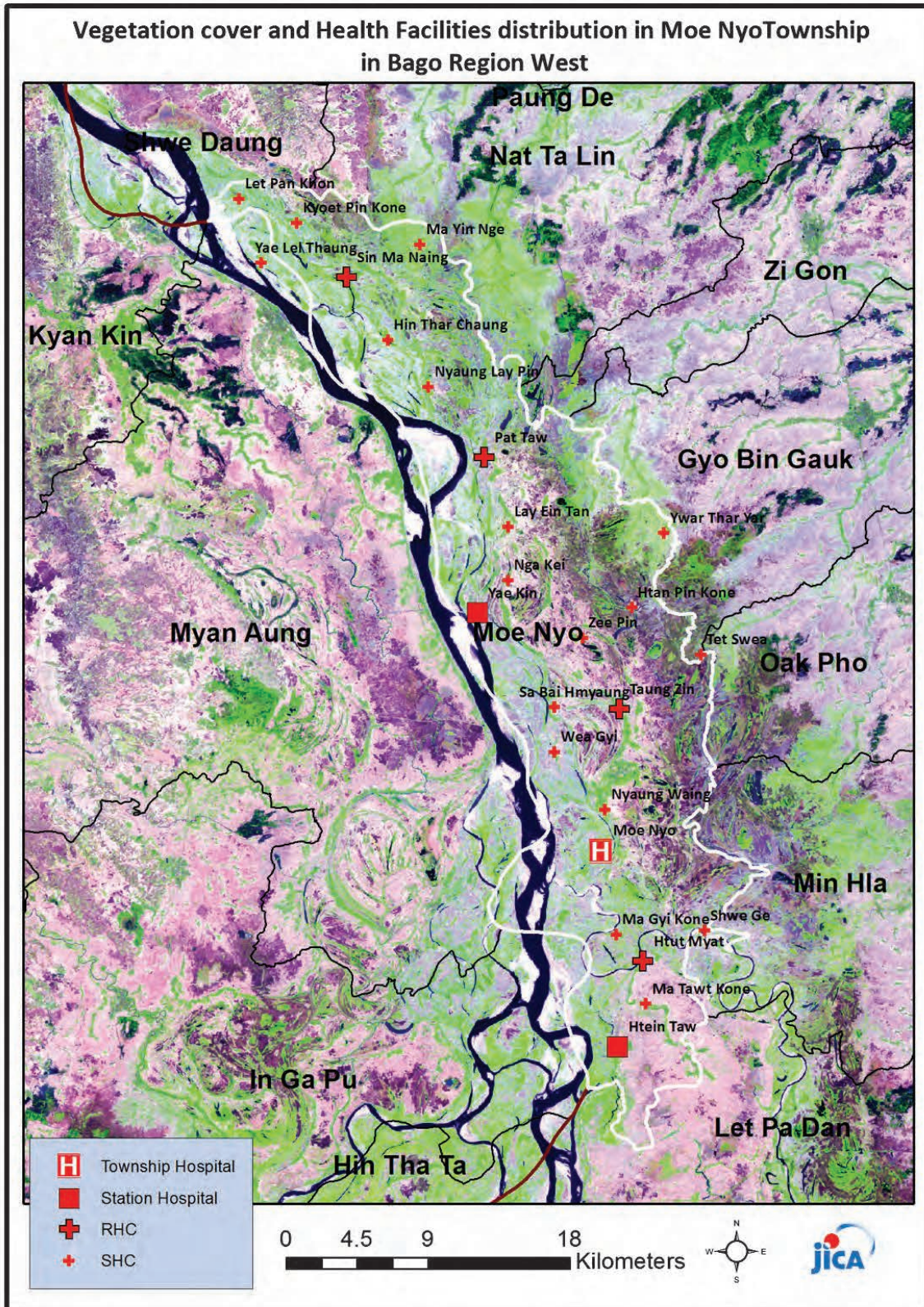
Common Diseases under National Surveillance*

<i>Diseases</i>	<i>Morbidity</i>	<i>Mortality</i>
Malaria	184.57	1.39
ARI <5	4469.94	39.56
Diarrhea	614.09	0
Dysentery	392.05	0
TB(Sputum+)	65.92	0
Snake Bite	34.00	4.86

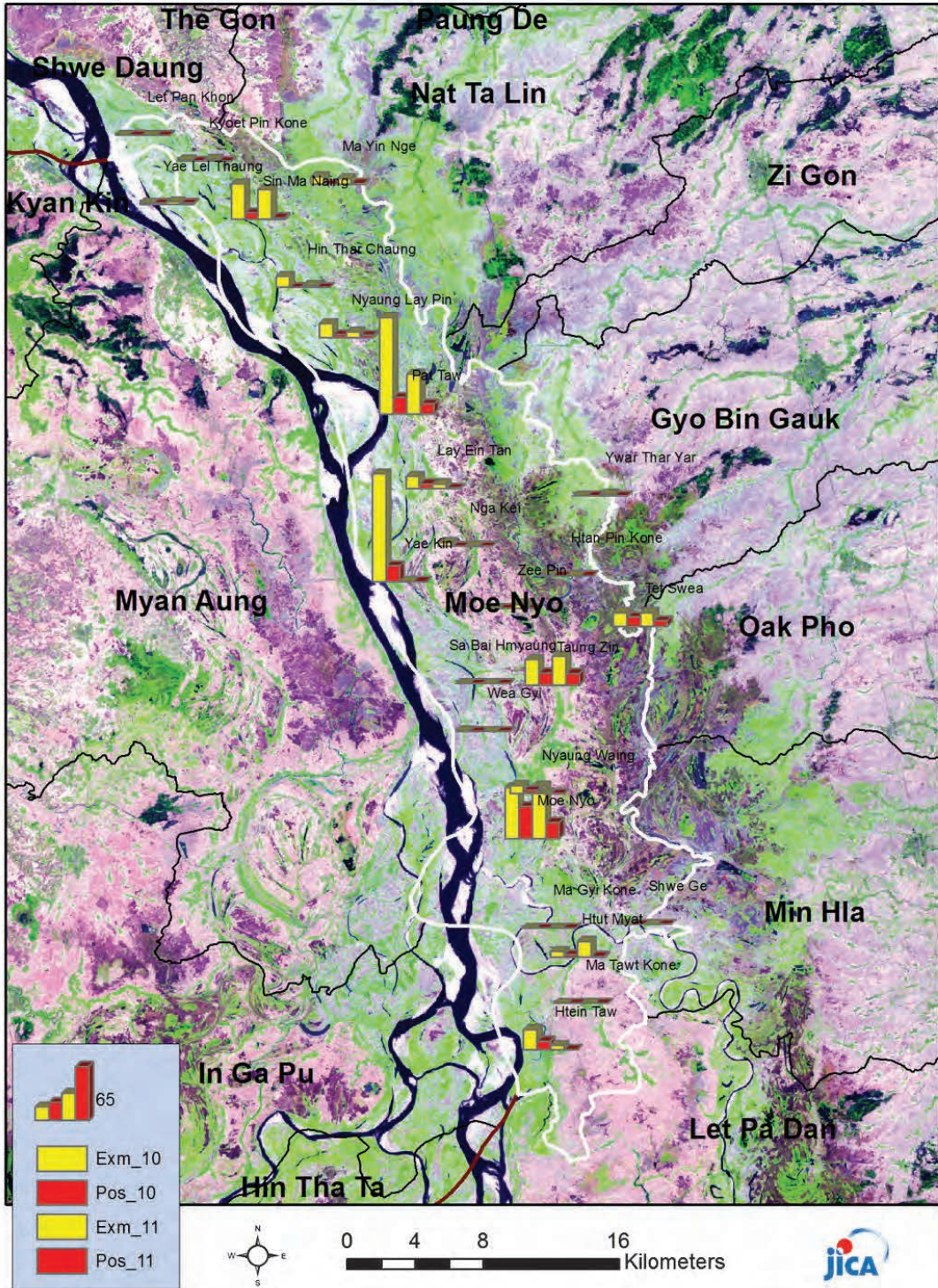
(Per 100,000 Populations)

*The data is Health Profile of Bago Region West (2009) from Department of Health Planning.

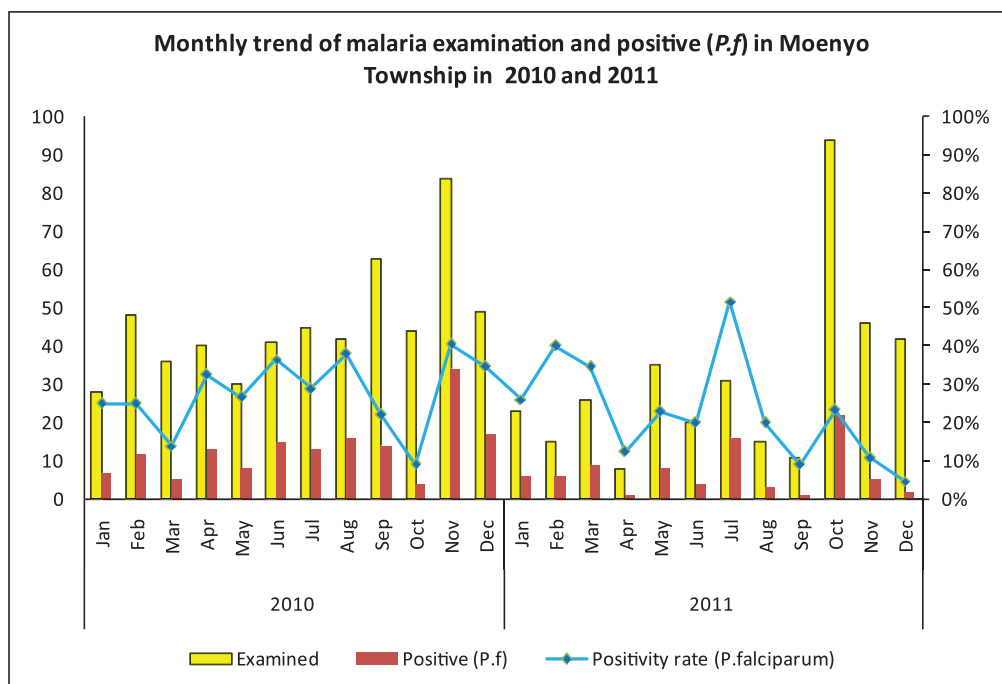
**Vegetation cover and Health Facilities distribution in Moe Nyo Township
in Bago Region West**



Health Facilities wise malaria examined and positive (*P.falciparum*) in Moe Nyo Township, 2010 and 2011

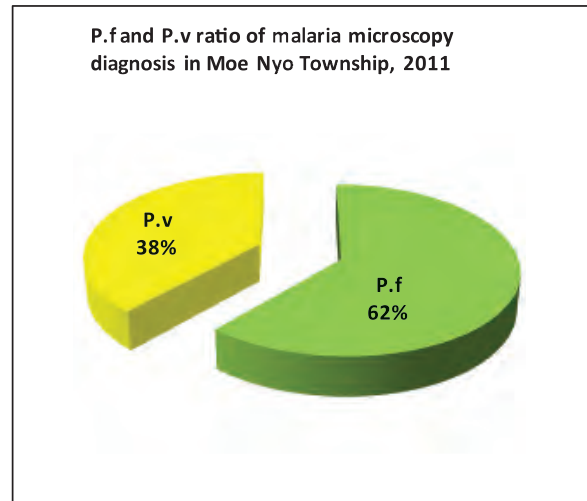
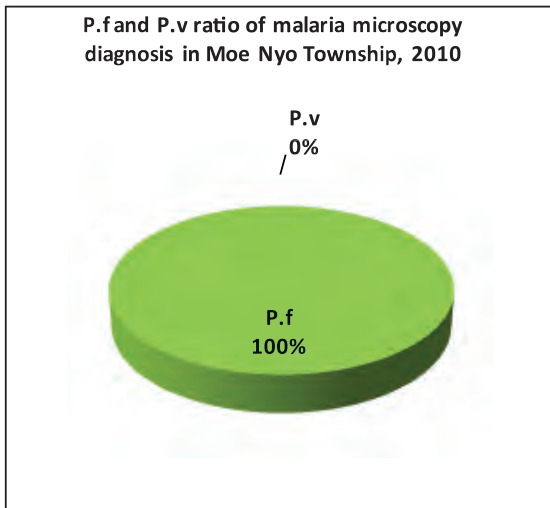


Monthly trend of malaria examined and Positive (*P.f*) in MoeNyo Township in 2010 and 2011

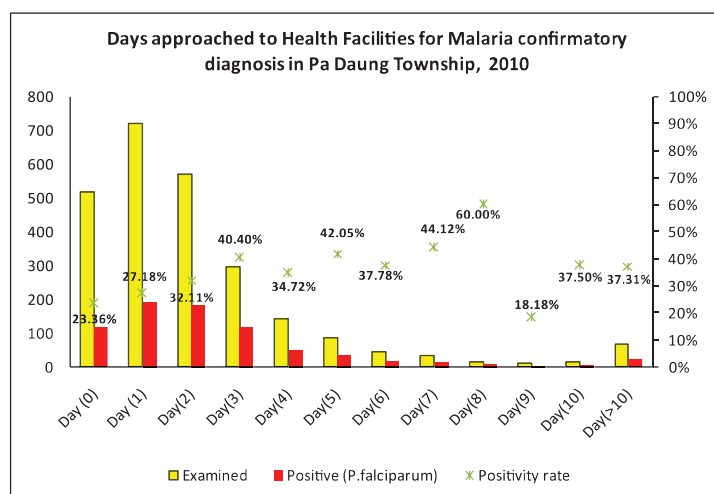
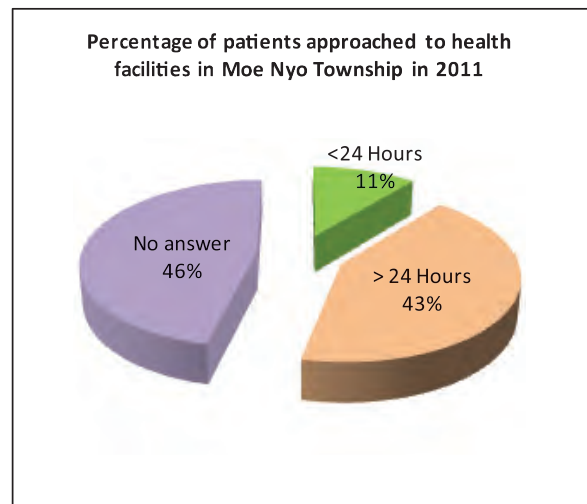
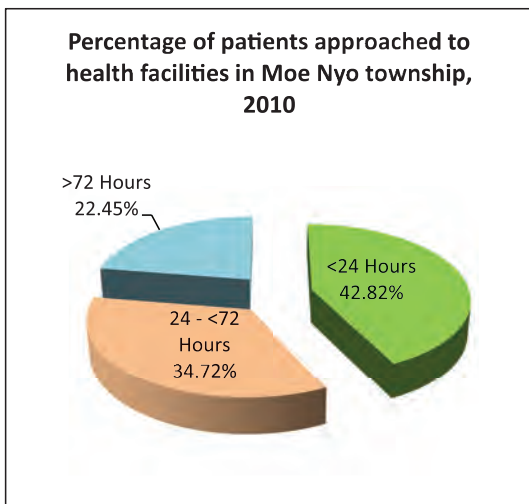


Month	2010			2011		
	Examined	Positive (<i>P.f</i>)	Positivity rate (<i>P.f</i>)	Examined	Positive (<i>P.f</i>)	Positivity rate (<i>P.f</i>)
Jan	28	7	25.00%	23	6	26.09%
Feb	48	12	25.00%	15	6	40.00%
Mar	36	5	13.89%	26	9	34.62%
Apr	40	13	32.50%	8	1	12.50%
May	30	8	26.67%	35	8	22.86%
Jun	41	15	36.59%	20	4	20.00%
Jul	45	13	28.89%	31	16	51.61%
Aug	42	16	38.10%	15	3	20.00%
Sep	63	14	22.22%	11	1	9.09%
Oct	44	4	9.09%	94	22	23.40%
Nov	84	34	40.48%	46	5	10.87%
Dec	49	17	34.69%	42	2	4.76%
Total	550	158	28.73%	366	83	22.68%

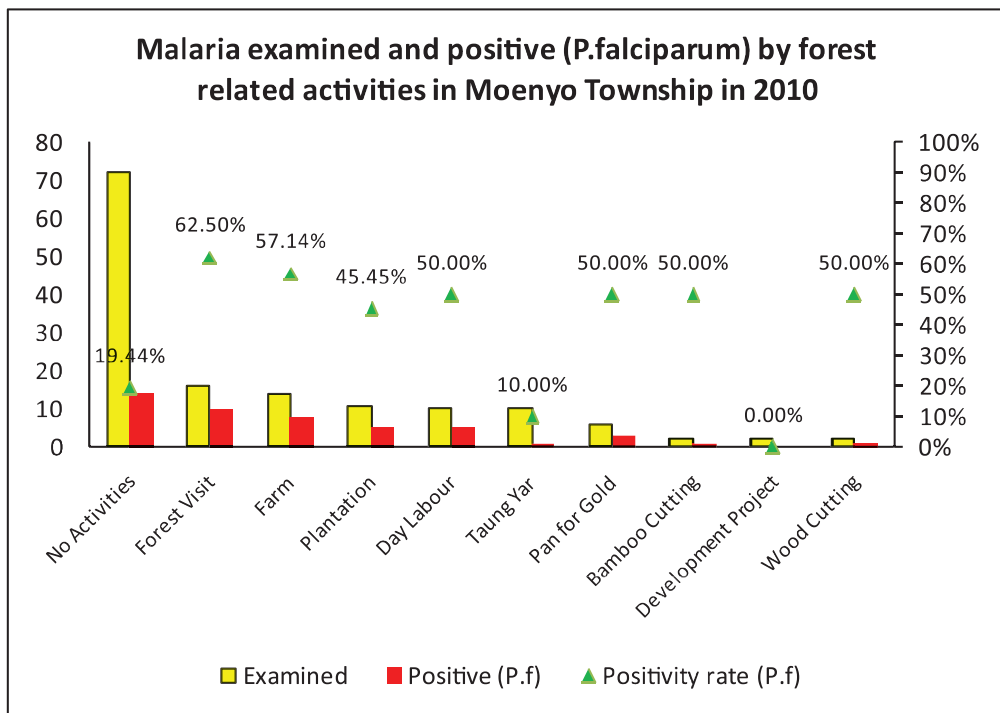
P.f and P.v ratio of malaria microscopy diagnosis in Moe Nyo Township, 2010 and 2011



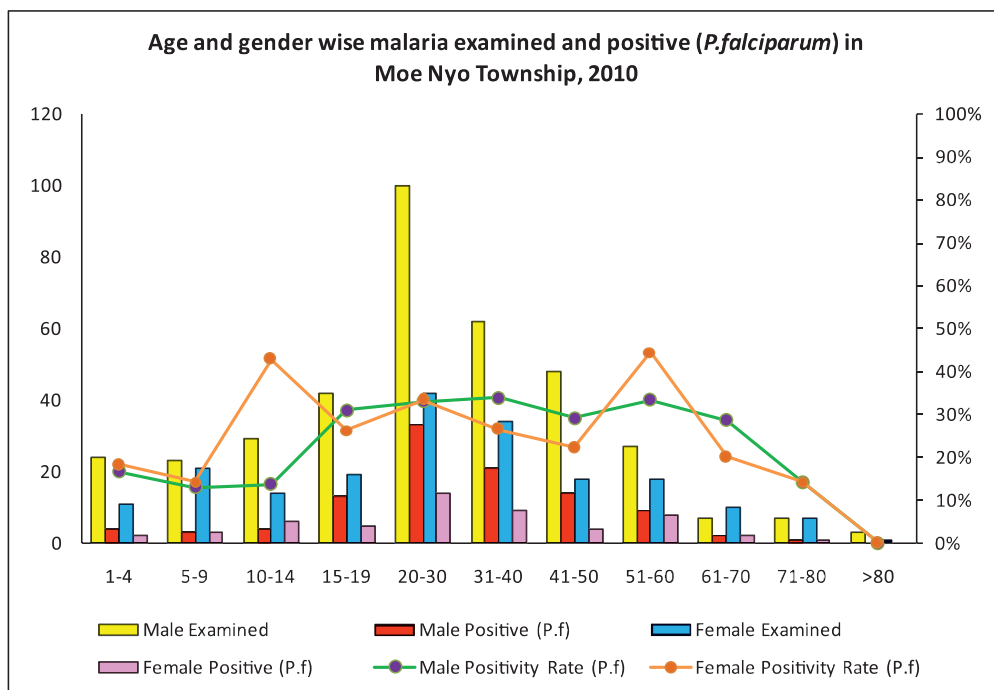
Percentage of Patients approached to health facilities for malaria confirmatory diagnosis in Moe Nyo Township in 2010 and 2011



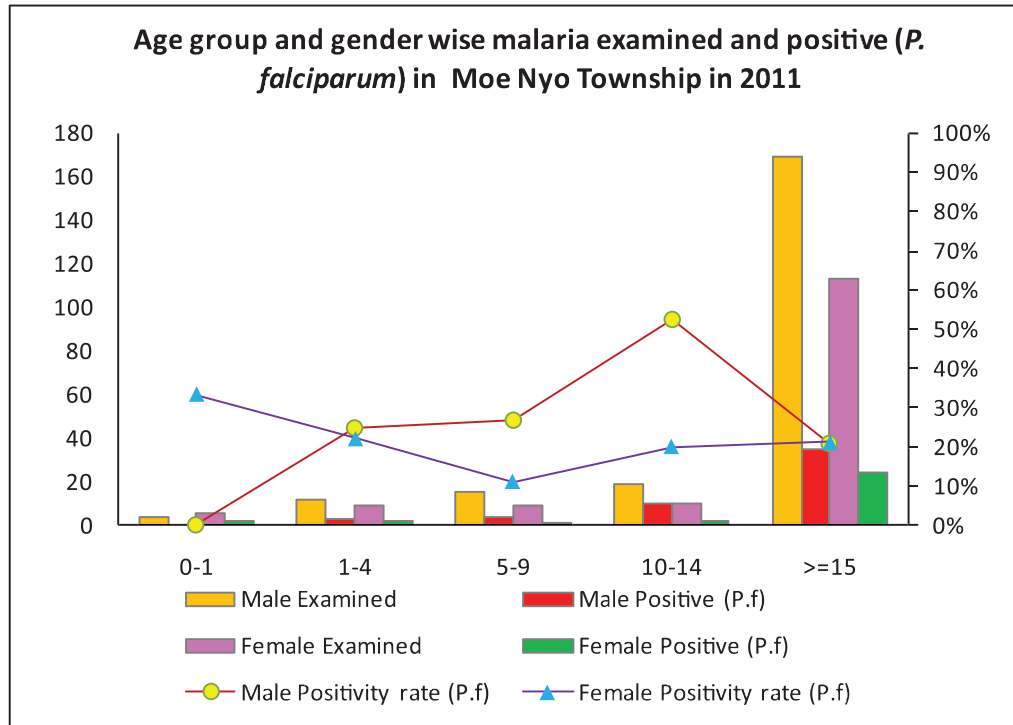
Malaria examined and Positive (*P.falciparum*) by forest related activities in Moenyo Township in 2010



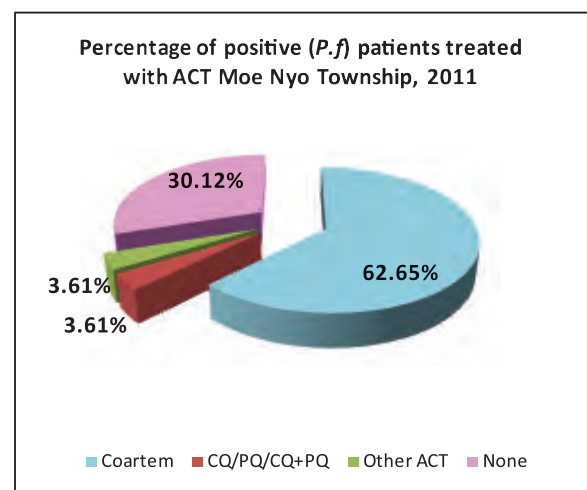
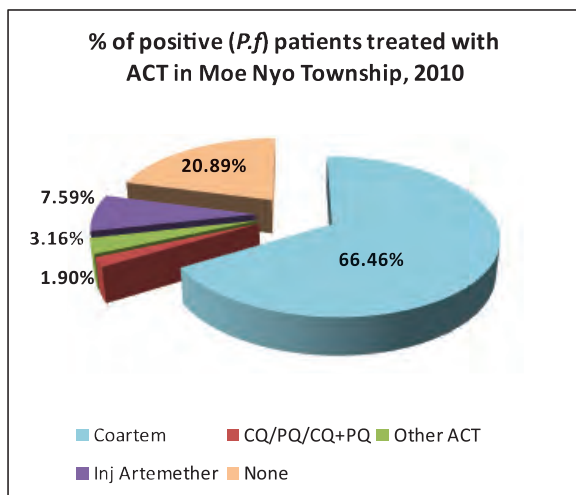
Age and Gender Wise Malaria examined and Positive (*P.falciparum*) in Moe Nyo Township in 2010



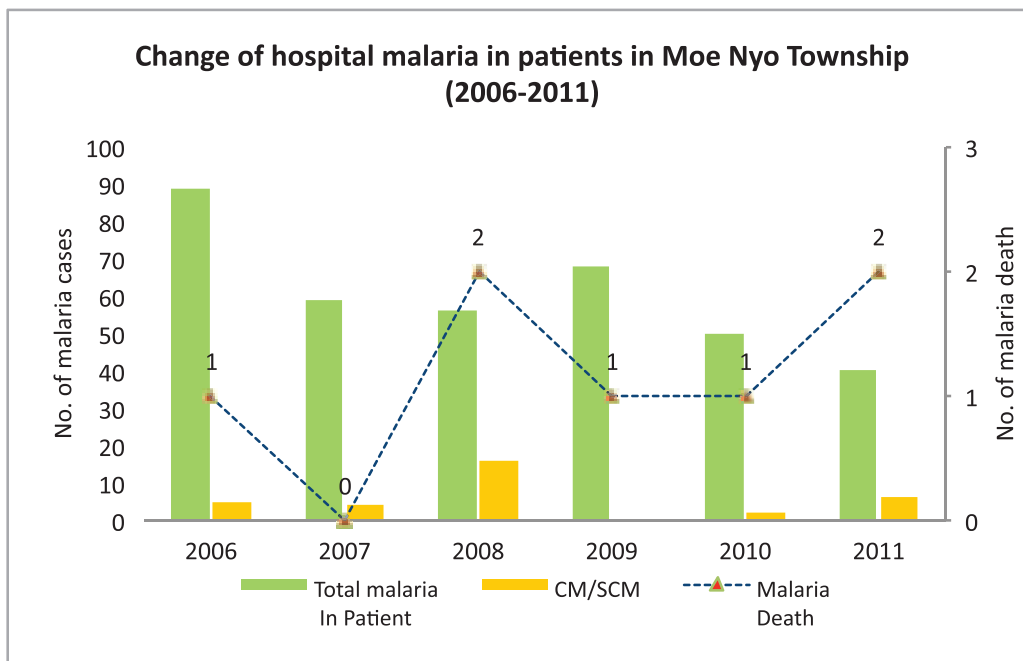
Age group and Gender Wise Malaria examined and positive (*P.falciparum*) in Moe NYO Township in 2011



Percentage of Positive Patients treated with ACT in Moe Nyo Township in 2010 and 2011



Change of hospital malaria in Patients in Moe Nyo Township from 2006 – 2011



Sr	Year	Total In Patient	Total malaria In Patient	CM/SCM	Malaria Death	Total Death
1	2006	1586	89	5	1	28
2	2007	2201	59	4	0	46
3	2008	2231	56	16	2	20
4	2009	2538	68	0	1	12
5	2010	3261	50	2	1	23
6	2011	3176	40	6	2	47

Health Profile of Nattalin Township



Area and Location*

Area	:	1367.36 Km ²
North	:	Paungde
South	:	Zigone
East	:	Phyu
West	:	Shwedaung

Administrative Units*

Wards	:	4
Village tracts	:	78
Villages	:	356

Population (2009)*

Total:	161310
Urban:	17707
Rural:	143603
Male:	78132
Female:	83178
Sex Ratio:	94
<5 Year:	10415
0-14 Year:	35034
15-49 Year:	90368
Population Density:	117.97/ Km ²

Health Facilities (2009)*

Township Hospital (25) Bedded	:	1
Station Hospital	:	2
Maternal and Child Health Centers	:	1
Rural Health Centers	:	6
Sub Health Centers	:	24
Private Clinics and Maternity Homes	:	11

Health Manpower*

	<i>Doctor</i>	<i>Nurse</i>	<i>HA</i>	<i>LHV</i>	<i>PHS I</i>	<i>PHS II</i>	<i>MW</i>
Sanction	7	8	5	6	3	-	36
Appointed	6	8	5	6	3	-	35
Vacant	1	-	-	-	-	-	1
% Vacancy	14.3%	0.0%	0.0%	0.0%	0.0%	0.0%	2.8%

(HA: Health Assistant, LHV: Lady Health Visitor, PHS:Public Health Supervisor , MW: Midwife)

Health Manpower (Volunteer)*

	Category of Volunteer Health Workers		
	CHW	AMW	TTBA
Trained	219	178	80
Functioning	120	117	30
% Functioning	54.8%	65.7%	37.5%

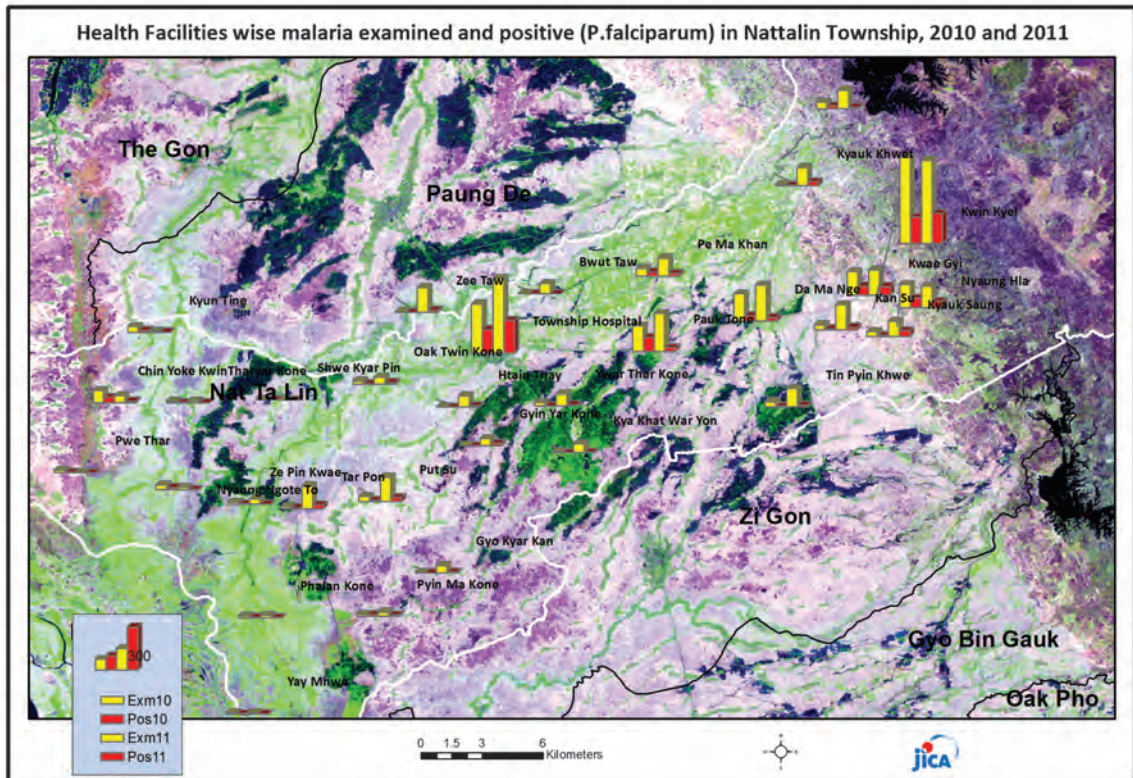
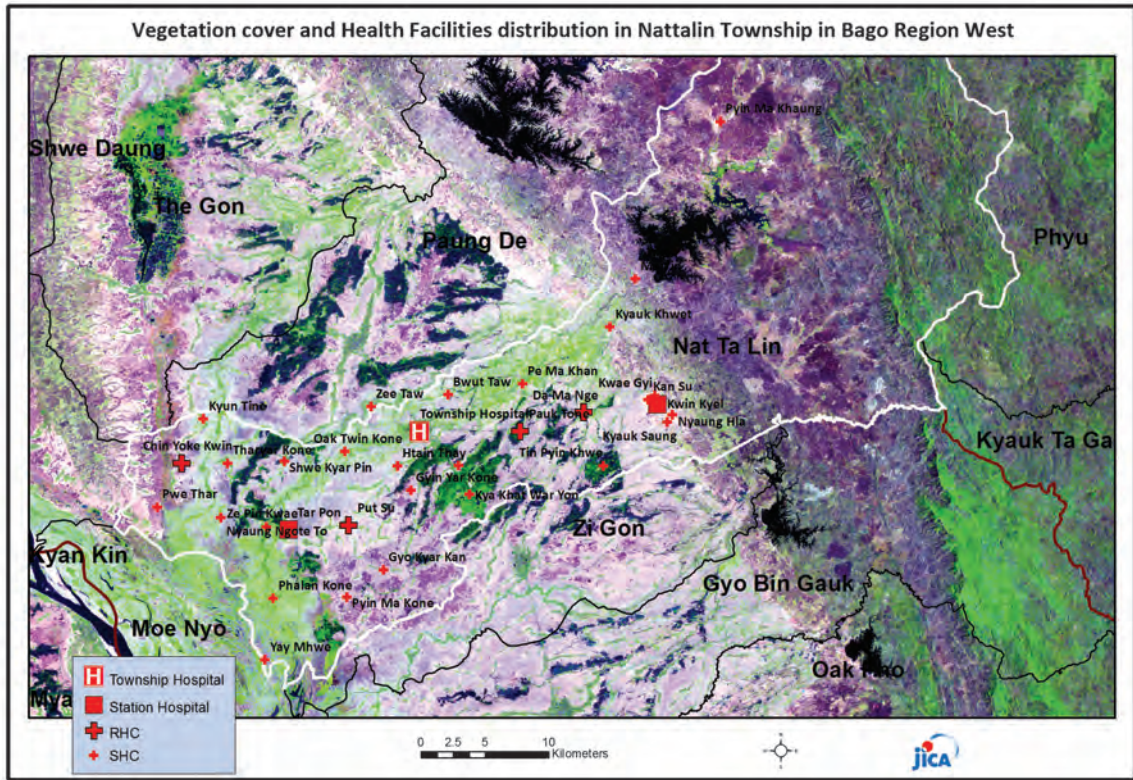
(CHW: Community health Worker, AMW: Auxiliary Mid Wife, TTBA: Trained Traditional Birth Attendant)

Common Diseases under National Surveillance*

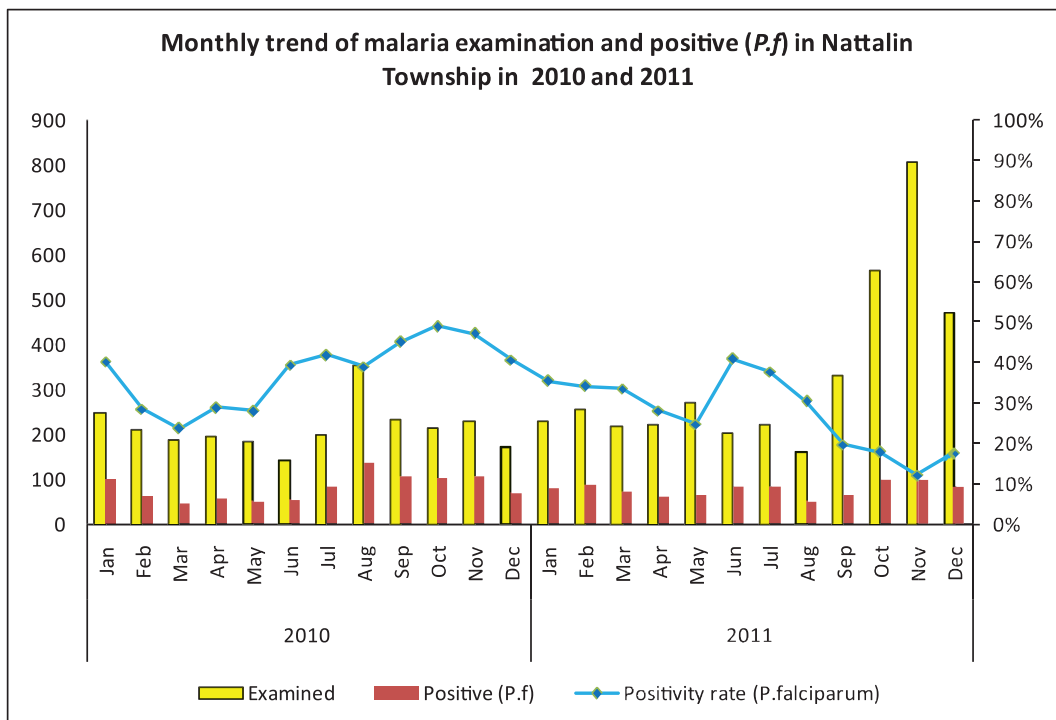
<i>Diseases</i>	<i>Morbidity</i>	<i>Mortality</i>
Malaria	1019.78	8.68
ARI <5	10196.83	9.60
Diarrhea	420.31	0
Dysentery	275.87	0
TB(Sputum+)	75.01	0
Snake Bite	37.20	1.24

(Per 100,000 Populations)

*The data source is Health Profile of Bago Region West(2009) From Department of Health Planning.

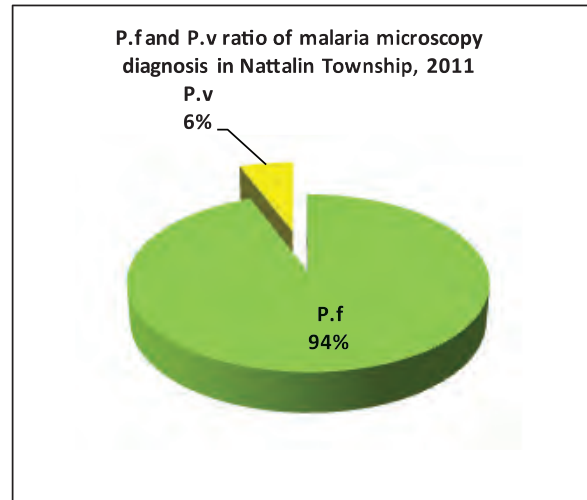
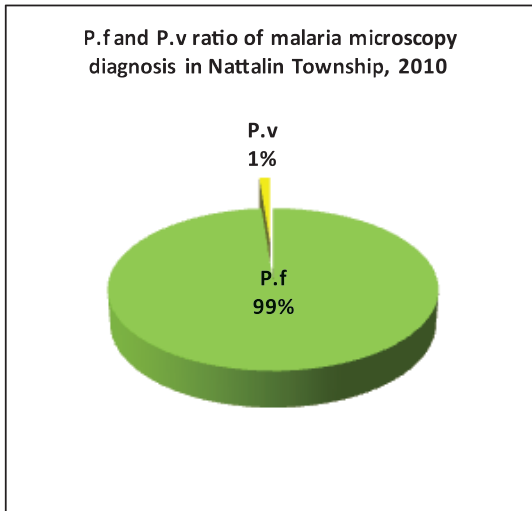


Monthly trend of malaria examination and Positive (*P.f*) in Nat Ta Lin Township in 2010 and 2011

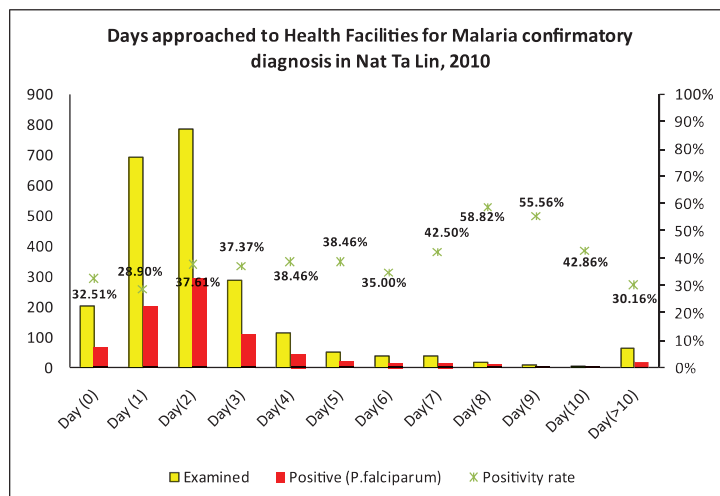
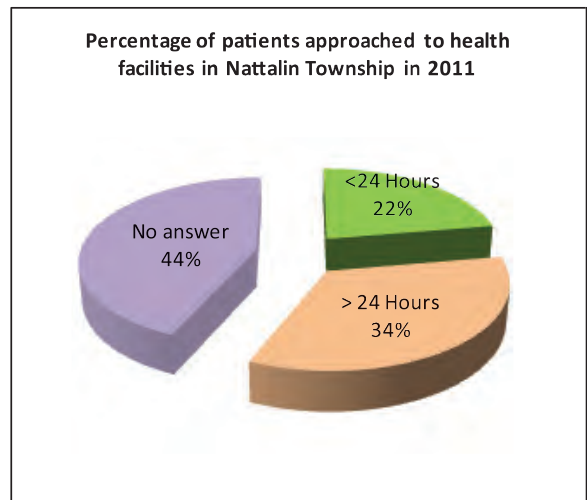
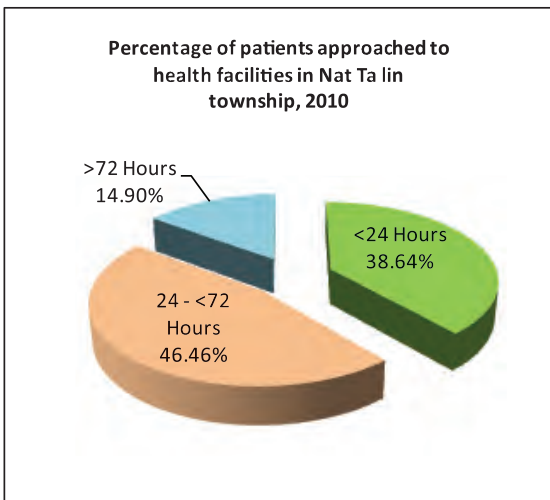


Month	2010			2011		
	Examined	Positive (<i>P.f</i>)	Positivity rate (<i>P.f</i>)	Examined	Positive (<i>P.f</i>)	Positivity rate (<i>P.f</i>)
Jan	250	101	40.40%	228	81	35.53%
Feb	210	60	28.57%	257	88	34.24%
Mar	189	45	23.81%	220	74	33.64%
Apr	197	57	28.93%	223	63	28.25%
May	185	52	28.11%	270	67	24.81%
Jun	142	56	39.44%	203	83	40.89%
Jul	198	83	41.92%	222	84	37.84%
Aug	353	138	39.09%	161	49	30.43%
Sep	235	106	45.11%	333	66	19.82%
Oct	214	105	49.07%	565	101	17.88%
Nov	231	109	47.19%	806	99	12.28%
Dec	174	71	40.80%	473	84	17.76%
Total	2,578	983	38.13%	3,961	939	23.71%

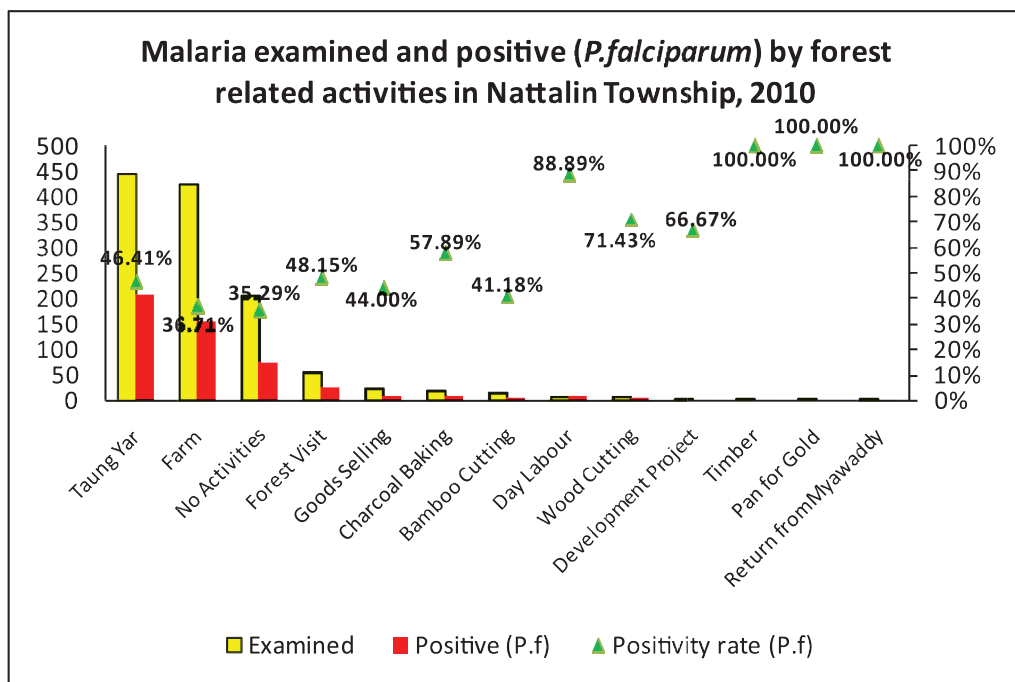
P.f and P.v ratio of microscopy diagnosis in Nattalin Township, 2010 and 2011



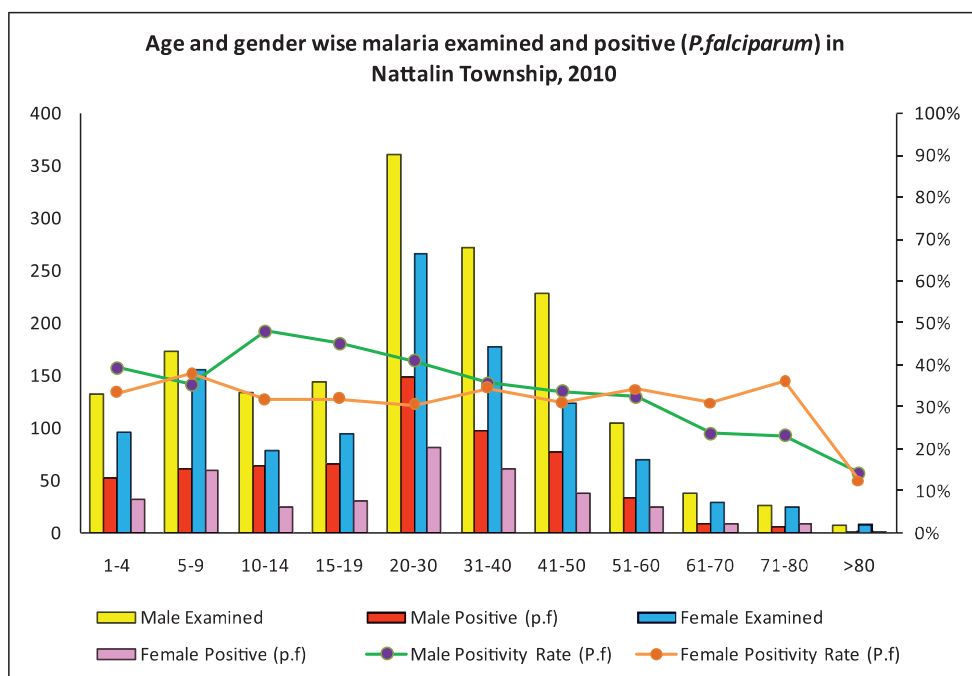
Percentage of patients approached to health facilities for malaria confirmatory diagnosis in Nat Ta Lin Township



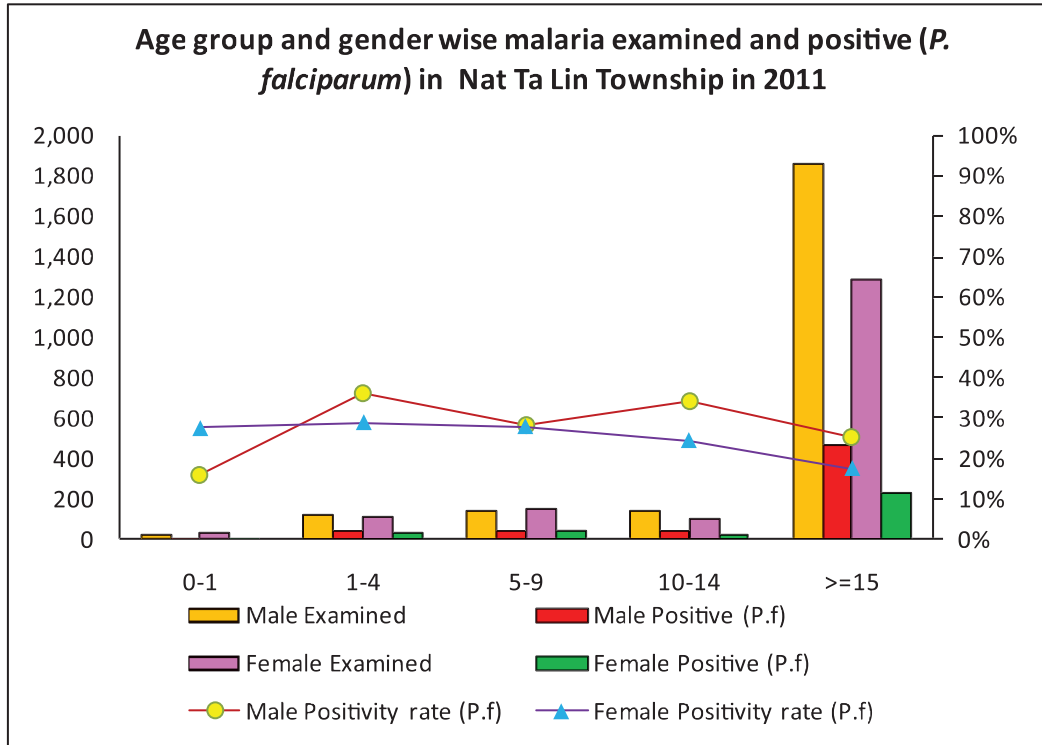
Malaria examined and positive (*P.falciparum*) by forest related activities in Nattalin Township in 2010



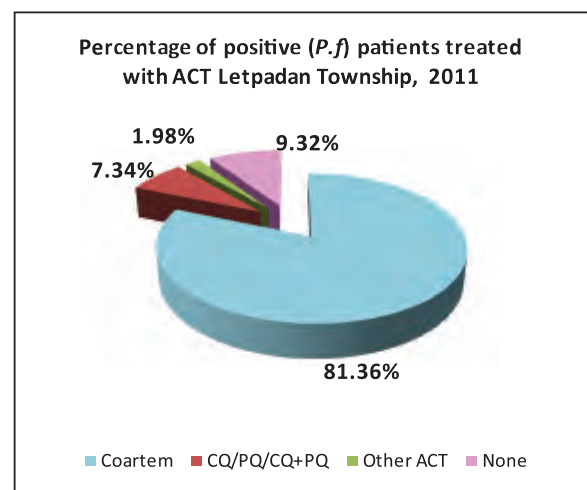
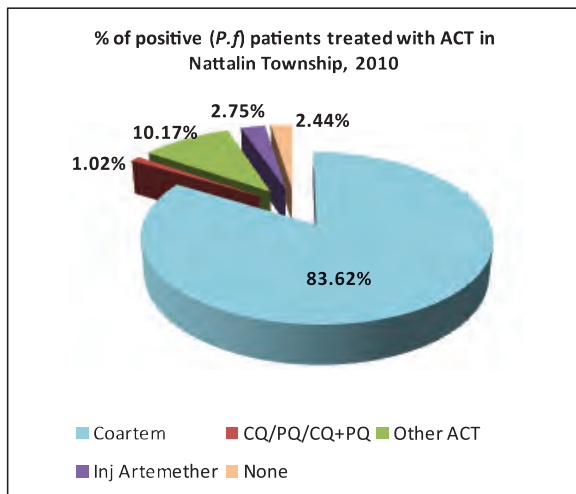
Age and Gender Wise Malaria examined and positive (*P.falciparum*) in Nattalin Township in 2010



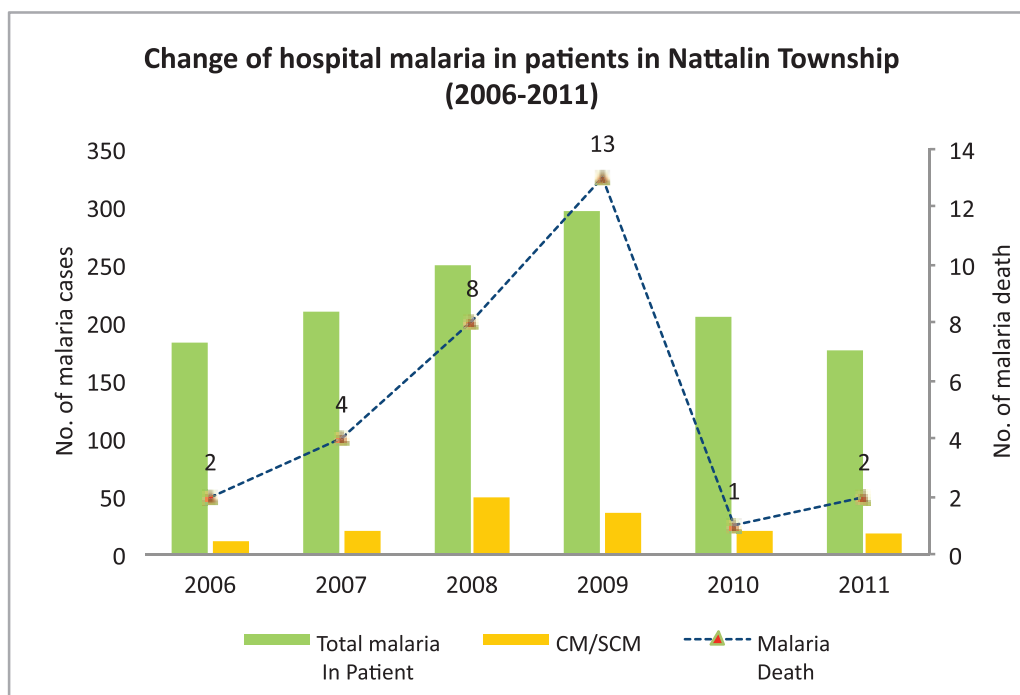
Age group and Gender Wise Malaria examined and positive (*P.falciparum*) in Nat Ta Lin Township in 2011



Percentage of positive patients treated with ACT in Nat Ta Lin Township in 2010 and 2011



Change of hospital malaria in patients in Nat Ta Lin Township from 2006 – 2011



Sr	Year	Total In Patient	Total malaria In Patient	CM/SCM	Malaria Death	Total Death
1	2006	2308	182	11	2	17
2	2007	3723	210	19	4	35
3	2008	2920	249	48	8	39
4	2009	3519	296	36	13	69
5	2010	4124	205	21	1	56
6	2011	4735	176	18	2	49

Health Profile of Oak Pho Township



Area and Location*

Area	:	1050.17 Km ²
North	:	Gyobingauk
South	:	Minhla
East	:	Kyauktaga
West	:	Gyobingauk

Administrative Units*

Wards	:	7
Village tracts	:	54
Villages	:	254

Population (2009)*

Total	:	140158
Urban	:	12925
Rural	:	127233
Male	:	68657
Female	:	71501
Sex Ratio	:	96
<5 Year	:	15055
0-14 Year	:	36792
15-49 Year	:	72250
Population Density	:	133.46/ Km ²

Health Facilities (2009)*

Township Hospital (25) Bedded	:	1
Station Hospital	:	2
Maternal and Child Health Centers	:	1
Rural Health Centers	:	5
Sub Health Centers	:	24
Private Clinics and Maternity Homes	:	8

Health Manpower*

	<i>Doctor</i>	<i>Nurse</i>	<i>HA</i>	<i>LHV</i>	<i>PHS I</i>	<i>PHS II</i>	<i>MW</i>
Sanction	9	20	6	5	2	1	35
Appointed	9	20	5	5	2	1	35
Vacant	-	-	1	-	-	-	-
% Vacancy	0.0%	0.0%	16.7%	0.0%	0.0%	0.0%	0.0%

(HA: Health Assistant, LHV: Lady Health Visitor, PHS:Public Health Supervisor , MW: Midwife)

Health Manpower (Volunteer)*

	Category of Volunteer Health Workers		
	CHW	AMW	TTBA
Trained	136	116	50
Functioning	97	82	35
% Functioning	71.3%	70.7%	70.0%

(CHW: Community health Worker, AMW: Auxiliary Mid Wife, TTBA: Trained Traditional Birth Attendant)

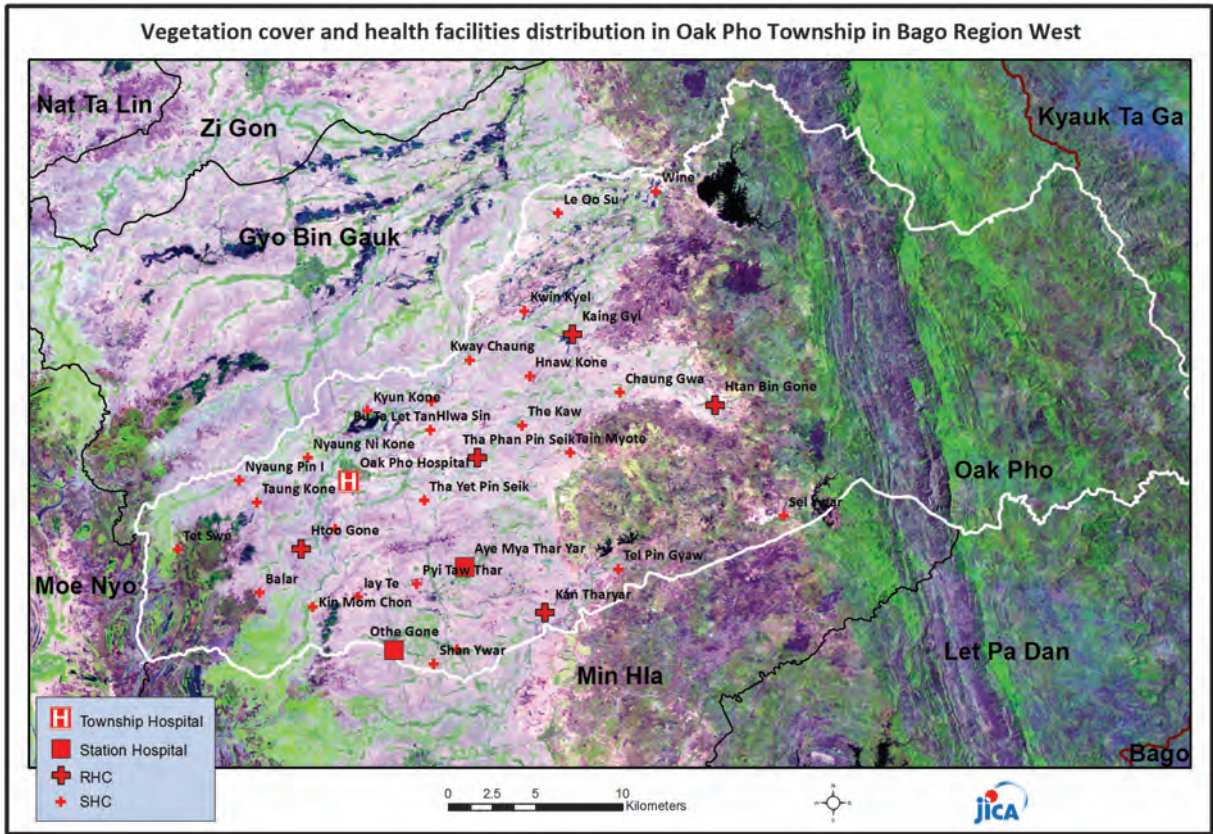
Common Diseases under National Surveillance*

<i>Diseases</i>	<i>Morbidity</i>	<i>Mortality</i>
Malaria	2929.55	0.71
ARI <5	4211.23	0
Diarrhea	209.76	0.71
Dysentery	117.01	0
TB(Sputum+)	62.07	0
Snake Bite	38.53	0.71

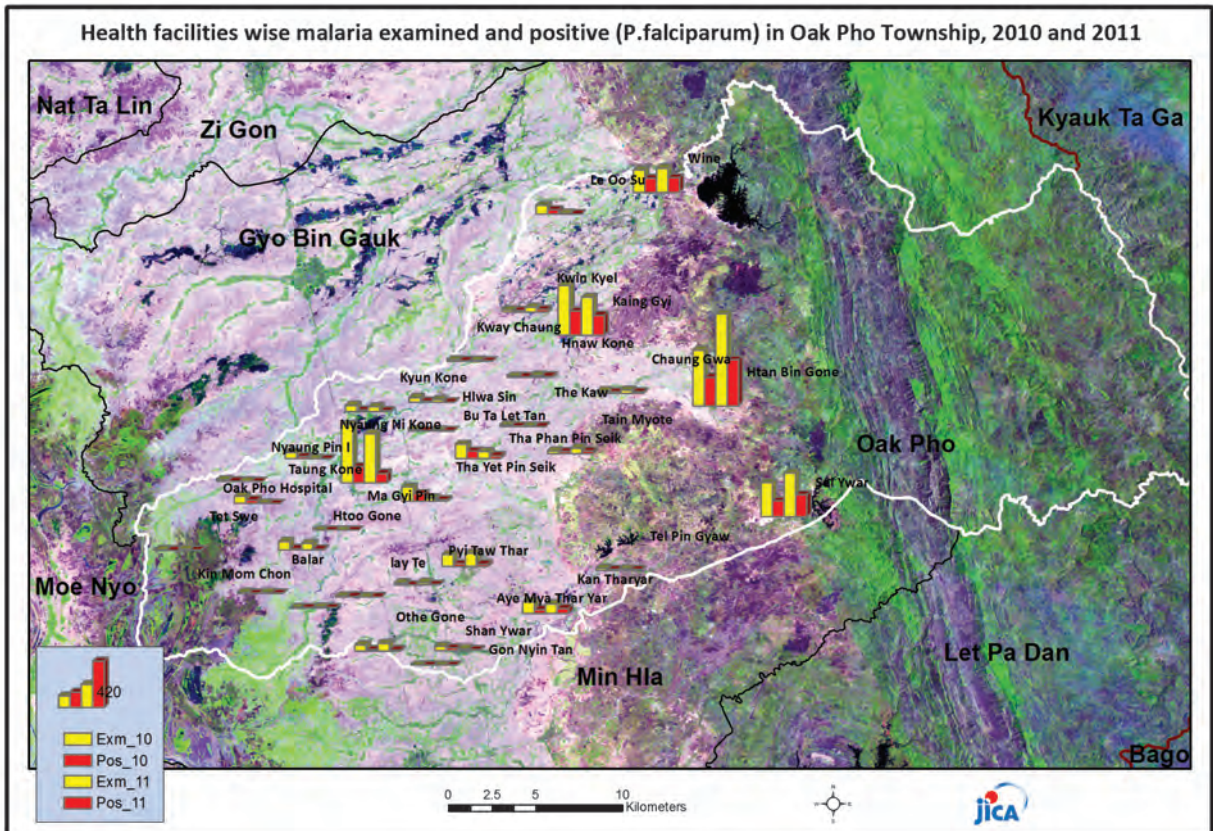
(Per 100,000 Populations)

*The data source is Health Profile of Bago Region West (2009) from Department of Health Planning.

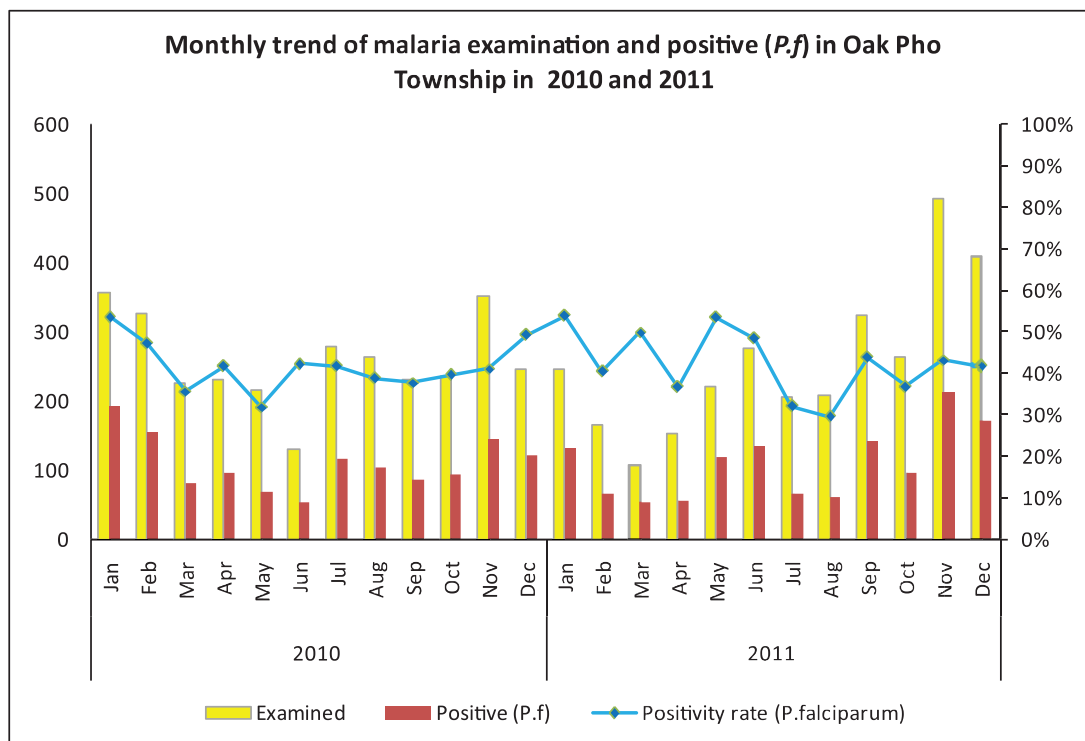
Vegetation cover and health facilities distribution in Oak Pho Township in Bago Region West



Health facilities wise malaria examined and positive (*P.falciparum*) in Oak Pho Township, 2010 and 2011

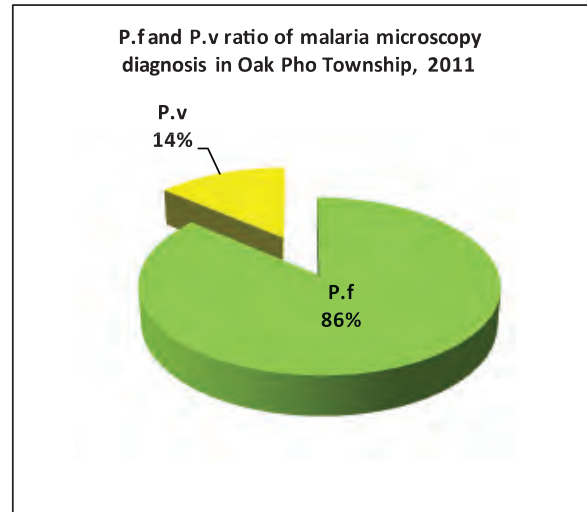
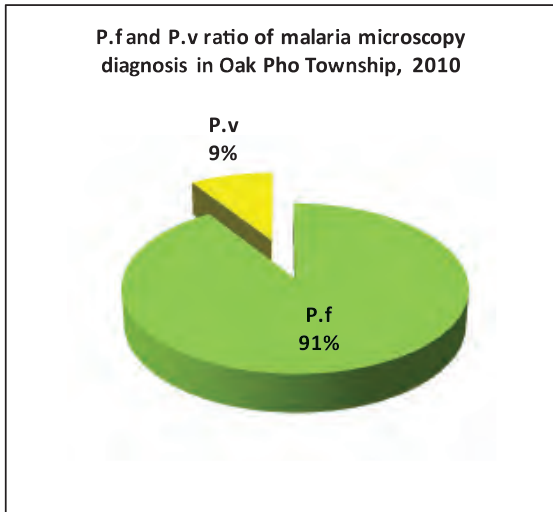


Monthly trend of malaria examined and Positive (*P.f*) in Oak Pho Township in 2010 and 2011

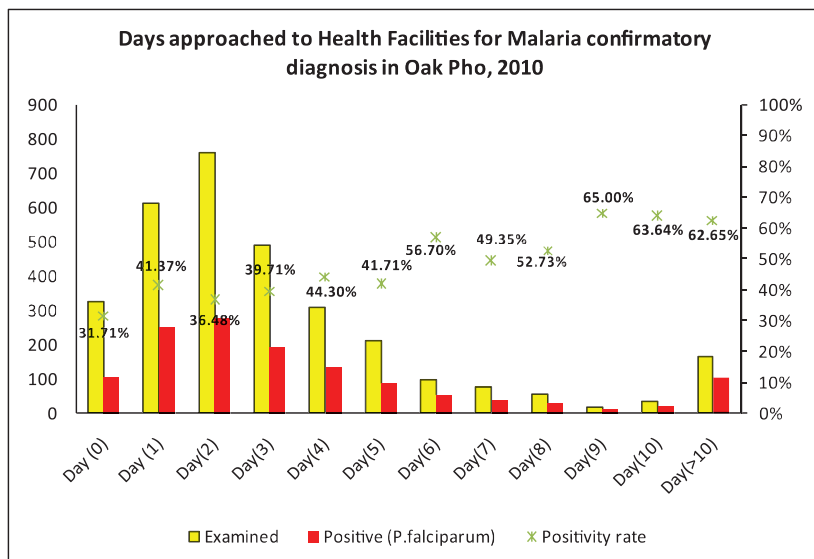
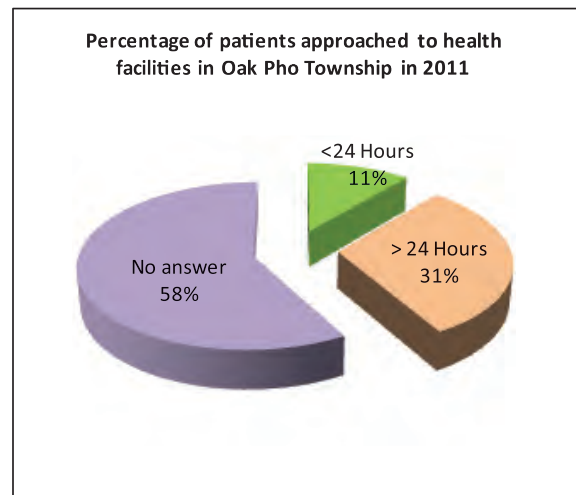
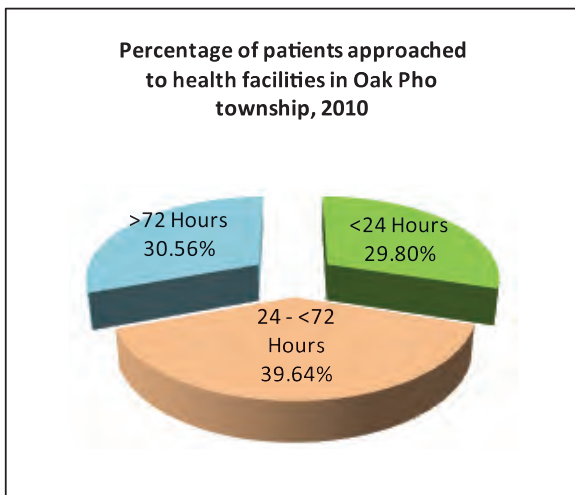


Month	2010			2011		
	Examined	Positive (<i>P.f</i>)	Positivity rate (<i>P.f</i>)	Examined	Positive (<i>P.f</i>)	Positivity rate (<i>P.f</i>)
Jan	356	191	53.65%	245	132	53.88%
Feb	328	155	47.26%	165	67	40.61%
Mar	227	81	35.68%	108	54	50.00%
Apr	232	97	41.81%	152	56	36.84%
May	216	69	31.94%	222	119	53.60%
Jun	130	55	42.31%	276	134	48.55%
Jul	280	117	41.79%	206	66	32.04%
Aug	265	103	38.87%	209	62	29.67%
Sep	230	87	37.83%	323	142	43.96%
Oct	235	93	39.57%	263	97	36.88%
Nov	352	145	41.19%	492	213	43.29%
Dec	247	122	49.39%	411	172	41.85%
Total	3,098	1,315	42.45%	3,072	1,314	42.77%

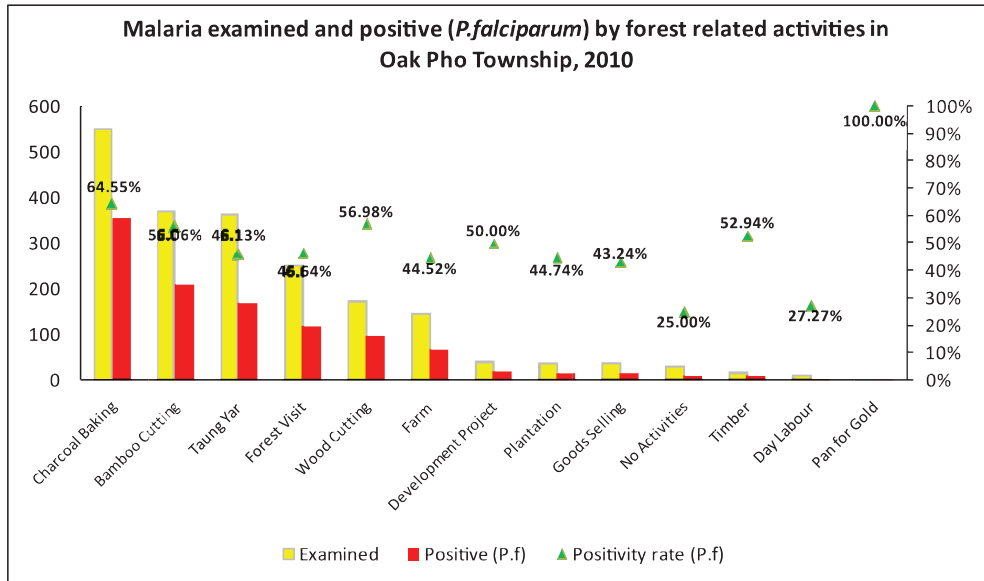
P.f and P.v ratio of microscopy diagnosis in Oak Pho Township, 2010 and 2011



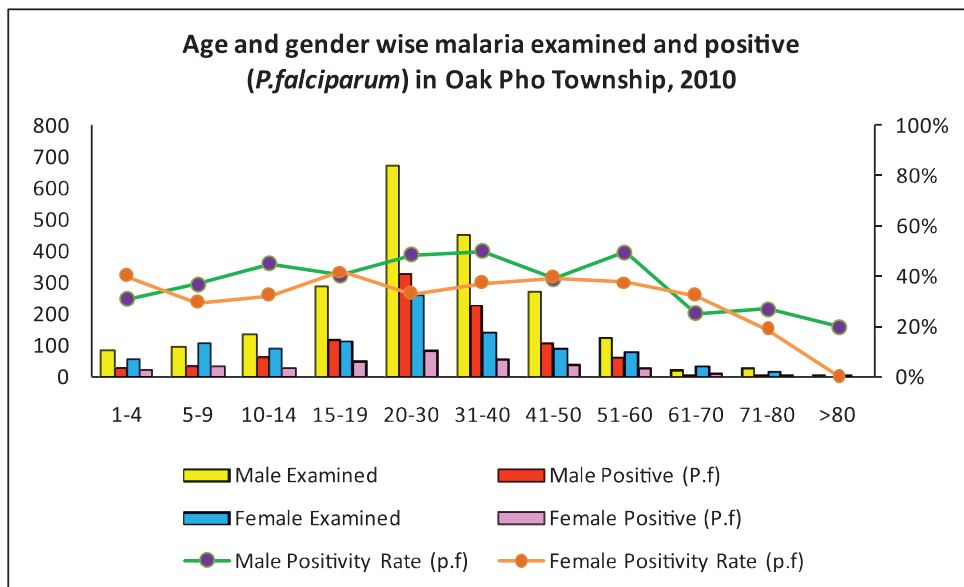
Percentage of patients approached to health facilities for malaria confirmatory diagnosis in Oak Pho Township in 2010 and 2011



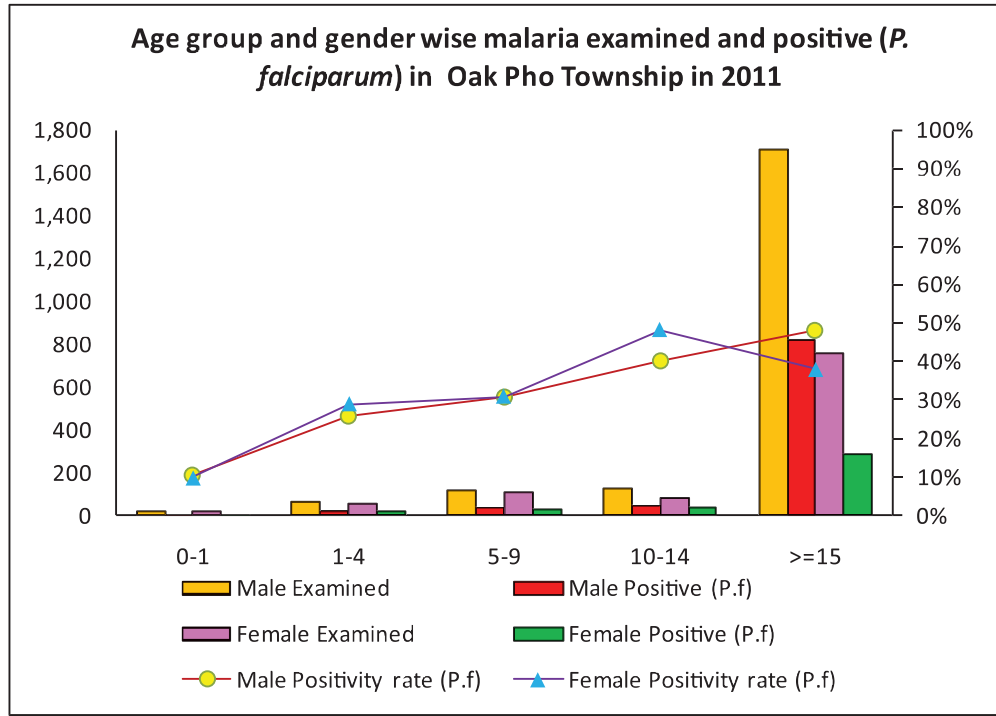
Malaria examined and positive (*P.falciparum*) by forest related activities in Oak Pho Township in 2010



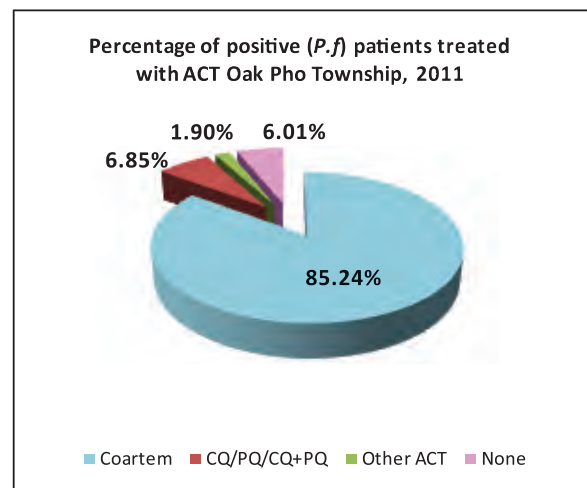
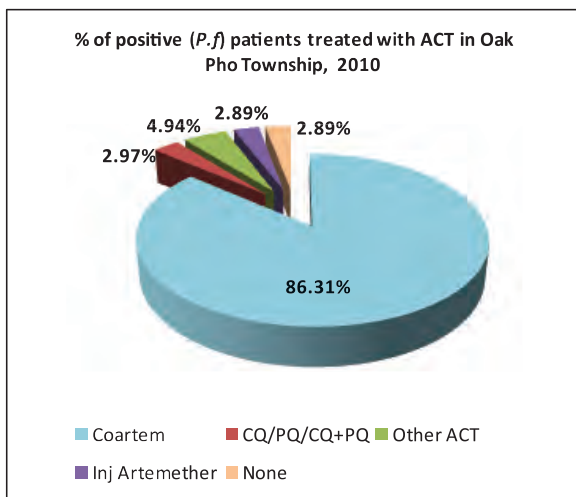
Age and Gender Wise Malaria examined and positive (*P.falciparum*) in Oak Pho Township in 2010



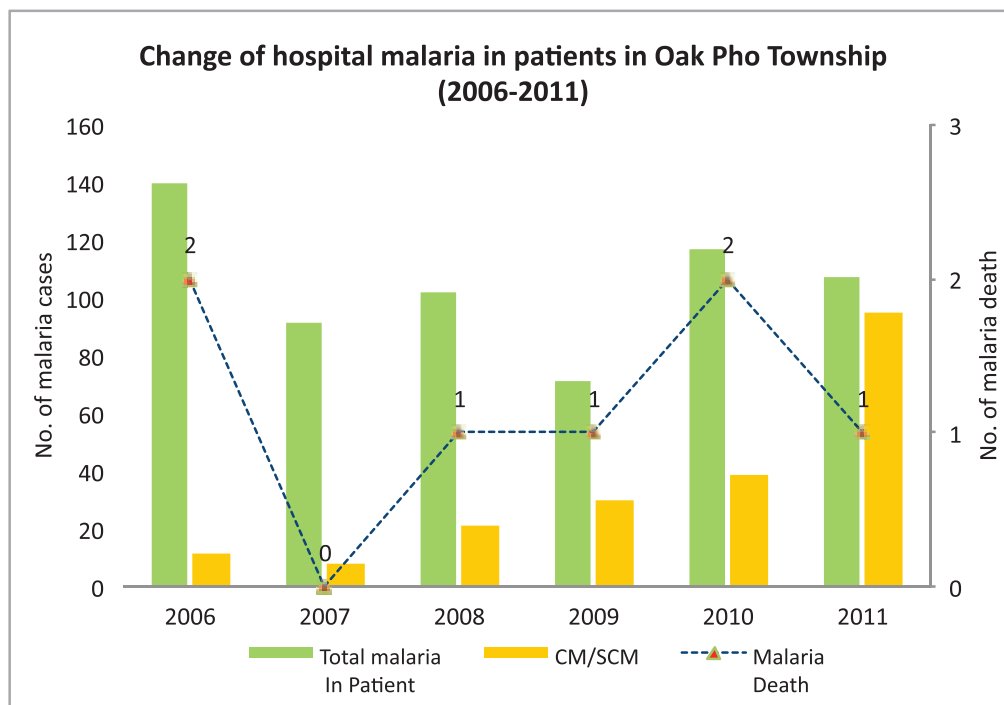
Age group and Gender Wise Malaria examined and positive (*P.falciparum*) in Oak Pho Township in 2011



Percentage of positive patients treated with ACT in Oak Pho Township in 2010 and 2011



Change of hospital malaria in patients in Oak Pho Township from 2006 – 2011



Sr	Year	Total In Patient	Total malaria In Patient	CM/SCM	Malaria Death	Total Death
1	2006	2207	140	11	2	66
2	2007	2228	91	8	0	30
3	2008	2118	102	21	1	25
4	2009	1886	71	30	1	25
5	2010	4051	117	39	2	53
6	2011	4321	107	95	1	58