

Health Profile of Tha Net Pin Township



Area and Location*

Area : 997.12 Km²
 North : Waw Township
 South : Kawa Township
 East : Sittaung River Township
 West : Bago Township

Administrative Units*

Wards : 25
 Village tracts : 37
 Villages : 253

Population (2009)*

Total : 156,465
 Urban : 15,139
 Rural : 141,326
 Male : 76,674
 Female : 79,791
 Sex Ratio : 96
 <5 Year : 18,177
 0-14 Year : 51,618
 15-49 Year : 81,161
 Population Density : 156.92/Km²

Health Facilities (2009)*

Township Hospital (25) Bedded : 1
 Station Hospital : 3
 Hospital Under other Ministry : 1
 Rural Health Centers : 5
 Sub Health Centers : 29
 Private Clinic and Maternity : 5

Health Man Power (2009)*

	Doctor	Nurse	HA	LHV	PHS I	PHS II	MW
Sanction	12	25	5	8	4	8	38
Appointed	9	18	5	8	4	7	36
Vacant	3	7	0	0	0	1	2
% Vacancy	25.0%	28.0%	0.0%	0.0%	0.0%	12.5%	5.3%

(HA: Health Assistant, LHV: Lady Health Visitor, PHS I: Public Health Supervisor, MW: Mid Wife)

Health Man Power (Volunteer) (2009)*

	Category of Volunteer Health Workers		
	CHW	AMW	TTBA
Trained	42	71	70
Functioning	41	70	70
% of Functioning	97.6%	98.6%	100.0%

(CHW: Community Health Worker, AMW: Auxiliary Mid Wife, TTBA: Trained Traditional Birth Attendant)

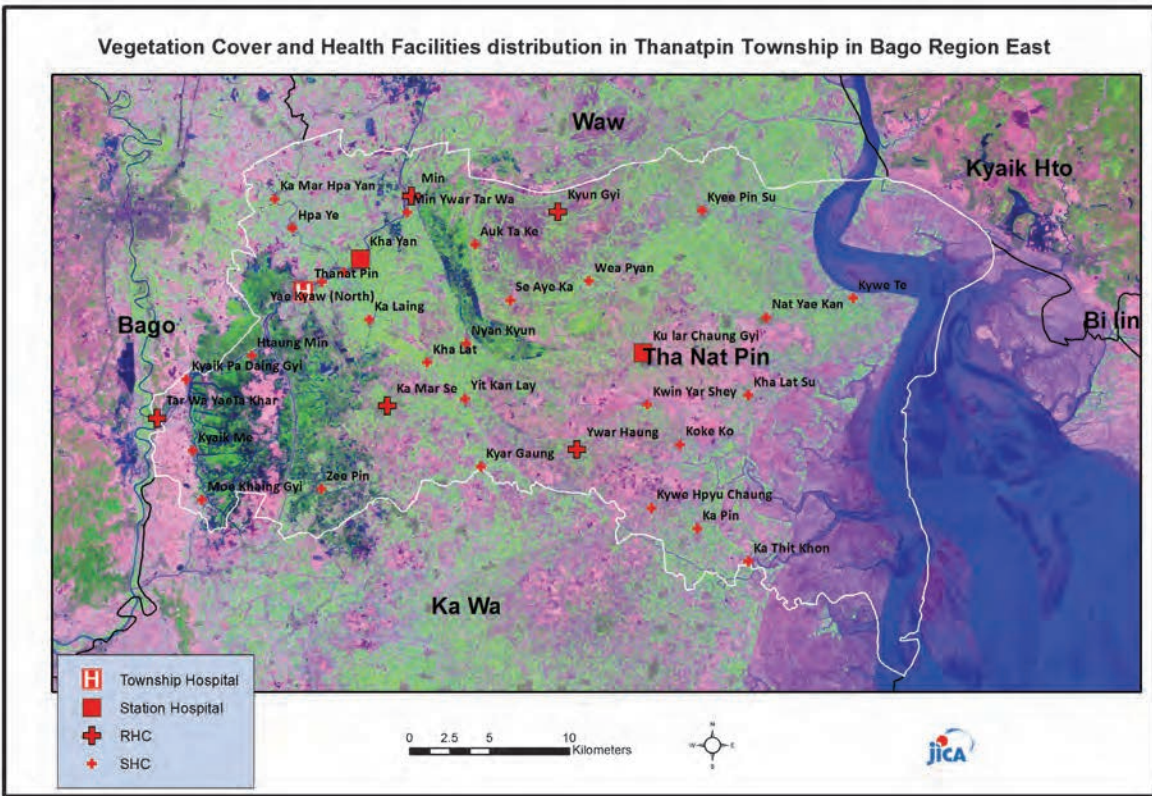
Common Diseases under National Surveillance (2009)*

Diseases	Morbidity	Mortality
Malaria	56.88	0
ARI <5	4406.67	11
Diarrhea	688.33	0
Dysentery	701.12	0
TB(Sputum+)	0	0
Snake Bite	7.67	0

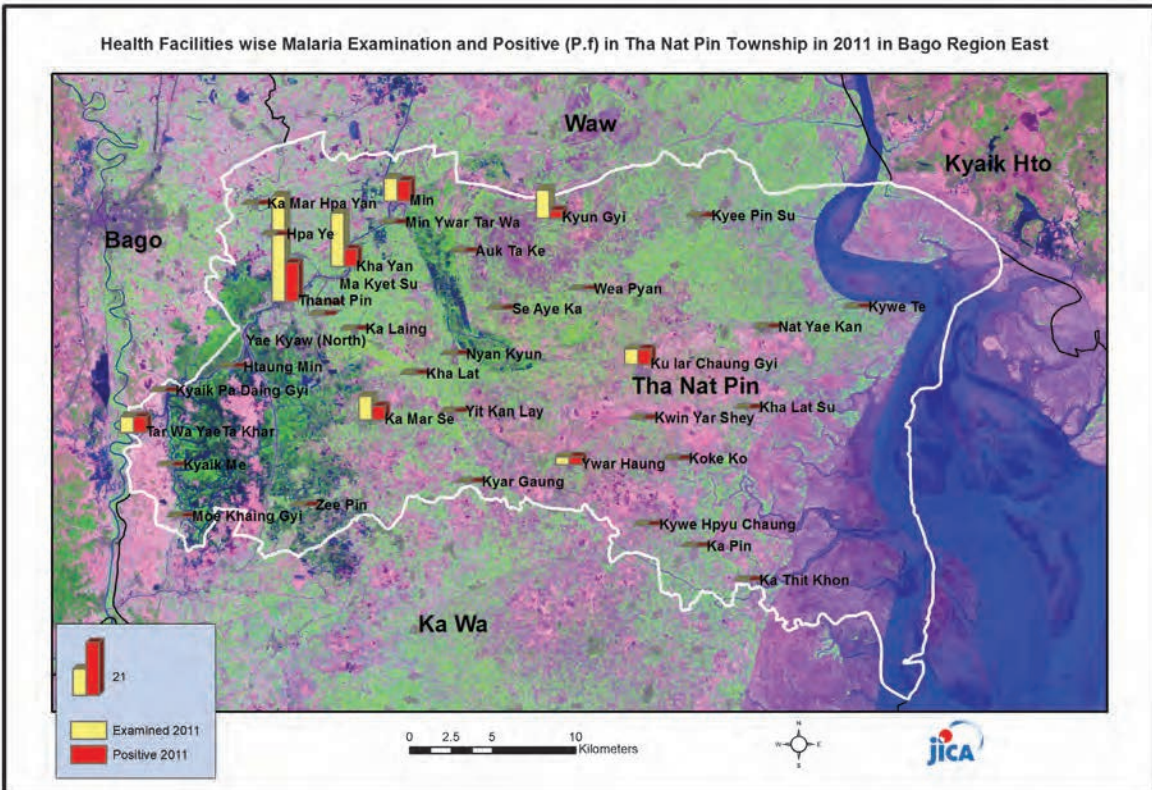
(Per 100,000 Populations)

* The data source is Health Profile of BagoRegion East (2009) from Department of Health Planning.

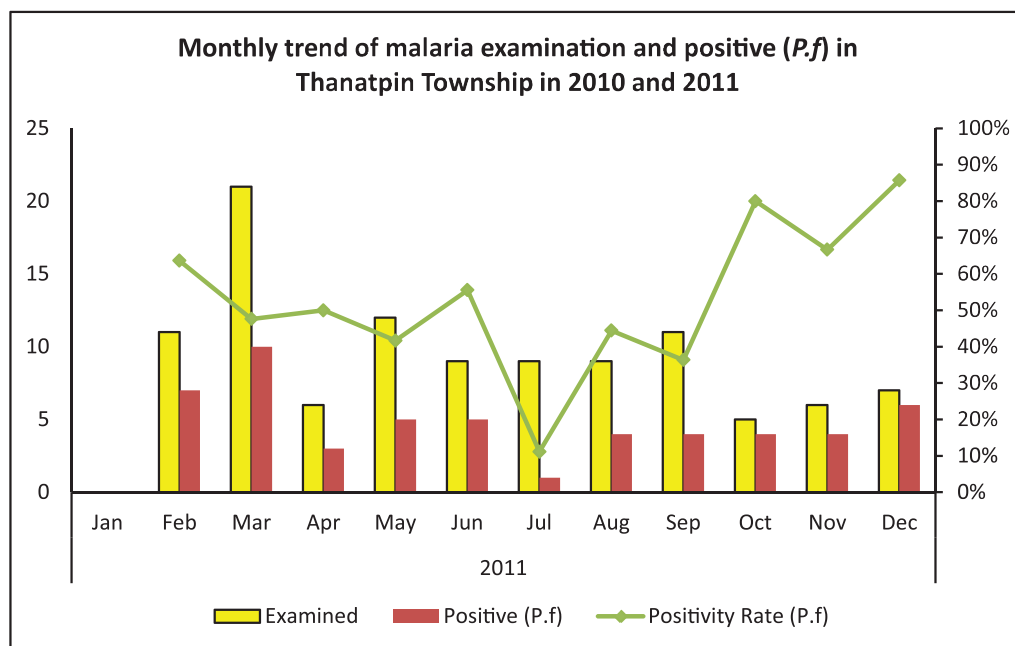
Vegetation Cover and Health Facilities distribution in Thanatpin Township in Bago Region East



Health Facilities wise Malaria Examination and Positive (P.f) in Tha Nat Pin Township in 2011 in Bago Region East

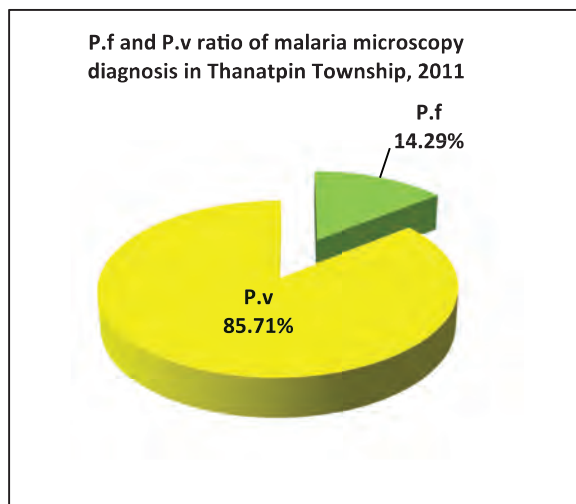


Monthly Trend Malaria examined and positive (P.f) in Tha Net Pin Township in 2010 and 2011

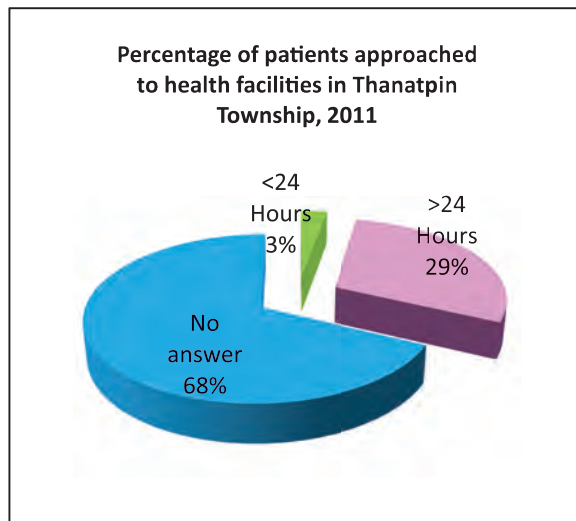


Month	2011		
	Examined	Positive (P.f)	Positivity rate (P.f)
Jan			
Feb	11	7	63.64%
Mar	21	10	47.62%
Apr	6	3	50.00%
May	12	5	41.67%
Jun	9	5	55.56%
Jul	9	1	11.11%
Aug	9	4	44.44%
Sep	11	4	36.36%
Oct	5	4	80.00%
Nov	6	4	66.67%
Dec	7	6	85.71%
Total	106	53	50.00%

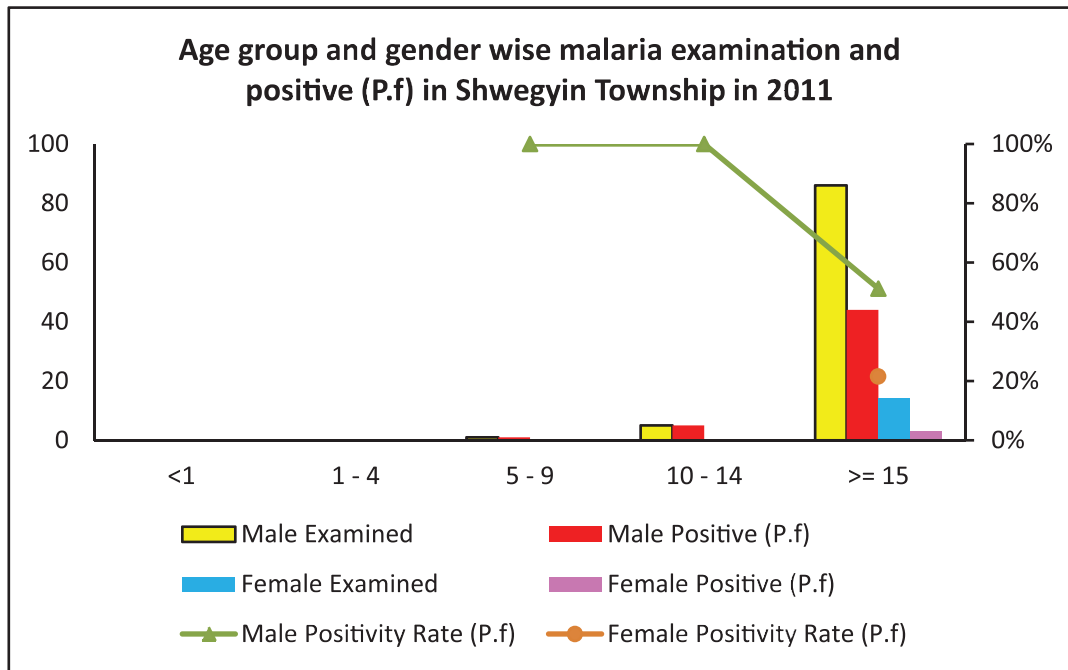
***P.f* and *P.v* ratio of microscopy diagnosis in Tha Net Pin Township, 2011**



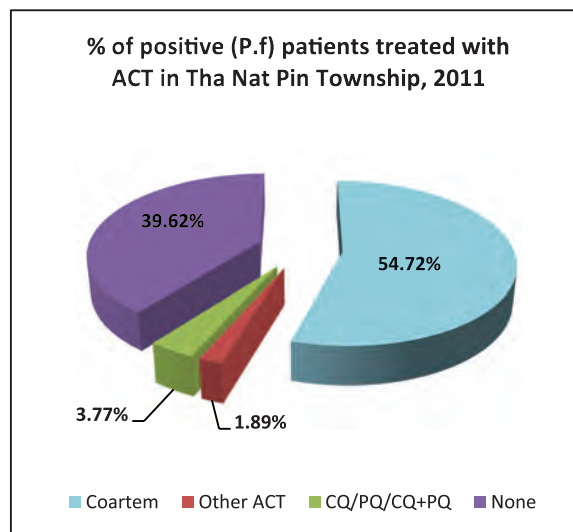
Percentage of patients approached to health facilities for malaria confirmatory diagnosis in Tha Net Pin Township in 2011



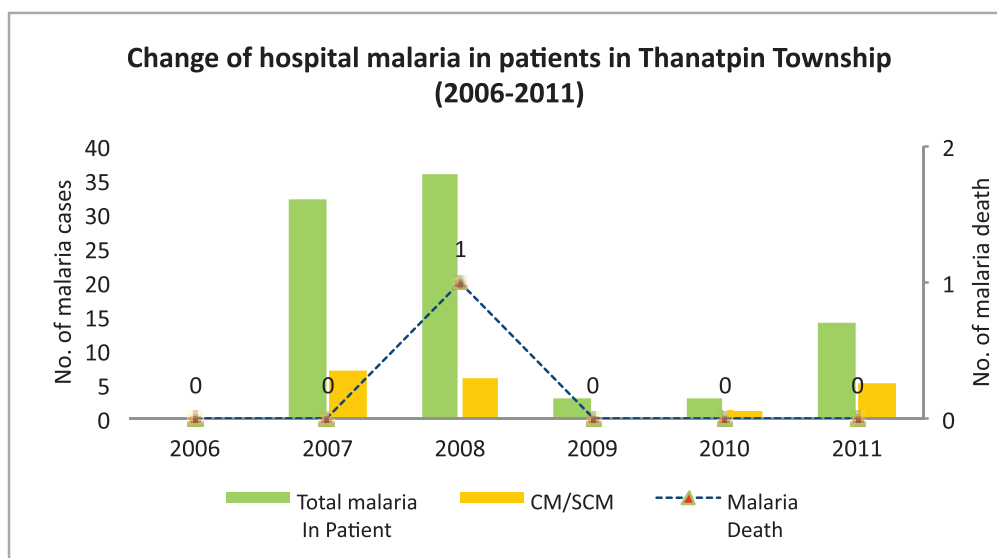
Age group and Gender Wise Malaria examined and positive (*P. falciparum*) in Tha Net Pin Township in 2011



Percentage of positive patients treated with ACT in Tha Net Pin Township in 2011



Change of hospital malaria in patients in Tha Net Pin Township from 2006 – 2011



Sr	Year	Total In Patient	Total malaria In Patient	CM/SCM	Malaria Death	Total Death
1	2006	884	0	0	0	7
2	2007	1,516	32	7	0	4
3	2008	1,798	36	6	1	13
4	2009	1,391	3	0	0	13
5	2010	1,481	3	1	0	10
6	2011	1,074	14	5	0	5
Total		8,144	88	19	1	52

Health Profile of Waw Township



Area and Location*

Area	: 376.70 Km ²
North	: Daik_UTownship
South	: ThanatpinTownship
East	: Kyaikhto River
West	: Bago Township

Administrative Units*

Wards	: 6
Village tracts	: 53
Villages	: 116

Population (2009)*

Total	: 198,677
Urban	: 26,538
Rural	: 172,139
Male	: 97,649
Female	: 101,028
Sex Ratio	: 97
<5 Year	: 23,121
0-14 Year	: 65,317
15-49 Year	: 104,266
Population Density	: 527.41/Km ²

Health Facilities (2009)*

TownshipHospital (16) Bedded	: 1
Station Hospital	: 3
Maternal and Child Health Centers	: 1
Rural Health Centers	: 5
Sub Health Centers	: 28
Private Clinics and Maternity	: 2

Health Man Power (2009)*

	Doctor	Nurse	HA	LHV	PHS I	PHS II	MW
Sanction	12	28	7	7	2	12	40
Appointed	11	15	7	7	2	5	33
Vacant	1	13	0	0	0	7	7
% Vacancy	8.3%	46.4%	0.0%	0.0%	0.0%	58.3%	17.5%

(HA: Health Assistant, LHV: Lady Health Visitor, PHS I: Public Health Supervisor, MW: Mid Wife)

Health Man Power (Volunteer) (2009)*

	Category of Volunteer Health Workers		
	CHW	AMW	TTBA
Trained	122	106	95
Functioning	75	74	67
% of Functioning	61.5%	69.8%	70.5%

(CHW: Community Health Worker, AMW: Auxiliary Mid Wife, TTBA: Trained Traditional Birth Attendant)

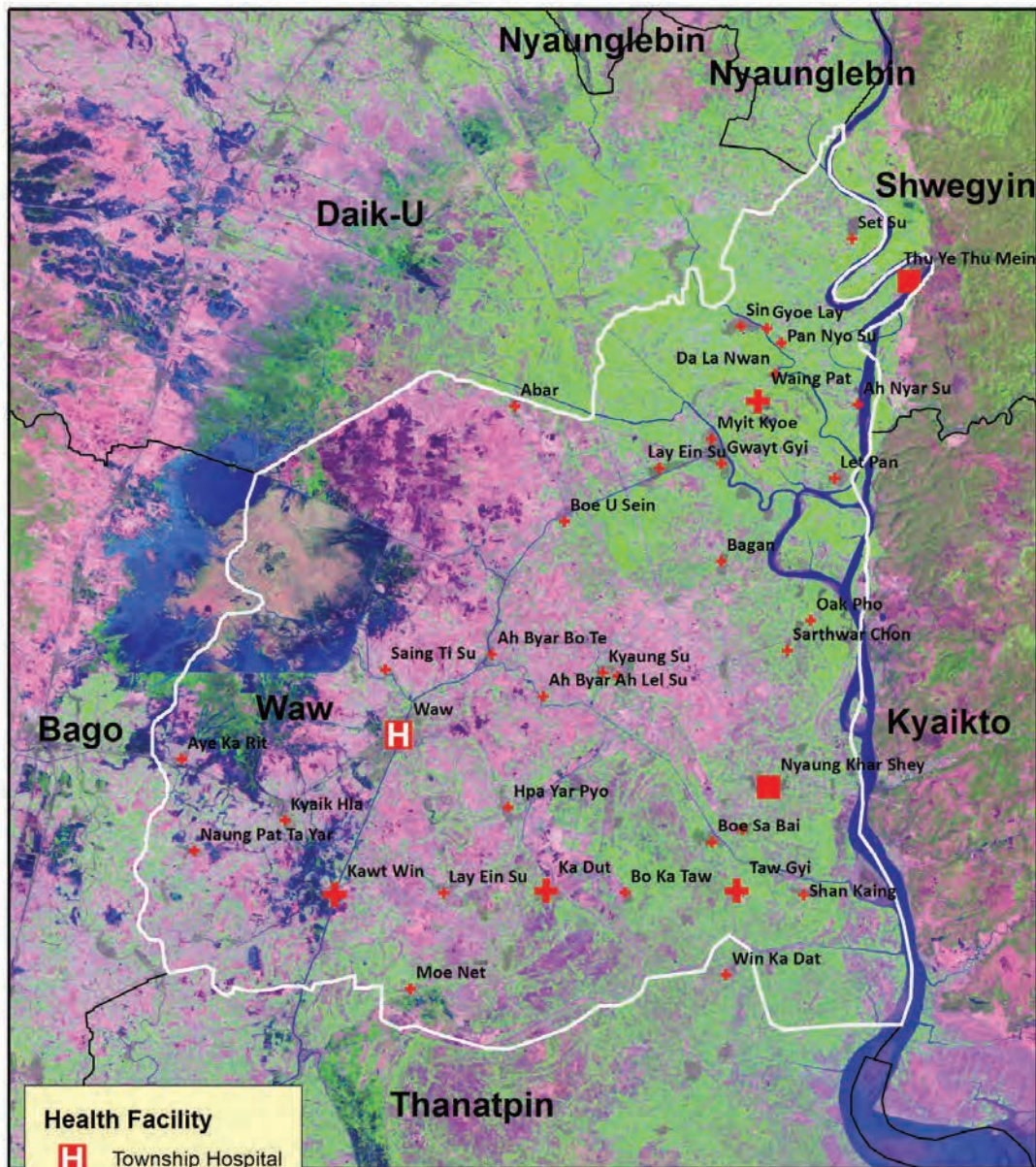
Common Diseases under National Surveillance (2009)*

Diseases	Morbidity	Mortality
Malaria	273.81	0
ARI <5	609.84	0
Diarrhea	668.42	0
Dysentery	256.19	0
TB(Sputum+)	73.49	0
Snake Bite	6.04	2.01

(Per 100,000 Populations)

* The data source is Health Profile of Bago Region East (2009) from Department of Health Planning.

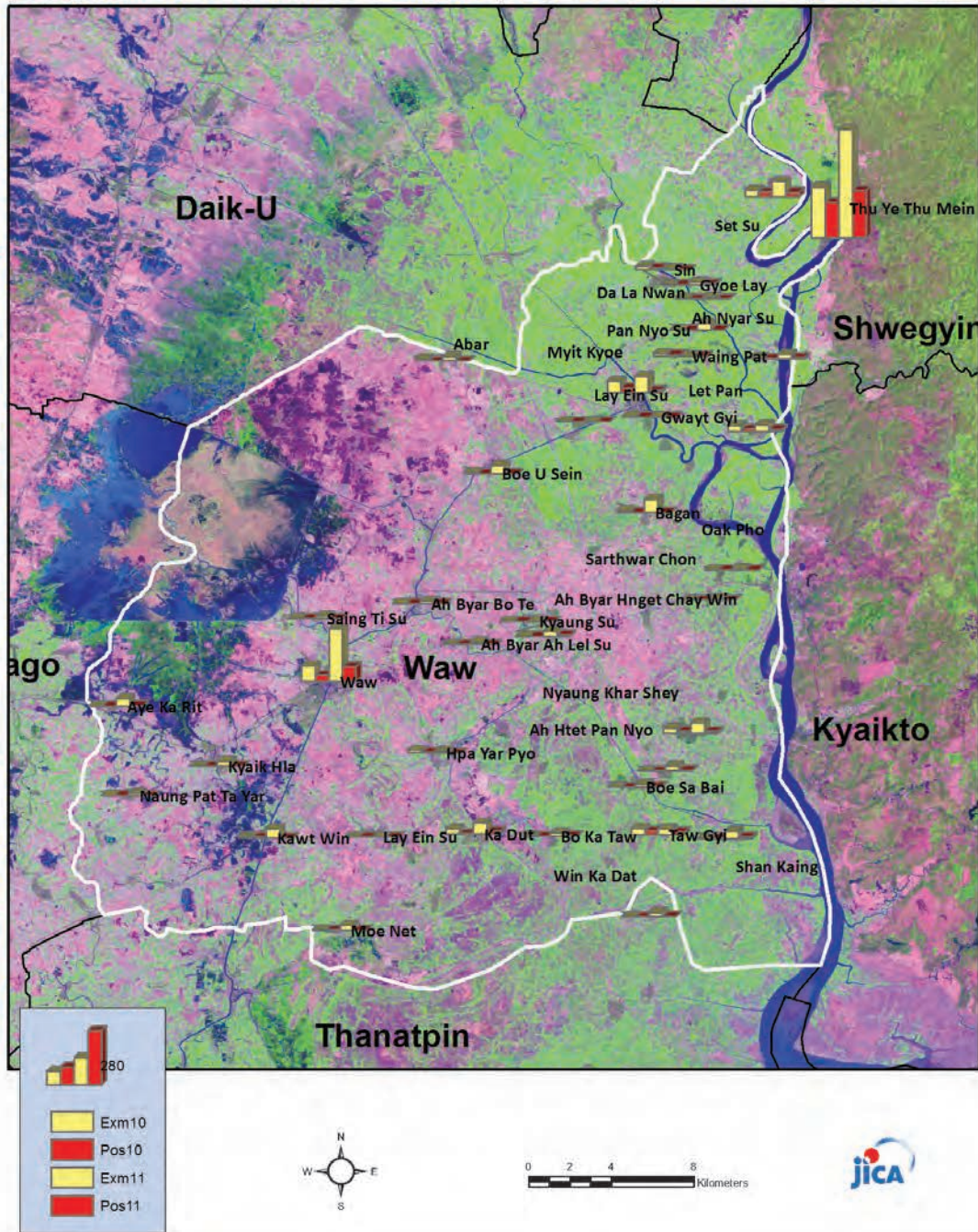
**Vegetation cover and Health Facilities distribution in Waw Township
in Bago Region East**



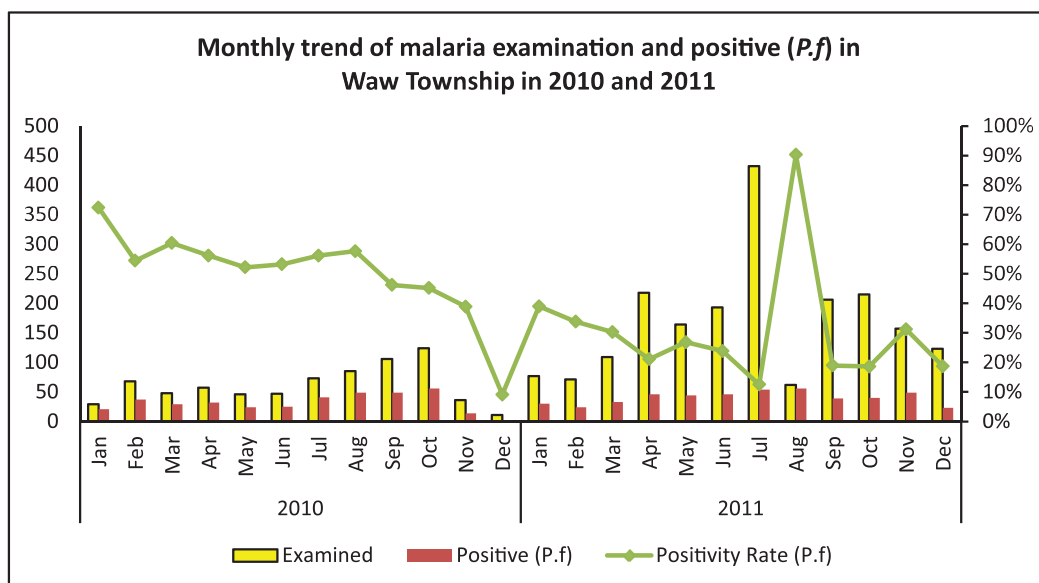
Health Facility	
	Township Hospital
	Station Hospital
	RHC
	SHC



Health Facilities Wise Malaria Examination and Positive (P.f) in Waw Township, 2010 and 2011

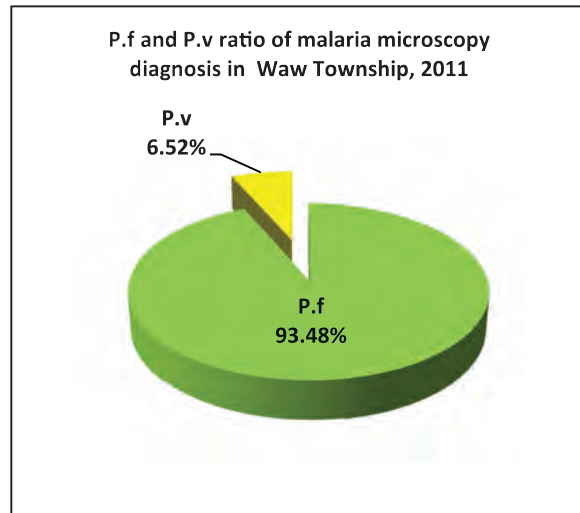
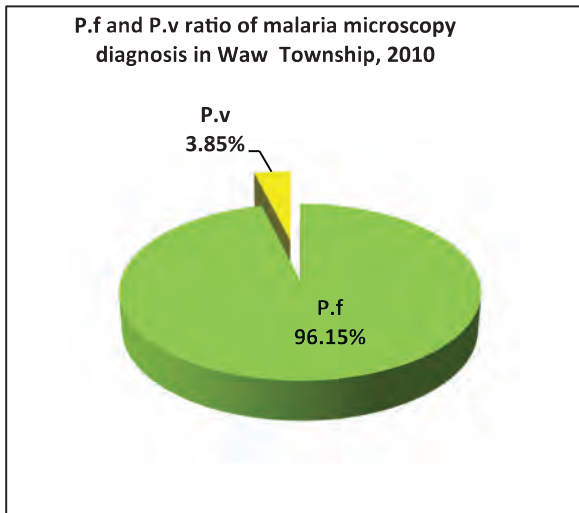


Monthly Trend Malaria examined and positive (P.f) in Waw Township in 2010 and 2011

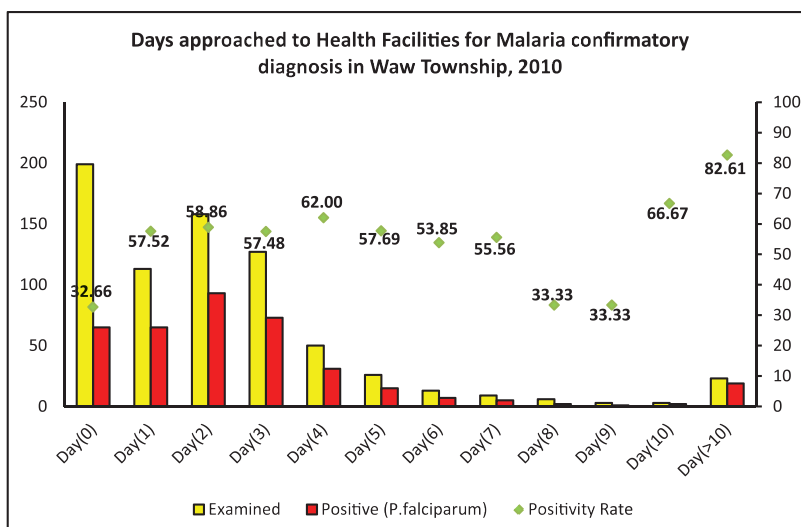
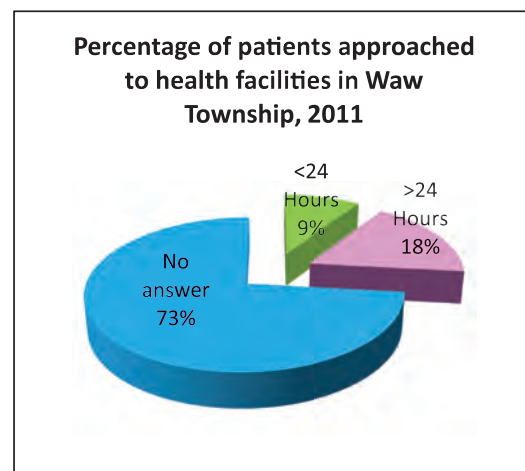
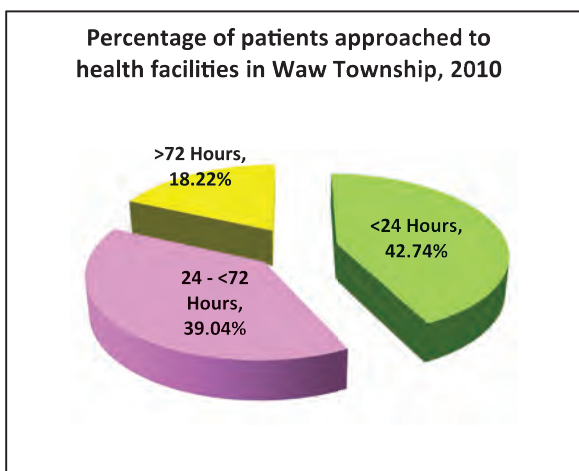


Month	2010			2011		
	Examined	Positive (P.f)	Positivity rate (P.f)	Examined	Positive (P.f)	Positivity rate (P.f)
Jan	29	21	72.41%	77	30	38.96%
Feb	68	37	54.41%	71	24	33.80%
Mar	48	29	60.42%	109	33	30.28%
Apr	57	32	56.14%	218	46	21.10%
May	46	24	52.17%	164	44	26.83%
Jun	47	25	53.19%	193	46	23.83%
Jul	73	41	56.16%	432	54	12.50%
Aug	85	49	57.65%	62	56	90.32%
Sep	106	49	46.23%	206	39	18.93%
Oct	124	56	45.16%	215	40	18.60%
Nov	36	14	38.89%	157	49	31.21%
Dec	11	1	9.09%	123	23	18.70%
Total	730	378	51.78%	2,027	484	23.88%

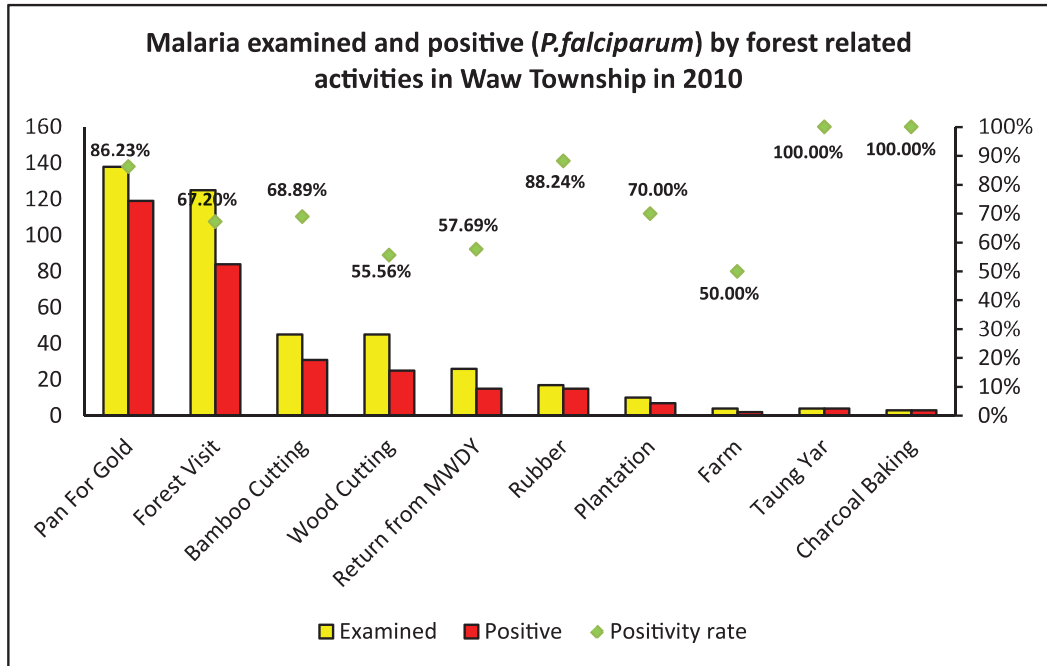
P.f and P.v ratio of microscopy diagnosis in Waw Township, 2010 and 2011



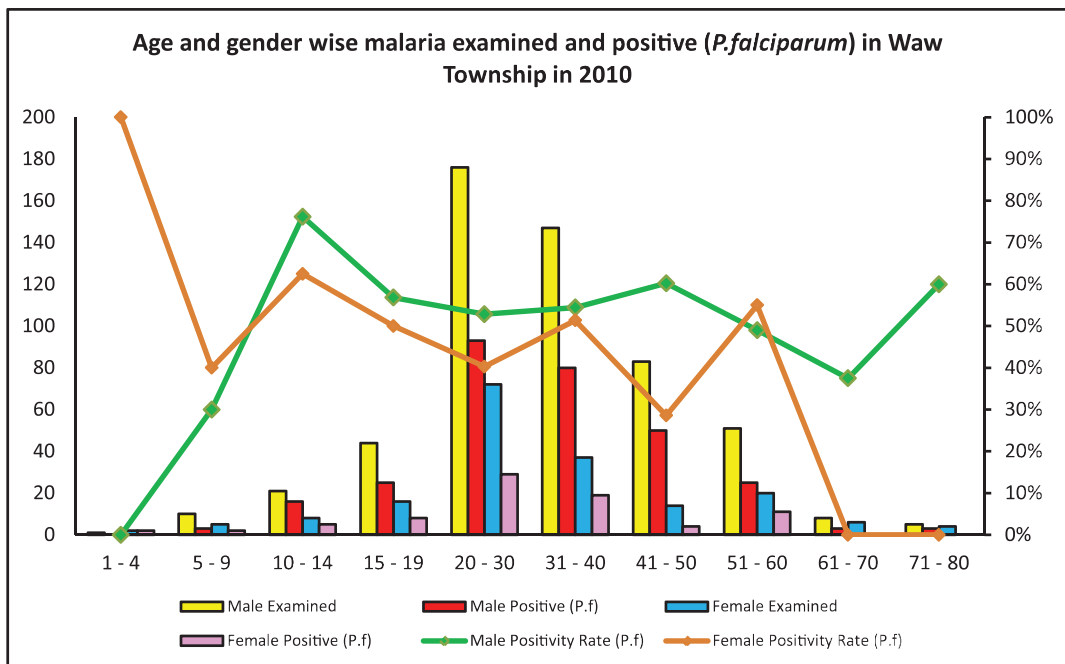
Percentage of patients approached to health facilities for malaria confirmatory diagnosis in Waw Township in 2010 and 2011



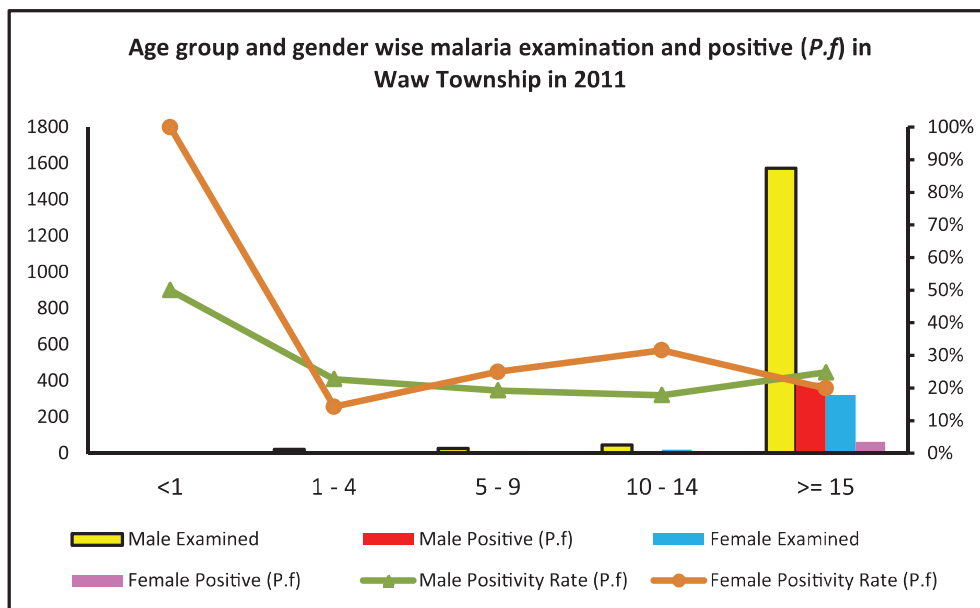
Malaria examined and positive (*P.falciparum*) by forest related activities in Waw Township in 2010



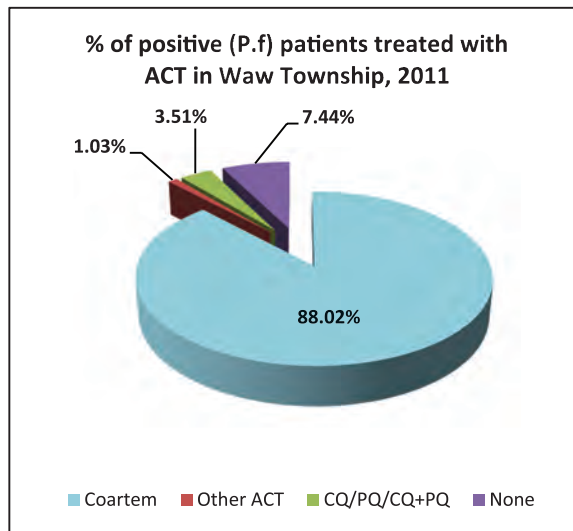
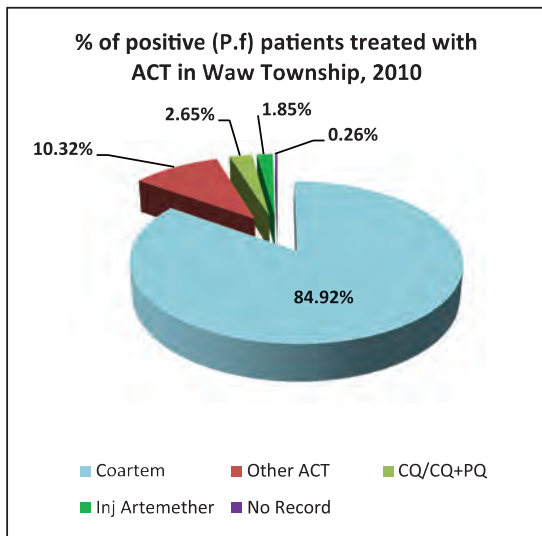
Age and Gender Wise Malaria examined and positive (*P. falciparum*) in Waw Township in 2010



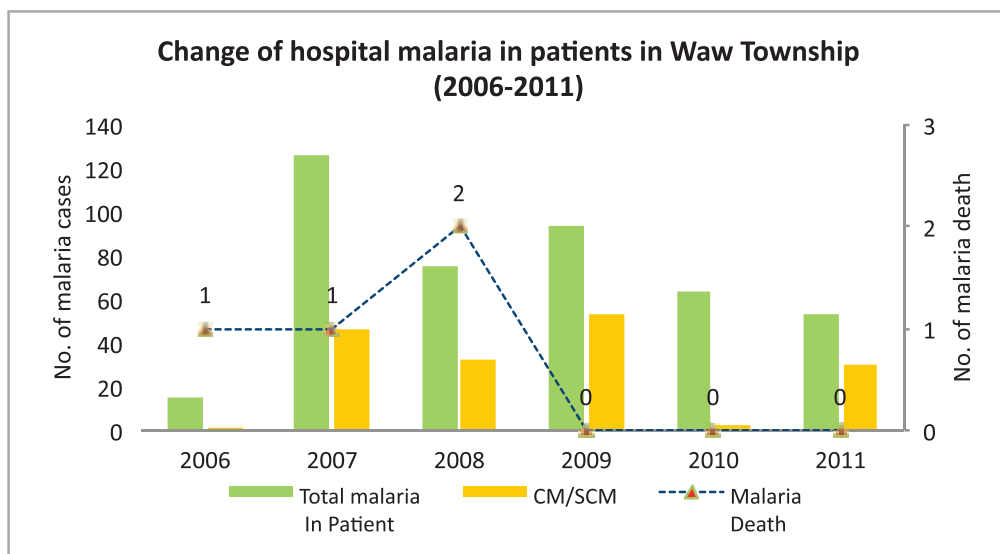
Age group and Gender Wise Malaria examined and positive (*P. falciparum*) in Waw Township in 2011



Percentage of positive patients treated with ACT in Waw Township in 2010 and 2011



Change of hospital malaria in patients in Waw Township from 2006 – 2011



Sr	Year	Total In Patient	Total malaria In Patient	CM/SCM	Malaria Death	Total Death
1	2006	616	15	1	1	1
2	2007	2377	126	46	1	5
3	2008	2202	75	32	2	14
4	2009	2326	93	53	0	14
5	2010	3089	64	2	0	10
6	2011	2632	53	30	0	11
Total		13242	426	164	4	55

Health Profile of Yaydashe Township



Area and Location*

Area	: 2618.74 Km ²
North	: Lewe Township
South	: Taungoo Township
East	: Than Daung Township
West	: Aunglan Township

Administrative Units*

Wards	: 25
Village tracts	: 37
Villages	: 253

Population (2009)*

Total:	189,019
Urban:	13,037
Rural:	175,982
Male:	91,422
Female:	97,597
Sex Ratio:	94
<5 Year:	21,121
0-14 Year:	57,479
15-49 Year:	100,968
Population Density:	72.18/Km ²

Health Facilities (2009)*

Township Hospital (25) Bedded	: 1
Yayni Paper Mill Hospital	: 1
Station Hospital	: 2
Maternal and Child Health Centers	: 1
Rural Health Centers	: 4
Sub Health Centers	: 24
Private Clinic and Maternity	: 5

Health Man Power (2009)*

	Doctor	Nurse	HA	LHV	PHS I	PHS II	MW
Sanction	9	25	5	5	2	3	28
Appointed	8	22	4	5	2	3	21
Vacant	1	3	1	0	0	0	7
% Vacancy	11.1%	12.0%	20.0%	0.0%	0.0%	0.0%	25.0%

(HA: Health Assistant, LHV: Lady Health Visitor, PHS I: Public Health Supervisor, MW: Mid Wife)

Health Man Power (Volunteer) (2009)*

	Category of Volunteer Health Workers		
	CHW	AMW	TTBA
Trained	233	246	189
Functioning	155	171	100
% of Functioning	66.5%	69.5%	52.9%

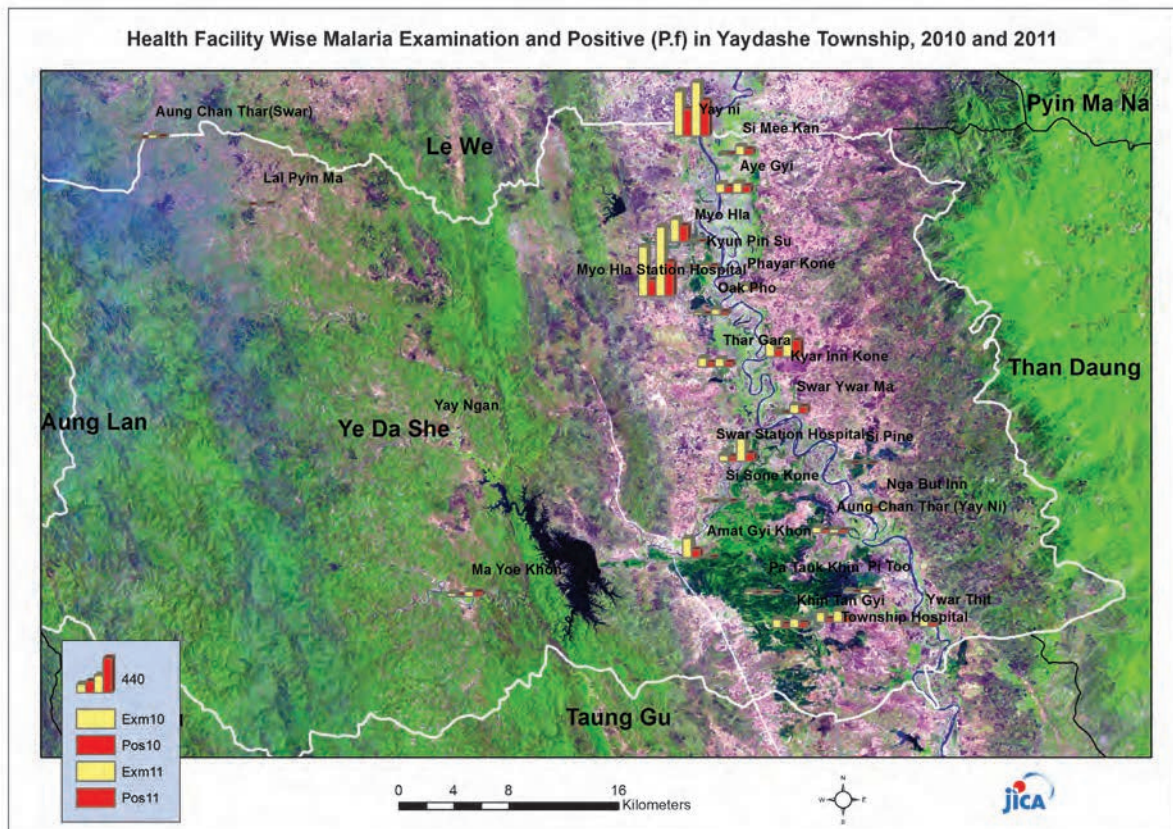
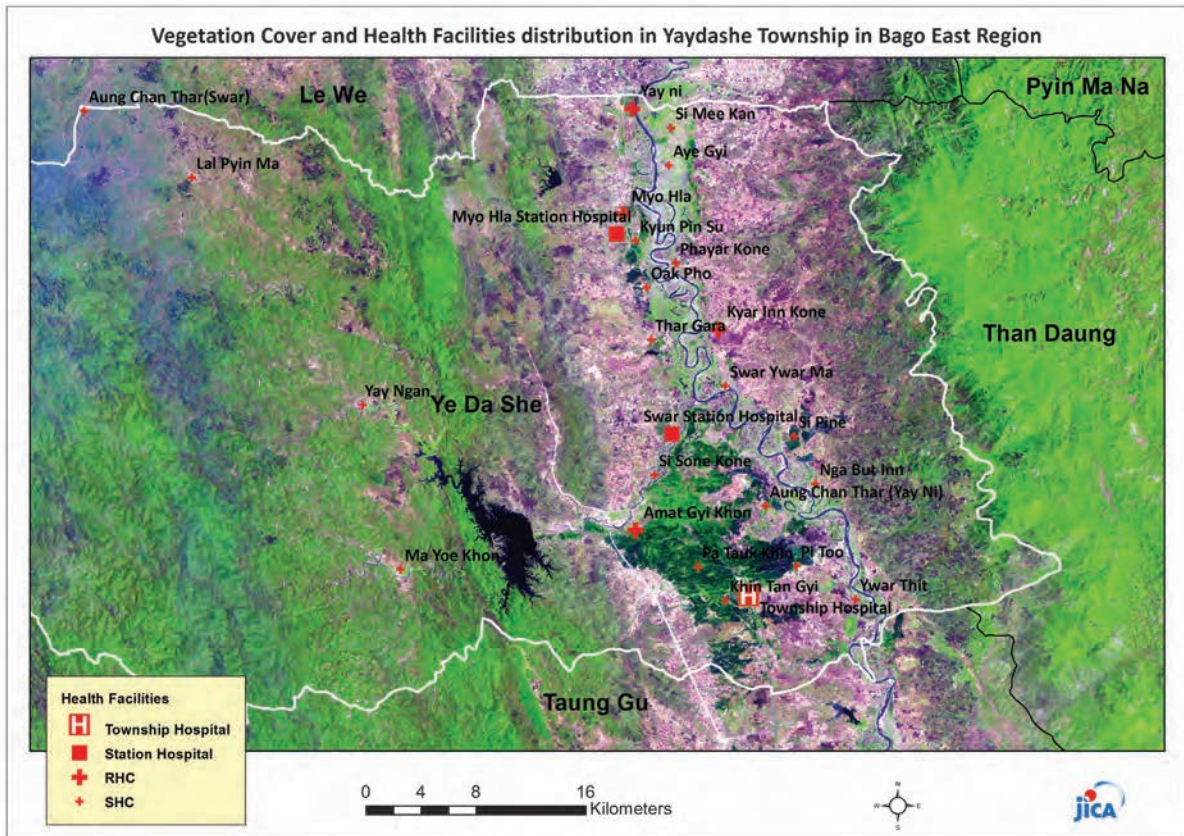
(CHW: Community Health Worker, AMW: Auxiliary Mid Wife, TTBA: Trained Traditional Birth Attendant)

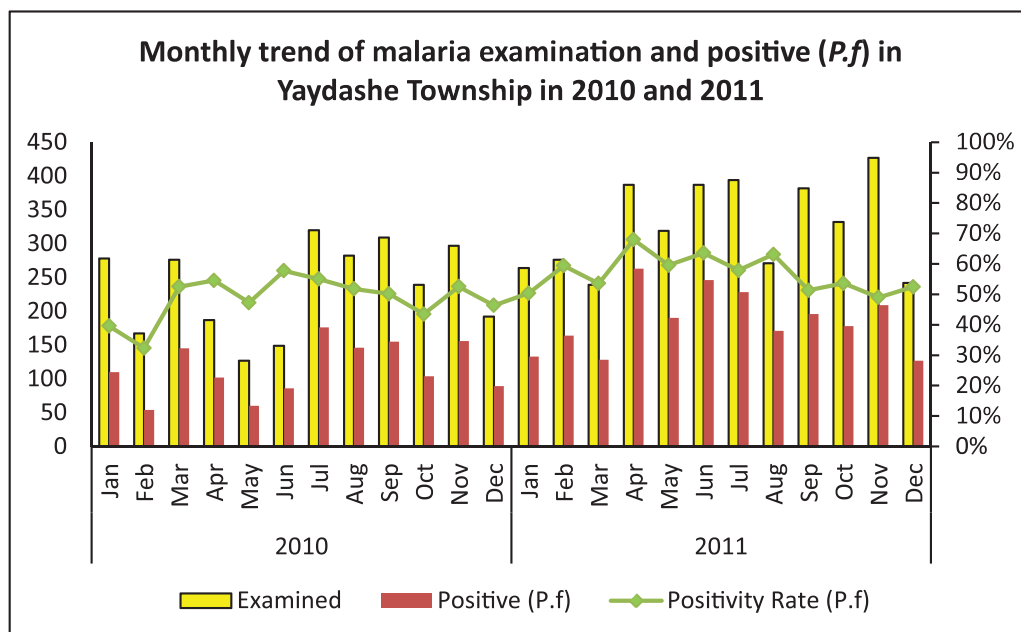
Common Diseases under National Surveillance (2009)*

Diseases	Morbidity	Mortality
Malaria	1825.21	4.76
ARI <5	5354.86	14.2
Diarrhea	947.52	1.59
Dysentery	249.18	0
TB(Sputum+)	26.45	0
Snake Bite	33.33	1.59

(Per 100,000 Populations)

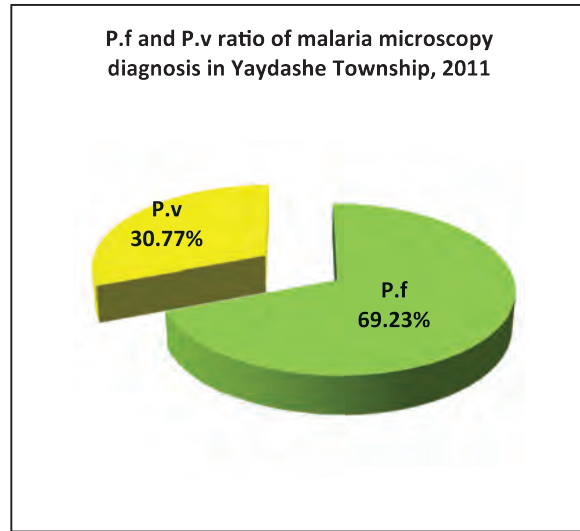
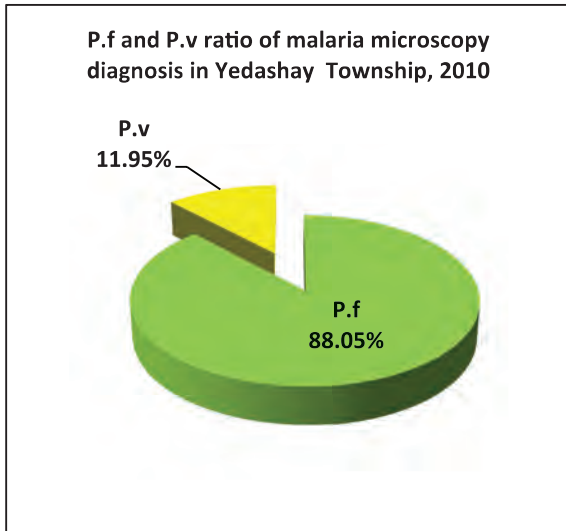
* The data source is Health Profile of BagoRegion East (2009) from Department of Health Planning.



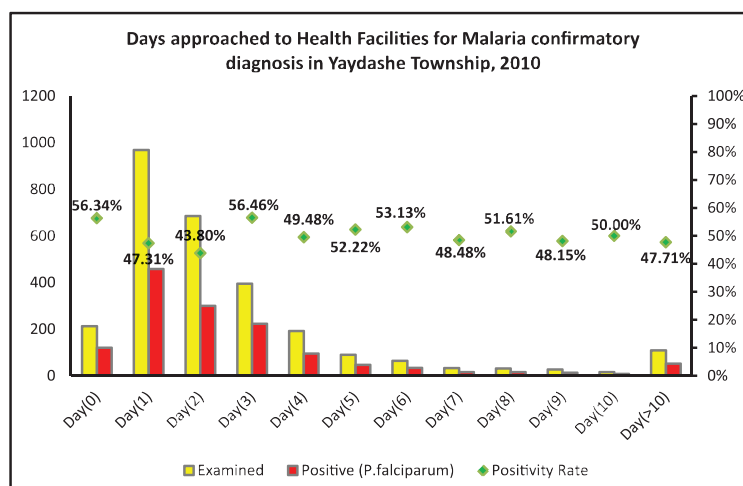
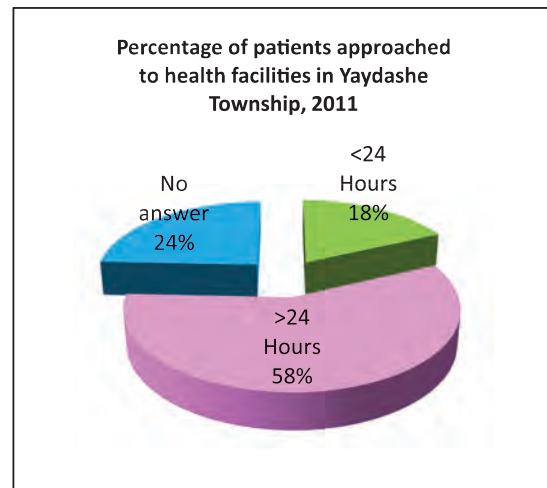
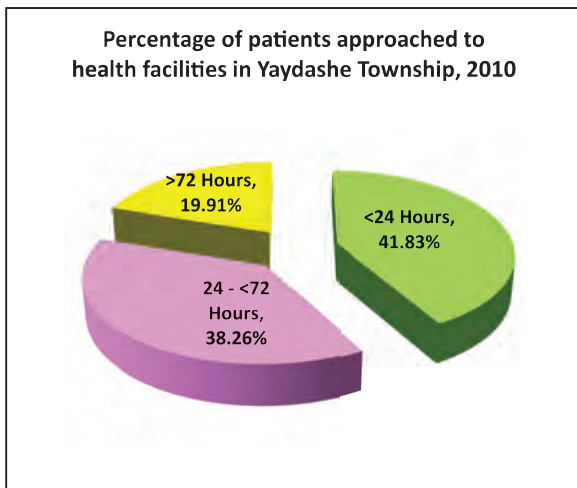
Monthly Trend Malaria examined and positive (P.f) in Yaydashe Township in 2010 and 2011


Month	2010			2011		
	Examined	Positive (P.f)	Positivity rate (P.f)	Examined	Positive (P.f)	Positivity rate (P.f)
Jan	278	110	39.57%	264	133	50.38%
Feb	167	54	32.34%	276	164	59.42%
Mar	276	145	52.54%	239	128	53.56%
Apr	187	102	54.55%	387	263	67.96%
May	127	60	47.24%	319	190	59.56%
Jun	149	86	57.72%	387	246	63.57%
Jul	320	176	55.00%	394	228	57.87%
Aug	282	146	51.77%	271	171	63.10%
Sep	309	155	50.16%	382	196	51.31%
Oct	239	104	43.51%	332	178	53.61%
Nov	297	156	52.53%	427	209	48.95%
Dec	192	89	46.35%	242	127	52.48%
Total	2,823	1,383	48.99%	3,920	2,233	56.96%

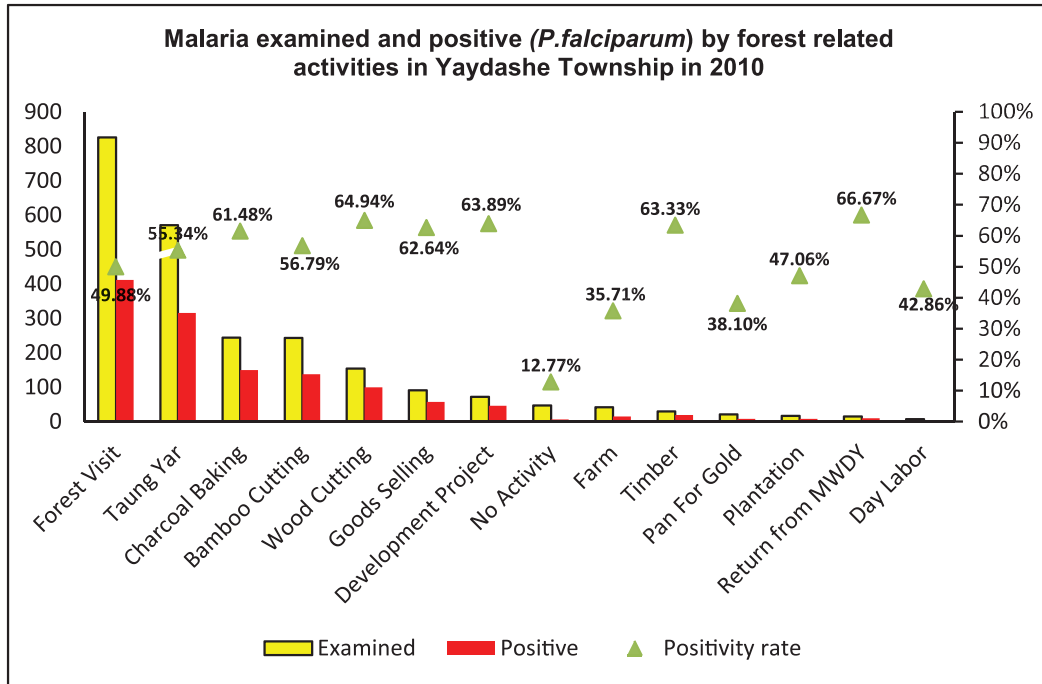
P.f and P.v ratio of microscopy diagnosis in Yaydashe Township, 2010 and 2011



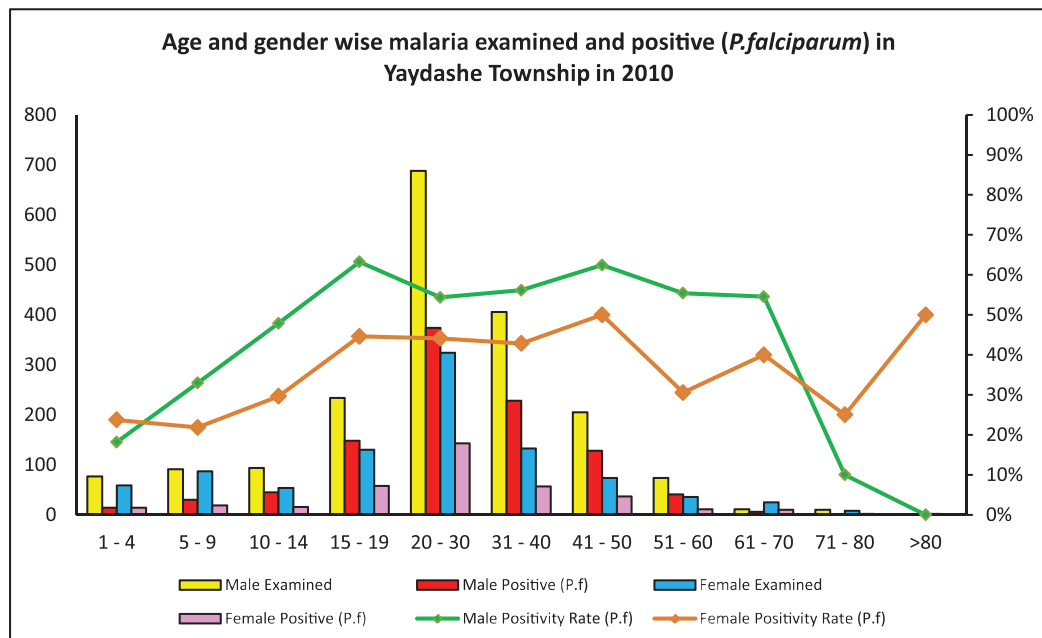
Percentage of patients approached to health facilities for malaria confirmatory diagnosis in Yaydashe Township in 2010 and 2011



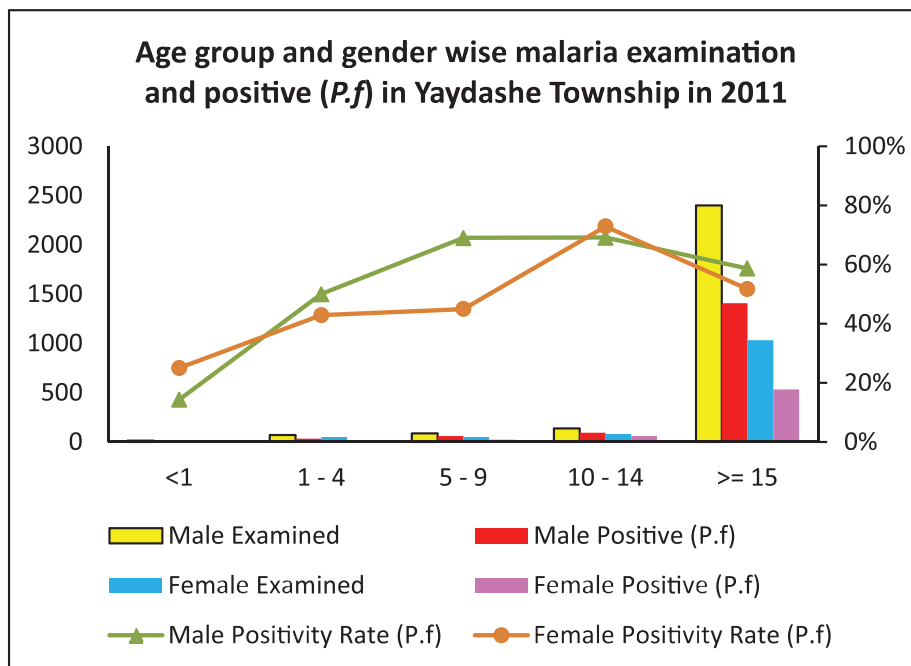
Malaria examined and positive (*P.falciparum*) by forest related activities in Yaydashe Township in 2010



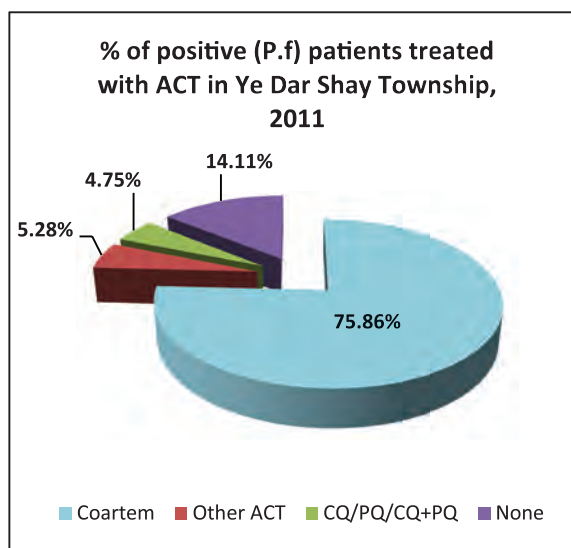
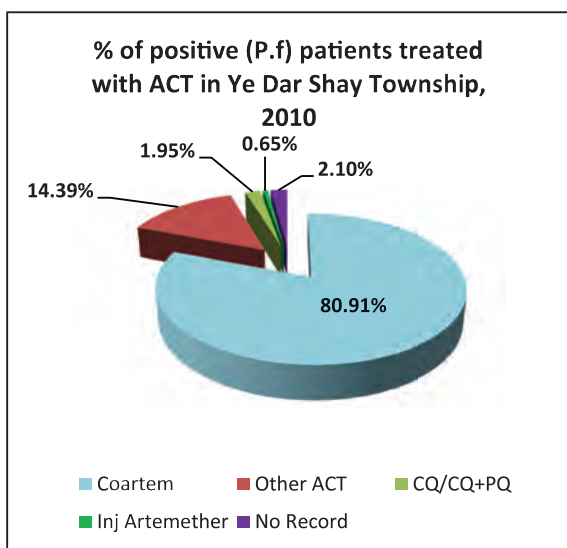
Age and Gender Wise Malaria examined and positive (*P. falciparum*) in Yaydashe Township in 2010



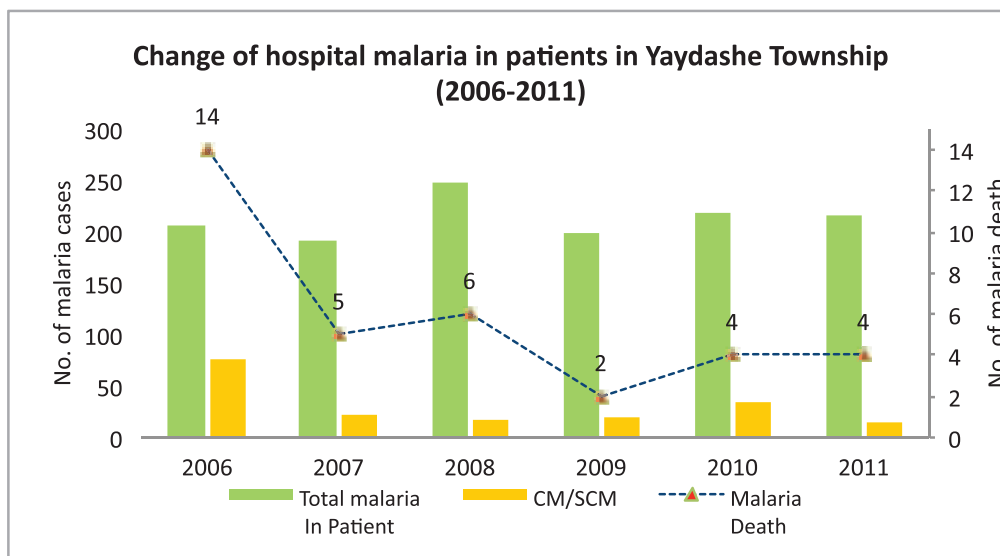
Age group and Gender Wise Malaria examined and positive (*P. falciparum*) in Yaydashe Township in 2011



Percentage of positive patients treated with ACT in Yaydashe Township in 2010 and 2011



Change of hospital malaria in patients in Yaydashe Township from 2006 – 2011



Sr	Year	Total In Patient	Total malaria In Patient	CM/SCM	Malaria Death	Total Death
1	2006	3,938	205	75	14	82
2	2007	4,399	192	22	5	79
3	2008	5,209	248	17	6	70
4	2009	3,702	200	19	2	24
5	2010	3,917	218	34	4	29
6	2011	5,290	217	14	4	22
Total		26,455	1,280	181	35	306