

Health Profile of Kyauktagar Township



Area and Location*

Area : 2831.02 Km²
 North : Phyu Township
 South : Daik U Township
 East : Kyaukkyi Township
 West : Oak Pho Township

Administrative Units*

Wards : 13
 Village tracts : 47
 Villages : 283

Population (2009)*

Total : 251,634
 Urban : 31,890
 Rural : 219,744
 Male : 123,501
 Female : 128,133
 Sex Ratio : 96
 <5 Year : 27,429
 0-14 Year : 82,913
 15-49 Year : 133,614
 Population Density : 88.88/ Km²

Health Facilities (2009)*

Township Hospital (25) Bedded: 1
 Station Hospital (25) bedded : 2
 Maternal and Child Health Centers : 1
 Rural Health Centers : 6
 Sub Health Centers : 32
 Private Clinics and Maternity : 12

Health Man Power (2009)*

	Doctor	Nurse	HA	LHV	PHS I	PHS II	MW
Sanction	8	15	7	8	2	7	39
Appointed	8	8	7	8	2	2	34
Vacant	0	7	0	0	0	5	5
% Vacancy	0.0%	46.7%	0.0%	0.0%	0.0%	71.4%	12.8%

(HA: Health Assistant, LHV: Lady Health Visitor, PHS I: Public Health Supervisor, MW: Mid Wife)

Health Man Power (Volunteer) (2009)*

	Category of Volunteer Health Workers		
	CHW	AMW	TTBA
Trained	166	131	36
Functioning	119	103	35
% of Functioning	71.7%	78.6%	97.2%

(CHW: Community Health Worker, AMW: Auxiliary Mid Wife, TTBA: Trained Traditional Birth Attendant)

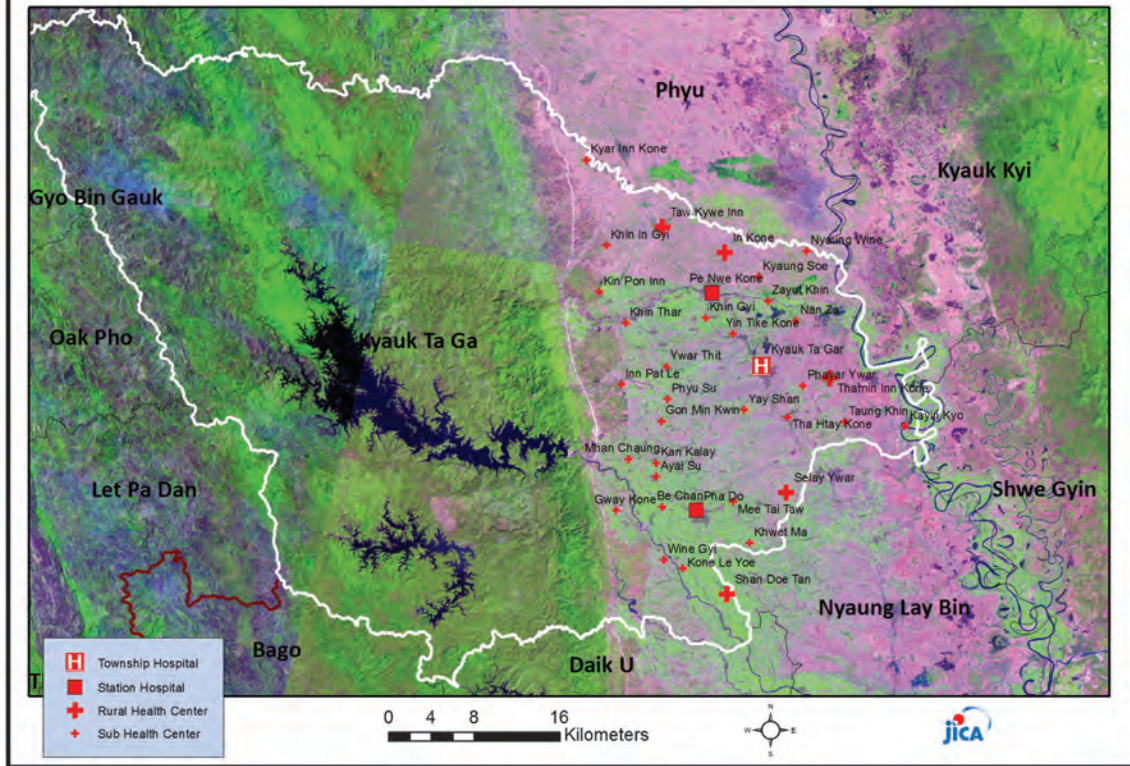
Common Diseases under National Surveillance (2009)*

Diseases	Morbidity	Mortality
Malaria	1773.61	1.99
ARI <5	4531.70	7.29
Diarrhea	869.91	0.40
Dysentery	251.19	0
TB(Sputum+)	12.32	0
Snake Bite	18.28	1.19

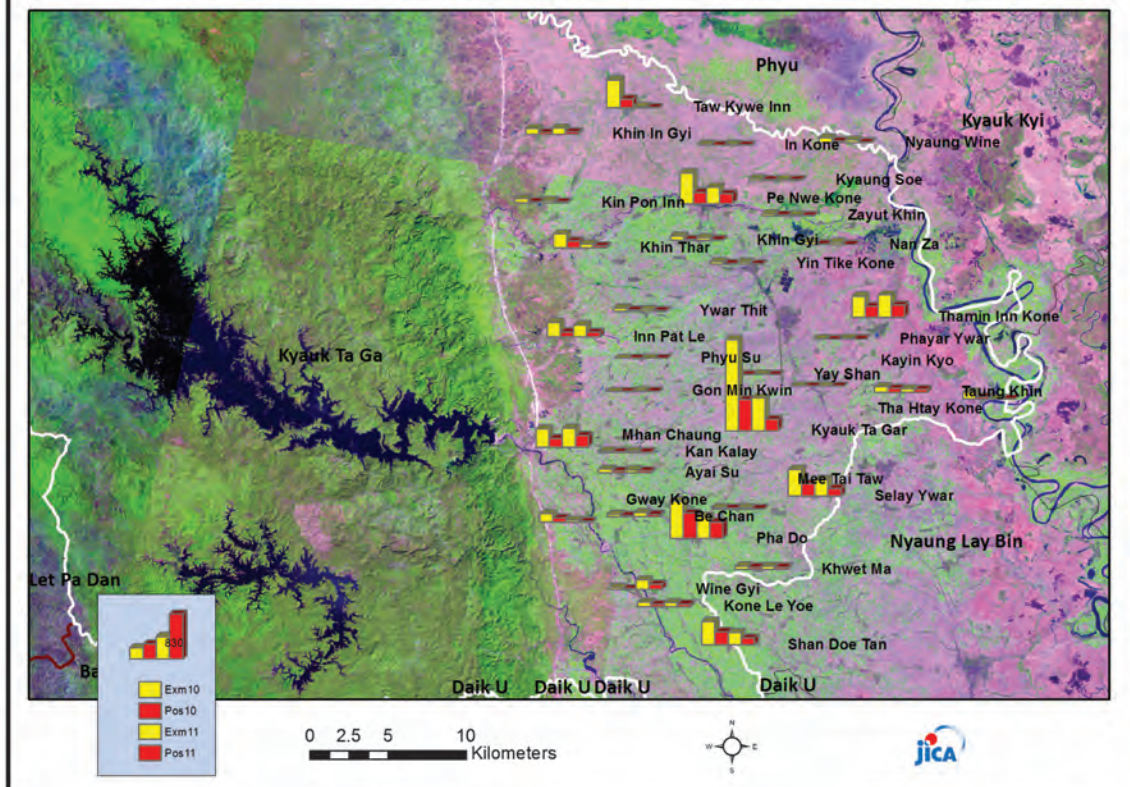
(Per 100,000 Populations)

* The data source is Health Profile of BagoRegion East (2009) from Department of Health Planning.

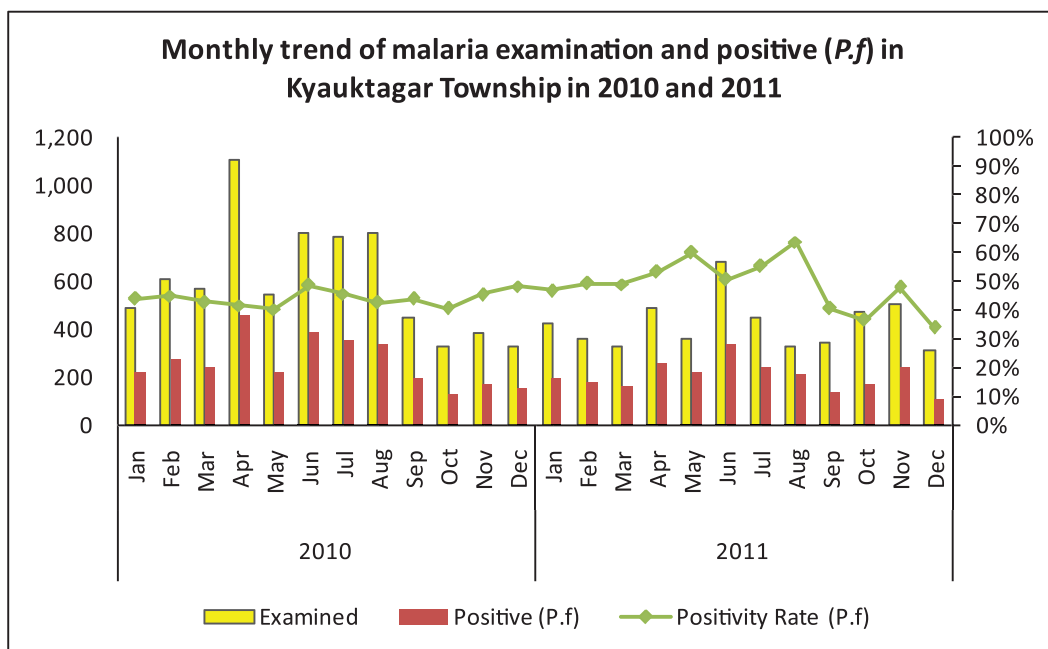
Vegetation cover and Health Facilities distribution of Kyauktaga Township in Bago East Region



Health Facilities wise Malaria Examination and Positive (P.f) in Kyauktaga Township, 2010 and 2011

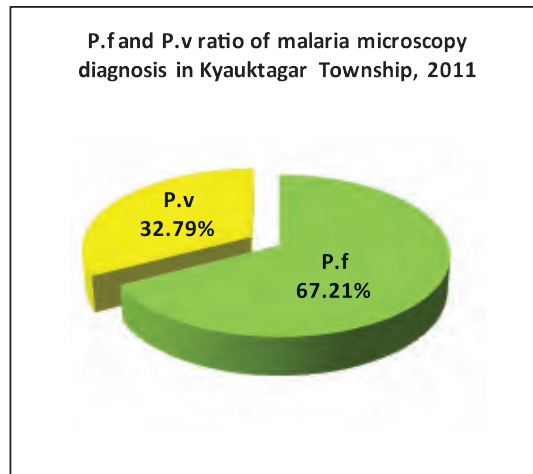
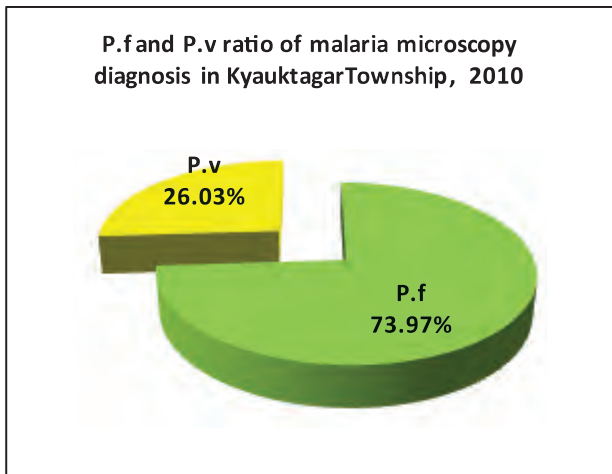


Monthly trend of Malaria examined and positive (P.f) in Kyauktagar Township in 2010 and 2011

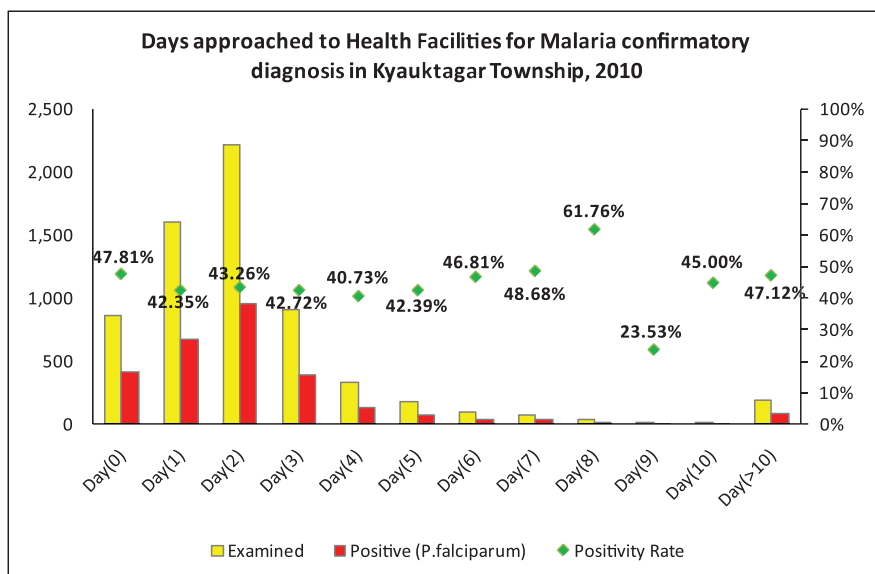
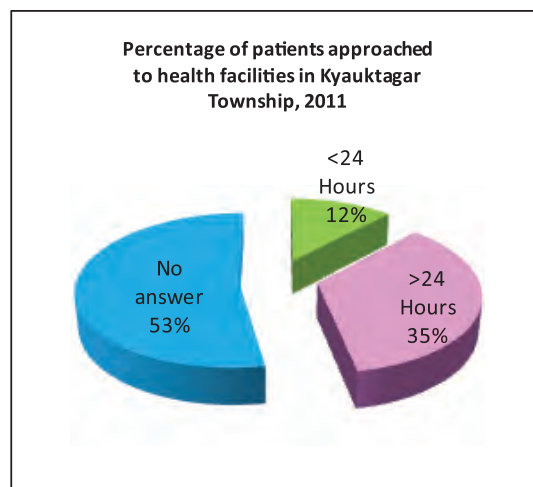
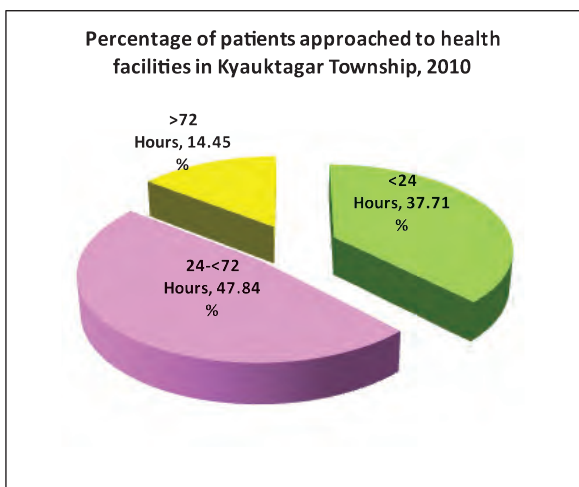


Month	2010			2011		
	Examined	Positive (P.f)	Positivity rate (P.f)	Examined	Positive (P.f)	Positivity rate (P.f)
Jan	491	216	43.99%	421	197	46.79%
Feb	613	276	45.02%	359	177	49.30%
Mar	565	242	42.83%	329	161	48.94%
Apr	1110	461	41.53%	488	260	53.28%
May	542	218	40.22%	362	217	59.94%
Jun	805	391	48.57%	678	343	50.59%
Jul	782	357	45.65%	448	247	55.13%
Aug	801	341	42.57%	331	211	63.75%
Sep	450	198	44.00%	348	141	40.52%
Oct	332	135	40.66%	475	173	36.42%
Nov	381	173	45.41%	508	243	47.83%
Dec	329	159	48.33%	314	106	33.76%
Total	7,201	3,167	43.98%	5,061	2,476	48.92%

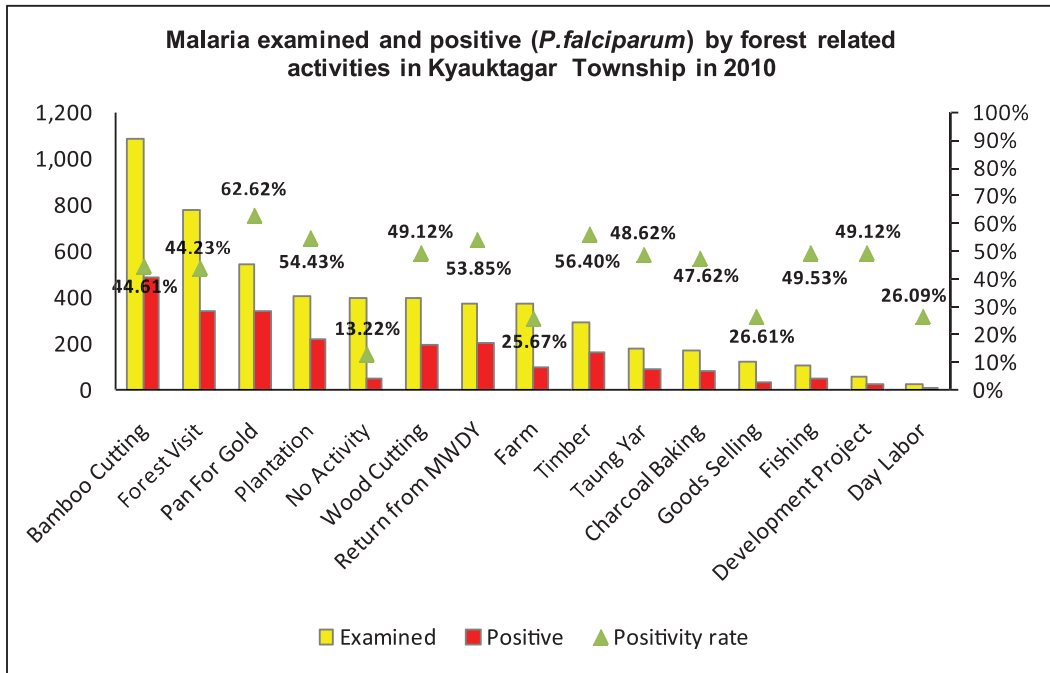
P.f and P.v ratio of microscopy diagnosis in Kyauktagar Township, 2010 and 2011



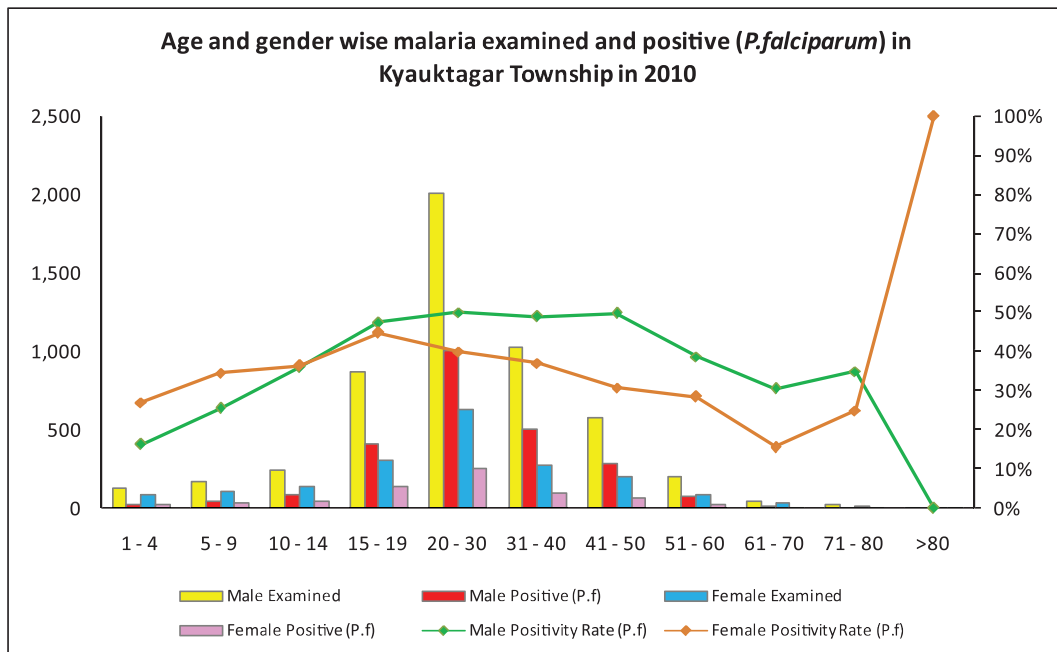
Percentage of patients approached to health facilities for malaria confirmatory diagnosis in Kyauktagar Township in 2010 and 2011



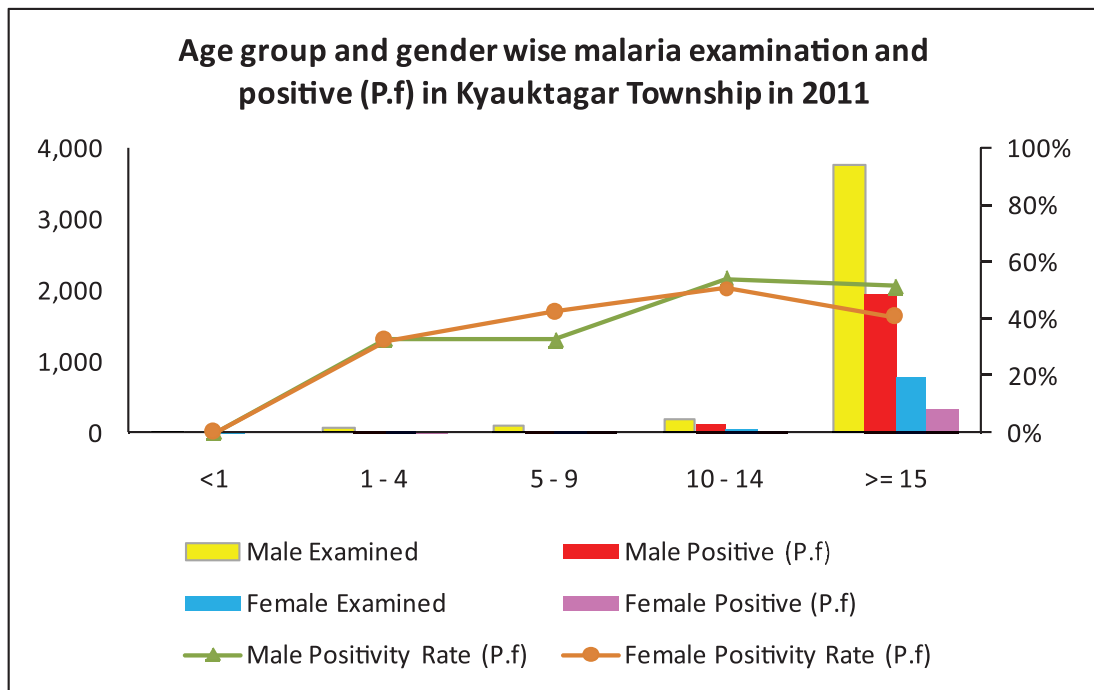
Malaria examined and positive (*P.falciparum*) by forest related activities in Kyauktagar Township in 2010



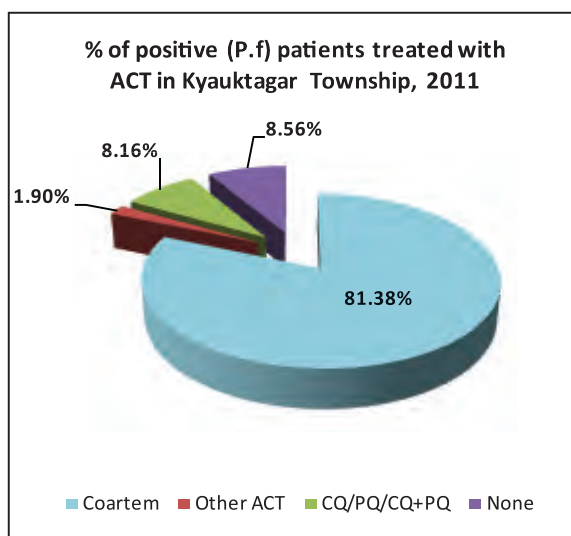
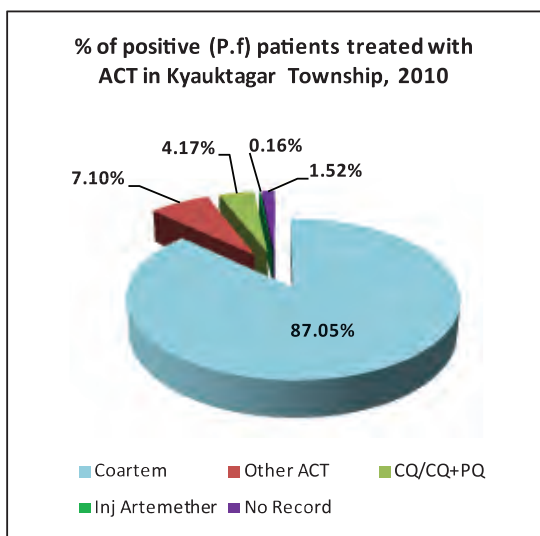
Age and Gender Wise Malaria examined and positive (*P.falciparum*) in Kyauktagar Township in 2010



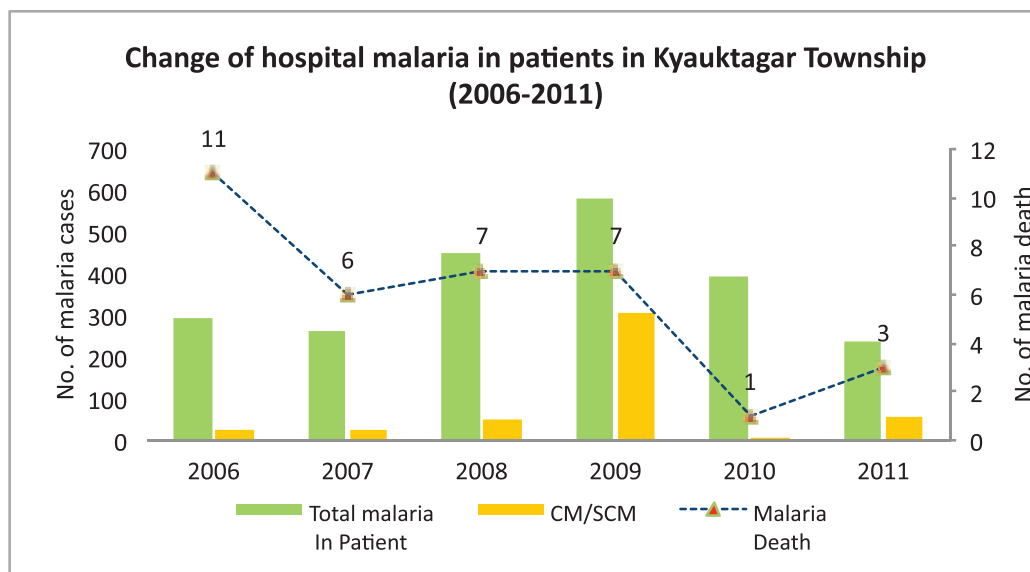
Age Group and Gender Wise Malaria examined and positive (*P.falciparum*) in Kyauktagar Township in 2011



Percentage of positive (*P.f*) patients teated with ACT in Kyauktagar Township in 2010 and 2011



Change of hospital malaria in patients in Kyauktagar Township from 2006-2011



Sr	Year	Total In Patient	Total malaria In Patient	CM/SCM	Malaria Death	Total Death
1	2006	3585	294	22	11	54
2	2007	4423	261	27	6	53
3	2008	5434	449	52	7	65
4	2009	6611	583	303	7	60
5	2010	5487	394	8	1	29
6	2011	4743	235	57	3	43
Total		30283	2216	469	35	304

Health Profile of Nyaunglebin Township



Area and Location*

Area	:	732.56 Km ²
North	:	KyauktagarTownship
South	:	Daik_UTownship
East	:	ShwegyinTownship
West	:	Daik_U Township

Administrative Units*

Wards	:	11
Village tracts	:	49
Villages	:	152

Population (2009)*

Total:	234,349
Urban:	35,668
Rural:	198,681
Male:	114,085
Female:	120,264
Sex Ratio:	95
<5 Year:	24,152
0-14 Year:	73,753
15-49 Year:	124,373
Population Density:	319.9/Km ²

Health Facilities (2009)*

TownshipHospital (25) Bedded	:	1
Station Hospital	:	3
Maternal and Child Health Centers	:	2
Rural Health Centers	:	5
Sub Health Centers	:	33
Private Clinics and Maternity	:	43

Health Man Power (2009)*

	Doctor	Nurse	HA	LHV	PHS I	PHS II	MW
Sanction	12	29	9	8	2	12	45
Appointed	10	9	9	8	2	10	41
Vacant	2	20	0	0	0	2	4
% Vacancy	16.7%	69.0%	0.0%	0.0%	0.0%	16.7%	8.9%

(HA: Health Assistant, LHV: Lady Health Visitor, PHS I: Public Health Supervisor, MW: Mid Wife)

Health Man Power (Volunteer) (2009)*

	Category of Volunteer Health Workers		
	CHW	AMW	TTBA
Trained	212	58	190
Functioning	148	46	82
% of Functioning	69.8%	79.3%	43.2%

(CHW: Community Health Worker, AMW: Auxiliary Mid Wife, TTBA: Trained Traditional Birth Attendant)

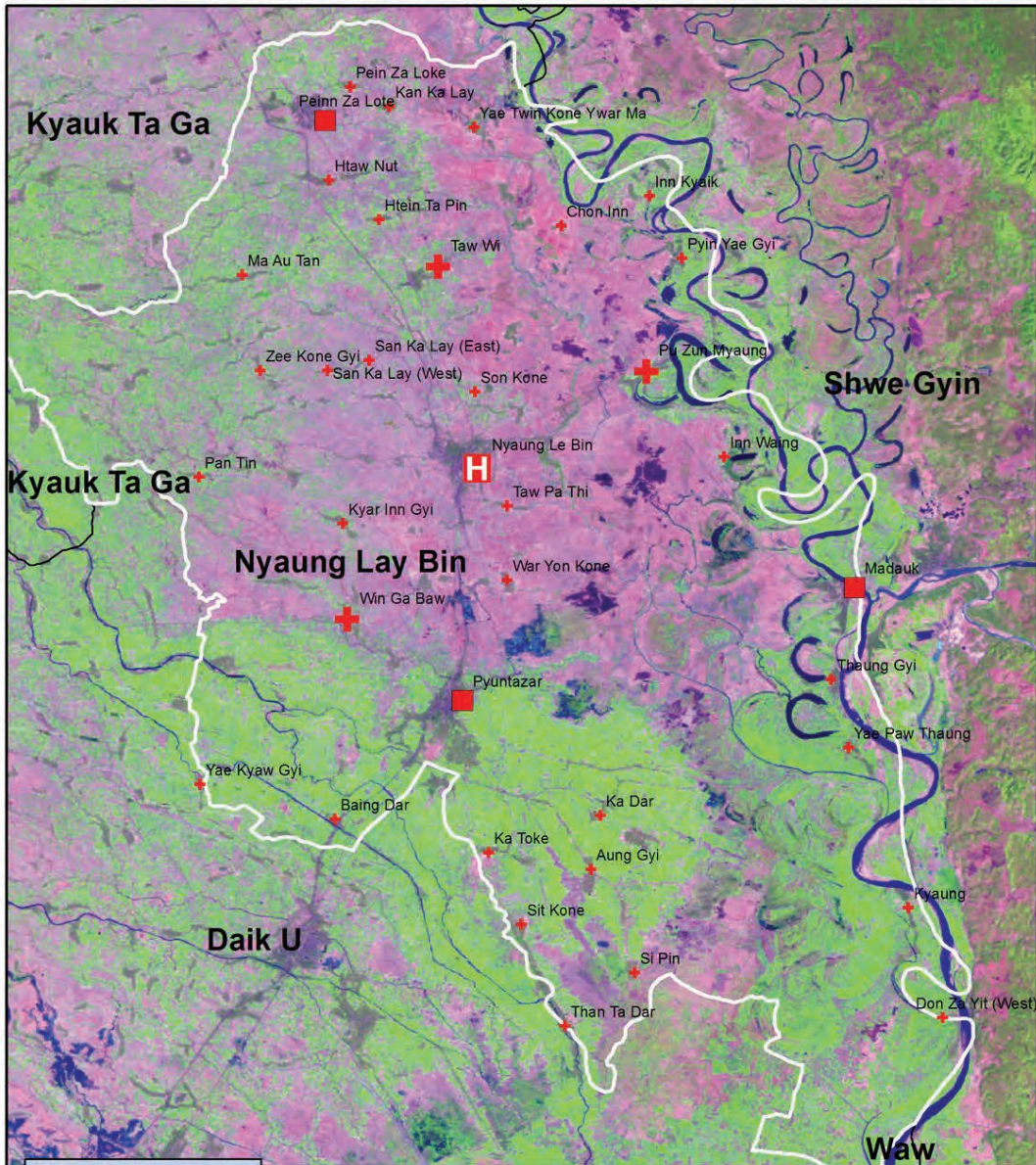
Common Diseases under National Surveillance (2009)*

Diseases	Morbidity	Mortality
Malaria	1152.98	2.56
ARI <5	1656.18	0
Diarrhea	363.56	0
Dysentery	114.79	0
TB(Sputum+)	0	0
Snake Bite	18.78	0.43

(Per 100,000 Populations)

* The data source is Health Profile of BagoRegion East (2009) from Department of Health Planning.

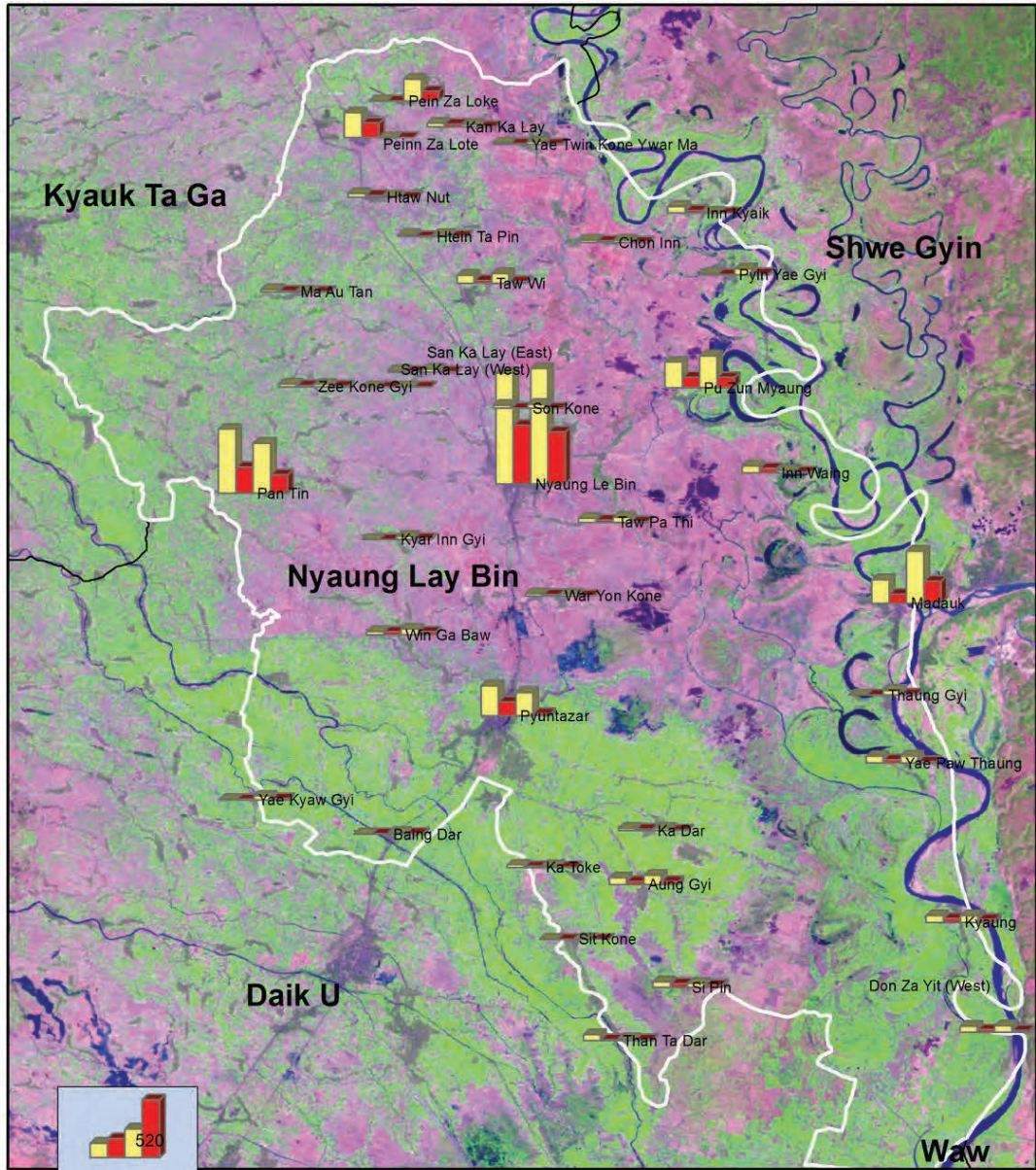
Vegetation Cover and Health Facilities distribution in Nyaunglebin Township in Bago Region East



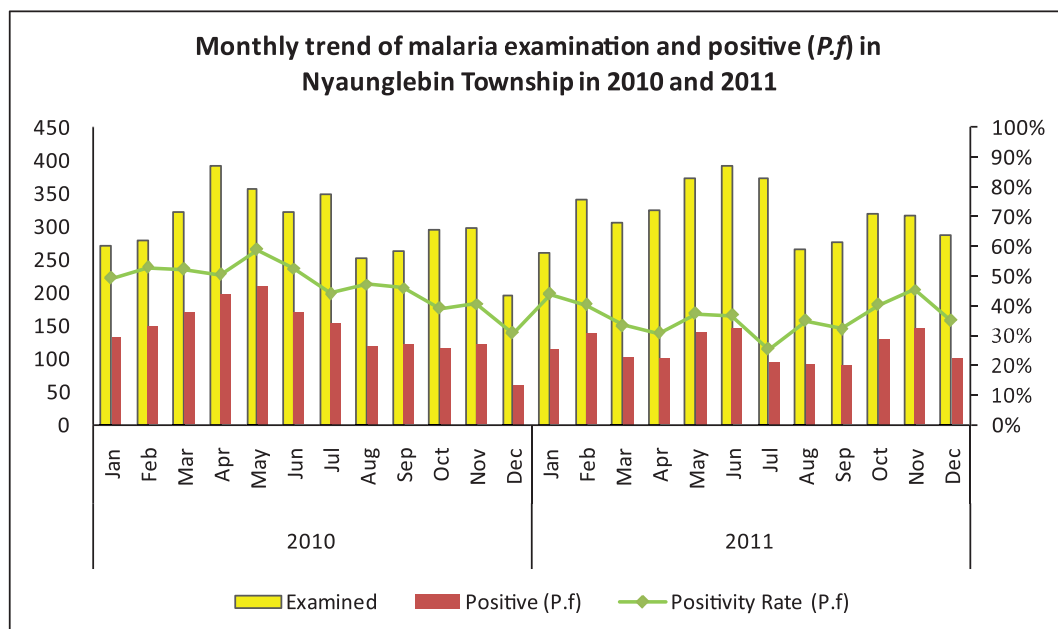
H Township Hospital
 Station Hospital
+ RHC
+ SHC



Health Facilities Wise Malaria Examination and Positive (P.f) in Nyaunglebin Township, (2010 and 2011)

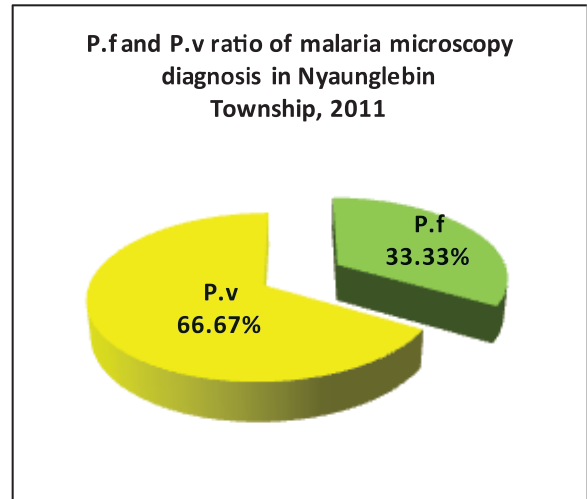
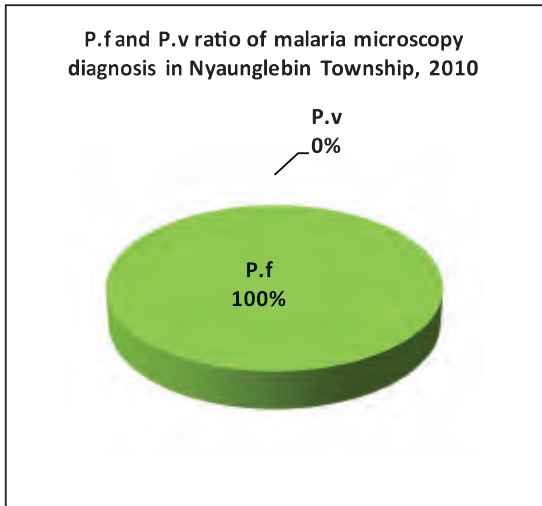


Monthly trend of malaria examined and positive (P.f) in Nyaunglebin Township in 2010 and 2011

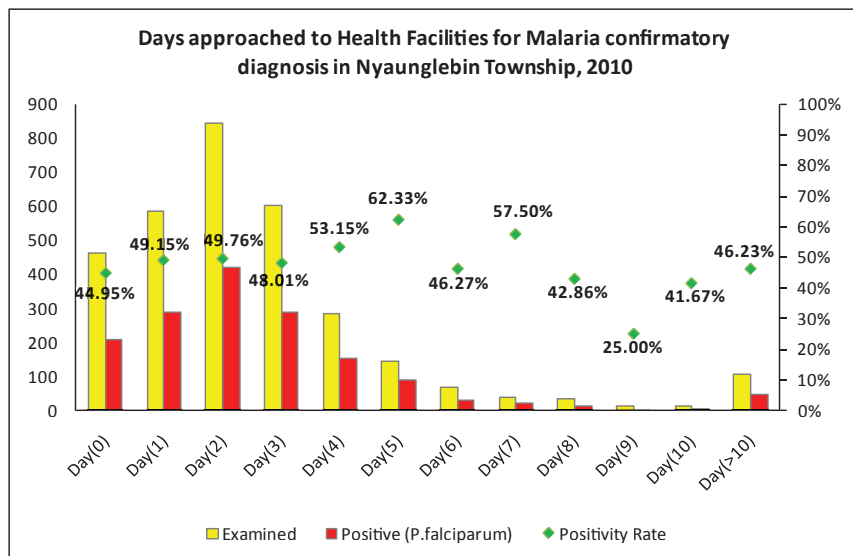
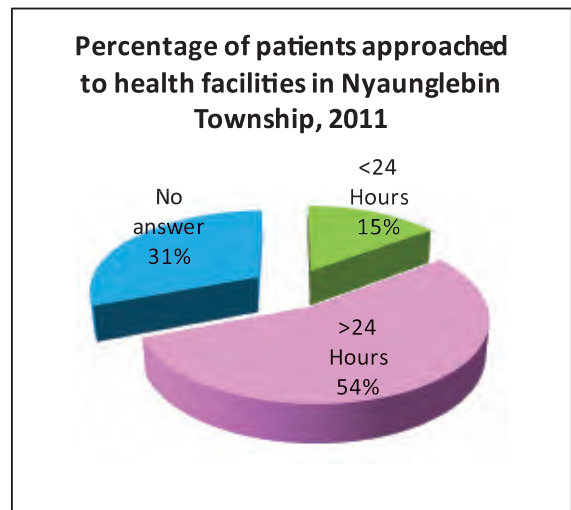
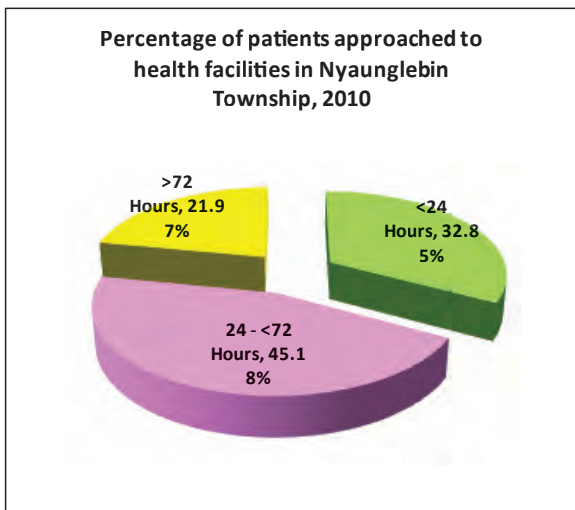


Month	2010			2011		
	Examined	Positive (P.f)	Positivity rate (P.f)	Examined	Positive (P.f)	Positivity rate (P.f)
Jan	270	133	49.26%	260	114	43.85%
Feb	279	148	53.05%	341	138	40.47%
Mar	323	169	52.32%	305	102	33.44%
Apr	391	198	50.64%	325	100	30.77%
May	356	210	58.99%	374	140	37.43%
Jun	323	170	52.63%	393	145	36.90%
Jul	349	154	44.13%	373	95	25.47%
Aug	252	119	47.22%	265	93	35.09%
Sep	263	121	46.01%	276	89	32.25%
Oct	296	116	39.19%	319	129	40.44%
Nov	297	121	40.74%	318	145	45.60%
Dec	197	61	30.96%	288	101	35.07%
Total	3,596	1,720	47.83%	3,837	1,391	36.25%

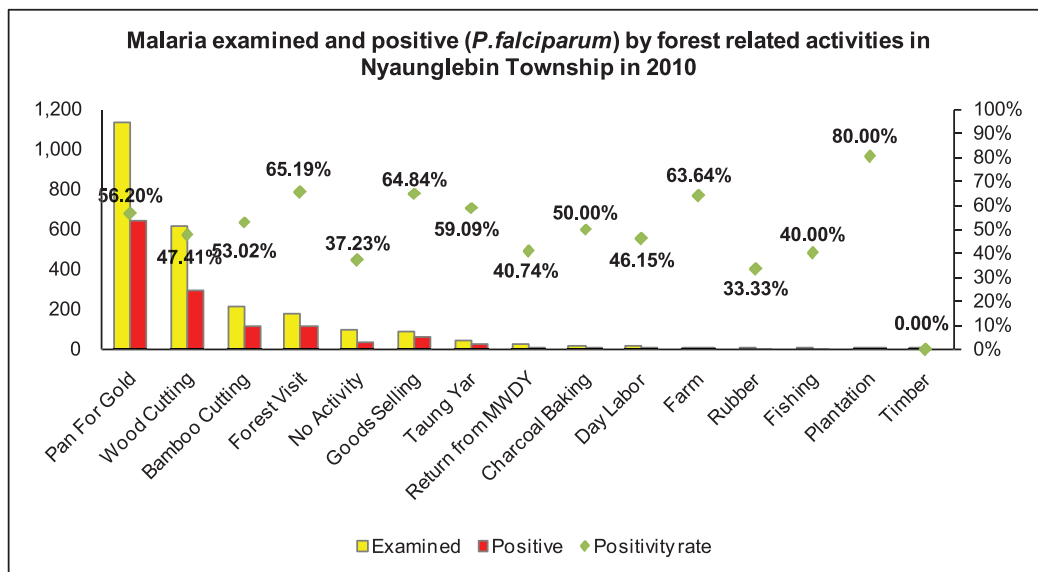
P.f and P.v ratio of microscopy diagnosis in Nyaunglebin Township, 2010 and 2011



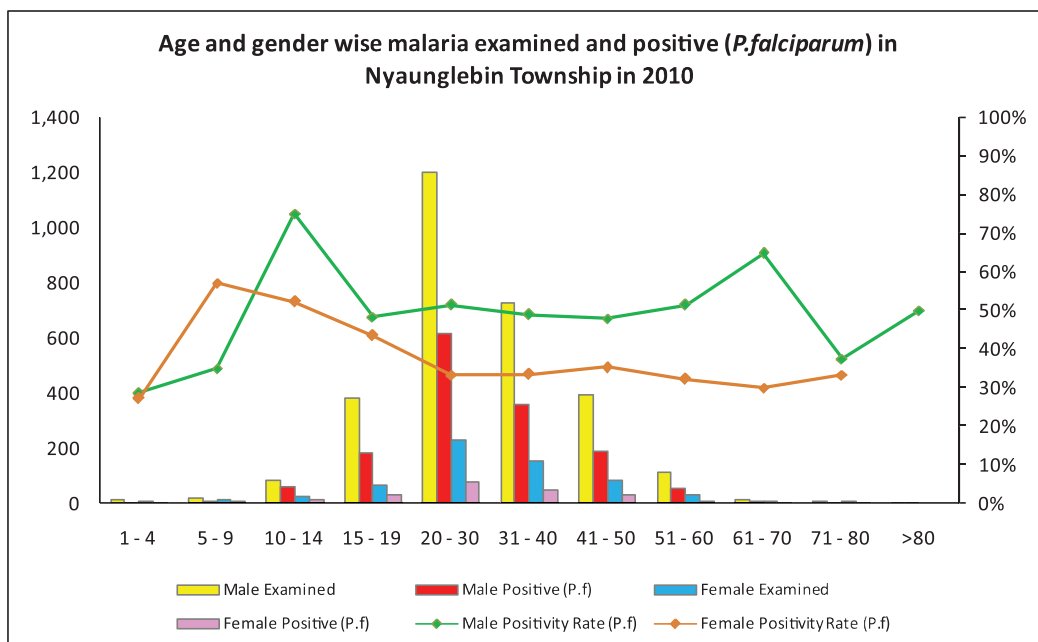
Percentage of patients approached to health facilities for malaria confirmatory diagnosis in Nyaunglebin Township in 2010 and 2011



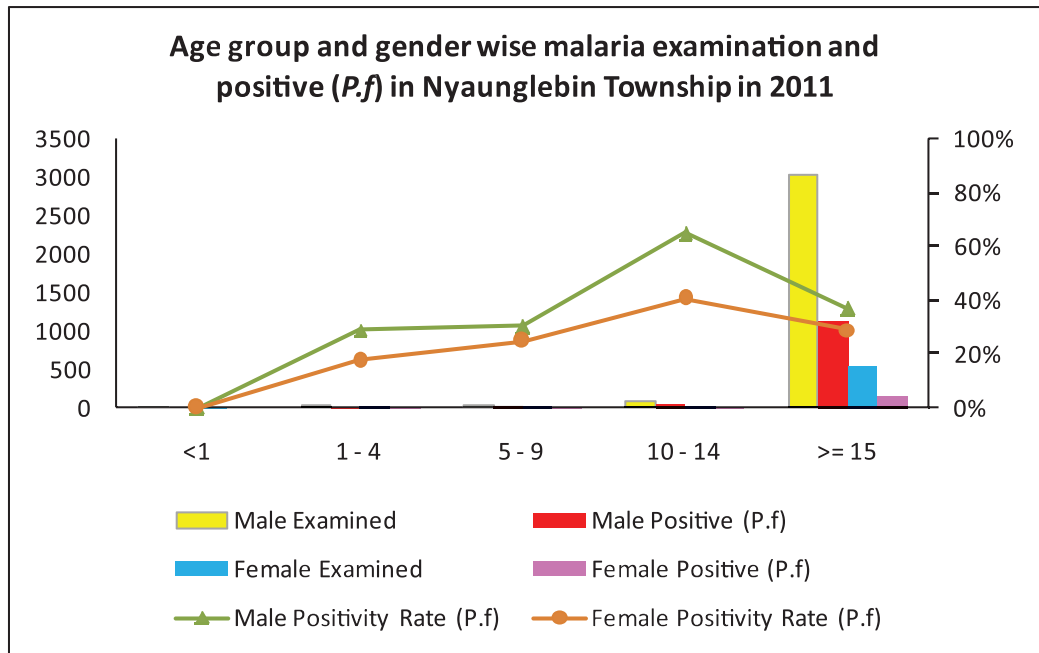
Malaria examined and positive (*P.falciparum*) by forest related activities in Nyaunglebin Township in 2010



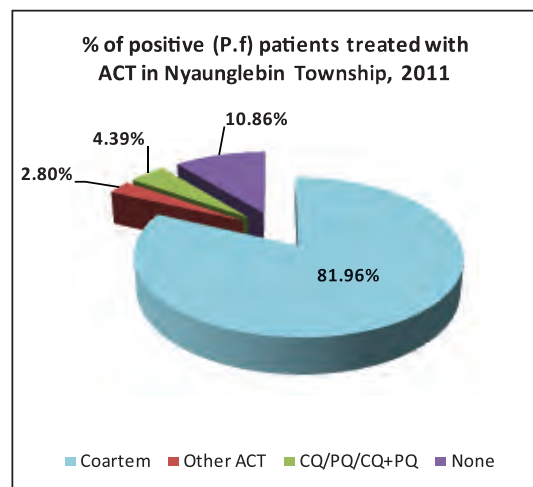
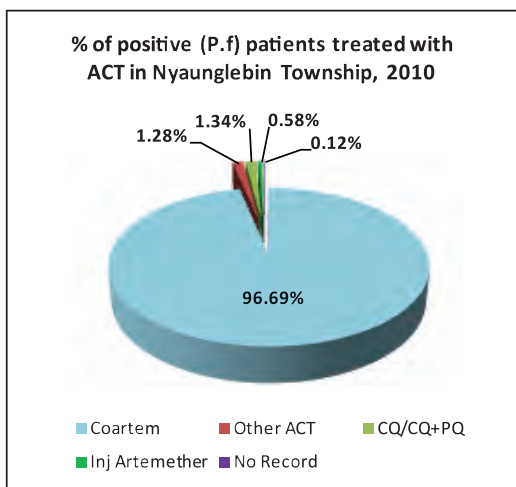
Age and Gender Wise Malaria examined and positive (*P. falciparum*) in Nyaunglebin Township in 2010



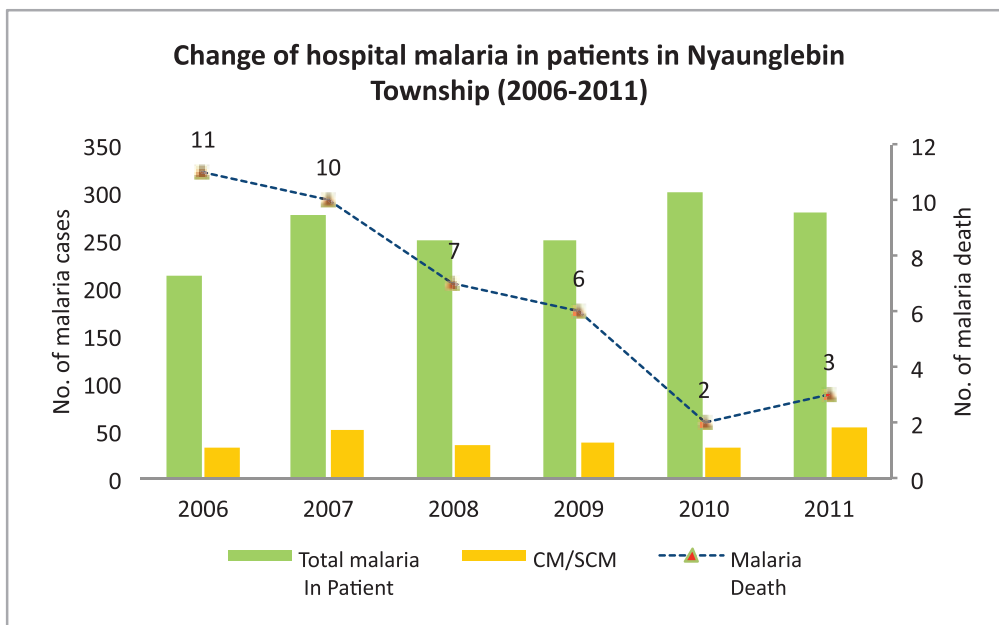
Age group and Gender Wise Malaria examined and positive (*P. falciparum*) in Nyaunglebin Township in 2011



Percentage of positive patients (*P.f*) treated with ACT in Nyaunglebin Township in 2010 and 2011



Change of hospital malaria in patients in Nyaunglebin Township from 2006 – 2011



Sr	Year	Total In Patient	Total malaria In Patient	CM/SCM	Malaria Death	Total Death
1	2006	3795	214	32	11	80
2	2007	4810	277	52	10	110
3	2008	3999	250	35	7	87
4	2009	4886	249	39	6	44
5	2010	5164	301	33	2	38
6	2011	5595	280	54	3	49
Total		28249	1571	245	39	408

Health Profile of OakTwin Township



Area and Location*

Area : 1423.59 Km²
 North : Taungoo Township
 South : Phyu Township
 East : Htantabin Township
 West : Pauk Khaung Township

Administrative Units*

Wards : 6
 Village tracts : 41
 Villages : 215

Population (2009)*

Total: 153,687
 Urban: 12,158
 Rural: 141,529
 Male: 74,706
 Female: 78,981
 Sex Ratio: 95
 <5 Year: 16,395
 0-14 Year: 48,033
 15-49 Year: 81,567
 Population Density: 107.96/Km²

Health Facilities (2009)*

Township Hospital (25) Bedded : 1
 Station Hospital : 1
 Maternal and Child Health Centers : 1
 Rural Health Centers : 4
 Sub Health Centers : 24

Health Man Power (2009)*

	Doctor	Nurse	HA	LHV	PHS I	PHS II	MW
Sanction	6	10	5	5	2	2	27
Appointed	5	8	5	5	2	1	25
Vacant	1	2	0	0	0	1	2
% Vacancy	16.7%	20.0%	0.0%	0.0%	0.0%	50.0%	7.4%

(HA: Health Assistant, LHV: Lady Health Visitor, PHS I: Public Health Supervisor, MW: Mid Wife)

Health Man Power (Volunteer) (2009)*

	Category of Volunteer Health Workers		
	CHW	AMW	TTBA
Trained	155	140	20
Functioning	112	102	19
% of Functioning	72.3%	72.9%	95.0%

(CHW: Community Health Worker, AMW: Auxiliary Mid Wife, TTBA: Trained Traditional Birth Attendant)

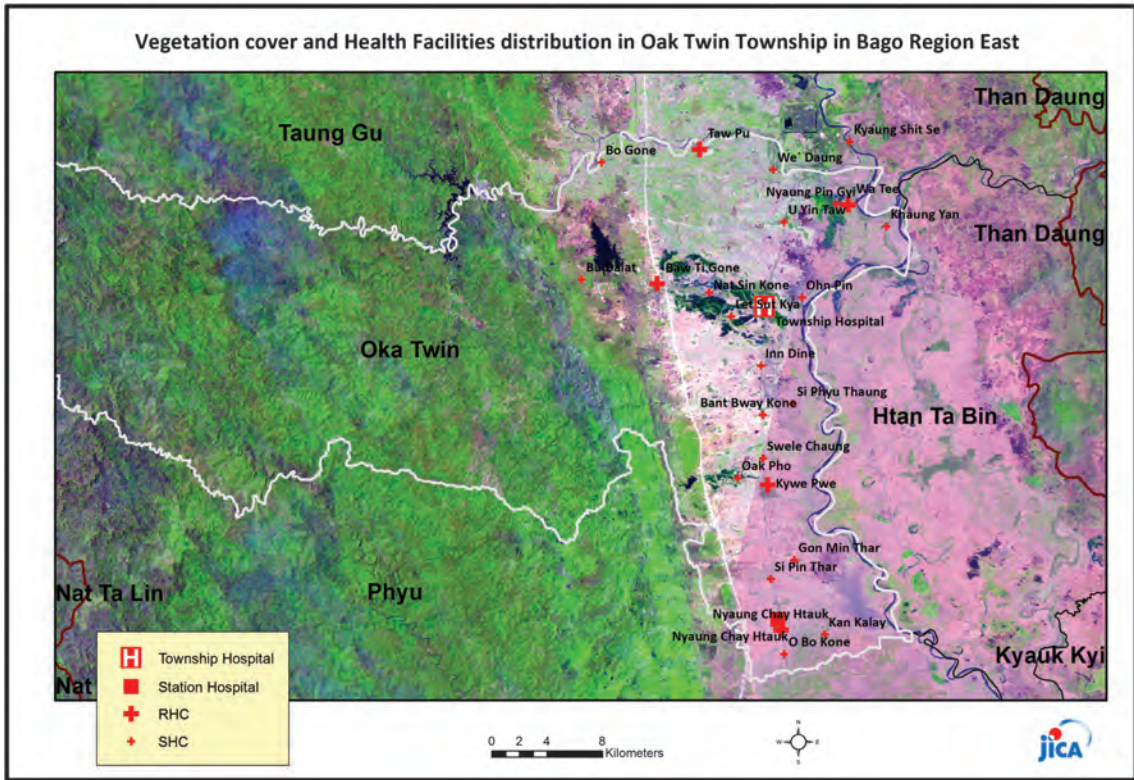
Common Diseases under National Surveillance (2009)*

Diseases	Morbidity	Mortality
Malaria	1635.14	1.30
ARI <5	9143.03	6.10
Diarrhea	1302	0
Dysentery	419.03	0
TB(Sputum+)	0	0
Snake Bite	9.11	2.60

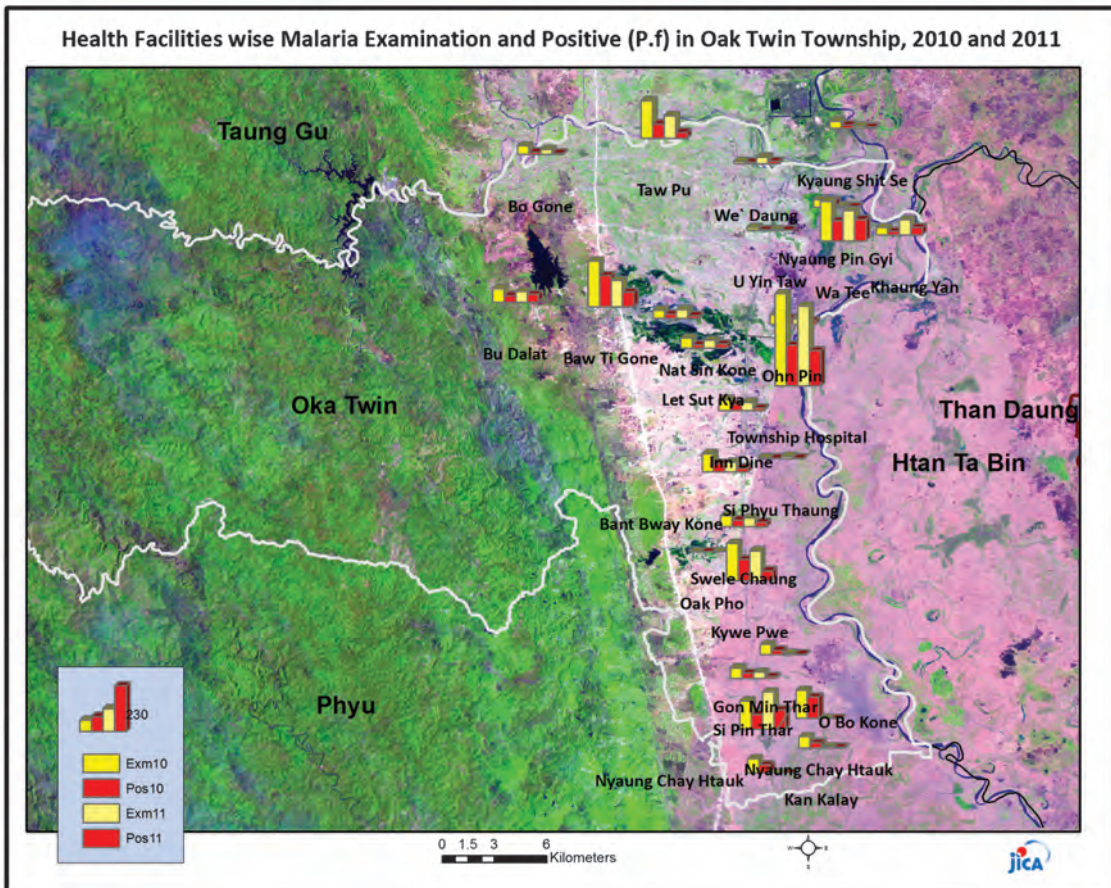
(Per 100,000 Populations)

* The data source is Health Profile of BagoRegion East (2009) from Department of Health Planning.

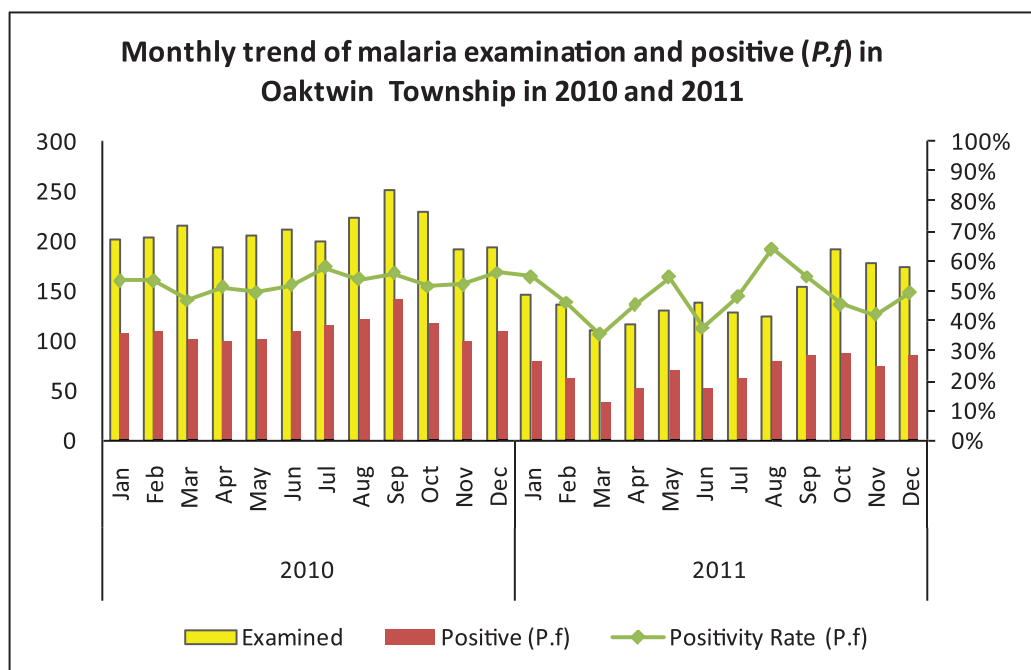
Vegetation cover and Health Facilities distribution in Oak Twin Township in Bago Region East



Health Facilities wise Malaria Examination and Positive (P.f) in Oak Twin Township, 2010 and 2011

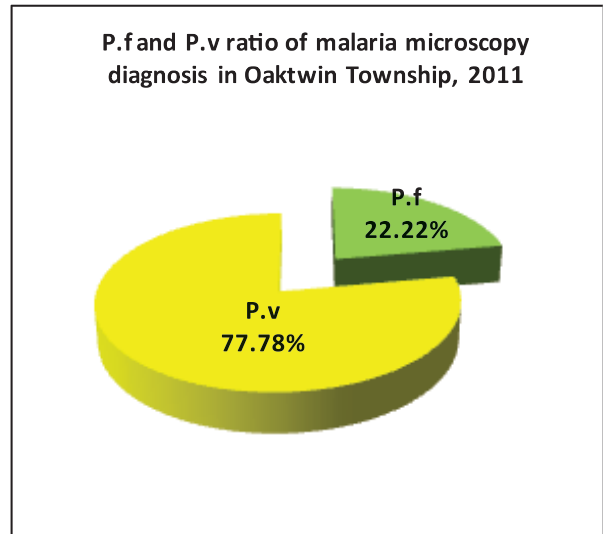
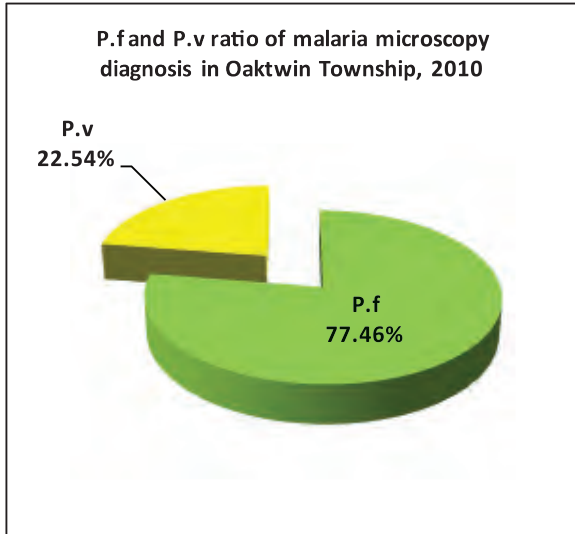


Monthly trend of malaria examined and positive (P.f) in Oak Twin Township in 2010 and 2011

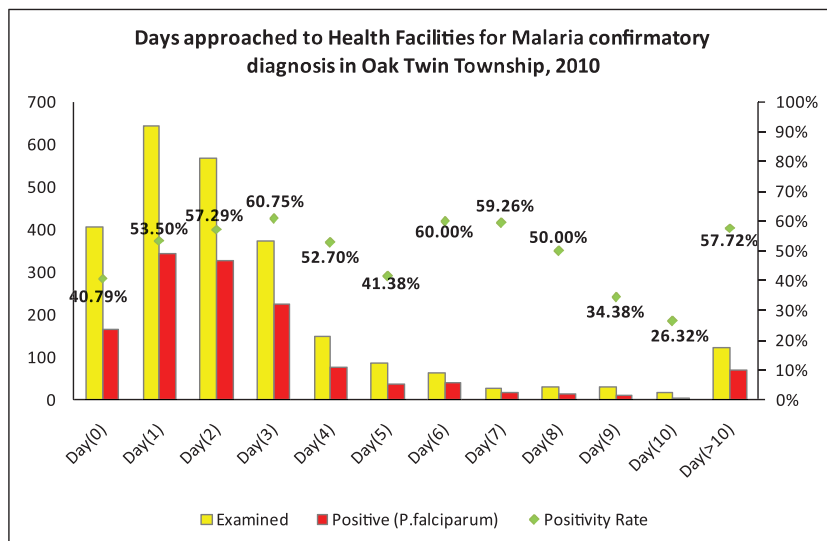
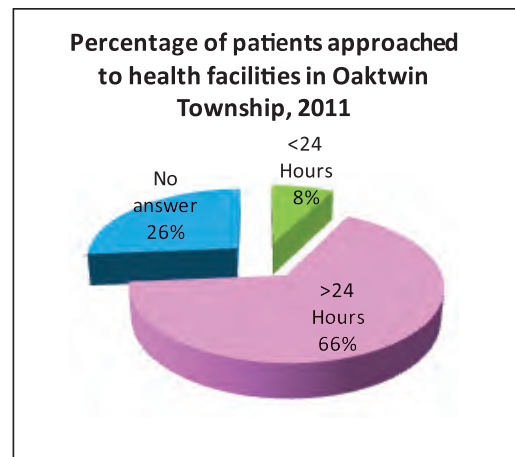
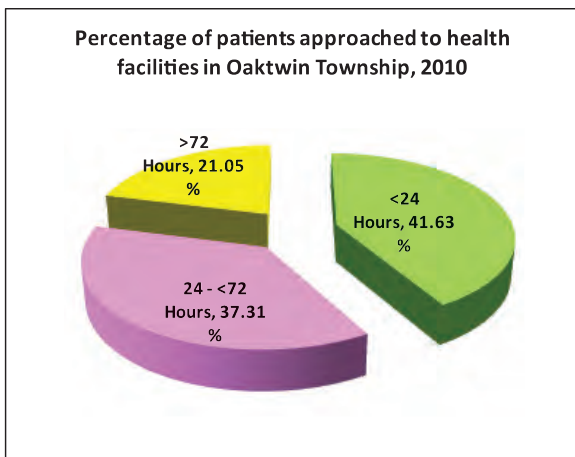


Month	2010			2011		
	Examined	Positive (P.f)	Positivity rate (P.f)	Examined	Positive (P.f)	Positivity rate (P.f)
Jan	202	108	53.47%	146	80	54.79%
Feb	204	109	53.43%	136	63	46.32%
Mar	215	101	46.98%	110	39	35.45%
Apr	193	99	51.30%	117	53	45.30%
May	206	102	49.51%	130	71	54.62%
Jun	212	110	51.89%	138	52	37.68%
Jul	199	115	57.79%	129	62	48.06%
Aug	224	121	54.02%	125	80	64.00%
Sep	252	141	55.95%	155	85	54.84%
Oct	229	118	51.53%	191	87	45.55%
Nov	192	100	52.08%	178	75	42.13%
Dec	194	109	56.19%	174	86	49.43%
Total	2,522	1,333	52.85%	1,729	833	48.18%

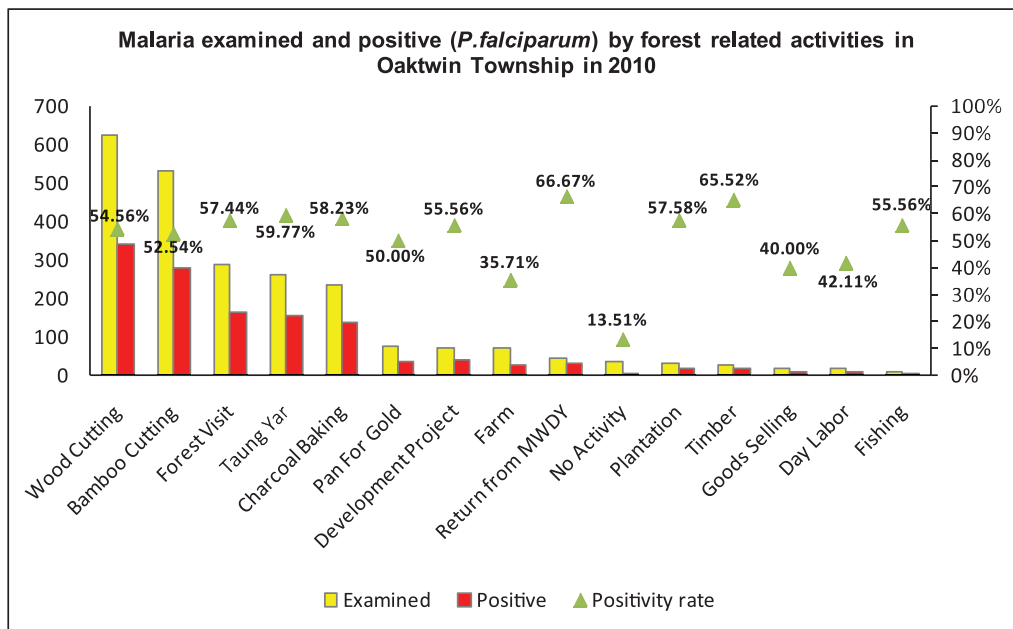
P.f and P.v ratio of microscopy diagnosis in Oak Twin Township, 2010 and 2011



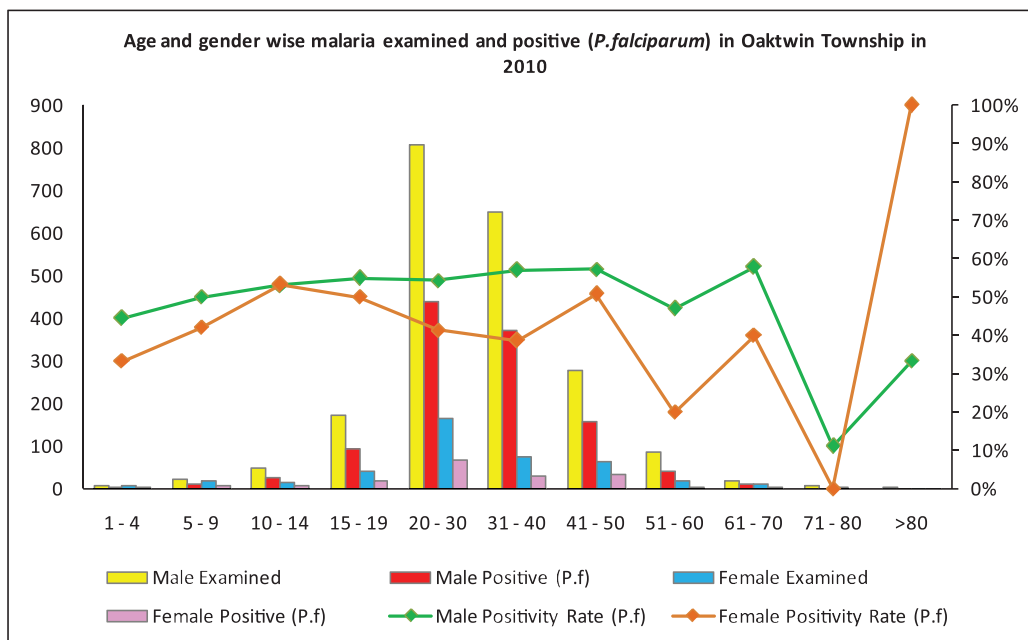
Percentage of patients approached to health facilities for malaria confirmatory diagnosis in Oak Twin Township in 2010 and 2011



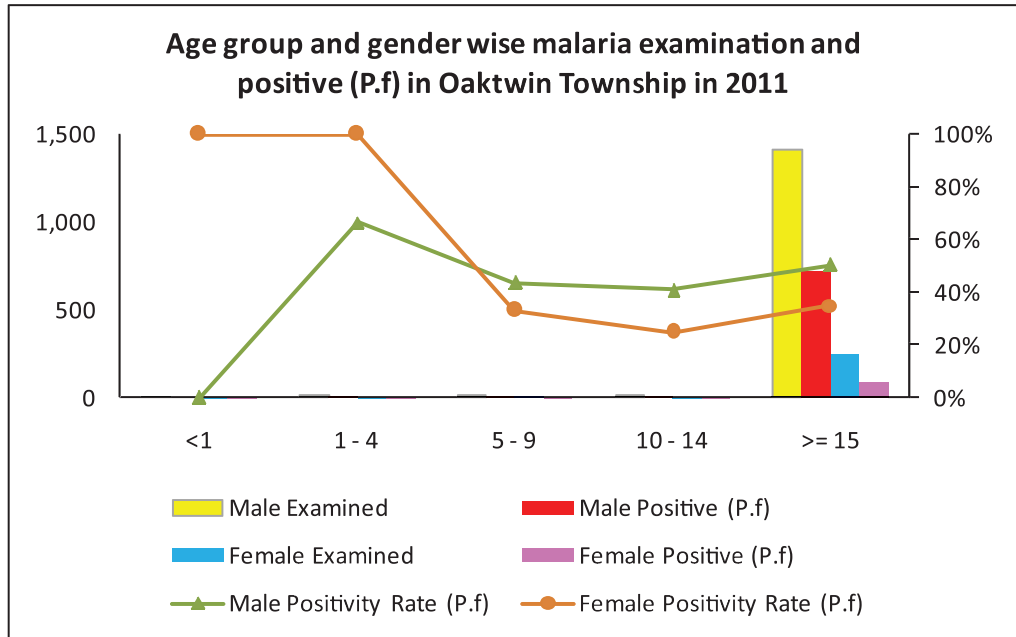
Malaria examined and positive (*P.falciparum*) by forest related activities in Oak Twin Township in 2010



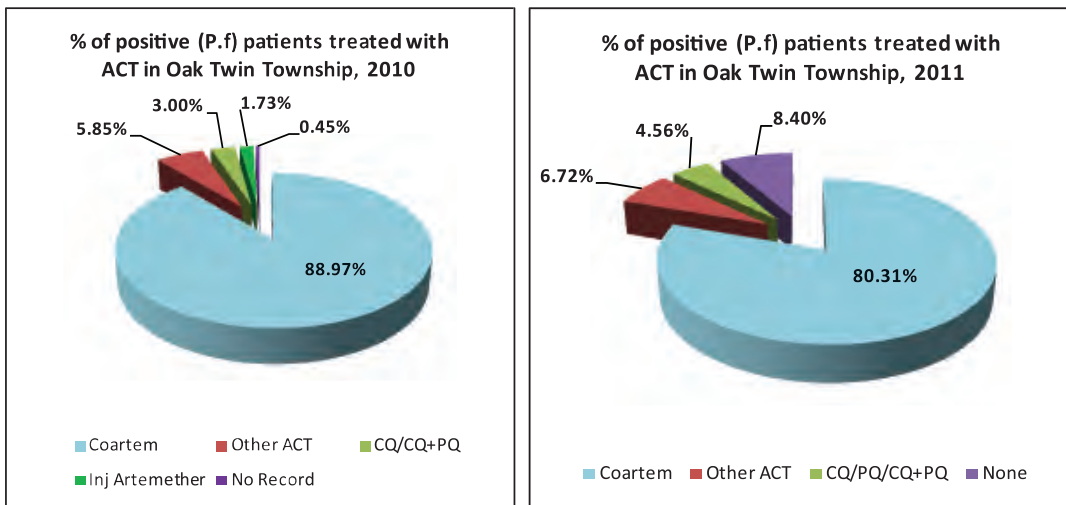
Age and Gender Wise Malaria examined and positive (*P. falciparum*) in Oak Twin Township in 2010



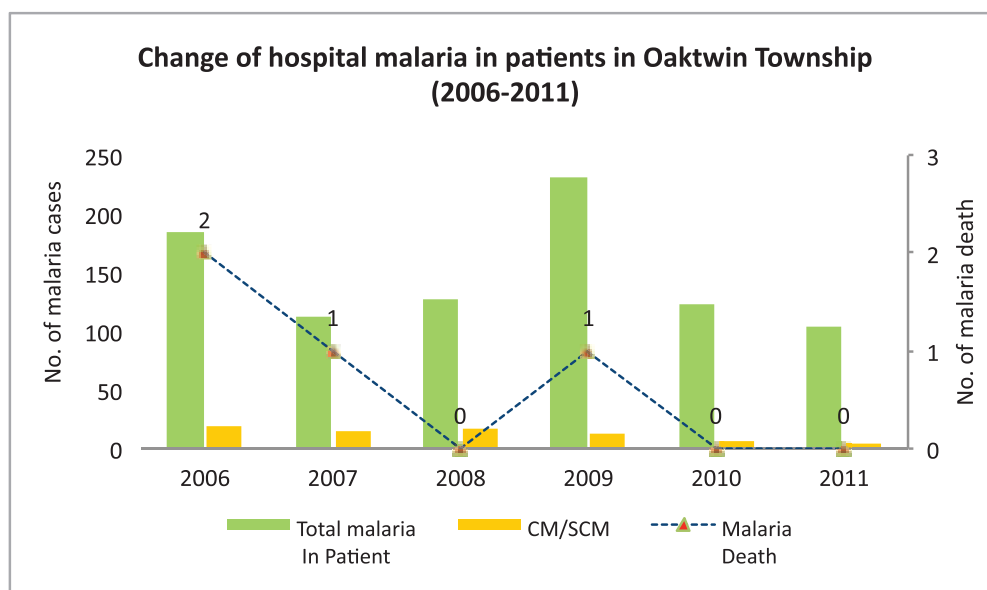
Age group and Gender Wise Malaria examined and positive (*P. falciparum*) in Oak Twin Township in 2011



Percentage of positive patients treated with ACT in Oak Twin Township in 2010 and 2011



Change of hospital malaria in patients in Oak Twin Township from 2006 – 2011



Sr	Year	Total In Patient	Total malaria In Patient	CM/SCM	Malaria Death	Total Death
1	2006	1,748	184	19	2	8
2	2007	1,610	112	14	1	5
3	2008	1,525	127	16	0	12
4	2009	2,914	232	13	1	11
5	2010	3,091	123	7	0	9
6	2011	3,048	105	5	0	13
Total		13,936	883	74	4	58