

Health Profile of Htantabin Township



Area and Location*

Area	:	538.67 Km ²
North	:	Taungoo Township
South	:	Phyu Township
East	:	Thandaung River
West	:	Oak Twin Township

Administrative Units*

Wards	:	5
Village tracts	:	29
Villages	:	108

Population (2009)*

Total	:	120,559
Urban	:	8,925
Rural	:	111,634
Male	:	58,296
Female	:	62,263
Sex Ratio	:	94
<5 Year	:	12,861
0-14 Year	:	38,636
15-49 Year	:	62,541
Population Density	:	223.81/Km ²

Health Facilities (2009)*

Township Hospital (25) Bedded	:	1
Station Hospital	:	1
Maternal and Child Health Centers	:	1
Rural Health Centers	:	4
Sub Health Centers	:	24

Health Man Power (2009)*

	Doctor	Nurse	HA	LHV	PHS I	PHS II	MW
Sanction	7	18	5	4	1	1	27
Appointed	3	12	4	4	1	1	26
Vacant	4	6	1	0	0	0	1
% Vacancy	57.1%	33.3%	20.0%	0.0%	0.0%	0.0%	3.7%

(HA: Health Assistant, LHV: Lady Health Visitor, PHS I: Public Health Supervisor, MW: Mid Wife)

Health Man Power (Volunteer) (2009)*

	Category of Volunteer Health Workers		
	CHW	AMW	TTBA
Trained	133	74	0
Functioning	103	63	0
% of Functioning	77.4%	85.1%	0.0%

(CHW: Community Health Worker, AMW: Auxiliary Mid Wife, TTBA: Trained Traditional Birth Attendant)

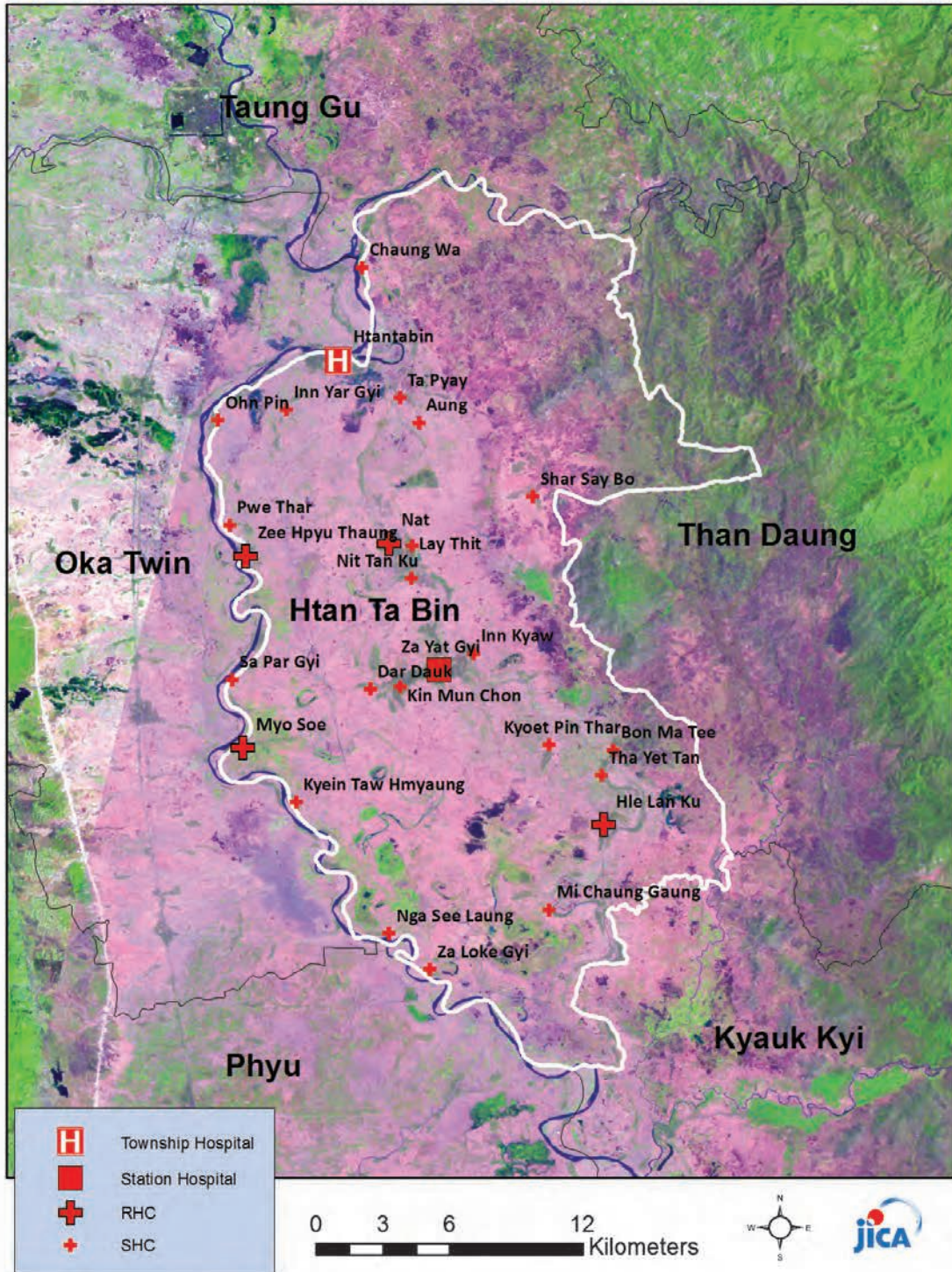
Common Diseases under National Surveillance (2009)*

Diseases	Morbidity	Mortality
Malaria	2080.31	1.66
ARI <5	5629.42	0
Diarrhea	802.10	2.49
Dysentery	271.24	0
TB(Sputum+)	14.10	0
Snake Bite	53.09	4.15

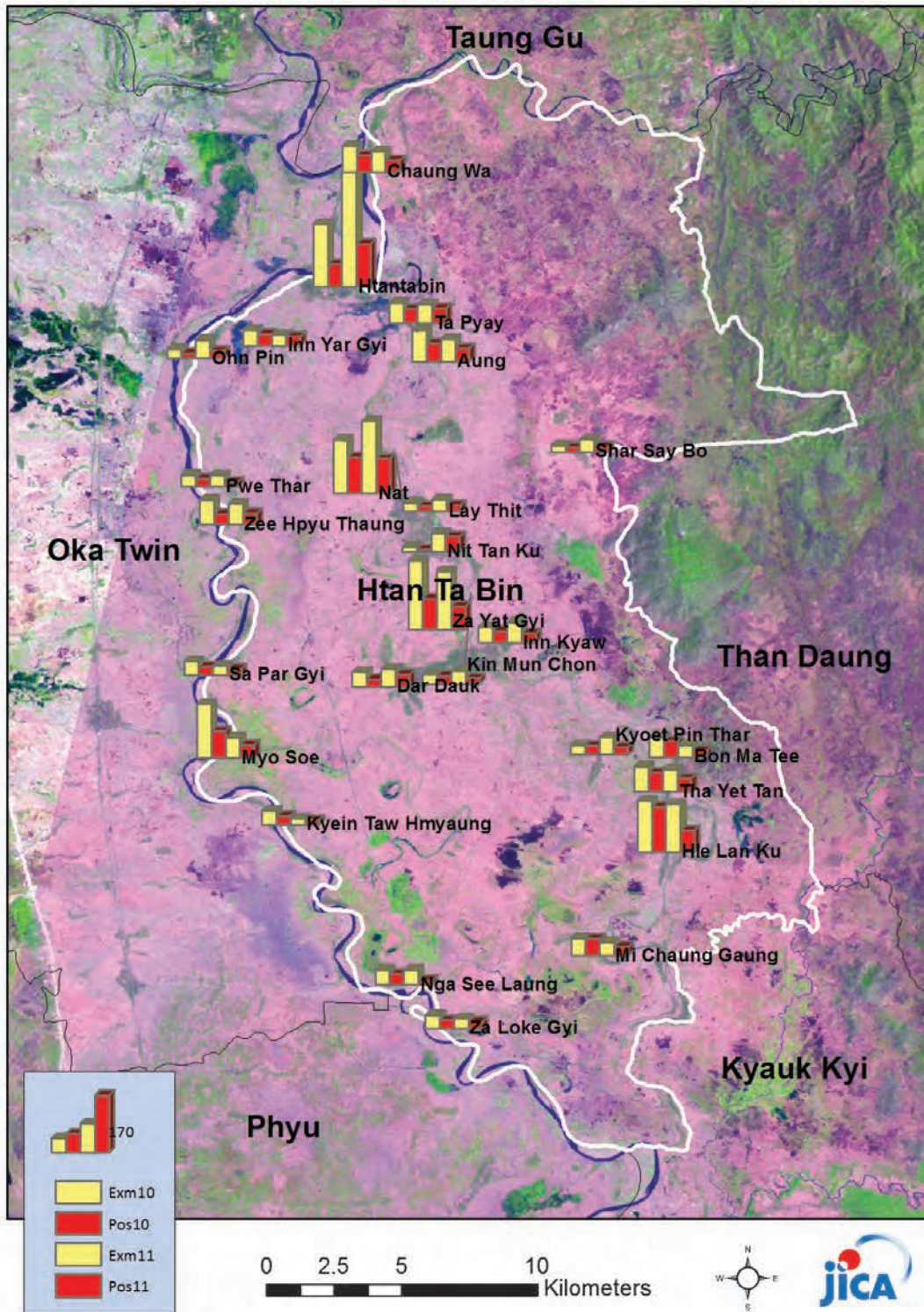
(Per 100,000 Populations)

* The data source is Health Profile of Bago Region East (2009) from Department of Health Planning.

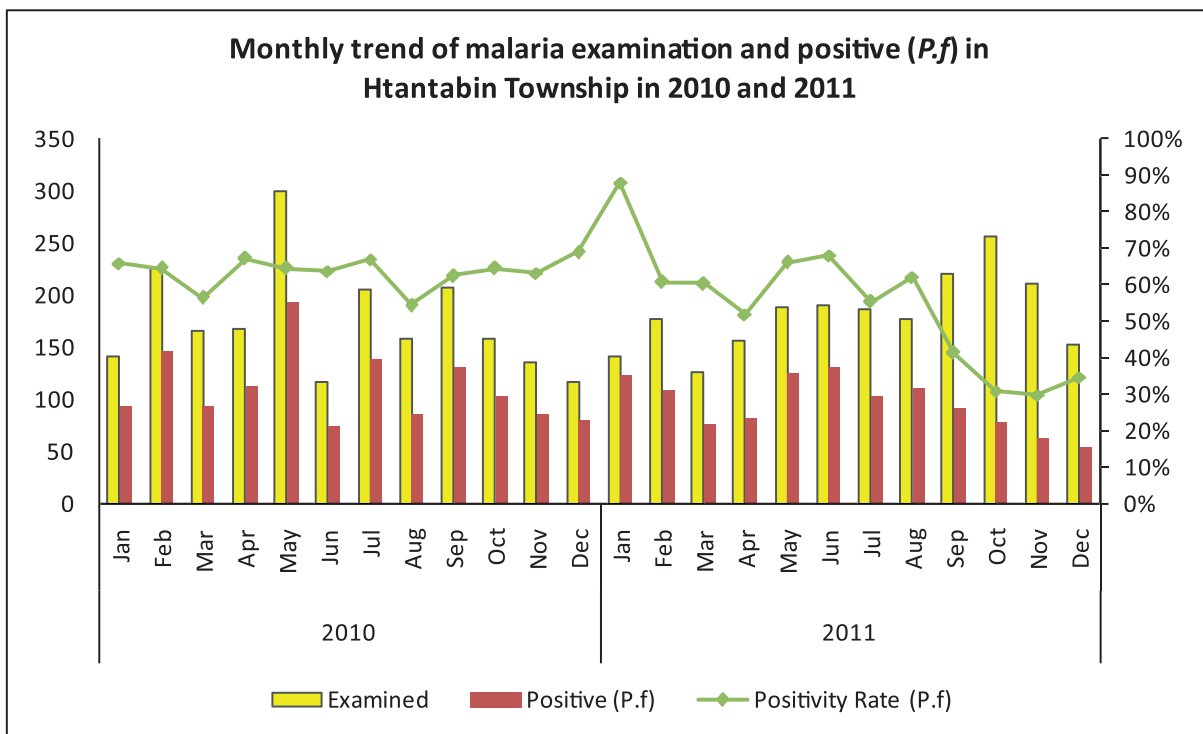
Vegetation cover and health facilities distribution in Htantabin Township in Bago Region (East)



Health Facility wise Malaria Examined and Positive (P.f) in Htantabin Township, 2010 and 2011

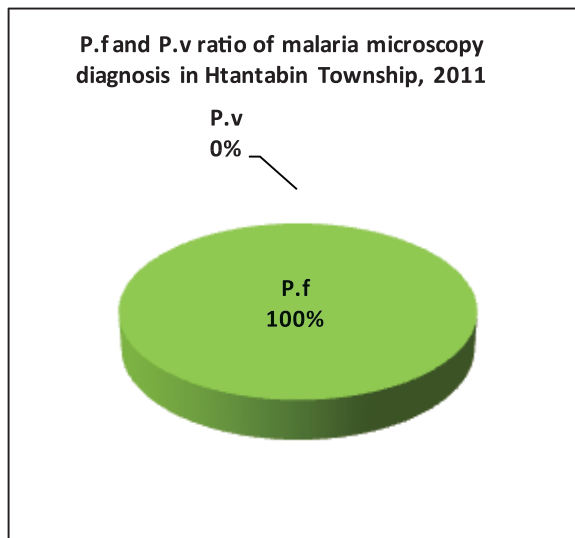
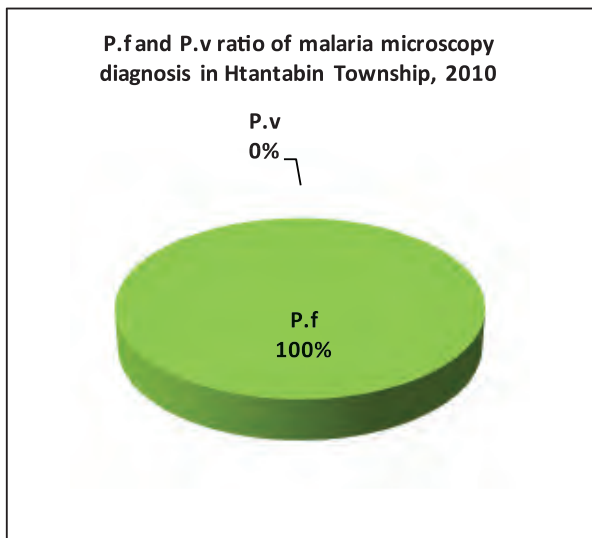


Monthly trend of malaria examination and positive (P.f) in Htantabin Township in 2010 and 2011

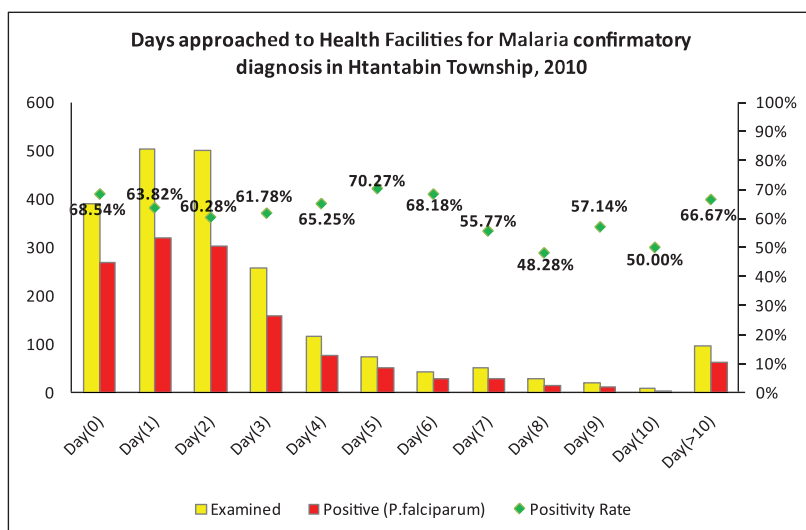
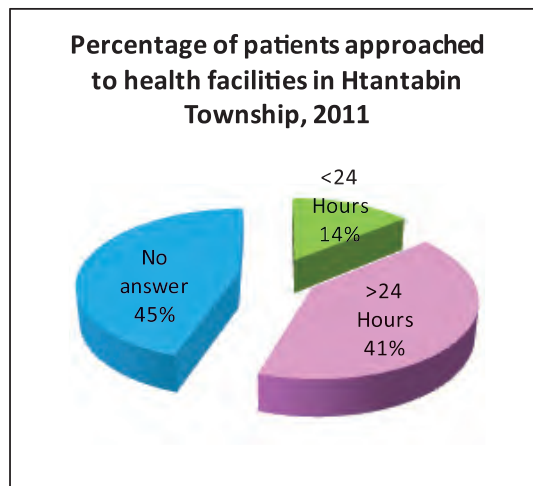
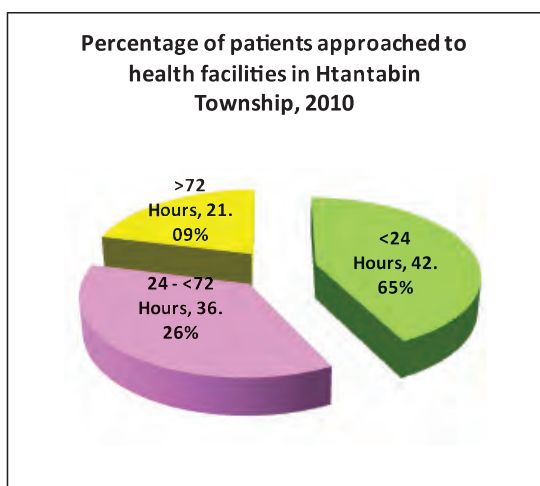


Month	2010			2011		
	Examined	Positive (P.f)	Positivity rate (P.f)	Examined	Positive (P.f)	Positivity rate (P.f)
Jan	141	93	65.96%	141	124	87.94%
Feb	226	146	64.60%	178	108	60.67%
Mar	165	93	56.36%	126	76	60.32%
Apr	167	112	67.07%	156	81	51.92%
May	299	193	64.55%	189	125	66.14%
Jun	116	74	63.79%	191	130	68.06%
Jul	206	138	66.99%	186	103	55.38%
Aug	158	86	54.43%	177	110	62.15%
Sep	208	130	62.50%	220	91	41.36%
Oct	158	102	64.56%	256	79	30.86%
Nov	136	86	63.24%	212	63	29.72%
Dec	116	80	68.97%	153	53	34.64%
Total	2,096	1,333	63.60%	2,185	1,143	52.31%

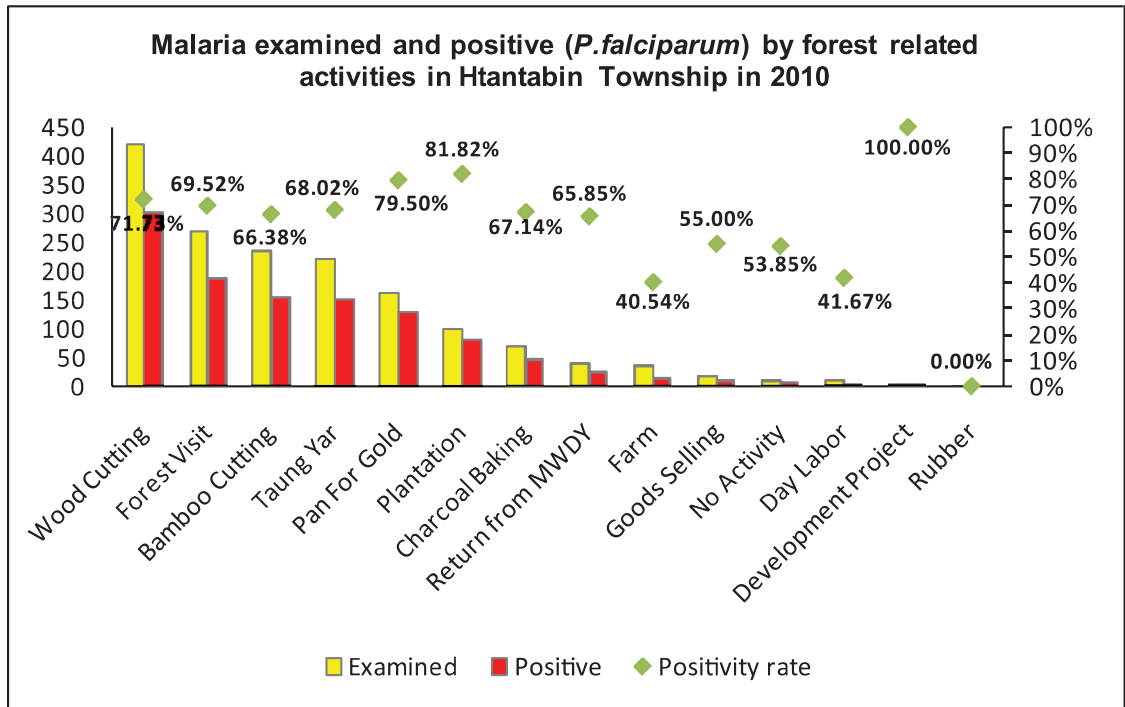
P.f and *P.v* ratio of microscopy diagnosis in Htantabin Township, 2010 and 2011



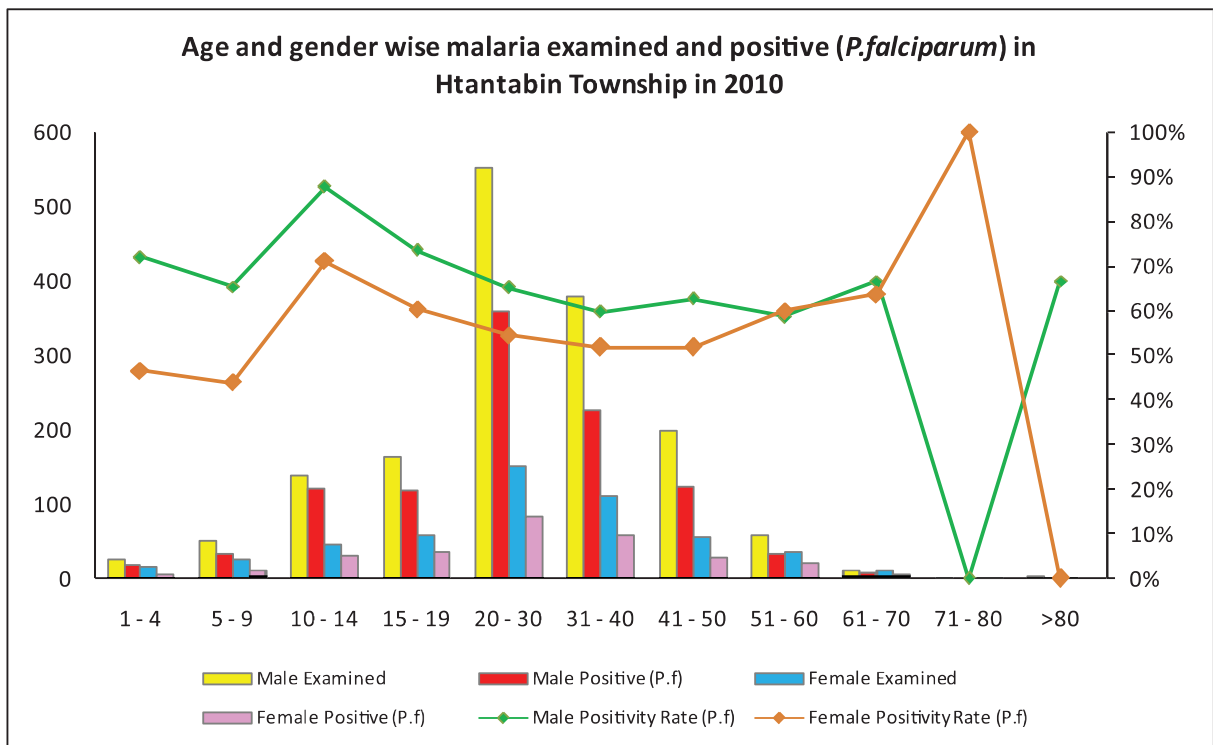
Percentage of patients approached to health facilities for malaria confirmatory diagnosis in Htantabin Township in 2010 and 2011



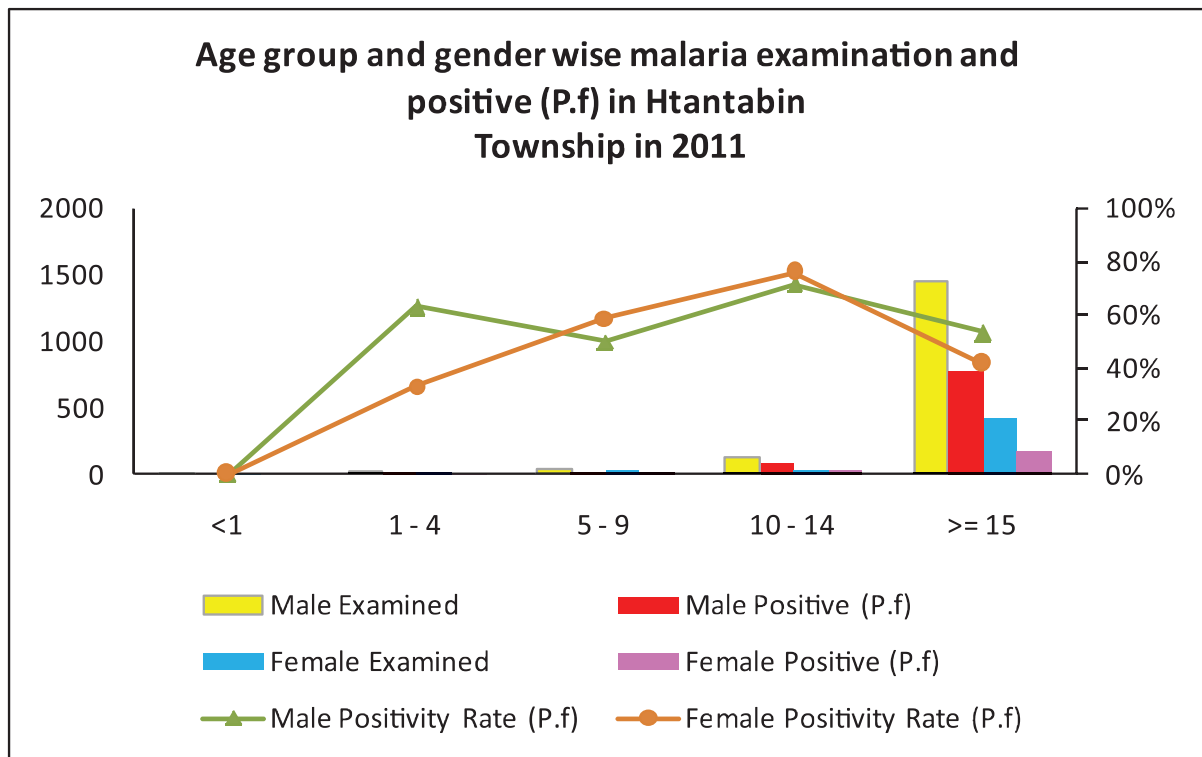
Malaria examination and positive (*P.falciparum*) by forest related activities in Htantabin Township in 2010



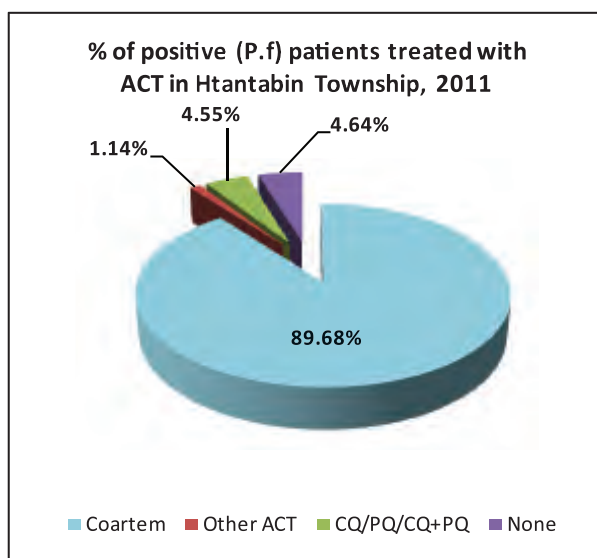
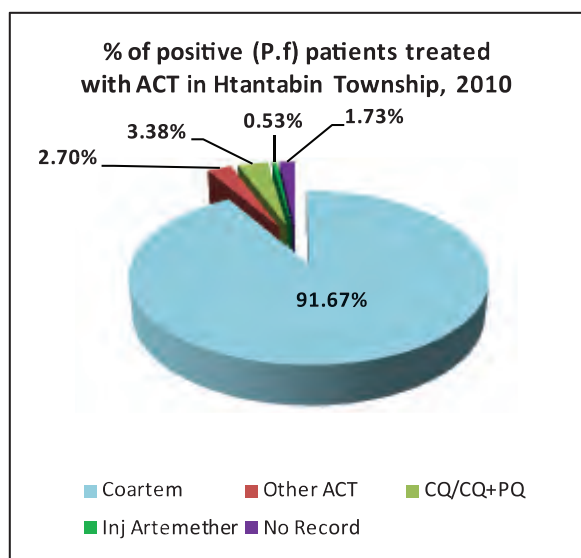
Age and Gender Wise Malaria examined and positive (*P.falciparum*) in Htantabin Township in 2010



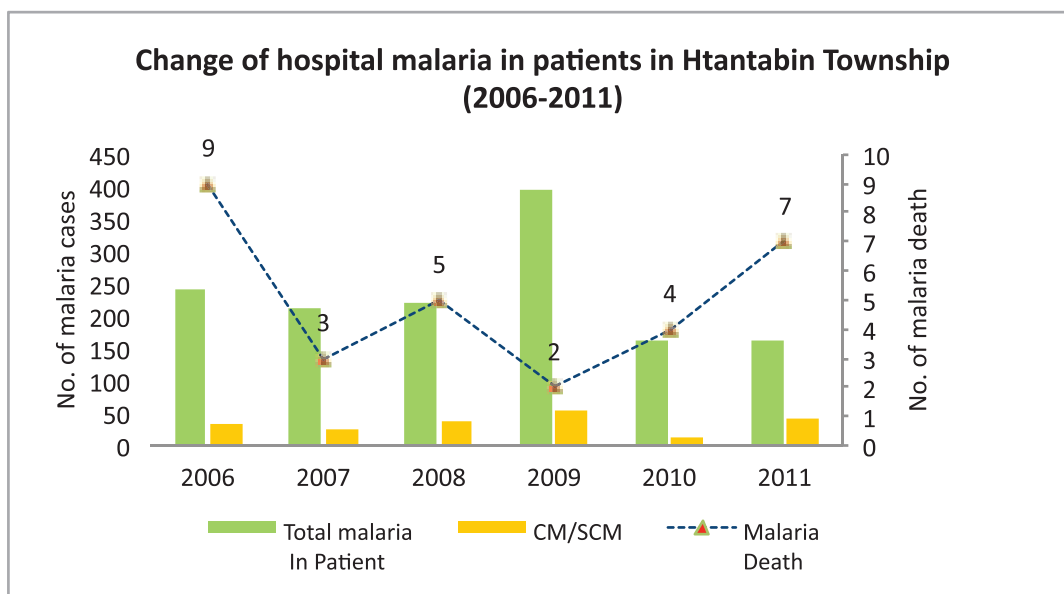
Age Group and Gender Wise Malaria examination and positive (*P.falciparum*) in Htantabin Township in 2011



Percentage of positive (*P.f*) patients teated with ACT in Htantabin Township in 2010 and 2011



Change of hospital malaria in patients in Htantabin Township from 2006 to 2011



Sr	Year	Total In Patient	Total malaria In Patient	CM/SCM	Malaria Death	Total Death
1	2006	1,940	241	32	9	60
2	2007	1,908	213	27	3	33
3	2008	1,697	219	36	5	27
4	2009	2,659	395	56	2	34
5	2010	1,917	164	12	4	30
6	2011	2,042	161	40	7	31
Total		12,163	1393	203	30	215

Health Profile of Kawa Township



Area and Location*

Area	:	1677.49 Km ²
North	:	ThanatpinTownship
South	:	KayanTownship
East	:	Sittaung River
West	:	Hlegu Township

Administrative Units*

Wards	:	6
Village tracts	:	95
Villages	:	167

Population (2009)*

Total:	221,957
Urban:	6,176
Rural:	215,781
Male:	108,804
Female:	113,153
Sex Ratio:	96
<5 Year:	26,607
0-14 Year:	74,805
15-49 Year:	112,796
Population Density:	132.31/Km ²

Health Facilities (2009)*

TownshipHospital (25) Bedded	:	1
Station Hospital	:	3
Maternal and Child Health Centers	:	1
Rural Health Centers	:	8
Sub Health Centers	:	38
Private Clinics and Maternity	:	6

Health Man Power (2009)*

	Doctor	Nurse	HA	LHV	PHS I	PHS II	MW
Sanction	12	27	8	10	4	15	47
Appointed	12	22	8	10	4	12	38
Vacant	0	5	0	0	0	3	9
% Vacancy	0.0%	18.5%	0.0%	0.0%	0.0%	20.0%	19.1%

(HA: Health Assistant, LHV: Lady Health Visitor, PHS I: Public Health Supervisor, MW: Mid Wife)

Health Man Power (Volunteer) (2009)*

	Category of Volunteer Health Workers		
	CHW	AMW	TTBA
Trained	153	93	261
Functioning	54	38	71
% of Functioning	35.3%	40.9%	27.2%

(CHW: Community Health Worker, AMW: Auxiliary Mid Wife, TTBA: Trained Traditional Birth Attendant)

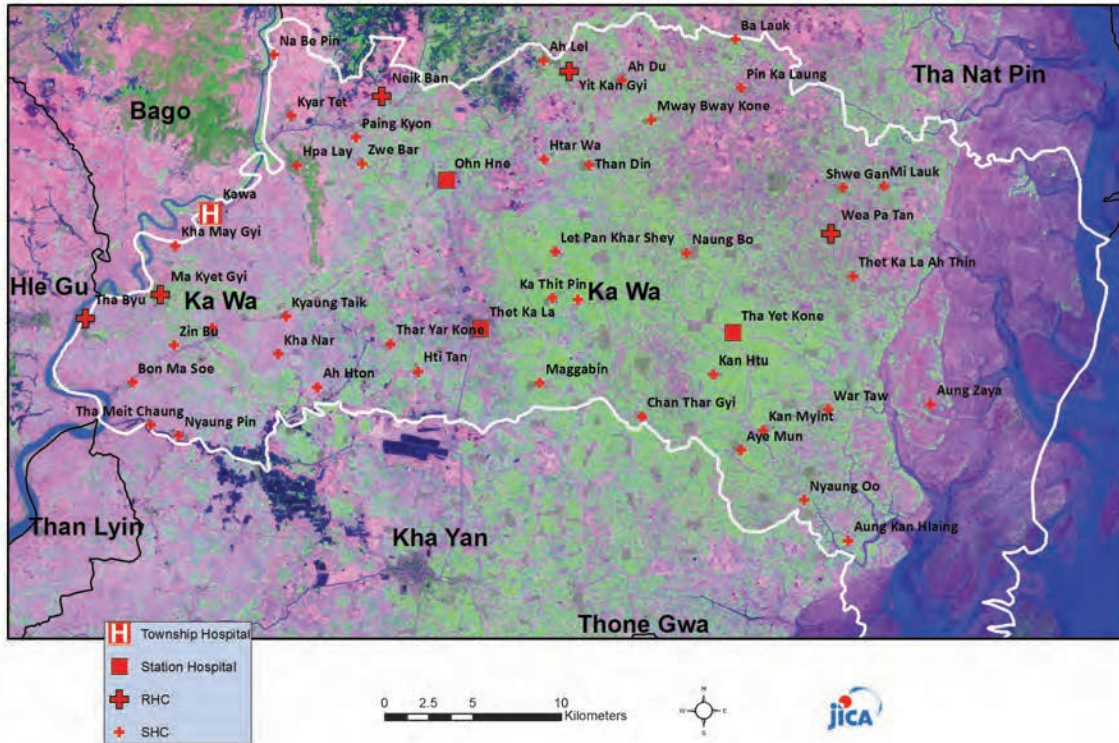
Common Diseases under National Surveillance (2009)*

Diseases	Morbidity	Mortality
Malaria	44.60	1.80
ARI <5	1826.59	0
Diarrhea	504.60	0
Dysentery	253.65	0
TB(Sputum+)	30.64	0
Snake Bite	7.66	3.60

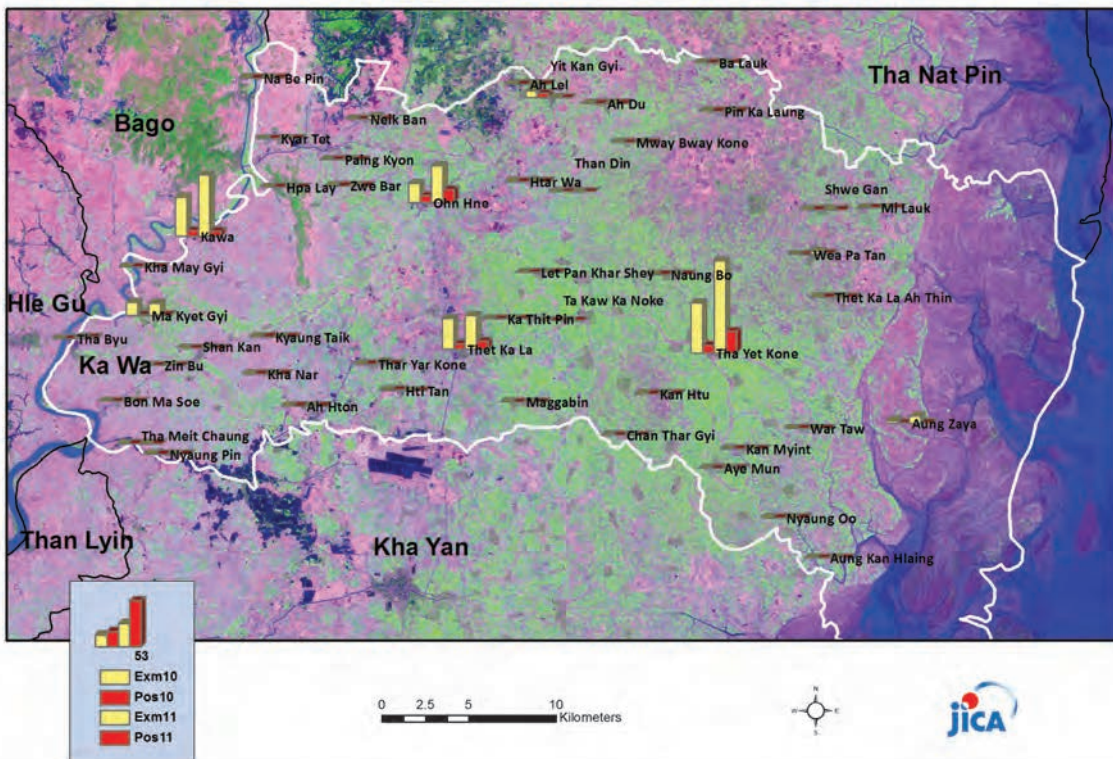
(Per 100,000 Populations)

* The data source is Health Profile of BagoRegion East (2009) from Department of Health Planning.

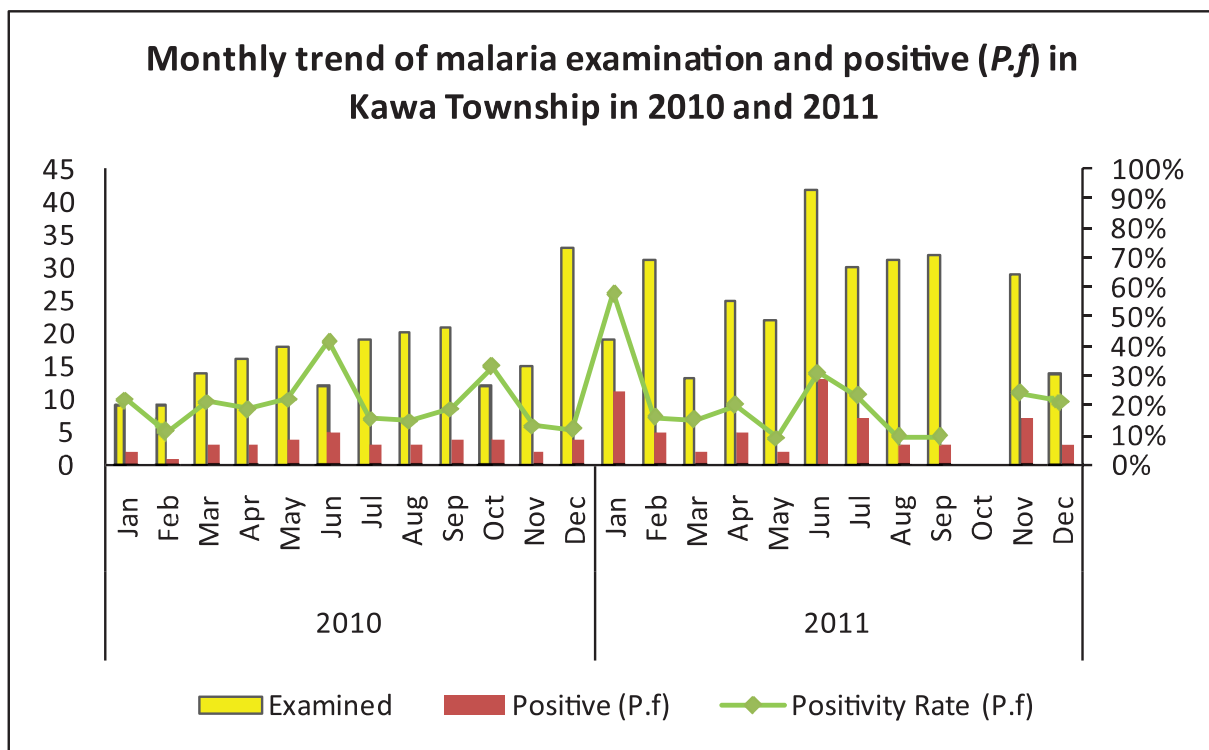
Vegetation Cover and Health Facilities distribution in Kawa Township in Bago Region East



Health Facilities Wise Malaria Examination and Positive (P.f) in Kawa Township, 2010 and 2011

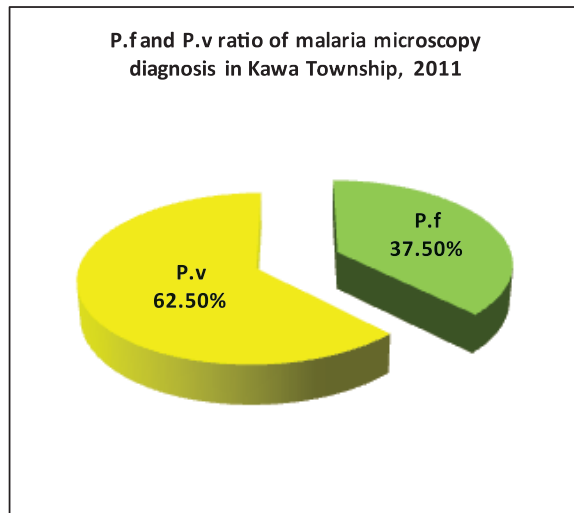


Monthly trend of malaria examination and positive (P.f) in Kawa Township in 2010 and 2011

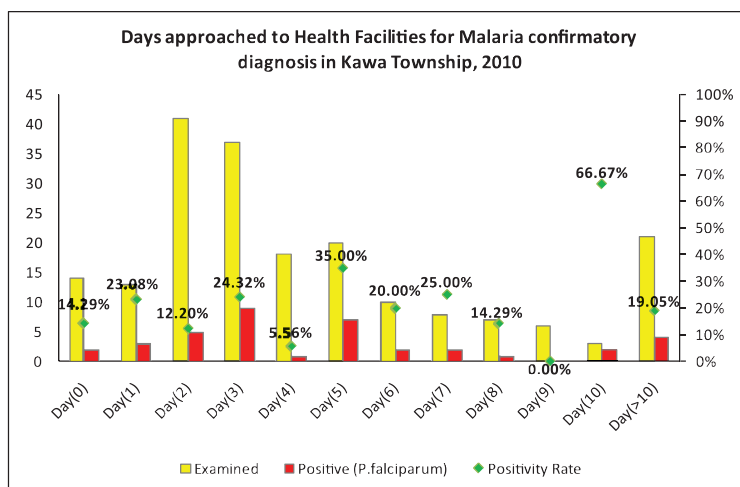
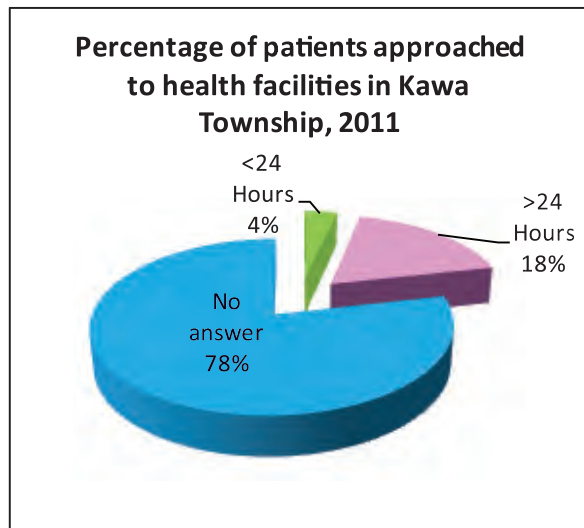
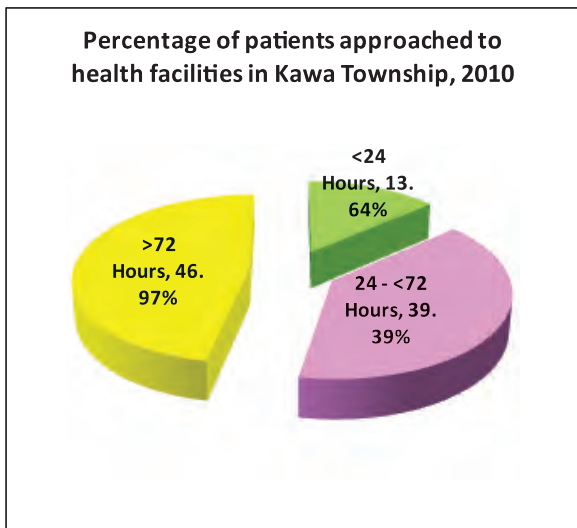


Month	2010			2011		
	Examined	Positive (P.f)	Positivity rate (P.f)	Examined	Positive (P.f)	Positivity rate (P.f)
Jan	9	2	22.22%	19	11	57.89%
Feb	9	1	11.11%	31	5	16.13%
Mar	14	3	21.43%	13	2	15.38%
Apr	16	3	18.75%	25	5	20.00%
May	18	4	22.22%	22	2	9.09%
Jun	12	5	41.67%	42	13	30.95%
Jul	19	3	15.79%	30	7	23.33%
Aug	20	3	15.00%	31	3	9.68%
Sep	21	4	19.05%	32	3	9.38%
Oct	12	4	33.33%			
Nov	15	2	13.33%	29	7	24.14%
Dec	33	4	12.12%	14	3	21.43%
Total	198	38	19.19%	288	61	21.18%

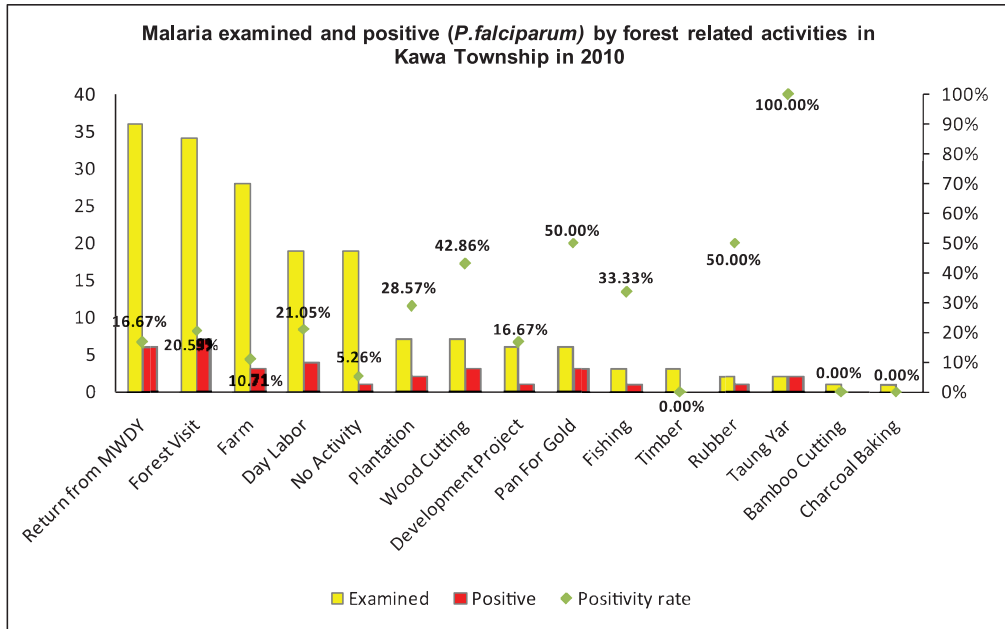
P.f and P.v ratio of microscopy diagnosis in Kawa Township, 2011



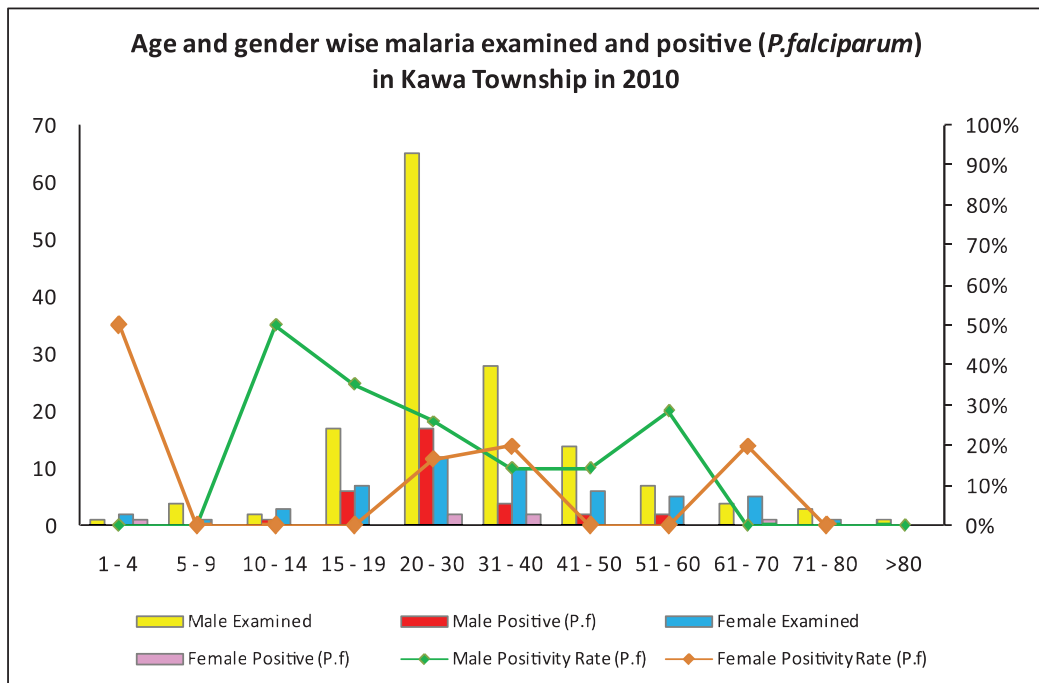
Percentage of patients approached to health facilities for malaria confirmatory diagnosis in Kawa Township in 2010 and 2011



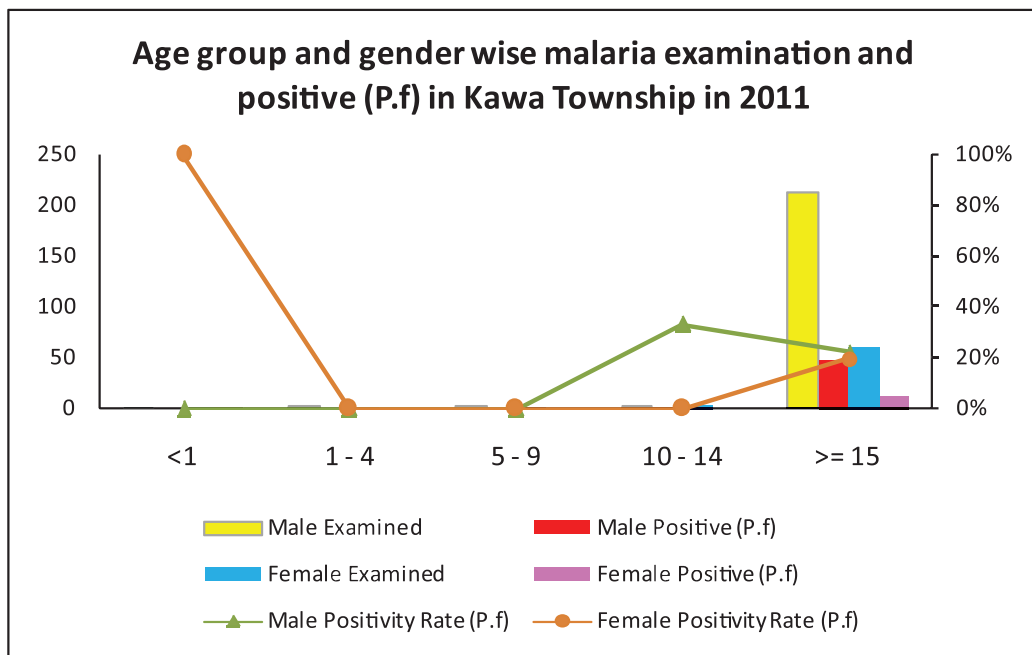
Malaria examination and positive (*P.falciparum*) by forest related activities in Kawa Township in 2010



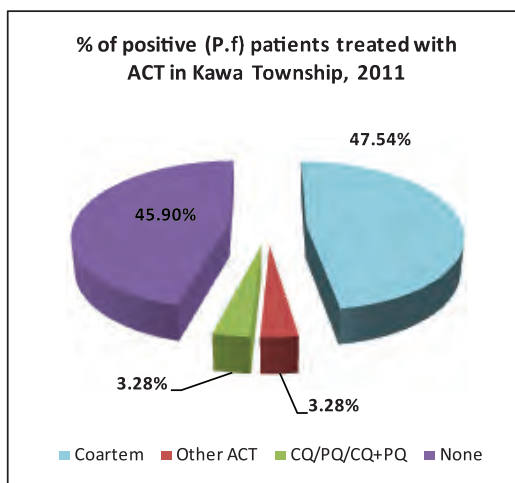
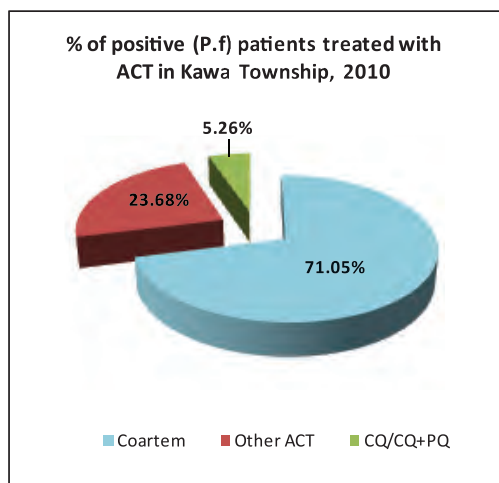
Age and Gender Wise Malaria examination and positive (*P.falciparum*) in Kawa Township in 2010



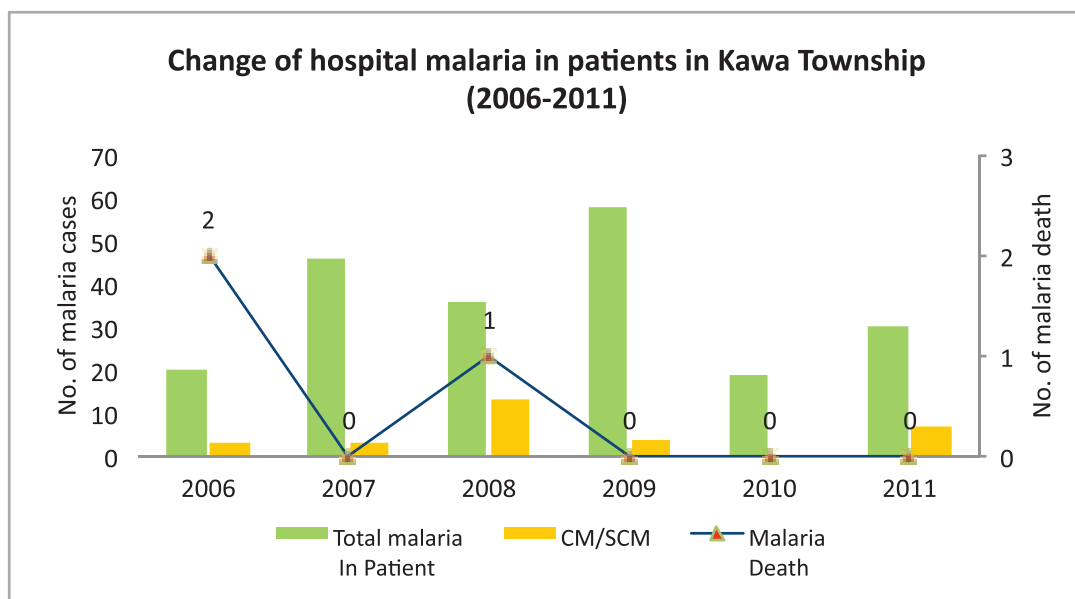
Age and Gender Wise Malaria examination and positive (*P.falciparum*) in Kawa Township in 2011



Percentage of positive *P.f* patients treated with ACT in Kawa Township in 2010 and 2011



Change of hospital malaria in patients in Kawa Township from 2006 – 2011



Sr	Year	Total In Patient	Total malaria In Patient	CM/SCM	Malaria Death	Total Death
1	2006	2012	20	3	2	42
2	2007	2271	46	3	0	41
3	2008	2265	36	13	1	69
4	2009	2401	58	4	0	28
5	2010	2983	19	0	0	57
6	2011	3004	30	7	0	53
Total		14936	209	30	3	290

Health Profile of Kyaukkyi Township



Area and Location*

Area : 2023.85 Km²
 North : Than Daung Township
 South : Shwegyin Township
 East : Phapun Township
 West : Phyu Township

Administrative Units*

Wards : 7
 Village tracts : 46
 Villages : 233

Population (2009)*

Total: 103,106
 Urban: 10,598
 Rural: 92,508
 Male: 49,848
 Female: 53,258
 Sex Ratio: 94
 <5 Year: 12,196
 0-14 Year: 36,065
 15-49 Year: 52,862
 Population Density: 50.95/Km²

Health Facilities (2009)*

Township Hospital (25) Bedded : 1
 Station Hospital : 2
 Maternal and Child Health Centers : 1
 Rural Health Centers : 3
 Sub Health Centers : 19

Health Man Power (2009)*

	Doctor	Nurse	HA	LHV	PHS I	PHS II	MW
Sanction	8	13	4	3	2	0	22
Appointed	6	11	2	3	2	0	20
Vacant	2	2	2	0	0	0	2
% Vacancy	25.0%	15.4%	50.0%	0.0%	0.0%	0.0%	9.1%

(HA: Health Assistant, LHV: Lady Health Visitor, PHS I: Public Health Supervisor, MW: Mid Wife)

Health Man Power (Volunteer) (2009)*

	Category of Volunteer Health Workers		
	CHW	AMW	TTBA
Trained	83	110	44
Functioning	30	58	38
% of Functioning	36.1%	52.7%	86.4%

(CHW: Community Health Worker, AMW: Auxiliary Mid Wife, TTBA: Trained Traditional Birth Attendant)

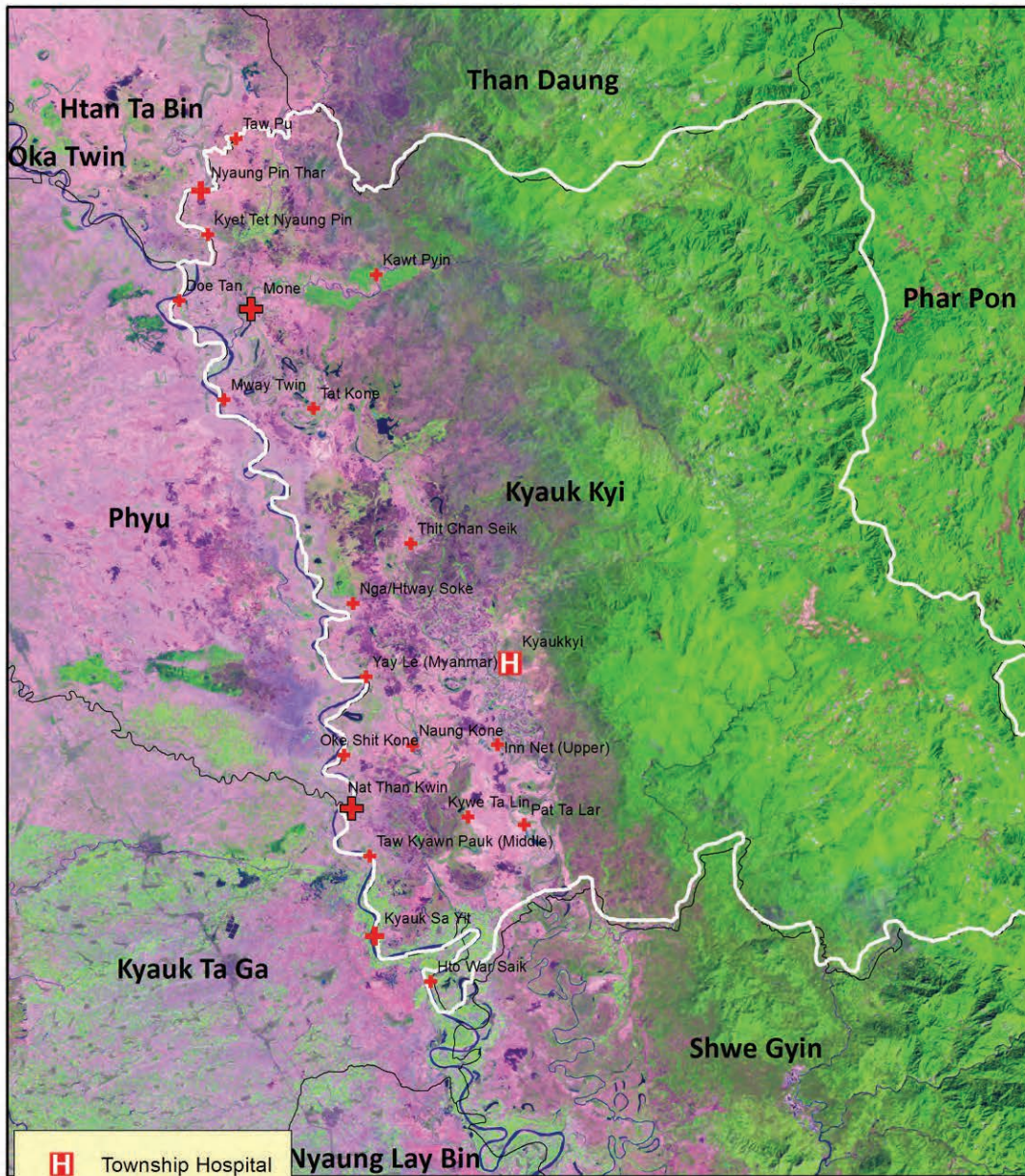
Common Diseases under National Surveillance (2009)*

Diseases	Morbidity	Mortality
Malaria	1236.59	5.82
ARI <5	6411.94	24.60
Diarrhea	1291.87	2.91
Dysentery	678.91	0
TB(Sputum+)	32.98	0
Snake Bite	35.89	8.73

(Per 100,000 Populations)

* The data source is Health Profile of BagoRegion East (2009) from Department of Health Planning.

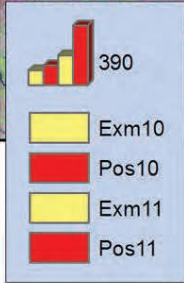
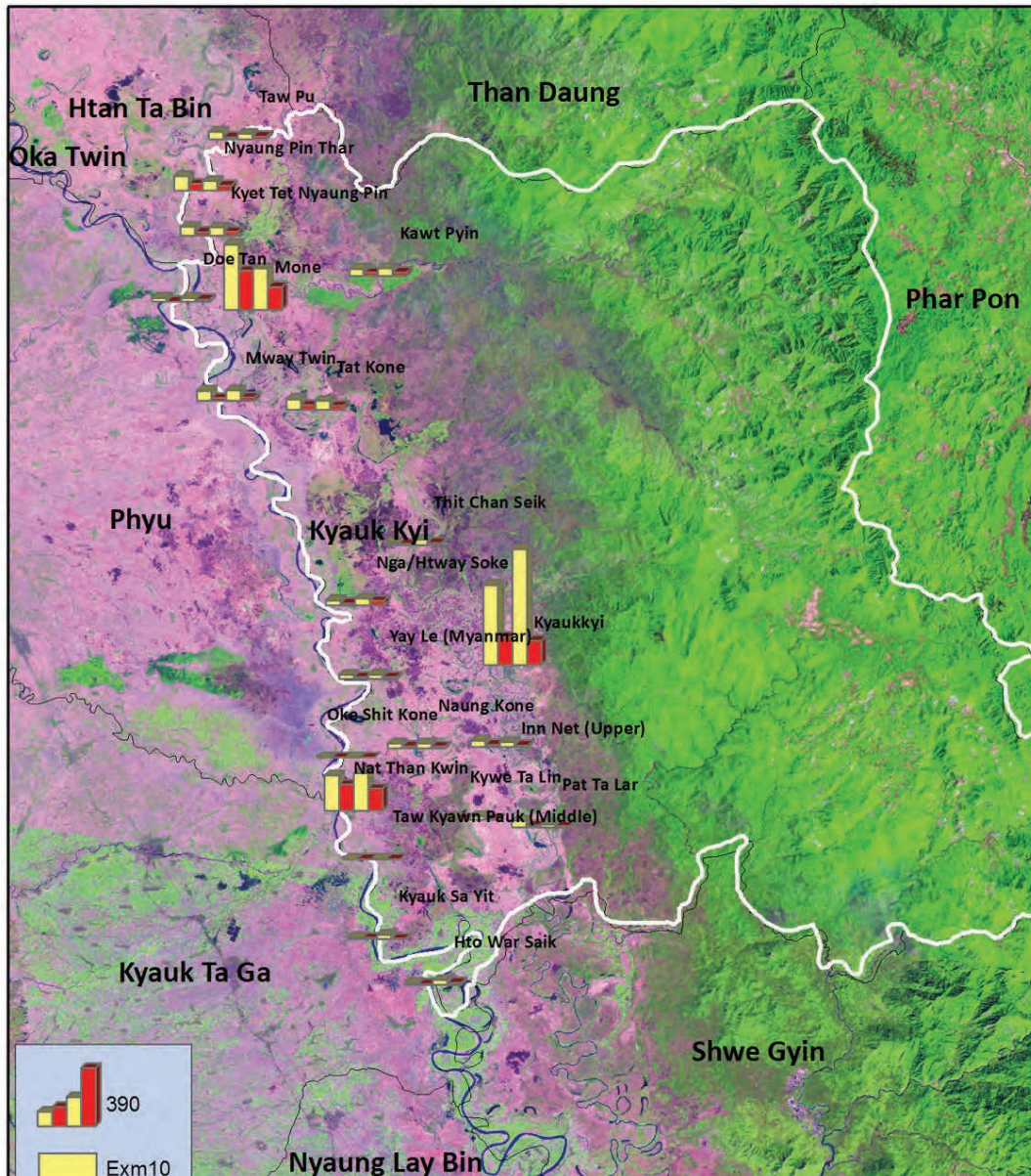
Vegetation cover and Health facilities distribution in Kyaukkyi Township in Bago Region East



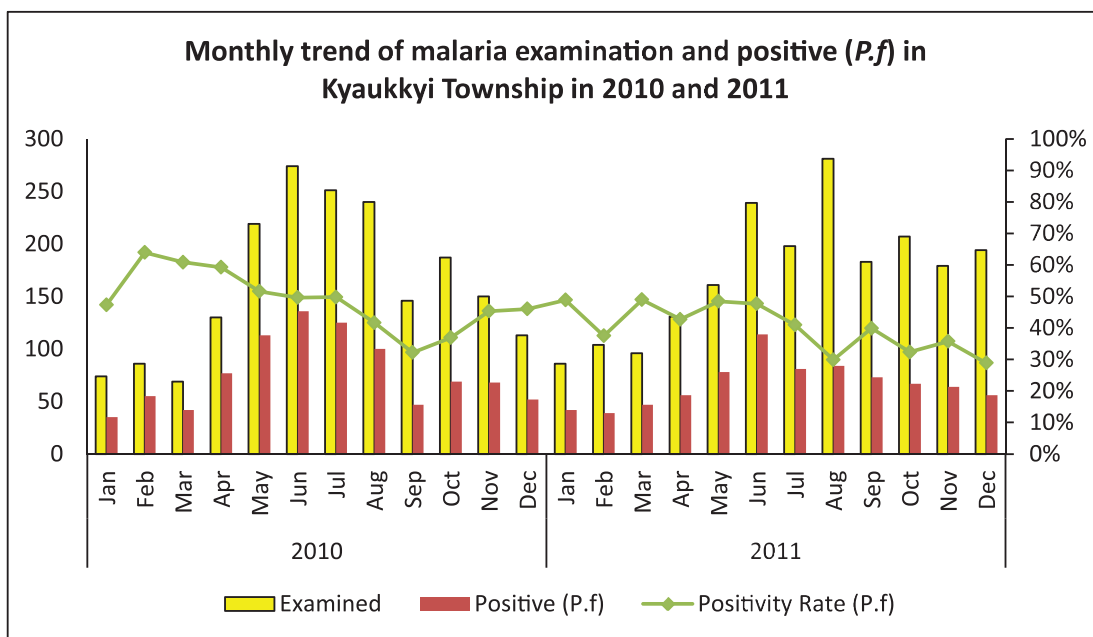
- H Township Hospital
- + Station Hospital
- + RHC
- + SHC



Health Facilities wise Malaria Examination and Positive (P.f) in Kyaukkyi Township, 2010 and 2011

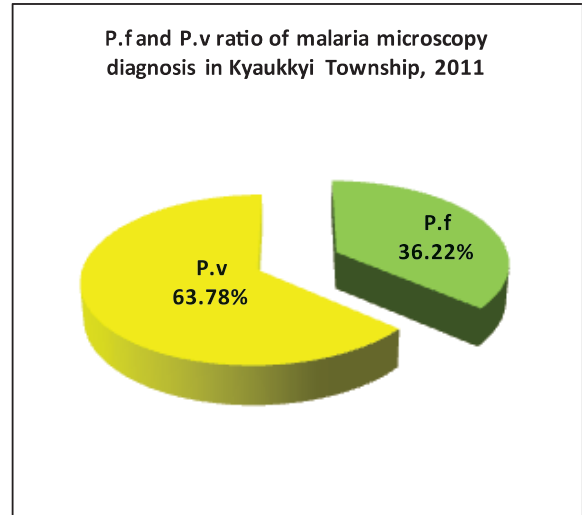
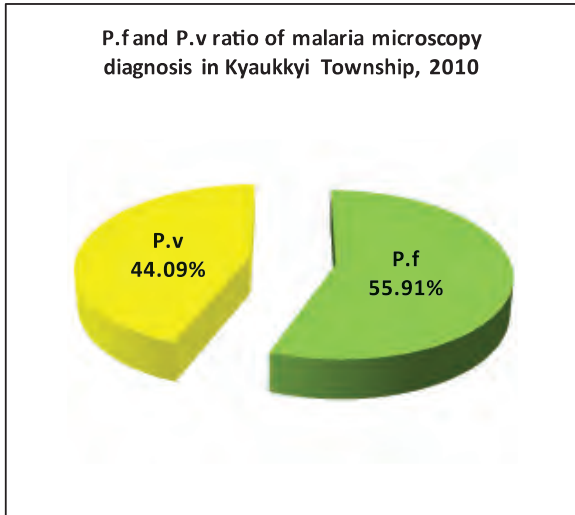


Monthly trend of malaria examination and Positive (P.f) in Kyaukkyi Township in 2010 and 2011

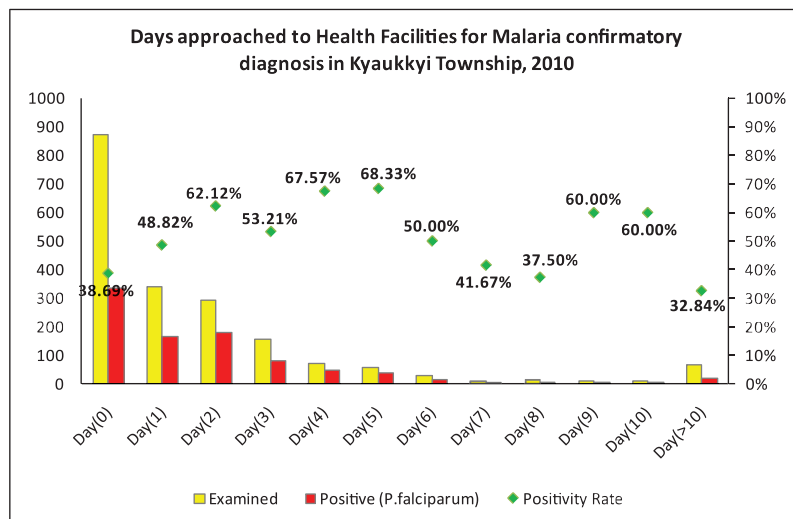
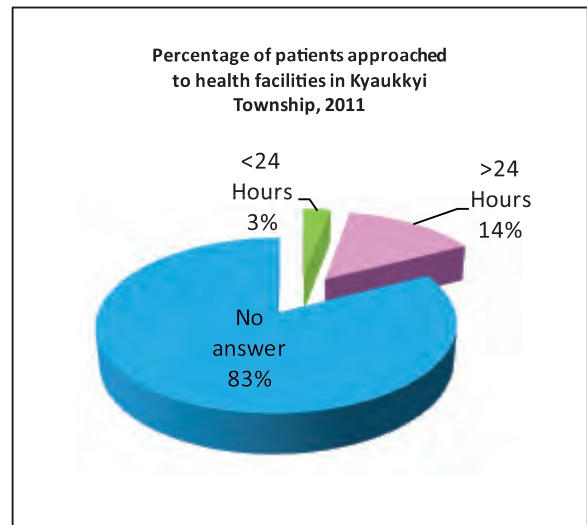
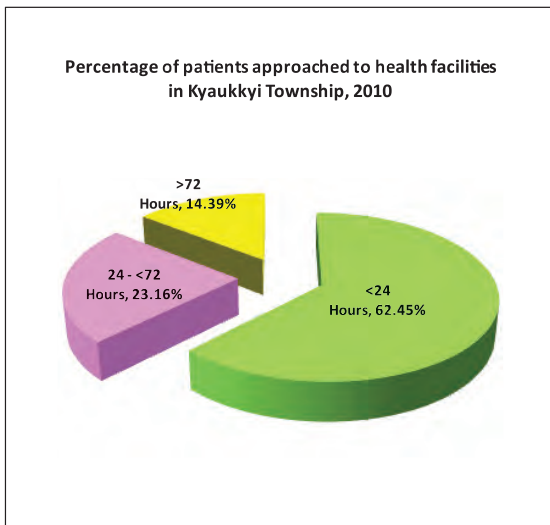


Month	2010			2011		
	Examined	Positive (P.f)	Positivity rate (P.f)	Examined	Positive (P.f)	Positivity rate (P.f)
Jan	74	35	47.30%	86	42	48.84%
Feb	86	55	63.95%	104	39	37.50%
Mar	69	42	60.87%	96	47	48.96%
Apr	130	77	59.23%	131	56	42.75%
May	219	113	51.60%	161	78	48.45%
Jun	274	136	49.64%	239	114	47.70%
Jul	251	125	49.80%	198	81	40.91%
Aug	240	100	41.67%	281	84	29.89%
Sep	146	47	32.19%	183	73	39.89%
Oct	187	69	36.90%	207	67	32.37%
Nov	150	68	45.33%	179	64	35.75%
Dec	113	52	46.02%	194	56	28.87%
Total	1,939	919	47.40%	2,059	801	38.90%

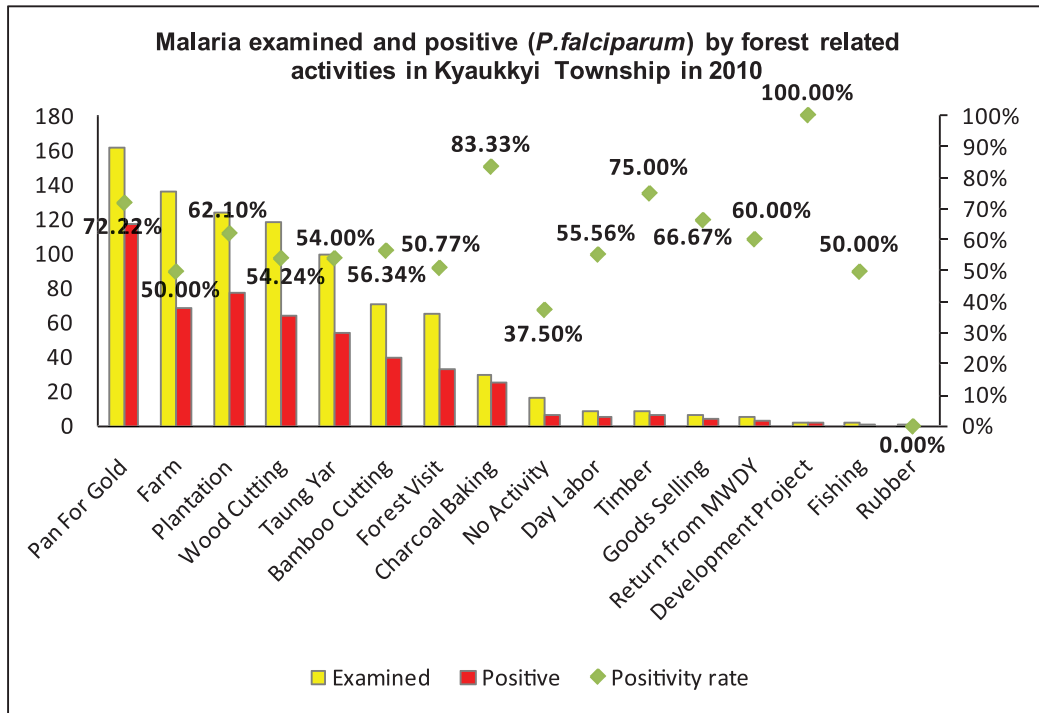
P.f and P.v ratio of microscopy diagnosis in Kyaukkyi Township, 2010 and 2011



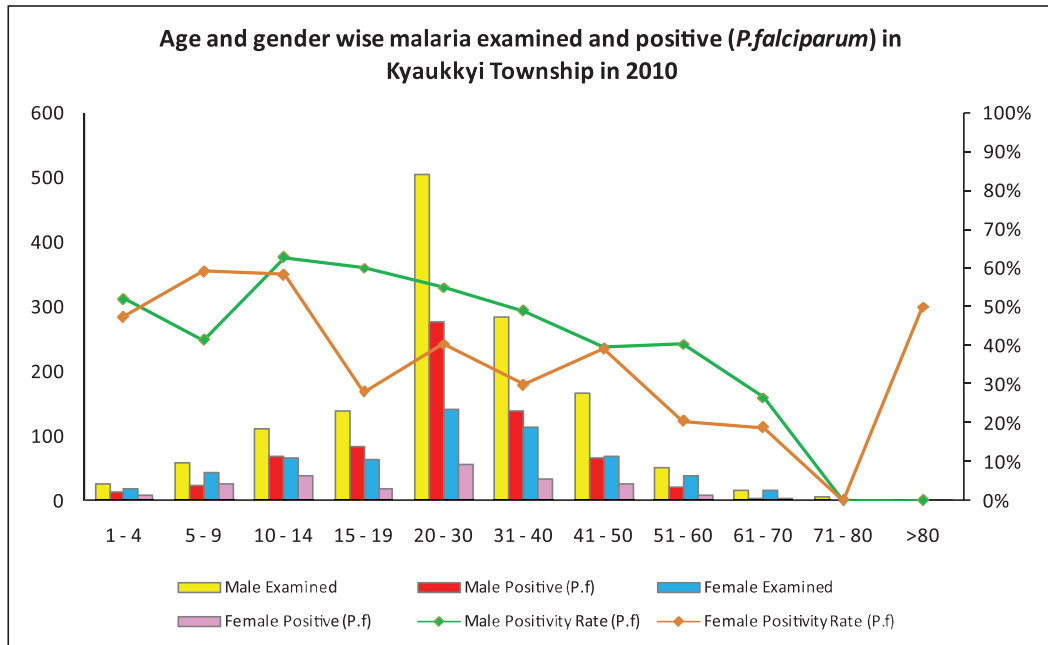
Percentage of patients approached to health facilities for malaria confirmatory diagnosis in Kyaukkyi Township in 2010 and 2011



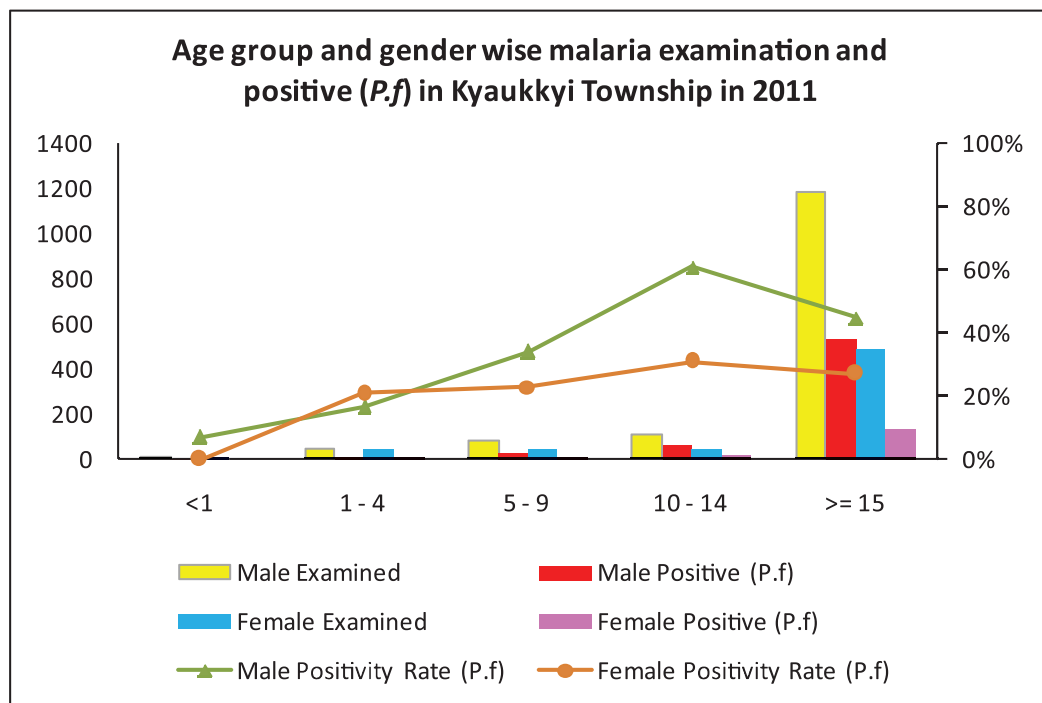
Malaria examined and positive (*P.falciparum*) by forest related activities in Kyaukkyi Township in 2010



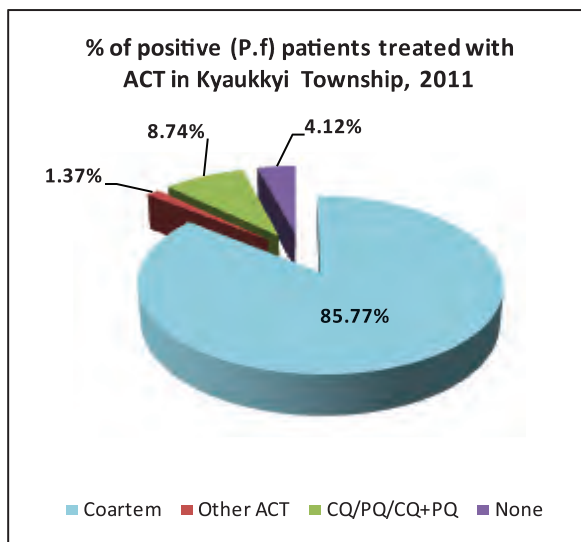
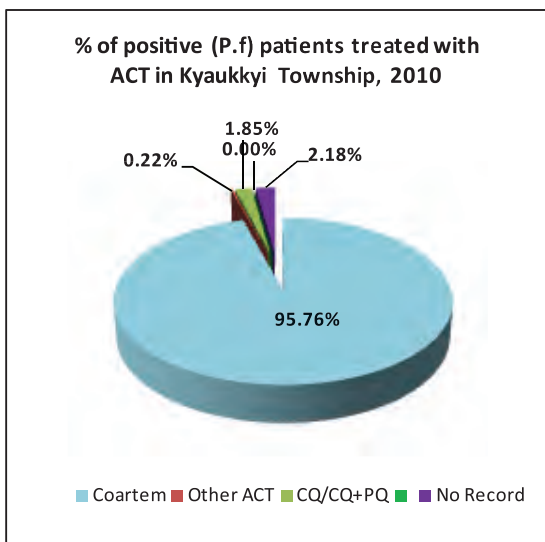
Age and Gender Wise Malaria examined and positive (*P.falciparum*) in Kyaukkyi Township in 2010



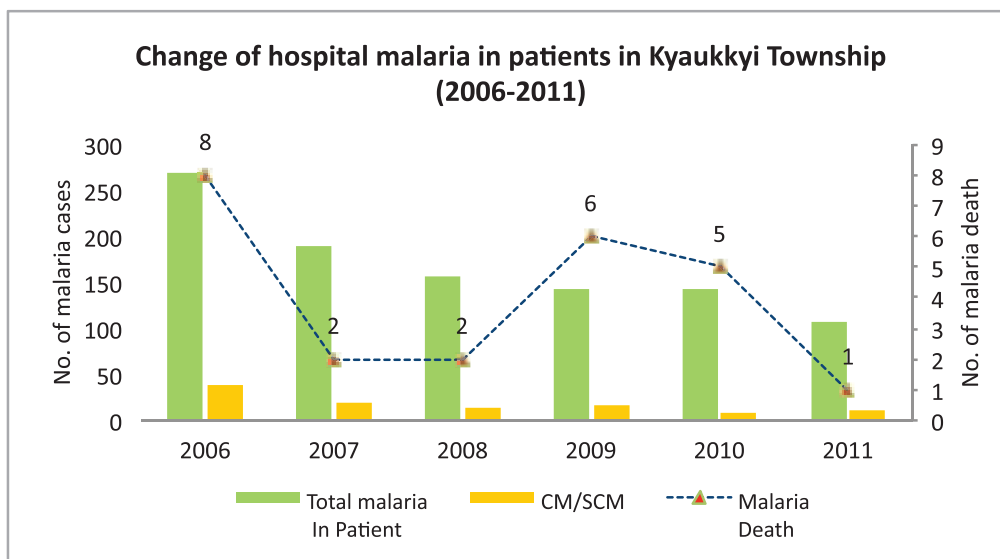
Age Group and Gender Wise Malaria examined and positive (*P.falciparum*) in Kyaukkyi Township in 2011



Percentage of positive (*P.f*) patients teated with ACT in Kyaukkyi Township in 2010 and 2011



Change of hospital malaria in patients in Kyaukkyi Township from 2006-2011



Sr	Year	Total In Patient	Total malaria In Patient	CM/SCM	Malaria Death	Total Death
1	2006	2030	270	38	8	64
2	2007	1993	189	19	2	36
3	2008	1817	157	14	2	46
4	2009	1919	144	16	6	68
5	2010	1971	144	8	5	73
6	2011	2156	107	12	1	49
Total		11886	1011	107	24	336