

## Bago Region (East)

### Profile of Bago Region (East)



#### Area and Location\*

Area	: 24200.00 Sq Km
North	: Mandalay Region
South	: Yangon Region
East	: Rakhine State
West	: Kayin State

#### Administrative Units\*

Townships	: 14
Wards	: 147
Village Tracts	: 740
Villages	: 2,859



#### Population (2009)\*

Total	: 2,854,395
Urban	: 490,169
Rural	: 2,364,226
Male	: 1,390,817
Female	: 1,467,578
Sex Ratio	: 95
<5 Year	: 327,370
0-14 Year	: 935,249
15-49 Year	: 1,469,249
Population Density	: 117.9502/Km <sup>2</sup>

**Health Facilities\*-**

General Hospital (200) Bedded	1	Maternal and Child Health Centers	16
Hospital (100) Bedded	1	Urban Health Centers	2
Hospital (150) Bedded	1	Rural Health Centers	68
Township Hospital (50=2, 25=10)	11	Sub Health Centers	390
Station Hospital	30	School Health Centers	3
Hospital under other Ministry	2	Private Clinics and Maternity	170

**Health Manpower (2009)\***

	Doctor	Nurse	HA	LHV	PHS I	PHS II	MW
Sanction	320	559	90	93	34	93	504
Appointed	256	395	80	93	34	66	452
Vacant	64	164	10	0	0	27	52
% Vacancy	20.0%	29.3%	11.1%	0.0%	0.0%	29.0%	10.3%

(HA: Health Assistant, LHV: Lady Health Visitor, PHS: Public Health Supervisor, MW: Midwife)

**Health Manpower (Volunteer) (2009)\***

	Category of Volunteer Health		
	CHW	AMW	TTBA
Trained	2181	1605	1599
Functioning	1348	1137	757
% Functioning	61.8%	70.8%	47.3%

(CHW: Community Health Worker, AMW: Auxiliary Mid Wife, TTBA: Trained Traditional Birth Attendant)

**Common Diseases under National Surveillance (2009)\***

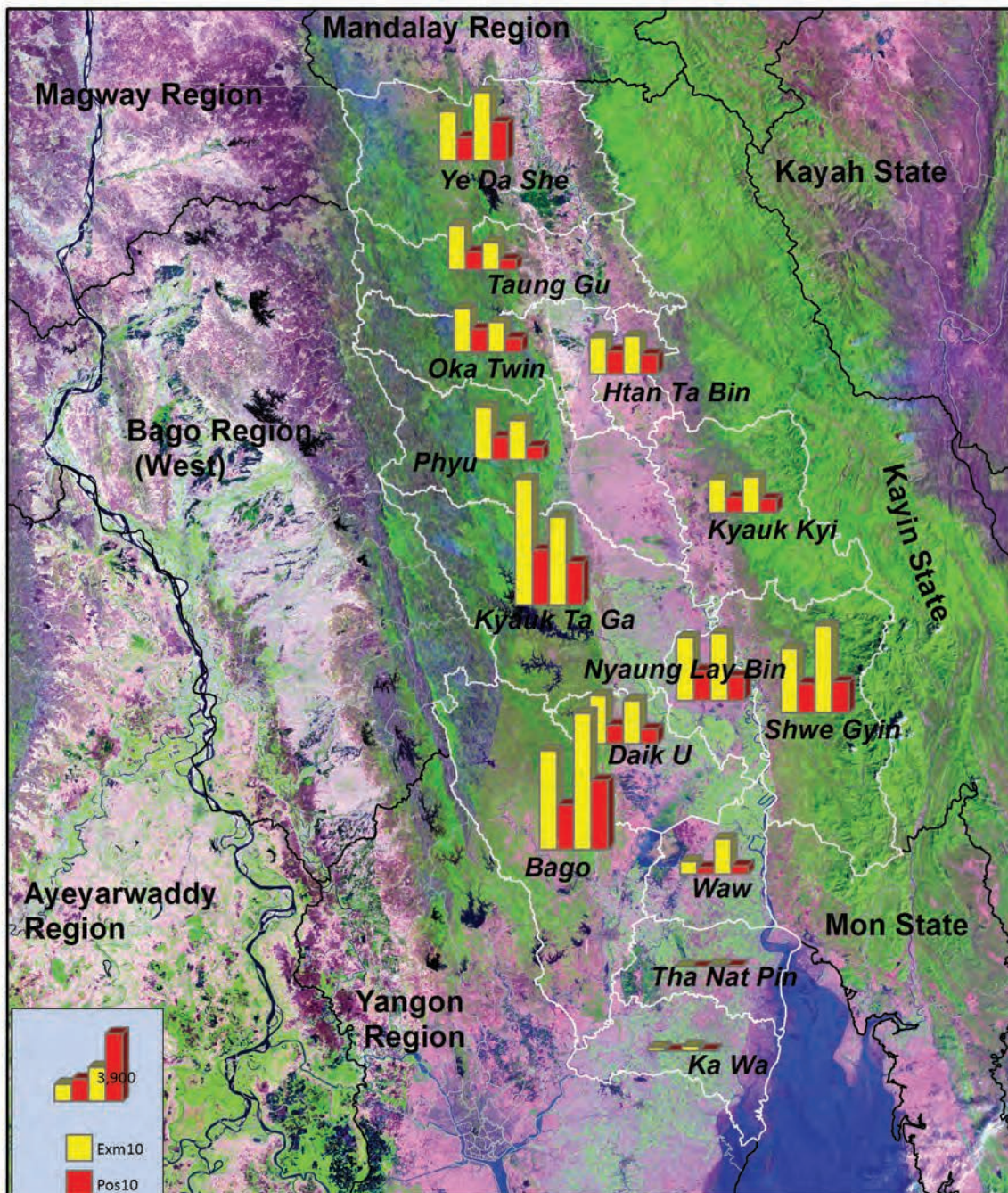
Diseases	Morbidity	Mortality
Malaria	1195	1.96
ARI<5	4094	5.50
Diarrhea	753.3	0.70
Dysentery	302.1	0
TB (Sputum +)	43.69	0.56
Snake Bite	15.2	1.75

(Per 100,000 Populations)

\* The data source is Health Profile of Bago Region (2009) from Department of Health Planning.



### Total Examined and Positive (*P.f*) by Townships in Bago Region East, 2010 and 2011



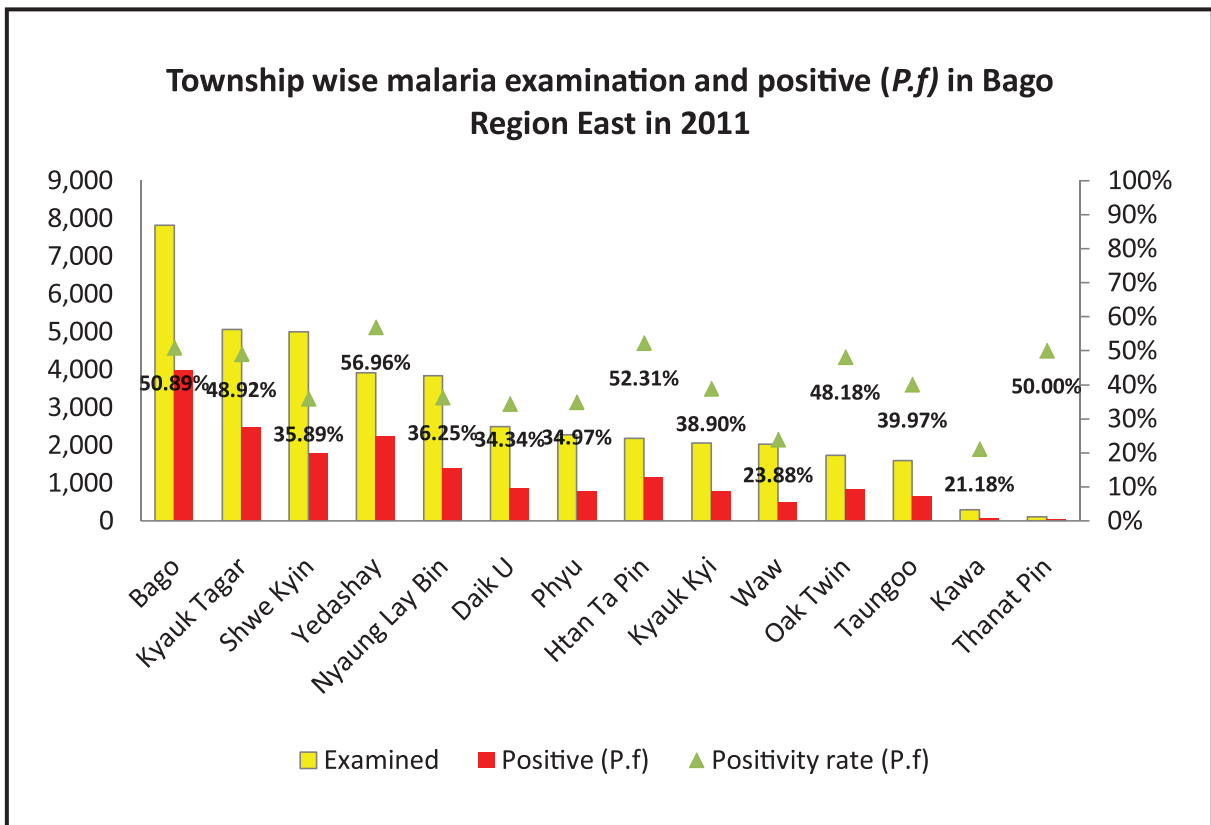
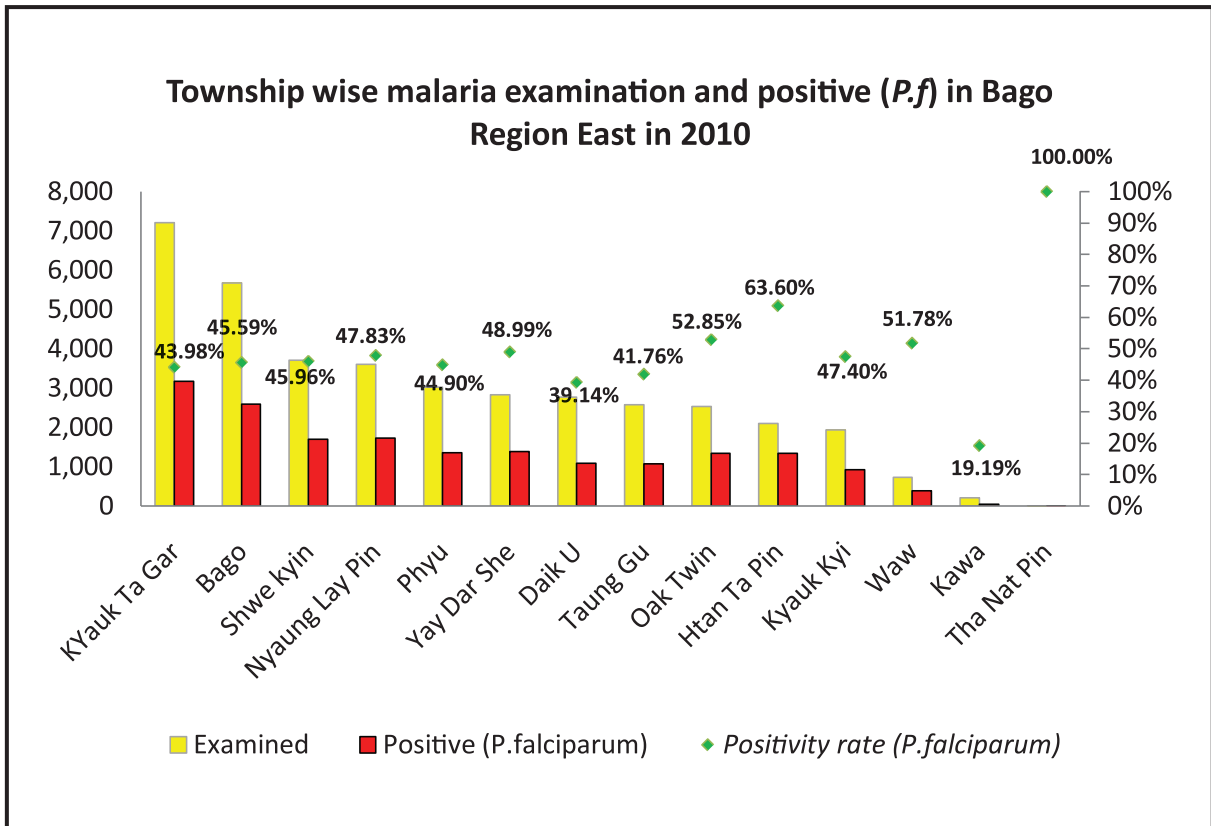
## Result of Malaria examination by Townships in Bago Region East in 2010

Sr	TownshipName	Total Malaria Examination	Examined by RDT		Examined by Microscope							SFR	SVR	SPR
			Examined	P.f	Examined	P.f	P.v	P.m/ P.o	Mix	Total Positive				
1	KYauk Ta Gar	7,201	6,536	2,843	665	318	114	0	6	438	73.97%	26.03%	45.56%	
2	Bago	5,674	4,071	1,932	1,603	650	177	0	5	832	78.73%	21.27%	48.71%	
3	Shwekyin	3,701	3,638	1,665	63	36	1	0	0	37	97.30%	2.70%	45.99%	
4	Nyaung Lay Pin	3,596	3,579	1,710	17	10	1	0	0	11	90.91%	9.09%	47.86%	
5	Phyuu	3,022	2,585	1,016	437	337	24	0	4	365	93.42%	6.58%	45.70%	
6	Yedashay	2,823	2,459	1,243	364	135	19	0	5	159	88.05%	11.95%	49.66%	
7	Daik U	2,762	2,595	1,011	167	62	32	0	8	102	68.63%	31.37%	40.30%	
8	TaungGu	2,572	2,369	967	203	105	22	0	2	129	82.95%	17.05%	42.61%	
9	Oak Twin	2,522	2,429	1,278	93	42	16	0	13	71	77.46%	22.54%	53.49%	
10	Htan Ta Pin	2,096	2,034	1,276	62	57	0	0	0	57	100.00%	0.00%	63.60%	
11	Kyaukkyi	1,939	1,805	867	134	51	41	0	1	93	55.91%	44.09%	49.51%	
12	Waw	730	693	353	37	25	1	0	0	26	96.15%	3.85%	51.92%	
13	Kawa	198	198	38	0	0	0	0	0	0	0.00%	0.00%	19.19%	
14	Tha Nat Pin	3	3	3	0	0	0	0	0	0	0.00%	0.00%	100.00%	
		<b>38,839</b>	<b>34,994</b>	<b>16,202</b>	<b>3,845</b>	<b>1,828</b>	<b>448</b>	<b>0</b>	<b>44</b>	<b>2,320</b>	<b>80.69%</b>	<b>19.31%</b>	<b>47.69%</b>	

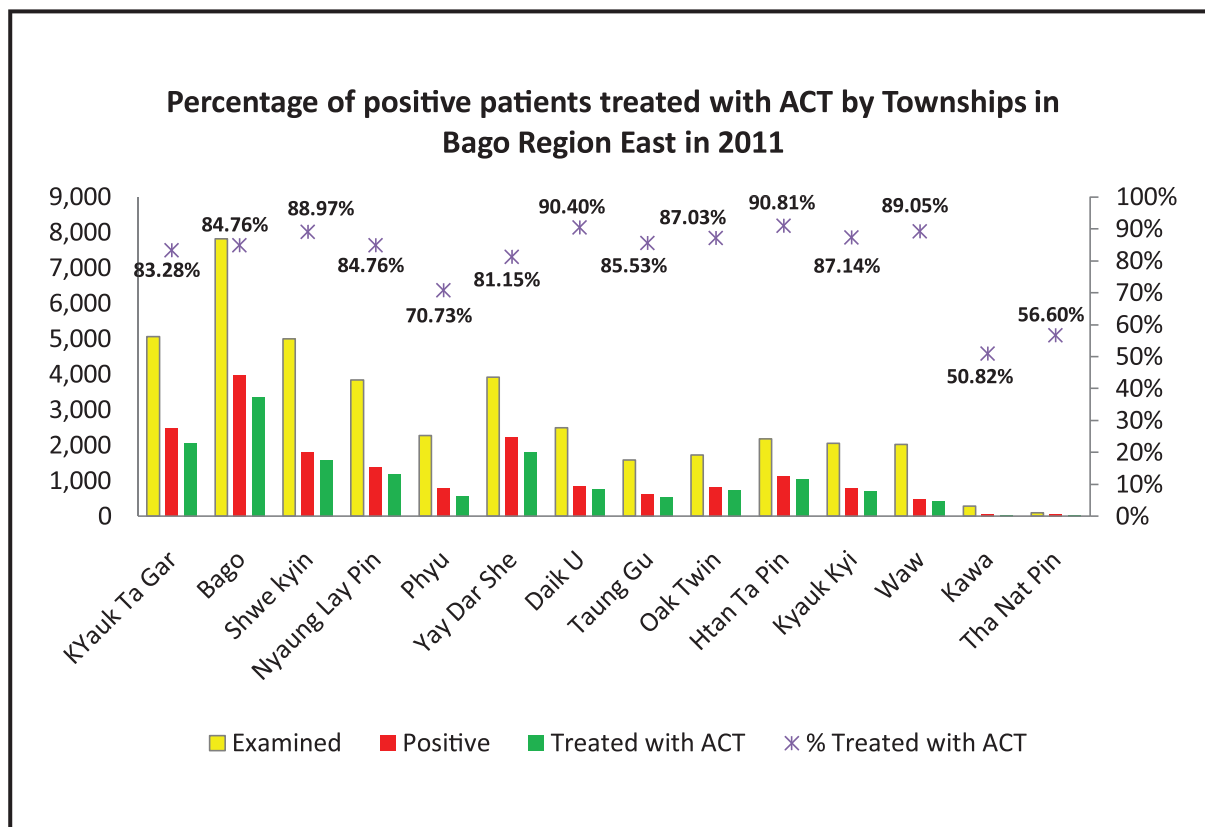
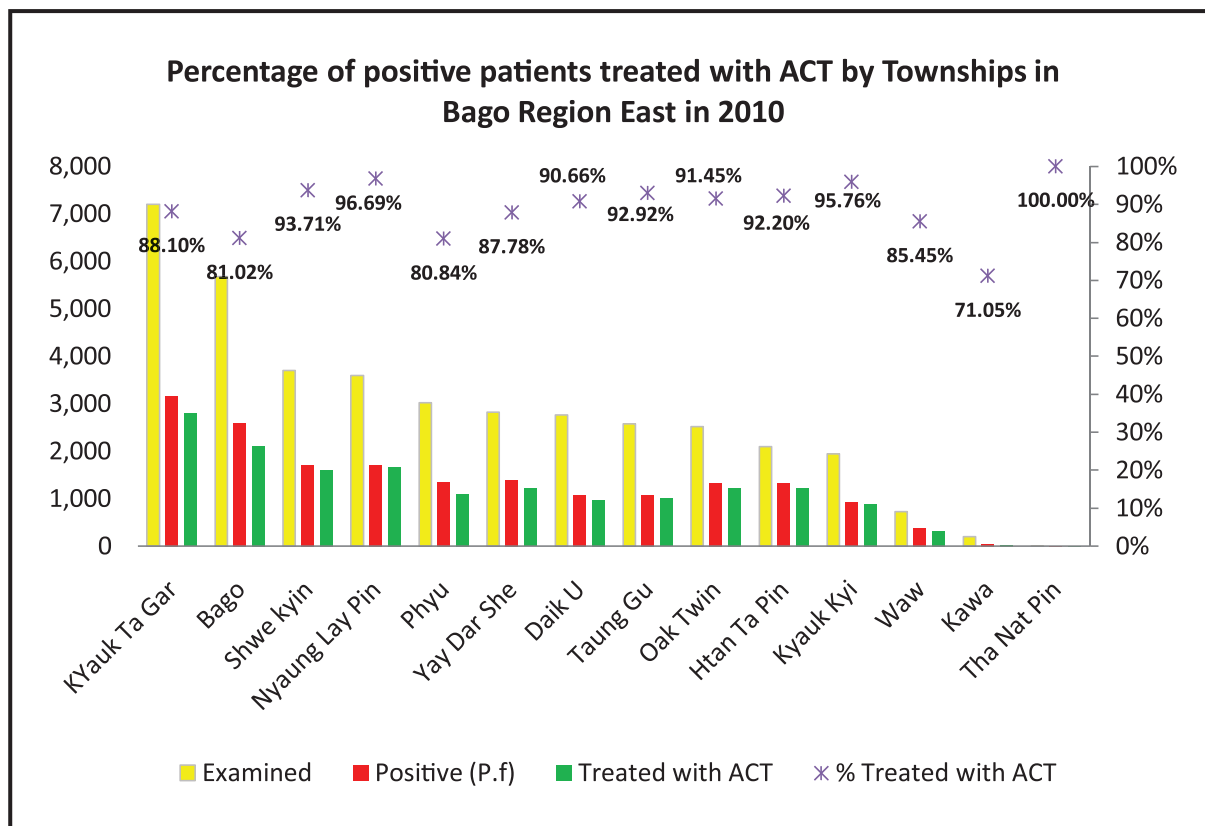
## Result of Malaria examination by Townships in Bago Region East 2011

Sr	TownshipName	Total Malaria Examination	Examined by RDT				Examined by Microscope						SFR	SVR	SPR
			Examined	Pf	Mix	Other species	Examined	Pf	P.v	P.m/P.o	Mix	Total Positive			
1	K'Yauk Ta Gar	5,061	4,709	2,110	202	44	352	121	80	0	43	244	67.21%	32.79%	50.50%
2	Bago	7,813	5,504	2,947	245	51	2,309	723	305	0	61	1089	71.99%	28.01%	54.79%
3	Shwekyin	5,001	4,902	1,670	100	3	99	18	8	0	7	33	75.76%	24.24%	36.05%
4	Nyaung Lay Pin	3,837	3,811	1,361	24	186	26	2	12	0	4	18	33.33%	66.67%	36.57%
5	Phyu	2,276	2,042	629	15	4	234	151	17	0	1	169	89.94%	10.06%	35.72%
6	Yay Dar She	3,920	3,682	2,181	7	40	238	44	20	0	1	65	69.23%	30.77%	57.47%
7	Daik U	2,487	2,210	786	30	17	277	36	48	0	2	86	44.19%	55.81%	36.27%
8	TaungGu	1,591	1,478	580	17	0	113	37	13	0	2	52	75.00%	25.00%	40.79%
9	Oak Twin	1,729	1,693	811	18	1	36	4	14	0	0	18	22.22%	77.78%	48.99%
10	Htan Ta Pin	2,185	2,176	1,115	25	1	9	2	0	0	1	3	100.00%	0.00%	52.31%
11	KyaukKyí	2,059	1,808	749	6	2	251	40	81	0	6	127	36.22%	63.78%	42.84%
12	Waw	2,027	1,932	438	3	35	95	42	3	0	1	46	93.48%	6.52%	24.03%
13	Kawa	288	245	54	1	1	43	2	10	0	4	16	0.00%	0.00%	24.65%
14	Tha Nat Pin	106	91	52	0	0	15	1	6	0	0	7	0.00%	0.00%	55.66%
		<b>40,380</b>	<b>36,283</b>	<b>15,483</b>	<b>693</b>	<b>385</b>	<b>4,097</b>	<b>1,223</b>	<b>617</b>	<b>0</b>	<b>133</b>	<b>1973</b>	<b>68.73%</b>	<b>31.27%</b>	<b>44.95%</b>

### Township wise malaria examined and positive (*P.f*) in Bago Region East in 2010 and 2011



## Percentage of positive patients treated with ACT by Townships in Bago Region East in 2010 and 2011



Percentage of positive (*P.f*) patients treated with ACT by Townships in Bago Region East, 2010

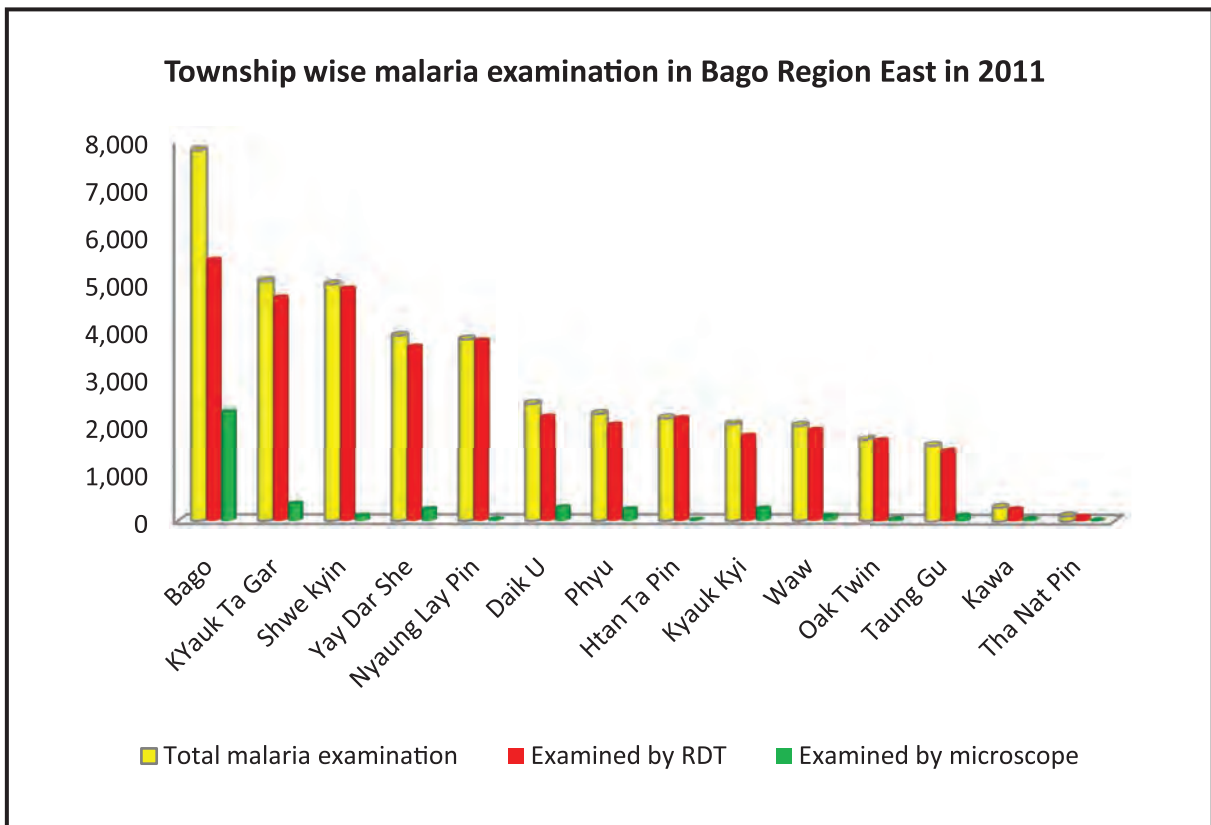
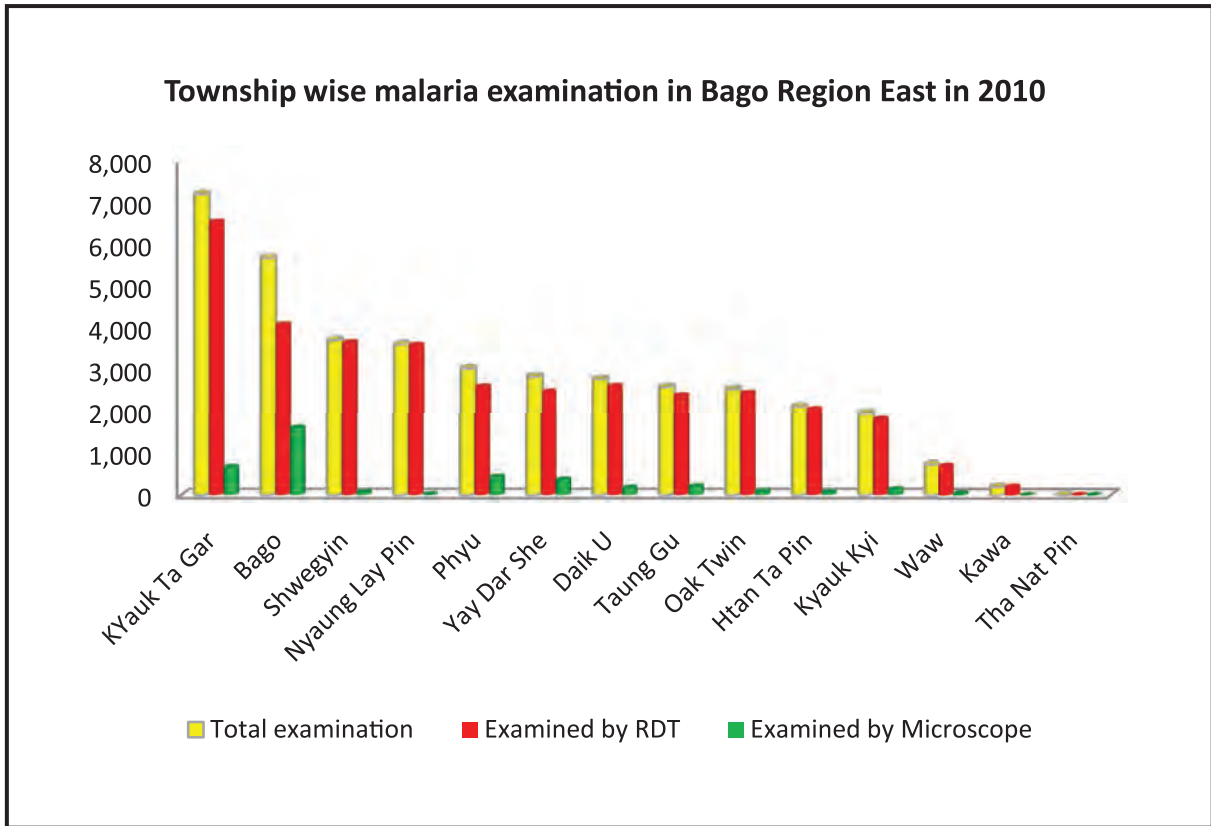
Sr	Township Name	Total Examination	Diagnosed by RDT		Diagnosed by Microscope			Total <i>P.f</i>	Treated with ACT	% treated with ACT
			Examined	<i>P.f</i>	Examined	<i>P.f</i>	<i>P.v</i>			
1	KYauk Ta Gar	7,201	6,536	2,841	665	326	112	3,167	2,790	88.10%
2	Bago	5,674	4,071	1,930	1,603	657	175	2,587	2,096	81.02%
3	Shwekyin	3,701	3,638	1,664	63	37	0	1,701	1,594	93.71%
4	Nyaung Lay Pin	3,596	3,579	1,710	17	10	1	1,720	1,663	96.69%
5	Phyu	3,022	2,585	1,014	437	343	22	1,357	1,097	80.84%
6	Yay Dar She	2,823	2,459	1,243	364	140	19	1,383	1,214	87.78%
7	Daik U	2,762	2,595	1,011	167	70	32	1,081	980	90.66%
8	TaungGu	2,572	2,369	967	203	107	22	1,074	998	92.92%
9	Oak Twin	2,522	2,429	1,278	93	55	16	1,333	1,219	91.45%
10	Htan Ta Pin	2,096	2,034	1,276	62	57	0	1,333	1,229	92.20%
11	KyaukKyí	1,939	1,805	867	134	52	41	919	880	95.76%
12	Waw	730	693	353	37	25	1	378	323	85.45%
13	Kawa	198	198	38	0	0	0	38	27	71.05%
14	Tha Nat Pin	3	3	3	0	0	0	3	3	100.00%
	<b>Total</b>	<b>38,839</b>	<b>34,994</b>	<b>16,195</b>	<b>3,845</b>	<b>1,879</b>	<b>441</b>	<b>18,074</b>	<b>16,113</b>	<b>89.15%</b>



## Percentage of positive (P.f) patients treated with ACT by Townships in Bago Region East in 2011

Sr	TownshipName	Total Examination	Examined by RDT			Examined by Microscope				Total P.f	Treated with ACT	% Treated with ACT
			Examined	P.f	Mix	Examined	P.f	Mix				
1	KYauk Ta Gar	5,061	4,709	2,110	202	352	121	80	43	2,476	2,062	83.28%
2	Bago	7,813	5,504	2,947	245	2,309	723	305	61	3,976	3,370	84.76%
3	Shwekyin	5,001	4,902	1,670	100	99	18	8	7	1,795	1,597	88.97%
4	Nyaung Lay Pin	3,837	3,811	1,361	24	26	2	12	4	1,391	1,179	84.76%
5	Phyu	2,276	2,042	629	15	234	151	17	1	796	563	70.73%
6	Yay Dar She	3,920	3,682	2,181	7	238	44	20	1	2,233	1,812	81.15%
7	Daik U	2,487	2,210	786	30	277	36	48	2	854	772	90.40%
8	TaungGu	1,591	1,478	580	17	113	37	13	2	636	544	85.53%
9	Oak Twin	1,729	1,693	811	18	36	4	14	0	833	725	87.03%
10	Htan Ta Pin	2,185	2,176	1,115	25	9	2		1	1,143	1,038	90.81%
11	Kyaukkyi	2,059	1,808	749	6	251	40	81	6	801	698	87.14%
12	Waw	2,027	1,932	438	3	95	42	3	1	484	431	89.05%
13	Kawa	288	245	54	1	43	2	10	4	61	31	50.82%
14	Tha Nat Pin	106	91	52	0	15	1	6	0	53	30	56.60%
		<b>40,380</b>	<b>36,283</b>	<b>15,483</b>	<b>693</b>	<b>4,097</b>	<b>1,223</b>	<b>617</b>	<b>133</b>	<b>17,532</b>	<b>14,852</b>	<b>84.71%</b>

### Township wise malaria examination in Bago Region East in 2010 and 2011



## HEALTH PROFILE OF BAGO TOWNSHIP



### Area and Location\*

Area : 2905.07 Km<sup>2</sup>  
 North : Kyauktaga  
 South : Kawa  
 East : Waw  
 West : Hlegu

### Population (2009)\*

Total : 412,733  
 Urban : 183,360  
 Rural : 229,373  
 Male : 203,001  
 Female : 209,732  
 Sex Ratio : 97

### Administrative Units\*

Wards : 31  
 Village tracts : 66  
 Villages : 227

<5 Year : 49,194  
 0-14 Year : 134,318  
 15-49 Year : 216,241  
 Population Density : 142.07/ Km<sup>2</sup>

## Health Facilities (2009)\*

Township Hospital (150) Bedded	:	1
Station Hospital	:	3
Maternal and Child Health Centers	:	1
Urban Health Centers	:	2
Rural Health Centers	:	5
Sub Health Centers	:	37
School Health Centers	:	1
Private Clinics and Maternity Homes	:	64

## Health Manpower\*

	Doctor	Nurse	HA	LHV	PHS I	PHS II	MW
Sanction	132	217	8	11	6	11	60
Appointed	108	131	8	11	6	10	54
Vacant	24	86	0	0	0	1	6
% Vacancy	18.2%	39.6%	0.0%	0.0%	0.0%	9.1%	10.0%

(HA: Health Assistant, LHV: Lady Health Visitor, PHS:Public Health Supervisor , MW: Midwife)

## Health Manpower (Volunteer)\*

	Category of Volunteer Health Workers		
	CHW	AMW	TTBA
Trained	249	137	280
Functioning	124	88	43
% Functioning	49.8%	64.2%	15.4%

(CHW: Community health Worker, AMW: Auxiliary Mid Wife, TTBA: Trained Traditional Birth Attendant)

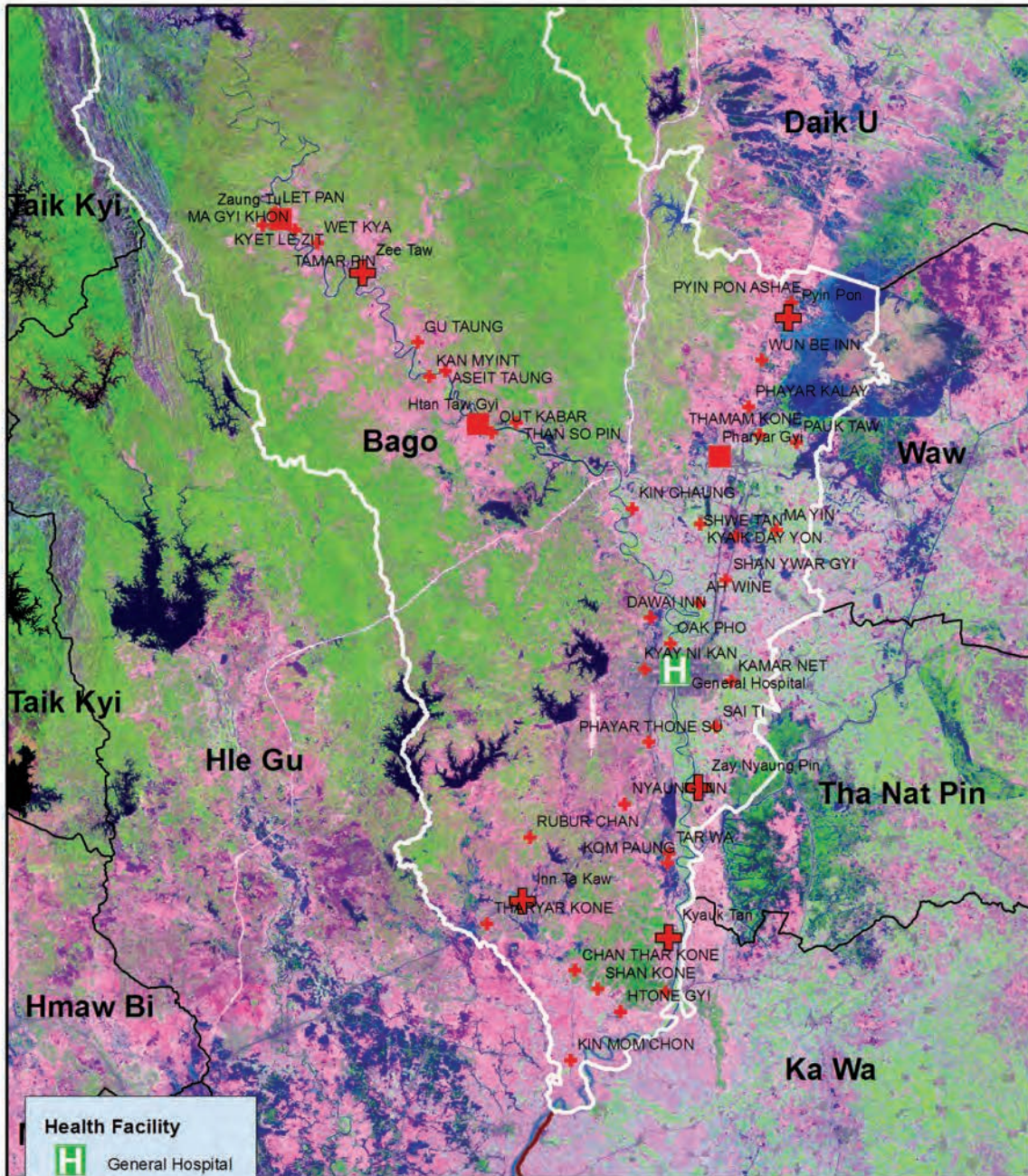
## Common Diseases under National Surveillance\*

Diseases	Morbidity	Mortality
Malaria	1253.4	0.73
ARI <5	1797	0
Diarrhea	470.76	0
Dysentery	230.66	0
TB(Sputum+)	109.03	0
Snake Bite	0.73	0.48

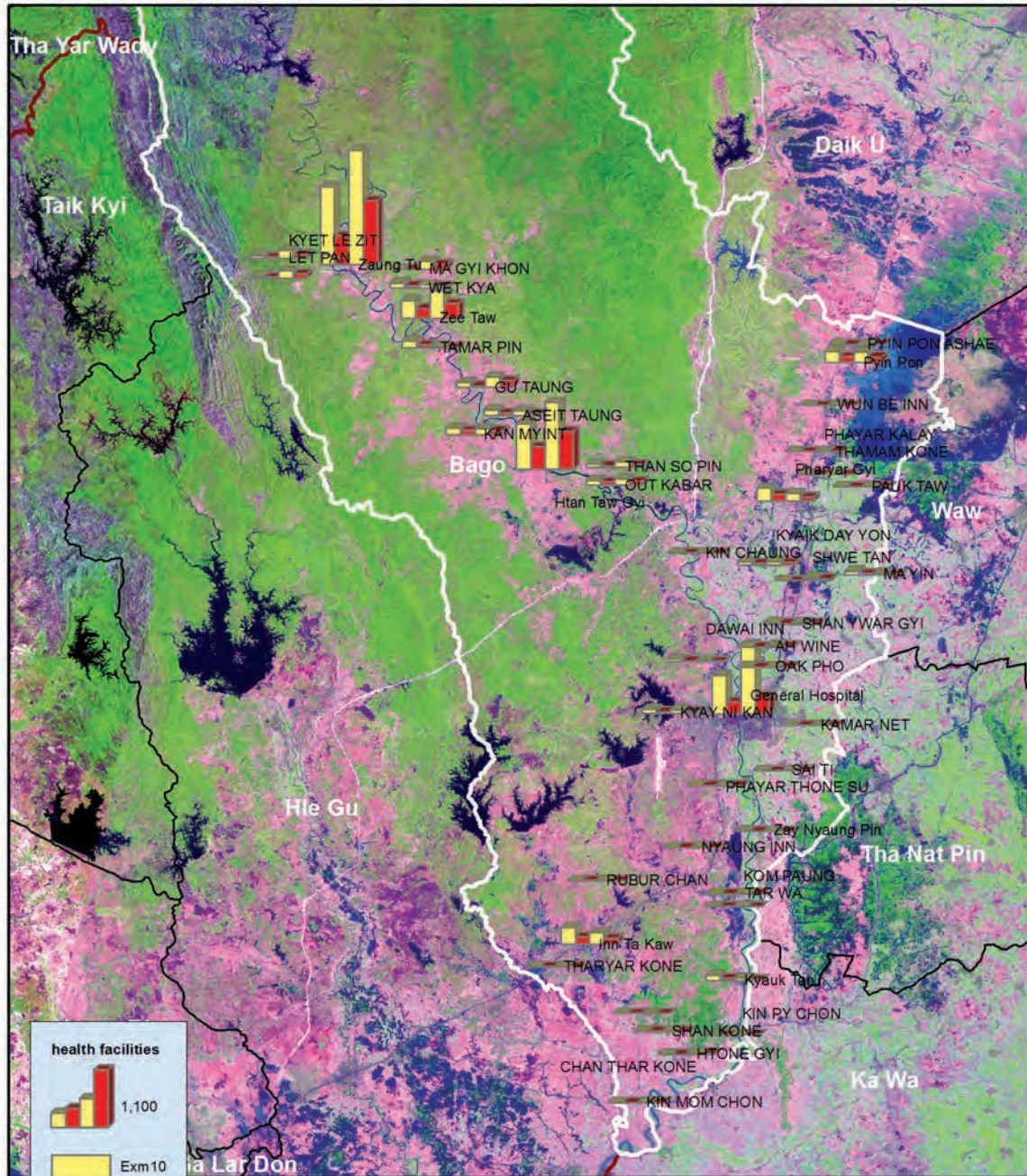
(Per 100,000 Populations)

\* The data source is Health Profile of BagoRegion East (2009) from Department of Health Planning.

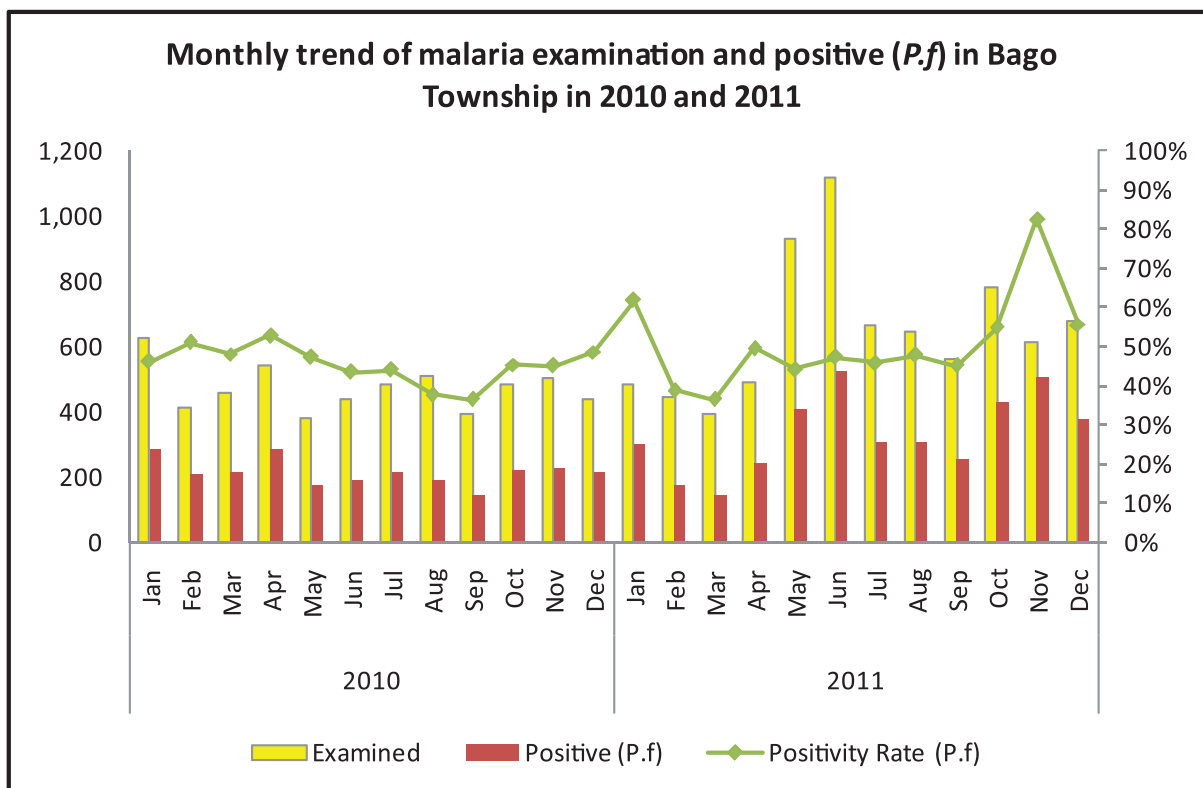
### Vegetation cover and Health Facilities distribution in Bago Township in Bago Region East



### Health Facilities wise Malaria Examination and Positive (P.f) in Bago Township, 2010 and 2011

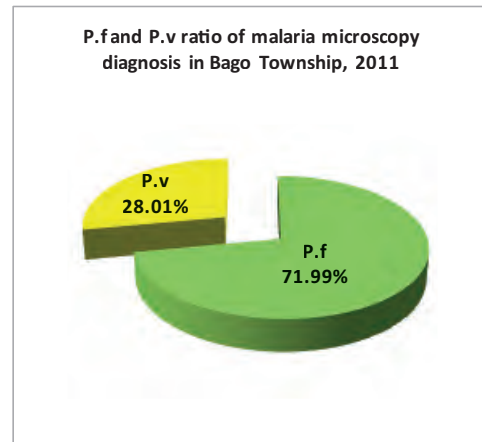
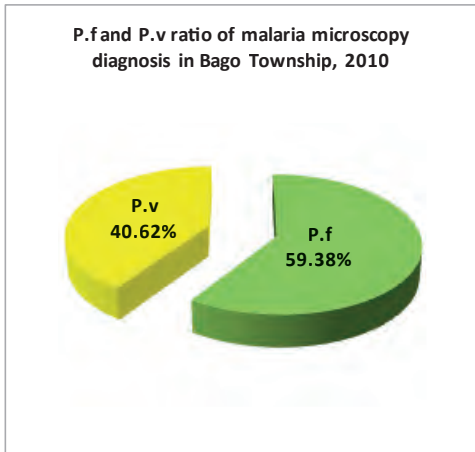


## Monthly trend of malaria examination and Positive (P.f) in Bago Township in 2010

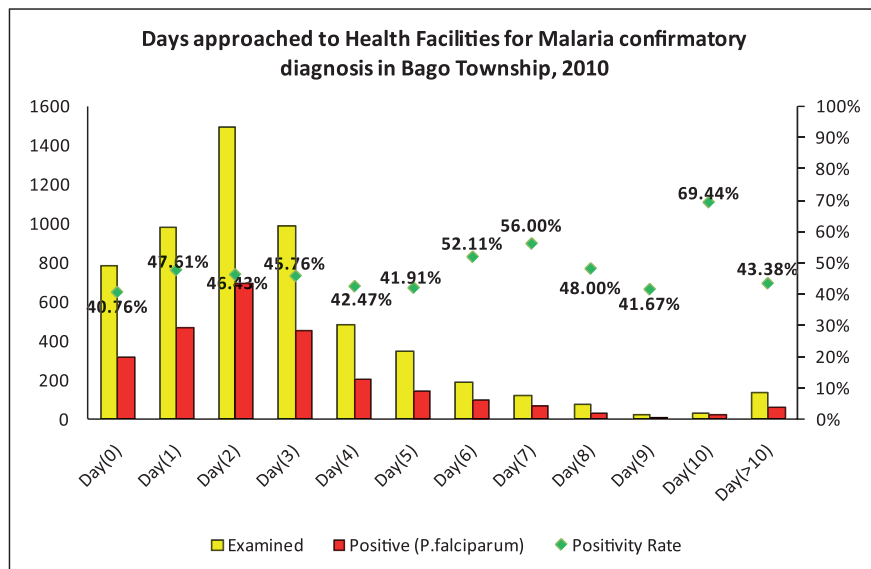
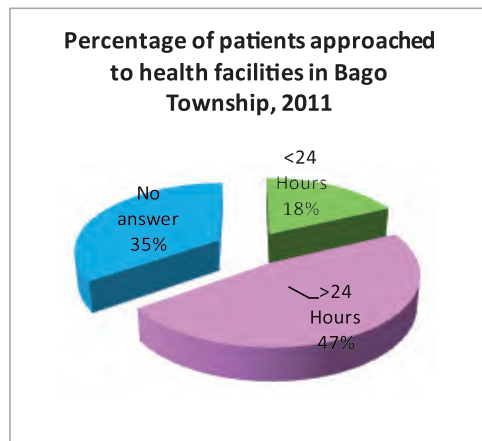
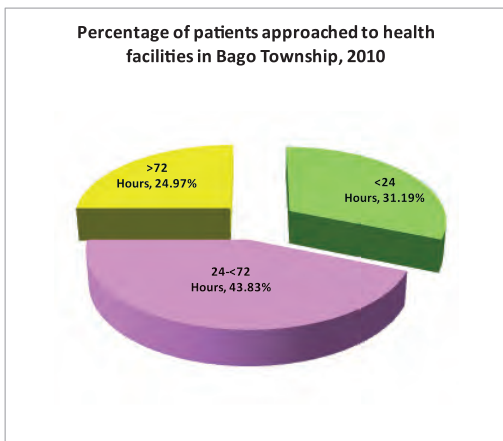


Month	2010			2011		
	Examined	Positive (P.f)	Positivity rate (P.f)	Examined	Positive (P.f)	Positivity rate (P.f)
Jan	624	288	46.15%	486	300	61.73%
Feb	416	212	50.96%	448	174	38.84%
Mar	456	219	48.03%	392	143	36.48%
Apr	543	287	52.85%	490	243	49.59%
May	379	179	47.23%	933	412	44.16%
Jun	438	190	43.38%	1,116	526	47.13%
Jul	483	213	44.10%	668	306	45.81%
Aug	509	192	37.72%	644	307	47.67%
Sep	393	143	36.39%	560	252	45.00%
Oct	484	220	45.45%	781	428	54.80%
Nov	507	229	45.17%	615	507	82.44%
Dec	442	215	48.64%	680	378	55.59%
<b>Total</b>	<b>5,674</b>	<b>2,587</b>	<b>45.59%</b>	<b>7,813</b>	<b>3,976</b>	<b>50.89%</b>

**P.f and P.v ratio of microscopy diagnosis in Bago Township, 2010 and 2011**

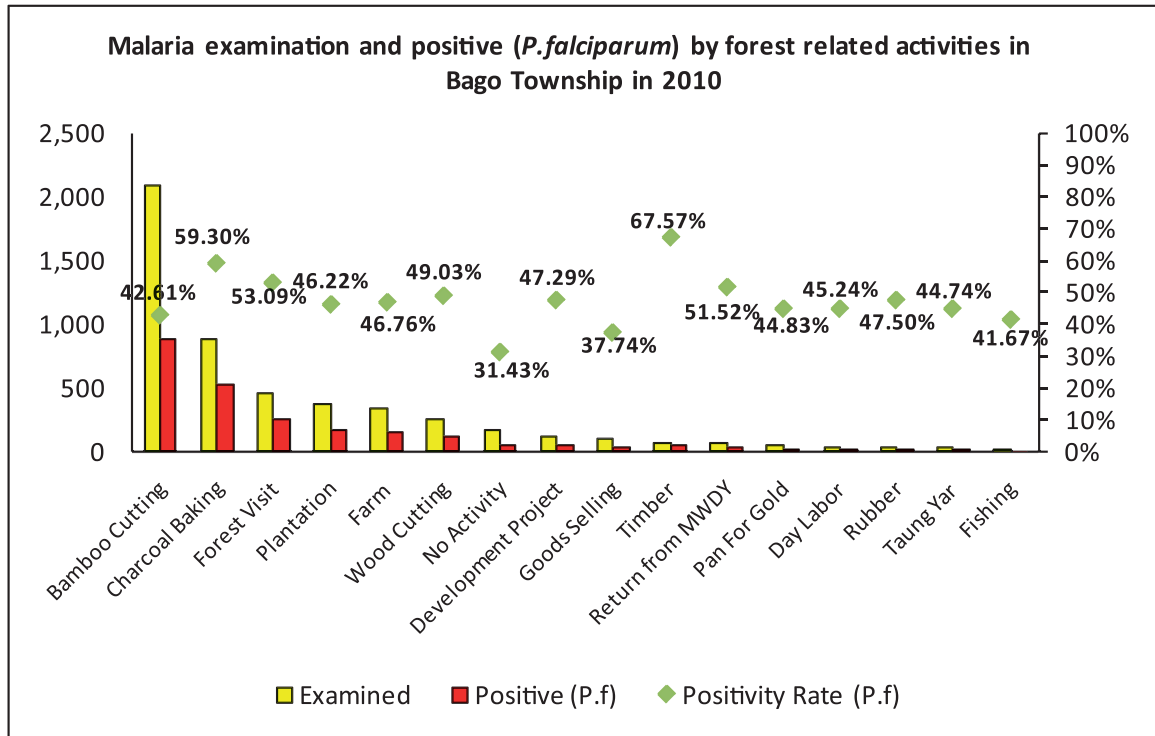


**Percentage of patients approached to health facilities for malaria confirmatory diagnosis in Bago Township in 2010 and 2011**

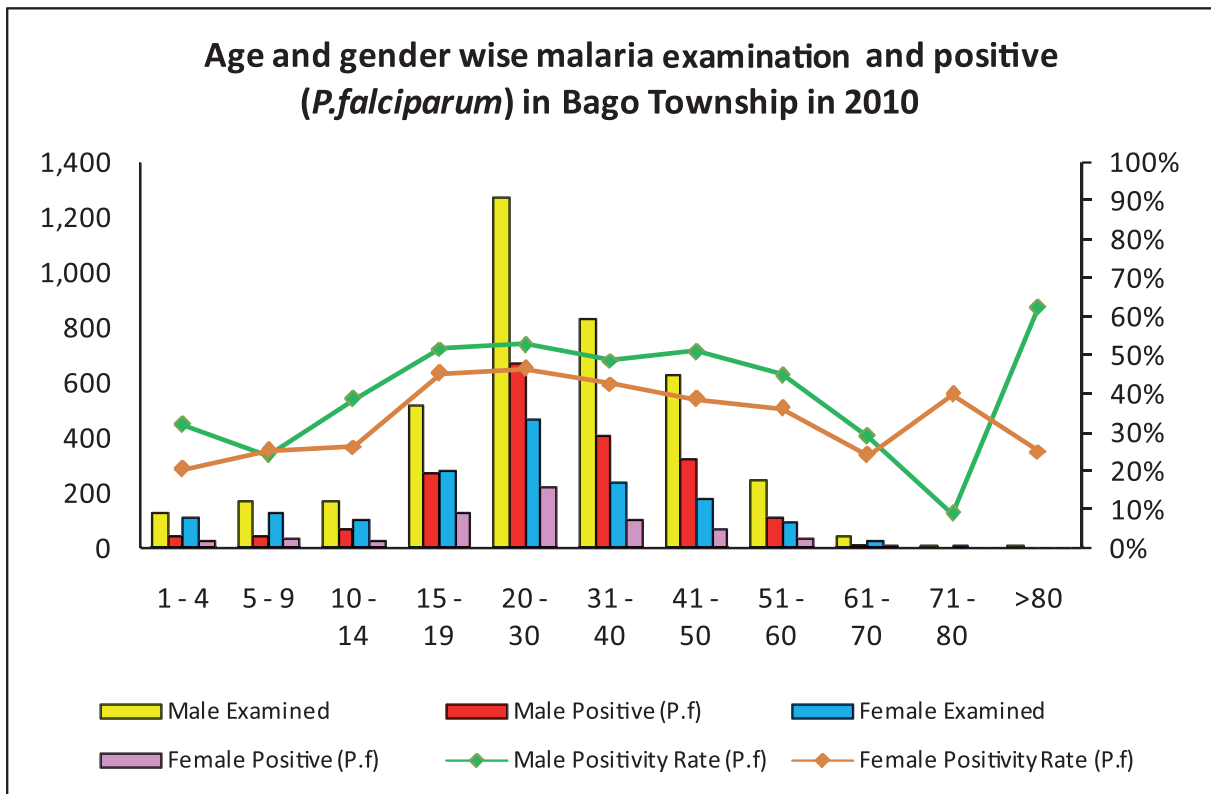




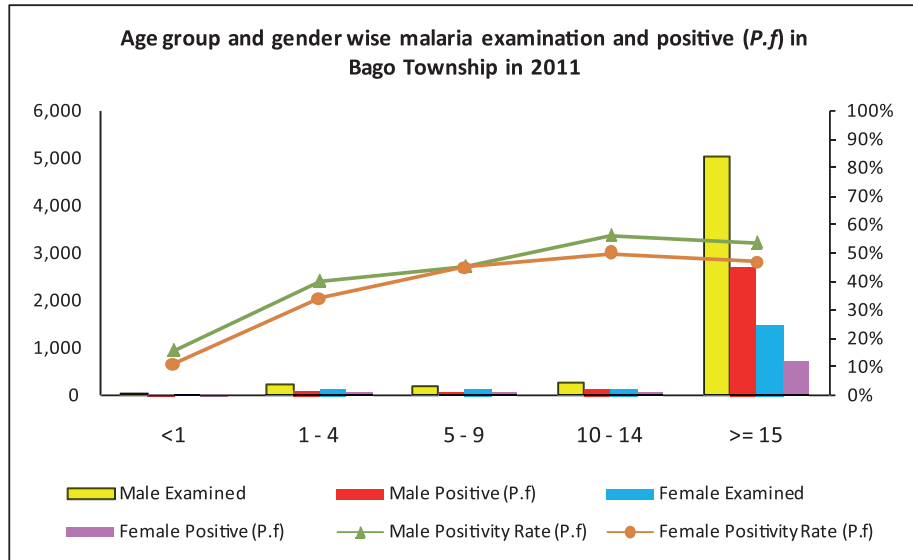
Malaria examination and positive (*P.falciparum*) by forest related activities in Bago Township in 2010



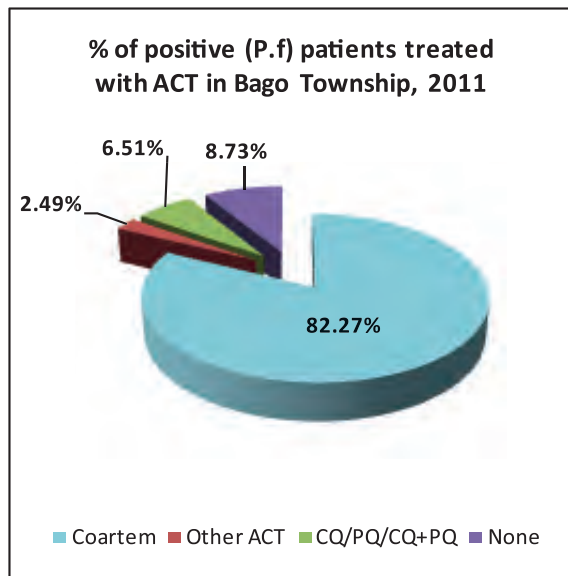
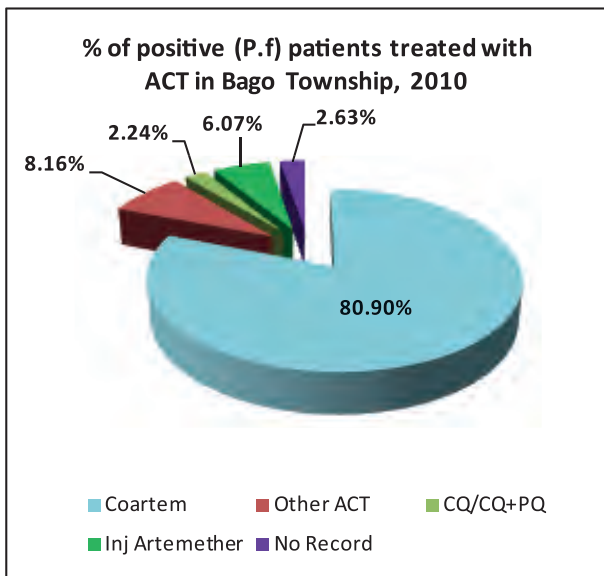
Age and Gender Wise Malaria examination and positive (*P. falciparum*) in Bago Township in 2010



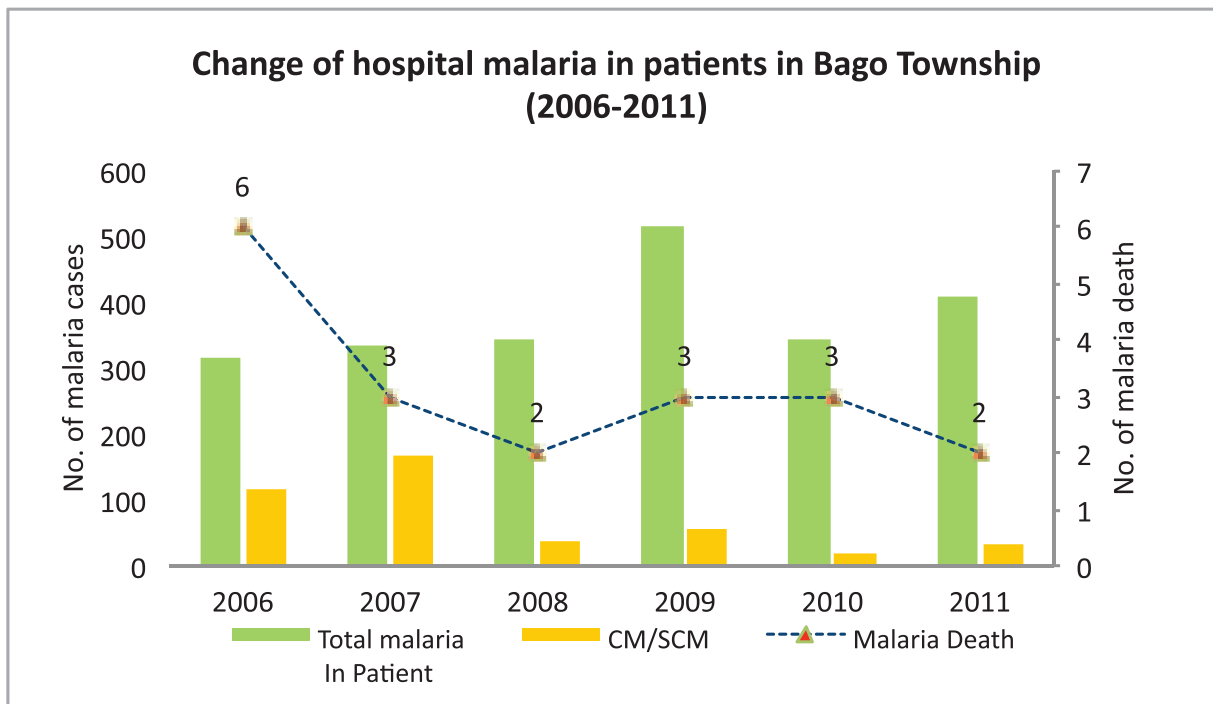
### Age group and Gender Wise Malaria examination and positive (*P. falciparum*) in Bago Township in 2011



### Percentage of positive patients treated with ACT in Bago Township in 2010 and 2011



Change of hospital malaria in patients in Bago Township from 2006 - 2011



Sr	Year	Total In Patient	Total malaria In Patient	CM/SCM	Malaria Death	Total Death
1	2006	8,092	317	118	6	125
2	2007	8,908	335	168	3	117
3	2008	10,373	343	39	2	102
4	2009	12,898	514	55	3	152
5	2010	13,416	345	19	3	181
6	2011	13,269	408	32	2	166
<b>Total</b>		<b>66,956</b>	<b>2,262</b>	<b>431</b>	<b>19</b>	<b>843</b>

## Health Profile of Daik U Township



### Area and Location\*

Area : 1287.30 Km<sup>2</sup>  
 North : KyauktagaTownship  
 South : Waw Township  
 East : Nyaunglebin Township  
 West : Bago Township

### Administrative Units\*

Wards : 7  
 Village tracts : 44  
 Villages : 172

### Population (2009)\*

Total : 213,137  
 Urban : 23,149  
 Rural : 189,988  
 Male : 102,312  
 Female : 110,825  
 Sex Ratio : 92  
 <5 Year : 27,716  
 0-14 Year : 72,901  
 15-49 Year : 92,086  
 Population Density : 165.57/ Km<sup>2</sup>

### Health Facilities (2009)\*

Township Hospital (50) Bedded : 1  
 Station Hospital : 2  
 Maternal and Child Health Centers : 1  
 Rural Health Centers : 5  
 Sub Health Centers : 28  
 Private Clinics and Maternity : 14

## Health Man Power (2009)\*

	Doctor	Nurse	HA	LHV	PHS I	PHS II	MW
Sanction	6	9	6	6	2	3	34
Appointed	6	8	5	6	2	3	32
Vacant	0	1	1	0	0	0	2
% Vacancy	0.0%	11.1%	16.7%	0.0%	0.0%	0.0%	5.9%

(HA: Health Assistant, LHV: Lady Health Visitor, PHS I: Public Health Supervisor, MW: Mid Wife)

## Health Man Power (Volunteer) (2009)\*

	Category of Volunteer Health Workers		
	CHW	AMW	TTBA
Trained	101	40	54
Functioning	99	40	54
% of Functioning	98.0%	100.0%	100.0%

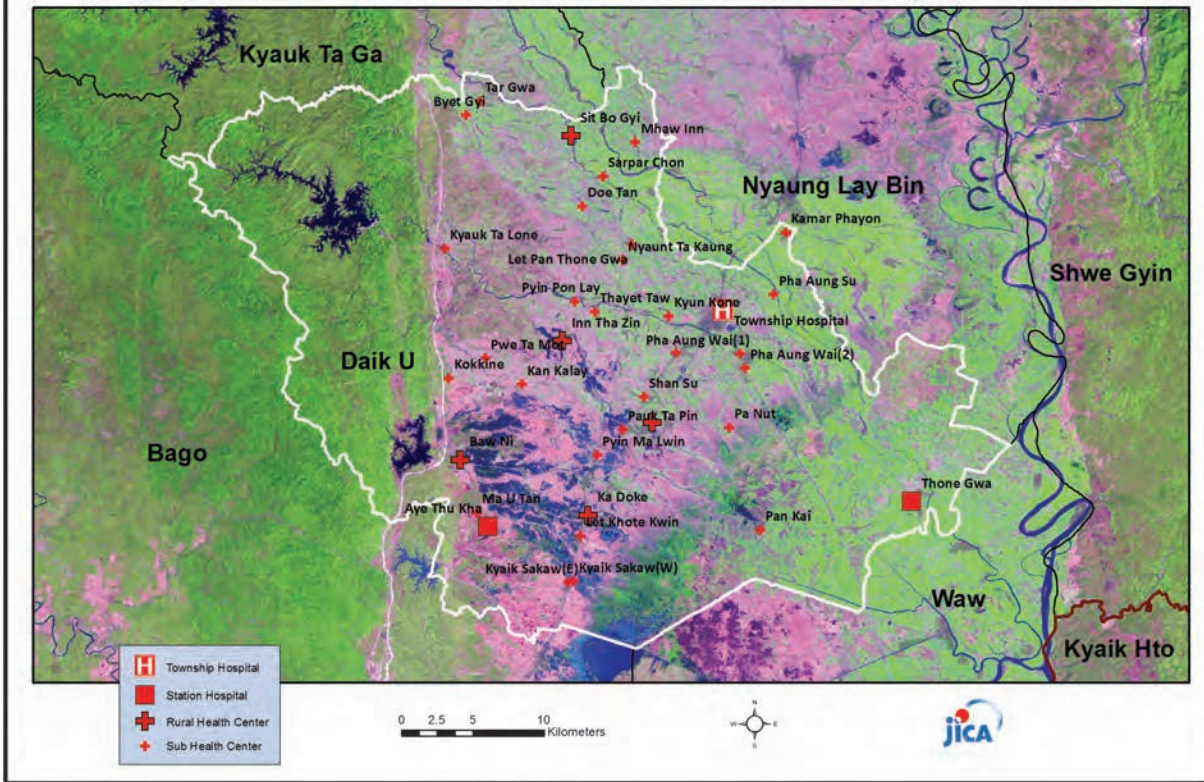
(CHW: Community Health Worker, AMW: Auxiliary Mid Wife, TTBA: Trained Traditional Birth Attendant)

## Common Diseases under National Surveillance (2009)\*

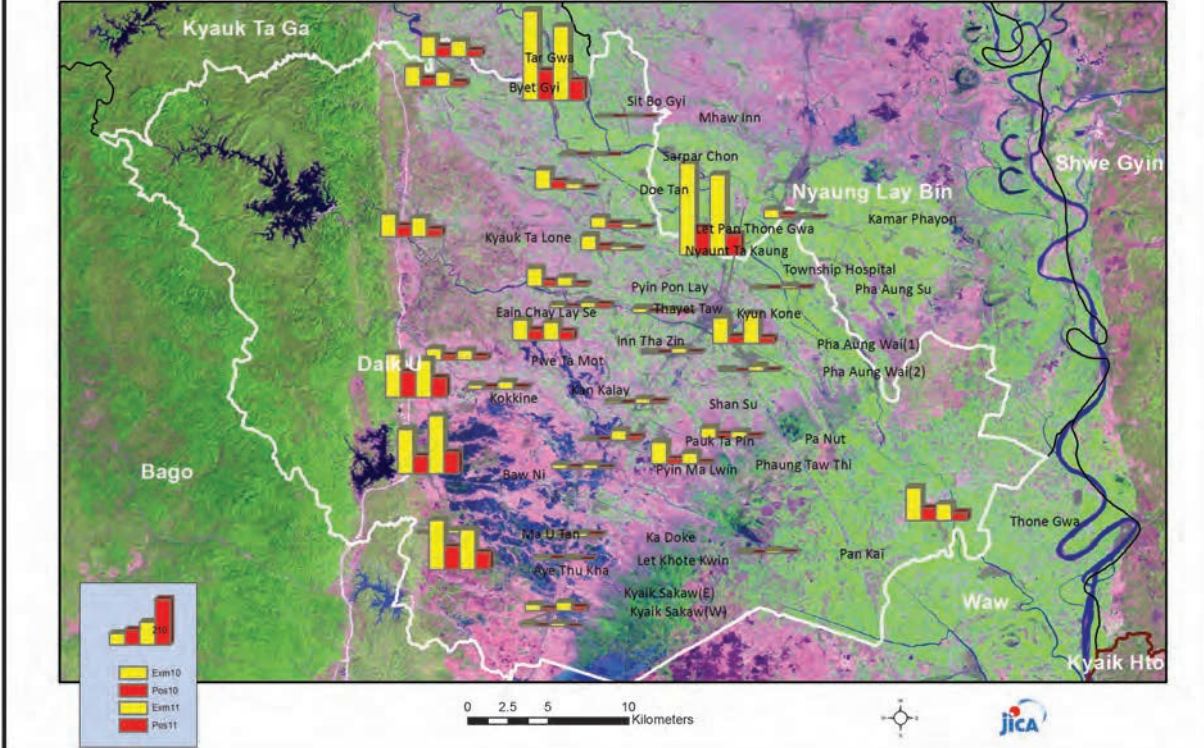
Diseases	Morbidity	Mortality
Malaria	1355.00	1.88
ARI <5	7035.65	0
Diarrhea	1064.10	1.88
Dysentery	487.48	0
TB(Sputum+)	67.09	0.94
Snake Bite	8.45	0.94

\* The data source is Health Profile of BagoRegion East (2009) from Department of Health Planning.

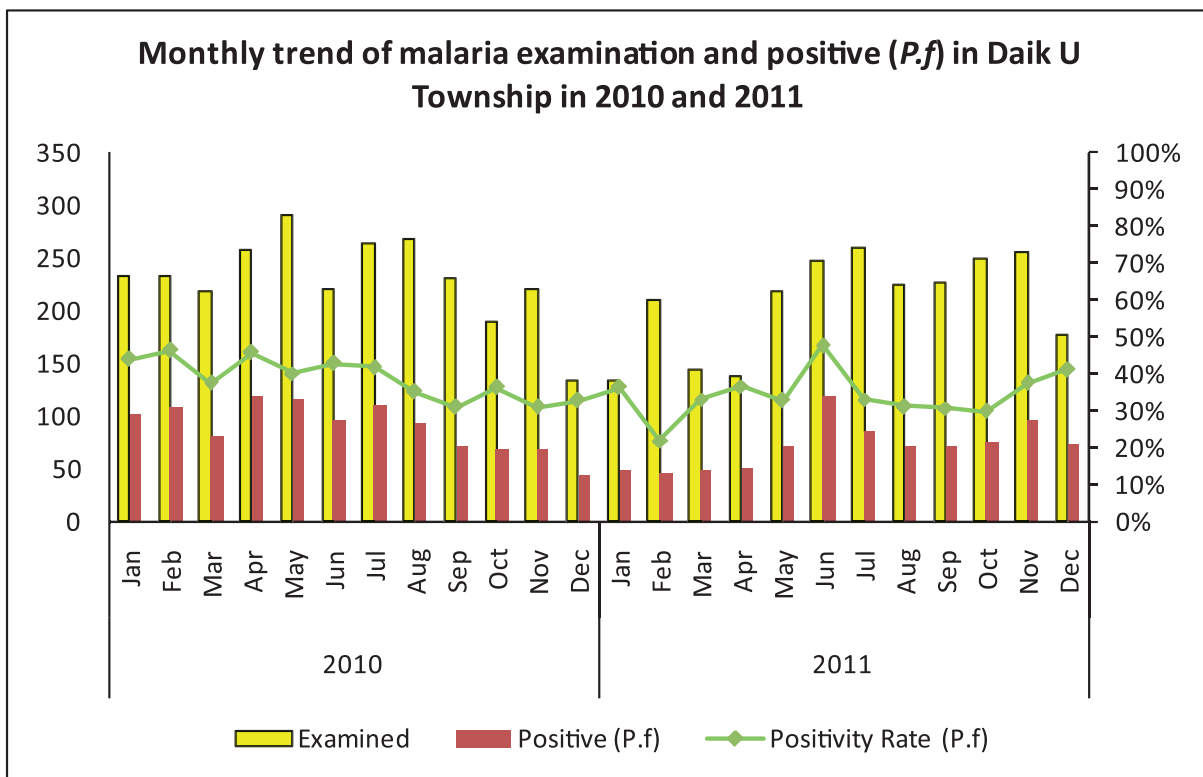
Vegetation cover and Health Facilities distribution in Daik\_U Township in Bago Region (East)



Health Facilities wise Malaria examination and positive (P.f) in Daik\_U Township 2010 and 2011



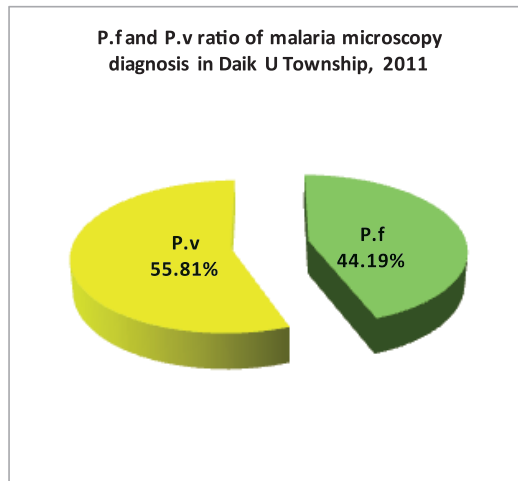
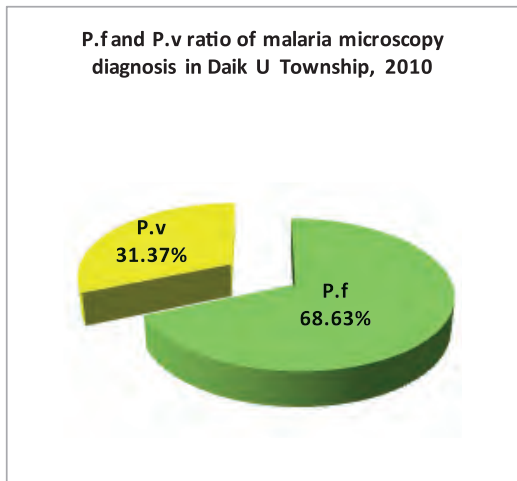
Monthly trend of malaria examination and positive (P.f) in Daik U Township in 2010 and 2011



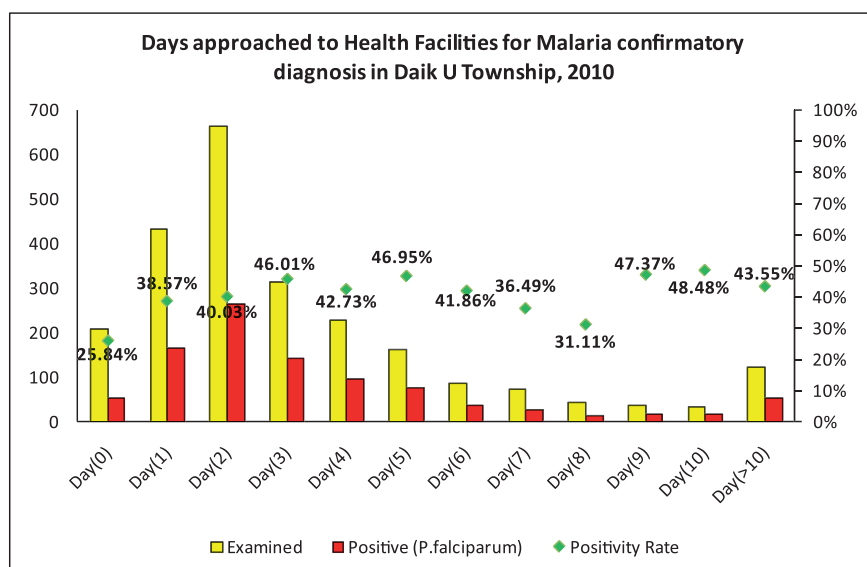
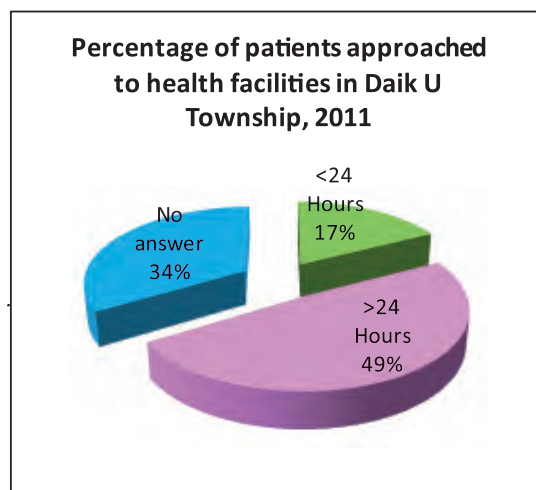
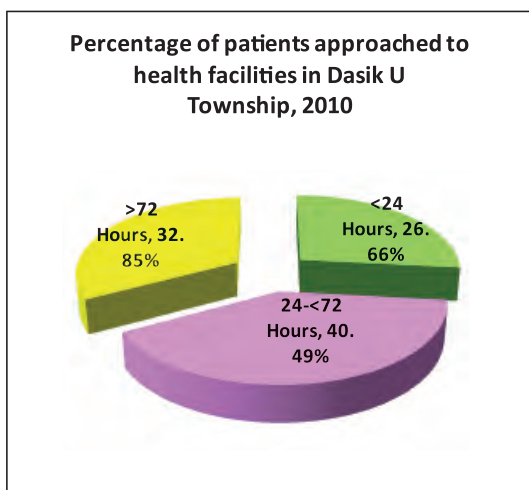
Month	2010			2011		
	Examined	Positive (P.f)	Positivity rate (P.f)	Examined	Positive (P.f)	Positivity rate (P.f)
Jan	234	103	44.02%	135	49	36.30%
Feb	233	108	46.35%	210	46	21.90%
Mar	218	82	37.61%	145	48	33.10%
Apr	257	118	45.91%	139	51	36.69%
May	291	117	40.21%	219	72	32.88%
Jun	221	95	42.99%	247	118	47.77%
Jul	265	111	41.89%	259	86	33.20%
Aug	268	94	35.07%	224	70	31.25%
Sep	231	72	31.17%	227	70	30.84%
Oct	190	69	36.32%	250	75	30.00%
Nov	220	68	30.91%	255	96	37.65%
Dec	134	44	32.84%	177	73	41.24%
<b>Total</b>	<b>2,762</b>	<b>1,081</b>	<b>39.14%</b>	<b>2,487</b>	<b>854</b>	<b>34.34%</b>



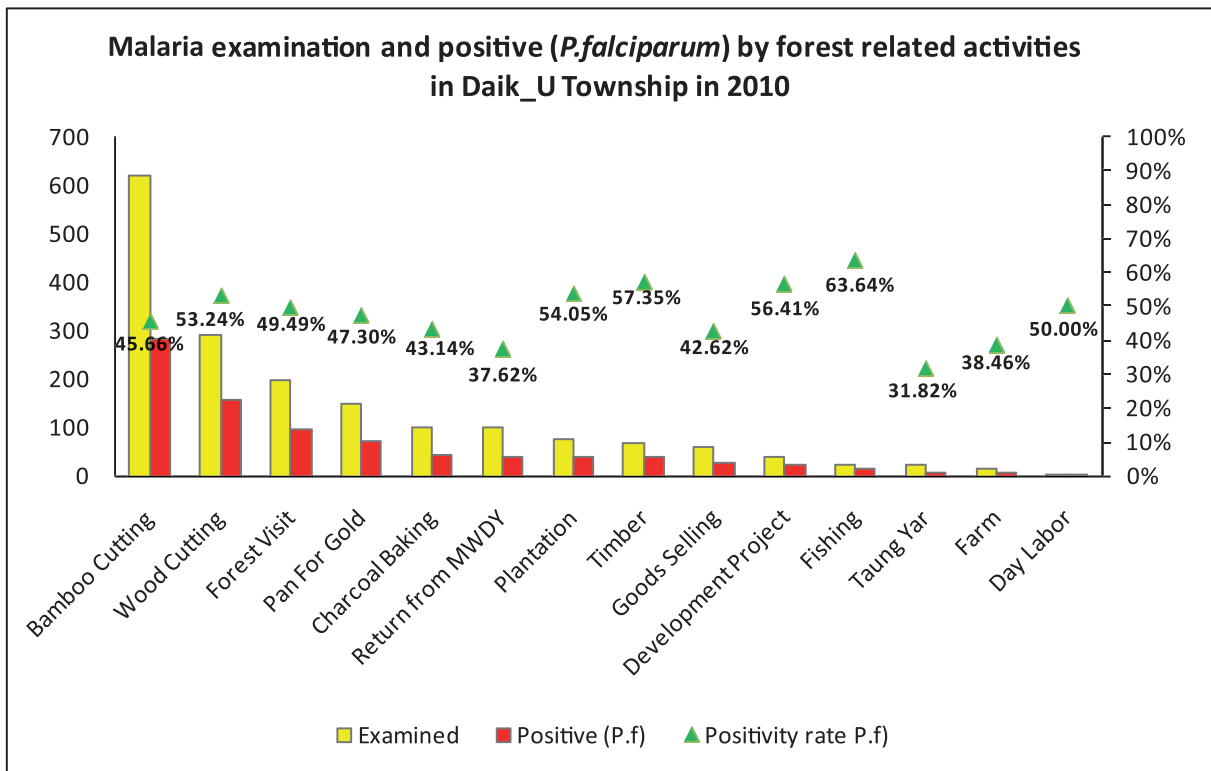
P.f and P.v ratio of microscopy diagnosis in Daik U Township, 2010 and 2011



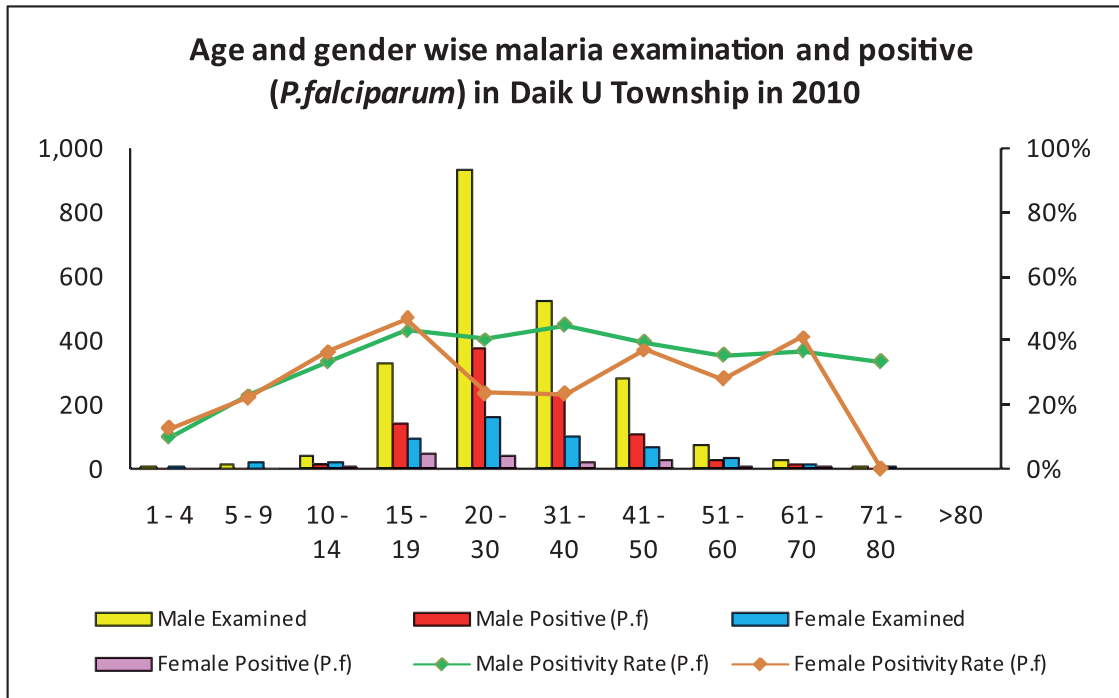
Percentage of patients approached to health facilities for malaria confirmatory diagnosis in Daik U Township in 2010 and 2011



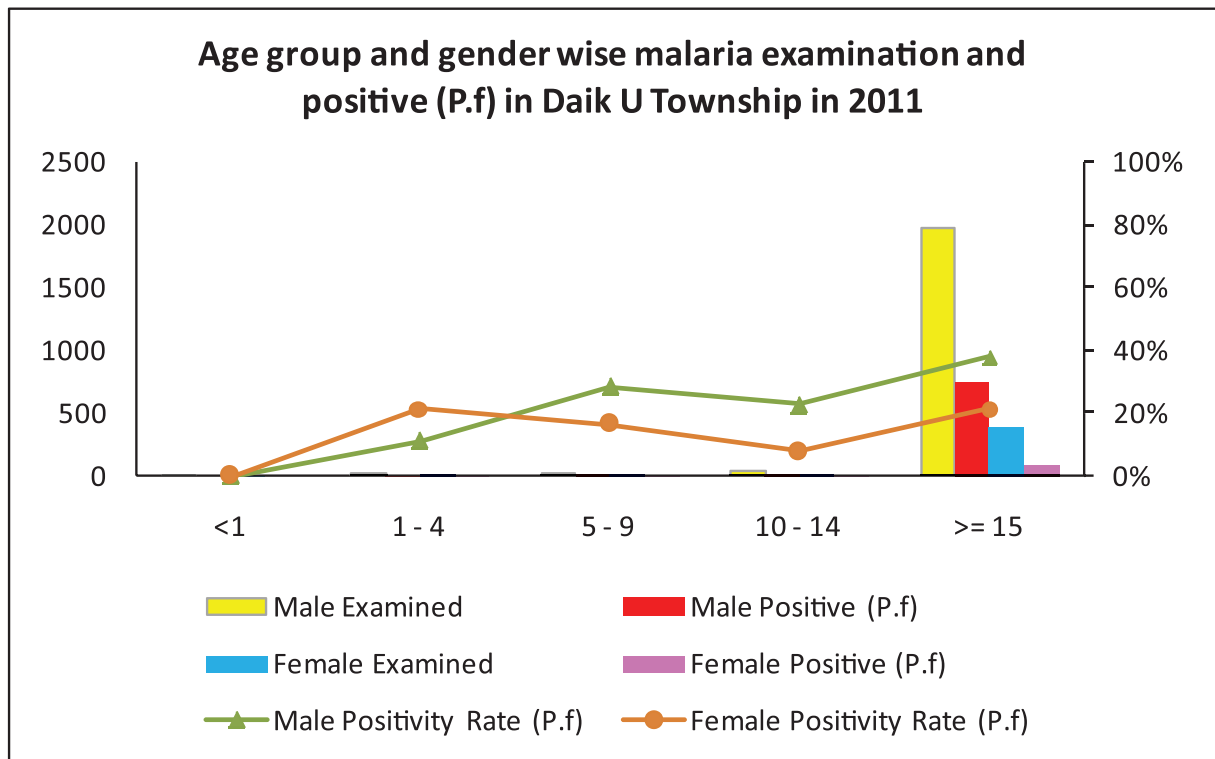
Malaria examination and positive (*P.falciparum*) by forest related activities in Daik U Township in 2010



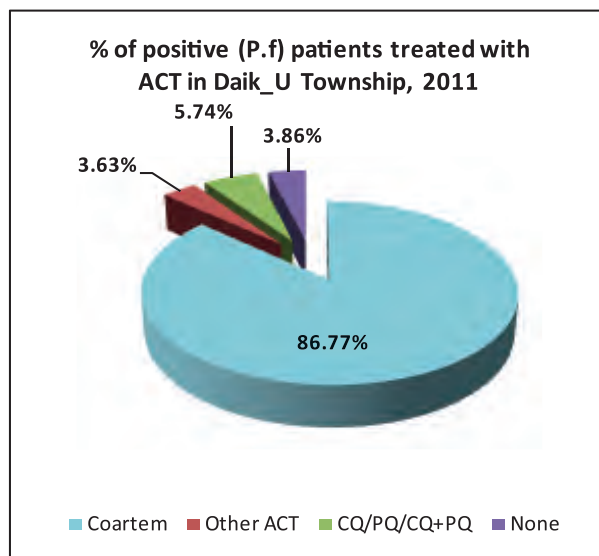
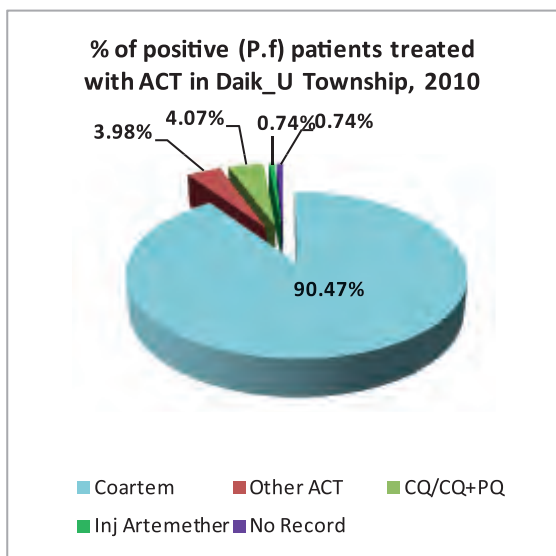
Age and Gender Wise Malaria examination and positive (*P.falciparum*) in Daik U Township in 2010



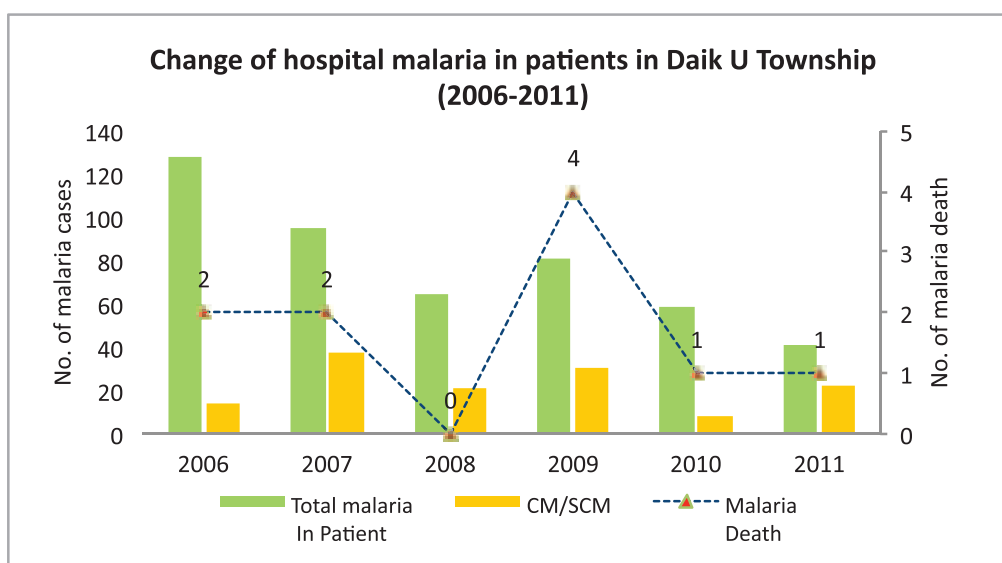
Age Group and Gender Wise Malaria examination and positive (P.falciparum) in Daik U Township in 2011



Percentage of positive (*p.f*) patients treated with ACT in Daik U Township in 2010 and 2011



Change of hospital malaria in patients in DaikU Township from 2006 to 2011



Sr	Year	Total In Patient	Total malaria In Patient	CM/SCM	Malaria Death	Total Death
1	2006	2,227	128	14	2	32
2	2007	2,036	95	37	2	20
3	2008	1,983	65	21	0	5
4	2009	2,143	81	30	4	36
5	2010	2,153	59	8	1	33
6	2011	2,190	41	22	1	18
<b>Total</b>		<b>12,732</b>	<b>469</b>	<b>132</b>	<b>10</b>	<b>144</b>