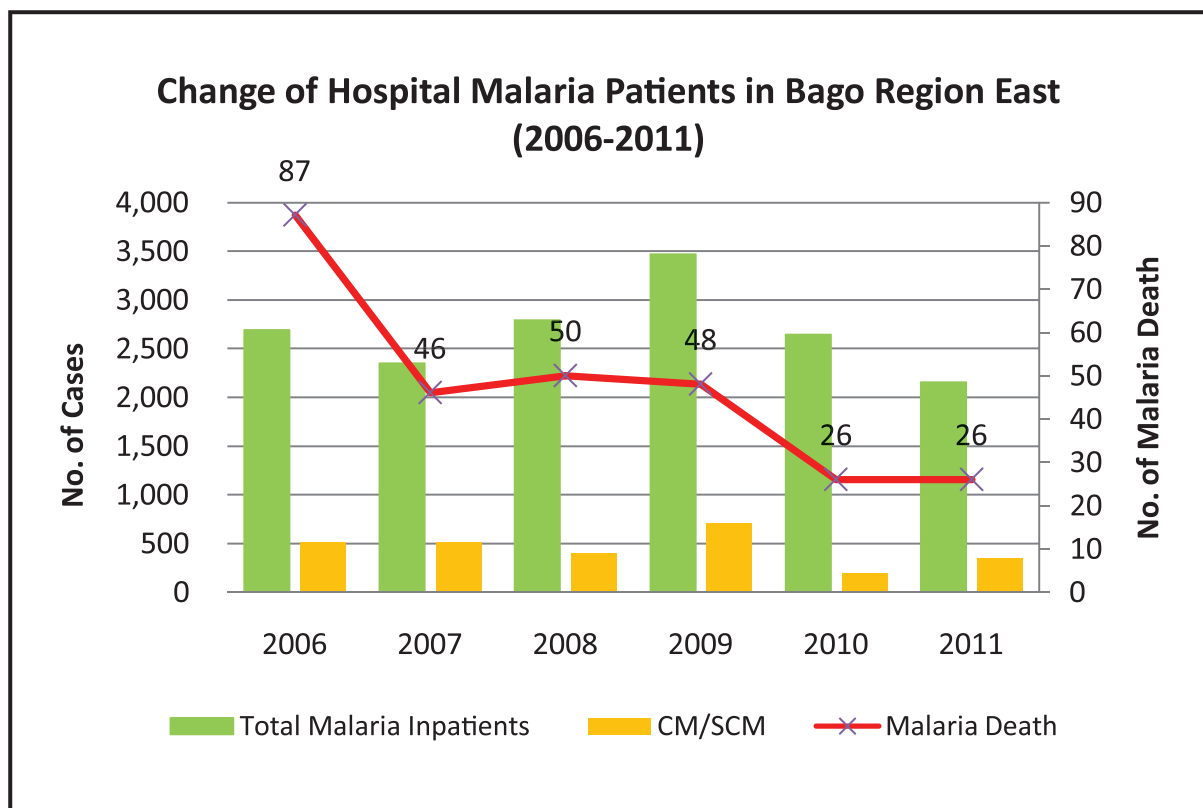


## Reduction of Hospital Malaria in patients for 6 years data from 2006 to 2011

(Government Hospital Records)

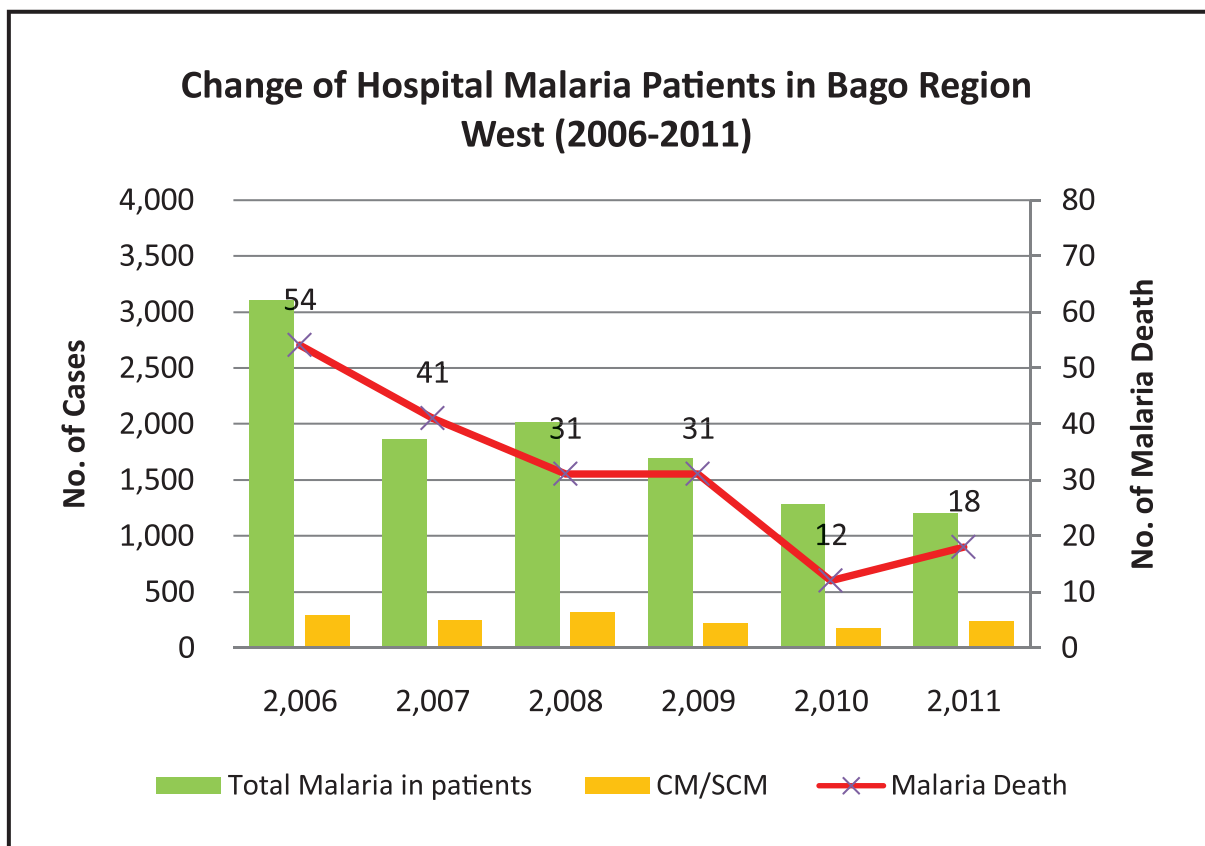
### Reduction of Hospital Malaria in patients in Bago Region East for 6 years data From 2006 to 2011



#### Bago Region East

Year	Total In Patient	Total Malaria In patients	CM/SCM	Malaria Death	Total Death
2006	47,720	2,688	508	87	887
2007	52,438	2,350	513	46	876
2008	55,267	2,790	401	50	812
2009	63,899	3,466	710	48	801
2010	63,761	2,640	193	26	864
2011	64,077	2,156	346	26	745
	<b>347,162</b>	<b>16,090</b>	<b>2,671</b>	<b>283</b>	<b>4,985</b>

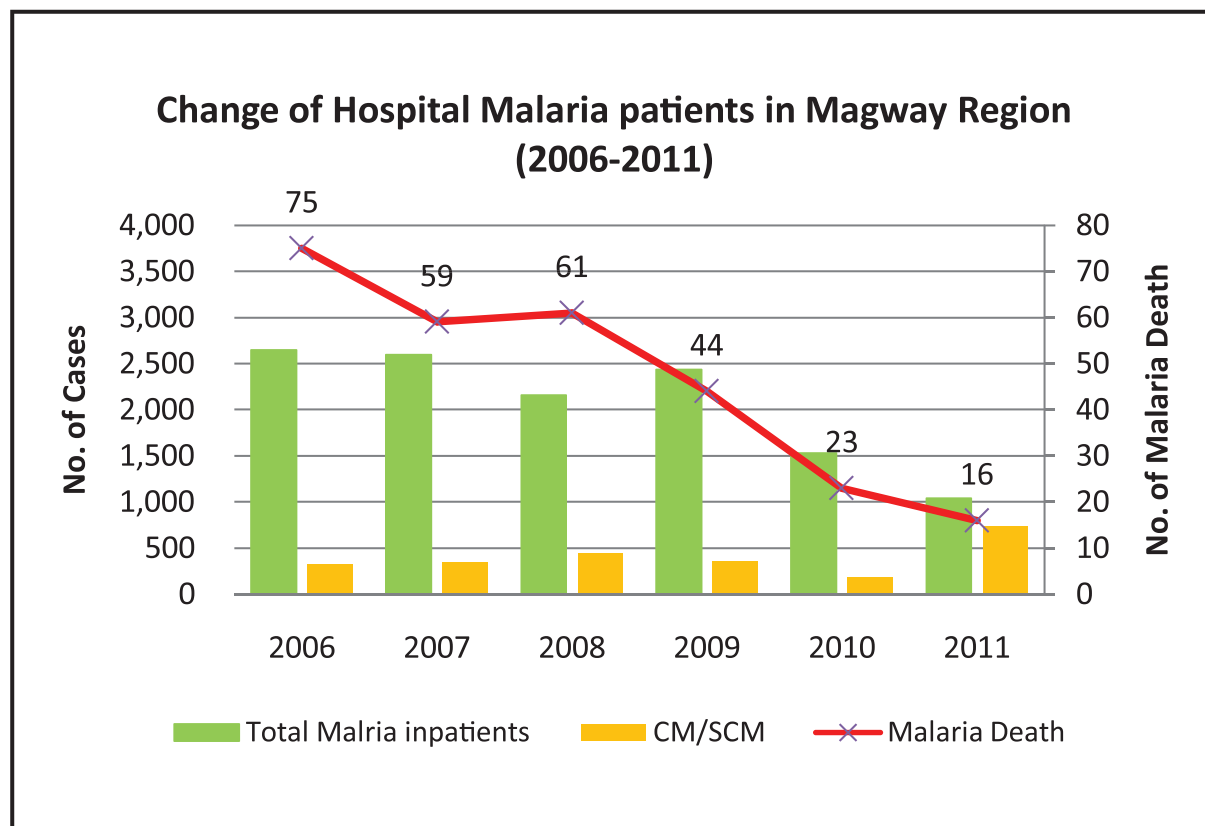
## Reduction of Hospital Malaria in patients in Bago Region West for 6 years data from 2006 to 2011



### Bago Region West

Year	Total inpatients	Total Malaria in patients	CM/SCM	Malaria Death	Total Death
2006	42,725	3,104	288	54	743
2007	40,822	1,859	247	41	485
2008	38,057	2,010	316	31	421
2009	41,719	1,695	219	31	337
2010	46,306	1,283	171	12	395
2011	46,197	1,200	234	18	414
	<b>255,826</b>	<b>11,151</b>	<b>1,475</b>	<b>187</b>	<b>2,795</b>

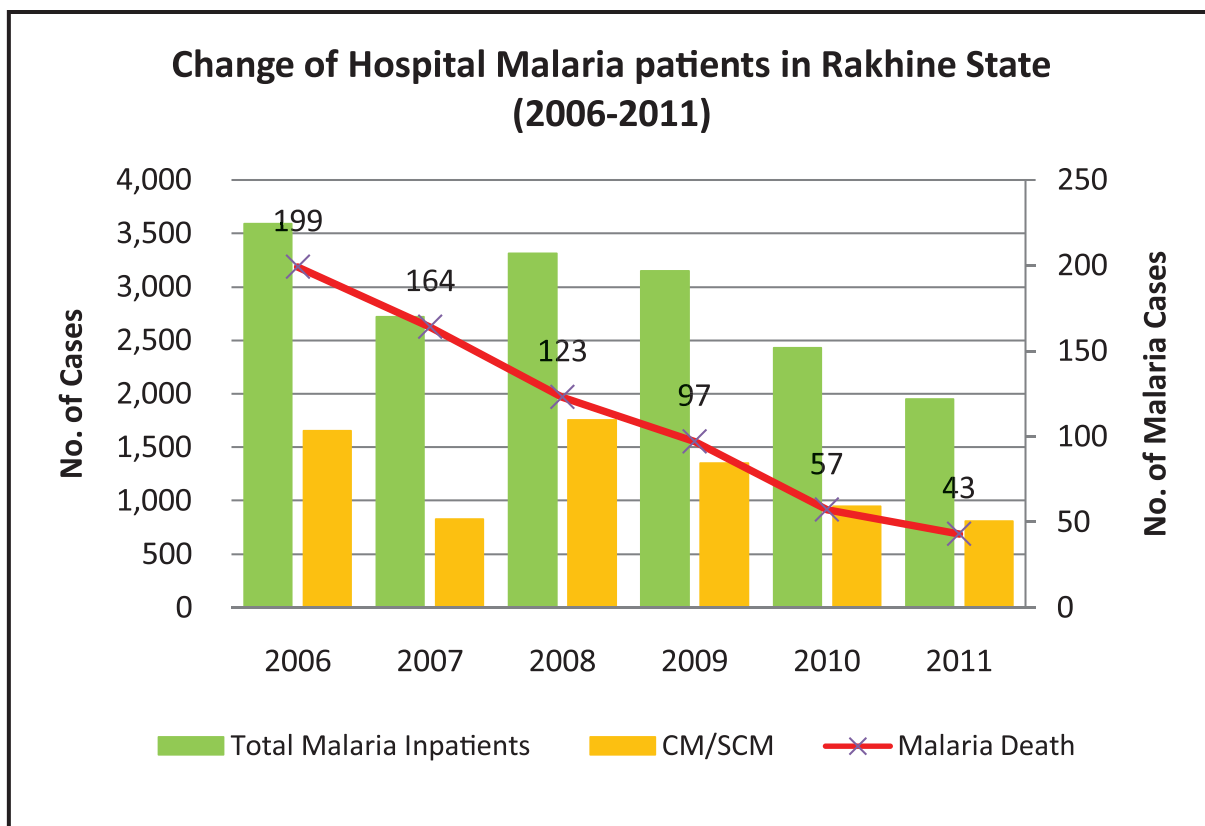
## Reduction of Hospital Malaria in patients in Magway Region for 6 years data from 2006 to 2011



### Magway Region

Year	Total inpatients	Total Malaria in patients	CM/SCM	Malaria Death	Total Death
2006	50,312	2,647	328	75	937
2007	54,203	2,594	344	59	965
2008	57,943	2,152	446	61	730
2009	66,363	2,436	358	44	688
2010	67,693	1,524	183	23	795
2011	65,494	1,036	732	16	963
	<b>362,008</b>	<b>12,389</b>	<b>2,391</b>	<b>278</b>	<b>5,078</b>

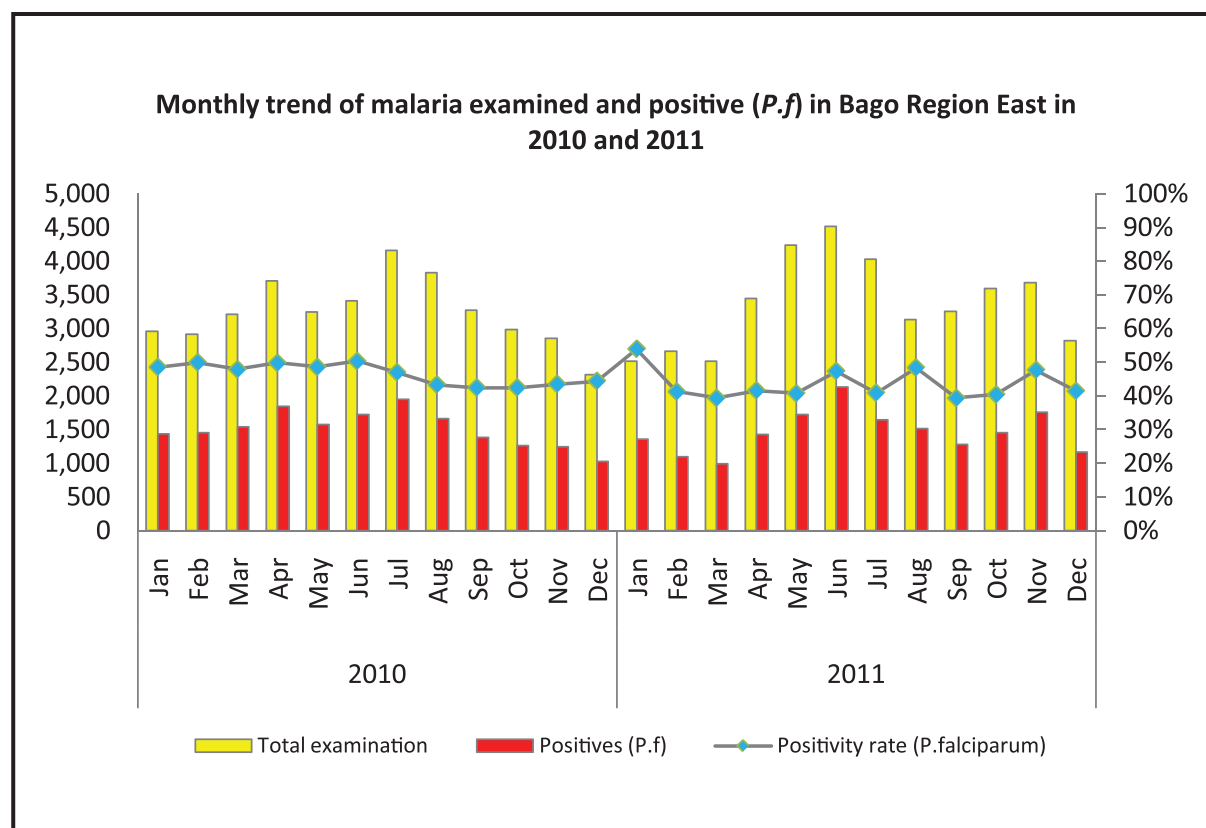
## Reduction of Hospital Malaria in patients in Rakhine State for 6 years data from 2006 to 2011



### Rakhine State

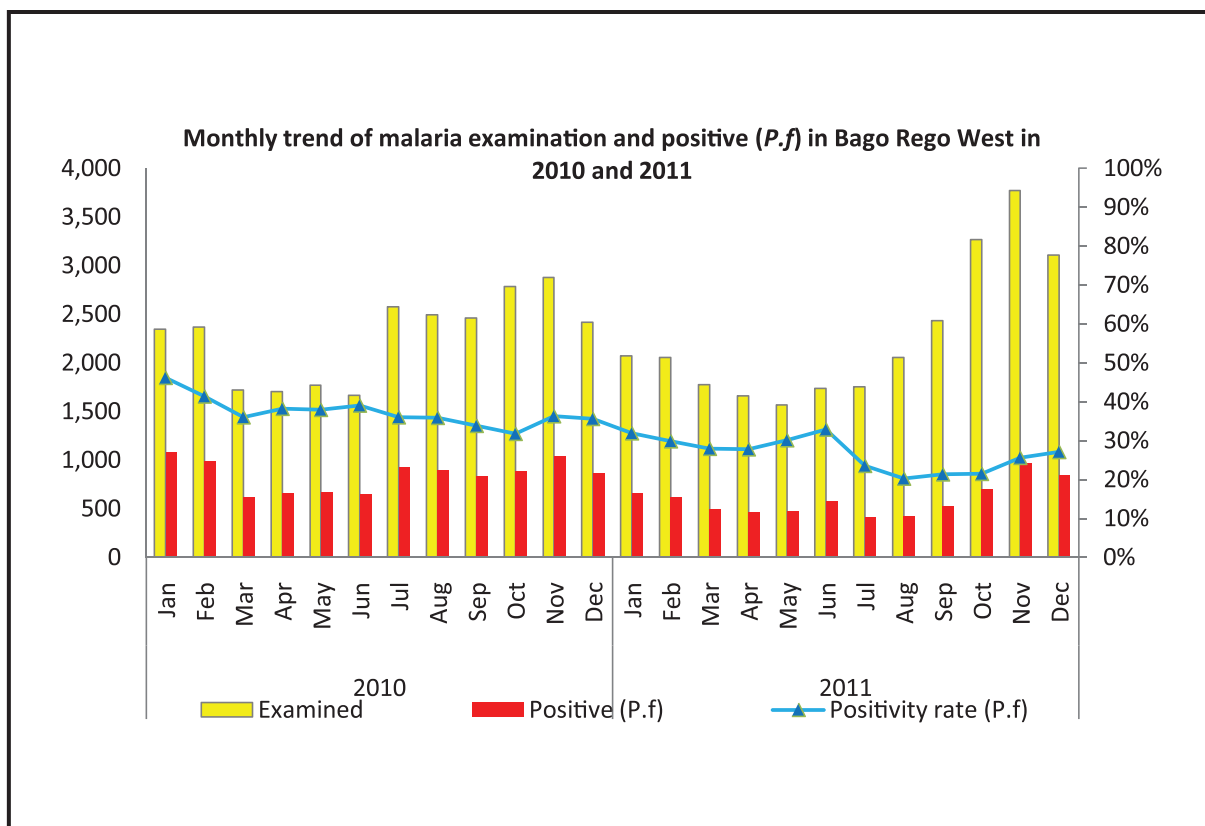
Year	Total inpatients	Total Malaria in patients	CM/SCM	Malaria Death	Total Death
2006	31,750	3,592	1,653	199	1,001
2007	32,616	2,717	829	164	1,146
2008	29,843	3,312	1,751	123	1,118
2009	33,652	3,148	1,353	97	1,020
2010	34,890	2,432	945	57	945
2011	38,138	1,949	809	43	989
	<b>200,889</b>	<b>17,150</b>	<b>7,340</b>	<b>683</b>	<b>6,219</b>

## Monthly trend of malaria examined (RDT & Microscope) and positive (*P.f*) in Bago Region East in 2010 and 2011



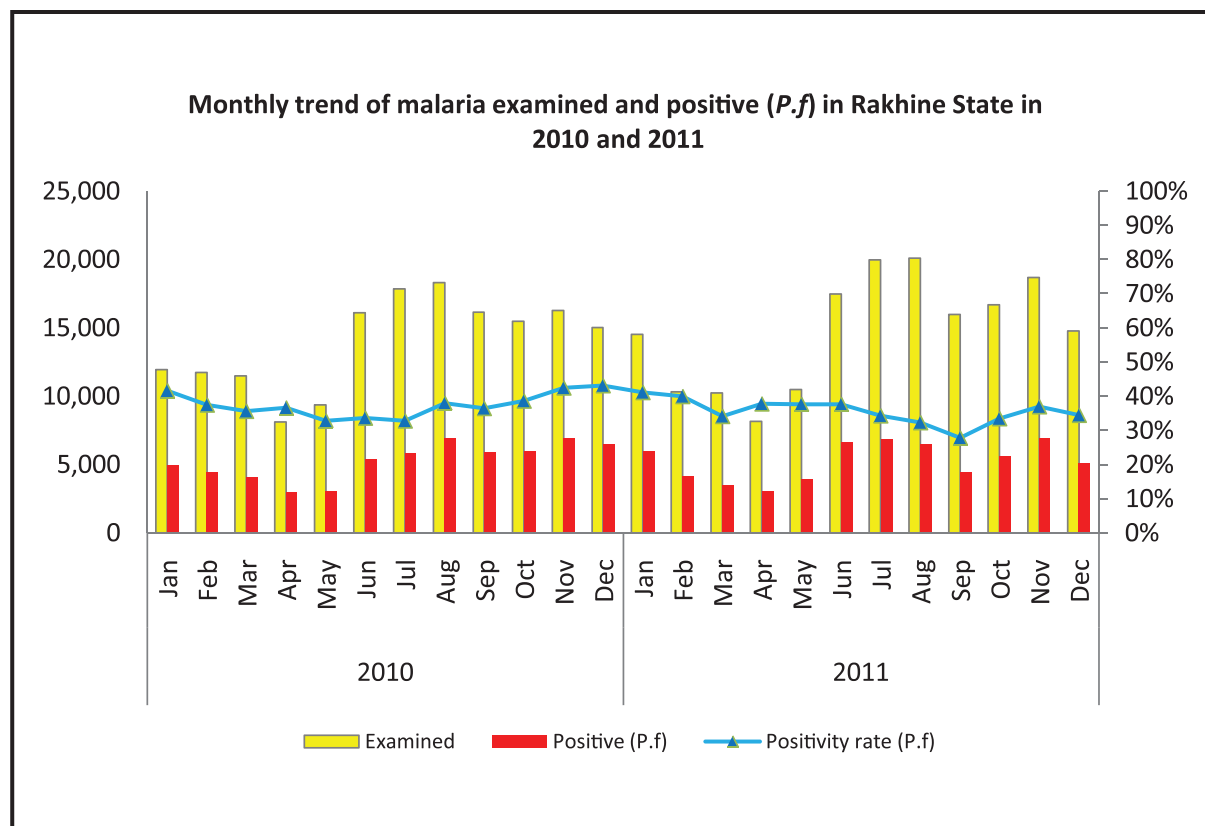
Month	2010			2011		
	Total examination	Positives ( <i>P.f</i> )	Positivity rate ( <i>P.f</i> )	Total examination	Positives ( <i>P.f</i> )	Positivity rate ( <i>P.f</i> )
Jan	2,958	1,434	48.48%	2,513	1,353	53.84%
Feb	2,916	1,455	49.90%	2,663	1,098	41.23%
Mar	3,208	1,535	47.85%	2,515	990	39.36%
Apr	3,702	1,842	49.76%	3,442	1,428	41.49%
May	3,239	1,573	48.56%	4,235	1,724	40.71%
Jun	3,412	1,717	50.32%	4,513	2,133	47.26%
Jul	4,156	1,948	46.87%	4,027	1,645	40.85%
Aug	3,827	1,656	43.27%	3,131	1,512	48.29%
Sep	3,270	1,385	42.35%	3,251	1,278	39.31%
Oct	2,981	1,263	42.37%	3,590	1,451	40.42%
Nov	2,856	1,241	43.45%	3,682	1,754	47.64%
Dec	2,314	1,025	44.30%	2,818	1,166	41.38%
<b>Total</b>	<b>38,839</b>	<b>18,074</b>	<b>46.54%</b>	<b>40,380</b>	<b>17,532</b>	<b>43.42%</b>

## Monthly trend of malaria examined (RDT & Microscope) and positive (P.f) in Bago Region West in 2010 and 2011



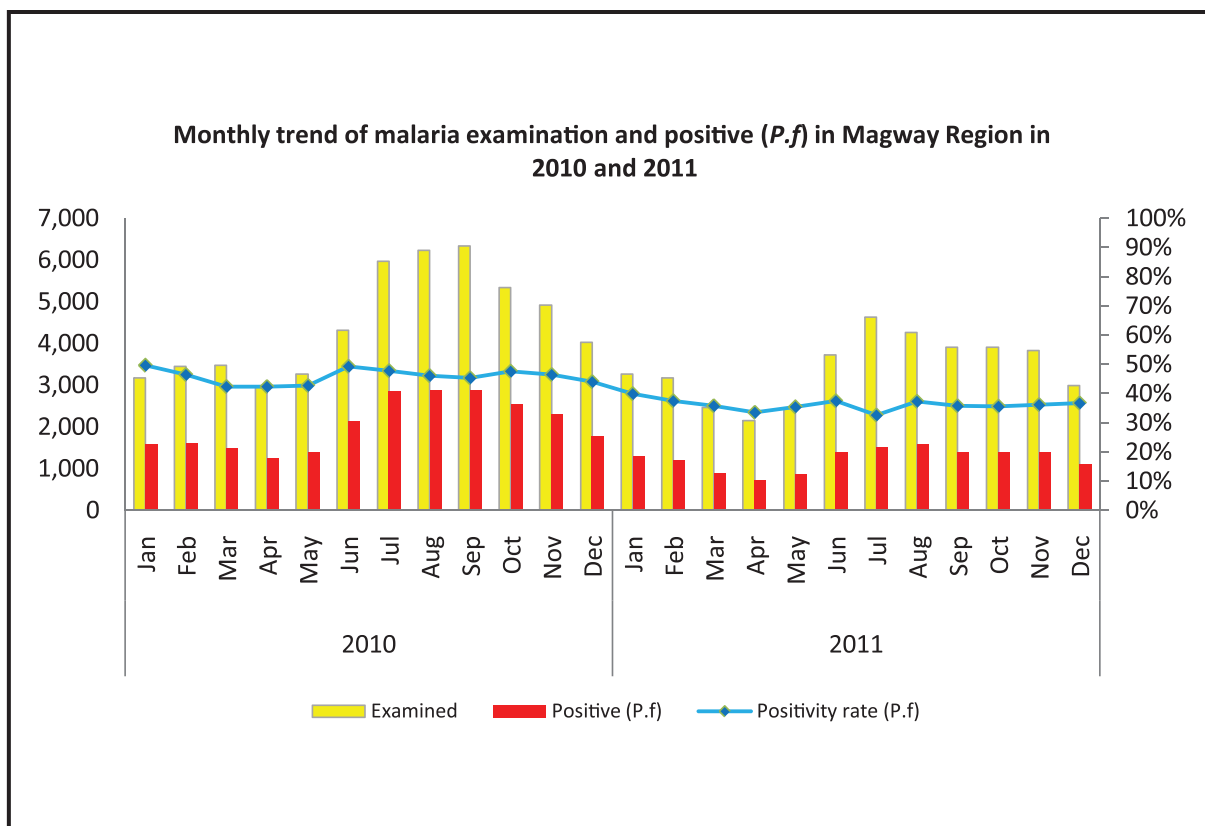
Month	2010			2011		
	Total examination	Positives (P.f)	Positivity rate (P.f)	Total examination	Positives (P.f)	Positivity rate (P.f)
Jan	2,345	1,081	46.10%	2,068	660	31.91%
Feb	2,368	980	41.39%	2,056	613	29.82%
Mar	1,719	619	36.01%	1,772	495	27.93%
Apr	1,701	650	38.21%	1,661	460	27.69%
May	1,767	669	37.86%	1,565	471	30.10%
Jun	1,666	649	38.96%	1,734	570	32.87%
Jul	2,573	925	35.95%	1,754	413	23.55%
Aug	2,494	895	35.89%	2,055	415	20.19%
Sep	2,461	833	33.85%	2,433	520	21.37%
Oct	2,782	882	31.70%	3,263	701	21.48%
Nov	2,877	1,044	36.29%	3,769	963	25.55%
Dec	2,417	859	35.54%	3,108	841	27.06%
<b>Total</b>	<b>27,170</b>	<b>10,086</b>	<b>37.12%</b>	<b>27,238</b>	<b>7,122</b>	<b>26.15%</b>

## Monthly trend of malaria examined (RDT & Microscope) and positive (*P.f*) in Rakhine State in 2010 and 2011



Month	2010			2011		
	Examined	Positive ( <i>P.f</i> )	Positivity rate ( <i>P.f</i> )	Examined	Positive ( <i>P.f</i> )	Positivity rate ( <i>P.f</i> )
Jan	11,948	4,964	41.55%	14,527	5,967	41.08%
Feb	11,724	4,376	37.33%	10,338	4,134	39.99%
Mar	11,473	4,073	35.50%	10,249	3,495	34.10%
Apr	8,108	2,967	36.59%	8,156	3,079	37.75%
May	9,382	3,076	32.79%	11,232	4,272	38.03%
Jun	16,102	5,410	33.60%	17,476	6,580	37.65%
Jul	17,840	5,848	32.78%	19,531	6,678	34.19%
Aug	18,287	6,948	37.99%	20,088	6,488	32.30%
Sep	16,122	5,884	36.50%	15,995	4,442	27.77%
Oct	15,807	6,120	38.72%	16,701	5,586	33.45%
Nov	16,487	7,010	42.52%	18,674	6,888	36.89%
Dec	14,491	6,226	42.96%	14,779	5,101	34.52%
<b>Total</b>	<b>167,771</b>	<b>62,902</b>	<b>37.49%</b>	<b>177,746</b>	<b>62,710</b>	<b>35.28%</b>

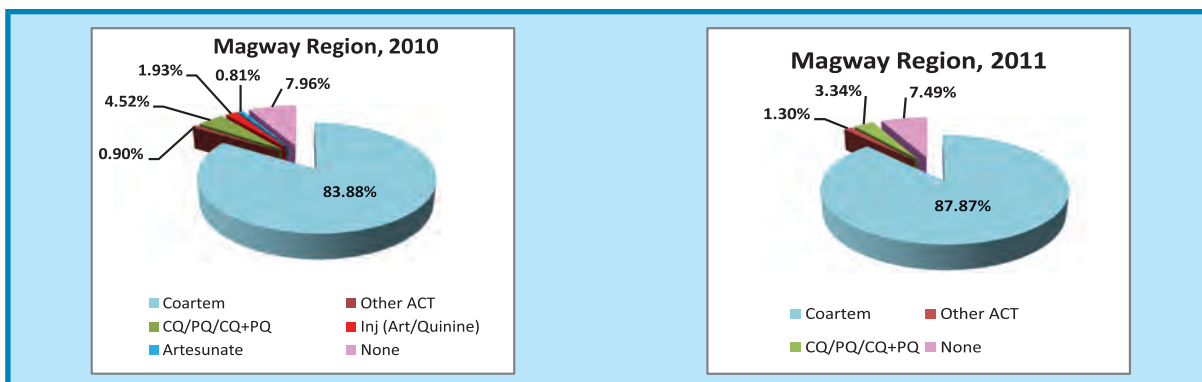
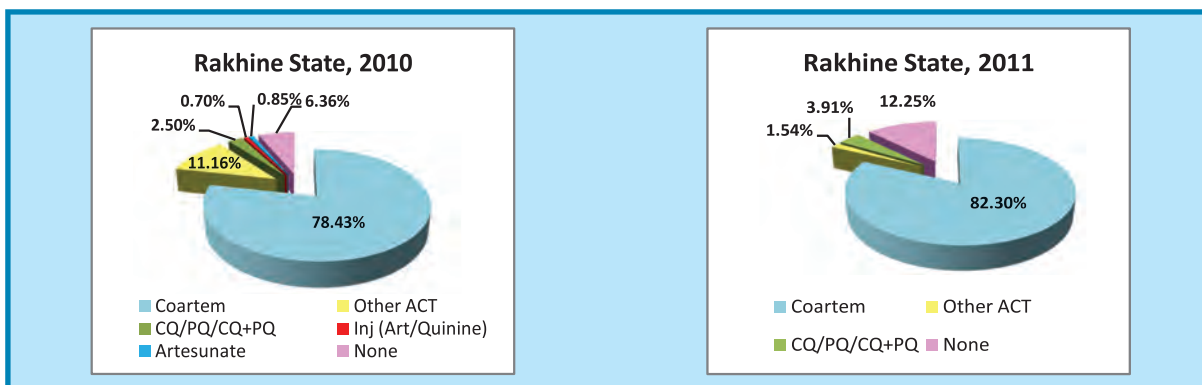
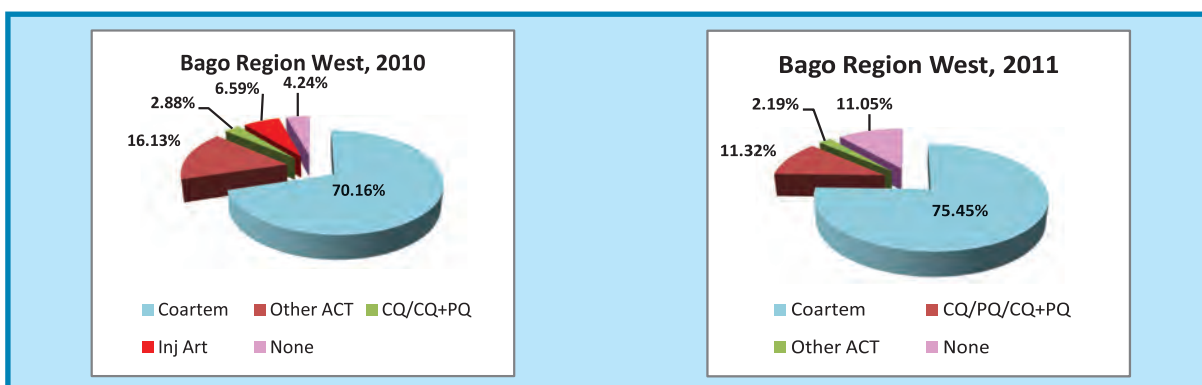
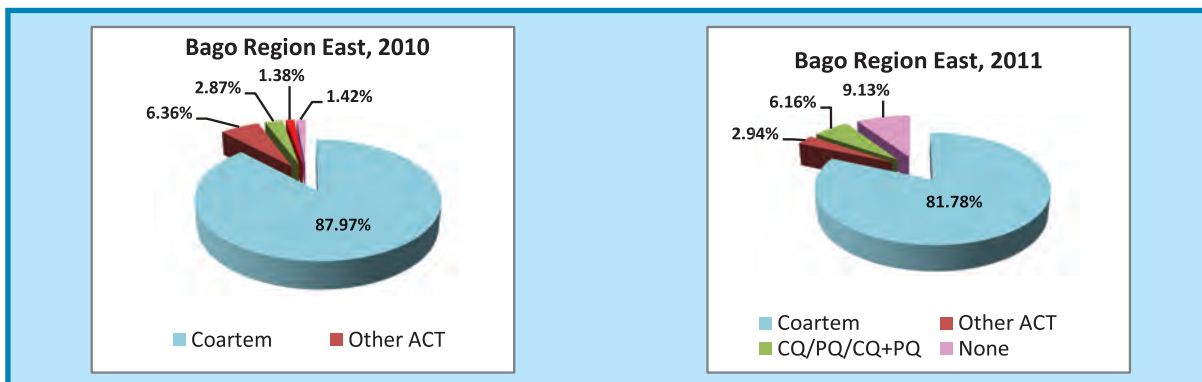
## Monthly trend of malaria examined (RDT & Microscope) and positive (*P.f*) in Magway Region in 2010 and 2011



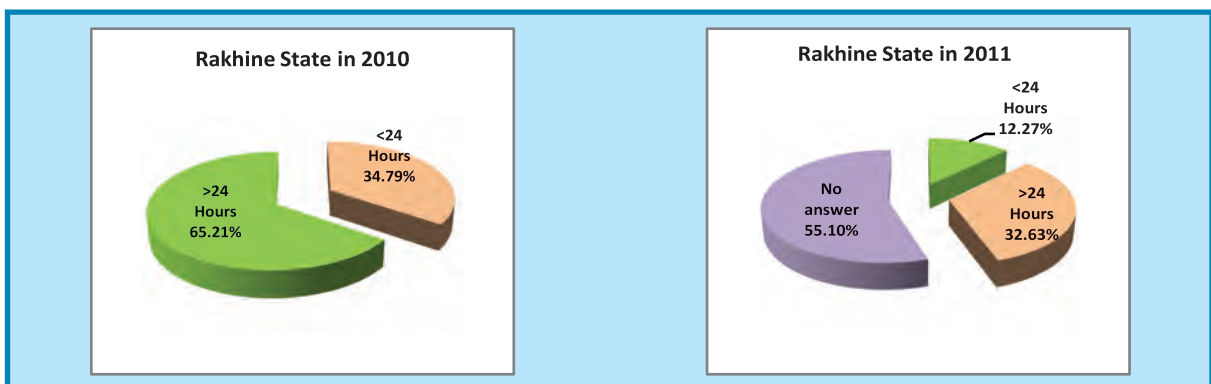
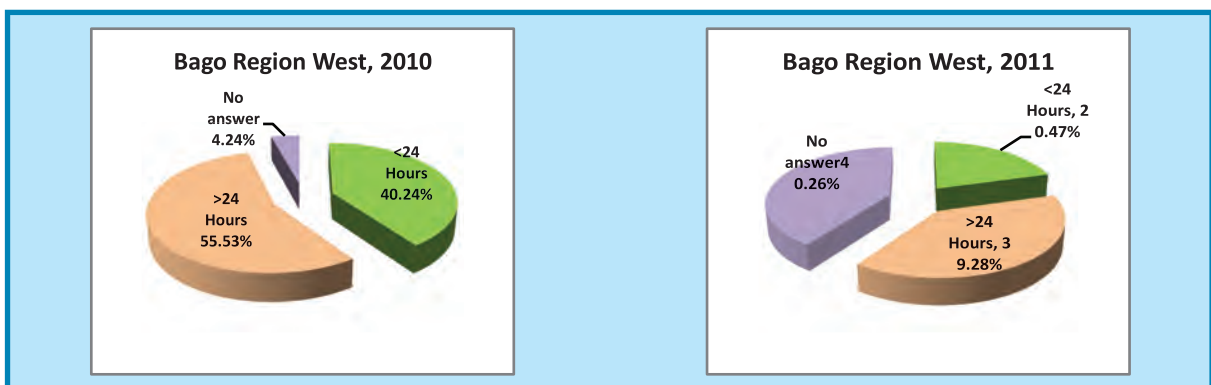
Month	2010			2011		
	Examined	Positive ( <i>P.f</i> )	Positivity rate ( <i>P.f</i> )	Examined	Positive ( <i>P.f</i> )	Positivity rate ( <i>P.f</i> )
Jan	3,171	1,573	49.61%	3,255	1,299	39.91%
Feb	3,444	1,597	46.37%	3,167	1,183	37.35%
Mar	3,475	1,471	42.33%	2,455	879	35.80%
Apr	2,958	1,251	42.29%	2,140	718	33.55%
May	3,267	1,391	42.58%	2,448	866	35.38%
Jun	4,308	2,123	49.28%	3,717	1,389	37.37%
Jul	5,970	2,844	47.64%	4,631	1,504	32.48%
Aug	6,222	2,869	46.11%	4,257	1,581	37.14%
Sep	6,334	2,871	45.33%	3,902	1,395	35.75%
Oct	5,335	2,531	47.44%	3,906	1,390	35.59%
Nov	4,921	2,281	46.35%	3,821	1,381	36.14%
Dec	4,018	1,770	44.05%	2,983	1,095	36.71%
<b>Total</b>	<b>53,423</b>	<b>24,572</b>	<b>46.00%</b>	<b>40,682</b>	<b>14,680</b>	<b>36.08%</b>



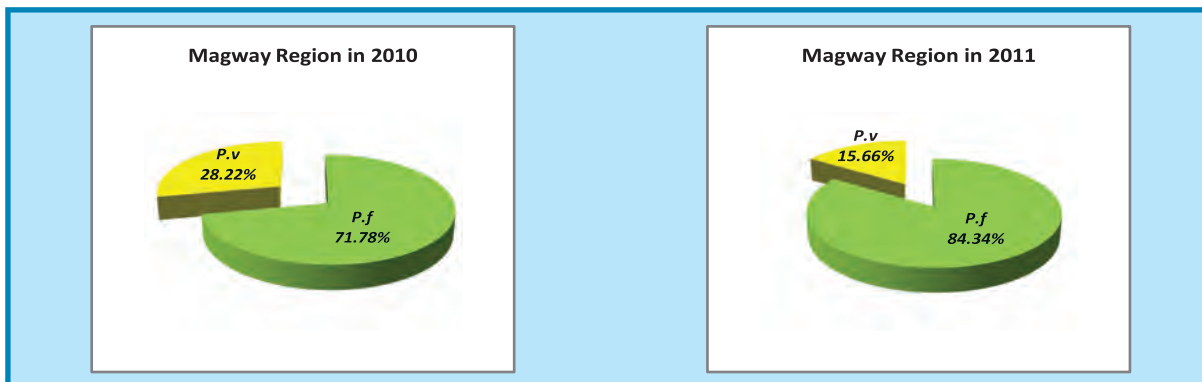
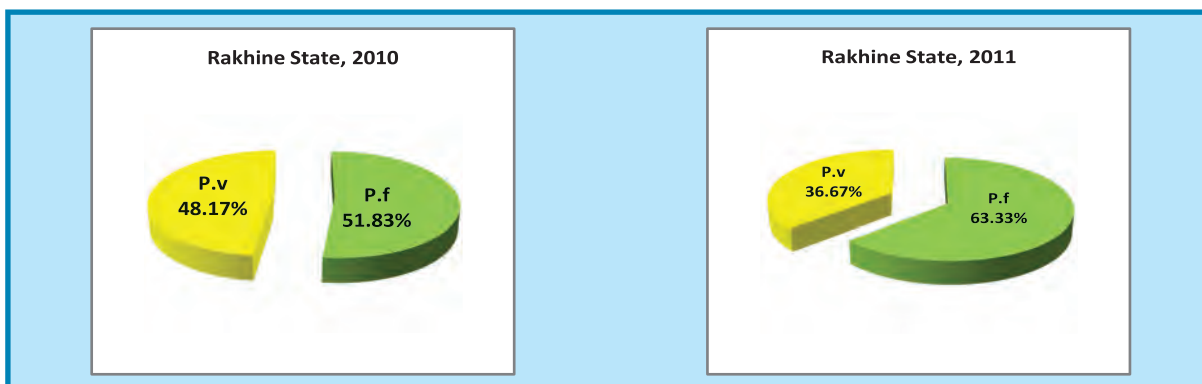
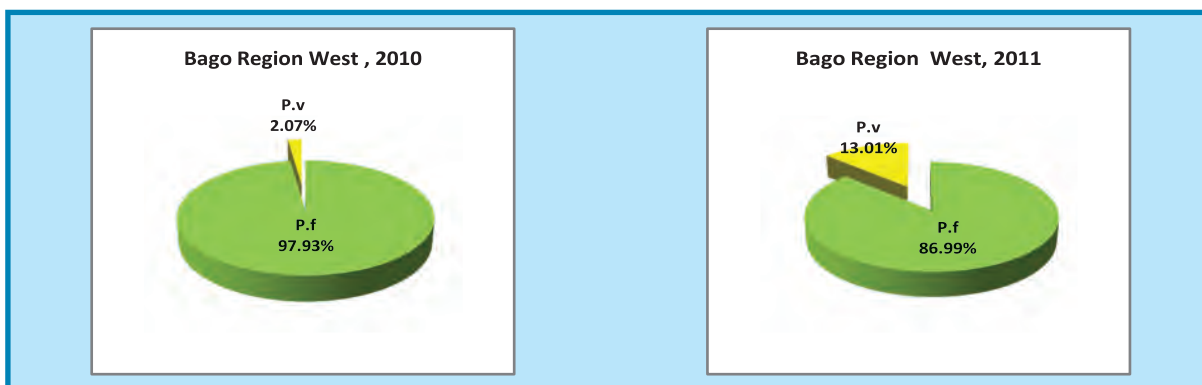
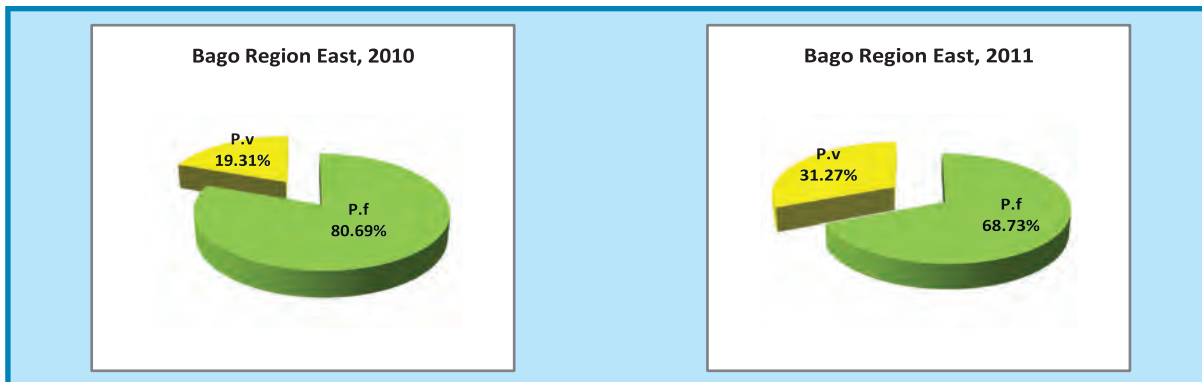
## Proportion of positive (*P.f*) patients treated by ACT



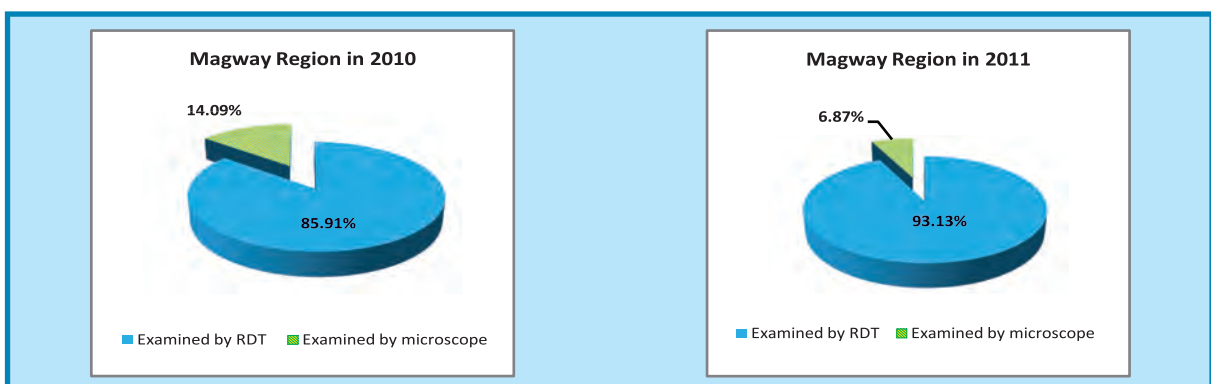
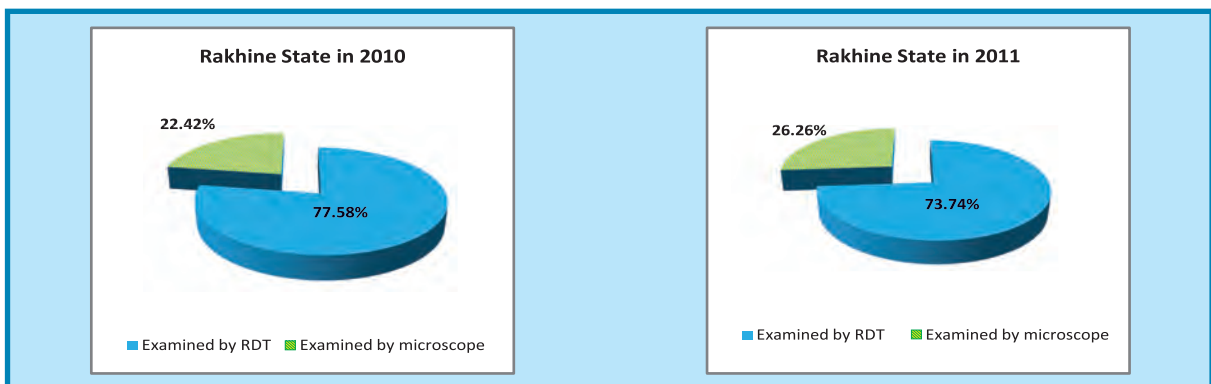
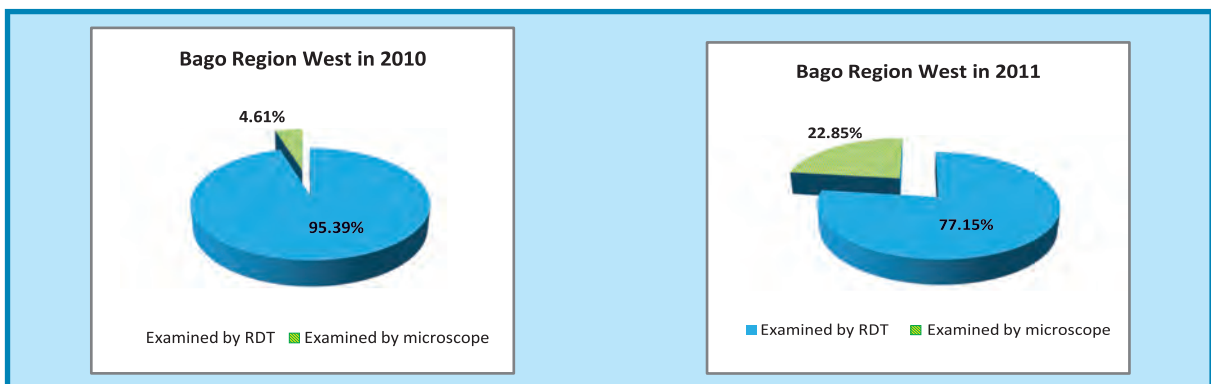
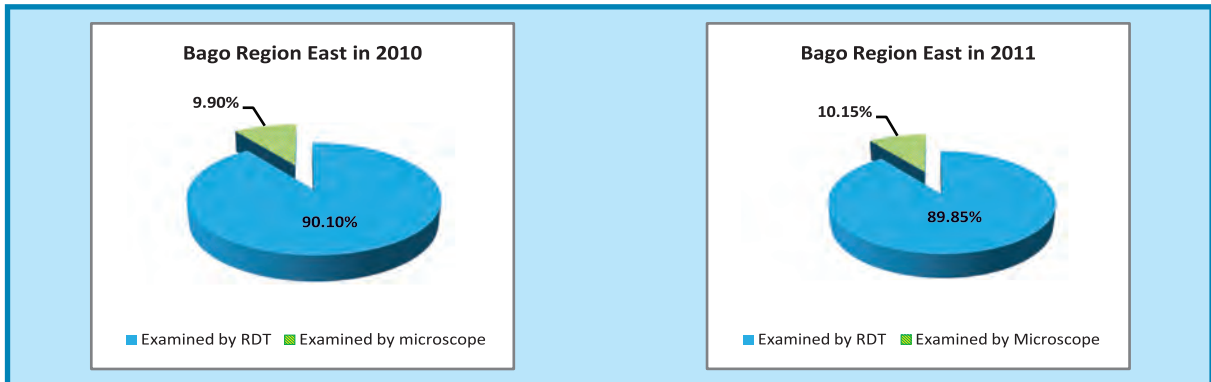
Proportion of Patients approached to Health Facilities within 24 hours after onset of symptom



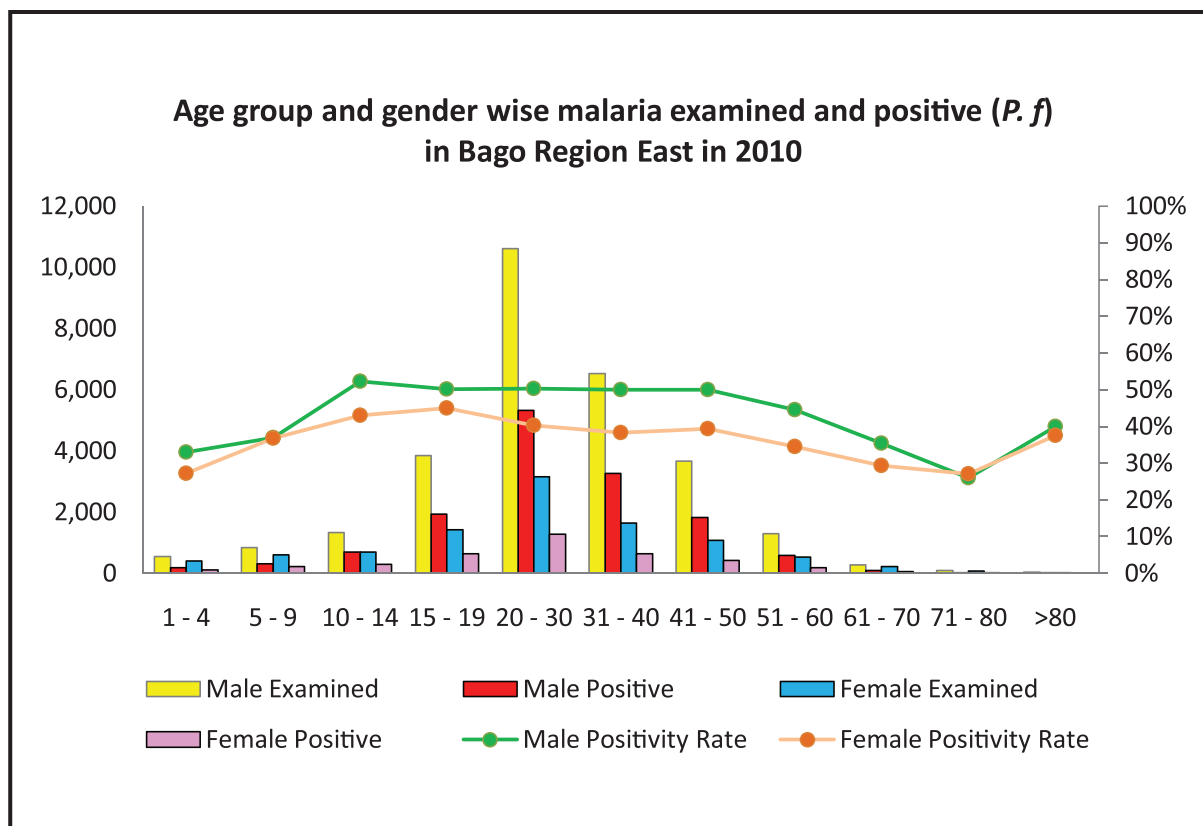
### *P.f* and *P.v* ratio by Microscopy diagnosis in 2010 and 2011



## Proportion of Malaria examination by RDT and Malaria Microscopy in 2010 and 2011

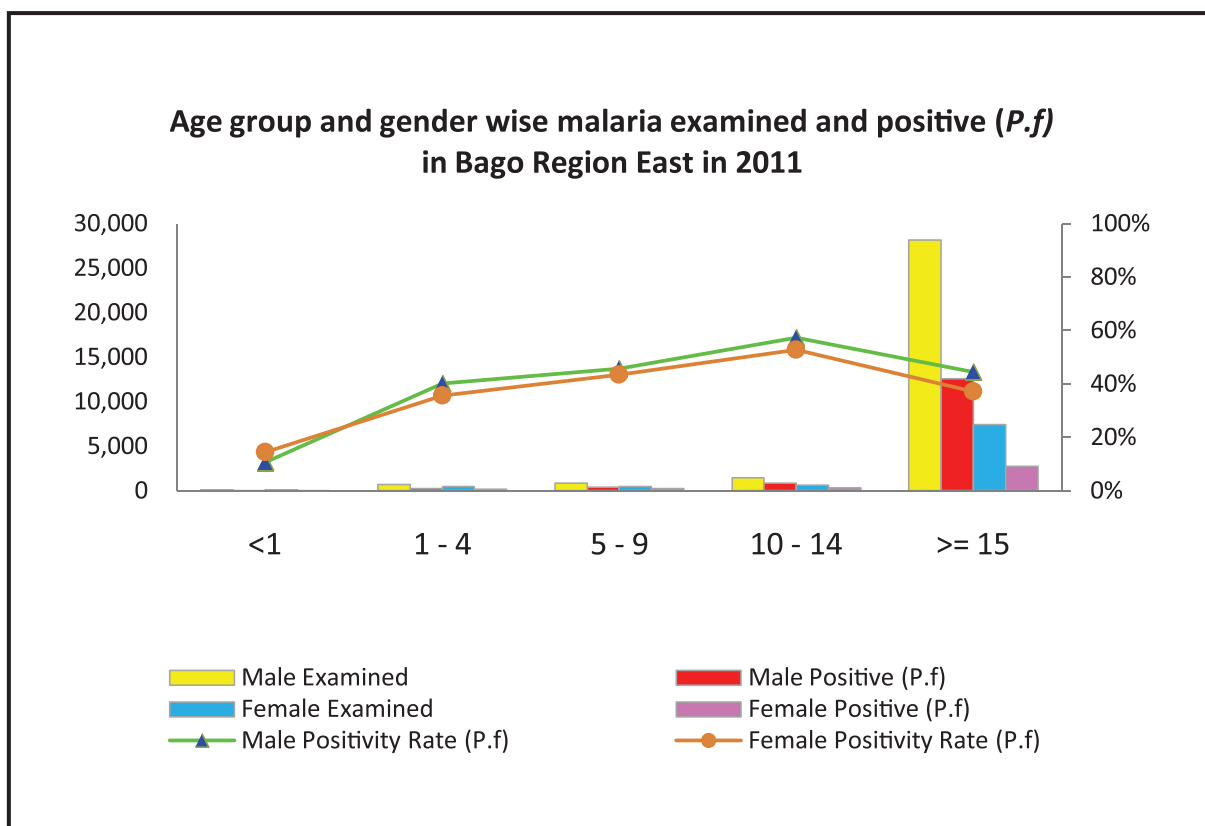


## Total examined and positive (*P.f*) by age group and gender in Bago Region East in 2010



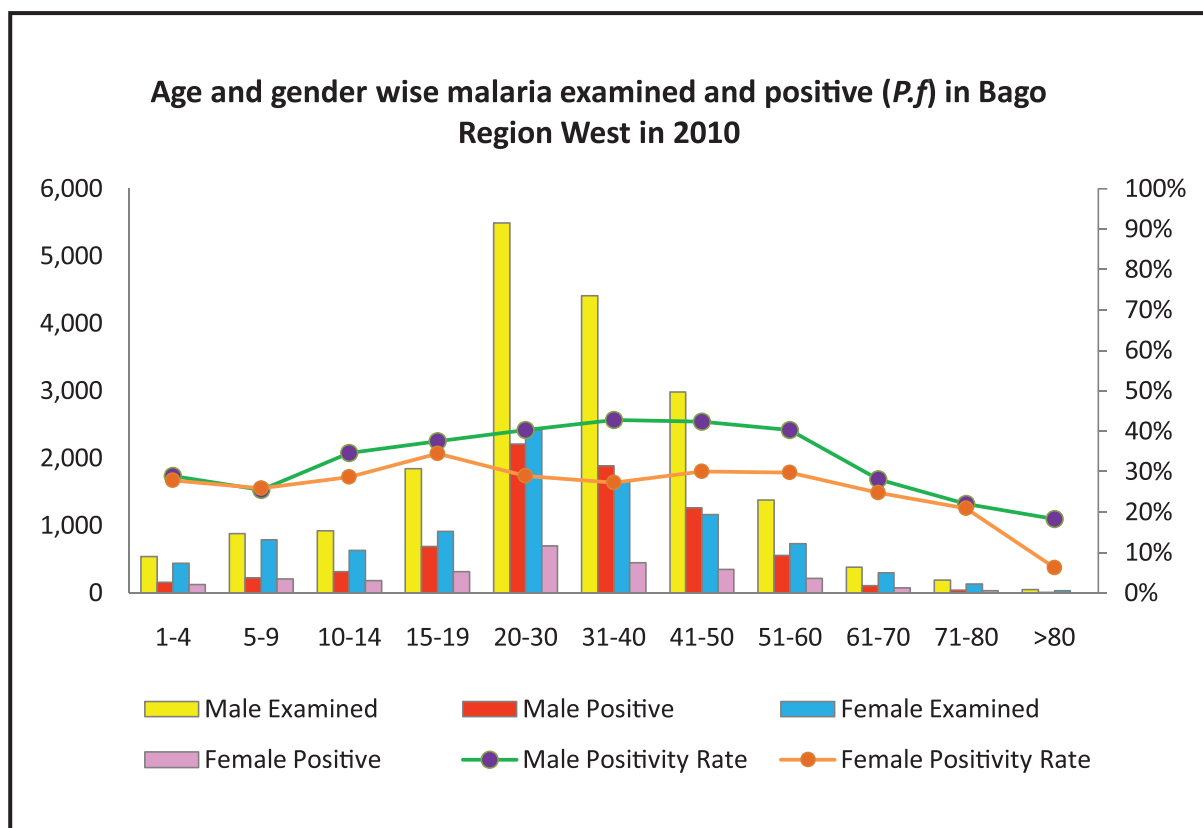
Age group	Male			Female		
	Examined	Positive ( <i>P.f</i> )	Positivity rate ( <i>P.f</i> )	Examined	Positive ( <i>P.f</i> )	Positivity rate ( <i>P.f</i> )
1 - 4	540	178	32.96%	404	110	27.23%
5 - 9	836	309	36.96%	599	220	36.73%
10 - 14	1,322	691	52.27%	692	297	42.92%
15 - 19	3,848	1,927	50.08%	1,417	636	44.88%
20 - 30	10,604	5,323	50.20%	3,149	1,267	40.23%
31 - 40	6,524	3,255	49.89%	1,643	630	38.34%
41 - 50	3,665	1,831	49.96%	1,074	422	39.29%
51 - 60	1,293	575	44.47%	523	180	34.42%
61 - 70	274	97	35.40%	212	62	29.25%
71 - 80	100	26	26.00%	74	20	27.03%
>80	30	12	40.00%	16	6	37.50%
<b>Total</b>	<b>29,036</b>	<b>14,224</b>	<b>48.99%</b>	<b>9,803</b>	<b>3,850</b>	<b>39.27%</b>

## Total examined and positive (*P.f*) by age group and gender in Bago Region East in 2011



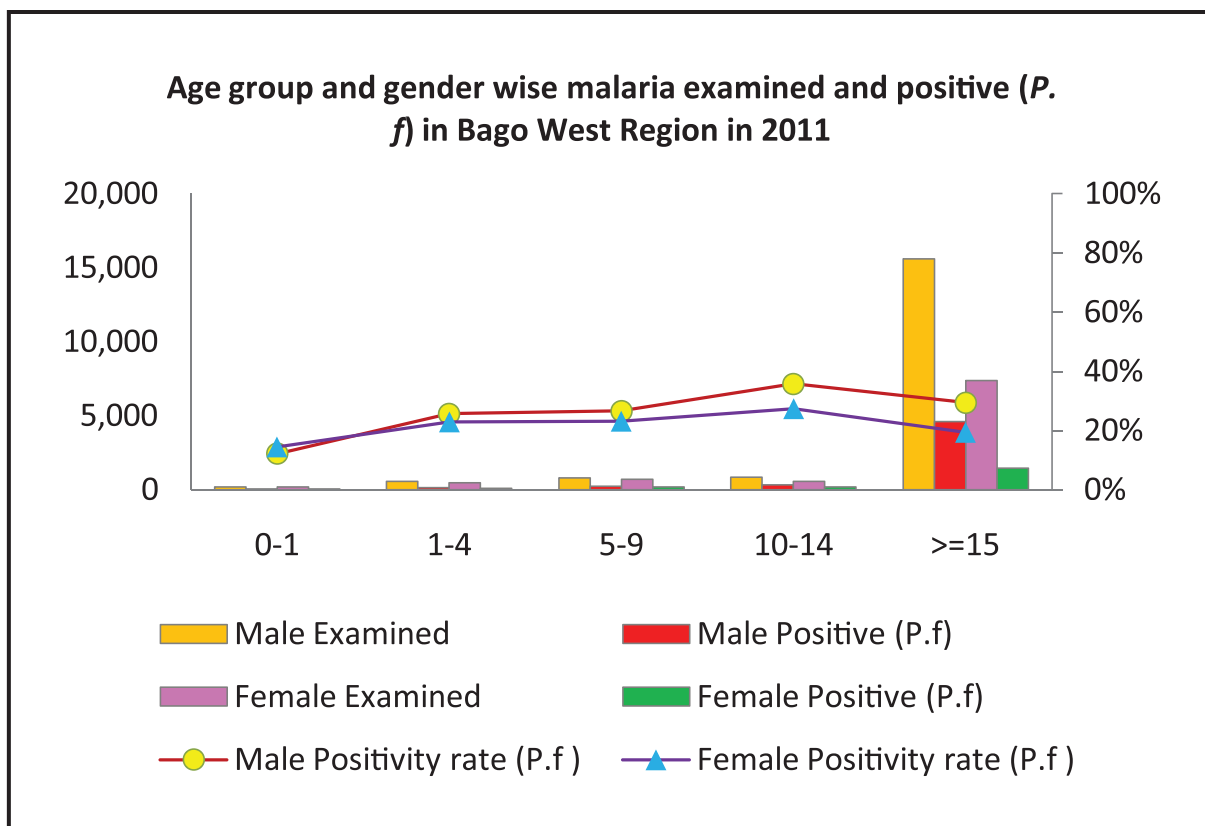
Age group	Male			Female		
	Examined	Positive ( <i>P.f</i> )	Positivity rate ( <i>P.f</i> )	Examined	Positive ( <i>P.f</i> )	Positivity rate ( <i>P.f</i> )
<1	113	12	10.62%	90	13	14.44%
1 - 4	688	276	40.12%	453	161	35.54%
5 - 9	872	398	45.64%	516	224	43.41%
10 - 14	1,433	820	57.22%	615	325	52.85%
15>=	28,158	12,540	44.53%	7,442	2,763	37.13%
<b>Total</b>	<b>31,264</b>	<b>14,046</b>	<b>44.93%</b>	<b>9,116</b>	<b>3,486</b>	<b>38.24%</b>

## Total examined and positive (*P.f*) by age group and gender in Bago Region West in 2010



Age group	Male			Female		
	Examined	Positive ( <i>P.f</i> )	Positivity rate ( <i>P.f</i> )	Examined	Positive ( <i>P.f</i> )	Positivity rate ( <i>P.f</i> )
1-4	535	155	28.97%	439	122	27.79%
5-9	880	224	25.45%	787	203	25.79%
10-14	917	317	34.57%	632	181	28.64%
15-19	1,841	689	37.43%	913	314	34.39%
20-30	5,492	2,210	40.24%	2,414	699	28.96%
31-40	4,407	1,884	42.75%	1,642	448	27.28%
41-50	2,983	1,264	42.37%	1,157	347	29.99%
51-60	1,375	553	40.22%	729	217	29.77%
61-70	382	107	28.01%	295	73	24.75%
71-80	186	41	22.04%	134	28	20.90%
>80	44	8	18.18%	32	2	6.25%
	<b>19,042</b>	<b>7,452</b>	<b>39.13%</b>	<b>9,174</b>	<b>2,634</b>	<b>28.71%</b>

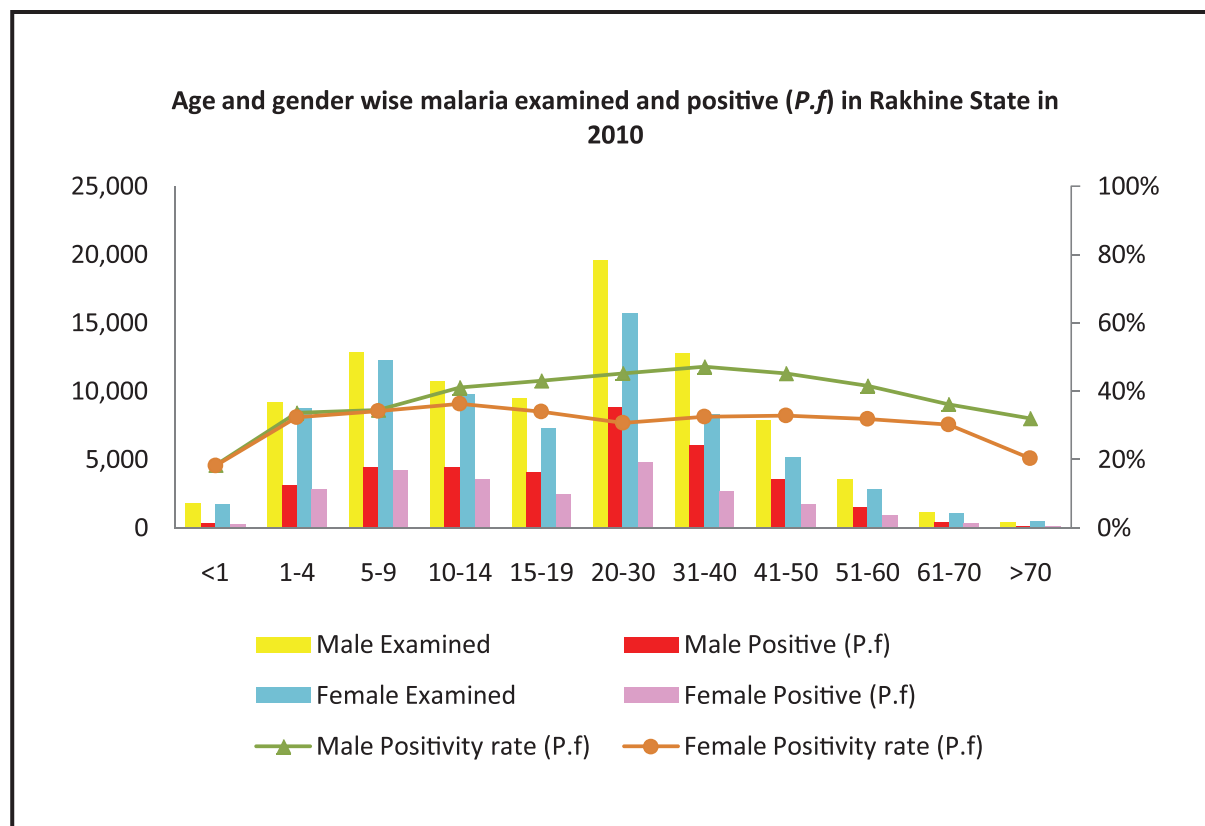
## Total examined and positive (*P.f*) by age group and gender in Bago Region West in 2011



Age group	Male			Female		
	Examined	Positive ( <i>P.f</i> )	Positivity rate ( <i>P.f</i> )	Examined	Positive ( <i>P.f</i> )	Positivity rate ( <i>P.f</i> )
0-1	166	20	12.05%	173	25	14.45%
1-4	558	143	25.63%	450	103	22.89%
5-9	807	214	26.52%	713	164	23.00%
10-14	846	302	35.70%	555	152	27.39%
>=15	15,597	4,576	29.34%	7,373	1,424	19.31%
	<b>17,974</b>	<b>5,255</b>	<b>29.24%</b>	<b>9,264</b>	<b>1,868</b>	<b>20.16%</b>

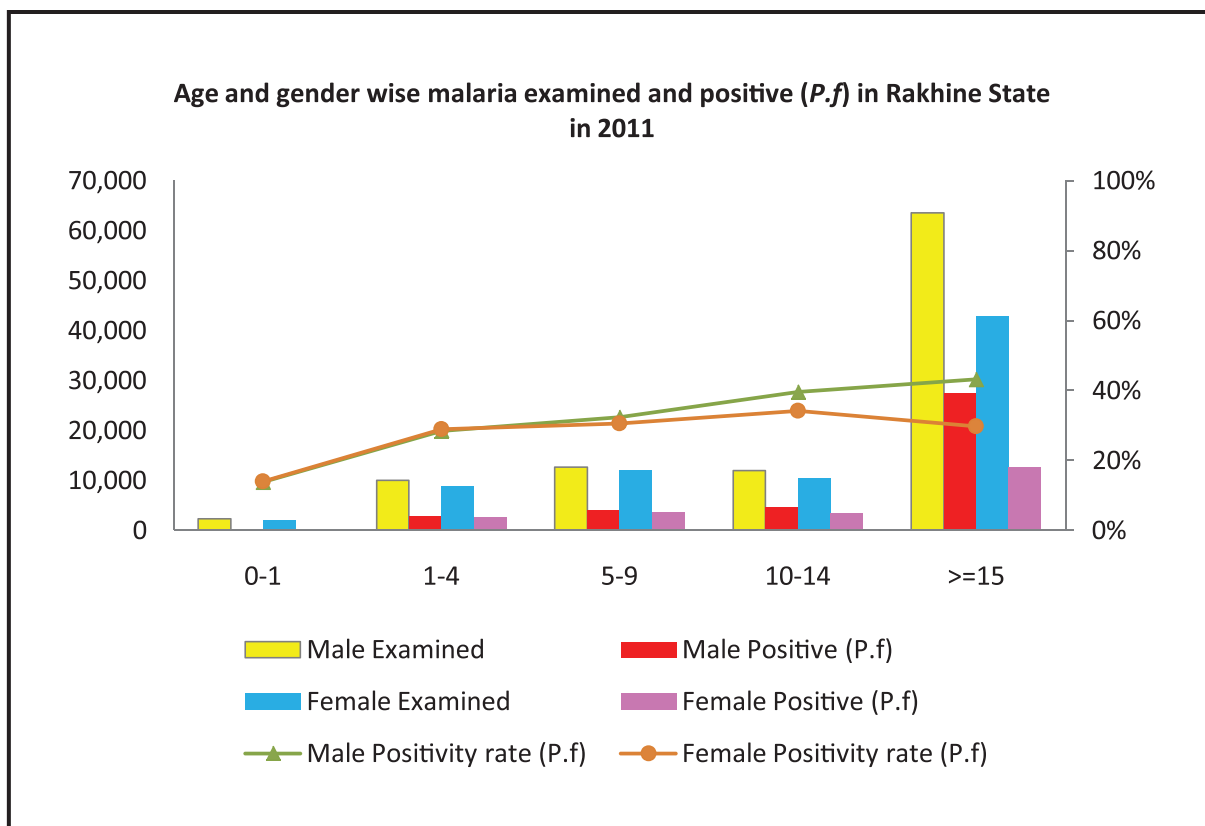


## Total examined and positive (P.f) by age group and gender in Rakhine State in 2010



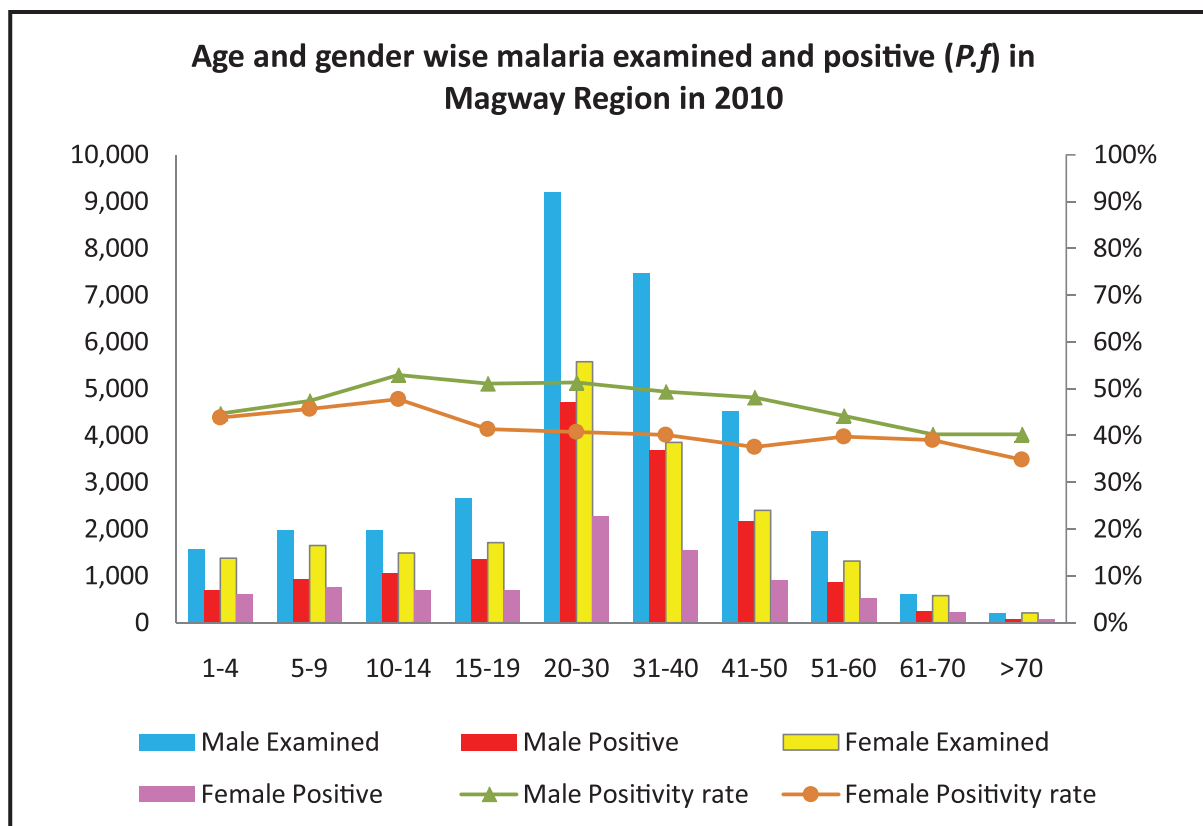
Age group	Male			Female		
	Examined	Positive (P.f)	Positivity rate (P.f)	Examined	Positive (P.f)	Positivity rate (P.f)
<1	1,813	333	18.37%	1,704	311	18.25%
1-4	9,220	3,101	33.63%	8,787	2,837	32.29%
5-9	12,827	4,434	34.57%	12,265	4,188	34.15%
10-14	10,730	4,415	41.15%	9,817	3,560	36.26%
15-19	9,518	4,095	43.02%	7,303	2,482	33.99%
20-30	19,568	8,838	45.17%	15,738	4,832	30.70%
31-40	12,803	6,034	47.13%	8,279	2,695	32.55%
41-50	7,904	3,568	45.14%	5,171	1,696	32.80%
51-60	3,602	1,495	41.50%	2,800	890	31.79%
61-70	1,112	402	36.15%	1,063	322	30.29%
>70	413	132	31.96%	473	96	20.30%
	<b>89,510</b>	<b>36,847</b>	<b>41.17%</b>	<b>73,400</b>	<b>23,909</b>	<b>32.57%</b>

## Total examined and positive (*P.f*) by age group and gender in Rakhine State in 2011



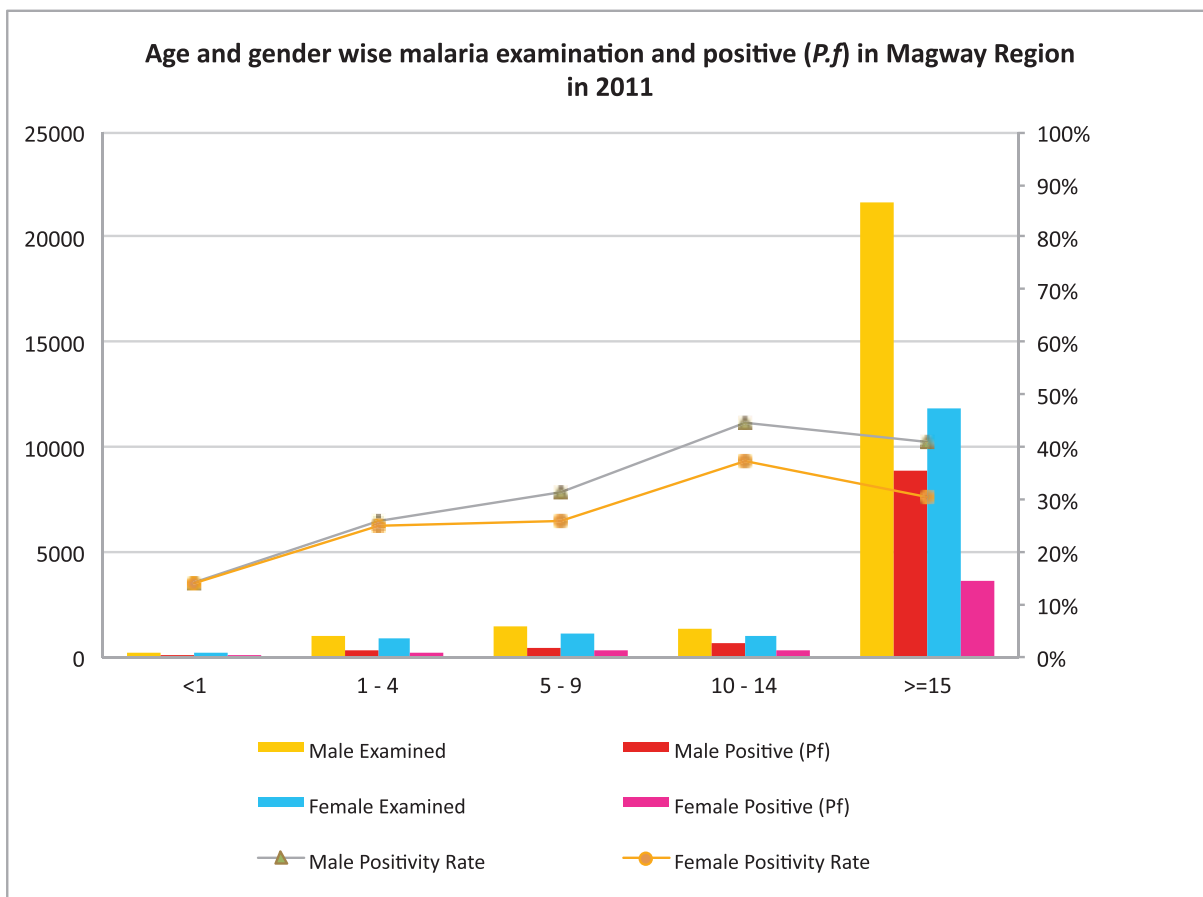
Age group	Male			Female		
	Examined	Positive ( <i>P.f</i> )	Positivity rate ( <i>P.f</i> )	Examined	Positive ( <i>P.f</i> )	Positivity rate ( <i>P.f</i> )
0-1	2,300	317	13.78%	2,197	308	14.02%
1-4	10,030	2,862	28.53%	9,012	2,608	28.94%
5-9	12,711	4,128	32.48%	12,056	3,697	30.67%
10-14	12,011	4,762	39.65%	10,576	3,610	34.13%
>=15	63,590	27,488	43.23%	42,953	12,771	29.73%
	100,642	39,557	39.30%	76,794	22,994	29.94%

## Total examined and positive (*P.f*) by age group and gender in Magway Region in 2010



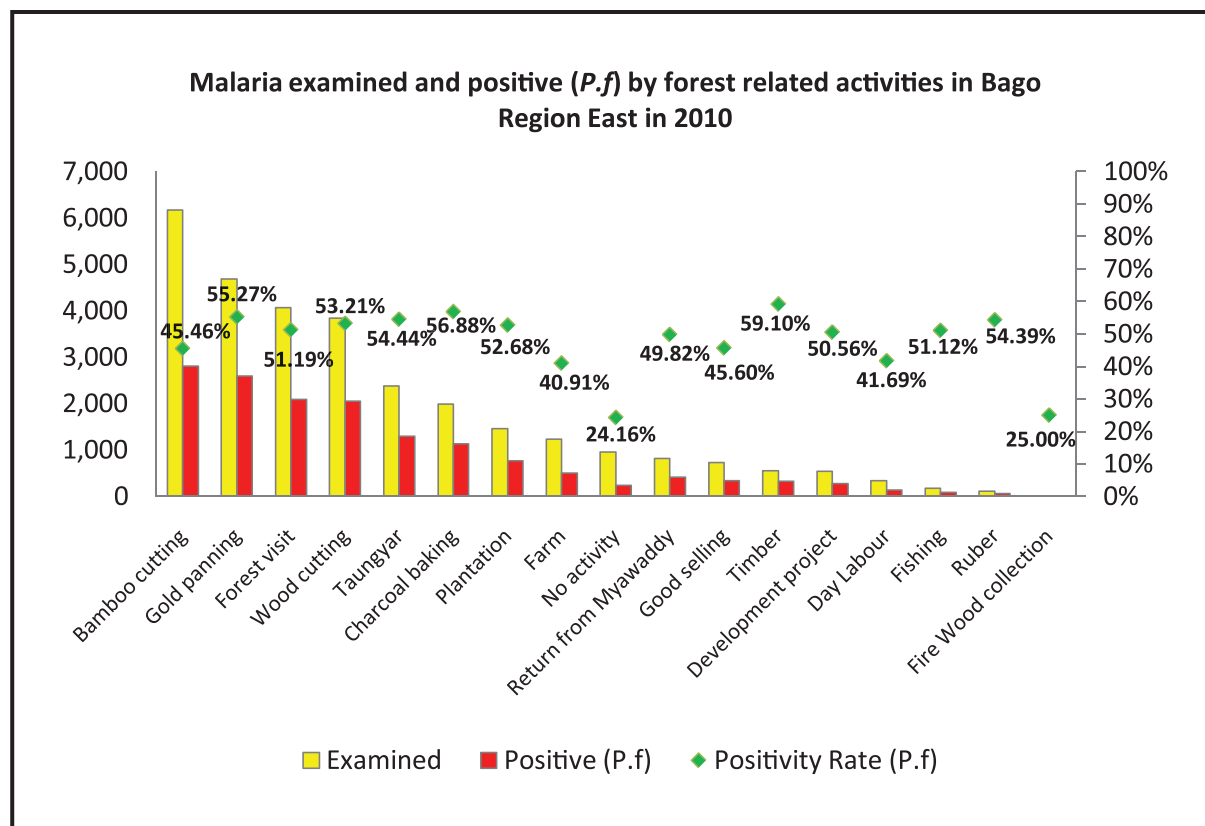
Age group	Male			Female		
	Examined	Positive ( <i>P.f</i> )	Positivity rate ( <i>P.f</i> )	Examined	Positive ( <i>P.f</i> )	Positivity rate ( <i>P.f</i> )
1-4	1,565	699	44.66%	1,378	604	43.83%
5-9	1,985	941	47.41%	1,652	755	45.70%
10-14	1,972	1,044	52.94%	1,484	709	47.78%
15-19	2,660	1,359	51.09%	1,705	704	41.29%
20-30	9,206	4,724	51.31%	5,571	2,272	40.78%
31-40	7,463	3,682	49.34%	3,846	1,541	40.07%
41-50	4,519	2,173	48.09%	2,397	899	37.51%
51-60	1,949	860	44.13%	1,320	525	39.77%
61-70	617	248	40.19%	579	226	39.03%
>70	199	80	40.20%	204	71	34.80%
<b>Total</b>	<b>32,135</b>	<b>15,810</b>	<b>49.20%</b>	<b>20,136</b>	<b>8,306</b>	<b>41.25%</b>

## Total examined and positive (*P.f*) by age group and gender in Magway Region in 2011



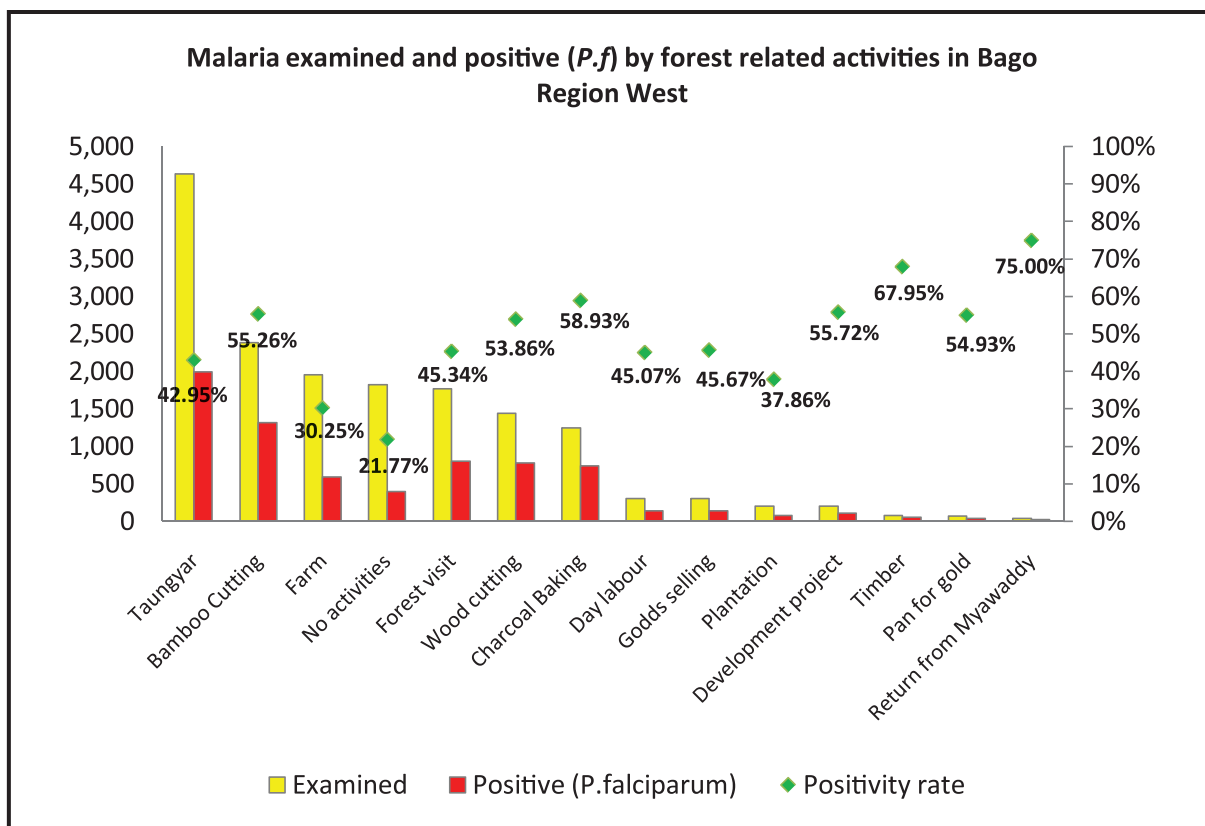
Age group	Male			Female		
	Examined	Positive ( <i>P.f</i> )	Positivity rate ( <i>P.f</i> )	Examined	Positive ( <i>P.f</i> )	Positivity rate ( <i>P.f</i> )
<1	246	35	14.23%	208	29	13.94%
1-4	1,034	267	25.82%	921	230	24.97%
5-9	1,416	445	31.43%	1,138	294	25.83%
10-14	1,383	617	44.61%	949	353	37.20%
>=15	21,594	8,834	40.91%	11,793	3,576	30.32%
	<b>25,673</b>	<b>10,198</b>	<b>39.72%</b>	<b>15,009</b>	<b>4,482</b>	<b>29.86%</b>

## Malaria examined (RDT & Microscope) and positive (P.f) by forest related activities in Bago Region East in 2010



Sr	Forest Activities	Examined	Positive (P.f)	Positivity Rate (P.f)
1	Bamboo cutting	6,173	2,806	45.46%
2	Gold panning	4,679	2,586	55.27%
3	Forest visit	4,069	2,083	51.19%
4	Wood cutting	3,843	2,045	53.21%
5	Taungyar	2,377	1,294	54.44%
6	Charcoal baking	1,992	1,133	56.88%
7	Plantation	1,454	766	52.68%
8	Farm	1,237	506	40.91%
9	No activity	956	231	24.16%
10	Return from Myawaddy	819	408	49.82%
11	Good selling	728	332	45.60%
12	Timber	555	328	59.10%
13	Development project	538	272	50.56%
14	Day Labour	331	138	41.69%
15	Fishing	178	91	51.12%
16	Ruber	114	62	54.39%
17	Fire Wood collection	4	1	25.00%

## Malaria examined (RDT & Microscope) and positive (*P.f*) by forest related activities in Bago Region West in 2010



Sr	Forest Activities	Examined	Positive ( <i>P.f</i> )	Positivity rate ( <i>P.f</i> )
1	Taungyar	4,638	1,992	42.95%
2	Bamboo Cutting	2,385	1,318	55.26%
3	Farm	1,957	592	30.25%
4	No activities	1,819	396	21.77%
5	Forest visit	1,769	802	45.34%
6	Wood cutting	1,439	775	53.86%
7	Charcoal Baking	1,249	736	58.93%
8	Day labour	304	137	45.07%
9	Godds selling	300	137	45.67%
10	Plantation	206	78	37.86%
11	Development project	201	112	55.72%
12	Timber	78	53	67.95%
13	Pan for gold	71	39	54.93%
14	Return from Myawaddy	36	27	75.00%