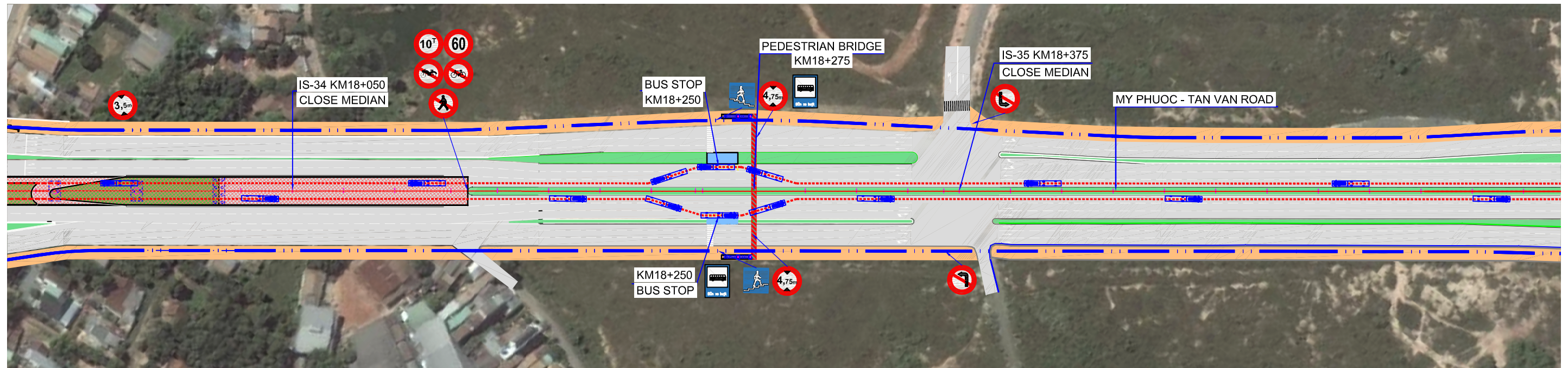


SUOI TIEN STATION

PLAN VIEW OF MY PHUOC - TAN VAN ROAD

SCALE:1/2000

BINH DUONG NEW CITY

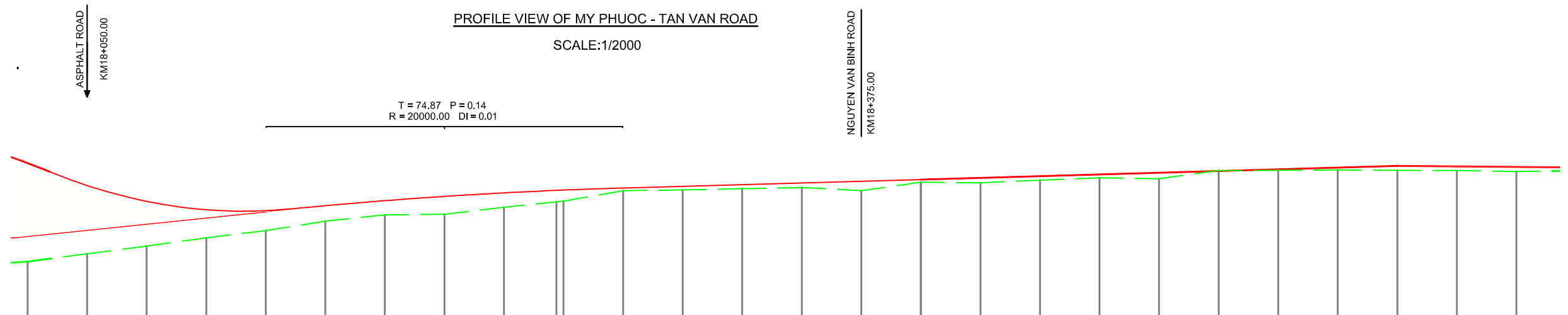


NOTES/ GHI CHÚ:

- SIDEWALK
- PAVEMENT
- GREEN BELT
- CENTERLINE
- BRT DIRECTION
- ROW
- BUS
- TRAFFIC LIGHT

PROFILE VIEW OF MY PHUOC - TAN VAN ROAD

SCALE:1/2000



PROFILE																											
DESIGN ELEVATION	33.05	32.12	31.45	31.1	31.06	31.27	31.48	31.66	31.81	31.92	32.01	32.08	32.15	32.22	32.29	32.36	32.43	32.50	32.58	32.65	32.72	32.80	32.87	32.94	32.92	32.89	
EXISTING ELEVATION	28.92	29.25	29.57	29.92	30.22	30.62	30.88	30.91	31.20	31.43	31.46	31.90	31.93	31.98	32.03	31.90	32.25	32.23	32.34	32.44	32.40	32.74	32.75	32.77	32.75	32.74	32.70
DISTANCE		25.00	25.00	25.00	25.00	25.00	25.00	25.00	22.00	31.00	25.00	25.00	25.00	25.00	25.00	25.00	25.00	25.00	25.00	25.00	25.00	25.00	25.00	25.00	25.00	25.00	
STATION	18025.00	18050.00	18075.00	18100.00	18125.00	18150.00	18175.00	18200.00	18225.00	18250.00	18275.00	18300.00	18325.00	18350.00	18375.00	18400.00	18425.00	18450.00	18475.00	18500.00	18525.00	18550.00	18575.00	18600.00	18625.00	18650.00	
STAKE	C1	C2	C3	H1	C4	C5	C6	H2	C7	C7*	C9	H3	C10	C11	C12	H4	C13	C14	C15	H5	C16	C17	C18	H6	C19	C20	
GEOMETRY ALIGNMENT																											

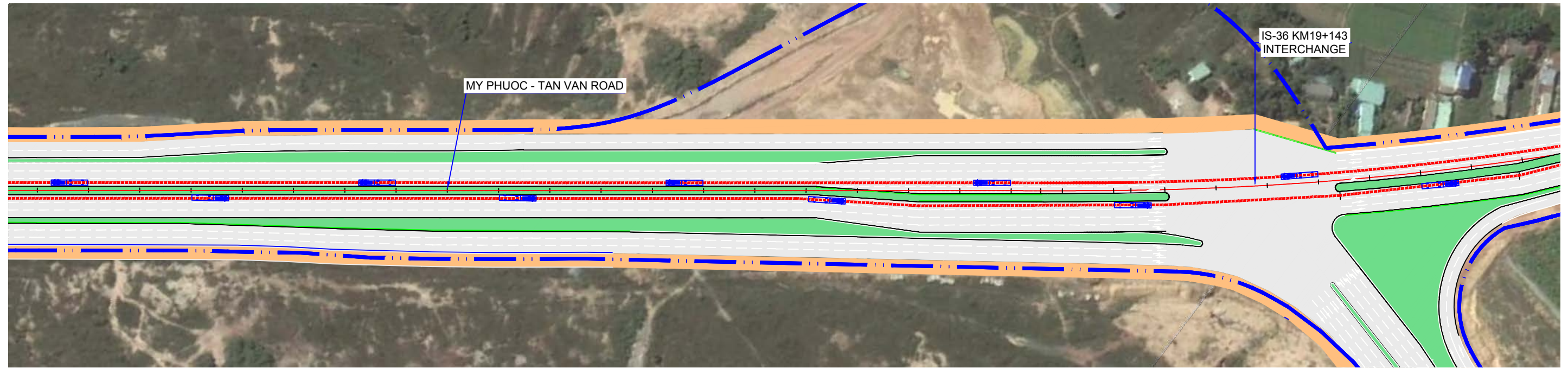
PROJECT NAME	CLIENT	COUNTERPART	CONSULTANT	DWG TITLE	DWG No.	
PREPARATORY SURVEY ON TRANSIT ORIENTED DEVELOPMENT (URBAN DEVELOPMENT AROUND PUBLIC TRANSPORT HUB) PROJECT AND BRT DEVELOPMENT PROJECT	JAPAN INTERNATIONAL COOPERATION AGENCY (JICA)	HO CHI MINH CITY PEOPLE'S COMMITTEE DEPARTMENT OF TRANSPORT	BINH DUONG PROVINCE PEOPLE'S COMMITTEE DEPARTMENT OF TRANSPORT	TOKYU CORPORATION NIPPON KOEI CO.,LTD. NIKKEN SEKKEI RESEARCH INSTITUTE KRI INTERNATIONAL CORPORATION	SECTION 2 PLAN AND PROFILE OF MY PHUOC - TAN VAN ROAD (30/35)	SE2 - 31
				SUB-CONSULTANT		SCALE
				HUNG NGHIEP CONSTRUCTION CONSULTING CO., LTD		1/2000

← SUOI TIEN STATION

PLAN VIEW OF MY PHUOC - TAN VAN ROAD

SCALE:1/2000

→ BINH DUONG NEW CITY

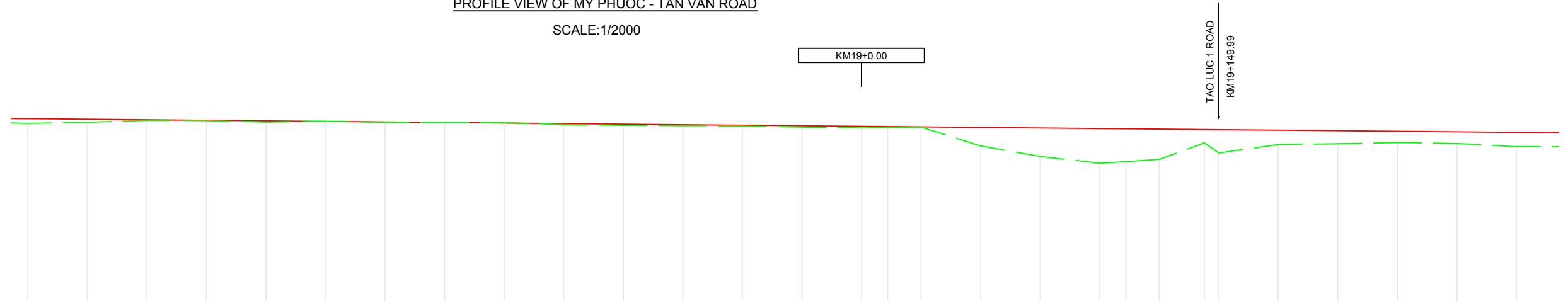


PROFILE VIEW OF MY PHUOC - TAN VAN ROAD

SCALE:1/2000

NOTES/ GHI CHÚ:

- SIDEWALK
- PAVEMENT
- GREEN BELT
- CENTERLINE
- BRT DIRECTION
- ROW
- BUS
- TRAFFIC LIGHT



PROFILE	0.09% 750.00																												
DESIGN ELEVATION	32.89	32.87	32.85	32.83	32.80	32.78	32.76	32.73	32.71	32.68	32.66	32.64	32.62	32.60	32.57	32.56	32.55	32.53	32.50	32.48	32.47	32.46	32.44	32.43	32.41	32.39	32.37	32.34	32.32
EXISTING ELEVATION	32.70	32.74	32.82	32.81	32.75	32.78	32.74	32.72	32.72	32.65	32.61	32.60	32.58	32.54	32.50	32.52	32.54	31.75	31.31	31.02	31.09	31.18	31.88	31.45	31.81	31.84	31.89	31.85	31.72
DISTANCE		25.00	25.00	25.00	25.00	25.00	25.00	25.00	25.00	25.00	25.00	25.00	25.00	25.00	10.99	14.01	25.00	25.00	25.00	10.99	14.01	18.93	6.07	25.00	25.00	25.00	25.00	25.00	25.00
STATION	18650.00	18675.00	18700.00	18725.00	18750.00	18775.00	18800.00	18825.00	18850.00	18875.00	18900.00	18925.00	18950.00	18975.00	19000.00	19010.99	19025.00	19050.00	19075.00	19100.00	19110.99	19125.00	19143.93	19150.00	19175.00	19200.00	19225.00	19250.00	19275.00
STAKE	C20	C21	H7	C22	C23	C24	H8	C25	C26	C28	H9	C29	C30	C31	KM19	ND13	C1	C2	C3	H1	TD13	C4	GIAO	C5	C6	H2	C7	C8	C9
GEOMETRY ALIGNMENT	R=1 T=																												

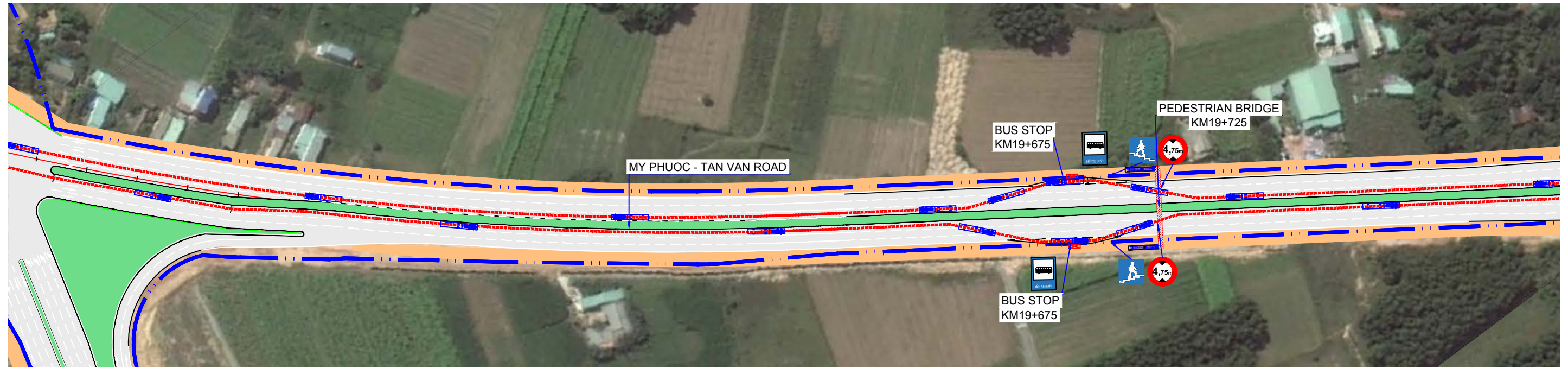
PROJECT NAME	CLIENT	COUNTERPART	CONSULTANT	DWG TITLE	DWG No.
PREPARATORY SURVEY ON TRANSIT ORIENTED DEVELOPMENT (URBAN DEVELOPMENT AROUND PUBLIC TRANSPORT HUB) PROJECT AND BRT DEVELOPMENT PROJECT	JAPAN INTERNATIONAL COOPERATION AGENCY (JICA)	HO CHI MINH CITY PEOPLE'S COMMITTEE DEPARTMENT OF TRANSPORT	BINH DUONG PROVINCE PEOPLE'S COMMITTEE DEPARTMENT OF TRANSPORT	SECTION 2 PLAN AND PROFILE OF MY PHUOC - TAN VAN ROAD (31/35)	SE2 - 32
					SCALE
					1/2000
			TOKYU CORPORATION NIPPON KOEI CO.,LTD. NIKKEN SEKKEI RESEARCH INSTITUTE KRI INTERNATIONAL CORPORATION SUB-CONSULTANT HUNG NGHIEP CONSTRUCTION CONSULTING CO., LTD		

SUOI TIEN STATION

PLAN VIEW OF MY PHUOC - TAN VAN ROAD

SCALE:1/2000

BINH DUONG NEW CITY

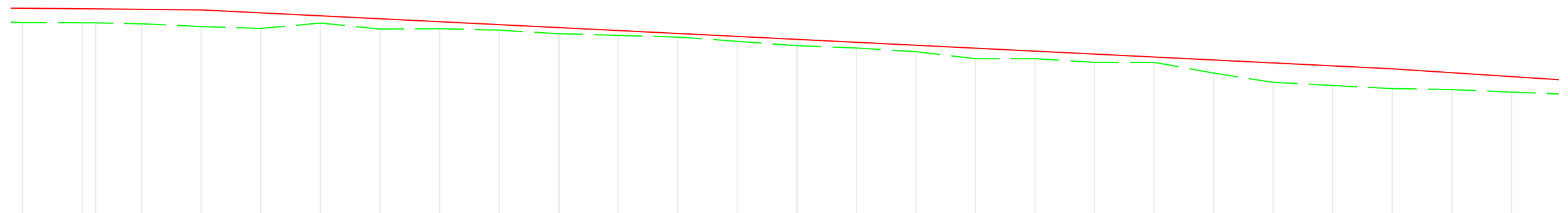


PROFILE VIEW OF MY PHUOC - TAN VAN ROAD

SCALE:1/2000

NOTES/ GHI CHÚ:

- SIDEWALK
- PAVEMENT
- GREEN BELT
- CENTERLINE
- BRT DIRECTION
- ROW
- BUS
- TRAFFIC LIGHT



PROFILE	0.49% 500.00																									0.65% 111.70			
DESIGN ELEVATION	32.32	32.30	32.29	32.27	32.25	32.13	32.00	31.88	31.76	31.63	31.51	31.39	31.26	31.14	31.02	30.89	30.77	30.64	30.52	30.40	30.27	30.15	30.03	29.90	29.78	29.62	29.45		
EXISTING ELEVATION	31.72	31.71	31.71	31.67	31.55	31.47	31.70	31.45	31.46	31.40	31.25	31.18	31.11	30.93	30.75	30.65	30.50	30.20	30.20	30.05	30.05	29.60	29.21	29.08	28.95	28.91	28.80		
DISTANCE		25.00	5.64	19.36	25.00	25.00	25.00	25.00	25.00	25.00	25.00	24.71	25.00	25.00	25.00	24.71	25.00	25.00	25.00	25.00	25.00	25.00	25.00	25.00	25.00	25.00	25.00		
STATION	19275.00	19300.00	19305.64	19325.00	19350.00	19375.00	19400.00	19425.00	19450.00	19475.00	19500.00	19525.00	19550.00	19575.00	19600.00	19625.00	19650.00	19675.00	19700.00	19725.00	19750.00	19775.00	19800.00	19825.00	19850.00	19875.00	19900.00		
STAKE	C9	H3	P13	C10	C11	C12	H4	C13	C14	C15	H5	TC13	C16	C17	C18	NC13	H6	C19	C20	C21	H7	C22	C23	C24	H8	C25	C26	C27	H9
GEOMETRY ALIGNMENT	A=18d41'23.0" R=1500.00 K=589.30 T=296.89 P=20.46																												

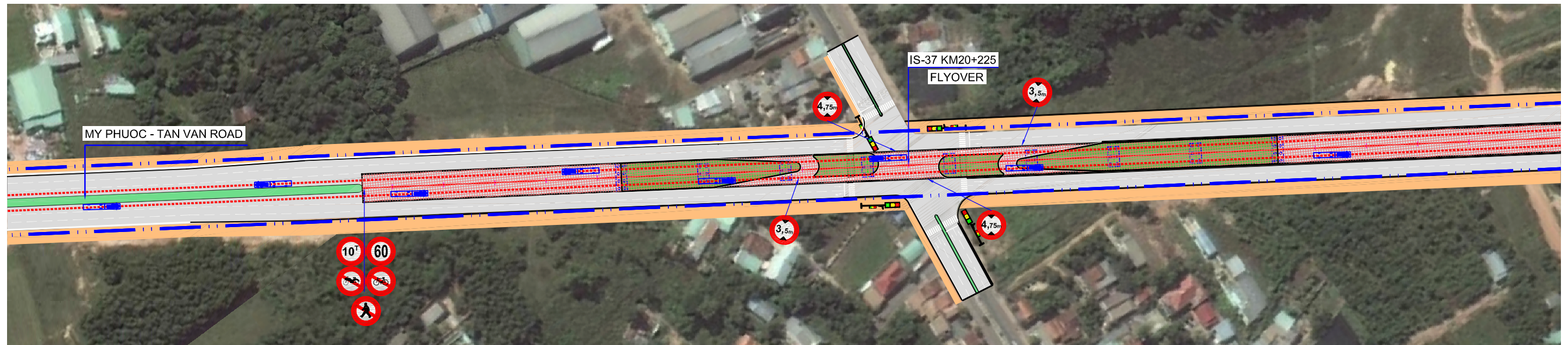
PROJECT NAME	CLIENT	COUNTERPART	CONSULTANT	DWG TITLE	DWG No.
PREPARATORY SURVEY ON TRANSIT ORIENTED DEVELOPMENT (URBAN DEVELOPMENT AROUND PUBLIC TRANSPORT HUB) PROJECT AND BRT DEVELOPMENT PROJECT	JAPAN INTERNATIONAL COOPERATION AGENCY (JICA)	HO CHI MINH CITY PEOPLE'S COMMITTEE DEPARTMENT OF TRANSPORT	BINH DUONG PROVINCE PEOPLE'S COMMITTEE DEPARTMENT OF TRANSPORT	SECTION 2 PLAN AND PROFILE OF MY PHUOC - TAN VAN ROAD (32/35)	SE2 - 33
					SCALE
					1/2000
			TOKYU CORPORATION NIPPON KOEI CO.,LTD. NIKKEN SEKKEI RESEARCH INSTITUTE KRI INTERNATIONAL CORPORATION SUB-CONSULTANT HUNG NGHIEP CONSTRUCTION CONSULTING CO., LTD		

SUOI TIEN STATION

PLAN VIEW OF MY PHUOC - TAN VAN ROAD

SCALE:1/2000

BINH DUONG NEW CITY



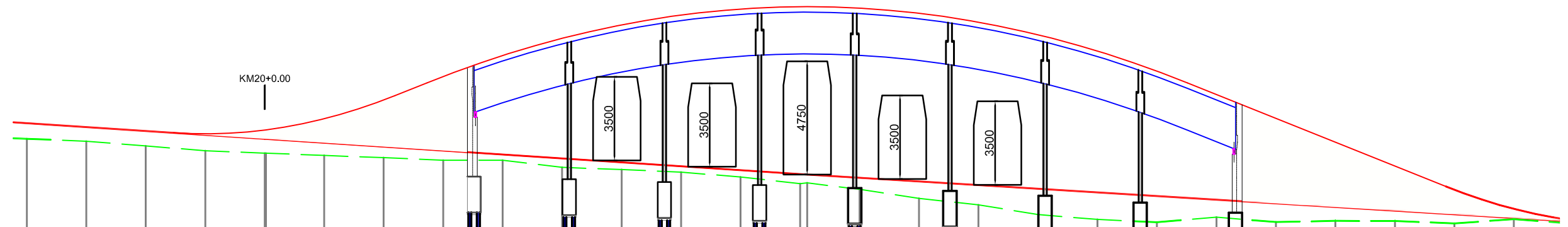
PROFILE VIEW OF MY PHUOC - TAN VAN ROAD

SCALE:1/2000

HUYNH VAN LUY ROAD
KM20+226.75
W=24M

NOTES/ GHI CHÚ:

- SIDEWALK
- PAVEMENT
- GREEN BELT
- CENTERLINE
- BRT DIRECTION
- ROW
- BUS
- TRAFFIC LIGHT



PROFILE	0.65%		4.00%												4.00%													
DESIGN ELEVATION	29.45	29.29	29.13	29.01	29.17	29.64	30.42	31.41	32.29	33.01	33.58	33.99	34.24	34.34	34.31	34.28	34.06	33.69	33.16	32.48	31.64	30.66	29.66	28.66	27.66	26.66	25.86	
EXISTING ELEVATION	28.80	28.70	28.50	28.30	28.20	28.10	28.01	27.90	27.90	27.60	27.51	27.40	27.20	26.92	26.96	26.68	26.30	26.03	25.62	25.42	25.30	25.51	25.31	25.36	25.35	25.25	25.43	
DISTANCE		25.00	25.00	25.00	25.00	24.50	25.00	25.00	25.00	25.00	25.00	25.00	25.00	22.00	25.00	25.00	25.00	25.00	25.00	25.00	25.00	25.00	25.00	25.00	25.00	25.00	25.00	
STATION	19900.00	19925.00	19950.00	19975.00	20000.00	20025.00	20050.00	20075.00	20100.00	20125.00	20150.00	20175.00	20200.00	20225.00	20250.00	20275.00	20300.00	20325.00	20350.00	20375.00	20400.00	20425.00	20450.00	20475.00	20500.00	20525.00	20550.00	
STAKE	H9	C28	C29	C30	KM20 D14	C1	C2	C3	H1	C4	C5	C6	H2	C7 GIAO	C8	C9	H3	C10	C11	C12	H4	C13	C14	C15	H5	C16		
GEOMETRY ALIGNMENT																												

PROJECT NAME	CLIENT	COUNTERPART	CONSULTANT	DWG TITLE	DWG No.	
PREPARATORY SURVEY ON TRANSIT ORIENTED DEVELOPMENT (URBAN DEVELOPMENT AROUND PUBLIC TRANSPORT HUB) PROJECT AND BRT DEVELOPMENT PROJECT	JAPAN INTERNATIONAL COOPERATION AGENCY (JICA)	HO CHI MINH CITY PEOPLE'S COMMITTEE DEPARTMENT OF TRANSPORT	BINH DUONG PROVINCE PEOPLE'S COMMITTEE DEPARTMENT OF TRANSPORT	TOKYU CORPORATION NIPPON KOEI CO.,LTD. NIKKEN SEKKEI RESEARCH INSTITUTE KRI INTERNATIONAL CORPORATION	SECTION 2 PLAN AND PROFILE OF MY PHUOC - TAN VAN ROAD (33/35)	SE2 - 34
				SUB-CONSULTANT		SCALE
				HUNG NGHIEP CONSTRUCTION CONSULTING CO., LTD		1/2000