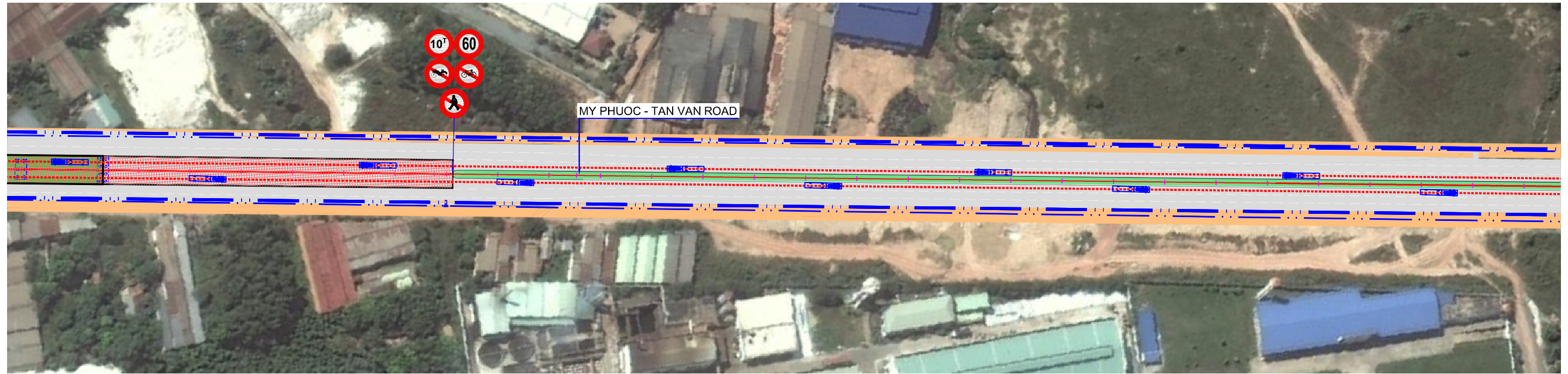


← SUOI TIEN STATION

PLAN VIEW OF MY PHUOC - TAN VAN ROAD

SCALE:1/2000

BINH DUONG NEW CITY →

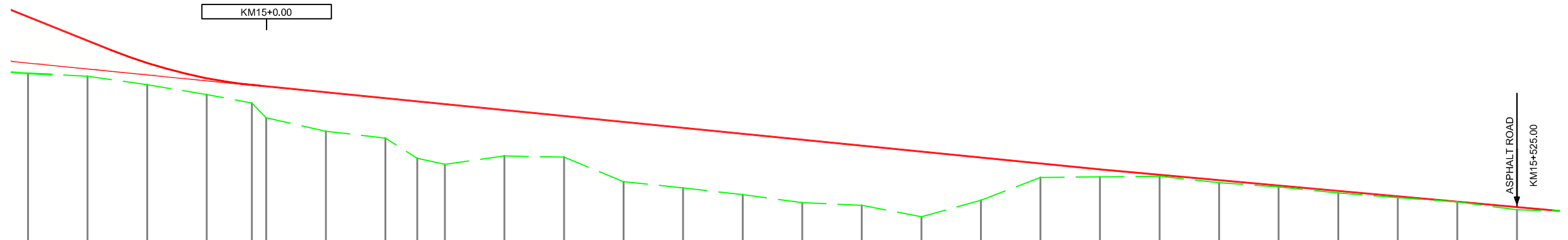


PROFILE VIEW OF MY PHUOC - TAN VAN ROAD

SCALE:1/2000

NOTES/ GHI CHÚ:

- SIDEWALK
- PAVEMENT
- GREEN BELT
- CENTERLINE
- BRT DIRECTION
- ROW
- BUS
- TRAFFIC LIGHT



PROFILE	1.00% 352.47																											
DESIGN ELEVATION	34.04	33.04	32.11	31.46	31.18	31.63	30.85	30.56	30.38	30.13	29.88	29.63	29.38	29.13	28.88	28.64	28.39	28.14	27.89	27.64	27.41	27.19	26.96	26.73	26.51	26.28	26.05	
EXISTING ELEVATION	31.67	31.55	31.19	30.78	30.42	29.80	29.24	28.95	28.10	27.85	26.20	28.15	27.12	26.86	26.58	26.24	26.13	25.65	26.34	27.30	27.32	27.35	27.08	26.90	26.65	26.45	26.27	25.94
DISTANCE		25.00	25.00	25.00	19.00	6.00	25.00	25.00	13.38	11.62	25.00	25.00	25.00	25.00	25.00	25.00	25.00	25.00	25.00	25.00	25.00	25.00	25.00	25.00	25.00	25.00	25.00	25.00
STATION	14900.00	14925.00	14950.00	14975.00	14994.00	15000.00	15025.00	15050.00	15063.38	15075.00	15100.00	15125.00	15150.00	15175.00	15200.00	15225.00	15250.00	15275.00	15300.00	15325.00	15350.00	15375.00	15400.00	15425.00	15450.00	15475.00	15500.00	15525.00
STAKE	H9	C27	C28	C29	KM15	C30	C1	C2	C3	C4	H1	C5	C6	C7	H2	C8	C9	C10	H3	C11	C12	C13	H4	C14	C15	C16	H5	C17
GEOMETRY ALIGNMENT																												

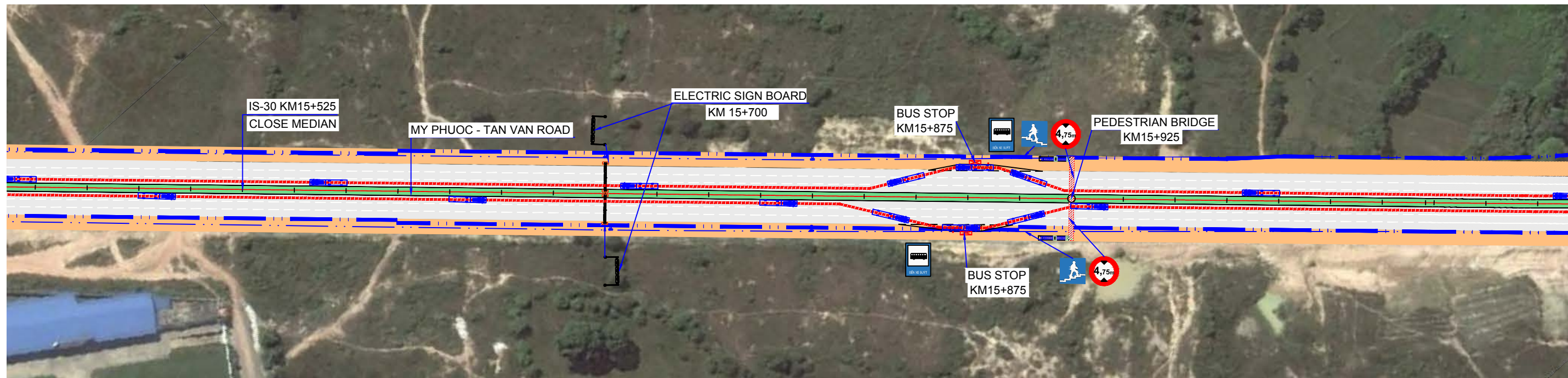
PROJECT NAME	CLIENT	COUNTERPART	CONSULTANT	DWG TITLE	DWG No.
PREPARATORY SURVEY ON TRANSIT ORIENTED DEVELOPMENT (URBAN DEVELOPMENT AROUND PUBLIC TRANSPORT HUB) PROJECT AND BRT DEVELOPMENT PROJECT	JAPAN INTERNATIONAL COOPERATION AGENCY (JICA)	HO CHI MINH CITY PEOPLE'S COMMITTEE DEPARTMENT OF TRANSPORT	BINH DUONG PROVINCE PEOPLE'S COMMITTEE DEPARTMENT OF TRANSPORT	SECTION 2 PLAN AND PROFILE OF MY PHUOC - TAN VAN ROAD (25/35)	SE2 - 26
					SCALE
					1/2000
			SUB-CONSULTANT		
			HUNG NGHIEP CONSTRUCTION CONSULTING CO., LTD		

SUOI TIEN STATION

PLAN VIEW OF MY PHUOC - TAN VAN ROAD

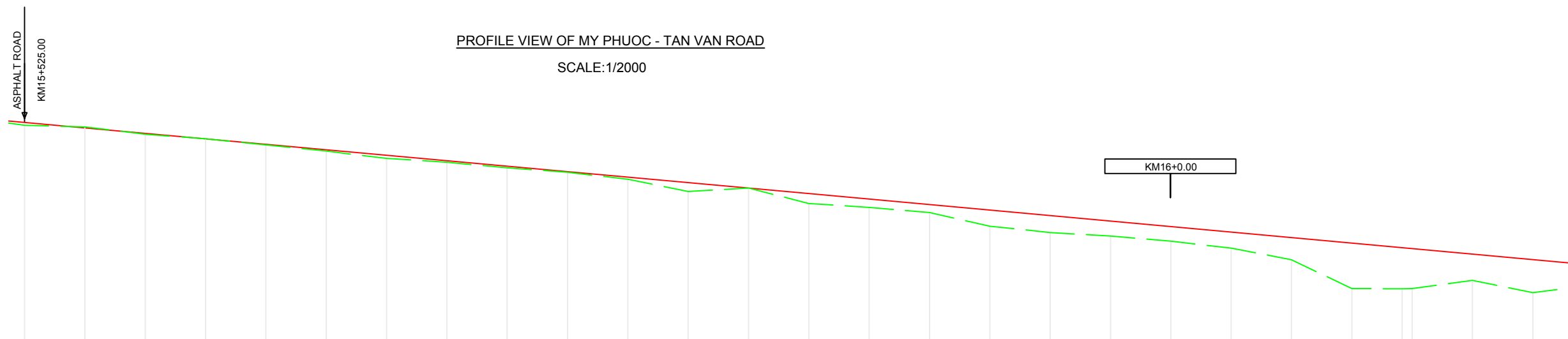
SCALE:1/2000

BINH DUONG NEW CITY



NOTES/ GHI CHÚ:

- SIDEWALK
- PAVEMENT
- GREEN BELT
- CENTERLINE
- BRT DIRECTION
- ROW
- BUS
- TRAFFIC LIGHT



PROFILE	0.91% 500.00																											
DESIGN ELEVATION	26.05	25.83	25.60	25.38	25.15	24.92	24.70	24.47	24.24	24.02	23.79	23.56	23.34	23.11	22.88	22.65	22.43	22.20	21.97	21.75	21.52	21.29	21.06	20.83	20.61	20.38		
EXISTING ELEVATION	25.94	25.87	25.57	25.38	25.13	24.87	24.57	24.41	24.18	23.99	23.71	23.20	23.34	22.70	22.54	22.33	21.76	21.50	21.35	21.14	20.85	20.37	19.18	19.17	19.18	19.52	19.01	
DISTANCE		25.00	25.00	25.00	25.00	25.00	25.00	25.00	25.00	25.00	25.00	25.00	25.00	25.00	25.00	25.00	25.00	25.00	25.00	25.00	25.00	25.00	20.88	4.12	25.00	25.00	25.00	
STATION	15525.00	15550.00	15575.00	15600.00	15625.00	15650.00	15675.00	15700.00	15725.00	15750.00	15775.00	15800.00	15825.00	15850.00	15875.00	15900.00	15925.00	15950.00	15975.00	16000.00	16025.00	16050.00	16075.00	16095.88	16100.00	16125.00	16150.00	
STAKE	C17	C18	C19	H6	C20	C21	C22	H7	C23	C24	C25	H8	C26	C27	C28	H9	C30	C31	C32	KM16	C1	C2	C3	ND11	C4	C5		
GEOMETRY ALIGNMENT	[Diagram showing road geometry alignment]																											

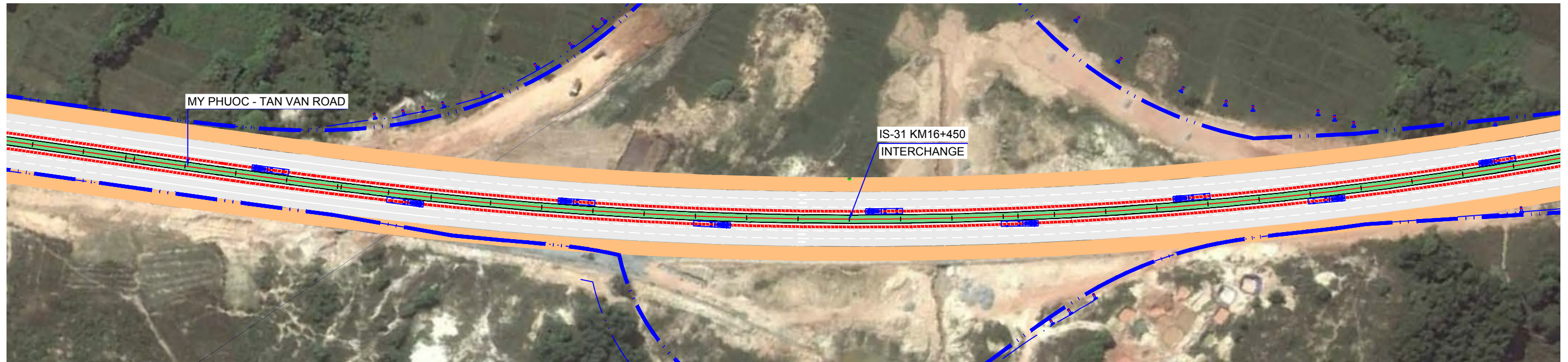
PROJECT NAME	CLIENT	COUNTERPART	CONSULTANT	DWG TITLE	DWG No.	
PREPARATORY SURVEY ON TRANSIT ORIENTED DEVELOPMENT (URBAN DEVELOPMENT AROUND PUBLIC TRANSPORT HUB) PROJECT AND BRT DEVELOPMENT PROJECT	JAPAN INTERNATIONAL COOPERATION AGENCY (JICA)	HO CHI MINH CITY PEOPLE'S COMMITTEE DEPARTMENT OF TRANSPORT	BINH DUONG PROVINCE PEOPLE'S COMMITTEE DEPARTMENT OF TRANSPORT	TOKYU CORPORATION NIPPON KOEI CO.,LTD. NIKKEN SEKKEI RESEARCH INSTITUTE KRI INTERNATIONAL CORPORATION	SECTION 2 PLAN AND PROFILE OF MY PHUOC - TAN VAN ROAD (26/35)	SE2 - 27
				SUB-CONSULTANT		SCALE
				HUNG NGHIEP CONSTRUCTION CONSULTING CO., LTD		1/2000

SUOI TIEN STATION

PLAN VIEW OF MY PHUOC - TAN VAN ROAD

SCALE:1/2000

BINH DUONG NEW CITY

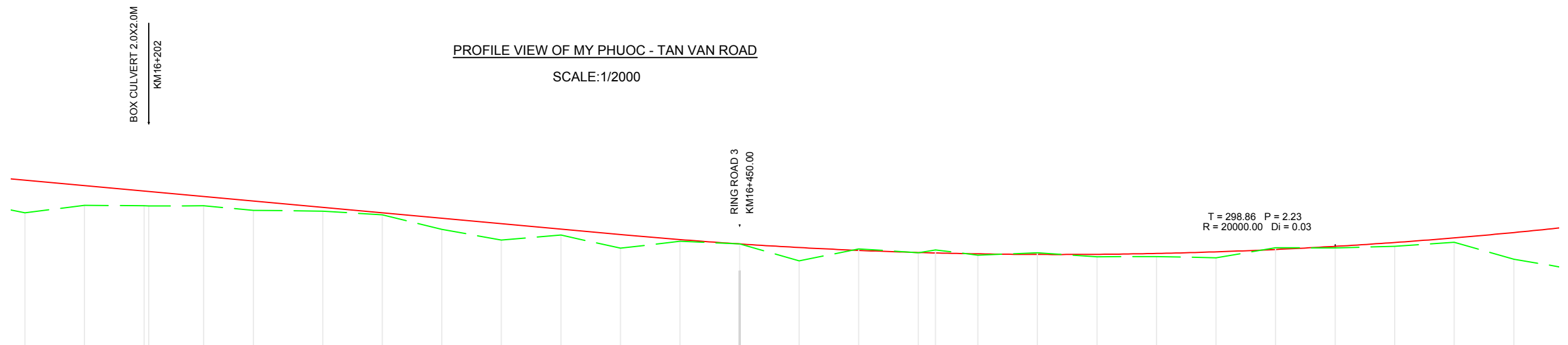


PROFILE VIEW OF MY PHUOC - TAN VAN ROAD

SCALE:1/2000

NOTES/ GHI CHÚ:

- SIDEWALK
- PAVEMENT
- GREEN BELT
- CENTERLINE
- BRT DIRECTION
- ROW
- BUS
- TRAFFIC LIGHT



PROFILE	0.91% 850.00																										
DESIGN ELEVATION	20.38	20.15	19.87	19.70	19.51	19.24	19.01	18.79	18.56	18.33	18.10	17.89	17.71	17.56	17.44	17.35	17.33	17.29	17.27	17.27	17.31	17.38	17.48	17.61	17.77	17.96	18.19
EXISTING ELEVATION	19.01	19.33	19.30	19.31	19.12	19.08	18.93	18.32	17.87	18.08	17.53	17.82	17.71	17.00	17.50	17.34	17.46	17.24	17.34	17.17	17.18	17.13	17.55	17.54	17.61	17.78	17.07
DISTANCE	25.00	25.00	23.00	20.88	29.12	25.00	25.00	25.00	25.00	25.00	25.00	25.00	25.00	25.00	25.00	7.24	17.76	25.00	25.00	25.00	25.00	25.00	25.00	25.00	25.00	25.00	25.00
STATION	16150.00	16175.00	16200.00	16225.00	16245.88	16275.00	16300.00	16325.00	16350.00	16375.00	16400.00	16425.00	16450.00	16475.00	16500.00	16525.00	16532.24	16550.00	16575.00	16600.00	16625.00	16650.00	16675.00	16700.00	16725.00	16750.00	16775.00
STAKE	C5	C6	H2 C6'	C7	TD11	C8	H3	C9	C10	C11	H4	C12	C13	C14	H5	C15	P11	C16	C17	H6	C18	C19	C20	H7	C21	C22	C23
GEOMETRY ALIGNMENT	A=159d1746.1" R=2000.00 K=872.71 T=440.42 P=33.57															L1=150.00 L2=150.00 isc1=2.00 w1=0.00 isc2=2.00 w2=0.00											

PROJECT NAME	CLIENT	COUNTERPART	CONSULTANT	DWG TITLE	DWG No.
PREPARATORY SURVEY ON TRANSIT ORIENTED DEVELOPMENT (URBAN DEVELOPMENT AROUND PUBLIC TRANSPORT HUB) PROJECT AND BRT DEVELOPMENT PROJECT	JAPAN INTERNATIONAL COOPERATION AGENCY (JICA)	HO CHI MINH CITY PEOPLE'S COMMITTEE DEPARTMENT OF TRANSPORT	BINH DUONG PROVINCE PEOPLE'S COMMITTEE DEPARTMENT OF TRANSPORT	SECTION 2 PLAN AND PROFILE OF MY PHUOC - TAN VAN ROAD (27/35)	SE2 - 28
					SCALE
					1/2000
			TOKYU CORPORATION NIPPON KOEI CO.,LTD. NIKKEN SEKKEI RESEARCH INSTITUTE KRI INTERNATIONAL CORPORATION SUB-CONSULTANT HUNG NGHIEP CONSTRUCTION CONSULTING CO., LTD		

← SUOI TIEN STATION

PLAN VIEW OF MY PHUOC - TAN VAN ROAD

SCALE:1/2000

BINH DUONG NEW CITY →



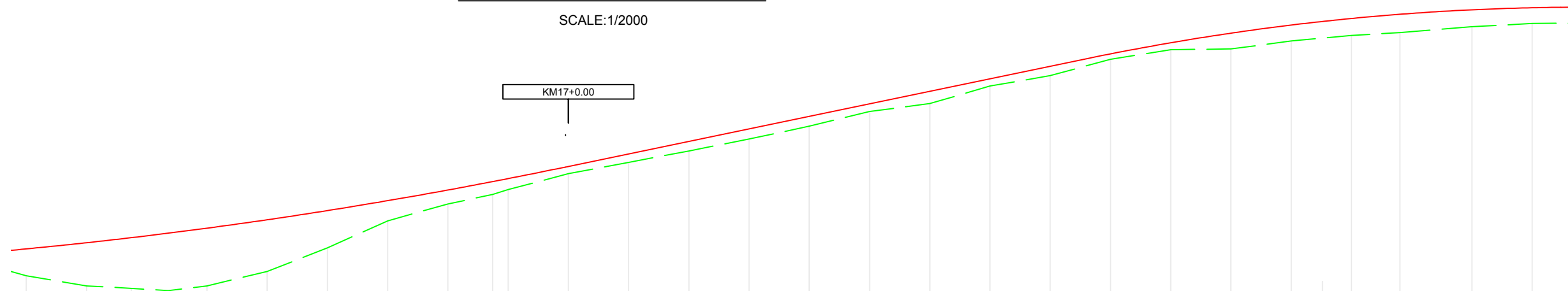
T = 98.99 P = 0.49
R = 10000.00 Di = 0.02

PROFILE VIEW OF MY PHUOC - TAN VAN ROAD

SCALE:1/2000

NOTES/ GHI CHÚ:

- SIDEWALK
- PAVEMENT
- GREEN BELT
- CENTERLINE
- BRT DIRECTION
- ROW
- BUS
- TRAFFIC LIGHT



PROFILE	2.08% 400.00										2.08% 213.00																					
DESIGN ELEVATION	18.19	18.44	18.65	18.84	19.05	19.40	19.78	20.19	20.63	20.98	21.11	21.61	22.13	22.65	23.17	23.68	24.21	24.73	25.25	25.77	26.28	26.75	27.14	27.48	27.75	27.93	28.11	28.20				
EXISTING ELEVATION	17.07	16.65	16.55	16.45	16.65	17.25	18.23	19.35	20.05	20.45	20.65	21.31	21.78	22.25	22.75	23.28	23.89	24.22	24.95	25.38	26.06	26.46	26.49	26.82	27.05	27.17	27.41	27.55				
DISTANCE		25.00	18.59	15.33	16.08	25.00	25.00	25.00	25.00	18.59	6.41	25.00	25.00	25.00	25.00	25.00	25.00	25.00	25.00	25.00	25.00	25.00	25.00	25.00	25.00	20.19	29.81	25.00	25.00			
STATION	16775.00	16800.00	16818.59	16833.92	16850.00	16875.00	16900.00	16925.00	16950.00	16968.59	16975.00	17000.00	17025.00	17050.00	17075.00	17100.00	17125.00	17150.00	17175.00	17200.00	17225.00	17250.00	17275.00	17300.00	17325.00	17345.19	17375.00	17400.00				
STAKE	C23	H8	TC11	C24	C25	C26	H9	C27	C28	NC11	C29	KM17	C1	C2	C3	H1	C4	C5	C6	H2	C7	C8	C9	H3	C10	ND12	C11	H4				
GEOMETRY ALIGNMENT	[Diagram showing alignment changes]																															

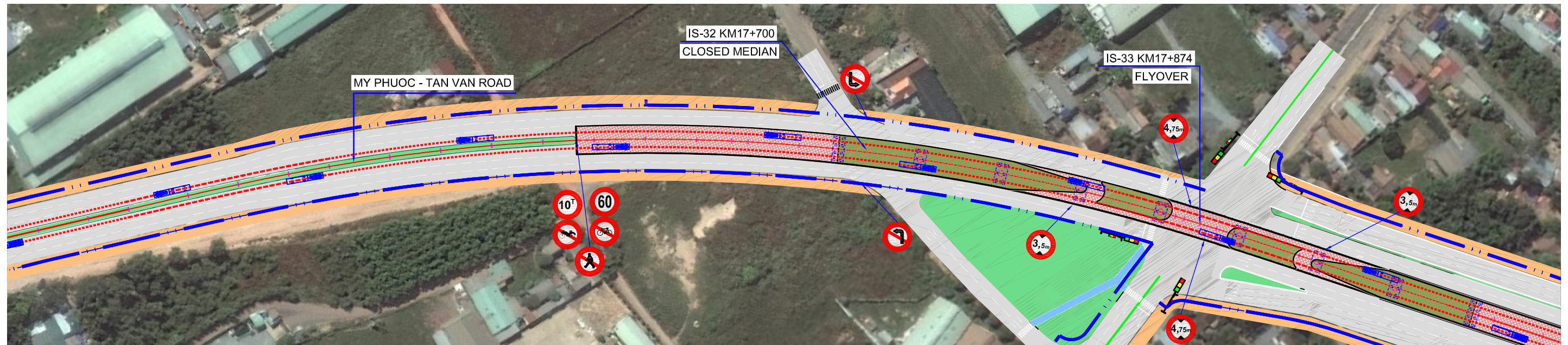
PROJECT NAME	CLIENT	COUNTERPART	CONSULTANT	DWG TITLE	DWG No.
PREPARATORY SURVEY ON TRANSIT ORIENTED DEVELOPMENT (URBAN DEVELOPMENT AROUND PUBLIC TRANSPORT HUB) PROJECT AND BRT DEVELOPMENT PROJECT	JAPAN INTERNATIONAL COOPERATION AGENCY (JICA)	HO CHI MINH CITY PEOPLE'S COMMITTEE DEPARTMENT OF TRANSPORT	BINH DUONG PROVINCE PEOPLE'S COMMITTEE DEPARTMENT OF TRANSPORT	SECTION 2 PLAN AND PROFILE OF MY PHUOC - TAN VAN ROAD (28/35)	SE2 - 29
					SCALE
					1/2000
			TOKYU CORPORATION NIPPON KOEI CO.,LTD. NIKKEN SEKKEI RESEARCH INSTITUTE KRI INTERNATIONAL CORPORATION SUB-CONSULTANT HUNG NGHIEP CONSTRUCTION CONSULTING CO., LTD		

← SUOI TIEN STATION

PLAN VIEW OF MY PHUOC - TAN VAN ROAD

SCALE:1/2000

→ BINH DUONG NEW CITY

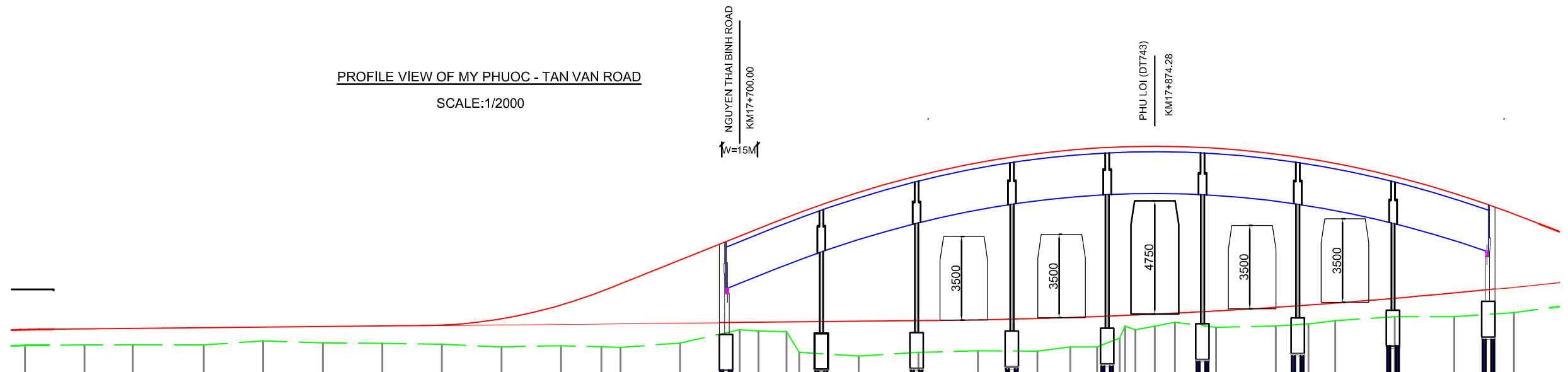


PROFILE VIEW OF MY PHUOC - TAN VAN ROAD

SCALE:1/2000

NOTES/ GHI CHÚ:

- SIDEWALK
- PAVEMENT
- GREEN BELT
- CENTERLINE
- BRT DIRECTION
- ROW
- BUS
- TRAFFIC LIGHT



PROFILE	0.10% 253.33										4.00% 307.95										4.00% 262.86														
DESIGN ELEVATION	28.20	28.23	28.25	28.28	28.31	28.33	28.36	28.38	28.75	29.26	29.8	30.12	31.12	32.12	32.44	32.91	33.13	33.97	34.71	35.2	35.63	35.73	35.86	35.35	35.35	35.89	35.89	35.81	35.57	35.38	35.18	34.63	33.92	33.05	
EXISTING ELEVATION	27.55	27.56	27.57	27.56	27.73	27.65	27.63	27.59	27.48	27.53	27.49	27.46	27.64	28.20	28.15	28.12	27.25	27.10	27.25	27.32	27.30	27.48	27.48	28.85	28.35	28.20	28.35	28.51	28.30	28.36	28.44	28.58	28.75	28.75	28.92
DISTANCE		25.00	20.19	29.81	25.00	25.00	25.00	25.00	25.00	16.98	8.02	25.00	25.00	7.93	11.71	5.36	25.00	25.00	25.00	13.77	11.23	9.53	2.72	4.36	8.15	8.45	17.27	25.00	13.77	11.23	25.00	25.00	25.00		
STATION	17400.00	17425.00	17445.19	17475.00	17500.00	17525.00	17550.00	17575.00	17600.00	17625.00	17641.98	17650.00	17675.00	17700.00	17707.93	17719.64	17725.00	17750.00	17775.00	17800.00	17825.00	17838.77	17850.00	17859.53	17866.13	17874.28	17882.73	17900.00	17925.00	17938.77	17950.00	17975.00	18000.00	18025.00	
STAKE	H4	C12	TD12	C13	H5	C14	C15	C16	H6	C16	P12	C18	C19	H7	C20	C21	C22	C23	C24	H8	C25	TC12	C26	C27	C28	C29	C30	C31	H9	C32	NC12	C33	C34	KM18	C1
GEOMETRY ALIGNMENT											$A=31d25'20.0''$ $R=900.00$ $K=593.58$ $T=303.29$ $P=35.41$ $L1=100.00$ $L2=100.00$										$isc1=2.00$ $w1=0.00$ $isc2=2.00$ $w2=0.00$ $isc3=2.00$ $w3=0.00$														

PROJECT NAME	CLIENT	COUNTERPART	CONSULTANT	DWG TITLE	DWG No.	
PREPARATORY SURVEY ON TRANSIT ORIENTED DEVELOPMENT (URBAN DEVELOPMENT AROUND PUBLIC TRANSPORT HUB) PROJECT AND BRT DEVELOPMENT PROJECT	JAPAN INTERNATIONAL COOPERATION AGENCY (JICA)	HO CHI MINH CITY PEOPLE'S COMMITTEE DEPARTMENT OF TRANSPORT	BINH DUONG PROVINCE PEOPLE'S COMMITTEE DEPARTMENT OF TRANSPORT	TOKYU CORPORATION NIPPON KOEI CO.,LTD. NIKKEN SEKKEI RESEARCH INSTITUTE KRI INTERNATIONAL CORPORATION	SECTION 2 PLAN AND PROFILE OF MY PHUOC - TAN VAN ROAD (29/35)	SE2 - 30
				SUB-CONSULTANT		SCALE
				HUNG NGHIEP CONSTRUCTION CONSULTING CO., LTD		1/2000